

## FINAL SCORE



**Wyoming**

**40**



**South Dakota St.**

**67**

November 23, 2019 • Frost Arena - Brookings, SD

## FINAL STATISTICS

**Official Box Score**  
**Wyoming vs South Dakota St.**  
**Game Totals -- Final Statistics**  
**November 23, 2019 at Frost Arena - Brookings, SD**



**Wyoming 40**

No.	Player	S	Pts	FG	3FG	FT	OR	DR	TR	PF	A	TO	Blk	Stl	Min	+/-
01	ERJAVEC, KARLA	G	6	3-6	0-1	0-0	0	2	2	2	4	3	0	0	36	-23
02	VITULOVA, TEREZA	F	7	3-8	0-0	1-2	0	0	0	0	0	0	0	0	16	-4
04	RUSK, TAYLOR	F	8	3-11	2-5	0-0	1	6	7	0	0	1	0	1	34	-12
11	SANCHEZ RAMOS, ALBA	G	2	1-8	0-2	0-0	0	5	5	2	1	2	0	0	24	-16
14	WEIDEMANN, QUINN	G	4	2-4	0-1	0-0	1	5	6	1	0	2	0	0	32	-19
05	JOHNSON, JAYE	F	0	0-2	0-1	0-0	0	0	0	0	0	0	0	0	3	-4
10	KEPENC, SELALE	F	3	1-1	1-1	0-2	0	1	1	3	0	0	0	0	12	-15
12	BRADSHAW, MCKINLEY	G	2	1-4	0-3	0-0	0	0	0	4	1	0	0	1	14	-11
22	POWELL, PAIGE	F	3	1-2	1-2	0-0	0	0	0	0	0	0	0	0	5	-4
23	VAIFANUA, JAEDEN	F	5	2-4	0-0	1-4	4	1	5	1	0	1	1	0	12	-8
24	OLSON, TOMMI	G	0	0-0	0-0	0-0	0	0	0	0	0	1	0	2	12	-19
	TEAM						2	2	4	0		0				
<b>TOTALS</b>			<b>40</b>	<b>17-50</b>	<b>4-16</b>	<b>2-8</b>	<b>8</b>	<b>22</b>	<b>30</b>	<b>13</b>	<b>6</b>	<b>10</b>	<b>1</b>	<b>4</b>	<b>199</b>	

*Shooting By Period*

Period	FG	FG%	3FG	3FG%	FT	FT%
1st Qtr	6-12	50%	1-4	25%	0-0	0%
2nd Qtr	5-10	50%	1-2	50%	1-2	50%
3rd Qtr	2-13	15%	1-4	25%	0-2	00%
4th Qtr	4-15	27%	1-6	17%	1-4	25%
1st Half	11-22	50%	2-6	33%	1-2	50%
2nd Half	6-28	21%	2-10	20%	1-6	17%
<b>Game</b>	<b>17-50</b>	<b>34.0%</b>	<b>4-16</b>	<b>25.0%</b>	<b>2-8</b>	<b>25.0%</b>

*Deadball Rebounds: 3,1*  
*Last FG: 4th-03:05*  
*Biggest Run: 10-0*  
*Largest lead: By 4 at 1-06*  
*Technical Fouls: None.*

**South Dakota St. 67**

No.	Player	S	Pts	FG	3FG	FT	OR	DR	TR	PF	A	TO	Blk	Stl	Min	+/-
02	CASCIO JENSEN, RYLIE	G	7	3-5	1-2	0-0	0	3	3	0	1	0	0	1	33	26
20	NELSON, TORI	F	8	3-5	1-2	1-2	0	5	5	1	1	1	2	0	25	21
21	IRWIN, TYLEE	G	4	2-10	0-3	0-0	2	3	5	0	0	0	1	1	25	6
33	BURCKHARD, PAITON	F	7	3-9	0-0	1-1	3	3	6	0	2	0	0	0	20	17
44	SELLAND, MYAH	F	16	6-9	0-1	4-5	0	3	3	1	2	1	1	0	26	8
03	THEUNINCK, LINDSEY	G	6	2-2	1-1	1-2	0	1	1	0	3	2	0	2	21	18
10	RONGISCH, LAUREN	G	0	0-0	0-0	0-0	0	0	0	0	0	0	0	0	3	4
12	THEISEN, KALLIE	F	9	3-5	2-2	1-2	0	4	4	1	1	0	0	0	17	10
30	FERRAND, JORDAN	F	3	1-1	1-1	0-0	0	1	1	0	0	1	0	0	3	4
35	STAPLETON, SYDNEY	G	5	1-5	1-3	2-2	1	1	2	2	2	0	1	0	18	15
50	BULTSMA, MEGAN	C	2	1-3	0-0	0-0	1	3	4	1	0	0	1	0	6	2
52	HIRSCHMAN, ADDISON	C	0	0-0	0-0	0-0	0	1	1	0	0	0	0	0	3	4
	TEAM						1	0	1	0		1				
<b>TOTALS</b>			<b>67</b>	<b>25-54</b>	<b>7-15</b>	<b>10-14</b>	<b>8</b>	<b>28</b>	<b>36</b>	<b>6</b>	<b>12</b>	<b>6</b>	<b>6</b>	<b>4</b>	<b>199</b>	

*Shooting By Period*

Period	FG	FG%	3FG	3FG%	FT	FT%
1st Qtr	8-16	50%	1-5	20%	3-4	75%
2nd Qtr	5-13	38%	2-5	40%	2-4	50%
3rd Qtr	4-13	31%	1-2	50%	3-4	75%
4th Qtr	8-12	67%	3-3	100%	2-2	100%
1st Half	13-29	45%	3-10	30%	5-8	63%
2nd Half	12-25	48%	4-5	80%	5-6	83%
<b>Game</b>	<b>25-54</b>	<b>46.3%</b>	<b>7-15</b>	<b>46.7%</b>	<b>10-14</b>	<b>71.4%</b>

*Deadball Rebounds: 2,0*  
*Last FG: 4th-00:24*  
*Biggest Run: 12-0*  
*Largest lead: By 28 at 4-00*  
*Technical Fouls: None.*

Game Notes:

Officials: **Doug Knight, Marty Cook, Misty Overstreet**  
 Attendance: **1499**

Start Time: **07:05 PM ET**  
 End Time: **08:37 PM ET**  
 Game Duration: **1:31**

Score	1st	2nd	3rd	4th	TOT
WYO	13	12	5	10	<b>40</b>
SDS	20	14	12	21	<b>67</b>

**WYO led for 3:08. SDS led for 34:58.**  
**Game was tied for 1:48.**  
 Times tied: 2      Lead Changes: 2

Points from	WYO	SDS
In the Paint	24	32
Off Turns	0	17
2nd Chance	8	8
Fast Break	0	3
Bench	13	25

**Official Box Score**  
**Wyoming vs South Dakota St.**  
**First Half Statistics Only**  
**November 23, 2019 at Frost Arena - Brookings, SD**



### Wyoming 25

No.	Player	S	Pts	FG	3FG	FT	OR	DR	TR	PF	A	TO	Blk	Stl	Min	+/-
01	ERJAVEC, KARLA	G	2	1-1	0-0	0-0	0	2	2	1	2	2	0	0	20	-9
02	VITULOVA, TEREZA	F	7	3-7	0-0	1-2	0	0	0	0	0	0	0	0	13	-4
04	RUSK, TAYLOR	F	6	2-5	2-3	0-0	0	3	3	0	0	1	0	0	19	-5
05	JOHNSON, JAYE	F	0	0-0	0-0	0-0	0	0	0	0	0	0	0	0	0	0
10	KEPENC, SELALE	F	0	0-0	0-0	0-0	0	1	1	1	0	0	0	0	3	-6
11	SANCHEZ RAMOS, ALBA	G	2	1-4	0-2	0-0	0	2	2	1	1	1	0	0	14	-7
12	BRADSHAW, MCKINLEY	G	2	1-2	0-1	0-0	0	0	0	2	1	0	0	1	6	-2
14	WEIDEMANN, QUINN	G	4	2-2	0-0	0-0	0	3	3	1	0	2	0	0	16	-7
22	POWELL, PAIGE	F	0	0-0	0-0	0-0	0	0	0	0	0	0	0	0	0	0
23	VAIFANUA, JAEDEN	F	2	1-1	0-0	0-0	1	1	2	1	0	0	1	0	4	1
24	OLSON, TOMMI	G	0	0-0	0-0	0-0	0	0	0	0	0	1	0	1	5	-6
	TEAM		0	0-0	0-0	0-0	0	1	1	0	0	0	0	0	0	0
<b>TOTALS</b>			<b>25</b>	<b>11-22</b>	<b>2-6</b>	<b>1-2</b>	<b>1</b>	<b>13</b>	<b>14</b>	<b>7</b>	<b>4</b>	<b>7</b>	<b>1</b>	<b>2</b>	<b>100</b>	

#### Shooting By Period

Period	FG	FG%	3FG	3FG%	FT	FT%
1st Qtr	6-12	50%	1-4	25%	0-0	0%
2nd Qtr	5-10	50%	1-2	50%	1-2	50%
1st Half	11-22	50%	2-6	33%	1-2	50%
Game	17-50	34.0%	4-16	25.0%	2-8	25.0%

Deadball Rebounds: 3,1  
 Last FG Half: WYO 2nd-00:30

### South Dakota St. 34

No.	Player	S	Pts	FG	3FG	FT	OR	DR	TR	PF	A	TO	Blk	Stl	Min	+/-
02	CASCIO JENSEN, RYLIE	G	5	2-3	1-2	0-0	0	1	1	0	0	0	0	0	17	12
03	THEUNINCK, LINDSEY	G	6	2-2	1-1	1-2	0	0	0	0	2	2	0	2	13	14
10	RONGISCH, LAUREN	G	0	0-0	0-0	0-0	0	0	0	0	0	0	0	0	0	0
12	THEISEN, KALLIE	F	0	0-2	0-0	0-0	0	2	2	0	0	0	0	0	8	1
20	NELSON, TORI	F	5	2-3	0-1	1-2	0	2	2	0	0	0	0	0	12	8
21	IRWIN, TYLEE	G	2	1-5	0-3	0-0	1	2	3	0	0	0	0	1	15	-4
30	FERRAND, JORDAN	F	0	0-0	0-0	0-0	0	0	0	0	0	0	0	0	0	0
33	BURCKHARD, PAITON	F	5	2-5	0-0	1-1	3	2	5	0	1	0	0	0	12	8
35	STAPLETON, SYDNEY	G	3	1-3	1-2	0-0	0	1	1	1	0	0	0	0	7	5
44	SELLAND, MYAH	F	8	3-6	0-1	2-3	0	0	0	1	1	0	0	0	17	1
50	BULTSMA, MEGAN	C	0	0-0	0-0	0-0	0	0	0	0	0	0	0	0	0	0
52	HIRSCHMAN, ADDISON	C	0	0-0	0-0	0-0	0	0	0	0	0	0	0	0	0	0
	TEAM		0	0-0	0-0	0-0	0	0	0	0	0	0	0	0	0	0
<b>TOTALS</b>			<b>34</b>	<b>13-29</b>	<b>3-10</b>	<b>5-8</b>	<b>4</b>	<b>10</b>	<b>14</b>	<b>2</b>	<b>4</b>	<b>2</b>	<b>0</b>	<b>3</b>	<b>100</b>	

#### Shooting By Period

Period	FG	FG%	3FG	3FG%	FT	FT%
1st Qtr	8-16	50%	1-5	20%	3-4	75%
2nd Qtr	5-13	38%	2-5	40%	2-4	50%
1st Half	13-29	45%	3-10	30%	5-8	63%
Game	25-54	46.3%	7-15	46.7%	10-14	71.4%

Deadball Rebounds: 2,0  
 Last FG Half: SDS 2nd-00:01

#### Game Notes:

Officials: Doug Knight, Marty Cook, Misty Overstreet  
 Attendance: 1499

Start Time: 07:05 PM ET  
 End Time: 08:37 PM ET  
 Game Duration: 1:31

Score	1st	2nd	3rd	4th	TOT
WYO	13	12	5	10	<b>40</b>
SDS	20	14	12	21	<b>67</b>

Points from (This Period)	WYO	SDS
In the Paint	16	18
Off Turns	0	12
2nd Chance	3	3
Fast Break	0	3
Bench	4	9

**Official Box Score**  
**Wyoming vs South Dakota St.**  
**First Quarter Statistics Only**  
**November 23, 2019 at Frost Arena - Brookings, SD**



### Wyoming 13

No.	Player	S	Pts	FG	3FG	FT	OR	DR	TR	PF	A	TO	Blk	Stl	Min	+/-
01	ERJAVEC, KARLA	G	0	0-0	0-0	0-0	0	1	1	0	2	0	0	0	10	-7
02	VITULOVA, TEREZA	F	6	3-4	0-0	0-0	0	0	0	0	0	0	0	0	7	-1
04	RUSK, TAYLOR	F	3	1-3	1-2	0-0	0	1	1	0	0	0	0	0	9	-3
11	SANCHEZ RAMOS, ALBA	G	0	0-3	0-2	0-0	0	1	1	1	1	1	0	0	8	-4
14	WEIDEMANN, QUINN	G	2	1-1	0-0	0-0	0	2	2	1	0	1	0	0	6	-5
05	JOHNSON, JAYE	F	0	0-0	0-0	0-0	0	0	0	0	0	0	0	0	0	0
10	KEPENC, SELALE	F	0	0-0	0-0	0-0	0	1	1	1	0	0	0	0	3	-6
12	BRADSHAW, MCKINLEY	G	2	1-1	0-0	0-0	0	0	0	2	0	0	0	0	2	-3
22	POWELL, PAIGE	F	0	0-0	0-0	0-0	0	0	0	0	0	0	0	0	0	0
23	VAIFANUA, JAEDEN	F	0	0-0	0-0	0-0	0	0	0	0	0	0	0	0	0	0
24	OLSON, TOMMI	G	0	0-0	0-0	0-0	0	0	0	0	0	1	0	1	5	-6
	TEAM						0	0	0	0		0				
<b>TOTALS</b>			<b>13</b>	<b>6-12</b>	<b>1-4</b>	<b>0-0</b>	<b>0</b>	<b>6</b>	<b>6</b>	<b>5</b>	<b>3</b>	<b>3</b>	<b>0</b>	<b>1</b>	<b>50</b>	

#### Shooting By Period

Period	FG	FG%	3FG	3FG%	FT	FT%
1st Qtr	6-12	50%	1-4	25%	0-0	0%
2nd Qtr	5-10	50%	1-2	50%	1-2	50%
1st Half	6-12	50%	1-4	25%	0-0	0%
1st Half	11-22	50%	2-6	33%	1-2	50%
Game	17-50	34.0%	4-16	25.0%	2-8	25.0%

Deadball Rebounds: 3,1

### South Dakota St. 20

No.	Player	S	Pts	FG	3FG	FT	OR	DR	TR	PF	A	TO	Blk	Stl	Min	+/-
02	CASCIO JENSEN, RYLIE	G	5	2-3	1-2	0-0	0	1	1	0	0	0	0	0	10	7
20	NELSON, TORI	F	2	1-2	0-1	0-0	0	0	0	0	0	0	0	0	5	1
21	IRWIN, TYLEE	G	2	1-2	0-1	0-0	1	1	2	0	0	0	0	1	9	4
33	BURCKHARD, PAITON	F	3	1-2	0-0	1-1	1	2	3	0	1	0	0	0	5	1
44	SELLAND, MYAH	F	6	2-5	0-1	2-3	0	0	0	1	0	0	0	0	9	4
03	THEUNINCK, LINDSEY	G	2	1-1	0-0	0-0	0	0	0	0	1	1	0	1	6	9
10	RONGISCH, LAUREN	G	0	0-0	0-0	0-0	0	0	0	0	0	0	0	0	0	0
12	THEISEN, KALLIE	F	0	0-1	0-0	0-0	0	2	2	0	0	0	0	0	5	6
30	FERRAND, JORDAN	F	0	0-0	0-0	0-0	0	0	0	0	0	0	0	0	0	0
35	STAPLETON, SYDNEY	G	0	0-0	0-0	0-0	0	0	0	0	0	0	0	0	1	3
50	BULTSMA, MEGAN	C	0	0-0	0-0	0-0	0	0	0	0	0	0	0	0	0	0
52	HIRSCHMAN, ADDISON	C	0	0-0	0-0	0-0	0	0	0	0	0	0	0	0	0	0
	TEAM						0	0	0	0		0				
<b>TOTALS</b>			<b>20</b>	<b>8-16</b>	<b>1-5</b>	<b>3-4</b>	<b>2</b>	<b>6</b>	<b>8</b>	<b>1</b>	<b>2</b>	<b>1</b>	<b>0</b>	<b>2</b>	<b>50</b>	

#### Shooting By Period

Period	FG	FG%	3FG	3FG%	FT	FT%
1st Qtr	8-16	50%	1-5	20%	3-4	75%
2nd Qtr	5-13	38%	2-5	40%	2-4	50%
1st Half	8-16	50%	1-5	20%	3-4	75%
1st Half	13-29	45%	3-10	30%	5-8	63%
Game	25-54	46.3%	7-15	46.7%	10-14	71.4%

Deadball Rebounds: 2,0

#### Game Notes:

Officials: **Doug Knight, Marty Cook, Misty Overstreet**  
 Attendance: **1499**

Start Time: **07:05 PM ET**  
 End Time: **08:37 PM ET**  
 Game Duration: **1:31**

Score	1st	2nd	3rd	4th	TOT
WYO	13	12	5	10	<b>40</b>
SDS	20	14	12	21	<b>67</b>

Points from (This Period)	WYO	SDS
In the Paint	8	14
Off Turns	0	5
2nd Chance	0	2
Fast Break	0	3
Bench	2	2

**Official Play-By-Play**  
**Wyoming vs South Dakota St.**  
**First Quarter**  
**November 23, 2019 at Frost Arena - Brookings, SD**



**Period 1**

**Starters:**

**Wyoming:** 1 ERJAVEC, KARLA (G); 2 VITULOVA, TEREZA (F); 4 RUSK, TAYLOR (F); 11 SANCHEZ RAMOS, ALBA (G); 14 WEIDEMANN, QUINN (G);  
**South Dakota St.:** 2 CASCIO JENSEN, RYLIE (G); 20 NELSON, TORI (F); 21 IRWIN, TYLEE (G); 33 BURCKHARD, PAITON (F); 44 SELLAND, MYAH (F);

Time	VISITORS: Wyoming	Score	Margin	HOME: South Dakota St.
09:48				MISSED 3PTR by SELLAND, MYAH
09:42				REBOUND (OFF) by IRWIN, TYLEE
09:37		2-0	H 2	GOOD! LAYUP by SELLAND, MYAH
09:18	GOOD! LAYUP by VITULOVA, TEREZA [PNT]	2-2	T	
08:50				MISSED JUMPER by SELLAND, MYAH
08:46				REBOUND (OFF) by BURCKHARD, PAITON
08:45				MISSED 3PTR by IRWIN, TYLEE
08:41	REBOUND (DEF) by WEIDEMANN, QUINN			
08:34	GOOD! LAYUP by VITULOVA, TEREZA [PNT]	2-4	V 2	
08:34	ASSIST by SANCHEZ RAMOS, ALBA			
08:06				MISSED 3PTR by NELSON, TORI
08:03	REBOUND (DEF) by RUSK, TAYLOR			
07:52	MISSED 3PTR by SANCHEZ RAMOS, ALBA			
07:47				REBOUND (DEF) by BURCKHARD, PAITON
07:31				MISSED LAYUP by SELLAND, MYAH
07:27	REBOUND (DEF) by SANCHEZ RAMOS, ALBA			
07:13	MISSED LAYUP by RUSK, TAYLOR			
07:09				REBOUND (DEF) by BURCKHARD, PAITON
06:59				MISSED JUMPER by BURCKHARD, PAITON
06:55	REBOUND (DEF) by WEIDEMANN, QUINN			
06:30	GOOD! JUMPER by WEIDEMANN, QUINN	2-6	V 4	
06:09		4-6	V 2	GOOD! JUMPER by CASCIO JENSEN, RYLIE [PNT]
06:09				ASSIST by BURCKHARD, PAITON
05:55				SUB OUT: NELSON, TORI
05:55				SUB OUT: BURCKHARD, PAITON
05:55				SUB IN: THEUNINCK, LINDSEY
05:55				SUB IN: THEISEN, KALLIE
05:55	SUB OUT: RUSK, TAYLOR			
05:55	SUB OUT: SANCHEZ RAMOS, ALBA			
05:55	SUB IN: BRADSHAW, MCKINLEY			
05:55	SUB IN: OLSON, TOMMI			
05:44	TURNOVER (LOSTBALL) by WEIDEMANN, QUINN			
05:44				STEAL by THEUNINCK, LINDSEY
05:43	FOUL (PERSONAL) by WEIDEMANN, QUINN			
05:26		6-6	T	GOOD! JUMPER by IRWIN, TYLEE [PNT]
04:56	MISSED LAYUP by VITULOVA, TEREZA			
04:53				REBOUND (DEF) by THEISEN, KALLIE
04:45		8-6	H 2	GOOD! LAYUP by SELLAND, MYAH [FB]
04:45	FOUL (PERSONAL) by BRADSHAW, MCKINLEY			
04:45				
04:45	SUB OUT: WEIDEMANN, QUINN			
04:45	SUB IN: RUSK, TAYLOR			
04:45		9-6	H 3	GOOD! FT by SELLAND, MYAH [FB]
04:15	GOOD! LAYUP by BRADSHAW, MCKINLEY [PNT]	9-8	H 1	
04:04	FOUL (PERSONAL) by BRADSHAW, MCKINLEY			
04:02	SUB OUT: VITULOVA, TEREZA			
04:02	SUB OUT: BRADSHAW, MCKINLEY			
04:02	SUB IN: KEPENC, SELALE			
04:02	SUB IN: SANCHEZ RAMOS, ALBA			
04:02				MISSED FT by SELLAND, MYAH
04:02				REBOUND (OFF) by TEAM
04:02		10-8	H 2	GOOD! FT by SELLAND, MYAH
03:46	MISSED 3PTR by SANCHEZ RAMOS, ALBA			
03:42				REBOUND (DEF) by CASCIO JENSEN, RYLIE
03:30		13-8	H 5	GOOD! 3PTR by CASCIO JENSEN, RYLIE
03:30				ASSIST by THEUNINCK, LINDSEY
03:13	GOOD! 3PTR by RUSK, TAYLOR	13-11	H 2	
03:13	ASSIST by ERJAVEC, KARLA			
02:44		15-11	H 4	GOOD! LAYUP by THEUNINCK, LINDSEY
02:24	TURNOVER (BADPASS) by OLSON, TOMMI			
02:24				STEAL by IRWIN, TYLEE
02:14				MISSED 3PTR by CASCIO JENSEN, RYLIE
02:10	REBOUND (DEF) by ERJAVEC, KARLA			
02:04	MISSED LAYUP by SANCHEZ RAMOS, ALBA			
01:59				REBOUND (DEF) by THEISEN, KALLIE
01:37				TURNOVER (BADPASS) by THEUNINCK, LINDSEY
01:37	STEAL by OLSON, TOMMI			
01:30	MISSED 3PTR by RUSK, TAYLOR			
01:25				REBOUND (DEF) by IRWIN, TYLEE
01:14				MISSED LAYUP by THEISEN, KALLIE

Time	VISITORS: Wyoming	Score	Margin	HOME: South Dakota St.
01:10	REBOUND (DEF) by KEPENC, SELALE			
01:07				FOUL (PERSONAL) by SELLAND, MYAH
01:07				SUB OUT: THEISEN, KALLIE
01:07				SUB OUT: IRWIN, TYLEE
01:07				SUB OUT: SELLAND, MYAH
01:07				SUB IN: NELSON, TORI
01:07				SUB IN: BURCKHARD, PAITON
01:07				SUB IN: STAPLETON, SYDNEY
01:07	SUB OUT: OLSON, TOMMI			
01:07	SUB IN: WEIDEMANN, QUINN			
01:01	FOUL (OFF) by SANCHEZ RAMOS, ALBA			
01:01	TURNOVER (OFFENSIVE) by SANCHEZ RAMOS, ALBA			
00:38		17-11	H 6	GOOD! LAYUP by BURCKHARD, PAITON [PNT]
00:38	FOUL (PERSONAL) by KEPENC, SELALE			
00:38		18-11	H 7	GOOD! FT by BURCKHARD, PAITON
00:38	SUB OUT: KEPENC, SELALE			
00:38	SUB IN: VITULOVA, TEREZA			
00:26	GOOD! LAYUP by VITULOVA, TEREZA [PNT]	18-13	H 5	
00:26	ASSIST by ERJAVEC, KARLA			
00:02		20-13	H 7	GOOD! LAYUP by NELSON, TORI

### Wyoming 13, South Dakota St. 20

Points from (This Period)	WYO	SDS
In the Paint	8	14
Off Turns	0	5
2nd Chance	0	2
Fast Break	0	3
Bench	2	2

**Official Box Score**  
**Wyoming vs South Dakota St.**  
**Second Quarter Statistics Only**  
**November 23, 2019 at Frost Arena - Brookings, SD**



### Wyoming 12

No.	Player	S	Pts	FG	3FG	FT	OR	DR	TR	PF	A	TO	Blk	Stl	Min	+/-
01	ERJAVEC, KARLA	G	2	1-1	0-0	0-0	0	1	1	1	0	2	0	0	10	-2
02	VITULOVA, TEREZA	F	1	0-3	0-0	1-2	0	0	0	0	0	0	0	0	6	-3
04	RUSK, TAYLOR	F	3	1-2	1-1	0-0	0	2	2	0	0	1	0	0	10	-2
11	SANCHEZ RAMOS, ALBA	G	2	1-1	0-0	0-0	0	1	1	0	0	0	0	0	6	-3
14	WEIDEMANN, QUINN	G	2	1-1	0-0	0-0	0	1	1	0	0	1	0	0	10	-2
05	JOHNSON, JAYE	F	0	0-0	0-0	0-0	0	0	0	0	0	0	0	0	0	0
10	KEPENC, SELALE	F	0	0-0	0-0	0-0	0	0	0	0	0	0	0	0	0	0
12	BRADSHAW, MCKINLEY	G	0	0-1	0-1	0-0	0	0	0	0	1	0	0	1	4	1
22	POWELL, PAIGE	F	0	0-0	0-0	0-0	0	0	0	0	0	0	0	0	0	0
23	VAIFANUA, JAEDEN	F	2	1-1	0-0	0-0	1	1	2	1	0	0	1	0	4	1
24	OLSON, TOMMI	G	0	0-0	0-0	0-0	0	0	0	0	0	0	0	0	0	0
	TEAM						0	1	1	0		0				
<b>TOTALS</b>			<b>12</b>	<b>5-10</b>	<b>1-2</b>	<b>1-2</b>	<b>1</b>	<b>7</b>	<b>8</b>	<b>2</b>	<b>1</b>	<b>4</b>	<b>1</b>	<b>1</b>	<b>50</b>	

#### Shooting By Period

Period	FG	FG%	3FG	3FG%	FT	FT%
3rd Qtr	2-13	15%	1-4	25%	0-2	00%
4th Qtr	4-15	27%	1-6	17%	1-4	25%
2nd Half	5-10	50%	1-2	50%	1-2	50%
2nd Half	6-28	21%	2-10	20%	1-6	17%
Game	17-50	34.0%	4-16	25.0%	2-8	25.0%

Deadball Rebounds: 3,1

### South Dakota St. 14

No.	Player	S	Pts	FG	3FG	FT	OR	DR	TR	PF	A	TO	Blk	Stl	Min	+/-
02	CASCIO JENSEN, RYLIE	G	0	0-0	0-0	0-0	0	0	0	0	0	0	0	0	7	5
20	NELSON, TORI	F	3	1-1	0-0	1-2	0	2	2	0	0	0	0	0	7	7
21	IRWIN, TYLEE	G	0	0-3	0-2	0-0	0	1	1	0	0	0	0	0	6	-8
33	BURCKHARD, PAITON	F	2	1-3	0-0	0-0	2	0	2	0	0	0	0	0	7	7
44	SELLAND, MYAH	F	2	1-1	0-0	0-0	0	0	0	0	1	0	0	0	8	-3
03	THEUNINCK, LINDSEY	G	4	1-1	1-1	1-2	0	0	0	0	1	1	0	1	7	5
10	RONGISCH, LAUREN	G	0	0-0	0-0	0-0	0	0	0	0	0	0	0	0	0	0
12	THEISEN, KALLIE	F	0	0-1	0-0	0-0	0	0	0	0	0	0	0	0	3	-5
30	FERRAND, JORDAN	F	0	0-0	0-0	0-0	0	0	0	0	0	0	0	0	0	0
35	STAPLETON, SYDNEY	G	3	1-3	1-2	0-0	0	1	1	1	0	0	0	0	6	2
50	BULTSMA, MEGAN	C	0	0-0	0-0	0-0	0	0	0	0	0	0	0	0	0	0
52	HIRSCHMAN, ADDISON	C	0	0-0	0-0	0-0	0	0	0	0	0	0	0	0	0	0
	TEAM						0	0	0	0		0				
<b>TOTALS</b>			<b>14</b>	<b>5-13</b>	<b>2-5</b>	<b>2-4</b>	<b>2</b>	<b>4</b>	<b>6</b>	<b>1</b>	<b>2</b>	<b>1</b>	<b>0</b>	<b>1</b>	<b>50</b>	

#### Shooting By Period

Period	FG	FG%	3FG	3FG%	FT	FT%
3rd Qtr	4-13	31%	1-2	50%	3-4	75%
4th Qtr	8-12	67%	3-3	100%	2-2	100%
2nd Half	5-13	38%	2-5	40%	2-4	50%
2nd Half	12-25	48%	4-5	80%	5-6	83%
Game	25-54	46.3%	7-15	46.7%	10-14	71.4%

Deadball Rebounds: 2,0

#### Game Notes:

Officials: **Doug Knight, Marty Cook, Misty Overstreet**  
 Attendance: **1499**

Start Time: **07:05 PM ET**  
 End Time: **08:37 PM ET**  
 Game Duration: **1:31**

Score	1st	2nd	3rd	4th	TOT
WYO	13	12	5	10	<b>40</b>
SDS	20	14	12	21	<b>67</b>

Points from (This Period)	WYO	SDS
In the Paint	8	4
Off Turns	0	7
2nd Chance	3	1
Fast Break	0	0
Bench	2	7

**Official Play-By-Play**  
**Wyoming vs South Dakota St.**  
**Second Quarter**  
**November 23, 2019 at Frost Arena - Brookings, SD**



**Period 2**

**Starters:**

**Wyoming:** 1 ERJAVEC, KARLA (G); 2 VITULOVA, TEREZA (F); 4 RUSK, TAYLOR (F); 11 SANCHEZ RAMOS, ALBA (G); 14 WEIDEMANN, QUINN (G);  
**South Dakota St.:** 2 CASCIO JENSEN, RYLIE (G); 20 NELSON, TORI (F); 21 IRWIN, TYLEE (G); 33 BURCKHARD, PAITON (F); 44 SELLAND, MYAH (F);

Time	VISITORS: Wyoming	Score	Margin	HOME: South Dakota St.
09:41	MISSED JUMPER by VITULOVA, TEREZA			
09:38				REBOUND (DEF) by NELSON, TORI
09:27				MISSED JUMPER by BURCKHARD, PAITON
09:22	REBOUND (DEF) by SANCHEZ RAMOS, ALBA			
09:03	TURNOVER (BADPASS) by WEIDEMANN, QUINN			
09:03				STEAL by THEUNINCK, LINDSEY
08:40		22-13	H 9	GOOD! LAYUP by BURCKHARD, PAITON [PNT]
08:23	MISSED LAYUP by VITULOVA, TEREZA			
08:20				REBOUND (DEF) by STAPLETON, SYDNEY
08:09		25-13	H 12	GOOD! 3PTR by STAPLETON, SYDNEY
08:09				ASSIST by THEUNINCK, LINDSEY
07:56	TIMEOUT 30SEC			
07:56				SUB OUT: CASCIO JENSEN, RYLIE
07:56				SUB OUT: THEUNINCK, LINDSEY
07:56				SUB IN: IRWIN, TYLEE
07:56				SUB IN: SELLAND, MYAH
07:40	TURNOVER (BADPASS) by ERJAVEC, KARLA			
07:15		27-13	H 14	GOOD! JUMPER by NELSON, TORI
06:59				FOUL (PERSONAL) by STAPLETON, SYDNEY
06:59	MISSED FT by VITULOVA, TEREZA			
06:59	REBOUND (OFF) by TEAM			
06:59	GOOD! FT by VITULOVA, TEREZA	27-14	H 13	
06:43				MISSED 3PTR by IRWIN, TYLEE
06:40	REBOUND (DEF) by WEIDEMANN, QUINN			
06:30	MISSED LAYUP by VITULOVA, TEREZA			
06:26				REBOUND (DEF) by IRWIN, TYLEE
06:02				MISSED JUMPER by STAPLETON, SYDNEY
05:59				REBOUND (OFF) by BURCKHARD, PAITON
05:57				MISSED LAYUP by BURCKHARD, PAITON
05:53	REBOUND (DEF) by RUSK, TAYLOR			
05:36	GOOD! LAYUP by ERJAVEC, KARLA [PNT]	27-16	H 11	
05:21				MISSED JUMPER by IRWIN, TYLEE
05:16	REBOUND (DEF) by RUSK, TAYLOR			
04:49	GOOD! LAYUP by SANCHEZ RAMOS, ALBA [PNT]	27-18	H 9	
04:35				MISSED 3PTR by STAPLETON, SYDNEY
04:30	REBOUND (DEF) by TEAM			
04:30				SUB OUT: NELSON, TORI
04:30				SUB OUT: BURCKHARD, PAITON
04:30				SUB OUT: STAPLETON, SYDNEY
04:30				SUB IN: CASCIO JENSEN, RYLIE
04:30				SUB IN: THEUNINCK, LINDSEY
04:30				SUB IN: THEISEN, KALLIE
04:30	SUB OUT: VITULOVA, TEREZA			
04:30	SUB OUT: SANCHEZ RAMOS, ALBA			
04:30	SUB IN: BRADSHAW, MCKINLEY			
04:30	SUB IN: VAIFANUA, JAEDEN			
04:13	GOOD! LAYUP by VAIFANUA, JAEDEN	27-20	H 7	
03:53				TURNOVER (BADPASS) by THEUNINCK, LINDSEY
03:53	STEAL by BRADSHAW, MCKINLEY			
03:34	TURNOVER (BADPASS) by RUSK, TAYLOR			
03:10				MISSED 3PTR by IRWIN, TYLEE
03:06	REBOUND (DEF) by ERJAVEC, KARLA			
02:37	MISSED 3PTR by BRADSHAW, MCKINLEY			
02:32	REBOUND (OFF) by VAIFANUA, JAEDEN			
02:14	GOOD! 3PTR by RUSK, TAYLOR	27-23	H 4	
02:14	ASSIST by BRADSHAW, MCKINLEY			
01:52				MISSED JUMPER by THEISEN, KALLIE
01:52	BLOCK by VAIFANUA, JAEDEN			
01:46	REBOUND (DEF) by VAIFANUA, JAEDEN			
01:45	TURNOVER (TRAVEL) by ERJAVEC, KARLA			
01:45				SUB OUT: THEISEN, KALLIE
01:45				SUB OUT: IRWIN, TYLEE
01:45				SUB IN: NELSON, TORI
01:45				SUB IN: BURCKHARD, PAITON
01:31		30-23	H 7	GOOD! 3PTR by THEUNINCK, LINDSEY
01:31				ASSIST by SELLAND, MYAH
01:08	MISSED JUMPER by RUSK, TAYLOR			
01:03				REBOUND (DEF) by NELSON, TORI
00:58	FOUL (PERSONAL) by ERJAVEC, KARLA			
00:58		31-23	H 8	GOOD! FT by THEUNINCK, LINDSEY



Time	VISITORS: Wyoming	Score	Margin	HOME: South Dakota St.
00:58				MISSED FT by THEUNINCK, LINDSEY
00:57				REBOUND (OFF) by BURCKHARD, PAITON
00:55	FOUL (PERSONAL) by VAIFANUA, JAELEN			
00:55	SUB OUT: BRADSHAW, MCKINLEY			
00:55	SUB OUT: VAIFANUA, JAELEN			
00:55	SUB IN: VITULOVA, TEREZA			
00:55	SUB IN: SANCHEZ RAMOS, ALBA			
00:55				MISSED FT by NELSON, TORI
00:55				REBOUND (OFF) by TEAM
00:55		32-23	H 9	GOOD! FT by NELSON, TORI
00:30	GOOD! LAYUP by WEIDEMANN, QUINN	32-25	H 7	
00:01		34-25	H 9	GOOD! LAYUP by SELLAND, MYAH [PNT]

**Wyoming 25, South Dakota St. 34**

Points from (This Period)	WYO	SDS
In the Paint	8	4
Off Turns	0	7
2nd Chance	3	1
Fast Break	0	0
Bench	2	7

**Official Box Score**  
**Wyoming vs South Dakota St.**  
**Second Half Statistics Only**  
**November 23, 2019 at Frost Arena - Brookings, SD**



**Wyoming 15**

No.	Player	S	Pts	FG	3FG	FT	OR	DR	TR	PF	A	TO	Blk	Stl	Min	+/-
01	ERJAVEC, KARLA	G	4	2-5	0-1	0-0	0	0	0	1	2	1	0	0	16	-14
02	VITULOVA, TEREZA	F	0	0-1	0-0	0-0	0	0	0	0	0	0	0	0	3	0
04	RUSK, TAYLOR	F	2	1-6	0-2	0-0	1	3	4	0	0	0	0	1	15	-7
05	JOHNSON, JAYE	F	0	0-2	0-1	0-0	0	0	0	0	0	0	0	0	3	-4
10	KEPENC, SELALE	F	3	1-1	1-1	0-2	0	0	0	2	0	0	0	0	8	-9
11	SANCHEZ RAMOS, ALBA	G	0	0-4	0-0	0-0	0	3	3	1	0	1	0	0	9	-9
12	BRADSHAW, MCKINLEY	G	0	0-2	0-2	0-0	0	0	0	2	0	0	0	0	8	-9
14	WEIDEMANN, QUINN	G	0	0-2	0-1	0-0	1	2	3	0	0	0	0	0	16	-12
22	POWELL, PAIGE	F	3	1-2	1-2	0-0	0	0	0	0	0	0	0	0	5	-4
23	VAIFANUA, JAEDEN	F	3	1-3	0-0	1-4	3	0	3	0	0	1	0	0	9	-9
24	OLSON, TOMMI	G	0	0-0	0-0	0-0	0	0	0	0	0	0	0	1	7	-13
	TEAM		0	0-0	0-0	0-0	2	1	3	0	0	0	0	0	0	0
	<b>TOTALS</b>		<b>15</b>	<b>6-28</b>	<b>2-10</b>	<b>1-6</b>	<b>7</b>	<b>9</b>	<b>16</b>	<b>6</b>	<b>2</b>	<b>3</b>	<b>0</b>	<b>2</b>	<b>99</b>	

*Shooting By Period*

Period	FG	FG%	3FG	3FG%	FT	FT%
3rd Qtr	2-13	15%	1-4	25%	0-2	00%
4th Qtr	4-15	27%	1-6	17%	1-4	25%
2nd Half	6-28	21%	2-10	20%	1-6	17%
Game	17-50	34.0%	4-16	25.0%	2-8	25.0%

Deadball Rebounds: 3,1  
 Last FG Half: WYO 4th-03:05

**South Dakota St. 33**

No.	Player	S	Pts	FG	3FG	FT	OR	DR	TR	PF	A	TO	Blk	Stl	Min	+/-
02	CASCIO JENSEN, RYLIE	G	2	1-2	0-0	0-0	0	2	2	0	1	0	0	1	16	14
03	THEUNINCK, LINDSEY	G	0	0-0	0-0	0-0	0	1	1	0	1	0	0	0	8	4
10	RONGISCH, LAUREN	G	0	0-0	0-0	0-0	0	0	0	0	0	0	0	0	3	4
12	THEISEN, KALLIE	F	9	3-3	2-2	1-2	0	2	2	1	1	0	0	0	10	9
20	NELSON, TORI	F	3	1-2	1-1	0-0	0	3	3	1	1	1	2	0	12	13
21	IRWIN, TYLEE	G	2	1-5	0-0	0-0	1	1	2	0	0	0	1	0	10	10
30	FERRAND, JORDAN	F	3	1-1	1-1	0-0	0	1	1	0	0	1	0	0	3	4
33	BURCKHARD, PAITON	F	2	1-4	0-0	0-0	0	1	1	0	1	0	0	0	7	9
35	STAPLETON, SYDNEY	G	2	0-2	0-1	2-2	1	0	1	1	2	0	1	0	11	10
44	SELLAND, MYAH	F	8	3-3	0-0	2-2	0	3	3	0	1	1	1	0	10	7
50	BULTSMA, MEGAN	C	2	1-3	0-0	0-0	1	3	4	1	0	0	1	0	6	2
52	HIRSCHMAN, ADDISON	C	0	0-0	0-0	0-0	0	1	1	0	0	0	0	0	3	4
	TEAM		0	0-0	0-0	0-0	1	0	1	0	0	1	0	0	0	0
	<b>TOTALS</b>		<b>33</b>	<b>12-25</b>	<b>4-5</b>	<b>5-6</b>	<b>4</b>	<b>18</b>	<b>22</b>	<b>4</b>	<b>8</b>	<b>4</b>	<b>6</b>	<b>1</b>	<b>99</b>	

*Shooting By Period*

Period	FG	FG%	3FG	3FG%	FT	FT%
3rd Qtr	4-13	31%	1-2	50%	3-4	75%
4th Qtr	8-12	67%	3-3	100%	2-2	100%
2nd Half	12-25	48%	4-5	80%	5-6	83%
Game	25-54	46.3%	7-15	46.7%	10-14	71.4%

Deadball Rebounds: 2,0  
 Last FG Half: SDS 4th-00:24

Game Notes:

Officials: Doug Knight, Marty Cook, Misty Overstreet  
 Attendance: 1499

Start Time: 07:05 PM ET  
 End Time: 08:37 PM ET  
 Game Duration: 1:31

Score	1st	2nd	3rd	4th	TOT
WYO	13	12	5	10	40
SDS	20	14	12	21	67

Points from (This Period)	WYO	SDS
In the Paint	8	14
Off Turns	0	5
2nd Chance	5	5
Fast Break	0	0
Bench	9	16

**Official Box Score**  
**Wyoming vs South Dakota St.**  
**Third Quarter Statistics Only**  
**November 23, 2019 at Frost Arena - Brookings, SD**



### Wyoming 15

No.	Player	S	Pts	FG	3FG	FT	OR	DR	TR	PF	A	TO	Blk	Stl	Min	+/-
01	ERJAVEC, KARLA	G	0	0-1	0-0	0-0	0	0	0	0	1	1	0	0	9	-7
02	VITULOVA, TEREZA	F	0	0-1	0-0	0-0	0	0	0	0	0	0	0	0	3	0
04	RUSK, TAYLOR	F	2	1-5	0-1	0-0	1	2	3	0	0	0	0	1	10	-7
11	SANCHEZ RAMOS, ALBA	G	0	0-2	0-0	0-0	0	2	2	1	0	1	0	0	6	-4
14	WEIDEMANN, QUINN	G	0	0-2	0-1	0-0	0	2	2	0	0	0	0	0	10	-7
05	JOHNSON, JAYE	F	0	0-0	0-0	0-0	0	0	0	0	0	0	0	0	0	0
10	KEPENC, SELALE	F	3	1-1	1-1	0-2	0	0	0	1	0	0	0	0	7	-7
12	BRADSHAW, MCKINLEY	G	0	0-1	0-1	0-0	0	0	0	1	0	0	0	0	4	-3
22	POWELL, PAIGE	F	0	0-0	0-0	0-0	0	0	0	0	0	0	0	0	0	0
23	VAFANUA, JAEDEN	F	0	0-0	0-0	0-0	0	0	0	0	0	0	0	0	0	0
24	OLSON, TOMMI	G	0	0-0	0-0	0-0	0	0	0	0	0	0	0	1	1	0
TEAM							1	1	2	0		0				
<b>TOTALS</b>			<b>5</b>	<b>2-13</b>	<b>1-4</b>	<b>0-2</b>	<b>2</b>	<b>7</b>	<b>9</b>	<b>3</b>	<b>1</b>	<b>2</b>	<b>0</b>	<b>2</b>	<b>50</b>	

*Shooting By Period*

Period	FG	FG%	3FG	3FG%	FT	FT%
2nd Half	0-0	0%	0-0	0%	0-0	0%
Game	17-50	34.0%	4-16	25.0%	2-8	25.0%

*Deadball Rebounds: 3,1*

### South Dakota St. 33

No.	Player	S	Pts	FG	3FG	FT	OR	DR	TR	PF	A	TO	Blk	Stl	Min	+/-
02	CASCIO JENSEN, RYLIE	G	2	1-1	0-0	0-0	0	1	1	0	0	0	0	1	9	7
20	NELSON, TORI	F	0	0-1	0-0	0-0	0	2	2	0	1	1	1	0	9	10
21	IRWIN, TYLEE	G	2	1-5	0-0	0-0	0	1	1	0	0	0	1	0	7	4
33	BURCKHARD, PAITON	F	0	0-3	0-0	0-0	0	1	1	0	0	0	0	0	4	0
44	SELLAND, MYAH	F	4	1-1	0-0	2-2	0	2	2	0	0	1	1	0	7	1
03	THEUNINCK, LINDSEY	G	0	0-0	0-0	0-0	0	1	1	0	1	0	0	0	4	3
10	RONGISCH, LAUREN	G	0	0-0	0-0	0-0	0	0	0	0	0	0	0	0	0	0
12	THEISEN, KALLIE	F	4	1-1	1-1	1-2	0	2	2	0	0	0	0	0	6	7
30	FERRAND, JORDAN	F	0	0-0	0-0	0-0	0	0	0	0	0	0	0	0	0	0
35	STAPLETON, SYDNEY	G	0	0-1	0-1	0-0	1	0	1	1	0	0	0	0	4	3
50	BULTSMA, MEGAN	C	0	0-0	0-0	0-0	0	0	0	0	0	0	0	0	0	0
52	HIRSCHMAN, ADDISON	C	0	0-0	0-0	0-0	0	0	0	0	0	0	0	0	0	0
TEAM							1	0	1	0		0				
<b>TOTALS</b>			<b>12</b>	<b>4-13</b>	<b>1-2</b>	<b>3-4</b>	<b>2</b>	<b>10</b>	<b>12</b>	<b>1</b>	<b>2</b>	<b>2</b>	<b>3</b>	<b>1</b>	<b>50</b>	

*Shooting By Period*

Period	FG	FG%	3FG	3FG%	FT	FT%
2nd Half	0-0	0%	0-0	0%	0-0	0%
Game	25-54	46.3%	7-15	46.7%	10-14	71.4%

*Deadball Rebounds: 2,0*

*Game Notes:*

Officials: **Doug Knight, Marty Cook, Misty Overstreet**  
Attendance: **1499**

Start Time: **07:05 PM ET**  
End Time: **08:37 PM ET**  
Game Duration: **1:31**

Score	1st	2nd	3rd	4th	TOT
WYO	13	12	5	10	<b>40</b>
SDS	20	14	12	21	<b>67</b>

Points from (This Period)	WYO	SDS
In the Paint	2	4
Off Turns	0	2
2nd Chance	2	3
Fast Break	0	0
Bench	3	4

**Official Play-By-Play**  
**Wyoming vs South Dakota St.**  
**Third Quarter**  
**November 23, 2019 at Frost Arena - Brookings, SD**



**Period 3**

**Starters:**

**Wyoming:** 1 ERJAVEC, KARLA (G); 2 VITULOVA, TEREZA (F); 4 RUSK, TAYLOR (F); 11 SANCHEZ RAMOS, ALBA (G); 14 WEIDEMANN, QUINN (G);  
**South Dakota St.:** 2 CASCIO JENSEN, RYLIE (G); 20 NELSON, TORI (F); 21 IRWIN, TYLEE (G); 33 BURCKHARD, PAITON (F); 44 SELLAND, MYAH (F);

Time	VISITORS: Wyoming	Score	Margin	HOME: South Dakota St.
10:00				SUB OUT: THEUNINCK, LINDSEY
10:00				SUB IN: IRWIN, TYLEE
09:47	FOUL (PERSONAL) by SANCHEZ RAMOS, ALBA			
09:46		35-25	H 10	GOOD! FT by SELLAND, MYAH
09:46		36-25	H 11	GOOD! FT by SELLAND, MYAH
09:29	MISSED LAYUP by VITULOVA, TEREZA			
09:25				REBOUND (DEF) by IRWIN, TYLEE
09:10				TURNOVER (BADPASS) by NELSON, TORI
09:10	STEAL by RUSK, TAYLOR			
08:59	MISSED 3PTR by WEIDEMANN, QUINN			
08:55				REBOUND (DEF) by SELLAND, MYAH
08:40				MISSED LAYUP by BURCKHARD, PAITON
08:37	REBOUND (DEF) by SANCHEZ RAMOS, ALBA			
08:22	MISSED LAYUP by ERJAVEC, KARLA			
08:22				BLOCK by IRWIN, TYLEE
08:21	REBOUND (OFF) by TEAM			
08:12	MISSED JUMPER by SANCHEZ RAMOS, ALBA			
08:08				REBOUND (DEF) by BURCKHARD, PAITON
08:00				MISSED LAYUP by BURCKHARD, PAITON
07:57	REBOUND (DEF) by SANCHEZ RAMOS, ALBA			
07:42	TURNOVER (LOSTBALL) by SANCHEZ RAMOS, ALBA			
07:42				STEAL by CASCIO JENSEN, RYLIE
07:36				MISSED LAYUP by IRWIN, TYLEE
07:33	REBOUND (DEF) by WEIDEMANN, QUINN			
07:15	MISSED LAYUP by RUSK, TAYLOR			
07:07	REBOUND (OFF) by RUSK, TAYLOR			
07:07	GOOD! LAYUP by RUSK, TAYLOR	36-27	H 9	
06:56				MISSED JUMPER by BURCKHARD, PAITON
06:51	REBOUND (DEF) by RUSK, TAYLOR			
06:50	TURNOVER (TRAVEL) by ERJAVEC, KARLA			
06:50	SUB OUT: VITULOVA, TEREZA			
06:50	SUB IN: KEPENC, SELALE			
06:34		38-27	H 11	GOOD! LAYUP by SELLAND, MYAH [PNT]
06:05	MISSED JUMPER by SANCHEZ RAMOS, ALBA			
06:05				BLOCK by NELSON, TORI
05:58				REBOUND (DEF) by NELSON, TORI
05:43		40-27	H 13	GOOD! LAYUP by IRWIN, TYLEE
05:14	MISSED LAYUP by RUSK, TAYLOR			
05:14				BLOCK by SELLAND, MYAH
05:09				REBOUND (DEF) by SELLAND, MYAH
05:00				MISSED JUMPER by IRWIN, TYLEE
04:55	REBOUND (DEF) by WEIDEMANN, QUINN			
04:44	MISSED 3PTR by RUSK, TAYLOR			
04:30				REBOUND (DEF) by THEISEN, KALLIE
04:16				MISSED JUMPER by IRWIN, TYLEE
04:10	REBOUND (DEF) by TEAM			
04:10				
06:50				SUB OUT: BURCKHARD, PAITON
06:50				SUB IN: THEISEN, KALLIE
04:10				SUB OUT: NELSON, TORI
04:10				SUB OUT: IRWIN, TYLEE
04:10				SUB IN: THEUNINCK, LINDSEY
04:10				SUB IN: STAPLETON, SYDNEY
04:10	SUB OUT: SANCHEZ RAMOS, ALBA			
04:10	SUB IN: BRADSHAW, MCKINLEY			
04:02	GOOD! 3PTR by KEPENC, SELALE	40-30	H 10	
04:02	ASSIST by ERJAVEC, KARLA			
03:39	FOUL (PERSONAL) by BRADSHAW, MCKINLEY			
03:38				SUB OUT: SELLAND, MYAH
03:38				SUB IN: NELSON, TORI
03:38		41-30	H 11	GOOD! FT by THEISEN, KALLIE
03:38				MISSED FT by THEISEN, KALLIE
03:38	REBOUND (DEF) by RUSK, TAYLOR			
03:14	MISSED LAYUP by RUSK, TAYLOR			
03:10				REBOUND (DEF) by THEISEN, KALLIE
02:50				MISSED LAYUP by NELSON, TORI
02:46				REBOUND (OFF) by STAPLETON, SYDNEY
02:26		44-30	H 14	GOOD! 3PTR by THEISEN, KALLIE
02:26				ASSIST by THEUNINCK, LINDSEY
02:03	MISSED 3PTR by BRADSHAW, MCKINLEY			

Time	VISITORS: Wyoming	Score	Margin	HOME: South Dakota St.
02:00				REBOUND (DEF) by THEUNINCK, LINDSEY
01:34		46-30	H 16	GOOD! JUMPER by CASCIO JENSEN, RYLIE
01:34				ASSIST by NELSON, TORI
01:12	MISSED LAYUP by WEIDEMANN, QUINN			
01:08				REBOUND (DEF) by CASCIO JENSEN, RYLIE
01:04				MISSED 3PTR by STAPLETON, SYDNEY
01:01	REBOUND (DEF) by TEAM			
01:01				SUB OUT: CASCIO JENSEN, RYLIE
01:01				SUB OUT: THEISEN, KALLIE
01:01				SUB IN: IRWIN, TYLEE
01:01				SUB IN: BURCKHARD, PAITON
01:01	SUB OUT: ERJAVEC, KARLA			
01:01	SUB IN: OLSON, TOMMI			
00:44				FOUL (PERSONAL) by STAPLETON, SYDNEY
00:43	MISSED FT by KEPENC, SELALE			
00:43	REBOUND (OFF) by TEAM			
00:43	MISSED FT by KEPENC, SELALE			
00:43				REBOUND (DEF) by NELSON, TORI
00:14				MISSED JUMPER by IRWIN, TYLEE
00:12				REBOUND (OFF) by TEAM
00:12				SUB OUT: NELSON, TORI
00:12				SUB IN: SELLAND, MYAH
00:12				SUB OUT: THEUNINCK, LINDSEY
00:12				SUB IN: CASCIO JENSEN, RYLIE
00:01	FOUL (PERSONAL) by KEPENC, SELALE			
00:00				TURNOVER (LOSTBALL) by SELLAND, MYAH
00:00	STEAL by OLSON, TOMMI			

### Wyoming 30, South Dakota St. 46

Points from (This Period)	WYO	SDS
In the Paint	2	4
Off Turns	0	2
2nd Chance	2	3
Fast Break	0	0
Bench	3	4

**Official Box Score**  
**Wyoming vs South Dakota St.**  
**Fourth Quarter Statistics Only**  
**November 23, 2019 at Frost Arena - Brookings, SD**



**Wyoming 10**

No.	Player	S	Pts	FG	3FG	FT	OR	DR	TR	PF	A	TO	Blk	Stl	Min	+/-
01	ERJAVEC, KARLA	G	4	2-4	0-1	0-0	0	0	0	1	1	0	0	0	7	-7
02	VITULOVA, TEREZA	F	0	0-0	0-0	0-0	0	0	0	0	0	0	0	0	0	0
04	RUSK, TAYLOR	F	0	0-1	0-1	0-0	0	1	1	0	0	0	0	0	5	0
11	SANCHEZ RAMOS, ALBA	G	0	0-2	0-0	0-0	0	1	1	0	0	0	0	0	3	-5
14	WEIDEMANN, QUINN	G	0	0-0	0-0	0-0	1	0	1	0	0	0	0	0	6	-5
05	JOHNSON, JAYE	F	0	0-2	0-1	0-0	0	0	0	0	0	0	0	0	3	-4
10	KEPENC, SELALE	F	0	0-0	0-0	0-0	0	0	0	1	0	0	0	0	1	-2
12	BRADSHAW, MCKINLEY	G	0	0-1	0-1	0-0	0	0	0	1	0	0	0	0	4	-6
22	POWELL, PAIGE	F	3	1-2	1-2	0-0	0	0	0	0	0	0	0	0	5	-4
23	VAIFANUA, JAEDEN	F	3	1-3	0-0	1-4	3	0	3	0	0	1	0	0	9	-9
24	OLSON, TOMMI	G	0	0-0	0-0	0-0	0	0	0	0	0	0	0	0	6	-13
	TEAM						1	0	1	0		0				
<b>TOTALS</b>			<b>10</b>	<b>4-15</b>	<b>1-6</b>	<b>1-4</b>	<b>5</b>	<b>2</b>	<b>7</b>	<b>3</b>	<b>1</b>	<b>1</b>	<b>0</b>	<b>0</b>	<b>49</b>	

*Shooting By Period*

Period	FG	FG%	3FG	3FG%	FT	FT%
Game	17-50	34.0%	4-16	25.0%	2-8	25.0%

*Deadball Rebounds: 3,1*

**South Dakota St. 21**

No.	Player	S	Pts	FG	3FG	FT	OR	DR	TR	PF	A	TO	Blk	Stl	Min	+/-
02	CASCIO JENSEN, RYLIE	G	0	0-1	0-0	0-0	0	1	1	0	1	0	0	0	7	7
20	NELSON, TORI	F	3	1-1	1-1	0-0	0	1	1	1	0	0	1	0	3	3
21	IRWIN, TYLEE	G	0	0-0	0-0	0-0	1	0	1	0	0	0	0	0	3	6
33	BURCKHARD, PAITON	F	2	1-1	0-0	0-0	0	0	0	0	1	0	0	0	3	9
44	SELLAND, MYAH	F	4	2-2	0-0	0-0	0	1	1	0	1	0	0	0	3	6
03	THEUNINCK, LINDSEY	G	0	0-0	0-0	0-0	0	0	0	0	0	0	0	0	4	1
10	RONGISCH, LAUREN	G	0	0-0	0-0	0-0	0	0	0	0	0	0	0	0	3	4
12	THEISEN, KALLIE	F	5	2-2	1-1	0-0	0	0	0	1	1	0	0	0	4	2
30	FERRAND, JORDAN	F	3	1-1	1-1	0-0	0	1	1	0	0	1	0	0	3	4
35	STAPLETON, SYDNEY	G	2	0-1	0-0	2-2	0	0	0	0	2	0	1	0	7	7
50	BULTSMA, MEGAN	C	2	1-3	0-0	0-0	1	3	4	1	0	0	1	0	6	2
52	HIRSCHMAN, ADDISON	C	0	0-0	0-0	0-0	0	1	1	0	0	0	0	0	3	4
	TEAM						0	0	0	0		1				
<b>TOTALS</b>			<b>21</b>	<b>8-12</b>	<b>3-3</b>	<b>2-2</b>	<b>2</b>	<b>8</b>	<b>10</b>	<b>3</b>	<b>6</b>	<b>2</b>	<b>3</b>	<b>0</b>	<b>49</b>	

*Shooting By Period*

Period	FG	FG%	3FG	3FG%	FT	FT%
Game	25-54	46.3%	7-15	46.7%	10-14	71.4%

*Deadball Rebounds: 2,0*

*Game Notes:*

Officials: **Doug Knight, Marty Cook, Misty Overstreet**  
 Attendance: **1499**

Start Time: **07:05 PM ET**  
 End Time: **08:37 PM ET**  
 Game Duration: **1:31**

Score	1st	2nd	3rd	4th	TOT
WYO	13	12	5	10	<b>40</b>
SDS	20	14	12	21	<b>67</b>

Points from (This Period)	WYO	SDS
In the Paint	6	10
Off Turns	0	3
2nd Chance	3	2
Fast Break	0	0
Bench	6	12

**Official Play-By-Play**  
**Wyoming vs South Dakota St.**  
**Fourth Quarter**  
**November 23, 2019 at Frost Arena - Brookings, SD**



**Period 4**

**Starters:**

**Wyoming:** 1 ERJAVEC, KARLA (G); 2 VITULOVA, TEREZA (F); 4 RUSK, TAYLOR (F); 11 SANCHEZ RAMOS, ALBA (G); 14 WEIDEMANN, QUINN (G);  
**South Dakota St.:** 2 CASCIO JENSEN, RYLIE (G); 20 NELSON, TORI (F); 21 IRWIN, TYLEE (G); 33 BURCKHARD, PAITON (F); 44 SELLAND, MYAH (F);

Time	VISITORS: Wyoming	Score	Margin	HOME: South Dakota St.
10:00	SUB OUT: WEIDEMANN, QUINN			
10:00	SUB IN: ERJAVEC, KARLA			
09:41				MISSED LAYUP by STAPLETON, SYDNEY
09:38				REBOUND (OFF) by IRWIN, TYLEE
09:26	FOUL (PERSONAL) by ERJAVEC, KARLA			
09:17		48-30	H 18	GOOD! LAYUP by SELLAND, MYAH
09:17				ASSIST by BURCKHARD, PAITON
09:07	MISSED 3PTR by BRADSHAW, MCKINLEY			
09:03				REBOUND (DEF) by CASCIO JENSEN, RYLIE
08:38	FOUL (PERSONAL) by KEPENC, SELALE			
08:38	SUB OUT: BRADSHAW, MCKINLEY			
08:38	SUB IN: SANCHEZ RAMOS, ALBA			
08:38	SUB OUT: RUSK, TAYLOR			
08:38	SUB OUT: KEPENC, SELALE			
08:38	SUB IN: WEIDEMANN, QUINN			
08:38	SUB IN: VAIFANUA, JAEDEN			
08:38		49-30	H 19	GOOD! FT by STAPLETON, SYDNEY
08:38		50-30	H 20	GOOD! FT by STAPLETON, SYDNEY
08:28	MISSED 3PTR by ERJAVEC, KARLA			
08:25				REBOUND (DEF) by SELLAND, MYAH
08:19		52-30	H 22	GOOD! LAYUP by SELLAND, MYAH [PNT]
07:58	MISSED JUMPER by ERJAVEC, KARLA			
07:48	REBOUND (OFF) by VAIFANUA, JAEDEN			
07:48	GOOD! LAYUP by VAIFANUA, JAEDEN	52-32	H 20	
07:25		54-32	H 22	GOOD! LAYUP by BURCKHARD, PAITON
07:25				ASSIST by SELLAND, MYAH
07:08	MISSED LAYUP by VAIFANUA, JAEDEN			
07:04	REBOUND (OFF) by VAIFANUA, JAEDEN			
07:03	TURNOVER (BADPASS) by VAIFANUA, JAEDEN			
07:01				SUB OUT: IRWIN, TYLEE
07:01				SUB OUT: SELLAND, MYAH
07:01				SUB IN: THEUNINCK, LINDSEY
07:01				SUB IN: NELSON, TORI
06:45		57-32	H 25	GOOD! 3PTR by NELSON, TORI
06:45				ASSIST by CASCIO JENSEN, RYLIE
06:34				SUB OUT: BURCKHARD, PAITON
06:34				SUB IN: BULTSMA, MEGAN
06:34	SUB OUT: OLSON, TOMMI			
06:34	SUB IN: RUSK, TAYLOR			
06:25	MISSED JUMPER by SANCHEZ RAMOS, ALBA			
06:25				BLOCK by NELSON, TORI
06:16				REBOUND (DEF) by NELSON, TORI
06:09				MISSED JUMPER by BULTSMA, MEGAN
06:05	REBOUND (DEF) by SANCHEZ RAMOS, ALBA			
06:00	MISSED 3PTR by RUSK, TAYLOR			
06:00				BLOCK by STAPLETON, SYDNEY
05:57	REBOUND (OFF) by TEAM			
05:56	MISSED JUMPER by SANCHEZ RAMOS, ALBA			
05:50	REBOUND (OFF) by WEIDEMANN, QUINN			
05:39	GOOD! JUMPER by ERJAVEC, KARLA [PNT]	57-34	H 23	
05:09	SUB OUT: SANCHEZ RAMOS, ALBA			
05:09	SUB IN: POWELL, PAIGE			
05:03		59-34	H 25	GOOD! JUMPER by BULTSMA, MEGAN [PNT]
05:03				ASSIST by STAPLETON, SYDNEY
04:41				FOUL (PERSONAL) by BULTSMA, MEGAN
04:41				
04:41	MISSED FT by VAIFANUA, JAEDEN			
04:41	REBOUND (OFF) by TEAM			
04:41	MISSED FT by VAIFANUA, JAEDEN			
04:40				REBOUND (DEF) by BULTSMA, MEGAN
04:25				MISSED LAYUP by CASCIO JENSEN, RYLIE
04:22				REBOUND (OFF) by BULTSMA, MEGAN
04:16				MISSED JUMPER by BULTSMA, MEGAN
04:13	REBOUND (DEF) by RUSK, TAYLOR			
04:05				FOUL (PERSONAL) by NELSON, TORI
04:05				SUB OUT: NELSON, TORI
04:05				SUB IN: THEISEN, KALLIE
03:54	GOOD! LAYUP by ERJAVEC, KARLA [PNT]	59-36	H 23	
03:22		62-36	H 26	GOOD! 3PTR by THEISEN, KALLIE
03:22				ASSIST by STAPLETON, SYDNEY

Time	VISITORS: Wyoming	Score	Margin	HOME: South Dakota St.
03:05	GOOD! 3PTR by POWELL, PAIGE	62-39	H 23	
03:05	ASSIST by ERJAVEC, KARLA			
02:57				TIMEOUT TEAM
02:57				SUB OUT: CASCIO JENSEN, RYLIE
02:57				SUB OUT: THEUNINCK, LINDSEY
02:57				SUB OUT: STAPLETON, SYDNEY
02:57				SUB IN: RONGISCH, LAUREN
02:57				SUB IN: FERRAND, JORDAN
02:57				SUB IN: HIRSCHMAN, ADDISON
02:57	SUB OUT: ERJAVEC, KARLA			
02:57	SUB OUT: RUSK, TAYLOR			
02:57	SUB OUT: WEIDEMANN, QUINN			
02:57	SUB IN: JOHNSON, JAYE			
02:57	SUB IN: BRADSHAW, MCKINLEY			
02:57	SUB IN: OLSON, TOMMI			
02:45		65-39	H 26	GOOD! 3PTR by FERRAND, JORDAN
02:45				ASSIST by THEISEN, KALLIE
02:15	MISSED 3PTR by JOHNSON, JAYE			
02:11				REBOUND (DEF) by BULTSMA, MEGAN
01:41				TURNOVER (SHOTCLOCK) by TEAM
01:31	MISSED JUMPER by VAIFANUA, JAEDEN			
01:26				REBOUND (DEF) by FERRAND, JORDAN
01:19	FOUL (PERSONAL) by BRADSHAW, MCKINLEY			
01:12				TURNOVER (BADPASS) by FERRAND, JORDAN
00:53	MISSED JUMPER by JOHNSON, JAYE			
00:53				BLOCK by BULTSMA, MEGAN
00:49				REBOUND (DEF) by BULTSMA, MEGAN
00:24		67-39	H 28	GOOD! LAYUP by THEISEN, KALLIE [PNT]
00:12	MISSED 3PTR by POWELL, PAIGE			
00:09	REBOUND (OFF) by VAIFANUA, JAEDEN			
00:07				FOUL (PERSONAL) by THEISEN, KALLIE
00:06	GOOD! FT by VAIFANUA, JAEDEN	67-40	H 27	
00:06	MISSED FT by VAIFANUA, JAEDEN			
00:06				REBOUND (DEF) by HIRSCHMAN, ADDISON

### Wyoming 40, South Dakota St. 67

Points from (This Period)	WYO	SDS
In the Paint	6	10
Off Turns	0	3
2nd Chance	3	2
Fast Break	0	0
Bench	6	12



**Official Scoring/Possession Reference Chart**  
**Wyoming vs South Dakota St.**  
**Period 1**  
**November 23, 2019 at Frost Arena - Brookings, SD**



**Period 1**

**Starters:**

**Wyoming:** 1 ERJAVEC, KARLA (G); 2 VITULOVA, TEREZA (F); 4 RUSK, TAYLOR (F); 11 SANCHEZ RAMOS, ALBA (G); 14 WEIDEMANN, QUINN (G);  
**South Dakota St.:** 2 CASCIO JENSEN, RYLIE (G); 20 NELSON, TORI (F); 21 IRWIN, TYLEE (G); 33 BURCKHARD, PAITON (F); 44 SELLAND, MYAH (F);

Time	VISITORS: Wyoming	Score	Margin	HOME: South Dakota St.
09:37		2-0	H 2	GOOD! LAYUP by SELLAND, MYAH
09:18	GOOD! LAYUP by VITULOVA, TEREZA [PNT]	2-2	T	
08:34	GOOD! LAYUP by VITULOVA, TEREZA [PNT]	2-4	V 2	
06:30	GOOD! JUMPER by WEIDEMANN, QUINN	2-6	V 4	
06:09		4-6	V 2	GOOD! JUMPER by CASCIO JENSEN, RYLIE [PNT]
05:26		6-6	T	GOOD! JUMPER by IRWIN, TYLEE [PNT]
04:45		8-6	H 2	GOOD! LAYUP by SELLAND, MYAH [FB]
04:45		9-6	H 3	GOOD! FT by SELLAND, MYAH [FB]
04:15	GOOD! LAYUP by BRADSHAW, MCKINLEY [PNT]	9-8	H 1	
04:02		10-8	H 2	GOOD! FT by SELLAND, MYAH
03:30		13-8	H 5	GOOD! 3PTR by CASCIO JENSEN, RYLIE
03:13	GOOD! 3PTR by RUSK, TAYLOR	13-11	H 2	
02:44		15-11	H 4	GOOD! LAYUP by THEUNINCK, LINDSEY
00:38		17-11	H 6	GOOD! LAYUP by BURCKHARD, PAITON [PNT]
00:38		18-11	H 7	GOOD! FT by BURCKHARD, PAITON
00:26	GOOD! LAYUP by VITULOVA, TEREZA [PNT]	18-13	H 5	
00:02		20-13	H 7	GOOD! LAYUP by NELSON, TORI

**Wyoming 13, South Dakota St. 20**

**Official Scoring/Possession Reference Chart**  
**Wyoming vs South Dakota St.**  
**Period 2**  
**November 23, 2019 at Frost Arena - Brookings, SD**



**Period 2**

**Starters:**

**Wyoming:** 1 ERJAVEC, KARLA (G); 2 VITULOVA, TEREZA (F); 4 RUSK, TAYLOR (F); 11 SANCHEZ RAMOS, ALBA (G); 14 WEIDEMANN, QUINN (G);

**South Dakota St.:** 2 CASCIO JENSEN, RYLIE (G); 20 NELSON, TORI (F); 21 IRWIN, TYLEE (G); 33 BURCKHARD, PAITON (F); 44 SELLAND, MYAH (F);

Time	VISITORS: Wyoming	Score	Margin	HOME: South Dakota St.
08:40		22-13	H 9	GOOD! LAYUP by BURCKHARD, PAITON [PNT]
08:09		25-13	H 12	GOOD! 3PTR by STAPLETON, SYDNEY
07:15		27-13	H 14	GOOD! JUMPER by NELSON, TORI
06:59	GOOD! FT by VITULOVA, TEREZA	27-14	H 13	
05:36	GOOD! LAYUP by ERJAVEC, KARLA [PNT]	27-16	H 11	
04:49	GOOD! LAYUP by SANCHEZ RAMOS, ALBA [PNT]	27-18	H 9	
04:13	GOOD! LAYUP by VAIFANUA, JAEDEN	27-20	H 7	
02:14	GOOD! 3PTR by RUSK, TAYLOR	27-23	H 4	
01:31		30-23	H 7	GOOD! 3PTR by THEUNINCK, LINDSEY
00:58		31-23	H 8	GOOD! FT by THEUNINCK, LINDSEY
00:55		32-23	H 9	GOOD! FT by NELSON, TORI
00:30	GOOD! LAYUP by WEIDEMANN, QUINN	32-25	H 7	
00:01		34-25	H 9	GOOD! LAYUP by SELLAND, MYAH [PNT]

**Wyoming 25, South Dakota St. 34**

**Official Scoring/Possession Reference Chart**  
**Wyoming vs South Dakota St.**  
**Period 3**  
**November 23, 2019 at Frost Arena - Brookings, SD**



**Period 3**

**Starters:**

**Wyoming:** 1 ERJAVEC, KARLA (G); 2 VITULOVA, TEREZA (F); 4 RUSK, TAYLOR (F); 11 SANCHEZ RAMOS, ALBA (G); 14 WEIDEMANN, QUINN (G);  
**South Dakota St.:** 2 CASCIO JENSEN, RYLIE (G); 20 NELSON, TORI (F); 21 IRWIN, TYLEE (G); 33 BURCKHARD, PAITON (F); 44 SELLAND, MYAH (F);

Time	VISITORS: Wyoming	Score	Margin	HOME: South Dakota St.
09:46		35-25	H 10	GOOD! FT by SELLAND, MYAH
09:46		36-25	H 11	GOOD! FT by SELLAND, MYAH
07:07	GOOD! LAYUP by RUSK, TAYLOR	36-27	H 9	
06:34		38-27	H 11	GOOD! LAYUP by SELLAND, MYAH [PNT]
05:43		40-27	H 13	GOOD! LAYUP by IRWIN, TYLEE
04:02	GOOD! 3PTR by KEPENC, SELALE	40-30	H 10	
03:38		41-30	H 11	GOOD! FT by THEISEN, KALLIE
02:26		44-30	H 14	GOOD! 3PTR by THEISEN, KALLIE
01:34		46-30	H 16	GOOD! JUMPER by CASCIO JENSEN, RYLIE

**Wyoming 30, South Dakota St. 46**

**Official Scoring/Possession Reference Chart  
Wyoming vs South Dakota St.  
Period 4  
November 23, 2019 at Frost Arena - Brookings, SD**



**Period 4**

**Starters:**

**Wyoming:** 1 ERJAVEC, KARLA (G); 2 VITULOVA, TEREZA (F); 4 RUSK, TAYLOR (F); 11 SANCHEZ RAMOS, ALBA (G); 14 WEIDEMANN, QUINN (G);  
**South Dakota St.:** 2 CASCIO JENSEN, RYLIE (G); 20 NELSON, TORI (F); 21 IRWIN, TYLEE (G); 33 BURCKHARD, PAITON (F); 44 SELLAND, MYAH (F);

Time	VISITORS: Wyoming	Score	Margin	HOME: South Dakota St.
09:17		48-30	H 18	GOOD! LAYUP by SELLAND, MYAH
08:38		49-30	H 19	GOOD! FT by STAPLETON, SYDNEY
08:38		50-30	H 20	GOOD! FT by STAPLETON, SYDNEY
08:19		52-30	H 22	GOOD! LAYUP by SELLAND, MYAH [PNT]
07:48	GOOD! LAYUP by VAIFANUA, JAEDEN	52-32	H 20	
07:25		54-32	H 22	GOOD! LAYUP by BURCKHARD, PAITON
06:45		57-32	H 25	GOOD! 3PTR by NELSON, TORI
05:39	GOOD! JUMPER by ERJAVEC, KARLA [PNT]	57-34	H 23	
05:03		59-34	H 25	GOOD! JUMPER by BULTSMA, MEGAN [PNT]
03:54	GOOD! LAYUP by ERJAVEC, KARLA [PNT]	59-36	H 23	
03:22		62-36	H 26	GOOD! 3PTR by THEISEN, KALLIE
03:05	GOOD! 3PTR by POWELL, PAIGE	62-39	H 23	
02:45		65-39	H 26	GOOD! 3PTR by FERRAND, JORDAN
00:24		67-39	H 28	GOOD! LAYUP by THEISEN, KALLIE [PNT]
00:06	GOOD! FT by VAIFANUA, JAEDEN	67-40	H 27	

**Wyoming 40, South Dakota St. 67**

**Official Substitutions Log**  
**Wyoming vs South Dakota St.**  
**Period 1**  
**November 23, 2019 at Frost Arena - Brookings, SD**



VISITORS: Wyoming	Time	Score	HOME: South Dakota St.
1 ERJAVEC, KARLA			2 CASCIO JENSEN, RYLIE
2 VITULOVA, TEREZA			20 NELSON, TORI
4 RUSK, TAYLOR			21 IRWIN, TYLEE
11 SANCHEZ RAMOS, ALBA			33 BURCKHARD, PAITON
14 WEIDEMANN, QUINN			44 SELLAND, MYAH
	05:55	6-4	SUB OUT: NELSON, TORI
	05:55		SUB OUT: BURCKHARD, PAITON
	05:55		SUB IN: THEUNINCK, LINDSEY
	05:55		SUB IN: THEISEN, KALLIE
SUB OUT: 4 RUSK, TAYLOR	05:55		
SUB OUT: 11 SANCHEZ RAMOS, ALBA	05:55		
SUB IN: 12 BRADSHAW, MCKINLEY	05:55		
SUB IN: 24 OLSON, TOMMI	05:55		
SUB OUT: 14 WEIDEMANN, QUINN	04:45	6-8	
SUB IN: 4 RUSK, TAYLOR	04:45		
SUB OUT: 2 VITULOVA, TEREZA	04:02	8-9	
SUB OUT: 12 BRADSHAW, MCKINLEY	04:02		
SUB IN: 10 KEPENC, SELALE	04:02		
SUB IN: 11 SANCHEZ RAMOS, ALBA	04:02		
	01:07	11-15	SUB OUT: THEISEN, KALLIE
	01:07		SUB OUT: IRWIN, TYLEE
	01:07		SUB OUT: SELLAND, MYAH
	01:07		SUB IN: NELSON, TORI
	01:07		SUB IN: BURCKHARD, PAITON
	01:07		SUB IN: STAPLETON, SYDNEY
SUB OUT: 24 OLSON, TOMMI	01:07		
SUB IN: 14 WEIDEMANN, QUINN	01:07		
SUB OUT: 10 KEPENC, SELALE	00:38	11-18	
SUB IN: 2 VITULOVA, TEREZA	00:38		

**Wyoming 13, South Dakota St. 20**

**Official Substitutions Log**  
**Wyoming vs South Dakota St.**  
**Period 2**  
**November 23, 2019 at Frost Arena - Brookings, SD**



VISITORS: Wyoming	Time	Score	HOME: South Dakota St.
1 ERJAVEC, KARLA			2 CASCIO JENSEN, RYLIE
2 VITULOVA, TEREZA			20 NELSON, TORI
4 RUSK, TAYLOR			21 IRWIN, TYLEE
11 SANCHEZ RAMOS, ALBA			33 BURCKHARD, PAITON
14 WEIDEMANN, QUINN			44 SELLAND, MYAH
	07:56	13-25	SUB OUT: CASCIO JENSEN, RYLIE
	07:56		SUB OUT: THEUNINCK, LINDSEY
	07:56		SUB IN: IRWIN, TYLEE
	07:56		SUB IN: SELLAND, MYAH
	04:30	18-27	SUB OUT: NELSON, TORI
	04:30		SUB OUT: BURCKHARD, PAITON
	04:30		SUB OUT: STAPLETON, SYDNEY
	04:30		SUB IN: CASCIO JENSEN, RYLIE
	04:30		SUB IN: THEUNINCK, LINDSEY
	04:30		SUB IN: THEISEN, KALLIE
SUB OUT: 2 VITULOVA, TEREZA	04:30		
SUB OUT: 11 SANCHEZ RAMOS, ALBA	04:30		
SUB IN: 12 BRADSHAW, MCKINLEY	04:30		
SUB IN: 23 VAIFANUA, JAEDEN	04:30		
	01:45	23-27	SUB OUT: THEISEN, KALLIE
	01:45		SUB OUT: IRWIN, TYLEE
	01:45		SUB IN: NELSON, TORI
	01:45		SUB IN: BURCKHARD, PAITON
SUB OUT: 12 BRADSHAW, MCKINLEY	00:55	23-31	
SUB OUT: 23 VAIFANUA, JAEDEN	00:55		
SUB IN: 2 VITULOVA, TEREZA	00:55		
SUB IN: 11 SANCHEZ RAMOS, ALBA	00:55		

**Wyoming 25, South Dakota St. 34**

**Official Substitutions Log**  
**Wyoming vs South Dakota St.**  
**Period 3**  
**November 23, 2019 at Frost Arena - Brookings, SD**



VISITORS: Wyoming	Time	Score	HOME: South Dakota St.
1 ERJAVEC, KARLA			2 CASCIO JENSEN, RYLIE
2 VITULOVA, TEREZA			20 NELSON, TORI
4 RUSK, TAYLOR			21 IRWIN, TYLEE
11 SANCHEZ RAMOS, ALBA			33 BURCKHARD, PAITON
14 WEIDEMANN, QUINN			44 SELLAND, MYAH
	10:00	-	SUB OUT: THEUNINCK, LINDSEY
	10:00		SUB IN: IRWIN, TYLEE
SUB OUT: 2 VITULOVA, TEREZA	06:50	27-36	
SUB IN: 10 KEPENC, SELALE	06:50		
	06:50		SUB OUT: BURCKHARD, PAITON
	06:50		SUB IN: THEISEN, KALLIE
	04:10	27-40	SUB OUT: NELSON, TORI
	04:10		SUB OUT: IRWIN, TYLEE
	04:10		SUB IN: THEUNINCK, LINDSEY
	04:10		SUB IN: STAPLETON, SYDNEY
SUB OUT: 11 SANCHEZ RAMOS, ALBA	04:10		
SUB IN: 12 BRADSHAW, MCKINLEY	04:10		
	03:38	30-40	SUB OUT: SELLAND, MYAH
	03:38		SUB IN: NELSON, TORI
	01:01	30-46	SUB OUT: CASCIO JENSEN, RYLIE
	01:01		SUB OUT: THEISEN, KALLIE
	01:01		SUB IN: IRWIN, TYLEE
	01:01		SUB IN: BURCKHARD, PAITON
SUB OUT: 1 ERJAVEC, KARLA	01:01		
SUB IN: 24 OLSON, TOMMI	01:01		
	00:12	30-46	SUB OUT: NELSON, TORI
	00:12		SUB IN: SELLAND, MYAH
	00:12		SUB OUT: THEUNINCK, LINDSEY
	00:12		SUB IN: CASCIO JENSEN, RYLIE

**Wyoming 30, South Dakota St. 46**

**Official Substitutions Log**  
**Wyoming vs South Dakota St.**  
**Period 4**  
**November 23, 2019 at Frost Arena - Brookings, SD**



VISITORS: Wyoming	Time	Score	HOME: South Dakota St.
1 ERJAVEC, KARLA			2 CASCIO JENSEN, RYLIE
2 VITULOVA, TEREZA			20 NELSON, TORI
4 RUSK, TAYLOR			21 IRWIN, TYLEE
11 SANCHEZ RAMOS, ALBA			33 BURCKHARD, PAITON
14 WEIDEMANN, QUINN			44 SELLAND, MYAH
SUB OUT: 14 WEIDEMANN, QUINN	10:00	-	
SUB IN: 1 ERJAVEC, KARLA	10:00		
SUB OUT: 12 BRADSHAW, MCKINLEY	08:38	30-48	
SUB IN: 11 SANCHEZ RAMOS, ALBA	08:38		
SUB OUT: 4 RUSK, TAYLOR	08:38		
SUB OUT: 10 KEPENC, SELALE	08:38		
SUB IN: 14 WEIDEMANN, QUINN	08:38		
SUB IN: 23 VAIFANUA, JAEDEN	08:38		
	07:01	32-54	SUB OUT: IRWIN, TYLEE
	07:01		SUB OUT: SELLAND, MYAH
	07:01		SUB IN: THEUNINCK, LINDSEY
	07:01		SUB IN: NELSON, TORI
	06:34	32-57	SUB OUT: BURCKHARD, PAITON
	06:34		SUB IN: BULTSMA, MEGAN
SUB OUT: 24 OLSON, TOMMI	06:34		
SUB IN: 4 RUSK, TAYLOR	06:34		
SUB OUT: 11 SANCHEZ RAMOS, ALBA	05:09	34-57	
SUB IN: 22 POWELL, PAIGE	05:09		
	04:05	34-59	SUB OUT: NELSON, TORI
	04:05		SUB IN: THEISEN, KALLIE
	02:57	39-62	SUB OUT: CASCIO JENSEN, RYLIE
	02:57		SUB OUT: THEUNINCK, LINDSEY
	02:57		SUB OUT: STAPLETON, SYDNEY
	02:57		SUB IN: RONGISCH, LAUREN
	02:57		SUB IN: FERRAND, JORDAN
	02:57		SUB IN: HIRSCHMAN, ADDISON
SUB OUT: 1 ERJAVEC, KARLA	02:57		
SUB OUT: 4 RUSK, TAYLOR	02:57		
SUB OUT: 14 WEIDEMANN, QUINN	02:57		
SUB IN: 5 JOHNSON, JAYE	02:57		
SUB IN: 12 BRADSHAW, MCKINLEY	02:57		
SUB IN: 24 OLSON, TOMMI	02:57		

**Wyoming 40, South Dakota St. 67**

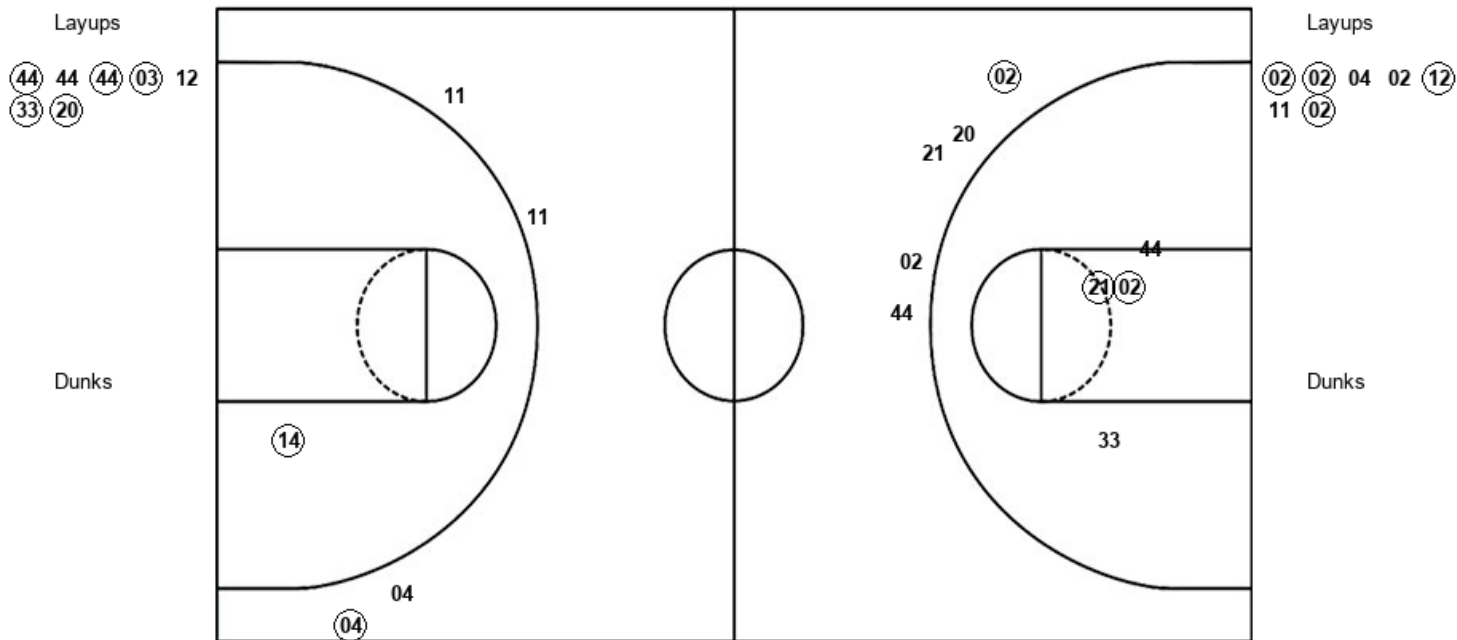


**Official Shot Chart**  
**Wyoming vs South Dakota St.**  
**PERIOD 1 Shots**  
 November 23, 2019 at Frost Arena - Brookings, SD



**South Dakota St.**

**Wyoming**



<b>SDS : Period 1</b>	<b>Made</b>	<b>Att</b>	<b>Pct</b>
Layups	5	7	71.4
Dunks	0	0	0
2PT Field Goals	7	11	63.6
3PT Field Goals	1	5	20.0
<b>Total Field Goals</b>	<b>8</b>	<b>16</b>	<b>50.0</b>

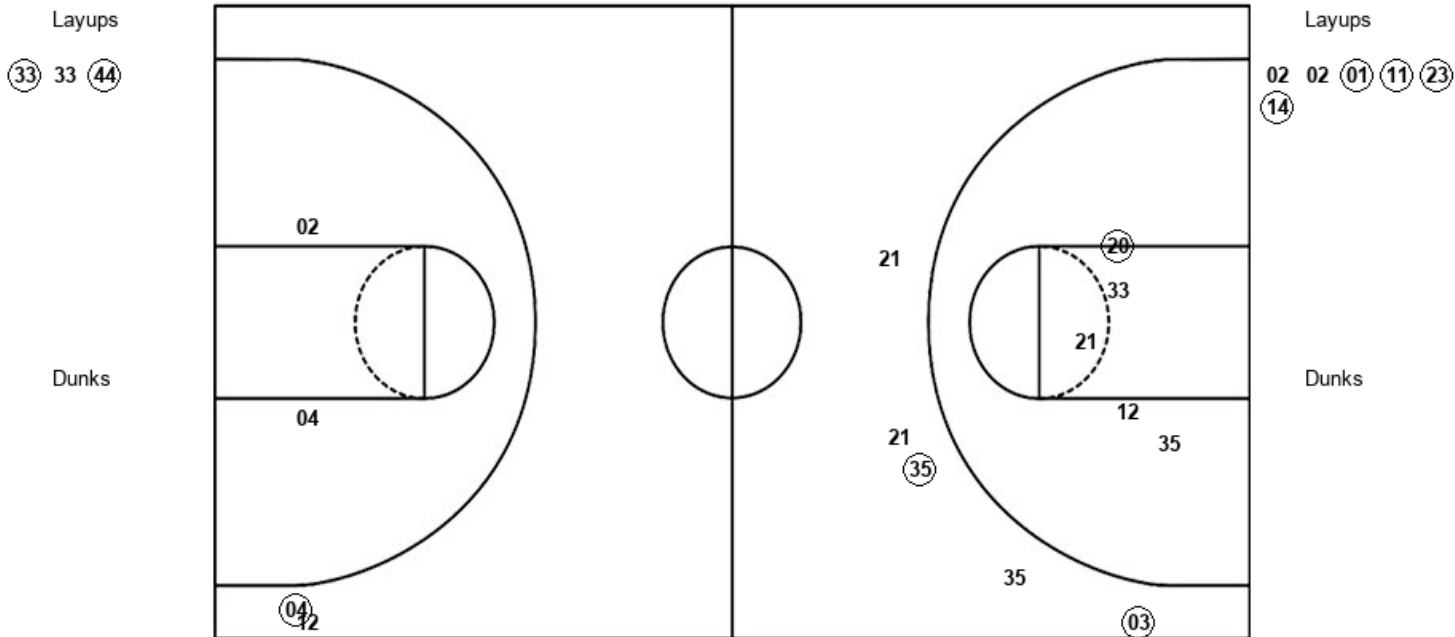
<b>WYO : Period 1</b>	<b>Made</b>	<b>Att</b>	<b>Pct</b>
Layups	4	7	57.1
Dunks	0	0	0
2PT Field Goals	5	8	62.5
3PT Field Goals	1	4	25.0
<b>Total Field Goals</b>	<b>6</b>	<b>12</b>	<b>50.0</b>

Official Shot Chart  
**Wyoming vs South Dakota St.**  
 PERIOD 2 Shots  
 November 23, 2019 at Frost Arena - Brookings, SD



**South Dakota St.**

**Wyoming**



<b>SDS : Period 2</b>	<b>Made</b>	<b>Att</b>	<b>Pct</b>
Layups	2	3	66.7
Dunks	0	0	0
2PT Field Goals	3	8	37.5
3PT Field Goals	2	5	40.0
<b>Total Field Goals</b>	<b>5</b>	<b>13</b>	<b>38.5</b>

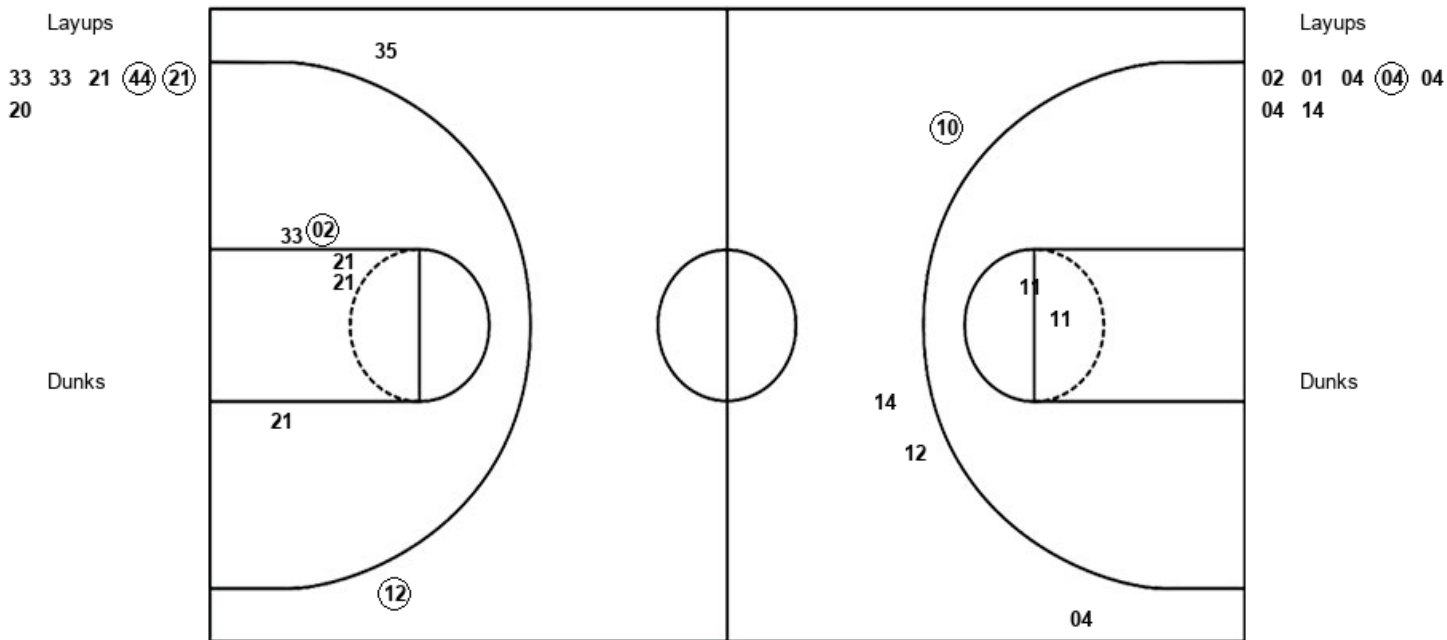
<b>WYO : Period 2</b>	<b>Made</b>	<b>Att</b>	<b>Pct</b>
Layups	4	6	66.7
Dunks	0	0	0
2PT Field Goals	4	8	50.0
3PT Field Goals	1	2	50.0
<b>Total Field Goals</b>	<b>5</b>	<b>10</b>	<b>50.0</b>

**Official Shot Chart**  
**Wyoming vs South Dakota St.**  
**PERIOD 3 Shots**  
 November 23, 2019 at Frost Arena - Brookings, SD



**South Dakota St.**

**Wyoming**



<b>SDS : Period 3</b>	<b>Made</b>	<b>Att</b>	<b>Pct</b>
Layups	2	6	33.3
Dunks	0	0	0
2PT Field Goals	3	11	27.3
3PT Field Goals	1	2	50.0
<b>Total Field Goals</b>	<b>4</b>	<b>13</b>	<b>30.8</b>

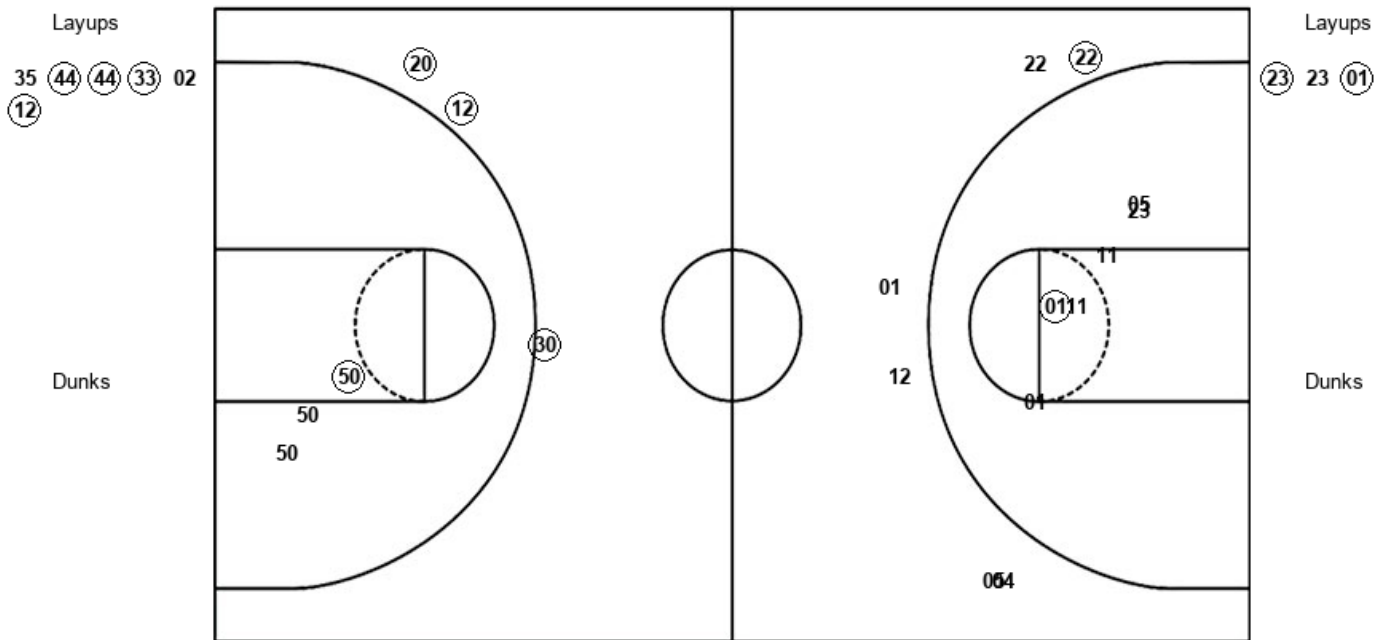
<b>WYO : Period 3</b>	<b>Made</b>	<b>Att</b>	<b>Pct</b>
Layups	1	7	14.3
Dunks	0	0	0
2PT Field Goals	1	9	11.1
3PT Field Goals	1	4	25.0
<b>Total Field Goals</b>	<b>2</b>	<b>13</b>	<b>15.4</b>

**Official Shot Chart**  
**Wyoming vs South Dakota St.**  
**PERIOD 4 Shots**  
 November 23, 2019 at Frost Arena - Brookings, SD



**South Dakota St.**

**Wyoming**



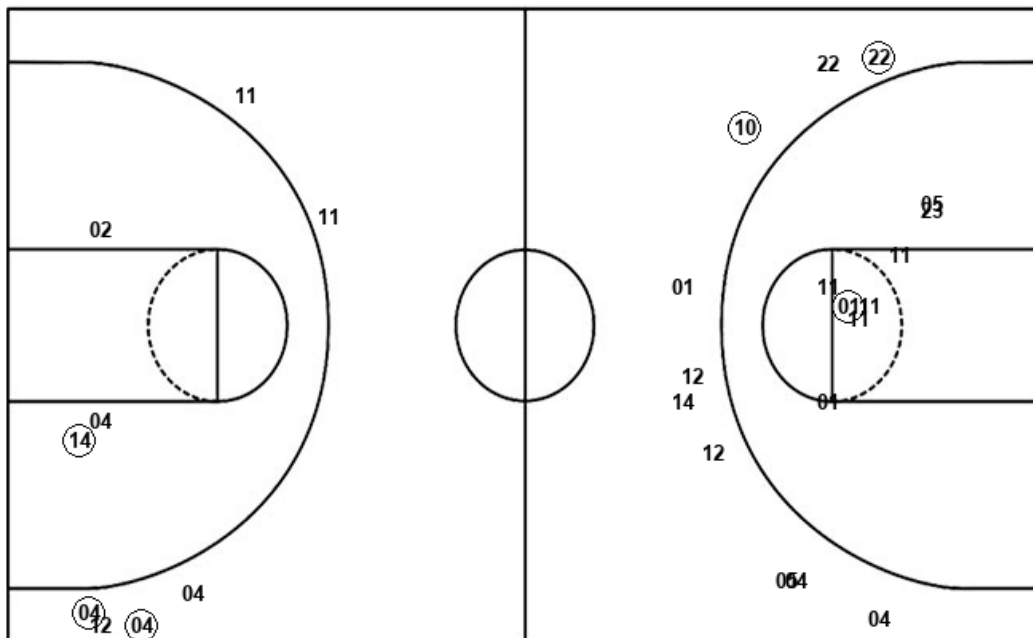
<b>SDS : Period 4</b>	<b>Made</b>	<b>Att</b>	<b>Pct</b>
Layups	4	6	66.7
Dunks	0	0	0
2PT Field Goals	5	9	55.6
3PT Field Goals	3	3	100.0
<b>Total Field Goals</b>	<b>8</b>	<b>12</b>	<b>66.7</b>

<b>WYO : Period 4</b>	<b>Made</b>	<b>Att</b>	<b>Pct</b>
Layups	2	3	66.7
Dunks	0	0	0
2PT Field Goals	3	9	33.3
3PT Field Goals	1	6	16.7
<b>Total Field Goals</b>	<b>4</b>	<b>15</b>	<b>26.7</b>

**Official Shot Chart**  
**Wyoming vs South Dakota St.**  
**Wyoming Team Shots**  
**November 23, 2019 at Frost Arena - Brookings, SD**



Layups



Layups

Dunks

Dunks

WYO : Period 1	Made	Att	Pct
Layups	4	7	57.1
Dunks	0	0	0
2PT Field Goals	5	8	62.5
3PT Field Goals	1	4	25.0
<b>Total Field Goals</b>	<b>6</b>	<b>12</b>	<b>50.0</b>

WYO : Period 2	Made	Att	Pct
Layups	4	6	66.7
Dunks	0	0	0
2PT Field Goals	4	8	50.0
3PT Field Goals	1	2	50.0
<b>Total Field Goals</b>	<b>5</b>	<b>10</b>	<b>50.0</b>

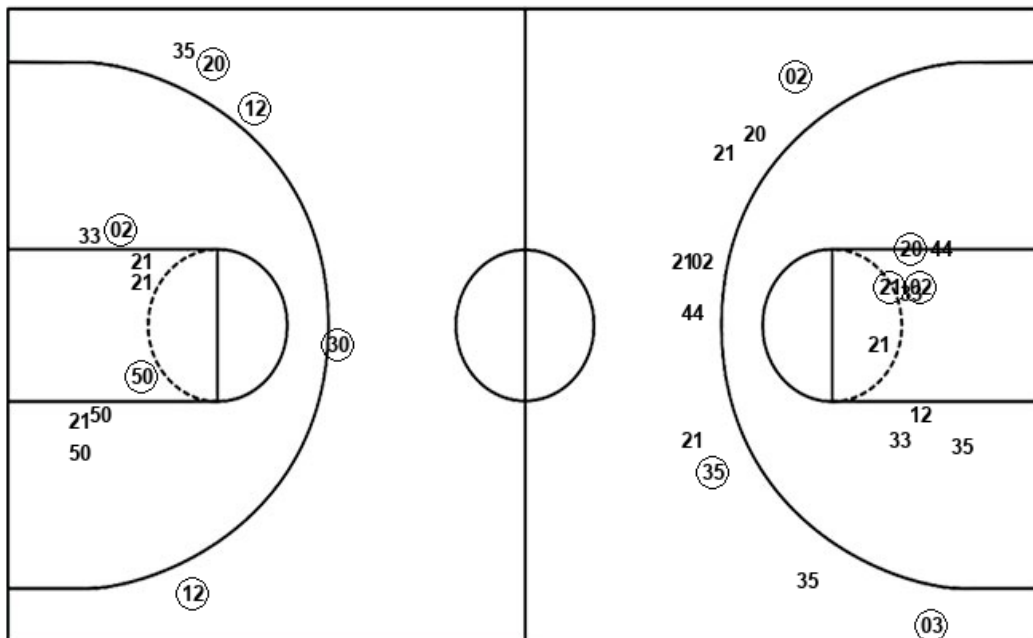
WYO : Period 3	Made	Att	Pct
Layups	1	7	14.3
Dunks	0	0	0
2PT Field Goals	1	9	11.1
3PT Field Goals	1	4	25.0
<b>Total Field Goals</b>	<b>2</b>	<b>13</b>	<b>15.4</b>

WYO : Period 4	Made	Att	Pct
Layups	2	3	66.7
Dunks	0	0	0
2PT Field Goals	3	9	33.3
3PT Field Goals	1	6	16.7
<b>Total Field Goals</b>	<b>4</b>	<b>15</b>	<b>26.7</b>

**Official Shot Chart**  
**Wyoming vs South Dakota St.**  
**South Dakota St. Team Shots**  
**November 23, 2019 at Frost Arena - Brookings, SD**



Layups



Layups

(44) 44 (44) (03) 12  
 (33) (20) (33) 33 (44)  
 33 33 21 (44) (21)  
 20 35 (44) (44) (33)  
 02 (12)

Dunks

Dunks

SDS : Period 1	Made	Att	Pct
Layups	5	7	71.4
Dunks	0	0	0
2PT Field Goals	7	11	63.6
3PT Field Goals	1	5	20.0
<b>Total Field Goals</b>	<b>8</b>	<b>16</b>	<b>50.0</b>

SDS : Period 2	Made	Att	Pct
Layups	2	3	66.7
Dunks	0	0	0
2PT Field Goals	3	8	37.5
3PT Field Goals	2	5	40.0
<b>Total Field Goals</b>	<b>5</b>	<b>13</b>	<b>38.5</b>

SDS : Period 3	Made	Att	Pct
Layups	2	6	33.3
Dunks	0	0	0
2PT Field Goals	3	11	27.3
3PT Field Goals	1	2	50.0
<b>Total Field Goals</b>	<b>4</b>	<b>13</b>	<b>30.8</b>

SDS : Period 4	Made	Att	Pct
Layups	4	6	66.7
Dunks	0	0	0
2PT Field Goals	5	9	55.6
3PT Field Goals	3	3	100.0
<b>Total Field Goals</b>	<b>8</b>	<b>12</b>	<b>66.7</b>