

## FINAL SCORE



**Montana St.**

**50**



**South Dakota St.**

**60**

November 21, 2019 • Frost Arena - Brookings, S.D.

## FINAL STATISTICS

**Official Box Score**  
**Montana St. vs South Dakota St.**  
**Game Totals -- Final Statistics**  
**November 21, 2019 at Frost Arena - Brookings, S.D.**



**Montana St. 50**

No.	Player	S	Pts	FG	3FG	FT	OR	DR	TR	PF	A	TO	Blk	Stl	Min	+/-
02	WHITE, DARIAN	G	9	2-6	0-1	5-5	1	6	7	2	3	6	0	1	24	3
15	KUDERER, MARTHA	F	1	0-4	0-2	1-2	3	2	5	2	1	1	0	1	23	-11
24	SQUIRES, OLIANA	G	10	3-13	2-6	2-4	0	3	3	2	2	2	0	3	30	-8
33	SMITH, MADELINE	F	2	1-1	0-0	0-0	0	0	0	4	0	0	0	0	11	-4
35	FREIJE, FALLYN	F	11	4-15	1-4	2-4	1	5	6	1	2	2	0	1	29	-12
10	BAD BEAR, KOLA	F	5	2-3	0-0	1-2	0	5	5	0	1	0	0	1	13	-2
12	MARTELL, TORI	G	2	1-3	0-2	0-0	0	2	2	1	2	0	0	2	24	-19
20	JACKSON, MADISON	G	2	0-3	0-0	2-2	0	3	3	4	0	3	0	1	17	1
23	MOCCHI, GABBY	F	2	1-2	0-1	0-0	1	1	2	1	0	0	0	0	3	7
25	ZIESKE, SIDNEY	G	0	0-0	0-0	0-0	0	0	0	0	0	0	0	0	2	4
44	BRAXTON, BLAIRE	F	6	2-7	0-0	2-2	0	2	2	2	0	3	1	1	24	-9
TEAM							4	1	5	0		2				
<b>TOTALS</b>			<b>50</b>	<b>16-57</b>	<b>3-16</b>	<b>15-21</b>	<b>10</b>	<b>30</b>	<b>40</b>	<b>19</b>	<b>11</b>	<b>19</b>	<b>1</b>	<b>11</b>	<b>200</b>	

*Shooting By Period*

Period	FG	FG%	3FG	3FG%	FT	FT%
1st Qtr	4-15	27%	2-4	50%	0-0	0%
2nd Qtr	3-11	27%	1-4	25%	5-8	63%
3rd Qtr	2-13	15%	0-3	00%	3-4	75%
4th Qtr	7-18	39%	0-5	00%	7-9	78%
1st Half	7-26	27%	3-8	38%	5-8	63%
2nd Half	9-31	29%	0-8	00%	10-13	77%
<b>Game</b>	<b>16-57</b>	<b>28.1%</b>	<b>3-16</b>	<b>18.8%</b>	<b>15-21</b>	<b>71.4%</b>

Deadball Rebounds: 4,0  
 Last FG: 4th-00:50  
 Biggest Run: 7-0  
 Largest lead: By 5 at 1-05  
 Technical Fouls: None.

**South Dakota St. 60**

No.	Player	S	Pts	FG	3FG	FT	OR	DR	TR	PF	A	TO	Blk	Stl	Min	+/-
02	CASCIO JENSEN, RYLIE	G	5	1-5	1-5	2-4	0	5	5	3	2	4	0	1	27	0
21	IRWIN, TYLEE	G	8	3-11	1-5	1-2	4	3	7	2	0	2	1	2	27	8
24	LARSON, TAGYN	F	14	6-9	2-3	0-2	0	5	5	2	1	3	3	0	31	1
33	BURCKHARD, PAITON	F	15	3-6	0-0	9-11	2	2	4	1	2	2	0	0	30	5
44	SELLAND, MYAH	F	4	2-5	0-3	0-0	1	5	6	2	3	3	0	1	20	7
03	THEUNINCK, LINDSEY	G	0	0-6	0-5	0-2	3	2	5	3	0	1	0	1	18	-4
12	THEISEN, KALLIE	F	2	1-3	0-0	0-0	1	2	3	0	0	1	1	1	9	7
20	NELSON, TORI	F	9	3-3	2-2	1-4	0	4	4	3	2	4	1	0	29	13
35	STAPLETON, SYDNEY	G	3	1-4	1-4	0-0	0	2	2	1	2	0	1	1	9	13
TEAM							0	3	3	0		1				
<b>TOTALS</b>			<b>60</b>	<b>20-52</b>	<b>7-27</b>	<b>13-25</b>	<b>11</b>	<b>33</b>	<b>44</b>	<b>17</b>	<b>12</b>	<b>21</b>	<b>7</b>	<b>7</b>	<b>200</b>	

*Shooting By Period*

Period	FG	FG%	3FG	3FG%	FT	FT%
1st Qtr	5-12	42%	2-6	33%	2-2	100%
2nd Qtr	5-15	33%	2-10	20%	1-6	17%
3rd Qtr	9-16	56%	2-5	40%	4-5	80%
4th Qtr	1-9	11%	1-6	17%	6-12	50%
1st Half	10-27	37%	4-16	25%	3-8	38%
2nd Half	10-25	40%	3-11	27%	10-17	59%
<b>Game</b>	<b>20-52</b>	<b>38.5%</b>	<b>7-27</b>	<b>25.9%</b>	<b>13-25</b>	<b>52.0%</b>

Deadball Rebounds: 3,0  
 Last FG: 4th-06:42  
 Biggest Run: 10-0  
 Largest lead: By 24 at 4-06  
 Technical Fouls: None.

*Game Notes:*

Officials: Jeff Cross, Mark Berger, Jessica Fortner  
 Attendance: 1596

Start Time: 08:05 PM ET  
 End Time: 11:32 PM ET  
 Game Duration: 3:26

Score	1st	2nd	3rd	4th	TOT
MSU	10	12	7	21	50
SDS	14	13	24	9	60

MSU led for 5:41. SDS led for 32:13.  
 Game was tied for 2:07.  
 Times tied: 1      Lead Changes: 1

Points from	MSU	SDS
In the Paint	18	22
Off Turns	15	18
2nd Chance	8	12
Fast Break	4	2
Bench	17	14

**Official Box Score**  
**Montana St. vs South Dakota St.**  
**First Half Statistics Only**  
**November 21, 2019 at Frost Arena - Brookings, S.D.**



### Montana St. 22

No.	Player	S	Pts	FG	3FG	FT	OR	DR	TR	PF	A	TO	Blk	Stl	Min	+/-
02	WHITE, DARIAN	G	0	0-2	0-0	0-0	0	5	5	1	1	6	0	0	11	-3
10	BAD BEAR, KOLA	F	1	0-1	0-0	1-2	0	1	1	0	1	0	0	0	6	-8
12	MARTELL, TORI	G	0	0-1	0-1	0-0	0	2	2	0	1	0	0	0	12	-6
15	KUDERER, MARTHA	F	0	0-2	0-1	0-0	2	2	4	0	1	0	0	0	12	2
20	JACKSON, MADISON	G	0	0-1	0-0	0-0	0	1	1	1	0	2	0	0	8	-7
23	MOCCHI, GABBY	F	0	0-0	0-0	0-0	0	0	0	0	0	0	0	0	0	0
24	SQUIRES, OLIANA	G	8	2-6	2-4	2-4	0	1	1	1	1	0	0	2	17	-1
25	ZIESKE, SIDNEY	G	0	0-0	0-0	0-0	0	0	0	0	0	0	0	0	0	0
33	SMITH, MADELINE	F	2	1-1	0-0	0-0	0	0	0	2	0	0	0	0	6	3
35	FREIJE, FALLYN	F	9	4-10	1-2	0-0	1	3	4	0	1	2	0	1	16	-1
44	BRAXTON, BLAIRE	F	2	0-2	0-0	2-2	0	0	0	1	0	1	0	1	12	-4
	TEAM		0	0-0	0-0	0-0	1	0	1	0	0	2	0	0	0	
<b>TOTALS</b>			<b>22</b>	<b>7-26</b>	<b>3-8</b>	<b>5-8</b>	<b>4</b>	<b>15</b>	<b>19</b>	<b>6</b>	<b>6</b>	<b>13</b>	<b>0</b>	<b>4</b>	<b>100</b>	

#### Shooting By Period

Period	FG	FG%	3FG	3FG%	FT	FT%
1st Qtr	4-15	27%	2-4	50%	0-0	0%
2nd Qtr	3-11	27%	1-4	25%	5-8	63%
1st Half	7-26	27%	3-8	38%	5-8	63%
Game	16-57	28.1%	3-16	18.8%	15-21	71.4%

Deadball Rebounds: 4,0

Last FG Half: MSU 2nd-02:36

### South Dakota St. 27

No.	Player	S	Pts	FG	3FG	FT	OR	DR	TR	PF	A	TO	Blk	Stl	Min	+/-
02	CASCIO JENSEN, RYLIE	G	0	0-1	0-1	0-0	0	1	1	2	0	2	0	0	9	-4
03	THEUNINCK, LINDSEY	G	0	0-3	0-2	0-2	2	1	3	2	0	1	0	1	9	3
12	THEISEN, KALLIE	F	0	0-0	0-0	0-0	0	1	1	0	0	1	0	0	4	0
20	NELSON, TORI	F	5	2-2	1-1	0-2	0	1	1	0	1	1	0	0	15	9
21	IRWIN, TYLEE	G	3	1-7	1-4	0-0	2	1	3	0	0	1	1	1	13	-6
24	LARSON, TAGYN	F	7	3-5	1-2	0-0	0	4	4	0	1	3	0	0	14	1
33	BURCKHARD, PAITON	F	5	1-1	0-0	3-4	0	1	1	1	1	1	0	0	15	7
35	STAPLETON, SYDNEY	G	3	1-4	1-4	0-0	0	2	2	1	2	0	1	1	9	13
44	SELLAND, MYAH	F	4	2-4	0-2	0-0	0	2	2	2	1	1	0	1	11	2
	TEAM		0	0-0	0-0	0-0	0	2	2	0	0	1	0	0	0	
<b>TOTALS</b>			<b>27</b>	<b>10-27</b>	<b>4-16</b>	<b>3-8</b>	<b>4</b>	<b>16</b>	<b>20</b>	<b>8</b>	<b>6</b>	<b>12</b>	<b>2</b>	<b>4</b>	<b>100</b>	

#### Shooting By Period

Period	FG	FG%	3FG	3FG%	FT	FT%
1st Qtr	5-12	42%	2-6	33%	2-2	100%
2nd Qtr	5-15	33%	2-10	20%	1-6	17%
1st Half	10-27	37%	4-16	25%	3-8	38%
Game	20-52	38.5%	7-27	25.9%	13-25	52.0%

Deadball Rebounds: 3,0

Last FG Half: SDS 2nd-02:20

#### Game Notes:

Officials: Jeff Cross, Mark Berger, Jessica Fortner  
Attendance: 1596

Start Time: 08:05 PM ET  
End Time: 11:32 PM ET  
Game Duration: 3:26

Score	1st	2nd	3rd	4th	TOT
MSU	10	12	7	21	<b>50</b>
SDS	14	13	24	9	<b>60</b>

Points from (This Period)	MSU	SDS
In the Paint	4	8
Off Turns	5	6
2nd Chance	3	3
Fast Break	3	0
Bench	3	8

**Official Box Score**  
**Montana St. vs South Dakota St.**  
**First Quarter Statistics Only**  
**November 21, 2019 at Frost Arena - Brookings, S.D.**



### Montana St. 10

No.	Player	S	Pts	FG	3FG	FT	OR	DR	TR	PF	A	TO	Blk	Stl	Min	+/-
02	WHITE, DARIAN	G	0	0-2	0-0	0-0	0	3	3	0	1	2	0	0	7	0
15	KUDERER, MARTHA	F	0	0-1	0-1	0-0	1	1	2	0	1	0	0	0	6	0
24	SQUIRES, OLIANA	G	3	1-2	1-2	0-0	0	0	0	0	0	0	0	1	8	-3
33	SMITH, MADELINE	F	0	0-0	0-0	0-0	0	0	0	1	0	0	0	0	5	1
35	FREIJE, FALLYN	F	7	3-7	1-1	0-0	1	2	3	0	0	1	0	0	6	0
10	BAD BEAR, KOLA	F	0	0-1	0-0	0-0	0	0	0	0	0	0	0	0	3	-4
12	MARTELL, TORI	G	0	0-0	0-0	0-0	0	0	0	0	1	0	0	0	5	-5
20	JACKSON, MADISON	G	0	0-1	0-0	0-0	0	0	0	0	0	0	0	0	4	-4
23	MOCCHI, GABBY	F	0	0-0	0-0	0-0	0	0	0	0	0	0	0	0	0	0
25	ZIESKE, SIDNEY	G	0	0-0	0-0	0-0	0	0	0	0	0	0	0	0	0	0
44	BRAXTON, BLAIRE	F	0	0-1	0-0	0-0	0	0	0	0	0	1	0	1	6	-5
	TEAM						0	0	0	0		2				
<b>TOTALS</b>			<b>10</b>	<b>4-15</b>	<b>2-4</b>	<b>0-0</b>	<b>2</b>	<b>6</b>	<b>8</b>	<b>1</b>	<b>3</b>	<b>6</b>	<b>0</b>	<b>2</b>	<b>50</b>	

#### Shooting By Period

Period	FG	FG%	3FG	3FG%	FT	FT%
1st Qtr	4-15	27%	2-4	50%	0-0	0%
2nd Qtr	3-11	27%	1-4	25%	5-8	63%
1st Half	4-15	27%	2-4	50%	0-0	0%
1st Half	7-26	27%	3-8	38%	5-8	63%
Game	16-57	28.1%	3-16	18.8%	15-21	71.4%

Deadball Rebounds: 4,0

### South Dakota St. 14

No.	Player	S	Pts	FG	3FG	FT	OR	DR	TR	PF	A	TO	Blk	Stl	Min	+/-
02	CASCIO JENSEN, RYLIE	G	0	0-1	0-1	0-0	0	1	1	1	0	2	0	0	8	0
21	IRWIN, TYLEE	G	3	1-5	1-3	0-0	1	1	2	0	0	0	0	1	7	-3
24	LARSON, TAGYN	F	0	0-1	0-0	0-0	0	3	3	0	0	2	0	0	6	-2
33	BURCKHARD, PAITON	F	4	1-1	0-0	2-2	0	0	0	0	1	0	0	0	8	5
44	SELLAND, MYAH	F	4	2-3	0-1	0-0	0	2	2	0	1	1	0	0	8	3
03	THEUNINCK, LINDSEY	G	0	0-0	0-0	0-0	0	0	0	1	0	0	0	0	2	4
12	THEISEN, KALLIE	F	0	0-0	0-0	0-0	0	1	1	0	0	0	0	0	2	-1
20	NELSON, TORI	F	3	1-1	1-1	0-0	0	0	0	0	0	1	0	0	6	7
35	STAPLETON, SYDNEY	G	0	0-0	0-0	0-0	0	0	0	0	0	0	0	0	3	7
	TEAM						0	1	1	0		1				
<b>TOTALS</b>			<b>14</b>	<b>5-12</b>	<b>2-6</b>	<b>2-2</b>	<b>1</b>	<b>9</b>	<b>10</b>	<b>2</b>	<b>2</b>	<b>7</b>	<b>0</b>	<b>1</b>	<b>50</b>	

#### Shooting By Period

Period	FG	FG%	3FG	3FG%	FT	FT%
1st Qtr	5-12	42%	2-6	33%	2-2	100%
2nd Qtr	5-15	33%	2-10	20%	1-6	17%
1st Half	5-12	42%	2-6	33%	2-2	100%
1st Half	10-27	37%	4-16	25%	3-8	38%
Game	20-52	38.5%	7-27	25.9%	13-25	52.0%

Deadball Rebounds: 3,0

#### Game Notes:

Officials: Jeff Cross, Mark Berger, Jessica Fortner  
Attendance: 1596

Start Time: 08:05 PM ET  
End Time: 11:32 PM ET  
Game Duration: 3:26

Score	1st	2nd	3rd	4th	TOT
MSU	10	12	7	21	<b>50</b>
SDS	14	13	24	9	<b>60</b>

Points from (This Period)	MSU	SDS
In the Paint	0	4
Off Turns	3	4
2nd Chance	3	2
Fast Break	0	0
Bench	0	3

**Official Play-By-Play**  
**Montana St. vs South Dakota St.**  
**First Quarter**  
**November 21, 2019 at Frost Arena - Brookings, S.D.**



**Period 1**

**Starters:**

**Montana St.:** 2 WHITE, DARIAN (G); 15 KUDERER, MARTHA (F); 24 SQUIRES, OLIANA (G); 33 SMITH, MADELINE (F); 35 FREIJE, FALLYN (F);

**South Dakota St.:** 2 CASCIO JENSEN, RYLIE (G); 21 IRWIN, TYLEE (G); 24 LARSON, TAGYN (F); 33 BURCKHARD, PAITON (F); 44 SELAND, MYAH (F);

Time	VISITORS: Montana St.	Score	Margin	HOME: South Dakota St.
09:36				MISSED 3PTR by CASCIO JENSEN, RYLIE
09:31	REBOUND (DEF) by FREIJE, FALLYN			
09:24	TURNOVER (TRAVEL) by WHITE, DARIAN			
09:12				TURNOVER (LOSTBALL) by LARSON, TAGYN
08:56	TURNOVER (3SEC) by FREIJE, FALLYN			
08:39				TURNOVER (LOSTBALL) by SELAND, MYAH
08:39	STEAL by SQUIRES, OLIANA			
08:29	MISSED 3PTR by SQUIRES, OLIANA			
08:25	REBOUND (OFF) by KUDERER, MARTHA			
08:17	GOOD! 3PTR by FREIJE, FALLYN	0-3	V 3	
08:17	ASSIST by WHITE, DARIAN			
08:03				MISSED 3PTR by SELAND, MYAH
07:59	REBOUND (DEF) by WHITE, DARIAN			
07:52	GOOD! JUMPER by FREIJE, FALLYN	0-5	V 5	
07:52	ASSIST by KUDERER, MARTHA			
07:25				MISSED JUMPER by IRWIN, TYLEE
07:21	REBOUND (DEF) by WHITE, DARIAN			
07:08	MISSED JUMPER by FREIJE, FALLYN			
07:06				REBOUND (DEF) by TEAM
06:46	FOUL (PERSONAL) by SMITH, MADELINE			
06:46		1-5	V 4	GOOD! FT by BURCKHARD, PAITON
06:46		2-5	V 3	GOOD! FT by BURCKHARD, PAITON
06:29	MISSED JUMPER by FREIJE, FALLYN			
06:24				REBOUND (DEF) by LARSON, TAGYN
06:17				TURNOVER (LOSTBALL) by LARSON, TAGYN
06:17	SUB OUT: SQUIRES, OLIANA			
06:17	SUB OUT: SMITH, MADELINE			
06:17	SUB IN: MARTELL, TORI			
06:17	SUB IN: BRAXTON, BLAIRE			
06:00				SUB OUT: SELAND, MYAH
06:00				SUB IN: NELSON, TORI
05:55	MISSED 3PTR by KUDERER, MARTHA			
05:49	REBOUND (OFF) by FREIJE, FALLYN			
05:48	MISSED JUMPER by FREIJE, FALLYN			
05:44				REBOUND (DEF) by LARSON, TAGYN
05:25				MISSED LAYUP by LARSON, TAGYN
05:20	REBOUND (DEF) by KUDERER, MARTHA			
05:17	GOOD! JUMPER by FREIJE, FALLYN	2-7	V 5	
05:17	ASSIST by MARTELL, TORI			
05:03				MISSED 3PTR by IRWIN, TYLEE
04:58	REBOUND (DEF) by FREIJE, FALLYN			
04:53	MISSED JUMPER by WHITE, DARIAN			
04:48				REBOUND (DEF) by CASCIO JENSEN, RYLIE
04:39		5-7	V 2	GOOD! 3PTR by IRWIN, TYLEE
04:39				ASSIST by BURCKHARD, PAITON
04:27	MISSED LAYUP by WHITE, DARIAN			
04:23				REBOUND (DEF) by IRWIN, TYLEE
04:16				
04:10				SUB OUT: IRWIN, TYLEE
04:10				SUB OUT: BURCKHARD, PAITON
04:10				SUB IN: THEISEN, KALLIE
04:10				SUB IN: STAPLETON, SYDNEY
04:10	SUB OUT: MARTELL, TORI			
04:10	SUB OUT: KUDERER, MARTHA			
04:10	SUB OUT: FREIJE, FALLYN			
04:10	SUB IN: JACKSON, MADISON			
04:10	SUB IN: SMITH, MADELINE			
03:53				TURNOVER (LOSTBALL) by CASCIO JENSEN, RYLIE
03:49	TURNOVER (LOSTBALL) by BRAXTON, BLAIRE			
03:33				TURNOVER (LOSTBALL) by NELSON, TORI
03:33	STEAL by BRAXTON, BLAIRE			
03:18	SUB OUT: WHITE, DARIAN			
03:18	SUB OUT: SMITH, MADELINE			
03:18	SUB IN: BAD BEAR, KOLA			
03:18	SUB IN: MARTELL, TORI			
03:10				TURNOVER (DRIBBLING) by CASCIO JENSEN, RYLIE
02:49	MISSED JUMPER by BRAXTON, BLAIRE			
02:38				REBOUND (DEF) by SELAND, MYAH
02:36		7-7	T	GOOD! JUMPER by SELAND, MYAH
02:12		9-7	H 2	GOOD! LAYUP by BURCKHARD, PAITON [PNT]

Time	VISITORS: Montana St.	Score	Margin	HOME: South Dakota St.
02:08	MISSED LAYUP by BAD BEAR, KOLA			
02:04				REBOUND (DEF) by SELLAND, MYAH
01:59		12-7	H 5	GOOD! 3PTR by NELSON, TORI
01:59				ASSIST by SELLAND, MYAH
01:34				SUB OUT: STAPLETON, SYDNEY
01:34				SUB IN: IRWIN, TYLEE
00:58	GOOD! 3PTR by SQUIRES, OLIANA	12-10	H 2	
00:35				SUB OUT: THEUNINCK, LINDSEY
00:35				SUB IN: CASCIO JENSEN, RYLIE
00:35	SUB OUT: BAD BEAR, KOLA			
00:35	SUB OUT: MARTELL, TORI			
00:35	SUB OUT: JACKSON, MADISON			
00:35	SUB OUT: BRAXTON, BLAIRE			
00:35	SUB IN: WHITE, DARIAN			
00:35	SUB IN: KUDERER, MARTHA			
00:35	SUB IN: SMITH, MADELINE			
00:35	SUB IN: FREIJE, FALLYN			
00:34	TURNOVER (LOSTBALL) by WHITE, DARIAN			
00:34				STEAL by IRWIN, TYLEE
00:28				MISSED LAYUP by IRWIN, TYLEE
00:19				REBOUND (OFF) by IRWIN, TYLEE
00:19		14-10	H 4	GOOD! LAYUP by SELLAND, MYAH
00:18	MISSED JUMPER by FREIJE, FALLYN			
00:13				REBOUND (DEF) by THEISEN, KALLIE
00:02				MISSED 3PTR by IRWIN, TYLEE
00:00	REBOUND (DEF) by WHITE, DARIAN			
01:34				FOUL (PERSONAL) by THEUNINCK, LINDSEY

Montana St. 10, South Dakota St. 14

Points from (This Period)	MSU	SDS
In the Paint	0	4
Off Turns	3	4
2nd Chance	3	2
Fast Break	0	0
Bench	0	3

**Official Box Score**  
**Montana St. vs South Dakota St.**  
**Second Quarter Statistics Only**  
**November 21, 2019 at Frost Arena - Brookings, S.D.**



### Montana St. 12

No.	Player	S	Pts	FG	3FG	FT	OR	DR	TR	PF	A	TO	Blk	Stl	Min	+/-
02	WHITE, DARIAN	G	0	0-0	0-0	0-0	0	2	2	1	0	4	0	0	4	-3
15	KUDERER, MARTHA	F	0	0-1	0-0	0-0	1	1	2	0	0	0	0	0	6	2
24	SQUIRES, OLIANA	G	5	1-4	1-2	2-4	0	1	1	1	1	0	0	1	9	2
33	SMITH, MADELINE	F	2	1-1	0-0	0-0	0	0	0	1	0	0	0	0	1	2
35	FREIJE, FALLYN	F	2	1-3	0-1	0-0	0	1	1	0	1	1	0	1	10	-1
10	BAD BEAR, KOLA	F	1	0-0	0-0	1-2	0	1	1	0	1	0	0	0	3	-4
12	MARTELL, TORI	G	0	0-1	0-1	0-0	0	2	2	0	0	0	0	0	7	-1
20	JACKSON, MADISON	G	0	0-0	0-0	0-0	0	1	1	1	0	2	0	0	4	-3
23	MOCCHI, GABBY	F	0	0-0	0-0	0-0	0	0	0	0	0	0	0	0	0	0
25	ZIESKE, SIDNEY	G	0	0-0	0-0	0-0	0	0	0	0	0	0	0	0	0	0
44	BRAXTON, BLAIRE	F	2	0-1	0-0	2-2	0	0	0	1	0	0	0	0	6	1
	TEAM						1	0	1	0		0				
<b>TOTALS</b>			<b>12</b>	<b>3-11</b>	<b>1-4</b>	<b>5-8</b>	<b>2</b>	<b>9</b>	<b>11</b>	<b>5</b>	<b>3</b>	<b>7</b>	<b>0</b>	<b>2</b>	<b>50</b>	

#### Shooting By Period

Period	FG	FG%	3FG	3FG%	FT	FT%
3rd Qtr	2-13	15%	0-3	00%	3-4	75%
4th Qtr	7-18	39%	0-5	00%	7-9	78%
2nd Half	3-11	27%	1-4	25%	5-8	63%
2nd Half	9-31	29%	0-8	00%	10-13	77%
Game	16-57	28.1%	3-16	18.8%	15-21	71.4%

Deadball Rebounds: 4,0

### South Dakota St. 13

No.	Player	S	Pts	FG	3FG	FT	OR	DR	TR	PF	A	TO	Blk	Stl	Min	+/-
02	CASCIO JENSEN, RYLIE	G	0	0-0	0-0	0-0	0	0	0	1	0	0	0	0	1	-4
21	IRWIN, TYLEE	G	0	0-2	0-1	0-0	1	0	1	0	0	1	1	0	6	-3
24	LARSON, TAGYN	F	7	3-4	1-2	0-0	0	1	1	0	1	1	0	0	8	3
33	BURCKHARD, PAITON	F	1	0-0	0-0	1-2	0	1	1	1	0	1	0	0	7	2
44	SELLAND, MYAH	F	0	0-1	0-1	0-0	0	0	0	2	0	0	0	1	3	-1
03	THEUNINCK, LINDSEY	G	0	0-3	0-2	0-2	2	1	3	1	0	1	0	1	7	-1
12	THEISEN, KALLIE	F	0	0-0	0-0	0-0	0	0	0	0	0	1	0	0	2	1
20	NELSON, TORI	F	2	1-1	0-0	0-2	0	1	1	0	1	0	0	0	9	2
35	STAPLETON, SYDNEY	G	3	1-4	1-4	0-0	0	2	2	1	2	0	1	1	6	6
	TEAM						0	1	1	0		0				
<b>TOTALS</b>			<b>13</b>	<b>5-15</b>	<b>2-10</b>	<b>1-6</b>	<b>3</b>	<b>7</b>	<b>10</b>	<b>6</b>	<b>4</b>	<b>5</b>	<b>2</b>	<b>3</b>	<b>50</b>	

#### Shooting By Period

Period	FG	FG%	3FG	3FG%	FT	FT%
3rd Qtr	9-16	56%	2-5	40%	4-5	80%
4th Qtr	1-9	11%	1-6	17%	6-12	50%
2nd Half	5-15	33%	2-10	20%	1-6	17%
2nd Half	10-25	40%	3-11	27%	10-17	59%
Game	20-52	38.5%	7-27	25.9%	13-25	52.0%

Deadball Rebounds: 3,0

#### Game Notes:

Officials: Jeff Cross, Mark Berger, Jessica Fortner  
Attendance: 1596

Start Time: 08:05 PM ET  
End Time: 11:32 PM ET  
Game Duration: 3:26

Score	1st	2nd	3rd	4th	TOT
MSU	10	12	7	21	50
SDS	14	13	24	9	60

Points from (This Period)	MSU	SDS
In the Paint	4	4
Off Turns	2	2
2nd Chance	0	1
Fast Break	3	0
Bench	3	5

**Official Play-By-Play**  
**Montana St. vs South Dakota St.**  
**Second Quarter**  
**November 21, 2019 at Frost Arena - Brookings, S.D.**



**Period 2**

**Starters:**

**Montana St.:** 2 WHITE, DARIAN (G); 15 KUDERER, MARTHA (F); 24 SQUIRES, OLIANA (G); 33 SMITH, MADELINE (F); 35 FREIJE, FALLYN (F);

**South Dakota St.:** 2 CASCIO JENSEN, RYLIE (G); 21 IRWIN, TYLEE (G); 24 LARSON, TAGYN (F); 33 BURCKHARD, PAITON (F); 44 SELLAND, MYAH (F);

Time	VISITORS: Montana St.	Score	Margin	HOME: South Dakota St.
09:56				TURNOVER (BADPASS) by THEISEN, KALLIE
09:56	STEAL by FREIJE, FALLYN			
09:49				FOUL (PERSONAL) by CASCIO JENSEN, RYLIE
09:49	GOOD! LAYUP by SMITH, MADELINE	14-12	H 2	
09:49	ASSIST by SQUIRES, OLIANA			
09:30				SUB OUT: CASCIO JENSEN, RYLIE
09:30				SUB OUT: IRWIN, TYLEE
09:30				SUB IN: THEUNINCK, LINDSEY
09:30				SUB IN: STAPLETON, SYDNEY
09:16	FOUL (PERSONAL) by SQUIRES, OLIANA			
09:10				MISSED 3PTR by THEUNINCK, LINDSEY
09:06				REBOUND (OFF) by THEUNINCK, LINDSEY
09:05	FOUL (PERSONAL) by SMITH, MADELINE			
09:01	SUB OUT: SMITH, MADELINE			
09:01	SUB IN: BRAXTON, BLAIRE			
09:00				MISSED 3PTR by SELLAND, MYAH
08:56	REBOUND (DEF) by KUDERER, MARTHA			
08:56	TURNOVER (BADPASS) by WHITE, DARIAN			
08:35				MISSED 3PTR by STAPLETON, SYDNEY
08:32	REBOUND (DEF) by WHITE, DARIAN			
08:24	MISSED LAYUP by BRAXTON, BLAIRE			
08:20				REBOUND (DEF) by STAPLETON, SYDNEY
08:14		17-12	H 5	GOOD! 3PTR by LARSON, TAGYN
08:14				ASSIST by STAPLETON, SYDNEY
08:03				FOUL (PERSONAL) by STAPLETON, SYDNEY
07:53				FOUL (PERSONAL) by SELLAND, MYAH
07:53	MISSED FT by SQUIRES, OLIANA			
07:53	REBOUND (OFF) by TEAM			
07:53				SUB OUT: THEISEN, KALLIE
07:53				SUB OUT: NELSON, TORI
07:53				SUB IN: CASCIO JENSEN, RYLIE
07:53	GOOD! FT by SQUIRES, OLIANA	17-13	H 4	
07:53				TURNOVER (BADPASS) by LARSON, TAGYN
07:32	TURNOVER (BADPASS) by WHITE, DARIAN			
07:32				STEAL by SELLAND, MYAH
07:23				MISSED 3PTR by STAPLETON, SYDNEY
07:18	REBOUND (DEF) by WHITE, DARIAN			
07:11				FOUL (PERSONAL) by SELLAND, MYAH
07:11				SUB OUT: LARSON, TAGYN
07:11				SUB IN: NELSON, TORI
07:11	SUB OUT: WHITE, DARIAN			
07:11	SUB IN: MARTELL, TORI			
07:11	MISSED FT by SQUIRES, OLIANA			
07:11	REBOUND (OFF) by TEAM			
07:11	GOOD! FT by SQUIRES, OLIANA	17-14	H 3	
07:11				SUB OUT: SELLAND, MYAH
07:11				SUB IN: IRWIN, TYLEE
06:51				TURNOVER (BADPASS) by THEUNINCK, LINDSEY
06:51	STEAL by SQUIRES, OLIANA			
06:40	MISSED LAYUP by KUDERER, MARTHA			
06:40				BLOCK by STAPLETON, SYDNEY
06:30				REBOUND (DEF) by STAPLETON, SYDNEY
06:29				MISSED LAYUP by THEUNINCK, LINDSEY
06:29				REBOUND (OFF) by THEUNINCK, LINDSEY
06:29	FOUL (PERSONAL) by BRAXTON, BLAIRE			
06:23	SUB OUT: KUDERER, MARTHA			
06:23	SUB OUT: BRAXTON, BLAIRE			
06:23	SUB IN: BAD BEAR, KOLA			
06:23	SUB IN: JACKSON, MADISON			
06:29		18-14	H 4	GOOD! FT by BURCKHARD, PAITON
06:29				MISSED FT by BURCKHARD, PAITON
06:29	REBOUND (DEF) by FREIJE, FALLYN			
06:10	TURNOVER (LOSTBALL) by JACKSON, MADISON			
06:10				STEAL by STAPLETON, SYDNEY
06:06				TURNOVER (DRIBBLING) by IRWIN, TYLEE
06:06				SUB OUT: THEUNINCK, LINDSEY
06:06				SUB IN: LARSON, TAGYN
05:54	MISSED 3PTR by MARTELL, TORI			
05:50				REBOUND (DEF) by BURCKHARD, PAITON
05:33		21-14	H 7	GOOD! 3PTR by STAPLETON, SYDNEY

Time	VISITORS: Montana St.	Score	Margin	HOME: South Dakota St.
05:33				ASSIST by LARSON, TAGYN
05:17	GOOD! LAYUP by FREIJE, FALLYN	21-16	H 5	
05:17	ASSIST by BAD BEAR, KOLA			
04:54				MISSED 3PTR by STAPLETON, SYDNEY
04:49				REBOUND (OFF) by IRWIN, TYLEE
04:47				MISSED LAYUP by IRWIN, TYLEE
04:44	REBOUND (DEF) by BAD BEAR, KOLA			
04:44				FOUL (PERSONAL) by BURCKHARD, PAITON
04:48				SUB OUT: IRWIN, TYLEE
04:48				SUB IN: THEUNINCK, LINDSEY
04:48	SUB OUT: SQUIRES, OLIANA			
04:48	SUB IN: WHITE, DARIAN			
04:44	GOOD! FT by BAD BEAR, KOLA [FB]	21-17	H 4	
04:44	MISSED FT by BAD BEAR, KOLA			
04:44				REBOUND (DEF) by LARSON, TAGYN
04:32		23-17	H 6	GOOD! JUMPER by LARSON, TAGYN
04:32				ASSIST by STAPLETON, SYDNEY
04:27	TURNOVER (LOSTBALL) by WHITE, DARIAN			
04:27				STEAL by THEUNINCK, LINDSEY
04:08				TURNOVER (BADPASS) by BURCKHARD, PAITON
04:00	TURNOVER (LOSTBALL) by WHITE, DARIAN			
03:49		25-17	H 8	GOOD! LAYUP by NELSON, TORI [PNT]
03:33	MISSED 3PTR by FREIJE, FALLYN			
03:29				REBOUND (DEF) by THEUNINCK, LINDSEY
03:28				SUB OUT: STAPLETON, SYDNEY
03:28				SUB IN: IRWIN, TYLEE
03:28	SUB OUT: BAD BEAR, KOLA			
03:28	SUB IN: BRAXTON, BLAIRE			
03:16	FOUL (PERSONAL) by WHITE, DARIAN			
03:10	TURNOVER (BADPASS) by JACKSON, MADISON			
03:04	FOUL (PERSONAL) by JACKSON, MADISON			
03:04				MISSED FT by NELSON, TORI
03:04				REBOUND (OFF) by TEAM
02:59				MISSED FT by NELSON, TORI
02:56	REBOUND (DEF) by JACKSON, MADISON			
02:36	GOOD! 3PTR by SQUIRES, OLIANA	25-20	H 5	
02:36	ASSIST by FREIJE, FALLYN			
02:20		27-20	H 7	GOOD! LAYUP by LARSON, TAGYN
02:20				ASSIST by NELSON, TORI
02:02	TURNOVER (TRAVEL) by FREIJE, FALLYN			
02:02	SUB OUT: JACKSON, MADISON			
02:02	SUB IN: KUDERER, MARTHA			
01:42				MISSED 3PTR by THEUNINCK, LINDSEY
01:38	REBOUND (DEF) by MARTELL, TORI			
01:35	MISSED 3PTR by SQUIRES, OLIANA			
01:31	REBOUND (OFF) by KUDERER, MARTHA			
01:25	MISSED LAYUP by FREIJE, FALLYN			
01:24				REBOUND (DEF) by TEAM
01:05				MISSED 3PTR by IRWIN, TYLEE
00:59	REBOUND (DEF) by MARTELL, TORI			
00:56	MISSED JUMPER by SQUIRES, OLIANA			
00:56				BLOCK by IRWIN, TYLEE
00:53	REBOUND (OFF) by TEAM			
00:40	MISSED LAYUP by SQUIRES, OLIANA			
00:35				REBOUND (DEF) by NELSON, TORI
00:23				MISSED 3PTR by LARSON, TAGYN
00:20	REBOUND (DEF) by SQUIRES, OLIANA			
00:04				FOUL (PERSONAL) by THEUNINCK, LINDSEY
00:04	GOOD! FT by BRAXTON, BLAIRE [FB]	27-21	H 6	
00:04	GOOD! FT by BRAXTON, BLAIRE [FB]	27-22	H 5	
03:53				FOUL (PERSONAL) by CASCIO JENSEN, RYLIE
03:53	MISSED LAYUP by JACKSON, MADISON			
03:53				REBOUND (DEF) by LARSON, TAGYN

Montana St. 22, South Dakota St. 27

Points from (This Period)	MSU	SDS
In the Paint	4	4
Off Turns	2	2
2nd Chance	0	1
Fast Break	3	0
Bench	3	5

**Official Box Score**  
**Montana St. vs South Dakota St.**  
**Second Half Statistics Only**  
**November 21, 2019 at Frost Arena - Brookings, S.D.**



### Montana St. 28

No.	Player	S	Pts	FG	3FG	FT	OR	DR	TR	PF	A	TO	Blk	Stl	Min	+/-
02	WHITE, DARIAN	G	9	2-4	0-1	5-5	1	1	2	1	2	0	0	1	12	6
10	BAD BEAR, KOLA	F	4	2-2	0-0	0-0	0	4	4	0	0	0	0	1	7	6
12	MARTELL, TORI	G	2	1-2	0-1	0-0	0	0	0	1	1	0	0	2	13	-13
15	KUDERER, MARTHA	F	1	0-2	0-1	1-2	1	0	1	2	0	1	0	1	11	-13
20	JACKSON, MADISON	G	2	0-2	0-0	2-2	0	2	2	3	0	1	0	1	9	8
23	MOCCHI, GABBY	F	2	1-2	0-1	0-0	1	1	2	1	0	0	0	0	3	7
24	SQUIRES, OLIANA	G	2	1-7	0-2	0-0	0	2	2	1	1	2	0	1	14	-7
25	ZIESKE, SIDNEY	G	0	0-0	0-0	0-0	0	0	0	0	0	0	0	0	2	4
33	SMITH, MADELINE	F	0	0-0	0-0	0-0	0	0	0	2	0	0	0	0	5	-7
35	FREIJE, FALLYN	F	2	0-5	0-2	2-4	0	2	2	1	1	0	0	0	13	-11
44	BRAXTON, BLAIRE	F	4	2-5	0-0	0-0	0	2	2	1	0	2	1	0	12	-5
	TEAM		0	0-0	0-0	0-0	3	1	4	0	0	0	0	0	0	
<b>TOTALS</b>			<b>28</b>	<b>9-31</b>	<b>0-8</b>	<b>10-13</b>	<b>6</b>	<b>15</b>	<b>21</b>	<b>13</b>	<b>5</b>	<b>6</b>	<b>1</b>	<b>7</b>	<b>100</b>	

#### Shooting By Period

Period	FG	FG%	3FG	3FG%	FT	FT%
3rd Qtr	2-13	15%	0-3	00%	3-4	75%
4th Qtr	7-18	39%	0-5	00%	7-9	78%
2nd Half	9-31	29%	0-8	00%	10-13	77%
Game	16-57	28.1%	3-16	18.8%	15-21	71.4%

Deadball Rebounds: 4,0

Last FG Half: MSU 4th-00:50

### South Dakota St. 33

No.	Player	S	Pts	FG	3FG	FT	OR	DR	TR	PF	A	TO	Blk	Stl	Min	+/-
02	CASCIO JENSEN, RYLIE	G	5	1-4	1-4	2-4	0	4	4	1	2	2	0	1	18	4
03	THEUNINCK, LINDSEY	G	0	0-3	0-3	0-0	1	1	2	1	0	0	0	0	9	-7
12	THEISEN, KALLIE	F	2	1-3	0-0	0-0	1	1	2	0	0	0	1	1	5	7
20	NELSON, TORI	F	4	1-1	1-1	1-2	0	3	3	3	1	3	1	0	14	4
21	IRWIN, TYLEE	G	5	2-4	0-1	1-2	2	2	4	2	0	1	0	1	13	14
24	LARSON, TAGYN	F	7	3-4	1-1	0-2	0	1	1	2	0	0	3	0	16	0
33	BURCKHARD, PAITON	F	10	2-5	0-0	6-7	2	1	3	0	1	1	0	0	15	-2
35	STAPLETON, SYDNEY	G	0	0-0	0-0	0-0	0	0	0	0	0	0	0	0	0	0
44	SELLAND, MYAH	F	0	0-1	0-1	0-0	1	3	4	0	2	2	0	0	9	5
	TEAM		0	0-0	0-0	0-0	0	1	1	0	0	0	0	0	0	
<b>TOTALS</b>			<b>33</b>	<b>10-25</b>	<b>3-11</b>	<b>10-17</b>	<b>7</b>	<b>17</b>	<b>24</b>	<b>9</b>	<b>6</b>	<b>9</b>	<b>5</b>	<b>3</b>	<b>100</b>	

#### Shooting By Period

Period	FG	FG%	3FG	3FG%	FT	FT%
3rd Qtr	9-16	56%	2-5	40%	4-5	80%
4th Qtr	1-9	11%	1-6	17%	6-12	50%
2nd Half	10-25	40%	3-11	27%	10-17	59%
Game	20-52	38.5%	7-27	25.9%	13-25	52.0%

Deadball Rebounds: 3,0

Last FG Half: SDS 4th-06:42

#### Game Notes:

Officials: Jeff Cross, Mark Berger, Jessica Fortner

Attendance: 1596

Start Time: 08:05 PM ET

End Time: 11:32 PM ET

Game Duration: 3:26

Score	1st	2nd	3rd	4th	TOT
MSU	10	12	7	21	50
SDS	14	13	24	9	60

Points from (This Period)	MSU	SDS
In the Paint	14	14
Off Turns	10	12
2nd Chance	5	9
Fast Break	1	2
Bench	14	6

**Official Box Score**  
**Montana St. vs South Dakota St.**  
**Third Quarter Statistics Only**  
**November 21, 2019 at Frost Arena - Brookings, S.D.**



### Montana St. 28

No.	Player	S	Pts	FG	3FG	FT	OR	DR	TR	PF	A	TO	Blk	Stl	Min	+/-
02	WHITE, DARIAN	G	2	0-2	0-1	2-2	0	1	1	0	0	0	0	1	6	-6
15	KUDERER, MARTHA	F	1	0-2	0-1	1-2	1	0	1	0	0	1	0	0	7	-13
24	SQUIRES, OLIANA	G	2	1-3	0-0	0-0	0	0	0	0	0	1	0	0	7	-13
33	SMITH, MADELINE	F	0	0-0	0-0	0-0	0	0	0	2	0	0	0	0	5	-7
35	FREIJE, FALLYN	F	0	0-2	0-0	0-0	0	0	0	1	1	0	0	0	7	-13
10	BAD BEAR, KOLA	F	0	0-0	0-0	0-0	0	0	0	0	0	0	0	0	3	-4
12	MARTELL, TORI	G	0	0-1	0-1	0-0	0	0	0	0	0	0	0	1	7	-15
20	JACKSON, MADISON	G	0	0-1	0-0	0-0	0	0	0	1	0	1	0	0	3	-4
23	MOCCHI, GABBY	F	0	0-0	0-0	0-0	0	0	0	0	0	0	0	0	0	0
25	ZIESKE, SIDNEY	G	0	0-0	0-0	0-0	0	0	0	0	0	0	0	0	0	0
44	BRAXTON, BLAIRE	F	2	1-2	0-0	0-0	0	2	2	0	0	1	1	0	5	-10
	TEAM						1	1	2	0		0				
<b>TOTALS</b>			<b>7</b>	<b>2-13</b>	<b>0-3</b>	<b>3-4</b>	<b>2</b>	<b>4</b>	<b>6</b>	<b>4</b>	<b>1</b>	<b>4</b>	<b>1</b>	<b>2</b>	<b>50</b>	

#### Shooting By Period

Period	FG	FG%	3FG	3FG%	FT	FT%
2nd Half	0-0	0%	0-0	0%	0-0	0%
Game	16-57	28.1%	3-16	18.8%	15-21	71.4%

Deadball Rebounds: 4,0

### South Dakota St. 33

No.	Player	S	Pts	FG	3FG	FT	OR	DR	TR	PF	A	TO	Blk	Stl	Min	+/-
02	CASCIO JENSEN, RYLIE	G	3	1-2	1-2	0-0	0	2	2	0	2	0	0	0	10	17
21	IRWIN, TYLEE	G	5	2-3	0-1	1-2	1	2	3	1	0	0	0	1	8	14
24	LARSON, TAGYN	F	7	3-4	1-1	0-0	0	0	0	2	0	0	0	0	8	10
33	BURCKHARD, PAITON	F	7	2-5	0-0	3-3	1	0	1	0	0	1	0	0	7	8
44	SELLAND, MYAH	F	0	0-0	0-0	0-0	1	3	4	0	2	0	0	0	7	9
03	THEUNINCK, LINDSEY	G	0	0-1	0-1	0-0	0	0	0	0	0	0	0	0	0	3
12	THEISEN, KALLIE	F	2	1-1	0-0	0-0	1	0	1	0	0	0	1	1	3	9
20	NELSON, TORI	F	0	0-0	0-0	0-0	0	2	2	0	1	1	1	0	6	15
35	STAPLETON, SYDNEY	G	0	0-0	0-0	0-0	0	0	0	0	0	0	0	0	0	0
	TEAM						0	1	1	0		0				
<b>TOTALS</b>			<b>24</b>	<b>9-16</b>	<b>2-5</b>	<b>4-5</b>	<b>4</b>	<b>10</b>	<b>14</b>	<b>3</b>	<b>5</b>	<b>2</b>	<b>2</b>	<b>2</b>	<b>50</b>	

#### Shooting By Period

Period	FG	FG%	3FG	3FG%	FT	FT%
2nd Half	0-0	0%	0-0	0%	0-0	0%
Game	20-52	38.5%	7-27	25.9%	13-25	52.0%

Deadball Rebounds: 3,0

#### Game Notes:

Officials: Jeff Cross, Mark Berger, Jessica Fortner  
Attendance: 1596

Start Time: 08:05 PM ET  
End Time: 11:32 PM ET  
Game Duration: 3:26

Score	1st	2nd	3rd	4th	TOT
MSU	10	12	7	21	50
SDS	14	13	24	9	60

Points from (This Period)	MSU	SDS
In the Paint	2	14
Off Turns	2	9
2nd Chance	0	5
Fast Break	0	0
Bench	2	2

**Official Play-By-Play**  
**Montana St. vs South Dakota St.**  
**Third Quarter**  
**November 21, 2019 at Frost Arena - Brookings, S.D.**



**Period 3**

**Starters:**

**Montana St.:** 2 WHITE, DARIAN (G); 15 KUDERER, MARTHA (F); 24 SQUIRES, OLIANA (G); 33 SMITH, MADELINE (F); 35 FREIJE, FALLYN (F);

**South Dakota St.:** 2 CASCIO JENSEN, RYLIE (G); 21 IRWIN, TYLEE (G); 24 LARSON, TAGYN (F); 33 BURCKHARD, PAITON (F); 44 SELLAND, MYAH (F);

Time	VISITORS: Montana St.	Score	Margin	HOME: South Dakota St.
10:00				SUB OUT: THEUNINCK, LINDSEY
10:00				SUB OUT: NELSON, TORI
10:00				SUB IN: CASCIO JENSEN, RYLIE
10:00				SUB IN: SELLAND, MYAH
10:00	SUB OUT: MARTELL, TORI			
10:00	SUB OUT: BRAXTON, BLAIRE			
10:00	SUB IN: WHITE, DARIAN			
10:00	SUB IN: SMITH, MADELINE			
09:45	MISSED JUMPER by SQUIRES, OLIANA			
09:44				REBOUND (DEF) by SELLAND, MYAH
09:13				MISSED LAYUP by BURCKHARD, PAITON
09:13				REBOUND (OFF) by IRWIN, TYLEE
09:11				MISSED LAYUP by BURCKHARD, PAITON
09:11	REBOUND (DEF) by TEAM			
08:53	MISSED LAYUP by FREIJE, FALLYN			
08:49				REBOUND (DEF) by IRWIN, TYLEE
08:34		30-22	H 8	GOOD! 3PTR by LARSON, TAGYN
08:34				ASSIST by SELLAND, MYAH
08:17	GOOD! JUMPER by SQUIRES, OLIANA	30-24	H 6	
07:54	FOUL (PERSONAL) by SMITH, MADELINE			
07:46		31-24	H 7	GOOD! FT by BURCKHARD, PAITON
07:45		32-24	H 8	GOOD! FT by BURCKHARD, PAITON
07:43	SUB OUT: SMITH, MADELINE			
07:43	SUB IN: BRAXTON, BLAIRE			
07:32				FOUL (PERSONAL) by LARSON, TAGYN
07:32	GOOD! FT by KUDERER, MARTHA	32-25	H 7	
07:28	MISSED FT by KUDERER, MARTHA			
07:25				REBOUND (DEF) by SELLAND, MYAH
07:16				MISSED 3PTR by IRWIN, TYLEE
07:12	REBOUND (DEF) by WHITE, DARIAN			
07:02	MISSED LAYUP by BRAXTON, BLAIRE			
06:58				REBOUND (DEF) by CASCIO JENSEN, RYLIE
06:49	SUB OUT: WHITE, DARIAN			
06:49	SUB IN: MARTELL, TORI			
06:34				MISSED LAYUP by LARSON, TAGYN
06:34	BLOCK by BRAXTON, BLAIRE			
06:28	REBOUND (DEF) by BRAXTON, BLAIRE			
06:25	MISSED LAYUP by SQUIRES, OLIANA			
06:24				REBOUND (DEF) by SELLAND, MYAH
06:24				FOUL (PERSONAL) by LARSON, TAGYN
06:15				SUB OUT: LARSON, TAGYN
06:15				SUB IN: NELSON, TORI
06:12	MISSED JUMPER by FREIJE, FALLYN			
06:08				REBOUND (DEF) by NELSON, TORI
06:06		34-25	H 9	GOOD! LAYUP by BURCKHARD, PAITON
06:06				ASSIST by CASCIO JENSEN, RYLIE
05:54	TURNOVER (LOSTBALL) by SQUIRES, OLIANA			
05:54				STEAL by IRWIN, TYLEE
05:43		37-25	H 12	GOOD! 3PTR by CASCIO JENSEN, RYLIE
05:43				ASSIST by SELLAND, MYAH
05:25	GOOD! LAYUP by BRAXTON, BLAIRE [PNT]	37-27	H 10	
05:25	ASSIST by FREIJE, FALLYN			
05:11	FOUL (PERSONAL) by FREIJE, FALLYN			
05:11				SUB OUT: BURCKHARD, PAITON
05:11				SUB IN: THEISEN, KALLIE
05:11		38-27	H 11	GOOD! FT by IRWIN, TYLEE
05:11				MISSED FT by IRWIN, TYLEE
05:09	REBOUND (DEF) by BRAXTON, BLAIRE			
04:52	MISSED LAYUP by KUDERER, MARTHA			
04:52				BLOCK by THEISEN, KALLIE
04:51	REBOUND (OFF) by KUDERER, MARTHA			
04:51				
04:41	TURNOVER (TRAVEL) by KUDERER, MARTHA			
04:41				SUB OUT: SELLAND, MYAH
04:41				SUB IN: LARSON, TAGYN
04:21		40-27	H 13	GOOD! LAYUP by IRWIN, TYLEE
04:07	TURNOVER (LOSTBALL) by BRAXTON, BLAIRE			
04:07				STEAL by THEISEN, KALLIE
04:01		42-27	H 15	GOOD! LAYUP by LARSON, TAGYN
04:01				ASSIST by NELSON, TORI

Time	VISITORS: Montana St.	Score	Margin	HOME: South Dakota St.
03:50	MISSED 3PTR by KUDERER, MARTHA			
03:46				REBOUND (DEF) by IRWIN, TYLEE
03:27				MISSED 3PTR by CASCIO JENSEN, RYLIE
03:20				REBOUND (OFF) by THEISEN, KALLIE
03:19		44-27	H 17	GOOD! LAYUP by THEISEN, KALLIE
03:16	TIMEOUT 30SEC			
03:02	SUB OUT: KUDERER, MARTHA			
03:02	SUB OUT: SQUIRES, OLIANA			
03:02	SUB OUT: FREIJE, FALLYN			
03:02	SUB OUT: BRAXTON, BLAIRE			
03:02	SUB IN: WHITE, DARIAN			
03:02	SUB IN: BAD BEAR, KOLA			
03:02	SUB IN: JACKSON, MADISON			
03:02	SUB IN: SMITH, MADELINE			
02:55	MISSED JUMPER by JACKSON, MADISON			
02:55				BLOCK by NELSON, TORI
02:48				REBOUND (DEF) by NELSON, TORI
02:46		46-27	H 19	GOOD! LAYUP by IRWIN, TYLEE [PNT]
02:46				ASSIST by CASCIO JENSEN, RYLIE
02:36	MISSED JUMPER by WHITE, DARIAN			
02:30				REBOUND (DEF) by CASCIO JENSEN, RYLIE
02:13				TURNOVER (BADPASS) by NELSON, TORI
02:13	STEAL by MARTELL, TORI			
01:52				FOUL (PERSONAL) by IRWIN, TYLEE
01:52				SUB IN: SELLAND, MYAH
01:52	GOOD! FT by WHITE, DARIAN	46-28	H 18	
01:52	GOOD! FT by WHITE, DARIAN	46-29	H 17	
01:38				TURNOVER (LOSTBALL) by BURCKHARD, PAITON
01:38	STEAL by WHITE, DARIAN			
01:32	FOUL (OFF) by JACKSON, MADISON			
01:32	TURNOVER (OFFENSIVE) by JACKSON, MADISON			
01:07		48-29	H 19	GOOD! LAYUP by LARSON, TAGYN [PNT]
00:49	MISSED 3PTR by MARTELL, TORI			
00:40	REBOUND (OFF) by TEAM			
00:25	MISSED 3PTR by WHITE, DARIAN			
00:23				REBOUND (DEF) by TEAM
00:04				MISSED 3PTR by THEUNINCK, LINDSEY
00:03				REBOUND (OFF) by SELLAND, MYAH
00:00		50-29	H 21	GOOD! LAYUP by BURCKHARD, PAITON
00:00	FOUL (PERSONAL) by SMITH, MADELINE			
00:00	SUB OUT: WHITE, DARIAN			
00:00	SUB OUT: BAD BEAR, KOLA			
00:00	SUB OUT: JACKSON, MADISON			
00:00	SUB OUT: SMITH, MADELINE			
00:00	SUB IN: KUDERER, MARTHA			
00:00	SUB IN: SQUIRES, OLIANA			
00:00	SUB IN: FREIJE, FALLYN			
00:00	SUB IN: BRAXTON, BLAIRE			
00:00		51-29	H 22	GOOD! FT by BURCKHARD, PAITON
00:01				MISSED LAYUP by BURCKHARD, PAITON
00:01				REBOUND (OFF) by BURCKHARD, PAITON

Montana St. 29, South Dakota St. 51

Points from (This Period)	MSU	SDS
In the Paint	2	14
Off Turns	2	9
2nd Chance	0	5
Fast Break	0	0
Bench	2	2

**Official Box Score**  
**Montana St. vs South Dakota St.**  
**Fourth Quarter Statistics Only**  
**November 21, 2019 at Frost Arena - Brookings, S.D.**



### Montana St. 21

No.	Player	S	Pts	FG	3FG	FT	OR	DR	TR	PF	A	TO	Blk	Stl	Min	+/-
02	WHITE, DARIAN	G	7	2-2	0-0	3-3	1	0	1	1	2	0	0	0	6	12
15	KUDERER, MARTHA	F	0	0-0	0-0	0-0	0	0	0	2	0	0	0	1	4	0
24	SQUIRES, OLIANA	G	0	0-4	0-2	0-0	0	2	2	1	1	1	0	1	7	6
33	SMITH, MADELINE	F	0	0-0	0-0	0-0	0	0	0	0	0	0	0	0	0	0
35	FREIJE, FALLYN	F	2	0-3	0-2	2-4	0	2	2	0	0	0	0	0	6	2
10	BAD BEAR, KOLA	F	4	2-2	0-0	0-0	0	4	4	0	0	0	0	1	4	10
12	MARTELL, TORI	G	2	1-1	0-0	0-0	0	0	0	1	1	0	0	1	6	2
20	JACKSON, MADISON	G	2	0-1	0-0	2-2	0	2	2	2	0	0	0	1	6	12
23	MOCCHI, GABBY	F	2	1-2	0-1	0-0	1	1	2	1	0	0	0	0	3	7
25	ZIESKE, SIDNEY	G	0	0-0	0-0	0-0	0	0	0	0	0	0	0	0	2	4
44	BRAXTON, BLAIRE	F	2	1-3	0-0	0-0	0	0	0	1	0	1	0	0	7	5
	TEAM						2	0	2	0		0				
<b>TOTALS</b>			<b>21</b>	<b>7-18</b>	<b>0-5</b>	<b>7-9</b>	<b>4</b>	<b>11</b>	<b>15</b>	<b>9</b>	<b>4</b>	<b>2</b>	<b>0</b>	<b>5</b>	<b>50</b>	

*Shooting By Period*

Period	FG	FG%	3FG	3FG%	FT	FT%
Game	16-57	28.1%	3-16	18.8%	15-21	71.4%

*Deadball Rebounds: 4,0*

### South Dakota St. 9

No.	Player	S	Pts	FG	3FG	FT	OR	DR	TR	PF	A	TO	Blk	Stl	Min	+/-
02	CASCIO JENSEN, RYLIE	G	2	0-2	0-2	2-4	0	2	2	1	0	2	0	1	8	-13
21	IRWIN, TYLEE	G	0	0-1	0-0	0-0	1	0	1	1	0	1	0	0	5	0
24	LARSON, TAGYN	F	0	0-0	0-0	0-2	0	1	1	0	0	0	3	0	8	-10
33	BURCKHARD, PAITON	F	3	0-0	0-0	3-4	1	1	2	0	1	0	0	0	8	-10
44	SELLAND, MYAH	F	0	0-1	0-1	0-0	0	0	0	0	0	2	0	0	2	-4
03	THEUNINCK, LINDSEY	G	0	0-2	0-2	0-0	1	1	2	1	0	0	0	0	9	-10
12	THEISEN, KALLIE	F	0	0-2	0-0	0-0	0	1	1	0	0	0	0	0	2	-2
20	NELSON, TORI	F	4	1-1	1-1	1-2	0	1	1	3	0	2	0	0	8	-11
35	STAPLETON, SYDNEY	G	0	0-0	0-0	0-0	0	0	0	0	0	0	0	0	0	0
	TEAM						0	0	0	0		0				
<b>TOTALS</b>			<b>9</b>	<b>1-9</b>	<b>1-6</b>	<b>6-12</b>	<b>3</b>	<b>7</b>	<b>10</b>	<b>6</b>	<b>1</b>	<b>7</b>	<b>3</b>	<b>1</b>	<b>50</b>	

*Shooting By Period*

Period	FG	FG%	3FG	3FG%	FT	FT%
Game	20-52	38.5%	7-27	25.9%	13-25	52.0%

*Deadball Rebounds: 3,0*

*Game Notes:*

Officials: **Jeff Cross, Mark Berger, Jessica Fortner**  
Attendance: **1596**

Start Time: **08:05 PM ET**  
End Time: **11:32 PM ET**  
Game Duration: **3:26**

Score	1st	2nd	3rd	4th	TOT
MSU	10	12	7	21	<b>50</b>
SDS	14	13	24	9	<b>60</b>

Points from (This Period)	MSU	SDS
In the Paint	12	0
Off Turns	8	3
2nd Chance	5	4
Fast Break	1	2
Bench	12	4

**Official Play-By-Play**  
**Montana St. vs South Dakota St.**  
**Fourth Quarter**  
**November 21, 2019 at Frost Arena - Brookings, S.D.**



**Period 4**

**Starters:**

**Montana St.:** 2 WHITE, DARIAN (G); 15 KUDERER, MARTHA (F); 24 SQUIRES, OLIANA (G); 33 SMITH, MADELINE (F); 35 FREIJE, FALLYN (F);

**South Dakota St.:** 2 CASCIO JENSEN, RYLIE (G); 21 IRWIN, TYLEE (G); 24 LARSON, TAGYN (F); 33 BURCKHARD, PAITON (F); 44 SELAND, MYAH (F);

Time	VISITORS: Montana St.	Score	Margin	HOME: South Dakota St.
09:56				SUB OUT: NELSON, TORI
09:56				SUB IN: LARSON, TAGYN
09:35				TURNOVER (BADPASS) by CASCIO JENSEN, RYLIE
09:32	GOOD! LAYUP by BRAXTON, BLAIRE	51-31	H 20	
09:32	ASSIST by MARTELL, TORI			
09:25	FOUL (PERSONAL) by KUDERER, MARTHA			
09:23				MISSED 3PTR by SELAND, MYAH
09:22				REBOUND (OFF) by BURCKHARD, PAITON
09:22	FOUL (PERSONAL) by KUDERER, MARTHA			
09:22				SUB OUT: SELAND, MYAH
09:22				SUB IN: IRWIN, TYLEE
09:22		52-31	H 21	GOOD! FT by BURCKHARD, PAITON [FB]
09:22				MISSED FT by BURCKHARD, PAITON
09:01	REBOUND (DEF) by SQUIRES, OLIANA			
08:57	MISSED 3PTR by FREIJE, FALLYN			
08:52				REBOUND (DEF) by BURCKHARD, PAITON
08:15				MISSED 3PTR by CASCIO JENSEN, RYLIE
08:09				REBOUND (OFF) by IRWIN, TYLEE
08:08				MISSED LAYUP by IRWIN, TYLEE
08:05	REBOUND (DEF) by FREIJE, FALLYN			
08:04	MISSED LAYUP by FREIJE, FALLYN			
08:04				BLOCK by LARSON, TAGYN
08:04	REBOUND (OFF) by TEAM			
08:01	MISSED 3PTR by SQUIRES, OLIANA			
07:56				REBOUND (DEF) by THEUNINCK, LINDSEY
07:49				MISSED 3PTR by CASCIO JENSEN, RYLIE
07:44	REBOUND (DEF) by SQUIRES, OLIANA			
07:44	TURNOVER (LOSTBALL) by SQUIRES, OLIANA			
07:44				SUB OUT: CASCIO JENSEN, RYLIE
07:44				SUB IN: NELSON, TORI
06:59				MISSED 3PTR by THEUNINCK, LINDSEY
06:56				REBOUND (OFF) by THEUNINCK, LINDSEY
06:42		55-31	H 24	GOOD! 3PTR by NELSON, TORI
06:42				ASSIST by BURCKHARD, PAITON
06:23	GOOD! LAYUP by MARTELL, TORI	55-33	H 22	
06:02				TURNOVER (TRAVEL) by IRWIN, TYLEE
05:56				SUB OUT: IRWIN, TYLEE
05:56				SUB OUT: LARSON, TAGYN
05:56				SUB OUT: BURCKHARD, PAITON
05:56				SUB IN: CASCIO JENSEN, RYLIE
05:56				SUB IN: THEISEN, KALLIE
05:56				SUB IN: SELAND, MYAH
05:56	SUB OUT: KUDERER, MARTHA			
05:56	SUB OUT: SQUIRES, OLIANA			
05:56	SUB IN: WHITE, DARIAN			
05:56	SUB IN: JACKSON, MADISON			
05:49				FOUL (PERSONAL) by NELSON, TORI
05:45	MISSED FT by FREIJE, FALLYN			
05:45	REBOUND (OFF) by TEAM			
05:45	GOOD! FT by FREIJE, FALLYN	55-34	H 21	
05:28				TURNOVER (BADPASS) by SELAND, MYAH
05:28	STEAL by MARTELL, TORI			
05:21				FOUL (PERSONAL) by CASCIO JENSEN, RYLIE
05:21	MISSED FT by FREIJE, FALLYN			
05:21	REBOUND (OFF) by TEAM			
05:21	GOOD! FT by FREIJE, FALLYN [FB]	55-35	H 20	
05:12	FOUL (PERSONAL) by MARTELL, TORI			
04:53				MISSED LAYUP by THEISEN, KALLIE
04:50	REBOUND (DEF) by FREIJE, FALLYN			
04:44	TURNOVER (LOSTBALL) by BRAXTON, BLAIRE			
04:44				STEAL by CASCIO JENSEN, RYLIE
04:34				MISSED LAYUP by THEISEN, KALLIE
04:30	REBOUND (DEF) by JACKSON, MADISON			
04:23	MISSED 3PTR by FREIJE, FALLYN			
04:21				REBOUND (DEF) by THEISEN, KALLIE
04:21	FOUL (PERSONAL) by BRAXTON, BLAIRE			
04:21				
04:21				SUB OUT: THEUNINCK, LINDSEY
04:21				SUB OUT: THEISEN, KALLIE
04:21				SUB OUT: SELAND, MYAH

Time	VISITORS: Montana St.	Score	Margin	HOME: South Dakota St.
04:21				SUB IN: IRWIN, TYLEE
04:21				SUB IN: LARSON, TAGYN
04:21				SUB IN: BURCKHARD, PAITON
04:21	SUB OUT: MARTELL, TORI			
04:21	SUB OUT: FREIJE, FALLYN			
04:21	SUB IN: BAD BEAR, KOLA			
04:21	SUB IN: SQUIRES, OLIANA			
04:06				TURNOVER (LOSTBALL) by NELSON, TORI
04:06	STEAL by BAD BEAR, KOLA			
03:53	GOOD! LAYUP by BAD BEAR, KOLA	55-37	H 18	
03:53	ASSIST by WHITE, DARIAN			
03:37	FOUL (PERSONAL) by JACKSON, MADISON			
03:37		56-37	H 19	GOOD! FT by BURCKHARD, PAITON
03:37		57-37	H 20	GOOD! FT by BURCKHARD, PAITON
03:17	MISSED LAYUP by BRAXTON, BLAIRE			
03:17				BLOCK by LARSON, TAGYN
03:17	REBOUND (OFF) by TEAM			
03:11	MISSED JUMPER by SQUIRES, OLIANA			
03:09	REBOUND (OFF) by WHITE, DARIAN			
03:09	GOOD! JUMPER by WHITE, DARIAN	57-39	H 18	
03:09				FOUL (PERSONAL) by IRWIN, TYLEE
03:09				SUB OUT: IRWIN, TYLEE
03:09				SUB IN: THEUNINCK, LINDSEY
03:09	GOOD! FT by WHITE, DARIAN	57-40	H 17	
02:55				MISSED 3PTR by THEUNINCK, LINDSEY
02:51	REBOUND (DEF) by BAD BEAR, KOLA			
02:39				FOUL (PERSONAL) by NELSON, TORI
02:39	SUB OUT: BRAXTON, BLAIRE			
02:39	SUB IN: MOCCHI, GABBY			
02:39	GOOD! FT by WHITE, DARIAN	57-41	H 16	
02:39	GOOD! FT by WHITE, DARIAN	57-42	H 15	
02:15				TURNOVER (LOSTBALL) by NELSON, TORI
02:15	STEAL by JACKSON, MADISON			
02:00	GOOD! LAYUP by WHITE, DARIAN	57-44	H 13	
02:00	ASSIST by SQUIRES, OLIANA			
01:50	FOUL (PERSONAL) by SQUIRES, OLIANA			
01:50		58-44	H 14	GOOD! FT by CASCIO JENSEN, RYLIE
01:50				MISSED FT by CASCIO JENSEN, RYLIE
01:50	REBOUND (DEF) by MOCCHI, GABBY			
01:45	MISSED 3PTR by MOCCHI, GABBY			
01:40				REBOUND (DEF) by CASCIO JENSEN, RYLIE
01:38				TURNOVER (LOSTBALL) by CASCIO JENSEN, RYLIE
01:38	STEAL by SQUIRES, OLIANA			
01:38	MISSED 3PTR by SQUIRES, OLIANA			
01:38				REBOUND (DEF) by NELSON, TORI
01:38	FOUL (PERSONAL) by MOCCHI, GABBY			
01:38	SUB OUT: SQUIRES, OLIANA			
01:38	SUB IN: ZIESKE, SIDNEY			
01:38		59-44	H 15	GOOD! FT by NELSON, TORI [FB]
01:38				MISSED FT by NELSON, TORI
01:37	REBOUND (DEF) by BAD BEAR, KOLA			
01:32	MISSED LAYUP by JACKSON, MADISON			
01:25	REBOUND (OFF) by MOCCHI, GABBY			
01:23	GOOD! LAYUP by MOCCHI, GABBY	59-46	H 13	
01:11	FOUL (PERSONAL) by JACKSON, MADISON			
01:07				MISSED FT by LARSON, TAGYN
01:07				REBOUND (OFF) by TEAM
01:03				MISSED FT by LARSON, TAGYN
01:01	REBOUND (DEF) by BAD BEAR, KOLA			
00:50	GOOD! LAYUP by BAD BEAR, KOLA	59-48	H 11	
00:50	ASSIST by WHITE, DARIAN			
00:34	FOUL (PERSONAL) by WHITE, DARIAN			
00:34		60-48	H 12	GOOD! FT by CASCIO JENSEN, RYLIE
00:34				MISSED FT by CASCIO JENSEN, RYLIE
00:32	REBOUND (DEF) by BAD BEAR, KOLA			
00:19				FOUL (PERSONAL) by NELSON, TORI
00:17	GOOD! FT by JACKSON, MADISON	60-50	H 10	
00:17	GOOD! FT by JACKSON, MADISON	60-49	H 11	

Montana St. 50, South Dakota St. 60

Points from (This Period)	MSU	SDS
In the Paint	12	0
Off Turns	8	3
2nd Chance	5	4
Fast Break	1	2
Bench	12	4

**Official Scoring/Possession Reference Chart**  
**Montana St. vs South Dakota St.**  
**Period 1**  
**November 21, 2019 at Frost Arena - Brookings, S.D.**



**Period 1**

**Starters:**

**Montana St.:** 2 WHITE,DARIAN (G); 15 KUDERER,MARTHA (F); 24 SQUIRES,OLIANA (G); 33 SMITH,MADELINE (F); 35 FREIJE,FALLYN (F);

**South Dakota St.:** 2 CASCIO JENSEN,RYLIE (G); 21 IRWIN,TYLEE (G); 24 LARSON,TAGYN (F); 33 BURCKHARD,PAITON (F); 44 SELLAND,MYAH (F);

Time	VISITORS: Montana St.	Score	Margin	HOME: South Dakota St.
08:17	GOOD! 3PTR by FREIJE, FALLYN	0-3	V 3	
07:52	GOOD! JUMPER by FREIJE, FALLYN	0-5	V 5	
06:46		1-5	V 4	GOOD! FT by BURCKHARD, PAITON
06:46		2-5	V 3	GOOD! FT by BURCKHARD, PAITON
05:17	GOOD! JUMPER by FREIJE, FALLYN	2-7	V 5	
04:39		5-7	V 2	GOOD! 3PTR by IRWIN, TYLEE
02:36		7-7	T	GOOD! JUMPER by SELLAND, MYAH
02:12		9-7	H 2	GOOD! LAYUP by BURCKHARD, PAITON [PNT]
01:59		12-7	H 5	GOOD! 3PTR by NELSON, TORI
00:58	GOOD! 3PTR by SQUIRES, OLIANA	12-10	H 2	
00:19		14-10	H 4	GOOD! LAYUP by SELLAND, MYAH

**Montana St. 10, South Dakota St. 14**

**Official Scoring/Possession Reference Chart**  
**Montana St. vs South Dakota St.**  
**Period 2**  
**November 21, 2019 at Frost Arena - Brookings, S.D.**



**Period 2**

**Starters:**

**Montana St.:** 2 WHITE,DARIAN (G); 15 KUDERER,MARTHA (F); 24 SQUIRES,OLIANA (G); 33 SMITH,MADELINE (F); 35 FREIJE,FALLYN (F);

**South Dakota St.:** 2 CASCIO JENSEN,RYLIE (G); 21 IRWIN,TYLEE (G); 24 LARSON,TAGYN (F); 33 BURCKHARD,PAITON (F); 44 SELLAND,MYAH (F);

Time	VISITORS: Montana St.	Score	Margin	HOME: South Dakota St.
09:49	GOOD! LAYUP by SMITH, MADELINE	14-12	H 2	
08:14		17-12	H 5	GOOD! 3PTR by LARSON, TAGYN
07:53	GOOD! FT by SQUIRES, OLIANA	17-13	H 4	
07:11	GOOD! FT by SQUIRES, OLIANA	17-14	H 3	
06:29		18-14	H 4	GOOD! FT by BURCKHARD, PAITON
05:33		21-14	H 7	GOOD! 3PTR by STAPLETON, SYDNEY
05:17	GOOD! LAYUP by FREIJE, FALLYN	21-16	H 5	
04:44	GOOD! FT by BAD BEAR, KOLA [FB]	21-17	H 4	
04:32		23-17	H 6	GOOD! JUMPER by LARSON, TAGYN
03:49		25-17	H 8	GOOD! LAYUP by NELSON, TORI [PNT]
02:36	GOOD! 3PTR by SQUIRES, OLIANA	25-20	H 5	
02:20		27-20	H 7	GOOD! LAYUP by LARSON, TAGYN
00:04	GOOD! FT by BRAXTON, BLAIRE [FB]	27-21	H 6	
00:04	GOOD! FT by BRAXTON, BLAIRE [FB]	27-22	H 5	

**Montana St. 22, South Dakota St. 27**

**Official Scoring/Possession Reference Chart**  
**Montana St. vs South Dakota St.**  
**Period 3**  
**November 21, 2019 at Frost Arena - Brookings, S.D.**



**Period 3**

**Starters:**

**Montana St.:** 2 WHITE, DARIAN (G); 15 KUDERER, MARTHA (F); 24 SQUIRES, OLIANA (G); 33 SMITH, MADELINE (F); 35 FREIJE, FALLYN (F);

**South Dakota St.:** 2 CASCIO JENSEN, RYLIE (G); 21 IRWIN, TYLEE (G); 24 LARSON, TAGYN (F); 33 BURCKHARD, PAITON (F); 44 SELAND, MYAH (F);

Time	VISITORS: Montana St.	Score	Margin	HOME: South Dakota St.
08:34		30-22	H 8	GOOD! 3PTR by LARSON, TAGYN
08:17	GOOD! JUMPER by SQUIRES, OLIANA	30-24	H 6	
07:46		31-24	H 7	GOOD! FT by BURCKHARD, PAITON
07:45		32-24	H 8	GOOD! FT by BURCKHARD, PAITON
07:32	GOOD! FT by KUDERER, MARTHA	32-25	H 7	
06:06		34-25	H 9	GOOD! LAYUP by BURCKHARD, PAITON
05:43		37-25	H 12	GOOD! 3PTR by CASCIO JENSEN, RYLIE
05:25	GOOD! LAYUP by BRAXTON, BLAIRE [PNT]	37-27	H 10	
05:11		38-27	H 11	GOOD! FT by IRWIN, TYLEE
04:21		40-27	H 13	GOOD! LAYUP by IRWIN, TYLEE
04:01		42-27	H 15	GOOD! LAYUP by LARSON, TAGYN
03:19		44-27	H 17	GOOD! LAYUP by THEISEN, KALLIE
02:46		46-27	H 19	GOOD! LAYUP by IRWIN, TYLEE [PNT]
01:52	GOOD! FT by WHITE, DARIAN	46-28	H 18	
01:52	GOOD! FT by WHITE, DARIAN	46-29	H 17	
01:07		48-29	H 19	GOOD! LAYUP by LARSON, TAGYN [PNT]
00:00		50-29	H 21	GOOD! LAYUP by BURCKHARD, PAITON
00:00		51-29	H 22	GOOD! FT by BURCKHARD, PAITON

**Montana St. 29, South Dakota St. 51**

**Official Scoring/Possession Reference Chart**  
**Montana St. vs South Dakota St.**  
**Period 4**  
**November 21, 2019 at Frost Arena - Brookings, S.D.**



**Period 4**

**Starters:**

**Montana St.:** 2 WHITE, DARIAN (G); 15 KUDERER, MARTHA (F); 24 SQUIRES, OLIANA (G); 33 SMITH, MADELINE (F); 35 FREIJE, FALLYN (F);

**South Dakota St.:** 2 CASCIO JENSEN, RYLIE (G); 21 IRWIN, TYLEE (G); 24 LARSON, TAGYN (F); 33 BURCKHARD, PAITON (F); 44 SELAND, MYAH (F);

Time	VISITORS: Montana St.	Score	Margin	HOME: South Dakota St.
09:32	GOOD! LAYUP by BRAXTON, BLAIRE	51-31	H 20	
09:22		52-31	H 21	GOOD! FT by BURCKHARD, PAITON [FB]
06:42		55-31	H 24	GOOD! 3PTR by NELSON, TORI
06:23	GOOD! LAYUP by MARTELL, TORI	55-33	H 22	
05:45	GOOD! FT by FREIJE, FALLYN	55-34	H 21	
05:21	GOOD! FT by FREIJE, FALLYN [FB]	55-35	H 20	
03:53	GOOD! LAYUP by BAD BEAR, KOLA	55-37	H 18	
03:37		56-37	H 19	GOOD! FT by BURCKHARD, PAITON
03:37		57-37	H 20	GOOD! FT by BURCKHARD, PAITON
03:09	GOOD! JUMPER by WHITE, DARIAN	57-39	H 18	
03:09	GOOD! FT by WHITE, DARIAN	57-40	H 17	
02:39	GOOD! FT by WHITE, DARIAN	57-41	H 16	
02:39	GOOD! FT by WHITE, DARIAN	57-42	H 15	
02:00	GOOD! LAYUP by WHITE, DARIAN	57-44	H 13	
01:50		58-44	H 14	GOOD! FT by CASCIO JENSEN, RYLIE
01:38		59-44	H 15	GOOD! FT by NELSON, TORI [FB]
01:23	GOOD! LAYUP by MOCCHI, GABBY	59-46	H 13	
00:50	GOOD! LAYUP by BAD BEAR, KOLA	59-48	H 11	
00:34		60-48	H 12	GOOD! FT by CASCIO JENSEN, RYLIE
00:17	GOOD! FT by JACKSON, MADISON	60-50	H 10	
00:17	GOOD! FT by JACKSON, MADISON	60-49	H 11	

**Montana St. 50, South Dakota St. 60**

**Official Substitutions Log**  
**Montana St. vs South Dakota St.**  
**Period 1**  
**November 21, 2019 at Frost Arena - Brookings, S.D.**



VISITORS: Montana St.	Time	Score	HOME: South Dakota St.
2 WHITE, DARIAN			2 CASCIO JENSEN, RYLIE
15 KUDERER, MARTHA			21 IRWIN, TYLEE
24 SQUIRES, OLIANA			24 LARSON, TAGYN
33 SMITH, MADELINE			33 BURCKHARD, PAITON
35 FREIJE, FALLYN			44 SELLAND, MYAH
SUB OUT: 24 SQUIRES, OLIANA	06:17	5-2	
SUB OUT: 33 SMITH, MADELINE	06:17		
SUB IN: 12 MARTELL, TORI	06:17		
SUB IN: 44 BRAXTON, BLAIRE	06:17		
	06:00	5-2	SUB OUT: SELLAND, MYAH
	06:00		SUB IN: NELSON, TORI
	04:10	7-5	SUB OUT: IRWIN, TYLEE
	04:10		SUB OUT: BURCKHARD, PAITON
	04:10		SUB IN: THEISEN, KALLIE
	04:10		SUB IN: STAPLETON, SYDNEY
SUB OUT: 12 MARTELL, TORI	04:10		
SUB OUT: 15 KUDERER, MARTHA	04:10		
SUB OUT: 35 FREIJE, FALLYN	04:10		
SUB IN: 20 JACKSON, MADISON	04:10		
SUB IN: 33 SMITH, MADELINE	04:10		
SUB OUT: 2 WHITE, DARIAN	03:18	7-5	
SUB OUT: 33 SMITH, MADELINE	03:18		
SUB IN: 10 BAD BEAR, KOLA	03:18		
SUB IN: 12 MARTELL, TORI	03:18		
	01:34	7-12	SUB OUT: STAPLETON, SYDNEY
	01:34		SUB IN: IRWIN, TYLEE
	00:35	10-12	SUB OUT: THEUNINCK, LINDSEY
	00:35		SUB IN: CASCIO JENSEN, RYLIE
SUB OUT: 10 BAD BEAR, KOLA	00:35		
SUB OUT: 12 MARTELL, TORI	00:35		
SUB OUT: 20 JACKSON, MADISON	00:35		
SUB OUT: 44 BRAXTON, BLAIRE	00:35		
SUB IN: 2 WHITE, DARIAN	00:35		
SUB IN: 15 KUDERER, MARTHA	00:35		
SUB IN: 33 SMITH, MADELINE	00:35		
SUB IN: 35 FREIJE, FALLYN	00:35		

**Montana St. 10, South Dakota St. 14**

**Official Substitutions Log**  
**Montana St. vs South Dakota St.**  
**Period 2**  
**November 21, 2019 at Frost Arena - Brookings, S.D.**



VISITORS: Montana St.	Time	Score	HOME: South Dakota St.
2 WHITE,DARIAN			2 CASCIO JENSEN,RYLIE
15 KUDERER,MARTHA			21 IRWIN,TYLEE
24 SQUIRES,OLIANA			24 LARSON,TAGYN
33 SMITH,MADELINE			33 BURCKHARD,PAITON
35 FREIJE,FALLYN			44 SELLAND,MYAH
	09:30	12-14	SUB OUT: CASCIO JENSEN,RYLIE
	09:30		SUB OUT: IRWIN,TYLEE
	09:30		SUB IN: THEUNINCK,LINDSEY
	09:30		SUB IN: STAPLETON,SYDNEY
SUB OUT: 33 SMITH,MADELINE	09:01	12-14	
SUB IN: 44 BRAXTON,BLAIRE	09:01		
	07:53	12-17	SUB OUT: THEISEN,KALLIE
	07:53		SUB OUT: NELSON,TORI
	07:53		SUB IN: CASCIO JENSEN,RYLIE
	07:11	13-17	SUB OUT: LARSON,TAGYN
	07:11		SUB IN: NELSON,TORI
SUB OUT: 2 WHITE,DARIAN	07:11		
SUB IN: 12 MARTELL,TORI	07:11		
	07:11		SUB OUT: SELLAND,MYAH
	07:11		SUB IN: IRWIN,TYLEE
SUB OUT: 15 KUDERER,MARTHA	06:23	14-17	
SUB OUT: 44 BRAXTON,BLAIRE	06:23		
SUB IN: 10 BAD BEAR,KOLA	06:23		
SUB IN: 20 JACKSON,MADISON	06:23		
	06:06	14-18	SUB OUT: THEUNINCK,LINDSEY
	06:06		SUB IN: LARSON,TAGYN
	04:48	16-21	SUB OUT: IRWIN,TYLEE
	04:48		SUB IN: THEUNINCK,LINDSEY
SUB OUT: 24 SQUIRES,OLIANA	04:48		
SUB IN: 2 WHITE,DARIAN	04:48		
	03:28	17-25	SUB OUT: STAPLETON,SYDNEY
	03:28		SUB IN: IRWIN,TYLEE
SUB OUT: 10 BAD BEAR,KOLA	03:28		
SUB IN: 44 BRAXTON,BLAIRE	03:28		
SUB OUT: 20 JACKSON,MADISON	02:02	20-27	
SUB IN: 15 KUDERER,MARTHA	02:02		

**Montana St. 22, South Dakota St. 27**

**Official Substitutions Log**  
**Montana St. vs South Dakota St.**  
**Period 3**  
**November 21, 2019 at Frost Arena - Brookings, S.D.**



VISITORS: Montana St.	Time	Score	HOME: South Dakota St.
2 WHITE, DARIAN			2 CASCIO JENSEN, RYLIE
15 KUDERER, MARTHA			21 IRWIN, TYLEE
24 SQUIRES, OLIANA			24 LARSON, TAGYN
33 SMITH, MADELINE			33 BURCKHARD, PAITON
35 FREIJE, FALLYN			44 SELLAND, MYAH
	10:00	-	SUB OUT: THEUNINCK, LINDSEY
	10:00		SUB OUT: NELSON, TORI
	10:00		SUB IN: CASCIO JENSEN, RYLIE
	10:00		SUB IN: SELLAND, MYAH
SUB OUT: 12 MARTELL, TORI	10:00		
SUB OUT: 44 BRAXTON, BLAIRE	10:00		
SUB IN: 2 WHITE, DARIAN	10:00		
SUB IN: 33 SMITH, MADELINE	10:00		
SUB OUT: 33 SMITH, MADELINE	07:43	24-32	
SUB IN: 44 BRAXTON, BLAIRE	07:43		
SUB OUT: 2 WHITE, DARIAN	06:49	25-32	
SUB IN: 12 MARTELL, TORI	06:49		
	06:15	25-32	SUB OUT: LARSON, TAGYN
	06:15		SUB IN: NELSON, TORI
	05:11	27-37	SUB OUT: BURCKHARD, PAITON
	05:11		SUB IN: THEISEN, KALLIE
	04:41	27-38	SUB OUT: SELLAND, MYAH
	04:41		SUB IN: LARSON, TAGYN
SUB OUT: 15 KUDERER, MARTHA	03:02	27-44	
SUB OUT: 24 SQUIRES, OLIANA	03:02		
SUB OUT: 35 FREIJE, FALLYN	03:02		
SUB OUT: 44 BRAXTON, BLAIRE	03:02		
SUB IN: 2 WHITE, DARIAN	03:02		
SUB IN: 10 BAD BEAR, KOLA	03:02		
SUB IN: 20 JACKSON, MADISON	03:02		
SUB IN: 33 SMITH, MADELINE	03:02		
	01:52	27-46	SUB IN: SELLAND, MYAH
SUB OUT: 2 WHITE, DARIAN	00:00	29-50	
SUB OUT: 10 BAD BEAR, KOLA	00:00		
SUB OUT: 20 JACKSON, MADISON	00:00		
SUB OUT: 33 SMITH, MADELINE	00:00		
SUB IN: 15 KUDERER, MARTHA	00:00		
SUB IN: 24 SQUIRES, OLIANA	00:00		
SUB IN: 35 FREIJE, FALLYN	00:00		
SUB IN: 44 BRAXTON, BLAIRE	00:00		

**Montana St. 29, South Dakota St. 51**

**Official Substitutions Log**  
**Montana St. vs South Dakota St.**  
**Period 4**  
**November 21, 2019 at Frost Arena - Brookings, S.D.**

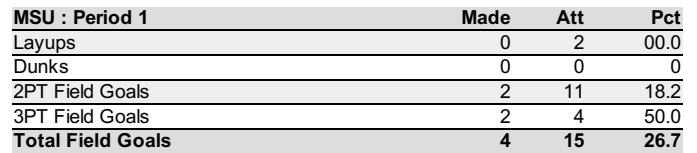


VISITORS: Montana St.	Time	Score	HOME: South Dakota St.
2 WHITE,DARIAN			2 CASCIO JENSEN,RYLIE
15 KUDERER,MARTHA			21 IRWIN,TYLEE
24 SQUIRES,OLIANA			24 LARSON,TAGYN
33 SMITH,MADELINE			33 BURCKHARD,PAITON
35 FREIJE,FALLYN			44 SELLAND,MYAH
	09:56	-	SUB OUT: NELSON,TORI
	09:56		SUB IN: LARSON,TAGYN
	09:22	31-51	SUB OUT: SELLAND,MYAH
	09:22		SUB IN: IRWIN,TYLEE
	07:44	31-52	SUB OUT: CASCIO JENSEN,RYLIE
	07:44		SUB IN: NELSON,TORI
	05:56	33-55	SUB OUT: IRWIN,TYLEE
	05:56		SUB OUT: LARSON,TAGYN
	05:56		SUB OUT: BURCKHARD,PAITON
	05:56		SUB IN: CASCIO JENSEN,RYLIE
	05:56		SUB IN: THEISEN,KALLIE
	05:56		SUB IN: SELLAND,MYAH
SUB OUT: 15 KUDERER,MARTHA	05:56		
SUB OUT: 24 SQUIRES,OLIANA	05:56		
SUB IN: 2 WHITE,DARIAN	05:56		
SUB IN: 20 JACKSON,MADISON	05:56		
	04:21	35-55	SUB OUT: THEUNINCK,LINDSEY
	04:21		SUB OUT: THEISEN,KALLIE
	04:21		SUB OUT: SELLAND,MYAH
	04:21		SUB IN: IRWIN,TYLEE
	04:21		SUB IN: LARSON,TAGYN
	04:21		SUB IN: BURCKHARD,PAITON
SUB OUT: 12 MARTELL,TORI	04:21		
SUB OUT: 35 FREIJE,FALLYN	04:21		
SUB IN: 10 BAD BEAR,KOLA	04:21		
SUB IN: 24 SQUIRES,OLIANA	04:21		
	03:09	39-57	SUB OUT: IRWIN,TYLEE
	03:09		SUB IN: THEUNINCK,LINDSEY
SUB OUT: 44 BRAXTON,BLAIRE	02:39	40-57	
SUB IN: 23 MOCCHI,GABBY	02:39		
SUB OUT: 24 SQUIRES,OLIANA	01:38	44-58	
SUB IN: 25 ZIESKE,SIDNEY	01:38		

**Montana St. 50, South Dakota St. 60**



**Montana St.**



Official Shot Chart  
**Montana St. vs South Dakota St.**  
 PERIOD 2 Shots  
 November 21, 2019 at Frost Arena - Brookings, S.D.

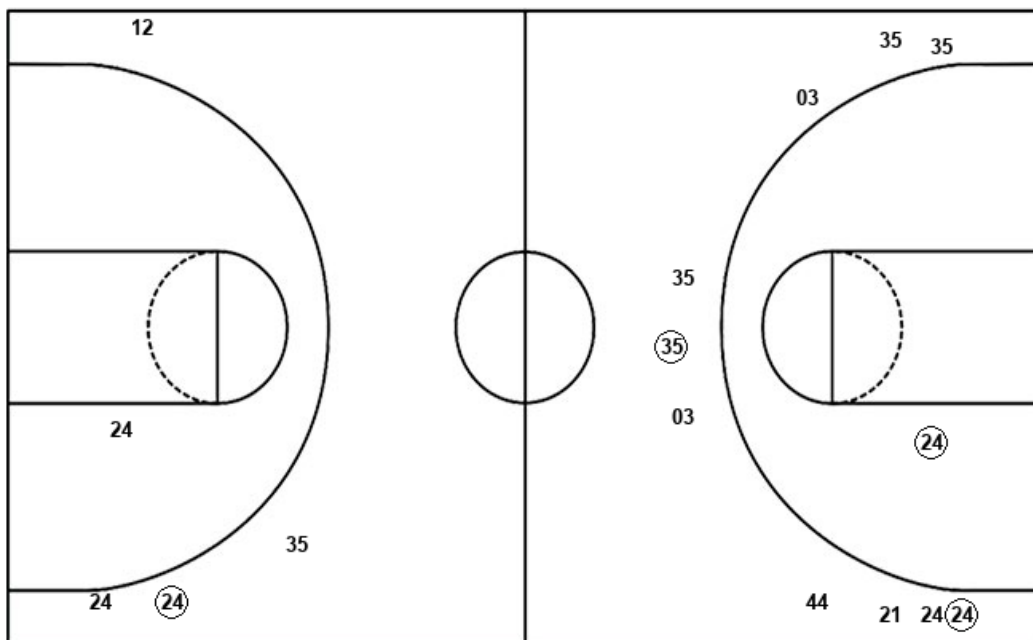


**South Dakota St.**

**Montana St.**

Layups  
 03 21 (20) (24)

Dunks



Layups  
 (33) 44 15 (35) 35  
 24 20

Dunks

SDS : Period 2	Made	Att	Pct
Layups	2	4	50.0
Dunks	0	0	0
2PT Field Goals	3	5	60.0
3PT Field Goals	2	10	20.0
<b>Total Field Goals</b>	<b>5</b>	<b>15</b>	<b>33.3</b>

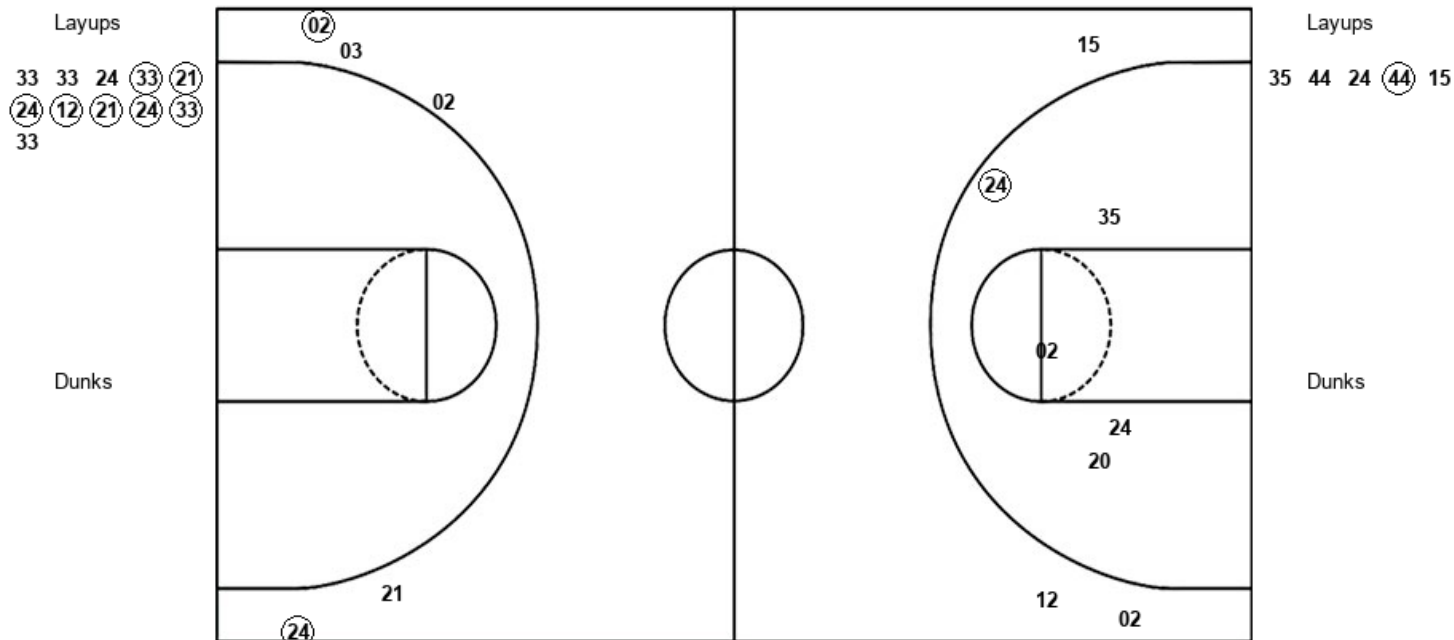
MSU : Period 2	Made	Att	Pct
Layups	2	7	28.6
Dunks	0	0	0
2PT Field Goals	2	7	28.6
3PT Field Goals	1	4	25.0
<b>Total Field Goals</b>	<b>3</b>	<b>11</b>	<b>27.3</b>

Official Shot Chart  
**Montana St. vs South Dakota St.**  
 PERIOD 3 Shots  
 November 21, 2019 at Frost Arena - Brookings, S.D.



**South Dakota St.**

**Montana St.**



SDS : Period 3	Made	Att	Pct
Layups	7	11	63.6
Dunks	0	0	0
2PT Field Goals	7	11	63.6
3PT Field Goals	2	5	40.0
<b>Total Field Goals</b>	<b>9</b>	<b>16</b>	<b>56.3</b>

MSU : Period 3	Made	Att	Pct
Layups	1	5	20.0
Dunks	0	0	0
2PT Field Goals	2	10	20.0
3PT Field Goals	0	3	00.0
<b>Total Field Goals</b>	<b>2</b>	<b>13</b>	<b>15.4</b>

Official Shot Chart  
**Montana St. vs South Dakota St.**  
 PERIOD 4 Shots  
 November 21, 2019 at Frost Arena - Brookings, S.D.



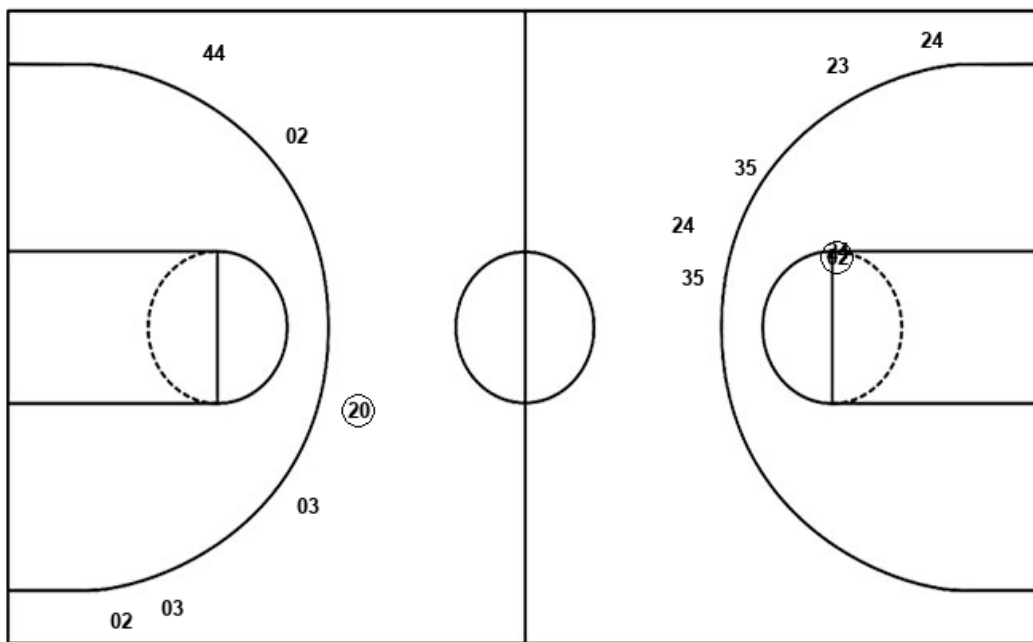
**South Dakota St.**

**Montana St.**

Layups

21 12 12

Dunks



Layups

44 35 12 10 44  
 02 20 23 10

Dunks

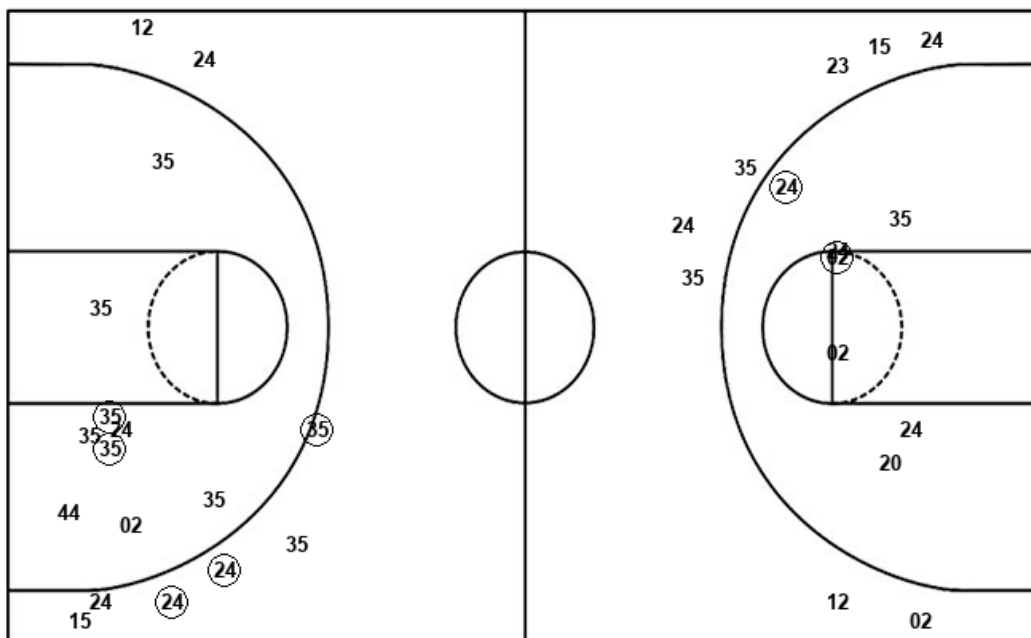
SDS : Period 4	Made	Att	Pct
Layups	0	3	00.0
Dunks	0	0	0
2PT Field Goals	0	3	00.0
3PT Field Goals	1	6	16.7
<b>Total Field Goals</b>	<b>1</b>	<b>9</b>	<b>11.1</b>

MSU : Period 4	Made	Att	Pct
Layups	6	9	66.7
Dunks	0	0	0
2PT Field Goals	7	13	53.8
3PT Field Goals	0	5	00.0
<b>Total Field Goals</b>	<b>7</b>	<b>18</b>	<b>38.9</b>

Official Shot Chart  
**Montana St. vs South Dakota St.**  
 Montana St. Team Shots  
 November 21, 2019 at Frost Arena - Brookings, S.D.



Layups



Layups

02 10 (33) 44 15  
 (35) 35 24 20 35  
 44 24 (44) 15 (44)  
 35 (12) (10) 44 (02)  
 20 (23) (10)

Dunks

Dunks

MSU : Period 1	Made	Att	Pct
Layups	0	2	00.0
Dunks	0	0	0
2PT Field Goals	2	11	18.2
3PT Field Goals	2	4	50.0
<b>Total Field Goals</b>	<b>4</b>	<b>15</b>	<b>26.7</b>

MSU : Period 3	Made	Att	Pct
Layups	1	5	20.0
Dunks	0	0	0
2PT Field Goals	2	10	20.0
3PT Field Goals	0	3	00.0
<b>Total Field Goals</b>	<b>2</b>	<b>13</b>	<b>15.4</b>

MSU : Period 2	Made	Att	Pct
Layups	2	7	28.6
Dunks	0	0	0
2PT Field Goals	2	7	28.6
3PT Field Goals	1	4	25.0
<b>Total Field Goals</b>	<b>3</b>	<b>11</b>	<b>27.3</b>

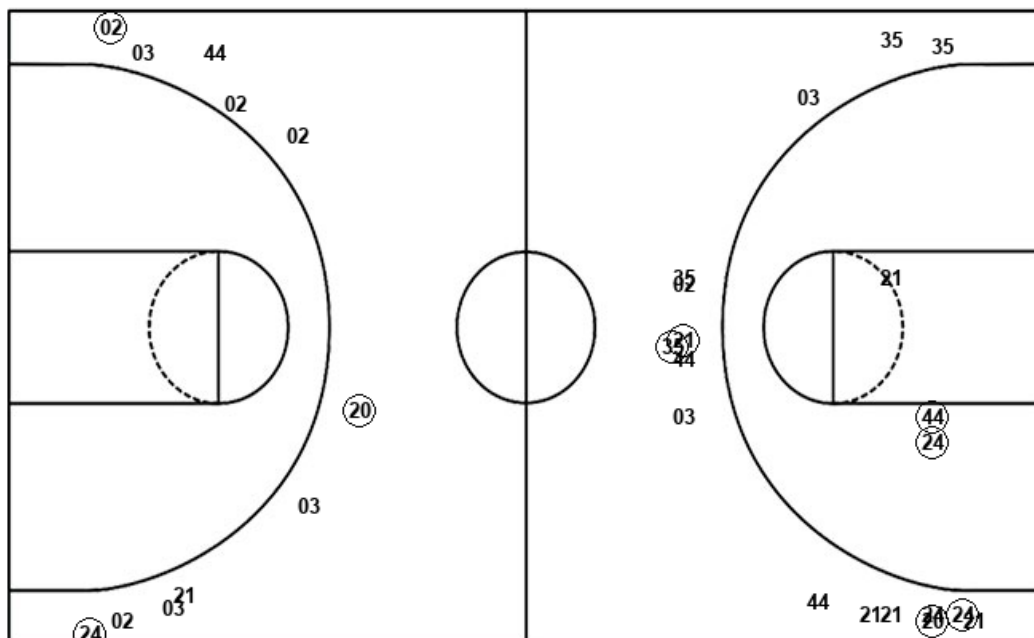
MSU : Period 4	Made	Att	Pct
Layups	6	9	66.7
Dunks	0	0	0
2PT Field Goals	7	13	53.8
3PT Field Goals	0	5	00.0
<b>Total Field Goals</b>	<b>7</b>	<b>18</b>	<b>38.9</b>

Official Shot Chart  
**Montana St. vs South Dakota St.**  
 South Dakota St. Team Shots  
 November 21, 2019 at Frost Arena - Brookings, S.D.



Layups

Dunks



Layups

Dunks

24 33 21 44 03  
 21 20 24 33 33  
 24 33 21 24 12  
 21 24 33 33 21  
 12 12

SDS : Period 1	Made	Att	Pct
Layups	2	4	50.0
Dunks	0	0	0
2PT Field Goals	3	6	50.0
3PT Field Goals	2	6	33.3
<b>Total Field Goals</b>	<b>5</b>	<b>12</b>	<b>41.7</b>

SDS : Period 3	Made	Att	Pct
Layups	7	11	63.6
Dunks	0	0	0
2PT Field Goals	7	11	63.6
3PT Field Goals	2	5	40.0
<b>Total Field Goals</b>	<b>9</b>	<b>16</b>	<b>56.3</b>

SDS : Period 2	Made	Att	Pct
Layups	2	4	50.0
Dunks	0	0	0
2PT Field Goals	3	5	60.0
3PT Field Goals	2	10	20.0
<b>Total Field Goals</b>	<b>5</b>	<b>15</b>	<b>33.3</b>

SDS : Period 4	Made	Att	Pct
Layups	0	3	00.0
Dunks	0	0	0
2PT Field Goals	0	3	00.0
3PT Field Goals	1	6	16.7
<b>Total Field Goals</b>	<b>1</b>	<b>9</b>	<b>11.1</b>