

FINAL SCORE



East Carolina

53



Wake Forest

76

November 30, 2019 • LJVM Coliseum - Winston-Salem, N.C.

FINAL STATISTICS

Official Box Score
East Carolina vs Wake Forest
Game Totals -- Final Statistics
November 30, 2019 at LJVM Coliseum - Winston-Salem, N.C.



East Carolina 53

No.	Player	S	Pts	FG	3FG	FT	OR	DR	TR	PF	A	TO	Blk	Stl	Min	+/-
01	THOMPSON, TANIYAH	G	4	2-13	0-1	0-0	2	0	2	1	0	2	0	2	35	-18
02	MONK, LASHONDA	G	21	8-22	2-8	3-4	0	3	3	3	2	0	0	2	37	-24
04	HOPE, NECOLE	G	10	5-13	0-1	0-0	1	1	2	3	0	1	0	4	31	-14
23	CLAYTOR, DOMINIQUE	G	8	3-8	2-2	0-0	2	0	2	3	3	1	0	1	36	-26
25	EVANS, RYANN	G	4	2-6	0-0	0-0	0	2	2	4	0	1	0	4	23	-3
05	TSINEKE, KATERINA	G	6	2-7	1-3	1-2	1	3	4	3	2	1	0	1	22	-12
33	CHAMBERS, TIARA	F	0	0-1	0-0	0-0	1	0	1	2	0	1	0	0	15	-18
TEAM							1	3	4	0		1				
TOTALS			53	22-70	5-15	4-6	8	12	20	19	7	8	0	14	199	

Shooting By Period

Period	FG	FG%	3FG	3FG%	FT	FT%
1st Qtr	3-20	15%	1-4	25%	1-2	50%
2nd Qtr	5-16	31%	0-1	00%	1-2	50%
3rd Qtr	8-15	53%	3-6	50%	2-2	100%
4th Qtr	6-19	32%	1-4	25%	0-0	0%
1st Half	8-36	22%	1-5	20%	2-4	50%
2nd Half	14-34	41%	4-10	40%	2-2	100%
Game	22-70	31.4%	5-15	33.3%	4-6	66.7%

Deadball Rebounds: 1,0
 Last FG: 4th-01:32
 Biggest Run: 5-0
 Largest lead: By 3 at 1-08
 Technical Fouls: None.

Wake Forest 76

No.	Player	S	Pts	FG	3FG	FT	OR	DR	TR	PF	A	TO	Blk	Stl	Min	+/-
05	CONTI, GINA	G	19	6-6	3-3	4-4	0	5	5	2	3	3	0	1	31	20
11	RACA, IVANA	F	11	5-13	0-4	1-2	0	3	3	0	3	2	0	0	26	4
14	SHARP, ALEX	G	7	2-7	0-0	3-4	3	12	15	2	3	7	0	1	31	21
32	SCRUGGS, ALEXANDRIA	G	3	1-5	0-2	1-2	1	1	2	1	3	3	0	1	25	13
44	UDOH, ONA	F	12	6-6	0-0	0-0	1	9	10	0	3	2	4	0	24	9
00	BANKS, MAYA	F	0	0-0	0-0	0-0	0	0	0	0	0	0	0	0	2	-1
01	HOARD, ANAIA	G	2	1-2	0-0	0-0	1	1	2	0	2	1	0	0	4	6
02	HARRISON, KAIA	G	3	1-1	1-1	0-0	0	1	1	2	0	1	0	0	11	3
03	MAIER, MCKENZIE	G	0	0-0	0-0	0-0	0	0	0	0	0	0	0	0	0	0
10	HAHNE, ELLEN	G	1	0-0	0-0	1-2	0	0	0	0	0	0	0	0	2	-1
12	DICKSON, KAYLEN	G	2	1-2	0-1	0-0	1	2	3	1	1	2	1	1	8	4
20	SUMMIEL, OLIVIA	F	0	0-1	0-0	0-0	0	1	1	0	0	0	0	0	2	-1
21	BRANCH, RAEGYN	F	10	2-2	0-0	6-6	0	3	3	1	2	2	0	0	18	23
23	MORRA, CHRISTINA	F	6	2-2	0-0	2-2	1	1	2	0	0	1	0	0	14	15
TEAM							0	2	2	0		0				
TOTALS			76	27-47	4-11	18-22	8	41	49	9	20	24	5	4	199	

Shooting By Period

Period	FG	FG%	3FG	3FG%	FT	FT%
1st Qtr	7-10	70%	1-3	33%	7-8	88%
2nd Qtr	6-13	46%	2-5	40%	3-4	75%
3rd Qtr	7-14	50%	0-2	00%	5-6	83%
4th Qtr	7-10	70%	1-1	100%	3-4	75%
1st Half	13-23	57%	3-8	38%	10-12	83%
2nd Half	14-24	58%	1-3	33%	8-10	80%
Game	27-47	57.4%	4-11	36.4%	18-22	81.8%

Deadball Rebounds: 4,0
 Last FG: 4th-01:11
 Biggest Run: 10-0
 Largest lead: By 24 at 4-02
 Technical Fouls: None.

Game Notes:

Officials: Kathleen Lynch, Michael Docouto, Ryan Durham
 Attendance: 430

Start Time: 01:02 PM ET
 End Time: 02:45 PM ET
 Game Duration: 1:43

Score	1st	2nd	3rd	4th	TOT
ECU	8	11	21	13	53
WFU	22	17	19	18	76

ECU led for 2:07. WFU led for 37:20.
 Game was tied for 0:23.
 Times tied: 1 Lead Changes: 2

Points from	ECU	WFU
In the Paint	20	34
Off Turns	22	6
2nd Chance	4	9
Fast Break	19	11
Bench	6	24

Official Box Score
East Carolina vs Wake Forest
First Half Statistics Only
November 30, 2019 at LJVM Coliseum - Winston-Salem, N.C.



East Carolina 19

No.	Player	S	Pts	FG	3FG	FT	OR	DR	TR	PF	A	TO	Blk	Stl	Min	+/-
01	THOMPSON, TANIYAH	G	0	0-6	0-0	0-0	1	0	1	1	0	2	0	1	18	-16
05	TSINEKE, KATERINA	G	1	0-2	0-1	1-2	0	3	3	1	1	1	0	0	9	-7
23	CLAYTOR, DOMINIQUE	G	5	2-6	1-1	0-0	2	0	2	2	0	0	0	0	17	-23
25	EVANS, RYANN	G	2	1-4	0-0	0-0	0	1	1	3	0	1	0	4	12	-3
33	CHAMBERS, TIARA	F	0	0-1	0-0	0-0	0	0	0	1	0	1	0	0	8	-15
02	MONK, LASHONDA	G	5	2-8	0-2	1-2	0	2	2	1	1	0	0	0	20	-20
04	HOPE, NECOLE	G	6	3-9	0-1	0-0	1	0	1	2	0	1	0	2	16	-16
	TEAM		0	0-0	0-0	0-0	1	2	3	0	0	0	0	0	0	
TOTALS			19	8-36	1-5	2-4	5	8	13	11	2	6	0	7	100	

Shooting By Period

Period	FG	FG%	3FG	3FG%	FT	FT%
1st Qtr	3-20	15%	1-4	25%	1-2	50%
2nd Qtr	5-16	31%	0-1	00%	1-2	50%
1st Half	8-36	22%	1-5	20%	2-4	50%
Game	22-70	31.4%	5-15	33.3%	4-6	66.7%

Deadball Rebounds: 1,0

Last FG Half: ECU 2nd-01:41

Wake Forest 39

No.	Player	S	Pts	FG	3FG	FT	OR	DR	TR	PF	A	TO	Blk	Stl	Min	+/-
00	BANKS, MAYA	F	0	0-0	0-0	0-0	0	0	0	0	0	0	0	0	0	0
01	HOARD, ANAIA	G	0	0-0	0-0	0-0	0	0	0	0	2	0	0	0	2	7
02	HARRISON, KAIA	G	3	1-1	1-1	0-0	0	1	1	1	0	0	0	0	5	3
03	MAIER, MCKENZIE	G	0	0-0	0-0	0-0	0	0	0	0	0	0	0	0	0	0
10	HAHNE, ELLEN	G	0	0-0	0-0	0-0	0	0	0	0	0	0	0	0	0	0
11	RACA, IVANA	F	8	4-9	0-4	0-0	0	3	3	0	1	1	0	0	16	10
12	DICKSON, KAYLEN	G	0	0-0	0-0	0-0	0	1	1	0	0	2	0	1	4	0
14	SHARP, ALEX	G	3	1-3	0-0	1-2	0	8	8	1	1	1	0	1	17	16
20	SUMMIEL, OLIVIA	F	0	0-0	0-0	0-0	0	0	0	0	0	0	0	0	0	0
21	BRANCH, RAEGYN	F	2	0-0	0-0	2-2	0	2	2	1	1	1	0	0	6	14
23	MORRA, CHRISTINA	F	4	1-1	0-0	2-2	1	1	2	0	0	1	0	0	10	11
32	SCRUGGS, ALEXANDRIA	G	1	0-3	0-1	1-2	1	0	1	1	2	1	0	0	14	13
44	UDOH, ONA	F	4	2-2	0-0	0-0	0	2	2	0	1	2	3	0	10	9
05	CONTI, GINA	G	14	4-4	2-2	4-4	0	4	4	1	1	3	0	1	15	17
	TEAM		0	0-0	0-0	0-0	0	2	2	0	0	0	0	0	0	
TOTALS			39	13-23	3-8	10-12	2	24	26	5	9	12	3	3	100	

Shooting By Period

Period	FG	FG%	3FG	3FG%	FT	FT%
1st Qtr	7-10	70%	1-3	33%	7-8	88%
2nd Qtr	6-13	46%	2-5	40%	3-4	75%
1st Half	13-23	57%	3-8	38%	10-12	83%
Game	27-47	57.4%	4-11	36.4%	18-22	81.8%

Deadball Rebounds: 4,0

Last FG Half: WFU 2nd-00:05

Game Notes:

Officials: Kathleen Lynch, Michael Docouto, Ryan Durham
Attendance: 430

Start Time: 01:02 PM ET
End Time: 02:45 PM ET
Game Duration: 1:43

Score	1st	2nd	3rd	4th	TOT
ECU	8	11	21	13	53
WFU	22	17	19	18	76

Points from (This Period)	ECU	WFU
In the Paint	8	12
Off Turns	6	4
2nd Chance	2	1
Fast Break	8	11
Bench	1	9

Official Box Score
East Carolina vs Wake Forest
First Quarter Statistics Only
November 30, 2019 at LJVM Coliseum - Winston-Salem, N.C.



East Carolina 8

No.	Player	S	Pts	FG	3FG	FT	OR	DR	TR	PF	A	TO	Blk	Stl	Min	+/-
01	THOMPSON, TANIYAH	G	0	0-4	0-0	0-0	1	0	1	1	0	1	0	1	8	-10
02	MONK, LASHONDA	G	3	1-3	0-1	1-2	0	1	1	1	1	0	0	0	10	-14
04	HOPE, NECOLE	G	2	1-5	0-1	0-0	0	0	0	1	0	0	0	2	7	-8
23	CLAYTOR, DOMINIQUE	G	3	1-3	1-1	0-0	1	0	1	1	0	0	0	0	10	-14
25	EVANS, RYANN	G	0	0-3	0-0	0-0	0	0	0	0	0	0	0	2	7	-8
05	TSINEKE, KATERINA	G	0	0-1	0-1	0-0	0	1	1	0	0	1	0	0	3	-6
33	CHAMBERS, TIARA	F	0	0-1	0-0	0-0	0	0	0	1	0	1	0	0	5	-10
TEAM							1	0	1	0		0				
TOTALS			8	3-20	1-4	1-2	3	2	5	5	1	3	0	5	50	

Shooting By Period

Period	FG	FG%	3FG	3FG%	FT	FT%
1st Qtr	3-20	15%	1-4	25%	1-2	50%
2nd Qtr	5-16	31%	0-1	00%	1-2	50%
1st Half	3-20	15%	1-4	25%	1-2	50%
1st Half	8-36	22%	1-5	20%	2-4	50%
Game	22-70	31.4%	5-15	33.3%	4-6	66.7%

Deadball Rebounds: 1,0

Wake Forest 22

No.	Player	S	Pts	FG	3FG	FT	OR	DR	TR	PF	A	TO	Blk	Stl	Min	+/-
05	CONTI, GINA	G	9	3-3	1-1	2-2	0	3	3	1	0	3	0	1	8	10
11	RACA, IVANA	F	2	1-2	0-1	0-0	0	3	3	0	1	1	0	0	7	8
14	SHARP, ALEX	G	2	1-1	0-0	0-0	0	1	1	0	0	0	0	1	8	10
32	SCRUGGS, ALEXANDRIA	G	1	0-2	0-1	1-2	1	0	1	0	1	0	0	0	8	10
44	UDOH, ONA	F	2	1-1	0-0	0-0	0	2	2	0	1	2	2	0	6	4
00	BANKS, MAYA	F	0	0-0	0-0	0-0	0	0	0	0	0	0	0	0	0	0
01	HOARD, ANAIA	G	0	0-0	0-0	0-0	0	0	0	0	0	0	0	0	0	0
02	HARRISON, KAIA	G	0	0-0	0-0	0-0	0	1	1	0	0	0	0	0	2	4
03	MAIER, MCKENZIE	G	0	0-0	0-0	0-0	0	0	0	0	0	0	0	0	0	0
10	HAHNE, ELLEN	G	0	0-0	0-0	0-0	0	0	0	0	0	0	0	0	0	0
12	DICKSON, KAYLEN	G	0	0-0	0-0	0-0	0	1	1	0	0	1	0	0	2	4
20	SUMMIEL, OLIVIA	F	0	0-0	0-0	0-0	0	0	0	0	0	0	0	0	0	0
21	BRANCH, RAEGYN	F	2	0-0	0-0	2-2	0	2	2	0	1	1	0	0	5	10
23	MORRA, CHRISTINA	F	4	1-1	0-0	2-2	0	0	0	0	0	0	0	0	4	10
TEAM							0	2	2	0		0				
TOTALS			22	7-10	1-3	7-8	1	15	16	1	4	8	2	2	50	

Shooting By Period

Period	FG	FG%	3FG	3FG%	FT	FT%
1st Qtr	7-10	70%	1-3	33%	7-8	88%
2nd Qtr	6-13	46%	2-5	40%	3-4	75%
1st Half	7-10	70%	1-3	33%	7-8	88%
1st Half	13-23	57%	3-8	38%	10-12	83%
Game	27-47	57.4%	4-11	36.4%	18-22	81.8%

Deadball Rebounds: 4,0

Game Notes:

Officials: Kathleen Lynch, Michael Docouto, Ryan Durham
Attendance: 430

Start Time: 01:02 PM ET

End Time: 02:45 PM ET

Game Duration: 1:43

Score	1st	2nd	3rd	4th	TOT
ECU	8	11	21	13	53
WFU	22	17	19	18	76

Points from (This Period)	ECU	WFU
In the Paint	2	6
Off Turns	2	4
2nd Chance	2	1
Fast Break	2	8
Bench	0	6

Official Play-By-Play
East Carolina vs Wake Forest
First Quarter
November 30, 2019 at LJV Coliseum - Winston-Salem, N.C.



Period 1

Starters:

East Carolina: 1 THOMPSON, TANIYAH (G); 23 CLAYTOR, DOMINIQUE (G); 25 EVANS, RYANN (G); 2 MONK, LASHONDA (G); 4 HOPE, NECOLE (G);

Wake Forest: 11 RACA, IVANA (F); 14 SHARP, ALEX (G); 32 SCRUGGS, ALEXANDRIA (G); 44 UDOH, ONA (F); 5 CONTI, GINA (G);

Time	VISITORS: East Carolina	Score	Margin	HOME: Wake Forest
09:42		2-0	H 2	GOOD! JUMPER by RACA, IVANA [PNT]
09:10	GOOD! 3PTR by CLAYTOR, DOMINIQUE	2-3	V 1	
09:10	ASSIST by MONK, LASHONDA			
08:56				TURNOVER (BADPASS) by CONTI, GINA
08:56	STEAL by HOPE, NECOLE			
08:52	GOOD! LAYUP by HOPE, NECOLE [FB/PNT]	2-5	V 3	
08:32		4-5	V 1	GOOD! LAYUP by UDOH, ONA [PNT]
08:32				ASSIST by RACA, IVANA
08:16	MISSED 3PTR by MONK, LASHONDA			
08:12				REBOUND (DEF) by UDOH, ONA
08:11				TURNOVER (BADPASS) by UDOH, ONA
08:11	STEAL by EVANS, RYANN			
08:04	MISSED JUMPER by HOPE, NECOLE			
08:04				REBOUND (DEF) by TEAM
07:50				MISSED 3PTR by RACA, IVANA
07:46				REBOUND (OFF) by SCRUGGS, ALEXANDRIA
07:45	FOUL (PERSONAL) by THOMPSON, TANIYAH			
07:45				MISSED FT by SCRUGGS, ALEXANDRIA
07:45				REBOUND (OFF) by TEAM
07:45		5-5	T	GOOD! FT by SCRUGGS, ALEXANDRIA
07:40				FOUL (PERSONAL) by CONTI, GINA
07:40	GOOD! FT by MONK, LASHONDA	5-6	V 1	
07:40	MISSED FT by MONK, LASHONDA			
07:40				REBOUND (DEF) by UDOH, ONA
07:35				TURNOVER (BADPASS) by CONTI, GINA
07:35	STEAL by EVANS, RYANN			
07:21	MISSED JUMPER by THOMPSON, TANIYAH			
07:16				REBOUND (DEF) by CONTI, GINA
07:15				TURNOVER (LOSTBALL) by CONTI, GINA
07:15	STEAL by HOPE, NECOLE			
07:06	MISSED JUMPER by EVANS, RYANN			
07:06				REBOUND (DEF) by TEAM
06:58		7-6	H 1	GOOD! JUMPER by SHARP, ALEX [FB]
06:58				ASSIST by UDOH, ONA
06:37	MISSED JUMPER by HOPE, NECOLE			
06:34				REBOUND (DEF) by CONTI, GINA
06:32	FOUL (PERSONAL) by CLAYTOR, DOMINIQUE			
06:19				TURNOVER (TRAVEL) by UDOH, ONA
06:12	MISSED JUMPER by THOMPSON, TANIYAH			
06:12				BLOCK by UDOH, ONA
06:07				REBOUND (DEF) by RACA, IVANA
05:58				TURNOVER (BADPASS) by RACA, IVANA
05:46	MISSED JUMPER by EVANS, RYANN			
05:41	REBOUND (OFF) by CLAYTOR, DOMINIQUE			
05:34	MISSED JUMPER by HOPE, NECOLE			
05:31				REBOUND (DEF) by RACA, IVANA
05:19		10-6	H 4	GOOD! 3PTR by CONTI, GINA
05:19				ASSIST by SCRUGGS, ALEXANDRIA
05:04	MISSED LAYUP by EVANS, RYANN			
05:01				REBOUND (DEF) by SHARP, ALEX
04:54	FOUL (PERSONAL) by HOPE, NECOLE			
07:06				BLOCK by UDOH, ONA
04:54				SUB OUT: RACA, IVANA
04:54				SUB IN: BRANCH, RAEGYN
04:54	SUB OUT: HOPE, NECOLE			
04:54	SUB OUT: EVANS, RYANN			
04:54	SUB IN: TSINEKE, KATERINA			
04:54	SUB IN: CHAMBERS, TIARA			
04:54		11-6	H 5	GOOD! FT by CONTI, GINA
04:54		12-6	H 6	GOOD! FT by CONTI, GINA
04:50	MISSED JUMPER by THOMPSON, TANIYAH			
04:46	REBOUND (OFF) by TEAM			
04:43	GOOD! JUMPER by MONK, LASHONDA	12-8	H 4	
04:31				MISSED JUMPER by SCRUGGS, ALEXANDRIA
04:28	REBOUND (DEF) by TSINEKE, KATERINA			
04:04	TURNOVER (LOSTBALL) by CHAMBERS, TIARA			
04:04				SUB OUT: UDOH, ONA
04:04				SUB IN: MORRA, CHRISTINA
03:57				TURNOVER (BADPASS) by BRANCH, RAEGYN
03:57	STEAL by THOMPSON, TANIYAH			

Time	VISITORS: East Carolina	Score	Margin	HOME: Wake Forest
03:52	MISSED LAYUP by THOMPSON, TANIYAH			
03:48				REBOUND (DEF) by BRANCH, RAEGYN
03:46		14-8	H 6	GOOD! JUMPER by CONTI, GINA [FB]
03:16	MISSED JUMPER by MONK, LASHONDA			
03:13				REBOUND (DEF) by CONTI, GINA
02:53				MISSED 3PTR by SCRUGGS, ALEXANDRIA
02:48	REBOUND (DEF) by MONK, LASHONDA			
02:39	MISSED 3PTR by TSINEKE, KATERINA			
02:34	REBOUND (OFF) by THOMPSON, TANIYAH			
02:33	TURNOVER (LOSTBALL) by THOMPSON, TANIYAH			
02:33				STEAL by SHARP, ALEX
02:22		16-8	H 8	GOOD! JUMPER by MORRA, CHRISTINA
02:22				ASSIST by BRANCH, RAEGYN
02:03	TURNOVER (BADPASS) by TSINEKE, KATERINA			
02:03				STEAL by CONTI, GINA
01:57		18-8	H 10	GOOD! LAYUP by CONTI, GINA [FB/PNT]
01:36	TIMEOUT 30SEC			
01:36				SUB OUT: CONTI, GINA
01:36				SUB OUT: SHARP, ALEX
01:36				SUB OUT: SCRUGGS, ALEXANDRIA
01:36				SUB IN: HARRISON, KAIA
01:36				SUB IN: RACA, IVANA
01:36				SUB IN: DICKSON, KAYLEN
01:36	SUB OUT: THOMPSON, TANIYAH			
01:36	SUB OUT: TSINEKE, KATERINA			
01:36	SUB IN: HOPE, NECOLE			
01:36	SUB IN: EVANS, RYANN			
01:19	MISSED JUMPER by CLAYTOR, DOMINIQUE			
01:15				REBOUND (DEF) by DICKSON, KAYLEN
00:54	FOUL (PERSONAL) by MONK, LASHONDA			
00:54		19-8	H 11	GOOD! FT by MORRA, CHRISTINA
00:54		20-8	H 12	GOOD! FT by MORRA, CHRISTINA
00:50	MISSED JUMPER by CLAYTOR, DOMINIQUE			
00:46				REBOUND (DEF) by RACA, IVANA
00:33				TURNOVER (BADPASS) by DICKSON, KAYLEN
00:21	MISSED JUMPER by CHAMBERS, TIARA			
00:20				REBOUND (DEF) by BRANCH, RAEGYN
00:20	FOUL (PERSONAL) by CHAMBERS, TIARA			
00:20		21-8	H 13	GOOD! FT by BRANCH, RAEGYN [FB]
00:20		22-8	H 14	GOOD! FT by BRANCH, RAEGYN [FB]
00:05	MISSED 3PTR by HOPE, NECOLE			
00:01				REBOUND (DEF) by HARRISON, KAIA

East Carolina 8, Wake Forest 22

Points from (This Period)	ECU	WFU
In the Paint	2	6
Off Turns	2	4
2nd Chance	2	1
Fast Break	2	8
Bench	0	6

Official Box Score
East Carolina vs Wake Forest
Second Quarter Statistics Only
November 30, 2019 at LJVM Coliseum - Winston-Salem, N.C.



East Carolina 11

No.	Player	S	Pts	FG	3FG	FT	OR	DR	TR	PF	A	TO	Blk	Stl	Min	+/-
01	THOMPSON, TANIYAH	G	0	0-2	0-0	0-0	0	0	0	0	0	1	0	0	10	-6
02	MONK, LASHONDA	G	2	1-5	0-1	0-0	0	1	1	0	0	0	0	0	10	-6
04	HOPE, NECOLE	G	4	2-4	0-0	0-0	1	0	1	1	0	1	0	0	9	-8
23	CLAYTOR, DOMINIQUE	G	2	1-3	0-0	0-0	1	0	1	1	0	0	0	0	7	-9
25	EVANS, RYANN	G	2	1-1	0-0	0-0	0	1	1	3	0	1	0	2	5	5
05	TSINEKE, KATERINA	G	1	0-1	0-0	1-2	0	2	2	1	1	0	0	0	6	-1
33	CHAMBERS, TIARA	F	0	0-0	0-0	0-0	0	0	0	0	0	0	0	0	3	-5
TEAM							0	2	2	0		0				
TOTALS			11	5-16	0-1	1-2	2	6	8	6	1	3	0	2	50	

Shooting By Period

Period	FG	FG%	3FG	3FG%	FT	FT%
3rd Qtr	8-15	53%	3-6	50%	2-2	100%
4th Qtr	6-19	32%	1-4	25%	0-0	0%
2nd Half	5-16	31%	0-1	00%	1-2	50%
2nd Half	14-34	41%	4-10	40%	2-2	100%
Game	22-70	31.4%	5-15	33.3%	4-6	66.7%

Deadball Rebounds: 1,0

Wake Forest 17

No.	Player	S	Pts	FG	3FG	FT	OR	DR	TR	PF	A	TO	Blk	Stl	Min	+/-
05	CONTI, GINA	G	5	1-1	1-1	2-2	0	1	1	0	1	0	0	0	7	7
11	RACA, IVANA	F	6	3-7	0-3	0-0	0	0	0	0	0	0	0	0	9	2
14	SHARP, ALEX	G	1	0-2	0-0	1-2	0	7	7	1	1	1	0	0	9	6
32	SCRUGGS, ALEXANDRIA	G	0	0-1	0-0	0-0	0	0	0	1	1	1	0	0	6	3
44	UDOH, ONA	F	2	1-1	0-0	0-0	0	0	0	0	0	0	1	0	4	5
00	BANKS, MAYA	F	0	0-0	0-0	0-0	0	0	0	0	0	0	0	0	0	0
01	HOARD, ANAIA	G	0	0-0	0-0	0-0	0	0	0	0	2	0	0	0	2	7
02	HARRISON, KAIA	G	3	1-1	1-1	0-0	0	0	0	1	0	0	0	0	3	-1
03	MAIER, MCKENZIE	G	0	0-0	0-0	0-0	0	0	0	0	0	0	0	0	0	0
10	HAHNE, ELLEN	G	0	0-0	0-0	0-0	0	0	0	0	0	0	0	0	0	0
12	DICKSON, KAYLEN	G	0	0-0	0-0	0-0	0	0	0	0	0	1	0	1	2	-4
20	SUMMIEL, OLIVIA	F	0	0-0	0-0	0-0	0	0	0	0	0	0	0	0	0	0
21	BRANCH, RAEGYN	F	0	0-0	0-0	0-0	0	0	0	1	0	0	0	0	1	4
23	MORRA, CHRISTINA	F	0	0-0	0-0	0-0	1	1	2	0	0	1	0	0	6	1
TEAM							0	0	0	0		0				
TOTALS			17	6-13	2-5	3-4	1	9	10	4	5	4	1	1	50	

Shooting By Period

Period	FG	FG%	3FG	3FG%	FT	FT%
3rd Qtr	7-14	50%	0-2	00%	5-6	83%
4th Qtr	7-10	70%	1-1	100%	3-4	75%
2nd Half	6-13	46%	2-5	40%	3-4	75%
2nd Half	14-24	58%	1-3	33%	8-10	80%
Game	27-47	57.4%	4-11	36.4%	18-22	81.8%

Deadball Rebounds: 4,0

Game Notes:

Officials: Kathleen Lynch, Michael Docouto, Ryan Durham
Attendance: 430

Start Time: 01:02 PM ET

End Time: 02:45 PM ET

Game Duration: 1:43

Score	1st	2nd	3rd	4th	TOT
ECU	8	11	21	13	53
WFU	22	17	19	18	76

Points from (This Period)	ECU	WFU
In the Paint	6	6
Off Turns	4	0
2nd Chance	0	0
Fast Break	6	3
Bench	1	3

Official Play-By-Play
East Carolina vs Wake Forest
Second Quarter
November 30, 2019 at LJVM Coliseum - Winston-Salem, N.C.



Period 2

Starters:

East Carolina: 1 THOMPSON, TANIYAH (G); 23 CLAYTOR, DOMINIQUE (G); 25 EVANS, RYANN (G); 2 MONK, LASHONDA (G); 4 HOPE, NECOLE (G);
Wake Forest: 11 RACA, IVANA (F); 14 SHARP, ALEX (G); 32 SCRUGGS, ALEXANDRIA (G); 44 UDOH, ONA (F); 5 CONTI, GINA (G);

Time	VISITORS: East Carolina	Score	Margin	HOME: Wake Forest
10:00	SUB OUT: CHAMBERS, TIARA			
10:00	SUB IN: THOMPSON, TANIYAH			
09:48				FOUL (PERSONAL) by HARRISON, KAIA
09:44	FOUL (OFF) by EVANS, RYANN			
09:44	TURNOVER (OFFENSIVE) by EVANS, RYANN			
09:30	FOUL (PERSONAL) by CLAYTOR, DOMINIQUE			
09:30	SUB OUT: CLAYTOR, DOMINIQUE			
09:30	SUB IN: TSINEKE, KATERINA			
09:17				MISSED 3PTR by RACA, IVANA
09:13	REBOUND (DEF) by TEAM			
09:13				FOUL (PERSONAL) by BRANCH, RAEGYN
09:13				SUB OUT: BRANCH, RAEGYN
09:13				SUB IN: SHARP, ALEX
09:03	GOOD! JUMPER by HOPE, NECOLE [PNT]	22-10	H 12	
08:40				TURNOVER (LOSTBALL) by DICKSON, KAYLEN
08:40	STEAL by EVANS, RYANN			
08:36	GOOD! LAYUP by EVANS, RYANN [FB]	22-12	H 10	
08:07				MISSED 3PTR by RACA, IVANA
08:03	REBOUND (DEF) by TSINEKE, KATERINA			
07:43	MISSED JUMPER by TSINEKE, KATERINA			
07:40	REBOUND (OFF) by HOPE, NECOLE			
07:38	TURNOVER (LOSTBALL) by HOPE, NECOLE			
07:38				STEAL by DICKSON, KAYLEN
07:38	FOUL (PERSONAL) by EVANS, RYANN			
07:38				SUB OUT: HARRISON, KAIA
07:38				SUB OUT: RACA, IVANA
07:38				SUB OUT: DICKSON, KAYLEN
07:38				SUB IN: CONTI, GINA
07:38				SUB IN: SCRUGGS, ALEXANDRIA
07:38				SUB IN: UDOH, ONA
07:36				SUB OUT: MORRA, CHRISTINA
07:36				SUB IN: RACA, IVANA
07:32				MISSED JUMPER by SHARP, ALEX
07:29	REBOUND (DEF) by EVANS, RYANN			
07:16				FOUL (PERSONAL) by SCRUGGS, ALEXANDRIA
07:16	MISSED FT by TSINEKE, KATERINA			
07:16	REBOUND (OFF) by TEAM			
07:16	GOOD! FT by TSINEKE, KATERINA	22-13	H 9	
06:58		24-13	H 11	GOOD! JUMPER by RACA, IVANA [PNT]
06:58				ASSIST by SCRUGGS, ALEXANDRIA
06:39	MISSED JUMPER by HOPE, NECOLE			
06:36				REBOUND (DEF) by SHARP, ALEX
06:28				TURNOVER (BADPASS) by SCRUGGS, ALEXANDRIA
06:27	SUB OUT: EVANS, RYANN			
06:27	SUB IN: CLAYTOR, DOMINIQUE			
06:05	MISSED JUMPER by MONK, LASHONDA			
06:02				REBOUND (DEF) by SHARP, ALEX
05:58		26-13	H 13	GOOD! LAYUP by UDOH, ONA [FB]
05:58				ASSIST by CONTI, GINA
05:54	TIMEOUT 30SEC			
05:54				
05:46	MISSED JUMPER by CLAYTOR, DOMINIQUE			
05:43				REBOUND (DEF) by CONTI, GINA
05:39				MISSED LAYUP by SCRUGGS, ALEXANDRIA
05:35	REBOUND (DEF) by MONK, LASHONDA			
05:27	MISSED JUMPER by CLAYTOR, DOMINIQUE			
05:27				BLOCK by UDOH, ONA
05:23				REBOUND (DEF) by SHARP, ALEX
05:17	FOUL (PERSONAL) by TSINEKE, KATERINA			
04:59		28-13	H 15	GOOD! JUMPER by RACA, IVANA
04:26	MISSED JUMPER by MONK, LASHONDA			
04:23	REBOUND (OFF) by CLAYTOR, DOMINIQUE			
04:18	MISSED JUMPER by HOPE, NECOLE			
04:15				REBOUND (DEF) by SHARP, ALEX
04:08				MISSED LAYUP by RACA, IVANA
04:05	REBOUND (DEF) by TSINEKE, KATERINA			
04:00	GOOD! LAYUP by CLAYTOR, DOMINIQUE [FB/PNT]	28-15	H 13	
04:00	ASSIST by TSINEKE, KATERINA			
03:44		30-15	H 15	GOOD! LAYUP by RACA, IVANA [PNT]
03:44				ASSIST by SHARP, ALEX

Time	VISITORS: East Carolina	Score	Margin	HOME: Wake Forest
03:19	TURNOVER (BADPASS) by THOMPSON, TANIYAH			
03:19				SUB OUT: UDOH, ONA
03:19				SUB IN: MORRA, CHRISTINA
03:19	SUB OUT: HOPE, NECOLE			
03:19	SUB OUT: TSINEKE, KATERINA			
03:19	SUB IN: EVANS, RYANN			
03:19	SUB IN: CHAMBERS, TIARA			
03:12				TURNOVER (BADPASS) by SHARP, ALEX
03:12	STEAL by EVANS, RYANN			
03:04	GOOD! JUMPER by MONK, LASHONDA [FB]	30-17	H 13	
02:48				TURNOVER (3SEC) by MORRA, CHRISTINA
02:37	MISSED LAYUP by THOMPSON, TANIYAH			
02:34				REBOUND (DEF) by SHARP, ALEX
02:27				MISSED JUMPER by SHARP, ALEX
02:25				REBOUND (OFF) by MORRA, CHRISTINA
02:21				MISSED 3PTR by RACA, IVANA
02:17	REBOUND (DEF) by TEAM			
02:17				FOUL (PERSONAL) by SHARP, ALEX
02:07	MISSED JUMPER by THOMPSON, TANIYAH			
02:04				REBOUND (DEF) by SHARP, ALEX
01:56	FOUL (PERSONAL) by EVANS, RYANN			
01:56				SUB OUT: SCRUGGS, ALEXANDRIA
01:56				SUB IN: HOARD, ANAIA
01:56	SUB OUT: EVANS, RYANN			
01:56	SUB IN: HOPE, NECOLE			
01:56		31-17	H 14	GOOD! FT by CONTI, GINA
01:56		32-17	H 15	GOOD! FT by CONTI, GINA
01:41	GOOD! JUMPER by HOPE, NECOLE	32-19	H 13	
01:16		35-19	H 16	GOOD! 3PTR by CONTI, GINA
01:16				ASSIST by HOARD, ANAIA
00:43	MISSED JUMPER by MONK, LASHONDA			
00:41				REBOUND (DEF) by SHARP, ALEX
00:41	FOUL (PERSONAL) by HOPE, NECOLE			
00:41				SUB OUT: RACA, IVANA
00:41				SUB IN: BRANCH, RAEGYN
00:41				MISSED FT by SHARP, ALEX
00:41				REBOUND (OFF) by TEAM
00:41		36-19	H 17	GOOD! FT by SHARP, ALEX [FB]
00:41				SUB OUT: CONTI, GINA
00:41				SUB IN: HARRISON, KAIA
00:31	MISSED 3PTR by MONK, LASHONDA			
00:27				REBOUND (DEF) by MORRA, CHRISTINA
00:05		39-19	H 20	GOOD! 3PTR by HARRISON, KAIA
00:05				ASSIST by HOARD, ANAIA

East Carolina 19, Wake Forest 39

Points from (This Period)	ECU	WFU
In the Paint	6	6
Off Turns	4	0
2nd Chance	0	0
Fast Break	6	3
Bench	1	3

Official Box Score
East Carolina vs Wake Forest
Second Half Statistics Only
November 30, 2019 at LJVM Coliseum - Winston-Salem, N.C.



East Carolina 34

No.	Player	S	Pts	FG	3FG	FT	OR	DR	TR	PF	A	TO	Blk	Stl	Min	+/-
01	THOMPSON, TANIYAH	G	4	2-7	0-1	0-0	1	0	1	0	0	0	0	1	16	-2
05	TSINEKE, KATERINA	G	5	2-5	1-2	0-0	1	0	1	2	1	0	0	1	12	-5
23	CLAYTOR, DOMINIQUE	G	3	1-2	1-1	0-0	0	0	0	1	3	1	0	1	19	-3
25	EVANS, RYANN	G	2	1-2	0-0	0-0	0	1	1	1	0	0	0	0	12	0
33	CHAMBERS, TIARA	F	0	0-0	0-0	0-0	1	0	1	1	0	0	0	0	7	-3
02	MONK, LASHONDA	G	16	6-14	2-6	2-2	0	1	1	2	1	0	0	2	17	-4
04	HOPE, NECOLE	G	4	2-4	0-0	0-0	0	1	1	1	0	0	0	2	16	2
	TEAM		0	0-0	0-0	0-0	0	1	1	0	0	1	0	0	0	
TOTALS			34	14-34	4-10	2-2	3	4	7	8	5	2	0	7	99	

Shooting By Period

Period	FG	FG%	3FG	3FG%	FT	FT%
3rd Qtr	8-15	53%	3-6	50%	2-2	100%
4th Qtr	6-19	32%	1-4	25%	0-0	0%
2nd Half	14-34	41%	4-10	40%	2-2	100%
Game	22-70	31.4%	5-15	33.3%	4-6	66.7%

Deadball Rebounds: 1,0

Last FG Half: ECU 4th-01:32

Wake Forest 37

No.	Player	S	Pts	FG	3FG	FT	OR	DR	TR	PF	A	TO	Blk	Stl	Min	+/-
00	BANKS, MAYA	F	0	0-0	0-0	0-0	0	0	0	0	0	0	0	0	2	-1
01	HOARD, ANAIA	G	2	1-2	0-0	0-0	1	1	2	0	0	1	0	0	2	-1
02	HARRISON, KAIA	G	0	0-0	0-0	0-0	0	0	0	1	0	1	0	0	6	0
03	MAIER, MCKENZIE	G	0	0-0	0-0	0-0	0	0	0	0	0	0	0	0	0	0
10	HAHNE, ELLEN	G	1	0-0	0-0	1-2	0	0	0	0	0	0	0	0	2	-1
11	RACA, IVANA	F	3	1-4	0-0	1-2	0	0	0	0	2	1	0	0	10	-6
12	DICKSON, KAYLEN	G	2	1-2	0-1	0-0	1	1	2	1	1	0	1	0	4	4
14	SHARP, ALEX	G	4	1-4	0-0	2-2	3	4	7	1	2	6	0	0	14	5
20	SUMMIEL, OLIVIA	F	0	0-1	0-0	0-0	0	1	1	0	0	0	0	0	2	-1
21	BRANCH, RAEGYN	F	8	2-2	0-0	4-4	0	1	1	0	1	1	0	0	12	9
23	MORRA, CHRISTINA	F	2	1-1	0-0	0-0	0	0	0	0	0	0	0	0	4	4
32	SCRUGGS, ALEXANDRIA	G	2	1-2	0-1	0-0	0	1	1	0	1	2	0	1	12	0
44	UDOH, ONA	F	8	4-4	0-0	0-0	1	7	8	0	2	0	1	0	14	0
05	CONTI, GINA	G	5	2-2	1-1	0-0	0	1	1	1	2	0	0	0	16	3
	TEAM		0	0-0	0-0	0-0	0	0	0	0	0	0	0	0	0	
TOTALS			37	14-24	1-3	8-10	6	17	23	4	11	12	2	1	99	

Shooting By Period

Period	FG	FG%	3FG	3FG%	FT	FT%
3rd Qtr	7-14	50%	0-2	00%	5-6	83%
4th Qtr	7-10	70%	1-1	100%	3-4	75%
2nd Half	14-24	58%	1-3	33%	8-10	80%
Game	27-47	57.4%	4-11	36.4%	18-22	81.8%

Deadball Rebounds: 4,0

Last FG Half: WFU 4th-01:11

Game Notes:

Officials: Kathleen Lynch, Michael Docouto, Ryan Durham
Attendance: 430

Start Time: 01:02 PM ET
End Time: 02:45 PM ET
Game Duration: 1:43

Score	1st	2nd	3rd	4th	TOT
ECU	8	11	21	13	53
WFU	22	17	19	18	76

Points from (This Period)	ECU	WFU
In the Paint	12	22
Off Turns	16	2
2nd Chance	2	8
Fast Break	11	0
Bench	5	15

Official Box Score
East Carolina vs Wake Forest
Third Quarter Statistics Only
November 30, 2019 at LJVM Coliseum - Winston-Salem, N.C.



East Carolina 34

No.	Player	S	Pts	FG	3FG	FT	OR	DR	TR	PF	A	TO	Blk	Stl	Min	+/-
01	THOMPSON, TANIYAH	G	4	2-4	0-1	0-0	1	0	1	0	0	0	0	1	10	2
02	MONK, LASHONDA	G	12	4-7	2-4	2-2	0	1	1	2	1	0	0	1	10	2
04	HOPE, NECOLE	G	0	0-1	0-0	0-0	0	0	0	1	0	0	0	1	9	3
23	CLAYTOR, DOMINIQUE	G	0	0-0	0-0	0-0	0	0	0	1	2	1	0	1	10	2
25	EVANS, RYANN	G	0	0-0	0-0	0-0	0	0	0	1	0	0	0	0	2	5
05	TSINEKE, KATERINA	G	5	2-3	1-1	0-0	0	0	0	1	0	0	0	0	6	-2
33	CHAMBERS, TIARA	F	0	0-0	0-0	0-0	1	0	1	0	0	0	0	0	3	-2
TEAM							0	1	1	0		1				
TOTALS			21	8-15	3-6	2-2	2	2	4	6	3	2	0	4	50	

Shooting By Period

Period	FG	FG%	3FG	3FG%	FT	FT%
2nd Half	0-0	0%	0-0	0%	0-0	0%
Game	22-70	31.4%	5-15	33.3%	4-6	66.7%

Deadball Rebounds: 1,0

Wake Forest 37

No.	Player	S	Pts	FG	3FG	FT	OR	DR	TR	PF	A	TO	Blk	Stl	Min	+/-
05	CONTI, GINA	G	2	1-1	0-0	0-0	0	0	0	1	1	0	0	0	8	-3
11	RACA, IVANA	F	3	1-3	0-0	1-2	0	0	0	0	1	1	0	0	6	-8
14	SHARP, ALEX	G	2	0-3	0-0	2-2	3	1	4	1	1	3	0	0	8	-1
32	SCRUGGS, ALEXANDRIA	G	2	1-2	0-1	0-0	0	0	0	0	1	1	0	1	6	-6
44	UDOH, ONA	F	0	0-0	0-0	0-0	1	3	4	0	1	0	1	0	6	-6
00	BANKS, MAYA	F	0	0-0	0-0	0-0	0	0	0	0	0	0	0	0	0	0
01	HOARD, ANAIA	G	0	0-0	0-0	0-0	0	0	0	0	0	0	0	0	0	0
02	HARRISON, KAIA	G	0	0-0	0-0	0-0	0	0	0	0	0	0	0	0	2	1
03	MAIER, MCKENZIE	G	0	0-0	0-0	0-0	0	0	0	0	0	0	0	0	0	0
10	HAHNE, ELLEN	G	0	0-0	0-0	0-0	0	0	0	0	0	0	0	0	0	0
12	DICKSON, KAYLEN	G	2	1-2	0-1	0-0	1	1	2	1	1	0	1	0	4	4
20	SUMMIEL, OLIVIA	F	0	0-0	0-0	0-0	0	0	0	0	0	0	0	0	0	0
21	BRANCH, RAEGYN	F	6	2-2	0-0	2-2	0	0	0	0	0	0	0	0	6	5
23	MORRA, CHRISTINA	F	2	1-1	0-0	0-0	0	0	0	0	0	0	0	0	4	4
TEAM							0	0	0	0		0				
TOTALS			19	7-14	0-2	5-6	5	5	10	3	6	5	2	1	50	

Shooting By Period

Period	FG	FG%	3FG	3FG%	FT	FT%
2nd Half	0-0	0%	0-0	0%	0-0	0%
Game	27-47	57.4%	4-11	36.4%	18-22	81.8%

Deadball Rebounds: 4,0

Game Notes:

Officials: Kathleen Lynch, Michael Docouto, Ryan Durham
Attendance: 430

Start Time: 01:02 PM ET
End Time: 02:45 PM ET
Game Duration: 1:43

Score	1st	2nd	3rd	4th	TOT
ECU	8	11	21	13	53
WFU	22	17	19	18	76

Points from (This Period)	ECU	WFU
In the Paint	4	10
Off Turns	7	2
2nd Chance	2	6
Fast Break	7	0
Bench	5	10

Official Play-By-Play
East Carolina vs Wake Forest
Third Quarter
November 30, 2019 at LJV Coliseum - Winston-Salem, N.C.



Period 3

Starters:

East Carolina: 1 THOMPSON, TANIYAH (G); 23 CLAYTOR, DOMINIQUE (G); 25 EVANS, RYANN (G); 2 MONK, LASHONDA (G); 4 HOPE, NECOLE (G);

Wake Forest: 11 RACA, IVANA (F); 14 SHARP, ALEX (G); 32 SCRUGGS, ALEXANDRIA (G); 44 UDOH, ONA (F); 5 CONTI, GINA (G);

Time	VISITORS: East Carolina	Score	Margin	HOME: Wake Forest
10:00				SUB OUT: HOARD, ANAIA
10:00				SUB OUT: HARRISON, KAIA
10:00				SUB OUT: BRANCH, RAEGYN
10:00				SUB OUT: MORRA, CHRISTINA
10:00				SUB IN: CONTI, GINA
10:00				SUB IN: RACA, IVANA
10:00				SUB IN: SCRUGGS, ALEXANDRIA
10:00				SUB IN: UDOH, ONA
10:00	SUB OUT: CHAMBERS, TIARA			
10:00	SUB IN: EVANS, RYANN			
09:51				TURNOVER (LOSTBALL) by SHARP, ALEX
09:51	STEAL by MONK, LASHONDA			
09:46				FOUL (PERSONAL) by CONTI, GINA
09:46	GOOD! FT by MONK, LASHONDA [FB]	39-20	H 19	
09:46	GOOD! FT by MONK, LASHONDA [FB]	39-21	H 18	
09:20		41-21	H 20	GOOD! JUMPER by CONTI, GINA
09:20				ASSIST by SCRUGGS, ALEXANDRIA
09:03	MISSED 3PTR by MONK, LASHONDA			
08:58	REBOUND (OFF) by THOMPSON, TANIYAH			
08:57	GOOD! JUMPER by THOMPSON, TANIYAH	41-23	H 18	
08:39				TURNOVER (LOSTBALL) by RACA, IVANA
08:39	STEAL by HOPE, NECOLE			
08:33	GOOD! 3PTR by MONK, LASHONDA [FB]	41-26	H 15	
08:18	FOUL (PERSONAL) by MONK, LASHONDA			
08:15	FOUL (PERSONAL) by HOPE, NECOLE			
08:07	FOUL (PERSONAL) by EVANS, RYANN			
08:07	SUB OUT: EVANS, RYANN			
08:07	SUB IN: TSINEKE, KATERINA			
08:07				MISSED FT by RACA, IVANA
08:07				REBOUND (OFF) by TEAM
08:07		42-26	H 16	GOOD! FT by RACA, IVANA
07:59	GOOD! 3PTR by TSINEKE, KATERINA	42-29	H 13	
07:59	ASSIST by CLAYTOR, DOMINIQUE			
07:41	FOUL (PERSONAL) by CLAYTOR, DOMINIQUE			
07:33		44-29	H 15	GOOD! LAYUP by RACA, IVANA [PNT]
07:33				ASSIST by UDOH, ONA
07:15	MISSED 3PTR by THOMPSON, TANIYAH			
07:12				REBOUND (DEF) by UDOH, ONA
07:03				TURNOVER (BADPASS) by SHARP, ALEX
07:03	STEAL by THOMPSON, TANIYAH			
06:55	GOOD! LAYUP by MONK, LASHONDA [FB]	44-31	H 13	
06:50				TIMEOUT 30SEC
06:50				
06:41				MISSED JUMPER by SHARP, ALEX
06:39				REBOUND (OFF) by SHARP, ALEX
06:38				MISSED LAYUP by SHARP, ALEX
06:35	REBOUND (DEF) by MONK, LASHONDA			
06:22	MISSED LAYUP by THOMPSON, TANIYAH			
06:22				BLOCK by UDOH, ONA
06:17				REBOUND (DEF) by UDOH, ONA
06:10				MISSED LAYUP by RACA, IVANA
06:06				REBOUND (OFF) by SHARP, ALEX
06:06				FOUL (OFF) by SHARP, ALEX
06:06				TURNOVER (OFFENSIVE) by SHARP, ALEX
06:06				SUB OUT: RACA, IVANA
06:06				SUB IN: BRANCH, RAEGYN
05:49	TURNOVER (BADPASS) by CLAYTOR, DOMINIQUE			
05:49				STEAL by SCRUGGS, ALEXANDRIA
05:45				TURNOVER (LOSTBALL) by SCRUGGS, ALEXANDRIA
05:45	STEAL by CLAYTOR, DOMINIQUE			
05:29	MISSED JUMPER by HOPE, NECOLE			
05:27				REBOUND (DEF) by UDOH, ONA
05:19		46-31	H 15	GOOD! JUMPER by SCRUGGS, ALEXANDRIA
05:19				ASSIST by CONTI, GINA
04:46	GOOD! JUMPER by MONK, LASHONDA	46-33	H 13	
04:25				MISSED 3PTR by SCRUGGS, ALEXANDRIA
04:21				REBOUND (OFF) by UDOH, ONA
04:18	FOUL (PERSONAL) by MONK, LASHONDA			
04:17				
04:17		47-33	H 14	GOOD! FT by BRANCH, RAEGYN

Time	VISITORS: East Carolina	Score	Margin	HOME: Wake Forest
04:17				SUB OUT: SCRUGGS, ALEXANDRIA
04:17				SUB OUT: UDOH, ONA
04:17				SUB IN: DICKSON, KAYLEN
04:17				SUB IN: MORRA, CHRISTINA
04:17	SUB OUT: HOPE, NECOLE			
04:17	SUB IN: CHAMBERS, TIARA			
04:17		48-33	H 15	GOOD! FT by BRANCH, RAEGYN
03:53	GOOD! LAYUP by TSINEKE, KATERINA [PNT]	48-35	H 13	
03:35		50-35	H 15	GOOD! LAYUP by MORRA, CHRISTINA [PNT]
03:35				ASSIST by DICKSON, KAYLEN
03:15	MISSED LAYUP by MONK, LASHONDA			
03:11	REBOUND (OFF) by CHAMBERS, TIARA			
03:10	SUB OUT: CHAMBERS, TIARA			
03:10	SUB IN: HOPE, NECOLE			
03:00	TURNOVER (SHOTCLOCK) by TEAM			
02:39		52-35	H 17	GOOD! JUMPER by BRANCH, RAEGYN [PNT]
02:39				ASSIST by SHARP, ALEX
02:21	MISSED LAYUP by TSINEKE, KATERINA			
02:21				REBOUND (DEF) by SHARP, ALEX
02:08				MISSED LAYUP by SHARP, ALEX
02:04				REBOUND (OFF) by SHARP, ALEX
02:03	FOUL (PERSONAL) by TSINEKE, KATERINA			
02:03	SUB OUT: TSINEKE, KATERINA			
02:03	SUB IN: CHAMBERS, TIARA			
02:03				SUB OUT: CONTI, GINA
02:03				SUB IN: HARRISON, KAIA
02:03		53-35	H 18	GOOD! FT by SHARP, ALEX
02:03		54-35	H 19	GOOD! FT by SHARP, ALEX
02:03				SUB OUT: SHARP, ALEX
02:03				SUB IN: RACA, IVANA
01:53	GOOD! 3PTR by MONK, LASHONDA	54-38	H 16	
01:53	ASSIST by CLAYTOR, DOMINIQUE			
01:27				MISSED JUMPER by RACA, IVANA
01:23				REBOUND (OFF) by DICKSON, KAYLEN
01:23		56-38	H 18	GOOD! JUMPER by DICKSON, KAYLEN
01:02	GOOD! JUMPER by THOMPSON, TANIYAH	56-40	H 16	
01:02	ASSIST by MONK, LASHONDA			
00:32		58-40	H 18	GOOD! LAYUP by BRANCH, RAEGYN [PNT]
00:32				ASSIST by RACA, IVANA
00:15				FOUL (PERSONAL) by DICKSON, KAYLEN
00:15	MISSED 3PTR by MONK, LASHONDA			
00:15				REBOUND (DEF) by DICKSON, KAYLEN
00:04				MISSED 3PTR by DICKSON, KAYLEN
00:00	REBOUND (DEF) by TEAM			
02:21				BLOCK by DICKSON, KAYLEN

East Carolina 40, Wake Forest 58

Points from (This Period)	ECU	WFU
In the Paint	4	10
Off Turns	7	2
2nd Chance	2	6
Fast Break	7	0
Bench	5	10

Official Box Score
East Carolina vs Wake Forest
Fourth Quarter Statistics Only
November 30, 2019 at LJVM Coliseum - Winston-Salem, N.C.



East Carolina 13

No.	Player	S	Pts	FG	3FG	FT	OR	DR	TR	PF	A	TO	Blk	Stl	Min	+/-
01	THOMPSON, TANIYAH	G	0	0-3	0-0	0-0	0	0	0	0	0	0	0	0	6	-4
02	MONK, LASHONDA	G	4	2-7	0-2	0-0	0	0	0	0	0	0	0	1	7	-6
04	HOPE, NECOLE	G	4	2-3	0-0	0-0	0	1	1	0	0	0	0	1	7	-1
23	CLAYTOR, DOMINIQUE	G	3	1-2	1-1	0-0	0	0	0	0	1	0	0	0	9	-5
25	EVANS, RYANN	G	2	1-2	0-0	0-0	0	1	1	0	0	0	0	0	10	-5
05	TSINEKE, KATERINA	G	0	0-2	0-1	0-0	1	0	1	1	1	0	0	1	6	-3
33	CHAMBERS, TIARA	F	0	0-0	0-0	0-0	0	0	0	1	0	0	0	0	4	-1
TEAM							0	0	0	0		0				
TOTALS			13	6-19	1-4	0-0	1	2	3	2	2	0	0	3	49	

Shooting By Period

Period	FG	FG%	3FG	3FG%	FT	FT%
Game	22-70	31.4%	5-15	33.3%	4-6	66.7%

Deadball Rebounds: 1,0

Wake Forest 18

No.	Player	S	Pts	FG	3FG	FT	OR	DR	TR	PF	A	TO	Blk	Stl	Min	+/-
05	CONTI, GINA	G	3	1-1	1-1	0-0	0	1	1	0	1	0	0	0	8	6
11	RACA, IVANA	F	0	0-1	0-0	0-0	0	0	0	0	1	0	0	0	4	2
14	SHARP, ALEX	G	2	1-1	0-0	0-0	0	3	3	0	1	3	0	0	6	6
32	SCRUGGS, ALEXANDRIA	G	0	0-0	0-0	0-0	0	1	1	0	0	1	0	0	6	6
44	UDOH, ONA	F	8	4-4	0-0	0-0	0	4	4	0	1	0	0	0	8	6
00	BANKS, MAYA	F	0	0-0	0-0	0-0	0	0	0	0	0	0	0	0	2	-1
01	HOARD, ANAIA	G	2	1-2	0-0	0-0	1	1	2	0	0	1	0	0	2	-1
02	HARRISON, KAIA	G	0	0-0	0-0	0-0	0	0	0	1	0	1	0	0	4	-1
03	MAIER, MCKENZIE	G	0	0-0	0-0	0-0	0	0	0	0	0	0	0	0	0	0
10	HAHNE, ELLEN	G	1	0-0	0-0	1-2	0	0	0	0	0	0	0	0	2	-1
12	DICKSON, KAYLEN	G	0	0-0	0-0	0-0	0	0	0	0	0	0	0	0	0	0
20	SUMMIEL, OLIVIA	F	0	0-1	0-0	0-0	0	1	1	0	0	0	0	0	2	-1
21	BRANCH, RAEGYN	F	2	0-0	0-0	2-2	0	1	1	0	1	1	0	0	6	4
23	MORRA, CHRISTINA	F	0	0-0	0-0	0-0	0	0	0	0	0	0	0	0	0	0
TEAM							0	0	0	0		0				
TOTALS			18	7-10	1-1	3-4	1	12	13	1	5	7	0	0	49	

Shooting By Period

Period	FG	FG%	3FG	3FG%	FT	FT%
Game	27-47	57.4%	4-11	36.4%	18-22	81.8%

Deadball Rebounds: 4,0

Game Notes:

Officials: Kathleen Lynch, Michael Docouto, Ryan Durham
Attendance: 430

Start Time: 01:02 PM ET

End Time: 02:45 PM ET

Game Duration: 1:43

Score	1st	2nd	3rd	4th	TOT
ECU	8	11	21	13	53
WFU	22	17	19	18	76

Points from (This Period)	ECU	WFU
In the Paint	8	12
Off Turns	9	0
2nd Chance	0	2
Fast Break	4	0
Bench	0	5

Official Play-By-Play
East Carolina vs Wake Forest
Fourth Quarter
November 30, 2019 at LJVM Coliseum - Winston-Salem, N.C.



Period 4

Starters:

East Carolina: 1 THOMPSON, TANIYAH (G); 23 CLAYTOR, DOMINIQUE (G); 25 EVANS, RYANN (G); 2 MONK, LASHONDA (G); 4 HOPE, NECOLE (G);

Wake Forest: 11 RACA, IVANA (F); 14 SHARP, ALEX (G); 32 SCRUGGS, ALEXANDRIA (G); 44 UDOH, ONA (F); 5 CONTI, GINA (G);

Time	VISITORS: East Carolina	Score	Margin	HOME: Wake Forest
10:00				SUB OUT: DICKSON, KAYLEN
10:00				SUB OUT: MORRA, CHRISTINA
10:00				SUB IN: CONTI, GINA
10:00				SUB IN: UDOH, ONA
10:00	SUB OUT: CHAMBERS, TIARA			
10:00	SUB IN: EVANS, RYANN			
09:49	MISSED JUMPER by MONK, LASHONDA			
09:46				REBOUND (DEF) by UDOH, ONA
09:27				TURNOVER (BADPASS) by BRANCH, RAEGYN
09:17	MISSED JUMPER by THOMPSON, TANIYAH			
09:14				REBOUND (DEF) by UDOH, ONA
09:02				TURNOVER (BADPASS) by HARRISON, KAIA
09:02	STEAL by MONK, LASHONDA			
08:57	GOOD! LAYUP by MONK, LASHONDA [FB/PNT]	58-42	H 16	
08:32		60-42	H 18	GOOD! LAYUP by UDOH, ONA
08:32				ASSIST by RACA, IVANA
08:20	MISSED JUMPER by CLAYTOR, DOMINIQUE			
08:17				REBOUND (DEF) by CONTI, GINA
08:05				MISSED JUMPER by RACA, IVANA
08:01	REBOUND (DEF) by HOPE, NECOLE			
07:45				FOUL (PERSONAL) by HARRISON, KAIA
07:45				SUB OUT: HARRISON, KAIA
07:45				SUB OUT: RACA, IVANA
07:45				SUB IN: SHARP, ALEX
07:45				SUB IN: SCRUGGS, ALEXANDRIA
07:45	SUB OUT: CLAYTOR, DOMINIQUE			
07:45	SUB IN: TSINEKE, KATERINA			
07:45	MISSED 3PTR by MONK, LASHONDA			
07:45				REBOUND (DEF) by SHARP, ALEX
07:44				TURNOVER (BADPASS) by SHARP, ALEX
07:32	SUB OUT: TSINEKE, KATERINA			
07:32	SUB IN: CLAYTOR, DOMINIQUE			
07:22	SUB OUT: HOPE, NECOLE			
07:22	SUB IN: TSINEKE, KATERINA			
07:20	MISSED JUMPER by THOMPSON, TANIYAH			
07:17				REBOUND (DEF) by SHARP, ALEX
07:06				TURNOVER (TRAVEL) by SHARP, ALEX
07:06	TIMEOUT 30SEC			
07:06				
06:50	MISSED JUMPER by EVANS, RYANN			
06:47				REBOUND (DEF) by BRANCH, RAEGYN
06:33	FOUL (PERSONAL) by TSINEKE, KATERINA			
06:33		61-42	H 19	GOOD! FT by BRANCH, RAEGYN
06:33		62-42	H 20	GOOD! FT by BRANCH, RAEGYN
06:18	GOOD! JUMPER by MONK, LASHONDA	62-44	H 18	
06:18	ASSIST by CLAYTOR, DOMINIQUE			
06:06				TURNOVER (LOSTBALL) by SHARP, ALEX
06:06	STEAL by TSINEKE, KATERINA			
05:55	GOOD! LAYUP by EVANS, RYANN [PNT]	62-46	H 16	
05:29		64-46	H 18	GOOD! LAYUP by UDOH, ONA [PNT]
05:29				ASSIST by CONTI, GINA
05:12	MISSED JUMPER by THOMPSON, TANIYAH			
05:05				REBOUND (DEF) by SHARP, ALEX
04:53		66-46	H 20	GOOD! LAYUP by UDOH, ONA
04:53				ASSIST by BRANCH, RAEGYN
04:42	MISSED JUMPER by MONK, LASHONDA			
04:38	REBOUND (OFF) by TSINEKE, KATERINA			
04:21	MISSED JUMPER by TSINEKE, KATERINA			
04:17				REBOUND (DEF) by UDOH, ONA
04:09		68-46	H 22	GOOD! LAYUP by SHARP, ALEX [PNT]
04:05	TIMEOUT TEAM			
04:05	SUB OUT: THOMPSON, TANIYAH			
04:05	SUB OUT: TSINEKE, KATERINA			
04:05	SUB IN: HOPE, NECOLE			
04:05	SUB IN: CHAMBERS, TIARA			
04:05				SUB OUT: BRANCH, RAEGYN
04:05				SUB IN: RACA, IVANA
03:51	MISSED 3PTR by MONK, LASHONDA			
03:46				REBOUND (DEF) by UDOH, ONA
03:28		70-46	H 24	GOOD! LAYUP by UDOH, ONA [PNT]

Time	VISITORS: East Carolina	Score	Margin	HOME: Wake Forest
03:28				ASSIST by SHARP, ALEX
03:14	MISSED JUMPER by MONK, LASHONDA			
03:09				REBOUND (DEF) by SCRUGGS, ALEXANDRIA
02:54				TURNOVER (TRAVEL) by SCRUGGS, ALEXANDRIA
02:54	SUB OUT: MONK, LASHONDA			
02:54	SUB IN: TSINEKE, KATERINA			
02:33	GOOD! 3PTR by CLAYTOR, DOMINIQUE	70-49	H 21	
02:33	ASSIST by TSINEKE, KATERINA			
02:16		73-49	H 24	GOOD! 3PTR by CONTI, GINA
02:16				ASSIST by UDOH, ONA
02:11				TIMEOUT 30SEC
02:11				SUB OUT: CONTI, GINA
02:11				SUB OUT: RACA, IVANA
02:11				SUB OUT: SHARP, ALEX
02:11				SUB OUT: SCRUGGS, ALEXANDRIA
02:11				SUB OUT: UDOH, ONA
02:11				SUB IN: BANKS, MAYA
02:11				SUB IN: HOARD, ANAIA
02:11				SUB IN: HARRISON, KAIA
02:11				SUB IN: HAHNE, ELLEN
02:11				SUB IN: SUMMIEL, OLIVIA
01:54	GOOD! LAYUP by HOPE, NECOLE	73-51	H 22	
01:36				TURNOVER (LOSTBALL) by HOARD, ANAIA
01:36	STEAL by HOPE, NECOLE			
01:32	GOOD! LAYUP by HOPE, NECOLE [FB]	73-53	H 20	
01:15				MISSED JUMPER by SUMMIEL, OLIVIA
01:11				REBOUND (OFF) by HOARD, ANAIA
01:11		75-53	H 22	GOOD! LAYUP by HOARD, ANAIA [PNT]
00:54	MISSED 3PTR by TSINEKE, KATERINA			
00:50				REBOUND (DEF) by SUMMIEL, OLIVIA
00:33	FOUL (PERSONAL) by CHAMBERS, TIARA			
00:33				MISSED FT by HAHNE, ELLEN
00:33				REBOUND (OFF) by TEAM
00:33		76-53	H 23	GOOD! FT by HAHNE, ELLEN
00:33				SUB OUT: HARRISON, KAIA
00:33				SUB IN: MAIER, MCKENZIE
00:32	SUB OUT: CLAYTOR, DOMINIQUE			
00:32	SUB IN: THOMPSON, TANIYAH			
00:31	MISSED JUMPER by HOPE, NECOLE			
00:27				REBOUND (DEF) by HOARD, ANAIA
00:13				MISSED JUMPER by HOARD, ANAIA
00:10	REBOUND (DEF) by EVANS, RYANN			

East Carolina 53, Wake Forest 76

Points from (This Period)	ECU	WFU
In the Paint	8	12
Off Turns	9	0
2nd Chance	0	2
Fast Break	4	0
Bench	0	5

Official Scoring/Possession Reference Chart
East Carolina vs Wake Forest
Period 1
November 30, 2019 at LJVM Coliseum - Winston-Salem, N.C.



Period 1

Starters:

East Carolina: 1 THOMPSON, TANIYAH (G); 23 CLAYTOR, DOMINIQUE (G); 25 EVANS, RYANN (G); 2 MONK, LASHONDA (G); 4 HOPE, NECOLE (G);

Wake Forest: 11 RACA, IVANA (F); 14 SHARP, ALEX (G); 32 SCRUGGS, ALEXANDRIA (G); 44 UDOH, ONA (F); 5 CONTI, GINA (G);

Time	VISITORS: East Carolina	Score	Margin	HOME: Wake Forest
09:42		2-0	H 2	GOOD! JUMPER by RACA, IVANA [PNT]
09:10	GOOD! 3PTR by CLAYTOR, DOMINIQUE	2-3	V 1	
08:52	GOOD! LAYUP by HOPE, NECOLE [FB/PNT]	2-5	V 3	
08:32		4-5	V 1	GOOD! LAYUP by UDOH, ONA [PNT]
07:45		5-5	T	GOOD! FT by SCRUGGS, ALEXANDRIA
07:40	GOOD! FT by MONK, LASHONDA	5-6	V 1	
06:58		7-6	H 1	GOOD! JUMPER by SHARP, ALEX [FB]
05:19		10-6	H 4	GOOD! 3PTR by CONTI, GINA
04:54		11-6	H 5	GOOD! FT by CONTI, GINA
04:54		12-6	H 6	GOOD! FT by CONTI, GINA
04:43	GOOD! JUMPER by MONK, LASHONDA	12-8	H 4	
03:46		14-8	H 6	GOOD! JUMPER by CONTI, GINA [FB]
02:22		16-8	H 8	GOOD! JUMPER by MORRA, CHRISTINA
01:57		18-8	H 10	GOOD! LAYUP by CONTI, GINA [FB/PNT]
00:54		19-8	H 11	GOOD! FT by MORRA, CHRISTINA
00:54		20-8	H 12	GOOD! FT by MORRA, CHRISTINA
00:20		21-8	H 13	GOOD! FT by BRANCH, RAEGYN [FB]
00:20		22-8	H 14	GOOD! FT by BRANCH, RAEGYN [FB]

East Carolina 8, Wake Forest 22

Official Scoring/Possession Reference Chart
East Carolina vs Wake Forest
Period 2
November 30, 2019 at LJVM Coliseum - Winston-Salem, N.C.



Period 2

Starters:

East Carolina: 1 THOMPSON, TANIYAH (G); 23 CLAYTOR, DOMINIQUE (G); 25 EVANS, RYANN (G); 2 MONK, LASHONDA (G); 4 HOPE, NECOLE (G);

Wake Forest: 11 RACA, IVANA (F); 14 SHARP, ALEX (G); 32 SCRUGGS, ALEXANDRIA (G); 44 UDOH, ONA (F); 5 CONTI, GINA (G);

Time	VISITORS: East Carolina	Score	Margin	HOME: Wake Forest
09:03	GOOD! JUMPER by HOPE, NECOLE [PNT]	22-10	H 12	
08:36	GOOD! LAYUP by EVANS, RYANN [FB]	22-12	H 10	
07:16	GOOD! FT by TSINEKE, KATERINA	22-13	H 9	
06:58		24-13	H 11	GOOD! JUMPER by RACA, IVANA [PNT]
05:58		26-13	H 13	GOOD! LAYUP by UDOH, ONA [FB]
04:59		28-13	H 15	GOOD! JUMPER by RACA, IVANA
04:00	GOOD! LAYUP by CLAYTOR, DOMINIQUE [FB/PNT]	28-15	H 13	
03:44		30-15	H 15	GOOD! LAYUP by RACA, IVANA [PNT]
03:04	GOOD! JUMPER by MONK, LASHONDA [FB]	30-17	H 13	
01:56		31-17	H 14	GOOD! FT by CONTI, GINA
01:56		32-17	H 15	GOOD! FT by CONTI, GINA
01:41	GOOD! JUMPER by HOPE, NECOLE	32-19	H 13	
01:16		35-19	H 16	GOOD! 3PTR by CONTI, GINA
00:41		36-19	H 17	GOOD! FT by SHARP, ALEX [FB]
00:05		39-19	H 20	GOOD! 3PTR by HARRISON, KAIA

East Carolina 19, Wake Forest 39

Official Scoring/Possession Reference Chart
East Carolina vs Wake Forest
Period 3
November 30, 2019 at LJVM Coliseum - Winston-Salem, N.C.



Period 3

Starters:

East Carolina: 1 THOMPSON, TANIYAH (G); 23 CLAYTOR, DOMINIQUE (G); 25 EVANS, RYANN (G); 2 MONK, LASHONDA (G); 4 HOPE, NECOLE (G);

Wake Forest: 11 RACA, IVANA (F); 14 SHARP, ALEX (G); 32 SCRUGGS, ALEXANDRIA (G); 44 UDOH, ONA (F); 5 CONTI, GINA (G);

Time	VISITORS: East Carolina	Score	Margin	HOME: Wake Forest
09:46	GOOD! FT by MONK, LASHONDA [FB]	39-20	H 19	
09:46	GOOD! FT by MONK, LASHONDA [FB]	39-21	H 18	
09:20		41-21	H 20	GOOD! JUMPER by CONTI, GINA
08:57	GOOD! JUMPER by THOMPSON, TANIYAH	41-23	H 18	
08:33	GOOD! 3PTR by MONK, LASHONDA [FB]	41-26	H 15	
08:07		42-26	H 16	GOOD! FT by RACA, IVANA
07:59	GOOD! 3PTR by TSINEKE, KATERINA	42-29	H 13	
07:33		44-29	H 15	GOOD! LAYUP by RACA, IVANA [PNT]
06:55	GOOD! LAYUP by MONK, LASHONDA [FB]	44-31	H 13	
05:19		46-31	H 15	GOOD! JUMPER by SCRUGGS, ALEXANDRIA
04:46	GOOD! JUMPER by MONK, LASHONDA	46-33	H 13	
04:17		47-33	H 14	GOOD! FT by BRANCH, RAEGYN
04:17		48-33	H 15	GOOD! FT by BRANCH, RAEGYN
03:53	GOOD! LAYUP by TSINEKE, KATERINA [PNT]	48-35	H 13	
03:35		50-35	H 15	GOOD! LAYUP by MORRA, CHRISTINA [PNT]
02:39		52-35	H 17	GOOD! JUMPER by BRANCH, RAEGYN [PNT]
02:03		53-35	H 18	GOOD! FT by SHARP, ALEX
02:03		54-35	H 19	GOOD! FT by SHARP, ALEX
01:53	GOOD! 3PTR by MONK, LASHONDA	54-38	H 16	
01:23		56-38	H 18	GOOD! JUMPER by DICKSON, KAYLEN
01:02	GOOD! JUMPER by THOMPSON, TANIYAH	56-40	H 16	
00:32		58-40	H 18	GOOD! LAYUP by BRANCH, RAEGYN [PNT]

East Carolina 40, Wake Forest 58

Official Scoring/Possession Reference Chart
East Carolina vs Wake Forest
Period 4
November 30, 2019 at LJVM Coliseum - Winston-Salem, N.C.



Period 4

Starters:

East Carolina: 1 THOMPSON, TANIYAH (G); 23 CLAYTOR, DOMINIQUE (G); 25 EVANS, RYANN (G); 2 MONK, LASHONDA (G); 4 HOPE, NECOLE (G);

Wake Forest: 11 RACA, IVANA (F); 14 SHARP, ALEX (G); 32 SCRUGGS, ALEXANDRIA (G); 44 UDOH, ONA (F); 5 CONTI, GINA (G);

Time	VISITORS: East Carolina	Score	Margin	HOME: Wake Forest
08:57	GOOD! LAYUP by MONK, LASHONDA [FB/PNT]	58-42	H 16	
08:32		60-42	H 18	GOOD! LAYUP by UDOH, ONA
06:33		61-42	H 19	GOOD! FT by BRANCH, RAEGYN
06:33		62-42	H 20	GOOD! FT by BRANCH, RAEGYN
06:18	GOOD! JUMPER by MONK, LASHONDA	62-44	H 18	
05:55	GOOD! LAYUP by EVANS, RYANN [PNT]	62-46	H 16	
05:29		64-46	H 18	GOOD! LAYUP by UDOH, ONA [PNT]
04:53		66-46	H 20	GOOD! LAYUP by UDOH, ONA
04:09		68-46	H 22	GOOD! LAYUP by SHARP, ALEX [PNT]
03:28		70-46	H 24	GOOD! LAYUP by UDOH, ONA [PNT]
02:33	GOOD! 3PTR by CLAYTOR, DOMINIQUE	70-49	H 21	
02:16		73-49	H 24	GOOD! 3PTR by CONTI, GINA
01:54	GOOD! LAYUP by HOPE, NECOLE	73-51	H 22	
01:32	GOOD! LAYUP by HOPE, NECOLE [FB]	73-53	H 20	
01:11		75-53	H 22	GOOD! LAYUP by HOARD, ANAIA [PNT]
00:33		76-53	H 23	GOOD! FT by HAHNE, ELLEN

East Carolina 53, Wake Forest 76

Official Substitutions Log
East Carolina vs Wake Forest
Period 1
November 30, 2019 at LJVM Coliseum - Winston-Salem, N.C.



VISITORS: East Carolina	Time	Score	HOME: Wake Forest
1 THOMPSON, TANIYAH			11 RACA, IVANA
23 CLAYTOR, DOMINIQUE			14 SHARP, ALEX
25 EVANS, RYANN			32 SCRUGGS, ALEXANDRIA
2 MONK, LASHONDA			44 UDOH, ONA
4 HOPE, NECOLE			5 CONTI, GINA
	04:54	6-10	SUB OUT: RACA, IVANA
	04:54		SUB IN: BRANCH, RAEGYN
SUB OUT: 4 HOPE, NECOLE	04:54		
SUB OUT: 25 EVANS, RYANN	04:54		
SUB IN: 5 TSINEKE, KATERINA	04:54		
SUB IN: 33 CHAMBERS, TIARA	04:54		
	04:04	8-12	SUB OUT: UDOH, ONA
	04:04		SUB IN: MORRA, CHRISTINA
	01:36	8-18	SUB OUT: CONTI, GINA
	01:36		SUB OUT: SHARP, ALEX
	01:36		SUB OUT: SCRUGGS, ALEXANDRIA
	01:36		SUB IN: HARRISON, KAIA
	01:36		SUB IN: RACA, IVANA
	01:36		SUB IN: DICKSON, KAYLEN
SUB OUT: 1 THOMPSON, TANIYAH	01:36		
SUB OUT: 5 TSINEKE, KATERINA	01:36		
SUB IN: 4 HOPE, NECOLE	01:36		
SUB IN: 25 EVANS, RYANN	01:36		

East Carolina 8, Wake Forest 22

Official Substitutions Log
East Carolina vs Wake Forest
Period 2
November 30, 2019 at LJVM Coliseum - Winston-Salem, N.C.



VISITORS: East Carolina	Time	Score	HOME: Wake Forest
1 THOMPSON, TANIYAH			11 RACA, IVANA
23 CLAYTOR, DOMINIQUE			14 SHARP, ALEX
25 EVANS, RYANN			32 SCRUGGS, ALEXANDRIA
2 MONK, LASHONDA			44 UDOH, ONA
4 HOPE, NECOLE			5 CONTI, GINA
SUB OUT: 33 CHAMBERS, TIARA	10:00	-	
SUB IN: 1 THOMPSON, TANIYAH	10:00		
SUB OUT: 23 CLAYTOR, DOMINIQUE	09:30	-	
SUB IN: 5 TSINEKE, KATERINA	09:30		
	09:13	-	SUB OUT: BRANCH, RAEGYN
	09:13		SUB IN: SHARP, ALEX
	07:38	12-22	SUB OUT: HARRISON, KAIA
	07:38		SUB OUT: RACA, IVANA
	07:38		SUB OUT: DICKSON, KAYLEN
	07:38		SUB IN: CONTI, GINA
	07:38		SUB IN: SCRUGGS, ALEXANDRIA
	07:38		SUB IN: UDOH, ONA
	07:36	12-22	SUB OUT: MORRA, CHRISTINA
	07:36		SUB IN: RACA, IVANA
SUB OUT: 25 EVANS, RYANN	06:27	13-24	
SUB IN: 23 CLAYTOR, DOMINIQUE	06:27		
	03:19	15-30	SUB OUT: UDOH, ONA
	03:19		SUB IN: MORRA, CHRISTINA
SUB OUT: 4 HOPE, NECOLE	03:19		
SUB OUT: 5 TSINEKE, KATERINA	03:19		
SUB IN: 25 EVANS, RYANN	03:19		
SUB IN: 33 CHAMBERS, TIARA	03:19		
	01:56	17-30	SUB OUT: SCRUGGS, ALEXANDRIA
	01:56		SUB IN: HOARD, ANAIA
SUB OUT: 25 EVANS, RYANN	01:56		
SUB IN: 4 HOPE, NECOLE	01:56		
	00:41	19-35	SUB OUT: RACA, IVANA
	00:41		SUB IN: BRANCH, RAEGYN
	00:41		SUB OUT: CONTI, GINA
	00:41		SUB IN: HARRISON, KAIA

East Carolina 19, Wake Forest 39

Official Substitutions Log
East Carolina vs Wake Forest
Period 3
November 30, 2019 at LJVM Coliseum - Winston-Salem, N.C.



VISITORS: East Carolina	Time	Score	HOME: Wake Forest
1 THOMPSON, TANIYAH			11 RACA, IVANA
23 CLAYTOR, DOMINIQUE			14 SHARP, ALEX
25 EVANS, RYANN			32 SCRUGGS, ALEXANDRIA
2 MONK, LASHONDA			44 UDOH, ONA
4 HOPE, NECOLE			5 CONTI, GINA
	10:00	-	SUB OUT: HOARD, ANAIA
	10:00		SUB OUT: HARRISON, KAIA
	10:00		SUB OUT: BRANCH, RAEGYN
	10:00		SUB OUT: MORRA, CHRISTINA
	10:00		SUB IN: CONTI, GINA
	10:00		SUB IN: RACA, IVANA
	10:00		SUB IN: SCRUGGS, ALEXANDRIA
	10:00		SUB IN: UDOH, ONA
SUB OUT: 33 CHAMBERS, TIARA	10:00		
SUB IN: 25 EVANS, RYANN	10:00		
SUB OUT: 25 EVANS, RYANN	08:07	26-41	
SUB IN: 5 TSINEKE, KATERINA	08:07		
	06:06	31-44	SUB OUT: RACA, IVANA
	06:06		SUB IN: BRANCH, RAEGYN
	04:17	33-47	SUB OUT: SCRUGGS, ALEXANDRIA
	04:17		SUB OUT: UDOH, ONA
	04:17		SUB IN: DICKSON, KAYLEN
	04:17		SUB IN: MORRA, CHRISTINA
SUB OUT: 4 HOPE, NECOLE	04:17		
SUB IN: 33 CHAMBERS, TIARA	04:17		
SUB OUT: 33 CHAMBERS, TIARA	03:10	35-50	
SUB IN: 4 HOPE, NECOLE	03:10		
SUB OUT: 5 TSINEKE, KATERINA	02:03	35-52	
SUB IN: 33 CHAMBERS, TIARA	02:03		
	02:03		SUB OUT: CONTI, GINA
	02:03		SUB IN: HARRISON, KAIA
	02:03		SUB OUT: SHARP, ALEX
	02:03		SUB IN: RACA, IVANA

East Carolina 40, Wake Forest 58

Official Substitutions Log
East Carolina vs Wake Forest
Period 4
November 30, 2019 at LJVM Coliseum - Winston-Salem, N.C.



VISITORS: East Carolina	Time	Score	HOME: Wake Forest
1 THOMPSON, TANIYAH			11 RACA, IVANA
23 CLAYTOR, DOMINIQUE			14 SHARP, ALEX
25 EVANS, RYANN			32 SCRUGGS, ALEXANDRIA
2 MONK, LASHONDA			44 UDOH, ONA
4 HOPE, NECOLE			5 CONTI, GINA
	10:00	-	SUB OUT: DICKSON, KAYLEN
	10:00		SUB OUT: MORRA, CHRISTINA
	10:00		SUB IN: CONTI, GINA
	10:00		SUB IN: UDOH, ONA
SUB OUT: 33 CHAMBERS, TIARA	10:00		
SUB IN: 25 EVANS, RYANN	10:00		
	07:45	42-60	SUB OUT: HARRISON, KAIA
	07:45		SUB OUT: RACA, IVANA
	07:45		SUB IN: SHARP, ALEX
	07:45		SUB IN: SCRUGGS, ALEXANDRIA
SUB OUT: 23 CLAYTOR, DOMINIQUE	07:45		
SUB IN: 5 TSINEKE, KATERINA	07:45		
SUB OUT: 5 TSINEKE, KATERINA	07:32	42-60	
SUB IN: 23 CLAYTOR, DOMINIQUE	07:32		
SUB OUT: 4 HOPE, NECOLE	07:22	42-60	
SUB IN: 5 TSINEKE, KATERINA	07:22		
SUB OUT: 1 THOMPSON, TANIYAH	04:05	46-68	
SUB OUT: 5 TSINEKE, KATERINA	04:05		
SUB IN: 4 HOPE, NECOLE	04:05		
SUB IN: 33 CHAMBERS, TIARA	04:05		
	04:05		SUB OUT: BRANCH, RAEGYN
	04:05		SUB IN: RACA, IVANA
SUB OUT: 2 MONK, LASHONDA	02:54	46-70	
SUB IN: 5 TSINEKE, KATERINA	02:54		
	02:11	49-73	SUB OUT: CONTI, GINA
	02:11		SUB OUT: RACA, IVANA
	02:11		SUB OUT: SHARP, ALEX
	02:11		SUB OUT: SCRUGGS, ALEXANDRIA
	02:11		SUB OUT: UDOH, ONA
	02:11		SUB IN: BANKS, MAYA
	02:11		SUB IN: HOARD, ANAIA
	02:11		SUB IN: HARRISON, KAIA
	02:11		SUB IN: HAHNE, ELLEN
	02:11		SUB IN: SUMMIEL, OLIVIA
	00:33	53-76	SUB OUT: HARRISON, KAIA
	00:33		SUB IN: MAIER, MCKENZIE
SUB OUT: 23 CLAYTOR, DOMINIQUE	00:32	53-76	
SUB IN: 1 THOMPSON, TANIYAH	00:32		

East Carolina 53, Wake Forest 76

Official Shot Chart
East Carolina vs Wake Forest
 PERIOD 2 Shots
 November 30, 2019 at LJV Coliseum - Winston-Salem, N.C.

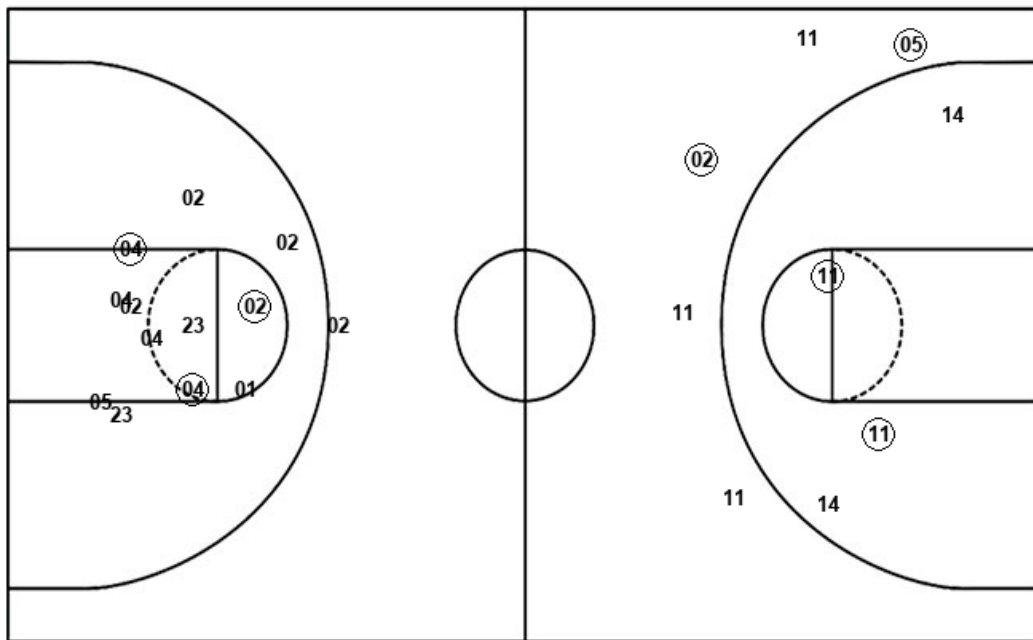


Wake Forest

East Carolina

Layups
 (44) 32 11 (11)

Dunks



Layups
 (25) (23) 01

Dunks

WFU : Period 2	Made	Att	Pct
Layups	2	4	50.0
Dunks	0	0	0
2PT Field Goals	4	8	50.0
3PT Field Goals	2	5	40.0
Total Field Goals	6	13	46.2

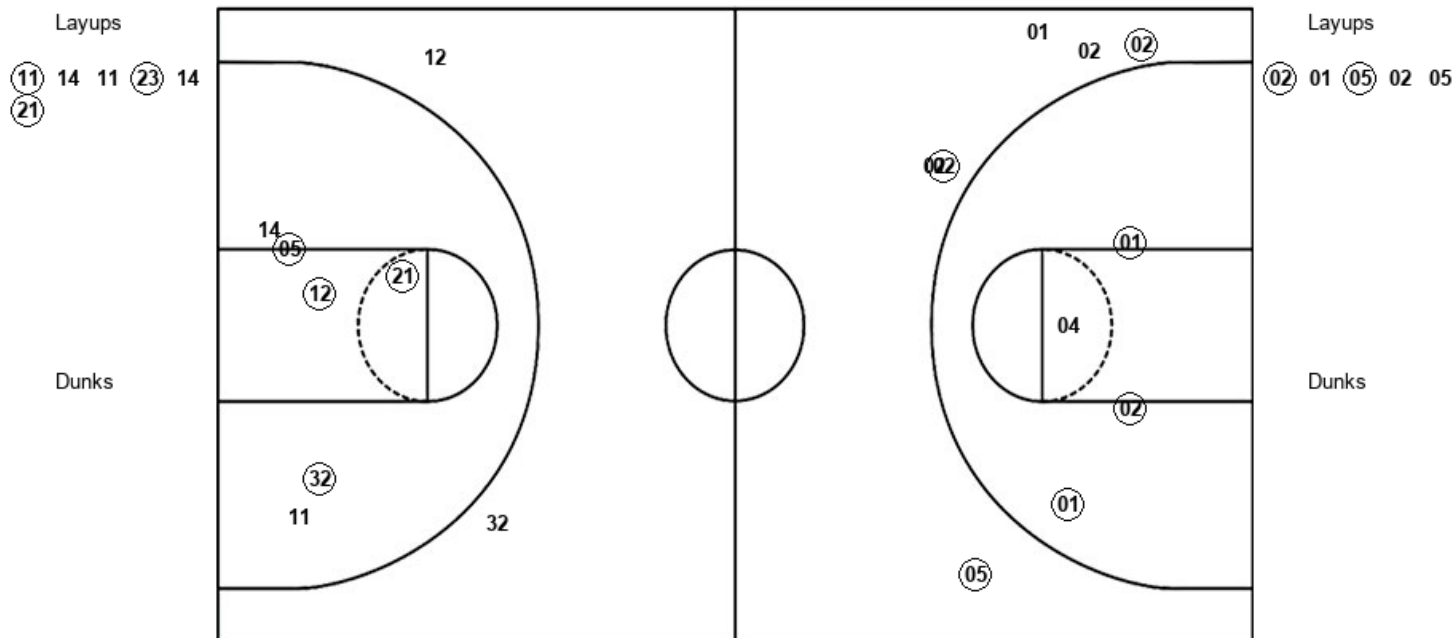
ECU : Period 2	Made	Att	Pct
Layups	2	3	66.7
Dunks	0	0	0
2PT Field Goals	5	15	33.3
3PT Field Goals	0	1	00.0
Total Field Goals	5	16	31.3

Official Shot Chart
East Carolina vs Wake Forest
 PERIOD 3 Shots
 November 30, 2019 at LJVM Coliseum - Winston-Salem, N.C.



Wake Forest

East Carolina



WFU : Period 3	Made	Att	Pct
Layups	3	6	50.0
Dunks	0	0	0
2PT Field Goals	7	12	58.3
3PT Field Goals	0	2	00.0
Total Field Goals	7	14	50.0

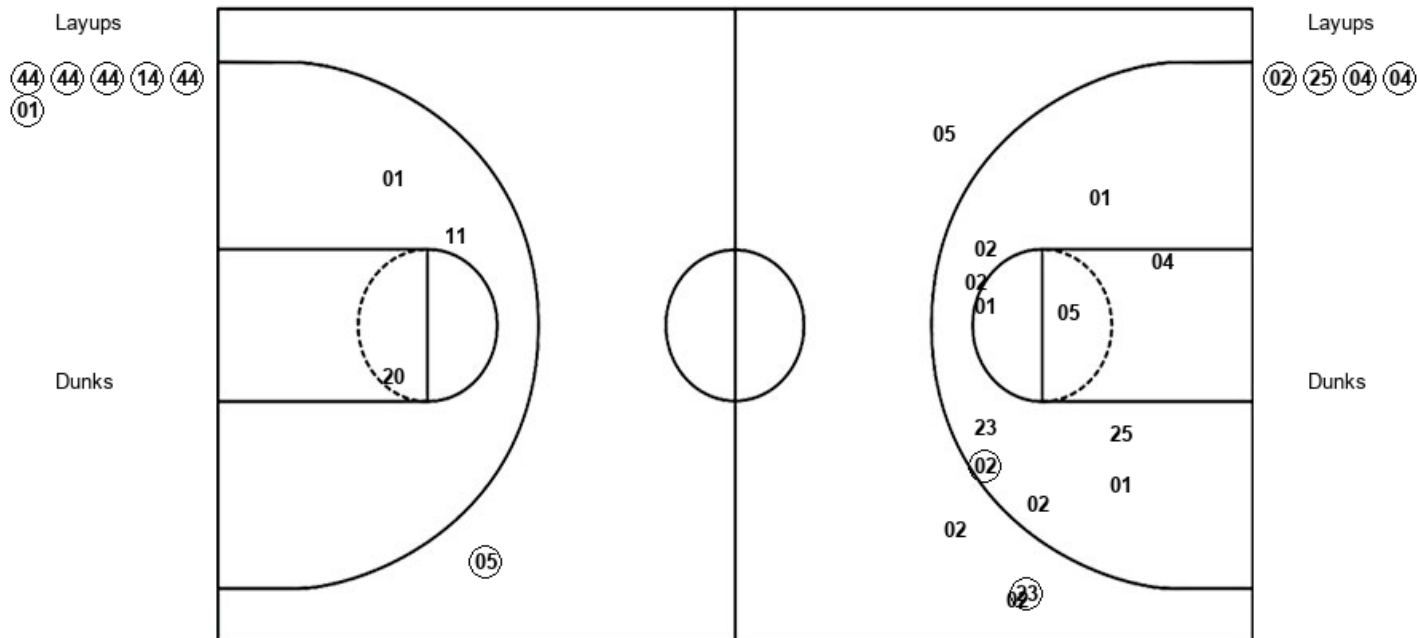
ECU : Period 3	Made	Att	Pct
Layups	2	5	40.0
Dunks	0	0	0
2PT Field Goals	5	9	55.6
3PT Field Goals	3	6	50.0
Total Field Goals	8	15	53.3

Official Shot Chart
East Carolina vs Wake Forest
 PERIOD 4 Shots
 November 30, 2019 at LJVM Coliseum - Winston-Salem, N.C.



Wake Forest

East Carolina



WFU : Period 4	Made	Att	Pct
Layups	6	6	100.0
Dunks	0	0	0
2PT Field Goals	6	9	66.7
3PT Field Goals	1	1	100.0
Total Field Goals	7	10	70.0

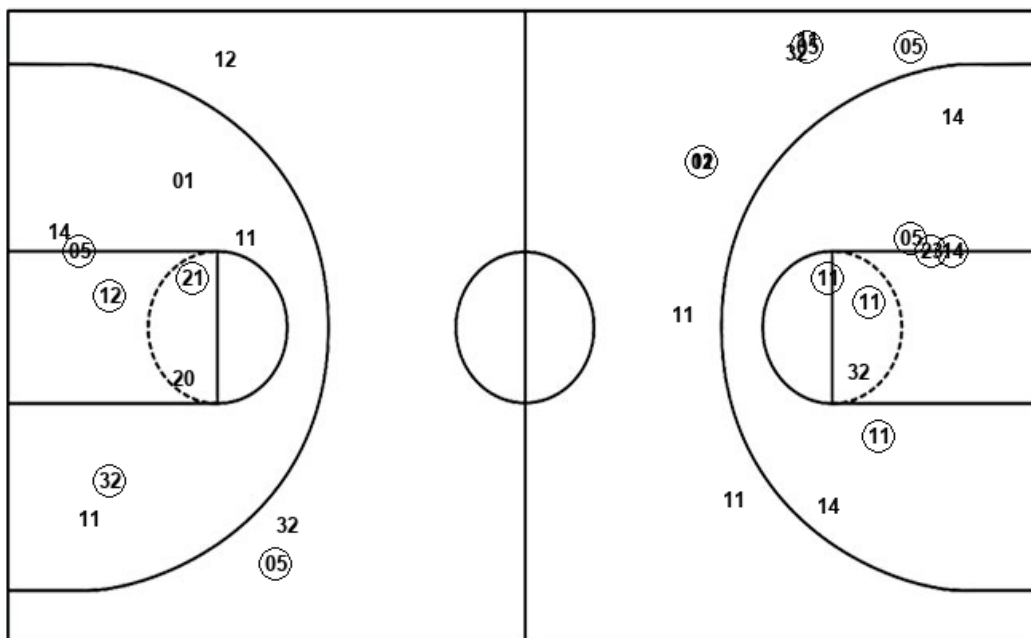
ECU : Period 4	Made	Att	Pct
Layups	4	4	100.0
Dunks	0	0	0
2PT Field Goals	5	15	33.3
3PT Field Goals	1	4	25.0
Total Field Goals	6	19	31.6

Official Shot Chart
East Carolina vs Wake Forest
Wake Forest Team Shots
November 30, 2019 at LJVM Coliseum - Winston-Salem, N.C.



Layups

Dunks



Layups

Dunks

(44) (05) (44) 32 11
(11) (11) 14 11 (23)
14 (21) (44) (44) (44)
(14) (44) (01)

WFU : Period 1	Made	Att	Pct
Layups	2	2	100.0
Dunks	0	0	0
2PT Field Goals	6	7	85.7
3PT Field Goals	1	3	33.3
Total Field Goals	7	10	70.0

WFU : Period 3	Made	Att	Pct
Layups	3	6	50.0
Dunks	0	0	0
2PT Field Goals	7	12	58.3
3PT Field Goals	0	2	00.0
Total Field Goals	7	14	50.0

WFU : Period 2	Made	Att	Pct
Layups	2	4	50.0
Dunks	0	0	0
2PT Field Goals	4	8	50.0
3PT Field Goals	2	5	40.0
Total Field Goals	6	13	46.2

WFU : Period 4	Made	Att	Pct
Layups	6	6	100.0
Dunks	0	0	0
2PT Field Goals	6	9	66.7
3PT Field Goals	1	1	100.0
Total Field Goals	7	10	70.0