

FINAL SCORE



Col. of Charleston

50



Wake Forest

106

November 08, 2019 • LJVM Coliseum - Winston-Salem, N.C.

FINAL STATISTICS

Official Box Score
Col. of Charleston vs Wake Forest
Game Totals -- Final Statistics
November 08, 2019 at LJVM Coliseum - Winston-Salem, N.C.



Col. of Charleston 50

No.	Player	S	Pts	FG	3FG	FT	OR	DR	TR	PF	A	TO	Blk	Stl	Min	+/-
02	WILLIAMS, TAYLOR	G	15	4-15	1-6	6-9	1	0	1	4	0	3	0	1	28	-42
03	PERKINS, LATRICE	G	10	5-18	0-3	0-0	2	5	7	4	1	1	1	1	28	-50
13	COVINGTON, NIA	G	0	0-8	0-0	0-0	1	1	2	2	1	5	0	1	23	-38
15	EADY, ARYNN	F	7	2-3	0-0	3-4	2	4	6	5	0	1	1	0	29	-44
25	FORD, DEJA	G	4	1-8	0-2	2-2	0	1	1	3	0	2	0	5	20	-29
00	TAYLOR, MADISON	G	3	0-4	0-2	3-4	0	2	2	1	1	2	0	0	16	-20
01	BLANDING, SHAI	G	2	1-3	0-0	0-0	0	0	0	1	3	8	0	2	26	-22
10	HEATH, DEE	G	2	1-2	0-1	0-0	0	0	0	0	0	0	0	1	7	-12
12	MOORE, CIARA	G	7	3-8	1-5	0-0	0	1	1	2	1	0	0	0	12	-11
21	LARSON, BAILEIGH	F	0	0-1	0-0	0-2	0	2	2	2	0	0	0	0	6	-4
33	DANIEL, ASHLEY	F	0	0-0	0-0	0-2	0	1	1	0	0	0	0	1	5	-8
	TEAM						7	4	11	0		1				
TOTALS			50	17-70	2-19	14-23	13	21	34	24	7	23	2	12	200	

Shooting By Period

Period	FG	FG%	3FG	3FG%	FT	FT%
1st Qtr	4-17	24%	0-4	00%	3-3	100%
2nd Qtr	2-15	13%	0-4	00%	7-10	70%
3rd Qtr	6-23	26%	1-6	17%	0-0	0%
4th Qtr	5-15	33%	1-5	20%	4-10	40%
1st Half	6-32	19%	0-8	00%	10-13	77%
2nd Half	11-38	29%	2-11	18%	4-10	40%
Game	17-70	24.3%	2-19	10.5%	14-23	60.9%

Deadball Rebounds: 5,0
 Last FG: 4th-03:00
 Biggest Run: 7-0
 Largest lead: By 0 at 4-00
 Technical Fouls: None.

Wake Forest 106

No.	Player	S	Pts	FG	3FG	FT	OR	DR	TR	PF	A	TO	Blk	Stl	Min	+/-
02	HARRISON, KAIA	G	5	2-3	0-0	1-1	0	2	2	3	4	0	0	4	18	32
05	CONTI, GINA	G	5	0-3	0-2	5-6	0	2	2	0	7	3	0	2	18	33
11	RACA, IVANA	F	21	9-12	1-2	2-2	3	1	4	1	2	2	0	2	23	49
14	SHARP, ALEX	G	7	3-7	1-2	0-0	1	4	5	1	4	0	0	0	17	35
44	UDOH, ONA	F	23	10-13	0-0	3-5	4	8	12	2	0	3	0	2	19	34
00	BANKS, MAYA	F	4	0-2	0-0	4-4	1	2	3	5	0	1	1	0	7	4
01	HOARD, ANAIA	G	3	1-6	1-2	0-0	0	2	2	2	4	1	0	1	16	15
03	MAIER, MCKENZIE	G	3	1-2	1-2	0-0	0	0	0	0	2	1	0	0	10	8
10	HAHNE, ELLEN	G	4	2-3	0-0	0-2	0	1	1	0	1	4	0	0	18	16
12	DICKSON, KAYLEN	G	6	2-4	2-3	0-0	0	2	2	2	0	1	0	1	8	7
20	SUMMIEL, OLIVIA	F	8	2-2	0-0	4-4	2	3	5	5	0	0	1	0	14	16
21	BRANCH, RAEGYN	F	0	0-2	0-1	0-0	0	2	2	0	0	0	0	0	11	3
23	MORRA, CHRISTINA	F	13	6-9	0-0	1-3	3	7	10	1	0	0	0	1	9	16
32	SCRUGGS, ALEXANDRIA	G	4	2-6	0-2	0-1	1	4	5	1	0	3	0	1	12	12
	TEAM						2	3	5	0		0				
TOTALS			106	40-74	6-16	20-28	17	43	60	23	24	19	2	14	200	

Shooting By Period

Period	FG	FG%	3FG	3FG%	FT	FT%
1st Qtr	9-17	53%	1-5	20%	6-7	86%
2nd Qtr	9-19	47%	1-4	25%	5-9	56%
3rd Qtr	15-23	65%	1-2	50%	3-4	75%
4th Qtr	7-15	47%	3-5	60%	6-8	75%
1st Half	18-36	50%	2-9	22%	11-16	69%
2nd Half	22-38	58%	4-7	57%	9-12	75%
Game	40-74	54.1%	6-16	37.5%	20-28	71.4%

Deadball Rebounds: 4,1
 Last FG: 4th-00:04
 Biggest Run: 12-0
 Largest lead: By 56 at -
 Technical Fouls: None.

Game Notes:

Officials: Bryan Brunette, Nykesha Thompson, Saif Esho
 Attendance: 630

Start Time: 07:02 PM ET
 End Time: 08:56 PM ET
 Game Duration: 1:54

Score	1st	2nd	3rd	4th	TOT
CHA	11	11	13	15	50
WFU	25	24	34	23	106

CHA led for 0:00. WFU led for 39:37.
 Game was tied for 0:19.
 Times tied: 91 Lead Changes: 0

Points from	CHA	WFU
In the Paint	12	32
Off Turns	9	27
2nd Chance	2	27
Fast Break	6	1
Bench	14	45

Official Box Score
Col. of Charleston vs Wake Forest
First Half Statistics Only
November 08, 2019 at LJVM Coliseum - Winston-Salem, N.C.



Col. of Charleston 22

No.	Player	S	Pts	FG	3FG	FT	OR	DR	TR	PF	A	TO	Blk	Stl	Min	+/-
00	TAYLOR, MADISON	G	1	0-2	0-2	1-2	0	0	0	1	0	1	0	0	6	-12
10	HEATH, DEE	G	2	1-2	0-1	0-0	0	0	0	0	0	0	0	0	4	-7
12	MOORE, CIARA	G	0	0-0	0-0	0-0	0	0	0	0	0	0	0	0	0	0
13	COVINGTON, NIA	G	0	0-6	0-0	0-0	1	1	2	1	0	3	0	1	17	-23
15	EADY, ARYNN	F	3	0-0	0-0	3-4	1	3	4	1	0	1	1	0	17	-21
21	LARSON, BAILEIGH	F	0	0-1	0-0	0-0	0	1	1	2	0	0	0	0	3	-6
25	FORD, DEJA	G	4	1-6	0-1	2-2	0	1	1	2	0	1	0	3	15	-16
33	DANIEL, ASHLEY	F	0	0-0	0-0	0-0	0	0	0	0	0	0	0	0	0	0
01	BLANDING, SHAI	G	0	0-1	0-0	0-0	0	0	0	0	0	4	0	1	9	-1
02	WILLIAMS, TAYLOR	G	8	2-7	0-3	4-5	0	0	0	3	0	1	0	1	15	-21
03	PERKINS, LATRICE	G	4	2-7	0-1	0-0	1	2	3	3	0	1	0	1	16	-28
	TEAM		0	0-0	0-0	0-0	2	2	4	0	0	1	0	0	0	0
TOTALS			22	6-32	0-8	10-13	5	10	15	13	0	13	1	7	100	

Shooting By Period

Period	FG	FG%	3FG	3FG%	FT	FT%
1st Qtr	4-17	24%	0-4	00%	3-3	100%
2nd Qtr	2-15	13%	0-4	00%	7-10	70%
1st Half	6-32	19%	0-8	00%	10-13	77%
Game	17-70	24.3%	2-19	10.5%	14-23	60.9%

Deadball Rebounds: 5,0
Last FG Half: CHA 2nd-00:25

Wake Forest 49

No.	Player	S	Pts	FG	3FG	FT	OR	DR	TR	PF	A	TO	Blk	Stl	Min	+/-
00	BANKS, MAYA	F	0	0-0	0-0	0-0	0	0	0	2	0	0	0	0	2	-2
01	HOARD, ANAIA	G	0	0-2	0-1	0-0	0	0	0	1	1	1	0	0	6	-3
02	HARRISON, KAIA	G	0	0-0	0-0	0-0	0	1	1	2	3	0	0	2	8	11
03	MAIER, MCKENZIE	G	0	0-0	0-0	0-0	0	0	0	0	0	0	0	0	0	0
10	HAHNE, ELLEN	G	0	0-0	0-0	0-0	0	0	0	0	0	2	0	0	5	7
11	RACA, IVANA	F	15	6-9	1-2	2-2	2	0	2	1	2	1	0	1	17	29
12	DICKSON, KAYLEN	G	0	0-0	0-0	0-0	0	0	0	0	0	0	0	0	0	0
14	SHARP, ALEX	G	7	3-6	1-2	0-0	1	3	4	1	1	0	0	0	12	19
20	SUMMIEL, OLIVIA	F	0	0-0	0-0	0-0	0	1	1	2	0	0	0	0	4	10
21	BRANCH, RAEGYN	F	0	0-0	0-0	0-0	0	1	1	0	0	0	0	0	2	-2
23	MORRA, CHRISTINA	F	3	1-2	0-0	1-2	1	3	4	1	0	0	0	1	4	8
32	SCRUGGS, ALEXANDRIA	G	4	2-6	0-2	0-1	1	4	5	1	0	3	0	1	11	12
44	UDOH, ONA	F	15	6-8	0-0	3-5	3	5	8	2	0	1	0	1	14	21
05	CONTI, GINA	G	5	0-3	0-2	5-6	0	1	1	0	6	3	0	2	15	25
	TEAM		0	0-0	0-0	0-0	2	2	4	0	0	0	0	0	0	0
TOTALS			49	18-36	2-9	11-16	10	21	31	13	13	11	0	8	100	

Shooting By Period

Period	FG	FG%	3FG	3FG%	FT	FT%
1st Qtr	9-17	53%	1-5	20%	6-7	86%
2nd Qtr	9-19	47%	1-4	25%	5-9	56%
1st Half	18-36	50%	2-9	22%	11-16	69%
Game	40-74	54.1%	6-16	37.5%	20-28	71.4%

Deadball Rebounds: 4,1
Last FG Half: WFU 2nd-00:58

Game Notes:

Officials: **Bryan Brunette, Nykesha Thompson, Saif Esho**
Attendance: **630**

Start Time: **07:02 PM ET**
End Time: **08:56 PM ET**
Game Duration: **1:54**

Score	1st	2nd	3rd	4th	TOT
CHA	11	11	13	15	50
WFU	25	24	34	23	106

Points from (This Period)	CHA	WFU
In the Paint	4	16
Off Turns	4	14
2nd Chance	0	13
Fast Break	6	1
Bench	3	7

Official Box Score
Col. of Charleston vs Wake Forest
First Quarter Statistics Only
November 08, 2019 at LJVM Coliseum - Winston-Salem, N.C.



Col. of Charleston 11

No.	Player	S	Pts	FG	3FG	FT	OR	DR	TR	PF	A	TO	Blk	Stl	Min	+/-
02	WILLIAMS, TAYLOR	G	5	2-3	0-1	1-1	0	0	0	2	0	1	0	0	6	-10
03	PERKINS, LATRICE	G	4	2-6	0-1	0-0	1	1	2	1	0	0	0	1	10	-14
13	COVINGTON, NIA	G	0	0-2	0-0	0-0	1	1	2	0	0	1	0	0	9	-14
15	EADY, ARYNN	F	0	0-0	0-0	0-0	1	1	2	1	0	1	0	0	10	-14
25	FORD, DEJA	G	2	0-4	0-1	2-2	0	1	1	0	0	1	0	1	8	-10
00	TAYLOR, MADISON	G	0	0-1	0-1	0-0	0	0	0	1	0	1	0	0	4	-10
01	BLANDING, SHAI	G	0	0-1	0-0	0-0	0	0	0	0	0	2	0	0	3	2
10	HEATH, DEE	G	0	0-0	0-0	0-0	0	0	0	0	0	0	0	0	1	0
12	MOORE, CIARA	G	0	0-0	0-0	0-0	0	0	0	0	0	0	0	0	0	0
21	LARSON, BAILEIGH	F	0	0-0	0-0	0-0	0	0	0	0	0	0	0	0	0	0
33	DANIEL, ASHLEY	F	0	0-0	0-0	0-0	0	0	0	0	0	0	0	0	0	0
	TEAM						1	1	2	0		1				
TOTALS			11	4-17	0-4	3-3	4	5	9	5	0	8	0	2	50	

Shooting By Period

Period	FG	FG%	3FG	3FG%	FT	FT%
1st Qtr	4-17	24%	0-4	00%	3-3	100%
2nd Qtr	2-15	13%	0-4	00%	7-10	70%
1st Half	4-17	24%	0-4	00%	3-3	100%
1st Half	6-32	19%	0-8	00%	10-13	77%
Game	17-70	24.3%	2-19	10.5%	14-23	60.9%

Deadball Rebounds: 5,0

Wake Forest 25

No.	Player	S	Pts	FG	3FG	FT	OR	DR	TR	PF	A	TO	Blk	Stl	Min	+/-
02	HARRISON, KAIA	G	0	0-0	0-0	0-0	0	1	1	1	3	0	0	2	8	11
05	CONTI, GINA	G	2	0-1	0-1	2-2	0	0	0	0	2	1	0	1	7	10
11	RACA, IVANA	F	9	3-4	1-2	2-2	1	0	1	0	2	0	0	1	8	16
14	SHARP, ALEX	G	2	1-1	0-0	0-0	0	1	1	1	0	0	0	0	5	7
44	UDOH, ONA	F	10	4-5	0-0	2-3	1	2	3	0	0	1	0	1	7	16
00	BANKS, MAYA	F	0	0-0	0-0	0-0	0	0	0	2	0	0	0	0	2	-2
01	HOARD, ANAIA	G	0	0-2	0-1	0-0	0	0	0	0	0	1	0	0	2	-2
03	MAIER, MCKENZIE	G	0	0-0	0-0	0-0	0	0	0	0	0	0	0	0	0	0
10	HAHNE, ELLEN	G	0	0-0	0-0	0-0	0	0	0	0	0	0	0	0	3	9
12	DICKSON, KAYLEN	G	0	0-0	0-0	0-0	0	0	0	0	0	0	0	0	0	0
20	SUMMIEL, OLIVIA	F	0	0-0	0-0	0-0	0	0	0	0	0	0	0	0	0	0
21	BRANCH, RAEGYN	F	0	0-0	0-0	0-0	0	1	1	0	0	0	0	0	2	-2
23	MORRA, CHRISTINA	F	0	0-0	0-0	0-0	0	0	0	0	0	0	0	0	1	0
32	SCRUGGS, ALEXANDRIA	G	2	1-4	0-1	0-0	1	2	3	0	0	0	0	0	5	7
	TEAM						0	2	2	0		0				
TOTALS			25	9-17	1-5	6-7	3	9	12	4	7	3	0	5	50	

Shooting By Period

Period	FG	FG%	3FG	3FG%	FT	FT%
1st Qtr	9-17	53%	1-5	20%	6-7	86%
2nd Qtr	9-19	47%	1-4	25%	5-9	56%
1st Half	9-17	53%	1-5	20%	6-7	86%
1st Half	18-36	50%	2-9	22%	11-16	69%
Game	40-74	54.1%	6-16	37.5%	20-28	71.4%

Deadball Rebounds: 4,1

Game Notes:

Officials: Bryan Brunette, Nykesha Thompson, Saif Esho
Attendance: 630

Start Time: 07:02 PM ET
End Time: 08:56 PM ET
Game Duration: 1:54

Score	1st	2nd	3rd	4th	TOT
CHA	11	11	13	15	50
WFU	25	24	34	23	106

Points from (This Period)	CHA	WFU
In the Paint	0	8
Off Turns	0	9
2nd Chance	0	4
Fast Break	0	0
Bench	0	2

Official Play-By-Play
Col. of Charleston vs Wake Forest
First Quarter
November 08, 2019 at LJVM Coliseum - Winston-Salem, N.C.



Period 1

Starters:

Col. of Charleston: 13 COVINGTON, NIA (G); 15 EADY, ARYNN (F); 25 FORD, DEJA (G); 2 WILLIAMS, TAYLOR (G); 3 PERKINS, LATRICE (G);

Wake Forest: 2 HARRISON, KAIA (G); 11 RACA, IVANA (F); 14 SHARP, ALEX (G); 44 UDOH, ONA (F); 5 CONTI, GINA (G);

Time	VISITORS: Col. of Charleston	Score	Margin	HOME: Wake Forest
09:54	MISSED LAYUP by FORD, DEJA			
09:50				REBOUND (DEF) by HARRISON, KAIA
09:41		2-0	H 2	GOOD! JUMPER by RACA, IVANA
09:20	TURNOVER (BADPASS) by FORD, DEJA			
09:20				STEAL by HARRISON, KAIA
09:14		4-0	H 4	GOOD! JUMPER by RACA, IVANA
09:14				ASSIST by CONTI, GINA
08:55	GOOD! JUMPER by WILLIAMS, TAYLOR	4-2	H 2	
08:40	FOUL (PERSONAL) by WILLIAMS, TAYLOR			
08:38		5-2	H 3	GOOD! FT by CONTI, GINA
08:38		6-2	H 4	GOOD! FT by CONTI, GINA
08:26	GOOD! JUMPER by PERKINS, LATRICE	6-4	H 2	
08:12		9-4	H 5	GOOD! 3PTR by RACA, IVANA
08:12				ASSIST by HARRISON, KAIA
07:43	TURNOVER (LOSTBALL) by WILLIAMS, TAYLOR			
07:43				STEAL by UDOH, ONA
07:35		11-4	H 7	GOOD! JUMPER by SHARP, ALEX
07:35				ASSIST by CONTI, GINA
07:34	TIMEOUT 30SEC			
07:26	GOOD! JUMPER by WILLIAMS, TAYLOR	11-6	H 5	
07:26				FOUL (PERSONAL) by SHARP, ALEX
07:26	GOOD! FT by WILLIAMS, TAYLOR	11-7	H 4	
07:26				MISSED LAYUP by UDOH, ONA
07:26		13-7	H 6	REBOUND (OFF) by UDOH, ONA
07:24	GOOD! JUMPER by PERKINS, LATRICE	13-9	H 4	GOOD! JUMPER by UDOH, ONA
07:01		15-9	H 6	
07:01				GOOD! LAYUP by UDOH, ONA
06:48	MISSED 3PTR by WILLIAMS, TAYLOR			ASSIST by HARRISON, KAIA
06:45				
06:35				REBOUND (DEF) by TEAM
06:29	REBOUND (DEF) by EADY, ARYNN			MISSED 3PTR by RACA, IVANA
06:23	MISSED JUMPER by FORD, DEJA			
06:18				REBOUND (DEF) by TEAM
06:18	SUB OUT: FORD, DEJA			
06:18	SUB IN: TAYLOR, MADISON			
06:16	FOUL (PERSONAL) by EADY, ARYNN			
05:58				MISSED 3PTR by CONTI, GINA
05:51	REBOUND (DEF) by PERKINS, LATRICE			
05:48	MISSED 3PTR by PERKINS, LATRICE			
05:43				REBOUND (DEF) by SHARP, ALEX
05:42	FOUL (PERSONAL) by PERKINS, LATRICE			
05:42				MISSED FT by UDOH, ONA
05:42				REBOUND (OFF) by TEAM
05:42		16-9	H 7	GOOD! FT by UDOH, ONA
05:31	TURNOVER (BADPASS) by COVINGTON, NIA			
05:31				STEAL by CONTI, GINA
05:10				SUB OUT: HARRISON, KAIA
05:10				SUB OUT: SHARP, ALEX
05:10				SUB IN: HAHNE, ELLEN
05:10				SUB IN: SCRUGGS, ALEXANDRIA
05:03		18-9	H 9	GOOD! LAYUP by UDOH, ONA [PNT]
05:03				ASSIST by RACA, IVANA
05:03	FOUL (PERSONAL) by TAYLOR, MADISON			
04:52		19-9	H 10	GOOD! FT by UDOH, ONA
04:36	TURNOVER (TRAVEL) by EADY, ARYNN			
04:24				TURNOVER (BADPASS) by CONTI, GINA
04:24	STEAL by PERKINS, LATRICE			
04:16	MISSED 3PTR by TAYLOR, MADISON			
04:11				REBOUND (DEF) by SCRUGGS, ALEXANDRIA
04:03				MISSED 3PTR by SCRUGGS, ALEXANDRIA
03:59				REBOUND (OFF) by RACA, IVANA
03:58	FOUL (PERSONAL) by WILLIAMS, TAYLOR			
03:58				SUB OUT: CONTI, GINA
03:58				SUB IN: HARRISON, KAIA
03:58	SUB OUT: WILLIAMS, TAYLOR			
03:58	SUB IN: FORD, DEJA			
03:58		20-9	H 11	GOOD! FT by RACA, IVANA
03:58		21-9	H 12	GOOD! FT by RACA, IVANA
03:43	TURNOVER (BADPASS) by TAYLOR, MADISON			

Time	VISITORS: Col. of Charleston	Score	Margin	HOME: Wake Forest
03:43				STEAL by RACA, IVANA
03:37		23-9	H 14	GOOD! JUMPER by UDOH, ONA
03:37				ASSIST by RACA, IVANA
03:21	MISSED JUMPER by COVINGTON, NIA			
03:15				REBOUND (DEF) by UDOH, ONA
03:13		25-9	H 16	GOOD! LAYUP by SCRUGGS, ALEXANDRIA [PNT]
03:13				ASSIST by HARRISON, KAIA
02:53	MISSED JUMPER by PERKINS, LATRICE			
02:48				REBOUND (DEF) by UDOH, ONA
02:47				TURNOVER (LOSTBALL) by UDOH, ONA
02:47				SUB OUT: UDOH, ONA
02:47				SUB IN: BANKS, MAYA
02:47	SUB OUT: TAYLOR, MADISON			
02:47	SUB IN: BLANDING, SHAI			
02:39	TURNOVER (BADPASS) by BLANDING, SHAI			
02:39				STEAL by HARRISON, KAIA
02:33				MISSED JUMPER by SCRUGGS, ALEXANDRIA
02:29				REBOUND (OFF) by SCRUGGS, ALEXANDRIA
02:27				MISSED LAYUP by SCRUGGS, ALEXANDRIA
02:23	REBOUND (DEF) by COVINGTON, NIA			
02:15				FOUL (PERSONAL) by BANKS, MAYA
02:15				SUB OUT: HAHNE, ELLEN
02:15				SUB OUT: RACA, IVANA
02:15				SUB IN: HOARD, ANAIA
02:15				SUB IN: BRANCH, RAEGYN
02:15	GOOD! FT by FORD, DEJA	25-10	H 15	
02:15	GOOD! FT by FORD, DEJA	25-11	H 14	
02:06				FOUL (PERSONAL) by HARRISON, KAIA
01:49	MISSED JUMPER by COVINGTON, NIA			
01:45	REBOUND (OFF) by COVINGTON, NIA			
01:41	MISSED JUMPER by PERKINS, LATRICE			
01:38	REBOUND (OFF) by EADY, ARYNN			
01:36	MISSED 3PTR by FORD, DEJA			
01:31				REBOUND (DEF) by BRANCH, RAEGYN
01:15				MISSED 3PTR by HOARD, ANAIA
01:10	REBOUND (DEF) by TEAM			
01:10				SUB OUT: HARRISON, KAIA
01:10				SUB IN: CONTI, GINA
01:10	SUB OUT: COVINGTON, NIA			
01:10	SUB IN: HEATH, DEE			
01:03	TURNOVER (TRAVEL) by BLANDING, SHAI			
00:52				TURNOVER (BADPASS) by HOARD, ANAIA
00:52	STEAL by FORD, DEJA			
00:51				FOUL (PERSONAL) by BANKS, MAYA
00:51				SUB OUT: BANKS, MAYA
00:51				SUB IN: MORRA, CHRISTINA
00:44	MISSED JUMPER by FORD, DEJA			
00:42	REBOUND (OFF) by TEAM			
00:42	TURNOVER (5SEC) by TEAM			
00:32				MISSED JUMPER by HOARD, ANAIA
00:32	REBOUND (DEF) by FORD, DEJA			
00:06	MISSED JUMPER by BLANDING, SHAI			
00:01				REBOUND (DEF) by SCRUGGS, ALEXANDRIA

Col. of Charleston 11, Wake Forest 25

Points from (This Period)	CHA	WFU
In the Paint	0	8
Off Turns	0	9
2nd Chance	0	4
Fast Break	0	0
Bench	0	2

Official Box Score
Col. of Charleston vs Wake Forest
Second Quarter Statistics Only
November 08, 2019 at LJVM Coliseum - Winston-Salem, N.C.



Col. of Charleston 11

No.	Player	S	Pts	FG	3FG	FT	OR	DR	TR	PF	A	TO	Blk	Stl	Min	+/-
02	WILLIAMS, TAYLOR	G	3	0-4	0-2	3-4	0	0	0	1	0	0	0	1	9	-11
03	PERKINS, LATRICE	G	0	0-1	0-0	0-0	0	1	1	2	0	1	0	0	6	-14
13	COVINGTON, NIA	G	0	0-4	0-0	0-0	0	0	0	1	0	2	0	1	8	-9
15	EADY, ARYNN	F	3	0-0	0-0	3-4	0	2	2	0	0	0	1	0	7	-7
25	FORD, DEJA	G	2	1-2	0-0	0-0	0	0	0	2	0	0	0	2	7	-6
00	TAYLOR, MADISON	G	1	0-1	0-1	1-2	0	0	0	0	0	0	0	0	2	-2
01	BLANDING, SHAI	G	0	0-0	0-0	0-0	0	0	0	0	0	2	0	1	6	-3
10	HEATH, DEE	G	2	1-2	0-1	0-0	0	0	0	0	0	0	0	0	3	-7
12	MOORE, CIARA	G	0	0-0	0-0	0-0	0	0	0	0	0	0	0	0	0	0
21	LARSON, BAILEIGH	F	0	0-1	0-0	0-0	0	1	1	2	0	0	0	0	3	-6
33	DANIEL, ASHLEY	F	0	0-0	0-0	0-0	0	0	0	0	0	0	0	0	0	0
	TEAM						1	1	2	0		0				
TOTALS			11	2-15	0-4	7-10	1	5	6	8	0	5	1	5	50	

Shooting By Period

Period	FG	FG%	3FG	3FG%	FT	FT%
3rd Qtr	6-23	26%	1-6	17%	0-0	0%
4th Qtr	5-15	33%	1-5	20%	4-10	40%
2nd Half	2-15	13%	0-4	00%	7-10	70%
2nd Half	11-38	29%	2-11	18%	4-10	40%
Game	17-70	24.3%	2-19	10.5%	14-23	60.9%

Deadball Rebounds: 5,0

Wake Forest 24

No.	Player	S	Pts	FG	3FG	FT	OR	DR	TR	PF	A	TO	Blk	Stl	Min	+/-
02	HARRISON, KAIA	G	0	0-0	0-0	0-0	0	0	0	1	0	0	0	0	0	0
05	CONTI, GINA	G	3	0-2	0-1	3-4	0	1	1	0	4	2	0	1	8	15
11	RACA, IVANA	F	6	3-5	0-0	0-0	1	0	1	1	0	1	0	0	9	13
14	SHARP, ALEX	G	5	2-5	1-2	0-0	1	2	3	0	1	0	0	0	7	12
44	UDOH, ONA	F	5	2-3	0-0	1-2	2	3	5	2	0	0	0	0	7	5
00	BANKS, MAYA	F	0	0-0	0-0	0-0	0	0	0	0	0	0	0	0	0	0
01	HOARD, ANAIA	G	0	0-0	0-0	0-0	0	0	0	1	1	0	0	0	4	-1
03	MAIER, MCKENZIE	G	0	0-0	0-0	0-0	0	0	0	0	0	0	0	0	0	0
10	HAHNE, ELLEN	G	0	0-0	0-0	0-0	0	0	0	0	0	2	0	0	2	-2
12	DICKSON, KAYLEN	G	0	0-0	0-0	0-0	0	0	0	0	0	0	0	0	0	0
20	SUMMIEL, OLIVIA	F	0	0-0	0-0	0-0	0	1	1	2	0	0	0	0	4	10
21	BRANCH, RAEGYN	F	0	0-0	0-0	0-0	0	0	0	0	0	0	0	0	0	0
23	MORRA, CHRISTINA	F	3	1-2	0-0	1-2	1	3	4	1	0	0	0	1	3	8
32	SCRUGGS, ALEXANDRIA	G	2	1-2	0-1	0-1	0	2	2	1	0	3	0	1	6	5
	TEAM						2	0	2	0		0				
TOTALS			24	9-19	1-4	5-9	7	12	19	9	6	8	0	3	50	

Shooting By Period

Period	FG	FG%	3FG	3FG%	FT	FT%
3rd Qtr	15-23	65%	1-2	50%	3-4	75%
4th Qtr	7-15	47%	3-5	60%	6-8	75%
2nd Half	9-19	47%	1-4	25%	5-9	56%
2nd Half	22-38	58%	4-7	57%	9-12	75%
Game	40-74	54.1%	6-16	37.5%	20-28	71.4%

Deadball Rebounds: 4,1

Game Notes:

Officials: Bryan Brunette, Nykesha Thompson, Saif Esho
Attendance: 630

Start Time: 07:02 PM ET
End Time: 08:56 PM ET
Game Duration: 1:54

Score	1st	2nd	3rd	4th	TOT
CHA	11	11	13	15	50
WFU	25	24	34	23	106

Points from (This Period)	CHA	WFU
In the Paint	4	8
Off Turns	4	5
2nd Chance	0	9
Fast Break	6	1
Bench	3	5

Official Play-By-Play
Col. of Charleston vs Wake Forest
Second Quarter
November 08, 2019 at LJVM Coliseum - Winston-Salem, N.C.



Period 2

Starters:

Col. of Charleston: 13 COVINGTON, NIA (G); 15 EADY, ARYNN (F); 25 FORD, DEJA (G); 2 WILLIAMS, TAYLOR (G); 3 PERKINS, LATRICE (G);

Wake Forest: 2 HARRISON, KAIA (G); 11 RACA, IVANA (F); 14 SHARP, ALEX (G); 44 UDOH, ONA (F); 5 CONTI, GINA (G);

Time	VISITORS: Col. of Charleston	Score	Margin	HOME: Wake Forest
05:48	MISSED JUMPER by PERKINS, LATRICE			
05:48	REBOUND (OFF) by PERKINS, LATRICE			
10:00				SUB OUT: HOARD, ANAIA
10:00				SUB OUT: BRANCH, RAEGYN
10:00				SUB IN: SHARP, ALEX
10:00				SUB IN: SUMMIEL, OLIVIA
10:00	SUB OUT: BLANDING, SHAI			
10:00	SUB OUT: HEATH, DEE			
10:00	SUB OUT: EADY, ARYNN			
10:00	SUB IN: WILLIAMS, TAYLOR			
10:00	SUB IN: COVINGTON, NIA			
10:00	SUB IN: LARSON, BAILEIGH			
09:54	MISSED JUMPER by PERKINS, LATRICE			
09:49				REBOUND (DEF) by MORRA, CHRISTINA
09:33				MISSED 3PTR by CONTI, GINA
09:29	REBOUND (DEF) by LARSON, BAILEIGH			
09:16	MISSED 3PTR by WILLIAMS, TAYLOR			
09:12				REBOUND (DEF) by SHARP, ALEX
09:09				FOUL (OFF) by SCRUGGS, ALEXANDRIA
09:09				TURNOVER (OFFENSIVE) by SCRUGGS, ALEXANDRIA
08:57	MISSED JUMPER by COVINGTON, NIA			
08:51				REBOUND (DEF) by SHARP, ALEX
08:45	FOUL (PERSONAL) by LARSON, BAILEIGH			
08:40				SUB OUT: SCRUGGS, ALEXANDRIA
08:40				SUB IN: RACA, IVANA
08:40				MISSED FT by MORRA, CHRISTINA
08:40				REBOUND (OFF) by TEAM
08:40		26-11	H 15	GOOD! FT by MORRA, CHRISTINA
08:27	MISSED JUMPER by LARSON, BAILEIGH			
08:22				REBOUND (DEF) by SUMMIEL, OLIVIA
08:15				MISSED JUMPER by RACA, IVANA
08:12				REBOUND (OFF) by MORRA, CHRISTINA
08:10		28-11	H 17	GOOD! LAYUP by MORRA, CHRISTINA [PNT]
07:58	MISSED JUMPER by WILLIAMS, TAYLOR			
07:53				REBOUND (DEF) by MORRA, CHRISTINA
07:47		31-11	H 20	GOOD! 3PTR by SHARP, ALEX
07:47				ASSIST by CONTI, GINA
07:27	TURNOVER (BADPASS) by COVINGTON, NIA			
07:27				STEAL by MORRA, CHRISTINA
07:26	FOUL (PERSONAL) by LARSON, BAILEIGH			
07:26				SUB OUT: CONTI, GINA
07:26				SUB IN: HARRISON, KAIA
07:26	SUB OUT: LARSON, BAILEIGH			
07:26	SUB IN: EADY, ARYNN			
07:23				MISSED JUMPER by SHARP, ALEX
07:19				REBOUND (OFF) by SHARP, ALEX
07:17				MISSED LAYUP by MORRA, CHRISTINA
07:14	REBOUND (DEF) by PERKINS, LATRICE			
07:14				FOUL (PERSONAL) by MORRA, CHRISTINA
07:09				FOUL (PERSONAL) by HARRISON, KAIA
07:09				SUB OUT: HARRISON, KAIA
07:09				SUB IN: CONTI, GINA
07:08	MISSED JUMPER by WILLIAMS, TAYLOR			
07:03				REBOUND (DEF) by MORRA, CHRISTINA
06:54				MISSED LAYUP by RACA, IVANA
06:54	BLOCK by EADY, ARYNN			
06:54				REBOUND (OFF) by TEAM
06:51	FOUL (PERSONAL) by PERKINS, LATRICE			
06:51	SUB OUT: FORD, DEJA			
06:51	SUB IN: HEATH, DEE			
06:50		33-11	H 22	GOOD! JUMPER by SHARP, ALEX
06:50				ASSIST by CONTI, GINA
06:34	TURNOVER (OTHER) by COVINGTON, NIA			
06:31				SUB OUT: MORRA, CHRISTINA
06:31				SUB IN: UDOH, ONA
06:27				MISSED JUMPER by UDOH, ONA
06:24				REBOUND (OFF) by UDOH, ONA
06:23		35-11	H 24	GOOD! LAYUP by UDOH, ONA [PNT]
06:22	TIMEOUT 30SEC			
06:22				

Time	VISITORS: Col. of Charleston	Score	Margin	HOME: Wake Forest
06:16	SUB OUT: COVINGTON, NIA			
06:16	SUB IN: BLANDING, SHAI			
05:55				FOUL (PERSONAL) by SUMMIEL, OLIVIA
05:50				FOUL (PERSONAL) by SUMMIEL, OLIVIA
05:49				SUB OUT: SUMMIEL, OLIVIA
05:49				SUB IN: SCRUGGS, ALEXANDRIA
05:49	MISSED FT by WILLIAMS, TAYLOR			
05:49	REBOUND (OFF) by TEAM			
05:49	GOOD! FT by WILLIAMS, TAYLOR	35-12	H 23	
05:44		37-12	H 25	GOOD! LAYUP by UDOH, ONA [PNT]
05:44				ASSIST by SHARP, ALEX
05:31	GOOD! LAYUP by HEATH, DEE [PNT]	37-14	H 23	
05:12				MISSED 3PTR by SCRUGGS, ALEXANDRIA
05:07				REBOUND (OFF) by RACA, IVANA
05:01				MISSED 3PTR by SHARP, ALEX
04:56				REBOUND (OFF) by TEAM
04:46		39-14	H 25	GOOD! JUMPER by RACA, IVANA
04:46				ASSIST by CONTI, GINA
04:37	MISSED 3PTR by HEATH, DEE			
04:30				REBOUND (DEF) by SCRUGGS, ALEXANDRIA
04:29		41-14	H 27	GOOD! LAYUP by RACA, IVANA [PNT]
04:29				ASSIST by CONTI, GINA
04:13	TURNOVER (BADPASS) by PERKINS, LATRICE			
04:13				STEAL by CONTI, GINA
04:08	FOUL (PERSONAL) by PERKINS, LATRICE			
04:08	SUB OUT: HEATH, DEE			
04:08	SUB IN: FORD, DEJA			
04:08				MISSED FT by CONTI, GINA
04:08				REBOUND (OFF) by TEAM
04:08		42-14	H 28	GOOD! FT by CONTI, GINA [FB]
04:08				SUB OUT: CONTI, GINA
04:08				SUB IN: HAHNE, ELLEN
04:08	SUB OUT: PERKINS, LATRICE			
04:08	SUB IN: COVINGTON, NIA			
04:04	TURNOVER (BADPASS) by BLANDING, SHAI			
03:47				MISSED JUMPER by SHARP, ALEX
03:42	REBOUND (DEF) by EADY, ARYNN			
03:42				FOUL (PERSONAL) by UDOH, ONA
03:42				SUB OUT: SHARP, ALEX
03:42				SUB IN: HOARD, ANAIA
03:42	GOOD! FT by EADY, ARYNN [FB]	42-15	H 27	
03:42	GOOD! FT by EADY, ARYNN [FB]	42-16	H 26	
03:26				TURNOVER (LOSTBALL) by RACA, IVANA
03:26	STEAL by WILLIAMS, TAYLOR			
03:24				FOUL (PERSONAL) by HOARD, ANAIA
03:24	GOOD! FT by WILLIAMS, TAYLOR [FB]	42-17	H 25	
03:24	GOOD! FT by WILLIAMS, TAYLOR [FB]	42-18	H 24	
03:18				TURNOVER (BADPASS) by SCRUGGS, ALEXANDRIA
03:07	MISSED 3PTR by WILLIAMS, TAYLOR			
03:02				REBOUND (DEF) by UDOH, ONA
02:59				TURNOVER (LOSTBALL) by HAHNE, ELLEN
02:59	STEAL by BLANDING, SHAI			
02:35	MISSED JUMPER by COVINGTON, NIA			
02:31				REBOUND (DEF) by UDOH, ONA
02:23				TURNOVER (BADPASS) by HAHNE, ELLEN
02:23	STEAL by FORD, DEJA			
02:10	TURNOVER (BADPASS) by BLANDING, SHAI			
02:10				STEAL by SCRUGGS, ALEXANDRIA
02:09		44-18	H 26	GOOD! JUMPER by SCRUGGS, ALEXANDRIA
02:09	FOUL (PERSONAL) by FORD, DEJA			
02:09				MISSED FT by SCRUGGS, ALEXANDRIA
02:09	REBOUND (DEF) by TEAM			
02:09				FOUL (PERSONAL) by RACA, IVANA
02:09	MISSED FT by EADY, ARYNN			
02:09	REBOUND (OFF) by TEAM			
02:09				SUB OUT: HAHNE, ELLEN
02:09				SUB IN: CONTI, GINA
02:09	GOOD! FT by EADY, ARYNN [FB]	44-19	H 25	
02:02				TURNOVER (LOSTBALL) by CONTI, GINA
02:02	STEAL by COVINGTON, NIA			
01:59	FOUL (PERSONAL) by COVINGTON, NIA			
01:57				TURNOVER (TRAVEL) by SCRUGGS, ALEXANDRIA
01:51	MISSED JUMPER by COVINGTON, NIA			
01:47				REBOUND (DEF) by SCRUGGS, ALEXANDRIA
01:30	FOUL (PERSONAL) by WILLIAMS, TAYLOR			
01:30	SUB OUT: WILLIAMS, TAYLOR			
01:30	SUB IN: TAYLOR, MADISON			
01:25		45-19	H 26	GOOD! FT by CONTI, GINA
01:25		46-19	H 27	GOOD! FT by CONTI, GINA
01:15	MISSED LAYUP by COVINGTON, NIA			

Time	VISITORS: Col. of Charleston	Score	Margin	HOME: Wake Forest
01:12				REBOUND (DEF) by UDOH, ONA
00:58		48-19	H 29	GOOD! JUMPER by RACA, IVANA
00:58				ASSIST by HOARD, ANAIA
00:42	MISSED JUMPER by FORD, DEJA			
00:42	REBOUND (OFF) by TEAM			
00:42				SUB OUT: SCRUGGS, ALEXANDRIA
00:42				SUB IN: SHARP, ALEX
00:36	MISSED 3PTR by TAYLOR, MADISON			
00:33				REBOUND (DEF) by CONTI, GINA
00:30				TURNOVER (LOSTBALL) by CONTI, GINA
00:30	STEAL by FORD, DEJA			
00:25	GOOD! LAYUP by FORD, DEJA [PNT]	48-21	H 27	
00:13				MISSED JUMPER by CONTI, GINA
00:12				REBOUND (OFF) by UDOH, ONA
00:12	FOUL (PERSONAL) by FORD, DEJA			
00:12		49-21	H 28	GOOD! FT by UDOH, ONA
00:12				MISSED FT by UDOH, ONA
00:12	REBOUND (DEF) by EADY, ARYNN			
00:09				FOUL (PERSONAL) by UDOH, ONA
00:06	GOOD! FT by TAYLOR, MADISON [FB]	49-22	H 27	
00:06	MISSED FT by TAYLOR, MADISON			
00:06				REBOUND (DEF) by TEAM

Col. of Charleston 22, Wake Forest 49

Points from (This Period)	CHA	WFU
In the Paint	4	8
Off Turns	4	5
2nd Chance	0	9
Fast Break	6	1
Bench	3	5

Official Box Score
Col. of Charleston vs Wake Forest
Second Half Statistics Only
November 08, 2019 at LJVM Coliseum - Winston-Salem, N.C.



Col. of Charleston 28

No.	Player	S	Pts	FG	3FG	FT	OR	DR	TR	PF	A	TO	Blk	Stl	Min	+/-
00	TAYLOR, MADISON	G	2	0-2	0-0	2-2	0	2	2	0	1	1	0	0	11	-8
10	HEATH, DEE	G	0	0-0	0-0	0-0	0	0	0	0	0	0	0	1	3	-5
12	MOORE, CIARA	G	7	3-8	1-5	0-0	0	1	1	2	1	0	0	0	12	-11
13	COVINGTON, NIA	G	0	0-2	0-0	0-0	0	0	0	1	1	2	0	0	6	-15
15	EADY, ARYNN	F	4	2-3	0-0	0-0	1	1	2	4	0	0	0	0	12	-23
21	LARSON, BAILEIGH	F	0	0-0	0-0	0-2	0	1	1	0	0	0	0	0	3	2
25	FORD, DEJA	G	0	0-2	0-1	0-0	0	0	0	1	0	1	0	2	5	-13
33	DANIEL, ASHLEY	F	0	0-0	0-0	0-2	0	1	1	0	0	0	0	1	5	-8
01	BLANDING, SHAI	G	2	1-2	0-0	0-0	0	0	0	1	3	4	0	1	17	-21
02	WILLIAMS, TAYLOR	G	7	2-8	1-3	2-4	1	0	1	1	0	2	0	0	14	-21
03	PERKINS, LATRICE	G	6	3-11	0-2	0-0	1	3	4	1	1	0	1	0	12	-22
	TEAM		0	0-0	0-0	0-0	5	2	7	0	0	0	0	0	0	
TOTALS			28	11-38	2-11	4-10	8	11	19	11	7	10	1	5	100	

Shooting By Period

Period	FG	FG%	3FG	3FG%	FT	FT%
3rd Qtr	6-23	26%	1-6	17%	0-0	0%
4th Qtr	5-15	33%	1-5	20%	4-10	40%
2nd Half	11-38	29%	2-11	18%	4-10	40%
Game	17-70	24.3%	2-19	10.5%	14-23	60.9%

Deadball Rebounds: 5,0

Last FG Half: CHA 4th-03:00

Wake Forest 57

No.	Player	S	Pts	FG	3FG	FT	OR	DR	TR	PF	A	TO	Blk	Stl	Min	+/-
00	BANKS, MAYA	F	4	0-2	0-0	4-4	1	2	3	3	0	1	1	0	5	6
01	HOARD, ANAIA	G	3	1-4	1-1	0-0	0	2	2	1	3	0	0	1	10	18
02	HARRISON, KAIA	G	5	2-3	0-0	1-1	0	1	1	1	1	0	0	2	10	21
03	MAIER, MCKENZIE	G	3	1-2	1-2	0-0	0	0	0	0	2	1	0	0	10	8
10	HAHNE, ELLEN	G	4	2-3	0-0	0-2	0	1	1	0	1	2	0	0	13	9
11	RACA, IVANA	F	6	3-3	0-0	0-0	1	1	2	0	0	1	0	1	7	20
12	DICKSON, KAYLEN	G	6	2-4	2-3	0-0	0	2	2	2	0	1	0	1	8	7
14	SHARP, ALEX	G	0	0-1	0-0	0-0	0	1	1	0	3	0	0	0	6	16
20	SUMMIEL, OLIVIA	F	8	2-2	0-0	4-4	2	2	4	3	0	0	1	0	10	6
21	BRANCH, RAEGYN	F	0	0-2	0-1	0-0	0	1	1	0	0	0	0	0	9	5
23	MORRA, CHRISTINA	F	10	5-7	0-0	0-1	2	4	6	0	0	0	0	0	5	8
32	SCRUGGS, ALEXANDRIA	G	0	0-0	0-0	0-0	0	0	0	0	0	0	0	0	0	0
44	UDOH, ONA	F	8	4-5	0-0	0-0	1	3	4	0	0	2	0	1	5	13
05	CONTI, GINA	G	0	0-0	0-0	0-0	0	1	1	0	1	0	0	0	3	8
	TEAM		0	0-0	0-0	0-0	0	1	1	0	0	0	0	0	0	
TOTALS			57	22-38	4-7	9-12	7	22	29	10	11	8	2	6	100	

Shooting By Period

Period	FG	FG%	3FG	3FG%	FT	FT%
3rd Qtr	15-23	65%	1-2	50%	3-4	75%
4th Qtr	7-15	47%	3-5	60%	6-8	75%
2nd Half	22-38	58%	4-7	57%	9-12	75%
Game	40-74	54.1%	6-16	37.5%	20-28	71.4%

Deadball Rebounds: 4,1

Last FG Half: WFU 4th-00:04

Game Notes:

Officials: **Bryan Brunette, Nykesha Thompson, Saif Esho**
Attendance: **630**

Start Time: **07:02 PM ET**
End Time: **08:56 PM ET**
Game Duration: **1:54**

Score	1st	2nd	3rd	4th	TOT
CHA	11	11	13	15	50
WFU	25	24	34	23	106

Points from (This Period)	CHA	WFU
In the Paint	8	16
Off Turns	5	13
2nd Chance	2	14
Fast Break	0	0
Bench	11	38

Official Box Score
Col. of Charleston vs Wake Forest
Third Quarter Statistics Only
November 08, 2019 at LJVM Coliseum - Winston-Salem, N.C.



Col. of Charleston 28

No.	Player	S	Pts	FG	3FG	FT	OR	DR	TR	PF	A	TO	Blk	Stl	Min	+/-
02	WILLIAMS, TAYLOR	G	0	0-1	0-0	0-0	0	0	0	1	0	0	0	0	4	-13
03	PERKINS, LATRICE	G	4	2-10	0-2	0-0	1	1	2	0	0	0	0	0	10	-21
13	COVINGTON, NIA	G	0	0-2	0-0	0-0	0	0	0	1	1	2	0	0	6	-15
15	EADY, ARYNN	F	4	2-3	0-0	0-0	1	1	2	2	0	0	0	0	10	-19
25	FORD, DEJA	G	0	0-1	0-1	0-0	0	0	0	1	0	1	0	2	5	-13
00	TAYLOR, MADISON	G	0	0-1	0-0	0-0	0	1	1	0	1	0	0	0	3	-1
01	BLANDING, SHAI	G	0	0-1	0-0	0-0	0	0	0	0	2	1	0	0	7	-13
10	HEATH, DEE	G	0	0-0	0-0	0-0	0	0	0	0	0	0	0	0	0	0
12	MOORE, CIARA	G	5	2-4	1-3	0-0	0	0	0	0	0	0	0	0	5	-8
21	LARSON, BAILEIGH	F	0	0-0	0-0	0-0	0	0	0	0	0	0	0	0	0	0
33	DANIEL, ASHLEY	F	0	0-0	0-0	0-0	0	0	0	0	0	0	0	0	0	-2
	TEAM						2	1	3	0		0				
TOTALS			13	6-23	1-6	0-0	4	4	8	5	4	4	0	2	50	

Shooting By Period

Period	FG	FG%	3FG	3FG%	FT	FT%
2nd Half	0-0	0%	0-0	0%	0-0	0%
Game	17-70	24.3%	2-19	10.5%	14-23	60.9%

Deadball Rebounds: 5,0

Wake Forest 57

No.	Player	S	Pts	FG	3FG	FT	OR	DR	TR	PF	A	TO	Blk	Stl	Min	+/-
02	HARRISON, KAIA	G	5	2-3	0-0	1-1	0	1	1	1	1	0	0	2	10	21
05	CONTI, GINA	G	0	0-0	0-0	0-0	0	1	1	0	1	0	0	0	3	8
11	RACA, IVANA	F	6	3-3	0-0	0-0	1	1	2	0	0	1	0	1	7	20
14	SHARP, ALEX	G	0	0-1	0-0	0-0	0	1	1	0	3	0	0	0	6	16
44	UDOH, ONA	F	8	4-5	0-0	0-0	1	3	4	0	0	2	0	1	5	13
00	BANKS, MAYA	F	0	0-0	0-0	0-0	0	0	0	0	0	0	0	0	0	0
01	HOARD, ANAIA	G	3	1-2	1-1	0-0	0	1	1	1	1	0	0	0	7	13
03	MAIER, MCKENZIE	G	0	0-0	0-0	0-0	0	0	0	0	0	0	0	0	0	0
10	HAHNE, ELLEN	G	0	0-1	0-0	0-0	0	0	0	0	1	0	0	0	3	1
12	DICKSON, KAYLEN	G	0	0-0	0-0	0-0	0	0	0	0	0	0	0	0	0	0
20	SUMMIEL, OLIVIA	F	2	0-0	0-0	2-2	1	0	1	0	0	0	0	0	1	2
21	BRANCH, RAEGYN	F	0	0-1	0-1	0-0	0	0	0	0	0	0	0	0	4	3
23	MORRA, CHRISTINA	F	10	5-7	0-0	0-1	2	4	6	0	0	0	0	0	5	8
32	SCRUGGS, ALEXANDRIA	G	0	0-0	0-0	0-0	0	0	0	0	0	0	0	0	0	0
	TEAM						0	1	1	0		0				
TOTALS			34	15-23	1-2	3-4	5	13	18	2	7	3	0	4	50	

Shooting By Period

Period	FG	FG%	3FG	3FG%	FT	FT%
2nd Half	0-0	0%	0-0	0%	0-0	0%
Game	40-74	54.1%	6-16	37.5%	20-28	71.4%

Deadball Rebounds: 4,1

Game Notes:

Officials: **Bryan Brunette, Nykesha Thompson, Saif Esho**
Attendance: **630**

Start Time: **07:02 PM ET**

End Time: **08:56 PM ET**

Game Duration: **1:54**

Score	1st	2nd	3rd	4th	TOT
CHA	11	11	13	15	50
WFU	25	24	34	23	106

Points from (This Period)	CHA	WFU
In the Paint	4	10
Off Turns	2	7
2nd Chance	2	10
Fast Break	0	0
Bench	5	15

Official Play-By-Play
Col. of Charleston vs Wake Forest
Third Quarter
November 08, 2019 at LJVM Coliseum - Winston-Salem, N.C.



Period 3

Starters:

Col. of Charleston: 13 COVINGTON, NIA (G); 15 EADY, ARYNN (F); 25 FORD, DEJA (G); 2 WILLIAMS, TAYLOR (G); 3 PERKINS, LATRICE (G);

Wake Forest: 2 HARRISON, KAIA (G); 11 RACA, IVANA (F); 14 SHARP, ALEX (G); 44 UDOH, ONA (F); 5 CONTI, GINA (G);

Time	VISITORS: Col. of Charleston	Score	Margin	HOME: Wake Forest
10:00				SUB OUT: HOARD, ANAIA
10:00				SUB IN: HARRISON, KAIA
10:00	SUB OUT: TAYLOR, MADISON			
10:00	SUB OUT: BLANDING, SHAI			
10:00	SUB IN: WILLIAMS, TAYLOR			
10:00	SUB IN: PERKINS, LATRICE			
09:47	MISSED JUMPER by PERKINS, LATRICE			
09:41	REBOUND (OFF) by EADY, ARYNN			
09:37	MISSED JUMPER by EADY, ARYNN			
09:34				REBOUND (DEF) by UDOH, ONA
09:33				MISSED JUMPER by SHARP, ALEX
09:25				REBOUND (OFF) by UDOH, ONA
09:24		51-22	H 29	GOOD! JUMPER by UDOH, ONA
09:15	MISSED JUMPER by WILLIAMS, TAYLOR			
09:12				REBOUND (DEF) by RACA, IVANA
09:05				TURNOVER (TRAVEL) by RACA, IVANA
08:54	MISSED JUMPER by COVINGTON, NIA			
08:51				REBOUND (DEF) by CONTI, GINA
08:45		53-22	H 31	GOOD! JUMPER by RACA, IVANA
08:45				ASSIST by CONTI, GINA
08:26	MISSED JUMPER by PERKINS, LATRICE			
08:21				REBOUND (DEF) by SHARP, ALEX
08:00		55-22	H 33	GOOD! JUMPER by UDOH, ONA [PNT]
08:00				ASSIST by HARRISON, KAIA
07:44	GOOD! JUMPER by EADY, ARYNN	55-24	H 31	
07:44	ASSIST by COVINGTON, NIA			
07:32		57-24	H 33	GOOD! JUMPER by UDOH, ONA
07:32				ASSIST by SHARP, ALEX
07:14	TURNOVER (BADPASS) by COVINGTON, NIA			
07:14				STEAL by RACA, IVANA
07:10		59-24	H 35	GOOD! JUMPER by RACA, IVANA
07:08	TIMEOUT 30SEC			
07:08				SUB OUT: CONTI, GINA
07:08				SUB IN: HOARD, ANAIA
07:08	SUB OUT: COVINGTON, NIA			
07:08	SUB IN: BLANDING, SHAI			
06:55	MISSED 3PTR by PERKINS, LATRICE			
06:52				REBOUND (DEF) by UDOH, ONA
06:45				MISSED JUMPER by UDOH, ONA
06:40				REBOUND (OFF) by RACA, IVANA
06:39		61-24	H 37	GOOD! JUMPER by RACA, IVANA
06:31	TURNOVER (BADPASS) by BLANDING, SHAI			
06:31				STEAL by HARRISON, KAIA
06:26		63-24	H 39	GOOD! LAYUP by HARRISON, KAIA [PNT]
06:26	FOUL (PERSONAL) by WILLIAMS, TAYLOR			
06:26		64-24	H 40	GOOD! FT by HARRISON, KAIA
06:26	SUB OUT: WILLIAMS, TAYLOR			
06:26	SUB IN: COVINGTON, NIA			
06:04	MISSED JUMPER by PERKINS, LATRICE			
06:00				REBOUND (DEF) by UDOH, ONA
05:57				TURNOVER (LOSTBALL) by UDOH, ONA
05:57	STEAL by FORD, DEJA			
05:48	TURNOVER (LOSTBALL) by FORD, DEJA			
05:48				STEAL by UDOH, ONA
05:41				TURNOVER (LOSTBALL) by UDOH, ONA
05:41	STEAL by FORD, DEJA			
05:29	GOOD! LAYUP by PERKINS, LATRICE [PNT]	64-26	H 38	
05:25		66-26	H 40	GOOD! LAYUP by UDOH, ONA [PNT]
05:25				ASSIST by SHARP, ALEX
05:09	MISSED 3PTR by FORD, DEJA			
05:06				REBOUND (DEF) by HOARD, ANAIA
05:06	FOUL (PERSONAL) by FORD, DEJA			
05:06				SUB OUT: UDOH, ONA
05:06				SUB IN: MORRA, CHRISTINA
05:06	SUB OUT: FORD, DEJA			
05:06	SUB IN: MOORE, CIARA			
04:53		69-26	H 43	GOOD! 3PTR by HOARD, ANAIA
04:53				ASSIST by SHARP, ALEX
04:43	GOOD! JUMPER by MOORE, CIARA	69-28	H 41	
04:43	ASSIST by BLANDING, SHAI			

Time	VISITORS: Col. of Charleston	Score	Margin	HOME: Wake Forest
04:30		71-28	H 43	GOOD! LAYUP by MORRA, CHRISTINA [PNT]
04:21				
04:21				SUB OUT: SHARP, ALEX
04:21				SUB IN: BRANCH, RAEGYN
04:08	MISSED 3PTR by MOORE, CIARA			
04:05	REBOUND (OFF) by TEAM			
04:05				FOUL (PERSONAL) by HARRISON, KAIA
04:02	MISSED 3PTR by PERKINS, LATRICE			
03:58				REBOUND (DEF) by MORRA, CHRISTINA
03:58	FOUL (PERSONAL) by COVINGTON, NIA			
03:49		73-28	H 45	GOOD! JUMPER by MORRA, CHRISTINA
03:49				ASSIST by HOARD, ANAIA
03:37	TURNOVER (BADPASS) by COVINGTON, NIA			
03:37				STEAL by HARRISON, KAIA
03:31		75-28	H 47	GOOD! JUMPER by HARRISON, KAIA
03:23	MISSED JUMPER by COVINGTON, NIA			
03:22				REBOUND (DEF) by TEAM
03:22				SUB OUT: RACA, IVANA
03:22				SUB IN: HAHNE, ELLEN
03:22	SUB OUT: COVINGTON, NIA			
03:22	SUB IN: TAYLOR, MADISON			
03:16		77-28	H 49	GOOD! JUMPER by MORRA, CHRISTINA
03:16				ASSIST by HAHNE, ELLEN
02:58	GOOD! 3PTR by MOORE, CIARA	77-31	H 46	
02:58	ASSIST by TAYLOR, MADISON			
02:46				MISSED JUMPER by MORRA, CHRISTINA
02:44	REBOUND (DEF) by TEAM			
02:32				FOUL (PERSONAL) by HOARD, ANAIA
02:22	MISSED JUMPER by PERKINS, LATRICE			
02:21	REBOUND (OFF) by TEAM			
02:17	GOOD! JUMPER by PERKINS, LATRICE	77-33	H 44	
02:00				MISSED JUMPER by MORRA, CHRISTINA
01:57	REBOUND (DEF) by TAYLOR, MADISON			
01:47	MISSED JUMPER by BLANDING, SHAI			
01:45				REBOUND (DEF) by MORRA, CHRISTINA
01:39				MISSED LAYUP by HOARD, ANAIA
01:34	REBOUND (DEF) by EADY, ARYNN			
01:27	GOOD! LAYUP by EADY, ARYNN [PNT]	77-35	H 42	
01:27	ASSIST by BLANDING, SHAI			
01:13				MISSED 3PTR by BRANCH, RAEGYN
01:10				REBOUND (OFF) by MORRA, CHRISTINA
01:09		79-35	H 44	GOOD! LAYUP by MORRA, CHRISTINA [PNT]
00:55	MISSED 3PTR by MOORE, CIARA			
00:51	REBOUND (OFF) by PERKINS, LATRICE			
00:47	MISSED JUMPER by PERKINS, LATRICE			
00:45				REBOUND (DEF) by MORRA, CHRISTINA
00:38				MISSED JUMPER by HAHNE, ELLEN
00:37				REBOUND (OFF) by MORRA, CHRISTINA
00:37		81-35	H 46	GOOD! JUMPER by MORRA, CHRISTINA
00:37	FOUL (PERSONAL) by EADY, ARYNN			
00:37				SUB OUT: BRANCH, RAEGYN
00:37				SUB IN: SUMMIEL, OLIVIA
00:37				MISSED FT by MORRA, CHRISTINA
00:37	REBOUND (DEF) by PERKINS, LATRICE			
00:31	MISSED JUMPER by TAYLOR, MADISON			
00:28				REBOUND (DEF) by HARRISON, KAIA
00:23				MISSED JUMPER by HARRISON, KAIA
00:21				REBOUND (OFF) by SUMMIEL, OLIVIA
00:21	FOUL (PERSONAL) by EADY, ARYNN			
00:21	SUB OUT: EADY, ARYNN			
00:21	SUB IN: DANIEL, ASHLEY			
00:21		82-35	H 47	GOOD! FT by SUMMIEL, OLIVIA
00:21		83-35	H 48	GOOD! FT by SUMMIEL, OLIVIA
00:08	MISSED LAYUP by PERKINS, LATRICE			
00:08				REBOUND (DEF) by MORRA, CHRISTINA

Col. of Charleston 35, Wake Forest 83

Points from (This Period)	CHA	WFU
In the Paint	4	10
Off Turns	2	7
2nd Chance	2	10
Fast Break	0	0
Bench	5	15

Official Box Score
Col. of Charleston vs Wake Forest
Fourth Quarter Statistics Only
November 08, 2019 at LJVM Coliseum - Winston-Salem, N.C.



Col. of Charleston 15

No.	Player	S	Pts	FG	3FG	FT	OR	DR	TR	PF	A	TO	Blk	Stl	Min	+/-
02	WILLIAMS, TAYLOR	G	7	2-7	1-3	2-4	1	0	1	0	0	2	0	0	10	-8
03	PERKINS, LATRICE	G	2	1-1	0-0	0-0	0	2	2	1	1	0	1	0	2	-1
13	COVINGTON, NIA	G	0	0-0	0-0	0-0	0	0	0	0	0	0	0	0	0	0
15	EADY, ARYNN	F	0	0-0	0-0	0-0	0	0	0	2	0	0	0	0	2	-4
25	FORD, DEJA	G	0	0-1	0-0	0-0	0	0	0	0	0	0	0	0	0	0
00	TAYLOR, MADISON	G	2	0-1	0-0	2-2	0	1	1	0	0	1	0	0	8	-7
01	BLANDING, SHAI	G	2	1-1	0-0	0-0	0	0	0	1	1	3	0	1	10	-8
10	HEATH, DEE	G	0	0-0	0-0	0-0	0	0	0	0	0	0	0	1	3	-5
12	MOORE, CIARA	G	2	1-4	0-2	0-0	0	1	1	2	1	0	0	0	7	-3
21	LARSON, BAILEIGH	F	0	0-0	0-0	0-2	0	1	1	0	0	0	0	0	3	2
33	DANIEL, ASHLEY	F	0	0-0	0-0	0-2	0	1	1	0	0	0	0	1	5	-6
	TEAM						3	1	4	0		0				
TOTALS			15	5-15	1-5	4-10	4	7	11	6	3	6	1	3	50	

Shooting By Period

Period	FG	FG%	3FG	3FG%	FT	FT%
Game	17-70	24.3%	2-19	10.5%	14-23	60.9%

Deadball Rebounds: 5,0

Wake Forest 23

No.	Player	S	Pts	FG	3FG	FT	OR	DR	TR	PF	A	TO	Blk	Stl	Min	+/-
02	HARRISON, KAIA	G	0	0-0	0-0	0-0	0	0	0	0	0	0	0	0	0	0
05	CONTI, GINA	G	0	0-0	0-0	0-0	0	0	0	0	0	0	0	0	0	0
11	RACA, IVANA	F	0	0-0	0-0	0-0	0	0	0	0	0	0	0	0	0	0
14	SHARP, ALEX	G	0	0-0	0-0	0-0	0	0	0	0	0	0	0	0	0	0
44	UDOH, ONA	F	0	0-0	0-0	0-0	0	0	0	0	0	0	0	0	0	0
00	BANKS, MAYA	F	4	0-2	0-0	4-4	1	2	3	3	0	1	1	0	5	6
01	HOARD, ANAIA	G	0	0-2	0-0	0-0	0	1	1	0	2	0	0	1	3	5
03	MAIER, MCKENZIE	G	3	1-2	1-2	0-0	0	0	0	0	2	1	0	0	10	8
10	HAHNE, ELLEN	G	4	2-2	0-0	0-2	0	1	1	0	0	2	0	0	10	8
12	DICKSON, KAYLEN	G	6	2-4	2-3	0-0	0	2	2	2	0	1	0	1	8	7
20	SUMMIEL, OLIVIA	F	6	2-2	0-0	2-2	1	2	3	3	0	0	1	0	9	4
21	BRANCH, RAEGYN	F	0	0-1	0-0	0-0	0	1	1	0	0	0	0	0	5	2
23	MORRA, CHRISTINA	F	0	0-0	0-0	0-0	0	0	0	0	0	0	0	0	0	0
32	SCRUGGS, ALEXANDRIA	G	0	0-0	0-0	0-0	0	0	0	0	0	0	0	0	0	0
	TEAM						0	0	0	0		0				
TOTALS			23	7-15	3-5	6-8	2	9	11	8	4	5	2	2	50	

Shooting By Period

Period	FG	FG%	3FG	3FG%	FT	FT%
Game	40-74	54.1%	6-16	37.5%	20-28	71.4%

Deadball Rebounds: 4,1

Game Notes:

Officials: **Bryan Brunette, Nykeshia Thompson, Saif Esho**
Attendance: **630**

Start Time: **07:02 PM ET**

End Time: **08:56 PM ET**

Game Duration: **1:54**

Score	1st	2nd	3rd	4th	TOT
CHA	11	11	13	15	50
WFU	25	24	34	23	106

Points from (This Period)	CHA	WFU
In the Paint	4	6
Off Turns	3	6
2nd Chance	0	4
Fast Break	0	0
Bench	6	23

Official Play-By-Play
Col. of Charleston vs Wake Forest
Fourth Quarter
November 08, 2019 at LJVM Coliseum - Winston-Salem, N.C.



Period 4

Starters:

Col. of Charleston: 13 COVINGTON, NIA (G); 15 EADY, ARYNN (F); 25 FORD, DEJA (G); 2 WILLIAMS, TAYLOR (G); 3 PERKINS, LATRICE (G);

Wake Forest: 2 HARRISON, KAIA (G); 11 RACA, IVANA (F); 14 SHARP, ALEX (G); 44 UDOH, ONA (F); 5 CONTI, GINA (G);

Time	VISITORS: Col. of Charleston	Score	Margin	HOME: Wake Forest
10:00				SUB OUT: HOARD, ANAIA
10:00				SUB OUT: HARRISON, KAIA
10:00				SUB OUT: MORRA, CHRISTINA
10:00				SUB IN: BANKS, MAYA
10:00				SUB IN: MAIER, MCKENZIE
10:00				SUB IN: DICKSON, KAYLEN
10:00	SUB OUT: TAYLOR, MADISON			
10:00	SUB IN: WILLIAMS, TAYLOR			
09:48				MISSED LAYUP by BANKS, MAYA
09:48	BLOCK by PERKINS, LATRICE			
09:46	REBOUND (DEF) by PERKINS, LATRICE			
09:37	MISSED 3PTR by MOORE, CIARA			
09:34	REBOUND (OFF) by TEAM			
09:19	TURNOVER (TRAVEL) by WILLIAMS, TAYLOR			
09:08				MISSED 3PTR by DICKSON, KAYLEN
09:04	REBOUND (DEF) by MOORE, CIARA			
09:04				FOUL (PERSONAL) by DICKSON, KAYLEN
08:51	MISSED 3PTR by WILLIAMS, TAYLOR			
08:47				REBOUND (DEF) by HAHNE, ELLEN
08:45	FOUL (PERSONAL) by PERKINS, LATRICE			
08:38		86-35	H 51	GOOD! 3PTR by DICKSON, KAYLEN
08:38				ASSIST by MAIER, MCKENZIE
08:28	MISSED JUMPER by WILLIAMS, TAYLOR			
08:26				REBOUND (DEF) by SUMMIEL, OLIVIA
08:26				FOUL (PERSONAL) by BANKS, MAYA
08:23	GOOD! LAYUP by PERKINS, LATRICE [PNT]	86-37	H 49	
08:23	ASSIST by MOORE, CIARA			
08:12	FOUL (PERSONAL) by MOORE, CIARA			
08:12				MISSED FT by HAHNE, ELLEN
08:12				REBOUND (OFF) by TEAM
08:12				MISSED FT by HAHNE, ELLEN
08:12	REBOUND (DEF) by PERKINS, LATRICE			
08:12	GOOD! LAYUP by MOORE, CIARA [PNT]	86-39	H 47	
08:12	ASSIST by PERKINS, LATRICE			
08:09		88-39	H 49	GOOD! JUMPER by HAHNE, ELLEN
07:54	TURNOVER (BADPASS) by BLANDING, SHAI			
07:54	SUB OUT: DANIEL, ASHLEY			
07:54	SUB IN: EADY, ARYNN			
07:51	FOUL (PERSONAL) by EADY, ARYNN			
07:51	SUB OUT: PERKINS, LATRICE			
07:51	SUB IN: TAYLOR, MADISON			
07:51		89-39	H 50	GOOD! FT by BANKS, MAYA
07:51		90-39	H 51	GOOD! FT by BANKS, MAYA
07:40	MISSED JUMPER by WILLIAMS, TAYLOR			
07:40				BLOCK by SUMMIEL, OLIVIA
07:33	REBOUND (OFF) by WILLIAMS, TAYLOR			
07:32	MISSED JUMPER by MOORE, CIARA			
07:26				REBOUND (DEF) by BANKS, MAYA
07:24				MISSED JUMPER by DICKSON, KAYLEN
07:24	REBOUND (DEF) by TEAM			
06:54	MISSED JUMPER by FORD, DEJA			
06:54				REBOUND (DEF) by BANKS, MAYA
06:48	FOUL (PERSONAL) by BLANDING, SHAI			
06:38		93-39	H 54	GOOD! 3PTR by DICKSON, KAYLEN
06:38				ASSIST by MAIER, MCKENZIE
06:23				FOUL (PERSONAL) by DICKSON, KAYLEN
06:19	GOOD! FT by TAYLOR, MADISON	93-40	H 53	
06:08	GOOD! FT by TAYLOR, MADISON	93-41	H 52	
05:59				MISSED JUMPER by BANKS, MAYA
05:57				REBOUND (OFF) by BANKS, MAYA
05:57	FOUL (PERSONAL) by EADY, ARYNN			
05:57		94-41	H 53	GOOD! FT by BANKS, MAYA
05:57	SUB OUT: EADY, ARYNN			
05:57	SUB IN: LARSON, BAILEIGH			
05:57		95-41	H 54	GOOD! FT by BANKS, MAYA
05:47	MISSED JUMPER by WILLIAMS, TAYLOR			
05:45	REBOUND (OFF) by TEAM			
05:38	MISSED 3PTR by MOORE, CIARA			
05:34				REBOUND (DEF) by DICKSON, KAYLEN
05:20				FOUL (OFF) by BANKS, MAYA

Time	VISITORS: Col. of Charleston	Score	Margin	HOME: Wake Forest
05:20				TURNOVER (OFFENSIVE) by BANKS, MAYA
05:10	TURNOVER (BADPASS) by BLANDING, SHAI			
05:10				STEAL by DICKSON, KAYLEN
04:57				MISSED 3PTR by MAIER, MCKENZIE
04:56	REBOUND (DEF) by LARSON, BAILEIGH			
04:56				FOUL (PERSONAL) by BANKS, MAYA
04:56				SUB OUT: BANKS, MAYA
04:56				SUB IN: BRANCH, RAEGYN
04:56				
06:54				BLOCK by BANKS, MAYA
04:56	MISSED FT by LARSON, BAILEIGH			
04:56	REBOUND (OFF) by TEAM			
04:56	MISSED FT by LARSON, BAILEIGH			
04:56				REBOUND (DEF) by DICKSON, KAYLEN
04:48				TURNOVER (BADPASS) by HAHNE, ELLEN
04:38	TURNOVER (TRAVEL) by WILLIAMS, TAYLOR			
04:16	FOUL (PERSONAL) by MOORE, CIARA			
04:16		96-41	H 55	GOOD! FT by SUMMIEL, OLIVIA
04:16		97-41	H 56	GOOD! FT by SUMMIEL, OLIVIA
04:03	GOOD! JUMPER by WILLIAMS, TAYLOR	97-43	H 54	
03:45				TURNOVER (LOSTBALL) by DICKSON, KAYLEN
03:45	STEAL by BLANDING, SHAI			
03:38	GOOD! JUMPER by BLANDING, SHAI	97-45	H 52	
03:14		99-45	H 54	GOOD! LAYUP by SUMMIEL, OLIVIA [PNT]
03:00	GOOD! 3PTR by WILLIAMS, TAYLOR	99-48	H 51	
03:00	ASSIST by BLANDING, SHAI			
02:55				TIMEOUT 30SEC
02:55				SUB OUT: DICKSON, KAYLEN
02:55				SUB IN: HOARD, ANAIA
02:55	SUB OUT: MOORE, CIARA			
02:55	SUB OUT: LARSON, BAILEIGH			
02:55	SUB IN: HEATH, DEE			
02:55	SUB IN: DANIEL, ASHLEY			
02:45				MISSED JUMPER by HOARD, ANAIA
02:43	REBOUND (DEF) by DANIEL, ASHLEY			
02:43				FOUL (PERSONAL) by SUMMIEL, OLIVIA
02:43	MISSED FT by DANIEL, ASHLEY			
02:43	REBOUND (OFF) by TEAM			
02:43	MISSED FT by DANIEL, ASHLEY			
02:43				REBOUND (DEF) by HOARD, ANAIA
02:33				TURNOVER (BADPASS) by MAIER, MCKENZIE
02:33	STEAL by DANIEL, ASHLEY			
02:19				FOUL (PERSONAL) by SUMMIEL, OLIVIA
02:19	MISSED FT by WILLIAMS, TAYLOR			
02:19	REBOUND (OFF) by TEAM			
02:19	GOOD! FT by WILLIAMS, TAYLOR	99-49	H 50	
02:07				TURNOVER (BADPASS) by HAHNE, ELLEN
02:07	STEAL by HEATH, DEE			
02:06	TURNOVER (TRAVEL) by BLANDING, SHAI			
01:56				MISSED LAYUP by HOARD, ANAIA
01:52	REBOUND (DEF) by TAYLOR, MADISON			
01:37	MISSED LAYUP by TAYLOR, MADISON			
01:34	REBOUND (OFF) by TEAM			
01:22	MISSED 3PTR by WILLIAMS, TAYLOR			
01:18				REBOUND (DEF) by SUMMIEL, OLIVIA
01:07				MISSED JUMPER by BRANCH, RAEGYN
01:01				REBOUND (OFF) by SUMMIEL, OLIVIA
00:59		101-49	H 52	GOOD! LAYUP by SUMMIEL, OLIVIA
00:47				FOUL (PERSONAL) by SUMMIEL, OLIVIA
00:47				SUB OUT: SUMMIEL, OLIVIA
00:47				SUB IN: DICKSON, KAYLEN
00:47	GOOD! FT by WILLIAMS, TAYLOR	101-50	H 51	
00:47	MISSED FT by WILLIAMS, TAYLOR			
00:47				REBOUND (DEF) by BRANCH, RAEGYN
00:36		104-50	H 54	GOOD! 3PTR by MAIER, MCKENZIE
00:36				ASSIST by HOARD, ANAIA
00:11	TURNOVER (BADPASS) by TAYLOR, MADISON			
00:11				STEAL by HOARD, ANAIA
00:04		106-50	H 56	GOOD! LAYUP by HAHNE, ELLEN [PNT]
00:04				ASSIST by HOARD, ANAIA

Col. of Charleston 50, Wake Forest 106

Points from (This Period)	CHA	WFU
In the Paint	4	6
Off Turns	3	6
2nd Chance	0	4
Fast Break	0	0
Bench	6	23

Official Scoring/Possession Reference Chart
Col. of Charleston vs Wake Forest
Period 1
November 08, 2019 at LJVM Coliseum - Winston-Salem, N.C.



Period 1

Starters:

Col. of Charleston: 13 COVINGTON,NIA (G); 15 EADY,ARYNN (F); 25 FORD,DEJA (G); 2 WILLIAMS,TAYLOR (G); 3 PERKINS,LATRICE (G);

Wake Forest: 2 HARRISON,KAIA (G); 11 RACA,IVANA (F); 14 SHARP,ALEX (G); 44 UDOH,ONA (F); 5 CONTI,GINA (G);

Time	VISITORS: Col. of Charleston	Score	Margin	HOME: Wake Forest
09:41		2-0	H 2	GOOD! JUMPER by RACA, IVANA
09:14		4-0	H 4	GOOD! JUMPER by RACA, IVANA
08:55	GOOD! JUMPER by WILLIAMS, TAYLOR	4-2	H 2	
08:38		5-2	H 3	GOOD! FT by CONTI, GINA
08:38		6-2	H 4	GOOD! FT by CONTI, GINA
08:26	GOOD! JUMPER by PERKINS, LATRICE	6-4	H 2	
08:12		9-4	H 5	GOOD! 3PTR by RACA, IVANA
07:35		11-4	H 7	GOOD! JUMPER by SHARP, ALEX
07:26	GOOD! JUMPER by WILLIAMS, TAYLOR	11-6	H 5	
07:26	GOOD! FT by WILLIAMS, TAYLOR	11-7	H 4	
07:26		13-7	H 6	GOOD! JUMPER by UDOH, ONA
07:24	GOOD! JUMPER by PERKINS, LATRICE	13-9	H 4	
07:01		15-9	H 6	GOOD! LAYUP by UDOH, ONA
05:42		16-9	H 7	GOOD! FT by UDOH, ONA
05:03		18-9	H 9	GOOD! LAYUP by UDOH, ONA [PNT]
04:52		19-9	H 10	GOOD! FT by UDOH, ONA
03:58		20-9	H 11	GOOD! FT by RACA, IVANA
03:58		21-9	H 12	GOOD! FT by RACA, IVANA
03:37		23-9	H 14	GOOD! JUMPER by UDOH, ONA
03:13		25-9	H 16	GOOD! LAYUP by SCRUGGS, ALEXANDRIA [PNT]
02:15	GOOD! FT by FORD, DEJA	25-10	H 15	
02:15	GOOD! FT by FORD, DEJA	25-11	H 14	

Col. of Charleston 11, Wake Forest 25

Official Scoring/Possession Reference Chart
Col. of Charleston vs Wake Forest
Period 2
November 08, 2019 at LJVM Coliseum - Winston-Salem, N.C.



Period 2

Starters:

Col. of Charleston: 13 COVINGTON, NIA (G); 15 EADY, ARYNN (F); 25 FORD, DEJA (G); 2 WILLIAMS, TAYLOR (G); 3 PERKINS, LATRICE (G);

Wake Forest: 2 HARRISON, KAIA (G); 11 RACA, IVANA (F); 14 SHARP, ALEX (G); 44 UDOH, ONA (F); 5 CONTI, GINA (G);

Time	VISITORS: Col. of Charleston	Score	Margin	HOME: Wake Forest
08:40		26-11	H 15	GOOD! FT by MORRA, CHRISTINA
08:10		28-11	H 17	GOOD! LAYUP by MORRA, CHRISTINA [PNT]
07:47		31-11	H 20	GOOD! 3PTR by SHARP, ALEX
06:50		33-11	H 22	GOOD! JUMPER by SHARP, ALEX
06:23		35-11	H 24	GOOD! LAYUP by UDOH, ONA [PNT]
05:49	GOOD! FT by WILLIAMS, TAYLOR	35-12	H 23	
05:44		37-12	H 25	GOOD! LAYUP by UDOH, ONA [PNT]
05:31	GOOD! LAYUP by HEATH, DEE [PNT]	37-14	H 23	
04:46		39-14	H 25	GOOD! JUMPER by RACA, IVANA
04:29		41-14	H 27	GOOD! LAYUP by RACA, IVANA [PNT]
04:08		42-14	H 28	GOOD! FT by CONTI, GINA [FB]
03:42	GOOD! FT by EADY, ARYNN [FB]	42-15	H 27	
03:42	GOOD! FT by EADY, ARYNN [FB]	42-16	H 26	
03:24	GOOD! FT by WILLIAMS, TAYLOR [FB]	42-17	H 25	
03:24	GOOD! FT by WILLIAMS, TAYLOR [FB]	42-18	H 24	
02:09		44-18	H 26	GOOD! JUMPER by SCRUGGS, ALEXANDRIA
02:09	GOOD! FT by EADY, ARYNN [FB]	44-19	H 25	
01:25		45-19	H 26	GOOD! FT by CONTI, GINA
01:25		46-19	H 27	GOOD! FT by CONTI, GINA
00:58		48-19	H 29	GOOD! JUMPER by RACA, IVANA
00:25	GOOD! LAYUP by FORD, DEJA [PNT]	48-21	H 27	
00:12		49-21	H 28	GOOD! FT by UDOH, ONA
00:06	GOOD! FT by TAYLOR, MADISON [FB]	49-22	H 27	

Col. of Charleston 22, Wake Forest 49

Official Scoring/Possession Reference Chart
Col. of Charleston vs Wake Forest
Period 3
November 08, 2019 at LJVM Coliseum - Winston-Salem, N.C.



Period 3

Starters:

Col. of Charleston: 13 COVINGTON, NIA (G); 15 EADY, ARYNN (F); 25 FORD, DEJA (G); 2 WILLIAMS, TAYLOR (G); 3 PERKINS, LATRICE (G);

Wake Forest: 2 HARRISON, KAIA (G); 11 RACA, IVANA (F); 14 SHARP, ALEX (G); 44 UDOH, ONA (F); 5 CONTI, GINA (G);

Time	VISITORS: Col. of Charleston	Score	Margin	HOME: Wake Forest
09:24		51-22	H 29	GOOD! JUMPER by UDOH, ONA
08:45		53-22	H 31	GOOD! JUMPER by RACA, IVANA
08:00		55-22	H 33	GOOD! JUMPER by UDOH, ONA [PNT]
07:44	GOOD! JUMPER by EADY, ARYNN	55-24	H 31	
07:32		57-24	H 33	GOOD! JUMPER by UDOH, ONA
07:10		59-24	H 35	GOOD! JUMPER by RACA, IVANA
06:39		61-24	H 37	GOOD! JUMPER by RACA, IVANA
06:26		63-24	H 39	GOOD! LAYUP by HARRISON, KAIA [PNT]
06:26		64-24	H 40	GOOD! FT by HARRISON, KAIA
05:29	GOOD! LAYUP by PERKINS, LATRICE [PNT]	64-26	H 38	
05:25		66-26	H 40	GOOD! LAYUP by UDOH, ONA [PNT]
04:53		69-26	H 43	GOOD! 3PTR by HOARD, ANAIA
04:43	GOOD! JUMPER by MOORE, CIARA	69-28	H 41	
04:30		71-28	H 43	GOOD! LAYUP by MORRA, CHRISTINA [PNT]
03:49		73-28	H 45	GOOD! JUMPER by MORRA, CHRISTINA
03:31		75-28	H 47	GOOD! JUMPER by HARRISON, KAIA
03:16		77-28	H 49	GOOD! JUMPER by MORRA, CHRISTINA
02:58	GOOD! 3PTR by MOORE, CIARA	77-31	H 46	
02:17	GOOD! JUMPER by PERKINS, LATRICE	77-33	H 44	
01:27	GOOD! LAYUP by EADY, ARYNN [PNT]	77-35	H 42	
01:09		79-35	H 44	GOOD! LAYUP by MORRA, CHRISTINA [PNT]
00:37		81-35	H 46	GOOD! JUMPER by MORRA, CHRISTINA
00:21		82-35	H 47	GOOD! FT by SUMMIEL, OLIVIA
00:21		83-35	H 48	GOOD! FT by SUMMIEL, OLIVIA

Col. of Charleston 35, Wake Forest 83

Official Scoring/Possession Reference Chart
Col. of Charleston vs Wake Forest
Period 4
November 08, 2019 at LJVM Coliseum - Winston-Salem, N.C.



Period 4

Starters:

Col. of Charleston: 13 COVINGTON,NIA (G); 15 EADY,ARYNN (F); 25 FORD,DEJA (G); 2 WILLIAMS,TAYLOR (G); 3 PERKINS,LATRICE (G);

Wake Forest: 2 HARRISON,KAIA (G); 11 RACA,IVANA (F); 14 SHARP,ALEX (G); 44 UDOH,ONA (F); 5 CONTI,GINA (G);

Time	VISITORS: Col. of Charleston	Score	Margin	HOME: Wake Forest
08:38		86-35	H 51	GOOD! 3PTR by DICKSON, KAYLEN
08:23	GOOD! LAYUP by PERKINS, LATRICE [PNT]	86-37	H 49	
08:12	GOOD! LAYUP by MOORE, CIARA [PNT]	86-39	H 47	
08:09		88-39	H 49	GOOD! JUMPER by HAHNE, ELLEN
07:51		89-39	H 50	GOOD! FT by BANKS, MAYA
07:51		90-39	H 51	GOOD! FT by BANKS, MAYA
06:38		93-39	H 54	GOOD! 3PTR by DICKSON, KAYLEN
06:19	GOOD! FT by TAYLOR, MADISON	93-40	H 53	
06:08	GOOD! FT by TAYLOR, MADISON	93-41	H 52	
05:57		94-41	H 53	GOOD! FT by BANKS, MAYA
05:57		95-41	H 54	GOOD! FT by BANKS, MAYA
04:16		96-41	H 55	GOOD! FT by SUMMIEL, OLIVIA
04:16		97-41	H 56	GOOD! FT by SUMMIEL, OLIVIA
04:03	GOOD! JUMPER by WILLIAMS, TAYLOR	97-43	H 54	
03:38	GOOD! JUMPER by BLANDING, SHAI	97-45	H 52	
03:14		99-45	H 54	GOOD! LAYUP by SUMMIEL, OLIVIA [PNT]
03:00	GOOD! 3PTR by WILLIAMS, TAYLOR	99-48	H 51	
02:19	GOOD! FT by WILLIAMS, TAYLOR	99-49	H 50	
00:59		101-49	H 52	GOOD! LAYUP by SUMMIEL, OLIVIA
00:47	GOOD! FT by WILLIAMS, TAYLOR	101-50	H 51	
00:36		104-50	H 54	GOOD! 3PTR by MAIER, MCKENZIE
00:04		106-50	H 56	GOOD! LAYUP by HAHNE, ELLEN [PNT]

Col. of Charleston 50, Wake Forest 106

Official Substitutions Log
Col. of Charleston vs Wake Forest
Period 1
November 08, 2019 at LJVM Coliseum - Winston-Salem, N.C.



VISITORS: Col. of Charleston	Time	Score	HOME: Wake Forest
13 COVINGTON,NIA			2 HARRISON,KAIA
15 EADY,ARYNN			11 RACA,IVANA
25 FORD,DEJA			14 SHARP,ALEX
2 WILLIAMS,TAYLOR			44 UDOH,ONA
3 PERKINS,LATRICE			5 CONTI,GINA
SUB OUT: 25 FORD,DEJA	06:18	9-15	
SUB IN: 0 TAYLOR,MADISON	06:18		
	05:10	9-16	SUB OUT: HARRISON,KAIA
	05:10		SUB OUT: SHARP,ALEX
	05:10		SUB IN: HAHNE,ELLEN
	05:10		SUB IN: SCRUGGS,ALEXANDRIA
	03:58	9-19	SUB OUT: CONTI,GINA
	03:58		SUB IN: HARRISON,KAIA
SUB OUT: 2 WILLIAMS,TAYLOR	03:58		
SUB IN: 25 FORD,DEJA	03:58		
	02:47	9-25	SUB OUT: UDOH,ONA
	02:47		SUB IN: BANKS,MAYA
SUB OUT: 0 TAYLOR,MADISON	02:47		
SUB IN: 1 BLANDING,SHAI	02:47		
	02:15	9-25	SUB OUT: HAHNE,ELLEN
	02:15		SUB OUT: RACA,IVANA
	02:15		SUB IN: HOARD,ANAIA
	02:15		SUB IN: BRANCH,RAEGYN
	01:10	11-25	SUB OUT: HARRISON,KAIA
	01:10		SUB IN: CONTI,GINA
SUB OUT: 13 COVINGTON,NIA	01:10		
SUB IN: 10 HEATH,DEE	01:10		
	00:51	11-25	SUB OUT: BANKS,MAYA
	00:51		SUB IN: MORRA,CHRISTINA

Col. of Charleston 11, Wake Forest 25

Official Substitutions Log
Col. of Charleston vs Wake Forest
Period 2
November 08, 2019 at LJVM Coliseum - Winston-Salem, N.C.



VISITORS: Col. of Charleston	Time	Score	HOME: Wake Forest
13 COVINGTON,NIA			2 HARRISON,KAIA
15 EADY,ARYNN			11 RACA,IVANA
25 FORD,DEJA			14 SHARP,ALEX
2 WILLIAMS,TAYLOR			44 UDOH,ONA
3 PERKINS,LATRICE			5 CONTI,GINA
	10:00	-	SUB OUT: HOARD,ANAIA
	10:00		SUB OUT: BRANCH,RAEGYN
	10:00		SUB IN: SHARP,ALEX
	10:00		SUB IN: SUMMIEL,OLIVIA
SUB OUT: 1 BLANDING,SHAI	10:00		
SUB OUT: 10 HEATH,DEE	10:00		
SUB OUT: 15 EADY,ARYNN	10:00		
SUB IN: 2 WILLIAMS,TAYLOR	10:00		
SUB IN: 13 COVINGTON,NIA	10:00		
SUB IN: 21 LARSON,BAILEIGH	10:00		
	08:40	-	SUB OUT: SCRUGGS,ALEXANDRIA
	08:40		SUB IN: RACA,IVANA
	07:26	11-31	SUB OUT: CONTI,GINA
	07:26		SUB IN: HARRISON,KAIA
SUB OUT: 21 LARSON,BAILEIGH	07:26		
SUB IN: 15 EADY,ARYNN	07:26		
	07:09	11-31	SUB OUT: HARRISON,KAIA
	07:09		SUB IN: CONTI,GINA
SUB OUT: 25 FORD,DEJA	06:51	11-31	
SUB IN: 10 HEATH,DEE	06:51		
	06:31	11-33	SUB OUT: MORRA,CHRISTINA
	06:31		SUB IN: UDOH,ONA
SUB OUT: 13 COVINGTON,NIA	06:16	11-35	
SUB IN: 1 BLANDING,SHAI	06:16		
	05:49	11-35	SUB OUT: SUMMIEL,OLIVIA
	05:49		SUB IN: SCRUGGS,ALEXANDRIA
SUB OUT: 10 HEATH,DEE	04:08	14-41	
SUB IN: 25 FORD,DEJA	04:08		
	04:08		SUB OUT: CONTI,GINA
	04:08		SUB IN: HAHNE,ELLEN
SUB OUT: 3 PERKINS,LATRICE	04:08		
SUB IN: 13 COVINGTON,NIA	04:08		
	03:42	14-42	SUB OUT: SHARP,ALEX
	03:42		SUB IN: HOARD,ANAIA
	02:09	18-44	SUB OUT: HAHNE,ELLEN
	02:09		SUB IN: CONTI,GINA
SUB OUT: 2 WILLIAMS,TAYLOR	01:30	19-44	
SUB IN: 0 TAYLOR,MADISON	01:30		
	00:42	19-48	SUB OUT: SCRUGGS,ALEXANDRIA
	00:42		SUB IN: SHARP,ALEX

Col. of Charleston 22, Wake Forest 49

Official Substitutions Log
Col. of Charleston vs Wake Forest
Period 3
November 08, 2019 at LJVM Coliseum - Winston-Salem, N.C.



VISITORS: Col. of Charleston	Time	Score	HOME: Wake Forest
13 COVINGTON, NIA			2 HARRISON, KAIA
15 EADY, ARYNN			11 RACA, IVANA
25 FORD, DEJA			14 SHARP, ALEX
2 WILLIAMS, TAYLOR			44 UDOH, ONA
3 PERKINS, LATRICE			5 CONTI, GINA
	10:00	-	SUB OUT: HOARD, ANAIA
	10:00		SUB IN: HARRISON, KAIA
SUB OUT: 0 TAYLOR, MADISON	10:00		
SUB OUT: 1 BLANDING, SHAI	10:00		
SUB IN: 2 WILLIAMS, TAYLOR	10:00		
SUB IN: 3 PERKINS, LATRICE	10:00		
	07:08	24-59	SUB OUT: CONTI, GINA
	07:08		SUB IN: HOARD, ANAIA
SUB OUT: 13 COVINGTON, NIA	07:08		
SUB IN: 1 BLANDING, SHAI	07:08		
SUB OUT: 2 WILLIAMS, TAYLOR	06:26	24-64	
SUB IN: 13 COVINGTON, NIA	06:26		
	05:06	26-66	SUB OUT: UDOH, ONA
	05:06		SUB IN: MORRA, CHRISTINA
SUB OUT: 25 FORD, DEJA	05:06		
SUB IN: 12 MOORE, CIARA	05:06		
	04:21	28-71	SUB OUT: SHARP, ALEX
	04:21		SUB IN: BRANCH, RAEGYN
	03:22	28-75	SUB OUT: RACA, IVANA
	03:22		SUB IN: HAHNE, ELLEN
SUB OUT: 13 COVINGTON, NIA	03:22		
SUB IN: 0 TAYLOR, MADISON	03:22		
	00:37	35-81	SUB OUT: BRANCH, RAEGYN
	00:37		SUB IN: SUMMIEL, OLIVIA
SUB OUT: 15 EADY, ARYNN	00:21	35-81	
SUB IN: 33 DANIEL, ASHLEY	00:21		

Col. of Charleston 35, Wake Forest 83

Official Substitutions Log
Col. of Charleston vs Wake Forest
Period 4
November 08, 2019 at LJVM Coliseum - Winston-Salem, N.C.



VISITORS: Col. of Charleston	Time	Score	HOME: Wake Forest
13 COVINGTON, NIA			2 HARRISON, KAIA
15 EADY, ARYNN			11 RACA, IVANA
25 FORD, DEJA			14 SHARP, ALEX
2 WILLIAMS, TAYLOR			44 UDOH, ONA
3 PERKINS, LATRICE			5 CONTI, GINA
	10:00	-	SUB OUT: HOARD, ANAIA
	10:00		SUB OUT: HARRISON, KAIA
	10:00		SUB OUT: MORRA, CHRISTINA
	10:00		SUB IN: BANKS, MAYA
	10:00		SUB IN: MAIER, MCKENZIE
	10:00		SUB IN: DICKSON, KAYLEN
SUB OUT: 0 TAYLOR, MADISON	10:00		
SUB IN: 2 WILLIAMS, TAYLOR	10:00		
SUB OUT: 33 DANIEL, ASHLEY	07:54	39-88	
SUB IN: 15 EADY, ARYNN	07:54		
SUB OUT: 3 PERKINS, LATRICE	07:51	39-88	
SUB IN: 0 TAYLOR, MADISON	07:51		
SUB OUT: 15 EADY, ARYNN	05:57	41-94	
SUB IN: 21 LARSON, BAILEIGH	05:57		
	04:56	41-95	SUB OUT: BANKS, MAYA
	04:56		SUB IN: BRANCH, RAEGYN
	02:55	48-99	SUB OUT: DICKSON, KAYLEN
	02:55		SUB IN: HOARD, ANAIA
SUB OUT: 12 MOORE, CIARA	02:55		
SUB OUT: 21 LARSON, BAILEIGH	02:55		
SUB IN: 10 HEATH, DEE	02:55		
SUB IN: 33 DANIEL, ASHLEY	02:55		
	00:47	49-101	SUB OUT: SUMMIEL, OLIVIA
	00:47		SUB IN: DICKSON, KAYLEN

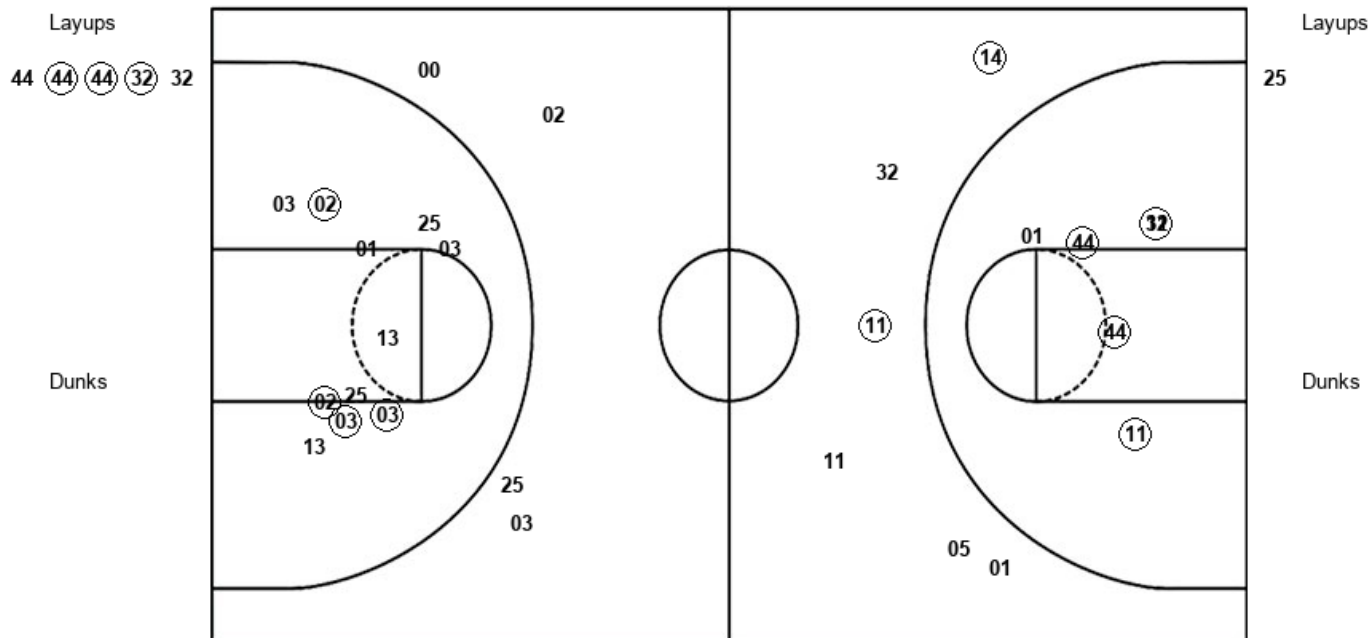
Col. of Charleston 50, Wake Forest 106

Official Shot Chart
Col. of Charleston vs Wake Forest
 PERIOD 1 Shots
 November 08, 2019 at LJVM Coliseum - Winston-Salem, N.C.



Wake Forest

Col. of Charleston



WFU : Period 1	Made	Att	Pct
Layups	3	5	60.0
Dunks	0	0	0
2PT Field Goals	8	12	66.7
3PT Field Goals	1	5	20.0
Total Field Goals	9	17	52.9

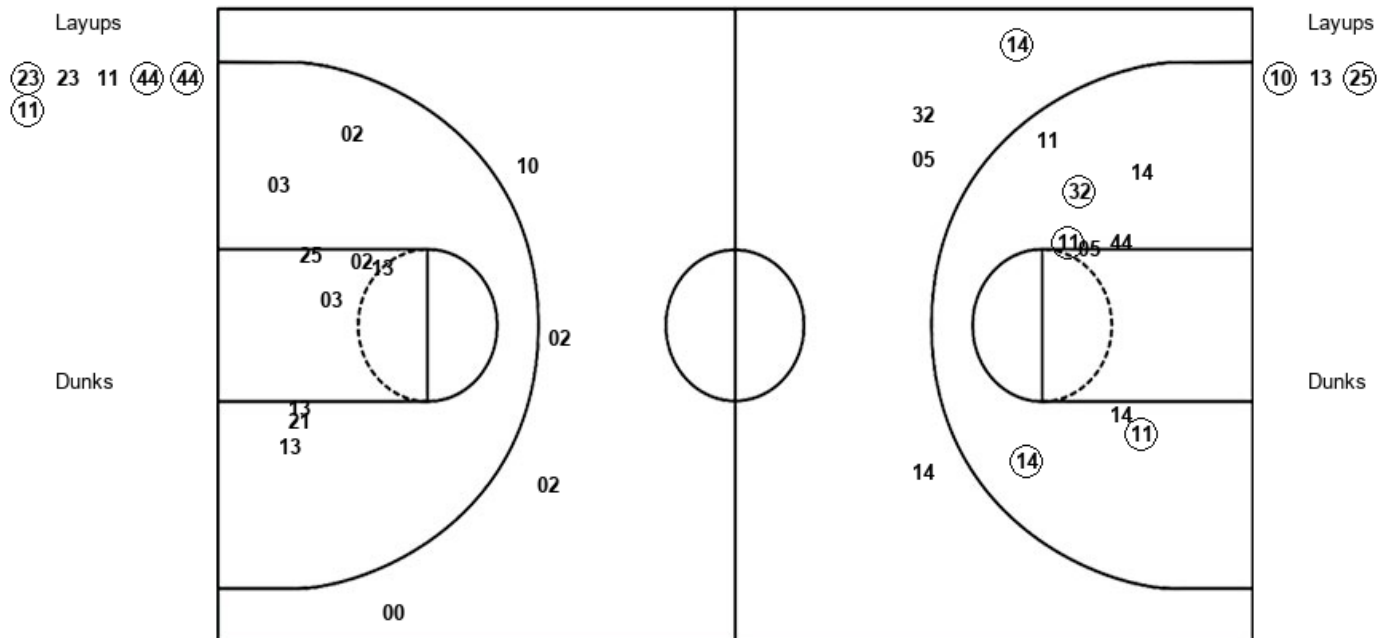
CHA : Period 1	Made	Att	Pct
Layups	0	1	00.0
Dunks	0	0	0
2PT Field Goals	4	13	30.8
3PT Field Goals	0	4	00.0
Total Field Goals	4	17	23.5

Official Shot Chart
Col. of Charleston vs Wake Forest
 PERIOD 2 Shots
 November 08, 2019 at LJVM Coliseum - Winston-Salem, N.C.



Wake Forest

Col. of Charleston



WFU : Period 2	Made	Att	Pct
Layups	4	6	66.7
Dunks	0	0	0
2PT Field Goals	8	15	53.3
3PT Field Goals	1	4	25.0
Total Field Goals	9	19	47.4

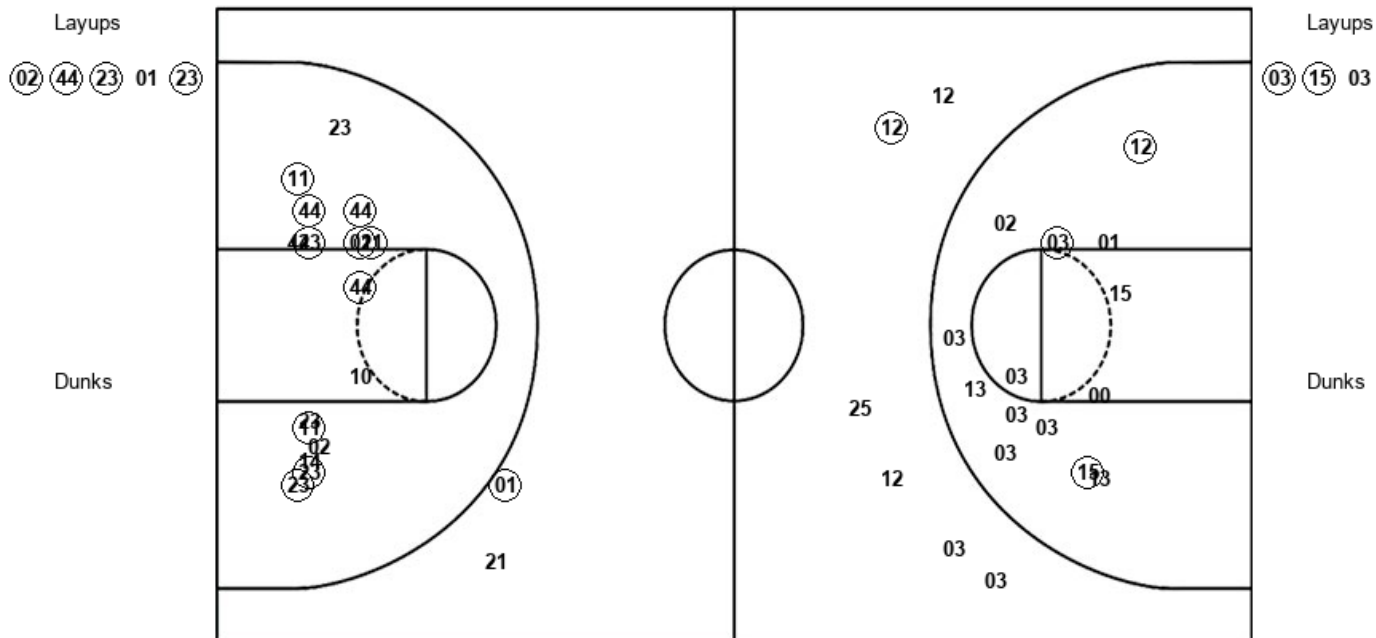
CHA : Period 2	Made	Att	Pct
Layups	2	3	66.7
Dunks	0	0	0
2PT Field Goals	2	11	18.2
3PT Field Goals	0	4	00.0
Total Field Goals	2	15	13.3

Official Shot Chart
Col. of Charleston vs Wake Forest
 PERIOD 3 Shots
 November 08, 2019 at LJVM Coliseum - Winston-Salem, N.C.



Wake Forest

Col. of Charleston



WFU : Period 3	Made	Att	Pct
Layups	4	5	80.0
Dunks	0	0	0
2PT Field Goals	14	21	66.7
3PT Field Goals	1	2	50.0
Total Field Goals	15	23	65.2

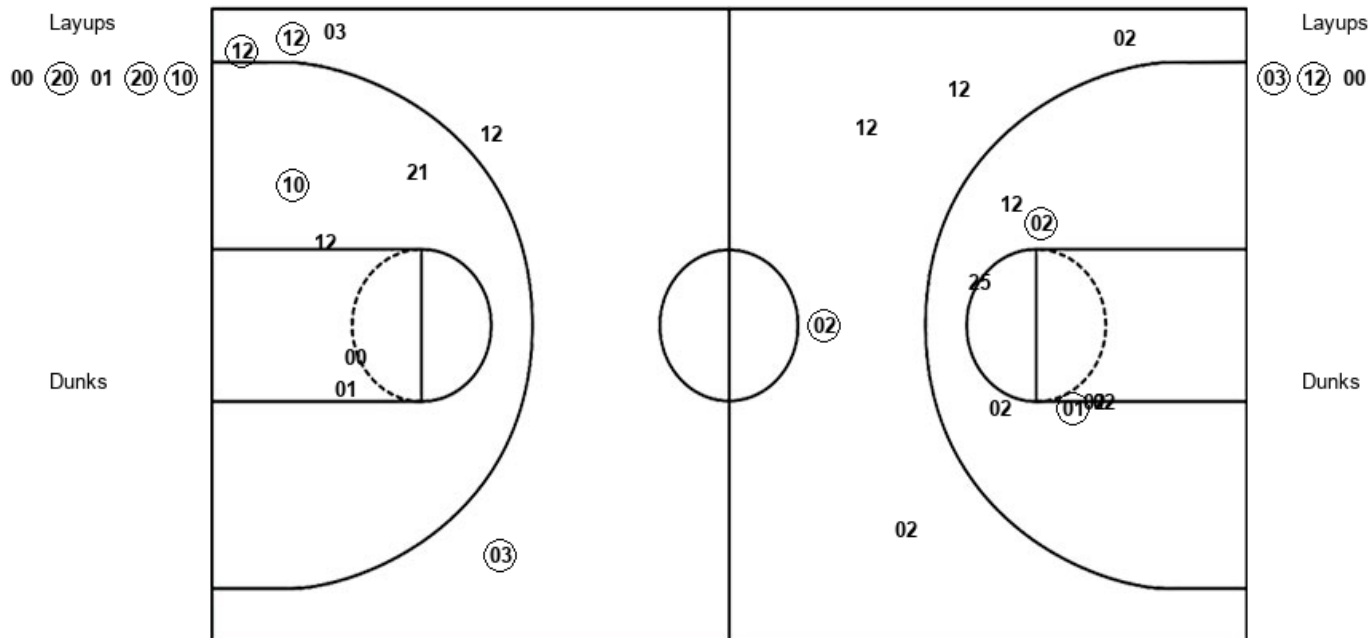
CHA : Period 3	Made	Att	Pct
Layups	2	3	66.7
Dunks	0	0	0
2PT Field Goals	5	17	29.4
3PT Field Goals	1	6	16.7
Total Field Goals	6	23	26.1

Official Shot Chart
Col. of Charleston vs Wake Forest
 PERIOD 4 Shots
 November 08, 2019 at LJVM Coliseum - Winston-Salem, N.C.



Wake Forest

Col. of Charleston



WFU : Period 4	Made	Att	Pct
Layups	3	5	60.0
Dunks	0	0	0
2PT Field Goals	4	10	40.0
3PT Field Goals	3	5	60.0
Total Field Goals	7	15	46.7

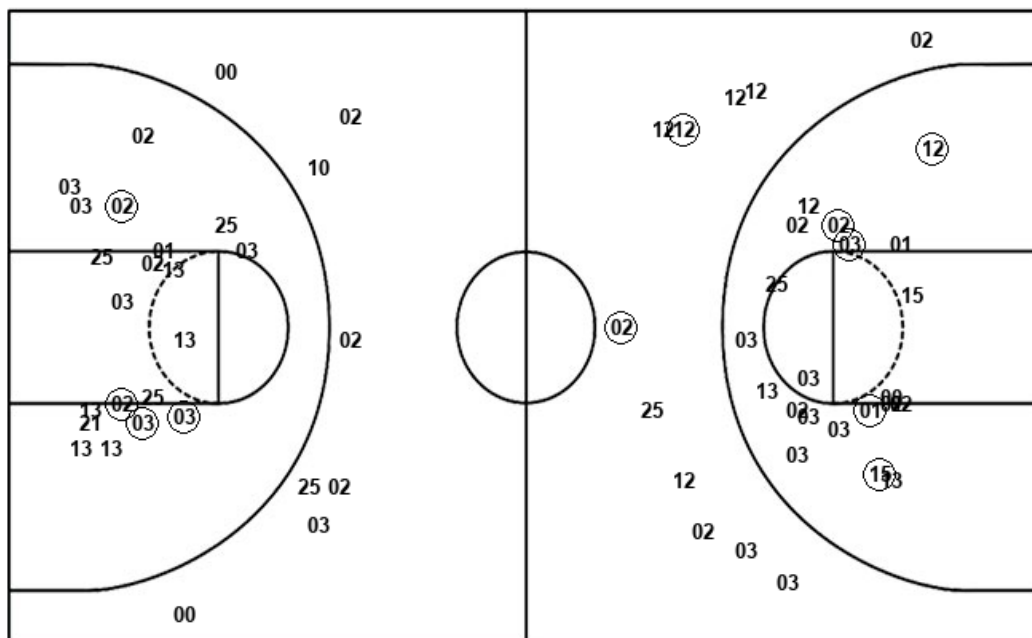
CHA : Period 4	Made	Att	Pct
Layups	2	3	66.7
Dunks	0	0	0
2PT Field Goals	4	10	40.0
3PT Field Goals	1	5	20.0
Total Field Goals	5	15	33.3

Official Shot Chart
Col. of Charleston vs Wake Forest
 Col. of Charleston Team Shots
 November 08, 2019 at LJVM Coliseum - Winston-Salem, N.C.



Layups

Dunks



Layups

Dunks

CHA : Period 1	Made	Att	Pct
Layups	0	1	00.0
Dunks	0	0	0
2PT Field Goals	4	13	30.8
3PT Field Goals	0	4	00.0
Total Field Goals	4	17	23.5

CHA : Period 3	Made	Att	Pct
Layups	2	3	66.7
Dunks	0	0	0
2PT Field Goals	5	17	29.4
3PT Field Goals	1	6	16.7
Total Field Goals	6	23	26.1

CHA : Period 2	Made	Att	Pct
Layups	2	3	66.7
Dunks	0	0	0
2PT Field Goals	2	11	18.2
3PT Field Goals	0	4	00.0
Total Field Goals	2	15	13.3

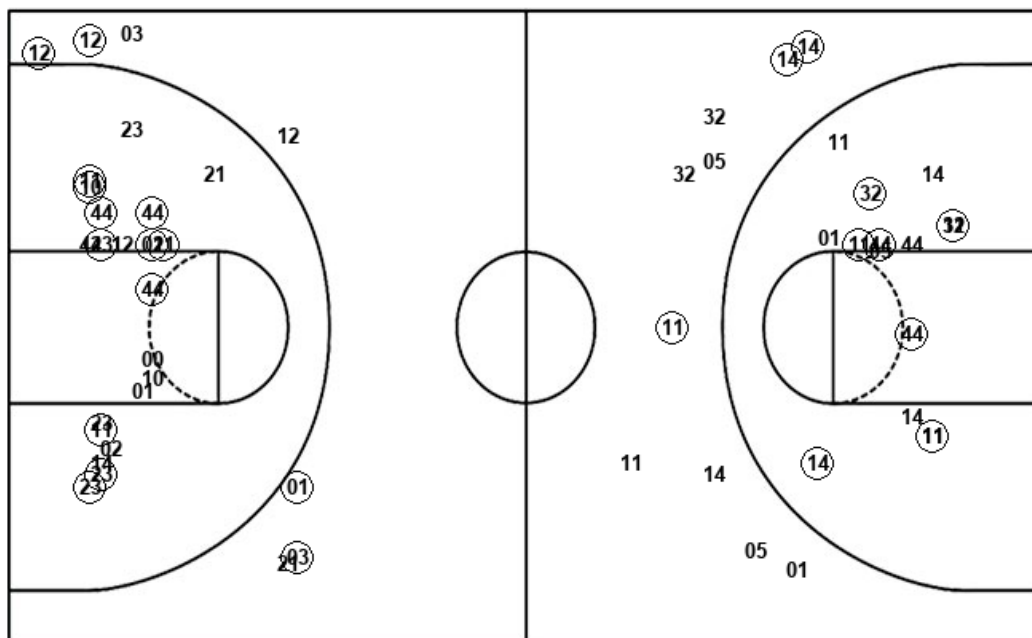
CHA : Period 4	Made	Att	Pct
Layups	2	3	66.7
Dunks	0	0	0
2PT Field Goals	4	10	40.0
3PT Field Goals	1	5	20.0
Total Field Goals	5	15	33.3

Official Shot Chart
Col. of Charleston vs Wake Forest
 Wake Forest Team Shots
 November 08, 2019 at LJVM Coliseum - Winston-Salem, N.C.



Layups

Dunks



Layups

Dunks

WFU : Period 1	Made	Att	Pct
Layups	3	5	60.0
Dunks	0	0	0
2PT Field Goals	8	12	66.7
3PT Field Goals	1	5	20.0
Total Field Goals	9	17	52.9

WFU : Period 3	Made	Att	Pct
Layups	4	5	80.0
Dunks	0	0	0
2PT Field Goals	14	21	66.7
3PT Field Goals	1	2	50.0
Total Field Goals	15	23	65.2

WFU : Period 2	Made	Att	Pct
Layups	4	6	66.7
Dunks	0	0	0
2PT Field Goals	8	15	53.3
3PT Field Goals	1	4	25.0
Total Field Goals	9	19	47.4

WFU : Period 4	Made	Att	Pct
Layups	3	5	60.0
Dunks	0	0	0
2PT Field Goals	4	10	40.0
3PT Field Goals	3	5	60.0
Total Field Goals	7	15	46.7