

FINAL SCORE



Charleston So.

53



Presbyterian

76

February 15, 2020 • Templeton Center - Clinton, S.C.

FINAL STATISTICS

Official Box Score
Charleston So. vs Presbyterian
Game Totals -- Final Statistics
February 15, 2020 at Templeton Center - Clinton, S.C.



Charleston So. 53

No.	Player	S	Pts	FG	3FG	FT	OR	DR	TR	PF	A	TO	Blk	Stl	Min	+/-
05	LEIGH, SHA'MYA	G	5	1-4	0-1	3-5	0	1	1	1	2	2	0	0	33	-25
11	RUFF-MILLS, KELSIE	G	9	4-5	1-1	0-0	0	2	2	0	5	4	0	0	36	-15
13	GODFREY, SHARITA	F	4	2-2	0-0	0-0	0	6	6	1	1	1	1	1	13	5
23	GITTENS, TORI	G	0	0-3	0-2	0-0	0	0	0	1	2	0	0	0	19	-19
25	STEEDE, TIERRA	F	7	3-7	1-1	0-0	2	9	11	2	1	1	1	0	21	-9
01	WALKER, CARMELLA	G	2	1-5	0-2	0-0	0	1	1	5	1	2	0	1	20	2
02	MYERS, AHLEA	G	12	4-12	2-7	2-2	0	1	1	3	3	2	0	1	26	-15
14	WRIGHT, TYRA	C	10	5-9	0-1	0-0	0	4	4	1	1	1	0	0	23	-28
24	HICKLIN, CAILAH	F	4	1-4	0-2	2-2	0	0	0	2	0	0	0	0	9	-11
	TEAM						2	2	4	0		1				
TOTALS			53	21-51	4-17	7-9	4	26	30	16	16	14	2	3	200	

Shooting By Period

Period	FG	FG%	3FG	3FG%	FT	FT%
1st Qtr	9-16	56%	1-4	25%	0-0	0%
2nd Qtr	6-14	43%	2-4	50%	2-2	100%
3rd Qtr	5-13	38%	1-4	25%	3-5	60%
4th Qtr	1-8	13%	0-5	00%	2-2	100%
1st Half	15-30	50%	3-8	38%	2-2	100%
2nd Half	6-21	29%	1-9	11%	5-7	71%
Game	21-51	41.2%	4-17	23.5%	7-9	77.8%

Deadball Rebounds: 1.0

Last FG: 4th-02:15

Biggest Run: 8-0

Largest lead: By 7 at 1st-02:15

Technical Fouls: None.

Presbyterian 76

No.	Player	S	Pts	FG	3FG	FT	OR	DR	TR	PF	A	TO	Blk	Stl	Min	+/-
11	HALL, KACIE	G	19	7-9	5-6	0-0	1	1	2	2	3	1	1	1	39	26
14	JOHNSON, TRINITY	G	17	6-14	1-5	4-7	1	4	5	1	7	2	0	1	35	29
15	SANTOS, TESS	F	14	4-6	4-5	2-2	0	4	4	0	2	2	0	0	23	17
22	CARTER, TIONNA	F	6	1-5	0-0	4-8	1	3	4	1	1	2	1	2	28	21
32	COMPTON, JADE	F	6	1-6	0-2	4-4	0	6	6	3	0	0	0	1	21	15
03	HEMM, RILEY	G	0	0-0	0-0	0-0	0	0	0	0	0	0	0	0	3	-9
04	GIBBS, BRIA	F	0	0-3	0-0	0-0	1	1	2	0	0	1	0	0	5	-5
20	STOCKTON, GEORGIA	G	2	1-4	0-1	0-0	4	1	5	2	2	0	0	0	27	23
35	CAPLEY, ALESSIA	F	12	5-9	2-3	0-0	0	5	5	2	0	0	2	0	18	-2
	TEAM						0	2	2	0		0				
TOTALS			76	25-56	12-22	14-21	8	27	35	11	15	8	4	5	200	

Shooting By Period

Period	FG	FG%	3FG	3FG%	FT	FT%
1st Qtr	3-10	30%	1-3	33%	6-7	86%
2nd Qtr	8-17	47%	2-6	33%	3-6	50%
3rd Qtr	9-15	60%	4-5	80%	0-2	00%
4th Qtr	5-14	36%	5-8	63%	5-6	83%
1st Half	11-27	41%	3-9	33%	9-13	69%
2nd Half	14-29	48%	9-13	69%	5-8	63%
Game	25-56	44.6%	12-22	54.5%	14-21	66.7%

Deadball Rebounds: 4.0

Last FG: 4th-00:05

Biggest Run: 13-0

Largest lead: By 23 at 4th-00:05

Technical Fouls: None.

Game Notes:

Officials: Chad Tucker, Shawnie Smith, Sam Allen

Attendance: 388

Start Time: 02:02 PM ET

End Time: 03:45 PM ET

Game Duration: 1:43

Conference Game;

Score	1st	2nd	3rd	4th	TOT
CSU	19	16	14	4	53
PRE	13	21	22	20	76

CSU led for 13:08. PRE led for 20:48.

Game was tied for 6:05.

Times tied: 8 Lead Changes: 6

Points from	CSU	PRE
In the Paint	24	22
Off Turns	7	21
2nd Chance	0	7
Fast Break	6	2
Bench	28	14

Official Box Score
Charleston So. vs Presbyterian
First Half Statistics Only
February 15, 2020 at Templeton Center - Clinton, S.C.



Charleston So. 35

No.	Player	S	Pts	FG	3FG	FT	OR	DR	TR	PF	A	TO	Blk	Stl	Min	+/-
01	WALKER, CARMELLA	G	2	1-1	0-0	0-0	0	1	1	1	0	1	0	0	10	2
02	MYERS, AHLEA	G	8	3-6	2-3	0-0	0	1	1	0	2	0	0	1	10	2
05	LEIGH, SHA'MYA	G	0	0-1	0-0	0-0	0	0	0	0	2	1	0	0	13	-1
11	RUFF-MILLS, KELSIE	G	9	4-5	1-1	0-0	0	1	1	0	3	2	0	0	17	1
13	GODFREY, SHARITA	F	4	2-2	0-0	0-0	0	6	6	1	1	1	1	1	13	5
14	WRIGHT, TYRA	C	8	4-8	0-1	0-0	0	3	3	1	1	0	0	0	13	0
23	GITTENS, TORI	G	0	0-2	0-2	0-0	0	0	0	0	2	0	0	0	10	1
24	HICKLIN, CAILAH	F	4	1-3	0-1	2-2	0	0	0	2	0	0	0	0	7	-3
25	STEEDE, TIERRA	F	0	0-2	0-0	0-0	1	1	2	2	1	1	0	0	6	-2
	TEAM		0	0-0	0-0	0-0	2	1	3	0	0	0	0	0	0	
TOTALS			35	15-30	3-8	2-2	3	14	17	7	12	6	1	2	100	

Shooting By Period

Period	FG	FG%	3FG	3FG%	FT	FT%
1st Qtr	9-16	56%	1-4	25%	0-0	0%
2nd Qtr	6-14	43%	2-4	50%	2-2	100%
1st Half	15-30	50%	3-8	38%	2-2	100%
Game	21-51	41.2%	4-17	23.5%	7-9	77.8%

Deadball Rebounds: 1,0

Last FG Half: CSU 2nd-00:23

Presbyterian 34

No.	Player	S	Pts	FG	3FG	FT	OR	DR	TR	PF	A	TO	Blk	Stl	Min	+/-
03	HEMM, RILEY	G	0	0-0	0-0	0-0	0	0	0	0	0	0	0	0	3	-9
04	GIBBS, BRIA	F	0	0-3	0-0	0-0	1	1	2	0	0	1	0	0	6	-5
11	HALL, KACIE	G	6	2-3	2-3	0-0	0	1	1	1	2	1	1	0	19	2
14	JOHNSON, TRINITY	G	10	3-7	0-2	4-7	1	1	2	1	0	0	0	0	15	5
15	SANTOS, TESS	F	0	0-0	0-0	0-0	0	0	0	0	1	2	0	0	11	-5
20	STOCKTON, GEORGIA	G	0	0-1	0-1	0-0	2	0	2	0	1	0	0	0	9	4
22	CARTER, TIONNA	F	3	1-2	0-0	1-2	0	3	3	0	1	2	0	1	14	4
32	COMPTON, JADE	F	6	1-5	0-1	4-4	0	2	2	1	0	0	0	0	15	2
35	CAPLEY, ALESSIA	F	9	4-6	1-2	0-0	0	3	3	0	0	0	1	0	8	-3
	TEAM		0	0-0	0-0	0-0	0	1	1	0	0	0	0	0	0	
TOTALS			34	11-27	3-9	9-13	4	12	16	3	5	6	2	1	100	

Shooting By Period

Period	FG	FG%	3FG	3FG%	FT	FT%
1st Qtr	3-10	30%	1-3	33%	6-7	86%
2nd Qtr	8-17	47%	2-6	33%	3-6	50%
1st Half	11-27	41%	3-9	33%	9-13	69%
Game	25-56	44.6%	12-22	54.5%	14-21	66.7%

Deadball Rebounds: 4,0

Last FG Half: PRE 2nd-00:40

Game Notes:

Officials: Chad Tucker, Shawnie Smith, Sam Allen
Attendance: 388

Start Time: 02:02 PM ET
End Time: 03:45 PM ET
Game Duration: 1:43
Conference Game;

Score	1st	2nd	3rd	4th	TOT
CSU	19	16	14	4	53
PRE	13	21	22	20	76

Points from (This Period)	CSU	PRE
In the Paint	18	12
Off Turns	7	7
2nd Chance	0	2
Fast Break	2	0
Bench	22	9

Official Box Score
Charleston So. vs Presbyterian
First Quarter Statistics Only
February 15, 2020 at Templeton Center - Clinton, S.C.



Charleston So. 19

No.	Player	S	Pts	FG	3FG	FT	OR	DR	TR	PF	A	TO	Blk	Stl	Min	+/-
05	LEIGH, SHA'MYA	G	0	0-1	0-0	0-0	0	0	0	0	2	1	0	0	9	2
11	RUFF-MILLS, KELSIE	G	4	2-2	0-0	0-0	0	1	1	0	2	1	0	0	7	6
13	GODFREY, SHARITA	F	4	2-2	0-0	0-0	0	3	3	1	1	1	0	1	7	6
23	GITTENS, TORI	G	0	0-2	0-2	0-0	0	0	0	0	0	0	0	0	6	2
25	STEEDE, TIERRA	F	0	0-1	0-0	0-0	1	1	2	2	1	0	0	0	4	2
01	WALKER, CARMELLA	G	2	1-1	0-0	0-0	0	0	0	0	0	0	0	0	4	4
02	MYERS, AHLEA	G	3	1-3	1-2	0-0	0	0	0	0	1	0	0	1	4	4
14	WRIGHT, TYRA	C	4	2-3	0-0	0-0	0	1	1	0	1	0	0	0	6	4
24	HICKLIN, CAILAH	F	2	1-1	0-0	0-0	0	0	0	1	0	0	0	0	3	0
	TEAM						1	1	2	0		0				
TOTALS			19	9-16	1-4	0-0	2	7	9	4	8	3	0	2	50	

Shooting By Period

Period	FG	FG%	3FG	3FG%	FT	FT%
1st Qtr	9-16	56%	1-4	25%	0-0	0%
2nd Qtr	6-14	43%	2-4	50%	2-2	100%
1st Half	9-16	56%	1-4	25%	0-0	0%
1st Half	15-30	50%	3-8	38%	2-2	100%
Game	21-51	41.2%	4-17	23.5%	7-9	77.8%

Deadball Rebounds: 1,0

Presbyterian 13

No.	Player	S	Pts	FG	3FG	FT	OR	DR	TR	PF	A	TO	Blk	Stl	Min	+/-
11	HALL, KACIE	G	3	1-1	1-1	0-0	0	0	0	0	1	1	0	0	9	-3
14	JOHNSON, TRINITY	G	4	1-2	0-0	2-3	1	0	1	1	0	0	0	0	5	0
15	SANTOS, TESS	F	0	0-0	0-0	0-0	0	0	0	0	1	2	0	0	9	-4
22	CARTER, TIONNA	F	0	0-1	0-0	0-0	0	2	2	0	0	1	0	0	6	-2
32	COMPTON, JADE	F	4	0-3	0-1	4-4	0	1	1	0	0	0	0	0	9	-4
03	HEMM, RILEY	G	0	0-0	0-0	0-0	0	0	0	0	0	0	0	0	3	-9
04	GIBBS, BRIA	F	0	0-1	0-0	0-0	0	0	0	0	0	1	0	0	4	-4
20	STOCKTON, GEORGIA	G	0	0-0	0-0	0-0	0	0	0	0	0	0	0	0	1	-2
35	CAPLEY, ALESSIA	F	2	1-2	0-1	0-0	0	2	2	0	0	0	1	0	4	-2
	TEAM						0	0	0	0		0				
TOTALS			13	3-10	1-3	6-7	1	5	6	1	2	5	1	0	50	

Shooting By Period

Period	FG	FG%	3FG	3FG%	FT	FT%
1st Qtr	3-10	30%	1-3	33%	6-7	86%
2nd Qtr	8-17	47%	2-6	33%	3-6	50%
1st Half	3-10	30%	1-3	33%	6-7	86%
1st Half	11-27	41%	3-9	33%	9-13	69%
Game	25-56	44.6%	12-22	54.5%	14-21	66.7%

Deadball Rebounds: 4,0

Game Notes:

Officials: Chad Tucker, Shawnie Smith, Sam Allen
Attendance: 388

Start Time: 02:02 PM ET
End Time: 03:45 PM ET
Game Duration: 1:43
Conference Game;

Score	1st	2nd	3rd	4th	TOT
CSU	19	16	14	4	53
PRE	13	21	22	20	76

Points from (This Period)	CSU	PRE
In the Paint	10	4
Off Turns	5	3
2nd Chance	0	2
Fast Break	0	0
Bench	11	2

Official Play-By-Play
Charleston So. vs Presbyterian
First Quarter
February 15, 2020 at Templeton Center - Clinton, S.C.



Period 1

Starters:

Charleston So.: 5 LEIGH, SHA'MYA (G); 11 RUFF-MILLS, KELSIE (G); 13 GODFREY, SHARITA (F); 23 GITTENS, TORI (G); 25 STEEDE, TIERRA (F);

Presbyterian: 11 HALL, KACIE (G); 14 JOHNSON, TRINITY (G); 15 SANTOS, TESS (F); 22 CARTER, TIONNA (F); 32 COMPTON, JADE (F);

Time	VISITORS: Charleston So.	Score	Margin	HOME: Presbyterian
09:31				MISSED JUMPER by JOHNSON, TRINITY
09:30				REBOUND (OFF) by JOHNSON, TRINITY
09:30	FOUL (PERSONAL) by GODFREY, SHARITA			
09:30		1-0	H 1	GOOD! FT by JOHNSON, TRINITY
09:30		2-0	H 2	GOOD! FT by JOHNSON, TRINITY
09:06	GOOD! LAYUP by RUFF-MILLS, KELSIE	2-2	T	
09:06	ASSIST by GODFREY, SHARITA			
08:43				TURNOVER (BADPASS) by CARTER, TIONNA
08:19	TURNOVER (BADPASS) by GODFREY, SHARITA			
08:08				MISSED JUMPER by CARTER, TIONNA
08:05	REBOUND (DEF) by STEEDE, TIERRA			
07:35	GOOD! LAYUP by RUFF-MILLS, KELSIE [PNT]	2-4	V 2	
07:22		4-4	T	GOOD! JUMPER by JOHNSON, TRINITY [PNT]
07:22	FOUL (PERSONAL) by STEEDE, TIERRA			
07:22				MISSED FT by JOHNSON, TRINITY
07:16	REBOUND (DEF) by GODFREY, SHARITA			
07:01	GOOD! JUMPER by GODFREY, SHARITA	4-6	V 2	
07:01	ASSIST by STEEDE, TIERRA			
06:42				MISSED LAYUP by COMPTON, JADE
06:37	REBOUND (DEF) by GODFREY, SHARITA			
06:35				FOUL (PERSONAL) by JOHNSON, TRINITY
06:35				SUB OUT: JOHNSON, TRINITY
06:35				SUB IN: CAPLEY, ALESSIA
06:28	MISSED LAYUP by STEEDE, TIERRA			
06:28				BLOCK by CAPLEY, ALESSIA
06:23	REBOUND (OFF) by STEEDE, TIERRA			
06:21	MISSED 3PTR by GITTENS, TORI			
06:18				REBOUND (DEF) by CARTER, TIONNA
06:05	FOUL (PERSONAL) by STEEDE, TIERRA			
06:05	SUB OUT: STEEDE, TIERRA			
06:05	SUB IN: WRIGHT, TYRA			
06:05		5-6	V 1	GOOD! FT by COMPTON, JADE
06:05		6-6	T	GOOD! FT by COMPTON, JADE
06:05				SUB IN: GIBBS, BRIA
06:05				SUB OUT: CARTER, TIONNA
05:59	MISSED 3PTR by GITTENS, TORI			
05:55				REBOUND (DEF) by COMPTON, JADE
05:40				MISSED 3PTR by COMPTON, JADE
05:31	REBOUND (DEF) by TEAM			
05:06	MISSED LAYUP by WRIGHT, TYRA			
05:02				REBOUND (DEF) by CAPLEY, ALESSIA
04:57				TURNOVER (BADPASS) by SANTOS, TESS
04:57	STEAL by GODFREY, SHARITA			
04:50	GOOD! JUMPER by GODFREY, SHARITA	6-8	V 2	
04:50	ASSIST by LEIGH, SHA'MYA			
04:30		8-8	T	GOOD! JUMPER by CAPLEY, ALESSIA [PNT]
04:30				ASSIST by HALL, KACIE
04:08	GOOD! LAYUP by WRIGHT, TYRA [PNT]	8-10	V 2	
04:08	ASSIST by RUFF-MILLS, KELSIE			
03:52				MISSED JUMPER by GIBBS, BRIA
03:51	REBOUND (DEF) by RUFF-MILLS, KELSIE			
03:51	TURNOVER (LOSTBALL) by RUFF-MILLS, KELSIE			
03:51				
03:51				SUB OUT: SANTOS, TESS
03:51				SUB OUT: COMPTON, JADE
03:51				SUB IN: HEMM, RILEY
03:51				SUB IN: STOCKTON, GEORGIA
03:51	SUB OUT: RUFF-MILLS, KELSIE			
03:51	SUB OUT: GODFREY, SHARITA			
03:51	SUB OUT: GITTENS, TORI			
03:51	SUB IN: WALKER, CARMELLA			
03:51	SUB IN: MYERS, AHLEA			
03:51	SUB IN: HICKLIN, CAILAH			
03:50				TURNOVER (BADPASS) by HALL, KACIE
03:31	MISSED 3PTR by MYERS, AHLEA			
03:26				REBOUND (DEF) by CAPLEY, ALESSIA
03:13				MISSED 3PTR by CAPLEY, ALESSIA
03:09	REBOUND (DEF) by WRIGHT, TYRA			
02:58	GOOD! JUMPER by HICKLIN, CAILAH	8-12	V 4	
02:58	ASSIST by WRIGHT, TYRA			

Time	VISITORS: Charleston So.	Score	Margin	HOME: Presbyterian
02:33				TURNOVER (TRAVEL) by GIBBS, BRIA
02:33				SUB OUT: GIBBS, BRIA
02:33				SUB OUT: HALL, KACIE
02:33				SUB OUT: STOCKTON, GEORGIA
02:33				SUB OUT: CAPLEY, ALESSIA
02:33				SUB IN: JOHNSON, TRINITY
02:33				SUB IN: SANTOS, TESS
02:33				SUB IN: CARTER, TIONNA
02:33				SUB IN: COMPTON, JADE
02:15	GOOD! 3PTR by MYERS, AHLEA	8-15	V 7	
02:15	ASSIST by LEIGH, SHA'MYA			
01:40				TURNOVER (LOSTBALL) by SANTOS, TESS
01:40	STEAL by MYERS, AHLEA			
01:34	MISSED JUMPER by LEIGH, SHA'MYA			
01:34	REBOUND (OFF) by TEAM			
01:34				SUB OUT: HEMM, RILEY
01:34				SUB IN: HALL, KACIE
01:31	TURNOVER (TRAVEL) by LEIGH, SHA'MYA			
01:18		11-15	V 4	GOOD! 3PTR by HALL, KACIE
01:18				ASSIST by SANTOS, TESS
00:53	MISSED LAYUP by MYERS, AHLEA			
00:49				REBOUND (DEF) by CARTER, TIONNA
00:42	FOUL (PERSONAL) by HICKLIN, CAILAH			
00:42		12-15	V 3	GOOD! FT by COMPTON, JADE
00:42		13-15	V 2	GOOD! FT by COMPTON, JADE
00:42				SUB OUT: JOHNSON, TRINITY
00:42				SUB IN: HEMM, RILEY
00:42	SUB OUT: LEIGH, SHA'MYA			
00:42	SUB OUT: HICKLIN, CAILAH			
00:42	SUB IN: RUFF-MILLS, KELSIE			
00:42	SUB IN: GODFREY, SHARITA			
00:39	GOOD! LAYUP by WALKER, CARMELLA [PNT]	13-17	V 4	
00:39	ASSIST by MYERS, AHLEA			
00:24				MISSED JUMPER by COMPTON, JADE
00:20	REBOUND (DEF) by GODFREY, SHARITA			
00:15	GOOD! JUMPER by WRIGHT, TYRA [PNT]	13-19	V 6	
00:15	ASSIST by RUFF-MILLS, KELSIE			

Charleston So. 19, Presbyterian 13

Points from (This Period)	CSU	PRE
In the Paint	10	4
Off Turns	5	3
2nd Chance	0	2
Fast Break	0	0
Bench	11	2

Official Box Score
Charleston So. vs Presbyterian
Second Quarter Statistics Only
February 15, 2020 at Templeton Center - Clinton, S.C.



Charleston So. 16

No.	Player	S	Pts	FG	3FG	FT	OR	DR	TR	PF	A	TO	Blk	Stl	Min	+/-
05	LEIGH, SHA'MYA	G	0	0-0	0-0	0-0	0	0	0	0	0	0	0	0	4	-3
11	RUFF-MILLS, KELSIE	G	5	2-3	1-1	0-0	0	0	0	0	1	1	0	0	10	-5
13	GODFREY, SHARITA	F	0	0-0	0-0	0-0	0	3	3	0	0	0	1	0	6	-1
23	GITTENS, TORI	G	0	0-0	0-0	0-0	0	0	0	0	2	0	0	0	4	-1
25	STEEDE, TIERRA	F	0	0-1	0-0	0-0	0	0	0	0	0	1	0	0	2	-4
01	WALKER, CARMELLA	G	0	0-0	0-0	0-0	0	1	1	1	0	1	0	0	6	-2
02	MYERS, AHLEA	G	5	2-3	1-1	0-0	0	1	1	0	1	0	0	0	6	-2
14	WRIGHT, TYRA	C	4	2-5	0-1	0-0	0	2	2	1	0	0	0	0	7	-4
24	HICKLIN, CAILAH	F	2	0-2	0-1	2-2	0	0	0	1	0	0	0	0	4	-3
	TEAM						1	0	1	0		0				
TOTALS			16	6-14	2-4	2-2	1	7	8	3	4	3	1	0	50	

Shooting By Period

Period	FG	FG%	3FG	3FG%	FT	FT%
3rd Qtr	5-13	38%	1-4	25%	3-5	60%
4th Qtr	1-8	13%	0-5	00%	2-2	100%
2nd Half	6-14	43%	2-4	50%	2-2	100%
2nd Half	6-21	29%	1-9	11%	5-7	71%
Game	21-51	41.2%	4-17	23.5%	7-9	77.8%

Deadball Rebounds: 1,0

Presbyterian 21

No.	Player	S	Pts	FG	3FG	FT	OR	DR	TR	PF	A	TO	Blk	Stl	Min	+/-
11	HALL, KACIE	G	3	1-2	1-2	0-0	0	1	1	1	1	0	1	0	10	5
14	JOHNSON, TRINITY	G	6	2-5	0-2	2-4	0	1	1	0	0	0	0	0	10	5
15	SANTOS, TESS	F	0	0-0	0-0	0-0	0	0	0	0	0	0	0	0	2	-1
22	CARTER, TIONNA	F	3	1-1	0-0	1-2	0	1	1	0	1	1	0	1	8	6
32	COMPTON, JADE	F	2	1-2	0-0	0-0	0	1	1	1	0	0	0	0	6	6
03	HEMM, RILEY	G	0	0-0	0-0	0-0	0	0	0	0	0	0	0	0	0	0
04	GIBBS, BRIA	F	0	0-2	0-0	0-0	1	1	2	0	0	0	0	0	2	-1
20	STOCKTON, GEORGIA	G	0	0-1	0-1	0-0	2	0	2	0	1	0	0	0	8	6
35	CAPLEY, ALESSIA	F	7	3-4	1-1	0-0	0	1	1	0	0	0	0	0	4	-1
	TEAM						0	1	1	0		0				
TOTALS			21	8-17	2-6	3-6	3	7	10	2	3	1	1	1	50	

Shooting By Period

Period	FG	FG%	3FG	3FG%	FT	FT%
3rd Qtr	9-15	60%	4-5	80%	0-2	00%
4th Qtr	5-14	36%	5-8	63%	5-6	83%
2nd Half	8-17	47%	2-6	33%	3-6	50%
2nd Half	14-29	48%	9-13	69%	5-8	63%
Game	25-56	44.6%	12-22	54.5%	14-21	66.7%

Deadball Rebounds: 4,0

Game Notes:

Officials: Chad Tucker, Shawnie Smith, Sam Allen
Attendance: 388

Start Time: 02:02 PM ET
End Time: 03:45 PM ET
Game Duration: 1:43
Conference Game;

Score	1st	2nd	3rd	4th	TOT
CSU	19	16	14	4	53
PRE	13	21	22	20	76

Points from (This Period)	CSU	PRE
In the Paint	8	8
Off Turns	2	4
2nd Chance	0	0
Fast Break	2	0
Bench	11	7

Official Play-By-Play
Charleston So. vs Presbyterian
Second Quarter
February 15, 2020 at Templeton Center - Clinton, S.C.



Period 2

Starters:

Charleston So.: 5 LEIGH, SHA'MYA (G); 11 RUFF-MILLS, KELSIE (G); 13 GODFREY, SHARITA (F); 23 GITTENS, TORI (G); 25 STEEDE, TIERRA (F);

Presbyterian: 11 HALL, KACIE (G); 14 JOHNSON, TRINITY (G); 15 SANTOS, TESS (F); 22 CARTER, TIONNA (F); 32 COMPTON, JADE (F);

Time	VISITORS: Charleston So.	Score	Margin	HOME: Presbyterian
10:00				SUB OUT: HEMM, RILEY
10:00				SUB OUT: SANTOS, TESS
10:00				SUB IN: JOHNSON, TRINITY
10:00				SUB IN: STOCKTON, GEORGIA
10:00	SUB OUT: WRIGHT, TYRA			
10:00	SUB IN: HICKLIN, CAILAH			
09:47		15-19	V 4	GOOD! JUMPER by JOHNSON, TRINITY [PNT]
09:36	TURNOVER (BADPASS) by WALKER, CARMELLA			
09:16	FOUL (PERSONAL) by WALKER, CARMELLA			
09:16		16-19	V 3	GOOD! FT by CARTER, TIONNA
09:15				MISSED FT by CARTER, TIONNA
09:14				REBOUND (OFF) by STOCKTON, GEORGIA
09:09				MISSED 3PTR by HALL, KACIE
09:09	REBOUND (DEF) by WALKER, CARMELLA			
09:09				FOUL (PERSONAL) by COMPTON, JADE
08:43	MISSED JUMPER by HICKLIN, CAILAH			
08:43	REBOUND (OFF) by TEAM			
08:29	MISSED JUMPER by MYERS, AHLEA			
08:29				BLOCK by HALL, KACIE
08:29				REBOUND (DEF) by TEAM
08:07		18-19	V 1	GOOD! JUMPER by COMPTON, JADE [PNT]
07:51				FOUL (PERSONAL) by HALL, KACIE
07:51	GOOD! FT by HICKLIN, CAILAH	18-20	V 2	
07:51	GOOD! FT by HICKLIN, CAILAH	18-21	V 3	
07:51				SUB OUT: CARTER, TIONNA
07:51				SUB IN: GIBBS, BRIA
07:51	SUB OUT: WALKER, CARMELLA			
07:51	SUB OUT: MYERS, AHLEA			
07:51	SUB OUT: HICKLIN, CAILAH			
07:51	SUB IN: LEIGH, SHA'MYA			
07:51	SUB IN: WRIGHT, TYRA			
07:51	SUB IN: GITTENS, TORI			
07:40	FOUL (PERSONAL) by WRIGHT, TYRA			
07:40				MISSED FT by JOHNSON, TRINITY
07:40				REBOUND (OFF) by TEAM
07:40		19-21	V 2	GOOD! FT by JOHNSON, TRINITY
07:34	MISSED JUMPER by WRIGHT, TYRA			
07:31				REBOUND (DEF) by HALL, KACIE
07:27				MISSED 3PTR by JOHNSON, TRINITY
07:18				REBOUND (OFF) by STOCKTON, GEORGIA
07:15				MISSED LAYUP by JOHNSON, TRINITY
07:05				MISSED LAYUP by GIBBS, BRIA
07:05				REBOUND (OFF) by GIBBS, BRIA
07:04	REBOUND (DEF) by GODFREY, SHARITA			
07:01	GOOD! LAYUP by WRIGHT, TYRA	19-23	V 4	
07:01	ASSIST by GITTENS, TORI			
06:40				MISSED JUMPER by GIBBS, BRIA
06:37	REBOUND (DEF) by GODFREY, SHARITA			
06:23	MISSED JUMPER by RUFF-MILLS, KELSIE			
06:19				REBOUND (DEF) by GIBBS, BRIA
06:19				
06:19				TIMEOUT 30SEC
06:19				SUB OUT: GIBBS, BRIA
06:19				SUB IN: CARTER, TIONNA
06:19	SUB OUT: GODFREY, SHARITA			
06:19	SUB IN: STEEDE, TIERRA			
05:55		21-23	V 2	GOOD! LAYUP by JOHNSON, TRINITY [PNT]
05:35	MISSED 3PTR by WRIGHT, TYRA			
05:30				REBOUND (DEF) by CARTER, TIONNA
05:23				MISSED JUMPER by COMPTON, JADE
05:18	REBOUND (DEF) by WRIGHT, TYRA			
04:49	MISSED JUMPER by STEEDE, TIERRA			
04:44				REBOUND (DEF) by COMPTON, JADE
04:39		23-23	T	GOOD! LAYUP by CARTER, TIONNA
04:19	TURNOVER (3SEC) by STEEDE, TIERRA			
04:19				SUB OUT: COMPTON, JADE
04:19				SUB IN: CAPLEY, ALESSIA
04:19	SUB OUT: LEIGH, SHA'MYA			
04:19	SUB OUT: GITTENS, TORI			
04:19	SUB OUT: STEEDE, TIERRA			

Time	VISITORS: Charleston So.	Score	Margin	HOME: Presbyterian
04:19	SUB IN: WALKER, CARMELLA			
04:19	SUB IN: MYERS, AHLEA			
04:19	SUB IN: HICKLIN, CAILAH			
04:15		26-23	H 3	GOOD! 3PTR by HALL, KACIE
04:15				ASSIST by CARTER, TIONNA
03:48	GOOD! 3PTR by MYERS, AHLEA	26-26	T	
03:48	ASSIST by RUFF-MILLS, KELSIE			
03:36		28-26	H 2	GOOD! JUMPER by CAPLEY, ALESSIA
03:36				ASSIST by STOCKTON, GEORGIA
03:12	MISSED 3PTR by HICKLIN, CAILAH			
03:08				REBOUND (DEF) by JOHNSON, TRINITY
02:59				MISSED 3PTR by STOCKTON, GEORGIA
02:56	REBOUND (DEF) by WRIGHT, TYRA			
02:51	TURNOVER (LOSTBALL) by RUFF-MILLS, KELSIE			
02:51				STEAL by CARTER, TIONNA
02:51				TURNOVER (DRIBBLING) by CARTER, TIONNA
02:51				SUB OUT: STOCKTON, GEORGIA
02:51				SUB IN: SANTOS, TESS
02:51	SUB OUT: HICKLIN, CAILAH			
02:51	SUB IN: GODFREY, SHARITA			
02:39	GOOD! JUMPER by RUFF-MILLS, KELSIE [PNT]	28-28	T	
02:07		30-28	H 2	GOOD! JUMPER by CAPLEY, ALESSIA
01:59	GOOD! LAYUP by WRIGHT, TYRA [FB]	30-30	T	
01:59	ASSIST by MYERS, AHLEA			
01:37				MISSED LAYUP by CAPLEY, ALESSIA
01:37	BLOCK by GODFREY, SHARITA			
01:28	REBOUND (DEF) by GODFREY, SHARITA			
01:26	MISSED JUMPER by WRIGHT, TYRA			
01:23				REBOUND (DEF) by CAPLEY, ALESSIA
01:06				MISSED 3PTR by JOHNSON, TRINITY
01:03	REBOUND (DEF) by MYERS, AHLEA			
01:01	GOOD! JUMPER by MYERS, AHLEA [PNT]	30-32	V 2	
00:40		33-32	H 1	GOOD! 3PTR by CAPLEY, ALESSIA
00:40				ASSIST by HALL, KACIE
00:32	TIMEOUT 30SEC			
00:32				SUB OUT: SANTOS, TESS
00:32				SUB IN: STOCKTON, GEORGIA
00:32	SUB OUT: GODFREY, SHARITA			
00:32	SUB OUT: WRIGHT, TYRA			
00:32	SUB IN: GITTENS, TORI			
00:32	SUB IN: HICKLIN, CAILAH			
00:23	GOOD! 3PTR by RUFF-MILLS, KELSIE	33-35	V 2	
00:23	ASSIST by GITTENS, TORI			
00:03	FOUL (PERSONAL) by HICKLIN, CAILAH			
00:03				MISSED FT by JOHNSON, TRINITY
00:03				REBOUND (OFF) by TEAM
00:03		34-35	V 1	GOOD! FT by JOHNSON, TRINITY

Charleston So. 35, Presbyterian 34

Points from (This Period)	CSU	PRE
In the Paint	8	8
Off Turns	2	4
2nd Chance	0	0
Fast Break	2	0
Bench	11	7

Official Box Score
Charleston So. vs Presbyterian
Second Half Statistics Only
February 15, 2020 at Templeton Center - Clinton, S.C.



Charleston So. 18

No.	Player	S	Pts	FG	3FG	FT	OR	DR	TR	PF	A	TO	Blk	Stl	Min	+/-
01	WALKER, CARMELLA	G	0	0-4	0-2	0-0	0	0	0	4	1	1	0	1	10	0
02	MYERS, AHLEA	G	4	1-6	0-4	2-2	0	0	0	3	1	2	0	0	16	-17
05	LEIGH, SHA'MYA	G	5	1-3	0-1	3-5	0	1	1	1	0	1	0	0	20	-24
11	RUFF-MILLS, KELSIE	G	0	0-0	0-0	0-0	0	1	1	0	2	2	0	0	19	-16
13	GODFREY, SHARITA	F	0	0-0	0-0	0-0	0	0	0	0	0	0	0	0	0	0
14	WRIGHT, TYRA	C	2	1-1	0-0	0-0	0	1	1	0	0	1	0	0	10	-28
23	GITTENS, TORI	G	0	0-1	0-0	0-0	0	0	0	1	0	0	0	0	9	-20
24	HICKLIN, CAILAH	F	0	0-1	0-1	0-0	0	0	0	0	0	0	0	0	1	-8
25	STEEDE, TIERRA	F	7	3-5	1-1	0-0	1	8	9	0	0	0	1	0	16	-7
	TEAM		0	0-0	0-0	0-0	0	1	1	0	0	1	0	0	0	
TOTALS			18	6-21	1-9	5-7	1	12	13	9	4	8	1	1	100	

Shooting By Period

Period	FG	FG%	3FG	3FG%	FT	FT%
3rd Qtr	5-13	38%	1-4	25%	3-5	60%
4th Qtr	1-8	13%	0-5	00%	2-2	100%
2nd Half	6-21	29%	1-9	11%	5-7	71%
Game	21-51	41.2%	4-17	23.5%	7-9	77.8%

Deadball Rebounds: 1,0

Last FG Half: CSU 4th-02:15

Presbyterian 42

No.	Player	S	Pts	FG	3FG	FT	OR	DR	TR	PF	A	TO	Blk	Stl	Min	+/-
03	HEMM, RILEY	G	0	0-0	0-0	0-0	0	0	0	0	0	0	0	0	0	0
04	GIBBS, BRIA	F	0	0-0	0-0	0-0	0	0	0	0	0	0	0	0	0	0
11	HALL, KACIE	G	13	5-6	3-3	0-0	1	0	1	1	1	0	0	1	20	24
14	JOHNSON, TRINITY	G	7	3-7	1-3	0-0	0	3	3	0	7	2	0	1	20	24
15	SANTOS, TESS	F	14	4-6	4-5	2-2	0	4	4	0	1	0	0	0	12	22
20	STOCKTON, GEORGIA	G	2	1-3	0-0	0-0	2	1	3	2	1	0	0	0	18	19
22	CARTER, TIONNA	F	3	0-3	0-0	3-6	1	0	1	1	0	0	1	1	13	17
32	COMPTON, JADE	F	0	0-1	0-1	0-0	0	4	4	2	0	0	0	1	7	13
35	CAPLEY, ALESSIA	F	3	1-3	1-1	0-0	0	2	2	2	0	0	1	0	10	1
	TEAM		0	0-0	0-0	0-0	0	1	1	0	0	0	0	0	0	
TOTALS			42	14-29	9-13	5-8	4	15	19	8	10	2	2	4	100	

Shooting By Period

Period	FG	FG%	3FG	3FG%	FT	FT%
3rd Qtr	9-15	60%	4-5	80%	0-2	00%
4th Qtr	5-14	36%	5-8	63%	5-6	83%
2nd Half	14-29	48%	9-13	69%	5-8	63%
Game	25-56	44.6%	12-22	54.5%	14-21	66.7%

Deadball Rebounds: 4,0

Last FG Half: PRE 4th-00:05

Game Notes:

Officials: Chad Tucker, Shawnie Smith, Sam Allen
Attendance: 388

Start Time: 02:02 PM ET

End Time: 03:45 PM ET

Game Duration: 1:43

Conference Game;

Score	1st	2nd	3rd	4th	TOT
CSU	19	16	14	4	53
PRE	13	21	22	20	76

Points from (This Period)	CSU	PRE
In the Paint	6	10
Off Turns	0	14
2nd Chance	0	5
Fast Break	4	2
Bench	6	5

Official Box Score
Charleston So. vs Presbyterian
Third Quarter Statistics Only
February 15, 2020 at Templeton Center - Clinton, S.C.



Charleston So. 18

No.	Player	S	Pts	FG	3FG	FT	OR	DR	TR	PF	A	TO	Blk	Stl	Min	+/-
05	LEIGH, SHA'MYA	G	5	1-1	0-0	3-5	0	0	0	1	0	1	0	0	10	-8
11	RUFF-MILLS, KELSIE	G	0	0-0	0-0	0-0	0	0	0	0	2	0	0	0	10	-8
13	GODFREY, SHARITA	F	0	0-0	0-0	0-0	0	0	0	0	0	0	0	0	0	0
23	GITTENS, TORI	G	0	0-1	0-0	0-0	0	0	0	0	0	0	0	0	4	-12
25	STEEDE, TIERRA	F	7	3-4	1-1	0-0	0	6	6	0	0	0	1	0	9	-3
01	WALKER, CARMELLA	G	0	0-3	0-1	0-0	0	0	0	2	1	0	0	1	6	4
02	MYERS, AHLEA	G	2	1-4	0-2	0-0	0	0	0	0	1	0	0	0	7	-1
14	WRIGHT, TYRA	C	0	0-0	0-0	0-0	0	0	0	0	0	1	0	0	4	-12
24	HICKLIN, CAILAH	F	0	0-0	0-0	0-0	0	0	0	0	0	0	0	0	0	0
	TEAM						0	1	1	0		0				
TOTALS			14	5-13	1-4	3-5	0	7	7	3	4	2	1	1	50	

Shooting By Period

Period	FG	FG%	3FG	3FG%	FT	FT%
2nd Half	0-0	0%	0-0	0%	0-0	0%
Game	21-51	41.2%	4-17	23.5%	7-9	77.8%

Deadball Rebounds: 1,0

Presbyterian 42

No.	Player	S	Pts	FG	3FG	FT	OR	DR	TR	PF	A	TO	Blk	Stl	Min	+/-
11	HALL, KACIE	G	13	5-5	3-3	0-0	0	0	0	1	0	0	0	0	10	8
14	JOHNSON, TRINITY	G	7	3-4	1-1	0-0	0	1	1	0	3	1	0	1	10	8
15	SANTOS, TESS	F	0	0-0	0-0	0-0	0	1	1	0	1	0	0	0	2	6
22	CARTER, TIONNA	F	0	0-1	0-0	0-2	0	0	0	1	0	0	1	0	7	4
32	COMPTON, JADE	F	0	0-1	0-1	0-0	0	4	4	2	0	0	0	1	7	13
03	HEMM, RILEY	G	0	0-0	0-0	0-0	0	0	0	0	0	0	0	0	0	0
04	GIBBS, BRIA	F	0	0-0	0-0	0-0	0	0	0	0	0	0	0	0	0	0
20	STOCKTON, GEORGIA	G	2	1-2	0-0	0-0	0	1	1	2	1	0	0	0	8	3
35	CAPLEY, ALESSIA	F	0	0-2	0-0	0-0	0	2	2	1	0	0	1	0	6	-2
	TEAM						0	0	0	0		0				
TOTALS			22	9-15	4-5	0-2	0	9	9	7	5	1	2	2	50	

Shooting By Period

Period	FG	FG%	3FG	3FG%	FT	FT%
2nd Half	0-0	0%	0-0	0%	0-0	0%
Game	25-56	44.6%	12-22	54.5%	14-21	66.7%

Deadball Rebounds: 4,0

Game Notes:

Officials: Chad Tucker, Shawnie Smith, Sam Allen
Attendance: 388

Start Time: 02:02 PM ET

End Time: 03:45 PM ET

Game Duration: 1:43

Conference Game;

Score	1st	2nd	3rd	4th	TOT
CSU	19	16	14	4	53
PRE	13	21	22	20	76

Points from (This Period)	CSU	PRE
In the Paint	4	10
Off Turns	0	5
2nd Chance	0	0
Fast Break	4	2
Bench	2	2

Official Play-By-Play
Charleston So. vs Presbyterian
Third Quarter
February 15, 2020 at Templeton Center - Clinton, S.C.



Period 3

Starters:

Charleston So.: 5 LEIGH, SHA'MYA (G); 11 RUFF-MILLS, KELSIE (G); 13 GODFREY, SHARITA (F); 23 GITTENS, TORI (G); 25 STEEDE, TIERRA (F);

Presbyterian: 11 HALL, KACIE (G); 14 JOHNSON, TRINITY (G); 15 SANTOS, TESS (F); 22 CARTER, TIONNA (F); 32 COMPTON, JADE (F);

Time	VISITORS: Charleston So.	Score	Margin	HOME: Presbyterian
10:00				SUB OUT: CAPLEY, ALESSIA
10:00				SUB IN: COMPTON, JADE
10:00	SUB OUT: WALKER, CARMELLA			
10:00	SUB OUT: MYERS, AHLEA			
10:00	SUB OUT: HICKLIN, CAILAH			
10:00	SUB IN: LEIGH, SHA'MYA			
10:00	SUB IN: GODFREY, SHARITA			
10:00	SUB IN: STEEDE, TIERRA			
09:43	SUB OUT: GODFREY, SHARITA			
09:43	SUB IN: WRIGHT, TYRA			
09:32	GOOD! 3PTR by STEEDE, TIERRA	34-38	V 4	
09:32	ASSIST by RUFF-MILLS, KELSIE			
09:09		36-38	V 2	GOOD! LAYUP by STOCKTON, GEORGIA [PNT]
08:42	TURNOVER (LOSTBALL) by WRIGHT, TYRA			
08:42				STEAL by JOHNSON, TRINITY
08:35		39-38	H 1	GOOD! 3PTR by HALL, KACIE
08:35				ASSIST by JOHNSON, TRINITY
08:20	MISSED JUMPER by STEEDE, TIERRA			
08:15				REBOUND (DEF) by COMPTON, JADE
08:11				MISSED 3PTR by COMPTON, JADE
08:07	REBOUND (DEF) by STEEDE, TIERRA			
07:59	TURNOVER (BADPASS) by LEIGH, SHA'MYA			
07:59				STEAL by COMPTON, JADE
07:49		41-38	H 3	GOOD! LAYUP by JOHNSON, TRINITY [PNT]
07:27	MISSED LAYUP by GITTENS, TORI			
07:27				BLOCK by CARTER, TIONNA
07:21				REBOUND (DEF) by STOCKTON, GEORGIA
07:18		44-38	H 6	GOOD! 3PTR by HALL, KACIE
07:18				ASSIST by JOHNSON, TRINITY
07:15	TIMEOUT 30SEC			
07:15				
07:15	SUB OUT: WRIGHT, TYRA			
07:15	SUB OUT: GITTENS, TORI			
07:15	SUB IN: WALKER, CARMELLA			
07:15	SUB IN: MYERS, AHLEA			
06:59	MISSED 3PTR by WALKER, CARMELLA			
06:56				REBOUND (DEF) by COMPTON, JADE
06:43		47-38	H 9	GOOD! 3PTR by HALL, KACIE
06:43				ASSIST by STOCKTON, GEORGIA
06:20	MISSED 3PTR by MYERS, AHLEA			
06:17				REBOUND (DEF) by JOHNSON, TRINITY
06:05				MISSED JUMPER by STOCKTON, GEORGIA
06:01	REBOUND (DEF) by STEEDE, TIERRA			
05:54				FOUL (PERSONAL) by CARTER, TIONNA
05:54				SUB OUT: CARTER, TIONNA
05:54				SUB IN: CAPLEY, ALESSIA
05:47				FOUL (PERSONAL) by CAPLEY, ALESSIA
05:40				FOUL (PERSONAL) by STOCKTON, GEORGIA
05:31				FOUL (PERSONAL) by COMPTON, JADE
05:20	GOOD! LAYUP by STEEDE, TIERRA	47-40	H 7	
04:55				SUB OUT: COMPTON, JADE
04:55				SUB IN: CARTER, TIONNA
04:51	FOUL (PERSONAL) by WALKER, CARMELLA			
04:51				
04:36				MISSED LAYUP by JOHNSON, TRINITY
04:36	BLOCK by STEEDE, TIERRA			
04:26	REBOUND (DEF) by STEEDE, TIERRA			
04:20	GOOD! JUMPER by STEEDE, TIERRA [FB]	47-42	H 5	
04:20	ASSIST by WALKER, CARMELLA			
04:13				MISSED JUMPER by CARTER, TIONNA
04:13	REBOUND (DEF) by STEEDE, TIERRA			
04:13				FOUL (PERSONAL) by STOCKTON, GEORGIA
04:13	GOOD! FT by LEIGH, SHA'MYA	47-43	H 4	
04:13	GOOD! FT by LEIGH, SHA'MYA	47-44	H 3	
03:52	FOUL (PERSONAL) by LEIGH, SHA'MYA			
03:50	FOUL (PERSONAL) by WALKER, CARMELLA			
03:50				MISSED FT by CARTER, TIONNA
03:50				REBOUND (OFF) by TEAM
03:50				MISSED FT by CARTER, TIONNA
03:47	REBOUND (DEF) by STEEDE, TIERRA			

Time	VISITORS: Charleston So.	Score	Margin	HOME: Presbyterian
03:41	MISSED 3PTR by MYERS, AHLEA			
03:37				REBOUND (DEF) by CAPLEY, ALESSIA
03:26				TURNOVER (LOSTBALL) by JOHNSON, TRINITY
03:26	STEAL by WALKER, CARMELLA			
03:21	MISSED LAYUP by WALKER, CARMELLA			
03:16				REBOUND (DEF) by CAPLEY, ALESSIA
03:00				MISSED LAYUP by CAPLEY, ALESSIA
02:57	REBOUND (DEF) by STEEDE, TIERRA			
02:54	GOOD! LAYUP by MYERS, AHLEA [FB]	47-46	H 1	
02:54	ASSIST by RUFF-MILLS, KELSIE			
02:24				MISSED JUMPER by CAPLEY, ALESSIA
02:21	REBOUND (DEF) by TEAM			
02:21				SUB OUT: STOCKTON, GEORGIA
02:21				SUB OUT: CARTER, TIONNA
02:21				SUB IN: SANTOS, TESS
02:21				SUB IN: COMPTON, JADE
02:07	MISSED LAYUP by WALKER, CARMELLA			
02:07				BLOCK by CAPLEY, ALESSIA
02:02				REBOUND (DEF) by COMPTON, JADE
01:50		50-46	H 4	GOOD! 3PTR by JOHNSON, TRINITY
01:50				ASSIST by SANTOS, TESS
01:24	GOOD! JUMPER by LEIGH, SHA'MYA	50-48	H 2	
01:24				FOUL (PERSONAL) by HALL, KACIE
01:24	SUB OUT: WALKER, CARMELLA			
01:24	SUB OUT: STEEDE, TIERRA			
01:24	SUB IN: WRIGHT, TYRA			
01:24	SUB IN: GITTENS, TORI			
01:24	MISSED FT by LEIGH, SHA'MYA			
01:24	ASSIST by MYERS, AHLEA			
01:22				REBOUND (DEF) by SANTOS, TESS
01:10		52-48	H 4	GOOD! JUMPER by HALL, KACIE [PNT]
00:47	MISSED JUMPER by MYERS, AHLEA			
00:44				REBOUND (DEF) by COMPTON, JADE
00:39		54-48	H 6	GOOD! LAYUP by HALL, KACIE [FB]
00:39				ASSIST by JOHNSON, TRINITY
00:21				FOUL (PERSONAL) by COMPTON, JADE
00:21				SUB OUT: COMPTON, JADE
00:21				SUB IN: STOCKTON, GEORGIA
00:21	MISSED FT by LEIGH, SHA'MYA			
00:21	REBOUND (OFF) by TEAM			
00:21	GOOD! FT by LEIGH, SHA'MYA	54-49	H 5	
00:00		56-49	H 7	GOOD! LAYUP by JOHNSON, TRINITY

Charleston So. 49, Presbyterian 56

Points from (This Period)	CSU	PRE
In the Paint	4	10
Off Turns	0	5
2nd Chance	0	0
Fast Break	4	2
Bench	2	2

Official Box Score
Charleston So. vs Presbyterian
Fourth Quarter Statistics Only
February 15, 2020 at Templeton Center - Clinton, S.C.



Charleston So. 4

No.	Player	S	Pts	FG	3FG	FT	OR	DR	TR	PF	A	TO	Blk	Stl	Min	+/-
05	LEIGH, SHA'MYA	G	0	0-2	0-1	0-0	0	1	1	0	0	0	0	0	10	-16
11	RUFF-MILLS, KELSIE	G	0	0-0	0-0	0-0	0	1	1	0	0	2	0	0	9	-8
13	GODFREY, SHARITA	F	0	0-0	0-0	0-0	0	0	0	0	0	0	0	0	0	0
23	GITTENS, TORI	G	0	0-0	0-0	0-0	0	0	0	1	0	0	0	0	5	-8
25	STEEDE, TIERRA	F	0	0-1	0-0	0-0	1	2	3	0	0	0	0	0	7	-4
01	WALKER, CARMELLA	G	0	0-1	0-1	0-0	0	0	0	2	0	1	0	0	4	-4
02	MYERS, AHLEA	G	2	0-2	0-2	2-2	0	0	0	3	0	2	0	0	9	-16
14	WRIGHT, TYRA	C	2	1-1	0-0	0-0	0	1	1	0	0	0	0	0	6	-16
24	HICKLIN, CAILAH	F	0	0-1	0-1	0-0	0	0	0	0	0	0	0	0	1	-8
	TEAM						0	0	0	0		1				
TOTALS			4	1-8	0-5	2-2	1	5	6	6	0	6	0	0	50	

Shooting By Period

Period	FG	FG%	3FG	3FG%	FT	FT%
Game	21-51	41.2%	4-17	23.5%	7-9	77.8%

Deadball Rebounds: 1,0

Presbyterian 20

No.	Player	S	Pts	FG	3FG	FT	OR	DR	TR	PF	A	TO	Blk	Stl	Min	+/-
11	HALL, KACIE	G	0	0-1	0-0	0-0	1	0	1	0	1	0	0	1	10	16
14	JOHNSON, TRINITY	G	0	0-3	0-2	0-0	0	2	2	0	4	1	0	0	10	16
15	SANTOS, TESS	F	14	4-6	4-5	2-2	0	3	3	0	0	0	0	0	10	16
22	CARTER, TIONNA	F	3	0-2	0-0	3-4	1	0	1	0	0	0	0	1	6	13
32	COMPTON, JADE	F	0	0-0	0-0	0-0	0	0	0	0	0	0	0	0	0	0
03	HEMM, RILEY	G	0	0-0	0-0	0-0	0	0	0	0	0	0	0	0	0	0
04	GIBBS, BRIA	F	0	0-0	0-0	0-0	0	0	0	0	0	0	0	0	0	0
20	STOCKTON, GEORGIA	G	0	0-1	0-0	0-0	2	0	2	0	0	0	0	0	10	16
35	CAPLEY, ALESSIA	F	3	1-1	1-1	0-0	0	0	0	1	0	0	0	0	4	3
	TEAM						0	1	1	0		0				
TOTALS			20	5-14	5-8	5-6	4	6	10	1	5	1	0	2	50	

Shooting By Period

Period	FG	FG%	3FG	3FG%	FT	FT%
Game	25-56	44.6%	12-22	54.5%	14-21	66.7%

Deadball Rebounds: 4,0

Game Notes:

Officials: Chad Tucker, Shawnie Smith, Sam Allen
Attendance: 388

Start Time: 02:02 PM ET
End Time: 03:45 PM ET
Game Duration: 1:43
Conference Game;

Score	1st	2nd	3rd	4th	TOT
CSU	19	16	14	4	53
PRE	13	21	22	20	76

Points from (This Period)	CSU	PRE
In the Paint	2	0
Off Turns	0	9
2nd Chance	0	5
Fast Break	0	0
Bench	4	3

Official Play-By-Play
Charleston So. vs Presbyterian
Fourth Quarter
February 15, 2020 at Templeton Center - Clinton, S.C.



Period 4

Starters:

Charleston So.: 5 LEIGH, SHA'MYA (G); 11 RUFF-MILLS, KELSIE (G); 13 GODFREY, SHARITA (F); 23 GITTENS, TORI (G); 25 STEEDE, TIERRA (F);

Presbyterian: 11 HALL, KACIE (G); 14 JOHNSON, TRINITY (G); 15 SANTOS, TESS (F); 22 CARTER, TIONNA (F); 32 COMPTON, JADE (F);

Time	VISITORS: Charleston So.	Score	Margin	HOME: Presbyterian
10:00	SUB OUT: WRIGHT, TYRA			
10:00	SUB IN: STEEDE, TIERRA			
09:31				FOUL (PERSONAL) by CAPLEY, ALESSIA
09:31				SUB OUT: CAPLEY, ALESSIA
09:31				SUB IN: CARTER, TIONNA
09:31	GOOD! FT by MYERS, AHLEA	56-50	H 6	
09:31	GOOD! FT by MYERS, AHLEA	56-51	H 5	
09:10				MISSED 3PTR by JOHNSON, TRINITY
09:06	REBOUND (DEF) by STEEDE, TIERRA			
08:55	TURNOVER (TRAVEL) by MYERS, AHLEA			
08:38				TURNOVER (BADPASS) by JOHNSON, TRINITY
08:21	TURNOVER (BADPASS) by RUFF-MILLS, KELSIE			
08:21				STEAL by HALL, KACIE
07:54				MISSED JUMPER by SANTOS, TESS
07:49				REBOUND (OFF) by STOCKTON, GEORGIA
07:48	FOUL (PERSONAL) by GITTENS, TORI			
07:48	SUB OUT: GITTENS, TORI			
07:48	SUB IN: WALKER, CARMELLA			
07:48		57-51	H 6	GOOD! FT by CARTER, TIONNA
07:48		58-51	H 7	GOOD! FT by CARTER, TIONNA
07:39	MISSED LAYUP by STEEDE, TIERRA			
07:36				REBOUND (DEF) by JOHNSON, TRINITY
07:33				MISSED LAYUP by STOCKTON, GEORGIA
07:29				REBOUND (OFF) by CARTER, TIONNA
07:28				MISSED LAYUP by CARTER, TIONNA
07:25	REBOUND (DEF) by LEIGH, SHA'MYA			
07:12	MISSED JUMPER by LEIGH, SHA'MYA			
07:09				REBOUND (DEF) by SANTOS, TESS
06:52				MISSED LAYUP by CARTER, TIONNA
06:49	REBOUND (DEF) by STEEDE, TIERRA			
06:33	TURNOVER (BADPASS) by RUFF-MILLS, KELSIE			
06:33				STEAL by CARTER, TIONNA
06:08	FOUL (PERSONAL) by WALKER, CARMELLA			
06:08	SUB OUT: STEEDE, TIERRA			
06:08	SUB IN: WRIGHT, TYRA			
06:08				MISSED FT by CARTER, TIONNA
06:08		59-51	H 8	REBOUND (OFF) by TEAM
06:08				GOOD! FT by CARTER, TIONNA
06:08				SUB OUT: CARTER, TIONNA
06:08				SUB IN: CAPLEY, ALESSIA
05:44	MISSED 3PTR by WALKER, CARMELLA			
05:41				REBOUND (DEF) by JOHNSON, TRINITY
05:29				MISSED JUMPER by HALL, KACIE
05:25				REBOUND (OFF) by HALL, KACIE
05:21		62-51	H 11	GOOD! 3PTR by CAPLEY, ALESSIA
05:21				ASSIST by JOHNSON, TRINITY
04:57	MISSED 3PTR by MYERS, AHLEA			
04:53				REBOUND (DEF) by SANTOS, TESS
04:43				MISSED 3PTR by SANTOS, TESS
04:39				REBOUND (OFF) by STOCKTON, GEORGIA
04:23				MISSED 3PTR by JOHNSON, TRINITY
04:18	REBOUND (DEF) by RUFF-MILLS, KELSIE			
04:09	FOUL (OFF) by WALKER, CARMELLA			
04:09	TURNOVER (OFFENSIVE) by WALKER, CARMELLA			
04:09				
04:09	SUB OUT: WALKER, CARMELLA			
04:09	SUB OUT: MYERS, AHLEA			
04:09	SUB IN: GITTENS, TORI			
04:09	SUB IN: STEEDE, TIERRA			
03:39				MISSED LAYUP by JOHNSON, TRINITY
03:36	REBOUND (DEF) by WRIGHT, TYRA			
03:27	MISSED 3PTR by LEIGH, SHA'MYA			
03:23	REBOUND (OFF) by STEEDE, TIERRA			
03:06	TURNOVER (SHOTCLOCK) by TEAM			
02:56				TIMEOUT 30SEC
02:56				SUB OUT: CAPLEY, ALESSIA
02:56				SUB IN: CARTER, TIONNA
02:56	SUB OUT: GITTENS, TORI			
02:56	SUB IN: MYERS, AHLEA			
02:37		65-51	H 14	GOOD! 3PTR by SANTOS, TESS

Time	VISITORS: Charleston So.	Score	Margin	HOME: Presbyterian
02:37				ASSIST by JOHNSON, TRINITY
02:15	GOOD! LAYUP by WRIGHT, TYRA [PNT]	65-53	H 12	
01:54	FOUL (PERSONAL) by MYERS, AHLEA			
01:35		68-53	H 15	GOOD! 3PTR by SANTOS, TESS
01:35				ASSIST by JOHNSON, TRINITY
01:19	MISSED 3PTR by MYERS, AHLEA			
01:16				REBOUND (DEF) by SANTOS, TESS
01:16	FOUL (PERSONAL) by MYERS, AHLEA			
01:16	SUB OUT: RUFF-MILLS, KELSIE			
01:16	SUB OUT: STEEDE, TIERRA			
01:16	SUB IN: GITTENS, TORI			
01:16	SUB IN: HICKLIN, CAILAH			
01:16		69-53	H 16	GOOD! FT by SANTOS, TESS
01:16		70-53	H 17	GOOD! FT by SANTOS, TESS
01:04	FOUL (OFF) by MYERS, AHLEA			
01:04	TURNOVER (OFFENSIVE) by MYERS, AHLEA			
00:44		73-53	H 20	GOOD! 3PTR by SANTOS, TESS
00:44				ASSIST by HALL, KACIE
00:28	MISSED 3PTR by HICKLIN, CAILAH			
00:26				REBOUND (DEF) by TEAM
00:05		76-53	H 23	GOOD! 3PTR by SANTOS, TESS
00:05				ASSIST by JOHNSON, TRINITY

Charleston So. 53, Presbyterian 76

Points from (This Period)	CSU	PRE
In the Paint	2	0
Off Turns	0	9
2nd Chance	0	5
Fast Break	0	0
Bench	4	3

Official Scoring/Possession Reference Chart
Charleston So. vs Presbyterian
Period 1
February 15, 2020 at Templeton Center - Clinton, S.C.



Period 1

Starters:

Charleston So.: 5 LEIGH, SHA'MYA (G); 11 RUFF-MILLS, KELSIE (G); 13 GODFREY, SHARITA (F); 23 GITTENS, TORI (G); 25 STEEDE, TIERRA (F);

Presbyterian: 11 HALL, KACIE (G); 14 JOHNSON, TRINITY (G); 15 SANTOS, TESS (F); 22 CARTER, TIONNA (F); 32 COMPTON, JADE (F);

Time	VISITORS: Charleston So.	Score	Margin	HOME: Presbyterian
09:30		1-0	H 1	GOOD! FT by JOHNSON, TRINITY
09:30		2-0	H 2	GOOD! FT by JOHNSON, TRINITY
09:06	GOOD! LAYUP by RUFF-MILLS, KELSIE	2-2	T	
07:35	GOOD! LAYUP by RUFF-MILLS, KELSIE [PNT]	2-4	V 2	
07:22		4-4	T	GOOD! JUMPER by JOHNSON, TRINITY [PNT]
07:01	GOOD! JUMPER by GODFREY, SHARITA	4-6	V 2	
06:05		5-6	V 1	GOOD! FT by COMPTON, JADE
06:05		6-6	T	GOOD! FT by COMPTON, JADE
04:50	GOOD! JUMPER by GODFREY, SHARITA	6-8	V 2	
04:30		8-8	T	GOOD! JUMPER by CAPLEY, ALESSIA [PNT]
04:08	GOOD! LAYUP by WRIGHT, TYRA [PNT]	8-10	V 2	
02:58	GOOD! JUMPER by HICKLIN, CAILAH	8-12	V 4	
02:15	GOOD! 3PTR by MYERS, AHLEA	8-15	V 7	
01:18		11-15	V 4	GOOD! 3PTR by HALL, KACIE
00:42		12-15	V 3	GOOD! FT by COMPTON, JADE
00:42		13-15	V 2	GOOD! FT by COMPTON, JADE
00:39	GOOD! LAYUP by WALKER, CARMELLA [PNT]	13-17	V 4	
00:15	GOOD! JUMPER by WRIGHT, TYRA [PNT]	13-19	V 6	

Charleston So. 19, Presbyterian 13

Official Scoring/Possession Reference Chart
Charleston So. vs Presbyterian
Period 2
February 15, 2020 at Templeton Center - Clinton, S.C.



Period 2

Starters:

Charleston So.: 5 LEIGH, SHA'MYA (G); 11 RUFF-MILLS, KELSIE (G); 13 GODFREY, SHARITA (F); 23 GITTENS, TORI (G); 25 STEEDE, TIERRA (F);

Presbyterian: 11 HALL, KACIE (G); 14 JOHNSON, TRINITY (G); 15 SANTOS, TESS (F); 22 CARTER, TIONNA (F); 32 COMPTON, JADE (F);

Time	VISITORS: Charleston So.	Score	Margin	HOME: Presbyterian
09:47		15-19	V 4	GOOD! JUMPER by JOHNSON, TRINITY [PNT]
09:16		16-19	V 3	GOOD! FT by CARTER, TIONNA
08:07		18-19	V 1	GOOD! JUMPER by COMPTON, JADE [PNT]
07:51	GOOD! FT by HICKLIN, CAILAH	18-20	V 2	
07:51	GOOD! FT by HICKLIN, CAILAH	18-21	V 3	
07:40		19-21	V 2	GOOD! FT by JOHNSON, TRINITY
07:01	GOOD! LAYUP by WRIGHT, TYRA	19-23	V 4	
05:55		21-23	V 2	GOOD! LAYUP by JOHNSON, TRINITY [PNT]
04:39		23-23	T	GOOD! LAYUP by CARTER, TIONNA
04:15		26-23	H 3	GOOD! 3PTR by HALL, KACIE
03:48	GOOD! 3PTR by MYERS, AHLEA	26-26	T	
03:36		28-26	H 2	GOOD! JUMPER by CAPLEY, ALESSIA
02:39	GOOD! JUMPER by RUFF-MILLS, KELSIE [PNT]	28-28	T	
02:07		30-28	H 2	GOOD! JUMPER by CAPLEY, ALESSIA
01:59	GOOD! LAYUP by WRIGHT, TYRA [FB]	30-30	T	
01:01	GOOD! JUMPER by MYERS, AHLEA [PNT]	30-32	V 2	
00:40		33-32	H 1	GOOD! 3PTR by CAPLEY, ALESSIA
00:23	GOOD! 3PTR by RUFF-MILLS, KELSIE	33-35	V 2	
00:03		34-35	V 1	GOOD! FT by JOHNSON, TRINITY

Charleston So. 35, Presbyterian 34

Official Scoring/Possession Reference Chart
Charleston So. vs Presbyterian
Period 3
February 15, 2020 at Templeton Center - Clinton, S.C.



Period 3

Starters:

Charleston So.: 5 LEIGH, SHA'MYA (G); 11 RUFF-MILLS, KELSIE (G); 13 GODFREY, SHARITA (F); 23 GITTENS, TORI (G); 25 STEEDE, TIERRA (F);

Presbyterian: 11 HALL, KACIE (G); 14 JOHNSON, TRINITY (G); 15 SANTOS, TESS (F); 22 CARTER, TIONNA (F); 32 COMPTON, JADE (F);

Time	VISITORS: Charleston So.	Score	Margin	HOME: Presbyterian
09:32	GOOD! 3PTR by STEEDE, TIERRA	34-38	V 4	
09:09		36-38	V 2	GOOD! LAYUP by STOCKTON, GEORGIA [PNT]
08:35		39-38	H 1	GOOD! 3PTR by HALL, KACIE
07:49		41-38	H 3	GOOD! LAYUP by JOHNSON, TRINITY [PNT]
07:18		44-38	H 6	GOOD! 3PTR by HALL, KACIE
06:43		47-38	H 9	GOOD! 3PTR by HALL, KACIE
05:20	GOOD! LAYUP by STEEDE, TIERRA	47-40	H 7	
04:20	GOOD! JUMPER by STEEDE, TIERRA [FB]	47-42	H 5	
04:13	GOOD! FT by LEIGH, SHA'MYA	47-43	H 4	
04:13	GOOD! FT by LEIGH, SHA'MYA	47-44	H 3	
02:54	GOOD! LAYUP by MYERS, AHLEA [FB]	47-46	H 1	
01:50		50-46	H 4	GOOD! 3PTR by JOHNSON, TRINITY
01:24	GOOD! JUMPER by LEIGH, SHA'MYA	50-48	H 2	
01:10		52-48	H 4	GOOD! JUMPER by HALL, KACIE [PNT]
00:39		54-48	H 6	GOOD! LAYUP by HALL, KACIE [FB]
00:21	GOOD! FT by LEIGH, SHA'MYA	54-49	H 5	
00:00		56-49	H 7	GOOD! LAYUP by JOHNSON, TRINITY

Charleston So. 49, Presbyterian 56

Official Scoring/Possession Reference Chart
Charleston So. vs Presbyterian
Period 4
February 15, 2020 at Templeton Center - Clinton, S.C.



Period 4

Starters:

Charleston So.: 5 LEIGH, SHA'MYA (G); 11 RUFF-MILLS, KELSIE (G); 13 GODFREY, SHARITA (F); 23 GITTENS, TORI (G); 25 STEEDE, TIERRA (F);

Presbyterian: 11 HALL, KACIE (G); 14 JOHNSON, TRINITY (G); 15 SANTOS, TESS (F); 22 CARTER, TIONNA (F); 32 COMPTON, JADE (F);

Time	VISITORS: Charleston So.	Score	Margin	HOME: Presbyterian
09:31	GOOD! FT by MYERS, AHLEA	56-50	H 6	
09:31	GOOD! FT by MYERS, AHLEA	56-51	H 5	
07:48		57-51	H 6	GOOD! FT by CARTER, TIONNA
07:48		58-51	H 7	GOOD! FT by CARTER, TIONNA
06:08		59-51	H 8	GOOD! FT by CARTER, TIONNA
05:21		62-51	H 11	GOOD! 3PTR by CAPLEY, ALESSIA
02:37		65-51	H 14	GOOD! 3PTR by SANTOS, TESS
02:15	GOOD! LAYUP by WRIGHT, TYRA [PNT]	65-53	H 12	
01:35		68-53	H 15	GOOD! 3PTR by SANTOS, TESS
01:16		69-53	H 16	GOOD! FT by SANTOS, TESS
01:16		70-53	H 17	GOOD! FT by SANTOS, TESS
00:44		73-53	H 20	GOOD! 3PTR by SANTOS, TESS
00:05		76-53	H 23	GOOD! 3PTR by SANTOS, TESS

Charleston So. 53, Presbyterian 76

Official Substitutions Log
Charleston So. vs Presbyterian
Period 1
February 15, 2020 at Templeton Center - Clinton, S.C.



VISITORS: Charleston So.	Time	Score	HOME: Presbyterian
5 LEIGH,SHA'MYA			11 HALL,KACIE
11 RUFF-MILLS,KELSIE			14 JOHNSON,TRINITY
13 GODFREY,SHARITA			15 SANTOS,TESS
23 GITTENS,TORI			22 CARTER,TIONNA
25 STEEDE,TIERRA			32 COMPTON,JADE
	06:35	6-4	SUB OUT: JOHNSON,TRINITY
	06:35		SUB IN: CAPLEY,ALESSIA
SUB OUT: 25 STEEDE,TIERRA	06:05	6-4	
SUB IN: 14 WRIGHT,TYRA	06:05		
	06:05		SUB IN: GIBBS,BRIA
	06:05		SUB OUT: CARTER,TIONNA
	03:51	10-8	SUB OUT: SANTOS,TESS
	03:51		SUB OUT: COMPTON,JADE
	03:51		SUB IN: HEMM,RILEY
	03:51		SUB IN: STOCKTON,GEORGIA
SUB OUT: 11 RUFF-MILLS,KELSIE	03:51		
SUB OUT: 13 GODFREY,SHARITA	03:51		
SUB OUT: 23 GITTENS,TORI	03:51		
SUB IN: 1 WALKER,CARMELLA	03:51		
SUB IN: 2 MYERS,AHLEA	03:51		
SUB IN: 24 HICKLIN,CAILAH	03:51		
	02:33	12-8	SUB OUT: GIBBS,BRIA
	02:33		SUB OUT: HALL,KACIE
	02:33		SUB OUT: STOCKTON,GEORGIA
	02:33		SUB OUT: CAPLEY,ALESSIA
	02:33		SUB IN: JOHNSON,TRINITY
	02:33		SUB IN: SANTOS,TESS
	02:33		SUB IN: CARTER,TIONNA
	02:33		SUB IN: COMPTON,JADE
	01:34	15-8	SUB OUT: HEMM,RILEY
	01:34		SUB IN: HALL,KACIE
	00:42	15-13	SUB OUT: JOHNSON,TRINITY
	00:42		SUB IN: HEMM,RILEY
SUB OUT: 5 LEIGH,SHA'MYA	00:42		
SUB OUT: 24 HICKLIN,CAILAH	00:42		
SUB IN: 11 RUFF-MILLS,KELSIE	00:42		
SUB IN: 13 GODFREY,SHARITA	00:42		

Charleston So. 19, Presbyterian 13

Official Substitutions Log
Charleston So. vs Presbyterian
Period 2
February 15, 2020 at Templeton Center - Clinton, S.C.



VISITORS: Charleston So.	Time	Score	HOME: Presbyterian
5 LEIGH,SHA'MYA			11 HALL,KACIE
11 RUFF-MILLS,KELSIE			14 JOHNSON,TRINITY
13 GODFREY,SHARITA			15 SANTOS,TESS
23 GITTENS,TORI			22 CARTER,TIONNA
25 STEEDE,TIERRA			32 COMPTON,JADE
	10:00	-	SUB OUT: HEMM,RILEY
	10:00		SUB OUT: SANTOS,TESS
	10:00		SUB IN: JOHNSON,TRINITY
	10:00		SUB IN: STOCKTON,GEORGIA
SUB OUT: 14 WRIGHT,TYRA	10:00		
SUB IN: 24 HICKLIN,CAILAH	10:00		
	07:51	21-18	SUB OUT: CARTER,TIONNA
	07:51		SUB IN: GIBBS,BRIA
SUB OUT: 1 WALKER,CARMELLA	07:51		
SUB OUT: 2 MYERS,AHLEA	07:51		
SUB OUT: 24 HICKLIN,CAILAH	07:51		
SUB IN: 5 LEIGH,SHA'MYA	07:51		
SUB IN: 14 WRIGHT,TYRA	07:51		
SUB IN: 23 GITTENS,TORI	07:51		
	06:19	23-19	SUB OUT: GIBBS,BRIA
	06:19		SUB IN: CARTER,TIONNA
SUB OUT: 13 GODFREY,SHARITA	06:19		
SUB IN: 25 STEEDE,TIERRA	06:19		
	04:19	23-23	SUB OUT: COMPTON,JADE
	04:19		SUB IN: CAPLEY,ALESSIA
SUB OUT: 5 LEIGH,SHA'MYA	04:19		
SUB OUT: 23 GITTENS,TORI	04:19		
SUB OUT: 25 STEEDE,TIERRA	04:19		
SUB IN: 1 WALKER,CARMELLA	04:19		
SUB IN: 2 MYERS,AHLEA	04:19		
SUB IN: 24 HICKLIN,CAILAH	04:19		
	02:51	26-28	SUB OUT: STOCKTON,GEORGIA
	02:51		SUB IN: SANTOS,TESS
SUB OUT: 24 HICKLIN,CAILAH	02:51		
SUB IN: 13 GODFREY,SHARITA	02:51		
	00:32	32-33	SUB OUT: SANTOS,TESS
	00:32		SUB IN: STOCKTON,GEORGIA
SUB OUT: 13 GODFREY,SHARITA	00:32		
SUB OUT: 14 WRIGHT,TYRA	00:32		
SUB IN: 23 GITTENS,TORI	00:32		
SUB IN: 24 HICKLIN,CAILAH	00:32		

Charleston So. 35, Presbyterian 34

Official Substitutions Log
Charleston So. vs Presbyterian
Period 3
February 15, 2020 at Templeton Center - Clinton, S.C.



VISITORS: Charleston So.	Time	Score	HOME: Presbyterian
5 LEIGH,SHA'MYA			11 HALL,KACIE
11 RUFF-MILLS,KELSIE			14 JOHNSON,TRINITY
13 GODFREY,SHARITA			15 SANTOS,TESS
23 GITTENS,TORI			22 CARTER,TIONNA
25 STEEDE,TIERRA			32 COMPTON,JADE
	10:00	-	SUB OUT: CAPLEY,ALESSIA
	10:00		SUB IN: COMPTON,JADE
SUB OUT: 1 WALKER,CARMELLA	10:00		
SUB OUT: 2 MYERS,AHLEA	10:00		
SUB OUT: 24 HICKLIN,CAILAH	10:00		
SUB IN: 5 LEIGH,SHA'MYA	10:00		
SUB IN: 13 GODFREY,SHARITA	10:00		
SUB IN: 25 STEEDE,TIERRA	10:00		
SUB OUT: 13 GODFREY,SHARITA	09:43	-	
SUB IN: 14 WRIGHT,TYRA	09:43		
SUB OUT: 14 WRIGHT,TYRA	07:15	38-44	
SUB OUT: 23 GITTENS,TORI	07:15		
SUB IN: 1 WALKER,CARMELLA	07:15		
SUB IN: 2 MYERS,AHLEA	07:15		
	05:54	38-47	SUB OUT: CARTER,TIONNA
	05:54		SUB IN: CAPLEY,ALESSIA
	04:55	40-47	SUB OUT: COMPTON,JADE
	04:55		SUB IN: CARTER,TIONNA
	02:21	46-47	SUB OUT: STOCKTON,GEORGIA
	02:21		SUB OUT: CARTER,TIONNA
	02:21		SUB IN: SANTOS,TESS
	02:21		SUB IN: COMPTON,JADE
SUB OUT: 1 WALKER,CARMELLA	01:24	48-50	
SUB OUT: 25 STEEDE,TIERRA	01:24		
SUB IN: 14 WRIGHT,TYRA	01:24		
SUB IN: 23 GITTENS,TORI	01:24		
	00:21	48-54	SUB OUT: COMPTON,JADE
	00:21		SUB IN: STOCKTON,GEORGIA

Charleston So. 49, Presbyterian 56

Official Substitutions Log
Charleston So. vs Presbyterian
Period 4
February 15, 2020 at Templeton Center - Clinton, S.C.



VISITORS: Charleston So.	Time	Score	HOME: Presbyterian
5 LEIGH, SHA'MYA			11 HALL, KACIE
11 RUFF-MILLS, KELSIE			14 JOHNSON, TRINITY
13 GODFREY, SHARITA			15 SANTOS, TESS
23 GITTENS, TORI			22 CARTER, TIONNA
25 STEEDE, TIERRA			32 COMPTON, JADE
SUB OUT: 14 WRIGHT, TYRA	10:00	-	
SUB IN: 25 STEEDE, TIERRA	10:00		
	09:31	-	SUB OUT: CAPLEY, ALESSIA
	09:31		SUB IN: CARTER, TIONNA
SUB OUT: 23 GITTENS, TORI	07:48	51-56	
SUB IN: 1 WALKER, CARMELLA	07:48		
SUB OUT: 25 STEEDE, TIERRA	06:08	51-58	
SUB IN: 14 WRIGHT, TYRA	06:08		
	06:08		SUB OUT: CARTER, TIONNA
	06:08		SUB IN: CAPLEY, ALESSIA
SUB OUT: 1 WALKER, CARMELLA	04:09	51-62	
SUB OUT: 2 MYERS, AHLEA	04:09		
SUB IN: 23 GITTENS, TORI	04:09		
SUB IN: 25 STEEDE, TIERRA	04:09		
	02:56	51-62	SUB OUT: CAPLEY, ALESSIA
	02:56		SUB IN: CARTER, TIONNA
SUB OUT: 23 GITTENS, TORI	02:56		
SUB IN: 2 MYERS, AHLEA	02:56		
SUB OUT: 11 RUFF-MILLS, KELSIE	01:16	53-68	
SUB OUT: 25 STEEDE, TIERRA	01:16		
SUB IN: 23 GITTENS, TORI	01:16		
SUB IN: 24 HICKLIN, CAILAH	01:16		

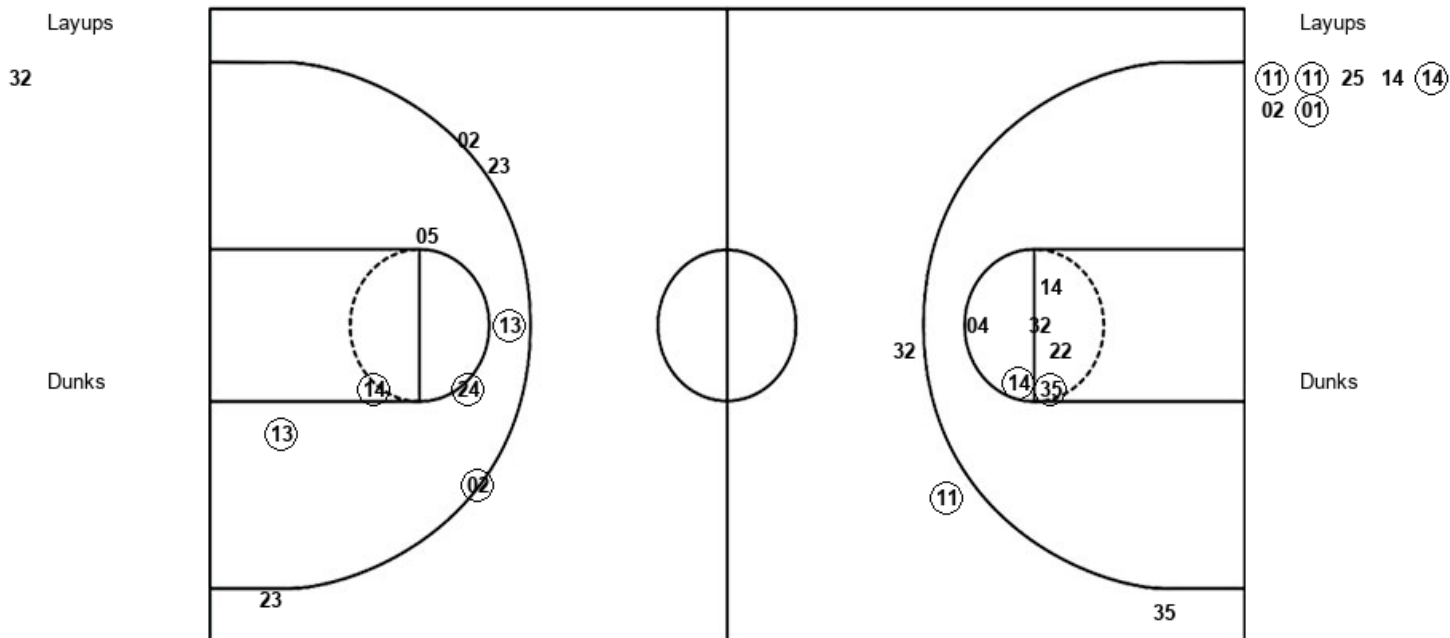
Charleston So. 53, Presbyterian 76

Official Shot Chart
Charleston So. vs Presbyterian
 PERIOD 1 Shots
 February 15, 2020 at Templeton Center - Clinton, S.C.



Presbyterian

Charleston So.



PRE : Period 1	Made	Att	Pct
Layups	0	1	00.0
Dunks	0	0	0
2PT Field Goals	2	7	28.6
3PT Field Goals	1	3	33.3
Total Field Goals	3	10	30.0

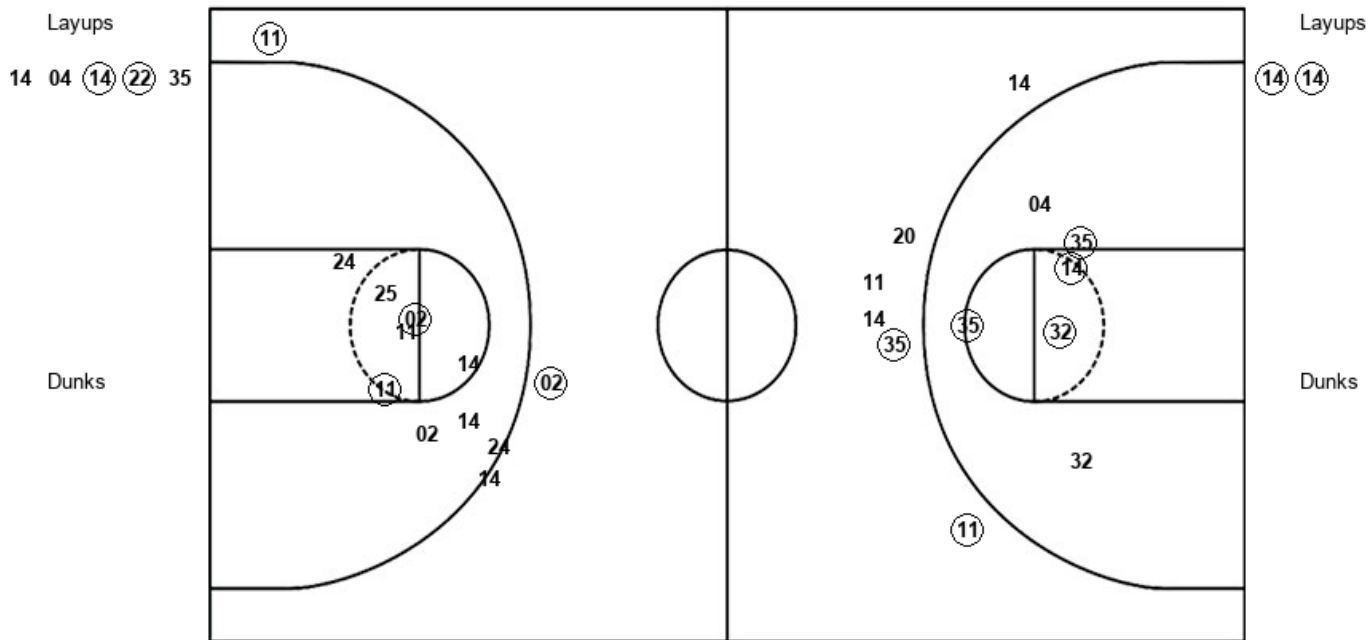
CSU : Period 1	Made	Att	Pct
Layups	4	7	57.1
Dunks	0	0	0
2PT Field Goals	8	12	66.7
3PT Field Goals	1	4	25.0
Total Field Goals	9	16	56.3

Official Shot Chart
Charleston So. vs Presbyterian
 PERIOD 2 Shots
 February 15, 2020 at Templeton Center - Clinton, S.C.



Presbyterian

Charleston So.



PRE : Period 2	Made	Att	Pct
Layups	2	5	40.0
Dunks	0	0	0
2PT Field Goals	6	11	54.5
3PT Field Goals	2	6	33.3
Total Field Goals	8	17	47.1

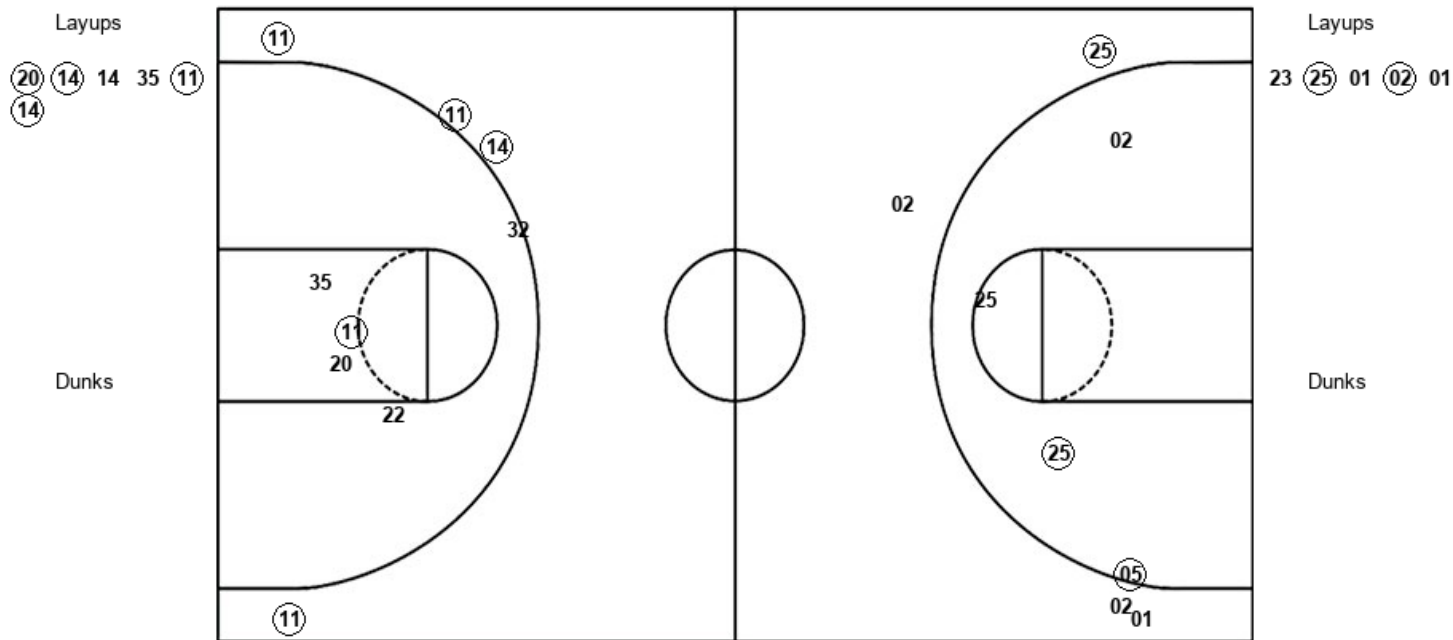
CSU : Period 2	Made	Att	Pct
Layups	2	2	100.0
Dunks	0	0	0
2PT Field Goals	4	10	40.0
3PT Field Goals	2	4	50.0
Total Field Goals	6	14	42.9

Official Shot Chart
Charleston So. vs Presbyterian
 PERIOD 3 Shots
 February 15, 2020 at Templeton Center - Clinton, S.C.



Presbyterian

Charleston So.



PRE : Period 3	Made	Att	Pct
Layups	4	6	66.7
Dunks	0	0	0
2PT Field Goals	5	10	50.0
3PT Field Goals	4	5	80.0
Total Field Goals	9	15	60.0

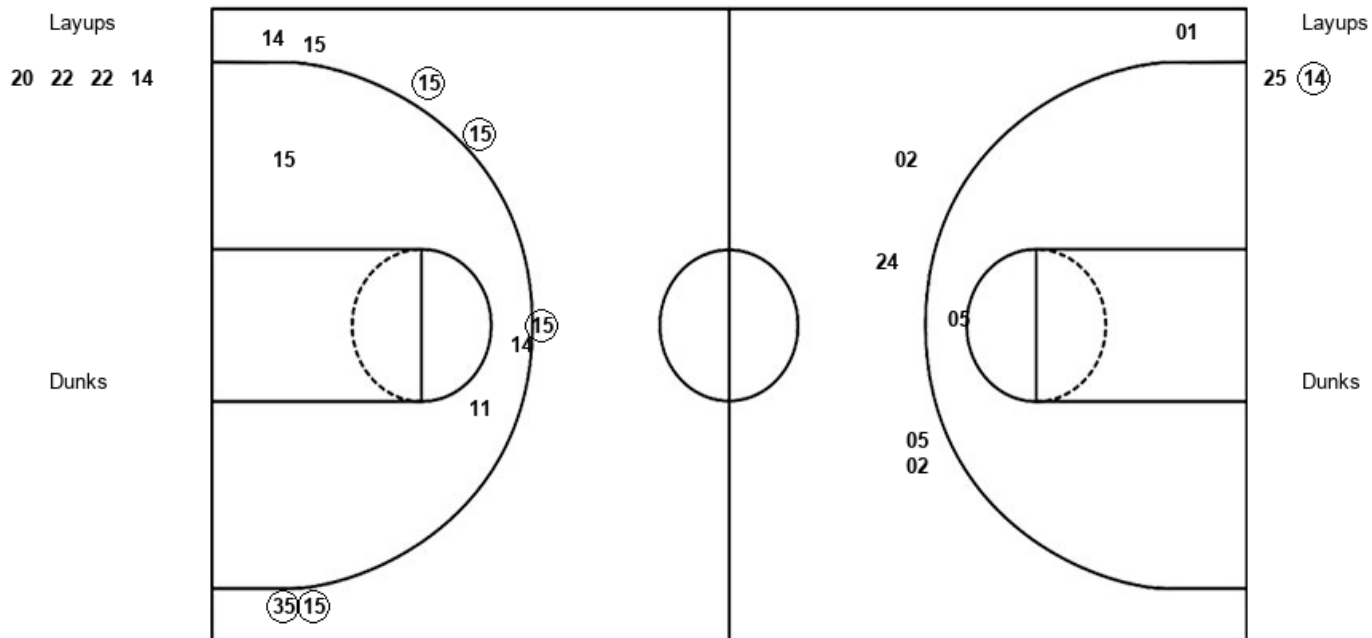
CSU : Period 3	Made	Att	Pct
Layups	2	5	40.0
Dunks	0	0	0
2PT Field Goals	4	9	44.4
3PT Field Goals	1	4	25.0
Total Field Goals	5	13	38.5

Official Shot Chart
Charleston So. vs Presbyterian
 PERIOD 4 Shots
 February 15, 2020 at Templeton Center - Clinton, S.C.



Presbyterian

Charleston So.



PRE : Period 4	Made	Att	Pct
Layups	0	4	00.0
Dunks	0	0	0
2PT Field Goals	0	6	00.0
3PT Field Goals	5	8	62.5
Total Field Goals	5	14	35.7

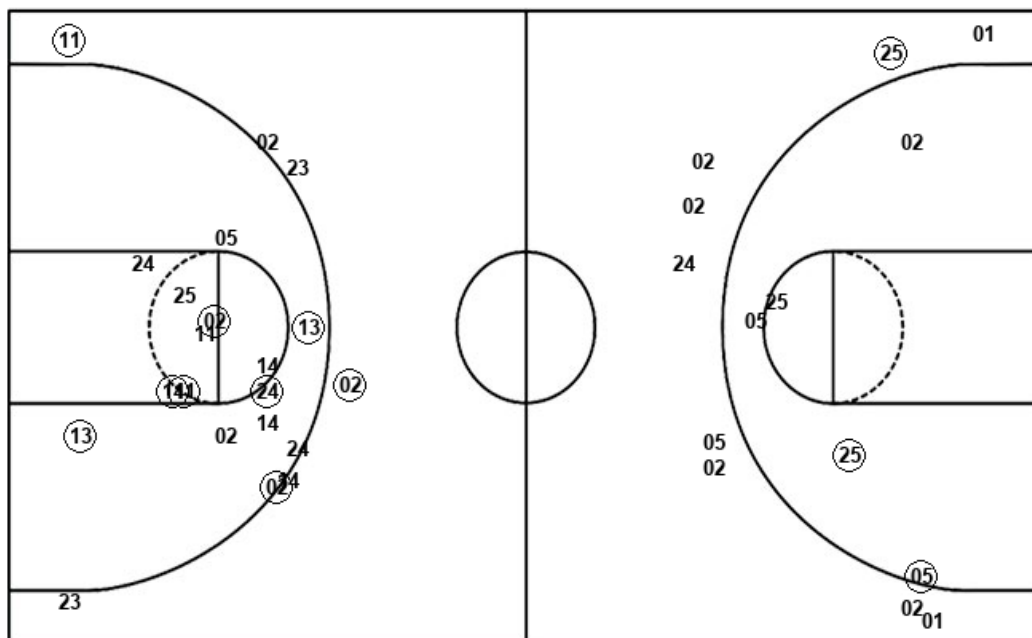
CSU : Period 4	Made	Att	Pct
Layups	1	2	50.0
Dunks	0	0	0
2PT Field Goals	1	3	33.3
3PT Field Goals	0	5	00.0
Total Field Goals	1	8	12.5

Official Shot Chart
Charleston So. vs Presbyterian
 Charleston So. Team Shots
 February 15, 2020 at Templeton Center - Clinton, S.C.



Layups

Dunks



Layups

Dunks

11 11 25 14 14
 02 01 14 14 23
 25 01 02 01 25
 14

CSU : Period 1	Made	Att	Pct
Layups	4	7	57.1
Dunks	0	0	0
2PT Field Goals	8	12	66.7
3PT Field Goals	1	4	25.0
Total Field Goals	9	16	56.3

CSU : Period 3	Made	Att	Pct
Layups	2	5	40.0
Dunks	0	0	0
2PT Field Goals	4	9	44.4
3PT Field Goals	1	4	25.0
Total Field Goals	5	13	38.5

CSU : Period 2	Made	Att	Pct
Layups	2	2	100.0
Dunks	0	0	0
2PT Field Goals	4	10	40.0
3PT Field Goals	2	4	50.0
Total Field Goals	6	14	42.9

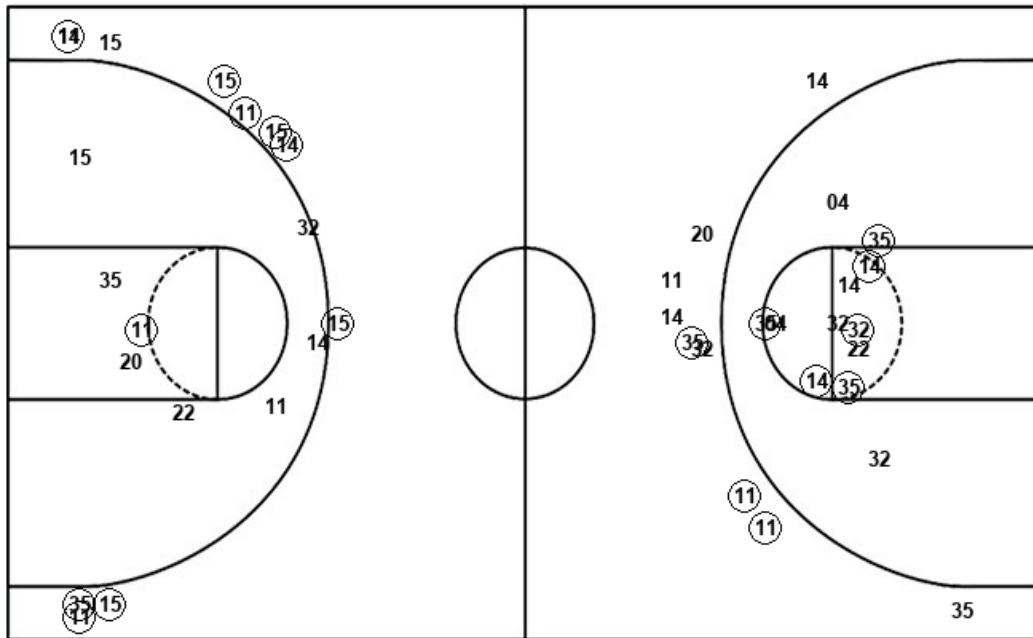
CSU : Period 4	Made	Att	Pct
Layups	1	2	50.0
Dunks	0	0	0
2PT Field Goals	1	3	33.3
3PT Field Goals	0	5	00.0
Total Field Goals	1	8	12.5

Official Shot Chart
Charleston So. vs Presbyterian
 Presbyterian Team Shots
 February 15, 2020 at Templeton Center - Clinton, S.C.



Layups

Dunks



Layups

Dunks

PRE : Period 1	Made	Att	Pct
Layups	0	1	00.0
Dunks	0	0	0
2PT Field Goals	2	7	28.6
3PT Field Goals	1	3	33.3
Total Field Goals	3	10	30.0

PRE : Period 3	Made	Att	Pct
Layups	4	6	66.7
Dunks	0	0	0
2PT Field Goals	5	10	50.0
3PT Field Goals	4	5	80.0
Total Field Goals	9	15	60.0

PRE : Period 2	Made	Att	Pct
Layups	2	5	40.0
Dunks	0	0	0
2PT Field Goals	6	11	54.5
3PT Field Goals	2	6	33.3
Total Field Goals	8	17	47.1

PRE : Period 4	Made	Att	Pct
Layups	0	4	00.0
Dunks	0	0	0
2PT Field Goals	0	6	00.0
3PT Field Goals	5	8	62.5
Total Field Goals	5	14	35.7