

**FINAL SCORE**



**Campbell**

**53**



**Presbyterian**

**47**

January 18, 2020 • Templeton Center - Clinton, S.C.

**FINAL STATISTICS**

**Official Box Score**  
**Campbell vs Presbyterian**  
**Game Totals -- Final Statistics**  
**January 18, 2020 at Templeton Center - Clinton, S.C.**



**Campbell 53**

No.	Player	S	Pts	FG	3FG	FT	OR	DR	TR	PF	A	TO	Blk	Stl	Min	+/-	
00	SPEIGHT, KIANNA	G	24	8-12	8-12	0-0	0	1	1	4	0	1	0	1	35	3	
10	BARBER, HAYLEY	G	13	3-9	2-7	5-10	2	2	4	3	2	2	1	1	35	18	
23	BOLDEN, TAYA	F	4	1-4	0-0	2-4	3	6	9	3	1	3	1	1	23	2	
25	SERRANHO, LUANA	G	9	2-4	1-3	4-4	0	2	2	2	4	6	0	1	32	4	
44	NÜRENBERG, SVENIA	F	0	0-3	0-2	0-0	2	4	6	2	2	0	0	1	31	2	
04	HAMPTON, ASHLYN	F	0	0-0	0-0	0-0	0	4	4	4	0	2	0	0	15	4	
05	CARVER, TATYANA	G	0	0-0	0-0	0-0	0	0	0	0	0	0	0	0	3	-5	
11	TUELLE, SHYANNE	G	3	1-8	0-5	1-2	0	3	3	0	2	1	0	0	22	4	
14	STAVES, BRITTANY	F	0	0-0	0-0	0-0	0	1	1	0	0	1	0	0	4	-1	
40	MCNAMARA-CLEMENT, LAUR	F	0	0-0	0-0	0-0	0	0	0	0	0	0	0	0	2	-1	
TEAM							1	1	2	0	3						
<b>TOTALS</b>			<b>53</b>	<b>15-40</b>	<b>11-29</b>	<b>12-20</b>	<b>8</b>	<b>24</b>	<b>32</b>	<b>18</b>	<b>11</b>	<b>19</b>	<b>2</b>	<b>5</b>	<b>200</b>		

*Shooting By Period*

Period	FG	FG%	3FG	3FG%	FT	FT%
1st Qtr	5-11	45%	4-9	44%	2-2	100%
2nd Qtr	4-10	40%	3-8	38%	2-2	100%
3rd Qtr	4-12	33%	3-8	38%	2-2	100%
4th Qtr	2-7	29%	1-4	25%	6-14	43%
1st Half	9-21	43%	7-17	41%	4-4	100%
2nd Half	6-19	32%	4-12	33%	8-16	50%
<b>Game</b>	<b>15-40</b>	<b>37.5%</b>	<b>11-29</b>	<b>37.9%</b>	<b>12-20</b>	<b>60.0%</b>

*Deadball Rebounds: 6,0*  
*Last FG: 4th-02:01*  
*Biggest Run: 8-0*  
*Largest lead: By 10 at 4th-02:01*  
*Technical Fouls: None.*

**Presbyterian 47**

No.	Player	S	Pts	FG	3FG	FT	OR	DR	TR	PF	A	TO	Blk	Stl	Min	+/-	
11	HALL, KACIE	G	2	1-3	0-2	0-0	0	0	0	1	1	1	0	1	26	-3	
14	JOHNSON, TRINITY	G	11	4-10	1-3	2-3	2	4	6	5	1	4	0	3	27	3	
15	SANTOS, TESS	F	9	2-6	1-3	4-4	0	1	1	3	0	1	0	1	31	0	
22	CARTER, TIONNA	F	5	1-3	0-0	3-4	0	3	3	2	2	2	0	3	27	2	
35	CAPLEY, ALESSIA	F	2	0-3	0-1	2-4	4	2	6	0	1	1	0	1	25	-14	
03	HEMM, RILEY	G	0	0-0	0-0	0-0	0	0	0	0	0	0	0	0	1	-5	
04	GIBBS, BRIA	F	8	2-7	0-0	4-6	0	2	2	4	0	4	1	0	20	-7	
12	MADDEN, LE'MESHA	G	2	1-1	0-0	0-0	0	1	1	2	0	2	0	1	7	0	
23	STAFFORD, SHAMANI	G	8	3-8	1-5	1-2	1	3	4	3	0	0	0	0	27	-13	
32	COMPTON, JADE	F	0	0-1	0-1	0-0	0	2	2	1	1	0	0	0	7	7	
TEAM							1	1	2	0	2						
<b>TOTALS</b>			<b>47</b>	<b>14-42</b>	<b>3-15</b>	<b>16-23</b>	<b>8</b>	<b>19</b>	<b>27</b>	<b>21</b>	<b>6</b>	<b>17</b>	<b>1</b>	<b>10</b>	<b>200</b>		

*Shooting By Period*

Period	FG	FG%	3FG	3FG%	FT	FT%
1st Qtr	4-8	50%	2-4	50%	1-2	50%
2nd Qtr	5-13	38%	1-3	33%	3-6	50%
3rd Qtr	3-10	30%	0-2	00%	3-5	60%
4th Qtr	2-11	18%	0-6	00%	9-10	90%
1st Half	9-21	43%	3-7	43%	4-8	50%
2nd Half	5-21	24%	0-8	00%	12-15	80%
<b>Game</b>	<b>14-42</b>	<b>33.3%</b>	<b>3-15</b>	<b>20.0%</b>	<b>16-23</b>	<b>69.6%</b>

*Deadball Rebounds: 3,0*  
*Last FG: 4th-00:14*  
*Biggest Run: 6-0*  
*Largest lead: By 3 at 1st-03:21*  
*Technical Fouls: None.*

*Game Notes:*

Officials: Mark McClenney, Whitney-Michael Armstrong, Daniel Drake

Attendance: 505

Start Time: 02:02 PM ET  
 End Time: 04:03 PM ET  
 Game Duration: 2:00  
 Conference Game;

Score	1st	2nd	3rd	4th	TOT
CAM	16	13	13	11	<b>53</b>
PRE	11	14	9	13	<b>47</b>

CAM led for 31:53. PRE led for 2:29.  
 Game was tied for 5:38.  
 Times tied: 4      Lead Changes: 4

Points from	CAM	PRE
In the Paint	4	14
Off Turns	25	20
2nd Chance	11	4
Fast Break	2	4
Bench	3	18

**Official Box Score**  
**Campbell vs Presbyterian**  
**First Half Statistics Only**  
**January 18, 2020 at Templeton Center - Clinton, S.C.**



**Campbell 29**

No.	Player	S	Pts	FG	3FG	FT	OR	DR	TR	PF	A	TO	Blk	Stl	Min	+/-
00	SPEIGHT, KIANNA	G	12	4-7	4-7	0-0	0	1	1	1	0	0	0	0	15	1
04	HAMPTON, ASHLYN	F	0	0-0	0-0	0-0	0	2	2	2	0	1	0	0	10	6
05	CARVER, TATYANA	G	0	0-0	0-0	0-0	0	0	0	0	0	0	0	0	2	-5
10	BARBER, HAYLEY	G	10	3-7	2-6	2-2	1	0	1	0	1	2	1	1	16	14
11	TUELLE, SHYANNE	G	2	1-4	0-2	0-0	0	3	3	0	1	1	0	0	14	0
14	STAVES, BRITTANY	F	0	0-0	0-0	0-0	0	1	1	0	0	1	0	0	4	-1
23	BOLDEN, TAYA	F	0	0-1	0-0	0-0	1	1	2	1	0	2	0	1	9	-1
25	SERRANHO, LUANA	G	5	1-2	1-2	2-2	0	1	1	1	3	2	0	0	16	7
40	MCNAMARA-CLEMENT, LAUR	F	0	0-0	0-0	0-0	0	0	0	0	0	0	0	0	2	-1
44	NÜRENBERG, SVENIA	F	0	0-0	0-0	0-0	2	2	4	1	1	0	0	0	12	0
	TEAM		0	0-0	0-0	0-0	0	0	0	0	0	1	0	0	0	
<b>TOTALS</b>			<b>29</b>	<b>9-21</b>	<b>7-17</b>	<b>4-4</b>	<b>4</b>	<b>11</b>	<b>15</b>	<b>6</b>	<b>6</b>	<b>10</b>	<b>1</b>	<b>2</b>	<b>100</b>	

*Shooting By Period*

Period	FG	FG%	3FG	3FG%	FT	FT%
1st Qtr	5-11	45%	4-9	44%	2-2	100%
2nd Qtr	4-10	40%	3-8	38%	2-2	100%
1st Half	9-21	43%	7-17	41%	4-4	100%
Game	15-40	37.5%	11-29	37.9%	12-20	60.0%

*Deadball Rebounds: 6,0*  
*Last FG Half: CAM 2nd-01:47*

**Presbyterian 25**

No.	Player	S	Pts	FG	3FG	FT	OR	DR	TR	PF	A	TO	Blk	Stl	Min	+/-
03	HEMM, RILEY	G	0	0-0	0-0	0-0	0	0	0	0	0	0	0	0	1	-3
04	GIBBS, BRIA	F	2	1-4	0-0	0-2	0	1	1	1	0	1	0	0	6	-3
11	HALL, KACIE	G	0	0-1	0-1	0-0	0	0	0	0	0	1	0	1	20	-4
12	MADDEN, LE'MESHA	G	2	1-1	0-0	0-0	0	1	1	2	0	2	0	1	6	-2
14	JOHNSON, TRINITY	G	5	2-3	1-1	0-0	0	1	1	2	0	2	0	0	7	3
15	SANTOS, TESS	F	3	1-2	1-1	0-0	0	0	0	1	0	0	0	0	13	1
22	CARTER, TIONNA	F	4	1-2	0-0	2-2	0	1	1	1	2	1	0	3	13	2
23	STAFFORD, SHAMANI	G	8	3-5	1-2	1-2	0	2	2	1	0	0	0	0	11	-7
32	COMPTON, JADE	F	0	0-1	0-1	0-0	0	1	1	0	1	0	0	0	5	3
35	CAPLEY, ALESSIA	F	1	0-2	0-1	1-2	2	0	2	0	1	0	0	1	17	-10
	TEAM		0	0-0	0-0	0-0	1	0	1	0	0	1	0	0	0	
<b>TOTALS</b>			<b>25</b>	<b>9-21</b>	<b>3-7</b>	<b>4-8</b>	<b>3</b>	<b>7</b>	<b>10</b>	<b>8</b>	<b>4</b>	<b>8</b>	<b>0</b>	<b>6</b>	<b>100</b>	

*Shooting By Period*

Period	FG	FG%	3FG	3FG%	FT	FT%
1st Qtr	4-8	50%	2-4	50%	1-2	50%
2nd Qtr	5-13	38%	1-3	33%	3-6	50%
1st Half	9-21	43%	3-7	43%	4-8	50%
Game	14-42	33.3%	3-15	20.0%	16-23	69.6%

*Deadball Rebounds: 3,0*  
*Last FG Half: PRE 2nd-01:17*

Game Notes:

Officials: Mark McClenney, Whitney-Michael Armstrong, Daniel Drake  
 Attendance: 505

Start Time: 02:02 PM ET  
 End Time: 04:03 PM ET  
 Game Duration: 2:00  
 Conference Game;

Score	1st	2nd	3rd	4th	TOT
CAM	16	13	13	11	<b>53</b>
PRE	11	14	9	13	<b>47</b>

Points from (This Period)	CAM	PRE
In the Paint	2	8
Off Turns	13	13
2nd Chance	5	1
Fast Break	2	2
Bench	2	12

**Official Box Score**  
**Campbell vs Presbyterian**  
**First Quarter Statistics Only**  
**January 18, 2020 at Templeton Center - Clinton, S.C.**



**Campbell 16**

No.	Player	S	Pts	FG	3FG	FT	OR	DR	TR	PF	A	TO	Blk	Stl	Min	+/-
00	SPEIGHT, KIANNA	G	3	1-3	1-3	0-0	0	0	0	0	0	0	0	0	8	-3
10	BARBER, HAYLEY	G	6	2-3	2-3	0-0	0	0	0	0	0	0	0	0	8	10
23	BOLDEN, TAYA	F	0	0-1	0-0	0-0	1	0	1	0	0	1	0	0	5	0
25	SERRANHO, LUANA	G	5	1-2	1-2	2-2	0	0	0	1	2	1	0	0	6	8
44	NÜRENBERG, SVENIA	F	0	0-0	0-0	0-0	2	1	3	1	1	0	0	0	6	6
04	HAMPTON, ASHLYN	F	0	0-0	0-0	0-0	0	1	1	0	0	0	0	0	5	5
05	CARVER, TATYANA	G	0	0-0	0-0	0-0	0	0	0	0	0	0	0	0	2	-5
11	TUELLE, SHYANNE	G	2	1-2	0-1	0-0	0	1	1	0	0	1	0	0	5	5
14	STAVES, BRITTANY	F	0	0-0	0-0	0-0	0	1	1	0	0	1	0	0	4	-1
40	MCNAMARA-CLEMENT, LAUR	F	0	0-0	0-0	0-0	0	0	0	0	0	0	0	0	0	0
<b>TEAM</b>							0	0	0	0		1				
<b>TOTALS</b>			<b>16</b>	<b>5-11</b>	<b>4-9</b>	<b>2-2</b>	<b>3</b>	<b>4</b>	<b>7</b>	<b>2</b>	<b>3</b>	<b>5</b>	<b>0</b>	<b>0</b>	<b>50</b>	

*Shooting By Period*

Period	FG	FG%	3FG	3FG%	FT	FT%
1st Qtr	5-11	45%	4-9	44%	2-2	100%
2nd Qtr	4-10	40%	3-8	38%	2-2	100%
1st Half	5-11	45%	4-9	44%	2-2	100%
1st Half	9-21	43%	7-17	41%	4-4	100%
Game	15-40	37.5%	11-29	37.9%	12-20	60.0%

*Deadball Rebounds: 6,0*

**Presbyterian 11**

No.	Player	S	Pts	FG	3FG	FT	OR	DR	TR	PF	A	TO	Blk	Stl	Min	+/-
11	HALL, KACIE	G	0	0-1	0-1	0-0	0	0	0	0	0	0	0	1	10	-5
14	JOHNSON, TRINITY	G	0	0-0	0-0	0-0	0	0	0	1	0	0	0	0	3	0
15	SANTOS, TESS	F	3	1-2	1-1	0-0	0	0	0	1	0	0	0	0	3	0
22	CARTER, TIONNA	F	2	1-2	0-0	0-0	0	0	0	0	2	1	0	1	8	-4
35	CAPLEY, ALESSIA	F	0	0-0	0-0	0-0	0	0	0	0	0	0	0	0	7	-11
03	HEMM, RILEY	G	0	0-0	0-0	0-0	0	0	0	0	0	0	0	0	1	-3
04	GIBBS, BRIA	F	0	0-0	0-0	0-0	0	0	0	1	0	1	0	0	1	2
12	MADDEN, LE'MESHA	G	2	1-1	0-0	0-0	0	1	1	2	0	2	0	1	6	-2
23	STAFFORD, SHAMANI	G	4	1-1	1-1	1-2	0	0	0	0	0	0	0	0	5	-5
32	COMPTON, JADE	F	0	0-1	0-1	0-0	0	1	1	0	1	0	0	0	5	3
<b>TEAM</b>							0	0	0	0		1				
<b>TOTALS</b>			<b>11</b>	<b>4-8</b>	<b>2-4</b>	<b>1-2</b>	<b>0</b>	<b>2</b>	<b>2</b>	<b>5</b>	<b>3</b>	<b>5</b>	<b>0</b>	<b>3</b>	<b>50</b>	

*Shooting By Period*

Period	FG	FG%	3FG	3FG%	FT	FT%
1st Qtr	4-8	50%	2-4	50%	1-2	50%
2nd Qtr	5-13	38%	1-3	33%	3-6	50%
1st Half	4-8	50%	2-4	50%	1-2	50%
1st Half	9-21	43%	3-7	43%	4-8	50%
Game	14-42	33.3%	3-15	20.0%	16-23	69.6%

*Deadball Rebounds: 3,0*

*Game Notes:*

Officials: **Mark McClenney, Whitney-Michael Armstrong, Daniel Drake**  
Attendance: **505**

Start Time: **02:02 PM ET**  
End Time: **04:03 PM ET**  
Game Duration: **2:00**  
Conference Game;

Score	1st	2nd	3rd	4th	TOT
CAM	16	13	13	11	<b>53</b>
PRE	11	14	9	13	<b>47</b>

Points from (This Period)	CAM	PRE
In the Paint	2	4
Off Turns	11	7
2nd Chance	2	0
Fast Break	0	2
Bench	2	6

**Official Play-By-Play**  
**Campbell vs Presbyterian**  
**First Quarter**  
**January 18, 2020 at Templeton Center - Clinton, S.C.**



**Period 1**

**Starters:**

**Campbell:** 0 SPEIGHT, KIANNA (G); 10 BARBER, HAYLEY (G); 23 BOLDEN, TAYA (F); 25 SERRANHO, LUANA (G); 44 NÜRENBERG, SVENIA (F);  
**Presbyterian:** 11 HALL, KACIE (G); 14 JOHNSON, TRINITY (G); 15 SANTOS, TESS (F); 22 CARTER, TIONNA (F); 35 CAPLEY, ALESSIA (F);

Time	VISITORS: Campbell	Score	Margin	HOME: Presbyterian
09:36	TURNOVER (LOSTBALL) by BOLDEN, TAYA			
09:04				MISSED JUMPER by SANTOS, TESS
09:00	REBOUND (DEF) by NÜRENBERG, SVENIA			
08:39	GOOD! 3PTR by SPEIGHT, KIANNA	0-3	V 3	
08:39	ASSIST by SERRANHO, LUANA			
08:21	FOUL (PERSONAL) by SERRANHO, LUANA			
08:08		3-3	T	GOOD! 3PTR by SANTOS, TESS
08:08				ASSIST by CARTER, TIONNA
07:34	MISSED 3PTR by SPEIGHT, KIANNA			
07:30	REBOUND (OFF) by BOLDEN, TAYA			
07:16	MISSED 3PTR by BARBER, HAYLEY			
07:13	REBOUND (OFF) by NÜRENBERG, SVENIA			
07:13				FOUL (PERSONAL) by SANTOS, TESS
07:13				SUB OUT: SANTOS, TESS
07:13				SUB IN: MADDEN, LE'MESHA
07:04	MISSED 3PTR by SERRANHO, LUANA			
07:00	REBOUND (OFF) by NÜRENBERG, SVENIA			
06:42				FOUL (PERSONAL) by JOHNSON, TRINITY
06:42				SUB OUT: JOHNSON, TRINITY
06:42				SUB IN: COMPTON, JADE
06:42	GOOD! FT by SERRANHO, LUANA	3-4	V 1	
06:42	GOOD! FT by SERRANHO, LUANA	3-5	V 2	
06:24				TURNOVER (BADPASS) by CARTER, TIONNA
06:24				SUB OUT: CARTER, TIONNA
06:24				SUB IN: GIBBS, BRIA
06:09	TURNOVER (LOSTBALL) by SERRANHO, LUANA			
06:09				STEAL by MADDEN, LE'MESHA
06:03		5-5	T	GOOD! LAYUP by MADDEN, LE'MESHA [FB]
05:35	MISSED LAYUP by BOLDEN, TAYA			
05:30				REBOUND (DEF) by COMPTON, JADE
05:26				FOUL (OFF) by GIBBS, BRIA
05:26				TURNOVER (OFFENSIVE) by GIBBS, BRIA
05:26				SUB OUT: GIBBS, BRIA
05:26				SUB IN: STAFFORD, SHAMANI
05:26	SUB OUT: BOLDEN, TAYA			
05:26	SUB OUT: SERRANHO, LUANA			
05:26	SUB IN: HAMPTON, ASHLYN			
05:26	SUB IN: TUELLE, SHYANNE			
05:04	GOOD! 3PTR by BARBER, HAYLEY	5-8	V 3	
05:04	ASSIST by NÜRENBERG, SVENIA			
04:43	FOUL (PERSONAL) by NÜRENBERG, SVENIA			
04:43				SUB OUT: CAPLEY, ALESSIA
04:43				SUB IN: CARTER, TIONNA
04:43	SUB OUT: NÜRENBERG, SVENIA			
04:43	SUB IN: STAVES, BRITTANY			
04:43		6-8	V 2	GOOD! FT by STAFFORD, SHAMANI
04:43				MISSED FT by STAFFORD, SHAMANI
04:41	REBOUND (DEF) by STAVES, BRITTANY			
04:12	TURNOVER (SHOTCLOCK) by TEAM			
04:12	SUB OUT: BARBER, HAYLEY			
04:12	SUB IN: CARVER, TATYANA			
04:03		8-8	T	GOOD! LAYUP by CARTER, TIONNA
04:03				ASSIST by COMPTON, JADE
03:35	TURNOVER (BADPASS) by STAVES, BRITTANY			
03:35				STEAL by CARTER, TIONNA
03:21		11-8	H 3	GOOD! 3PTR by STAFFORD, SHAMANI
03:21				ASSIST by CARTER, TIONNA
03:05	MISSED 3PTR by SPEIGHT, KIANNA			
03:01				REBOUND (DEF) by MADDEN, LE'MESHA
02:43				MISSED LAYUP by CARTER, TIONNA
02:39	REBOUND (DEF) by HAMPTON, ASHLYN			
02:25	TURNOVER (BADPASS) by TUELLE, SHYANNE			
02:25				STEAL by HALL, KACIE
01:55				MISSED 3PTR by COMPTON, JADE
01:55				REBOUND (OFF) by TEAM
01:55				TURNOVER (SHOTCLOCK) by TEAM
01:55				SUB OUT: COMPTON, JADE
01:55				SUB IN: CAPLEY, ALESSIA
01:55	SUB OUT: SPEIGHT, KIANNA			

Time	VISITORS: Campbell	Score	Margin	HOME: Presbyterian
01:55	SUB OUT: CARVER, TATYANA			
01:55	SUB IN: BARBER, HAYLEY			
01:55	SUB IN: SERRANHO, LUANA			
01:52	GOOD! JUMPER by TUELLE, SHYANNE [PNT]	11-10	H 1	
01:34				FOUL (OFF) by MADDEN, LE'MESHA
01:34				TURNOVER (OFFENSIVE) by MADDEN, LE'MESHA
01:20	GOOD! 3PTR by SERRANHO, LUANA	11-13	V 2	
00:44				FOUL (OFF) by MADDEN, LE'MESHA
00:44				TURNOVER (OFFENSIVE) by MADDEN, LE'MESHA
00:44				SUB OUT: MADDEN, LE'MESHA
00:44				SUB IN: HEMM, RILEY
00:44	SUB OUT: STAVES, BRITTANY			
00:44	SUB IN: NÜRENBERG, SVENIA			
00:34	GOOD! 3PTR by BARBER, HAYLEY	11-16	V 5	
00:34	ASSIST by SERRANHO, LUANA			
00:15				MISSED 3PTR by HALL, KACIE
00:11	REBOUND (DEF) by TUELLE, SHYANNE			
00:00	MISSED 3PTR by TUELLE, SHYANNE			
00:00	REBOUND (OFF) by TEAM			

### Campbell 16, Presbyterian 11

Points from (This Period)	CAM	PRE
In the Paint	2	4
Off Turns	11	7
2nd Chance	2	0
Fast Break	0	2
Bench	2	6

**Official Box Score**  
**Campbell vs Presbyterian**  
**Second Quarter Statistics Only**  
**January 18, 2020 at Templeton Center - Clinton, S.C.**



**Campbell 13**

No.	Player	S	Pts	FG	3FG	FT	OR	DR	TR	PF	A	TO	Blk	Stl	Min	+/-
00	SPEIGHT, KIANNA	G	9	3-4	3-4	0-0	0	1	1	1	0	0	0	0	7	4
10	BARBER, HAYLEY	G	4	1-4	0-3	2-2	1	0	1	0	1	2	1	1	8	4
23	BOLDEN, TAYA	F	0	0-0	0-0	0-0	0	1	1	1	0	1	0	1	4	-1
25	SERRANHO, LUANA	G	0	0-0	0-0	0-0	0	1	1	0	1	1	0	0	10	-1
44	NÜRENBERG, SVENIA	F	0	0-0	0-0	0-0	0	1	1	0	0	0	0	0	6	-6
04	HAMPTON, ASHLYN	F	0	0-0	0-0	0-0	0	1	1	2	0	1	0	0	5	1
05	CARVER, TATYANA	G	0	0-0	0-0	0-0	0	0	0	0	0	0	0	0	0	0
11	TUELLE, SHYANNE	G	0	0-2	0-1	0-0	0	2	2	0	1	0	0	0	9	-5
14	STAVES, BRITTANY	F	0	0-0	0-0	0-0	0	0	0	0	0	0	0	0	0	0
40	MCNAMARA-CLEMENT, LAUR	F	0	0-0	0-0	0-0	0	0	0	0	0	0	0	0	2	-1
<b>TEAM</b>							0	0	0	0	0	0	0	0	0	0
<b>TOTALS</b>			<b>13</b>	<b>4-10</b>	<b>3-8</b>	<b>2-2</b>	<b>1</b>	<b>7</b>	<b>8</b>	<b>4</b>	<b>3</b>	<b>5</b>	<b>1</b>	<b>2</b>	<b>50</b>	

*Shooting By Period*

Period	FG	FG%	3FG	3FG%	FT	FT%
3rd Qtr	4-12	33%	3-8	38%	2-2	100%
4th Qtr	2-7	29%	1-4	25%	6-14	43%
2nd Half	4-10	40%	3-8	38%	2-2	100%
2nd Half	6-19	32%	4-12	33%	8-16	50%
Game	15-40	37.5%	11-29	37.9%	12-20	60.0%

*Deadball Rebounds: 6,0*

**Presbyterian 14**

No.	Player	S	Pts	FG	3FG	FT	OR	DR	TR	PF	A	TO	Blk	Stl	Min	+/-
11	HALL, KACIE	G	0	0-0	0-0	0-0	0	0	0	0	0	1	0	0	10	1
14	JOHNSON, TRINITY	G	5	2-3	1-1	0-0	0	1	1	1	0	2	0	0	4	3
15	SANTOS, TESS	F	0	0-0	0-0	0-0	0	0	0	0	0	0	0	0	10	1
22	CARTER, TIONNA	F	2	0-0	0-0	2-2	0	1	1	1	0	0	0	2	5	6
35	CAPLEY, ALESSIA	F	1	0-2	0-1	1-2	2	0	2	0	1	0	0	1	10	1
03	HEMM, RILEY	G	0	0-0	0-0	0-0	0	0	0	0	0	0	0	0	0	0
04	GIBBS, BRIA	F	2	1-4	0-0	0-2	0	1	1	0	0	0	0	0	5	-5
12	MADDEN, LE'MESHA	G	0	0-0	0-0	0-0	0	0	0	0	0	0	0	0	0	0
23	STAFFORD, SHAMANI	G	4	2-4	0-1	0-0	0	2	2	1	0	0	0	0	6	-2
32	COMPTON, JADE	F	0	0-0	0-0	0-0	0	0	0	0	0	0	0	0	0	0
<b>TEAM</b>							1	0	1	0	0	0	0	0	0	
<b>TOTALS</b>			<b>14</b>	<b>5-13</b>	<b>1-3</b>	<b>3-6</b>	<b>3</b>	<b>5</b>	<b>8</b>	<b>3</b>	<b>1</b>	<b>3</b>	<b>0</b>	<b>3</b>	<b>50</b>	

*Shooting By Period*

Period	FG	FG%	3FG	3FG%	FT	FT%
3rd Qtr	3-10	30%	0-2	00%	3-5	60%
4th Qtr	2-11	18%	0-6	00%	9-10	90%
2nd Half	5-13	38%	1-3	33%	3-6	50%
2nd Half	5-21	24%	0-8	00%	12-15	80%
Game	14-42	33.3%	3-15	20.0%	16-23	69.6%

*Deadball Rebounds: 3,0*

*Game Notes:*

Officials: **Mark McClenney, Whitney-Michael Armstrong, Daniel Drake**  
Attendance: **505**

Start Time: **02:02 PM ET**  
End Time: **04:03 PM ET**  
Game Duration: **2:00**  
Conference Game;

Score	1st	2nd	3rd	4th	TOT
CAM	16	13	13	11	<b>53</b>
PRE	11	14	9	13	<b>47</b>

Points from (This Period)	CAM	PRE
In the Paint	0	4
Off Turns	2	6
2nd Chance	3	1
Fast Break	2	0
Bench	0	6

**Official Play-By-Play**  
**Campbell vs Presbyterian**  
**Second Quarter**  
**January 18, 2020 at Templeton Center - Clinton, S.C.**



**Period 2**

**Starters:**

**Campbell:** 0 SPEIGHT, KIANNA (G); 10 BARBER, HAYLEY (G); 23 BOLDEN, TAYA (F); 25 SERRANHO, LUANA (G); 44 NÜRENBERG, SVENIA (F);  
**Presbyterian:** 11 HALL, KACIE (G); 14 JOHNSON, TRINITY (G); 15 SANTOS, TESS (F); 22 CARTER, TIONNA (F); 35 CAPLEY, ALESSIA (F);

Time	VISITORS: Campbell	Score	Margin	HOME: Presbyterian
10:00				SUB OUT: HEMM, RILEY
10:00				SUB OUT: STAFFORD, SHAMANI
10:00				SUB IN: JOHNSON, TRINITY
10:00				SUB IN: SANTOS, TESS
09:49				MISSED 3PTR by CAPLEY, ALESSIA
09:45	REBOUND (DEF) by TUELLE, SHYANNE			
09:38	MISSED JUMPER by TUELLE, SHYANNE			
09:34				REBOUND (DEF) by JOHNSON, TRINITY
09:32				MISSED LAYUP by JOHNSON, TRINITY
09:32	BLOCK by BARBER, HAYLEY			
09:32				REBOUND (OFF) by TEAM
09:21				TURNOVER (LOSTBALL) by JOHNSON, TRINITY
09:21	STEAL by BARBER, HAYLEY			
09:18	TURNOVER (BADPASS) by BARBER, HAYLEY			
09:18				STEAL by CARTER, TIONNA
08:49				MISSED JUMPER by CAPLEY, ALESSIA
08:45	REBOUND (DEF) by NÜRENBERG, SVENIA			
08:42	TURNOVER (BADPASS) by SERRANHO, LUANA			
08:42				STEAL by CAPLEY, ALESSIA
08:06		13-16	V 3	GOOD! JUMPER by JOHNSON, TRINITY
07:47	MISSED 3PTR by BARBER, HAYLEY			
07:43				REBOUND (DEF) by CARTER, TIONNA
07:30		16-16	T	GOOD! 3PTR by JOHNSON, TRINITY
07:30				ASSIST by CAPLEY, ALESSIA
07:01				FOUL (PERSONAL) by CARTER, TIONNA
07:01				SUB OUT: CARTER, TIONNA
07:01				SUB IN: GIBBS, BRIA
07:01	SUB OUT: HAMPTON, ASHLYN			
07:01	SUB OUT: TUELLE, SHYANNE			
07:01	SUB IN: SPEIGHT, KIANNA			
07:01	SUB IN: BOLDEN, TAYA			
06:53	MISSED 3PTR by BARBER, HAYLEY			
06:50				REBOUND (DEF) by GIBBS, BRIA
06:42				MISSED JUMPER by GIBBS, BRIA
06:37	REBOUND (DEF) by BOLDEN, TAYA			
06:20	GOOD! JUMPER by BARBER, HAYLEY	16-18	V 2	
06:05				TURNOVER (BADPASS) by JOHNSON, TRINITY
06:05	STEAL by BOLDEN, TAYA			
06:00				FOUL (PERSONAL) by JOHNSON, TRINITY
06:00				SUB OUT: JOHNSON, TRINITY
06:00				SUB IN: STAFFORD, SHAMANI
06:00	GOOD! FT by BARBER, HAYLEY [FB]	16-19	V 3	
06:00	GOOD! FT by BARBER, HAYLEY [FB]	16-20	V 4	
06:00	SUB OUT: BARBER, HAYLEY			
06:00	SUB IN: TUELLE, SHYANNE			
05:35				MISSED JUMPER by GIBBS, BRIA
05:34				REBOUND (OFF) by CAPLEY, ALESSIA
05:34	FOUL (PERSONAL) by BOLDEN, TAYA			
05:34		17-20	V 3	GOOD! FT by CAPLEY, ALESSIA
05:34				MISSED FT by CAPLEY, ALESSIA
05:30	REBOUND (DEF) by SERRANHO, LUANA			
05:05	TURNOVER (TRAVEL) by BOLDEN, TAYA			
04:52		19-20	V 1	GOOD! JUMPER by STAFFORD, SHAMANI
04:31	MISSED 3PTR by TUELLE, SHYANNE			
04:27				REBOUND (DEF) by STAFFORD, SHAMANI
04:07		21-20	H 1	GOOD! LAYUP by GIBBS, BRIA
03:58	TIMEOUT 30SEC			
03:58				
03:58	SUB OUT: BOLDEN, TAYA			
03:58	SUB OUT: NÜRENBERG, SVENIA			
03:58	SUB IN: HAMPTON, ASHLYN			
03:58	SUB IN: BARBER, HAYLEY			
03:50	MISSED 3PTR by SPEIGHT, KIANNA			
03:46	REBOUND (OFF) by BARBER, HAYLEY			
03:46				FOUL (PERSONAL) by STAFFORD, SHAMANI
03:39	GOOD! 3PTR by SPEIGHT, KIANNA	21-23	V 2	
03:39	ASSIST by BARBER, HAYLEY			
03:07				MISSED JUMPER by STAFFORD, SHAMANI
03:01	REBOUND (DEF) by TUELLE, SHYANNE			
02:50	GOOD! 3PTR by SPEIGHT, KIANNA	21-26	V 5	



Time	VISITORS: Campbell	Score	Margin	HOME: Presbyterian
02:50	ASSIST by SERRANHO, LUANA			
02:21				MISSED LAYUP by GIBBS, BRIA
02:21				REBOUND (OFF) by CAPLEY, ALESSIA
02:21	FOUL (PERSONAL) by HAMPTON, ASHLYN			
02:21				MISSED FT by GIBBS, BRIA
02:21				REBOUND (OFF) by TEAM
02:21				MISSED FT by GIBBS, BRIA
02:18	REBOUND (DEF) by HAMPTON, ASHLYN			
02:13	FOUL (OFF) by HAMPTON, ASHLYN			
02:13	TURNOVER (OFFENSIVE) by HAMPTON, ASHLYN			
02:13				SUB OUT: GIBBS, BRIA
02:13				SUB IN: CARTER, TIONNA
02:13	SUB OUT: HAMPTON, ASHLYN			
02:13	SUB IN: MCNAMARA-CLEMENT, LAUREN			
01:58	FOUL (PERSONAL) by SPEIGHT, KIANNA			
01:58		22-26	V 4	GOOD! FT by CARTER, TIONNA
01:58		23-26	V 3	GOOD! FT by CARTER, TIONNA
01:47	GOOD! 3PTR by SPEIGHT, KIANNA	23-29	V 6	
01:47	ASSIST by TUELLE, SHYANNE			
01:17		25-29	V 4	GOOD! JUMPER by STAFFORD, SHAMANI [PNT]
00:54	TURNOVER (BADPASS) by BARBER, HAYLEY			
00:54				STEAL by CARTER, TIONNA
00:30				TURNOVER (BADPASS) by HALL, KACIE
00:30	SUB OUT: MCNAMARA-CLEMENT, LAUREN			
00:30	SUB IN: BOLDEN, TAYA			
00:12	MISSED 3PTR by BARBER, HAYLEY			
00:09				REBOUND (DEF) by STAFFORD, SHAMANI
00:00				MISSED 3PTR by STAFFORD, SHAMANI
00:00	REBOUND (DEF) by SPEIGHT, KIANNA			

### Campbell 29, Presbyterian 25

Points from (This Period)	CAM	PRE
In the Paint	0	4
Off Turns	2	6
2nd Chance	3	1
Fast Break	2	0
Bench	0	6

**Official Box Score**  
**Campbell vs Presbyterian**  
**Second Half Statistics Only**  
**January 18, 2020 at Templeton Center - Clinton, S.C.**



**Campbell 24**

No.	Player	S	Pts	FG	3FG	FT	OR	DR	TR	PF	A	TO	Blk	Stl	Min	+/-
00	SPEIGHT, KIANNA	G	12	4-5	4-5	0-0	0	0	0	3	0	1	0	1	20	2
04	HAMPTON, ASHLYN	F	0	0-0	0-0	0-0	0	2	2	2	0	1	0	0	4	-2
05	CARVER, TATYANA	G	0	0-0	0-0	0-0	0	0	0	0	0	0	0	0	0	0
10	BARBER, HAYLEY	G	3	0-2	0-1	3-8	1	2	3	3	1	0	0	0	20	4
11	TUELLE, SHYANNE	G	1	0-4	0-3	1-2	0	0	0	0	1	0	0	0	7	4
14	STAVES, BRITTANY	F	0	0-0	0-0	0-0	0	0	0	0	0	0	0	0	0	0
23	BOLDEN, TAYA	F	4	1-3	0-0	2-4	2	5	7	2	1	1	1	0	15	3
25	SERRANHO, LUANA	G	4	1-2	0-1	2-2	0	1	1	1	1	4	0	1	15	-3
40	MCNAMARA-CLEMENT, LAUR	F	0	0-0	0-0	0-0	0	0	0	0	0	0	0	0	0	0
44	NÜRENBERG, SVENIA	F	0	0-3	0-2	0-0	0	2	2	1	1	0	0	1	19	2
	TEAM		0	0-0	0-0	0-0	1	1	2	0	0	2	0	0	0	0
<b>TOTALS</b>			<b>24</b>	<b>6-19</b>	<b>4-12</b>	<b>8-16</b>	<b>4</b>	<b>13</b>	<b>17</b>	<b>12</b>	<b>5</b>	<b>9</b>	<b>1</b>	<b>3</b>	<b>100</b>	

*Shooting By Period*

Period	FG	FG%	3FG	3FG%	FT	FT%
3rd Qtr	4-12	33%	3-8	38%	2-2	100%
4th Qtr	2-7	29%	1-4	25%	6-14	43%
2nd Half	6-19	32%	4-12	33%	8-16	50%
Game	15-40	37.5%	11-29	37.9%	12-20	60.0%

*Deadball Rebounds: 6,0*

*Last FG Half: CAM 4th-02:01*

**Presbyterian 22**

No.	Player	S	Pts	FG	3FG	FT	OR	DR	TR	PF	A	TO	Blk	Stl	Min	+/-
03	HEMM, RILEY	G	0	0-0	0-0	0-0	0	0	0	0	0	0	0	0	0	-2
04	GIBBS, BRIA	F	6	1-3	0-0	4-4	0	1	1	3	0	3	1	0	14	-4
11	HALL, KACIE	G	2	1-2	0-1	0-0	0	0	0	1	1	0	0	0	6	1
12	MADDEN, LE'MESHA	G	0	0-0	0-0	0-0	0	0	0	0	0	0	0	0	1	2
14	JOHNSON, TRINITY	G	6	2-7	0-2	2-3	2	3	5	3	1	2	0	3	20	0
15	SANTOS, TESS	F	6	1-4	0-2	4-4	0	1	1	2	0	1	0	1	19	-1
22	CARTER, TIONNA	F	1	0-1	0-0	1-2	0	2	2	1	0	1	0	0	14	0
23	STAFFORD, SHAMANI	G	0	0-3	0-3	0-0	1	1	2	2	0	0	0	0	16	-6
32	COMPTON, JADE	F	0	0-0	0-0	0-0	0	1	1	1	0	0	0	0	2	4
35	CAPLEY, ALESSIA	F	1	0-1	0-0	1-2	2	2	4	0	0	1	0	0	8	-4
	TEAM		0	0-0	0-0	0-0	0	1	1	0	0	1	0	0	0	0
<b>TOTALS</b>			<b>22</b>	<b>5-21</b>	<b>0-8</b>	<b>12-15</b>	<b>5</b>	<b>12</b>	<b>17</b>	<b>13</b>	<b>2</b>	<b>9</b>	<b>1</b>	<b>4</b>	<b>100</b>	

*Shooting By Period*

Period	FG	FG%	3FG	3FG%	FT	FT%
3rd Qtr	3-10	30%	0-2	00%	3-5	60%
4th Qtr	2-11	18%	0-6	00%	9-10	90%
2nd Half	5-21	24%	0-8	00%	12-15	80%
Game	14-42	33.3%	3-15	20.0%	16-23	69.6%

*Deadball Rebounds: 3,0*

*Last FG Half: PRE 4th-00:14*

*Game Notes:*

*Officials: Mark McClenney, Whitney-Michael Armstrong, Daniel*

*Drake*

*Attendance: 505*

*Start Time: 02:02 PM ET*

*End Time: 04:03 PM ET*

*Game Duration: 2:00*

*Conference Game;*

Score	1st	2nd	3rd	4th	TOT
CAM	16	13	13	11	53
PRE	11	14	9	13	47

Points from (This Period)	CAM	PRE
In the Paint	2	6
Off Turns	12	7
2nd Chance	6	3
Fast Break	0	2
Bench	1	6

**Official Box Score**  
**Campbell vs Presbyterian**  
**Third Quarter Statistics Only**  
**January 18, 2020 at Templeton Center - Clinton, S.C.**



**Campbell 24**

No.	Player	S	Pts	FG	3FG	FT	OR	DR	TR	PF	A	TO	Blk	Stl	Min	+/-
00	SPEIGHT, KIANNA	G	9	3-4	3-4	0-0	0	0	0	1	0	0	0	1	10	4
10	BARBER, HAYLEY	G	2	0-1	0-0	2-2	0	0	0	2	1	0	0	0	10	4
23	BOLDEN, TAYA	F	0	0-1	0-0	0-0	1	3	4	0	1	0	1	0	7	9
25	SERRANHO, LUANA	G	2	1-1	0-0	0-0	0	1	1	1	0	2	0	0	5	-1
44	NÜRENBERG, SVENIA	F	0	0-2	0-1	0-0	0	0	0	1	1	0	0	1	10	4
04	HAMPTON, ASHLYN	F	0	0-0	0-0	0-0	0	2	2	0	0	0	0	0	3	-5
05	CARVER, TATYANA	G	0	0-0	0-0	0-0	0	0	0	0	0	0	0	0	0	0
11	TUELLE, SHYANNE	G	0	0-3	0-3	0-0	0	0	0	0	1	0	0	0	5	5
14	STAVES, BRITTANY	F	0	0-0	0-0	0-0	0	0	0	0	0	0	0	0	0	0
40	MCNAMARA-CLEMENT, LAUR	F	0	0-0	0-0	0-0	0	0	0	0	0	0	0	0	0	0
TEAM							1	0	1	0		1				
<b>TOTALS</b>			<b>13</b>	<b>4-12</b>	<b>3-8</b>	<b>2-2</b>	<b>2</b>	<b>6</b>	<b>8</b>	<b>5</b>	<b>4</b>	<b>3</b>	<b>1</b>	<b>2</b>	<b>50</b>	

*Shooting By Period*

Period	FG	FG%	3FG	3FG%	FT	FT%
2nd Half	0-0	0%	0-0	0%	0-0	0%
Game	15-40	37.5%	11-29	37.9%	12-20	60.0%

*Deadball Rebounds: 6,0*

**Presbyterian 22**

No.	Player	S	Pts	FG	3FG	FT	OR	DR	TR	PF	A	TO	Blk	Stl	Min	+/-
11	HALL, KACIE	G	0	0-1	0-1	0-0	0	0	0	1	1	0	0	0	3	-1
14	JOHNSON, TRINITY	G	4	2-4	0-0	0-1	0	2	2	0	1	1	0	1	10	-4
15	SANTOS, TESS	F	0	0-1	0-1	0-0	0	0	0	1	0	1	0	1	9	-3
22	CARTER, TIONNA	F	0	0-0	0-0	0-0	0	0	0	1	0	1	0	0	4	-2
35	CAPLEY, ALESSIA	F	1	0-1	0-0	1-2	2	1	3	0	0	0	0	0	7	-4
03	HEMM, RILEY	G	0	0-0	0-0	0-0	0	0	0	0	0	0	0	0	0	0
04	GIBBS, BRIA	F	4	1-3	0-0	2-2	0	1	1	0	0	1	1	0	7	-4
12	MADDEN, LE'MESHA	G	0	0-0	0-0	0-0	0	0	0	0	0	0	0	0	1	2
23	STAFFORD, SHAMANI	G	0	0-0	0-0	0-0	0	1	1	0	0	0	0	0	8	-6
32	COMPTON, JADE	F	0	0-0	0-0	0-0	0	1	1	0	0	0	0	0	2	2
TEAM							0	0	0	0		1				
<b>TOTALS</b>			<b>9</b>	<b>3-10</b>	<b>0-2</b>	<b>3-5</b>	<b>2</b>	<b>6</b>	<b>8</b>	<b>3</b>	<b>2</b>	<b>5</b>	<b>1</b>	<b>2</b>	<b>50</b>	

*Shooting By Period*

Period	FG	FG%	3FG	3FG%	FT	FT%
2nd Half	0-0	0%	0-0	0%	0-0	0%
Game	14-42	33.3%	3-15	20.0%	16-23	69.6%

*Deadball Rebounds: 3,0*

Game Notes:

Officials: Mark McClenney, Whitney-Michael Armstrong, Daniel Drake  
 Attendance: 505

Start Time: 02:02 PM ET  
 End Time: 04:03 PM ET  
 Game Duration: 2:00  
 Conference Game;

Score	1st	2nd	3rd	4th	TOT
CAM	16	13	13	11	<b>53</b>
PRE	11	14	9	13	<b>47</b>

Points from (This Period)	CAM	PRE
In the Paint	0	4
Off Turns	8	0
2nd Chance	3	1
Fast Break	0	0
Bench	0	4

**Official Play-By-Play**  
**Campbell vs Presbyterian**  
**Third Quarter**  
**January 18, 2020 at Templeton Center - Clinton, S.C.**



**Period 3**

**Starters:**

**Campbell:** 0 SPEIGHT, KIANNA (G); 10 BARBER, HAYLEY (G); 23 BOLDEN, TAYA (F); 25 SERRANHO, LUANA (G); 44 NÜRENBERG, SVENIA (F);  
**Presbyterian:** 11 HALL, KACIE (G); 14 JOHNSON, TRINITY (G); 15 SANTOS, TESS (F); 22 CARTER, TIONNA (F); 35 CAPLEY, ALESSIA (F);

Time	VISITORS: Campbell	Score	Margin	HOME: Presbyterian
10:00				SUB OUT: STAFFORD, SHAMANI
10:00				SUB IN: JOHNSON, TRINITY
10:00	SUB OUT: TUELLE, SHYANNE			
10:00	SUB IN: NÜRENBERG, SVENIA			
09:36				MISSED 3PTR by HALL, KACIE
09:33	REBOUND (DEF) by SERRANHO, LUANA			
09:07	MISSED 3PTR by SPEIGHT, KIANNA			
09:04				REBOUND (DEF) by CAPLEY, ALESSIA
08:48		27-29	V 2	GOOD! JUMPER by JOHNSON, TRINITY
08:48				ASSIST by HALL, KACIE
08:27	MISSED LAYUP by BOLDEN, TAYA			
08:23				REBOUND (DEF) by JOHNSON, TRINITY
07:58				TURNOVER (LOSTBALL) by SANTOS, TESS
07:58	STEAL by SPEIGHT, KIANNA			
07:41				FOUL (PERSONAL) by HALL, KACIE
07:41				SUB OUT: HALL, KACIE
07:41				SUB IN: STAFFORD, SHAMANI
07:28				FOUL (PERSONAL) by SANTOS, TESS
07:28	GOOD! FT by BARBER, HAYLEY	27-30	V 3	
07:28	GOOD! FT by BARBER, HAYLEY	27-31	V 4	
07:28				SUB OUT: CAPLEY, ALESSIA
07:28				SUB IN: GIBBS, BRIA
07:11				MISSED LAYUP by GIBBS, BRIA
07:08	REBOUND (DEF) by BOLDEN, TAYA			
06:45	GOOD! JUMPER by SERRANHO, LUANA	27-33	V 6	
06:45	ASSIST by NÜRENBERG, SVENIA			
06:30				FOUL (OFF) by CARTER, TIONNA
06:30				TURNOVER (OFFENSIVE) by CARTER, TIONNA
06:30				SUB OUT: CARTER, TIONNA
06:30				SUB IN: CAPLEY, ALESSIA
06:30	SUB OUT: BOLDEN, TAYA			
06:30	SUB IN: HAMPTON, ASHLYN			
06:16	MISSED 3PTR by NÜRENBERG, SVENIA			
06:10				REBOUND (DEF) by JOHNSON, TRINITY
06:07				MISSED 3PTR by SANTOS, TESS
06:04				REBOUND (OFF) by CAPLEY, ALESSIA
06:04	FOUL (PERSONAL) by SERRANHO, LUANA			
06:04				MISSED FT by CAPLEY, ALESSIA
06:04				REBOUND (OFF) by TEAM
06:04		28-33	V 5	GOOD! FT by CAPLEY, ALESSIA
05:45	TURNOVER (BADPASS) by SERRANHO, LUANA			
05:45				STEAL by SANTOS, TESS
05:41	FOUL (PERSONAL) by SPEIGHT, KIANNA			
05:39		30-33	V 3	GOOD! LAYUP by GIBBS, BRIA [PNT]
05:39				ASSIST by JOHNSON, TRINITY
05:18	TURNOVER (LOSTBALL) by SERRANHO, LUANA			
05:18				STEAL by JOHNSON, TRINITY
05:18	SUB OUT: HAMPTON, ASHLYN			
05:18	SUB OUT: SERRANHO, LUANA			
05:18	SUB IN: TUELLE, SHYANNE			
05:18	SUB IN: BOLDEN, TAYA			
05:13				TURNOVER (BADPASS) by JOHNSON, TRINITY
05:13	STEAL by NÜRENBERG, SVENIA			
05:01	GOOD! 3PTR by SPEIGHT, KIANNA	30-36	V 6	
05:01	ASSIST by BARBER, HAYLEY			
04:36				MISSED JUMPER by JOHNSON, TRINITY
04:31	REBOUND (DEF) by BOLDEN, TAYA			
04:09	MISSED 3PTR by TUELLE, SHYANNE			
04:04	REBOUND (OFF) by BOLDEN, TAYA			
04:02	GOOD! 3PTR by SPEIGHT, KIANNA	30-39	V 9	
04:02	ASSIST by BOLDEN, TAYA			
03:56				TIMEOUT 30SEC
03:56				
03:56				SUB OUT: SANTOS, TESS
03:56				SUB IN: MADDEN, LE'MESHA
03:40		32-39	V 7	GOOD! JUMPER by JOHNSON, TRINITY [PNT]
03:40	FOUL (PERSONAL) by BARBER, HAYLEY			
03:40				
03:40				MISSED FT by JOHNSON, TRINITY
03:39				REBOUND (OFF) by CAPLEY, ALESSIA

Time	VISITORS: Campbell	Score	Margin	HOME: Presbyterian
03:39	FOUL (PERSONAL) by NÜRENBERG, SVENIA			
03:26				MISSED LAYUP by CAPLEY, ALESSIA
03:26	BLOCK by BOLDEN, TAYA			
03:21	REBOUND (DEF) by BOLDEN, TAYA			
03:18	MISSED 3PTR by TUELLE, SHYANNE			
03:14				REBOUND (DEF) by GIBBS, BRIA
03:14				TURNOVER (BADPASS) by GIBBS, BRIA
03:14				SUB OUT: MADDEN, LE'MESHA
03:14				SUB IN: HALL, KACIE
03:04	GOOD! 3PTR by SPEIGHT, KIANNA	32-42	V 10	
03:04	ASSIST by TUELLE, SHYANNE			
02:31				TURNOVER (SHOTCLOCK) by TEAM
02:31				SUB OUT: HALL, KACIE
02:31				SUB OUT: CAPLEY, ALESSIA
02:31				SUB IN: SANTOS, TESS
02:31				SUB IN: COMPTON, JADE
02:03	MISSED 3PTR by TUELLE, SHYANNE			
01:58				REBOUND (DEF) by COMPTON, JADE
01:42	FOUL (PERSONAL) by BARBER, HAYLEY			
01:42	SUB OUT: BOLDEN, TAYA			
01:42	SUB IN: HAMPTON, ASHLYN			
01:42		33-42	V 9	GOOD! FT by GIBBS, BRIA
01:42		34-42	V 8	GOOD! FT by GIBBS, BRIA
01:18	MISSED LAYUP by BARBER, HAYLEY			
01:18				BLOCK by GIBBS, BRIA
01:18	REBOUND (OFF) by TEAM			
01:16	MISSED LAYUP by NÜRENBERG, SVENIA			
01:12				REBOUND (DEF) by STAFFORD, SHAMANI
00:58				MISSED JUMPER by JOHNSON, TRINITY
00:52	REBOUND (DEF) by HAMPTON, ASHLYN			
00:28	SUB OUT: NÜRENBERG, SVENIA			
00:28	SUB IN: SERRANHO, LUANA			
00:26	TURNOVER (SHOTCLOCK) by TEAM			
00:26				SUB OUT: COMPTON, JADE
00:26				SUB IN: CARTER, TIONNA
00:26	SUB OUT: BARBER, HAYLEY			
00:26	SUB IN: CARVER, TATYANA			
00:02				MISSED LAYUP by GIBBS, BRIA
00:00	REBOUND (DEF) by HAMPTON, ASHLYN			

### Campbell 42, Presbyterian 34

Points from (This Period)	CAM	PRE
In the Paint	0	4
Off Turns	8	0
2nd Chance	3	1
Fast Break	0	0
Bench	0	4

**Official Box Score**  
**Campbell vs Presbyterian**  
**Fourth Quarter Statistics Only**  
**January 18, 2020 at Templeton Center - Clinton, S.C.**



**Campbell 11**

No.	Player	S	Pts	FG	3FG	FT	OR	DR	TR	PF	A	TO	Blk	Stl	Min	+/-
00	SPEIGHT, KIANNA	G	3	1-1	1-1	0-0	0	0	0	2	0	1	0	0	10	-2
10	BARBER, HAYLEY	G	1	0-1	0-1	1-6	1	2	3	1	0	0	0	0	10	0
23	BOLDEN, TAYA	F	4	1-2	0-0	2-4	1	2	3	2	0	1	0	0	8	-6
25	SERRANHO, LUANA	G	2	0-1	0-1	2-2	0	0	0	0	1	2	0	1	10	-2
44	NÜRENBERG, SVENIA	F	0	0-1	0-1	0-0	0	2	2	0	0	0	0	0	9	-2
04	HAMPTON, ASHLYN	F	0	0-0	0-0	0-0	0	0	0	2	0	1	0	0	1	3
05	CARVER, TATYANA	G	0	0-0	0-0	0-0	0	0	0	0	0	0	0	0	0	0
11	TUELLE, SHYANNE	G	1	0-1	0-0	1-2	0	0	0	0	0	0	0	0	2	-1
14	STAVES, BRITTANY	F	0	0-0	0-0	0-0	0	0	0	0	0	0	0	0	0	0
40	MCNAMARA-CLEMENT, LAUR	F	0	0-0	0-0	0-0	0	0	0	0	0	0	0	0	0	0
TEAM							0	1	1	0		1				
<b>TOTALS</b>			<b>11</b>	<b>2-7</b>	<b>1-4</b>	<b>6-14</b>	<b>2</b>	<b>7</b>	<b>9</b>	<b>7</b>	<b>1</b>	<b>6</b>	<b>0</b>	<b>1</b>	<b>50</b>	

*Shooting By Period*

Period	FG	FG%	3FG	3FG%	FT	FT%
Game	15-40	37.5%	11-29	37.9%	12-20	60.0%

*Deadball Rebounds: 6,0*

**Presbyterian 13**

No.	Player	S	Pts	FG	3FG	FT	OR	DR	TR	PF	A	TO	Blk	Stl	Min	+/-
11	HALL, KACIE	G	2	1-1	0-0	0-0	0	0	0	0	0	0	0	0	3	2
14	JOHNSON, TRINITY	G	2	0-3	0-2	2-2	2	1	3	3	0	1	0	2	10	4
15	SANTOS, TESS	F	6	1-3	0-1	4-4	0	1	1	1	0	0	0	0	10	2
22	CARTER, TIONNA	F	1	0-1	0-0	1-2	0	2	2	0	0	0	0	0	10	2
35	CAPLEY, ALESSIA	F	0	0-0	0-0	0-0	0	1	1	0	0	1	0	0	1	0
03	HEMM, RILEY	G	0	0-0	0-0	0-0	0	0	0	0	0	0	0	0	0	-2
04	GIBBS, BRIA	F	2	0-0	0-0	2-2	0	0	0	3	0	2	0	0	7	0
12	MADDEN, LE'MESHA	G	0	0-0	0-0	0-0	0	0	0	0	0	0	0	0	0	0
23	STAFFORD, SHAMANI	G	0	0-3	0-3	0-0	1	0	1	2	0	0	0	0	8	0
32	COMPTON, JADE	F	0	0-0	0-0	0-0	0	0	0	1	0	0	0	0	0	2
TEAM							0	1	1	0		0				
<b>TOTALS</b>			<b>13</b>	<b>2-11</b>	<b>0-6</b>	<b>9-10</b>	<b>3</b>	<b>6</b>	<b>9</b>	<b>10</b>	<b>0</b>	<b>4</b>	<b>0</b>	<b>2</b>	<b>50</b>	

*Shooting By Period*

Period	FG	FG%	3FG	3FG%	FT	FT%
Game	14-42	33.3%	3-15	20.0%	16-23	69.6%

*Deadball Rebounds: 3,0*

Game Notes:

Officials: Mark McClenney, Whitney-Michael Armstrong, Daniel

Drake

Attendance: 505

Start Time: 02:02 PM ET

End Time: 04:03 PM ET

Game Duration: 2:00

Conference Game;

Score	1st	2nd	3rd	4th	TOT
CAM	16	13	13	11	<b>53</b>
PRE	11	14	9	13	<b>47</b>

Points from (This Period)	CAM	PRE
In the Paint	2	2
Off Turns	4	7
2nd Chance	3	2
Fast Break	0	2
Bench	1	2

**Official By-By-Play**  
**Campbell vs Presbyterian**  
**Fourth Quarter**  
**January 18, 2020 at Templeton Center - Clinton, S.C.**



**Period 4**

**Starters:**

**Campbell:** 0 SPEIGHT, KIANNA (G); 10 BARBER, HAYLEY (G); 23 BOLDEN, TAYA (F); 25 SERRANHO, LUANA (G); 44 NÜRENBERG, SVENIA (F);  
**Presbyterian:** 11 HALL, KACIE (G); 14 JOHNSON, TRINITY (G); 15 SANTOS, TESS (F); 22 CARTER, TIONNA (F); 35 CAPLEY, ALESSIA (F);

Time	VISITORS: Campbell	Score	Margin	HOME: Presbyterian
10:00	SUB OUT: CARVER, TATYANA			
10:00	SUB IN: BARBER, HAYLEY			
09:50				FOUL (PERSONAL) by STAFFORD, SHAMANI
09:27	MISSED JUMPER by TUELLE, SHYANNE			
09:24	REBOUND (OFF) by BARBER, HAYLEY			
09:09	FOUL (OFF) by HAMPTON, ASHLYN			
09:09	TURNOVER (OFFENSIVE) by HAMPTON, ASHLYN			
09:00	FOUL (PERSONAL) by HAMPTON, ASHLYN			
08:58	SUB OUT: HAMPTON, ASHLYN			
08:58	SUB OUT: TUELLE, SHYANNE			
08:58	SUB IN: BOLDEN, TAYA			
08:58	SUB IN: NÜRENBERG, SVENIA			
08:58		35-42	V 7	GOOD! FT by CARTER, TIONNA
08:58				MISSED FT by CARTER, TIONNA
08:54	REBOUND (DEF) by BOLDEN, TAYA			
08:30	TURNOVER (TRAVEL) by SERRANHO, LUANA			
08:16				MISSED 3PTR by STAFFORD, SHAMANI
08:14	REBOUND (DEF) by TEAM			
07:45	MISSED 3PTR by BARBER, HAYLEY			
07:42	REBOUND (OFF) by TEAM			
07:42	TURNOVER (SHOTCLOCK) by TEAM			
07:26	FOUL (PERSONAL) by BARBER, HAYLEY			
07:26		36-42	V 6	GOOD! FT by GIBBS, BRIA
07:26		37-42	V 5	GOOD! FT by GIBBS, BRIA
07:07				FOUL (PERSONAL) by GIBBS, BRIA
07:07	GOOD! FT by BOLDEN, TAYA	37-43	V 6	
07:07	MISSED FT by BOLDEN, TAYA			
07:07				REBOUND (DEF) by CARTER, TIONNA
06:46				TURNOVER (3SEC) by GIBBS, BRIA
06:46				SUB OUT: GIBBS, BRIA
06:46				SUB IN: CAPLEY, ALESSIA
06:18	MISSED 3PTR by SERRANHO, LUANA			
06:17				REBOUND (DEF) by CAPLEY, ALESSIA
06:17	FOUL (PERSONAL) by BOLDEN, TAYA			
06:02				TURNOVER (BADPASS) by CAPLEY, ALESSIA
06:02	STEAL by SERRANHO, LUANA			
05:51	MISSED 3PTR by NÜRENBERG, SVENIA			
05:48	REBOUND (OFF) by BOLDEN, TAYA			
05:46				FOUL (PERSONAL) by JOHNSON, TRINITY
05:46				SUB OUT: CAPLEY, ALESSIA
05:46				SUB IN: GIBBS, BRIA
05:46	SUB OUT: BOLDEN, TAYA			
05:46	SUB IN: HAMPTON, ASHLYN			
05:29	GOOD! 3PTR by SPEIGHT, KIANNA	37-46	V 9	
05:29	ASSIST by SERRANHO, LUANA			
05:19				TIMEOUT 30SEC
05:19				
05:19	SUB OUT: HAMPTON, ASHLYN			
05:19	SUB OUT: BARBER, HAYLEY			
05:19	SUB IN: TUELLE, SHYANNE			
05:19	SUB IN: BOLDEN, TAYA			
05:06	FOUL (PERSONAL) by SPEIGHT, KIANNA			
05:06		38-46	V 8	GOOD! FT by JOHNSON, TRINITY
05:06		39-46	V 7	GOOD! FT by JOHNSON, TRINITY
05:06	SUB OUT: TUELLE, SHYANNE			
05:06	SUB IN: BARBER, HAYLEY			
04:46	MISSED LAYUP by BOLDEN, TAYA			
04:43				REBOUND (DEF) by JOHNSON, TRINITY
04:19				TURNOVER (TRAVEL) by JOHNSON, TRINITY
04:00				FOUL (PERSONAL) by SANTOS, TESS
03:50				FOUL (PERSONAL) by GIBBS, BRIA
03:50	MISSED FT by BOLDEN, TAYA			
03:50	REBOUND (OFF) by TEAM			
03:50	GOOD! FT by BOLDEN, TAYA	39-47	V 8	
03:30				TURNOVER (TRAVEL) by GIBBS, BRIA
03:30				TIMEOUT 30SEC
03:30				SUB OUT: GIBBS, BRIA
03:30				SUB IN: COMPTON, JADE
03:26	TURNOVER (BADPASS) by SPEIGHT, KIANNA			
03:26				SUB OUT: STAFFORD, SHAMANI

Time	VISITORS: Campbell	Score	Margin	HOME: Presbyterian
03:26				SUB OUT: COMPTON, JADE
03:26				SUB IN: GIBBS, BRIA
03:26				SUB IN: HALL, KACIE
03:12				MISSED 3PTR by JOHNSON, TRINITY
03:06	REBOUND (DEF) by BOLDEN, TAYA			
02:50				FOUL (PERSONAL) by GIBBS, BRIA
02:50	MISSED FT by BARBER, HAYLEY			
02:50	REBOUND (OFF) by TEAM			
02:50	MISSED FT by BARBER, HAYLEY			
02:50				REBOUND (DEF) by SANTOS, TESS
02:28				MISSED LAYUP by CARTER, TIONNA
02:24	REBOUND (DEF) by BARBER, HAYLEY			
02:01	GOOD! LAYUP by BOLDEN, TAYA [PNT]	39-49	V 10	
01:45	FOUL (PERSONAL) by SPEIGHT, KIANNA			
01:45		40-49	V 9	GOOD! FT by SANTOS, TESS
01:45		41-49	V 8	GOOD! FT by SANTOS, TESS
01:45				SUB OUT: GIBBS, BRIA
01:45				SUB IN: COMPTON, JADE
01:39	TURNOVER (LOSTBALL) by BOLDEN, TAYA			
01:39				STEAL by JOHNSON, TRINITY
01:39	FOUL (PERSONAL) by BOLDEN, TAYA			
01:39		42-49	V 7	GOOD! FT by SANTOS, TESS
01:39		43-49	V 6	GOOD! FT by SANTOS, TESS
01:33				FOUL (PERSONAL) by JOHNSON, TRINITY
01:33				SUB OUT: COMPTON, JADE
01:33				SUB IN: STAFFORD, SHAMANI
01:33	MISSED FT by BARBER, HAYLEY			
01:33	REBOUND (OFF) by TEAM			
01:33	MISSED FT by BARBER, HAYLEY			
01:31				REBOUND (DEF) by CARTER, TIONNA
01:22				MISSED 3PTR by SANTOS, TESS
01:17				REBOUND (OFF) by JOHNSON, TRINITY
01:15				MISSED LAYUP by JOHNSON, TRINITY
01:12	REBOUND (DEF) by BARBER, HAYLEY			
01:07				FOUL (PERSONAL) by STAFFORD, SHAMANI
01:07	GOOD! FT by BARBER, HAYLEY	43-50	V 7	
01:05	MISSED FT by BARBER, HAYLEY			
01:04				REBOUND (DEF) by TEAM
00:55				TIMEOUT TEAM
00:51				MISSED 3PTR by JOHNSON, TRINITY
00:48	REBOUND (DEF) by NÜRENBERG, SVENIA			
00:44	TURNOVER (LOSTBALL) by SERRANHO, LUANA			
00:44				STEAL by JOHNSON, TRINITY
00:41		45-50	V 5	GOOD! LAYUP by HALL, KACIE [FB/PNT]
00:41	TIMEOUT 30SEC			
00:41				SUB OUT: STAFFORD, SHAMANI
00:41				SUB IN: COMPTON, JADE
00:41	SUB OUT: BOLDEN, TAYA			
00:41	SUB IN: TUELLE, SHYANNE			
00:41				FOUL (PERSONAL) by COMPTON, JADE
00:41				SUB OUT: COMPTON, JADE
00:41				SUB IN: STAFFORD, SHAMANI
00:41	MISSED FT by TUELLE, SHYANNE			
00:41	REBOUND (OFF) by TEAM			
00:41	GOOD! FT by TUELLE, SHYANNE	45-51	V 6	
00:33				MISSED 3PTR by STAFFORD, SHAMANI
00:30				REBOUND (OFF) by JOHNSON, TRINITY
00:25				MISSED 3PTR by STAFFORD, SHAMANI
00:19				REBOUND (OFF) by STAFFORD, SHAMANI
00:14		47-51	V 4	GOOD! JUMPER by SANTOS, TESS
00:14				FOUL (PERSONAL) by JOHNSON, TRINITY
00:14				SUB OUT: JOHNSON, TRINITY
00:14				SUB IN: HEMM, RILEY
00:14	GOOD! FT by SERRANHO, LUANA	47-52	V 5	
00:14	GOOD! FT by SERRANHO, LUANA	47-53	V 6	
00:04				MISSED LAYUP by SANTOS, TESS
00:00	REBOUND (DEF) by NÜRENBERG, SVENIA			
00:00				SUB OUT: STAFFORD, SHAMANI
00:00				SUB IN: COMPTON, JADE
00:00				SUB OUT: HEMM, RILEY
00:00				SUB IN: MADDEN, LE'MESHA

### Campbell 53, Presbyterian 47

Points from (This Period)	CAM	PRE
In the Paint	2	2
Off Turns	4	7
2nd Chance	3	2
Fast Break	0	2
Bench	1	2





**Official Scoring/Possession Reference Chart**  
**Campbell vs Presbyterian**  
**Period 1**  
**January 18, 2020 at Templeton Center - Clinton, S.C.**



**Period 1**

**Starters:**

**Campbell:** 0 SPEIGHT, KIANNA (G); 10 BARBER, HAYLEY (G); 23 BOLDEN, TAYA (F); 25 SERRANHO, LUANA (G); 44 NIRENBERG, SVENIA (F);  
**Presbyterian:** 11 HALL, KACIE (G); 14 JOHNSON, TRINITY (G); 15 SANTOS, TESS (F); 22 CARTER, TIONNA (F); 35 CAPLEY, ALESSIA (F);

Time	VISITORS: Campbell	Score	Margin	HOME: Presbyterian
08:39	GOOD! 3PTR by SPEIGHT, KIANNA	0-3	V 3	
08:08		3-3	T	GOOD! 3PTR by SANTOS, TESS
06:42	GOOD! FT by SERRANHO, LUANA	3-4	V 1	
06:42	GOOD! FT by SERRANHO, LUANA	3-5	V 2	
06:03		5-5	T	GOOD! LAYUP by MADDEN, LE'MESHA [FB]
05:04	GOOD! 3PTR by BARBER, HAYLEY	5-8	V 3	
04:43		6-8	V 2	GOOD! FT by STAFFORD, SHAMANI
04:03		8-8	T	GOOD! LAYUP by CARTER, TIONNA
03:21		11-8	H 3	GOOD! 3PTR by STAFFORD, SHAMANI
01:52	GOOD! JUMPER by TUELLE, SHYANNE [PNT]	11-10	H 1	
01:20	GOOD! 3PTR by SERRANHO, LUANA	11-13	V 2	
00:34	GOOD! 3PTR by BARBER, HAYLEY	11-16	V 5	

**Campbell 16, Presbyterian 11**

**Official Scoring/Possession Reference Chart**  
**Campbell vs Presbyterian**  
**Period 2**  
**January 18, 2020 at Templeton Center - Clinton, S.C.**



**Period 2**

**Starters:**

**Campbell:** 0 SPEIGHT, KIANNA (G); 10 BARBER, HAYLEY (G); 23 BOLDEN, TAYA (F); 25 SERRANHO, LUANA (G); 44 NIRENBERG, SVENIA (F);  
**Presbyterian:** 11 HALL, KACIE (G); 14 JOHNSON, TRINITY (G); 15 SANTOS, TESS (F); 22 CARTER, TIONNA (F); 35 CAPLEY, ALESSIA (F);

Time	VISITORS: Campbell	Score	Margin	HOME: Presbyterian
08:06		13-16	V 3	GOOD! JUMPER by JOHNSON, TRINITY
07:30		16-16	T	GOOD! 3PTR by JOHNSON, TRINITY
06:20	GOOD! JUMPER by BARBER, HAYLEY	16-18	V 2	
06:00	GOOD! FT by BARBER, HAYLEY [FB]	16-19	V 3	
06:00	GOOD! FT by BARBER, HAYLEY [FB]	16-20	V 4	
05:34		17-20	V 3	GOOD! FT by CAPLEY, ALESSIA
04:52		19-20	V 1	GOOD! JUMPER by STAFFORD, SHAMANI
04:07		21-20	H 1	GOOD! LAYUP by GIBBS, BRIA
03:39	GOOD! 3PTR by SPEIGHT, KIANNA	21-23	V 2	
02:50	GOOD! 3PTR by SPEIGHT, KIANNA	21-26	V 5	
01:58		22-26	V 4	GOOD! FT by CARTER, TIONNA
01:58		23-26	V 3	GOOD! FT by CARTER, TIONNA
01:47	GOOD! 3PTR by SPEIGHT, KIANNA	23-29	V 6	
01:17		25-29	V 4	GOOD! JUMPER by STAFFORD, SHAMANI [PNT]

**Campbell 29, Presbyterian 25**

**Official Scoring/Possession Reference Chart**  
**Campbell vs Presbyterian**  
**Period 3**  
**January 18, 2020 at Templeton Center - Clinton, S.C.**



**Period 3**

**Starters:**

**Campbell:** 0 SPEIGHT, KIANNA (G); 10 BARBER, HAYLEY (G); 23 BOLDEN, TAYA (F); 25 SERRANHO, LUANA (G); 44 NÜRENBERG, SVENIA (F);  
**Presbyterian:** 11 HALL, KACIE (G); 14 JOHNSON, TRINITY (G); 15 SANTOS, TESS (F); 22 CARTER, TIONNA (F); 35 CAPLEY, ALESSIA (F);

Time	VISITORS: Campbell	Score	Margin	HOME: Presbyterian
08:48		27-29	V 2	GOOD! JUMPER by JOHNSON, TRINITY
07:28	GOOD! FT by BARBER, HAYLEY	27-30	V 3	
07:28	GOOD! FT by BARBER, HAYLEY	27-31	V 4	
06:45	GOOD! JUMPER by SERRANHO, LUANA	27-33	V 6	
06:04		28-33	V 5	GOOD! FT by CAPLEY, ALESSIA
05:39		30-33	V 3	GOOD! LAYUP by GIBBS, BRIA [PNT]
05:01	GOOD! 3PTR by SPEIGHT, KIANNA	30-36	V 6	
04:02	GOOD! 3PTR by SPEIGHT, KIANNA	30-39	V 9	
03:40		32-39	V 7	GOOD! JUMPER by JOHNSON, TRINITY [PNT]
03:04	GOOD! 3PTR by SPEIGHT, KIANNA	32-42	V 10	
01:42		33-42	V 9	GOOD! FT by GIBBS, BRIA
01:42		34-42	V 8	GOOD! FT by GIBBS, BRIA

**Campbell 42, Presbyterian 34**

**Official Scoring/Possession Reference Chart**  
**Campbell vs Presbyterian**  
**Period 4**  
**January 18, 2020 at Templeton Center - Clinton, S.C.**



**Period 4**

**Starters:**

**Campbell:** 0 SPEIGHT, KIANNA (G); 10 BARBER, HAYLEY (G); 23 BOLDEN, TAYA (F); 25 SERRANHO, LUANA (G); 44 NIRENBERG, SVENIA (F);  
**Presbyterian:** 11 HALL, KACIE (G); 14 JOHNSON, TRINITY (G); 15 SANTOS, TESS (F); 22 CARTER, TIONNA (F); 35 CAPLEY, ALESSIA (F);

Time	VISITORS: Campbell	Score	Margin	HOME: Presbyterian
08:58		35-42	V 7	GOOD! FT by CARTER, TIONNA
07:26		36-42	V 6	GOOD! FT by GIBBS, BRIA
07:26		37-42	V 5	GOOD! FT by GIBBS, BRIA
07:07	GOOD! FT by BOLDEN, TAYA	37-43	V 6	
05:29	GOOD! 3PTR by SPEIGHT, KIANNA	37-46	V 9	
05:06		38-46	V 8	GOOD! FT by JOHNSON, TRINITY
05:06		39-46	V 7	GOOD! FT by JOHNSON, TRINITY
03:50	GOOD! FT by BOLDEN, TAYA	39-47	V 8	
02:01	GOOD! LAYUP by BOLDEN, TAYA [PNT]	39-49	V 10	
01:45		40-49	V 9	GOOD! FT by SANTOS, TESS
01:45		41-49	V 8	GOOD! FT by SANTOS, TESS
01:39		42-49	V 7	GOOD! FT by SANTOS, TESS
01:39		43-49	V 6	GOOD! FT by SANTOS, TESS
01:07	GOOD! FT by BARBER, HAYLEY	43-50	V 7	
00:41		45-50	V 5	GOOD! LAYUP by HALL, KACIE [FB/PNT]
00:41	GOOD! FT by TUELLE, SHYANNE	45-51	V 6	
00:14		47-51	V 4	GOOD! JUMPER by SANTOS, TESS
00:14	GOOD! FT by SERRANHO, LUANA	47-52	V 5	
00:14	GOOD! FT by SERRANHO, LUANA	47-53	V 6	

**Campbell 53, Presbyterian 47**

**Official Substitutions Log**  
**Campbell vs Presbyterian**  
**Period 1**  
**January 18, 2020 at Templeton Center - Clinton, S.C.**



VISITORS: Campbell	Time	Score	HOME: Presbyterian
0 SPEIGHT, KIANNA			11 HALL, KACIE
10 BARBER, HAYLEY			14 JOHNSON, TRINITY
23 BOLDEN, TAYA			15 SANTOS, TESS
25 SERRANHO, LUANA			22 CARTER, TIONNA
44 NÜRENBERG, SVENIA			35 CAPLEY, ALESSIA
	07:13	3-3	SUB OUT: SANTOS, TESS
	07:13		SUB IN: MADDEN, LE'MESHA
	06:42	3-3	SUB OUT: JOHNSON, TRINITY
	06:42		SUB IN: COMPTON, JADE
	06:24	5-3	SUB OUT: CARTER, TIONNA
	06:24		SUB IN: GIBBS, BRIA
	05:26	5-5	SUB OUT: GIBBS, BRIA
	05:26		SUB IN: STAFFORD, SHAMANI
SUB OUT: 23 BOLDEN, TAYA	05:26		
SUB OUT: 25 SERRANHO, LUANA	05:26		
SUB IN: 4 HAMPTON, ASHLYN	05:26		
SUB IN: 11 TUELLE, SHYANNE	05:26		
	04:43	8-5	SUB OUT: CAPLEY, ALESSIA
	04:43		SUB IN: CARTER, TIONNA
SUB OUT: 44 NÜRENBERG, SVENIA	04:43		
SUB IN: 14 STAVES, BRITTANY	04:43		
SUB OUT: 10 BARBER, HAYLEY	04:12	8-6	
SUB IN: 5 CARVER, TATYANA	04:12		
	01:55	8-11	SUB OUT: COMPTON, JADE
	01:55		SUB IN: CAPLEY, ALESSIA
SUB OUT: 0 SPEIGHT, KIANNA	01:55		
SUB OUT: 5 CARVER, TATYANA	01:55		
SUB IN: 10 BARBER, HAYLEY	01:55		
SUB IN: 25 SERRANHO, LUANA	01:55		
	00:44	13-11	SUB OUT: MADDEN, LE'MESHA
	00:44		SUB IN: HEMM, RILEY
SUB OUT: 14 STAVES, BRITTANY	00:44		
SUB IN: 44 NÜRENBERG, SVENIA	00:44		

**Campbell 16, Presbyterian 11**

**Official Substitutions Log**  
**Campbell vs Presbyterian**  
**Period 2**  
**January 18, 2020 at Templeton Center - Clinton, S.C.**



VISITORS: Campbell	Time	Score	HOME: Presbyterian
0 SPEIGHT, KIANNA			11 HALL, KACIE
10 BARBER, HAYLEY			14 JOHNSON, TRINITY
23 BOLDEN, TAYA			15 SANTOS, TESS
25 SERRANHO, LUANA			22 CARTER, TIONNA
44 NÜRENBERG, SVENIA			35 CAPLEY, ALESSIA
	10:00	-	SUB OUT: HEMM, RILEY
	10:00		SUB OUT: STAFFORD, SHAMANI
	10:00		SUB IN: JOHNSON, TRINITY
	10:00		SUB IN: SANTOS, TESS
	07:01	16-16	SUB OUT: CARTER, TIONNA
	07:01		SUB IN: GIBBS, BRIA
SUB OUT: 4 HAMPTON, ASHLYN	07:01		
SUB OUT: 11 TUELLE, SHYANNE	07:01		
SUB IN: 0 SPEIGHT, KIANNA	07:01		
SUB IN: 23 BOLDEN, TAYA	07:01		
	06:00	18-16	SUB OUT: JOHNSON, TRINITY
	06:00		SUB IN: STAFFORD, SHAMANI
SUB OUT: 10 BARBER, HAYLEY	06:00		
SUB IN: 11 TUELLE, SHYANNE	06:00		
SUB OUT: 23 BOLDEN, TAYA	03:58	20-21	
SUB OUT: 44 NÜRENBERG, SVENIA	03:58		
SUB IN: 4 HAMPTON, ASHLYN	03:58		
SUB IN: 10 BARBER, HAYLEY	03:58		
	02:13	26-21	SUB OUT: GIBBS, BRIA
	02:13		SUB IN: CARTER, TIONNA
SUB OUT: 4 HAMPTON, ASHLYN	02:13		
SUB IN: 40 MCNAMARA-CLEMENT, LAUREN	02:13		
SUB OUT: 40 MCNAMARA-CLEMENT, LAUREN	00:30	29-25	
SUB IN: 23 BOLDEN, TAYA	00:30		

**Campbell 29, Presbyterian 25**

**Official Substitutions Log**  
**Campbell vs Presbyterian**  
**Period 3**  
**January 18, 2020 at Templeton Center - Clinton, S.C.**



VISITORS: Campbell	Time	Score	HOME: Presbyterian
0 SPEIGHT, KIANNA			11 HALL, KACIE
10 BARBER, HAYLEY			14 JOHNSON, TRINITY
23 BOLDEN, TAYA			15 SANTOS, TESS
25 SERRANHO, LUANA			22 CARTER, TIONNA
44 NÜRENBERG, SVENIA			35 CAPLEY, ALESSIA
	10:00	-	SUB OUT: STAFFORD, SHAMANI
	10:00		SUB IN: JOHNSON, TRINITY
SUB OUT: 11 TUELLE, SHYANNE	10:00		
SUB IN: 44 NÜRENBERG, SVENIA	10:00		
	07:41	29-27	SUB OUT: HALL, KACIE
	07:41		SUB IN: STAFFORD, SHAMANI
	07:28	31-27	SUB OUT: CAPLEY, ALESSIA
	07:28		SUB IN: GIBBS, BRIA
	06:30	33-27	SUB OUT: CARTER, TIONNA
	06:30		SUB IN: CAPLEY, ALESSIA
SUB OUT: 23 BOLDEN, TAYA	06:30		
SUB IN: 4 HAMPTON, ASHLYN	06:30		
SUB OUT: 4 HAMPTON, ASHLYN	05:18	33-30	
SUB OUT: 25 SERRANHO, LUANA	05:18		
SUB IN: 11 TUELLE, SHYANNE	05:18		
SUB IN: 23 BOLDEN, TAYA	05:18		
	03:56	39-30	SUB OUT: SANTOS, TESS
	03:56		SUB IN: MADDEN, LE'MESHA
	03:14	39-32	SUB OUT: MADDEN, LE'MESHA
	03:14		SUB IN: HALL, KACIE
	02:31	42-32	SUB OUT: HALL, KACIE
	02:31		SUB OUT: CAPLEY, ALESSIA
	02:31		SUB IN: SANTOS, TESS
	02:31		SUB IN: COMPTON, JADE
SUB OUT: 23 BOLDEN, TAYA	01:42	42-32	
SUB IN: 4 HAMPTON, ASHLYN	01:42		
SUB OUT: 44 NÜRENBERG, SVENIA	00:28	42-34	
SUB IN: 25 SERRANHO, LUANA	00:28		
	00:26	42-34	SUB OUT: COMPTON, JADE
	00:26		SUB IN: CARTER, TIONNA
SUB OUT: 10 BARBER, HAYLEY	00:26		
SUB IN: 5 CARVER, TATYANA	00:26		

**Campbell 42, Presbyterian 34**



**Official Substitutions Log**  
**Campbell vs Presbyterian**  
**Period 4**  
**January 18, 2020 at Templeton Center - Clinton, S.C.**



VISITORS: Campbell	Time	Score	HOME: Presbyterian
0 SPEIGHT, KIANNA			11 HALL, KACIE
10 BARBER, HAYLEY			14 JOHNSON, TRINITY
23 BOLDEN, TAYA			15 SANTOS, TESS
25 SERRANHO, LUANA			22 CARTER, TIONNA
44 NÜRENBERG, SVENIA			35 CAPLEY, ALESSIA
SUB OUT: 5 CARVER, TATYANA	10:00	-	
SUB IN: 10 BARBER, HAYLEY	10:00		
SUB OUT: 4 HAMPTON, ASHLYN	08:58	-	
SUB OUT: 11 TUELLE, SHYANNE	08:58		
SUB IN: 23 BOLDEN, TAYA	08:58		
SUB IN: 44 NÜRENBERG, SVENIA	08:58		
	06:46	43-37	SUB OUT: GIBBS, BRIA
	06:46		SUB IN: CAPLEY, ALESSIA
	05:46	43-37	SUB OUT: CAPLEY, ALESSIA
	05:46		SUB IN: GIBBS, BRIA
SUB OUT: 23 BOLDEN, TAYA	05:46		
SUB IN: 4 HAMPTON, ASHLYN	05:46		
SUB OUT: 4 HAMPTON, ASHLYN	05:19	46-37	
SUB OUT: 10 BARBER, HAYLEY	05:19		
SUB IN: 11 TUELLE, SHYANNE	05:19		
SUB IN: 23 BOLDEN, TAYA	05:19		
SUB OUT: 11 TUELLE, SHYANNE	05:06	46-39	
SUB IN: 10 BARBER, HAYLEY	05:06		
	03:30	47-39	SUB OUT: GIBBS, BRIA
	03:30		SUB IN: COMPTON, JADE
	03:26	47-39	SUB OUT: STAFFORD, SHAMANI
	03:26		SUB OUT: COMPTON, JADE
	03:26		SUB IN: GIBBS, BRIA
	03:26		SUB IN: HALL, KACIE
	01:45	49-41	SUB OUT: GIBBS, BRIA
	01:45		SUB IN: COMPTON, JADE
	01:33	49-43	SUB OUT: COMPTON, JADE
	01:33		SUB IN: STAFFORD, SHAMANI
	00:41	50-45	SUB OUT: STAFFORD, SHAMANI
	00:41		SUB IN: COMPTON, JADE
SUB OUT: 23 BOLDEN, TAYA	00:41		
SUB IN: 11 TUELLE, SHYANNE	00:41		
	00:41		SUB OUT: COMPTON, JADE
	00:41		SUB IN: STAFFORD, SHAMANI
	00:14	51-47	SUB OUT: JOHNSON, TRINITY
	00:14		SUB IN: HEMM, RILEY
	00:00	53-47	SUB OUT: STAFFORD, SHAMANI
	00:00		SUB IN: COMPTON, JADE
	00:00		SUB OUT: HEMM, RILEY
	00:00		SUB IN: MADDEN, LE'MESHA

**Campbell 53, Presbyterian 47**

**Official Shot Chart**  
**Campbell vs Presbyterian**  
**PERIOD 1 Shots**  
 January 18, 2020 at Templeton Center - Clinton, S.C.

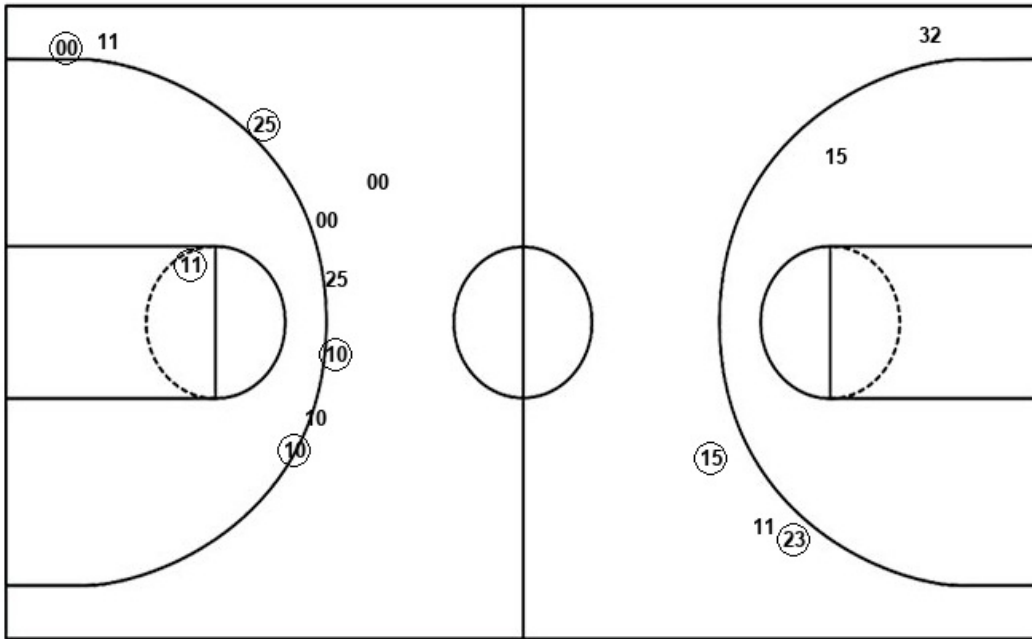


**Presbyterian**

**Campbell**

Layups  
 12 22 22

Layups



23

Dunks

PRE : Period 1	Made	Att	Pct
Layups	2	3	66.7
Dunks	0	0	0
2PT Field Goals	2	4	50.0
3PT Field Goals	2	4	50.0
<b>Total Field Goals</b>	<b>4</b>	<b>8</b>	<b>50.0</b>

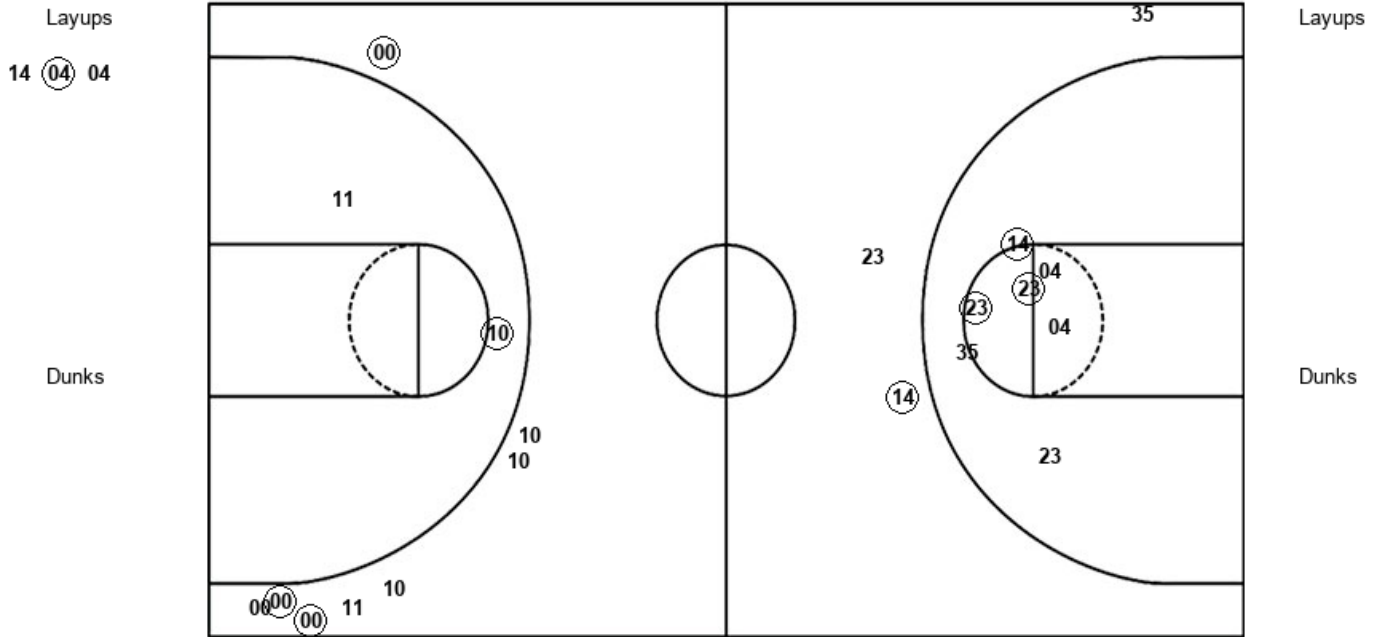
CAM : Period 1	Made	Att	Pct
Layups	0	1	00.0
Dunks	0	0	0
2PT Field Goals	1	2	50.0
3PT Field Goals	4	9	44.4
<b>Total Field Goals</b>	<b>5</b>	<b>11</b>	<b>45.5</b>

**Official Shot Chart**  
**Campbell vs Presbyterian**  
**PERIOD 2 Shots**  
 January 18, 2020 at Templeton Center - Clinton, S.C.



**Presbyterian**

**Campbell**



PRE : Period 2	Made	Att	Pct
Layups	1	3	33.3
Dunks	0	0	0
2PT Field Goals	4	10	40.0
3PT Field Goals	1	3	33.3
<b>Total Field Goals</b>	<b>5</b>	<b>13</b>	<b>38.5</b>

CAM : Period 2	Made	Att	Pct
Layups	0	0	0
Dunks	0	0	0
2PT Field Goals	1	2	50.0
3PT Field Goals	3	8	37.5
<b>Total Field Goals</b>	<b>4</b>	<b>10</b>	<b>40.0</b>

**Official Shot Chart**  
**Campbell vs Presbyterian**  
**PERIOD 3 Shots**  
 January 18, 2020 at Templeton Center - Clinton, S.C.



**Presbyterian**

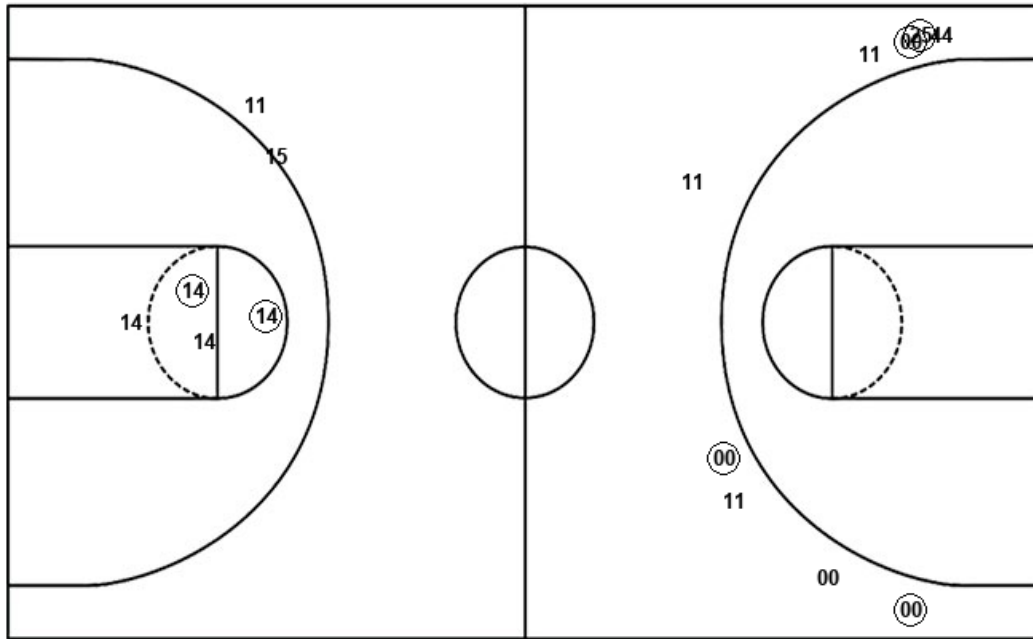
**Campbell**

Layups  
 04 (04) 35 04

Layups  
 23 10 44

Dunks

Dunks



PRE : Period 3	Made	Att	Pct
Layups	1	4	25.0
Dunks	0	0	0
2PT Field Goals	3	8	37.5
3PT Field Goals	0	2	00.0
<b>Total Field Goals</b>	<b>3</b>	<b>10</b>	<b>30.0</b>

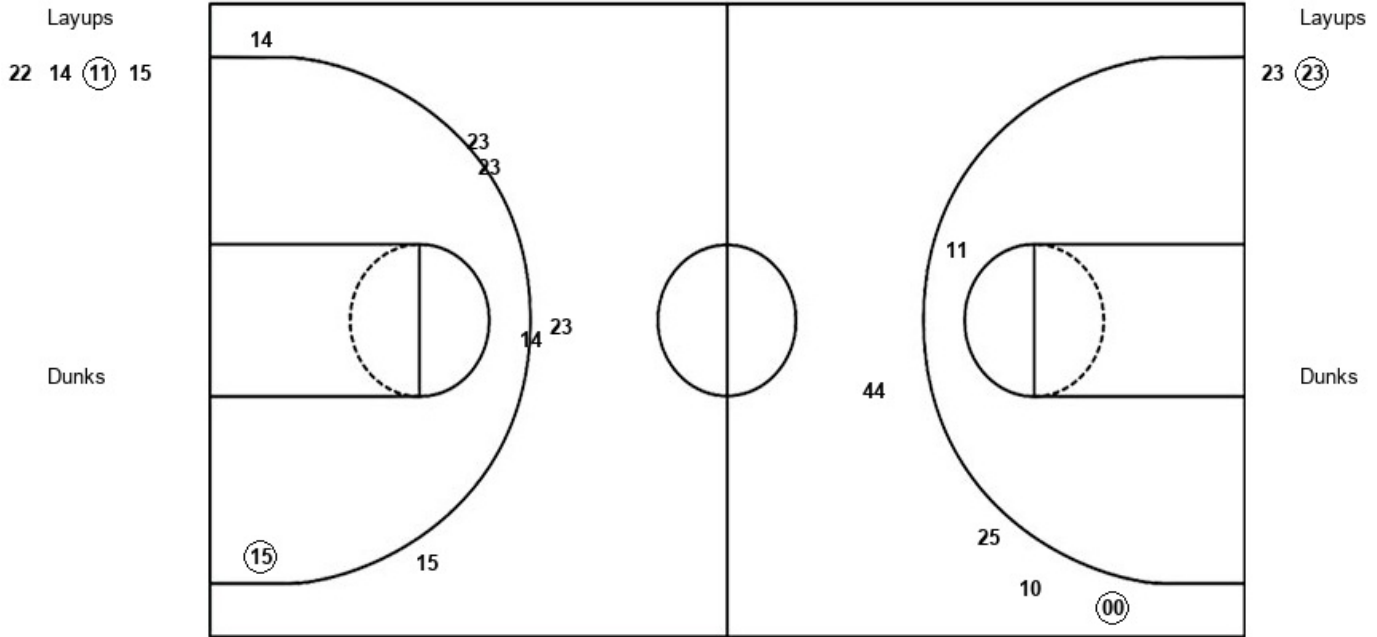
CAM : Period 3	Made	Att	Pct
Layups	0	3	00.0
Dunks	0	0	0
2PT Field Goals	1	4	25.0
3PT Field Goals	3	8	37.5
<b>Total Field Goals</b>	<b>4</b>	<b>12</b>	<b>33.3</b>

**Official Shot Chart**  
**Campbell vs Presbyterian**  
**PERIOD 4 Shots**  
 January 18, 2020 at Templeton Center - Clinton, S.C.



**Presbyterian**

**Campbell**



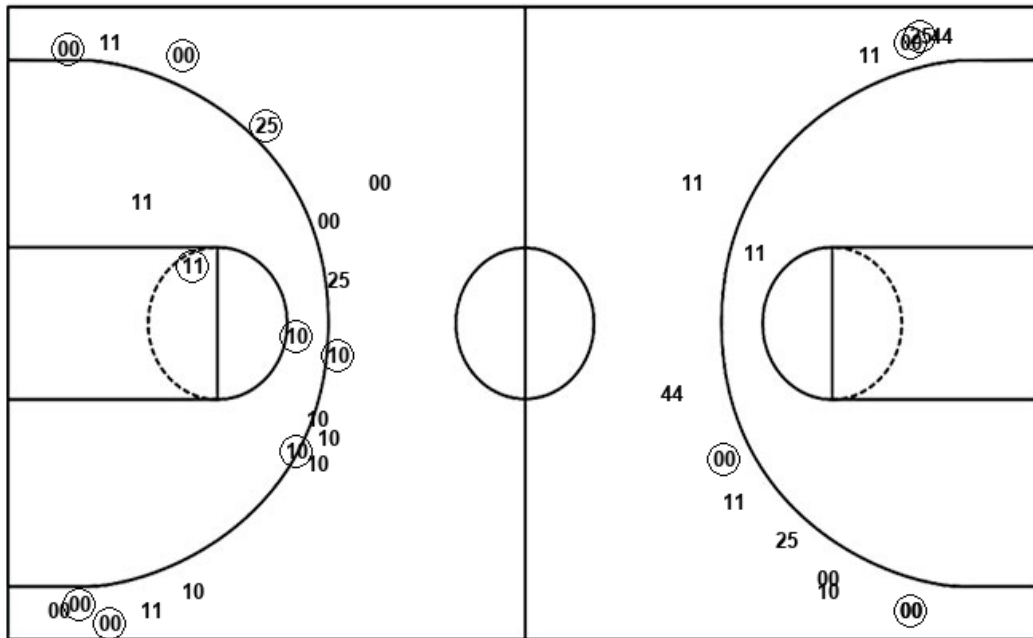
PRE : Period 4	Made	Att	Pct
Layups	1	4	25.0
Dunks	0	0	0
2PT Field Goals	2	5	40.0
3PT Field Goals	0	6	00.0
<b>Total Field Goals</b>	<b>2</b>	<b>11</b>	<b>18.2</b>

CAM : Period 4	Made	Att	Pct
Layups	1	2	50.0
Dunks	0	0	0
2PT Field Goals	1	3	33.3
3PT Field Goals	1	4	25.0
<b>Total Field Goals</b>	<b>2</b>	<b>7</b>	<b>28.6</b>

**Official Shot Chart**  
**Campbell vs Presbyterian**  
**Campbell Team Shots**  
 January 18, 2020 at Templeton Center - Clinton, S.C.



Layups



Layups

23 23 10 44 23  
 (23)

Dunks

Dunks

CAM : Period 1	Made	Att	Pct
Layups	0	1	00.0
Dunks	0	0	0
2PT Field Goals	1	2	50.0
3PT Field Goals	4	9	44.4
<b>Total Field Goals</b>	<b>5</b>	<b>11</b>	<b>45.5</b>

CAM : Period 2	Made	Att	Pct
Layups	0	0	0
Dunks	0	0	0
2PT Field Goals	1	2	50.0
3PT Field Goals	3	8	37.5
<b>Total Field Goals</b>	<b>4</b>	<b>10</b>	<b>40.0</b>

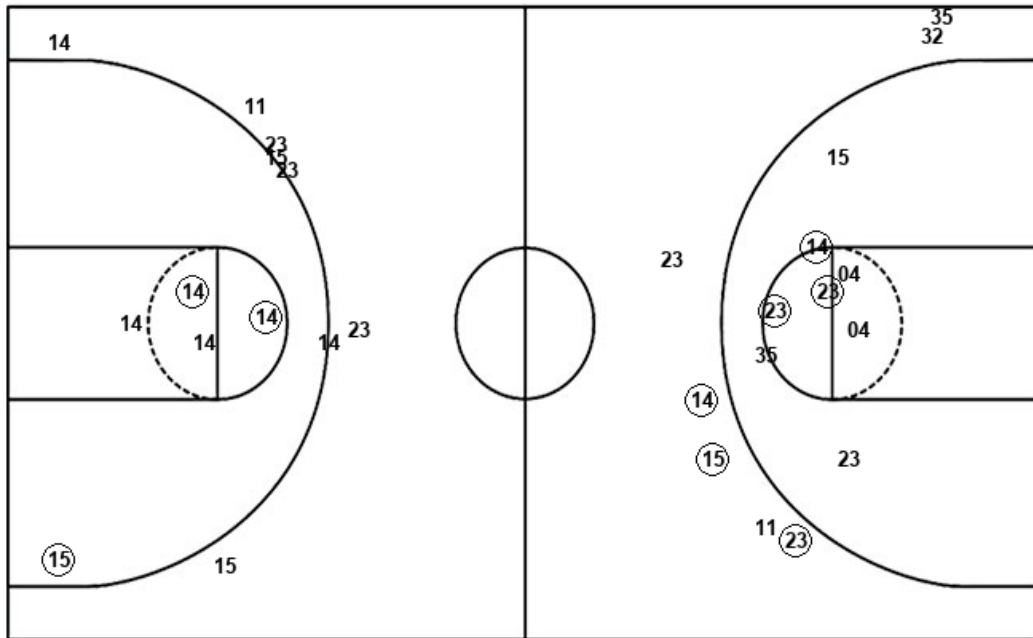
CAM : Period 3	Made	Att	Pct
Layups	0	3	00.0
Dunks	0	0	0
2PT Field Goals	1	4	25.0
3PT Field Goals	3	8	37.5
<b>Total Field Goals</b>	<b>4</b>	<b>12</b>	<b>33.3</b>

CAM : Period 4	Made	Att	Pct
Layups	1	2	50.0
Dunks	0	0	0
2PT Field Goals	1	3	33.3
3PT Field Goals	1	4	25.0
<b>Total Field Goals</b>	<b>2</b>	<b>7</b>	<b>28.6</b>

**Official Shot Chart**  
**Campbell vs Presbyterian**  
**Presbyterian Team Shots**  
 January 18, 2020 at Templeton Center - Clinton, S.C.



Layups



Layups

12 22 22 14 04  
 04 04 04 35 04  
 22 14 11 15

Dunks

Dunks

PRE : Period 1	Made	Att	Pct
Layups	2	3	66.7
Dunks	0	0	0
2PT Field Goals	2	4	50.0
3PT Field Goals	2	4	50.0
<b>Total Field Goals</b>	<b>4</b>	<b>8</b>	<b>50.0</b>

PRE : Period 2	Made	Att	Pct
Layups	1	3	33.3
Dunks	0	0	0
2PT Field Goals	4	10	40.0
3PT Field Goals	1	3	33.3
<b>Total Field Goals</b>	<b>5</b>	<b>13</b>	<b>38.5</b>

PRE : Period 3	Made	Att	Pct
Layups	1	4	25.0
Dunks	0	0	0
2PT Field Goals	3	8	37.5
3PT Field Goals	0	2	00.0
<b>Total Field Goals</b>	<b>3</b>	<b>10</b>	<b>30.0</b>

PRE : Period 4	Made	Att	Pct
Layups	1	4	25.0
Dunks	0	0	0
2PT Field Goals	2	5	40.0
3PT Field Goals	0	6	00.0
<b>Total Field Goals</b>	<b>2</b>	<b>11</b>	<b>18.2</b>