

## FINAL SCORE



**Winthrop**

**89**



**Presbyterian**

**88**

February 15, 2020 • Ross E. Templeton Center - Clinton, S.C.

## FINAL STATISTICS

**Official Box Score**  
**Winthrop vs Presbyterian**  
**Game Totals -- Final Statistics**  
**February 15, 2020 at Ross E. Templeton Center - Clinton, S.C.**



**Winthrop 89**

No.	Player	S	Pts	FG	3FG	FT	OR	DR	TR	PF	A	TO	Blk	Stl	Min	+/-	
03	ANUMBA, MICHEAL	G	1	0-1	0-1	1-2	0	3	3	5	3	0	0	2	18	10	
13	HALE, HUNTER	G	14	5-11	4-9	0-2	2	2	4	1	0	3	0	1	27	-4	
25	FERGUSON, JOSH	C	17	5-10	3-7	4-5	3	3	6	3	1	1	2	0	30	6	
30	BURNS JR., D.J.	F	6	3-6	0-0	0-1	0	3	3	5	0	3	0	0	14	-4	
52	VAUDRIN, CHANDLER	G	10	2-8	1-4	5-8	1	5	6	2	4	2	0	0	32	-3	
00	JONES JR., RUSSELL	G	11	5-8	1-3	0-0	1	3	4	1	2	3	0	1	22	-14	
11	FALDEN, CHARLES	G	6	1-2	0-0	4-4	0	2	2	1	3	0	0	0	14	15	
21	KING, JAMAL	G	3	1-4	0-3	1-2	1	0	1	2	1	1	0	0	7	-3	
22	ZUNIC, KYLE	G	7	2-4	2-4	1-1	1	1	2	4	0	0	0	0	9	4	
33	CLAXTON, CHASE	F	14	6-6	0-0	2-5	4	3	7	3	2	0	1	2	27	-2	
TEAM							0	1	1	0	1						
<b>TOTALS</b>			<b>89</b>	<b>30-60</b>	<b>11-31</b>	<b>18-30</b>	<b>13</b>	<b>26</b>	<b>39</b>	<b>27</b>	<b>16</b>	<b>14</b>	<b>3</b>	<b>6</b>	<b>200</b>		

*Shooting By Period*

Period	FG	FG%	3FG	3FG%	FT	FT%
1st Half	15-33	45%	7-16	44%	8-9	89%
2nd Half	15-27	56%	4-15	27%	10-21	48%
<b>Game</b>	<b>30-60</b>	<b>50.0%</b>	<b>11-31</b>	<b>35.5%</b>	<b>18-30</b>	<b>60.0%</b>

*Deadball Rebounds: 6,0*  
*Last FG: 2nd-00:30*  
*Biggest Run: 6-0*  
*Largest lead: By 13 at 1st-04:26*  
*Technical Fouls: None.*

**Presbyterian 88**

No.	Player	S	Pts	FG	3FG	FT	OR	DR	TR	PF	A	TO	Blk	Stl	Min	+/-	
00	MARTIN, CHRIS	G	26	8-12	1-1	9-12	0	4	4	5	0	1	0	2	28	7	
05	GRAHAM, ZEB	G	2	1-4	0-1	0-0	0	3	3	3	1	1	0	0	18	-14	
12	HIGHTOWER, CORY	F	18	4-9	0-4	10-13	0	4	4	4	0	3	0	2	32	8	
15	MCCORMACK, OWEN	F	0	0-1	0-1	0-0	0	4	4	5	0	1	0	1	17	-1	
22	ISLER, MICHAEL	G	13	4-7	0-0	5-8	3	3	6	3	3	3	0	1	36	0	
02	SHUBERT, KODY	G	12	5-6	2-3	0-2	0	1	1	2	5	0	0	0	23	8	
03	MELTON, CJ	G	0	0-0	0-0	0-0	1	0	1	0	1	0	0	0	1	0	
04	DRAKE, BEN	F	9	4-6	0-0	1-2	0	3	3	1	1	0	1	1	21	-5	
10	JENKINS, SEAN	G	0	0-2	0-1	0-0	0	1	1	0	0	0	0	0	5	-2	
25	YOUNGER, J.C.	G	8	3-5	2-4	0-0	0	0	0	0	0	0	0	0	20	-6	
TEAM							1	0	1	0	1						
<b>TOTALS</b>			<b>88</b>	<b>29-52</b>	<b>5-15</b>	<b>25-37</b>	<b>5</b>	<b>23</b>	<b>28</b>	<b>23</b>	<b>11</b>	<b>10</b>	<b>1</b>	<b>7</b>	<b>200</b>		

*Shooting By Period*

Period	FG	FG%	3FG	3FG%	FT	FT%
1st Half	12-26	46%	2-8	25%	9-15	60%
2nd Half	17-26	65%	3-7	43%	16-22	73%
<b>Game</b>	<b>29-52</b>	<b>55.8%</b>	<b>5-15</b>	<b>33.3%</b>	<b>25-37</b>	<b>67.6%</b>

*Deadball Rebounds: 4,0*  
*Last FG: 2nd-00:04*  
*Biggest Run: 7-0*  
*Largest lead: By 4 at 2nd-08:52*  
*Technical Fouls: None.*

Game Notes:

Officials: Ty Meixsell, Ryan Christian, Ben Stirt  
 Attendance: 841

Start Time: 04:19 PM ET  
 End Time: 06:30 PM ET  
 Game Duration: 2:10  
 Conference Game;

Score	1st	2nd	TOT
WIN	45	44	<b>89</b>
PRE	35	53	<b>88</b>

WIN led for 32:03. PRE led for 3:43.  
 Game was tied for 4:14.  
 Times tied: 12      Lead Changes: 6

Points from	WIN	PRE
In the Paint	36	38
Off Turns	13	22
2nd Chance	16	10
Fast Break	8	15
Bench	41	29

**Official Box Score**  
**Winthrop vs Presbyterian**  
**First Half Statistics Only**  
**February 15, 2020 at Ross E. Templeton Center - Clinton, S.C.**



**Winthrop 45**

No.	Player	S	Pts	FG	3FG	FT	OR	DR	TR	PF	A	TO	Blk	Stl	Min	+/-
03	ANUMBA, MICHEAL	G	0	0-1	0-1	0-0	0	1	1	2	2	0	0	2	9	10
13	HALE, HUNTER	G	5	2-5	1-3	0-0	2	0	2	0	0	1	0	0	14	2
25	FERGUSON, JOSH	C	15	4-7	3-5	4-4	2	1	3	1	0	0	1	0	13	9
30	BURNS JR., D.J.	F	2	1-4	0-0	0-0	0	3	3	2	0	2	0	0	9	2
52	VAUDRIN, CHANDLER	G	4	1-3	1-1	1-2	0	5	5	1	3	1	0	0	14	10
00	JONES JR., RUSSELL	G	2	1-3	0-1	0-0	0	3	3	1	2	2	0	1	10	-3
11	FALDEN, CHARLES	G	4	1-2	0-0	2-2	0	1	1	1	1	0	0	0	8	12
21	KING, JAMAL	G	2	1-3	0-2	0-0	1	0	1	1	1	1	0	0	6	0
22	ZUNIC, KYLE	G	7	2-3	2-3	1-1	1	1	2	2	0	0	0	0	6	7
33	CLAXTON, CHASE	F	4	2-2	0-0	0-0	0	1	1	1	0	0	0	1	12	1
TEAM							0	1	1	0		0				
<b>TOTALS</b>			<b>45</b>	<b>15-33</b>	<b>7-16</b>	<b>8-9</b>	<b>6</b>	<b>17</b>	<b>23</b>	<b>12</b>	<b>9</b>	<b>7</b>	<b>1</b>	<b>4</b>	<b>100</b>	

*Shooting By Period*

Period	FG	FG%	3FG	3FG%	FT	FT%
1st Half	15-33	45%	7-16	44%	8-9	89%
Game	30-60	50.0%	11-31	35.5%	18-30	60.0%

Deadball Rebounds: 6,0

Last FG Half: WIN 2nd-00:30

**Presbyterian 35**

No.	Player	S	Pts	FG	3FG	FT	OR	DR	TR	PF	A	TO	Blk	Stl	Min	+/-
00	MARTIN, CHRIS	G	10	4-6	0-0	2-3	0	1	1	2	0	1	0	2	12	-4
05	GRAHAM, ZEB	G	0	0-2	0-1	0-0	0	2	2	1	0	1	0	0	11	-15
12	HIGHTOWER, CORY	F	6	1-4	0-2	4-6	0	2	2	2	0	2	0	0	15	-5
15	MCCORMACK, OWEN	F	0	0-0	0-0	0-0	0	1	1	1	0	1	0	1	8	-6
22	ISLER, MICHAEL	G	9	3-4	0-0	3-6	2	1	3	1	2	1	0	1	18	-10
02	SHUBERT, KODY	G	3	1-2	1-2	0-0	0	1	1	1	2	0	0	0	8	-2
03	MELTON, CJ	G	0	0-0	0-0	0-0	0	0	0	0	0	0	0	0	1	-3
04	DRAKE, BEN	F	2	1-3	0-0	0-0	0	2	2	1	0	0	0	0	12	-2
10	JENKINS, SEAN	G	0	0-2	0-1	0-0	0	1	1	0	0	0	0	0	5	-2
25	YOUNGER, J.C.	G	5	2-3	1-2	0-0	0	0	0	0	0	0	0	0	11	-1
TEAM							0	0	0	0		1				
<b>TOTALS</b>			<b>35</b>	<b>12-26</b>	<b>2-8</b>	<b>9-15</b>	<b>2</b>	<b>11</b>	<b>13</b>	<b>9</b>	<b>4</b>	<b>7</b>	<b>0</b>	<b>4</b>	<b>100</b>	

*Shooting By Period*

Period	FG	FG%	3FG	3FG%	FT	FT%
1st Half	12-26	46%	2-8	25%	9-15	60%
Game	29-52	55.8%	5-15	33.3%	25-37	67.6%

Deadball Rebounds: 4,0

Last FG Half: PRE 2nd-00:04

Game Notes:

Officials: Ty Meixsell, Ryan Christian, Ben Stirt  
 Attendance: 841

Start Time: 04:19 PM ET  
 End Time: 06:30 PM ET  
 Game Duration: 2:10  
 Conference Game;

Score	1st	2nd	TOT
WIN	45	44	89
PRE	35	53	88

Points from (This Period)	WIN	PRE
In the Paint	14	16
Off Turns	9	7
2nd Chance	2	3
Fast Break	6	7
Bench	19	10

**Official Play-By-Play  
Winthrop vs Presbyterian  
First Half**

**February 15, 2020 at Ross E. Templeton Center - Clinton, S.C.**



**Period 1**

**Starters:**

**Winthrop:** 3 ANUMBA, MICHEAL (G); 13 HALE, HUNTER (G); 25 FERGUSON, JOSH (C); 30 BURNS JR., D.J. (F); 52 VAUDRIN, CHANDLER (G);

**Presbyterian:** 0 MARTIN, CHRIS (G); 5 GRAHAM, ZEB (G); 12 HIGHTOWER, CORY (F); 15 MCCORMACK, OWEN (F); 22 ISLER, MICHAEL (G);

Time	VISITORS: Winthrop	Score	Margin	HOME: Presbyterian
19:47	TURNOVER (BADPASS) by BURNS JR., D.J.			
19:47				STEAL by MARTIN, CHRIS
19:30				TURNOVER (BADPASS) by GRAHAM, ZEB
19:30	STEAL by ANUMBA, MICHEAL			
19:24	GOOD! LAYUP by HALE, HUNTER [FB]	0-2	V 2	
18:56		2-2	T	GOOD! LAYUP by HIGHTOWER, CORY
18:43	GOOD! 3PTR by VAUDRIN, CHANDLER	2-5	V 3	
18:43	ASSIST by ANUMBA, MICHEAL			
18:22	FOUL (PERSONAL) by ANUMBA, MICHEAL			
18:22		3-5	V 2	GOOD! FT by MARTIN, CHRIS
18:22		4-5	V 1	GOOD! FT by MARTIN, CHRIS
18:10				FOUL (PERSONAL) by ISLER, MICHAEL
18:10	MISSED FT by VAUDRIN, CHANDLER			
18:10	REBOUND (OFF) by TEAM			
18:10	SUB OUT: BURNS JR., D.J.			
18:10	SUB IN: CLAXTON, CHASE			
18:10	GOOD! FT by VAUDRIN, CHANDLER	4-6	V 2	
18:10	SUB OUT: ANUMBA, MICHEAL			
18:10	SUB IN: ZUNIC, KYLE			
17:52				TURNOVER (LOSTBALL) by HIGHTOWER, CORY
17:42	TURNOVER (LOSTBALL) by VAUDRIN, CHANDLER			
17:42				STEAL by MCCORMACK, OWEN
17:36				MISSED LAYUP by ISLER, MICHAEL
17:36	BLOCK by FERGUSON, JOSH			
17:28	REBOUND (DEF) by FERGUSON, JOSH			
17:27	MISSED LAYUP by VAUDRIN, CHANDLER			
17:23	REBOUND (OFF) by HALE, HUNTER			
17:23				FOUL (PERSONAL) by MARTIN, CHRIS
17:23	SUB OUT: VAUDRIN, CHANDLER			
17:23	SUB IN: JONES JR., RUSSELL			
17:21	MISSED 3PTR by HALE, HUNTER			
17:14				REBOUND (DEF) by MCCORMACK, OWEN
17:11		6-6	T	GOOD! JUMPER by MARTIN, CHRIS
17:08	TURNOVER (LOSTBALL) by HALE, HUNTER			
17:08				STEAL by ISLER, MICHAEL
17:08		8-6	H 2	GOOD! LAYUP by ISLER, MICHAEL [FB/PNT]
17:08	FOUL (PERSONAL) by FERGUSON, JOSH			
17:08				MISSED FT by ISLER, MICHAEL
17:08	SUB OUT: HALE, HUNTER			
17:08	SUB OUT: FERGUSON, JOSH			
17:08	SUB IN: BURNS JR., D.J.			
17:08	SUB IN: FALDEN, CHARLES			
17:05	REBOUND (DEF) by ZUNIC, KYLE			
17:01	GOOD! JUMPER by BURNS JR., D.J.	8-8	T	
17:01	ASSIST by FALDEN, CHARLES			
16:41				TURNOVER (LOSTBALL) by MCCORMACK, OWEN
16:41	STEAL by CLAXTON, CHASE			
16:36	GOOD! DUNK by CLAXTON, CHASE [FB]	8-10	V 2	
16:16		10-10	T	GOOD! LAYUP by MARTIN, CHRIS
16:16				ASSIST by ISLER, MICHAEL
16:02	GOOD! 3PTR by ZUNIC, KYLE	10-13	V 3	
16:02	ASSIST by JONES JR., RUSSELL			
15:40				MISSED 3PTR by HIGHTOWER, CORY
15:36	REBOUND (DEF) by JONES JR., RUSSELL			
15:31	TURNOVER (LOSTBALL) by JONES JR., RUSSELL			
15:31				STEAL by MARTIN, CHRIS
15:27		12-13	V 1	GOOD! LAYUP by MARTIN, CHRIS [FB]
15:27	FOUL (PERSONAL) by ZUNIC, KYLE			
15:27				SUB OUT: GRAHAM, ZEB
15:27				SUB OUT: MCCORMACK, OWEN
15:27				SUB OUT: ISLER, MICHAEL
15:27				SUB IN: DRAKE, BEN
15:27				SUB IN: JENKINS, SEAN
15:27				SUB IN: YOUNGER, J.C.
15:27	SUB OUT: JONES JR., RUSSELL			
15:27	SUB OUT: CLAXTON, CHASE			
15:27	SUB OUT: BURNS JR., D.J.			
15:27	SUB IN: ANUMBA, MICHEAL			
15:27	SUB IN: FERGUSON, JOSH			

Time	VISITORS: Winthrop	Score	Margin	HOME: Presbyterian
15:27	SUB IN: VAUDRIN, CHANDLER			
15:27				MISSED FT by MARTIN, CHRIS
15:25	REBOUND (DEF) by VAUDRIN, CHANDLER			
15:02	MISSED 3PTR by ZUNIC, KYLE			
14:58				REBOUND (DEF) by HIGHTOWER, CORY
14:54				FOUL (OFF) by HIGHTOWER, CORY
14:54				TURNOVER (OFFENSIVE) by HIGHTOWER, CORY
14:54				SUB OUT: HIGHTOWER, CORY
14:54				SUB IN: ISLER, MICHAEL
14:54	SUB OUT: ZUNIC, KYLE			
14:54	SUB IN: KING, JAMAL			
14:24	MISSED LAYUP by FALDEN, CHARLES			
14:20				REBOUND (DEF) by DRAKE, BEN
14:15				TURNOVER (BADPASS) by MARTIN, CHRIS
14:15	STEAL by ANUMBA, MICHEAL			
14:09	MISSED 3PTR by KING, JAMAL			
14:07				REBOUND (DEF) by JENKINS, SEAN
14:07	FOUL (PERSONAL) by FALDEN, CHARLES			
14:07	SUB OUT: FALDEN, CHARLES			
14:07	SUB IN: HALE, HUNTER			
13:45				MISSED 3PTR by JENKINS, SEAN
13:40	REBOUND (DEF) by ANUMBA, MICHEAL			
13:29	FOUL (OFF) by KING, JAMAL			
13:29	TURNOVER (OFFENSIVE) by KING, JAMAL			
13:29	SUB OUT: FERGUSON, JOSH			
13:29	SUB OUT: VAUDRIN, CHANDLER			
13:29	SUB IN: JONES JR., RUSSELL			
13:29	SUB IN: BURNS JR., D.J.			
13:04				MISSED LAYUP by DRAKE, BEN
13:01	REBOUND (DEF) by JONES JR., RUSSELL			
12:50	MISSED JUMPER by BURNS JR., D.J.			
12:43	GOOD! LAYUP by KING, JAMAL	12-15	V 3	
12:43	REBOUND (OFF) by KING, JAMAL			
12:28		14-15	V 1	GOOD! LAYUP by MARTIN, CHRIS [PNT]
12:20				FOUL (PERSONAL) by MARTIN, CHRIS
12:20				SUB OUT: MARTIN, CHRIS
12:20				SUB IN: SHUBERT, KODY
12:20	SUB OUT: KING, JAMAL			
12:20	SUB IN: CLAXTON, CHASE			
12:06	GOOD! 3PTR by HALE, HUNTER	14-18	V 4	
12:06	ASSIST by ANUMBA, MICHEAL			
11:46		17-18	V 1	GOOD! 3PTR by SHUBERT, KODY
11:46				ASSIST by ISLER, MICHAEL
11:35				FOUL (PERSONAL) by DRAKE, BEN
11:35				
11:35	SUB OUT: ANUMBA, MICHEAL			
11:35	SUB IN: VAUDRIN, CHANDLER			
11:24	TURNOVER (TRAVEL) by BURNS JR., D.J.			
11:08	FOUL (PERSONAL) by JONES JR., RUSSELL			
10:56				MISSED JUMPER by JENKINS, SEAN
10:52	REBOUND (DEF) by JONES JR., RUSSELL			
10:44	GOOD! DUNK by CLAXTON, CHASE	17-20	V 3	
10:44	ASSIST by JONES JR., RUSSELL			
10:19				SUB OUT: YOUNGER, J.C.
10:19				SUB IN: HIGHTOWER, CORY
10:19	SUB OUT: JONES JR., RUSSELL			
10:19	SUB IN: ZUNIC, KYLE			
10:12				TURNOVER (SHOTCLOCK) by TEAM
10:12				SUB OUT: JENKINS, SEAN
10:12				SUB IN: GRAHAM, ZEB
10:12	SUB OUT: BURNS JR., D.J.			
10:12	SUB IN: FERGUSON, JOSH			
10:00	GOOD! 3PTR by FERGUSON, JOSH	17-23	V 6	
10:00	ASSIST by VAUDRIN, CHANDLER			
09:37				MISSED LAYUP by DRAKE, BEN
09:34	REBOUND (DEF) by CLAXTON, CHASE			
09:32	MISSED 3PTR by HALE, HUNTER			
09:26	REBOUND (OFF) by ZUNIC, KYLE			
09:26	TIMEOUT 30SEC			
09:26				SUB OUT: DRAKE, BEN
09:26				SUB IN: MCCORMACK, OWEN
09:26	SUB OUT: HALE, HUNTER			
09:26	SUB IN: FALDEN, CHARLES			
09:19	MISSED 3PTR by FERGUSON, JOSH			
09:15				REBOUND (DEF) by ISLER, MICHAEL
08:59	FOUL (PERSONAL) by VAUDRIN, CHANDLER			
08:59		18-23	V 5	GOOD! FT by HIGHTOWER, CORY
08:59	SUB OUT: CLAXTON, CHASE			
08:59	SUB IN: ANUMBA, MICHEAL			
08:59				MISSED FT by HIGHTOWER, CORY

Time	VISITORS: Winthrop	Score	Margin	HOME: Presbyterian
08:56	REBOUND (DEF) by VAUDRIN, CHANDLER			
08:51	GOOD! 3PTR by ZUNIC, KYLE	18-26	V 8	
08:51	ASSIST by VAUDRIN, CHANDLER			
08:49				FOUL (PERSONAL) by GRAHAM, ZEB
08:49	GOOD! FT by ZUNIC, KYLE	18-27	V 9	
08:26				MISSED 3PTR by HIGHTOWER, CORY
08:23	REBOUND (DEF) by VAUDRIN, CHANDLER			
08:03	MISSED LAYUP by FERGUSON, JOSH			
08:02	REBOUND (OFF) by FERGUSON, JOSH			
08:02				FOUL (PERSONAL) by MCCORMACK, OWEN
08:02	GOOD! FT by FERGUSON, JOSH	18-28	V 10	
08:02				SUB OUT: SHUBERT, KODY
08:02				SUB IN: MARTIN, CHRIS
08:02	SUB OUT: VAUDRIN, CHANDLER			
08:02	SUB IN: JONES JR., RUSSELL			
08:02	GOOD! FT by FERGUSON, JOSH	18-29	V 11	
08:02	SUB OUT: FERGUSON, JOSH			
08:02	SUB IN: BURNS JR., D.J.			
07:42	FOUL (PERSONAL) by ZUNIC, KYLE			
07:42				
07:42	SUB OUT: FALDEN, CHARLES			
07:42	SUB OUT: ZUNIC, KYLE			
07:42	SUB IN: HALE, HUNTER			
07:42	SUB IN: KING, JAMAL			
07:42		19-29	V 10	GOOD! FT by ISLER, MICHAEL
07:42				MISSED FT by ISLER, MICHAEL
07:42	REBOUND (DEF) by BURNS JR., D.J.			
07:28	GOOD! LAYUP by JONES JR., RUSSELL [PNT]	19-31	V 12	
07:01				MISSED 3PTR by GRAHAM, ZEB
06:56	REBOUND (DEF) by BURNS JR., D.J.			
06:48	MISSED JUMPER by BURNS JR., D.J.			
06:44				REBOUND (DEF) by GRAHAM, ZEB
06:36				MISSED JUMPER by MARTIN, CHRIS
06:31	REBOUND (DEF) by BURNS JR., D.J.			
06:28	MISSED JUMPER by JONES JR., RUSSELL			
06:25				REBOUND (DEF) by GRAHAM, ZEB
06:19	FOUL (PERSONAL) by BURNS JR., D.J.			
06:19		20-31	V 11	GOOD! FT by HIGHTOWER, CORY
06:19				SUB OUT: MCCORMACK, OWEN
06:19				SUB OUT: ISLER, MICHAEL
06:19				SUB IN: DRAKE, BEN
06:19				SUB IN: YOUNGER, J.C.
06:19	SUB OUT: JONES JR., RUSSELL			
06:19	SUB OUT: ANUMBA, MICHEAL			
06:19	SUB OUT: BURNS JR., D.J.			
06:19	SUB IN: FERGUSON, JOSH			
06:19	SUB IN: CLAXTON, CHASE			
06:19	SUB IN: VAUDRIN, CHANDLER			
06:19		21-31	V 10	GOOD! FT by HIGHTOWER, CORY
06:15	GOOD! 3PTR by FERGUSON, JOSH	21-34	V 13	
06:15	ASSIST by KING, JAMAL			
05:53				MISSED LAYUP by GRAHAM, ZEB
05:49	REBOUND (DEF) by VAUDRIN, CHANDLER			
05:47	MISSED 3PTR by KING, JAMAL			
05:43				REBOUND (DEF) by MARTIN, CHRIS
05:24				SUB OUT: GRAHAM, ZEB
05:24				SUB IN: SHUBERT, KODY
05:24	SUB OUT: HALE, HUNTER			
05:24	SUB IN: FALDEN, CHARLES			
05:15		23-34	V 11	GOOD! LAYUP by DRAKE, BEN [PNT]
05:15				ASSIST by SHUBERT, KODY
04:57	GOOD! LAYUP by FALDEN, CHARLES [PNT]	23-36	V 13	
04:34		25-36	V 11	GOOD! JUMPER by YOUNGER, J.C.
04:26				FOUL (PERSONAL) by SHUBERT, KODY
04:26	SUB OUT: KING, JAMAL			
04:26	SUB OUT: CLAXTON, CHASE			
04:26	SUB IN: JONES JR., RUSSELL			
04:26	SUB IN: ANUMBA, MICHEAL			
04:26				SUB OUT: DRAKE, BEN
04:26				SUB IN: ISLER, MICHAEL
04:26	GOOD! FT by FALDEN, CHARLES	25-37	V 12	
04:26	GOOD! FT by FALDEN, CHARLES	25-38	V 13	
04:04				MISSED 3PTR by YOUNGER, J.C.
04:00	REBOUND (DEF) by FALDEN, CHARLES			
03:51	MISSED 3PTR by ANUMBA, MICHEAL			
03:47				REBOUND (DEF) by SHUBERT, KODY
03:39				MISSED LAYUP by MARTIN, CHRIS
03:39				REBOUND (OFF) by ISLER, MICHAEL
03:39	FOUL (PERSONAL) by ANUMBA, MICHEAL			
03:39				

Time	VISITORS: Winthrop	Score	Margin	HOME: Presbyterian
03:39				SUB OUT: MARTIN, CHRIS
03:39				SUB IN: DRAKE, BEN
03:39	SUB OUT: ANUMBA, MICHEAL			
03:39	SUB OUT: FALDEN, CHARLES			
03:39	SUB OUT: FERGUSON, JOSH			
03:39	SUB IN: HALE, HUNTER			
03:39	SUB IN: BURNS JR., D.J.			
03:39	SUB IN: CLAXTON, CHASE			
03:39		26-38	V 12	GOOD! FT by ISLER, MICHAEL
03:39				MISSED FT by ISLER, MICHAEL
03:37	REBOUND (DEF) by VAUDRIN, CHANDLER			
03:21	MISSED JUMPER by BURNS JR., D.J.			
03:18				REBOUND (DEF) by HIGHTOWER, CORY
03:13		28-38	V 10	GOOD! LAYUP by ISLER, MICHAEL [FB/PNT]
03:13	FOUL (PERSONAL) by BURNS JR., D.J.			
03:13		29-38	V 9	GOOD! FT by ISLER, MICHAEL [FB]
03:01	MISSED 3PTR by JONES JR., RUSSELL			
03:01	SUB OUT: BURNS JR., D.J.			
03:01	SUB IN: FERGUSON, JOSH			
02:56	REBOUND (OFF) by HALE, HUNTER			
02:55	TURNOVER (BADPASS) by JONES JR., RUSSELL			
02:40		32-38	V 6	GOOD! 3PTR by YOUNGER, J.C.
02:40				ASSIST by SHUBERT, KODY
02:27	MISSED JUMPER by VAUDRIN, CHANDLER			
02:22				REBOUND (DEF) by DRAKE, BEN
02:02				TURNOVER (BADPASS) by ISLER, MICHAEL
02:02	STEAL by JONES JR., RUSSELL			
01:56	MISSED DUNK by HALE, HUNTER			
01:44	GOOD! DUNK by FERGUSON, JOSH	32-40	V 8	
01:44	REBOUND (OFF) by FERGUSON, JOSH			
01:37				MISSED 3PTR by SHUBERT, KODY
01:28				REBOUND (OFF) by ISLER, MICHAEL
01:28		34-40	V 6	GOOD! DUNK by ISLER, MICHAEL
01:27				FOUL (PERSONAL) by HIGHTOWER, CORY
01:27				SUB OUT: SHUBERT, KODY
01:27				SUB IN: GRAHAM, ZEB
01:27	SUB OUT: JONES JR., RUSSELL			
01:27	SUB IN: FALDEN, CHARLES			
01:27	GOOD! FT by FERGUSON, JOSH [FB]	34-41	V 7	
01:27	GOOD! FT by FERGUSON, JOSH [FB]	34-42	V 8	
01:06	FOUL (PERSONAL) by CLAXTON, CHASE			
01:06				MISSED FT by HIGHTOWER, CORY
01:06				REBOUND (OFF) by TEAM
01:06		35-42	V 7	GOOD! FT by HIGHTOWER, CORY
01:06				SUB OUT: HIGHTOWER, CORY
01:06				SUB IN: MELTON, CJ
00:42	GOOD! 3PTR by FERGUSON, JOSH	35-45	V 10	
00:42	ASSIST by VAUDRIN, CHANDLER			
00:28				TIMEOUT 30SEC
00:28				SUB OUT: MELTON, CJ
00:28				SUB IN: HIGHTOWER, CORY
00:06				MISSED JUMPER by HIGHTOWER, CORY
00:01	REBOUND (DEF) by TEAM			
00:01	SUB OUT: CLAXTON, CHASE			
00:01	SUB IN: JONES JR., RUSSELL			
00:01	MISSED 3PTR by FERGUSON, JOSH			
00:00	REBOUND (OFF) by TEAM			

### Winthrop 45, Presbyterian 35

Points from (This Period)	WIN	PRE
In the Paint	14	16
Off Turns	9	7
2nd Chance	2	3
Fast Break	6	7
Bench	19	10

**Official Box Score**  
**Winthrop vs Presbyterian**  
**Second Half Statistics Only**  
**February 15, 2020 at Ross E. Templeton Center - Clinton, S.C.**



**Winthrop 44**

No.	Player	S	Pts	FG	3FG	FT	OR	DR	TR	PF	A	TO	Blk	Stl	Min	+/-
03	ANUMBA, MICHEAL	G	1	0-0	0-0	1-2	0	2	2	3	1	0	0	0	8	0
13	HALE, HUNTER	G	9	3-6	3-6	0-2	0	2	2	1	0	2	0	1	13	-6
25	FERGUSON, JOSH	C	2	1-3	0-2	0-1	1	2	3	2	1	1	1	0	18	-3
30	BURNS JR., D.J.	F	4	2-2	0-0	0-1	0	0	0	3	0	1	0	0	5	-6
52	VAUDRIN, CHANDLER	G	6	1-5	0-3	4-6	1	0	1	1	1	1	0	0	18	-13
00	JONES JR., RUSSELL	G	9	4-5	1-2	0-0	1	0	1	0	0	1	0	0	12	-11
11	FALDEN, CHARLES	G	2	0-0	0-0	2-2	0	1	1	0	2	0	0	0	6	3
21	KING, JAMAL	G	1	0-1	0-1	1-2	0	0	0	1	0	0	0	0	2	-3
22	ZUNIC, KYLE	G	0	0-1	0-1	0-0	0	0	0	2	0	0	0	0	3	-3
33	CLAXTON, CHASE	F	10	4-4	0-0	2-5	4	2	6	2	2	0	1	1	15	-3
<b>TEAM</b>							0	0	0	0		1				
<b>TOTALS</b>			<b>44</b>	<b>15-27</b>	<b>4-15</b>	<b>10-21</b>	<b>7</b>	<b>9</b>	<b>16</b>	<b>15</b>	<b>7</b>	<b>7</b>	<b>2</b>	<b>2</b>	<b>100</b>	

*Shooting By Period*

Period	FG	FG%	3FG	3FG%	FT	FT%
2nd Half	15-27	56%	4-15	27%	10-21	48%
Game	30-60	50.0%	11-31	35.5%	18-30	60.0%

Deadball Rebounds: 6,0

Last FG Half: WIN -

**Presbyterian 53**

No.	Player	S	Pts	FG	3FG	FT	OR	DR	TR	PF	A	TO	Blk	Stl	Min	+/-
00	MARTIN, CHRIS	G	16	4-6	1-1	7-9	0	3	3	3	0	0	0	0	16	11
05	GRAHAM, ZEB	G	2	1-2	0-0	0-0	0	1	1	2	1	0	0	0	7	1
12	HIGHTOWER, CORY	F	12	3-5	0-2	6-7	0	2	2	2	0	1	0	2	17	13
15	MCCORMACK, OWEN	F	0	0-1	0-1	0-0	0	3	3	4	0	0	0	0	9	5
22	ISLER, MICHAEL	G	4	1-3	0-0	2-2	1	2	3	2	1	2	0	0	18	10
02	SHUBERT, KODY	G	9	4-4	1-1	0-2	0	0	0	1	3	0	0	0	15	10
03	MELTON, CJ	G	0	0-0	0-0	0-0	1	0	1	0	1	0	0	0	0	3
04	DRAKE, BEN	F	7	3-3	0-0	1-2	0	1	1	0	1	0	1	1	10	-3
10	JENKINS, SEAN	G	0	0-0	0-0	0-0	0	0	0	0	0	0	0	0	0	0
25	YOUNGER, J.C.	G	3	1-2	1-2	0-0	0	0	0	0	0	0	0	0	8	-5
<b>TEAM</b>							1	0	1	0		0				
<b>TOTALS</b>			<b>53</b>	<b>17-26</b>	<b>3-7</b>	<b>16-22</b>	<b>3</b>	<b>12</b>	<b>15</b>	<b>14</b>	<b>7</b>	<b>3</b>	<b>1</b>	<b>3</b>	<b>100</b>	

*Shooting By Period*

Period	FG	FG%	3FG	3FG%	FT	FT%
2nd Half	17-26	65%	3-7	43%	16-22	73%
Game	29-52	55.8%	5-15	33.3%	25-37	67.6%

Deadball Rebounds: 4,0

Last FG Half: PRE -

Game Notes:

Officials: Ty Meixsell, Ryan Christian, Ben Stirt  
 Attendance: 841

Start Time: 04:19 PM ET  
 End Time: 06:30 PM ET  
 Game Duration: 2:10  
 Conference Game;

Score	1st	2nd	TOT
WIN	45	44	89
PRE	35	53	88

Points from (This Period)	WIN	PRE
In the Paint	22	22
Off Turns	4	15
2nd Chance	14	7
Fast Break	2	8
Bench	22	19



**Official Play-By-Play  
Winthrop vs Presbyterian  
Second Half**

**February 15, 2020 at Ross E. Templeton Center - Clinton, S.C.**



**Period 2**

**Starters:**

**Winthrop:** 3 ANUMBA, MICHEAL (G); 13 HALE, HUNTER (G); 25 FERGUSON, JOSH (C); 30 BURNS JR., D.J. (F); 52 VAUDRIN, CHANDLER (G);

**Presbyterian:** 0 MARTIN, CHRIS (G); 5 GRAHAM, ZEB (G); 12 HIGHTOWER, CORY (F); 15 MCCORMACK, OWEN (F); 22 ISLER, MICHAEL (G);

Time	VISITORS: Winthrop	Score	Margin	HOME: Presbyterian
20:00				SUB OUT: DRAKE, BEN
20:00				SUB OUT: YOUNGER, J.C.
20:00				SUB IN: MARTIN, CHRIS
20:00				SUB IN: MCCORMACK, OWEN
20:00	SUB OUT: JONES JR., RUSSELL			
20:00	SUB OUT: FALDEN, CHARLES			
20:00	SUB IN: ANUMBA, MICHEAL			
20:00	SUB IN: BURNS JR., D.J.			
19:46		37-45	V 8	GOOD! LAYUP by HIGHTOWER, CORY
19:13	GOOD! LAYUP by BURNS JR., D.J. [PNT]	37-47	V 10	
18:56	FOUL (PERSONAL) by ANUMBA, MICHEAL			
18:56	SUB OUT: ANUMBA, MICHEAL			
18:56	SUB IN: ZUNIC, KYLE			
18:48		39-47	V 8	GOOD! JUMPER by GRAHAM, ZEB
18:39	GOOD! LAYUP by BURNS JR., D.J. [PNT]	39-49	V 10	
18:39				FOUL (PERSONAL) by MCCORMACK, OWEN
18:39	MISSED FT by BURNS JR., D.J.			
18:36				REBOUND (DEF) by MCCORMACK, OWEN
18:17	FOUL (PERSONAL) by BURNS JR., D.J.			
18:17		40-49	V 9	GOOD! FT by ISLER, MICHAEL
18:17	SUB OUT: BURNS JR., D.J.			
18:17	SUB IN: CLAXTON, CHASE			
18:17		41-49	V 8	GOOD! FT by ISLER, MICHAEL
18:03				FOUL (PERSONAL) by MCCORMACK, OWEN
18:03	MISSED FT by CLAXTON, CHASE			
18:03	REBOUND (OFF) by TEAM			
18:02	MISSED FT by CLAXTON, CHASE			
17:59				REBOUND (DEF) by MCCORMACK, OWEN
17:42				FOUL (OFF) by ISLER, MICHAEL
17:42				TURNOVER (OFFENSIVE) by ISLER, MICHAEL
17:42	SUB OUT: HALE, HUNTER			
17:42	SUB IN: JONES JR., RUSSELL			
17:10	MISSED 3PTR by VAUDRIN, CHANDLER			
17:10	REBOUND (OFF) by TEAM			
17:10	TURNOVER (SHOTCLOCK) by TEAM			
16:53	FOUL (PERSONAL) by ZUNIC, KYLE			
16:53		42-49	V 7	GOOD! FT by HIGHTOWER, CORY
16:53	SUB OUT: ZUNIC, KYLE			
16:53	SUB OUT: VAUDRIN, CHANDLER			
16:53	SUB IN: FALDEN, CHARLES			
16:53	SUB IN: HALE, HUNTER			
16:53		43-49	V 6	GOOD! FT by HIGHTOWER, CORY
16:49				FOUL (PERSONAL) by MARTIN, CHRIS
16:33	GOOD! LAYUP by JONES JR., RUSSELL [PNT]	43-51	V 8	
16:27				MISSED LAYUP by ISLER, MICHAEL
16:27	BLOCK by FERGUSON, JOSH			
16:20	REBOUND (DEF) by CLAXTON, CHASE			
16:17	GOOD! 3PTR by JONES JR., RUSSELL	43-54	V 11	
16:17	ASSIST by FALDEN, CHARLES			
15:56		45-54	V 9	GOOD! LAYUP by HIGHTOWER, CORY [PNT]
15:44	MISSED 3PTR by HALE, HUNTER			
15:39	REBOUND (OFF) by CLAXTON, CHASE			
15:38	GOOD! 3PTR by HALE, HUNTER	45-57	V 12	
15:38	ASSIST by CLAXTON, CHASE			
15:08				MISSED 3PTR by HIGHTOWER, CORY
15:04	REBOUND (DEF) by FERGUSON, JOSH			
15:04				
15:04	SUB OUT: FALDEN, CHARLES			
15:04	SUB IN: KING, JAMAL			
14:55	MISSED 3PTR by KING, JAMAL			
14:51				REBOUND (DEF) by GRAHAM, ZEB
14:48				MISSED DUNK by GRAHAM, ZEB
14:45				REBOUND (OFF) by ISLER, MICHAEL
14:36	FOUL (PERSONAL) by CLAXTON, CHASE			
14:36		46-57	V 11	GOOD! FT by HIGHTOWER, CORY
14:36				SUB OUT: GRAHAM, ZEB
14:36				SUB IN: SHUBERT, KODY
14:36	SUB OUT: JONES JR., RUSSELL			
14:36	SUB OUT: FERGUSON, JOSH			
14:36	SUB IN: BURNS JR., D.J.			

Time	VISITORS: Winthrop	Score	Margin	HOME: Presbyterian
14:36	SUB IN: VAUDRIN, CHANDLER			
14:36		47-57	V 10	GOOD! FT by HIGHTOWER, CORY
14:15				FOUL (PERSONAL) by HIGHTOWER, CORY
14:15	GOOD! FT by KING, JAMAL	47-58	V 11	
14:14	MISSED FT by KING, JAMAL			
14:12				REBOUND (DEF) by MARTIN, CHRIS
13:47		49-58	V 9	GOOD! JUMPER by SHUBERT, KODY [PNT]
13:43	TURNOVER (BADPASS) by HALE, HUNTER			
13:43	SUB OUT: HALE, HUNTER			
13:43	SUB IN: FALDEN, CHARLES			
13:31	FOUL (PERSONAL) by KING, JAMAL			
13:31	SUB OUT: KING, JAMAL			
13:31	SUB IN: JONES JR., RUSSELL			
13:15				MISSED LAYUP by MARTIN, CHRIS
13:15				REBOUND (OFF) by TEAM
13:09		51-58	V 7	GOOD! JUMPER by ISLER, MICHAEL
12:59	FOUL (OFF) by BURNS JR., D.J.			
12:59	TURNOVER (OFFENSIVE) by BURNS JR., D.J.			
12:59	SUB OUT: BURNS JR., D.J.			
12:59	SUB IN: FERGUSON, JOSH			
12:56		53-58	V 5	GOOD! LAYUP by MARTIN, CHRIS [PNT]
12:56	FOUL (PERSONAL) by CLAXTON, CHASE			
12:56		54-58	V 4	GOOD! FT by MARTIN, CHRIS
12:49	TIMEOUT 30SEC			
12:49				
12:49	SUB OUT: FALDEN, CHARLES			
12:49	SUB OUT: CLAXTON, CHASE			
12:49	SUB IN: ANUMBA, MICHEAL			
12:49	SUB IN: ZUNIC, KYLE			
12:39				FOUL (PERSONAL) by MCCORMACK, OWEN
12:39	GOOD! FT by VAUDRIN, CHANDLER	54-59	V 5	
12:39				SUB OUT: MCCORMACK, OWEN
12:39				SUB IN: DRAKE, BEN
12:38	MISSED FT by VAUDRIN, CHANDLER			
12:35				REBOUND (DEF) by MARTIN, CHRIS
12:24	FOUL (PERSONAL) by FERGUSON, JOSH			
12:24		55-59	V 4	GOOD! FT by MARTIN, CHRIS
12:23				MISSED FT by MARTIN, CHRIS
12:21	REBOUND (DEF) by ANUMBA, MICHEAL			
12:00	MISSED 3PTR by ZUNIC, KYLE			
11:57				REBOUND (DEF) by MARTIN, CHRIS
11:56	FOUL (PERSONAL) by ZUNIC, KYLE			
11:56				
11:56	SUB OUT: ZUNIC, KYLE			
11:56	SUB IN: HALE, HUNTER			
11:56		56-59	V 3	GOOD! FT by MARTIN, CHRIS [FB]
11:56		57-59	V 2	GOOD! FT by MARTIN, CHRIS [FB]
11:48	TURNOVER (TRAVEL) by HALE, HUNTER			
11:38		59-59	T	GOOD! LAYUP by SHUBERT, KODY [PNT]
11:38				ASSIST by DRAKE, BEN
11:18	TURNOVER (LOSTBALL) by FERGUSON, JOSH			
11:18				STEAL by HIGHTOWER, CORY
11:18	FOUL (PERSONAL) by FERGUSON, JOSH			
11:18		60-59	H 1	GOOD! FT by HIGHTOWER, CORY
11:18		61-59	H 2	GOOD! FT by HIGHTOWER, CORY
10:54	MISSED 3PTR by VAUDRIN, CHANDLER			
10:50	REBOUND (OFF) by FERGUSON, JOSH			
10:48	GOOD! DUNK by FERGUSON, JOSH	61-61	T	
10:26		63-61	H 2	GOOD! LAYUP by MARTIN, CHRIS
10:20	TURNOVER (BADPASS) by JONES JR., RUSSELL			
10:20				STEAL by DRAKE, BEN
10:15		65-61	H 4	GOOD! LAYUP by MARTIN, CHRIS [FB]
10:09	GOOD! 3PTR by HALE, HUNTER	65-64	H 1	
10:09	ASSIST by VAUDRIN, CHANDLER			
09:42	FOUL (PERSONAL) by HALE, HUNTER			
09:42				MISSED FT by DRAKE, BEN
09:42				REBOUND (OFF) by TEAM
09:42				SUB OUT: MARTIN, CHRIS
09:42				SUB OUT: ISLER, MICHAEL
09:42				SUB IN: GRAHAM, ZEB
09:42				SUB IN: YOUNGER, J.C.
09:42	SUB OUT: JONES JR., RUSSELL			
09:42	SUB OUT: ANUMBA, MICHEAL			
09:42	SUB IN: FALDEN, CHARLES			
09:42	SUB IN: CLAXTON, CHASE			
09:38		66-64	H 2	GOOD! FT by DRAKE, BEN
09:31	MISSED 3PTR by HALE, HUNTER			
09:25	REBOUND (OFF) by CLAXTON, CHASE			
09:10	GOOD! LAYUP by CLAXTON, CHASE	66-66	T	
09:06		68-66	H 2	GOOD! LAYUP by HIGHTOWER, CORY [PNT]

Time	VISITORS: Winthrop	Score	Margin	HOME: Presbyterian
09:06	FOUL (PERSONAL) by VAUDRIN, CHANDLER			
09:06				MISSED FT by HIGHTOWER, CORY
09:04	REBOUND (DEF) by HALE, HUNTER			
08:57	TURNOVER (LOSTBALL) by VAUDRIN, CHANDLER			
08:57				STEAL by HIGHTOWER, CORY
08:52		70-66	H 4	GOOD! JUMPER by DRAKE, BEN
08:52				ASSIST by GRAHAM, ZEB
08:30	GOOD! DUNK by CLAXTON, CHASE	70-68	H 2	
08:30	ASSIST by FERGUSON, JOSH			
07:56				MISSED 3PTR by HIGHTOWER, CORY
07:52	REBOUND (DEF) by HALE, HUNTER			
07:47	GOOD! LAYUP by CLAXTON, CHASE	70-70	T	
07:47	ASSIST by FALDEN, CHARLES			
07:47				FOUL (PERSONAL) by GRAHAM, ZEB
07:47				SUB OUT: DRAKE, BEN
07:47				SUB OUT: GRAHAM, ZEB
07:47				SUB OUT: YOUNGER, J.C.
07:47				SUB IN: MARTIN, CHRIS
07:47				SUB IN: MCCORMACK, OWEN
07:47				SUB IN: ISLER, MICHAEL
07:47	GOOD! FT by CLAXTON, CHASE	70-71	V 1	
07:47	SUB OUT: HALE, HUNTER			
07:47	SUB IN: JONES JR., RUSSELL			
07:28		73-71	H 2	GOOD! 3PTR by MARTIN, CHRIS
07:05	MISSED 3PTR by FERGUSON, JOSH			
06:59	REBOUND (OFF) by JONES JR., RUSSELL			
06:57	GOOD! JUMPER by JONES JR., RUSSELL [PNT]	73-73	T	
06:38				MISSED 3PTR by MCCORMACK, OWEN
06:36	REBOUND (DEF) by FERGUSON, JOSH			
06:36				FOUL (PERSONAL) by HIGHTOWER, CORY
06:36				SUB OUT: HIGHTOWER, CORY
06:36				SUB IN: YOUNGER, J.C.
06:36	MISSED FT by FERGUSON, JOSH			
06:34				REBOUND (DEF) by MCCORMACK, OWEN
06:13				MISSED LAYUP by MARTIN, CHRIS
06:09	REBOUND (DEF) by FALDEN, CHARLES			
06:03				FOUL (PERSONAL) by MCCORMACK, OWEN
06:03				SUB OUT: MCCORMACK, OWEN
06:03				SUB IN: DRAKE, BEN
06:03	GOOD! FT by FALDEN, CHARLES	73-74	V 1	
06:03	GOOD! FT by FALDEN, CHARLES	73-75	V 2	
06:03	SUB OUT: FALDEN, CHARLES			
06:03	SUB IN: ANUMBA, MICHEAL			
06:03	SUB OUT: FERGUSON, JOSH			
06:03	SUB IN: BURNS JR., D.J.			
05:33		75-75	T	GOOD! LAYUP by DRAKE, BEN
05:33				ASSIST by SHUBERT, KODY
05:18	MISSED 3PTR by JONES JR., RUSSELL			
05:15	REBOUND (OFF) by CLAXTON, CHASE			
05:15				FOUL (PERSONAL) by MARTIN, CHRIS
05:15	MISSED FT by CLAXTON, CHASE			
05:15	REBOUND (OFF) by TEAM			
05:15	SUB OUT: BURNS JR., D.J.			
05:15	SUB IN: FERGUSON, JOSH			
05:15	GOOD! FT by CLAXTON, CHASE	75-76	V 1	
04:48				MISSED LAYUP by ISLER, MICHAEL
04:48	BLOCK by CLAXTON, CHASE			
04:43	REBOUND (DEF) by CLAXTON, CHASE			
04:42	MISSED 3PTR by FERGUSON, JOSH			
04:29	REBOUND (OFF) by CLAXTON, CHASE			
04:29	GOOD! DUNK by CLAXTON, CHASE	75-78	V 3	
04:15	FOUL (PERSONAL) by ANUMBA, MICHEAL			
04:15				MISSED FT by MARTIN, CHRIS
04:15				REBOUND (OFF) by TEAM
04:15	SUB OUT: ANUMBA, MICHEAL			
04:15	SUB IN: BURNS JR., D.J.			
04:15		76-78	V 2	GOOD! FT by MARTIN, CHRIS
03:51	MISSED LAYUP by VAUDRIN, CHANDLER			
03:51				BLOCK by DRAKE, BEN
03:37				REBOUND (DEF) by ISLER, MICHAEL
03:37				TURNOVER (LOSTBALL) by ISLER, MICHAEL
03:37	STEAL by CLAXTON, CHASE			
03:37	GOOD! LAYUP by JONES JR., RUSSELL [FB]	76-80	V 4	
03:37	ASSIST by CLAXTON, CHASE			
03:37	FOUL (PERSONAL) by BURNS JR., D.J.			
03:37				SUB OUT: DRAKE, BEN
03:37				SUB IN: HIGHTOWER, CORY
03:37	SUB OUT: BURNS JR., D.J.			

Time	VISITORS: Winthrop	Score	Margin	HOME: Presbyterian
03:37	SUB IN: HALE, HUNTER			
03:37		77-80	V 3	GOOD! FT by MARTIN, CHRIS [FB]
03:37		78-80	V 2	GOOD! FT by MARTIN, CHRIS [FB]
03:07	MISSED 3PTR by VAUDRIN, CHANDLER			
03:04				REBOUND (DEF) by ISLER, MICHAEL
03:00		80-80	T	GOOD! LAYUP by SHUBERT, KODY [FB/PNT]
03:00				ASSIST by ISLER, MICHAEL
02:35				FOUL (PERSONAL) by MARTIN, CHRIS
02:35				SUB OUT: MARTIN, CHRIS
02:35				SUB IN: DRAKE, BEN
02:35	SUB OUT: JONES JR., RUSSELL			
02:35	SUB IN: ANUMBA, MICHEAL			
02:35	GOOD! FT by VAUDRIN, CHANDLER	80-81	V 1	
02:34	MISSED FT by VAUDRIN, CHANDLER			
02:32				REBOUND (DEF) by DRAKE, BEN
02:14				TURNOVER (LOSTBALL) by HIGHTOWER, CORY
02:14	STEAL by HALE, HUNTER			
01:47	GOOD! LAYUP by VAUDRIN, CHANDLER	80-83	V 3	
01:28		82-83	V 1	GOOD! LAYUP by DRAKE, BEN [PNT]
01:28				ASSIST by SHUBERT, KODY
01:06	MISSED 3PTR by HALE, HUNTER			
01:04	REBOUND (OFF) by VAUDRIN, CHANDLER			
01:04				FOUL (PERSONAL) by SHUBERT, KODY
01:04	GOOD! FT by VAUDRIN, CHANDLER	82-84	V 2	
01:04	GOOD! FT by VAUDRIN, CHANDLER	82-85	V 3	
01:00				TIMEOUT 30SEC
00:51		85-85	T	GOOD! 3PTR by YOUNGER, J.C.
00:51				ASSIST by SHUBERT, KODY
00:30	GOOD! 3PTR by HALE, HUNTER	85-88	V 3	
00:30	ASSIST by ANUMBA, MICHEAL			
00:30				TIMEOUT TEAM
00:17				MISSED 3PTR by YOUNGER, J.C.
00:15	REBOUND (DEF) by ANUMBA, MICHEAL			
00:15				FOUL (PERSONAL) by ISLER, MICHAEL
00:15	GOOD! FT by ANUMBA, MICHEAL	85-89	V 4	
00:14	MISSED FT by ANUMBA, MICHEAL			
00:12				REBOUND (DEF) by HIGHTOWER, CORY
00:08	FOUL (PERSONAL) by ANUMBA, MICHEAL			
00:08	SUB OUT: ANUMBA, MICHEAL			
00:08	SUB IN: JONES JR., RUSSELL			
00:08				MISSED FT by SHUBERT, KODY
00:08				REBOUND (OFF) by TEAM
00:08				SUB OUT: DRAKE, BEN
00:08				SUB OUT: YOUNGER, J.C.
00:08				SUB IN: MELTON, CJ
00:08				SUB IN: GRAHAM, ZEB
00:08	TIMEOUT 30SEC			
00:08				MISSED FT by SHUBERT, KODY
00:05				REBOUND (OFF) by MELTON, CJ
00:04		88-89	V 1	GOOD! 3PTR by SHUBERT, KODY
00:04				ASSIST by MELTON, CJ
00:04				TIMEOUT 30SEC
00:02				FOUL (PERSONAL) by GRAHAM, ZEB
00:02	MISSED FT by HALE, HUNTER			
00:02	REBOUND (OFF) by TEAM			
00:02				SUB OUT: MELTON, CJ
00:02				SUB IN: DRAKE, BEN
00:00	MISSED FT by HALE, HUNTER			
00:00				REBOUND (DEF) by HIGHTOWER, CORY

### Winthrop 89, Presbyterian 88

Points from (This Period)	WIN	PRE
In the Paint	22	22
Off Turns	4	15
2nd Chance	14	7
Fast Break	2	8
Bench	22	19

**Official Scoring/Possession Reference Chart**  
**Winthrop vs Presbyterian**  
**Period 1**  
**February 15, 2020 at Ross E. Templeton Center - Clinton, S.C.**



**Period 1**

**Starters:**

**Winthrop:** 3 ANUMBA, MICHEAL (G); 13 HALE, HUNTER (G); 25 FERGUSON, JOSH (C); 30 BURNS JR., D.J. (F); 52 VAUDRIN, CHANDLER (G);

**Presbyterian:** 0 MARTIN, CHRIS (G); 5 GRAHAM, ZEB (G); 12 HIGHTOWER, CORY (F); 15 MCCORMACK, OWEN (F); 22 ISLER, MICHAEL (G);

Time	VISITORS: Winthrop	Score	Margin	HOME: Presbyterian
19:24	GOOD! LAYUP by HALE, HUNTER [FB]	0-2	V 2	
18:56		2-2	T	GOOD! LAYUP by HIGHTOWER, CORY
18:43	GOOD! 3PTR by VAUDRIN, CHANDLER	2-5	V 3	
18:22		3-5	V 2	GOOD! FT by MARTIN, CHRIS
18:22		4-5	V 1	GOOD! FT by MARTIN, CHRIS
18:10	GOOD! FT by VAUDRIN, CHANDLER	4-6	V 2	
17:11		6-6	T	GOOD! JUMPER by MARTIN, CHRIS
17:08		8-6	H 2	GOOD! LAYUP by ISLER, MICHAEL [FB/PNT]
17:01	GOOD! JUMPER by BURNS JR., D.J.	8-8	T	
16:36	GOOD! DUNK by CLAXTON, CHASE [FB]	8-10	V 2	
16:16		10-10	T	GOOD! LAYUP by MARTIN, CHRIS
16:02	GOOD! 3PTR by ZUNIC, KYLE	10-13	V 3	
15:27		12-13	V 1	GOOD! LAYUP by MARTIN, CHRIS [FB]
12:43	GOOD! LAYUP by KING, JAMAL	12-15	V 3	
12:28		14-15	V 1	GOOD! LAYUP by MARTIN, CHRIS [PNT]
12:06	GOOD! 3PTR by HALE, HUNTER	14-18	V 4	
11:46		17-18	V 1	GOOD! 3PTR by SHUBERT, KODY
10:44	GOOD! DUNK by CLAXTON, CHASE	17-20	V 3	
10:00	GOOD! 3PTR by FERGUSON, JOSH	17-23	V 6	
08:59		18-23	V 5	GOOD! FT by HIGHTOWER, CORY
08:51	GOOD! 3PTR by ZUNIC, KYLE	18-26	V 8	
08:49	GOOD! FT by ZUNIC, KYLE	18-27	V 9	
08:02	GOOD! FT by FERGUSON, JOSH	18-28	V 10	
08:02	GOOD! FT by FERGUSON, JOSH	18-29	V 11	
07:42		19-29	V 10	GOOD! FT by ISLER, MICHAEL
07:28	GOOD! LAYUP by JONES JR., RUSSELL [PNT]	19-31	V 12	
06:19		20-31	V 11	GOOD! FT by HIGHTOWER, CORY
06:19		21-31	V 10	GOOD! FT by HIGHTOWER, CORY
06:15	GOOD! 3PTR by FERGUSON, JOSH	21-34	V 13	
05:15		23-34	V 11	GOOD! LAYUP by DRAKE, BEN [PNT]
04:57	GOOD! LAYUP by FALDEN, CHARLES [PNT]	23-36	V 13	
04:34		25-36	V 11	GOOD! JUMPER by YOUNGER, J.C.
04:26	GOOD! FT by FALDEN, CHARLES	25-37	V 12	
04:26	GOOD! FT by FALDEN, CHARLES	25-38	V 13	
03:39		26-38	V 12	GOOD! FT by ISLER, MICHAEL
03:13		28-38	V 10	GOOD! LAYUP by ISLER, MICHAEL [FB/PNT]
03:13		29-38	V 9	GOOD! FT by ISLER, MICHAEL [FB]
02:40		32-38	V 6	GOOD! 3PTR by YOUNGER, J.C.
01:44	GOOD! DUNK by FERGUSON, JOSH	32-40	V 8	
01:28		34-40	V 6	GOOD! DUNK by ISLER, MICHAEL
01:27	GOOD! FT by FERGUSON, JOSH [FB]	34-41	V 7	
01:27	GOOD! FT by FERGUSON, JOSH [FB]	34-42	V 8	
01:06		35-42	V 7	GOOD! FT by HIGHTOWER, CORY
00:42	GOOD! 3PTR by FERGUSON, JOSH	35-45	V 10	

**Winthrop 45, Presbyterian 35**

**Official Scoring/Possession Reference Chart**  
**Winthrop vs Presbyterian**  
**Period 2**  
**February 15, 2020 at Ross E. Templeton Center - Clinton, S.C.**



**Period 2**

**Starters:**

**Winthrop:** 3 ANUMBA, MICHAEL (G); 13 HALE, HUNTER (G); 25 FERGUSON, JOSH (C); 30 BURNS JR., D.J. (F); 52 VAUDRIN, CHANDLER (G);  
**Presbyterian:** 0 MARTIN, CHRIS (G); 5 GRAHAM, ZEB (G); 12 HIGHTOWER, CORY (F); 15 MCCORMACK, OWEN (F); 22 ISLER, MICHAEL (G);

Time	VISITORS: Winthrop	Score	Margin	HOME: Presbyterian
19:46		37-45	V 8	GOOD! LAYUP by HIGHTOWER, CORY
19:13	GOOD! LAYUP by BURNS JR., D.J. [PNT]	37-47	V 10	
18:48		39-47	V 8	GOOD! JUMPER by GRAHAM, ZEB
18:39	GOOD! LAYUP by BURNS JR., D.J. [PNT]	39-49	V 10	
18:17		40-49	V 9	GOOD! FT by ISLER, MICHAEL
18:17		41-49	V 8	GOOD! FT by ISLER, MICHAEL
16:53		42-49	V 7	GOOD! FT by HIGHTOWER, CORY
16:53		43-49	V 6	GOOD! FT by HIGHTOWER, CORY
16:33	GOOD! LAYUP by JONES JR., RUSSELL [PNT]	43-51	V 8	
16:17	GOOD! 3PTR by JONES JR., RUSSELL	43-54	V 11	
15:56		45-54	V 9	GOOD! LAYUP by HIGHTOWER, CORY [PNT]
15:38	GOOD! 3PTR by HALE, HUNTER	45-57	V 12	
14:36		46-57	V 11	GOOD! FT by HIGHTOWER, CORY
14:36		47-57	V 10	GOOD! FT by HIGHTOWER, CORY
14:15	GOOD! FT by KING, JAMAL	47-58	V 11	
13:47		49-58	V 9	GOOD! JUMPER by SHUBERT, KODY [PNT]
13:09		51-58	V 7	GOOD! JUMPER by ISLER, MICHAEL
12:56		53-58	V 5	GOOD! LAYUP by MARTIN, CHRIS [PNT]
12:56		54-58	V 4	GOOD! FT by MARTIN, CHRIS
12:39	GOOD! FT by VAUDRIN, CHANDLER	54-59	V 5	
12:24		55-59	V 4	GOOD! FT by MARTIN, CHRIS
11:56		56-59	V 3	GOOD! FT by MARTIN, CHRIS [FB]
11:56		57-59	V 2	GOOD! FT by MARTIN, CHRIS [FB]
11:38		59-59	T	GOOD! LAYUP by SHUBERT, KODY [PNT]
11:18		60-59	H 1	GOOD! FT by HIGHTOWER, CORY
11:18		61-59	H 2	GOOD! FT by HIGHTOWER, CORY
10:48	GOOD! DUNK by FERGUSON, JOSH	61-61	T	
10:26		63-61	H 2	GOOD! LAYUP by MARTIN, CHRIS
10:15		65-61	H 4	GOOD! LAYUP by MARTIN, CHRIS [FB]
10:09	GOOD! 3PTR by HALE, HUNTER	65-64	H 1	
09:38		66-64	H 2	GOOD! FT by DRAKE, BEN
09:10	GOOD! LAYUP by CLAXTON, CHASE	66-66	T	
09:06		68-66	H 2	GOOD! LAYUP by HIGHTOWER, CORY [PNT]
08:52		70-66	H 4	GOOD! JUMPER by DRAKE, BEN
08:30	GOOD! DUNK by CLAXTON, CHASE	70-68	H 2	
07:47	GOOD! LAYUP by CLAXTON, CHASE	70-70	T	
07:47	GOOD! FT by CLAXTON, CHASE	70-71	V 1	
07:28		73-71	H 2	GOOD! 3PTR by MARTIN, CHRIS
06:57	GOOD! JUMPER by JONES JR., RUSSELL [PNT]	73-73	T	
06:03	GOOD! FT by FALDEN, CHARLES	73-74	V 1	
06:03	GOOD! FT by FALDEN, CHARLES	73-75	V 2	
05:33		75-75	T	GOOD! LAYUP by DRAKE, BEN
05:15	GOOD! FT by CLAXTON, CHASE	75-76	V 1	
04:29	GOOD! DUNK by CLAXTON, CHASE	75-78	V 3	
04:15		76-78	V 2	GOOD! FT by MARTIN, CHRIS
03:37	GOOD! LAYUP by JONES JR., RUSSELL [FB]	76-80	V 4	
03:37		77-80	V 3	GOOD! FT by MARTIN, CHRIS [FB]
03:37		78-80	V 2	GOOD! FT by MARTIN, CHRIS [FB]
03:00		80-80	T	GOOD! LAYUP by SHUBERT, KODY [FB/PNT]
02:35	GOOD! FT by VAUDRIN, CHANDLER	80-81	V 1	
01:47	GOOD! LAYUP by VAUDRIN, CHANDLER	80-83	V 3	
01:28		82-83	V 1	GOOD! LAYUP by DRAKE, BEN [PNT]

Time	VISITORS: Winthrop	Score	Margin	HOME: Presbyterian
01:04	GOOD! FT by VAUDRIN, CHANDLER	82-84	V 2	
01:04	GOOD! FT by VAUDRIN, CHANDLER	82-85	V 3	
00:51		85-85	T	GOOD! 3PTR by YOUNGER, J.C.
00:30	GOOD! 3PTR by HALE, HUNTER	85-88	V 3	
00:15	GOOD! FT by ANUMBA, MICHEAL	85-89	V 4	
00:04		88-89	V 1	GOOD! 3PTR by SHUBERT, KODY

**Winthrop 89, Presbyterian 88**

**Official Substitutions Log**  
**Winthrop vs Presbyterian**  
**Period 1**  
**February 15, 2020 at Ross E. Templeton Center - Clinton, S.C.**



VISITORS: Winthrop	Time	Score	HOME: Presbyterian
3 ANUMBA, MICHEAL			0 MARTIN, CHRIS
13 HALE, HUNTER			5 GRAHAM, ZEB
25 FERGUSON, JOSH			12 HIGHTOWER, CORY
30 BURNS JR., D.J.			15 MCCORMACK, OWEN
52 VAUDRIN, CHANDLER			22 ISLER, MICHAEL
SUB OUT: 30 BURNS JR., D.J.	18:10	5-4	
SUB IN: 33 CLAXTON, CHASE	18:10		
SUB OUT: 3 ANUMBA, MICHEAL	18:10		
SUB IN: 22 ZUNIC, KYLE	18:10		
SUB OUT: 52 VAUDRIN, CHANDLER	17:23	6-4	
SUB IN: 0 JONES JR., RUSSELL	17:23		
SUB OUT: 13 HALE, HUNTER	17:08	6-8	
SUB OUT: 25 FERGUSON, JOSH	17:08		
SUB IN: 30 BURNS JR., D.J.	17:08		
SUB IN: 11 FALDEN, CHARLES	17:08		
	15:27	13-12	SUB OUT: GRAHAM, ZEB
	15:27		SUB OUT: MCCORMACK, OWEN
	15:27		SUB OUT: ISLER, MICHAEL
	15:27		SUB IN: DRAKE, BEN
	15:27		SUB IN: JENKINS, SEAN
	15:27		SUB IN: YOUNGER, J.C.
SUB OUT: 0 JONES JR., RUSSELL	15:27		
SUB OUT: 33 CLAXTON, CHASE	15:27		
SUB OUT: 30 BURNS JR., D.J.	15:27		
SUB IN: 3 ANUMBA, MICHEAL	15:27		
SUB IN: 25 FERGUSON, JOSH	15:27		
SUB IN: 52 VAUDRIN, CHANDLER	15:27		
	14:54	13-12	SUB OUT: HIGHTOWER, CORY
	14:54		SUB IN: ISLER, MICHAEL
SUB OUT: 22 ZUNIC, KYLE	14:54		
SUB IN: 21 KING, JAMAL	14:54		
SUB OUT: 11 FALDEN, CHARLES	14:07	13-12	
SUB IN: 13 HALE, HUNTER	14:07		
SUB OUT: 25 FERGUSON, JOSH	13:29	13-12	
SUB OUT: 52 VAUDRIN, CHANDLER	13:29		
SUB IN: 0 JONES JR., RUSSELL	13:29		
SUB IN: 30 BURNS JR., D.J.	13:29		
	12:20	15-14	SUB OUT: MARTIN, CHRIS
	12:20		SUB IN: SHUBERT, KODY
SUB OUT: 21 KING, JAMAL	12:20		
SUB IN: 33 CLAXTON, CHASE	12:20		
SUB OUT: 3 ANUMBA, MICHEAL	11:35	18-17	
SUB IN: 52 VAUDRIN, CHANDLER	11:35		
	10:19	20-17	SUB OUT: YOUNGER, J.C.
	10:19		SUB IN: HIGHTOWER, CORY
SUB OUT: 0 JONES JR., RUSSELL	10:19		
SUB IN: 22 ZUNIC, KYLE	10:19		
	10:12	20-17	SUB OUT: JENKINS, SEAN
	10:12		SUB IN: GRAHAM, ZEB
SUB OUT: 30 BURNS JR., D.J.	10:12		
SUB IN: 25 FERGUSON, JOSH	10:12		
	09:26	23-17	SUB OUT: DRAKE, BEN
	09:26		SUB IN: MCCORMACK, OWEN
SUB OUT: 13 HALE, HUNTER	09:26		
SUB IN: 11 FALDEN, CHARLES	09:26		
SUB OUT: 33 CLAXTON, CHASE	08:59	23-18	
SUB IN: 3 ANUMBA, MICHEAL	08:59		
	08:02	28-18	SUB OUT: SHUBERT, KODY
	08:02		SUB IN: MARTIN, CHRIS
SUB OUT: 52 VAUDRIN, CHANDLER	08:02		
SUB IN: 0 JONES JR., RUSSELL	08:02		
SUB OUT: 25 FERGUSON, JOSH	08:02		
SUB IN: 30 BURNS JR., D.J.	08:02		
SUB OUT: 11 FALDEN, CHARLES	07:42	29-18	
SUB OUT: 22 ZUNIC, KYLE	07:42		
SUB IN: 13 HALE, HUNTER	07:42		
SUB IN: 21 KING, JAMAL	07:42		
	06:19	31-20	SUB OUT: MCCORMACK, OWEN
	06:19		SUB OUT: ISLER, MICHAEL
	06:19		SUB IN: DRAKE, BEN
	06:19		SUB IN: YOUNGER, J.C.
SUB OUT: 0 JONES JR., RUSSELL	06:19		
SUB OUT: 3 ANUMBA, MICHEAL	06:19		
SUB OUT: 30 BURNS JR., D.J.	06:19		
SUB IN: 25 FERGUSON, JOSH	06:19		



VISITORS: Winthrop	Time	Score	HOME: Presbyterian
SUB IN: 33 CLAXTON,CHASE	06:19		
SUB IN: 52 VAUDRIN,CHANDLER	06:19		
	05:24	34-21	SUB OUT: GRAHAM,ZEB
	05:24		SUB IN: SHUBERT,KODY
SUB OUT: 13 HALE,HUNTER	05:24		
SUB IN: 11 FALDEN,CHARLES	05:24		
SUB OUT: 21 KING,JAMAL	04:26	36-25	
SUB OUT: 33 CLAXTON,CHASE	04:26		
SUB IN: 0 JONES JR.,RUSSELL	04:26		
SUB IN: 3 ANUMBA,MICHEAL	04:26		
	04:26		SUB OUT: DRAKE,BEN
	04:26		SUB IN: ISLER,MICHAEL
	03:39	38-25	SUB OUT: MARTIN,CHRIS
	03:39		SUB IN: DRAKE,BEN
SUB OUT: 3 ANUMBA,MICHEAL	03:39		
SUB OUT: 11 FALDEN,CHARLES	03:39		
SUB OUT: 25 FERGUSON,JOSH	03:39		
SUB IN: 13 HALE,HUNTER	03:39		
SUB IN: 30 BURNS JR.,D.J.	03:39		
SUB IN: 33 CLAXTON,CHASE	03:39		
SUB OUT: 30 BURNS JR.,D.J.	03:01	38-29	
SUB IN: 25 FERGUSON,JOSH	03:01		
	01:27	40-34	SUB OUT: SHUBERT,KODY
	01:27		SUB IN: GRAHAM,ZEB
SUB OUT: 0 JONES JR.,RUSSELL	01:27		
SUB IN: 11 FALDEN,CHARLES	01:27		
	01:06	42-35	SUB OUT: HIGHTOWER,CORY
	01:06		SUB IN: MELTON,CJ
	00:28	45-35	SUB OUT: MELTON,CJ
	00:28		SUB IN: HIGHTOWER,CORY
SUB OUT: 33 CLAXTON,CHASE	00:01	45-35	
SUB IN: 0 JONES JR.,RUSSELL	00:01		

**Winthrop 45, Presbyterian 35**

**Official Substitutions Log**  
**Winthrop vs Presbyterian**  
**Period 2**  
**February 15, 2020 at Ross E. Templeton Center - Clinton, S.C.**



VISITORS: Winthrop	Time	Score	HOME: Presbyterian
3 ANUMBA, MICHEAL			0 MARTIN, CHRIS
13 HALE, HUNTER			5 GRAHAM, ZEB
25 FERGUSON, JOSH			12 HIGHTOWER, CORY
30 BURNS JR., D.J.			15 MCCORMACK, OWEN
52 VAUDRIN, CHANDLER			22 ISLER, MICHAEL
	20:00	-	SUB OUT: DRAKE, BEN
	20:00		SUB OUT: YOUNGER, J. C.
	20:00		SUB IN: MARTIN, CHRIS
	20:00		SUB IN: MCCORMACK, OWEN
SUB OUT: 0 JONES JR., RUSSELL	20:00		
SUB OUT: 11 FALDEN, CHARLES	20:00		
SUB IN: 3 ANUMBA, MICHEAL	20:00		
SUB IN: 30 BURNS JR., D.J.	20:00		
SUB OUT: 3 ANUMBA, MICHEAL	18:56	47-37	
SUB IN: 22 ZUNIC, KYLE	18:56		
SUB OUT: 30 BURNS JR., D.J.	18:17	49-40	
SUB IN: 33 CLAXTON, CHASE	18:17		
SUB OUT: 13 HALE, HUNTER	17:42	49-41	
SUB IN: 0 JONES JR., RUSSELL	17:42		
SUB OUT: 22 ZUNIC, KYLE	16:53	49-42	
SUB OUT: 52 VAUDRIN, CHANDLER	16:53		
SUB IN: 11 FALDEN, CHARLES	16:53		
SUB IN: 13 HALE, HUNTER	16:53		
SUB OUT: 11 FALDEN, CHARLES	15:04	57-45	
SUB IN: 21 KING, JAMAL	15:04		
	14:36	57-46	
	14:36		SUB OUT: GRAHAM, ZEB
	14:36		SUB IN: SHUBERT, KODY
SUB OUT: 0 JONES JR., RUSSELL	14:36		
SUB OUT: 25 FERGUSON, JOSH	14:36		
SUB IN: 30 BURNS JR., D.J.	14:36		
SUB IN: 52 VAUDRIN, CHANDLER	14:36		
SUB OUT: 13 HALE, HUNTER	13:43	58-49	
SUB IN: 11 FALDEN, CHARLES	13:43		
SUB OUT: 21 KING, JAMAL	13:31	58-49	
SUB IN: 0 JONES JR., RUSSELL	13:31		
SUB OUT: 30 BURNS JR., D.J.	12:59	58-51	
SUB IN: 25 FERGUSON, JOSH	12:59		
SUB OUT: 11 FALDEN, CHARLES	12:49	58-54	
SUB OUT: 33 CLAXTON, CHASE	12:49		
SUB IN: 3 ANUMBA, MICHEAL	12:49		
SUB IN: 22 ZUNIC, KYLE	12:49		
	12:39	59-54	SUB OUT: MCCORMACK, OWEN
	12:39		SUB IN: DRAKE, BEN
SUB OUT: 22 ZUNIC, KYLE	11:56	59-55	
SUB IN: 13 HALE, HUNTER	11:56		
	09:42	64-65	SUB OUT: MARTIN, CHRIS
	09:42		SUB OUT: ISLER, MICHAEL
	09:42		SUB IN: GRAHAM, ZEB
	09:42		SUB IN: YOUNGER, J. C.
SUB OUT: 0 JONES JR., RUSSELL	09:42		
SUB OUT: 3 ANUMBA, MICHEAL	09:42		
SUB IN: 11 FALDEN, CHARLES	09:42		
SUB IN: 33 CLAXTON, CHASE	09:42		
	07:47	70-70	SUB OUT: DRAKE, BEN
	07:47		SUB OUT: GRAHAM, ZEB
	07:47		SUB OUT: YOUNGER, J. C.
	07:47		SUB IN: MARTIN, CHRIS
	07:47		SUB IN: MCCORMACK, OWEN
	07:47		SUB IN: ISLER, MICHAEL
SUB OUT: 13 HALE, HUNTER	07:47		
SUB IN: 0 JONES JR., RUSSELL	07:47		
	06:36	73-73	SUB OUT: HIGHTOWER, CORY
	06:36		SUB IN: YOUNGER, J. C.
	06:03	73-73	SUB OUT: MCCORMACK, OWEN
	06:03		SUB IN: DRAKE, BEN
SUB OUT: 11 FALDEN, CHARLES	06:03		
SUB IN: 3 ANUMBA, MICHEAL	06:03		
SUB OUT: 25 FERGUSON, JOSH	06:03		
SUB IN: 30 BURNS JR., D.J.	06:03		
SUB OUT: 30 BURNS JR., D.J.	05:15	75-75	
SUB IN: 25 FERGUSON, JOSH	05:15		
SUB OUT: 3 ANUMBA, MICHEAL	04:15	78-75	
SUB IN: 30 BURNS JR., D.J.	04:15		
	03:37	80-76	SUB OUT: DRAKE, BEN
	03:37		SUB IN: HIGHTOWER, CORY

VISITORS: Winthrop	Time	Score	HOME: Presbyterian
SUB OUT: 30 BURNS JR.,D.J.	03:37		
SUB IN: 13 HALE,HUNTER	03:37		
	02:35	80-80	SUB OUT: MARTIN,CHRIS
	02:35		SUB IN: DRAKE,BEN
SUB OUT: 0 JONES JR.,RUSSELL	02:35		
SUB IN: 3 ANUMBA,MICHEAL	02:35		
SUB OUT: 3 ANUMBA,MICHEAL	00:08	89-85	
SUB IN: 0 JONES JR.,RUSSELL	00:08		
	00:08		SUB OUT: DRAKE,BEN
	00:08		SUB OUT: YOUNGER,J.C.
	00:08		SUB IN: MELTON,CJ
	00:08		SUB IN: GRAHAM,ZEB
	00:02	89-88	SUB OUT: MELTON,CJ
	00:02		SUB IN: DRAKE,BEN

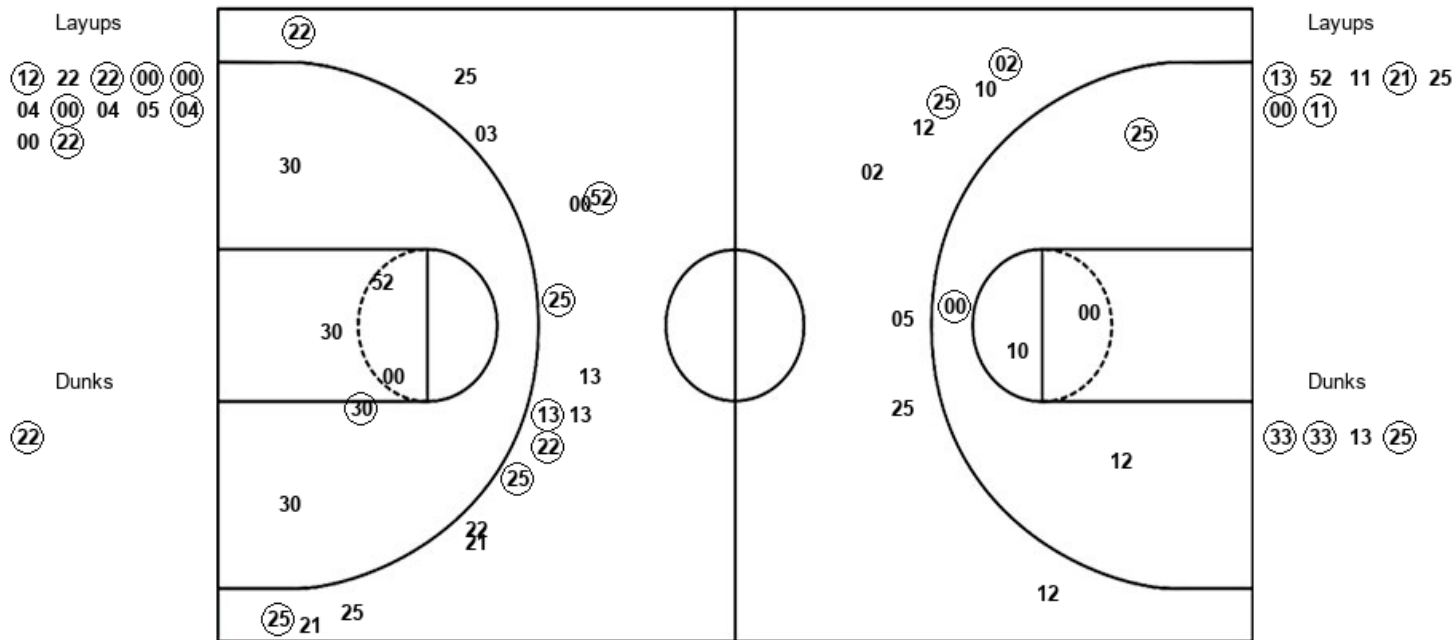
**Winthrop 89, Presbyterian 88**

**Official Shot Chart**  
**Winthrop vs Presbyterian**  
**PERIOD 1 Shots**  
 February 15, 2020 at Ross E. Templeton Center - Clinton, S.C.



**Presbyterian**

**Winthrop**



PRE : Period 1	Made	Att	Pct
Layups	7	12	58.3
Dunks	1	1	100.0
2PT Field Goals	10	18	55.6
3PT Field Goals	2	8	25.0
<b>Total Field Goals</b>	<b>12</b>	<b>26</b>	<b>46.2</b>

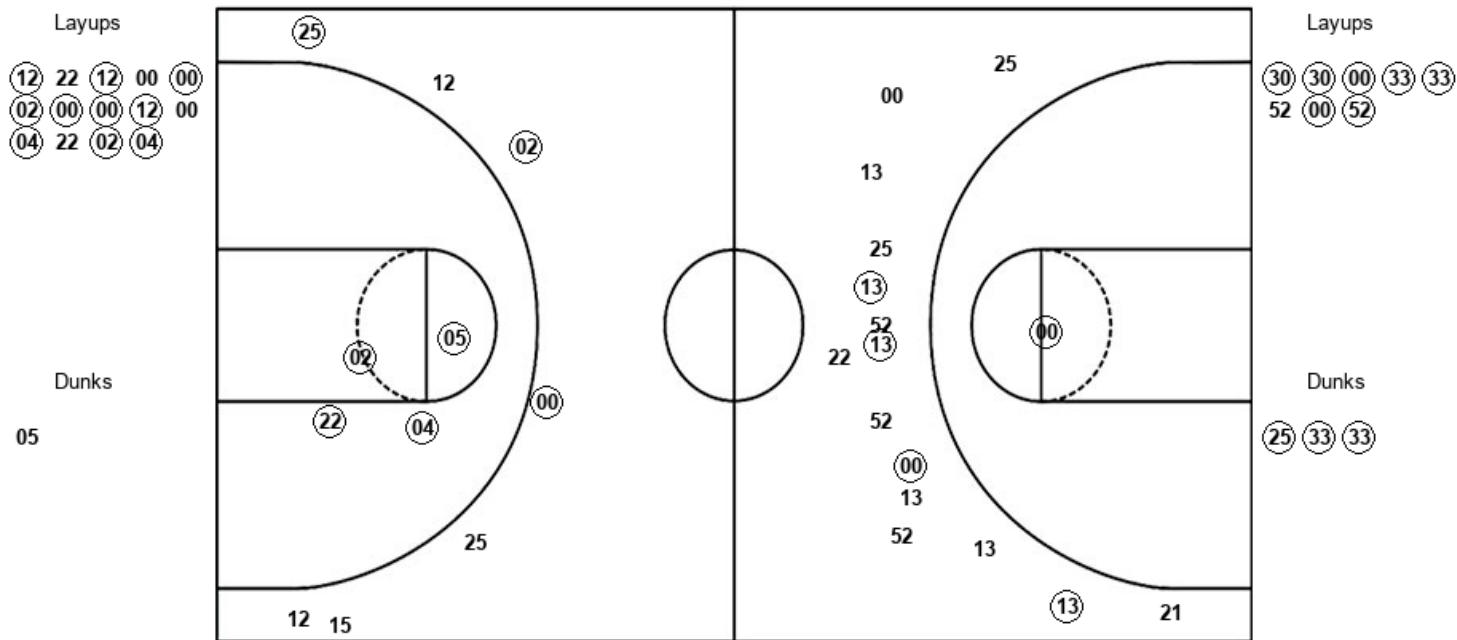
WIN : Period 1	Made	Att	Pct
Layups	4	7	57.1
Dunks	3	4	75.0
2PT Field Goals	8	17	47.1
3PT Field Goals	7	16	43.8
<b>Total Field Goals</b>	<b>15</b>	<b>33</b>	<b>45.5</b>

**Official Shot Chart**  
**Winthrop vs Presbyterian**  
**PERIOD 2 Shots**  
 February 15, 2020 at Ross E. Templeton Center - Clinton, S.C.



**Presbyterian**

**Winthrop**



PRE : Period 2	Made	Att	Pct
Layups	10	14	71.4
Dunks	0	1	00.0
2PT Field Goals	14	19	73.7
3PT Field Goals	3	7	42.9
<b>Total Field Goals</b>	<b>17</b>	<b>26</b>	<b>65.4</b>

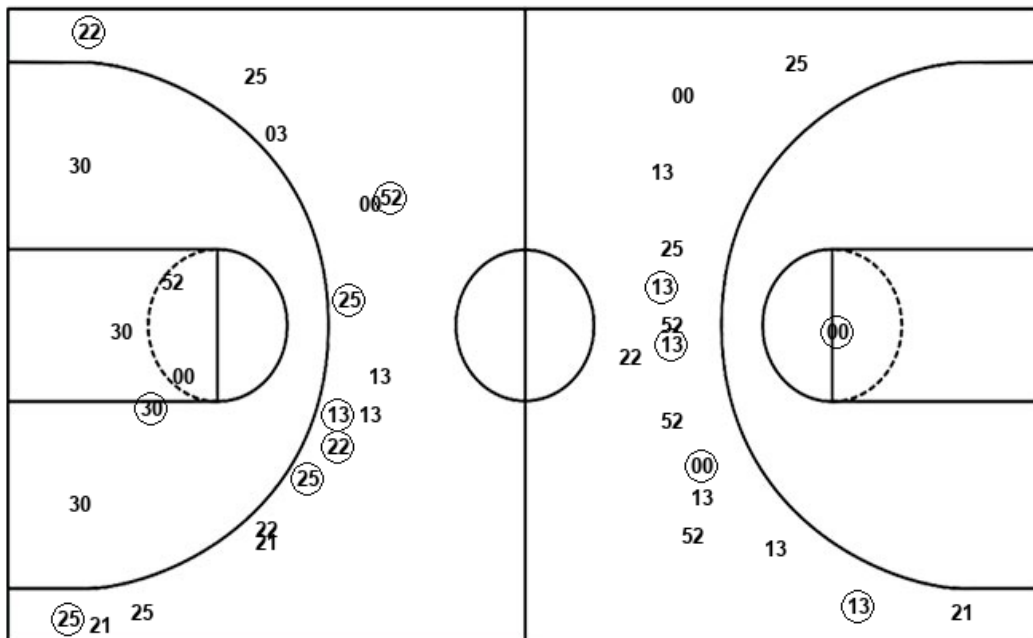
WIN : Period 2	Made	Att	Pct
Layups	7	8	87.5
Dunks	3	3	100.0
2PT Field Goals	11	12	91.7
3PT Field Goals	4	15	26.7
<b>Total Field Goals</b>	<b>15</b>	<b>27</b>	<b>55.6</b>

**Official Shot Chart**  
**Winthrop vs Presbyterian**  
**Winthrop Team Shots**  
 February 15, 2020 at Ross E. Templeton Center - Clinton, S.C.



Layups

Dunks



Layups

Dunks

(13) 52 11 (21) 25  
 (00) (11) (30) (30) (00)  
 (33) (33) 52 (00) (52)

(33) (33) 13 (25) (25)  
 (33) (33)

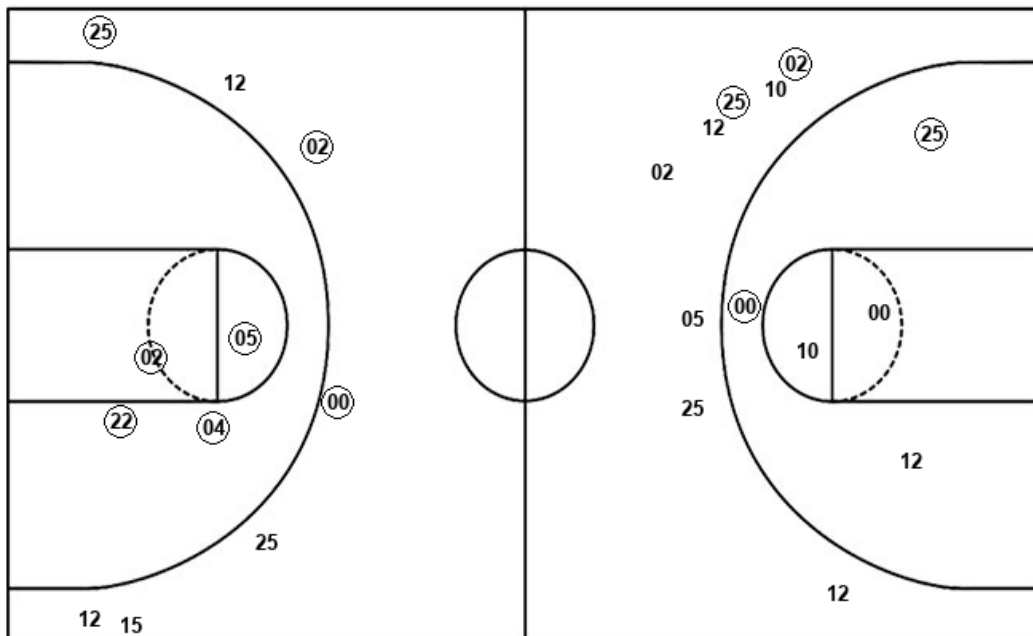
WIN : Period 1	Made	Att	Pct
Layups	4	7	57.1
Dunks	3	4	75.0
2PT Field Goals	8	17	47.1
3PT Field Goals	7	16	43.8
<b>Total Field Goals</b>	<b>15</b>	<b>33</b>	<b>45.5</b>

WIN : Period 2	Made	Att	Pct
Layups	7	8	87.5
Dunks	3	3	100.0
2PT Field Goals	11	12	91.7
3PT Field Goals	4	15	26.7
<b>Total Field Goals</b>	<b>15</b>	<b>27</b>	<b>55.6</b>

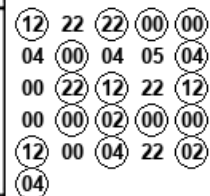
**Official Shot Chart**  
**Winthrop vs Presbyterian**  
**Presbyterian Team Shots**  
 February 15, 2020 at Ross E. Templeton Center - Clinton, S.C.



Layups



Layups



Dunks

Dunks



PRE : Period 1	Made	Att	Pct
Layups	7	12	58.3
Dunks	1	1	100.0
2PT Field Goals	10	18	55.6
3PT Field Goals	2	8	25.0
<b>Total Field Goals</b>	<b>12</b>	<b>26</b>	<b>46.2</b>

PRE : Period 2	Made	Att	Pct
Layups	10	14	71.4
Dunks	0	1	00.0
2PT Field Goals	14	19	73.7
3PT Field Goals	3	7	42.9
<b>Total Field Goals</b>	<b>17</b>	<b>26</b>	<b>65.4</b>