

## FINAL SCORE



**Wichita St.**

**69**



**Tulane**

**68**

February 16, 2020 • Avron B. Fogelman Arena in Devlin Fieldhouse - New Orleans

## FINAL STATISTICS

**Official Box Score**  
**Wichita St. vs Tulane**  
**Game Totals -- Final Statistics**  
**February 16, 2020 at Avron B. Fogelman Arena in Devlin Fieldhouse - New Orleans**



**Wichita St. 69**

No.	Player	S	Pts	FG	3FG	FT	OR	DR	TR	PF	A	TO	Blk	Stl	Min	+/-
02	MCCULLY, MARIAH	G	19	8-17	3-10	0-2	0	2	2	1	2	3	1	7	34	-2
12	BREMAUD, CARLA	G	3	1-5	1-3	0-0	0	2	2	2	0	1	0	0	19	-7
13	PRINCE, RAVEN	F	8	2-6	0-0	4-4	5	3	8	5	1	1	0	2	24	-4
23	BASTIN, SERAPHINE	G	9	3-4	0-0	3-4	1	0	1	2	6	4	0	2	29	9
34	SMITH, SHYIA	F	2	1-2	0-1	0-0	1	3	4	1	0	3	0	0	19	-1
01	MCCARTY, DJ	G	2	1-6	0-1	0-0	0	0	0	1	1	0	0	2	12	-3
05	REID, ASHLEY	G	4	2-7	0-4	0-0	0	1	1	2	2	2	0	1	25	6
21	BREWER, MAYA	G	15	6-9	3-4	0-0	3	4	7	1	1	2	0	2	21	6
24	COLBERT, TRAJATA	F	0	0-1	0-0	0-0	0	0	0	1	0	0	0	0	6	0
42	HENDERSON, ASIA	F	7	3-9	0-0	1-2	3	0	3	1	0	0	0	1	10	1
<b>TEAM</b>							3	1	4	0						
<b>TOTALS</b>			<b>69</b>	<b>27-66</b>	<b>7-23</b>	<b>8-12</b>	<b>16</b>	<b>16</b>	<b>32</b>	<b>17</b>	<b>13</b>	<b>16</b>	<b>1</b>	<b>17</b>	<b>200</b>	

*Shooting By Period*

Period	FG	FG%	3FG	3FG%	FT	FT%
1st Qtr	3-11	27%	1-3	33%	4-6	67%
2nd Qtr	9-18	50%	1-7	14%	0-0	0%
3rd Qtr	10-16	63%	3-5	60%	2-2	100%
4th Qtr	5-21	24%	2-8	25%	2-4	50%
1st Half	12-29	41%	2-10	20%	4-6	67%
2nd Half	15-37	41%	5-13	38%	4-6	67%
<b>Game</b>	<b>27-66</b>	<b>40.9%</b>	<b>7-23</b>	<b>30.4%</b>	<b>8-12</b>	<b>66.7%</b>

*Deadball Rebounds: 2,0*  
*Last FG: 4th-00:22*  
*Biggest Run: 7-0*  
*Largest lead: By 4 at 4th-07:50*  
*Technical Fouls: None.*

**Tulane 68**

No.	Player	S	Pts	FG	3FG	FT	OR	DR	TR	PF	A	TO	Blk	Stl	Min	+/-
00	CLARK, ARSULA	G	31	10-13	2-3	9-11	0	4	4	2	6	10	0	1	38	1
05	MANUIRIRANGI, KAYLA	G	3	1-2	1-2	0-0	0	0	0	0	1	1	0	2	14	6
12	CHEATHAM, SIERRA	G	11	4-12	3-9	0-0	4	2	6	0	2	3	2	1	37	-4
23	FREEMAN, KRYSTAL	F	17	8-13	0-4	1-1	1	4	5	4	0	2	0	2	35	1
42	HEIDE, MIA	F	2	1-3	0-0	0-0	1	5	6	2	1	2	3	1	21	3
01	ANDERSON, KAILA	G	0	0-0	0-0	0-0	0	0	0	2	1	0	0	0	6	-1
11	BATES, SALMA	G	4	1-4	0-1	2-2	1	1	2	0	4	2	0	1	20	-1
14	JONES, DYNAH	G	0	0-2	0-1	0-0	0	2	2	2	1	2	0	2	6	-2
15	GRANT, ANIJAH	F	0	0-0	0-0	0-0	0	0	0	1	0	0	0	0	4	-2
21	PARAU, IRINA	F	0	0-1	0-0	0-0	1	3	4	1	0	1	1	0	15	-2
30	MIMMS, DENE'	F	0	0-0	0-0	0-0	0	0	0	0	0	0	0	1	5	-4
<b>TEAM</b>							1	4	5	0						
<b>TOTALS</b>			<b>68</b>	<b>25-50</b>	<b>6-20</b>	<b>12-14</b>	<b>9</b>	<b>25</b>	<b>34</b>	<b>14</b>	<b>16</b>	<b>26</b>	<b>6</b>	<b>11</b>	<b>200</b>	

*Shooting By Period*

Period	FG	FG%	3FG	3FG%	FT	FT%
1st Qtr	7-15	47%	0-5	00%	1-1	100%
2nd Qtr	6-13	46%	2-4	50%	4-6	67%
3rd Qtr	7-13	54%	2-7	29%	4-4	100%
4th Qtr	5-9	56%	2-4	50%	3-3	100%
1st Half	13-28	46%	2-9	22%	5-7	71%
2nd Half	12-22	55%	4-11	36%	7-7	100%
<b>Game</b>	<b>25-50</b>	<b>50.0%</b>	<b>6-20</b>	<b>30.0%</b>	<b>12-14</b>	<b>85.7%</b>

*Deadball Rebounds: 2,0*  
*Last FG: 4th-00:00*  
*Biggest Run: 8-0*  
*Largest lead: By 8 at 3rd-08:08*  
*Technical Fouls: None.*

*Game Notes:*

*Officials: Bryan Brunette, Kathleen Lynch, Jules Gallien*  
*Attendance: 506*

*Start Time: 02:59 PM ET*  
*End Time: 04:56 PM ET*  
*Game Duration: 1:56*  
*Conference Game:*

Score	1st	2nd	3rd	4th	TOT
WSU	11	19	25	14	<b>69</b>
TLN	15	18	20	15	<b>68</b>

*WSU led for 10:24. TLN led for 26:30.*  
*Game was tied for 3:06.*  
*Times tied: 4*      *Lead Changes: 5*

Points from	WSU	TLN
In the Paint	30	34
Off Turns	25	8
2nd Chance	13	10
Fast Break	19	8
Bench	28	4

**Official Box Score**  
**Wichita St. vs Tulane**  
**First Half Statistics Only**  
 February 16, 2020 at Avron B. Fogelman Arena in Devlin Fieldhouse - New Orleans



**Wichita St. 30**

No.	Player	S	Pts	FG	3FG	FT	OR	DR	TR	PF	A	TO	Blk	Stl	Min	+/-
01	MCCARTY, DJ	G	2	1-4	0-0	0-0	0	0	0	0	1	0	0	2	6	2
02	MCCULLY, MARIAH	G	9	4-9	1-5	0-0	0	1	1	0	0	2	1	1	16	-7
05	REID, ASHLEY	G	2	1-2	0-1	0-0	0	0	0	2	1	0	0	0	10	-1
12	BREMAUD, CARLA	G	3	1-4	1-3	0-0	0	2	2	1	0	1	0	0	9	0
13	PRINCE, RAVEN	F	6	2-2	0-0	2-2	2	2	4	1	1	1	0	1	15	-3
21	BREWER, MAYA	G	4	2-2	0-0	0-0	1	2	3	0	0	1	0	2	8	-3
23	BASTIN, SERAPHINE	G	1	0-0	0-0	1-2	0	0	0	1	1	3	0	0	11	2
24	COLBERT, TRAJATA	F	0	0-1	0-0	0-0	0	0	0	1	0	0	0	0	6	0
34	SMITH, SHYIA	F	2	1-2	0-1	0-0	1	2	3	0	0	3	0	0	16	-5
42	HENDERSON, ASIA	F	1	0-3	0-0	1-2	2	0	2	1	0	0	0	0	2	0
	TEAM		0	0-0	0-0	0-0	2	1	3	0	0	0	0	0	0	
<b>TOTALS</b>			<b>30</b>	<b>12-29</b>	<b>2-10</b>	<b>4-6</b>	<b>8</b>	<b>10</b>	<b>18</b>	<b>7</b>	<b>4</b>	<b>11</b>	<b>1</b>	<b>6</b>	<b>100</b>	

*Shooting By Period*

Period	FG	FG%	3FG	3FG%	FT	FT%
1st Qtr	3-11	27%	1-3	33%	4-6	67%
2nd Qtr	9-18	50%	1-7	14%	0-0	0%
1st Half	12-29	41%	2-10	20%	4-6	67%
Game	27-66	40.9%	7-23	30.4%	8-12	66.7%

*Deadball Rebounds: 2,0*

*Last FG Half: WSU 2nd-00:01*

**Tulane 33**

No.	Player	S	Pts	FG	3FG	FT	OR	DR	TR	PF	A	TO	Blk	Stl	Min	+/-
00	CLARK, ARSULA	G	18	6-7	1-1	5-7	0	1	1	0	2	4	0	0	18	5
01	ANDERSON, KAILA	G	0	0-0	0-0	0-0	0	0	0	2	1	0	0	0	4	2
05	MANUIRIRANGI, KAYLA	G	0	0-0	0-0	0-0	0	0	0	0	1	1	0	2	9	3
11	BATES, SALMA	G	0	0-3	0-1	0-0	1	0	1	0	1	0	0	0	6	-2
12	CHEATHAM, SIERRA	G	3	1-6	1-4	0-0	3	0	3	0	2	1	0	1	16	0
14	JONES, DYNAH	G	0	0-2	0-1	0-0	0	2	2	2	1	2	0	2	5	1
15	GRANT, ANIJAH	F	0	0-0	0-0	0-0	0	0	0	0	0	0	0	0	0	0
21	PARAU, IRINA	F	0	0-1	0-0	0-0	1	3	4	1	0	1	1	0	11	2
23	FREEMAN, KRYSTAL	F	10	5-7	0-2	0-0	0	3	3	2	0	0	0	1	15	5
30	MIMMS, DENE'	F	0	0-0	0-0	0-0	0	0	0	0	0	0	0	1	5	-2
42	HEIDE, MIA	F	2	1-2	0-0	0-0	1	1	2	1	0	1	0	0	9	1
	TEAM		0	0-0	0-0	0-0	0	0	0	0	0	0	0	0	0	
<b>TOTALS</b>			<b>33</b>	<b>13-28</b>	<b>2-9</b>	<b>5-7</b>	<b>6</b>	<b>10</b>	<b>16</b>	<b>8</b>	<b>8</b>	<b>10</b>	<b>1</b>	<b>7</b>	<b>100</b>	

*Shooting By Period*

Period	FG	FG%	3FG	3FG%	FT	FT%
1st Qtr	7-15	47%	0-5	00%	1-1	100%
2nd Qtr	6-13	46%	2-4	50%	4-6	67%
1st Half	13-28	46%	2-9	22%	5-7	71%
Game	25-50	50.0%	6-20	30.0%	12-14	85.7%

*Deadball Rebounds: 2,0*

*Last FG Half: TLN 2nd-00:34*

Game Notes:

Officials: Bryan Brunette, Kathleen Lynch, Jules Gallien

Attendance: 506

Start Time: 02:59 PM ET

End Time: 04:56 PM ET

Game Duration: 1:56

Conference Game;

Score	1st	2nd	3rd	4th	TOT
WSU	11	19	25	14	<b>69</b>
TLN	15	18	20	15	<b>68</b>

Points from (This Period)	WSU	TLN
In the Paint	16	20
Off Turns	7	6
2nd Chance	11	6
Fast Break	5	6
Bench	9	0

**Official Box Score**  
**Wichita St. vs Tulane**  
**First Quarter Statistics Only**  
 February 16, 2020 at Avron B. Fogelman Arena in Devlin Fieldhouse - New Orleans



**Wichita St. 11**

No.	Player	S	Pts	FG	3FG	FT	OR	DR	TR	PF	A	TO	Blk	Stl	Min	+/-
02	MCCULLY, MARIAH	G	3	1-4	1-3	0-0	0	0	0	0	0	1	0	0	8	-6
12	BREMAUD, CARLA	G	0	0-1	0-0	0-0	0	1	1	0	0	1	0	0	6	-2
13	PRINCE, RAVEN	F	2	0-0	0-0	2-2	0	0	0	0	0	1	0	1	6	-2
23	BASTIN, SERAPHINE	G	1	0-0	0-0	1-2	0	0	0	1	1	2	0	0	8	0
34	SMITH, SHYIA	F	2	1-1	0-0	0-0	1	2	3	0	0	3	0	0	8	-4
01	MCCARTY, DJ	G	0	0-0	0-0	0-0	0	0	0	0	0	0	0	0	0	0
05	REID, ASHLEY	G	0	0-0	0-0	0-0	0	0	0	1	0	0	0	0	4	-2
21	BREWER, MAYA	G	2	1-1	0-0	0-0	0	1	1	0	0	0	0	2	4	-2
24	COLBERT, TRAJATA	F	0	0-1	0-0	0-0	0	0	0	0	0	0	0	0	4	-2
42	HENDERSON, ASIA	F	1	0-3	0-0	1-2	2	0	2	1	0	0	0	0	2	0
TEAM							1	1	2	0		0				
<b>TOTALS</b>			<b>11</b>	<b>3-11</b>	<b>1-3</b>	<b>4-6</b>	<b>4</b>	<b>5</b>	<b>9</b>	<b>3</b>	<b>1</b>	<b>8</b>	<b>0</b>	<b>3</b>	<b>50</b>	

*Shooting By Period*

Period	FG	FG%	3FG	3FG%	FT	FT%
1st Qtr	3-11	27%	1-3	33%	4-6	67%
2nd Qtr	9-18	50%	1-7	14%	0-0	0%
1st Half	3-11	27%	1-3	33%	4-6	67%
1st Half	12-29	41%	2-10	20%	4-6	67%
Game	27-66	40.9%	7-23	30.4%	8-12	66.7%

*Deadball Rebounds: 2,0*

**Tulane 15**

No.	Player	S	Pts	FG	3FG	FT	OR	DR	TR	PF	A	TO	Blk	Stl	Min	+/-
00	CLARK, ARSULA	G	7	3-3	0-0	1-1	0	1	1	0	2	1	0	0	8	6
05	MANUIRIRANGI, KAYLA	G	0	0-0	0-0	0-0	0	0	0	0	1	1	0	2	5	2
12	CHEATHAM, SIERRA	G	0	0-3	0-2	0-0	3	0	3	0	0	1	0	0	9	5
23	FREEMAN, KRYSTAL	F	8	4-6	0-2	0-0	0	0	0	1	0	0	0	1	10	4
42	HEIDE, MIA	F	0	0-1	0-0	0-0	0	1	1	1	0	1	0	0	4	3
01	ANDERSON, KAILA	G	0	0-0	0-0	0-0	0	0	0	1	0	0	0	0	2	-2
11	BATES, SALMA	G	0	0-0	0-0	0-0	0	0	0	0	0	0	0	0	0	0
14	JONES, DYNAH	G	0	0-2	0-1	0-0	0	2	2	2	1	2	0	2	5	1
15	GRANT, ANIJAH	F	0	0-0	0-0	0-0	0	0	0	0	0	0	0	0	0	0
21	PARAU, IRINA	F	0	0-0	0-0	0-0	0	1	1	1	0	1	1	0	6	1
30	MIMMS, DENE'	F	0	0-0	0-0	0-0	0	0	0	0	0	0	0	0	0	0
TEAM							0	0	0	0		0				
<b>TOTALS</b>			<b>15</b>	<b>7-15</b>	<b>0-5</b>	<b>1-1</b>	<b>3</b>	<b>5</b>	<b>8</b>	<b>6</b>	<b>4</b>	<b>7</b>	<b>1</b>	<b>5</b>	<b>50</b>	

*Shooting By Period*

Period	FG	FG%	3FG	3FG%	FT	FT%
1st Qtr	7-15	47%	0-5	00%	1-1	100%
2nd Qtr	6-13	46%	2-4	50%	4-6	67%
1st Half	7-15	47%	0-5	00%	1-1	100%
1st Half	13-28	46%	2-9	22%	5-7	71%
Game	25-50	50.0%	6-20	30.0%	12-14	85.7%

*Deadball Rebounds: 2,0*

*Game Notes:*

Officials: Bryan Brunette, Kathleen Lynch, Jules Gallien  
 Attendance: 506

Start Time: 02:59 PM ET  
 End Time: 04:56 PM ET  
 Game Duration: 1:56  
 Conference Game;

Score	1st	2nd	3rd	4th	TOT
WSU	11	19	25	14	<b>69</b>
TLN	15	18	20	15	<b>68</b>

Points from (This Period)	WSU	TLN
In the Paint	2	12
Off Turns	5	2
2nd Chance	5	4
Fast Break	0	2
Bench	3	0

**Official Play-By-Play  
Wichita St. vs Tulane**

**February 16, 2020 at Avron B. Fogelman Arena in Devlin Fieldhouse - New Orleans**



**Period 1**

**Starters:**

**Wichita St.:** 2 MCCULLY, MARIAH (G); 12 BREMAUD, CARLA (G); 13 PRINCE, RAVEN (F); 23 BASTIN, SERAPHINE (G); 34 SMITH, SHYIA (F);  
**Tulane:** 00 CLARK, ARSULA (G); 5 MANUIRIRANGI, KAYLA (G); 12 CHEATHAM, SIERRA (G); 23 FREEMAN, KRYSTAL (F); 42 HEIDE, MIA (F);

Time	VISITORS: Wichita St.	Score	Margin	HOME: Tulane
09:49		2-0	H 2	GOOD! JUMPER by CLARK, ARSULA [PNT]
09:49	FOUL (PERSONAL) by BASTIN, SERAPHINE			
09:49		3-0	H 3	GOOD! FT by CLARK, ARSULA
09:41	TURNOVER (BADPASS) by SMITH, SHYIA			
09:31				MISSED LAYUP by HEIDE, MIA
09:28	REBOUND (DEF) by BREMAUD, CARLA			
09:26	TURNOVER (BADPASS) by MCCULLY, MARIAH			
09:10				TURNOVER (BADPASS) by HEIDE, MIA
08:45	MISSED 3PTR by MCCULLY, MARIAH			
08:42	REBOUND (OFF) by SMITH, SHYIA			
08:40	GOOD! LAYUP by SMITH, SHYIA	3-2	H 1	
08:27				TURNOVER (DRIBBLING) by CLARK, ARSULA
08:16	MISSED LAYUP by BREMAUD, CARLA			
08:14				REBOUND (DEF) by HEIDE, MIA
07:46		5-2	H 3	GOOD! JUMPER by FREEMAN, KRYSTAL
07:46				ASSIST by MANUIRIRANGI, KAYLA
07:26	TURNOVER (BADPASS) by BASTIN, SERAPHINE			
07:26				STEAL by FREEMAN, KRYSTAL
06:54				MISSED 3PTR by FREEMAN, KRYSTAL
06:53	REBOUND (DEF) by TEAM			
06:39	TURNOVER (BADPASS) by BREMAUD, CARLA			
06:39				STEAL by MANUIRIRANGI, KAYLA
06:39				TURNOVER (BADPASS) by MANUIRIRANGI, KAYLA
06:39	STEAL by PRINCE, RAVEN			
06:39				FOUL (PERSONAL) by HEIDE, MIA
06:39				SUB OUT: MANUIRIRANGI, KAYLA
06:39				SUB OUT: HEIDE, MIA
06:39				SUB IN: JONES, DYNAH
06:39				SUB IN: PARAU, IRINA
06:39	GOOD! FT by PRINCE, RAVEN	5-3	H 2	
06:39	GOOD! FT by PRINCE, RAVEN	5-4	H 1	
06:29				MISSED LAYUP by JONES, DYNAH
06:26	REBOUND (DEF) by SMITH, SHYIA			
06:20	GOOD! 3PTR by MCCULLY, MARIAH	5-7	V 2	
06:20	ASSIST by BASTIN, SERAPHINE			
06:09				MISSED 3PTR by CHEATHAM, SIERRA
06:06				REBOUND (OFF) by CHEATHAM, SIERRA
06:02		7-7	T	GOOD! LAYUP by FREEMAN, KRYSTAL
06:02				ASSIST by CLARK, ARSULA
05:41	MISSED JUMPER by MCCULLY, MARIAH			
05:37				REBOUND (DEF) by JONES, DYNAH
05:35				MISSED 3PTR by FREEMAN, KRYSTAL
05:31	REBOUND (DEF) by SMITH, SHYIA			
05:22	MISSED 3PTR by MCCULLY, MARIAH			
05:20				REBOUND (DEF) by PARAU, IRINA
05:11				MISSED 3PTR by JONES, DYNAH
05:08				REBOUND (OFF) by CHEATHAM, SIERRA
05:07				MISSED JUMPER by CHEATHAM, SIERRA
05:05				REBOUND (OFF) by CHEATHAM, SIERRA
04:52		9-7	H 2	GOOD! LAYUP by CLARK, ARSULA
04:24	TURNOVER (TRAVEL) by PRINCE, RAVEN			
04:24				
04:24	SUB OUT: PRINCE, RAVEN			
04:24	SUB OUT: BASTIN, SERAPHINE			
04:24	SUB IN: REID, ASHLEY			
04:24	SUB IN: COLBERT, TRAJATA			
03:57	FOUL (PERSONAL) by REID, ASHLEY			
03:57	SUB OUT: BREMAUD, CARLA			
03:57	SUB IN: BREWER, MAYA			
03:50				TURNOVER (BADPASS) by JONES, DYNAH
03:50	STEAL by BREWER, MAYA			
03:27	TURNOVER (LOSTBALL) by SMITH, SHYIA			
03:27				STEAL by JONES, DYNAH
03:21		11-7	H 4	GOOD! LAYUP by CLARK, ARSULA [FB]
03:21				ASSIST by JONES, DYNAH
03:02	TURNOVER (LOSTBALL) by SMITH, SHYIA			
03:02				STEAL by JONES, DYNAH
03:00				TURNOVER (DRIBBLING) by CHEATHAM, SIERRA
03:00	SUB OUT: SMITH, SHYIA			
03:00	SUB IN: HENDERSON, ASIA			

Time	VISITORS: Wichita St.	Score	Margin	HOME: Tulane
02:52	MISSED LAYUP by COLBERT, TRAJATA			
02:50				REBOUND (DEF) by CLARK, ARSULA
02:42	FOUL (PERSONAL) by HENDERSON, ASIA			
02:40		13-7	H 6	GOOD! LAYUP by FREEMAN, KRYSTAL
02:40				ASSIST by CLARK, ARSULA
02:19				FOUL (PERSONAL) by PARAU, IRINA
02:18				SUB OUT: CLARK, ARSULA
02:18				SUB IN: ANDERSON, KAILA
02:18	SUB OUT: MCCULLY, MARIAH			
02:18	SUB IN: BASTIN, SERAPHINE			
02:11	MISSED LAYUP by HENDERSON, ASIA			
02:11				FOUL (PERSONAL) by FREEMAN, KRYSTAL
02:11	GOOD! FT by HENDERSON, ASIA	13-8	H 5	
02:10	REBOUND (OFF) by HENDERSON, ASIA			
02:10	MISSED FT by HENDERSON, ASIA			
02:09				REBOUND (DEF) by JONES, DYNAH
01:43				TURNOVER (BADPASS) by PARAU, IRINA
01:43	STEAL by BREWER, MAYA			
01:43				FOUL (PERSONAL) by JONES, DYNAH
01:43				SUB OUT: CHEATHAM, SIERRA
01:43				SUB IN: MANUIRIRANGI, KAYLA
01:28				FOUL (PERSONAL) by ANDERSON, KAILA
01:28	MISSED FT by BASTIN, SERAPHINE			
01:28	REBOUND (OFF) by TEAM			
01:28	GOOD! FT by BASTIN, SERAPHINE	13-9	H 4	
01:11				FOUL (OFF) by JONES, DYNAH
01:11				TURNOVER (OFFENSIVE) by JONES, DYNAH
01:11				SUB OUT: JONES, DYNAH
01:11				SUB IN: CHEATHAM, SIERRA
01:03	TURNOVER (BADPASS) by BASTIN, SERAPHINE			
01:03				STEAL by MANUIRIRANGI, KAYLA
00:56				MISSED 3PTR by CHEATHAM, SIERRA
00:53	REBOUND (DEF) by BREWER, MAYA			
00:44	MISSED LAYUP by HENDERSON, ASIA			
00:44				BLOCK by PARAU, IRINA
00:41	REBOUND (OFF) by HENDERSON, ASIA			
00:41	MISSED LAYUP by HENDERSON, ASIA			
00:41	REBOUND (OFF) by TEAM			
00:41				SUB OUT: PARAU, IRINA
00:41				SUB IN: HEIDE, MIA
00:41	SUB OUT: HENDERSON, ASIA			
00:41	SUB IN: SMITH, SHYIA			
00:31	GOOD! JUMPER by BREWER, MAYA	13-11	H 2	
00:04		15-11	H 4	GOOD! JUMPER by FREEMAN, KRYSTAL

### Wichita St. 11, Tulane 15

Points from (This Period)	WSU	TLN
In the Paint	2	12
Off Turns	5	2
2nd Chance	5	4
Fast Break	0	2
Bench	3	0

**Official Box Score**  
**Wichita St. vs Tulane**  
**Second Quarter Statistics Only**  
**February 16, 2020 at Avron B. Fogelman Arena in Devlin Fieldhouse - New Orleans**



**Wichita St. 19**

No.	Player	S	Pts	FG	3FG	FT	OR	DR	TR	PF	A	TO	Blk	Stl	Min	+/-
02	MCCULLY, MARIAH	G	6	3-5	0-2	0-0	0	1	1	0	0	1	1	1	8	-1
12	BREMAUD, CARLA	G	3	1-3	1-3	0-0	0	1	1	1	0	0	0	0	3	2
13	PRINCE, RAVEN	F	4	2-2	0-0	0-0	2	2	4	1	1	0	0	0	9	-1
23	BASTIN, SERAPHINE	G	0	0-0	0-0	0-0	0	0	0	0	0	1	0	0	3	2
34	SMITH, SHYIA	F	0	0-1	0-1	0-0	0	0	0	0	0	0	0	0	8	-1
01	MCCARTY, DJ	G	2	1-4	0-0	0-0	0	0	0	0	1	0	0	2	6	2
05	REID, ASHLEY	G	2	1-2	0-1	0-0	0	0	0	1	1	0	0	0	6	1
21	BREWER, MAYA	G	2	1-1	0-0	0-0	1	1	2	0	0	1	0	0	4	-1
24	COLBERT, TRAJATA	F	0	0-0	0-0	0-0	0	0	0	1	0	0	0	0	2	2
42	HENDERSON, ASIA	F	0	0-0	0-0	0-0	0	0	0	0	0	0	0	0	0	0
<b>TEAM</b>							1	0	1	0	0					
<b>TOTALS</b>			<b>19</b>	<b>9-18</b>	<b>1-7</b>	<b>0-0</b>	<b>4</b>	<b>5</b>	<b>9</b>	<b>4</b>	<b>3</b>	<b>3</b>	<b>1</b>	<b>3</b>	<b>50</b>	

*Shooting By Period*

Period	FG	FG%	3FG	3FG%	FT	FT%
3rd Qtr	10-16	63%	3-5	60%	2-2	100%
4th Qtr	5-21	24%	2-8	25%	2-4	50%
2nd Half	9-18	50%	1-7	14%	0-0	0%
2nd Half	15-37	41%	5-13	38%	4-6	67%
Game	27-66	40.9%	7-23	30.4%	8-12	66.7%

*Deadball Rebounds: 2,0*

**Tulane 18**

No.	Player	S	Pts	FG	3FG	FT	OR	DR	TR	PF	A	TO	Blk	Stl	Min	+/-
00	CLARK, ARSULA	G	11	3-4	1-1	4-6	0	0	0	0	0	3	0	0	10	-1
05	MANUIRIRANGI, KAYLA	G	0	0-0	0-0	0-0	0	0	0	0	0	0	0	0	4	1
12	CHEATHAM, SIERRA	G	3	1-3	1-2	0-0	0	0	0	0	2	0	0	1	7	-5
23	FREEMAN, KRYSTAL	F	2	1-1	0-0	0-0	0	3	3	1	0	0	0	0	5	1
42	HEIDE, MIA	F	2	1-1	0-0	0-0	1	0	1	0	0	0	0	0	5	-2
01	ANDERSON, KAILA	G	0	0-0	0-0	0-0	0	0	0	1	1	0	0	0	2	4
11	BATES, SALMA	G	0	0-3	0-1	0-0	1	0	1	0	1	0	0	0	6	-2
14	JONES, DYNAH	G	0	0-0	0-0	0-0	0	0	0	0	0	0	0	0	0	0
15	GRANT, ANIJAH	F	0	0-0	0-0	0-0	0	0	0	0	0	0	0	0	0	0
21	PARAU, IRINA	F	0	0-1	0-0	0-0	1	2	3	0	0	0	0	0	5	1
30	MIMMS, DENE'	F	0	0-0	0-0	0-0	0	0	0	0	0	0	0	1	5	-2
<b>TEAM</b>							0	0	0	0	0					
<b>TOTALS</b>			<b>18</b>	<b>6-13</b>	<b>2-4</b>	<b>4-6</b>	<b>3</b>	<b>5</b>	<b>8</b>	<b>2</b>	<b>4</b>	<b>3</b>	<b>0</b>	<b>2</b>	<b>50</b>	

*Shooting By Period*

Period	FG	FG%	3FG	3FG%	FT	FT%
3rd Qtr	7-13	54%	2-7	29%	4-4	100%
4th Qtr	5-9	56%	2-4	50%	3-3	100%
2nd Half	6-13	46%	2-4	50%	4-6	67%
2nd Half	12-22	55%	4-11	36%	7-7	100%
Game	25-50	50.0%	6-20	30.0%	12-14	85.7%

*Deadball Rebounds: 2,0*

*Game Notes:*

Officials: **Bryan Brunette, Kathleen Lynch, Jules Gallien**  
 Attendance: **506**

Start Time: **02:59 PM ET**  
 End Time: **04:56 PM ET**  
 Game Duration: **1:56**  
 Conference Game;

Score	1st	2nd	3rd	4th	TOT
WSU	11	19	25	14	<b>69</b>
TLN	15	18	20	15	<b>68</b>

Points from (This Period)	WSU	TLN
In the Paint	14	8
Off Turns	2	4
2nd Chance	6	2
Fast Break	5	4
Bench	6	0

**Official Play-By-Play  
Wichita St. vs Tulane**

February 16, 2020 at Avron B. Fogelman Arena in Devlin Fieldhouse - New Orleans



**Period 2**

**Starters:**

**Wichita St.:** 2 MCCULLY, MARIAH (G); 12 BREMAUD, CARLA (G); 13 PRINCE, RAVEN (F); 23 BASTIN, SERAPHINE (G); 34 SMITH, SHYIA (F);  
**Tulane:** 00 CLARK, ARSULA (G); 5 MANUIRIRANGI, KAYLA (G); 12 CHEATHAM, SIERRA (G); 23 FREEMAN, KRYSTAL (F); 42 HEIDE, MIA (F);

Time	VISITORS: Wichita St.	Score	Margin	HOME: Tulane
10:00				SUB OUT: ANDERSON, KAILA
10:00				SUB OUT: FREEMAN, KRYSTAL
10:00				SUB IN: CLARK, ARSULA
10:00				SUB IN: MIMMS, DENE'
10:00	SUB OUT: BASTIN, SERAPHINE			
10:00	SUB IN: PRINCE, RAVEN			
09:50	GOOD! JUMPER by BREWER, MAYA	15-13	H 2	
09:21				MISSED JUMPER by CLARK, ARSULA
09:18	REBOUND (DEF) by BREWER, MAYA			
09:05	MISSED 3PTR by REID, ASHLEY			
09:02	REBOUND (OFF) by BREWER, MAYA			
08:54	TURNOVER (BADPASS) by BASTIN, SERAPHINE			
08:54				STEAL by CHEATHAM, SIERRA
08:46		17-13	H 4	GOOD! LAYUP by CLARK, ARSULA [FB]
08:46				ASSIST by CHEATHAM, SIERRA
08:29	SUB OUT: PRINCE, RAVEN			
08:29	SUB IN: BASTIN, SERAPHINE			
08:14	GOOD! JUMPER by REID, ASHLEY [PNT]	17-15	H 2	
07:58	FOUL (PERSONAL) by COLBERT, TRAJATA			
07:58				SUB OUT: HEIDE, MIA
07:58				SUB IN: FREEMAN, KRYSTAL
07:58	SUB OUT: BASTIN, SERAPHINE			
07:58	SUB OUT: COLBERT, TRAJATA			
07:58	SUB IN: MCCULLY, MARIAH			
07:58	SUB IN: PRINCE, RAVEN			
07:58		18-15	H 3	GOOD! FT by CLARK, ARSULA
07:57				MISSED FT by CLARK, ARSULA
07:55	REBOUND (DEF) by PRINCE, RAVEN			
07:45	MISSED 3PTR by MCCULLY, MARIAH			
07:41	REBOUND (OFF) by PRINCE, RAVEN			
07:40	GOOD! LAYUP by PRINCE, RAVEN	18-17	H 1	
07:23		20-17	H 3	GOOD! LAYUP by CLARK, ARSULA
07:04	TURNOVER (BADPASS) by BREWER, MAYA			
07:04				STEAL by MIMMS, DENE'
06:36		22-17	H 5	GOOD! LAYUP by FREEMAN, KRYSTAL
06:36				ASSIST by CHEATHAM, SIERRA
06:26	TURNOVER (TRAVEL) by MCCULLY, MARIAH			
06:26				SUB OUT: MANUIRIRANGI, KAYLA
06:26				SUB IN: BATES, SALMA
06:26	SUB OUT: BREWER, MAYA			
06:26	SUB IN: MCCARTY, DJ			
06:12	FOUL (PERSONAL) by REID, ASHLEY			
06:12	SUB OUT: REID, ASHLEY			
06:12	SUB IN: BREMAUD, CARLA			
06:07				MISSED LAYUP by BATES, SALMA
06:07	BLOCK by MCCULLY, MARIAH			
06:03				REBOUND (OFF) by BATES, SALMA
06:02				MISSED 3PTR by CHEATHAM, SIERRA
05:59	REBOUND (DEF) by BREMAUD, CARLA			
05:52	MISSED JUMPER by MCCARTY, DJ			
05:49				REBOUND (DEF) by FREEMAN, KRYSTAL
05:43				MISSED JUMPER by CHEATHAM, SIERRA
05:39	REBOUND (DEF) by PRINCE, RAVEN			
05:35	GOOD! 3PTR by BREMAUD, CARLA [FB]	22-20	H 2	
05:35	ASSIST by MCCARTY, DJ			
05:11				SUB OUT: MIMMS, DENE'
05:11				SUB IN: PARAU, IRINA
05:00				TURNOVER (BADPASS) by CLARK, ARSULA
05:00	STEAL by MCCARTY, DJ			
04:54	MISSED JUMPER by MCCARTY, DJ			
04:51				REBOUND (DEF) by FREEMAN, KRYSTAL
04:41				MISSED JUMPER by BATES, SALMA
04:39	REBOUND (DEF) by MCCULLY, MARIAH			
04:22	MISSED 3PTR by BREMAUD, CARLA			
04:19				REBOUND (DEF) by FREEMAN, KRYSTAL
04:15	FOUL (PERSONAL) by BREMAUD, CARLA			
04:15				SUB OUT: CHEATHAM, SIERRA
04:15				SUB IN: MANUIRIRANGI, KAYLA
04:15		23-20	H 3	GOOD! FT by CLARK, ARSULA [FB]



Time	VISITORS: Wichita St.	Score	Margin	HOME: Tulane
04:15		24-20	H 4	GOOD! FT by CLARK, ARSULA [FB]
04:02	GOOD! JUMPER by MCCULLY, MARIAH [PNT]	24-22	H 2	
04:02	ASSIST by PRINCE, RAVEN			
03:32	FOUL (PERSONAL) by PRINCE, RAVEN			
03:32				SUB OUT: MANUIRIRANGI, KAYLA
03:32				SUB IN: ANDERSON, KAILA
03:32				MISSED FT by CLARK, ARSULA
03:32				REBOUND (OFF) by TEAM
03:32		25-22	H 3	GOOD! FT by CLARK, ARSULA
03:07				FOUL (PERSONAL) by FREEMAN, KRYSTAL
03:07				SUB OUT: FREEMAN, KRYSTAL
03:07				SUB IN: HEIDE, MIA
03:00	MISSED 3PTR by BREMAUD, CARLA			
02:57				REBOUND (DEF) by PARAU, IRINA
02:50	SUB OUT: BREMAUD, CARLA			
02:50	SUB IN: BASTIN, SERAPHINE			
02:43				MISSED 3PTR by BATES, SALMA
02:41				REBOUND (OFF) by PARAU, IRINA
02:40				MISSED LAYUP by PARAU, IRINA
02:36				REBOUND (OFF) by HEIDE, MIA
02:36		27-22	H 5	GOOD! LAYUP by HEIDE, MIA
02:19	MISSED 3PTR by SMITH, SHYIA			
02:18	REBOUND (OFF) by TEAM			
02:18	SUB OUT: SMITH, SHYIA			
02:18	SUB IN: REID, ASHLEY			
02:16	GOOD! LAYUP by MCCARTY, DJ	27-24	H 3	
02:01		30-24	H 6	GOOD! 3PTR by CLARK, ARSULA
02:01				ASSIST by ANDERSON, KAILA
01:37				FOUL (PERSONAL) by ANDERSON, KAILA
01:37				SUB OUT: ANDERSON, KAILA
01:37				SUB IN: CHEATHAM, SIERRA
01:35	GOOD! LAYUP by MCCULLY, MARIAH [PNT]	30-26	H 4	
01:35	ASSIST by REID, ASHLEY			
01:20				TURNOVER (LOSTBALL) by CLARK, ARSULA
01:20	STEAL by MCCULLY, MARIAH			
01:17	GOOD! LAYUP by MCCULLY, MARIAH [FB]	30-28	H 2	
00:52				TURNOVER (BADPASS) by CLARK, ARSULA
00:52	STEAL by MCCARTY, DJ			
00:46	MISSED LAYUP by MCCARTY, DJ			
00:43				REBOUND (DEF) by PARAU, IRINA
00:34		33-28	H 5	GOOD! 3PTR by CHEATHAM, SIERRA
00:34				ASSIST by BATES, SALMA
00:06	MISSED 3PTR by MCCULLY, MARIAH			
00:03	REBOUND (OFF) by PRINCE, RAVEN			
00:01	GOOD! JUMPER by PRINCE, RAVEN [PNT]	33-30	H 3	

### Wichita St. 30, Tulane 33

Points from (This Period)	WSU	TLN
In the Paint	14	8
Off Turns	2	4
2nd Chance	6	2
Fast Break	5	4
Bench	6	0

**Official Box Score**  
**Wichita St. vs Tulane**  
**Second Half Statistics Only**  
 February 16, 2020 at Avron B. Fogelman Arena in Devlin Fieldhouse - New Orleans



**Wichita St. 39**

No.	Player	S	Pts	FG	3FG	FT	OR	DR	TR	PF	A	TO	Blk	Stl	Min	+/-
01	MCCARTY, DJ	G	0	0-2	0-1	0-0	0	0	0	1	0	0	0	0	6	-5
02	MCCULLY, MARIAH	G	10	4-8	2-5	0-2	0	1	1	1	2	1	0	6	18	5
05	REID, ASHLEY	G	2	1-5	0-3	0-0	0	1	1	0	1	2	0	1	15	7
12	BREMAUD, CARLA	G	0	0-1	0-0	0-0	0	0	0	1	0	0	0	0	9	-7
13	PRINCE, RAVEN	F	2	0-4	0-0	2-2	3	1	4	4	0	0	0	1	8	-1
21	BREWER, MAYA	G	11	4-7	3-4	0-0	2	2	4	1	1	1	0	0	14	9
23	BASTIN, SERAPHINE	G	8	3-4	0-0	2-2	1	0	1	1	5	1	0	2	18	7
24	COLBERT, TRAJATA	F	0	0-0	0-0	0-0	0	0	0	0	0	0	0	0	0	0
34	SMITH, SHYIA	F	0	0-0	0-0	0-0	0	1	1	1	0	0	0	0	4	4
42	HENDERSON, ASIA	F	6	3-6	0-0	0-0	1	0	1	0	0	0	0	1	8	1
	TEAM		0	0-0	0-0	0-0	1	0	1	0	0	0	0	0	0	
<b>TOTALS</b>			<b>39</b>	<b>15-37</b>	<b>5-13</b>	<b>4-6</b>	<b>8</b>	<b>6</b>	<b>14</b>	<b>10</b>	<b>9</b>	<b>5</b>	<b>0</b>	<b>11</b>	<b>100</b>	

*Shooting By Period*

Period	FG	FG%	3FG	3FG%	FT	FT%
3rd Qtr	10-16	63%	3-5	60%	2-2	100%
4th Qtr	5-21	24%	2-8	25%	2-4	50%
2nd Half	15-37	41%	5-13	38%	4-6	67%
Game	27-66	40.9%	7-23	30.4%	8-12	66.7%

Deadball Rebounds: 2,0  
 Last FG Half: WSU 4th-00:22

**Tulane 35**

No.	Player	S	Pts	FG	3FG	FT	OR	DR	TR	PF	A	TO	Blk	Stl	Min	+/-
00	CLARK, ARSULA	G	13	4-6	1-2	4-4	0	3	3	2	4	6	0	1	20	-4
01	ANDERSON, KAILA	G	0	0-0	0-0	0-0	0	0	0	0	0	0	0	0	1	-3
05	MANUIRIRANGI, KAYLA	G	3	1-2	1-2	0-0	0	0	0	0	0	0	0	0	4	3
11	BATES, SALMA	G	4	1-1	0-0	2-2	0	1	1	0	3	2	0	1	14	1
12	CHEATHAM, SIERRA	G	8	3-6	2-5	0-0	1	2	3	0	0	2	2	0	20	-4
14	JONES, DYNAH	G	0	0-0	0-0	0-0	0	0	0	0	0	0	0	0	1	-3
15	GRANT, ANIJAH	F	0	0-0	0-0	0-0	0	0	0	1	0	0	0	0	4	-2
21	PARAU, IRINA	F	0	0-0	0-0	0-0	0	0	0	0	0	0	0	0	4	-4
23	FREEMAN, KRYSTAL	F	7	3-6	0-2	1-1	1	1	2	2	0	2	0	1	20	-4
30	MIMMS, DENE'	F	0	0-0	0-0	0-0	0	0	0	0	0	0	0	0	0	-2
42	HEIDE, MIA	F	0	0-1	0-0	0-0	0	4	4	1	1	1	3	1	12	2
	TEAM		0	0-0	0-0	0-0	1	4	5	0	0	3	0	0	0	
<b>TOTALS</b>			<b>35</b>	<b>12-22</b>	<b>4-11</b>	<b>7-7</b>	<b>3</b>	<b>15</b>	<b>18</b>	<b>6</b>	<b>8</b>	<b>16</b>	<b>5</b>	<b>4</b>	<b>100</b>	

*Shooting By Period*

Period	FG	FG%	3FG	3FG%	FT	FT%
3rd Qtr	7-13	54%	2-7	29%	4-4	100%
4th Qtr	5-9	56%	2-4	50%	3-3	100%
2nd Half	12-22	55%	4-11	36%	7-7	100%
Game	25-50	50.0%	6-20	30.0%	12-14	85.7%

Deadball Rebounds: 2,0  
 Last FG Half: TLN 4th-00:00

*Game Notes:*

Officials: Bryan Brunette, Kathleen Lynch, Jules Gallien  
 Attendance: 506

Start Time: 02:59 PM ET  
 End Time: 04:56 PM ET  
 Game Duration: 1:56  
 Conference Game;

Score	1st	2nd	3rd	4th	TOT
WSU	11	19	25	14	<b>69</b>
TLN	15	18	20	15	<b>68</b>

Points from (This Period)	WSU	TLN
In the Paint	14	14
Off Turns	18	2
2nd Chance	2	4
Fast Break	14	2
Bench	19	4

**Official Box Score**  
**Wichita St. vs Tulane**  
**Third Quarter Statistics Only**  
**February 16, 2020 at Avron B. Fogelman Arena in Devlin Fieldhouse - New Orleans**



**Wichita St. 39**

No.	Player	S	Pts	FG	3FG	FT	OR	DR	TR	PF	A	TO	Blk	Stl	Min	+/-
02	MCCULLY, MARIAH	G	5	2-2	1-1	0-0	0	0	0	1	2	1	0	3	10	5
12	BREMAUD, CARLA	G	0	0-0	0-0	0-0	0	0	0	0	0	0	0	0	2	-3
13	PRINCE, RAVEN	F	2	0-0	0-0	2-2	0	0	0	2	0	0	0	0	4	2
23	BASTIN, SERAPHINE	G	2	1-1	0-0	0-0	0	0	0	1	3	1	0	1	10	5
34	SMITH, SHYIA	F	0	0-0	0-0	0-0	0	0	0	1	0	0	0	0	2	1
01	MCCARTY, DJ	G	0	0-2	0-1	0-0	0	0	0	1	0	0	0	0	2	-2
05	REID, ASHLEY	G	2	1-2	0-0	0-0	0	1	1	0	1	1	0	1	8	8
21	BREWER, MAYA	G	8	3-5	2-3	0-0	0	2	2	0	1	0	0	0	8	7
24	COLBERT, TRAJATA	F	0	0-0	0-0	0-0	0	0	0	0	0	0	0	0	0	0
42	HENDERSON, ASIA	F	6	3-4	0-0	0-0	0	0	0	0	0	0	0	0	4	2
TEAM							0	0	0	0		0				
<b>TOTALS</b>			<b>25</b>	<b>10-16</b>	<b>3-5</b>	<b>2-2</b>	<b>0</b>	<b>3</b>	<b>3</b>	<b>6</b>	<b>7</b>	<b>3</b>	<b>0</b>	<b>5</b>	<b>50</b>	

*Shooting By Period*

Period	FG	FG%	3FG	3FG%	FT	FT%
2nd Half	0-0	0%	0-0	0%	0-0	0%
Game	27-66	40.9%	7-23	30.4%	8-12	66.7%

*Deadball Rebounds: 2,0*

**Tulane 35**

No.	Player	S	Pts	FG	3FG	FT	OR	DR	TR	PF	A	TO	Blk	Stl	Min	+/-
00	CLARK, ARSULA	G	11	4-4	1-1	2-2	0	1	1	0	2	2	0	1	10	-5
05	MANUIRIRANGI, KAYLA	G	3	1-2	1-2	0-0	0	0	0	0	0	0	0	0	4	1
12	CHEATHAM, SIERRA	G	0	0-2	0-2	0-0	0	1	1	0	0	1	1	0	10	-5
23	FREEMAN, KRYSTAL	F	2	1-4	0-2	0-0	1	1	2	0	0	2	0	1	10	-5
42	HEIDE, MIA	F	0	0-0	0-0	0-0	0	1	1	0	0	0	0	0	2	1
01	ANDERSON, KAILA	G	0	0-0	0-0	0-0	0	0	0	0	0	0	0	0	1	-3
11	BATES, SALMA	G	4	1-1	0-0	2-2	0	0	0	0	2	2	0	1	4	0
14	JONES, DYNAH	G	0	0-0	0-0	0-0	0	0	0	0	0	0	0	0	1	-3
15	GRANT, ANIJAH	F	0	0-0	0-0	0-0	0	0	0	1	0	0	0	0	4	-2
21	PARAU, IRINA	F	0	0-0	0-0	0-0	0	0	0	0	0	0	0	0	4	-4
30	MIMMS, DENE'	F	0	0-0	0-0	0-0	0	0	0	0	0	0	0	0	0	0
TEAM							1	2	3	0		1				
<b>TOTALS</b>			<b>20</b>	<b>7-13</b>	<b>2-7</b>	<b>4-4</b>	<b>2</b>	<b>6</b>	<b>8</b>	<b>1</b>	<b>4</b>	<b>8</b>	<b>1</b>	<b>3</b>	<b>50</b>	

*Shooting By Period*

Period	FG	FG%	3FG	3FG%	FT	FT%
2nd Half	0-0	0%	0-0	0%	0-0	0%
Game	25-50	50.0%	6-20	30.0%	12-14	85.7%

*Deadball Rebounds: 2,0*

Game Notes:

Officials: Bryan Brunette, Kathleen Lynch, Jules Gallien  
 Attendance: 506

Start Time: 02:59 PM ET  
 End Time: 04:56 PM ET  
 Game Duration: 1:56  
 Conference Game;

Score	1st	2nd	3rd	4th	TOT
WSU	11	19	25	14	<b>69</b>
TLN	15	18	20	15	<b>68</b>

Points from (This Period)	WSU	TLN
In the Paint	8	8
Off Turns	11	0
2nd Chance	0	2
Fast Break	12	2
Bench	16	4

**Official Play-By-Play  
Wichita St. vs Tulane  
Third Quarter**

**February 16, 2020 at Avron B. Fogelman Arena in Devlin Fieldhouse - New Orleans**



**Period 3**

**Starters:**

**Wichita St.:** 2 MCCULLY, MARIAH (G); 12 BREMAUD, CARLA (G); 13 PRINCE, RAVEN (F); 23 BASTIN, SERAPHINE (G); 34 SMITH, SHYIA (F);  
**Tulane:** 00 CLARK, ARSULA (G); 5 MANUIRIRANGI, KAYLA (G); 12 CHEATHAM, SIERRA (G); 23 FREEMAN, KRYSTAL (F); 42 HEIDE, MIA (F);

Time	VISITORS: Wichita St.	Score	Margin	HOME: Tulane
10:00				SUB OUT: BATES, SALMA
10:00				SUB OUT: PARAU, IRINA
10:00				SUB OUT: HEIDE, MIA
10:00				SUB IN: MANUIRIRANGI, KAYLA
10:00				SUB IN: GRANT, ANIJAH
10:00				SUB IN: FREEMAN, KRYSTAL
10:00	SUB OUT: REID, ASHLEY			
10:00	SUB IN: BREMAUD, CARLA			
09:43	MISSED 3PTR by MCCARTY, DJ			
09:40				REBOUND (DEF) by FREEMAN, KRYSTAL
09:33				MISSED 3PTR by CHEATHAM, SIERRA
09:30				REBOUND (OFF) by TEAM
09:22		35-30	H 5	GOOD! LAYUP by CLARK, ARSULA
08:51	TURNOVER (BADPASS) by BASTIN, SERAPHINE			
08:51				STEAL by FREEMAN, KRYSTAL
08:42	FOUL (PERSONAL) by MCCARTY, DJ			
08:27				TURNOVER (BADPASS) by FREEMAN, KRYSTAL
08:27	STEAL by MCCULLY, MARIAH			
08:20	MISSED JUMPER by MCCARTY, DJ			
08:20				REBOUND (DEF) by TEAM
08:13				TIMEOUT 30SEC
08:13				
08:13	SUB OUT: MCCARTY, DJ			
08:13	SUB IN: BREWER, MAYA			
08:08		38-30	H 8	GOOD! 3PTR by MANUIRIRANGI, KAYLA
08:08				ASSIST by CLARK, ARSULA
07:47				FOUL (PERSONAL) by GRANT, ANIJAH
07:47	GOOD! FT by PRINCE, RAVEN	38-31	H 7	
07:47	GOOD! FT by PRINCE, RAVEN	38-32	H 6	
07:37				MISSED 3PTR by MANUIRIRANGI, KAYLA
07:34				REBOUND (OFF) by FREEMAN, KRYSTAL
07:33	SUB OUT: BREMAUD, CARLA			
07:33	SUB IN: REID, ASHLEY			
07:14				MISSED 3PTR by FREEMAN, KRYSTAL
07:13				REBOUND (OFF) by TEAM
07:13				TURNOVER (SHOTCLOCK) by TEAM
06:56	MISSED JUMPER by REID, ASHLEY			
06:53				REBOUND (DEF) by CLARK, ARSULA
06:35	FOUL (PERSONAL) by MCCULLY, MARIAH			
06:21				TURNOVER (LOSTBALL) by CLARK, ARSULA
06:21	STEAL by MCCULLY, MARIAH			
06:15	GOOD! LAYUP by MCCULLY, MARIAH [FB]	38-34	H 4	
05:59				TURNOVER (BADPASS) by CHEATHAM, SIERRA
05:59				SUB OUT: MANUIRIRANGI, KAYLA
05:59				SUB IN: JONES, DYNAH
05:54	GOOD! 3PTR by BREWER, MAYA [FB]	38-37	H 1	
05:54	ASSIST by BASTIN, SERAPHINE			
05:43	FOUL (PERSONAL) by PRINCE, RAVEN			
05:43				SUB OUT: GRANT, ANIJAH
05:43				SUB IN: PARAU, IRINA
05:42	FOUL (PERSONAL) by PRINCE, RAVEN			
05:42	SUB OUT: PRINCE, RAVEN			
05:42	SUB IN: SMITH, SHYIA			
05:29		40-37	H 3	GOOD! JUMPER by FREEMAN, KRYSTAL
05:29				ASSIST by CLARK, ARSULA
05:17	GOOD! JUMPER by BREWER, MAYA	40-39	H 1	
05:17	ASSIST by MCCULLY, MARIAH			
05:05	FOUL (PERSONAL) by SMITH, SHYIA			
05:05				SUB OUT: JONES, DYNAH
05:05				SUB IN: ANDERSON, KAILA
05:05		41-39	H 2	GOOD! FT by CLARK, ARSULA
05:05		42-39	H 3	GOOD! FT by CLARK, ARSULA
04:43	GOOD! 3PTR by MCCULLY, MARIAH	42-42	T	
04:43	ASSIST by BASTIN, SERAPHINE			
04:24				TURNOVER (BADPASS) by FREEMAN, KRYSTAL
04:24	STEAL by REID, ASHLEY			
04:19	GOOD! LAYUP by REID, ASHLEY	42-44	V 2	
04:14		44-44	T	GOOD! LAYUP by CLARK, ARSULA
04:04	MISSED 3PTR by BREWER, MAYA			
04:04				REBOUND (DEF) by TEAM

Time	VISITORS: Wichita St.	Score	Margin	HOME: Tulane
04:04				
04:04	SUB OUT: SMITH, SHYIA			
04:04	SUB IN: HENDERSON, ASIA			
03:47				TURNOVER (BADPASS) by CLARK, ARSULA
03:47	STEAL by BASTIN, SERAPHINE			
03:42	GOOD! LAYUP by BASTIN, SERAPHINE [FB]	44-46	V 2	
03:36				SUB OUT: ANDERSON, KAILA
03:36				SUB IN: BATES, SALMA
03:29				TURNOVER (BADPASS) by BATES, SALMA
03:29	STEAL by MCCULLY, MARIAH			
03:26	TURNOVER (LOSTBALL) by MCCULLY, MARIAH			
03:26				STEAL by BATES, SALMA
03:16				TURNOVER (LOSTBALL) by BATES, SALMA
03:00	GOOD! LAYUP by HENDERSON, ASIA	44-48	V 4	
03:00	ASSIST by BASTIN, SERAPHINE			
02:31		47-48	V 1	GOOD! 3PTR by CLARK, ARSULA
02:31				ASSIST by BATES, SALMA
02:18	TURNOVER (BADPASS) by REID, ASHLEY			
02:18				STEAL by CLARK, ARSULA
02:13				MISSED 3PTR by CHEATHAM, SIERRA
02:10	REBOUND (DEF) by BREWER, MAYA			
02:05	GOOD! JUMPER by HENDERSON, ASIA [FB]	47-50	V 3	
02:05	ASSIST by BREWER, MAYA			
01:55	FOUL (PERSONAL) by BASTIN, SERAPHINE			
01:55				SUB OUT: PARAU, IRINA
01:55		48-50	V 2	SUB IN: HEIDE, MIA
01:55		49-50	V 1	GOOD! FT by BATES, SALMA
01:55		49-52	V 3	GOOD! FT by BATES, SALMA
01:43	GOOD! JUMPER by HENDERSON, ASIA			
01:43	ASSIST by MCCULLY, MARIAH			
01:26				MISSED 3PTR by FREEMAN, KRYSTAL
01:24	REBOUND (DEF) by BREWER, MAYA			
01:19	MISSED JUMPER by BREWER, MAYA			
01:19				BLOCK by CHEATHAM, SIERRA
01:15				REBOUND (DEF) by CHEATHAM, SIERRA
01:13		51-52	V 1	GOOD! LAYUP by CLARK, ARSULA [FB]
01:13				ASSIST by BATES, SALMA
00:56	MISSED JUMPER by HENDERSON, ASIA			
00:53				REBOUND (DEF) by HEIDE, MIA
00:37				MISSED JUMPER by FREEMAN, KRYSTAL
00:35	REBOUND (DEF) by REID, ASHLEY			
00:30	GOOD! 3PTR by BREWER, MAYA [FB]	51-55	V 4	
00:30	ASSIST by REID, ASHLEY			
00:02		53-55	V 2	GOOD! JUMPER by BATES, SALMA

### Wichita St. 55, Tulane 53

Points from (This Period)	WSU	TLN
In the Paint	8	8
Off Turns	11	0
2nd Chance	0	2
Fast Break	12	2
Bench	16	4

**Official Box Score**  
**Wichita St. vs Tulane**  
**Fourth Quarter Statistics Only**  
**February 16, 2020 at Avron B. Fogelman Arena in Devlin Fieldhouse - New Orleans**



**Wichita St. 14**

No.	Player	S	Pts	FG	3FG	FT	OR	DR	TR	PF	A	TO	Blk	Stl	Min	+/-	
02	MCCULLY, MARIAH	G	5	2-6	1-4	0-2	0	1	1	0	0	0	0	3	8	0	
12	BREMAUD, CARLA	G	0	0-1	0-0	0-0	0	0	0	1	0	0	0	0	7	-4	
13	PRINCE, RAVEN	F	0	0-4	0-0	0-0	3	1	4	2	0	0	0	1	4	-3	
23	BASTIN, SERAPHINE	G	6	2-3	0-0	2-2	1	0	1	0	2	0	0	1	8	2	
34	SMITH, SHYIA	F	0	0-0	0-0	0-0	0	1	1	0	0	0	0	0	2	3	
01	MCCARTY, DJ	G	0	0-0	0-0	0-0	0	0	0	0	0	0	0	0	4	-3	
05	REID, ASHLEY	G	0	0-3	0-3	0-0	0	0	0	0	0	1	0	0	7	-1	
21	BREWER, MAYA	G	3	1-2	1-1	0-0	2	0	2	1	0	1	0	0	6	2	
24	COLBERT, TRAJATA	F	0	0-0	0-0	0-0	0	0	0	0	0	0	0	0	0	0	
42	HENDERSON, ASIA	F	0	0-2	0-0	0-0	1	0	1	0	0	0	0	1	4	-1	
TEAM							1	0	1	0	0						
<b>TOTALS</b>			<b>14</b>	<b>5-21</b>	<b>2-8</b>	<b>2-4</b>	<b>8</b>	<b>3</b>	<b>11</b>	<b>4</b>	<b>2</b>	<b>2</b>	<b>0</b>	<b>6</b>	<b>50</b>		

*Shooting By Period*

Period	FG	FG%	3FG	3FG%	FT	FT%
Game	27-66	40.9%	7-23	30.4%	8-12	66.7%

*Deadball Rebounds: 2,0*

**Tulane 15**

No.	Player	S	Pts	FG	3FG	FT	OR	DR	TR	PF	A	TO	Blk	Stl	Min	+/-	
00	CLARK, ARSULA	G	2	0-2	0-1	2-2	0	2	2	2	2	4	0	0	10	1	
05	MANUIRIRANGI, KAYLA	G	0	0-0	0-0	0-0	0	0	0	0	0	0	0	0	0	2	
12	CHEATHAM, SIERRA	G	8	3-4	2-3	0-0	1	1	2	0	0	1	1	0	10	1	
23	FREEMAN, KRYSTAL	F	5	2-2	0-0	1-1	0	0	0	2	0	0	0	0	10	1	
42	HEIDE, MIA	F	0	0-1	0-0	0-0	0	3	3	1	1	1	3	1	10	1	
01	ANDERSON, KAILA	G	0	0-0	0-0	0-0	0	0	0	0	0	0	0	0	0	0	
11	BATES, SALMA	G	0	0-0	0-0	0-0	0	1	1	0	1	0	0	0	10	1	
14	JONES, DYNAH	G	0	0-0	0-0	0-0	0	0	0	0	0	0	0	0	0	0	
15	GRANT, ANIJAH	F	0	0-0	0-0	0-0	0	0	0	0	0	0	0	0	0	0	
21	PARAU, IRINA	F	0	0-0	0-0	0-0	0	0	0	0	0	0	0	0	0	0	
30	MIMMS, DENE'	F	0	0-0	0-0	0-0	0	0	0	0	0	0	0	0	0	-2	
TEAM							0	2	2	0	2						
<b>TOTALS</b>			<b>15</b>	<b>5-9</b>	<b>2-4</b>	<b>3-3</b>	<b>1</b>	<b>9</b>	<b>10</b>	<b>5</b>	<b>4</b>	<b>8</b>	<b>4</b>	<b>1</b>	<b>50</b>		

*Shooting By Period*

Period	FG	FG%	3FG	3FG%	FT	FT%
Game	25-50	50.0%	6-20	30.0%	12-14	85.7%

*Deadball Rebounds: 2,0*

Game Notes:

Officials: Bryan Brunette, Kathleen Lynch, Jules Gallien  
 Attendance: 506

Start Time: 02:59 PM ET  
 End Time: 04:56 PM ET  
 Game Duration: 1:56  
 Conference Game;

Score	1st	2nd	3rd	4th	TOT
WSU	11	19	25	14	<b>69</b>
TLN	15	18	20	15	<b>68</b>

Points from (This Period)	WSU	TLN
In the Paint	6	6
Off Turns	7	2
2nd Chance	2	2
Fast Break	2	0
Bench	3	0

**Official Play-By-Play  
Wichita St. vs Tulane  
Fourth Quarter**

**February 16, 2020 at Avron B. Fogelman Arena in Devlin Fieldhouse - New Orleans**



**Period 4**

**Starters:**

**Wichita St.:** 2 MCCULLY, MARIAH (G); 12 BREMAUD, CARLA (G); 13 PRINCE, RAVEN (F); 23 BASTIN, SERAPHINE (G); 34 SMITH, SHYIA (F);

**Tulane:** 00 CLARK, ARSULA (G); 5 MANUIRIRANGI, KAYLA (G); 12 CHEATHAM, SIERRA (G); 23 FREEMAN, KRYSTAL (F); 42 HEIDE, MIA (F);

Time	VISITORS: Wichita St.	Score	Margin	HOME: Tulane
10:00	SUB OUT: MCCULLY, MARIAH			
10:00	SUB OUT: HENDERSON, ASIA			
10:00	SUB IN: BREMAUD, CARLA			
10:00	SUB IN: PRINCE, RAVEN			
09:41	MISSED 3PTR by REID, ASHLEY			
09:38	REBOUND (OFF) by PRINCE, RAVEN			
09:37	MISSED LAYUP by PRINCE, RAVEN			
09:33	REBOUND (OFF) by PRINCE, RAVEN			
09:33	MISSED LAYUP by PRINCE, RAVEN			
09:32	REBOUND (OFF) by PRINCE, RAVEN			
09:27	MISSED JUMPER by PRINCE, RAVEN			
09:23				REBOUND (DEF) by HEIDE, MIA
09:14	FOUL (PERSONAL) by BREMAUD, CARLA			
08:58				TURNOVER (BADPASS) by CHEATHAM, SIERRA
08:58	STEAL by PRINCE, RAVEN			
08:52	TURNOVER (LOSTBALL) by BREWER, MAYA			
08:52				STEAL by HEIDE, MIA
08:40				MISSED LAYUP by CLARK, ARSULA
08:38	REBOUND (DEF) by PRINCE, RAVEN			
08:32	GOOD! LAYUP by BASTIN, SERAPHINE [FB]	53-57	V 4	
08:09		55-57	V 2	GOOD! LAYUP by FREEMAN, KRYSTAL
08:09				ASSIST by BATES, SALMA
08:09	FOUL (PERSONAL) by PRINCE, RAVEN			
08:09	SUB OUT: PRINCE, RAVEN			
08:09	SUB IN: HENDERSON, ASIA			
08:09		56-57	V 1	GOOD! FT by FREEMAN, KRYSTAL
07:52	SUB OUT: REID, ASHLEY			
07:52	SUB IN: MCCULLY, MARIAH			
07:50	GOOD! 3PTR by MCCULLY, MARIAH	56-60	V 4	
07:50	ASSIST by BASTIN, SERAPHINE			
07:37		59-60	V 1	GOOD! 3PTR by CHEATHAM, SIERRA
07:37				ASSIST by HEIDE, MIA
07:16	MISSED 3PTR by MCCULLY, MARIAH			
07:12	REBOUND (OFF) by BREWER, MAYA			
07:02				FOUL (PERSONAL) by HEIDE, MIA
07:02	SUB OUT: BREWER, MAYA			
07:02	SUB IN: MCCARTY, DJ			
07:02	MISSED FT by MCCULLY, MARIAH			
07:02	REBOUND (OFF) by TEAM			
07:01	MISSED FT by MCCULLY, MARIAH			
07:00				REBOUND (DEF) by HEIDE, MIA
06:52				TURNOVER (LOSTBALL) by CLARK, ARSULA
06:52	STEAL by MCCULLY, MARIAH			
06:37	MISSED JUMPER by BASTIN, SERAPHINE			
06:37				BLOCK by HEIDE, MIA
06:30				REBOUND (DEF) by BATES, SALMA
06:20				TURNOVER (LOSTBALL) by HEIDE, MIA
06:20	STEAL by HENDERSON, ASIA			
06:13	MISSED 3PTR by MCCULLY, MARIAH			
06:09				REBOUND (DEF) by CLARK, ARSULA
06:07				TURNOVER (LOSTBALL) by CLARK, ARSULA
06:07	STEAL by BASTIN, SERAPHINE			
05:54	MISSED JUMPER by BREMAUD, CARLA			
05:51	REBOUND (OFF) by HENDERSON, ASIA			
05:50	MISSED JUMPER by HENDERSON, ASIA			
05:48				REBOUND (DEF) by CLARK, ARSULA
05:22				MISSED LAYUP by HEIDE, MIA
05:20	REBOUND (DEF) by MCCULLY, MARIAH			
05:15	MISSED LAYUP by MCCULLY, MARIAH			
05:15				BLOCK by HEIDE, MIA
05:15	REBOUND (OFF) by TEAM			
05:15	SUB OUT: BASTIN, SERAPHINE			
05:15	SUB IN: REID, ASHLEY			
05:08	MISSED LAYUP by HENDERSON, ASIA			
05:05				REBOUND (DEF) by CHEATHAM, SIERRA
04:37				TURNOVER (SHOTCLOCK) by TEAM
04:37				
04:37	SUB OUT: HENDERSON, ASIA			
04:37	SUB IN: PRINCE, RAVEN			
04:20	GOOD! LAYUP by MCCULLY, MARIAH	59-62	V 3	

Time	VISITORS: Wichita St.	Score	Margin	HOME: Tulane
04:03		62-62	T	GOOD! 3PTR by CHEATHAM, SIERRA
04:03				ASSIST by CLARK, ARSULA
03:44	MISSED LAYUP by PRINCE, RAVEN			
03:44				BLOCK by HEIDE, MIA
03:40				REBOUND (DEF) by HEIDE, MIA
03:14		64-62	H 2	GOOD! JUMPER by FREEMAN, KRYSTAL [PNT]
03:14				ASSIST by CLARK, ARSULA
03:03	MISSED 3PTR by MCCULLY, MARIAH			
03:00				REBOUND (DEF) by TEAM
03:00	SUB OUT: MCCARTY, DJ			
03:00	SUB OUT: BREMAUD, CARLA			
03:00	SUB IN: BREWER, MAYA			
03:00	SUB IN: BASTIN, SERAPHINE			
02:43				TURNOVER (LOSTBALL) by CLARK, ARSULA
02:43	STEAL by MCCULLY, MARIAH			
02:30	TURNOVER (LOSTBALL) by REID, ASHLEY			
02:13	FOUL (PERSONAL) by PRINCE, RAVEN			
02:13	SUB OUT: PRINCE, RAVEN			
02:13	SUB IN: SMITH, SHYIA			
02:13		65-62	H 3	GOOD! FT by CLARK, ARSULA
02:13		66-62	H 4	GOOD! FT by CLARK, ARSULA
01:52	MISSED 3PTR by REID, ASHLEY			
01:48	REBOUND (OFF) by BASTIN, SERAPHINE			
01:47	GOOD! JUMPER by BASTIN, SERAPHINE [PNT]	66-64	H 2	
01:22				TIMEOUT 30SEC
01:14				MISSED 3PTR by CHEATHAM, SIERRA
01:10	REBOUND (DEF) by SMITH, SHYIA			
01:02	MISSED LAYUP by BREWER, MAYA			
01:02				BLOCK by CHEATHAM, SIERRA
00:56	REBOUND (OFF) by BREWER, MAYA			
00:52	MISSED 3PTR by REID, ASHLEY			
00:49				REBOUND (DEF) by TEAM
00:32				TIMEOUT 30SEC
00:32				TURNOVER (5SEC) by TEAM
00:32	TIMEOUT TEAM			
00:22	GOOD! 3PTR by BREWER, MAYA	66-67	V 1	
00:22	ASSIST by BASTIN, SERAPHINE			
00:15	FOUL (PERSONAL) by BREWER, MAYA			
00:15				SUB OUT: HEIDE, MIA
00:15				SUB IN: MANUIRIRANGI, KAYLA
00:15				TIMEOUT TEAM
00:15	SUB OUT: BREWER, MAYA			
00:15	SUB IN: BREMAUD, CARLA			
00:14				TURNOVER (BADPASS) by CLARK, ARSULA
00:14	STEAL by MCCULLY, MARIAH			
00:13	TIMEOUT 30SEC			
00:13				SUB OUT: MANUIRIRANGI, KAYLA
00:13				SUB IN: MIMMS, DENE'
00:12				FOUL (PERSONAL) by CLARK, ARSULA
00:11				FOUL (PERSONAL) by FREEMAN, KRYSTAL
00:10				FOUL (PERSONAL) by CLARK, ARSULA
00:07				FOUL (PERSONAL) by FREEMAN, KRYSTAL
00:07	GOOD! FT by BASTIN, SERAPHINE	66-68	V 2	
00:07	GOOD! FT by BASTIN, SERAPHINE	66-69	V 3	
00:07	TIMEOUT 30SEC			
00:07				SUB OUT: MIMMS, DENE'
00:07				SUB IN: MANUIRIRANGI, KAYLA
00:00				MISSED 3PTR by CLARK, ARSULA
00:00				REBOUND (OFF) by CHEATHAM, SIERRA
00:00		68-69	V 1	GOOD! LAYUP by CHEATHAM, SIERRA

### Wichita St. 69, Tulane 68

Points from (This Period)	WSU	TLN
In the Paint	6	6
Off Turns	7	2
2nd Chance	2	2
Fast Break	2	0
Bench	3	0



**Official Scoring/Possession Reference Chart  
Wichita St. vs Tulane  
Period 1**

**February 16, 2020 at Avron B. Fogelman Arena in Devlin Fieldhouse - New Orleans**



**Period 1**

**Starters:**

**Wichita St.:** 2 MCCULLY, MARIAH (G); 12 BREMAUD, CARLA (G); 13 PRINCE, RAVEN (F); 23 BASTIN, SERAPHINE (G); 34 SMITH, SHYIA (F);

**Tulane:** 00 CLARK, ARSULA (G); 5 MANUIRIRANGI, KAYLA (G); 12 CHEATHAM, SIERRA (G); 23 FREEMAN, KRYSTAL (F); 42 HEIDE, MIA (F);

Time	VISITORS: Wichita St.	Score	Margin	HOME: Tulane
09:49		2-0	H 2	GOOD! JUMPER by CLARK, ARSULA [PNT]
09:49		3-0	H 3	GOOD! FT by CLARK, ARSULA
08:40	GOOD! LAYUP by SMITH, SHYIA	3-2	H 1	
07:46		5-2	H 3	GOOD! JUMPER by FREEMAN, KRYSTAL
06:39	GOOD! FT by PRINCE, RAVEN	5-3	H 2	
06:39	GOOD! FT by PRINCE, RAVEN	5-4	H 1	
06:20	GOOD! 3PTR by MCCULLY, MARIAH	5-7	V 2	
06:02		7-7	T	GOOD! LAYUP by FREEMAN, KRYSTAL
04:52		9-7	H 2	GOOD! LAYUP by CLARK, ARSULA
03:21		11-7	H 4	GOOD! LAYUP by CLARK, ARSULA [FB]
02:40		13-7	H 6	GOOD! LAYUP by FREEMAN, KRYSTAL
02:11	GOOD! FT by HENDERSON, ASIA	13-8	H 5	
01:28	GOOD! FT by BASTIN, SERAPHINE	13-9	H 4	
00:31	GOOD! JUMPER by BREWER, MAYA	13-11	H 2	
00:04		15-11	H 4	GOOD! JUMPER by FREEMAN, KRYSTAL

**Wichita St. 11, Tulane 15**

**Official Scoring/Possession Reference Chart  
Wichita St. vs Tulane  
Period 2**

**February 16, 2020 at Avron B. Fogelman Arena in Devlin Fieldhouse - New Orleans**



**Period 2**

**Starters:**

**Wichita St.:** 2 MCCULLY, MARIAH (G); 12 BREMAUD, CARLA (G); 13 PRINCE, RAVEN (F); 23 BASTIN, SERAPHINE (G); 34 SMITH, SHYIA (F);

**Tulane:** 00 CLARK, ARSULA (G); 5 MANUIRIRANGI, KAYLA (G); 12 CHEATHAM, SIERRA (G); 23 FREEMAN, KRYSTAL (F); 42 HEIDE, MIA (F);

Time	VISITORS: Wichita St.	Score	Margin	HOME: Tulane
09:50	GOOD! JUMPER by BREWER, MAYA	15-13	H 2	
08:46		17-13	H 4	GOOD! LAYUP by CLARK, ARSULA [FB]
08:14	GOOD! JUMPER by REID, ASHLEY [PNT]	17-15	H 2	
07:58		18-15	H 3	GOOD! FT by CLARK, ARSULA
07:40	GOOD! LAYUP by PRINCE, RAVEN	18-17	H 1	
07:23		20-17	H 3	GOOD! LAYUP by CLARK, ARSULA
06:36		22-17	H 5	GOOD! LAYUP by FREEMAN, KRYSTAL
05:35	GOOD! 3PTR by BREMAUD, CARLA [FB]	22-20	H 2	
04:15		23-20	H 3	GOOD! FT by CLARK, ARSULA [FB]
04:15		24-20	H 4	GOOD! FT by CLARK, ARSULA [FB]
04:02	GOOD! JUMPER by MCCULLY, MARIAH [PNT]	24-22	H 2	
03:32		25-22	H 3	GOOD! FT by CLARK, ARSULA
02:36		27-22	H 5	GOOD! LAYUP by HEIDE, MIA
02:16	GOOD! LAYUP by MCCARTY, DJ	27-24	H 3	
02:01		30-24	H 6	GOOD! 3PTR by CLARK, ARSULA
01:35	GOOD! LAYUP by MCCULLY, MARIAH [PNT]	30-26	H 4	
01:17	GOOD! LAYUP by MCCULLY, MARIAH [FB]	30-28	H 2	
00:34		33-28	H 5	GOOD! 3PTR by CHEATHAM, SIERRA
00:01	GOOD! JUMPER by PRINCE, RAVEN [PNT]	33-30	H 3	

**Wichita St. 30, Tulane 33**

**Official Scoring/Possession Reference Chart**  
**Wichita St. vs Tulane**  
**Period 3**

**February 16, 2020 at Avron B. Fogelman Arena in Devlin Fieldhouse - New Orleans**



**Period 3**

**Starters:**

**Wichita St.:** 2 MCCULLY, MARIAH (G); 12 BREMAUD, CARLA (G); 13 PRINCE, RAVEN (F); 23 BASTIN, SERAPHINE (G); 34 SMITH, SHYIA (F);  
**Tulane:** 00 CLARK, ARSULA (G); 5 MANUIRIRANGI, KAYLA (G); 12 CHEATHAM, SIERRA (G); 23 FREEMAN, KRYSTAL (F); 42 HEIDE, MIA (F);

Time	VISITORS: Wichita St.	Score	Margin	HOME: Tulane
09:22		35-30	H 5	GOOD! LAYUP by CLARK, ARSULA
08:08		38-30	H 8	GOOD! 3PTR by MANUIRIRANGI, KAYLA
07:47	GOOD! FT by PRINCE, RAVEN	38-31	H 7	
07:47	GOOD! FT by PRINCE, RAVEN	38-32	H 6	
06:15	GOOD! LAYUP by MCCULLY, MARIAH [FB]	38-34	H 4	
05:54	GOOD! 3PTR by BREWER, MAYA [FB]	38-37	H 1	
05:29		40-37	H 3	GOOD! JUMPER by FREEMAN, KRYSTAL
05:17	GOOD! JUMPER by BREWER, MAYA	40-39	H 1	
05:05		41-39	H 2	GOOD! FT by CLARK, ARSULA
05:05		42-39	H 3	GOOD! FT by CLARK, ARSULA
04:43	GOOD! 3PTR by MCCULLY, MARIAH	42-42	T	
04:19	GOOD! LAYUP by REID, ASHLEY	42-44	V 2	
04:14		44-44	T	GOOD! LAYUP by CLARK, ARSULA
03:42	GOOD! LAYUP by BASTIN, SERAPHINE [FB]	44-46	V 2	
03:00	GOOD! LAYUP by HENDERSON, ASIA	44-48	V 4	
02:31		47-48	V 1	GOOD! 3PTR by CLARK, ARSULA
02:05	GOOD! JUMPER by HENDERSON, ASIA [FB]	47-50	V 3	
01:55		48-50	V 2	GOOD! FT by BATES, SALMA
01:55		49-50	V 1	GOOD! FT by BATES, SALMA
01:43	GOOD! JUMPER by HENDERSON, ASIA	49-52	V 3	
01:13		51-52	V 1	GOOD! LAYUP by CLARK, ARSULA [FB]
00:30	GOOD! 3PTR by BREWER, MAYA [FB]	51-55	V 4	
00:02		53-55	V 2	GOOD! JUMPER by BATES, SALMA

**Wichita St. 55, Tulane 53**

**Official Scoring/Possession Reference Chart  
Wichita St. vs Tulane  
Period 4**

**February 16, 2020 at Avron B. Fogelman Arena in Devlin Fieldhouse - New Orleans**



**Period 4**

**Starters:**

**Wichita St.:** 2 MCCULLY, MARIAH (G); 12 BREMAUD, CARLA (G); 13 PRINCE, RAVEN (F); 23 BASTIN, SERAPHINE (G); 34 SMITH, SHYIA (F);  
**Tulane:** 00 CLARK, ARSULA (G); 5 MANUIRIRANGI, KAYLA (G); 12 CHEATHAM, SIERRA (G); 23 FREEMAN, KRYSTAL (F); 42 HEIDE, MIA (F);

Time	VISITORS: Wichita St.	Score	Margin	HOME: Tulane
08:32	GOOD! LAYUP by BASTIN, SERAPHINE [FB]	53-57	V 4	
08:09		55-57	V 2	GOOD! LAYUP by FREEMAN, KRYSTAL
08:09		56-57	V 1	GOOD! FT by FREEMAN, KRYSTAL
07:50	GOOD! 3PTR by MCCULLY, MARIAH	56-60	V 4	
07:37		59-60	V 1	GOOD! 3PTR by CHEATHAM, SIERRA
04:20	GOOD! LAYUP by MCCULLY, MARIAH	59-62	V 3	
04:03		62-62	T	GOOD! 3PTR by CHEATHAM, SIERRA
03:14		64-62	H 2	GOOD! JUMPER by FREEMAN, KRYSTAL [PNT]
02:13		65-62	H 3	GOOD! FT by CLARK, ARSULA
02:13		66-62	H 4	GOOD! FT by CLARK, ARSULA
01:47	GOOD! JUMPER by BASTIN, SERAPHINE [PNT]	66-64	H 2	
00:22	GOOD! 3PTR by BREWER, MAYA	66-67	V 1	
00:07	GOOD! FT by BASTIN, SERAPHINE	66-68	V 2	
00:07	GOOD! FT by BASTIN, SERAPHINE	66-69	V 3	
00:00		68-69	V 1	GOOD! LAYUP by CHEATHAM, SIERRA

**Wichita St. 69, Tulane 68**

**Official Substitutions Log  
Wichita St. vs Tulane  
Period 1**

**February 16, 2020 at Avron B. Fogelman Arena in Devlin Fieldhouse - New Orleans**



<b>VISITORS: Wichita St.</b>	<b>Time</b>	<b>Score</b>	<b>HOME: Tulane</b>
2 MCCULLY, MARIAH			00 CLARK, ARSULA
12 BREMAUD, CARLA			5 MANUIRIRANGI, KAYLA
13 PRINCE, RAVEN			12 CHEATHAM, SIERRA
23 BASTIN, SERAPHINE			23 FREEMAN, KRYSTAL
34 SMITH, SHYIA			42 HEIDE, MIA
	06:39	2-5	SUB OUT: MANUIRIRANGI, KAYLA
	06:39		SUB OUT: HEIDE, MIA
	06:39		SUB IN: JONES, DYNAH
	06:39		SUB IN: PARAU, IRINA
SUB OUT: 13 PRINCE, RAVEN	04:24	7-9	
SUB OUT: 23 BASTIN, SERAPHINE	04:24		
SUB IN: 5 REID, ASHLEY	04:24		
SUB IN: 24 COLBERT, TRAJATA	04:24		
SUB OUT: 12 BREMAUD, CARLA	03:57	7-9	
SUB IN: 21 BREWER, MAYA	03:57		
SUB OUT: 34 SMITH, SHYIA	03:00	7-11	
SUB IN: 42 HENDERSON, ASIA	03:00		
	02:18	7-13	SUB OUT: CLARK, ARSULA
	02:18		SUB IN: ANDERSON, KAILA
SUB OUT: 2 MCCULLY, MARIAH	02:18		
SUB IN: 23 BASTIN, SERAPHINE	02:18		
	01:43	8-13	SUB OUT: CHEATHAM, SIERRA
	01:43		SUB IN: MANUIRIRANGI, KAYLA
	01:11	9-13	SUB OUT: JONES, DYNAH
	01:11		SUB IN: CHEATHAM, SIERRA
	00:41	9-13	SUB OUT: PARAU, IRINA
	00:41		SUB IN: HEIDE, MIA
SUB OUT: 42 HENDERSON, ASIA	00:41		
SUB IN: 34 SMITH, SHYIA	00:41		

**Wichita St. 11, Tulane 15**

**Official Substitutions Log  
Wichita St. vs Tulane  
Period 2**

**February 16, 2020 at Avron B. Fogelman Arena in Devlin Fieldhouse - New Orleans**



<b>VISITORS: Wichita St.</b>	<b>Time</b>	<b>Score</b>	<b>HOME: Tulane</b>
2 MCCULLY, MARIAH			00 CLARK, ARSULA
12 BREMAUD, CARLA			5 MANUIRIRANGI, KAYLA
13 PRINCE, RAVEN			12 CHEATHAM, SIERRA
23 BASTIN, SERAPHINE			23 FREEMAN, KRYSTAL
34 SMITH, SHYIA			42 HEIDE, MIA
	10:00	-	SUB OUT: ANDERSON, KAILA
	10:00		SUB OUT: FREEMAN, KRYSTAL
	10:00		SUB IN: CLARK, ARSULA
	10:00		SUB IN: MIMMS, DENE'
SUB OUT: 23 BASTIN, SERAPHINE	10:00		
SUB IN: 13 PRINCE, RAVEN	10:00		
SUB OUT: 13 PRINCE, RAVEN	08:29	13-17	
SUB IN: 23 BASTIN, SERAPHINE	08:29		
	07:58	15-17	SUB OUT: HEIDE, MIA
	07:58		SUB IN: FREEMAN, KRYSTAL
SUB OUT: 23 BASTIN, SERAPHINE	07:58		
SUB OUT: 24 COLBERT, TRAJATA	07:58		
SUB IN: 2 MCCULLY, MARIAH	07:58		
SUB IN: 13 PRINCE, RAVEN	07:58		
	06:26	17-22	SUB OUT: MANUIRIRANGI, KAYLA
	06:26		SUB IN: BATES, SALMA
SUB OUT: 21 BREWER, MAYA	06:26		
SUB IN: 1 MCCARTY, DJ	06:26		
SUB OUT: 5 REID, ASHLEY	06:12	17-22	
SUB IN: 12 BREMAUD, CARLA	06:12		
	05:11	20-22	SUB OUT: MIMMS, DENE'
	05:11		SUB IN: PARAU, IRINA
	04:15	20-22	SUB OUT: CHEATHAM, SIERRA
	04:15		SUB IN: MANUIRIRANGI, KAYLA
	03:32	22-24	SUB OUT: MANUIRIRANGI, KAYLA
	03:32		SUB IN: ANDERSON, KAILA
	03:07	22-25	SUB OUT: FREEMAN, KRYSTAL
	03:07		SUB IN: HEIDE, MIA
SUB OUT: 12 BREMAUD, CARLA	02:50	22-25	
SUB IN: 23 BASTIN, SERAPHINE	02:50		
SUB OUT: 34 SMITH, SHYIA	02:18	22-27	
SUB IN: 5 REID, ASHLEY	02:18		
	01:37	24-30	SUB OUT: ANDERSON, KAILA
	01:37		SUB IN: CHEATHAM, SIERRA

**Wichita St. 30, Tulane 33**

**Official Substitutions Log  
Wichita St. vs Tulane  
Period 3**

**February 16, 2020 at Avron B. Fogelman Arena in Devlin Fieldhouse - New Orleans**



<b>VISITORS: Wichita St.</b>	<b>Time</b>	<b>Score</b>	<b>HOME: Tulane</b>
2 MCCULLY, MARIAH			00 CLARK, ARSULA
12 BREMAUD, CARLA			5 MANUIRIRANGI, KAYLA
13 PRINCE, RAVEN			12 CHEATHAM, SIERRA
23 BASTIN, SERAPHINE			23 FREEMAN, KRYSTAL
34 SMITH, SHYIA			42 HEIDE, MIA
	10:00	-	SUB OUT: BATES, SALMA
	10:00		SUB OUT: PARAU, IRINA
	10:00		SUB OUT: HEIDE, MIA
	10:00		SUB IN: MANUIRIRANGI, KAYLA
	10:00		SUB IN: GRANT, ANIJAH
	10:00		SUB IN: FREEMAN, KRYSTAL
SUB OUT: 5 REID, ASHLEY	10:00		
SUB IN: 12 BREMAUD, CARLA	10:00		
SUB OUT: 1 MCCARTY, DJ	08:13	30-35	
SUB IN: 21 BREWER, MAYA	08:13		
SUB OUT: 12 BREMAUD, CARLA	07:33	32-38	
SUB IN: 5 REID, ASHLEY	07:33		
	05:59	34-38	SUB OUT: MANUIRIRANGI, KAYLA
	05:59		SUB IN: JONES, DYNAH
	05:43	37-38	SUB OUT: GRANT, ANIJAH
	05:43		SUB IN: PARAU, IRINA
SUB OUT: 13 PRINCE, RAVEN	05:42	37-38	
SUB IN: 34 SMITH, SHYIA	05:42		
	05:05	39-40	SUB OUT: JONES, DYNAH
	05:05		SUB IN: ANDERSON, KAILA
SUB OUT: 34 SMITH, SHYIA	04:04	44-44	
SUB IN: 42 HENDERSON, ASIA	04:04		
	03:36	46-44	SUB OUT: ANDERSON, KAILA
	03:36		SUB IN: BATES, SALMA
	01:55	50-47	SUB OUT: PARAU, IRINA
	01:55		SUB IN: HEIDE, MIA

**Wichita St. 55, Tulane 53**

**Official Substitutions Log  
Wichita St. vs Tulane  
Period 4**

**February 16, 2020 at Avron B. Fogelman Arena in Devlin Fieldhouse - New Orleans**



<b>VISITORS: Wichita St.</b>	<b>Time</b>	<b>Score</b>	<b>HOME: Tulane</b>
2 MCCULLY, MARIAH			00 CLARK, ARSULA
12 BREMAUD, CARLA			5 MANUIRIRANGI, KAYLA
13 PRINCE, RAVEN			12 CHEATHAM, SIERRA
23 BASTIN, SERAPHINE			23 FREEMAN, KRISTAL
34 SMITH, SHYIA			42 HEIDE, MIA
SUB OUT: 2 MCCULLY, MARIAH	10:00	-	
SUB OUT: 42 HENDERSON, ASIA	10:00		
SUB IN: 12 BREMAUD, CARLA	10:00		
SUB IN: 13 PRINCE, RAVEN	10:00		
SUB OUT: 13 PRINCE, RAVEN	08:09	57-55	
SUB IN: 42 HENDERSON, ASIA	08:09		
SUB OUT: 5 REID, ASHLEY	07:52	57-56	
SUB IN: 2 MCCULLY, MARIAH	07:52		
SUB OUT: 21 BREWER, MAYA	07:02	60-59	
SUB IN: 1 MCCARTY, DJ	07:02		
SUB OUT: 23 BASTIN, SERAPHINE	05:15	60-59	
SUB IN: 5 REID, ASHLEY	05:15		
SUB OUT: 42 HENDERSON, ASIA	04:37	60-59	
SUB IN: 13 PRINCE, RAVEN	04:37		
SUB OUT: 1 MCCARTY, DJ	03:00	62-64	
SUB OUT: 12 BREMAUD, CARLA	03:00		
SUB IN: 21 BREWER, MAYA	03:00		
SUB IN: 23 BASTIN, SERAPHINE	03:00		
SUB OUT: 13 PRINCE, RAVEN	02:13	62-64	
SUB IN: 34 SMITH, SHYIA	02:13		
	00:15	67-66	
	00:15		SUB OUT: HEIDE, MIA
SUB OUT: 21 BREWER, MAYA	00:15		SUB IN: MANUIRIRANGI, KAYLA
SUB IN: 12 BREMAUD, CARLA	00:15		
	00:13	67-66	SUB OUT: MANUIRIRANGI, KAYLA
	00:13		SUB IN: MIMMS, DENE'
	00:07	69-66	SUB OUT: MIMMS, DENE'
	00:07		SUB IN: MANUIRIRANGI, KAYLA

**Wichita St. 69, Tulane 68**



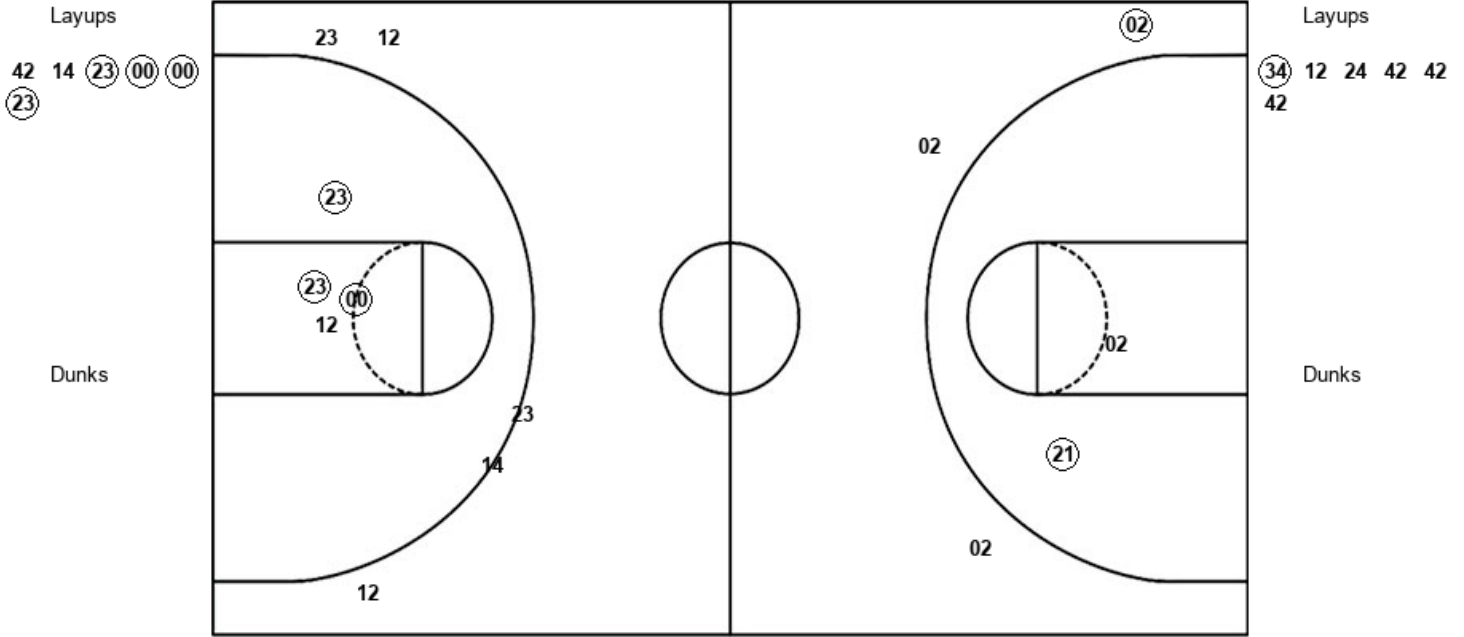
Official Shot Chart  
 Wichita St. vs Tulane  
 PERIOD 1 Shots

February 16, 2020 at Avron B. Fogelman Arena in Devlin Fieldhouse - New Orleans



Tulane

Wichita St.



TLN : Period 1	Made	Att	Pct
Layups	4	6	66.7
Dunks	0	0	0
2PT Field Goals	7	10	70.0
3PT Field Goals	0	5	00.0
<b>Total Field Goals</b>	<b>7</b>	<b>15</b>	<b>46.7</b>

WSU : Period 1	Made	Att	Pct
Layups	1	6	16.7
Dunks	0	0	0
2PT Field Goals	2	8	25.0
3PT Field Goals	1	3	33.3
<b>Total Field Goals</b>	<b>3</b>	<b>11</b>	<b>27.3</b>

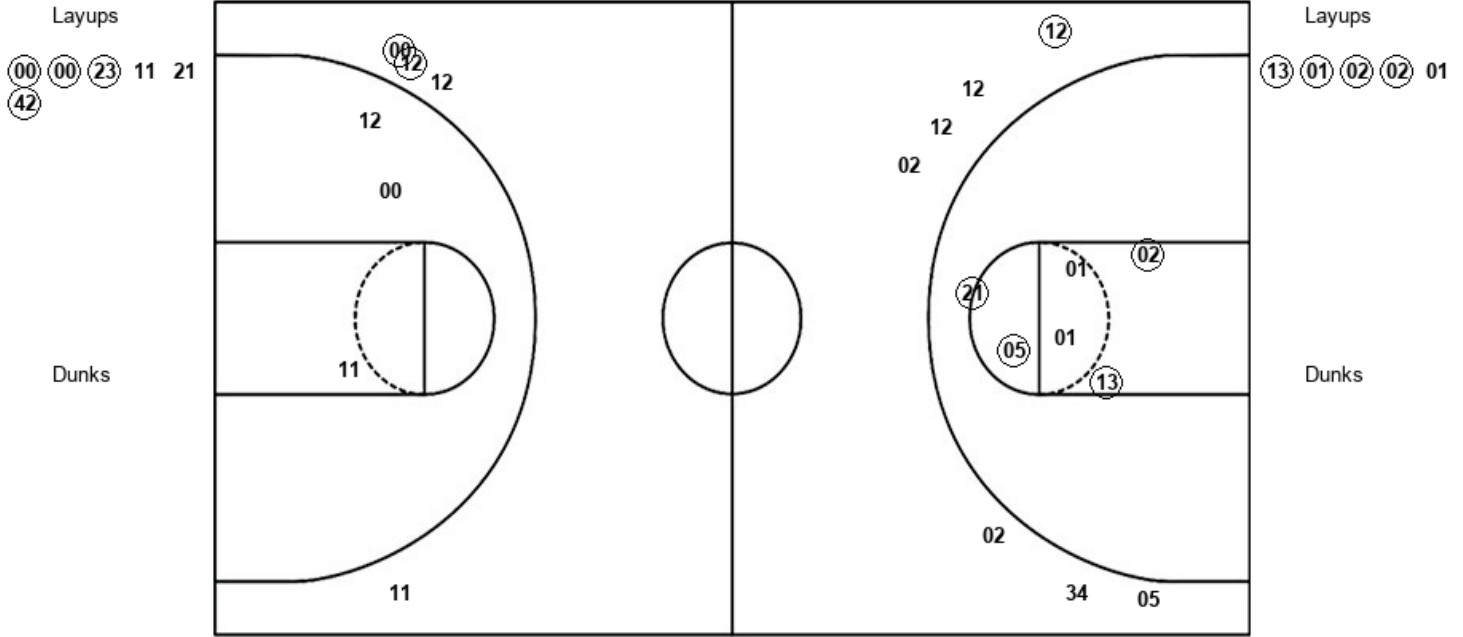
Official Shot Chart  
 Wichita St. vs Tulane  
 PERIOD 2 Shots

February 16, 2020 at Avron B. Fogelman Arena in Devlin Fieldhouse - New Orleans



Tulane

Wichita St.



TLN : Period 2	Made	Att	Pct
Layups	4	6	66.7
Dunks	0	0	0
2PT Field Goals	4	9	44.4
3PT Field Goals	2	4	50.0
<b>Total Field Goals</b>	<b>6</b>	<b>13</b>	<b>46.2</b>

WSU : Period 2	Made	Att	Pct
Layups	4	5	80.0
Dunks	0	0	0
2PT Field Goals	8	11	72.7
3PT Field Goals	1	7	14.3
<b>Total Field Goals</b>	<b>9</b>	<b>18</b>	<b>50.0</b>

Official Shot Chart  
**Wichita St. vs Tulane**  
 PERIOD 3 Shots

February 16, 2020 at Avron B. Fogelman Arena in Devlin Fieldhouse - New Orleans



**Tulane**

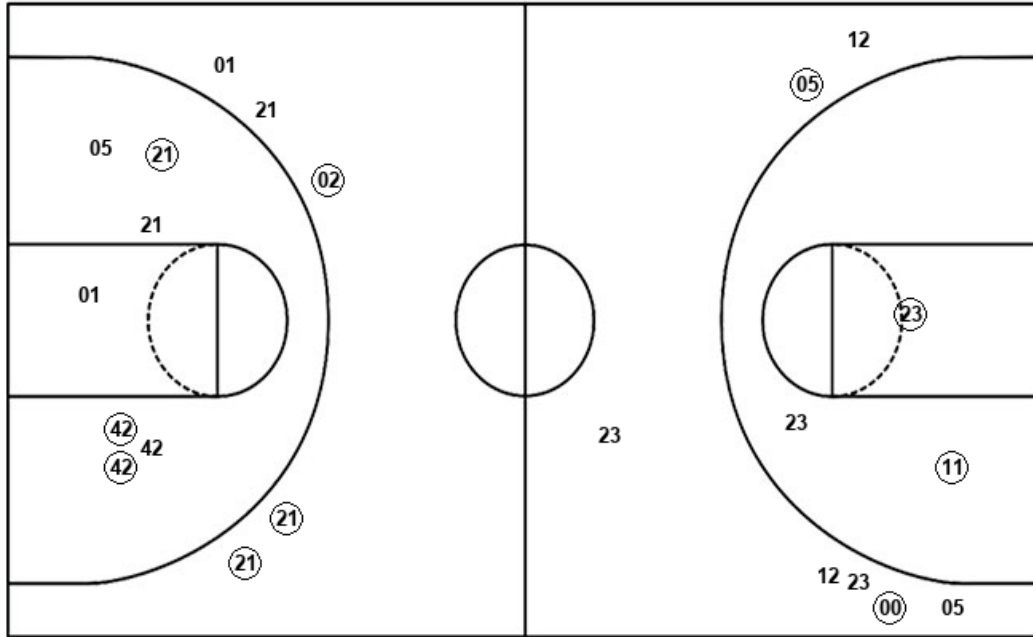
**Wichita St.**

Layups  
 (00) (00) (00)

Layups  
 (02) (05) (23) (42)

Dunks

Dunks



TLN : Period 3	Made	Att	Pct
Layups	3	3	100.0
Dunks	0	0	0
2PT Field Goals	5	6	83.3
3PT Field Goals	2	7	28.6
<b>Total Field Goals</b>	<b>7</b>	<b>13</b>	<b>53.8</b>

WSU : Period 3	Made	Att	Pct
Layups	4	4	100.0
Dunks	0	0	0
2PT Field Goals	7	11	63.6
3PT Field Goals	3	5	60.0
<b>Total Field Goals</b>	<b>10</b>	<b>16</b>	<b>62.5</b>

Official Shot Chart  
 Wichita St. vs Tulane  
 PERIOD 4 Shots

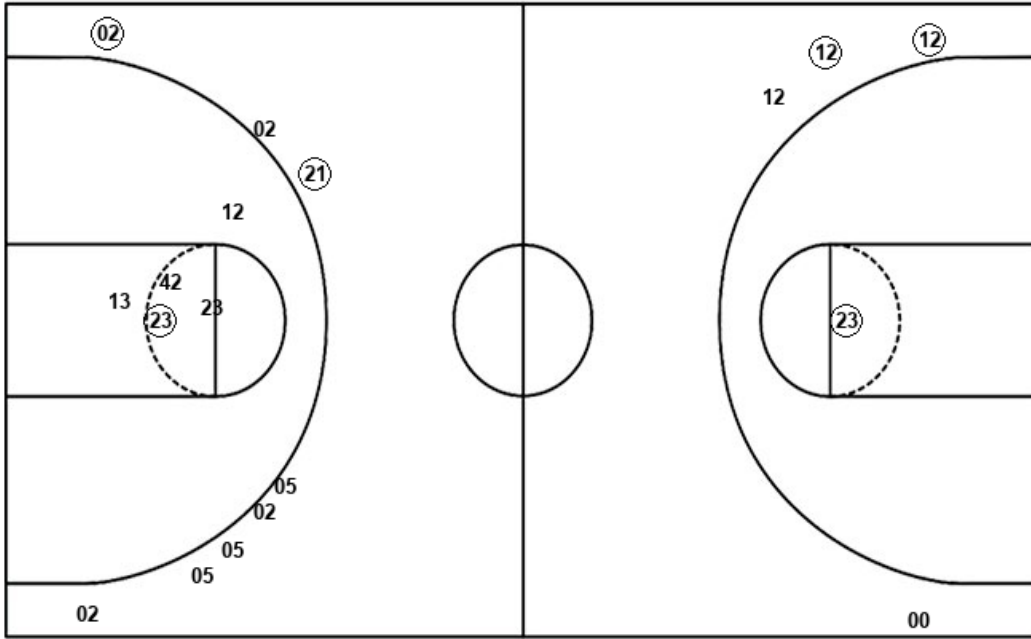
February 16, 2020 at Avron B. Fogelman Arena in Devlin Fieldhouse - New Orleans



Tulane

Wichita St.

Layups  
 00 (23) 42 (12)



Layups  
 13 13 (23) 02 42  
 (02) 13 21

Dunks

Dunks

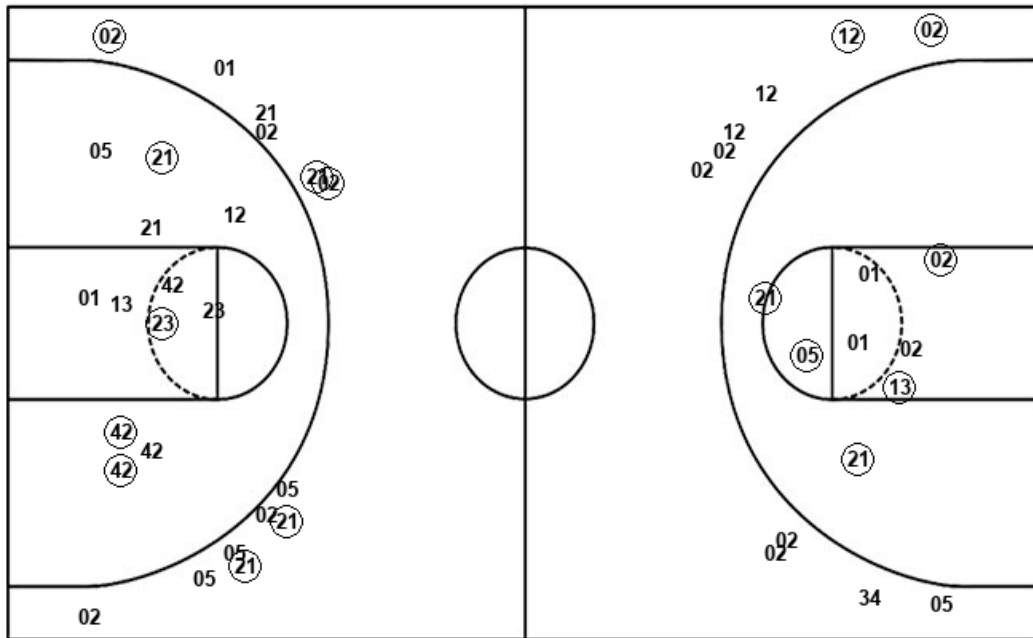
TLN : Period 4	Made	Att	Pct
Layups	2	4	50.0
Dunks	0	0	0
2PT Field Goals	3	5	60.0
3PT Field Goals	2	4	50.0
<b>Total Field Goals</b>	<b>5</b>	<b>9</b>	<b>55.6</b>

WSU : Period 4	Made	Att	Pct
Layups	2	8	25.0
Dunks	0	0	0
2PT Field Goals	3	13	23.1
3PT Field Goals	2	8	25.0
<b>Total Field Goals</b>	<b>5</b>	<b>21</b>	<b>23.8</b>

**Official Shot Chart**  
**Wichita St. vs Tulane**  
**Wichita St. Team Shots**  
 February 16, 2020 at Avron B. Fogelman Arena in Devlin Fieldhouse - New Orleans



Layups



Layups

(34) 12 24 42 42  
 42 (13) (01) (02) (02)  
 01 (02) (05) (23) (42)  
 13 13 (23) 02 42  
 (02) 13 21

Dunks

Dunks

WSU : Period 1	Made	Att	Pct
Layups	1	6	16.7
Dunks	0	0	0
2PT Field Goals	2	8	25.0
3PT Field Goals	1	3	33.3
<b>Total Field Goals</b>	<b>3</b>	<b>11</b>	<b>27.3</b>

WSU : Period 3	Made	Att	Pct
Layups	4	4	100.0
Dunks	0	0	0
2PT Field Goals	7	11	63.6
3PT Field Goals	3	5	60.0
<b>Total Field Goals</b>	<b>10</b>	<b>16</b>	<b>62.5</b>

WSU : Period 2	Made	Att	Pct
Layups	4	5	80.0
Dunks	0	0	0
2PT Field Goals	8	11	72.7
3PT Field Goals	1	7	14.3
<b>Total Field Goals</b>	<b>9</b>	<b>18</b>	<b>50.0</b>

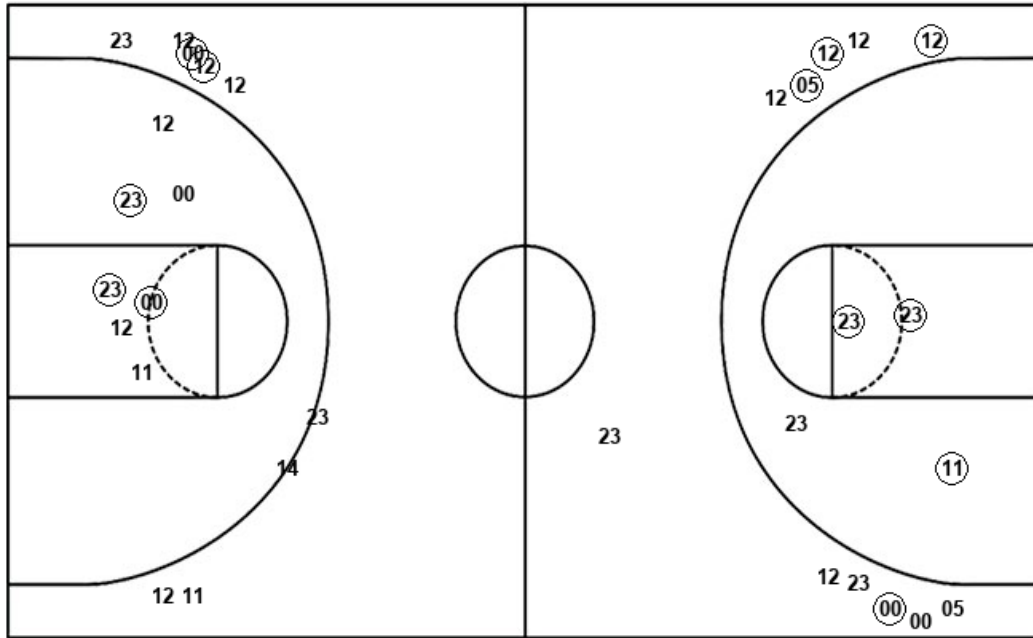
WSU : Period 4	Made	Att	Pct
Layups	2	8	25.0
Dunks	0	0	0
2PT Field Goals	3	13	23.1
3PT Field Goals	2	8	25.0
<b>Total Field Goals</b>	<b>5</b>	<b>21</b>	<b>23.8</b>

Official Shot Chart  
 Wichita St. vs Tulane  
 Tulane Team Shots

February 16, 2020 at Avron B. Fogelman Arena in Devlin Fieldhouse - New Orleans



Layups



Layups

42	14	(23)	(00)	(00)
(23)	(00)	(00)	(23)	11
21	42	(00)	(00)	(00)
00	23	42	12	

Dunks

Dunks

TLN : Period 1	Made	Att	Pct
Layups	4	6	66.7
Dunks	0	0	0
2PT Field Goals	7	10	70.0
3PT Field Goals	0	5	00.0
<b>Total Field Goals</b>	<b>7</b>	<b>15</b>	<b>46.7</b>

TLN : Period 2	Made	Att	Pct
Layups	4	6	66.7
Dunks	0	0	0
2PT Field Goals	4	9	44.4
3PT Field Goals	2	4	50.0
<b>Total Field Goals</b>	<b>6</b>	<b>13</b>	<b>46.2</b>

TLN : Period 3	Made	Att	Pct
Layups	3	3	100.0
Dunks	0	0	0
2PT Field Goals	5	6	83.3
3PT Field Goals	2	7	28.6
<b>Total Field Goals</b>	<b>7</b>	<b>13</b>	<b>53.8</b>

TLN : Period 4	Made	Att	Pct
Layups	2	4	50.0
Dunks	0	0	0
2PT Field Goals	3	5	60.0
3PT Field Goals	2	4	50.0
<b>Total Field Goals</b>	<b>5</b>	<b>9</b>	<b>55.6</b>