

FINAL SCORE



UTEP

65



Western Ky.

78

February 13, 2020 • E.A. Diddle Arena (John Oldham Court) - Bowling Green, Ky.

FINAL STATISTICS

Official Box Score
UTEP vs Western Ky.
Game Totals -- Final Statistics
February 13, 2020 at E.A. Diddle Arena (John Oldham Court) - Bowling Green, Ky.



UTEP 65

No.	Player	S	Pts	FG	3FG	FT	OR	DR	TR	PF	A	TO	Blk	Stl	Min	+/-
03	GALLEGOS, KATIA	G	9	4-12	1-3	0-0	1	6	7	3	4	1	0	2	39	-7
12	GILL, ARIONA	F	19	8-14	0-0	3-6	1	6	7	3	2	1	1	0	36	-4
13	LIPE, SABINE	G	7	3-6	0-2	1-1	2	3	5	3	4	3	1	1	24	-4
15	CROUSE, AVERY	G	6	2-5	1-2	1-4	1	5	6	3	2	2	0	1	36	-7
44	ZEC, KATARINA	G	7	3-9	0-2	1-1	1	6	7	1	0	5	0	0	27	-6
01	KHLOPKOVA, ARINA	G	0	0-0	0-0	0-0	1	0	1	0	0	2	0	0	4	-11
02	BRADSHAW, TIA	G	0	0-0	0-0	0-0	0	0	0	2	0	2	0	0	4	-9
22	ROEBUCK, DEJANAE	F	0	0-0	0-0	0-0	0	0	0	0	0	2	0	0	3	-7
25	TAYLOR, ARIANA	F	0	0-2	0-0	0-0	0	0	0	2	0	0	0	0	2	-5
33	PRUITT, MICHELLE	F	17	8-8	0-0	1-2	2	1	3	1	0	1	0	0	22	-5
TEAM							0	0	0	0		0				
TOTALS			65	28-56	2-9	7-14	9	27	36	18	12	19	2	4	198	

Shooting By Period

Period	FG	FG%	3FG	3FG%	FT	FT%
1st Qtr	5-13	38%	0-2	00%	1-1	100%
2nd Qtr	7-15	47%	1-3	33%	2-8	25%
3rd Qtr	8-14	57%	0-2	00%	3-3	100%
4th Qtr	8-14	57%	1-2	50%	1-2	50%
1st Half	12-28	43%	1-5	20%	3-9	33%
2nd Half	16-28	57%	1-4	25%	4-5	80%
Game	28-56	50.0%	2-9	22.2%	7-14	50.0%

Deadball Rebounds: 3,1

Last FG: 4th-00:44

Biggest Run: 11-0

Largest lead: By 0 at 1st-07:39

Technical Fouls: None.

Western Ky. 78

No.	Player	S	Pts	FG	3FG	FT	OR	DR	TR	PF	A	TO	Blk	Stl	Min	+/-
04	GIVENS, DEE	F	16	7-19	2-11	0-0	2	3	5	3	6	1	0	6	35	20
05	CREECH, WHITNEY	G	6	2-9	0-1	2-2	0	1	1	1	3	3	0	2	38	18
11	BREWER, ALEXIS	G	17	6-9	3-5	2-2	0	2	2	0	4	3	0	0	30	14
15	ELGEDAWY, RANEEM	F	16	7-14	0-2	2-7	4	10	14	1	1	2	1	0	30	8
40	ABDELGAWAD, MERAL	G	17	6-12	2-5	3-3	5	1	6	4	2	0	0	3	33	13
00	HAYWOOD, MYRIAH	G	0	0-4	0-0	0-0	0	1	1	3	0	1	0	0	12	-6
03	BROWN, DEMYLA	G	3	1-1	1-1	0-0	1	0	1	0	0	1	0	1	5	-7
12	POUYE, FATOU	F	0	0-1	0-0	0-0	0	3	3	2	0	1	0	0	7	0
23	SKINNER, SANDRA	F	3	1-1	0-0	1-2	1	2	3	1	0	0	0	0	10	5
TEAM							2	0	2	0		0				
TOTALS			78	30-70	8-25	10-16	15	23	38	15	16	12	1	12	198	

Shooting By Period

Period	FG	FG%	3FG	3FG%	FT	FT%
1st Qtr	11-19	58%	1-6	17%	3-5	60%
2nd Qtr	7-18	39%	4-7	57%	0-3	00%
3rd Qtr	6-17	35%	0-5	00%	2-2	100%
4th Qtr	6-16	38%	3-7	43%	5-6	83%
1st Half	18-37	49%	5-13	38%	3-8	38%
2nd Half	12-33	36%	3-12	25%	7-8	88%
Game	30-70	42.9%	8-25	32.0%	10-16	62.5%

Deadball Rebounds: 3,0

Last FG: 4th-00:23

Biggest Run: 12-0

Largest lead: By 27 at 2nd-03:29

Technical Fouls: None.

Game Notes:

Officials: Jody Cantrell, Royce Blevins, Carla Roberts

Attendance: 1113

Start Time: 07:02 PM ET

End Time: 08:57 PM ET

Game Duration: 1:55

Conference Game;

Score	1st	2nd	3rd	4th	TOT
UTE	11	17	19	18	65
WKU	26	18	14	20	78

UTE led for 0:00. WKU led for 38:00.

Game was tied for 1:40.

Times tied: 2 Lead Changes: 0

Points from	UTE	WKU
In the Paint	52	36
Off Turns	6	23
2nd Chance	11	11
Fast Break	13	15
Bench	17	6

Official Box Score
UTEP vs Western Ky.
First Half Statistics Only
February 13, 2020 at E.A. Diddle Arena (John Oldham Court) - Bowling Green, Ky.



UTEP 28

No.	Player	S	Pts	FG	3FG	FT	OR	DR	TR	PF	A	TO	Blk	Stl	Min	+/-
01	KHLOPKOVA, ARINA	G	0	0-0	0-0	0-0	1	0	1	0	0	1	0	0	3	-8
02	BRADSHAW, TIA	G	0	0-0	0-0	0-0	0	0	0	2	0	1	0	0	1	-3
03	GALLEGOS, KATIA	G	7	3-10	1-3	0-0	1	4	5	1	1	0	0	0	19	-13
12	GILL, ARIONA	F	7	3-4	0-0	1-4	0	1	1	1	0	0	1	0	17	-10
13	LIPE, SABINE	G	5	2-4	0-1	1-1	2	2	4	2	2	2	1	0	13	-3
15	CROUSE, AVERY	G	1	0-1	0-0	1-4	1	3	4	1	2	1	0	1	20	-16
22	ROEBUCK, DEJANAE	F	0	0-0	0-0	0-0	0	0	0	0	0	2	0	0	3	-4
25	TAYLOR, ARIANA	F	0	0-2	0-0	0-0	0	0	0	2	0	0	0	0	2	-5
33	PRUITT, MICHELLE	F	8	4-4	0-0	0-0	1	0	1	1	0	1	0	0	11	-1
44	ZEC, KATARINA	G	0	0-3	0-1	0-0	0	2	2	0	0	3	0	0	11	-17
	TEAM		0	0-0	0-0	0-0	0	0	0	0	0	0	0	0	0	
TOTALS			28	12-28	1-5	3-9	6	12	18	10	5	11	2	1	100	

Shooting By Period

Period	FG	FG%	3FG	3FG%	FT	FT%
1st Qtr	5-13	38%	0-2	00%	1-1	100%
2nd Qtr	7-15	47%	1-3	33%	2-8	25%
1st Half	12-28	43%	1-5	20%	3-9	33%
Game	28-56	50.0%	2-9	22.2%	7-14	50.0%

Deadball Rebounds: 3,1

Last FG Half: UTE 2nd-00:07

Western Ky. 44

No.	Player	S	Pts	FG	3FG	FT	OR	DR	TR	PF	A	TO	Blk	Stl	Min	+/-
00	HAYWOOD, MYRIAH	G	0	0-2	0-0	0-0	0	0	0	2	0	0	0	0	4	0
03	BROWN, DE'MYLA	G	3	1-1	1-1	0-0	1	0	1	0	0	1	0	1	5	-7
04	GIVENS, DEE	F	11	5-9	1-5	0-0	1	2	3	2	2	1	0	3	15	23
05	CREECH, WHITNEY	G	2	1-4	0-0	0-0	0	1	1	0	3	2	0	1	20	16
11	BREWER, ALEXIS	G	9	3-6	3-5	0-0	0	0	0	0	2	1	0	0	16	16
12	POUYE, FATOU	F	0	0-1	0-0	0-0	0	3	3	2	0	1	0	0	4	1
15	ELGEDAWY, RANEEM	F	12	5-9	0-1	2-7	4	7	11	1	1	1	1	0	17	18
23	SKINNER, SANDRA	F	0	0-0	0-0	0-0	0	0	0	0	0	0	0	0	3	-2
40	ABDELGAWAD, MERAL	G	7	3-5	0-1	1-1	3	0	3	2	2	0	0	2	16	15
	TEAM		0	0-0	0-0	0-0	0	0	0	0	0	0	0	0	0	
TOTALS			44	18-37	5-13	3-8	9	13	22	9	10	7	1	7	100	

Shooting By Period

Period	FG	FG%	3FG	3FG%	FT	FT%
1st Qtr	11-19	58%	1-6	17%	3-5	60%
2nd Qtr	7-18	39%	4-7	57%	0-3	00%
1st Half	18-37	49%	5-13	38%	3-8	38%
Game	30-70	42.9%	8-25	32.0%	10-16	62.5%

Deadball Rebounds: 3,0

Last FG Half: WKU 2nd-03:29

Game Notes:

Officials: Jody Cantrell, Royce Blevins, Carla Roberts
Attendance: 1113

Start Time: 07:02 PM ET

End Time: 08:57 PM ET

Game Duration: 1:55

Conference Game;

Score	1st	2nd	3rd	4th	TOT
UTE	11	17	19	18	65
WKU	26	18	14	20	78

Points from (This Period)	UTE	WKU
In the Paint	22	22
Off Turns	2	15
2nd Chance	7	6
Fast Break	4	9
Bench	8	3

Official Box Score
UTEP vs Western Ky.
First Quarter Statistics Only
February 13, 2020 at E.A. Diddle Arena (John Oldham Court) - Bowling Green, Ky.



UTEP 11

No.	Player	S	Pts	FG	3FG	FT	OR	DR	TR	PF	A	TO	Blk	Stl	Min	+/-
03	GALLEGOS, KATIA	G	0	0-4	0-1	0-0	0	0	0	0	0	0	0	0	9	-12
12	GILL, ARIONA	F	6	3-3	0-0	0-0	0	1	1	0	0	0	0	0	7	-9
13	LIPE, SABINE	G	3	1-2	0-0	1-1	1	0	1	2	1	1	0	0	7	-12
15	CROUSE, AVERY	G	0	0-0	0-0	0-0	0	2	2	0	1	1	0	0	10	-15
44	ZEC, KATARINA	G	0	0-1	0-1	0-0	0	0	0	0	0	2	0	0	7	-7
01	KHLOPKOVA, ARINA	G	0	0-0	0-0	0-0	1	0	1	0	0	1	0	0	3	-8
02	BRADSHAW, TIA	G	0	0-0	0-0	0-0	0	0	0	2	0	1	0	0	1	-3
22	ROEBUCK, DEJANAE	F	0	0-0	0-0	0-0	0	0	0	0	0	0	0	0	1	0
25	TAYLOR, ARIANA	F	0	0-2	0-0	0-0	0	0	0	2	0	0	0	0	2	-5
33	PRUITT, MICHELLE	F	2	1-1	0-0	0-0	0	0	0	0	0	1	0	0	3	-4
TEAM							0	0	0	0		0				
TOTALS			11	5-13	0-2	1-1	2	3	5	6	2	7	0	0	50	

Shooting By Period

Period	FG	FG%	3FG	3FG%	FT	FT%
1st Qtr	5-13	38%	0-2	00%	1-1	100%
2nd Qtr	7-15	47%	1-3	33%	2-8	25%
1st Half	5-13	38%	0-2	00%	1-1	100%
1st Half	12-28	43%	1-5	20%	3-9	33%
Game	28-56	50.0%	2-9	22.2%	7-14	50.0%

Deadball Rebounds: 3,1

Western Ky. 26

No.	Player	S	Pts	FG	3FG	FT	OR	DR	TR	PF	A	TO	Blk	Stl	Min	+/-
04	GIVENS, DEE	F	11	5-8	1-4	0-0	1	1	2	0	1	0	0	2	10	15
05	CREECH, WHITNEY	G	2	1-2	0-0	0-0	0	1	1	0	2	1	0	0	10	15
11	BREWER, ALEXIS	G	0	0-1	0-1	0-0	0	0	0	0	2	0	0	0	8	15
15	ELGEDAWY, RANEEM	F	8	3-5	0-1	2-4	2	4	6	1	0	1	0	0	9	17
40	ABDELGAWAD, MERAL	G	5	2-2	0-0	1-1	2	0	2	1	0	0	0	2	10	15
00	HAYWOOD, MYRIAH	G	0	0-1	0-0	0-0	0	0	0	0	0	0	0	0	2	0
03	BROWN, DEMYLA	G	0	0-0	0-0	0-0	0	0	0	0	0	0	0	0	0	0
12	POUYE, FATOU	F	0	0-0	0-0	0-0	0	0	0	0	0	0	0	0	0	0
23	SKINNER, SANDRA	F	0	0-0	0-0	0-0	0	0	0	0	0	0	0	0	1	-2
TEAM							0	0	0	0		0				
TOTALS			26	11-19	1-6	3-5	5	6	11	2	5	2	0	4	50	

Shooting By Period

Period	FG	FG%	3FG	3FG%	FT	FT%
1st Qtr	11-19	58%	1-6	17%	3-5	60%
2nd Qtr	7-18	39%	4-7	57%	0-3	00%
1st Half	11-19	58%	1-6	17%	3-5	60%
1st Half	18-37	49%	5-13	38%	3-8	38%
Game	30-70	42.9%	8-25	32.0%	10-16	62.5%

Deadball Rebounds: 3,0

Game Notes:

Officials: Jody Cantrell, Royce Blevins, Carla Roberts
Attendance: 1113

Start Time: 07:02 PM ET
End Time: 08:57 PM ET
Game Duration: 1:55
Conference Game;

Score	1st	2nd	3rd	4th	TOT
UTEP	11	17	19	18	65
WKU	26	18	14	20	78

Points from (This Period)	UTEP	WKU
In the Paint	10	16
Off Turns	0	13
2nd Chance	0	2
Fast Break	2	7
Bench	2	0

**Official Play-By-Play
UTEP vs Western Ky.
First Quarter**

February 13, 2020 at E.A. Diddle Arena (John Oldham Court) - Bowling Green, Ky.



Period 1

Starters:

UTEP: 3 GALLEGOS, KATIA (G); 12 GILL, ARIONA (F); 13 LIPE, SABINE (G); 15 CROUSE, AVERY (G); 44 ZEC, KATARINA (G);

Western Ky.: 4 GIVENS, DEE (F); 5 CREECH, WHITNEY (G); 11 BREWER, ALEXIS (G); 15 ELGEDAWY, RANEEM (F); 40 ABDELGAWAD, MERAL (G);

Time	VISITORS: UTEP	Score	Margin	HOME: Western Ky.
09:41	MISSED 3PTR by ZEC, KATARINA			
09:36				REBOUND (DEF) by ELGEDAWY, RANEEM
09:29		3-0	H 3	GOOD! 3PTR by GIVENS, DEE
09:10	GOOD! LAYUP by LIPE, SABINE	3-2	H 1	
09:10				FOUL (PERSONAL) by ELGEDAWY, RANEEM
09:10	GOOD! FT by LIPE, SABINE	3-3	T	
08:50				MISSED 3PTR by BREWER, ALEXIS
08:45				REBOUND (OFF) by ABDELGAWAD, MERAL
08:42				MISSED 3PTR by GIVENS, DEE
08:39	REBOUND (DEF) by GILL, ARIONA			
08:27	TURNOVER (LOSTBALL) by ZEC, KATARINA			
08:27				STEAL by ABDELGAWAD, MERAL
08:17		5-3	H 2	GOOD! LAYUP by ELGEDAWY, RANEEM
08:17				ASSIST by GIVENS, DEE
08:06	MISSED LAYUP by GALLEGOS, KATIA			
08:02				REBOUND (DEF) by ELGEDAWY, RANEEM
07:59				MISSED JUMPER by CREECH, WHITNEY
07:55	REBOUND (DEF) by CROUSE, AVERY			
07:39	GOOD! LAYUP by GILL, ARIONA	5-5	T	
07:23		7-5	H 2	GOOD! LAYUP by ELGEDAWY, RANEEM
07:23				ASSIST by BREWER, ALEXIS
07:09	TURNOVER (LOSTBALL) by ZEC, KATARINA			
07:09				STEAL by GIVENS, DEE
07:02		9-5	H 4	GOOD! JUMPER by GIVENS, DEE [FB/PNT]
06:55	GOOD! LAYUP by GILL, ARIONA [FB]	9-7	H 2	
06:55	ASSIST by LIPE, SABINE			
06:42		11-7	H 4	GOOD! LAYUP by ABDELGAWAD, MERAL [FB]
06:42				ASSIST by BREWER, ALEXIS
06:31				FOUL (PERSONAL) by ABDELGAWAD, MERAL
06:31	SUB OUT: ZEC, KATARINA			
06:31	SUB IN: KHLOPKOVA, ARINA			
06:19	MISSED JUMPER by LIPE, SABINE			
06:16				REBOUND (DEF) by CREECH, WHITNEY
05:52		13-7	H 6	GOOD! JUMPER by GIVENS, DEE
05:38	SUB OUT: GILL, ARIONA			
05:38	SUB IN: TAYLOR, ARIANA			
05:31	MISSED 3PTR by GALLEGOS, KATIA			
05:28	REBOUND (OFF) by LIPE, SABINE			
05:22	MISSED JUMPER by GALLEGOS, KATIA			
05:19	REBOUND (OFF) by KHLOPKOVA, ARINA			
05:17	TURNOVER (LOSTBALL) by KHLOPKOVA, ARINA			
05:17				STEAL by GIVENS, DEE
05:16	FOUL (PERSONAL) by LIPE, SABINE			
05:07		15-7	H 8	GOOD! LAYUP by CREECH, WHITNEY
04:46	MISSED LAYUP by TAYLOR, ARIANA			
04:43				REBOUND (DEF) by ELGEDAWY, RANEEM
04:30		17-7	H 10	GOOD! LAYUP by ELGEDAWY, RANEEM
04:30				ASSIST by CREECH, WHITNEY
04:18	TURNOVER (BADPASS) by LIPE, SABINE			
04:18				
04:18	SUB OUT: TAYLOR, ARIANA			
04:18	SUB IN: PRUITT, MICHELLE			
04:05		19-7	H 12	GOOD! JUMPER by GIVENS, DEE
03:42	MISSED JUMPER by GALLEGOS, KATIA			
03:38				REBOUND (DEF) by GIVENS, DEE
03:15				MISSED 3PTR by GIVENS, DEE
03:09	REBOUND (DEF) by CROUSE, AVERY			
03:09	TURNOVER (BADPASS) by CROUSE, AVERY			
03:09	SUB OUT: KHLOPKOVA, ARINA			
03:09	SUB IN: ZEC, KATARINA			
02:52				MISSED 3PTR by ELGEDAWY, RANEEM
02:48				REBOUND (OFF) by ABDELGAWAD, MERAL
02:34	FOUL (PERSONAL) by LIPE, SABINE			
02:34	SUB OUT: LIPE, SABINE			
02:34	SUB IN: GILL, ARIONA			
02:32		21-7	H 14	GOOD! LAYUP by GIVENS, DEE
02:32				ASSIST by CREECH, WHITNEY
02:13	GOOD! LAYUP by PRUITT, MICHELLE [PNT]	21-9	H 12	
02:03				TURNOVER (TRAVEL) by CREECH, WHITNEY
02:03	SUB OUT: GALLEGOS, KATIA			

Time	VISITORS: UTEP	Score	Margin	HOME: Western Ky.
02:03	SUB IN: BRADSHAW, TIA			
01:43	TURNOVER (LOSTBALL) by PRUITT, MICHELLE			
01:43				STEAL by ABDELGAWAD, MERAL
01:39		23-9	H 14	GOOD! LAYUP by ABDELGAWAD, MERAL [FB]
01:39	FOUL (PERSONAL) by BRADSHAW, TIA			
01:39	SUB OUT: PRUITT, MICHELLE			
01:39	SUB IN: TAYLOR, ARIANA			
01:39	TIMEOUT 30SEC			
01:39		24-9	H 15	GOOD! FT by ABDELGAWAD, MERAL [FB]
01:32	FOUL (OFF) by BRADSHAW, TIA			
01:32	TURNOVER (OFFENSIVE) by BRADSHAW, TIA			
01:32				SUB OUT: BREWER, ALEXIS
01:32				SUB IN: HAYWOOD, MYRIAH
01:32	SUB OUT: BRADSHAW, TIA			
01:32	SUB IN: GALLEGOS, KATIA			
01:21	FOUL (PERSONAL) by TAYLOR, ARIANA			
01:21				MISSED FT by ELGEDAWY, RANEEM
01:21				REBOUND (OFF) by TEAM
01:20				MISSED FT by ELGEDAWY, RANEEM
01:14				REBOUND (OFF) by GIVENS, DEE
01:02				MISSED 3PTR by GIVENS, DEE
00:57				REBOUND (OFF) by ELGEDAWY, RANEEM
00:55				MISSED LAYUP by ELGEDAWY, RANEEM
00:53				REBOUND (OFF) by ELGEDAWY, RANEEM
00:53				TURNOVER (TRAVEL) by ELGEDAWY, RANEEM
00:34	MISSED LAYUP by TAYLOR, ARIANA			
00:33				REBOUND (DEF) by ELGEDAWY, RANEEM
00:33	FOUL (PERSONAL) by TAYLOR, ARIANA			
00:33	SUB OUT: TAYLOR, ARIANA			
00:33	SUB IN: ROEBUCK, DEJANAE			
00:33		25-9	H 16	GOOD! FT by ELGEDAWY, RANEEM
00:33		26-9	H 17	GOOD! FT by ELGEDAWY, RANEEM
00:33				SUB OUT: ELGEDAWY, RANEEM
00:33				SUB IN: SKINNER, SANDRA
00:17	GOOD! LAYUP by GILL, ARIANA	26-11	H 15	
00:17	ASSIST by CROUSE, AVERY			
00:00				MISSED JUMPER by HAYWOOD, MYRIAH
00:00	REBOUND (DEF) by TEAM			

UTEP 11, Western Ky. 26

Points from (This Period)	UTE	WKU
In the Paint	10	16
Off Turns	0	13
2nd Chance	0	2
Fast Break	2	7
Bench	2	0

Official Box Score
UTEP vs Western Ky.
Second Quarter Statistics Only
February 13, 2020 at E.A. Diddle Arena (John Oldham Court) - Bowling Green, Ky.



UTEP 17

No.	Player	S	Pts	FG	3FG	FT	OR	DR	TR	PF	A	TO	Blk	Stl	Min	+/-
03	GALLEGOS, KATIA	G	7	3-6	1-2	0-0	1	4	5	1	1	0	0	0	10	-1
12	GILL, ARIONA	F	1	0-1	0-0	1-4	0	0	0	1	0	0	1	0	10	-1
13	LIPE, SABINE	G	2	1-2	0-1	0-0	1	2	3	0	1	1	1	0	6	9
15	CROUSE, AVERY	G	1	0-1	0-0	1-4	1	1	2	1	1	0	0	1	10	-1
44	ZEC, KATARINA	G	0	0-2	0-0	0-0	0	2	2	0	0	1	0	0	4	-10
01	KHLOPKOVA, ARINA	G	0	0-0	0-0	0-0	0	0	0	0	0	0	0	0	0	0
02	BRADSHAW, TIA	G	0	0-0	0-0	0-0	0	0	0	0	0	0	0	0	0	0
22	ROEBUCK, DEJANAE	F	0	0-0	0-0	0-0	0	0	0	0	0	2	0	0	2	-4
25	TAYLOR, ARIANA	F	0	0-0	0-0	0-0	0	0	0	0	0	0	0	0	0	0
33	PRUITT, MICHELLE	F	6	3-3	0-0	0-0	1	0	1	1	0	0	0	0	8	3
TEAM							0	0	0	0		0				
TOTALS			17	7-15	1-3	2-8	4	9	13	4	3	4	2	1	50	

Shooting By Period

Period	FG	FG%	3FG	3FG%	FT	FT%
3rd Qtr	8-14	57%	0-2	00%	3-3	100%
4th Qtr	8-14	57%	1-2	50%	1-2	50%
2nd Half	7-15	47%	1-3	33%	2-8	25%
2nd Half	16-28	57%	1-4	25%	4-5	80%
Game	28-56	50.0%	2-9	22.2%	7-14	50.0%

Deadball Rebounds: 3,1

Western Ky. 18

No.	Player	S	Pts	FG	3FG	FT	OR	DR	TR	PF	A	TO	Blk	Stl	Min	+/-
04	GIVENS, DEE	F	0	0-1	0-1	0-0	0	1	1	2	1	1	0	1	5	8
05	CREECH, WHITNEY	G	0	0-2	0-0	0-0	0	0	0	0	1	1	0	1	10	1
11	BREWER, ALEXIS	G	9	3-5	3-4	0-0	0	0	0	0	0	1	0	0	8	1
15	ELGEDAWY, RANEEM	F	4	2-4	0-0	0-3	2	3	5	0	1	0	1	0	8	1
40	ABDELGAWAD, MERAL	G	2	1-3	0-1	0-0	1	0	1	1	2	0	0	0	6	0
00	HAYWOOD, MYRIAH	G	0	0-1	0-0	0-0	0	0	0	2	0	0	0	0	2	0
03	BROWN, DE'MYLA	G	3	1-1	1-1	0-0	1	0	1	0	0	1	0	1	5	-7
12	POUYE, FATOU	F	0	0-1	0-0	0-0	0	3	3	2	0	1	0	0	4	1
23	SKINNER, SANDRA	F	0	0-0	0-0	0-0	0	0	0	0	0	0	0	0	2	0
TEAM							0	0	0	0		0				
TOTALS			18	7-18	4-7	0-3	4	7	11	7	5	5	1	3	50	

Shooting By Period

Period	FG	FG%	3FG	3FG%	FT	FT%
3rd Qtr	6-17	35%	0-5	00%	2-2	100%
4th Qtr	6-16	38%	3-7	43%	5-6	83%
2nd Half	7-18	39%	4-7	57%	0-3	00%
2nd Half	12-33	36%	3-12	25%	7-8	88%
Game	30-70	42.9%	8-25	32.0%	10-16	62.5%

Deadball Rebounds: 3,0

Game Notes:

Officials: Jody Cantrell, Royce Blevins, Carla Roberts
Attendance: 1113

Start Time: 07:02 PM ET
End Time: 08:57 PM ET
Game Duration: 1:55
Conference Game;

Score	1st	2nd	3rd	4th	TOT
UTE	11	17	19	18	65
WKU	26	18	14	20	78

Points from (This Period)	UTE	WKU
In the Paint	12	6
Off Turns	2	2
2nd Chance	7	4
Fast Break	2	2
Bench	6	3

**Official Play-By-Play
UTEP vs Western Ky.
Second Quarter**

February 13, 2020 at E.A. Diddle Arena (John Oldham Court) - Bowling Green, Ky.



Period 2

Starters:

UTEP: 3 GALLEGOS, KATIA (G); 12 GILL, ARIONA (F); 13 LIPE, SABINE (G); 15 CROUSE, AVERY (G); 44 ZEC, KATARINA (G);

Western Ky.: 4 GIVENS, DEE (F); 5 CREECH, WHITNEY (G); 11 BREWER, ALEXIS (G); 15 ELGEDAWY, RANEEM (F); 40 ABDELGAWAD, MERAL (G);

Time	VISITORS: UTEP	Score	Margin	HOME: Western Ky.
09:48				TURNOVER (BADPASS) by CREECH, WHITNEY
09:29	TURNOVER (BADPASS) by ROEBUCK, DEJANAE			
09:29				STEAL by GIVENS, DEE
09:22				MISSED 3PTR by GIVENS, DEE
09:20	REBOUND (DEF) by CROUSE, AVERY			
09:20				FOUL (PERSONAL) by HAYWOOD, MYRIAH
09:08	TURNOVER (TRAVEL) by ZEC, KATARINA			
08:58				MISSED JUMPER by HAYWOOD, MYRIAH
08:54	REBOUND (DEF) by ZEC, KATARINA			
08:33	MISSED JUMPER by GALLEGOS, KATIA			
08:29	REBOUND (OFF) by CROUSE, AVERY			
08:29				FOUL (PERSONAL) by HAYWOOD, MYRIAH
08:29				SUB OUT: HAYWOOD, MYRIAH
08:29				SUB OUT: SKINNER, SANDRA
08:29				SUB IN: BREWER, ALEXIS
08:29				SUB IN: ELGEDAWY, RANEEM
08:29	MISSED FT by CROUSE, AVERY			
08:29	REBOUND (OFF) by TEAM			
08:29	GOOD! FT by CROUSE, AVERY	26-12	H 14	
08:14		29-12	H 17	GOOD! 3PTR by BREWER, ALEXIS
08:14				ASSIST by ABDELGAWAD, MERAL
07:54	TURNOVER (LOSTBALL) by ROEBUCK, DEJANAE			
07:54				STEAL by CREECH, WHITNEY
07:46		31-12	H 19	GOOD! LAYUP by ELGEDAWY, RANEEM [FB]
07:46				ASSIST by ABDELGAWAD, MERAL
07:46	FOUL (PERSONAL) by GILL, ARIONA			
07:46	SUB OUT: ROEBUCK, DEJANAE			
07:46	SUB IN: PRUITT, MICHELLE			
07:45				MISSED FT by ELGEDAWY, RANEEM
07:43	REBOUND (DEF) by ZEC, KATARINA			
07:31	MISSED JUMPER by ZEC, KATARINA			
07:31				BLOCK by ELGEDAWY, RANEEM
07:26				REBOUND (DEF) by ELGEDAWY, RANEEM
07:14		34-12	H 22	GOOD! 3PTR by BREWER, ALEXIS
07:14				ASSIST by GIVENS, DEE
06:56				FOUL (PERSONAL) by GIVENS, DEE
06:51	MISSED JUMPER by GILL, ARIONA			
06:48				REBOUND (DEF) by GIVENS, DEE
06:43	FOUL (PERSONAL) by PRUITT, MICHELLE			
06:33				MISSED JUMPER by BREWER, ALEXIS
06:29				REBOUND (OFF) by ABDELGAWAD, MERAL
06:28		36-12	H 24	GOOD! LAYUP by ABDELGAWAD, MERAL
06:23				FOUL (PERSONAL) by ABDELGAWAD, MERAL
06:23				SUB OUT: ABDELGAWAD, MERAL
06:23				SUB IN: POUYE, FATOU
06:23	GOOD! FT by GILL, ARIONA	36-13	H 23	
06:22	MISSED FT by GILL, ARIONA			
06:21				REBOUND (DEF) by ELGEDAWY, RANEEM
06:11				MISSED JUMPER by CREECH, WHITNEY
06:09				REBOUND (OFF) by ELGEDAWY, RANEEM
06:07		38-13	H 25	GOOD! LAYUP by ELGEDAWY, RANEEM
05:56	MISSED JUMPER by ZEC, KATARINA			
05:52				REBOUND (DEF) by POUYE, FATOU
05:51				TURNOVER (BADPASS) by POUYE, FATOU
05:51	STEAL by CROUSE, AVERY			
05:51				FOUL (PERSONAL) by POUYE, FATOU
05:51	SUB OUT: ZEC, KATARINA			
05:51	SUB IN: LIPE, SABINE			
05:51	MISSED FT by CROUSE, AVERY			
05:51	REBOUND (OFF) by TEAM			
05:49	MISSED FT by CROUSE, AVERY			
05:48				REBOUND (DEF) by POUYE, FATOU
05:45				TURNOVER (BADPASS) by BREWER, ALEXIS
05:33	MISSED 3PTR by GALLEGOS, KATIA			
05:29				REBOUND (DEF) by ELGEDAWY, RANEEM
05:07				MISSED LAYUP by ELGEDAWY, RANEEM
05:04	REBOUND (DEF) by GALLEGOS, KATIA			
05:00	GOOD! LAYUP by GALLEGOS, KATIA [FB]	38-15	H 23	
04:55				
04:41				FOUL (OFF) by GIVENS, DEE

Time	VISITORS: UTEP	Score	Margin	HOME: Western Ky.
04:41				SUB OUT: GIVENS, DEE
04:41				SUB IN: BROWN, DE'MYLA
04:41				TURNOVER (OFFENSIVE) by GIVENS, DEE
04:32				FOUL (PERSONAL) by POUYE, FATOU
04:32	MISSED FT by GILL, ARIONA			
04:32	REBOUND (OFF) by TEAM			
04:32	MISSED FT by GILL, ARIONA			
04:31				REBOUND (DEF) by POUYE, FATOU
04:01		41-15	H 26	GOOD! 3PTR by BREWER, ALEXIS
04:01				ASSIST by CREECH, WHITNEY
03:50	GOOD! LAYUP by PRUITT, MICHELLE	41-17	H 24	
03:50	ASSIST by GALLEGOS, KATIA			
03:29		44-17	H 27	GOOD! 3PTR by BROWN, DE'MYLA
03:29				ASSIST by ELGEDAWY, RANEEM
03:10	GOOD! LAYUP by PRUITT, MICHELLE	44-19	H 25	
03:10	ASSIST by LIPE, SABINE			
02:48				MISSED JUMPER by POUYE, FATOU
02:45				REBOUND (OFF) by BROWN, DE'MYLA
02:45	FOUL (PERSONAL) by GALLEGOS, KATIA			
02:45				SUB OUT: POUYE, FATOU
02:45				SUB IN: ABDELGAWAD, MERAL
02:35				MISSED LAYUP by ELGEDAWY, RANEEM
02:35	BLOCK by LIPE, SABINE			
02:32	REBOUND (DEF) by LIPE, SABINE			
02:23	MISSED LAYUP by GALLEGOS, KATIA			
02:20	REBOUND (OFF) by PRUITT, MICHELLE			
02:18	GOOD! LAYUP by PRUITT, MICHELLE	44-21	H 23	
02:01				TURNOVER (LOSTBALL) by BROWN, DE'MYLA
01:50	MISSED 3PTR by LIPE, SABINE			
01:46	REBOUND (OFF) by LIPE, SABINE			
01:44	GOOD! LAYUP by LIPE, SABINE	44-23	H 21	
01:19				MISSED 3PTR by ABDELGAWAD, MERAL
01:16	REBOUND (DEF) by LIPE, SABINE			
01:12	TURNOVER (BADPASS) by LIPE, SABINE			
01:12				STEAL by BROWN, DE'MYLA
01:04				MISSED LAYUP by ABDELGAWAD, MERAL
01:04	BLOCK by GILL, ARIONA			
01:04				REBOUND (OFF) by ELGEDAWY, RANEEM
01:04	FOUL (PERSONAL) by CROUSE, AVERY			
01:04				MISSED FT by ELGEDAWY, RANEEM
01:04				REBOUND (OFF) by TEAM
01:03				MISSED FT by ELGEDAWY, RANEEM
01:01	REBOUND (DEF) by GALLEGOS, KATIA			
00:54	GOOD! 3PTR by GALLEGOS, KATIA	44-26	H 18	
00:54	ASSIST by CROUSE, AVERY			
00:26				MISSED 3PTR by BREWER, ALEXIS
00:21	REBOUND (DEF) by GALLEGOS, KATIA			
00:11	MISSED JUMPER by CROUSE, AVERY			
00:08	REBOUND (OFF) by GALLEGOS, KATIA			
00:07	GOOD! LAYUP by GALLEGOS, KATIA	44-28	H 16	
00:00				MISSED JUMPER by CREECH, WHITNEY
00:00	REBOUND (DEF) by GALLEGOS, KATIA			

UTEP 28, Western Ky. 44

Points from (This Period)	UTE	WKU
In the Paint	12	6
Off Turns	2	2
2nd Chance	7	4
Fast Break	2	2
Bench	6	3

Official Box Score
UTEP vs Western Ky.
Second Half Statistics Only
February 13, 2020 at E.A. Diddle Arena (John Oldham Court) - Bowling Green, Ky.



UTEP 37

No.	Player	S	Pts	FG	3FG	FT	OR	DR	TR	PF	A	TO	Blk	Stl	Min	+/-
01	KHLOPKOVA, ARINA	G	0	0-0	0-0	0-0	0	0	0	0	0	1	0	0	0	-3
02	BRADSHAW, TIA	G	0	0-0	0-0	0-0	0	0	0	0	0	1	0	0	3	-6
03	GALLEGOS, KATIA	G	2	1-2	0-0	0-0	0	2	2	2	3	1	0	2	19	6
12	GILL, ARIONA	F	12	5-10	0-0	2-2	1	5	6	2	2	1	0	0	19	6
13	LIPE, SABINE	G	2	1-2	0-1	0-0	0	1	1	1	2	1	0	1	11	-1
15	CROUSE, AVERY	G	5	2-4	1-2	0-0	0	2	2	2	0	1	0	0	16	9
22	ROEBUCK, DEJANAE	F	0	0-0	0-0	0-0	0	0	0	0	0	0	0	0	0	-3
25	TAYLOR, ARIANA	F	0	0-0	0-0	0-0	0	0	0	0	0	0	0	0	0	0
33	PRUITT, MICHELLE	F	9	4-4	0-0	1-2	1	1	2	0	0	0	0	0	12	-4
44	ZEC, KATARINA	G	7	3-6	0-1	1-1	1	4	5	1	0	2	0	0	17	11
	TEAM		0	0-0	0-0	0-0	0	0	0	0	0	0	0	0	0	
TOTALS			37	16-28	1-4	4-5	3	15	18	8	7	8	0	3	98	

Shooting By Period

Period	FG	FG%	3FG	3FG%	FT	FT%
3rd Qtr	8-14	57%	0-2	00%	3-3	100%
4th Qtr	8-14	57%	1-2	50%	1-2	50%
2nd Half	16-28	57%	1-4	25%	4-5	80%
Game	28-56	50.0%	2-9	22.2%	7-14	50.0%

Deadball Rebounds: 3,1

Last FG Half: UTE 4th-00:44

Western Ky. 34

No.	Player	S	Pts	FG	3FG	FT	OR	DR	TR	PF	A	TO	Blk	Stl	Min	+/-
00	HAYWOOD, MYRIAH	G	0	0-2	0-0	0-0	0	1	1	1	0	1	0	0	9	-6
03	BROWN, DE'MYLA	G	0	0-0	0-0	0-0	0	0	0	0	0	0	0	0	0	0
04	GIVENS, DEE	F	5	2-10	1-6	0-0	1	1	2	1	4	0	0	3	20	-3
05	CREECH, WHITNEY	G	4	1-5	0-1	2-2	0	0	0	1	0	1	0	1	18	2
11	BREWER, ALEXIS	G	8	3-3	0-0	2-2	0	2	2	0	2	2	0	0	13	-2
12	POUYE, FATOU	F	0	0-0	0-0	0-0	0	0	0	0	0	0	0	0	3	-1
15	ELGEDAWY, RANEEM	F	4	2-5	0-1	0-0	0	3	3	0	0	1	0	0	12	-10
23	SKINNER, SANDRA	F	3	1-1	0-0	1-2	1	2	3	1	0	0	0	0	8	7
40	ABDELGAWAD, MERAL	G	10	3-7	2-4	2-2	2	1	3	2	0	0	0	1	16	-2
	TEAM		0	0-0	0-0	0-0	2	0	2	0	0	0	0	0	0	
TOTALS			34	12-33	3-12	7-8	6	10	16	6	6	5	0	5	98	

Shooting By Period

Period	FG	FG%	3FG	3FG%	FT	FT%
3rd Qtr	6-17	35%	0-5	00%	2-2	100%
4th Qtr	6-16	38%	3-7	43%	5-6	83%
2nd Half	12-33	36%	3-12	25%	7-8	88%
Game	30-70	42.9%	8-25	32.0%	10-16	62.5%

Deadball Rebounds: 3,0

Last FG Half: WKU 4th-00:23

Game Notes:

Officials: Jody Cantrell, Royce Blevins, Carla Roberts
Attendance: 1113

Start Time: 07:02 PM ET

End Time: 08:57 PM ET

Game Duration: 1:55

Conference Game;

Score	1st	2nd	3rd	4th	TOT
UTE	11	17	19	18	65
WKU	26	18	14	20	78

Points from (This Period)	UTE	WKU
In the Paint	30	14
Off Turns	4	8
2nd Chance	4	5
Fast Break	9	6
Bench	9	3

Official Box Score
UTEP vs Western Ky.
Third Quarter Statistics Only
February 13, 2020 at E.A. Diddle Arena (John Oldham Court) - Bowling Green, Ky.



UTEP 37

No.	Player	S	Pts	FG	3FG	FT	OR	DR	TR	PF	A	TO	Blk	Stl	Min	+/-
03	GALLEGOS, KATIA	G	0	0-0	0-0	0-0	0	1	1	0	2	1	0	1	10	5
12	GILL, ARIONA	F	8	3-5	0-0	2-2	1	3	4	1	1	0	0	0	10	5
13	LIPE, SABINE	G	2	1-2	0-1	0-0	0	1	1	0	1	1	0	1	8	7
15	CROUSE, AVERY	G	0	0-2	0-1	0-0	0	2	2	0	0	1	0	0	9	7
44	ZEC, KATARINA	G	7	3-4	0-0	1-1	1	1	2	1	0	1	0	0	10	5
01	KHLOPKOVA, ARINA	G	0	0-0	0-0	0-0	0	0	0	0	0	0	0	0	0	0
02	BRADSHAW, TIA	G	0	0-0	0-0	0-0	0	0	0	0	0	0	0	0	1	-2
22	ROEBUCK, DEJANAE	F	0	0-0	0-0	0-0	0	0	0	0	0	0	0	0	0	0
25	TAYLOR, ARIANA	F	0	0-0	0-0	0-0	0	0	0	0	0	0	0	0	0	0
33	PRUITT, MICHELLE	F	2	1-1	0-0	0-0	0	0	0	0	0	0	0	0	2	-2
TEAM							0	0	0	0		0				
TOTALS			19	8-14	0-2	3-3	2	8	10	2	4	4	0	2	50	

Shooting By Period

Period	FG	FG%	3FG	3FG%	FT	FT%
2nd Half	0-0	0%	0-0	0%	0-0	0%
Game	28-56	50.0%	2-9	22.2%	7-14	50.0%

Deadball Rebounds: 3,1

Western Ky. 34

No.	Player	S	Pts	FG	3FG	FT	OR	DR	TR	PF	A	TO	Blk	Stl	Min	+/-
04	GIVENS, DEE	F	2	1-4	0-2	0-0	0	1	1	1	1	0	0	3	10	-5
05	CREECH, WHITNEY	G	2	1-4	0-1	0-0	0	0	0	1	0	1	0	0	10	-5
11	BREWER, ALEXIS	G	4	2-2	0-0	0-0	0	1	1	0	1	2	0	0	8	-5
15	ELGEDAWY, RANEEM	F	4	2-5	0-1	0-0	0	2	2	0	0	0	0	0	8	-5
40	ABDELGAWAD, MERAL	G	2	0-2	0-1	2-2	1	0	1	1	0	0	0	0	10	-5
00	HAYWOOD, MYRIAH	G	0	0-0	0-0	0-0	0	0	0	0	0	0	0	0	2	0
03	BROWN, DE'MYLA	G	0	0-0	0-0	0-0	0	0	0	0	0	0	0	0	0	0
12	POUYE, FATOU	F	0	0-0	0-0	0-0	0	0	0	0	0	0	0	0	0	0
23	SKINNER, SANDRA	F	0	0-0	0-0	0-0	1	0	1	0	0	0	0	0	2	0
TEAM							1	0	1	0		0				
TOTALS			14	6-17	0-5	2-2	3	4	7	3	2	3	0	3	50	

Shooting By Period

Period	FG	FG%	3FG	3FG%	FT	FT%
2nd Half	0-0	0%	0-0	0%	0-0	0%
Game	30-70	42.9%	8-25	32.0%	10-16	62.5%

Deadball Rebounds: 3,0

Game Notes:

Officials: Jody Cantrell, Royce Blevins, Carla Roberts

Attendance: 1113

Start Time: 07:02 PM ET

End Time: 08:57 PM ET

Game Duration: 1:55

Conference Game;

Score	1st	2nd	3rd	4th	TOT
UTEP	11	17	19	18	65
WKU	26	18	14	20	78

Points from (This Period)	UTEP	WKU
In the Paint	16	8
Off Turns	2	6
2nd Chance	2	2
Fast Break	7	2
Bench	2	0

**Official Play-By-Play
UTEP vs Western Ky.
Third Quarter**

February 13, 2020 at E.A. Diddle Arena (John Oldham Court) - Bowling Green, Ky.



Period 3

Starters:

UTEP: 3 GALLEGOS, KATIA (G); 12 GILL, ARIONA (F); 13 LIPE, SABINE (G); 15 CROUSE, AVERY (G); 44 ZEC, KATARINA (G);

Western Ky.: 4 GIVENS, DEE (F); 5 CREECH, WHITNEY (G); 11 BREWER, ALEXIS (G); 15 ELGEDAWY, RANEEM (F); 40 ABDELGAWAD, MERAL (G);

Time	VISITORS: UTEP	Score	Margin	HOME: Western Ky.
09:43				SUB OUT: BROWN, DE'MYLA
09:43				SUB IN: GIVENS, DEE
09:43	SUB OUT: PRUITT, MICHELLE			
09:43	SUB IN: ZEC, KATARINA			
09:41		46-28	H 18	GOOD! LAYUP by BREWER, ALEXIS
09:27	MISSED LAYUP by GILL, ARIONA			
09:24	REBOUND (OFF) by GILL, ARIONA			
09:23	GOOD! LAYUP by GILL, ARIONA	46-30	H 16	
08:59				MISSED JUMPER by CREECH, WHITNEY
08:57	REBOUND (DEF) by GILL, ARIONA			
08:54	GOOD! LAYUP by ZEC, KATARINA [FB]	46-32	H 14	
08:54	ASSIST by GALLEGOS, KATIA			
08:54				FOUL (PERSONAL) by ABDELGAWAD, MERAL
08:54	GOOD! FT by ZEC, KATARINA [FB]	46-33	H 13	
08:38				MISSED 3PTR by ELGEDAWY, RANEEM
08:35	REBOUND (DEF) by CROUSE, AVERY			
08:25	GOOD! LAYUP by GILL, ARIONA	46-35	H 11	
08:25	ASSIST by LIPE, SABINE			
08:10		48-35	H 13	GOOD! JUMPER by BREWER, ALEXIS
07:56	MISSED LAYUP by ZEC, KATARINA			
07:53				REBOUND (DEF) by ELGEDAWY, RANEEM
07:27				TURNOVER (BADPASS) by BREWER, ALEXIS
07:27	STEAL by LIPE, SABINE			
07:22	GOOD! LAYUP by LIPE, SABINE [FB]	48-37	H 11	
07:18				TIMEOUT 30SEC
07:18				
06:58				MISSED 3PTR by GIVENS, DEE
06:55				REBOUND (OFF) by TEAM
06:39		50-37	H 13	GOOD! LAYUP by ELGEDAWY, RANEEM
06:39				ASSIST by BREWER, ALEXIS
06:18	MISSED 3PTR by LIPE, SABINE			
06:15	REBOUND (OFF) by ZEC, KATARINA			
06:12	TURNOVER (LOSTBALL) by ZEC, KATARINA			
06:12				STEAL by GIVENS, DEE
06:07				TURNOVER (BADPASS) by BREWER, ALEXIS
05:53	MISSED JUMPER by GILL, ARIONA			
05:50				REBOUND (DEF) by ELGEDAWY, RANEEM
05:42				MISSED JUMPER by GIVENS, DEE
05:39	REBOUND (DEF) by LIPE, SABINE			
05:38	TURNOVER (LOSTBALL) by LIPE, SABINE			
05:38				STEAL by GIVENS, DEE
05:33		52-37	H 15	GOOD! LAYUP by ELGEDAWY, RANEEM [FB]
05:33				ASSIST by GIVENS, DEE
05:11	GOOD! LAYUP by ZEC, KATARINA	52-39	H 13	
05:11	ASSIST by GILL, ARIONA			
04:55				TURNOVER (LOSTBALL) by CREECH, WHITNEY
04:55	STEAL by GALLEGOS, KATIA			
04:51	TURNOVER (BADPASS) by GALLEGOS, KATIA			
04:51				STEAL by GIVENS, DEE
04:47	FOUL (PERSONAL) by GILL, ARIONA			
04:47		53-39	H 14	GOOD! FT by ABDELGAWAD, MERAL
04:47		54-39	H 15	GOOD! FT by ABDELGAWAD, MERAL
04:27	GOOD! LAYUP by GILL, ARIONA	54-41	H 13	
03:52				MISSED 3PTR by CREECH, WHITNEY
03:49				REBOUND (OFF) by ABDELGAWAD, MERAL
03:36				MISSED JUMPER by ELGEDAWY, RANEEM
03:36	REBOUND (DEF) by CROUSE, AVERY			
03:23	GOOD! JUMPER by ZEC, KATARINA [PNT]	54-43	H 11	
02:59				MISSED JUMPER by ABDELGAWAD, MERAL
02:56	REBOUND (DEF) by GALLEGOS, KATIA			
02:50	MISSED LAYUP by CROUSE, AVERY			
02:48				REBOUND (DEF) by BREWER, ALEXIS
02:35				MISSED 3PTR by GIVENS, DEE
02:31	REBOUND (DEF) by GILL, ARIONA			
02:27	MISSED 3PTR by CROUSE, AVERY			
02:24				REBOUND (DEF) by GIVENS, DEE
02:09				MISSED LAYUP by ELGEDAWY, RANEEM
02:06	REBOUND (DEF) by GILL, ARIONA			
02:04				FOUL (PERSONAL) by CREECH, WHITNEY

Time	VISITORS: UTEP	Score	Margin	HOME: Western Ky.
02:04				SUB OUT: BREWER, ALEXIS
02:04				SUB OUT: ELGEDAWY, RANEEM
02:04				SUB IN: HAYWOOD, MYRIAH
02:04				SUB IN: SKINNER, SANDRA
02:04	GOOD! FT by GILL, ARIONA [FB]	54-44	H 10	
02:04	GOOD! FT by GILL, ARIONA [FB]	54-45	H 9	
02:04	SUB OUT: LIPE, SABINE			
02:04	SUB IN: PRUITT, MICHELLE			
01:59	FOUL (PERSONAL) by ZEC, KATARINA			
01:38				MISSED LAYUP by CREECH, WHITNEY
01:35				REBOUND (OFF) by SKINNER, SANDRA
01:27				MISSED 3PTR by ABDELGAWAD, MERAL
01:25	REBOUND (DEF) by ZEC, KATARINA			
01:25				FOUL (PERSONAL) by GIVENS, DEE
01:12	TURNOVER (BADPASS) by CROUSE, AVERY			
01:12	SUB OUT: CROUSE, AVERY			
01:12	SUB IN: BRADSHAW, TIA			
00:45		56-45	H 11	GOOD! JUMPER by CREECH, WHITNEY
00:28	GOOD! LAYUP by PRUITT, MICHELLE	56-47	H 9	
00:28	ASSIST by GALLEGOS, KATIA			
00:04		58-47	H 11	GOOD! JUMPER by GIVENS, DEE [PNT]

UTEP 47, Western Ky. 58

Points from (This Period)	UTE	WKU
In the Paint	16	8
Off Turns	2	6
2nd Chance	2	2
Fast Break	7	2
Bench	2	0

Official Box Score
UTEP vs Western Ky.
Fourth Quarter Statistics Only
February 13, 2020 at E.A. Diddle Arena (John Oldham Court) - Bowling Green, Ky.



UTEP 18

No.	Player	S	Pts	FG	3FG	FT	OR	DR	TR	PF	A	TO	Blk	Stl	Min	+/-
03	GALLEGOS, KATIA	G	2	1-2	0-0	0-0	0	1	1	2	1	0	0	1	9	1
12	GILL, ARIONA	F	4	2-5	0-0	0-0	0	2	2	1	1	1	0	0	9	1
13	LIPE, SABINE	G	0	0-0	0-0	0-0	0	0	0	1	1	0	0	0	3	-8
15	CROUSE, AVERY	G	5	2-2	1-1	0-0	0	0	0	2	0	0	0	0	7	2
44	ZEC, KATARINA	G	0	0-2	0-1	0-0	0	3	3	0	0	1	0	0	7	6
01	KHLOPKOVA, ARINA	G	0	0-0	0-0	0-0	0	0	0	0	0	1	0	0	0	-3
02	BRADSHAW, TIA	G	0	0-0	0-0	0-0	0	0	0	0	0	1	0	0	2	-4
22	ROEBUCK, DEJANAE	F	0	0-0	0-0	0-0	0	0	0	0	0	0	0	0	0	-3
25	TAYLOR, ARIANA	F	0	0-0	0-0	0-0	0	0	0	0	0	0	0	0	0	0
33	PRUITT, MICHELLE	F	7	3-3	0-0	1-2	1	1	2	0	0	0	0	0	10	-2
TEAM							0	0	0	0		0				
TOTALS			18	8-14	1-2	1-2	1	7	8	6	3	4	0	1	48	

Shooting By Period

Period	FG	FG%	3FG	3FG%	FT	FT%
Game	28-56	50.0%	2-9	22.2%	7-14	50.0%

Deadball Rebounds: 3,1

Western Ky. 20

No.	Player	S	Pts	FG	3FG	FT	OR	DR	TR	PF	A	TO	Blk	Stl	Min	+/-
04	GIVENS, DEE	F	3	1-6	1-4	0-0	1	0	1	0	3	0	0	0	10	2
05	CREECH, WHITNEY	G	2	0-1	0-0	2-2	0	0	0	0	0	0	0	1	8	7
11	BREWER, ALEXIS	G	4	1-1	0-0	2-2	0	1	1	0	1	0	0	0	5	3
15	ELGEDAWY, RANEEM	F	0	0-0	0-0	0-0	0	1	1	0	0	1	0	0	4	-5
40	ABDELGAWAD, MERAL	G	8	3-5	2-3	0-0	1	1	2	1	0	0	0	1	6	3
00	HAYWOOD, MYRIAH	G	0	0-2	0-0	0-0	0	1	1	1	0	1	0	0	7	-6
03	BROWN, DE'MYLA	G	0	0-0	0-0	0-0	0	0	0	0	0	0	0	0	0	0
12	POUYE, FATOU	F	0	0-0	0-0	0-0	0	0	0	0	0	0	0	0	3	-1
23	SKINNER, SANDRA	F	3	1-1	0-0	1-2	0	2	2	1	0	0	0	0	6	7
TEAM							1	0	1	0		0				
TOTALS			20	6-16	3-7	5-6	3	6	9	3	4	2	0	2	48	

Shooting By Period

Period	FG	FG%	3FG	3FG%	FT	FT%
Game	30-70	42.9%	8-25	32.0%	10-16	62.5%

Deadball Rebounds: 3,0

Game Notes:

Officials: Jody Cantrell, Royce Blevins, Carla Roberts
Attendance: 1113

Start Time: 07:02 PM ET
End Time: 08:57 PM ET
Game Duration: 1:55
Conference Game;

Score	1st	2nd	3rd	4th	TOT
UTE	11	17	19	18	65
WKU	26	18	14	20	78

Points from (This Period)	UTE	WKU
In the Paint	14	6
Off Turns	2	2
2nd Chance	2	3
Fast Break	2	4
Bench	7	3

**Official Play-By-Play
UTEP vs Western Ky.
Fourth Quarter**

February 13, 2020 at E.A. Diddle Arena (John Oldham Court) - Bowling Green, Ky.



Period 4

Starters:

UTEP: 3 GALLEGOS, KATIA (G); 12 GILL, ARIONA (F); 13 LIPE, SABINE (G); 15 CROUSE, AVERY (G); 44 ZEC, KATARINA (G);

Western Ky.: 4 GIVENS, DEE (F); 5 CREECH, WHITNEY (G); 11 BREWER, ALEXIS (G); 15 ELGEDAWY, RANEEM (F); 40 ABDELGAWAD, MERAL (G);

Time	VISITORS: UTEP	Score	Margin	HOME: Western Ky.
09:51				MISSED JUMPER by HAYWOOD, MYRIAH
09:48	REBOUND (DEF) by GILL, ARIONA			
09:43	MISSED LAYUP by ZEC, KATARINA			
09:40				REBOUND (DEF) by SKINNER, SANDRA
09:12				MISSED JUMPER by HAYWOOD, MYRIAH
09:09				REBOUND (OFF) by GIVENS, DEE
09:09				MISSED LAYUP by GIVENS, DEE
09:09				REBOUND (OFF) by TEAM
09:03		61-47	H 14	GOOD! 3PTR by ABDELGAWAD, MERAL
09:03				ASSIST by GIVENS, DEE
08:51	GOOD! JUMPER by GALLEGOS, KATIA [PNT]	61-49	H 12	
08:25				MISSED 3PTR by ABDELGAWAD, MERAL
08:24	REBOUND (DEF) by GALLEGOS, KATIA			
08:24				FOUL (PERSONAL) by SKINNER, SANDRA
08:24				SUB OUT: SKINNER, SANDRA
08:24				SUB IN: ELGEDAWY, RANEEM
08:07	TIMEOUT 30SEC			
08:07				
08:07	SUB OUT: BRADSHAW, TIA			
08:07	SUB IN: CROUSE, AVERY			
07:48	TURNOVER (LOSTBALL) by GILL, ARIONA			
07:48				STEAL by ABDELGAWAD, MERAL
07:30				MISSED 3PTR by GIVENS, DEE
07:26	REBOUND (DEF) by PRUITT, MICHELLE			
07:17	GOOD! 3PTR by CROUSE, AVERY	61-52	H 9	
07:17	ASSIST by GALLEGOS, KATIA			
06:54				MISSED LAYUP by CREECH, WHITNEY
06:50	REBOUND (DEF) by ZEC, KATARINA			
06:40	GOOD! LAYUP by GILL, ARIONA	61-54	H 7	
06:30				MISSED JUMPER by GIVENS, DEE
06:24				REBOUND (OFF) by ABDELGAWAD, MERAL
06:22				MISSED LAYUP by ABDELGAWAD, MERAL
06:20	REBOUND (DEF) by GILL, ARIONA			
06:17	MISSED JUMPER by GALLEGOS, KATIA			
06:13				REBOUND (DEF) by ABDELGAWAD, MERAL
05:57		64-54	H 10	GOOD! 3PTR by GIVENS, DEE
05:38	MISSED 3PTR by ZEC, KATARINA			
05:36				REBOUND (DEF) by HAYWOOD, MYRIAH
05:32				MISSED 3PTR by GIVENS, DEE
05:28	REBOUND (DEF) by ZEC, KATARINA			
05:22				FOUL (PERSONAL) by ABDELGAWAD, MERAL
05:22				SUB OUT: CREECH, WHITNEY
05:22				SUB OUT: ABDELGAWAD, MERAL
05:22				SUB IN: BREWER, ALEXIS
05:22				SUB IN: POUYE, FATOU
05:22	GOOD! FT by PRUITT, MICHELLE	64-55	H 9	
05:20	MISSED FT by PRUITT, MICHELLE			
05:18				REBOUND (DEF) by ELGEDAWY, RANEEM
05:17				TURNOVER (LOSTBALL) by ELGEDAWY, RANEEM
05:17	STEAL by GALLEGOS, KATIA			
05:09	GOOD! LAYUP by CROUSE, AVERY	64-57	H 7	
04:39				FOUL (OFF) by HAYWOOD, MYRIAH
04:39				TURNOVER (OFFENSIVE) by HAYWOOD, MYRIAH
04:39				SUB OUT: ELGEDAWY, RANEEM
04:39				SUB IN: SKINNER, SANDRA
04:21	TURNOVER (LOSTBALL) by ZEC, KATARINA			
03:58				MISSED 3PTR by GIVENS, DEE
03:55	REBOUND (DEF) by ZEC, KATARINA			
03:35	GOOD! LAYUP by PRUITT, MICHELLE	64-59	H 5	
03:35	ASSIST by GILL, ARIONA			
03:12				SUB OUT: HAYWOOD, MYRIAH
03:12				SUB IN: CREECH, WHITNEY
03:12	SUB OUT: ZEC, KATARINA			
03:12	SUB IN: LIPE, SABINE			
03:06	FOUL (PERSONAL) by GALLEGOS, KATIA			
03:06		65-59	H 6	GOOD! FT by BREWER, ALEXIS
03:06		66-59	H 7	GOOD! FT by BREWER, ALEXIS
02:50	MISSED JUMPER by GILL, ARIONA			
02:46	REBOUND (OFF) by PRUITT, MICHELLE			
02:45	GOOD! LAYUP by PRUITT, MICHELLE	66-61	H 5	

Time	VISITORS: UTEP	Score	Margin	HOME: Western Ky.
02:25		68-61	H 7	GOOD! JUMPER by BREWER, ALEXIS
02:13	MISSED JUMPER by GILL, ARIONA			
02:10				REBOUND (DEF) by BREWER, ALEXIS
02:06		70-61	H 9	GOOD! LAYUP by SKINNER, SANDRA [FB]
02:06				ASSIST by GIVENS, DEE
02:06	TIMEOUT 30SEC			
02:05				SUB OUT: POUYE, FATOU
02:05				SUB IN: ABDELGAWAD, MERAL
01:44	GOOD! LAYUP by GILL, ARIONA	70-63	H 7	
01:36	FOUL (PERSONAL) by CROUSE, AVERY			
01:22	FOUL (PERSONAL) by CROUSE, AVERY			
01:07		73-63	H 10	GOOD! 3PTR by ABDELGAWAD, MERAL
01:07				ASSIST by BREWER, ALEXIS
00:53	MISSED JUMPER by GILL, ARIONA			
00:52				REBOUND (DEF) by SKINNER, SANDRA
00:52	FOUL (PERSONAL) by GILL, ARIONA			
00:51	FOUL (PERSONAL) by GALLEGOS, KATIA			
00:51		74-63	H 11	GOOD! FT by CREECH, WHITNEY
00:51		75-63	H 12	GOOD! FT by CREECH, WHITNEY
00:44	GOOD! LAYUP by PRUITT, MICHELLE [FB]	75-65	H 10	
00:44	ASSIST by LIPE, SABINE			
00:39	FOUL (PERSONAL) by LIPE, SABINE			
00:39	SUB OUT: GALLEGOS, KATIA			
00:39	SUB OUT: GILL, ARIONA			
00:39	SUB OUT: CROUSE, AVERY			
00:39	SUB IN: KHLOPKOVA, ARINA			
00:39	SUB IN: BRADSHAW, TIA			
00:39	SUB IN: ROEBUCK, DEJANAE			
00:39				MISSED FT by SKINNER, SANDRA
00:39				REBOUND (OFF) by TEAM
00:39		76-65	H 11	GOOD! FT by SKINNER, SANDRA
00:29	TURNOVER (LOSTBALL) by KHLOPKOVA, ARINA			
00:29				STEAL by CREECH, WHITNEY
00:23		78-65	H 13	GOOD! LAYUP by ABDELGAWAD, MERAL [FB]
00:23				ASSIST by GIVENS, DEE
00:20	TURNOVER (BADPASS) by BRADSHAW, TIA			

UTEP 65, Western Ky. 78

Points from (This Period)	UTE	WKU
In the Paint	14	6
Off Turns	2	2
2nd Chance	2	3
Fast Break	2	4
Bench	7	3

Official Scoring/Possession Reference Chart
UTEP vs Western Ky.

Period 1

February 13, 2020 at E.A. Diddle Arena (John Oldham Court) - Bowling Green, Ky.



Period 1

Starters:

UTEP: 3 GALLEGOS, KATIA (G); 12 GILL, ARIONA (F); 13 LIPE, SABINE (G); 15 CROUSE, AVERY (G); 44 ZEC, KATARINA (G);

Western Ky.: 4 GIVENS, DEE (F); 5 CREECH, WHITNEY (G); 11 BREWER, ALEXIS (G); 15 ELGEDAWY, RANEEM (F); 40 ABDELGAWAD, MERAL (G);

Time	VISITORS: UTEP	Score	Margin	HOME: Western Ky.
09:29		3-0	H 3	GOOD! 3PTR by GIVENS, DEE
09:10	GOOD! LAYUP by LIPE, SABINE	3-2	H 1	
09:10	GOOD! FT by LIPE, SABINE	3-3	T	
08:17		5-3	H 2	GOOD! LAYUP by ELGEDAWY, RANEEM
07:39	GOOD! LAYUP by GILL, ARIONA	5-5	T	
07:23		7-5	H 2	GOOD! LAYUP by ELGEDAWY, RANEEM
07:02		9-5	H 4	GOOD! JUMPER by GIVENS, DEE [FB/PNT]
06:55	GOOD! LAYUP by GILL, ARIONA [FB]	9-7	H 2	
06:42		11-7	H 4	GOOD! LAYUP by ABDELGAWAD, MERAL [FB]
05:52		13-7	H 6	GOOD! JUMPER by GIVENS, DEE
05:07		15-7	H 8	GOOD! LAYUP by CREECH, WHITNEY
04:30		17-7	H 10	GOOD! LAYUP by ELGEDAWY, RANEEM
04:05		19-7	H 12	GOOD! JUMPER by GIVENS, DEE
02:32		21-7	H 14	GOOD! LAYUP by GIVENS, DEE
02:13	GOOD! LAYUP by PRUITT, MICHELLE [PNT]	21-9	H 12	
01:39		23-9	H 14	GOOD! LAYUP by ABDELGAWAD, MERAL [FB]
01:39		24-9	H 15	GOOD! FT by ABDELGAWAD, MERAL [FB]
00:33		25-9	H 16	GOOD! FT by ELGEDAWY, RANEEM
00:33		26-9	H 17	GOOD! FT by ELGEDAWY, RANEEM
00:17	GOOD! LAYUP by GILL, ARIONA	26-11	H 15	

UTEP 11, Western Ky. 26

Official Scoring/Possession Reference Chart
UTEP vs Western Ky.

Period 2

February 13, 2020 at E.A. Diddle Arena (John Oldham Court) - Bowling Green, Ky.



Period 2

Starters:

UTEP: 3 GALLEGOS, KATIA (G); 12 GILL, ARIONA (F); 13 LIPE, SABINE (G); 15 CROUSE, AVERY (G); 44 ZEC, KATARINA (G);

Western Ky.: 4 GIVENS, DEE (F); 5 CREECH, WHITNEY (G); 11 BREWER, ALEXIS (G); 15 ELGEDAWY, RANEEM (F); 40 ABDELGAWAD, MERAL (G);

Time	VISITORS: UTEP	Score	Margin	HOME: Western Ky.
08:29	GOOD! FT by CROUSE, AVERY	26-12	H 14	
08:14		29-12	H 17	GOOD! 3PTR by BREWER, ALEXIS
07:46		31-12	H 19	GOOD! LAYUP by ELGEDAWY, RANEEM [FB]
07:14		34-12	H 22	GOOD! 3PTR by BREWER, ALEXIS
06:28		36-12	H 24	GOOD! LAYUP by ABDELGAWAD, MERAL
06:23	GOOD! FT by GILL, ARIONA	36-13	H 23	
06:07		38-13	H 25	GOOD! LAYUP by ELGEDAWY, RANEEM
05:00	GOOD! LAYUP by GALLEGOS, KATIA [FB]	38-15	H 23	
04:01		41-15	H 26	GOOD! 3PTR by BREWER, ALEXIS
03:50	GOOD! LAYUP by PRUITT, MICHELLE	41-17	H 24	
03:29		44-17	H 27	GOOD! 3PTR by BROWN, DE'MYLA
03:10	GOOD! LAYUP by PRUITT, MICHELLE	44-19	H 25	
02:18	GOOD! LAYUP by PRUITT, MICHELLE	44-21	H 23	
01:44	GOOD! LAYUP by LIPE, SABINE	44-23	H 21	
00:54	GOOD! 3PTR by GALLEGOS, KATIA	44-26	H 18	
00:07	GOOD! LAYUP by GALLEGOS, KATIA	44-28	H 16	

UTEP 28, Western Ky. 44

Official Scoring/Possession Reference Chart
UTEP vs Western Ky.

Period 3

February 13, 2020 at E.A. Diddle Arena (John Oldham Court) - Bowling Green, Ky.



Period 3

Starters:

UTEP: 3 GALLEGOS, KATIA (G); 12 GILL, ARIONA (F); 13 LIPE, SABINE (G); 15 CROUSE, AVERY (G); 44 ZEC, KATARINA (G);

Western Ky.: 4 GIVENS, DEE (F); 5 CREECH, WHITNEY (G); 11 BREWER, ALEXIS (G); 15 ELGEDAWY, RANEEM (F); 40 ABDELGAWAD, MERAL (G);

Time	VISITORS: UTEP	Score	Margin	HOME: Western Ky.
09:41		46-28	H 18	GOOD! LAYUP by BREWER, ALEXIS
09:23	GOOD! LAYUP by GILL, ARIONA	46-30	H 16	
08:54	GOOD! LAYUP by ZEC, KATARINA [FB]	46-32	H 14	
08:54	GOOD! FT by ZEC, KATARINA [FB]	46-33	H 13	
08:25	GOOD! LAYUP by GILL, ARIONA	46-35	H 11	
08:10		48-35	H 13	GOOD! JUMPER by BREWER, ALEXIS
07:22	GOOD! LAYUP by LIPE, SABINE [FB]	48-37	H 11	
06:39		50-37	H 13	GOOD! LAYUP by ELGEDAWY, RANEEM
05:33		52-37	H 15	GOOD! LAYUP by ELGEDAWY, RANEEM [FB]
05:11	GOOD! LAYUP by ZEC, KATARINA	52-39	H 13	
04:47		53-39	H 14	GOOD! FT by ABDELGAWAD, MERAL
04:47		54-39	H 15	GOOD! FT by ABDELGAWAD, MERAL
04:27	GOOD! LAYUP by GILL, ARIONA	54-41	H 13	
03:23	GOOD! JUMPER by ZEC, KATARINA [PNT]	54-43	H 11	
02:04	GOOD! FT by GILL, ARIONA [FB]	54-44	H 10	
02:04	GOOD! FT by GILL, ARIONA [FB]	54-45	H 9	
00:45		56-45	H 11	GOOD! JUMPER by CREECH, WHITNEY
00:28	GOOD! LAYUP by PRUITT, MICHELLE	56-47	H 9	
00:04		58-47	H 11	GOOD! JUMPER by GIVENS, DEE [PNT]

UTEP 47, Western Ky. 58

Official Scoring/Possession Reference Chart
UTEP vs Western Ky.

Period 4

February 13, 2020 at E.A. Diddle Arena (John Oldham Court) - Bowling Green, Ky.



Period 4

Starters:

UTEP: 3 GALLEGOS, KATIA (G); 12 GILL, ARIONA (F); 13 LIPE, SABINE (G); 15 CROUSE, AVERY (G); 44 ZEC, KATARINA (G);

Western Ky.: 4 GIVENS, DEE (F); 5 CREECH, WHITNEY (G); 11 BREWER, ALEXIS (G); 15 ELGEDAWY, RANEEM (F); 40 ABDELGAWAD, MERAL (G);

Time	VISITORS: UTEP	Score	Margin	HOME: Western Ky.
09:03		61-47	H 14	GOOD! 3PTR by ABDELGAWAD, MERAL
08:51	GOOD! JUMPER by GALLEGOS, KATIA [PNT]	61-49	H 12	
07:17	GOOD! 3PTR by CROUSE, AVERY	61-52	H 9	
06:40	GOOD! LAYUP by GILL, ARIONA	61-54	H 7	
05:57		64-54	H 10	GOOD! 3PTR by GIVENS, DEE
05:22	GOOD! FT by PRUITT, MICHELLE	64-55	H 9	
05:09	GOOD! LAYUP by CROUSE, AVERY	64-57	H 7	
03:35	GOOD! LAYUP by PRUITT, MICHELLE	64-59	H 5	
03:06		65-59	H 6	GOOD! FT by BREWER, ALEXIS
03:06		66-59	H 7	GOOD! FT by BREWER, ALEXIS
02:45	GOOD! LAYUP by PRUITT, MICHELLE	66-61	H 5	
02:25		68-61	H 7	GOOD! JUMPER by BREWER, ALEXIS
02:06		70-61	H 9	GOOD! LAYUP by SKINNER, SANDRA [FB]
01:44	GOOD! LAYUP by GILL, ARIONA	70-63	H 7	
01:07		73-63	H 10	GOOD! 3PTR by ABDELGAWAD, MERAL
00:51		74-63	H 11	GOOD! FT by CREECH, WHITNEY
00:51		75-63	H 12	GOOD! FT by CREECH, WHITNEY
00:44	GOOD! LAYUP by PRUITT, MICHELLE [FB]	75-65	H 10	
00:39		76-65	H 11	GOOD! FT by SKINNER, SANDRA
00:23		78-65	H 13	GOOD! LAYUP by ABDELGAWAD, MERAL [FB]

UTEP 65, Western Ky. 78

**Official Substitutions Log
UTEP vs Western Ky.
Period 1**

February 13, 2020 at E.A. Diddle Arena (John Oldham Court) - Bowling Green, Ky.



VISITORS: UTEP	Time	Score	HOME: Western Ky.
3 GALLEGOS,KATIA			4 GIVENS,DEE
12 GILL,ARIONA			5 CREECH,WHITNEY
13 LIPE,SABINE			11 BREWER,ALEXIS
15 CROUSE,AVERY			15 ELGEDAWY,RANEEM
44 ZEC,KATARINA			40 ABDEL GAWAD,MERAL
SUB OUT: 44 ZEC,KATARINA	06:31	7-11	
SUB IN: 1 KHLOPKOVA,ARINA	06:31		
SUB OUT: 12 GILL,ARIONA	05:38	7-13	
SUB IN: 25 TAYLOR,ARIANA	05:38		
SUB OUT: 25 TAYLOR,ARIANA	04:18	7-17	
SUB IN: 33 PRUITT,MICHELLE	04:18		
SUB OUT: 1 KHLOPKOVA,ARINA	03:09	7-19	
SUB IN: 44 ZEC,KATARINA	03:09		
SUB OUT: 13 LIPE,SABINE	02:34	7-19	
SUB IN: 12 GILL,ARIONA	02:34		
SUB OUT: 3 GALLEGOS,KATIA	02:03	9-21	
SUB IN: 2 BRADSHAW,TIA	02:03		
SUB OUT: 33 PRUITT,MICHELLE	01:39	9-23	
SUB IN: 25 TAYLOR,ARIANA	01:39		
	01:32	9-24	SUB OUT: BREWER,ALEXIS
	01:32		SUB IN: HAYWOOD,MYRIAH
SUB OUT: 2 BRADSHAW,TIA	01:32		
SUB IN: 3 GALLEGOS,KATIA	01:32		
SUB OUT: 25 TAYLOR,ARIANA	00:33	9-24	
SUB IN: 22 ROEBUCK,DEJANAE	00:33		
	00:33		SUB OUT: ELGEDAWY,RANEEM
	00:33		SUB IN: SKINNER,SANDRA

UTEP 11, Western Ky. 26

**Official Substitutions Log
UTEP vs Western Ky.
Period 2**

February 13, 2020 at E.A. Diddle Arena (John Oldham Court) - Bowling Green, Ky.



VISITORS: UTEP	Time	Score	HOME: Western Ky.
3 GALLEGOS,KATIA			4 GIVENS,DEE
12 GILL,ARIONA			5 CREECH,WHITNEY
13 LIPE,SABINE			11 BREWER,ALEXIS
15 CROUSE,AVERY			15 ELGEDAWY,RANEEM
44 ZEC,KATARINA			40 ABDELGAWAD,MERAL
	08:29	-	SUB OUT: HAYWOOD,MYRIAH
	08:29		SUB OUT: SKINNER,SANDRA
	08:29		SUB IN: BREWER,ALEXIS
	08:29		SUB IN: ELGEDAWY,RANEEM
SUB OUT: 22 ROEBUCK,DEJANAE	07:46	12-31	
SUB IN: 33 PRUITT,MICHELLE	07:46		
	06:23	12-36	SUB OUT: ABDELGAWAD,MERAL
	06:23		SUB IN: POUYE,FATOU
SUB OUT: 44 ZEC,KATARINA	05:51	13-38	
SUB IN: 13 LIPE,SABINE	05:51		
	04:41	15-38	SUB OUT: GIVENS,DEE
	04:41		SUB IN: BROWN,DE'MYLA
	02:45	19-44	SUB OUT: POUYE,FATOU
	02:45		SUB IN: ABDELGAWAD,MERAL

UTEP 28, Western Ky. 44

**Official Substitutions Log
UTEP vs Western Ky.
Period 3**

February 13, 2020 at E.A. Diddle Arena (John Oldham Court) - Bowling Green, Ky.



VISITORS: UTEP	Time	Score	HOME: Western Ky.
3 GALLEGOS,KATIA			4 GIVENS,DEE
12 GILL,ARIONA			5 CREECH,WHITNEY
13 LIPE,SABINE			11 BREWER,ALEXIS
15 CROUSE,AVERY			15 ELGEDAWY,RANEEM
44 ZEC,KATARINA			40 ABDELGAWAD,MERAL
	09:43	-	SUB OUT: BROWN,DE'MYLA
	09:43		SUB IN: GIVENS,DEE
SUB OUT: 33 PRUITT,MICHELLE	09:43		
SUB IN: 44 ZEC,KATARINA	09:43		
	02:04	43-54	SUB OUT: BREWER,ALEXIS
	02:04		SUB OUT: ELGEDAWY,RANEEM
	02:04		SUB IN: HAYWOOD,MYRIAH
	02:04		SUB IN: SKINNER,SANDRA
SUB OUT: 13 LIPE,SABINE	02:04		
SUB IN: 33 PRUITT,MICHELLE	02:04		
SUB OUT: 15 CROUSE,AVERY	01:12	45-54	
SUB IN: 2 BRADSHAW,TIA	01:12		

UTEP 47, Western Ky. 58

**Official Substitutions Log
UTEP vs Western Ky.
Period 4**

February 13, 2020 at E.A. Diddle Arena (John Oldham Court) - Bowling Green, Ky.



VISITORS: UTEP	Time	Score	HOME: Western Ky.
3 GALLEGOS,KATIA			4 GIVENS,DEE
12 GILL,ARIONA			5 CREECH,WHITNEY
13 LIPE,SABINE			11 BREWER,ALEXIS
15 CROUSE,AVERY			15 ELGEDAWY,RANEEM
44 ZEC,KATARINA			40 ABDEL GAWAD,MERAL
	08:24	49-61	SUB OUT: SKINNER,SANDRA
	08:24		SUB IN: ELGEDAWY,RANEEM
SUB OUT: 2 BRADSHAW,TIA	08:07	49-61	
SUB IN: 15 CROUSE,AVERY	08:07		
	05:22	54-64	SUB OUT: CREECH,WHITNEY
	05:22		SUB OUT: ABDEL GAWAD,MERAL
	05:22		SUB IN: BREWER,ALEXIS
	05:22		SUB IN: POUYE,FATOU
	04:39	57-64	SUB OUT: ELGEDAWY,RANEEM
	04:39		SUB IN: SKINNER,SANDRA
	03:12	59-64	SUB OUT: HAYWOOD,MYRIAH
	03:12		SUB IN: CREECH,WHITNEY
SUB OUT: 44 ZEC,KATARINA	03:12		
SUB IN: 13 LIPE,SABINE	03:12		
	02:05	61-70	SUB OUT: POUYE,FATOU
	02:05		SUB IN: ABDEL GAWAD,MERAL
SUB OUT: 3 GALLEGOS,KATIA	00:39	65-75	
SUB OUT: 12 GILL,ARIONA	00:39		
SUB OUT: 15 CROUSE,AVERY	00:39		
SUB IN: 1 KHLOPKOVA,ARINA	00:39		
SUB IN: 2 BRADSHAW,TIA	00:39		
SUB IN: 22 ROEBUCK,DEJANAE	00:39		

UTEP 65, Western Ky. 78

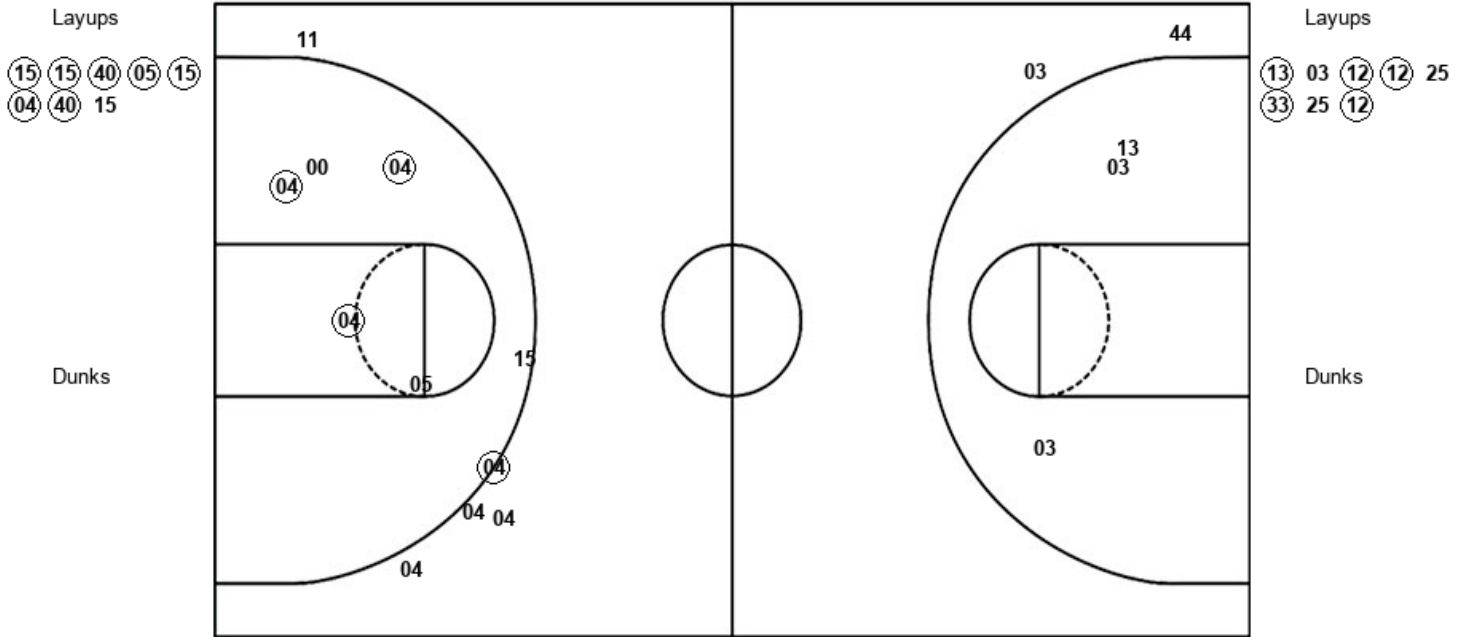
Official Shot Chart
UTEP vs Western Ky.
 PERIOD 1 Shots

February 13, 2020 at E.A. Diddle Arena (John Oldham Court) - Bowling Green, Ky.



Western Ky.

UTEP



WKU : Period 1	Made	Att	Pct
Layups	7	8	87.5
Dunks	0	0	0
2PT Field Goals	10	13	76.9
3PT Field Goals	1	6	16.7
Total Field Goals	11	19	57.9

UTE : Period 1	Made	Att	Pct
Layups	5	8	62.5
Dunks	0	0	0
2PT Field Goals	5	11	45.5
3PT Field Goals	0	2	00.0
Total Field Goals	5	13	38.5

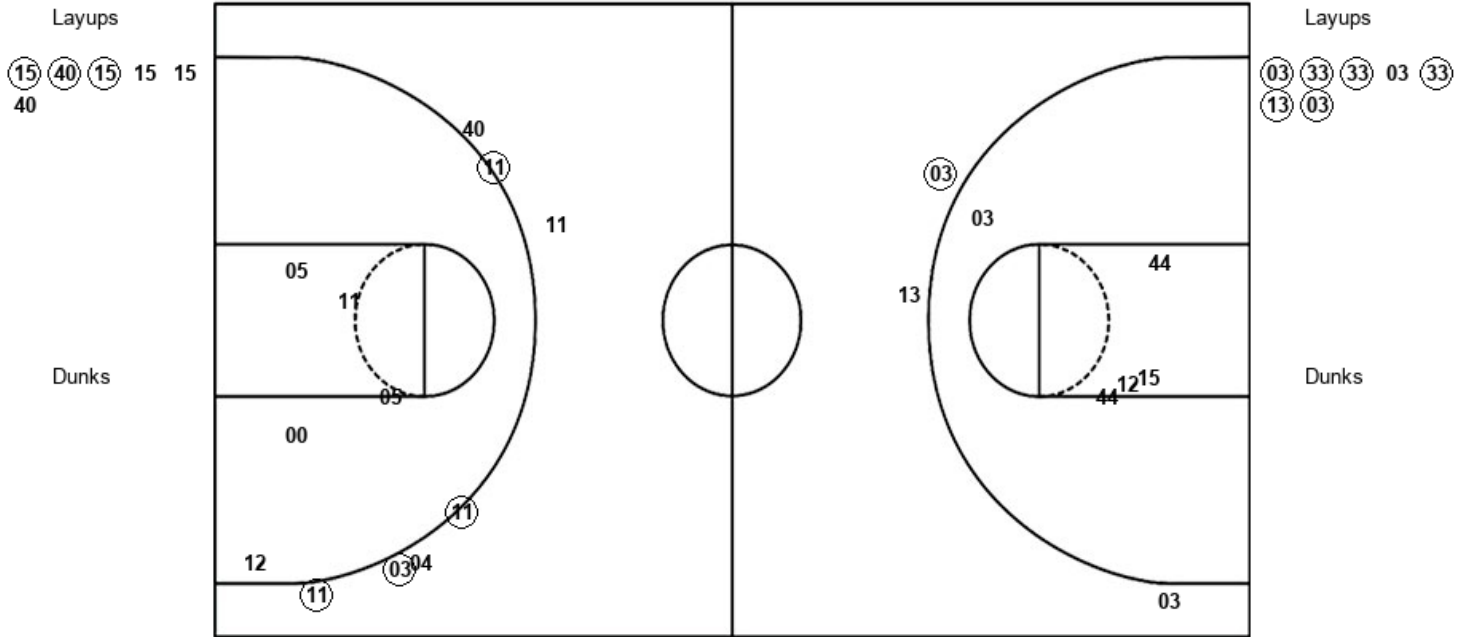
Official Shot Chart
UTEP vs Western Ky.
 PERIOD 2 Shots

February 13, 2020 at E.A. Diddle Arena (John Oldham Court) - Bowling Green, Ky.



Western Ky.

UTEP



WKU : Period 2	Made	Att	Pct
Layups	3	6	50.0
Dunks	0	0	0
2PT Field Goals	3	11	27.3
3PT Field Goals	4	7	57.1
Total Field Goals	7	18	38.9

UTE : Period 2	Made	Att	Pct
Layups	6	7	85.7
Dunks	0	0	0
2PT Field Goals	6	12	50.0
3PT Field Goals	1	3	33.3
Total Field Goals	7	15	46.7

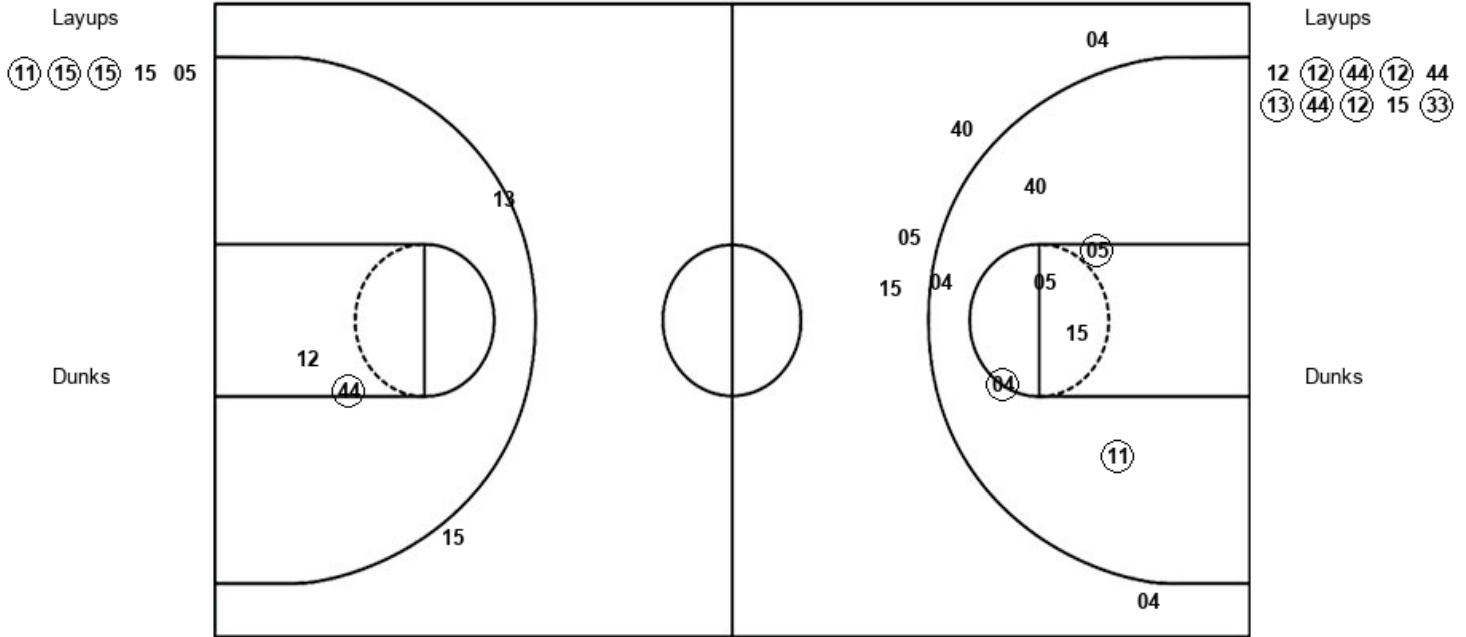
Official Shot Chart
UTEP vs Western Ky.
 PERIOD 3 Shots

February 13, 2020 at E.A. Diddle Arena (John Oldham Court) - Bowling Green, Ky.



Western Ky.

UTEP



WKU : Period 3	Made	Att	Pct
Layups	3	5	60.0
Dunks	0	0	0
2PT Field Goals	6	12	50.0
3PT Field Goals	0	5	00.0
Total Field Goals	6	17	35.3

UTE : Period 3	Made	Att	Pct
Layups	7	10	70.0
Dunks	0	0	0
2PT Field Goals	8	12	66.7
3PT Field Goals	0	2	00.0
Total Field Goals	8	14	57.1

Official Shot Chart
UTEP vs Western Ky.
 PERIOD 4 Shots

February 13, 2020 at E.A. Diddle Arena (John Oldham Court) - Bowling Green, Ky.

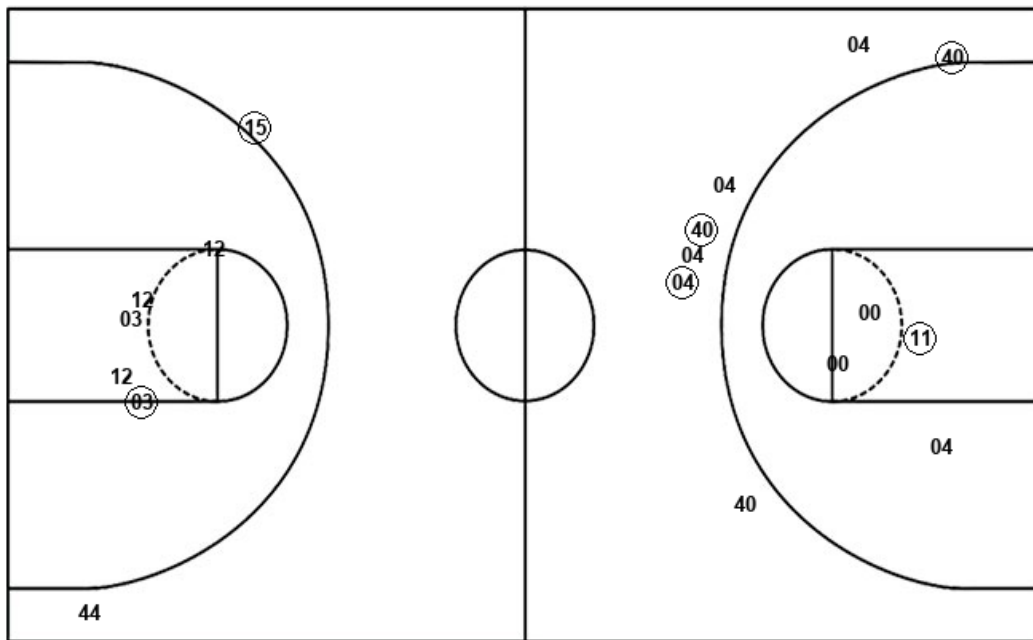


Western Ky.

UTEP

Layups
 04 05 40 (23) (40)

Dunks



Layups

44 (12) (15) (33) (33)
 (12) (33)

Dunks

WKU : Period 4	Made	Att	Pct
Layups	2	5	40.0
Dunks	0	0	0
2PT Field Goals	3	9	33.3
3PT Field Goals	3	7	42.9
Total Field Goals	6	16	37.5

UTE : Period 4	Made	Att	Pct
Layups	6	7	85.7
Dunks	0	0	0
2PT Field Goals	7	12	58.3
3PT Field Goals	1	2	50.0
Total Field Goals	8	14	57.1

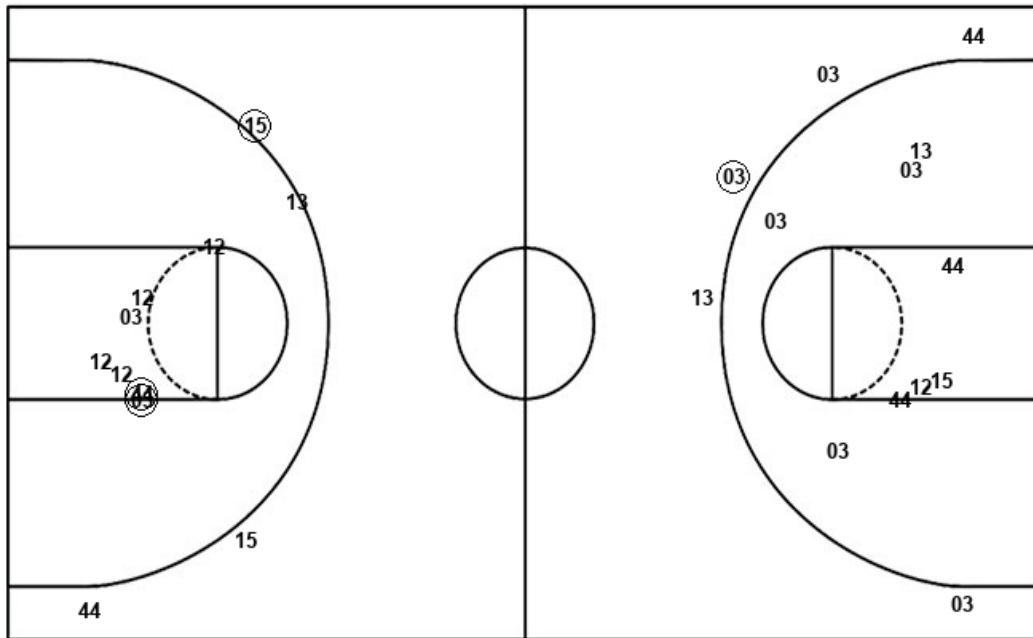
Official Shot Chart
UTEP vs Western Ky.
 UTEP Team Shots

February 13, 2020 at E.A. Diddle Arena (John Oldham Court) - Bowling Green, Ky.



Layups

Dunks



Layups

Dunks

13	03	12	12	25
33	25	12	03	33
33	03	33	13	03
12	12	44	12	44
13	44	12	15	33
44	12	15	33	33
12	33			

UTE : Period 1	Made	Att	Pct
Layups	5	8	62.5
Dunks	0	0	0
2PT Field Goals	5	11	45.5
3PT Field Goals	0	2	00.0
Total Field Goals	5	13	38.5

UTE : Period 3	Made	Att	Pct
Layups	7	10	70.0
Dunks	0	0	0
2PT Field Goals	8	12	66.7
3PT Field Goals	0	2	00.0
Total Field Goals	8	14	57.1

UTE : Period 2	Made	Att	Pct
Layups	6	7	85.7
Dunks	0	0	0
2PT Field Goals	6	12	50.0
3PT Field Goals	1	3	33.3
Total Field Goals	7	15	46.7

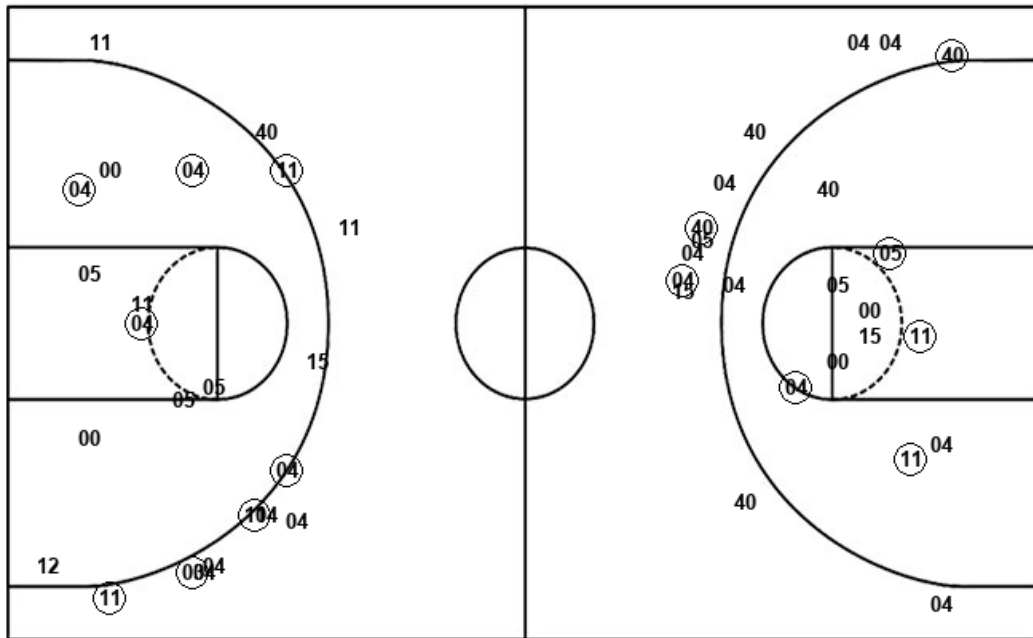
UTE : Period 4	Made	Att	Pct
Layups	6	7	85.7
Dunks	0	0	0
2PT Field Goals	7	12	58.3
3PT Field Goals	1	2	50.0
Total Field Goals	8	14	57.1

Official Shot Chart
UTEP vs Western Ky.
 Western Ky. Team Shots
 February 13, 2020 at E.A. Diddle Arena (John Oldham Court) - Bowling Green, Ky.



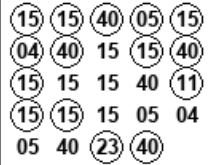
Layups

Dunks



Layups

Dunks



WKU : Period 1	Made	Att	Pct
Layups	7	8	87.5
Dunks	0	0	0
2PT Field Goals	10	13	76.9
3PT Field Goals	1	6	16.7
Total Field Goals	11	19	57.9

WKU : Period 3	Made	Att	Pct
Layups	3	5	60.0
Dunks	0	0	0
2PT Field Goals	6	12	50.0
3PT Field Goals	0	5	00.0
Total Field Goals	6	17	35.3

WKU : Period 2	Made	Att	Pct
Layups	3	6	50.0
Dunks	0	0	0
2PT Field Goals	3	11	27.3
3PT Field Goals	4	7	57.1
Total Field Goals	7	18	38.9

WKU : Period 4	Made	Att	Pct
Layups	2	5	40.0
Dunks	0	0	0
2PT Field Goals	3	9	33.3
3PT Field Goals	3	7	42.9
Total Field Goals	6	16	37.5