

FINAL SCORE



Fla. Atlantic

59



Western Ky.

68

January 30, 2020 • E.A. Diddle Arena (John Oldham Court) - Bowling Green

FINAL STATISTICS

Official Box Score
Fla. Atlantic vs Western Ky.
Game Totals -- Final Statistics
January 30, 2020 at E.A. Diddle Arena (John Oldham Court) - Bowling Green



Fla. Atlantic 59

No.	Player	S	Pts	FG	3FG	FT	OR	DR	TR	PF	A	TO	Blk	Stl	Min	+/-
00	GAYE, ASTOU	F	8	3-6	2-3	0-0	0	2	2	5	1	1	1	0	19	-7
01	PRIMM, CRYSTAL	G	8	3-8	0-1	2-6	2	4	6	5	3	0	0	2	28	-10
03	VEHKA-AHO, LOTTA	G	18	5-14	3-10	5-5	2	0	2	5	0	4	0	1	31	-1
10	HARKLESS, GLENISHA	G	0	0-2	0-1	0-0	1	1	2	2	6	4	2	0	25	2
11	GAUTHIER, JULIETTE	F	11	3-8	2-5	3-3	2	3	5	3	2	2	1	2	40	-9
05	OZOLA, NIKOLA	G	0	0-0	0-0	0-0	0	0	0	0	1	1	0	0	2	-4
12	TYLKA, ALLIE	G	0	0-0	0-0	0-0	0	0	0	4	0	2	0	0	13	-5
14	VOSS, ABBY	F	3	1-2	0-1	1-2	1	3	4	2	1	1	0	1	21	-2
23	GORDON, TANIYA	G	3	1-1	1-1	0-0	0	1	1	0	0	0	0	0	1	1
34	ZAPH, ALEXA		8	3-6	2-4	0-2	0	1	1	0	0	0	0	0	19	-10
TEAM							1	3	4	0		1				
TOTALS			59	19-47	10-26	11-18	9	18	27	26	14	16	4	6	200	

Shooting By Period

Period	FG	FG%	3FG	3FG%	FT	FT%
1st Qtr	6-14	43%	4-9	44%	0-0	0%
2nd Qtr	3-10	30%	0-3	00%	4-5	80%
3rd Qtr	5-13	38%	3-7	43%	0-4	00%
4th Qtr	5-10	50%	3-7	43%	7-9	78%
1st Half	9-24	38%	4-12	33%	4-5	80%
2nd Half	10-23	43%	6-14	43%	7-13	54%
Game	19-47	40.4%	10-26	38.5%	11-18	61.1%

Deadball Rebounds: 5,1

Last FG: 4th-00:03

Biggest Run: 11-0

Largest lead: By 4 at 1st-05:43

Technical Fouls: None.

Western Ky. 68

No.	Player	S	Pts	FG	3FG	FT	OR	DR	TR	PF	A	TO	Blk	Stl	Min	+/-
04	GIVENS, DEE	F	25	8-18	3-12	6-6	1	5	6	4	1	1	0	1	36	11
05	CREECH, WHITNEY	G	9	3-9	0-0	3-4	1	3	4	0	5	1	0	3	39	11
15	ELGEDAWY, RANEEM	F	28	10-16	0-0	8-9	9	9	18	3	0	5	0	0	28	7
22	PORTER, SHERRY	G	0	0-4	0-2	0-0	1	0	1	1	2	1	0	0	27	7
40	ABDELGAWAD, MERAL	G	4	1-6	0-2	2-3	3	2	5	3	2	2	0	2	29	15
00	HAYWOOD, MYRIAH	G	0	0-1	0-0	0-0	2	0	2	0	0	0	0	0	11	-2
11	BREWER, ALEXIS	G	2	1-7	0-6	0-0	1	0	1	1	1	0	1	0	14	-4
12	POUYE, FATOU	F	0	0-2	0-0	0-0	0	0	0	3	0	0	0	0	7	4
23	SKINNER, SANDRA	F	0	0-0	0-0	0-0	2	1	3	1	0	2	0	0	8	-4
TEAM							3	0	3	0		3				
TOTALS			68	23-63	3-22	19-22	23	20	43	16	11	15	1	6	200	

Shooting By Period

Period	FG	FG%	3FG	3FG%	FT	FT%
1st Qtr	6-15	40%	0-3	00%	7-7	100%
2nd Qtr	4-21	19%	1-9	11%	5-6	83%
3rd Qtr	10-13	77%	1-4	25%	5-5	100%
4th Qtr	3-14	21%	1-6	17%	2-4	50%
1st Half	10-36	28%	1-12	08%	12-13	92%
2nd Half	13-27	48%	2-10	20%	7-9	78%
Game	23-63	36.5%	3-22	13.6%	19-22	86.4%

Deadball Rebounds: 1,1

Last FG: 4th-00:17

Biggest Run: 9-0

Largest lead: By 20 at 3rd-00:02

Technical Fouls: None.

Game Notes:

Officials: Kelly Johnson, Chris Saucedo, Trey Miles

Attendance: 1082

Start Time: 07:01 PM ET

End Time: 08:54 PM ET

Game Duration: 1:53

Conference Game;

Score	1st	2nd	3rd	4th	TOT
FAU	16	10	13	20	59
WKU	19	14	26	9	68

FAU led for 4:24. WKU led for 34:10.

Game was tied for 1:26.

Times tied: 2 Lead Changes: 3

Points from	FAU	WKU
In the Paint	16	34
Off Turns	18	22
2nd Chance	7	8
Fast Break	9	4
Bench	14	2

Official Box Score
Fla. Atlantic vs Western Ky.
First Half Statistics Only
January 30, 2020 at E.A. Diddle Arena (John Oldham Court) - Bowling Green



Fla. Atlantic 26

No.	Player	S	Pts	FG	3FG	FT	OR	DR	TR	PF	A	TO	Blk	Stl	Min	+/-
00	GAYE, ASTOU	F	8	3-5	2-2	0-0	0	2	2	3	0	0	1	0	12	-4
01	PRIMM, CRYSTAL	G	0	0-2	0-1	0-0	1	2	3	2	0	0	0	0	9	-6
03	VEHKA-AHO, LOTTA	G	13	4-10	2-6	3-3	2	0	2	3	0	3	0	1	20	-7
05	OZOLA, NIKOLA	G	0	0-0	0-0	0-0	0	0	0	0	1	1	0	0	2	-4
10	HARKLESS, GLENISHA	G	0	0-1	0-0	0-0	0	1	1	2	5	1	1	0	13	-4
11	GAUTHIER, JULIETTE	F	2	1-3	0-2	0-0	1	1	2	0	1	2	1	1	20	-7
12	TYLKA, ALLIE	G	0	0-0	0-0	0-0	0	0	0	3	0	2	0	0	11	-1
14	VOSS, ABBY	F	3	1-2	0-1	1-2	1	1	2	2	0	1	0	0	8	-3
23	GORDON, TANIYA	G	0	0-0	0-0	0-0	0	0	0	0	0	0	0	0	0	0
34	ZAPH, ALEXA		0	0-1	0-0	0-0	0	0	0	0	0	0	0	0	5	1
	TEAM		0	0-0	0-0	0-0	0	3	3	0	0	0	0	0	0	
TOTALS			26	9-24	4-12	4-5	5	10	15	15	7	10	3	2	100	

Shooting By Period

Period	FG	FG%	3FG	3FG%	FT	FT%
1st Qtr	6-14	43%	4-9	44%	0-0	0%
2nd Qtr	3-10	30%	0-3	00%	4-5	80%
1st Half	9-24	38%	4-12	33%	4-5	80%
Game	19-47	40.4%	10-26	38.5%	11-18	61.1%

Deadball Rebounds: 5,1

Last FG Half: FAU 2nd-04:33

Western Ky. 33

No.	Player	S	Pts	FG	3FG	FT	OR	DR	TR	PF	A	TO	Blk	Stl	Min	+/-
00	HAYWOOD, MYRIAH	G	0	0-0	0-0	0-0	1	0	1	0	0	0	0	0	7	3
04	GIVENS, DEE	F	13	3-9	1-6	6-6	1	4	5	1	0	1	0	1	16	9
05	CREECH, WHITNEY	G	0	0-4	0-0	0-0	0	2	2	0	0	1	0	2	19	9
11	BREWER, ALEXIS	G	2	1-4	0-3	0-0	1	0	1	1	1	0	0	0	7	1
12	POUYE, FATOU	F	0	0-2	0-0	0-0	0	0	0	1	0	0	0	0	2	0
15	ELGEDAWY, RANEEM	F	17	6-11	0-0	5-5	7	3	10	1	0	0	0	0	16	1
22	PORTER, SHERRY	G	0	0-3	0-2	0-0	0	0	0	0	2	1	0	0	14	4
23	SKINNER, SANDRA	F	0	0-0	0-0	0-0	1	1	2	0	0	1	0	0	4	6
40	ABDELGAWAD, MERAL	G	1	0-3	0-1	1-2	3	0	3	2	0	1	0	0	15	2
	TEAM		0	0-0	0-0	0-0	2	0	2	0	0	1	0	0	0	
TOTALS			33	10-36	1-12	12-13	16	10	26	6	3	6	0	3	100	

Shooting By Period

Period	FG	FG%	3FG	3FG%	FT	FT%
1st Qtr	6-15	40%	0-3	00%	7-7	100%
2nd Qtr	4-21	19%	1-9	11%	5-6	83%
1st Half	10-36	28%	1-12	08%	12-13	92%
Game	23-63	36.5%	3-22	13.6%	19-22	86.4%

Deadball Rebounds: 1,1

Last FG Half: WKU 2nd-00:41

Game Notes:

Officials: Kelly Johnson, Chris Saucedo, Trey Miles
Attendance: 1082

Start Time: 07:01 PM ET

End Time: 08:54 PM ET

Game Duration: 1:53

Conference Game;

Score	1st	2nd	3rd	4th	TOT
FAU	16	10	13	20	59
WKU	19	14	26	9	68

Points from (This Period)	FAU	WKU
In the Paint	8	16
Off Turns	9	12
2nd Chance	3	8
Fast Break	0	0
Bench	3	2

Official Box Score
Fla. Atlantic vs Western Ky.
First Quarter Statistics Only
January 30, 2020 at E.A. Diddle Arena (John Oldham Court) - Bowling Green



Fla. Atlantic 16

No.	Player	S	Pts	FG	3FG	FT	OR	DR	TR	PF	A	TO	Blk	Stl	Min	+/-
00	GAYE, ASTOU	F	6	2-3	2-2	0-0	0	1	1	0	0	0	1	0	8	-4
01	PRIMM, CRYSTAL	G	0	0-2	0-1	0-0	1	1	2	2	0	0	0	0	6	-3
03	VEHKA-AHO, LOTTA	G	8	3-6	2-5	0-0	0	0	0	1	0	0	0	0	10	-3
10	HARKLESS, GLENISHA	G	0	0-0	0-0	0-0	0	0	0	1	3	0	1	0	7	1
11	GAUTHIER, JULIETTE	F	2	1-2	0-1	0-0	1	0	1	0	0	1	1	1	10	-3
05	OZOLA, NIKOLA	G	0	0-0	0-0	0-0	0	0	0	0	1	1	0	0	2	-4
12	TYLKA, ALLIE	G	0	0-0	0-0	0-0	0	0	0	2	0	0	0	0	4	0
14	VOSS, ABBY	F	0	0-0	0-0	0-0	0	0	0	1	0	0	0	0	2	1
23	GORDON, TANIYA	G	0	0-0	0-0	0-0	0	0	0	0	0	0	0	0	0	0
34	ZAPH, ALEXA		0	0-1	0-0	0-0	0	0	0	0	0	0	0	0	1	0
TEAM							0	0	0	0		0				
TOTALS			16	6-14	4-9	0-0	2	2	4	7	4	2	3	1	50	

Shooting By Period

Period	FG	FG%	3FG	3FG%	FT	FT%
1st Qtr	6-14	43%	4-9	44%	0-0	0%
2nd Qtr	3-10	30%	0-3	00%	4-5	80%
1st Half	6-14	43%	4-9	44%	0-0	0%
1st Half	9-24	38%	4-12	33%	4-5	80%
Game	19-47	40.4%	10-26	38.5%	11-18	61.1%

Deadball Rebounds: 5,1

Western Ky. 19

No.	Player	S	Pts	FG	3FG	FT	OR	DR	TR	PF	A	TO	Blk	Stl	Min	+/-
04	GIVENS, DEE	F	4	1-4	0-3	2-2	1	3	4	0	0	1	0	0	10	3
05	CREECH, WHITNEY	G	0	0-1	0-0	0-0	0	1	1	0	0	0	0	0	10	3
15	ELGEDAWY, RANEEM	F	15	5-7	0-0	5-5	2	2	4	0	0	0	0	0	10	3
22	PORTER, SHERRY	G	0	0-1	0-0	0-0	0	0	0	0	2	0	0	0	6	3
40	ABDELGAWAD, MERAL	G	0	0-1	0-0	0-0	2	0	2	1	0	1	0	0	9	1
00	HAYWOOD, MYRIAH	G	0	0-0	0-0	0-0	0	0	0	0	0	0	0	0	4	0
11	BREWER, ALEXIS	G	0	0-0	0-0	0-0	0	0	0	1	0	0	0	0	0	0
12	POUYE, FATOU	F	0	0-1	0-0	0-0	0	0	0	1	0	0	0	0	1	2
23	SKINNER, SANDRA	F	0	0-0	0-0	0-0	0	0	0	0	0	0	0	0	0	0
TEAM							2	0	2	0		1				
TOTALS			19	6-15	0-3	7-7	7	6	13	3	2	3	0	0	50	

Shooting By Period

Period	FG	FG%	3FG	3FG%	FT	FT%
1st Qtr	6-15	40%	0-3	00%	7-7	100%
2nd Qtr	4-21	19%	1-9	11%	5-6	83%
1st Half	6-15	40%	0-3	00%	7-7	100%
1st Half	10-36	28%	1-12	08%	12-13	92%
Game	23-63	36.5%	3-22	13.6%	19-22	86.4%

Deadball Rebounds: 1,1

Game Notes:

Officials: Kelly Johnson, Chris Saucedo, Trey Miles
Attendance: 1082

Start Time: 07:01 PM ET
End Time: 08:54 PM ET
Game Duration: 1:53
Conference Game;

Score	1st	2nd	3rd	4th	TOT
FAU	16	10	13	20	59
WKU	19	14	26	9	68

Points from (This Period)	FAU	WKU
In the Paint	4	12
Off Turns	9	4
2nd Chance	2	5
Fast Break	0	0
Bench	0	0

Official Play-By-Play
Fla. Atlantic vs Western Ky.
First Quarter

January 30, 2020 at E.A. Diddle Arena (John Oldham Court) - Bowling Green



Period 1

Starters:

Fla. Atlantic: 00 GAYE, ASTOU (F); 1 PRIMM, CRYSTAL (G); 3 VEHKA-AHO, LOTTA (G); 10 HARKLESS, GLENISHA (G); 11 GAUTHIER, JULIETTE (F);

Western Ky.: 4 GIVENS, DEE (F); 5 CREECH, WHITNEY (G); 15 ELGEDAWY, RANEEM (F); 22 PORTER, SHERRY (G); 40 ABDELGAUWAD, MERAL (G);

Time	VISITORS: Fla. Atlantic	Score	Margin	HOME: Western Ky.
09:35	MISSED JUMPER by PRIMM, CRYSTAL			
09:32				REBOUND (DEF) by GIVENS, DEE
09:26				TURNOVER (LOSTBALL) by ABDELGAUWAD, MERAL
09:26	STEAL by GAUTHIER, JULIETTE			
09:03	GOOD! 3PTR by GAYE, ASTOU	0-3	V 3	
09:03	ASSIST by HARKLESS, GLENISHA			
08:48				MISSED 3PTR by GIVENS, DEE
08:44				REBOUND (OFF) by ABDELGAUWAD, MERAL
08:28				MISSED JUMPER by PORTER, SHERRY
08:28	BLOCK by GAUTHIER, JULIETTE			
08:24	REBOUND (DEF) by PRIMM, CRYSTAL			
08:10	MISSED JUMPER by GAYE, ASTOU			
08:05				REBOUND (DEF) by ELGEDAWY, RANEEM
07:54		2-3	V 1	GOOD! LAYUP by ELGEDAWY, RANEEM
07:41	TIMEOUT 30SEC			
07:41				
07:37	MISSED 3PTR by VEHKA-AHO, LOTTA			
07:34	REBOUND (OFF) by PRIMM, CRYSTAL			
07:22	MISSED 3PTR by GAUTHIER, JULIETTE			
07:19				REBOUND (DEF) by GIVENS, DEE
06:54				MISSED 3PTR by GIVENS, DEE
06:52				REBOUND (OFF) by ELGEDAWY, RANEEM
06:52				MISSED LAYUP by ELGEDAWY, RANEEM
06:52	BLOCK by HARKLESS, GLENISHA			
06:52				REBOUND (OFF) by TEAM
06:38				MISSED JUMPER by ABDELGAUWAD, MERAL
06:38	BLOCK by GAYE, ASTOU			
06:38				REBOUND (OFF) by TEAM
06:34				MISSED LAYUP by ELGEDAWY, RANEEM
06:29				REBOUND (OFF) by ABDELGAUWAD, MERAL
06:08				TURNOVER (SHOTCLOCK) by TEAM
06:08	SUB OUT: HARKLESS, GLENISHA			
06:08	SUB IN: OZOLA, NIKOLA			
05:43	GOOD! 3PTR by GAYE, ASTOU	2-6	V 4	
05:43	ASSIST by OZOLA, NIKOLA			
05:22		4-6	V 2	GOOD! LAYUP by ELGEDAWY, RANEEM
05:22				ASSIST by PORTER, SHERRY
05:14	TURNOVER (TRAVEL) by OZOLA, NIKOLA			
04:55		6-6	T	GOOD! LAYUP by ELGEDAWY, RANEEM
04:55				ASSIST by PORTER, SHERRY
04:35	MISSED 3PTR by PRIMM, CRYSTAL			
04:32				REBOUND (DEF) by CREECH, WHITNEY
04:29				MISSED 3PTR by GIVENS, DEE
04:26				REBOUND (OFF) by ELGEDAWY, RANEEM
04:26		8-6	H 2	GOOD! LAYUP by ELGEDAWY, RANEEM
04:26	FOUL (PERSONAL) by PRIMM, CRYSTAL			
04:26	SUB OUT: GAYE, ASTOU			
04:26	SUB IN: VOSS, ABBY			
04:26		9-6	H 3	GOOD! FT by ELGEDAWY, RANEEM
04:10				FOUL (PERSONAL) by ABDELGAUWAD, MERAL
04:10				SUB OUT: PORTER, SHERRY
04:10				SUB IN: HAYWOOD, MYRIAH
04:10	SUB OUT: OZOLA, NIKOLA			
04:10	SUB IN: HARKLESS, GLENISHA			
04:07	MISSED 3PTR by VEHKA-AHO, LOTTA			
04:03				REBOUND (DEF) by ELGEDAWY, RANEEM
03:44	FOUL (PERSONAL) by PRIMM, CRYSTAL			
03:44	SUB OUT: PRIMM, CRYSTAL			
03:44	SUB IN: TYLKA, ALLIE			
03:23		11-6	H 5	GOOD! LAYUP by ELGEDAWY, RANEEM
03:02	GOOD! 3PTR by VEHKA-AHO, LOTTA	11-9	H 2	
03:02	ASSIST by HARKLESS, GLENISHA			
02:44				TURNOVER (TRAVEL) by GIVENS, DEE
02:35	GOOD! 3PTR by VEHKA-AHO, LOTTA	11-12	V 1	
02:35	ASSIST by HARKLESS, GLENISHA			
02:29	FOUL (PERSONAL) by VEHKA-AHO, LOTTA			
02:23	FOUL (PERSONAL) by VOSS, ABBY			
02:19	FOUL (PERSONAL) by HARKLESS, GLENISHA			
02:19		12-12	T	GOOD! FT by ELGEDAWY, RANEEM
02:19		13-12	H 1	GOOD! FT by ELGEDAWY, RANEEM

Time	VISITORS: Fla. Atlantic	Score	Margin	HOME: Western Ky.
02:19	SUB OUT: VOSS, ABBY			
02:19	SUB IN: GAYE, ASTOU			
02:11	TURNOVER (BADPASS) by GAUTHIER, JULIETTE			
01:50				MISSED JUMPER by CREECH, WHITNEY
01:47				REBOUND (OFF) by GIVENS, DEE
01:42		15-12	H 3	GOOD! JUMPER by GIVENS, DEE [PNT]
01:32	MISSED 3PTR by VEHKA-AHO, LOTTA			
01:28	REBOUND (OFF) by GAUTHIER, JULIETTE			
01:27	GOOD! LAYUP by GAUTHIER, JULIETTE	15-14	H 1	
01:20	FOUL (PERSONAL) by TYLKA, ALLIE			
01:20	SUB OUT: HARKLESS, GLENISHA			
01:20	SUB IN: ZAPH, ALEXA			
01:20		16-14	H 2	GOOD! FT by GIVENS, DEE
01:20		17-14	H 3	GOOD! FT by GIVENS, DEE
01:20				FOUL (PERSONAL) by POUYE, FATOU
01:20				SUB OUT: ABDELGAWAD, MERAL
01:20				SUB IN: POUYE, FATOU
00:20				MISSED LAYUP by POUYE, FATOU
00:20	REBOUND (DEF) by GAYE, ASTOU			
00:20	MISSED JUMPER by ZAPH, ALEXA			
00:20				REBOUND (DEF) by GIVENS, DEE
00:20	FOUL (PERSONAL) by TYLKA, ALLIE			
00:20		18-14	H 4	GOOD! FT by ELGEDAWY, RANEEM
00:20		19-14	H 5	GOOD! FT by ELGEDAWY, RANEEM
00:20				FOUL (PERSONAL) by BREWER, ALEXIS
00:20	GOOD! LAYUP by VEHKA-AHO, LOTTA	19-16	H 3	

Fla. Atlantic 16, Western Ky. 19

Points from (This Period)	FAU	WKU
In the Paint	4	12
Off Turns	9	4
2nd Chance	2	5
Fast Break	0	0
Bench	0	0

Official Box Score
Fla. Atlantic vs Western Ky.
Second Quarter Statistics Only
January 30, 2020 at E.A. Diddle Arena (John Oldham Court) - Bowling Green



Fla. Atlantic 10

No.	Player	S	Pts	FG	3FG	FT	OR	DR	TR	PF	A	TO	Blk	Stl	Min	+/-
00	GAYE, ASTOU	F	2	1-2	0-0	0-0	0	1	1	3	0	0	0	0	4	0
01	PRIMM, CRYSTAL	G	0	0-0	0-0	0-0	0	1	1	0	0	0	0	0	3	-3
03	VEHKA-AHO, LOTTA	G	5	1-4	0-1	3-3	2	0	2	2	0	3	0	1	10	-4
10	HARKLESS, GLENISHA	G	0	0-1	0-0	0-0	0	1	1	1	2	1	0	0	6	-5
11	GAUTHIER, JULIETTE	F	0	0-1	0-1	0-0	0	1	1	0	1	1	0	0	10	-4
05	OZOLA, NIKOLA	G	0	0-0	0-0	0-0	0	0	0	0	0	0	0	0	0	0
12	TYLKA, ALLIE	G	0	0-0	0-0	0-0	0	0	0	1	0	2	0	0	7	-1
14	VOSS, ABBY	F	3	1-2	0-1	1-2	1	1	2	1	0	1	0	0	6	-4
23	GORDON, TANIYA	G	0	0-0	0-0	0-0	0	0	0	0	0	0	0	0	0	0
34	ZAPH, ALEXA		0	0-0	0-0	0-0	0	0	0	0	0	0	0	0	4	1
TEAM							0	3	3	0		0				
TOTALS			10	3-10	0-3	4-5	3	8	11	8	3	8	0	1	50	

Shooting By Period

Period	FG	FG%	3FG	3FG%	FT	FT%
3rd Qtr	5-13	38%	3-7	43%	0-4	00%
4th Qtr	5-10	50%	3-7	43%	7-9	78%
2nd Half	3-10	30%	0-3	00%	4-5	80%
2nd Half	10-23	43%	6-14	43%	7-13	54%
Game	19-47	40.4%	10-26	38.5%	11-18	61.1%

Deadball Rebounds: 5,1

Western Ky. 14

No.	Player	S	Pts	FG	3FG	FT	OR	DR	TR	PF	A	TO	Blk	Stl	Min	+/-
04	GIVENS, DEE	F	9	2-5	1-3	4-4	0	1	1	1	0	0	0	1	6	6
05	CREECH, WHITNEY	G	0	0-3	0-0	0-0	0	1	1	0	0	1	0	2	9	6
15	ELGEDAWY, RANEEM	F	2	1-4	0-0	0-0	5	1	6	1	0	0	0	0	6	-2
22	PORTER, SHERRY	G	0	0-2	0-2	0-0	0	0	0	0	0	1	0	0	8	1
40	ABDELGAWAD, MERAL	G	1	0-2	0-1	1-2	1	0	1	1	0	0	0	0	6	1
00	HAYWOOD, MYRIAH	G	0	0-0	0-0	0-0	1	0	1	0	0	0	0	0	3	3
11	BREWER, ALEXIS	G	2	1-4	0-3	0-0	1	0	1	0	1	0	0	0	7	1
12	POUYE, FATOU	F	0	0-1	0-0	0-0	0	0	0	0	0	0	0	0	1	-2
23	SKINNER, SANDRA	F	0	0-0	0-0	0-0	1	1	2	0	0	1	0	0	4	6
TEAM							0	0	0	0		0				
TOTALS			14	4-21	1-9	5-6	9	4	13	3	1	3	0	3	50	

Shooting By Period

Period	FG	FG%	3FG	3FG%	FT	FT%
3rd Qtr	10-13	77%	1-4	25%	5-5	100%
4th Qtr	3-14	21%	1-6	17%	2-4	50%
2nd Half	4-21	19%	1-9	11%	5-6	83%
2nd Half	13-27	48%	2-10	20%	7-9	78%
Game	23-63	36.5%	3-22	13.6%	19-22	86.4%

Deadball Rebounds: 1,1

Game Notes:

Officials: Kelly Johnson, Chris Saucedo, Trey Miles
Attendance: 1082

Start Time: 07:01 PM ET
End Time: 08:54 PM ET
Game Duration: 1:53
Conference Game;

Score	1st	2nd	3rd	4th	TOT
FAU	16	10	13	20	59
WKU	19	14	26	9	68

Points from (This Period)	FAU	WKU
In the Paint	4	4
Off Turns	0	8
2nd Chance	1	3
Fast Break	0	0
Bench	3	2

Official Play-By-Play
Fla. Atlantic vs Western Ky.
Second Quarter

January 30, 2020 at E.A. Diddle Arena (John Oldham Court) - Bowling Green



Period 2

Starters:

Fla. Atlantic: 00 GAYE, ASTOU (F); 1 PRIMM, CRYSTAL (G); 3 VEHKA-AHO, LOTTA (G); 10 HARKLESS, GLENISHA (G); 11 GAUTHIER, JULIETTE (F);

Western Ky.: 4 GIVENS, DEE (F); 5 CREECH, WHITNEY (G); 15 ELGEDAWY, RANEEM (F); 22 PORTER, SHERRY (G); 40 ABDELGAWAD, MERAL (G);

Time	VISITORS: Fla. Atlantic	Score	Margin	HOME: Western Ky.
09:39				SUB OUT: HAYWOOD, MYRIAH
09:39				SUB OUT: CREECH, WHITNEY
09:39				SUB OUT: ABDELGAWAD, MERAL
09:39				SUB IN: BREWER, ALEXIS
09:39				SUB IN: POUYE, FATOU
09:39				SUB IN: PORTER, SHERRY
09:39	SUB OUT: TYLKA, ALLIE			
09:39	SUB OUT: ZAPH, ALEXA			
09:39	SUB IN: PRIMM, CRYSTAL			
09:39	SUB IN: HARKLESS, GLENISHA			
09:39				MISSED 3PTR by BREWER, ALEXIS
09:39	REBOUND (DEF) by GAUTHIER, JULIETTE			
09:39	TURNOVER (TRAVEL) by GAUTHIER, JULIETTE			
09:39	SUB OUT: PRIMM, CRYSTAL			
09:39	SUB IN: TYLKA, ALLIE			
09:33				MISSED LAYUP by POUYE, FATOU
09:30	REBOUND (DEF) by GAYE, ASTOU			
09:05	GOOD! LAYUP by VEHKA-AHO, LOTTA	19-18	H 1	
09:05	ASSIST by HARKLESS, GLENISHA			
08:54	FOUL (PERSONAL) by GAYE, ASTOU			
08:54				SUB OUT: POUYE, FATOU
08:54				SUB OUT: PORTER, SHERRY
08:54				SUB IN: CREECH, WHITNEY
08:54				SUB IN: ABDELGAWAD, MERAL
08:54		20-18	H 2	GOOD! FT by GIVENS, DEE
08:54		21-18	H 3	GOOD! FT by GIVENS, DEE
08:40	GOOD! LAYUP by GAYE, ASTOU	21-20	H 1	
08:40	ASSIST by HARKLESS, GLENISHA			
08:30				TURNOVER (BADPASS) by CREECH, WHITNEY
08:30	STEAL by VEHKA-AHO, LOTTA			
08:23	MISSED JUMPER by VEHKA-AHO, LOTTA			
08:20				REBOUND (DEF) by GIVENS, DEE
08:05				MISSED JUMPER by CREECH, WHITNEY
08:01				REBOUND (OFF) by ELGEDAWY, RANEEM
08:00				MISSED LAYUP by ELGEDAWY, RANEEM
07:58				REBOUND (OFF) by ELGEDAWY, RANEEM
07:55				MISSED 3PTR by GIVENS, DEE
07:52				REBOUND (OFF) by BREWER, ALEXIS
07:50		23-20	H 3	GOOD! LAYUP by BREWER, ALEXIS
07:47	MISSED JUMPER by HARKLESS, GLENISHA			
07:47				REBOUND (DEF) by ELGEDAWY, RANEEM
07:47	FOUL (PERSONAL) by HARKLESS, GLENISHA			
07:47				SUB OUT: GIVENS, DEE
07:47				SUB IN: PORTER, SHERRY
07:47	SUB OUT: HARKLESS, GLENISHA			
07:47	SUB IN: ZAPH, ALEXA			
07:36				MISSED 3PTR by BREWER, ALEXIS
07:32				REBOUND (OFF) by ELGEDAWY, RANEEM
07:22	FOUL (PERSONAL) by GAYE, ASTOU			
07:10				MISSED 3PTR by ABDELGAWAD, MERAL
07:08	REBOUND (DEF) by TEAM			
06:37	MISSED LAYUP by GAYE, ASTOU			
06:34	REBOUND (OFF) by VEHKA-AHO, LOTTA			
06:34	FOUL (OFF) by VEHKA-AHO, LOTTA			
06:34	TURNOVER (OFFENSIVE) by VEHKA-AHO, LOTTA			
06:18				MISSED 3PTR by BREWER, ALEXIS
06:15				REBOUND (OFF) by ABDELGAWAD, MERAL
06:15	FOUL (PERSONAL) by GAYE, ASTOU			
06:15	SUB OUT: GAYE, ASTOU			
06:15	SUB IN: VOSS, ABBY			
06:15		24-20	H 4	GOOD! FT by ABDELGAWAD, MERAL
06:14				MISSED FT by ABDELGAWAD, MERAL
06:13	REBOUND (DEF) by TEAM			
06:03	TURNOVER (LOSTBALL) by VEHKA-AHO, LOTTA			
06:03				STEAL by CREECH, WHITNEY
05:52				MISSED 3PTR by PORTER, SHERRY
05:49				REBOUND (OFF) by ELGEDAWY, RANEEM
05:49				MISSED LAYUP by ELGEDAWY, RANEEM
05:49	REBOUND (DEF) by TEAM			
05:49	TIMEOUT 30SEC			

Time	VISITORS: Fla. Atlantic	Score	Margin	HOME: Western Ky.
05:49				
05:29				FOUL (PERSONAL) by ELGEDAWY, RANEEM
05:29	GOOD! FT by VEHKA-AHO, LOTTA	24-21	H 3	
05:29	GOOD! FT by VEHKA-AHO, LOTTA	24-22	H 2	
05:29	GOOD! FT by VEHKA-AHO, LOTTA	24-23	H 1	
05:29	SUB OUT: ZAPH, ALEXA			
05:29	SUB IN: HARKLESS, GLENISHA			
05:18				TURNOVER (LOSTBALL) by PORTER, SHERRY
05:03	TURNOVER (BADPASS) by HARKLESS, GLENISHA			
05:03				STEAL by CREECH, WHITNEY
04:48		26-23	H 3	GOOD! LAYUP by ELGEDAWY, RANEEM
04:33	GOOD! JUMPER by VOSS, ABBY	26-25	H 1	
04:33	ASSIST by GAUTHIER, JULIETTE			
04:05				MISSED LAYUP by ABDELGAWAD, MERAL
04:02				REBOUND (OFF) by ELGEDAWY, RANEEM
04:02				MISSED LAYUP by ELGEDAWY, RANEEM
04:02	REBOUND (DEF) by HARKLESS, GLENISHA			
04:02				FOUL (PERSONAL) by ABDELGAWAD, MERAL
04:02				SUB OUT: ELGEDAWY, RANEEM
04:02				SUB OUT: ABDELGAWAD, MERAL
04:02				SUB IN: GIVENS, DEE
04:02				SUB IN: SKINNER, SANDRA
03:41	TURNOVER (LOSTBALL) by TYLKA, ALLIE			
03:35				MISSED LAYUP by GIVENS, DEE
03:32	REBOUND (DEF) by VOSS, ABBY			
03:22	FOUL (OFF) by VOSS, ABBY			
03:22	TURNOVER (OFFENSIVE) by VOSS, ABBY			
03:10		29-25	H 4	GOOD! 3PTR by GIVENS, DEE
03:10				ASSIST by BREWER, ALEXIS
02:53	TURNOVER (BADPASS) by TYLKA, ALLIE			
02:53				STEAL by GIVENS, DEE
02:50	FOUL (PERSONAL) by TYLKA, ALLIE			
02:50				SUB OUT: BREWER, ALEXIS
02:50				SUB IN: HAYWOOD, MYRIAH
02:50	SUB OUT: TYLKA, ALLIE			
02:50	SUB IN: PRIMM, CRYSTAL			
02:50		30-25	H 5	GOOD! FT by GIVENS, DEE
02:50		31-25	H 6	GOOD! FT by GIVENS, DEE
02:35	MISSED 3PTR by VOSS, ABBY			
02:31				REBOUND (DEF) by SKINNER, SANDRA
02:10				MISSED 3PTR by PORTER, SHERRY
02:05				REBOUND (OFF) by SKINNER, SANDRA
02:05				TURNOVER (LOSTBALL) by SKINNER, SANDRA
01:50	MISSED 3PTR by VEHKA-AHO, LOTTA			
01:45				REBOUND (DEF) by CREECH, WHITNEY
01:32				MISSED JUMPER by CREECH, WHITNEY
01:29	REBOUND (DEF) by PRIMM, CRYSTAL			
01:02	MISSED 3PTR by GAUTHIER, JULIETTE			
00:56	REBOUND (OFF) by VEHKA-AHO, LOTTA			
00:56	MISSED JUMPER by VEHKA-AHO, LOTTA			
00:56	REBOUND (OFF) by VOSS, ABBY			
00:56				FOUL (PERSONAL) by GIVENS, DEE
00:56				SUB OUT: PORTER, SHERRY
00:56				SUB IN: ABDELGAWAD, MERAL
00:56	SUB OUT: HARKLESS, GLENISHA			
00:56	SUB IN: ZAPH, ALEXA			
00:56	MISSED FT by VOSS, ABBY			
00:56	REBOUND (OFF) by TEAM			
00:56	GOOD! FT by VOSS, ABBY	31-26	H 5	
00:41		33-26	H 7	GOOD! JUMPER by GIVENS, DEE
00:23	FOUL (OFF) by VEHKA-AHO, LOTTA			
00:23	TURNOVER (OFFENSIVE) by VEHKA-AHO, LOTTA			
00:02				MISSED JUMPER by CREECH, WHITNEY
00:00				MISSED 3PTR by GIVENS, DEE
00:00				REBOUND (OFF) by HAYWOOD, MYRIAH
00:00	REBOUND (DEF) by TEAM			

Fla. Atlantic 26, Western Ky. 33

Points from (This Period)	FAU	WKU
In the Paint	4	4
Off Turns	0	8
2nd Chance	1	3
Fast Break	0	0
Bench	3	2

Official Box Score
Fla. Atlantic vs Western Ky.
Second Half Statistics Only
January 30, 2020 at E.A. Diddle Arena (John Oldham Court) - Bowling Green



Fla. Atlantic 33

No.	Player	S	Pts	FG	3FG	FT	OR	DR	TR	PF	A	TO	Blk	Stl	Min	+/-
00	GAYE, ASTOU	F	0	0-1	0-1	0-0	0	0	0	2	1	1	0	0	8	-3
01	PRIMM, CRYSTAL	G	8	3-6	0-0	2-6	1	2	3	3	3	0	0	2	19	-4
03	VEHKA-AHO, LOTTA	G	5	1-4	1-4	2-2	0	0	0	2	0	1	0	0	11	6
05	OZOLA, NIKOLA	G	0	0-0	0-0	0-0	0	0	0	0	0	0	0	0	0	0
10	HARKLESS, GLENISHA	G	0	0-1	0-1	0-0	1	0	1	0	1	3	1	0	12	6
11	GAUTHIER, JULIETTE	F	9	2-5	2-3	3-3	1	2	3	3	1	0	0	1	20	-2
12	TYLKA, ALLIE	G	0	0-0	0-0	0-0	0	0	0	1	0	0	0	0	2	-4
14	VOSS, ABBY	F	0	0-0	0-0	0-0	0	2	2	0	1	0	0	1	12	1
23	GORDON, TANIYA	G	3	1-1	1-1	0-0	0	1	1	0	0	0	0	0	1	1
34	ZAPH, ALEXA		8	3-5	2-4	0-2	0	1	1	0	0	0	0	0	14	-11
	TEAM		0	0-0	0-0	0-0	1	0	1	0	0	1	0	0	0	
TOTALS			33	10-23	6-14	7-13	4	8	12	11	7	6	1	4	100	

Shooting By Period

Period	FG	FG%	3FG	3FG%	FT	FT%
3rd Qtr	5-13	38%	3-7	43%	0-4	00%
4th Qtr	5-10	50%	3-7	43%	7-9	78%
2nd Half	10-23	43%	6-14	43%	7-13	54%
Game	19-47	40.4%	10-26	38.5%	11-18	61.1%

Deadball Rebounds: 5,1

Last FG Half: FAU 4th-00:03

Western Ky. 35

No.	Player	S	Pts	FG	3FG	FT	OR	DR	TR	PF	A	TO	Blk	Stl	Min	+/-
00	HAYWOOD, MYRIAH	G	0	0-1	0-0	0-0	1	0	1	0	0	0	0	0	4	-5
04	GIVENS, DEE	F	12	5-9	2-6	0-0	0	1	1	3	1	0	0	0	20	2
05	CREECH, WHITNEY	G	9	3-5	0-0	3-4	1	1	2	0	5	0	0	1	20	2
11	BREWER, ALEXIS	G	0	0-3	0-3	0-0	0	0	0	0	0	0	1	0	8	-5
12	POUYE, FATOU	F	0	0-0	0-0	0-0	0	0	0	2	0	0	0	0	4	4
15	ELGEDAWY, RANEEM	F	11	4-5	0-0	3-4	2	6	8	2	0	5	0	0	12	6
22	PORTER, SHERRY	G	0	0-1	0-0	0-0	1	0	1	1	0	0	0	0	13	3
23	SKINNER, SANDRA	F	0	0-0	0-0	0-0	1	0	1	1	0	1	0	0	5	-10
40	ABDELGAWAD, MERAL	G	3	1-3	0-1	1-1	0	2	2	1	2	1	0	2	15	13
	TEAM		0	0-0	0-0	0-0	1	0	1	0	0	2	0	0	0	
TOTALS			35	13-27	2-10	7-9	7	10	17	10	8	9	1	3	100	

Shooting By Period

Period	FG	FG%	3FG	3FG%	FT	FT%
3rd Qtr	10-13	77%	1-4	25%	5-5	100%
4th Qtr	3-14	21%	1-6	17%	2-4	50%
2nd Half	13-27	48%	2-10	20%	7-9	78%
Game	23-63	36.5%	3-22	13.6%	19-22	86.4%

Deadball Rebounds: 1,1

Last FG Half: WKU 4th-00:17

Game Notes:

Officials: Kelly Johnson, Chris Saucedo, Trey Miles
Attendance: 1082

Start Time: 07:01 PM ET

End Time: 08:54 PM ET

Game Duration: 1:53

Conference Game;

Score	1st	2nd	3rd	4th	TOT
FAU	16	10	13	20	59
WKU	19	14	26	9	68

Points from (This Period)	FAU	WKU
In the Paint	8	18
Off Turns	9	10
2nd Chance	4	0
Fast Break	9	4
Bench	11	0

Official Box Score
Fla. Atlantic vs Western Ky.
Third Quarter Statistics Only
January 30, 2020 at E.A. Diddle Arena (John Oldham Court) - Bowling Green



Fla. Atlantic 33

No.	Player	S	Pts	FG	3FG	FT	OR	DR	TR	PF	A	TO	Blk	Stl	Min	+/-
00	GAYE, ASTOU	F	0	0-1	0-1	0-0	0	0	0	1	1	1	0	0	6	-4
01	PRIMM, CRYSTAL	G	4	2-4	0-0	0-2	1	2	3	1	2	0	0	1	10	-13
03	VEHKA-AHO, LOTTA	G	0	0-1	0-1	0-0	0	0	0	1	0	0	0	0	2	-4
10	HARKLESS, GLENISHA	G	0	0-1	0-1	0-0	1	0	1	0	1	2	0	0	6	-3
11	GAUTHIER, JULIETTE	F	3	1-3	1-1	0-0	0	0	0	1	0	0	0	0	10	-13
05	OZOLA, NIKOLA	G	0	0-0	0-0	0-0	0	0	0	0	0	0	0	0	0	0
12	TYLKA, ALLIE	G	0	0-0	0-0	0-0	0	0	0	1	0	0	0	0	2	-6
14	VOSS, ABBY	F	0	0-0	0-0	0-0	0	0	0	0	1	0	0	1	4	-9
23	GORDON, TANIYA	G	0	0-0	0-0	0-0	0	0	0	0	0	0	0	0	0	0
34	ZAPH, ALEXA		6	2-3	2-3	0-2	0	0	0	0	0	0	0	0	10	-13
	TEAM						1	0	1	0		0				
TOTALS			13	5-13	3-7	0-4	3	2	5	5	5	3	0	2	50	

Shooting By Period

Period	FG	FG%	3FG	3FG%	FT	FT%
2nd Half	0-0	0%	0-0	0%	0-0	0%
Game	19-47	40.4%	10-26	38.5%	11-18	61.1%

Deadball Rebounds: 5,1

Western Ky. 35

No.	Player	S	Pts	FG	3FG	FT	OR	DR	TR	PF	A	TO	Blk	Stl	Min	+/-
04	GIVENS, DEE	F	9	4-6	1-3	0-0	0	0	0	0	1	0	0	0	10	13
05	CREECH, WHITNEY	G	8	3-3	0-0	2-2	0	1	1	0	4	0	0	1	10	13
15	ELGEDAWY, RANEEM	F	6	2-2	0-0	2-2	1	3	4	2	0	2	0	0	6	12
22	PORTER, SHERRY	G	0	0-0	0-0	0-0	0	0	0	1	0	0	0	0	8	7
40	ABDELGAWAD, MERAL	G	3	1-2	0-1	1-1	0	2	2	0	1	1	0	1	10	13
00	HAYWOOD, MYRIAH	G	0	0-0	0-0	0-0	0	0	0	0	0	0	0	0	0	0
11	BREWER, ALEXIS	G	0	0-0	0-0	0-0	0	0	0	0	0	0	0	0	2	6
12	POUYE, FATOU	F	0	0-0	0-0	0-0	0	0	0	1	0	0	0	0	2	6
23	SKINNER, SANDRA	F	0	0-0	0-0	0-0	0	0	0	0	0	0	0	0	2	-5
	TEAM						0	0	0	0		0				
TOTALS			26	10-13	1-4	5-5	1	6	7	4	6	3	0	2	50	

Shooting By Period

Period	FG	FG%	3FG	3FG%	FT	FT%
2nd Half	0-0	0%	0-0	0%	0-0	0%
Game	23-63	36.5%	3-22	13.6%	19-22	86.4%

Deadball Rebounds: 1,1

Game Notes:

Officials: Kelly Johnson, Chris Saucedo, Trey Miles

Attendance: 1082

Start Time: 07:01 PM ET

End Time: 08:54 PM ET

Game Duration: 1:53

Conference Game;

Score	1st	2nd	3rd	4th	TOT
FAU	16	10	13	20	59
WKU	19	14	26	9	68

Points from (This Period)	FAU	WKU
In the Paint	4	14
Off Turns	5	6
2nd Chance	2	0
Fast Break	3	4
Bench	6	0

Official Play-By-Play
Fla. Atlantic vs Western Ky.
Third Quarter

January 30, 2020 at E.A. Diddle Arena (John Oldham Court) - Bowling Green



Period 3

Starters:

Fla. Atlantic: 00 GAYE, ASTOU (F); 1 PRIMM, CRYSTAL (G); 3 VEKKA-AHO, LOTTA (G); 10 HARKLESS, GLENISHA (G); 11 GAUTHIER, JULIETTE (F);

Western Ky.: 4 GIVENS, DEE (F); 5 CREECH, WHITNEY (G); 15 ELGEDAWY, RANEEM (F); 22 PORTER, SHERRY (G); 40 ABDELGAWAD, MERAL (G);

Time	VISITORS: Fla. Atlantic	Score	Margin	HOME: Western Ky.
10:00				SUB OUT: HAYWOOD, MYRIAH
10:00				SUB OUT: SKINNER, SANDRA
10:00				SUB IN: ELGEDAWY, RANEEM
10:00				SUB IN: PORTER, SHERRY
10:00	SUB OUT: VOSS, ABBY			
10:00	SUB IN: GAYE, ASTOU			
09:43	FOUL (PERSONAL) by PRIMM, CRYSTAL			
09:25		36-26	H 10	GOOD! 3PTR by GIVENS, DEE
09:25				ASSIST by CREECH, WHITNEY
09:02	MISSED 3PTR by VEKKA-AHO, LOTTA			
08:59				REBOUND (DEF) by ELGEDAWY, RANEEM
08:52				MISSED 3PTR by GIVENS, DEE
08:48	REBOUND (DEF) by PRIMM, CRYSTAL			
08:31	MISSED 3PTR by ZAPH, ALEXA			
08:27				REBOUND (DEF) by ELGEDAWY, RANEEM
08:16				TURNOVER (3SEC) by ELGEDAWY, RANEEM
08:01				FOUL (PERSONAL) by PORTER, SHERRY
08:01	MISSED FT by ZAPH, ALEXA			
08:01	REBOUND (OFF) by TEAM			
08:01	MISSED FT by ZAPH, ALEXA			
07:57	REBOUND (OFF) by TEAM			
07:50	GOOD! LAYUP by PRIMM, CRYSTAL	36-28	H 8	
07:50	ASSIST by GAYE, ASTOU			
07:38		38-28	H 10	GOOD! LAYUP by ELGEDAWY, RANEEM
07:38				ASSIST by GIVENS, DEE
07:38	FOUL (PERSONAL) by VEKKA-AHO, LOTTA			
07:38		39-28	H 11	GOOD! FT by ELGEDAWY, RANEEM
07:38	SUB OUT: VEKKA-AHO, LOTTA			
07:38	SUB IN: HARKLESS, GLENISHA			
07:26	MISSED 3PTR by GAYE, ASTOU			
07:23	REBOUND (OFF) by PRIMM, CRYSTAL			
07:19	MISSED JUMPER by PRIMM, CRYSTAL			
07:16	REBOUND (OFF) by HARKLESS, GLENISHA			
06:58	MISSED JUMPER by GAUTHIER, JULIETTE			
06:55				REBOUND (DEF) by CREECH, WHITNEY
06:46		41-28	H 13	GOOD! LAYUP by ELGEDAWY, RANEEM [PNT]
06:46				ASSIST by CREECH, WHITNEY
06:46	FOUL (PERSONAL) by GAUTHIER, JULIETTE			
06:46		42-28	H 14	GOOD! FT by ELGEDAWY, RANEEM
06:18	TURNOVER (LOSTBALL) by GAYE, ASTOU			
06:18				STEAL by CREECH, WHITNEY
06:12		44-28	H 16	GOOD! LAYUP by GIVENS, DEE [FB]
06:12				ASSIST by CREECH, WHITNEY
06:04				FOUL (PERSONAL) by ELGEDAWY, RANEEM
06:04	MISSED FT by PRIMM, CRYSTAL			
06:04	REBOUND (OFF) by TEAM			
06:03	MISSED FT by PRIMM, CRYSTAL			
06:03				REBOUND (DEF) by TEAM
05:40				MISSED 3PTR by GIVENS, DEE
05:37	REBOUND (DEF) by PRIMM, CRYSTAL			
05:37				FOUL (PERSONAL) by ELGEDAWY, RANEEM
05:37				SUB OUT: ELGEDAWY, RANEEM
05:37				SUB IN: SKINNER, SANDRA
05:17	GOOD! 3PTR by ZAPH, ALEXA	44-31	H 13	
05:17	ASSIST by PRIMM, CRYSTAL			
04:57				TURNOVER (BADPASS) by ABDELGAWAD, MERAL
04:57	STEAL by PRIMM, CRYSTAL			
04:50	GOOD! 3PTR by ZAPH, ALEXA [FB]	44-34	H 10	
04:50	ASSIST by PRIMM, CRYSTAL			
04:44				TIMEOUT 30SEC
04:44				
04:29		46-34	H 12	GOOD! JUMPER by GIVENS, DEE
04:04	GOOD! 3PTR by GAUTHIER, JULIETTE	46-37	H 9	
04:04	ASSIST by HARKLESS, GLENISHA			
03:50		48-37	H 11	GOOD! LAYUP by ABDELGAWAD, MERAL
03:50				ASSIST by CREECH, WHITNEY
03:50	FOUL (PERSONAL) by GAYE, ASTOU			
03:50				
03:50				SUB OUT: SKINNER, SANDRA
03:50				SUB IN: ELGEDAWY, RANEEM

Time	VISITORS: Fla. Atlantic	Score	Margin	HOME: Western Ky.
03:50	SUB OUT: GAYE, ASTOU			
03:50	SUB IN: VOSS, ABBY			
03:50		49-37	H 12	GOOD! FT by ABDELGAWAD, MERAL
03:41	TURNOVER (BADPASS) by HARKLESS, GLENISHA			
03:41				STEAL by ABDELGAWAD, MERAL
03:34		51-37	H 14	GOOD! LAYUP by GIVENS, DEE [FB]
03:34				ASSIST by ABDELGAWAD, MERAL
03:10	GOOD! LAYUP by PRIMM, CRYSTAL	51-39	H 12	
03:10	ASSIST by VOSS, ABBY			
02:40		53-39	H 14	GOOD! JUMPER by CREECH, WHITNEY
02:25	MISSED 3PTR by HARKLESS, GLENISHA			
02:21				REBOUND (DEF) by ELGEDAWY, RANEEM
01:58				MISSED 3PTR by ABDELGAWAD, MERAL
01:54				REBOUND (OFF) by ELGEDAWY, RANEEM
01:53				TURNOVER (LOSTBALL) by ELGEDAWY, RANEEM
01:53	STEAL by VOSS, ABBY			
01:53				SUB OUT: ELGEDAWY, RANEEM
01:53				SUB IN: POUYE, FATOU
01:40	TURNOVER (TRAVEL) by HARKLESS, GLENISHA			
01:40				SUB OUT: PORTER, SHERRY
01:40				SUB IN: BREWER, ALEXIS
01:40	SUB OUT: HARKLESS, GLENISHA			
01:40	SUB IN: TYLKA, ALLIE			
01:21	FOUL (PERSONAL) by TYLKA, ALLIE			
01:21		54-39	H 15	GOOD! FT by CREECH, WHITNEY
01:21		55-39	H 16	GOOD! FT by CREECH, WHITNEY
01:01				FOUL (PERSONAL) by POUYE, FATOU
00:52	MISSED LAYUP by GAUTHIER, JULIETTE			
00:49				REBOUND (DEF) by ABDELGAWAD, MERAL
00:43		57-39	H 18	GOOD! JUMPER by CREECH, WHITNEY [PNT]
00:24	MISSED JUMPER by PRIMM, CRYSTAL			
00:20				REBOUND (DEF) by ABDELGAWAD, MERAL
00:02		59-39	H 20	GOOD! LAYUP by CREECH, WHITNEY

Fla. Atlantic 39, Western Ky. 59

Points from (This Period)	FAU	WKU
In the Paint	4	14
Off Turns	5	6
2nd Chance	2	0
Fast Break	3	4
Bench	6	0

Official Box Score
Fla. Atlantic vs Western Ky.
Fourth Quarter Statistics Only
January 30, 2020 at E.A. Diddle Arena (John Oldham Court) - Bowling Green



Fla. Atlantic 20

No.	Player	S	Pts	FG	3FG	FT	OR	DR	TR	PF	A	TO	Blk	Stl	Min	+/-
00	GAYE, ASTOU	F	0	0-0	0-0	0-0	0	0	0	1	0	0	0	0	2	1
01	PRIMM, CRYSTAL	G	4	1-2	0-0	2-4	0	0	0	2	1	0	0	1	9	9
03	VEHKA-AHO, LOTTA	G	5	1-3	1-3	2-2	0	0	0	1	0	1	0	0	9	10
10	HARKLESS, GLENISHA	G	0	0-0	0-0	0-0	0	0	0	0	0	1	1	0	6	9
11	GAUTHIER, JULIETTE	F	6	1-2	1-2	3-3	1	2	3	2	1	0	0	1	10	11
05	OZOLA, NIKOLA	G	0	0-0	0-0	0-0	0	0	0	0	0	0	0	0	0	0
12	TYLKA, ALLIE	G	0	0-0	0-0	0-0	0	0	0	0	0	0	0	0	0	2
14	VOSS, ABBY	F	0	0-0	0-0	0-0	0	2	2	0	0	0	0	0	8	10
23	GORDON, TANIYA	G	3	1-1	1-1	0-0	0	1	1	0	0	0	0	0	1	1
34	ZAPH, ALEXA		2	1-2	0-1	0-0	0	1	1	0	0	0	0	0	4	2
	TEAM						0	0	0	0		1				
TOTALS			20	5-10	3-7	7-9	1	6	7	6	2	3	1	2	50	

Shooting By Period

Period	FG	FG%	3FG	3FG%	FT	FT%
Game	19-47	40.4%	10-26	38.5%	11-18	61.1%

Deadball Rebounds: 5,1

Western Ky. 9

No.	Player	S	Pts	FG	3FG	FT	OR	DR	TR	PF	A	TO	Blk	Stl	Min	+/-
04	GIVENS, DEE	F	3	1-3	1-3	0-0	0	1	1	3	0	0	0	0	10	-11
05	CREECH, WHITNEY	G	1	0-2	0-0	1-2	1	0	1	0	1	0	0	0	10	-11
15	ELGEDAWY, RANEEM	F	5	2-3	0-0	1-2	1	3	4	0	0	3	0	0	6	-6
22	PORTER, SHERRY	G	0	0-1	0-0	0-0	1	0	1	0	0	0	0	0	5	-4
40	ABDELGAWAD, MERAL	G	0	0-1	0-0	0-0	0	0	0	1	1	0	0	1	5	0
00	HAYWOOD, MYRIAH	G	0	0-1	0-0	0-0	1	0	1	0	0	0	0	0	4	-5
11	BREWER, ALEXIS	G	0	0-3	0-3	0-0	0	0	0	0	0	0	1	0	6	-11
12	POUYE, FATOU	F	0	0-0	0-0	0-0	0	0	0	1	0	0	0	0	2	-2
23	SKINNER, SANDRA	F	0	0-0	0-0	0-0	1	0	1	1	0	1	0	0	3	-5
	TEAM						1	0	1	0		2				
TOTALS			9	3-14	1-6	2-4	6	4	10	6	2	6	1	1	50	

Shooting By Period

Period	FG	FG%	3FG	3FG%	FT	FT%
Game	23-63	36.5%	3-22	13.6%	19-22	86.4%

Deadball Rebounds: 1,1

Game Notes:

Officials: Kelly Johnson, Chris Saucedo, Trey Miles
Attendance: 1082

Start Time: 07:01 PM ET
End Time: 08:54 PM ET
Game Duration: 1:53
Conference Game;

Score	1st	2nd	3rd	4th	TOT
FAU	16	10	13	20	59
WKU	19	14	26	9	68

Points from (This Period)	FAU	WKU
In the Paint	4	4
Off Turns	4	4
2nd Chance	2	0
Fast Break	6	0
Bench	5	0

Official Play-By-Play
Fla. Atlantic vs Western Ky.
Fourth Quarter

January 30, 2020 at E.A. Diddle Arena (John Oldham Court) - Bowling Green



Period 4

Starters:

Fla. Atlantic: 00 GAYE,ASTOU (F); 1 PRIMM,CRYSTAL (G); 3 VEKKA-AHO,LOTTA (G); 10 HARKLESS,GLENISHA (G); 11 GAUTHIER,JULIETTE (F);

Western Ky.: 4 GIVENS,DEE (F); 5 CREECH,WHITNEY (G); 15 ELGEDAWY,RANEEM (F); 22 PORTER,SHERRY (G); 40 ABDELGAWAD,MERAL (G);

Time	VISITORS: Fla. Atlantic	Score	Margin	HOME: Western Ky.
10:00	SUB OUT: TYLKA, ALLIE			
10:00	SUB IN: VEKKA-AHO, LOTTA			
09:34				MISSED LAYUP by ABDELGAWAD, MERAL
09:31	REBOUND (DEF) by VOSS, ABBY			
09:31				FOUL (PERSONAL) by ABDELGAWAD, MERAL
09:31				SUB OUT: ABDELGAWAD, MERAL
09:31				SUB IN: HAYWOOD, MYRIAH
09:31	SUB OUT: ZAPH, ALEXA			
09:31	SUB IN: HARKLESS, GLENISHA			
09:10				FOUL (PERSONAL) by GIVENS, DEE
09:10	MISSED FT by PRIMM, CRYSTAL			
09:10	REBOUND (OFF) by TEAM			
09:10	GOOD! FT by PRIMM, CRYSTAL	59-40	H 19	
08:41				MISSED JUMPER by CREECH, WHITNEY
08:41	BLOCK by HARKLESS, GLENISHA			
08:36				REBOUND (OFF) by CREECH, WHITNEY
08:35				TURNOVER (SHOTCLOCK) by TEAM
08:28	TIMEOUT 30SEC			
08:28				
08:28	SUB OUT: VOSS, ABBY			
08:28	SUB IN: GAYE, ASTOU			
08:13	MISSED JUMPER by PRIMM, CRYSTAL			
08:10				REBOUND (DEF) by GIVENS, DEE
07:45				MISSED 3PTR by BREWER, ALEXIS
07:45	REBOUND (DEF) by GAUTHIER, JULIETTE			
07:45				FOUL (PERSONAL) by GIVENS, DEE
07:33				FOUL (PERSONAL) by POUYE, FATOU
07:33	MISSED FT by PRIMM, CRYSTAL			
07:33	REBOUND (OFF) by TEAM			
07:32	GOOD! FT by PRIMM, CRYSTAL	59-41	H 18	
07:32				SUB OUT: POUYE, FATOU
07:32				SUB IN: SKINNER, SANDRA
07:01				MISSED JUMPER by CREECH, WHITNEY
06:59				REBOUND (OFF) by SKINNER, SANDRA
06:50	FOUL (PERSONAL) by GAYE, ASTOU			
06:50	SUB OUT: GAYE, ASTOU			
06:50	SUB IN: VOSS, ABBY			
06:34				MISSED 3PTR by BREWER, ALEXIS
06:29				REBOUND (OFF) by HAYWOOD, MYRIAH
06:28				MISSED JUMPER by HAYWOOD, MYRIAH
06:25	REBOUND (DEF) by GAUTHIER, JULIETTE			
06:21	GOOD! 3PTR by VEKKA-AHO, LOTTA [FB]	59-44	H 15	
06:21	ASSIST by PRIMM, CRYSTAL			
05:48				TURNOVER (SHOTCLOCK) by TEAM
05:48				SUB OUT: HAYWOOD, MYRIAH
05:48				SUB IN: ELGEDAWY, RANEEM
05:48	SUB OUT: HARKLESS, GLENISHA			
05:48	SUB IN: ZAPH, ALEXA			
05:34	MISSED 3PTR by VEKKA-AHO, LOTTA			
05:34				BLOCK by BREWER, ALEXIS
05:29	REBOUND (OFF) by GAUTHIER, JULIETTE			
05:26	GOOD! LAYUP by ZAPH, ALEXA	59-46	H 13	
05:10				TURNOVER (BADPASS) by SKINNER, SANDRA
04:57				FOUL (PERSONAL) by SKINNER, SANDRA
04:57				SUB OUT: SKINNER, SANDRA
04:57				SUB IN: PORTER, SHERRY
04:57	GOOD! FT by VEKKA-AHO, LOTTA	59-47	H 12	
04:57	GOOD! FT by VEKKA-AHO, LOTTA	59-48	H 11	
04:44				MISSED 3PTR by GIVENS, DEE
04:40	REBOUND (DEF) by ZAPH, ALEXA			
04:34	GOOD! LAYUP by PRIMM, CRYSTAL	59-50	H 9	
04:14				MISSED JUMPER by ELGEDAWY, RANEEM
04:10				REBOUND (OFF) by PORTER, SHERRY
04:09				MISSED 3PTR by BREWER, ALEXIS
04:04				REBOUND (OFF) by TEAM
04:04				SUB OUT: BREWER, ALEXIS
04:04				SUB IN: ABDELGAWAD, MERAL
04:03				TURNOVER (LOSTBALL) by ELGEDAWY, RANEEM
04:03	STEAL by PRIMM, CRYSTAL			
03:49	MISSED 3PTR by ZAPH, ALEXA			

Time	VISITORS: Fla. Atlantic	Score	Margin	HOME: Western Ky.
03:45				REBOUND (DEF) by ELGEDAWY, RANEEM
03:45				TURNOVER (TRAVEL) by ELGEDAWY, RANEEM
03:30	MISSED 3PTR by VEHKA-AHO, LOTTA			
03:25				REBOUND (DEF) by ELGEDAWY, RANEEM
03:07		61-50	H 11	GOOD! LAYUP by ELGEDAWY, RANEEM
02:52	TURNOVER (10SEC) by TEAM			
02:31		63-50	H 13	GOOD! LAYUP by ELGEDAWY, RANEEM
02:31				ASSIST by ABDELGAWAD, MERAL
02:10	MISSED 3PTR by GAUTHIER, JULIETTE			
02:07				REBOUND (DEF) by ELGEDAWY, RANEEM
02:00	FOUL (PERSONAL) by PRIMM, CRYSTAL			
02:00	SUB OUT: ZAPH, ALEXA			
02:00	SUB IN: HARKLESS, GLENISHA			
01:56				MISSED 3PTR by GIVENS, DEE
01:53				REBOUND (OFF) by ELGEDAWY, RANEEM
01:34				MISSED JUMPER by PORTER, SHERRY
01:31	REBOUND (DEF) by VOSS, ABBY			
01:27				FOUL (PERSONAL) by GIVENS, DEE
01:27	GOOD! FT by GAUTHIER, JULIETTE [FB]	63-51	H 12	
01:27	GOOD! FT by GAUTHIER, JULIETTE [FB]	63-52	H 11	
01:27	GOOD! FT by GAUTHIER, JULIETTE [FB]	63-53	H 10	
01:27	SUB OUT: PRIMM, CRYSTAL			
01:27	SUB IN: GORDON, TANIYA			
01:01				TURNOVER (LOSTBALL) by ELGEDAWY, RANEEM
01:01	STEAL by GAUTHIER, JULIETTE			
00:57	TURNOVER (LOSTBALL) by VEHKA-AHO, LOTTA			
00:57				STEAL by ABDELGAWAD, MERAL
00:55	FOUL (PERSONAL) by GAUTHIER, JULIETTE			
00:53	FOUL (PERSONAL) by VEHKA-AHO, LOTTA			
00:53	SUB OUT: VEHKA-AHO, LOTTA			
00:53	SUB IN: PRIMM, CRYSTAL			
00:45	FOUL (PERSONAL) by GAUTHIER, JULIETTE			
00:45				MISSED FT by CREECH, WHITNEY
00:45				REBOUND (OFF) by TEAM
00:45		64-53	H 11	GOOD! FT by CREECH, WHITNEY
00:33	GOOD! 3PTR by GAUTHIER, JULIETTE	64-56	H 8	
00:17		67-56	H 11	GOOD! 3PTR by GIVENS, DEE
00:17				ASSIST by CREECH, WHITNEY
00:12	TURNOVER (LOSTBALL) by HARKLESS, GLENISHA			
00:12	FOUL (PERSONAL) by PRIMM, CRYSTAL			
00:12	SUB OUT: PRIMM, CRYSTAL			
00:12	SUB IN: TYLKA, ALLIE			
00:12		68-56	H 12	GOOD! FT by ELGEDAWY, RANEEM
00:12				MISSED FT by ELGEDAWY, RANEEM
00:09	REBOUND (DEF) by GORDON, TANIYA			
00:03	GOOD! 3PTR by GORDON, TANIYA	68-59	H 9	
00:03	ASSIST by GAUTHIER, JULIETTE			

Fla. Atlantic 59, Western Ky. 68

Points from (This Period)	FAU	WKU
In the Paint	4	4
Off Turns	4	4
2nd Chance	2	0
Fast Break	6	0
Bench	5	0

**Official Scoring/Possession Reference Chart
Fla. Atlantic vs Western Ky.**

Period 1

January 30, 2020 at E.A. Diddle Arena (John Oldham Court) - Bowling Green



Period 1

Starters:

Fla. Atlantic: 00 GAYE,ASTOU (F); 1 PRIMM,CRYSTAL (G); 3 VEHKA-AHO,LOTTA (G); 10 HARKLESS,GLENISHA (G); 11 GAUTHIER,JULIETTE (F);

Western Ky.: 4 GIVENS,DEE (F); 5 CREECH,WHITNEY (G); 15 ELGEDAWY,RANEEM (F); 22 PORTER,SHERRY (G); 40 ABDELGAUWAD,MERAL (G);

Time	VISITORS: Fla. Atlantic	Score	Margin	HOME: Western Ky.
09:03	GOOD! 3PTR by GAYE, ASTOU	0-3	V 3	
07:54		2-3	V 1	GOOD! LAYUP by ELGEDAWY, RANEEM
05:43	GOOD! 3PTR by GAYE, ASTOU	2-6	V 4	
05:22		4-6	V 2	GOOD! LAYUP by ELGEDAWY, RANEEM
04:55		6-6	T	GOOD! LAYUP by ELGEDAWY, RANEEM
04:26		8-6	H 2	GOOD! LAYUP by ELGEDAWY, RANEEM
04:26		9-6	H 3	GOOD! FT by ELGEDAWY, RANEEM
03:23		11-6	H 5	GOOD! LAYUP by ELGEDAWY, RANEEM
03:02	GOOD! 3PTR by VEHKA-AHO, LOTTA	11-9	H 2	
02:35	GOOD! 3PTR by VEHKA-AHO, LOTTA	11-12	V 1	
02:19		12-12	T	GOOD! FT by ELGEDAWY, RANEEM
02:19		13-12	H 1	GOOD! FT by ELGEDAWY, RANEEM
01:42		15-12	H 3	GOOD! JUMPER by GIVENS, DEE [PNT]
01:27	GOOD! LAYUP by GAUTHIER, JULIETTE	15-14	H 1	
01:20		16-14	H 2	GOOD! FT by GIVENS, DEE
01:20		17-14	H 3	GOOD! FT by GIVENS, DEE
00:20		18-14	H 4	GOOD! FT by ELGEDAWY, RANEEM
00:20		19-14	H 5	GOOD! FT by ELGEDAWY, RANEEM
00:20	GOOD! LAYUP by VEHKA-AHO, LOTTA	19-16	H 3	

Fla. Atlantic 16, Western Ky. 19

**Official Scoring/Possession Reference Chart
Fla. Atlantic vs Western Ky.**

Period 2

January 30, 2020 at E.A. Diddle Arena (John Oldham Court) - Bowling Green



Period 2

Starters:

Fla. Atlantic: 00 GAYE,ASTOU (F); 1 PRIMM,CRYSTAL (G); 3 VEHKA-AHO,LOTTA (G); 10 HARKLESS,GLENISHA (G); 11 GAUTHIER,JULIETTE (F);

Western Ky.: 4 GIVENS,DEE (F); 5 CREECH,WHITNEY (G); 15 ELGEDAWY,RANEEM (F); 22 PORTER,SHERRY (G); 40 ABDELGAWAD,MERAL (G);

Time	VISITORS: Fla. Atlantic	Score	Margin	HOME: Western Ky.
09:05	GOOD! LAYUP by VEHKA-AHO, LOTTA	19-18	H 1	
08:54		20-18	H 2	GOOD! FT by GIVENS, DEE
08:54		21-18	H 3	GOOD! FT by GIVENS, DEE
08:40	GOOD! LAYUP by GAYE, ASTOU	21-20	H 1	
07:50		23-20	H 3	GOOD! LAYUP by BREWER, ALEXIS
06:15		24-20	H 4	GOOD! FT by ABDELGAWAD, MERAL
05:29	GOOD! FT by VEHKA-AHO, LOTTA	24-21	H 3	
05:29	GOOD! FT by VEHKA-AHO, LOTTA	24-22	H 2	
05:29	GOOD! FT by VEHKA-AHO, LOTTA	24-23	H 1	
04:48		26-23	H 3	GOOD! LAYUP by ELGEDAWY, RANEEM
04:33	GOOD! JUMPER by VOSS, ABBY	26-25	H 1	
03:10		29-25	H 4	GOOD! 3PTR by GIVENS, DEE
02:50		30-25	H 5	GOOD! FT by GIVENS, DEE
02:50		31-25	H 6	GOOD! FT by GIVENS, DEE
00:56	GOOD! FT by VOSS, ABBY	31-26	H 5	
00:41		33-26	H 7	GOOD! JUMPER by GIVENS, DEE

Fla. Atlantic 26, Western Ky. 33

Official Scoring/Possession Reference Chart
Fla. Atlantic vs Western Ky.

Period 3

January 30, 2020 at E.A. Diddle Arena (John Oldham Court) - Bowling Green



Period 3

Starters:

Fla. Atlantic: 00 GAYE,ASTOU (F); 1 PRIMM,CRYSTAL (G); 3 VEKKA-AHO,LOTTA (G); 10 HARKLESS,GLENISHA (G); 11 GAUTHIER,JULIETTE (F);
Western Ky.: 4 GIVENS,DEE (F); 5 CREECH,WHITNEY (G); 15 ELGEDAWY,RANEEM (F); 22 PORTER,SHERRY (G); 40 ABDELGAWAD,MERAL (G);

Time	VISITORS: Fla. Atlantic	Score	Margin	HOME: Western Ky.
09:25		36-26	H 10	GOOD! 3PTR by GIVENS, DEE
07:50	GOOD! LAYUP by PRIMM, CRYSTAL	36-28	H 8	
07:38		38-28	H 10	GOOD! LAYUP by ELGEDAWY, RANEEM
07:38		39-28	H 11	GOOD! FT by ELGEDAWY, RANEEM
06:46		41-28	H 13	GOOD! LAYUP by ELGEDAWY, RANEEM [PNT]
06:46		42-28	H 14	GOOD! FT by ELGEDAWY, RANEEM
06:12		44-28	H 16	GOOD! LAYUP by GIVENS, DEE [FB]
05:17	GOOD! 3PTR by ZAPH, ALEXA	44-31	H 13	
04:50	GOOD! 3PTR by ZAPH, ALEXA [FB]	44-34	H 10	
04:29		46-34	H 12	GOOD! JUMPER by GIVENS, DEE
04:04	GOOD! 3PTR by GAUTHIER, JULIETTE	46-37	H 9	
03:50		48-37	H 11	GOOD! LAYUP by ABDELGAWAD, MERAL
03:50		49-37	H 12	GOOD! FT by ABDELGAWAD, MERAL
03:34		51-37	H 14	GOOD! LAYUP by GIVENS, DEE [FB]
03:10	GOOD! LAYUP by PRIMM, CRYSTAL	51-39	H 12	
02:40		53-39	H 14	GOOD! JUMPER by CREECH, WHITNEY
01:21		54-39	H 15	GOOD! FT by CREECH, WHITNEY
01:21		55-39	H 16	GOOD! FT by CREECH, WHITNEY
00:43		57-39	H 18	GOOD! JUMPER by CREECH, WHITNEY [PNT]
00:02		59-39	H 20	GOOD! LAYUP by CREECH, WHITNEY

Fla. Atlantic 39, Western Ky. 59

**Official Scoring/Possession Reference Chart
Fla. Atlantic vs Western Ky.**

Period 4

January 30, 2020 at E.A. Diddle Arena (John Oldham Court) - Bowling Green



Period 4

Starters:

Fla. Atlantic: 00 GAYE,ASTOU (F); 1 PRIMM,CRYSTAL (G); 3 VEKKA-AHO,LOTTA (G); 10 HARKLESS,GLENISHA (G); 11 GAUTHIER,JULIETTE (F);

Western Ky.: 4 GIVENS,DEE (F); 5 CREECH,WHITNEY (G); 15 ELGEDAWY,RANEEM (F); 22 PORTER,SHERRY (G); 40 ABDELGAWAD,MERAL (G);

Time	VISITORS: Fla. Atlantic	Score	Margin	HOME: Western Ky.
09:10	GOOD! FT by PRIMM, CRYSTAL	59-40	H 19	
07:32	GOOD! FT by PRIMM, CRYSTAL	59-41	H 18	
06:21	GOOD! 3PTR by VEKKA-AHO, LOTTA [FB]	59-44	H 15	
05:26	GOOD! LAYUP by ZAPH, ALEXA	59-46	H 13	
04:57	GOOD! FT by VEKKA-AHO, LOTTA	59-47	H 12	
04:57	GOOD! FT by VEKKA-AHO, LOTTA	59-48	H 11	
04:34	GOOD! LAYUP by PRIMM, CRYSTAL	59-50	H 9	
03:07		61-50	H 11	GOOD! LAYUP by ELGEDAWY, RANEEM
02:31		63-50	H 13	GOOD! LAYUP by ELGEDAWY, RANEEM
01:27	GOOD! FT by GAUTHIER, JULIETTE [FB]	63-51	H 12	
01:27	GOOD! FT by GAUTHIER, JULIETTE [FB]	63-52	H 11	
01:27	GOOD! FT by GAUTHIER, JULIETTE [FB]	63-53	H 10	
00:45		64-53	H 11	GOOD! FT by CREECH, WHITNEY
00:33	GOOD! 3PTR by GAUTHIER, JULIETTE	64-56	H 8	
00:17		67-56	H 11	GOOD! 3PTR by GIVENS, DEE
00:12		68-56	H 12	GOOD! FT by ELGEDAWY, RANEEM
00:03	GOOD! 3PTR by GORDON, TANIYA	68-59	H 9	

Fla. Atlantic 59, Western Ky. 68

**Official Substitutions Log
Fla. Atlantic vs Western Ky.
Period 1**

January 30, 2020 at E.A. Diddle Arena (John Oldham Court) - Bowling Green



VISITORS: Fla. Atlantic	Time	Score	HOME: Western Ky.
00 GAYE,ASTOU			4 GIVENS,DEE
1 PRIMM,CRYSTAL			5 CREECH,WHITNEY
3 VEHKA-AHO,LOTTA			15 ELGEDAWY,RANEEM
10 HARKLESS,GLENISHA			22 PORTER,SHERRY
11 GAUTHIER,JULIETTE			40 ABDEL GAWAD,MERAL
SUB OUT: 10 HARKLESS,GLENISHA	06:08	3-2	
SUB IN: 5 OZOLA,NIKOLA	06:08		
SUB OUT: 00 GAYE,ASTOU	04:26	6-8	
SUB IN: 14 VOSS,ABBY	04:26		
	04:10	6-9	SUB OUT: PORTER,SHERRY
	04:10		SUB IN: HAYWOOD,MYRIAH
SUB OUT: 5 OZOLA,NIKOLA	04:10		
SUB IN: 10 HARKLESS,GLENISHA	04:10		
SUB OUT: 1 PRIMM,CRYSTAL	03:44	6-9	
SUB IN: 12 TYLKA,ALLIE	03:44		
SUB OUT: 14 VOSS,ABBY	02:19	12-13	
SUB IN: 00 GAYE,ASTOU	02:19		
SUB OUT: 10 HARKLESS,GLENISHA	01:20	14-15	
SUB IN: 34 ZAPH,ALEXA	01:20		
	01:20		SUB OUT: ABDEL GAWAD,MERAL
	01:20		SUB IN: POUYE,FATOU

Fla. Atlantic 16, Western Ky. 19

**Official Substitutions Log
Fla. Atlantic vs Western Ky.
Period 2**

January 30, 2020 at E.A. Diddle Arena (John Oldham Court) - Bowling Green



VISITORS: Fla. Atlantic	Time	Score	HOME: Western Ky.
00 GAYE,ASTOU			4 GIVENS,DEE
1 PRIMM,CRYSTAL			5 CREECH,WHITNEY
3 VEKKA-AHO,LOTTA			15 ELGEDAWY,RANEEM
10 HARKLESS,GLENISHA			22 PORTER,SHERRY
11 GAUTHIER,JULIETTE			40 ABDEL GAWAD, MERAL
	09:39	-	SUB OUT: HAYWOOD,MYRIAH
	09:39		SUB OUT: CREECH,WHITNEY
	09:39		SUB OUT: ABDEL GAWAD, MERAL
	09:39		SUB IN: BREWER,ALEXIS
	09:39		SUB IN: POUYE,FATOU
	09:39		SUB IN: PORTER,SHERRY
SUB OUT: 12 TYLKA,ALLIE	09:39		
SUB OUT: 34 ZAPH,ALEXA	09:39		
SUB IN: 1 PRIMM,CRYSTAL	09:39		
SUB IN: 10 HARKLESS,GLENISHA	09:39		
SUB OUT: 1 PRIMM,CRYSTAL	09:39		
SUB IN: 12 TYLKA,ALLIE	09:39		
	08:54	18-19	SUB OUT: POUYE,FATOU
	08:54		SUB OUT: PORTER,SHERRY
	08:54		SUB IN: CREECH,WHITNEY
	08:54		SUB IN: ABDEL GAWAD, MERAL
	07:47	20-23	SUB OUT: GIVENS,DEE
	07:47		SUB IN: PORTER,SHERRY
SUB OUT: 10 HARKLESS,GLENISHA	07:47		
SUB IN: 34 ZAPH,ALEXA	07:47		
SUB OUT: 00 GAYE,ASTOU	06:15	20-23	
SUB IN: 14 VOSS,ABBY	06:15		
SUB OUT: 34 ZAPH,ALEXA	05:29	23-24	
SUB IN: 10 HARKLESS,GLENISHA	05:29		
	04:02	25-26	SUB OUT: ELGEDAWY,RANEEM
	04:02		SUB OUT: ABDEL GAWAD, MERAL
	04:02		SUB IN: GIVENS,DEE
	04:02		SUB IN: SKINNER,SANDRA
	02:50	25-29	SUB OUT: BREWER,ALEXIS
	02:50		SUB IN: HAYWOOD,MYRIAH
SUB OUT: 12 TYLKA,ALLIE	02:50		
SUB IN: 1 PRIMM,CRYSTAL	02:50		
	00:56	25-31	SUB OUT: PORTER,SHERRY
	00:56		SUB IN: ABDEL GAWAD, MERAL
SUB OUT: 10 HARKLESS,GLENISHA	00:56		
SUB IN: 34 ZAPH,ALEXA	00:56		

Fla. Atlantic 26, Western Ky. 33

**Official Substitutions Log
Fla. Atlantic vs Western Ky.
Period 3**

January 30, 2020 at E.A. Diddle Arena (John Oldham Court) - Bowling Green



VISITORS: Fla. Atlantic	Time	Score	HOME: Western Ky.
00 GAYE,ASTOU			4 GIVENS,DEE
1 PRIMM,CRYSTAL			5 CREECH,WHITNEY
3 VEHKA-AHO,LOTTA			15 ELGEDAWY,RANEEM
10 HARKLESS,GLENISHA			22 PORTER,SHERRY
11 GAUTHIER,JULIETTE			40 ABDEL GAWAD, MERAL
	10:00	-	SUB OUT: HAYWOOD,MYRIAH
	10:00		SUB OUT: SKINNER,SANDRA
	10:00		SUB IN: ELGEDAWY,RANEEM
	10:00		SUB IN: PORTER,SHERRY
SUB OUT: 14 VOSS,ABBY	10:00		
SUB IN: 00 GAYE,ASTOU	10:00		
SUB OUT: 3 VEHKA-AHO,LOTTA	07:38	28-39	
SUB IN: 10 HARKLESS,GLENISHA	07:38		
	05:37	28-44	SUB OUT: ELGEDAWY,RANEEM
	05:37		SUB IN: SKINNER,SANDRA
	03:50	37-48	SUB OUT: SKINNER,SANDRA
	03:50		SUB IN: ELGEDAWY,RANEEM
SUB OUT: 00 GAYE,ASTOU	03:50		
SUB IN: 14 VOSS,ABBY	03:50		
	01:53	39-53	SUB OUT: ELGEDAWY,RANEEM
	01:53		SUB IN: POUYE,FATOU
	01:40	39-53	SUB OUT: PORTER,SHERRY
	01:40		SUB IN: BREWER,ALEXIS
SUB OUT: 10 HARKLESS,GLENISHA	01:40		
SUB IN: 12 TYLKA,ALLIE	01:40		

Fla. Atlantic 39, Western Ky. 59

**Official Substitutions Log
Fla. Atlantic vs Western Ky.
Period 4**

January 30, 2020 at E.A. Diddle Arena (John Oldham Court) - Bowling Green



VISITORS: Fla. Atlantic	Time	Score	HOME: Western Ky.
00 GAYE,ASTOU			4 GIVENS,DEE
1 PRIMM,CRYSTAL			5 CREECH,WHITNEY
3 VEHKA-AHO,LOTTA			15 ELGEDAWY,RANEEM
10 HARKLESS,GLENISHA			22 PORTER,SHERRY
11 GAUTHIER,JULIETTE			40 ABDELGAWAD,MERAL
SUB OUT: 12 TYLKA,ALLIE	10:00	-	
SUB IN: 3 VEHKA-AHO,LOTTA	10:00		
	09:31	-	SUB OUT: ABDELGAWAD,MERAL
	09:31		SUB IN: HAYWOOD,MYRIAH
SUB OUT: 34 ZAPH,ALEXA	09:31		
SUB IN: 10 HARKLESS,GLENISHA	09:31		
SUB OUT: 14 VOSS,ABBY	08:28	40-59	
SUB IN: 00 GAYE,ASTOU	08:28		
	07:32	41-59	SUB OUT: POUYE,FATOU
	07:32		SUB IN: SKINNER,SANDRA
SUB OUT: 00 GAYE,ASTOU	06:50	41-59	
SUB IN: 14 VOSS,ABBY	06:50		
	05:48	44-59	SUB OUT: HAYWOOD,MYRIAH
	05:48		SUB IN: ELGEDAWY,RANEEM
SUB OUT: 10 HARKLESS,GLENISHA	05:48		
SUB IN: 34 ZAPH,ALEXA	05:48		
	04:57	46-59	SUB OUT: SKINNER,SANDRA
	04:57		SUB IN: PORTER,SHERRY
	04:04	50-59	SUB OUT: BREWER,ALEXIS
	04:04		SUB IN: ABDELGAWAD,MERAL
SUB OUT: 34 ZAPH,ALEXA	02:00	50-63	
SUB IN: 10 HARKLESS,GLENISHA	02:00		
SUB OUT: 1 PRIMM,CRYSTAL	01:27	53-63	
SUB IN: 23 GORDON,TANIYA	01:27		
SUB OUT: 3 VEHKA-AHO,LOTTA	00:53	53-63	
SUB IN: 1 PRIMM,CRYSTAL	00:53		
SUB OUT: 1 PRIMM,CRYSTAL	00:12	56-67	
SUB IN: 12 TYLKA,ALLIE	00:12		

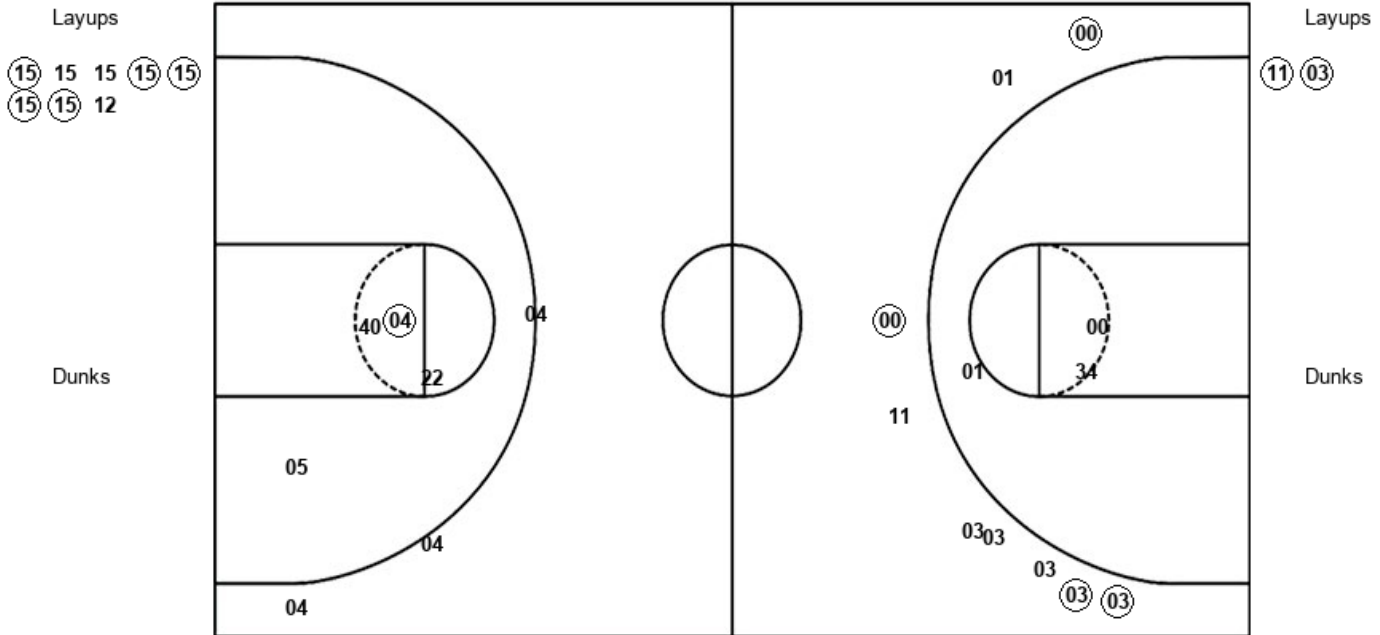
Fla. Atlantic 59, Western Ky. 68

Official Shot Chart
Fla. Atlantic vs Western Ky.
 PERIOD 1 Shots
 January 30, 2020 at E.A. Diddle Arena (John Oldham Court) - Bowling Green



Western Ky.

Fla. Atlantic



WKU : Period 1	Made	Att	Pct
Layups	5	8	62.5
Dunks	0	0	0
2PT Field Goals	6	12	50.0
3PT Field Goals	0	3	00.0
Total Field Goals	6	15	40.0

FAU : Period 1	Made	Att	Pct
Layups	2	2	100.0
Dunks	0	0	0
2PT Field Goals	2	5	40.0
3PT Field Goals	4	9	44.4
Total Field Goals	6	14	42.9

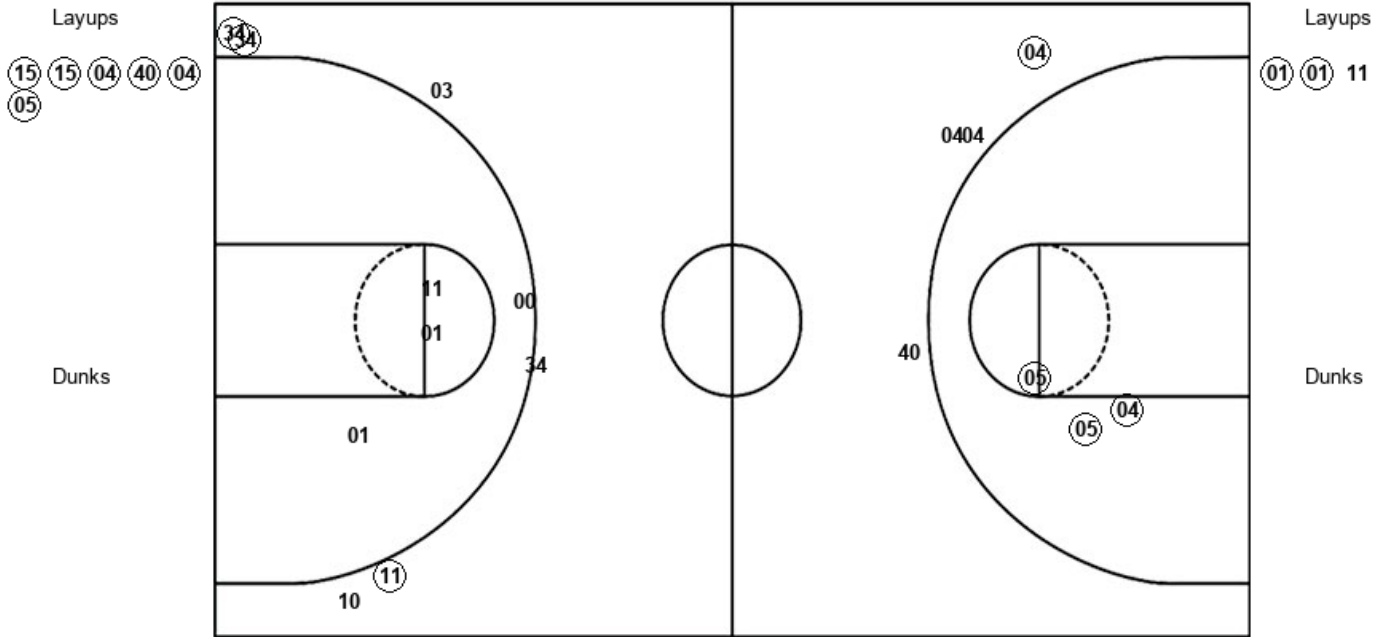
Official Shot Chart
Fla. Atlantic vs Western Ky.
 PERIOD 3 Shots

January 30, 2020 at E.A. Diddle Arena (John Oldham Court) - Bowling Green



Western Ky.

Fla. Atlantic



WKU : Period 3	Made	Att	Pct
Layups	6	6	100.0
Dunks	0	0	0
2PT Field Goals	9	9	100.0
3PT Field Goals	1	4	25.0
Total Field Goals	10	13	76.9

FAU : Period 3	Made	Att	Pct
Layups	2	3	66.7
Dunks	0	0	0
2PT Field Goals	2	6	33.3
3PT Field Goals	3	7	42.9
Total Field Goals	5	13	38.5

Official Shot Chart
Fla. Atlantic vs Western Ky.
 PERIOD 4 Shots
 January 30, 2020 at E.A. Diddle Arena (John Oldham Court) - Bowling Green

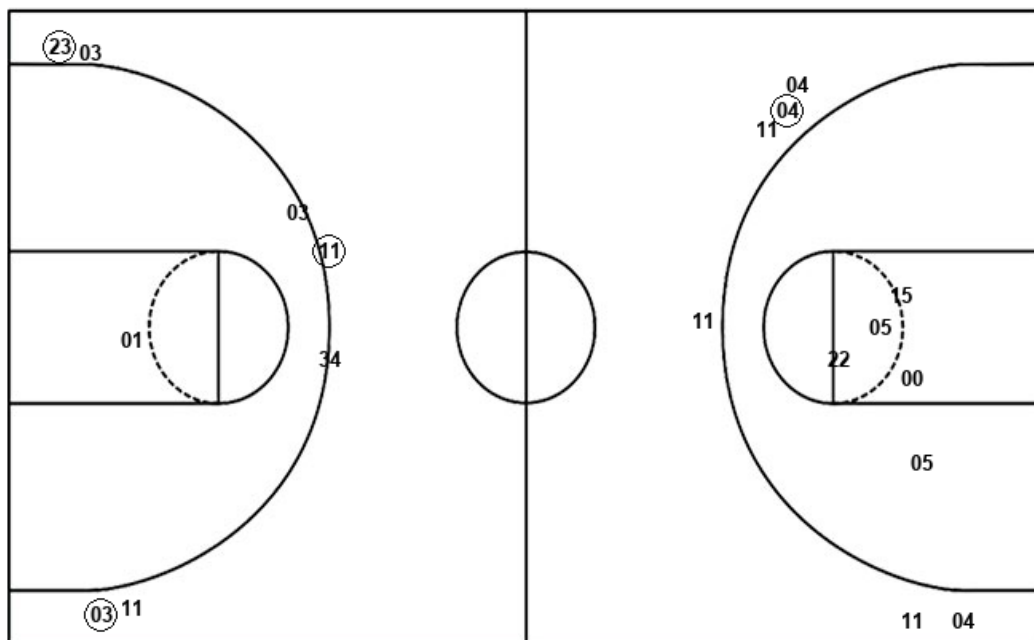


Western Ky.

Fla. Atlantic

Layups
 40 (15) (15)

Dunks



Layups

Dunks

WKU : Period 4	Made	Att	Pct
Layups	2	3	66.7
Dunks	0	0	0
2PT Field Goals	2	8	25.0
3PT Field Goals	1	6	16.7
Total Field Goals	3	14	21.4

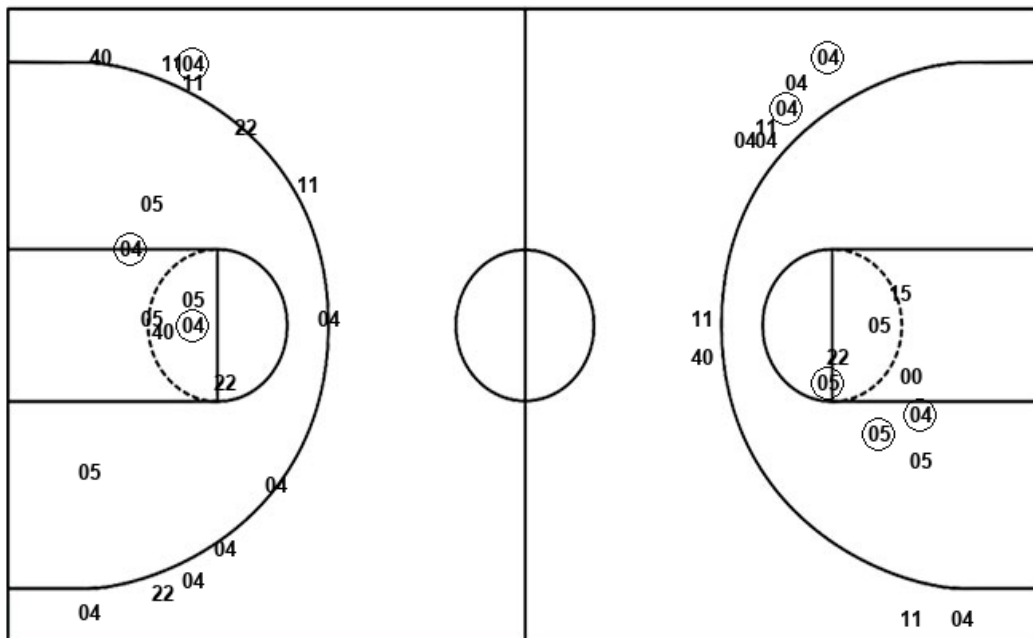
FAU : Period 4	Made	Att	Pct
Layups	2	2	100.0
Dunks	0	0	0
2PT Field Goals	2	3	66.7
3PT Field Goals	3	7	42.9
Total Field Goals	5	10	50.0

Official Shot Chart
Fla. Atlantic vs Western Ky.
Western Ky. Team Shots
January 30, 2020 at E.A. Diddle Arena (John Oldham Court) - Bowling Green



Layups

Dunks



Layups

Dunks

15	15	15	15	15
15	15	12	12	15
11	15	15	40	15
04	15	15	04	40
04	05	40	15	15

WKU : Period 1	Made	Att	Pct
Layups	5	8	62.5
Dunks	0	0	0
2PT Field Goals	6	12	50.0
3PT Field Goals	0	3	00.0
Total Field Goals	6	15	40.0

WKU : Period 3	Made	Att	Pct
Layups	6	6	100.0
Dunks	0	0	0
2PT Field Goals	9	9	100.0
3PT Field Goals	1	4	25.0
Total Field Goals	10	13	76.9

WKU : Period 2	Made	Att	Pct
Layups	2	8	25.0
Dunks	0	0	0
2PT Field Goals	3	12	25.0
3PT Field Goals	1	9	11.1
Total Field Goals	4	21	19.0

WKU : Period 4	Made	Att	Pct
Layups	2	3	66.7
Dunks	0	0	0
2PT Field Goals	2	8	25.0
3PT Field Goals	1	6	16.7
Total Field Goals	3	14	21.4