

## FINAL SCORE



**Eastern Wash.**

**60**



**Saint Louis**

**82**

November 13, 2019 • Chaifetz Arena - St. Louis, Mo.

## FINAL STATISTICS

**Official Box Score**  
**Eastern Wash. vs Saint Louis**  
**Game Totals -- Final Statistics**  
**November 13, 2019 at Chaifetz Arena - St. Louis, Mo.**



**Eastern Wash. 60**

No.	Player	S	Pts	FG	3FG	FT	OR	DR	TR	PF	A	TO	Blk	Stl	Min	+/-
10	DAVISON, JACOB	G	2	1-6	0-0	0-1	2	1	3	5	0	4	0	0	18	-11
11	PERRY, JACK	G	3	1-2	1-1	0-0	0	1	1	1	3	1	0	2	21	-14
14	PEATLING, MASON	F	10	3-8	1-3	3-5	4	2	6	3	3	1	0	0	30	-19
24	AIKEN JR., KIM	G	13	5-15	2-8	1-1	2	11	13	3	3	2	1	3	31	-19
55	MAGNUSON, ELLIS	G	0	0-4	0-2	0-1	0	2	2	1	1	4	0	1	21	-17
00	KIDD, TYLER	G	10	3-11	2-4	2-2	0	0	0	2	1	2	0	2	26	-9
05	ROUSE, CASSON	G	6	2-7	2-4	0-0	0	2	2	0	0	1	0	0	22	-11
15	ROBERTSON, TYLER	G	0	0-2	0-1	0-0	0	1	1	1	0	1	0	0	7	-3
22	JACKSON, ELIJAH	G	3	0-0	0-0	3-4	1	1	2	2	0	0	0	0	5	0
25	MEADOWS, MICHAEL	G	0	0-2	0-2	0-0	1	1	2	0	1	0	0	0	6	-2
33	GROVES, TANNER	F	9	4-4	1-1	0-0	1	1	2	4	0	2	0	0	10	-8
44	MOHAMED, ABDULLAHI	F	4	0-2	0-0	4-4	1	1	2	0	0	0	0	0	4	3
	TEAM						3	1	4	0		0				
	<b>TOTALS</b>		<b>60</b>	<b>19-63</b>	<b>9-26</b>	<b>13-18</b>	<b>15</b>	<b>25</b>	<b>40</b>	<b>22</b>	<b>12</b>	<b>18</b>	<b>1</b>	<b>8</b>	<b>200</b>	

*Shooting By Period*

Period	FG	FG%	3FG	3FG%	FT	FT%
1st Half	8-26	31%	4-12	33%	4-5	80%
2nd Half	11-37	30%	5-14	36%	9-13	69%
<b>Game</b>	<b>19-63</b>	<b>30.2%</b>	<b>9-26</b>	<b>34.6%</b>	<b>13-18</b>	<b>72.2%</b>

Deadball Rebounds: 0,0

Last FG: 2nd-03:38

Biggest Run: 10-0

Largest lead: By 3 at -

Technical Fouls: #10 DAVISON (Double) @ 1st - 04:14;

**Saint Louis 82**

No.	Player	S	Pts	FG	3FG	FT	OR	DR	TR	PF	A	TO	Blk	Stl	Min	+/-
00	GOODWIN, JORDAN	G	8	2-5	1-3	3-4	2	5	7	2	1	4	0	3	21	11
11	FRENCH, HASAHN	F	19	9-11	0-0	1-7	1	5	6	1	3	3	2	2	28	18
15	JACOBS, DEMARIUS	G	5	2-4	1-3	0-0	0	3	3	1	1	0	1	1	20	17
20	THATCH JR., FRED	G	11	3-7	2-4	3-5	1	6	7	3	1	2	1	1	22	12
32	BELL JR., JIMMY	F	4	1-3	0-0	2-4	2	2	4	2	0	1	2	0	12	5
01	COLLINS, YURI	G	6	2-3	0-1	2-4	1	2	3	2	11	2	0	2	27	20
02	WEAVER, TAY	G	9	3-3	3-3	0-0	0	1	1	3	0	1	0	0	17	13
03	PERKINS, JAVONTE	F	6	3-6	0-2	0-0	0	3	3	3	3	2	0	1	12	7
10	HIGHTOWER, JOSHUA	G	1	0-1	0-1	1-2	0	0	0	1	1	0	0	0	3	-1
12	COURTNEY, BRANDON	G	3	1-1	1-1	0-0	0	1	1	1	0	1	0	1	2	4
21	DIARRA, MADANI	C	0	0-0	0-0	0-2	0	3	3	1	0	0	0	0	4	-3
22	HARGROVE JR., TERRENCE	F	4	2-3	0-1	0-0	0	0	0	0	1	0	0	0	7	2
23	HANKTON, KC	F	2	1-3	0-1	0-0	0	1	1	2	0	0	0	0	6	2
24	JIMERSON, GIBSON	G	4	2-4	0-1	0-0	0	2	2	3	1	2	0	0	16	-1
31	RABOIN, JACK	G	0	0-0	0-0	0-0	0	0	0	0	0	0	0	0	2	4
	TEAM						0	0	0	0		0				
	<b>TOTALS</b>		<b>82</b>	<b>31-54</b>	<b>8-21</b>	<b>12-28</b>	<b>7</b>	<b>34</b>	<b>41</b>	<b>25</b>	<b>23</b>	<b>18</b>	<b>6</b>	<b>11</b>	<b>200</b>	

*Shooting By Period*

Period	FG	FG%	3FG	3FG%	FT	FT%
1st Half	15-31	48%	5-14	36%	1-12	08%
2nd Half	16-23	70%	3-7	43%	11-16	69%
<b>Game</b>	<b>31-54</b>	<b>57.4%</b>	<b>8-21</b>	<b>38.1%</b>	<b>12-28</b>	<b>42.9%</b>

Deadball Rebounds: 7,0

Last FG: 2nd-00:47

Biggest Run: 12-0

Largest lead: By 28 at -

Technical Fouls: #00 GOODWIN (Double) @ 1st - 04:14;

*Game Notes:*

Officials: Brian Dorsey, James Breeding, Olandis Poole

Attendance: 5023

Start Time: 08:06 PM ET

End Time: 10:02 PM ET

Game Duration: 1:56

Score	1st	2nd	TOT
EWU	24	36	60
SLU	36	46	82

EWU led for 0:36. SLU led for 37:06.

Game was tied for 2:18.

Times tied: 75      Lead Changes: 0

Points from	EWU	SLU
In the Paint	18	34
Off Turns	10	15
2nd Chance	9	5
Fast Break	2	15
Bench	32	35

**Official Box Score**  
**Eastern Wash. vs Saint Louis**  
**First Half Statistics Only**  
**November 13, 2019 at Chaifetz Arena - St. Louis, Mo.**



**Eastern Wash. 24**

No.	Player	S	Pts	FG	3FG	FT	OR	DR	TR	PF	A	TO	Blk	Stl	Min	+/-
10	DAVISON, JACOB	G	2	1-4	0-0	0-1	2	1	3	3	0	2	0	0	12	-7
11	PERRY, JACK	G	0	0-1	0-0	0-0	0	0	0	1	2	1	0	1	9	-8
14	PEATLING, MASON	F	7	2-5	1-3	2-2	2	2	4	1	2	1	0	0	17	-10
24	AIKEN JR., KIM	G	5	2-6	1-4	0-0	0	8	8	2	0	1	1	1	16	-10
55	MAGNUSON, ELLIS	G	0	0-2	0-1	0-0	0	2	2	1	1	2	0	1	10	-6
00	KIDD, TYLER	G	5	1-5	1-3	2-2	0	0	0	0	0	1	0	0	15	-8
05	ROUSE, CASSON	G	0	0-1	0-0	0-0	0	1	1	0	0	1	0	0	8	-5
15	ROBERTSON, TYLER	G	0	0-0	0-0	0-0	0	1	1	1	0	1	0	0	6	-2
22	JACKSON, ELIJAH	G	0	0-0	0-0	0-0	0	0	0	0	0	0	0	0	0	0
25	MEADOWS, MICHAEL	G	0	0-0	0-0	0-0	0	0	0	0	0	0	0	0	0	0
33	GROVES, TANNER	F	5	2-2	1-1	0-0	0	1	1	2	0	2	0	0	7	-4
44	MOHAMED, ABDULLAHI	F	0	0-0	0-0	0-0	0	0	0	0	0	0	0	0	0	0
	TEAM						0	0	0	0		0				
	<b>TOTALS</b>		<b>24</b>	<b>8-26</b>	<b>4-12</b>	<b>4-5</b>	<b>4</b>	<b>16</b>	<b>20</b>	<b>11</b>	<b>5</b>	<b>12</b>	<b>1</b>	<b>3</b>	<b>100</b>	

*Shooting By Period*

Period	FG	FG%	3FG	3FG%	FT	FT%
1st Half	8-26	31%	4-12	33%	4-5	80%
Game	19-63	30.2%	9-26	34.6%	13-18	72.2%

Deadball Rebounds: 0,0  
 Last FG Half: EWU 2nd-03:38

**Saint Louis 36**

No.	Player	S	Pts	FG	3FG	FT	OR	DR	TR	PF	A	TO	Blk	Stl	Min	+/-
00	GOODWIN, JORDAN	G	6	2-5	1-3	1-2	2	3	5	1	0	2	0	2	12	8
11	FRENCH, HASAHN	F	8	4-6	0-0	0-6	1	3	4	1	1	1	1	2	18	12
15	JACOBS, DEMARIUS	G	0	0-2	0-2	0-0	0	3	3	0	1	0	0	0	12	10
20	THATCH JR., FRED	G	8	3-6	2-3	0-0	1	3	4	2	0	1	0	0	14	10
32	BELL JR., JIMMY	F	0	0-0	0-0	0-2	1	0	1	0	0	1	0	0	4	1
01	COLLINS, YURI	G	0	0-1	0-1	0-2	1	1	2	1	6	1	0	1	15	13
02	WEAVER, TAY	G	6	2-2	2-2	0-0	0	0	0	1	0	0	0	0	8	4
03	PERKINS, JAVONTE	F	6	3-5	0-1	0-0	0	1	1	2	2	2	0	1	9	2
10	HIGHTOWER, JOSHUA	G	0	0-0	0-0	0-0	0	0	0	0	0	0	0	0	0	0
12	COURTNEY, BRANDON	G	0	0-0	0-0	0-0	0	0	0	0	0	0	0	0	0	0
21	DIARRA, MADANI	C	0	0-0	0-0	0-0	0	0	0	0	0	0	0	0	0	0
22	HARGROVE JR., TERRENCE	F	0	0-0	0-0	0-0	0	0	0	0	0	0	0	0	0	0
23	HANKTON, KC	F	0	0-2	0-1	0-0	0	0	0	1	0	0	0	0	3	0
24	JIMERSON, GIBSON	G	2	1-2	0-1	0-0	0	1	1	1	0	0	0	0	6	0
31	RABOIN, JACK	G	0	0-0	0-0	0-0	0	0	0	0	0	0	0	0	0	0
	TEAM						0	0	0	0		0				
	<b>TOTALS</b>		<b>36</b>	<b>15-31</b>	<b>5-14</b>	<b>1-12</b>	<b>6</b>	<b>15</b>	<b>21</b>	<b>10</b>	<b>10</b>	<b>8</b>	<b>1</b>	<b>6</b>	<b>100</b>	

*Shooting By Period*

Period	FG	FG%	3FG	3FG%	FT	FT%
1st Half	15-31	48%	5-14	36%	1-12	08%
Game	31-54	57.4%	8-21	38.1%	12-28	42.9%

Deadball Rebounds: 7,0  
 Last FG Half: SLU 2nd-00:47

Game Notes:

Officials: Brian Dorsey, James Breeding, Olandis Poole  
 Attendance: 5023

Start Time: 08:06 PM ET  
 End Time: 10:02 PM ET  
 Game Duration: 1:56

Score	1st	2nd	TOT
EWU	24	36	60
SLU	36	46	82

Points from (This Period)	EWU	SLU
In the Paint	8	10
Off Turns	2	6
2nd Chance	0	5
Fast Break	2	4
Bench	10	14

**Official Play-By-Play**  
**Eastern Wash. vs Saint Louis**  
**First Half**  
**November 13, 2019 at Chaifetz Arena - St. Louis, Mo.**



**Period 1**

**Starters:**

**Eastern Wash.:** 10 DAVISON, JACOB (G); 11 PERRY, JACK (G); 14 PEATLING, MASON (F); 24 AIKEN JR., KIM (G); 55 MAGNUSON, ELLIS (G);  
**Saint Louis:** 0 GOODWIN, JORDAN (G); 11 FRENCH, HASAHN (F); 15 JACOBS, DEMARIUS (G); 20 THATCH JR., FRED (G); 32 BELL JR., JIMMY (F);

Time	VISITORS: Eastern Wash.	Score	Margin	HOME: Saint Louis
19:47				TURNOVER (BADPASS) by BELL JR., JIMMY
19:47	STEAL by AIKEN JR., KIM			
19:36	MISSED 3PTR by PEATLING, MASON			
19:32				REBOUND (DEF) by GOODWIN, JORDAN
19:18		3-0	H 3	GOOD! 3PTR by THATCH JR., FRED
19:18				ASSIST by JACOBS, DEMARIUS
19:07	TURNOVER (BADPASS) by MAGNUSON, ELLIS			
19:07				STEAL by GOODWIN, JORDAN
19:02				MISSED 3PTR by JACOBS, DEMARIUS
18:56	REBOUND (DEF) by AIKEN JR., KIM			
18:41	GOOD! 3PTR by AIKEN JR., KIM	3-3	T	
18:41	ASSIST by MAGNUSON, ELLIS			
18:20				MISSED LAYUP by GOODWIN, JORDAN
18:18				REBOUND (OFF) by BELL JR., JIMMY
18:17	FOUL (PERSONAL) by PEATLING, MASON			
18:17				MISSED FT by BELL JR., JIMMY
18:17				REBOUND (OFF) by TEAM
18:17				MISSED FT by BELL JR., JIMMY
18:14	REBOUND (DEF) by AIKEN JR., KIM			
18:03	MISSED JUMPER by PERRY, JACK			
18:01	REBOUND (OFF) by DAVISON, JACOB			
18:00	MISSED 3PTR by AIKEN JR., KIM			
17:57				REBOUND (DEF) by JACOBS, DEMARIUS
17:45				MISSED JUMPER by FRENCH, HASAHN
17:43	REBOUND (DEF) by AIKEN JR., KIM			
17:25	GOOD! 3PTR by PEATLING, MASON	3-6	V 3	
17:25	ASSIST by PERRY, JACK			
16:56				MISSED JUMPER by FRENCH, HASAHN
16:53				REBOUND (OFF) by GOODWIN, JORDAN
16:49		6-6	T	GOOD! 3PTR by GOODWIN, JORDAN
16:36	MISSED LAYUP by AIKEN JR., KIM			
16:33				REBOUND (DEF) by JACOBS, DEMARIUS
16:33	FOUL (PERSONAL) by PERRY, JACK			
16:29	FOUL (PERSONAL) by DAVISON, JACOB			
16:29		7-6	H 1	GOOD! FT by GOODWIN, JORDAN
16:29				SUB OUT: BELL JR., JIMMY
16:29				SUB IN: COLLINS, YURI
16:29				MISSED FT by GOODWIN, JORDAN
16:26				REBOUND (OFF) by GOODWIN, JORDAN
16:12				TURNOVER (OTHER) by THATCH JR., FRED
15:58	MISSED 3PTR by MAGNUSON, ELLIS			
15:54				REBOUND (DEF) by THATCH JR., FRED
15:34		10-6	H 4	GOOD! 3PTR by THATCH JR., FRED
15:34				ASSIST by FRENCH, HASAHN
15:19	TURNOVER (LOSTBALL) by DAVISON, JACOB			
15:19				STEAL by GOODWIN, JORDAN
15:17				
15:17	FOUL (PERSONAL) by MAGNUSON, ELLIS			
15:17				MISSED FT by COLLINS, YURI
15:17				REBOUND (OFF) by TEAM
15:17				MISSED FT by COLLINS, YURI
15:16	REBOUND (DEF) by DAVISON, JACOB			
15:00	TURNOVER (BADPASS) by DAVISON, JACOB			
15:00				STEAL by FRENCH, HASAHN
14:46				MISSED 3PTR by JACOBS, DEMARIUS
14:43	REBOUND (DEF) by PEATLING, MASON			
14:37				FOUL (PERSONAL) by COLLINS, YURI
14:37	SUB OUT: PERRY, JACK			
14:37	SUB IN: KIDD, TYLER			
14:34	MISSED JUMPER by DAVISON, JACOB			
14:32	REBOUND (OFF) by PEATLING, MASON			
14:31				FOUL (PERSONAL) by THATCH JR., FRED
14:31				SUB OUT: JACOBS, DEMARIUS
14:31				SUB IN: JIMERSON, GIBSON
14:25				FOUL (PERSONAL) by JIMERSON, GIBSON
14:22	MISSED JUMPER by DAVISON, JACOB			
14:20				REBOUND (DEF) by COLLINS, YURI
14:07				TURNOVER (BADPASS) by GOODWIN, JORDAN
14:07	STEAL by MAGNUSON, ELLIS			
13:42	TURNOVER (TRAVEL) by PEATLING, MASON			

Time	VISITORS: Eastern Wash.	Score	Margin	HOME: Saint Louis
13:42				SUB OUT: GOODWIN, JORDAN
13:42				SUB IN: HANKTON, KC
13:18				MISSED 3PTR by JIMERSON, GIBSON
13:14	REBOUND (DEF) by MAGNUSON, ELLIS			
13:03	TURNOVER (BADPASS) by MAGNUSON, ELLIS			
13:03				STEAL by FRENCH, HASAHN
13:03	FOUL (PERSONAL) by DAVISON, JACOB			
13:03				SUB OUT: FRENCH, HASAHN
13:03				SUB IN: PERKINS, JAVONTE
13:03	SUB OUT: DAVISON, JACOB			
13:03	SUB OUT: MAGNUSON, ELLIS			
13:03	SUB IN: ROUSE, CASSON			
13:03	SUB IN: ROBERTSON, TYLER			
12:47				MISSED 3PTR by THATCH JR., FRED
12:44	REBOUND (DEF) by AIKEN JR., KIM			
12:28	GOOD! JUMPER by PEATLING, MASON [PNT]	10-8	H 2	
12:05		12-8	H 4	GOOD! JUMPER by JIMERSON, GIBSON
12:05				ASSIST by PERKINS, JAVONTE
11:36	MISSED 3PTR by PEATLING, MASON			
11:32				REBOUND (DEF) by THATCH JR., FRED
11:25				MISSED 3PTR by HANKTON, KC
11:21	REBOUND (DEF) by AIKEN JR., KIM			
11:18	MISSED 3PTR by KIDD, TYLER			
11:14				REBOUND (DEF) by JIMERSON, GIBSON
10:54				MISSED JUMPER by HANKTON, KC
10:51	REBOUND (DEF) by AIKEN JR., KIM			
10:45				FOUL (PERSONAL) by HANKTON, KC
10:45				
10:45				SUB OUT: THATCH JR., FRED
10:45				SUB OUT: HANKTON, KC
10:45				SUB IN: WEAVER, TAY
10:45				SUB IN: FRENCH, HASAHN
10:45	SUB OUT: PEATLING, MASON			
10:45	SUB IN: GROVES, TANNER			
10:42	TURNOVER (TRAVEL) by ROBERTSON, TYLER			
10:25				MISSED JUMPER by PERKINS, JAVONTE
10:22	REBOUND (DEF) by ROUSE, CASSON			
10:15	MISSED JUMPER by KIDD, TYLER			
10:12				REBOUND (DEF) by PERKINS, JAVONTE
10:04				MISSED 3PTR by COLLINS, YURI
10:01	REBOUND (DEF) by ROBERTSON, TYLER			
09:48	MISSED JUMPER by ROUSE, CASSON			
09:45				REBOUND (DEF) by FRENCH, HASAHN
09:33		14-8	H 6	GOOD! LAYUP by FRENCH, HASAHN
09:33	FOUL (PERSONAL) by GROVES, TANNER			
09:33				SUB OUT: COLLINS, YURI
09:33				SUB IN: GOODWIN, JORDAN
09:33				MISSED FT by FRENCH, HASAHN
09:33	REBOUND (DEF) by AIKEN JR., KIM			
09:19	TURNOVER (LOSTBALL) by ROUSE, CASSON			
09:19				STEAL by PERKINS, JAVONTE
09:13				TURNOVER (BADPASS) by GOODWIN, JORDAN
09:13	SUB OUT: ROBERTSON, TYLER			
09:13	SUB IN: DAVISON, JACOB			
09:13	SUB OUT: ROUSE, CASSON			
09:13	SUB IN: ROBERTSON, TYLER			
08:57	GOOD! LAYUP by DAVISON, JACOB	14-10	H 4	
08:46				FOUL (OFF) by PERKINS, JAVONTE
08:46				TURNOVER (OFFENSIVE) by PERKINS, JAVONTE
08:46				SUB OUT: JIMERSON, GIBSON
08:46				SUB IN: THATCH JR., FRED
08:34	MISSED JUMPER by DAVISON, JACOB			
08:29				REBOUND (DEF) by GOODWIN, JORDAN
08:26				FOUL (OFF) by PERKINS, JAVONTE
08:26				TURNOVER (OFFENSIVE) by PERKINS, JAVONTE
08:26				SUB OUT: PERKINS, JAVONTE
08:26				SUB IN: COLLINS, YURI
08:13	TURNOVER (TRAVEL) by AIKEN JR., KIM			
07:59		16-10	H 6	GOOD! JUMPER by THATCH JR., FRED
07:59				ASSIST by COLLINS, YURI
07:47	FOUL (OFF) by GROVES, TANNER			
07:47	TURNOVER (OFFENSIVE) by GROVES, TANNER			
07:47				
07:47	SUB OUT: GROVES, TANNER			
07:47	SUB IN: PEATLING, MASON			
07:22				MISSED LAYUP by THATCH JR., FRED
07:20				REBOUND (OFF) by FRENCH, HASAHN
07:19	FOUL (PERSONAL) by ROBERTSON, TYLER			
07:19				MISSED FT by FRENCH, HASAHN
07:19				REBOUND (OFF) by TEAM

Time	VISITORS: Eastern Wash.	Score	Margin	HOME: Saint Louis
07:19	SUB OUT: ROBERTSON, TYLER			
07:19	SUB IN: PERRY, JACK			
07:19				MISSED FT by FRENCH, HASAHN
07:19				REBOUND (OFF) by TEAM
07:19				TURNOVER (OTHER) by FRENCH, HASAHN
07:03	MISSED 3PTR by AIKEN JR., KIM			
06:58	REBOUND (OFF) by PEATLING, MASON			
06:56	MISSED 3PTR by KIDD, TYLER			
06:53				REBOUND (DEF) by FRENCH, HASAHN
06:41				TURNOVER (BADPASS) by COLLINS, YURI
06:41	STEAL by PERRY, JACK			
06:40	MISSED LAYUP by KIDD, TYLER			
06:38	REBOUND (OFF) by DAVISON, JACOB			
06:37				FOUL (PERSONAL) by FRENCH, HASAHN
06:36				SUB OUT: WEAVER, TAY
06:36				SUB IN: JACOBS, DEMARIUS
06:37	MISSED FT by DAVISON, JACOB			
06:36				REBOUND (DEF) by FRENCH, HASAHN
06:15		18-10	H 8	GOOD! LAYUP by FRENCH, HASAHN
06:15				ASSIST by COLLINS, YURI
06:09	GOOD! LAYUP by AIKEN JR., KIM [FB]	18-12	H 6	
06:09	ASSIST by PERRY, JACK			
05:48				MISSED 3PTR by GOODWIN, JORDAN
05:45	REBOUND (DEF) by PEATLING, MASON			
05:33	TURNOVER (BADPASS) by PERRY, JACK			
05:33				STEAL by COLLINS, YURI
05:28		20-12	H 8	GOOD! DUNK by GOODWIN, JORDAN [FB]
05:28				ASSIST by COLLINS, YURI
05:28	TIMEOUT 30SEC			
05:28	SUB OUT: PERRY, JACK			
05:28	SUB IN: MAGNUSON, ELLIS			
05:05	MISSED LAYUP by PEATLING, MASON			
05:05				BLOCK by FRENCH, HASAHN
05:02				REBOUND (DEF) by THATCH JR., FRED
05:00		22-12	H 10	GOOD! DUNK by FRENCH, HASAHN [FB]
05:00				ASSIST by COLLINS, YURI
04:37	MISSED JUMPER by MAGNUSON, ELLIS			
04:34				REBOUND (DEF) by JACOBS, DEMARIUS
04:29				MISSED 3PTR by GOODWIN, JORDAN
04:27				REBOUND (OFF) by THATCH JR., FRED
04:25				MISSED LAYUP by THATCH JR., FRED
04:25	BLOCK by AIKEN JR., KIM			
04:22	REBOUND (DEF) by MAGNUSON, ELLIS			
04:20	MISSED 3PTR by AIKEN JR., KIM			
04:17				REBOUND (DEF) by GOODWIN, JORDAN
04:14	FOUL (PERSONAL) by AIKEN JR., KIM			
04:14				FOUL (TECH) by GOODWIN, JORDAN
04:14	FOUL (TECH) by DAVISON, JACOB			
04:14				MISSED FT by FRENCH, HASAHN
04:14				REBOUND (OFF) by TEAM
04:14				MISSED FT by FRENCH, HASAHN
04:14	REBOUND (DEF) by AIKEN JR., KIM			
04:14				FOUL (PERSONAL) by THATCH JR., FRED
04:14				SUB OUT: THATCH JR., FRED
04:14				SUB IN: WEAVER, TAY
04:14				SUB OUT: GOODWIN, JORDAN
04:14				SUB IN: PERKINS, JAVONTE
04:14	GOOD! FT by PEATLING, MASON	22-13	H 9	
04:14	SUB OUT: DAVISON, JACOB			
04:14	SUB IN: ROUSE, CASSON			
04:14	GOOD! FT by PEATLING, MASON	22-14	H 8	
03:51				MISSED 3PTR by PERKINS, JAVONTE
03:48				REBOUND (OFF) by COLLINS, YURI
03:42		24-14	H 10	GOOD! LAYUP by FRENCH, HASAHN
03:42	FOUL (PERSONAL) by AIKEN JR., KIM			
03:42				
03:42	SUB OUT: AIKEN JR., KIM			
03:42	SUB IN: GROVES, TANNER			
03:42				MISSED FT by FRENCH, HASAHN
03:42	REBOUND (DEF) by GROVES, TANNER			
03:18	GOOD! 3PTR by GROVES, TANNER	24-17	H 7	
03:18	ASSIST by PEATLING, MASON			
03:00		26-17	H 9	GOOD! JUMPER by PERKINS, JAVONTE
02:47	TURNOVER (TRAVEL) by GROVES, TANNER			
02:30		28-17	H 11	GOOD! JUMPER by PERKINS, JAVONTE
02:12				FOUL (PERSONAL) by WEAVER, TAY
02:12	GOOD! FT by KIDD, TYLER	28-18	H 10	
02:12	SUB OUT: MAGNUSON, ELLIS			
02:12	SUB IN: PERRY, JACK			
02:12	GOOD! FT by KIDD, TYLER	28-19	H 9	

Time	VISITORS: Eastern Wash.	Score	Margin	HOME: Saint Louis
02:01		30-19	H 11	GOOD! JUMPER by PERKINS, JAVONTE
02:01				ASSIST by COLLINS, YURI
01:35	GOOD! DUNK by GROVES, TANNER	30-21	H 9	
01:35	ASSIST by PEATLING, MASON			
01:09		33-21	H 12	GOOD! 3PTR by WEAVER, TAY
01:09				ASSIST by COLLINS, YURI
00:55	GOOD! 3PTR by KIDD, TYLER	33-24	H 9	
00:30		36-24	H 12	GOOD! 3PTR by WEAVER, TAY
00:30				ASSIST by PERKINS, JAVONTE
00:00	TURNOVER (BADPASS) by KIDD, TYLER			

**Eastern Wash. 24, Saint Louis 36**

Points from (This Period)	EWU	SLU
In the Paint	8	10
Off Turns	2	6
2nd Chance	0	5
Fast Break	2	4
Bench	10	14

**Official Box Score**  
**Eastern Wash. vs Saint Louis**  
**Second Half Statistics Only**  
**November 13, 2019 at Chaifetz Arena - St. Louis, Mo.**



**Eastern Wash. 36**

No.	Player	S	Pts	FG	3FG	FT	OR	DR	TR	PF	A	TO	Blk	Stl	Min	+/-
10	DAVISON, JACOB	G	0	0-2	0-0	0-0	0	0	0	2	0	2	0	0	6	-4
11	PERRY, JACK	G	3	1-1	1-1	0-0	0	1	1	0	1	0	0	1	12	-6
14	PEATLING, MASON	F	3	1-3	0-0	1-3	2	0	2	2	1	0	0	0	13	-9
24	AIKEN JR., KIM	G	8	3-9	1-4	1-1	2	3	5	1	3	1	0	2	15	-9
55	MAGNUSON, ELLIS	G	0	0-2	0-1	0-1	0	0	0	0	0	2	0	0	11	-11
00	KIDD, TYLER	G	5	2-6	1-1	0-0	0	0	0	2	1	1	0	2	12	-1
05	ROUSE, CASSON	G	6	2-6	2-4	0-0	0	1	1	0	0	0	0	0	14	-6
15	ROBERTSON, TYLER	G	0	0-2	0-1	0-0	0	0	0	0	0	0	0	0	1	-1
22	JACKSON, ELIJAH	G	3	0-0	0-0	3-4	1	1	2	2	0	0	0	0	5	0
25	MEADOWS, MICHAEL	G	0	0-2	0-2	0-0	1	1	2	0	1	0	0	0	6	-2
33	GROVES, TANNER	F	4	2-2	0-0	0-0	1	0	1	2	0	0	0	0	4	-4
44	MOHAMED, ABDULLAHI	F	4	0-2	0-0	4-4	1	1	2	0	0	0	0	0	4	3
	TEAM						3	1	4	0		0				
	<b>TOTALS</b>		<b>36</b>	<b>11-37</b>	<b>5-14</b>	<b>9-13</b>	<b>11</b>	<b>9</b>	<b>20</b>	<b>11</b>	<b>7</b>	<b>6</b>	<b>0</b>	<b>5</b>	<b>100</b>	

*Shooting By Period*

Period	FG	FG%	3FG	3FG%	FT	FT%
2nd Half	11-37	30%	5-14	36%	9-13	69%
Game	19-63	30.2%	9-26	34.6%	13-18	72.2%

Deadball Rebounds: 0,0

Last FG Half: EWU -

**Saint Louis 46**

No.	Player	S	Pts	FG	3FG	FT	OR	DR	TR	PF	A	TO	Blk	Stl	Min	+/-
00	GOODWIN, JORDAN	G	2	0-0	0-0	2-2	0	2	2	1	1	2	0	1	10	3
11	FRENCH, HASAHN	F	11	5-5	0-0	1-1	0	2	2	0	2	2	1	0	11	6
15	JACOBS, DEMARIUS	G	5	2-2	1-1	0-0	0	0	0	1	0	0	1	1	8	7
20	THATCH JR., FRED	G	3	0-1	0-1	3-5	0	3	3	1	1	1	1	1	9	2
32	BELL JR., JIMMY	F	4	1-3	0-0	2-2	1	2	3	2	0	0	2	0	9	4
01	COLLINS, YURI	G	6	2-2	0-0	2-2	0	1	1	1	5	1	0	1	12	7
02	WEAVER, TAY	G	3	1-1	1-1	0-0	0	1	1	2	0	1	0	0	8	9
03	PERKINS, JAVONTE	F	0	0-1	0-1	0-0	0	2	2	1	1	0	0	0	3	5
10	HIGHTOWER, JOSHUA	G	1	0-1	0-1	1-2	0	0	0	1	1	0	0	0	3	-1
12	COURTNEY, BRANDON	G	3	1-1	1-1	0-0	0	1	1	1	0	1	0	1	2	4
21	DIARRA, MADANI	C	0	0-0	0-0	0-2	0	3	3	1	0	0	0	0	4	-3
22	HARGROVE JR., TERRENCE	F	4	2-3	0-1	0-0	0	0	0	0	1	0	0	0	7	2
23	HANKTON, KC	F	2	1-1	0-0	0-0	0	1	1	1	0	0	0	0	4	2
24	JIMERSON, GIBSON	G	2	1-2	0-0	0-0	0	1	1	2	1	2	0	0	11	-1
31	RABOIN, JACK	G	0	0-0	0-0	0-0	0	0	0	0	0	0	0	0	2	4
	TEAM						0	0	0	0		0				
	<b>TOTALS</b>		<b>46</b>	<b>16-23</b>	<b>3-7</b>	<b>11-16</b>	<b>1</b>	<b>19</b>	<b>20</b>	<b>15</b>	<b>13</b>	<b>10</b>	<b>5</b>	<b>5</b>	<b>100</b>	

*Shooting By Period*

Period	FG	FG%	3FG	3FG%	FT	FT%
2nd Half	16-23	70%	3-7	43%	11-16	69%
Game	31-54	57.4%	8-21	38.1%	12-28	42.9%

Deadball Rebounds: 7,0

Last FG Half: SLU -

Game Notes:

Officials: Brian Dorsey, James Breeding, Olandis Poole  
Attendance: 5023

Start Time: 08:06 PM ET  
End Time: 10:02 PM ET  
Game Duration: 1:56

Score	1st	2nd	TOT
EWU	24	36	60
SLU	36	46	82

Points from (This Period)	EWU	SLU
In the Paint	10	24
Off Turns	8	9
2nd Chance	9	0
Fast Break	0	11
Bench	22	21



**Official Play-By-Play**  
**Eastern Wash. vs Saint Louis**  
**Second Half**  
**November 13, 2019 at Chaifetz Arena - St. Louis, Mo.**



**Period 2**

**Starters:**

**Eastern Wash.:** 10 DAVISON, JACOB (G); 11 PERRY, JACK (G); 14 PEATLING, MASON (F); 24 AIKEN JR., KIM (G); 55 MAGNUSON, ELLIS (G);

**Saint Louis:** 0 GOODWIN, JORDAN (G); 11 FRENCH, HASAHN (F); 15 JACOBS, DEMARIUS (G); 20 THATCH JR., FRED (G); 32 BELL JR., JIMMY (F);

Time	VISITORS: Eastern Wash.	Score	Margin	HOME: Saint Louis
20:00				SUB OUT: COLLINS, YURI
20:00				SUB OUT: WEAVER, TAY
20:00				SUB OUT: PERKINS, JAVONTE
20:00				SUB IN: GOODWIN, JORDAN
20:00				SUB IN: THATCH JR., FRED
20:00				SUB IN: BELL JR., JIMMY
20:00	SUB OUT: KIDD, TYLER			
20:00	SUB OUT: ROUSE, CASSON			
20:00	SUB OUT: GROVES, TANNER			
20:00	SUB IN: DAVISON, JACOB			
20:00	SUB IN: AIKEN JR., KIM			
20:00	SUB IN: MAGNUSON, ELLIS			
19:39				MISSED 3PTR by THATCH JR., FRED
19:36	REBOUND (DEF) by AIKEN JR., KIM			
19:18	MISSED LAYUP by PEATLING, MASON			
19:16				REBOUND (DEF) by BELL JR., JIMMY
18:56		38-24	H 14	GOOD! JUMPER by FRENCH, HASAHN [PNT]
18:56				ASSIST by GOODWIN, JORDAN
18:34	MISSED LAYUP by AIKEN JR., KIM			
18:34				BLOCK by FRENCH, HASAHN
18:32	REBOUND (OFF) by TEAM			
18:21	MISSED JUMPER by DAVISON, JACOB			
18:19				REBOUND (DEF) by THATCH JR., FRED
18:11		41-24	H 17	GOOD! 3PTR by JACOBS, DEMARIUS
18:11				ASSIST by FRENCH, HASAHN
18:05				FOUL (PERSONAL) by GOODWIN, JORDAN
17:48	MISSED 3PTR by AIKEN JR., KIM			
17:44				REBOUND (DEF) by THATCH JR., FRED
17:42		43-24	H 19	GOOD! LAYUP by FRENCH, HASAHN [FB]
17:42				ASSIST by THATCH JR., FRED
17:41	TIMEOUT 30SEC			
17:41				
17:41	SUB OUT: MAGNUSON, ELLIS			
17:41	SUB IN: KIDD, TYLER			
17:26	TURNOVER (LOSTBALL) by DAVISON, JACOB			
17:26				STEAL by JACOBS, DEMARIUS
17:25	FOUL (PERSONAL) by DAVISON, JACOB			
17:10	FOUL (PERSONAL) by PEATLING, MASON			
17:10		44-24	H 20	GOOD! FT by GOODWIN, JORDAN
17:10		45-24	H 21	GOOD! FT by GOODWIN, JORDAN
16:59	GOOD! 3PTR by AIKEN JR., KIM	45-27	H 18	
16:59	ASSIST by PERRY, JACK			
16:38	FOUL (PERSONAL) by AIKEN JR., KIM			
16:38				MISSED FT by THATCH JR., FRED
16:38				REBOUND (OFF) by TEAM
16:38		46-27	H 19	GOOD! FT by THATCH JR., FRED
16:25	GOOD! 3PTR by PERRY, JACK	46-30	H 16	
16:25	ASSIST by KIDD, TYLER			
16:10				TURNOVER (LOSTBALL) by FRENCH, HASAHN
16:10	STEAL by PERRY, JACK			
16:05	MISSED LAYUP by DAVISON, JACOB			
16:05				BLOCK by BELL JR., JIMMY
16:01				REBOUND (DEF) by FRENCH, HASAHN
16:00		48-30	H 18	GOOD! LAYUP by JACOBS, DEMARIUS [FB]
16:00				ASSIST by FRENCH, HASAHN
15:44	MISSED 3PTR by AIKEN JR., KIM			
15:40				REBOUND (DEF) by GOODWIN, JORDAN
15:37				TURNOVER (LOSTBALL) by GOODWIN, JORDAN
15:37	STEAL by KIDD, TYLER			
15:34	MISSED LAYUP by KIDD, TYLER			
15:34				BLOCK by JACOBS, DEMARIUS
15:34	REBOUND (OFF) by TEAM			
15:34				
15:34				SUB OUT: BELL JR., JIMMY
15:34				SUB IN: COLLINS, YURI
15:29	TURNOVER (LOSTBALL) by DAVISON, JACOB			
15:29				STEAL by THATCH JR., FRED
15:18				FOUL (OFF) by THATCH JR., FRED
15:18				TURNOVER (OFFENSIVE) by THATCH JR., FRED
14:58	MISSED JUMPER by KIDD, TYLER			

Time	VISITORS: Eastern Wash.	Score	Margin	HOME: Saint Louis
14:55				REBOUND (DEF) by THATCH JR., FRED
14:29				TURNOVER (LOSTBALL) by GOODWIN, JORDAN
14:29	STEAL by KIDD, TYLER			
14:18	GOOD! JUMPER by PEATLING, MASON [PNT]	48-32	H 16	
13:58				TURNOVER (TRAVEL) by FRENCH, HASAHN
13:45	MISSED 3PTR by AIKEN JR., KIM			
13:42				REBOUND (DEF) by GOODWIN, JORDAN
13:38	FOUL (PERSONAL) by DAVISON, JACOB			
13:38	SUB OUT: DAVISON, JACOB			
13:38	SUB IN: ROUSE, CASSON			
13:38		49-32	H 17	GOOD! FT by THATCH JR., FRED
13:38		50-32	H 18	GOOD! FT by THATCH JR., FRED
13:38				MISSED FT by THATCH JR., FRED
13:37	REBOUND (DEF) by AIKEN JR., KIM			
13:22	MISSED JUMPER by KIDD, TYLER			
13:22				BLOCK by THATCH JR., FRED
13:19	REBOUND (OFF) by AIKEN JR., KIM			
13:17	GOOD! 3PTR by ROUSE, CASSON	50-35	H 15	
13:17	ASSIST by AIKEN JR., KIM			
12:44		52-35	H 17	GOOD! LAYUP by FRENCH, HASAHN [PNT]
12:27	TURNOVER (BADPASS) by KIDD, TYLER			
12:27				STEAL by GOODWIN, JORDAN
12:22		54-35	H 19	GOOD! DUNK by FRENCH, HASAHN [FB]
12:22				ASSIST by COLLINS, YURI
12:12				FOUL (PERSONAL) by JACOBS, DEMARIUS
12:12				SUB OUT: JACOBS, DEMARIUS
12:12				SUB IN: JIMERSON, GIBSON
11:52	GOOD! LAYUP by AIKEN JR., KIM	54-37	H 17	
11:52	ASSIST by PEATLING, MASON			
11:32				MISSED JUMPER by JIMERSON, GIBSON
11:29	REBOUND (DEF) by AIKEN JR., KIM			
11:22	GOOD! 3PTR by KIDD, TYLER	54-40	H 14	
11:22	ASSIST by AIKEN JR., KIM			
11:20				TIMEOUT 30SEC
11:20				SUB OUT: THATCH JR., FRED
11:20				SUB IN: WEAVER, TAY
11:20	SUB OUT: AIKEN JR., KIM			
11:20	SUB IN: ROBERTSON, TYLER			
11:01		56-40	H 16	GOOD! LAYUP by COLLINS, YURI [PNT]
10:52	MISSED 3PTR by ROBERTSON, TYLER			
10:49				REBOUND (DEF) by FRENCH, HASAHN
10:41				FOUL (OFF) by JIMERSON, GIBSON
10:41				TURNOVER (OFFENSIVE) by JIMERSON, GIBSON
10:28	MISSED LAYUP by ROBERTSON, TYLER			
10:27	REBOUND (OFF) by PEATLING, MASON			
10:27				FOUL (PERSONAL) by WEAVER, TAY
10:27	GOOD! FT by PEATLING, MASON	56-41	H 15	
10:27				SUB OUT: GOODWIN, JORDAN
10:27				SUB IN: PERKINS, JAVONTE
10:27	SUB OUT: ROBERTSON, TYLER			
10:27	SUB IN: AIKEN JR., KIM			
10:26	MISSED FT by PEATLING, MASON			
10:25				REBOUND (DEF) by COLLINS, YURI
10:19	FOUL (PERSONAL) by KIDD, TYLER			
09:57		58-41	H 17	GOOD! DUNK by FRENCH, HASAHN
09:57				ASSIST by COLLINS, YURI
09:57	FOUL (PERSONAL) by PEATLING, MASON			
09:57		59-41	H 18	GOOD! FT by FRENCH, HASAHN
09:44				FOUL (PERSONAL) by PERKINS, JAVONTE
09:31	MISSED 3PTR by ROUSE, CASSON			
09:26	REBOUND (OFF) by AIKEN JR., KIM			
09:25	MISSED LAYUP by AIKEN JR., KIM			
09:25	REBOUND (OFF) by PEATLING, MASON			
09:25				FOUL (PERSONAL) by COLLINS, YURI
09:25				SUB OUT: FRENCH, HASAHN
09:25				SUB IN: HANKTON, KC
09:25	MISSED FT by PEATLING, MASON			
09:24				REBOUND (DEF) by HANKTON, KC
09:11				MISSED 3PTR by PERKINS, JAVONTE
09:08	REBOUND (DEF) by PERRY, JACK			
08:50	MISSED JUMPER by AIKEN JR., KIM			
08:47				REBOUND (DEF) by WEAVER, TAY
08:29		61-41	H 20	GOOD! JUMPER by JIMERSON, GIBSON
08:29				ASSIST by PERKINS, JAVONTE
08:17	GOOD! JUMPER by KIDD, TYLER	61-43	H 18	
08:16	TIMEOUT 30SEC			
08:16				
08:16	SUB OUT: PERRY, JACK			
08:16	SUB IN: MAGNUSON, ELLIS			

Time	VISITORS: Eastern Wash.	Score	Margin	HOME: Saint Louis
08:08		63-43	H 20	GOOD! LAYUP by HANKTON, KC
08:08				ASSIST by JIMERSON, GIBSON
08:01				FOUL (PERSONAL) by JIMERSON, GIBSON
08:01	MISSED FT by MAGNUSON, ELLIS			
07:59				REBOUND (DEF) by PERKINS, JAVONTE
07:36				TURNOVER (BADPASS) by JIMERSON, GIBSON
07:36	STEAL by AIKEN JR., KIM			
07:23	MISSED LAYUP by PEATLING, MASON			
07:21				REBOUND (DEF) by PERKINS, JAVONTE
07:17	FOUL (PERSONAL) by KIDD, TYLER			
07:17				SUB OUT: PERKINS, JAVONTE
07:17				SUB IN: HARGROVE JR., TERRENCE
07:17		64-43	H 21	GOOD! FT by COLLINS, YURI
07:17	SUB OUT: PEATLING, MASON			
07:17	SUB IN: GROVES, TANNER			
07:17		65-43	H 22	GOOD! FT by COLLINS, YURI
06:55	GOOD! LAYUP by GROVES, TANNER [PNT]	65-45	H 20	
06:55	ASSIST by AIKEN JR., KIM			
06:28		67-45	H 22	GOOD! LAYUP by COLLINS, YURI
06:15	MISSED JUMPER by KIDD, TYLER			
06:12				REBOUND (DEF) by JIMERSON, GIBSON
06:10				TURNOVER (BADPASS) by COLLINS, YURI
06:10	STEAL by AIKEN JR., KIM			
06:02	MISSED JUMPER by ROUSE, CASSON			
06:00	REBOUND (OFF) by GROVES, TANNER			
05:53	GOOD! LAYUP by AIKEN JR., KIM [PNT]	67-47	H 20	
05:53				FOUL (PERSONAL) by HANKTON, KC
05:53				SUB OUT: HANKTON, KC
05:53				SUB IN: BELL JR., JIMMY
05:53	SUB OUT: KIDD, TYLER			
05:53	SUB IN: MEADOWS, MICHAEL			
05:53	GOOD! FT by AIKEN JR., KIM	67-48	H 19	
05:44	FOUL (PERSONAL) by GROVES, TANNER			
05:42		69-48	H 21	GOOD! DUNK by HARGROVE JR., TERRENCE
05:42				ASSIST by COLLINS, YURI
05:24	TURNOVER (OTHER) by AIKEN JR., KIM			
05:07		72-48	H 24	GOOD! 3PTR by WEAVER, TAY
05:07				ASSIST by HARGROVE JR., TERRENCE
04:48	GOOD! LAYUP by GROVES, TANNER	72-50	H 22	
04:48	ASSIST by MEADOWS, MICHAEL			
04:34	FOUL (PERSONAL) by GROVES, TANNER			
04:34	SUB OUT: AIKEN JR., KIM			
04:34	SUB IN: JACKSON, ELIJAH			
04:34		73-50	H 23	GOOD! FT by BELL JR., JIMMY
04:34		74-50	H 24	GOOD! FT by BELL JR., JIMMY
04:22	TURNOVER (BADPASS) by MAGNUSON, ELLIS			
04:22				STEAL by COLLINS, YURI
04:19		76-50	H 26	GOOD! DUNK by HARGROVE JR., TERRENCE [FB]
04:19				ASSIST by COLLINS, YURI
04:04	MISSED 3PTR by ROUSE, CASSON			
04:01				REBOUND (DEF) by BELL JR., JIMMY
03:52		78-50	H 28	GOOD! LAYUP by BELL JR., JIMMY
03:52				ASSIST by COLLINS, YURI
03:38	GOOD! 3PTR by ROUSE, CASSON	78-53	H 25	
03:37	TIMEOUT TEAM			
03:37				
05:44				FOUL (PERSONAL) by BELL JR., JIMMY
03:37				SUB OUT: COLLINS, YURI
03:37				SUB IN: DIARRA, MADANI
03:37	SUB OUT: GROVES, TANNER			
03:37	SUB IN: MOHAMED, ABDULLAHI			
03:26				TURNOVER (DRIBBLING) by WEAVER, TAY
03:18				FOUL (PERSONAL) by WEAVER, TAY
03:18	GOOD! FT by MOHAMED, ABDULLAHI	78-54	H 24	
03:18	GOOD! FT by MOHAMED, ABDULLAHI	78-55	H 23	
03:03				MISSED 3PTR by HARGROVE JR., TERRENCE
02:59				REBOUND (OFF) by BELL JR., JIMMY
02:56				MISSED JUMPER by BELL JR., JIMMY
02:55	REBOUND (DEF) by TEAM			
02:55				SUB OUT: WEAVER, TAY
02:55				SUB IN: HIGHTOWER, JOSHUA
02:41	MISSED JUMPER by MAGNUSON, ELLIS			
02:41				BLOCK by BELL JR., JIMMY
02:39	REBOUND (OFF) by JACKSON, ELIJAH			
02:39				FOUL (PERSONAL) by BELL JR., JIMMY
02:39	GOOD! FT by JACKSON, ELIJAH	78-56	H 22	
02:39	GOOD! FT by JACKSON, ELIJAH	78-57	H 21	
02:24				MISSED 3PTR by HIGHTOWER, JOSHUA
02:21	REBOUND (DEF) by MEADOWS, MICHAEL			
02:13				FOUL (PERSONAL) by HIGHTOWER, JOSHUA

Time	VISITORS: Eastern Wash.	Score	Margin	HOME: Saint Louis
02:13	GOOD! FT by MOHAMED, ABDULLAHI	78-58	H 20	
02:13	GOOD! FT by MOHAMED, ABDULLAHI	78-59	H 19	
01:52				MISSED LAYUP by BELL JR., JIMMY
01:52	REBOUND (DEF) by JACKSON, ELIJAH			
01:52				FOUL (PERSONAL) by DIARRA, MADANI
01:52	GOOD! FT by JACKSON, ELIJAH	78-60	H 18	
01:52	MISSED FT by JACKSON, ELIJAH			
01:51				REBOUND (DEF) by DIARRA, MADANI
01:31	FOUL (PERSONAL) by JACKSON, ELIJAH			
01:31				MISSED FT by DIARRA, MADANI
01:31				REBOUND (OFF) by TEAM
01:31				SUB OUT: JIMERSON, GIBSON
01:31				SUB OUT: BELL JR., JIMMY
01:31				SUB IN: COURTNEY, BRANDON
01:31				SUB IN: RABOIN, JACK
01:30				MISSED FT by DIARRA, MADANI
01:30	REBOUND (DEF) by MOHAMED, ABDULLAHI			
01:20	MISSED 3PTR by MAGNUSON, ELLIS			
01:17	REBOUND (OFF) by TEAM			
01:12	MISSED JUMPER by MOHAMED, ABDULLAHI			
01:09				REBOUND (DEF) by DIARRA, MADANI
01:06	FOUL (PERSONAL) by JACKSON, ELIJAH			
01:06		79-60	H 19	GOOD! FT by HIGHTOWER, JOSHUA
01:06				MISSED FT by HIGHTOWER, JOSHUA
01:05	REBOUND (DEF) by ROUSE, CASSON			
00:55	MISSED 3PTR by MEADOWS, MICHAEL			
00:52				REBOUND (DEF) by COURTNEY, BRANDON
00:47		82-60	H 22	GOOD! 3PTR by COURTNEY, BRANDON [FB]
00:47				ASSIST by HIGHTOWER, JOSHUA
00:31	TURNOVER (BADPASS) by MAGNUSON, ELLIS			
00:31				STEAL by COURTNEY, BRANDON
00:21				FOUL (OFF) by COURTNEY, BRANDON
00:21				TURNOVER (OFFENSIVE) by COURTNEY, BRANDON
00:09	MISSED JUMPER by ROUSE, CASSON			
00:07	REBOUND (OFF) by MEADOWS, MICHAEL			
00:05	MISSED 3PTR by MEADOWS, MICHAEL			
00:01	REBOUND (OFF) by MOHAMED, ABDULLAHI			
00:00	MISSED LAYUP by MOHAMED, ABDULLAHI			
00:00				REBOUND (DEF) by DIARRA, MADANI

### Eastern Wash. 60, Saint Louis 82

Points from (This Period)	EWU	SLU
In the Paint	10	24
Off Turns	8	9
2nd Chance	9	0
Fast Break	0	11
Bench	22	21

**Official Scoring/Possession Reference Chart**  
**Eastern Wash. vs Saint Louis**  
**Period 1**  
**November 13, 2019 at Chaifetz Arena - St. Louis, Mo.**



**Period 1**

**Starters:**

**Eastern Wash.:** 10 DAVISON, JACOB (G); 11 PERRY, JACK (G); 14 PEATLING, MASON (F); 24 AIKEN JR., KIM (G); 55 MAGNUSON, ELLIS (G);

**Saint Louis:** 0 GOODWIN, JORDAN (G); 11 FRENCH, HASAHN (F); 15 JACOBS, DEMARIUS (G); 20 THATCH JR., FRED (G); 32 BELL JR., JIMMY (F);

Time	VISITORS: Eastern Wash.	Score	Margin	HOME: Saint Louis
19:18		3-0	H 3	GOOD! 3PTR by THATCH JR., FRED
18:41	GOOD! 3PTR by AIKEN JR., KIM	3-3	T	
17:25	GOOD! 3PTR by PEATLING, MASON	3-6	V 3	
16:49		6-6	T	GOOD! 3PTR by GOODWIN, JORDAN
16:29		7-6	H 1	GOOD! FT by GOODWIN, JORDAN
15:34		10-6	H 4	GOOD! 3PTR by THATCH JR., FRED
12:28	GOOD! JUMPER by PEATLING, MASON [PNT]	10-8	H 2	
12:05		12-8	H 4	GOOD! JUMPER by JIMERSON, GIBSON
09:33		14-8	H 6	GOOD! LAYUP by FRENCH, HASAHN
08:57	GOOD! LAYUP by DAVISON, JACOB	14-10	H 4	
07:59		16-10	H 6	GOOD! JUMPER by THATCH JR., FRED
06:15		18-10	H 8	GOOD! LAYUP by FRENCH, HASAHN
06:09	GOOD! LAYUP by AIKEN JR., KIM [FB]	18-12	H 6	
05:28		20-12	H 8	GOOD! DUNK by GOODWIN, JORDAN [FB]
05:00		22-12	H 10	GOOD! DUNK by FRENCH, HASAHN [FB]
04:14	GOOD! FT by PEATLING, MASON	22-13	H 9	
04:14	GOOD! FT by PEATLING, MASON	22-14	H 8	
03:42		24-14	H 10	GOOD! LAYUP by FRENCH, HASAHN
03:18	GOOD! 3PTR by GROVES, TANNER	24-17	H 7	
03:00		26-17	H 9	GOOD! JUMPER by PERKINS, JAVONTE
02:30		28-17	H 11	GOOD! JUMPER by PERKINS, JAVONTE
02:12	GOOD! FT by KIDD, TYLER	28-18	H 10	
02:12	GOOD! FT by KIDD, TYLER	28-19	H 9	
02:01		30-19	H 11	GOOD! JUMPER by PERKINS, JAVONTE
01:35	GOOD! DUNK by GROVES, TANNER	30-21	H 9	
01:09		33-21	H 12	GOOD! 3PTR by WEAVER, TAY
00:55	GOOD! 3PTR by KIDD, TYLER	33-24	H 9	
00:30		36-24	H 12	GOOD! 3PTR by WEAVER, TAY

**Eastern Wash. 24, Saint Louis 36**

**Official Scoring/Possession Reference Chart**  
**Eastern Wash. vs Saint Louis**  
**Period 2**  
**November 13, 2019 at Chaifetz Arena - St. Louis, Mo.**



**Period 2**

**Starters:**

**Eastern Wash.:** 10 DAVISON, JACOB (G); 11 PERRY, JACK (G); 14 PEATLING, MASON (F); 24 AIKEN JR., KIM (G); 55 MAGNUSON, ELLIS (G);

**Saint Louis:** 0 GOODWIN, JORDAN (G); 11 FRENCH, HASAHN (F); 15 JACOBS, DEMARIUS (G); 20 THATCH JR., FRED (G); 32 BELL JR., JIMMY (F);

Time	VISITORS: Eastern Wash.	Score	Margin	HOME: Saint Louis
18:56		38-24	H 14	GOOD! JUMPER by FRENCH, HASAHN [PNT]
18:11		41-24	H 17	GOOD! 3PTR by JACOBS, DEMARIUS
17:42		43-24	H 19	GOOD! LAYUP by FRENCH, HASAHN [FB]
17:10		44-24	H 20	GOOD! FT by GOODWIN, JORDAN
17:10		45-24	H 21	GOOD! FT by GOODWIN, JORDAN
16:59	GOOD! 3PTR by AIKEN JR., KIM	45-27	H 18	
16:38		46-27	H 19	GOOD! FT by THATCH JR., FRED
16:25	GOOD! 3PTR by PERRY, JACK	46-30	H 16	
16:00		48-30	H 18	GOOD! LAYUP by JACOBS, DEMARIUS [FB]
14:18	GOOD! JUMPER by PEATLING, MASON [PNT]	48-32	H 16	
13:38		49-32	H 17	GOOD! FT by THATCH JR., FRED
13:38		50-32	H 18	GOOD! FT by THATCH JR., FRED
13:17	GOOD! 3PTR by ROUSE, CASSON	50-35	H 15	
12:44		52-35	H 17	GOOD! LAYUP by FRENCH, HASAHN [PNT]
12:22		54-35	H 19	GOOD! DUNK by FRENCH, HASAHN [FB]
11:52	GOOD! LAYUP by AIKEN JR., KIM	54-37	H 17	
11:22	GOOD! 3PTR by KIDD, TYLER	54-40	H 14	
11:01		56-40	H 16	GOOD! LAYUP by COLLINS, YURI [PNT]
10:27	GOOD! FT by PEATLING, MASON	56-41	H 15	
09:57		58-41	H 17	GOOD! DUNK by FRENCH, HASAHN
09:57		59-41	H 18	GOOD! FT by FRENCH, HASAHN
08:29		61-41	H 20	GOOD! JUMPER by JIMERSON, GIBSON
08:17	GOOD! JUMPER by KIDD, TYLER	61-43	H 18	
08:08		63-43	H 20	GOOD! LAYUP by HANKTON, KC
07:17		64-43	H 21	GOOD! FT by COLLINS, YURI
07:17		65-43	H 22	GOOD! FT by COLLINS, YURI
06:55	GOOD! LAYUP by GROVES, TANNER [PNT]	65-45	H 20	
06:28		67-45	H 22	GOOD! LAYUP by COLLINS, YURI
05:53	GOOD! LAYUP by AIKEN JR., KIM [PNT]	67-47	H 20	
05:53	GOOD! FT by AIKEN JR., KIM	67-48	H 19	
05:42		69-48	H 21	GOOD! DUNK by HARGROVE JR., TERRENCE
05:07		72-48	H 24	GOOD! 3PTR by WEAVER, TAY
04:48	GOOD! LAYUP by GROVES, TANNER	72-50	H 22	
04:34		73-50	H 23	GOOD! FT by BELL JR., JIMMY
04:34		74-50	H 24	GOOD! FT by BELL JR., JIMMY
04:19		76-50	H 26	GOOD! DUNK by HARGROVE JR., TERRENCE [FB]
03:52		78-50	H 28	GOOD! LAYUP by BELL JR., JIMMY
03:38	GOOD! 3PTR by ROUSE, CASSON	78-53	H 25	
03:18	GOOD! FT by MOHAMED, ABDULLAHI	78-54	H 24	
03:18	GOOD! FT by MOHAMED, ABDULLAHI	78-55	H 23	
02:39	GOOD! FT by JACKSON, ELIJAH	78-56	H 22	
02:39	GOOD! FT by JACKSON, ELIJAH	78-57	H 21	
02:13	GOOD! FT by MOHAMED, ABDULLAHI	78-58	H 20	
02:13	GOOD! FT by MOHAMED, ABDULLAHI	78-59	H 19	
01:52	GOOD! FT by JACKSON, ELIJAH	78-60	H 18	
01:06		79-60	H 19	GOOD! FT by HIGHTOWER, JOSHUA
00:47		82-60	H 22	GOOD! 3PTR by COURTNEY, BRANDON [FB]

**Eastern Wash. 60, Saint Louis 82**

**Official Substitutions Log**  
**Eastern Wash. vs Saint Louis**  
**Period 1**  
**November 13, 2019 at Chaifetz Arena - St. Louis, Mo.**



VISITORS: Eastern Wash.	Time	Score	HOME: Saint Louis
10 DAVISON, JACOB			0 GOODWIN, JORDAN
11 PERRY, JACK			11 FRENCH, HASAHN
14 PEATLING, MASON			15 JACOBS, DEMARIUS
24 AIKEN JR., KIM			20 THATCH JR., FRED
55 MAGNUSON, ELLIS			32 BELL JR., JIMMY
	16:29	6-7	SUB OUT: BELL JR., JIMMY
	16:29		SUB IN: COLLINS, YURI
SUB OUT: 11 PERRY, JACK	14:37	6-10	
SUB IN: 0 KIDD, TYLER	14:37		
	14:31	6-10	SUB OUT: JACOBS, DEMARIUS
	14:31		SUB IN: JIMERSON, GIBSON
	13:42	6-10	SUB OUT: GOODWIN, JORDAN
	13:42		SUB IN: HANKTON, KC
	13:03	6-10	SUB OUT: FRENCH, HASAHN
	13:03		SUB IN: PERKINS, JAVONTE
SUB OUT: 10 DAVISON, JACOB	13:03		
SUB OUT: 55 MAGNUSON, ELLIS	13:03		
SUB IN: 5 ROUSE, CASSON	13:03		
SUB IN: 15 ROBERTSON, TYLER	13:03		
	10:45	8-12	SUB OUT: THATCH JR., FRED
	10:45		SUB OUT: HANKTON, KC
	10:45		SUB IN: WEAVER, TAY
	10:45		SUB IN: FRENCH, HASAHN
SUB OUT: 14 PEATLING, MASON	10:45		
SUB IN: 33 GROVES, TANNER	10:45		
	09:33	8-14	SUB OUT: COLLINS, YURI
	09:33		SUB IN: GOODWIN, JORDAN
SUB OUT: 15 ROBERTSON, TYLER	09:13	8-14	
SUB IN: 10 DAVISON, JACOB	09:13		
SUB OUT: 5 ROUSE, CASSON	09:13		
SUB IN: 15 ROBERTSON, TYLER	09:13		
	08:46	10-14	SUB OUT: JIMERSON, GIBSON
	08:46		SUB IN: THATCH JR., FRED
	08:26	10-14	SUB OUT: PERKINS, JAVONTE
	08:26		SUB IN: COLLINS, YURI
SUB OUT: 33 GROVES, TANNER	07:47	10-16	
SUB IN: 14 PEATLING, MASON	07:47		
SUB OUT: 15 ROBERTSON, TYLER	07:19	10-16	
SUB IN: 11 PERRY, JACK	07:19		
	06:36	10-16	SUB OUT: WEAVER, TAY
	06:36		SUB IN: JACOBS, DEMARIUS
SUB OUT: 11 PERRY, JACK	05:28	12-20	
SUB IN: 55 MAGNUSON, ELLIS	05:28		
	04:14	12-22	SUB OUT: THATCH JR., FRED
	04:14		SUB IN: WEAVER, TAY
	04:14		SUB OUT: GOODWIN, JORDAN
	04:14		SUB IN: PERKINS, JAVONTE
SUB OUT: 10 DAVISON, JACOB	04:14		
SUB IN: 5 ROUSE, CASSON	04:14		
SUB OUT: 24 AIKEN JR., KIM	03:42	14-24	
SUB IN: 33 GROVES, TANNER	03:42		
SUB OUT: 55 MAGNUSON, ELLIS	02:12	18-28	
SUB IN: 11 PERRY, JACK	02:12		

**Eastern Wash. 24, Saint Louis 36**

**Official Substitutions Log**  
**Eastern Wash. vs Saint Louis**  
**Period 2**  
**November 13, 2019 at Chaifetz Arena - St. Louis, Mo.**



VISITORS: Eastern Wash.	Time	Score	HOME: Saint Louis
10 DAVISON, JACOB			0 GOODWIN, JORDAN
11 PERRY, JACK			11 FRENCH, HASAHN
14 PEATLING, MASON			15 JACOBS, DEMARIUS
24 AIKEN JR., KIM			20 THATCH JR., FRED
55 MAGNUSON, ELLIS			32 BELL JR., JIMMY
	20:00	-	SUB OUT: COLLINS, YURI
	20:00		SUB OUT: WEAVER, TAY
	20:00		SUB OUT: PERKINS, JAVONTE
	20:00		SUB IN: GOODWIN, JORDAN
	20:00		SUB IN: THATCH JR., FRED
	20:00		SUB IN: BELL JR., JIMMY
SUB OUT: 0 KIDD, TYLER	20:00		
SUB OUT: 5 ROUSE, CASSON	20:00		
SUB OUT: 33 GROVES, TANNER	20:00		
SUB IN: 10 DAVISON, JACOB	20:00		
SUB IN: 24 AIKEN JR., KIM	20:00		
SUB IN: 55 MAGNUSON, ELLIS	20:00		
SUB OUT: 55 MAGNUSON, ELLIS	17:41	24-43	
SUB IN: 0 KIDD, TYLER	17:41		
	15:34	30-48	SUB OUT: BELL JR., JIMMY
	15:34		SUB IN: COLLINS, YURI
SUB OUT: 10 DAVISON, JACOB	13:38	32-48	
SUB IN: 5 ROUSE, CASSON	13:38		
	12:12	35-54	SUB OUT: JACOBS, DEMARIUS
	12:12		SUB IN: JIMERSON, GIBSON
	11:20	40-54	SUB OUT: THATCH JR., FRED
	11:20		SUB IN: WEAVER, TAY
SUB OUT: 24 AIKEN JR., KIM	11:20		
SUB IN: 15 ROBERTSON, TYLER	11:20		
	10:27	41-56	SUB OUT: GOODWIN, JORDAN
	10:27		SUB IN: PERKINS, JAVONTE
SUB OUT: 15 ROBERTSON, TYLER	10:27		
SUB IN: 24 AIKEN JR., KIM	10:27		
	09:25	41-59	SUB OUT: FRENCH, HASAHN
	09:25		SUB IN: HANKTON, KC
SUB OUT: 11 PERRY, JACK	08:16	43-61	
SUB IN: 55 MAGNUSON, ELLIS	08:16		
	07:17	43-63	SUB OUT: PERKINS, JAVONTE
	07:17		SUB IN: HARGROVE JR., TERRENCE
SUB OUT: 14 PEATLING, MASON	07:17		
SUB IN: 33 GROVES, TANNER	07:17		
	05:53	47-67	SUB OUT: HANKTON, KC
	05:53		SUB IN: BELL JR., JIMMY
SUB OUT: 0 KIDD, TYLER	05:53		
SUB IN: 25 MEADOWS, MICHAEL	05:53		
SUB OUT: 24 AIKEN JR., KIM	04:34	50-72	
SUB IN: 22 JACKSON, ELIJAH	04:34		
	03:37	53-78	SUB OUT: COLLINS, YURI
	03:37		SUB IN: DIARRA, MADANI
SUB OUT: 33 GROVES, TANNER	03:37		
SUB IN: 44 MOHAMED, ABDULLAHI	03:37		
	02:55	55-78	SUB OUT: WEAVER, TAY
	02:55		SUB IN: HIGHTOWER, JOSHUA
	01:31	60-78	SUB OUT: JIMERSON, GIBSON
	01:31		SUB OUT: BELL JR., JIMMY
	01:31		SUB IN: COURTNEY, BRANDON
	01:31		SUB IN: RABOIN, JACK

**Eastern Wash. 60, Saint Louis 82**

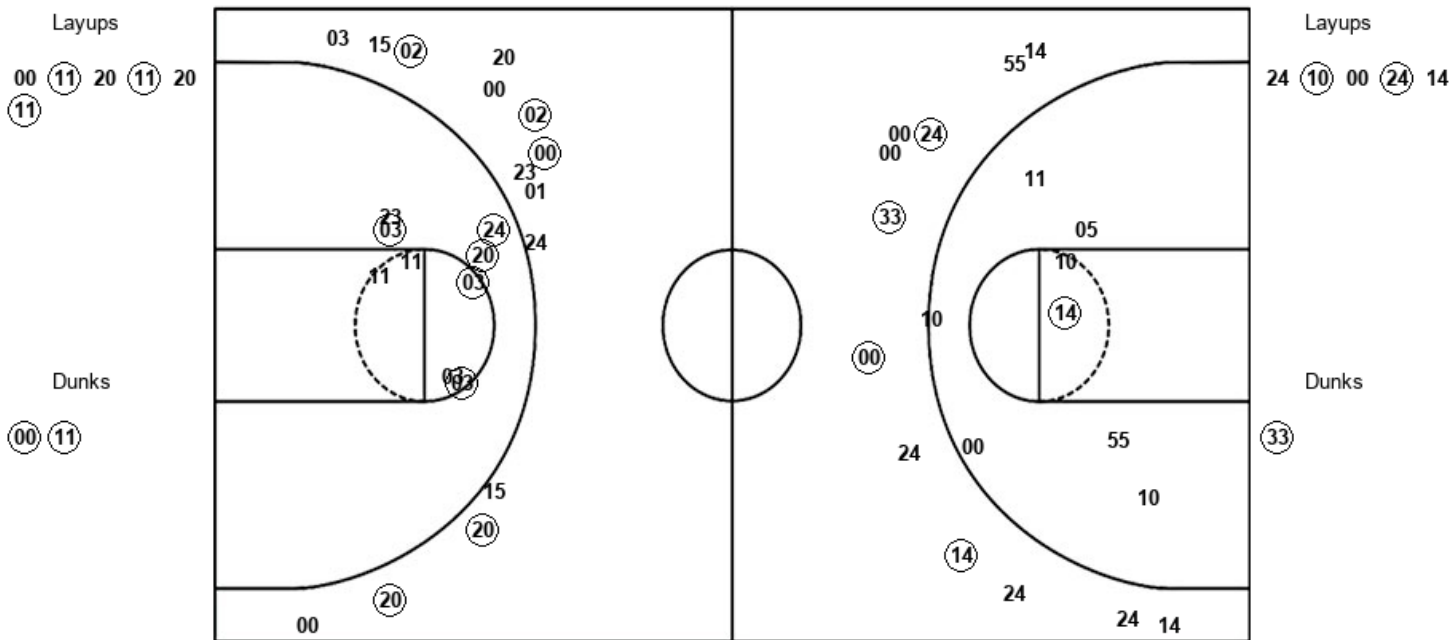


**Official Shot Chart**  
**Eastern Wash. vs Saint Louis**  
**PERIOD 1 Shots**  
 November 13, 2019 at Chaifetz Arena - St. Louis, Mo.



**Saint Louis**

**Eastern Wash.**



SLU : Period 1	Made	Att	Pct
Layups	3	6	50.0
Dunks	2	2	100.0
2PT Field Goals	10	17	58.8
3PT Field Goals	5	14	35.7
<b>Total Field Goals</b>	<b>15</b>	<b>31</b>	<b>48.4</b>

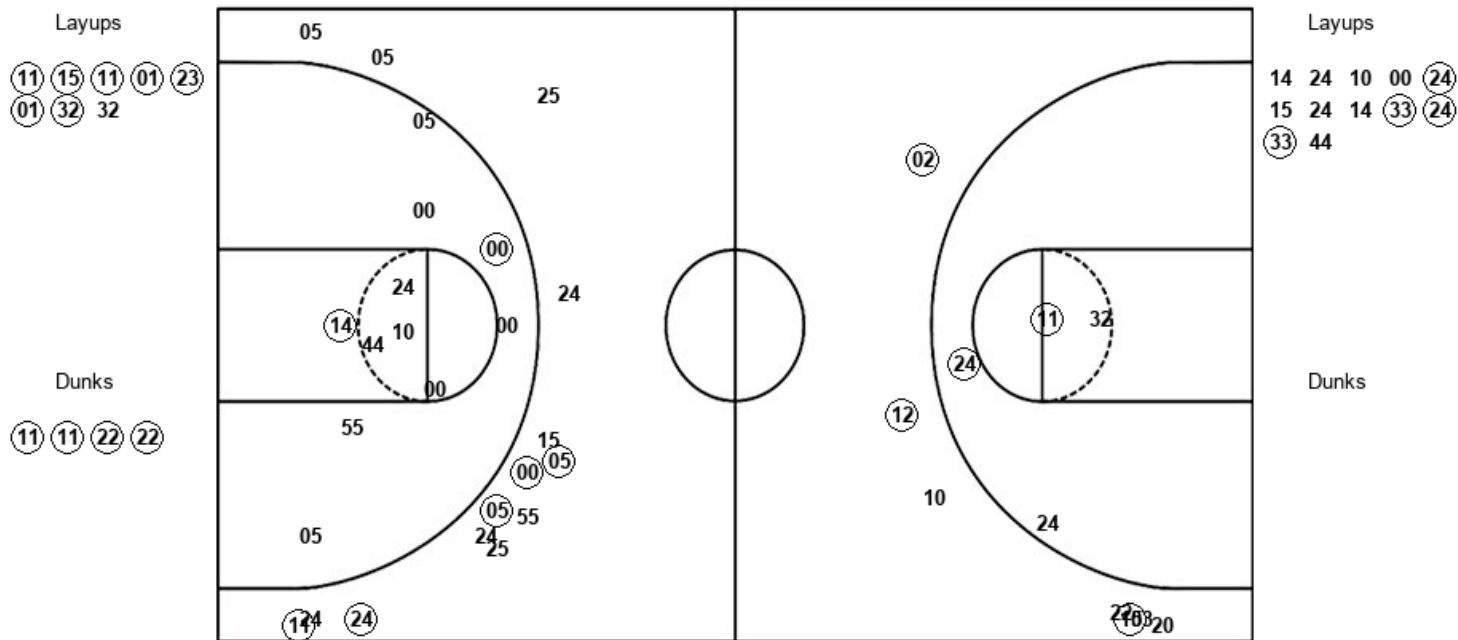
EWU : Period 1	Made	Att	Pct
Layups	2	5	40.0
Dunks	1	1	100.0
2PT Field Goals	4	14	28.6
3PT Field Goals	4	12	33.3
<b>Total Field Goals</b>	<b>8</b>	<b>26</b>	<b>30.8</b>

**Official Shot Chart**  
**Eastern Wash. vs Saint Louis**  
**PERIOD 2 Shots**  
 November 13, 2019 at Chaifetz Arena - St. Louis, Mo.



**Saint Louis**

**Eastern Wash.**



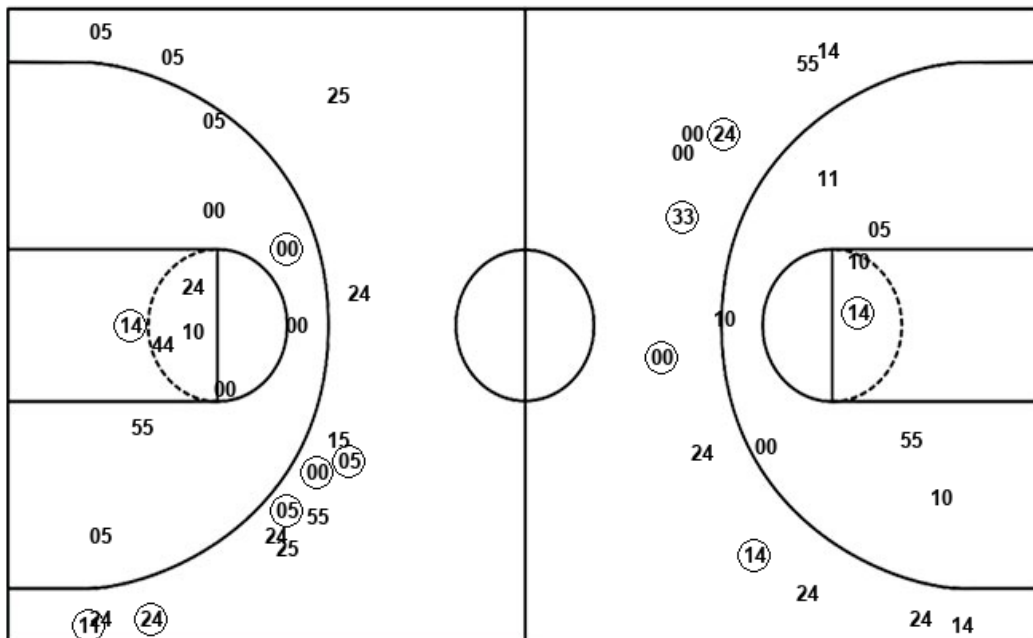
SLU : Period 2	Made	Att	Pct
Layups	7	8	87.5
Dunks	4	4	100.0
2PT Field Goals	13	16	81.3
3PT Field Goals	3	7	42.9
<b>Total Field Goals</b>	<b>16</b>	<b>23</b>	<b>69.6</b>

EWU : Period 2	Made	Att	Pct
Layups	4	12	33.3
Dunks	0	0	0
2PT Field Goals	6	23	26.1
3PT Field Goals	5	14	35.7
<b>Total Field Goals</b>	<b>11</b>	<b>37</b>	<b>29.7</b>

**Official Shot Chart**  
**Eastern Wash. vs Saint Louis**  
 Eastern Wash. Team Shots  
 November 13, 2019 at Chaifetz Arena - St. Louis, Mo.



Layups



Layups

24 (10) 00 (24) 14  
 14 24 10 00 (24)  
 15 24 14 (33) (24)  
 (33) 44

Dunks

Dunks

(33)

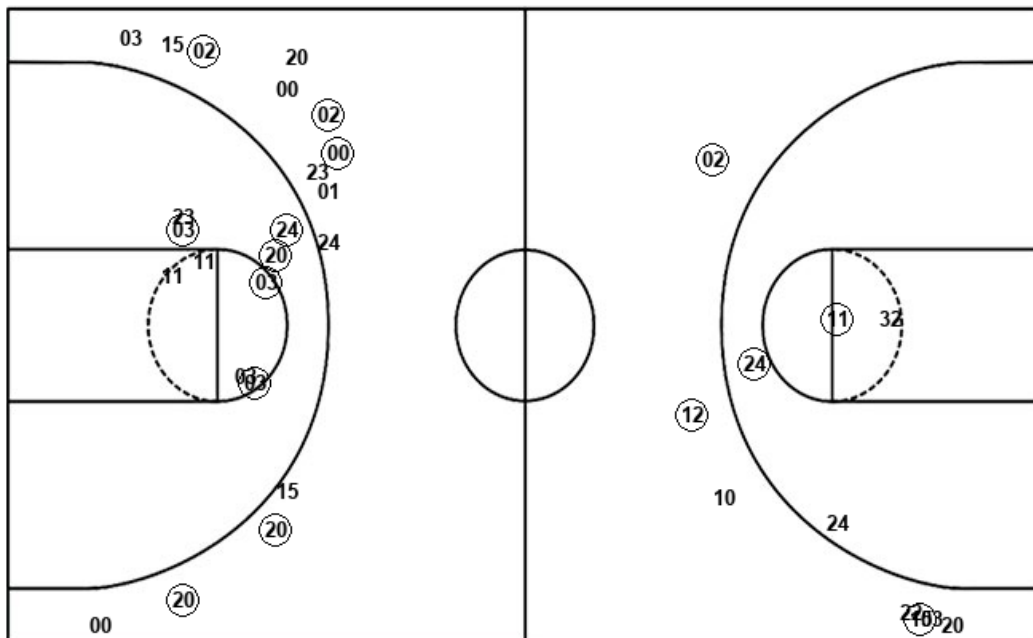
EWU : Period 1	Made	Att	Pct
Layups	2	5	40.0
Dunks	1	1	100.0
2PT Field Goals	4	14	28.6
3PT Field Goals	4	12	33.3
<b>Total Field Goals</b>	<b>8</b>	<b>26</b>	<b>30.8</b>

EWU : Period 2	Made	Att	Pct
Layups	4	12	33.3
Dunks	0	0	0
2PT Field Goals	6	23	26.1
3PT Field Goals	5	14	35.7
<b>Total Field Goals</b>	<b>11</b>	<b>37</b>	<b>29.7</b>

**Official Shot Chart**  
**Eastern Wash. vs Saint Louis**  
**Saint Louis Team Shots**  
**November 13, 2019 at Chaifetz Arena - St. Louis, Mo.**

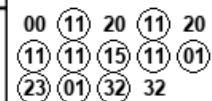


Layups

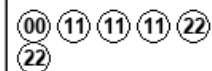


Dunks

Layups



Dunks



SLU : Period 1	Made	Att	Pct
Layups	3	6	50.0
Dunks	2	2	100.0
2PT Field Goals	10	17	58.8
3PT Field Goals	5	14	35.7
<b>Total Field Goals</b>	<b>15</b>	<b>31</b>	<b>48.4</b>

SLU : Period 2	Made	Att	Pct
Layups	7	8	87.5
Dunks	4	4	100.0
2PT Field Goals	13	16	81.3
3PT Field Goals	3	7	42.9
<b>Total Field Goals</b>	<b>16</b>	<b>23</b>	<b>69.6</b>