

## FINAL SCORE



**Florida St.**

**67**



**Louisville**

**59**

February 06, 2020 • KFC Yum! Center (Denny Crum Court) - Louisville

## FINAL STATISTICS

**Official Box Score**  
**Florida St. vs Louisville**  
**Game Totals -- Final Statistics**  
**February 06, 2020 at KFC Yum! Center (Denny Crum Court) - Louisville**



**Florida St. 67**

No.	Player	S	Pts	FG	3FG	FT	OR	DR	TR	PF	A	TO	Blk	Stl	Min	+/-
12	EKHOMU, NICKI	G	18	7-17	2-5	2-2	0	1	1	3	6	4	1	0	39	8
13	WOOLFOLK, NAUSIA	G	11	2-11	1-6	6-6	0	4	4	3	1	3	0	1	28	6
15	GILLESPIE, KIAH	F	25	10-20	3-5	2-2	2	11	13	3	1	1	0	1	38	8
24	JONES, MO.	G	2	1-1	0-0	0-0	2	3	5	3	0	1	2	1	25	12
32	MYERS, VALENCIA	F	8	3-4	0-0	2-2	3	2	5	4	0	2	1	0	27	12
01	BALDWIN, RIVER	C	1	0-2	0-0	1-2	1	2	3	1	0	1	0	0	14	-10
02	PUISIS, SAMMIE	G	0	0-5	0-5	0-0	2	3	5	1	1	1	0	0	18	0
10	WEBER, KOURTNEY	G	2	1-3	0-1	0-0	3	1	4	1	0	0	0	0	12	4
TEAM							3	1	4	0						
<b>TOTALS</b>			<b>67</b>	<b>24-63</b>	<b>6-22</b>	<b>13-14</b>	<b>16</b>	<b>28</b>	<b>44</b>	<b>19</b>	<b>9</b>	<b>13</b>	<b>4</b>	<b>3</b>	<b>200</b>	

*Shooting By Period*

Period	FG	FG%	3FG	3FG%	FT	FT%
1st Qtr	5-19	26%	1-6	17%	0-0	0%
2nd Qtr	7-16	44%	1-5	20%	0-0	0%
3rd Qtr	6-18	33%	1-6	17%	3-4	75%
4th Qtr	6-10	60%	3-5	60%	10-10	100%
1st Half	12-35	34%	2-11	18%	0-0	0%
2nd Half	12-28	43%	4-11	36%	13-14	93%
<b>Game</b>	<b>24-63</b>	<b>38.1%</b>	<b>6-22</b>	<b>27.3%</b>	<b>13-14</b>	<b>92.9%</b>

Deadball Rebounds: 0,0  
 Last FG: 4th-04:02  
 Biggest Run: 13-0  
 Largest lead: By 14 at 4th-04:02  
 Technical Fouls: None.

**Louisville 59**

No.	Player	S	Pts	FG	3FG	FT	OR	DR	TR	PF	A	TO	Blk	Stl	Min	+/-
01	EVANS, DANA	G	18	7-20	2-9	2-3	1	3	4	2	6	2	0	1	38	-5
02	DIOP, YACINE	G	2	1-3	0-0	0-0	2	3	5	2	0	1	0	0	20	-12
21	SHOOK, KYLEE	F	9	3-9	1-4	2-2	2	7	9	1	0	2	3	2	34	0
23	JONES, JAZMINE	G	5	2-12	0-1	1-1	3	4	7	3	3	4	0	5	38	-8
33	DUNHAM, BIONCA	F	14	5-13	0-0	4-4	1	1	2	3	0	1	0	0	34	-4
05	ROBINSON, MYKASA	G	5	2-2	0-0	1-2	2	2	4	2	1	2	0	0	20	-4
12	DUVALL, LINDSEY	G	0	0-2	0-1	0-0	0	0	0	0	0	0	0	0	3	0
22	DIXON, ELIZABETH	F	4	1-1	0-0	2-4	1	2	3	0	0	0	0	1	11	-5
24	LAEMMLE, JESSICA	G	2	1-2	0-1	0-0	0	0	0	2	0	0	0	0	1	-2
TEAM							3	1	4	0						
<b>TOTALS</b>			<b>59</b>	<b>22-64</b>	<b>3-16</b>	<b>12-16</b>	<b>15</b>	<b>23</b>	<b>38</b>	<b>15</b>	<b>10</b>	<b>12</b>	<b>3</b>	<b>9</b>	<b>200</b>	

*Shooting By Period*

Period	FG	FG%	3FG	3FG%	FT	FT%
1st Qtr	5-16	31%	1-3	33%	0-0	0%
2nd Qtr	2-13	15%	0-5	00%	2-3	67%
3rd Qtr	7-12	58%	1-2	50%	8-9	89%
4th Qtr	8-23	35%	1-6	17%	2-4	50%
1st Half	7-29	24%	1-8	13%	2-3	67%
2nd Half	15-35	43%	2-8	25%	10-13	77%
<b>Game</b>	<b>22-64</b>	<b>34.4%</b>	<b>3-16</b>	<b>18.8%</b>	<b>12-16</b>	<b>75.0%</b>

Deadball Rebounds: 3,1  
 Last FG: 4th-00:08  
 Biggest Run: 7-0  
 Largest lead: By 1 at 2nd-08:49  
 Technical Fouls: None.

*Game Notes:*

Officials: Dee Kantner, Rod Creech, Jeffrey Smith  
 Attendance: 8314

Start Time: 08:02 PM ET  
 End Time: 10:00 PM ET  
 Game Duration: 1:58  
 Conference Game;

Score	1st	2nd	3rd	4th	TOT
FSU	11	15	16	25	<b>67</b>
LOU	11	6	23	19	<b>59</b>

FSU led for 35:36. LOU led for 0:13.  
 Game was tied for 4:05.  
 Times tied: 2      Lead Changes: 2

Points from	FSU	LOU
In the Paint	24	26
Off Turns	13	14
2nd Chance	13	10
Fast Break	2	13
Bench	3	11

**Official Box Score**  
**Florida St. vs Louisville**  
**First Half Statistics Only**  
**February 06, 2020 at KFC Yum! Center (Denny Crum Court) - Louisville**



**Florida St. 26**

No.	Player	S	Pts	FG	3FG	FT	OR	DR	TR	PF	A	TO	Blk	Stl	Min	+/-
01	BALDWIN, RIVER	C	0	0-1	0-0	0-0	0	2	2	0	0	0	0	0	7	0
02	PUISIS, SAMMIE	G	0	0-3	0-3	0-0	1	3	4	1	0	1	0	0	12	7
10	WEBER, KOURTNEY	G	2	1-3	0-1	0-0	3	0	3	1	0	0	0	0	9	5
12	EKHOMU, NICKI	G	11	5-8	1-2	0-0	0	1	1	2	2	1	0	0	19	9
13	WOOLFOLK, NAUSIA	G	2	1-7	0-3	0-0	0	2	2	2	0	1	0	1	10	3
15	GILLESPIE, KIAH	F	9	4-11	1-2	0-0	2	8	10	0	0	0	0	0	19	9
24	JONES, MO.	G	0	0-0	0-0	0-0	1	1	2	0	0	1	2	0	10	3
32	MYERS, VALENCIA	F	2	1-2	0-0	0-0	2	1	3	1	0	2	1	0	14	9
	TEAM		0	0-0	0-0	0-0	1	1	2	0	0	0	0	0	0	0
<b>TOTALS</b>			<b>26</b>	<b>12-35</b>	<b>2-11</b>	<b>0-0</b>	<b>10</b>	<b>19</b>	<b>29</b>	<b>7</b>	<b>2</b>	<b>6</b>	<b>3</b>	<b>1</b>	<b>100</b>	

*Shooting By Period*

Period	FG	FG%	3FG	3FG%	FT	FT%
1st Qtr	5-19	26%	1-6	17%	0-0	0%
2nd Qtr	7-16	44%	1-5	20%	0-0	0%
1st Half	12-35	34%	2-11	18%	0-0	0%
Game	24-63	38.1%	6-22	27.3%	13-14	92.9%

Deadball Rebounds: 0,0  
 Last FG Half: FSU 2nd-00:02

**Louisville 17**

No.	Player	S	Pts	FG	3FG	FT	OR	DR	TR	PF	A	TO	Blk	Stl	Min	+/-
01	EVANS, DANA	G	8	3-10	1-5	1-1	0	2	2	0	1	0	0	1	18	-6
02	DIOP, YACINE	G	0	0-1	0-0	0-0	0	1	1	0	0	1	0	0	10	-12
05	ROBINSON, MYKASA	G	2	1-1	0-0	0-0	0	2	2	0	1	1	0	0	14	-5
12	DUVALL, LINDSEY	G	0	0-0	0-0	0-0	0	0	0	0	0	0	0	0	2	1
21	SHOOK, KYLEE	F	0	0-4	0-2	0-0	0	3	3	1	0	1	2	1	16	-2
22	DIXON, ELIZABETH	F	3	1-1	0-0	1-2	0	2	2	0	0	0	0	1	5	-1
23	JONES, JAZMINE	G	0	0-6	0-1	0-0	1	2	3	0	0	1	0	1	18	-9
24	LAEMMLE, JESSICA	G	0	0-0	0-0	0-0	0	0	0	0	0	0	0	0	0	0
33	DUNHAM, BIONCA	F	4	2-6	0-0	0-0	0	0	0	0	0	0	0	0	17	-11
	TEAM		0	0-0	0-0	0-0	2	1	3	0	0	0	0	0	0	0
<b>TOTALS</b>			<b>17</b>	<b>7-29</b>	<b>1-8</b>	<b>2-3</b>	<b>3</b>	<b>13</b>	<b>16</b>	<b>1</b>	<b>2</b>	<b>4</b>	<b>2</b>	<b>4</b>	<b>100</b>	

*Shooting By Period*

Period	FG	FG%	3FG	3FG%	FT	FT%
1st Qtr	5-16	31%	1-3	33%	0-0	0%
2nd Qtr	2-13	15%	0-5	00%	2-3	67%
1st Half	7-29	24%	1-8	13%	2-3	67%
Game	22-64	34.4%	3-16	18.8%	12-16	75.0%

Deadball Rebounds: 3,1  
 Last FG Half: LOU 2nd-01:05

Game Notes:

Officials: Dee Kantner, Rod Creech, Jeffrey Smith  
 Attendance: 8314

Start Time: 08:02 PM ET  
 End Time: 10:00 PM ET  
 Game Duration: 1:58  
 Conference Game;

Score	1st	2nd	3rd	4th	TOT
FSU	11	15	16	25	<b>67</b>
LOU	11	6	23	19	<b>59</b>

Points from (This Period)	FSU	LOU
In the Paint	14	8
Off Turns	4	3
2nd Chance	6	0
Fast Break	0	4
Bench	2	5

**Official Box Score**  
**Florida St. vs Louisville**  
**First Quarter Statistics Only**  
**February 06, 2020 at KFC Yum! Center (Denny Crum Court) - Louisville**



**Florida St. 11**

No.	Player	S	Pts	FG	3FG	FT	OR	DR	TR	PF	A	TO	Blk	Stl	Min	+/-
12	EKHOMU, NICKI	G	2	1-3	0-0	0-0	0	0	0	1	2	0	0	0	9	0
13	WOOLFOLK, NAUSIA	G	2	1-6	0-3	0-0	0	2	2	1	0	0	0	0	8	3
15	GILLESPIE, KIAH	F	5	2-6	1-2	0-0	2	3	5	0	0	0	0	0	9	0
24	JONES, MO.	G	0	0-0	0-0	0-0	1	1	2	0	0	1	2	0	7	2
32	MYERS, VALENCIA	F	2	1-2	0-0	0-0	0	1	1	0	0	1	0	0	7	3
01	BALDWIN, RIVER	C	0	0-1	0-0	0-0	0	1	1	0	0	0	0	0	4	-3
02	PUISIS, SAMMIE	G	0	0-1	0-1	0-0	1	0	1	0	0	0	0	0	3	-2
10	WEBER, KOURTNEY	G	0	0-0	0-0	0-0	1	0	1	1	0	0	0	0	2	-3
<b>TEAM</b>							1	1	2	0	0					
<b>TOTALS</b>			<b>11</b>	<b>5-19</b>	<b>1-6</b>	<b>0-0</b>	<b>6</b>	<b>9</b>	<b>15</b>	<b>3</b>	<b>2</b>	<b>2</b>	<b>2</b>	<b>0</b>	<b>50</b>	

*Shooting By Period*

Period	FG	FG%	3FG	3FG%	FT	FT%
1st Qtr	5-19	26%	1-6	17%	0-0	0%
2nd Qtr	7-16	44%	1-5	20%	0-0	0%
1st Half	5-19	26%	1-6	17%	0-0	0%
1st Half	12-35	34%	2-11	18%	0-0	0%
Game	24-63	38.1%	6-22	27.3%	13-14	92.9%

*Deadball Rebounds: 0,0*

**Louisville 11**

No.	Player	S	Pts	FG	3FG	FT	OR	DR	TR	PF	A	TO	Blk	Stl	Min	+/-
01	EVANS, DANA	G	5	2-6	1-3	0-0	0	2	2	0	1	0	0	0	10	0
02	DIOP, YACINE	G	0	0-1	0-0	0-0	0	0	0	0	0	0	0	0	5	-5
21	SHOOK, KYLEE	F	0	0-2	0-0	0-0	0	1	1	1	0	1	1	1	10	0
23	JONES, JAZMINE	G	0	0-2	0-0	0-0	1	2	3	0	0	0	0	0	9	0
33	DUNHAM, BIONCA	F	2	1-3	0-0	0-0	0	0	0	0	0	0	0	0	8	-2
05	ROBINSON, MYKASA	G	2	1-1	0-0	0-0	0	1	1	0	0	0	0	0	6	5
12	DUVALL, LINDSEY	G	0	0-0	0-0	0-0	0	0	0	0	0	0	0	0	0	0
22	DIXON, ELIZABETH	F	2	1-1	0-0	0-0	0	1	1	0	0	0	0	0	2	2
24	LAEMMLE, JESSICA	G	0	0-0	0-0	0-0	0	0	0	0	0	0	0	0	0	0
<b>TEAM</b>							1	1	2	0	0					
<b>TOTALS</b>			<b>11</b>	<b>5-16</b>	<b>1-3</b>	<b>0-0</b>	<b>2</b>	<b>8</b>	<b>10</b>	<b>1</b>	<b>1</b>	<b>1</b>	<b>1</b>	<b>1</b>	<b>1</b>	<b>50</b>

*Shooting By Period*

Period	FG	FG%	3FG	3FG%	FT	FT%
1st Qtr	5-16	31%	1-3	33%	0-0	0%
2nd Qtr	2-13	15%	0-5	00%	2-3	67%
1st Half	5-16	31%	1-3	33%	0-0	0%
1st Half	7-29	24%	1-8	13%	2-3	67%
Game	22-64	34.4%	3-16	18.8%	12-16	75.0%

*Deadball Rebounds: 3,1*

*Game Notes:*

Officials: **Dee Kantner, Rod Creech, Jeffrey Smith**  
 Attendance: **8314**

Start Time: **08:02 PM ET**  
 End Time: **10:00 PM ET**  
 Game Duration: **1:58**  
 Conference Game;

Score	1st	2nd	3rd	4th	TOT
FSU	11	15	16	25	<b>67</b>
LOU	11	6	23	19	<b>59</b>

Points from (This Period)	FSU	LOU
In the Paint	6	4
Off Turns	0	0
2nd Chance	2	0
Fast Break	0	2
Bench	0	4

**Official Play-By-Play  
Florida St. vs Louisville**

**First Quarter  
February 06, 2020 at KFC Yum! Center (Denny Crum Court) - Louisville**



**Period 1**

**Starters:**

**Florida St.:** 12 EKHOMU, NICKI (G); 13 WOOLFOLK, NAUSIA (G); 15 GILLESPIE, KIAH (F); 24 JONES, MO. (G); 32 MYERS, VALENCIA (F);

**Louisville:** 1 EVANS, DANA (G); 2 DIOP, YACINE (G); 21 SHOOK, KYLEE (F); 23 JONES, JAZMINE (G); 33 DUNHAM, BIONCA (F);

Time	VISITORS: Florida St.	Score	Margin	HOME: Louisville
09:46				MISSED 3PTR by EVANS, DANA
09:40				REBOUND (OFF) by JONES, JAZMINE
09:40	FOUL (PERSONAL) by WOOLFOLK, NAUSIA			
09:40				MISSED JUMPER by JONES, JAZMINE
09:34	REBOUND (DEF) by GILLESPIE, KIAH			
09:27	MISSED JUMPER by GILLESPIE, KIAH			
09:23	REBOUND (OFF) by JONES, MO.			
09:23	TURNOVER (DRIBBLING) by JONES, MO.			
09:01				MISSED JUMPER by DIOP, YACINE
08:57	REBOUND (DEF) by WOOLFOLK, NAUSIA			
08:41	GOOD! LAYUP by MYERS, VALENCIA	0-2	V 2	
08:41	ASSIST by EKHOMU, NICKI			
08:30				MISSED JUMPER by DUNHAM, BIONCA
08:25	REBOUND (DEF) by GILLESPIE, KIAH			
08:00	MISSED 3PTR by WOOLFOLK, NAUSIA			
07:51	REBOUND (OFF) by GILLESPIE, KIAH			
07:51	MISSED LAYUP by GILLESPIE, KIAH			
07:49				REBOUND (DEF) by EVANS, DANA
07:32				MISSED JUMPER by SHOOK, KYLEE
07:28	REBOUND (DEF) by TEAM			
07:16	TURNOVER (BADPASS) by MYERS, VALENCIA			
07:16				STEAL by SHOOK, KYLEE
07:06				MISSED LAYUP by DUNHAM, BIONCA
07:02	REBOUND (DEF) by JONES, MO.			
06:48	MISSED JUMPER by EKHOMU, NICKI			
06:44	REBOUND (OFF) by GILLESPIE, KIAH			
06:43	GOOD! LAYUP by GILLESPIE, KIAH	0-4	V 4	
06:31		2-4	V 2	GOOD! JUMPER by DUNHAM, BIONCA
06:31				ASSIST by EVANS, DANA
06:14	GOOD! 3PTR by GILLESPIE, KIAH	2-7	V 5	
06:14	ASSIST by EKHOMU, NICKI			
05:59				TURNOVER (TRAVEL) by SHOOK, KYLEE
05:59				SUB OUT: DIOP, YACINE
05:59				SUB IN: ROBINSON, MYKASA
05:59	SUB OUT: MYERS, VALENCIA			
05:59	SUB IN: BALDWIN, RIVER			
05:48				FOUL (PERSONAL) by SHOOK, KYLEE
05:30	MISSED JUMPER by WOOLFOLK, NAUSIA			
05:27				REBOUND (DEF) by TEAM
05:11				MISSED LAYUP by EVANS, DANA
05:11	BLOCK by JONES, MO.			
05:11				REBOUND (OFF) by TEAM
05:11	FOUL (PERSONAL) by WEBER, KOURTNEY			
05:09	SUB OUT: WOOLFOLK, NAUSIA			
05:09	SUB IN: WEBER, KOURTNEY			
05:00				MISSED JUMPER by SHOOK, KYLEE
04:56	REBOUND (DEF) by GILLESPIE, KIAH			
04:46	MISSED JUMPER by GILLESPIE, KIAH			
04:41				REBOUND (DEF) by SHOOK, KYLEE
04:37		4-7	V 3	GOOD! LAYUP by EVANS, DANA [PNT]
04:15	GOOD! JUMPER by EKHOMU, NICKI	4-9	V 5	
04:03		7-9	V 2	GOOD! 3PTR by EVANS, DANA
03:45	MISSED JUMPER by EKHOMU, NICKI			
03:40	REBOUND (OFF) by WEBER, KOURTNEY			
03:25	MISSED JUMPER by BALDWIN, RIVER			
03:25				BLOCK by SHOOK, KYLEE
03:24				
03:24	SUB OUT: GILLESPIE, KIAH			
03:24	SUB OUT: JONES, MO.			
03:24	SUB OUT: WEBER, KOURTNEY			
03:24	SUB IN: PUISIS, SAMMIE			
03:24	SUB IN: WOOLFOLK, NAUSIA			
03:24	SUB IN: MYERS, VALENCIA			
03:23	REBOUND (OFF) by TEAM			
03:22	MISSED 3PTR by PUISIS, SAMMIE			
03:18				REBOUND (DEF) by EVANS, DANA
03:16				MISSED LAYUP by JONES, JAZMINE
03:12	REBOUND (DEF) by MYERS, VALENCIA			
02:57	GOOD! LAYUP by WOOLFOLK, NAUSIA [PNT]	7-11	V 4	
02:37				MISSED 3PTR by EVANS, DANA

Time	VISITORS: Florida St.	Score	Margin	HOME: Louisville
02:33	REBOUND (DEF) by BALDWIN, RIVER			
02:16	MISSED JUMPER by MYERS, VALENCIA			
02:12				REBOUND (DEF) by ROBINSON, MYKASA
02:08		9-11	V 2	GOOD! LAYUP by ROBINSON, MYKASA [FB/PNT]
01:54				SUB OUT: DUNHAM, BIONCA
01:54				SUB IN: DIXON, ELIZABETH
01:54	SUB OUT: BALDWIN, RIVER			
01:54	SUB IN: GILLESPIE, KIAH			
01:41	MISSED JUMPER by WOOLFOLK, NAUSIA			
01:37				REBOUND (DEF) by JONES, JAZMINE
01:12		11-11	T	GOOD! JUMPER by DIXON, ELIZABETH
00:45	MISSED 3PTR by WOOLFOLK, NAUSIA			
00:40				REBOUND (DEF) by JONES, JAZMINE
00:31	FOUL (PERSONAL) by EKHOMU, NICKI			
00:31				SUB OUT: JONES, JAZMINE
00:31				SUB IN: DIOP, YACINE
00:31	SUB OUT: EKHOMU, NICKI			
00:31	SUB IN: JONES, MO.			
00:29				MISSED LAYUP by EVANS, DANA
00:29	REBOUND (DEF) by WOOLFOLK, NAUSIA			
00:29	BLOCK by JONES, MO.			
00:10	MISSED 3PTR by WOOLFOLK, NAUSIA			
00:06	REBOUND (OFF) by PUISIS, SAMMIE			
00:04	MISSED 3PTR by GILLESPIE, KIAH			
00:00				REBOUND (DEF) by DIXON, ELIZABETH

### Florida St. 11, Louisville 11

Points from (This Period)	FSU	LOU
In the Paint	6	4
Off Turns	0	0
2nd Chance	2	0
Fast Break	0	2
Bench	0	4

**Official Box Score**  
**Florida St. vs Louisville**  
**Second Quarter Statistics Only**  
**February 06, 2020 at KFC Yum! Center (Denny Crum Court) - Louisville**



**Florida St. 15**

No.	Player	S	Pts	FG	3FG	FT	OR	DR	TR	PF	A	TO	Blk	Stl	Min	+/-
12	EKHOMU, NICKI	G	9	4-5	1-2	0-0	0	1	1	1	0	1	0	0	10	9
13	WOOLFOLK, NAUSIA	G	0	0-1	0-0	0-0	0	0	0	1	0	1	0	1	2	0
15	GILLESPIE, KIAH	F	4	2-5	0-0	0-0	0	5	5	0	0	0	0	0	10	9
24	JONES, MO.	G	0	0-0	0-0	0-0	0	0	0	0	0	0	0	0	3	1
32	MYERS, VALENCIA	F	0	0-0	0-0	0-0	2	0	2	1	0	1	1	0	7	6
01	BALDWIN, RIVER	C	0	0-0	0-0	0-0	0	1	1	0	0	0	0	0	3	3
02	PUISIS, SAMMIE	G	0	0-2	0-2	0-0	0	3	3	1	0	1	0	0	9	9
10	WEBER, KOURTNEY	G	2	1-3	0-1	0-0	2	0	2	0	0	0	0	0	7	8
<b>TEAM</b>							0	0	0	0	0	0	0	0	0	0
<b>TOTALS</b>			<b>15</b>	<b>7-16</b>	<b>1-5</b>	<b>0-0</b>	<b>4</b>	<b>10</b>	<b>14</b>	<b>4</b>	<b>0</b>	<b>4</b>	<b>1</b>	<b>1</b>	<b>50</b>	

*Shooting By Period*

Period	FG	FG%	3FG	3FG%	FT	FT%
3rd Qtr	6-18	33%	1-6	17%	3-4	75%
4th Qtr	6-10	60%	3-5	60%	10-10	100%
2nd Half	7-16	44%	1-5	20%	0-0	0%
2nd Half	12-28	43%	4-11	36%	13-14	93%
Game	24-63	38.1%	6-22	27.3%	13-14	92.9%

*Deadball Rebounds: 0,0*

**Louisville 6**

No.	Player	S	Pts	FG	3FG	FT	OR	DR	TR	PF	A	TO	Blk	Stl	Min	+/-
01	EVANS, DANA	G	3	1-4	0-2	1-1	0	0	0	0	0	0	0	1	8	-6
02	DIOP, YACINE	G	0	0-0	0-0	0-0	0	1	1	0	0	1	0	0	5	-7
21	SHOOK, KYLEE	F	0	0-2	0-2	0-0	0	2	2	0	0	0	1	0	6	-2
23	JONES, JAZMINE	G	0	0-4	0-1	0-0	0	0	0	0	0	1	0	1	9	-9
33	DUNHAM, BIONCA	F	2	1-3	0-0	0-0	0	0	0	0	0	0	0	0	9	-9
05	ROBINSON, MYKASA	G	0	0-0	0-0	0-0	0	1	1	0	1	1	0	0	8	-10
12	DUVALL, LINDSEY	G	0	0-0	0-0	0-0	0	0	0	0	0	0	0	0	2	1
22	DIXON, ELIZABETH	F	1	0-0	0-0	1-2	0	1	1	0	0	0	0	1	3	-3
24	LAEMMLE, JESSICA	G	0	0-0	0-0	0-0	0	0	0	0	0	0	0	0	0	0
<b>TEAM</b>							1	0	1	0	0	0	0	0	0	
<b>TOTALS</b>			<b>6</b>	<b>2-13</b>	<b>0-5</b>	<b>2-3</b>	<b>1</b>	<b>5</b>	<b>6</b>	<b>0</b>	<b>1</b>	<b>3</b>	<b>1</b>	<b>3</b>	<b>50</b>	

*Shooting By Period*

Period	FG	FG%	3FG	3FG%	FT	FT%
3rd Qtr	7-12	58%	1-2	50%	8-9	89%
4th Qtr	8-23	35%	1-6	17%	2-4	50%
2nd Half	2-13	15%	0-5	00%	2-3	67%
2nd Half	15-35	43%	2-8	25%	10-13	77%
Game	22-64	34.4%	3-16	18.8%	12-16	75.0%

*Deadball Rebounds: 3,1*

*Game Notes:*

Officials: Dee Kantner, Rod Creech, Jeffrey Smith  
 Attendance: 8314

Start Time: 08:02 PM ET  
 End Time: 10:00 PM ET  
 Game Duration: 1:58  
 Conference Game;

Score	1st	2nd	3rd	4th	TOT
FSU	11	15	16	25	<b>67</b>
LOU	11	6	23	19	<b>59</b>

Points from (This Period)	FSU	LOU
In the Paint	8	4
Off Turns	4	3
2nd Chance	4	0
Fast Break	0	2
Bench	2	1

**Official Play-By-Play  
Florida St. vs Louisville  
Second Quarter**

**February 06, 2020 at KFC Yum! Center (Denny Crum Court) - Louisville**



**Period 2**

**Starters:**

**Florida St.:** 12 EKHOMU, NICKI (G); 13 WOOLFOLK, NAUSIA (G); 15 GILLESPIE, KIAH (F); 24 JONES, MO. (G); 32 MYERS, VALENCIA (F);

**Louisville:** 1 EVANS, DANA (G); 2 DIOP, YACINE (G); 21 SHOOK, KYLEE (F); 23 JONES, JAZMINE (G); 33 DUNHAM, BIONCA (F);

Time	VISITORS: Florida St.	Score	Margin	HOME: Louisville
10:00	SUB OUT: PUISIS, SAMMIE			
10:00	SUB OUT: MYERS, VALENCIA			
10:00	SUB IN: BALDWIN, RIVER			
10:00	SUB IN: EKHOMU, NICKI			
09:39				MISSED 3PTR by SHOOK, KYLEE
09:34	REBOUND (DEF) by EKHOMU, NICKI			
09:15	MISSED JUMPER by WOOLFOLK, NAUSIA			
09:12				REBOUND (DEF) by DIXON, ELIZABETH
08:49	FOUL (PERSONAL) by WOOLFOLK, NAUSIA			
08:49				SUB OUT: EVANS, DANA
08:49				SUB OUT: SHOOK, KYLEE
08:49				SUB IN: JONES, JAZMINE
08:49				SUB IN: DUNHAM, BIONCA
08:49	SUB OUT: WOOLFOLK, NAUSIA			
08:49	SUB OUT: JONES, MO.			
08:49	SUB IN: PUISIS, SAMMIE			
08:49	SUB IN: WEBER, KOURTNEY			
08:49				MISSED FT by DIXON, ELIZABETH
08:49				REBOUND (OFF) by TEAM
08:49		12-11	H 1	GOOD! FT by DIXON, ELIZABETH
08:36	GOOD! JUMPER by EKHOMU, NICKI	12-13	V 1	
08:18				MISSED JUMPER by JONES, JAZMINE
08:15	REBOUND (DEF) by PUISIS, SAMMIE			
08:08	MISSED JUMPER by GILLESPIE, KIAH			
08:03				REBOUND (DEF) by DIOP, YACINE
07:50				MISSED JUMPER by DUNHAM, BIONCA
07:46	REBOUND (DEF) by BALDWIN, RIVER			
07:30	GOOD! JUMPER by GILLESPIE, KIAH	12-15	V 3	
07:07				MISSED JUMPER by JONES, JAZMINE
07:05	SUB OUT: BALDWIN, RIVER			
07:05	SUB OUT: EKHOMU, NICKI			
07:05	SUB IN: WOOLFOLK, NAUSIA			
07:05	SUB IN: MYERS, VALENCIA			
07:04				REBOUND (OFF) by TEAM
06:49				TURNOVER (BADPASS) by JONES, JAZMINE
06:49	STEAL by WOOLFOLK, NAUSIA			
06:35	TURNOVER (BADPASS) by WOOLFOLK, NAUSIA			
06:35				STEAL by DIXON, ELIZABETH
06:35	FOUL (PERSONAL) by MYERS, VALENCIA			
06:35				SUB OUT: DIXON, ELIZABETH
06:35				SUB IN: EVANS, DANA
06:35	SUB OUT: WOOLFOLK, NAUSIA			
06:35	SUB IN: EKHOMU, NICKI			
06:17				MISSED JUMPER by DUNHAM, BIONCA
06:17	BLOCK by MYERS, VALENCIA			
06:10	REBOUND (DEF) by GILLESPIE, KIAH			
05:56	TURNOVER (LOSTBALL) by MYERS, VALENCIA			
05:56				STEAL by JONES, JAZMINE
05:50				TURNOVER (LOSTBALL) by DIOP, YACINE
05:33	GOOD! LAYUP by EKHOMU, NICKI	12-17	V 5	
05:16				MISSED JUMPER by JONES, JAZMINE
05:12	REBOUND (DEF) by GILLESPIE, KIAH			
05:05	MISSED 3PTR by WEBER, KOURTNEY			
05:00	REBOUND (OFF) by MYERS, VALENCIA			
04:46	MISSED JUMPER by GILLESPIE, KIAH			
04:40	REBOUND (OFF) by MYERS, VALENCIA			
04:37	GOOD! JUMPER by GILLESPIE, KIAH [PNT]	12-19	V 7	
04:35				TIMEOUT 30SEC
04:35				SUB OUT: DIOP, YACINE
04:35				SUB IN: SHOOK, KYLEE
04:35	SUB OUT: WEBER, KOURTNEY			
04:35	SUB IN: JONES, MO.			
04:21				MISSED 3PTR by EVANS, DANA
04:17	REBOUND (DEF) by GILLESPIE, KIAH			
04:05	MISSED 3PTR by PUISIS, SAMMIE			
04:00				REBOUND (DEF) by ROBINSON, MYKASA
03:51				MISSED 3PTR by SHOOK, KYLEE
03:48	REBOUND (DEF) by PUISIS, SAMMIE			
03:37	GOOD! 3PTR by EKHOMU, NICKI	12-22	V 10	
03:14		14-22	V 8	GOOD! JUMPER by DUNHAM, BIONCA [PNT]



Time	VISITORS: Florida St.	Score	Margin	HOME: Louisville
03:14				ASSIST by ROBINSON, MYKASA
03:06	FOUL (OFF) by PUISIS, SAMMIE			
03:06	TURNOVER (OFFENSIVE) by PUISIS, SAMMIE			
03:06	SUB OUT: JONES, MO.			
03:06	SUB IN: WEBER, KOURTNEY			
02:55				MISSED 3PTR by JONES, JAZMINE
02:52	REBOUND (DEF) by PUISIS, SAMMIE			
02:33	MISSED JUMPER by GILLESPIE, KIAH			
02:29	REBOUND (OFF) by WEBER, KOURTNEY			
02:18	MISSED 3PTR by EKHOMU, NICKI			
02:14				REBOUND (DEF) by SHOOK, KYLEE
02:10				TURNOVER (BADPASS) by ROBINSON, MYKASA
01:49	MISSED LAYUP by WEBER, KOURTNEY			
01:49				BLOCK by SHOOK, KYLEE
01:41	REBOUND (OFF) by WEBER, KOURTNEY			
01:41	GOOD! LAYUP by WEBER, KOURTNEY	14-24	V 10	
01:34				MISSED 3PTR by EVANS, DANA
01:32				SUB OUT: ROBINSON, MYKASA
01:32				SUB IN: DUVALL, LINDSEY
01:31	REBOUND (DEF) by GILLESPIE, KIAH			
01:08	TURNOVER (LOSTBALL) by EKHOMU, NICKI			
01:08				STEAL by EVANS, DANA
01:05		16-24	V 8	GOOD! LAYUP by EVANS, DANA [FB/PNT]
01:05	FOUL (PERSONAL) by EKHOMU, NICKI			
01:05		17-24	V 7	GOOD! FT by EVANS, DANA
00:51	MISSED 3PTR by PUISIS, SAMMIE			
00:47				REBOUND (DEF) by SHOOK, KYLEE
00:28				MISSED JUMPER by EVANS, DANA
00:24	REBOUND (DEF) by GILLESPIE, KIAH			
00:02	GOOD! JUMPER by EKHOMU, NICKI [PNT]	17-26	V 9	

### Florida St. 26, Louisville 17

Points from (This Period)	FSU	LOU
In the Paint	8	4
Off Turns	4	3
2nd Chance	4	0
Fast Break	0	2
Bench	2	1

**Official Box Score**  
**Florida St. vs Louisville**  
**Second Half Statistics Only**  
**February 06, 2020 at KFC Yum! Center (Denny Crum Court) - Louisville**



**Florida St. 41**

No.	Player	S	Pts	FG	3FG	FT	OR	DR	TR	PF	A	TO	Blk	Stl	Min	+/-
01	BALDWIN, RIVER	C	1	0-1	0-0	1-2	1	0	1	1	0	1	0	0	7	-10
02	PUISIS, SAMMIE	G	0	0-2	0-2	0-0	1	0	1	0	1	0	0	0	5	-7
10	WEBER, KOURTNEY	G	0	0-0	0-0	0-0	0	1	1	0	0	0	0	0	3	-1
12	EKHOMU, NICKI	G	7	2-9	1-3	2-2	0	0	0	1	4	3	1	0	20	-1
13	WOOLFOLK, NAUSIA	G	9	1-4	1-3	6-6	0	2	2	1	1	2	0	0	18	3
15	GILLESPIE, KIAH	F	16	6-9	2-3	2-2	0	3	3	3	1	1	0	1	19	-1
24	JONES, MO.	G	2	1-1	0-0	0-0	1	2	3	3	0	0	0	1	15	9
32	MYERS, VALENCIA	F	6	2-2	0-0	2-2	1	1	2	3	0	0	0	0	12	3
	TEAM		0	0-0	0-0	0-0	2	0	2	0	0	0	0	0	0	0
<b>TOTALS</b>			<b>41</b>	<b>12-28</b>	<b>4-11</b>	<b>13-14</b>	<b>6</b>	<b>9</b>	<b>15</b>	<b>12</b>	<b>7</b>	<b>7</b>	<b>1</b>	<b>2</b>	<b>100</b>	

*Shooting By Period*

Period	FG	FG%	3FG	3FG%	FT	FT%
3rd Qtr	6-18	33%	1-6	17%	3-4	75%
4th Qtr	6-10	60%	3-5	60%	10-10	100%
2nd Half	12-28	43%	4-11	36%	13-14	93%
Game	24-63	38.1%	6-22	27.3%	13-14	92.9%

*Deadball Rebounds: 0,0*  
*Last FG Half: FSU 4th-04:02*

**Louisville 42**

No.	Player	S	Pts	FG	3FG	FT	OR	DR	TR	PF	A	TO	Blk	Stl	Min	+/-
01	EVANS, DANA	G	10	4-10	1-4	1-2	1	1	2	2	5	2	0	0	20	1
02	DIOP, YACINE	G	2	1-2	0-0	0-0	2	2	4	2	0	0	0	0	11	0
05	ROBINSON, MYKASA	G	3	1-1	0-0	1-2	2	0	2	2	0	1	0	0	5	1
12	DUVALL, LINDSEY	G	0	0-2	0-1	0-0	0	0	0	0	0	0	0	0	1	-1
21	SHOOK, KYLEE	F	9	3-5	1-2	2-2	2	4	6	0	0	1	1	1	18	2
22	DIXON, ELIZABETH	F	1	0-0	0-0	1-2	1	0	1	0	0	0	0	0	6	-4
23	JONES, JAZMINE	G	5	2-6	0-0	1-1	2	2	4	3	3	3	0	4	20	1
24	LAEMMLE, JESSICA	G	2	1-2	0-1	0-0	0	0	0	2	0	0	0	0	1	-2
33	DUNHAM, BIONCA	F	10	3-7	0-0	4-4	1	1	2	3	0	1	0	0	17	7
	TEAM		0	0-0	0-0	0-0	1	0	1	0	0	0	0	0	0	0
<b>TOTALS</b>			<b>42</b>	<b>15-35</b>	<b>2-8</b>	<b>10-13</b>	<b>12</b>	<b>10</b>	<b>22</b>	<b>14</b>	<b>8</b>	<b>8</b>	<b>1</b>	<b>5</b>	<b>100</b>	

*Shooting By Period*

Period	FG	FG%	3FG	3FG%	FT	FT%
3rd Qtr	7-12	58%	1-2	50%	8-9	89%
4th Qtr	8-23	35%	1-6	17%	2-4	50%
2nd Half	15-35	43%	2-8	25%	10-13	77%
Game	22-64	34.4%	3-16	18.8%	12-16	75.0%

*Deadball Rebounds: 3,1*  
*Last FG Half: LOU 4th-00:08*

*Game Notes:*

Officials: **Dee Kantner, Rod Creech, Jeffrey Smith**  
 Attendance: **8314**

Start Time: **08:02 PM ET**  
 End Time: **10:00 PM ET**  
 Game Duration: **1:58**  
 Conference Game;

Score	1st	2nd	3rd	4th	TOT
FSU	11	15	16	25	<b>67</b>
LOU	11	6	23	19	<b>59</b>

Points from (This Period)	FSU	LOU
In the Paint	10	18
Off Turns	9	11
2nd Chance	7	10
Fast Break	2	9
Bench	1	6

**Official Box Score**  
**Florida St. vs Louisville**  
**Third Quarter Statistics Only**  
**February 06, 2020 at KFC Yum! Center (Denny Crum Court) - Louisville**



**Florida St. 41**

No.	Player	S	Pts	FG	3FG	FT	OR	DR	TR	PF	A	TO	Blk	Stl	Min	+/-
12	EKHOMU, NICKI	G	2	1-6	0-1	0-0	0	0	0	0	2	0	0	0	10	-7
13	WOOLFOLK, NAUSIA	G	0	0-1	0-1	0-0	0	0	0	1	0	0	0	0	8	-3
15	GILLESPIE, KIAH	F	9	4-7	1-2	0-0	0	2	2	3	0	1	0	0	10	-7
24	JONES, MO.	G	2	1-1	0-0	0-0	0	0	0	1	0	0	0	1	6	-2
32	MYERS, VALENCIA	F	2	0-0	0-0	2-2	1	1	2	2	0	0	0	0	6	0
01	BALDWIN, RIVER	C	1	0-1	0-0	1-2	1	0	1	0	0	0	0	0	4	-7
02	PUISIS, SAMMIE	G	0	0-2	0-2	0-0	1	0	1	0	1	0	0	0	4	-5
10	WEBER, KOURTNEY	G	0	0-0	0-0	0-0	0	0	0	0	0	0	0	0	2	-4
<b>TEAM</b>							0	0	0	0	0	0	0	0	0	0
<b>TOTALS</b>			<b>16</b>	<b>6-18</b>	<b>1-6</b>	<b>3-4</b>	<b>3</b>	<b>3</b>	<b>6</b>	<b>7</b>	<b>3</b>	<b>1</b>	<b>0</b>	<b>1</b>	<b>50</b>	

*Shooting By Period*

Period	FG	FG%	3FG	3FG%	FT	FT%
2nd Half	0-0	0%	0-0	0%	0-0	0%
Game	24-63	38.1%	6-22	27.3%	13-14	92.9%

Deadball Rebounds: 0,0

**Louisville 42**

No.	Player	S	Pts	FG	3FG	FT	OR	DR	TR	PF	A	TO	Blk	Stl	Min	+/-
01	EVANS, DANA	G	2	1-3	0-1	0-0	0	1	1	1	5	1	0	0	10	7
02	DIOP, YACINE	G	2	1-2	0-0	0-0	1	2	3	0	0	0	0	0	6	7
21	SHOOK, KYLEE	F	5	1-1	1-1	2-2	0	4	4	0	0	1	0	0	10	7
23	JONES, JAZMINE	G	3	1-1	0-0	1-1	0	2	2	2	1	1	0	0	10	7
33	DUNHAM, BIONCA	F	10	3-5	0-0	4-4	0	1	1	2	0	1	0	0	10	7
05	ROBINSON, MYKASA	G	0	0-0	0-0	0-0	0	0	0	0	0	0	0	0	0	0
12	DUVALL, LINDSEY	G	0	0-0	0-0	0-0	0	0	0	0	0	0	0	0	0	0
22	DIXON, ELIZABETH	F	1	0-0	0-0	1-2	1	0	1	0	0	0	0	0	4	0
24	LAEMMLE, JESSICA	G	0	0-0	0-0	0-0	0	0	0	0	0	0	0	0	0	0
<b>TEAM</b>							0	0	0	0	0	0	0	0	0	
<b>TOTALS</b>			<b>23</b>	<b>7-12</b>	<b>1-2</b>	<b>8-9</b>	<b>2</b>	<b>10</b>	<b>12</b>	<b>5</b>	<b>6</b>	<b>4</b>	<b>0</b>	<b>0</b>	<b>50</b>	

*Shooting By Period*

Period	FG	FG%	3FG	3FG%	FT	FT%
2nd Half	0-0	0%	0-0	0%	0-0	0%
Game	22-64	34.4%	3-16	18.8%	12-16	75.0%

Deadball Rebounds: 3,1

Game Notes:

Officials: **Dee Kantner, Rod Creech, Jeffrey Smith**  
 Attendance: **8314**

Start Time: **08:02 PM ET**  
 End Time: **10:00 PM ET**  
 Game Duration: **1:58**  
 Conference Game;

Score	1st	2nd	3rd	4th	TOT
FSU	11	15	16	25	<b>67</b>
LOU	11	6	23	19	<b>59</b>

Points from (This Period)	FSU	LOU
In the Paint	4	8
Off Turns	4	2
2nd Chance	3	1
Fast Break	2	4
Bench	1	1

**Official Play-By-Play  
Florida St. vs Louisville  
Third Quarter**

**February 06, 2020 at KFC Yum! Center (Denny Crum Court) - Louisville**



**Period 3**

**Starters:**

**Florida St.:** 12 EKHOMU, NICKI (G); 13 WOOLFOLK, NAUSIA (G); 15 GILLESPIE, KIAH (F); 24 JONES, MO. (G); 32 MYERS, VALENCIA (F);  
**Louisville:** 1 EVANS, DANA (G); 2 DIOP, YACINE (G); 21 SHOOK, KYLEE (F); 23 JONES, JAZMINE (G); 33 DUNHAM, BIONCA (F);

Time	VISITORS: Florida St.	Score	Margin	HOME: Louisville
10:00				SUB OUT: DUVALL, LINDSEY
10:00				SUB IN: DIXON, ELIZABETH
10:00	SUB OUT: PUISIS, SAMMIE			
10:00	SUB OUT: WEBER, KOURTNEY			
10:00	SUB IN: WOOLFOLK, NAUSIA			
10:00	SUB IN: JONES, MO.			
09:42				FOUL (PERSONAL) by JONES, JAZMINE
09:42	GOOD! FT by MYERS, VALENCIA	17-27	V 10	
09:42	GOOD! FT by MYERS, VALENCIA	17-28	V 11	
09:22	FOUL (PERSONAL) by JONES, MO.			
09:22		18-28	V 10	GOOD! FT by DUNHAM, BIONCA
09:22		19-28	V 9	GOOD! FT by DUNHAM, BIONCA
09:07	MISSED JUMPER by GILLESPIE, KIAH			
09:02				REBOUND (DEF) by SHOOK, KYLEE
08:53		21-28	V 7	GOOD! LAYUP by JONES, JAZMINE [PNT]
08:53				ASSIST by EVANS, DANA
08:53	FOUL (PERSONAL) by GILLESPIE, KIAH			
08:53		22-28	V 6	GOOD! FT by JONES, JAZMINE
08:40	GOOD! JUMPER by GILLESPIE, KIAH	22-30	V 8	
08:40	ASSIST by EKHOMU, NICKI			
08:17				MISSED JUMPER by DUNHAM, BIONCA
08:13				REBOUND (OFF) by DIXON, ELIZABETH
08:12	FOUL (PERSONAL) by MYERS, VALENCIA			
08:12				MISSED FT by DIXON, ELIZABETH
08:12				REBOUND (OFF) by TEAM
08:12		23-30	V 7	GOOD! FT by DIXON, ELIZABETH
07:53	GOOD! JUMPER by EKHOMU, NICKI	23-32	V 9	
07:30	FOUL (PERSONAL) by MYERS, VALENCIA			
07:30	SUB OUT: JONES, MO.			
07:30	SUB OUT: MYERS, VALENCIA			
07:30	SUB IN: BALDWIN, RIVER			
07:30	SUB IN: PUISIS, SAMMIE			
07:26		25-32	V 7	GOOD! JUMPER by DUNHAM, BIONCA
07:26				ASSIST by JONES, JAZMINE
07:09	MISSED 3PTR by EKHOMU, NICKI			
07:05				REBOUND (DEF) by DUNHAM, BIONCA
07:02				TURNOVER (LOSTBALL) by EVANS, DANA
06:42	GOOD! JUMPER by GILLESPIE, KIAH [PNT]	25-34	V 9	
06:29				MISSED LAYUP by EVANS, DANA
06:26	REBOUND (DEF) by GILLESPIE, KIAH			
06:14	MISSED JUMPER by BALDWIN, RIVER			
06:11				REBOUND (DEF) by JONES, JAZMINE
06:05				MISSED 3PTR by EVANS, DANA
06:01	REBOUND (DEF) by GILLESPIE, KIAH			
05:50	MISSED JUMPER by EKHOMU, NICKI			
05:49				REBOUND (DEF) by SHOOK, KYLEE
05:49	FOUL (PERSONAL) by GILLESPIE, KIAH			
05:49		26-34	V 8	GOOD! FT by SHOOK, KYLEE
05:49		27-34	V 7	GOOD! FT by SHOOK, KYLEE
05:47				SUB OUT: DIXON, ELIZABETH
05:47				SUB IN: DIOP, YACINE
05:35	MISSED LAYUP by EKHOMU, NICKI			
05:34	REBOUND (OFF) by BALDWIN, RIVER			
05:34				FOUL (PERSONAL) by JONES, JAZMINE
05:34	GOOD! FT by BALDWIN, RIVER	27-35	V 8	
05:34	MISSED FT by BALDWIN, RIVER			
05:34				REBOUND (DEF) by DIOP, YACINE
05:24	FOUL (PERSONAL) by WOOLFOLK, NAUSIA			
05:23	SUB OUT: WOOLFOLK, NAUSIA			
05:23	SUB IN: WEBER, KOURTNEY			
05:23		28-35	V 7	GOOD! FT by DUNHAM, BIONCA
05:23		29-35	V 6	GOOD! FT by DUNHAM, BIONCA
04:55	MISSED JUMPER by EKHOMU, NICKI			
04:51				REBOUND (DEF) by EVANS, DANA
04:48		31-35	V 4	GOOD! LAYUP by EVANS, DANA [FB/PNT]
04:48	TIMEOUT 30SEC			
04:38	MISSED 3PTR by PUISIS, SAMMIE			
04:35				REBOUND (DEF) by DIOP, YACINE
04:19		33-35	V 2	GOOD! LAYUP by DUNHAM, BIONCA
04:19				ASSIST by EVANS, DANA

Time	VISITORS: Florida St.	Score	Margin	HOME: Louisville
04:09	MISSED 3PTR by PUISIS, SAMMIE			
04:05	REBOUND (OFF) by PUISIS, SAMMIE			
03:50				FOUL (PERSONAL) by EVANS, DANA
03:50				
03:50	SUB OUT: BALDWIN, RIVER			
03:50	SUB IN: MYERS, VALENCIA			
03:40	GOOD! JUMPER by GILLESPIE, KIAH	33-37	V 4	
03:40	ASSIST by PUISIS, SAMMIE			
03:20				TURNOVER (OTHER) by SHOOK, KYLEE
03:19	SUB OUT: PUISIS, SAMMIE			
03:19	SUB OUT: WEBER, KOURTNEY			
03:19	SUB IN: WOOLFOLK, NAUSIA			
03:19	SUB IN: JONES, MO.			
03:05	MISSED JUMPER by GILLESPIE, KIAH			
03:03	REBOUND (OFF) by MYERS, VALENCIA			
03:03				FOUL (PERSONAL) by DUNHAM, BIONCA
03:02	MISSED 3PTR by GILLESPIE, KIAH			
02:57				REBOUND (DEF) by SHOOK, KYLEE
02:52				FOUL (OFF) by DUNHAM, BIONCA
02:52				TURNOVER (OFFENSIVE) by DUNHAM, BIONCA
02:35	MISSED 3PTR by WOOLFOLK, NAUSIA			
02:32				REBOUND (DEF) by JONES, JAZMINE
02:26				TURNOVER (BADPASS) by JONES, JAZMINE
02:26	STEAL by JONES, MO.			
02:21	GOOD! LAYUP by JONES, MO. [FB]	33-39	V 6	
01:58		36-39	V 3	GOOD! 3PTR by SHOOK, KYLEE
01:58				ASSIST by EVANS, DANA
01:38	GOOD! 3PTR by GILLESPIE, KIAH	36-42	V 6	
01:38	ASSIST by EKHOMU, NICKI			
01:23				MISSED LAYUP by DUNHAM, BIONCA
01:19				REBOUND (OFF) by DIOP, YACINE
01:18				MISSED JUMPER by DIOP, YACINE
01:12	REBOUND (DEF) by MYERS, VALENCIA			
01:10	FOUL (OFF) by GILLESPIE, KIAH			
01:10	TURNOVER (OFFENSIVE) by GILLESPIE, KIAH			
00:39		38-42	V 4	GOOD! LAYUP by DUNHAM, BIONCA
00:39				ASSIST by EVANS, DANA
00:10	MISSED LAYUP by EKHOMU, NICKI			
00:06				REBOUND (DEF) by SHOOK, KYLEE
00:02		40-42	V 2	GOOD! JUMPER by DIOP, YACINE [FB]
00:02				ASSIST by EVANS, DANA

### Florida St. 42, Louisville 40

Points from (This Period)	FSU	LOU
In the Paint	4	8
Off Turns	4	2
2nd Chance	3	1
Fast Break	2	4
Bench	1	1

**Official Box Score**  
**Florida St. vs Louisville**  
**Fourth Quarter Statistics Only**  
**February 06, 2020 at KFC Yum! Center (Denny Crum Court) - Louisville**



**Florida St. 25**

No.	Player	S	Pts	FG	3FG	FT	OR	DR	TR	PF	A	TO	Blk	Stl	Min	+/-	
12	EKHOMU, NICKI	G	5	1-3	1-2	2-2	0	0	0	1	2	3	1	0	10	6	
13	WOOLFOLK, NAUSIA	G	9	1-3	1-2	6-6	0	2	2	0	1	2	0	0	10	6	
15	GILLESPIE, KIAH	F	7	2-2	1-1	2-2	0	1	1	0	1	0	0	1	9	6	
24	JONES, MO.	G	0	0-0	0-0	0-0	1	2	3	2	0	0	0	0	9	11	
32	MYERS, VALENCIA	F	4	2-2	0-0	0-0	0	0	0	1	0	0	0	0	6	3	
01	BALDWIN, RIVER	C	0	0-0	0-0	0-0	0	0	0	1	0	1	0	0	3	-3	
02	PUISIS, SAMMIE	G	0	0-0	0-0	0-0	0	0	0	0	0	0	0	0	1	-2	
10	WEBER, KOURTNEY	G	0	0-0	0-0	0-0	0	1	1	0	0	0	0	0	1	3	
<b>TEAM</b>							2	0	2	0	0						
<b>TOTALS</b>			<b>25</b>	<b>6-10</b>	<b>3-5</b>	<b>10-10</b>	<b>3</b>	<b>6</b>	<b>9</b>	<b>5</b>	<b>4</b>	<b>6</b>	<b>1</b>	<b>1</b>	<b>50</b>		

*Shooting By Period*

Period	FG	FG%	3FG	3FG%	FT	FT%
Game	24-63	38.1%	6-22	27.3%	13-14	92.9%

Deadball Rebounds: 0,0

**Louisville 19**

No.	Player	S	Pts	FG	3FG	FT	OR	DR	TR	PF	A	TO	Blk	Stl	Min	+/-	
01	EVANS, DANA	G	8	3-7	1-3	1-2	1	0	1	1	0	1	0	0	10	-6	
02	DIOP, YACINE	G	0	0-0	0-0	0-0	1	0	1	2	0	0	0	0	5	-7	
21	SHOOK, KYLEE	F	4	2-4	0-1	0-0	2	0	2	0	0	0	1	1	8	-5	
23	JONES, JAZMINE	G	2	1-5	0-0	0-0	2	0	2	1	2	2	0	4	10	-6	
33	DUNHAM, BIONCA	F	0	0-2	0-0	0-0	1	0	1	1	0	0	0	0	7	0	
05	ROBINSON, MYKASA	G	3	1-1	0-0	1-2	2	0	2	2	0	1	0	0	5	1	
12	DUVALL, LINDSEY	G	0	0-2	0-1	0-0	0	0	0	0	0	0	0	0	1	-1	
22	DIXON, ELIZABETH	F	0	0-0	0-0	0-0	0	0	0	0	0	0	0	0	2	-4	
24	LAEMMLE, JESSICA	G	2	1-2	0-1	0-0	0	0	0	2	0	0	0	0	1	-2	
<b>TEAM</b>							1	0	1	0	0						
<b>TOTALS</b>			<b>19</b>	<b>8-23</b>	<b>1-6</b>	<b>2-4</b>	<b>10</b>	<b>0</b>	<b>10</b>	<b>9</b>	<b>2</b>	<b>4</b>	<b>1</b>	<b>5</b>	<b>50</b>		

*Shooting By Period*

Period	FG	FG%	3FG	3FG%	FT	FT%
Game	22-64	34.4%	3-16	18.8%	12-16	75.0%

Deadball Rebounds: 3,1

Game Notes:

Officials: Dee Kantner, Rod Creech, Jeffrey Smith  
 Attendance: 8314

Start Time: 08:02 PM ET  
 End Time: 10:00 PM ET  
 Game Duration: 1:58  
 Conference Game;

Score	1st	2nd	3rd	4th	TOT
FSU	11	15	16	25	<b>67</b>
LOU	11	6	23	19	<b>59</b>

Points from (This Period)	FSU	LOU
In the Paint	6	10
Off Turns	5	9
2nd Chance	4	9
Fast Break	0	5
Bench	0	5

**Official Play-By-Play  
Florida St. vs Louisville  
Fourth Quarter**

**February 06, 2020 at KFC Yum! Center (Denny Crum Court) - Louisville**



**Period 4**

**Starters:**

**Florida St.:** 12 EKHOMU, NICKI (G); 13 WOOLFOLK, NAUSIA (G); 15 GILLESPIE, KIAH (F); 24 JONES, MO. (G); 32 MYERS, VALENCIA (F);  
**Louisville:** 1 EVANS, DANA (G); 2 DIOP, YACINE (G); 21 SHOOK, KYLEE (F); 23 JONES, JAZMINE (G); 33 DUNHAM, BIONCA (F);

Time	VISITORS: Florida St.	Score	Margin	HOME: Louisville
09:48				MISSED JUMPER by JONES, JAZMINE
09:43				REBOUND (OFF) by SHOOK, KYLEE
09:43		42-42	T	GOOD! LAYUP by SHOOK, KYLEE
09:36	MISSED JUMPER by WOOLFOLK, NAUSIA			
09:32	REBOUND (OFF) by JONES, MO.			
09:20	GOOD! LAYUP by MYERS, VALENCIA	42-44	V 2	
08:57				TURNOVER (LOSTBALL) by JONES, JAZMINE
08:38	GOOD! 3PTR by EKHOMU, NICKI	42-47	V 5	
08:38	ASSIST by WOOLFOLK, NAUSIA			
08:23	FOUL (PERSONAL) by JONES, MO.			
08:09				TURNOVER (OTHER) by EVANS, DANA
07:53	TURNOVER (BADPASS) by WOOLFOLK, NAUSIA			
07:53				STEAL by JONES, JAZMINE
07:49				MISSED LAYUP by EVANS, DANA
07:45	REBOUND (DEF) by WOOLFOLK, NAUSIA			
07:32	GOOD! 3PTR by WOOLFOLK, NAUSIA	42-50	V 8	
07:32	ASSIST by GILLESPIE, KIAH			
07:16				MISSED JUMPER by DUNHAM, BIONCA
07:12				REBOUND (OFF) by DIOP, YACINE
07:10				MISSED JUMPER by SHOOK, KYLEE
07:05	REBOUND (DEF) by JONES, MO.			
06:58				FOUL (PERSONAL) by DIOP, YACINE
06:58				SUB OUT: DIOP, YACINE
06:58				SUB OUT: DUNHAM, BIONCA
06:58				SUB IN: ROBINSON, MYKASA
06:58				SUB IN: DIXON, ELIZABETH
06:58	SUB OUT: MYERS, VALENCIA			
06:58	SUB IN: BALDWIN, RIVER			
06:49	GOOD! 3PTR by GILLESPIE, KIAH	42-53	V 11	
06:49	ASSIST by EKHOMU, NICKI			
06:33				MISSED LAYUP by EVANS, DANA
06:30	REBOUND (DEF) by GILLESPIE, KIAH			
06:13	MISSED JUMPER by EKHOMU, NICKI			
06:13				BLOCK by SHOOK, KYLEE
06:08	REBOUND (OFF) by TEAM			
06:05	GOOD! JUMPER by GILLESPIE, KIAH [PNT]	42-55	V 13	
06:05	ASSIST by EKHOMU, NICKI			
05:46	FOUL (PERSONAL) by EKHOMU, NICKI			
05:33				MISSED JUMPER by JONES, JAZMINE
05:28	FOUL (PERSONAL) by BALDWIN, RIVER			
05:28				MISSED FT by ROBINSON, MYKASA
05:28				REBOUND (OFF) by TEAM
05:28		43-55	V 12	GOOD! FT by ROBINSON, MYKASA
05:28				SUB OUT: DIXON, ELIZABETH
05:28				SUB IN: DUNHAM, BIONCA
05:27				REBOUND (OFF) by ROBINSON, MYKASA
05:12				FOUL (PERSONAL) by ROBINSON, MYKASA
04:54	MISSED 3PTR by EKHOMU, NICKI			
04:52				REBOUND (DEF) by TEAM
04:52				
04:52	SUB OUT: BALDWIN, RIVER			
04:52	SUB IN: MYERS, VALENCIA			
04:36				MISSED LAYUP by DUNHAM, BIONCA
04:32				REBOUND (OFF) by SHOOK, KYLEE
04:29				MISSED 3PTR by EVANS, DANA
04:25				REBOUND (OFF) by TEAM
04:22				MISSED JUMPER by JONES, JAZMINE
04:17	REBOUND (DEF) by WOOLFOLK, NAUSIA			
04:09				FOUL (PERSONAL) by ROBINSON, MYKASA
04:02	GOOD! LAYUP by MYERS, VALENCIA [PNT]	43-57	V 14	
03:47				MISSED 3PTR by SHOOK, KYLEE
03:43				REBOUND (OFF) by DUNHAM, BIONCA
03:43	FOUL (PERSONAL) by MYERS, VALENCIA			
03:43	SUB OUT: MYERS, VALENCIA			
03:43	SUB IN: BALDWIN, RIVER			
03:31		45-57	V 12	GOOD! LAYUP by EVANS, DANA [PNT]
03:04	MISSED 3PTR by WOOLFOLK, NAUSIA			
03:00	REBOUND (OFF) by TEAM			
02:59	TURNOVER (LOSTBALL) by BALDWIN, RIVER			
02:59				STEAL by SHOOK, KYLEE

Time	VISITORS: Florida St.	Score	Margin	HOME: Louisville
02:55		47-57	V 10	GOOD! LAYUP by SHOOK, KYLEE [FB]
02:38	TURNOVER (BADPASS) by EKHOMU, NICKI			
02:38				STEAL by JONES, JAZMINE
02:33		50-57	V 7	GOOD! 3PTR by EVANS, DANA [FB]
02:33				ASSIST by JONES, JAZMINE
02:32				TIMEOUT 30SEC
02:32	SUB OUT: BALDWIN, RIVER			
02:32	SUB IN: MYERS, VALENCIA			
02:13	TURNOVER (TRAVEL) by EKHOMU, NICKI			
02:01				MISSED 3PTR by EVANS, DANA
01:57				REBOUND (OFF) by ROBINSON, MYKASA
01:55				TURNOVER (BADPASS) by ROBINSON, MYKASA
01:55	STEAL by GILLESPIE, KIAH			
01:53				FOUL (PERSONAL) by JONES, JAZMINE
01:44				FOUL (PERSONAL) by DUNHAM, BIONCA
01:44				SUB OUT: ROBINSON, MYKASA
01:44				SUB OUT: SHOOK, KYLEE
01:44				SUB OUT: DUNHAM, BIONCA
01:44				SUB IN: DIOP, YACINE
01:44				SUB IN: DUVALL, LINDSEY
01:44				SUB IN: LAEMMLE, JESSICA
01:44	SUB OUT: MYERS, VALENCIA			
01:44	SUB IN: WEBER, KOURTNEY			
01:44	GOOD! FT by WOOLFOLK, NAUSIA	50-58	V 8	
01:44	GOOD! FT by WOOLFOLK, NAUSIA	50-59	V 9	
01:39	FOUL (PERSONAL) by JONES, MO.			
01:39				SUB OUT: LAEMMLE, JESSICA
01:39				SUB IN: DUNHAM, BIONCA
01:39	SUB OUT: JONES, MO.			
01:39	SUB IN: MYERS, VALENCIA			
01:39		51-59	V 8	GOOD! FT by EVANS, DANA
01:39				MISSED FT by EVANS, DANA
01:39				REBOUND (OFF) by JONES, JAZMINE
01:37		53-59	V 6	GOOD! JUMPER by JONES, JAZMINE [PNT]
01:26				FOUL (PERSONAL) by DIOP, YACINE
01:26	SUB OUT: MYERS, VALENCIA			
01:26	SUB IN: JONES, MO.			
01:26	GOOD! FT by EKHOMU, NICKI	53-60	V 7	
01:26	GOOD! FT by EKHOMU, NICKI	53-61	V 8	
01:26				SUB OUT: DUNHAM, BIONCA
01:26				SUB IN: LAEMMLE, JESSICA
01:26	SUB OUT: GILLESPIE, KIAH			
01:26	SUB IN: PUISIS, SAMMIE			
01:15				MISSED JUMPER by JONES, JAZMINE
01:11	REBOUND (DEF) by JONES, MO.			
01:09	TIMEOUT 30SEC			
01:09	SUB OUT: WEBER, KOURTNEY			
01:09	SUB OUT: JONES, MO.			
01:09	SUB IN: GILLESPIE, KIAH			
01:09	SUB IN: MYERS, VALENCIA			
01:08				FOUL (PERSONAL) by LAEMMLE, JESSICA
01:08	SUB OUT: GILLESPIE, KIAH			
01:08	SUB OUT: MYERS, VALENCIA			
01:08	SUB IN: WEBER, KOURTNEY			
01:08	SUB IN: JONES, MO.			
01:08	GOOD! FT by WOOLFOLK, NAUSIA	53-62	V 9	
01:08	GOOD! FT by WOOLFOLK, NAUSIA	53-63	V 10	
01:00				MISSED JUMPER by DUVALL, LINDSEY
01:00	BLOCK by EKHOMU, NICKI			
00:54	REBOUND (DEF) by WEBER, KOURTNEY			
00:50	TURNOVER (BADPASS) by EKHOMU, NICKI			
00:50				STEAL by JONES, JAZMINE
00:44		55-63	V 8	GOOD! JUMPER by LAEMMLE, JESSICA
00:44				ASSIST by JONES, JAZMINE
00:44				TIMEOUT 30SEC
00:44	SUB OUT: PUISIS, SAMMIE			
00:44	SUB OUT: JONES, MO.			
00:44	SUB IN: GILLESPIE, KIAH			
00:44	SUB IN: MYERS, VALENCIA			
00:42				FOUL (PERSONAL) by EVANS, DANA
00:42	SUB OUT: MYERS, VALENCIA			
00:42	SUB IN: JONES, MO.			
00:42	GOOD! FT by GILLESPIE, KIAH	55-64	V 9	
00:42	GOOD! FT by GILLESPIE, KIAH	55-65	V 10	
00:42	SUB OUT: GILLESPIE, KIAH			
00:42	SUB IN: PUISIS, SAMMIE			
00:37				TURNOVER (LOSTBALL) by JONES, JAZMINE
00:37	SUB OUT: WEBER, KOURTNEY			
00:37	SUB OUT: JONES, MO.			
00:37	SUB IN: GILLESPIE, KIAH			



Time	VISITORS: Florida St.	Score	Margin	HOME: Louisville
00:37	SUB IN: MYERS, VALENCIA			
00:32	TURNOVER (BADPASS) by WOOLFOLK, NAUSIA			
00:32				STEAL by JONES, JAZMINE
00:26				MISSED 3PTR by LAEMMLE, JESSICA
00:20				REBOUND (OFF) by EVANS, DANA
00:19				MISSED 3PTR by DUVALL, LINDSEY
00:18				REBOUND (OFF) by JONES, JAZMINE
00:15		57-65	V 8	GOOD! JUMPER by EVANS, DANA [PNT]
00:14				TIMEOUT TEAM
00:14	TIMEOUT 30SEC			
00:14	TIMEOUT TEAM			
00:14				SUB OUT: DUVALL, LINDSEY
00:14				SUB IN: ROBINSON, MYKASA
00:12				FOUL (PERSONAL) by LAEMMLE, JESSICA
00:12	SUB OUT: GILLESPIE, KIAH			
00:12	SUB OUT: MYERS, VALENCIA			
00:12	SUB IN: WEBER, KOURTNEY			
00:12	SUB IN: JONES, MO.			
00:12	GOOD! FT by WOOLFOLK, NAUSIA	57-66	V 9	
00:12	GOOD! FT by WOOLFOLK, NAUSIA	57-67	V 10	
00:08		59-67	V 8	GOOD! JUMPER by ROBINSON, MYKASA

**Florida St. 67, Louisville 59**

Points from (This Period)	FSU	LOU
In the Paint	6	10
Off Turns	5	9
2nd Chance	4	9
Fast Break	0	5
Bench	0	5

**Official Scoring/Possession Reference Chart**  
**Florida St. vs Louisville**  
**Period 1**  
**February 06, 2020 at KFC Yum! Center (Denny Crum Court) - Louisville**



**Period 1**

**Starters:**

**Florida St.:** 12 EKHOMU, NICKI (G); 13 WOOLFOLK, NAUSIA (G); 15 GILLESPIE, KIAH (F); 24 JONES, MO. (G); 32 MYERS, VALENCIA (F);  
**Louisville:** 1 EVANS, DANA (G); 2 DIOP, YACINE (G); 21 SHOOK, KYLEE (F); 23 JONES, JAZMINE (G); 33 DUNHAM, BIONCA (F);

Time	VISITORS: Florida St.	Score	Margin	HOME: Louisville
08:41	GOOD! LAYUP by MYERS, VALENCIA	0-2	V 2	
06:43	GOOD! LAYUP by GILLESPIE, KIAH	0-4	V 4	
06:31		2-4	V 2	GOOD! JUMPER by DUNHAM, BIONCA
06:14	GOOD! 3PTR by GILLESPIE, KIAH	2-7	V 5	
04:37		4-7	V 3	GOOD! LAYUP by EVANS, DANA [PNT]
04:15	GOOD! JUMPER by EKHOMU, NICKI	4-9	V 5	
04:03		7-9	V 2	GOOD! 3PTR by EVANS, DANA
02:57	GOOD! LAYUP by WOOLFOLK, NAUSIA [PNT]	7-11	V 4	
02:08		9-11	V 2	GOOD! LAYUP by ROBINSON, MYKASA [FB/PNT]
01:12		11-11	T	GOOD! JUMPER by DIXON, ELIZABETH

**Florida St. 11, Louisville 11**

**Official Scoring/Possession Reference Chart**  
**Florida St. vs Louisville**  
**Period 2**  
**February 06, 2020 at KFC Yum! Center (Denny Crum Court) - Louisville**



**Period 2**

**Starters:**

**Florida St.:** 12 EKHOMU, NICKI (G); 13 WOOLFOLK, NAUSIA (G); 15 GILLESPIE, KIAH (F); 24 JONES, MO. (G); 32 MYERS, VALENCIA (F);  
**Louisville:** 1 EVANS, DANA (G); 2 DIOP, YACINE (G); 21 SHOOK, KYLEE (F); 23 JONES, JAZMINE (G); 33 DUNHAM, BIONCA (F);

Time	VISITORS: Florida St.	Score	Margin	HOME: Louisville
08:49		12-11	H 1	GOOD! FT by DIXON, ELIZABETH
08:36	GOOD! JUMPER by EKHOMU, NICKI	12-13	V 1	
07:30	GOOD! JUMPER by GILLESPIE, KIAH	12-15	V 3	
05:33	GOOD! LAYUP by EKHOMU, NICKI	12-17	V 5	
04:37	GOOD! JUMPER by GILLESPIE, KIAH [PNT]	12-19	V 7	
03:37	GOOD! 3PTR by EKHOMU, NICKI	12-22	V 10	
03:14		14-22	V 8	GOOD! JUMPER by DUNHAM, BIONCA [PNT]
01:41	GOOD! LAYUP by WEBER, KOURTNEY	14-24	V 10	
01:05		16-24	V 8	GOOD! LAYUP by EVANS, DANA [FB/PNT]
01:05		17-24	V 7	GOOD! FT by EVANS, DANA
00:02	GOOD! JUMPER by EKHOMU, NICKI [PNT]	17-26	V 9	

**Florida St. 26, Louisville 17**

**Official Scoring/Possession Reference Chart**  
**Florida St. vs Louisville**  
**Period 3**  
**February 06, 2020 at KFC Yum! Center (Denny Crum Court) - Louisville**



**Period 3**

**Starters:**

**Florida St.:** 12 EKHOMU, NICKI (G); 13 WOOLFOLK, NAUSIA (G); 15 GILLESPIE, KIAH (F); 24 JONES, MO. (G); 32 MYERS, VALENCIA (F);  
**Louisville:** 1 EVANS, DANA (G); 2 DIOP, YACINE (G); 21 SHOOK, KYLEE (F); 23 JONES, JAZMINE (G); 33 DUNHAM, BIONCA (F);

Time	VISITORS: Florida St.	Score	Margin	HOME: Louisville
09:42	GOOD! FT by MYERS, VALENCIA	17-27	V 10	
09:42	GOOD! FT by MYERS, VALENCIA	17-28	V 11	
09:22		18-28	V 10	GOOD! FT by DUNHAM, BIONCA
09:22		19-28	V 9	GOOD! FT by DUNHAM, BIONCA
08:53		21-28	V 7	GOOD! LAYUP by JONES, JAZMINE [PNT]
08:53		22-28	V 6	GOOD! FT by JONES, JAZMINE
08:40	GOOD! JUMPER by GILLESPIE, KIAH	22-30	V 8	
08:12		23-30	V 7	GOOD! FT by DIXON, ELIZABETH
07:53	GOOD! JUMPER by EKHOMU, NICKI	23-32	V 9	
07:26		25-32	V 7	GOOD! JUMPER by DUNHAM, BIONCA
06:42	GOOD! JUMPER by GILLESPIE, KIAH [PNT]	25-34	V 9	
05:49		26-34	V 8	GOOD! FT by SHOOK, KYLEE
05:49		27-34	V 7	GOOD! FT by SHOOK, KYLEE
05:34	GOOD! FT by BALDWIN, RIVER	27-35	V 8	
05:23		28-35	V 7	GOOD! FT by DUNHAM, BIONCA
05:23		29-35	V 6	GOOD! FT by DUNHAM, BIONCA
04:48		31-35	V 4	GOOD! LAYUP by EVANS, DANA [FB/PNT]
04:19		33-35	V 2	GOOD! LAYUP by DUNHAM, BIONCA
03:40	GOOD! JUMPER by GILLESPIE, KIAH	33-37	V 4	
02:21	GOOD! LAYUP by JONES, MO. [FB]	33-39	V 6	
01:58		36-39	V 3	GOOD! 3PTR by SHOOK, KYLEE
01:38	GOOD! 3PTR by GILLESPIE, KIAH	36-42	V 6	
00:39		38-42	V 4	GOOD! LAYUP by DUNHAM, BIONCA
00:02		40-42	V 2	GOOD! JUMPER by DIOP, YACINE [FB]

**Florida St. 42, Louisville 40**

**Official Scoring/Possession Reference Chart  
Florida St. vs Louisville**



**Period 4  
February 06, 2020 at KFC Yum! Center (Denny Crum Court) - Louisville**

**Period 4**

**Starters:**

**Florida St.:** 12 EKHOMU,NICKI (G); 13 WOOLFOLK,NAUSIA (G); 15 GILLESPIE,KIAH (F); 24 JONES,MO. (G); 32 MYERS,VALENCIA (F);  
**Louisville:** 1 EVANS,DANA (G); 2 DIOP,YACINE (G); 21 SHOOK,KYLEE (F); 23 JONES,JAZMINE (G); 33 DUNHAM,BIONCA (F);

Time	VISITORS: Florida St.	Score	Margin	HOME: Louisville
09:43		42-42	T	GOOD! LAYUP by SHOOK, KYLEE
09:20	GOOD! LAYUP by MYERS, VALENCIA	42-44	V 2	
08:38	GOOD! 3PTR by EKHOMU, NICKI	42-47	V 5	
07:32	GOOD! 3PTR by WOOLFOLK, NAUSIA	42-50	V 8	
06:49	GOOD! 3PTR by GILLESPIE, KIAH	42-53	V 11	
06:05	GOOD! JUMPER by GILLESPIE, KIAH [PNT]	42-55	V 13	
05:28		43-55	V 12	GOOD! FT by ROBINSON, MYKASA
04:02	GOOD! LAYUP by MYERS, VALENCIA [PNT]	43-57	V 14	
03:31		45-57	V 12	GOOD! LAYUP by EVANS, DANA [PNT]
02:55		47-57	V 10	GOOD! LAYUP by SHOOK, KYLEE [FB]
02:33		50-57	V 7	GOOD! 3PTR by EVANS, DANA [FB]
01:44	GOOD! FT by WOOLFOLK, NAUSIA	50-58	V 8	
01:44	GOOD! FT by WOOLFOLK, NAUSIA	50-59	V 9	
01:39		51-59	V 8	GOOD! FT by EVANS, DANA
01:37		53-59	V 6	GOOD! JUMPER by JONES, JAZMINE [PNT]
01:26	GOOD! FT by EKHOMU, NICKI	53-60	V 7	
01:26	GOOD! FT by EKHOMU, NICKI	53-61	V 8	
01:08	GOOD! FT by WOOLFOLK, NAUSIA	53-62	V 9	
01:08	GOOD! FT by WOOLFOLK, NAUSIA	53-63	V 10	
00:44		55-63	V 8	GOOD! JUMPER by LAEMMLE, JESSICA
00:42	GOOD! FT by GILLESPIE, KIAH	55-64	V 9	
00:42	GOOD! FT by GILLESPIE, KIAH	55-65	V 10	
00:15		57-65	V 8	GOOD! JUMPER by EVANS, DANA [PNT]
00:12	GOOD! FT by WOOLFOLK, NAUSIA	57-66	V 9	
00:12	GOOD! FT by WOOLFOLK, NAUSIA	57-67	V 10	
00:08		59-67	V 8	GOOD! JUMPER by ROBINSON, MYKASA

**Florida St. 67, Louisville 59**

**Official Substitutions Log  
Florida St. vs Louisville  
Period 1**

**February 06, 2020 at KFC Yum! Center (Denny Crum Court) - Louisville**



<b>VISITORS: Florida St.</b>	<b>Time</b>	<b>Score</b>	<b>HOME: Louisville</b>
12 EKHOMU,NICKI			1 EVANS,DANA
13 WOOLFOLK,NAUSIA			2 DIOP,YACINE
15 GILLESPIE,KIAH			21 SHOOK,KYLEE
24 JONES,MO.			23 JONES,JAZMINE
32 MYERS,VALENCIA			33 DUNHAM,BIONCA
	05:59	7-2	SUB OUT: DIOP,YACINE
	05:59		SUB IN: ROBINSON,MYKASA
SUB OUT: 32 MYERS,VALENCIA	05:59		
SUB IN: 1 BALDWIN,RIVER	05:59		
SUB OUT: 13 WOOLFOLK,NAUSIA	05:09	7-2	
SUB IN: 10 WEBER,KOURTNEY	05:09		
SUB OUT: 15 GILLESPIE,KIAH	03:24	9-7	
SUB OUT: 24 JONES,MO.	03:24		
SUB OUT: 10 WEBER,KOURTNEY	03:24		
SUB IN: 2 PUISIS,SAMMIE	03:24		
SUB IN: 13 WOOLFOLK,NAUSIA	03:24		
SUB IN: 32 MYERS,VALENCIA	03:24		
	01:54	11-9	SUB OUT: DUNHAM,BIONCA
	01:54		SUB IN: DIXON,ELIZABETH
SUB OUT: 1 BALDWIN,RIVER	01:54		
SUB IN: 15 GILLESPIE,KIAH	01:54		
	00:31	11-11	SUB OUT: JONES,JAZMINE
	00:31		SUB IN: DIOP,YACINE
SUB OUT: 12 EKHOMU,NICKI	00:31		
SUB IN: 24 JONES,MO.	00:31		

**Florida St. 11, Louisville 11**

**Official Substitutions Log**  
**Florida St. vs Louisville**  
**Period 2**  
**February 06, 2020 at KFC Yum! Center (Denny Crum Court) - Louisville**



VISITORS: Florida St.	Time	Score	HOME: Louisville
12 EKHOMU,NICKI			1 EVANS,DANA
13 WOOLFOLK,NAUSIA			2 DIOP,YACINE
15 GILLESPIE,KIAH			21 SHOOK,KYLEE
24 JONES,MO.			23 JONES,JAZMINE
32 MYERS,VALENCIA			33 DUNHAM,BIONCA
SUB OUT: 2 PUISIS,SAMMIE	10:00	-	
SUB OUT: 32 MYERS,VALENCIA	10:00		
SUB IN: 1 BALDWIN,RIVER	10:00		
SUB IN: 12 EKHOMU,NICKI	10:00		
	08:49	-	SUB OUT: EVANS,DANA
	08:49		SUB OUT: SHOOK,KYLEE
	08:49		SUB IN: JONES,JAZMINE
	08:49		SUB IN: DUNHAM,BIONCA
SUB OUT: 13 WOOLFOLK,NAUSIA	08:49		
SUB OUT: 24 JONES,MO.	08:49		
SUB IN: 2 PUISIS,SAMMIE	08:49		
SUB IN: 10 WEBER,KOURTNEY	08:49		
SUB OUT: 1 BALDWIN,RIVER	07:05	15-12	
SUB OUT: 12 EKHOMU,NICKI	07:05		
SUB IN: 13 WOOLFOLK,NAUSIA	07:05		
SUB IN: 32 MYERS,VALENCIA	07:05		
	06:35	15-12	SUB OUT: DIXON,ELIZABETH
	06:35		SUB IN: EVANS,DANA
SUB OUT: 13 WOOLFOLK,NAUSIA	06:35		
SUB IN: 12 EKHOMU,NICKI	06:35		
	04:35	19-12	SUB OUT: DIOP,YACINE
	04:35		SUB IN: SHOOK,KYLEE
SUB OUT: 10 WEBER,KOURTNEY	04:35		
SUB IN: 24 JONES,MO.	04:35		
SUB OUT: 24 JONES,MO.	03:06	22-14	
SUB IN: 10 WEBER,KOURTNEY	03:06		
	01:32	24-14	SUB OUT: ROBINSON,MYKASA
	01:32		SUB IN: DUVALL,LINDSEY

**Florida St. 26, Louisville 17**

**Official Substitutions Log  
Florida St. vs Louisville  
Period 3**

**February 06, 2020 at KFC Yum! Center (Denny Crum Court) - Louisville**



<b>VISITORS: Florida St.</b>	<b>Time</b>	<b>Score</b>	<b>HOME: Louisville</b>
12 EKHOMU, NICKI			1 EVANS, DANA
13 WOOLFOLK, NAUSIA			2 DIOP, YACINE
15 GILLESPIE, KIAH			21 SHOOK, KYLEE
24 JONES, MO.			23 JONES, JAZMINE
32 MYERS, VALENCIA			33 DUNHAM, BIONCA
	10:00	-	SUB OUT: DUVALL, LINDSEY
	10:00		SUB IN: DIXON, ELIZABETH
SUB OUT: 2 PUISIS, SAMMIE	10:00		
SUB OUT: 10 WEBER, KOURTNEY	10:00		
SUB IN: 13 WOOLFOLK, NAUSIA	10:00		
SUB IN: 24 JONES, MO.	10:00		
SUB OUT: 24 JONES, MO.	07:30	32-23	
SUB OUT: 32 MYERS, VALENCIA	07:30		
SUB IN: 1 BALDWIN, RIVER	07:30		
SUB IN: 2 PUISIS, SAMMIE	07:30		
	05:47	34-27	SUB OUT: DIXON, ELIZABETH
	05:47		SUB IN: DIOP, YACINE
SUB OUT: 13 WOOLFOLK, NAUSIA	05:23	35-27	
SUB IN: 10 WEBER, KOURTNEY	05:23		
SUB OUT: 1 BALDWIN, RIVER	03:50	35-33	
SUB IN: 32 MYERS, VALENCIA	03:50		
SUB OUT: 2 PUISIS, SAMMIE	03:19	37-33	
SUB OUT: 10 WEBER, KOURTNEY	03:19		
SUB IN: 13 WOOLFOLK, NAUSIA	03:19		
SUB IN: 24 JONES, MO.	03:19		

**Florida St. 42, Louisville 40**



**Official Substitutions Log**  
**Florida St. vs Louisville**  
**Period 4**  
**February 06, 2020 at KFC Yum! Center (Denny Crum Court) - Louisville**



VISITORS: Florida St.	Time	Score	HOME: Louisville
12 EKHOMEJ,NICKI			1 EVANS,DANA
13 WOOLFOLK,NAUSIA			2 DIOP,YACINE
15 GILLESPIE,KIAH			21 SHOOK,KYLEE
24 JONES,MO.			23 JONES,JAZMINE
32 MYERS,VALENCIA			33 DUNHAM,BIONCA
	06:58	50-42	SUB OUT: DIOP,YACINE
	06:58		SUB OUT: DUNHAM,BIONCA
	06:58		SUB IN: ROBINSON,MYKASA
	06:58		SUB IN: DIXON,ELIZABETH
SUB OUT: 32 MYERS,VALENCIA	06:58		
SUB IN: 1 BALDWIN,RIVER	06:58		
	05:28	55-43	SUB OUT: DIXON,ELIZABETH
	05:28		SUB IN: DUNHAM,BIONCA
SUB OUT: 1 BALDWIN,RIVER	04:52	55-43	
SUB IN: 32 MYERS,VALENCIA	04:52		
SUB OUT: 32 MYERS,VALENCIA	03:43	57-43	
SUB IN: 1 BALDWIN,RIVER	03:43		
SUB OUT: 1 BALDWIN,RIVER	02:32	57-50	
SUB IN: 32 MYERS,VALENCIA	02:32		
	01:44	57-50	SUB OUT: ROBINSON,MYKASA
	01:44		SUB OUT: SHOOK,KYLEE
	01:44		SUB OUT: DUNHAM,BIONCA
	01:44		SUB IN: DIOP,YACINE
	01:44		SUB IN: DUVALL,LINDSEY
	01:44		SUB IN: LAEMMLE,JESSICA
SUB OUT: 32 MYERS,VALENCIA	01:44		
SUB IN: 10 WEBER,KOURTNEY	01:44		
	01:39	59-50	SUB OUT: LAEMMLE,JESSICA
	01:39		SUB IN: DUNHAM,BIONCA
SUB OUT: 24 JONES,MO.	01:39		
SUB IN: 32 MYERS,VALENCIA	01:39		
SUB OUT: 32 MYERS,VALENCIA	01:26	59-53	
SUB IN: 24 JONES,MO.	01:26		
	01:26		SUB OUT: DUNHAM,BIONCA
	01:26		SUB IN: LAEMMLE,JESSICA
SUB OUT: 15 GILLESPIE,KIAH	01:26		
SUB IN: 2 PUISIS,SAMMIE	01:26		
SUB OUT: 10 WEBER,KOURTNEY	01:09	61-53	
SUB OUT: 24 JONES,MO.	01:09		
SUB IN: 15 GILLESPIE,KIAH	01:09		
SUB IN: 32 MYERS,VALENCIA	01:09		
SUB OUT: 15 GILLESPIE,KIAH	01:08	61-53	
SUB OUT: 32 MYERS,VALENCIA	01:08		
SUB IN: 10 WEBER,KOURTNEY	01:08		
SUB IN: 24 JONES,MO.	01:08		
SUB OUT: 2 PUISIS,SAMMIE	00:44	63-55	
SUB OUT: 24 JONES,MO.	00:44		
SUB IN: 15 GILLESPIE,KIAH	00:44		
SUB IN: 32 MYERS,VALENCIA	00:44		
SUB OUT: 32 MYERS,VALENCIA	00:42	63-55	
SUB IN: 24 JONES,MO.	00:42		
SUB OUT: 15 GILLESPIE,KIAH	00:42		
SUB IN: 2 PUISIS,SAMMIE	00:42		
SUB OUT: 10 WEBER,KOURTNEY	00:37	65-55	
SUB OUT: 24 JONES,MO.	00:37		
SUB IN: 15 GILLESPIE,KIAH	00:37		
SUB IN: 32 MYERS,VALENCIA	00:37		
	00:14	65-57	SUB OUT: DUVALL,LINDSEY
	00:14		SUB IN: ROBINSON,MYKASA
SUB OUT: 15 GILLESPIE,KIAH	00:12	65-57	
SUB OUT: 32 MYERS,VALENCIA	00:12		
SUB IN: 10 WEBER,KOURTNEY	00:12		
SUB IN: 24 JONES,MO.	00:12		

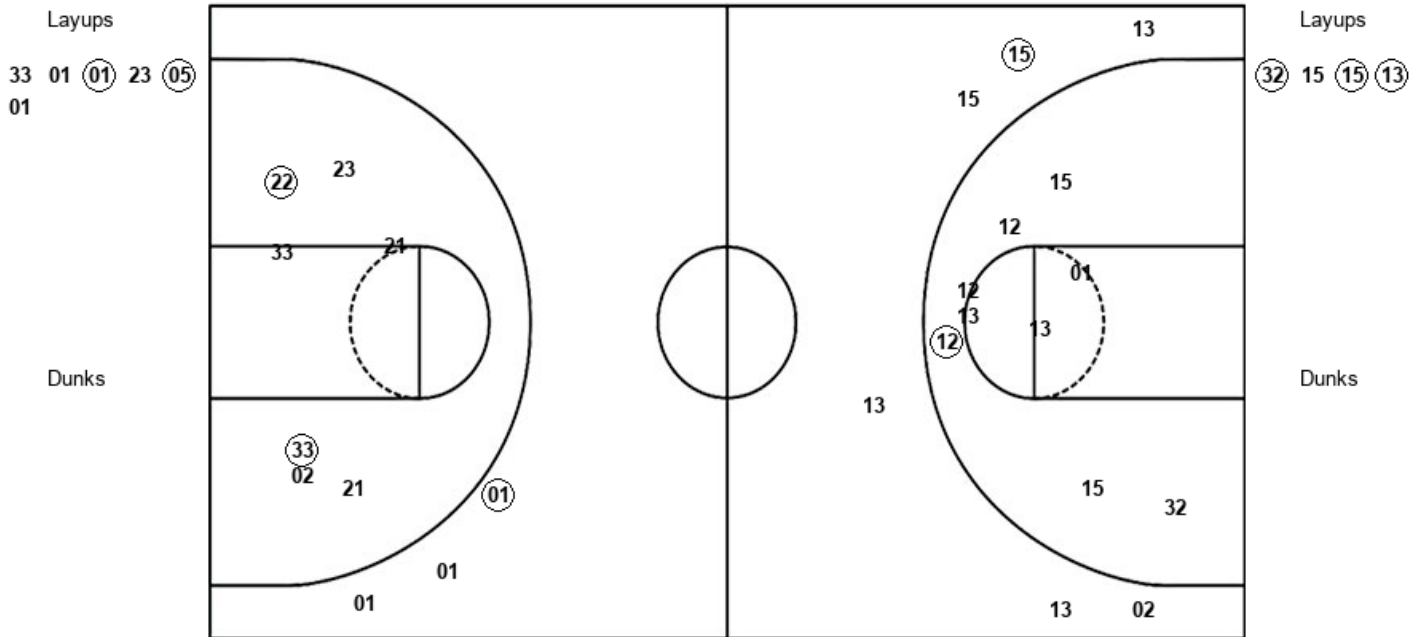
**Florida St. 67, Louisville 59**

**Official Shot Chart**  
**Florida St. vs Louisville**  
**PERIOD 1 Shots**  
 February 06, 2020 at KFC Yum! Center (Denny Crum Court) - Louisville



**Louisville**

**Florida St.**



LOU : Period 1	Made	Att	Pct
Layups	2	6	33.3
Dunks	0	0	0
2PT Field Goals	4	13	30.8
3PT Field Goals	1	3	33.3
<b>Total Field Goals</b>	<b>5</b>	<b>16</b>	<b>31.3</b>

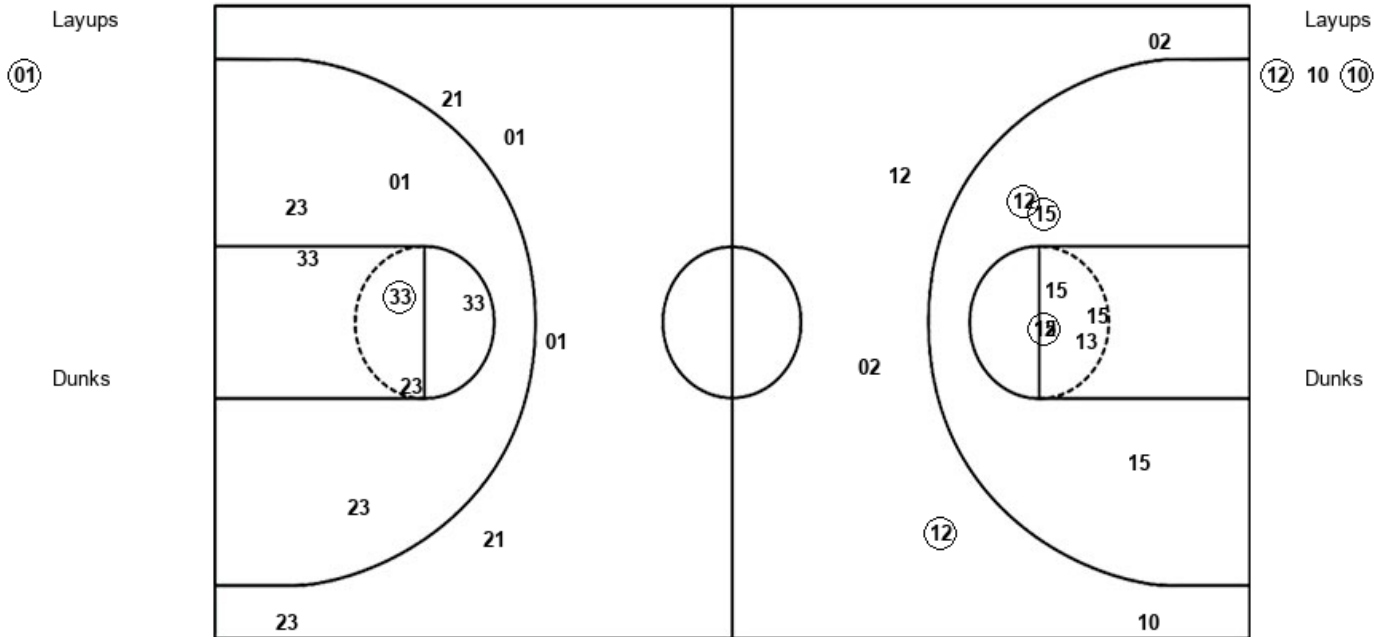
FSU : Period 1	Made	Att	Pct
Layups	3	4	75.0
Dunks	0	0	0
2PT Field Goals	4	13	30.8
3PT Field Goals	1	6	16.7
<b>Total Field Goals</b>	<b>5</b>	<b>19</b>	<b>26.3</b>

**Official Shot Chart**  
**Florida St. vs Louisville**  
**PERIOD 2 Shots**  
 February 06, 2020 at KFC Yum! Center (Denny Crum Court) - Louisville



**Louisville**

**Florida St.**



LOU : Period 2	Made	Att	Pct
Layups	1	1	100.0
Dunks	0	0	0
2PT Field Goals	2	8	25.0
3PT Field Goals	0	5	00.0
<b>Total Field Goals</b>	<b>2</b>	<b>13</b>	<b>15.4</b>

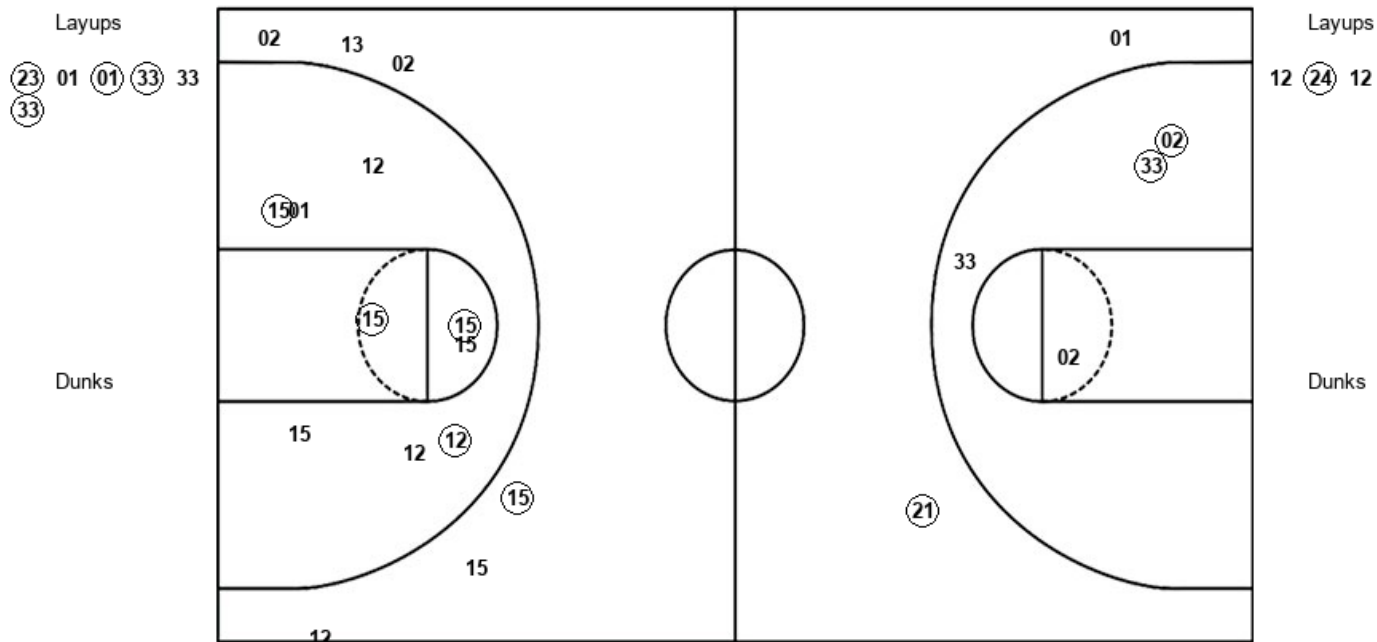
FSU : Period 2	Made	Att	Pct
Layups	2	3	66.7
Dunks	0	0	0
2PT Field Goals	6	11	54.5
3PT Field Goals	1	5	20.0
<b>Total Field Goals</b>	<b>7</b>	<b>16</b>	<b>43.8</b>

**Official Shot Chart**  
**Florida St. vs Louisville**  
**PERIOD 3 Shots**  
 February 06, 2020 at KFC Yum! Center (Denny Crum Court) - Louisville



**Louisville**

**Florida St.**



<b>LOU : Period 3</b>	<b>Made</b>	<b>Att</b>	<b>Pct</b>
Layups	4	6	66.7
Dunks	0	0	0
2PT Field Goals	6	10	60.0
3PT Field Goals	1	2	50.0
<b>Total Field Goals</b>	<b>7</b>	<b>12</b>	<b>58.3</b>

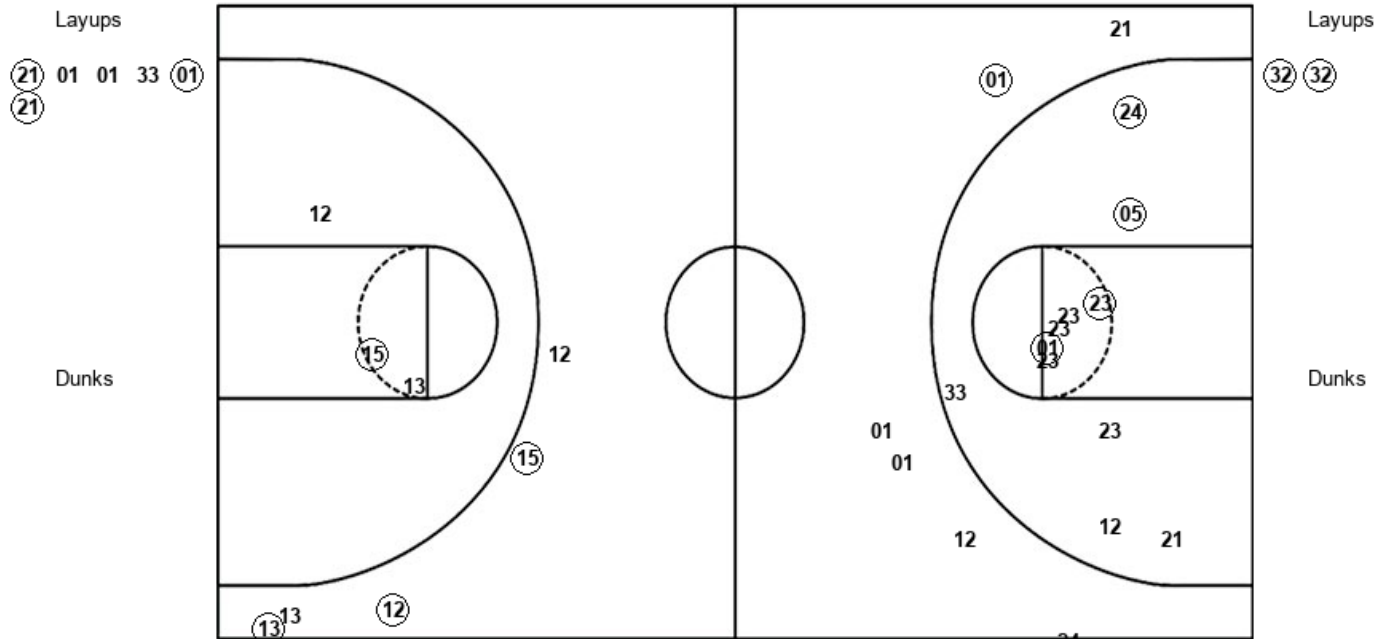
<b>FSU : Period 3</b>	<b>Made</b>	<b>Att</b>	<b>Pct</b>
Layups	1	3	33.3
Dunks	0	0	0
2PT Field Goals	5	12	41.7
3PT Field Goals	1	6	16.7
<b>Total Field Goals</b>	<b>6</b>	<b>18</b>	<b>33.3</b>

**Official Shot Chart**  
**Florida St. vs Louisville**  
**PERIOD 4 Shots**  
 February 06, 2020 at KFC Yum! Center (Denny Crum Court) - Louisville



**Louisville**

**Florida St.**



<b>LOU : Period 4</b>	<b>Made</b>	<b>Att</b>	<b>Pct</b>
Layups	3	6	50.0
Dunks	0	0	0
2PT Field Goals	7	17	41.2
3PT Field Goals	1	6	16.7
<b>Total Field Goals</b>	<b>8</b>	<b>23</b>	<b>34.8</b>

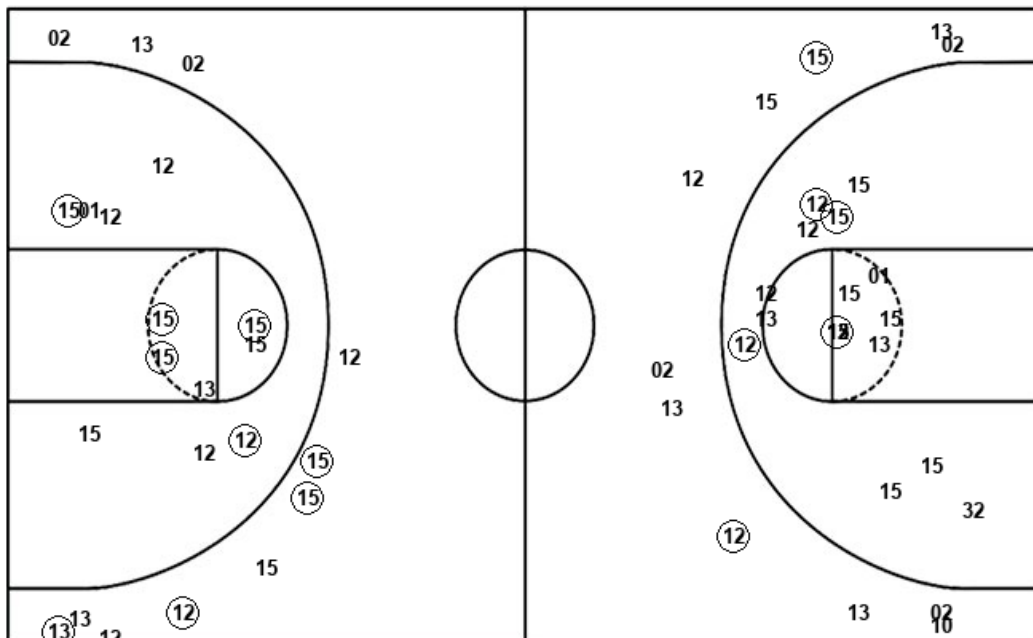
<b>FSU : Period 4</b>	<b>Made</b>	<b>Att</b>	<b>Pct</b>
Layups	2	2	100.0
Dunks	0	0	0
2PT Field Goals	3	5	60.0
3PT Field Goals	3	5	60.0
<b>Total Field Goals</b>	<b>6</b>	<b>10</b>	<b>60.0</b>

**Official Shot Chart**  
**Florida St. vs Louisville**  
 Florida St. Team Shots  
 February 06, 2020 at KFC Yum! Center (Denny Crum Court) - Louisville



Layups

Dunks



Layups

Dunks

- (32)
- 15
- (15)
- (13)
- (12)
- 10
- (10)
- 12
- (24)
- 12
- (32)
- (32)

FSU : Period 1	Made	Att	Pct
Layups	3	4	75.0
Dunks	0	0	0
2PT Field Goals	4	13	30.8
3PT Field Goals	1	6	16.7
<b>Total Field Goals</b>	<b>5</b>	<b>19</b>	<b>26.3</b>

FSU : Period 2	Made	Att	Pct
Layups	2	3	66.7
Dunks	0	0	0
2PT Field Goals	6	11	54.5
3PT Field Goals	1	5	20.0
<b>Total Field Goals</b>	<b>7</b>	<b>16</b>	<b>43.8</b>

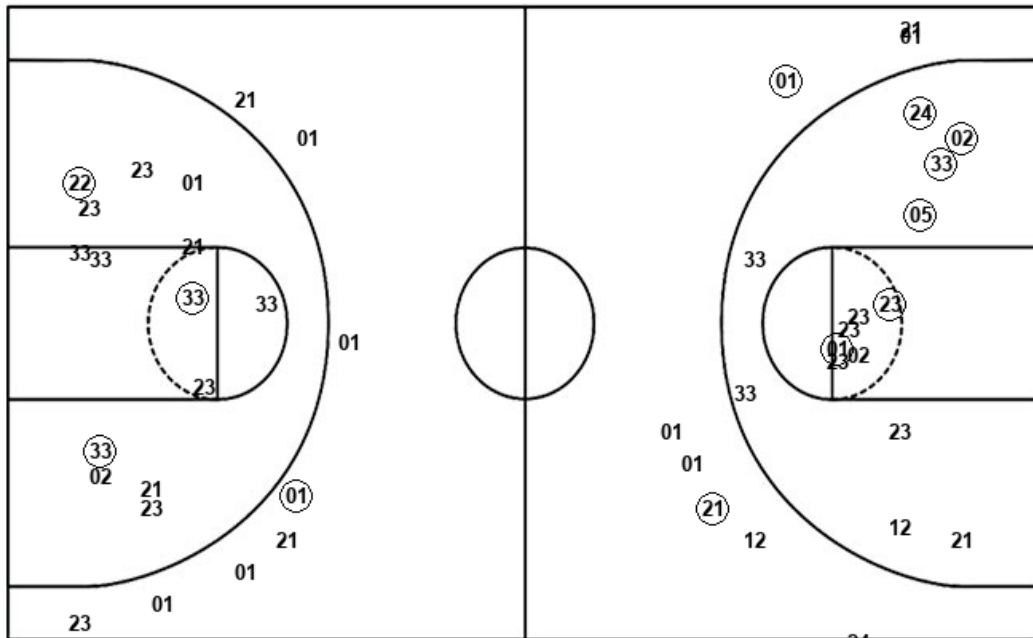
FSU : Period 3	Made	Att	Pct
Layups	1	3	33.3
Dunks	0	0	0
2PT Field Goals	5	12	41.7
3PT Field Goals	1	6	16.7
<b>Total Field Goals</b>	<b>6</b>	<b>18</b>	<b>33.3</b>

FSU : Period 4	Made	Att	Pct
Layups	2	2	100.0
Dunks	0	0	0
2PT Field Goals	3	5	60.0
3PT Field Goals	3	5	60.0
<b>Total Field Goals</b>	<b>6</b>	<b>10</b>	<b>60.0</b>

**Official Shot Chart**  
**Florida St. vs Louisville**  
 Louisville Team Shots  
 February 06, 2020 at KFC Yum! Center (Denny Crum Court) - Louisville



Layups



Layups

33 01 (01) 23 (05)  
 01 (01) (23) 01 (01)  
 (33) 33 (33) (21) 01  
 01 33 (01) (21)

Dunks

Dunks

LOU : Period 1	Made	Att	Pct
Layups	2	6	33.3
Dunks	0	0	0
2PT Field Goals	4	13	30.8
3PT Field Goals	1	3	33.3
<b>Total Field Goals</b>	<b>5</b>	<b>16</b>	<b>31.3</b>

LOU : Period 3	Made	Att	Pct
Layups	4	6	66.7
Dunks	0	0	0
2PT Field Goals	6	10	60.0
3PT Field Goals	1	2	50.0
<b>Total Field Goals</b>	<b>7</b>	<b>12</b>	<b>58.3</b>

LOU : Period 2	Made	Att	Pct
Layups	1	1	100.0
Dunks	0	0	0
2PT Field Goals	2	8	25.0
3PT Field Goals	0	5	00.0
<b>Total Field Goals</b>	<b>2</b>	<b>13</b>	<b>15.4</b>

LOU : Period 4	Made	Att	Pct
Layups	3	6	50.0
Dunks	0	0	0
2PT Field Goals	7	17	41.2
3PT Field Goals	1	6	16.7
<b>Total Field Goals</b>	<b>8</b>	<b>23</b>	<b>34.8</b>