

FINAL SCORE



Pittsburgh

49



Louisville

83

January 26, 2020 • KFC Yum! Center (Denny Crum) - Louisville

FINAL STATISTICS

Official Box Score
Pittsburgh vs Louisville
Game Totals -- Final Statistics
January 26, 2020 at KFC Yum! Center (Denny Crum) - Louisville



Pittsburgh 49

No.	Player	S	Pts	FG	3FG	FT	OR	DR	TR	PF	A	TO	Blk	Stl	Min	+/-
01	HARRIS, DAYSHANETTE	G	18	7-20	1-6	3-4	1	5	6	4	5	5	0	2	31	-20
02	BUGG, AYSIA	G	8	3-12	2-10	0-0	0	1	1	1	1	5	0	0	23	-15
05	BROWN, AMBER	G	6	2-7	0-0	2-2	5	4	9	2	1	1	0	0	32	-16
11	JUDKINS, CARA	C	6	3-6	0-0	0-0	4	3	7	1	0	2	0	0	26	-40
12	GREEN, GABBIE	G	6	2-10	2-7	0-0	2	1	3	2	1	4	0	0	30	-29
00	KNIGHT, JAHSYNI	G	0	0-0	0-0	0-0	0	0	0	1	0	1	0	1	12	-14
04	HAYFORD, EMY	G	5	2-7	1-4	0-0	0	3	3	3	0	3	0	0	21	-28
10	PRAPA, ISMINI	G	0	0-0	0-0	0-0	0	1	1	2	0	0	0	0	3	4
21	LAMARK, MARCELLA	C	0	0-1	0-1	0-2	0	1	1	1	0	0	0	0	5	-14
23	IGBOKWE, RITA	F	0	0-1	0-0	0-0	5	3	8	3	1	1	1	1	17	2
TEAM							1	0	1	0						
TOTALS			49	19-64	6-28	5-8	18	22	40	20	9	22	1	4	199	

Shooting By Period

Period	FG	FG%	3FG	3FG%	FT	FT%
1st Qtr	5-11	45%	3-8	38%	0-2	00%
2nd Qtr	5-23	22%	1-8	13%	0-0	0%
3rd Qtr	5-13	38%	1-5	20%	0-0	0%
4th Qtr	4-17	24%	1-7	14%	5-6	83%
1st Half	10-34	29%	4-16	25%	0-2	00%
2nd Half	9-30	30%	2-12	17%	5-6	83%
Game	19-64	29.7%	6-28	21.4%	5-8	62.5%

Deadball Rebounds: 1,0
Last FG: 4th-00:47
Biggest Run: 6-0
Largest lead: By 3 at 1st-07:57
Technical Fouls: None.

Louisville 83

No.	Player	S	Pts	FG	3FG	FT	OR	DR	TR	PF	A	TO	Blk	Stl	Min	+/-
01	EVANS, DANA	G	12	4-9	2-7	2-3	0	3	3	0	4	0	0	1	28	26
04	BALOGUN, ELIZABETH	G	12	5-9	2-5	0-0	1	7	8	1	3	2	1	2	28	27
21	SHOOK, KYLEE	F	12	4-7	2-3	2-2	2	3	5	2	0	0	1	1	23	29
23	JONES, JAZMINE	G	11	4-8	0-1	3-4	1	0	1	0	3	1	1	5	23	26
33	DUNHAM, BIONCA	F	12	5-7	0-0	2-2	3	3	6	0	5	0	0	1	22	27
02	DIOP, YACINE	G	8	3-8	1-2	1-2	0	2	2	2	1	3	0	2	22	21
05	ROBINSON, MYKASA	G	4	2-3	0-0	0-2	0	8	8	2	5	2	1	3	22	17
12	DUVALL, LINDSEY	G	0	0-3	0-3	0-0	2	0	2	0	0	0	0	0	7	-6
22	DIXON, ELIZABETH	F	10	3-7	0-0	4-4	4	0	4	4	1	2	0	0	17	9
24	LAEMMLE, JESSICA	G	2	1-4	0-3	0-0	0	1	1	2	1	0	0	0	7	-6
TEAM							0	2	2	0						
TOTALS			83	31-65	7-24	14-19	13	29	42	13	23	10	4	15	199	

Shooting By Period

Period	FG	FG%	3FG	3FG%	FT	FT%
1st Qtr	6-17	35%	3-9	33%	6-8	75%
2nd Qtr	9-14	64%	1-3	33%	1-1	100%
3rd Qtr	9-17	53%	1-4	25%	6-8	75%
4th Qtr	7-17	41%	2-8	25%	1-2	50%
1st Half	15-31	48%	4-12	33%	7-9	78%
2nd Half	16-34	47%	3-12	25%	7-10	70%
Game	31-65	47.7%	7-24	29.2%	14-19	73.7%

Deadball Rebounds: 4,0
Last FG: 4th-00:26
Biggest Run: 14-0
Largest lead: By 42 at 4th-05:56
Technical Fouls: None.

Game Notes:

Officials: Angelica Suffren, Jeffrey Smith, Brandon Enterline
 Attendance: 11624

Start Time: 04:02 PM ET
 End Time: 05:49 PM ET
 Game Duration: 1:47
 Conference Game;

Score	1st	2nd	3rd	4th	TOT
PIT	13	11	11	14	49
LOU	21	20	25	17	83

PIT led for 2:54. LOU led for 36:14.
 Game was tied for 0:37.
 Times tied: 2 Lead Changes: 1

Points from	PIT	LOU
In the Paint	20	32
Off Turns	13	19
2nd Chance	9	13
Fast Break	2	17
Bench	5	24

Official Box Score
Pittsburgh vs Louisville
First Half Statistics Only
January 26, 2020 at KFC Yum! Center (Denny Crum) - Louisville



Pittsburgh 24

No.	Player	S	Pts	FG	3FG	FT	OR	DR	TR	PF	A	TO	Blk	Stl	Min	+/-
00	KNIGHT, JAHSYNI	G	0	0-0	0-0	0-0	0	0	0	0	0	1	0	0	7	-12
01	HARRIS, DAYSHANETTE	G	9	4-11	1-3	0-0	0	3	3	1	3	2	0	1	15	-10
02	BUGG, AYSIA	G	6	2-9	2-8	0-0	0	0	0	0	1	3	0	0	14	-12
04	HAYFORD, EMY	G	0	0-2	0-2	0-0	0	2	2	1	0	2	0	0	8	-11
05	BROWN, AMBER	G	2	1-3	0-0	0-0	2	2	4	2	1	0	0	0	16	-7
10	PRAPA, ISMINI	G	0	0-0	0-0	0-0	0	0	0	0	0	0	0	0	0	0
11	JUDKINS, CARA	C	4	2-4	0-0	0-0	3	3	6	1	0	1	0	0	14	-16
12	GREEN, GABBIE	G	3	1-4	1-3	0-0	0	0	0	1	1	1	0	0	15	-6
21	LAMARK, MARCELLA	C	0	0-0	0-0	0-2	0	1	1	0	0	0	0	0	3	-8
23	IGBOKWE, RITA	F	0	0-1	0-0	0-0	3	0	3	2	0	0	1	0	7	-3
	TEAM		0	0-0	0-0	0-0	1	0	1	0	0	0	0	0	0	0
TOTALS			24	10-34	4-16	0-2	9	11	20	8	6	10	1	1	100	

Shooting By Period

Period	FG	FG%	3FG	3FG%	FT	FT%
1st Qtr	5-11	45%	3-8	38%	0-2	00%
2nd Qtr	5-23	22%	1-8	13%	0-0	0%
1st Half	10-34	29%	4-16	25%	0-2	00%
Game	19-64	29.7%	6-28	21.4%	5-8	62.5%

Deadball Rebounds: 1,0
 Last FG Half: PIT 2nd-00:56

Louisville 41

No.	Player	S	Pts	FG	3FG	FT	OR	DR	TR	PF	A	TO	Blk	Stl	Min	+/-
01	EVANS, DANA	G	12	4-8	2-6	2-3	0	3	3	0	1	0	0	0	20	17
02	DIOP, YACINE	G	0	0-2	0-1	0-0	0	0	0	1	0	0	0	0	6	9
04	BALOGUN, ELIZABETH	G	7	3-5	1-3	0-0	1	5	6	1	1	2	0	0	18	10
05	ROBINSON, MYKASA	G	4	2-3	0-0	0-0	0	2	2	0	2	1	1	2	11	9
12	DUVALL, LINDSEY	G	0	0-0	0-0	0-0	0	0	0	0	0	0	0	0	0	0
21	SHOOK, KYLEE	F	5	2-4	1-1	0-0	1	2	3	2	0	0	1	1	10	6
22	DIXON, ELIZABETH	F	2	0-0	0-0	2-2	0	0	0	2	0	1	0	0	3	3
23	JONES, JAZMINE	G	3	1-5	0-1	1-2	1	0	1	0	1	1	1	3	17	15
24	LAEMMLE, JESSICA	G	0	0-0	0-0	0-0	0	0	0	0	0	0	0	0	0	0
33	DUNHAM, BIONCA	F	8	3-4	0-0	2-2	2	3	5	0	3	0	0	0	16	16
	TEAM		0	0-0	0-0	0-0	0	1	1	0	0	0	0	0	0	0
TOTALS			41	15-31	4-12	7-9	5	16	21	6	8	5	3	6	100	

Shooting By Period

Period	FG	FG%	3FG	3FG%	FT	FT%
1st Qtr	6-17	35%	3-9	33%	6-8	75%
2nd Qtr	9-14	64%	1-3	33%	1-1	100%
1st Half	15-31	48%	4-12	33%	7-9	78%
Game	31-65	47.7%	7-24	29.2%	14-19	73.7%

Deadball Rebounds: 4,0
 Last FG Half: LOU 2nd-01:38

Game Notes:

Officials: Angelica Suffren, Jeffrey Smith, Brandon Enterline
 Attendance: 11624

Start Time: 04:02 PM ET
 End Time: 05:49 PM ET
 Game Duration: 1:47
 Conference Game;

Score	1st	2nd	3rd	4th	TOT
PIT	13	11	11	14	49
LOU	21	20	25	17	83

Points from (This Period)	PIT	LOU
In the Paint	8	12
Off Turns	9	6
2nd Chance	2	5
Fast Break	2	9
Bench	0	6

Official Box Score
Pittsburgh vs Louisville
First Quarter Statistics Only
January 26, 2020 at KFC Yum! Center (Denny Crum) - Louisville



Pittsburgh 13

No.	Player	S	Pts	FG	3FG	FT	OR	DR	TR	PF	A	TO	Blk	Stl	Min	+/-
01	HARRIS, DAYSHANETTE	G	2	1-3	0-1	0-0	0	2	2	0	2	0	0	0	7	-5
02	BUGG, AYSIA	G	6	2-4	2-4	0-0	0	0	0	0	0	3	0	0	8	-8
05	BROWN, AMBER	G	0	0-0	0-0	0-0	0	1	1	1	1	0	0	0	7	-2
11	JUDKINS, CARA	C	2	1-1	0-0	0-0	0	1	1	1	0	0	0	0	6	-11
12	GREEN, GABBIE	G	3	1-2	1-2	0-0	0	0	0	0	1	1	0	0	7	4
00	KNIGHT, JAHSYNI	G	0	0-0	0-0	0-0	0	0	0	0	0	0	0	0	3	-3
04	HAYFORD, EMY	G	0	0-1	0-1	0-0	0	1	1	1	0	2	0	0	5	-12
10	PRAPA, ISMINI	G	0	0-0	0-0	0-0	0	0	0	0	0	0	0	0	0	0
21	LAMARK, MARCELLA	C	0	0-0	0-0	0-2	0	1	1	0	0	0	0	0	2	-4
23	IGBOKWE, RITA	F	0	0-0	0-0	0-0	0	0	0	2	0	0	0	0	4	1
TEAM							0	0	0	0	0					
TOTALS			13	5-11	3-8	0-2	0	6	6	5	4	6	0	0	50	

Shooting By Period

Period	FG	FG%	3FG	3FG%	FT	FT%
1st Qtr	5-11	45%	3-8	38%	0-2	00%
2nd Qtr	5-23	22%	1-8	13%	0-0	0%
1st Half	5-11	45%	3-8	38%	0-2	00%
1st Half	10-34	29%	4-16	25%	0-2	00%
Game	19-64	29.7%	6-28	21.4%	5-8	62.5%

Deadball Rebounds: 1,0

Louisville 21

No.	Player	S	Pts	FG	3FG	FT	OR	DR	TR	PF	A	TO	Blk	Stl	Min	+/-
01	EVANS, DANA	G	7	2-5	2-5	1-2	0	3	3	0	0	0	0	0	10	8
04	BALOGUN, ELIZABETH	G	3	1-2	1-2	0-0	1	3	4	1	1	1	0	0	8	1
21	SHOOK, KYLEE	F	2	1-2	0-0	0-0	1	0	1	0	0	0	0	1	7	5
23	JONES, JAZMINE	G	3	1-4	0-1	1-2	1	0	1	0	0	0	0	2	7	6
33	DUNHAM, BIONCA	F	4	1-2	0-0	2-2	2	1	3	0	2	0	0	0	9	8
02	DIOP, YACINE	G	0	0-2	0-1	0-0	0	0	0	1	0	0	0	0	6	9
05	ROBINSON, MYKASA	G	0	0-0	0-0	0-0	0	0	0	0	0	0	0	1	1	0
12	DUVALL, LINDSEY	G	0	0-0	0-0	0-0	0	0	0	0	0	0	0	0	0	0
22	DIXON, ELIZABETH	F	2	0-0	0-0	2-2	0	0	0	2	0	1	0	0	3	3
24	LAEMMLE, JESSICA	G	0	0-0	0-0	0-0	0	0	0	0	0	0	0	0	0	0
TEAM							0	0	0	0	0					
TOTALS			21	6-17	3-9	6-8	5	7	12	4	3	2	0	4	50	

Shooting By Period

Period	FG	FG%	3FG	3FG%	FT	FT%
1st Qtr	6-17	35%	3-9	33%	6-8	75%
2nd Qtr	9-14	64%	1-3	33%	1-1	100%
1st Half	6-17	35%	3-9	33%	6-8	75%
1st Half	15-31	48%	4-12	33%	7-9	78%
Game	31-65	47.7%	7-24	29.2%	14-19	73.7%

Deadball Rebounds: 4,0

Game Notes:

Officials: Angelica Suffren, Jeffrey Smith, Brandon Enterline
Attendance: 11624

Start Time: 04:02 PM ET
End Time: 05:49 PM ET
Game Duration: 1:47
Conference Game;

Score	1st	2nd	3rd	4th	TOT
PIT	13	11	11	14	49
LOU	21	20	25	17	83

Points from (This Period)	PIT	LOU
In the Paint	2	4
Off Turns	4	2
2nd Chance	0	5
Fast Break	0	5
Bench	0	2

Official Play-By-Play
Pittsburgh vs Louisville
First Quarter
January 26, 2020 at KFC Yum! Center (Denny Crum) - Louisville



Period 1

Starters:

Pittsburgh: 1 HARRIS, DAYSHANETTE (G); 2 BUGG, AYSIA (G); 5 BROWN, AMBER (G); 11 JUDKINS, CARA (C); 12 GREEN, GABBIE (G);
Louisville: 1 EVANS, DANA (G); 4 BALOGUN, ELIZABETH (G); 21 SHOOK, KYLEE (F); 23 JONES, JAZMINE (G); 33 DUNHAM, BIONCA (F);

Time	VISITORS: Pittsburgh	Score	Margin	HOME: Louisville
09:53				TURNOVER (OTHER) by BALOGUN, ELIZABETH
09:33	GOOD! LAYUP by JUDKINS, CARA	0-2	V 2	
09:33	ASSIST by BROWN, AMBER			
09:21				MISSED JUMPER by DUNHAM, BIONCA
09:18				REBOUND (OFF) by BALOGUN, ELIZABETH
09:08				MISSED 3PTR by JONES, JAZMINE
09:05				REBOUND (OFF) by DUNHAM, BIONCA
09:05	FOUL (PERSONAL) by BROWN, AMBER			
09:05		1-2	V 1	GOOD! FT by DUNHAM, BIONCA
09:05		2-2	T	GOOD! FT by DUNHAM, BIONCA
08:55	GOOD! 3PTR by BUGG, AYSIA	2-5	V 3	
08:55	ASSIST by GREEN, GABBIE			
08:38		4-5	V 1	GOOD! LAYUP by DUNHAM, BIONCA [PNT]
08:14	TURNOVER (BADPASS) by BUGG, AYSIA			
08:14				STEAL by JONES, JAZMINE
08:11				SUB OUT: SHOOK, KYLEE
08:11				SUB IN: DIXON, ELIZABETH
08:11	SUB OUT: BUGG, AYSIA			
08:11	SUB OUT: JUDKINS, CARA			
08:11	SUB IN: KNIGHT, JAHSYNI			
08:11	SUB IN: IGBOKWE, RITA			
08:04				FOUL (OFF) by DIXON, ELIZABETH
08:04				TURNOVER (OFFENSIVE) by DIXON, ELIZABETH
07:57	GOOD! JUMPER by HARRIS, DAYSHANETTE	4-7	V 3	
07:37		6-7	V 1	GOOD! JUMPER by JONES, JAZMINE
07:18	TURNOVER (BADPASS) by GREEN, GABBIE			
07:18				STEAL by JONES, JAZMINE
07:06				MISSED 3PTR by EVANS, DANA
07:02	REBOUND (DEF) by BROWN, AMBER			
06:44	MISSED JUMPER by HARRIS, DAYSHANETTE			
06:41				REBOUND (DEF) by BALOGUN, ELIZABETH
06:29	FOUL (PERSONAL) by IGBOKWE, RITA			
06:29				SUB OUT: BALOGUN, ELIZABETH
06:29				SUB IN: DIOP, YACINE
06:29	SUB OUT: HARRIS, DAYSHANETTE			
06:29	SUB OUT: BROWN, AMBER			
06:29	SUB OUT: GREEN, GABBIE			
06:29	SUB IN: BUGG, AYSIA			
06:29	SUB IN: HAYFORD, EMY			
06:29	SUB IN: JUDKINS, CARA			
06:29		7-7	T	GOOD! FT by DIXON, ELIZABETH
06:29		8-7	H 1	GOOD! FT by DIXON, ELIZABETH
06:18	TURNOVER (DRIBBLING) by BUGG, AYSIA			
06:10				MISSED JUMPER by JONES, JAZMINE
06:06	REBOUND (DEF) by HAYFORD, EMY			
05:50	MISSED 3PTR by BUGG, AYSIA			
05:41				REBOUND (DEF) by EVANS, DANA
05:31	FOUL (PERSONAL) by IGBOKWE, RITA			
05:31	SUB OUT: IGBOKWE, RITA			
05:31	SUB IN: LAMARK, MARCELLA			
05:28	FOUL (PERSONAL) by JUDKINS, CARA			
05:28				MISSED FT by JONES, JAZMINE
05:28				REBOUND (OFF) by TEAM
05:28		9-7	H 2	GOOD! FT by JONES, JAZMINE
05:17	SUB OUT: KNIGHT, JAHSYNI			
05:17	SUB IN: HARRIS, DAYSHANETTE			
05:06				FOUL (PERSONAL) by DIXON, ELIZABETH
05:06				SUB OUT: DIXON, ELIZABETH
05:06				SUB IN: SHOOK, KYLEE
05:06	MISSED FT by LAMARK, MARCELLA			
05:06	REBOUND (OFF) by TEAM			
05:06	MISSED FT by LAMARK, MARCELLA			
05:05				REBOUND (DEF) by DUNHAM, BIONCA
04:58		12-7	H 5	GOOD! 3PTR by EVANS, DANA [FB]
04:58				ASSIST by DUNHAM, BIONCA
04:37	MISSED 3PTR by HAYFORD, EMY			
04:33				REBOUND (DEF) by EVANS, DANA
04:29	FOUL (PERSONAL) by HAYFORD, EMY			
04:29				
04:29	SUB OUT: LAMARK, MARCELLA			

Time	VISITORS: Pittsburgh	Score	Margin	HOME: Louisville
04:29	SUB IN: BROWN, AMBER			
04:29				MISSED FT by EVANS, DANA
04:29				REBOUND (OFF) by TEAM
04:29		13-7	H 6	GOOD! FT by EVANS, DANA
04:29				SUB OUT: JONES, JAZMINE
04:29				SUB IN: BALOGUN, ELIZABETH
04:02	MISSED 3PTR by HARRIS, DAYSHANETTE			
03:59				REBOUND (DEF) by BALOGUN, ELIZABETH
03:50				MISSED 3PTR by DIOP, YACINE
03:47	REBOUND (DEF) by HARRIS, DAYSHANETTE			
03:42	MISSED 3PTR by BUGG, AYSIA			
03:40				REBOUND (DEF) by EVANS, DANA
03:31		16-7	H 9	GOOD! 3PTR by BALOGUN, ELIZABETH
03:31				ASSIST by DUNHAM, BIONCA
03:15	TURNOVER (BADPASS) by HAYFORD, EMY			
03:15				STEAL by SHOOK, KYLEE
03:11		18-7	H 11	GOOD! LAYUP by SHOOK, KYLEE [FB]
03:11				ASSIST by BALOGUN, ELIZABETH
03:11	TIMEOUT 30SEC			
03:11	SUB OUT: HAYFORD, EMY			
03:11	SUB OUT: JUDKINS, CARA			
03:11	SUB IN: GREEN, GABBIE			
03:11	SUB IN: IGBOKWE, RITA			
02:47	GOOD! 3PTR by BUGG, AYSIA	18-10	H 8	
02:47	ASSIST by HARRIS, DAYSHANETTE			
02:23				MISSED 3PTR by EVANS, DANA
02:20				REBOUND (OFF) by DUNHAM, BIONCA
02:07				MISSED JUMPER by DIOP, YACINE
02:03				REBOUND (OFF) by SHOOK, KYLEE
01:55		21-10	H 11	GOOD! 3PTR by EVANS, DANA
01:41	GOOD! 3PTR by GREEN, GABBIE	21-13	H 8	
01:41	ASSIST by HARRIS, DAYSHANETTE			
01:27				MISSED 3PTR by EVANS, DANA
01:23	REBOUND (DEF) by HARRIS, DAYSHANETTE			
01:22				FOUL (PERSONAL) by BALOGUN, ELIZABETH
01:22	SUB OUT: HARRIS, DAYSHANETTE			
01:22	SUB OUT: BROWN, AMBER			
01:22	SUB OUT: IGBOKWE, RITA			
01:22	SUB IN: HAYFORD, EMY			
01:22	SUB IN: JUDKINS, CARA			
01:22	SUB IN: LAMARK, MARCELLA			
01:11	TURNOVER (BADPASS) by BUGG, AYSIA			
01:11				SUB OUT: DUNHAM, BIONCA
01:11				SUB IN: JONES, JAZMINE
00:58				MISSED JUMPER by SHOOK, KYLEE
00:54				REBOUND (OFF) by JONES, JAZMINE
00:54				MISSED LAYUP by JONES, JAZMINE
00:52	REBOUND (DEF) by JUDKINS, CARA			
00:40				FOUL (PERSONAL) by DIOP, YACINE
00:40				SUB OUT: DIOP, YACINE
00:40				SUB IN: ROBINSON, MYKASA
00:29	MISSED 3PTR by GREEN, GABBIE			
00:26				REBOUND (DEF) by BALOGUN, ELIZABETH
00:09				MISSED 3PTR by BALOGUN, ELIZABETH
00:06	REBOUND (DEF) by LAMARK, MARCELLA			
00:00	TURNOVER (LOSTBALL) by HAYFORD, EMY			
00:00				STEAL by ROBINSON, MYKASA

Pittsburgh 13, Louisville 21

Points from (This Period)	PIT	LOU
In the Paint	2	4
Off Turns	4	2
2nd Chance	0	5
Fast Break	0	5
Bench	0	2

Official Box Score
Pittsburgh vs Louisville
Second Quarter Statistics Only
January 26, 2020 at KFC Yum! Center (Denny Crum) - Louisville



Pittsburgh 11

No.	Player	S	Pts	FG	3FG	FT	OR	DR	TR	PF	A	TO	Blk	Stl	Min	+/-	
01	HARRIS, DAYSHANETTE	G	7	3-8	1-2	0-0	0	1	1	1	1	2	0	1	8	-5	
02	BUGG, AYSIA	G	0	0-5	0-4	0-0	0	0	0	0	1	0	0	0	6	-4	
05	BROWN, AMBER	G	2	1-3	0-0	0-0	2	1	3	1	0	0	0	0	9	-5	
11	JUDKINS, CARA	C	2	1-3	0-0	0-0	3	2	5	0	0	1	0	0	8	-5	
12	GREEN, GABBIE	G	0	0-2	0-1	0-0	0	0	0	1	0	0	0	0	8	-10	
00	KNIGHT, JAHSYNI	G	0	0-0	0-0	0-0	0	0	0	0	0	1	0	0	4	-9	
04	HAYFORD, EMY	G	0	0-1	0-1	0-0	0	1	1	0	0	0	0	0	3	1	
10	PRAPA, ISMINI	G	0	0-0	0-0	0-0	0	0	0	0	0	0	0	0	0	0	
21	LAMARK, MARCELLA	C	0	0-0	0-0	0-0	0	0	0	0	0	0	0	0	1	-4	
23	IGBOKWE, RITA	F	0	0-1	0-0	0-0	3	0	3	0	0	0	1	0	3	-4	
TEAM							1	0	1	0	0						
TOTALS			11	5-23	1-8	0-0	9	5	14	3	2	4	1	1	50		

Shooting By Period

Period	FG	FG%	3FG	3FG%	FT	FT%
3rd Qtr	5-13	38%	1-5	20%	0-0	0%
4th Qtr	4-17	24%	1-7	14%	5-6	83%
2nd Half	5-23	22%	1-8	13%	0-0	0%
2nd Half	9-30	30%	2-12	17%	5-6	83%
Game	19-64	29.7%	6-28	21.4%	5-8	62.5%

Deadball Rebounds: 1,0

Louisville 20

No.	Player	S	Pts	FG	3FG	FT	OR	DR	TR	PF	A	TO	Blk	Stl	Min	+/-	
01	EVANS, DANA	G	5	2-3	0-1	1-1	0	0	0	0	1	0	0	0	10	9	
04	BALOGUN, ELIZABETH	G	4	2-3	0-1	0-0	0	2	2	0	0	1	0	0	10	9	
21	SHOOK, KYLEE	F	3	1-2	1-1	0-0	0	2	2	2	0	0	1	0	3	1	
23	JONES, JAZMINE	G	0	0-1	0-0	0-0	0	0	0	0	1	1	1	1	10	9	
33	DUNHAM, BIONCA	F	4	2-2	0-0	0-0	0	2	2	0	1	0	0	0	7	8	
02	DIOP, YACINE	G	0	0-0	0-0	0-0	0	0	0	0	0	0	0	0	0	0	
05	ROBINSON, MYKASA	G	4	2-3	0-0	0-0	0	2	2	0	2	1	1	1	10	9	
12	DUVALL, LINDSEY	G	0	0-0	0-0	0-0	0	0	0	0	0	0	0	0	0	0	
22	DIXON, ELIZABETH	F	0	0-0	0-0	0-0	0	0	0	0	0	0	0	0	0	0	
24	LAEMMLE, JESSICA	G	0	0-0	0-0	0-0	0	0	0	0	0	0	0	0	0	0	
TEAM							0	1	1	0	0						
TOTALS			20	9-14	1-3	1-1	0	9	9	2	5	3	3	2	50		

Shooting By Period

Period	FG	FG%	3FG	3FG%	FT	FT%
3rd Qtr	9-17	53%	1-4	25%	6-8	75%
4th Qtr	7-17	41%	2-8	25%	1-2	50%
2nd Half	9-14	64%	1-3	33%	1-1	100%
2nd Half	16-34	47%	3-12	25%	7-10	70%
Game	31-65	47.7%	7-24	29.2%	14-19	73.7%

Deadball Rebounds: 4,0

Game Notes:

Officials: Angelica Suffren, Jeffrey Smith, Brandon Enterline
 Attendance: 11624

Start Time: 04:02 PM ET
 End Time: 05:49 PM ET
 Game Duration: 1:47
 Conference Game;

Score	1st	2nd	3rd	4th	TOT
PIT	13	11	11	14	49
LOU	21	20	25	17	83

Points from (This Period)	PIT	LOU
In the Paint	6	8
Off Turns	5	4
2nd Chance	2	0
Fast Break	2	4
Bench	0	4

Official By-By-Play
Pittsburgh vs Louisville
Second Quarter
January 26, 2020 at KFC Yum! Center (Denny Crum) - Louisville



Period 2

Starters:

Pittsburgh: 1 HARRIS, DAYSHANETTE (G); 2 BUGG, AYSIA (G); 5 BROWN, AMBER (G); 11 JUDKINS, CARA (C); 12 GREEN, GABBIE (G);
Louisville: 1 EVANS, DANA (G); 4 BALOGUN, ELIZABETH (G); 21 SHOOK, KYLEE (F); 23 JONES, JAZMINE (G); 33 DUNHAM, BIONCA (F);

Time	VISITORS: Pittsburgh	Score	Margin	HOME: Louisville
10:00	SUB OUT: BUGG, AYSIA			
10:00	SUB OUT: HAYFORD, EMY			
10:00	SUB OUT: LAMARK, MARCELLA			
10:00	SUB IN: KNIGHT, JAHSYNI			
10:00	SUB IN: HARRIS, DAYSHANETTE			
10:00	SUB IN: BROWN, AMBER			
09:47	GOOD! LAYUP by HARRIS, DAYSHANETTE [PNT]	21-15	H 6	
09:23				MISSED LAYUP by ROBINSON, MYKASA
09:20	REBOUND (DEF) by JUDKINS, CARA			
08:56	TURNOVER (LOSTBALL) by HARRIS, DAYSHANETTE			
08:56				STEAL by JONES, JAZMINE
08:40				MISSED 3PTR by BALOGUN, ELIZABETH
08:37	REBOUND (DEF) by HARRIS, DAYSHANETTE			
08:15	MISSED JUMPER by HARRIS, DAYSHANETTE			
08:15				BLOCK by SHOOK, KYLEE
08:10				REBOUND (DEF) by SHOOK, KYLEE
08:04		24-15	H 9	GOOD! 3PTR by SHOOK, KYLEE
08:04				ASSIST by EVANS, DANA
07:53				FOUL (PERSONAL) by SHOOK, KYLEE
07:53	SUB OUT: KNIGHT, JAHSYNI			
07:53	SUB OUT: HARRIS, DAYSHANETTE			
07:53	SUB OUT: JUDKINS, CARA			
07:53	SUB IN: BUGG, AYSIA			
07:53	SUB IN: HAYFORD, EMY			
07:53	SUB IN: IGBOKWE, RITA			
07:36	MISSED 3PTR by HAYFORD, EMY			
07:33	REBOUND (OFF) by IGBOKWE, RITA			
07:19	MISSED 3PTR by BUGG, AYSIA			
07:16	REBOUND (OFF) by IGBOKWE, RITA			
07:15	MISSED LAYUP by IGBOKWE, RITA			
07:14				REBOUND (DEF) by SHOOK, KYLEE
07:03				MISSED JUMPER by SHOOK, KYLEE
07:03	BLOCK by IGBOKWE, RITA			
06:57	REBOUND (DEF) by HAYFORD, EMY			
06:43	MISSED 3PTR by BUGG, AYSIA			
06:42				FOUL (PERSONAL) by SHOOK, KYLEE
06:42				SUB OUT: SHOOK, KYLEE
06:42				SUB IN: DUNHAM, BIONCA
06:42	SUB OUT: GREEN, GABBIE			
06:42	SUB OUT: IGBOKWE, RITA			
06:42	SUB IN: HARRIS, DAYSHANETTE			
06:42	SUB IN: JUDKINS, CARA			
06:41	REBOUND (OFF) by IGBOKWE, RITA			
06:41	GOOD! JUMPER by JUDKINS, CARA	24-17	H 7	
06:41	ASSIST by BUGG, AYSIA			
06:24		26-17	H 9	GOOD! JUMPER by DUNHAM, BIONCA
06:24				ASSIST by ROBINSON, MYKASA
06:04	MISSED LAYUP by BROWN, AMBER			
06:04	REBOUND (OFF) by JUDKINS, CARA			
06:04				BLOCK by JONES, JAZMINE
06:02	TURNOVER (BADPASS) by JUDKINS, CARA			
06:00	FOUL (PERSONAL) by BROWN, AMBER			
05:49		28-17	H 11	GOOD! LAYUP by EVANS, DANA
05:36	MISSED JUMPER by BUGG, AYSIA			
05:32	REBOUND (OFF) by BROWN, AMBER			
05:27	MISSED 3PTR by BUGG, AYSIA			
05:23	REBOUND (OFF) by JUDKINS, CARA			
05:08	MISSED JUMPER by HARRIS, DAYSHANETTE			
05:05				REBOUND (DEF) by BALOGUN, ELIZABETH
05:02				TURNOVER (BADPASS) by BALOGUN, ELIZABETH
04:48	GOOD! 3PTR by HARRIS, DAYSHANETTE	28-20	H 8	
04:31	FOUL (PERSONAL) by HARRIS, DAYSHANETTE			
04:31				
04:31	SUB OUT: HARRIS, DAYSHANETTE			
04:31	SUB OUT: HAYFORD, EMY			
04:31	SUB OUT: JUDKINS, CARA			
04:31	SUB IN: KNIGHT, JAHSYNI			
04:31	SUB IN: GREEN, GABBIE			
04:31	SUB IN: LAMARK, MARCELLA			
04:23		30-20	H 10	GOOD! JUMPER by DUNHAM, BIONCA

Time	VISITORS: Pittsburgh	Score	Margin	HOME: Louisville
04:23				ASSIST by JONES, JAZMINE
04:01	MISSED 3PTR by GREEN, GABBIE			
03:58				REBOUND (DEF) by ROBINSON, MYKASA
03:52		32-20	H 12	GOOD! JUMPER by BALOGUN, ELIZABETH [PNT]
03:52				ASSIST by ROBINSON, MYKASA
03:39	TURNOVER (BADPASS) by KNIGHT, JAHSYNI			
03:39	SUB OUT: BUGG, AYSIA			
03:39	SUB OUT: BROWN, AMBER			
03:39	SUB OUT: LAMARK, MARCELLA			
03:39	SUB IN: HARRIS, DAYSHANETTE			
03:39	SUB IN: JUDKINS, CARA			
03:39	SUB IN: IGBOKWE, RITA			
03:32				TURNOVER (LOSTBALL) by JONES, JAZMINE
03:32	STEAL by HARRIS, DAYSHANETTE			
03:27	GOOD! LAYUP by HARRIS, DAYSHANETTE [FB/PNT]	32-22	H 10	
03:10		34-22	H 12	GOOD! JUMPER by ROBINSON, MYKASA
02:53	TURNOVER (BADPASS) by HARRIS, DAYSHANETTE			
02:53				STEAL by ROBINSON, MYKASA
02:50		36-22	H 14	GOOD! LAYUP by ROBINSON, MYKASA [FB]
02:18	MISSED 3PTR by HARRIS, DAYSHANETTE			
02:12	REBOUND (OFF) by JUDKINS, CARA			
02:12	MISSED LAYUP by JUDKINS, CARA			
02:10				REBOUND (DEF) by DUNHAM, BIONCA
02:09		38-22	H 16	GOOD! JUMPER by EVANS, DANA [FB/PNT]
02:09	FOUL (PERSONAL) by GREEN, GABBIE			
02:09	SUB OUT: KNIGHT, JAHSYNI			
02:09	SUB OUT: IGBOKWE, RITA			
02:09	SUB IN: BUGG, AYSIA			
02:09	SUB IN: BROWN, AMBER			
02:09		39-22	H 17	GOOD! FT by EVANS, DANA
02:00	MISSED 3PTR by BUGG, AYSIA			
01:58	REBOUND (OFF) by TEAM			
01:52	MISSED JUMPER by GREEN, GABBIE			
01:52	REBOUND (OFF) by BROWN, AMBER			
01:52				BLOCK by ROBINSON, MYKASA
01:47	MISSED LAYUP by BROWN, AMBER			
01:44				REBOUND (DEF) by DUNHAM, BIONCA
01:38		41-22	H 19	GOOD! JUMPER by BALOGUN, ELIZABETH
01:38				ASSIST by DUNHAM, BIONCA
01:13	MISSED JUMPER by JUDKINS, CARA			
01:11				REBOUND (DEF) by BALOGUN, ELIZABETH
01:05				MISSED JUMPER by JONES, JAZMINE
01:02	REBOUND (DEF) by JUDKINS, CARA			
00:56	GOOD! LAYUP by BROWN, AMBER	41-24	H 17	
00:56	ASSIST by HARRIS, DAYSHANETTE			
00:40				MISSED 3PTR by EVANS, DANA
00:35	REBOUND (DEF) by BROWN, AMBER			
00:30	MISSED JUMPER by HARRIS, DAYSHANETTE			
00:28				REBOUND (DEF) by ROBINSON, MYKASA
00:04				TURNOVER (LOSTBALL) by ROBINSON, MYKASA
00:00	MISSED JUMPER by HARRIS, DAYSHANETTE			
00:00				REBOUND (DEF) by TEAM

Pittsburgh 24, Louisville 41

Points from (This Period)	PIT	LOU
In the Paint	6	8
Off Turns	5	4
2nd Chance	2	0
Fast Break	2	4
Bench	0	4

Official Box Score
Pittsburgh vs Louisville
Second Half Statistics Only
January 26, 2020 at KFC Yum! Center (Denny Crum) - Louisville



Pittsburgh 25

No.	Player	S	Pts	FG	3FG	FT	OR	DR	TR	PF	A	TO	Blk	Stl	Min	+/-
00	KNIGHT, JAHSYNI	G	0	0-0	0-0	0-0	0	0	0	1	0	0	0	1	4	-2
01	HARRIS, DAYSHANETTE	G	9	3-9	0-3	3-4	1	2	3	3	2	3	0	1	16	-10
02	BUGG, AYSIA	G	2	1-3	0-2	0-0	0	1	1	1	0	2	0	0	8	-3
04	HAYFORD, EMY	G	5	2-5	1-2	0-0	0	1	1	2	0	1	0	0	13	-17
05	BROWN, AMBER	G	4	1-4	0-0	2-2	3	2	5	0	0	1	0	0	17	-9
10	PRAPA, ISMINI	G	0	0-0	0-0	0-0	0	1	1	2	0	0	0	0	3	4
11	JUDKINS, CARA	C	2	1-2	0-0	0-0	1	0	1	0	0	1	0	0	11	-24
12	GREEN, GABBIE	G	3	1-6	1-4	0-0	2	1	3	1	0	3	0	0	15	-23
21	LAMARK, MARCELLA	C	0	0-1	0-1	0-0	0	0	0	1	0	0	0	0	2	-6
23	IGBOKWE, RITA	F	0	0-0	0-0	0-0	2	3	5	1	1	1	0	1	10	5
	TEAM		0	0-0	0-0	0-0	0	0	0	0	0	0	0	0	0	
TOTALS			25	9-30	2-12	5-6	9	11	20	12	3	12	0	3	99	

Shooting By Period

Period	FG	FG%	3FG	3FG%	FT	FT%
3rd Qtr	5-13	38%	1-5	20%	0-0	0%
4th Qtr	4-17	24%	1-7	14%	5-6	83%
2nd Half	9-30	30%	2-12	17%	5-6	83%
Game	19-64	29.7%	6-28	21.4%	5-8	62.5%

Deadball Rebounds: 1,0
Last FG Half: PIT 4th-00:47

Louisville 42

No.	Player	S	Pts	FG	3FG	FT	OR	DR	TR	PF	A	TO	Blk	Stl	Min	+/-
01	EVANS, DANA	G	0	0-1	0-1	0-0	0	0	0	0	3	0	0	1	8	9
02	DIOP, YACINE	G	8	3-6	1-1	1-2	0	2	2	1	1	3	0	2	16	12
04	BALOGUN, ELIZABETH	G	5	2-4	1-2	0-0	0	2	2	0	2	0	1	2	10	17
05	ROBINSON, MYKASA	G	0	0-0	0-0	0-2	0	6	6	2	3	1	0	1	12	8
12	DUVALL, LINDSEY	G	0	0-3	0-3	0-0	2	0	2	0	0	0	0	0	7	-6
21	SHOOK, KYLEE	F	7	2-3	1-2	2-2	1	1	2	0	0	0	0	0	12	23
22	DIXON, ELIZABETH	F	8	3-7	0-0	2-2	4	0	4	2	1	1	0	0	14	6
23	JONES, JAZMINE	G	8	3-3	0-0	2-2	0	0	0	0	2	0	0	2	6	11
24	LAEMMLE, JESSICA	G	2	1-4	0-3	0-0	0	1	1	2	1	0	0	0	7	-6
33	DUNHAM, BIONCA	F	4	2-3	0-0	0-0	1	0	1	0	2	0	0	1	6	11
	TEAM		0	0-0	0-0	0-0	0	1	1	0	0	0	0	0	0	
TOTALS			42	16-34	3-12	7-10	8	13	21	7	15	5	1	9	99	

Shooting By Period

Period	FG	FG%	3FG	3FG%	FT	FT%
3rd Qtr	9-17	53%	1-4	25%	6-8	75%
4th Qtr	7-17	41%	2-8	25%	1-2	50%
2nd Half	16-34	47%	3-12	25%	7-10	70%
Game	31-65	47.7%	7-24	29.2%	14-19	73.7%

Deadball Rebounds: 4,0
Last FG Half: LOU 4th-00:26

Game Notes:

Officials: **Angelica Suffren, Jeffrey Smith, Brandon Enterline**
 Attendance: **11624**

Start Time: **04:02 PM ET**
 End Time: **05:49 PM ET**
 Game Duration: **1:47**
 Conference Game;

Score	1st	2nd	3rd	4th	TOT
PIT	13	11	11	14	49
LOU	21	20	25	17	83

Points from (This Period)	PIT	LOU
In the Paint	12	20
Off Turns	4	13
2nd Chance	7	8
Fast Break	0	8
Bench	5	18

Official Box Score
Pittsburgh vs Louisville
Third Quarter Statistics Only
January 26, 2020 at KFC Yum! Center (Denny Crum) - Louisville



Pittsburgh 25

No.	Player	S	Pts	FG	3FG	FT	OR	DR	TR	PF	A	TO	Blk	Stl	Min	+/-
01	HARRIS, DAYSHANETTE	G	0	0-2	0-1	0-0	0	0	0	1	2	1	0	0	6	-7
02	BUGG, AYSIA	G	2	1-2	0-1	0-0	0	1	1	0	0	2	0	0	6	-3
05	BROWN, AMBER	G	2	1-2	0-0	0-0	1	1	2	0	0	1	0	0	8	-6
11	JUDKINS, CARA	C	2	1-1	0-0	0-0	1	0	1	0	0	1	0	0	6	-15
12	GREEN, GABBIE	G	3	1-3	1-2	0-0	1	1	2	1	0	3	0	0	8	-16
00	KNIGHT, JAHSYNI	G	0	0-0	0-0	0-0	0	0	0	1	0	0	0	0	2	-6
04	HAYFORD, EMY	G	2	1-2	0-0	0-0	0	0	0	2	0	0	0	0	7	-10
10	PRAPA, ISMINI	G	0	0-0	0-0	0-0	0	0	0	0	0	0	0	0	0	0
21	LAMARK, MARCELLA	C	0	0-1	0-1	0-0	0	0	0	1	0	0	0	0	2	-6
23	IGBOKWE, RITA	F	0	0-0	0-0	0-0	1	2	3	1	0	1	0	0	5	-1
TEAM							0	0	0	0	0	0				
TOTALS			11	5-13	1-5	0-0	4	5	9	7	2	9	0	0	50	

Shooting By Period

Period	FG	FG%	3FG	3FG%	FT	FT%
2nd Half	0-0	0%	0-0	0%	0-0	0%
Game	19-64	29.7%	6-28	21.4%	5-8	62.5%

Deadball Rebounds: 1,0

Louisville 42

No.	Player	S	Pts	FG	3FG	FT	OR	DR	TR	PF	A	TO	Blk	Stl	Min	+/-
01	EVANS, DANA	G	0	0-1	0-1	0-0	0	0	0	0	3	0	0	1	8	9
04	BALOGUN, ELIZABETH	G	3	1-3	1-2	0-0	0	1	1	0	1	0	1	2	8	8
21	SHOOK, KYLEE	F	4	1-2	0-1	2-2	1	0	1	0	0	0	0	0	10	14
23	JONES, JAZMINE	G	8	3-3	0-0	2-2	0	0	0	0	2	0	0	2	6	11
33	DUNHAM, BIONCA	F	4	2-3	0-0	0-0	1	0	1	0	2	0	0	1	6	11
02	DIOP, YACINE	G	2	1-3	0-0	0-0	0	1	1	0	0	0	0	0	6	9
05	ROBINSON, MYKASA	G	0	0-0	0-0	0-2	0	1	1	1	0	1	0	0	2	5
12	DUVALL, LINDSEY	G	0	0-0	0-0	0-0	0	0	0	0	0	0	0	0	0	0
22	DIXON, ELIZABETH	F	4	1-2	0-0	2-2	2	0	2	0	1	0	0	0	4	3
24	LAEMMLE, JESSICA	G	0	0-0	0-0	0-0	0	0	0	0	0	0	0	0	0	0
TEAM							0	1	1	0	0	0				
TOTALS			25	9-17	1-4	6-8	4	4	8	1	9	1	1	6	50	

Shooting By Period

Period	FG	FG%	3FG	3FG%	FT	FT%
2nd Half	0-0	0%	0-0	0%	0-0	0%
Game	31-65	47.7%	7-24	29.2%	14-19	73.7%

Deadball Rebounds: 4,0

Game Notes:

Officials: **Angelica Suffren, Jeffrey Smith, Brandon Enterline**
 Attendance: **11624**

Start Time: **04:02 PM ET**
 End Time: **05:49 PM ET**
 Game Duration: **1:47**
 Conference Game;

Score	1st	2nd	3rd	4th	TOT
PIT	13	11	11	14	49
LOU	21	20	25	17	83

Points from (This Period)	PIT	LOU
In the Paint	6	10
Off Turns	0	12
2nd Chance	4	7
Fast Break	0	4
Bench	2	6

Official Play-By-Play
Pittsburgh vs Louisville
Third Quarter
January 26, 2020 at KFC Yum! Center (Denny Crum) - Louisville



Period 3

Starters:

Pittsburgh: 1 HARRIS, DAYSHANETTE (G); 2 BUGG, AYSIA (G); 5 BROWN, AMBER (G); 11 JUDKINS, CARA (C); 12 GREEN, GABBIE (G);
Louisville: 1 EVANS, DANA (G); 4 BALOGUN, ELIZABETH (G); 21 SHOOK, KYLEE (F); 23 JONES, JAZMINE (G); 33 DUNHAM, BIONCA (F);

Time	VISITORS: Pittsburgh	Score	Margin	HOME: Louisville
10:00				SUB OUT: ROBINSON, MYKASA
10:00				SUB IN: SHOOK, KYLEE
10:00	SUB OUT: HARRIS, DAYSHANETTE			
10:00	SUB IN: KNIGHT, JAHSYNI			
09:39	TURNOVER (BADPASS) by JUDKINS, CARA			
09:39				STEAL by JONES, JAZMINE
09:33				TIMEOUT 30SEC
09:30				MISSED JUMPER by DUNHAM, BIONCA
09:27	REBOUND (DEF) by GREEN, GABBIE			
08:59	TURNOVER (BADPASS) by BUGG, AYSIA			
08:59				STEAL by JONES, JAZMINE
08:54		43-24	H 19	GOOD! LAYUP by JONES, JAZMINE [FB/PNT]
08:54				ASSIST by EVANS, DANA
08:29	FOUL (OFF) by GREEN, GABBIE			
08:29	TURNOVER (OFFENSIVE) by GREEN, GABBIE			
08:29	SUB OUT: KNIGHT, JAHSYNI			
08:29	SUB OUT: JUDKINS, CARA			
08:29	SUB IN: HAYFORD, EMY			
08:29	SUB IN: IGBOKWE, RITA			
08:17	FOUL (PERSONAL) by HAYFORD, EMY			
08:13		45-24	H 21	GOOD! JUMPER by DUNHAM, BIONCA
08:13				ASSIST by JONES, JAZMINE
07:50	GOOD! 3PTR by GREEN, GABBIE	45-27	H 18	
07:41				MISSED 3PTR by BALOGUN, ELIZABETH
07:37	REBOUND (DEF) by IGBOKWE, RITA			
07:23	MISSED 3PTR by BUGG, AYSIA			
07:21	REBOUND (OFF) by IGBOKWE, RITA			
07:19	TURNOVER (BADPASS) by IGBOKWE, RITA			
07:19				STEAL by BALOGUN, ELIZABETH
07:11		47-27	H 20	GOOD! LAYUP by SHOOK, KYLEE
07:11				ASSIST by EVANS, DANA
06:50	MISSED JUMPER by BROWN, AMBER			
06:47				REBOUND (DEF) by BALOGUN, ELIZABETH
06:47	SUB OUT: BUGG, AYSIA			
06:47	SUB OUT: BROWN, AMBER			
06:47	SUB OUT: IGBOKWE, RITA			
06:47	SUB IN: HARRIS, DAYSHANETTE			
06:47	SUB IN: JUDKINS, CARA			
06:47	SUB IN: LAMARK, MARCELLA			
06:36	FOUL (PERSONAL) by HARRIS, DAYSHANETTE			
06:36		48-27	H 21	GOOD! FT by JONES, JAZMINE
06:36		49-27	H 22	GOOD! FT by JONES, JAZMINE
06:21	TURNOVER (LOSTBALL) by GREEN, GABBIE			
06:21				STEAL by EVANS, DANA
06:21	FOUL (PERSONAL) by LAMARK, MARCELLA			
06:20				SUB OUT: BALOGUN, ELIZABETH
06:20				SUB IN: DIOP, YACINE
06:08		51-27	H 24	GOOD! JUMPER by DUNHAM, BIONCA
06:08				ASSIST by JONES, JAZMINE
05:38	MISSED 3PTR by LAMARK, MARCELLA			
05:34				REBOUND (DEF) by DIOP, YACINE
05:29				MISSED 3PTR by SHOOK, KYLEE
05:26				REBOUND (OFF) by DUNHAM, BIONCA
05:24		53-27	H 26	GOOD! LAYUP by JONES, JAZMINE [PNT]
05:24				ASSIST by EVANS, DANA
05:15	TIMEOUT 30SEC			
05:15	SUB OUT: HAYFORD, EMY			
05:15	SUB OUT: LAMARK, MARCELLA			
05:15	SUB IN: BUGG, AYSIA			
05:15	SUB IN: BROWN, AMBER			
05:00	MISSED 3PTR by GREEN, GABBIE			
04:56	REBOUND (OFF) by GREEN, GABBIE			
04:53	GOOD! LAYUP by BROWN, AMBER	53-29	H 24	
04:53	ASSIST by HARRIS, DAYSHANETTE			
04:35		55-29	H 26	GOOD! JUMPER by DIOP, YACINE
04:35				ASSIST by DUNHAM, BIONCA
04:13	TURNOVER (BADPASS) by GREEN, GABBIE			
04:13				STEAL by DUNHAM, BIONCA
04:07		57-29	H 28	GOOD! LAYUP by JONES, JAZMINE [FB]
04:07				ASSIST by DUNHAM, BIONCA

Time	VISITORS: Pittsburgh	Score	Margin	HOME: Louisville
04:00	TURNOVER (LOSTBALL) by HARRIS, DAYSHANETTE			
04:00				SUB OUT: JONES, JAZMINE
04:00				SUB OUT: DUNHAM, BIONCA
04:00				SUB IN: BALOGUN, ELIZABETH
04:00				SUB IN: DIXON, ELIZABETH
04:00	SUB OUT: JUDKINS, CARA			
04:00	SUB OUT: GREEN, GABBIE			
04:00	SUB IN: HAYFORD, EMY			
04:00	SUB IN: IGBOKWE, RITA			
03:41				MISSED JUMPER by BALOGUN, ELIZABETH
03:40				REBOUND (OFF) by DIXON, ELIZABETH
03:25				MISSED 3PTR by EVANS, DANA
03:22	REBOUND (DEF) by BROWN, AMBER			
03:15	GOOD! LAYUP by HAYFORD, EMY	57-31	H 26	
03:00		59-31	H 28	GOOD! LAYUP by DIXON, ELIZABETH [PNT]
03:00				ASSIST by BALOGUN, ELIZABETH
02:41	TURNOVER (BADPASS) by BROWN, AMBER			
02:41				STEAL by BALOGUN, ELIZABETH
02:32				MISSED JUMPER by DIXON, ELIZABETH
02:28	REBOUND (DEF) by IGBOKWE, RITA			
02:20	GOOD! JUMPER by BUGG, AYSIA	59-33	H 26	
02:20	ASSIST by HARRIS, DAYSHANETTE			
02:05				MISSED JUMPER by DIOP, YACINE
02:01	REBOUND (DEF) by BUGG, AYSIA			
01:59	TURNOVER (BADPASS) by BUGG, AYSIA			
01:59				SUB OUT: EVANS, DANA
01:59				SUB IN: ROBINSON, MYKASA
01:59	SUB OUT: HARRIS, DAYSHANETTE			
01:59	SUB OUT: BUGG, AYSIA			
01:59	SUB OUT: BROWN, AMBER			
01:59	SUB IN: KNIGHT, JAHSYNI			
01:59	SUB IN: JUDKINS, CARA			
01:59	SUB IN: GREEN, GABBIE			
01:46	FOUL (PERSONAL) by IGBOKWE, RITA			
01:46		60-33	H 27	GOOD! FT by DIXON, ELIZABETH
01:46		61-33	H 28	GOOD! FT by DIXON, ELIZABETH
01:25	MISSED JUMPER by GREEN, GABBIE			
01:24				REBOUND (DEF) by TEAM
01:14				MISSED JUMPER by DIOP, YACINE
01:12				REBOUND (OFF) by SHOOK, KYLEE
01:11	FOUL (PERSONAL) by KNIGHT, JAHSYNI			
01:11	SUB OUT: IGBOKWE, RITA			
01:11	SUB IN: BROWN, AMBER			
01:11		62-33	H 29	GOOD! FT by SHOOK, KYLEE
01:11		63-33	H 30	GOOD! FT by SHOOK, KYLEE
01:04	SUB OUT: KNIGHT, JAHSYNI			
01:04	SUB IN: HARRIS, DAYSHANETTE			
00:45	MISSED 3PTR by HARRIS, DAYSHANETTE			
00:42	REBOUND (OFF) by JUDKINS, CARA			
00:41	GOOD! JUMPER by JUDKINS, CARA [PNT]	63-35	H 28	
00:34				FOUL (OFF) by ROBINSON, MYKASA
00:34				TURNOVER (OFFENSIVE) by ROBINSON, MYKASA
00:10	MISSED LAYUP by HARRIS, DAYSHANETTE			
00:08	REBOUND (OFF) by BROWN, AMBER			
00:04	MISSED LAYUP by HAYFORD, EMY			
00:04				BLOCK by BALOGUN, ELIZABETH
00:03	FOUL (PERSONAL) by HAYFORD, EMY			
00:03				MISSED FT by ROBINSON, MYKASA
00:03				REBOUND (OFF) by TEAM
00:03				MISSED FT by ROBINSON, MYKASA
00:03				REBOUND (OFF) by DIXON, ELIZABETH
00:03				REBOUND (DEF) by ROBINSON, MYKASA
00:01		66-35	H 31	GOOD! 3PTR by BALOGUN, ELIZABETH
00:01				ASSIST by DIXON, ELIZABETH

Pittsburgh 35, Louisville 66

Points from (This Period)	PIT	LOU
In the Paint	6	10
Off Turns	0	12
2nd Chance	4	7
Fast Break	0	4
Bench	2	6

Official Box Score
Pittsburgh vs Louisville
Fourth Quarter Statistics Only
January 26, 2020 at KFC Yum! Center (Denny Crum) - Louisville



Pittsburgh 14

No.	Player	S	Pts	FG	3FG	FT	OR	DR	TR	PF	A	TO	Blk	Stl	Min	+/-
01	HARRIS, DAYSHANETTE	G	9	3-7	0-2	3-4	1	2	3	2	0	2	0	1	10	-3
02	BUGG, AYSIA	G	0	0-1	0-1	0-0	0	0	0	1	0	0	0	0	2	0
05	BROWN, AMBER	G	2	0-2	0-0	2-2	2	1	3	0	0	0	0	0	9	-3
11	JUDKINS, CARA	C	0	0-1	0-0	0-0	0	0	0	0	0	0	0	0	5	-9
12	GREEN, GABBIE	G	0	0-3	0-2	0-0	1	0	1	0	0	0	0	0	7	-7
00	KNIGHT, JAHSYNI	G	0	0-0	0-0	0-0	0	0	0	0	0	0	0	1	2	4
04	HAYFORD, EMY	G	3	1-3	1-2	0-0	0	1	1	0	0	1	0	0	6	-7
10	PRAPA, ISMINI	G	0	0-0	0-0	0-0	0	1	1	2	0	0	0	0	3	4
21	LAMARK, MARCELLA	C	0	0-0	0-0	0-0	0	0	0	0	0	0	0	0	0	0
23	IGBOKWE, RITA	F	0	0-0	0-0	0-0	1	1	2	0	1	0	0	1	5	6
TEAM							0	0	0	0	0	0				
TOTALS			14	4-17	1-7	5-6	5	6	11	5	1	3	0	3	49	

Shooting By Period

Period	FG	FG%	3FG	3FG%	FT	FT%
Game	19-64	29.7%	6-28	21.4%	5-8	62.5%

Deadball Rebounds: 1,0

Louisville 17

No.	Player	S	Pts	FG	3FG	FT	OR	DR	TR	PF	A	TO	Blk	Stl	Min	+/-
01	EVANS, DANA	G	0	0-0	0-0	0-0	0	0	0	0	0	0	0	0	0	0
04	BALOGUN, ELIZABETH	G	2	1-1	0-0	0-0	0	1	1	0	1	0	0	0	2	9
21	SHOOK, KYLEE	F	3	1-1	1-1	0-0	0	1	1	0	0	0	0	0	2	9
23	JONES, JAZMINE	G	0	0-0	0-0	0-0	0	0	0	0	0	0	0	0	0	0
33	DUNHAM, BIONCA	F	0	0-0	0-0	0-0	0	0	0	0	0	0	0	0	0	0
02	DIOP, YACINE	G	6	2-3	1-1	1-2	0	1	1	1	1	3	0	2	10	3
05	ROBINSON, MYKASA	G	0	0-0	0-0	0-0	0	5	5	1	3	0	0	1	10	3
12	DUVALL, LINDSEY	G	0	0-3	0-3	0-0	2	0	2	0	0	0	0	0	7	-6
22	DIXON, ELIZABETH	F	4	2-5	0-0	0-0	2	0	2	2	0	1	0	0	10	3
24	LAEMMLE, JESSICA	G	2	1-4	0-3	0-0	0	1	1	2	1	0	0	0	7	-6
TEAM							0	0	0	0	0	0				
TOTALS			17	7-17	2-8	1-2	4	9	13	6	6	4	0	3	49	

Shooting By Period

Period	FG	FG%	3FG	3FG%	FT	FT%
Game	31-65	47.7%	7-24	29.2%	14-19	73.7%

Deadball Rebounds: 4,0

Game Notes:

Officials: Angelica Suffren, Jeffrey Smith, Brandon Enterline
 Attendance: 11624

Start Time: 04:02 PM ET
 End Time: 05:49 PM ET
 Game Duration: 1:47
 Conference Game;

Score	1st	2nd	3rd	4th	TOT
PIT	13	11	11	14	49
LOU	21	20	25	17	83

Points from (This Period)	PIT	LOU
In the Paint	6	10
Off Turns	4	1
2nd Chance	3	1
Fast Break	0	4
Bench	3	12

Official Play-By-Play
Pittsburgh vs Louisville
Fourth Quarter
January 26, 2020 at KFC Yum! Center (Denny Crum) - Louisville



Period 4

Starters:

Pittsburgh: 1 HARRIS, DAYSHANETTE (G); 2 BUGG, AYSIA (G); 5 BROWN, AMBER (G); 11 JUDKINS, CARA (C); 12 GREEN, GABBIE (G);
Louisville: 1 EVANS, DANA (G); 4 BALOGUN, ELIZABETH (G); 21 SHOOK, KYLEE (F); 23 JONES, JAZMINE (G); 33 DUNHAM, BIONCA (F);

Time	VISITORS: Pittsburgh	Score	Margin	HOME: Louisville
09:54	FOUL (PERSONAL) by HARRIS, DAYSHANETTE			
09:45				MISSED LAYUP by DIXON, ELIZABETH
09:42	REBOUND (DEF) by HARRIS, DAYSHANETTE			
09:41				FOUL (PERSONAL) by ROBINSON, MYKASA
09:24	MISSED LAYUP by HAYFORD, EMY			
09:22				REBOUND (DEF) by BALOGUN, ELIZABETH
09:10		68-35	H 33	GOOD! LAYUP by DIXON, ELIZABETH [PNT]
09:10				ASSIST by DIOP, YACINE
08:43	MISSED 3PTR by HAYFORD, EMY			
08:41				REBOUND (DEF) by SHOOK, KYLEE
08:34		71-35	H 36	GOOD! 3PTR by SHOOK, KYLEE
08:34				ASSIST by BALOGUN, ELIZABETH
08:08	MISSED JUMPER by JUDKINS, CARA			
08:05				REBOUND (DEF) by ROBINSON, MYKASA
08:02		73-35	H 38	GOOD! LAYUP by BALOGUN, ELIZABETH [FB/PNT]
08:02				ASSIST by ROBINSON, MYKASA
07:40	MISSED JUMPER by HARRIS, DAYSHANETTE			
07:38				REBOUND (DEF) by ROBINSON, MYKASA
07:34		75-35	H 40	GOOD! LAYUP by DIOP, YACINE [FB]
07:34				ASSIST by ROBINSON, MYKASA
07:34	TIMEOUT 30SEC			
07:34				SUB OUT: BALOGUN, ELIZABETH
07:34				SUB OUT: SHOOK, KYLEE
07:34				SUB IN: DUVALL, LINDSEY
07:34				SUB IN: LAEMMLE, JESSICA
07:34	SUB OUT: HAYFORD, EMY			
07:34	SUB IN: BUGG, AYSIA			
07:21	TURNOVER (LOSTBALL) by HARRIS, DAYSHANETTE			
07:21				STEAL by DIOP, YACINE
07:16				TURNOVER (BADPASS) by DIOP, YACINE
07:16	STEAL by HARRIS, DAYSHANETTE			
07:06	MISSED 3PTR by GREEN, GABBIE			
07:03	REBOUND (OFF) by HARRIS, DAYSHANETTE			
06:58	MISSED 3PTR by BUGG, AYSIA			
06:56	REBOUND (OFF) by BROWN, AMBER			
06:55	MISSED LAYUP by BROWN, AMBER			
06:50	REBOUND (OFF) by BROWN, AMBER			
06:50	MISSED LAYUP by BROWN, AMBER			
06:49				REBOUND (DEF) by ROBINSON, MYKASA
06:45				MISSED 3PTR by DUVALL, LINDSEY
06:41				REBOUND (OFF) by DIXON, ELIZABETH
06:35				MISSED 3PTR by LAEMMLE, JESSICA
06:32				REBOUND (OFF) by DUVALL, LINDSEY
06:29				MISSED 3PTR by LAEMMLE, JESSICA
06:25	REBOUND (DEF) by BROWN, AMBER			
06:19	MISSED JUMPER by GREEN, GABBIE			
06:16	REBOUND (OFF) by GREEN, GABBIE			
06:05	MISSED 3PTR by GREEN, GABBIE			
06:02				REBOUND (DEF) by LAEMMLE, JESSICA
05:56		77-35	H 42	GOOD! LAYUP by DIXON, ELIZABETH [PNT]
05:56				ASSIST by LAEMMLE, JESSICA
05:46	GOOD! LAYUP by HARRIS, DAYSHANETTE [PNT]	77-37	H 40	
05:36	FOUL (PERSONAL) by BUGG, AYSIA			
05:36	SUB OUT: BUGG, AYSIA			
05:36	SUB OUT: JUDKINS, CARA			
05:36	SUB OUT: GREEN, GABBIE			
05:36	SUB IN: KNIGHT, JAHSYNI			
05:36	SUB IN: PRAPA, ISMINI			
05:36	SUB IN: IGBOKWE, RITA			
05:34				MISSED JUMPER by DIOP, YACINE
05:31	REBOUND (DEF) by HARRIS, DAYSHANETTE			
05:29	TURNOVER (BADPASS) by HARRIS, DAYSHANETTE			
05:29				STEAL by DIOP, YACINE
05:17				TURNOVER (BADPASS) by DIOP, YACINE
05:17	STEAL by KNIGHT, JAHSYNI			
05:04	GOOD! LAYUP by HARRIS, DAYSHANETTE [PNT]	77-39	H 38	
04:53				MISSED LAYUP by DIXON, ELIZABETH
04:49				REBOUND (OFF) by DUVALL, LINDSEY
04:47				MISSED 3PTR by DUVALL, LINDSEY
04:45	REBOUND (DEF) by IGBOKWE, RITA			

Time	VISITORS: Pittsburgh	Score	Margin	HOME: Louisville
04:23	GOOD! JUMPER by HARRIS, DAYSHANETTE [PNT]	77-41	H 36	
03:55				MISSED JUMPER by DIXON, ELIZABETH
03:53	REBOUND (DEF) by PRAPA, ISMINI			
03:47	MISSED 3PTR by HARRIS, DAYSHANETTE			
03:46				REBOUND (DEF) by ROBINSON, MYKASA
03:45	FOUL (PERSONAL) by PRAPA, ISMINI			
03:45	SUB OUT: KNIGHT, JAHSYNI			
03:45	SUB OUT: BROWN, AMBER			
03:45	SUB IN: HAYFORD, EMY			
03:45	SUB IN: JUDKINS, CARA			
03:36	FOUL (PERSONAL) by PRAPA, ISMINI			
03:31				TURNOVER (BADPASS) by DIOP, YACINE
03:31	STEAL by IGBOKWE, RITA			
03:14	MISSED JUMPER by HARRIS, DAYSHANETTE			
03:12				REBOUND (DEF) by DIOP, YACINE
03:06				MISSED 3PTR by DUVALL, LINDSEY
03:03	REBOUND (DEF) by HAYFORD, EMY			
03:02				FOUL (PERSONAL) by DIOP, YACINE
03:02	SUB OUT: JUDKINS, CARA			
03:02	SUB IN: BROWN, AMBER			
03:02	SUB OUT: PRAPA, ISMINI			
03:02	SUB IN: GREEN, GABBIE			
02:46	TURNOVER (BADPASS) by HAYFORD, EMY			
02:46				STEAL by ROBINSON, MYKASA
02:38				MISSED 3PTR by LAEMMLE, JESSICA
02:35				REBOUND (OFF) by DIXON, ELIZABETH
02:26	FOUL (PERSONAL) by HARRIS, DAYSHANETTE			
02:26				MISSED FT by DIOP, YACINE
02:26				REBOUND (OFF) by TEAM
02:26		78-41	H 37	GOOD! FT by DIOP, YACINE
02:04				FOUL (PERSONAL) by LAEMMLE, JESSICA
02:04	GOOD! FT by HARRIS, DAYSHANETTE	78-42	H 36	
02:04	MISSED FT by HARRIS, DAYSHANETTE			
02:02				REBOUND (DEF) by ROBINSON, MYKASA
01:46				FOUL (OFF) by DIXON, ELIZABETH
01:46				TURNOVER (OFFENSIVE) by DIXON, ELIZABETH
01:23				FOUL (PERSONAL) by LAEMMLE, JESSICA
01:23	GOOD! FT by HARRIS, DAYSHANETTE	78-43	H 35	
01:23	GOOD! FT by HARRIS, DAYSHANETTE	78-44	H 34	
01:07		81-44	H 37	GOOD! 3PTR by DIOP, YACINE
01:07				ASSIST by ROBINSON, MYKASA
00:54	MISSED 3PTR by HARRIS, DAYSHANETTE			
00:49	REBOUND (OFF) by IGBOKWE, RITA			
00:47	GOOD! 3PTR by HAYFORD, EMY	81-47	H 34	
00:47	ASSIST by IGBOKWE, RITA			
00:26		83-47	H 36	GOOD! LAYUP by LAEMMLE, JESSICA
00:15				FOUL (PERSONAL) by DIXON, ELIZABETH
00:15	GOOD! FT by BROWN, AMBER	83-48	H 35	
00:15	GOOD! FT by BROWN, AMBER	83-49	H 34	

Pittsburgh 49, Louisville 83

Points from (This Period)	PIT	LOU
In the Paint	6	10
Off Turns	4	1
2nd Chance	3	1
Fast Break	0	4
Bench	3	12

Official Scoring/Possession Reference Chart
Pittsburgh vs Louisville
Period 1
January 26, 2020 at KFC Yum! Center (Denny Crum) - Louisville



Period 1

Starters:

Pittsburgh: 1 HARRIS, DAYSHANETTE (G); 2 BUGG, AYSIA (G); 5 BROWN, AMBER (G); 11 JUDKINS, CARA (C); 12 GREEN, GABBIE (G);
Louisville: 1 EVANS, DANA (G); 4 BALOGUN, ELIZABETH (G); 21 SHOOK, KYLEE (F); 23 JONES, JAZMINE (G); 33 DUNHAM, BIONCA (F);

Time	VISITORS: Pittsburgh	Score	Margin	HOME: Louisville
09:33	GOOD! LAYUP by JUDKINS, CARA	0-2	V 2	
09:05		1-2	V 1	GOOD! FT by DUNHAM, BIONCA
09:05		2-2	T	GOOD! FT by DUNHAM, BIONCA
08:55	GOOD! 3PTR by BUGG, AYSIA	2-5	V 3	
08:38		4-5	V 1	GOOD! LAYUP by DUNHAM, BIONCA [PNT]
07:57	GOOD! JUMPER by HARRIS, DAYSHANETTE	4-7	V 3	
07:37		6-7	V 1	GOOD! JUMPER by JONES, JAZMINE
06:29		7-7	T	GOOD! FT by DIXON, ELIZABETH
06:29		8-7	H 1	GOOD! FT by DIXON, ELIZABETH
05:28		9-7	H 2	GOOD! FT by JONES, JAZMINE
04:58		12-7	H 5	GOOD! 3PTR by EVANS, DANA [FB]
04:29		13-7	H 6	GOOD! FT by EVANS, DANA
03:31		16-7	H 9	GOOD! 3PTR by BALOGUN, ELIZABETH
03:11		18-7	H 11	GOOD! LAYUP by SHOOK, KYLEE [FB]
02:47	GOOD! 3PTR by BUGG, AYSIA	18-10	H 8	
01:55		21-10	H 11	GOOD! 3PTR by EVANS, DANA
01:41	GOOD! 3PTR by GREEN, GABBIE	21-13	H 8	

Pittsburgh 13, Louisville 21

Official Scoring/Possession Reference Chart
Pittsburgh vs Louisville
Period 2
January 26, 2020 at KFC Yum! Center (Denny Crum) - Louisville



Period 2

Starters:

Pittsburgh: 1 HARRIS, DAYSHANETTE (G); 2 BUGG, AYSIA (G); 5 BROWN, AMBER (G); 11 JUDKINS, CARA (C); 12 GREEN, GABBIE (G);

Louisville: 1 EVANS, DANA (G); 4 BALOGUN, ELIZABETH (G); 21 SHOOK, KYLEE (F); 23 JONES, JAZMINE (G); 33 DUNHAM, BIONCA (F);

Time	VISITORS: Pittsburgh	Score	Margin	HOME: Louisville
09:47	GOOD! LAYUP by HARRIS, DAYSHANETTE [PNT]	21-15	H 6	
08:04		24-15	H 9	GOOD! 3PTR by SHOOK, KYLEE
06:41	GOOD! JUMPER by JUDKINS, CARA	24-17	H 7	
06:24		26-17	H 9	GOOD! JUMPER by DUNHAM, BIONCA
05:49		28-17	H 11	GOOD! LAYUP by EVANS, DANA
04:48	GOOD! 3PTR by HARRIS, DAYSHANETTE	28-20	H 8	
04:23		30-20	H 10	GOOD! JUMPER by DUNHAM, BIONCA
03:52		32-20	H 12	GOOD! JUMPER by BALOGUN, ELIZABETH [PNT]
03:27	GOOD! LAYUP by HARRIS, DAYSHANETTE [FB/PNT]	32-22	H 10	
03:10		34-22	H 12	GOOD! JUMPER by ROBINSON, MYKASA
02:50		36-22	H 14	GOOD! LAYUP by ROBINSON, MYKASA [FB]
02:09		38-22	H 16	GOOD! JUMPER by EVANS, DANA [FB/PNT]
02:09		39-22	H 17	GOOD! FT by EVANS, DANA
01:38		41-22	H 19	GOOD! JUMPER by BALOGUN, ELIZABETH
00:56	GOOD! LAYUP by BROWN, AMBER	41-24	H 17	

Pittsburgh 24, Louisville 41

Official Scoring/Possession Reference Chart
Pittsburgh vs Louisville
Period 3
January 26, 2020 at KFC Yum! Center (Denny Crum) - Louisville



Period 3

Starters:

Pittsburgh: 1 HARRIS, DAYSHANETTE (G); 2 BUGG, AYSIA (G); 5 BROWN, AMBER (G); 11 JUDKINS, CARA (C); 12 GREEN, GABBIE (G);
Louisville: 1 EVANS, DANA (G); 4 BALOGUN, ELIZABETH (G); 21 SHOOK, KYLEE (F); 23 JONES, JAZMINE (G); 33 DUNHAM, BIONCA (F);

Time	VISITORS: Pittsburgh	Score	Margin	HOME: Louisville
08:54		43-24	H 19	GOOD! LAYUP by JONES, JAZMINE [FB/PNT]
08:13		45-24	H 21	GOOD! JUMPER by DUNHAM, BIONCA
07:50	GOOD! 3PTR by GREEN, GABBIE	45-27	H 18	
07:11		47-27	H 20	GOOD! LAYUP by SHOOK, KYLEE
06:36		48-27	H 21	GOOD! FT by JONES, JAZMINE
06:36		49-27	H 22	GOOD! FT by JONES, JAZMINE
06:08		51-27	H 24	GOOD! JUMPER by DUNHAM, BIONCA
05:24		53-27	H 26	GOOD! LAYUP by JONES, JAZMINE [PNT]
04:53	GOOD! LAYUP by BROWN, AMBER	53-29	H 24	
04:35		55-29	H 26	GOOD! JUMPER by DIOP, YACINE
04:07		57-29	H 28	GOOD! LAYUP by JONES, JAZMINE [FB]
03:15	GOOD! LAYUP by HAYFORD, EMY	57-31	H 26	
03:00		59-31	H 28	GOOD! LAYUP by DIXON, ELIZABETH [PNT]
02:20	GOOD! JUMPER by BUGG, AYSIA	59-33	H 26	
01:46		60-33	H 27	GOOD! FT by DIXON, ELIZABETH
01:46		61-33	H 28	GOOD! FT by DIXON, ELIZABETH
01:11		62-33	H 29	GOOD! FT by SHOOK, KYLEE
01:11		63-33	H 30	GOOD! FT by SHOOK, KYLEE
00:41	GOOD! JUMPER by JUDKINS, CARA [PNT]	63-35	H 28	
00:01		66-35	H 31	GOOD! 3PTR by BALOGUN, ELIZABETH

Pittsburgh 35, Louisville 66

Official Scoring/Possession Reference Chart
Pittsburgh vs Louisville
Period 4
January 26, 2020 at KFC Yum! Center (Denny Crum) - Louisville



Period 4

Starters:

Pittsburgh: 1 HARRIS, DAYSHANETTE (G); 2 BUGG, AYSIA (G); 5 BROWN, AMBER (G); 11 JUDKINS, CARA (C); 12 GREEN, GABBIE (G);
Louisville: 1 EVANS, DANA (G); 4 BALOGUN, ELIZABETH (G); 21 SHOOK, KYLEE (F); 23 JONES, JAZMINE (G); 33 DUNHAM, BIONCA (F);

Time	VISITORS: Pittsburgh	Score	Margin	HOME: Louisville
09:10		68-35	H 33	GOOD! LAYUP by DIXON, ELIZABETH [PNT]
08:34		71-35	H 36	GOOD! 3PTR by SHOOK, KYLEE
08:02		73-35	H 38	GOOD! LAYUP by BALOGUN, ELIZABETH [FB/PNT]
07:34		75-35	H 40	GOOD! LAYUP by DIOP, YACINE [FB]
05:56		77-35	H 42	GOOD! LAYUP by DIXON, ELIZABETH [PNT]
05:46	GOOD! LAYUP by HARRIS, DAYSHANETTE [PNT]	77-37	H 40	
05:04	GOOD! LAYUP by HARRIS, DAYSHANETTE [PNT]	77-39	H 38	
04:23	GOOD! JUMPER by HARRIS, DAYSHANETTE [PNT]	77-41	H 36	
02:26		78-41	H 37	GOOD! FT by DIOP, YACINE
02:04	GOOD! FT by HARRIS, DAYSHANETTE	78-42	H 36	
01:23	GOOD! FT by HARRIS, DAYSHANETTE	78-43	H 35	
01:23	GOOD! FT by HARRIS, DAYSHANETTE	78-44	H 34	
01:07		81-44	H 37	GOOD! 3PTR by DIOP, YACINE
00:47	GOOD! 3PTR by HAYFORD, EMY	81-47	H 34	
00:26		83-47	H 36	GOOD! LAYUP by LAEMMLE, JESSICA
00:15	GOOD! FT by BROWN, AMBER	83-48	H 35	
00:15	GOOD! FT by BROWN, AMBER	83-49	H 34	

Pittsburgh 49, Louisville 83

Official Substitutions Log
Pittsburgh vs Louisville
Period 1
January 26, 2020 at KFC Yum! Center (Denny Crum) - Louisville



VISITORS: Pittsburgh	Time	Score	HOME: Louisville
1 HARRIS, DAYSHANETTE			1 EVANS, DANA
2 BUGG, AYSIA			4 BALOGUN, ELIZABETH
5 BROWN, AMBER			21 SHOOK, KYLEE
11 JUDKINS, CARA			23 JONES, JAZMINE
12 GREEN, GABBIE			33 DUNHAM, BIONCA
	08:11	5-4	SUB OUT: SHOOK, KYLEE
	08:11		SUB IN: DIXON, ELIZABETH
SUB OUT: 2 BUGG, AYSIA	08:11		
SUB OUT: 11 JUDKINS, CARA	08:11		
SUB IN: 00 KNIGHT, JAHSYNI	08:11		
SUB IN: 23 IGBOKWE, RITA	08:11		
	06:29	7-6	SUB OUT: BALOGUN, ELIZABETH
	06:29		SUB IN: DIOP, YACINE
SUB OUT: 1 HARRIS, DAYSHANETTE	06:29		
SUB OUT: 5 BROWN, AMBER	06:29		
SUB OUT: 12 GREEN, GABBIE	06:29		
SUB IN: 2 BUGG, AYSIA	06:29		
SUB IN: 4 HAYFORD, EMY	06:29		
SUB IN: 11 JUDKINS, CARA	06:29		
SUB OUT: 23 IGBOKWE, RITA	05:31	7-8	
SUB IN: 21 LAMARK, MARCELLA	05:31		
SUB OUT: 00 KNIGHT, JAHSYNI	05:17	7-9	
SUB IN: 1 HARRIS, DAYSHANETTE	05:17		
	05:06	7-9	SUB OUT: DIXON, ELIZABETH
	05:06		SUB IN: SHOOK, KYLEE
SUB OUT: 21 LAMARK, MARCELLA	04:29	7-12	
SUB IN: 5 BROWN, AMBER	04:29		
	04:29		SUB OUT: JONES, JAZMINE
	04:29		SUB IN: BALOGUN, ELIZABETH
SUB OUT: 4 HAYFORD, EMY	03:11	7-18	
SUB OUT: 11 JUDKINS, CARA	03:11		
SUB IN: 12 GREEN, GABBIE	03:11		
SUB IN: 23 IGBOKWE, RITA	03:11		
SUB OUT: 1 HARRIS, DAYSHANETTE	01:22	13-21	
SUB OUT: 5 BROWN, AMBER	01:22		
SUB OUT: 23 IGBOKWE, RITA	01:22		
SUB IN: 4 HAYFORD, EMY	01:22		
SUB IN: 11 JUDKINS, CARA	01:22		
SUB IN: 21 LAMARK, MARCELLA	01:22		
	01:11	13-21	SUB OUT: DUNHAM, BIONCA
	01:11		SUB IN: JONES, JAZMINE
	00:40	13-21	SUB OUT: DIOP, YACINE
	00:40		SUB IN: ROBINSON, MYKASA

Pittsburgh 13, Louisville 21

Official Substitutions Log
Pittsburgh vs Louisville
Period 2
January 26, 2020 at KFC Yum! Center (Denny Crum) - Louisville



VISITORS: Pittsburgh	Time	Score	HOME: Louisville
1 HARRIS, DAYSHANETTE			1 EVANS, DANA
2 BUGG, AYSIA			4 BALOGUN, ELIZABETH
5 BROWN, AMBER			21 SHOOK, KYLEE
11 JUDKINS, CARA			23 JONES, JAZMINE
12 GREEN, GABBIE			33 DUNHAM, BIONCA
SUB OUT: 2 BUGG, AYSIA	10:00	-	
SUB OUT: 4 HAYFORD, EMY	10:00		
SUB OUT: 21 LAMARK, MARCELLA	10:00		
SUB IN: 00 KNIGHT, JAHSYNI	10:00		
SUB IN: 1 HARRIS, DAYSHANETTE	10:00		
SUB IN: 5 BROWN, AMBER	10:00		
SUB OUT: 00 KNIGHT, JAHSYNI	07:53	15-24	
SUB OUT: 1 HARRIS, DAYSHANETTE	07:53		
SUB OUT: 11 JUDKINS, CARA	07:53		
SUB IN: 2 BUGG, AYSIA	07:53		
SUB IN: 4 HAYFORD, EMY	07:53		
SUB IN: 23 IGBOKWE, RITA	07:53		
	06:42	15-24	SUB OUT: SHOOK, KYLEE
	06:42		SUB IN: DUNHAM, BIONCA
SUB OUT: 12 GREEN, GABBIE	06:42		
SUB OUT: 23 IGBOKWE, RITA	06:42		
SUB IN: 1 HARRIS, DAYSHANETTE	06:42		
SUB IN: 11 JUDKINS, CARA	06:42		
SUB OUT: 1 HARRIS, DAYSHANETTE	04:31	20-28	
SUB OUT: 4 HAYFORD, EMY	04:31		
SUB OUT: 11 JUDKINS, CARA	04:31		
SUB IN: 00 KNIGHT, JAHSYNI	04:31		
SUB IN: 12 GREEN, GABBIE	04:31		
SUB IN: 21 LAMARK, MARCELLA	04:31		
SUB OUT: 2 BUGG, AYSIA	03:39	20-32	
SUB OUT: 5 BROWN, AMBER	03:39		
SUB OUT: 21 LAMARK, MARCELLA	03:39		
SUB IN: 1 HARRIS, DAYSHANETTE	03:39		
SUB IN: 11 JUDKINS, CARA	03:39		
SUB IN: 23 IGBOKWE, RITA	03:39		
SUB OUT: 00 KNIGHT, JAHSYNI	02:09	22-38	
SUB OUT: 23 IGBOKWE, RITA	02:09		
SUB IN: 2 BUGG, AYSIA	02:09		
SUB IN: 5 BROWN, AMBER	02:09		

Pittsburgh 24, Louisville 41

Official Substitutions Log
Pittsburgh vs Louisville
Period 3
January 26, 2020 at KFC Yum! Center (Denny Crum) - Louisville



VISITORS: Pittsburgh	Time	Score	HOME: Louisville
1 HARRIS, DAYSHANETTE			1 EVANS, DANA
2 BUGG, AYSIA			4 BALOGUN, ELIZABETH
5 BROWN, AMBER			21 SHOOK, KYLEE
11 JUDKINS, CARA			23 JONES, JAZMINE
12 GREEN, GABBIE			33 DUNHAM, BIONCA
	10:00	-	SUB OUT: ROBINSON, MYKASA
	10:00		SUB IN: SHOOK, KYLEE
SUB OUT: 1 HARRIS, DAYSHANETTE	10:00		
SUB IN: 00 KNIGHT, JAHSYNI	10:00		
SUB OUT: 00 KNIGHT, JAHSYNI	08:29	24-43	
SUB OUT: 11 JUDKINS, CARA	08:29		
SUB IN: 4 HAYFORD, EMY	08:29		
SUB IN: 23 IGBOKWE, RITA	08:29		
SUB OUT: 2 BUGG, AYSIA	06:47	27-47	
SUB OUT: 5 BROWN, AMBER	06:47		
SUB OUT: 23 IGBOKWE, RITA	06:47		
SUB IN: 1 HARRIS, DAYSHANETTE	06:47		
SUB IN: 11 JUDKINS, CARA	06:47		
SUB IN: 21 LAMARK, MARCELLA	06:47		
	06:20	27-49	SUB OUT: BALOGUN, ELIZABETH
	06:20		SUB IN: DIOP, YACINE
SUB OUT: 4 HAYFORD, EMY	05:15	27-53	
SUB OUT: 21 LAMARK, MARCELLA	05:15		
SUB IN: 2 BUGG, AYSIA	05:15		
SUB IN: 5 BROWN, AMBER	05:15		
	04:00	29-57	SUB OUT: JONES, JAZMINE
	04:00		SUB OUT: DUNHAM, BIONCA
	04:00		SUB IN: BALOGUN, ELIZABETH
	04:00		SUB IN: DIXON, ELIZABETH
SUB OUT: 11 JUDKINS, CARA	04:00		
SUB OUT: 12 GREEN, GABBIE	04:00		
SUB IN: 4 HAYFORD, EMY	04:00		
SUB IN: 23 IGBOKWE, RITA	04:00		
	01:59	33-59	SUB OUT: EVANS, DANA
	01:59		SUB IN: ROBINSON, MYKASA
SUB OUT: 1 HARRIS, DAYSHANETTE	01:59		
SUB OUT: 2 BUGG, AYSIA	01:59		
SUB OUT: 5 BROWN, AMBER	01:59		
SUB IN: 00 KNIGHT, JAHSYNI	01:59		
SUB IN: 11 JUDKINS, CARA	01:59		
SUB IN: 12 GREEN, GABBIE	01:59		
SUB OUT: 23 IGBOKWE, RITA	01:11	33-61	
SUB IN: 5 BROWN, AMBER	01:11		
SUB OUT: 00 KNIGHT, JAHSYNI	01:04	33-63	
SUB IN: 1 HARRIS, DAYSHANETTE	01:04		

Pittsburgh 35, Louisville 66

Official Substitutions Log
Pittsburgh vs Louisville
Period 4
January 26, 2020 at KFC Yum! Center (Denny Crum) - Louisville



VISITORS: Pittsburgh	Time	Score	HOME: Louisville
1 HARRIS, DAYSHANETTE			1 EVANS, DANA
2 BUGG, AYSIA			4 BALOGUN, ELIZABETH
5 BROWN, AMBER			21 SHOOK, KYLEE
11 JUDKINS, CARA			23 JONES, JAZMINE
12 GREEN, GABBIE			33 DUNHAM, BIONCA
	07:34	35-75	SUB OUT: BALOGUN, ELIZABETH
	07:34		SUB OUT: SHOOK, KYLEE
	07:34		SUB IN: DUVALL, LINDSEY
	07:34		SUB IN: LAEMMLE, JESSICA
SUB OUT: 4 HAYFORD, EMY	07:34		
SUB IN: 2 BUGG, AYSIA	07:34		
SUB OUT: 2 BUGG, AYSIA	05:36	37-77	
SUB OUT: 11 JUDKINS, CARA	05:36		
SUB OUT: 12 GREEN, GABBIE	05:36		
SUB IN: 00 KNIGHT, JAHSYNI	05:36		
SUB IN: 10 PRAPA, ISMINI	05:36		
SUB IN: 23 IGBOKWE, RITA	05:36		
SUB OUT: 00 KNIGHT, JAHSYNI	03:45	41-77	
SUB OUT: 5 BROWN, AMBER	03:45		
SUB IN: 4 HAYFORD, EMY	03:45		
SUB IN: 11 JUDKINS, CARA	03:45		
SUB OUT: 11 JUDKINS, CARA	03:02	41-77	
SUB IN: 5 BROWN, AMBER	03:02		
SUB OUT: 10 PRAPA, ISMINI	03:02		
SUB IN: 12 GREEN, GABBIE	03:02		

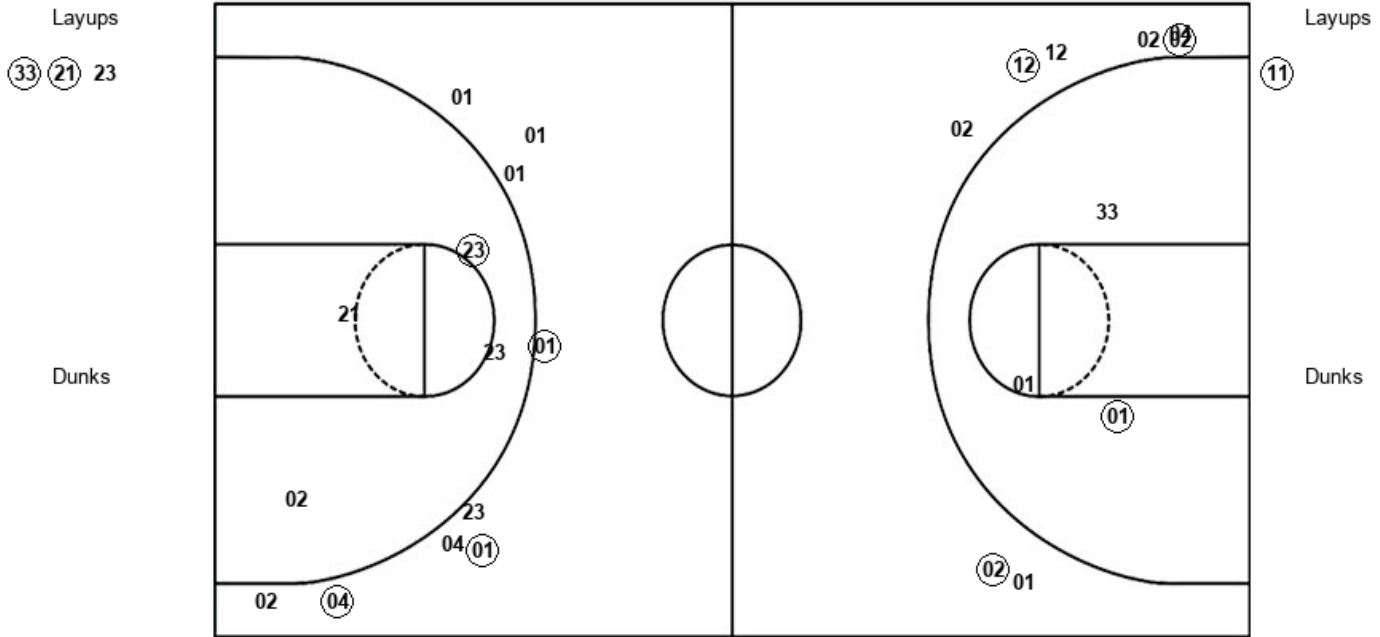
Pittsburgh 49, Louisville 83

Official Shot Chart
Pittsburgh vs Louisville
PERIOD 1 Shots
 January 26, 2020 at KFC Yum! Center (Denny Crum) - Louisville



Louisville

Pittsburgh



LOU : Period 1	Made	Att	Pct
Layups	2	3	66.7
Dunks	0	0	0
2PT Field Goals	3	8	37.5
3PT Field Goals	3	9	33.3
Total Field Goals	6	17	35.3

PIT : Period 1	Made	Att	Pct
Layups	1	1	100.0
Dunks	0	0	0
2PT Field Goals	2	3	66.7
3PT Field Goals	3	8	37.5
Total Field Goals	5	11	45.5

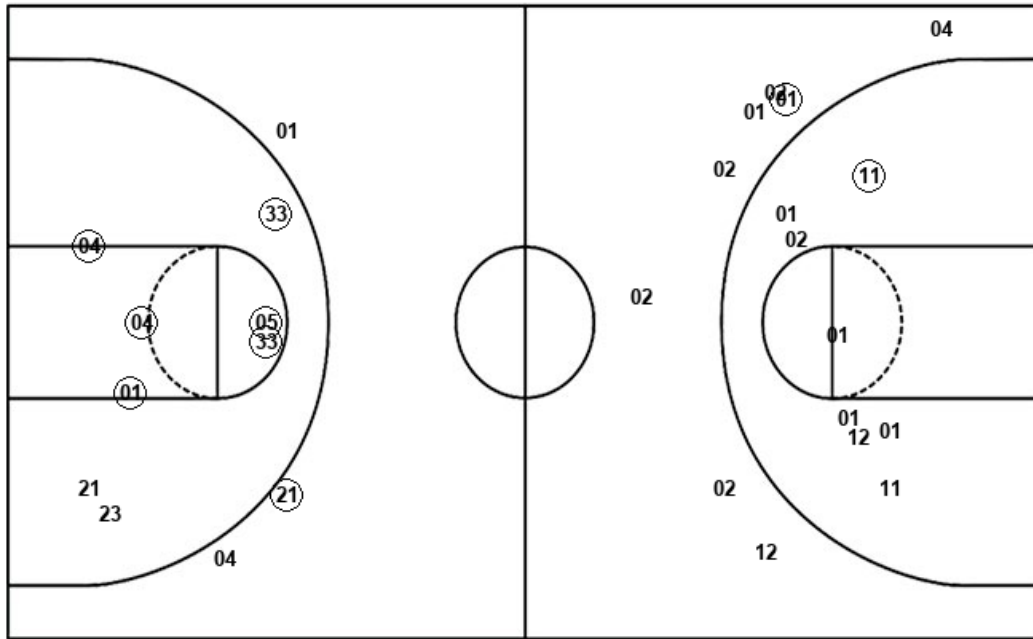
Official Shot Chart
Pittsburgh vs Louisville
PERIOD 2 Shots
 January 26, 2020 at KFC Yum! Center (Denny Crum) - Louisville



Louisville

Pittsburgh

Layups
05 (01) (05)



Layups
(01) 23 05 (01) 11
05 (05)

Dunks

Dunks

LOU : Period 2	Made	Att	Pct
Layups	2	3	66.7
Dunks	0	0	0
2PT Field Goals	8	11	72.7
3PT Field Goals	1	3	33.3
Total Field Goals	9	14	64.3

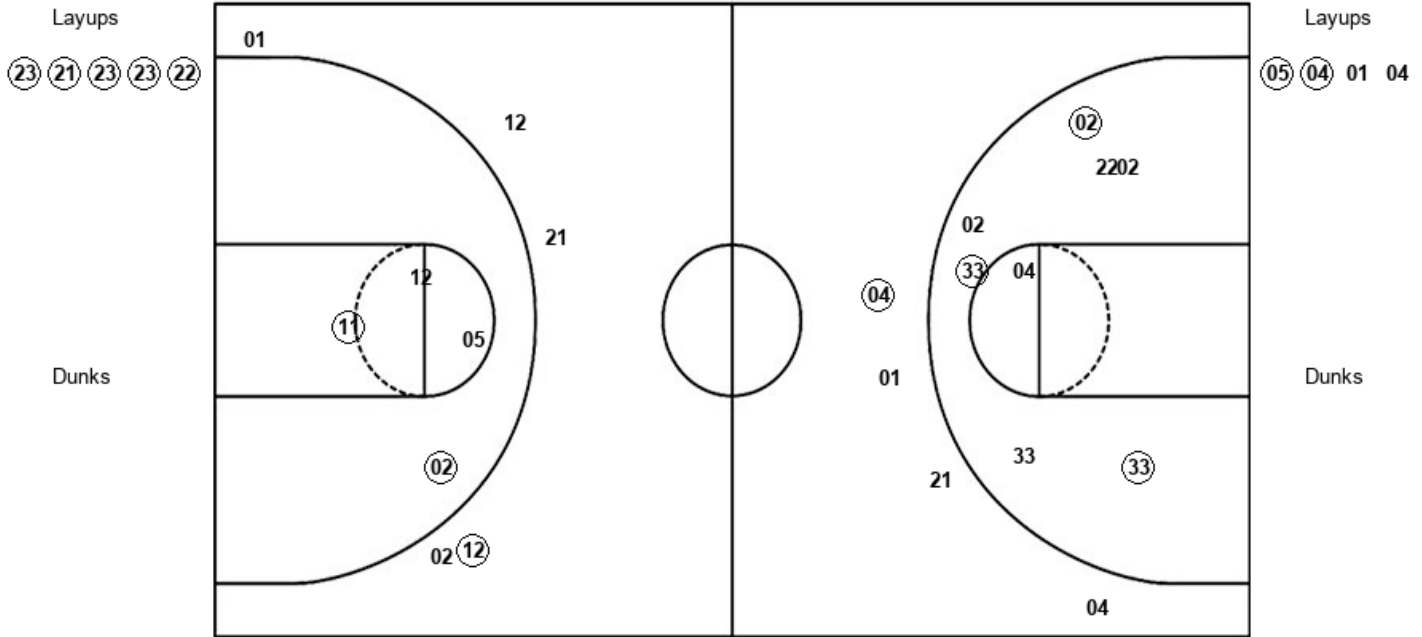
PIT : Period 2	Made	Att	Pct
Layups	3	7	42.9
Dunks	0	0	0
2PT Field Goals	4	15	26.7
3PT Field Goals	1	8	12.5
Total Field Goals	5	23	21.7

Official Shot Chart
Pittsburgh vs Louisville
PERIOD 3 Shots
 January 26, 2020 at KFC Yum! Center (Denny Crum) - Louisville



Louisville

Pittsburgh



LOU : Period 3	Made	Att	Pct
Layups	5	5	100.0
Dunks	0	0	0
2PT Field Goals	8	13	61.5
3PT Field Goals	1	4	25.0
Total Field Goals	9	17	52.9

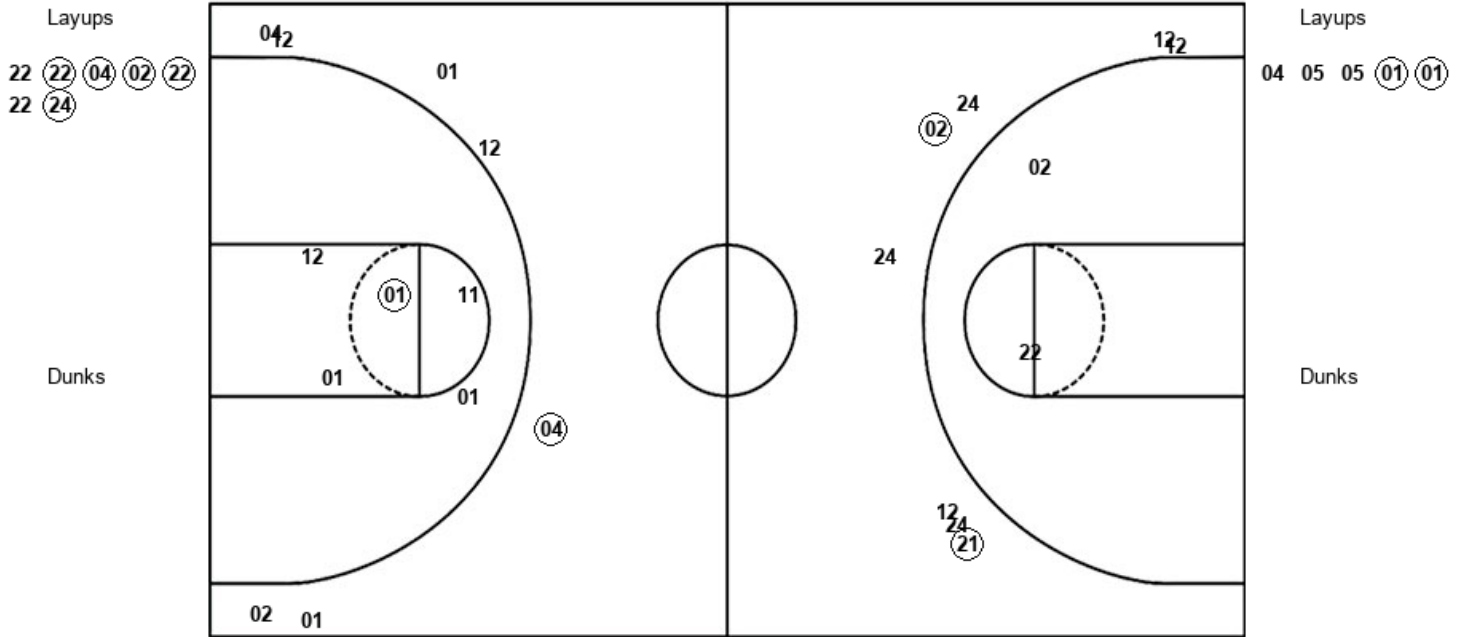
PIT : Period 3	Made	Att	Pct
Layups	2	4	50.0
Dunks	0	0	0
2PT Field Goals	4	8	50.0
3PT Field Goals	1	5	20.0
Total Field Goals	5	13	38.5

Official Shot Chart
Pittsburgh vs Louisville
PERIOD 4 Shots
 January 26, 2020 at KFC Yum! Center (Denny Crum) - Louisville



Louisville

Pittsburgh



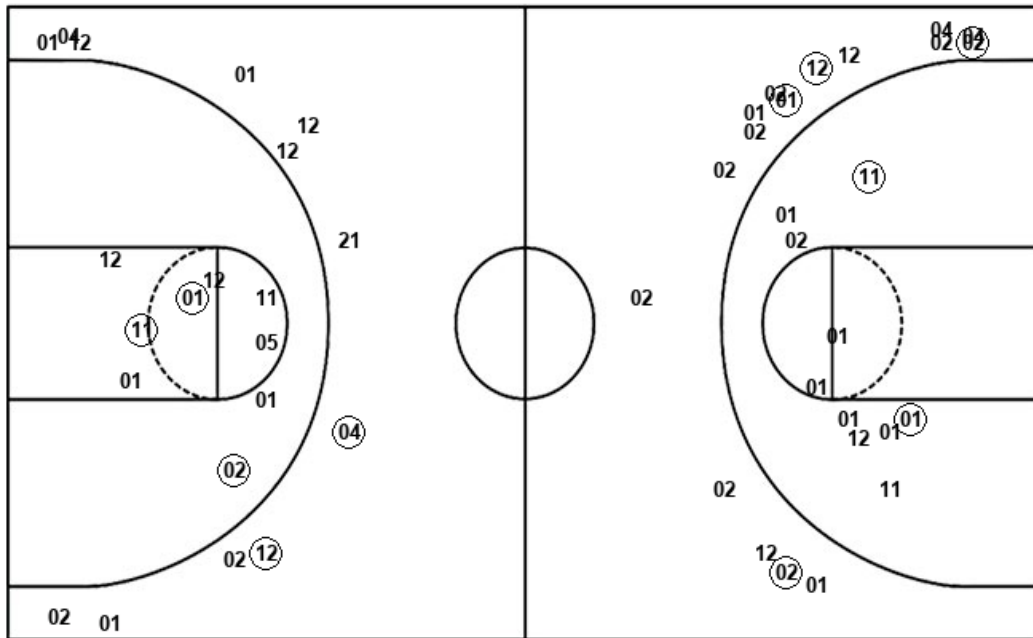
LOU : Period 4	Made	Att	Pct
Layups	5	7	71.4
Dunks	0	0	0
2PT Field Goals	5	9	55.6
3PT Field Goals	2	8	25.0
Total Field Goals	7	17	41.2

PIT : Period 4	Made	Att	Pct
Layups	2	5	40.0
Dunks	0	0	0
2PT Field Goals	3	10	30.0
3PT Field Goals	1	7	14.3
Total Field Goals	4	17	23.5

Official Shot Chart
Pittsburgh vs Louisville
Pittsburgh Team Shots
 January 26, 2020 at KFC Yum! Center (Denny Crum) - Louisville



Layups



Layups

- Layups
 11 01 23 05 01
 11 05 05 05 04
 01 04 04 05 05
 01 01

Dunks

Dunks

PIT : Period 1	Made	Att	Pct
Layups	1	1	100.0
Dunks	0	0	0
2PT Field Goals	2	3	66.7
3PT Field Goals	3	8	37.5
Total Field Goals	5	11	45.5

PIT : Period 3	Made	Att	Pct
Layups	2	4	50.0
Dunks	0	0	0
2PT Field Goals	4	8	50.0
3PT Field Goals	1	5	20.0
Total Field Goals	5	13	38.5

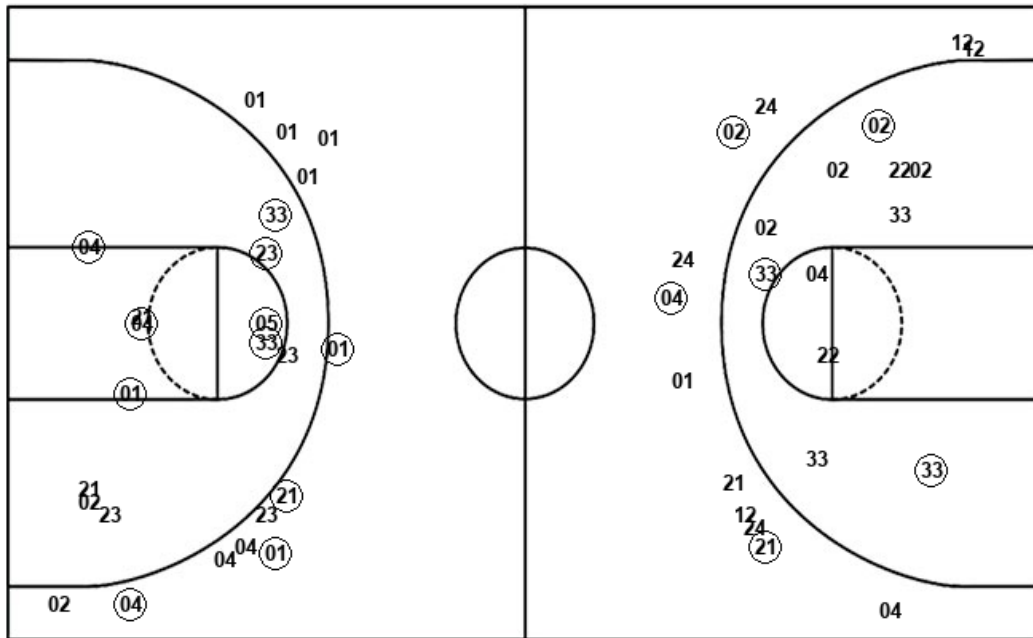
PIT : Period 2	Made	Att	Pct
Layups	3	7	42.9
Dunks	0	0	0
2PT Field Goals	4	15	26.7
3PT Field Goals	1	8	12.5
Total Field Goals	5	23	21.7

PIT : Period 4	Made	Att	Pct
Layups	2	5	40.0
Dunks	0	0	0
2PT Field Goals	3	10	30.0
3PT Field Goals	1	7	14.3
Total Field Goals	4	17	23.5

Official Shot Chart
Pittsburgh vs Louisville
 Louisville Team Shots
 January 26, 2020 at KFC Yum! Center (Denny Crum) - Louisville



Layups



Layups

- (33) (21) 23 05 (01)
- (05) (23) (21) (23) (23)
- (22) 22 (22) (04) (02)
- (22) 22 (24)

Dunks

Dunks

LOU : Period 1	Made	Att	Pct
Layups	2	3	66.7
Dunks	0	0	0
2PT Field Goals	3	8	37.5
3PT Field Goals	3	9	33.3
Total Field Goals	6	17	35.3

LOU : Period 2	Made	Att	Pct
Layups	2	3	66.7
Dunks	0	0	0
2PT Field Goals	8	11	72.7
3PT Field Goals	1	3	33.3
Total Field Goals	9	14	64.3

LOU : Period 3	Made	Att	Pct
Layups	5	5	100.0
Dunks	0	0	0
2PT Field Goals	8	13	61.5
3PT Field Goals	1	4	25.0
Total Field Goals	9	17	52.9

LOU : Period 4	Made	Att	Pct
Layups	5	7	71.4
Dunks	0	0	0
2PT Field Goals	5	9	55.6
3PT Field Goals	2	8	25.0
Total Field Goals	7	17	41.2