

## FINAL SCORE



**Virginia**

**56**



**Louisville**

**71**

January 23, 2020 • KFC Yum! Center (Denny Crum Court) - Louisville

## FINAL STATISTICS

**Official Box Score**  
**Virginia vs Louisville**  
**Game Totals -- Final Statistics**  
**January 23, 2020 at KFC Yum! Center (Denny Crum Court) - Louisville**



**Virginia 56**

No.	Player	S	Pts	FG	3FG	FT	OR	DR	TR	PF	A	TO	Blk	Stl	Min	+/-
01	MILLER, CAROLE	G	8	4-6	0-0	0-0	1	2	3	1	0	1	0	0	22	-15
04	TOUSSAINT, DOMINIQUE	G	4	2-12	0-2	0-2	0	1	1	4	4	5	0	0	32	-19
13	WILLOUGHBY, JOCELYN	G	17	6-14	2-2	3-4	2	9	11	2	2	2	1	1	40	-15
14	JABLONOWSKI, LISA	G	4	2-5	0-1	0-0	1	1	2	0	2	0	0	2	25	-5
23	TOI, AMANDINE	G	0	0-2	0-1	0-0	0	0	0	2	0	3	0	0	13	-13
10	WILLIAMS, SHERA	G	20	6-14	2-7	6-8	0	2	2	2	1	3	0	2	22	-6
15	KORNEGAY-LUCAS, KYLIE	G	1	0-3	0-0	1-2	1	4	5	5	0	1	0	0	21	3
21	LAWSON, DANI	F	2	1-2	0-0	0-2	0	5	5	1	0	0	1	0	25	-5
TEAM								3	1	4	0	0				
<b>TOTALS</b>			<b>56</b>	<b>21-58</b>	<b>4-13</b>	<b>10-18</b>	<b>8</b>	<b>25</b>	<b>33</b>	<b>17</b>	<b>9</b>	<b>15</b>	<b>2</b>	<b>5</b>	<b>199</b>	

*Shooting By Period*

Period	FG	FG%	3FG	3FG%	FT	FT%
1st Qtr	6-14	43%	1-4	25%	0-2	00%
2nd Qtr	3-14	21%	0-2	00%	3-4	75%
3rd Qtr	6-16	38%	0-2	00%	5-9	56%
4th Qtr	6-14	43%	3-5	60%	2-3	67%
1st Half	9-28	32%	1-6	17%	3-6	50%
2nd Half	12-30	40%	3-7	43%	7-12	58%
<b>Game</b>	<b>21-58</b>	<b>36.2%</b>	<b>4-13</b>	<b>30.8%</b>	<b>10-18</b>	<b>55.6%</b>

*Deadball Rebounds: 6,0*  
*Last FG: 4th-00:10*  
*Biggest Run: 8-0*  
*Largest lead: By 2 at 1st-06:23*  
*Technical Fouls: None.*

**Louisville 71**

No.	Player	S	Pts	FG	3FG	FT	OR	DR	TR	PF	A	TO	Blk	Stl	Min	+/-
01	EVANS, DANA	G	21	8-14	3-8	2-2	0	6	6	3	3	2	0	3	35	19
04	BALOGUN, ELIZABETH	G	7	2-6	1-3	2-2	2	10	12	3	1	2	0	0	30	2
21	SHOOK, KYLEE	F	10	4-7	2-3	0-0	0	7	7	1	1	2	6	0	25	17
23	JONES, JAZMINE	G	13	4-8	0-1	5-6	0	1	1	2	2	2	0	3	21	8
33	DUNHAM, BIONCA	F	8	4-8	0-0	0-0	1	0	1	3	2	3	1	1	25	6
02	DIOP, YACINE	G	8	2-5	0-0	4-6	0	1	1	4	1	1	0	0	21	16
05	ROBINSON, MYKASA	G	4	1-4	0-0	2-4	2	1	3	2	2	1	0	1	20	8
12	DUVALL, LINDSEY	G	0	0-3	0-3	0-0	1	2	3	0	0	1	0	0	7	-6
22	DIXON, ELIZABETH	F	0	0-2	0-0	0-0	2	2	4	2	1	1	0	1	16	5
TEAM								1	1	2	0	1				
<b>TOTALS</b>			<b>71</b>	<b>25-57</b>	<b>6-18</b>	<b>15-20</b>	<b>9</b>	<b>31</b>	<b>40</b>	<b>20</b>	<b>13</b>	<b>16</b>	<b>7</b>	<b>9</b>	<b>199</b>	

*Shooting By Period*

Period	FG	FG%	3FG	3FG%	FT	FT%
1st Qtr	10-14	71%	5-8	63%	0-0	0%
2nd Qtr	6-18	33%	0-5	00%	2-2	100%
3rd Qtr	3-11	27%	0-3	00%	6-7	86%
4th Qtr	6-14	43%	1-2	50%	7-11	64%
1st Half	16-32	50%	5-13	38%	2-2	100%
2nd Half	9-25	36%	1-5	20%	13-18	72%
<b>Game</b>	<b>25-57</b>	<b>43.9%</b>	<b>6-18</b>	<b>33.3%</b>	<b>15-20</b>	<b>75.0%</b>

*Deadball Rebounds: 3,0*  
*Last FG: 4th-04:03*  
*Biggest Run: 9-0*  
*Largest lead: By 21 at 3rd-08:13*  
*Technical Fouls: None.*

*Game Notes:*

Officials: **Bryan Brunette, Angela Lewis, Saif Esho**  
 Attendance: **7776**

Start Time: **08:02 PM ET**  
 End Time: **09:57 PM ET**  
 Game Duration: **1:54**  
 Conference Game;

Score	1st	2nd	3rd	4th	TOT
UVA	13	9	17	17	<b>56</b>
LOU	25	14	12	20	<b>71</b>

UVA led for 0:18. LOU led for 39:16.  
 Game was tied for 0:16.  
 Times tied: 0      Lead Changes: 2

Points from	UVA	LOU
In the Paint	20	28
Off Turns	18	16
2nd Chance	6	6
Fast Break	6	10
Bench	23	12

**Official Box Score**  
**Virginia vs Louisville**  
**First Half Statistics Only**  
**January 23, 2020 at KFC Yum! Center (Denny Crum Court) - Louisville**



### Virginia 22

No.	Player	S	Pts	FG	3FG	FT	OR	DR	TR	PF	A	TO	Blk	Stl	Min	+/-
10	WILLIAMS, SHEMERA	G	0	0-4	0-2	0-0	0	1	1	0	0	2	0	0	7	-12
13	WILLOUGHBY, JOCELYN	G	10	3-5	1-1	3-4	1	6	7	1	1	1	1	0	20	-17
14	JABLONOWSKI, LISA	G	2	1-3	0-1	0-0	0	0	0	0	1	0	0	0	15	-7
15	KORNEGAY-LUCAS, KYLIE	G	0	0-3	0-0	0-0	0	1	1	0	0	1	0	0	11	-10
21	LAWSON, DANI	F	0	0-0	0-0	0-0	0	1	1	0	0	0	1	0	9	-7
23	TOI, AMANDINE	G	0	0-2	0-1	0-0	0	0	0	1	0	0	0	0	7	-4
01	MILLER, CAROLE	G	8	4-6	0-0	0-0	1	1	2	0	0	0	0	0	13	-10
04	TOUSSAINT, DOMINIQUE	G	2	1-5	0-1	0-2	0	1	1	1	2	4	0	0	17	-18
	TEAM		0	0-0	0-0	0-0	2	1	3	0	0	0	0	0	0	0
<b>TOTALS</b>			<b>22</b>	<b>9-28</b>	<b>1-6</b>	<b>3-6</b>	<b>4</b>	<b>12</b>	<b>16</b>	<b>3</b>	<b>4</b>	<b>8</b>	<b>2</b>	<b>0</b>	<b>100</b>	

#### Shooting By Period

Period	FG	FG%	3FG	3FG%	FT	FT%
1st Qtr	6-14	43%	1-4	25%	0-2	00%
2nd Qtr	3-14	21%	0-2	00%	3-4	75%
1st Half	9-28	32%	1-6	17%	3-6	50%
Game	21-58	36.2%	4-13	30.8%	10-18	55.6%

Deadball Rebounds: 6,0  
 Last FG Half: UVA 2nd-01:43

### Louisville 39

No.	Player	S	Pts	FG	3FG	FT	OR	DR	TR	PF	A	TO	Blk	Stl	Min	+/-
01	EVANS, DANA	G	15	5-9	3-6	2-2	0	4	4	0	1	1	0	2	20	17
02	DIOP, YACINE	G	4	2-2	0-0	0-0	0	1	1	2	1	1	0	0	6	14
04	BALOGUN, ELIZABETH	G	2	1-4	0-2	0-0	0	2	2	1	1	0	0	0	10	4
05	ROBINSON, MYKASA	G	2	1-3	0-0	0-0	2	0	2	1	2	0	0	0	14	15
12	DUVALL, LINDSEY	G	0	0-2	0-2	0-0	1	1	2	0	0	0	0	0	3	-1
21	SHOOK, KYLEE	F	8	3-5	2-3	0-0	0	6	6	1	1	0	3	0	15	18
22	DIXON, ELIZABETH	F	0	0-0	0-0	0-0	0	1	1	2	1	1	0	1	8	4
23	JONES, JAZMINE	G	0	0-1	0-0	0-0	0	0	0	2	1	2	0	1	6	2
33	DUNHAM, BIONCA	F	8	4-6	0-0	0-0	1	0	1	1	2	1	1	1	17	12
	TEAM		0	0-0	0-0	0-0	0	1	1	0	0	1	0	0	0	0
<b>TOTALS</b>			<b>39</b>	<b>16-32</b>	<b>5-13</b>	<b>2-2</b>	<b>4</b>	<b>16</b>	<b>20</b>	<b>10</b>	<b>10</b>	<b>7</b>	<b>4</b>	<b>5</b>	<b>100</b>	

#### Shooting By Period

Period	FG	FG%	3FG	3FG%	FT	FT%
1st Qtr	10-14	71%	5-8	63%	0-0	0%
2nd Qtr	6-18	33%	0-5	00%	2-2	100%
1st Half	16-32	50%	5-13	38%	2-2	100%
Game	25-57	43.9%	6-18	33.3%	15-20	75.0%

Deadball Rebounds: 3,0  
 Last FG Half: LOU 2nd-00:21

#### Game Notes:

Officials: Bryan Brunette, Angela Lewis, Saif Esho  
 Attendance: 7776

Start Time: 08:02 PM ET  
 End Time: 09:57 PM ET  
 Game Duration: 1:54  
 Conference Game;

Score	1st	2nd	3rd	4th	TOT
UVA	13	9	17	17	56
LOU	25	14	12	20	71

Points from (This Period)	UVA	LOU
In the Paint	8	18
Off Turns	5	11
2nd Chance	4	4
Fast Break	2	6
Bench	0	6

**Official Box Score**  
**Virginia vs Louisville**  
**First Quarter Statistics Only**  
**January 23, 2020 at KFC Yum! Center (Denny Crum Court) - Louisville**



### Virginia 13

No.	Player	S	Pts	FG	3FG	FT	OR	DR	TR	PF	A	TO	Blk	Stl	Min	+/-
01	MILLER, CAROLE	G	6	3-3	0-0	0-0	0	1	1	0	0	0	0	0	8	-7
04	TOUSSAINT, DOMINIQUE	G	2	1-4	0-1	0-2	0	0	0	0	2	3	0	0	10	-12
13	WILLOUGHBY, JOCELYN	G	5	2-3	1-1	0-0	0	2	2	0	1	0	0	0	10	-12
14	JABLONOWSKI, LISA	G	0	0-1	0-0	0-0	0	0	0	0	1	0	0	0	5	-2
23	TOI, AMANDINE	G	0	0-0	0-0	0-0	0	0	0	0	0	0	0	0	5	-2
10	WILLIAMS, SHEMERA	G	0	0-3	0-2	0-0	0	0	0	0	0	1	0	0	5	-10
15	KORNEGAY-LUCAS, KYLIE	G	0	0-0	0-0	0-0	0	0	0	0	0	0	0	0	2	-5
21	LAWSON, DANI	F	0	0-0	0-0	0-0	0	0	0	0	0	0	0	0	5	-10
<b>TEAM</b>								1	1	2	0	0				
<b>TOTALS</b>			<b>13</b>	<b>6-14</b>	<b>1-4</b>	<b>0-2</b>	<b>1</b>	<b>4</b>	<b>5</b>	<b>0</b>	<b>4</b>	<b>4</b>	<b>0</b>	<b>0</b>	<b>50</b>	

#### Shooting By Period

Period	FG	FG%	3FG	3FG%	FT	FT%
1st Qtr	6-14	43%	1-4	25%	0-2	00%
2nd Qtr	3-14	21%	0-2	00%	3-4	75%
1st Half	6-14	43%	1-4	25%	0-2	00%
1st Half	9-28	32%	1-6	17%	3-6	50%
Game	21-58	36.2%	4-13	30.8%	10-18	55.6%

Deadball Rebounds: 6,0

### Louisville 25

No.	Player	S	Pts	FG	3FG	FT	OR	DR	TR	PF	A	TO	Blk	Stl	Min	+/-
01	EVANS, DANA	G	9	3-4	3-4	0-0	0	1	1	0	1	0	0	0	10	12
04	BALOGUN, ELIZABETH	G	2	1-2	0-1	0-0	0	1	1	0	1	0	0	0	5	2
21	SHOOK, KYLEE	F	8	3-4	2-3	0-0	0	3	3	0	1	0	2	0	10	12
23	JONES, JAZMINE	G	0	0-1	0-0	0-0	0	0	0	2	1	2	0	1	6	2
33	DUNHAM, BIONCA	F	2	1-1	0-0	0-0	0	0	0	0	2	1	0	1	7	7
02	DIOP, YACINE	G	4	2-2	0-0	0-0	0	1	1	1	0	1	0	0	5	10
05	ROBINSON, MYKASA	G	0	0-0	0-0	0-0	0	0	0	0	1	0	0	0	4	10
12	DUVALL, LINDSEY	G	0	0-0	0-0	0-0	0	0	0	0	0	0	0	0	0	0
22	DIXON, ELIZABETH	F	0	0-0	0-0	0-0	0	1	1	2	0	1	0	0	3	5
<b>TEAM</b>							0	1	1	0	0	0				
<b>TOTALS</b>			<b>25</b>	<b>10-14</b>	<b>5-8</b>	<b>0-0</b>	<b>0</b>	<b>8</b>	<b>8</b>	<b>5</b>	<b>7</b>	<b>5</b>	<b>2</b>	<b>2</b>	<b>50</b>	

#### Shooting By Period

Period	FG	FG%	3FG	3FG%	FT	FT%
1st Qtr	10-14	71%	5-8	63%	0-0	0%
2nd Qtr	6-18	33%	0-5	00%	2-2	100%
1st Half	10-14	71%	5-8	63%	0-0	0%
1st Half	16-32	50%	5-13	38%	2-2	100%
Game	25-57	43.9%	6-18	33.3%	15-20	75.0%

Deadball Rebounds: 3,0

#### Game Notes:

Officials: Bryan Brunette, Angela Lewis, Saif Esho  
 Attendance: 7776

Start Time: 08:02 PM ET  
 End Time: 09:57 PM ET  
 Game Duration: 1:54  
 Conference Game;

Score	1st	2nd	3rd	4th	TOT
UVA	13	9	17	17	56
LOU	25	14	12	20	71

Points from (This Period)	UVA	LOU
In the Paint	4	8
Off Turns	3	5
2nd Chance	2	0
Fast Break	0	2
Bench	0	4

**Official Play-By-Play  
Virginia vs Louisville**

**January 23, 2020 at KFC Yum! Center (Denny Crum Court) - Louisville**



**Period 1**

**Starters:**

**Virginia:** 13 WILLOUGHBY, JOCELYN (G); 14 JABLONOWSKI, LISA (G); 23 TOI, AMANDINE (G); 1 MILLER, CAROLE (G); 4 TOUSSAINT, DOMINIQUE (G);  
**Louisville:** 1 EVANS, DANA (G); 4 BALOGUN, ELIZABETH (G); 21 SHOOK, KYLEE (F); 23 JONES, JAZMINE (G); 33 DUNHAM, BIONCA (F);

Time	VISITORS: Virginia	Score	Margin	HOME: Louisville
09:43		3-0	H 3	GOOD! 3PTR by SHOOK, KYLEE
09:43				ASSIST by DUNHAM, BIONCA
09:18	MISSED JUMPER by TOUSSAINT, DOMINIQUE			
09:14				REBOUND (DEF) by BALOGUN, ELIZABETH
09:10				MISSED JUMPER by JONES, JAZMINE
09:09	REBOUND (DEF) by TEAM			
08:50	MISSED LAYUP by JABLONOWSKI, LISA			
08:47				REBOUND (DEF) by SHOOK, KYLEE
08:39		5-0	H 5	GOOD! JUMPER by SHOOK, KYLEE [PNT]
08:39				ASSIST by DUNHAM, BIONCA
08:14	GOOD! LAYUP by MILLER, CAROLE	5-2	H 3	
08:14	ASSIST by JABLONOWSKI, LISA			
08:02				MISSED 3PTR by BALOGUN, ELIZABETH
07:59	REBOUND (DEF) by MILLER, CAROLE			
07:44	MISSED JUMPER by WILLOUGHBY, JOCELYN			
07:44				BLOCK by SHOOK, KYLEE
07:44	REBOUND (OFF) by TEAM			
07:43	GOOD! JUMPER by MILLER, CAROLE	5-4	H 1	
07:43	ASSIST by TOUSSAINT, DOMINIQUE			
07:23		7-4	H 3	GOOD! LAYUP by BALOGUN, ELIZABETH
06:54	GOOD! JUMPER by MILLER, CAROLE	7-6	H 1	
06:54	ASSIST by WILLOUGHBY, JOCELYN			
06:41				TURNOVER (BADPASS) by DUNHAM, BIONCA
06:23	GOOD! 3PTR by WILLOUGHBY, JOCELYN	7-9	V 2	
06:23	ASSIST by TOUSSAINT, DOMINIQUE			
06:05		10-9	H 1	GOOD! 3PTR by EVANS, DANA
06:05				ASSIST by BALOGUN, ELIZABETH
06:00	TURNOVER (BADPASS) by TOUSSAINT, DOMINIQUE			
05:53		13-9	H 4	GOOD! 3PTR by SHOOK, KYLEE
05:53				ASSIST by JONES, JAZMINE
05:31	GOOD! JUMPER by TOUSSAINT, DOMINIQUE	13-11	H 2	
05:18				MISSED 3PTR by SHOOK, KYLEE
05:15	REBOUND (DEF) by WILLOUGHBY, JOCELYN			
05:15				SUB OUT: BALOGUN, ELIZABETH
05:15				SUB IN: DIOP, YACINE
05:15	SUB OUT: JABLONOWSKI, LISA			
05:15	SUB OUT: TOI, AMANDINE			
05:15	SUB IN: WILLIAMS, SHEMERA			
05:15	SUB IN: LAWSON, DANI			
05:15				FOUL (PERSONAL) by JONES, JAZMINE
04:54	MISSED JUMPER by WILLIAMS, SHEMERA			
04:54				BLOCK by SHOOK, KYLEE
04:50				REBOUND (DEF) by DIOP, YACINE
04:38				TURNOVER (BADPASS) by JONES, JAZMINE
04:38				
04:38				SUB OUT: DUNHAM, BIONCA
04:38				SUB IN: DIXON, ELIZABETH
04:21	TURNOVER (BADPASS) by TOUSSAINT, DOMINIQUE			
04:21				STEAL by JONES, JAZMINE
03:59				FOUL (OFF) by JONES, JAZMINE
03:59				TURNOVER (OFFENSIVE) by JONES, JAZMINE
03:59				SUB OUT: JONES, JAZMINE
03:59				SUB IN: ROBINSON, MYKASA
03:45				FOUL (PERSONAL) by DIXON, ELIZABETH
03:38	TURNOVER (BADPASS) by WILLIAMS, SHEMERA			
03:21		15-11	H 4	GOOD! JUMPER by DIOP, YACINE
02:49	MISSED 3PTR by WILLIAMS, SHEMERA			
02:45				REBOUND (DEF) by SHOOK, KYLEE
02:38				TURNOVER (LOSTBALL) by DIXON, ELIZABETH
02:30				FOUL (PERSONAL) by DIXON, ELIZABETH
02:30	MISSED FT by TOUSSAINT, DOMINIQUE			
02:30	REBOUND (OFF) by TEAM			
02:30	MISSED FT by TOUSSAINT, DOMINIQUE			
02:29				REBOUND (DEF) by DIXON, ELIZABETH
02:24		18-11	H 7	GOOD! 3PTR by EVANS, DANA
02:24				ASSIST by ROBINSON, MYKASA
02:00				SUB OUT: DIXON, ELIZABETH
02:00				SUB IN: DUNHAM, BIONCA
01:55	TURNOVER (BADPASS) by TOUSSAINT, DOMINIQUE			
01:55				STEAL by DUNHAM, BIONCA

Time	VISITORS: Virginia	Score	Margin	HOME: Louisville
01:51				FOUL (OFF) by DIOP, YACINE
01:51				TURNOVER (OFFENSIVE) by DIOP, YACINE
01:51	SUB OUT: MILLER, CAROLE			
01:51	SUB IN: KORNEGAY-LUCAS, KYLIE			
01:45	MISSED 3PTR by WILLIAMS, SHEMERA			
01:41				REBOUND (DEF) by EVANS, DANA
01:28		20-11	H 9	GOOD! LAYUP by DUNHAM, BIONCA
01:11	MISSED JUMPER by TOUSSAINT, DOMINIQUE			
01:09				REBOUND (DEF) by TEAM
01:03				MISSED 3PTR by EVANS, DANA
00:58	REBOUND (DEF) by WILLOUGHBY, JOCELYN			
00:53	GOOD! LAYUP by WILLOUGHBY, JOCELYN	20-13	H 7	
00:37		23-13	H 10	GOOD! 3PTR by EVANS, DANA
00:37				ASSIST by SHOOK, KYLEE
00:10	MISSED 3PTR by TOUSSAINT, DOMINIQUE			
00:06				REBOUND (DEF) by SHOOK, KYLEE
00:03		25-13	H 12	GOOD! LAYUP by DIOP, YACINE [FB]
00:03				ASSIST by EVANS, DANA

### Virginia 13, Louisville 25

Points from (This Period)	UVA	LOU
In the Paint	4	8
Off Turns	3	5
2nd Chance	2	0
Fast Break	0	2
Bench	0	4

**Official Box Score**  
**Virginia vs Louisville**  
**Second Quarter Statistics Only**  
**January 23, 2020 at KFC Yum! Center (Denny Crum Court) - Louisville**



### Virginia 9

No.	Player	S	Pts	FG	3FG	FT	OR	DR	TR	PF	A	TO	Blk	Stl	Min	+/-
01	MILLER, CAROLE	G	2	1-3	0-0	0-0	1	0	1	0	0	0	0	0	5	-3
04	TOUSSAINT, DOMINIQUE	G	0	0-1	0-0	0-0	0	1	1	1	0	1	0	0	7	-6
13	WILLOUGHBY, JOCELYN	G	5	1-2	0-0	3-4	1	4	5	1	0	1	1	0	10	-5
14	JABLONOWSKI, LISA	G	2	1-2	0-1	0-0	0	0	0	0	0	0	0	0	10	-5
23	TOI, AMANDINE	G	0	0-2	0-1	0-0	0	0	0	1	0	0	0	0	2	-2
10	WILLIAMS, SHEMERA	G	0	0-1	0-0	0-0	0	1	1	0	0	1	0	0	2	-2
15	KORNEGAY-LUCAS, KYLIE	G	0	0-3	0-0	0-0	0	1	1	0	0	1	0	0	9	-5
21	LAWSON, DANI	F	0	0-0	0-0	0-0	0	1	1	0	0	0	1	0	4	3
<b>TEAM</b>							1	0	1	0	0					
<b>TOTALS</b>			<b>9</b>	<b>3-14</b>	<b>0-2</b>	<b>3-4</b>	<b>3</b>	<b>8</b>	<b>11</b>	<b>3</b>	<b>0</b>	<b>4</b>	<b>2</b>	<b>0</b>	<b>50</b>	

#### Shooting By Period

Period	FG	FG%	3FG	3FG%	FT	FT%
3rd Qtr	6-16	38%	0-2	00%	5-9	56%
4th Qtr	6-14	43%	3-5	60%	2-3	67%
2nd Half	3-14	21%	0-2	00%	3-4	75%
2nd Half	12-30	40%	3-7	43%	7-12	58%
Game	21-58	36.2%	4-13	30.8%	10-18	55.6%

Deadball Rebounds: 6,0

### Louisville 14

No.	Player	S	Pts	FG	3FG	FT	OR	DR	TR	PF	A	TO	Blk	Stl	Min	+/-	
01	EVANS, DANA	G	6	2-5	0-2	2-2	0	3	3	0	0	1	0	2	10	5	
04	BALOGUN, ELIZABETH	G	0	0-2	0-1	0-0	0	1	1	1	0	0	0	0	5	2	
21	SHOOK, KYLEE	F	0	0-1	0-0	0-0	0	3	3	1	0	0	1	0	5	6	
23	JONES, JAZMINE	G	0	0-0	0-0	0-0	0	0	0	0	0	0	0	0	0	0	
33	DUNHAM, BIONCA	F	6	3-5	0-0	0-0	1	0	1	1	0	0	1	0	10	5	
02	DIOP, YACINE	G	0	0-0	0-0	0-0	0	0	0	1	1	0	0	0	1	4	
05	ROBINSON, MYKASA	G	2	1-3	0-0	0-0	2	0	2	1	1	0	0	0	10	5	
12	DUVALL, LINDSEY	G	0	0-2	0-2	0-0	1	1	2	0	0	0	0	0	3	-1	
22	DIXON, ELIZABETH	F	0	0-0	0-0	0-0	0	0	0	0	1	0	0	1	5	-1	
<b>TEAM</b>							0	0	0	0	1	1					
<b>TOTALS</b>			<b>14</b>	<b>6-18</b>	<b>0-5</b>	<b>2-2</b>	<b>4</b>	<b>8</b>	<b>12</b>	<b>5</b>	<b>3</b>	<b>2</b>	<b>2</b>	<b>3</b>	<b>50</b>		

#### Shooting By Period

Period	FG	FG%	3FG	3FG%	FT	FT%
3rd Qtr	3-11	27%	0-3	00%	6-7	86%
4th Qtr	6-14	43%	1-2	50%	7-11	64%
2nd Half	6-18	33%	0-5	00%	2-2	100%
2nd Half	9-25	36%	1-5	20%	13-18	72%
Game	25-57	43.9%	6-18	33.3%	15-20	75.0%

Deadball Rebounds: 3,0

#### Game Notes:

Officials: Bryan Brunette, Angela Lewis, Saif Esho  
Attendance: 7776

Start Time: 08:02 PM ET  
End Time: 09:57 PM ET  
Game Duration: 1:54  
Conference Game;

Score	1st	2nd	3rd	4th	TOT
UVA	13	9	17	17	56
LOU	25	14	12	20	71

Points from (This Period)	UVA	LOU
In the Paint	4	10
Off Turns	2	6
2nd Chance	2	4
Fast Break	2	4
Bench	0	2

**Official By-By-Play  
Virginia vs Louisville  
Second Quarter**

**January 23, 2020 at KFC Yum! Center (Denny Crum Court) - Louisville**



**Period 2**

**Starters:**

**Virginia:** 13 WILLOUGHBY, JOCELYN (G); 14 JABLONOWSKI, LISA (G); 23 TOI, AMANDINE (G); 1 MILLER, CAROLE (G); 4 TOUSSAINT, DOMINIQUE (G);

**Louisville:** 1 EVANS, DANA (G); 4 BALOGUN, ELIZABETH (G); 21 SHOOK, KYLEE (F); 23 JONES, JAZMINE (G); 33 DUNHAM, BIONCA (F);

Time	VISITORS: Virginia	Score	Margin	HOME: Louisville
10:00	SUB OUT: WILLIAMS, SHEMERA			
10:00	SUB OUT: LAWSON, DANI			
10:00	SUB IN: MILLER, CAROLE			
10:00	SUB IN: JABLONOWSKI, LISA			
09:32	MISSED JUMPER by WILLOUGHBY, JOCELYN			
09:29	REBOUND (OFF) by MILLER, CAROLE			
09:28	MISSED LAYUP by MILLER, CAROLE			
09:26				REBOUND (DEF) by EVANS, DANA
09:19		27-13	H 14	GOOD! JUMPER by DUNHAM, BIONCA
08:57				FOUL (PERSONAL) by DIOP, YACINE
08:55	MISSED JUMPER by TOUSSAINT, DOMINIQUE			
08:51				REBOUND (DEF) by SHOOK, KYLEE
08:46		29-13	H 16	GOOD! LAYUP by DUNHAM, BIONCA [FB]
08:46				ASSIST by DIOP, YACINE
08:34	TIMEOUT 30SEC			
08:34				SUB OUT: DIOP, YACINE
08:34				SUB IN: BALOGUN, ELIZABETH
08:34	SUB OUT: MILLER, CAROLE			
08:34	SUB IN: TOI, AMANDINE			
08:28				FOUL (PERSONAL) by BALOGUN, ELIZABETH
08:22	MISSED LAYUP by KORNEGAY-LUCAS, KYLIE			
08:22				BLOCK by SHOOK, KYLEE
08:18				REBOUND (DEF) by SHOOK, KYLEE
08:04				MISSED LAYUP by DUNHAM, BIONCA
08:01	REBOUND (DEF) by TOUSSAINT, DOMINIQUE			
07:55	MISSED 3PTR by TOI, AMANDINE			
07:52	REBOUND (OFF) by WILLOUGHBY, JOCELYN			
07:50				FOUL (PERSONAL) by SHOOK, KYLEE
07:50	GOOD! FT by WILLOUGHBY, JOCELYN	29-14	H 15	
07:50	GOOD! FT by WILLOUGHBY, JOCELYN	29-15	H 14	
07:37		31-15	H 16	GOOD! LAYUP by DUNHAM, BIONCA
07:37				ASSIST by ROBINSON, MYKASA
07:14	TURNOVER (LOSTBALL) by WILLOUGHBY, JOCELYN			
07:14				STEAL by EVANS, DANA
07:10	FOUL (PERSONAL) by TOI, AMANDINE			
07:10		32-15	H 17	GOOD! FT by EVANS, DANA
07:10		33-15	H 18	GOOD! FT by EVANS, DANA
06:54	MISSED LAYUP by TOI, AMANDINE			
06:54				BLOCK by DUNHAM, BIONCA
06:51				REBOUND (DEF) by EVANS, DANA
06:45				MISSED JUMPER by SHOOK, KYLEE
06:41				REBOUND (OFF) by ROBINSON, MYKASA
06:32	FOUL (PERSONAL) by TOUSSAINT, DOMINIQUE			
06:32	SUB OUT: KORNEGAY-LUCAS, KYLIE			
06:32	SUB OUT: TOI, AMANDINE			
06:32	SUB IN: MILLER, CAROLE			
06:32	SUB IN: WILLIAMS, SHEMERA			
06:26		35-15	H 20	GOOD! LAYUP by EVANS, DANA
06:14	MISSED JUMPER by WILLIAMS, SHEMERA			
06:10				REBOUND (DEF) by SHOOK, KYLEE
05:58				MISSED JUMPER by EVANS, DANA
05:54	REBOUND (DEF) by WILLOUGHBY, JOCELYN			
05:50	GOOD! JUMPER by MILLER, CAROLE [FB]	35-17	H 18	
05:42	SUB OUT: TOUSSAINT, DOMINIQUE			
05:42	SUB IN: KORNEGAY-LUCAS, KYLIE			
05:25				MISSED 3PTR by EVANS, DANA
05:21	REBOUND (DEF) by WILLIAMS, SHEMERA			
05:17	MISSED LAYUP by KORNEGAY-LUCAS, KYLIE			
05:16	REBOUND (OFF) by TEAM			
05:13	MISSED LAYUP by MILLER, CAROLE			
05:10				REBOUND (DEF) by BALOGUN, ELIZABETH
04:55				MISSED JUMPER by ROBINSON, MYKASA
04:53	REBOUND (DEF) by KORNEGAY-LUCAS, KYLIE			
04:53				SUB OUT: SHOOK, KYLEE
04:53				SUB IN: DIXON, ELIZABETH
04:39	TURNOVER (LOSTBALL) by WILLIAMS, SHEMERA			
04:39				STEAL by EVANS, DANA
04:35		37-17	H 20	GOOD! LAYUP by EVANS, DANA [FB]
04:11				FOUL (PERSONAL) by DUNHAM, BIONCA
04:11	SUB OUT: WILLIAMS, SHEMERA			



Time	VISITORS: Virginia	Score	Margin	HOME: Louisville
04:11	SUB IN: LAWSON, DANI			
04:06	GOOD! LAYUP by JABLONOWSKI, LISA	37-19	H 18	
03:54				MISSED 3PTR by BALOGUN, ELIZABETH
03:54	REBOUND (DEF) by LAWSON, DANI			
03:36	MISSED 3PTR by JABLONOWSKI, LISA			
03:33				REBOUND (DEF) by EVANS, DANA
03:15				MISSED JUMPER by BALOGUN, ELIZABETH
03:15	BLOCK by WILLOUGHBY, JOCELYN			
03:11	REBOUND (DEF) by WILLOUGHBY, JOCELYN			
03:11				FOUL (PERSONAL) by ROBINSON, MYKASA
03:11				SUB OUT: BALOGUN, ELIZABETH
03:11				SUB IN: DUVALL, LINDSEY
03:11	MISSED FT by WILLOUGHBY, JOCELYN			
03:11	REBOUND (OFF) by TEAM			
03:11	GOOD! FT by WILLOUGHBY, JOCELYN	37-20	H 17	
03:11	SUB OUT: MILLER, CAROLE			
03:11	SUB IN: TOUSSAINT, DOMINIQUE			
02:51				TURNOVER (BADPASS) by EVANS, DANA
02:28	TURNOVER (BADPASS) by TOUSSAINT, DOMINIQUE			
02:28				STEAL by DIXON, ELIZABETH
02:18				MISSED 3PTR by DUVALL, LINDSEY
02:17				REBOUND (OFF) by ROBINSON, MYKASA
02:17	FOUL (PERSONAL) by WILLOUGHBY, JOCELYN			
02:03				MISSED JUMPER by DUNHAM, BIONCA
02:03				REBOUND (OFF) by DUNHAM, BIONCA
02:03				TIMEOUT 30SEC
02:03	BLOCK by LAWSON, DANI			
01:57				TURNOVER (SHOTCLOCK) by TEAM
01:43	GOOD! LAYUP by WILLOUGHBY, JOCELYN	37-22	H 15	
01:20				MISSED JUMPER by ROBINSON, MYKASA
01:17	REBOUND (DEF) by WILLOUGHBY, JOCELYN			
01:06	TURNOVER (LOSTBALL) by KORNEGAY-LUCAS, KYLIE			
00:41				MISSED 3PTR by EVANS, DANA
00:38				REBOUND (OFF) by DUVALL, LINDSEY
00:21		39-22	H 17	GOOD! JUMPER by ROBINSON, MYKASA [PNT]
00:21				ASSIST by DIXON, ELIZABETH
00:09	MISSED JUMPER by KORNEGAY-LUCAS, KYLIE			
00:06				REBOUND (DEF) by DUVALL, LINDSEY
00:00				MISSED 3PTR by DUVALL, LINDSEY
00:00	REBOUND (DEF) by WILLOUGHBY, JOCELYN			

### Virginia 22, Louisville 39

Points from (This Period)	UVA	LOU
In the Paint	4	10
Off Turns	2	6
2nd Chance	2	4
Fast Break	2	4
Bench	0	2

**Official Box Score**  
**Virginia vs Louisville**  
**Second Half Statistics Only**  
**January 23, 2020 at KFC Yum! Center (Denny Crum Court) - Louisville**



**Virginia 34**

No.	Player	S	Pts	FG	3FG	FT	OR	DR	TR	PF	A	TO	Blk	Stl	Min	+/-
10	WILLIAMS, SHEMERA	G	20	6-10	2-5	6-8	0	1	1	2	1	1	0	2	15	6
13	WILLOUGHBY, JOCELYN	G	7	3-9	1-1	0-0	1	3	4	1	1	1	0	1	20	2
14	JABLONOWSKI, LISA	G	2	1-2	0-0	0-0	1	1	2	0	1	0	0	2	10	2
15	KORNEGAY-LUCAS, KYLIE	G	1	0-0	0-0	1-2	1	3	4	5	0	0	0	0	10	13
21	LAWSON, DANI	F	2	1-2	0-0	0-2	0	4	4	1	0	0	0	0	16	2
23	TOI, AMANDINE	G	0	0-0	0-0	0-0	0	0	0	1	0	3	0	0	7	-9
01	MILLER, CAROLE	G	0	0-0	0-0	0-0	0	1	1	1	0	1	0	0	8	-5
04	TOUSSAINT, DOMINIQUE	G	2	1-7	0-1	0-0	0	0	0	3	2	1	0	0	15	-1
	TEAM		0	0-0	0-0	0-0	1	0	1	0	0	0	0	0	0	
<b>TOTALS</b>			<b>34</b>	<b>12-30</b>	<b>3-7</b>	<b>7-12</b>	<b>4</b>	<b>13</b>	<b>17</b>	<b>14</b>	<b>5</b>	<b>7</b>	<b>0</b>	<b>5</b>	<b>99</b>	

*Shooting By Period*

Period	FG	FG%	3FG	3FG%	FT	FT%
3rd Qtr	6-16	38%	0-2	00%	5-9	56%
4th Qtr	6-14	43%	3-5	60%	2-3	67%
2nd Half	12-30	40%	3-7	43%	7-12	58%
Game	21-58	36.2%	4-13	30.8%	10-18	55.6%

*Deadball Rebounds: 6,0*

*Last FG Half: UVA 4th-00:10*

**Louisville 32**

No.	Player	S	Pts	FG	3FG	FT	OR	DR	TR	PF	A	TO	Blk	Stl	Min	+/-
01	EVANS, DANA	G	6	3-5	0-2	0-0	0	2	2	3	2	1	0	1	15	2
02	DIOP, YACINE	G	4	0-3	0-0	4-6	0	0	0	2	0	0	0	0	14	2
04	BALOGUN, ELIZABETH	G	5	1-2	1-1	2-2	2	8	10	2	0	2	0	0	20	-2
05	ROBINSON, MYKASA	G	2	0-1	0-0	2-4	0	1	1	1	0	1	0	1	7	-7
12	DUVALL, LINDSEY	G	0	0-1	0-1	0-0	0	1	1	0	0	1	0	0	4	-5
21	SHOOK, KYLEE	F	2	1-2	0-0	0-0	0	1	1	0	0	2	3	0	9	-1
22	DIXON, ELIZABETH	F	0	0-2	0-0	0-0	2	1	3	0	0	0	0	0	9	1
23	JONES, JAZMINE	G	13	4-7	0-1	5-6	0	1	1	0	1	0	0	2	14	6
33	DUNHAM, BIONCA	F	0	0-2	0-0	0-0	0	0	0	2	0	2	0	0	7	-6
	TEAM		0	0-0	0-0	0-0	1	0	1	0	0	0	0	0	0	
<b>TOTALS</b>			<b>32</b>	<b>9-25</b>	<b>1-5</b>	<b>13-18</b>	<b>5</b>	<b>15</b>	<b>20</b>	<b>10</b>	<b>3</b>	<b>9</b>	<b>3</b>	<b>4</b>	<b>99</b>	

*Shooting By Period*

Period	FG	FG%	3FG	3FG%	FT	FT%
3rd Qtr	3-11	27%	0-3	00%	6-7	86%
4th Qtr	6-14	43%	1-2	50%	7-11	64%
2nd Half	9-25	36%	1-5	20%	13-18	72%
Game	25-57	43.9%	6-18	33.3%	15-20	75.0%

*Deadball Rebounds: 3,0*

*Last FG Half: LOU 4th-04:03*

*Game Notes:*

Officials: **Bryan Brunette, Angela Lewis, Saif Esho**

Attendance: **7776**

Start Time: **08:02 PM ET**

End Time: **09:57 PM ET**

Game Duration: **1:54**

Conference Game;

Score	1st	2nd	3rd	4th	TOT
UVA	13	9	17	17	<b>56</b>
LOU	25	14	12	20	<b>71</b>

Points from (This Period)	UVA	LOU
In the Paint	12	10
Off Turns	13	5
2nd Chance	2	2
Fast Break	4	4
Bench	23	6

**Official Box Score**  
**Virginia vs Louisville**  
**Third Quarter Statistics Only**  
**January 23, 2020 at KFC Yum! Center (Denny Crum Court) - Louisville**



### Virginia 34

No.	Player	S	Pts	FG	3FG	FT	OR	DR	TR	PF	A	TO	Blk	Stl	Min	+/-
01	MILLER, CAROLE	G	0	0-0	0-0	0-0	0	1	1	0	0	0	0	0	3	0
04	TOUSSAINT, DOMINIQUE	G	2	1-2	0-0	0-0	0	0	0	1	0	0	0	0	8	1
13	WILLOUGHBY, JOCELYN	G	2	1-6	0-0	0-0	0	1	1	1	0	1	0	1	10	5
14	JABLONOWSKI, LISA	G	2	1-2	0-0	0-0	1	1	2	0	1	0	0	2	8	2
23	TOI, AMANDINE	G	0	0-0	0-0	0-0	0	0	0	0	0	0	0	0	0	0
10	WILLIAMS, SHEMERA	G	8	2-4	0-2	4-5	0	0	0	0	1	0	0	1	7	5
15	KORNEGAY-LUCAS, KYLIE	G	1	0-0	0-0	1-2	1	2	3	3	0	0	0	0	7	7
21	LAWSON, DANI	F	2	1-2	0-0	0-2	0	1	1	1	0	0	0	0	8	5
<b>TEAM</b>							1	0	1	0						
<b>TOTALS</b>			<b>17</b>	<b>6-16</b>	<b>0-2</b>	<b>5-9</b>	<b>3</b>	<b>6</b>	<b>9</b>	<b>6</b>	<b>2</b>	<b>1</b>	<b>0</b>	<b>4</b>	<b>50</b>	

*Shooting By Period*

Period	FG	FG%	3FG	3FG%	FT	FT%
2nd Half	0-0	0%	0-0	0%	0-0	0%
Game	21-58	36.2%	4-13	30.8%	10-18	55.6%

Deadball Rebounds: 6,0

### Louisville 32

No.	Player	S	Pts	FG	3FG	FT	OR	DR	TR	PF	A	TO	Blk	Stl	Min	+/-
01	EVANS, DANA	G	0	0-2	0-2	0-0	0	2	2	1	1	1	0	0	9	-6
04	BALOGUN, ELIZABETH	G	0	0-1	0-0	0-0	2	5	7	2	0	0	0	0	10	-5
21	SHOOK, KYLEE	F	2	1-2	0-0	0-0	0	0	0	0	0	2	2	0	8	-3
23	JONES, JAZMINE	G	7	2-3	0-1	3-3	0	0	0	0	1	0	0	0	8	-2
33	DUNHAM, BIONCA	F	0	0-2	0-0	0-0	0	0	0	2	0	2	0	0	7	-6
02	DIOP, YACINE	G	2	0-1	0-0	2-2	0	0	0	1	0	0	0	0	4	-1
05	ROBINSON, MYKASA	G	1	0-0	0-0	1-2	0	1	1	0	0	0	0	0	3	-2
12	DUVALL, LINDSEY	G	0	0-0	0-0	0-0	0	0	0	0	0	0	0	0	0	0
22	DIXON, ELIZABETH	F	0	0-0	0-0	0-0	0	0	0	0	0	0	0	0	0	0
<b>TEAM</b>							0	0	0	0						
<b>TOTALS</b>			<b>12</b>	<b>3-11</b>	<b>0-3</b>	<b>6-7</b>	<b>2</b>	<b>8</b>	<b>10</b>	<b>6</b>	<b>2</b>	<b>5</b>	<b>2</b>	<b>0</b>	<b>50</b>	

*Shooting By Period*

Period	FG	FG%	3FG	3FG%	FT	FT%
2nd Half	0-0	0%	0-0	0%	0-0	0%
Game	25-57	43.9%	6-18	33.3%	15-20	75.0%

Deadball Rebounds: 3,0

Game Notes:

Officials: Bryan Brunette, Angela Lewis, Saif Esho  
 Attendance: 7776

Start Time: 08:02 PM ET  
 End Time: 09:57 PM ET  
 Game Duration: 1:54  
 Conference Game;

Score	1st	2nd	3rd	4th	TOT
UVA	13	9	17	17	<b>56</b>
LOU	25	14	12	20	<b>71</b>

Points from (This Period)	UVA	LOU
In the Paint	8	4
Off Turns	6	0
2nd Chance	2	0
Fast Break	4	0
Bench	11	3

**Official Play-By-Play  
Virginia vs Louisville  
Third Quarter**

**January 23, 2020 at KFC Yum! Center (Denny Crum Court) - Louisville**



**Period 3**

**Starters:**

**Virginia:** 13 WILLOUGHBY, JOCELYN (G); 14 JABLONOWSKI, LISA (G); 23 TOI, AMANDINE (G); 1 MILLER, CAROLE (G); 4 TOUSSAINT, DOMINIQUE (G);  
**Louisville:** 1 EVANS, DANA (G); 4 BALOGUN, ELIZABETH (G); 21 SHOOK, KYLEE (F); 23 JONES, JAZMINE (G); 33 DUNHAM, BIONCA (F);

Time	VISITORS: Virginia	Score	Margin	HOME: Louisville
10:00				SUB OUT: ROBINSON, MYKASA
10:00				SUB OUT: DUVALL, LINDSEY
10:00				SUB OUT: DIXON, ELIZABETH
10:00				SUB IN: BALOGUN, ELIZABETH
10:00				SUB IN: SHOOK, KYLEE
10:00				SUB IN: JONES, JAZMINE
10:00	SUB OUT: KORNEGAY-LUCAS, KYLIE			
10:00	SUB IN: MILLER, CAROLE			
09:33	MISSED JUMPER by WILLOUGHBY, JOCELYN			
09:30				REBOUND (DEF) by EVANS, DANA
09:15		41-22	H 19	GOOD! LAYUP by JONES, JAZMINE
09:15				ASSIST by EVANS, DANA
08:57	TURNOVER (BADPASS) by WILLOUGHBY, JOCELYN			
08:32				MISSED JUMPER by DUNHAM, BIONCA
08:29	REBOUND (DEF) by WILLOUGHBY, JOCELYN			
08:24	MISSED JUMPER by WILLOUGHBY, JOCELYN			
08:21				REBOUND (DEF) by BALOGUN, ELIZABETH
08:13		43-22	H 21	GOOD! JUMPER by SHOOK, KYLEE
08:13				ASSIST by JONES, JAZMINE
07:46	GOOD! LAYUP by LAWSON, DANI	43-24	H 19	
07:46	ASSIST by JABLONOWSKI, LISA			
07:24				MISSED 3PTR by EVANS, DANA
07:20	REBOUND (DEF) by MILLER, CAROLE			
07:14	GOOD! JUMPER by TOUSSAINT, DOMINIQUE	43-26	H 17	
06:53				MISSED JUMPER by DUNHAM, BIONCA
06:49				REBOUND (OFF) by BALOGUN, ELIZABETH
06:47				MISSED 3PTR by EVANS, DANA
06:43	REBOUND (DEF) by JABLONOWSKI, LISA			
06:43	SUB OUT: MILLER, CAROLE			
06:43	SUB OUT: TOUSSAINT, DOMINIQUE			
06:43	SUB IN: WILLIAMS, SHEMERA			
06:43	SUB IN: KORNEGAY-LUCAS, KYLIE			
06:19	MISSED JUMPER by LAWSON, DANI			
06:18				REBOUND (DEF) by EVANS, DANA
06:18	FOUL (PERSONAL) by KORNEGAY-LUCAS, KYLIE			
06:08				MISSED 3PTR by JONES, JAZMINE
06:04				REBOUND (OFF) by BALOGUN, ELIZABETH
05:57				TURNOVER (BADPASS) by DUNHAM, BIONCA
05:57	STEAL by JABLONOWSKI, LISA			
05:50	MISSED LAYUP by WILLOUGHBY, JOCELYN			
05:50				BLOCK by SHOOK, KYLEE
05:50	REBOUND (OFF) by TEAM			
05:49	GOOD! JUMPER by JABLONOWSKI, LISA	43-28	H 15	
05:49	ASSIST by WILLIAMS, SHEMERA			
05:22				TURNOVER (BADPASS) by SHOOK, KYLEE
05:22	STEAL by WILLOUGHBY, JOCELYN			
05:17	GOOD! LAYUP by WILLOUGHBY, JOCELYN [FB]	43-30	H 13	
05:10				TIMEOUT 30SEC
05:10				SUB OUT: EVANS, DANA
05:10				SUB IN: ROBINSON, MYKASA
05:02				TURNOVER (BADPASS) by SHOOK, KYLEE
05:02	STEAL by JABLONOWSKI, LISA			
04:44	MISSED 3PTR by WILLIAMS, SHEMERA			
04:41				REBOUND (DEF) by BALOGUN, ELIZABETH
04:16	FOUL (PERSONAL) by WILLOUGHBY, JOCELYN			
04:16				SUB OUT: SHOOK, KYLEE
04:16				SUB IN: DIOP, YACINE
04:16	SUB OUT: LAWSON, DANI			
04:16	SUB IN: TOUSSAINT, DOMINIQUE			
04:16				MISSED FT by ROBINSON, MYKASA
04:16				REBOUND (OFF) by TEAM
04:16		44-30	H 14	GOOD! FT by ROBINSON, MYKASA
04:16				SUB OUT: JONES, JAZMINE
04:16				SUB IN: EVANS, DANA
04:16	SUB OUT: JABLONOWSKI, LISA			
04:16	SUB IN: LAWSON, DANI			
04:09	GOOD! LAYUP by WILLIAMS, SHEMERA	44-32	H 12	
04:09				FOUL (PERSONAL) by DUNHAM, BIONCA
04:09	GOOD! FT by WILLIAMS, SHEMERA	44-33	H 11	

Time	VISITORS: Virginia	Score	Margin	HOME: Louisville
04:03				MISSED LAYUP by BALOGUN, ELIZABETH
03:59	REBOUND (DEF) by LAWSON, DANI			
03:33	MISSED JUMPER by WILLOUGHBY, JOCELYN			
03:29				REBOUND (DEF) by ROBINSON, MYKASA
03:05				TURNOVER (3SEC) by DUNHAM, BIONCA
03:00				FOUL (PERSONAL) by DUNHAM, BIONCA
03:00	MISSED FT by LAWSON, DANI			
03:00	REBOUND (OFF) by TEAM			
03:00	MISSED FT by LAWSON, DANI			
02:59	REBOUND (OFF) by KORNEGAY-LUCAS, KYLIE			
02:44	MISSED JUMPER by TOUSSAINT, DOMINIQUE			
02:41				REBOUND (DEF) by BALOGUN, ELIZABETH
02:31	FOUL (PERSONAL) by LAWSON, DANI			
02:31				SUB OUT: ROBINSON, MYKASA
02:31				SUB OUT: DUNHAM, BIONCA
02:31				SUB IN: SHOOK, KYLEE
02:31				SUB IN: JONES, JAZMINE
02:31	SUB OUT: KORNEGAY-LUCAS, KYLIE			
02:31	SUB IN: JABLONOWSKI, LISA			
02:31		45-33	H 12	GOOD! FT by DIOP, YACINE
02:31		46-33	H 13	GOOD! FT by DIOP, YACINE
02:27				FOUL (PERSONAL) by DIOP, YACINE
02:27	SUB OUT: LAWSON, DANI			
02:27	SUB IN: KORNEGAY-LUCAS, KYLIE			
02:27	GOOD! FT by WILLIAMS, SHEMERA	46-34	H 12	
02:27	GOOD! FT by WILLIAMS, SHEMERA	46-35	H 11	
02:15				MISSED JUMPER by DIOP, YACINE
02:13	REBOUND (DEF) by KORNEGAY-LUCAS, KYLIE			
02:13				FOUL (PERSONAL) by BALOGUN, ELIZABETH
01:54	MISSED JUMPER by WILLOUGHBY, JOCELYN			
01:53	FOUL (PERSONAL) by KORNEGAY-LUCAS, KYLIE			
01:52				REBOUND (DEF) by BALOGUN, ELIZABETH
01:33				MISSED JUMPER by SHOOK, KYLEE
01:29	REBOUND (DEF) by KORNEGAY-LUCAS, KYLIE			
01:12				FOUL (PERSONAL) by EVANS, DANA
01:12	MISSED FT by WILLIAMS, SHEMERA			
01:12	REBOUND (OFF) by TEAM			
01:12	GOOD! FT by WILLIAMS, SHEMERA	46-36	H 10	
01:01		48-36	H 12	GOOD! JUMPER by JONES, JAZMINE [PNT]
01:01	FOUL (PERSONAL) by TOUSSAINT, DOMINIQUE			
01:01		49-36	H 13	GOOD! FT by JONES, JAZMINE
00:45	MISSED 3PTR by WILLIAMS, SHEMERA			
00:42	REBOUND (OFF) by JABLONOWSKI, LISA			
00:41	MISSED LAYUP by JABLONOWSKI, LISA			
00:41				BLOCK by SHOOK, KYLEE
00:37				REBOUND (DEF) by BALOGUN, ELIZABETH
00:24	FOUL (PERSONAL) by KORNEGAY-LUCAS, KYLIE			
00:24		50-36	H 14	GOOD! FT by JONES, JAZMINE
00:24		51-36	H 15	GOOD! FT by JONES, JAZMINE
00:22				FOUL (PERSONAL) by BALOGUN, ELIZABETH
00:22	MISSED FT by KORNEGAY-LUCAS, KYLIE			
00:22	REBOUND (OFF) by TEAM			
00:22	GOOD! FT by KORNEGAY-LUCAS, KYLIE	51-37	H 14	
00:05				TURNOVER (BADPASS) by EVANS, DANA
00:05	STEAL by WILLIAMS, SHEMERA			
00:00	GOOD! LAYUP by WILLIAMS, SHEMERA [FB]	51-39	H 12	

### Virginia 39, Louisville 51

Points from (This Period)	UVA	LOU
In the Paint	8	4
Off Turns	6	0
2nd Chance	2	0
Fast Break	4	0
Bench	11	3

**Official Box Score**  
**Virginia vs Louisville**  
**Fourth Quarter Statistics Only**  
**January 23, 2020 at KFC Yum! Center (Denny Crum Court) - Louisville**



**Virginia 17**

No.	Player	S	Pts	FG	3FG	FT	OR	DR	TR	PF	A	TO	Blk	Stl	Min	+/-
01	MILLER, CAROLE	G	0	0-0	0-0	0-0	0	0	0	1	0	1	0	0	5	-5
04	TOUSSAINT, DOMINIQUE	G	0	0-5	0-1	0-0	0	0	0	2	2	1	0	0	7	-2
13	WILLOUGHBY, JOCELYN	G	5	2-3	1-1	0-0	1	2	3	0	1	0	0	0	10	-3
14	JABLONOWSKI, LISA	G	0	0-0	0-0	0-0	0	0	0	0	0	0	0	0	2	0
23	TOI, AMANDINE	G	0	0-0	0-0	0-0	0	0	0	1	0	3	0	0	7	-9
10	WILLIAMS, SHERERA	G	12	4-6	2-3	2-3	0	1	1	2	0	1	0	1	8	1
15	KORNEGAY-LUCAS, KYLIE	G	0	0-0	0-0	0-0	0	1	1	2	0	0	0	0	3	6
21	LAWSON, DANI	F	0	0-0	0-0	0-0	0	3	3	0	0	0	0	0	8	-3
<b>TEAM</b>							0	0	0	0	0	0	0	0		
<b>TOTALS</b>			<b>17</b>	<b>6-14</b>	<b>3-5</b>	<b>2-3</b>	<b>1</b>	<b>7</b>	<b>8</b>	<b>8</b>	<b>3</b>	<b>6</b>	<b>0</b>	<b>1</b>	<b>49</b>	

*Shooting By Period*

Period	FG	FG%	3FG	3FG%	FT	FT%
Game	21-58	36.2%	4-13	30.8%	10-18	55.6%

Deadball Rebounds: 6,0

**Louisville 20**

No.	Player	S	Pts	FG	3FG	FT	OR	DR	TR	PF	A	TO	Blk	Stl	Min	+/-
01	EVANS, DANA	G	6	3-3	0-0	0-0	0	0	0	2	1	0	0	1	6	8
04	BALOGUN, ELIZABETH	G	5	1-1	1-1	2-2	0	3	3	0	0	2	0	0	10	3
21	SHOOK, KYLEE	F	0	0-0	0-0	0-0	0	1	1	0	0	0	1	0	1	2
23	JONES, JAZMINE	G	6	2-4	0-0	2-3	0	1	1	0	0	0	0	2	6	8
33	DUNHAM, BIONCA	F	0	0-0	0-0	0-0	0	0	0	0	0	0	0	0	0	0
02	DIOP, YACINE	G	2	0-2	0-0	2-4	0	0	0	1	0	0	0	0	10	3
05	ROBINSON, MYKASA	G	1	0-1	0-0	1-2	0	0	0	1	0	1	0	1	4	-5
12	DUVALL, LINDSEY	G	0	0-1	0-1	0-0	0	1	1	0	0	1	0	0	4	-5
22	DIXON, ELIZABETH	F	0	0-2	0-0	0-0	2	1	3	0	0	0	0	0	9	1
<b>TEAM</b>							1	0	1	0	0	0	0	0		
<b>TOTALS</b>			<b>20</b>	<b>6-14</b>	<b>1-2</b>	<b>7-11</b>	<b>3</b>	<b>7</b>	<b>10</b>	<b>4</b>	<b>1</b>	<b>4</b>	<b>1</b>	<b>4</b>	<b>49</b>	

*Shooting By Period*

Period	FG	FG%	3FG	3FG%	FT	FT%
Game	25-57	43.9%	6-18	33.3%	15-20	75.0%

Deadball Rebounds: 3,0

Game Notes:

Officials: Bryan Brunette, Angela Lewis, Saif Esho

Attendance: 7776

Start Time: 08:02 PM ET

End Time: 09:57 PM ET

Game Duration: 1:54

Conference Game;

Score	1st	2nd	3rd	4th	TOT
UVA	13	9	17	17	<b>56</b>
LOU	25	14	12	20	<b>71</b>

Points from (This Period)	UVA	LOU
In the Paint	4	6
Off Turns	7	5
2nd Chance	0	2
Fast Break	0	4
Bench	12	3

**Official Play-By-Play  
Virginia vs Louisville  
Fourth Quarter**

**January 23, 2020 at KFC Yum! Center (Denny Crum Court) - Louisville**



**Period 4**

**Starters:**

**Virginia:** 13 WILLOUGHBY, JOCELYN (G); 14 JABLONOWSKI, LISA (G); 23 TOI, AMANDINE (G); 1 MILLER, CAROLE (G); 4 TOUSSAINT, DOMINIQUE (G);

**Louisville:** 1 EVANS, DANA (G); 4 BALOGUN, ELIZABETH (G); 21 SHOOK, KYLEE (F); 23 JONES, JAZMINE (G); 33 DUNHAM, BIONCA (F);

Time	VISITORS: Virginia	Score	Margin	HOME: Louisville
09:50		53-39	H 14	GOOD! JUMPER by JONES, JAZMINE [PNT]
09:50	FOUL (PERSONAL) by TOUSSAINT, DOMINIQUE			
09:50		54-39	H 15	GOOD! FT by JONES, JAZMINE
09:18	MISSED JUMPER by WILLOUGHBY, JOCELYN			
09:18				BLOCK by SHOOK, KYLEE
09:18				REBOUND (DEF) by SHOOK, KYLEE
09:01				TIMEOUT 30SEC
08:54	FOUL (PERSONAL) by TOUSSAINT, DOMINIQUE			
08:52				TURNOVER (BADPASS) by BALOGUN, ELIZABETH
08:52	STEAL by WILLIAMS, SHEMERA			
08:51				FOUL (PERSONAL) by EVANS, DANA
08:51	SUB OUT: TOUSSAINT, DOMINIQUE			
08:51	SUB IN: MILLER, CAROLE			
08:51	MISSED FT by WILLIAMS, SHEMERA			
08:51	REBOUND (OFF) by TEAM			
08:51	GOOD! FT by WILLIAMS, SHEMERA	54-40	H 14	
08:42	FOUL (PERSONAL) by KORNEGAY-LUCAS, KYLIE			
08:42				SUB OUT: SHOOK, KYLEE
08:42				SUB IN: DIXON, ELIZABETH
08:26				MISSED JUMPER by JONES, JAZMINE
08:23	REBOUND (DEF) by KORNEGAY-LUCAS, KYLIE			
08:11	GOOD! LAYUP by WILLIAMS, SHEMERA	54-42	H 12	
07:55	FOUL (PERSONAL) by MILLER, CAROLE			
07:55	SUB OUT: JABLONOWSKI, LISA			
07:55	SUB OUT: KORNEGAY-LUCAS, KYLIE			
07:55	SUB IN: LAWSON, DANI			
07:55	SUB IN: TOI, AMANDINE			
07:55		55-42	H 13	GOOD! FT by JONES, JAZMINE
07:55				MISSED FT by JONES, JAZMINE
07:52	REBOUND (DEF) by WILLOUGHBY, JOCELYN			
07:36	GOOD! JUMPER by WILLOUGHBY, JOCELYN	55-44	H 11	
07:09	FOUL (PERSONAL) by TOI, AMANDINE			
07:09				MISSED FT by DIOP, YACINE
07:09				REBOUND (OFF) by TEAM
07:09		56-44	H 12	GOOD! FT by DIOP, YACINE
06:58				FOUL (PERSONAL) by EVANS, DANA
06:57	TURNOVER (BADPASS) by TOI, AMANDINE			
06:57				STEAL by EVANS, DANA
06:53		58-44	H 14	GOOD! LAYUP by EVANS, DANA [FB]
06:38	TURNOVER (BADPASS) by WILLIAMS, SHEMERA			
06:38				STEAL by JONES, JAZMINE
06:19				MISSED JUMPER by JONES, JAZMINE
06:19				REBOUND (OFF) by TEAM
06:12				MISSED LAYUP by DIXON, ELIZABETH
06:09	REBOUND (DEF) by LAWSON, DANI			
06:03	TURNOVER (LOSTBALL) by MILLER, CAROLE			
06:03				STEAL by JONES, JAZMINE
05:58		60-44	H 16	GOOD! LAYUP by EVANS, DANA [FB]
05:55	TIMEOUT 30SEC			
05:55	SUB OUT: WILLIAMS, SHEMERA			
05:55	SUB IN: TOUSSAINT, DOMINIQUE			
05:40	GOOD! 3PTR by WILLOUGHBY, JOCELYN	60-47	H 13	
05:40	ASSIST by TOUSSAINT, DOMINIQUE			
05:19		63-47	H 16	GOOD! 3PTR by BALOGUN, ELIZABETH
05:19				ASSIST by EVANS, DANA
05:03	MISSED JUMPER by TOUSSAINT, DOMINIQUE			
04:59				REBOUND (DEF) by JONES, JAZMINE
04:47		65-47	H 18	GOOD! JUMPER by JONES, JAZMINE [PNT]
04:25	MISSED LAYUP by TOUSSAINT, DOMINIQUE			
04:22				REBOUND (DEF) by BALOGUN, ELIZABETH
04:10				MISSED JUMPER by DIOP, YACINE
04:07				REBOUND (OFF) by DIXON, ELIZABETH
04:03		67-47	H 20	GOOD! JUMPER by EVANS, DANA
03:41	TURNOVER (TRAVEL) by TOI, AMANDINE			
03:41				SUB OUT: EVANS, DANA
03:41				SUB OUT: JONES, JAZMINE
03:41				SUB IN: ROBINSON, MYKASA
03:41				SUB IN: DUVALL, LINDSEY
03:41	SUB OUT: TOI, AMANDINE			
03:41	SUB IN: WILLIAMS, SHEMERA			

Time	VISITORS: Virginia	Score	Margin	HOME: Louisville
03:24				TURNOVER (TRAVEL) by DUVALL, LINDSEY
03:24	SUB OUT: MILLER, CAROLE			
03:24	SUB IN: KORNEGAY-LUCAS, KYLIE			
03:18	GOOD! JUMPER by WILLIAMS, SHEMERA [PNT]	67-49	H 18	
03:18				FOUL (PERSONAL) by ROBINSON, MYKASA
03:18	GOOD! FT by WILLIAMS, SHEMERA	67-50	H 17	
03:10				MISSED JUMPER by ROBINSON, MYKASA
03:07	REBOUND (DEF) by LAWSON, DANI			
03:03	MISSED LAYUP by WILLIAMS, SHEMERA			
03:00				REBOUND (DEF) by DUVALL, LINDSEY
02:50				TURNOVER (TRAVEL) by ROBINSON, MYKASA
02:41	GOOD! 3PTR by WILLIAMS, SHEMERA	67-53	H 14	
02:41	ASSIST by WILLOUGHBY, JOCELYN			
02:29	FOUL (PERSONAL) by KORNEGAY-LUCAS, KYLIE			
02:29	SUB OUT: KORNEGAY-LUCAS, KYLIE			
02:29	SUB IN: TOI, AMANDINE			
02:29		68-53	H 15	GOOD! FT by DIOP, YACINE
02:29				MISSED FT by DIOP, YACINE
02:28	REBOUND (DEF) by WILLIAMS, SHEMERA			
02:28				FOUL (PERSONAL) by DIOP, YACINE
02:20	MISSED JUMPER by TOUSSAINT, DOMINIQUE			
02:19				REBOUND (DEF) by DIXON, ELIZABETH
01:53				MISSED JUMPER by DIOP, YACINE
01:50	REBOUND (DEF) by WILLOUGHBY, JOCELYN			
01:42	MISSED 3PTR by TOUSSAINT, DOMINIQUE			
01:39				REBOUND (DEF) by BALOGUN, ELIZABETH
01:17				MISSED 3PTR by DUVALL, LINDSEY
01:13				REBOUND (OFF) by DIXON, ELIZABETH
01:13				MISSED LAYUP by DIXON, ELIZABETH
01:11	REBOUND (DEF) by LAWSON, DANI			
01:07	MISSED 3PTR by WILLIAMS, SHEMERA			
01:03	REBOUND (OFF) by WILLOUGHBY, JOCELYN			
01:00	MISSED LAYUP by TOUSSAINT, DOMINIQUE			
00:57				REBOUND (DEF) by BALOGUN, ELIZABETH
00:54	FOUL (PERSONAL) by WILLIAMS, SHEMERA			
00:54		69-53	H 16	GOOD! FT by BALOGUN, ELIZABETH
00:54		70-53	H 17	GOOD! FT by BALOGUN, ELIZABETH
00:54	TIMEOUT 30SEC			
00:46	TURNOVER (TRAVEL) by TOI, AMANDINE			
00:25				TURNOVER (TRAVEL) by BALOGUN, ELIZABETH
00:24	TURNOVER (BADPASS) by TOUSSAINT, DOMINIQUE			
00:24				STEAL by ROBINSON, MYKASA
00:20	FOUL (PERSONAL) by WILLIAMS, SHEMERA			
00:20				MISSED FT by ROBINSON, MYKASA
00:20				REBOUND (OFF) by TEAM
00:20		71-53	H 18	GOOD! FT by ROBINSON, MYKASA
00:10	GOOD! 3PTR by WILLIAMS, SHEMERA	71-56	H 15	
00:10	ASSIST by TOUSSAINT, DOMINIQUE			

### Virginia 56, Louisville 71

Points from (This Period)	UVA	LOU
In the Paint	4	6
Off Turns	7	5
2nd Chance	0	2
Fast Break	0	4
Bench	12	3



**Official Scoring/Possession Reference Chart**  
**Virginia vs Louisville**  
**Period 1**  
**January 23, 2020 at KFC Yum! Center (Denny Crum Court) - Louisville**



**Period 1**

**Starters:**

**Virginia:** 13 WILLOUGHBY, JOCELYN (G); 14 JABLONOWSKI, LISA (G); 23 TOI, AMANDINE (G); 1 MILLER, CAROLE (G); 4 TOUSSAINT, DOMINIQUE (G);

**Louisville:** 1 EVANS, DANA (G); 4 BALOGUN, ELIZABETH (G); 21 SHOOK, KYLEE (F); 23 JONES, JAZMINE (G); 33 DUNHAM, BIONCA (F);

Time	VISITORS: Virginia	Score	Margin	HOME: Louisville
09:43		3-0	H 3	GOOD! 3PTR by SHOOK, KYLEE
08:39		5-0	H 5	GOOD! JUMPER by SHOOK, KYLEE [PNT]
08:14	GOOD! LAYUP by MILLER, CAROLE	5-2	H 3	
07:43	GOOD! JUMPER by MILLER, CAROLE	5-4	H 1	
07:23		7-4	H 3	GOOD! LAYUP by BALOGUN, ELIZABETH
06:54	GOOD! JUMPER by MILLER, CAROLE	7-6	H 1	
06:23	GOOD! 3PTR by WILLOUGHBY, JOCELYN	7-9	V 2	
06:05		10-9	H 1	GOOD! 3PTR by EVANS, DANA
05:53		13-9	H 4	GOOD! 3PTR by SHOOK, KYLEE
05:31	GOOD! JUMPER by TOUSSAINT, DOMINIQUE	13-11	H 2	
03:21		15-11	H 4	GOOD! JUMPER by DIOP, YACINE
02:24		18-11	H 7	GOOD! 3PTR by EVANS, DANA
01:28		20-11	H 9	GOOD! LAYUP by DUNHAM, BIONCA
00:53	GOOD! LAYUP by WILLOUGHBY, JOCELYN	20-13	H 7	
00:37		23-13	H 10	GOOD! 3PTR by EVANS, DANA
00:03		25-13	H 12	GOOD! LAYUP by DIOP, YACINE [FB]

**Virginia 13, Louisville 25**

**Official Scoring/Possession Reference Chart**  
**Virginia vs Louisville**  
**Period 2**  
**January 23, 2020 at KFC Yum! Center (Denny Crum Court) - Louisville**



**Period 2**

**Starters:**

**Virginia:** 13 WILLOUGHBY, JOCELYN (G); 14 JABLONOWSKI, LISA (G); 23 TOI, AMANDINE (G); 1 MILLER, CAROLE (G); 4 TOUSSAINT, DOMINIQUE (G);

**Louisville:** 1 EVANS, DANA (G); 4 BALOGUN, ELIZABETH (G); 21 SHOOK, KYLEE (F); 23 JONES, JAZMINE (G); 33 DUNHAM, BIONCA (F);

Time	VISITORS: Virginia	Score	Margin	HOME: Louisville
09:19		27-13	H 14	GOOD! JUMPER by DUNHAM, BIONCA
08:46		29-13	H 16	GOOD! LAYUP by DUNHAM, BIONCA [FB]
07:50	GOOD! FT by WILLOUGHBY, JOCELYN	29-14	H 15	
07:50	GOOD! FT by WILLOUGHBY, JOCELYN	29-15	H 14	
07:37		31-15	H 16	GOOD! LAYUP by DUNHAM, BIONCA
07:10		32-15	H 17	GOOD! FT by EVANS, DANA
07:10		33-15	H 18	GOOD! FT by EVANS, DANA
06:26		35-15	H 20	GOOD! LAYUP by EVANS, DANA
05:50	GOOD! JUMPER by MILLER, CAROLE [FB]	35-17	H 18	
04:35		37-17	H 20	GOOD! LAYUP by EVANS, DANA [FB]
04:06	GOOD! LAYUP by JABLONOWSKI, LISA	37-19	H 18	
03:11	GOOD! FT by WILLOUGHBY, JOCELYN	37-20	H 17	
01:43	GOOD! LAYUP by WILLOUGHBY, JOCELYN	37-22	H 15	
00:21		39-22	H 17	GOOD! JUMPER by ROBINSON, MYKASA [PNT]

**Virginia 22, Louisville 39**

**Official Scoring/Possession Reference Chart**  
**Virginia vs Louisville**  
**Period 3**  
**January 23, 2020 at KFC Yum! Center (Denny Crum Court) - Louisville**



**Period 3**

**Starters:**

**Virginia:** 13 WILLOUGHBY, JOCELYN (G); 14 JABLONOWSKI, LISA (G); 23 TOI, AMANDINE (G); 1 MILLER, CAROLE (G); 4 TOUSSAINT, DOMINIQUE (G);  
**Louisville:** 1 EVANS, DANA (G); 4 BALOGUN, ELIZABETH (G); 21 SHOOK, KYLEE (F); 23 JONES, JAZMINE (G); 33 DUNHAM, BIONCA (F);

Time	VISITORS: Virginia	Score	Margin	HOME: Louisville
09:15		41-22	H 19	GOOD! LAYUP by JONES, JAZMINE
08:13		43-22	H 21	GOOD! JUMPER by SHOOK, KYLEE
07:46	GOOD! LAYUP by LAWSON, DANI	43-24	H 19	
07:14	GOOD! JUMPER by TOUSSAINT, DOMINIQUE	43-26	H 17	
05:49	GOOD! JUMPER by JABLONOWSKI, LISA	43-28	H 15	
05:17	GOOD! LAYUP by WILLOUGHBY, JOCELYN [FB]	43-30	H 13	
04:16		44-30	H 14	GOOD! FT by ROBINSON, MYKASA
04:09	GOOD! LAYUP by WILLIAMS, SHEMERA	44-32	H 12	
04:09	GOOD! FT by WILLIAMS, SHEMERA	44-33	H 11	
02:31		45-33	H 12	GOOD! FT by DIOP, YACINE
02:31		46-33	H 13	GOOD! FT by DIOP, YACINE
02:27	GOOD! FT by WILLIAMS, SHEMERA	46-34	H 12	
02:27	GOOD! FT by WILLIAMS, SHEMERA	46-35	H 11	
01:12	GOOD! FT by WILLIAMS, SHEMERA	46-36	H 10	
01:01		48-36	H 12	GOOD! JUMPER by JONES, JAZMINE [PNT]
01:01		49-36	H 13	GOOD! FT by JONES, JAZMINE
00:24		50-36	H 14	GOOD! FT by JONES, JAZMINE
00:24		51-36	H 15	GOOD! FT by JONES, JAZMINE
00:22	GOOD! FT by KORNEGAY-LUCAS, KYLIE	51-37	H 14	
00:00	GOOD! LAYUP by WILLIAMS, SHEMERA [FB]	51-39	H 12	

**Virginia 39, Louisville 51**

**Official Scoring/Possession Reference Chart  
Virginia vs Louisville**

**Period 4**

**January 23, 2020 at KFC Yum! Center (Denny Crum Court) - Louisville**



**Period 4**

**Starters:**

**Virginia:** 13 WILLOUGHBY, JOCELYN (G); 14 JABLONOWSKI, LISA (G); 23 TOI, AMANDINE (G); 1 MILLER, CAROLE (G); 4 TOUSSAINT, DOMINIQUE (G);

**Louisville:** 1 EVANS, DANA (G); 4 BALOGUN, ELIZABETH (G); 21 SHOOK, KYLEE (F); 23 JONES, JAZMINE (G); 33 DUNHAM, BIONCA (F);

Time	VISITORS: Virginia	Score	Margin	HOME: Louisville
09:50		53-39	H 14	GOOD! JUMPER by JONES, JAZMINE [PNT]
09:50		54-39	H 15	GOOD! FT by JONES, JAZMINE
08:51	GOOD! FT by WILLIAMS, SHEMERA	54-40	H 14	
08:11	GOOD! LAYUP by WILLIAMS, SHEMERA	54-42	H 12	
07:55		55-42	H 13	GOOD! FT by JONES, JAZMINE
07:36	GOOD! JUMPER by WILLOUGHBY, JOCELYN	55-44	H 11	
07:09		56-44	H 12	GOOD! FT by DIOP, YACINE
06:53		58-44	H 14	GOOD! LAYUP by EVANS, DANA [FB]
05:58		60-44	H 16	GOOD! LAYUP by EVANS, DANA [FB]
05:40	GOOD! 3PTR by WILLOUGHBY, JOCELYN	60-47	H 13	
05:19		63-47	H 16	GOOD! 3PTR by BALOGUN, ELIZABETH
04:47		65-47	H 18	GOOD! JUMPER by JONES, JAZMINE [PNT]
04:03		67-47	H 20	GOOD! JUMPER by EVANS, DANA
03:18	GOOD! JUMPER by WILLIAMS, SHEMERA [PNT]	67-49	H 18	
03:18	GOOD! FT by WILLIAMS, SHEMERA	67-50	H 17	
02:41	GOOD! 3PTR by WILLIAMS, SHEMERA	67-53	H 14	
02:29		68-53	H 15	GOOD! FT by DIOP, YACINE
00:54		69-53	H 16	GOOD! FT by BALOGUN, ELIZABETH
00:54		70-53	H 17	GOOD! FT by BALOGUN, ELIZABETH
00:20		71-53	H 18	GOOD! FT by ROBINSON, MYKASA
00:10	GOOD! 3PTR by WILLIAMS, SHEMERA	71-56	H 15	

**Virginia 56, Louisville 71**

**Official Substitutions Log**  
**Virginia vs Louisville**  
**Period 1**  
**January 23, 2020 at KFC Yum! Center (Denny Crum Court) - Louisville**



VISITORS: Virginia	Time	Score	HOME: Louisville
13 WILLOUGHBY, JOCELYN			1 EVANS, DANA
14 JABLONOWSKI, LISA			4 BALOGUN, ELIZABETH
23 TOI, AMANDINE			21 SHOOK, KYLEE
1 MILLER, CAROLE			23 JONES, JAZMINE
4 TOUSSAINT, DOMINIQUE			33 DUNHAM, BIONCA
	05:15	11-13	SUB OUT: BALOGUN, ELIZABETH
	05:15		SUB IN: DIOP, YACINE
SUB OUT: 14 JABLONOWSKI, LISA	05:15		
SUB OUT: 23 TOI, AMANDINE	05:15		
SUB IN: 10 WILLIAMS, SHERA	05:15		
SUB IN: 21 LAWSON, DANI	05:15		
	04:38	11-13	SUB OUT: DUNHAM, BIONCA
	04:38		SUB IN: DIXON, ELIZABETH
	03:59	11-13	SUB OUT: JONES, JAZMINE
	03:59		SUB IN: ROBINSON, MYKASA
	02:00	11-18	SUB OUT: DIXON, ELIZABETH
	02:00		SUB IN: DUNHAM, BIONCA
SUB OUT: 1 MILLER, CAROLE	01:51	11-18	
SUB IN: 15 KORNEGAY-LUCAS, KYLIE	01:51		

**Virginia 13, Louisville 25**

**Official Substitutions Log**  
**Virginia vs Louisville**  
**Period 2**  
**January 23, 2020 at KFC Yum! Center (Denny Crum Court) - Louisville**



VISITORS: Virginia	Time	Score	HOME: Louisville
13 WILLOUGHBY, JOCELYN			1 EVANS, DANA
14 JABLONOWSKI, LISA			4 BALOGUN, ELIZABETH
23 TOI, AMANDINE			21 SHOOK, KYLEE
1 MILLER, CAROLE			23 JONES, JAZMINE
4 TOUSSAINT, DOMINIQUE			33 DUNHAM, BIONCA
SUB OUT: 10 WILLIAMS, SHERA	10:00	-	
SUB OUT: 21 LAWSON, DANI	10:00		
SUB IN: 1 MILLER, CAROLE	10:00		
SUB IN: 14 JABLONOWSKI, LISA	10:00		
	08:34	13-29	SUB OUT: DIOP, YACINE
	08:34		SUB IN: BALOGUN, ELIZABETH
SUB OUT: 1 MILLER, CAROLE	08:34		
SUB IN: 23 TOI, AMANDINE	08:34		
SUB OUT: 15 KORNEGAY-LUCAS, KYLIE	06:32	15-33	
SUB OUT: 23 TOI, AMANDINE	06:32		
SUB IN: 1 MILLER, CAROLE	06:32		
SUB IN: 10 WILLIAMS, SHERA	06:32		
SUB OUT: 4 TOUSSAINT, DOMINIQUE	05:42	17-35	
SUB IN: 15 KORNEGAY-LUCAS, KYLIE	05:42		
	04:53	17-35	SUB OUT: SHOOK, KYLEE
	04:53		SUB IN: DIXON, ELIZABETH
SUB OUT: 10 WILLIAMS, SHERA	04:11	17-37	
SUB IN: 21 LAWSON, DANI	04:11		
	03:11	19-37	SUB OUT: BALOGUN, ELIZABETH
	03:11		SUB IN: DUVALL, LINDSEY
SUB OUT: 1 MILLER, CAROLE	03:11		
SUB IN: 4 TOUSSAINT, DOMINIQUE	03:11		

**Virginia 22, Louisville 39**

**Official Substitutions Log**  
**Virginia vs Louisville**  
**Period 3**  
**January 23, 2020 at KFC Yum! Center (Denny Crum Court) - Louisville**



VISITORS: Virginia	Time	Score	HOME: Louisville
13 WILLOUGHBY, JOCELYN			1 EVANS, DANA
14 JABLONOWSKI, LISA			4 BALOGUN, ELIZABETH
23 TOI, AMANDINE			21 SHOOK, KYLEE
1 MILLER, CAROLE			23 JONES, JAZMINE
4 TOUSSAINT, DOMINIQUE			33 DUNHAM, BIONCA
	10:00	-	SUB OUT: ROBINSON, MYKASA
	10:00		SUB OUT: DUVAL, LINDSEY
	10:00		SUB OUT: DIXON, ELIZABETH
	10:00		SUB IN: BALOGUN, ELIZABETH
	10:00		SUB IN: SHOOK, KYLEE
	10:00		SUB IN: JONES, JAZMINE
SUB OUT: 15 KORNEGAY-LUCAS, KYLIE	10:00		
SUB IN: 1 MILLER, CAROLE	10:00		
SUB OUT: 1 MILLER, CAROLE	06:43	26-43	
SUB OUT: 4 TOUSSAINT, DOMINIQUE	06:43		
SUB IN: 10 WILLIAMS, SHERA	06:43		
SUB IN: 15 KORNEGAY-LUCAS, KYLIE	06:43		
	05:10	30-43	SUB OUT: EVANS, DANA
	05:10		SUB IN: ROBINSON, MYKASA
	04:16	30-43	SUB OUT: SHOOK, KYLEE
	04:16		SUB IN: DIOP, YACINE
SUB OUT: 21 LAWSON, DANI	04:16		
SUB IN: 4 TOUSSAINT, DOMINIQUE	04:16		
	04:16		SUB OUT: JONES, JAZMINE
	04:16		SUB IN: EVANS, DANA
SUB OUT: 14 JABLONOWSKI, LISA	04:16		
SUB IN: 21 LAWSON, DANI	04:16		
	02:31	33-44	SUB OUT: ROBINSON, MYKASA
	02:31		SUB OUT: DUNHAM, BIONCA
	02:31		SUB IN: SHOOK, KYLEE
	02:31		SUB IN: JONES, JAZMINE
SUB OUT: 15 KORNEGAY-LUCAS, KYLIE	02:31		
SUB IN: 14 JABLONOWSKI, LISA	02:31		
SUB OUT: 21 LAWSON, DANI	02:27	33-46	
SUB IN: 15 KORNEGAY-LUCAS, KYLIE	02:27		

**Virginia 39, Louisville 51**

**Official Substitutions Log**  
**Virginia vs Louisville**  
**Period 4**  
**January 23, 2020 at KFC Yum! Center (Denny Crum Court) - Louisville**



VISITORS: Virginia	Time	Score	HOME: Louisville
13 WILLOUGHBY, JOCELYN			1 EVANS, DANA
14 JABLONOWSKI, LISA			4 BALOGUN, ELIZABETH
23 TOI, AMANDINE			21 SHOOK, KYLEE
1 MILLER, CAROLE			23 JONES, JAZMINE
4 TOUSSAINT, DOMINIQUE			33 DUNHAM, BIONCA
SUB OUT: 4 TOUSSAINT, DOMINIQUE	08:51	39-54	
SUB IN: 1 MILLER, CAROLE	08:51		
	08:42	40-54	SUB OUT: SHOOK, KYLEE
	08:42		SUB IN: DIXON, ELIZABETH
SUB OUT: 14 JABLONOWSKI, LISA	07:55	42-54	
SUB OUT: 15 KORNEGAY-LUCAS, KYLIE	07:55		
SUB IN: 21 LAWSON, DANI	07:55		
SUB IN: 23 TOI, AMANDINE	07:55		
SUB OUT: 10 WILLIAMS, SHEMERA	05:55	44-60	
SUB IN: 4 TOUSSAINT, DOMINIQUE	05:55		
	03:41	47-67	SUB OUT: EVANS, DANA
	03:41		SUB OUT: JONES, JAZMINE
	03:41		SUB IN: ROBINSON, MYKASA
	03:41		SUB IN: DUVALL, LINDSEY
SUB OUT: 23 TOI, AMANDINE	03:41		
SUB IN: 10 WILLIAMS, SHEMERA	03:41		
SUB OUT: 1 MILLER, CAROLE	03:24	47-67	
SUB IN: 15 KORNEGAY-LUCAS, KYLIE	03:24		
SUB OUT: 15 KORNEGAY-LUCAS, KYLIE	02:29	53-67	
SUB IN: 23 TOI, AMANDINE	02:29		

**Virginia 56, Louisville 71**



**Official Shot Chart**  
**Virginia vs Louisville**  
**PERIOD 1 Shots**  
 January 23, 2020 at KFC Yum! Center (Denny Crum Court) - Louisville



**Louisville**

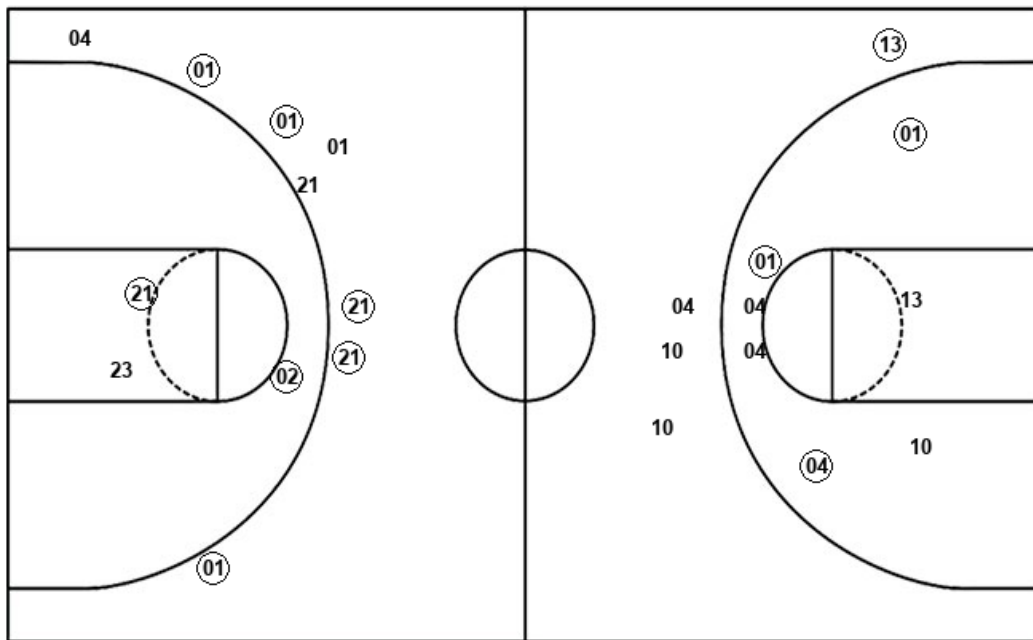
**Virginia**

Layups  
 04 33 02

Layups  
 14 01 13

Dunks

Dunks



LOU : Period 1	Made	Att	Pct
Layups	3	3	100.0
Dunks	0	0	0
2PT Field Goals	5	6	83.3
3PT Field Goals	5	8	62.5
<b>Total Field Goals</b>	<b>10</b>	<b>14</b>	<b>71.4</b>

UVA : Period 1	Made	Att	Pct
Layups	2	3	66.7
Dunks	0	0	0
2PT Field Goals	5	10	50.0
3PT Field Goals	1	4	25.0
<b>Total Field Goals</b>	<b>6</b>	<b>14</b>	<b>42.9</b>

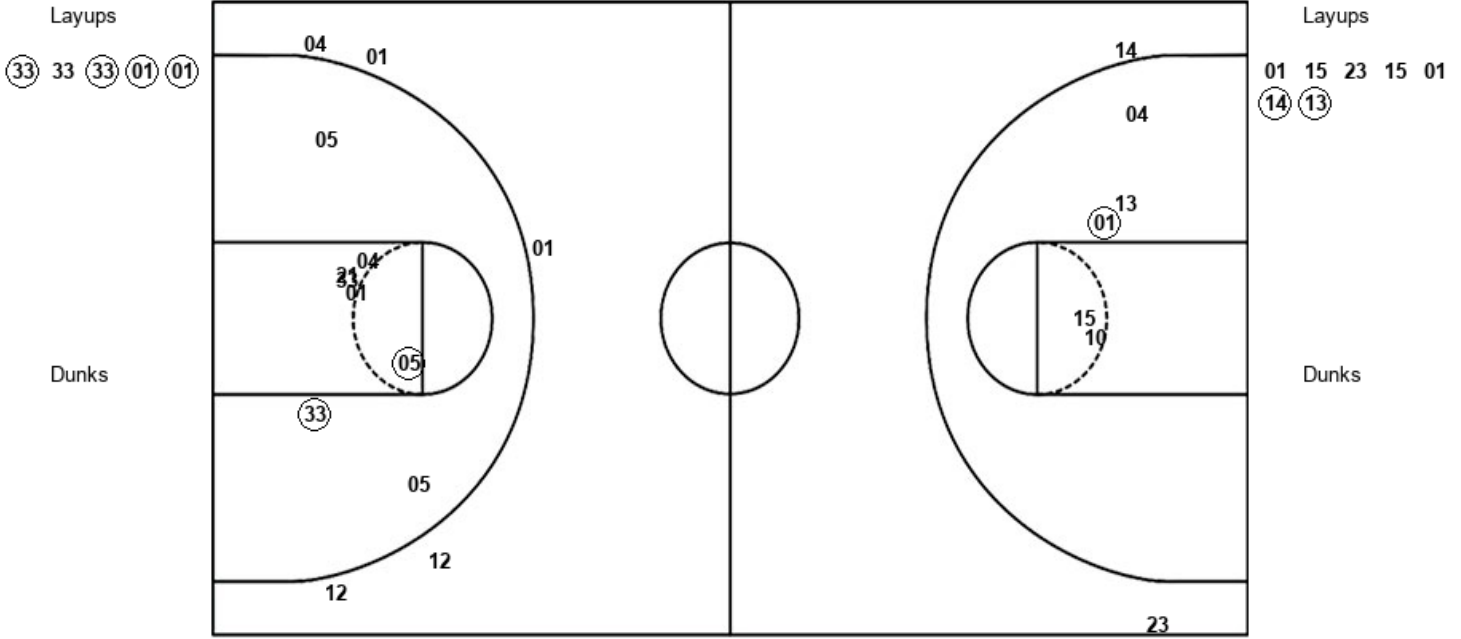
Official Shot Chart  
 Virginia vs Louisville  
 PERIOD 2 Shots

January 23, 2020 at KFC Yum! Center (Denny Crum Court) - Louisville



Louisville

Virginia



LOU : Period 2	Made	Att	Pct
Layups	4	5	80.0
Dunks	0	0	0
2PT Field Goals	6	13	46.2
3PT Field Goals	0	5	00.0
<b>Total Field Goals</b>	<b>6</b>	<b>18</b>	<b>33.3</b>

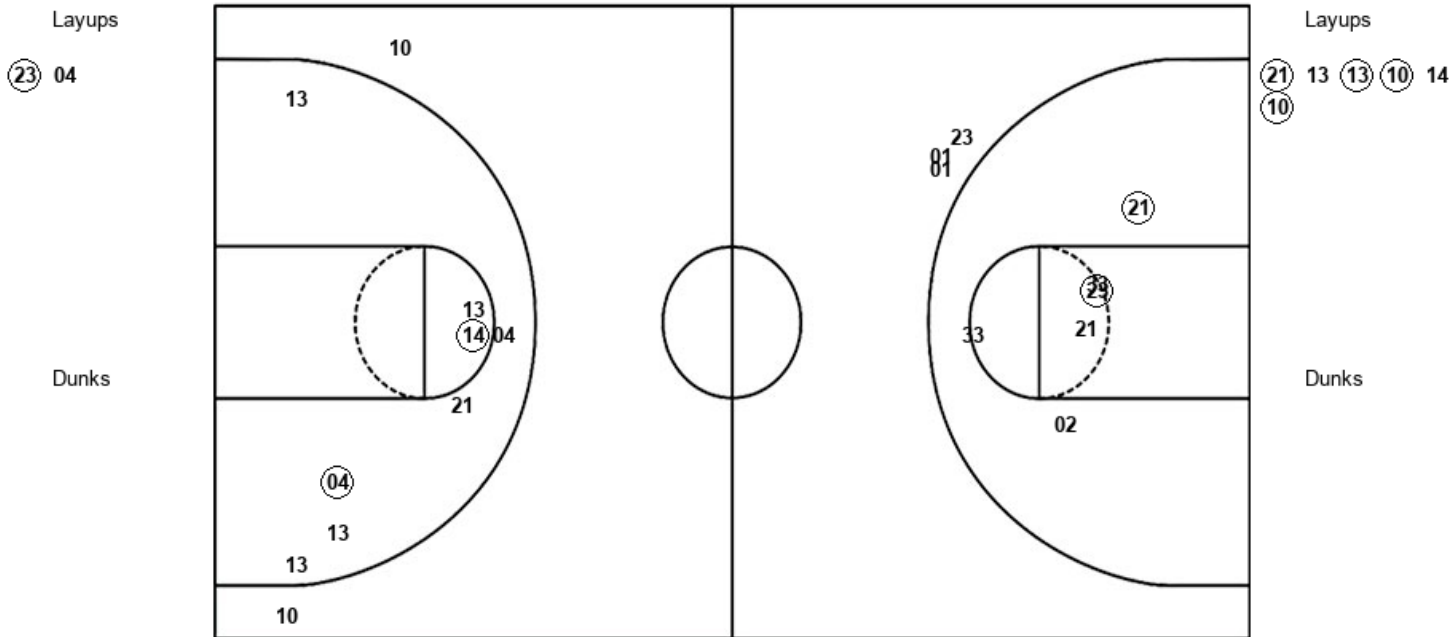
UVA : Period 2	Made	Att	Pct
Layups	2	7	28.6
Dunks	0	0	0
2PT Field Goals	3	12	25.0
3PT Field Goals	0	2	00.0
<b>Total Field Goals</b>	<b>3</b>	<b>14</b>	<b>21.4</b>

**Official Shot Chart**  
**Virginia vs Louisville**  
**PERIOD 3 Shots**  
 January 23, 2020 at KFC Yum! Center (Denny Crum Court) - Louisville



**Louisville**

**Virginia**



LOU : Period 3	Made	Att	Pct
Layups	1	2	50.0
Dunks	0	0	0
2PT Field Goals	3	8	37.5
3PT Field Goals	0	3	00.0
<b>Total Field Goals</b>	<b>3</b>	<b>11</b>	<b>27.3</b>

UVA : Period 3	Made	Att	Pct
Layups	4	6	66.7
Dunks	0	0	0
2PT Field Goals	6	14	42.9
3PT Field Goals	0	2	00.0
<b>Total Field Goals</b>	<b>6</b>	<b>16</b>	<b>37.5</b>

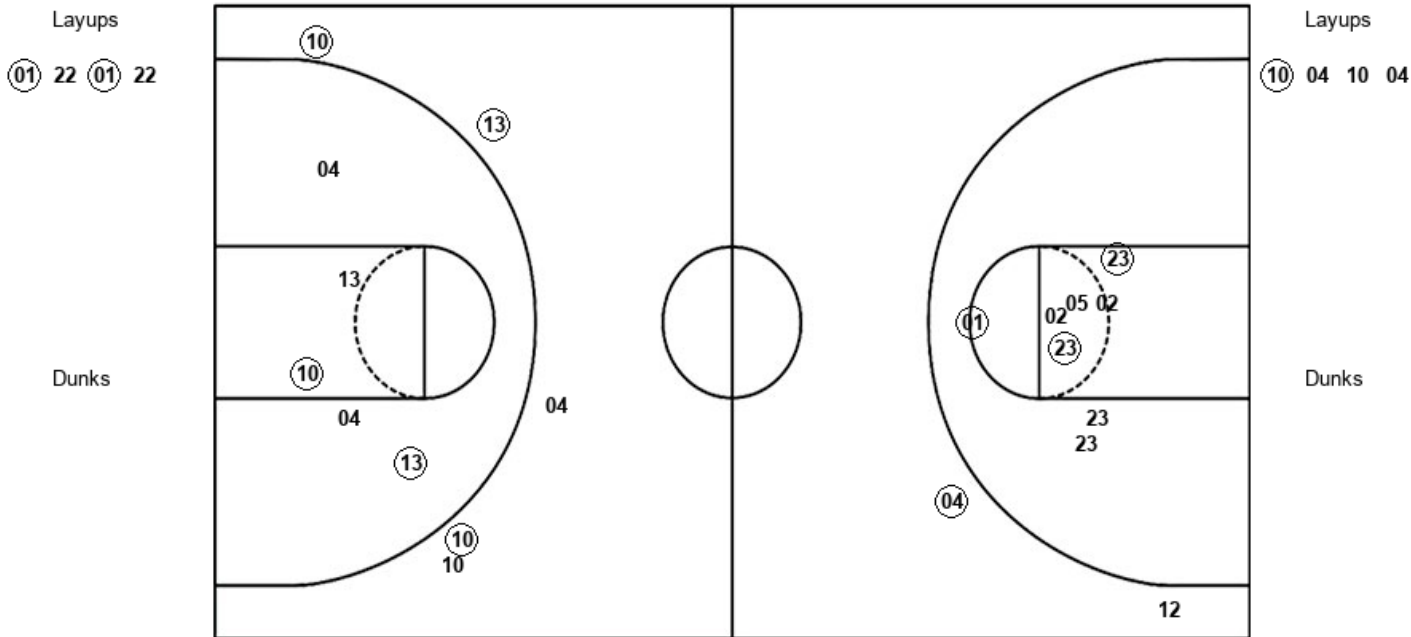
Official Shot Chart  
 Virginia vs Louisville  
 PERIOD 4 Shots

January 23, 2020 at KFC Yum! Center (Denny Crum Court) - Louisville



Louisville

Virginia



LOU : Period 4	Made	Att	Pct
Layups	2	4	50.0
Dunks	0	0	0
2PT Field Goals	5	12	41.7
3PT Field Goals	1	2	50.0
<b>Total Field Goals</b>	<b>6</b>	<b>14</b>	<b>42.9</b>

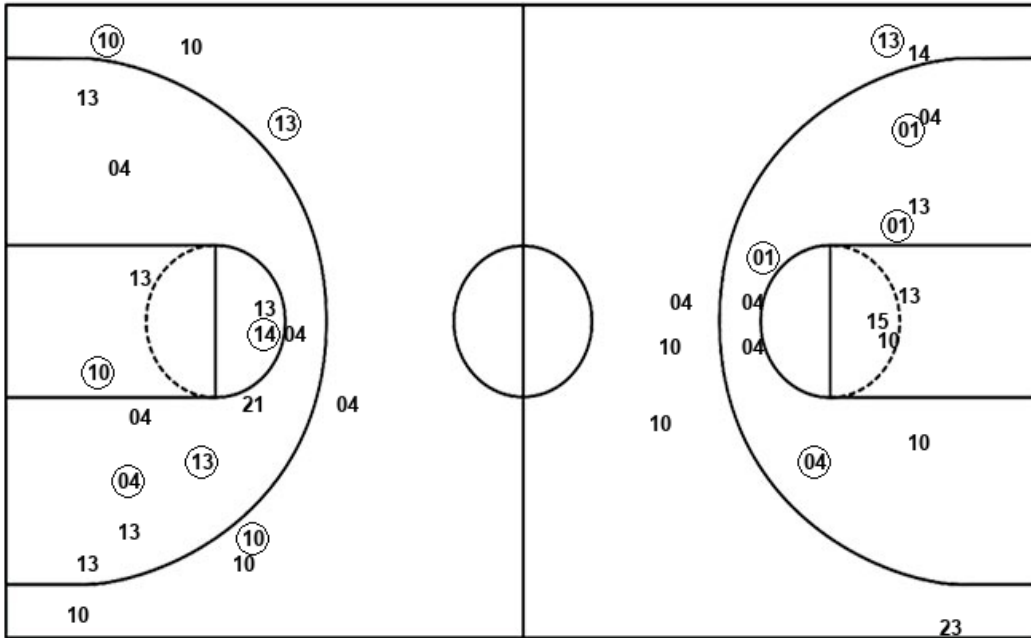
UVA : Period 4	Made	Att	Pct
Layups	1	4	25.0
Dunks	0	0	0
2PT Field Goals	3	9	33.3
3PT Field Goals	3	5	60.0
<b>Total Field Goals</b>	<b>6</b>	<b>14</b>	<b>42.9</b>

Official Shot Chart  
 Virginia vs Louisville  
 Virginia Team Shots

January 23, 2020 at KFC Yum! Center (Denny Crum Court) - Louisville



Layups



Layups

14 01 13 01 15  
 23 15 01 14 13  
 21 13 13 10 14  
 10 10 04 10 04

Dunks

Dunks

UVA : Period 1	Made	Att	Pct
Layups	2	3	66.7
Dunks	0	0	0
2PT Field Goals	5	10	50.0
3PT Field Goals	1	4	25.0
<b>Total Field Goals</b>	<b>6</b>	<b>14</b>	<b>42.9</b>

UVA : Period 2	Made	Att	Pct
Layups	2	7	28.6
Dunks	0	0	0
2PT Field Goals	3	12	25.0
3PT Field Goals	0	2	00.0
<b>Total Field Goals</b>	<b>3</b>	<b>14</b>	<b>21.4</b>

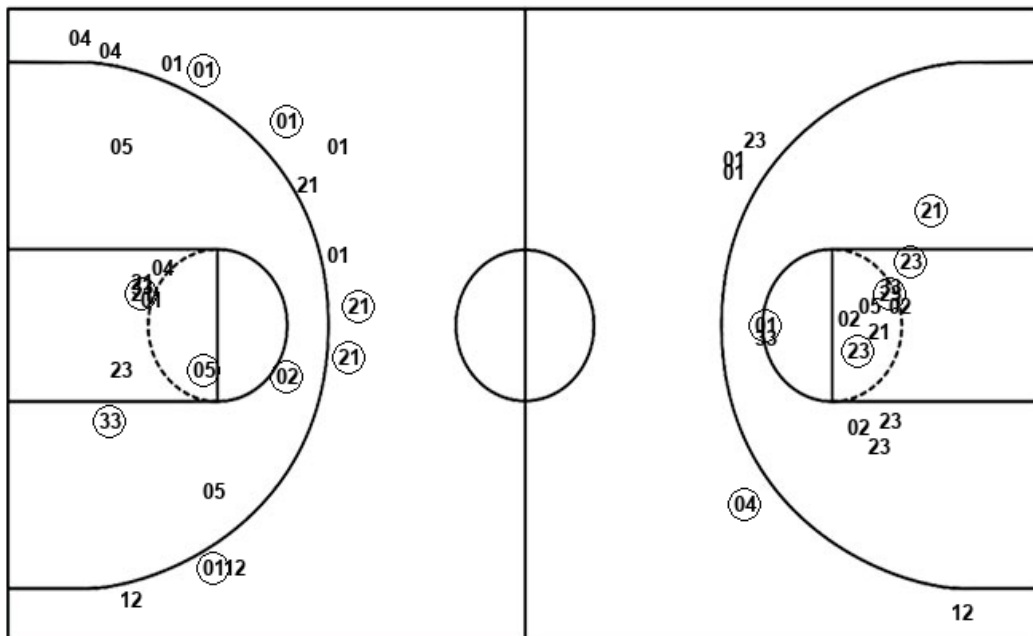
UVA : Period 3	Made	Att	Pct
Layups	4	6	66.7
Dunks	0	0	0
2PT Field Goals	6	14	42.9
3PT Field Goals	0	2	00.0
<b>Total Field Goals</b>	<b>6</b>	<b>16</b>	<b>37.5</b>

UVA : Period 4	Made	Att	Pct
Layups	1	4	25.0
Dunks	0	0	0
2PT Field Goals	3	9	33.3
3PT Field Goals	3	5	60.0
<b>Total Field Goals</b>	<b>6</b>	<b>14</b>	<b>42.9</b>

**Official Shot Chart**  
**Virginia vs Louisville**  
 Louisville Team Shots  
 January 23, 2020 at KFC Yum! Center (Denny Crum Court) - Louisville



Layups



Layups

(04)	(33)	(02)	(33)	33
(33)	(01)	(01)	(23)	04
(01)	22	(01)	22	

Dunks

Dunks

LOU : Period 1	Made	Att	Pct
Layups	3	3	100.0
Dunks	0	0	0
2PT Field Goals	5	6	83.3
3PT Field Goals	5	8	62.5
<b>Total Field Goals</b>	<b>10</b>	<b>14</b>	<b>71.4</b>

LOU : Period 2	Made	Att	Pct
Layups	4	5	80.0
Dunks	0	0	0
2PT Field Goals	6	13	46.2
3PT Field Goals	0	5	00.0
<b>Total Field Goals</b>	<b>6</b>	<b>18</b>	<b>33.3</b>

LOU : Period 3	Made	Att	Pct
Layups	1	2	50.0
Dunks	0	0	0
2PT Field Goals	3	8	37.5
3PT Field Goals	0	3	00.0
<b>Total Field Goals</b>	<b>3</b>	<b>11</b>	<b>27.3</b>

LOU : Period 4	Made	Att	Pct
Layups	2	4	50.0
Dunks	0	0	0
2PT Field Goals	5	12	41.7
3PT Field Goals	1	2	50.0
<b>Total Field Goals</b>	<b>6</b>	<b>14</b>	<b>42.9</b>