

FINAL SCORE

Western Ky.

56



Louisville

75



November 05, 2019 • KFC Yum! Center (Denny Crum Court) - Louisville

FINAL STATISTICS

Official Box Score
Western Ky. vs Louisville
Game Totals -- Final Statistics
November 05, 2019 at KFC Yum! Center (Denny Crum Court) - Louisville



Western Ky. 56

| No. | Player | S | Pts | FG | 3FG | FT | OR | DR | TR | PF | A | TO | Blk | Stl | Min | +/- |
|---------------|-------------------|---|-----------|--------------|-------------|--------------|-----------|-----------|-----------|-----------|----------|-----------|----------|----------|------------|-----|
| 05 | CREECH, WHITNEY | G | 10 | 3-8 | 0-3 | 4-6 | 1 | 4 | 5 | 3 | 3 | 2 | 0 | 3 | 37 | -25 |
| 15 | ELGEDAWY, RANEEM | F | 8 | 3-9 | 0-1 | 2-8 | 4 | 4 | 8 | 3 | 0 | 2 | 0 | 0 | 30 | -28 |
| 22 | PORTER, SHERRY | G | 15 | 6-16 | 2-6 | 1-1 | 1 | 2 | 3 | 1 | 3 | 6 | 0 | 1 | 32 | -14 |
| 23 | SKINNER, SANDRA | F | 4 | 1-2 | 0-0 | 2-2 | 3 | 3 | 6 | 0 | 0 | 0 | 0 | 1 | 19 | 3 |
| 40 | ABDELGAWAD, MERAL | G | 3 | 1-3 | 1-3 | 0-0 | 1 | 1 | 2 | 2 | 0 | 2 | 0 | 0 | 16 | -8 |
| 00 | HAYWOOD, MYRIAH | G | 0 | 0-8 | 0-0 | 0-2 | 2 | 1 | 3 | 3 | 0 | 0 | 1 | 3 | 22 | -19 |
| 03 | BROWN, DE'MYLA | G | 0 | 0-0 | 0-0 | 0-0 | 0 | 1 | 1 | 0 | 0 | 0 | 0 | 0 | 2 | 3 |
| 04 | GIVENS, DEE | F | 13 | 4-10 | 3-6 | 2-2 | 2 | 1 | 3 | 2 | 1 | 3 | 1 | 1 | 31 | -17 |
| 12 | POUYE, FATOU | F | 3 | 1-1 | 0-0 | 1-2 | 1 | 2 | 3 | 0 | 0 | 0 | 0 | 0 | 11 | 7 |
| 13 | HAYWOOD, HYA | G | 0 | 0-0 | 0-0 | 0-0 | 0 | 0 | 0 | 0 | 0 | 0 | 0 | 0 | 2 | 3 |
| TEAM | | | | | | | 3 | 0 | 3 | 0 | 2 | | | | | |
| TOTALS | | | 56 | 19-57 | 6-19 | 12-23 | 18 | 19 | 37 | 14 | 7 | 17 | 2 | 9 | 200 | |

Shooting By Period

| Period | FG | FG% | 3FG | 3FG% | FT | FT% |
|-------------|--------------|--------------|-------------|--------------|--------------|--------------|
| 1st Qtr | 5-18 | 28% | 2-8 | 25% | 1-2 | 50% |
| 2nd Qtr | 5-13 | 38% | 1-2 | 50% | 1-3 | 33% |
| 3rd Qtr | 5-16 | 31% | 2-5 | 40% | 6-10 | 60% |
| 4th Qtr | 4-10 | 40% | 1-4 | 25% | 4-8 | 50% |
| 1st Half | 10-31 | 32% | 3-10 | 30% | 2-5 | 40% |
| 2nd Half | 9-26 | 35% | 3-9 | 33% | 10-18 | 56% |
| Game | 19-57 | 33.3% | 6-19 | 31.6% | 12-23 | 52.2% |

Deadball Rebounds: 7.0
Last FG: 4th-01:14
Biggest Run: 6-0
Largest lead: By 2 at -
Technical Fouls: None.

Louisville 75

| No. | Player | S | Pts | FG | 3FG | FT | OR | DR | TR | PF | A | TO | Blk | Stl | Min | +/- |
|---------------|--------------------|---|-----------|--------------|-------------|------------|-----------|-----------|-----------|-----------|-----------|-----------|----------|----------|------------|-----|
| 01 | EVANS, DANA | G | 19 | 7-14 | 3-6 | 2-3 | 0 | 2 | 2 | 1 | 3 | 4 | 0 | 1 | 32 | 23 |
| 04 | BALOGUN, ELIZABETH | G | 15 | 5-6 | 5-6 | 0-0 | 2 | 2 | 4 | 0 | 3 | 3 | 1 | 2 | 29 | 18 |
| 22 | DIXON, ELIZABETH | F | 10 | 5-9 | 0-0 | 0-0 | 7 | 6 | 13 | 2 | 3 | 2 | 1 | 0 | 28 | 18 |
| 23 | JONES, JAZMINE | G | 8 | 4-8 | 0-1 | 0-2 | 3 | 5 | 8 | 3 | 10 | 1 | 0 | 2 | 25 | 16 |
| 33 | DUNHAM, BIONCA | F | 10 | 5-7 | 0-0 | 0-0 | 0 | 3 | 3 | 4 | 0 | 0 | 0 | 1 | 19 | 12 |
| 02 | DIOP, YACINE | G | 2 | 1-3 | 0-0 | 0-0 | 1 | 3 | 4 | 2 | 1 | 0 | 2 | 0 | 16 | 4 |
| 03 | ROBINS, SEYGAN | G | 0 | 0-0 | 0-0 | 0-0 | 0 | 1 | 1 | 3 | 0 | 2 | 0 | 0 | 8 | 0 |
| 11 | KONNO, NORIKA | G | 9 | 3-8 | 0-2 | 3-4 | 1 | 0 | 1 | 3 | 2 | 2 | 0 | 0 | 26 | 9 |
| 12 | DUVALL, LINDSEY | G | 0 | 0-2 | 0-2 | 0-0 | 0 | 0 | 0 | 0 | 0 | 1 | 0 | 0 | 5 | -3 |
| 21 | SHOOK, KYLEE | F | 2 | 1-6 | 0-0 | 0-0 | 2 | 2 | 4 | 2 | 0 | 1 | 2 | 1 | 11 | 1 |
| 24 | LAEMMLE, JESSICA | G | 0 | 0-0 | 0-0 | 0-0 | 0 | 0 | 0 | 0 | 0 | 0 | 0 | 0 | 2 | -3 |
| TEAM | | | | | | | 0 | 0 | 0 | 0 | 0 | | | | | |
| TOTALS | | | 75 | 31-63 | 8-17 | 5-9 | 16 | 24 | 40 | 20 | 22 | 16 | 6 | 7 | 200 | |

Shooting By Period

| Period | FG | FG% | 3FG | 3FG% | FT | FT% |
|-------------|--------------|--------------|-------------|--------------|------------|--------------|
| 1st Qtr | 9-13 | 69% | 3-4 | 75% | 0-2 | 00% |
| 2nd Qtr | 6-18 | 33% | 1-3 | 33% | 0-1 | 00% |
| 3rd Qtr | 9-17 | 53% | 2-5 | 40% | 1-1 | 100% |
| 4th Qtr | 7-15 | 47% | 2-5 | 40% | 4-5 | 80% |
| 1st Half | 15-31 | 48% | 4-7 | 57% | 0-3 | 00% |
| 2nd Half | 16-32 | 50% | 4-10 | 40% | 5-6 | 83% |
| Game | 31-63 | 49.2% | 8-17 | 47.1% | 5-9 | 55.6% |

Deadball Rebounds: 1.0
Last FG: 4th-03:58
Biggest Run: 10-0
Largest lead: By 23 at -
Technical Fouls: None.

Game Notes:

Officials: Luis Gonzalez, Erika Herriman-Camarota, Roy Jackson
 Attendance: 8304

Start Time: 07:02 PM ET
 End Time: 08:51 PM ET
 Game Duration: 1:49

| Score | 1st | 2nd | 3rd | 4th | TOT |
|-------|-----|-----|-----|-----|-----|
| WKU | 13 | 12 | 18 | 13 | 56 |
| LOU | 21 | 13 | 21 | 20 | 75 |

WKU led for 0:13. LOU led for 39:22.
 Game was tied for 0:25.
 Times tied: 67 Lead Changes: 0

| Points from | WKU | LOU |
|--------------|-----|-----|
| In the Paint | 26 | 40 |
| Off Turns | 15 | 16 |
| 2nd Chance | 16 | 14 |
| Fast Break | 9 | 11 |
| Bench | 16 | 13 |

Official Box Score
Western Ky. vs Louisville
First Half Statistics Only
November 05, 2019 at KFC Yum! Center (Denny Crum Court) - Louisville



Western Ky. 25

| No. | Player | S | Pts | FG | 3FG | FT | OR | DR | TR | PF | A | TO | Blk | Stl | Min | +/- |
|---------------|-------------------|---|-----------|--------------|-------------|------------|----------|-----------|-----------|----------|----------|-----------|----------|----------|------------|-----|
| 00 | HAYWOOD, MYRIAH | G | 0 | 0-3 | 0-0 | 0-0 | 1 | 0 | 1 | 0 | 0 | 0 | 0 | 2 | 10 | -12 |
| 03 | BROWN, DE'MYLA | G | 0 | 0-0 | 0-0 | 0-0 | 0 | 0 | 0 | 0 | 0 | 0 | 0 | 0 | 0 | 0 |
| 04 | GIVENS, DEE | F | 0 | 0-3 | 0-1 | 0-0 | 0 | 1 | 1 | 0 | 1 | 2 | 1 | 1 | 15 | -6 |
| 05 | CREECH, WHITNEY | G | 4 | 2-4 | 0-1 | 0-0 | 0 | 3 | 3 | 2 | 1 | 1 | 0 | 2 | 18 | -11 |
| 12 | POUYE, FATOU | F | 2 | 1-1 | 0-0 | 0-0 | 1 | 1 | 2 | 0 | 0 | 0 | 0 | 0 | 4 | 2 |
| 13 | HAYWOOD, HYA | G | 0 | 0-0 | 0-0 | 0-0 | 0 | 0 | 0 | 0 | 0 | 0 | 0 | 0 | 0 | 0 |
| 15 | ELGEDAWY, RANEEM | F | 3 | 1-5 | 0-0 | 1-4 | 3 | 3 | 6 | 2 | 0 | 2 | 0 | 0 | 16 | -13 |
| 22 | PORTER, SHERRY | G | 13 | 5-12 | 2-6 | 1-1 | 1 | 1 | 2 | 0 | 1 | 3 | 0 | 0 | 19 | -7 |
| 23 | SKINNER, SANDRA | F | 0 | 0-1 | 0-0 | 0-0 | 1 | 1 | 2 | 0 | 0 | 0 | 0 | 0 | 9 | -1 |
| 40 | ABDELGAWAD, MERAL | G | 3 | 1-2 | 1-2 | 0-0 | 0 | 1 | 1 | 2 | 0 | 2 | 0 | 0 | 9 | 3 |
| | TEAM | | 0 | 0-0 | 0-0 | 0-0 | 2 | 0 | 2 | 0 | 0 | 1 | 0 | 0 | 0 | 0 |
| TOTALS | | | 25 | 10-31 | 3-10 | 2-5 | 9 | 11 | 20 | 6 | 3 | 11 | 1 | 5 | 100 | |

Shooting By Period

| Period | FG | FG% | 3FG | 3FG% | FT | FT% |
|----------|-------|-------|------|-------|-------|-------|
| 1st Qtr | 5-18 | 28% | 2-8 | 25% | 1-2 | 50% |
| 2nd Qtr | 5-13 | 38% | 1-2 | 50% | 1-3 | 33% |
| 1st Half | 10-31 | 32% | 3-10 | 30% | 2-5 | 40% |
| Game | 19-57 | 33.3% | 6-19 | 31.6% | 12-23 | 52.2% |

Deadball Rebounds: 7,0
Last FG Half: WKU 2nd-02:09

Louisville 34

| No. | Player | S | Pts | FG | 3FG | FT | OR | DR | TR | PF | A | TO | Blk | Stl | Min | +/- |
|---------------|--------------------|---|-----------|--------------|------------|------------|----------|-----------|-----------|----------|-----------|-----------|----------|----------|------------|-----|
| 01 | EVANS, DANA | G | 4 | 2-5 | 0-1 | 0-0 | 0 | 1 | 1 | 1 | 2 | 3 | 0 | 0 | 16 | 11 |
| 02 | DIOP, YACINE | G | 2 | 1-3 | 0-0 | 0-0 | 0 | 2 | 2 | 0 | 0 | 0 | 1 | 0 | 10 | 4 |
| 03 | ROBINS, SEYGAN | G | 0 | 0-0 | 0-0 | 0-0 | 0 | 0 | 0 | 1 | 0 | 1 | 0 | 0 | 4 | -2 |
| 04 | BALOGUN, ELIZABETH | G | 12 | 4-4 | 4-4 | 0-0 | 1 | 1 | 2 | 0 | 1 | 2 | 0 | 2 | 15 | 10 |
| 11 | KONNO, NORIKA | G | 4 | 2-6 | 0-2 | 0-1 | 0 | 0 | 0 | 0 | 1 | 0 | 0 | 0 | 12 | 4 |
| 12 | DUVALL, LINDSEY | G | 0 | 0-0 | 0-0 | 0-0 | 0 | 0 | 0 | 0 | 0 | 1 | 0 | 0 | 1 | -4 |
| 21 | SHOOK, KYLEE | F | 0 | 0-0 | 0-0 | 0-0 | 0 | 0 | 0 | 2 | 0 | 1 | 0 | 0 | 1 | 0 |
| 22 | DIXON, ELIZABETH | F | 4 | 2-6 | 0-0 | 0-0 | 5 | 3 | 8 | 0 | 2 | 1 | 1 | 0 | 14 | 8 |
| 23 | JONES, JAZMINE | G | 2 | 1-2 | 0-0 | 0-2 | 1 | 3 | 4 | 2 | 6 | 1 | 0 | 1 | 14 | 6 |
| 24 | LAEMMLE, JESSICA | G | 0 | 0-0 | 0-0 | 0-0 | 0 | 0 | 0 | 0 | 0 | 0 | 0 | 0 | 0 | 0 |
| 33 | DUNHAM, BIONCA | F | 6 | 3-5 | 0-0 | 0-0 | 0 | 3 | 3 | 2 | 0 | 0 | 0 | 1 | 13 | 8 |
| | TEAM | | 0 | 0-0 | 0-0 | 0-0 | 0 | 0 | 0 | 0 | 0 | 0 | 0 | 0 | 0 | 0 |
| TOTALS | | | 34 | 15-31 | 4-7 | 0-3 | 7 | 13 | 20 | 8 | 12 | 10 | 2 | 4 | 100 | |

Shooting By Period

| Period | FG | FG% | 3FG | 3FG% | FT | FT% |
|----------|-------|-------|------|-------|-----|-------|
| 1st Qtr | 9-13 | 69% | 3-4 | 75% | 0-2 | 00% |
| 2nd Qtr | 6-18 | 33% | 1-3 | 33% | 0-1 | 00% |
| 1st Half | 15-31 | 48% | 4-7 | 57% | 0-3 | 00% |
| Game | 31-63 | 49.2% | 8-17 | 47.1% | 5-9 | 55.6% |

Deadball Rebounds: 1,0
Last FG Half: LOU 2nd-01:28

Game Notes:

Officials: Luis Gonzalez, Erika Herriman-Camarota, Roy Jackson
 Attendance: 8304

Start Time: 07:02 PM ET
 End Time: 08:51 PM ET
 Game Duration: 1:49

| Score | 1st | 2nd | 3rd | 4th | TOT |
|-------|-----|-----|-----|-----|-----------|
| WKU | 13 | 12 | 18 | 13 | 56 |
| LOU | 21 | 13 | 21 | 20 | 75 |

| Points from (This Period) | WKU | LOU |
|---------------------------|-----|-----|
| In the Paint | 14 | 16 |
| Off Turns | 8 | 7 |
| 2nd Chance | 5 | 4 |
| Fast Break | 9 | 7 |
| Bench | 2 | 6 |

Official Box Score
Western Ky. vs Louisville
First Quarter Statistics Only
November 05, 2019 at KFC Yum! Center (Denny Crum Court) - Louisville



Western Ky. 13

| No. | Player | S | Pts | FG | 3FG | FT | OR | DR | TR | PF | A | TO | Blk | Stl | Min | +/- |
|---------------|-------------------|---|-----------|-------------|------------|------------|----------|----------|----------|----------|----------|----------|----------|----------|-----------|-----|
| 05 | CREECH, WHITNEY | G | 2 | 1-3 | 0-1 | 0-0 | 0 | 0 | 0 | 1 | 1 | 0 | 0 | 2 | 10 | -8 |
| 15 | ELGEDAWY, RANEEM | F | 3 | 1-2 | 0-0 | 1-2 | 3 | 2 | 5 | 0 | 0 | 2 | 0 | 0 | 8 | -10 |
| 22 | PORTER, SHERRY | G | 8 | 3-8 | 2-5 | 0-0 | 0 | 0 | 0 | 0 | 0 | 1 | 0 | 0 | 10 | -8 |
| 23 | SKINNER, SANDRA | F | 0 | 0-1 | 0-0 | 0-0 | 1 | 0 | 1 | 0 | 0 | 0 | 0 | 0 | 4 | -1 |
| 40 | ABDELGAWAD, MERAL | G | 0 | 0-1 | 0-1 | 0-0 | 0 | 0 | 0 | 1 | 0 | 0 | 0 | 0 | 3 | -1 |
| 00 | HAYWOOD, MYRIAH | G | 0 | 0-1 | 0-0 | 0-0 | 1 | 0 | 1 | 0 | 0 | 0 | 0 | 1 | 5 | -9 |
| 03 | BROWN, DE'MYLA | G | 0 | 0-0 | 0-0 | 0-0 | 0 | 0 | 0 | 0 | 0 | 0 | 0 | 0 | 0 | 0 |
| 04 | GIVENS, DEE | F | 0 | 0-2 | 0-1 | 0-0 | 0 | 0 | 0 | 0 | 0 | 2 | 0 | 0 | 8 | -5 |
| 12 | POUYE, FATOU | F | 0 | 0-0 | 0-0 | 0-0 | 0 | 1 | 1 | 0 | 0 | 0 | 0 | 0 | 2 | 2 |
| 13 | HAYWOOD, HYA | G | 0 | 0-0 | 0-0 | 0-0 | 0 | 0 | 0 | 0 | 0 | 0 | 0 | 0 | 0 | 0 |
| TEAM | | | | | | | 1 | 0 | 1 | 0 | 0 | 0 | 0 | 0 | 0 | 0 |
| TOTALS | | | 13 | 5-18 | 2-8 | 1-2 | 6 | 3 | 9 | 2 | 1 | 5 | 0 | 3 | 50 | |

Shooting By Period

| Period | FG | FG% | 3FG | 3FG% | FT | FT% |
|----------|-------|-------|------|-------|-------|-------|
| 1st Qtr | 5-18 | 28% | 2-8 | 25% | 1-2 | 50% |
| 2nd Qtr | 5-13 | 38% | 1-2 | 50% | 1-3 | 33% |
| 1st Half | 5-18 | 28% | 2-8 | 25% | 1-2 | 50% |
| 1st Half | 10-31 | 32% | 3-10 | 30% | 2-5 | 40% |
| Game | 19-57 | 33.3% | 6-19 | 31.6% | 12-23 | 52.2% |

Deadball Rebounds: 7,0

Louisville 21

| No. | Player | S | Pts | FG | 3FG | FT | OR | DR | TR | PF | A | TO | Blk | Stl | Min | +/- |
|---------------|--------------------|---|-----------|-------------|------------|------------|----------|----------|----------|----------|----------|----------|----------|----------|-----------|-----|
| 01 | EVANS, DANA | G | 2 | 1-2 | 0-1 | 0-0 | 0 | 1 | 1 | 0 | 2 | 1 | 0 | 0 | 8 | 10 |
| 04 | BALOGUN, ELIZABETH | G | 9 | 3-3 | 3-3 | 0-0 | 1 | 0 | 1 | 0 | 0 | 2 | 0 | 1 | 7 | 9 |
| 22 | DIXON, ELIZABETH | F | 2 | 1-2 | 0-0 | 0-0 | 1 | 1 | 2 | 0 | 1 | 1 | 1 | 0 | 9 | 8 |
| 23 | JONES, JAZMINE | G | 2 | 1-2 | 0-0 | 0-2 | 0 | 3 | 3 | 1 | 6 | 1 | 0 | 1 | 10 | 8 |
| 33 | DUNHAM, BIONCA | F | 4 | 2-2 | 0-0 | 0-0 | 0 | 2 | 2 | 0 | 0 | 0 | 0 | 0 | 7 | 9 |
| 02 | DIOP, YACINE | G | 2 | 1-2 | 0-0 | 0-0 | 0 | 0 | 0 | 0 | 0 | 0 | 0 | 0 | 3 | -1 |
| 03 | ROBINS, SEYGAN | G | 0 | 0-0 | 0-0 | 0-0 | 0 | 0 | 0 | 0 | 0 | 0 | 0 | 0 | 2 | -2 |
| 11 | KONNO, NORIKA | G | 0 | 0-0 | 0-0 | 0-0 | 0 | 0 | 0 | 0 | 0 | 0 | 0 | 0 | 3 | -1 |
| 12 | DUVALL, LINDSEY | G | 0 | 0-0 | 0-0 | 0-0 | 0 | 0 | 0 | 0 | 0 | 0 | 0 | 0 | 0 | 0 |
| 21 | SHOOK, KYLEE | F | 0 | 0-0 | 0-0 | 0-0 | 0 | 0 | 0 | 2 | 0 | 1 | 0 | 0 | 1 | 0 |
| 24 | LAEMMLE, JESSICA | G | 0 | 0-0 | 0-0 | 0-0 | 0 | 0 | 0 | 0 | 0 | 0 | 0 | 0 | 0 | 0 |
| TEAM | | | | | | | 0 | 0 | 0 | 0 | 0 | 0 | 0 | 0 | 0 | |
| TOTALS | | | 21 | 9-13 | 3-4 | 0-2 | 2 | 7 | 9 | 3 | 9 | 6 | 1 | 2 | 50 | |

Shooting By Period

| Period | FG | FG% | 3FG | 3FG% | FT | FT% |
|----------|-------|-------|------|-------|-----|-------|
| 1st Qtr | 9-13 | 69% | 3-4 | 75% | 0-2 | 00% |
| 2nd Qtr | 6-18 | 33% | 1-3 | 33% | 0-1 | 00% |
| 1st Half | 9-13 | 69% | 3-4 | 75% | 0-2 | 00% |
| 1st Half | 15-31 | 48% | 4-7 | 57% | 0-3 | 00% |
| Game | 31-63 | 49.2% | 8-17 | 47.1% | 5-9 | 55.6% |

Deadball Rebounds: 1,0

Game Notes:

Officials: Luis Gonzalez,Erika Herriman-Camarota,Roy Jackson
Attendance: 8304

Start Time: 07:02 PM ET
End Time: 08:51 PM ET
Game Duration: 1:49

| Score | 1st | 2nd | 3rd | 4th | TOT |
|-------|-----|-----|-----|-----|-----------|
| WKU | 13 | 12 | 18 | 13 | 56 |
| LOU | 21 | 13 | 21 | 20 | 75 |

| Points from (This Period) | WKU | LOU |
|---------------------------|-----|-----|
| In the Paint | 6 | 10 |
| Off Turns | 5 | 0 |
| 2nd Chance | 3 | 0 |
| Fast Break | 5 | 4 |
| Bench | 0 | 2 |

**Official Play-By-Play
Western Ky. vs Louisville
First Quarter**

November 05, 2019 at KFC Yum! Center (Denny Crum Court) - Louisville



Period 1

Starters:

Western Ky.: 5 CREECH,WHITNEY (G); 15 ELGEDAWY,RANEEM (F); 22 PORTER,SHERRY (G); 23 SKINNER,SANDRA (F); 40 ABDELGAWAD,MERAL (G);
Louisville: 1 EVANS,DANA (G); 4 BALOGUN,ELIZABETH (G); 22 DIXON,ELIZABETH (F); 23 JONES,JAZMINE (G); 33 DUNHAM,BIONCA (F);

| Time | VISITORS: Western Ky. | Score | Margin | HOME: Louisville |
|-------|---|-------|--------|--|
| 09:45 | TURNOVER (LOSTBALL) by ELGEDAWY, RANEEM | | | |
| 09:45 | | | | STEAL by BALOGUN, ELIZABETH |
| 09:40 | | | | TURNOVER (BADPASS) by BALOGUN, ELIZABETH |
| 09:40 | STEAL by CREECH, WHITNEY | | | |
| 09:35 | GOOD! LAYUP by CREECH, WHITNEY [FB] | 0-2 | V 2 | |
| 09:22 | | 3-2 | H 1 | GOOD! 3PTR by BALOGUN, ELIZABETH |
| 09:22 | | | | ASSIST by JONES, JAZMINE |
| 09:05 | MISSED JUMPER by CREECH, WHITNEY | | | |
| 09:01 | | | | REBOUND (DEF) by DIXON, ELIZABETH |
| 08:58 | | 5-2 | H 3 | GOOD! LAYUP by JONES, JAZMINE [FB] |
| 08:58 | | | | ASSIST by EVANS, DANA |
| 08:43 | MISSED 3PTR by ABDELGAWAD, MERAL | | | |
| 08:38 | REBOUND (OFF) by ELGEDAWY, RANEEM | | | |
| 08:37 | GOOD! LAYUP by ELGEDAWY, RANEEM | 5-4 | H 1 | |
| 08:17 | | 7-4 | H 3 | GOOD! JUMPER by DIXON, ELIZABETH [PNT] |
| 08:17 | | | | ASSIST by JONES, JAZMINE |
| 08:02 | MISSED 3PTR by PORTER, SHERRY | | | |
| 07:57 | REBOUND (OFF) by ELGEDAWY, RANEEM | | | |
| 07:44 | | | | FOUL (PERSONAL) by JONES, JAZMINE |
| 07:44 | SUB OUT: SKINNER, SANDRA | | | |
| 07:44 | SUB IN: GIVENS, DEE | | | |
| 07:44 | MISSED FT by ELGEDAWY, RANEEM | | | |
| 07:44 | REBOUND (OFF) by TEAM | | | |
| 07:44 | GOOD! FT by ELGEDAWY, RANEEM | 7-5 | H 2 | |
| 07:32 | | 9-5 | H 4 | GOOD! LAYUP by DUNHAM, BIONCA |
| 07:32 | | | | ASSIST by DIXON, ELIZABETH |
| 07:17 | GOOD! 3PTR by PORTER, SHERRY | 9-8 | H 1 | |
| 07:05 | FOUL (PERSONAL) by CREECH, WHITNEY | | | |
| 07:05 | | | | SUB OUT: DIXON, ELIZABETH |
| 07:05 | | | | SUB IN: SHOOK, KYLEE |
| 06:59 | | | | FOUL (OFF) by SHOOK, KYLEE |
| 06:59 | | | | TURNOVER (OFFENSIVE) by SHOOK, KYLEE |
| 06:38 | TURNOVER (BADPASS) by ELGEDAWY, RANEEM | | | |
| 06:38 | | | | STEAL by JONES, JAZMINE |
| 06:33 | FOUL (PERSONAL) by ABDELGAWAD, MERAL | | | |
| 06:33 | | | | MISSED FT by JONES, JAZMINE |
| 06:33 | | | | REBOUND (OFF) by TEAM |
| 06:33 | | | | MISSED FT by JONES, JAZMINE |
| 06:33 | REBOUND (DEF) by ELGEDAWY, RANEEM | | | |
| 06:33 | | | | FOUL (PERSONAL) by SHOOK, KYLEE |
| 06:33 | | | | SUB OUT: SHOOK, KYLEE |
| 06:33 | | | | SUB IN: DIXON, ELIZABETH |
| 06:33 | SUB OUT: ABDELGAWAD, MERAL | | | |
| 06:33 | SUB IN: HAYWOOD, MYRIAH | | | |
| 06:08 | MISSED 3PTR by PORTER, SHERRY | | | |
| 06:04 | | | | REBOUND (DEF) by DUNHAM, BIONCA |
| 05:51 | | 12-8 | H 4 | GOOD! 3PTR by BALOGUN, ELIZABETH |
| 05:51 | | | | ASSIST by EVANS, DANA |
| 05:28 | TURNOVER (LOSTBALL) by GIVENS, DEE | | | |
| 05:09 | | | | TURNOVER (TRAVEL) by BALOGUN, ELIZABETH |
| 04:59 | MISSED 3PTR by PORTER, SHERRY | | | |
| 04:53 | REBOUND (OFF) by ELGEDAWY, RANEEM | | | |
| 04:51 | MISSED LAYUP by ELGEDAWY, RANEEM | | | |
| 04:49 | | | | REBOUND (DEF) by JONES, JAZMINE |
| 04:48 | | 15-8 | H 7 | GOOD! 3PTR by BALOGUN, ELIZABETH |
| 04:47 | TIMEOUT 30SEC | | | |
| 04:48 | | | | ASSIST by JONES, JAZMINE |
| 04:35 | MISSED LAYUP by HAYWOOD, MYRIAH | | | |
| 04:32 | | | | REBOUND (DEF) by DUNHAM, BIONCA |
| 04:23 | | 17-8 | H 9 | GOOD! JUMPER by DUNHAM, BIONCA |
| 04:23 | | | | ASSIST by JONES, JAZMINE |
| 04:00 | TURNOVER (BADPASS) by GIVENS, DEE | | | |
| 03:39 | | | | MISSED 3PTR by EVANS, DANA |
| 03:36 | | | | REBOUND (OFF) by BALOGUN, ELIZABETH |
| 03:33 | | | | MISSED JUMPER by JONES, JAZMINE |
| 03:28 | REBOUND (DEF) by ELGEDAWY, RANEEM | | | |
| 03:05 | MISSED JUMPER by PORTER, SHERRY | | | |
| 03:03 | REBOUND (OFF) by HAYWOOD, MYRIAH | | | |
| 03:03 | | | | SUB OUT: BALOGUN, ELIZABETH |
| 03:03 | | | | SUB OUT: DUNHAM, BIONCA |

| Time | VISITORS: Western Ky. | Score | Margin | HOME: Louisville |
|-------|-------------------------------------|-------|--------|---------------------------------------|
| 03:03 | | | | SUB IN: DIOP, YACINE |
| 03:03 | | | | SUB IN: KONNO, NORIKA |
| 02:51 | MISSED 3PTR by CREECH, WHITNEY | | | |
| 02:47 | | | | REBOUND (DEF) by EVANS, DANA |
| 02:40 | | | | TURNOVER (LOSTBALL) by EVANS, DANA |
| 02:40 | STEAL by HAYWOOD, MYRIAH | | | |
| 02:35 | GOOD! 3PTR by PORTER, SHERRY [FB] | 17-11 | H 6 | |
| 02:35 | ASSIST by CREECH, WHITNEY | | | |
| 02:17 | | 19-11 | H 8 | GOOD! JUMPER by DIOP, YACINE [PNT] |
| 02:17 | | | | ASSIST by JONES, JAZMINE |
| 02:03 | MISSED 3PTR by GIVENS, DEE | | | |
| 01:59 | | | | REBOUND (DEF) by JONES, JAZMINE |
| 01:55 | | 21-11 | H 10 | GOOD! LAYUP by EVANS, DANA [FB] |
| 01:55 | | | | ASSIST by JONES, JAZMINE |
| 01:54 | TIMEOUT 30SEC | | | |
| 01:54 | | | | SUB OUT: EVANS, DANA |
| 01:54 | | | | SUB IN: ROBINS, SEYGAN |
| 01:54 | SUB OUT: HAYWOOD, MYRIAH | | | |
| 01:54 | SUB OUT: ELGEDAWY, RANEEM | | | |
| 01:54 | SUB IN: POUYE, FATOU | | | |
| 01:54 | SUB IN: SKINNER, SANDRA | | | |
| 01:41 | TURNOVER (OTHER) by PORTER, SHERRY | | | |
| 01:22 | | | | MISSED LAYUP by DIXON, ELIZABETH |
| 01:20 | | | | REBOUND (OFF) by DIXON, ELIZABETH |
| 01:21 | | | | TURNOVER (TRAVEL) by DIXON, ELIZABETH |
| 01:05 | MISSED LAYUP by SKINNER, SANDRA | | | |
| 01:01 | | | | REBOUND (DEF) by JONES, JAZMINE |
| 00:45 | | | | MISSED JUMPER by DIOP, YACINE |
| 00:41 | REBOUND (DEF) by POUYE, FATOU | | | |
| 00:17 | GOOD! LAYUP by PORTER, SHERRY [PNT] | 21-13 | H 8 | |
| 00:10 | | | | TURNOVER (BADPASS) by JONES, JAZMINE |
| 00:10 | STEAL by CREECH, WHITNEY | | | |
| 00:01 | MISSED LAYUP by PORTER, SHERRY | | | |
| 00:01 | | | | BLOCK by DIXON, ELIZABETH |
| 00:01 | REBOUND (OFF) by TEAM | | | |
| 00:00 | | | | SUB OUT: DIXON, ELIZABETH |
| 00:00 | | | | SUB IN: DUNHAM, BIONCA |
| 00:00 | MISSED JUMPER by GIVENS, DEE | | | |
| 00:00 | REBOUND (OFF) by SKINNER, SANDRA | | | |

Western Ky. 13, Louisville 21

| Points from (This Period) | WKU | LOU |
|---------------------------|-----|-----|
| In the Paint | 6 | 10 |
| Off Turns | 5 | 0 |
| 2nd Chance | 3 | 0 |
| Fast Break | 5 | 4 |
| Bench | 0 | 2 |

Official Box Score
Western Ky. vs Louisville
Second Quarter Statistics Only
November 05, 2019 at KFC Yum! Center (Denny Crum Court) - Louisville



Western Ky. 12

| No. | Player | S | Pts | FG | 3FG | FT | OR | DR | TR | PF | A | TO | Blk | Stl | Min | +/- |
|---------------|-------------------|---|-----------|-------------|------------|------------|----------|----------|-----------|----------|----------|----------|----------|----------|-----------|-----|
| 05 | CREECH, WHITNEY | G | 2 | 1-1 | 0-0 | 0-0 | 0 | 3 | 3 | 1 | 0 | 1 | 0 | 0 | 8 | -3 |
| 15 | ELGEDAWY, RANEEM | F | 0 | 0-3 | 0-0 | 0-2 | 0 | 1 | 1 | 2 | 0 | 0 | 0 | 0 | 8 | -3 |
| 22 | PORTER, SHERRY | G | 5 | 2-4 | 0-1 | 1-1 | 1 | 1 | 2 | 0 | 1 | 2 | 0 | 0 | 9 | 1 |
| 23 | SKINNER, SANDRA | F | 0 | 0-0 | 0-0 | 0-0 | 0 | 1 | 1 | 0 | 0 | 0 | 0 | 0 | 5 | 0 |
| 40 | ABDELGAWAD, MERAL | G | 3 | 1-1 | 1-1 | 0-0 | 0 | 1 | 1 | 1 | 0 | 2 | 0 | 0 | 6 | 4 |
| 00 | HAYWOOD, MYRIAH | G | 0 | 0-2 | 0-0 | 0-0 | 0 | 0 | 0 | 0 | 0 | 0 | 0 | 1 | 5 | -3 |
| 03 | BROWN, DE'MYLA | G | 0 | 0-0 | 0-0 | 0-0 | 0 | 0 | 0 | 0 | 0 | 0 | 0 | 0 | 0 | 0 |
| 04 | GIVENS, DEE | F | 0 | 0-1 | 0-0 | 0-0 | 0 | 1 | 1 | 0 | 1 | 0 | 1 | 1 | 7 | -1 |
| 12 | POUYE, FATOU | F | 2 | 1-1 | 0-0 | 0-0 | 1 | 0 | 1 | 0 | 0 | 0 | 0 | 0 | 2 | 0 |
| 13 | HAYWOOD, HYA | G | 0 | 0-0 | 0-0 | 0-0 | 0 | 0 | 0 | 0 | 0 | 0 | 0 | 0 | 0 | 0 |
| TEAM | | | | | | | 1 | 0 | 1 | 0 | | 1 | | | | |
| TOTALS | | | 12 | 5-13 | 1-2 | 1-3 | 3 | 8 | 11 | 4 | 2 | 6 | 1 | 2 | 50 | |

Shooting By Period

| Period | FG | FG% | 3FG | 3FG% | FT | FT% |
|----------|-------|-------|------|-------|-------|-------|
| 3rd Qtr | 5-16 | 31% | 2-5 | 40% | 6-10 | 60% |
| 4th Qtr | 4-10 | 40% | 1-4 | 25% | 4-8 | 50% |
| 2nd Half | 5-13 | 38% | 1-2 | 50% | 1-3 | 33% |
| 2nd Half | 9-26 | 35% | 3-9 | 33% | 10-18 | 56% |
| Game | 19-57 | 33.3% | 6-19 | 31.6% | 12-23 | 52.2% |

Deadball Rebounds: 7,0

Louisville 13

| No. | Player | S | Pts | FG | 3FG | FT | OR | DR | TR | PF | A | TO | Blk | Stl | Min | +/- |
|---------------|--------------------|---|-----------|-------------|------------|------------|----------|----------|-----------|----------|----------|----------|----------|----------|-----------|-----|
| 01 | EVANS, DANA | G | 2 | 1-3 | 0-0 | 0-0 | 0 | 0 | 0 | 1 | 0 | 2 | 0 | 0 | 8 | 1 |
| 04 | BALOGUN, ELIZABETH | G | 3 | 1-1 | 1-1 | 0-0 | 0 | 1 | 1 | 0 | 1 | 0 | 0 | 1 | 8 | 1 |
| 22 | DIXON, ELIZABETH | F | 2 | 1-4 | 0-0 | 0-0 | 4 | 2 | 6 | 0 | 1 | 0 | 0 | 0 | 5 | 0 |
| 23 | JONES, JAZMINE | G | 0 | 0-0 | 0-0 | 0-0 | 1 | 0 | 1 | 1 | 0 | 0 | 0 | 0 | 4 | -2 |
| 33 | DUNHAM, BIONCA | F | 2 | 1-3 | 0-0 | 0-0 | 0 | 1 | 1 | 2 | 0 | 0 | 0 | 1 | 6 | -1 |
| 02 | DIOP, YACINE | G | 0 | 0-1 | 0-0 | 0-0 | 0 | 2 | 2 | 0 | 0 | 0 | 1 | 0 | 7 | 5 |
| 03 | ROBINS, SEYGAN | G | 0 | 0-0 | 0-0 | 0-0 | 0 | 0 | 0 | 1 | 0 | 1 | 0 | 0 | 2 | 0 |
| 11 | KONNO, NORIKA | G | 4 | 2-6 | 0-2 | 0-1 | 0 | 0 | 0 | 0 | 1 | 0 | 0 | 0 | 9 | 5 |
| 12 | DUVALL, LINDSEY | G | 0 | 0-0 | 0-0 | 0-0 | 0 | 0 | 0 | 0 | 0 | 1 | 0 | 0 | 1 | -4 |
| 21 | SHOOK, KYLEE | F | 0 | 0-0 | 0-0 | 0-0 | 0 | 0 | 0 | 0 | 0 | 0 | 0 | 0 | 0 | 0 |
| 24 | LAEMMLE, JESSICA | G | 0 | 0-0 | 0-0 | 0-0 | 0 | 0 | 0 | 0 | 0 | 0 | 0 | 0 | 0 | 0 |
| TEAM | | | | | | | 0 | 0 | 0 | 0 | | 0 | | | | |
| TOTALS | | | 13 | 6-18 | 1-3 | 0-1 | 5 | 6 | 11 | 5 | 3 | 4 | 1 | 2 | 50 | |

Shooting By Period

| Period | FG | FG% | 3FG | 3FG% | FT | FT% |
|----------|-------|-------|------|-------|-----|-------|
| 3rd Qtr | 9-17 | 53% | 2-5 | 40% | 1-1 | 100% |
| 4th Qtr | 7-15 | 47% | 2-5 | 40% | 4-5 | 80% |
| 2nd Half | 6-18 | 33% | 1-3 | 33% | 0-1 | 00% |
| 2nd Half | 16-32 | 50% | 4-10 | 40% | 5-6 | 83% |
| Game | 31-63 | 49.2% | 8-17 | 47.1% | 5-9 | 55.6% |

Deadball Rebounds: 1,0

Game Notes:

Officials: Luis Gonzalez,Erika Herriman-Camarota,Roy Jackson
 Attendance: 8304

Start Time: 07:02 PM ET
 End Time: 08:51 PM ET
 Game Duration: 1:49

| Score | 1st | 2nd | 3rd | 4th | TOT |
|-------|-----|-----|-----|-----|-----|
| WKU | 13 | 12 | 18 | 13 | 56 |
| LOU | 21 | 13 | 21 | 20 | 75 |

| Points from (This Period) | WKU | LOU |
|---------------------------|-----|-----|
| In the Paint | 8 | 6 |
| Off Turns | 3 | 7 |
| 2nd Chance | 2 | 4 |
| Fast Break | 4 | 3 |
| Bench | 2 | 4 |

**Official Play-By-Play
Western Ky. vs Louisville
Second Quarter**

November 05, 2019 at KFC Yum! Center (Denny Crum Court) - Louisville



Period 2

Starters:

Western Ky.: 5 CREECH,WHITNEY (G); 15 ELGEDAWY,RANEEM (F); 22 PORTER,SHERRY (G); 23 SKINNER,SANDRA (F); 40 ABDELGAWAD,MERAL (G);

Louisville: 1 EVANS,DANA (G); 4 BALOGUN,ELIZABETH (G); 22 DIXON,ELIZABETH (F); 23 JONES,JAZMINE (G); 33 DUNHAM,BIONCA (F);

| Time | VISITORS: Western Ky. | Score | Margin | HOME: Louisville |
|-------|---|-------|--------|--|
| 10:00 | SUB OUT: PORTER, SHERRY | | | |
| 10:00 | SUB OUT: SKINNER, SANDRA | | | |
| 10:00 | SUB IN: ELGEDAWY, RANEEM | | | |
| 10:00 | SUB IN: ABDELGAWAD, MERAL | | | |
| 09:39 | | | | FOUL (OFF) by ROBINS, SEYGAN |
| 09:39 | | | | TURNOVER (OFFENSIVE) by ROBINS, SEYGAN |
| 09:11 | MISSED JUMPER by ELGEDAWY, RANEEM | | | |
| 09:07 | | | | REBOUND (DEF) by DUNHAM, BIONCA |
| 08:56 | | 23-13 | H 10 | GOOD! LAYUP by KONNO, NORIKA [PNT] |
| 08:56 | FOUL (PERSONAL) by ELGEDAWY, RANEEM | | | |
| 08:56 | SUB OUT: CREECH, WHITNEY | | | |
| 08:56 | SUB IN: PORTER, SHERRY | | | |
| 08:56 | | | | MISSED FT by KONNO, NORIKA |
| 08:54 | | | | REBOUND (OFF) by JONES, JAZMINE |
| 08:50 | | | | MISSED JUMPER by KONNO, NORIKA |
| 08:50 | BLOCK by GIVENS, DEE | | | |
| 08:46 | REBOUND (DEF) by PORTER, SHERRY | | | |
| 08:30 | MISSED JUMPER by PORTER, SHERRY | | | |
| 08:30 | REBOUND (OFF) by TEAM | | | |
| 08:30 | | | | BLOCK by DIOP, YACINE |
| 08:28 | SUB OUT: GIVENS, DEE | | | |
| 08:28 | SUB IN: HAYWOOD, MYRIAH | | | |
| 08:19 | MISSED JUMPER by ELGEDAWY, RANEEM | | | |
| 08:14 | REBOUND (OFF) by POUYE, FATOU | | | |
| 08:14 | GOOD! LAYUP by POUYE, FATOU | 23-15 | H 8 | |
| 07:56 | | | | MISSED 3PTR by KONNO, NORIKA |
| 07:52 | REBOUND (DEF) by ELGEDAWY, RANEEM | | | |
| 07:34 | | | | SUB OUT: ROBINS, SEYGAN |
| 07:34 | | | | SUB OUT: JONES, JAZMINE |
| 07:34 | | | | SUB OUT: DUNHAM, BIONCA |
| 07:34 | | | | SUB IN: EVANS, DANA |
| 07:34 | | | | SUB IN: BALOGUN, ELIZABETH |
| 07:34 | | | | SUB IN: DIXON, ELIZABETH |
| 07:34 | SUB OUT: POUYE, FATOU | | | |
| 07:34 | SUB OUT: ABDELGAWAD, MERAL | | | |
| 07:34 | SUB IN: CREECH, WHITNEY | | | |
| 07:34 | SUB IN: SKINNER, SANDRA | | | |
| 07:23 | TURNOVER (SHOTCLOCK) by TEAM | | | |
| 07:09 | | | | MISSED JUMPER by DIOP, YACINE |
| 07:05 | REBOUND (DEF) by CREECH, WHITNEY | | | |
| 07:01 | TURNOVER (BADPASS) by CREECH, WHITNEY | | | |
| 07:01 | | | | STEAL by BALOGUN, ELIZABETH |
| 06:52 | | 25-15 | H 10 | GOOD! JUMPER by KONNO, NORIKA |
| 06:52 | | | | ASSIST by BALOGUN, ELIZABETH |
| 06:31 | MISSED JUMPER by ELGEDAWY, RANEEM | | | |
| 06:27 | | | | REBOUND (DEF) by DIOP, YACINE |
| 06:22 | | | | MISSED LAYUP by KONNO, NORIKA |
| 06:19 | | | | REBOUND (OFF) by DIXON, ELIZABETH |
| 06:17 | | | | MISSED LAYUP by DIXON, ELIZABETH |
| 06:13 | REBOUND (DEF) by CREECH, WHITNEY | | | |
| 06:11 | GOOD! LAYUP by CREECH, WHITNEY [FB/PNT] | 25-17 | H 8 | |
| 05:43 | | | | MISSED LAYUP by DIXON, ELIZABETH |
| 05:37 | | | | REBOUND (OFF) by DIXON, ELIZABETH |
| 05:37 | | 27-17 | H 10 | GOOD! LAYUP by DIXON, ELIZABETH |
| 05:23 | MISSED JUMPER by HAYWOOD, MYRIAH | | | |
| 05:19 | | | | REBOUND (DEF) by DIXON, ELIZABETH |
| 05:13 | | | | MISSED LAYUP by EVANS, DANA |
| 05:10 | REBOUND (DEF) by SKINNER, SANDRA | | | |
| 05:04 | MISSED 3PTR by PORTER, SHERRY | | | |
| 05:02 | REBOUND (OFF) by PORTER, SHERRY | | | |
| 05:02 | TURNOVER (TRAVEL) by PORTER, SHERRY | | | |
| 05:02 | | | | SUB OUT: DIOP, YACINE |
| 05:02 | | | | SUB IN: DUNHAM, BIONCA |
| 05:02 | SUB OUT: HAYWOOD, MYRIAH | | | |
| 05:02 | SUB OUT: ELGEDAWY, RANEEM | | | |
| 05:02 | SUB IN: GIVENS, DEE | | | |
| 05:02 | SUB IN: ABDELGAWAD, MERAL | | | |
| 04:49 | | 29-17 | H 12 | GOOD! JUMPER by EVANS, DANA |
| 04:44 | | | | |
| 04:44 | | | | SUB OUT: KONNO, NORIKA |

| Time | VISITORS: Western Ky. | Score | Margin | HOME: Louisville |
|-------|---|-------|--------|---------------------------------------|
| 04:44 | | | | SUB IN: DUVALL, LINDSEY |
| 04:33 | GOOD! 3PTR by ABDELGAWAD, MERAL | 29-20 | H 9 | |
| 04:33 | ASSIST by PORTER, SHERRY | | | |
| 04:05 | | | | TURNOVER (BADPASS) by DUVALL, LINDSEY |
| 04:05 | STEAL by GIVENS, DEE | | | |
| 03:59 | GOOD! LAYUP by PORTER, SHERRY [FB] | 29-22 | H 7 | |
| 03:59 | ASSIST by GIVENS, DEE | | | |
| 03:59 | | | | FOUL (PERSONAL) by EVANS, DANA |
| 03:59 | GOOD! FT by PORTER, SHERRY | 29-23 | H 6 | |
| 03:44 | | | | MISSED LAYUP by DUNHAM, BIONCA |
| 03:39 | | | | REBOUND (OFF) by DIXON, ELIZABETH |
| 03:38 | | 31-23 | H 8 | GOOD! LAYUP by DUNHAM, BIONCA |
| 03:38 | | | | ASSIST by DIXON, ELIZABETH |
| 03:24 | | | | FOUL (PERSONAL) by DUNHAM, BIONCA |
| 03:24 | | | | SUB OUT: DUVALL, LINDSEY |
| 03:24 | | | | SUB OUT: DIXON, ELIZABETH |
| 03:24 | | | | SUB IN: KONNO, NORIKA |
| 03:24 | | | | SUB IN: JONES, JAZMINE |
| 03:24 | SUB OUT: SKINNER, SANDRA | | | |
| 03:24 | SUB IN: ELGEDAWY, RANEEM | | | |
| 03:10 | TURNOVER (BADPASS) by ABDELGAWAD, MERAL | | | |
| 03:10 | | | | STEAL by DUNHAM, BIONCA |
| 02:48 | | | | MISSED 3PTR by KONNO, NORIKA |
| 02:44 | REBOUND (DEF) by CREECH, WHITNEY | | | |
| 02:39 | TURNOVER (3SEC) by ABDELGAWAD, MERAL | | | |
| 02:26 | | | | MISSED LAYUP by DUNHAM, BIONCA |
| 02:25 | REBOUND (DEF) by ABDELGAWAD, MERAL | | | |
| 02:24 | | | | FOUL (PERSONAL) by JONES, JAZMINE |
| 02:09 | GOOD! LAYUP by PORTER, SHERRY | 31-25 | H 6 | |
| 01:47 | FOUL (PERSONAL) by ABDELGAWAD, MERAL | | | |
| 01:47 | | | | SUB OUT: JONES, JAZMINE |
| 01:47 | | | | SUB IN: DIOP, YACINE |
| 01:46 | | | | TURNOVER (TRAVEL) by EVANS, DANA |
| 01:46 | SUB OUT: ABDELGAWAD, MERAL | | | |
| 01:46 | SUB IN: HAYWOOD, MYRIAH | | | |
| 01:34 | TURNOVER (TRAVEL) by PORTER, SHERRY | | | |
| 01:28 | | 34-25 | H 9 | GOOD! 3PTR by BALOGUN, ELIZABETH [FB] |
| 01:28 | | | | ASSIST by KONNO, NORIKA |
| 01:10 | | | | FOUL (PERSONAL) by DUNHAM, BIONCA |
| 01:10 | | | | SUB OUT: DUNHAM, BIONCA |
| 01:10 | | | | SUB IN: DIXON, ELIZABETH |
| 01:10 | SUB OUT: CREECH, WHITNEY | | | |
| 01:10 | SUB IN: SKINNER, SANDRA | | | |
| 01:10 | MISSED FT by ELGEDAWY, RANEEM | | | |
| 01:10 | REBOUND (OFF) by TEAM | | | |
| 01:10 | MISSED FT by ELGEDAWY, RANEEM | | | |
| 01:09 | | | | REBOUND (DEF) by DIOP, YACINE |
| 00:54 | | | | MISSED LAYUP by EVANS, DANA |
| 00:51 | | | | REBOUND (OFF) by DIXON, ELIZABETH |
| 00:50 | | | | MISSED LAYUP by DIXON, ELIZABETH |
| 00:44 | REBOUND (DEF) by GIVENS, DEE | | | |
| 00:31 | MISSED JUMPER by GIVENS, DEE | | | |
| 00:29 | | | | REBOUND (DEF) by DIXON, ELIZABETH |
| 00:30 | FOUL (PERSONAL) by ELGEDAWY, RANEEM | | | |
| 00:25 | | | | TIMEOUT 30SEC |
| 00:25 | SUB OUT: ELGEDAWY, RANEEM | | | |
| 00:25 | SUB IN: CREECH, WHITNEY | | | |
| 00:16 | FOUL (PERSONAL) by CREECH, WHITNEY | | | |
| 00:04 | | | | TURNOVER (BADPASS) by EVANS, DANA |
| 00:04 | STEAL by HAYWOOD, MYRIAH | | | |
| 00:00 | MISSED LAYUP by HAYWOOD, MYRIAH | | | |
| 00:00 | | | | REBOUND (DEF) by BALOGUN, ELIZABETH |

Western Ky. 25, Louisville 34

| Points from (This Period) | WKU | LOU |
|---------------------------|-----|-----|
| In the Paint | 8 | 6 |
| Off Turns | 3 | 7 |
| 2nd Chance | 2 | 4 |
| Fast Break | 4 | 3 |
| Bench | 2 | 4 |

Official Box Score
Western Ky. vs Louisville
Second Half Statistics Only
November 05, 2019 at KFC Yum! Center (Denny Crum Court) - Louisville



Western Ky. 31

| No. | Player | S | Pts | FG | 3FG | FT | OR | DR | TR | PF | A | TO | Blk | Stl | Min | +/- |
|---------------|-------------------|---|-----------|-------------|------------|--------------|----------|----------|-----------|----------|----------|----------|----------|----------|------------|-----|
| 00 | HAYWOOD, MYRIAH | G | 0 | 0-5 | 0-0 | 0-2 | 1 | 1 | 2 | 3 | 0 | 0 | 1 | 1 | 11 | -7 |
| 03 | BROWN, DE'MYLA | G | 0 | 0-0 | 0-0 | 0-0 | 0 | 1 | 1 | 0 | 0 | 0 | 0 | 0 | 2 | 3 |
| 04 | GIVENS, DEE | F | 13 | 4-7 | 3-5 | 2-2 | 2 | 0 | 2 | 2 | 0 | 1 | 0 | 0 | 16 | -11 |
| 05 | CREECH, WHITNEY | G | 6 | 1-4 | 0-2 | 4-6 | 1 | 1 | 2 | 1 | 2 | 1 | 0 | 1 | 19 | -14 |
| 12 | POUYE, FATOU | F | 1 | 0-0 | 0-0 | 1-2 | 0 | 1 | 1 | 0 | 0 | 0 | 0 | 0 | 7 | 5 |
| 13 | HAYWOOD, HYA | G | 0 | 0-0 | 0-0 | 0-0 | 0 | 0 | 0 | 0 | 0 | 0 | 0 | 0 | 2 | 3 |
| 15 | ELGEDAWY, RANEEM | F | 5 | 2-4 | 0-1 | 1-4 | 1 | 1 | 2 | 1 | 0 | 0 | 0 | 0 | 14 | -15 |
| 22 | PORTER, SHERRY | G | 2 | 1-4 | 0-0 | 0-0 | 0 | 1 | 1 | 1 | 2 | 3 | 0 | 1 | 13 | -7 |
| 23 | SKINNER, SANDRA | F | 4 | 1-1 | 0-0 | 2-2 | 2 | 2 | 4 | 0 | 0 | 0 | 0 | 1 | 9 | 4 |
| 40 | ABDELGAWAD, MERAL | G | 0 | 0-1 | 0-1 | 0-0 | 1 | 0 | 1 | 0 | 0 | 0 | 0 | 0 | 7 | -11 |
| | TEAM | | 0 | 0-0 | 0-0 | 0-0 | 1 | 0 | 1 | 0 | 0 | 1 | 0 | 0 | 0 | |
| TOTALS | | | 31 | 9-26 | 3-9 | 10-18 | 9 | 8 | 17 | 8 | 4 | 6 | 1 | 4 | 100 | |

Shooting By Period

| Period | FG | FG% | 3FG | 3FG% | FT | FT% |
|----------|-------|-------|------|-------|-------|-------|
| 3rd Qtr | 5-16 | 31% | 2-5 | 40% | 6-10 | 60% |
| 4th Qtr | 4-10 | 40% | 1-4 | 25% | 4-8 | 50% |
| 2nd Half | 9-26 | 35% | 3-9 | 33% | 10-18 | 56% |
| Game | 19-57 | 33.3% | 6-19 | 31.6% | 12-23 | 52.2% |

Deadball Rebounds: 7,0
Last FG Half: WKU 4th-01:14

Louisville 41

| No. | Player | S | Pts | FG | 3FG | FT | OR | DR | TR | PF | A | TO | Blk | Stl | Min | +/- |
|---------------|--------------------|---|-----------|--------------|-------------|------------|----------|-----------|-----------|-----------|-----------|----------|----------|----------|------------|-----|
| 01 | EVANS, DANA | G | 15 | 5-9 | 3-5 | 2-3 | 0 | 1 | 1 | 0 | 1 | 1 | 0 | 1 | 16 | 12 |
| 02 | DIOP, YACINE | G | 0 | 0-0 | 0-0 | 0-0 | 1 | 1 | 2 | 2 | 1 | 0 | 1 | 0 | 6 | 0 |
| 03 | ROBINS, SEYGAN | G | 0 | 0-0 | 0-0 | 0-0 | 0 | 1 | 1 | 2 | 0 | 1 | 0 | 0 | 4 | 2 |
| 04 | BALOGUN, ELIZABETH | G | 3 | 1-2 | 1-2 | 0-0 | 1 | 1 | 2 | 0 | 2 | 1 | 1 | 0 | 14 | 8 |
| 11 | KONNO, NORIKA | G | 5 | 1-2 | 0-0 | 3-3 | 1 | 0 | 1 | 3 | 1 | 2 | 0 | 0 | 14 | 5 |
| 12 | DUVALL, LINDSEY | G | 0 | 0-2 | 0-2 | 0-0 | 0 | 0 | 0 | 0 | 0 | 0 | 0 | 0 | 4 | 1 |
| 21 | SHOOK, KYLEE | F | 2 | 1-6 | 0-0 | 0-0 | 2 | 2 | 4 | 0 | 0 | 0 | 2 | 1 | 11 | 1 |
| 22 | DIXON, ELIZABETH | F | 6 | 3-3 | 0-0 | 0-0 | 2 | 3 | 5 | 2 | 1 | 1 | 0 | 0 | 13 | 10 |
| 23 | JONES, JAZMINE | G | 6 | 3-6 | 0-1 | 0-0 | 2 | 2 | 4 | 1 | 4 | 0 | 0 | 1 | 11 | 10 |
| 24 | LAEMMLE, JESSICA | G | 0 | 0-0 | 0-0 | 0-0 | 0 | 0 | 0 | 0 | 0 | 0 | 0 | 0 | 2 | -3 |
| 33 | DUNHAM, BIONCA | F | 4 | 2-2 | 0-0 | 0-0 | 0 | 0 | 0 | 2 | 0 | 0 | 0 | 0 | 5 | 4 |
| | TEAM | | 0 | 0-0 | 0-0 | 0-0 | 0 | 0 | 0 | 0 | 0 | 0 | 0 | 0 | 0 | |
| TOTALS | | | 41 | 16-32 | 4-10 | 5-6 | 9 | 11 | 20 | 12 | 10 | 6 | 4 | 3 | 100 | |

Shooting By Period

| Period | FG | FG% | 3FG | 3FG% | FT | FT% |
|----------|-------|-------|------|-------|-----|-------|
| 3rd Qtr | 9-17 | 53% | 2-5 | 40% | 1-1 | 100% |
| 4th Qtr | 7-15 | 47% | 2-5 | 40% | 4-5 | 80% |
| 2nd Half | 16-32 | 50% | 4-10 | 40% | 5-6 | 83% |
| Game | 31-63 | 49.2% | 8-17 | 47.1% | 5-9 | 55.6% |

Deadball Rebounds: 1,0
Last FG Half: LOU 4th-03:58

Game Notes:

Officials: Luis Gonzalez, Erika Herriman-Camarota, Roy Jackson
 Attendance: 8304

Start Time: 07:02 PM ET
 End Time: 08:51 PM ET
 Game Duration: 1:49

| Score | 1st | 2nd | 3rd | 4th | TOT |
|-------|-----|-----|-----|-----|-----|
| WKU | 13 | 12 | 18 | 13 | 56 |
| LOU | 21 | 13 | 21 | 20 | 75 |

| Points from (This Period) | WKU | LOU |
|---------------------------|-----|-----|
| In the Paint | 12 | 24 |
| Off Turns | 7 | 9 |
| 2nd Chance | 11 | 10 |
| Fast Break | 0 | 4 |
| Bench | 14 | 7 |

Official Box Score
Western Ky. vs Louisville
Third Quarter Statistics Only
November 05, 2019 at KFC Yum! Center (Denny Crum Court) - Louisville



Western Ky. 31

| No. | Player | S | Pts | FG | 3FG | FT | OR | DR | TR | PF | A | TO | Blk | Stl | Min | +/- |
|---------------|-------------------|---|-----------|-------------|------------|-------------|----------|----------|-----------|----------|----------|----------|----------|----------|-----------|-----|
| 05 | CREECH, WHITNEY | G | 4 | 1-3 | 0-1 | 2-2 | 1 | 0 | 1 | 1 | 1 | 1 | 0 | 0 | 9 | -7 |
| 15 | ELGEDAWY, RANEEM | F | 2 | 1-3 | 0-1 | 0-2 | 1 | 1 | 2 | 0 | 0 | 0 | 0 | 0 | 9 | -6 |
| 22 | PORTER, SHERRY | G | 2 | 1-3 | 0-0 | 0-0 | 0 | 1 | 1 | 1 | 1 | 0 | 0 | 1 | 7 | -3 |
| 23 | SKINNER, SANDRA | F | 2 | 0-0 | 0-0 | 2-2 | 1 | 1 | 2 | 0 | 0 | 0 | 0 | 0 | 4 | 2 |
| 40 | ABDELGAWAD, MERAL | G | 0 | 0-0 | 0-0 | 0-0 | 1 | 0 | 1 | 0 | 0 | 0 | 0 | 0 | 4 | -5 |
| 00 | HAYWOOD, MYRIAH | G | 0 | 0-3 | 0-0 | 0-2 | 1 | 1 | 2 | 0 | 0 | 0 | 1 | 1 | 6 | 2 |
| 03 | BROWN, DE'MYLA | G | 0 | 0-0 | 0-0 | 0-0 | 0 | 0 | 0 | 0 | 0 | 0 | 0 | 0 | 0 | 0 |
| 04 | GIVENS, DEE | F | 8 | 2-4 | 2-3 | 2-2 | 1 | 0 | 1 | 0 | 0 | 1 | 0 | 0 | 8 | -1 |
| 12 | POUYE, FATOU | F | 0 | 0-0 | 0-0 | 0-0 | 0 | 0 | 0 | 0 | 0 | 0 | 0 | 0 | 3 | 3 |
| 13 | HAYWOOD, HYA | G | 0 | 0-0 | 0-0 | 0-0 | 0 | 0 | 0 | 0 | 0 | 0 | 0 | 0 | 0 | 0 |
| TEAM | | | | | | | 1 | 0 | 1 | 0 | 0 | 0 | 0 | 0 | 0 | 0 |
| TOTALS | | | 18 | 5-16 | 2-5 | 6-10 | 7 | 4 | 11 | 2 | 2 | 2 | 1 | 2 | 50 | |

Shooting By Period

| Period | FG | FG% | 3FG | 3FG% | FT | FT% |
|----------|-------|-------|------|-------|-------|-------|
| 2nd Half | 0-0 | 0% | 0-0 | 0% | 0-0 | 0% |
| Game | 19-57 | 33.3% | 6-19 | 31.6% | 12-23 | 52.2% |

Deadball Rebounds: 7,0

Louisville 41

| No. | Player | S | Pts | FG | 3FG | FT | OR | DR | TR | PF | A | TO | Blk | Stl | Min | +/- |
|---------------|--------------------|---|-----------|-------------|------------|------------|----------|----------|-----------|----------|----------|----------|----------|----------|-----------|-----|
| 01 | EVANS, DANA | G | 8 | 3-7 | 1-3 | 1-1 | 0 | 1 | 1 | 0 | 0 | 1 | 0 | 0 | 10 | 3 |
| 04 | BALOGUN, ELIZABETH | G | 3 | 1-2 | 1-2 | 0-0 | 0 | 1 | 1 | 0 | 2 | 1 | 1 | 0 | 10 | 3 |
| 22 | DIXON, ELIZABETH | F | 2 | 1-1 | 0-0 | 0-0 | 1 | 1 | 2 | 1 | 0 | 1 | 0 | 0 | 6 | 2 |
| 23 | JONES, JAZMINE | G | 2 | 1-2 | 0-0 | 0-0 | 1 | 1 | 2 | 1 | 3 | 0 | 0 | 1 | 7 | 2 |
| 33 | DUNHAM, BIONCA | F | 4 | 2-2 | 0-0 | 0-0 | 0 | 0 | 0 | 2 | 0 | 0 | 0 | 0 | 5 | 4 |
| 02 | DIOP, YACINE | G | 0 | 0-0 | 0-0 | 0-0 | 1 | 1 | 2 | 1 | 0 | 0 | 1 | 0 | 3 | 1 |
| 03 | ROBINS, SEYGAN | G | 0 | 0-0 | 0-0 | 0-0 | 0 | 0 | 0 | 0 | 0 | 0 | 0 | 0 | 0 | 0 |
| 11 | KONNO, NORIKA | G | 0 | 0-0 | 0-0 | 0-0 | 0 | 0 | 0 | 2 | 0 | 0 | 0 | 0 | 4 | 1 |
| 12 | DUVALL, LINDSEY | G | 0 | 0-0 | 0-0 | 0-0 | 0 | 0 | 0 | 0 | 0 | 0 | 0 | 0 | 0 | 0 |
| 21 | SHOOK, KYLEE | F | 2 | 1-3 | 0-0 | 0-0 | 1 | 1 | 2 | 0 | 0 | 0 | 1 | 0 | 5 | -1 |
| 24 | LAEMMLE, JESSICA | G | 0 | 0-0 | 0-0 | 0-0 | 0 | 0 | 0 | 0 | 0 | 0 | 0 | 0 | 0 | 0 |
| TEAM | | | | | | | 0 | 0 | 0 | 0 | 0 | 0 | 0 | 0 | 0 | |
| TOTALS | | | 21 | 9-17 | 2-5 | 1-1 | 4 | 6 | 10 | 7 | 5 | 3 | 3 | 1 | 50 | |

Shooting By Period

| Period | FG | FG% | 3FG | 3FG% | FT | FT% |
|----------|-------|-------|------|-------|-----|-------|
| 2nd Half | 0-0 | 0% | 0-0 | 0% | 0-0 | 0% |
| Game | 31-63 | 49.2% | 8-17 | 47.1% | 5-9 | 55.6% |

Deadball Rebounds: 1,0

Game Notes:

Officials: Luis Gonzalez,Erika Herriman-Camarota,Roy Jackson
 Attendance: 8304

Start Time: 07:02 PM ET
 End Time: 08:51 PM ET
 Game Duration: 1:49

| Score | 1st | 2nd | 3rd | 4th | TOT |
|-------|-----|-----|-----|-----|-----|
| WKU | 13 | 12 | 18 | 13 | 56 |
| LOU | 21 | 13 | 21 | 20 | 75 |

| Points from (This Period) | WKU | LOU |
|---------------------------|-----|-----|
| In the Paint | 6 | 14 |
| Off Turns | 2 | 4 |
| 2nd Chance | 9 | 6 |
| Fast Break | 0 | 2 |
| Bench | 8 | 2 |

**Official Play-By-Play
Western Ky. vs Louisville
Third Quarter**

November 05, 2019 at KFC Yum! Center (Denny Crum Court) - Louisville



Period 3

Starters:

Western Ky.: 5 CREECH,WHITNEY (G); 15 ELGEDAWY,RANEEM (F); 22 PORTER,SHERRY (G); 23 SKINNER,SANDRA (F); 40 ABDELGAWAD,MERAL (G);
Louisville: 1 EVANS,DANA (G); 4 BALOGUN,ELIZABETH (G); 22 DIXON,ELIZABETH (F); 23 JONES,JAZMINE (G); 33 DUNHAM,BIONCA (F);

| Time | VISITORS: Western Ky. | Score | Margin | HOME: Louisville |
|-------|---------------------------------------|-------|--------|--|
| 10:00 | | | | SUB OUT: DIOP, YACINE |
| 10:00 | | | | SUB OUT: KONNO, NORIKA |
| 10:00 | | | | SUB IN: JONES, JAZMINE |
| 10:00 | | | | SUB IN: DUNHAM, BIONCA |
| 10:00 | SUB OUT: HAYWOOD, MYRIAH | | | |
| 10:00 | SUB OUT: SKINNER, SANDRA | | | |
| 10:00 | SUB IN: ELGEDAWY, RANEEM | | | |
| 10:00 | SUB IN: ABDELGAWAD, MERAL | | | |
| 09:48 | | | | MISSED LAYUP by JONES, JAZMINE |
| 09:43 | | | | REBOUND (OFF) by JONES, JAZMINE |
| 09:43 | | 36-25 | H 11 | GOOD! LAYUP by JONES, JAZMINE |
| 09:32 | | | | FOUL (PERSONAL) by DUNHAM, BIONCA |
| 09:29 | MISSED 3PTR by ELGEDAWY, RANEEM | | | |
| 09:26 | | | | REBOUND (DEF) by DIXON, ELIZABETH |
| 09:17 | | 39-25 | H 14 | GOOD! 3PTR by EVANS, DANA |
| 09:17 | | | | ASSIST by JONES, JAZMINE |
| 08:46 | TURNOVER (BADPASS) by GIVENS, DEE | | | |
| 08:21 | | 41-25 | H 16 | GOOD! JUMPER by DUNHAM, BIONCA [PNT] |
| 08:21 | | | | ASSIST by JONES, JAZMINE |
| 08:05 | | | | FOUL (PERSONAL) by DIXON, ELIZABETH |
| 08:05 | MISSED FT by ELGEDAWY, RANEEM | | | |
| 08:05 | REBOUND (OFF) by TEAM | | | |
| 08:05 | MISSED FT by ELGEDAWY, RANEEM | | | |
| 08:03 | REBOUND (OFF) by ABDELGAWAD, MERAL | | | |
| 08:00 | GOOD! 3PTR by GIVENS, DEE | 41-28 | H 13 | |
| 08:00 | ASSIST by PORTER, SHERRY | | | |
| 07:47 | | | | MISSED 3PTR by EVANS, DANA |
| 07:41 | | | | REBOUND (OFF) by DIXON, ELIZABETH |
| 07:41 | | 43-28 | H 15 | GOOD! LAYUP by DIXON, ELIZABETH |
| 07:30 | GOOD! LAYUP by PORTER, SHERRY | 43-30 | H 13 | |
| 07:15 | | | | TURNOVER (BADPASS) by BALOGUN, ELIZABETH |
| 07:15 | STEAL by PORTER, SHERRY | | | |
| 07:06 | GOOD! JUMPER by CREECH, WHITNEY [PNT] | 43-32 | H 11 | |
| 06:37 | | 46-32 | H 14 | GOOD! 3PTR by BALOGUN, ELIZABETH |
| 06:37 | | | | ASSIST by JONES, JAZMINE |
| 06:29 | TIMEOUT 30SEC | | | |
| 06:29 | SUB OUT: ELGEDAWY, RANEEM | | | |
| 06:29 | SUB OUT: PORTER, SHERRY | | | |
| 06:29 | SUB OUT: ABDELGAWAD, MERAL | | | |
| 06:29 | SUB IN: HAYWOOD, MYRIAH | | | |
| 06:29 | SUB IN: POUYE, FATOU | | | |
| 06:29 | SUB IN: SKINNER, SANDRA | | | |
| 06:06 | GOOD! 3PTR by GIVENS, DEE | 46-35 | H 11 | |
| 06:06 | ASSIST by CREECH, WHITNEY | | | |
| 05:46 | | | | TURNOVER (BADPASS) by EVANS, DANA |
| 05:46 | STEAL by HAYWOOD, MYRIAH | | | |
| 05:42 | MISSED LAYUP by HAYWOOD, MYRIAH | | | |
| 05:39 | | | | REBOUND (DEF) by JONES, JAZMINE |
| 05:29 | | | | TURNOVER (TRAVEL) by DIXON, ELIZABETH |
| 05:29 | SUB OUT: SKINNER, SANDRA | | | |
| 05:29 | SUB IN: ELGEDAWY, RANEEM | | | |
| 05:16 | TURNOVER (BADPASS) by CREECH, WHITNEY | | | |
| 05:16 | | | | STEAL by JONES, JAZMINE |
| 05:01 | | 48-35 | H 13 | GOOD! LAYUP by DUNHAM, BIONCA [PNT] |
| 05:01 | | | | ASSIST by BALOGUN, ELIZABETH |
| 04:45 | MISSED JUMPER by HAYWOOD, MYRIAH | | | |
| 04:42 | REBOUND (OFF) by GIVENS, DEE | | | |
| 04:42 | | | | FOUL (PERSONAL) by DUNHAM, BIONCA |
| 04:42 | | | | SUB OUT: DUNHAM, BIONCA |
| 04:42 | | | | SUB IN: SHOOK, KYLEE |
| 04:42 | SUB OUT: CREECH, WHITNEY | | | |
| 04:42 | SUB IN: PORTER, SHERRY | | | |
| 04:42 | GOOD! FT by GIVENS, DEE | 48-36 | H 12 | |
| 04:42 | GOOD! FT by GIVENS, DEE | 48-37 | H 11 | |
| 04:28 | | | | MISSED 3PTR by BALOGUN, ELIZABETH |
| 04:25 | REBOUND (DEF) by HAYWOOD, MYRIAH | | | |
| 04:19 | MISSED JUMPER by PORTER, SHERRY | | | |
| 04:19 | | | | BLOCK by SHOOK, KYLEE |
| 04:19 | REBOUND (OFF) by TEAM | | | |

| Time | VISITORS: Western Ky. | Score | Margin | HOME: Louisville |
|-------|------------------------------------|-------|--------|-------------------------------------|
| 04:19 | | | | SUB OUT: DIXON, ELIZABETH |
| 04:19 | | | | SUB IN: KONNO, NORIKA |
| 04:17 | MISSED JUMPER by HAYWOOD, MYRIAH | | | |
| 04:12 | REBOUND (OFF) by ELGEDAWY, RANEEM | | | |
| 04:12 | GOOD! LAYUP by ELGEDAWY, RANEEM | 48-39 | H 9 | |
| 03:59 | | | | MISSED JUMPER by SHOOK, KYLEE |
| 03:59 | BLOCK by HAYWOOD, MYRIAH | | | |
| 03:54 | REBOUND (DEF) by PORTER, SHERRY | | | |
| 03:43 | | | | FOUL (PERSONAL) by JONES, JAZMINE |
| 03:43 | SUB OUT: PORTER, SHERRY | | | |
| 03:43 | SUB IN: CREECH, WHITNEY | | | |
| 03:25 | MISSED JUMPER by GIVENS, DEE | | | |
| 03:22 | | | | REBOUND (DEF) by EVANS, DANA |
| 03:18 | | 50-39 | H 11 | GOOD! LAYUP by EVANS, DANA [PNT] |
| 03:18 | FOUL (PERSONAL) by CREECH, WHITNEY | | | |
| 03:18 | | | | SUB OUT: JONES, JAZMINE |
| 03:18 | | | | SUB IN: DIOP, YACINE |
| 03:18 | SUB OUT: POUYE, FATOU | | | |
| 03:18 | SUB IN: SKINNER, SANDRA | | | |
| 03:18 | | 51-39 | H 12 | GOOD! FT by EVANS, DANA |
| 03:09 | | | | FOUL (PERSONAL) by KONNO, NORIKA |
| 03:09 | GOOD! FT by CREECH, WHITNEY | 51-40 | H 11 | |
| 03:09 | GOOD! FT by CREECH, WHITNEY | 51-41 | H 10 | |
| 02:57 | | | | MISSED 3PTR by EVANS, DANA |
| 02:53 | REBOUND (DEF) by SKINNER, SANDRA | | | |
| 02:47 | MISSED 3PTR by GIVENS, DEE | | | |
| 02:47 | | | | BLOCK by BALOGUN, ELIZABETH |
| 02:43 | REBOUND (OFF) by CREECH, WHITNEY | | | |
| 02:30 | MISSED 3PTR by CREECH, WHITNEY | | | |
| 02:27 | REBOUND (OFF) by SKINNER, SANDRA | | | |
| 02:28 | | | | FOUL (PERSONAL) by DIOP, YACINE |
| 02:28 | SUB OUT: GIVENS, DEE | | | |
| 02:28 | SUB IN: PORTER, SHERRY | | | |
| 02:28 | GOOD! FT by SKINNER, SANDRA | 51-42 | H 9 | |
| 02:28 | GOOD! FT by SKINNER, SANDRA | 51-43 | H 8 | |
| 02:11 | FOUL (PERSONAL) by PORTER, SHERRY | | | |
| 02:09 | | | | MISSED JUMPER by EVANS, DANA |
| 02:04 | REBOUND (DEF) by ELGEDAWY, RANEEM | | | |
| 01:38 | MISSED JUMPER by CREECH, WHITNEY | | | |
| 01:35 | | | | REBOUND (DEF) by SHOOK, KYLEE |
| 01:26 | | | | MISSED LAYUP by SHOOK, KYLEE |
| 01:23 | | | | REBOUND (OFF) by SHOOK, KYLEE |
| 01:22 | | 53-43 | H 10 | GOOD! LAYUP by SHOOK, KYLEE |
| 01:05 | MISSED JUMPER by PORTER, SHERRY | | | |
| 01:05 | | | | BLOCK by DIOP, YACINE |
| 01:01 | REBOUND (OFF) by HAYWOOD, MYRIAH | | | |
| 00:56 | MISSED LAYUP by ELGEDAWY, RANEEM | | | |
| 00:53 | | | | REBOUND (DEF) by BALOGUN, ELIZABETH |
| 00:49 | | 55-43 | H 12 | GOOD! LAYUP by EVANS, DANA [FB] |
| 00:49 | | | | ASSIST by BALOGUN, ELIZABETH |
| 00:26 | | | | FOUL (PERSONAL) by KONNO, NORIKA |
| 00:26 | SUB OUT: ELGEDAWY, RANEEM | | | |
| 00:26 | SUB IN: GIVENS, DEE | | | |
| 00:26 | MISSED FT by HAYWOOD, MYRIAH | | | |
| 00:26 | REBOUND (OFF) by TEAM | | | |
| 00:25 | MISSED FT by HAYWOOD, MYRIAH | | | |
| 00:23 | | | | REBOUND (DEF) by DIOP, YACINE |
| 00:01 | | | | MISSED LAYUP by EVANS, DANA |
| 00:00 | | | | REBOUND (OFF) by DIOP, YACINE |

Western Ky. 43, Louisville 55

| Points from (This Period) | WKU | LOU |
|---------------------------|-----|-----|
| In the Paint | 6 | 14 |
| Off Turns | 2 | 4 |
| 2nd Chance | 9 | 6 |
| Fast Break | 0 | 2 |
| Bench | 8 | 2 |

Official Box Score
Western Ky. vs Louisville
Fourth Quarter Statistics Only
November 05, 2019 at KFC Yum! Center (Denny Crum Court) - Louisville



Western Ky. 13

| No. | Player | S | Pts | FG | 3FG | FT | OR | DR | TR | PF | A | TO | Blk | Stl | Min | +/- |
|---------------|-------------------|---|-----------|-------------|------------|------------|----------|----------|----------|----------|----------|----------|----------|----------|-----------|-----|
| 05 | CREECH, WHITNEY | G | 2 | 0-1 | 0-1 | 2-4 | 0 | 1 | 1 | 0 | 1 | 0 | 0 | 1 | 10 | -7 |
| 15 | ELGEDAWY, RANEEM | F | 3 | 1-1 | 0-0 | 1-2 | 0 | 0 | 0 | 1 | 0 | 0 | 0 | 0 | 5 | -9 |
| 22 | PORTER, SHERRY | G | 0 | 0-1 | 0-0 | 0-0 | 0 | 0 | 0 | 0 | 1 | 3 | 0 | 0 | 6 | -4 |
| 23 | SKINNER, SANDRA | F | 2 | 1-1 | 0-0 | 0-0 | 1 | 1 | 2 | 0 | 0 | 0 | 0 | 1 | 5 | 2 |
| 40 | ABDELGAWAD, MERAL | G | 0 | 0-1 | 0-1 | 0-0 | 0 | 0 | 0 | 0 | 0 | 0 | 0 | 0 | 3 | -6 |
| 00 | HAYWOOD, MYRIAH | G | 0 | 0-2 | 0-0 | 0-0 | 0 | 0 | 0 | 3 | 0 | 0 | 0 | 0 | 5 | -9 |
| 03 | BROWN, DE'MYLA | G | 0 | 0-0 | 0-0 | 0-0 | 0 | 1 | 1 | 0 | 0 | 0 | 0 | 0 | 2 | 3 |
| 04 | GIVENS, DEE | F | 5 | 2-3 | 1-2 | 0-0 | 1 | 0 | 1 | 2 | 0 | 0 | 0 | 0 | 8 | -10 |
| 12 | POUYE, FATOU | F | 1 | 0-0 | 0-0 | 1-2 | 0 | 1 | 1 | 0 | 0 | 0 | 0 | 0 | 4 | 2 |
| 13 | HAYWOOD, HYA | G | 0 | 0-0 | 0-0 | 0-0 | 0 | 0 | 0 | 0 | 0 | 0 | 0 | 0 | 2 | 3 |
| TEAM | | | | | | | 0 | 0 | 0 | 0 | | 1 | | | | |
| TOTALS | | | 13 | 4-10 | 1-4 | 4-8 | 2 | 4 | 6 | 6 | 2 | 4 | 0 | 2 | 50 | |

Shooting By Period

| Period | FG | FG% | 3FG | 3FG% | FT | FT% |
|--------|-------|-------|------|-------|-------|-------|
| Game | 19-57 | 33.3% | 6-19 | 31.6% | 12-23 | 52.2% |

Deadball Rebounds: 7,0

Louisville 20

| No. | Player | S | Pts | FG | 3FG | FT | OR | DR | TR | PF | A | TO | Blk | Stl | Min | +/- |
|---------------|--------------------|---|-----------|-------------|------------|------------|----------|----------|-----------|----------|----------|----------|----------|----------|-----------|-----|
| 01 | EVANS, DANA | G | 7 | 2-2 | 2-2 | 1-2 | 0 | 0 | 0 | 0 | 1 | 0 | 0 | 1 | 6 | 9 |
| 04 | BALOGUN, ELIZABETH | G | 0 | 0-0 | 0-0 | 0-0 | 1 | 0 | 1 | 0 | 0 | 0 | 0 | 0 | 4 | 5 |
| 22 | DIXON, ELIZABETH | F | 4 | 2-2 | 0-0 | 0-0 | 1 | 2 | 3 | 1 | 1 | 0 | 0 | 0 | 7 | 8 |
| 23 | JONES, JAZMINE | G | 4 | 2-4 | 0-1 | 0-0 | 1 | 1 | 2 | 0 | 1 | 0 | 0 | 0 | 4 | 8 |
| 33 | DUNHAM, BIONCA | F | 0 | 0-0 | 0-0 | 0-0 | 0 | 0 | 0 | 0 | 0 | 0 | 0 | 0 | 0 | 0 |
| 02 | DIOP, YACINE | G | 0 | 0-0 | 0-0 | 0-0 | 0 | 0 | 0 | 1 | 1 | 0 | 0 | 0 | 3 | -1 |
| 03 | ROBINS, SEYGAN | G | 0 | 0-0 | 0-0 | 0-0 | 0 | 1 | 1 | 2 | 0 | 1 | 0 | 0 | 4 | 2 |
| 11 | KONNO, NORIKA | G | 5 | 1-2 | 0-0 | 3-3 | 1 | 0 | 1 | 1 | 1 | 2 | 0 | 0 | 10 | 4 |
| 12 | DUVALL, LINDSEY | G | 0 | 0-2 | 0-2 | 0-0 | 0 | 0 | 0 | 0 | 0 | 0 | 0 | 0 | 4 | 1 |
| 21 | SHOOK, KYLEE | F | 0 | 0-3 | 0-0 | 0-0 | 1 | 1 | 2 | 0 | 0 | 0 | 1 | 1 | 6 | 2 |
| 24 | LAEMMLE, JESSICA | G | 0 | 0-0 | 0-0 | 0-0 | 0 | 0 | 0 | 0 | 0 | 0 | 0 | 0 | 2 | -3 |
| TEAM | | | | | | | 0 | 0 | 0 | 0 | | 0 | | | | |
| TOTALS | | | 20 | 7-15 | 2-5 | 4-5 | 5 | 5 | 10 | 5 | 5 | 3 | 1 | 2 | 50 | |

Shooting By Period

| Period | FG | FG% | 3FG | 3FG% | FT | FT% |
|--------|-------|-------|------|-------|-----|-------|
| Game | 31-63 | 49.2% | 8-17 | 47.1% | 5-9 | 55.6% |

Deadball Rebounds: 1,0

Game Notes:

Officials: Luis Gonzalez, Erika Herriman-Camarota, Roy Jackson
 Attendance: 8304

Start Time: 07:02 PM ET
 End Time: 08:51 PM ET
 Game Duration: 1:49

| Score | 1st | 2nd | 3rd | 4th | TOT |
|-------|-----|-----|-----|-----|-----------|
| WKU | 13 | 12 | 18 | 13 | 56 |
| LOU | 21 | 13 | 21 | 20 | 75 |

| Points from (This Period) | WKU | LOU |
|---------------------------|-----|-----|
| In the Paint | 6 | 10 |
| Off Turns | 5 | 5 |
| 2nd Chance | 2 | 4 |
| Fast Break | 0 | 2 |
| Bench | 6 | 5 |

**Official Play-By-Play
Western Ky. vs Louisville
Fourth Quarter**

November 05, 2019 at KFC Yum! Center (Denny Crum Court) - Louisville



Period 4

Starters:

Western Ky.: 5 CREECH,WHITNEY (G); 15 ELGEDAWY,RANEEM (F); 22 PORTER,SHERRY (G); 23 SKINNER,SANDRA (F); 40 ABDELGAWAD,MERAL (G);
Louisville: 1 EVANS,DANA (G); 4 BALOGUN,ELIZABETH (G); 22 DIXON,ELIZABETH (F); 23 JONES,JAZMINE (G); 33 DUNHAM,BIONCA (F);

| Time | VISITORS: Western Ky. | Score | Margin | HOME: Louisville |
|-------|---------------------------------------|-------|--------|--------------------------------------|
| 10:00 | | | | SUB OUT: BALOGUN, ELIZABETH |
| 10:00 | | | | SUB IN: ROBINS, SEYGAN |
| 10:00 | SUB OUT: SKINNER, SANDRA | | | |
| 10:00 | SUB IN: ELGEDAWY, RANEEM | | | |
| 09:48 | MISSED JUMPER by HAYWOOD, MYRIAH | | | |
| 09:45 | | | | REBOUND (DEF) by ROBINS, SEYGAN |
| 09:45 | FOUL (PERSONAL) by ELGEDAWY, RANEEM | | | |
| 09:25 | | 58-43 | H 15 | GOOD! 3PTR by EVANS, DANA |
| 09:25 | | | | ASSIST by DIOP, YACINE |
| 08:53 | MISSED 3PTR by CREECH, WHITNEY | | | |
| 08:48 | REBOUND (OFF) by GIVENS, DEE | | | |
| 08:48 | GOOD! LAYUP by GIVENS, DEE | 58-45 | H 13 | |
| 08:27 | | | | TURNOVER (BADPASS) by ROBINS, SEYGAN |
| 08:07 | | | | FOUL (PERSONAL) by ROBINS, SEYGAN |
| 08:07 | | | | SUB OUT: DIOP, YACINE |
| 08:07 | | | | SUB OUT: ROBINS, SEYGAN |
| 08:07 | | | | SUB OUT: SHOOK, KYLEE |
| 08:07 | | | | SUB IN: BALOGUN, ELIZABETH |
| 08:07 | | | | SUB IN: DIXON, ELIZABETH |
| 08:07 | | | | SUB IN: JONES, JAZMINE |
| 08:07 | MISSED FT by CREECH, WHITNEY | | | |
| 08:07 | REBOUND (OFF) by TEAM | | | |
| 08:07 | GOOD! FT by CREECH, WHITNEY | 58-46 | H 12 | |
| 07:49 | | | | TURNOVER (BADPASS) by KONNO, NORIKA |
| 07:49 | STEAL by CREECH, WHITNEY | | | |
| 07:28 | GOOD! LAYUP by ELGEDAWY, RANEEM [PNT] | 58-48 | H 10 | |
| 07:28 | ASSIST by CREECH, WHITNEY | | | |
| 07:17 | | 61-48 | H 13 | GOOD! 3PTR by EVANS, DANA |
| 07:17 | | | | ASSIST by DIXON, ELIZABETH |
| 06:59 | TURNOVER (LOSTBALL) by PORTER, SHERRY | | | |
| 06:59 | | | | STEAL by EVANS, DANA |
| 06:54 | | 63-48 | H 15 | GOOD! LAYUP by KONNO, NORIKA [FB] |
| 06:54 | | | | ASSIST by EVANS, DANA |
| 06:54 | FOUL (PERSONAL) by HAYWOOD, MYRIAH | | | |
| 06:54 | SUB OUT: PORTER, SHERRY | | | |
| 06:54 | SUB IN: ABDELGAWAD, MERAL | | | |
| 06:54 | | 64-48 | H 16 | GOOD! FT by KONNO, NORIKA |
| 06:33 | | | | FOUL (PERSONAL) by DIXON, ELIZABETH |
| 06:33 | MISSED FT by ELGEDAWY, RANEEM | | | |
| 06:33 | REBOUND (OFF) by TEAM | | | |
| 06:33 | GOOD! FT by ELGEDAWY, RANEEM | 64-49 | H 15 | |
| 06:25 | FOUL (PERSONAL) by HAYWOOD, MYRIAH | | | |
| 06:18 | | | | MISSED 3PTR by JONES, JAZMINE |
| 06:14 | | | | REBOUND (OFF) by BALOGUN, ELIZABETH |
| 06:11 | | | | MISSED LAYUP by JONES, JAZMINE |
| 06:05 | | 66-49 | H 17 | REBOUND (OFF) by DIXON, ELIZABETH |
| 06:05 | | | | GOOD! LAYUP by DIXON, ELIZABETH |
| 05:49 | MISSED 3PTR by GIVENS, DEE | | | |
| 05:46 | | | | REBOUND (DEF) by JONES, JAZMINE |
| 05:47 | FOUL (PERSONAL) by HAYWOOD, MYRIAH | | | |
| 05:35 | | 68-49 | H 19 | GOOD! LAYUP by DIXON, ELIZABETH |
| 05:35 | | | | ASSIST by JONES, JAZMINE |
| 05:15 | MISSED JUMPER by HAYWOOD, MYRIAH | | | |
| 05:10 | | | | REBOUND (DEF) by DIXON, ELIZABETH |
| 05:08 | | | | MISSED JUMPER by KONNO, NORIKA |
| 05:04 | REBOUND (DEF) by CREECH, WHITNEY | | | |
| 05:00 | MISSED 3PTR by ABDELGAWAD, MERAL | | | |
| 04:56 | | | | REBOUND (DEF) by DIXON, ELIZABETH |
| 04:50 | | 70-49 | H 21 | GOOD! LAYUP by JONES, JAZMINE [PNT] |
| 04:50 | | | | ASSIST by KONNO, NORIKA |
| 04:49 | TIMEOUT 30SEC | | | |
| 04:49 | SUB OUT: HAYWOOD, MYRIAH | | | |
| 04:49 | SUB OUT: ELGEDAWY, RANEEM | | | |
| 04:49 | SUB IN: PORTER, SHERRY | | | |
| 04:49 | SUB IN: SKINNER, SANDRA | | | |
| 04:33 | GOOD! 3PTR by GIVENS, DEE | 70-52 | H 18 | |
| 04:33 | ASSIST by PORTER, SHERRY | | | |
| 04:03 | FOUL (PERSONAL) by GIVENS, DEE | | | |
| 04:03 | | | | SUB OUT: BALOGUN, ELIZABETH |
| 04:03 | | | | SUB OUT: KONNO, NORIKA |

| Time | VISITORS: Western Ky. | Score | Margin | HOME: Louisville |
|-------|---------------------------------------|-------|--------|-------------------------------------|
| 04:03 | | | | SUB IN: DUVALL, LINDSEY |
| 04:03 | | | | SUB IN: SHOOK, KYLEE |
| 04:03 | | 71-52 | H 19 | GOOD! FT by EVANS, DANA |
| 04:02 | | | | MISSED FT by EVANS, DANA |
| 03:58 | | | | REBOUND (OFF) by JONES, JAZMINE |
| 03:58 | | 73-52 | H 21 | GOOD! LAYUP by JONES, JAZMINE |
| 03:48 | TURNOVER (TRAVEL) by PORTER, SHERRY | | | |
| 03:48 | | | | SUB OUT: EVANS, DANA |
| 03:48 | | | | SUB OUT: JONES, JAZMINE |
| 03:48 | | | | SUB IN: ROBINS, SEYGAN |
| 03:48 | | | | SUB IN: KONNO, NORIKA |
| 03:48 | SUB OUT: ABDELGAWAD, MERAL | | | |
| 03:48 | SUB IN: POUYE, FATOU | | | |
| 03:24 | FOUL (PERSONAL) by GIVENS, DEE | | | |
| 03:24 | | 74-52 | H 22 | GOOD! FT by KONNO, NORIKA |
| 03:24 | | 75-52 | H 23 | GOOD! FT by KONNO, NORIKA |
| 02:55 | MISSED JUMPER by PORTER, SHERRY | | | |
| 02:55 | | | | BLOCK by SHOOK, KYLEE |
| 02:51 | REBOUND (OFF) by SKINNER, SANDRA | | | |
| 02:51 | TURNOVER (SHOTCLOCK) by TEAM | | | |
| 02:27 | | | | MISSED 3PTR by DUVALL, LINDSEY |
| 02:21 | | | | REBOUND (OFF) by SHOOK, KYLEE |
| 02:21 | | | | MISSED LAYUP by SHOOK, KYLEE |
| 02:20 | REBOUND (DEF) by SKINNER, SANDRA | | | |
| 02:17 | | | | FOUL (PERSONAL) by ROBINS, SEYGAN |
| 02:17 | GOOD! FT by CREECH, WHITNEY | 75-53 | H 22 | |
| 02:17 | MISSED FT by CREECH, WHITNEY | | | |
| 02:15 | | | | REBOUND (DEF) by SHOOK, KYLEE |
| 02:07 | | | | SUB OUT: ROBINS, SEYGAN |
| 02:07 | | | | SUB IN: LAEMMLE, JESSICA |
| 01:52 | | | | MISSED LAYUP by SHOOK, KYLEE |
| 01:49 | REBOUND (DEF) by POUYE, FATOU | | | |
| 01:45 | TURNOVER (BADPASS) by PORTER, SHERRY | | | |
| 01:45 | | | | STEAL by SHOOK, KYLEE |
| 01:36 | | | | TURNOVER (BADPASS) by KONNO, NORIKA |
| 01:36 | STEAL by SKINNER, SANDRA | | | |
| 01:34 | | | | FOUL (PERSONAL) by KONNO, NORIKA |
| 01:34 | SUB OUT: GIVENS, DEE | | | |
| 01:34 | SUB IN: BROWN, DE'MYLA | | | |
| 01:14 | GOOD! JUMPER by SKINNER, SANDRA [PNT] | 75-55 | H 20 | |
| 00:55 | | | | MISSED 3PTR by DUVALL, LINDSEY |
| 00:50 | | | | REBOUND (OFF) by KONNO, NORIKA |
| 00:36 | | | | MISSED JUMPER by SHOOK, KYLEE |
| 00:31 | REBOUND (DEF) by BROWN, DE'MYLA | | | |
| 00:30 | | | | FOUL (PERSONAL) by DIOP, YACINE |
| 00:30 | MISSED FT by POUYE, FATOU | | | |
| 00:30 | REBOUND (OFF) by TEAM | | | |
| 00:30 | GOOD! FT by POUYE, FATOU | 75-56 | H 19 | |
| 00:30 | | | | SUB OUT: DIXON, ELIZABETH |
| 00:30 | | | | SUB IN: DIOP, YACINE |

Western Ky. 56, Louisville 75

| Points from (This Period) | WKU | LOU |
|---------------------------|-----|-----|
| In the Paint | 6 | 10 |
| Off Turns | 5 | 5 |
| 2nd Chance | 2 | 4 |
| Fast Break | 0 | 2 |
| Bench | 6 | 5 |

**Official Scoring/Possession Reference Chart
Western Ky. vs Louisville
Period 1**

November 05, 2019 at KFC Yum! Center (Denny Crum Court) - Louisville



Period 1

Starters:

Western Ky.: 5 CREECH,WHITNEY (G); 15 ELGEDAWY,RANEEM (F); 22 PORTER,SHERRY (G); 23 SKINNER,SANDRA (F); 40 ABDELGAWAD,MERAL (G);

Louisville: 1 EVANS,DANA (G); 4 BALOGUN,ELIZABETH (G); 22 DIXON,ELIZABETH (F); 23 JONES,JAZMINE (G); 33 DUNHAM,BIONCA (F);

| Time | VISITORS: Western Ky. | Score | Margin | HOME: Louisville |
|-------|-------------------------------------|-------|--------|--|
| 09:35 | GOOD! LAYUP by CREECH, WHITNEY [FB] | 0-2 | V 2 | |
| 09:22 | | 3-2 | H 1 | GOOD! 3PTR by BALOGUN, ELIZABETH |
| 08:58 | | 5-2 | H 3 | GOOD! LAYUP by JONES, JAZMINE [FB] |
| 08:37 | GOOD! LAYUP by ELGEDAWY, RANEEM | 5-4 | H 1 | |
| 08:17 | | 7-4 | H 3 | GOOD! JUMPER by DIXON, ELIZABETH [PNT] |
| 07:44 | GOOD! FT by ELGEDAWY, RANEEM | 7-5 | H 2 | |
| 07:32 | | 9-5 | H 4 | GOOD! LAYUP by DUNHAM, BIONCA |
| 07:17 | GOOD! 3PTR by PORTER, SHERRY | 9-8 | H 1 | |
| 05:51 | | 12-8 | H 4 | GOOD! 3PTR by BALOGUN, ELIZABETH |
| 04:48 | | 15-8 | H 7 | GOOD! 3PTR by BALOGUN, ELIZABETH |
| 04:23 | | 17-8 | H 9 | GOOD! JUMPER by DUNHAM, BIONCA |
| 02:35 | GOOD! 3PTR by PORTER, SHERRY [FB] | 17-11 | H 6 | |
| 02:17 | | 19-11 | H 8 | GOOD! JUMPER by DIOP, YACINE [PNT] |
| 01:55 | | 21-11 | H 10 | GOOD! LAYUP by EVANS, DANA [FB] |
| 00:17 | GOOD! LAYUP by PORTER, SHERRY [PNT] | 21-13 | H 8 | |

Western Ky. 13, Louisville 21

**Official Scoring/Possession Reference Chart
Western Ky. vs Louisville
Period 2**

November 05, 2019 at KFC Yum! Center (Denny Crum Court) - Louisville



Period 2

Starters:

Western Ky.: 5 CREECH,WHITNEY (G); 15 ELGEDAWY,RANEEM (F); 22 PORTER,SHERRY (G); 23 SKINNER,SANDRA (F); 40 ABDELGAWAD,MERAL (G);

Louisville: 1 EVANS,DANA (G); 4 BALOGUN,ELIZABETH (G); 22 DIXON,ELIZABETH (F); 23 JONES,JAZMINE (G); 33 DUNHAM,BIONCA (F);

| Time | VISITORS: Western Ky. | Score | Margin | HOME: Louisville |
|-------|---|-------|--------|---------------------------------------|
| 08:56 | | 23-13 | H 10 | GOOD! LAYUP by KONNO, NORIKA [PNT] |
| 08:14 | GOOD! LAYUP by POUYE, FATOU | 23-15 | H 8 | |
| 06:52 | | 25-15 | H 10 | GOOD! JUMPER by KONNO, NORIKA |
| 06:11 | GOOD! LAYUP by CREECH, WHITNEY [FB/PNT] | 25-17 | H 8 | |
| 05:37 | | 27-17 | H 10 | GOOD! LAYUP by DIXON, ELIZABETH |
| 04:49 | | 29-17 | H 12 | GOOD! JUMPER by EVANS, DANA |
| 04:33 | GOOD! 3PTR by ABDELGAWAD, MERAL | 29-20 | H 9 | |
| 03:59 | GOOD! LAYUP by PORTER, SHERRY [FB] | 29-22 | H 7 | |
| 03:59 | GOOD! FT by PORTER, SHERRY | 29-23 | H 6 | |
| 03:38 | | 31-23 | H 8 | GOOD! LAYUP by DUNHAM, BIONCA |
| 02:09 | GOOD! LAYUP by PORTER, SHERRY | 31-25 | H 6 | |
| 01:28 | | 34-25 | H 9 | GOOD! 3PTR by BALOGUN, ELIZABETH [FB] |

Western Ky. 25, Louisville 34

**Official Scoring/Possession Reference Chart
Western Ky. vs Louisville
Period 3**

November 05, 2019 at KFC Yum! Center (Denny Crum Court) - Louisville



Period 3

Starters:

Western Ky.: 5 CREECH,WHITNEY (G); 15 ELGEDAWY,RANEEM (F); 22 PORTER,SHERRY (G); 23 SKINNER,SANDRA (F); 40 ABDELGAWAD,MERAL (G);

Louisville: 1 EVANS,DANA (G); 4 BALOGUN,ELIZABETH (G); 22 DIXON,ELIZABETH (F); 23 JONES,JAZMINE (G); 33 DUNHAM,BIONCA (F);

| Time | VISITORS: Western Ky. | Score | Margin | HOME: Louisville |
|-------|---------------------------------------|-------|--------|--------------------------------------|
| 09:43 | | 36-25 | H 11 | GOOD! LAYUP by JONES, JAZMINE |
| 09:17 | | 39-25 | H 14 | GOOD! 3PTR by EVANS, DANA |
| 08:21 | | 41-25 | H 16 | GOOD! JUMPER by DUNHAM, BIONCA [PNT] |
| 08:00 | GOOD! 3PTR by GIVENS, DEE | 41-28 | H 13 | |
| 07:41 | | 43-28 | H 15 | GOOD! LAYUP by DIXON, ELIZABETH |
| 07:30 | GOOD! LAYUP by PORTER, SHERRY | 43-30 | H 13 | |
| 07:06 | GOOD! JUMPER by CREECH, WHITNEY [PNT] | 43-32 | H 11 | |
| 06:37 | | 46-32 | H 14 | GOOD! 3PTR by BALOGUN, ELIZABETH |
| 06:06 | GOOD! 3PTR by GIVENS, DEE | 46-35 | H 11 | |
| 05:01 | | 48-35 | H 13 | GOOD! LAYUP by DUNHAM, BIONCA [PNT] |
| 04:42 | GOOD! FT by GIVENS, DEE | 48-36 | H 12 | |
| 04:42 | GOOD! FT by GIVENS, DEE | 48-37 | H 11 | |
| 04:12 | GOOD! LAYUP by ELGEDAWY, RANEEM | 48-39 | H 9 | |
| 03:18 | | 50-39 | H 11 | GOOD! LAYUP by EVANS, DANA [PNT] |
| 03:18 | | 51-39 | H 12 | GOOD! FT by EVANS, DANA |
| 03:09 | GOOD! FT by CREECH, WHITNEY | 51-40 | H 11 | |
| 03:09 | GOOD! FT by CREECH, WHITNEY | 51-41 | H 10 | |
| 02:28 | GOOD! FT by SKINNER, SANDRA | 51-42 | H 9 | |
| 02:28 | GOOD! FT by SKINNER, SANDRA | 51-43 | H 8 | |
| 01:22 | | 53-43 | H 10 | GOOD! LAYUP by SHOOK, KYLEE |
| 00:49 | | 55-43 | H 12 | GOOD! LAYUP by EVANS, DANA [FB] |

Western Ky. 43, Louisville 55

**Official Scoring/Possession Reference Chart
Western Ky. vs Louisville
Period 4**

November 05, 2019 at KFC Yum! Center (Denny Crum Court) - Louisville



Period 4

Starters:

Western Ky.: 5 CREECH,WHITNEY (G); 15 ELGEDAWY,RANEEM (F); 22 PORTER,SHERRY (G); 23 SKINNER,SANDRA (F); 40 ABDELGAWAD,MERAL (G);

Louisville: 1 EVANS,DANA (G); 4 BALOGUN,ELIZABETH (G); 22 DIXON,ELIZABETH (F); 23 JONES,JAZMINE (G); 33 DUNHAM,BIONCA (F);

| Time | VISITORS: Western Ky. | Score | Margin | HOME: Louisville |
|-------|---------------------------------------|-------|--------|-------------------------------------|
| 09:25 | | 58-43 | H 15 | GOOD! 3PTR by EVANS, DANA |
| 08:48 | GOOD! LAYUP by GIVENS, DEE | 58-45 | H 13 | |
| 08:07 | GOOD! FT by CREECH, WHITNEY | 58-46 | H 12 | |
| 07:28 | GOOD! LAYUP by ELGEDAWY, RANEEM [PNT] | 58-48 | H 10 | |
| 07:17 | | 61-48 | H 13 | GOOD! 3PTR by EVANS, DANA |
| 06:54 | | 63-48 | H 15 | GOOD! LAYUP by KONNO, NORIKA [FB] |
| 06:54 | | 64-48 | H 16 | GOOD! FT by KONNO, NORIKA |
| 06:33 | GOOD! FT by ELGEDAWY, RANEEM | 64-49 | H 15 | |
| 06:05 | | 66-49 | H 17 | GOOD! LAYUP by DIXON, ELIZABETH |
| 05:35 | | 68-49 | H 19 | GOOD! LAYUP by DIXON, ELIZABETH |
| 04:50 | | 70-49 | H 21 | GOOD! LAYUP by JONES, JAZMINE [PNT] |
| 04:33 | GOOD! 3PTR by GIVENS, DEE | 70-52 | H 18 | |
| 04:03 | | 71-52 | H 19 | GOOD! FT by EVANS, DANA |
| 03:58 | | 73-52 | H 21 | GOOD! LAYUP by JONES, JAZMINE |
| 03:24 | | 74-52 | H 22 | GOOD! FT by KONNO, NORIKA |
| 03:24 | | 75-52 | H 23 | GOOD! FT by KONNO, NORIKA |
| 02:17 | GOOD! FT by CREECH, WHITNEY | 75-53 | H 22 | |
| 01:14 | GOOD! JUMPER by SKINNER, SANDRA [PNT] | 75-55 | H 20 | |
| 00:30 | GOOD! FT by POUYE, FATOU | 75-56 | H 19 | |

Western Ky. 56, Louisville 75

**Official Substitutions Log
Western Ky. vs Louisville
Period 1**

November 05, 2019 at KFC Yum! Center (Denny Crum Court) - Louisville



| VISITORS: Western Ky. | Time | Score | HOME: Louisville |
|------------------------------|-------------|--------------|----------------------------|
| 5 CREECH,WHITNEY | | | 1 EVANS,DANA |
| 15 ELGEDAWY,RANEEM | | | 4 BALOGUN,ELIZABETH |
| 22 PORTER,SHERRY | | | 22 DIXON,ELIZABETH |
| 23 SKINNER,SANDRA | | | 23 JONES,JAZMINE |
| 40 ABDELGAWAD,MERAL | | | 33 DUNHAM,BIONCA |
| SUB OUT: 23 SKINNER,SANDRA | 07:44 | 4-7 | |
| SUB IN: 4 GIVENS,DEE | 07:44 | | |
| | 07:05 | 8-9 | SUB OUT: DIXON,ELIZABETH |
| | 07:05 | | SUB IN: SHOOK,KYLEE |
| | 06:33 | 8-9 | SUB OUT: SHOOK,KYLEE |
| | 06:33 | | SUB IN: DIXON,ELIZABETH |
| SUB OUT: 40 ABDELGAWAD,MERAL | 06:33 | | |
| SUB IN: 00 HAYWOOD,MYRIAH | 06:33 | | |
| | 03:03 | 8-17 | SUB OUT: BALOGUN,ELIZABETH |
| | 03:03 | | SUB OUT: DUNHAM,BIONCA |
| | 03:03 | | SUB IN: DIOP,YACINE |
| | 03:03 | | SUB IN: KONNO,NORIKA |
| | 01:54 | 11-21 | SUB OUT: EVANS,DANA |
| | 01:54 | | SUB IN: ROBINS,SEYGAN |
| SUB OUT: 00 HAYWOOD,MYRIAH | 01:54 | | |
| SUB OUT: 15 ELGEDAWY,RANEEM | 01:54 | | |
| SUB IN: 12 POUYE,FATOU | 01:54 | | |
| SUB IN: 23 SKINNER,SANDRA | 01:54 | | |
| | 00:00 | 13-21 | SUB OUT: DIXON,ELIZABETH |
| | 00:00 | | SUB IN: DUNHAM,BIONCA |

Western Ky. 13, Louisville 21

**Official Substitutions Log
Western Ky. vs Louisville
Period 2**

November 05, 2019 at KFC Yum! Center (Denny Crum Court) - Louisville



| VISITORS: Western Ky. | Time | Score | HOME: Louisville |
|------------------------------|-------------|--------------|---------------------------|
| 5 CREECH,WHITNEY | | | 1 EVANS,DANA |
| 15 ELGEDAWY,RANEEM | | | 4 BALOGUN,ELIZABETH |
| 22 PORTER,SHERRY | | | 22 DIXON,ELIZABETH |
| 23 SKINNER,SANDRA | | | 23 JONES,JAZMINE |
| 40 ABDELGAWAD,MERAL | | | 33 DUNHAM,BIONCA |
| SUB OUT: 22 PORTER,SHERRY | 10:00 | - | |
| SUB OUT: 23 SKINNER,SANDRA | 10:00 | | |
| SUB IN: 15 ELGEDAWY,RANEEM | 10:00 | | |
| SUB IN: 40 ABDELGAWAD,MERAL | 10:00 | | |
| SUB OUT: 5 CREECH,WHITNEY | 08:56 | 13-23 | |
| SUB IN: 22 PORTER,SHERRY | 08:56 | | |
| SUB OUT: 4 GIVENS,DEE | 08:28 | 13-23 | |
| SUB IN: 00 HAYWOOD,MYRIAH | 08:28 | | |
| | 07:34 | 15-23 | SUB OUT: ROBINS,SEYGAN |
| | 07:34 | | SUB OUT: JONES,JAZMINE |
| | 07:34 | | SUB OUT: DUNHAM,BIONCA |
| | 07:34 | | SUB IN: EVANS,DANA |
| | 07:34 | | SUB IN: BALOGUN,ELIZABETH |
| | 07:34 | | SUB IN: DIXON,ELIZABETH |
| SUB OUT: 12 POUYE,FATOU | 07:34 | | |
| SUB OUT: 40 ABDELGAWAD,MERAL | 07:34 | | |
| SUB IN: 5 CREECH,WHITNEY | 07:34 | | |
| SUB IN: 23 SKINNER,SANDRA | 07:34 | | |
| | 05:02 | 17-27 | SUB OUT: DIOP,YACINE |
| | 05:02 | | SUB IN: DUNHAM,BIONCA |
| SUB OUT: 00 HAYWOOD,MYRIAH | 05:02 | | |
| SUB OUT: 15 ELGEDAWY,RANEEM | 05:02 | | |
| SUB IN: 4 GIVENS,DEE | 05:02 | | |
| SUB IN: 40 ABDELGAWAD,MERAL | 05:02 | | |
| | 04:44 | 17-29 | SUB OUT: KONNO,NORIKA |
| | 04:44 | | SUB IN: DUVALL,LINDSEY |
| | 03:24 | 23-31 | SUB OUT: DUVALL,LINDSEY |
| | 03:24 | | SUB OUT: DIXON,ELIZABETH |
| | 03:24 | | SUB IN: KONNO,NORIKA |
| | 03:24 | | SUB IN: JONES,JAZMINE |
| SUB OUT: 23 SKINNER,SANDRA | 03:24 | | |
| SUB IN: 15 ELGEDAWY,RANEEM | 03:24 | | |
| | 01:47 | 25-31 | SUB OUT: JONES,JAZMINE |
| | 01:47 | | SUB IN: DIOP,YACINE |
| SUB OUT: 40 ABDELGAWAD,MERAL | 01:46 | 25-31 | |
| SUB IN: 00 HAYWOOD,MYRIAH | 01:46 | | |
| | 01:10 | 25-34 | SUB OUT: DUNHAM,BIONCA |
| | 01:10 | | SUB IN: DIXON,ELIZABETH |
| SUB OUT: 5 CREECH,WHITNEY | 01:10 | | |
| SUB IN: 23 SKINNER,SANDRA | 01:10 | | |
| SUB OUT: 15 ELGEDAWY,RANEEM | 00:25 | 25-34 | |
| SUB IN: 5 CREECH,WHITNEY | 00:25 | | |

Western Ky. 25, Louisville 34

**Official Substitutions Log
Western Ky. vs Louisville
Period 3**

November 05, 2019 at KFC Yum! Center (Denny Crum Court) - Louisville



| VISITORS: Western Ky. | Time | Score | HOME: Louisville |
|------------------------------|-------------|--------------|--------------------------|
| 5 CREECH,WHITNEY | | | 1 EVANS,DANA |
| 15 ELGEDAWY,RANEEM | | | 4 BALOGUN,ELIZABETH |
| 22 PORTER,SHERRY | | | 22 DIXON,ELIZABETH |
| 23 SKINNER,SANDRA | | | 23 JONES,JAZMINE |
| 40 ABDELGAWAD,MERAL | | | 33 DUNHAM,BIONCA |
| | 10:00 | - | SUB OUT: DIOP,YACINE |
| | 10:00 | | SUB OUT: KONNO,NORIKI |
| | 10:00 | | SUB IN: JONES,JAZMINE |
| | 10:00 | | SUB IN: DUNHAM,BIONCA |
| SUB OUT: 00 HAYWOOD,MYRIAH | 10:00 | | |
| SUB OUT: 23 SKINNER,SANDRA | 10:00 | | |
| SUB IN: 15 ELGEDAWY,RANEEM | 10:00 | | |
| SUB IN: 40 ABDELGAWAD,MERAL | 10:00 | | |
| SUB OUT: 15 ELGEDAWY,RANEEM | 06:29 | 32-46 | |
| SUB OUT: 22 PORTER,SHERRY | 06:29 | | |
| SUB OUT: 40 ABDELGAWAD,MERAL | 06:29 | | |
| SUB IN: 00 HAYWOOD,MYRIAH | 06:29 | | |
| SUB IN: 12 POUYE,FATOU | 06:29 | | |
| SUB IN: 23 SKINNER,SANDRA | 06:29 | | |
| SUB OUT: 23 SKINNER,SANDRA | 05:29 | 35-46 | |
| SUB IN: 15 ELGEDAWY,RANEEM | 05:29 | | |
| | 04:42 | 35-48 | SUB OUT: DUNHAM,BIONCA |
| | 04:42 | | SUB IN: SHOOK,KYLEE |
| SUB OUT: 5 CREECH,WHITNEY | 04:42 | | |
| SUB IN: 22 PORTER,SHERRY | 04:42 | | |
| | 04:19 | 37-48 | SUB OUT: DIXON,ELIZABETH |
| | 04:19 | | SUB IN: KONNO,NORIKI |
| SUB OUT: 22 PORTER,SHERRY | 03:43 | 39-48 | |
| SUB IN: 5 CREECH,WHITNEY | 03:43 | | |
| | 03:18 | 39-50 | SUB OUT: JONES,JAZMINE |
| | 03:18 | | SUB IN: DIOP,YACINE |
| SUB OUT: 12 POUYE,FATOU | 03:18 | | |
| SUB IN: 23 SKINNER,SANDRA | 03:18 | | |
| SUB OUT: 4 GIVENS,DEE | 02:28 | 41-51 | |
| SUB IN: 22 PORTER,SHERRY | 02:28 | | |
| SUB OUT: 15 ELGEDAWY,RANEEM | 00:26 | 43-55 | |
| SUB IN: 4 GIVENS,DEE | 00:26 | | |

Western Ky. 43, Louisville 55

**Official Substitutions Log
Western Ky. vs Louisville
Period 4**

November 05, 2019 at KFC Yum! Center (Denny Crum Court) - Louisville



| VISITORS: Western Ky. | Time | Score | HOME: Louisville |
|------------------------------|-------|-------|----------------------------|
| 5 CREECH,WHITNEY | | | 1 EVANS,DANA |
| 15 ELGEDAWY,RANEEM | | | 4 BALOGUN,ELIZABETH |
| 22 PORTER,SHERRY | | | 22 DIXON,ELIZABETH |
| 23 SKINNER,SANDRA | | | 23 JONES,JAZMINE |
| 40 ABDELGAWAD,MERAL | | | 33 DUNHAM,BIONCA |
| | 10:00 | - | SUB OUT: BALOGUN,ELIZABETH |
| | 10:00 | | SUB IN: ROBINS,SEYGAN |
| SUB OUT: 23 SKINNER,SANDRA | 10:00 | | |
| SUB IN: 15 ELGEDAWY,RANEEM | 10:00 | | |
| | 08:07 | 45-58 | SUB OUT: DIOP,YACINE |
| | 08:07 | | SUB OUT: ROBINS,SEYGAN |
| | 08:07 | | SUB OUT: SHOOK,KYLEE |
| | 08:07 | | SUB IN: BALOGUN,ELIZABETH |
| | 08:07 | | SUB IN: DIXON,ELIZABETH |
| | 08:07 | | SUB IN: JONES,JAZMINE |
| SUB OUT: 22 PORTER,SHERRY | 06:54 | 48-63 | |
| SUB IN: 40 ABDELGAWAD,MERAL | 06:54 | | |
| SUB OUT: 00 HAYWOOD,MYRIAH | 04:49 | 49-70 | |
| SUB OUT: 15 ELGEDAWY,RANEEM | 04:49 | | |
| SUB IN: 22 PORTER,SHERRY | 04:49 | | |
| SUB IN: 23 SKINNER,SANDRA | 04:49 | | |
| | 04:03 | 52-70 | SUB OUT: BALOGUN,ELIZABETH |
| | 04:03 | | SUB OUT: KONNO,NORIKI |
| | 04:03 | | SUB IN: DUVALL,LINDSEY |
| | 04:03 | | SUB IN: SHOOK,KYLEE |
| | 03:48 | 52-73 | SUB OUT: EVANS,DANA |
| | 03:48 | | SUB OUT: JONES,JAZMINE |
| | 03:48 | | SUB IN: ROBINS,SEYGAN |
| | 03:48 | | SUB IN: KONNO,NORIKI |
| SUB OUT: 40 ABDELGAWAD,MERAL | 03:48 | | |
| SUB IN: 12 POUYE,FATOU | 03:48 | | |
| | 02:07 | 53-75 | SUB OUT: ROBINS,SEYGAN |
| | 02:07 | | SUB IN: LAEMMLE,JESSICA |
| SUB OUT: 4 GIVENS,DEE | 01:34 | 53-75 | |
| SUB IN: 3 BROWN,DE'MYLA | 01:34 | | |
| | 00:30 | 56-75 | SUB OUT: DIXON,ELIZABETH |
| | 00:30 | | SUB IN: DIOP,YACINE |

Western Ky. 56, Louisville 75

Official Shot Chart
Western Ky. vs Louisville
 PERIOD 1 Shots
 November 05, 2019 at KFC Yum! Center (Denny Crum Court) - Louisville

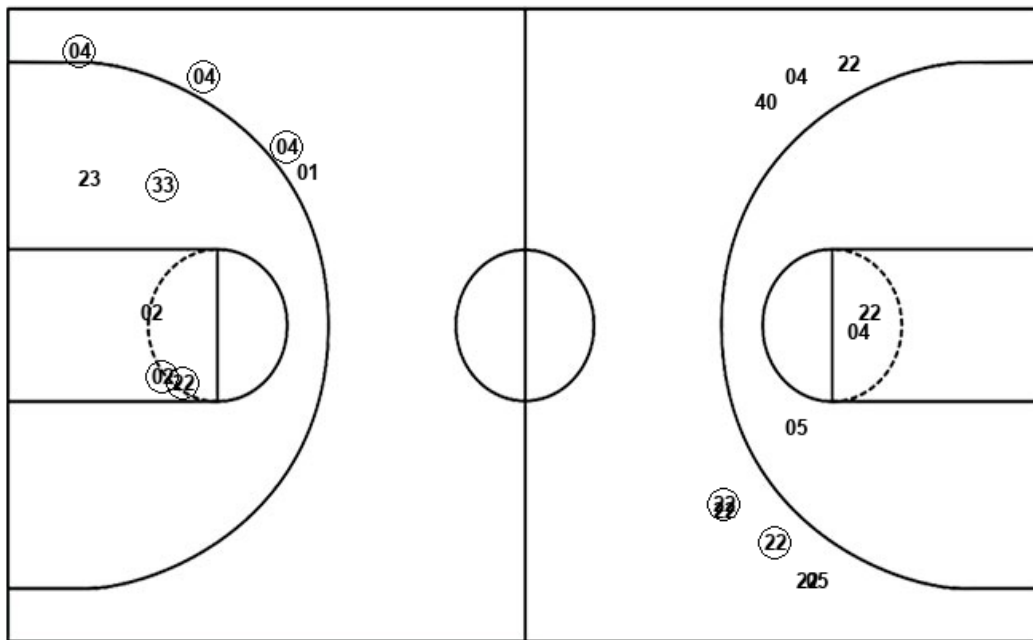


Louisville

Western Ky.

Layups
 23 33 01 22

Layups
 05 15 15 00 23
 22 22



Dunks

Dunks

| LOU : Period 1 | Made | Att | Pct |
|--------------------------|----------|-----------|-------------|
| Layups | 3 | 4 | 75.0 |
| Dunks | 0 | 0 | 0 |
| 2PT Field Goals | 6 | 9 | 66.7 |
| 3PT Field Goals | 3 | 4 | 75.0 |
| Total Field Goals | 9 | 13 | 69.2 |

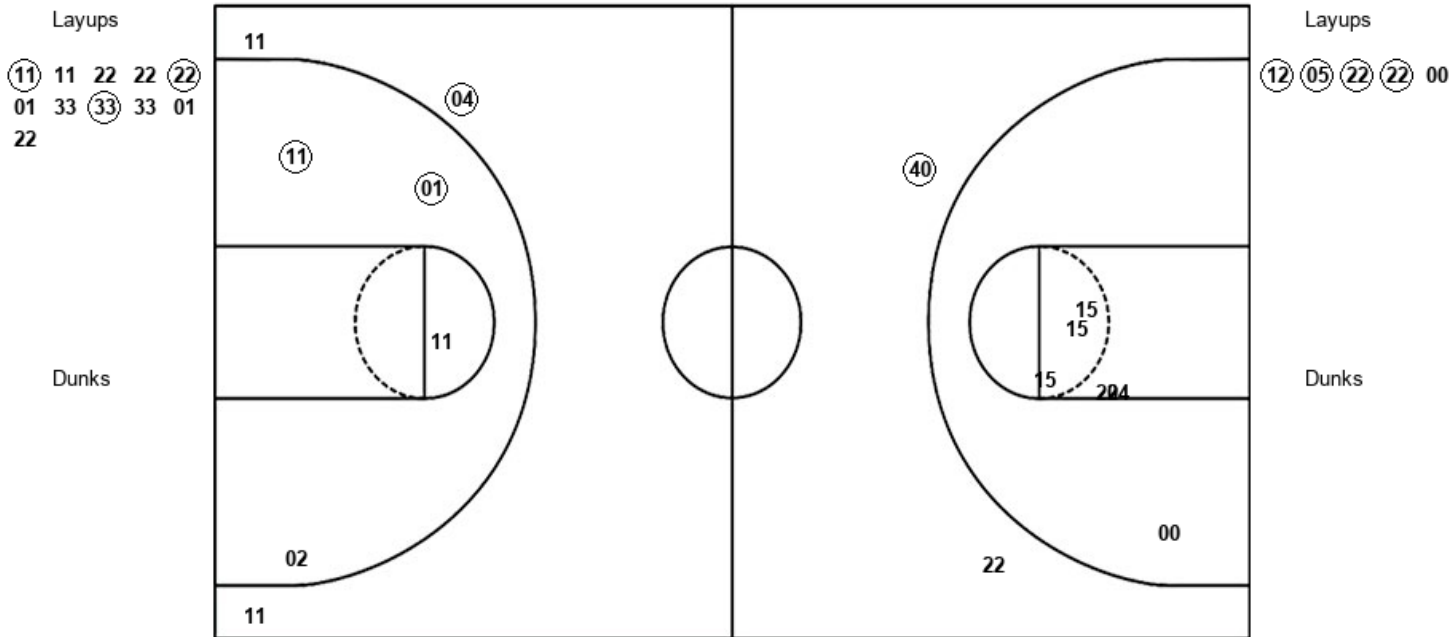
| WKU : Period 1 | Made | Att | Pct |
|--------------------------|----------|-----------|-------------|
| Layups | 3 | 7 | 42.9 |
| Dunks | 0 | 0 | 0 |
| 2PT Field Goals | 3 | 10 | 30.0 |
| 3PT Field Goals | 2 | 8 | 25.0 |
| Total Field Goals | 5 | 18 | 27.8 |

Official Shot Chart
Western Ky. vs Louisville
PERIOD 2 Shots
 November 05, 2019 at KFC Yum! Center (Denny Crum Court) - Louisville



Louisville

Western Ky.



| LOU : Period 2 | Made | Att | Pct |
|--------------------------|-------------|------------|-------------|
| Layups | 3 | 11 | 27.3 |
| Dunks | 0 | 0 | 0 |
| 2PT Field Goals | 5 | 15 | 33.3 |
| 3PT Field Goals | 1 | 3 | 33.3 |
| Total Field Goals | 6 | 18 | 33.3 |

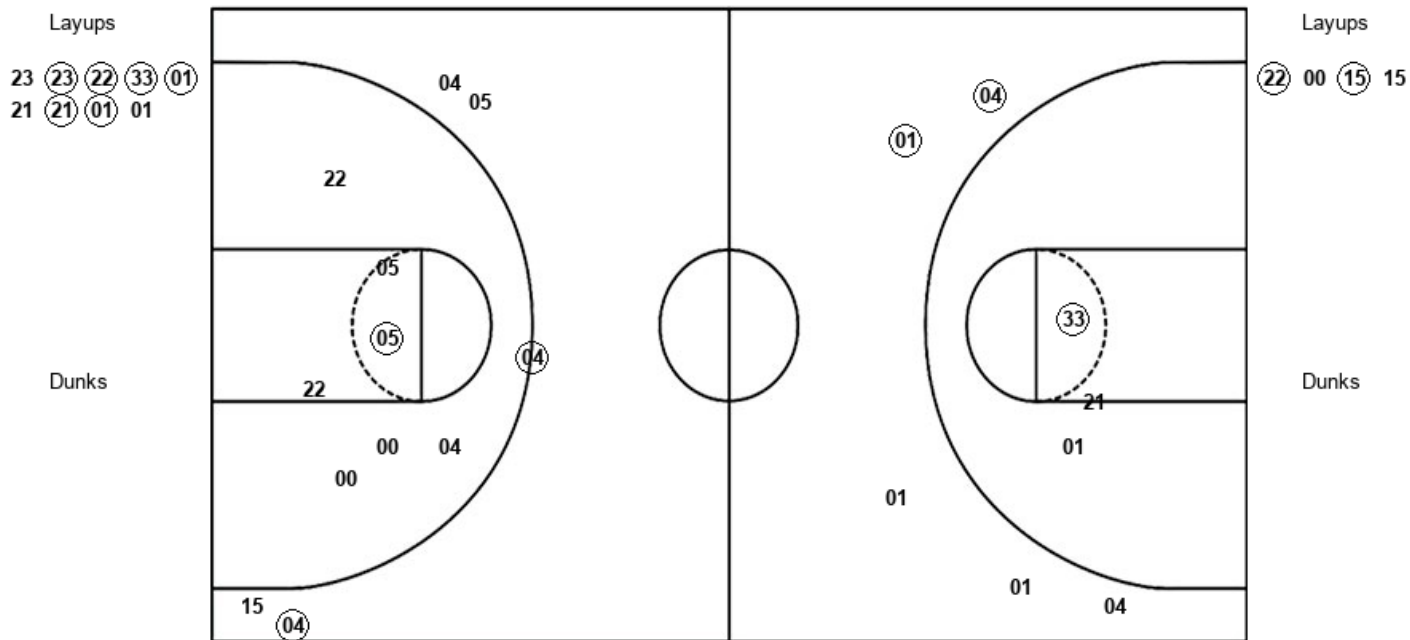
| WKU : Period 2 | Made | Att | Pct |
|--------------------------|-------------|------------|-------------|
| Layups | 4 | 5 | 80.0 |
| Dunks | 0 | 0 | 0 |
| 2PT Field Goals | 4 | 11 | 36.4 |
| 3PT Field Goals | 1 | 2 | 50.0 |
| Total Field Goals | 5 | 13 | 38.5 |

Official Shot Chart
Western Ky. vs Louisville
PERIOD 3 Shots
 November 05, 2019 at KFC Yum! Center (Denny Crum Court) - Louisville



Louisville

Western Ky.



| LOU : Period 3 | Made | Att | Pct |
|--------------------------|----------|-----------|-------------|
| Layups | 6 | 9 | 66.7 |
| Dunks | 0 | 0 | 0 |
| 2PT Field Goals | 7 | 12 | 58.3 |
| 3PT Field Goals | 2 | 5 | 40.0 |
| Total Field Goals | 9 | 17 | 52.9 |

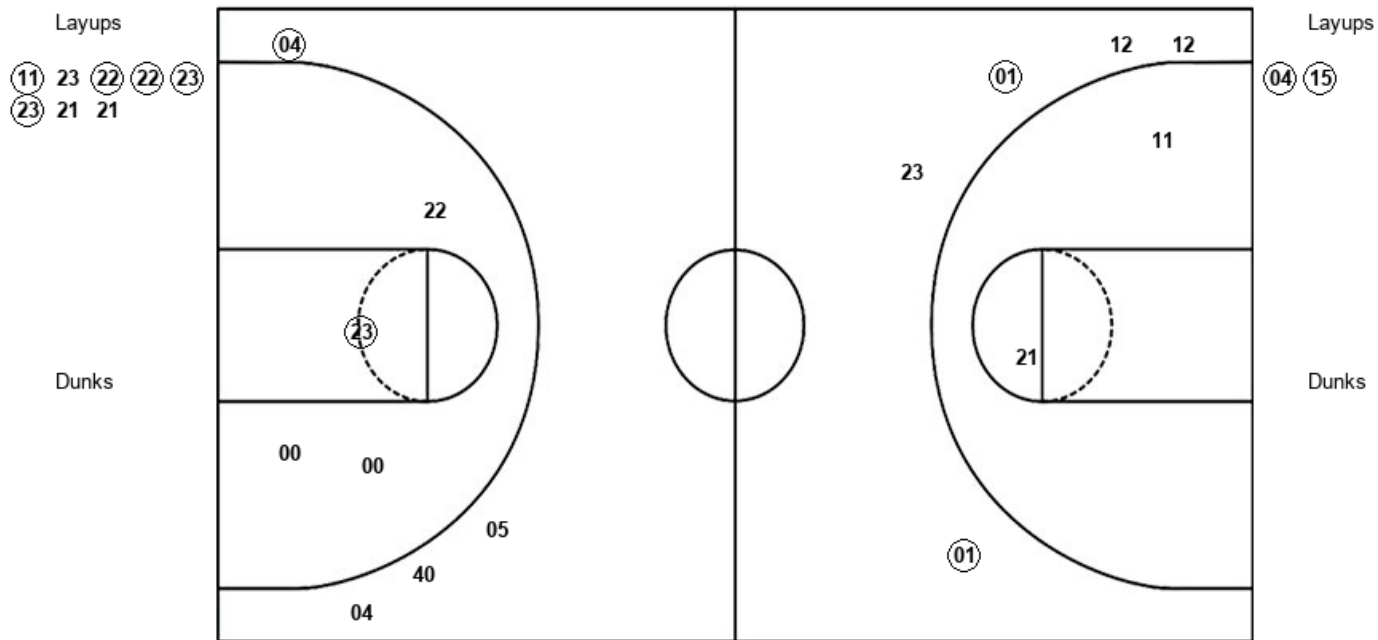
| WKU : Period 3 | Made | Att | Pct |
|--------------------------|----------|-----------|-------------|
| Layups | 2 | 4 | 50.0 |
| Dunks | 0 | 0 | 0 |
| 2PT Field Goals | 3 | 11 | 27.3 |
| 3PT Field Goals | 2 | 5 | 40.0 |
| Total Field Goals | 5 | 16 | 31.3 |

Official Shot Chart
Western Ky. vs Louisville
PERIOD 4 Shots
 November 05, 2019 at KFC Yum! Center (Denny Crum Court) - Louisville



Louisville

Western Ky.



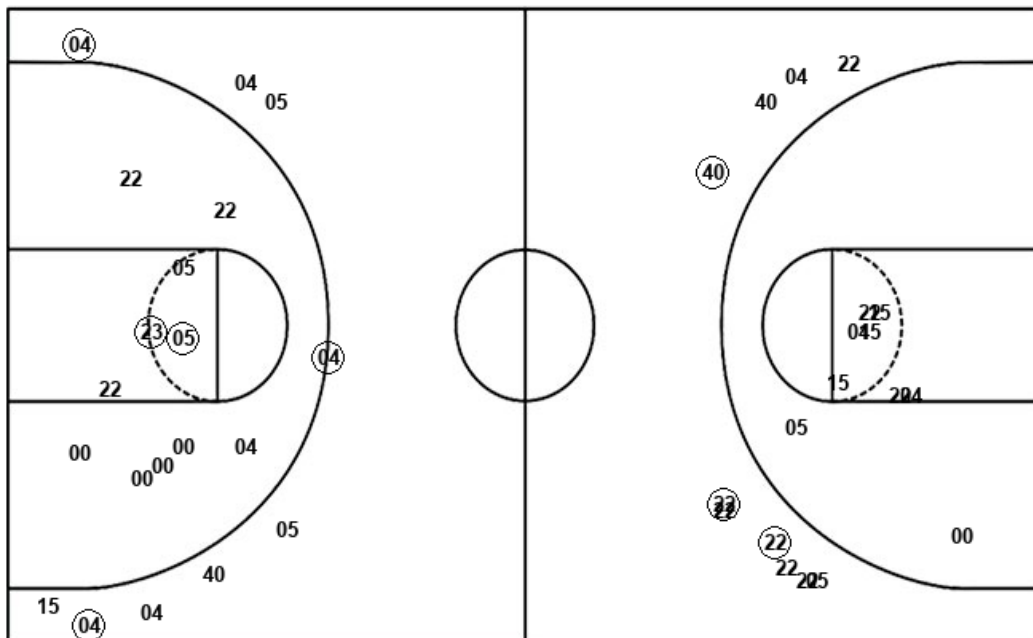
| LOU : Period 4 | Made | Att | Pct |
|--------------------------|-------------|------------|-------------|
| Layups | 5 | 8 | 62.5 |
| Dunks | 0 | 0 | 0 |
| 2PT Field Goals | 5 | 10 | 50.0 |
| 3PT Field Goals | 2 | 5 | 40.0 |
| Total Field Goals | 7 | 15 | 46.7 |

| WKU : Period 4 | Made | Att | Pct |
|--------------------------|-------------|------------|-------------|
| Layups | 2 | 2 | 100.0 |
| Dunks | 0 | 0 | 0 |
| 2PT Field Goals | 3 | 6 | 50.0 |
| 3PT Field Goals | 1 | 4 | 25.0 |
| Total Field Goals | 4 | 10 | 40.0 |

Official Shot Chart
Western Ky. vs Louisville
Western Ky. Team Shots
November 05, 2019 at KFC Yum! Center (Denny Crum Court) - Louisville



Layups



Layups

| | | | | |
|----|----|----|----|----|
| 05 | 15 | 15 | 00 | 23 |
| 22 | 22 | 12 | 05 | 22 |
| 22 | 00 | 22 | 00 | 15 |
| 15 | 04 | 15 | | |

Dunks

Dunks

| WKU : Period 1 | Made | Att | Pct |
|--------------------------|----------|-----------|-------------|
| Layups | 3 | 7 | 42.9 |
| Dunks | 0 | 0 | 0 |
| 2PT Field Goals | 3 | 10 | 30.0 |
| 3PT Field Goals | 2 | 8 | 25.0 |
| Total Field Goals | 5 | 18 | 27.8 |

| WKU : Period 2 | Made | Att | Pct |
|--------------------------|----------|-----------|-------------|
| Layups | 4 | 5 | 80.0 |
| Dunks | 0 | 0 | 0 |
| 2PT Field Goals | 4 | 11 | 36.4 |
| 3PT Field Goals | 1 | 2 | 50.0 |
| Total Field Goals | 5 | 13 | 38.5 |

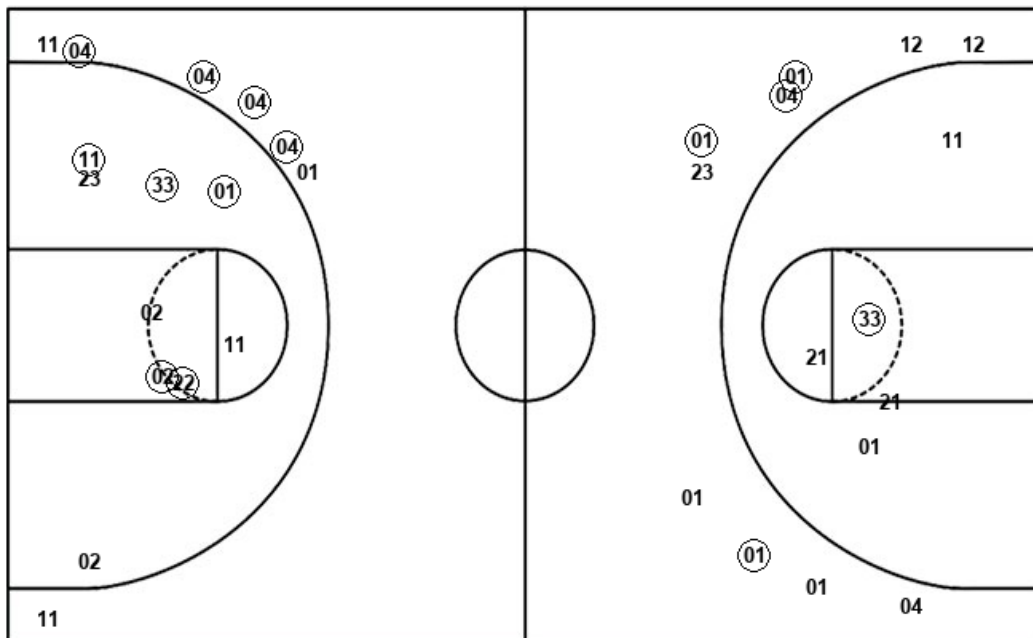
| WKU : Period 3 | Made | Att | Pct |
|--------------------------|----------|-----------|-------------|
| Layups | 2 | 4 | 50.0 |
| Dunks | 0 | 0 | 0 |
| 2PT Field Goals | 3 | 11 | 27.3 |
| 3PT Field Goals | 2 | 5 | 40.0 |
| Total Field Goals | 5 | 16 | 31.3 |

| WKU : Period 4 | Made | Att | Pct |
|--------------------------|----------|-----------|-------------|
| Layups | 2 | 2 | 100.0 |
| Dunks | 0 | 0 | 0 |
| 2PT Field Goals | 3 | 6 | 50.0 |
| 3PT Field Goals | 1 | 4 | 25.0 |
| Total Field Goals | 4 | 10 | 40.0 |

Official Shot Chart
Western Ky. vs Louisville
 Louisville Team Shots
 November 05, 2019 at KFC Yum! Center (Denny Crum Court) - Louisville



Layups



Layups

| | | | | |
|----|----|----|----|----|
| 23 | 33 | 01 | 22 | 11 |
| 11 | 22 | 22 | 22 | 01 |
| 33 | 33 | 33 | 01 | 22 |
| 23 | 23 | 22 | 33 | 01 |
| 21 | 21 | 01 | 01 | 11 |
| 23 | 22 | 22 | 23 | 23 |
| 21 | 21 | | | |

Dunks

Dunks

| LOU : Period 1 | Made | Att | Pct |
|--------------------------|----------|-----------|-------------|
| Layups | 3 | 4 | 75.0 |
| Dunks | 0 | 0 | 0 |
| 2PT Field Goals | 6 | 9 | 66.7 |
| 3PT Field Goals | 3 | 4 | 75.0 |
| Total Field Goals | 9 | 13 | 69.2 |

| LOU : Period 2 | Made | Att | Pct |
|--------------------------|----------|-----------|-------------|
| Layups | 3 | 11 | 27.3 |
| Dunks | 0 | 0 | 0 |
| 2PT Field Goals | 5 | 15 | 33.3 |
| 3PT Field Goals | 1 | 3 | 33.3 |
| Total Field Goals | 6 | 18 | 33.3 |

| LOU : Period 3 | Made | Att | Pct |
|--------------------------|----------|-----------|-------------|
| Layups | 6 | 9 | 66.7 |
| Dunks | 0 | 0 | 0 |
| 2PT Field Goals | 7 | 12 | 58.3 |
| 3PT Field Goals | 2 | 5 | 40.0 |
| Total Field Goals | 9 | 17 | 52.9 |

| LOU : Period 4 | Made | Att | Pct |
|--------------------------|----------|-----------|-------------|
| Layups | 5 | 8 | 62.5 |
| Dunks | 0 | 0 | 0 |
| 2PT Field Goals | 5 | 10 | 50.0 |
| 3PT Field Goals | 2 | 5 | 40.0 |
| Total Field Goals | 7 | 15 | 46.7 |