

## FINAL SCORE



**BYU**

**55**



**Boise State**

**66**

December 11, 2019 • ExtraMile Arena - Boise

## FINAL STATISTICS

**Official Box Score**  
**BYU vs Boise State**  
**Game Totals -- Final Statistics**  
**December 11, 2019 at ExtraMile Arena - Boise**



**BYU 55**

No.	Player	S	Pts	FG	3FG	FT	OR	DR	TR	PF	A	TO	Blk	Stl	Min	+/-
01	DROLLINGER, BRENNIA	G	11	3-14	3-9	2-2	1	2	3	3	5	0	0	1	38	-11
03	SALMON, SHALAE	F	6	3-13	0-0	0-0	6	5	11	1	0	2	0	1	25	-5
05	ALBIERO, MARIA	G	0	0-4	0-2	0-0	0	0	0	1	5	0	0	0	27	-14
13	JOHNSON, PAISLEY	G	18	6-13	4-8	2-2	0	4	4	2	2	2	1	0	38	-12
22	HAMSON, SARA	C	8	4-7	0-0	0-0	1	6	7	4	0	2	3	0	23	-19
11	SMILER, KAYLEE	G	0	0-2	0-1	0-0	0	1	1	2	1	0	0	0	14	3
14	UGWU, BABALU	F	12	4-8	1-1	3-4	2	3	5	3	0	1	0	4	17	-5
15	PERRI, MALLI	F	0	0-1	0-0	0-0	0	0	0	0	0	0	0	0	2	0
20	OTUAFI, LEILANI	G	0	0-0	0-0	0-0	0	0	0	0	0	1	0	0	2	1
21	TAITO, KHAEDIN	G	0	0-0	0-0	0-0	0	0	0	0	0	0	0	0	2	0
32	GLANTZ, SIGNE	F	0	0-2	0-0	0-0	0	1	1	2	0	1	0	0	13	7
TEAM							1	2	3	0		0				
<b>TOTALS</b>			<b>55</b>	<b>20-64</b>	<b>8-21</b>	<b>7-8</b>	<b>11</b>	<b>24</b>	<b>35</b>	<b>18</b>	<b>13</b>	<b>9</b>	<b>4</b>	<b>6</b>	<b>200</b>	

*Shooting By Period*

Period	FG	FG%	3FG	3FG%	FT	FT%
1st Qtr	6-17	35%	1-4	25%	0-0	0%
2nd Qtr	3-12	25%	2-4	50%	2-2	100%
3rd Qtr	7-15	47%	3-5	60%	5-6	83%
4th Qtr	4-20	20%	2-8	25%	0-0	0%
1st Half	9-29	31%	3-8	38%	2-2	100%
2nd Half	11-35	31%	5-13	38%	5-6	83%
<b>Game</b>	<b>20-64</b>	<b>31.3%</b>	<b>8-21</b>	<b>38.1%</b>	<b>7-8</b>	<b>87.5%</b>

Deadball Rebounds: 1,1  
 Last FG: 4th-00:07  
 Biggest Run: 6-0  
 Largest lead: By 5 at 1-07  
 Technical Fouls: None.

**Boise State 66**

No.	Player	S	Pts	FG	3FG	FT	OR	DR	TR	PF	A	TO	Blk	Stl	Min	+/-
14	HODGINS, BRAYDEY	G	9	2-10	0-3	5-6	0	4	4	2	2	0	0	1	35	11
21	LUPFER, RILEY	G	15	5-9	4-8	1-2	0	4	4	1	1	2	1	2	38	14
23	CHRISTOPHER, JAYDE	G	6	2-7	0-3	2-2	0	4	4	0	7	3	0	0	33	8
42	COLEMAN, A'SHANTI	F	19	8-10	1-1	2-3	1	3	4	0	2	2	0	0	33	14
44	MCGWIRE, MALLORY	C	15	5-9	2-2	3-4	2	12	14	2	1	2	4	1	28	13
03	FREEMAN, MAGGIE	G	0	0-0	0-0	0-0	0	0	0	0	0	1	0	0	2	1
22	WOERNER, ELLIE	G	2	1-3	0-2	0-0	0	2	2	0	1	1	0	0	14	-2
25	BOWERS, RACHEL	F	0	0-4	0-0	0-0	3	1	4	2	1	1	1	0	12	-2
30	LOVILLE, JADE	G	0	0-2	0-1	0-0	0	0	0	0	0	0	0	0	5	-2
TEAM							1	2	3	0		0				
<b>TOTALS</b>			<b>66</b>	<b>23-54</b>	<b>7-20</b>	<b>13-17</b>	<b>7</b>	<b>32</b>	<b>39</b>	<b>7</b>	<b>15</b>	<b>12</b>	<b>6</b>	<b>4</b>	<b>200</b>	

*Shooting By Period*

Period	FG	FG%	3FG	3FG%	FT	FT%
1st Qtr	8-13	62%	2-4	50%	1-2	50%
2nd Qtr	3-18	17%	1-7	14%	1-2	50%
3rd Qtr	9-13	69%	3-5	60%	3-5	60%
4th Qtr	3-10	30%	1-4	25%	8-8	100%
1st Half	11-31	35%	3-11	27%	2-4	50%
2nd Half	12-23	52%	4-9	44%	11-13	85%
<b>Game</b>	<b>23-54</b>	<b>42.6%</b>	<b>7-20</b>	<b>35.0%</b>	<b>13-17</b>	<b>76.5%</b>

Deadball Rebounds: 3,1  
 Last FG: 4th-04:44  
 Biggest Run: 11-0  
 Largest lead: By 13 at 4-00  
 Technical Fouls: None.

Game Notes:

Officials: Lisa Jones, Brenda Pantoja, Melissa Barlow  
 Attendance: 1140

Start Time: 09:06 PM ET  
 End Time: 10:40 PM ET  
 Game Duration: 1:34

Score	1st	2nd	3rd	4th	TOT
BYU	13	10	22	10	<b>55</b>
BSU	19	8	24	15	<b>66</b>

BYU led for 3:57. BSU led for 35:19.  
 Game was tied for 0:40.  
 Times tied: 1      Lead Changes: 1

Points from	BYU	BSU
In the Paint	24	22
Off Turns	6	8
2nd Chance	9	0
Fast Break	12	10
Bench	12	2

**Official Box Score**  
**BYU vs Boise State**  
**First Half Statistics Only**  
**December 11, 2019 at ExtraMile Arena - Boise**



### BYU 23

No.	Player	S	Pts	FG	3FG	FT	OR	DR	TR	PF	A	TO	Blk	Stl	Min	+/-
01	DROLLINGER, BRENNIA	G	8	2-7	2-4	2-2	1	2	3	1	2	0	0	0	18	-4
03	SALMON, SHALAE	F	4	2-5	0-0	0-0	3	5	8	1	0	1	0	0	12	3
05	ALBIERO, MARIA	G	0	0-2	0-0	0-0	0	0	0	0	2	0	0	0	13	-5
11	SMILER, KAYLEE	G	0	0-1	0-1	0-0	0	1	1	2	1	0	0	0	7	1
13	JOHNSON, PAISLEY	G	5	2-7	1-3	0-0	0	3	3	0	1	1	0	0	18	-5
14	UGWU, BABALU	F	0	0-1	0-0	0-0	0	1	1	0	0	1	0	0	6	-7
15	PERRI, MALLI	F	0	0-1	0-0	0-0	0	0	0	0	0	0	0	0	2	0
20	OTUAFI, LEILANI	G	0	0-0	0-0	0-0	0	0	0	0	0	1	0	0	2	1
21	TAITO, KHAEDIN	G	0	0-0	0-0	0-0	0	0	0	0	0	0	0	0	2	0
22	HAMSON, SARA	C	6	3-5	0-0	0-0	0	3	3	2	0	1	2	0	14	-6
32	GLANTZ, SIGNE	F	0	0-0	0-0	0-0	0	0	0	0	0	1	0	0	6	2
	TEAM		0	0-0	0-0	0-0	1	1	2	0	0	0	0	0	0	
<b>TOTALS</b>			<b>23</b>	<b>9-29</b>	<b>3-8</b>	<b>2-2</b>	<b>5</b>	<b>16</b>	<b>21</b>	<b>6</b>	<b>6</b>	<b>6</b>	<b>2</b>	<b>0</b>	<b>100</b>	

#### Shooting By Period

Period	FG	FG%	3FG	3FG%	FT	FT%
1st Qtr	6-17	35%	1-4	25%	0-0	0%
2nd Qtr	3-12	25%	2-4	50%	2-2	100%
1st Half	9-29	31%	3-8	38%	2-2	100%
Game	20-64	31.3%	8-21	38.1%	7-8	87.5%

Deadball Rebounds: 1,1

Last FG Half: BYU 2nd-03:47

### Boise State 27

No.	Player	S	Pts	FG	3FG	FT	OR	DR	TR	PF	A	TO	Blk	Stl	Min	+/-
03	FREEMAN, MAGGIE	G	0	0-0	0-0	0-0	0	0	0	0	0	1	0	0	2	1
14	HODGINS, BRAYDEY	G	4	2-7	0-2	0-0	0	0	0	1	0	0	0	0	17	4
21	LUPFER, RILEY	G	4	1-2	1-2	1-2	0	4	4	0	1	1	1	1	18	7
22	WOERNER, ELLIE	G	0	0-1	0-1	0-0	0	2	2	0	1	0	0	0	8	-2
23	CHRISTOPHER, JAYDE	G	2	1-6	0-3	0-0	0	1	1	0	3	0	0	0	14	2
25	BOWERS, RACHEL	F	0	0-4	0-0	0-0	3	1	4	1	1	0	1	0	9	-1
30	LOVILLE, JADE	G	0	0-2	0-1	0-0	0	0	0	0	0	0	0	0	5	-2
42	COLEMAN, A'SHANTI	F	11	5-6	1-1	0-0	0	3	3	0	0	1	0	0	15	6
44	MCGWIRE, MALLORY	C	6	2-3	1-1	1-2	1	3	4	2	1	1	1	1	11	5
	TEAM		0	0-0	0-0	0-0	1	1	2	0	0	0	0	0	0	
<b>TOTALS</b>			<b>27</b>	<b>11-31</b>	<b>3-11</b>	<b>2-4</b>	<b>5</b>	<b>15</b>	<b>20</b>	<b>4</b>	<b>7</b>	<b>4</b>	<b>3</b>	<b>2</b>	<b>100</b>	

#### Shooting By Period

Period	FG	FG%	3FG	3FG%	FT	FT%
1st Qtr	8-13	62%	2-4	50%	1-2	50%
2nd Qtr	3-18	17%	1-7	14%	1-2	50%
1st Half	11-31	35%	3-11	27%	2-4	50%
Game	23-54	42.6%	7-20	35.0%	13-17	76.5%

Deadball Rebounds: 3,1

Last FG Half: BSU 2nd-02:42

#### Game Notes:

Officials: Lisa Jones, Brenda Pantoja, Melissa Barlow  
Attendance: 1140

Start Time: 09:06 PM ET  
End Time: 10:40 PM ET  
Game Duration: 1:34

Score	1st	2nd	3rd	4th	TOT
BYU	13	10	22	10	<b>55</b>
BSU	19	8	24	15	<b>66</b>

Points from (This Period)	BYU	BSU
In the Paint	12	10
Off Turns	0	4
2nd Chance	5	0
Fast Break	3	4
Bench	0	0

**Official Box Score**  
**BYU vs Boise State**  
**First Quarter Statistics Only**  
**December 11, 2019 at ExtraMile Arena - Boise**



### BYU 13

No.	Player	S	Pts	FG	3FG	FT	OR	DR	TR	PF	A	TO	Blk	Stl	Min	+/-
01	DROLLINGER, BRENNNA	G	0	0-3	0-1	0-0	1	1	2	1	2	0	0	0	8	-6
03	SALMON, SHALAE	F	2	1-4	0-0	0-0	2	1	3	1	0	0	0	0	6	1
05	ALBIERO, MARIA	G	0	0-0	0-0	0-0	0	0	0	0	1	0	0	0	8	-6
13	JOHNSON, PAISLEY	G	5	2-4	1-3	0-0	0	2	2	0	1	0	0	0	10	-6
22	HAMSON, SARA	C	6	3-4	0-0	0-0	0	1	1	1	0	1	0	0	8	-6
11	SMILER, KAYLEE	G	0	0-0	0-0	0-0	0	0	0	1	1	0	0	0	4	0
14	UGWU, BABALU	F	0	0-1	0-0	0-0	0	0	0	0	0	0	0	0	2	-7
15	PERRI, MALLI	F	0	0-1	0-0	0-0	0	0	0	0	0	0	0	0	2	0
20	OTUAFI, LEILANI	G	0	0-0	0-0	0-0	0	0	0	0	0	0	0	0	0	0
21	TAITO, KHAEDIN	G	0	0-0	0-0	0-0	0	0	0	0	0	0	0	0	0	0
32	GLANTZ, SIGNE	F	0	0-0	0-0	0-0	0	0	0	0	0	0	0	0	2	0
	TEAM						0	0	0	0		0				
<b>TOTALS</b>			<b>13</b>	<b>6-17</b>	<b>1-4</b>	<b>0-0</b>	<b>3</b>	<b>5</b>	<b>8</b>	<b>4</b>	<b>5</b>	<b>1</b>	<b>0</b>	<b>0</b>	<b>50</b>	

#### Shooting By Period

Period	FG	FG%	3FG	3FG%	FT	FT%
1st Qtr	6-17	35%	1-4	25%	0-0	0%
2nd Qtr	3-12	25%	2-4	50%	2-2	100%
1st Half	6-17	35%	1-4	25%	0-0	0%
1st Half	9-29	31%	3-8	38%	2-2	100%
Game	20-64	31.3%	8-21	38.1%	7-8	87.5%

Deadball Rebounds: 1,1

### Boise State 19

No.	Player	S	Pts	FG	3FG	FT	OR	DR	TR	PF	A	TO	Blk	Stl	Min	+/-
14	HODGINS, BRAYDEY	G	2	1-2	0-0	0-0	0	0	0	0	0	0	0	0	7	6
21	LUPFER, RILEY	G	3	1-1	1-1	0-0	0	2	2	0	1	0	0	0	10	6
23	CHRISTOPHER, JAYDE	G	0	0-2	0-1	0-0	0	0	0	0	3	0	0	0	8	6
42	COLEMAN, A'SHANTI	F	11	5-5	1-1	0-0	0	1	1	0	0	1	0	0	9	6
44	MCGWIRE, MALLORY	C	3	1-1	0-0	1-2	0	3	3	1	0	1	1	1	6	6
03	FREEMAN, MAGGIE	G	0	0-0	0-0	0-0	0	0	0	0	0	0	0	0	0	0
22	WOERNER, ELLIE	G	0	0-1	0-1	0-0	0	2	2	0	0	0	0	0	4	0
25	BOWERS, RACHEL	F	0	0-0	0-0	0-0	1	0	1	1	1	0	0	0	4	0
30	LOVILLE, JADE	G	0	0-1	0-0	0-0	0	0	0	0	0	0	0	0	1	0
	TEAM						0	0	0	0		0				
<b>TOTALS</b>			<b>19</b>	<b>8-13</b>	<b>2-4</b>	<b>1-2</b>	<b>1</b>	<b>8</b>	<b>9</b>	<b>2</b>	<b>5</b>	<b>2</b>	<b>1</b>	<b>1</b>	<b>50</b>	

#### Shooting By Period

Period	FG	FG%	3FG	3FG%	FT	FT%
1st Qtr	8-13	62%	2-4	50%	1-2	50%
2nd Qtr	3-18	17%	1-7	14%	1-2	50%
1st Half	8-13	62%	2-4	50%	1-2	50%
1st Half	11-31	35%	3-11	27%	2-4	50%
Game	23-54	42.6%	7-20	35.0%	13-17	76.5%

Deadball Rebounds: 3,1

#### Game Notes:

Officials: Lisa Jones, Brenda Pantoja, Melissa Barlow  
Attendance: 1140

Start Time: 09:06 PM ET  
End Time: 10:40 PM ET  
Game Duration: 1:34

Score	1st	2nd	3rd	4th	TOT
BYU	13	10	22	10	<b>55</b>
BSU	19	8	24	15	<b>66</b>

Points from (This Period)	BYU	BSU
In the Paint	10	6
Off Turns	0	2
2nd Chance	2	0
Fast Break	3	3
Bench	0	0

**Official Play-By-Play**  
**BYU vs Boise State**  
**First Quarter**  
**December 11, 2019 at ExtraMile Arena - Boise**



**Period 1**

**Starters:**

**BYU:** 1 DROLLINGER, BRENNNA (G); 3 SALMON, SHALAE (F); 5 ALBIERO, MARIA (G); 13 JOHNSON, PAISLEY (G); 22 HAMSON, SARA (C);

**Boise State:** 14 HODGINS, BRAYDEY (G); 21 LUPFER, RILEY (G); 23 CHRISTOPHER, JAYDE (G); 42 COLEMAN, A'SHANTI (F); 44 MCGWIRE, MALLORY (C);

Time	VISITORS: BYU	Score	Margin	HOME: Boise State
09:35	GOOD! LAYUP by HAMSON, SARA	0-2	V 2	
09:35	ASSIST by DROLLINGER, BRENNNA			
09:06				MISSED LAYUP by CHRISTOPHER, JAYDE
09:00	REBOUND (DEF) by DROLLINGER, BRENNNA			
08:42	MISSED 3PTR by DROLLINGER, BRENNNA			
08:38				REBOUND (DEF) by MCGWIRE, MALLORY
08:34				MISSED LAYUP by HODGINS, BRAYDEY
08:31	REBOUND (DEF) by JOHNSON, PAISLEY			
08:28	GOOD! 3PTR by JOHNSON, PAISLEY [FB]	0-5	V 5	
08:28	ASSIST by DROLLINGER, BRENNNA			
08:18		2-5	V 3	GOOD! JUMPER by COLEMAN, A'SHANTI
08:18				ASSIST by CHRISTOPHER, JAYDE
07:43	MISSED JUMPER by DROLLINGER, BRENNNA			
07:40	REBOUND (OFF) by SALMON, SHALAE			
07:39	MISSED LAYUP by SALMON, SHALAE			
07:35	REBOUND (OFF) by SALMON, SHALAE			
07:34	GOOD! LAYUP by SALMON, SHALAE	2-7	V 5	
07:29		5-7	V 2	GOOD! 3PTR by LUPFER, RILEY [FB]
07:29				ASSIST by CHRISTOPHER, JAYDE
07:02	MISSED JUMPER by SALMON, SHALAE			
06:58				REBOUND (DEF) by MCGWIRE, MALLORY
06:48				FOUL (OFF) by MCGWIRE, MALLORY
06:48				TURNOVER (OFFENSIVE) by MCGWIRE, MALLORY
06:34	MISSED JUMPER by HAMSON, SARA			
06:34				BLOCK by MCGWIRE, MALLORY
06:28				REBOUND (DEF) by COLEMAN, A'SHANTI
06:22	FOUL (PERSONAL) by SALMON, SHALAE			
06:22		6-7	V 1	GOOD! FT by MCGWIRE, MALLORY
06:22				MISSED FT by MCGWIRE, MALLORY
06:22	REBOUND (DEF) by HAMSON, SARA			
06:01	MISSED JUMPER by DROLLINGER, BRENNNA			
05:59	REBOUND (OFF) by DROLLINGER, BRENNNA			
05:56	MISSED 3PTR by JOHNSON, PAISLEY			
05:52				REBOUND (DEF) by MCGWIRE, MALLORY
05:52	FOUL (PERSONAL) by HAMSON, SARA			
05:52	SUB OUT: SALMON, SHALAE			
05:52	SUB IN: UGWU, BABALU			
05:38		9-7	H 2	GOOD! 3PTR by COLEMAN, A'SHANTI
05:38				ASSIST by LUPFER, RILEY
05:11	MISSED JUMPER by UGWU, BABALU			
05:08				REBOUND (DEF) by LUPFER, RILEY
05:02		11-7	H 4	GOOD! LAYUP by COLEMAN, A'SHANTI
04:41	TURNOVER (BADPASS) by HAMSON, SARA			
04:41				STEAL by MCGWIRE, MALLORY
04:33		13-7	H 6	GOOD! JUMPER by MCGWIRE, MALLORY
04:29	TIMEOUT 30SEC			
04:29				SUB OUT: HODGINS, BRAYDEY
04:29				SUB OUT: MCGWIRE, MALLORY
04:29				SUB IN: WOERNER, ELLIE
04:29				SUB IN: BOWERS, RACHEL
04:29	SUB OUT: UGWU, BABALU			
04:29	SUB IN: SMILER, KAYLEE			
04:13	SUB OUT: DROLLINGER, BRENNNA			
04:13	SUB IN: UGWU, BABALU			
04:03				FOUL (PERSONAL) by BOWERS, RACHEL
04:03	SUB OUT: UGWU, BABALU			
04:03	SUB IN: PERRI, MALLI			
03:44	GOOD! LAYUP by HAMSON, SARA	13-9	H 4	
03:44	ASSIST by ALBIERO, MARIA			
03:21		15-9	H 6	GOOD! JUMPER by COLEMAN, A'SHANTI [PNT]
03:21				ASSIST by BOWERS, RACHEL
03:03	GOOD! LAYUP by HAMSON, SARA [PNT]	15-11	H 4	
03:03	ASSIST by JOHNSON, PAISLEY			
02:54		17-11	H 6	GOOD! JUMPER by COLEMAN, A'SHANTI
02:54				ASSIST by CHRISTOPHER, JAYDE
02:28	MISSED JUMPER by PERRI, MALLI			
02:25				REBOUND (DEF) by WOERNER, ELLIE
02:04				MISSED 3PTR by CHRISTOPHER, JAYDE
02:00				REBOUND (OFF) by BOWERS, RACHEL

Time	VISITORS: BYU	Score	Margin	HOME: Boise State
01:53				TURNOVER (TRAVEL) by COLEMAN, A'SHANTI
01:53				SUB OUT: CHRISTOPHER, JAYDE
01:53				SUB IN: HODGINS, BRAYDEY
01:53	SUB OUT: ALBIERO, MARIA			
01:53	SUB OUT: PERRI, MALLI			
01:53	SUB OUT: HAMSON, SARA			
01:53	SUB IN: DROLLINGER, BRENNNA			
01:53	SUB IN: SALMON, SHALAE			
01:53	SUB IN: GLANTZ, SIGNE			
01:39	MISSED LAYUP by SALMON, SHALAE			
01:36				REBOUND (DEF) by LUPFER, RILEY
01:12				MISSED 3PTR by WOERNER, ELLIE
01:07	REBOUND (DEF) by JOHNSON, PAISLEY			
00:52				SUB OUT: COLEMAN, A'SHANTI
00:52				SUB IN: LOVILLE, JADE
00:49	GOOD! LAYUP by JOHNSON, PAISLEY	17-13	H 4	
00:49	ASSIST by SMILER, KAYLEE			
00:40	FOUL (PERSONAL) by DROLLINGER, BRENNNA			
00:35				MISSED JUMPER by LOVILLE, JADE
00:31	REBOUND (DEF) by SALMON, SHALAE			
00:27	MISSED 3PTR by JOHNSON, PAISLEY			
00:23				REBOUND (DEF) by WOERNER, ELLIE
00:05	FOUL (PERSONAL) by SMILER, KAYLEE			
00:02		19-13	H 6	GOOD! LAYUP by HODGINS, BRAYDEY

BYU 13, Boise State 19

Points from (This Period)	BYU	BSU
In the Paint	10	6
Off Turns	0	2
2nd Chance	2	0
Fast Break	3	3
Bench	0	0

**Official Box Score**  
**BYU vs Boise State**  
**Second Quarter Statistics Only**  
**December 11, 2019 at ExtraMile Arena - Boise**



### BYU 10

No.	Player	S	Pts	FG	3FG	FT	OR	DR	TR	PF	A	TO	Blk	Stl	Min	+/-
01	DROLLINGER, BRENNIA	G	8	2-4	2-3	2-2	0	1	1	0	0	0	0	0	10	2
03	SALMON, SHALAE	F	2	1-1	0-0	0-0	1	4	5	0	0	1	0	0	6	2
05	ALBIERO, MARIA	G	0	0-2	0-0	0-0	0	0	0	0	1	0	0	0	5	1
13	JOHNSON, PAISLEY	G	0	0-3	0-0	0-0	0	1	1	0	0	1	0	0	8	1
22	HAMSON, SARA	C	0	0-1	0-0	0-0	0	2	2	1	0	0	2	0	6	0
11	SMILER, KAYLEE	G	0	0-1	0-1	0-0	0	1	1	1	0	0	0	0	3	1
14	UGWU, BABALU	F	0	0-0	0-0	0-0	0	1	1	0	0	1	0	0	4	0
15	PERRI, MALLI	F	0	0-0	0-0	0-0	0	0	0	0	0	0	0	0	0	0
20	OTUAFI, LEILANI	G	0	0-0	0-0	0-0	0	0	0	0	0	1	0	0	2	1
21	TAITO, KHAEDIN	G	0	0-0	0-0	0-0	0	0	0	0	0	0	0	0	2	0
32	GLANTZ, SIGNE	F	0	0-0	0-0	0-0	0	0	0	0	0	1	0	0	4	2
	TEAM						1	1	2	0		0				
<b>TOTALS</b>			<b>10</b>	<b>3-12</b>	<b>2-4</b>	<b>2-2</b>	<b>2</b>	<b>11</b>	<b>13</b>	<b>2</b>	<b>1</b>	<b>5</b>	<b>2</b>	<b>0</b>	<b>50</b>	

#### Shooting By Period

Period	FG	FG%	3FG	3FG%	FT	FT%
3rd Qtr	7-15	47%	3-5	60%	5-6	83%
4th Qtr	4-20	20%	2-8	25%	0-0	0%
2nd Half	3-12	25%	2-4	50%	2-2	100%
2nd Half	11-35	31%	5-13	38%	5-6	83%
Game	20-64	31.3%	8-21	38.1%	7-8	87.5%

Deadball Rebounds: 1,1

### Boise State 8

No.	Player	S	Pts	FG	3FG	FT	OR	DR	TR	PF	A	TO	Blk	Stl	Min	+/-
14	HODGINS, BRAYDEY	G	2	1-5	0-2	0-0	0	0	0	1	0	0	0	0	10	-2
21	LUPFER, RILEY	G	1	0-1	0-1	1-2	0	2	2	0	0	1	1	1	8	1
23	CHRISTOPHER, JAYDE	G	2	1-4	0-2	0-0	0	1	1	0	0	0	0	0	6	-4
42	COLEMAN, A'SHANTI	F	0	0-1	0-0	0-0	0	2	2	0	0	0	0	0	6	0
44	MCGWIRE, MALLORY	C	3	1-2	1-1	0-0	1	0	1	1	1	0	0	0	5	-1
03	FREEMAN, MAGGIE	G	0	0-0	0-0	0-0	0	0	0	0	0	1	0	0	2	1
22	WOERNER, ELLIE	G	0	0-0	0-0	0-0	0	0	0	0	1	0	0	0	4	-2
25	BOWERS, RACHEL	F	0	0-4	0-0	0-0	2	1	3	0	0	0	1	0	5	-1
30	LOVILLE, JADE	G	0	0-1	0-1	0-0	0	0	0	0	0	0	0	0	4	-2
	TEAM						1	1	2	0		0				
<b>TOTALS</b>			<b>8</b>	<b>3-18</b>	<b>1-7</b>	<b>1-2</b>	<b>4</b>	<b>7</b>	<b>11</b>	<b>2</b>	<b>2</b>	<b>2</b>	<b>2</b>	<b>1</b>	<b>50</b>	

#### Shooting By Period

Period	FG	FG%	3FG	3FG%	FT	FT%
3rd Qtr	9-13	69%	3-5	60%	3-5	60%
4th Qtr	3-10	30%	1-4	25%	8-8	100%
2nd Half	3-18	17%	1-7	14%	1-2	50%
2nd Half	12-23	52%	4-9	44%	11-13	85%
Game	23-54	42.6%	7-20	35.0%	13-17	76.5%

Deadball Rebounds: 3,1

#### Game Notes:

Officials: Lisa Jones, Brenda Pantoja, Melissa Barlow  
Attendance: 1140

Start Time: 09:06 PM ET  
End Time: 10:40 PM ET  
Game Duration: 1:34

Score	1st	2nd	3rd	4th	TOT
BYU	13	10	22	10	<b>55</b>
BSU	19	8	24	15	<b>66</b>

Points from (This Period)	BYU	BSU
In the Paint	2	4
Off Turns	0	2
2nd Chance	3	0
Fast Break	0	1
Bench	0	0

**Official Play-By-Play**  
**BYU vs Boise State**  
**Second Quarter**  
**December 11, 2019 at ExtraMile Arena - Boise**



**Period 2**

**Starters:**

**BYU:** 1 DROLLINGER, BRENNIA (G); 3 SALMON, SHALAE (F); 5 ALBIERO, MARIA (G); 13 JOHNSON, PAISLEY (G); 22 HAMSON, SARA (C);

**Boise State:** 14 HODGINS, BRAYDEY (G); 21 LUPFER, RILEY (G); 23 CHRISTOPHER, JAYDE (G); 42 COLEMAN, A'SHANTI (F); 44 MCGWIRE, MALLORY (C);

Time	VISITORS: BYU	Score	Margin	HOME: Boise State
10:00				SUB OUT: BOWERS, RACHEL
10:00				SUB IN: MCGWIRE, MALLORY
09:46				TURNOVER (TRAVEL) by LUPFER, RILEY
09:26	MISSED 3PTR by SMILER, KAYLEE			
09:25				REBOUND (DEF) by TEAM
09:16		22-13	H 9	GOOD! 3PTR by MCGWIRE, MALLORY
09:16				ASSIST by WOERNER, ELLIE
08:59	GOOD! JUMPER by SALMON, SHALAE [PNT]	22-15	H 7	
08:46				MISSED JUMPER by HODGINS, BRAYDEY
08:42				REBOUND (OFF) by MCGWIRE, MALLORY
08:31				MISSED JUMPER by MCGWIRE, MALLORY
08:27	REBOUND (DEF) by SALMON, SHALAE			
08:21				FOUL (PERSONAL) by HODGINS, BRAYDEY
08:21				SUB OUT: LUPFER, RILEY
08:21				SUB IN: CHRISTOPHER, JAYDE
08:21	GOOD! FT by DROLLINGER, BRENNIA	22-16	H 6	
08:21	GOOD! FT by DROLLINGER, BRENNIA	22-17	H 5	
08:21	SUB OUT: JOHNSON, PAISLEY			
08:21	SUB IN: OTUAFI, LEILANI			
08:06	FOUL (PERSONAL) by SMILER, KAYLEE			
07:57				MISSED 3PTR by LOVILLE, JADE
07:52	REBOUND (DEF) by SMILER, KAYLEE			
07:42	TURNOVER (BADPASS) by OTUAFI, LEILANI			
07:22				MISSED LAYUP by CHRISTOPHER, JAYDE
07:19	REBOUND (DEF) by SALMON, SHALAE			
07:09	TURNOVER (TRAVEL) by GLANTZ, SIGNE			
07:09	SUB OUT: SMILER, KAYLEE			
07:09	SUB IN: ALBIERO, MARIA			
06:59		24-17	H 7	GOOD! LAYUP by CHRISTOPHER, JAYDE [PNT]
06:59				ASSIST by MCGWIRE, MALLORY
06:39	MISSED LAYUP by ALBIERO, MARIA			
06:35	REBOUND (OFF) by SALMON, SHALAE			
06:29	GOOD! 3PTR by DROLLINGER, BRENNIA	24-20	H 4	
06:29	ASSIST by ALBIERO, MARIA			
06:15				MISSED 3PTR by CHRISTOPHER, JAYDE
06:11	REBOUND (DEF) by SALMON, SHALAE			
05:57	TURNOVER (TRAVEL) by SALMON, SHALAE			
05:57				SUB OUT: WOERNER, ELLIE
05:57				SUB OUT: LOVILLE, JADE
05:57				SUB IN: LUPFER, RILEY
05:57				SUB IN: COLEMAN, A'SHANTI
05:57	SUB OUT: OTUAFI, LEILANI			
05:57	SUB OUT: GLANTZ, SIGNE			
05:57	SUB IN: JOHNSON, PAISLEY			
05:57	SUB IN: HAMSON, SARA			
05:39				MISSED 3PTR by CHRISTOPHER, JAYDE
05:34	REBOUND (DEF) by TEAM			
05:19	MISSED LAYUP by HAMSON, SARA			
05:19				BLOCK by BOWERS, RACHEL
05:15	REBOUND (OFF) by TEAM			
05:15	MISSED JUMPER by DROLLINGER, BRENNIA			
05:12				REBOUND (DEF) by LUPFER, RILEY
05:05				MISSED JUMPER by BOWERS, RACHEL
05:00	REBOUND (DEF) by HAMSON, SARA			
04:51	MISSED JUMPER by JOHNSON, PAISLEY			
04:51				REBOUND (DEF) by CHRISTOPHER, JAYDE
04:48				MISSED 3PTR by LUPFER, RILEY
04:44	REBOUND (DEF) by SALMON, SHALAE			
04:28	MISSED 3PTR by DROLLINGER, BRENNIA			
04:24				REBOUND (DEF) by COLEMAN, A'SHANTI
04:17				MISSED JUMPER by HODGINS, BRAYDEY
04:15				REBOUND (OFF) by BOWERS, RACHEL
04:14				MISSED JUMPER by BOWERS, RACHEL
04:14	BLOCK by HAMSON, SARA			
04:14				REBOUND (OFF) by TEAM
04:13				
05:19				SUB OUT: MCGWIRE, MALLORY
05:19				SUB IN: BOWERS, RACHEL
04:13	SUB OUT: SALMON, SHALAE			
04:13	SUB IN: UGWU, BABALU			



Time	VISITORS: BYU	Score	Margin	HOME: Boise State
04:02				MISSED 3PTR by HODGINS, BRAYDEY
03:57	REBOUND (DEF) by HAMSON, SARA			
03:47	GOOD! 3PTR by DROLLINGER, BRENNNA	24-23	H 1	
03:20				MISSED JUMPER by BOWERS, RACHEL
03:20	BLOCK by HAMSON, SARA			
03:15				REBOUND (OFF) by BOWERS, RACHEL
03:13				MISSED JUMPER by COLEMAN, A'SHANTI
03:08	REBOUND (DEF) by UGWU, BABALU			
02:58	MISSED JUMPER by JOHNSON, PAISLEY			
02:54				REBOUND (DEF) by COLEMAN, A'SHANTI
02:42		26-23	H 3	GOOD! LAYUP by HODGINS, BRAYDEY [PNT]
02:13	MISSED JUMPER by ALBIERO, MARIA			
02:13				BLOCK by LUPFER, RILEY
02:05				REBOUND (DEF) by LUPFER, RILEY
02:04	FOUL (PERSONAL) by HAMSON, SARA			
02:04				SUB OUT: CHRISTOPHER, JAYDE
02:04				SUB OUT: BOWERS, RACHEL
02:04				SUB IN: FREEMAN, MAGGIE
02:04				SUB IN: MCGWIRE, MALLORY
02:04				MISSED FT by LUPFER, RILEY
02:04				REBOUND (OFF) by TEAM
02:04		27-23	H 4	GOOD! FT by LUPFER, RILEY [FB]
01:50				FOUL (PERSONAL) by MCGWIRE, MALLORY
01:50				SUB OUT: MCGWIRE, MALLORY
01:50				SUB IN: BOWERS, RACHEL
01:50	SUB OUT: ALBIERO, MARIA			
01:50	SUB IN: TAITO, KHAEDIN			
01:47	TURNOVER (TRAVEL) by JOHNSON, PAISLEY			
01:35				TURNOVER (TRAVEL) by FREEMAN, MAGGIE
01:13	MISSED JUMPER by JOHNSON, PAISLEY			
01:10				REBOUND (DEF) by BOWERS, RACHEL
00:45				MISSED JUMPER by BOWERS, RACHEL
00:42	REBOUND (DEF) by DROLLINGER, BRENNNA			
00:31	TURNOVER (LOSTBALL) by UGWU, BABALU			
00:31				STEAL by LUPFER, RILEY
00:04				MISSED 3PTR by HODGINS, BRAYDEY
00:00	REBOUND (DEF) by JOHNSON, PAISLEY			

BYU 23, Boise State 27

Points from (This Period)	BYU	BSU
In the Paint	2	4
Off Turns	0	2
2nd Chance	3	0
Fast Break	0	1
Bench	0	0

**Official Box Score**  
**BYU vs Boise State**  
**Second Half Statistics Only**  
**December 11, 2019 at ExtraMile Arena - Boise**



### BYU 32

No.	Player	S	Pts	FG	3FG	FT	OR	DR	TR	PF	A	TO	Blk	Stl	Min	+/-
01	DROLLINGER, BRENNIA	G	3	1-7	1-5	0-0	0	0	0	2	3	0	0	1	20	-7
03	SALMON, SHALAE	F	2	1-8	0-0	0-0	3	0	3	0	0	1	0	1	13	-8
05	ALBIERO, MARIA	G	0	0-2	0-2	0-0	0	0	0	1	3	0	0	0	14	-9
11	SMILER, KAYLEE	G	0	0-1	0-0	0-0	0	0	0	0	0	0	0	0	6	2
13	JOHNSON, PAISLEY	G	13	4-6	3-5	2-2	0	1	1	2	1	1	1	0	20	-7
14	UGWU, BABALU	F	12	4-7	1-1	3-4	2	2	4	3	0	0	0	4	11	2
15	PERRI, MALLI	F	0	0-0	0-0	0-0	0	0	0	0	0	0	0	0	0	0
20	OTUAFI, LEILANI	G	0	0-0	0-0	0-0	0	0	0	0	0	0	0	0	0	0
21	TAITO, KHAEDIN	G	0	0-0	0-0	0-0	0	0	0	0	0	0	0	0	0	0
22	HAMSON, SARA	C	2	1-2	0-0	0-0	1	3	4	2	0	1	1	0	9	-13
32	GLANTZ, SIGNE	F	0	0-2	0-0	0-0	0	1	1	2	0	0	0	0	6	5
	TEAM		0	0-0	0-0	0-0	0	1	1	0	0	0	0	0	0	
<b>TOTALS</b>			<b>32</b>	<b>11-35</b>	<b>5-13</b>	<b>5-6</b>	<b>6</b>	<b>8</b>	<b>14</b>	<b>12</b>	<b>7</b>	<b>3</b>	<b>2</b>	<b>6</b>	<b>100</b>	

#### Shooting By Period

Period	FG	FG%	3FG	3FG%	FT	FT%
3rd Qtr	7-15	47%	3-5	60%	5-6	83%
4th Qtr	4-20	20%	2-8	25%	0-0	0%
2nd Half	11-35	31%	5-13	38%	5-6	83%
Game	20-64	31.3%	8-21	38.1%	7-8	87.5%

Deadball Rebounds: 1,1

Last FG Half: BYU 4th-00:07

### Boise State 39

No.	Player	S	Pts	FG	3FG	FT	OR	DR	TR	PF	A	TO	Blk	Stl	Min	+/-
03	FREEMAN, MAGGIE	G	0	0-0	0-0	0-0	0	0	0	0	0	0	0	0	0	0
14	HODGINS, BRAYDEY	G	5	0-3	0-1	5-6	0	4	4	1	2	0	0	1	17	7
21	LUPFER, RILEY	G	11	4-7	3-6	0-0	0	0	0	1	0	1	0	1	20	7
22	WOERNER, ELLIE	G	2	1-2	0-1	0-0	0	0	0	0	0	1	0	0	6	0
23	CHRISTOPHER, JAYDE	G	4	1-1	0-0	2-2	0	3	3	0	4	3	0	0	18	6
25	BOWERS, RACHEL	F	0	0-0	0-0	0-0	0	0	0	1	0	1	0	0	3	-1
30	LOVILLE, JADE	G	0	0-0	0-0	0-0	0	0	0	0	0	0	0	0	0	0
42	COLEMAN, A'SHANTI	F	8	3-4	0-0	2-3	1	0	1	0	2	1	0	0	18	8
44	MCGWIRE, MALLORY	C	9	3-6	1-1	2-2	1	9	10	0	0	1	3	0	17	8
	TEAM		0	0-0	0-0	0-0	0	1	1	0	0	0	0	0	0	
<b>TOTALS</b>			<b>39</b>	<b>12-23</b>	<b>4-9</b>	<b>11-13</b>	<b>2</b>	<b>17</b>	<b>19</b>	<b>3</b>	<b>8</b>	<b>8</b>	<b>3</b>	<b>2</b>	<b>100</b>	

#### Shooting By Period

Period	FG	FG%	3FG	3FG%	FT	FT%
3rd Qtr	9-13	69%	3-5	60%	3-5	60%
4th Qtr	3-10	30%	1-4	25%	8-8	100%
2nd Half	12-23	52%	4-9	44%	11-13	85%
Game	23-54	42.6%	7-20	35.0%	13-17	76.5%

Deadball Rebounds: 3,1

Last FG Half: BSU 4th-04:44

#### Game Notes:

Officials: Lisa Jones, Brenda Pantoja, Melissa Barlow  
Attendance: 1140

Start Time: 09:06 PM ET

End Time: 10:40 PM ET

Game Duration: 1:34

Score	1st	2nd	3rd	4th	TOT
BYU	13	10	22	10	55
BSU	19	8	24	15	66

Points from (This Period)	BYU	BSU
In the Paint	12	12
Off Turns	6	4
2nd Chance	4	0
Fast Break	9	6
Bench	12	2

**Official Box Score**  
**BYU vs Boise State**  
**Third Quarter Statistics Only**  
**December 11, 2019 at ExtraMile Arena - Boise**



## BYU 32

No.	Player	S	Pts	FG	3FG	FT	OR	DR	TR	PF	A	TO	Blk	Stl	Min	+/-
01	DROLLINGER, BRENNIA	G	0	0-2	0-2	0-0	0	0	0	1	2	0	0	0	10	-2
03	SALMON, SHALAE	F	2	1-5	0-0	0-0	1	0	1	0	0	1	0	0	6	-6
05	ALBIERO, MARIA	G	0	0-0	0-0	0-0	0	0	0	0	2	0	0	0	6	-6
13	JOHNSON, PAISLEY	G	8	2-2	2-2	2-2	0	0	0	1	0	1	0	0	10	-2
22	HAMSON, SARA	C	2	1-1	0-0	0-0	1	2	3	0	0	1	0	0	6	-6
11	SMILER, KAYLEE	G	0	0-0	0-0	0-0	0	0	0	0	0	0	0	0	4	4
14	UGWU, BABALU	F	10	3-4	1-1	3-4	2	0	2	0	0	0	0	1	4	4
15	PERRI, MALLI	F	0	0-0	0-0	0-0	0	0	0	0	0	0	0	0	0	0
20	OTUAFI, LEILANI	G	0	0-0	0-0	0-0	0	0	0	0	0	0	0	0	0	0
21	TAITO, KHAEDIN	G	0	0-0	0-0	0-0	0	0	0	0	0	0	0	0	0	0
32	GLANTZ, SIGNE	F	0	0-1	0-0	0-0	0	1	1	2	0	0	0	0	4	4
TEAM							0	0	0	0		0				
<b>TOTALS</b>			<b>22</b>	<b>7-15</b>	<b>3-5</b>	<b>5-6</b>	<b>4</b>	<b>3</b>	<b>7</b>	<b>4</b>	<b>4</b>	<b>3</b>	<b>0</b>	<b>1</b>	<b>50</b>	

### Shooting By Period

Period	FG	FG%	3FG	3FG%	FT	FT%
2nd Half	0-0	0%	0-0	0%	0-0	0%
Game	20-64	31.3%	8-21	38.1%	7-8	87.5%

Deadball Rebounds: 1,1

## Boise State 39

No.	Player	S	Pts	FG	3FG	FT	OR	DR	TR	PF	A	TO	Blk	Stl	Min	+/-
14	HODGINS, BRAYDEY	G	1	0-1	0-0	1-2	0	1	1	1	1	0	0	1	9	4
21	LUPFER, RILEY	G	8	3-4	2-3	0-0	0	0	0	1	0	0	0	1	10	2
23	CHRISTOPHER, JAYDE	G	0	0-0	0-0	0-0	0	0	0	0	4	1	0	0	8	1
42	COLEMAN, A'SHANTI	F	8	3-4	0-0	2-3	0	0	0	0	1	0	0	0	10	2
44	MCGWIRE, MALLORY	C	7	3-3	1-1	0-0	0	3	3	0	0	0	1	0	7	3
03	FREEMAN, MAGGIE	G	0	0-0	0-0	0-0	0	0	0	0	0	0	0	0	0	0
22	WOERNER, ELLIE	G	0	0-1	0-1	0-0	0	0	0	0	0	0	0	0	3	-1
25	BOWERS, RACHEL	F	0	0-0	0-0	0-0	0	0	0	1	0	1	0	0	3	-1
30	LOVILLE, JADE	G	0	0-0	0-0	0-0	0	0	0	0	0	0	0	0	0	0
TEAM							0	0	0	0		0				
<b>TOTALS</b>			<b>24</b>	<b>9-13</b>	<b>3-5</b>	<b>3-5</b>	<b>0</b>	<b>4</b>	<b>4</b>	<b>3</b>	<b>6</b>	<b>2</b>	<b>1</b>	<b>2</b>	<b>50</b>	

### Shooting By Period

Period	FG	FG%	3FG	3FG%	FT	FT%
2nd Half	0-0	0%	0-0	0%	0-0	0%
Game	23-54	42.6%	7-20	35.0%	13-17	76.5%

Deadball Rebounds: 3,1

### Game Notes:

Officials: Lisa Jones, Brenda Pantoja, Melissa Barlow  
Attendance: 1140

Start Time: 09:06 PM ET  
End Time: 10:40 PM ET  
Game Duration: 1:34

Score	1st	2nd	3rd	4th	TOT
BYU	13	10	22	10	55
BSU	19	8	24	15	66

Points from (This Period)	BYU	BSU
In the Paint	8	8
Off Turns	0	4
2nd Chance	4	0
Fast Break	1	6
Bench	10	0

**Official Play-By-Play**  
**BYU vs Boise State**  
**Third Quarter**  
**December 11, 2019 at ExtraMile Arena - Boise**



**Period 3**

**Starters:**

**BYU:** 1 DROLLINGER, BRENNIA (G); 3 SALMON, SHALAE (F); 5 ALBIERO, MARIA (G); 13 JOHNSON, PAISLEY (G); 22 HAMSON, SARA (C);

**Boise State:** 14 HODGINS, BRAYDEY (G); 21 LUPFER, RILEY (G); 23 CHRISTOPHER, JAYDE (G); 42 COLEMAN, A'SHANTI (F); 44 MCGWIRE, MALLORY (C);

Time	VISITORS: BYU	Score	Margin	HOME: Boise State
10:00				SUB OUT: FREEMAN, MAGGIE
10:00				SUB OUT: BOWERS, RACHEL
10:00				SUB IN: CHRISTOPHER, JAYDE
10:00				SUB IN: MCGWIRE, MALLORY
10:00	SUB OUT: UGWU, BABALU			
10:00	SUB OUT: TAITO, KHAEDIN			
10:00	SUB IN: SALMON, SHALAE			
10:00	SUB IN: ALBIERO, MARIA			
09:45	MISSED JUMPER by SALMON, SHALAE			
09:45				BLOCK by MCGWIRE, MALLORY
09:39	REBOUND (OFF) by HAMSON, SARA			
09:36	MISSED JUMPER by SALMON, SHALAE			
09:33				REBOUND (DEF) by MCGWIRE, MALLORY
09:29				TURNOVER (BADPASS) by CHRISTOPHER, JAYDE
09:10	TURNOVER (TRAVEL) by HAMSON, SARA			
08:58	FOUL (PERSONAL) by JOHNSON, PAISLEY			
08:58				MISSED FT by COLEMAN, A'SHANTI
08:58				REBOUND (OFF) by TEAM
08:58		28-23	H 5	GOOD! FT by COLEMAN, A'SHANTI
08:45	GOOD! 3PTR by JOHNSON, PAISLEY	28-26	H 2	
08:45	ASSIST by ALBIERO, MARIA			
08:31		31-26	H 5	GOOD! 3PTR by MCGWIRE, MALLORY
08:31				ASSIST by CHRISTOPHER, JAYDE
08:16	GOOD! 3PTR by JOHNSON, PAISLEY	31-29	H 2	
07:57				MISSED JUMPER by COLEMAN, A'SHANTI
07:53	REBOUND (DEF) by HAMSON, SARA			
07:47	MISSED 3PTR by DROLLINGER, BRENNIA			
07:43	REBOUND (OFF) by SALMON, SHALAE			
07:41	GOOD! LAYUP by SALMON, SHALAE	31-31	T	
07:26		34-31	H 3	GOOD! 3PTR by LUPFER, RILEY
07:26				ASSIST by COLEMAN, A'SHANTI
07:04	GOOD! LAYUP by HAMSON, SARA	34-33	H 1	
07:04	ASSIST by ALBIERO, MARIA			
06:38		36-33	H 3	GOOD! JUMPER by MCGWIRE, MALLORY
06:38				ASSIST by HODGINS, BRAYDEY
06:08	MISSED LAYUP by SALMON, SHALAE			
06:05				REBOUND (DEF) by MCGWIRE, MALLORY
05:57		38-33	H 5	GOOD! LAYUP by COLEMAN, A'SHANTI [PNT]
05:57				ASSIST by CHRISTOPHER, JAYDE
05:40	MISSED JUMPER by SALMON, SHALAE			
05:36				REBOUND (DEF) by MCGWIRE, MALLORY
05:33		40-33	H 7	GOOD! LAYUP by COLEMAN, A'SHANTI [FB]
05:33				ASSIST by CHRISTOPHER, JAYDE
05:02	TURNOVER (LOSTBALL) by SALMON, SHALAE			
05:02				STEAL by HODGINS, BRAYDEY
04:45				MISSED JUMPER by HODGINS, BRAYDEY
04:42	REBOUND (DEF) by HAMSON, SARA			
04:34	TURNOVER (LOSTBALL) by JOHNSON, PAISLEY			
04:34				STEAL by LUPFER, RILEY
04:26		43-33	H 10	GOOD! 3PTR by LUPFER, RILEY [FB]
04:26				ASSIST by CHRISTOPHER, JAYDE
04:26	TIMEOUT 30SEC			
04:26				
04:26	SUB OUT: SALMON, SHALAE			
04:26	SUB OUT: ALBIERO, MARIA			
04:26	SUB OUT: HAMSON, SARA			
04:26	SUB IN: SMILER, KAYLEE			
04:26	SUB IN: UGWU, BABALU			
04:26	SUB IN: GLANTZ, SIGNE			
04:10				
04:00	MISSED 3PTR by DROLLINGER, BRENNIA			
03:57	REBOUND (OFF) by UGWU, BABALU			
03:54	GOOD! LAYUP by UGWU, BABALU	43-35	H 8	
03:42		45-35	H 10	GOOD! JUMPER by MCGWIRE, MALLORY [PNT]
03:18	GOOD! 3PTR by UGWU, BABALU	45-38	H 7	
03:18	ASSIST by DROLLINGER, BRENNIA			
02:49				MISSED 3PTR by LUPFER, RILEY
02:46	REBOUND (DEF) by GLANTZ, SIGNE			
02:42				FOUL (PERSONAL) by HODGINS, BRAYDEY
02:42				SUB OUT: CHRISTOPHER, JAYDE

Time	VISITORS: BYU	Score	Margin	HOME: Boise State
02:42				SUB OUT: MCGWIRE, MALLORY
02:42				SUB IN: WOERNER, ELLIE
02:42				SUB IN: BOWERS, RACHEL
02:42	MISSED FT by UGWU, BABALU			
02:42	REBOUND (OFF) by TEAM			
02:42	GOOD! FT by UGWU, BABALU [FB]	45-39	H 6	
02:25		47-39	H 8	GOOD! JUMPER by LUPFER, RILEY
01:59				FOUL (PERSONAL) by BOWERS, RACHEL
01:59	GOOD! FT by UGWU, BABALU	47-40	H 7	
01:59	GOOD! FT by UGWU, BABALU	47-41	H 6	
01:37	FOUL (PERSONAL) by GLANTZ, SIGNE			
01:35		49-41	H 8	GOOD! LAYUP by COLEMAN, A'SHANTI
01:35	FOUL (PERSONAL) by GLANTZ, SIGNE			
01:35		50-41	H 9	GOOD! FT by COLEMAN, A'SHANTI
01:25	GOOD! LAYUP by UGWU, BABALU	50-43	H 7	
01:25	ASSIST by DROLLINGER, BRENNNA			
01:13				TURNOVER (LOSTBALL) by BOWERS, RACHEL
01:13	STEAL by UGWU, BABALU			
01:08	MISSED LAYUP by GLANTZ, SIGNE			
01:02	REBOUND (OFF) by UGWU, BABALU			
01:01	MISSED LAYUP by UGWU, BABALU			
00:55				REBOUND (DEF) by HODGINS, BRAYDEY
00:55	FOUL (PERSONAL) by DROLLINGER, BRENNNA			
00:55				MISSED FT by HODGINS, BRAYDEY
00:55				REBOUND (OFF) by TEAM
00:55		51-43	H 8	GOOD! FT by HODGINS, BRAYDEY [FB]
00:55				SUB OUT: HODGINS, BRAYDEY
00:55				SUB IN: CHRISTOPHER, JAYDE
00:35				FOUL (PERSONAL) by LUPFER, RILEY
00:35	GOOD! FT by JOHNSON, PAISLEY	51-44	H 7	
00:35	GOOD! FT by JOHNSON, PAISLEY	51-45	H 6	
00:07				MISSED 3PTR by WOERNER, ELLIE
00:00	REBOUND (DEF) by TEAM			

BYU 45, Boise State 51

Points from (This Period)	BYU	BSU
In the Paint	8	8
Off Turns	0	4
2nd Chance	4	0
Fast Break	1	6
Bench	10	0

**Official Box Score**  
**BYU vs Boise State**  
**Fourth Quarter Statistics Only**  
**December 11, 2019 at ExtraMile Arena - Boise**



### BYU 10

No.	Player	S	Pts	FG	3FG	FT	OR	DR	TR	PF	A	TO	Blk	Stl	Min	+/-
01	DROLLINGER, BRENNIA	G	3	1-5	1-3	0-0	0	0	0	1	1	0	0	1	10	-5
03	SALMON, SHALAE	F	0	0-3	0-0	0-0	2	0	2	0	0	0	0	1	7	-2
05	ALBIERO, MARIA	G	0	0-2	0-2	0-0	0	0	0	1	1	0	0	0	8	-3
13	JOHNSON, PAISLEY	G	5	2-4	1-3	0-0	0	1	1	1	1	0	1	0	10	-5
22	HAMSON, SARA	C	0	0-1	0-0	0-0	0	1	1	2	0	0	1	0	3	-7
11	SMILER, KAYLEE	G	0	0-1	0-0	0-0	0	0	0	0	0	0	0	0	2	-2
14	UGWU, BABALU	F	2	1-3	0-0	0-0	0	2	2	3	0	0	0	3	7	-2
15	PERRI, MALLI	F	0	0-0	0-0	0-0	0	0	0	0	0	0	0	0	0	0
20	OTUAFI, LEILANI	G	0	0-0	0-0	0-0	0	0	0	0	0	0	0	0	0	0
21	TAITO, KHAEDIN	G	0	0-0	0-0	0-0	0	0	0	0	0	0	0	0	0	0
32	GLANTZ, SIGNE	F	0	0-1	0-0	0-0	0	0	0	0	0	0	0	0	2	1
	TEAM						0	1	1	0		0				
<b>TOTALS</b>			<b>10</b>	<b>4-20</b>	<b>2-8</b>	<b>0-0</b>	<b>2</b>	<b>5</b>	<b>7</b>	<b>8</b>	<b>3</b>	<b>0</b>	<b>2</b>	<b>5</b>	<b>50</b>	

*Shooting By Period*

Period	FG	FG%	3FG	3FG%	FT	FT%
Game	20-64	31.3%	8-21	38.1%	7-8	87.5%

*Deadball Rebounds: 1,1*

### Boise State 15

No.	Player	S	Pts	FG	3FG	FT	OR	DR	TR	PF	A	TO	Blk	Stl	Min	+/-
14	HODGINS, BRAYDEY	G	4	0-2	0-1	4-4	0	3	3	0	1	0	0	0	8	3
21	LUPFER, RILEY	G	3	1-3	1-3	0-0	0	0	0	0	0	1	0	0	10	5
23	CHRISTOPHER, JAYDE	G	4	1-1	0-0	2-2	0	3	3	0	0	2	0	0	10	5
42	COLEMAN, A'SHANTI	F	0	0-0	0-0	0-0	1	0	1	0	1	1	0	0	8	6
44	MCGWIRE, MALLORY	C	2	0-3	0-0	2-2	1	6	7	0	0	1	2	0	10	5
03	FREEMAN, MAGGIE	G	0	0-0	0-0	0-0	0	0	0	0	0	0	0	0	0	0
22	WOERNER, ELLIE	G	2	1-1	0-0	0-0	0	0	0	0	0	1	0	0	3	1
25	BOWERS, RACHEL	F	0	0-0	0-0	0-0	0	0	0	0	0	0	0	0	0	0
30	LOVILLE, JADE	G	0	0-0	0-0	0-0	0	0	0	0	0	0	0	0	0	0
	TEAM						0	1	1	0		0				
<b>TOTALS</b>			<b>15</b>	<b>3-10</b>	<b>1-4</b>	<b>8-8</b>	<b>2</b>	<b>13</b>	<b>15</b>	<b>0</b>	<b>2</b>	<b>6</b>	<b>2</b>	<b>0</b>	<b>50</b>	

*Shooting By Period*

Period	FG	FG%	3FG	3FG%	FT	FT%
Game	23-54	42.6%	7-20	35.0%	13-17	76.5%

*Deadball Rebounds: 3,1*

*Game Notes:*

Officials: Lisa Jones, Brenda Pantoja, Melissa Barlow  
Attendance: 1140

Start Time: 09:06 PM ET  
End Time: 10:40 PM ET  
Game Duration: 1:34

Score	1st	2nd	3rd	4th	TOT
BYU	13	10	22	10	<b>55</b>
BSU	19	8	24	15	<b>66</b>

Points from (This Period)	BYU	BSU
In the Paint	4	4
Off Turns	6	0
2nd Chance	0	0
Fast Break	8	0
Bench	2	2

**Official Play-By-Play**  
**BYU vs Boise State**  
**Fourth Quarter**  
**December 11, 2019 at ExtraMile Arena - Boise**



**Period 4**

**Starters:**

**BYU:** 1 DROLLINGER, BRENNIA (G); 3 SALMON, SHALAE (F); 5 ALBIERO, MARIA (G); 13 JOHNSON, PAISLEY (G); 22 HAMSON, SARA (C);

**Boise State:** 14 HODGINS, BRAYDEY (G); 21 LUPFER, RILEY (G); 23 CHRISTOPHER, JAYDE (G); 42 COLEMAN, A'SHANTI (F); 44 MCGWIRE, MALLORY (C);

Time	VISITORS: BYU	Score	Margin	HOME: Boise State
10:00				SUB OUT: BOWERS, RACHEL
10:00				SUB IN: MCGWIRE, MALLORY
09:42				TURNOVER (BADPASS) by LUPFER, RILEY
09:42	STEAL by DROLLINGER, BRENNIA			
09:12	MISSED JUMPER by SMILER, KAYLEE			
09:08				REBOUND (DEF) by MCGWIRE, MALLORY
09:03		53-45	H 8	GOOD! JUMPER by CHRISTOPHER, JAYDE [PNT]
08:35	MISSED JUMPER by GLANTZ, SIGNE			
08:33				REBOUND (DEF) by TEAM
08:33	FOUL (PERSONAL) by UGWU, BABALU			
08:33				SUB OUT: COLEMAN, A'SHANTI
08:33				SUB IN: HODGINS, BRAYDEY
08:33	SUB OUT: SMILER, KAYLEE			
08:33	SUB OUT: GLANTZ, SIGNE			
08:33	SUB IN: SALMON, SHALAE			
08:33	SUB IN: ALBIERO, MARIA			
08:30				TURNOVER (LOSTBALL) by CHRISTOPHER, JAYDE
08:30	STEAL by UGWU, BABALU			
08:22	GOOD! 3PTR by JOHNSON, PAISLEY [FB]	53-48	H 5	
08:22	ASSIST by ALBIERO, MARIA			
08:04				TURNOVER (LOSTBALL) by WOERNER, ELLIE
08:04	STEAL by UGWU, BABALU			
07:58	MISSED LAYUP by UGWU, BABALU			
07:55				REBOUND (DEF) by MCGWIRE, MALLORY
07:28				MISSED LAYUP by MCGWIRE, MALLORY
07:24	REBOUND (DEF) by UGWU, BABALU			
07:17	MISSED 3PTR by DROLLINGER, BRENNIA			
07:12				REBOUND (DEF) by MCGWIRE, MALLORY
07:06				MISSED JUMPER by HODGINS, BRAYDEY
07:06	BLOCK by JOHNSON, PAISLEY			
07:00	REBOUND (DEF) by JOHNSON, PAISLEY			
06:58	MISSED LAYUP by DROLLINGER, BRENNIA			
06:53				REBOUND (DEF) by CHRISTOPHER, JAYDE
06:46		55-48	H 7	GOOD! LAYUP by WOERNER, ELLIE
06:46				ASSIST by HODGINS, BRAYDEY
06:45	TIMEOUT 30SEC			
06:45				
06:45				SUB OUT: WOERNER, ELLIE
06:45				SUB IN: COLEMAN, A'SHANTI
06:45	SUB OUT: UGWU, BABALU			
06:45	SUB IN: HAMSON, SARA			
06:32	MISSED LAYUP by HAMSON, SARA			
06:32				BLOCK by MCGWIRE, MALLORY
06:24				REBOUND (DEF) by HODGINS, BRAYDEY
06:16				TURNOVER (LOSTBALL) by MCGWIRE, MALLORY
06:16	STEAL by SALMON, SHALAE			
06:00	MISSED JUMPER by SALMON, SHALAE			
05:56	REBOUND (OFF) by SALMON, SHALAE			
05:52	MISSED 3PTR by ALBIERO, MARIA			
05:48				REBOUND (DEF) by CHRISTOPHER, JAYDE
05:40	FOUL (PERSONAL) by HAMSON, SARA			
05:23				MISSED JUMPER by MCGWIRE, MALLORY
05:23	BLOCK by HAMSON, SARA			
05:15	REBOUND (DEF) by HAMSON, SARA			
04:56	MISSED JUMPER by SALMON, SHALAE			
04:53				REBOUND (DEF) by MCGWIRE, MALLORY
04:44		58-48	H 10	GOOD! 3PTR by LUPFER, RILEY
04:44				ASSIST by COLEMAN, A'SHANTI
04:12	MISSED 3PTR by ALBIERO, MARIA			
04:08	REBOUND (OFF) by SALMON, SHALAE			
03:51	MISSED JUMPER by DROLLINGER, BRENNIA			
03:50				REBOUND (DEF) by TEAM
03:50	SUB OUT: HAMSON, SARA			
03:50	SUB IN: UGWU, BABALU			
03:31				MISSED 3PTR by LUPFER, RILEY
03:28	REBOUND (DEF) by TEAM			
03:15	MISSED JUMPER by UGWU, BABALU			
03:09				REBOUND (DEF) by HODGINS, BRAYDEY
03:01				TURNOVER (BADPASS) by CHRISTOPHER, JAYDE
03:01	STEAL by UGWU, BABALU			

Time	VISITORS: BYU	Score	Margin	HOME: Boise State
02:43	MISSED 3PTR by JOHNSON, PAISLEY			
02:40				REBOUND (DEF) by CHRISTOPHER, JAYDE
02:25				MISSED 3PTR by LUPFER, RILEY
02:20	REBOUND (DEF) by UGWU, BABALU			
02:03	MISSED JUMPER by SALMON, SHALAE			
01:59				REBOUND (DEF) by MCGWIRE, MALLORY
01:42				TIMEOUT 30SEC
01:39	FOUL (PERSONAL) by UGWU, BABALU			
01:24				MISSED LAYUP by MCGWIRE, MALLORY
01:21				REBOUND (OFF) by MCGWIRE, MALLORY
01:19	SUB OUT: SALMON, SHALAE			
01:19	SUB IN: GLANTZ, SIGNE			
01:07				MISSED 3PTR by HODGINS, BRAYDEY
01:04				REBOUND (OFF) by COLEMAN, A'SHANTI
01:02				TURNOVER (BADPASS) by COLEMAN, A'SHANTI
00:56	GOOD! 3PTR by DROLLINGER, BRENNNA [FB]	58-51	H 7	
00:56	ASSIST by JOHNSON, PAISLEY			
00:55	FOUL (PERSONAL) by DROLLINGER, BRENNNA			
00:47	FOUL (PERSONAL) by ALBIERO, MARIA			
00:47		59-51	H 8	GOOD! FT by CHRISTOPHER, JAYDE
00:47		60-51	H 9	GOOD! FT by CHRISTOPHER, JAYDE
00:39	GOOD! LAYUP by UGWU, BABALU [FB]	60-53	H 7	
00:39	ASSIST by DROLLINGER, BRENNNA			
00:39				TIMEOUT 30SEC
00:39	SUB OUT: GLANTZ, SIGNE			
00:39	SUB IN: HAMSON, SARA			
00:37	FOUL (PERSONAL) by UGWU, BABALU			
00:37		61-53	H 8	GOOD! FT by HODGINS, BRAYDEY
00:37		62-53	H 9	GOOD! FT by HODGINS, BRAYDEY
00:28	MISSED 3PTR by DROLLINGER, BRENNNA			
00:25				REBOUND (DEF) by HODGINS, BRAYDEY
00:25	FOUL (PERSONAL) by HAMSON, SARA			
00:25		63-53	H 10	GOOD! FT by HODGINS, BRAYDEY
00:25		64-53	H 11	GOOD! FT by HODGINS, BRAYDEY
00:25	TIMEOUT TEAM			
00:25	SUB OUT: ALBIERO, MARIA			
00:25	SUB OUT: HAMSON, SARA			
00:25	SUB IN: SMILER, KAYLEE			
00:25	SUB IN: GLANTZ, SIGNE			
00:23	MISSED 3PTR by JOHNSON, PAISLEY			
00:23				BLOCK by MCGWIRE, MALLORY
00:21				REBOUND (DEF) by MCGWIRE, MALLORY
00:21	FOUL (PERSONAL) by JOHNSON, PAISLEY			
00:21		65-53	H 12	GOOD! FT by MCGWIRE, MALLORY
00:21		66-53	H 13	GOOD! FT by MCGWIRE, MALLORY
00:07	GOOD! LAYUP by JOHNSON, PAISLEY	66-55	H 11	

BYU 55, Boise State 66

Points from (This Period)	BYU	BSU
In the Paint	4	4
Off Turns	6	0
2nd Chance	0	0
Fast Break	8	0
Bench	2	2



**Official Scoring/Possession Reference Chart**  
**BYU vs Boise State**  
**Period 1**  
**December 11, 2019 at ExtraMile Arena - Boise**



**Period 1**

**Starters:**

**BYU:** 1 DROLLINGER, BRENNAN (G); 3 SALMON, SHALAE (F); 5 ALBIERO, MARIA (G); 13 JOHNSON, PAISLEY (G); 22 HAMSON, SARA (C);

**Boise State:** 14 HODGINS, BRAYDEY (G); 21 LUPFER, RILEY (G); 23 CHRISTOPHER, JAYDE (G); 42 COLEMAN, A'SHANTI (F); 44 MCGWIRE, MALLORY (C);

Time	VISITORS: BYU	Score	Margin	HOME: Boise State
09:35	GOOD! LAYUP by HAMSON, SARA	0-2	V 2	
08:28	GOOD! 3PTR by JOHNSON, PAISLEY [FB]	0-5	V 5	
08:18		2-5	V 3	GOOD! JUMPER by COLEMAN, A'SHANTI
07:34	GOOD! LAYUP by SALMON, SHALAE	2-7	V 5	
07:29		5-7	V 2	GOOD! 3PTR by LUPFER, RILEY [FB]
06:22		6-7	V 1	GOOD! FT by MCGWIRE, MALLORY
05:38		9-7	H 2	GOOD! 3PTR by COLEMAN, A'SHANTI
05:02		11-7	H 4	GOOD! LAYUP by COLEMAN, A'SHANTI
04:33		13-7	H 6	GOOD! JUMPER by MCGWIRE, MALLORY
03:44	GOOD! LAYUP by HAMSON, SARA	13-9	H 4	
03:21		15-9	H 6	GOOD! JUMPER by COLEMAN, A'SHANTI [PNT]
03:03	GOOD! LAYUP by HAMSON, SARA [PNT]	15-11	H 4	
02:54		17-11	H 6	GOOD! JUMPER by COLEMAN, A'SHANTI
00:49	GOOD! LAYUP by JOHNSON, PAISLEY	17-13	H 4	
00:02		19-13	H 6	GOOD! LAYUP by HODGINS, BRAYDEY

**BYU 13, Boise State 19**

**Official Scoring/Possession Reference Chart**  
**BYU vs Boise State**  
**Period 2**  
**December 11, 2019 at ExtraMile Arena - Boise**



**Period 2**

**Starters:**

**BYU:** 1 DROLLINGER, BRENNIA (G); 3 SALMON, SHALAE (F); 5 ALBIERO, MARIA (G); 13 JOHNSON, PAISLEY (G); 22 HAMSON, SARA (C);

**Boise State:** 14 HODGINS, BRAYDEY (G); 21 LUPFER, RILEY (G); 23 CHRISTOPHER, JAYDE (G); 42 COLEMAN, A'SHANTI (F); 44 MCGWIRE, MALLORY (C);

Time	VISITORS: BYU	Score	Margin	HOME: Boise State
09:16		22-13	H 9	GOOD! 3PTR by MCGWIRE, MALLORY
08:59	GOOD! JUMPER by SALMON, SHALAE [PNT]	22-15	H 7	
08:21	GOOD! FT by DROLLINGER, BRENNIA	22-16	H 6	
08:21	GOOD! FT by DROLLINGER, BRENNIA	22-17	H 5	
06:59		24-17	H 7	GOOD! LAYUP by CHRISTOPHER, JAYDE [PNT]
06:29	GOOD! 3PTR by DROLLINGER, BRENNIA	24-20	H 4	
03:47	GOOD! 3PTR by DROLLINGER, BRENNIA	24-23	H 1	
02:42		26-23	H 3	GOOD! LAYUP by HODGINS, BRAYDEY [PNT]
02:04		27-23	H 4	GOOD! FT by LUPFER, RILEY [FB]

**BYU 23, Boise State 27**

**Official Scoring/Possession Reference Chart**  
**BYU vs Boise State**  
**Period 3**  
**December 11, 2019 at ExtraMile Arena - Boise**



**Period 3**

**Starters:**

**BYU:** 1 DROLLINGER, BRENNIA (G); 3 SALMON, SHALAE (F); 5 ALBIERO, MARIA (G); 13 JOHNSON, PAISLEY (G); 22 HAMSON, SARA (C);

**Boise State:** 14 HODGINS, BRAYDEY (G); 21 LUPFER, RILEY (G); 23 CHRISTOPHER, JAYDE (G); 42 COLEMAN, A'SHANTI (F); 44 MCGWIRE, MALLORY (C);

Time	VISITORS: BYU	Score	Margin	HOME: Boise State
08:58		28-23	H 5	GOOD! FT by COLEMAN, A'SHANTI
08:45	GOOD! 3PTR by JOHNSON, PAISLEY	28-26	H 2	
08:31		31-26	H 5	GOOD! 3PTR by MCGWIRE, MALLORY
08:16	GOOD! 3PTR by JOHNSON, PAISLEY	31-29	H 2	
07:41	GOOD! LAYUP by SALMON, SHALAE	31-31	T	
07:26		34-31	H 3	GOOD! 3PTR by LUPFER, RILEY
07:04	GOOD! LAYUP by HAMSON, SARA	34-33	H 1	
06:38		36-33	H 3	GOOD! JUMPER by MCGWIRE, MALLORY
05:57		38-33	H 5	GOOD! LAYUP by COLEMAN, A'SHANTI [PNT]
05:33		40-33	H 7	GOOD! LAYUP by COLEMAN, A'SHANTI [FB]
04:26		43-33	H 10	GOOD! 3PTR by LUPFER, RILEY [FB]
03:54	GOOD! LAYUP by UGWU, BABALU	43-35	H 8	
03:42		45-35	H 10	GOOD! JUMPER by MCGWIRE, MALLORY [PNT]
03:18	GOOD! 3PTR by UGWU, BABALU	45-38	H 7	
02:42	GOOD! FT by UGWU, BABALU [FB]	45-39	H 6	
02:25		47-39	H 8	GOOD! JUMPER by LUPFER, RILEY
01:59	GOOD! FT by UGWU, BABALU	47-40	H 7	
01:59	GOOD! FT by UGWU, BABALU	47-41	H 6	
01:35		49-41	H 8	GOOD! LAYUP by COLEMAN, A'SHANTI
01:35		50-41	H 9	GOOD! FT by COLEMAN, A'SHANTI
01:25	GOOD! LAYUP by UGWU, BABALU	50-43	H 7	
00:55		51-43	H 8	GOOD! FT by HODGINS, BRAYDEY [FB]
00:35	GOOD! FT by JOHNSON, PAISLEY	51-44	H 7	
00:35	GOOD! FT by JOHNSON, PAISLEY	51-45	H 6	

**BYU 45, Boise State 51**

**Official Scoring/Possession Reference Chart**  
**BYU vs Boise State**  
**Period 4**  
**December 11, 2019 at ExtraMile Arena - Boise**



**Period 4**

**Starters:**

**BYU:** 1 DROLLINGER, BRENNIA (G); 3 SALMON, SHALAE (F); 5 ALBIERO, MARIA (G); 13 JOHNSON, PAISLEY (G); 22 HAMSON, SARA (C);

**Boise State:** 14 HODGINS, BRAYDEY (G); 21 LUPFER, RILEY (G); 23 CHRISTOPHER, JAYDE (G); 42 COLEMAN, A'SHANTI (F); 44 MCGWIRE, MALLORY (C);

Time	VISITORS: BYU	Score	Margin	HOME: Boise State
09:03		53-45	H 8	GOOD! JUMPER by CHRISTOPHER, JAYDE [PNT]
08:22	GOOD! 3PTR by JOHNSON, PAISLEY [FB]	53-48	H 5	
06:46		55-48	H 7	GOOD! LAYUP by WOERNER, ELLIE
04:44		58-48	H 10	GOOD! 3PTR by LUPFER, RILEY
00:56	GOOD! 3PTR by DROLLINGER, BRENNIA [FB]	58-51	H 7	
00:47		59-51	H 8	GOOD! FT by CHRISTOPHER, JAYDE
00:47		60-51	H 9	GOOD! FT by CHRISTOPHER, JAYDE
00:39	GOOD! LAYUP by UGWU, BABALU [FB]	60-53	H 7	
00:37		61-53	H 8	GOOD! FT by HODGINS, BRAYDEY
00:37		62-53	H 9	GOOD! FT by HODGINS, BRAYDEY
00:25		63-53	H 10	GOOD! FT by HODGINS, BRAYDEY
00:25		64-53	H 11	GOOD! FT by HODGINS, BRAYDEY
00:21		65-53	H 12	GOOD! FT by MCGWIRE, MALLORY
00:21		66-53	H 13	GOOD! FT by MCGWIRE, MALLORY
00:07	GOOD! LAYUP by JOHNSON, PAISLEY	66-55	H 11	

**BYU 55, Boise State 66**

**Official Substitutions Log**  
**BYU vs Boise State**  
**Period 1**  
**December 11, 2019 at ExtraMile Arena - Boise**



VISITORS: BYU	Time	Score	HOME: Boise State
1 DROLLINGER, BRENNIA			14 HODGINS, BRAYDEY
3 SALMON, SHALAE			21 LUPFER, RILEY
5 ALBIERO, MARIA			23 CHRISTOPHER, JAYDE
13 JOHNSON, PAISLEY			42 COLEMAN, A'SHANTI
22 HAMSON, SARA			44 MCGWIRE, MALLORY
SUB OUT: 3 SALMON, SHALAE	05:52	7-6	
SUB IN: 14 UGWU, BABALU	05:52		
	04:29	7-13	SUB OUT: HODGINS, BRAYDEY
	04:29		SUB OUT: MCGWIRE, MALLORY
	04:29		SUB IN: WOERNER, ELLIE
	04:29		SUB IN: BOWERS, RACHEL
SUB OUT: 14 UGWU, BABALU	04:29		
SUB IN: 11 SMILER, KAYLEE	04:29		
SUB OUT: 1 DROLLINGER, BRENNIA	04:13	7-13	
SUB IN: 14 UGWU, BABALU	04:13		
SUB OUT: 14 UGWU, BABALU	04:03	7-13	
SUB IN: 15 PERRI, MALLI	04:03		
	01:53	11-17	SUB OUT: CHRISTOPHER, JAYDE
	01:53		SUB IN: HODGINS, BRAYDEY
SUB OUT: 5 ALBIERO, MARIA	01:53		
SUB OUT: 15 PERRI, MALLI	01:53		
SUB OUT: 22 HAMSON, SARA	01:53		
SUB IN: 1 DROLLINGER, BRENNIA	01:53		
SUB IN: 3 SALMON, SHALAE	01:53		
SUB IN: 32 GLANTZ, SIGNE	01:53		
	00:52	11-17	SUB OUT: COLEMAN, A'SHANTI
	00:52		SUB IN: LOVILLE, JADE

**BYU 13, Boise State 19**

**Official Substitutions Log**  
**BYU vs Boise State**  
**Period 2**  
**December 11, 2019 at ExtraMile Arena - Boise**



VISITORS: BYU	Time	Score	HOME: Boise State
1 DROLLINGER, BRENNIA			14 HODGINS, BRAYDEY
3 SALMON, SHALAE			21 LUPFER, RILEY
5 ALBIERO, MARIA			23 CHRISTOPHER, JAYDE
13 JOHNSON, PAISLEY			42 COLEMAN, A'SHANTI
22 HAMSON, SARA			44 MCGWIRE, MALLORY
	10:00	-	SUB OUT: BOWERS, RACHEL
	10:00		SUB IN: MCGWIRE, MALLORY
	08:21	15-22	SUB OUT: LUPFER, RILEY
	08:21		SUB IN: CHRISTOPHER, JAYDE
SUB OUT: 13 JOHNSON, PAISLEY	08:21		
SUB IN: 20 OTUAFI, LEILANI	08:21		
SUB OUT: 11 SMILER, KAYLEE	07:09	17-22	
SUB IN: 5 ALBIERO, MARIA	07:09		
	05:57	20-24	SUB OUT: WOERNER, ELLIE
	05:57		SUB OUT: LOVILLE, JADE
	05:57		SUB IN: LUPFER, RILEY
	05:57		SUB IN: COLEMAN, A'SHANTI
SUB OUT: 20 OTUAFI, LEILANI	05:57		
SUB OUT: 32 GLANTZ, SIGNE	05:57		
SUB IN: 13 JOHNSON, PAISLEY	05:57		
SUB IN: 22 HAMSON, SARA	05:57		
	05:19	20-24	SUB OUT: MCGWIRE, MALLORY
			SUB IN: BOWERS, RACHEL
SUB OUT: 3 SALMON, SHALAE	04:13	20-24	
SUB IN: 14 UGWU, BABALU	04:13		
	02:04	23-26	SUB OUT: CHRISTOPHER, JAYDE
	02:04		SUB OUT: BOWERS, RACHEL
	02:04		SUB IN: FREEMAN, MAGGIE
	02:04		SUB IN: MCGWIRE, MALLORY
	01:50	23-27	SUB OUT: MCGWIRE, MALLORY
	01:50		SUB IN: BOWERS, RACHEL
SUB OUT: 5 ALBIERO, MARIA	01:50		
SUB IN: 21 TAITO, KHAEDIN	01:50		

**BYU 23, Boise State 27**

**Official Substitutions Log**  
**BYU vs Boise State**  
**Period 3**  
**December 11, 2019 at ExtraMile Arena - Boise**



VISITORS: BYU	Time	Score	HOME: Boise State
1 DROLLINGER, BRENNAN			14 HODGINS, BRAYDEY
3 SALMON, SHALAE			21 LUPFER, RILEY
5 ALBIERO, MARIA			23 CHRISTOPHER, JAYDE
13 JOHNSON, PAISLEY			42 COLEMAN, A'SHANTI
22 HAMSON, SARA			44 MCGWIRE, MALLORY
	10:00	-	SUB OUT: FREEMAN, MAGGIE
	10:00		SUB OUT: BOWERS, RACHEL
	10:00		SUB IN: CHRISTOPHER, JAYDE
	10:00		SUB IN: MCGWIRE, MALLORY
SUB OUT: 14 UGWU, BABALU	10:00		
SUB OUT: 21 TAITO, KHAEDIN	10:00		
SUB IN: 3 SALMON, SHALAE	10:00		
SUB IN: 5 ALBIERO, MARIA	10:00		
SUB OUT: 3 SALMON, SHALAE	04:26	33-43	
SUB OUT: 5 ALBIERO, MARIA	04:26		
SUB OUT: 22 HAMSON, SARA	04:26		
SUB IN: 11 SMILER, KAYLEE	04:26		
SUB IN: 14 UGWU, BABALU	04:26		
SUB IN: 32 GLANTZ, SIGNE	04:26		
	02:42	38-45	SUB OUT: CHRISTOPHER, JAYDE
	02:42		SUB OUT: MCGWIRE, MALLORY
	02:42		SUB IN: WOERNER, ELLIE
	02:42		SUB IN: BOWERS, RACHEL
	00:55	43-51	SUB OUT: HODGINS, BRAYDEY
	00:55		SUB IN: CHRISTOPHER, JAYDE

**BYU 45, Boise State 51**

**Official Substitutions Log**  
**BYU vs Boise State**  
**Period 4**  
**December 11, 2019 at ExtraMile Arena - Boise**



VISITORS: BYU	Time	Score	HOME: Boise State
1 DROLLINGER, BRENNIA			14 HODGINS, BRAYDEY
3 SALMON, SHALAE			21 LUPFER, RILEY
5 ALBIERO, MARIA			23 CHRISTOPHER, JAYDE
13 JOHNSON, PAISLEY			42 COLEMAN, A'SHANTI
22 HAMSON, SARA			44 MCGWIRE, MALLORY
	10:00	-	SUB OUT: BOWERS, RACHEL
	10:00		SUB IN: MCGWIRE, MALLORY
	08:33	45-53	SUB OUT: COLEMAN, A'SHANTI
	08:33		SUB IN: HODGINS, BRAYDEY
SUB OUT: 11 SMILER, KAYLEE	08:33		
SUB OUT: 32 GLANTZ, SIGNE	08:33		
SUB IN: 3 SALMON, SHALAE	08:33		
SUB IN: 5 ALBIERO, MARIA	08:33		
	06:45	48-55	SUB OUT: WOERNER, ELLIE
	06:45		SUB IN: COLEMAN, A'SHANTI
SUB OUT: 14 UGWU, BABALU	06:45		
SUB IN: 22 HAMSON, SARA	06:45		
SUB OUT: 22 HAMSON, SARA	03:50	48-58	
SUB IN: 14 UGWU, BABALU	03:50		
SUB OUT: 3 SALMON, SHALAE	01:19	48-58	
SUB IN: 32 GLANTZ, SIGNE	01:19		
SUB OUT: 32 GLANTZ, SIGNE	00:39	53-60	
SUB IN: 22 HAMSON, SARA	00:39		
SUB OUT: 5 ALBIERO, MARIA	00:25	53-64	
SUB OUT: 22 HAMSON, SARA	00:25		
SUB IN: 11 SMILER, KAYLEE	00:25		
SUB IN: 32 GLANTZ, SIGNE	00:25		

**BYU 55, Boise State 66**

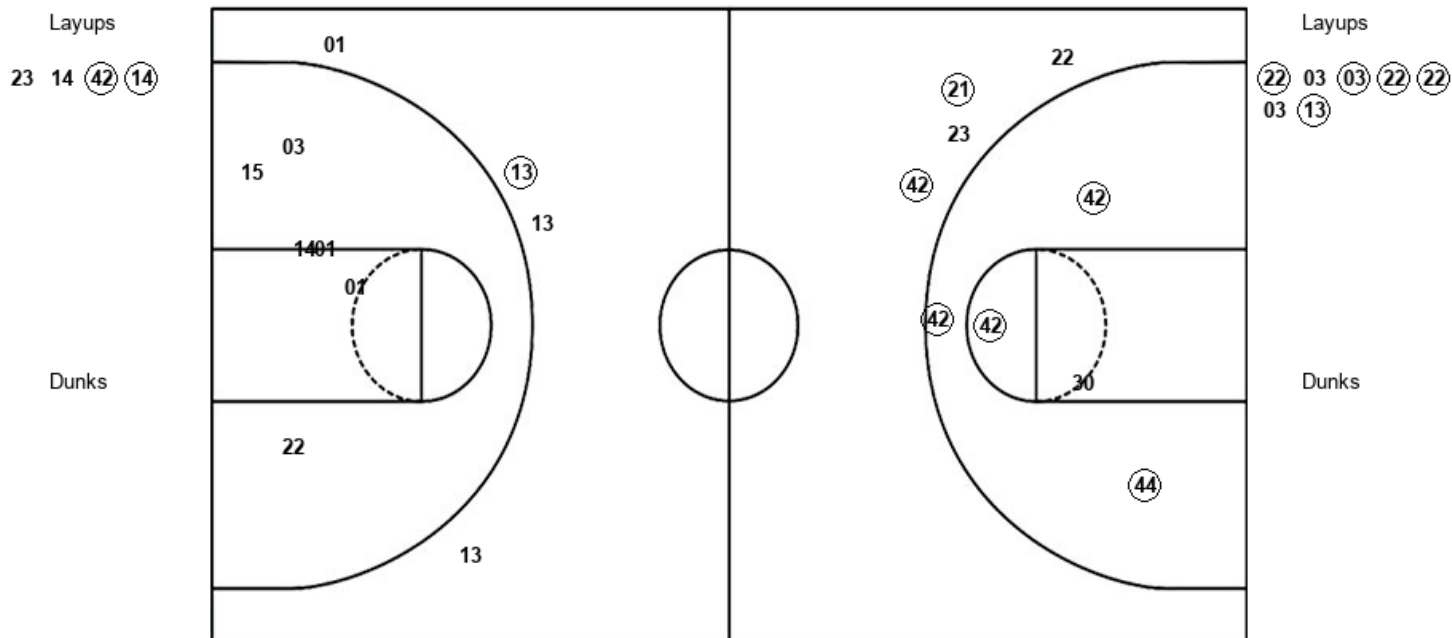


Official Shot Chart  
**BYU vs Boise State**  
 PERIOD 1 Shots  
 December 11, 2019 at ExtraMile Arena - Boise



**Boise State**

**BYU**



BSU : Period 1	Made	Att	Pct
Layups	2	4	50.0
Dunks	0	0	0
2PT Field Goals	6	9	66.7
3PT Field Goals	2	4	50.0
<b>Total Field Goals</b>	<b>8</b>	<b>13</b>	<b>61.5</b>

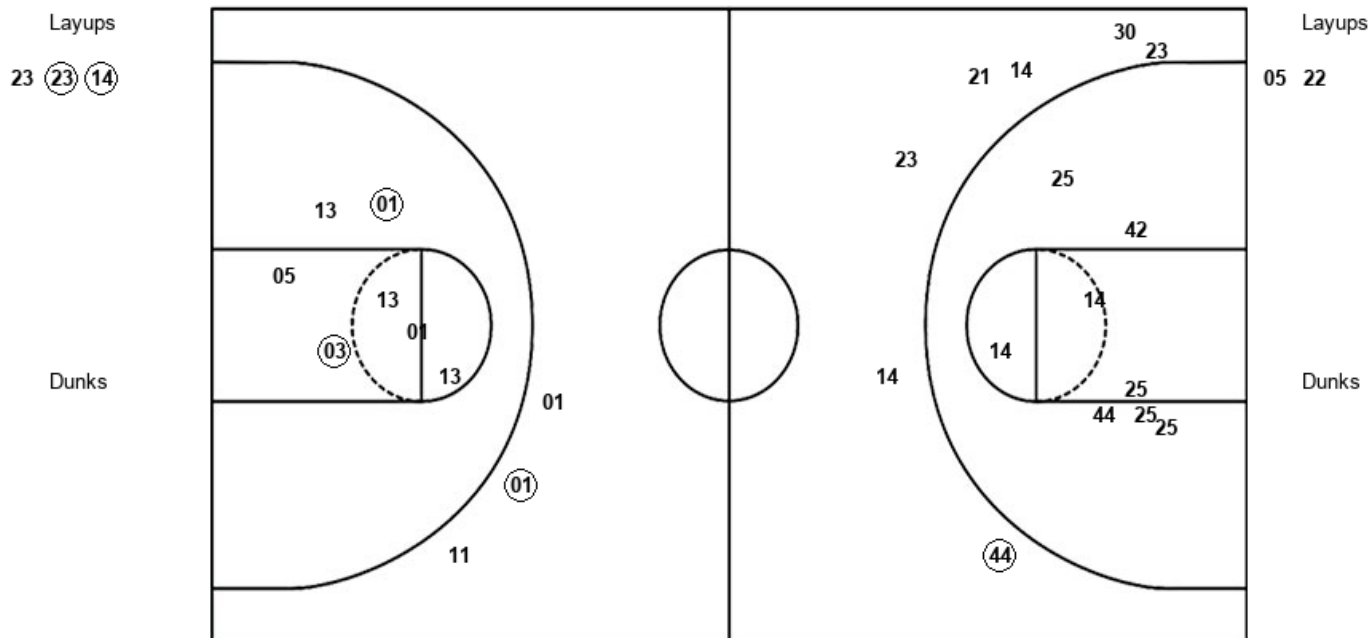
BYU : Period 1	Made	Att	Pct
Layups	5	7	71.4
Dunks	0	0	0
2PT Field Goals	5	13	38.5
3PT Field Goals	1	4	25.0
<b>Total Field Goals</b>	<b>6</b>	<b>17</b>	<b>35.3</b>

Official Shot Chart  
**BYU vs Boise State**  
 PERIOD 2 Shots  
 December 11, 2019 at ExtraMile Arena - Boise



**Boise State**

**BYU**



BSU : Period 2	Made	Att	Pct
Layups	2	3	66.7
Dunks	0	0	0
2PT Field Goals	2	11	18.2
3PT Field Goals	1	7	14.3
<b>Total Field Goals</b>	<b>3</b>	<b>18</b>	<b>16.7</b>

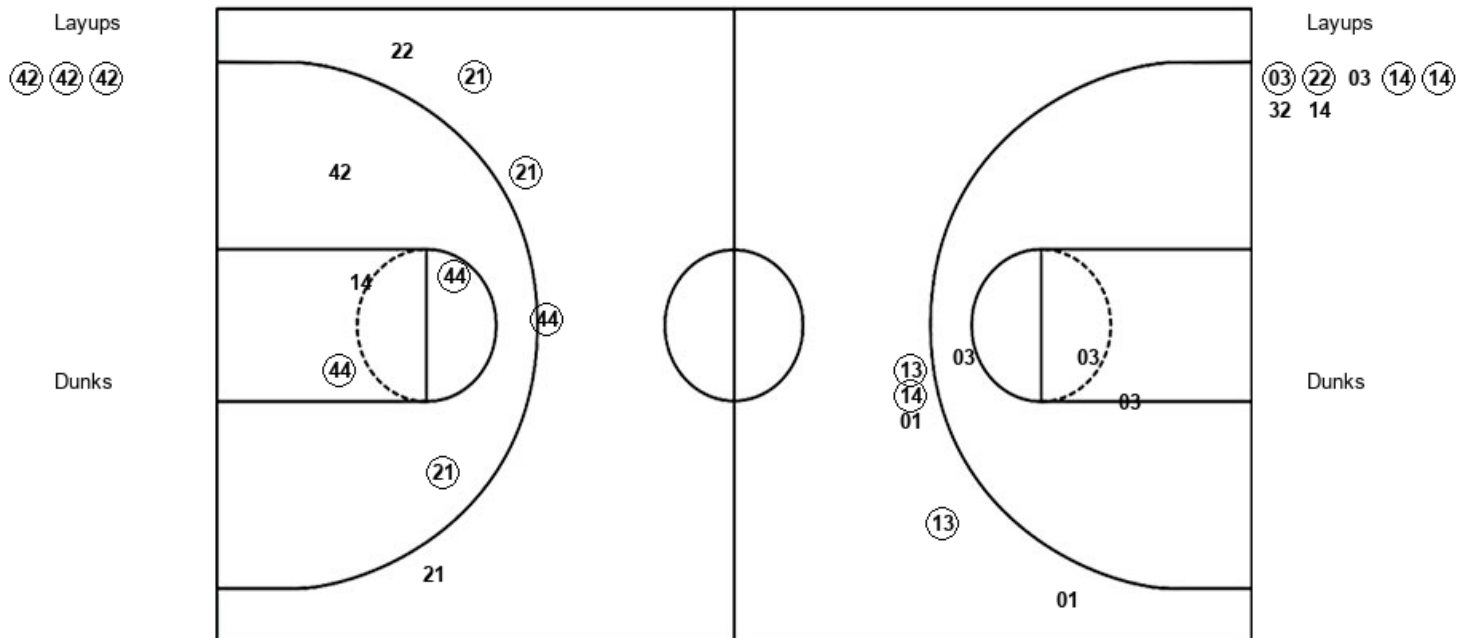
BYU : Period 2	Made	Att	Pct
Layups	0	2	00.0
Dunks	0	0	0
2PT Field Goals	1	8	12.5
3PT Field Goals	2	4	50.0
<b>Total Field Goals</b>	<b>3</b>	<b>12</b>	<b>25.0</b>

Official Shot Chart  
**BYU vs Boise State**  
 PERIOD 3 Shots  
 December 11, 2019 at ExtraMile Arena - Boise



**Boise State**

**BYU**



BSU : Period 3	Made	Att	Pct
Layups	3	3	100.0
Dunks	0	0	0
2PT Field Goals	6	8	75.0
3PT Field Goals	3	5	60.0
<b>Total Field Goals</b>	<b>9</b>	<b>13</b>	<b>69.2</b>

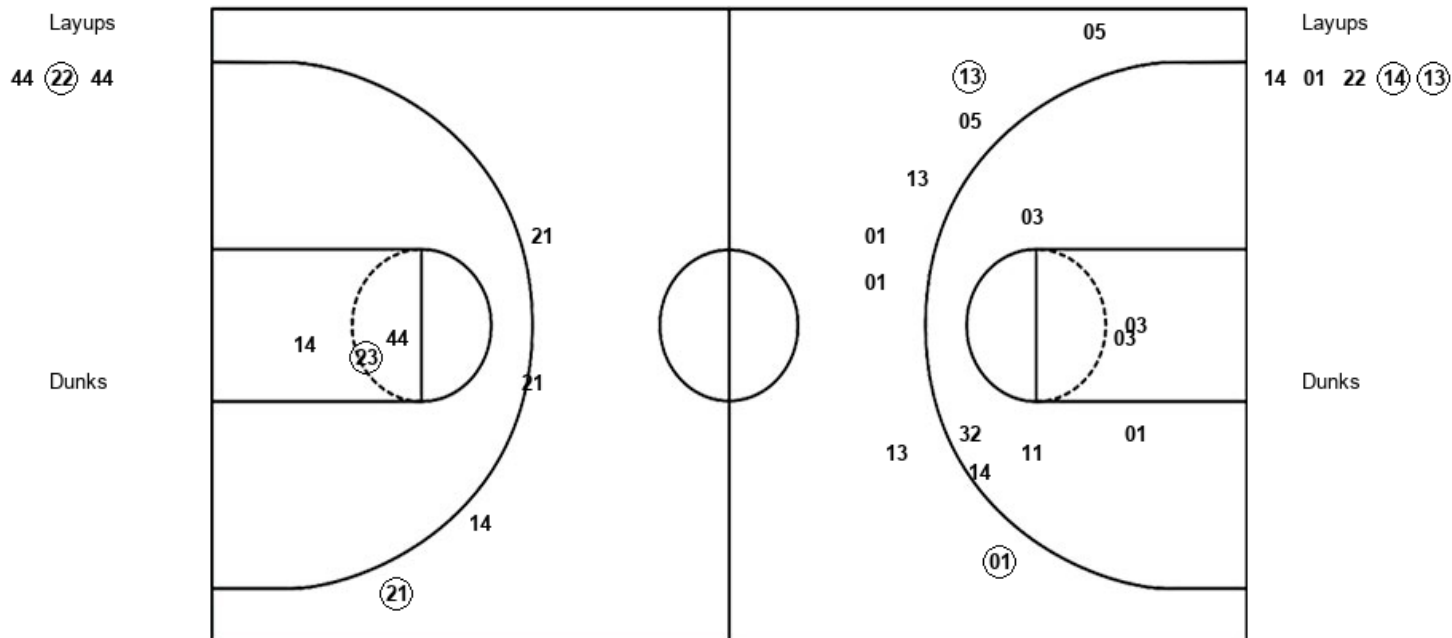
BYU : Period 3	Made	Att	Pct
Layups	4	7	57.1
Dunks	0	0	0
2PT Field Goals	4	10	40.0
3PT Field Goals	3	5	60.0
<b>Total Field Goals</b>	<b>7</b>	<b>15</b>	<b>46.7</b>

Official Shot Chart  
**BYU vs Boise State**  
 PERIOD 4 Shots  
 December 11, 2019 at ExtraMile Arena - Boise



**Boise State**

**BYU**



BSU : Period 4	Made	Att	Pct
Layups	1	3	33.3
Dunks	0	0	0
2PT Field Goals	2	6	33.3
3PT Field Goals	1	4	25.0
<b>Total Field Goals</b>	<b>3</b>	<b>10</b>	<b>30.0</b>

BYU : Period 4	Made	Att	Pct
Layups	2	5	40.0
Dunks	0	0	0
2PT Field Goals	2	12	16.7
3PT Field Goals	2	8	25.0
<b>Total Field Goals</b>	<b>4</b>	<b>20</b>	<b>20.0</b>

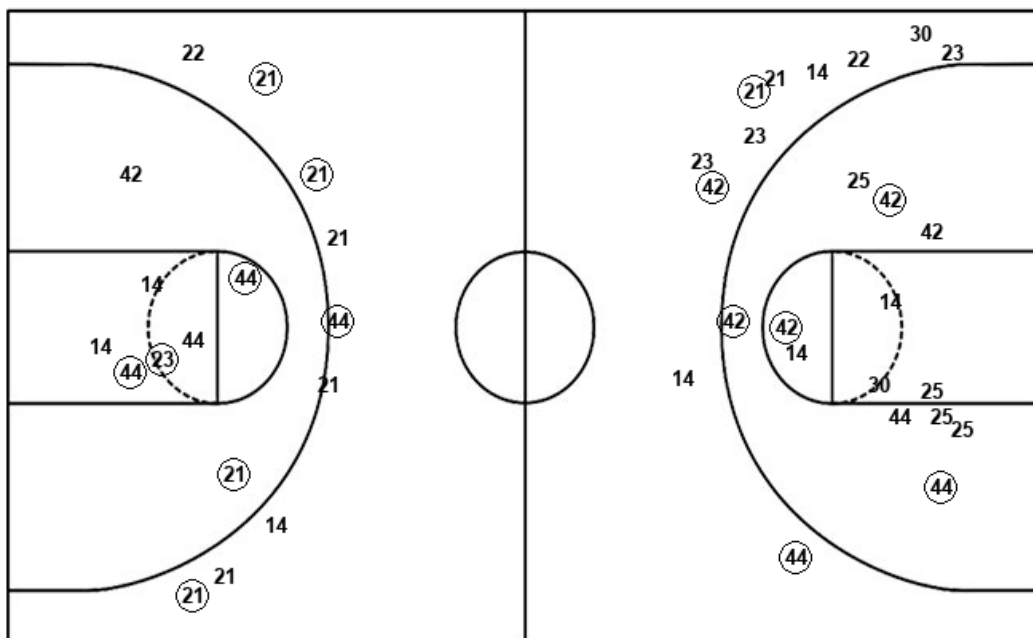


Official Shot Chart  
**BYU vs Boise State**  
 Boise State Team Shots  
 December 11, 2019 at ExtraMile Arena - Boise



Layups

Dunks



Layups

Dunks

BSU : Period 1	Made	Att	Pct
Layups	2	4	50.0
Dunks	0	0	0
2PT Field Goals	6	9	66.7
3PT Field Goals	2	4	50.0
<b>Total Field Goals</b>	<b>8</b>	<b>13</b>	<b>61.5</b>

BSU : Period 3	Made	Att	Pct
Layups	3	3	100.0
Dunks	0	0	0
2PT Field Goals	6	8	75.0
3PT Field Goals	3	5	60.0
<b>Total Field Goals</b>	<b>9</b>	<b>13</b>	<b>69.2</b>

BSU : Period 2	Made	Att	Pct
Layups	2	3	66.7
Dunks	0	0	0
2PT Field Goals	2	11	18.2
3PT Field Goals	1	7	14.3
<b>Total Field Goals</b>	<b>3</b>	<b>18</b>	<b>16.7</b>

BSU : Period 4	Made	Att	Pct
Layups	1	3	33.3
Dunks	0	0	0
2PT Field Goals	2	6	33.3
3PT Field Goals	1	4	25.0
<b>Total Field Goals</b>	<b>3</b>	<b>10</b>	<b>30.0</b>