

FINAL SCORE



Portland St.

57



Boise St.

82

November 08, 2019 • ExtraMile Arena - Boise

FINAL STATISTICS

Official Box Score
Portland St. vs Boise St.
Game Totals -- Final Statistics
November 08, 2019 at ExtraMile Arena - Boise



Portland St. 57

No.	Player	S	Pts	FG	3FG	FT	OR	DR	TR	PF	A	TO	Blk	Stl	Min	+/-
03	JIMENEZ, KYLIE	G	8	3-11	1-2	1-2	1	3	4	1	4	3	0	0	34	-33
11	STOTLER, JORDAN	F	8	3-7	0-0	2-2	4	3	7	4	0	2	1	0	16	-2
12	STREUN, TATIANA	F	7	3-5	0-0	1-3	1	6	7	2	0	2	0	0	23	-17
35	FRAZIER, BELLE	G	10	3-13	2-5	2-4	3	0	3	2	2	2	0	2	28	-10
53	HANSEN, DESIRAE	G	10	3-12	1-3	3-4	1	1	2	2	1	5	0	1	28	-28
01	DENSON, LABREA	G	6	1-1	0-0	4-4	0	0	0	0	1	5	0	2	4	5
10	CANZOBRE, MARINA	F	0	0-1	0-0	0-0	0	3	3	0	1	1	1	2	21	-16
15	GARDNER, CASSIDY	G	3	1-2	1-2	0-0	0	1	1	1	1	0	0	0	13	-12
22	WALTON, RUCHAE	G	0	0-0	0-0	0-0	0	0	0	0	0	0	0	0	2	1
23	LEWIS, JADA	G	0	0-3	0-3	0-0	0	2	2	2	0	1	0	0	14	-14
30	SCHULTZ, SYD	F	5	1-1	0-0	3-4	2	0	2	1	0	1	0	1	14	1
	TEAM						2	4	6	0		1				
TOTALS			57	18-56	5-15	16-23	14	23	37	15	10	23	2	8	198	

Shooting By Period

Period	FG	FG%	3FG	3FG%	FT	FT%
1st Qtr	5-17	29%	2-5	40%	1-3	33%
2nd Qtr	4-14	29%	1-3	33%	1-2	50%
3rd Qtr	5-15	33%	0-4	00%	2-4	50%
4th Qtr	4-10	40%	2-3	67%	12-14	86%
1st Half	9-31	29%	3-8	38%	2-5	40%
2nd Half	9-25	36%	2-7	29%	14-18	78%
Game	18-56	32.1%	5-15	33.3%	16-23	69.6%

Deadball Rebounds: 3,1
Last FG: 4th-01:10
Biggest Run: 7-0
Largest lead: By 2 at -
Technical Fouls: None.

Boise St. 82

No.	Player	S	Pts	FG	3FG	FT	OR	DR	TR	PF	A	TO	Blk	Stl	Min	+/-
14	HODGINS, BRAYDEY	G	5	1-6	1-3	2-2	0	3	3	1	6	0	0	1	29	20
21	LUPFER, RILEY	G	20	7-13	6-12	0-0	1	4	5	2	3	1	0	1	26	32
23	CHRISTOPHER, JAYDE	G	5	2-3	1-2	0-0	1	2	3	4	7	4	0	2	28	16
42	COLEMAN, A'SHANTI	F	2	1-7	0-0	0-0	3	0	3	4	1	2	1	2	21	8
44	MCGWIRE, MALLORY	C	10	5-8	0-1	0-0	2	6	8	1	3	5	1	0	20	7
03	FREEMAN, MAGGIE	G	5	2-4	1-3	0-0	0	1	1	0	0	1	0	1	6	-3
05	SOLER, LAIA	F	0	0-6	0-3	0-0	0	0	0	1	1	0	0	2	7	-10
22	WOERNER, ELLIE	G	6	3-11	0-0	0-2	6	5	11	2	2	1	0	0	23	16
25	BOWERS, RACHEL	F	15	7-9	0-0	1-2	4	2	6	3	1	0	0	0	18	21
30	LOVILLE, JADE	G	14	5-10	2-4	2-2	2	3	5	1	1	3	0	0	21	18
	TEAM						2	2	4	0		0				
TOTALS			82	33-77	11-28	5-8	21	28	49	19	25	17	2	9	198	

Shooting By Period

Period	FG	FG%	3FG	3FG%	FT	FT%
1st Qtr	9-18	50%	3-6	50%	0-0	0%
2nd Qtr	11-21	52%	7-12	58%	1-2	50%
3rd Qtr	7-18	39%	1-5	20%	4-4	100%
4th Qtr	6-20	30%	0-5	00%	0-2	00%
1st Half	20-39	51%	10-18	56%	1-2	50%
2nd Half	13-38	34%	1-10	10%	4-6	67%
Game	33-77	42.9%	11-28	39.3%	5-8	62.5%

Deadball Rebounds: 2,0
Last FG: 4th-00:54
Biggest Run: 13-0
Largest lead: By 37 at -
Technical Fouls: None.

Game Notes:

Officials: **Evan Sharples, Brad Schmidt, Esther Hsu**
 Attendance: **964**

Start Time: **09:06 PM ET**
 End Time: **10:45 PM ET**
 Game Duration: **1:39**

Score	1st	2nd	3rd	4th	TOT
PSU	13	10	12	22	57
BSU	21	30	19	12	82

PSU led for 0:13. BSU led for 38:14.
Game was tied for 1:12.
 Times tied: **72** Lead Changes: **0**

Points from	PSU	BSU
In the Paint	20	26
Off Turns	15	24
2nd Chance	11	19
Fast Break	9	14
Bench	14	40

Official Box Score
Portland St. vs Boise St.
First Half Statistics Only
November 08, 2019 at ExtraMile Arena - Boise



Portland St. 23

No.	Player	S	Pts	FG	3FG	FT	OR	DR	TR	PF	A	TO	Blk	Stl	Min	+/-
01	DENSON, LABREA	G	0	0-0	0-0	0-0	0	0	0	0	0	0	0	0	0	0
03	JIMENEZ, KYLIE	G	6	2-5	1-1	1-2	0	2	2	0	2	3	0	0	20	-28
10	CANZOBRE, MARINA	F	0	0-1	0-0	0-0	0	1	1	0	1	1	1	1	14	-19
11	STOTLER, JORDAN	F	0	0-2	0-0	0-0	2	1	3	2	0	0	1	0	4	-2
12	STREUN, TATIANA	F	4	2-4	0-0	0-1	1	2	3	2	0	2	0	0	11	-10
15	GARDNER, CASSIDY	G	0	0-1	0-1	0-0	0	0	0	1	0	0	0	0	4	-15
22	WALTON, RUCHAE	G	0	0-0	0-0	0-0	0	0	0	0	0	0	0	0	0	0
23	LEWIS, JADA	G	0	0-2	0-2	0-0	0	1	1	0	0	0	0	0	8	-20
30	SCHULTZ, SYD	F	2	1-1	0-0	0-0	1	0	1	1	0	1	0	1	6	-9
35	FRAZIER, BELLE	G	4	1-7	1-2	1-2	2	0	2	1	1	1	0	2	16	-13
53	HANSEN, DESIRAE	G	7	3-8	1-2	0-0	1	0	1	1	1	4	0	1	17	-24
	TEAM		0	0-0	0-0	0-0	0	3	3	0	0	0	0	0	0	0
TOTALS			23	9-31	3-8	2-5	7	10	17	8	5	12	2	5	100	

Shooting By Period

Period	FG	FG%	3FG	3FG%	FT	FT%
1st Qtr	5-17	29%	2-5	40%	1-3	33%
2nd Qtr	4-14	29%	1-3	33%	1-2	50%
1st Half	9-31	29%	3-8	38%	2-5	40%
Game	18-56	32.1%	5-15	33.3%	16-23	69.6%

Deadball Rebounds: 3,1
Last FG Half: PSU 2nd-02:04

Boise St. 51

No.	Player	S	Pts	FG	3FG	FT	OR	DR	TR	PF	A	TO	Blk	Stl	Min	+/-
03	FREEMAN, MAGGIE	G	3	1-1	1-1	0-0	0	0	0	0	0	0	0	0	1	6
05	SOLER, LAIA	F	0	0-0	0-0	0-0	0	0	0	0	0	0	0	0	0	0
14	HODGINS, BRAYDEY	G	3	1-4	1-3	0-0	0	1	1	1	5	0	0	0	16	19
21	LUPFER, RILEY	G	17	6-10	5-9	0-0	1	4	5	1	3	1	0	1	17	25
22	WOERNER, ELLIE	G	2	1-5	0-0	0-0	2	3	5	0	1	0	0	0	10	13
23	CHRISTOPHER, JAYDE	G	3	1-1	1-1	0-0	0	1	1	2	3	1	0	0	10	16
25	BOWERS, RACHEL	F	9	4-5	0-0	1-2	1	2	3	1	1	0	0	0	8	19
30	LOVILLE, JADE	G	8	3-5	2-3	0-0	2	1	3	0	1	1	0	0	12	18
42	COLEMAN, A'SHANTI	F	0	0-4	0-0	0-0	1	0	1	1	1	1	1	2	13	15
44	MCGWIRE, MALLORY	C	6	3-4	0-1	0-0	1	4	5	0	3	4	1	0	12	9
	TEAM		0	0-0	0-0	0-0	1	1	2	0	0	0	0	0	0	0
TOTALS			51	20-39	10-18	1-2	9	17	26	6	18	8	2	3	100	

Shooting By Period

Period	FG	FG%	3FG	3FG%	FT	FT%
1st Qtr	9-18	50%	3-6	50%	0-0	0%
2nd Qtr	11-21	52%	7-12	58%	1-2	50%
1st Half	20-39	51%	10-18	56%	1-2	50%
Game	33-77	42.9%	11-28	39.3%	5-8	62.5%

Deadball Rebounds: 2,0
Last FG Half: BSU 2nd-00:00

Game Notes:

Officials: **Evan Sharples, Brad Schmidt, Esther Hsu**
 Attendance: **964**

Start Time: **09:06 PM ET**
 End Time: **10:45 PM ET**
 Game Duration: **1:39**

Score	1st	2nd	3rd	4th	TOT
PSU	13	10	12	22	57
BSU	21	30	19	12	82

Points from (This Period)	PSU	BSU
In the Paint	12	12
Off Turns	7	18
2nd Chance	2	13
Fast Break	5	6
Bench	2	22

Official Box Score
Portland St. vs Boise St.
First Quarter Statistics Only
November 08, 2019 at ExtraMile Arena - Boise



Portland St. 13

No.	Player	S	Pts	FG	3FG	FT	OR	DR	TR	PF	A	TO	Blk	Stl	Min	+/-
03	JIMENEZ, KYLIE	G	0	0-2	0-0	0-0	0	1	1	0	2	2	0	0	10	-8
11	STOTLER, JORDAN	F	0	0-2	0-0	0-0	2	1	3	2	0	0	1	0	4	-2
12	STREUN, TATIANA	F	4	2-3	0-0	0-1	1	1	2	1	0	1	0	0	9	-8
35	FRAZIER, BELLE	G	4	1-3	1-2	1-2	1	0	1	0	1	1	0	0	10	-8
53	HANSEN, DESIRAE	G	5	2-6	1-2	0-0	1	0	1	0	1	2	0	0	7	-4
01	DENSON, LABREA	G	0	0-0	0-0	0-0	0	0	0	0	0	0	0	0	0	0
10	CANZOBRE, MARINA	F	0	0-0	0-0	0-0	0	1	1	0	0	0	0	1	6	-6
15	GARDNER, CASSIDY	G	0	0-0	0-0	0-0	0	0	0	0	0	0	0	0	0	0
22	WALTON, RUCHAE	G	0	0-0	0-0	0-0	0	0	0	0	0	0	0	0	0	0
23	LEWIS, JADA	G	0	0-1	0-1	0-0	0	1	1	0	0	0	0	0	3	-4
30	SCHULTZ, SYD	F	0	0-0	0-0	0-0	0	0	0	0	0	0	0	0	1	0
	TEAM						0	1	1	0		0				
TOTALS			13	5-17	2-5	1-3	5	6	11	3	4	6	1	1	50	

Shooting By Period

Period	FG	FG%	3FG	3FG%	FT	FT%
1st Qtr	5-17	29%	2-5	40%	1-3	33%
2nd Qtr	4-14	29%	1-3	33%	1-2	50%
1st Half	5-17	29%	2-5	40%	1-3	33%
1st Half	9-31	29%	3-8	38%	2-5	40%
Game	18-56	32.1%	5-15	33.3%	16-23	69.6%

Deadball Rebounds: 3,1

Boise St. 21

No.	Player	S	Pts	FG	3FG	FT	OR	DR	TR	PF	A	TO	Blk	Stl	Min	+/-
14	HODGINS, BRAYDEY	G	3	1-2	1-1	0-0	0	0	0	0	2	0	0	0	10	8
21	LUPFER, RILEY	G	8	3-6	2-5	0-0	1	4	5	1	2	0	0	1	10	8
23	CHRISTOPHER, JAYDE	G	0	0-0	0-0	0-0	0	1	1	2	1	1	0	0	4	4
42	COLEMAN, A'SHANTI	F	0	0-3	0-0	0-0	0	0	0	0	0	1	0	1	7	4
44	MCGWIRE, MALLORY	C	6	3-3	0-0	0-0	1	1	2	0	2	2	0	0	7	4
03	FREEMAN, MAGGIE	G	0	0-0	0-0	0-0	0	0	0	0	0	0	0	0	0	0
05	SOLER, LAIA	F	0	0-0	0-0	0-0	0	0	0	0	0	0	0	0	0	0
22	WOERNER, ELLIE	G	2	1-3	0-0	0-0	0	1	1	0	0	0	0	0	6	4
25	BOWERS, RACHEL	F	2	1-1	0-0	0-0	0	2	2	0	0	0	0	0	3	4
30	LOVILLE, JADE	G	0	0-0	0-0	0-0	1	0	1	0	1	0	0	0	3	4
	TEAM						0	0	0	0		0				
TOTALS			21	9-18	3-6	0-0	3	9	12	3	8	4	0	2	50	

Shooting By Period

Period	FG	FG%	3FG	3FG%	FT	FT%
1st Qtr	9-18	50%	3-6	50%	0-0	0%
2nd Qtr	11-21	52%	7-12	58%	1-2	50%
1st Half	9-18	50%	3-6	50%	0-0	0%
1st Half	20-39	51%	10-18	56%	1-2	50%
Game	33-77	42.9%	11-28	39.3%	5-8	62.5%

Deadball Rebounds: 2,0

Game Notes:

Officials: **Evan Sharples, Brad Schmidt, Esther Hsu**
Attendance: **964**

Start Time: **09:06 PM ET**
End Time: **10:45 PM ET**
Game Duration: **1:39**

Score	1st	2nd	3rd	4th	TOT
PSU	13	10	12	22	57
BSU	21	30	19	12	82

Points from (This Period)	PSU	BSU
In the Paint	6	6
Off Turns	2	9
2nd Chance	2	2
Fast Break	0	6
Bench	0	4

Official Play-By-Play
Portland St. vs Boise St.
First Quarter
November 08, 2019 at ExtraMile Arena - Boise



Period 1

Starters:

Portland St.: 3 JIMENEZ,KYLIE (G); 11 STOTLER,JORDAN (F); 12 STREUN,TATIANA (F); 35 FRAZIER,BELLE (G); 53 HANSEN,DESIRAE (G);

Boise St.: 14 HODGINS,BRAYDEY (G); 21 LUPFER,RILEY (G); 23 CHRISTOPHER,JAYDE (G); 42 COLEMAN,A'SHANTI (F); 44 MCGWIRE,MALLORY (C);

Time	VISITORS: Portland St.	Score	Margin	HOME: Boise St.
09:52	MISSED JUMPER by JIMENEZ, KYLIE			
09:46				REBOUND (DEF) by MCGWIRE, MALLORY
09:39				MISSED JUMPER by COLEMAN, A'SHANTI
09:39	BLOCK by STOTLER, JORDAN			
09:32	REBOUND (DEF) by STOTLER, JORDAN			
09:28	TURNOVER (BADPASS) by HANSEN, DESIRAE			
09:28				STEAL by COLEMAN, A'SHANTI
09:20				MISSED JUMPER by COLEMAN, A'SHANTI
09:14	REBOUND (DEF) by TEAM			
09:04	GOOD! LAYUP by HANSEN, DESIRAE	0-2	V 2	
09:04	ASSIST by FRAZIER, BELLE			
08:56		3-2	H 1	GOOD! 3PTR by LUPFER, RILEY [FB]
08:43	MISSED JUMPER by HANSEN, DESIRAE			
08:39	REBOUND (OFF) by STOTLER, JORDAN			
08:38	MISSED JUMPER by STOTLER, JORDAN			
08:35				REBOUND (DEF) by CHRISTOPHER, JAYDE
08:29				MISSED JUMPER by COLEMAN, A'SHANTI
08:25				REBOUND (OFF) by LUPFER, RILEY
08:19				TURNOVER (BADPASS) by CHRISTOPHER, JAYDE
08:05	MISSED JUMPER by STOTLER, JORDAN			
08:00	REBOUND (OFF) by HANSEN, DESIRAE			
07:46	MISSED 3PTR by FRAZIER, BELLE			
07:41	REBOUND (OFF) by STOTLER, JORDAN			
07:28	MISSED JUMPER by HANSEN, DESIRAE			
07:27	REBOUND (OFF) by STREUN, TATIANA			
07:27	GOOD! JUMPER by STREUN, TATIANA [PNT]	3-4	V 1	
07:27				FOUL (PERSONAL) by CHRISTOPHER, JAYDE
07:27	MISSED FT by STREUN, TATIANA			
07:27				REBOUND (DEF) by LUPFER, RILEY
07:22		6-4	H 2	GOOD! 3PTR by HODGINS, BRAYDEY [FB]
07:22				ASSIST by MCGWIRE, MALLORY
07:06	TURNOVER (BADPASS) by JIMENEZ, KYLIE			
06:56		8-4	H 4	GOOD! JUMPER by MCGWIRE, MALLORY [PNT]
06:56				ASSIST by CHRISTOPHER, JAYDE
06:34	GOOD! LAYUP by STREUN, TATIANA	8-6	H 2	
06:34	ASSIST by HANSEN, DESIRAE			
06:19	FOUL (PERSONAL) by STOTLER, JORDAN			
06:14	FOUL (PERSONAL) by STOTLER, JORDAN			
06:14	SUB OUT: STOTLER, JORDAN			
06:14	SUB IN: CANZOBRE, MARINA			
06:11		10-6	H 4	GOOD! LAYUP by MCGWIRE, MALLORY [PNT]
06:11				ASSIST by LUPFER, RILEY
06:00				FOUL (PERSONAL) by CHRISTOPHER, JAYDE
06:00				SUB OUT: CHRISTOPHER, JAYDE
06:00				SUB IN: WOERNER, ELLIE
06:00	GOOD! FT by FRAZIER, BELLE	10-7	H 3	
06:00	MISSED FT by FRAZIER, BELLE			
05:58				REBOUND (DEF) by LUPFER, RILEY
05:48				MISSED 3PTR by LUPFER, RILEY
05:43	REBOUND (DEF) by JIMENEZ, KYLIE			
05:39	GOOD! 3PTR by HANSEN, DESIRAE	10-10	T	
05:39	ASSIST by JIMENEZ, KYLIE			
05:23		12-10	H 2	GOOD! JUMPER by MCGWIRE, MALLORY
05:23				ASSIST by LUPFER, RILEY
05:11	MISSED 3PTR by HANSEN, DESIRAE			
05:07	REBOUND (OFF) by FRAZIER, BELLE			
05:06	TURNOVER (OTHER) by FRAZIER, BELLE			
04:56		14-10	H 4	GOOD! LAYUP by LUPFER, RILEY [PNT]
04:56				ASSIST by MCGWIRE, MALLORY
04:45	TURNOVER (OTHER) by JIMENEZ, KYLIE			
04:41				
04:27		17-10	H 7	GOOD! 3PTR by LUPFER, RILEY
04:27				ASSIST by HODGINS, BRAYDEY
04:15	GOOD! 3PTR by FRAZIER, BELLE	17-13	H 4	
04:15	ASSIST by JIMENEZ, KYLIE			
04:05				TURNOVER (LOSTBALL) by COLEMAN, A'SHANTI
04:05	STEAL by CANZOBRE, MARINA			
03:49	TURNOVER (LOSTBALL) by HANSEN, DESIRAE			
03:49				STEAL by LUPFER, RILEY
03:40				MISSED 3PTR by LUPFER, RILEY

Time	VISITORS: Portland St.	Score	Margin	HOME: Boise St.
03:37				REBOUND (OFF) by MCGWIRE, MALLORY
03:36				TURNOVER (BADPASS) by MCGWIRE, MALLORY
03:24	MISSED JUMPER by HANSEN, DESIRAE			
03:20				REBOUND (DEF) by WOERNER, ELLIE
03:13				TURNOVER (3SEC) by MCGWIRE, MALLORY
03:13				SUB OUT: COLEMAN, A'SHANTI
03:13				SUB OUT: MCGWIRE, MALLORY
03:13				SUB IN: BOWERS, RACHEL
03:13				SUB IN: LOVILLE, JADE
03:13	SUB OUT: HANSEN, DESIRAE			
03:13	SUB IN: LEWIS, JADA			
03:05	MISSED 3PTR by LEWIS, JADA			
03:01				REBOUND (DEF) by LUPFER, RILEY
02:44				MISSED JUMPER by WOERNER, ELLIE
02:39	REBOUND (DEF) by STREUN, TATIANA			
02:26	MISSED JUMPER by STREUN, TATIANA			
02:23				REBOUND (DEF) by BOWERS, RACHEL
02:17				MISSED JUMPER by HODGINS, BRAYDEY
02:11				REBOUND (OFF) by LOVILLE, JADE
02:04		19-13	H 6	GOOD! JUMPER by BOWERS, RACHEL
02:04				ASSIST by LOVILLE, JADE
01:50	FOUL (OFF) by STREUN, TATIANA			
01:50	TURNOVER (OFFENSIVE) by STREUN, TATIANA			
01:34		21-13	H 8	GOOD! JUMPER by WOERNER, ELLIE
01:34				ASSIST by HODGINS, BRAYDEY
01:18				FOUL (PERSONAL) by LUPFER, RILEY
01:18	SUB OUT: STREUN, TATIANA			
01:18	SUB IN: SCHULTZ, SYD			
01:03	MISSED JUMPER by FRAZIER, BELLE			
00:59				REBOUND (DEF) by LUPFER, RILEY
00:49				MISSED JUMPER by WOERNER, ELLIE
00:43	REBOUND (DEF) by LEWIS, JADA			
00:32	MISSED JUMPER by JIMENEZ, KYLIE			
00:27				REBOUND (DEF) by BOWERS, RACHEL
00:01				MISSED 3PTR by LUPFER, RILEY
00:00	REBOUND (DEF) by CANZOBRE, MARINA			

Portland St. 13, Boise St. 21

Points from (This Period)	PSU	BSU
In the Paint	6	6
Off Turns	2	9
2nd Chance	2	2
Fast Break	0	6
Bench	0	4

Official Box Score
Portland St. vs Boise St.
Second Quarter Statistics Only
November 08, 2019 at ExtraMile Arena - Boise



Portland St. 10

No.	Player	S	Pts	FG	3FG	FT	OR	DR	TR	PF	A	TO	Blk	Stl	Min	+/-
03	JIMENEZ, KYLIE	G	6	2-3	1-1	1-2	0	1	1	0	0	1	0	0	10	-20
11	STOTLER, JORDAN	F	0	0-0	0-0	0-0	0	0	0	0	0	0	0	0	0	0
12	STREUN, TATIANA	F	0	0-1	0-0	0-0	0	1	1	1	0	1	0	0	2	-2
35	FRAZIER, BELLE	G	0	0-4	0-0	0-0	1	0	1	1	0	0	0	2	6	-5
53	HANSEN, DESIRAE	G	2	1-2	0-0	0-0	0	0	0	1	0	2	0	1	10	-20
01	DENSON, LABREA	G	0	0-0	0-0	0-0	0	0	0	0	0	0	0	0	0	0
10	CANZOBRE, MARINA	F	0	0-1	0-0	0-0	0	0	0	0	1	1	1	0	8	-13
15	GARDNER, CASSIDY	G	0	0-1	0-1	0-0	0	0	0	1	0	0	0	0	4	-15
22	WALTON, RUCHAE	G	0	0-0	0-0	0-0	0	0	0	0	0	0	0	0	0	0
23	LEWIS, JADA	G	0	0-1	0-1	0-0	0	0	0	0	0	0	0	0	5	-16
30	SCHULTZ, SYD	F	2	1-1	0-0	0-0	1	0	1	1	0	1	0	1	5	-9
	TEAM						0	2	2	0		0				
TOTALS			10	4-14	1-3	1-2	2	4	6	5	1	6	1	4	50	

Shooting By Period

Period	FG	FG%	3FG	3FG%	FT	FT%
3rd Qtr	5-15	33%	0-4	00%	2-4	50%
4th Qtr	4-10	40%	2-3	67%	12-14	86%
2nd Half	4-14	29%	1-3	33%	1-2	50%
2nd Half	9-25	36%	2-7	29%	14-18	78%
Game	18-56	32.1%	5-15	33.3%	16-23	69.6%

Deadball Rebounds: 3,1

Boise St. 30

No.	Player	S	Pts	FG	3FG	FT	OR	DR	TR	PF	A	TO	Blk	Stl	Min	+/-
14	HODGINS, BRAYDEY	G	0	0-2	0-2	0-0	0	1	1	1	3	0	0	0	6	11
21	LUPFER, RILEY	G	9	3-4	3-4	0-0	0	0	0	0	1	1	0	0	7	17
23	CHRISTOPHER, JAYDE	G	3	1-1	1-1	0-0	0	0	0	0	2	0	0	0	6	12
42	COLEMAN, A'SHANTI	F	0	0-1	0-0	0-0	1	0	1	1	1	0	1	1	6	11
44	MCGWIRE, MALLORY	C	0	0-1	0-1	0-0	0	3	3	0	1	2	1	0	5	5
03	FREEMAN, MAGGIE	G	3	1-1	1-1	0-0	0	0	0	0	0	0	0	0	1	6
05	SOLER, LAIA	F	0	0-0	0-0	0-0	0	0	0	0	0	0	0	0	0	0
22	WOERNER, ELLIE	G	0	0-2	0-0	0-0	2	2	4	0	1	0	0	0	4	9
25	BOWERS, RACHEL	F	7	3-4	0-0	1-2	1	0	1	1	1	0	0	0	5	15
30	LOVILLE, JADE	G	8	3-5	2-3	0-0	1	1	2	0	0	1	0	0	9	14
	TEAM						1	1	2	0		0				
TOTALS			30	11-21	7-12	1-2	6	8	14	3	10	4	2	1	50	

Shooting By Period

Period	FG	FG%	3FG	3FG%	FT	FT%
3rd Qtr	7-18	39%	1-5	20%	4-4	100%
4th Qtr	6-20	30%	0-5	00%	0-2	00%
2nd Half	11-21	52%	7-12	58%	1-2	50%
2nd Half	13-38	34%	1-10	10%	4-6	67%
Game	33-77	42.9%	11-28	39.3%	5-8	62.5%

Deadball Rebounds: 2,0

Game Notes:

Officials: **Evan Sharples, Brad Schmidt, Esther Hsu**
 Attendance: **964**

Start Time: **09:06 PM ET**
 End Time: **10:45 PM ET**
 Game Duration: **1:39**

Score	1st	2nd	3rd	4th	TOT
PSU	13	10	12	22	57
BSU	21	30	19	12	82

Points from (This Period)	PSU	BSU
In the Paint	6	6
Off Turns	5	9
2nd Chance	0	11
Fast Break	5	0
Bench	2	18

Official Play-By-Play
Portland St. vs Boise St.
Second Quarter
November 08, 2019 at ExtraMile Arena - Boise



Period 2

Starters:

Portland St.: 3 JIMENEZ, KYLIE (G); 11 STOTLER, JORDAN (F); 12 STREUN, TATIANA (F); 35 FRAZIER, BELLE (G); 53 HANSEN, DESIRAE (G);

Boise St.: 14 HODGINS, BRAYDEY (G); 21 LUPFER, RILEY (G); 23 CHRISTOPHER, JAYDE (G); 42 COLEMAN, A'SHANTI (F); 44 MCGWIRE, MALLORY (C);

Time	VISITORS: Portland St.	Score	Margin	HOME: Boise St.
10:00				SUB OUT: HODGINS, BRAYDEY
10:00				SUB IN: CHRISTOPHER, JAYDE
10:00	SUB OUT: CANZOBRE, MARINA			
10:00	SUB OUT: FRAZIER, BELLE			
10:00	SUB IN: GARDNER, CASSIDY			
10:00	SUB IN: HANSEN, DESIRAE			
09:46	TURNOVER (TRAVEL) by HANSEN, DESIRAE			
09:24				MISSED JUMPER by BOWERS, RACHEL
09:20				REBOUND (OFF) by WOERNER, ELLIE
09:14		23-13	H 10	GOOD! LAYUP by BOWERS, RACHEL [PNT]
09:14				ASSIST by WOERNER, ELLIE
08:58	MISSED JUMPER by HANSEN, DESIRAE			
08:54	REBOUND (OFF) by SCHULTZ, SYD			
08:53	TURNOVER (TRAVEL) by SCHULTZ, SYD			
08:42				MISSED 3PTR by LOVILLE, JADE
08:38				REBOUND (OFF) by WOERNER, ELLIE
08:36				MISSED LAYUP by WOERNER, ELLIE
08:36				REBOUND (OFF) by TEAM
08:33		26-13	H 13	GOOD! 3PTR by LUPFER, RILEY
08:33				ASSIST by CHRISTOPHER, JAYDE
08:19	MISSED 3PTR by GARDNER, CASSIDY			
08:15				REBOUND (DEF) by WOERNER, ELLIE
08:07		28-13	H 15	GOOD! JUMPER by BOWERS, RACHEL
08:07				ASSIST by CHRISTOPHER, JAYDE
08:04	TIMEOUT 30SEC			
08:04				
08:04	SUB OUT: LEWIS, JADA			
08:04	SUB OUT: SCHULTZ, SYD			
08:04	SUB IN: CANZOBRE, MARINA			
08:04	SUB IN: STREUN, TATIANA			
07:44	TURNOVER (TRAVEL) by STREUN, TATIANA			
07:36		30-13	H 17	GOOD! LAYUP by BOWERS, RACHEL [PNT]
07:36				ASSIST by LUPFER, RILEY
07:10	MISSED LAYUP by STREUN, TATIANA			
07:09				REBOUND (DEF) by LOVILLE, JADE
07:09	FOUL (PERSONAL) by STREUN, TATIANA			
07:09	SUB OUT: GARDNER, CASSIDY			
07:09	SUB IN: FRAZIER, BELLE			
06:56				MISSED JUMPER by WOERNER, ELLIE
06:52	REBOUND (DEF) by STREUN, TATIANA			
06:38	MISSED JUMPER by FRAZIER, BELLE			
06:33				REBOUND (DEF) by WOERNER, ELLIE
06:22				TIMEOUT 30SEC
06:22				SUB OUT: LUPFER, RILEY
06:22				SUB OUT: WOERNER, ELLIE
06:22				SUB OUT: BOWERS, RACHEL
06:22				SUB IN: HODGINS, BRAYDEY
06:22				SUB IN: COLEMAN, A'SHANTI
06:22				SUB IN: MCGWIRE, MALLORY
06:22	SUB OUT: STREUN, TATIANA			
06:22	SUB IN: LEWIS, JADA			
06:13				MISSED 3PTR by MCGWIRE, MALLORY
06:13	BLOCK by CANZOBRE, MARINA			
06:13	REBOUND (DEF) by TEAM			
06:09	MISSED JUMPER by FRAZIER, BELLE			
06:04				REBOUND (DEF) by MCGWIRE, MALLORY
06:02				MISSED LAYUP by LOVILLE, JADE
05:58	REBOUND (DEF) by JIMENEZ, KYLIE			
05:46	MISSED JUMPER by FRAZIER, BELLE			
05:43	REBOUND (OFF) by FRAZIER, BELLE			
05:42	MISSED JUMPER by FRAZIER, BELLE			
05:42				BLOCK by MCGWIRE, MALLORY
05:37				REBOUND (DEF) by MCGWIRE, MALLORY
05:36	FOUL (PERSONAL) by FRAZIER, BELLE			
05:28				TURNOVER (BADPASS) by LOVILLE, JADE
05:28	STEAL by HANSEN, DESIRAE			
05:22	GOOD! LAYUP by HANSEN, DESIRAE [FB]	30-15	H 15	
05:08		33-15	H 18	GOOD! 3PTR by CHRISTOPHER, JAYDE
05:08				ASSIST by HODGINS, BRAYDEY
04:49				FOUL (PERSONAL) by COLEMAN, A'SHANTI

Time	VISITORS: Portland St.	Score	Margin	HOME: Boise St.
04:41	TURNOVER (BADPASS) by HANSEN, DESIRAE			
04:41				STEAL by COLEMAN, A'SHANTI
04:33				MISSED 3PTR by HODGINS, BRAYDEY
04:28				REBOUND (OFF) by LOVILLE, JADE
04:26		35-15	H 20	GOOD! LAYUP by LOVILLE, JADE [PNT]
04:10	TURNOVER (BADPASS) by CANZOBRE, MARINA			
04:10	SUB OUT: LEWIS, JADA			
04:10	SUB IN: SCHULTZ, SYD			
04:01				MISSED JUMPER by COLEMAN, A'SHANTI
03:57				REBOUND (OFF) by TEAM
03:57	FOUL (PERSONAL) by SCHULTZ, SYD			
03:55				MISSED 3PTR by HODGINS, BRAYDEY
03:51	REBOUND (DEF) by TEAM			
03:51				SUB OUT: CHRISTOPHER, JAYDE
03:51				SUB IN: LUPFER, RILEY
03:43	MISSED JUMPER by JIMENEZ, KYLIE			
03:36				REBOUND (DEF) by HODGINS, BRAYDEY
03:29		38-15	H 23	GOOD! 3PTR by LOVILLE, JADE
03:29				ASSIST by MCGWIRE, MALLORY
03:13	GOOD! LAYUP by SCHULTZ, SYD [PNT]	38-17	H 21	
03:13	ASSIST by CANZOBRE, MARINA			
03:03				TURNOVER (BADPASS) by MCGWIRE, MALLORY
03:03	STEAL by FRAZIER, BELLE			
02:57	TURNOVER (BADPASS) by JIMENEZ, KYLIE			
02:44				TURNOVER (BADPASS) by LUPFER, RILEY
02:44	STEAL by FRAZIER, BELLE			
02:37	GOOD! LAYUP by JIMENEZ, KYLIE [FB/PNT]	38-19	H 19	
02:17		41-19	H 22	GOOD! 3PTR by LOVILLE, JADE
02:17				ASSIST by HODGINS, BRAYDEY
02:04	GOOD! 3PTR by JIMENEZ, KYLIE	41-22	H 19	
01:48		44-22	H 22	GOOD! 3PTR by LUPFER, RILEY
01:48				ASSIST by COLEMAN, A'SHANTI
01:33	MISSED JUMPER by CANZOBRE, MARINA			
01:33				BLOCK by COLEMAN, A'SHANTI
01:26				REBOUND (DEF) by MCGWIRE, MALLORY
01:22				TURNOVER (BADPASS) by MCGWIRE, MALLORY
01:22	STEAL by SCHULTZ, SYD			
01:16				FOUL (PERSONAL) by HODGINS, BRAYDEY
01:16				SUB OUT: LOVILLE, JADE
01:16				SUB OUT: MCGWIRE, MALLORY
01:16				SUB IN: FREEMAN, MAGGIE
01:16				SUB IN: BOWERS, RACHEL
01:16	SUB OUT: SCHULTZ, SYD			
01:16	SUB OUT: FRAZIER, BELLE			
01:16	SUB IN: GARDNER, CASSIDY			
01:16	SUB IN: LEWIS, JADA			
01:16	MISSED FT by JIMENEZ, KYLIE			
01:16	REBOUND (OFF) by TEAM			
01:16	GOOD! FT by JIMENEZ, KYLIE [FB]	44-23	H 21	
01:05		47-23	H 24	GOOD! 3PTR by LUPFER, RILEY
01:05				ASSIST by BOWERS, RACHEL
00:44				FOUL (PERSONAL) by BOWERS, RACHEL
00:42	MISSED 3PTR by LEWIS, JADA			
00:39				REBOUND (DEF) by TEAM
00:39	FOUL (PERSONAL) by HANSEN, DESIRAE			
00:12				MISSED 3PTR by LUPFER, RILEY
00:09				REBOUND (OFF) by BOWERS, RACHEL
00:09	FOUL (PERSONAL) by GARDNER, CASSIDY			
00:09		48-23	H 25	GOOD! FT by BOWERS, RACHEL
00:09				MISSED FT by BOWERS, RACHEL
00:07				REBOUND (OFF) by COLEMAN, A'SHANTI
00:00		51-23	H 28	GOOD! 3PTR by FREEMAN, MAGGIE
00:00				ASSIST by HODGINS, BRAYDEY

Portland St. 23, Boise St. 51

Points from (This Period)	PSU	BSU
In the Paint	6	6
Off Turns	5	9
2nd Chance	0	11
Fast Break	5	0
Bench	2	18

Official Box Score
Portland St. vs Boise St.
Second Half Statistics Only
November 08, 2019 at ExtraMile Arena - Boise



Portland St. 34

No.	Player	S	Pts	FG	3FG	FT	OR	DR	TR	PF	A	TO	Blk	Stl	Min	+/-
01	DENSON, LABREA	G	6	1-1	0-0	4-4	0	0	0	0	1	5	0	2	4	5
03	JIMENEZ, KYLIE	G	2	1-6	0-1	0-0	1	1	2	1	2	0	0	0	14	-5
10	CANZOBRE, MARINA	F	0	0-0	0-0	0-0	0	2	2	0	0	0	0	1	7	3
11	STOTLER, JORDAN	F	8	3-5	0-0	2-2	2	2	4	2	0	2	0	0	13	0
12	STREUN, TATIANA	F	3	1-1	0-0	1-2	0	4	4	0	0	0	0	0	12	-7
15	GARDNER, CASSIDY	G	3	1-1	1-1	0-0	0	1	1	0	1	0	0	0	10	3
22	WALTON, RUCHAE	G	0	0-0	0-0	0-0	0	0	0	0	0	0	0	0	2	1
23	LEWIS, JADA	G	0	0-1	0-1	0-0	0	1	1	2	0	1	0	0	6	6
30	SCHULTZ, SYD	F	3	0-0	0-0	3-4	1	0	1	0	0	0	0	0	7	10
35	FRAZIER, BELLE	G	6	2-6	1-3	1-2	1	0	1	1	1	1	0	0	11	3
53	HANSEN, DESIRAE	G	3	0-4	0-1	3-4	0	1	1	1	0	1	0	0	11	-4
	TEAM		0	0-0	0-0	0-0	2	1	3	0	0	1	0	0	0	0
TOTALS			34	9-25	2-7	14-18	7	13	20	7	5	11	0	3	98	

Shooting By Period

Period	FG	FG%	3FG	3FG%	FT	FT%
3rd Qtr	5-15	33%	0-4	00%	2-4	50%
4th Qtr	4-10	40%	2-3	67%	12-14	86%
2nd Half	9-25	36%	2-7	29%	14-18	78%
Game	18-56	32.1%	5-15	33.3%	16-23	69.6%

Deadball Rebounds: 3,1

Last FG Half: PSU 4th-01:10

Boise St. 31

No.	Player	S	Pts	FG	3FG	FT	OR	DR	TR	PF	A	TO	Blk	Stl	Min	+/-
03	FREEMAN, MAGGIE	G	2	1-3	0-2	0-0	0	1	1	0	0	1	0	1	5	-9
05	SOLER, LAIA	F	0	0-6	0-3	0-0	0	0	0	1	1	0	0	2	7	-10
14	HODGINS, BRAYDEY	G	2	0-2	0-0	2-2	0	2	2	0	1	0	0	1	13	1
21	LUPFER, RILEY	G	3	1-3	1-3	0-0	0	0	0	1	0	0	0	0	9	7
22	WOERNER, ELLIE	G	4	2-6	0-0	0-2	4	2	6	2	1	1	0	0	13	3
23	CHRISTOPHER, JAYDE	G	2	1-2	0-1	0-0	1	1	2	2	4	3	0	2	17	0
25	BOWERS, RACHEL	F	6	3-4	0-0	0-0	3	0	3	2	0	0	0	0	10	2
30	LOVILLE, JADE	G	6	2-5	0-1	2-2	0	2	2	1	0	2	0	0	10	0
42	COLEMAN, A'SHANTI	F	2	1-3	0-0	0-0	2	0	2	3	0	1	0	0	8	-7
44	MCGWIRE, MALLORY	C	4	2-4	0-0	0-0	1	2	3	1	0	1	0	0	8	-2
	TEAM		0	0-0	0-0	0-0	1	1	2	0	0	0	0	0	0	0
TOTALS			31	13-38	1-10	4-6	12	11	23	13	7	9	0	6	98	

Shooting By Period

Period	FG	FG%	3FG	3FG%	FT	FT%
3rd Qtr	7-18	39%	1-5	20%	4-4	100%
4th Qtr	6-20	30%	0-5	00%	0-2	00%
2nd Half	13-38	34%	1-10	10%	4-6	67%
Game	33-77	42.9%	11-28	39.3%	5-8	62.5%

Deadball Rebounds: 2,0

Last FG Half: BSU 4th-00:54

Game Notes:

Officials: **Evan Sharples, Brad Schmidt, Esther Hsu**
 Attendance: **964**

Start Time: **09:06 PM ET**
 End Time: **10:45 PM ET**
 Game Duration: **1:39**

Score	1st	2nd	3rd	4th	TOT
PSU	13	10	12	22	57
BSU	21	30	19	12	82

Points from (This Period)	PSU	BSU
In the Paint	8	14
Off Turns	8	6
2nd Chance	9	6
Fast Break	4	8
Bench	12	18

Official Box Score
Portland St. vs Boise St.
Third Quarter Statistics Only
November 08, 2019 at ExtraMile Arena - Boise



Portland St. 34

No.	Player	S	Pts	FG	3FG	FT	OR	DR	TR	PF	A	TO	Blk	Stl	Min	+/-
03	JIMENEZ, KYLIE	G	2	1-4	0-1	0-0	0	1	1	0	2	0	0	0	10	-7
11	STOTLER, JORDAN	F	4	2-3	0-0	0-0	2	0	2	2	0	2	0	0	8	-3
12	STREUN, TATIANA	F	3	1-1	0-0	1-2	0	3	3	0	0	0	0	0	10	-7
35	FRAZIER, BELLE	G	2	1-3	0-1	0-0	1	0	1	1	1	1	0	0	6	-2
53	HANSEN, DESIRAE	G	1	0-3	0-1	1-2	0	0	0	1	0	1	0	0	6	-7
01	DENSON, LABREA	G	0	0-0	0-0	0-0	0	0	0	0	0	0	0	0	0	0
10	CANZOBRE, MARINA	F	0	0-0	0-0	0-0	0	0	0	0	0	0	0	1	2	-4
15	GARDNER, CASSIDY	G	0	0-0	0-0	0-0	0	0	0	0	0	0	0	0	4	-5
22	WALTON, RUCHAE	G	0	0-0	0-0	0-0	0	0	0	0	0	0	0	0	0	0
23	LEWIS, JADA	G	0	0-1	0-1	0-0	0	1	1	1	0	1	0	0	4	0
30	SCHULTZ, SYD	F	0	0-0	0-0	0-0	0	0	0	0	0	0	0	0	0	0
	TEAM						2	1	3	0		1				
TOTALS			12	5-15	0-4	2-4	5	6	11	5	3	6	0	1	50	

Shooting By Period

Period	FG	FG%	3FG	3FG%	FT	FT%
2nd Half	0-0	0%	0-0	0%	0-0	0%
Game	18-56	32.1%	5-15	33.3%	16-23	69.6%

Deadball Rebounds: 3,1

Boise St. 31

No.	Player	S	Pts	FG	3FG	FT	OR	DR	TR	PF	A	TO	Blk	Stl	Min	+/-
14	HODGINS, BRAYDEY	G	2	0-2	0-0	2-2	0	2	2	0	1	0	0	1	8	4
21	LUPFER, RILEY	G	3	1-3	1-3	0-0	0	0	0	1	0	0	0	0	9	7
23	CHRISTOPHER, JAYDE	G	0	0-1	0-1	0-0	0	1	1	0	3	2	0	0	10	7
42	COLEMAN, A'SHANTI	F	0	0-2	0-0	0-0	0	0	0	1	0	0	0	0	4	-2
44	MCGWIRE, MALLORY	C	4	2-3	0-0	0-0	1	1	2	0	0	1	0	0	5	-2
03	FREEMAN, MAGGIE	G	0	0-0	0-0	0-0	0	0	0	0	0	0	0	0	0	0
05	SOLER, LAIA	F	0	0-0	0-0	0-0	0	0	0	0	0	0	0	0	0	0
22	WOERNER, ELLIE	G	4	2-4	0-0	0-0	1	1	2	1	1	0	0	0	6	9
25	BOWERS, RACHEL	F	4	2-2	0-0	0-0	2	0	2	1	0	0	0	0	5	9
30	LOVILLE, JADE	G	2	0-1	0-1	2-2	0	0	0	0	0	0	0	0	4	3
	TEAM						0	1	1	0		0				
TOTALS			19	7-18	1-5	4-4	4	6	10	4	5	3	0	1	50	

Shooting By Period

Period	FG	FG%	3FG	3FG%	FT	FT%
2nd Half	0-0	0%	0-0	0%	0-0	0%
Game	33-77	42.9%	11-28	39.3%	5-8	62.5%

Deadball Rebounds: 2,0

Game Notes:

Officials: **Evan Sharples, Brad Schmidt, Esther Hsu**
 Attendance: **964**

Start Time: **09:06 PM ET**
 End Time: **10:45 PM ET**
 Game Duration: **1:39**

Score	1st	2nd	3rd	4th	TOT
PSU	13	10	12	22	57
BSU	21	30	19	12	82

Points from (This Period)	PSU	BSU
In the Paint	8	8
Off Turns	3	2
2nd Chance	6	4
Fast Break	0	4
Bench	0	10

Official Play-By-Play
Portland St. vs Boise St.
Third Quarter
November 08, 2019 at ExtraMile Arena - Boise



Period 3

Starters:

Portland St.: 3 JIMENEZ,KYLIE (G); 11 STOTLER,JORDAN (F); 12 STREUN,TATIANA (F); 35 FRAZIER,BELLE (G); 53 HANSEN,DESIRAE (G);

Boise St.: 14 HODGINS,BRAYDEY (G); 21 LUPFER,RILEY (G); 23 CHRISTOPHER,JAYDE (G); 42 COLEMAN,A'SHANTI (F); 44 MCGWIRE,MALLORY (C);

Time	VISITORS: Portland St.	Score	Margin	HOME: Boise St.
10:00				SUB OUT: FREEMAN, MAGGIE
10:00				SUB OUT: BOWERS, RACHEL
10:00				SUB IN: CHRISTOPHER, JAYDE
10:00				SUB IN: MCGWIRE, MALLORY
10:00	SUB OUT: CANZOBRE, MARINA			
10:00	SUB OUT: GARDNER, CASSIDY			
10:00	SUB OUT: LEWIS, JADA			
10:00	SUB IN: STOTLER, JORDAN			
10:00	SUB IN: STREUN, TATIANA			
10:00	SUB IN: FRAZIER, BELLE			
09:54		53-23	H 30	GOOD! JUMPER by MCGWIRE, MALLORY [FB]
09:54				ASSIST by CHRISTOPHER, JAYDE
09:39	GOOD! JUMPER by JIMENEZ, KYLIE	53-25	H 28	
09:39	ASSIST by FRAZIER, BELLE			
09:32				MISSED 3PTR by LUPFER, RILEY
09:26	REBOUND (DEF) by STREUN, TATIANA			
09:19	TURNOVER (BADPASS) by STOTLER, JORDAN			
09:19				STEAL by HODGINS, BRAYDEY
09:11				TURNOVER (BADPASS) by CHRISTOPHER, JAYDE
08:49				FOUL (PERSONAL) by COLEMAN, A'SHANTI
08:49	GOOD! FT by STREUN, TATIANA	53-26	H 27	
08:49	MISSED FT by STREUN, TATIANA			
08:47				REBOUND (DEF) by HODGINS, BRAYDEY
08:35				MISSED JUMPER by COLEMAN, A'SHANTI
08:31	REBOUND (DEF) by STREUN, TATIANA			
08:22	MISSED JUMPER by HANSEN, DESIRAE			
08:18				REBOUND (DEF) by MCGWIRE, MALLORY
08:05				TURNOVER (BADPASS) by CHRISTOPHER, JAYDE
07:55	MISSED JUMPER by HANSEN, DESIRAE			
07:50				REBOUND (DEF) by HODGINS, BRAYDEY
07:30		56-26	H 30	GOOD! 3PTR by LUPFER, RILEY
07:30				ASSIST by HODGINS, BRAYDEY
07:16	MISSED JUMPER by JIMENEZ, KYLIE			
07:14	REBOUND (OFF) by TEAM			
07:14	SUB OUT: HANSEN, DESIRAE			
07:14	SUB IN: LEWIS, JADA			
07:11	GOOD! LAYUP by STOTLER, JORDAN [PNT]	56-28	H 28	
07:11	ASSIST by JIMENEZ, KYLIE			
07:01				MISSED JUMPER by COLEMAN, A'SHANTI
06:55	REBOUND (DEF) by LEWIS, JADA			
06:51	TURNOVER (BADPASS) by LEWIS, JADA			
06:45				MISSED JUMPER by HODGINS, BRAYDEY
06:41	REBOUND (DEF) by STREUN, TATIANA			
06:30	MISSED JUMPER by FRAZIER, BELLE			
06:26	REBOUND (OFF) by FRAZIER, BELLE			
06:24	GOOD! LAYUP by FRAZIER, BELLE [PNT]	56-30	H 26	
06:15				SUB OUT: COLEMAN, A'SHANTI
06:15				SUB OUT: MCGWIRE, MALLORY
06:15				SUB IN: WOERNER, ELLIE
06:15				SUB IN: BOWERS, RACHEL
06:12				MISSED JUMPER by WOERNER, ELLIE
06:08				REBOUND (OFF) by BOWERS, RACHEL
06:04	FOUL (PERSONAL) by STOTLER, JORDAN			
05:57				MISSED 3PTR by LUPFER, RILEY
05:51	REBOUND (DEF) by JIMENEZ, KYLIE			
05:41	TURNOVER (LOSTBALL) by FRAZIER, BELLE			
05:29				MISSED 3PTR by CHRISTOPHER, JAYDE
05:28	REBOUND (DEF) by TEAM			
05:04	MISSED 3PTR by FRAZIER, BELLE			
05:01				REBOUND (DEF) by WOERNER, ELLIE
04:49		58-30	H 28	GOOD! LAYUP by WOERNER, ELLIE [PNT]
04:32				FOUL (PERSONAL) by BOWERS, RACHEL
04:32				
04:30	MISSED 3PTR by LEWIS, JADA			
04:29				REBOUND (DEF) by TEAM
04:19	FOUL (PERSONAL) by LEWIS, JADA			
04:05		60-30	H 30	GOOD! LAYUP by BOWERS, RACHEL [PNT]
04:05				ASSIST by WOERNER, ELLIE
03:42	TURNOVER (BADPASS) by STOTLER, JORDAN			
03:37	FOUL (PERSONAL) by FRAZIER, BELLE			

Time	VISITORS: Portland St.	Score	Margin	HOME: Boise St.
03:37	SUB OUT: LEWIS, JADA			
03:37	SUB OUT: FRAZIER, BELLE			
03:37	SUB IN: GARDNER, CASSIDY			
03:37	SUB IN: HANSEN, DESIRAE			
03:37		61-30	H 31	GOOD! FT by HODGINS, BRAYDEY [FB]
03:37		62-30	H 32	GOOD! FT by HODGINS, BRAYDEY [FB]
03:37				SUB OUT: HODGINS, BRAYDEY
03:37				SUB IN: LOVILLE, JADE
03:25	MISSED JUMPER by JIMENEZ, KYLIE			
03:20	REBOUND (OFF) by STOTLER, JORDAN			
03:19	MISSED JUMPER by STOTLER, JORDAN			
03:12	REBOUND (OFF) by STOTLER, JORDAN			
03:12	GOOD! LAYUP by STOTLER, JORDAN	62-32	H 30	
03:04		64-32	H 32	GOOD! JUMPER by WOERNER, ELLIE
03:04				ASSIST by CHRISTOPHER, JAYDE
02:45				FOUL (PERSONAL) by LUPFER, RILEY
02:45	MISSED FT by HANSEN, DESIRAE			
02:45	REBOUND (OFF) by TEAM			
02:45	GOOD! FT by HANSEN, DESIRAE	64-33	H 31	
02:36				MISSED 3PTR by LOVILLE, JADE
02:32				REBOUND (OFF) by BOWERS, RACHEL
02:25	FOUL (PERSONAL) by STOTLER, JORDAN			
02:25	SUB OUT: STOTLER, JORDAN			
02:25	SUB IN: CANZOBRE, MARINA			
02:25		65-33	H 32	GOOD! FT by LOVILLE, JADE
02:25		66-33	H 33	GOOD! FT by LOVILLE, JADE
02:05	MISSED 3PTR by HANSEN, DESIRAE			
02:00				REBOUND (DEF) by CHRISTOPHER, JAYDE
01:53		68-33	H 35	GOOD! LAYUP by BOWERS, RACHEL [PNT]
01:53				ASSIST by CHRISTOPHER, JAYDE
01:22				SUB OUT: LUPFER, RILEY
01:22				SUB OUT: BOWERS, RACHEL
01:22				SUB IN: HODGINS, BRAYDEY
01:22				SUB IN: MCGWIRE, MALLORY
01:21	TURNOVER (SHOTCLOCK) by TEAM			
01:13				TURNOVER (BADPASS) by MCGWIRE, MALLORY
01:13	STEAL by CANZOBRE, MARINA			
00:58	GOOD! LAYUP by STREUN, TATIANA [PNT]	68-35	H 33	
00:58	ASSIST by JIMENEZ, KYLIE			
00:43				MISSED LAYUP by MCGWIRE, MALLORY
00:38				REBOUND (OFF) by MCGWIRE, MALLORY
00:36		70-35	H 35	GOOD! LAYUP by MCGWIRE, MALLORY
00:28	MISSED 3PTR by JIMENEZ, KYLIE			
00:26	REBOUND (OFF) by TEAM			
00:26				FOUL (PERSONAL) by WOERNER, ELLIE
00:22	FOUL (OFF) by HANSEN, DESIRAE			
00:22	TURNOVER (OFFENSIVE) by HANSEN, DESIRAE			
00:01				MISSED JUMPER by HODGINS, BRAYDEY
00:00				REBOUND (OFF) by WOERNER, ELLIE
00:00				MISSED JUMPER by WOERNER, ELLIE
00:00	REBOUND (DEF) by TEAM			

Portland St. 35, Boise St. 70

Points from (This Period)	PSU	BSU
In the Paint	8	8
Off Turns	3	2
2nd Chance	6	4
Fast Break	0	4
Bench	0	10

Official Box Score
Portland St. vs Boise St.
Fourth Quarter Statistics Only
November 08, 2019 at ExtraMile Arena - Boise



Portland St. 22

No.	Player	S	Pts	FG	3FG	FT	OR	DR	TR	PF	A	TO	Blk	Stl	Min	+/-
03	JIMENEZ, KYLIE	G	0	0-2	0-0	0-0	1	0	1	1	0	0	0	0	4	2
11	STOTLER, JORDAN	F	4	1-2	0-0	2-2	0	2	2	0	0	0	0	0	5	3
12	STREUN, TATIANA	F	0	0-0	0-0	0-0	0	1	1	0	0	0	0	0	2	0
35	FRAZIER, BELLE	G	4	1-3	1-2	1-2	0	0	0	0	0	0	0	0	5	5
53	HANSEN, DESIRAE	G	2	0-1	0-0	2-2	0	1	1	0	0	0	0	0	5	3
01	DENSON, LABREA	G	6	1-1	0-0	4-4	0	0	0	0	1	5	0	2	4	5
10	CANZOBRE, MARINA	F	0	0-0	0-0	0-0	0	2	2	0	0	0	0	0	5	7
15	GARDNER, CASSIDY	G	3	1-1	1-1	0-0	0	1	1	0	1	0	0	0	6	8
22	WALTON, RUCHAE	G	0	0-0	0-0	0-0	0	0	0	0	0	0	0	0	2	1
23	LEWIS, JADA	G	0	0-0	0-0	0-0	0	0	0	1	0	0	0	0	2	6
30	SCHULTZ, SYD	F	3	0-0	0-0	3-4	1	0	1	0	0	0	0	0	7	10
	TEAM						0	0	0	0		0				
TOTALS			22	4-10	2-3	12-14	2	7	9	2	2	5	0	2	48	

Shooting By Period

Period	FG	FG%	3FG	3FG%	FT	FT%
Game	18-56	32.1%	5-15	33.3%	16-23	69.6%

Deadball Rebounds: 3,1

Boise St. 12

No.	Player	S	Pts	FG	3FG	FT	OR	DR	TR	PF	A	TO	Blk	Stl	Min	+/-
14	HODGINS, BRAYDEY	G	0	0-0	0-0	0-0	0	0	0	0	0	0	0	0	5	-3
21	LUPFER, RILEY	G	0	0-0	0-0	0-0	0	0	0	0	0	0	0	0	0	0
23	CHRISTOPHER, JAYDE	G	2	1-1	0-0	0-0	1	0	1	2	1	1	0	2	7	-7
42	COLEMAN, A'SHANTI	F	2	1-1	0-0	0-0	2	0	2	2	0	1	0	0	4	-5
44	MCGWIRE, MALLORY	C	0	0-1	0-0	0-0	0	1	1	1	0	0	0	0	3	0
03	FREEMAN, MAGGIE	G	2	1-3	0-2	0-0	0	1	1	0	0	1	0	1	5	-9
05	SOLER, LAIA	F	0	0-6	0-3	0-0	0	0	0	1	1	0	0	2	7	-10
22	WOERNER, ELLIE	G	0	0-2	0-0	0-2	3	1	4	1	0	1	0	0	7	-6
25	BOWERS, RACHEL	F	2	1-2	0-0	0-0	1	0	1	1	0	0	0	0	5	-7
30	LOVILLE, JADE	G	4	2-4	0-0	0-0	0	2	2	1	0	2	0	0	6	-3
	TEAM						1	0	1	0		0				
TOTALS			12	6-20	0-5	0-2	8	5	13	9	2	6	0	5	48	

Shooting By Period

Period	FG	FG%	3FG	3FG%	FT	FT%
Game	33-77	42.9%	11-28	39.3%	5-8	62.5%

Deadball Rebounds: 2,0

Game Notes:

Officials: Evan Sharples, Brad Schmidt, Esther Hsu
 Attendance: 964

Start Time: 09:06 PM ET
 End Time: 10:45 PM ET
 Game Duration: 1:39

Score	1st	2nd	3rd	4th	TOT
PSU	13	10	12	22	57
BSU	21	30	19	12	82

Points from (This Period)	PSU	BSU
In the Paint	0	6
Off Turns	5	4
2nd Chance	3	2
Fast Break	4	4
Bench	12	8

Official Play-By-Play
Portland St. vs Boise St.
Fourth Quarter
November 08, 2019 at ExtraMile Arena - Boise



Period 4

Starters:

Portland St.: 3 JIMENEZ,KYLIE (G); 11 STOTLER,JORDAN (F); 12 STREUN,TATIANA (F); 35 FRAZIER,BELLE (G); 53 HANSEN,DESIRAE (G);

Boise St.: 14 HODGINS,BRAYDEY (G); 21 LUPFER,RILEY (G); 23 CHRISTOPHER,JAYDE (G); 42 COLEMAN,A'SHANTI (F); 44 MCGWIRE,MALLORY (C);

Time	VISITORS: Portland St.	Score	Margin	HOME: Boise St.
10:00	SUB OUT: CANZOBRE, MARINA			
10:00	SUB OUT: GARDNER, CASSIDY			
10:00	SUB IN: STOTLER, JORDAN			
10:00	SUB IN: FRAZIER, BELLE			
09:49				FOUL (PERSONAL) by LOVILLE, JADE
09:46	MISSED JUMPER by FRAZIER, BELLE			
09:42				REBOUND (DEF) by MCGWIRE, MALLORY
09:35		72-35	H 37	GOOD! JUMPER by LOVILLE, JADE
09:22	MISSED JUMPER by HANSEN, DESIRAE			
09:18				REBOUND (DEF) by WOERNER, ELLIE
09:09				MISSED JUMPER by LOVILLE, JADE
09:06	REBOUND (DEF) by STOTLER, JORDAN			
09:01	MISSED JUMPER by JIMENEZ, KYLIE			
08:57				REBOUND (DEF) by LOVILLE, JADE
08:47				MISSED JUMPER by MCGWIRE, MALLORY
08:43	REBOUND (DEF) by STREUN, TATIANA			
08:35				
08:35	TIMEOUT 30SEC			
08:35				SUB OUT: WOERNER, ELLIE
08:35				SUB IN: COLEMAN, A'SHANTI
08:30				FOUL (PERSONAL) by COLEMAN, A'SHANTI
08:20	MISSED JUMPER by JIMENEZ, KYLIE			
08:15	REBOUND (OFF) by JIMENEZ, KYLIE			
08:02				FOUL (PERSONAL) by MCGWIRE, MALLORY
08:02	GOOD! FT by HANSEN, DESIRAE	72-36	H 36	
08:02	GOOD! FT by HANSEN, DESIRAE	72-37	H 35	
07:46				TURNOVER (TRAVEL) by LOVILLE, JADE
07:46	SUB OUT: STREUN, TATIANA			
07:46	SUB IN: SCHULTZ, SYD			
07:36	GOOD! JUMPER by STOTLER, JORDAN	72-39	H 33	
07:23		74-39	H 35	GOOD! LAYUP by COLEMAN, A'SHANTI [PNT]
07:23				ASSIST by CHRISTOPHER, JAYDE
07:11				FOUL (PERSONAL) by COLEMAN, A'SHANTI
07:11				SUB OUT: CHRISTOPHER, JAYDE
07:11				SUB OUT: MCGWIRE, MALLORY
07:11				SUB IN: FREEMAN, MAGGIE
07:11				SUB IN: SOLER, LAIA
07:11	GOOD! FT by STOTLER, JORDAN	74-40	H 34	
07:11	GOOD! FT by STOTLER, JORDAN	74-41	H 33	
07:01				MISSED JUMPER by SOLER, LAIA
06:57	REBOUND (DEF) by STOTLER, JORDAN			
06:38	MISSED 3PTR by FRAZIER, BELLE			
06:34				REBOUND (DEF) by LOVILLE, JADE
06:20				MISSED JUMPER by LOVILLE, JADE
06:16	REBOUND (DEF) by HANSEN, DESIRAE			
06:10	MISSED JUMPER by STOTLER, JORDAN			
06:07				REBOUND (DEF) by FREEMAN, MAGGIE
06:07	FOUL (PERSONAL) by JIMENEZ, KYLIE			
06:07				SUB OUT: LOVILLE, JADE
06:07				SUB IN: WOERNER, ELLIE
06:07	SUB OUT: JIMENEZ, KYLIE			
06:07	SUB IN: GARDNER, CASSIDY			
05:57		76-41	H 35	GOOD! JUMPER by FREEMAN, MAGGIE
05:41	GOOD! 3PTR by FRAZIER, BELLE	76-44	H 32	
05:41	ASSIST by GARDNER, CASSIDY			
05:23				MISSED 3PTR by FREEMAN, MAGGIE
05:19				REBOUND (OFF) by WOERNER, ELLIE
05:03				MISSED JUMPER by SOLER, LAIA
05:00				REBOUND (OFF) by COLEMAN, A'SHANTI
04:57				MISSED 3PTR by SOLER, LAIA
04:54				REBOUND (OFF) by COLEMAN, A'SHANTI
04:54				TURNOVER (OTHER) by COLEMAN, A'SHANTI
04:54				
04:54				SUB OUT: HODGINS, BRAYDEY
04:54				SUB OUT: COLEMAN, A'SHANTI
04:54				SUB IN: CHRISTOPHER, JAYDE
04:54				SUB IN: BOWERS, RACHEL
04:54	SUB OUT: STOTLER, JORDAN			
04:54	SUB OUT: HANSEN, DESIRAE			
04:54	SUB IN: CANZOBRE, MARINA			

Time	VISITORS: Portland St.	Score	Margin	HOME: Boise St.
04:54	SUB IN: LEWIS, JADA			
04:39				FOUL (PERSONAL) by SOLER, LAIA
04:39	GOOD! FT by FRAZIER, BELLE	76-45	H 31	
04:39	MISSED FT by FRAZIER, BELLE			
04:38	REBOUND (OFF) by SCHULTZ, SYD			
04:38				FOUL (PERSONAL) by WOERNER, ELLIE
04:38	MISSED FT by SCHULTZ, SYD			
04:38	REBOUND (OFF) by TEAM			
04:38	GOOD! FT by SCHULTZ, SYD	76-46	H 30	
04:38	SUB OUT: FRAZIER, BELLE			
04:38	SUB IN: DENSON, LABREA			
04:22				MISSED LAYUP by WOERNER, ELLIE
04:18	REBOUND (DEF) by CANZOBRE, MARINA			
04:05				FOUL (PERSONAL) by BOWERS, RACHEL
04:05	GOOD! FT by SCHULTZ, SYD	76-47	H 29	
04:05	GOOD! FT by SCHULTZ, SYD	76-48	H 28	
04:00				TURNOVER (LOSTBALL) by CHRISTOPHER, JAYDE
04:00	STEAL by DENSON, LABREA			
03:55	TURNOVER (LOSTBALL) by DENSON, LABREA			
03:55				STEAL by CHRISTOPHER, JAYDE
03:49		78-48	H 30	GOOD! LAYUP by CHRISTOPHER, JAYDE [FB/PNT]
03:43				FOUL (PERSONAL) by CHRISTOPHER, JAYDE
03:43	GOOD! FT by DENSON, LABREA [FB]	78-49	H 29	
03:43	GOOD! FT by DENSON, LABREA [FB]	78-50	H 28	
03:36				MISSED JUMPER by BOWERS, RACHEL
03:34				REBOUND (OFF) by TEAM
03:30				MISSED 3PTR by SOLER, LAIA
03:25				REBOUND (OFF) by WOERNER, ELLIE
03:12				TURNOVER (BADPASS) by WOERNER, ELLIE
03:07				FOUL (PERSONAL) by CHRISTOPHER, JAYDE
03:07	GOOD! FT by DENSON, LABREA [FB]	78-51	H 27	
03:07	GOOD! FT by DENSON, LABREA [FB]	78-52	H 26	
02:42				MISSED JUMPER by SOLER, LAIA
02:40				REBOUND (OFF) by WOERNER, ELLIE
02:40	FOUL (PERSONAL) by LEWIS, JADA			
02:40	SUB OUT: LEWIS, JADA			
02:40	SUB IN: WALTON, RUCHAE			
02:40				MISSED FT by WOERNER, ELLIE
02:40				REBOUND (OFF) by TEAM
02:40				MISSED FT by WOERNER, ELLIE
02:40	REBOUND (DEF) by GARDNER, CASSIDY			
02:27	TURNOVER (BADPASS) by DENSON, LABREA			
02:27				STEAL by FREEMAN, MAGGIE
02:20				MISSED 3PTR by FREEMAN, MAGGIE
02:17				REBOUND (OFF) by CHRISTOPHER, JAYDE
02:15				TURNOVER (TRAVEL) by FREEMAN, MAGGIE
02:05				SUB OUT: FREEMAN, MAGGIE
02:05				SUB IN: LOVILLE, JADE
02:03	TURNOVER (BADPASS) by DENSON, LABREA			
02:03				STEAL by SOLER, LAIA
01:56		80-52	H 28	GOOD! JUMPER by LOVILLE, JADE [FB]
01:56				ASSIST by SOLER, LAIA
01:42	GOOD! 3PTR by GARDNER, CASSIDY	80-55	H 25	
01:42	ASSIST by DENSON, LABREA			
01:24				MISSED JUMPER by WOERNER, ELLIE
01:20	REBOUND (DEF) by CANZOBRE, MARINA			
01:10	GOOD! JUMPER by DENSON, LABREA	80-57	H 23	
01:02				MISSED 3PTR by SOLER, LAIA
00:56				REBOUND (OFF) by BOWERS, RACHEL
00:54		82-57	H 25	GOOD! LAYUP by BOWERS, RACHEL
00:49	TURNOVER (LOSTBALL) by DENSON, LABREA			
00:49				STEAL by SOLER, LAIA
00:34				TURNOVER (BADPASS) by LOVILLE, JADE
00:34	STEAL by DENSON, LABREA			
00:25	TURNOVER (BADPASS) by DENSON, LABREA			
00:25				STEAL by CHRISTOPHER, JAYDE

Portland St. 57, Boise St. 82

Points from (This Period)	PSU	BSU
In the Paint	0	6
Off Turns	5	4
2nd Chance	3	2
Fast Break	4	4
Bench	12	8

Official Scoring/Possession Reference Chart
Portland St. vs Boise St.
Period 1
November 08, 2019 at ExtraMile Arena - Boise



Period 1

Starters:

Portland St.: 3 JIMENEZ,KYLIE (G); 11 STOTLER,JORDAN (F); 12 STREUN,TATIANA (F); 35 FRAZIER,BELLE (G); 53 HANSEN,DESIRAE (G);

Boise St.: 14 HODGINS,BRAYDEY (G); 21 LUPFER,RILEY (G); 23 CHRISTOPHER,JAYDE (G); 42 COLEMAN,A'SHANTI (F); 44 MCGWIRE,MALLORY (C);

Time	VISITORS: Portland St.	Score	Margin	HOME: Boise St.
09:04	GOOD! LAYUP by HANSEN, DESIRAE	0-2	V 2	
08:56		3-2	H 1	GOOD! 3PTR by LUPFER, RILEY [FB]
07:27	GOOD! JUMPER by STREUN, TATIANA [PNT]	3-4	V 1	
07:22		6-4	H 2	GOOD! 3PTR by HODGINS, BRAYDEY [FB]
06:56		8-4	H 4	GOOD! JUMPER by MCGWIRE, MALLORY [PNT]
06:34	GOOD! LAYUP by STREUN, TATIANA	8-6	H 2	
06:11		10-6	H 4	GOOD! LAYUP by MCGWIRE, MALLORY [PNT]
06:00	GOOD! FT by FRAZIER, BELLE	10-7	H 3	
05:39	GOOD! 3PTR by HANSEN, DESIRAE	10-10	T	
05:23		12-10	H 2	GOOD! JUMPER by MCGWIRE, MALLORY
04:56		14-10	H 4	GOOD! LAYUP by LUPFER, RILEY [PNT]
04:27		17-10	H 7	GOOD! 3PTR by LUPFER, RILEY
04:15	GOOD! 3PTR by FRAZIER, BELLE	17-13	H 4	
02:04		19-13	H 6	GOOD! JUMPER by BOWERS, RACHEL
01:34		21-13	H 8	GOOD! JUMPER by WOERNER, ELLIE

Portland St. 13, Boise St. 21

**Official Scoring/Possession Reference Chart
Portland St. vs Boise St.
Period 2
November 08, 2019 at ExtraMile Arena - Boise**



Period 2

Starters:

Portland St.: 3 JIMENEZ,KYLIE (G); 11 STOTLER,JORDAN (F); 12 STREUN,TATIANA (F); 35 FRAZIER,BELLE (G); 53 HANSEN,DESIRAE (G);

Boise St.: 14 HODGINS,BRAYDEY (G); 21 LUPFER,RILEY (G); 23 CHRISTOPHER,JAYDE (G); 42 COLEMAN,A'SHANTI (F); 44 MCGWIRE,MALLORY (C);

Time	VISITORS: Portland St.	Score	Margin	HOME: Boise St.
09:14		23-13	H 10	GOOD! LAYUP by BOWERS, RACHEL [PNT]
08:33		26-13	H 13	GOOD! 3PTR by LUPFER, RILEY
08:07		28-13	H 15	GOOD! JUMPER by BOWERS, RACHEL
07:36		30-13	H 17	GOOD! LAYUP by BOWERS, RACHEL [PNT]
05:22	GOOD! LAYUP by HANSEN, DESIRAE [FB]	30-15	H 15	
05:08		33-15	H 18	GOOD! 3PTR by CHRISTOPHER, JAYDE
04:26		35-15	H 20	GOOD! LAYUP by LOVILLE, JADE [PNT]
03:29		38-15	H 23	GOOD! 3PTR by LOVILLE, JADE
03:13	GOOD! LAYUP by SCHULTZ, SYD [PNT]	38-17	H 21	
02:37	GOOD! LAYUP by JIMENEZ, KYLIE [FB/PNT]	38-19	H 19	
02:17		41-19	H 22	GOOD! 3PTR by LOVILLE, JADE
02:04	GOOD! 3PTR by JIMENEZ, KYLIE	41-22	H 19	
01:48		44-22	H 22	GOOD! 3PTR by LUPFER, RILEY
01:16	GOOD! FT by JIMENEZ, KYLIE [FB]	44-23	H 21	
01:05		47-23	H 24	GOOD! 3PTR by LUPFER, RILEY
00:09		48-23	H 25	GOOD! FT by BOWERS, RACHEL
00:00		51-23	H 28	GOOD! 3PTR by FREEMAN, MAGGIE

Portland St. 23, Boise St. 51

Official Scoring/Possession Reference Chart
Portland St. vs Boise St.
Period 3
November 08, 2019 at ExtraMile Arena - Boise



Period 3

Starters:

Portland St.: 3 JIMENEZ,KYLIE (G); 11 STOTLER,JORDAN (F); 12 STREUN,TATIANA (F); 35 FRAZIER,BELLE (G); 53 HANSEN,DESIRAE (G);

Boise St.: 14 HODGINS,BRAYDEY (G); 21 LUPFER,RILEY (G); 23 CHRISTOPHER,JAYDE (G); 42 COLEMAN,A'SHANTI (F); 44 MCGWIRE,MALLORY (C);

Time	VISITORS: Portland St.	Score	Margin	HOME: Boise St.
09:54		53-23	H 30	GOOD! JUMPER by MCGWIRE, MALLORY [FB]
09:39	GOOD! JUMPER by JIMENEZ, KYLIE	53-25	H 28	
08:49	GOOD! FT by STREUN, TATIANA	53-26	H 27	
07:30		56-26	H 30	GOOD! 3PTR by LUPFER, RILEY
07:11	GOOD! LAYUP by STOTLER, JORDAN [PNT]	56-28	H 28	
06:24	GOOD! LAYUP by FRAZIER, BELLE [PNT]	56-30	H 26	
04:49		58-30	H 28	GOOD! LAYUP by WOERNER, ELLIE [PNT]
04:05		60-30	H 30	GOOD! LAYUP by BOWERS, RACHEL [PNT]
03:37		61-30	H 31	GOOD! FT by HODGINS, BRAYDEY [FB]
03:37		62-30	H 32	GOOD! FT by HODGINS, BRAYDEY [FB]
03:12	GOOD! LAYUP by STOTLER, JORDAN	62-32	H 30	
03:04		64-32	H 32	GOOD! JUMPER by WOERNER, ELLIE
02:45	GOOD! FT by HANSEN, DESIRAE	64-33	H 31	
02:25		65-33	H 32	GOOD! FT by LOVILLE, JADE
02:25		66-33	H 33	GOOD! FT by LOVILLE, JADE
01:53		68-33	H 35	GOOD! LAYUP by BOWERS, RACHEL [PNT]
00:58	GOOD! LAYUP by STREUN, TATIANA [PNT]	68-35	H 33	
00:36		70-35	H 35	GOOD! LAYUP by MCGWIRE, MALLORY

Portland St. 35, Boise St. 70

**Official Scoring/Possession Reference Chart
Portland St. vs Boise St.
Period 4
November 08, 2019 at ExtraMile Arena - Boise**



Period 4

Starters:

Portland St.: 3 JIMENEZ,KYLIE (G); 11 STOTLER,JORDAN (F); 12 STREUN,TATIANA (F); 35 FRAZIER,BELLE (G); 53 HANSEN,DESIRAE (G);

Boise St.: 14 HODGINS,BRAYDEY (G); 21 LUPFER,RILEY (G); 23 CHRISTOPHER,JAYDE (G); 42 COLEMAN,A'SHANTI (F); 44 MCGWIRE,MALLORY (C);

Time	VISITORS: Portland St.	Score	Margin	HOME: Boise St.
09:35		72-35	H 37	GOOD! JUMPER by LOVILLE, JADE
08:02	GOOD! FT by HANSEN, DESIRAE	72-36	H 36	
08:02	GOOD! FT by HANSEN, DESIRAE	72-37	H 35	
07:36	GOOD! JUMPER by STOTLER, JORDAN	72-39	H 33	
07:23		74-39	H 35	GOOD! LAYUP by COLEMAN, A'SHANTI [PNT]
07:11	GOOD! FT by STOTLER, JORDAN	74-40	H 34	
07:11	GOOD! FT by STOTLER, JORDAN	74-41	H 33	
05:57		76-41	H 35	GOOD! JUMPER by FREEMAN, MAGGIE
05:41	GOOD! 3PTR by FRAZIER, BELLE	76-44	H 32	
04:39	GOOD! FT by FRAZIER, BELLE	76-45	H 31	
04:38	GOOD! FT by SCHULTZ, SYD	76-46	H 30	
04:05	GOOD! FT by SCHULTZ, SYD	76-47	H 29	
04:05	GOOD! FT by SCHULTZ, SYD	76-48	H 28	
03:49		78-48	H 30	GOOD! LAYUP by CHRISTOPHER, JAYDE [FB/PNT]
03:43	GOOD! FT by DENSON, LABREA [FB]	78-49	H 29	
03:43	GOOD! FT by DENSON, LABREA [FB]	78-50	H 28	
03:07	GOOD! FT by DENSON, LABREA [FB]	78-51	H 27	
03:07	GOOD! FT by DENSON, LABREA [FB]	78-52	H 26	
01:56		80-52	H 28	GOOD! JUMPER by LOVILLE, JADE [FB]
01:42	GOOD! 3PTR by GARDNER, CASSIDY	80-55	H 25	
01:10	GOOD! JUMPER by DENSON, LABREA	80-57	H 23	
00:54		82-57	H 25	GOOD! LAYUP by BOWERS, RACHEL

Portland St. 57, Boise St. 82

**Official Substitutions Log
Portland St. vs Boise St.
Period 1
November 08, 2019 at ExtraMile Arena - Boise**



VISITORS: Portland St.	Time	Score	HOME: Boise St.
3 JIMENEZ, KYLIE			14 HODGINS, BRAYDEY
11 STOTLER, JORDAN			21 LUPFER, RILEY
12 STREUN, TATIANA			23 CHRISTOPHER, JAYDE
35 FRAZIER, BELLE			42 COLEMAN, A'SHANTI
53 HANSEN, DESIRAE			44 MCGWIRE, MALLORY
SUB OUT: 11 STOTLER, JORDAN	06:14	6-8	
SUB IN: 10 CANZOBRE, MARINA	06:14		
	06:00	6-10	SUB OUT: CHRISTOPHER, JAYDE
	06:00		SUB IN: WOERNER, ELLIE
	03:13	13-17	SUB OUT: COLEMAN, A'SHANTI
	03:13		SUB OUT: MCGWIRE, MALLORY
	03:13		SUB IN: BOWERS, RACHEL
	03:13		SUB IN: LOVILLE, JADE
SUB OUT: 53 HANSEN, DESIRAE	03:13		
SUB IN: 23 LEWIS, JADA	03:13		
SUB OUT: 12 STREUN, TATIANA	01:18	13-21	
SUB IN: 30 SCHULTZ, SYD	01:18		

Portland St. 13, Boise St. 21

Official Substitutions Log
Portland St. vs Boise St.
Period 2
November 08, 2019 at ExtraMile Arena - Boise



VISITORS: Portland St.	Time	Score	HOME: Boise St.
3 JIMENEZ, KYLIE			14 HODGINS, BRAYDEY
11 STOTLER, JORDAN			21 LUPFER, RILEY
12 STREUN, TATIANA			23 CHRISTOPHER, JAYDE
35 FRAZIER, BELLE			42 COLEMAN, A'SHANTI
53 HANSEN, DESIRAE			44 MCGWIRE, MALLORY
	10:00	-	SUB OUT: HODGINS, BRAYDEY
	10:00		SUB IN: CHRISTOPHER, JAYDE
SUB OUT: 10 CANZOBRE, MARINA	10:00		
SUB OUT: 35 FRAZIER, BELLE	10:00		
SUB IN: 15 GARDNER, CASSIDY	10:00		
SUB IN: 53 HANSEN, DESIRAE	10:00		
SUB OUT: 23 LEWIS, JADA	08:04	13-28	
SUB OUT: 30 SCHULTZ, SYD	08:04		
SUB IN: 10 CANZOBRE, MARINA	08:04		
SUB IN: 12 STREUN, TATIANA	08:04		
SUB OUT: 15 GARDNER, CASSIDY	07:09	13-30	
SUB IN: 35 FRAZIER, BELLE	07:09		
	06:22	13-30	SUB OUT: LUPFER, RILEY
	06:22		SUB OUT: WOERNER, ELLIE
	06:22		SUB OUT: BOWERS, RACHEL
	06:22		SUB IN: HODGINS, BRAYDEY
	06:22		SUB IN: COLEMAN, A'SHANTI
	06:22		SUB IN: MCGWIRE, MALLORY
SUB OUT: 12 STREUN, TATIANA	06:22		
SUB IN: 23 LEWIS, JADA	06:22		
SUB OUT: 23 LEWIS, JADA	04:10	15-35	
SUB IN: 30 SCHULTZ, SYD	04:10		
	03:51	15-35	SUB OUT: CHRISTOPHER, JAYDE
	03:51		SUB IN: LUPFER, RILEY
	01:16	22-44	SUB OUT: LOVILLE, JADE
	01:16		SUB OUT: MCGWIRE, MALLORY
	01:16		SUB IN: FREEMAN, MAGGIE
	01:16		SUB IN: BOWERS, RACHEL
SUB OUT: 30 SCHULTZ, SYD	01:16		
SUB OUT: 35 FRAZIER, BELLE	01:16		
SUB IN: 15 GARDNER, CASSIDY	01:16		
SUB IN: 23 LEWIS, JADA	01:16		

Portland St. 23, Boise St. 51

**Official Substitutions Log
Portland St. vs Boise St.
Period 3
November 08, 2019 at ExtraMile Arena - Boise**



VISITORS: Portland St.	Time	Score	HOME: Boise St.
3 JIMENEZ, KYLIE			14 HODGINS, BRAYDEY
11 STOTLER, JORDAN			21 LUPFER, RILEY
12 STREUN, TATIANA			23 CHRISTOPHER, JAYDE
35 FRAZIER, BELLE			42 COLEMAN, A'SHANTI
53 HANSEN, DESIRAE			44 MCGWIRE, MALLORY
	10:00	-	SUB OUT: FREEMAN, MAGGIE
	10:00		SUB OUT: BOWERS, RACHEL
	10:00		SUB IN: CHRISTOPHER, JAYDE
	10:00		SUB IN: MCGWIRE, MALLORY
SUB OUT: 10 CANZOBRE, MARINA	10:00		
SUB OUT: 15 GARDNER, CASSIDY	10:00		
SUB OUT: 23 LEWIS, JADA	10:00		
SUB IN: 11 STOTLER, JORDAN	10:00		
SUB IN: 12 STREUN, TATIANA	10:00		
SUB IN: 35 FRAZIER, BELLE	10:00		
SUB OUT: 53 HANSEN, DESIRAE	07:14	26-56	
SUB IN: 23 LEWIS, JADA	07:14		
	06:15	30-56	SUB OUT: COLEMAN, A'SHANTI
	06:15		SUB OUT: MCGWIRE, MALLORY
	06:15		SUB IN: WOERNER, ELLIE
	06:15		SUB IN: BOWERS, RACHEL
SUB OUT: 23 LEWIS, JADA	03:37	30-60	
SUB OUT: 35 FRAZIER, BELLE	03:37		
SUB IN: 15 GARDNER, CASSIDY	03:37		
SUB IN: 53 HANSEN, DESIRAE	03:37		
	03:37		SUB OUT: HODGINS, BRAYDEY
	03:37		SUB IN: LOVILLE, JADE
SUB OUT: 11 STOTLER, JORDAN	02:25	33-64	
SUB IN: 10 CANZOBRE, MARINA	02:25		
	01:22	33-68	SUB OUT: LUPFER, RILEY
	01:22		SUB OUT: BOWERS, RACHEL
	01:22		SUB IN: HODGINS, BRAYDEY
	01:22		SUB IN: MCGWIRE, MALLORY

Portland St. 35, Boise St. 70

**Official Substitutions Log
Portland St. vs Boise St.
Period 4
November 08, 2019 at ExtraMile Arena - Boise**



VISITORS: Portland St.	Time	Score	HOME: Boise St.
3 JIMENEZ,KYLIE			14 HODGINS,BRAYDEY
11 STOTLER,JORDAN			21 LUPFER,RILEY
12 STREUN,TATIANA			23 CHRISTOPHER,JAYDE
35 FRAZIER,BELLE			42 COLEMAN,A'SHANTI
53 HANSEN,DESIRAE			44 MCGWIRE,MALLORY
SUB OUT: 10 CANZOBRE,MARINA	10:00	-	
SUB OUT: 15 GARDNER,CASSIDY	10:00		
SUB IN: 11 STOTLER,JORDAN	10:00		
SUB IN: 35 FRAZIER,BELLE	10:00		
	08:35	35-72	SUB OUT: WOERNER,ELLIE
	08:35		SUB IN: COLEMAN,A'SHANTI
SUB OUT: 12 STREUN,TATIANA	07:46	37-72	
SUB IN: 30 SCHULTZ,SYD	07:46		
	07:11	39-74	SUB OUT: CHRISTOPHER,JAYDE
	07:11		SUB OUT: MCGWIRE,MALLORY
	07:11		SUB IN: FREEMAN,MAGGIE
	07:11		SUB IN: SOLER,LAIA
	06:07	41-74	SUB OUT: LOVILLE,JADE
	06:07		SUB IN: WOERNER,ELLIE
SUB OUT: 3 JIMENEZ,KYLIE	06:07		
SUB IN: 15 GARDNER,CASSIDY	06:07		
	04:54	44-76	SUB OUT: HODGINS,BRAYDEY
	04:54		SUB OUT: COLEMAN,A'SHANTI
	04:54		SUB IN: CHRISTOPHER,JAYDE
	04:54		SUB IN: BOWERS,RACHEL
SUB OUT: 11 STOTLER,JORDAN	04:54		
SUB OUT: 53 HANSEN,DESIRAE	04:54		
SUB IN: 10 CANZOBRE,MARINA	04:54		
SUB IN: 23 LEWIS,JADA	04:54		
SUB OUT: 35 FRAZIER,BELLE	04:38	46-76	
SUB IN: 1 DENSON,LABREA	04:38		
SUB OUT: 23 LEWIS,JADA	02:40	52-78	
SUB IN: 22 WALTON,RUCHAE	02:40		
	02:05	52-78	SUB OUT: FREEMAN,MAGGIE
	02:05		SUB IN: LOVILLE,JADE

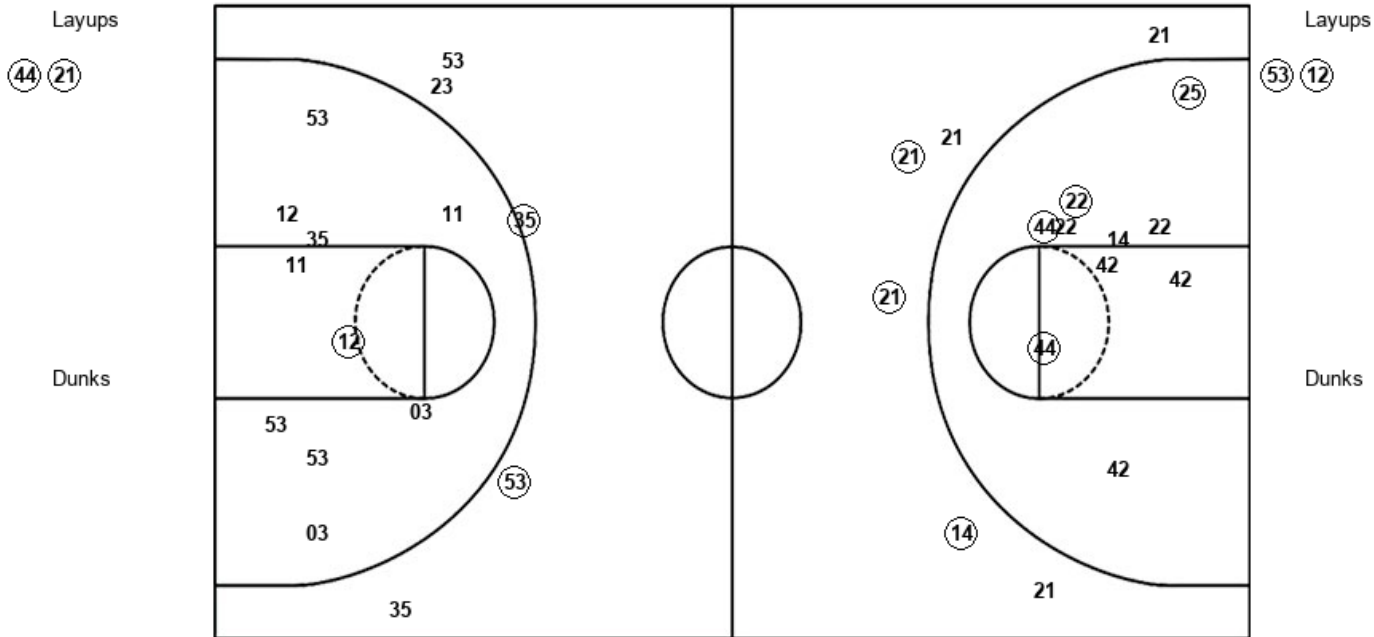
Portland St. 57, Boise St. 82

Official Shot Chart
Portland St. vs Boise St.
PERIOD 1 Shots
 November 08, 2019 at ExtraMile Arena - Boise



Boise St.

Portland St.



BSU : Period 1	Made	Att	Pct
Layups	2	2	100.0
Dunks	0	0	0
2PT Field Goals	6	12	50.0
3PT Field Goals	3	6	50.0
Total Field Goals	9	18	50.0

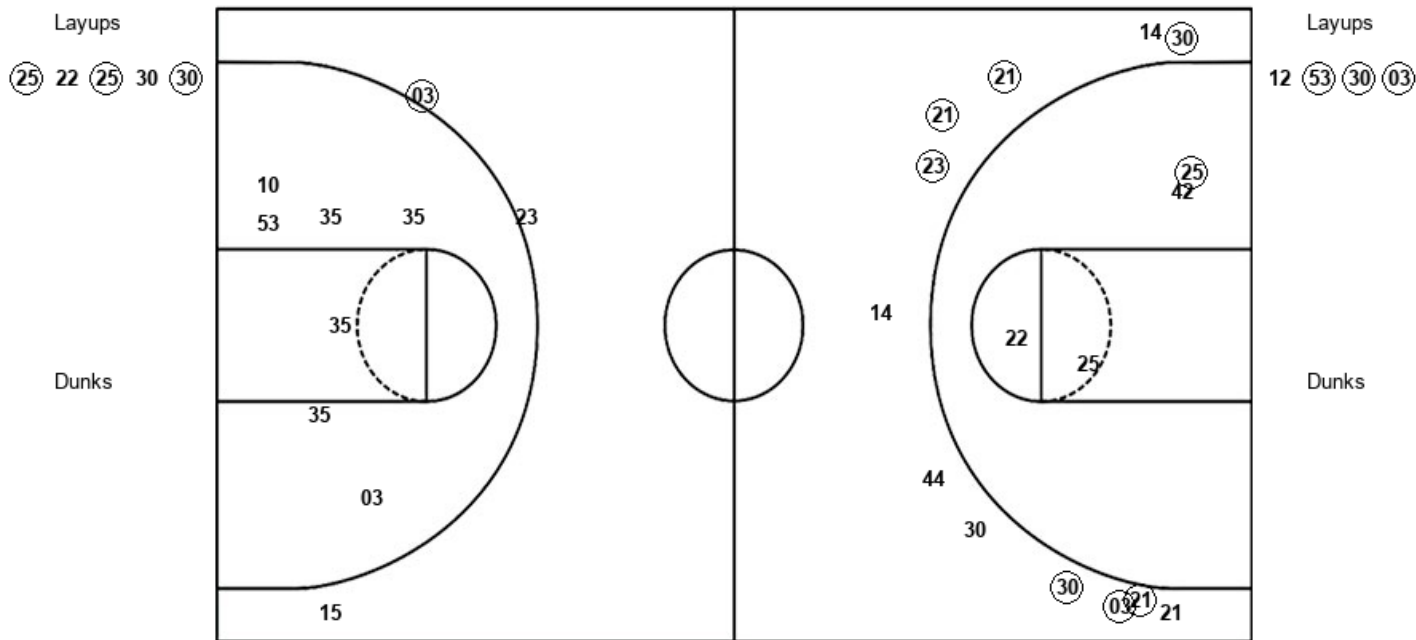
PSU : Period 1	Made	Att	Pct
Layups	2	2	100.0
Dunks	0	0	0
2PT Field Goals	3	12	25.0
3PT Field Goals	2	5	40.0
Total Field Goals	5	17	29.4

Official Shot Chart
Portland St. vs Boise St.
PERIOD 2 Shots
November 08, 2019 at ExtraMile Arena - Boise



Boise St.

Portland St.



BSU : Period 2	Made	Att	Pct
Layups	3	5	60.0
Dunks	0	0	0
2PT Field Goals	4	9	44.4
3PT Field Goals	7	12	58.3
Total Field Goals	11	21	52.4

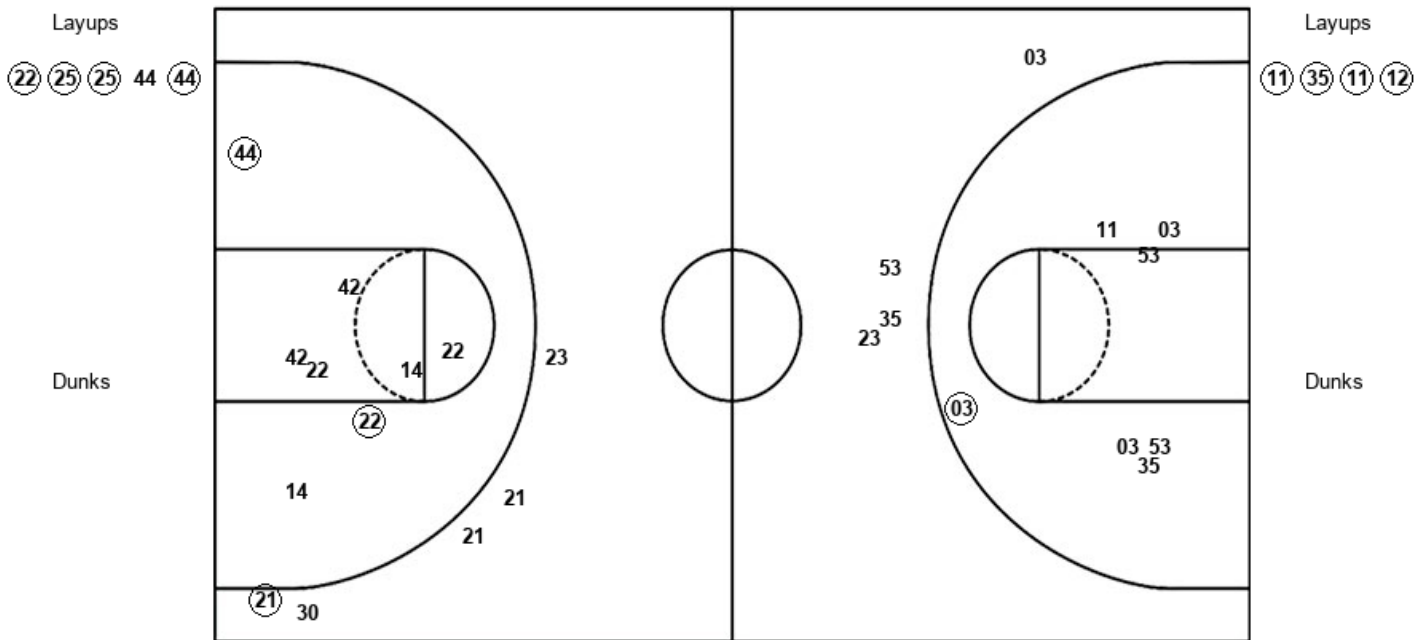
PSU : Period 2	Made	Att	Pct
Layups	3	4	75.0
Dunks	0	0	0
2PT Field Goals	3	11	27.3
3PT Field Goals	1	3	33.3
Total Field Goals	4	14	28.6

Official Shot Chart
Portland St. vs Boise St.
PERIOD 3 Shots
 November 08, 2019 at ExtraMile Arena - Boise



Boise St.

Portland St.



BSU : Period 3	Made	Att	Pct
Layups	4	5	80.0
Dunks	0	0	0
2PT Field Goals	6	13	46.2
3PT Field Goals	1	5	20.0
Total Field Goals	7	18	38.9

PSU : Period 3	Made	Att	Pct
Layups	4	4	100.0
Dunks	0	0	0
2PT Field Goals	5	11	45.5
3PT Field Goals	0	4	00.0
Total Field Goals	5	15	33.3

Official Shot Chart
Portland St. vs Boise St.
PERIOD 4 Shots
 November 08, 2019 at ExtraMile Arena - Boise



Boise St.

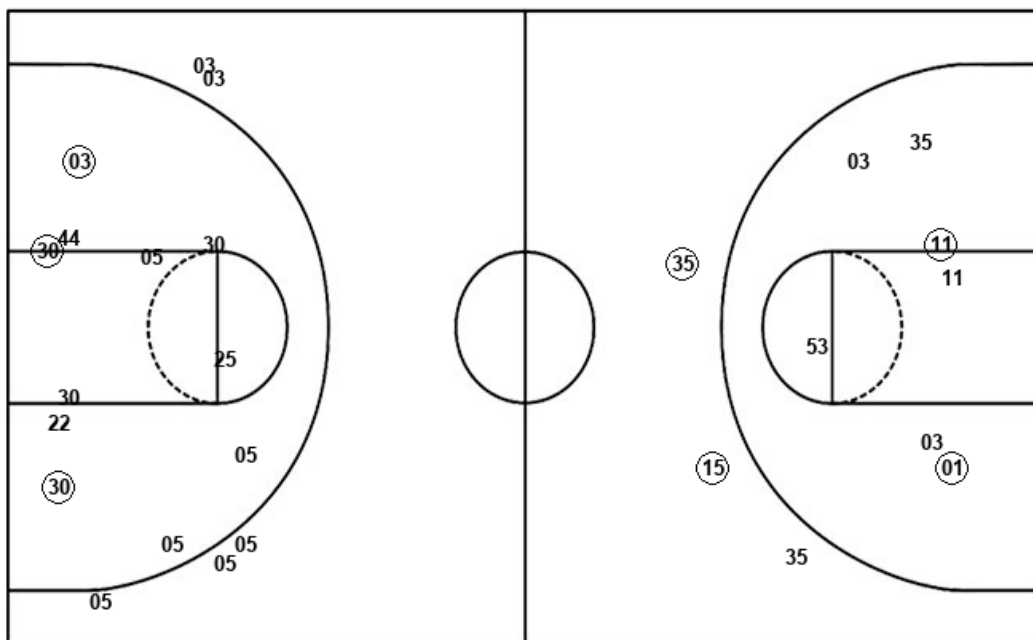
Portland St.

Layups
 (42) 22 (23) (25)

Layups

Dunks

Dunks



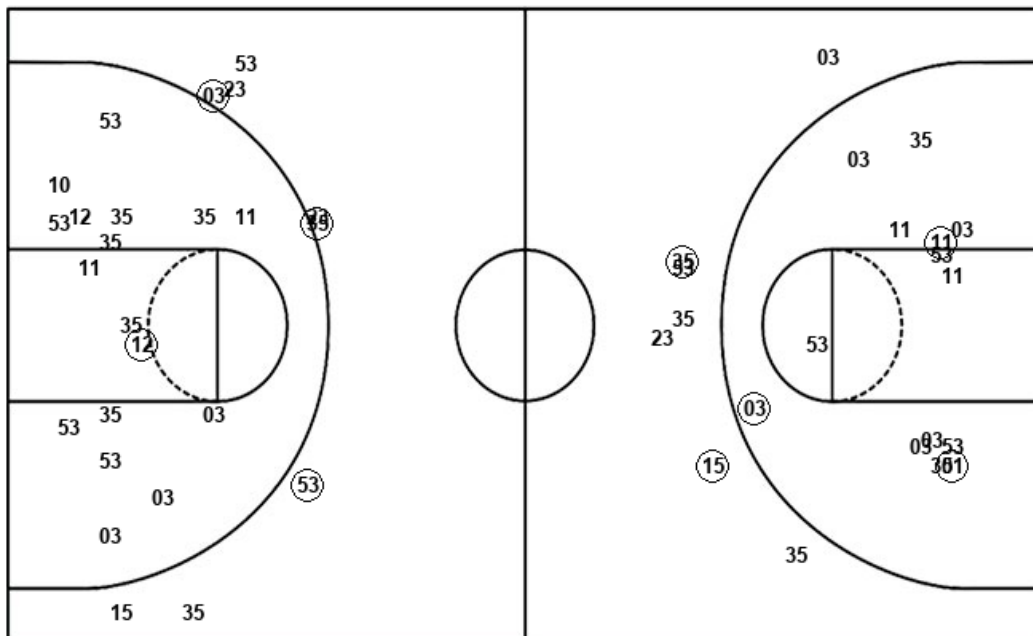
BSU : Period 4	Made	Att	Pct
Layups	3	4	75.0
Dunks	0	0	0
2PT Field Goals	6	15	40.0
3PT Field Goals	0	5	00.0
Total Field Goals	6	20	30.0

PSU : Period 4	Made	Att	Pct
Layups	0	0	0
Dunks	0	0	0
2PT Field Goals	2	7	28.6
3PT Field Goals	2	3	66.7
Total Field Goals	4	10	40.0

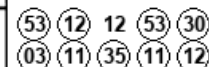
Official Shot Chart
Portland St. vs Boise St.
Portland St. Team Shots
November 08, 2019 at ExtraMile Arena - Boise



Layups



Layups



Dunks

Dunks

PSU : Period 1	Made	Att	Pct
Layups	2	2	100.0
Dunks	0	0	0
2PT Field Goals	3	12	25.0
3PT Field Goals	2	5	40.0
Total Field Goals	5	17	29.4

PSU : Period 2	Made	Att	Pct
Layups	3	4	75.0
Dunks	0	0	0
2PT Field Goals	3	11	27.3
3PT Field Goals	1	3	33.3
Total Field Goals	4	14	28.6

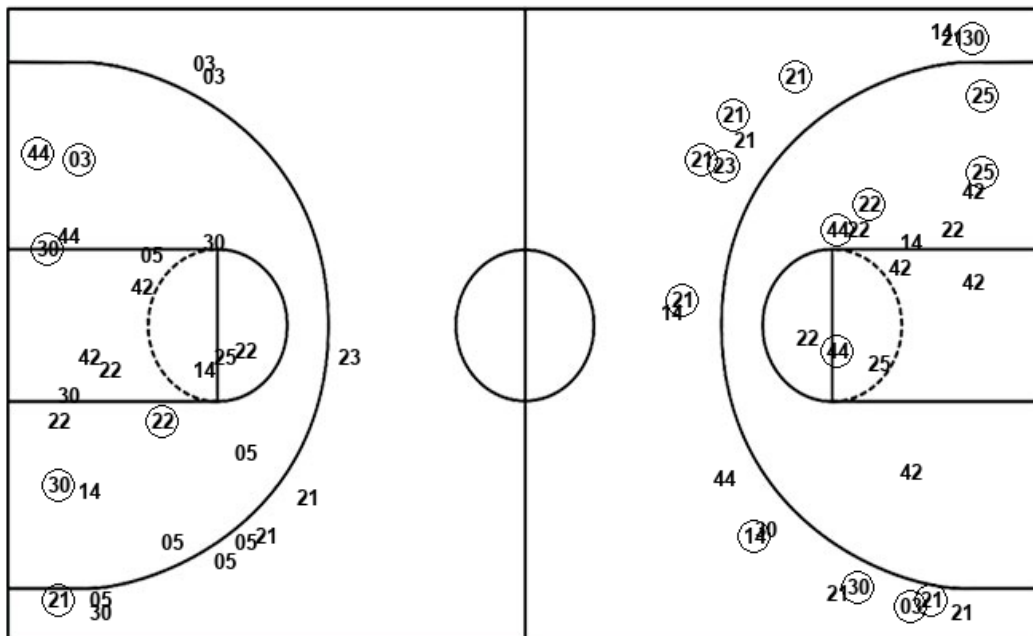
PSU : Period 3	Made	Att	Pct
Layups	4	4	100.0
Dunks	0	0	0
2PT Field Goals	5	11	45.5
3PT Field Goals	0	4	00.0
Total Field Goals	5	15	33.3

PSU : Period 4	Made	Att	Pct
Layups	0	0	0
Dunks	0	0	0
2PT Field Goals	2	7	28.6
3PT Field Goals	2	3	66.7
Total Field Goals	4	10	40.0

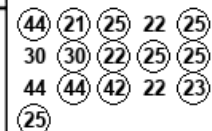
Official Shot Chart
Portland St. vs Boise St.
Boise St. Team Shots
November 08, 2019 at ExtraMile Arena - Boise



Layups



Layups



Dunks

Dunks

BSU : Period 1	Made	Att	Pct
Layups	2	2	100.0
Dunks	0	0	0
2PT Field Goals	6	12	50.0
3PT Field Goals	3	6	50.0
Total Field Goals	9	18	50.0

BSU : Period 2	Made	Att	Pct
Layups	3	5	60.0
Dunks	0	0	0
2PT Field Goals	4	9	44.4
3PT Field Goals	7	12	58.3
Total Field Goals	11	21	52.4

BSU : Period 3	Made	Att	Pct
Layups	4	5	80.0
Dunks	0	0	0
2PT Field Goals	6	13	46.2
3PT Field Goals	1	5	20.0
Total Field Goals	7	18	38.9

BSU : Period 4	Made	Att	Pct
Layups	3	4	75.0
Dunks	0	0	0
2PT Field Goals	6	15	40.0
3PT Field Goals	0	5	00.0
Total Field Goals	6	20	30.0