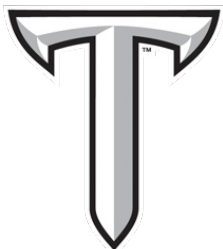


## FINAL SCORE



**Texas State**

**50**



**Troy**

**84**

January 23, 2020 • Trojan Arena - Troy, Ala.

## FINAL STATISTICS



**Official Box Score**  
**Texas State vs Troy**  
**Game Totals -- Final Statistics**  
**January 23, 2020 at Trojan Arena - Troy, Ala.**



**Texas State 50**

No.	Player	S	Pts	FG	3FG	FT	OR	DR	TR	PF	A	TO	Blk	Stl	Min	+/-
01	ALEXANDER, AVIONNE	G	5	0-1	0-0	5-8	1	2	3	1	1	1	0	2	19	-9
03	TAYLOR, KENNEDY	G	8	2-10	1-3	3-4	0	1	1	2	5	3	0	2	32	-20
24	HOLLE, BROOKE	G	2	1-10	0-2	0-0	1	3	4	2	0	1	0	2	17	-22
32	HOOD, DA'NASIA	F	3	1-7	1-5	0-0	1	2	3	1	1	2	1	2	21	-9
55	REED, JAEDA	C	5	2-6	0-0	1-2	0	2	2	0	0	0	0	0	17	-8
00	JOHNSON, JAYLA	F	10	4-11	0-2	2-4	1	2	3	4	0	1	0	0	21	-23
05	PAZ Y PUENTE, JESSICA	G	2	0-1	0-1	2-2	0	0	0	0	1	1	0	0	7	-11
13	KING, KESLYN	G	0	0-2	0-0	0-0	1	0	1	0	0	0	0	0	8	-13
15	BOWIE, JA'KAYLA	G	3	1-5	1-3	0-0	0	1	1	1	1	0	0	0	21	-26
20	JOHNSON, CHELSEA	F	4	2-4	0-0	0-2	0	1	1	4	0	1	0	1	14	-19
33	HOLLE, BAILEY	G	8	2-3	1-1	3-4	2	4	6	2	4	1	0	1	23	-10
	TEAM						1	1	2	0		0				
<b>TOTALS</b>			<b>50</b>	<b>15-60</b>	<b>4-17</b>	<b>16-26</b>	<b>8</b>	<b>19</b>	<b>27</b>	<b>17</b>	<b>13</b>	<b>11</b>	<b>1</b>	<b>10</b>	<b>200</b>	

*Shooting By Period*

Period	FG	FG%	3FG	3FG%	FT	FT%
1st Qtr	6-15	40%	1-3	33%	4-6	67%
2nd Qtr	3-12	25%	0-3	00%	3-8	38%
3rd Qtr	4-16	25%	3-6	50%	5-6	83%
4th Qtr	2-17	12%	0-5	00%	4-6	67%
1st Half	9-27	33%	1-6	17%	7-14	50%
2nd Half	6-33	18%	3-11	27%	9-12	75%
<b>Game</b>	<b>15-60</b>	<b>25.0%</b>	<b>4-17</b>	<b>23.5%</b>	<b>16-26</b>	<b>61.5%</b>

*Deadball Rebounds: 6,0*

*Last FG: 4th-01:11*

*Biggest Run: 7-0*

*Largest lead: By 6 at 2nd-09:49*

*Technical Fouls: None.*

**Troy 84**

No.	Player	S	Pts	FG	3FG	FT	OR	DR	TR	PF	A	TO	Blk	Stl	Min	+/-
04	ROBINSON, JASMINE	G	9	3-9	3-7	0-0	0	1	1	2	9	1	0	1	23	28
10	SANDIFER, JANIAH	G	3	1-3	1-2	0-1	2	1	3	0	2	2	0	0	19	27
12	WINCHESTER, HARRIET	G	5	2-3	1-2	0-0	0	2	2	1	1	1	1	1	17	23
20	JAMES, JAPONICA	F	28	10-13	0-0	8-11	8	3	11	3	1	3	1	2	24	24
32	RODGERS, KATE	F	2	1-3	0-0	0-0	0	6	6	1	1	4	3	0	17	20
00	ROSARIO, EMELY	G	0	0-1	0-0	0-0	0	4	4	0	0	4	0	0	10	-2
01	ROBINSON, KAYLA	G	3	1-5	1-3	0-0	1	6	7	1	3	1	0	0	20	13
02	SHAW, SHAWNITA	G	0	0-0	0-0	0-0	0	0	0	1	0	0	0	0	1	1
05	MOORE, TYASIA	F	4	2-4	0-0	0-0	2	3	5	3	2	0	1	0	17	6
14	JOHNSON, TIYAH	G	10	4-7	2-5	0-0	0	1	1	0	1	0	1	0	15	4
25	DYE, ALEXUS	F	12	5-9	0-0	2-4	7	9	16	4	3	2	1	0	17	15
40	RIVERS, AMBER	F	8	4-15	0-4	0-0	2	3	5	3	0	2	0	0	19	11
	TEAM						2	2	4	0		0				
<b>TOTALS</b>			<b>84</b>	<b>33-72</b>	<b>8-23</b>	<b>10-16</b>	<b>24</b>	<b>41</b>	<b>65</b>	<b>19</b>	<b>23</b>	<b>20</b>	<b>8</b>	<b>4</b>	<b>200</b>	

*Shooting By Period*

Period	FG	FG%	3FG	3FG%	FT	FT%
1st Qtr	5-16	31%	1-6	17%	2-5	40%
2nd Qtr	7-19	37%	2-6	33%	6-8	75%
3rd Qtr	11-18	61%	3-4	75%	2-3	67%
4th Qtr	10-19	53%	2-7	29%	0-0	0%
1st Half	12-35	34%	3-12	25%	8-13	62%
2nd Half	21-37	57%	5-11	45%	2-3	67%
<b>Game</b>	<b>33-72</b>	<b>45.8%</b>	<b>8-23</b>	<b>34.8%</b>	<b>10-16</b>	<b>62.5%</b>

*Deadball Rebounds: 2,0*

*Last FG: 4th-00:24*

*Biggest Run: 13-0*

*Largest lead: By 34 at 4th-00:24*

*Technical Fouls: None.*

Game Notes:

Officials: Angel Stanton, Troy Winders, Aaron Brooks  
Attendance: 1789

Start Time: 07:02 PM ET

End Time: 09:07 PM ET

Game Duration: 2:05

Conference Game;

Score	1st	2nd	3rd	4th	TOT
TSU	17	9	16	8	50
TRY	13	22	27	22	84

TSU led for 5:05. TRY led for 33:10.

Game was tied for 1:45.

Times tied: 3      Lead Changes: 4

Points from	TSU	TRY
In the Paint	14	50
Off Turns	17	19
2nd Chance	4	22
Fast Break	5	22
Bench	27	37



**Official Box Score**  
**Texas State vs Troy**  
**First Half Statistics Only**  
**January 23, 2020 at Trojan Arena - Troy, Ala.**



### Texas State 26

No.	Player	S	Pts	FG	3FG	FT	OR	DR	TR	PF	A	TO	Blk	Stl	Min	+/-
00	JOHNSON, JAYLA	F	8	4-6	0-0	0-0	1	1	2	3	0	1	0	0	10	-4
01	ALEXANDER, AVIONNE	G	3	0-0	0-0	3-6	0	1	1	1	0	1	0	2	14	-4
03	TAYLOR, KENNEDY	G	5	1-5	0-1	3-4	0	1	1	2	4	1	0	2	19	-6
05	PAZ Y PUENTE, JESSICA	G	0	0-0	0-0	0-0	0	0	0	0	0	0	0	0	0	0
13	KING, KESLYN	G	0	0-0	0-0	0-0	0	0	0	0	0	0	0	0	0	0
15	BOWIE, JA'KAYLA	G	3	1-4	1-2	0-0	0	0	0	0	0	0	0	0	10	-10
20	JOHNSON, CHELSEA	F	2	1-3	0-0	0-2	0	1	1	1	0	1	0	1	7	-4
24	HOLLE, BROOKE	G	2	1-3	0-1	0-0	0	1	1	2	0	0	0	0	5	-6
32	HOOD, DA'NASIA	F	0	0-3	0-2	0-0	1	2	3	1	0	2	1	1	13	-5
33	HOLLE, BAILEY	G	3	1-2	0-0	1-2	1	3	4	2	3	1	0	1	15	-3
55	REED, JAEDA	C	0	0-1	0-0	0-0	0	1	1	0	0	0	0	0	9	-3
	TEAM		0	0-0	0-0	0-0	0	1	1	0	0	0	0	0	0	
<b>TOTALS</b>			<b>26</b>	<b>9-27</b>	<b>1-6</b>	<b>7-14</b>	<b>3</b>	<b>12</b>	<b>15</b>	<b>12</b>	<b>7</b>	<b>7</b>	<b>1</b>	<b>7</b>	<b>100</b>	

#### Shooting By Period

Period	FG	FG%	3FG	3FG%	FT	FT%
1st Qtr	6-15	40%	1-3	33%	4-6	67%
2nd Qtr	3-12	25%	0-3	00%	3-8	38%
1st Half	9-27	33%	1-6	17%	7-14	50%
Game	15-60	25.0%	4-17	23.5%	16-26	61.5%

Deadball Rebounds: 6,0

Last FG Half: TSU 2nd-01:48

### Troy 35

No.	Player	S	Pts	FG	3FG	FT	OR	DR	TR	PF	A	TO	Blk	Stl	Min	+/-
00	ROSARIO, EMELY	G	0	0-1	0-0	0-0	0	3	3	0	0	2	0	0	6	-7
01	ROBINSON, KAYLA	G	0	0-2	0-0	0-0	0	3	3	1	1	1	0	0	8	-2
02	SHAW, SHAWNITA	G	0	0-0	0-0	0-0	0	0	0	0	0	0	0	0	0	0
04	ROBINSON, JASMINE	G	3	1-3	1-2	0-0	0	0	0	2	3	1	0	0	10	10
05	MOORE, TYASIA	F	4	2-3	0-0	0-0	2	1	3	2	1	0	0	0	9	0
10	SANDIFER, JANIAH	G	3	1-3	1-2	0-1	2	0	2	0	1	2	0	0	13	17
12	WINCHESTER, HARRIET	G	2	1-2	0-1	0-0	0	1	1	0	0	0	0	1	11	13
14	JOHNSON, TIYAH	G	3	1-4	1-4	0-0	0	0	0	0	1	0	0	0	6	-6
20	JAMES, JAPONICA	F	16	4-7	0-0	8-10	6	2	8	1	1	2	0	1	15	11
25	DYE, ALEXUS	F	0	0-1	0-0	0-2	2	5	7	2	1	1	0	0	7	3
32	RODGERS, KATE	F	2	1-2	0-0	0-0	0	2	2	0	0	1	1	0	8	7
40	RIVERS, AMBER	F	2	1-7	0-3	0-0	0	1	1	1	0	0	0	0	8	-1
	TEAM		0	0-0	0-0	0-0	2	1	3	0	0	0	0	0	0	
<b>TOTALS</b>			<b>35</b>	<b>12-35</b>	<b>3-12</b>	<b>8-13</b>	<b>14</b>	<b>19</b>	<b>33</b>	<b>9</b>	<b>9</b>	<b>10</b>	<b>1</b>	<b>2</b>	<b>100</b>	

#### Shooting By Period

Period	FG	FG%	3FG	3FG%	FT	FT%
1st Qtr	5-16	31%	1-6	17%	2-5	40%
2nd Qtr	7-19	37%	2-6	33%	6-8	75%
1st Half	12-35	34%	3-12	25%	8-13	62%
Game	33-72	45.8%	8-23	34.8%	10-16	62.5%

Deadball Rebounds: 2,0

Last FG Half: TRY 2nd-02:42

#### Game Notes:

Officials: Angel Stanton, Troy Winders, Aaron Brooks

Attendance: 1789

Start Time: 07:02 PM ET

End Time: 09:07 PM ET

Game Duration: 2:05

Conference Game;

Score	1st	2nd	3rd	4th	TOT
TSU	17	9	16	8	<b>50</b>
TRY	13	22	27	22	<b>84</b>

Points from (This Period)	TSU	TRY
In the Paint	8	18
Off Turns	9	8
2nd Chance	2	10
Fast Break	5	10
Bench	16	9



**Official Box Score**  
**Texas State vs Troy**  
**First Quarter Statistics Only**  
**January 23, 2020 at Trojan Arena - Troy, Ala.**



### Texas State 17

No.	Player	S	Pts	FG	3FG	FT	OR	DR	TR	PF	A	TO	Blk	Stl	Min	+/-
01	ALEXANDER, AVIONNE	G	1	0-0	0-0	1-2	0	0	0	1	0	1	0	1	7	5
03	TAYLOR, KENNEDY	G	4	1-3	0-0	2-2	0	1	1	1	3	0	0	1	10	4
24	HOLLE, BROOKE	G	2	1-3	0-1	0-0	0	1	1	2	0	0	0	0	5	-6
32	HOOD, DA'NASIA	F	0	0-2	0-1	0-0	1	1	2	0	0	2	1	1	8	-2
55	REED, JAEDA	C	0	0-1	0-0	0-0	0	1	1	0	0	0	0	0	7	0
00	JOHNSON, JAYLA	F	2	1-2	0-0	0-0	1	0	1	0	0	0	0	0	4	6
05	PAZ Y PUENTE, JESSICA	G	0	0-0	0-0	0-0	0	0	0	0	0	0	0	0	0	0
13	KING, KESLYN	G	0	0-0	0-0	0-0	0	0	0	0	0	0	0	0	0	0
15	BOWIE, JA'KAYLA	G	3	1-2	1-1	0-0	0	0	0	0	0	0	0	0	2	4
20	JOHNSON, CHELSEA	F	2	1-1	0-0	0-0	0	0	0	0	0	0	0	0	1	4
33	HOLLE, BAILEY	G	3	1-1	0-0	1-2	1	3	4	1	2	1	0	1	7	5
	TEAM						0	0	0	0		0				
<b>TOTALS</b>			<b>17</b>	<b>6-15</b>	<b>1-3</b>	<b>4-6</b>	<b>3</b>	<b>7</b>	<b>10</b>	<b>5</b>	<b>5</b>	<b>4</b>	<b>1</b>	<b>4</b>	<b>50</b>	

#### Shooting By Period

Period	FG	FG%	3FG	3FG%	FT	FT%
1st Qtr	6-15	40%	1-3	33%	4-6	67%
2nd Qtr	3-12	25%	0-3	00%	3-8	38%
1st Half	6-15	40%	1-3	33%	4-6	67%
1st Half	9-27	33%	1-6	17%	7-14	50%
Game	15-60	25.0%	4-17	23.5%	16-26	61.5%

Deadball Rebounds: 6,0

### Troy 13

No.	Player	S	Pts	FG	3FG	FT	OR	DR	TR	PF	A	TO	Blk	Stl	Min	+/-
04	ROBINSON, JASMINE	G	0	0-1	0-1	0-0	0	0	0	1	1	1	0	0	6	2
10	SANDIFER, JANIAH	G	3	1-3	1-2	0-1	0	0	0	0	0	0	0	0	5	6
12	WINCHESTER, HARRIET	G	0	0-0	0-0	0-0	0	0	0	0	0	0	0	1	6	4
20	JAMES, JAPONICA	F	4	1-1	0-0	2-2	1	1	2	1	0	2	0	1	7	0
32	RODGERS, KATE	F	2	1-1	0-0	0-0	0	2	2	0	0	1	0	0	3	1
00	ROSARIO, EMELY	G	0	0-1	0-0	0-0	0	1	1	0	0	2	0	0	4	-6
01	ROBINSON, KAYLA	G	0	0-1	0-0	0-0	0	0	0	1	0	0	0	0	4	-8
02	SHAW, SHAWNITA	G	0	0-0	0-0	0-0	0	0	0	0	0	0	0	0	0	0
05	MOORE, TYASIA	F	4	2-3	0-0	0-0	2	0	2	2	0	0	0	0	4	-4
14	JOHNSON, TIYAH	G	0	0-3	0-3	0-0	0	0	0	0	1	0	0	0	4	-8
25	DYE, ALEXUS	F	0	0-1	0-0	0-2	2	3	5	0	1	1	0	0	5	1
40	RIVERS, AMBER	F	0	0-1	0-0	0-0	0	1	1	0	0	0	0	0	3	-8
	TEAM						1	0	1	0		0				
<b>TOTALS</b>			<b>13</b>	<b>5-16</b>	<b>1-6</b>	<b>2-5</b>	<b>6</b>	<b>8</b>	<b>14</b>	<b>5</b>	<b>3</b>	<b>7</b>	<b>0</b>	<b>2</b>	<b>50</b>	

#### Shooting By Period

Period	FG	FG%	3FG	3FG%	FT	FT%
1st Qtr	5-16	31%	1-6	17%	2-5	40%
2nd Qtr	7-19	37%	2-6	33%	6-8	75%
1st Half	5-16	31%	1-6	17%	2-5	40%
1st Half	12-35	34%	3-12	25%	8-13	62%
Game	33-72	45.8%	8-23	34.8%	10-16	62.5%

Deadball Rebounds: 2,0

#### Game Notes:

Officials: Angel Stanton, Troy Winders, Aaron Brooks  
Attendance: 1789

Start Time: 07:02 PM ET  
End Time: 09:07 PM ET  
Game Duration: 2:05  
Conference Game;

Score	1st	2nd	3rd	4th	TOT
TSU	17	9	16	8	50
TRY	13	22	27	22	84

Points from (This Period)	TSU	TRY
In the Paint	6	8
Off Turns	7	5
2nd Chance	2	2
Fast Break	5	2
Bench	10	4



**Official Play-By-Play**  
**Texas State vs Troy**  
**First Quarter**  
**January 23, 2020 at Trojan Arena - Troy, Ala.**



**Period 1**

**Starters:**

**Texas State:** 1 ALEXANDER, AVIONNE (G); 3 TAYLOR, KENNEDY (G); 24 HOLLE, BROOKE (G); 32 HOOD, DA'NASIA (F); 55 REED, JAEDA (C);

**Troy:** 4 ROBINSON, JASMINE (G); 10 SANDIFER, JANIAH (G); 12 WINCHESTER, HARRIET (G); 20 JAMES, JAPONICA (F); 32 RODGERS, KATE (F);

Time	VISITORS: Texas State	Score	Margin	HOME: Troy
09:49		2-0	H 2	GOOD! LAYUP by RODGERS, KATE
09:49				ASSIST by ROBINSON, JASMINE
09:13	GOOD! JUMPER by HOLLE, BROOKE	2-2	T	
09:13	ASSIST by TAYLOR, KENNEDY			
09:01				TURNOVER (LOSTBALL) by JAMES, JAPONICA
09:01	STEAL by ALEXANDER, AVIONNE			
08:53				FOUL (PERSONAL) by ROBINSON, JASMINE
08:53	GOOD! FT by ALEXANDER, AVIONNE	2-3	V 1	
08:53	MISSED FT by ALEXANDER, AVIONNE			
08:52	REBOUND (OFF) by HOOD, DA'NASIA			
08:42	MISSED JUMPER by REED, JAEDA			
08:39				REBOUND (DEF) by RODGERS, KATE
08:35				TURNOVER (LOSTBALL) by ROBINSON, JASMINE
08:11	MISSED LAYUP by HOLLE, BROOKE			
08:09				REBOUND (DEF) by RODGERS, KATE
08:08				TURNOVER (BADPASS) by RODGERS, KATE
08:08	STEAL by HOOD, DA'NASIA			
08:05	TURNOVER (BADPASS) by HOOD, DA'NASIA			
07:55		4-3	H 1	GOOD! LAYUP by JAMES, JAPONICA
07:32	TURNOVER (TRAVEL) by ALEXANDER, AVIONNE			
07:06				MISSED JUMPER by SANDIFER, JANIAH
07:03	REBOUND (DEF) by HOLLE, BROOKE			
06:56	MISSED 3PTR by HOLLE, BROOKE			
06:52				REBOUND (DEF) by JAMES, JAPONICA
06:49	FOUL (PERSONAL) by HOLLE, BROOKE			
06:49				SUB OUT: RODGERS, KATE
06:49				SUB IN: DYE, ALEXUS
06:49	SUB OUT: ALEXANDER, AVIONNE			
06:49	SUB IN: HOLLE, BAILEY			
06:49		5-3	H 2	GOOD! FT by JAMES, JAPONICA [FB]
06:49		6-3	H 3	GOOD! FT by JAMES, JAPONICA [FB]
06:22	TURNOVER (LOSTBALL) by HOOD, DA'NASIA			
06:22				STEAL by JAMES, JAPONICA
06:03		9-3	H 6	GOOD! 3PTR by SANDIFER, JANIAH
06:03				ASSIST by DYE, ALEXUS
06:03	FOUL (PERSONAL) by TAYLOR, KENNEDY			
06:03				MISSED FT by SANDIFER, JANIAH
06:02				REBOUND (OFF) by DYE, ALEXUS
05:59				MISSED LAYUP by DYE, ALEXUS
05:57	REBOUND (DEF) by REED, JAEDA			
05:44	MISSED LAYUP by TAYLOR, KENNEDY			
05:40				REBOUND (DEF) by DYE, ALEXUS
05:38				MISSED 3PTR by SANDIFER, JANIAH
05:33	REBOUND (DEF) by TAYLOR, KENNEDY			
05:23	MISSED 3PTR by HOOD, DA'NASIA			
05:21				REBOUND (DEF) by DYE, ALEXUS
05:21	FOUL (PERSONAL) by HOLLE, BROOKE			
05:21				SUB OUT: ROBINSON, JASMINE
05:21				SUB OUT: SANDIFER, JANIAH
05:21				SUB OUT: JAMES, JAPONICA
05:21				SUB IN: ROSARIO, EMELY
05:21				SUB IN: ROBINSON, KAYLA
05:21				SUB IN: RIVERS, AMBER
05:21	SUB OUT: HOLLE, BROOKE			
05:21	SUB OUT: REED, JAEDA			
05:21	SUB IN: ALEXANDER, AVIONNE			
05:21	SUB IN: JOHNSON, CHELSEA			
05:11				MISSED LAYUP by ROSARIO, EMELY
05:08	REBOUND (DEF) by HOLLE, BAILEY			
04:57	GOOD! JUMPER by JOHNSON, CHELSEA	9-5	H 4	
04:57	ASSIST by TAYLOR, KENNEDY			
04:43				TURNOVER (TRAVEL) by DYE, ALEXUS
04:43				
04:43				SUB OUT: RIVERS, AMBER
04:43				SUB IN: MOORE, TYASIA
04:32	TURNOVER (LOSTBALL) by HOLLE, BAILEY			
04:32				STEAL by WINCHESTER, HARRIET
04:26				MISSED LAYUP by ROBINSON, KAYLA
04:26	BLOCK by HOOD, DA'NASIA			
04:25				REBOUND (OFF) by TEAM



Time	VISITORS: Texas State	Score	Margin	HOME: Troy
04:25				SUB OUT: WINCHESTER, HARRIET
04:25				SUB IN: JOHNSON, TIYAH
04:19				TURNOVER (LOSTBALL) by ROSARIO, EMELY
04:19	STEAL by TAYLOR, KENNEDY			
04:14	GOOD! JUMPER by TAYLOR, KENNEDY [FB]	9-7	H 2	
04:14	ASSIST by HOLLE, BAILEY			
03:56	FOUL (PERSONAL) by HOLLE, BAILEY			
03:56	SUB OUT: JOHNSON, CHELSEA			
03:56	SUB IN: JOHNSON, JAYLA			
03:36		11-7	H 4	GOOD! JUMPER by MOORE, TYASIA [PNT]
03:36				ASSIST by JOHNSON, TIYAH
03:25				FOUL (PERSONAL) by MOORE, TYASIA
03:07	MISSED JUMPER by JOHNSON, JAYLA			
03:04				REBOUND (DEF) by DYE, ALEXUS
02:58				MISSED 3PTR by JOHNSON, TIYAH
02:55				REBOUND (OFF) by MOORE, TYASIA
02:54				MISSED LAYUP by MOORE, TYASIA
02:53				REBOUND (OFF) by DYE, ALEXUS
02:53	FOUL (PERSONAL) by ALEXANDER, AVIONNE			
02:53				MISSED FT by DYE, ALEXUS
02:53				REBOUND (OFF) by TEAM
02:53				MISSED FT by DYE, ALEXUS
02:51	REBOUND (DEF) by HOLLE, BAILEY			
02:37	MISSED JUMPER by HOOD, DA'NASIA			
02:34				REBOUND (DEF) by ROSARIO, EMELY
02:31				MISSED 3PTR by JOHNSON, TIYAH
02:26	REBOUND (DEF) by HOOD, DA'NASIA			
02:12	MISSED LAYUP by TAYLOR, KENNEDY			
02:11	REBOUND (OFF) by JOHNSON, JAYLA			
02:11				FOUL (PERSONAL) by MOORE, TYASIA
02:11				SUB OUT: MOORE, TYASIA
02:11				SUB OUT: DYE, ALEXUS
02:11				SUB IN: JAMES, JAPONICA
02:11				SUB IN: RIVERS, AMBER
02:11	SUB OUT: HOOD, DA'NASIA			
02:11	SUB IN: REED, JAEDA			
02:11	GOOD! FT by TAYLOR, KENNEDY	11-8	H 3	
02:11	GOOD! FT by TAYLOR, KENNEDY	11-9	H 2	
02:00				TURNOVER (LOSTBALL) by ROSARIO, EMELY
02:00	STEAL by HOLLE, BAILEY			
01:56	GOOD! LAYUP by JOHNSON, JAYLA [FB/PNT]	11-11	T	
01:56	ASSIST by HOLLE, BAILEY			
01:47				FOUL (OFF) by JAMES, JAPONICA
01:47				TURNOVER (OFFENSIVE) by JAMES, JAPONICA
01:47				SUB OUT: ROSARIO, EMELY
01:47				SUB IN: ROBINSON, JASMINE
01:47	SUB OUT: ALEXANDER, AVIONNE			
01:47	SUB IN: BOWIE, JA'KAYLA			
01:24	GOOD! LAYUP by HOLLE, BAILEY	11-13	V 2	
01:15				MISSED 3PTR by JOHNSON, TIYAH
01:10				REBOUND (OFF) by JAMES, JAPONICA
01:06				MISSED JUMPER by RIVERS, AMBER
01:05	REBOUND (DEF) by HOLLE, BAILEY			
01:05				FOUL (PERSONAL) by ROBINSON, KAYLA
01:05				SUB OUT: ROBINSON, KAYLA
01:05				SUB IN: MOORE, TYASIA
01:05	GOOD! FT by HOLLE, BAILEY [FB]	11-14	V 3	
01:05	MISSED FT by HOLLE, BAILEY			
01:02	REBOUND (OFF) by HOLLE, BAILEY			
00:47	MISSED LAYUP by BOWIE, JA'KAYLA			
00:44				REBOUND (DEF) by RIVERS, AMBER
00:18				MISSED 3PTR by ROBINSON, JASMINE
00:10				REBOUND (OFF) by MOORE, TYASIA
00:10		13-14	V 1	GOOD! LAYUP by MOORE, TYASIA
00:00	GOOD! 3PTR by BOWIE, JA'KAYLA	13-17	V 4	
00:00	ASSIST by TAYLOR, KENNEDY			

Texas State 17, Troy 13

Points from (This Period)	TSU	TRY
In the Paint	6	8
Off Turns	7	5
2nd Chance	2	2
Fast Break	5	2
Bench	10	4



**Official Box Score**  
**Texas State vs Troy**  
**Second Quarter Statistics Only**  
**January 23, 2020 at Trojan Arena - Troy, Ala.**



### Texas State 9

No.	Player	S	Pts	FG	3FG	FT	OR	DR	TR	PF	A	TO	Blk	Stl	Min	+/-
01	ALEXANDER, AVIONNE	G	2	0-0	0-0	2-4	0	1	1	0	0	0	0	1	7	-9
03	TAYLOR, KENNEDY	G	1	0-2	0-1	1-2	0	0	0	1	1	1	0	1	9	-10
24	HOLLE, BROOKE	G	0	0-0	0-0	0-0	0	0	0	0	0	0	0	0	0	0
32	HOOD, DA'NASIA	F	0	0-1	0-1	0-0	0	1	1	1	0	0	0	0	5	-3
55	REED, JAEDA	C	0	0-0	0-0	0-0	0	0	0	0	0	0	0	0	2	-3
00	JOHNSON, JAYLA	F	6	3-4	0-0	0-0	0	1	1	3	0	1	0	0	6	-10
05	PAZ Y PUENTE, JESSICA	G	0	0-0	0-0	0-0	0	0	0	0	0	0	0	0	0	0
13	KING, KESLYN	G	0	0-0	0-0	0-0	0	0	0	0	0	0	0	0	0	0
15	BOWIE, JA'KAYLA	G	0	0-2	0-1	0-0	0	0	0	0	0	0	0	0	8	-14
20	JOHNSON, CHELSEA	F	0	0-2	0-0	0-2	0	1	1	1	0	1	0	1	6	-8
33	HOLLE, BAILEY	G	0	0-1	0-0	0-0	0	0	0	1	1	0	0	0	8	-8
	TEAM						0	1	1	0		0				
<b>TOTALS</b>			<b>9</b>	<b>3-12</b>	<b>0-3</b>	<b>3-8</b>	<b>0</b>	<b>5</b>	<b>5</b>	<b>7</b>	<b>2</b>	<b>3</b>	<b>0</b>	<b>3</b>	<b>50</b>	

#### Shooting By Period

Period	FG	FG%	3FG	3FG%	FT	FT%
3rd Qtr	4-16	25%	3-6	50%	5-6	83%
4th Qtr	2-17	12%	0-5	00%	4-6	67%
2nd Half	3-12	25%	0-3	00%	3-8	38%
2nd Half	6-33	18%	3-11	27%	9-12	75%
Game	15-60	25.0%	4-17	23.5%	16-26	61.5%

Deadball Rebounds: 6,0

### Troy 22

No.	Player	S	Pts	FG	3FG	FT	OR	DR	TR	PF	A	TO	Blk	Stl	Min	+/-
04	ROBINSON, JASMINE	G	3	1-2	1-1	0-0	0	0	0	1	2	0	0	0	4	8
10	SANDIFER, JANIAH	G	0	0-0	0-0	0-0	2	0	2	0	1	2	0	0	8	11
12	WINCHESTER, HARRIET	G	2	1-2	0-1	0-0	0	1	1	0	0	0	0	0	5	9
20	JAMES, JAPONICA	F	12	3-6	0-0	6-8	5	1	6	0	1	0	0	0	8	11
32	RODGERS, KATE	F	0	0-1	0-0	0-0	0	0	0	0	0	0	1	0	5	6
00	ROSARIO, EMELY	G	0	0-0	0-0	0-0	0	2	2	0	0	0	0	0	2	-1
01	ROBINSON, KAYLA	G	0	0-1	0-0	0-0	0	3	3	0	1	1	0	0	4	6
02	SHAW, SHAWNITA	G	0	0-0	0-0	0-0	0	0	0	0	0	0	0	0	0	0
05	MOORE, TYASIA	F	0	0-0	0-0	0-0	0	1	1	0	1	0	0	0	5	4
14	JOHNSON, TIYAH	G	3	1-1	1-1	0-0	0	0	0	0	0	0	0	0	2	2
25	DYE, ALEXUS	F	0	0-0	0-0	0-0	0	2	2	2	0	0	0	0	2	2
40	RIVERS, AMBER	F	2	1-6	0-3	0-0	0	0	0	1	0	0	0	0	5	7
	TEAM						1	1	2	0		0				
<b>TOTALS</b>			<b>22</b>	<b>7-19</b>	<b>2-6</b>	<b>6-8</b>	<b>8</b>	<b>11</b>	<b>19</b>	<b>4</b>	<b>6</b>	<b>3</b>	<b>1</b>	<b>0</b>	<b>50</b>	

#### Shooting By Period

Period	FG	FG%	3FG	3FG%	FT	FT%
3rd Qtr	11-18	61%	3-4	75%	2-3	67%
4th Qtr	10-19	53%	2-7	29%	0-0	0%
2nd Half	7-19	37%	2-6	33%	6-8	75%
2nd Half	21-37	57%	5-11	45%	2-3	67%
Game	33-72	45.8%	8-23	34.8%	10-16	62.5%

Deadball Rebounds: 2,0

#### Game Notes:

Officials: Angel Stanton, Troy Winders, Aaron Brooks  
Attendance: 1789

Start Time: 07:02 PM ET  
End Time: 09:07 PM ET  
Game Duration: 2:05  
Conference Game;

Score	1st	2nd	3rd	4th	TOT
TSU	17	9	16	8	50
TRY	13	22	27	22	84

Points from (This Period)	TSU	TRY
In the Paint	2	10
Off Turns	2	3
2nd Chance	0	8
Fast Break	0	8
Bench	6	5



**Official Play-By-Play**  
**Texas State vs Troy**  
**Second Quarter**  
**January 23, 2020 at Trojan Arena - Troy, Ala.**



**Period 2**

**Starters:**

**Texas State:** 1 ALEXANDER, AVIONNE (G); 3 TAYLOR, KENNEDY (G); 24 HOLLE, BROOKE (G); 32 HOOD, DA'NASIA (F); 55 REED, JAEDA (C);

**Troy:** 4 ROBINSON, JASMINE (G); 10 SANDIFER, JANIAH (G); 12 WINCHESTER, HARRIET (G); 20 JAMES, JAPONICA (F); 32 RODGERS, KATE (F);

Time	VISITORS: Texas State	Score	Margin	HOME: Troy
09:52				SUB OUT: RIVERS, AMBER
09:52				SUB IN: RODGERS, KATE
09:49	GOOD! JUMPER by JOHNSON, JAYLA	13-19	V 6	
09:49	ASSIST by HOLLE, BAILEY			
09:42		16-19	V 3	GOOD! 3PTR by JOHNSON, TIYAH [FB]
09:42				ASSIST by ROBINSON, JASMINE
09:04	TURNOVER (BADPASS) by TAYLOR, KENNEDY			
08:48	FOUL (PERSONAL) by TAYLOR, KENNEDY			
08:42	FOUL (PERSONAL) by HOLLE, BAILEY			
08:42		17-19	V 2	GOOD! FT by JAMES, JAPONICA
08:42		18-19	V 1	GOOD! FT by JAMES, JAPONICA
08:30	GOOD! JUMPER by JOHNSON, JAYLA	18-21	V 3	
08:30	ASSIST by TAYLOR, KENNEDY			
08:21		20-21	V 1	GOOD! LAYUP by JAMES, JAPONICA [FB]
08:21				ASSIST by ROBINSON, JASMINE
08:09				FOUL (PERSONAL) by ROBINSON, JASMINE
08:09				SUB OUT: ROBINSON, JASMINE
08:09				SUB IN: ROBINSON, KAYLA
08:09	SUB OUT: REED, JAEDA			
08:09	SUB IN: HOOD, DA'NASIA			
08:09	MISSED FT by TAYLOR, KENNEDY			
08:09	REBOUND (OFF) by TEAM			
08:09	GOOD! FT by TAYLOR, KENNEDY	20-22	V 2	
08:09				SUB OUT: JOHNSON, TIYAH
08:09				SUB IN: SANDIFER, JANIAH
07:56				MISSED JUMPER by ROBINSON, KAYLA
07:53	REBOUND (DEF) by JOHNSON, JAYLA			
07:42	MISSED LAYUP by JOHNSON, JAYLA			
07:39				REBOUND (DEF) by ROBINSON, KAYLA
07:34				TURNOVER (BADPASS) by SANDIFER, JANIAH
07:34	STEAL by TAYLOR, KENNEDY			
07:30	MISSED JUMPER by TAYLOR, KENNEDY			
07:26				REBOUND (DEF) by MOORE, TYASIA
07:17		22-22	T	GOOD! LAYUP by JAMES, JAPONICA
07:17				ASSIST by MOORE, TYASIA
06:56	MISSED 3PTR by HOOD, DA'NASIA			
06:52				REBOUND (DEF) by ROBINSON, KAYLA
06:45				MISSED JUMPER by RODGERS, KATE
06:43				REBOUND (OFF) by JAMES, JAPONICA
06:43	FOUL (PERSONAL) by HOOD, DA'NASIA			
06:43				SUB OUT: MOORE, TYASIA
06:43				SUB OUT: RODGERS, KATE
06:43				SUB IN: WINCHESTER, HARRIET
06:43				SUB IN: RIVERS, AMBER
06:43	SUB OUT: TAYLOR, KENNEDY			
06:43	SUB IN: ALEXANDER, AVIONNE			
06:40				MISSED JUMPER by RIVERS, AMBER
06:36				REBOUND (OFF) by JAMES, JAPONICA
06:36				MISSED LAYUP by JAMES, JAPONICA
06:35				REBOUND (OFF) by JAMES, JAPONICA
06:35		24-22	H 2	GOOD! LAYUP by JAMES, JAPONICA
06:20	FOUL (OFF) by JOHNSON, JAYLA			
06:20	TURNOVER (OFFENSIVE) by JOHNSON, JAYLA			
06:20	SUB OUT: JOHNSON, JAYLA			
06:20	SUB IN: JOHNSON, CHELSEA			
06:07				MISSED 3PTR by RIVERS, AMBER
06:05	REBOUND (DEF) by JOHNSON, CHELSEA			
06:05	TURNOVER (TRAVEL) by JOHNSON, CHELSEA			
05:58				MISSED 3PTR by RIVERS, AMBER
05:56				REBOUND (OFF) by JAMES, JAPONICA
05:54	FOUL (PERSONAL) by JOHNSON, CHELSEA			
05:54		25-22	H 3	GOOD! FT by JAMES, JAPONICA
05:54				MISSED FT by JAMES, JAPONICA
05:51	REBOUND (DEF) by ALEXANDER, AVIONNE			
05:46	TIMEOUT 30SEC			
05:46				
05:46				SUB OUT: JAMES, JAPONICA
05:46				SUB OUT: RIVERS, AMBER
05:46				SUB IN: DYE, ALEXUS
05:46				SUB IN: RODGERS, KATE



Time	VISITORS: Texas State	Score	Margin	HOME: Troy
05:38	SUB OUT: HOOD, DA'NASIA			
05:38	SUB IN: TAYLOR, KENNEDY			
05:35				FOUL (PERSONAL) by DYE, ALEXUS
05:35	MISSED FT by JOHNSON, CHELSEA			
05:35	REBOUND (OFF) by TEAM			
05:35	MISSED FT by JOHNSON, CHELSEA			
05:34				REBOUND (DEF) by DYE, ALEXUS
05:21				TURNOVER (LOSTBALL) by ROBINSON, KAYLA
05:21	STEAL by ALEXANDER, AVIONNE			
04:56	MISSED LAYUP by JOHNSON, CHELSEA			
04:56				BLOCK by RODGERS, KATE
04:53				REBOUND (DEF) by ROBINSON, KAYLA
04:50		27-22	H 5	GOOD! LAYUP by WINCHESTER, HARRIET [FB]
04:50				ASSIST by ROBINSON, KAYLA
04:19				FOUL (PERSONAL) by DYE, ALEXUS
04:19				SUB OUT: ROBINSON, KAYLA
04:19				SUB IN: ROBINSON, JASMINE
04:19	SUB OUT: HOLLE, BAILEY			
04:19	SUB IN: JOHNSON, JAYLA			
04:19	MISSED FT by ALEXANDER, AVIONNE			
04:19	REBOUND (OFF) by TEAM			
04:19	MISSED FT by ALEXANDER, AVIONNE			
04:18				REBOUND (DEF) by DYE, ALEXUS
04:07				MISSED JUMPER by ROBINSON, JASMINE
04:05	REBOUND (DEF) by TEAM			
04:05				SUB OUT: DYE, ALEXUS
04:05				SUB OUT: RODGERS, KATE
04:05				SUB IN: JAMES, JAPONICA
04:05				SUB IN: RIVERS, AMBER
03:47	MISSED JUMPER by BOWIE, JA'KAYLA			
03:45				REBOUND (DEF) by TEAM
03:26		29-22	H 7	GOOD! LAYUP by RIVERS, AMBER
03:26				ASSIST by JAMES, JAPONICA
02:56	MISSED 3PTR by BOWIE, JA'KAYLA			
02:52				REBOUND (DEF) by JAMES, JAPONICA
02:48				MISSED 3PTR by WINCHESTER, HARRIET
02:44				REBOUND (OFF) by SANDIFER, JANIAH
02:42		32-22	H 10	GOOD! 3PTR by ROBINSON, JASMINE
02:42				ASSIST by SANDIFER, JANIAH
02:20	MISSED JUMPER by JOHNSON, CHELSEA			
02:17				REBOUND (DEF) by WINCHESTER, HARRIET
02:15	FOUL (PERSONAL) by JOHNSON, JAYLA			
02:15				SUB OUT: ROBINSON, JASMINE
02:15				SUB IN: ROSARIO, EMELY
02:15	SUB OUT: JOHNSON, CHELSEA			
02:15	SUB IN: HOOD, DA'NASIA			
02:15	SUB IN: HOLLE, BAILEY			
02:15				MISSED FT by JAMES, JAPONICA
02:15				REBOUND (OFF) by TEAM
02:15		33-22	H 11	GOOD! FT by JAMES, JAPONICA [FB]
02:15	SUB OUT: BOWIE, JA'KAYLA			
01:48	GOOD! JUMPER by JOHNSON, JAYLA [PNT]	33-24	H 9	
01:38				MISSED 3PTR by RIVERS, AMBER
01:35				REBOUND (OFF) by SANDIFER, JANIAH
01:35	FOUL (PERSONAL) by JOHNSON, JAYLA			
01:35	SUB OUT: JOHNSON, JAYLA			
01:35	SUB IN: JOHNSON, CHELSEA			
01:35				SUB OUT: WINCHESTER, HARRIET
01:35				SUB IN: MOORE, TYASIA
01:35		34-24	H 10	GOOD! FT by JAMES, JAPONICA
01:35		35-24	H 11	GOOD! FT by JAMES, JAPONICA
01:06	MISSED JUMPER by HOLLE, BAILEY			
01:03				REBOUND (DEF) by ROSARIO, EMELY
00:56				MISSED LAYUP by JAMES, JAPONICA
00:53				REBOUND (OFF) by JAMES, JAPONICA
00:52				MISSED JUMPER by JAMES, JAPONICA
00:51				REBOUND (OFF) by TEAM
00:45				MISSED JUMPER by RIVERS, AMBER
00:41	REBOUND (DEF) by HOOD, DA'NASIA			
00:21	MISSED 3PTR by TAYLOR, KENNEDY			
00:18				REBOUND (DEF) by ROSARIO, EMELY
00:12				TURNOVER (BADPASS) by SANDIFER, JANIAH
00:12	STEAL by JOHNSON, CHELSEA			
00:02				FOUL (PERSONAL) by RIVERS, AMBER
00:02	GOOD! FT by ALEXANDER, AVIONNE	35-25	H 10	
00:02	GOOD! FT by ALEXANDER, AVIONNE	35-26	H 9	
00:02				SUB OUT: ROSARIO, EMELY
00:02				SUB IN: ROBINSON, JASMINE



Points from (This Period)	TSU	TRY
In the Paint	2	10
Off Turns	2	3
2nd Chance	0	8
Fast Break	0	8
Bench	6	5



**Official Box Score**  
**Texas State vs Troy**  
**Second Half Statistics Only**  
**January 23, 2020 at Trojan Arena - Troy, Ala.**



### Texas State 24

No.	Player	S	Pts	FG	3FG	FT	OR	DR	TR	PF	A	TO	Blk	Stl	Min	+/-
00	JOHNSON, JAYLA	F	2	0-5	0-2	2-4	0	1	1	1	0	0	0	0	11	-19
01	ALEXANDER, AVIONNE	G	2	0-1	0-0	2-2	1	1	2	0	1	0	0	0	5	-5
03	TAYLOR, KENNEDY	G	3	1-5	1-2	0-0	0	0	0	0	1	2	0	0	13	-14
05	PAZ Y PUENTE, JESSICA	G	2	0-1	0-1	2-2	0	0	0	0	1	1	0	0	7	-11
13	KING, KESLYN	G	0	0-2	0-0	0-0	1	0	1	0	0	0	0	0	8	-13
15	BOWIE, JA'KAYLA	G	0	0-1	0-1	0-0	0	1	1	1	1	0	0	0	12	-16
20	JOHNSON, CHELSEA	F	2	1-1	0-0	0-0	0	0	0	3	0	0	0	0	7	-15
24	HOLLE, BROOKE	G	0	0-7	0-1	0-0	1	2	3	0	0	1	0	2	12	-16
32	HOOD, DA'NASIA	F	3	1-4	1-3	0-0	0	0	0	0	1	0	0	1	8	-4
33	HOLLE, BAILEY	G	5	1-1	1-1	2-2	1	1	2	0	1	0	0	0	9	-7
55	REED, JAEDA	C	5	2-5	0-0	1-2	0	1	1	0	0	0	0	0	8	-5
	TEAM		0	0-0	0-0	0-0	1	0	1	0	0	0	0	0	0	
<b>TOTALS</b>			<b>24</b>	<b>6-33</b>	<b>3-11</b>	<b>9-12</b>	<b>5</b>	<b>7</b>	<b>12</b>	<b>5</b>	<b>6</b>	<b>4</b>	<b>0</b>	<b>3</b>	<b>100</b>	

#### Shooting By Period

Period	FG	FG%	3FG	3FG%	FT	FT%
3rd Qtr	4-16	25%	3-6	50%	5-6	83%
4th Qtr	2-17	12%	0-5	00%	4-6	67%
2nd Half	6-33	18%	3-11	27%	9-12	75%
Game	15-60	25.0%	4-17	23.5%	16-26	61.5%

Deadball Rebounds: 6,0

Last FG Half: TSU 4th-01:11

### Troy 49

No.	Player	S	Pts	FG	3FG	FT	OR	DR	TR	PF	A	TO	Blk	Stl	Min	+/-
00	ROSARIO, EMELY	G	0	0-0	0-0	0-0	0	1	1	0	0	2	0	0	4	5
01	ROBINSON, KAYLA	G	3	1-3	1-3	0-0	1	3	4	0	2	0	0	0	12	15
02	SHAW, SHAWNTA	G	0	0-0	0-0	0-0	0	0	0	1	0	0	0	0	1	1
04	ROBINSON, JASMINE	G	6	2-6	2-5	0-0	0	1	1	0	6	0	0	1	12	18
05	MOORE, TYASIA	F	0	0-1	0-0	0-0	0	2	2	1	1	0	1	0	8	6
10	SANDIFER, JANIAH	G	0	0-0	0-0	0-0	0	1	1	0	1	0	0	0	6	10
12	WINCHESTER, HARRIET	G	3	1-1	1-1	0-0	0	1	1	1	1	1	1	0	6	10
14	JOHNSON, TIYAH	G	7	3-3	1-1	0-0	0	1	1	0	0	0	1	0	10	10
20	JAMES, JAPONICA	F	12	6-6	0-0	0-1	2	1	3	2	0	1	1	1	9	13
25	DYE, ALEXUS	F	12	5-8	0-0	2-2	5	4	9	2	2	1	1	0	11	12
32	RODGERS, KATE	F	0	0-1	0-0	0-0	0	4	4	1	1	3	2	0	9	13
40	RIVERS, AMBER	F	6	3-8	0-1	0-0	2	2	4	2	0	2	0	0	11	12
	TEAM		0	0-0	0-0	0-0	0	1	1	0	0	0	0	0	0	
<b>TOTALS</b>			<b>49</b>	<b>21-37</b>	<b>5-11</b>	<b>2-3</b>	<b>10</b>	<b>22</b>	<b>32</b>	<b>10</b>	<b>14</b>	<b>10</b>	<b>7</b>	<b>2</b>	<b>100</b>	

#### Shooting By Period

Period	FG	FG%	3FG	3FG%	FT	FT%
3rd Qtr	11-18	61%	3-4	75%	2-3	67%
4th Qtr	10-19	53%	2-7	29%	0-0	0%
2nd Half	21-37	57%	5-11	45%	2-3	67%
Game	33-72	45.8%	8-23	34.8%	10-16	62.5%

Deadball Rebounds: 2,0

Last FG Half: TRY 4th-00:24

#### Game Notes:

Officials: Angel Stanton, Troy Winders, Aaron Brooks

Attendance: 1789

Start Time: 07:02 PM ET

End Time: 09:07 PM ET

Game Duration: 2:05

Conference Game;

Score	1st	2nd	3rd	4th	TOT
TSU	17	9	16	8	<b>50</b>
TRY	13	22	27	22	<b>84</b>

Points from (This Period)	TSU	TRY
In the Paint	6	32
Off Turns	8	11
2nd Chance	2	12
Fast Break	0	12
Bench	11	28



**Official Box Score**  
**Texas State vs Troy**  
**Third Quarter Statistics Only**  
**January 23, 2020 at Trojan Arena - Troy, Ala.**



### Texas State 24

No.	Player	S	Pts	FG	3FG	FT	OR	DR	TR	PF	A	TO	Blk	Stl	Min	+/-
01	ALEXANDER, AVIONNE	G	2	0-1	0-0	2-2	1	1	2	0	1	0	0	0	5	-5
03	TAYLOR, KENNEDY	G	3	1-3	1-2	0-0	0	0	0	0	1	2	0	0	10	-11
24	HOLLE, BROOKE	G	0	0-4	0-1	0-0	0	1	1	0	0	1	0	1	8	-11
32	HOOD, DA'NASIA	F	3	1-3	1-2	0-0	0	0	0	0	0	0	0	0	7	-3
55	REED, JAEDA	C	2	1-4	0-0	0-0	0	0	0	0	0	0	0	0	6	-6
00	JOHNSON, JAYLA	F	1	0-0	0-0	1-2	0	0	0	1	0	0	0	0	2	-6
05	PAZ Y PUENTE, JESSICA	G	0	0-0	0-0	0-0	0	0	0	0	0	0	0	0	0	0
13	KING, KESLYN	G	0	0-0	0-0	0-0	0	0	0	0	0	0	0	0	0	0
15	BOWIE, JA'KAYLA	G	0	0-0	0-0	0-0	0	1	1	0	1	0	0	0	3	-3
20	JOHNSON, CHELSEA	F	0	0-0	0-0	0-0	0	0	0	3	0	0	0	0	2	-4
33	HOLLE, BAILEY	G	5	1-1	1-1	2-2	1	1	2	0	1	0	0	0	7	-6
	TEAM						1	0	1	0		0				
<b>TOTALS</b>			<b>16</b>	<b>4-16</b>	<b>3-6</b>	<b>5-6</b>	<b>3</b>	<b>4</b>	<b>7</b>	<b>4</b>	<b>4</b>	<b>3</b>	<b>0</b>	<b>1</b>	<b>50</b>	

#### Shooting By Period

Period	FG	FG%	3FG	3FG%	FT	FT%
2nd Half	0-0	0%	0-0	0%	0-0	0%
Game	15-60	25.0%	4-17	23.5%	16-26	61.5%

Deadball Rebounds: 6,0

### Troy 49

No.	Player	S	Pts	FG	3FG	FT	OR	DR	TR	PF	A	TO	Blk	Stl	Min	+/-
04	ROBINSON, JASMINE	G	6	2-4	2-3	0-0	0	1	1	0	4	0	0	1	8	10
10	SANDIFER, JANIAH	G	0	0-0	0-0	0-0	0	1	1	0	1	0	0	0	6	10
12	WINCHESTER, HARRIET	G	3	1-1	1-1	0-0	0	1	1	1	1	1	1	0	6	10
20	JAMES, JAPONICA	F	10	5-5	0-0	0-1	2	1	3	1	0	0	1	1	6	10
32	RODGERS, KATE	F	0	0-1	0-0	0-0	0	1	1	0	0	2	2	0	6	10
00	ROSARIO, EMELY	G	0	0-0	0-0	0-0	0	0	0	0	0	0	0	0	0	0
01	ROBINSON, KAYLA	G	0	0-0	0-0	0-0	0	0	0	0	1	0	0	0	2	1
02	SHAW, SHAWNITA	G	0	0-0	0-0	0-0	0	0	0	0	0	0	0	0	0	0
05	MOORE, TYASIA	F	0	0-1	0-0	0-0	0	1	1	1	0	0	0	0	4	1
14	JOHNSON, TIYAH	G	0	0-0	0-0	0-0	0	0	0	0	0	0	0	0	4	1
25	DYE, ALEXUS	F	8	3-5	0-0	2-2	1	2	3	0	0	1	0	0	4	1
40	RIVERS, AMBER	F	0	0-1	0-0	0-0	1	0	1	1	0	1	0	0	4	1
	TEAM						0	1	1	0		0				
<b>TOTALS</b>			<b>27</b>	<b>11-18</b>	<b>3-4</b>	<b>2-3</b>	<b>4</b>	<b>9</b>	<b>13</b>	<b>4</b>	<b>7</b>	<b>5</b>	<b>4</b>	<b>2</b>	<b>50</b>	

#### Shooting By Period

Period	FG	FG%	3FG	3FG%	FT	FT%
2nd Half	0-0	0%	0-0	0%	0-0	0%
Game	33-72	45.8%	8-23	34.8%	10-16	62.5%

Deadball Rebounds: 2,0

#### Game Notes:

Officials: Angel Stanton, Troy Winders, Aaron Brooks  
Attendance: 1789

Start Time: 07:02 PM ET

End Time: 09:07 PM ET

Game Duration: 2:05

Conference Game;

Score	1st	2nd	3rd	4th	TOT
TSU	17	9	16	8	<b>50</b>
TRY	13	22	27	22	<b>84</b>

Points from (This Period)	TSU	TRY
In the Paint	2	16
Off Turns	7	7
2nd Chance	2	7
Fast Break	0	8
Bench	6	8



**Official By-By-Play**  
**Texas State vs Troy**  
**Third Quarter**  
**January 23, 2020 at Trojan Arena - Troy, Ala.**



**Period 3**

**Starters:**

**Texas State:** 1 ALEXANDER, AVIONNE (G); 3 TAYLOR, KENNEDY (G); 24 HOLLE, BROOKE (G); 32 HOOD, DA'NASIA (F); 55 REED, JAEDA (C);

**Troy:** 4 ROBINSON, JASMINE (G); 10 SANDIFER, JANIAH (G); 12 WINCHESTER, HARRIET (G); 20 JAMES, JAPONICA (F); 32 RODGERS, KATE (F);

Time	VISITORS: Texas State	Score	Margin	HOME: Troy
10:00				SUB OUT: MOORE, TYASIA
10:00				SUB OUT: RIVERS, AMBER
10:00				SUB IN: WINCHESTER, HARRIET
10:00				SUB IN: RODGERS, KATE
10:00	SUB OUT: JOHNSON, CHELSEA			
10:00	SUB OUT: HOLLE, BAILEY			
10:00	SUB IN: HOLLE, BROOKE			
10:00	SUB IN: REED, JAEDA			
09:49				TURNOVER (BADPASS) by RODGERS, KATE
09:29	GOOD! 3PTR by TAYLOR, KENNEDY	35-29	H 6	
09:29	ASSIST by ALEXANDER, AVIONNE			
09:20		37-29	H 8	GOOD! LAYUP by JAMES, JAPONICA [FB]
09:20				ASSIST by ROBINSON, JASMINE
08:56	MISSED LAYUP by ALEXANDER, AVIONNE			
08:56				BLOCK by RODGERS, KATE
08:53				REBOUND (DEF) by ROBINSON, JASMINE
08:37				MISSED JUMPER by RODGERS, KATE
08:33	REBOUND (DEF) by HOLLE, BROOKE			
08:24	MISSED LAYUP by HOLLE, BROOKE			
08:24				BLOCK by JAMES, JAPONICA
08:22	REBOUND (OFF) by TEAM			
08:16	TURNOVER (BADPASS) by TAYLOR, KENNEDY			
08:16	SUB OUT: HOOD, DA'NASIA			
08:16	SUB IN: JOHNSON, JAYLA			
08:09		40-29	H 11	GOOD! 3PTR by WINCHESTER, HARRIET
08:09				ASSIST by ROBINSON, JASMINE
07:42	MISSED JUMPER by HOLLE, BROOKE			
07:39	REBOUND (OFF) by ALEXANDER, AVIONNE			
07:36	TURNOVER (BADPASS) by HOLLE, BROOKE			
07:36				STEAL by JAMES, JAPONICA
07:32		42-29	H 13	GOOD! LAYUP by JAMES, JAPONICA [FB]
07:29	TIMEOUT 30SEC			
07:03	MISSED JUMPER by REED, JAEDA			
07:03				BLOCK by RODGERS, KATE
06:59				REBOUND (DEF) by WINCHESTER, HARRIET
06:58				TURNOVER (BADPASS) by WINCHESTER, HARRIET
06:44				FOUL (PERSONAL) by JAMES, JAPONICA
06:44	MISSED FT by JOHNSON, JAYLA			
06:44	REBOUND (OFF) by TEAM			
06:44	GOOD! FT by JOHNSON, JAYLA	42-30	H 12	
06:39				MISSED JUMPER by ROBINSON, JASMINE
06:36				REBOUND (OFF) by JAMES, JAPONICA
06:36		44-30	H 14	GOOD! LAYUP by JAMES, JAPONICA
06:36	FOUL (PERSONAL) by JOHNSON, JAYLA			
06:36	SUB OUT: JOHNSON, JAYLA			
06:36	SUB OUT: ALEXANDER, AVIONNE			
06:36	SUB IN: BOWIE, JA'KAYLA			
06:36	SUB IN: HOLLE, BAILEY			
06:36				MISSED FT by JAMES, JAPONICA
06:34	REBOUND (DEF) by BOWIE, JA'KAYLA			
06:17	MISSED LAYUP by REED, JAEDA			
06:17				BLOCK by WINCHESTER, HARRIET
06:13				REBOUND (DEF) by JAMES, JAPONICA
06:11				MISSED 3PTR by ROBINSON, JASMINE
06:07				REBOUND (OFF) by JAMES, JAPONICA
05:58		46-30	H 16	GOOD! LAYUP by JAMES, JAPONICA
05:58				ASSIST by ROBINSON, JASMINE
05:23				FOUL (PERSONAL) by WINCHESTER, HARRIET
05:23	SUB OUT: REED, JAEDA			
05:23	SUB IN: HOOD, DA'NASIA			
05:23	GOOD! FT by HOLLE, BAILEY	46-31	H 15	
05:23	GOOD! FT by HOLLE, BAILEY	46-32	H 14	
05:17				TURNOVER (LOSTBALL) by RODGERS, KATE
05:02	GOOD! 3PTR by HOLLE, BAILEY	46-35	H 11	
05:02	ASSIST by BOWIE, JA'KAYLA			
04:53		49-35	H 14	GOOD! 3PTR by ROBINSON, JASMINE
04:34	MISSED LAYUP by HOOD, DA'NASIA			
04:32				REBOUND (DEF) by RODGERS, KATE
04:25		52-35	H 17	GOOD! 3PTR by ROBINSON, JASMINE
04:25				ASSIST by WINCHESTER, HARRIET



Time	VISITORS: Texas State	Score	Margin	HOME: Troy
03:57	MISSED LAYUP by HOLLE, BROOKE			
03:55				REBOUND (DEF) by SANDIFER, JANIAH
03:53		54-35	H 19	GOOD! LAYUP by JAMES, JAPONICA [FB]
03:53				ASSIST by SANDIFER, JANIAH
03:47	TIMEOUT 30SEC			
03:47				
03:47				SUB OUT: SANDIFER, JANIAH
03:47				SUB OUT: WINCHESTER, HARRIET
03:47				SUB OUT: JAMES, JAPONICA
03:47				SUB OUT: RODGERS, KATE
03:47				SUB IN: MOORE, TYASIA
03:47				SUB IN: JOHNSON, TIYAH
03:47				SUB IN: DYE, ALEXUS
03:47				SUB IN: RIVERS, AMBER
03:47	SUB OUT: HOLLE, BROOKE			
03:47	SUB IN: ALEXANDER, AVIONNE			
03:33				FOUL (PERSONAL) by MOORE, TYASIA
03:33	GOOD! FT by ALEXANDER, AVIONNE	54-36	H 18	
03:33	GOOD! FT by ALEXANDER, AVIONNE	54-37	H 17	
03:33	SUB OUT: BOWIE, JA'KAYLA			
03:33	SUB IN: JOHNSON, CHELSEA			
03:18				MISSED LAYUP by DYE, ALEXUS
03:17				REBOUND (OFF) by DYE, ALEXUS
03:17		56-37	H 19	GOOD! LAYUP by DYE, ALEXUS
03:15	FOUL (PERSONAL) by JOHNSON, CHELSEA			
03:15		57-37	H 20	GOOD! FT by DYE, ALEXUS
02:56	TURNOVER (LOSTBALL) by TAYLOR, KENNEDY			
02:56				STEAL by ROBINSON, JASMINE
02:50		59-37	H 22	GOOD! LAYUP by DYE, ALEXUS [FB]
02:50				ASSIST by ROBINSON, JASMINE
02:26	MISSED 3PTR by TAYLOR, KENNEDY			
02:23				REBOUND (DEF) by MOORE, TYASIA
02:19				MISSED JUMPER by MOORE, TYASIA
02:16	REBOUND (DEF) by ALEXANDER, AVIONNE			
02:08	GOOD! 3PTR by HOOD, DA'NASIA	59-40	H 19	
02:08	ASSIST by TAYLOR, KENNEDY			
01:53				FOUL (OFF) by RIVERS, AMBER
01:53				TURNOVER (OFFENSIVE) by RIVERS, AMBER
01:53				SUB OUT: ROBINSON, JASMINE
01:53				SUB IN: ROBINSON, KAYLA
01:53	SUB OUT: ALEXANDER, AVIONNE			
01:53	SUB IN: HOLLE, BROOKE			
01:34	MISSED LAYUP by TAYLOR, KENNEDY			
01:34				REBOUND (DEF) by DYE, ALEXUS
01:34	FOUL (PERSONAL) by JOHNSON, CHELSEA			
01:18		61-40	H 21	GOOD! LAYUP by DYE, ALEXUS
01:18				ASSIST by ROBINSON, KAYLA
01:18	FOUL (PERSONAL) by JOHNSON, CHELSEA			
01:18	SUB OUT: JOHNSON, CHELSEA			
01:18	SUB IN: REED, JAEDA			
01:18		62-40	H 22	GOOD! FT by DYE, ALEXUS
01:04	MISSED 3PTR by HOLLE, BROOKE			
01:00	REBOUND (OFF) by HOLLE, BAILEY			
00:59	GOOD! LAYUP by REED, JAEDA	62-42	H 20	
00:59	ASSIST by HOLLE, BAILEY			
00:49				MISSED LAYUP by RIVERS, AMBER
00:46	REBOUND (DEF) by HOLLE, BAILEY			
00:39	MISSED LAYUP by REED, JAEDA			
00:36				REBOUND (DEF) by DYE, ALEXUS
00:35				TURNOVER (BADPASS) by DYE, ALEXUS
00:35	STEAL by HOLLE, BROOKE			
00:14	MISSED 3PTR by HOOD, DA'NASIA			
00:13				REBOUND (DEF) by TEAM
00:13				SUB OUT: JOHNSON, TIYAH
00:13				SUB IN: ROSARIO, EMELY
00:00				MISSED LAYUP by DYE, ALEXUS
00:00				REBOUND (OFF) by RIVERS, AMBER

### Texas State 42, Troy 62

Points from (This Period)	TSU	TRY
In the Paint	2	16
Off Turns	7	7
2nd Chance	2	7
Fast Break	0	8
Bench	6	8



**Official Box Score**  
**Texas State vs Troy**  
**Fourth Quarter Statistics Only**  
**January 23, 2020 at Trojan Arena - Troy, Ala.**



### Texas State 8

No.	Player	S	Pts	FG	3FG	FT	OR	DR	TR	PF	A	TO	Blk	Stl	Min	+/-
01	ALEXANDER, AVIONNE	G	0	0-0	0-0	0-0	0	0	0	0	0	0	0	0	0	0
03	TAYLOR, KENNEDY	G	0	0-2	0-0	0-0	0	0	0	0	0	0	0	0	3	-3
24	HOLLE, BROOKE	G	0	0-3	0-0	0-0	1	1	2	0	0	0	0	1	4	-5
32	HOOD, DA'NASIA	F	0	0-1	0-1	0-0	0	0	0	0	1	0	0	1	1	-1
55	REED, JAEDA	C	3	1-1	0-0	1-2	0	1	1	0	0	0	0	0	2	1
00	JOHNSON, JAYLA	F	1	0-5	0-2	1-2	0	1	1	0	0	0	0	0	9	-13
05	PAZ Y PUENTE, JESSICA	G	2	0-1	0-1	2-2	0	0	0	0	1	1	0	0	7	-11
13	KING, KESLYN	G	0	0-2	0-0	0-0	1	0	1	0	0	0	0	0	8	-13
15	BOWIE, JA'KAYLA	G	0	0-1	0-1	0-0	0	0	0	1	0	0	0	0	9	-13
20	JOHNSON, CHELSEA	F	2	1-1	0-0	0-0	0	0	0	0	0	0	0	0	5	-11
33	HOLLE, BAILEY	G	0	0-0	0-0	0-0	0	0	0	0	0	0	0	0	2	-1
	TEAM						0	0	0	0		0				
<b>TOTALS</b>			<b>8</b>	<b>2-17</b>	<b>0-5</b>	<b>4-6</b>	<b>2</b>	<b>3</b>	<b>5</b>	<b>1</b>	<b>2</b>	<b>1</b>	<b>0</b>	<b>2</b>	<b>50</b>	

*Shooting By Period*

Period	FG	FG%	3FG	3FG%	FT	FT%
Game	15-60	25.0%	4-17	23.5%	16-26	61.5%

*Deadball Rebounds: 6,0*

### Troy 22

No.	Player	S	Pts	FG	3FG	FT	OR	DR	TR	PF	A	TO	Blk	Stl	Min	+/-
04	ROBINSON, JASMINE	G	0	0-2	0-2	0-0	0	0	0	0	2	0	0	0	4	8
10	SANDIFER, JANIAH	G	0	0-0	0-0	0-0	0	0	0	0	0	0	0	0	0	0
12	WINCHESTER, HARRIET	G	0	0-0	0-0	0-0	0	0	0	0	0	0	0	0	0	0
20	JAMES, JAPONICA	F	2	1-1	0-0	0-0	0	0	0	1	0	1	0	0	3	3
32	RODGERS, KATE	F	0	0-0	0-0	0-0	0	3	3	1	1	1	0	0	3	3
00	ROSARIO, EMELY	G	0	0-0	0-0	0-0	0	1	1	0	0	2	0	0	4	5
01	ROBINSON, KAYLA	G	3	1-3	1-3	0-0	1	3	4	0	1	0	0	0	10	14
02	SHAW, SHAWNITA	G	0	0-0	0-0	0-0	0	0	0	1	0	0	0	0	1	1
05	MOORE, TYASIA	F	0	0-0	0-0	0-0	0	1	1	0	1	0	1	0	4	5
14	JOHNSON, TIYAH	G	7	3-3	1-1	0-0	0	1	1	0	0	0	1	0	6	9
25	DYE, ALEXUS	F	4	2-3	0-0	0-0	4	2	6	2	2	0	1	0	7	11
40	RIVERS, AMBER	F	6	3-7	0-1	0-0	1	2	3	1	0	1	0	0	7	11
	TEAM						0	0	0	0		0				
<b>TOTALS</b>			<b>22</b>	<b>10-19</b>	<b>2-7</b>	<b>0-0</b>	<b>6</b>	<b>13</b>	<b>19</b>	<b>6</b>	<b>7</b>	<b>5</b>	<b>3</b>	<b>0</b>	<b>50</b>	

*Shooting By Period*

Period	FG	FG%	3FG	3FG%	FT	FT%
Game	33-72	45.8%	8-23	34.8%	10-16	62.5%

*Deadball Rebounds: 2,0*

Game Notes:

Officials: **Angel Stanton, Troy Winders, Aaron Brooks**  
Attendance: **1789**

Start Time: **07:02 PM ET**

End Time: **09:07 PM ET**

Game Duration: **2:05**

Conference Game;

Score	1st	2nd	3rd	4th	TOT
TSU	17	9	16	8	<b>50</b>
TRY	13	22	27	22	<b>84</b>

Points from (This Period)	TSU	TRY
In the Paint	4	16
Off Turns	1	4
2nd Chance	0	5
Fast Break	0	4
Bench	5	20



**Official Play-By-Play**  
**Texas State vs Troy**  
**Fourth Quarter**  
**January 23, 2020 at Trojan Arena - Troy, Ala.**



**Period 4**

**Starters:**

**Texas State:** 1 ALEXANDER, AVIONNE (G); 3 TAYLOR, KENNEDY (G); 24 HOLLE, BROOKE (G); 32 HOOD, DA'NASIA (F); 55 REED, JAEDA (C);

**Troy:** 4 ROBINSON, JASMINE (G); 10 SANDIFER, JANIAH (G); 12 WINCHESTER, HARRIET (G); 20 JAMES, JAPONICA (F); 32 RODGERS, KATE (F);

Time	VISITORS: Texas State	Score	Margin	HOME: Troy
10:00				SUB OUT: DYE, ALEXUS
10:00				SUB OUT: RIVERS, AMBER
10:00				SUB IN: JAMES, JAPONICA
10:00				SUB IN: RODGERS, KATE
09:43	GOOD! LAYUP by REED, JAEDA	62-44	H 18	
09:43	ASSIST by HOOD, DA'NASIA			
09:33		65-44	H 21	GOOD! 3PTR by ROBINSON, KAYLA
09:33				ASSIST by MOORE, TYASIA
09:17	MISSED 3PTR by HOOD, DA'NASIA			
09:14				REBOUND (DEF) by ROBINSON, KAYLA
09:08				TURNOVER (BADPASS) by ROSARIO, EMELY
09:08	STEAL by HOOD, DA'NASIA			
08:43	MISSED JUMPER by TAYLOR, KENNEDY			
08:40				REBOUND (DEF) by RODGERS, KATE
08:36				FOUL (OFF) by JAMES, JAPONICA
08:36				TURNOVER (OFFENSIVE) by JAMES, JAPONICA
08:36	SUB OUT: HOOD, DA'NASIA			
08:36	SUB OUT: REED, JAEDA			
08:36	SUB IN: JOHNSON, JAYLA			
08:36	SUB IN: BOWIE, JA'KAYLA			
08:19	MISSED JUMPER by HOLLE, BROOKE			
08:16				REBOUND (DEF) by RODGERS, KATE
08:08				FOUL (OFF) by RODGERS, KATE
08:08				TURNOVER (OFFENSIVE) by RODGERS, KATE
08:08	SUB OUT: HOLLE, BAILEY			
08:08	SUB IN: KING, KESLYN			
07:52	MISSED 3PTR by JOHNSON, JAYLA			
07:47	REBOUND (OFF) by HOLLE, BROOKE			
07:36	MISSED JUMPER by HOLLE, BROOKE			
07:36				BLOCK by MOORE, TYASIA
07:32				REBOUND (DEF) by MOORE, TYASIA
07:30		67-44	H 23	GOOD! LAYUP by JAMES, JAPONICA [FB]
07:30				ASSIST by RODGERS, KATE
07:17	MISSED JUMPER by TAYLOR, KENNEDY			
07:14				REBOUND (DEF) by RODGERS, KATE
07:08				SUB OUT: JAMES, JAPONICA
07:08				SUB OUT: RODGERS, KATE
07:08				SUB IN: DYE, ALEXUS
07:08				SUB IN: RIVERS, AMBER
07:08	SUB OUT: TAYLOR, KENNEDY			
07:08	SUB IN: PAZ Y PUENTE, JESSICA			
07:04		69-44	H 25	GOOD! LAYUP by RIVERS, AMBER [PNT]
07:04				ASSIST by ROBINSON, KAYLA
06:39	MISSED JUMPER by HOLLE, BROOKE			
06:35				REBOUND (DEF) by ROBINSON, KAYLA
06:29				TURNOVER (BADPASS) by ROSARIO, EMELY
06:29	STEAL by HOLLE, BROOKE			
06:18	MISSED LAYUP by JOHNSON, JAYLA			
06:15				REBOUND (DEF) by RIVERS, AMBER
05:59				MISSED JUMPER by DYE, ALEXUS
05:56	REBOUND (DEF) by HOLLE, BROOKE			
05:44	MISSED 3PTR by PAZ Y PUENTE, JESSICA			
05:40				REBOUND (DEF) by ROSARIO, EMELY
05:35				MISSED 3PTR by ROBINSON, KAYLA
05:33				REBOUND (OFF) by RIVERS, AMBER
05:33	FOUL (PERSONAL) by BOWIE, JA'KAYLA			
05:32				MISSED JUMPER by RIVERS, AMBER
05:31				REBOUND (OFF) by DYE, ALEXUS
05:31		71-44	H 27	GOOD! LAYUP by DYE, ALEXUS
05:13				SUB OUT: ROSARIO, EMELY
05:13				SUB OUT: MOORE, TYASIA
05:13				SUB IN: ROBINSON, JASMINE
05:13				SUB IN: JOHNSON, TIYAH
05:13	SUB OUT: HOLLE, BROOKE			
05:13	SUB IN: JOHNSON, CHELSEA			
05:10	TURNOVER (LOSTBALL) by PAZ Y PUENTE, JESSICA			
04:55		73-44	H 29	GOOD! JUMPER by RIVERS, AMBER [PNT]
04:55				ASSIST by ROBINSON, JASMINE
04:31	MISSED 3PTR by BOWIE, JA'KAYLA			
04:28	REBOUND (OFF) by KING, KESLYN			



Time	VISITORS: Texas State	Score	Margin	HOME: Troy
04:23	MISSED JUMPER by KING, KESLYN			
04:18				REBOUND (DEF) by RIVERS, AMBER
04:11				FOUL (OFF) by RIVERS, AMBER
04:11				TURNOVER (OFFENSIVE) by RIVERS, AMBER
04:11				
04:11	SUB OUT: JOHNSON, CHELSEA			
04:11	SUB IN: REED, JAEDA			
03:41				FOUL (PERSONAL) by DYE, ALEXUS
03:41	MISSED FT by JOHNSON, JAYLA			
03:41	REBOUND (OFF) by TEAM			
03:41	GOOD! FT by JOHNSON, JAYLA	73-45	H 28	
03:31				MISSED 3PTR by ROBINSON, JASMINE
03:28				REBOUND (OFF) by ROBINSON, KAYLA
03:23				MISSED JUMPER by RIVERS, AMBER
03:22	REBOUND (DEF) by REED, JAEDA			
03:22				FOUL (PERSONAL) by DYE, ALEXUS
03:22	MISSED FT by REED, JAEDA			
03:22	REBOUND (OFF) by TEAM			
03:22	GOOD! FT by REED, JAEDA	73-46	H 27	
03:22	SUB OUT: REED, JAEDA			
03:22	SUB IN: JOHNSON, CHELSEA			
03:11		75-46	H 29	GOOD! JUMPER by RIVERS, AMBER [PNT]
03:11				ASSIST by ROBINSON, JASMINE
02:47	MISSED JUMPER by JOHNSON, JAYLA			
02:47				BLOCK by DYE, ALEXUS
02:43				REBOUND (DEF) by DYE, ALEXUS
02:41				MISSED 3PTR by ROBINSON, JASMINE
02:38	REBOUND (DEF) by JOHNSON, JAYLA			
02:25	MISSED JUMPER by KING, KESLYN			
02:25				BLOCK by JOHNSON, TIYAH
02:21				REBOUND (DEF) by JOHNSON, TIYAH
02:20				MISSED 3PTR by ROBINSON, KAYLA
02:15				REBOUND (OFF) by DYE, ALEXUS
02:15		77-46	H 31	GOOD! LAYUP by DYE, ALEXUS
01:43	MISSED LAYUP by JOHNSON, JAYLA			
01:39				REBOUND (DEF) by DYE, ALEXUS
01:37		79-46	H 33	GOOD! LAYUP by JOHNSON, TIYAH [FB]
01:37				ASSIST by DYE, ALEXUS
01:24	TIMEOUT TEAM			
01:24				SUB OUT: ROBINSON, JASMINE
01:24				SUB IN: SHAW, SHAWNNTA
01:11	GOOD! LAYUP by JOHNSON, CHELSEA	79-48	H 31	
01:11	ASSIST by PAZ Y PUENTE, JESSICA			
01:02				MISSED 3PTR by RIVERS, AMBER
00:58				REBOUND (OFF) by DYE, ALEXUS
00:56				MISSED JUMPER by RIVERS, AMBER
00:53				REBOUND (OFF) by DYE, ALEXUS
00:51		82-48	H 34	GOOD! 3PTR by JOHNSON, TIYAH
00:51				ASSIST by DYE, ALEXUS
00:42				FOUL (PERSONAL) by SHAW, SHAWNNTA
00:42	GOOD! FT by PAZ Y PUENTE, JESSICA	82-49	H 33	
00:42	GOOD! FT by PAZ Y PUENTE, JESSICA	82-50	H 32	
00:24		84-50	H 34	GOOD! LAYUP by JOHNSON, TIYAH
00:07	MISSED 3PTR by JOHNSON, JAYLA			
00:03				REBOUND (DEF) by ROBINSON, KAYLA

Texas State 50, Troy 84

Points from (This Period)	TSU	TRY
In the Paint	4	16
Off Turns	1	4
2nd Chance	0	5
Fast Break	0	4
Bench	5	20



**Official Scoring/Possession Reference Chart**  
**Texas State vs Troy**  
**Period 1**  
**January 23, 2020 at Trojan Arena - Troy, Ala.**



**Period 1**

**Starters:**

**Texas State:** 1 ALEXANDER, AVIONNE (G); 3 TAYLOR, KENNEDY (G); 24 HOLLE, BROOKE (G); 32 HOOD, DA'NASIA (F); 55 REED, JAEDA (C);

**Troy:** 4 ROBINSON, JASMINE (G); 10 SANDIFER, JANIAH (G); 12 WINCHESTER, HARRIET (G); 20 JAMES, JAPONICA (F); 32 RODGERS, KATE (F);

Time	VISITORS: Texas State	Score	Margin	HOME: Troy
09:49		2-0	H 2	GOOD! LAYUP by RODGERS, KATE
09:13	GOOD! JUMPER by HOLLE, BROOKE	2-2	T	
08:53	GOOD! FT by ALEXANDER, AVIONNE	2-3	V 1	
07:55		4-3	H 1	GOOD! LAYUP by JAMES, JAPONICA
06:49		5-3	H 2	GOOD! FT by JAMES, JAPONICA [FB]
06:49		6-3	H 3	GOOD! FT by JAMES, JAPONICA [FB]
06:03		9-3	H 6	GOOD! 3PTR by SANDIFER, JANIAH
04:57	GOOD! JUMPER by JOHNSON, CHELSEA	9-5	H 4	
04:14	GOOD! JUMPER by TAYLOR, KENNEDY [FB]	9-7	H 2	
03:36		11-7	H 4	GOOD! JUMPER by MOORE, TYASIA [PNT]
02:11	GOOD! FT by TAYLOR, KENNEDY	11-8	H 3	
02:11	GOOD! FT by TAYLOR, KENNEDY	11-9	H 2	
01:56	GOOD! LAYUP by JOHNSON, JAYLA [FB/PNT]	11-11	T	
01:24	GOOD! LAYUP by HOLLE, BAILEY	11-13	V 2	
01:05	GOOD! FT by HOLLE, BAILEY [FB]	11-14	V 3	
00:10		13-14	V 1	GOOD! LAYUP by MOORE, TYASIA
00:00	GOOD! 3PTR by BOWIE, JA'KAYLA	13-17	V 4	

**Texas State 17, Troy 13**



**Official Scoring/Possession Reference Chart**  
**Texas State vs Troy**  
**Period 2**  
**January 23, 2020 at Trojan Arena - Troy, Ala.**



**Period 2**

**Starters:**

**Texas State:** 1 ALEXANDER, AVIONNE (G); 3 TAYLOR, KENNEDY (G); 24 HOLLE, BROOKE (G); 32 HOOD, DA'NASIA (F); 55 REED, JAEDA (C);

**Troy:** 4 ROBINSON, JASMINE (G); 10 SANDIFER, JANIAH (G); 12 WINCHESTER, HARRIET (G); 20 JAMES, JAPONICA (F); 32 RODGERS, KATE (F);

Time	VISITORS: Texas State	Score	Margin	HOME: Troy
09:49	GOOD! JUMPER by JOHNSON, JAYLA	13-19	V 6	
09:42		16-19	V 3	GOOD! 3PTR by JOHNSON, TIYAH [FB]
08:42		17-19	V 2	GOOD! FT by JAMES, JAPONICA
08:42		18-19	V 1	GOOD! FT by JAMES, JAPONICA
08:30	GOOD! JUMPER by JOHNSON, JAYLA	18-21	V 3	
08:21		20-21	V 1	GOOD! LAYUP by JAMES, JAPONICA [FB]
08:09	GOOD! FT by TAYLOR, KENNEDY	20-22	V 2	
07:17		22-22	T	GOOD! LAYUP by JAMES, JAPONICA
06:35		24-22	H 2	GOOD! LAYUP by JAMES, JAPONICA
05:54		25-22	H 3	GOOD! FT by JAMES, JAPONICA
04:50		27-22	H 5	GOOD! LAYUP by WINCHESTER, HARRIET [FB]
03:26		29-22	H 7	GOOD! LAYUP by RIVERS, AMBER
02:42		32-22	H 10	GOOD! 3PTR by ROBINSON, JASMINE
02:15		33-22	H 11	GOOD! FT by JAMES, JAPONICA [FB]
01:48	GOOD! JUMPER by JOHNSON, JAYLA [PNT]	33-24	H 9	
01:35		34-24	H 10	GOOD! FT by JAMES, JAPONICA
01:35		35-24	H 11	GOOD! FT by JAMES, JAPONICA
00:02	GOOD! FT by ALEXANDER, AVIONNE	35-25	H 10	
00:02	GOOD! FT by ALEXANDER, AVIONNE	35-26	H 9	

**Texas State 26, Troy 35**



**Official Scoring/Possession Reference Chart**  
**Texas State vs Troy**  
**Period 3**  
**January 23, 2020 at Trojan Arena - Troy, Ala.**



**Period 3**

**Starters:**

**Texas State:** 1 ALEXANDER, AVIONNE (G); 3 TAYLOR, KENNEDY (G); 24 HOLLE, BROOKE (G); 32 HOOD, DA'NASIA (F); 55 REED, JAEDA (C);

**Troy:** 4 ROBINSON, JASMINE (G); 10 SANDIFER, JANIAH (G); 12 WINCHESTER, HARRIET (G); 20 JAMES, JAPONICA (F); 32 RODGERS, KATE (F);

Time	VISITORS: Texas State	Score	Margin	HOME: Troy
09:29	GOOD! 3PTR by TAYLOR, KENNEDY	35-29	H 6	
09:20		37-29	H 8	GOOD! LAYUP by JAMES, JAPONICA [FB]
08:09		40-29	H 11	GOOD! 3PTR by WINCHESTER, HARRIET
07:32		42-29	H 13	GOOD! LAYUP by JAMES, JAPONICA [FB]
06:44	GOOD! FT by JOHNSON, JAYLA	42-30	H 12	
06:36		44-30	H 14	GOOD! LAYUP by JAMES, JAPONICA
05:58		46-30	H 16	GOOD! LAYUP by JAMES, JAPONICA
05:23	GOOD! FT by HOLLE, BAILEY	46-31	H 15	
05:23	GOOD! FT by HOLLE, BAILEY	46-32	H 14	
05:02	GOOD! 3PTR by HOLLE, BAILEY	46-35	H 11	
04:53		49-35	H 14	GOOD! 3PTR by ROBINSON, JASMINE
04:25		52-35	H 17	GOOD! 3PTR by ROBINSON, JASMINE
03:53		54-35	H 19	GOOD! LAYUP by JAMES, JAPONICA [FB]
03:33	GOOD! FT by ALEXANDER, AVIONNE	54-36	H 18	
03:33	GOOD! FT by ALEXANDER, AVIONNE	54-37	H 17	
03:17		56-37	H 19	GOOD! LAYUP by DYE, ALEXUS
03:15		57-37	H 20	GOOD! FT by DYE, ALEXUS
02:50		59-37	H 22	GOOD! LAYUP by DYE, ALEXUS [FB]
02:08	GOOD! 3PTR by HOOD, DA'NASIA	59-40	H 19	
01:18		61-40	H 21	GOOD! LAYUP by DYE, ALEXUS
01:18		62-40	H 22	GOOD! FT by DYE, ALEXUS
00:59	GOOD! LAYUP by REED, JAEDA	62-42	H 20	

**Texas State 42, Troy 62**



**Official Scoring/Possession Reference Chart**  
**Texas State vs Troy**  
**Period 4**  
**January 23, 2020 at Trojan Arena - Troy, Ala.**



**Period 4**

**Starters:**

**Texas State:** 1 ALEXANDER, AVIONNE (G); 3 TAYLOR, KENNEDY (G); 24 HOLLE, BROOKE (G); 32 HOOD, DA'NASIA (F); 55 REED, JAEDA (C);

**Troy:** 4 ROBINSON, JASMINE (G); 10 SANDIFER, JANIAH (G); 12 WINCHESTER, HARRIET (G); 20 JAMES, JAPONICA (F); 32 RODGERS, KATE (F);

Time	VISITORS: Texas State	Score	Margin	HOME: Troy
09:43	GOOD! LAYUP by REED, JAEDA	62-44	H 18	
09:33		65-44	H 21	GOOD! 3PTR by ROBINSON, KAYLA
07:30		67-44	H 23	GOOD! LAYUP by JAMES, JAPONICA [FB]
07:04		69-44	H 25	GOOD! LAYUP by RIVERS, AMBER [PNT]
05:31		71-44	H 27	GOOD! LAYUP by DYE, ALEXUS
04:55		73-44	H 29	GOOD! JUMPER by RIVERS, AMBER [PNT]
03:41	GOOD! FT by JOHNSON, JAYLA	73-45	H 28	
03:22	GOOD! FT by REED, JAEDA	73-46	H 27	
03:11		75-46	H 29	GOOD! JUMPER by RIVERS, AMBER [PNT]
02:15		77-46	H 31	GOOD! LAYUP by DYE, ALEXUS
01:37		79-46	H 33	GOOD! LAYUP by JOHNSON, TIYAH [FB]
01:11	GOOD! LAYUP by JOHNSON, CHELSEA	79-48	H 31	
00:51		82-48	H 34	GOOD! 3PTR by JOHNSON, TIYAH
00:42	GOOD! FT by PAZ Y PUENTE, JESSICA	82-49	H 33	
00:42	GOOD! FT by PAZ Y PUENTE, JESSICA	82-50	H 32	
00:24		84-50	H 34	GOOD! LAYUP by JOHNSON, TIYAH

**Texas State 50, Troy 84**



**Official Substitutions Log**  
**Texas State vs Troy**  
**Period 1**  
**January 23, 2020 at Trojan Arena - Troy, Ala.**



VISITORS: Texas State	Time	Score	HOME: Troy
1 ALEXANDER, AVIONNE			4 ROBINSON, JASMINE
3 TAYLOR, KENNEDY			10 SANDIFER, JANIAH
24 HOLLE, BROOKE			12 WINCHESTER, HARRIET
32 HOOD, DA'NASIA			20 JAMES, JAPONICA
55 REED, JAEDA			32 RODGERS, KATE
	06:49	3-4	SUB OUT: RODGERS, KATE
	06:49		SUB IN: DYE, ALEXUS
SUB OUT: 1 ALEXANDER, AVIONNE	06:49		
SUB IN: 33 HOLLE, BAILEY	06:49		
	05:21	3-9	SUB OUT: ROBINSON, JASMINE
	05:21		SUB OUT: SANDIFER, JANIAH
	05:21		SUB OUT: JAMES, JAPONICA
	05:21		SUB IN: ROSARIO, EMELY
	05:21		SUB IN: ROBINSON, KAYLA
	05:21		SUB IN: RIVERS, AMBER
SUB OUT: 24 HOLLE, BROOKE	05:21		
SUB OUT: 55 REED, JAEDA	05:21		
SUB IN: 1 ALEXANDER, AVIONNE	05:21		
SUB IN: 20 JOHNSON, CHELSEA	05:21		
	04:43	5-9	SUB OUT: RIVERS, AMBER
	04:43		SUB IN: MOORE, TYASIA
	04:25	5-9	SUB OUT: WINCHESTER, HARRIET
	04:25		SUB IN: JOHNSON, TIYAH
SUB OUT: 20 JOHNSON, CHELSEA	03:56	7-9	
SUB IN: 00 JOHNSON, JAYLA	03:56		
	02:11	7-11	SUB OUT: MOORE, TYASIA
	02:11		SUB OUT: DYE, ALEXUS
	02:11		SUB IN: JAMES, JAPONICA
	02:11		SUB IN: RIVERS, AMBER
SUB OUT: 32 HOOD, DA'NASIA	02:11		
SUB IN: 55 REED, JAEDA	02:11		
	01:47	11-11	SUB OUT: ROSARIO, EMELY
	01:47		SUB IN: ROBINSON, JASMINE
SUB OUT: 1 ALEXANDER, AVIONNE	01:47		
SUB IN: 15 BOWIE, JA'KAYLA	01:47		
	01:05	13-11	SUB OUT: ROBINSON, KAYLA
	01:05		SUB IN: MOORE, TYASIA

**Texas State 17, Troy 13**



**Official Substitutions Log**  
**Texas State vs Troy**  
**Period 2**  
**January 23, 2020 at Trojan Arena - Troy, Ala.**



VISITORS: Texas State	Time	Score	HOME: Troy
1 ALEXANDER, AVIONNE			4 ROBINSON, JASMINE
3 TAYLOR, KENNEDY			10 SANDIFER, JANIAH
24 HOLLE, BROOKE			12 WINCHESTER, HARRIET
32 HOOD, DA'NASIA			20 JAMES, JAPONICA
55 REED, JAEDA			32 RODGERS, KATE
	09:52	-	SUB OUT: RIVERS, AMBER
	09:52		SUB IN: RODGERS, KATE
	08:09	21-20	SUB OUT: ROBINSON, JASMINE
	08:09		SUB IN: ROBINSON, KAYLA
SUB OUT: 55 REED, JAEDA	08:09		
SUB IN: 32 HOOD, DA'NASIA	08:09		
	08:09		SUB OUT: JOHNSON, TIYAH
	08:09		SUB IN: SANDIFER, JANIAH
	06:43	22-22	SUB OUT: MOORE, TYASIA
	06:43		SUB OUT: RODGERS, KATE
	06:43		SUB IN: WINCHESTER, HARRIET
	06:43		SUB IN: RIVERS, AMBER
SUB OUT: 3 TAYLOR, KENNEDY	06:43		
SUB IN: 1 ALEXANDER, AVIONNE	06:43		
SUB OUT: 00 JOHNSON, JAYLA	06:20	22-24	
SUB IN: 20 JOHNSON, CHELSEA	06:20		
	05:46	22-25	SUB OUT: JAMES, JAPONICA
	05:46		SUB OUT: RIVERS, AMBER
	05:46		SUB IN: DYE, ALEXUS
	05:46		SUB IN: RODGERS, KATE
SUB OUT: 32 HOOD, DA'NASIA	05:38	22-25	
SUB IN: 3 TAYLOR, KENNEDY	05:38		
	04:19	22-27	SUB OUT: ROBINSON, KAYLA
	04:19		SUB IN: ROBINSON, JASMINE
SUB OUT: 33 HOLLE, BAILEY	04:19		
SUB IN: 00 JOHNSON, JAYLA	04:19		
	04:05	22-27	SUB OUT: DYE, ALEXUS
	04:05		SUB OUT: RODGERS, KATE
	04:05		SUB IN: JAMES, JAPONICA
	04:05		SUB IN: RIVERS, AMBER
	02:15	22-32	SUB OUT: ROBINSON, JASMINE
	02:15		SUB IN: ROSARIO, EMELY
SUB OUT: 20 JOHNSON, CHELSEA	02:15		
SUB IN: 32 HOOD, DA'NASIA	02:15		
SUB IN: 33 HOLLE, BAILEY	02:15		
SUB OUT: 15 BOWIE, JA'KAYLA	02:15		
SUB OUT: 00 JOHNSON, JAYLA	01:35	24-33	
SUB IN: 20 JOHNSON, CHELSEA	01:35		
	01:35		SUB OUT: WINCHESTER, HARRIET
	01:35		SUB IN: MOORE, TYASIA
	00:02	26-35	SUB OUT: ROSARIO, EMELY
	00:02		SUB IN: ROBINSON, JASMINE

**Texas State 26, Troy 35**



**Official Substitutions Log**  
**Texas State vs Troy**  
**Period 3**  
**January 23, 2020 at Trojan Arena - Troy, Ala.**



VISITORS: Texas State	Time	Score	HOME: Troy
1 ALEXANDER, AVIONNE			4 ROBINSON, JASMINE
3 TAYLOR, KENNEDY			10 SANDIFER, JANIAH
24 HOLLE, BROOKE			12 WINCHESTER, HARRIET
32 HOOD, DA'NASIA			20 JAMES, JAPONICA
55 REED, JAEDA			32 RODGERS, KATE
	10:00	-	SUB OUT: MOORE, TYASIA
	10:00		SUB OUT: RIVERS, AMBER
	10:00		SUB IN: WINCHESTER, HARRIET
	10:00		SUB IN: RODGERS, KATE
SUB OUT: 20 JOHNSON, CHELSEA	10:00		
SUB OUT: 33 HOLLE, BAILEY	10:00		
SUB IN: 24 HOLLE, BROOKE	10:00		
SUB IN: 55 REED, JAEDA	10:00		
SUB OUT: 32 HOOD, DA'NASIA	08:16	29-37	
SUB IN: 00 JOHNSON, JAYLA	08:16		
SUB OUT: 00 JOHNSON, JAYLA	06:36	30-44	
SUB OUT: 1 ALEXANDER, AVIONNE	06:36		
SUB IN: 15 BOWIE, JA'KAYLA	06:36		
SUB IN: 33 HOLLE, BAILEY	06:36		
SUB OUT: 55 REED, JAEDA	05:23	30-46	
SUB IN: 32 HOOD, DA'NASIA	05:23		
	03:47	35-54	SUB OUT: SANDIFER, JANIAH
	03:47		SUB OUT: WINCHESTER, HARRIET
	03:47		SUB OUT: JAMES, JAPONICA
	03:47		SUB OUT: RODGERS, KATE
	03:47		SUB IN: MOORE, TYASIA
	03:47		SUB IN: JOHNSON, TIYAH
	03:47		SUB IN: DYE, ALEXUS
	03:47		SUB IN: RIVERS, AMBER
SUB OUT: 24 HOLLE, BROOKE	03:47		
SUB IN: 1 ALEXANDER, AVIONNE	03:47		
SUB OUT: 15 BOWIE, JA'KAYLA	03:33	37-54	
SUB IN: 20 JOHNSON, CHELSEA	03:33		
	01:53	40-59	SUB OUT: ROBINSON, JASMINE
	01:53		SUB IN: ROBINSON, KAYLA
SUB OUT: 1 ALEXANDER, AVIONNE	01:53		
SUB IN: 24 HOLLE, BROOKE	01:53		
SUB OUT: 20 JOHNSON, CHELSEA	01:18	40-61	
SUB IN: 55 REED, JAEDA	01:18		
	00:13	42-62	SUB OUT: JOHNSON, TIYAH
	00:13		SUB IN: ROSARIO, EMELY

**Texas State 42, Troy 62**



**Official Substitutions Log**  
**Texas State vs Troy**  
**Period 4**  
**January 23, 2020 at Trojan Arena - Troy, Ala.**



VISITORS: Texas State	Time	Score	HOME: Troy
1 ALEXANDER, AVIONNE			4 ROBINSON, JASMINE
3 TAYLOR, KENNEDY			10 SANDIFER, JANIAH
24 HOLLE, BROOKE			12 WINCHESTER, HARRIET
32 HOOD, DA'NASIA			20 JAMES, JAPONICA
55 REED, JAEDA			32 RODGERS, KATE
	10:00	-	SUB OUT: DYE, ALEXUS
	10:00		SUB OUT: RIVERS, AMBER
	10:00		SUB IN: JAMES, JAPONICA
	10:00		SUB IN: RODGERS, KATE
SUB OUT: 32 HOOD, DA'NASIA	08:36	44-65	
SUB OUT: 55 REED, JAEDA	08:36		
SUB IN: 00 JOHNSON, JAYLA	08:36		
SUB IN: 15 BOWIE, JA'KAYLA	08:36		
SUB OUT: 33 HOLLE, BAILEY	08:08	44-65	
SUB IN: 13 KING, KESLYN	08:08		
	07:08	44-67	SUB OUT: JAMES, JAPONICA
	07:08		SUB OUT: RODGERS, KATE
	07:08		SUB IN: DYE, ALEXUS
	07:08		SUB IN: RIVERS, AMBER
SUB OUT: 3 TAYLOR, KENNEDY	07:08		
SUB IN: 5 PAZ Y PUENTE, JESSICA	07:08		
	05:13	44-71	SUB OUT: ROSARIO, EMELY
	05:13		SUB OUT: MOORE, TYASIA
	05:13		SUB IN: ROBINSON, JASMINE
	05:13		SUB IN: JOHNSON, TIYAH
SUB OUT: 24 HOLLE, BROOKE	05:13		
SUB IN: 20 JOHNSON, CHELSEA	05:13		
SUB OUT: 20 JOHNSON, CHELSEA	04:11	44-73	
SUB IN: 55 REED, JAEDA	04:11		
SUB OUT: 55 REED, JAEDA	03:22	46-73	
SUB IN: 20 JOHNSON, CHELSEA	03:22		
	01:24	46-79	SUB OUT: ROBINSON, JASMINE
	01:24		SUB IN: SHAW, SHAWNITA

**Texas State 50, Troy 84**

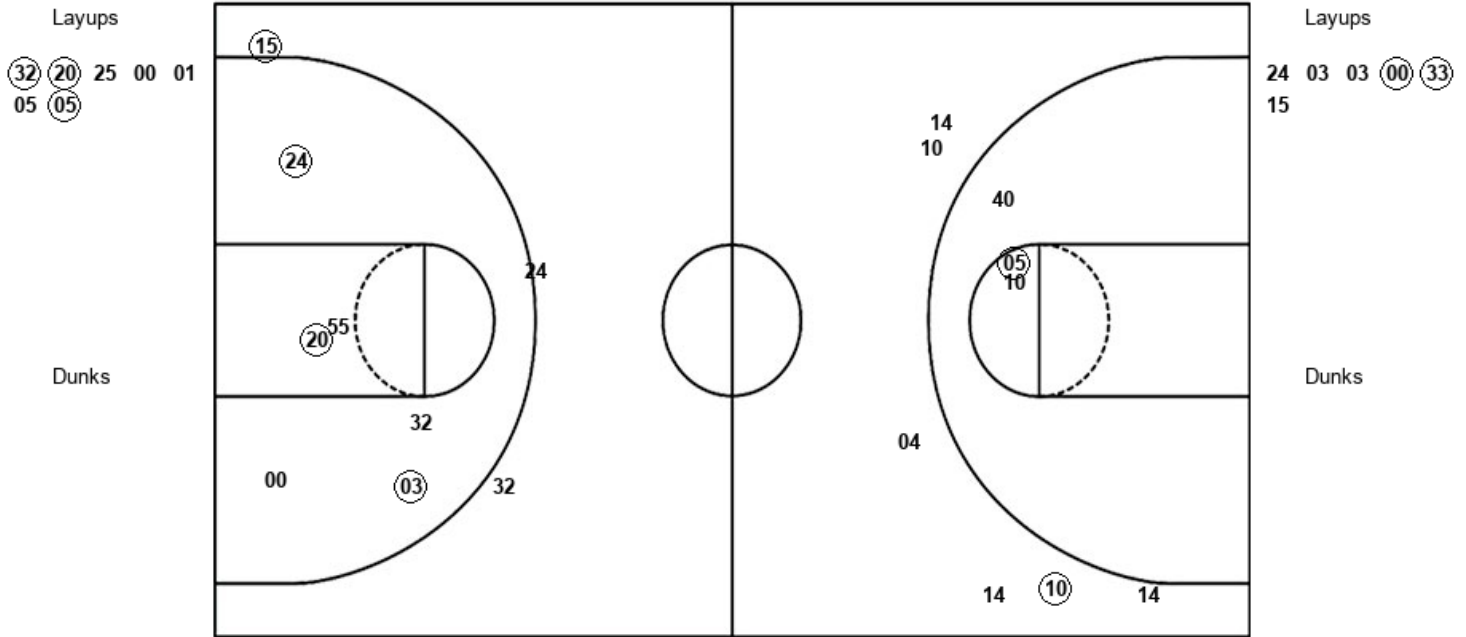


Official Shot Chart  
**Texas State vs Troy**  
 PERIOD 1 Shots  
 January 23, 2020 at Trojan Arena - Troy, Ala.



**Troy**

**Texas State**



TRY : Period 1	Made	Att	Pct
Layups	3	7	42.9
Dunks	0	0	0
2PT Field Goals	4	10	40.0
3PT Field Goals	1	6	16.7
<b>Total Field Goals</b>	<b>5</b>	<b>16</b>	<b>31.3</b>

TSU : Period 1	Made	Att	Pct
Layups	2	6	33.3
Dunks	0	0	0
2PT Field Goals	5	12	41.7
3PT Field Goals	1	3	33.3
<b>Total Field Goals</b>	<b>6</b>	<b>15</b>	<b>40.0</b>

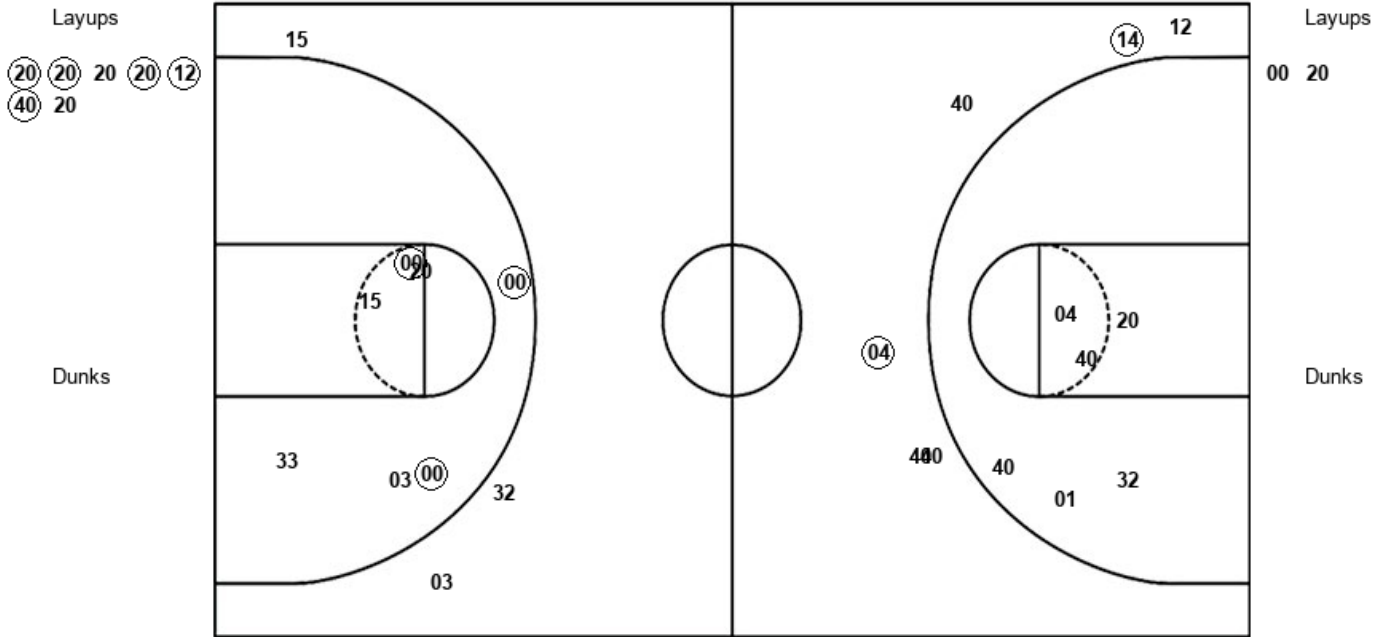


Official Shot Chart  
**Texas State vs Troy**  
 PERIOD 2 Shots  
 January 23, 2020 at Trojan Arena - Troy, Ala.



Troy

Texas State



TRY : Period 2	Made	Att	Pct
Layups	5	7	71.4
Dunks	0	0	0
2PT Field Goals	5	13	38.5
3PT Field Goals	2	6	33.3
<b>Total Field Goals</b>	<b>7</b>	<b>19</b>	<b>36.8</b>

TSU : Period 2	Made	Att	Pct
Layups	0	2	00.0
Dunks	0	0	0
2PT Field Goals	3	9	33.3
3PT Field Goals	0	3	00.0
<b>Total Field Goals</b>	<b>3</b>	<b>12</b>	<b>25.0</b>

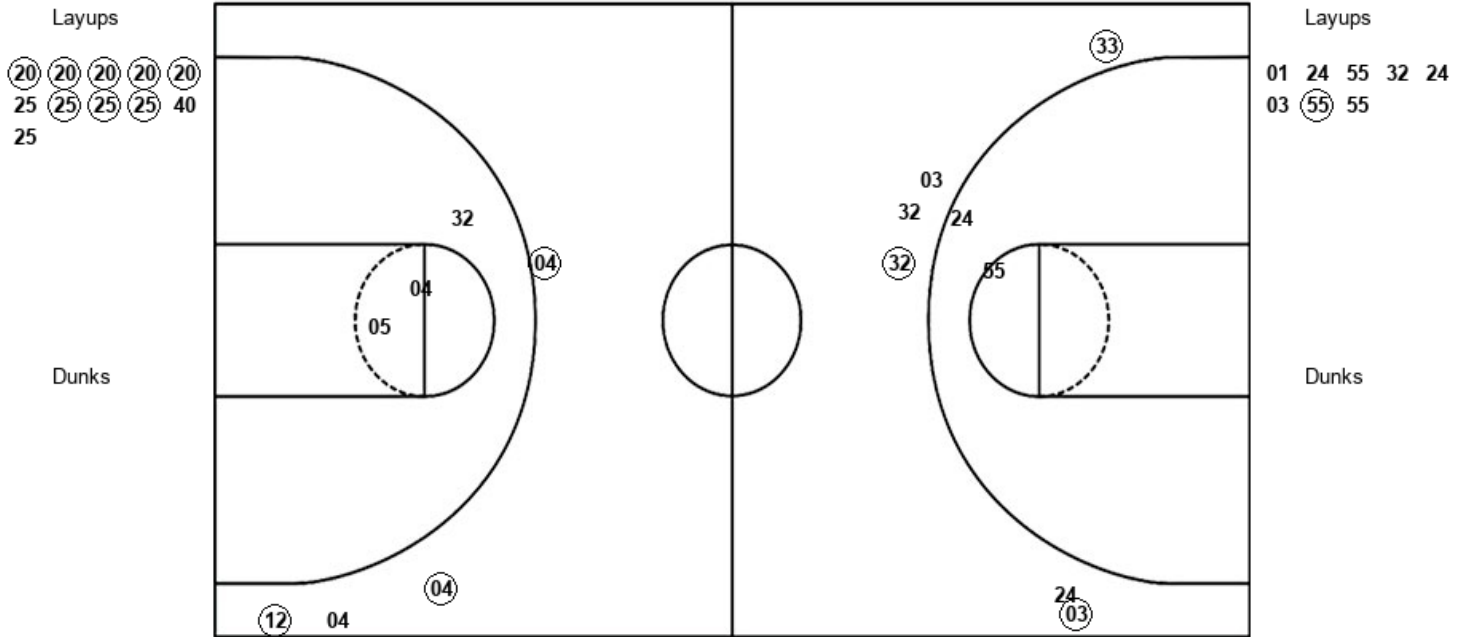


Official Shot Chart  
**Texas State vs Troy**  
 PERIOD 3 Shots  
 January 23, 2020 at Trojan Arena - Troy, Ala.



Troy

Texas State



TRY : Period 3	Made	Att	Pct
Layups	8	11	72.7
Dunks	0	0	0
2PT Field Goals	8	14	57.1
3PT Field Goals	3	4	75.0
<b>Total Field Goals</b>	<b>11</b>	<b>18</b>	<b>61.1</b>

TSU : Period 3	Made	Att	Pct
Layups	1	8	12.5
Dunks	0	0	0
2PT Field Goals	1	10	10.0
3PT Field Goals	3	6	50.0
<b>Total Field Goals</b>	<b>4</b>	<b>16</b>	<b>25.0</b>





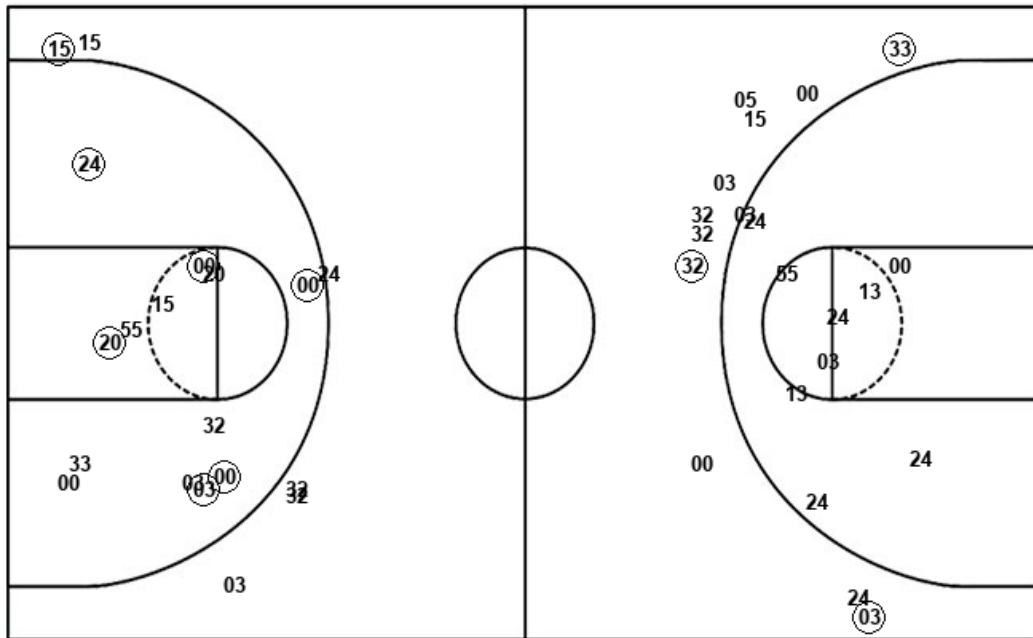


Official Shot Chart  
**Texas State vs Troy**  
 Texas State Team Shots  
 January 23, 2020 at Trojan Arena - Troy, Ala.



Layups

Dunks



Layups

Dunks

24 03 03 00 33  
 15 00 20 01 24  
 55 32 24 03 55  
 55 55 00 00 20

TSU : Period 1	Made	Att	Pct
Layups	2	6	33.3
Dunks	0	0	0
2PT Field Goals	5	12	41.7
3PT Field Goals	1	3	33.3
<b>Total Field Goals</b>	<b>6</b>	<b>15</b>	<b>40.0</b>

TSU : Period 3	Made	Att	Pct
Layups	1	8	12.5
Dunks	0	0	0
2PT Field Goals	1	10	10.0
3PT Field Goals	3	6	50.0
<b>Total Field Goals</b>	<b>4</b>	<b>16</b>	<b>25.0</b>

TSU : Period 2	Made	Att	Pct
Layups	0	2	00.0
Dunks	0	0	0
2PT Field Goals	3	9	33.3
3PT Field Goals	0	3	00.0
<b>Total Field Goals</b>	<b>3</b>	<b>12</b>	<b>25.0</b>

TSU : Period 4	Made	Att	Pct
Layups	2	4	50.0
Dunks	0	0	0
2PT Field Goals	2	12	16.7
3PT Field Goals	0	5	00.0
<b>Total Field Goals</b>	<b>2</b>	<b>17</b>	<b>11.8</b>

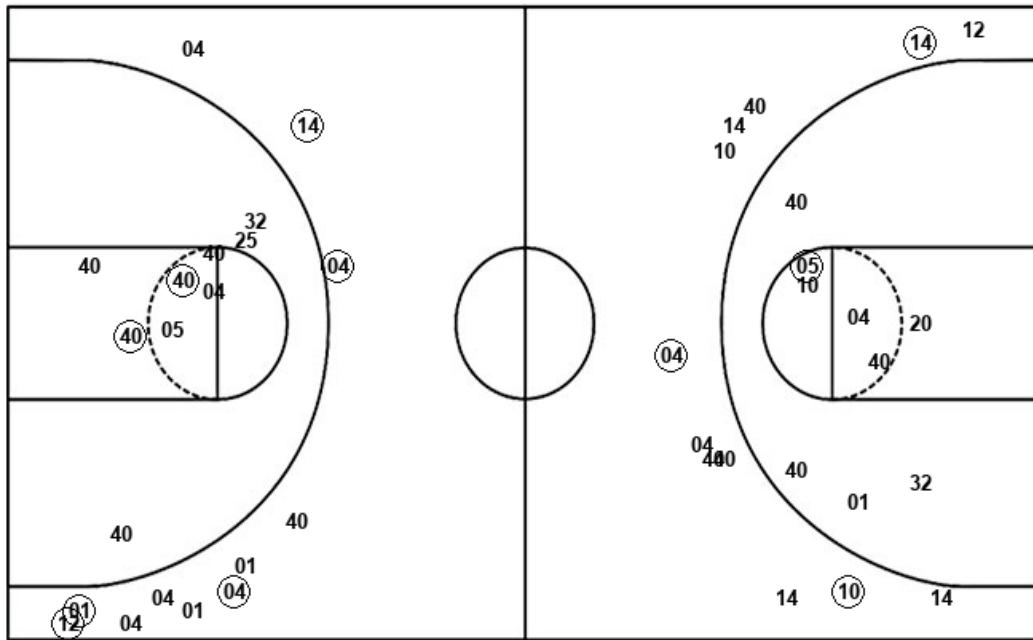


**Official Shot Chart**  
**Texas State vs Troy**  
 Troy Team Shots  
 January 23, 2020 at Trojan Arena - Troy, Ala.



Layups

Dunks



Layups

Dunks

32	20	25	00	01
05	05	20	20	20
20	12	40	20	20
20	20	20	20	25
25	25	25	40	25
20	40	25	25	14
14				

TRY : Period 1	Made	Att	Pct
Layups	3	7	42.9
Dunks	0	0	0
2PT Field Goals	4	10	40.0
3PT Field Goals	1	6	16.7
<b>Total Field Goals</b>	<b>5</b>	<b>16</b>	<b>31.3</b>

TRY : Period 3	Made	Att	Pct
Layups	8	11	72.7
Dunks	0	0	0
2PT Field Goals	8	14	57.1
3PT Field Goals	3	4	75.0
<b>Total Field Goals</b>	<b>11</b>	<b>18</b>	<b>61.1</b>

TRY : Period 2	Made	Att	Pct
Layups	5	7	71.4
Dunks	0	0	0
2PT Field Goals	5	13	38.5
3PT Field Goals	2	6	33.3
<b>Total Field Goals</b>	<b>7</b>	<b>19</b>	<b>36.8</b>

TRY : Period 4	Made	Att	Pct
Layups	6	6	100.0
Dunks	0	0	0
2PT Field Goals	8	12	66.7
3PT Field Goals	2	7	28.6
<b>Total Field Goals</b>	<b>10</b>	<b>19</b>	<b>52.6</b>