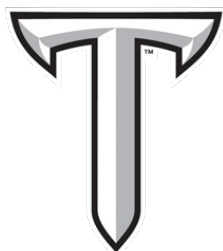


FINAL SCORE



Fort Valley St.

52



Troy

101

November 05, 2019 • Trojan Arena - Troy

FINAL STATISTICS

Official Box Score
Fort Valley St. vs Troy
Game Totals -- Final Statistics
November 05, 2019 at Trojan Arena - Troy



Fort Valley St. 52

No.	Player	S	Pts	FG	3FG	FT	OR	DR	TR	PF	A	TO	Blk	Stl	Min	+/-
11	FRANKLIN, ALICIA	PG	3	1-4	0-0	1-1	2	1	3	1	4	8	0	1	24	-25
12	NEAL, JADA	G	4	1-4	0-1	2-2	1	4	5	4	1	7	2	3	23	-35
13	CARTER, NOLA	F	7	3-7	0-0	1-2	1	2	3	5	3	7	0	1	21	-24
22	MYERS, TORRI	F	2	1-5	0-3	0-0	0	3	3	3	0	3	1	0	10	-19
44	MOYE, JALIN	C	0	0-2	0-0	0-0	2	0	2	1	0	1	0	0	8	-12
03	CULBRETH, NIKKI	G	11	4-7	3-5	0-0	0	3	3	3	2	2	0	1	19	-28
04	BROWN, JAH'NE		10	4-10	2-6	0-0	1	3	4	1	1	3	0	0	13	-20
10	HEIGHT, AMIAH	F	0	0-1	0-0	0-0	0	1	1	0	0	0	0	0	6	1
20	GREEN, ALEXIA	C	3	1-5	0-0	1-2	0	2	2	3	0	1	0	1	22	-19
21	DISMUKES, NYAH	G	0	0-5	0-1	0-0	1	2	3	3	1	4	0	2	12	-3
24	FANNING, TAZIHA	F	6	3-3	0-0	0-2	1	5	6	5	1	2	0	0	12	-11
31	JOHNSON, CEASIA	G	0	0-0	0-0	0-0	0	0	0	0	0	0	0	0	1	-4
34	SLEET, JADA	G	3	1-4	1-2	0-2	0	0	0	3	0	6	0	0	11	-16
45	CARROLL, JENAY	F	3	1-3	0-0	1-4	3	2	5	1	0	4	0	0	13	-19
52	BEARDEN, ASHLEY	C	0	0-0	0-0	0-0	1	0	1	2	1	0	0	0	4	-11
	TEAM						2	4	6	0		0				
TOTALS			52	20-60	6-18	6-15	15	32	47	35	14	48	3	9	200	

Shooting By Period

Period	FG	FG%	3FG	3FG%	FT	FT%
1st Qtr	5-16	31%	1-6	17%	1-2	50%
2nd Qtr	6-20	30%	3-7	43%	0-0	0%
3rd Qtr	5-15	33%	0-1	00%	0-2	00%
4th Qtr	4-9	44%	2-4	50%	5-11	45%
1st Half	11-36	31%	4-13	31%	1-2	50%
2nd Half	9-24	38%	2-5	40%	5-13	38%
Game	20-60	33.3%	6-18	33.3%	6-15	40.0%

Deadball Rebounds: 4,0

Last FG: 4th-02:39

Biggest Run: 5-0

Largest lead: By 2 at -

Technical Fouls: None.

Troy 101

No.	Player	S	Pts	FG	3FG	FT	OR	DR	TR	PF	A	TO	Blk	Stl	Min	+/-
04	ROBINSON, JASMINE	G	5	1-7	1-3	2-2	1	1	2	1	2	1	0	1	14	10
10	SANDIFER, JANIAH	G	2	0-7	0-5	2-2	4	0	4	0	4	0	0	1	19	36
11	LEBLANC, JASMINE	G	11	1-4	0-0	9-12	3	4	7	3	1	2	0	2	14	11
12	WINCHESTER, HARRIET	G	8	3-9	2-6	0-0	4	0	4	1	0	2	0	6	18	33
40	RIVERS, AMBER	F	10	4-13	2-8	0-0	1	2	3	1	0	1	0	0	16	25
00	ROSARIO, EMELY	G	0	0-3	0-1	0-0	1	1	2	1	2	2	1	0	16	21
01	ROBINSON, KAYLA	G	9	3-8	0-2	3-4	2	6	8	2	2	4	0	3	21	16
02	SHAW, SHAWNNTA	G	2	1-2	0-0	0-0	0	2	2	2	1	1	1	1	9	18
05	MOORE, TYASIA	F	12	3-7	1-1	5-5	2	5	7	2	1	3	0	5	18	18
14	JOHNSON, TIYAH	G	1	0-5	0-4	1-2	0	2	2	0	0	1	1	3	17	6
20	JAMES, JAPONICA	F	28	7-12	0-0	14-21	5	3	8	4	0	6	1	6	20	22
25	DYE, ALEXUS	F	13	4-8	0-0	5-5	2	3	5	1	0	0	0	4	19	29
	TEAM						4	1	5	0		0				
TOTALS			101	27-85	6-30	41-53	29	30	59	18	13	23	4	32	200	

Shooting By Period

Period	FG	FG%	3FG	3FG%	FT	FT%
1st Qtr	3-18	17%	2-8	25%	5-8	63%
2nd Qtr	10-21	48%	3-9	33%	12-14	86%
3rd Qtr	6-22	27%	1-9	11%	10-12	83%
4th Qtr	8-24	33%	0-4	00%	14-19	74%
1st Half	13-39	33%	5-17	29%	17-22	77%
2nd Half	14-46	30%	1-13	08%	24-31	77%
Game	27-85	31.8%	6-30	20.0%	41-53	77.4%

Deadball Rebounds: 9,0

Last FG: 4th-00:00

Biggest Run: 13-0

Largest lead: By 49 at -

Technical Fouls: None.

Game Notes:

Officials: Starr Jefferson, Jessica Fortner, Tim Buckner
 Attendance: 2539

Start Time: 07:02 PM ET
 End Time: 09:21 PM ET
 Game Duration: 2:19

Score	1st	2nd	3rd	4th	TOT
FVS	12	15	10	15	52
TRY	13	35	23	30	101

FVS led for 3:20. TRY led for 35:50.

Game was tied for 0:51.

Times tied: 94 Lead Changes: 0

Points from	FVS	TRY
In the Paint	20	36
Off Turns	7	54
2nd Chance	6	18
Fast Break	10	41
Bench	36	65

Official Box Score
Fort Valley St. vs Troy
First Half Statistics Only
November 05, 2019 at Trojan Arena - Troy



Fort Valley St. 27

No.	Player	S	Pts	FG	3FG	FT	OR	DR	TR	PF	A	TO	Blk	Stl	Min	+/-
10	HEIGHT, AMIAH	F	0	0-0	0-0	0-0	0	0	0	0	0	0	0	0	2	0
11	FRANKLIN, ALICIA	PG	0	0-3	0-0	0-0	2	1	3	1	3	3	0	1	16	-15
12	NEAL, JADA	G	0	0-2	0-0	0-0	1	2	3	2	0	1	1	1	12	-15
13	CARTER, NOLA	F	3	1-3	0-0	1-2	1	1	2	2	1	3	0	1	13	-12
20	GREEN, ALEXIA	C	2	1-4	0-0	0-0	0	0	0	1	0	0	0	1	13	-14
21	DISMUKES, NYAH	G	0	0-2	0-1	0-0	0	0	0	1	0	1	0	0	4	4
22	MYERS, TORRI	F	2	1-5	0-3	0-0	0	2	2	1	0	1	1	0	7	-7
24	FANNING, TAZIHA	F	4	2-2	0-0	0-0	0	5	5	2	1	2	0	0	7	-1
31	JOHNSON, CEASIA	G	0	0-0	0-0	0-0	0	0	0	0	0	0	0	0	0	0
34	SLEET, JADA	G	0	0-1	0-1	0-0	0	0	0	2	0	3	0	0	3	1
44	MOYE, JALIN	C	0	0-1	0-0	0-0	2	0	2	0	0	1	0	0	5	-9
52	BEARDEN, ASHLEY	C	0	0-0	0-0	0-0	0	0	0	0	0	0	0	0	0	0
45	CARROLL, JENAY	F	0	0-0	0-0	0-0	0	0	0	0	0	0	0	0	2	-3
03	CULBRETH, NIKKI	G	8	3-6	2-4	0-0	0	3	3	2	2	1	0	1	10	-17
04	BROWN, JAH'NE		8	3-7	2-4	0-0	1	1	2	0	0	0	0	0	8	-17
	TEAM		0	0-0	0-0	0-0	0	2	2	0	0	0	0	0	0	0
	TOTALS		27	11-36	4-13	1-2	7	17	24	14	7	16	2	5	100	

Shooting By Period

Period	FG	FG%	3FG	3FG%	FT	FT%
1st Qtr	5-16	31%	1-6	17%	1-2	50%
2nd Qtr	6-20	30%	3-7	43%	0-0	0%
1st Half	11-36	31%	4-13	31%	1-2	50%
Game	20-60	33.3%	6-18	33.3%	6-15	40.0%

Deadball Rebounds: 4,0
Last FG Half: FVS 2nd-00:37

Troy 48

No.	Player	S	Pts	FG	3FG	FT	OR	DR	TR	PF	A	TO	Blk	Stl	Min	+/-
00	ROSARIO, EMELY	G	0	0-1	0-0	0-0	0	1	1	0	2	1	1	0	8	9
01	ROBINSON, KAYLA	G	7	2-4	0-0	3-4	0	5	5	0	1	1	0	2	11	7
02	SHAW, SHAWNTA	G	0	0-1	0-0	0-0	0	2	2	1	1	1	0	0	3	8
04	ROBINSON, JASMINE	G	3	1-4	1-2	0-0	1	1	2	1	1	0	0	0	7	4
05	MOORE, TYASIA	F	9	3-4	1-1	2-2	0	2	2	1	0	0	0	2	10	12
10	SANDIFER, JANIAH	G	2	0-4	0-3	2-2	3	0	3	0	4	0	0	1	10	17
11	LEBLANC, JASMINE	G	1	0-0	0-0	1-2	1	2	3	2	1	1	0	0	4	4
12	WINCHESTER, HARRIET	G	6	2-4	2-4	0-0	0	0	0	1	0	0	0	1	9	14
14	JOHNSON, TIYAH	G	1	0-3	0-3	1-2	0	2	2	0	0	1	1	2	9	4
20	JAMES, JAPONICA	F	9	2-4	0-0	5-7	3	1	4	2	0	3	0	0	10	1
25	DYE, ALEXUS	F	7	2-4	0-0	3-3	0	0	0	0	0	0	0	3	9	6
40	RIVERS, AMBER	F	3	1-6	1-4	0-0	0	2	2	1	0	1	0	0	10	19
	TEAM		0	0-0	0-0	0-0	2	1	3	0	0	0	0	0	0	0
	TOTALS		48	13-39	5-17	17-22	10	19	29	9	10	9	2	11	100	

Shooting By Period

Period	FG	FG%	3FG	3FG%	FT	FT%
1st Qtr	3-18	17%	2-8	25%	5-8	63%
2nd Qtr	10-21	48%	3-9	33%	12-14	86%
1st Half	13-39	33%	5-17	29%	17-22	77%
Game	27-85	31.8%	6-30	20.0%	41-53	77.4%

Deadball Rebounds: 9,0
Last FG Half: TRY 2nd-00:00

Game Notes:

Officials: **Starr Jefferson, Jessica Fortner, Tim Buckner**
 Attendance: **2539**

Start Time: **07:02 PM ET**
 End Time: **09:21 PM ET**
 Game Duration: **2:19**

Score	1st	2nd	3rd	4th	TOT
FVS	12	15	10	15	52
TRY	13	35	23	30	101

Points from (This Period)	FVS	TRY
In the Paint	10	14
Off Turns	5	15
2nd Chance	2	2
Fast Break	3	17
Bench	22	33

Official Box Score
Fort Valley St. vs Troy
First Quarter Statistics Only
November 05, 2019 at Trojan Arena - Troy



Fort Valley St. 12

No.	Player	S	Pts	FG	3FG	FT	OR	DR	TR	PF	A	TO	Blk	Stl	Min	+/-
11	FRANKLIN, ALICIA	PG	0	0-2	0-0	0-0	2	0	2	0	0	0	0	1	9	-2
12	NEAL, JADA	G	0	0-0	0-0	0-0	0	0	0	1	0	0	0	0	6	-5
13	CARTER, NOLA	F	3	1-2	0-0	1-2	1	1	2	0	1	1	0	1	6	-4
22	MYERS, TORRI	F	2	1-5	0-3	0-0	0	2	2	1	0	1	1	0	6	-4
44	MOYE, JALIN	C	0	0-1	0-0	0-0	1	0	1	0	0	1	0	0	3	-1
03	CULBRETH, NIKKI	G	5	2-2	1-1	0-0	0	2	2	0	0	0	0	1	3	3
04	BROWN, JAH'NE		0	0-0	0-0	0-0	0	0	0	0	0	0	0	0	0	0
10	HEIGHT, AMIAH	F	0	0-0	0-0	0-0	0	0	0	0	0	0	0	0	0	0
20	GREEN, ALEXIA	C	0	0-0	0-0	0-0	0	0	0	0	0	0	0	1	6	3
21	DISMUKES, NYAH	G	0	0-2	0-1	0-0	0	0	0	0	0	1	0	0	3	3
24	FANNING, TAZIHA	F	2	1-1	0-0	0-0	0	5	5	1	1	2	0	0	6	1
31	JOHNSON, CEASIA	G	0	0-0	0-0	0-0	0	0	0	0	0	0	0	0	0	0
34	SLEET, JADA	G	0	0-1	0-1	0-0	0	0	0	2	0	3	0	0	3	1
45	CARROLL, JENAY	F	0	0-0	0-0	0-0	0	0	0	0	0	0	0	0	0	0
52	BEARDEN, ASHLEY	C	0	0-0	0-0	0-0	0	0	0	0	0	0	0	0	0	0
	TEAM						0	1	1	0		0				
	TOTALS		12	5-16	1-6	1-2	4	11	15	5	2	9	1	4	50	

Shooting By Period

Period	FG	FG%	3FG	3FG%	FT	FT%
1st Qtr	5-16	31%	1-6	17%	1-2	50%
2nd Qtr	6-20	30%	3-7	43%	0-0	0%
1st Half	5-16	31%	1-6	17%	1-2	50%
1st Half	11-36	31%	4-13	31%	1-2	50%
Game	20-60	33.3%	6-18	33.3%	6-15	40.0%

Deadball Rebounds: 4,0

Troy 13

No.	Player	S	Pts	FG	3FG	FT	OR	DR	TR	PF	A	TO	Blk	Stl	Min	+/-
04	ROBINSON, JASMINE	G	3	1-2	1-1	0-0	0	0	0	1	1	0	0	0	4	1
10	SANDIFER, JANIAH	G	0	0-2	0-1	0-0	2	0	2	0	0	0	0	1	3	1
11	LEBLANC, JASMINE	G	1	0-0	0-0	1-2	1	2	3	2	1	1	0	0	4	4
12	WINCHESTER, HARRIET	G	3	1-2	1-2	0-0	0	0	0	0	0	0	0	1	4	1
40	RIVERS, AMBER	F	0	0-5	0-3	0-0	0	1	1	0	0	1	0	0	6	4
00	ROSARIO, EMELY	G	0	0-1	0-0	0-0	0	1	1	0	1	0	0	0	3	-2
01	ROBINSON, KAYLA	G	4	1-3	0-0	2-2	0	1	1	0	0	0	0	1	6	0
02	SHAW, SHAWNATA	G	0	0-0	0-0	0-0	0	1	1	1	0	1	0	0	1	2
05	MOORE, TYASIA	F	0	0-0	0-0	0-0	0	0	0	0	0	0	0	0	3	0
14	JOHNSON, TIYAH	G	1	0-1	0-1	1-2	0	2	2	0	0	1	1	2	6	0
20	JAMES, JAPONICA	F	1	0-1	0-0	1-2	0	0	0	1	0	2	0	0	6	-3
25	DYE, ALEXUS	F	0	0-1	0-0	0-0	0	0	0	0	0	0	0	1	4	-3
	TEAM						2	0	2	0		0				
	TOTALS		13	3-18	2-8	5-8	5	8	13	5	3	6	1	6	50	

Shooting By Period

Period	FG	FG%	3FG	3FG%	FT	FT%
1st Qtr	3-18	17%	2-8	25%	5-8	63%
2nd Qtr	10-21	48%	3-9	33%	12-14	86%
1st Half	3-18	17%	2-8	25%	5-8	63%
1st Half	13-39	33%	5-17	29%	17-22	77%
Game	27-85	31.8%	6-30	20.0%	41-53	77.4%

Deadball Rebounds: 9,0

Game Notes:

Officials: Starr Jefferson, Jessica Fortner, Tim Buckner
Attendance: 2539

Start Time: 07:02 PM ET
End Time: 09:21 PM ET
Game Duration: 2:19

Score	1st	2nd	3rd	4th	TOT
FVS	12	15	10	15	52
TRY	13	35	23	30	101

Points from (This Period)	FVS	TRY
In the Paint	6	0
Off Turns	5	4
2nd Chance	2	1
Fast Break	1	7
Bench	7	6

Official Play-By-Play
Fort Valley St. vs Troy
First Quarter
November 05, 2019 at Trojan Arena - Troy



Period 1

Starters:

Fort Valley St.: 11 FRANKLIN,ALICIA (PG); 12 NEAL,JADA (G); 13 CARTER,NOLA (F); 22 MYERS,TORRI (F); 44 MOYE,JALIN (C);

Troy: 4 ROBINSON,JASMINE (G); 10 SANDIFER,JANIAH (G); 11 LEBLANC,JASMINE (G); 12 WINCHESTER,HARRIET (G); 40 RIVERS,AMBER (F);

Time	VISITORS: Fort Valley St.	Score	Margin	HOME: Troy
09:50				MISSED LAYUP by RIVERS, AMBER
09:45				REBOUND (OFF) by LEBLANC, JASMINE
09:44				TURNOVER (BADPASS) by RIVERS, AMBER
09:44	STEAL by CARTER, NOLA			
09:37	GOOD! LAYUP by MYERS, TORRI [PNT]	0-2	V 2	
09:37	ASSIST by CARTER, NOLA			
09:28				MISSED 3PTR by SANDIFER, JANIAH
09:24	REBOUND (DEF) by TEAM			
09:04				FOUL (PERSONAL) by ROBINSON, JASMINE
09:01	TURNOVER (LOSTBALL) by MOYE, JALIN			
09:01				STEAL by SANDIFER, JANIAH
08:52				MISSED 3PTR by RIVERS, AMBER
08:48				REBOUND (OFF) by SANDIFER, JANIAH
08:47				MISSED LAYUP by SANDIFER, JANIAH
08:44				REBOUND (OFF) by SANDIFER, JANIAH
08:35				MISSED 3PTR by RIVERS, AMBER
08:32	REBOUND (DEF) by MYERS, TORRI			
08:32				FOUL (PERSONAL) by LEBLANC, JASMINE
08:06	TURNOVER (LOSTBALL) by CARTER, NOLA			
08:06				STEAL by WINCHESTER, HARRIET
08:01				TURNOVER (LOSTBALL) by LEBLANC, JASMINE
07:55	MISSED JUMPER by CARTER, NOLA			
07:52				REBOUND (DEF) by LEBLANC, JASMINE
07:47		3-2	H 1	GOOD! 3PTR by ROBINSON, JASMINE [FB]
07:47				ASSIST by LEBLANC, JASMINE
07:21	MISSED 3PTR by MYERS, TORRI			
07:17	REBOUND (OFF) by MOYE, JALIN			
07:16				SUB OUT: ROBINSON, JASMINE
07:16				SUB OUT: SANDIFER, JANIAH
07:16				SUB OUT: WINCHESTER, HARRIET
07:16				SUB IN: ROBINSON, KAYLA
07:16				SUB IN: SHAW, SHAWNTA
07:16				SUB IN: JOHNSON, TIYAH
07:05				FOUL (PERSONAL) by SHAW, SHAWNTA
06:59	MISSED LAYUP by FRANKLIN, ALICIA			
06:56				REBOUND (DEF) by JOHNSON, TIYAH
06:53				TURNOVER (LOSTBALL) by SHAW, SHAWNTA
06:52	MISSED JUMPER by MYERS, TORRI			
06:47	REBOUND (OFF) by FRANKLIN, ALICIA			
06:45	MISSED JUMPER by MOYE, JALIN			
06:41				REBOUND (DEF) by LEBLANC, JASMINE
06:38	FOUL (PERSONAL) by MYERS, TORRI			
06:38	SUB OUT: MOYE, JALIN			
06:38	SUB IN: GREEN, ALEXIA			
06:38				MISSED FT by LEBLANC, JASMINE
06:38				REBOUND (OFF) by TEAM
06:38		4-2	H 2	GOOD! FT by LEBLANC, JASMINE [FB]
06:21	MISSED 3PTR by MYERS, TORRI			
06:17				REBOUND (DEF) by SHAW, SHAWNTA
06:09				MISSED JUMPER by RIVERS, AMBER
06:09	BLOCK by MYERS, TORRI			
06:08				REBOUND (OFF) by TEAM
06:08				SUB OUT: LEBLANC, JASMINE
06:08				SUB IN: JAMES, JAPONICA
06:08	FOUL (PERSONAL) by NEAL, JADA			
06:08	SUB OUT: CARTER, NOLA			
06:08	SUB OUT: MYERS, TORRI			
06:08	SUB IN: FANNING, TAZIHA			
06:08	SUB IN: SLEET, JADA			
06:08		5-2	H 3	GOOD! FT by JAMES, JAPONICA
06:08				MISSED FT by JAMES, JAPONICA
06:07	REBOUND (DEF) by FANNING, TAZIHA			
06:01	TURNOVER (LOSTBALL) by SLEET, JADA			
06:01				STEAL by JOHNSON, TIYAH
05:57	FOUL (PERSONAL) by SLEET, JADA			
05:57				MISSED FT by JOHNSON, TIYAH
05:57				REBOUND (OFF) by TEAM
05:57				SUB OUT: SHAW, SHAWNTA
05:57				SUB IN: ROSARIO, EMELY
05:57		6-2	H 4	GOOD! FT by JOHNSON, TIYAH [FB]

Time	VISITORS: Fort Valley St.	Score	Margin	HOME: Troy
05:49	GOOD! JUMPER by FANNING, TAZIHA [PNT]	6-4	H 2	
05:38				MISSED LAYUP by ROSARIO, EMELY
05:34	REBOUND (DEF) by FANNING, TAZIHA			
05:23	TURNOVER (3SEC) by FANNING, TAZIHA			
05:23				SUB OUT: RIVERS, AMBER
05:23				SUB IN: DYE, ALEXUS
05:11				MISSED LAYUP by JAMES, JAPONICA
05:06	REBOUND (DEF) by FANNING, TAZIHA			
04:44	MISSED JUMPER by FRANKLIN, ALICIA			
04:44				BLOCK by JOHNSON, TIYAH
04:39	REBOUND (OFF) by FRANKLIN, ALICIA			
04:36	MISSED 3PTR by SLEET, JADA			
04:33				REBOUND (DEF) by ROSARIO, EMELY
04:31				TURNOVER (LOSTBALL) by JAMES, JAPONICA
04:31	STEAL by FRANKLIN, ALICIA			
04:27	TURNOVER (LOSTBALL) by SLEET, JADA			
04:27				STEAL by DYE, ALEXUS
04:21				TURNOVER (LOSTBALL) by JAMES, JAPONICA
04:21	STEAL by GREEN, ALEXIA			
04:21				
04:21	SUB OUT: FRANKLIN, ALICIA			
04:21	SUB OUT: NEAL, JADA			
04:21	SUB IN: CULBRETH, NIKKI			
04:21	SUB IN: DISMUKES, NYAH			
03:52	GOOD! 3PTR by CULBRETH, NIKKI	6-7	V 1	
03:52	ASSIST by FANNING, TAZIHA			
03:43		8-7	H 1	GOOD! JUMPER by ROBINSON, KAYLA
03:43				ASSIST by ROSARIO, EMELY
03:35	TURNOVER (LOSTBALL) by DISMUKES, NYAH			
03:35				STEAL by ROBINSON, KAYLA
03:31				MISSED LAYUP by ROBINSON, KAYLA
03:27	REBOUND (DEF) by CULBRETH, NIKKI			
03:08	TURNOVER (LOSTBALL) by SLEET, JADA			
03:08				STEAL by JOHNSON, TIYAH
03:08	FOUL (PERSONAL) by SLEET, JADA			
03:08	SUB OUT: SLEET, JADA			
03:08	SUB IN: FRANKLIN, ALICIA			
03:04				MISSED 3PTR by JOHNSON, TIYAH
02:59	REBOUND (DEF) by FANNING, TAZIHA			
02:54				SUB OUT: ROSARIO, EMELY
02:54				SUB IN: MOORE, TYASIA
02:45				FOUL (PERSONAL) by JAMES, JAPONICA
02:29	GOOD! JUMPER by CULBRETH, NIKKI	8-9	V 1	
02:20				MISSED JUMPER by ROBINSON, KAYLA
02:19				REBOUND (OFF) by TEAM
02:17				TURNOVER (BADPASS) by JOHNSON, TIYAH
02:17	STEAL by CULBRETH, NIKKI			
02:11	MISSED 3PTR by DISMUKES, NYAH			
02:07				REBOUND (DEF) by JOHNSON, TIYAH
01:56				MISSED JUMPER by DYE, ALEXUS
01:53	REBOUND (DEF) by CULBRETH, NIKKI			
01:47	MISSED JUMPER by DISMUKES, NYAH			
01:45				REBOUND (DEF) by ROBINSON, KAYLA
01:45	FOUL (PERSONAL) by FANNING, TAZIHA			
01:45				SUB OUT: JAMES, JAPONICA
01:45				SUB OUT: DYE, ALEXUS
01:45				SUB IN: LEBLANC, JASMINE
01:45				SUB IN: RIVERS, AMBER
01:45	SUB OUT: CULBRETH, NIKKI			
01:45	SUB OUT: DISMUKES, NYAH			
01:45	SUB IN: CARTER, NOLA			
01:45	SUB IN: MYERS, TORRI			
01:45		9-9	T	GOOD! FT by ROBINSON, KAYLA [FB]
01:45		10-9	H 1	GOOD! FT by ROBINSON, KAYLA [FB]
01:45				SUB OUT: ROBINSON, KAYLA
01:45				SUB IN: ROBINSON, JASMINE
01:26	TURNOVER (TRAVEL) by FANNING, TAZIHA			
01:26				SUB OUT: JOHNSON, TIYAH
01:26				SUB IN: WINCHESTER, HARRIET
01:16				MISSED 3PTR by RIVERS, AMBER
01:10	REBOUND (DEF) by CARTER, NOLA			
01:08				FOUL (PERSONAL) by LEBLANC, JASMINE
01:08				SUB OUT: LEBLANC, JASMINE
01:08				SUB IN: JAMES, JAPONICA
01:08	GOOD! FT by CARTER, NOLA [FB]	10-10	T	
01:08	MISSED FT by CARTER, NOLA			
01:06				REBOUND (DEF) by RIVERS, AMBER
01:02				MISSED 3PTR by WINCHESTER, HARRIET
00:55	REBOUND (DEF) by MYERS, TORRI			
00:46	MISSED 3PTR by MYERS, TORRI			

Time	VISITORS: Fort Valley St.	Score	Margin	HOME: Troy
00:40	REBOUND (OFF) by CARTER, NOLA			
00:40	GOOD! LAYUP by CARTER, NOLA	10-12	V 2	
00:35				MISSED JUMPER by ROBINSON, JASMINE
00:28	REBOUND (DEF) by FANNING, TAZIHA			
00:28	TIMEOUT 30SEC			
00:13	TURNOVER (TRAVEL) by MYERS, TORRI			
00:12	SUB OUT: GREEN, ALEXIA			
00:12	SUB IN: NEAL, JADA			
00:03		13-12	H 1	GOOD! 3PTR by WINCHESTER, HARRIET
00:03				ASSIST by ROBINSON, JASMINE

Fort Valley St. 12, Troy 13

Points from (This Period)	FVS	TRY
In the Paint	6	0
Off Turns	5	4
2nd Chance	2	1
Fast Break	1	7
Bench	7	6

Official Box Score
Fort Valley St. vs Troy
Second Quarter Statistics Only
November 05, 2019 at Trojan Arena - Troy



Fort Valley St. 15

No.	Player	S	Pts	FG	3FG	FT	OR	DR	TR	PF	A	TO	Blk	Stl	Min	+/-
11	FRANKLIN, ALICIA	PG	0	0-1	0-0	0-0	0	1	1	1	3	3	0	0	7	-13
12	NEAL, JADA	G	0	0-2	0-0	0-0	1	2	3	1	0	1	1	1	6	-10
13	CARTER, NOLA	F	0	0-1	0-0	0-0	0	0	0	2	0	2	0	0	7	-8
22	MYERS, TORRI	F	0	0-0	0-0	0-0	0	0	0	0	0	0	0	0	1	-3
44	MOYE, JALIN	C	0	0-0	0-0	0-0	1	0	1	0	0	0	0	0	2	-8
03	CULBRETH, NIKKI	G	3	1-4	1-3	0-0	0	1	1	2	2	1	0	0	7	-20
04	BROWN, JAH'NE		8	3-7	2-4	0-0	1	1	2	0	0	0	0	0	8	-17
10	HEIGHT, AMIAH	F	0	0-0	0-0	0-0	0	0	0	0	0	0	0	0	2	0
20	GREEN, ALEXIA	C	2	1-4	0-0	0-0	0	0	0	1	0	0	0	0	7	-17
21	DISMUKES, NYAH	G	0	0-0	0-0	0-0	0	0	0	1	0	0	0	0	1	1
24	FANNING, TAZIHA	F	2	1-1	0-0	0-0	0	0	0	1	0	0	0	0	1	-2
31	JOHNSON, CEASIA	G	0	0-0	0-0	0-0	0	0	0	0	0	0	0	0	0	0
34	SLEET, JADA	G	0	0-0	0-0	0-0	0	0	0	0	0	0	0	0	0	0
45	CARROLL, JENAY	F	0	0-0	0-0	0-0	0	0	0	0	0	0	0	0	2	-3
52	BEARDEN, ASHLEY	C	0	0-0	0-0	0-0	0	0	0	0	0	0	0	0	0	0
	TEAM						0	1	1	0		0				
TOTALS			15	6-20	3-7	0-0	3	6	9	9	5	7	1	1	50	

Shooting By Period

Period	FG	FG%	3FG	3FG%	FT	FT%
3rd Qtr	5-15	33%	0-1	00%	0-2	00%
4th Qtr	4-9	44%	2-4	50%	5-11	45%
2nd Half	6-20	30%	3-7	43%	0-0	0%
2nd Half	9-24	38%	2-5	40%	5-13	38%
Game	20-60	33.3%	6-18	33.3%	6-15	40.0%

Deadball Rebounds: 4,0

Troy 35

No.	Player	S	Pts	FG	3FG	FT	OR	DR	TR	PF	A	TO	Blk	Stl	Min	+/-
04	ROBINSON, JASMINE	G	0	0-2	0-1	0-0	1	1	2	0	0	0	0	0	3	3
10	SANDIFER, JANIAH	G	2	0-2	0-2	2-2	1	0	1	0	4	0	0	0	7	16
11	LEBLANC, JASMINE	G	0	0-0	0-0	0-0	0	0	0	0	0	0	0	0	0	0
12	WINCHESTER, HARRIET	G	3	1-2	1-2	0-0	0	0	0	1	0	0	0	0	5	13
40	RIVERS, AMBER	F	3	1-1	1-1	0-0	0	1	1	1	0	0	0	0	4	15
00	ROSARIO, EMELY	G	0	0-0	0-0	0-0	0	0	0	0	1	1	1	0	5	11
01	ROBINSON, KAYLA	G	3	1-1	0-0	1-2	0	4	4	0	1	1	0	1	5	7
02	SHAW, SHAWNATA	G	0	0-1	0-0	0-0	0	1	1	0	1	0	0	0	2	6
05	MOORE, TYASIA	F	9	3-4	1-1	2-2	0	2	2	1	0	0	0	2	7	12
14	JOHNSON, TIYAH	G	0	0-2	0-2	0-0	0	0	0	0	0	0	0	0	3	4
20	JAMES, JAPONICA	F	8	2-3	0-0	4-5	3	1	4	1	0	1	0	0	4	4
25	DYE, ALEXUS	F	7	2-3	0-0	3-3	0	0	0	0	0	0	0	2	5	9
	TEAM						0	1	1	0		0				
TOTALS			35	10-21	3-9	12-14	5	11	16	4	7	3	1	5	50	

Shooting By Period

Period	FG	FG%	3FG	3FG%	FT	FT%
3rd Qtr	6-22	27%	1-9	11%	10-12	83%
4th Qtr	8-24	33%	0-4	00%	14-19	74%
2nd Half	10-21	48%	3-9	33%	12-14	86%
2nd Half	14-46	30%	1-13	08%	24-31	77%
Game	27-85	31.8%	6-30	20.0%	41-53	77.4%

Deadball Rebounds: 9,0

Game Notes:

Officials: Starr Jefferson, Jessica Fortner, Tim Buckner
Attendance: 2539

Start Time: 07:02 PM ET
End Time: 09:21 PM ET
Game Duration: 2:19

Score	1st	2nd	3rd	4th	TOT
FVS	12	15	10	15	52
TRY	13	35	23	30	101

Points from (This Period)	FVS	TRY
In the Paint	4	14
Off Turns	0	11
2nd Chance	0	1
Fast Break	2	10
Bench	15	27

Official Play-By-Play
Fort Valley St. vs Troy
Second Quarter
November 05, 2019 at Trojan Arena - Troy



Period 2

Starters:

Fort Valley St.: 11 FRANKLIN, ALICIA (PG); 12 NEAL, JADA (G); 13 CARTER, NOLA (F); 22 MYERS, TORRI (F); 44 MOYE, JALIN (C);

Troy: 4 ROBINSON, JASMINE (G); 10 SANDIFER, JANIAH (G); 11 LEBLANC, JASMINE (G); 12 WINCHESTER, HARRIET (G); 40 RIVERS, AMBER (F);

Time	VISITORS: Fort Valley St.	Score	Margin	HOME: Troy
10:00				SUB OUT: MOORE, TYASIA
10:00				SUB IN: SANDIFER, JANIAH
09:52		15-12	H 3	GOOD! LAYUP by JAMES, JAPONICA
09:52				ASSIST by SANDIFER, JANIAH
09:52	FOUL (PERSONAL) by FRANKLIN, ALICIA			
09:52		16-12	H 4	GOOD! FT by JAMES, JAPONICA
09:52	SUB OUT: NEAL, JADA			
09:52	SUB IN: HEIGHT, AMIAH			
09:30	SUB OUT: MYERS, TORRI			
09:30	SUB IN: DISMUKES, NYAH			
09:29				FOUL (PERSONAL) by WINCHESTER, HARRIET
09:22	GOOD! LAYUP by FANNING, TAZIHA	16-14	H 2	
09:14				MISSED 3PTR by WINCHESTER, HARRIET
09:11				REBOUND (OFF) by JAMES, JAPONICA
09:11	FOUL (PERSONAL) by DISMUKES, NYAH			
09:08				MISSED 3PTR by ROBINSON, JASMINE
09:03				REBOUND (OFF) by ROBINSON, JASMINE
09:03	FOUL (PERSONAL) by FANNING, TAZIHA			
09:03				MISSED FT by JAMES, JAPONICA
09:03				REBOUND (OFF) by TEAM
09:03		17-14	H 3	GOOD! FT by JAMES, JAPONICA
09:03				SUB OUT: RIVERS, AMBER
09:03				SUB IN: MOORE, TYASIA
09:03	SUB OUT: FANNING, TAZIHA			
09:03	SUB IN: NEAL, JADA			
08:51	TURNOVER (TRAVEL) by FRANKLIN, ALICIA			
08:51	SUB OUT: DISMUKES, NYAH			
08:51	SUB IN: CULBRETH, NIKKI			
08:41		19-14	H 5	GOOD! LAYUP by JAMES, JAPONICA [PNT]
08:32	MISSED 3PTR by CULBRETH, NIKKI			
08:27				REBOUND (DEF) by MOORE, TYASIA
08:19		21-14	H 7	GOOD! LAYUP by MOORE, TYASIA [PNT]
08:19				ASSIST by SANDIFER, JANIAH
08:08	GOOD! 3PTR by CULBRETH, NIKKI	21-17	H 4	
08:08	ASSIST by FRANKLIN, ALICIA			
07:45				MISSED JUMPER by MOORE, TYASIA
07:41				REBOUND (OFF) by JAMES, JAPONICA
07:41				TURNOVER (TRAVEL) by JAMES, JAPONICA
07:41	SUB OUT: HEIGHT, AMIAH			
07:41	SUB OUT: CARTER, NOLA			
07:41	SUB IN: BROWN, JAH'NE			
07:41	SUB IN: GREEN, ALEXIA			
07:28	MISSED JUMPER by BROWN, JAH'NE			
07:25				REBOUND (DEF) by ROBINSON, JASMINE
07:20				MISSED LAYUP by ROBINSON, JASMINE
07:17				REBOUND (OFF) by SANDIFER, JANIAH
07:15				MISSED 3PTR by SANDIFER, JANIAH
07:11	REBOUND (DEF) by NEAL, JADA			
07:07	GOOD! LAYUP by GREEN, ALEXIA [FB]	21-19	H 2	
07:07	ASSIST by CULBRETH, NIKKI			
06:59	FOUL (PERSONAL) by GREEN, ALEXIA			
06:59				SUB OUT: ROBINSON, JASMINE
06:59				SUB OUT: MOORE, TYASIA
06:59				SUB OUT: SANDIFER, JANIAH
06:59				SUB OUT: WINCHESTER, HARRIET
06:59				SUB IN: ROBINSON, KAYLA
06:59				SUB IN: SHAW, SHAWNTA
06:59				SUB IN: JOHNSON, TIYAH
06:59				SUB IN: DYE, ALEXUS
06:59				SUB OUT: JAMES, JAPONICA
06:59				SUB IN: RIVERS, AMBER
06:31	MISSED LAYUP by FRANKLIN, ALICIA			
06:27				REBOUND (DEF) by SHAW, SHAWNTA
06:25		25-19	H 6	GOOD! LAYUP by DYE, ALEXUS [FB]
06:25				ASSIST by SHAW, SHAWNTA
06:10	MISSED JUMPER by NEAL, JADA			
06:08				REBOUND (DEF) by ROBINSON, KAYLA
06:08	FOUL (PERSONAL) by CULBRETH, NIKKI			
06:08	SUB OUT: FRANKLIN, ALICIA			
06:08	SUB IN: CARTER, NOLA			

Time	VISITORS: Fort Valley St.	Score	Margin	HOME: Troy
06:08				MISSED FT by ROBINSON, KAYLA
06:08				REBOUND (OFF) by TEAM
06:08		26-19	H 7	GOOD! FT by ROBINSON, KAYLA [FB]
05:50	MISSED LAYUP by GREEN, ALEXIA			
05:41				REBOUND (DEF) by RIVERS, AMBER
05:41				TURNOVER (LOSTBALL) by ROBINSON, KAYLA
05:32	MISSED 3PTR by BROWN, JAH'NE			
05:28	REBOUND (OFF) by NEAL, JADA			
05:26	MISSED LAYUP by BROWN, JAH'NE			
05:23	REBOUND (OFF) by BROWN, JAH'NE			
05:22	MISSED JUMPER by CARTER, NOLA			
05:18				REBOUND (DEF) by ROBINSON, KAYLA
05:17		28-19	H 9	GOOD! LAYUP by DYE, ALEXUS [FB]
05:17				ASSIST by ROBINSON, KAYLA
05:17	FOUL (PERSONAL) by CARTER, NOLA			
05:17				SUB OUT: RIVERS, AMBER
05:17				SUB IN: JAMES, JAPONICA
05:17		29-19	H 10	GOOD! FT by DYE, ALEXUS [FB]
05:17	SUB OUT: CULBRETH, NIKKI			
05:17	SUB IN: FRANKLIN, ALICIA			
05:00	MISSED JUMPER by GREEN, ALEXIA			
04:57				REBOUND (DEF) by ROBINSON, KAYLA
04:53				MISSED LAYUP by DYE, ALEXUS
04:48				REBOUND (OFF) by JAMES, JAPONICA
04:48				MISSED LAYUP by JAMES, JAPONICA
04:46	REBOUND (DEF) by NEAL, JADA			
04:41	MISSED 3PTR by BROWN, JAH'NE			
04:37				REBOUND (DEF) by JAMES, JAPONICA
04:30				MISSED LAYUP by SHAW, SHAWNTA
04:30	BLOCK by NEAL, JADA			
04:30	REBOUND (DEF) by TEAM			
06:59		22-19	H 3	GOOD! FT by JAMES, JAPONICA
06:59		23-19	H 4	GOOD! FT by JAMES, JAPONICA
04:30				
04:30				SUB OUT: SHAW, SHAWNTA
04:30				SUB IN: ROSARIO, EMELY
04:29				FOUL (PERSONAL) by JAMES, JAPONICA
04:29				SUB OUT: JAMES, JAPONICA
04:29				SUB IN: MOORE, TYASIA
04:23				FOUL (PERSONAL) by MOORE, TYASIA
04:20	TURNOVER (BADPASS) by NEAL, JADA			
04:20				STEAL by DYE, ALEXUS
04:12				MISSED 3PTR by JOHNSON, TIYAH
04:05	REBOUND (DEF) by FRANKLIN, ALICIA			
04:03	GOOD! JUMPER by BROWN, JAH'NE	29-21	H 8	
04:03	ASSIST by FRANKLIN, ALICIA			
03:51				MISSED 3PTR by JOHNSON, TIYAH
03:48	REBOUND (DEF) by BROWN, JAH'NE			
03:43	TURNOVER (TRAVEL) by CARTER, NOLA			
03:33				SUB OUT: JOHNSON, TIYAH
03:33				SUB IN: SANDIFER, JANIAH
03:33	SUB OUT: FRANKLIN, ALICIA			
03:33	SUB IN: CULBRETH, NIKKI			
03:29				TURNOVER (BADPASS) by ROSARIO, EMELY
03:29	STEAL by NEAL, JADA			
03:25	MISSED LAYUP by CULBRETH, NIKKI			
03:21				REBOUND (DEF) by ROBINSON, KAYLA
03:13	FOUL (PERSONAL) by NEAL, JADA			
03:13		30-21	H 9	GOOD! FT by MOORE, TYASIA
03:13		31-21	H 10	GOOD! FT by MOORE, TYASIA
03:13	SUB OUT: GREEN, ALEXIA			
03:13	SUB IN: CARROLL, JENAY			
02:53	MISSED JUMPER by NEAL, JADA			
02:50				REBOUND (DEF) by MOORE, TYASIA
02:47	SUB OUT: NEAL, JADA			
02:47	SUB IN: GREEN, ALEXIA			
02:38		33-21	H 12	GOOD! JUMPER by MOORE, TYASIA [PNT]
02:38				ASSIST by SANDIFER, JANIAH
02:20	GOOD! 3PTR by BROWN, JAH'NE	33-24	H 9	
02:20	ASSIST by CULBRETH, NIKKI			
02:11				MISSED 3PTR by SANDIFER, JANIAH
02:07	REBOUND (DEF) by CULBRETH, NIKKI			
02:00	TURNOVER (LOSTBALL) by CULBRETH, NIKKI			
01:54		35-24	H 11	GOOD! LAYUP by ROBINSON, KAYLA [PNT]
01:44	TURNOVER (LOSTBALL) by CARTER, NOLA			
01:44				STEAL by DYE, ALEXUS
01:40	FOUL (PERSONAL) by CARTER, NOLA			
01:40				SUB OUT: ROBINSON, KAYLA
01:40				SUB IN: WINCHESTER, HARRIET
01:40	SUB OUT: CARTER, NOLA			

Time	VISITORS: Fort Valley St.	Score	Margin	HOME: Troy
01:40	SUB IN: FRANKLIN, ALICIA			
01:40		36-24	H 12	GOOD! FT by DYE, ALEXUS [FB]
01:40	SUB OUT: CARROLL, JENAY			
01:40	SUB IN: MOYE, JALIN			
01:40		37-24	H 13	GOOD! FT by DYE, ALEXUS [FB]
01:40				SUB OUT: DYE, ALEXUS
01:40				SUB IN: RIVERS, AMBER
01:16	MISSED JUMPER by GREEN, ALEXIA			
01:15	REBOUND (OFF) by MOYE, JALIN			
01:15				FOUL (PERSONAL) by RIVERS, AMBER
00:54	MISSED 3PTR by CULBRETH, NIKKI			
00:54				BLOCK by ROSARIO, EMELY
00:54				REBOUND (DEF) by TEAM
00:47		40-24	H 16	GOOD! 3PTR by RIVERS, AMBER
00:47				ASSIST by SANDIFER, JANIAH
00:37	GOOD! 3PTR by BROWN, JAHNE	40-27	H 13	
00:37	ASSIST by FRANKLIN, ALICIA			
00:28		43-27	H 16	GOOD! 3PTR by WINCHESTER, HARRIET
00:28				ASSIST by ROSARIO, EMELY
00:11	TURNOVER (BADPASS) by FRANKLIN, ALICIA			
00:11				STEAL by MOORE, TYASIA
00:10	FOUL (PERSONAL) by CULBRETH, NIKKI			
00:10		44-27	H 17	GOOD! FT by SANDIFER, JANIAH [FB]
00:10		45-27	H 18	GOOD! FT by SANDIFER, JANIAH [FB]
00:05	TURNOVER (LOSTBALL) by FRANKLIN, ALICIA			
00:05				STEAL by MOORE, TYASIA
00:00		48-27	H 21	GOOD! 3PTR by MOORE, TYASIA
02:00				STEAL by ROBINSON, KAYLA

Fort Valley St. 27, Troy 48

Points from (This Period)	FVS	TRY
In the Paint	4	14
Off Turns	0	11
2nd Chance	0	1
Fast Break	2	10
Bench	15	27

Official Box Score
Fort Valley St. vs Troy
Second Half Statistics Only
November 05, 2019 at Trojan Arena - Troy



Fort Valley St. 25

No.	Player	S	Pts	FG	3FG	FT	OR	DR	TR	PF	A	TO	Blk	Stl	Min	+/-
10	HEIGHT, AMIAH	F	0	0-1	0-0	0-0	0	1	1	0	0	0	0	0	4	1
11	FRANKLIN, ALICIA	PG	3	1-1	0-0	1-1	0	0	0	0	1	5	0	0	9	-10
12	NEAL, JADA	G	4	1-2	0-1	2-2	0	2	2	2	1	6	1	2	10	-20
13	CARTER, NOLA	F	4	2-4	0-0	0-0	0	1	1	3	2	4	0	0	9	-12
20	GREEN, ALEXIA	C	1	0-1	0-0	1-2	0	2	2	2	0	1	0	0	9	-5
21	DISMUKES, NYAH	G	0	0-3	0-0	0-0	1	2	3	2	1	3	0	2	9	-7
22	MYERS, TORRI	F	0	0-0	0-0	0-0	0	1	1	2	0	2	0	0	4	-12
24	FANNING, TAZIHA	F	2	1-1	0-0	0-2	1	0	1	3	0	0	0	0	5	-10
31	JOHNSON, CEASIA	G	0	0-0	0-0	0-0	0	0	0	0	0	0	0	0	1	-4
34	SLEET, JADA	G	3	1-3	1-1	0-2	0	0	0	1	0	3	0	0	8	-17
44	MOYE, JALIN	C	0	0-1	0-0	0-0	0	0	0	1	0	0	0	0	3	-3
52	BEARDEN, ASHLEY	C	0	0-0	0-0	0-0	1	0	1	2	1	0	0	0	4	-11
45	CARROLL, JENAY	F	3	1-3	0-0	1-4	3	2	5	1	0	4	0	0	12	-16
03	CULBRETH, NIKKI	G	3	1-1	1-1	0-0	0	0	0	1	0	1	0	0	9	-11
04	BROWN, JAH'NE		2	1-3	0-2	0-0	0	2	2	1	1	3	0	0	5	-3
	TEAM		0	0-0	0-0	0-0	2	2	4	0	0	0	0	0	0	0
	TOTALS		25	9-24	2-5	5-13	8	15	23	21	7	32	1	4	100	

Shooting By Period

Period	FG	FG%	3FG	3FG%	FT	FT%
3rd Qtr	5-15	33%	0-1	00%	0-2	00%
4th Qtr	4-9	44%	2-4	50%	5-11	45%
2nd Half	9-24	38%	2-5	40%	5-13	38%
Game	20-60	33.3%	6-18	33.3%	6-15	40.0%

Deadball Rebounds: 4,0
Last FG Half: FVS 4th-02:39

Troy 53

No.	Player	S	Pts	FG	3FG	FT	OR	DR	TR	PF	A	TO	Blk	Stl	Min	+/-
00	ROSARIO, EMELY	G	0	0-2	0-1	0-0	1	0	1	1	0	1	0	0	8	12
01	ROBINSON, KAYLA	G	2	1-4	0-2	0-0	2	1	3	2	1	3	0	1	10	9
02	SHAW, SHAWNNTA	G	2	1-1	0-0	0-0	0	0	0	1	0	0	1	1	5	10
04	ROBINSON, JASMINE	G	2	0-3	0-1	2-2	0	0	0	0	1	1	0	1	7	6
05	MOORE, TYASIA	F	3	0-3	0-0	3-3	2	3	5	1	1	3	0	3	8	6
10	SANDIFER, JANIAH	G	0	0-3	0-2	0-0	1	0	1	0	0	0	0	0	10	19
11	LEBLANC, JASMINE	G	10	1-4	0-0	8-10	2	2	4	1	0	1	0	2	10	7
12	WINCHESTER, HARRIET	G	2	1-5	0-2	0-0	4	0	4	0	0	2	0	5	10	19
14	JOHNSON, TIYAH	G	0	0-2	0-1	0-0	0	0	0	0	0	0	0	1	7	2
20	JAMES, JAPONICA	F	19	5-8	0-0	9-14	2	2	4	2	0	3	1	6	10	21
25	DYE, ALEXUS	F	6	2-4	0-0	2-2	2	3	5	1	0	0	0	1	10	23
40	RIVERS, AMBER	F	7	3-7	1-4	0-0	1	0	1	0	0	0	0	0	5	6
	TEAM		0	0-0	0-0	0-0	2	0	2	0	0	0	0	0	0	0
	TOTALS		53	14-46	1-13	24-31	19	11	30	9	3	14	2	21	100	

Shooting By Period

Period	FG	FG%	3FG	3FG%	FT	FT%
3rd Qtr	6-22	27%	1-9	11%	10-12	83%
4th Qtr	8-24	33%	0-4	00%	14-19	74%
2nd Half	14-46	30%	1-13	08%	24-31	77%
Game	27-85	31.8%	6-30	20.0%	41-53	77.4%

Deadball Rebounds: 9,0
Last FG Half: TRY 4th-00:00

Game Notes:

Officials: Starr Jefferson, Jessica Fortner, Tim Buckner
Attendance: 2539

Start Time: 07:02 PM ET
End Time: 09:21 PM ET
Game Duration: 2:19

Score	1st	2nd	3rd	4th	TOT
FVS	12	15	10	15	52
TRY	13	35	23	30	101

Points from (This Period)	FVS	TRY
In the Paint	10	22
Off Turns	2	39
2nd Chance	4	16
Fast Break	7	24
Bench	14	32

Official Box Score
Fort Valley St. vs Troy
Third Quarter Statistics Only
November 05, 2019 at Trojan Arena - Troy



Fort Valley St. 25

No.	Player	S	Pts	FG	3FG	FT	OR	DR	TR	PF	A	TO	Blk	Stl	Min	+/-
11	FRANKLIN, ALICIA	PG	2	1-1	0-0	0-0	0	0	0	0	1	3	0	0	7	-8
12	NEAL, JADA	G	2	1-1	0-0	0-0	0	1	1	1	0	0	1	1	5	-5
13	CARTER, NOLA	F	2	1-2	0-0	0-0	0	1	1	1	1	1	0	0	6	-7
22	MYERS, TORRI	F	0	0-0	0-0	0-0	0	0	0	2	0	2	0	0	2	-3
44	MOYE, JALIN	C	0	0-1	0-0	0-0	0	0	0	0	0	0	0	0	2	-3
03	CULBRETH, NIKKI	G	0	0-0	0-0	0-0	0	0	0	1	0	0	0	0	3	-5
04	BROWN, JAH'NE		0	0-1	0-1	0-0	0	2	2	0	1	1	0	0	2	-3
10	HEIGHT, AMIAH	F	0	0-0	0-0	0-0	0	0	0	0	0	0	0	0	0	0
20	GREEN, ALEXIA	C	0	0-1	0-0	0-0	0	1	1	1	0	1	0	0	5	-5
21	DISMUKES, NYAH	G	0	0-3	0-0	0-0	1	1	2	1	0	2	0	1	7	-8
24	FANNING, TAZIHA	F	2	1-1	0-0	0-2	1	0	1	1	0	0	0	0	3	-5
31	JOHNSON, CEASIA	G	0	0-0	0-0	0-0	0	0	0	0	0	0	0	0	0	0
34	SLEET, JADA	G	0	0-1	0-0	0-0	0	0	0	0	0	1	0	0	3	-5
45	CARROLL, JENAY	F	2	1-3	0-0	0-0	2	2	4	1	0	2	0	0	5	-8
52	BEARDEN, ASHLEY	C	0	0-0	0-0	0-0	0	0	0	0	0	0	0	0	0	0
	TEAM						1	0	1	0		0				
	TOTALS		10	5-15	0-1	0-2	5	8	13	9	3	13	1	2	50	

Shooting By Period

Period	FG	FG%	3FG	3FG%	FT	FT%
2nd Half	0-0	0%	0-0	0%	0-0	0%
Game	20-60	33.3%	6-18	33.3%	6-15	40.0%

Deadball Rebounds: 4,0

Troy 53

No.	Player	S	Pts	FG	3FG	FT	OR	DR	TR	PF	A	TO	Blk	Stl	Min	+/-
04	ROBINSON, JASMINE	G	0	0-2	0-1	0-0	0	0	0	0	0	1	0	0	4	3
10	SANDIFER, JANIAH	G	0	0-1	0-1	0-0	1	0	1	0	0	0	0	0	7	8
11	LEBLANC, JASMINE	G	8	1-3	0-0	6-8	2	1	3	0	0	1	0	2	7	8
12	WINCHESTER, HARRIET	G	0	0-4	0-2	0-0	2	0	2	0	0	2	0	3	7	8
40	RIVERS, AMBER	F	7	3-7	1-4	0-0	1	0	1	0	0	0	0	0	5	6
00	ROSARIO, EMELY	G	0	0-0	0-0	0-0	0	0	0	0	0	0	0	0	3	5
01	ROBINSON, KAYLA	G	0	0-1	0-1	0-0	1	1	2	1	0	2	0	0	3	5
02	SHAW, SHAWNTA	G	0	0-0	0-0	0-0	0	0	0	0	0	0	1	0	3	5
05	MOORE, TYASIA	F	1	0-0	0-0	1-1	0	2	2	0	0	0	0	1	2	2
14	JOHNSON, TIYAH	G	0	0-0	0-0	0-0	0	0	0	0	0	0	0	0	3	5
20	JAMES, JAPONICA	F	7	2-4	0-0	3-3	1	1	2	1	0	1	1	1	3	5
25	DYE, ALEXUS	F	0	0-0	0-0	0-0	0	1	1	0	0	0	0	0	3	5
	TEAM						1	0	1	0		0				
	TOTALS		23	6-22	1-9	10-12	9	6	15	2	0	7	2	7	50	

Shooting By Period

Period	FG	FG%	3FG	3FG%	FT	FT%
2nd Half	0-0	0%	0-0	0%	0-0	0%
Game	27-85	31.8%	6-30	20.0%	41-53	77.4%

Deadball Rebounds: 9,0

Game Notes:

Officials: Starr Jefferson, Jessica Fortner, Tim Buckner
Attendance: 2539

Start Time: 07:02 PM ET
End Time: 09:21 PM ET
Game Duration: 2:19

Score	1st	2nd	3rd	4th	TOT
FVS	12	15	10	15	52
TRY	13	35	23	30	101

Points from (This Period)	FVS	TRY
In the Paint	6	6
Off Turns	2	15
2nd Chance	0	5
Fast Break	2	9
Bench	4	8

Official Play-By-Play
Fort Valley St. vs Troy
Third Quarter
November 05, 2019 at Trojan Arena - Troy



Period 3

Starters:

Fort Valley St.: 11 FRANKLIN, ALICIA (PG); 12 NEAL, JADA (G); 13 CARTER, NOLA (F); 22 MYERS, TORRI (F); 44 MOYE, JALIN (C);

Troy: 4 ROBINSON, JASMINE (G); 10 SANDIFER, JANIAH (G); 11 LEBLANC, JASMINE (G); 12 WINCHESTER, HARRIET (G); 40 RIVERS, AMBER (F);

Time	VISITORS: Fort Valley St.	Score	Margin	HOME: Troy
10:00				SUB OUT: ROSARIO, EMELY
10:00				SUB OUT: MOORE, TYASIA
10:00				SUB IN: ROBINSON, JASMINE
10:00				SUB IN: LEBLANC, JASMINE
10:00	SUB OUT: CULBRETH, NIKKI			
10:00	SUB OUT: BROWN, JAH'NE			
10:00	SUB OUT: GREEN, ALEXIA			
10:00	SUB IN: NEAL, JADA			
10:00	SUB IN: CARTER, NOLA			
10:00	SUB IN: MYERS, TORRI			
09:51				MISSED 3PTR by RIVERS, AMBER
09:47	REBOUND (DEF) by NEAL, JADA			
09:42	MISSED JUMPER by MOYE, JALIN			
09:38				REBOUND (DEF) by LEBLANC, JASMINE
09:35				TURNOVER (LOSTBALL) by ROBINSON, JASMINE
09:35	STEAL by NEAL, JADA			
09:29	GOOD! LAYUP by NEAL, JADA [FB]	48-29	H 19	
09:17		50-29	H 21	GOOD! JUMPER by RIVERS, AMBER
09:03	TURNOVER (LOSTBALL) by CARTER, NOLA			
08:57		53-29	H 24	GOOD! 3PTR by RIVERS, AMBER
08:42	GOOD! JUMPER by FRANKLIN, ALICIA	53-31	H 22	
08:33				MISSED 3PTR by ROBINSON, JASMINE
08:30	REBOUND (DEF) by CARTER, NOLA			
08:23	TURNOVER (TRAVEL) by MYERS, TORRI			
08:07	FOUL (PERSONAL) by MYERS, TORRI			
08:07		54-31	H 23	GOOD! FT by LEBLANC, JASMINE
08:07		55-31	H 24	GOOD! FT by LEBLANC, JASMINE
08:01	TURNOVER (BADPASS) by MYERS, TORRI			
08:01	SUB OUT: MOYE, JALIN			
08:01	SUB IN: GREEN, ALEXIA			
07:52	FOUL (PERSONAL) by MYERS, TORRI			
07:52	SUB OUT: MYERS, TORRI			
07:52	SUB IN: DISMUKES, NYAH			
07:50				MISSED JUMPER by RIVERS, AMBER
07:49				REBOUND (OFF) by TEAM
07:45				MISSED 3PTR by WINCHESTER, HARRIET
07:41				REBOUND (OFF) by SANDIFER, JANIAH
07:36				MISSED 3PTR by RIVERS, AMBER
07:33				REBOUND (OFF) by RIVERS, AMBER
07:31		57-31	H 26	GOOD! JUMPER by RIVERS, AMBER
07:20	GOOD! JUMPER by CARTER, NOLA	57-33	H 24	
07:20	ASSIST by FRANKLIN, ALICIA			
06:58	FOUL (PERSONAL) by GREEN, ALEXIA			
06:57				TURNOVER (BADPASS) by WINCHESTER, HARRIET
06:40	TURNOVER (LOSTBALL) by DISMUKES, NYAH			
06:40				STEAL by LEBLANC, JASMINE
06:34				MISSED LAYUP by LEBLANC, JASMINE
06:34	BLOCK by NEAL, JADA			
06:30	REBOUND (DEF) by GREEN, ALEXIA			
06:21	TURNOVER (LOSTBALL) by FRANKLIN, ALICIA			
06:21				STEAL by WINCHESTER, HARRIET
06:17				MISSED LAYUP by ROBINSON, JASMINE
06:11				REBOUND (OFF) by WINCHESTER, HARRIET
06:11				MISSED LAYUP by WINCHESTER, HARRIET
06:10				REBOUND (OFF) by WINCHESTER, HARRIET
06:10				TURNOVER (TRAVEL) by LEBLANC, JASMINE
06:09				SUB OUT: ROBINSON, JASMINE
06:09				SUB OUT: SANDIFER, JANIAH
06:09				SUB OUT: LEBLANC, JASMINE
06:09				SUB OUT: WINCHESTER, HARRIET
06:09				SUB OUT: RIVERS, AMBER
06:09				SUB IN: ROBINSON, KAYLA
06:09				SUB IN: SHAW, SHAWNITA
06:09				SUB IN: JOHNSON, TIYAH
06:09				SUB IN: JAMES, JAPONICA
06:09				SUB IN: DYE, ALEXUS
05:54	MISSED LAYUP by GREEN, ALEXIA			
05:51				REBOUND (DEF) by DYE, ALEXUS
05:39				MISSED 3PTR by ROBINSON, KAYLA
05:36				REBOUND (OFF) by ROBINSON, KAYLA

Time	VISITORS: Fort Valley St.	Score	Margin	HOME: Troy
05:36				FOUL (OFF) by ROBINSON, KAYLA
05:36				TURNOVER (OFFENSIVE) by ROBINSON, KAYLA
05:29	TURNOVER (BADPASS) by FRANKLIN, ALICIA			
05:29				STEAL by JAMES, JAPONICA
05:25		59-33	H 26	GOOD! LAYUP by JAMES, JAPONICA [FB/PNT]
05:09	TURNOVER (TRAVEL) by FRANKLIN, ALICIA			
05:09	SUB OUT: DISMUKES, NYAH			
05:09	SUB IN: CULBRETH, NIKKI			
05:09	SUB IN: FANNING, TAZIHA			
05:09	SUB IN: SLEET, JADA			
05:00	FOUL (PERSONAL) by NEAL, JADA			
05:00				
05:09	SUB OUT: FRANKLIN, ALICIA			
05:09	SUB OUT: GREEN, ALEXIA			
05:00	SUB OUT: NEAL, JADA			
05:00	SUB IN: CARROLL, JENAY			
05:00		60-33	H 27	GOOD! FT by JAMES, JAPONICA
05:00		61-33	H 28	GOOD! FT by JAMES, JAPONICA
04:49	GOOD! LAYUP by FANNING, TAZIHA	61-35	H 26	
04:49	ASSIST by CARTER, NOLA			
04:38				TURNOVER (TRAVEL) by JAMES, JAPONICA
04:24	MISSED JUMPER by CARTER, NOLA			
04:24				BLOCK by JAMES, JAPONICA
04:19				REBOUND (DEF) by JAMES, JAPONICA
04:19		63-35	H 28	GOOD! LAYUP by JAMES, JAPONICA [FB]
04:19	FOUL (PERSONAL) by CARTER, NOLA			
04:19	SUB OUT: CARTER, NOLA			
04:19	SUB IN: DISMUKES, NYAH			
04:19		64-35	H 29	GOOD! FT by JAMES, JAPONICA [FB]
03:56	TURNOVER (LOSTBALL) by CARROLL, JENAY			
03:44				MISSED LAYUP by JAMES, JAPONICA
03:41				REBOUND (OFF) by JAMES, JAPONICA
03:40				MISSED LAYUP by JAMES, JAPONICA
03:37	REBOUND (DEF) by CARROLL, JENAY			
03:35	MISSED LAYUP by DISMUKES, NYAH			
03:35				BLOCK by SHAW, SHAWNTA
03:35	REBOUND (OFF) by TEAM			
03:35				SUB OUT: DYE, ALEXUS
03:35				SUB IN: MOORE, TYASIA
03:15	MISSED JUMPER by DISMUKES, NYAH			
03:13	REBOUND (OFF) by FANNING, TAZIHA			
03:10				FOUL (PERSONAL) by JAMES, JAPONICA
03:10				SUB OUT: SHAW, SHAWNTA
03:10				SUB IN: ROSARIO, EMELY
03:10				SUB OUT: JAMES, JAPONICA
03:10				SUB IN: LEBLANC, JASMINE
03:10	MISSED FT by FANNING, TAZIHA			
03:10	MISSED FT by FANNING, TAZIHA			
03:10	REBOUND (OFF) by DISMUKES, NYAH			
02:53	MISSED JUMPER by SLEET, JADA			
02:49				REBOUND (DEF) by ROBINSON, KAYLA
02:47				TURNOVER (LOSTBALL) by ROBINSON, KAYLA
02:47	STEAL by DISMUKES, NYAH			
02:42	MISSED JUMPER by CARROLL, JENAY			
02:41				REBOUND (DEF) by MOORE, TYASIA
02:41	FOUL (PERSONAL) by CULBRETH, NIKKI			
02:41				SUB OUT: ROBINSON, KAYLA
02:41				SUB OUT: JOHNSON, TIYAH
02:41				SUB IN: SANDIFER, JANIAH
02:41				SUB IN: WINCHESTER, HARRIET
02:41		65-35	H 30	GOOD! FT by MOORE, TYASIA [FB]
02:31	TURNOVER (BADPASS) by CARROLL, JENAY			
02:31				STEAL by MOORE, TYASIA
02:25				MISSED LAYUP by WINCHESTER, HARRIET
02:21				REBOUND (OFF) by LEBLANC, JASMINE
02:21	FOUL (PERSONAL) by FANNING, TAZIHA			
02:21		66-35	H 31	GOOD! FT by LEBLANC, JASMINE
02:21				MISSED FT by LEBLANC, JASMINE
02:20	REBOUND (DEF) by CARROLL, JENAY			
02:00	TURNOVER (LOSTBALL) by SLEET, JADA			
02:00				STEAL by WINCHESTER, HARRIET
01:53	FOUL (PERSONAL) by CARROLL, JENAY			
01:53	SUB OUT: CULBRETH, NIKKI			
01:53	SUB OUT: FANNING, TAZIHA			
01:53	SUB OUT: SLEET, JADA			
01:53	SUB IN: BROWN, JAH'NE			
01:53	SUB IN: FRANKLIN, ALICIA			
01:53	SUB IN: GREEN, ALEXIA			
01:53		67-35	H 32	GOOD! FT by LEBLANC, JASMINE [FB]
01:53		68-35	H 33	GOOD! FT by LEBLANC, JASMINE [FB]

Time	VISITORS: Fort Valley St.	Score	Margin	HOME: Troy
01:39	GOOD! LAYUP by CARROLL, JENAY	68-37	H 31	
01:39	ASSIST by BROWN, JAH'NE			
01:27				MISSED JUMPER by LEBLANC, JASMINE
01:24	REBOUND (DEF) by BROWN, JAH'NE			
01:17	MISSED JUMPER by DISMUKES, NYAH			
01:12				REBOUND (DEF) by MOORE, TYASIA
01:12				TIMEOUT 30SEC
02:41				TURNOVER (LANEVIOLATION) by WINCHESTER, HARRIET
01:12				SUB OUT: MOORE, TYASIA
01:12				SUB IN: RIVERS, AMBER
01:03				MISSED 3PTR by SANDIFER, JANIAH
00:56				REBOUND (OFF) by LEBLANC, JASMINE
00:56		70-37	H 33	GOOD! LAYUP by LEBLANC, JASMINE
00:50	TURNOVER (LOSTBALL) by GREEN, ALEXIA			
00:50				STEAL by LEBLANC, JASMINE
00:42				MISSED 3PTR by WINCHESTER, HARRIET
00:38	REBOUND (DEF) by BROWN, JAH'NE			
00:35	TURNOVER (BADPASS) by BROWN, JAH'NE			
00:35				STEAL by WINCHESTER, HARRIET
00:30	FOUL (PERSONAL) by DISMUKES, NYAH			
00:30				MISSED FT by LEBLANC, JASMINE
00:30				REBOUND (OFF) by TEAM
00:30		71-37	H 34	GOOD! FT by LEBLANC, JASMINE [FB]
00:29	TURNOVER (BADPASS) by DISMUKES, NYAH			
00:16				MISSED 3PTR by RIVERS, AMBER
00:12	REBOUND (DEF) by DISMUKES, NYAH			
00:05	MISSED 3PTR by BROWN, JAH'NE			
00:01	REBOUND (OFF) by CARROLL, JENAY			
00:00	MISSED LAYUP by CARROLL, JENAY			
00:00	REBOUND (OFF) by CARROLL, JENAY			

Fort Valley St. 37, Troy 71

Points from (This Period)	FVS	TRY
In the Paint	6	6
Off Turns	2	15
2nd Chance	0	5
Fast Break	2	9
Bench	4	8

Official Box Score
Fort Valley St. vs Troy
Fourth Quarter Statistics Only
November 05, 2019 at Trojan Arena - Troy



Fort Valley St. 15

No.	Player	S	Pts	FG	3FG	FT	OR	DR	TR	PF	A	TO	Blk	Stl	Min	+/-
11	FRANKLIN, ALICIA	PG	1	0-0	0-0	1-1	0	0	0	0	0	2	0	0	2	-2
12	NEAL, JADA	G	2	0-1	0-1	2-2	0	1	1	1	1	6	0	1	5	-15
13	CARTER, NOLA	F	2	1-2	0-0	0-0	0	0	0	2	1	3	0	0	3	-5
22	MYERS, TORRI	F	0	0-0	0-0	0-0	0	1	1	0	0	0	0	0	2	-9
44	MOYE, JALIN	C	0	0-0	0-0	0-0	0	0	0	1	0	0	0	0	1	0
03	CULBRETH, NIKKI	G	3	1-1	1-1	0-0	0	0	0	0	0	1	0	0	6	-6
04	BROWN, JAH'NE		2	1-2	0-1	0-0	0	0	0	1	0	2	0	0	3	0
10	HEIGHT, AMIAH	F	0	0-1	0-0	0-0	0	1	1	0	0	0	0	0	4	1
20	GREEN, ALEXIA	C	1	0-0	0-0	1-2	0	1	1	1	0	0	0	0	4	0
21	DISMUKES, NYAH	G	0	0-0	0-0	0-0	0	1	1	1	1	1	0	1	2	1
24	FANNING, TAZIHA	F	0	0-0	0-0	0-0	0	0	0	2	0	0	0	0	2	-5
31	JOHNSON, CEASIA	G	0	0-0	0-0	0-0	0	0	0	0	0	0	0	0	1	-4
34	SLEET, JADA	G	3	1-2	1-1	0-2	0	0	0	1	0	2	0	0	5	-12
45	CARROLL, JENAY	F	1	0-0	0-0	1-4	1	0	1	0	0	2	0	0	7	-8
52	BEARDEN, ASHLEY	C	0	0-0	0-0	0-0	1	0	1	2	1	0	0	0	4	-11
	TEAM						1	2	3	0		0				
	TOTALS		15	4-9	2-4	5-11	3	7	10	12	4	19	0	2	50	

Shooting By Period

Period	FG	FG%	3FG	3FG%	FT	FT%
Game	20-60	33.3%	6-18	33.3%	6-15	40.0%

Deadball Rebounds: 4,0

Troy 30

No.	Player	S	Pts	FG	3FG	FT	OR	DR	TR	PF	A	TO	Blk	Stl	Min	+/-
04	ROBINSON, JASMINE	G	2	0-1	0-0	2-2	0	0	0	0	1	0	0	1	3	3
10	SANDIFER, JANIAH	G	0	0-2	0-1	0-0	0	0	0	0	0	0	0	0	3	11
11	LEBLANC, JASMINE	G	2	0-1	0-0	2-2	0	1	1	1	0	0	0	0	3	-1
12	WINCHESTER, HARRIET	G	2	1-1	0-0	0-0	2	0	2	0	0	0	0	2	3	11
40	RIVERS, AMBER	F	0	0-0	0-0	0-0	0	0	0	0	0	0	0	0	0	0
00	ROSARIO, EMELY	G	0	0-2	0-1	0-0	1	0	1	1	0	1	0	0	5	7
01	ROBINSON, KAYLA	G	2	1-3	0-1	0-0	1	0	1	1	1	1	0	1	7	4
02	SHAW, SHAWNTA	G	2	1-1	0-0	0-0	0	0	0	1	0	0	0	1	2	5
05	MOORE, TYASIA	F	2	0-3	0-0	2-2	2	1	3	1	1	3	0	2	6	4
14	JOHNSON, TIYAH	G	0	0-2	0-1	0-0	0	0	0	0	0	0	0	1	4	-3
20	JAMES, JAPONICA	F	12	3-4	0-0	6-11	1	1	2	1	0	2	0	5	7	16
25	DYE, ALEXUS	F	6	2-4	0-0	2-2	2	2	4	1	0	0	0	1	7	18
	TEAM						1	0	1	0		0				
	TOTALS		30	8-24	0-4	14-19	10	5	15	7	3	7	0	14	50	

Shooting By Period

Period	FG	FG%	3FG	3FG%	FT	FT%
Game	27-85	31.8%	6-30	20.0%	41-53	77.4%

Deadball Rebounds: 9,0

Game Notes:

Officials: **Starr Jefferson, Jessica Fortner, Tim Buckner**
Attendance: **2539**

Start Time: **07:02 PM ET**
End Time: **09:21 PM ET**
Game Duration: **2:19**

Score	1st	2nd	3rd	4th	TOT
FVS	12	15	10	15	52
TRY	13	35	23	30	101

Points from (This Period)	FVS	TRY
In the Paint	4	16
Off Turns	0	24
2nd Chance	4	11
Fast Break	5	15
Bench	10	24

Official Play-By-Play
Fort Valley St. vs Troy
Fourth Quarter
November 05, 2019 at Trojan Arena - Troy



Period 4

Starters:

Fort Valley St.: 11 FRANKLIN, ALICIA (PG); 12 NEAL, JADA (G); 13 CARTER, NOLA (F); 22 MYERS, TORRI (F); 44 MOYE, JALIN (C);

Troy: 4 ROBINSON, JASMINE (G); 10 SANDIFER, JANIAH (G); 11 LEBLANC, JASMINE (G); 12 WINCHESTER, HARRIET (G); 40 RIVERS, AMBER (F);

Time	VISITORS: Fort Valley St.	Score	Margin	HOME: Troy
10:00				SUB OUT: ROSARIO, EMELY
10:00				SUB OUT: LEBLANC, JASMINE
10:00				SUB OUT: RIVERS, AMBER
10:00				SUB IN: SHAW, SHAWNTA
10:00				SUB IN: JAMES, JAPONICA
10:00				SUB IN: DYE, ALEXUS
09:45	TURNOVER (BADPASS) by FRANKLIN, ALICIA			
09:45				STEAL by JAMES, JAPONICA
09:42				TURNOVER (BADPASS) by JAMES, JAPONICA
09:42	SUB OUT: BROWN, JAH'NE			
09:42	SUB OUT: FRANKLIN, ALICIA			
09:42	SUB OUT: GREEN, ALEXIA			
09:42	SUB OUT: DISMUKES, NYAH			
09:42	SUB OUT: CARROLL, JENAY			
09:42	SUB IN: CULBRETH, NIKKI			
09:42	SUB IN: NEAL, JADA			
09:42	SUB IN: MYERS, TORRI			
09:42	SUB IN: FANNING, TAZIHA			
09:42	SUB IN: BEARDEN, ASHLEY			
09:40	TURNOVER (BADPASS) by NEAL, JADA			
09:40				STEAL by JAMES, JAPONICA
09:35				MISSED LAYUP by JAMES, JAPONICA
09:31				REBOUND (OFF) by WINCHESTER, HARRIET
09:31		73-37	H 36	GOOD! LAYUP by WINCHESTER, HARRIET
09:29	TURNOVER (BADPASS) by NEAL, JADA			
09:29				STEAL by WINCHESTER, HARRIET
09:25				MISSED LAYUP by SANDIFER, JANIAH
09:22	REBOUND (DEF) by MYERS, TORRI			
09:19				FOUL (PERSONAL) by DYE, ALEXUS
09:19	SUB OUT: CULBRETH, NIKKI			
09:19	SUB IN: SLEET, JADA			
09:19	GOOD! FT by NEAL, JADA [FB]	73-38	H 35	
09:19	GOOD! FT by NEAL, JADA [FB]	73-39	H 34	
09:08				MISSED 3PTR by SANDIFER, JANIAH
09:04				REBOUND (OFF) by WINCHESTER, HARRIET
08:59	FOUL (PERSONAL) by FANNING, TAZIHA			
08:59				MISSED FT by JAMES, JAPONICA
08:59				REBOUND (OFF) by TEAM
08:59		74-39	H 35	GOOD! FT by JAMES, JAPONICA
08:42	MISSED LAYUP by SLEET, JADA			
08:40				REBOUND (DEF) by JAMES, JAPONICA
08:36		76-39	H 37	GOOD! LAYUP by JAMES, JAPONICA [FB/PNT]
08:22	TURNOVER (LOSTBALL) by SLEET, JADA			
08:22				STEAL by SHAW, SHAWNTA
08:17		78-39	H 39	GOOD! LAYUP by SHAW, SHAWNTA [FB/PNT]
08:01				FOUL (PERSONAL) by SHAW, SHAWNTA
08:01				SUB OUT: SHAW, SHAWNTA
08:01				SUB IN: ROBINSON, JASMINE
08:01	MISSED FT by SLEET, JADA			
08:01	REBOUND (OFF) by TEAM			
08:01	MISSED FT by SLEET, JADA			
07:59				REBOUND (DEF) by DYE, ALEXUS
07:52	FOUL (PERSONAL) by FANNING, TAZIHA			
07:52	SUB OUT: FANNING, TAZIHA			
07:52	SUB IN: CARROLL, JENAY			
07:52		79-39	H 40	GOOD! FT by ROBINSON, JASMINE
07:52		80-39	H 41	GOOD! FT by ROBINSON, JASMINE
07:52	SUB OUT: SLEET, JADA			
07:52	SUB IN: CARTER, NOLA			
07:45	TURNOVER (LOSTBALL) by NEAL, JADA			
07:45				STEAL by JAMES, JAPONICA
07:41	FOUL (PERSONAL) by CARTER, NOLA			
07:41	SUB OUT: MYERS, TORRI			
07:41	SUB IN: HEIGHT, AMIAH			
07:32	TURNOVER (LOSTBALL) by CARTER, NOLA			
07:32				STEAL by WINCHESTER, HARRIET
07:27		84-39	H 45	GOOD! LAYUP by DYE, ALEXUS [FB]
07:27				ASSIST by ROBINSON, JASMINE
07:17	TURNOVER (LOSTBALL) by CARTER, NOLA			
07:17				STEAL by ROBINSON, JASMINE

Time	VISITORS: Fort Valley St.	Score	Margin	HOME: Troy
07:10	FOUL (PERSONAL) by NEAL, JADA			
07:10	TIMEOUT 30SEC			
07:41		81-39	H 42	GOOD! FT by JAMES, JAPONICA
07:41		82-39	H 43	GOOD! FT by JAMES, JAPONICA
07:10				SUB OUT: SANDIFER, JANIAH
07:10				SUB OUT: WINCHESTER, HARRIET
07:10				SUB IN: ROBINSON, KAYLA
07:10				SUB IN: JOHNSON, TIYAH
07:10	SUB OUT: NEAL, JADA			
07:10	SUB IN: DISMUKES, NYAH			
07:10		85-39	H 46	GOOD! FT by DYE, ALEXUS [FB]
07:10		86-39	H 47	GOOD! FT by DYE, ALEXUS [FB]
06:56	MISSED LAYUP by CARTER, NOLA			
06:53	REBOUND (OFF) by BEARDEN, ASHLEY			
06:52	GOOD! LAYUP by CARTER, NOLA	86-41	H 45	
06:52	ASSIST by BEARDEN, ASHLEY			
06:41				MISSED 3PTR by JOHNSON, TIYAH
06:39				REBOUND (OFF) by ROBINSON, KAYLA
06:37				TURNOVER (LOSTBALL) by ROBINSON, KAYLA
06:37	STEAL by DISMUKES, NYAH			
06:34	FOUL (OFF) by DISMUKES, NYAH			
06:34	TURNOVER (OFFENSIVE) by DISMUKES, NYAH			
06:29				SUB OUT: JAMES, JAPONICA
06:29				SUB OUT: DYE, ALEXUS
06:29				SUB IN: MOORE, TYASIA
06:29				SUB IN: LEBLANC, JASMINE
06:29	SUB OUT: CARTER, NOLA			
06:29	SUB OUT: BEARDEN, ASHLEY			
06:29	SUB IN: CULBRETH, NIKKI			
06:29	SUB IN: GREEN, ALEXIA			
06:23				MISSED JUMPER by LEBLANC, JASMINE
06:17	REBOUND (DEF) by GREEN, ALEXIA			
06:17				FOUL (PERSONAL) by ROBINSON, KAYLA
06:10	GOOD! 3PTR by CULBRETH, NIKKI	86-44	H 42	
06:10	ASSIST by DISMUKES, NYAH			
06:00				MISSED LAYUP by ROBINSON, JASMINE
05:57	REBOUND (DEF) by DISMUKES, NYAH			
05:48	TURNOVER (LOSTBALL) by CARROLL, JENAY			
05:48				STEAL by MOORE, TYASIA
05:43		88-44	H 44	GOOD! LAYUP by ROBINSON, KAYLA [FB]
05:43				ASSIST by MOORE, TYASIA
05:18	MISSED JUMPER by HEIGHT, AMIAH			
05:18	REBOUND (OFF) by CARROLL, JENAY			
05:18				FOUL (PERSONAL) by LEBLANC, JASMINE
05:18	SUB OUT: DISMUKES, NYAH			
05:18	SUB IN: BROWN, JAH'NE			
05:18	GOOD! FT by CARROLL, JENAY	88-45	H 43	
05:18	MISSED FT by CARROLL, JENAY			
05:17	REBOUND (OFF) by TEAM			
05:17				FOUL (PERSONAL) by MOORE, TYASIA
05:17	MISSED FT by GREEN, ALEXIA			
05:17	REBOUND (OFF) by TEAM			
05:17	GOOD! FT by GREEN, ALEXIA	88-46	H 42	
05:06				MISSED 3PTR by ROBINSON, KAYLA
05:03	REBOUND (DEF) by TEAM			
04:56	TURNOVER (BADPASS) by BROWN, JAH'NE			
04:56				SUB OUT: ROBINSON, JASMINE
04:56				SUB IN: ROSARIO, EMELY
04:56	SUB OUT: GREEN, ALEXIA			
04:56	SUB IN: NEAL, JADA			
04:46				MISSED LAYUP by MOORE, TYASIA
04:38	REBOUND (DEF) by HEIGHT, AMIAH			
04:36	MISSED 3PTR by BROWN, JAH'NE			
04:33				REBOUND (DEF) by MOORE, TYASIA
04:32				TURNOVER (BADPASS) by MOORE, TYASIA
04:25	MISSED 3PTR by NEAL, JADA			
04:21				REBOUND (DEF) by LEBLANC, JASMINE
04:11				TURNOVER (3SEC) by MOORE, TYASIA
03:53	SUB OUT: CULBRETH, NIKKI			
03:53	SUB OUT: HEIGHT, AMIAH			
03:53	SUB OUT: CARROLL, JENAY			
03:53	SUB IN: FRANKLIN, ALICIA			
03:53	SUB IN: MOYE, JALIN			
03:53	SUB IN: BEARDEN, ASHLEY			
03:52	TURNOVER (BADPASS) by NEAL, JADA			
03:52				STEAL by JOHNSON, TIYAH
03:48				MISSED LAYUP by JOHNSON, TIYAH
03:46				REBOUND (OFF) by ROSARIO, EMELY
03:46	FOUL (PERSONAL) by MOYE, JALIN			
03:46				SUB OUT: MOORE, TYASIA

Time	VISITORS: Fort Valley St.	Score	Margin	HOME: Troy
03:46				SUB IN: DYE, ALEXUS
03:46		89-46	H 43	GOOD! FT by LEBLANC, JASMINE [FB]
03:46		90-46	H 44	GOOD! FT by LEBLANC, JASMINE [FB]
03:46				SUB OUT: LEBLANC, JASMINE
03:46				SUB IN: JAMES, JAPONICA
03:45	TURNOVER (BADPASS) by NEAL, JADA			
03:45				STEAL by DYE, ALEXUS
03:41				MISSED LAYUP by DYE, ALEXUS
03:38	REBOUND (DEF) by NEAL, JADA			
03:34				FOUL (PERSONAL) by ROSARIO, EMELY
03:34	GOOD! FT by FRANKLIN, ALICIA [FB]	90-47	H 43	
03:34	TURNOVER (LANEVIOLATION) by FRANKLIN, ALICIA			
03:21	FOUL (PERSONAL) by BEARDEN, ASHLEY			
03:21				MISSED FT by JAMES, JAPONICA
03:21				REBOUND (OFF) by TEAM
03:21		91-47	H 44	GOOD! FT by JAMES, JAPONICA
03:16	GOOD! LAYUP by BROWN, JAH'NE [FB]	91-49	H 42	
03:16	ASSIST by NEAL, JADA			
03:07	FOUL (PERSONAL) by BEARDEN, ASHLEY			
03:07	SUB OUT: BROWN, JAH'NE			
03:07	SUB OUT: FRANKLIN, ALICIA			
03:07	SUB OUT: NEAL, JADA			
03:07	SUB OUT: MOYE, JALIN			
03:07	SUB OUT: BEARDEN, ASHLEY			
03:07	SUB IN: CULBRETH, NIKKI			
03:07	SUB IN: CARTER, NOLA			
03:07	SUB IN: GREEN, ALEXIA			
03:07	SUB IN: SLEET, JADA			
03:07	SUB IN: CARROLL, JENAY			
03:07		92-49	H 43	GOOD! FT by JAMES, JAPONICA
03:07				TURNOVER (LANEVIOLATION) by MOORE, TYASIA
03:05	TURNOVER (BADPASS) by CARTER, NOLA			
03:05				STEAL by JAMES, JAPONICA
03:05	FOUL (PERSONAL) by GREEN, ALEXIA			
03:05				MISSED FT by JAMES, JAPONICA
03:05				REBOUND (OFF) by TEAM
03:05		93-49	H 44	GOOD! FT by JAMES, JAPONICA [FB]
02:39	GOOD! 3PTR by SLEET, JADA	93-52	H 41	
02:39	ASSIST by CARTER, NOLA			
02:35	TIMEOUT 30SEC			
03:07				SUB OUT: JOHNSON, TIYAH
03:07				SUB IN: MOORE, TYASIA
02:27				TURNOVER (TRAVEL) by JAMES, JAPONICA
01:59	TURNOVER (LOSTBALL) by CARROLL, JENAY			
01:59				STEAL by MOORE, TYASIA
01:53				MISSED JUMPER by ROSARIO, EMELY
01:50				REBOUND (OFF) by DYE, ALEXUS
01:48				MISSED LAYUP by DYE, ALEXUS
01:44				REBOUND (OFF) by JAMES, JAPONICA
01:44		95-52	H 43	GOOD! LAYUP by JAMES, JAPONICA
01:38	FOUL (OFF) by SLEET, JADA			
01:38	TURNOVER (OFFENSIVE) by SLEET, JADA			
01:30	FOUL (PERSONAL) by CARTER, NOLA			
01:30	SUB OUT: CARTER, NOLA			
01:30	SUB IN: JOHNSON, CEASIA			
01:30		96-52	H 44	GOOD! FT by MOORE, TYASIA [FB]
01:30		97-52	H 45	GOOD! FT by MOORE, TYASIA [FB]
01:20	TURNOVER (BADPASS) by CULBRETH, NIKKI			
01:08				MISSED JUMPER by ROBINSON, KAYLA
01:07				REBOUND (OFF) by TEAM
01:07	SUB OUT: GREEN, ALEXIA			
01:07	SUB IN: NEAL, JADA			
01:04		99-52	H 47	GOOD! LAYUP by JAMES, JAPONICA [PNT]
01:04				ASSIST by ROBINSON, KAYLA
00:46				FOUL (PERSONAL) by JAMES, JAPONICA
00:46	MISSED FT by CARROLL, JENAY			
00:46	REBOUND (OFF) by TEAM			
00:46	MISSED FT by CARROLL, JENAY			
00:46				REBOUND (DEF) by DYE, ALEXUS
00:40				MISSED 3PTR by ROSARIO, EMELY
00:39				REBOUND (OFF) by MOORE, TYASIA
00:35				MISSED JUMPER by MOORE, TYASIA
00:34	REBOUND (DEF) by TEAM			
00:34	SUB OUT: JOHNSON, CEASIA			
00:34	SUB OUT: CARROLL, JENAY			
00:34	SUB IN: BROWN, JAH'NE			
00:34	SUB IN: FRANKLIN, ALICIA			
00:33	TURNOVER (BADPASS) by NEAL, JADA			
00:33				STEAL by ROBINSON, KAYLA
00:17				TURNOVER (BADPASS) by ROSARIO, EMELY

Time	VISITORS: Fort Valley St.	Score	Margin	HOME: Troy
00:17	STEAL by NEAL, JADA			
00:09	TURNOVER (BADPASS) by BROWN, JAH'NE			
00:09				STEAL by JAMES, JAPONICA
00:03	FOUL (PERSONAL) by BROWN, JAH'NE			
00:03				MISSED FT by JAMES, JAPONICA
00:03				REBOUND (OFF) by TEAM
00:03				MISSED FT by JAMES, JAPONICA
00:03				REBOUND (OFF) by MOORE, TYASIA
00:02				MISSED LAYUP by MOORE, TYASIA
00:01				REBOUND (OFF) by DYE, ALEXUS
00:00		101-52	H 49	GOOD! LAYUP by DYE, ALEXUS
03:10	REBOUND (OFF) by TEAM			

Fort Valley St. 52, Troy 101

Points from (This Period)	FVS	TRY
In the Paint	4	16
Off Turns	0	24
2nd Chance	4	11
Fast Break	5	15
Bench	10	24

Official Scoring/Possession Reference Chart
Fort Valley St. vs Troy
Period 1
November 05, 2019 at Trojan Arena - Troy



Period 1

Starters:

Fort Valley St.: 11 FRANKLIN, ALICIA (PG); 12 NEAL, JADA (G); 13 CARTER, NOLA (F); 22 MYERS, TORRI (F); 44 MOYE, JALIN (C);

Troy: 4 ROBINSON, JASMINE (G); 10 SANDIFER, JANIAH (G); 11 LEBLANC, JASMINE (G); 12 WINCHESTER, HARRIET (G); 40 RIVERS, AMBER (F);

Time	VISITORS: Fort Valley St.	Score	Margin	HOME: Troy
09:37	GOOD! LAYUP by MYERS, TORRI [PNT]	0-2	V 2	
07:47		3-2	H 1	GOOD! 3PTR by ROBINSON, JASMINE [FB]
06:38		4-2	H 2	GOOD! FT by LEBLANC, JASMINE [FB]
06:08		5-2	H 3	GOOD! FT by JAMES, JAPONICA
05:57		6-2	H 4	GOOD! FT by JOHNSON, TIYAH [FB]
05:49	GOOD! JUMPER by FANNING, TAZIHA [PNT]	6-4	H 2	
03:52	GOOD! 3PTR by CULBRETH, NIKKI	6-7	V 1	
03:43		8-7	H 1	GOOD! JUMPER by ROBINSON, KAYLA
02:29	GOOD! JUMPER by CULBRETH, NIKKI	8-9	V 1	
01:45		9-9	T	GOOD! FT by ROBINSON, KAYLA [FB]
01:45		10-9	H 1	GOOD! FT by ROBINSON, KAYLA [FB]
01:08	GOOD! FT by CARTER, NOLA [FB]	10-10	T	
00:40	GOOD! LAYUP by CARTER, NOLA	10-12	V 2	
00:03		13-12	H 1	GOOD! 3PTR by WINCHESTER, HARRIET

Fort Valley St. 12, Troy 13

Official Scoring/Possession Reference Chart
Fort Valley St. vs Troy
Period 2
November 05, 2019 at Trojan Arena - Troy



Period 2

Starters:

Fort Valley St.: 11 FRANKLIN,ALICIA (PG); 12 NEAL,JADA (G); 13 CARTER,NOLA (F); 22 MYERS,TORRI (F); 44 MOYE,JALIN (C);

Troy: 4 ROBINSON,JASMINE (G); 10 SANDIFER,JANIAH (G); 11 LEBLANC,JASMINE (G); 12 WINCHESTER,HARRIET (G); 40 RIVERS,AMBER (F);

Time	VISITORS: Fort Valley St.	Score	Margin	HOME: Troy
09:52		15-12	H 3	GOOD! LAYUP by JAMES, JAPONICA
09:52		16-12	H 4	GOOD! FT by JAMES, JAPONICA
09:22	GOOD! LAYUP by FANNING, TAZIHA	16-14	H 2	
09:03		17-14	H 3	GOOD! FT by JAMES, JAPONICA
08:41		19-14	H 5	GOOD! LAYUP by JAMES, JAPONICA [PNT]
08:19		21-14	H 7	GOOD! LAYUP by MOORE, TYASIA [PNT]
08:08	GOOD! 3PTR by CULBRETH, NIKKI	21-17	H 4	
07:07	GOOD! LAYUP by GREEN, ALEXIA [FB]	21-19	H 2	
06:25		25-19	H 6	GOOD! LAYUP by DYE, ALEXUS [FB]
06:08		26-19	H 7	GOOD! FT by ROBINSON, KAYLA [FB]
05:17		28-19	H 9	GOOD! LAYUP by DYE, ALEXUS [FB]
05:17		29-19	H 10	GOOD! FT by DYE, ALEXUS [FB]
06:59		22-19	H 3	GOOD! FT by JAMES, JAPONICA
06:59		23-19	H 4	GOOD! FT by JAMES, JAPONICA
04:03	GOOD! JUMPER by BROWN, JAH'NE	29-21	H 8	
03:13		30-21	H 9	GOOD! FT by MOORE, TYASIA
03:13		31-21	H 10	GOOD! FT by MOORE, TYASIA
02:38		33-21	H 12	GOOD! JUMPER by MOORE, TYASIA [PNT]
02:20	GOOD! 3PTR by BROWN, JAH'NE	33-24	H 9	
01:54		35-24	H 11	GOOD! LAYUP by ROBINSON, KAYLA [PNT]
01:40		36-24	H 12	GOOD! FT by DYE, ALEXUS [FB]
01:40		37-24	H 13	GOOD! FT by DYE, ALEXUS [FB]
00:47		40-24	H 16	GOOD! 3PTR by RIVERS, AMBER
00:37	GOOD! 3PTR by BROWN, JAH'NE	40-27	H 13	
00:28		43-27	H 16	GOOD! 3PTR by WINCHESTER, HARRIET
00:10		44-27	H 17	GOOD! FT by SANDIFER, JANIAH [FB]
00:10		45-27	H 18	GOOD! FT by SANDIFER, JANIAH [FB]
00:00		48-27	H 21	GOOD! 3PTR by MOORE, TYASIA

Fort Valley St. 27, Troy 48

Official Scoring/Possession Reference Chart
Fort Valley St. vs Troy
Period 3
November 05, 2019 at Trojan Arena - Troy



Period 3

Starters:

Fort Valley St.: 11 FRANKLIN,ALICIA (PG); 12 NEAL,JADA (G); 13 CARTER,NOLA (F); 22 MYERS,TORRI (F); 44 MOYE,JALIN (C);

Troy: 4 ROBINSON,JASMINE (G); 10 SANDIFER,JANIAH (G); 11 LEBLANC,JASMINE (G); 12 WINCHESTER,HARRIET (G); 40 RIVERS,AMBER (F);

Time	VISITORS: Fort Valley St.	Score	Margin	HOME: Troy
09:29	GOOD! LAYUP by NEAL, JADA [FB]	48-29	H 19	
09:17		50-29	H 21	GOOD! JUMPER by RIVERS, AMBER
08:57		53-29	H 24	GOOD! 3PTR by RIVERS, AMBER
08:42	GOOD! JUMPER by FRANKLIN, ALICIA	53-31	H 22	
08:07		54-31	H 23	GOOD! FT by LEBLANC, JASMINE
08:07		55-31	H 24	GOOD! FT by LEBLANC, JASMINE
07:31		57-31	H 26	GOOD! JUMPER by RIVERS, AMBER
07:20	GOOD! JUMPER by CARTER, NOLA	57-33	H 24	
05:25		59-33	H 26	GOOD! LAYUP by JAMES, JAPONICA [FB/PNT]
05:00		60-33	H 27	GOOD! FT by JAMES, JAPONICA
05:00		61-33	H 28	GOOD! FT by JAMES, JAPONICA
04:49	GOOD! LAYUP by FANNING, TAZIHA	61-35	H 26	
04:19		63-35	H 28	GOOD! LAYUP by JAMES, JAPONICA [FB]
04:19		64-35	H 29	GOOD! FT by JAMES, JAPONICA [FB]
02:41		65-35	H 30	GOOD! FT by MOORE, TYASIA [FB]
02:21		66-35	H 31	GOOD! FT by LEBLANC, JASMINE
01:53		67-35	H 32	GOOD! FT by LEBLANC, JASMINE [FB]
01:53		68-35	H 33	GOOD! FT by LEBLANC, JASMINE [FB]
01:39	GOOD! LAYUP by CARROLL, JENAY	68-37	H 31	
00:56		70-37	H 33	GOOD! LAYUP by LEBLANC, JASMINE
00:30		71-37	H 34	GOOD! FT by LEBLANC, JASMINE [FB]

Fort Valley St. 37, Troy 71

Official Scoring/Possession Reference Chart
Fort Valley St. vs Troy
Period 4
November 05, 2019 at Trojan Arena - Troy



Period 4

Starters:

Fort Valley St.: 11 FRANKLIN,ALICIA (PG); 12 NEAL,JADA (G); 13 CARTER,NOLA (F); 22 MYERS,TORRI (F); 44 MOYE,JALIN (C);

Troy: 4 ROBINSON,JASMINE (G); 10 SANDIFER,JANIAH (G); 11 LEBLANC,JASMINE (G); 12 WINCHESTER,HARRIET (G); 40 RIVERS,AMBER (F);

Time	VISITORS: Fort Valley St.	Score	Margin	HOME: Troy
09:31		73-37	H 36	GOOD! LAYUP by WINCHESTER, HARRIET
09:19	GOOD! FT by NEAL, JADA [FB]	73-38	H 35	
09:19	GOOD! FT by NEAL, JADA [FB]	73-39	H 34	
08:59		74-39	H 35	GOOD! FT by JAMES, JAPONICA
08:36		76-39	H 37	GOOD! LAYUP by JAMES, JAPONICA [FB/PNT]
08:17		78-39	H 39	GOOD! LAYUP by SHAW, SHAWNATA [FB/PNT]
07:52		79-39	H 40	GOOD! FT by ROBINSON, JASMINE
07:52		80-39	H 41	GOOD! FT by ROBINSON, JASMINE
07:27		84-39	H 45	GOOD! LAYUP by DYE, ALEXUS [FB]
07:41		81-39	H 42	GOOD! FT by JAMES, JAPONICA
07:41		82-39	H 43	GOOD! FT by JAMES, JAPONICA
07:10		85-39	H 46	GOOD! FT by DYE, ALEXUS [FB]
07:10		86-39	H 47	GOOD! FT by DYE, ALEXUS [FB]
06:52	GOOD! LAYUP by CARTER, NOLA	86-41	H 45	
06:10	GOOD! 3PTR by CULBRETH, NIKKI	86-44	H 42	
05:43		88-44	H 44	GOOD! LAYUP by ROBINSON, KAYLA [FB]
05:18	GOOD! FT by CARROLL, JENAY	88-45	H 43	
05:17	GOOD! FT by GREEN, ALEXIA	88-46	H 42	
03:46		89-46	H 43	GOOD! FT by LEBLANC, JASMINE [FB]
03:46		90-46	H 44	GOOD! FT by LEBLANC, JASMINE [FB]
03:34	GOOD! FT by FRANKLIN, ALICIA [FB]	90-47	H 43	
03:21		91-47	H 44	GOOD! FT by JAMES, JAPONICA
03:16	GOOD! LAYUP by BROWN, JAH'NE [FB]	91-49	H 42	
03:07		92-49	H 43	GOOD! FT by JAMES, JAPONICA
03:05		93-49	H 44	GOOD! FT by JAMES, JAPONICA [FB]
02:39	GOOD! 3PTR by SLEET, JADA	93-52	H 41	
01:44		95-52	H 43	GOOD! LAYUP by JAMES, JAPONICA
01:30		96-52	H 44	GOOD! FT by MOORE, TYASIA [FB]
01:30		97-52	H 45	GOOD! FT by MOORE, TYASIA [FB]
01:04		99-52	H 47	GOOD! LAYUP by JAMES, JAPONICA [PNT]
00:00		101-52	H 49	GOOD! LAYUP by DYE, ALEXUS

Fort Valley St. 52, Troy 101

Official Substitutions Log
Fort Valley St. vs Troy
Period 1
November 05, 2019 at Trojan Arena - Troy



VISITORS: Fort Valley St.	Time	Score	HOME: Troy
11 FRANKLIN,ALICIA			4 ROBINSON,JASMINE
12 NEAL,JADA			10 SANDIFER,JANIAH
13 CARTER,NOLA			11 LEBLANC,JASMINE
22 MYERS,TORRI			12 WINCHESTER,HARRIET
44 MOYE,JALIN			40 RIVERS,AMBER
	07:16	2-3	SUB OUT: ROBINSON,JASMINE
	07:16		SUB OUT: SANDIFER,JANIAH
	07:16		SUB OUT: WINCHESTER,HARRIET
	07:16		SUB IN: ROBINSON,KAYLA
	07:16		SUB IN: SHAW,SHAWNTA
	07:16		SUB IN: JOHNSON,TIYAH
SUB OUT: 44 MOYE,JALIN	06:38	2-3	
SUB IN: 20 GREEN,ALEXIA	06:38		
	06:08	2-4	SUB OUT: LEBLANC,JASMINE
	06:08		SUB IN: JAMES,JAPONICA
SUB OUT: 13 CARTER,NOLA	06:08		
SUB OUT: 22 MYERS,TORRI	06:08		
SUB IN: 24 FANNING,TAZIHA	06:08		
SUB IN: 34 SLEET,JADA	06:08		
	05:57	2-5	SUB OUT: SHAW,SHAWNTA
	05:57		SUB IN: ROSARIO,EMELY
	05:23	4-6	SUB OUT: RIVERS,AMBER
	05:23		SUB IN: DYE,ALEXUS
SUB OUT: 11 FRANKLIN,ALICIA	04:21	4-6	
SUB OUT: 12 NEAL,JADA	04:21		
SUB IN: 3 CULBRETH,NIKKI	04:21		
SUB IN: 21 DISMUKES,NYAH	04:21		
SUB OUT: 34 SLEET,JADA	03:08	7-8	
SUB IN: 11 FRANKLIN,ALICIA	03:08		
	02:54	7-8	SUB OUT: ROSARIO,EMELY
	02:54		SUB IN: MOORE,TYASIA
	01:45	9-8	SUB OUT: JAMES,JAPONICA
	01:45		SUB OUT: DYE,ALEXUS
	01:45		SUB IN: LEBLANC,JASMINE
	01:45		SUB IN: RIVERS,AMBER
SUB OUT: 3 CULBRETH,NIKKI	01:45		
SUB OUT: 21 DISMUKES,NYAH	01:45		
SUB IN: 13 CARTER,NOLA	01:45		
SUB IN: 22 MYERS,TORRI	01:45		
	01:45		SUB OUT: ROBINSON,KAYLA
	01:45		SUB IN: ROBINSON,JASMINE
	01:26	9-10	SUB OUT: JOHNSON,TIYAH
	01:26		SUB IN: WINCHESTER,HARRIET
	01:08	9-10	SUB OUT: LEBLANC,JASMINE
	01:08		SUB IN: JAMES,JAPONICA
SUB OUT: 20 GREEN,ALEXIA	00:12	12-10	
SUB IN: 12 NEAL,JADA	00:12		

Fort Valley St. 12, Troy 13

Official Substitutions Log
Fort Valley St. vs Troy
Period 2
November 05, 2019 at Trojan Arena - Troy



VISITORS: Fort Valley St.	Time	Score	HOME: Troy
11 FRANKLIN,ALICIA			4 ROBINSON,JASMINE
12 NEAL,JADA			10 SANDIFER,JANIAH
13 CARTER,NOLA			11 LEBLANC,JASMINE
22 MYERS,TORRI			12 WINCHESTER,HARRIET
44 MOYE,JALIN			40 RIVERS,AMBER
	10:00	-	SUB OUT: MOORE,TYASIA
	10:00		SUB IN: SANDIFER,JANIAH
SUB OUT: 12 NEAL,JADA	09:52	12-16	
SUB IN: 10 HEIGHT,AMIAH	09:52		
SUB OUT: 22 MYERS,TORRI	09:30	12-16	
SUB IN: 21 DISMUKES,NYAH	09:30		
	09:03	14-17	SUB OUT: RIVERS,AMBER
	09:03		SUB IN: MOORE,TYASIA
SUB OUT: 24 FANNING,TAZIHA	09:03		
SUB IN: 12 NEAL,JADA	09:03		
SUB OUT: 21 DISMUKES,NYAH	08:51	14-17	
SUB IN: 3 CULBRETH,NIKKI	08:51		
SUB OUT: 10 HEIGHT,AMIAH	07:41	17-21	
SUB OUT: 13 CARTER,NOLA	07:41		
SUB IN: 4 BROWN,JA'NE	07:41		
SUB IN: 20 GREEN,ALEXIA	07:41		
	06:59	19-21	SUB OUT: ROBINSON,JASMINE
	06:59		SUB OUT: MOORE,TYASIA
	06:59		SUB OUT: SANDIFER,JANIAH
	06:59		SUB OUT: WINCHESTER,HARRIET
	06:59		SUB IN: ROBINSON,KAYLA
	06:59		SUB IN: SHAW,SHAWNTA
	06:59		SUB IN: JOHNSON,TIYAH
	06:59		SUB IN: DYE,ALEXUS
	06:59		SUB OUT: JAMES,JAPONICA
	06:59		SUB IN: RIVERS,AMBER
SUB OUT: 11 FRANKLIN,ALICIA	06:08	19-25	
SUB IN: 13 CARTER,NOLA	06:08		
	05:17	19-28	SUB OUT: RIVERS,AMBER
	05:17		SUB IN: JAMES,JAPONICA
SUB OUT: 3 CULBRETH,NIKKI	05:17		
SUB IN: 11 FRANKLIN,ALICIA	05:17		
	04:30	19-23	SUB OUT: SHAW,SHAWNTA
	04:30		SUB IN: ROSARIO,EMELY
	04:29	19-23	SUB OUT: JAMES,JAPONICA
	04:29		SUB IN: MOORE,TYASIA
	03:33	21-29	SUB OUT: JOHNSON,TIYAH
	03:33		SUB IN: SANDIFER,JANIAH
SUB OUT: 11 FRANKLIN,ALICIA	03:33		
SUB IN: 3 CULBRETH,NIKKI	03:33		
SUB OUT: 20 GREEN,ALEXIA	03:13	21-31	
SUB IN: 45 CARROLL,JENAY	03:13		
SUB OUT: 12 NEAL,JADA	02:47	21-31	
SUB IN: 20 GREEN,ALEXIA	02:47		
	01:40	24-35	SUB OUT: ROBINSON,KAYLA
	01:40		SUB IN: WINCHESTER,HARRIET
SUB OUT: 13 CARTER,NOLA	01:40		
SUB IN: 11 FRANKLIN,ALICIA	01:40		
SUB OUT: 45 CARROLL,JENAY	01:40		
SUB IN: 44 MOYE,JALIN	01:40		
	01:40		SUB OUT: DYE,ALEXUS
	01:40		SUB IN: RIVERS,AMBER

Fort Valley St. 27, Troy 48

Official Substitutions Log
Fort Valley St. vs Troy
Period 3
November 05, 2019 at Trojan Arena - Troy



VISITORS: Fort Valley St.	Time	Score	HOME: Troy
11 FRANKLIN,ALICIA			4 ROBINSON,JASMINE
12 NEAL,JADA			10 SANDIFER,JANIAH
13 CARTER,NOLA			11 LEBLANC,JASMINE
22 MYERS,TORRI			12 WINCHESTER,HARRIET
44 MOYE,JALIN			40 RIVERS,AMBER
	10:00	-	SUB OUT: ROSARIO,EMELY
	10:00		SUB OUT: MOORE,TYASIA
	10:00		SUB IN: ROBINSON,JASMINE
	10:00		SUB IN: LEBLANC,JASMINE
SUB OUT: 3 CULBRETH,NIKKI	10:00		
SUB OUT: 4 BROWN,JA'NE	10:00		
SUB OUT: 20 GREEN,ALEXIA	10:00		
SUB IN: 12 NEAL,JADA	10:00		
SUB IN: 13 CARTER,NOLA	10:00		
SUB IN: 22 MYERS,TORRI	10:00		
SUB OUT: 44 MOYE,JALIN	08:01	31-55	
SUB IN: 20 GREEN,ALEXIA	08:01		
SUB OUT: 22 MYERS,TORRI	07:52	31-55	
SUB IN: 21 DISMUKES,NYAH	07:52		
	06:09	33-57	SUB OUT: ROBINSON,JASMINE
	06:09		SUB OUT: SANDIFER,JANIAH
	06:09		SUB OUT: LEBLANC,JASMINE
	06:09		SUB OUT: WINCHESTER,HARRIET
	06:09		SUB OUT: RIVERS,AMBER
	06:09		SUB IN: ROBINSON,KAYLA
	06:09		SUB IN: SHAW,SHAWNNTA
	06:09		SUB IN: JOHNSON,TIYAH
	06:09		SUB IN: JAMES,JAPONICA
	06:09		SUB IN: DYE,ALEXUS
SUB OUT: 21 DISMUKES,NYAH	05:09	33-59	
SUB IN: 3 CULBRETH,NIKKI	05:09		
SUB IN: 24 FANNING,TAZIHA	05:09		
SUB IN: 34 SLEET,JADA	05:09		
SUB OUT: 11 FRANKLIN,ALICIA	05:09		
SUB OUT: 20 GREEN,ALEXIA	05:09		
SUB OUT: 12 NEAL,JADA	05:00	33-59	
SUB IN: 45 CARROLL,JENAY	05:00		
SUB OUT: 13 CARTER,NOLA	04:19	35-63	
SUB IN: 21 DISMUKES,NYAH	04:19		
	03:35	35-64	SUB OUT: DYE,ALEXUS
	03:35		SUB IN: MOORE,TYASIA
	03:10	35-64	SUB OUT: SHAW,SHAWNNTA
	03:10		SUB IN: ROSARIO,EMELY
	03:10		SUB OUT: JAMES,JAPONICA
	03:10		SUB IN: LEBLANC,JASMINE
	02:41	35-64	SUB OUT: ROBINSON,KAYLA
	02:41		SUB OUT: JOHNSON,TIYAH
	02:41		SUB IN: SANDIFER,JANIAH
	02:41		SUB IN: WINCHESTER,HARRIET
SUB OUT: 3 CULBRETH,NIKKI	01:53	35-66	
SUB OUT: 24 FANNING,TAZIHA	01:53		
SUB OUT: 34 SLEET,JADA	01:53		
SUB IN: 4 BROWN,JA'NE	01:53		
SUB IN: 11 FRANKLIN,ALICIA	01:53		
SUB IN: 20 GREEN,ALEXIA	01:53		
	01:12	37-68	SUB OUT: MOORE,TYASIA
	01:12		SUB IN: RIVERS,AMBER

Fort Valley St. 37, Troy 71

Official Substitutions Log
Fort Valley St. vs Troy
Period 4
November 05, 2019 at Trojan Arena - Troy



VISITORS: Fort Valley St.	Time	Score	HOME: Troy
11 FRANKLIN,ALICIA			4 ROBINSON,JASMINE
12 NEAL,JADA			10 SANDIFER,JANIAH
13 CARTER,NOLA			11 LEBLANC,JASMINE
22 MYERS,TORRI			12 WINCHESTER,HARRIET
44 MOYE,JALIN			40 RIVERS,AMBER
	10:00	-	SUB OUT: ROSARIO,EMELY
	10:00		SUB OUT: LEBLANC,JASMINE
	10:00		SUB OUT: RIVERS,AMBER
	10:00		SUB IN: SHAW,SHAWNTA
	10:00		SUB IN: JAMES,JAPONICA
	10:00		SUB IN: DYE,ALEXUS
SUB OUT: 4 BROWN,JA'NE	09:42	-	
SUB OUT: 11 FRANKLIN,ALICIA	09:42		
SUB OUT: 20 GREEN,ALEXIA	09:42		
SUB OUT: 21 DISMUKES,NYAH	09:42		
SUB OUT: 45 CARROLL,JENAY	09:42		
SUB IN: 3 CULBRETH,NIKKI	09:42		
SUB IN: 12 NEAL,JADA	09:42		
SUB IN: 22 MYERS,TORRI	09:42		
SUB IN: 24 FANNING,TAZIHA	09:42		
SUB IN: 52 BEARDEN,ASHLEY	09:42		
SUB OUT: 3 CULBRETH,NIKKI	09:19	37-73	
SUB IN: 34 SLEET,JADA	09:19		
	08:01	39-78	SUB OUT: SHAW,SHAWNTA
	08:01		SUB IN: ROBINSON,JASMINE
SUB OUT: 24 FANNING,TAZIHA	07:52	39-78	
SUB IN: 45 CARROLL,JENAY	07:52		
SUB OUT: 34 SLEET,JADA	07:52		
SUB IN: 13 CARTER,NOLA	07:52		
SUB OUT: 22 MYERS,TORRI	07:41	39-80	
SUB IN: 10 HEIGHT,AMIAH	07:41		
	07:10	39-82	SUB OUT: SANDIFER,JANIAH
	07:10		SUB OUT: WINCHESTER,HARRIET
	07:10		SUB IN: ROBINSON,KAYLA
	07:10		SUB IN: JOHNSON,TIYAH
SUB OUT: 12 NEAL,JADA	07:10		
SUB IN: 21 DISMUKES,NYAH	07:10		
	06:29	41-86	SUB OUT: JAMES,JAPONICA
	06:29		SUB OUT: DYE,ALEXUS
	06:29		SUB IN: MOORE,TYASIA
	06:29		SUB IN: LEBLANC,JASMINE
SUB OUT: 13 CARTER,NOLA	06:29		
SUB OUT: 52 BEARDEN,ASHLEY	06:29		
SUB IN: 3 CULBRETH,NIKKI	06:29		
SUB IN: 20 GREEN,ALEXIA	06:29		
SUB OUT: 21 DISMUKES,NYAH	05:18	44-88	
SUB IN: 4 BROWN,JA'NE	05:18		
	04:56	46-88	SUB OUT: ROBINSON,JASMINE
	04:56		SUB IN: ROSARIO,EMELY
SUB OUT: 20 GREEN,ALEXIA	04:56		
SUB IN: 12 NEAL,JADA	04:56		
SUB OUT: 3 CULBRETH,NIKKI	03:53	46-88	
SUB OUT: 10 HEIGHT,AMIAH	03:53		
SUB OUT: 45 CARROLL,JENAY	03:53		
SUB IN: 11 FRANKLIN,ALICIA	03:53		
SUB IN: 44 MOYE,JALIN	03:53		
SUB IN: 52 BEARDEN,ASHLEY	03:53		
	03:46	46-88	SUB OUT: MOORE,TYASIA
	03:46		SUB IN: DYE,ALEXUS
	03:46		SUB OUT: LEBLANC,JASMINE
	03:46		SUB IN: JAMES,JAPONICA
SUB OUT: 4 BROWN,JA'NE	03:07	49-91	
SUB OUT: 11 FRANKLIN,ALICIA	03:07		
SUB OUT: 12 NEAL,JADA	03:07		
SUB OUT: 44 MOYE,JALIN	03:07		
SUB OUT: 52 BEARDEN,ASHLEY	03:07		
SUB IN: 3 CULBRETH,NIKKI	03:07		
SUB IN: 13 CARTER,NOLA	03:07		
SUB IN: 20 GREEN,ALEXIA	03:07		
SUB IN: 34 SLEET,JADA	03:07		
SUB IN: 45 CARROLL,JENAY	03:07		
	03:07		SUB OUT: JOHNSON,TIYAH
	03:07		SUB IN: MOORE,TYASIA
SUB OUT: 13 CARTER,NOLA	01:30	52-95	
SUB IN: 31 JOHNSON,CEASIA	01:30		

VISITORS: Fort Valley St.	Time	Score	HOME: Troy
SUB OUT: 20 GREEN,ALEXIA	01:07	52-97	
SUB IN: 12 NEAL,JADA	01:07		
SUB OUT: 31 JOHNSON,CEASIA	00:34	52-99	
SUB OUT: 45 CARROLL,JENAY	00:34		
SUB IN: 4 BROWN,JA'HNE	00:34		
SUB IN: 11 FRANKLIN,ALICIA	00:34		

Fort Valley St. 52, Troy 101

Official Shot Chart
Fort Valley St. vs Troy
 PERIOD 1 Shots
 November 05, 2019 at Trojan Arena - Troy



Troy

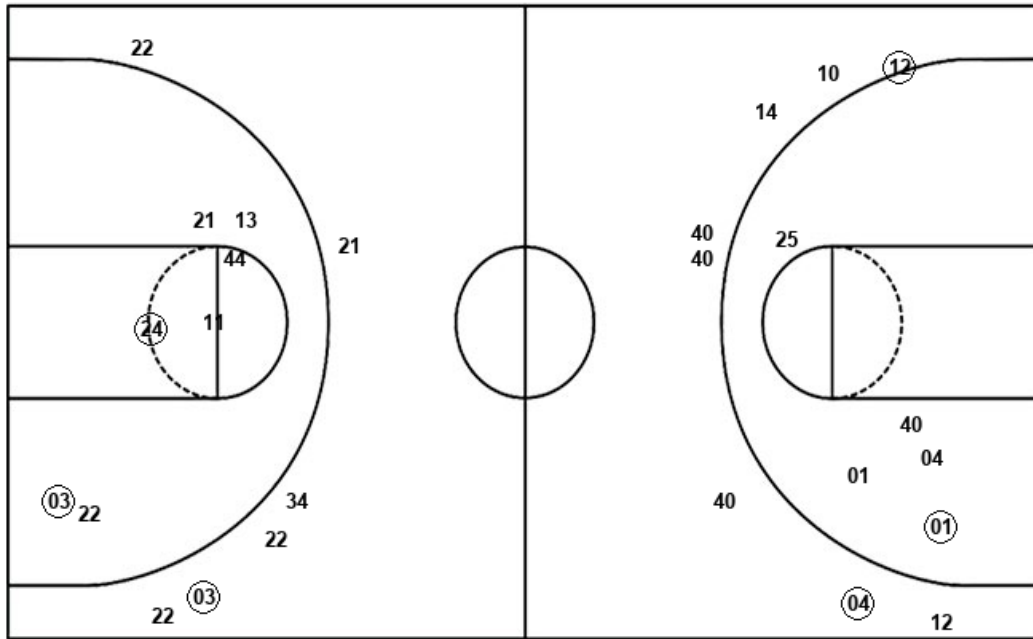
Fort Valley St.

Layups
 40 10 00 20 01

Layups

Dunks

Dunks



TRY : Period 1	Made	Att	Pct
Layups	0	5	00.0
Dunks	0	0	0
2PT Field Goals	1	10	10.0
3PT Field Goals	2	8	25.0
Total Field Goals	3	18	16.7

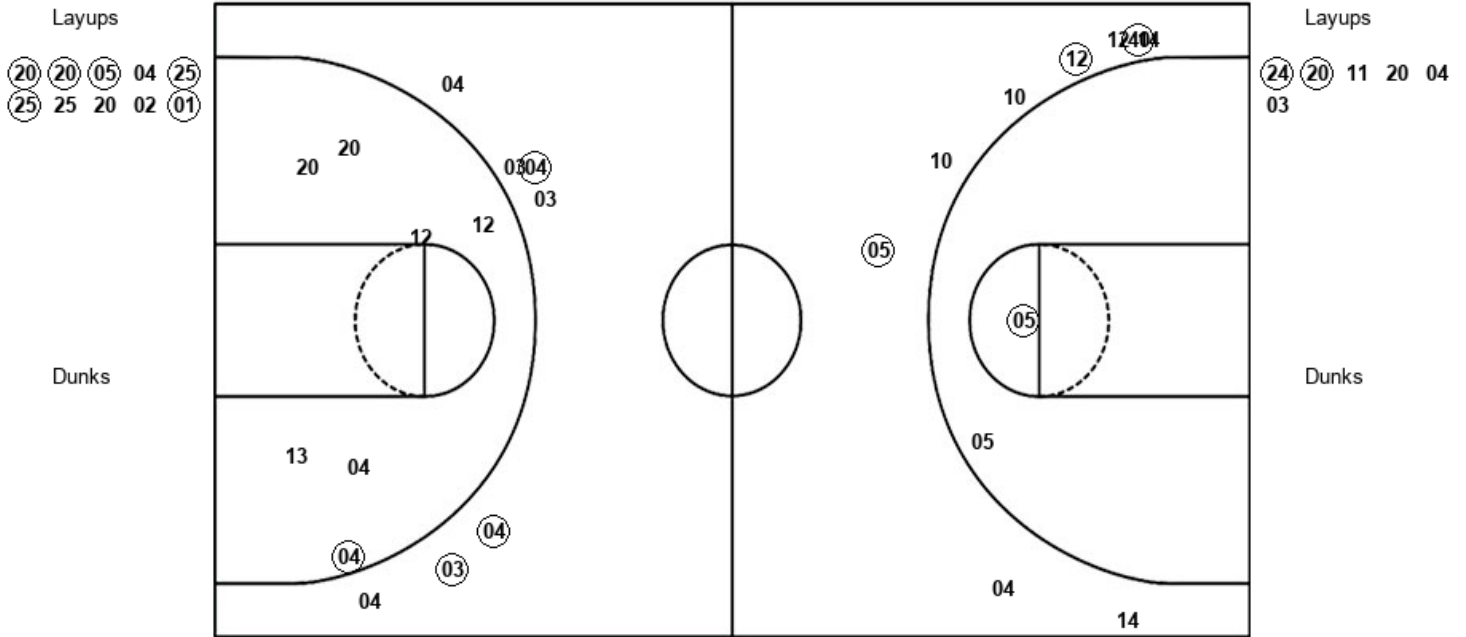
FVS : Period 1	Made	Att	Pct
Layups	2	3	66.7
Dunks	0	0	0
2PT Field Goals	4	10	40.0
3PT Field Goals	1	6	16.7
Total Field Goals	5	16	31.3

Official Shot Chart
Fort Valley St. vs Troy
PERIOD 2 Shots
November 05, 2019 at Trojan Arena - Troy



Troy

Fort Valley St.



TRY : Period 2	Made	Att	Pct
Layups	6	10	60.0
Dunks	0	0	0
2PT Field Goals	7	12	58.3
3PT Field Goals	3	9	33.3
Total Field Goals	10	21	47.6

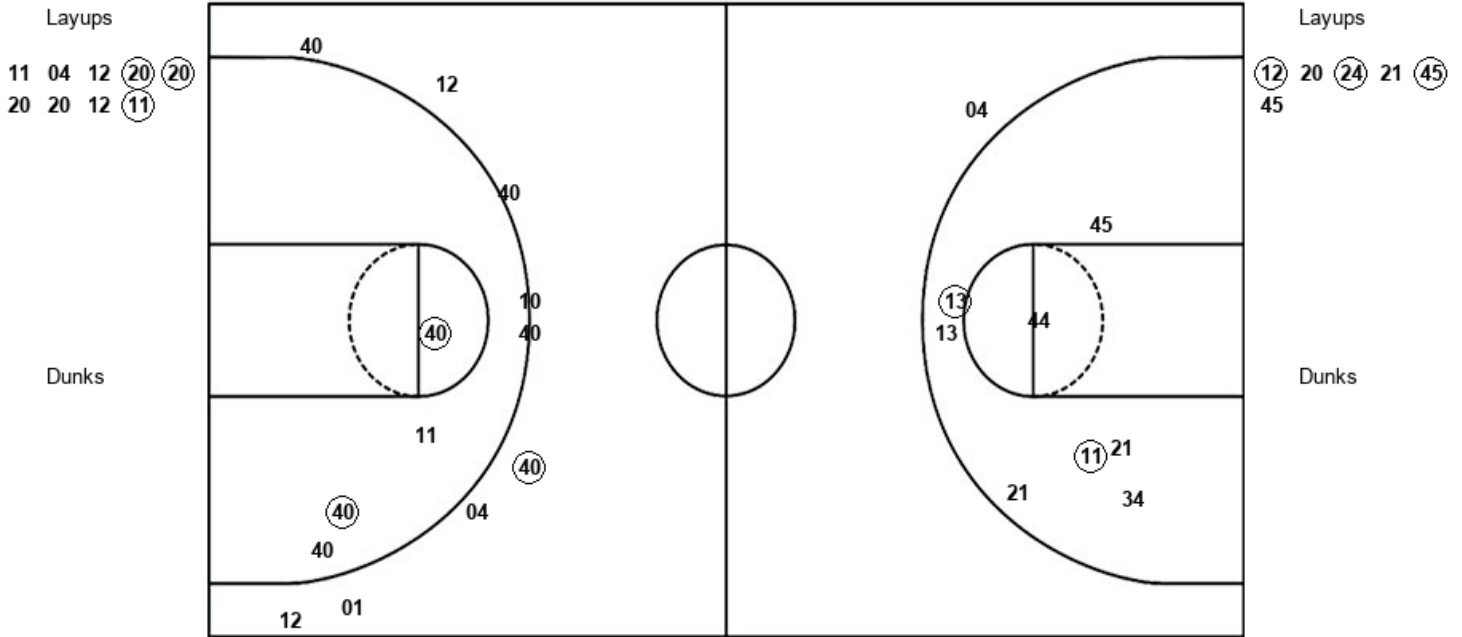
FVS : Period 2	Made	Att	Pct
Layups	2	6	33.3
Dunks	0	0	0
2PT Field Goals	3	13	23.1
3PT Field Goals	3	7	42.9
Total Field Goals	6	20	30.0

Official Shot Chart
 Fort Valley St. vs Troy
 PERIOD 3 Shots
 November 05, 2019 at Trojan Arena - Troy



Troy

Fort Valley St.



TRY : Period 3	Made	Att	Pct
Layups	3	9	33.3
Dunks	0	0	0
2PT Field Goals	5	13	38.5
3PT Field Goals	1	9	11.1
Total Field Goals	6	22	27.3

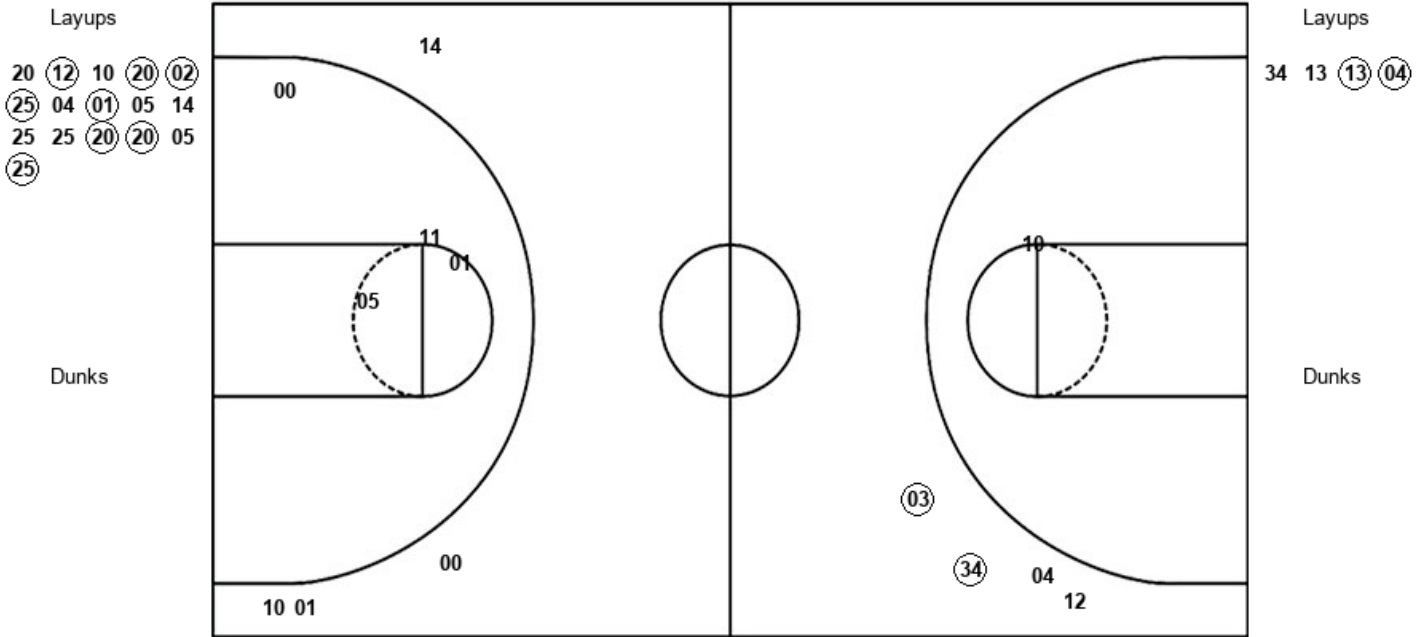
FVS : Period 3	Made	Att	Pct
Layups	3	6	50.0
Dunks	0	0	0
2PT Field Goals	5	14	35.7
3PT Field Goals	0	1	00.0
Total Field Goals	5	15	33.3

Official Shot Chart
 Fort Valley St. vs Troy
 PERIOD 4 Shots
 November 05, 2019 at Trojan Arena - Troy



Troy

Fort Valley St.



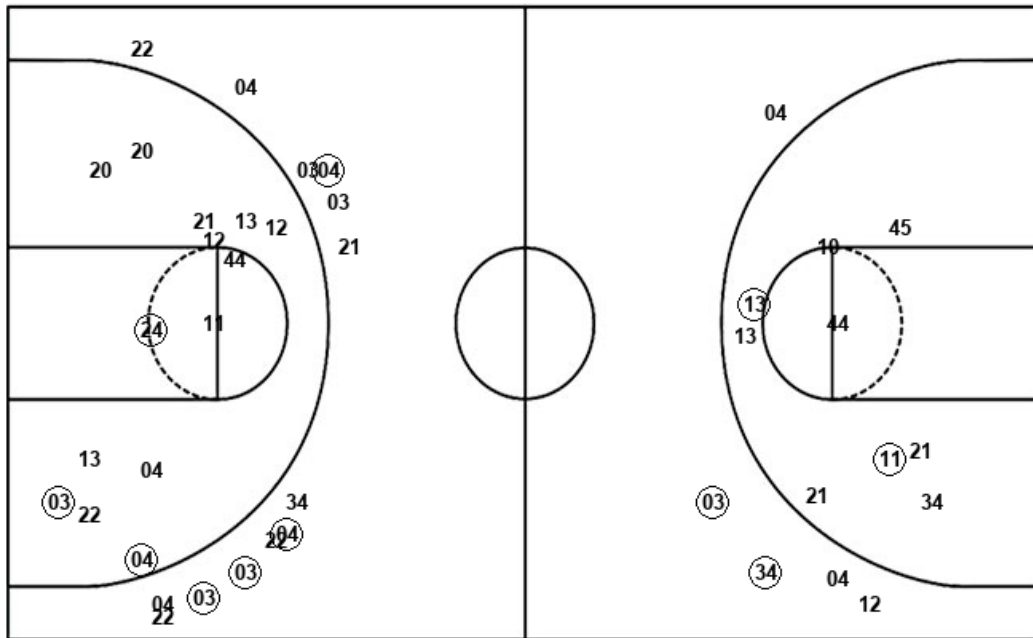
TRY : Period 4	Made	Att	Pct
Layups	8	16	50.0
Dunks	0	0	0
2PT Field Goals	8	20	40.0
3PT Field Goals	0	4	00.0
Total Field Goals	8	24	33.3

FVS : Period 4	Made	Att	Pct
Layups	2	4	50.0
Dunks	0	0	0
2PT Field Goals	2	5	40.0
3PT Field Goals	2	4	50.0
Total Field Goals	4	9	44.4

Official Shot Chart
Fort Valley St. vs Troy
Fort Valley St. Team Shots
November 05, 2019 at Trojan Arena - Troy



Layups



Layups

(22) 11 (13) (24) (20)
 11 20 04 03 (12)
 20 (24) 21 (45) 45
 34 13 (13) (04)

Dunks

Dunks

FVS : Period 1	Made	Att	Pct
Layups	2	3	66.7
Dunks	0	0	0
2PT Field Goals	4	10	40.0
3PT Field Goals	1	6	16.7
Total Field Goals	5	16	31.3

FVS : Period 3	Made	Att	Pct
Layups	3	6	50.0
Dunks	0	0	0
2PT Field Goals	5	14	35.7
3PT Field Goals	0	1	00.0
Total Field Goals	5	15	33.3

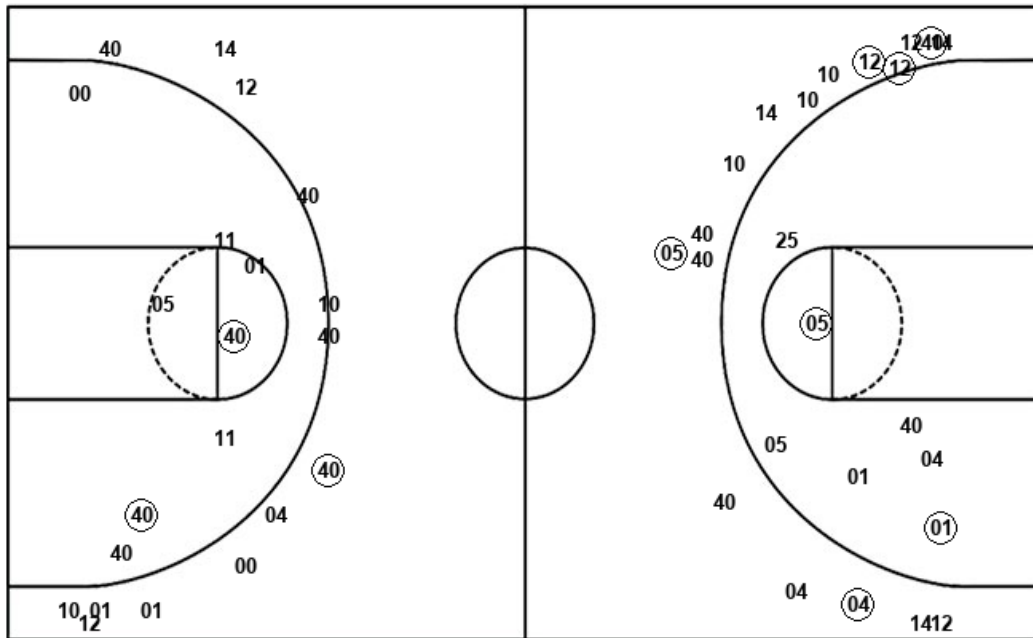
FVS : Period 2	Made	Att	Pct
Layups	2	6	33.3
Dunks	0	0	0
2PT Field Goals	3	13	23.1
3PT Field Goals	3	7	42.9
Total Field Goals	6	20	30.0

FVS : Period 4	Made	Att	Pct
Layups	2	4	50.0
Dunks	0	0	0
2PT Field Goals	2	5	40.0
3PT Field Goals	2	4	50.0
Total Field Goals	4	9	44.4

Official Shot Chart
Fort Valley St. vs Troy
Troy Team Shots
November 05, 2019 at Trojan Arena - Troy



Layups



Layups

40	10	00	20	01
(20)	(20)	(05)	04	(25)
(25)	25	20	02	(01)
11	04	12	(20)	(20)
20	20	12	(11)	20
(12)	10	(20)	(02)	(25)
04	(01)	05	14	25
25	(20)	(20)	05	(25)

Dunks

Dunks

TRY : Period 1	Made	Att	Pct
Layups	0	5	00.0
Dunks	0	0	0
2PT Field Goals	1	10	10.0
3PT Field Goals	2	8	25.0
Total Field Goals	3	18	16.7

TRY : Period 2	Made	Att	Pct
Layups	6	10	60.0
Dunks	0	0	0
2PT Field Goals	7	12	58.3
3PT Field Goals	3	9	33.3
Total Field Goals	10	21	47.6

TRY : Period 3	Made	Att	Pct
Layups	3	9	33.3
Dunks	0	0	0
2PT Field Goals	5	13	38.5
3PT Field Goals	1	9	11.1
Total Field Goals	6	22	27.3

TRY : Period 4	Made	Att	Pct
Layups	8	16	50.0
Dunks	0	0	0
2PT Field Goals	8	20	40.0
3PT Field Goals	0	4	00.0
Total Field Goals	8	24	33.3