

FINAL SCORE



Morehead State

75



Tennessee Tech

82

January 23, 2020 • Eblen Center - Cookeville

FINAL STATISTICS

Official Box Score
Morehead State vs Tennessee Tech
Game Totals -- Final Statistics
January 23, 2020 at Eblen Center - Cookeville



Morehead State 75

No.	Player	S	Pts	FG	3FG	FT	OR	DR	TR	PF	A	TO	Blk	Stl	Min	+/-
01	JACKSON, BREUNA	G	11	5-12	1-4	0-1	1	1	2	4	4	1	0	0	32	-7
02	JOHNSON, ELLIE	F	6	2-5	0-0	2-2	1	3	4	2	0	3	0	0	28	-11
04	ALFORD, TOMIYAH	G	6	3-11	0-0	0-0	2	3	5	4	1	0	0	1	21	2
10	AVERY, JALEESA	F	2	1-5	0-0	0-0	2	5	7	2	2	3	0	0	26	6
11	KIRKWOOD, ARIEL	G	8	4-12	0-4	0-0	4	4	8	3	3	8	2	3	36	-8
00	NIEVES, ALYSSA	G	0	0-0	0-0	0-0	0	0	0	0	0	0	0	0	5	-4
05	SCHWARBER, MACKENZIE	G	0	0-0	0-0	0-0	1	0	1	2	0	2	0	0	9	-3
23	HUMPHRIES, ORLANDRA	F	12	6-7	0-0	0-0	2	3	5	4	0	0	0	0	15	-7
24	ELSTON, JAZZMYN	G	30	12-18	5-10	1-4	0	1	1	2	1	1	0	0	29	-3
TEAM							1	5	6	0		0				
TOTALS			75	33-70	6-18	3-7	14	25	39	23	11	18	2	4	200	

Shooting By Period

Period	FG	FG%	3FG	3FG%	FT	FT%
1st Qtr	7-20	35%	2-5	40%	0-0	0%
2nd Qtr	9-19	47%	2-4	50%	2-4	50%
3rd Qtr	9-15	60%	2-4	50%	0-1	00%
4th Qtr	8-16	50%	0-5	00%	1-2	50%
1st Half	16-39	41%	4-9	44%	2-4	50%
2nd Half	17-31	55%	2-9	22%	1-3	33%
Game	33-70	47.1%	6-18	33.3%	3-7	42.9%

Deadball Rebounds: 2,0
 Last FG: 4th-00:17
 Biggest Run: 6-0
 Largest lead: By 9 at 3rd-08:45
 Technical Fouls: None.

Tennessee Tech 82

No.	Player	S	Pts	FG	3FG	FT	OR	DR	TR	PF	A	TO	Blk	Stl	Min	+/-
00	HARRIS, AKIA	G	13	5-12	0-2	3-6	0	2	2	1	7	3	1	2	34	-1
02	BROCK, JORDAN	G	21	7-10	4-7	3-5	1	0	1	2	4	1	2	0	36	17
14	BUCKNER, ABBY	G	3	1-5	1-5	0-0	1	1	2	0	4	0	0	1	29	11
20	BRADY, KESHA	G	19	8-20	1-7	2-2	1	1	2	3	0	4	0	0	34	8
33	COLEMAN, MACKENZIE	F	16	6-8	1-1	3-6	4	7	11	1	0	3	1	1	33	13
11	OWENS, MAALIYA	G	5	2-4	0-2	1-1	0	1	1	0	1	1	0	0	11	-4
24	GUINN, JADA	G	2	1-3	0-0	0-0	0	5	5	1	1	0	0	0	16	-3
32	LAMB, TAYLOR	F	3	1-1	0-0	1-1	0	0	0	2	0	1	0	1	7	-6
TEAM							2	8	10	0		1				
TOTALS			82	31-63	7-24	13-21	9	25	34	10	17	14	4	5	200	

Shooting By Period

Period	FG	FG%	3FG	3FG%	FT	FT%
1st Qtr	6-15	40%	0-2	00%	1-4	25%
2nd Qtr	6-16	38%	1-8	13%	5-6	83%
3rd Qtr	9-14	64%	3-6	50%	6-7	86%
4th Qtr	10-18	56%	3-8	38%	1-4	25%
1st Half	12-31	39%	1-10	10%	6-10	60%
2nd Half	19-32	59%	6-14	43%	7-11	64%
Game	31-63	49.2%	7-24	29.2%	13-21	61.9%

Deadball Rebounds: 6,0
 Last FG: 4th-00:56
 Biggest Run: 8-0
 Largest lead: By 10 at 4th-00:56
 Technical Fouls: None.

Game Notes:

Officials: Maria Gearhart, Daniel Drake, Tori Durrett
 Attendance: 1581

Start Time: 06:31 PM ET
 End Time: 08:39 PM ET
 Game Duration: 2:07
 Conference Game;

Score	1st	2nd	3rd	4th	TOT
MSU	16	22	20	17	75
TTU	13	18	27	24	82

MSU led for 19:16. TTU led for 14:23.
 Game was tied for 6:21.
 Times tied: 9 Lead Changes: 4

Points from	MSU	TTU
In the Paint	42	42
Off Turns	15	19
2nd Chance	10	6
Fast Break	5	2
Bench	42	10

Official Box Score
Morehead State vs Tennessee Tech
First Half Statistics Only
January 23, 2020 at Eblen Center - Cookeville



Morehead State 38

No.	Player	S	Pts	FG	3FG	FT	OR	DR	TR	PF	A	TO	Blk	Stl	Min	+/-
00	NIEVES, ALYSSA	G	0	0-0	0-0	0-0	0	0	0	0	0	0	0	0	1	-2
01	JACKSON, BREUNA	G	4	2-8	0-2	0-0	0	0	0	1	3	0	0	0	17	3
02	JOHNSON, ELLIE	F	2	0-3	0-0	2-2	1	2	3	1	0	2	0	0	14	3
04	ALFORD, TOMIYAH	G	4	2-7	0-0	0-0	0	1	1	1	1	0	0	1	10	7
05	SCHWARBER, MACKENZIE	G	0	0-0	0-0	0-0	1	0	1	1	0	0	0	0	4	2
10	AVERY, JALEESA	F	2	1-3	0-0	0-0	2	3	5	2	0	1	0	0	16	7
11	KIRKWOOD, ARIEL	G	6	3-8	0-2	0-0	2	2	4	0	0	2	1	2	18	4
23	HUMPHRIES, ORLANDRA	F	2	1-2	0-0	0-0	1	3	4	3	0	0	0	0	6	2
24	ELSTON, JAZZMYN	G	18	7-8	4-5	0-2	0	1	1	1	0	0	0	0	14	9
	TEAM		0	0-0	0-0	0-0	1	2	3	0	0	0	0	0	0	0
TOTALS			38	16-39	4-9	2-4	8	14	22	10	4	5	1	3	100	

Shooting By Period

Period	FG	FG%	3FG	3FG%	FT	FT%
1st Qtr	7-20	35%	2-5	40%	0-0	0%
2nd Qtr	9-19	47%	2-4	50%	2-4	50%
1st Half	16-39	41%	4-9	44%	2-4	50%
Game	33-70	47.1%	6-18	33.3%	3-7	42.9%

Deadball Rebounds: 2,0
Last FG Half: MSU 2nd-00:05

Tennessee Tech 31

No.	Player	S	Pts	FG	3FG	FT	OR	DR	TR	PF	A	TO	Blk	Stl	Min	+/-
00	HARRIS, AKIA	G	6	2-7	0-1	2-2	0	2	2	1	4	3	0	1	16	-8
02	BROCK, JORDAN	G	3	1-2	0-1	1-2	0	0	0	0	1	1	2	0	16	-1
11	OWENS, MAALIYA	G	2	1-2	0-1	0-0	0	1	1	0	0	1	0	0	8	-5
14	BUCKNER, ABBY	G	0	0-2	0-2	0-0	1	0	1	0	1	0	0	0	12	-2
20	BRADY, KESHA	G	7	3-10	0-4	1-1	0	1	1	1	0	2	0	0	17	-5
24	GUINN, JADA	G	2	1-2	0-0	0-0	0	3	3	1	0	0	0	0	10	-7
32	LAMB, TAYLOR	F	3	1-1	0-0	1-1	0	0	0	2	0	1	0	1	4	-2
33	COLEMAN, MACKENZIE	F	8	3-5	1-1	1-4	3	6	9	1	0	1	0	0	16	-5
	TEAM		0	0-0	0-0	0-0	2	3	5	0	0	0	0	0	0	0
TOTALS			31	12-31	1-10	6-10	6	16	22	6	6	9	2	2	100	

Shooting By Period

Period	FG	FG%	3FG	3FG%	FT	FT%
1st Qtr	6-15	40%	0-2	00%	1-4	25%
2nd Qtr	6-16	38%	1-8	13%	5-6	83%
1st Half	12-31	39%	1-10	10%	6-10	60%
Game	31-63	49.2%	7-24	29.2%	13-21	61.9%

Deadball Rebounds: 6,0
Last FG Half: TTU 2nd-02:44

Game Notes:

Officials: Maria Gearhart, Daniel Drake, Tori Durrett
 Attendance: 1581

Start Time: 06:31 PM ET
 End Time: 08:39 PM ET
 Game Duration: 2:07
 Conference Game;

Score	1st	2nd	3rd	4th	TOT
MSU	16	22	20	17	75
TTU	13	18	27	24	82

Points from (This Period)	MSU	TTU
In the Paint	20	18
Off Turns	11	4
2nd Chance	4	3
Fast Break	2	2
Bench	20	7

Official Box Score
Morehead State vs Tennessee Tech
First Quarter Statistics Only
January 23, 2020 at Eblen Center - Cookeville



Morehead State 16

No.	Player	S	Pts	FG	3FG	FT	OR	DR	TR	PF	A	TO	Blk	Stl	Min	+/-
01	JACKSON, BREUNA	G	2	1-3	0-0	0-0	0	0	0	1	1	0	0	0	10	3
02	JOHNSON, ELLIE	F	0	0-0	0-0	0-0	0	2	2	1	0	2	0	0	6	1
04	ALFORD, TOMIYAH	G	0	0-5	0-0	0-0	0	1	1	0	1	0	0	0	5	3
10	AVERY, JALEESA	F	0	0-1	0-0	0-0	0	2	2	1	0	1	0	0	7	2
11	KIRKWOOD, ARIEL	G	4	2-5	0-2	0-0	1	0	1	0	0	1	1	1	8	0
00	NIEVES, ALYSSA	G	0	0-0	0-0	0-0	0	0	0	0	0	0	0	0	0	0
05	SCHWARBER, MACKENZIE	G	0	0-0	0-0	0-0	1	0	1	0	0	0	0	0	4	2
23	HUMPHRIES, ORLANDRA	F	2	1-2	0-0	0-0	1	3	4	2	0	0	0	0	3	1
24	ELSTON, JAZZMYN	G	8	3-4	2-3	0-0	0	0	0	0	0	0	0	0	7	3
TEAM							1	1	2	0		0				
TOTALS			16	7-20	2-5	0-0	4	9	13	5	2	4	1	0	50	

Shooting By Period

Period	FG	FG%	3FG	3FG%	FT	FT%
1st Qtr	7-20	35%	2-5	40%	0-0	0%
2nd Qtr	9-19	47%	2-4	50%	2-4	50%
1st Half	7-20	35%	2-5	40%	0-0	0%
1st Half	16-39	41%	4-9	44%	2-4	50%
Game	33-70	47.1%	6-18	33.3%	3-7	42.9%

Deadball Rebounds: 2.0

Tennessee Tech 13

No.	Player	S	Pts	FG	3FG	FT	OR	DR	TR	PF	A	TO	Blk	Stl	Min	+/-
00	HARRIS, AKIA	G	2	1-5	0-0	0-0	0	2	2	1	1	2	0	0	8	-4
02	BROCK, JORDAN	G	3	1-1	0-0	1-2	0	0	0	0	1	0	2	0	8	0
14	BUCKNER, ABBY	G	0	0-0	0-0	0-0	0	0	0	0	0	0	0	0	6	-1
20	BRADY, KESHA	G	4	2-5	0-1	0-0	0	1	1	1	0	1	0	0	9	-3
33	COLEMAN, MACKENZIE	F	2	1-1	0-0	0-2	0	3	3	0	0	0	0	0	7	-1
11	OWENS, MAALIYA	G	2	1-2	0-1	0-0	0	0	0	0	0	0	0	0	4	-2
24	GUINN, JADA	G	0	0-1	0-0	0-0	0	1	1	0	0	0	0	0	4	-2
32	LAMB, TAYLOR	F	0	0-0	0-0	0-0	0	0	0	1	0	1	0	1	3	-2
TEAM							1	2	3	0		0				
TOTALS			13	6-15	0-2	1-4	1	9	10	3	2	4	2	1	50	

Shooting By Period

Period	FG	FG%	3FG	3FG%	FT	FT%
1st Qtr	6-15	40%	0-2	00%	1-4	25%
2nd Qtr	6-16	38%	1-8	13%	5-6	83%
1st Half	6-15	40%	0-2	00%	1-4	25%
1st Half	12-31	39%	1-10	10%	6-10	60%
Game	31-63	49.2%	7-24	29.2%	13-21	61.9%

Deadball Rebounds: 6.0

Game Notes:

Officials: Maria Gearhart, Daniel Drake, Tori Durrett
 Attendance: 1581

Start Time: 06:31 PM ET
 End Time: 08:39 PM ET
 Game Duration: 2:07
 Conference Game;

Score	1st	2nd	3rd	4th	TOT
MSU	16	22	20	17	75
TTU	13	18	27	24	82

Points from (This Period)	MSU	TTU
In the Paint	10	12
Off Turns	7	4
2nd Chance	0	0
Fast Break	0	2
Bench	10	2

Official Play-By-Play
Morehead State vs Tennessee Tech
First Quarter
January 23, 2020 at Eblen Center - Cookeville



Period 1

Starters:

Morehead State: 1 JACKSON, BREUNA (G); 2 JOHNSON, ELLIE (F); 4 ALFORD, TOMIYAH (G); 10 AVERY, JALEESA (F); 11 KIRKWOOD, ARIEL (G);

Tennessee Tech: 0 HARRIS, AKIA (G); 2 BROCK, JORDAN (G); 14 BUCKNER, ABBY (G); 20 BRADY, KESHA (G); 33 COLEMAN, MACKENZIE (F);

Time	VISITORS: Morehead State	Score	Margin	HOME: Tennessee Tech
09:32	TURNOVER (TRAVEL) by JOHNSON, ELLIE			
09:14		2-0	H 2	GOOD! LAYUP by BRADY, KESHA
08:54	MISSED JUMPER by ALFORD, TOMIYAH			
08:52				REBOUND (DEF) by TEAM
08:52	FOUL (PERSONAL) by AVERY, JALEESA			
08:38		4-0	H 4	GOOD! LAYUP by BRADY, KESHA [PNT]
08:38				ASSIST by BROCK, JORDAN
08:19	MISSED LAYUP by ALFORD, TOMIYAH			
08:16	REBOUND (OFF) by KIRKWOOD, ARIEL			
08:13	MISSED JUMPER by ALFORD, TOMIYAH			
08:10				REBOUND (DEF) by COLEMAN, MACKENZIE
08:06				TURNOVER (BADPASS) by BRADY, KESHA
08:01				FOUL (PERSONAL) by BRADY, KESHA
07:46	GOOD! JUMPER by KIRKWOOD, ARIEL [PNT]	4-2	H 2	
07:46	ASSIST by ALFORD, TOMIYAH			
07:38				TURNOVER (TRAVEL) by HARRIS, AKIA
07:22	GOOD! LAYUP by KIRKWOOD, ARIEL [PNT]	4-4	T	
07:14				MISSED LAYUP by BRADY, KESHA
07:10	REBOUND (DEF) by JOHNSON, ELLIE			
07:05	MISSED LAYUP by JACKSON, BREUNA			
07:05				BLOCK by BROCK, JORDAN
07:05	REBOUND (OFF) by TEAM			
07:05	SUB OUT: ALFORD, TOMIYAH			
07:05	SUB OUT: AVERY, JALEESA			
07:05	SUB IN: HUMPHRIES, ORLANDRA			
07:05	SUB IN: ELSTON, JAZZMYN			
07:04	FOUL (OFF) by JOHNSON, ELLIE			
07:04	TURNOVER (OFFENSIVE) by JOHNSON, ELLIE			
06:48	FOUL (PERSONAL) by HUMPHRIES, ORLANDRA			
06:48				MISSED FT by COLEMAN, MACKENZIE
06:48				REBOUND (OFF) by TEAM
06:48				MISSED FT by COLEMAN, MACKENZIE
06:47	REBOUND (DEF) by HUMPHRIES, ORLANDRA			
06:39	MISSED 3PTR by KIRKWOOD, ARIEL			
06:34	REBOUND (OFF) by HUMPHRIES, ORLANDRA			
06:33	MISSED LAYUP by HUMPHRIES, ORLANDRA			
06:28				REBOUND (DEF) by BRADY, KESHA
06:22				MISSED 3PTR by BRADY, KESHA
06:18	REBOUND (DEF) by HUMPHRIES, ORLANDRA			
06:05	GOOD! LAYUP by HUMPHRIES, ORLANDRA [PNT]	4-6	V 2	
05:56				MISSED LAYUP by HARRIS, AKIA
05:54	REBOUND (DEF) by HUMPHRIES, ORLANDRA			
05:48	MISSED JUMPER by KIRKWOOD, ARIEL			
05:44				REBOUND (DEF) by COLEMAN, MACKENZIE
05:17				MISSED LAYUP by HARRIS, AKIA
05:14	REBOUND (DEF) by JOHNSON, ELLIE			
05:09	MISSED LAYUP by JACKSON, BREUNA			
05:09				BLOCK by BROCK, JORDAN
05:05				REBOUND (DEF) by COLEMAN, MACKENZIE
05:00		6-6	T	GOOD! LAYUP by HARRIS, AKIA [PNT]
04:45	GOOD! 3PTR by ELSTON, JAZZMYN	6-9	V 3	
04:29		8-9	V 1	GOOD! LAYUP by COLEMAN, MACKENZIE [PNT]
04:29				ASSIST by HARRIS, AKIA
04:09	MISSED 3PTR by KIRKWOOD, ARIEL			
04:07				REBOUND (DEF) by TEAM
04:07	FOUL (PERSONAL) by HUMPHRIES, ORLANDRA			
04:07				SUB OUT: BROCK, JORDAN
04:07				SUB OUT: BUCKNER, ABBY
04:07				SUB IN: OWENS, MAALIYA
04:07				SUB IN: GUINN, JADA
04:07	SUB OUT: JOHNSON, ELLIE			
04:07	SUB OUT: KIRKWOOD, ARIEL			
04:07	SUB OUT: HUMPHRIES, ORLANDRA			
04:07	SUB IN: ALFORD, TOMIYAH			
04:07	SUB IN: SCHWARBER, MACKENZIE			
04:07	SUB IN: AVERY, JALEESA			
03:46				MISSED LAYUP by HARRIS, AKIA
03:44	REBOUND (DEF) by ALFORD, TOMIYAH			
03:44				FOUL (PERSONAL) by HARRIS, AKIA

Time	VISITORS: Morehead State	Score	Margin	HOME: Tennessee Tech
03:30	MISSED JUMPER by ALFORD, TOMIYAH			
03:27				REBOUND (DEF) by HARRIS, AKIA
03:25				TURNOVER (BADPASS) by HARRIS, AKIA
03:25				SUB OUT: COLEMAN, MACKENZIE
03:25				SUB IN: LAMB, TAYLOR
03:12	GOOD! 3PTR by ELSTON, JAZZMYN	8-12	V 4	
03:12	ASSIST by JACKSON, BREUNA			
02:52				MISSED JUMPER by GUINN, JADA
02:48	REBOUND (DEF) by AVERY, JALEESA			
02:44	MISSED 3PTR by ELSTON, JAZZMYN			
02:42	REBOUND (OFF) by SCHWARBER, MACKENZIE			
02:42				FOUL (PERSONAL) by LAMB, TAYLOR
02:35	MISSED LAYUP by ALFORD, TOMIYAH			
02:32				REBOUND (DEF) by GUINN, JADA
02:25				TURNOVER (LOSTBALL) by LAMB, TAYLOR
02:25				SUB OUT: HARRIS, AKIA
02:25				SUB IN: BROCK, JORDAN
02:25	SUB OUT: ALFORD, TOMIYAH			
02:25	SUB IN: KIRKWOOD, ARIEL			
02:12	TURNOVER (TRAVEL) by KIRKWOOD, ARIEL			
01:44				MISSED LAYUP by BRADY, KESHA
01:41	REBOUND (DEF) by AVERY, JALEESA			
01:39	TURNOVER (LOSTBALL) by AVERY, JALEESA			
01:39				STEAL by LAMB, TAYLOR
01:35		10-12	V 2	GOOD! LAYUP by OWENS, MAALIYA [FB/PNT]
01:14	GOOD! JUMPER by ELSTON, JAZZMYN [PNT]	10-14	V 4	
01:03		12-14	V 2	GOOD! LAYUP by BROCK, JORDAN [PNT]
00:54	GOOD! LAYUP by JACKSON, BREUNA [PNT]	12-16	V 4	
00:45	FOUL (PERSONAL) by JACKSON, BREUNA			
00:45				MISSED FT by BROCK, JORDAN
00:45				REBOUND (OFF) by TEAM
00:45		13-16	V 3	GOOD! FT by BROCK, JORDAN
00:45				SUB OUT: BRADY, KESHA
00:45				SUB IN: HARRIS, AKIA
00:34	MISSED JUMPER by AVERY, JALEESA			
00:31				REBOUND (DEF) by HARRIS, AKIA
00:05				MISSED LAYUP by HARRIS, AKIA
00:05	BLOCK by KIRKWOOD, ARIEL			
00:05				REBOUND (OFF) by TEAM
00:05	SUB OUT: JACKSON, BREUNA			
00:05	SUB IN: NIEVES, ALYSSA			
00:05	SUB OUT: ELSTON, JAZZMYN			
00:05	SUB IN: ALFORD, TOMIYAH			
00:04				MISSED 3PTR by OWENS, MAALIYA
00:01	REBOUND (DEF) by TEAM			

Morehead State 16, Tennessee Tech 13

Points from (This Period)	MSU	TTU
In the Paint	10	12
Off Turns	7	4
2nd Chance	0	0
Fast Break	0	2
Bench	10	2

Official Box Score
Morehead State vs Tennessee Tech
Second Quarter Statistics Only
January 23, 2020 at Eblen Center - Cookeville



Morehead State 22

No.	Player	S	Pts	FG	3FG	FT	OR	DR	TR	PF	A	TO	Blk	Stl	Min	+/-
01	JACKSON, BREUNA	G	2	1-5	0-2	0-0	0	0	0	0	2	0	0	0	7	0
02	JOHNSON, ELLIE	F	2	0-3	0-0	2-2	1	0	1	0	0	0	0	0	8	2
04	ALFORD, TOMIYAH	G	4	2-2	0-0	0-0	0	0	0	1	0	0	0	1	5	4
10	AVERY, JALEESA	F	2	1-2	0-0	0-0	2	1	3	1	0	0	0	0	9	5
11	KIRKWOOD, ARIEL	G	2	1-3	0-0	0-0	1	2	3	0	0	1	0	2	10	4
00	NIEVES, ALYSSA	G	0	0-0	0-0	0-0	0	0	0	0	0	0	0	0	1	-2
05	SCHWARBER, MACKENZIE	G	0	0-0	0-0	0-0	0	0	0	1	0	0	0	0	0	0
23	HUMPHRIES, ORLANDRA	F	0	0-0	0-0	0-0	0	0	0	1	0	0	0	0	3	1
24	ELSTON, JAZZMYN	G	10	4-4	2-2	0-2	0	1	1	1	0	0	0	0	7	6
TEAM							0	1	1	0						
TOTALS			22	9-19	2-4	2-4	4	5	9	5	2	1	0	3	50	

Shooting By Period

Period	FG	FG%	3FG	3FG%	FT	FT%
3rd Qtr	9-15	60%	2-4	50%	0-1	00%
4th Qtr	8-16	50%	0-5	00%	1-2	50%
2nd Half	9-19	47%	2-4	50%	2-4	50%
2nd Half	17-31	55%	2-9	22%	1-3	33%
Game	33-70	47.1%	6-18	33.3%	3-7	42.9%

Deadball Rebounds: 2,0

Tennessee Tech 18

No.	Player	S	Pts	FG	3FG	FT	OR	DR	TR	PF	A	TO	Blk	Stl	Min	+/-
00	HARRIS, AKIA	G	4	1-2	0-1	2-2	0	0	0	0	3	1	0	1	8	-4
02	BROCK, JORDAN	G	0	0-1	0-1	0-0	0	0	0	0	0	1	0	0	8	-1
14	BUCKNER, ABBY	G	0	0-2	0-2	0-0	1	0	1	0	1	0	0	0	6	-1
20	BRADY, KESHA	G	3	1-5	0-3	1-1	0	0	0	0	0	1	0	0	8	-2
33	COLEMAN, MACKENZIE	F	6	2-4	1-1	1-2	3	3	6	1	0	1	0	0	9	-4
11	OWENS, MAALIYA	G	0	0-0	0-0	0-0	0	1	1	0	0	1	0	0	4	-3
24	GUINN, JADA	G	2	1-1	0-0	0-0	0	2	2	1	0	0	0	0	6	-5
32	LAMB, TAYLOR	F	3	1-1	0-0	1-1	0	0	0	1	0	0	0	0	1	0
TEAM							1	1	2	0						
TOTALS			18	6-16	1-8	5-6	5	7	12	3	4	5	0	1	50	

Shooting By Period

Period	FG	FG%	3FG	3FG%	FT	FT%
3rd Qtr	9-14	64%	3-6	50%	6-7	86%
4th Qtr	10-18	56%	3-8	38%	1-4	25%
2nd Half	6-16	38%	1-8	13%	5-6	83%
2nd Half	19-32	59%	6-14	43%	7-11	64%
Game	31-63	49.2%	7-24	29.2%	13-21	61.9%

Deadball Rebounds: 6,0

Game Notes:

Officials: Maria Gearhart, Daniel Drake, Tori Durrett
 Attendance: 1581

Start Time: 06:31 PM ET
 End Time: 08:39 PM ET
 Game Duration: 2:07
 Conference Game;

Score	1st	2nd	3rd	4th	TOT
MSU	16	22	20	17	75
TTU	13	18	27	24	82

Points from (This Period)	MSU	TTU
In the Paint	10	6
Off Turns	4	0
2nd Chance	4	3
Fast Break	2	0
Bench	10	5

Official Play-By-Play
Morehead State vs Tennessee Tech
Second Quarter
January 23, 2020 at Eblen Center - Cookeville



Period 2

Starters:

Morehead State: 1 JACKSON,BREUNA (G); 2 JOHNSON,ELLIE (F); 4 ALFORD,TOMIYAH (G); 10 AVERY,JALEESA (F); 11 KIRKWOOD,ARIEL (G);

Tennessee Tech: 0 HARRIS,AKIA (G); 2 BROCK,JORDAN (G); 14 BUCKNER,ABBY (G); 20 BRADY,KESHA (G); 33 COLEMAN,MACKENZIE (F);

Time	VISITORS: Morehead State	Score	Margin	HOME: Tennessee Tech
10:00				SUB OUT: OWENS, MAALIYA
10:00				SUB OUT: GUINN, JADA
10:00				SUB OUT: LAMB, TAYLOR
10:00				SUB IN: BUCKNER, ABBY
10:00				SUB IN: BRADY, KESHA
10:00				SUB IN: COLEMAN, MACKENZIE
09:46				MISSED JUMPER by COLEMAN, MACKENZIE
09:44				REBOUND (OFF) by TEAM
09:44	FOUL (PERSONAL) by SCHWARBER, MACKENZIE			
09:44	SUB OUT: SCHWARBER, MACKENZIE			
09:44	SUB IN: HUMPHRIES, ORLANDRA			
09:38				MISSED 3PTR by BRADY, KESHA
09:33				REBOUND (OFF) by BUCKNER, ABBY
09:19		15-16	V 1	GOOD! LAYUP by BRADY, KESHA
09:19				ASSIST by HARRIS, AKIA
09:19	FOUL (PERSONAL) by ALFORD, TOMIYAH			
09:19	SUB OUT: NIEVES, ALYSSA			
09:19	SUB OUT: ALFORD, TOMIYAH			
09:19	SUB IN: JACKSON, BREUNA			
09:19	SUB IN: ELSTON, JAZZMYN			
09:19		16-16	T	GOOD! FT by BRADY, KESHA
08:56	GOOD! 3PTR by ELSTON, JAZZMYN	16-19	V 3	
08:37		18-19	V 1	GOOD! JUMPER by COLEMAN, MACKENZIE
08:37				ASSIST by BUCKNER, ABBY
08:18	GOOD! LAYUP by ELSTON, JAZZMYN [PNT]	18-21	V 3	
08:09				MISSED 3PTR by BUCKNER, ABBY
08:02				REBOUND (OFF) by COLEMAN, MACKENZIE
08:01				MISSED 3PTR by BRADY, KESHA
07:57				REBOUND (OFF) by COLEMAN, MACKENZIE
07:55				MISSED 3PTR by HARRIS, AKIA
07:51	REBOUND (DEF) by KIRKWOOD, ARIEL			
07:45	GOOD! LAYUP by JACKSON, BREUNA [PNT]	18-23	V 5	
07:44				TIMEOUT 30SEC
07:44				
07:44	SUB OUT: HUMPHRIES, ORLANDRA			
07:44	SUB IN: JOHNSON, ELLIE			
07:19	FOUL (PERSONAL) by ELSTON, JAZZMYN			
07:19		19-23	V 4	GOOD! FT by HARRIS, AKIA
07:19		20-23	V 3	GOOD! FT by HARRIS, AKIA
06:54	MISSED LAYUP by JOHNSON, ELLIE			
06:52				REBOUND (DEF) by COLEMAN, MACKENZIE
06:45		23-23	T	GOOD! 3PTR by COLEMAN, MACKENZIE
06:45				ASSIST by HARRIS, AKIA
06:32	MISSED 3PTR by JACKSON, BREUNA			
06:29				REBOUND (DEF) by COLEMAN, MACKENZIE
06:22				MISSED LAYUP by BRADY, KESHA
06:19				REBOUND (OFF) by COLEMAN, MACKENZIE
06:17				MISSED JUMPER by COLEMAN, MACKENZIE
06:12	REBOUND (DEF) by ELSTON, JAZZMYN			
06:08	MISSED LAYUP by KIRKWOOD, ARIEL			
06:06	REBOUND (OFF) by AVERY, JALEESA			
05:51	GOOD! JUMPER by AVERY, JALEESA [PNT]	23-25	V 2	
05:40	FOUL (PERSONAL) by AVERY, JALEESA			
05:40				SUB OUT: BROCK, JORDAN
05:40				SUB OUT: BUCKNER, ABBY
05:40				SUB IN: OWENS, MAALIYA
05:40				SUB IN: GUINN, JADA
05:40	SUB OUT: AVERY, JALEESA			
05:40	SUB IN: HUMPHRIES, ORLANDRA			
05:40				MISSED FT by COLEMAN, MACKENZIE
05:40				REBOUND (OFF) by TEAM
05:40		24-25	V 1	GOOD! FT by COLEMAN, MACKENZIE
05:40				SUB OUT: COLEMAN, MACKENZIE
05:40				SUB IN: LAMB, TAYLOR
05:27	GOOD! JUMPER by ELSTON, JAZZMYN	24-27	V 3	
05:13		26-27	V 1	GOOD! LAYUP by LAMB, TAYLOR [PNT]
05:13				ASSIST by HARRIS, AKIA
05:13	FOUL (PERSONAL) by HUMPHRIES, ORLANDRA			
05:13		27-27	T	GOOD! FT by LAMB, TAYLOR
05:03	GOOD! 3PTR by ELSTON, JAZZMYN	27-30	V 3	

Time	VISITORS: Morehead State	Score	Margin	HOME: Tennessee Tech
05:03	ASSIST by JACKSON, BREUNA			
04:47		29-30	V 1	GOOD! JUMPER by HARRIS, AKIA
04:37	MISSED LAYUP by JOHNSON, ELLIE			
04:35	REBOUND (OFF) by JOHNSON, ELLIE			
04:35				FOUL (PERSONAL) by LAMB, TAYLOR
04:35				SUB OUT: LAMB, TAYLOR
04:35				SUB IN: COLEMAN, MACKENZIE
04:35	SUB OUT: JACKSON, BREUNA			
04:35	SUB IN: ALFORD, TOMIYAH			
04:35	SUB OUT: HUMPHRIES, ORLANDRA			
04:35	SUB IN: AVERY, JALEESA			
04:35	GOOD! FT by JOHNSON, ELLIE	29-31	V 2	
04:35	GOOD! FT by JOHNSON, ELLIE	29-32	V 3	
04:20				TURNOVER (BADPASS) by BRADY, KESHA
04:20	STEAL by KIRKWOOD, ARIEL			
04:15	GOOD! LAYUP by ALFORD, TOMIYAH [PNT]	29-34	V 5	
04:01				TURNOVER (3SEC) by COLEMAN, MACKENZIE
04:01				SUB OUT: HARRIS, AKIA
04:01				SUB IN: BROCK, JORDAN
04:01	SUB OUT: ELSTON, JAZZMYN			
04:01	SUB IN: JACKSON, BREUNA			
03:54	MISSED JUMPER by JACKSON, BREUNA			
03:51	REBOUND (OFF) by AVERY, JALEESA			
03:36	MISSED 3PTR by JACKSON, BREUNA			
03:33				REBOUND (DEF) by COLEMAN, MACKENZIE
03:27				MISSED 3PTR by BRADY, KESHA
03:23	REBOUND (DEF) by AVERY, JALEESA			
03:11	GOOD! JUMPER by KIRKWOOD, ARIEL	29-36	V 7	
03:11	ASSIST by JACKSON, BREUNA			
02:44		31-36	V 5	GOOD! JUMPER by GUINN, JADA [PNT]
02:24	MISSED LAYUP by KIRKWOOD, ARIEL			
02:22				REBOUND (DEF) by GUINN, JADA
02:18				MISSED 3PTR by BROCK, JORDAN
02:14	REBOUND (DEF) by KIRKWOOD, ARIEL			
02:08	MISSED JUMPER by JACKSON, BREUNA			
02:05				REBOUND (DEF) by OWENS, MAALIYA
01:53				TURNOVER (BADPASS) by OWENS, MAALIYA
01:53				SUB OUT: OWENS, MAALIYA
01:53				SUB OUT: BRADY, KESHA
01:53				SUB IN: HARRIS, AKIA
01:53				SUB IN: BUCKNER, ABBY
01:53	SUB OUT: JACKSON, BREUNA			
01:53	SUB IN: ELSTON, JAZZMYN			
01:32	MISSED LAYUP by AVERY, JALEESA			
01:32	REBOUND (OFF) by KIRKWOOD, ARIEL			
01:32				FOUL (PERSONAL) by GUINN, JADA
01:26	MISSED LAYUP by JOHNSON, ELLIE			
01:26				REBOUND (DEF) by TEAM
01:26	SUB OUT: KIRKWOOD, ARIEL			
01:26	SUB IN: JACKSON, BREUNA			
01:17				MISSED 3PTR by BUCKNER, ABBY
01:16	REBOUND (DEF) by TEAM			
01:16	SUB OUT: ALFORD, TOMIYAH			
01:16	SUB IN: KIRKWOOD, ARIEL			
00:51				FOUL (PERSONAL) by COLEMAN, MACKENZIE
00:51	SUB OUT: JACKSON, BREUNA			
00:51	SUB IN: ALFORD, TOMIYAH			
00:51	MISSED FT by ELSTON, JAZZMYN			
00:51	REBOUND (OFF) by TEAM			
00:51	MISSED FT by ELSTON, JAZZMYN			
00:49				REBOUND (DEF) by GUINN, JADA
00:34				TURNOVER (LOSTBALL) by HARRIS, AKIA
00:34	STEAL by KIRKWOOD, ARIEL			
00:29	TURNOVER (LOSTBALL) by KIRKWOOD, ARIEL			
00:29				STEAL by HARRIS, AKIA
00:09				TURNOVER (BADPASS) by BROCK, JORDAN
00:09	STEAL by ALFORD, TOMIYAH			
00:05	GOOD! LAYUP by ALFORD, TOMIYAH [FB/PNT]	31-38	V 7	

Morehead State 38, Tennessee Tech 31

Points from (This Period)	MSU	TTU
In the Paint	10	6
Off Turns	4	0
2nd Chance	4	3
Fast Break	2	0
Bench	10	5

Official Box Score
Morehead State vs Tennessee Tech
Second Half Statistics Only
January 23, 2020 at Eblen Center - Cookeville



Morehead State 37

No.	Player	S	Pts	FG	3FG	FT	OR	DR	TR	PF	A	TO	Blk	Stl	Min	+/-
00	NIEVES, ALYSSA	G	0	0-0	0-0	0-0	0	0	0	0	0	0	0	0	4	-2
01	JACKSON, BREUNA	G	7	3-4	1-2	0-1	1	1	2	3	1	1	0	0	14	-10
02	JOHNSON, ELLIE	F	4	2-2	0-0	0-0	0	1	1	1	0	1	0	0	14	-14
04	ALFORD, TOMIYAH	G	2	1-4	0-0	0-0	2	2	4	3	0	0	0	0	12	-5
05	SCHWARBER, MACKENZIE	G	0	0-0	0-0	0-0	0	0	0	1	0	2	0	0	5	-5
10	AVERY, JALEESA	F	0	0-2	0-0	0-0	0	2	2	0	2	2	0	0	10	-1
11	KIRKWOOD, ARIEL	G	2	1-4	0-2	0-0	2	2	4	3	3	6	1	1	17	-12
23	HUMPHRIES, ORLANDRA	F	10	5-5	0-0	0-0	1	0	1	1	0	0	0	0	9	-9
24	ELSTON, JAZZMYN	G	12	5-10	1-5	1-2	0	0	0	1	1	1	0	0	14	-12
	TEAM		0	0-0	0-0	0-0	0	3	3	0	0	0	0	0	0	0
	TOTALS		37	17-31	2-9	1-3	6	11	17	13	7	13	1	1	100	

Shooting By Period

Period	FG	FG%	3FG	3FG%	FT	FT%
3rd Qtr	9-15	60%	2-4	50%	0-1	00%
4th Qtr	8-16	50%	0-5	00%	1-2	50%
2nd Half	17-31	55%	2-9	22%	1-3	33%
Game	33-70	47.1%	6-18	33.3%	3-7	42.9%

Deadball Rebounds: 2,0
Last FG Half: MSU 4th-00:17

Tennessee Tech 51

No.	Player	S	Pts	FG	3FG	FT	OR	DR	TR	PF	A	TO	Blk	Stl	Min	+/-
00	HARRIS, AKIA	G	7	3-5	0-1	1-4	0	0	0	0	3	0	1	1	18	7
02	BROCK, JORDAN	G	18	6-8	4-6	2-3	1	0	1	2	3	0	0	0	19	18
11	OWENS, MAALIYA	G	3	1-2	0-1	1-1	0	0	0	0	1	0	0	0	4	1
14	BUCKNER, ABBY	G	3	1-3	1-3	0-0	0	1	1	0	3	0	0	1	17	13
20	BRADY, KESHA	G	12	5-10	1-3	1-1	1	0	1	2	0	2	0	0	17	13
24	GUINN, JADA	G	0	0-1	0-0	0-0	0	2	2	0	1	0	0	0	6	4
32	LAMB, TAYLOR	F	0	0-0	0-0	0-0	0	0	0	0	0	0	0	0	3	-4
33	COLEMAN, MACKENZIE	F	8	3-3	0-0	2-2	1	1	2	0	0	2	1	1	17	18
	TEAM		0	0-0	0-0	0-0	0	5	5	0	0	1	0	0	0	0
	TOTALS		51	19-32	6-14	7-11	3	9	12	4	11	5	2	3	100	

Shooting By Period

Period	FG	FG%	3FG	3FG%	FT	FT%
3rd Qtr	9-14	64%	3-6	50%	6-7	86%
4th Qtr	10-18	56%	3-8	38%	1-4	25%
2nd Half	19-32	59%	6-14	43%	7-11	64%
Game	31-63	49.2%	7-24	29.2%	13-21	61.9%

Deadball Rebounds: 6,0
Last FG Half: TTU 4th-00:56

Game Notes:

Officials: Maria Gearhart, Daniel Drake, Tori Durrett
Attendance: 1581

Start Time: 06:31 PM ET
End Time: 08:39 PM ET
Game Duration: 2:07
Conference Game;

Score	1st	2nd	3rd	4th	TOT
MSU	16	22	20	17	75
TTU	13	18	27	24	82

Points from (This Period)	MSU	TTU
In the Paint	22	24
Off Turns	4	15
2nd Chance	6	3
Fast Break	3	0
Bench	22	3

Official Box Score
Morehead State vs Tennessee Tech
Third Quarter Statistics Only
January 23, 2020 at Eblen Center - Cookeville



Morehead State 37

No.	Player	S	Pts	FG	3FG	FT	OR	DR	TR	PF	A	TO	Blk	Stl	Min	+/-
01	JACKSON, BREUNA	G	5	2-3	1-2	0-1	0	0	0	1	0	0	0	0	8	-8
02	JOHNSON, ELLIE	F	4	2-2	0-0	0-0	0	1	1	1	0	1	0	0	10	-7
04	ALFORD, TOMIYAH	G	0	0-2	0-0	0-0	1	0	1	1	0	0	0	0	5	2
10	AVERY, JALEESA	F	0	0-2	0-0	0-0	0	1	1	0	2	1	0	0	6	-2
11	KIRKWOOD, ARIEL	G	0	0-0	0-0	0-0	0	1	1	3	2	4	0	1	9	-9
00	NIEVES, ALYSSA	G	0	0-0	0-0	0-0	0	0	0	0	0	0	0	0	1	0
05	SCHWARBER, MACKENZIE	G	0	0-0	0-0	0-0	0	0	0	0	0	1	0	0	4	-3
23	HUMPHRIES, ORLANDRA	F	0	0-0	0-0	0-0	0	0	0	1	0	0	0	0	0	-2
24	ELSTON, JAZZMYN	G	11	5-6	1-2	0-0	0	0	0	1	0	0	0	0	7	-6
TEAM							0	2	2	0		0				
TOTALS			20	9-15	2-4	0-1	1	5	6	8	4	7	0	1	50	

Shooting By Period

Period	FG	FG%	3FG	3FG%	FT	FT%
2nd Half	0-0	0%	0-0	0%	0-0	0%
Game	33-70	47.1%	6-18	33.3%	3-7	42.9%

Deadball Rebounds: 2.0

Tennessee Tech 51

No.	Player	S	Pts	FG	3FG	FT	OR	DR	TR	PF	A	TO	Blk	Stl	Min	+/-
00	HARRIS, AKIA	G	3	1-3	0-1	1-2	0	0	0	0	2	0	1	0	8	0
02	BROCK, JORDAN	G	12	4-4	3-3	1-1	0	0	0	1	1	0	0	0	9	7
14	BUCKNER, ABBY	G	0	0-0	0-0	0-0	0	0	0	0	1	0	0	1	7	6
20	BRADY, KESHA	G	5	2-3	0-1	1-1	0	0	0	1	0	2	0	0	7	6
33	COLEMAN, MACKENZIE	F	4	1-1	0-0	2-2	0	1	1	0	0	1	1	1	7	11
11	OWENS, MAALIYA	G	3	1-2	0-1	1-1	0	0	0	0	1	0	0	0	4	1
24	GUINN, JADA	G	0	0-1	0-0	0-0	0	2	2	0	1	0	0	0	6	8
32	LAMB, TAYLOR	F	0	0-0	0-0	0-0	0	0	0	0	0	0	0	0	3	-4
TEAM							0	3	3	0		1				
TOTALS			27	9-14	3-6	6-7	0	6	6	2	6	4	2	2	50	

Shooting By Period

Period	FG	FG%	3FG	3FG%	FT	FT%
2nd Half	0-0	0%	0-0	0%	0-0	0%
Game	31-63	49.2%	7-24	29.2%	13-21	61.9%

Deadball Rebounds: 6.0

Game Notes:

Officials: Maria Gearhart, Daniel Drake, Tori Durrett
 Attendance: 1581

Start Time: 06:31 PM ET
 End Time: 08:39 PM ET
 Game Duration: 2:07
 Conference Game;

Score	1st	2nd	3rd	4th	TOT
MSU	16	22	20	17	75
TTU	13	18	27	24	82

Points from (This Period)	MSU	TTU
In the Paint	12	10
Off Turns	2	10
2nd Chance	0	0
Fast Break	3	0
Bench	11	3

Official By-By-Play
Morehead State vs Tennessee Tech
Third Quarter
January 23, 2020 at Eblen Center - Cookeville



Period 3

Starters:

Morehead State: 1 JACKSON, BREUNA (G); 2 JOHNSON, ELLIE (F); 4 ALFORD, TOMIYAH (G); 10 AVERY, JALEESA (F); 11 KIRKWOOD, ARIEL (G);

Tennessee Tech: 0 HARRIS, AKIA (G); 2 BROCK, JORDAN (G); 14 BUCKNER, ABBY (G); 20 BRADY, KESHA (G); 33 COLEMAN, MACKENZIE (F);

Time	VISITORS: Morehead State	Score	Margin	HOME: Tennessee Tech
10:00				SUB OUT: GUINN, JADA
10:00				SUB IN: BRADY, KESHA
10:00	SUB OUT: ELSTON, JAZZMYN			
10:00	SUB IN: JACKSON, BREUNA			
09:51	FOUL (OFF) by JOHNSON, ELLIE			
09:51	TURNOVER (OFFENSIVE) by JOHNSON, ELLIE			
09:39				MISSED 3PTR by HARRIS, AKIA
09:36	REBOUND (DEF) by TEAM			
09:36				FOUL (PERSONAL) by BRADY, KESHA
09:20	GOOD! LAYUP by JOHNSON, ELLIE [PNT]	31-40	V 9	
09:05		33-40	V 7	GOOD! JUMPER by COLEMAN, MACKENZIE
09:05				ASSIST by BROCK, JORDAN
08:45	GOOD! JUMPER by JOHNSON, ELLIE	33-42	V 9	
08:45	ASSIST by AVERY, JALEESA			
08:22		36-42	V 6	GOOD! 3PTR by BROCK, JORDAN
08:22				ASSIST by HARRIS, AKIA
08:04	MISSED LAYUP by AVERY, JALEESA			
08:04				BLOCK by HARRIS, AKIA
07:58	MISSED LAYUP by ALFORD, TOMIYAH			
07:58				BLOCK by COLEMAN, MACKENZIE
07:58				REBOUND (DEF) by COLEMAN, MACKENZIE
07:58				SUB OUT: HARRIS, AKIA
07:58				SUB IN: GUINN, JADA
07:57	REBOUND (OFF) by ALFORD, TOMIYAH			
07:50				TURNOVER (BADPASS) by BRADY, KESHA
07:50	STEAL by KIRKWOOD, ARIEL			
07:40	MISSED JUMPER by ALFORD, TOMIYAH			
07:38				REBOUND (DEF) by TEAM
07:38	FOUL (PERSONAL) by ALFORD, TOMIYAH			
07:38	SUB OUT: ALFORD, TOMIYAH			
07:38	SUB OUT: AVERY, JALEESA			
07:38	SUB IN: HUMPHRIES, ORLANDRA			
07:38	SUB IN: ELSTON, JAZZMYN			
07:16		38-42	V 4	GOOD! LAYUP by BRADY, KESHA
07:16				ASSIST by BUCKNER, ABBY
07:16	FOUL (PERSONAL) by HUMPHRIES, ORLANDRA			
07:16	SUB OUT: HUMPHRIES, ORLANDRA			
07:16	SUB IN: AVERY, JALEESA			
07:16		39-42	V 3	GOOD! FT by BRADY, KESHA
06:55	GOOD! JUMPER by ELSTON, JAZZMYN [PNT]	39-44	V 5	
06:34				MISSED 3PTR by BRADY, KESHA
06:31	REBOUND (DEF) by AVERY, JALEESA			
06:31	TURNOVER (TRAVEL) by AVERY, JALEESA			
06:31	SUB OUT: AVERY, JALEESA			
06:31	SUB IN: SCHWARBER, MACKENZIE			
06:27		42-44	V 2	GOOD! 3PTR by BROCK, JORDAN
06:27				ASSIST by GUINN, JADA
06:14	FOUL (OFF) by KIRKWOOD, ARIEL			
06:14	TURNOVER (OFFENSIVE) by KIRKWOOD, ARIEL			
05:56		45-44	H 1	GOOD! 3PTR by BROCK, JORDAN
05:51	TIMEOUT 30SEC			
05:51				SUB OUT: GUINN, JADA
05:51				SUB IN: HARRIS, AKIA
05:36	TURNOVER (TRAVEL) by KIRKWOOD, ARIEL			
05:19		47-44	H 3	GOOD! LAYUP by BRADY, KESHA [PNT]
05:11	GOOD! 3PTR by JACKSON, BREUNA	47-47	T	
05:11	ASSIST by KIRKWOOD, ARIEL			
04:44	FOUL (PERSONAL) by JACKSON, BREUNA			
04:44				MISSED FT by HARRIS, AKIA
04:44				REBOUND (OFF) by TEAM
04:44		48-47	H 1	GOOD! FT by HARRIS, AKIA
04:39	TURNOVER (TRAVEL) by KIRKWOOD, ARIEL			
04:25				TURNOVER (BADPASS) by BRADY, KESHA
04:25	SUB OUT: KIRKWOOD, ARIEL			
04:25	SUB IN: ALFORD, TOMIYAH			
04:25	SUB OUT: SCHWARBER, MACKENZIE			
04:25	SUB IN: AVERY, JALEESA			
04:08	GOOD! LAYUP by ELSTON, JAZZMYN [PNT]	48-49	V 1	

Time	VISITORS: Morehead State	Score	Margin	HOME: Tennessee Tech
04:08	ASSIST by AVERY, JALEESA			
03:47				TURNOVER (TRAVEL) by COLEMAN, MACKENZIE
03:32	MISSED 3PTR by JACKSON, BREUNA			
03:31				REBOUND (DEF) by TEAM
03:31				SUB OUT: BUCKNER, ABBY
03:31				SUB OUT: BRADY, KESHA
03:31				SUB IN: OWENS, MAALIYA
03:31				SUB IN: GUINN, JADA
03:31	SUB OUT: JACKSON, BREUNA			
03:31	SUB IN: KIRKWOOD, ARIEL			
03:19		50-49	H 1	GOOD! JUMPER by BROCK, JORDAN [PNT]
03:19				ASSIST by OWENS, MAALIYA
03:19	FOUL (PERSONAL) by KIRKWOOD, ARIEL			
03:19	SUB OUT: ALFORD, TOMIYAH			
03:19	SUB IN: JACKSON, BREUNA			
03:19		51-49	H 2	GOOD! FT by BROCK, JORDAN
02:55	TURNOVER (BADPASS) by KIRKWOOD, ARIEL			
02:55				STEAL by COLEMAN, MACKENZIE
02:54	FOUL (PERSONAL) by KIRKWOOD, ARIEL			
02:54		52-49	H 3	GOOD! FT by COLEMAN, MACKENZIE
02:54		53-49	H 4	GOOD! FT by COLEMAN, MACKENZIE
02:48	GOOD! LAYUP by JACKSON, BREUNA [PNT]	53-51	H 2	
02:48				FOUL (PERSONAL) by BROCK, JORDAN
02:48	MISSED FT by JACKSON, BREUNA			
02:47				REBOUND (DEF) by GUINN, JADA
02:39		55-51	H 4	GOOD! LAYUP by OWENS, MAALIYA [PNT]
02:39				ASSIST by HARRIS, AKIA
02:39	FOUL (PERSONAL) by ELSTON, JAZZMYN			
02:39				SUB OUT: COLEMAN, MACKENZIE
02:39				SUB IN: LAMB, TAYLOR
02:39		56-51	H 5	GOOD! FT by OWENS, MAALIYA
02:25	GOOD! LAYUP by ELSTON, JAZZMYN [PNT]	56-53	H 3	
02:17				MISSED 3PTR by OWENS, MAALIYA
02:15	REBOUND (DEF) by TEAM			
01:54	MISSED LAYUP by AVERY, JALEESA			
01:52				REBOUND (DEF) by GUINN, JADA
01:42	SUB OUT: JACKSON, BREUNA			
01:42	SUB OUT: AVERY, JALEESA			
01:42	SUB IN: ALFORD, TOMIYAH			
01:42	SUB IN: SCHWARBER, MACKENZIE			
01:35		58-53	H 5	GOOD! LAYUP by HARRIS, AKIA [PNT]
01:27	GOOD! 3PTR by ELSTON, JAZZMYN [FB]	58-56	H 2	
01:27	ASSIST by KIRKWOOD, ARIEL			
01:16				MISSED LAYUP by HARRIS, AKIA
01:12	REBOUND (DEF) by JOHNSON, ELLIE			
01:08	GOOD! LAYUP by ELSTON, JAZZMYN	58-58	T	
00:42				MISSED LAYUP by GUINN, JADA
00:39	REBOUND (DEF) by KIRKWOOD, ARIEL			
00:33	MISSED 3PTR by ELSTON, JAZZMYN			
00:32				REBOUND (DEF) by TEAM
00:32				SUB OUT: BROCK, JORDAN
00:32				SUB IN: BRADY, KESHA
00:32	SUB OUT: ELSTON, JAZZMYN			
00:32	SUB IN: NIEVES, ALYSSA			
00:01				TURNOVER (SHOTCLOCK) by TEAM
00:01				SUB OUT: LAMB, TAYLOR
00:01				SUB IN: BUCKNER, ABBY
00:01	SUB OUT: KIRKWOOD, ARIEL			
00:01	SUB IN: ELSTON, JAZZMYN			
00:00	TURNOVER (BADPASS) by SCHWARBER, MACKENZIE			
00:00				STEAL by BUCKNER, ABBY

Morehead State 58, Tennessee Tech 58

Points from (This Period)	MSU	TTU
In the Paint	12	10
Off Turns	2	10
2nd Chance	0	0
Fast Break	3	0
Bench	11	3

Official Box Score
Morehead State vs Tennessee Tech
Fourth Quarter Statistics Only
January 23, 2020 at Eblen Center - Cookeville



Morehead State 17

No.	Player	S	Pts	FG	3FG	FT	OR	DR	TR	PF	A	TO	Blk	Stl	Min	+/-
01	JACKSON, BREUNA	G	2	1-1	0-0	0-0	1	1	2	2	1	1	0	0	6	-2
02	JOHNSON, ELLIE	F	0	0-0	0-0	0-0	0	0	0	0	0	0	0	0	4	-7
04	ALFORD, TOMIYAH	G	2	1-2	0-0	0-0	1	2	3	2	0	0	0	0	7	-7
10	AVERY, JALEESA	F	0	0-0	0-0	0-0	0	1	1	0	0	1	0	0	4	1
11	KIRKWOOD, ARIEL	G	2	1-4	0-2	0-0	2	1	3	0	1	2	1	0	8	-3
00	NIEVES, ALYSSA	G	0	0-0	0-0	0-0	0	0	0	0	0	0	0	0	3	-2
05	SCHWARBER, MACKENZIE	G	0	0-0	0-0	0-0	0	0	0	1	0	1	0	0	1	-2
23	HUMPHRIES, ORLANDRA	F	10	5-5	0-0	0-0	1	0	1	0	0	0	0	0	9	-7
24	ELSTON, JAZZMYN	G	1	0-4	0-3	1-2	0	0	0	0	1	1	0	0	7	-6
TEAM							0	1	1	0		0				
TOTALS			17	8-16	0-5	1-2	5	6	11	5	3	6	1	0	50	

Shooting By Period

Period	FG	FG%	3FG	3FG%	FT	FT%
Game	33-70	47.1%	6-18	33.3%	3-7	42.9%

Deadball Rebounds: 2,0

Tennessee Tech 24

No.	Player	S	Pts	FG	3FG	FT	OR	DR	TR	PF	A	TO	Blk	Stl	Min	+/-
00	HARRIS, AKIA	G	4	2-2	0-0	0-2	0	0	0	0	1	0	0	1	10	7
02	BROCK, JORDAN	G	6	2-4	1-3	1-2	1	0	1	1	2	0	0	0	10	11
14	BUCKNER, ABBY	G	3	1-3	1-3	0-0	0	1	1	0	2	0	0	0	10	7
20	BRADY, KESHA	G	7	3-7	1-2	0-0	1	0	1	1	0	0	0	0	10	7
33	COLEMAN, MACKENZIE	F	4	2-2	0-0	0-0	1	0	1	0	0	1	0	0	10	7
11	OWENS, MAALIYA	G	0	0-0	0-0	0-0	0	0	0	0	0	0	0	0	0	0
24	GUINN, JADA	G	0	0-0	0-0	0-0	0	0	0	0	0	0	0	0	0	-4
32	LAMB, TAYLOR	F	0	0-0	0-0	0-0	0	0	0	0	0	0	0	0	0	0
TEAM							0	2	2	0		0				
TOTALS			24	10-18	3-8	1-4	3	3	6	2	5	1	0	1	50	

Shooting By Period

Period	FG	FG%	3FG	3FG%	FT	FT%
Game	31-63	49.2%	7-24	29.2%	13-21	61.9%

Deadball Rebounds: 6,0

Game Notes:

Officials: Maria Gearhart, Daniel Drake, Tori Durrett
 Attendance: 1581

Start Time: 06:31 PM ET
 End Time: 08:39 PM ET
 Game Duration: 2:07
 Conference Game;

Score	1st	2nd	3rd	4th	TOT
MSU	16	22	20	17	75
TTU	13	18	27	24	82

Points from (This Period)	MSU	TTU
In the Paint	10	14
Off Turns	2	5
2nd Chance	6	3
Fast Break	0	0
Bench	11	0

Official Play-By-Play
Morehead State vs Tennessee Tech
Fourth Quarter
January 23, 2020 at Eblen Center - Cookeville



Period 4

Starters:

Morehead State: 1 JACKSON, BREUNA (G); 2 JOHNSON, ELLIE (F); 4 ALFORD, TOMIYAH (G); 10 AVERY, JALEESA (F); 11 KIRKWOOD, ARIEL (G);

Tennessee Tech: 0 HARRIS, AKIA (G); 2 BROCK, JORDAN (G); 14 BUCKNER, ABBY (G); 20 BRADY, KESHA (G); 33 COLEMAN, MACKENZIE (F);

Time	VISITORS: Morehead State	Score	Margin	HOME: Tennessee Tech
00:00				SUB OUT: OWENS, MAALIYA
00:00				SUB OUT: GUINN, JADA
00:00				SUB IN: BROCK, JORDAN
00:00				SUB IN: COLEMAN, MACKENZIE
00:00	SUB OUT: NIEVES, ALYSSA			
00:00	SUB IN: JACKSON, BREUNA			
09:51		60-58	H 2	GOOD! LAYUP by BRADY, KESHA [PNT]
09:40	TURNOVER (TRAVEL) by ELSTON, JAZZMYN			
09:35	SUB OUT: JACKSON, BREUNA			
09:35	SUB IN: NIEVES, ALYSSA			
09:18				MISSED LAYUP by BRADY, KESHA
09:16	REBOUND (DEF) by ALFORD, TOMIYAH			
09:13	FOUL (OFF) by SCHWARBER, MACKENZIE			
09:13	TURNOVER (OFFENSIVE) by SCHWARBER, MACKENZIE			
09:13	SUB OUT: SCHWARBER, MACKENZIE			
09:13	SUB IN: KIRKWOOD, ARIEL			
08:54				TURNOVER (TRAVEL) by COLEMAN, MACKENZIE
08:54	SUB OUT: NIEVES, ALYSSA			
08:54	SUB OUT: JOHNSON, ELLIE			
08:54	SUB IN: JACKSON, BREUNA			
08:54	SUB IN: HUMPHRIES, ORLANDRA			
08:38	MISSED LAYUP by ELSTON, JAZZMYN			
08:35	REBOUND (OFF) by KIRKWOOD, ARIEL			
08:34	GOOD! LAYUP by KIRKWOOD, ARIEL [PNT]	60-60	T	
08:27	FOUL (PERSONAL) by ALFORD, TOMIYAH			
08:27	SUB OUT: ALFORD, TOMIYAH			
08:27	SUB IN: JOHNSON, ELLIE			
08:27				MISSED FT by HARRIS, AKIA
08:27				REBOUND (OFF) by TEAM
08:27				MISSED FT by HARRIS, AKIA
08:26	REBOUND (DEF) by KIRKWOOD, ARIEL			
08:19	TURNOVER (LOSTBALL) by KIRKWOOD, ARIEL			
08:19				STEAL by HARRIS, AKIA
08:01		62-60	H 2	GOOD! LAYUP by BROCK, JORDAN [PNT]
07:52	GOOD! LAYUP by HUMPHRIES, ORLANDRA	62-62	T	
07:52	ASSIST by ELSTON, JAZZMYN			
07:46				MISSED 3PTR by BRADY, KESHA
07:42				REBOUND (OFF) by BRADY, KESHA
07:38				MISSED 3PTR by BUCKNER, ABBY
07:35				REBOUND (OFF) by COLEMAN, MACKENZIE
07:33		64-62	H 2	GOOD! JUMPER by COLEMAN, MACKENZIE [PNT]
07:19	TURNOVER (BADPASS) by KIRKWOOD, ARIEL			
07:19	SUB OUT: KIRKWOOD, ARIEL			
07:19	SUB IN: ALFORD, TOMIYAH			
07:02		67-62	H 5	GOOD! 3PTR by BROCK, JORDAN
07:02				ASSIST by BUCKNER, ABBY
06:36				FOUL (PERSONAL) by BROCK, JORDAN
06:36	MISSED FT by ELSTON, JAZZMYN			
06:36	REBOUND (OFF) by TEAM			
06:36	GOOD! FT by ELSTON, JAZZMYN	67-63	H 4	
06:36	SUB OUT: JACKSON, BREUNA			
06:36	SUB OUT: ALFORD, TOMIYAH			
06:36	SUB IN: NIEVES, ALYSSA			
06:36	SUB IN: KIRKWOOD, ARIEL			
06:36	SUB OUT: ELSTON, JAZZMYN			
06:36	SUB IN: ALFORD, TOMIYAH			
06:23		70-63	H 7	GOOD! 3PTR by BRADY, KESHA
06:23				ASSIST by BROCK, JORDAN
06:18	TIMEOUT 30SEC			
06:18				
06:18	SUB OUT: NIEVES, ALYSSA			
06:18	SUB OUT: KIRKWOOD, ARIEL			
06:18	SUB IN: JACKSON, BREUNA			
06:18	SUB IN: ELSTON, JAZZMYN			
06:16	MISSED 3PTR by ELSTON, JAZZMYN			
06:14	REBOUND (OFF) by JACKSON, BREUNA			
06:14	TURNOVER (TRAVEL) by JACKSON, BREUNA			
06:14	SUB OUT: JACKSON, BREUNA			
06:14	SUB IN: KIRKWOOD, ARIEL			
06:02				MISSED 3PTR by BROCK, JORDAN

Time	VISITORS: Morehead State	Score	Margin	HOME: Tennessee Tech
06:00	REBOUND (DEF) by TEAM			
06:00				FOUL (PERSONAL) by BRADY, KESHA
06:00	SUB OUT: ALFORD, TOMIYAH			
06:00	SUB IN: JACKSON, BREUNA			
05:38	MISSED 3PTR by ELSTON, JAZZMYN			
05:35	REBOUND (OFF) by KIRKWOOD, ARIEL			
05:34	MISSED LAYUP by KIRKWOOD, ARIEL			
05:34	SUB OUT: JACKSON, BREUNA			
05:34	SUB IN: ALFORD, TOMIYAH			
05:34	SUB OUT: JOHNSON, ELLIE			
05:34	SUB IN: AVERY, JALEESA			
05:32				REBOUND (DEF) by TEAM
05:13		72-63	H 9	GOOD! LAYUP by BRADY, KESHA [PNT]
05:13				ASSIST by HARRIS, AKIA
04:57	MISSED 3PTR by ELSTON, JAZZMYN			
04:55				REBOUND (DEF) by TEAM
04:55	SUB OUT: ELSTON, JAZZMYN			
04:55	SUB IN: NIEVES, ALYSSA			
04:34				MISSED JUMPER by BRADY, KESHA
04:34	BLOCK by KIRKWOOD, ARIEL			
04:29	REBOUND (DEF) by AVERY, JALEESA			
04:26	GOOD! LAYUP by HUMPHRIES, ORLANDRA [PNT]	72-65	H 7	
04:07				MISSED 3PTR by BUCKNER, ABBY
04:04	REBOUND (DEF) by ALFORD, TOMIYAH			
03:52	MISSED 3PTR by KIRKWOOD, ARIEL			
03:46				REBOUND (DEF) by BUCKNER, ABBY
03:35		74-65	H 9	GOOD! LAYUP by HARRIS, AKIA [PNT]
03:16	TURNOVER (TRAVEL) by AVERY, JALEESA			
03:16	SUB OUT: ALFORD, TOMIYAH			
03:16	SUB IN: JACKSON, BREUNA			
03:01	FOUL (PERSONAL) by JACKSON, BREUNA			
03:01	SUB OUT: NIEVES, ALYSSA			
03:01	SUB IN: ELSTON, JAZZMYN			
02:59	FOUL (PERSONAL) by JACKSON, BREUNA			
02:53				MISSED LAYUP by BRADY, KESHA
02:49	REBOUND (DEF) by JACKSON, BREUNA			
02:47	MISSED 3PTR by KIRKWOOD, ARIEL			
02:44	REBOUND (OFF) by HUMPHRIES, ORLANDRA			
02:43	GOOD! LAYUP by HUMPHRIES, ORLANDRA	74-67	H 7	
02:11		77-67	H 10	GOOD! 3PTR by BUCKNER, ABBY
02:11				ASSIST by BROCK, JORDAN
01:50	GOOD! JUMPER by HUMPHRIES, ORLANDRA	77-69	H 8	
01:50	ASSIST by JACKSON, BREUNA			
01:50	TIMEOUT 30SEC			
01:50	SUB OUT: AVERY, JALEESA			
01:50	SUB IN: ALFORD, TOMIYAH			
01:34		79-69	H 10	GOOD! LAYUP by HARRIS, AKIA [PNT]
01:23	GOOD! JUMPER by JACKSON, BREUNA	79-71	H 8	
00:56		81-71	H 10	GOOD! JUMPER by COLEMAN, MACKENZIE [PNT]
00:56				ASSIST by BUCKNER, ABBY
00:56	TIMEOUT TEAM			
00:56				SUB OUT: BROCK, JORDAN
00:56				SUB IN: GUINN, JADA
00:56	SUB OUT: HUMPHRIES, ORLANDRA			
00:56	SUB OUT: ELSTON, JAZZMYN			
00:56	SUB IN: JOHNSON, ELLIE			
00:56	SUB IN: AVERY, JALEESA			
00:53	MISSED JUMPER by ALFORD, TOMIYAH			
00:51	REBOUND (OFF) by ALFORD, TOMIYAH			
00:50	GOOD! JUMPER by ALFORD, TOMIYAH	81-73	H 8	
00:50				TIMEOUT 30SEC
00:50				SUB OUT: GUINN, JADA
00:50				SUB IN: BROCK, JORDAN
00:50	SUB OUT: JOHNSON, ELLIE			
00:50	SUB IN: HUMPHRIES, ORLANDRA			
00:29				MISSED 3PTR by BROCK, JORDAN
00:25				REBOUND (OFF) by BROCK, JORDAN
00:24	FOUL (PERSONAL) by ALFORD, TOMIYAH			
00:24	SUB OUT: ALFORD, TOMIYAH			
00:24	SUB OUT: AVERY, JALEESA			
00:24	SUB IN: NIEVES, ALYSSA			
00:24	SUB IN: ELSTON, JAZZMYN			
00:24				MISSED FT by BROCK, JORDAN
00:24				REBOUND (OFF) by TEAM
00:24		82-73	H 9	GOOD! FT by BROCK, JORDAN
00:24				SUB OUT: BROCK, JORDAN
00:24				SUB IN: GUINN, JADA
00:17	GOOD! LAYUP by HUMPHRIES, ORLANDRA	82-75	H 7	
00:17	ASSIST by KIRKWOOD, ARIEL			
00:17				TIMEOUT 30SEC

Time	VISITORS: Morehead State	Score	Margin	HOME: Tennessee Tech
00:17				SUB OUT: GUINN, JADA
00:17				SUB IN: BROCK, JORDAN

Morehead State 75, Tennessee Tech 82

Points from (This Period)	MSU	TTU
In the Paint	10	14
Off Turns	2	5
2nd Chance	6	3
Fast Break	0	0
Bench	11	0

**Official Scoring/Possession Reference Chart
Morehead State vs Tennessee Tech
Period 1
January 23, 2020 at Eblen Center - Cookeville**



Period 1

Starters:

Morehead State: 1 JACKSON,BREUNA (G); 2 JOHNSON,ELLIE (F); 4 ALFORD,TOMIYAH (G); 10 AVERY,JALEESA (F); 11 KIRKWOOD,ARIEL (G);
Tennessee Tech: 0 HARRIS,AKIA (G); 2 BROCK,JORDAN (G); 14 BUCKNER,ABBY (G); 20 BRADY,KESHA (G); 33 COLEMAN,MACKENZIE (F);

Time	VISITORS: Morehead State	Score	Margin	HOME: Tennessee Tech
09:14		2-0	H 2	GOOD! LAYUP by BRADY, KESHA
08:38		4-0	H 4	GOOD! LAYUP by BRADY, KESHA [PNT]
07:46	GOOD! JUMPER by KIRKWOOD, ARIEL [PNT]	4-2	H 2	
07:22	GOOD! LAYUP by KIRKWOOD, ARIEL [PNT]	4-4	T	
06:05	GOOD! LAYUP by HUMPHRIES, ORLANDRA [PNT]	4-6	V 2	
05:00		6-6	T	GOOD! LAYUP by HARRIS, AKIA [PNT]
04:45	GOOD! 3PTR by ELSTON, JAZZMYN	6-9	V 3	
04:29		8-9	V 1	GOOD! LAYUP by COLEMAN, MACKENZIE [PNT]
03:12	GOOD! 3PTR by ELSTON, JAZZMYN	8-12	V 4	
01:35		10-12	V 2	GOOD! LAYUP by OWENS, MAALIYA [FB/PNT]
01:14	GOOD! JUMPER by ELSTON, JAZZMYN [PNT]	10-14	V 4	
01:03		12-14	V 2	GOOD! LAYUP by BROCK, JORDAN [PNT]
00:54	GOOD! LAYUP by JACKSON, BREUNA [PNT]	12-16	V 4	
00:45		13-16	V 3	GOOD! FT by BROCK, JORDAN

Morehead State 16, Tennessee Tech 13

Official Scoring/Possession Reference Chart
Morehead State vs Tennessee Tech
Period 2
January 23, 2020 at Eblen Center - Cookeville



Period 2

Starters:

Morehead State: 1 JACKSON,BREUNA (G); 2 JOHNSON,ELLIE (F); 4 ALFORD,TOMIYAH (G); 10 AVERY,JALEESA (F); 11 KIRKWOOD,ARIEL (G);
Tennessee Tech: 0 HARRIS,AKIA (G); 2 BROCK,JORDAN (G); 14 BUCKNER,ABBY (G); 20 BRADY,KESHA (G); 33 COLEMAN,MACKENZIE (F);

Time	VISITORS: Morehead State	Score	Margin	HOME: Tennessee Tech
09:19		15-16	V 1	GOOD! LAYUP by BRADY, KESHA
09:19		16-16	T	GOOD! FT by BRADY, KESHA
08:56	GOOD! 3PTR by ELSTON, JAZZMYN	16-19	V 3	
08:37		18-19	V 1	GOOD! JUMPER by COLEMAN, MACKENZIE
08:18	GOOD! LAYUP by ELSTON, JAZZMYN [PNT]	18-21	V 3	
07:45	GOOD! LAYUP by JACKSON, BREUNA [PNT]	18-23	V 5	
07:19		19-23	V 4	GOOD! FT by HARRIS, AKIA
07:19		20-23	V 3	GOOD! FT by HARRIS, AKIA
06:45		23-23	T	GOOD! 3PTR by COLEMAN, MACKENZIE
05:51	GOOD! JUMPER by AVERY, JALEESA [PNT]	23-25	V 2	
05:40		24-25	V 1	GOOD! FT by COLEMAN, MACKENZIE
05:27	GOOD! JUMPER by ELSTON, JAZZMYN	24-27	V 3	
05:13		26-27	V 1	GOOD! LAYUP by LAMB, TAYLOR [PNT]
05:13		27-27	T	GOOD! FT by LAMB, TAYLOR
05:03	GOOD! 3PTR by ELSTON, JAZZMYN	27-30	V 3	
04:47		29-30	V 1	GOOD! JUMPER by HARRIS, AKIA
04:35	GOOD! FT by JOHNSON, ELLIE	29-31	V 2	
04:35	GOOD! FT by JOHNSON, ELLIE	29-32	V 3	
04:15	GOOD! LAYUP by ALFORD, TOMIYAH [PNT]	29-34	V 5	
03:11	GOOD! JUMPER by KIRKWOOD, ARIEL	29-36	V 7	
02:44		31-36	V 5	GOOD! JUMPER by GUINN, JADA [PNT]
00:05	GOOD! LAYUP by ALFORD, TOMIYAH [FB/PNT]	31-38	V 7	

Morehead State 38, Tennessee Tech 31

**Official Scoring/Possession Reference Chart
Morehead State vs Tennessee Tech
Period 3
January 23, 2020 at Eblen Center - Cookeville**



Period 3

Starters:

Morehead State: 1 JACKSON,BREUNA (G); 2 JOHNSON,ELLIE (F); 4 ALFORD,TOMIYAH (G); 10 AVERY,JALEESA (F); 11 KIRKWOOD,ARIEL (G);
Tennessee Tech: 0 HARRIS,AKIA (G); 2 BROCK,JORDAN (G); 14 BUCKNER,ABBY (G); 20 BRADY,KESHA (G); 33 COLEMAN,MACKENZIE (F);

Time	VISITORS: Morehead State	Score	Margin	HOME: Tennessee Tech
09:20	GOOD! LAYUP by JOHNSON, ELLIE [PNT]	31-40	V 9	
09:05		33-40	V 7	GOOD! JUMPER by COLEMAN, MACKENZIE
08:45	GOOD! JUMPER by JOHNSON, ELLIE	33-42	V 9	
08:22		36-42	V 6	GOOD! 3PTR by BROCK, JORDAN
07:16		38-42	V 4	GOOD! LAYUP by BRADY, KESHA
07:16		39-42	V 3	GOOD! FT by BRADY, KESHA
06:55	GOOD! JUMPER by ELSTON, JAZZMYN [PNT]	39-44	V 5	
06:27		42-44	V 2	GOOD! 3PTR by BROCK, JORDAN
05:56		45-44	H 1	GOOD! 3PTR by BROCK, JORDAN
05:19		47-44	H 3	GOOD! LAYUP by BRADY, KESHA [PNT]
05:11	GOOD! 3PTR by JACKSON, BREUNA	47-47	T	
04:44		48-47	H 1	GOOD! FT by HARRIS, AKIA
04:08	GOOD! LAYUP by ELSTON, JAZZMYN [PNT]	48-49	V 1	
03:19		50-49	H 1	GOOD! JUMPER by BROCK, JORDAN [PNT]
03:19		51-49	H 2	GOOD! FT by BROCK, JORDAN
02:54		52-49	H 3	GOOD! FT by COLEMAN, MACKENZIE
02:54		53-49	H 4	GOOD! FT by COLEMAN, MACKENZIE
02:48	GOOD! LAYUP by JACKSON, BREUNA [PNT]	53-51	H 2	
02:39		55-51	H 4	GOOD! LAYUP by OWENS, MAALIYA [PNT]
02:39		56-51	H 5	GOOD! FT by OWENS, MAALIYA
02:25	GOOD! LAYUP by ELSTON, JAZZMYN [PNT]	56-53	H 3	
01:35		58-53	H 5	GOOD! LAYUP by HARRIS, AKIA [PNT]
01:27	GOOD! 3PTR by ELSTON, JAZZMYN [FB]	58-56	H 2	
01:08	GOOD! LAYUP by ELSTON, JAZZMYN	58-58	T	

Morehead State 58, Tennessee Tech 58

Official Scoring/Possession Reference Chart
Morehead State vs Tennessee Tech
Period 4
January 23, 2020 at Eblen Center - Cookeville



Period 4

Starters:

Morehead State: 1 JACKSON,BREUNA (G); 2 JOHNSON,ELLIE (F); 4 ALFORD,TOMIYAH (G); 10 AVERY,JALEESA (F); 11 KIRKWOOD,ARIEL (G);

Tennessee Tech: 0 HARRIS,AKIA (G); 2 BROCK,JORDAN (G); 14 BUCKNER,ABBY (G); 20 BRADY,KESHA (G); 33 COLEMAN,MACKENZIE (F);

Time	VISITORS: Morehead State	Score	Margin	HOME: Tennessee Tech
09:51		60-58	H 2	GOOD! LAYUP by BRADY, KESHA [PNT]
08:34	GOOD! LAYUP by KIRKWOOD, ARIEL [PNT]	60-60	T	
08:01		62-60	H 2	GOOD! LAYUP by BROCK, JORDAN [PNT]
07:52	GOOD! LAYUP by HUMPHRIES, ORLANDRA	62-62	T	
07:33		64-62	H 2	GOOD! JUMPER by COLEMAN, MACKENZIE [PNT]
07:02		67-62	H 5	GOOD! 3PTR by BROCK, JORDAN
06:36	GOOD! FT by ELSTON, JAZZMYN	67-63	H 4	
06:23		70-63	H 7	GOOD! 3PTR by BRADY, KESHA
05:13		72-63	H 9	GOOD! LAYUP by BRADY, KESHA [PNT]
04:26	GOOD! LAYUP by HUMPHRIES, ORLANDRA [PNT]	72-65	H 7	
03:35		74-65	H 9	GOOD! LAYUP by HARRIS, AKIA [PNT]
02:43	GOOD! LAYUP by HUMPHRIES, ORLANDRA	74-67	H 7	
02:11		77-67	H 10	GOOD! 3PTR by BUCKNER, ABBY
01:50	GOOD! JUMPER by HUMPHRIES, ORLANDRA	77-69	H 8	
01:34		79-69	H 10	GOOD! LAYUP by HARRIS, AKIA [PNT]
01:23	GOOD! JUMPER by JACKSON, BREUNA	79-71	H 8	
00:56		81-71	H 10	GOOD! JUMPER by COLEMAN, MACKENZIE [PNT]
00:50	GOOD! JUMPER by ALFORD, TOMIYAH	81-73	H 8	
00:24		82-73	H 9	GOOD! FT by BROCK, JORDAN
00:17	GOOD! LAYUP by HUMPHRIES, ORLANDRA	82-75	H 7	

Morehead State 75, Tennessee Tech 82

Official Substitutions Log
Morehead State vs Tennessee Tech
Period 1
January 23, 2020 at Eblen Center - Cookeville



VISITORS: Morehead State	Time	Score	HOME: Tennessee Tech
1 JACKSON,BREUNA			0 HARRIS,AKIA
2 JOHNSON,ELLIE			2 BROCK,JORDAN
4 ALFORD,TOMIYAH			14 BUCKNER,ABBY
10 AVERY,JALEESA			20 BRADY,KESHA
11 KIRKWOOD,ARIEL			33 COLEMAN,MACKENZIE
SUB OUT: 4 ALFORD,TOMIYAH	07:05	4-4	
SUB OUT: 10 AVERY,JALEESA	07:05		
SUB IN: 23 HUMPHRIES,ORLANDRA	07:05		
SUB IN: 24 ELSTON,JAZZMYN	07:05		
	04:07	9-8	SUB OUT: BROCK,JORDAN
	04:07		SUB OUT: BUCKNER,ABBY
	04:07		SUB IN: OWENS,MAALIYA
	04:07		SUB IN: GUINN,JADA
SUB OUT: 2 JOHNSON,ELLIE	04:07		
SUB OUT: 11 KIRKWOOD,ARIEL	04:07		
SUB OUT: 23 HUMPHRIES,ORLANDRA	04:07		
SUB IN: 4 ALFORD,TOMIYAH	04:07		
SUB IN: 5 SCHWARBER,MACKENZIE	04:07		
SUB IN: 10 AVERY,JALEESA	04:07		
	03:25	9-8	SUB OUT: COLEMAN,MACKENZIE
	03:25		SUB IN: LAMB,TAYLOR
	02:25	12-8	SUB OUT: HARRIS,AKIA
	02:25		SUB IN: BROCK,JORDAN
SUB OUT: 4 ALFORD,TOMIYAH	02:25		
SUB IN: 11 KIRKWOOD,ARIEL	02:25		
	00:45	16-13	SUB OUT: BRADY,KESHA
	00:45		SUB IN: HARRIS,AKIA
SUB OUT: 1 JACKSON,BREUNA	00:05	16-13	
SUB IN: 0 NIEVES,ALYSSA	00:05		
SUB OUT: 24 ELSTON,JAZZMYN	00:05		
SUB IN: 4 ALFORD,TOMIYAH	00:05		

Morehead State 16, Tennessee Tech 13

Official Substitutions Log
Morehead State vs Tennessee Tech
Period 2
January 23, 2020 at Eblen Center - Cookeville



VISITORS: Morehead State	Time	Score	HOME: Tennessee Tech
1 JACKSON,BREUNA			0 HARRIS,AKIA
2 JOHNSON,ELLIE			2 BROCK,JORDAN
4 ALFORD,TOMIYAH			14 BUCKNER,ABBY
10 AVERY,JALEESA			20 BRADY,KESHA
11 KIRKWOOD,ARIEL			33 COLEMAN,MACKENZIE
	10:00	-	SUB OUT: OWENS,MAALIYA
	10:00		SUB OUT: GUINN,JADA
	10:00		SUB OUT: LAMB,TAYLOR
	10:00		SUB IN: BUCKNER,ABBY
	10:00		SUB IN: BRADY,KESHA
	10:00		SUB IN: COLEMAN,MACKENZIE
SUB OUT: 5 SCHWARBER,MACKENZIE	09:44	-	
SUB IN: 23 HUMPHRIES,ORLANDRA	09:44		
SUB OUT: 0 NIEVES,ALYSSA	09:19	16-15	
SUB OUT: 4 ALFORD,TOMIYAH	09:19		
SUB IN: 1 JACKSON,BREUNA	09:19		
SUB IN: 24 ELSTON,JAZZMYN	09:19		
SUB OUT: 23 HUMPHRIES,ORLANDRA	07:44	23-18	
SUB IN: 2 JOHNSON,ELLIE	07:44		
	05:40	25-23	SUB OUT: BROCK,JORDAN
	05:40		SUB OUT: BUCKNER,ABBY
	05:40		SUB IN: OWENS,MAALIYA
	05:40		SUB IN: GUINN,JADA
SUB OUT: 10 AVERY,JALEESA	05:40		
SUB IN: 23 HUMPHRIES,ORLANDRA	05:40		
	05:40		SUB OUT: COLEMAN,MACKENZIE
	05:40		SUB IN: LAMB,TAYLOR
	04:35	30-29	SUB OUT: LAMB,TAYLOR
	04:35		SUB IN: COLEMAN,MACKENZIE
SUB OUT: 1 JACKSON,BREUNA	04:35		
SUB IN: 4 ALFORD,TOMIYAH	04:35		
SUB OUT: 23 HUMPHRIES,ORLANDRA	04:35		
SUB IN: 10 AVERY,JALEESA	04:35		
	04:01	34-29	SUB OUT: HARRIS,AKIA
	04:01		SUB IN: BROCK,JORDAN
SUB OUT: 24 ELSTON,JAZZMYN	04:01		
SUB IN: 1 JACKSON,BREUNA	04:01		
	01:53	36-31	SUB OUT: OWENS,MAALIYA
	01:53		SUB OUT: BRADY,KESHA
	01:53		SUB IN: HARRIS,AKIA
	01:53		SUB IN: BUCKNER,ABBY
SUB OUT: 1 JACKSON,BREUNA	01:53		
SUB IN: 24 ELSTON,JAZZMYN	01:53		
SUB OUT: 11 KIRKWOOD,ARIEL	01:26	36-31	
SUB IN: 1 JACKSON,BREUNA	01:26		
SUB OUT: 4 ALFORD,TOMIYAH	01:16	36-31	
SUB IN: 11 KIRKWOOD,ARIEL	01:16		
SUB OUT: 1 JACKSON,BREUNA	00:51	36-31	
SUB IN: 4 ALFORD,TOMIYAH	00:51		

Morehead State 38, Tennessee Tech 31

Official Substitutions Log
Morehead State vs Tennessee Tech
Period 3
January 23, 2020 at Eblen Center - Cookeville



VISITORS: Morehead State	Time	Score	HOME: Tennessee Tech
1 JACKSON,BREUNA			0 HARRIS,AKIA
2 JOHNSON,ELLIE			2 BROCK,JORDAN
4 ALFORD,TOMIYAH			14 BUCKNER,ABBY
10 AVERY,JALEESA			20 BRADY,KESHA
11 KIRKWOOD,ARIEL			33 COLEMAN,MACKENZIE
	10:00	-	SUB OUT: GUINN,JADA
	10:00		SUB IN: BRADY,KESHA
SUB OUT: 24 ELSTON,JAZZMYN	10:00		
SUB IN: 1 JACKSON,BREUNA	10:00		
	07:58	42-36	SUB OUT: HARRIS,AKIA
	07:58		SUB IN: GUINN,JADA
SUB OUT: 4 ALFORD,TOMIYAH	07:38	42-36	
SUB OUT: 10 AVERY,JALEESA	07:38		
SUB IN: 23 HUMPHRIES,ORLANDRA	07:38		
SUB IN: 24 ELSTON,JAZZMYN	07:38		
SUB OUT: 23 HUMPHRIES,ORLANDRA	07:16	42-38	
SUB IN: 10 AVERY,JALEESA	07:16		
SUB OUT: 10 AVERY,JALEESA	06:31	44-39	
SUB IN: 5 SCHWARBER,MACKENZIE	06:31		
	05:51	44-45	SUB OUT: GUINN,JADA
	05:51		SUB IN: HARRIS,AKIA
SUB OUT: 11 KIRKWOOD,ARIEL	04:25	47-48	
SUB IN: 4 ALFORD,TOMIYAH	04:25		
SUB OUT: 5 SCHWARBER,MACKENZIE	04:25		
SUB IN: 10 AVERY,JALEESA	04:25		
	03:31	49-48	SUB OUT: BUCKNER,ABBY
	03:31		SUB OUT: BRADY,KESHA
	03:31		SUB IN: OWENS,MAALIYA
	03:31		SUB IN: GUINN,JADA
SUB OUT: 1 JACKSON,BREUNA	03:31		
SUB IN: 11 KIRKWOOD,ARIEL	03:31		
SUB OUT: 4 ALFORD,TOMIYAH	03:19	49-50	
SUB IN: 1 JACKSON,BREUNA	03:19		
	02:39	51-55	SUB OUT: COLEMAN,MACKENZIE
	02:39		SUB IN: LAMB,TAYLOR
SUB OUT: 1 JACKSON,BREUNA	01:42	53-56	
SUB OUT: 10 AVERY,JALEESA	01:42		
SUB IN: 4 ALFORD,TOMIYAH	01:42		
SUB IN: 5 SCHWARBER,MACKENZIE	01:42		
	00:32	58-58	SUB OUT: BROCK,JORDAN
	00:32		SUB IN: BRADY,KESHA
SUB OUT: 24 ELSTON,JAZZMYN	00:32		
SUB IN: 0 NIEVES,ALYSSA	00:32		
	00:01	58-58	SUB OUT: LAMB,TAYLOR
	00:01		SUB IN: BUCKNER,ABBY
SUB OUT: 11 KIRKWOOD,ARIEL	00:01		
SUB IN: 24 ELSTON,JAZZMYN	00:01		

Morehead State 58, Tennessee Tech 58

Official Substitutions Log
Morehead State vs Tennessee Tech
Period 4
January 23, 2020 at Eblen Center - Cookeville



VISITORS: Morehead State	Time	Score	HOME: Tennessee Tech
1 JACKSON,BREUNA			0 HARRIS,AKIA
2 JOHNSON,ELLIE			2 BROCK,JORDAN
4 ALFORD,TOMIYAH			14 BUCKNER,ABBY
10 AVERY,JALEESA			20 BRADY,KESHA
11 KIRKWOOD,ARIEL			33 COLEMAN,MACKENZIE
	00:00	-	SUB OUT: OWENS,MAALIYA
	00:00		SUB OUT: GUINN,JADA
	00:00		SUB IN: BROCK,JORDAN
	00:00		SUB IN: COLEMAN,MACKENZIE
SUB OUT: 0 NIEVES,ALYSSA	00:00		
SUB IN: 1 JACKSON,BREUNA	00:00		
SUB OUT: 1 JACKSON,BREUNA	09:35	58-60	
SUB IN: 0 NIEVES,ALYSSA	09:35		
SUB OUT: 5 SCHWARBER,MACKENZIE	09:13	58-60	
SUB IN: 11 KIRKWOOD,ARIEL	09:13		
SUB OUT: 0 NIEVES,ALYSSA	08:54	58-60	
SUB OUT: 2 JOHNSON,ELLIE	08:54		
SUB IN: 1 JACKSON,BREUNA	08:54		
SUB IN: 23 HUMPHRIES,ORLANDRA	08:54		
SUB OUT: 4 ALFORD,TOMIYAH	08:27	60-60	
SUB IN: 2 JOHNSON,ELLIE	08:27		
SUB OUT: 11 KIRKWOOD,ARIEL	07:19	62-64	
SUB IN: 4 ALFORD,TOMIYAH	07:19		
SUB OUT: 1 JACKSON,BREUNA	06:36	63-67	
SUB OUT: 4 ALFORD,TOMIYAH	06:36		
SUB IN: 0 NIEVES,ALYSSA	06:36		
SUB IN: 11 KIRKWOOD,ARIEL	06:36		
SUB OUT: 24 ELSTON,JAZZMYN	06:36		
SUB IN: 4 ALFORD,TOMIYAH	06:36		
SUB OUT: 0 NIEVES,ALYSSA	06:18	63-70	
SUB OUT: 11 KIRKWOOD,ARIEL	06:18		
SUB IN: 1 JACKSON,BREUNA	06:18		
SUB IN: 24 ELSTON,JAZZMYN	06:18		
SUB OUT: 1 JACKSON,BREUNA	06:14	63-70	
SUB IN: 11 KIRKWOOD,ARIEL	06:14		
SUB OUT: 4 ALFORD,TOMIYAH	06:00	63-70	
SUB IN: 1 JACKSON,BREUNA	06:00		
SUB OUT: 1 JACKSON,BREUNA	05:34	63-70	
SUB IN: 4 ALFORD,TOMIYAH	05:34		
SUB OUT: 2 JOHNSON,ELLIE	05:34		
SUB IN: 10 AVERY,JALEESA	05:34		
SUB OUT: 24 ELSTON,JAZZMYN	04:55	63-72	
SUB IN: 0 NIEVES,ALYSSA	04:55		
SUB OUT: 4 ALFORD,TOMIYAH	03:16	65-74	
SUB IN: 1 JACKSON,BREUNA	03:16		
SUB OUT: 0 NIEVES,ALYSSA	03:01	65-74	
SUB IN: 24 ELSTON,JAZZMYN	03:01		
SUB OUT: 10 AVERY,JALEESA	01:50	69-77	
SUB IN: 4 ALFORD,TOMIYAH	01:50		
	00:56	71-81	SUB OUT: BROCK,JORDAN
	00:56		SUB IN: GUINN,JADA
SUB OUT: 23 HUMPHRIES,ORLANDRA	00:56		
SUB OUT: 24 ELSTON,JAZZMYN	00:56		
SUB IN: 2 JOHNSON,ELLIE	00:56		
SUB IN: 10 AVERY,JALEESA	00:56		
	00:50	73-81	SUB OUT: GUINN,JADA
	00:50		SUB IN: BROCK,JORDAN
SUB OUT: 2 JOHNSON,ELLIE	00:50		
SUB IN: 23 HUMPHRIES,ORLANDRA	00:50		
SUB OUT: 4 ALFORD,TOMIYAH	00:24	73-81	
SUB OUT: 10 AVERY,JALEESA	00:24		
SUB IN: 0 NIEVES,ALYSSA	00:24		
SUB IN: 24 ELSTON,JAZZMYN	00:24		
	00:24		SUB OUT: BROCK,JORDAN
	00:24		SUB IN: GUINN,JADA
	00:17	75-82	SUB OUT: GUINN,JADA
	00:17		SUB IN: BROCK,JORDAN

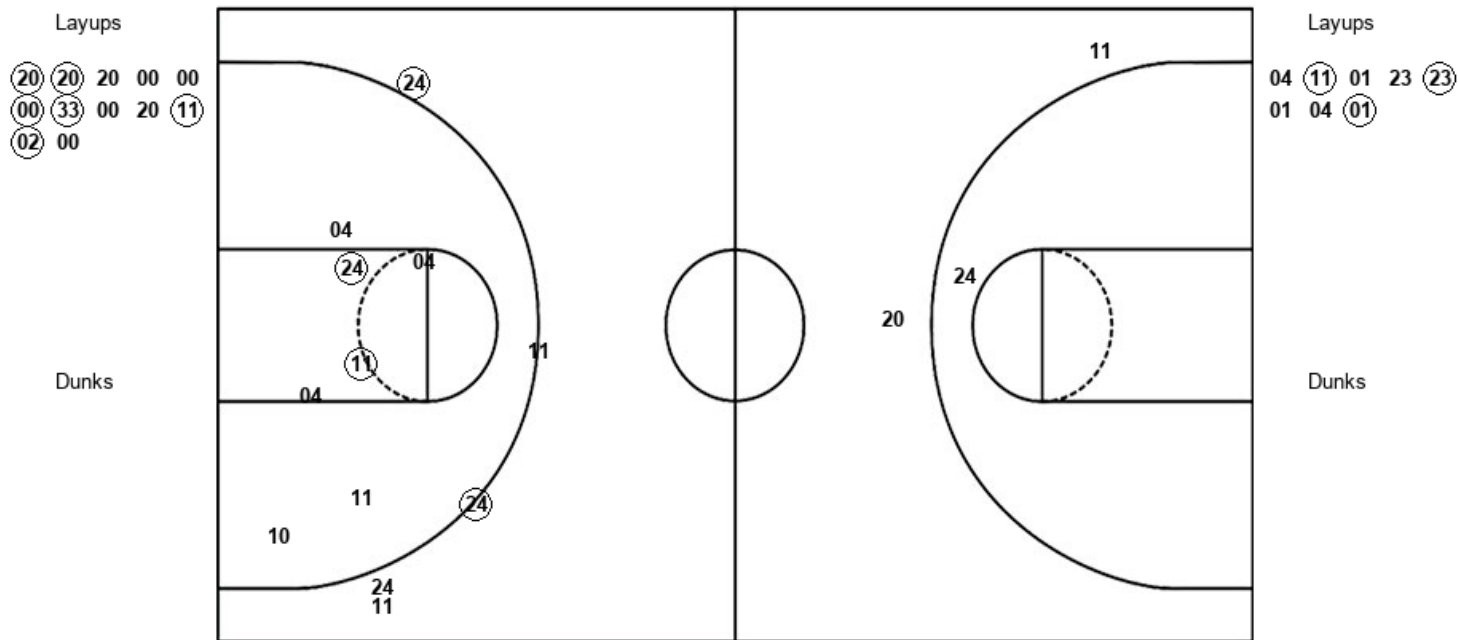
Morehead State 75, Tennessee Tech 82

Official Shot Chart
Morehead State vs Tennessee Tech
PERIOD 1 Shots
 January 23, 2020 at Eblen Center - Cookeville



Tennessee Tech

Morehead State



TTU : Period 1	Made	Att	Pct
Layups	6	12	50.0
Dunks	0	0	0
2PT Field Goals	6	13	46.2
3PT Field Goals	0	2	00.0
Total Field Goals	6	15	40.0

MSU : Period 1	Made	Att	Pct
Layups	3	8	37.5
Dunks	0	0	0
2PT Field Goals	5	15	33.3
3PT Field Goals	2	5	40.0
Total Field Goals	7	20	35.0

Official Shot Chart
Morehead State vs Tennessee Tech
PERIOD 2 Shots
 January 23, 2020 at Eblen Center - Cookeville

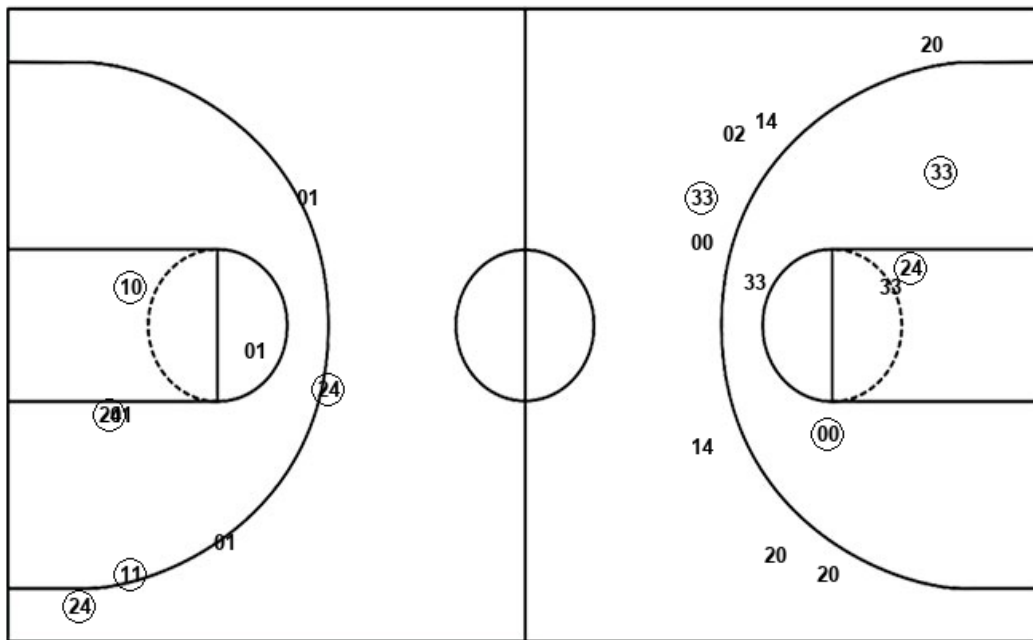


Tennessee Tech

Morehead State

Layups
 (20) 20 (32)

Dunks



Layups
 (24) (01) 02 11 02
 (04) 11 10 02 (04)

Dunks

TTU : Period 2	Made	Att	Pct
Layups	2	3	66.7
Dunks	0	0	0
2PT Field Goals	5	8	62.5
3PT Field Goals	1	8	12.5
Total Field Goals	6	16	37.5

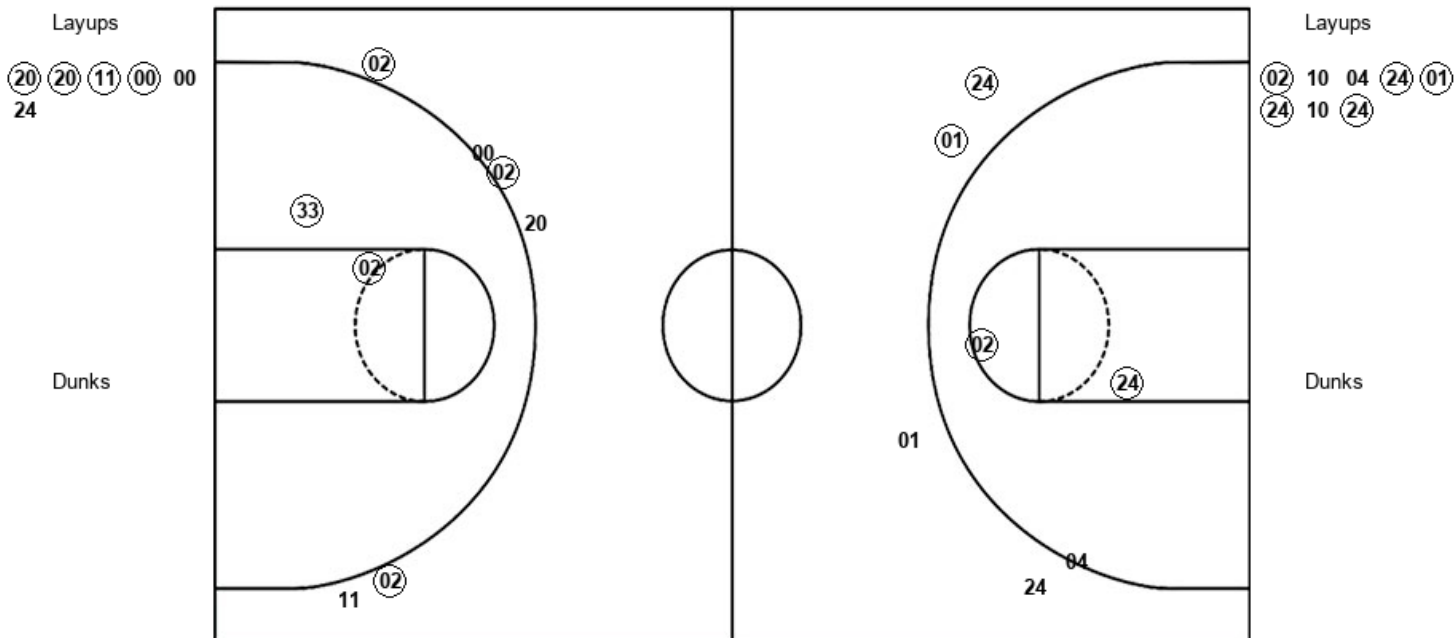
MSU : Period 2	Made	Att	Pct
Layups	4	10	40.0
Dunks	0	0	0
2PT Field Goals	7	15	46.7
3PT Field Goals	2	4	50.0
Total Field Goals	9	19	47.4

Official Shot Chart
Morehead State vs Tennessee Tech
PERIOD 3 Shots
 January 23, 2020 at Eblen Center - Cookeville



Tennessee Tech

Morehead State



TTU : Period 3	Made	Att	Pct
Layups	4	6	66.7
Dunks	0	0	0
2PT Field Goals	6	8	75.0
3PT Field Goals	3	6	50.0
Total Field Goals	9	14	64.3

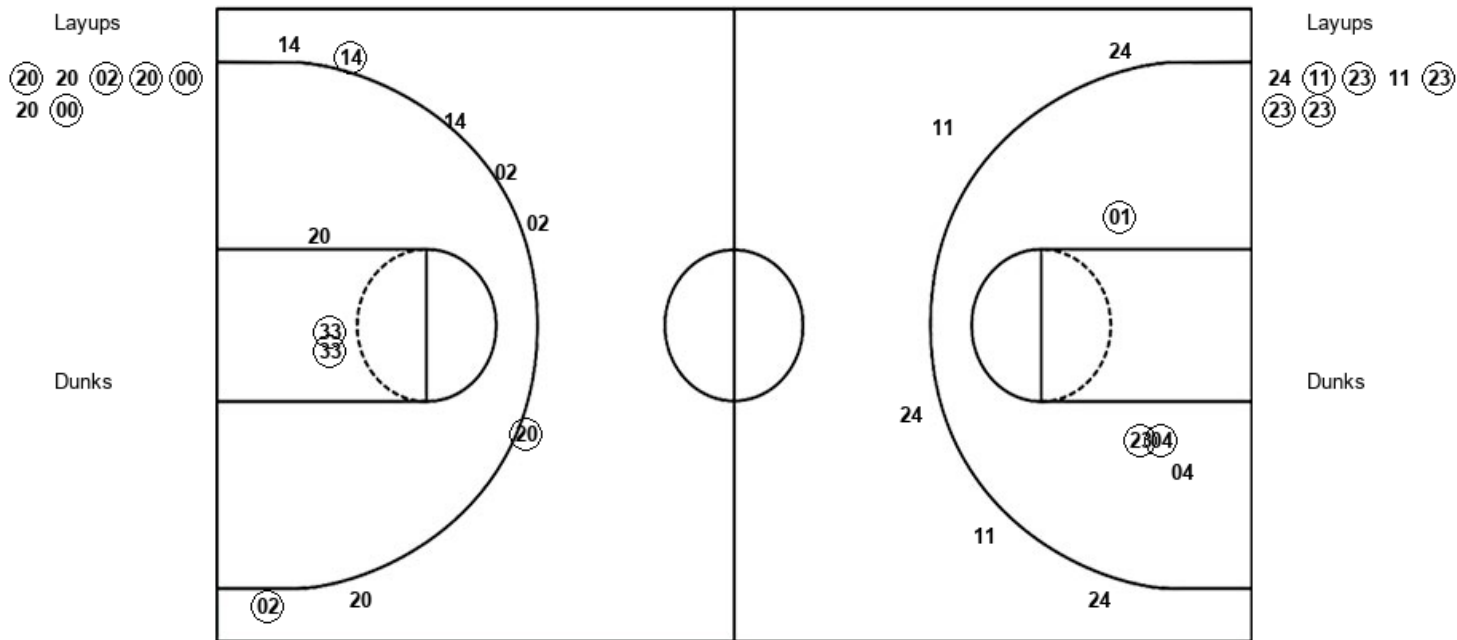
MSU : Period 3	Made	Att	Pct
Layups	5	8	62.5
Dunks	0	0	0
2PT Field Goals	7	11	63.6
3PT Field Goals	2	4	50.0
Total Field Goals	9	15	60.0

Official Shot Chart
Morehead State vs Tennessee Tech
PERIOD 4 Shots
 January 23, 2020 at Eblen Center - Cookeville



Tennessee Tech

Morehead State



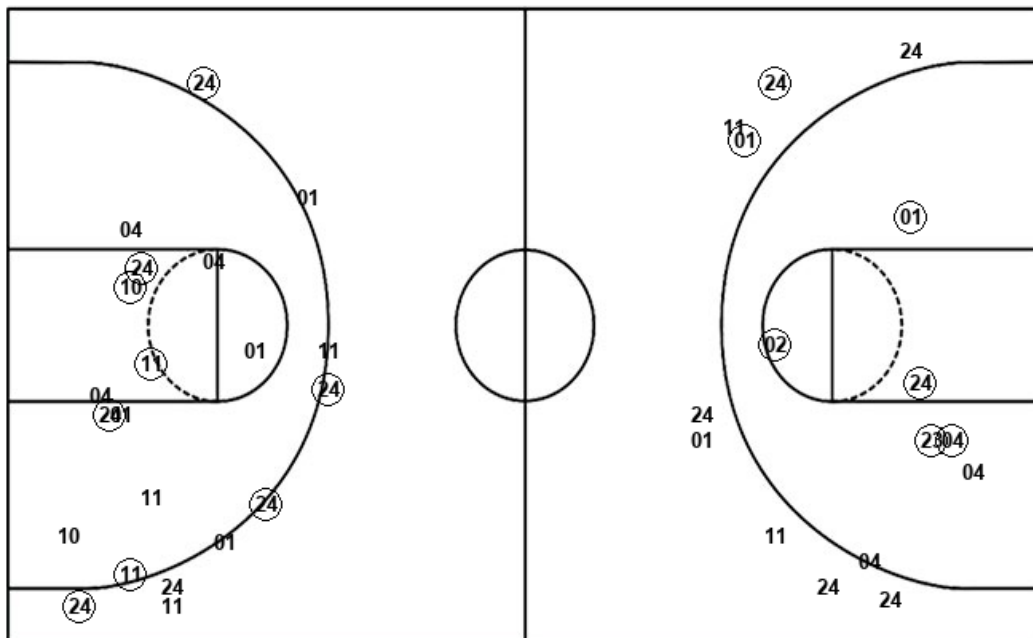
TTU : Period 4	Made	Att	Pct
Layups	5	7	71.4
Dunks	0	0	0
2PT Field Goals	7	10	70.0
3PT Field Goals	3	8	37.5
Total Field Goals	10	18	55.6

MSU : Period 4	Made	Att	Pct
Layups	5	7	71.4
Dunks	0	0	0
2PT Field Goals	8	11	72.7
3PT Field Goals	0	5	00.0
Total Field Goals	8	16	50.0

Official Shot Chart
Morehead State vs Tennessee Tech
Morehead State Team Shots
January 23, 2020 at Eblen Center - Cookeville



Layups



Layups

04	(11)	01	23	(23)
01	04	(01)	(24)	(01)
02	11	02	(04)	11
10	02	(04)	(02)	10
04	(24)	(01)	(24)	10
(24)	24	(11)	(23)	11
(23)	(23)	(23)		

Dunks

Dunks

MSU : Period 1	Made	Att	Pct
Layups	3	8	37.5
Dunks	0	0	0
2PT Field Goals	5	15	33.3
3PT Field Goals	2	5	40.0
Total Field Goals	7	20	35.0

MSU : Period 2	Made	Att	Pct
Layups	4	10	40.0
Dunks	0	0	0
2PT Field Goals	7	15	46.7
3PT Field Goals	2	4	50.0
Total Field Goals	9	19	47.4

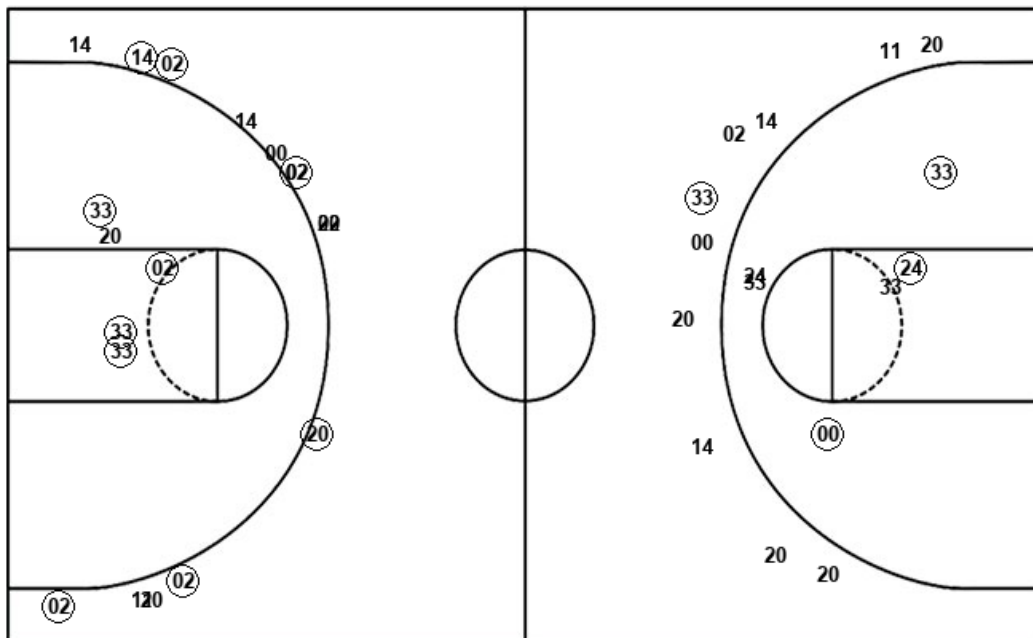
MSU : Period 3	Made	Att	Pct
Layups	5	8	62.5
Dunks	0	0	0
2PT Field Goals	7	11	63.6
3PT Field Goals	2	4	50.0
Total Field Goals	9	15	60.0

MSU : Period 4	Made	Att	Pct
Layups	5	7	71.4
Dunks	0	0	0
2PT Field Goals	8	11	72.7
3PT Field Goals	0	5	00.0
Total Field Goals	8	16	50.0

Official Shot Chart
Morehead State vs Tennessee Tech
Tennessee Tech Team Shots
January 23, 2020 at Eblen Center - Cookeville



Layups



Layups

(20)	(20)	20	00	00
(00)	(33)	00	20	(11)
(02)	00	(20)	20	(32)
(20)	(20)	(11)	(00)	00
24	(20)	20	(02)	(20)
(00)	20	(00)		

Dunks

Dunks

TTU : Period 1	Made	Att	Pct
Layups	6	12	50.0
Dunks	0	0	0
2PT Field Goals	6	13	46.2
3PT Field Goals	0	2	00.0
Total Field Goals	6	15	40.0

TTU : Period 2	Made	Att	Pct
Layups	2	3	66.7
Dunks	0	0	0
2PT Field Goals	5	8	62.5
3PT Field Goals	1	8	12.5
Total Field Goals	6	16	37.5

TTU : Period 3	Made	Att	Pct
Layups	4	6	66.7
Dunks	0	0	0
2PT Field Goals	6	8	75.0
3PT Field Goals	3	6	50.0
Total Field Goals	9	14	64.3

TTU : Period 4	Made	Att	Pct
Layups	5	7	71.4
Dunks	0	0	0
2PT Field Goals	7	10	70.0
3PT Field Goals	3	8	37.5
Total Field Goals	10	18	55.6