

## FINAL SCORE



**La.-Monroe**

**64**



**Coastal Carolina**

**93**

January 07, 2020 • The HTC Center

## FINAL STATISTICS

**Official Box Score**  
**La.-Monroe vs Coastal Carolina**  
**Game Totals -- Final Statistics**  
**January 07, 2020 at The HTC Center**



**La.-Monroe 64**

No.	Player	S	Pts	FG	3FG	FT	OR	DR	TR	PF	A	TO	Blk	Stl	Min	+/-
00	EFRETUEI, CHRIS	C	0	0-0	0-0	0-0	0	0	0	0	0	1	0	0	2	-25
02	ERTEL, MICHAEL	G	15	4-12	2-6	5-6	0	0	0	2	5	4	0	3	32	-30
03	WILLIAMS, JD	G	6	2-5	0-2	2-4	1	4	5	1	1	3	0	2	30	-30
14	IFEJEH, ELIJAH	F	0	0-1	0-0	0-0	1	0	1	1	0	1	0	0	9	-13
15	NICHOLAS, JOSH	G	2	1-8	0-4	0-0	0	3	3	2	2	1	1	0	24	-15
05	WHITE, TYREE	F	8	3-6	1-3	1-1	0	3	3	1	0	2	0	0	21	-2
10	POWELL, LANGSTON	G	18	5-7	4-5	4-4	1	0	1	1	0	1	0	1	18	-5
13	HODGE, JALEN	G	11	3-5	1-1	4-5	0	3	3	1	2	1	0	0	22	-13
22	BERNARD, D'ANDRE	F	3	1-5	1-2	0-0	2	3	5	4	1	1	1	0	17	-6
23	WHITE, YOURY	F	1	0-2	0-0	1-2	0	1	1	1	1	0	1	0	13	-3
24	TRAORE, DADOU	C	0	0-0	0-0	0-0	0	0	0	0	0	0	0	0	12	-3
<b>TEAM</b>							0	1	1	0		1				
<b>TOTALS</b>			<b>64</b>	<b>19-51</b>	<b>9-23</b>	<b>17-22</b>	<b>5</b>	<b>18</b>	<b>23</b>	<b>14</b>	<b>12</b>	<b>16</b>	<b>3</b>	<b>6</b>	<b>200</b>	

*Shooting By Period*

Period	FG	FG%	3FG	3FG%	FT	FT%
1st Half	9-22	41%	5-13	38%	5-7	71%
2nd Half	10-29	34%	4-10	40%	12-15	80%
<b>Game</b>	<b>19-51</b>	<b>37.3%</b>	<b>9-23</b>	<b>39.1%</b>	<b>17-22</b>	<b>77.3%</b>

Last FG: 2nd-02:42  
Largest lead: By 0 at  
Technical Fouls: None.

**Coastal Carolina 93**

No.	Player	S	Pts	FG	3FG	FT	OR	DR	TR	PF	A	TO	Blk	Stl	Min	+/-
02	GREEN, GARRICK	G	13	5-8	3-6	0-0	2	7	9	0	2	1	0	0	27	19
03	JONES, DEVANTE	G	17	7-13	1-5	2-2	3	7	10	2	8	3	0	3	33	26
04	BREWTON, KEISHAWN	G	17	5-12	3-9	4-5	0	2	2	2	1	1	1	2	29	34
15	HIPPOLYTE, ISAAC	F	5	2-7	0-4	1-2	2	4	6	2	2	2	0	0	25	23
33	BURTON, TOMMY	F	11	4-5	0-0	3-3	0	3	3	3	1	2	0	0	19	23
05	PETERSON, JOSH	G	5	2-3	0-0	1-2	1	0	1	0	1	0	0	1	8	4
10	GUMBS-FRATER, TYRELL	G	14	5-9	4-6	0-0	0	2	2	2	1	2	1	3	18	5
11	CEASER, TIM	F	0	0-0	0-0	0-0	0	1	1	0	0	2	1	0	8	-5
12	KITENGE, HOSANA	F	10	4-4	0-0	2-3	4	4	8	3	1	3	0	0	23	22
20	HARVEY, AHMARD	F	0	0-0	0-0	0-0	0	0	0	2	0	1	0	0	3	-3
21	MILNER, JALEN	G	1	0-0	0-0	1-2	0	0	0	0	0	0	0	0	2	2
32	COOK, LEVI	C	0	0-1	0-0	0-0	0	0	0	2	0	0	0	0	5	-5
<b>TEAM</b>							1	1	2	0		0				
<b>TOTALS</b>			<b>93</b>	<b>34-62</b>	<b>11-30</b>	<b>14-19</b>	<b>13</b>	<b>31</b>	<b>44</b>	<b>18</b>	<b>17</b>	<b>17</b>	<b>3</b>	<b>9</b>	<b>200</b>	

*Shooting By Period*

Period	FG	FG%	3FG	3FG%	FT	FT%
1st Half	16-33	48%	8-17	47%	2-4	50%
2nd Half	18-29	62%	3-13	23%	12-15	80%
<b>Game</b>	<b>34-62</b>	<b>54.8%</b>	<b>11-30</b>	<b>36.7%</b>	<b>14-19</b>	<b>73.7%</b>

Last FG: 2nd-00:56  
Largest lead: By 32 at  
Technical Fouls: None.

*Game Notes:*

Officials: Bart Lenox, Garrick Shannon, Michael Husted  
Attendance: 676

Start Time: 12:00 AM  
Conference Game;

Score	1st	2nd	TOT
ULM	28	36	<b>64</b>
CCU	42	51	<b>93</b>

ULM led for 0:00. CCU led for 39:53.  
Game was tied for 0:0.  
Times tied: 0      Lead Changes: 0

Points from	ULM	CCU
In the Paint	16	36
Off Turns	21	19
2nd Chance	2	18
Fast Break	8	17
Bench	41	30

**Official Box Score**  
**La.-Monroe vs Coastal Carolina**  
**First Half Statistics Only**  
**January 07, 2020 at The HTC Center**



**La.-Monroe 28**

No.	Player	S	Pts	FG	3FG	FT	OR	DR	TR	PF	A	TO	Blk	Stl	Min
00	EFRETUEI, CHRIS	C	0	0-0	0-0	0-0	0	0	0	0	0	1	0	0	2
02	ERTEL, MICHAEL	G	2	0-6	0-3	2-2	0	0	0	1	4	3	0	1	18
03	WILLIAMS, JD	G	3	1-3	0-2	1-2	0	3	3	0	1	1	0	1	15
14	IFEJEH, ELIJAH	F	0	0-0	0-0	0-0	1	0	1	1	0	1	0	0	6
15	NICHOLAS, JOSH	G	0	0-2	0-2	0-0	0	1	1	2	0	0	1	0	11
05	WHITE, TYREE	F	8	3-4	1-2	1-1	0	1	1	0	0	2	0	0	13
10	POWELL, LANGSTON	G	9	3-3	3-3	0-0	0	0	0	0	0	0	0	0	7
13	HODGE, JALEN	G	2	1-1	0-0	0-0	0	2	2	0	2	1	0	0	9
22	BERNARD, D'ANDRE	F	3	1-1	1-1	0-0	0	1	1	0	0	1	1	0	4
23	WHITE, YOURY	F	1	0-2	0-0	1-2	0	1	1	0	1	0	1	0	10
24	TRAORE, DADOU	C	0	0-0	0-0	0-0	0	0	0	0	0	0	0	0	4
	TEAM			0-0			0	0	0	0		1			
<b>TOTALS</b>			<b>28</b>	<b>9-22</b>	<b>5-13</b>	<b>5-7</b>	<b>1</b>	<b>9</b>	<b>10</b>	<b>4</b>	<b>8</b>	<b>11</b>	<b>3</b>	<b>2</b>	<b>100</b>

*Shooting By Period*

Period	FG	FG%	3FG	3FG%	FT	FT%
1st Half	9-22	41%	5-13	38%	5-7	71%
Game	19-51	37.3%	9-23	39.1%	17-22	77.3%

*Last FG Half: ULM 2nd-02:42*

**Coastal Carolina 42**

No.	Player	S	Pts	FG	3FG	FT	OR	DR	TR	PF	A	TO	Blk	Stl	Min
02	GREEN, GARRICK	G	6	2-4	2-4	0-0	1	4	5	0	2	1	0	0	15
03	JONES, DEVANTE	G	7	3-7	1-4	0-0	1	3	4	0	4	1	0	2	17
04	BREWTON, KEISHAWN	G	11	4-6	3-4	0-0	0	2	2	0	1	0	1	2	12
15	HIPPOLYTE, ISAAC	F	3	1-4	0-2	1-2	2	3	5	1	1	1	0	0	13
33	BURTON, TOMMY	F	2	1-2	0-0	0-0	0	0	0	2	0	1	0	0	8
05	PETERSON, JOSH	G	0	0-1	0-0	0-0	1	0	1	0	1	0	0	0	4
10	GUMBS-FRATER, TYRELL	G	8	3-6	2-3	0-0	0	1	1	0	1	1	0	2	12
11	CEASER, TIM	F	0	0-0	0-0	0-0	0	0	0	0	0	1	0	0	5
12	KITENGE, HOSANA	F	5	2-2	0-0	1-2	2	1	3	2	0	3	0	0	12
20	HARVEY, AHMARD	F	0	0-0	0-0	0-0	0	0	0	0	0	0	0	0	0
21	MILNER, JALEN	G	0	0-0	0-0	0-0	0	0	0	0	0	0	0	0	0
32	COOK, LEVI	C	0	0-1	0-0	0-0	0	0	0	2	0	0	0	0	2
	TEAM			0-0			1	0	1	0		0			
<b>TOTALS</b>			<b>42</b>	<b>16-33</b>	<b>8-17</b>	<b>2-4</b>	<b>8</b>	<b>14</b>	<b>22</b>	<b>7</b>	<b>10</b>	<b>9</b>	<b>1</b>	<b>6</b>	<b>100</b>

*Shooting By Period*

Period	FG	FG%	3FG	3FG%	FT	FT%
1st Half	16-33	48%	8-17	47%	2-4	50%
Game	34-62	54.8%	11-30	36.7%	14-19	73.7%

*Last FG Half: CCU 2nd-00:56*

Game Notes:

Officials: **Bart Lenox, Garrick Shannon, Michael Husted**  
 Attendance: **676**

Start Time: **12:00 AM**  
 Conference Game;

Score	1st	2nd	TOT
ULM	28	36	<b>64</b>
CCU	42	51	<b>93</b>

Points from (This Period)	ULM	CCU
In the Paint	6	12
Off Turns	16	16
2nd Chance	0	12
Fast Break	3	8
Bench	23	13

**Official Play-By-Play**  
**La.-Monroe vs Coastal Carolina**  
**First Half**  
**January 07, 2020 at The HTC Center**



**Period 1**

**Starters:**

**La.-Monroe:** 0 EFRETUEI, CHRIS (C); 2 ERTEL, MICHAEL (G); 3 WILLIAMS, JD (G); 14 IFEJEH, ELIJAH (F); 15 NICHOLAS, JOSH (G);

**Coastal Carolina:** 2 GREEN, GARRICK (G); 3 JONES, DEVANTE (G); 4 BREWTON, KEISHAWN (G); 15 HIPPOLYTE, ISAAC (F); 33 BURTON, TOMMY (F);

Time	VISITORS: La.-Monroe	Score	Margin	HOME: Coastal Carolina
19:53		3-0	H 3	GOOD! 3PTR by BREWTON, KEISHAWN
19:53				ASSIST by JONES, DEVANTE
19:29	MISSED 3PTR by NICHOLAS, JOSH			
19:24	REBOUND (OFF) by IFEJEH, ELIJAH			
19:11	TURNOVER by ERTEL, MICHAEL			
18:41		6-0	H 6	GOOD! 3PTR by GREEN, GARRICK
18:41				ASSIST by JONES, DEVANTE
18:17	MISSED 3PTR by WILLIAMS, JD			
18:12				REBOUND (DEF) by JONES, DEVANTE
18:05				MISSED JUMPER by BURTON, TOMMY
18:02				REBOUND (OFF) by JONES, DEVANTE
17:58		8-0	H 8	GOOD! JUMPER by BREWTON, KEISHAWN
17:58				ASSIST by JONES, DEVANTE
17:38	TURNOVER by EFRETUEI, CHRIS			
17:38				STEAL by JONES, DEVANTE
17:35		10-0	H 10	GOOD! LAYUP by JONES, DEVANTE [FB]
17:34	TIMEOUT 30SEC			
17:34	SUB OUT: EFRETUEI, CHRIS			
17:34	SUB OUT: IFEJEH, ELIJAH			
17:34	SUB IN: WHITE, TYREE			
17:34	SUB IN: TRAORE, DADOU			
17:19	TURNOVER by WHITE, TYREE			
17:19				STEAL by BREWTON, KEISHAWN
17:13		12-0	H 12	GOOD! LAYUP by HIPPOLYTE, ISAAC [FB]
17:13				ASSIST by GREEN, GARRICK
16:54	MISSED 3PTR by NICHOLAS, JOSH			
16:50				REBOUND (DEF) by BREWTON, KEISHAWN
16:42				MISSED JUMPER by JONES, DEVANTE [PNT]
16:42	REBOUND (DEF) by WHITE, TYREE			
16:23	MISSED JUMPER by ERTEL, MICHAEL			
16:23				REBOUND (DEF) by JONES, DEVANTE
16:23				BLOCK by BREWTON, KEISHAWN
16:14				MISSED 3PTR by BREWTON, KEISHAWN
16:14	BLOCK by NICHOLAS, JOSH			
16:01				REBOUND (OFF) by HIPPOLYTE, ISAAC
16:00		14-0	H 14	GOOD! LAYUP by BURTON, TOMMY [PNT]
15:48	MISSED JUMPER by ERTEL, MICHAEL			
15:45				REBOUND (DEF) by GREEN, GARRICK
15:41				TURNOVER by BURTON, TOMMY
15:41	TIMEOUT MEDIA			
15:41	SUB OUT: NICHOLAS, JOSH			
15:41	SUB IN: HODGE, JALEN			
15:24	GOOD! 3PTR by WHITE, TYREE	14-3	H 11	
15:24	ASSIST by HODGE, JALEN			
15:01				TURNOVER by HIPPOLYTE, ISAAC
14:48	GOOD! LAYUP by WHITE, TYREE	14-5	H 9	
14:48	ASSIST by ERTEL, MICHAEL			
14:48				FOUL by BURTON, TOMMY
14:48				SUB OUT: BREWTON, KEISHAWN
14:48				SUB OUT: BURTON, TOMMY
14:48				SUB IN: GUMBS-FRATER, TYRELL
14:48				SUB IN: KITENGE, HOSANA
14:48	GOOD! FT by WHITE, TYREE	14-6	H 8	
14:30				MISSED 3PTR by HIPPOLYTE, ISAAC
14:27				REBOUND (OFF) by GREEN, GARRICK
14:19				MISSED 3PTR by JONES, DEVANTE
14:15	REBOUND (DEF) by HODGE, JALEN			
14:11	MISSED 3PTR by WILLIAMS, JD			
14:06				REBOUND (DEF) by GREEN, GARRICK
14:00		16-6	H 10	GOOD! LAYUP by JONES, DEVANTE
13:26	MISSED 3PTR by ERTEL, MICHAEL			
13:20				REBOUND (DEF) by GREEN, GARRICK
13:19				TURNOVER by GREEN, GARRICK
13:19	STEAL by WILLIAMS, JD			
13:14	TURNOVER by ERTEL, MICHAEL			
13:14	SUB OUT: TRAORE, DADOU			
13:14	SUB IN: WHITE, YOURY			
13:14				STEAL by JONES, DEVANTE
13:01				MISSED 3PTR by GREEN, GARRICK
12:58	REBOUND (DEF) by WILLIAMS, JD			

Time	VISITORS: La.-Monroe	Score	Margin	HOME: Coastal Carolina
12:53	MISSED 3PTR by ERTEL, MICHAEL			
12:50				REBOUND (DEF) by GREEN, GARRICK
12:44				MISSED 3PTR by JONES, DEVANTE
12:41	REBOUND (DEF) by WILLIAMS, JD			
12:26	GOOD! JUMPER by WHITE, TYREE	16-8	H 8	
12:26	ASSIST by WHITE, YOURY			
12:02				SUB OUT: JONES, DEVANTE
12:02				SUB OUT: HIPPOLYTE, ISAAC
12:02				SUB IN: PETERSON, JOSH
12:02				SUB IN: BURTON, TOMMY
11:57				MISSED JUMPER by GUMBS-FRATER, TYRELL [PNT]
11:57	BLOCK by WHITE, YOURY			
11:52				REBOUND (OFF) by PETERSON, JOSH
11:50				MISSED JUMPER by PETERSON, JOSH
11:47	REBOUND (DEF) by WILLIAMS, JD			
11:47	TURNOVER by WILLIAMS, JD			
11:47	TIMEOUT MEDIA			
11:47				SUB OUT: GREEN, GARRICK
11:47				SUB IN: BREWTON, KEISHAWN
11:32				TURNOVER by KITENGE, HOSANA
11:22	MISSED 3PTR by WHITE, TYREE			
11:19				REBOUND (DEF) by GUMBS-FRATER, TYRELL
11:17				TURNOVER by GUMBS-FRATER, TYRELL
11:04	GOOD! JUMPER by HODGE, JALEN [PNT]	16-10	H 6	
10:48				MISSED LAYUP by BREWTON, KEISHAWN [PNT]
10:47				REBOUND (OFF) by KITENGE, HOSANA
10:44		19-10	H 9	GOOD! 3PTR by BREWTON, KEISHAWN
10:44				ASSIST by GUMBS-FRATER, TYRELL
10:28	MISSED JUMPER by WHITE, YOURY			
10:25				REBOUND (DEF) by BREWTON, KEISHAWN
10:15		22-10	H 12	GOOD! 3PTR by GUMBS-FRATER, TYRELL
10:15				ASSIST by BREWTON, KEISHAWN
10:05	GOOD! LAYUP by WILLIAMS, JD	22-12	H 10	
10:05	ASSIST by ERTEL, MICHAEL			
09:56				FOUL by KITENGE, HOSANA
09:56				TURNOVER by KITENGE, HOSANA
09:27	TURNOVER by WHITE, TYREE [PNT]			
09:27				STEAL by GUMBS-FRATER, TYRELL
09:22		25-12	H 13	GOOD! 3PTR by GUMBS-FRATER, TYRELL [FB]
09:22				ASSIST by PETERSON, JOSH
09:03				FOUL by BURTON, TOMMY
09:03				SUB OUT: PETERSON, JOSH
09:03				SUB OUT: BURTON, TOMMY
09:03				SUB IN: JONES, DEVANTE
09:03				SUB IN: HIPPOLYTE, ISAAC
09:03	SUB OUT: WHITE, TYREE			
09:03	SUB IN: BERNARD, D'ANDRE			
08:52	FOUL by ERTEL, MICHAEL			
08:52	TURNOVER by ERTEL, MICHAEL			
08:35		28-12	H 16	GOOD! 3PTR by BREWTON, KEISHAWN
08:35				ASSIST by JONES, DEVANTE
08:13	TURNOVER by HODGE, JALEN [PNT]			
08:13				STEAL by GUMBS-FRATER, TYRELL
08:05				MISSED JUMPER by GUMBS-FRATER, TYRELL [PNT]
08:05	BLOCK by BERNARD, D'ANDRE			
07:59				REBOUND (OFF) by KITENGE, HOSANA
07:59		30-12	H 18	GOOD! LAYUP by KITENGE, HOSANA
07:39	MISSED 3PTR by ERTEL, MICHAEL			
07:36				REBOUND (DEF) by HIPPOLYTE, ISAAC
07:34				MISSED 3PTR by HIPPOLYTE, ISAAC
07:29	REBOUND (DEF) by HODGE, JALEN			
07:26	GOOD! 3PTR by BERNARD, D'ANDRE	30-15	H 15	
07:26	ASSIST by HODGE, JALEN			
07:05				MISSED 3PTR by GUMBS-FRATER, TYRELL
07:05	REBOUND (DEF) by BERNARD, D'ANDRE			
07:05				FOUL by HIPPOLYTE, ISAAC
07:05	TIMEOUT MEDIA			
07:05				SUB OUT: GUMBS-FRATER, TYRELL
07:05				SUB OUT: KITENGE, HOSANA
07:05				SUB IN: GREEN, GARRICK
07:05				SUB IN: COOK, LEVI
07:05	SUB OUT: ERTEL, MICHAEL			
07:05	SUB OUT: HODGE, JALEN			
07:05	SUB IN: POWELL, LANGSTON			
07:05	SUB IN: NICHOLAS, JOSH			
06:54				FOUL by COOK, LEVI [PNT]
06:54	GOOD! FT by WHITE, YOURY	30-16	H 14	
06:54	MISSED FT by WHITE, YOURY			
06:52				REBOUND (DEF) by HIPPOLYTE, ISAAC
06:37		33-16	H 17	GOOD! 3PTR by GREEN, GARRICK

Time	VISITORS: La.-Monroe	Score	Margin	HOME: Coastal Carolina
06:37				ASSIST by HIPPOLYTE, ISAAC
06:14				FOUL by COOK, LEVI
06:14	GOOD! FT by WILLIAMS, JD	33-17	H 16	
06:13	MISSED FT by WILLIAMS, JD			
06:12				REBOUND (DEF) by HIPPOLYTE, ISAAC
06:02				MISSED JUMPER by COOK, LEVI
05:56	REBOUND (DEF) by NICHOLAS, JOSH			
05:54	GOOD! 3PTR by POWELL, LANGSTON [FB]	33-20	H 13	
05:54	ASSIST by WILLIAMS, JD			
05:26				MISSED 3PTR by GREEN, GARRICK
05:23				REBOUND (OFF) by TEAM
05:23				SUB OUT: COOK, LEVI
05:23				SUB IN: KITENGE, HOSANA
05:08		35-20	H 15	GOOD! LAYUP by KITENGE, HOSANA
05:08				ASSIST by GREEN, GARRICK
04:49	TURNOVER by BERNARD, D'ANDRE			
04:49				STEAL by BREWTON, KEISHAWN
04:43				MISSED LAYUP by HIPPOLYTE, ISAAC
04:41				REBOUND (OFF) by HIPPOLYTE, ISAAC
04:41	FOUL by NICHOLAS, JOSH			
04:41				SUB OUT: BREWTON, KEISHAWN
04:41				SUB IN: GUMBS-FRATER, TYRELL
04:41	SUB OUT: WILLIAMS, JD			
04:41	SUB OUT: BERNARD, D'ANDRE			
04:41	SUB OUT: WHITE, YOURY			
04:41	SUB IN: ERTEL, MICHAEL			
04:41	SUB IN: WHITE, TYREE			
04:41	SUB IN: IFEJEH, ELIJAH			
04:41				MISSED FT by HIPPOLYTE, ISAAC [FB]
04:41				REBOUND (DEADB) by TEAM
04:41		36-20	H 16	GOOD! FT by HIPPOLYTE, ISAAC [FB]
04:41				SUB OUT: HIPPOLYTE, ISAAC
04:41				SUB IN: CEASER, TIM
04:10	MISSED JUMPER by ERTEL, MICHAEL			
04:07				REBOUND (DEF) by KITENGE, HOSANA
04:03		39-20	H 19	GOOD! 3PTR by JONES, DEVANTE
03:38	TIMEOUT MEDIA			
03:25	TURNOVER by TEAM			
03:25	TIMEOUT 30SEC			
03:09				TURNOVER by KITENGE, HOSANA
02:48				FOUL by KITENGE, HOSANA [PNT]
02:48	GOOD! FT by ERTEL, MICHAEL	39-21	H 18	
02:48	GOOD! FT by ERTEL, MICHAEL	39-22	H 17	
02:19				TURNOVER by JONES, DEVANTE
02:02	GOOD! 3PTR by POWELL, LANGSTON	39-25	H 14	
02:02	ASSIST by ERTEL, MICHAEL			
01:44		41-25	H 16	GOOD! JUMPER by GUMBS-FRATER, TYRELL
01:31	FOUL by IFEJEH, ELIJAH			
01:31	TURNOVER by IFEJEH, ELIJAH			
01:31	SUB OUT: IFEJEH, ELIJAH			
01:31	SUB IN: WHITE, YOURY			
01:11				TURNOVER by CEASER, TIM [PNT]
01:11	STEAL by ERTEL, MICHAEL			
01:03	GOOD! 3PTR by POWELL, LANGSTON	41-28	H 13	
01:03	ASSIST by ERTEL, MICHAEL			
00:37	FOUL by NICHOLAS, JOSH [PNT]			
00:37				MISSED FT by KITENGE, HOSANA
00:37				REBOUND (DEADB) by TEAM
00:37				SUB OUT: GUMBS-FRATER, TYRELL
00:37				SUB IN: PETERSON, JOSH
00:37		42-28	H 14	GOOD! FT by KITENGE, HOSANA
00:37				SUB OUT: KITENGE, HOSANA
00:37				SUB IN: HIPPOLYTE, ISAAC
00:13	MISSED LAYUP by WHITE, YOURY			
00:10				REBOUND (DEF) by JONES, DEVANTE
00:01				MISSED 3PTR by JONES, DEVANTE
00:00	REBOUND (DEF) by WHITE, YOURY			

### La.-Monroe 28, Coastal Carolina 42

Points from (This Period)	ULM	CCU
In the Paint	6	12
Off Turns	16	16
2nd Chance	0	12
Fast Break	3	8
Bench	23	13

**Official Box Score**  
**La.-Monroe vs Coastal Carolina**  
**Second Half Statistics Only**  
**January 07, 2020 at The HTC Center**



**La.-Monroe 36**

No.	Player	S	Pts	FG	3FG	FT	OR	DR	TR	PF	A	TO	Blk	Stl	Min
00	EFRETUEI, CHRIS	C	0	0-0	0-0	0-0	0	0	0	0	0	0	0	0	0
02	ERTEL, MICHAEL	G	13	4-6	2-3	3-4	0	0	0	1	1	1	0	2	14
03	WILLIAMS, JD	G	3	1-2	0-0	1-2	1	1	2	1	0	2	0	1	14
14	IFEJEH, ELIJAH	F	0	0-1	0-0	0-0	0	0	0	0	0	0	0	0	4
15	NICHOLAS, JOSH	G	2	1-6	0-2	0-0	0	2	2	0	2	1	0	0	12
05	WHITE, TYREE	F	0	0-2	0-1	0-0	0	2	2	1	0	0	0	0	8
10	POWELL, LANGSTON	G	9	2-4	1-2	4-4	1	0	1	1	0	1	0	1	11
13	HODGE, JALEN	G	9	2-4	1-1	4-5	0	1	1	1	0	0	0	0	14
22	BERNARD, D'ANDRE	F	0	0-4	0-1	0-0	2	2	4	4	1	0	0	0	13
23	WHITE, YOURY	F	0	0-0	0-0	0-0	0	0	0	1	0	0	0	0	3
24	TRAORE, DADOU	C	0	0-0	0-0	0-0	0	0	0	0	0	0	0	0	8
	TEAM			0-0			0	1	1	0		0			
<b>TOTALS</b>			<b>36</b>	<b>10-29</b>	<b>4-10</b>	<b>12-15</b>	<b>4</b>	<b>9</b>	<b>13</b>	<b>10</b>	<b>4</b>	<b>5</b>	<b>0</b>	<b>4</b>	<b>100</b>

*Shooting By Period*

Period	FG	FG%	3FG	3FG%	FT	FT%
2nd Half	10-29	34%	4-10	40%	12-15	80%
Game	19-51	37.3%	9-23	39.1%	17-22	77.3%

*Last FG Half: ULM -*

**Coastal Carolina 51**

No.	Player	S	Pts	FG	3FG	FT	OR	DR	TR	PF	A	TO	Blk	Stl	Min
02	GREEN, GARRICK	G	7	3-4	1-2	0-0	1	3	4	0	0	0	0	0	12
03	JONES, DEVANTE	G	10	4-6	0-1	2-2	2	4	6	2	4	2	0	1	16
04	BREWTON, KEISHAWN	G	6	1-6	0-5	4-5	0	0	0	2	0	1	0	0	17
15	HIPPOLYTE, ISAAC	F	2	1-3	0-2	0-0	0	1	1	1	1	1	0	0	12
33	BURTON, TOMMY	F	9	3-3	0-0	3-3	0	3	3	1	1	1	0	0	11
05	PETERSON, JOSH	G	5	2-2	0-0	1-2	0	0	0	0	0	0	0	1	4
10	GUMBS-FRATER, TYRELL	G	6	2-3	2-3	0-0	0	1	1	2	0	1	1	1	7
11	CEASER, TIM	F	0	0-0	0-0	0-0	0	1	1	0	0	1	1	0	3
12	KITENGE, HOSANA	F	5	2-2	0-0	1-1	2	3	5	1	1	0	0	0	11
20	HARVEY, AHMARD	F	0	0-0	0-0	0-0	0	0	0	2	0	1	0	0	3
21	MILNER, JALEN	G	1	0-0	0-0	1-2	0	0	0	0	0	0	0	0	2
32	COOK, LEVI	C	0	0-0	0-0	0-0	0	0	0	0	0	0	0	0	3
	TEAM			0-0			0	1	1	0		0			
<b>TOTALS</b>			<b>51</b>	<b>18-29</b>	<b>3-13</b>	<b>12-15</b>	<b>5</b>	<b>17</b>	<b>22</b>	<b>11</b>	<b>7</b>	<b>8</b>	<b>2</b>	<b>3</b>	<b>100</b>

*Shooting By Period*

Period	FG	FG%	3FG	3FG%	FT	FT%
2nd Half	18-29	62%	3-13	23%	12-15	80%
Game	34-62	54.8%	11-30	36.7%	14-19	73.7%

*Last FG Half: CCU -*

*Game Notes:*

Officials: **Bart Lenox, Garrick Shannon, Michael Husted**  
 Attendance: **676**

Start Time: **12:00 AM**

Conference Game;

Score	1st	2nd	TOT
ULM	28	36	<b>64</b>
CCU	42	51	<b>93</b>

Points from (This Period)	ULM	CCU
In the Paint	10	24
Off Turns	5	3
2nd Chance	2	6
Fast Break	5	9
Bench	18	17

**Official By-By-Play**  
**La.-Monroe vs Coastal Carolina**  
**Second Half**  
**January 07, 2020 at The HTC Center**



**Period 2**

**Starters:**

**La.-Monroe:** 0 EFRETUEI, CHRIS (C); 2 ERTEL, MICHAEL (G); 3 WILLIAMS, JD (G); 14 IFEJEH, ELIJAH (F); 15 NICHOLAS, JOSH (G);

**Coastal Carolina:** 2 GREEN, GARRICK (G); 3 JONES, DEVANTE (G); 4 BREWTON, KEISHAWN (G); 15 HIPPOLYTE, ISAAC (F); 33 BURTON, TOMMY (F);

Time	VISITORS: La.-Monroe	Score	Margin	HOME: Coastal Carolina
20:00				SUB OUT: PETERSON, JOSH
20:00				SUB OUT: CEASER, TIM
20:00				SUB IN: BREWTON, KEISHAWN
20:00				SUB IN: BURTON, TOMMY
20:00	SUB OUT: POWELL, LANGSTON			
20:00	SUB IN: WILLIAMS, JD			
19:40		44-28	H 16	GOOD! JUMPER by HIPPOLYTE, ISAAC
19:24	MISSED JUMPER by WHITE, TYREE			
19:19	REBOUND (OFF) by WILLIAMS, JD			
19:12	FOUL by WILLIAMS, JD			
19:12	TURNOVER by WILLIAMS, JD			
18:56				TURNOVER by BURTON, TOMMY [PNT]
18:56	STEAL by WILLIAMS, JD			
18:50	GOOD! LAYUP by WILLIAMS, JD [FB]	44-30	H 14	
18:30		47-30	H 17	GOOD! 3PTR by GREEN, GARRICK
18:30				ASSIST by HIPPOLYTE, ISAAC
18:13	GOOD! LAYUP by NICHOLAS, JOSH [PNT]	47-32	H 15	
17:54		49-32	H 17	GOOD! JUMPER by JONES, DEVANTE
17:54				ASSIST by BURTON, TOMMY
17:27	MISSED JUMPER by NICHOLAS, JOSH			
17:24				REBOUND (DEF) by JONES, DEVANTE
17:22		51-32	H 19	GOOD! LAYUP by BURTON, TOMMY [FB]
17:22				ASSIST by JONES, DEVANTE
17:22	FOUL by WHITE, YOURY			
17:22	SUB OUT: WHITE, YOURY			
17:22	SUB IN: BERNARD, D'ANDRE			
17:22		52-32	H 20	GOOD! FT by BURTON, TOMMY [FB]
17:13	GOOD! LAYUP by ERTEL, MICHAEL	52-34	H 18	
17:01				MISSED LAYUP by JONES, DEVANTE
16:58				REBOUND (OFF) by JONES, DEVANTE
16:56		54-34	H 20	GOOD! LAYUP by JONES, DEVANTE
16:49	TURNOVER by ERTEL, MICHAEL			
16:49				STEAL by JONES, DEVANTE
16:44		56-34	H 22	GOOD! LAYUP by JONES, DEVANTE [FB]
16:32	GOOD! 3PTR by ERTEL, MICHAEL	56-37	H 19	
16:32	ASSIST by NICHOLAS, JOSH			
16:18				MISSED 3PTR by BREWTON, KEISHAWN
16:14	REBOUND (DEF) by WHITE, TYREE			
16:10	GOOD! 3PTR by ERTEL, MICHAEL [FB]	56-40	H 16	
16:10	ASSIST by BERNARD, D'ANDRE			
16:09	TIMEOUT 30SEC			
16:09	TIMEOUT MEDIA			
15:50	FOUL by BERNARD, D'ANDRE			
15:50	TIMEOUT MEDIA			
15:50		57-40	H 17	GOOD! FT by BURTON, TOMMY
15:50		58-40	H 18	GOOD! FT by BURTON, TOMMY
15:38	MISSED 3PTR by WHITE, TYREE			
15:34				REBOUND (DEF) by JONES, DEVANTE
14:57				TURNOVER by JONES, DEVANTE
14:57	STEAL by ERTEL, MICHAEL			
14:48	TIMEOUT TEAM			
14:42	MISSED 3PTR by NICHOLAS, JOSH			
14:40				REBOUND (DEF) by TEAM
14:27				MISSED 3PTR by HIPPOLYTE, ISAAC
14:22	REBOUND (DEF) by WILLIAMS, JD			
14:18				FOUL by BURTON, TOMMY
14:18	GOOD! FT by WILLIAMS, JD	58-41	H 17	
14:18				SUB OUT: BURTON, TOMMY
14:18				SUB IN: KITENGE, HOSANA
14:15	MISSED FT by WILLIAMS, JD			
14:13				REBOUND (DEF) by GREEN, GARRICK
14:03				MISSED 3PTR by HIPPOLYTE, ISAAC
13:59	REBOUND (DEF) by WHITE, TYREE			
13:47	MISSED JUMPER by NICHOLAS, JOSH [PNT]			
13:44				REBOUND (DEF) by KITENGE, HOSANA
13:41				MISSED 3PTR by GREEN, GARRICK
13:37	REBOUND (DEF) by NICHOLAS, JOSH			
13:35	TURNOVER by WILLIAMS, JD			
13:35	SUB OUT: NICHOLAS, JOSH			
13:35	SUB IN: HODGE, JALEN			



Time	VISITORS: La.-Monroe	Score	Margin	HOME: Coastal Carolina
13:22				MISSED 3PTR by BREWTON, KEISHAWN
13:18				REBOUND (OFF) by KITENGE, HOSANA
13:13				FOUL by HIPPOLYTE, ISAAC
13:13				TURNOVER by HIPPOLYTE, ISAAC
12:59	MISSED JUMPER by BERNARD, D'ANDRE			
12:55				REBOUND (DEF) by GREEN, GARRICK
12:39		60-41	H 19	GOOD! LAYUP by GREEN, GARRICK
12:28	MISSED 3PTR by ERTEL, MICHAEL			
12:25				REBOUND (DEF) by GREEN, GARRICK
12:16		62-41	H 21	GOOD! LAYUP by KITENGE, HOSANA
12:16				ASSIST by JONES, DEVANTE
12:16	FOUL by WHITE, TYREE			
12:16				SUB OUT: JONES, DEVANTE
12:16				SUB IN: PETERSON, JOSH
12:16		63-41	H 22	GOOD! FT by KITENGE, HOSANA
11:53	MISSED JUMPER by WILLIAMS, JD			
11:50				REBOUND (DEF) by KITENGE, HOSANA
11:45		65-41	H 24	GOOD! LAYUP by PETERSON, JOSH [PNT]
11:44	TIMEOUT MEDIA			
11:44	SUB OUT: WHITE, TYREE			
11:44	SUB IN: IFEJEH, ELIJAH			
11:29				FOUL by BREWTON, KEISHAWN
11:29	GOOD! FT by ERTEL, MICHAEL	65-42	H 23	
11:29	GOOD! FT by ERTEL, MICHAEL	65-43	H 22	
11:29				SUB OUT: PETERSON, JOSH
11:29				SUB IN: JONES, DEVANTE
11:29	GOOD! FT by ERTEL, MICHAEL	65-44	H 21	
11:17		67-44	H 23	GOOD! JUMPER by BREWTON, KEISHAWN [PNT]
11:17	FOUL by BERNARD, D'ANDRE [PNT]			
11:16				MISSED FT by BREWTON, KEISHAWN
11:15	REBOUND (DEF) by BERNARD, D'ANDRE			
11:05	GOOD! JUMPER by ERTEL, MICHAEL	67-46	H 21	
10:50	FOUL by ERTEL, MICHAEL			
10:50		68-46	H 22	GOOD! FT by BREWTON, KEISHAWN
10:50		69-46	H 23	GOOD! FT by BREWTON, KEISHAWN
10:38				FOUL by JONES, DEVANTE
10:38	MISSED FT by HODGE, JALEN			
10:38	REBOUND (DEADB) by TEAM			
10:38	SUB OUT: BERNARD, D'ANDRE			
10:38	SUB IN: POWELL, LANGSTON			
10:38	GOOD! FT by HODGE, JALEN	69-47	H 22	
10:25				FOUL by JONES, DEVANTE
10:25				TURNOVER by JONES, DEVANTE
10:05	MISSED JUMPER by IFEJEH, ELIJAH [PNT]			
10:00				REBOUND (DEF) by HIPPOLYTE, ISAAC
09:59				MISSED 3PTR by BREWTON, KEISHAWN
09:54				REBOUND (OFF) by GREEN, GARRICK
09:54		71-47	H 24	GOOD! LAYUP by GREEN, GARRICK
09:26	MISSED JUMPER by ERTEL, MICHAEL			
09:21				REBOUND (DEF) by JONES, DEVANTE
09:18		73-47	H 26	GOOD! LAYUP by JONES, DEVANTE [FB]
09:01	GOOD! 3PTR by POWELL, LANGSTON	73-50	H 23	
09:01	ASSIST by ERTEL, MICHAEL			
08:26				MISSED 3PTR by JONES, DEVANTE
08:21				REBOUND (OFF) by KITENGE, HOSANA
08:21		75-50	H 25	GOOD! LAYUP by KITENGE, HOSANA
08:18	MISSED 3PTR by POWELL, LANGSTON			
08:14				REBOUND (DEF) by KITENGE, HOSANA
08:11	FOUL by HODGE, JALEN			
08:11		76-50	H 26	GOOD! FT by JONES, DEVANTE [FB]
08:11				SUB OUT: GREEN, GARRICK
08:11				SUB OUT: HIPPOLYTE, ISAAC
08:11				SUB IN: GUMBS-FRATER, TYRELL
08:11				SUB IN: BURTON, TOMMY
08:11	SUB OUT: IFEJEH, ELIJAH			
08:11	SUB IN: TRAORE, DADOU			
08:11		77-50	H 27	GOOD! FT by JONES, DEVANTE [FB]
07:54	MISSED JUMPER by HODGE, JALEN [PNT]			
07:50				REBOUND (DEF) by BURTON, TOMMY
07:42		80-50	H 30	GOOD! 3PTR by GUMBS-FRATER, TYRELL
07:42				ASSIST by JONES, DEVANTE
07:25				FOUL by KITENGE, HOSANA [PNT]
07:25	TIMEOUT MEDIA			
07:25	GOOD! FT by POWELL, LANGSTON	80-51	H 29	
07:25	GOOD! FT by POWELL, LANGSTON	80-52	H 28	
07:12	FOUL by POWELL, LANGSTON [PNT]			
07:12		81-52	H 29	GOOD! FT by BREWTON, KEISHAWN
07:12		82-52	H 30	GOOD! FT by BREWTON, KEISHAWN
07:02				FOUL by BREWTON, KEISHAWN
07:02	MISSED FT by ERTEL, MICHAEL			

Time	VISITORS: La.-Monroe	Score	Margin	HOME: Coastal Carolina
07:00				REBOUND (DEF) by BURTON, TOMMY
06:32				TURNOVER by BREWTON, KEISHAWN
06:32	STEAL by ERTEL, MICHAEL			
06:16	MISSED JUMPER by HODGE, JALEN			
06:11	REBOUND (OFF) by POWELL, LANGSTON			
06:11	MISSED LAYUP by POWELL, LANGSTON			
06:10				REBOUND (DEF) by BURTON, TOMMY
06:06		84-52	H 32	GOOD! LAYUP by BURTON, TOMMY
06:06				ASSIST by JONES, DEVANTE
05:47	GOOD! LAYUP by HODGE, JALEN	84-54	H 30	
05:47				FOUL by GUMBS-FRATER, TYRELL
05:47	SUB OUT: ERTEL, MICHAEL			
05:47	SUB IN: NICHOLAS, JOSH			
05:47	GOOD! FT by HODGE, JALEN	84-55	H 29	
05:47	SUB OUT: WILLIAMS, JD			
05:47	SUB IN: BERNARD, D'ANDRE			
05:34				MISSED 3PTR by GUMBS-FRATER, TYRELL
05:31	REBOUND (DEF) by TEAM			
05:06	MISSED 3PTR by BERNARD, D'ANDRE			
05:03				REBOUND (DEF) by JONES, DEVANTE
04:34		87-55	H 32	GOOD! 3PTR by GUMBS-FRATER, TYRELL
04:34				ASSIST by KITENGE, HOSANA
04:16	TURNOVER by NICHOLAS, JOSH			
04:16				STEAL by GUMBS-FRATER, TYRELL
04:11				MISSED 3PTR by BREWTON, KEISHAWN
04:08				REBOUND (OFF) by JONES, DEVANTE
04:06				MISSED 3PTR by BREWTON, KEISHAWN
04:01	REBOUND (DEF) by HODGE, JALEN			
03:53	GOOD! LAYUP by POWELL, LANGSTON	87-57	H 30	
03:32		89-57	H 32	GOOD! JUMPER by BURTON, TOMMY
03:16				FOUL by GUMBS-FRATER, TYRELL [PNT]
03:16	TIMEOUT MEDIA			
03:16				SUB OUT: JONES, DEVANTE
03:16				SUB OUT: BREWTON, KEISHAWN
03:16				SUB OUT: KITENGE, HOSANA
03:16				SUB OUT: BURTON, TOMMY
03:16				SUB IN: PETERSON, JOSH
03:16				SUB IN: CEASER, TIM
03:16				SUB IN: HARVEY, AHMARD
03:16				SUB IN: COOK, LEVI
03:16	GOOD! FT by HODGE, JALEN	89-58	H 31	
03:16	GOOD! FT by HODGE, JALEN	89-59	H 30	
03:01				TURNOVER by GUMBS-FRATER, TYRELL [PNT]
02:42	GOOD! 3PTR by HODGE, JALEN	89-62	H 27	
02:42	ASSIST by NICHOLAS, JOSH			
02:24				FOUL by HARVEY, AHMARD
02:24				TURNOVER by HARVEY, AHMARD
02:10	MISSED JUMPER by NICHOLAS, JOSH [PNT]			
02:10				BLOCK by GUMBS-FRATER, TYRELL
02:02	REBOUND (OFF) by BERNARD, D'ANDRE			
02:00	MISSED LAYUP by BERNARD, D'ANDRE			
01:57				REBOUND (DEF) by GUMBS-FRATER, TYRELL
01:55				TURNOVER by CEASER, TIM
01:55	STEAL by POWELL, LANGSTON			
01:49	TURNOVER by POWELL, LANGSTON			
01:49				STEAL by PETERSON, JOSH
01:36	FOUL by BERNARD, D'ANDRE			
01:36				SUB OUT: GUMBS-FRATER, TYRELL
01:36				SUB IN: MILNER, JALEN
01:36		90-62	H 28	GOOD! FT by PETERSON, JOSH
01:33				MISSED FT by PETERSON, JOSH
01:30	REBOUND (DEF) by BERNARD, D'ANDRE			
01:14	MISSED 3PTR by NICHOLAS, JOSH			
01:11				REBOUND (DEF) by CEASER, TIM
00:56		92-62	H 30	GOOD! LAYUP by PETERSON, JOSH
00:32	MISSED JUMPER by BERNARD, D'ANDRE [PNT]			
00:32				BLOCK by CEASER, TIM
00:31				FOUL by HARVEY, AHMARD
00:31	GOOD! FT by POWELL, LANGSTON	92-63	H 29	
00:31	GOOD! FT by POWELL, LANGSTON	92-64	H 28	
00:28	REBOUND (OFF) by BERNARD, D'ANDRE			
00:11	FOUL by BERNARD, D'ANDRE			
00:11		93-64	H 29	GOOD! FT by MILNER, JALEN
00:11				MISSED FT by MILNER, JALEN
00:09	REBOUND (DEF) by NICHOLAS, JOSH			

La.-Monroe 64, Coastal Carolina 93

<b>Points from (This Period)</b>	<b>ULM</b>	<b>CCU</b>
In the Paint	10	24
Off Turns	5	3
2nd Chance	2	6
Fast Break	5	9
Bench	18	17

**Official Scoring/Possession Reference Chart**  
**La.-Monroe vs Coastal Carolina**  
**Period 1**  
**January 07, 2020 at The HTC Center**



**Period 1**

**Starters:**

**La.-Monroe:** 0 EFRETUEI, CHRIS (C); 2 ERTEL, MICHAEL (G); 3 WILLIAMS, JD (G); 14 IFEJEH, ELIJAH (F); 15 NICHOLAS, JOSH (G);

**Coastal Carolina:** 2 GREEN, GARRICK (G); 3 JONES, DEVANTE (G); 4 BREWTON, KEISHAWN (G); 15 HIPPOLYTE, ISAAC (F); 33 BURTON, TOMMY (F);

Time	VISITORS: La.-Monroe	Score	Margin	HOME: Coastal Carolina
19:53		3-0	H 3	GOOD! 3PTR by BREWTON, KEISHAWN
18:41		6-0	H 6	GOOD! 3PTR by GREEN, GARRICK
17:58		8-0	H 8	GOOD! JUMPER by BREWTON, KEISHAWN
17:35		10-0	H 10	GOOD! LAYUP by JONES, DEVANTE [FB]
17:13		12-0	H 12	GOOD! LAYUP by HIPPOLYTE, ISAAC [FB]
16:00		14-0	H 14	GOOD! LAYUP by BURTON, TOMMY [PNT]
15:24	GOOD! 3PTR by WHITE, TYREE	14-3	H 11	
14:48	GOOD! LAYUP by WHITE, TYREE	14-5	H 9	
14:48	GOOD! FT by WHITE, TYREE	14-6	H 8	
14:00		16-6	H 10	GOOD! LAYUP by JONES, DEVANTE
12:26	GOOD! JUMPER by WHITE, TYREE	16-8	H 8	
11:04	GOOD! JUMPER by HODGE, JALEN [PNT]	16-10	H 6	
10:44		19-10	H 9	GOOD! 3PTR by BREWTON, KEISHAWN
10:15		22-10	H 12	GOOD! 3PTR by GUMBS-FRATER, TYRELL
10:05	GOOD! LAYUP by WILLIAMS, JD	22-12	H 10	
09:22		25-12	H 13	GOOD! 3PTR by GUMBS-FRATER, TYRELL [FB]
08:35		28-12	H 16	GOOD! 3PTR by BREWTON, KEISHAWN
07:59		30-12	H 18	GOOD! LAYUP by KITENGE, HOSANA
07:26	GOOD! 3PTR by BERNARD, D'ANDRE	30-15	H 15	
06:54	GOOD! FT by WHITE, YOURY	30-16	H 14	
06:37		33-16	H 17	GOOD! 3PTR by GREEN, GARRICK
06:14	GOOD! FT by WILLIAMS, JD	33-17	H 16	
05:54	GOOD! 3PTR by POWELL, LANGSTON [FB]	33-20	H 13	
05:08		35-20	H 15	GOOD! LAYUP by KITENGE, HOSANA
04:41		36-20	H 16	GOOD! FT by HIPPOLYTE, ISAAC [FB]
04:03		39-20	H 19	GOOD! 3PTR by JONES, DEVANTE
02:48	GOOD! FT by ERTEL, MICHAEL	39-21	H 18	
02:48	GOOD! FT by ERTEL, MICHAEL	39-22	H 17	
02:02	GOOD! 3PTR by POWELL, LANGSTON	39-25	H 14	
01:44		41-25	H 16	GOOD! JUMPER by GUMBS-FRATER, TYRELL
01:03	GOOD! 3PTR by POWELL, LANGSTON	41-28	H 13	
00:37		42-28	H 14	GOOD! FT by KITENGE, HOSANA

**La.-Monroe 28, Coastal Carolina 42**

**Official Scoring/Possession Reference Chart**  
**La.-Monroe vs Coastal Carolina**  
**Period 2**  
**January 07, 2020 at The HTC Center**



**Period 2**

**Starters:**

**La.-Monroe:** 0 EFRETUEI, CHRIS (C); 2 ERTEL, MICHAEL (G); 3 WILLIAMS, JD (G); 14 IFEJEH, ELIJAH (F); 15 NICHOLAS, JOSH (G);

**Coastal Carolina:** 2 GREEN, GARRICK (G); 3 JONES, DEVANTE (G); 4 BREWTON, KEISHAWN (G); 15 HIPPOLYTE, ISAAC (F); 33 BURTON, TOMMY (F);

Time	VISITORS: La.-Monroe	Score	Margin	HOME: Coastal Carolina
19:40		44-28	H 16	GOOD! JUMPER by HIPPOLYTE, ISAAC
18:50	GOOD! LAYUP by WILLIAMS, JD [FB]	44-30	H 14	
18:30		47-30	H 17	GOOD! 3PTR by GREEN, GARRICK
18:13	GOOD! LAYUP by NICHOLAS, JOSH [PNT]	47-32	H 15	
17:54		49-32	H 17	GOOD! JUMPER by JONES, DEVANTE
17:22		51-32	H 19	GOOD! LAYUP by BURTON, TOMMY [FB]
17:22		52-32	H 20	GOOD! FT by BURTON, TOMMY [FB]
17:13	GOOD! LAYUP by ERTEL, MICHAEL	52-34	H 18	
16:56		54-34	H 20	GOOD! LAYUP by JONES, DEVANTE
16:44		56-34	H 22	GOOD! LAYUP by JONES, DEVANTE [FB]
16:32	GOOD! 3PTR by ERTEL, MICHAEL	56-37	H 19	
16:10	GOOD! 3PTR by ERTEL, MICHAEL [FB]	56-40	H 16	
15:50		57-40	H 17	GOOD! FT by BURTON, TOMMY
15:50		58-40	H 18	GOOD! FT by BURTON, TOMMY
14:18	GOOD! FT by WILLIAMS, JD	58-41	H 17	
12:39		60-41	H 19	GOOD! LAYUP by GREEN, GARRICK
12:16		62-41	H 21	GOOD! LAYUP by KITENGE, HOSANA
12:16		63-41	H 22	GOOD! FT by KITENGE, HOSANA
11:45		65-41	H 24	GOOD! LAYUP by PETERSON, JOSH [PNT]
11:29	GOOD! FT by ERTEL, MICHAEL	65-42	H 23	
11:29	GOOD! FT by ERTEL, MICHAEL	65-43	H 22	
11:29	GOOD! FT by ERTEL, MICHAEL	65-44	H 21	
11:17		67-44	H 23	GOOD! JUMPER by BREWTON, KEISHAWN [PNT]
11:05	GOOD! JUMPER by ERTEL, MICHAEL	67-46	H 21	
10:50		68-46	H 22	GOOD! FT by BREWTON, KEISHAWN
10:50		69-46	H 23	GOOD! FT by BREWTON, KEISHAWN
10:38	GOOD! FT by HODGE, JALEN	69-47	H 22	
09:54		71-47	H 24	GOOD! LAYUP by GREEN, GARRICK
09:18		73-47	H 26	GOOD! LAYUP by JONES, DEVANTE [FB]
09:01	GOOD! 3PTR by POWELL, LANGSTON	73-50	H 23	
08:21		75-50	H 25	GOOD! LAYUP by KITENGE, HOSANA
08:11		76-50	H 26	GOOD! FT by JONES, DEVANTE [FB]
08:11		77-50	H 27	GOOD! FT by JONES, DEVANTE [FB]
07:42		80-50	H 30	GOOD! 3PTR by GUMBS-FRATER, TYRELL
07:25	GOOD! FT by POWELL, LANGSTON	80-51	H 29	
07:25	GOOD! FT by POWELL, LANGSTON	80-52	H 28	
07:12		81-52	H 29	GOOD! FT by BREWTON, KEISHAWN
07:12		82-52	H 30	GOOD! FT by BREWTON, KEISHAWN
06:06		84-52	H 32	GOOD! LAYUP by BURTON, TOMMY
05:47	GOOD! LAYUP by HODGE, JALEN	84-54	H 30	
05:47	GOOD! FT by HODGE, JALEN	84-55	H 29	
04:34		87-55	H 32	GOOD! 3PTR by GUMBS-FRATER, TYRELL
03:53	GOOD! LAYUP by POWELL, LANGSTON	87-57	H 30	
03:32		89-57	H 32	GOOD! JUMPER by BURTON, TOMMY
03:16	GOOD! FT by HODGE, JALEN	89-58	H 31	
03:16	GOOD! FT by HODGE, JALEN	89-59	H 30	
02:42	GOOD! 3PTR by HODGE, JALEN	89-62	H 27	
01:36		90-62	H 28	GOOD! FT by PETERSON, JOSH
00:56		92-62	H 30	GOOD! LAYUP by PETERSON, JOSH
00:31	GOOD! FT by POWELL, LANGSTON	92-63	H 29	
00:31	GOOD! FT by POWELL, LANGSTON	92-64	H 28	
00:11		93-64	H 29	GOOD! FT by MILNER, JALEN



**Official Substitutions Log  
La.-Monroe vs Coastal Carolina  
Period 1  
January 07, 2020 at The HTC Center**



VISITORS: La.-Monroe	Time	Score	HOME: Coastal Carolina
0 EFRETUEI, CHRIS			2 GREEN, GARRICK
2 ERTEL, MICHAEL			3 JONES, DEVANTE
3 WILLIAMS, JD			4 BREWTON, KEISHAWN
14 IFEJEH, ELIJAH			15 HIPPOLYTE, ISAAC
15 NICHOLAS, JOSH			33 BURTON, TOMMY
SUB OUT: 0 EFRETUEI, CHRIS	17:34	0-10	
SUB OUT: 14 IFEJEH, ELIJAH	17:34		
SUB IN: 5 WHITE, TYREE	17:34		
SUB IN: 24 TRAORE, DADOU	17:34		
SUB OUT: 15 NICHOLAS, JOSH	15:41	0-14	
SUB IN: 13 HODGE, JALEN	15:41		
	14:48	5-14	SUB OUT: BREWTON, KEISHAWN
	14:48		SUB OUT: BURTON, TOMMY
	14:48		SUB IN: GUMBS-FRATER, TYRELL
	14:48		SUB IN: KITENGE, HOSANA
SUB OUT: 24 TRAORE, DADOU	13:14	6-16	
SUB IN: 23 WHITE, YOURY	13:14		
	12:02	8-16	SUB OUT: JONES, DEVANTE
	12:02		SUB OUT: HIPPOLYTE, ISAAC
	12:02		SUB IN: PETERSON, JOSH
	12:02		SUB IN: BURTON, TOMMY
	11:47	8-16	SUB OUT: GREEN, GARRICK
	11:47		SUB IN: BREWTON, KEISHAWN
	09:03	12-25	SUB OUT: PETERSON, JOSH
	09:03		SUB OUT: BURTON, TOMMY
	09:03		SUB IN: JONES, DEVANTE
	09:03		SUB IN: HIPPOLYTE, ISAAC
SUB OUT: 5 WHITE, TYREE	09:03		
SUB IN: 22 BERNARD, D'ANDRE	09:03		
	07:05	15-30	SUB OUT: GUMBS-FRATER, TYRELL
	07:05		SUB OUT: KITENGE, HOSANA
	07:05		SUB IN: GREEN, GARRICK
	07:05		SUB IN: COOK, LEVI
SUB OUT: 2 ERTEL, MICHAEL	07:05		
SUB OUT: 13 HODGE, JALEN	07:05		
SUB IN: 10 POWELL, LANGSTON	07:05		
SUB IN: 15 NICHOLAS, JOSH	07:05		
	05:23	20-33	SUB OUT: COOK, LEVI
	05:23		SUB IN: KITENGE, HOSANA
	04:41	20-35	SUB OUT: BREWTON, KEISHAWN
	04:41		SUB IN: GUMBS-FRATER, TYRELL
SUB OUT: 3 WILLIAMS, JD	04:41		
SUB OUT: 22 BERNARD, D'ANDRE	04:41		
SUB OUT: 23 WHITE, YOURY	04:41		
SUB IN: 2 ERTEL, MICHAEL	04:41		
SUB IN: 5 WHITE, TYREE	04:41		
SUB IN: 14 IFEJEH, ELIJAH	04:41		
	04:41		SUB OUT: HIPPOLYTE, ISAAC
	04:41		SUB IN: CEASER, TIM
SUB OUT: 14 IFEJEH, ELIJAH	01:31	25-41	
SUB IN: 23 WHITE, YOURY	01:31		
	00:37	28-41	SUB OUT: GUMBS-FRATER, TYRELL
	00:37		SUB IN: PETERSON, JOSH
	00:37		SUB OUT: KITENGE, HOSANA
	00:37		SUB IN: HIPPOLYTE, ISAAC

**La.-Monroe 28, Coastal Carolina 42**

**Official Substitutions Log  
La.-Monroe vs Coastal Carolina  
Period 2  
January 07, 2020 at The HTC Center**



VISITORS: La.-Monroe	Time	Score	HOME: Coastal Carolina
0 EFRETUEI, CHRIS			2 GREEN, GARRICK
2 ERTEL, MICHAEL			3 JONES, DEVANTE
3 WILLIAMS, JD			4 BREWTON, KEISHAWN
14 IFEJEH, ELIJAH			15 HIPPOLYTE, ISAAC
15 NICHOLAS, JOSH			33 BURTON, TOMMY
	20:00	-	SUB OUT: PETERSON, JOSH
	20:00		SUB OUT: CEASER, TIM
	20:00		SUB IN: BREWTON, KEISHAWN
	20:00		SUB IN: BURTON, TOMMY
SUB OUT: 10 POWELL, LANGSTON	20:00		
SUB IN: 3 WILLIAMS, JD	20:00		
SUB OUT: 23 WHITE, YOURY	17:22	32-51	
SUB IN: 22 BERNARD, D'ANDRE	17:22		
	14:18	41-58	SUB OUT: BURTON, TOMMY
	14:18		SUB IN: KITENGE, HOSANA
SUB OUT: 15 NICHOLAS, JOSH	13:35	41-58	
SUB IN: 13 HODGE, JALEN	13:35		
	12:16	41-62	SUB OUT: JONES, DEVANTE
	12:16		SUB IN: PETERSON, JOSH
SUB OUT: 5 WHITE, TYREE	11:44	41-65	
SUB IN: 14 IFEJEH, ELIJAH	11:44		
	11:29	43-65	SUB OUT: PETERSON, JOSH
	11:29		SUB IN: JONES, DEVANTE
SUB OUT: 22 BERNARD, D'ANDRE	10:38	46-69	
SUB IN: 10 POWELL, LANGSTON	10:38		
	08:11	50-76	SUB OUT: GREEN, GARRICK
	08:11		SUB OUT: HIPPOLYTE, ISAAC
	08:11		SUB IN: GUMBS-FRATER, TYRELL
	08:11		SUB IN: BURTON, TOMMY
SUB OUT: 14 IFEJEH, ELIJAH	08:11		
SUB IN: 24 TRAORE, DADOU	08:11		
SUB OUT: 2 ERTEL, MICHAEL	05:47	54-84	
SUB IN: 15 NICHOLAS, JOSH	05:47		
SUB OUT: 3 WILLIAMS, JD	05:47		
SUB IN: 22 BERNARD, D'ANDRE	05:47		
	03:16	57-89	SUB OUT: JONES, DEVANTE
	03:16		SUB OUT: BREWTON, KEISHAWN
	03:16		SUB OUT: KITENGE, HOSANA
	03:16		SUB OUT: BURTON, TOMMY
	03:16		SUB IN: PETERSON, JOSH
	03:16		SUB IN: CEASER, TIM
	03:16		SUB IN: HARVEY, AHMARD
	03:16		SUB IN: COOK, LEVI
	01:36	62-89	SUB OUT: GUMBS-FRATER, TYRELL
	01:36		SUB IN: MILNER, JALEN

**La.-Monroe 64, Coastal Carolina 93**

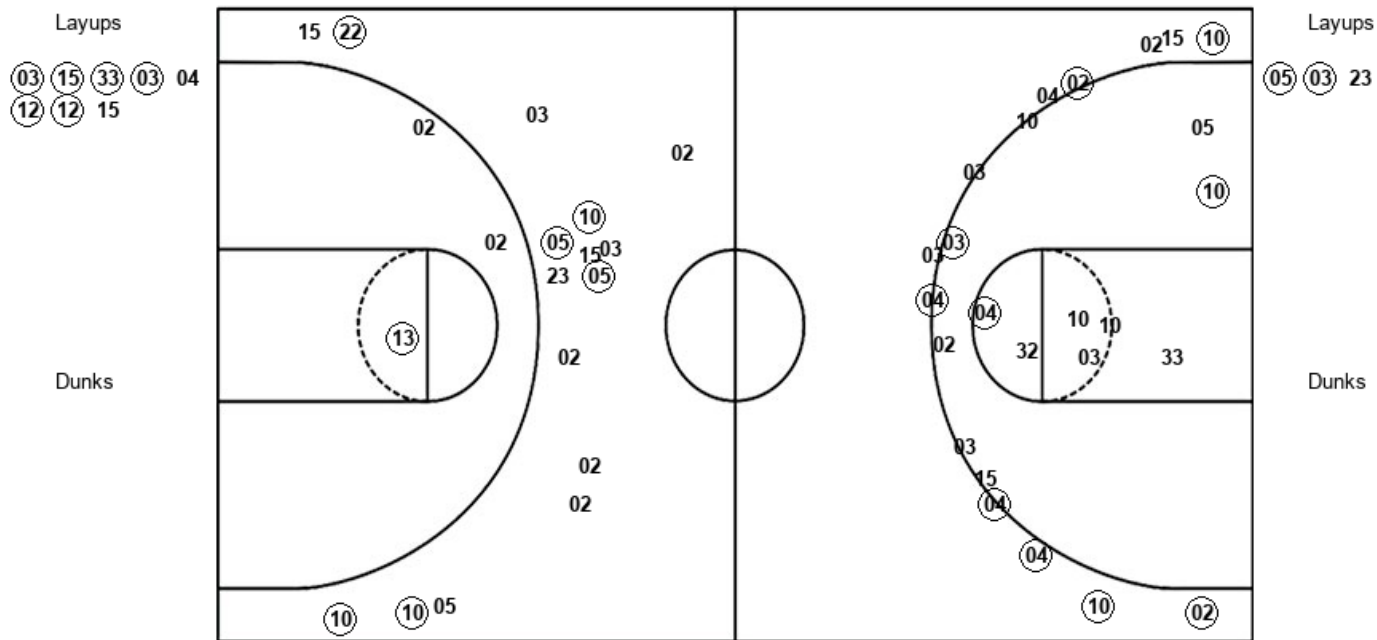


Official Shot Chart  
 La.-Monroe vs Coastal Carolina  
 PERIOD 1 Shots  
 January 07, 2020 at The HTC Center



Coastal Carolina

La.-Monroe



CCU : Period 1	Made	Att	Pct
Layups	6	8	75.0
Dunks	0	0	0
2PT Field Goals	8	16	50.0
3PT Field Goals	8	17	47.1
<b>Total Field Goals</b>	<b>16</b>	<b>33</b>	<b>48.5</b>

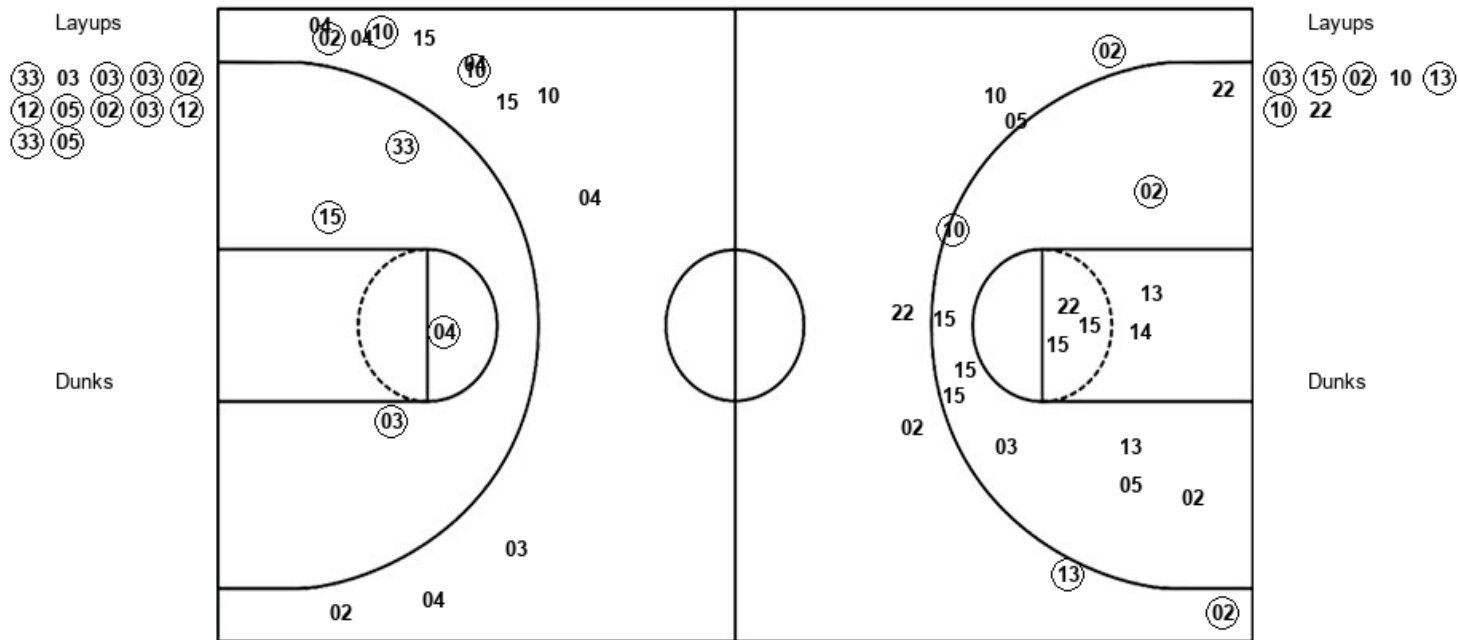
ULM : Period 1	Made	Att	Pct
Layups	2	3	66.7
Dunks	0	0	0
2PT Field Goals	4	9	44.4
3PT Field Goals	5	13	38.5
<b>Total Field Goals</b>	<b>9</b>	<b>22</b>	<b>40.9</b>

Official Shot Chart  
 La.-Monroe vs Coastal Carolina  
 PERIOD 2 Shots  
 January 07, 2020 at The HTC Center



Coastal Carolina

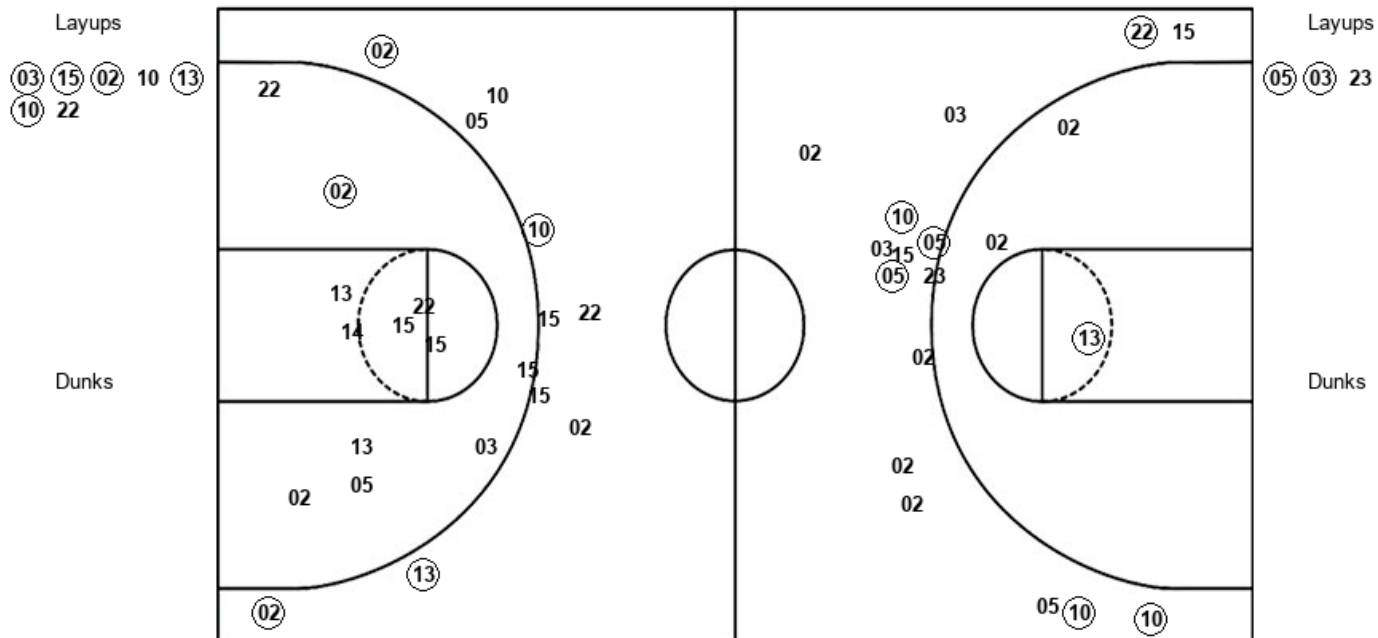
La.-Monroe



CCU : Period 2	Made	Att	Pct
Layups	11	12	91.7
Dunks	0	0	0
2PT Field Goals	15	16	93.8
3PT Field Goals	3	13	23.1
<b>Total Field Goals</b>	<b>18</b>	<b>29</b>	<b>62.1</b>

ULM : Period 2	Made	Att	Pct
Layups	5	7	71.4
Dunks	0	0	0
2PT Field Goals	6	19	31.6
3PT Field Goals	4	10	40.0
<b>Total Field Goals</b>	<b>10</b>	<b>29</b>	<b>34.5</b>

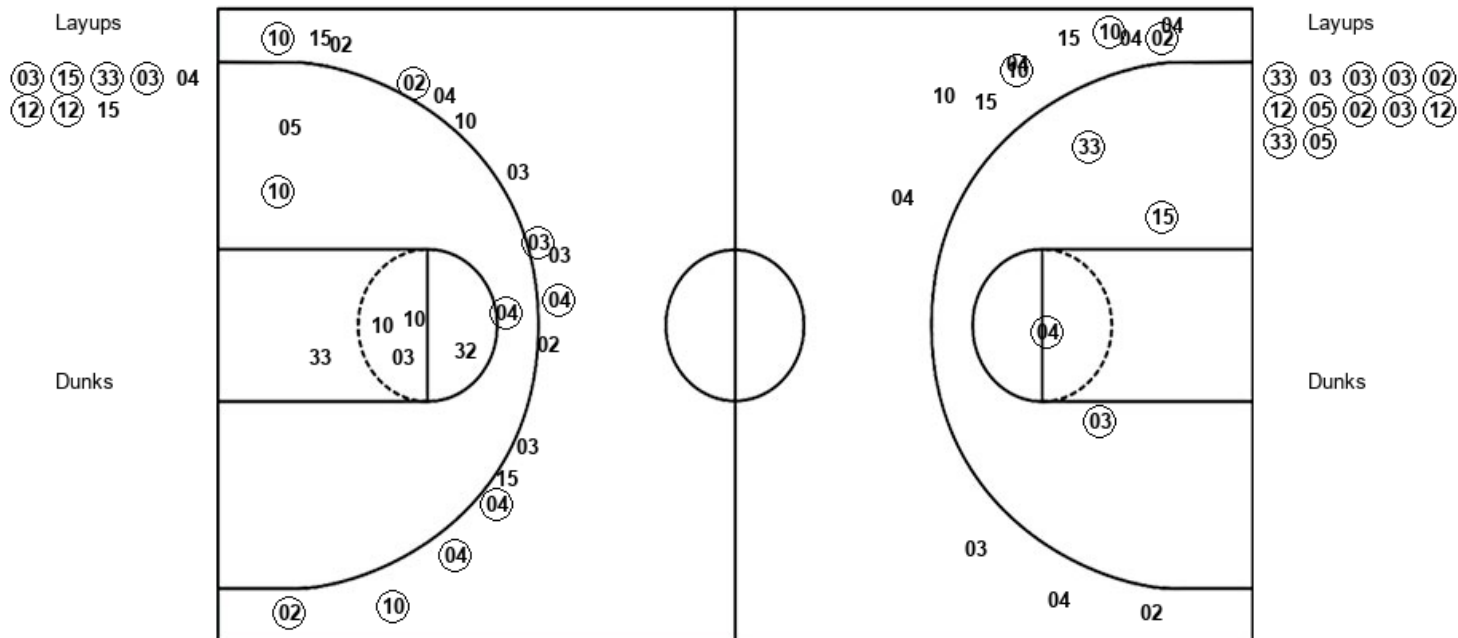
Official Shot Chart  
 La.-Monroe vs Coastal Carolina  
 La.-Monroe Team Shots  
 January 07, 2020 at The HTC Center



ULM : Period 1	Made	Att	Pct
Layups	2	3	66.7
Dunks	0	0	0
2PT Field Goals	4	9	44.4
3PT Field Goals	5	13	38.5
<b>Total Field Goals</b>	<b>9</b>	<b>22</b>	<b>40.9</b>

ULM : Period 2	Made	Att	Pct
Layups	5	7	71.4
Dunks	0	0	0
2PT Field Goals	6	19	31.6
3PT Field Goals	4	10	40.0
<b>Total Field Goals</b>	<b>10</b>	<b>29</b>	<b>34.5</b>

**Official Shot Chart**  
**La.-Monroe vs Coastal Carolina**  
 Coastal Carolina Team Shots  
 January 07, 2020 at The HTC Center



CCU : Period 1	Made	Att	Pct
Layups	6	8	75.0
Dunks	0	0	0
2PT Field Goals	8	16	50.0
3PT Field Goals	8	17	47.1
<b>Total Field Goals</b>	<b>16</b>	<b>33</b>	<b>48.5</b>

CCU : Period 2	Made	Att	Pct
Layups	11	12	91.7
Dunks	0	0	0
2PT Field Goals	15	16	93.8
3PT Field Goals	3	13	23.1
<b>Total Field Goals</b>	<b>18</b>	<b>29</b>	<b>62.1</b>