

FINAL SCORE



Samford

75



UT Martin

80

November 21, 2019 • Kathleen and Tom Elam Center - Martin, Tenn.

FINAL STATISTICS

Official Box Score
Samford vs UT Martin
Game Totals -- Final Statistics
November 21, 2019 at Kathleen and Tom Elam Center - Martin, Tenn.



Samford 75

No.	Player	S	Pts	FG	3FG	FT	OR	DR	TR	PF	A	TO	Blk	Stl	Min	+/-
03	BATTLE, SHAUNTAI	G	10	4-6	1-2	1-2	2	3	5	0	1	4	1	0	40	-6
12	BROWN, CHARITY	G	18	4-7	3-3	7-10	0	8	8	3	10	8	1	1	41	-5
25	MYERS, SARAH	G	15	4-15	0-7	7-9	3	8	11	3	4	6	1	4	41	-2
35	FITZGERALD, SAMANTHA	F	7	3-6	1-2	0-0	1	3	4	4	2	1	0	3	31	-1
45	ARMSTRONG, NATALIE	C	15	7-13	0-2	1-2	2	4	6	4	0	4	1	0	17	-6
11	SERUP, PAIGE	G	6	2-7	2-6	0-0	1	3	4	4	1	1	0	1	37	-4
14	CARTER, CHRISTEN	F	2	1-3	0-0	0-0	0	0	0	1	0	0	0	0	9	-3
15	HILL, TA'NAISHA	G	0	0-1	0-0	0-0	0	1	1	1	1	0	0	0	6	2
32	CROZER, OLIVIA	F	2	1-1	0-0	0-0	0	0	0	1	0	1	0	0	2	0
	TEAM						0	1	1	0		0				
TOTALS			75	26-59	7-22	16-23	9	31	40	21	19	25	4	9	225	

Shooting By Period

Period	FG	FG%	3FG	3FG%	FT	FT%
1st Qtr	10-16	63%	1-5	20%	2-2	100%
2nd Qtr	6-13	46%	2-5	40%	1-2	50%
3rd Qtr	5-16	31%	2-6	33%	6-7	86%
4th Qtr	3-8	38%	1-1	100%	4-8	50%
5th Qtr	2-6	33%	1-5	20%	3-4	75%
1st Half	16-29	55%	3-10	30%	3-4	75%
2nd Half	8-24	33%	3-7	43%	10-15	67%
Game	26-59	44.1%	7-22	31.8%	16-23	69.6%

Deadball Rebounds: 6.0
 Last FG: 5th-01:40
 Biggest Run: 9-0
 Largest lead: By 12 at 3-01
 Technical Fouls: None.

UT Martin 80

No.	Player	S	Pts	FG	3FG	FT	OR	DR	TR	PF	A	TO	Blk	Stl	Min	+/-
13	STANFORD, TAMIAH	G	7	2-6	1-3	2-3	0	3	3	3	4	2	0	1	33	6
15	MOORE, BRITTON	F	8	3-7	2-5	0-0	1	3	4	3	3	1	0	5	36	4
20	PERRY, CHELSEY	F	32	12-19	3-5	5-6	1	4	5	4	0	4	2	1	32	2
21	WALDROP, MADDIE	F	5	2-7	1-4	0-0	2	6	8	1	1	5	0	0	34	2
22	GRIFFIN, DAMIAH	F	16	5-13	1-1	5-6	2	4	6	1	3	2	1	4	35	4
00	DAVIS, EMMA	G	0	0-0	0-0	0-0	1	0	1	0	0	0	0	0	5	-3
02	HUDSON, SADE'	G	10	4-11	0-1	2-2	0	1	1	1	2	1	0	3	26	11
11	YOUNG, DASIA	F	2	1-1	0-0	0-1	0	0	0	3	0	1	0	0	8	-1
31	GRANT, KYANNAH	G	0	0-2	0-2	0-0	1	2	3	1	2	4	0	0	12	-1
33	BURDICK, DEMI	F	0	0-2	0-0	0-0	1	1	2	1	0	1	1	0	3	1
	TEAM						1	1	2	0		1				
TOTALS			80	29-68	8-21	14-18	10	25	35	18	15	22	4	14	225	

Shooting By Period

Period	FG	FG%	3FG	3FG%	FT	FT%
1st Qtr	8-14	57%	2-3	67%	0-2	00%
2nd Qtr	6-15	40%	3-8	38%	0-0	0%
3rd Qtr	5-15	33%	1-5	20%	2-2	100%
4th Qtr	6-17	35%	2-5	40%	7-8	88%
5th Qtr	4-7	57%	0-0	0%	5-6	83%
1st Half	14-29	48%	5-11	45%	0-2	00%
2nd Half	11-32	34%	3-10	30%	9-10	90%
Game	29-68	42.6%	8-21	38.1%	14-18	77.8%

Deadball Rebounds: 2.0
 Last FG: 5th-00:18
 Biggest Run: 8-0
 Largest lead: By 5 at 1-00
 Technical Fouls: None.

Game Notes:

Officials: Joshua Hall, Trey Miles, Brooke Shoulders
 Attendance: 1511

Start Time: 07:02 PM ET
 End Time: 09:16 PM ET
 Game Duration: 2:13

Score	1st	2nd	3rd	4th	5th	TOT
SAM	23	15	18	11	8	75
UTM	18	15	13	21	13	80

SAM led for 36:06. UTM led for 1:59.
 Game was tied for 6:50.
 Times tied: 9 Lead Changes: 9

Points from	SAM	UTM
In the Paint	34	32
Off Turns	17	23
2nd Chance	4	4
Fast Break	19	19
Bench	10	12

Official Box Score
Samford vs UT Martin
First Half Statistics Only
November 21, 2019 at Kathleen and Tom Elam Center - Martin, Tenn.



Samford 38

No.	Player	S	Pts	FG	3FG	FT	OR	DR	TR	PF	A	TO	Blk	Stl	Min	+/-
11	SERUP, PAIGE	G	0	0-2	0-2	0-0	0	1	1	0	0	0	0	0	14	1
12	BROWN, CHARITY	G	3	1-1	1-1	0-0	0	0	0	2	6	3	1	0	16	5
14	CARTER, CHRISTEN	F	2	1-1	0-0	0-0	0	0	0	0	0	0	0	0	6	-2
15	HILL, TA'NAISHA	G	0	0-1	0-0	0-0	0	1	1	1	1	0	0	0	5	2
25	MYERS, SARAH	G	9	3-7	0-3	3-4	2	5	7	1	2	1	1	2	18	7
32	CROZER, OLIVIA	F	2	1-1	0-0	0-0	0	0	0	1	0	1	0	0	2	0
35	FITZGERALD, SAMANTHA	F	5	2-4	1-2	0-0	0	2	2	1	2	1	0	2	12	3
45	ARMSTRONG, NATALIE	C	12	6-10	0-1	0-0	2	1	3	2	0	2	1	0	11	5
03	BATTLE, SHAUNTAI	G	5	2-2	1-1	0-0	0	2	2	0	0	2	0	0	16	4
	TEAM		0	0-0	0-0	0-0	0	1	1	0	0	0	0	0	0	0
TOTALS			38	16-29	3-10	3-4	4	13	17	8	11	10	3	4	100	

Shooting By Period

Period	FG	FG%	3FG	3FG%	FT	FT%
1st Qtr	10-16	63%	1-5	20%	2-2	100%
2nd Qtr	6-13	46%	2-5	40%	1-2	50%
1st Half	16-29	55%	3-10	30%	3-4	75%
Game	26-59	44.1%	7-22	31.8%	16-23	69.6%

Deadball Rebounds: 6,0

Last FG Half: SAM 2nd-01:21

UT Martin 33

No.	Player	S	Pts	FG	3FG	FT	OR	DR	TR	PF	A	TO	Blk	Stl	Min	+/-
00	DAVIS, EMMA	G	0	0-0	0-0	0-0	0	0	0	0	0	0	0	0	0	0
02	HUDSON, SADE'	G	4	2-4	0-1	0-0	0	0	0	1	1	1	0	0	13	-1
11	YOUNG, DASIA	F	2	1-1	0-0	0-1	0	0	0	2	0	1	0	0	6	-1
13	STANFORD, TAMIAH	G	5	2-3	1-2	0-1	0	1	1	0	0	1	0	0	12	-7
15	MOORE, BRITTNI	F	0	0-1	0-1	0-0	0	1	1	0	1	0	0	0	11	-6
20	PERRY, CHELSEY	F	14	6-11	2-3	0-0	1	1	2	1	0	3	1	1	18	-4
21	WALDROP, MADDIE	F	5	2-5	1-2	0-0	2	1	3	0	1	3	0	0	18	-5
22	GRIFFIN, DAMIAH	F	3	1-3	1-1	0-0	0	3	3	0	2	1	1	1	14	-3
31	GRANT, KYANNAH	G	0	0-1	0-1	0-0	0	1	1	1	2	2	0	0	8	2
33	BURDICK, DEMI	F	0	0-0	0-0	0-0	0	0	0	0	0	0	0	0	0	0
	TEAM		0	0-0	0-0	0-0	1	1	2	0	0	0	0	0	0	0
TOTALS			33	14-29	5-11	0-2	4	9	13	5	7	12	2	2	100	

Shooting By Period

Period	FG	FG%	3FG	3FG%	FT	FT%
1st Qtr	8-14	57%	2-3	67%	0-2	00%
2nd Qtr	6-15	40%	3-8	38%	0-0	0%
1st Half	14-29	48%	5-11	45%	0-2	00%
Game	29-68	42.6%	8-21	38.1%	14-18	77.8%

Deadball Rebounds: 2,0

Last FG Half: UTM 2nd-03:17

Game Notes:

Officials: Joshua Hall, Trey Miles, Brooke Shoulders
 Attendance: 1511

Start Time: 07:02 PM ET
 End Time: 09:16 PM ET
 Game Duration: 2:13

Score	1st	2nd	3rd	4th	5th	TOT
SAM	23	15	18	11	8	75
UTM	18	15	13	21	13	80

Points from (This Period)	SAM	UTM
In the Paint	24	14
Off Turns	13	4
2nd Chance	4	2
Fast Break	4	2
Bench	4	6

Official Box Score
Samford vs UT Martin
First Quarter Statistics Only
November 21, 2019 at Kathleen and Tom Elam Center - Martin, Tenn.



Samford 23

No.	Player	S	Pts	FG	3FG	FT	OR	DR	TR	PF	A	TO	Blk	Stl	Min	+/-
03	BATTLE, SHAUNTAI	G	0	0-0	0-0	0-0	0	0	0	0	0	0	0	0	6	4
12	BROWN, CHARITY	G	0	0-0	0-0	0-0	0	0	0	1	5	2	1	0	10	5
25	MYERS, SARAH	G	4	1-4	0-2	2-2	0	2	2	0	2	0	1	2	10	5
35	FITZGERALD, SAMANTHA	F	5	2-2	1-1	0-0	0	1	1	0	0	0	0	1	6	4
45	ARMSTRONG, NATALIE	C	12	6-8	0-1	0-0	1	1	2	1	0	0	1	0	8	5
11	SERUP, PAIGE	G	0	0-1	0-1	0-0	0	0	0	0	0	0	0	0	4	1
14	CARTER, CHRISTEN	F	0	0-0	0-0	0-0	0	0	0	0	0	0	0	0	0	0
15	HILL, TA'NAISHA	G	0	0-0	0-0	0-0	0	1	1	1	1	0	0	0	4	1
32	CROZER, OLIVIA	F	2	1-1	0-0	0-0	0	0	0	1	0	1	0	0	2	0
TEAM							0	0	0	0		0				
TOTALS			23	10-16	1-5	2-2	1	5	6	4	8	3	3	3	50	

Shooting By Period

Period	FG	FG%	3FG	3FG%	FT	FT%
1st Qtr	10-16	63%	1-5	20%	2-2	100%
2nd Qtr	6-13	46%	2-5	40%	1-2	50%
1st Half	10-16	63%	1-5	20%	2-2	100%
1st Half	16-29	55%	3-10	30%	3-4	75%
Game	26-59	44.1%	7-22	31.8%	16-23	69.6%

Deadball Rebounds: 6,0

UT Martin 18

No.	Player	S	Pts	FG	3FG	FT	OR	DR	TR	PF	A	TO	Blk	Stl	Min	+/-
13	STANFORD, TAMIAH	G	5	2-3	1-2	0-1	0	1	1	0	0	1	0	0	10	-5
15	MOORE, BRITNI	F	0	0-0	0-0	0-0	0	0	0	0	0	0	0	0	4	-6
20	PERRY, CHELSEY	F	4	2-4	0-0	0-0	0	1	1	1	0	2	1	1	8	-4
21	WALDROP, MADDIE	F	5	2-4	1-1	0-0	2	1	3	0	1	2	0	0	10	-5
22	GRIFFIN, DAMIAH	F	0	0-1	0-0	0-0	0	2	2	0	1	1	0	1	8	-5
00	DAVIS, EMMA	G	0	0-0	0-0	0-0	0	0	0	0	0	0	0	0	0	0
02	HUDSON, SADE'	G	2	1-1	0-0	0-0	0	0	0	1	1	1	0	0	6	1
11	YOUNG, DASIA	F	2	1-1	0-0	0-1	0	0	0	0	0	1	0	0	4	-1
31	GRANT, KYANNAH	G	0	0-0	0-0	0-0	0	0	0	0	0	0	0	0	0	0
33	BURDICK, DEMI	F	0	0-0	0-0	0-0	0	0	0	0	0	0	0	0	0	0
TEAM							1	0	1	0		0				
TOTALS			18	8-14	2-3	0-2	3	5	8	2	3	8	1	2	50	

Shooting By Period

Period	FG	FG%	3FG	3FG%	FT	FT%
1st Qtr	8-14	57%	2-3	67%	0-2	00%
2nd Qtr	6-15	40%	3-8	38%	0-0	0%
1st Half	8-14	57%	2-3	67%	0-2	00%
1st Half	14-29	48%	5-11	45%	0-2	00%
Game	29-68	42.6%	8-21	38.1%	14-18	77.8%

Deadball Rebounds: 2,0

Game Notes:

Officials: Joshua Hall, Trey Miles, Brooke Shoulders
 Attendance: 1511

Start Time: 07:02 PM ET
 End Time: 09:16 PM ET
 Game Duration: 2:13

Score	1st	2nd	3rd	4th	5th	TOT
SAM	23	15	18	11	8	75
UTM	18	15	13	21	13	80

Points from (This Period)	SAM	UTM
In the Paint	16	10
Off Turns	9	0
2nd Chance	2	2
Fast Break	2	2
Bench	2	4

**Official Play-By-Play
Samford vs UT Martin
First Quarter**

November 21, 2019 at Kathleen and Tom Elam Center - Martin, Tenn.



Period 1

Starters:

Samford: 12 BROWN, CHARITY (G); 25 MYERS, SARAH (G); 35 FITZGERALD, SAMANTHA (F); 45 ARMSTRONG, NATALIE (C); 3 BATTLE, SHAUNTAI (G);
UT Martin: 13 STANFORD, TAMIAH (G); 15 MOORE, BRITNI (F); 20 PERRY, CHELSEY (F); 21 WALDROP, MADDIE (F); 22 GRIFFIN, DAMIAH (F);

Time	VISITORS: Samford	Score	Margin	HOME: UT Martin
09:43				MISSED JUMPER by PERRY, CHELSEY
09:43	BLOCK by ARMSTRONG, NATALIE			
09:38	REBOUND (DEF) by FITZGERALD, SAMANTHA			
09:29	GOOD! LAYUP by ARMSTRONG, NATALIE	0-2	V 2	
09:29	ASSIST by BROWN, CHARITY			
09:11				MISSED LAYUP by WALDROP, MADDIE
09:11	BLOCK by MYERS, SARAH			
09:08				REBOUND (OFF) by WALDROP, MADDIE
09:08				MISSED LAYUP by WALDROP, MADDIE
09:08	REBOUND (DEF) by MYERS, SARAH			
08:52	GOOD! LAYUP by FITZGERALD, SAMANTHA	0-4	V 4	
08:29				TURNOVER (TRAVEL) by PERRY, CHELSEY
08:09	GOOD! 3PTR by FITZGERALD, SAMANTHA	0-7	V 7	
08:09	ASSIST by MYERS, SARAH			
07:49				TURNOVER (LOSTBALL) by STANFORD, TAMIAH
07:49	STEAL by FITZGERALD, SAMANTHA			
07:35	GOOD! LAYUP by ARMSTRONG, NATALIE	0-9	V 9	
07:35	ASSIST by BROWN, CHARITY			
07:19		2-9	V 7	GOOD! LAYUP by PERRY, CHELSEY
07:02	MISSED 3PTR by MYERS, SARAH			
06:59				REBOUND (DEF) by STANFORD, TAMIAH
06:38		5-9	V 4	GOOD! 3PTR by STANFORD, TAMIAH
06:38				ASSIST by WALDROP, MADDIE
06:24	GOOD! LAYUP by ARMSTRONG, NATALIE	5-11	V 6	
06:24	ASSIST by BROWN, CHARITY			
05:59				MISSED JUMPER by GRIFFIN, DAMIAH
05:59	BLOCK by BROWN, CHARITY			
05:59				REBOUND (OFF) by TEAM
05:59				SUB OUT: MOORE, BRITNI
05:59				SUB IN: HUDSON, SADE'
05:55		7-11	V 4	GOOD! JUMPER by HUDSON, SADE' [PNT]
05:46	MISSED 3PTR by MYERS, SARAH			
05:42	REBOUND (OFF) by ARMSTRONG, NATALIE			
05:39				FOUL (PERSONAL) by PERRY, CHELSEY
05:39	GOOD! FT by MYERS, SARAH	7-12	V 5	
05:39	GOOD! FT by MYERS, SARAH	7-13	V 6	
05:19				TURNOVER (TRAVEL) by WALDROP, MADDIE
05:02	MISSED 3PTR by ARMSTRONG, NATALIE			
04:59				REBOUND (DEF) by GRIFFIN, DAMIAH
04:47				TURNOVER (BADPASS) by PERRY, CHELSEY
04:47	STEAL by MYERS, SARAH			
04:37	MISSED JUMPER by ARMSTRONG, NATALIE			
04:34				REBOUND (DEF) by GRIFFIN, DAMIAH
04:29		9-13	V 4	GOOD! JUMPER by STANFORD, TAMIAH [FB/PNT]
04:29	FOUL (PERSONAL) by BROWN, CHARITY			
04:29				SUB OUT: PERRY, CHELSEY
04:29				SUB IN: YOUNG, DASIA
04:29	SUB OUT: BATTLE, SHAUNTAI			
04:29	SUB OUT: FITZGERALD, SAMANTHA			
04:29	SUB IN: SERUP, PAIGE			
04:29	SUB IN: HILL, TA'NAISHA			
04:29				MISSED FT by STANFORD, TAMIAH
04:29	REBOUND (DEF) by ARMSTRONG, NATALIE			
04:24	TURNOVER (BADPASS) by BROWN, CHARITY			
04:24				STEAL by GRIFFIN, DAMIAH
04:11				TURNOVER (TRAVEL) by YOUNG, DASIA
03:46	GOOD! LAYUP by ARMSTRONG, NATALIE	9-15	V 6	
03:46	ASSIST by BROWN, CHARITY			
03:37				TURNOVER (LOSTBALL) by GRIFFIN, DAMIAH
03:37	STEAL by MYERS, SARAH			
03:26	GOOD! LAYUP by ARMSTRONG, NATALIE	9-17	V 8	
03:26	ASSIST by MYERS, SARAH			
03:16		11-17	V 6	GOOD! LAYUP by YOUNG, DASIA
03:16				ASSIST by HUDSON, SADE'
03:16	FOUL (PERSONAL) by ARMSTRONG, NATALIE			
03:16				MISSED FT by YOUNG, DASIA
03:16	REBOUND (DEF) by MYERS, SARAH			
03:06	GOOD! LAYUP by ARMSTRONG, NATALIE [FB]	11-19	V 8	
03:06	ASSIST by BROWN, CHARITY			

Time	VISITORS: Samford	Score	Margin	HOME: UT Martin
02:55		14-19	V 5	GOOD! 3PTR by WALDROP, MADDIE
02:55				ASSIST by GRIFFIN, DAMIAH
02:40	MISSED 3PTR by SERUP, PAIGE			
02:37				REBOUND (DEF) by WALDROP, MADDIE
02:29	FOUL (PERSONAL) by HILL, TA'NAISHA			
02:29				SUB OUT: GRIFFIN, DAMIAH
02:29				SUB IN: PERRY, CHELSEY
02:29	SUB OUT: ARMSTRONG, NATALIE			
02:29	SUB IN: CROZER, OLIVIA			
02:19		16-19	V 3	GOOD! JUMPER by WALDROP, MADDIE
02:00	FOUL (OFF) by CROZER, OLIVIA			
02:00	TURNOVER (OFFENSIVE) by CROZER, OLIVIA			
01:53				FOUL (OFF) by HUDSON, SADE'
01:53				TURNOVER (OFFENSIVE) by HUDSON, SADE'
01:38	MISSED LAYUP by MYERS, SARAH			
01:38				BLOCK by PERRY, CHELSEY
01:34				REBOUND (DEF) by PERRY, CHELSEY
01:31				TURNOVER (TRAVEL) by WALDROP, MADDIE
01:26	TURNOVER (BADPASS) by BROWN, CHARITY			
01:26				STEAL by PERRY, CHELSEY
01:17				MISSED JUMPER by PERRY, CHELSEY
01:14	REBOUND (DEF) by HILL, TA'NAISHA			
01:02	GOOD! JUMPER by CROZER, OLIVIA	16-21	V 5	
01:02	ASSIST by HILL, TA'NAISHA			
00:37		18-21	V 3	GOOD! JUMPER by PERRY, CHELSEY
00:24	GOOD! LAYUP by MYERS, SARAH	18-23	V 5	
00:07				MISSED 3PTR by STANFORD, TAMIAH
00:02				REBOUND (OFF) by WALDROP, MADDIE

Samford 23, UT Martin 18

Points from (This Period)	SAM	UTM
In the Paint	16	10
Off Turns	9	0
2nd Chance	2	2
Fast Break	2	2
Bench	2	4

Official Box Score
Samford vs UT Martin
Second Quarter Statistics Only
November 21, 2019 at Kathleen and Tom Elam Center - Martin, Tenn.



Samford 15

No.	Player	S	Pts	FG	3FG	FT	OR	DR	TR	PF	A	TO	Blk	Stl	Min	+/-
03	BATTLE, SHAUNTAI	G	5	2-2	1-1	0-0	0	2	2	0	0	2	0	0	10	0
12	BROWN, CHARITY	G	3	1-1	1-1	0-0	0	0	0	1	1	1	0	0	6	0
25	MYERS, SARAH	G	5	2-3	0-1	1-2	2	3	5	1	0	1	0	0	8	2
35	FITZGERALD, SAMANTHA	F	0	0-2	0-1	0-0	0	1	1	1	2	1	0	1	6	-1
45	ARMSTRONG, NATALIE	C	0	0-2	0-0	0-0	1	0	1	1	0	2	0	0	3	0
11	SERUP, PAIGE	G	0	0-1	0-1	0-0	0	1	1	0	0	0	0	0	10	0
14	CARTER, CHRISTEN	F	2	1-1	0-0	0-0	0	0	0	0	0	0	0	0	6	-2
15	HILL, TA'NAISHA	G	0	0-1	0-0	0-0	0	0	0	0	0	0	0	0	1	1
32	CROZER, OLIVIA	F	0	0-0	0-0	0-0	0	0	0	0	0	0	0	0	0	0
TEAM							0	1	1	0		0				
TOTALS			15	6-13	2-5	1-2	3	8	11	4	3	7	0	1	50	

Shooting By Period

Period	FG	FG%	3FG	3FG%	FT	FT%
3rd Qtr	5-16	31%	2-6	33%	6-7	86%
4th Qtr	3-8	38%	1-1	100%	4-8	50%
2nd Half	6-13	46%	2-5	40%	1-2	50%
2nd Half	8-24	33%	3-7	43%	10-15	67%
Game	26-59	44.1%	7-22	31.8%	16-23	69.6%

Deadball Rebounds: 6,0

UT Martin 15

No.	Player	S	Pts	FG	3FG	FT	OR	DR	TR	PF	A	TO	Blk	Stl	Min	+/-
13	STANFORD, TAMIAH	G	0	0-0	0-0	0-0	0	0	0	0	0	0	0	0	2	-2
15	MOORE, BRITNI	F	0	0-1	0-1	0-0	0	1	1	0	1	0	0	0	7	0
20	PERRY, CHELSEY	F	10	4-7	2-3	0-0	1	0	1	0	0	1	0	0	10	0
21	WALDROP, MADDIE	F	0	0-1	0-1	0-0	0	0	0	0	0	1	0	0	8	0
22	GRIFFIN, DAMIAH	F	3	1-2	1-1	0-0	0	1	1	0	1	0	1	0	6	2
00	DAVIS, EMMA	G	0	0-0	0-0	0-0	0	0	0	0	0	0	0	0	0	0
02	HUDSON, SADE'	G	2	1-3	0-1	0-0	0	0	0	0	0	0	0	0	7	-2
11	YOUNG, DASIA	F	0	0-0	0-0	0-0	0	0	0	2	0	0	0	0	2	0
31	GRANT, KYANNAH	G	0	0-1	0-1	0-0	0	1	1	1	2	2	0	0	8	2
33	BURDICK, DEMI	F	0	0-0	0-0	0-0	0	0	0	0	0	0	0	0	0	0
TEAM							0	1	1	0		0				
TOTALS			15	6-15	3-8	0-0	1	4	5	3	4	4	1	0	50	

Shooting By Period

Period	FG	FG%	3FG	3FG%	FT	FT%
3rd Qtr	5-15	33%	1-5	20%	2-2	100%
4th Qtr	6-17	35%	2-5	40%	7-8	88%
2nd Half	6-15	40%	3-8	38%	0-0	0%
2nd Half	11-32	34%	3-10	30%	9-10	90%
Game	29-68	42.6%	8-21	38.1%	14-18	77.8%

Deadball Rebounds: 2,0

Game Notes:

Officials: Joshua Hall, Trey Miles, Brooke Shoulders
 Attendance: 1511

Start Time: 07:02 PM ET
 End Time: 09:16 PM ET
 Game Duration: 2:13

Score	1st	2nd	3rd	4th	5th	TOT
SAM	23	15	18	11	8	75
UTM	18	15	13	21	13	80

Points from (This Period)	SAM	UTM
In the Paint	8	4
Off Turns	4	4
2nd Chance	2	0
Fast Break	2	0
Bench	2	2

**Official Play-By-Play
Samford vs UT Martin
Second Quarter**

November 21, 2019 at Kathleen and Tom Elam Center - Martin, Tenn.



Period 2

Starters:

Samford: 12 BROWN, CHARITY (G); 25 MYERS, SARAH (G); 35 FITZGERALD, SAMANTHA (F); 45 ARMSTRONG, NATALIE (C); 3 BATTLE, SHAUNTAI (G);
UT Martin: 13 STANFORD, TAMIAH (G); 15 MOORE, BRITTONI (F); 20 PERRY, CHELSEY (F); 21 WALDROP, MADDIE (F); 22 GRIFFIN, DAMIAH (F);

Time	VISITORS: Samford	Score	Margin	HOME: UT Martin
10:00				SUB OUT: STANFORD, TAMIAH
10:00				SUB OUT: WALDROP, MADDIE
10:00				SUB IN: GRIFFIN, DAMIAH
10:00				SUB IN: GRANT, KYANNAH
10:00	SUB OUT: BROWN, CHARITY			
10:00	SUB OUT: CROZER, OLIVIA			
10:00	SUB IN: BATTLE, SHAUNTAI			
10:00	SUB IN: ARMSTRONG, NATALIE			
09:45				MISSED 3PTR by PERRY, CHELSEY
09:40	REBOUND (DEF) by BATTLE, SHAUNTAI			
09:28				FOUL (PERSONAL) by YOUNG, DASIA
09:28	MISSED FT by MYERS, SARAH			
09:28	REBOUND (OFF) by TEAM			
09:28	GOOD! FT by MYERS, SARAH	18-24	V 6	
09:15				MISSED 3PTR by GRANT, KYANNAH
09:13	REBOUND (DEF) by SERUP, PAIGE			
09:02	MISSED JUMPER by HILL, TA'NAISHA			
08:58	REBOUND (OFF) by MYERS, SARAH			
08:53	TURNOVER (TRAVEL) by ARMSTRONG, NATALIE			
08:53	SUB OUT: HILL, TA'NAISHA			
08:53	SUB IN: FITZGERALD, SAMANTHA			
08:39				MISSED JUMPER by HUDSON, SADE'
08:36	REBOUND (DEF) by MYERS, SARAH			
08:23	GOOD! 3PTR by BATTLE, SHAUNTAI	18-27	V 9	
08:23	ASSIST by FITZGERALD, SAMANTHA			
08:08		21-27	V 6	GOOD! 3PTR by GRIFFIN, DAMIAH
08:08				ASSIST by GRANT, KYANNAH
07:52	GOOD! LAYUP by MYERS, SARAH [FB]	21-29	V 8	
07:44		24-29	V 5	GOOD! 3PTR by PERRY, CHELSEY
07:44				ASSIST by GRANT, KYANNAH
07:43				FOUL (PERSONAL) by YOUNG, DASIA
07:43				SUB OUT: HUDSON, SADE'
07:43				SUB OUT: YOUNG, DASIA
07:43				SUB IN: MOORE, BRITTONI
07:43				SUB IN: WALDROP, MADDIE
07:23	MISSED LAYUP by ARMSTRONG, NATALIE			
07:16	REBOUND (OFF) by ARMSTRONG, NATALIE			
07:16	MISSED LAYUP by ARMSTRONG, NATALIE			
07:15				REBOUND (DEF) by MOORE, BRITTONI
07:11				TURNOVER (BADPASS) by GRANT, KYANNAH
07:11	STEAL by FITZGERALD, SAMANTHA			
07:11	FOUL (OFF) by ARMSTRONG, NATALIE			
07:11	TURNOVER (OFFENSIVE) by ARMSTRONG, NATALIE			
07:02				MISSED LAYUP by GRIFFIN, DAMIAH
06:59	REBOUND (DEF) by BATTLE, SHAUNTAI			
06:54	MISSED 3PTR by MYERS, SARAH			
06:50				REBOUND (DEF) by GRANT, KYANNAH
06:45				MISSED 3PTR by WALDROP, MADDIE
06:42	REBOUND (DEF) by MYERS, SARAH			
06:20	SUB OUT: ARMSTRONG, NATALIE			
06:20	SUB IN: CARTER, CHRISTEN			
06:12	MISSED LAYUP by FITZGERALD, SAMANTHA			
06:12				BLOCK by GRIFFIN, DAMIAH
06:10				REBOUND (DEF) by TEAM
06:07	SUB OUT: MYERS, SARAH			
06:07	SUB IN: BROWN, CHARITY			
05:53		27-29	V 2	GOOD! 3PTR by PERRY, CHELSEY
05:53				ASSIST by GRIFFIN, DAMIAH
05:32	MISSED 3PTR by FITZGERALD, SAMANTHA			
05:28				REBOUND (DEF) by GRIFFIN, DAMIAH
05:22		29-29	T	GOOD! JUMPER by PERRY, CHELSEY
05:22				ASSIST by MOORE, BRITTONI
05:01	GOOD! 3PTR by BROWN, CHARITY	29-32	V 3	
05:01	ASSIST by FITZGERALD, SAMANTHA			
04:35				TURNOVER (BADPASS) by PERRY, CHELSEY
04:34				
04:34				SUB OUT: GRIFFIN, DAMIAH
04:34				SUB IN: HUDSON, SADE'
04:34	SUB OUT: FITZGERALD, SAMANTHA			
04:34	SUB IN: MYERS, SARAH			

Time	VISITORS: Samford	Score	Margin	HOME: UT Martin
04:17	TURNOVER (TRAVEL) by BATTLE, SHAUNTAI			
03:52		31-32	V 1	GOOD! LAYUP by HUDSON, SADE'
03:36	TURNOVER (DRIBBLING) by BATTLE, SHAUNTAI			
03:17		33-32	H 1	GOOD! LAYUP by PERRY, CHELSEY
02:49	FOUL (OFF) by MYERS, SARAH			
02:49	TURNOVER (OFFENSIVE) by MYERS, SARAH			
02:29				TURNOVER (TRAVEL) by WALDROP, MADDIE
02:18	GOOD! LAYUP by CARTER, CHRISTEN	33-34	V 1	
02:18	ASSIST by BROWN, CHARITY			
02:08				MISSED 3PTR by MOORE, BRITTNI
02:04				REBOUND (OFF) by PERRY, CHELSEY
02:02				MISSED JUMPER by PERRY, CHELSEY
01:59	REBOUND (DEF) by MYERS, SARAH			
01:51	MISSED 3PTR by SERUP, PAIGE			
01:48	REBOUND (OFF) by MYERS, SARAH			
01:46	GOOD! LAYUP by MYERS, SARAH	33-36	V 3	
01:39				FOUL (OFF) by GRANT, KYANNAH
01:39				TURNOVER (OFFENSIVE) by GRANT, KYANNAH
01:39				SUB OUT: GRANT, KYANNAH
01:39				SUB IN: STANFORD, TAMIAH
01:39	SUB OUT: CARTER, CHRISTEN			
01:39	SUB IN: FITZGERALD, SAMANTHA			
01:21	GOOD! LAYUP by BATTLE, SHAUNTAI	33-38	V 5	
01:06				MISSED JUMPER by PERRY, CHELSEY
01:03	REBOUND (DEF) by FITZGERALD, SAMANTHA			
00:48	FOUL (OFF) by BROWN, CHARITY			
00:48	TURNOVER (OFFENSIVE) by BROWN, CHARITY			
00:36				MISSED 3PTR by HUDSON, SADE'
00:33	REBOUND (DEF) by TEAM			
00:32				SUB OUT: MOORE, BRITTNI
00:32				SUB IN: GRIFFIN, DAMIAH
00:08	FOUL (OFF) by FITZGERALD, SAMANTHA			
00:08	TURNOVER (OFFENSIVE) by FITZGERALD, SAMANTHA			

Samford 38, UT Martin 33

Points from (This Period)	SAM	UTM
In the Paint	8	4
Off Turns	4	4
2nd Chance	2	0
Fast Break	2	0
Bench	2	2

Official Box Score
Samford vs UT Martin
Second Half Statistics Only
November 21, 2019 at Kathleen and Tom Elam Center - Martin, Tenn.



Samford 29

No.	Player	S	Pts	FG	3FG	FT	OR	DR	TR	PF	A	TO	Blk	Stl	Min	+/-
11	SERUP, PAIGE	G	6	2-5	2-4	0-0	0	2	2	2	0	1	0	1	18	0
12	BROWN, CHARITY	G	9	2-5	1-1	4-6	0	6	6	1	3	4	0	1	20	-5
14	CARTER, CHRISTEN	F	0	0-2	0-0	0-0	0	0	0	1	0	0	0	0	3	-1
15	HILL, TA'NAISHA	G	0	0-0	0-0	0-0	0	0	0	0	0	0	0	0	0	0
25	MYERS, SARAH	G	6	1-5	0-1	4-5	1	3	4	1	2	4	0	2	18	-4
32	CROZER, OLIVIA	F	0	0-0	0-0	0-0	0	0	0	0	0	0	0	0	0	0
35	FITZGERALD, SAMANTHA	F	2	1-2	0-0	0-0	1	1	2	3	0	0	0	1	17	-2
45	ARMSTRONG, NATALIE	C	1	0-2	0-1	1-2	0	2	2	2	0	2	0	0	4	-8
03	BATTLE, SHAUNTAI	G	5	2-3	0-0	1-2	2	1	3	0	1	1	1	0	20	-5
	TEAM		0	0-0	0-0	0-0	0	0	0	0	0	0	0	0	0	0
TOTALS			29	8-24	3-7	10-15	4	15	19	10	6	12	1	5	100	

Shooting By Period

Period	FG	FG%	3FG	3FG%	FT	FT%
3rd Qtr	5-16	31%	2-6	33%	6-7	86%
4th Qtr	3-8	38%	1-1	100%	4-8	50%
2nd Half	8-24	33%	3-7	43%	10-15	67%
Game	26-59	44.1%	7-22	31.8%	16-23	69.6%

Deadball Rebounds: 6,0
Last FG Half: SAM 4th-01:45

UT Martin 34

No.	Player	S	Pts	FG	3FG	FT	OR	DR	TR	PF	A	TO	Blk	Stl	Min	+/-
00	DAVIS, EMMA	G	0	0-0	0-0	0-0	1	0	1	0	0	0	0	0	5	-3
02	HUDSON, SADE'	G	4	1-5	0-0	2-2	0	0	0	0	1	0	0	2	11	11
11	YOUNG, DASIA	F	0	0-0	0-0	0-0	0	0	0	1	0	0	0	0	1	0
13	STANFORD, TAMIAH	G	0	0-3	0-1	0-0	0	1	1	3	4	1	0	1	16	8
15	MOORE, BRITTON	F	8	3-6	2-4	0-0	1	2	3	1	1	1	0	5	20	5
20	PERRY, CHELSEY	F	9	3-5	1-2	2-2	0	2	2	3	0	1	1	0	9	1
21	WALDROP, MADDIE	F	0	0-2	0-2	0-0	0	5	5	1	0	1	0	0	15	3
22	GRIFFIN, DAMIAH	F	13	4-8	0-0	5-6	2	1	3	1	1	1	0	1	17	2
31	GRANT, KYANNAH	G	0	0-1	0-1	0-0	1	1	2	0	0	2	0	0	4	-3
33	BURDICK, DEMI	F	0	0-2	0-0	0-0	1	1	2	1	0	1	1	0	3	1
	TEAM		0	0-0	0-0	0-0	0	0	0	0	0	1	0	0	0	0
TOTALS			34	11-32	3-10	9-10	6	13	19	11	7	9	2	9	100	

Shooting By Period

Period	FG	FG%	3FG	3FG%	FT	FT%
3rd Qtr	5-15	33%	1-5	20%	2-2	100%
4th Qtr	6-17	35%	2-5	40%	7-8	88%
2nd Half	11-32	34%	3-10	30%	9-10	90%
Game	29-68	42.6%	8-21	38.1%	14-18	77.8%

Deadball Rebounds: 2,0
Last FG Half: UTM 4th-03:17

Game Notes:

Officials: Joshua Hall, Trey Miles, Brooke Shoulders
 Attendance: 1511

Start Time: 07:02 PM ET
 End Time: 09:16 PM ET
 Game Duration: 2:13

Score	1st	2nd	3rd	4th	5th	TOT
SAM	23	15	18	11	8	75
UTM	18	15	13	21	13	80

Points from (This Period)	SAM	UTM
In the Paint	8	10
Off Turns	4	15
2nd Chance	0	2
Fast Break	12	11
Bench	6	4

Official Box Score
Samford vs UT Martin
Third Quarter Statistics Only
November 21, 2019 at Kathleen and Tom Elam Center - Martin, Tenn.



Samford 37

No.	Player	S	Pts	FG	3FG	FT	OR	DR	TR	PF	A	TO	Blk	Stl	Min	+/-
03	BATTLE, SHAUNTAI	G	3	1-2	0-0	1-2	2	0	2	0	1	0	0	0	10	5
12	BROWN, CHARITY	G	4	1-2	0-0	2-2	0	3	3	0	2	1	0	1	10	5
25	MYERS, SARAH	G	5	1-4	0-1	3-3	1	2	3	0	0	2	0	2	10	5
35	FITZGERALD, SAMANTHA	F	0	0-0	0-0	0-0	1	0	1	1	0	0	0	1	7	6
45	ARMSTRONG, NATALIE	C	0	0-1	0-1	0-0	0	0	0	1	0	0	0	0	2	-5
11	SERUP, PAIGE	G	6	2-5	2-4	0-0	0	1	1	1	0	0	0	1	8	10
14	CARTER, CHRISTEN	F	0	0-2	0-0	0-0	0	0	0	1	0	0	0	0	3	-1
15	HILL, TA'NAISHA	G	0	0-0	0-0	0-0	0	0	0	0	0	0	0	0	0	0
32	CROZER, OLIVIA	F	0	0-0	0-0	0-0	0	0	0	0	0	0	0	0	0	0
TEAM							0	0	0	0	0	0	0	0	0	0
TOTALS			18	5-16	2-6	6-7	4	6	10	4	3	3	0	5	50	

Shooting By Period

Period	FG	FG%	3FG	3FG%	FT	FT%
5th Qtr	2-6	33%	1-5	20%	3-4	75%
2nd Half	2-6	33%	1-5	20%	3-4	75%
Game	26-59	44.1%	7-22	31.8%	16-23	69.6%

Deadball Rebounds: 6,0

UT Martin 47

No.	Player	S	Pts	FG	3FG	FT	OR	DR	TR	PF	A	TO	Blk	Stl	Min	+/-
13	STANFORD, TAMIAH	G	0	0-2	0-1	0-0	0	0	0	0	3	1	0	0	6	-2
15	MOORE, BRITTONI	F	2	1-2	0-1	0-0	0	1	1	0	0	0	0	2	10	-5
20	PERRY, CHELSEY	F	9	3-4	1-2	2-2	0	1	1	3	0	1	1	0	7	1
21	WALDROP, MADDIE	F	0	0-0	0-0	0-0	0	2	2	1	0	1	0	0	6	-6
22	GRIFFIN, DAMIAH	F	2	1-3	0-0	0-0	1	1	2	0	0	1	0	0	7	-7
00	DAVIS, EMMA	G	0	0-0	0-0	0-0	1	0	1	0	0	0	0	0	5	-3
02	HUDSON, SADE'	G	0	0-1	0-0	0-0	0	0	0	0	1	0	0	0	2	-1
11	YOUNG, DASIA	F	0	0-0	0-0	0-0	0	0	0	1	0	0	0	0	1	0
31	GRANT, KYANNAH	G	0	0-1	0-1	0-0	1	1	2	0	0	2	0	0	4	-3
33	BURDICK, DEMI	F	0	0-2	0-0	0-0	1	1	2	1	0	1	1	0	3	1
TEAM							0	0	0	0	0	0	0	0	0	
TOTALS			13	5-15	1-5	2-2	4	7	11	6	4	7	2	2	50	

Shooting By Period

Period	FG	FG%	3FG	3FG%	FT	FT%
5th Qtr	4-7	57%	0-0	0%	5-6	83%
2nd Half	4-7	57%	0-0	0%	5-6	83%
Game	29-68	42.6%	8-21	38.1%	14-18	77.8%

Deadball Rebounds: 2,0

Game Notes:

Officials: Joshua Hall, Trey Miles, Brooke Shoulders
Attendance: 1511

Start Time: 07:02 PM ET
End Time: 09:16 PM ET
Game Duration: 2:13

Score	1st	2nd	3rd	4th	5th	TOT
SAM	23	15	18	11	8	75
UTM	18	15	13	21	13	80

Points from (This Period)	SAM	UTM
In the Paint	4	4
Off Turns	4	5
2nd Chance	0	0
Fast Break	9	2
Bench	6	0

**Official Play-By-Play
Samford vs UT Martin
Third Quarter**

November 21, 2019 at Kathleen and Tom Elam Center - Martin, Tenn.



Period 3

Starters:

Samford: 12 BROWN, CHARITY (G); 25 MYERS, SARAH (G); 35 FITZGERALD, SAMANTHA (F); 45 ARMSTRONG, NATALIE (C); 3 BATTLE, SHAUNTAI (G);
UT Martin: 13 STANFORD, TAMIAH (G); 15 MOORE, BRITNI (F); 20 PERRY, CHELSEY (F); 21 WALDROP, MADDIE (F); 22 GRIFFIN, DAMIAH (F);

Time	VISITORS: Samford	Score	Margin	HOME: UT Martin
10:00				SUB OUT: HUDSON, SADE'
10:00				SUB IN: MOORE, BRITNI
10:00	SUB OUT: SERUP, PAIGE			
10:00	SUB IN: ARMSTRONG, NATALIE			
09:46	FOUL (PERSONAL) by FITZGERALD, SAMANTHA			
09:43		35-38	V 3	GOOD! JUMPER by PERRY, CHELSEY
09:43				ASSIST by STANFORD, TAMIAH
09:13	TURNOVER (BADPASS) by BROWN, CHARITY			
09:13				STEAL by MOORE, BRITNI
08:59		38-38	T	GOOD! 3PTR by PERRY, CHELSEY
08:59				ASSIST by STANFORD, TAMIAH
08:35	MISSED 3PTR by ARMSTRONG, NATALIE			
08:32	REBOUND (OFF) by BATTLE, SHAUNTAI			
08:26	MISSED JUMPER by BROWN, CHARITY			
08:23	REBOUND (OFF) by FITZGERALD, SAMANTHA			
08:19	MISSED 3PTR by MYERS, SARAH			
08:17				REBOUND (DEF) by WALDROP, MADDIE
08:15	FOUL (PERSONAL) by ARMSTRONG, NATALIE			
07:54				TURNOVER (DRIBBLING) by WALDROP, MADDIE
07:54	SUB OUT: ARMSTRONG, NATALIE			
07:54	SUB IN: SERUP, PAIGE			
07:37	MISSED JUMPER by SERUP, PAIGE			
07:33				REBOUND (DEF) by MOORE, BRITNI
07:27				MISSED 3PTR by MOORE, BRITNI
07:23	REBOUND (DEF) by BROWN, CHARITY			
07:17	GOOD! 3PTR by SERUP, PAIGE [FB]	38-41	V 3	
07:17	ASSIST by BROWN, CHARITY			
06:59				MISSED JUMPER by GRIFFIN, DAMIAH
06:56	REBOUND (DEF) by BROWN, CHARITY			
06:53	GOOD! 3PTR by SERUP, PAIGE [FB]	38-44	V 6	
06:53	ASSIST by BROWN, CHARITY			
06:40				TURNOVER (BADPASS) by STANFORD, TAMIAH
06:40	STEAL by FITZGERALD, SAMANTHA			
06:27	TURNOVER (LOSTBALL) by MYERS, SARAH			
06:27				SUB OUT: WALDROP, MADDIE
06:27				SUB OUT: GRIFFIN, DAMIAH
06:27				SUB IN: DAVIS, EMMA
06:27				SUB IN: YOUNG, DASIA
06:10				MISSED 3PTR by STANFORD, TAMIAH
06:07	REBOUND (DEF) by BROWN, CHARITY			
06:00	GOOD! JUMPER by BROWN, CHARITY	38-46	V 8	
05:40		40-46	V 6	GOOD! LAYUP by PERRY, CHELSEY
05:40				ASSIST by STANFORD, TAMIAH
05:13				FOUL (PERSONAL) by YOUNG, DASIA
05:13				SUB OUT: YOUNG, DASIA
05:13				SUB OUT: STANFORD, TAMIAH
05:13				SUB IN: GRANT, KYANNAH
05:13				SUB IN: BURDICK, DEMI
05:13	SUB OUT: FITZGERALD, SAMANTHA			
05:13	SUB IN: CARTER, CHRISTEN			
05:06				FOUL (PERSONAL) by PERRY, CHELSEY
05:06	GOOD! FT by MYERS, SARAH	40-47	V 7	
05:06	GOOD! FT by MYERS, SARAH	40-48	V 8	
04:51	FOUL (PERSONAL) by CARTER, CHRISTEN			
04:51		41-48	V 7	GOOD! FT by PERRY, CHELSEY
04:51		42-48	V 6	GOOD! FT by PERRY, CHELSEY
04:34	TURNOVER (BADPASS) by MYERS, SARAH			
04:34				STEAL by MOORE, BRITNI
04:29		44-48	V 4	GOOD! LAYUP by MOORE, BRITNI [FB]
04:18	MISSED JUMPER by CARTER, CHRISTEN			
04:18				BLOCK by PERRY, CHELSEY
04:14				REBOUND (DEF) by PERRY, CHELSEY
04:07				FOUL (OFF) by PERRY, CHELSEY
04:07				TURNOVER (OFFENSIVE) by PERRY, CHELSEY
03:53	MISSED LAYUP by MYERS, SARAH			
03:53				BLOCK by BURDICK, DEMI
03:50				REBOUND (DEF) by BURDICK, DEMI
03:36				MISSED 3PTR by GRANT, KYANNAH
03:31				REBOUND (OFF) by DAVIS, EMMA

Time	VISITORS: Samford	Score	Margin	HOME: UT Martin
03:26				MISSED 3PTR by PERRY, CHELSEY
03:24				REBOUND (OFF) by GRANT, KYANNAH
03:23	FOUL (PERSONAL) by SERUP, PAIGE			
03:20				MISSED JUMPER by BURDICK, DEMI
03:16				REBOUND (OFF) by BURDICK, DEMI
03:16				TURNOVER (LOSTBALL) by BURDICK, DEMI
03:16	STEAL by SERUP, PAIGE			
03:04				FOUL (PERSONAL) by PERRY, CHELSEY
03:04				SUB OUT: PERRY, CHELSEY
03:04				SUB IN: GRIFFIN, DAMIAH
03:04	MISSED FT by BATTLE, SHAUNTAI			
03:04	REBOUND (OFF) by TEAM			
03:04	GOOD! FT by BATTLE, SHAUNTAI	44-49	V 5	
02:58				TURNOVER (LOSTBALL) by GRANT, KYANNAH
02:58	STEAL by MYERS, SARAH			
02:52	MISSED 3PTR by SERUP, PAIGE			
02:47	REBOUND (OFF) by MYERS, SARAH			
02:38	MISSED LAYUP by CARTER, CHRISTEN			
02:36				REBOUND (DEF) by GRANT, KYANNAH
02:28				MISSED JUMPER by BURDICK, DEMI
02:26				REBOUND (OFF) by GRIFFIN, DAMIAH
02:25				MISSED JUMPER by GRIFFIN, DAMIAH
02:22	REBOUND (DEF) by MYERS, SARAH			
02:04				FOUL (PERSONAL) by BURDICK, DEMI
02:04				SUB OUT: BURDICK, DEMI
02:04				SUB IN: WALDROP, MADDIE
02:04	SUB OUT: CARTER, CHRISTEN			
02:04	SUB IN: FITZGERALD, SAMANTHA			
02:04	GOOD! FT by BROWN, CHARITY	44-50	V 6	
02:04	GOOD! FT by BROWN, CHARITY	44-51	V 7	
01:57				TURNOVER (LOSTBALL) by GRIFFIN, DAMIAH
01:57	STEAL by MYERS, SARAH			
01:53	MISSED LAYUP by MYERS, SARAH			
01:49	REBOUND (OFF) by BATTLE, SHAUNTAI			
01:48	MISSED LAYUP by BATTLE, SHAUNTAI			
01:45				REBOUND (DEF) by WALDROP, MADDIE
01:42				TURNOVER (BADPASS) by GRANT, KYANNAH
01:42	STEAL by BROWN, CHARITY			
01:37	GOOD! LAYUP by MYERS, SARAH [FB]	44-53	V 9	
01:37	ASSIST by BATTLE, SHAUNTAI			
01:37				FOUL (PERSONAL) by WALDROP, MADDIE
01:37				SUB OUT: DAVIS, EMMA
01:37				SUB OUT: GRANT, KYANNAH
01:37				SUB IN: HUDSON, SADE'
01:37				SUB IN: STANFORD, TAMI'AH
01:37	GOOD! FT by MYERS, SARAH [FB]	44-54	V 10	
01:15				MISSED JUMPER by STANFORD, TAMI'AH
01:11	REBOUND (DEF) by SERUP, PAIGE			
01:01	GOOD! LAYUP by BATTLE, SHAUNTAI	44-56	V 12	
00:51				MISSED JUMPER by HUDSON, SADE'
00:48	REBOUND (DEF) by MYERS, SARAH			
00:31	MISSED 3PTR by SERUP, PAIGE			
00:28				REBOUND (DEF) by GRIFFIN, DAMIAH
00:04		46-56	V 10	GOOD! JUMPER by GRIFFIN, DAMIAH
00:04				ASSIST by HUDSON, SADE'

Samford 56, UT Martin 46

Points from (This Period)	SAM	UTM
In the Paint	4	4
Off Turns	4	5
2nd Chance	0	0
Fast Break	9	2
Bench	6	0

Official Box Score
Samford vs UT Martin
Fourth Quarter Statistics Only
November 21, 2019 at Kathleen and Tom Elam Center - Martin, Tenn.



Samford 11

No.	Player	S	Pts	FG	3FG	FT	OR	DR	TR	PF	A	TO	Blk	Stl	Min	+/-
03	BATTLE, SHAUNTAI	G	2	1-1	0-0	0-0	0	1	1	0	0	1	1	0	10	-10
12	BROWN, CHARITY	G	5	1-3	1-1	2-4	0	3	3	1	1	3	0	0	10	-10
25	MYERS, SARAH	G	1	0-1	0-0	1-2	0	1	1	1	2	2	0	0	8	-9
35	FITZGERALD, SAMANTHA	F	2	1-2	0-0	0-0	0	1	1	2	0	0	0	0	10	-8
45	ARMSTRONG, NATALIE	C	1	0-1	0-0	1-2	0	2	2	1	0	2	0	0	2	-3
11	SERUP, PAIGE	G	0	0-0	0-0	0-0	0	1	1	1	0	1	0	0	10	-10
14	CARTER, CHRISTEN	F	0	0-0	0-0	0-0	0	0	0	0	0	0	0	0	0	0
15	HILL, TA'NAISHA	G	0	0-0	0-0	0-0	0	0	0	0	0	0	0	0	0	0
32	CROZER, OLIVIA	F	0	0-0	0-0	0-0	0	0	0	0	0	0	0	0	0	0
TEAM							0	0	0	0	0	0	0	0	0	0
TOTALS			11	3-8	1-1	4-8	0	9	9	6	3	9	1	0	50	

Shooting By Period

Period	FG	FG%	3FG	3FG%	FT	FT%
Game	26-59	44.1%	7-22	31.8%	16-23	69.6%

Deadball Rebounds: 6,0

UT Martin 21

No.	Player	S	Pts	FG	3FG	FT	OR	DR	TR	PF	A	TO	Blk	Stl	Min	+/-
13	STANFORD, TAMIAH	G	0	0-1	0-0	0-0	0	1	1	3	1	0	0	1	10	10
15	MOORE, BRITNI	F	6	2-4	2-3	0-0	1	1	2	1	1	1	0	3	10	10
20	PERRY, CHELSEY	F	0	0-1	0-0	0-0	0	1	1	0	0	0	0	0	2	0
21	WALDROP, MADDIE	F	0	0-2	0-2	0-0	0	3	3	0	0	0	0	0	9	9
22	GRIFFIN, DAMIAH	F	11	3-5	0-0	5-6	1	0	1	1	1	0	0	1	10	9
00	DAVIS, EMMA	G	0	0-0	0-0	0-0	0	0	0	0	0	0	0	0	0	0
02	HUDSON, SADE'	G	4	1-4	0-0	2-2	0	0	0	0	0	0	0	2	9	12
11	YOUNG, DASIA	F	0	0-0	0-0	0-0	0	0	0	0	0	0	0	0	0	0
31	GRANT, KYANNAH	G	0	0-0	0-0	0-0	0	0	0	0	0	0	0	0	0	0
33	BURDICK, DEMI	F	0	0-0	0-0	0-0	0	0	0	0	0	0	0	0	0	0
TEAM							0	0	0	0	0	1	0	0	0	
TOTALS			21	6-17	2-5	7-8	2	6	8	5	3	2	0	7	50	

Shooting By Period

Period	FG	FG%	3FG	3FG%	FT	FT%
Game	29-68	42.6%	8-21	38.1%	14-18	77.8%

Deadball Rebounds: 2,0

Game Notes:

Officials: Joshua Hall, Trey Miles, Brooke Shoulders
 Attendance: 1511

Start Time: 07:02 PM ET
 End Time: 09:16 PM ET
 Game Duration: 2:13

Score	1st	2nd	3rd	4th	5th	TOT
SAM	23	15	18	11	8	75
UTM	18	15	13	21	13	80

Points from (This Period)	SAM	UTM
In the Paint	4	6
Off Turns	0	10
2nd Chance	0	2
Fast Break	3	9
Bench	0	4

**Official Play-By-Play
Samford vs UT Martin
Fourth Quarter**

November 21, 2019 at Kathleen and Tom Elam Center - Martin, Tenn.



Period 4

Starters:

Samford: 12 BROWN, CHARITY (G); 25 MYERS, SARAH (G); 35 FITZGERALD, SAMANTHA (F); 45 ARMSTRONG, NATALIE (C); 3 BATTLE, SHAUNTAI (G);
UT Martin: 13 STANFORD, TAMIAH (G); 15 MOORE, BRITNI (F); 20 PERRY, CHELSEY (F); 21 WALDROP, MADDIE (F); 22 GRIFFIN, DAMIAH (F);

Time	VISITORS: Samford	Score	Margin	HOME: UT Martin
10:00	SUB OUT: MYERS, SARAH			
10:00	SUB IN: ARMSTRONG, NATALIE			
09:44	MISSED LAYUP by ARMSTRONG, NATALIE			
09:39				REBOUND (DEF) by WALDROP, MADDIE
09:34				MISSED JUMPER by GRIFFIN, DAMIAH
09:29	REBOUND (DEF) by ARMSTRONG, NATALIE			
09:19	TURNOVER (LOSTBALL) by ARMSTRONG, NATALIE			
08:59				MISSED 3PTR by WALDROP, MADDIE
08:56	REBOUND (DEF) by BROWN, CHARITY			
08:34				FOUL (PERSONAL) by GRIFFIN, DAMIAH
08:34	MISSED FT by ARMSTRONG, NATALIE			
08:34	REBOUND (OFF) by TEAM			
08:34	GOOD! FT by ARMSTRONG, NATALIE	46-57	V 11	
08:19				MISSED 3PTR by MOORE, BRITNI
08:15	REBOUND (DEF) by FITZGERALD, SAMANTHA			
08:10	TURNOVER (LOSTBALL) by BROWN, CHARITY			
08:10				STEAL by HUDSON, SADE'
08:05		48-57	V 9	GOOD! LAYUP by HUDSON, SADE' [FB]
08:01	TURNOVER (BADPASS) by BROWN, CHARITY			
08:01				STEAL by HUDSON, SADE'
08:01	FOUL (PERSONAL) by SERUP, PAIGE			
08:01	SUB OUT: FITZGERALD, SAMANTHA			
08:01	SUB IN: MYERS, SARAH			
07:45				MISSED JUMPER by HUDSON, SADE'
07:41				REBOUND (OFF) by MOORE, BRITNI
07:39				MISSED JUMPER by MOORE, BRITNI
07:36	REBOUND (DEF) by ARMSTRONG, NATALIE			
07:35	TURNOVER (LOSTBALL) by ARMSTRONG, NATALIE			
07:35				STEAL by GRIFFIN, DAMIAH
07:33				MISSED LAYUP by GRIFFIN, DAMIAH
07:33				REBOUND (OFF) by GRIFFIN, DAMIAH
07:33	FOUL (PERSONAL) by ARMSTRONG, NATALIE			
07:33		49-57	V 8	GOOD! FT by GRIFFIN, DAMIAH [FB]
07:33		50-57	V 7	GOOD! FT by GRIFFIN, DAMIAH [FB]
07:33	SUB OUT: ARMSTRONG, NATALIE			
07:33	SUB IN: FITZGERALD, SAMANTHA			
07:31	TURNOVER (BADPASS) by MYERS, SARAH			
07:31				STEAL by MOORE, BRITNI
07:29				FOUL (OFF) by MOORE, BRITNI
07:29				TURNOVER (OFFENSIVE) by MOORE, BRITNI
07:23	TURNOVER (BADPASS) by BATTLE, SHAUNTAI			
07:23				STEAL by MOORE, BRITNI
07:11		52-57	V 5	GOOD! JUMPER by GRIFFIN, DAMIAH
07:00	TURNOVER (LOSTBALL) by SERUP, PAIGE			
07:00				STEAL by MOORE, BRITNI
06:38				MISSED JUMPER by HUDSON, SADE'
06:38	BLOCK by BATTLE, SHAUNTAI			
06:34	REBOUND (DEF) by SERUP, PAIGE			
06:33	GOOD! LAYUP by FITZGERALD, SAMANTHA [FB]	52-59	V 7	
06:33	ASSIST by MYERS, SARAH			
06:32	TIMEOUT 30SEC			
06:19		55-59	V 4	GOOD! 3PTR by MOORE, BRITNI
06:19				ASSIST by GRIFFIN, DAMIAH
05:51				FOUL (PERSONAL) by STANFORD, TAMIAH
05:51	GOOD! FT by MYERS, SARAH	55-60	V 5	
05:51	MISSED FT by MYERS, SARAH			
05:51				REBOUND (DEF) by WALDROP, MADDIE
05:36	FOUL (PERSONAL) by FITZGERALD, SAMANTHA			
05:31				MISSED JUMPER by HUDSON, SADE'
05:28	REBOUND (DEF) by MYERS, SARAH			
05:21	TURNOVER (BADPASS) by BROWN, CHARITY			
05:21				STEAL by STANFORD, TAMIAH
05:15		57-60	V 3	GOOD! LAYUP by GRIFFIN, DAMIAH [FB]
05:15				ASSIST by MOORE, BRITNI
04:41				FOUL (PERSONAL) by STANFORD, TAMIAH
04:41				
04:41	MISSED FT by BROWN, CHARITY			
04:41	REBOUND (OFF) by TEAM			
04:41	GOOD! FT by BROWN, CHARITY	57-61	V 4	
04:20		59-61	V 2	GOOD! JUMPER by GRIFFIN, DAMIAH [PNT]

Time	VISITORS: Samford	Score	Margin	HOME: UT Martin
03:48	TURNOVER (LOSTBALL) by MYERS, SARAH			
03:27	FOUL (PERSONAL) by MYERS, SARAH			
03:27		60-61	V 1	GOOD! FT by GRIFFIN, DAMIAH
03:27		61-61	T	GOOD! FT by GRIFFIN, DAMIAH
03:23	MISSED LAYUP by BROWN, CHARITY			
03:19				REBOUND (DEF) by WALDROP, MADDIE
03:17		64-61	H 3	GOOD! 3PTR by MOORE, BRITTN [FB]
03:17				ASSIST by STANFORD, TAMIAH
03:02	GOOD! 3PTR by BROWN, CHARITY	64-64	T	
03:02	ASSIST by MYERS, SARAH			
02:43				MISSED 3PTR by WALDROP, MADDIE
02:40	REBOUND (DEF) by BROWN, CHARITY			
02:28	MISSED JUMPER by BROWN, CHARITY			
02:24				REBOUND (DEF) by MOORE, BRITTN
02:18				MISSED JUMPER by STANFORD, TAMIAH
02:15	REBOUND (DEF) by BATTLE, SHAUNTAI			
02:13				FOUL (PERSONAL) by STANFORD, TAMIAH
02:13				SUB OUT: GRIFFIN, DAMIAH
02:13				SUB IN: PERRY, CHELSEY
02:13	MISSED FT by BROWN, CHARITY			
02:13	REBOUND (OFF) by TEAM			
02:13	GOOD! FT by BROWN, CHARITY [FB]	64-65	V 1	
02:00	FOUL (PERSONAL) by BROWN, CHARITY			
02:00		65-65	T	GOOD! FT by HUDSON, SADE'
02:00		66-65	H 1	GOOD! FT by HUDSON, SADE'
02:00				SUB OUT: HUDSON, SADE'
02:00				SUB IN: GRIFFIN, DAMIAH
01:45	GOOD! LAYUP by BATTLE, SHAUNTAI	66-67	V 1	
01:45	ASSIST by BROWN, CHARITY			
01:23				MISSED JUMPER by PERRY, CHELSEY
01:20	REBOUND (DEF) by BROWN, CHARITY			
01:09	MISSED JUMPER by MYERS, SARAH			
01:06				REBOUND (DEF) by PERRY, CHELSEY
00:56	FOUL (PERSONAL) by FITZGERALD, SAMANTHA			
00:56				SUB OUT: WALDROP, MADDIE
00:56				SUB IN: HUDSON, SADE'
00:56				MISSED FT by GRIFFIN, DAMIAH
00:56				REBOUND (OFF) by TEAM
00:56		67-67	T	GOOD! FT by GRIFFIN, DAMIAH
00:35	MISSED JUMPER by FITZGERALD, SAMANTHA			
00:31				REBOUND (DEF) by STANFORD, TAMIAH
00:01				TURNOVER (SHOTCLOCK) by TEAM
00:01	TIMEOUT TEAM			
00:01				SUB OUT: HUDSON, SADE'
00:01				SUB IN: WALDROP, MADDIE

Samford 67, UT Martin 67

Points from (This Period)	SAM	UTM
In the Paint	4	6
Off Turns	0	10
2nd Chance	0	2
Fast Break	3	9
Bench	0	4

Official Box Score
Samford vs UT Martin
Overtime Statistics Only
November 21, 2019 at Kathleen and Tom Elam Center - Martin, Tenn.



Samford 8

No.	Player	S	Pts	FG	3FG	FT	OR	DR	TR	PF	A	TO	Blk	Stl	Min	+/-
11	SERUP, PAIGE	G	0	0-0	0-0	0-0	1	0	1	2	1	0	0	0	5	-5
12	BROWN, CHARITY	G	6	1-1	1-1	3-4	0	2	2	0	1	1	0	0	5	-5
14	CARTER, CHRISTEN	F	0	0-0	0-0	0-0	0	0	0	0	0	0	0	0	0	0
15	HILL, TA'NAISHA	G	0	0-0	0-0	0-0	0	0	0	0	0	0	0	0	0	0
25	MYERS, SARAH	G	0	0-3	0-3	0-0	0	0	0	1	0	1	0	0	5	-5
32	CROZER, OLIVIA	F	0	0-0	0-0	0-0	0	0	0	0	0	0	0	0	0	0
35	FITZGERALD, SAMANTHA	F	0	0-0	0-0	0-0	0	0	0	0	0	0	0	0	3	-2
45	ARMSTRONG, NATALIE	C	2	1-1	0-0	0-0	0	1	1	0	0	0	0	0	2	-3
03	BATTLE, SHAUNTAI	G	0	0-1	0-1	0-0	0	0	0	0	0	1	0	0	5	-5
	TEAM		0	0-0	0-0	0-0	0	0	0	0	0	0	0	0	0	0
	TOTALS		8	2-6	1-5	3-4	1	3	4	3	2	3	0	0	25	

Shooting By Period

Period	FG	FG%	3FG	3FG%	FT	FT%
5th Qtr	2-6	33%	1-5	20%	3-4	75%
2nd Half	2-6	33%	1-5	20%	3-4	75%
Game	26-59	44.1%	7-22	31.8%	16-23	69.6%

Deadball Rebounds: 6,0

Last FG Half: SAM 5th-01:40

UT Martin 13

No.	Player	S	Pts	FG	3FG	FT	OR	DR	TR	PF	A	TO	Blk	Stl	Min	+/-
00	DAVIS, EMMA	G	0	0-0	0-0	0-0	0	0	0	0	0	0	0	0	0	0
02	HUDSON, SADE'	G	2	1-2	0-0	0-0	0	1	1	0	0	0	0	1	3	1
11	YOUNG, DASIA	F	0	0-0	0-0	0-0	0	0	0	0	0	0	0	0	0	0
13	STANFORD, TAMIAH	G	2	0-0	0-0	2-2	0	1	1	0	0	0	0	0	5	5
15	MOORE, BRITTNI	F	0	0-0	0-0	0-0	0	0	0	2	1	0	0	0	5	5
20	PERRY, CHELSEY	F	9	3-3	0-0	3-4	0	1	1	0	0	0	0	0	5	5
21	WALDROP, MADDIE	F	0	0-0	0-0	0-0	0	0	0	0	0	1	0	0	2	4
22	GRIFFIN, DAMIAH	F	0	0-2	0-0	0-0	0	0	0	0	0	0	0	2	5	5
31	GRANT, KYANNAH	G	0	0-0	0-0	0-0	0	0	0	0	0	0	0	0	0	0
33	BURDICK, DEMI	F	0	0-0	0-0	0-0	0	0	0	0	0	0	0	0	0	0
	TEAM		0	0-0	0-0	0-0	0	0	0	0	0	0	0	0	0	0
	TOTALS		13	4-7	0-0	5-6	0	3	3	2	1	1	0	3	25	

Shooting By Period

Period	FG	FG%	3FG	3FG%	FT	FT%
5th Qtr	4-7	57%	0-0	0%	5-6	83%
2nd Half	4-7	57%	0-0	0%	5-6	83%
Game	29-68	42.6%	8-21	38.1%	14-18	77.8%

Deadball Rebounds: 2,0

Last FG Half: UTM 5th-00:18

Game Notes:

Officials: Joshua Hall, Trey Miles, Brooke Shoulders

Attendance: 1511

Start Time: 07:02 PM ET

End Time: 09:16 PM ET

Game Duration: 2:13

Score	1st	2nd	3rd	4th	5th	TOT
SAM	23	15	18	11	8	75
UTM	18	15	13	21	13	80

Points from (This Period)	SAM	UTM
In the Paint	2	8
Off Turns	0	4
2nd Chance	0	0
Fast Break	3	6
Bench	0	2

Official Play-By-Play
Samford vs UT Martin
Overtime
November 21, 2019 at Kathleen and Tom Elam Center - Martin, Tenn.



Period 5

Starters:

Samford: 12 BROWN, CHARITY (G); 25 MYERS, SARAH (G); 35 FITZGERALD, SAMANTHA (F); 45 ARMSTRONG, NATALIE (C); 3 BATTLE, SHAUNTAI (G);

UT Martin: 13 STANFORD, TAMIAH (G); 15 MOORE, BRITTONI (F); 20 PERRY, CHELSEY (F); 21 WALDROP, MADDIE (F); 22 GRIFFIN, DAMIAH (F);

Time	VISITORS: Samford	Score	Margin	HOME: UT Martin
04:44				MISSED JUMPER by GRIFFIN, DAMIAH
04:41	REBOUND (DEF) by BROWN, CHARITY			
04:24	GOOD! 3PTR by BROWN, CHARITY	67-70	V 3	
04:24	ASSIST by SERUP, PAIGE			
04:01	FOUL (PERSONAL) by MYERS, SARAH			
04:01				MISSED FT by PERRY, CHELSEY
04:01				REBOUND (OFF) by TEAM
04:01		68-70	V 2	GOOD! FT by PERRY, CHELSEY
04:01				SUB OUT: WALDROP, MADDIE
04:01				SUB IN: HUDSON, SADE'
03:49	MISSED 3PTR by MYERS, SARAH			
03:45	REBOUND (OFF) by SERUP, PAIGE			
03:36	MISSED 3PTR by MYERS, SARAH			
03:32				REBOUND (DEF) by HUDSON, SADE'
03:11		70-70	T	GOOD! JUMPER by PERRY, CHELSEY [PNT]
03:04	TURNOVER (BADPASS) by MYERS, SARAH			
03:04				STEAL by HUDSON, SADE'
02:51				MISSED JUMPER by GRIFFIN, DAMIAH
02:47	REBOUND (DEF) by BROWN, CHARITY			
02:28	MISSED 3PTR by BATTLE, SHAUNTAI			
02:24				REBOUND (DEF) by STANFORD, TAMIAH
02:18		72-70	H 2	GOOD! LAYUP by PERRY, CHELSEY [FB]
02:18				ASSIST by MOORE, BRITTONI
02:13				FOUL (PERSONAL) by MOORE, BRITTONI
02:13	SUB OUT: FITZGERALD, SAMANTHA			
02:13	SUB IN: ARMSTRONG, NATALIE			
02:13	GOOD! FT by BROWN, CHARITY [FB]	72-71	H 1	
02:13	GOOD! FT by BROWN, CHARITY [FB]	72-72	T	
01:52		74-72	H 2	GOOD! JUMPER by HUDSON, SADE' [PNT]
01:40	GOOD! JUMPER by ARMSTRONG, NATALIE	74-74	T	
01:40	ASSIST by BROWN, CHARITY			
01:17				MISSED JUMPER by HUDSON, SADE'
01:14	REBOUND (DEF) by ARMSTRONG, NATALIE			
01:10				FOUL (PERSONAL) by MOORE, BRITTONI
01:10	MISSED FT by BROWN, CHARITY			
01:10	REBOUND (OFF) by TEAM			
01:10	GOOD! FT by BROWN, CHARITY [FB]	74-75	V 1	
01:10				SUB OUT: HUDSON, SADE'
01:10				SUB IN: WALDROP, MADDIE
01:01				TURNOVER (LOSTBALL) by WALDROP, MADDIE
00:44	TIMEOUT 30SEC			
00:39	TURNOVER (BADPASS) by BATTLE, SHAUNTAI			
00:39				STEAL by GRIFFIN, DAMIAH
00:18		76-75	H 1	GOOD! JUMPER by PERRY, CHELSEY
00:18	TIMEOUT 30SEC			
00:18	TURNOVER (BADPASS) by BROWN, CHARITY			
00:18				STEAL by GRIFFIN, DAMIAH
00:14	FOUL (PERSONAL) by SERUP, PAIGE			
00:14		77-75	H 2	GOOD! FT by STANFORD, TAMIAH [FB]
00:14		78-75	H 3	GOOD! FT by STANFORD, TAMIAH [FB]
00:14	TIMEOUT 30SEC			
00:10	MISSED 3PTR by MYERS, SARAH			
00:07				REBOUND (DEF) by PERRY, CHELSEY
00:06	FOUL (PERSONAL) by SERUP, PAIGE			
00:06		79-75	H 4	GOOD! FT by PERRY, CHELSEY [FB]
00:06		80-75	H 5	GOOD! FT by PERRY, CHELSEY [FB]
00:06				TIMEOUT 30SEC
00:06				SUB OUT: WALDROP, MADDIE
00:06				SUB IN: HUDSON, SADE'

Samford 75, UT Martin 80

Points from (This Period)	SAM	UTM
In the Paint	2	8
Off Turns	0	4
2nd Chance	0	0
Fast Break	3	6
Bench	0	2

**Official Scoring/Possession Reference Chart
Samford vs UT Martin
Period 1**



November 21, 2019 at Kathleen and Tom Elam Center - Martin, Tenn.

Period 1

Starters:

Samford: 12 BROWN, CHARITY (G); 25 MYERS, SARAH (G); 35 FITZGERALD, SAMANTHA (F); 45 ARMSTRONG, NATALIE (C); 3 BATTLE, SHAUNTAI (G);
UT Martin: 13 STANFORD, TAMIAH (G); 15 MOORE, BRITNI (F); 20 PERRY, CHELSEY (F); 21 WALDROP, MADDIE (F); 22 GRIFFIN, DAMIAH (F);

Time	VISITORS: Samford	Score	Margin	HOME: UT Martin
09:29	GOOD! LAYUP by ARMSTRONG, NATALIE	0-2	V 2	
08:52	GOOD! LAYUP by FITZGERALD, SAMANTHA	0-4	V 4	
08:09	GOOD! 3PTR by FITZGERALD, SAMANTHA	0-7	V 7	
07:35	GOOD! LAYUP by ARMSTRONG, NATALIE	0-9	V 9	
07:19		2-9	V 7	GOOD! LAYUP by PERRY, CHELSEY
06:38		5-9	V 4	GOOD! 3PTR by STANFORD, TAMIAH
06:24	GOOD! LAYUP by ARMSTRONG, NATALIE	5-11	V 6	
05:55		7-11	V 4	GOOD! JUMPER by HUDSON, SADE' [PNT]
05:39	GOOD! FT by MYERS, SARAH	7-12	V 5	
05:39	GOOD! FT by MYERS, SARAH	7-13	V 6	
04:29		9-13	V 4	GOOD! JUMPER by STANFORD, TAMIAH [FB/PNT]
03:46	GOOD! LAYUP by ARMSTRONG, NATALIE	9-15	V 6	
03:26	GOOD! LAYUP by ARMSTRONG, NATALIE	9-17	V 8	
03:16		11-17	V 6	GOOD! LAYUP by YOUNG, DASIA
03:06	GOOD! LAYUP by ARMSTRONG, NATALIE [FB]	11-19	V 8	
02:55		14-19	V 5	GOOD! 3PTR by WALDROP, MADDIE
02:19		16-19	V 3	GOOD! JUMPER by WALDROP, MADDIE
01:02	GOOD! JUMPER by CROZER, OLIVIA	16-21	V 5	
00:37		18-21	V 3	GOOD! JUMPER by PERRY, CHELSEY
00:24	GOOD! LAYUP by MYERS, SARAH	18-23	V 5	

Samford 23, UT Martin 18

**Official Scoring/Possession Reference Chart
Samford vs UT Martin
Period 2**



November 21, 2019 at Kathleen and Tom Elam Center - Martin, Tenn.

Period 2

Starters:

Samford: 12 BROWN, CHARITY (G); 25 MYERS, SARAH (G); 35 FITZGERALD, SAMANTHA (F); 45 ARMSTRONG, NATALIE (C); 3 BATTLE, SHAUNTAI (G);
UT Martin: 13 STANFORD, TAMIAH (G); 15 MOORE, BRITNI (F); 20 PERRY, CHELSEY (F); 21 WALDROP, MADDIE (F); 22 GRIFFIN, DAMIAH (F);

Time	VISITORS: Samford	Score	Margin	HOME: UT Martin
09:28	GOOD! FT by MYERS, SARAH	18-24	V 6	
08:23	GOOD! 3PTR by BATTLE, SHAUNTAI	18-27	V 9	
08:08		21-27	V 6	GOOD! 3PTR by GRIFFIN, DAMIAH
07:52	GOOD! LAYUP by MYERS, SARAH [FB]	21-29	V 8	
07:44		24-29	V 5	GOOD! 3PTR by PERRY, CHELSEY
05:53		27-29	V 2	GOOD! 3PTR by PERRY, CHELSEY
05:22		29-29	T	GOOD! JUMPER by PERRY, CHELSEY
05:01	GOOD! 3PTR by BROWN, CHARITY	29-32	V 3	
03:52		31-32	V 1	GOOD! LAYUP by HUDSON, SADE'
03:17		33-32	H 1	GOOD! LAYUP by PERRY, CHELSEY
02:18	GOOD! LAYUP by CARTER, CHRISTEN	33-34	V 1	
01:46	GOOD! LAYUP by MYERS, SARAH	33-36	V 3	
01:21	GOOD! LAYUP by BATTLE, SHAUNTAI	33-38	V 5	

Samford 38, UT Martin 33

**Official Scoring/Possession Reference Chart
Samford vs UT Martin
Period 3**



November 21, 2019 at Kathleen and Tom Elam Center - Martin, Tenn.

Period 3

Starters:

Samford: 12 BROWN, CHARITY (G); 25 MYERS, SARAH (G); 35 FITZGERALD, SAMANTHA (F); 45 ARMSTRONG, NATALIE (C); 3 BATTLE, SHAUNTAI (G);
UT Martin: 13 STANFORD, TAMIAH (G); 15 MOORE, BRITNI (F); 20 PERRY, CHELSEY (F); 21 WALDROP, MADDIE (F); 22 GRIFFIN, DAMIAH (F);

Time	VISITORS: Samford	Score	Margin	HOME: UT Martin
09:43		35-38	V 3	GOOD! JUMPER by PERRY, CHELSEY
08:59		38-38	T	GOOD! 3PTR by PERRY, CHELSEY
07:17	GOOD! 3PTR by SERUP, PAIGE [FB]	38-41	V 3	
06:53	GOOD! 3PTR by SERUP, PAIGE [FB]	38-44	V 6	
06:00	GOOD! JUMPER by BROWN, CHARITY	38-46	V 8	
05:40		40-46	V 6	GOOD! LAYUP by PERRY, CHELSEY
05:06	GOOD! FT by MYERS, SARAH	40-47	V 7	
05:06	GOOD! FT by MYERS, SARAH	40-48	V 8	
04:51		41-48	V 7	GOOD! FT by PERRY, CHELSEY
04:51		42-48	V 6	GOOD! FT by PERRY, CHELSEY
04:29		44-48	V 4	GOOD! LAYUP by MOORE, BRITNI [FB]
03:04	GOOD! FT by BATTLE, SHAUNTAI	44-49	V 5	
02:04	GOOD! FT by BROWN, CHARITY	44-50	V 6	
02:04	GOOD! FT by BROWN, CHARITY	44-51	V 7	
01:37	GOOD! LAYUP by MYERS, SARAH [FB]	44-53	V 9	
01:37	GOOD! FT by MYERS, SARAH [FB]	44-54	V 10	
01:01	GOOD! LAYUP by BATTLE, SHAUNTAI	44-56	V 12	
00:04		46-56	V 10	GOOD! JUMPER by GRIFFIN, DAMIAH

Samford 56, UT Martin 46

**Official Scoring/Possession Reference Chart
Samford vs UT Martin
Period 4**



November 21, 2019 at Kathleen and Tom Elam Center - Martin, Tenn.

Period 4

Starters:

Samford: 12 BROWN, CHARITY (G); 25 MYERS, SARAH (G); 35 FITZGERALD, SAMANTHA (F); 45 ARMSTRONG, NATALIE (C); 3 BATTLE, SHAUNTAI (G);
UT Martin: 13 STANFORD, TAMIAH (G); 15 MOORE, BRITTONI (F); 20 PERRY, CHELSEY (F); 21 WALDROP, MADDIE (F); 22 GRIFFIN, DAMIAH (F);

Time	VISITORS: Samford	Score	Margin	HOME: UT Martin
08:34	GOOD! FT by ARMSTRONG, NATALIE	46-57	V 11	
08:05		48-57	V 9	GOOD! LAYUP by HUDSON, SADE' [FB]
07:33		49-57	V 8	GOOD! FT by GRIFFIN, DAMIAH [FB]
07:33		50-57	V 7	GOOD! FT by GRIFFIN, DAMIAH [FB]
07:11		52-57	V 5	GOOD! JUMPER by GRIFFIN, DAMIAH
06:33	GOOD! LAYUP by FITZGERALD, SAMANTHA [FB]	52-59	V 7	
06:19		55-59	V 4	GOOD! 3PTR by MOORE, BRITTONI
05:51	GOOD! FT by MYERS, SARAH	55-60	V 5	
05:15		57-60	V 3	GOOD! LAYUP by GRIFFIN, DAMIAH [FB]
04:41	GOOD! FT by BROWN, CHARITY	57-61	V 4	
04:20		59-61	V 2	GOOD! JUMPER by GRIFFIN, DAMIAH [PNT]
03:27		60-61	V 1	GOOD! FT by GRIFFIN, DAMIAH
03:27		61-61	T	GOOD! FT by GRIFFIN, DAMIAH
03:17		64-61	H 3	GOOD! 3PTR by MOORE, BRITTONI [FB]
03:02	GOOD! 3PTR by BROWN, CHARITY	64-64	T	
02:13	GOOD! FT by BROWN, CHARITY [FB]	64-65	V 1	
02:00		65-65	T	GOOD! FT by HUDSON, SADE'
02:00		66-65	H 1	GOOD! FT by HUDSON, SADE'
01:45	GOOD! LAYUP by BATTLE, SHAUNTAI	66-67	V 1	
00:56		67-67	T	GOOD! FT by GRIFFIN, DAMIAH

Samford 67, UT Martin 67

**Official Scoring/Possession Reference Chart
Samford vs UT Martin
Period 5**



November 21, 2019 at Kathleen and Tom Elam Center - Martin, Tenn.

Period 5

Starters:

Samford: 12 BROWN, CHARITY (G); 25 MYERS, SARAH (G); 35 FITZGERALD, SAMANTHA (F); 45 ARMSTRONG, NATALIE (C); 3 BATTLE, SHAUNTAI (G);
UT Martin: 13 STANFORD, TAMIAH (G); 15 MOORE, BRITNI (F); 20 PERRY, CHELSEY (F); 21 WALDROP, MADDIE (F); 22 GRIFFIN, DAMIAH (F);

Time	VISITORS: Samford	Score	Margin	HOME: UT Martin
04:24	GOOD! 3PTR by BROWN, CHARITY	67-70	V 3	
04:01		68-70	V 2	GOOD! FT by PERRY, CHELSEY
03:11		70-70	T	GOOD! JUMPER by PERRY, CHELSEY [PNT]
02:18		72-70	H 2	GOOD! LAYUP by PERRY, CHELSEY [FB]
02:13	GOOD! FT by BROWN, CHARITY [FB]	72-71	H 1	
02:13	GOOD! FT by BROWN, CHARITY [FB]	72-72	T	
01:52		74-72	H 2	GOOD! JUMPER by HUDSON, SADE' [PNT]
01:40	GOOD! JUMPER by ARMSTRONG, NATALIE	74-74	T	
01:10	GOOD! FT by BROWN, CHARITY [FB]	74-75	V 1	
00:18		76-75	H 1	GOOD! JUMPER by PERRY, CHELSEY
00:14		77-75	H 2	GOOD! FT by STANFORD, TAMIAH [FB]
00:14		78-75	H 3	GOOD! FT by STANFORD, TAMIAH [FB]
00:06		79-75	H 4	GOOD! FT by PERRY, CHELSEY [FB]
00:06		80-75	H 5	GOOD! FT by PERRY, CHELSEY [FB]

Samford 75, UT Martin 80

Official Substitutions Log
Samford vs UT Martin
Period 1
November 21, 2019 at Kathleen and Tom Elam Center - Martin, Tenn.



VISITORS: Samford	Time	Score	HOME: UT Martin
12 BROWN, CHARITY			13 STANFORD, TAMIAH
25 MYERS, SARAH			15 MOORE, BRITNI
35 FITZGERALD, SAMANTHA			20 PERRY, CHELSEY
45 ARMSTRONG, NATALIE			21 WALDROP, MADDIE
3 BATTLE, SHAUNTAI			22 GRIFFIN, DAMIAH
	05:59	11-5	SUB OUT: MOORE, BRITNI
	05:59		SUB IN: HUDSON, SADE'
	04:29	13-9	SUB OUT: PERRY, CHELSEY
	04:29		SUB IN: YOUNG, DASIA
SUB OUT: 3 BATTLE, SHAUNTAI	04:29		
SUB OUT: 35 FITZGERALD, SAMANTHA	04:29		
SUB IN: 11 SERUP, PAIGE	04:29		
SUB IN: 15 HILL, TA'NAISHA	04:29		
	02:29	19-14	SUB OUT: GRIFFIN, DAMIAH
	02:29		SUB IN: PERRY, CHELSEY
SUB OUT: 45 ARMSTRONG, NATALIE	02:29		
SUB IN: 32 CROZER, OLIVIA	02:29		

Samford 23, UT Martin 18

Official Substitutions Log
Samford vs UT Martin
Period 2
November 21, 2019 at Kathleen and Tom Elam Center - Martin, Tenn.



VISITORS: Samford	Time	Score	HOME: UT Martin
12 BROWN, CHARITY			13 STANFORD, TAMIAH
25 MYERS, SARAH			15 MOORE, BRITTNI
35 FITZGERALD, SAMANTHA			20 PERRY, CHELSEY
45 ARMSTRONG, NATALIE			21 WALDROP, MADDIE
3 BATTLE, SHAUNTAI			22 GRIFFIN, DAMIAH
	10:00	-	SUB OUT: STANFORD, TAMIAH
	10:00		SUB OUT: WALDROP, MADDIE
	10:00		SUB IN: GRIFFIN, DAMIAH
	10:00		SUB IN: GRANT, KYANNAH
SUB OUT: 12 BROWN, CHARITY	10:00		
SUB OUT: 32 CROZER, OLIVIA	10:00		
SUB IN: 3 BATTLE, SHAUNTAI	10:00		
SUB IN: 45 ARMSTRONG, NATALIE	10:00		
SUB OUT: 15 HILL, TA'NAISHA	08:53	24-18	
SUB IN: 35 FITZGERALD, SAMANTHA	08:53		
	07:43	29-24	SUB OUT: HUDSON, SADE'
	07:43		SUB OUT: YOUNG, DASIA
	07:43		SUB IN: MOORE, BRITTNI
	07:43		SUB IN: WALDROP, MADDIE
SUB OUT: 45 ARMSTRONG, NATALIE	06:20	29-24	
SUB IN: 14 CARTER, CHRISTEN	06:20		
SUB OUT: 25 MYERS, SARAH	06:07	29-24	
SUB IN: 12 BROWN, CHARITY	06:07		
	04:34	32-29	SUB OUT: GRIFFIN, DAMIAH
	04:34		SUB IN: HUDSON, SADE'
SUB OUT: 35 FITZGERALD, SAMANTHA	04:34		
SUB IN: 25 MYERS, SARAH	04:34		
	01:39	36-33	SUB OUT: GRANT, KYANNAH
	01:39		SUB IN: STANFORD, TAMIAH
SUB OUT: 14 CARTER, CHRISTEN	01:39		
SUB IN: 35 FITZGERALD, SAMANTHA	01:39		
	00:32	38-33	SUB OUT: MOORE, BRITTNI
	00:32		SUB IN: GRIFFIN, DAMIAH

Samford 38, UT Martin 33

Official Substitutions Log
Samford vs UT Martin
Period 3
November 21, 2019 at Kathleen and Tom Elam Center - Martin, Tenn.



VISITORS: Samford	Time	Score	HOME: UT Martin
12 BROWN, CHARITY			13 STANFORD, TAMIAH
25 MYERS, SARAH			15 MOORE, BRITTONI
35 FITZGERALD, SAMANTHA			20 PERRY, CHELSEY
45 ARMSTRONG, NATALIE			21 WALDROP, MADDIE
3 BATTLE, SHAUNTAI			22 GRIFFIN, DAMIAH
	10:00	-	SUB OUT: HUDSON, SADE'
	10:00		SUB IN: MOORE, BRITTONI
SUB OUT: 11 SERUP, PAIGE	10:00		
SUB IN: 45 ARMSTRONG, NATALIE	10:00		
SUB OUT: 45 ARMSTRONG, NATALIE	07:54	38-38	
SUB IN: 11 SERUP, PAIGE	07:54		
	06:27	44-38	SUB OUT: WALDROP, MADDIE
	06:27		SUB OUT: GRIFFIN, DAMIAH
	06:27		SUB IN: DAVIS, EMMA
	06:27		SUB IN: YOUNG, DASIA
	05:13	46-40	SUB OUT: YOUNG, DASIA
	05:13		SUB OUT: STANFORD, TAMIAH
	05:13		SUB IN: GRANT, KYANNAH
	05:13		SUB IN: BURDICK, DEMI
SUB OUT: 35 FITZGERALD, SAMANTHA	05:13		
SUB IN: 14 CARTER, CHRISTEN	05:13		
	03:04	48-44	SUB OUT: PERRY, CHELSEY
	03:04		SUB IN: GRIFFIN, DAMIAH
	02:04	49-44	SUB OUT: BURDICK, DEMI
	02:04		SUB IN: WALDROP, MADDIE
SUB OUT: 14 CARTER, CHRISTEN	02:04		
SUB IN: 35 FITZGERALD, SAMANTHA	02:04		
	01:37	53-44	SUB OUT: DAVIS, EMMA
	01:37		SUB OUT: GRANT, KYANNAH
	01:37		SUB IN: HUDSON, SADE'
	01:37		SUB IN: STANFORD, TAMIAH

Samford 56, UT Martin 46

**Official Substitutions Log
Samford vs UT Martin
Period 4**



November 21, 2019 at Kathleen and Tom Elam Center - Martin, Tenn.

VISITORS: Samford	Time	Score	HOME: UT Martin
12 BROWN, CHARITY			13 STANFORD, TAMIAH
25 MYERS, SARAH			15 MOORE, BRITTNI
35 FITZGERALD, SAMANTHA			20 PERRY, CHELSEY
45 ARMSTRONG, NATALIE			21 WALDROP, MADDIE
3 BATTLE, SHAUNTAI			22 GRIFFIN, DAMIAH
SUB OUT: 25 MYERS, SARAH	10:00	-	
SUB IN: 45 ARMSTRONG, NATALIE	10:00		
SUB OUT: 35 FITZGERALD, SAMANTHA	08:01	57-48	
SUB IN: 25 MYERS, SARAH	08:01		
SUB OUT: 45 ARMSTRONG, NATALIE	07:33	57-50	
SUB IN: 35 FITZGERALD, SAMANTHA	07:33		
	02:13	64-64	SUB OUT: GRIFFIN, DAMIAH
	02:13		SUB IN: PERRY, CHELSEY
	02:00	65-66	SUB OUT: HUDSON, SADE'
	02:00		SUB IN: GRIFFIN, DAMIAH
	00:56	67-66	SUB OUT: WALDROP, MADDIE
	00:56		SUB IN: HUDSON, SADE'
	00:01	67-67	SUB OUT: HUDSON, SADE'
	00:01		SUB IN: WALDROP, MADDIE

Samford 67, UT Martin 67

Official Substitutions Log
Samford vs UT Martin
Period 5
November 21, 2019 at Kathleen and Tom Elam Center - Martin, Tenn.



VISITORS: Samford	Time	Score	HOME: UT Martin
12 BROWN, CHARITY			13 STANFORD, TAMIAH
25 MYERS, SARAH			15 MOORE, BRITNI
35 FITZGERALD, SAMANTHA			20 PERRY, CHELSEY
45 ARMSTRONG, NATALIE			21 WALDROP, MADDIE
3 BATTLE, SHAUNTAI			22 GRIFFIN, DAMIAH
	04:01	70-68	SUB OUT: WALDROP, MADDIE
	04:01		SUB IN: HUDSON, SADE'
SUB OUT: 35 FITZGERALD, SAMANTHA	02:13	70-72	
SUB IN: 45 ARMSTRONG, NATALIE	02:13		
	01:10	75-74	SUB OUT: HUDSON, SADE'
	01:10		SUB IN: WALDROP, MADDIE
	00:06	75-80	SUB OUT: WALDROP, MADDIE
	00:06		SUB IN: HUDSON, SADE'

Samford 75, UT Martin 80

Official Shot Chart
Samford vs UT Martin
PERIOD 1 Shots
 November 21, 2019 at Kathleen and Tom Elam Center - Martin, Tenn.



UT Martin

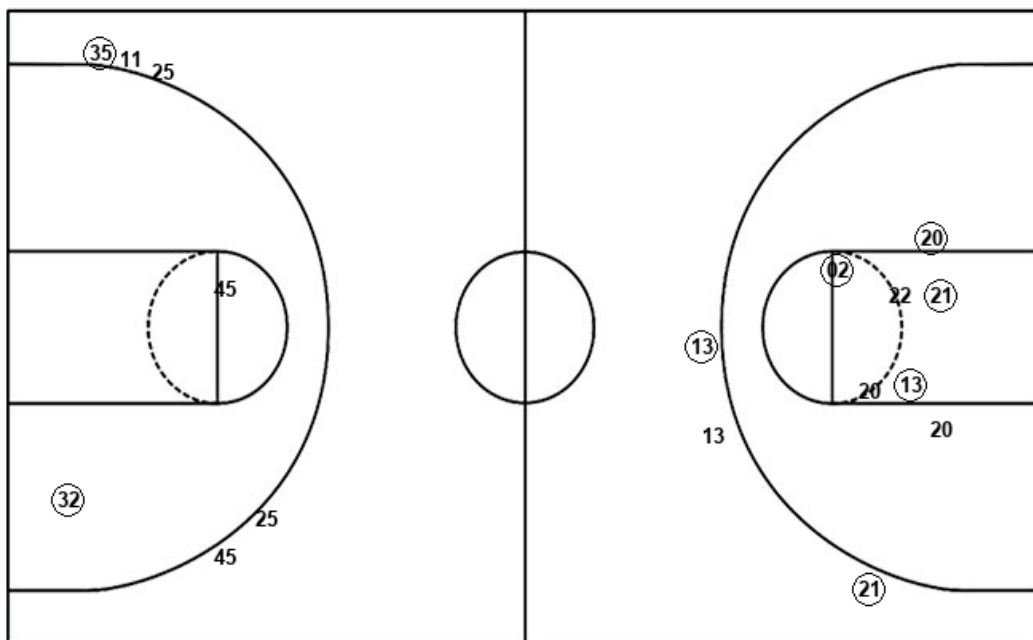
Samford

Layups
 21 21 (20) (11)

Layups
 (45) (35) (45) (45) (45)
 (45) (45) 25 (25)

Dunks

Dunks



UTM : Period 1	Made	Att	Pct
Layups	2	4	50.0
Dunks	0	0	0
2PT Field Goals	6	11	54.5
3PT Field Goals	2	3	66.7
Total Field Goals	8	14	57.1

SAM : Period 1	Made	Att	Pct
Layups	8	9	88.9
Dunks	0	0	0
2PT Field Goals	9	11	81.8
3PT Field Goals	1	5	20.0
Total Field Goals	10	16	62.5

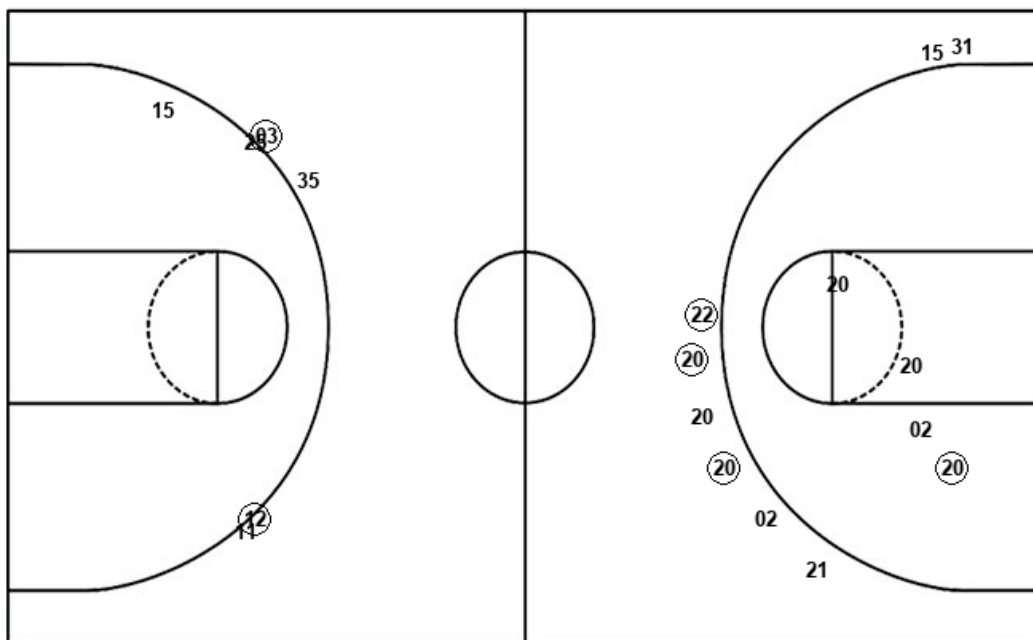
Official Shot Chart
Samford vs UT Martin
PERIOD 2 Shots
 November 21, 2019 at Kathleen and Tom Elam Center - Martin, Tenn.



UT Martin

Samford

Layups
 22 (02) (20)



Layups
 (25) 45 45 35 (14)
 (25) (03)

Dunks

Dunks

UTM : Period 2	Made	Att	Pct
Layups	2	3	66.7
Dunks	0	0	0
2PT Field Goals	3	7	42.9
3PT Field Goals	3	8	37.5
Total Field Goals	6	15	40.0

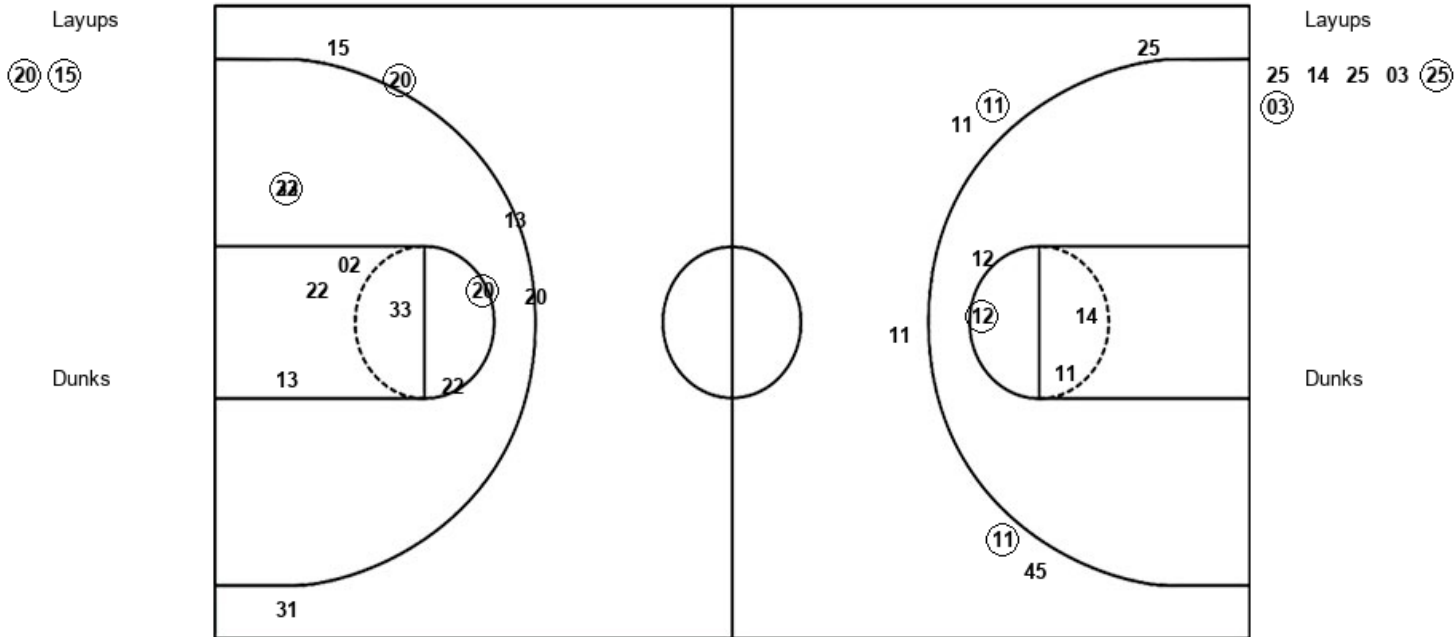
SAM : Period 2	Made	Att	Pct
Layups	4	7	57.1
Dunks	0	0	0
2PT Field Goals	4	8	50.0
3PT Field Goals	2	5	40.0
Total Field Goals	6	13	46.2

Official Shot Chart
Samford vs UT Martin
PERIOD 3 Shots
 November 21, 2019 at Kathleen and Tom Elam Center - Martin, Tenn.



UT Martin

Samford



UTM : Period 3	Made	Att	Pct
Layups	2	2	100.0
Dunks	0	0	0
2PT Field Goals	4	10	40.0
3PT Field Goals	1	5	20.0
Total Field Goals	5	15	33.3

SAM : Period 3	Made	Att	Pct
Layups	2	6	33.3
Dunks	0	0	0
2PT Field Goals	3	10	30.0
3PT Field Goals	2	6	33.3
Total Field Goals	5	16	31.3

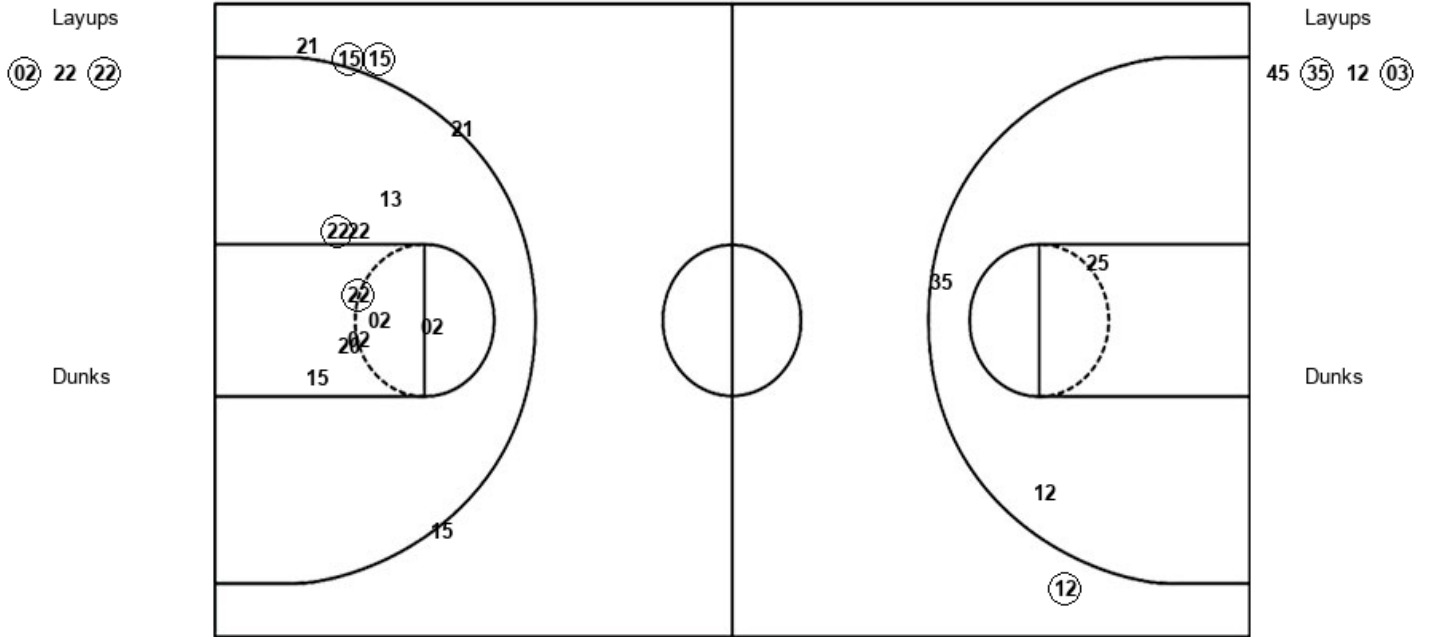
Official Shot Chart
Samford vs UT Martin
 PERIOD 4 Shots

November 21, 2019 at Kathleen and Tom Elam Center - Martin, Tenn.



UT Martin

Samford



UTM : Period 4	Made	Att	Pct
Layups	2	3	66.7
Dunks	0	0	0
2PT Field Goals	4	12	33.3
3PT Field Goals	2	5	40.0
Total Field Goals	6	17	35.3

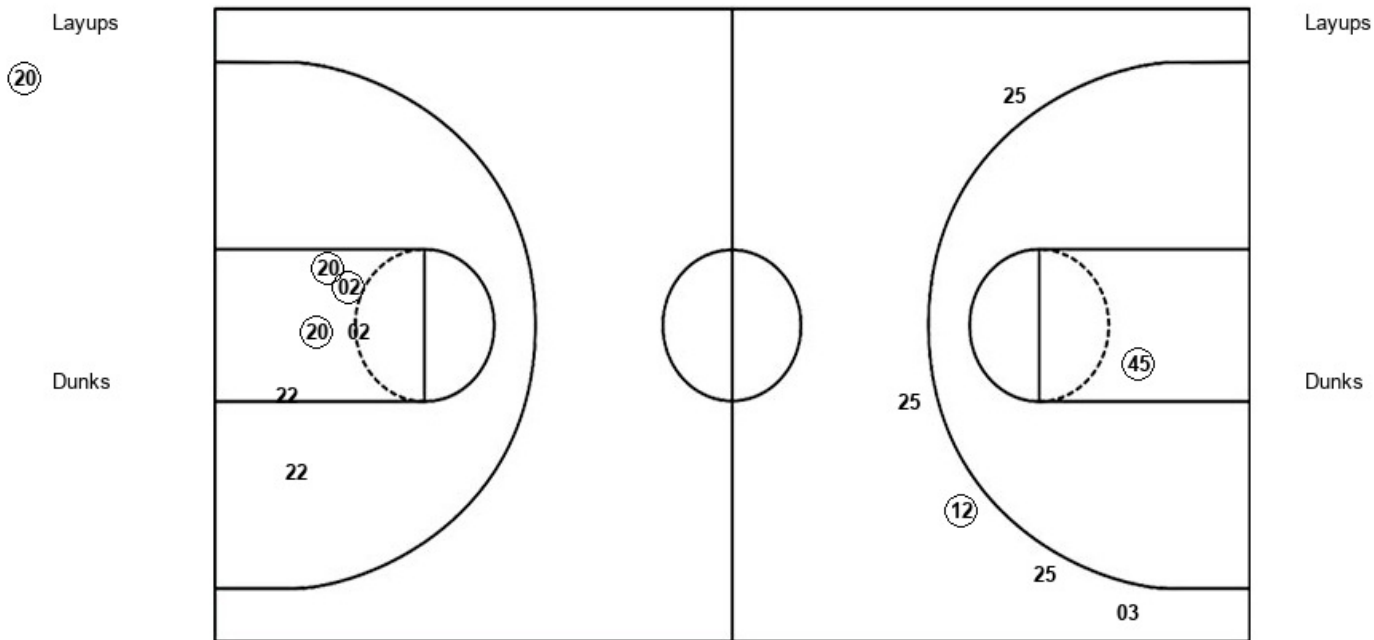
SAM : Period 4	Made	Att	Pct
Layups	2	4	50.0
Dunks	0	0	0
2PT Field Goals	2	7	28.6
3PT Field Goals	1	1	100.0
Total Field Goals	3	8	37.5

Official Shot Chart
Samford vs UT Martin
PERIOD 5 Shots
 November 21, 2019 at Kathleen and Tom Elam Center - Martin, Tenn.



UT Martin

Samford



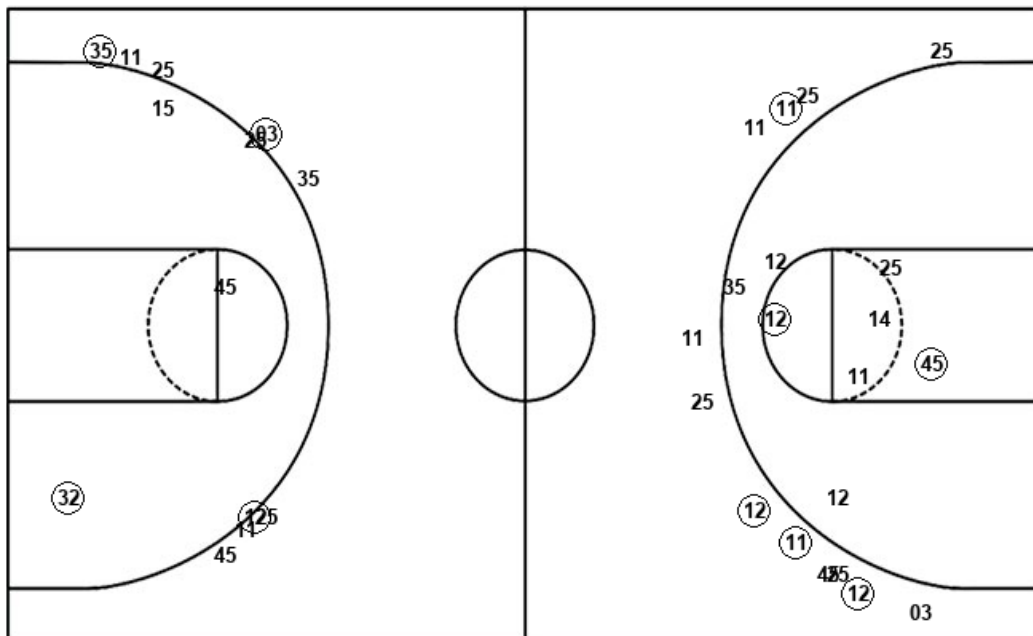
UTM : Period 5	Made	Att	Pct
Layups	1	1	100.0
Dunks	0	0	0
2PT Field Goals	4	7	57.1
3PT Field Goals	0	0	0
Total Field Goals	4	7	57.1

SAM : Period 5	Made	Att	Pct
Layups	0	0	0
Dunks	0	0	0
2PT Field Goals	1	1	100.0
3PT Field Goals	1	5	20.0
Total Field Goals	2	6	33.3

Official Shot Chart
Samford vs UT Martin
Samford Team Shots
 November 21, 2019 at Kathleen and Tom Elam Center - Martin, Tenn.



Layups



Layups

- (45) (35) (45) (45) (45)
- (45) (45) 25 (25) (25)
- 45 45 35 (14) (25)
- (03) 25 14 25 03
- (25) (03) 45 (35) 12
- (03)

Dunks

Dunks

SAM : Period 1	Made	Att	Pct
Layups	8	9	88.9
Dunks	0	0	0
2PT Field Goals	9	11	81.8
3PT Field Goals	1	5	20.0
Total Field Goals	10	16	62.5

SAM : Period 2	Made	Att	Pct
Layups	4	7	57.1
Dunks	0	0	0
2PT Field Goals	4	8	50.0
3PT Field Goals	2	5	40.0
Total Field Goals	6	13	46.2

SAM : Period 3	Made	Att	Pct
Layups	2	6	33.3
Dunks	0	0	0
2PT Field Goals	3	10	30.0
3PT Field Goals	2	6	33.3
Total Field Goals	5	16	31.3

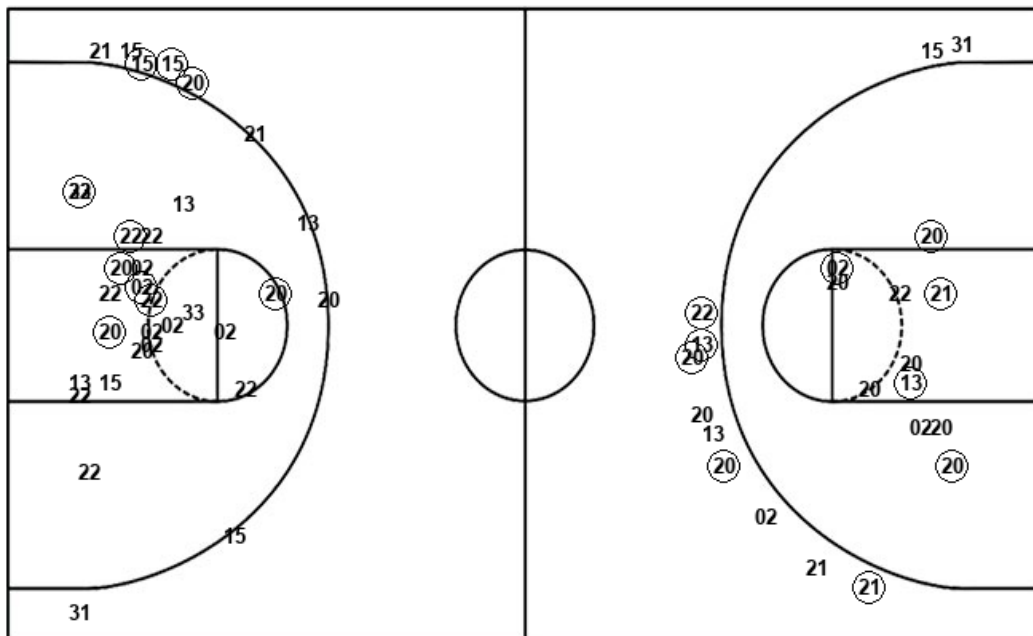
SAM : Period 4	Made	Att	Pct
Layups	2	4	50.0
Dunks	0	0	0
2PT Field Goals	2	7	28.6
3PT Field Goals	1	1	100.0
Total Field Goals	3	8	37.5

SAM : Period 5	Made	Att	Pct
Layups	0	0	0
Dunks	0	0	0
2PT Field Goals	1	1	100.0
3PT Field Goals	1	5	20.0
Total Field Goals	2	6	33.3

Official Shot Chart
Samford vs UT Martin
UT Martin Team Shots
 November 21, 2019 at Kathleen and Tom Elam Center - Martin, Tenn.



Layups



Dunks

Layups

21 21 (20) (11) 22
 (02) (20) (20) (15) (02)
 22 (22) (20)

Dunks

UTM : Period 1	Made	Att	Pct
Layups	2	4	50.0
Dunks	0	0	0
2PT Field Goals	6	11	54.5
3PT Field Goals	2	3	66.7
Total Field Goals	8	14	57.1

UTM : Period 2	Made	Att	Pct
Layups	2	3	66.7
Dunks	0	0	0
2PT Field Goals	3	7	42.9
3PT Field Goals	3	8	37.5
Total Field Goals	6	15	40.0

UTM : Period 3	Made	Att	Pct
Layups	2	2	100.0
Dunks	0	0	0
2PT Field Goals	4	10	40.0
3PT Field Goals	1	5	20.0
Total Field Goals	5	15	33.3

UTM : Period 4	Made	Att	Pct
Layups	2	3	66.7
Dunks	0	0	0
2PT Field Goals	4	12	33.3
3PT Field Goals	2	5	40.0
Total Field Goals	6	17	35.3

UTM : Period 5	Made	Att	Pct
Layups	1	1	100.0
Dunks	0	0	0
2PT Field Goals	4	7	57.1
3PT Field Goals	0	0	0
Total Field Goals	4	7	57.1