

## FINAL SCORE



**Alabama**

**74**



**South Alabama**

**62**

November 21, 2019 • Mitchell Center - Mobile

## FINAL STATISTICS

**Official Box Score**  
**Alabama vs South Alabama**  
**Game Totals -- Final Statistics**  
**November 21, 2019 at Mitchell Center - Mobile**



**Alabama 74**

No.	Player	S	Pts	FG	3FG	FT	OR	DR	TR	PF	A	TO	Blk	Stl	Min	+/-
01	ABRAMS, MEGAN	G	5	2-6	0-2	1-2	0	0	0	2	2	4	0	0	24	9
02	RICHARDSON, AMBER	G	2	0-5	0-0	2-2	4	1	5	1	3	2	0	2	13	4
03	LEWIS, JORDAN	G	11	3-7	0-3	5-8	1	0	1	2	1	0	0	3	30	-10
22	COPELAND, ARIYAH	F	7	3-7	0-0	1-4	3	3	6	2	0	2	1	1	22	5
40	WALKER, JASMINE	F	9	4-9	1-3	0-2	4	7	11	3	0	3	0	2	27	-3
04	JOHNSON, CIERRA	G	16	6-10	0-1	4-5	4	4	8	3	3	3	0	2	23	14
05	BARBER, HANNAH	G	4	1-2	1-2	1-2	0	0	0	1	0	1	0	0	12	18
12	CRUCE, ALLIE CRAIG	F	0	0-0	0-0	0-0	0	0	0	0	0	0	0	0	0	2
23	DAVIS, BRITTANY	G	2	1-6	0-3	0-0	0	1	1	1	1	1	0	3	16	6
24	BENJAMIN, DE'SHA	F	5	2-5	0-1	1-2	1	5	6	2	0	1	0	1	16	5
25	KNIGHT, ASHLEY	F	8	4-6	0-0	0-0	3	3	6	3	0	0	4	0	11	0
42	GIBSON, SHELBY	F	5	2-2	1-1	0-0	0	3	3	2	0	2	0	1	5	10
	TEAM						2	0	2	0		1				
	<b>TOTALS</b>		<b>74</b>	<b>28-65</b>	<b>3-16</b>	<b>15-27</b>	<b>22</b>	<b>27</b>	<b>49</b>	<b>22</b>	<b>10</b>	<b>20</b>	<b>5</b>	<b>15</b>	<b>200</b>	

*Shooting By Period*

Period	FG	FG%	3FG	3FG%	FT	FT%
1st Qtr	9-21	43%	1-5	20%	4-4	100%
2nd Qtr	6-12	50%	1-3	33%	5-8	63%
3rd Qtr	6-15	40%	0-5	00%	4-9	44%
4th Qtr	7-17	41%	1-3	33%	2-6	33%
1st Half	15-33	45%	2-8	25%	9-12	75%
2nd Half	13-32	41%	1-8	13%	6-15	40%
<b>Game</b>	<b>28-65</b>	<b>43.1%</b>	<b>3-16</b>	<b>18.8%</b>	<b>15-27</b>	<b>55.6%</b>

*Deadball Rebounds: 6,0*  
*Last FG: 4th-03:27*  
*Biggest Run: 11-0*  
*Largest lead: By 25 at 4-06*  
*Technical Fouls: None.*

**South Alabama 62**

No.	Player	S	Pts	FG	3FG	FT	OR	DR	TR	PF	A	TO	Blk	Stl	Min	+/-
02	KINES, SHAFORIA	G	29	8-14	6-12	7-8	0	1	1	2	4	5	0	3	38	-3
12	TELEMAQUE, DAMAYA	G	8	3-6	0-1	2-4	0	0	0	4	1	1	1	1	30	6
14	JONES, SAVANNAH	G	15	5-14	4-10	1-2	0	6	6	2	1	3	3	0	37	-8
23	BUSTER, JALA	F	3	1-4	1-1	0-0	1	4	5	4	2	1	0	2	27	3
35	LEWIS, ANTOINETTE	C	6	0-5	0-0	6-8	4	5	9	3	3	5	3	2	32	-1
03	MORROW, JAYLA	G	0	0-1	0-1	0-0	0	0	0	0	0	1	0	0	3	-12
04	VAUGHT, MAHOGANY	G	0	0-1	0-0	0-0	0	1	1	0	0	2	0	0	5	-8
21	FERGUSON, CASEY	G	1	0-0	0-0	1-2	0	2	2	0	0	3	0	0	13	-15
22	MALLARD, JAYLEN	F	0	0-2	0-0	0-0	0	1	1	2	0	0	1	0	8	-11
45	LOWE, DEVYN	G	0	0-3	0-1	0-0	1	0	1	1	0	2	0	0	7	-11
	TEAM						2	1	3	1		0				
	<b>TOTALS</b>		<b>62</b>	<b>17-50</b>	<b>11-26</b>	<b>17-24</b>	<b>8</b>	<b>21</b>	<b>29</b>	<b>19</b>	<b>11</b>	<b>23</b>	<b>8</b>	<b>8</b>	<b>200</b>	

*Shooting By Period*

Period	FG	FG%	3FG	3FG%	FT	FT%
1st Qtr	3-9	33%	2-6	33%	3-4	75%
2nd Qtr	5-11	45%	4-6	67%	5-6	83%
3rd Qtr	4-13	31%	1-6	17%	1-4	25%
4th Qtr	5-17	29%	4-8	50%	8-10	80%
1st Half	8-20	40%	6-12	50%	8-10	80%
2nd Half	9-30	30%	5-14	36%	9-14	64%
<b>Game</b>	<b>17-50</b>	<b>34.0%</b>	<b>11-26</b>	<b>42.3%</b>	<b>17-24</b>	<b>70.8%</b>

*Deadball Rebounds: 5,0*  
*Last FG: 4th-02:29*  
*Biggest Run: 9-0*  
*Largest lead: By 3 at 1-09*  
*Technical Fouls: None.*

Game Notes:

Officials: Pualani Spurlock, Joshua Howell, Missy Brooks  
Attendance: 1270

Start Time: 08:02 PM ET  
End Time: 10:09 PM ET  
Game Duration: 2:06

Score	1st	2nd	3rd	4th	TOT
BAM	23	18	16	17	<b>74</b>
USA	11	19	10	22	<b>62</b>

**BAM led for 36:19. USA led for 2:29.**  
**Game was tied for 1:12.**  
Times tied: 2      Lead Changes: 3

Points from	BAM	USA
In the Paint	46	10
Off Turns	26	16
2nd Chance	23	4
Fast Break	10	7
Bench	40	1

**Official Box Score**  
**Alabama vs South Alabama**  
**First Half Statistics Only**  
**November 21, 2019 at Mitchell Center - Mobile**



### Alabama 41

No.	Player	S	Pts	FG	3FG	FT	OR	DR	TR	PF	A	TO	Blk	Stl	Min	+/-
01	ABRAMS, MEGAN	G	2	1-4	0-1	0-0	0	0	0	0	2	3	0	0	13	2
02	RICHARDSON, AMBER	G	0	0-3	0-0	0-0	2	0	2	0	2	2	0	1	7	5
03	LEWIS, JORDAN	G	10	3-4	0-1	4-6	0	0	0	1	0	0	0	3	16	-3
04	JOHNSON, CIERRA	G	8	2-3	0-1	4-4	1	2	3	2	2	0	0	1	7	10
05	BARBER, HANNAH	G	4	1-1	1-1	1-2	0	0	0	0	0	1	0	0	6	10
12	CRUCE, ALLIE CRAIG	F	0	0-0	0-0	0-0	0	0	0	0	0	0	0	0	0	2
22	COPELAND, ARIYAH	F	4	2-5	0-0	0-0	3	1	4	2	0	1	0	1	10	1
23	DAVIS, BRITTANY	G	2	1-4	0-2	0-0	0	1	1	1	1	1	0	3	11	9
24	BENJAMIN, DE'SHA	F	2	1-2	0-0	0-0	1	1	2	1	0	0	0	1	9	9
25	KNIGHT, ASHLEY	F	2	1-2	0-0	0-0	1	1	2	0	0	0	0	0	5	3
40	WALKER, JASMINE	F	2	1-3	0-1	0-0	2	2	4	2	0	1	0	0	13	-3
42	GIBSON, SHELBY	F	5	2-2	1-1	0-0	0	2	2	2	0	2	0	1	3	10
	TEAM		0	0-0	0-0	0-0	1	0	1	0	0	0	0	0	0	0
<b>TOTALS</b>			<b>41</b>	<b>15-33</b>	<b>2-8</b>	<b>9-12</b>	<b>11</b>	<b>10</b>	<b>21</b>	<b>11</b>	<b>7</b>	<b>11</b>	<b>0</b>	<b>11</b>	<b>100</b>	

*Shooting By Period*

Period	FG	FG%	3FG	3FG%	FT	FT%
1st Qtr	9-21	43%	1-5	20%	4-4	100%
2nd Qtr	6-12	50%	1-3	33%	5-8	63%
1st Half	15-33	45%	2-8	25%	9-12	75%
Game	28-65	43.1%	3-16	18.8%	15-27	55.6%

Deadball Rebounds: 6,0  
 Last FG Half: BAM 2nd-00:22

### South Alabama 30

No.	Player	S	Pts	FG	3FG	FT	OR	DR	TR	PF	A	TO	Blk	Stl	Min	+/-
12	TELEMAQUE, DAMAYA	G	2	0-2	0-1	2-2	0	0	0	1	0	1	0	0	14	-2
14	JONES, SAVANNAH	G	9	3-7	2-4	1-2	0	3	3	1	1	3	3	0	18	-6
21	FERGUSON, CASEY	G	0	0-0	0-0	0-0	0	1	1	0	0	2	0	0	10	-13
22	MALLARD, JAYLEN	F	0	0-0	0-0	0-0	0	0	0	0	0	0	0	0	2	-7
23	BUSTER, JALA	F	3	1-2	1-1	0-0	1	0	1	2	2	0	0	2	10	2
35	LEWIS, ANTOINETTE	C	0	0-1	0-0	0-0	0	3	3	2	1	4	2	1	19	-4
45	LOWE, DEVYN	G	0	0-0	0-0	0-0	0	0	0	0	0	1	0	0	4	-3
02	KINES, SHAFORIA	G	16	4-6	3-5	5-6	0	0	0	1	2	2	0	1	18	-2
03	MORROW, JAYLA	G	0	0-1	0-1	0-0	0	0	0	0	0	1	0	0	3	-12
04	VAUGHT, MAHOGANY	G	0	0-1	0-0	0-0	0	1	1	0	0	1	0	0	3	-8
	TEAM		0	0-0	0-0	0-0	1	0	1	1	0	0	0	0	0	0
<b>TOTALS</b>			<b>30</b>	<b>8-20</b>	<b>6-12</b>	<b>8-10</b>	<b>2</b>	<b>8</b>	<b>10</b>	<b>8</b>	<b>6</b>	<b>15</b>	<b>5</b>	<b>4</b>	<b>100</b>	

*Shooting By Period*

Period	FG	FG%	3FG	3FG%	FT	FT%
1st Qtr	3-9	33%	2-6	33%	3-4	75%
2nd Qtr	5-11	45%	4-6	67%	5-6	83%
1st Half	8-20	40%	6-12	50%	8-10	80%
Game	17-50	34.0%	11-26	42.3%	17-24	70.8%

Deadball Rebounds: 5,0  
 Last FG Half: USA 2nd-01:41

Game Notes:

Officials: Pualani Spurlock, Joshua Howell, Missy Brooks  
 Attendance: 1270

Start Time: 08:02 PM ET  
 End Time: 10:09 PM ET  
 Game Duration: 2:06

Score	1st	2nd	3rd	4th	TOT
BAM	23	18	16	17	<b>74</b>
USA	11	19	10	22	<b>62</b>

Points from (This Period)	BAM	USA
In the Paint	24	4
Off Turns	19	8
2nd Chance	10	0
Fast Break	8	3
Bench	23	0

**Official Box Score**  
**Alabama vs South Alabama**  
**First Quarter Statistics Only**  
**November 21, 2019 at Mitchell Center - Mobile**



**Alabama 23**

No.	Player	S	Pts	FG	3FG	FT	OR	DR	TR	PF	A	TO	Blk	Stl	Min	+/-
01	ABRAMS, MEGAN	G	0	0-1	0-1	0-0	0	0	0	0	1	1	0	0	6	7
02	RICHARDSON, AMBER	G	0	0-1	0-0	0-0	2	0	2	0	2	2	0	0	4	-3
03	LEWIS, JORDAN	G	4	2-2	0-0	0-0	0	0	0	0	0	0	0	1	8	4
22	COPELAND, ARIYAH	F	4	2-5	0-0	0-0	3	0	3	1	0	0	0	1	6	5
40	WALKER, JASMINE	F	0	0-2	0-1	0-0	2	2	4	0	0	1	0	0	8	4
04	JOHNSON, CIERRA	G	6	1-2	0-1	4-4	1	0	1	2	1	0	0	1	4	7
05	BARBER, HANNAH	G	3	1-1	1-1	0-0	0	0	0	0	0	0	0	0	2	8
12	CRUCE, ALLIE CRAIG	F	0	0-0	0-0	0-0	0	0	0	0	0	0	0	0	0	0
23	DAVIS, BRITTANY	G	2	1-3	0-1	0-0	0	0	0	1	1	0	0	3	6	13
24	BENJAMIN, DE'SHA	F	2	1-2	0-0	0-0	1	1	2	0	0	0	0	0	3	6
25	KNIGHT, ASHLEY	F	0	0-1	0-0	0-0	0	0	0	0	0	0	0	0	2	5
42	GIBSON, SHELBY	F	2	1-1	0-0	0-0	0	1	1	1	0	1	0	0	1	4
TEAM							1	0	1	0						
<b>TOTALS</b>			<b>23</b>	<b>9-21</b>	<b>1-5</b>	<b>4-4</b>	<b>10</b>	<b>4</b>	<b>14</b>	<b>5</b>	<b>5</b>	<b>5</b>	<b>0</b>	<b>6</b>	<b>50</b>	

*Shooting By Period*

Period	FG	FG%	3FG	3FG%	FT	FT%
1st Qtr	9-21	43%	1-5	20%	4-4	100%
2nd Qtr	6-12	50%	1-3	33%	5-8	63%
1st Half	9-21	43%	1-5	20%	4-4	100%
1st Half	15-33	45%	2-8	25%	9-12	75%
Game	28-65	43.1%	3-16	18.8%	15-27	55.6%

*Deadball Rebounds: 6,0*

**South Alabama 11**

No.	Player	S	Pts	FG	3FG	FT	OR	DR	TR	PF	A	TO	Blk	Stl	Min	+/-
02	KINES, SHAFORIA	G	3	1-2	1-2	0-0	0	0	0	1	1	2	0	0	8	-3
12	TELEMAQUE, DAMAYA	G	2	0-1	0-1	2-2	0	0	0	0	0	1	0	0	9	-9
14	JONES, SAVANNAH	G	3	1-3	0-1	1-2	0	0	0	0	0	1	1	0	8	-7
23	BUSTER, JALA	F	3	1-1	1-1	0-0	1	0	1	2	1	0	0	1	5	0
35	LEWIS, ANTOINETTE	C	0	0-1	0-0	0-0	0	1	1	1	0	2	1	0	9	-7
03	MORROW, JAYLA	G	0	0-1	0-1	0-0	0	0	0	0	0	1	0	0	3	-12
04	VAUGHT, MAHOGANY	G	0	0-0	0-0	0-0	0	0	0	0	0	0	0	0	0	0
21	FERGUSON, CASEY	G	0	0-0	0-0	0-0	0	1	1	0	0	1	0	0	5	-12
22	MALLARD, JAYLEN	F	0	0-0	0-0	0-0	0	0	0	0	0	0	0	0	2	-5
45	LOWE, DEVYN	G	0	0-0	0-0	0-0	0	0	0	0	0	1	0	0	2	-5
TEAM							1	0	1	0						
<b>TOTALS</b>			<b>11</b>	<b>3-9</b>	<b>2-6</b>	<b>3-4</b>	<b>2</b>	<b>2</b>	<b>4</b>	<b>4</b>	<b>2</b>	<b>9</b>	<b>2</b>	<b>1</b>	<b>50</b>	

*Shooting By Period*

Period	FG	FG%	3FG	3FG%	FT	FT%
1st Qtr	3-9	33%	2-6	33%	3-4	75%
2nd Qtr	5-11	45%	4-6	67%	5-6	83%
1st Half	3-9	33%	2-6	33%	3-4	75%
1st Half	8-20	40%	6-12	50%	8-10	80%
Game	17-50	34.0%	11-26	42.3%	17-24	70.8%

*Deadball Rebounds: 5,0*

Game Notes:

Officials: Pualani Spurlock, Joshua Howell, Missy Brooks  
 Attendance: 1270

Start Time: 08:02 PM ET  
 End Time: 10:09 PM ET  
 Game Duration: 2:06

Score	1st	2nd	3rd	4th	TOT
BAM	23	18	16	17	<b>74</b>
USA	11	19	10	22	<b>62</b>

Points from (This Period)	BAM	USA
In the Paint	16	2
Off Turns	12	2
2nd Chance	8	0
Fast Break	6	2
Bench	15	0

**Official Play-By-Play**  
**Alabama vs South Alabama**  
**First Quarter**  
**November 21, 2019 at Mitchell Center - Mobile**



**Period 1**

**Starters:**

**Alabama:** 1 ABRAMS, MEGAN (G); 2 RICHARDSON, AMBER (G); 3 LEWIS, JORDAN (G); 22 COPELAND, ARIYAH (F); 40 WALKER, JASMINE (F);

**South Alabama:** 12 TELEMAQUE, DAMAYA (G); 14 JONES, SAVANNAH (G); 23 BUSTER, JALA (F); 35 LEWIS, ANTOINETTE (C); 2 KINES, SHAFORIA (G);

Time	VISITORS: Alabama	Score	Margin	HOME: South Alabama
09:44		3-0	H 3	GOOD! 3PTR by BUSTER, JALA
09:44				ASSIST by KINES, SHAFORIA
09:16	GOOD! LAYUP by COPELAND, ARIYAH	3-2	H 1	
09:16	ASSIST by RICHARDSON, AMBER			
08:58				MISSED 3PTR by TELEMAQUE, DAMAYA
08:56				REBOUND (OFF) by TEAM
08:36				MISSED LAYUP by LEWIS, ANTOINETTE
08:33	REBOUND (DEF) by WALKER, JASMINE			
08:29	TURNOVER (TRAVEL) by WALKER, JASMINE			
08:23				TURNOVER (LOSTBALL) by KINES, SHAFORIA
08:09	MISSED LAYUP by COPELAND, ARIYAH			
08:07	REBOUND (OFF) by COPELAND, ARIYAH			
08:05	MISSED LAYUP by COPELAND, ARIYAH			
08:05				BLOCK by JONES, SAVANNAH
08:02	REBOUND (OFF) by COPELAND, ARIYAH			
08:02	MISSED 3PTR by WALKER, JASMINE			
08:02	REBOUND (OFF) by RICHARDSON, AMBER			
07:53	MISSED 3PTR by ABRAMS, MEGAN			
07:49	REBOUND (OFF) by RICHARDSON, AMBER			
07:46	GOOD! LAYUP by COPELAND, ARIYAH	3-4	V 1	
07:46	ASSIST by RICHARDSON, AMBER			
07:22				MISSED 3PTR by KINES, SHAFORIA
07:19	REBOUND (DEF) by WALKER, JASMINE			
07:14	TURNOVER (LOSTBALL) by RICHARDSON, AMBER			
07:14				STEAL by BUSTER, JALA
07:08		5-4	H 1	GOOD! LAYUP by JONES, SAVANNAH [FB]
06:49	MISSED JUMPER by RICHARDSON, AMBER			
06:48	REBOUND (OFF) by TEAM			
06:48	SUB OUT: RICHARDSON, AMBER			
06:48	SUB IN: JOHNSON, CIERRA			
06:37				FOUL (PERSONAL) by BUSTER, JALA
06:37	GOOD! FT by JOHNSON, CIERRA	5-5	T	
06:37	GOOD! FT by JOHNSON, CIERRA	5-6	V 1	
06:37	SUB OUT: ABRAMS, MEGAN			
06:37	SUB IN: DAVIS, BRITTANY			
06:16				MISSED 3PTR by JONES, SAVANNAH
06:12				REBOUND (OFF) by BUSTER, JALA
06:10	FOUL (PERSONAL) by DAVIS, BRITTANY			
05:56				TURNOVER (LOSTBALL) by JONES, SAVANNAH
05:56	STEAL by DAVIS, BRITTANY			
05:51	GOOD! LAYUP by LEWIS, JORDAN [FB]	5-8	V 3	
05:51	ASSIST by DAVIS, BRITTANY			
05:29		8-8	T	GOOD! 3PTR by KINES, SHAFORIA
05:29				ASSIST by BUSTER, JALA
05:04	MISSED JUMPER by COPELAND, ARIYAH			
05:02	REBOUND (OFF) by JOHNSON, CIERRA			
05:01	MISSED 3PTR by JOHNSON, CIERRA			
04:58	REBOUND (OFF) by COPELAND, ARIYAH			
04:50	MISSED 3PTR by DAVIS, BRITTANY			
04:47	REBOUND (OFF) by WALKER, JASMINE			
04:45	MISSED LAYUP by WALKER, JASMINE			
04:39	REBOUND (OFF) by WALKER, JASMINE			
04:37				FOUL (PERSONAL) by BUSTER, JALA
04:37				SUB OUT: BUSTER, JALA
04:37				SUB IN: FERGUSON, CASEY
04:37				
04:37	SUB OUT: COPELAND, ARIYAH			
04:37	SUB IN: KNIGHT, ASHLEY			
04:33				FOUL (PERSONAL) by LEWIS, ANTOINETTE
04:33	GOOD! FT by JOHNSON, CIERRA	8-9	V 1	
04:33	GOOD! FT by JOHNSON, CIERRA	8-10	V 2	
04:16				TURNOVER (TRAVEL) by KINES, SHAFORIA
04:03	MISSED LAYUP by KNIGHT, ASHLEY			
04:03				BLOCK by LEWIS, ANTOINETTE
03:56				REBOUND (DEF) by FERGUSON, CASEY
03:49				TURNOVER (TRAVEL) by LEWIS, ANTOINETTE
03:49				SUB OUT: TELEMAQUE, DAMAYA
03:49				SUB IN: MORROW, JAYLA
03:33	GOOD! LAYUP by JOHNSON, CIERRA	8-12	V 4	
03:24				TURNOVER (BADPASS) by MORROW, JAYLA

Time	VISITORS: Alabama	Score	Margin	HOME: South Alabama
03:24	STEAL by JOHNSON, CIERRA			
03:19	GOOD! LAYUP by LEWIS, JORDAN [FB]	8-14	V 6	
03:19	ASSIST by JOHNSON, CIERRA			
02:58	FOUL (PERSONAL) by JOHNSON, CIERRA			
02:58	SUB OUT: LEWIS, JORDAN			
02:58	SUB OUT: WALKER, JASMINE			
02:58	SUB IN: BARBER, HANNAH			
02:58	SUB IN: BENJAMIN, DE'SHA			
02:57	FOUL (PERSONAL) by JOHNSON, CIERRA			
02:57	SUB OUT: JOHNSON, CIERRA			
02:57	SUB IN: ABRAMS, MEGAN			
02:57				MISSED FT by JONES, SAVANNAH
02:57				REBOUND (OFF) by TEAM
02:57		9-14	V 5	GOOD! FT by JONES, SAVANNAH
02:48				SUB OUT: KINES, SHAFORIA
02:48				SUB IN: TELEMAQUE, DAMAYA
02:48	SUB OUT: KNIGHT, ASHLEY			
02:48	SUB IN: GIBSON, SHELBY			
02:39	GOOD! LAYUP by GIBSON, SHELBY	9-16	V 7	
02:39	ASSIST by ABRAMS, MEGAN			
02:25				MISSED LAYUP by JONES, SAVANNAH
02:22	REBOUND (DEF) by GIBSON, SHELBY			
02:16	TURNOVER (TRAVEL) by ABRAMS, MEGAN			
02:16				SUB OUT: JONES, SAVANNAH
02:16				SUB IN: LOWE, DEVYN
02:06				TURNOVER (BADPASS) by FERGUSON, CASEY
02:06	STEAL by DAVIS, BRITTANY			
01:59	FOUL (OFF) by GIBSON, SHELBY			
01:59	TURNOVER (OFFENSIVE) by GIBSON, SHELBY			
01:59				SUB OUT: LEWIS, ANTOINETTE
01:59				SUB IN: MALLARD, JAYLEN
01:50				TURNOVER (LOSTBALL) by TELEMAQUE, DAMAYA
01:50	STEAL by DAVIS, BRITTANY			
01:47	GOOD! LAYUP by DAVIS, BRITTANY [FB]	9-18	V 9	
01:46				TIMEOUT 30SEC
01:46	SUB OUT: GIBSON, SHELBY			
01:46	SUB IN: COPELAND, ARIYAH			
01:36				MISSED 3PTR by MORROW, JAYLA
01:33	REBOUND (DEF) by BENJAMIN, DE'SHA			
01:26	GOOD! 3PTR by BARBER, HANNAH	9-21	V 12	
01:03				TURNOVER (BADPASS) by LOWE, DEVYN
01:03	STEAL by COPELAND, ARIYAH			
00:57	MISSED LAYUP by DAVIS, BRITTANY			
00:53	REBOUND (OFF) by BENJAMIN, DE'SHA			
00:53	GOOD! LAYUP by BENJAMIN, DE'SHA	9-23	V 14	
00:40	FOUL (PERSONAL) by COPELAND, ARIYAH			
00:40				SUB OUT: MORROW, JAYLA
00:40				SUB IN: KINES, SHAFORIA
00:40	SUB OUT: BARBER, HANNAH			
00:40	SUB IN: LEWIS, JORDAN			
00:40	SUB OUT: COPELAND, ARIYAH			
00:40	SUB OUT: DAVIS, BRITTANY			
00:40	SUB IN: RICHARDSON, AMBER			
00:40	SUB IN: WALKER, JASMINE			
00:40		10-23	V 13	GOOD! FT by TELEMAQUE, DAMAYA
00:40		11-23	V 12	GOOD! FT by TELEMAQUE, DAMAYA
00:29	TURNOVER (OTHER) by RICHARDSON, AMBER			
00:29				SUB OUT: MALLARD, JAYLEN
00:29				SUB IN: LEWIS, ANTOINETTE
00:14				TURNOVER (BADPASS) by LEWIS, ANTOINETTE
00:14	STEAL by LEWIS, JORDAN			
00:12				FOUL (PERSONAL) by KINES, SHAFORIA
00:12	SUB OUT: RICHARDSON, AMBER			
00:12	SUB IN: DAVIS, BRITTANY			
00:00	MISSED JUMPER by BENJAMIN, DE'SHA			
00:00				REBOUND (DEF) by LEWIS, ANTOINETTE

### Alabama 23, South Alabama 11

Points from (This Period)	BAM	USA
In the Paint	16	2
Off Turns	12	2
2nd Chance	8	0
Fast Break	6	2
Bench	15	0

**Official Box Score**  
**Alabama vs South Alabama**  
**Second Quarter Statistics Only**  
**November 21, 2019 at Mitchell Center - Mobile**



**Alabama 18**

No.	Player	S	Pts	FG	3FG	FT	OR	DR	TR	PF	A	TO	Blk	Stl	Min	+/-
01	ABRAMS, MEGAN	G	2	1-3	0-0	0-0	0	0	0	0	1	2	0	0	7	-5
02	RICHARDSON, AMBER	G	0	0-2	0-0	0-0	0	0	0	0	0	0	0	1	3	8
03	LEWIS, JORDAN	G	6	1-2	0-1	4-6	0	0	0	1	0	0	0	2	8	-7
22	COPELAND, ARIYAH	F	0	0-0	0-0	0-0	0	1	1	1	0	1	0	0	4	-4
40	WALKER, JASMINE	F	2	1-1	0-0	0-0	0	0	0	2	0	0	0	0	5	-7
04	JOHNSON, CIERRA	G	2	1-1	0-0	0-0	0	2	2	0	1	0	0	0	3	3
05	BARBER, HANNAH	G	1	0-0	0-0	1-2	0	0	0	0	0	1	0	0	4	2
12	CRUCE, ALLIE CRAIG	F	0	0-0	0-0	0-0	0	0	0	0	0	0	0	0	0	2
23	DAVIS, BRITTANY	G	0	0-1	0-1	0-0	0	1	1	0	0	1	0	0	5	-4
24	BENJAMIN, DE'SHA	F	0	0-0	0-0	0-0	0	0	0	1	0	0	0	1	6	3
25	KNIGHT, ASHLEY	F	2	1-1	0-0	0-0	1	1	2	0	0	0	0	0	3	-2
42	GIBSON, SHELBY	F	3	1-1	1-1	0-0	0	1	1	1	0	1	0	1	2	6
TEAM							0	0	0	0	0	0	0	0	0	0
<b>TOTALS</b>			<b>18</b>	<b>6-12</b>	<b>1-3</b>	<b>5-8</b>	<b>1</b>	<b>6</b>	<b>7</b>	<b>6</b>	<b>2</b>	<b>6</b>	<b>0</b>	<b>5</b>	<b>50</b>	

*Shooting By Period*

Period	FG	FG%	3FG	3FG%	FT	FT%
3rd Qtr	6-15	40%	0-5	00%	4-9	44%
4th Qtr	7-17	41%	1-3	33%	2-6	33%
2nd Half	6-12	50%	1-3	33%	5-8	63%
2nd Half	13-32	41%	1-8	13%	6-15	40%
Game	28-65	43.1%	3-16	18.8%	15-27	55.6%

*Deadball Rebounds: 6,0*

**South Alabama 19**

No.	Player	S	Pts	FG	3FG	FT	OR	DR	TR	PF	A	TO	Blk	Stl	Min	+/-
02	KINES, SHAFORIA	G	13	3-4	2-3	5-6	0	0	0	0	1	0	0	1	10	1
12	TELEMAQUE, DAMAYA	G	0	0-1	0-0	0-0	0	0	0	1	0	0	0	0	5	7
14	JONES, SAVANNAH	G	6	2-4	2-3	0-0	0	3	3	1	1	2	2	0	10	1
23	BUSTER, JALA	F	0	0-1	0-0	0-0	0	0	0	0	1	0	0	1	5	2
35	LEWIS, ANTOINETTE	C	0	0-0	0-0	0-0	0	2	2	1	1	2	1	1	10	3
03	MORROW, JAYLA	G	0	0-0	0-0	0-0	0	0	0	0	0	0	0	0	0	0
04	VAUGHT, MAHOGANY	G	0	0-1	0-0	0-0	0	1	1	0	0	1	0	0	3	-8
21	FERGUSON, CASEY	G	0	0-0	0-0	0-0	0	0	0	0	0	1	0	0	5	-1
22	MALLARD, JAYLEN	F	0	0-0	0-0	0-0	0	0	0	0	0	0	0	0	0	-2
45	LOWE, DEVYN	G	0	0-0	0-0	0-0	0	0	0	0	0	0	0	0	2	2
TEAM							0	0	0	1	0	0	0	0	0	
<b>TOTALS</b>			<b>19</b>	<b>5-11</b>	<b>4-6</b>	<b>5-6</b>	<b>0</b>	<b>6</b>	<b>6</b>	<b>4</b>	<b>4</b>	<b>6</b>	<b>3</b>	<b>3</b>	<b>50</b>	

*Shooting By Period*

Period	FG	FG%	3FG	3FG%	FT	FT%
3rd Qtr	4-13	31%	1-6	17%	1-4	25%
4th Qtr	5-17	29%	4-8	50%	8-10	80%
2nd Half	5-11	45%	4-6	67%	5-6	83%
2nd Half	9-30	30%	5-14	36%	9-14	64%
Game	17-50	34.0%	11-26	42.3%	17-24	70.8%

*Deadball Rebounds: 5,0*

Game Notes:

Officials: Pualani Spurlock, Joshua Howell, Missy Brooks  
Attendance: 1270

Start Time: 08:02 PM ET  
End Time: 10:09 PM ET  
Game Duration: 2:06

Score	1st	2nd	3rd	4th	TOT
BAM	23	18	16	17	<b>74</b>
USA	11	19	10	22	<b>62</b>

Points from (This Period)	BAM	USA
In the Paint	8	2
Off Turns	7	6
2nd Chance	2	0
Fast Break	2	1
Bench	8	0

**Official Play-By-Play**  
**Alabama vs South Alabama**  
**Second Quarter**  
**November 21, 2019 at Mitchell Center - Mobile**



**Period 2**

**Starters:**

**Alabama:** 1 ABRAMS, MEGAN (G); 2 RICHARDSON, AMBER (G); 3 LEWIS, JORDAN (G); 22 COPELAND, ARIYAH (F); 40 WALKER, JASMINE (F);

**South Alabama:** 12 TELEMAQUE, DAMAYA (G); 14 JONES, SAVANNAH (G); 23 BUSTER, JALA (F); 35 LEWIS, ANTOINETTE (C); 2 KINES, SHAFORIA (G);

Time	VISITORS: Alabama	Score	Margin	HOME: South Alabama
10:00				SUB OUT: LOWE, DEVYN
10:00				SUB IN: JONES, SAVANNAH
10:00	SUB OUT: BENJAMIN, DE'SHA			
10:00	SUB IN: COPELAND, ARIYAH			
09:56		14-23	V 9	GOOD! 3PTR by JONES, SAVANNAH
09:56				ASSIST by KINES, SHAFORIA
09:32				FOUL (PERSONAL) by TELEMAQUE, DAMAYA
09:32	MISSED FT by LEWIS, JORDAN			
09:32	REBOUND (OFF) by TEAM			
09:32	MISSED FT by LEWIS, JORDAN			
09:31				REBOUND (DEF) by LEWIS, ANTOINETTE
09:08		17-23	V 6	GOOD! 3PTR by KINES, SHAFORIA
09:08				ASSIST by JONES, SAVANNAH
08:52	GOOD! JUMPER by WALKER, JASMINE	17-25	V 8	
08:52	ASSIST by ABRAMS, MEGAN			
08:35				MISSED LAYUP by TELEMAQUE, DAMAYA
08:31	REBOUND (DEF) by COPELAND, ARIYAH			
08:25	GOOD! LAYUP by ABRAMS, MEGAN	17-27	V 10	
08:05				SUB OUT: TELEMAQUE, DAMAYA
08:05				SUB IN: LOWE, DEVYN
07:55		19-27	V 8	GOOD! LAYUP by KINES, SHAFORIA
07:55				ASSIST by LEWIS, ANTOINETTE
07:39	TURNOVER (BADPASS) by ABRAMS, MEGAN			
07:39				STEAL by LEWIS, ANTOINETTE
07:31				MISSED 3PTR by KINES, SHAFORIA
07:28	REBOUND (DEF) by DAVIS, BRITTANY			
07:16	MISSED 3PTR by DAVIS, BRITTANY			
07:14				REBOUND (DEF) by JONES, SAVANNAH
07:14	FOUL (PERSONAL) by WALKER, JASMINE			
07:14	SUB OUT: ABRAMS, MEGAN			
07:14	SUB IN: RICHARDSON, AMBER			
07:14	SUB OUT: DAVIS, BRITTANY			
07:14	SUB IN: JOHNSON, CIERRA			
06:54				MISSED 3PTR by JONES, SAVANNAH
06:51	REBOUND (DEF) by JOHNSON, CIERRA			
06:46	MISSED LAYUP by RICHARDSON, AMBER			
06:46				BLOCK by JONES, SAVANNAH
06:41				REBOUND (DEF) by JONES, SAVANNAH
06:40				TURNOVER (BADPASS) by JONES, SAVANNAH
06:40	STEAL by LEWIS, JORDAN			
06:26	FOUL (OFF) by COPELAND, ARIYAH			
06:26	TURNOVER (OFFENSIVE) by COPELAND, ARIYAH			
06:26				SUB OUT: LOWE, DEVYN
06:26				SUB IN: VAUGHT, MAHOGANY
06:26	SUB OUT: LEWIS, JORDAN			
06:26	SUB OUT: COPELAND, ARIYAH			
06:26	SUB IN: BARBER, HANNAH			
06:26	SUB IN: GIBSON, SHELBY			
06:10	SUB OUT: WALKER, JASMINE			
06:10	SUB IN: BENJAMIN, DE'SHA			
06:06				MISSED JUMPER by JONES, SAVANNAH
06:03	REBOUND (DEF) by JOHNSON, CIERRA			
05:58	GOOD! 3PTR by GIBSON, SHELBY	19-30	V 11	
05:58	ASSIST by JOHNSON, CIERRA			
05:33				TURNOVER (BADPASS) by FERGUSON, CASEY
05:33	STEAL by RICHARDSON, AMBER			
05:29	GOOD! LAYUP by JOHNSON, CIERRA [FB]	19-32	V 13	
05:12				TURNOVER (LOSTBALL) by LEWIS, ANTOINETTE
05:12	STEAL by GIBSON, SHELBY			
05:12				SUB OUT: FERGUSON, CASEY
05:12				SUB IN: BUSTER, JALA
05:12				FOUL (COACHTECHNICAL) by TEAM
05:12	GOOD! FT by BARBER, HANNAH	19-33	V 14	
05:12	MISSED FT by BARBER, HANNAH			
05:12	REBOUND (OFF) by TEAM			
05:12	SUB OUT: JOHNSON, CIERRA			
05:12	SUB IN: DAVIS, BRITTANY			
04:45	MISSED JUMPER by RICHARDSON, AMBER			
04:45				BLOCK by JONES, SAVANNAH
04:41				REBOUND (DEF) by VAUGHT, MAHOGANY



Time	VISITORS: Alabama	Score	Margin	HOME: South Alabama
04:38				MISSED LAYUP by BUSTER, JALA
04:34	REBOUND (DEF) by GIBSON, SHELBY			
04:18	FOUL (OFF) by GIBSON, SHELBY			
04:18	TURNOVER (OFFENSIVE) by GIBSON, SHELBY			
04:18				
04:18	SUB OUT: RICHARDSON, AMBER			
04:18	SUB IN: ABRAMS, MEGAN			
04:18	SUB OUT: GIBSON, SHELBY			
04:18	SUB IN: KNIGHT, ASHLEY			
04:04				MISSED JUMPER by VAUGHT, MAHOGANY
04:03	REBOUND (DEF) by KNIGHT, ASHLEY			
03:57	SUB OUT: BARBER, HANNAH			
03:57	SUB IN: LEWIS, JORDAN			
03:38	MISSED LAYUP by ABRAMS, MEGAN			
03:34	REBOUND (OFF) by KNIGHT, ASHLEY			
03:34	GOOD! LAYUP by KNIGHT, ASHLEY	19-35	V 16	
03:24				TURNOVER (BADPASS) by VAUGHT, MAHOGANY
03:24	STEAL by BENJAMIN, DE'SHA			
03:19				FOUL (PERSONAL) by JONES, SAVANNAH
03:19				SUB OUT: VAUGHT, MAHOGANY
03:19				SUB IN: TELEMAQUE, DAMAYA
03:19	SUB OUT: DAVIS, BRITTANY			
03:19	SUB IN: BARBER, HANNAH			
03:19	GOOD! FT by LEWIS, JORDAN	19-36	V 17	
03:19	GOOD! FT by LEWIS, JORDAN	19-37	V 18	
02:53				TURNOVER (OTHER) by LEWIS, ANTOINETTE
02:37	TURNOVER (BADPASS) by ABRAMS, MEGAN			
02:37				STEAL by BUSTER, JALA
02:20		22-37	V 15	GOOD! 3PTR by KINES, SHAFORIA
02:20				ASSIST by BUSTER, JALA
01:50	MISSED LAYUP by ABRAMS, MEGAN			
01:50				BLOCK by LEWIS, ANTOINETTE
01:46				REBOUND (DEF) by LEWIS, ANTOINETTE
01:41		25-37	V 12	GOOD! 3PTR by JONES, SAVANNAH
01:25	TURNOVER (OTHER) by BARBER, HANNAH			
01:21	SUB OUT: ABRAMS, MEGAN			
01:21	SUB OUT: BARBER, HANNAH			
01:21	SUB OUT: KNIGHT, ASHLEY			
01:21	SUB IN: JOHNSON, CIERRA			
01:21	SUB IN: DAVIS, BRITTANY			
01:21	SUB IN: WALKER, JASMINE			
01:14	FOUL (PERSONAL) by BENJAMIN, DE'SHA			
01:14		26-37	V 11	GOOD! FT by KINES, SHAFORIA
01:14		27-37	V 10	GOOD! FT by KINES, SHAFORIA
01:06	TURNOVER (BADPASS) by DAVIS, BRITTANY			
01:06				STEAL by KINES, SHAFORIA
01:06	FOUL (PERSONAL) by LEWIS, JORDAN			
01:06	SUB OUT: DAVIS, BRITTANY			
01:06	SUB IN: ABRAMS, MEGAN			
01:06				MISSED FT by KINES, SHAFORIA
01:06				REBOUND (OFF) by TEAM
01:06		28-37	V 9	GOOD! FT by KINES, SHAFORIA [FB]
00:36	MISSED 3PTR by LEWIS, JORDAN			
00:31				REBOUND (DEF) by JONES, SAVANNAH
00:22	GOOD! LAYUP by LEWIS, JORDAN	28-39	V 11	
00:21	FOUL (PERSONAL) by WALKER, JASMINE			
00:21		29-39	V 10	GOOD! FT by KINES, SHAFORIA
00:21		30-39	V 9	GOOD! FT by KINES, SHAFORIA
00:04				FOUL (PERSONAL) by LEWIS, ANTOINETTE
00:04				SUB OUT: LEWIS, ANTOINETTE
00:04				SUB IN: MALLARD, JAYLEN
00:04	SUB OUT: JOHNSON, CIERRA			
00:04	SUB IN: RICHARDSON, AMBER			
00:04	SUB OUT: WALKER, JASMINE			
00:04	SUB IN: CRUCE, ALLIE CRAIG			
00:04	GOOD! FT by LEWIS, JORDAN	30-40	V 10	
00:04	GOOD! FT by LEWIS, JORDAN	30-41	V 11	
00:22				TURNOVER (LOSTBALL) by JONES, SAVANNAH
00:22	STEAL by LEWIS, JORDAN			

### Alabama 41, South Alabama 30

Points from (This Period)	BAM	USA
In the Paint	8	2
Off Turns	7	6
2nd Chance	2	0
Fast Break	2	1
Bench	8	0

**Official Box Score**  
**Alabama vs South Alabama**  
**Second Half Statistics Only**  
**November 21, 2019 at Mitchell Center - Mobile**



**Alabama 33**

No.	Player	S	Pts	FG	3FG	FT	OR	DR	TR	PF	A	TO	Blk	Stl	Min	+/-
01	ABRAMS, MEGAN	G	3	1-2	0-1	1-2	0	0	0	2	0	1	0	0	11	7
02	RICHARDSON, AMBER	G	2	0-2	0-0	2-2	2	1	3	1	1	0	0	1	6	-1
03	LEWIS, JORDAN	G	1	0-3	0-2	1-2	1	0	1	1	1	0	0	0	14	-7
04	JOHNSON, CIERRA	G	8	4-7	0-0	0-1	3	2	5	1	1	3	0	1	16	4
05	BARBER, HANNAH	G	0	0-1	0-1	0-0	0	0	0	1	0	0	0	0	6	8
12	CRUCE, ALLIE CRAIG	F	0	0-0	0-0	0-0	0	0	0	0	0	0	0	0	0	0
22	COPELAND, ARIYAH	F	3	1-2	0-0	1-4	0	2	2	0	0	1	1	0	12	4
23	DAVIS, BRITTANY	G	0	0-2	0-1	0-0	0	0	0	0	0	0	0	0	6	-3
24	BENJAMIN, DE'SHA	F	3	1-3	0-1	1-2	0	4	4	1	0	1	0	0	7	-4
25	KNIGHT, ASHLEY	F	6	3-4	0-0	0-0	2	2	4	3	0	0	4	0	7	-3
40	WALKER, JASMINE	F	7	3-6	1-2	0-2	2	5	7	1	0	2	0	2	15	0
42	GIBSON, SHELBY	F	0	0-0	0-0	0-0	0	1	1	0	0	0	0	0	1	0
	TEAM		0	0-0	0-0	0-0	1	0	1	0	0	1	0	0	0	0
	<b>TOTALS</b>		<b>33</b>	<b>13-32</b>	<b>1-8</b>	<b>6-15</b>	<b>11</b>	<b>17</b>	<b>28</b>	<b>11</b>	<b>3</b>	<b>9</b>	<b>5</b>	<b>4</b>	<b>100</b>	

*Shooting By Period*

Period	FG	FG%	3FG	3FG%	FT	FT%
3rd Qtr	6-15	40%	0-5	00%	4-9	44%
4th Qtr	7-17	41%	1-3	33%	2-6	33%
2nd Half	13-32	41%	1-8	13%	6-15	40%
Game	28-65	43.1%	3-16	18.8%	15-27	55.6%

*Deadball Rebounds: 6,0*  
*Last FG Half: BAM 4th-03:27*

**South Alabama 32**

No.	Player	S	Pts	FG	3FG	FT	OR	DR	TR	PF	A	TO	Blk	Stl	Min	+/-
12	TELEMAQUE, DAMAYA	G	6	3-4	0-0	0-2	0	0	0	3	1	0	1	1	16	8
14	JONES, SAVANNAH	G	6	2-7	2-6	0-0	0	3	3	1	0	0	0	0	19	-2
21	FERGUSON, CASEY	G	1	0-0	0-0	1-2	0	1	1	0	0	1	0	0	3	-2
22	MALLARD, JAYLEN	F	0	0-2	0-0	0-0	0	1	1	2	0	0	1	0	6	-4
23	BUSTER, JALA	F	0	0-2	0-0	0-0	0	4	4	2	0	1	0	0	17	1
35	LEWIS, ANTOINETTE	C	6	0-4	0-0	6-8	4	2	6	1	2	1	1	1	14	3
45	LOWE, DEVYN	G	0	0-3	0-1	0-0	1	0	1	1	0	1	0	0	4	-8
02	KINES, SHAFORIA	G	13	4-8	3-7	2-2	0	1	1	1	2	3	0	2	20	-1
03	MORROW, JAYLA	G	0	0-0	0-0	0-0	0	0	0	0	0	0	0	0	0	0
04	VAUGHT, MAHOGANY	G	0	0-0	0-0	0-0	0	0	0	0	0	1	0	0	1	0
	TEAM		0	0-0	0-0	0-0	1	1	2	0	0	0	0	0	0	0
	<b>TOTALS</b>		<b>32</b>	<b>9-30</b>	<b>5-14</b>	<b>9-14</b>	<b>6</b>	<b>13</b>	<b>19</b>	<b>11</b>	<b>5</b>	<b>8</b>	<b>3</b>	<b>4</b>	<b>100</b>	

*Shooting By Period*

Period	FG	FG%	3FG	3FG%	FT	FT%
3rd Qtr	4-13	31%	1-6	17%	1-4	25%
4th Qtr	5-17	29%	4-8	50%	8-10	80%
2nd Half	9-30	30%	5-14	36%	9-14	64%
Game	17-50	34.0%	11-26	42.3%	17-24	70.8%

*Deadball Rebounds: 5,0*  
*Last FG Half: USA 4th-02:29*

Game Notes:

Officials: Pualani Spurlock, Joshua Howell, Missy Brooks  
 Attendance: 1270

Start Time: 08:02 PM ET  
 End Time: 10:09 PM ET  
 Game Duration: 2:06

Score	1st	2nd	3rd	4th	TOT
BAM	23	18	16	17	<b>74</b>
USA	11	19	10	22	<b>62</b>

Points from (This Period)	BAM	USA
In the Paint	22	6
Off Turns	7	8
2nd Chance	13	4
Fast Break	2	4
Bench	17	1

**Official Box Score**  
**Alabama vs South Alabama**  
**Third Quarter Statistics Only**  
**November 21, 2019 at Mitchell Center - Mobile**



**Alabama 33**

No.	Player	S	Pts	FG	3FG	FT	OR	DR	TR	PF	A	TO	Blk	Stl	Min	+/-
01	ABRAMS, MEGAN	G	3	1-2	0-1	1-2	0	0	0	1	0	1	0	0	7	2
02	RICHARDSON, AMBER	G	2	0-2	0-0	2-2	1	0	1	0	0	0	0	1	4	-3
03	LEWIS, JORDAN	G	0	0-1	0-1	0-0	0	0	0	1	0	0	0	0	6	1
22	COPELAND, ARIYAH	F	2	1-2	0-0	0-2	0	1	1	0	0	1	0	0	7	4
40	WALKER, JASMINE	F	2	1-2	0-1	0-0	1	3	4	1	0	1	0	0	8	4
04	JOHNSON, CIERRA	G	6	3-4	0-0	0-1	2	1	3	0	0	1	0	0	6	9
05	BARBER, HANNAH	G	0	0-0	0-0	0-0	0	0	0	1	0	0	0	0	4	5
12	CRUCE, ALLIE CRAIG	F	0	0-0	0-0	0-0	0	0	0	0	0	0	0	0	0	0
23	DAVIS, BRITTANY	G	0	0-1	0-1	0-0	0	0	0	0	0	0	0	0	3	4
24	BENJAMIN, DE'SHA	F	1	0-1	0-1	1-2	0	3	3	0	0	1	0	0	2	2
25	KNIGHT, ASHLEY	F	0	0-0	0-0	0-0	0	2	2	1	0	0	2	0	2	2
42	GIBSON, SHELBY	F	0	0-0	0-0	0-0	0	1	1	0	0	0	0	0	1	0
TEAM							1	0	1	0						
<b>TOTALS</b>			<b>16</b>	<b>6-15</b>	<b>0-5</b>	<b>4-9</b>	<b>5</b>	<b>11</b>	<b>16</b>	<b>5</b>	<b>0</b>	<b>5</b>	<b>2</b>	<b>1</b>	<b>50</b>	

*Shooting By Period*

Period	FG	FG%	3FG	3FG%	FT	FT%
2nd Half	0-0	0%	0-0	0%	0-0	0%
Game	28-65	43.1%	3-16	18.8%	15-27	55.6%

Deadball Rebounds: 6,0

**South Alabama 32**

No.	Player	S	Pts	FG	3FG	FT	OR	DR	TR	PF	A	TO	Blk	Stl	Min	+/-
02	KINES, SHAFORIA	G	2	1-3	0-2	0-0	0	0	0	1	1	2	0	1	10	-6
12	TELEMAQUE, DAMAYA	G	4	2-2	0-0	0-2	0	0	0	1	0	0	0	1	9	-6
14	JONES, SAVANNAH	G	3	1-4	1-4	0-0	0	1	1	1	0	0	0	0	10	-6
23	BUSTER, JALA	F	0	0-1	0-0	0-0	0	2	2	0	0	1	0	0	9	-6
35	LEWIS, ANTOINETTE	C	0	0-1	0-0	0-0	0	1	1	1	0	1	0	1	4	-2
03	MORROW, JAYLA	G	0	0-0	0-0	0-0	0	0	0	0	0	0	0	0	0	0
04	VAUGHT, MAHOGANY	G	0	0-0	0-0	0-0	0	0	0	0	0	1	0	0	1	0
21	FERGUSON, CASEY	G	1	0-0	0-0	1-2	0	1	1	0	0	0	0	0	1	0
22	MALLARD, JAYLEN	F	0	0-2	0-0	0-0	0	1	1	2	0	0	1	0	6	-4
45	LOWE, DEVYN	G	0	0-0	0-0	0-0	0	0	0	0	0	0	0	0	0	0
TEAM							0	1	1	0						
<b>TOTALS</b>			<b>10</b>	<b>4-13</b>	<b>1-6</b>	<b>1-4</b>	<b>0</b>	<b>7</b>	<b>7</b>	<b>6</b>	<b>1</b>	<b>5</b>	<b>1</b>	<b>3</b>	<b>50</b>	

*Shooting By Period*

Period	FG	FG%	3FG	3FG%	FT	FT%
2nd Half	0-0	0%	0-0	0%	0-0	0%
Game	17-50	34.0%	11-26	42.3%	17-24	70.8%

Deadball Rebounds: 5,0

Game Notes:

Officials: Pualani Spurlock, Joshua Howell, Missy Brooks  
 Attendance: 1270

Start Time: 08:02 PM ET  
 End Time: 10:09 PM ET  
 Game Duration: 2:06

Score	1st	2nd	3rd	4th	TOT
BAM	23	18	16	17	<b>74</b>
USA	11	19	10	22	<b>62</b>

Points from (This Period)	BAM	USA
In the Paint	10	4
Off Turns	4	2
2nd Chance	2	0
Fast Break	2	2
Bench	7	1

**Official Play-By-Play**  
**Alabama vs South Alabama**  
**Third Quarter**  
**November 21, 2019 at Mitchell Center - Mobile**



**Period 3**

**Starters:**

**Alabama:** 1 ABRAMS, MEGAN (G); 2 RICHARDSON, AMBER (G); 3 LEWIS, JORDAN (G); 22 COPELAND, ARIYAH (F); 40 WALKER, JASMINE (F);

**South Alabama:** 12 TELEMAQUE, DAMAYA (G); 14 JONES, SAVANNAH (G); 23 BUSTER, JALA (F); 35 LEWIS, ANTOINETTE (C); 2 KINES, SHAFORIA (G);

Time	VISITORS: Alabama	Score	Margin	HOME: South Alabama
10:00				SUB OUT: MALLARD, JAYLEN
10:00				SUB IN: LEWIS, ANTOINETTE
10:00	SUB OUT: CRUCE, ALLIE CRAIG			
10:00	SUB OUT: BENJAMIN, DE'SHA			
10:00	SUB IN: COPELAND, ARIYAH			
10:00	SUB IN: WALKER, JASMINE			
09:46				MISSED 3PTR by KINES, SHAFORIA
09:44	REBOUND (DEF) by WALKER, JASMINE			
09:31				FOUL (PERSONAL) by LEWIS, ANTOINETTE
09:31				SUB OUT: LEWIS, ANTOINETTE
09:31				SUB IN: MALLARD, JAYLEN
09:31	MISSED FT by COPELAND, ARIYAH			
09:31	REBOUND (OFF) by TEAM			
09:31	MISSED FT by COPELAND, ARIYAH			
09:31				REBOUND (DEF) by TEAM
09:28				TURNOVER (BADPASS) by KINES, SHAFORIA
09:28	STEAL by RICHARDSON, AMBER			
09:28				FOUL (PERSONAL) by KINES, SHAFORIA
09:28	GOOD! FT by RICHARDSON, AMBER	30-42	V 12	
09:28	GOOD! FT by RICHARDSON, AMBER	30-43	V 13	
09:08		32-43	V 11	GOOD! LAYUP by KINES, SHAFORIA
08:47	GOOD! JUMPER by COPELAND, ARIYAH	32-45	V 13	
08:31		35-45	V 10	GOOD! 3PTR by JONES, SAVANNAH
08:31				ASSIST by KINES, SHAFORIA
08:09	MISSED LAYUP by RICHARDSON, AMBER			
08:06	REBOUND (OFF) by RICHARDSON, AMBER			
08:06	MISSED LAYUP by RICHARDSON, AMBER			
08:06				REBOUND (DEF) by MALLARD, JAYLEN
07:40				MISSED 3PTR by JONES, SAVANNAH
07:37	REBOUND (DEF) by WALKER, JASMINE			
07:27	TURNOVER (LOSTBALL) by ABRAMS, MEGAN			
07:27				STEAL by TELEMAQUE, DAMAYA
07:20		37-45	V 8	GOOD! LAYUP by TELEMAQUE, DAMAYA [FB]
07:06	SUB OUT: RICHARDSON, AMBER			
07:06	SUB IN: JOHNSON, CIERRA			
06:55				FOUL (PERSONAL) by JONES, SAVANNAH
06:55	GOOD! FT by ABRAMS, MEGAN	37-46	V 9	
06:55	MISSED FT by ABRAMS, MEGAN			
06:54				REBOUND (DEF) by BUSTER, JALA
06:44	FOUL (PERSONAL) by ABRAMS, MEGAN			
06:32		39-46	V 7	GOOD! JUMPER by TELEMAQUE, DAMAYA
06:11	GOOD! LAYUP by ABRAMS, MEGAN	39-48	V 9	
05:42				MISSED JUMPER by MALLARD, JAYLEN
05:38	REBOUND (DEF) by JOHNSON, CIERRA			
05:34	GOOD! LAYUP by JOHNSON, CIERRA	39-50	V 11	
05:20				TURNOVER (BADPASS) by BUSTER, JALA
05:20	SUB OUT: ABRAMS, MEGAN			
05:20	SUB IN: DAVIS, BRITTANY			
05:11	MISSED 3PTR by LEWIS, JORDAN			
05:08	REBOUND (OFF) by JOHNSON, CIERRA			
05:05	MISSED 3PTR by DAVIS, BRITTANY			
05:04	REBOUND (OFF) by WALKER, JASMINE			
05:04				FOUL (PERSONAL) by MALLARD, JAYLEN
04:49	MISSED JUMPER by COPELAND, ARIYAH			
04:49				BLOCK by MALLARD, JAYLEN
04:49	REBOUND (OFF) by TEAM			
04:49				
04:47	TURNOVER (TRAVEL) by JOHNSON, CIERRA			
04:29				TURNOVER (TRAVEL) by KINES, SHAFORIA
04:16	GOOD! JUMPER by JOHNSON, CIERRA [PNT]	39-52	V 13	
04:04	FOUL (PERSONAL) by LEWIS, JORDAN			
04:04				SUB OUT: MALLARD, JAYLEN
04:04				SUB IN: LEWIS, ANTOINETTE
04:04	SUB OUT: LEWIS, JORDAN			
04:04	SUB IN: BARBER, HANNAH			
03:55				MISSED LAYUP by LEWIS, ANTOINETTE
03:52	REBOUND (DEF) by COPELAND, ARIYAH			
03:49	TURNOVER (BADPASS) by COPELAND, ARIYAH			
03:49				STEAL by KINES, SHAFORIA
03:35				MISSED 3PTR by JONES, SAVANNAH

Time	VISITORS: Alabama	Score	Margin	HOME: South Alabama
03:31	REBOUND (DEF) by WALKER, JASMINE			
03:17	MISSED LAYUP by JOHNSON, CIERRA			
03:14	REBOUND (OFF) by JOHNSON, CIERRA			
03:02	GOOD! JUMPER by WALKER, JASMINE	39-54	V 15	
02:41				TURNOVER (TRAVEL) by LEWIS, ANTOINETTE
02:41	SUB OUT: DAVIS, BRITTANY			
02:41	SUB IN: ABRAMS, MEGAN			
02:41	SUB OUT: COPELAND, ARIYAH			
02:41	SUB IN: KNIGHT, ASHLEY			
02:29	FOUL (OFF) by WALKER, JASMINE			
02:29	TURNOVER (OFFENSIVE) by WALKER, JASMINE			
02:17				MISSED LAYUP by BUSTER, JALA
02:17	BLOCK by KNIGHT, ASHLEY			
02:13	REBOUND (DEF) by KNIGHT, ASHLEY			
02:06	MISSED 3PTR by WALKER, JASMINE			
02:03				REBOUND (DEF) by LEWIS, ANTOINETTE
01:58	FOUL (PERSONAL) by KNIGHT, ASHLEY			
01:58				SUB OUT: LEWIS, ANTOINETTE
01:58				SUB IN: MALLARD, JAYLEN
01:58	SUB OUT: WALKER, JASMINE			
01:58	SUB IN: BENJAMIN, DE'SHA			
01:58				MISSED FT by TELEMAQUE, DAMAYA
01:58				REBOUND (OFF) by TEAM
01:58				MISSED FT by TELEMAQUE, DAMAYA
01:57	REBOUND (DEF) by BENJAMIN, DE'SHA			
01:52	GOOD! LAYUP by JOHNSON, CIERRA [FB]	39-56	V 17	
01:52				FOUL (PERSONAL) by MALLARD, JAYLEN
01:52	MISSED FT by JOHNSON, CIERRA			
01:51				REBOUND (DEF) by JONES, SAVANNAH
01:40				MISSED LAYUP by MALLARD, JAYLEN
01:40	BLOCK by KNIGHT, ASHLEY			
01:35	REBOUND (DEF) by KNIGHT, ASHLEY			
01:27	MISSED 3PTR by BENJAMIN, DE'SHA			
01:24				REBOUND (DEF) by BUSTER, JALA
01:14				MISSED 3PTR by KINES, SHAFORIA
01:11	REBOUND (DEF) by BENJAMIN, DE'SHA			
01:05				FOUL (PERSONAL) by TELEMAQUE, DAMAYA
01:05				SUB OUT: TELEMAQUE, DAMAYA
01:05				SUB OUT: MALLARD, JAYLEN
01:05				SUB OUT: BUSTER, JALA
01:05				SUB IN: VAUGHT, MAHOGANY
01:05				SUB IN: FERGUSON, CASEY
01:05				SUB IN: LEWIS, ANTOINETTE
01:05	SUB OUT: JOHNSON, CIERRA			
01:05	SUB OUT: KNIGHT, ASHLEY			
01:05	SUB IN: RICHARDSON, AMBER			
01:05	SUB IN: GIBSON, SHELBY			
01:05	MISSED FT by BENJAMIN, DE'SHA			
01:05	REBOUND (OFF) by TEAM			
01:05	GOOD! FT by BENJAMIN, DE'SHA	39-57	V 18	
00:41				TURNOVER (LOSTBALL) by VAUGHT, MAHOGANY
00:19	MISSED 3PTR by ABRAMS, MEGAN			
00:15				REBOUND (DEF) by FERGUSON, CASEY
00:15	FOUL (PERSONAL) by BARBER, HANNAH			
00:15	SUB OUT: BARBER, HANNAH			
00:15	SUB IN: LEWIS, JORDAN			
00:15		40-57	V 17	GOOD! FT by FERGUSON, CASEY
00:15				MISSED FT by FERGUSON, CASEY
00:14	REBOUND (DEF) by BENJAMIN, DE'SHA			
00:11	TURNOVER (BADPASS) by BENJAMIN, DE'SHA			
00:11				STEAL by LEWIS, ANTOINETTE
00:04				MISSED 3PTR by JONES, SAVANNAH
00:01	REBOUND (DEF) by GIBSON, SHELBY			

Alabama 57, South Alabama 40

Points from (This Period)	BAM	USA
In the Paint	10	4
Off Turns	4	2
2nd Chance	2	0
Fast Break	2	2
Bench	7	1

**Official Box Score**  
**Alabama vs South Alabama**  
**Fourth Quarter Statistics Only**  
**November 21, 2019 at Mitchell Center - Mobile**



**Alabama 17**

No.	Player	S	Pts	FG	3FG	FT	OR	DR	TR	PF	A	TO	Blk	Stl	Min	+/-
01	ABRAMS, MEGAN	G	0	0-0	0-0	0-0	0	0	0	1	0	0	0	0	4	5
02	RICHARDSON, AMBER	G	0	0-0	0-0	0-0	1	1	2	1	1	0	0	0	2	2
03	LEWIS, JORDAN	G	1	0-2	0-1	1-2	1	0	1	0	1	0	0	0	8	-8
22	COPELAND, ARIYAH	F	1	0-0	0-0	1-2	0	1	1	0	0	0	1	0	5	0
40	WALKER, JASMINE	F	5	2-4	1-1	0-2	1	2	3	0	0	1	0	2	7	-4
04	JOHNSON, CIERRA	G	2	1-3	0-0	0-0	1	1	2	1	1	2	0	1	10	-5
05	BARBER, HANNAH	G	0	0-1	0-1	0-0	0	0	0	0	0	0	0	0	2	3
12	CRUCE, ALLIE CRAIG	F	0	0-0	0-0	0-0	0	0	0	0	0	0	0	0	0	0
23	DAVIS, BRITTANY	G	0	0-1	0-0	0-0	0	0	0	0	0	0	0	0	3	-7
24	BENJAMIN, DE'SHA	F	2	1-2	0-0	0-0	0	1	1	1	0	0	0	0	5	-6
25	KNIGHT, ASHLEY	F	6	3-4	0-0	0-0	2	0	2	2	0	0	2	0	5	-5
42	GIBSON, SHELBY	F	0	0-0	0-0	0-0	0	0	0	0	0	0	0	0	0	0
TEAM							0	0	0	0	1					
<b>TOTALS</b>			<b>17</b>	<b>7-17</b>	<b>1-3</b>	<b>2-6</b>	<b>6</b>	<b>6</b>	<b>12</b>	<b>6</b>	<b>3</b>	<b>4</b>	<b>3</b>	<b>3</b>	<b>50</b>	

*Shooting By Period*

Period	FG	FG%	3FG	3FG%	FT	FT%	Deadball Rebounds: 6,0
Game	28-65	43.1%	3-16	18.8%	15-27	55.6%	

**South Alabama 22**

No.	Player	S	Pts	FG	3FG	FT	OR	DR	TR	PF	A	TO	Blk	Stl	Min	+/-
02	KINES, SHAFORIA	G	11	3-5	3-5	2-2	0	1	1	0	1	1	0	1	10	5
12	TELEMAQUE, DAMAYA	G	2	1-2	0-0	0-0	0	0	0	2	1	0	1	0	7	14
14	JONES, SAVANNAH	G	3	1-3	1-2	0-0	0	2	2	0	0	0	0	0	9	4
23	BUSTER, JALA	F	0	0-1	0-0	0-0	0	2	2	2	0	0	0	0	8	7
35	LEWIS, ANTOINETTE	C	6	0-3	0-0	6-8	4	1	5	0	2	0	1	0	10	5
03	MORROW, JAYLA	G	0	0-0	0-0	0-0	0	0	0	0	0	0	0	0	0	0
04	VAUGHT, MAHOGANY	G	0	0-0	0-0	0-0	0	0	0	0	0	0	0	0	0	0
21	FERGUSON, CASEY	G	0	0-0	0-0	0-0	0	0	0	0	0	1	0	0	2	-2
22	MALLARD, JAYLEN	F	0	0-0	0-0	0-0	0	0	0	0	0	0	0	0	0	0
45	LOWE, DEVYN	G	0	0-3	0-1	0-0	1	0	1	1	0	1	0	0	4	-8
TEAM							1	0	1	0	0					
<b>TOTALS</b>			<b>22</b>	<b>5-17</b>	<b>4-8</b>	<b>8-10</b>	<b>6</b>	<b>6</b>	<b>12</b>	<b>5</b>	<b>4</b>	<b>3</b>	<b>2</b>	<b>1</b>	<b>50</b>	

*Shooting By Period*

Period	FG	FG%	3FG	3FG%	FT	FT%	Deadball Rebounds: 5,0
Game	17-50	34.0%	11-26	42.3%	17-24	70.8%	

*Game Notes:*

Officials: Pualani Spurlock, Joshua Howell, Missy Brooks  
Attendance: 1270

Start Time: 08:02 PM ET  
End Time: 10:09 PM ET  
Game Duration: 2:06

Score	1st	2nd	3rd	4th	TOT
BAM	23	18	16	17	<b>74</b>
USA	11	19	10	22	<b>62</b>

Points from (This Period)	BAM	USA
In the Paint	12	2
Off Turns	3	6
2nd Chance	11	4
Fast Break	0	2
Bench	10	0

**Official Play-By-Play**  
**Alabama vs South Alabama**  
**Fourth Quarter**  
**November 21, 2019 at Mitchell Center - Mobile**



**Period 4**

**Starters:**

**Alabama:** 1 ABRAMS, MEGAN (G); 2 RICHARDSON, AMBER (G); 3 LEWIS, JORDAN (G); 22 COPELAND, ARIYAH (F); 40 WALKER, JASMINE (F);

**South Alabama:** 12 TELEMAQUE, DAMAYA (G); 14 JONES, SAVANNAH (G); 23 BUSTER, JALA (F); 35 LEWIS, ANTOINETTE (C); 2 KINES, SHAFORIA (G);

Time	VISITORS: Alabama	Score	Margin	HOME: South Alabama
10:00	SUB OUT: RICHARDSON, AMBER			
10:00	SUB OUT: BENJAMIN, DE'SHA			
10:00	SUB IN: JOHNSON, CIERRA			
10:00	SUB IN: WALKER, JASMINE			
09:39				TURNOVER (BADPASS) by FERGUSON, CASEY
09:39	STEAL by WALKER, JASMINE			
09:33	TIMEOUT 30SEC			
09:33	SUB OUT: GIBSON, SHELBY			
09:33	SUB IN: COPELAND, ARIYAH			
09:33				SUB OUT: VAUGHT, MAHOGANY
09:33				SUB OUT: JONES, SAVANNAH
09:33				SUB IN: TELEMAQUE, DAMAYA
09:33				SUB IN: LOWE, DEVYN
09:15	MISSED LAYUP by WALKER, JASMINE			
09:12				REBOUND (DEF) by LEWIS, ANTOINETTE
09:06	FOUL (PERSONAL) by ABRAMS, MEGAN			
09:06		41-57	V 16	GOOD! FT by KINES, SHAFORIA
09:06		42-57	V 15	GOOD! FT by KINES, SHAFORIA
08:57				FOUL (PERSONAL) by TELEMAQUE, DAMAYA
08:57	MISSED FT by COPELAND, ARIYAH			
08:57	REBOUND (OFF) by TEAM			
08:57	GOOD! FT by COPELAND, ARIYAH	42-58	V 16	
08:32				MISSED JUMPER by LOWE, DEVYN
08:29	REBOUND (DEF) by WALKER, JASMINE			
08:25				FOUL (PERSONAL) by TELEMAQUE, DAMAYA
08:25				SUB OUT: TELEMAQUE, DAMAYA
08:25				SUB IN: JONES, SAVANNAH
08:25	GOOD! FT by LEWIS, JORDAN	42-59	V 17	
08:25	MISSED FT by LEWIS, JORDAN			
08:24	REBOUND (OFF) by WALKER, JASMINE			
08:23	GOOD! LAYUP by WALKER, JASMINE	42-61	V 19	
08:00				MISSED JUMPER by LOWE, DEVYN
07:52				REBOUND (OFF) by LOWE, DEVYN
07:51				TURNOVER (BADPASS) by LOWE, DEVYN
07:51	STEAL by JOHNSON, CIERRA			
07:46	MISSED 3PTR by LEWIS, JORDAN			
07:44	REBOUND (OFF) by LEWIS, JORDAN			
07:44				FOUL (PERSONAL) by LOWE, DEVYN
07:44				SUB OUT: FERGUSON, CASEY
07:44				SUB IN: BUSTER, JALA
07:37	GOOD! 3PTR by WALKER, JASMINE	42-64	V 22	
07:37	ASSIST by JOHNSON, CIERRA			
07:22				MISSED 3PTR by KINES, SHAFORIA
07:18				REBOUND (OFF) by LEWIS, ANTOINETTE
07:18				MISSED LAYUP by LEWIS, ANTOINETTE
07:18				REBOUND (OFF) by LEWIS, ANTOINETTE
07:18	SUB OUT: ABRAMS, MEGAN			
07:18	SUB OUT: COPELAND, ARIYAH			
07:18	SUB OUT: WALKER, JASMINE			
07:18	SUB IN: RICHARDSON, AMBER			
07:18	SUB IN: BENJAMIN, DE'SHA			
07:18	SUB IN: KNIGHT, ASHLEY			
07:13				MISSED JUMPER by JONES, SAVANNAH
07:09				REBOUND (OFF) by LEWIS, ANTOINETTE
07:07				MISSED LAYUP by LEWIS, ANTOINETTE
07:07	BLOCK by KNIGHT, ASHLEY			
07:03	REBOUND (DEF) by RICHARDSON, AMBER			
07:03	FOUL (OFF) by JOHNSON, CIERRA			
07:03	TURNOVER (OFFENSIVE) by JOHNSON, CIERRA			
06:48	FOUL (PERSONAL) by RICHARDSON, AMBER			
06:48				MISSED FT by LEWIS, ANTOINETTE
06:48				REBOUND (OFF) by TEAM
06:48		43-64	V 21	GOOD! FT by LEWIS, ANTOINETTE
06:48	SUB OUT: LEWIS, JORDAN			
06:48	SUB IN: BARBER, HANNAH			
06:38	MISSED JUMPER by JOHNSON, CIERRA			
06:35	REBOUND (OFF) by KNIGHT, ASHLEY			
06:34	MISSED LAYUP by KNIGHT, ASHLEY			
06:29	REBOUND (OFF) by KNIGHT, ASHLEY			
06:29	GOOD! LAYUP by KNIGHT, ASHLEY	43-66	V 23	

Time	VISITORS: Alabama	Score	Margin	HOME: South Alabama
06:18				MISSED 3PTR by LOWE, DEVYN
06:17	REBOUND (DEF) by BENJAMIN, DE'SHA			
06:17				FOUL (PERSONAL) by BUSTER, JALA
06:08	MISSED 3PTR by BARBER, HANNAH			
06:05	REBOUND (OFF) by RICHARDSON, AMBER			
06:04	GOOD! LAYUP by KNIGHT, ASHLEY	43-68	V 25	
06:04	ASSIST by RICHARDSON, AMBER			
06:02				TIMEOUT 30SEC
06:02				SUB OUT: LOWE, DEVYN
06:02				SUB IN: TELEMAQUE, DAMAYA
05:48		46-68	V 22	GOOD! 3PTR by KINES, SHAFORIA
05:48				ASSIST by LEWIS, ANTOINETTE
05:26	GOOD! LAYUP by BENJAMIN, DE'SHA	46-70	V 24	
05:10				MISSED LAYUP by BUSTER, JALA
05:10	BLOCK by KNIGHT, ASHLEY			
05:10				REBOUND (OFF) by TEAM
05:10	SUB OUT: RICHARDSON, AMBER			
05:10	SUB OUT: BARBER, HANNAH			
05:10	SUB IN: LEWIS, JORDAN			
05:10	SUB IN: DAVIS, BRITTANY			
05:09	FOUL (PERSONAL) by KNIGHT, ASHLEY			
05:09		47-70	V 23	GOOD! FT by LEWIS, ANTOINETTE
05:09		48-70	V 22	GOOD! FT by LEWIS, ANTOINETTE
05:00	MISSED LAYUP by JOHNSON, CIERRA			
04:55	REBOUND (OFF) by JOHNSON, CIERRA			
04:55	GOOD! LAYUP by JOHNSON, CIERRA	48-72	V 24	
04:41		51-72	V 21	GOOD! 3PTR by KINES, SHAFORIA
04:41				ASSIST by LEWIS, ANTOINETTE
04:06	MISSED LAYUP by BENJAMIN, DE'SHA			
04:02				REBOUND (DEF) by BUSTER, JALA
03:52	FOUL (PERSONAL) by KNIGHT, ASHLEY			
03:52	SUB OUT: BENJAMIN, DE'SHA			
03:52	SUB IN: WALKER, JASMINE			
03:52				MISSED FT by LEWIS, ANTOINETTE
03:52				REBOUND (OFF) by TEAM
03:52		52-72	V 20	GOOD! FT by LEWIS, ANTOINETTE
03:43	TURNOVER (BADPASS) by JOHNSON, CIERRA			
03:43				STEAL by KINES, SHAFORIA
03:37		54-72	V 18	GOOD! LAYUP by TELEMAQUE, DAMAYA [FB]
03:37				ASSIST by KINES, SHAFORIA
03:37	TIMEOUT 30SEC			
03:27	GOOD! LAYUP by KNIGHT, ASHLEY	54-74	V 20	
03:27	ASSIST by LEWIS, JORDAN			
03:06		57-74	V 17	GOOD! 3PTR by KINES, SHAFORIA
03:06				ASSIST by TELEMAQUE, DAMAYA
02:55	MISSED LAYUP by DAVIS, BRITTANY			
02:55				BLOCK by LEWIS, ANTOINETTE
02:51				REBOUND (DEF) by JONES, SAVANNAH
02:39				MISSED LAYUP by LEWIS, ANTOINETTE
02:36	REBOUND (DEF) by WALKER, JASMINE			
02:36	TURNOVER (BADPASS) by WALKER, JASMINE			
02:36	SUB OUT: DAVIS, BRITTANY			
02:36	SUB OUT: KNIGHT, ASHLEY			
02:36	SUB IN: COPELAND, ARIYAH			
02:36	SUB IN: BENJAMIN, DE'SHA			
02:29		60-74	V 14	GOOD! 3PTR by JONES, SAVANNAH
02:10	MISSED JUMPER by WALKER, JASMINE			
02:07				REBOUND (DEF) by KINES, SHAFORIA
01:59				MISSED LAYUP by TELEMAQUE, DAMAYA
01:59	BLOCK by COPELAND, ARIYAH			
01:56	REBOUND (DEF) by COPELAND, ARIYAH			
01:33	MISSED LAYUP by LEWIS, JORDAN			
01:33				BLOCK by TELEMAQUE, DAMAYA
01:28				REBOUND (DEF) by JONES, SAVANNAH
01:23				MISSED 3PTR by KINES, SHAFORIA
01:21				REBOUND (OFF) by LEWIS, ANTOINETTE
01:21	FOUL (PERSONAL) by BENJAMIN, DE'SHA			
01:21		61-74	V 13	GOOD! FT by LEWIS, ANTOINETTE
01:21		62-74	V 12	GOOD! FT by LEWIS, ANTOINETTE
01:13	SUB OUT: BENJAMIN, DE'SHA			
01:13	SUB IN: ABRAMS, MEGAN			
01:13	TIMEOUT 30SEC			
00:50	TURNOVER (SHOTCLOCK) by TEAM			
00:42				TURNOVER (BADPASS) by KINES, SHAFORIA
00:42	STEAL by WALKER, JASMINE			
00:39				FOUL (PERSONAL) by BUSTER, JALA
00:39	MISSED FT by WALKER, JASMINE			
00:39	REBOUND (OFF) by TEAM			
00:38	MISSED FT by WALKER, JASMINE			
00:38				REBOUND (DEF) by BUSTER, JALA



Time	VISITORS: Alabama	Score	Margin	HOME: South Alabama
00:38				TIMEOUT 30SEC
00:30				MISSED 3PTR by JONES, SAVANNAH
00:26	REBOUND (DEF) by JOHNSON, CIERRA			

**Alabama 74, South Alabama 62**

Points from (This Period)	BAM	USA
In the Paint	12	2
Off Turns	3	6
2nd Chance	11	4
Fast Break	0	2
Bench	10	0

**Official Scoring/Possession Reference Chart**  
**Alabama vs South Alabama**  
**Period 1**  
**November 21, 2019 at Mitchell Center - Mobile**



**Period 1**

**Starters:**

**Alabama:** 1 ABRAMS, MEGAN (G); 2 RICHARDSON, AMBER (G); 3 LEWIS, JORDAN (G); 22 COPELAND, ARIYAH (F); 40 WALKER, JASMINE (F);

**South Alabama:** 12 TELEMAQUE, DAMAYA (G); 14 JONES, SAVANNAH (G); 23 BUSTER, JALA (F); 35 LEWIS, ANTOINETTE (C); 2 KINES, SHAFORIA (G);

Time	VISITORS: Alabama	Score	Margin	HOME: South Alabama
09:44		3-0	H 3	GOOD! 3PTR by BUSTER, JALA
09:16	GOOD! LAYUP by COPELAND, ARIYAH	3-2	H 1	
07:46	GOOD! LAYUP by COPELAND, ARIYAH	3-4	V 1	
07:08		5-4	H 1	GOOD! LAYUP by JONES, SAVANNAH [FB]
06:37	GOOD! FT by JOHNSON, CIERRA	5-5	T	
06:37	GOOD! FT by JOHNSON, CIERRA	5-6	V 1	
05:51	GOOD! LAYUP by LEWIS, JORDAN [FB]	5-8	V 3	
05:29		8-8	T	GOOD! 3PTR by KINES, SHAFORIA
04:33	GOOD! FT by JOHNSON, CIERRA	8-9	V 1	
04:33	GOOD! FT by JOHNSON, CIERRA	8-10	V 2	
03:33	GOOD! LAYUP by JOHNSON, CIERRA	8-12	V 4	
03:19	GOOD! LAYUP by LEWIS, JORDAN [FB]	8-14	V 6	
02:57		9-14	V 5	GOOD! FT by JONES, SAVANNAH
02:39	GOOD! LAYUP by GIBSON, SHELBY	9-16	V 7	
01:47	GOOD! LAYUP by DAVIS, BRITTANY [FB]	9-18	V 9	
01:26	GOOD! 3PTR by BARBER, HANNAH	9-21	V 12	
00:53	GOOD! LAYUP by BENJAMIN, DE'SHA	9-23	V 14	
00:40		10-23	V 13	GOOD! FT by TELEMAQUE, DAMAYA
00:40		11-23	V 12	GOOD! FT by TELEMAQUE, DAMAYA

**Alabama 23, South Alabama 11**

**Official Scoring/Possession Reference Chart**  
**Alabama vs South Alabama**  
**Period 2**  
**November 21, 2019 at Mitchell Center - Mobile**



**Period 2**

**Starters:**

**Alabama:** 1 ABRAMS, MEGAN (G); 2 RICHARDSON, AMBER (G); 3 LEWIS, JORDAN (G); 22 COPELAND, ARIYAH (F); 40 WALKER, JASMINE (F);

**South Alabama:** 12 TELEMAQUE, DAMAYA (G); 14 JONES, SAVANNAH (G); 23 BUSTER, JALA (F); 35 LEWIS, ANTOINETTE (C); 2 KINES, SHAFORIA (G);

Time	VISITORS: Alabama	Score	Margin	HOME: South Alabama
09:56		14-23	V 9	GOOD! 3PTR by JONES, SAVANNAH
09:08		17-23	V 6	GOOD! 3PTR by KINES, SHAFORIA
08:52	GOOD! JUMPER by WALKER, JASMINE	17-25	V 8	
08:25	GOOD! LAYUP by ABRAMS, MEGAN	17-27	V 10	
07:55		19-27	V 8	GOOD! LAYUP by KINES, SHAFORIA
05:58	GOOD! 3PTR by GIBSON, SHELBY	19-30	V 11	
05:29	GOOD! LAYUP by JOHNSON, CIERRA [FB]	19-32	V 13	
05:12	GOOD! FT by BARBER, HANNAH	19-33	V 14	
03:34	GOOD! LAYUP by KNIGHT, ASHLEY	19-35	V 16	
03:19	GOOD! FT by LEWIS, JORDAN	19-36	V 17	
03:19	GOOD! FT by LEWIS, JORDAN	19-37	V 18	
02:20		22-37	V 15	GOOD! 3PTR by KINES, SHAFORIA
01:41		25-37	V 12	GOOD! 3PTR by JONES, SAVANNAH
01:14		26-37	V 11	GOOD! FT by KINES, SHAFORIA
01:14		27-37	V 10	GOOD! FT by KINES, SHAFORIA
01:06		28-37	V 9	GOOD! FT by KINES, SHAFORIA [FB]
00:22	GOOD! LAYUP by LEWIS, JORDAN	28-39	V 11	
00:21		29-39	V 10	GOOD! FT by KINES, SHAFORIA
00:21		30-39	V 9	GOOD! FT by KINES, SHAFORIA
00:04	GOOD! FT by LEWIS, JORDAN	30-40	V 10	
00:04	GOOD! FT by LEWIS, JORDAN	30-41	V 11	

**Alabama 41, South Alabama 30**

**Official Scoring/Possession Reference Chart**  
**Alabama vs South Alabama**  
**Period 3**  
**November 21, 2019 at Mitchell Center - Mobile**



**Period 3**

**Starters:**

**Alabama:** 1 ABRAMS, MEGAN (G); 2 RICHARDSON, AMBER (G); 3 LEWIS, JORDAN (G); 22 COPELAND, ARIYAH (F); 40 WALKER, JASMINE (F);

**South Alabama:** 12 TELEMAQUE, DAMAYA (G); 14 JONES, SAVANNAH (G); 23 BUSTER, JALA (F); 35 LEWIS, ANTOINETTE (C); 2 KINES, SHAFORIA (G);

Time	VISITORS: Alabama	Score	Margin	HOME: South Alabama
09:28	GOOD! FT by RICHARDSON, AMBER	30-42	V 12	
09:28	GOOD! FT by RICHARDSON, AMBER	30-43	V 13	
09:08		32-43	V 11	GOOD! LAYUP by KINES, SHAFORIA
08:47	GOOD! JUMPER by COPELAND, ARIYAH	32-45	V 13	
08:31		35-45	V 10	GOOD! 3PTR by JONES, SAVANNAH
07:20		37-45	V 8	GOOD! LAYUP by TELEMAQUE, DAMAYA [FB]
06:55	GOOD! FT by ABRAMS, MEGAN	37-46	V 9	
06:32		39-46	V 7	GOOD! JUMPER by TELEMAQUE, DAMAYA
06:11	GOOD! LAYUP by ABRAMS, MEGAN	39-48	V 9	
05:34	GOOD! LAYUP by JOHNSON, CIERRA	39-50	V 11	
04:16	GOOD! JUMPER by JOHNSON, CIERRA [PNT]	39-52	V 13	
03:02	GOOD! JUMPER by WALKER, JASMINE	39-54	V 15	
01:52	GOOD! LAYUP by JOHNSON, CIERRA [FB]	39-56	V 17	
01:05	GOOD! FT by BENJAMIN, DE'SHA	39-57	V 18	
00:15		40-57	V 17	GOOD! FT by FERGUSON, CASEY

**Alabama 57, South Alabama 40**

**Official Scoring/Possession Reference Chart**  
**Alabama vs South Alabama**  
**Period 4**  
**November 21, 2019 at Mitchell Center - Mobile**



**Period 4**

**Starters:**

**Alabama:** 1 ABRAMS, MEGAN (G); 2 RICHARDSON, AMBER (G); 3 LEWIS, JORDAN (G); 22 COPELAND, ARIYAH (F); 40 WALKER, JASMINE (F);

**South Alabama:** 12 TELEMAQUE, DAMAYA (G); 14 JONES, SAVANNAH (G); 23 BUSTER, JALA (F); 35 LEWIS, ANTOINETTE (C); 2 KINES, SHAFORIA (G);

Time	VISITORS: Alabama	Score	Margin	HOME: South Alabama
09:06		41-57	V 16	GOOD! FT by KINES, SHAFORIA
09:06		42-57	V 15	GOOD! FT by KINES, SHAFORIA
08:57	GOOD! FT by COPELAND, ARIYAH	42-58	V 16	
08:25	GOOD! FT by LEWIS, JORDAN	42-59	V 17	
08:23	GOOD! LAYUP by WALKER, JASMINE	42-61	V 19	
07:37	GOOD! 3PTR by WALKER, JASMINE	42-64	V 22	
06:48		43-64	V 21	GOOD! FT by LEWIS, ANTOINETTE
06:29	GOOD! LAYUP by KNIGHT, ASHLEY	43-66	V 23	
06:04	GOOD! LAYUP by KNIGHT, ASHLEY	43-68	V 25	
05:48		46-68	V 22	GOOD! 3PTR by KINES, SHAFORIA
05:26	GOOD! LAYUP by BENJAMIN, DE'SHA	46-70	V 24	
05:09		47-70	V 23	GOOD! FT by LEWIS, ANTOINETTE
05:09		48-70	V 22	GOOD! FT by LEWIS, ANTOINETTE
04:55	GOOD! LAYUP by JOHNSON, CIERRA	48-72	V 24	
04:41		51-72	V 21	GOOD! 3PTR by KINES, SHAFORIA
03:52		52-72	V 20	GOOD! FT by LEWIS, ANTOINETTE
03:37		54-72	V 18	GOOD! LAYUP by TELEMAQUE, DAMAYA [FB]
03:27	GOOD! LAYUP by KNIGHT, ASHLEY	54-74	V 20	
03:06		57-74	V 17	GOOD! 3PTR by KINES, SHAFORIA
02:29		60-74	V 14	GOOD! 3PTR by JONES, SAVANNAH
01:21		61-74	V 13	GOOD! FT by LEWIS, ANTOINETTE
01:21		62-74	V 12	GOOD! FT by LEWIS, ANTOINETTE

**Alabama 74, South Alabama 62**

**Official Substitutions Log**  
**Alabama vs South Alabama**  
**Period 1**  
**November 21, 2019 at Mitchell Center - Mobile**



<b>VISITORS: Alabama</b>	<b>Time</b>	<b>Score</b>	<b>HOME: South Alabama</b>
1 ABRAMS, MEGAN			12 TELEMAQUE, DAMAYA
2 RICHARDSON, AMBER			14 JONES, SAVANNAH
3 LEWIS, JORDAN			23 BUSTER, JALA
22 COPELAND, ARIYAH			35 LEWIS, ANTOINETTE
40 WALKER, JASMINE			2 KINES, SHAFORIA
SUB OUT: 2 RICHARDSON, AMBER	06:48	4-5	
SUB IN: 4 JOHNSON, CIERRA	06:48		
SUB OUT: 1 ABRAMS, MEGAN	06:37	6-5	
SUB IN: 23 DAVIS, BRITTANY	06:37		
	04:37	8-8	SUB OUT: BUSTER, JALA
	04:37		SUB IN: FERGUSON, CASEY
SUB OUT: 22 COPELAND, ARIYAH	04:37		
SUB IN: 25 KNIGHT, ASHLEY	04:37		
	03:49	10-8	SUB OUT: TELEMAQUE, DAMAYA
	03:49		SUB IN: MORROW, JAYLA
SUB OUT: 3 LEWIS, JORDAN	02:58	14-8	
SUB OUT: 40 WALKER, JASMINE	02:58		
SUB IN: 5 BARBER, HANNAH	02:58		
SUB IN: 24 BENJAMIN, DE'SHA	02:58		
SUB OUT: 4 JOHNSON, CIERRA	02:57	14-8	
SUB IN: 1 ABRAMS, MEGAN	02:57		
	02:48	14-9	SUB OUT: KINES, SHAFORIA
	02:48		SUB IN: TELEMAQUE, DAMAYA
SUB OUT: 25 KNIGHT, ASHLEY	02:48		
SUB IN: 42 GIBSON, SHELBY	02:48		
	02:16	16-9	SUB OUT: JONES, SAVANNAH
	02:16		SUB IN: LOWE, DEVYN
	01:59	16-9	SUB OUT: LEWIS, ANTOINETTE
	01:59		SUB IN: MALLARD, JAYLEN
SUB OUT: 42 GIBSON, SHELBY	01:46	18-9	
SUB IN: 22 COPELAND, ARIYAH	01:46		
	00:40	23-9	SUB OUT: MORROW, JAYLA
	00:40		SUB IN: KINES, SHAFORIA
SUB OUT: 5 BARBER, HANNAH	00:40		
SUB IN: 3 LEWIS, JORDAN	00:40		
SUB OUT: 22 COPELAND, ARIYAH	00:40		
SUB OUT: 23 DAVIS, BRITTANY	00:40		
SUB IN: 2 RICHARDSON, AMBER	00:40		
SUB IN: 40 WALKER, JASMINE	00:40		
	00:29	23-11	SUB OUT: MALLARD, JAYLEN
	00:29		SUB IN: LEWIS, ANTOINETTE
SUB OUT: 2 RICHARDSON, AMBER	00:12	23-11	
SUB IN: 23 DAVIS, BRITTANY	00:12		

**Alabama 23, South Alabama 11**

**Official Substitutions Log**  
**Alabama vs South Alabama**  
**Period 2**  
**November 21, 2019 at Mitchell Center - Mobile**



VISITORS: Alabama	Time	Score	HOME: South Alabama
1 ABRAMS, MEGAN			12 TELEMAQUE, DAMAYA
2 RICHARDSON, AMBER			14 JONES, SAVANNAH
3 LEWIS, JORDAN			23 BUSTER, JALA
22 COPELAND, ARIYAH			35 LEWIS, ANTOINETTE
40 WALKER, JASMINE			2 KINES, SHAFORIA
	10:00	-	SUB OUT: LOWE, DEVYN
	10:00		SUB IN: JONES, SAVANNAH
SUB OUT: 24 BENJAMIN, DE'SHA	10:00		
SUB IN: 22 COPELAND, ARIYAH	10:00		
	08:05	27-17	SUB OUT: TELEMAQUE, DAMAYA
	08:05		SUB IN: LOWE, DEVYN
SUB OUT: 1 ABRAMS, MEGAN	07:14	27-19	
SUB IN: 2 RICHARDSON, AMBER	07:14		
SUB OUT: 23 DAVIS, BRITTANY	07:14		
SUB IN: 4 JOHNSON, CIERRA	07:14		
	06:26	27-19	SUB OUT: LOWE, DEVYN
	06:26		SUB IN: VAUGHT, MAHOGANY
SUB OUT: 3 LEWIS, JORDAN	06:26		
SUB OUT: 22 COPELAND, ARIYAH	06:26		
SUB IN: 5 BARBER, HANNAH	06:26		
SUB IN: 42 GIBSON, SHELBY	06:26		
SUB OUT: 40 WALKER, JASMINE	06:10	27-19	
SUB IN: 24 BENJAMIN, DE'SHA	06:10		
	05:12	32-19	SUB OUT: FERGUSON, CASEY
	05:12		SUB IN: BUSTER, JALA
SUB OUT: 4 JOHNSON, CIERRA	05:12		
SUB IN: 23 DAVIS, BRITTANY	05:12		
SUB OUT: 2 RICHARDSON, AMBER	04:18	33-19	
SUB IN: 1 ABRAMS, MEGAN	04:18		
SUB OUT: 42 GIBSON, SHELBY	04:18		
SUB IN: 25 KNIGHT, ASHLEY	04:18		
SUB OUT: 5 BARBER, HANNAH	03:57	33-19	
SUB IN: 3 LEWIS, JORDAN	03:57		
	03:19	35-19	SUB OUT: VAUGHT, MAHOGANY
	03:19		SUB IN: TELEMAQUE, DAMAYA
SUB OUT: 23 DAVIS, BRITTANY	03:19		
SUB IN: 5 BARBER, HANNAH	03:19		
SUB OUT: 1 ABRAMS, MEGAN	01:21	37-25	
SUB OUT: 5 BARBER, HANNAH	01:21		
SUB OUT: 25 KNIGHT, ASHLEY	01:21		
SUB IN: 4 JOHNSON, CIERRA	01:21		
SUB IN: 23 DAVIS, BRITTANY	01:21		
SUB IN: 40 WALKER, JASMINE	01:21		
SUB OUT: 23 DAVIS, BRITTANY	01:06	37-27	
SUB IN: 1 ABRAMS, MEGAN	01:06		
	00:04	39-30	SUB OUT: LEWIS, ANTOINETTE
	00:04		SUB IN: MALLARD, JAYLEN
SUB OUT: 4 JOHNSON, CIERRA	00:04		
SUB IN: 2 RICHARDSON, AMBER	00:04		
SUB OUT: 40 WALKER, JASMINE	00:04		
SUB IN: 12 CRUCE, ALLIE CRAIG	00:04		

**Alabama 41, South Alabama 30**

**Official Substitutions Log**  
**Alabama vs South Alabama**  
**Period 3**  
**November 21, 2019 at Mitchell Center - Mobile**



VISITORS: Alabama	Time	Score	HOME: South Alabama
1 ABRAMS, MEGAN			12 TELEMAQUE, DAMAYA
2 RICHARDSON, AMBER			14 JONES, SAVANNAH
3 LEWIS, JORDAN			23 BUSTER, JALA
22 COPELAND, ARIYAH			35 LEWIS, ANTOINETTE
40 WALKER, JASMINE			2 KINES, SHAFORIA
	10:00	-	SUB OUT: MALLARD, JAYLEN
	10:00		SUB IN: LEWIS, ANTOINETTE
SUB OUT: 12 CRUCE, ALLIE CRAIG	10:00		
SUB OUT: 24 BENJAMIN, DE'SHA	10:00		
SUB IN: 22 COPELAND, ARIYAH	10:00		
SUB IN: 40 WALKER, JASMINE	10:00		
	09:31	-	SUB OUT: LEWIS, ANTOINETTE
	09:31		SUB IN: MALLARD, JAYLEN
SUB OUT: 2 RICHARDSON, AMBER	07:06	45-37	
SUB IN: 4 JOHNSON, CIERRA	07:06		
SUB OUT: 1 ABRAMS, MEGAN	05:20	50-39	
SUB IN: 23 DAVIS, BRITTANY	05:20		
	04:04	52-39	SUB OUT: MALLARD, JAYLEN
	04:04		SUB IN: LEWIS, ANTOINETTE
SUB OUT: 3 LEWIS, JORDAN	04:04		
SUB IN: 5 BARBER, HANNAH	04:04		
SUB OUT: 23 DAVIS, BRITTANY	02:41	54-39	
SUB IN: 1 ABRAMS, MEGAN	02:41		
SUB OUT: 22 COPELAND, ARIYAH	02:41		
SUB IN: 25 KNIGHT, ASHLEY	02:41		
	01:58	54-39	SUB OUT: LEWIS, ANTOINETTE
	01:58		SUB IN: MALLARD, JAYLEN
SUB OUT: 40 WALKER, JASMINE	01:58		
SUB IN: 24 BENJAMIN, DE'SHA	01:58		
	01:05	56-39	SUB OUT: TELEMAQUE, DAMAYA
	01:05		SUB OUT: MALLARD, JAYLEN
	01:05		SUB OUT: BUSTER, JALA
	01:05		SUB IN: VAUGHT, MAHOGANY
	01:05		SUB IN: FERGUSON, CASEY
	01:05		SUB IN: LEWIS, ANTOINETTE
SUB OUT: 4 JOHNSON, CIERRA	01:05		
SUB OUT: 25 KNIGHT, ASHLEY	01:05		
SUB IN: 2 RICHARDSON, AMBER	01:05		
SUB IN: 42 GIBSON, SHELBY	01:05		
SUB OUT: 5 BARBER, HANNAH	00:15	57-39	
SUB IN: 3 LEWIS, JORDAN	00:15		

**Alabama 57, South Alabama 40**



**Official Substitutions Log**  
**Alabama vs South Alabama**  
**Period 4**  
**November 21, 2019 at Mitchell Center - Mobile**



VISITORS: Alabama	Time	Score	HOME: South Alabama
1 ABRAMS, MEGAN			12 TELEMAQUE, DAMAYA
2 RICHARDSON, AMBER			14 JONES, SAVANNAH
3 LEWIS, JORDAN			23 BUSTER, JALA
22 COPELAND, ARIYAH			35 LEWIS, ANTOINETTE
40 WALKER, JASMINE			2 KINES, SHAFORIA
SUB OUT: 2 RICHARDSON, AMBER	10:00	-	
SUB OUT: 24 BENJAMIN, DE'SHA	10:00		
SUB IN: 4 JOHNSON, CIERRA	10:00		
SUB IN: 40 WALKER, JASMINE	10:00		
SUB OUT: 42 GIBSON, SHELBY	09:33	-	
SUB IN: 22 COPELAND, ARIYAH	09:33		
	09:33		SUB OUT: VAUGHT, MAHOGANY
	09:33		SUB OUT: JONES, SAVANNAH
	09:33		SUB IN: TELEMAQUE, DAMAYA
	09:33		SUB IN: LOWE, DEVYN
	08:25	58-42	SUB OUT: TELEMAQUE, DAMAYA
	08:25		SUB IN: JONES, SAVANNAH
	07:44	61-42	SUB OUT: FERGUSON, CASEY
	07:44		SUB IN: BUSTER, JALA
SUB OUT: 1 ABRAMS, MEGAN	07:18	64-42	
SUB OUT: 22 COPELAND, ARIYAH	07:18		
SUB OUT: 40 WALKER, JASMINE	07:18		
SUB IN: 2 RICHARDSON, AMBER	07:18		
SUB IN: 24 BENJAMIN, DE'SHA	07:18		
SUB IN: 25 KNIGHT, ASHLEY	07:18		
SUB OUT: 3 LEWIS, JORDAN	06:48	64-43	
SUB IN: 5 BARBER, HANNAH	06:48		
	06:02	68-43	SUB OUT: LOWE, DEVYN
	06:02		SUB IN: TELEMAQUE, DAMAYA
SUB OUT: 2 RICHARDSON, AMBER	05:10	70-46	
SUB OUT: 5 BARBER, HANNAH	05:10		
SUB IN: 3 LEWIS, JORDAN	05:10		
SUB IN: 23 DAVIS, BRITTANY	05:10		
SUB OUT: 24 BENJAMIN, DE'SHA	03:52	72-51	
SUB IN: 40 WALKER, JASMINE	03:52		
SUB OUT: 23 DAVIS, BRITTANY	02:36	74-57	
SUB OUT: 25 KNIGHT, ASHLEY	02:36		
SUB IN: 22 COPELAND, ARIYAH	02:36		
SUB IN: 24 BENJAMIN, DE'SHA	02:36		
SUB OUT: 24 BENJAMIN, DE'SHA	01:13	74-62	
SUB IN: 1 ABRAMS, MEGAN	01:13		

**Alabama 74, South Alabama 62**

**Official Shot Chart**  
**Alabama vs South Alabama**  
**PERIOD 1 Shots**  
 November 21, 2019 at Mitchell Center - Mobile



**South Alabama**

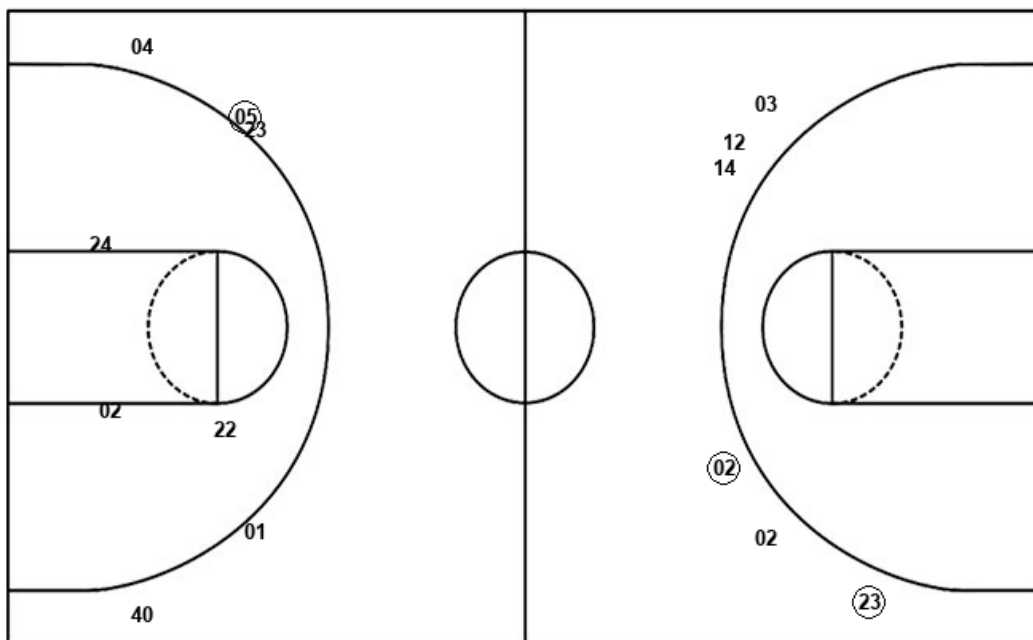
**Alabama**

Layups  
35 (14) 14

Layups  
(22) 22 22 (22) (03)  
40 25 (04) (03) (42)  
(23) 23 (24)

Dunks

Dunks



USA : Period 1	Made	Att	Pct
Layups	1	3	33.3
Dunks	0	0	0
2PT Field Goals	1	3	33.3
3PT Field Goals	2	6	33.3
<b>Total Field Goals</b>	<b>3</b>	<b>9</b>	<b>33.3</b>

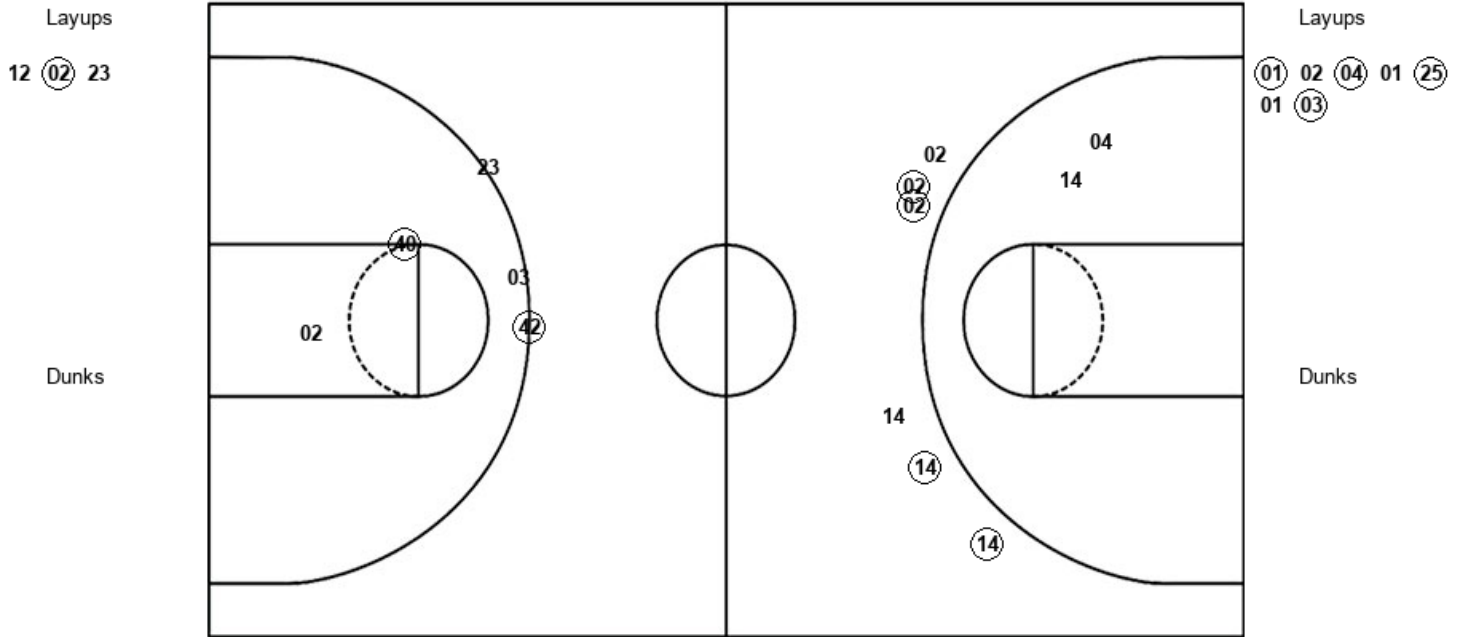
BAM : Period 1	Made	Att	Pct
Layups	8	13	61.5
Dunks	0	0	0
2PT Field Goals	8	16	50.0
3PT Field Goals	1	5	20.0
<b>Total Field Goals</b>	<b>9</b>	<b>21</b>	<b>42.9</b>

**Official Shot Chart**  
**Alabama vs South Alabama**  
**PERIOD 2 Shots**  
 November 21, 2019 at Mitchell Center - Mobile



**South Alabama**

**Alabama**



<b>USA : Period 2</b>	<b>Made</b>	<b>Att</b>	<b>Pct</b>
Layups	1	3	33.3
Dunks	0	0	0
2PT Field Goals	1	5	20.0
3PT Field Goals	4	6	66.7
<b>Total Field Goals</b>	<b>5</b>	<b>11</b>	<b>45.5</b>

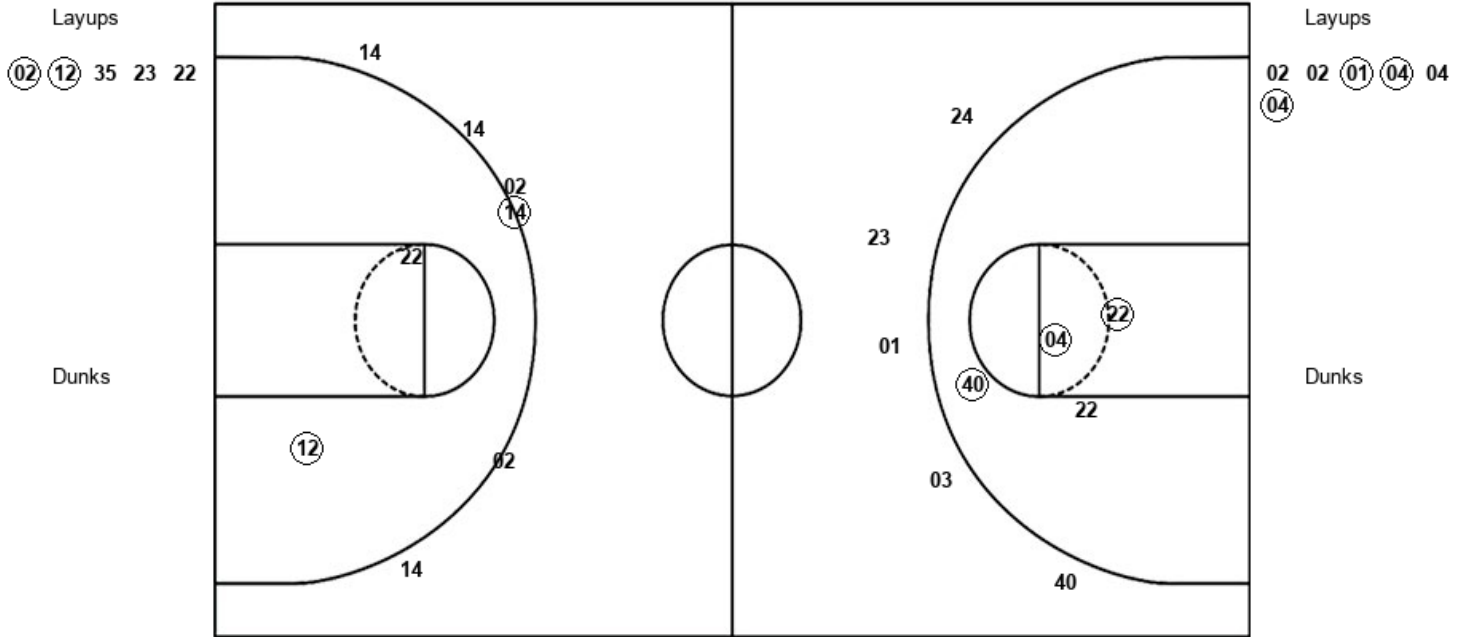
<b>BAM : Period 2</b>	<b>Made</b>	<b>Att</b>	<b>Pct</b>
Layups	4	7	57.1
Dunks	0	0	0
2PT Field Goals	5	9	55.6
3PT Field Goals	1	3	33.3
<b>Total Field Goals</b>	<b>6</b>	<b>12</b>	<b>50.0</b>

**Official Shot Chart**  
**Alabama vs South Alabama**  
**PERIOD 3 Shots**  
**November 21, 2019 at Mitchell Center - Mobile**



**South Alabama**

**Alabama**



USA : Period 3	Made	Att	Pct
Layups	2	5	40.0
Dunks	0	0	0
2PT Field Goals	3	7	42.9
3PT Field Goals	1	6	16.7
<b>Total Field Goals</b>	<b>4</b>	<b>13</b>	<b>30.8</b>

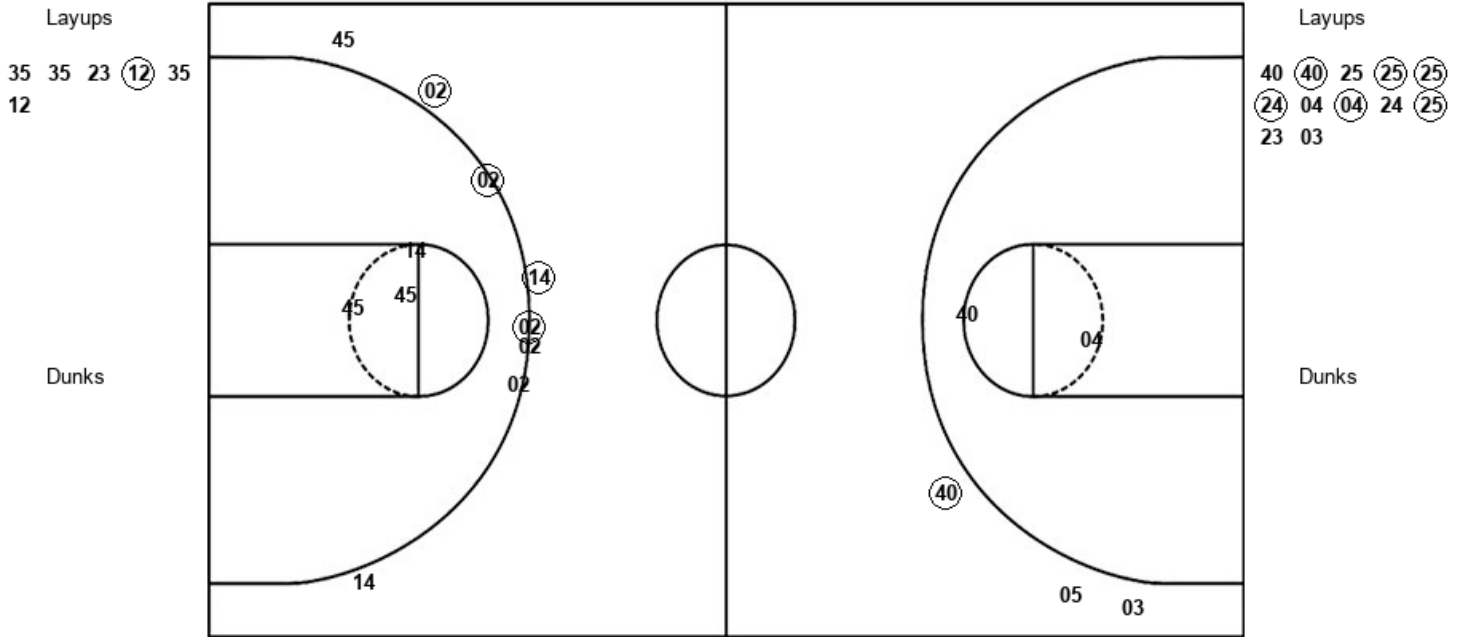
BAM : Period 3	Made	Att	Pct
Layups	3	6	50.0
Dunks	0	0	0
2PT Field Goals	6	10	60.0
3PT Field Goals	0	5	00.0
<b>Total Field Goals</b>	<b>6</b>	<b>15</b>	<b>40.0</b>

Official Shot Chart  
**Alabama vs South Alabama**  
 PERIOD 4 Shots  
 November 21, 2019 at Mitchell Center - Mobile



South Alabama

Alabama



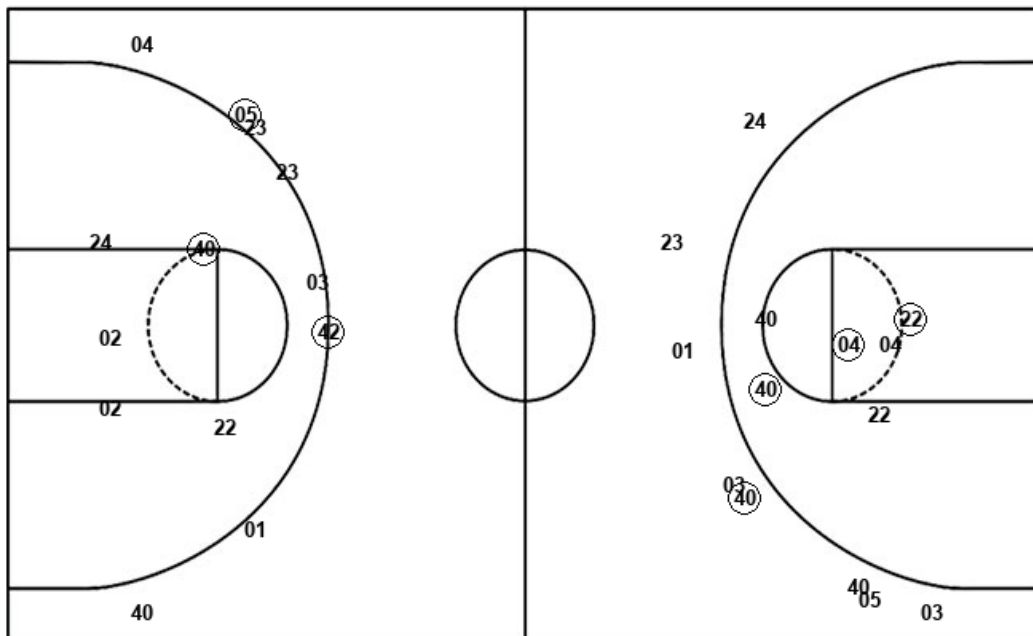
USA : Period 4	Made	Att	Pct
Layups	1	6	16.7
Dunks	0	0	0
2PT Field Goals	1	9	11.1
3PT Field Goals	4	8	50.0
<b>Total Field Goals</b>	<b>5</b>	<b>17</b>	<b>29.4</b>

BAM : Period 4	Made	Att	Pct
Layups	6	12	50.0
Dunks	0	0	0
2PT Field Goals	6	14	42.9
3PT Field Goals	1	3	33.3
<b>Total Field Goals</b>	<b>7</b>	<b>17</b>	<b>41.2</b>

**Official Shot Chart**  
**Alabama vs South Alabama**  
**Alabama Team Shots**  
**November 21, 2019 at Mitchell Center - Mobile**



Layups



Dunks

Layups

(22)	22	22	(22)	(03)
40	25	(04)	(03)	(42)
(23)	23	(24)	(01)	02
(04)	01	(25)	01	(03)
02	02	(01)	(04)	04
(04)	40	(40)	25	(25)
(25)	(24)	04	(04)	24
(25)	23	03		

Dunks

BAM : Period 1	Made	Att	Pct
Layups	8	13	61.5
Dunks	0	0	0
2PT Field Goals	8	16	50.0
3PT Field Goals	1	5	20.0
<b>Total Field Goals</b>	<b>9</b>	<b>21</b>	<b>42.9</b>

BAM : Period 2	Made	Att	Pct
Layups	4	7	57.1
Dunks	0	0	0
2PT Field Goals	5	9	55.6
3PT Field Goals	1	3	33.3
<b>Total Field Goals</b>	<b>6</b>	<b>12</b>	<b>50.0</b>

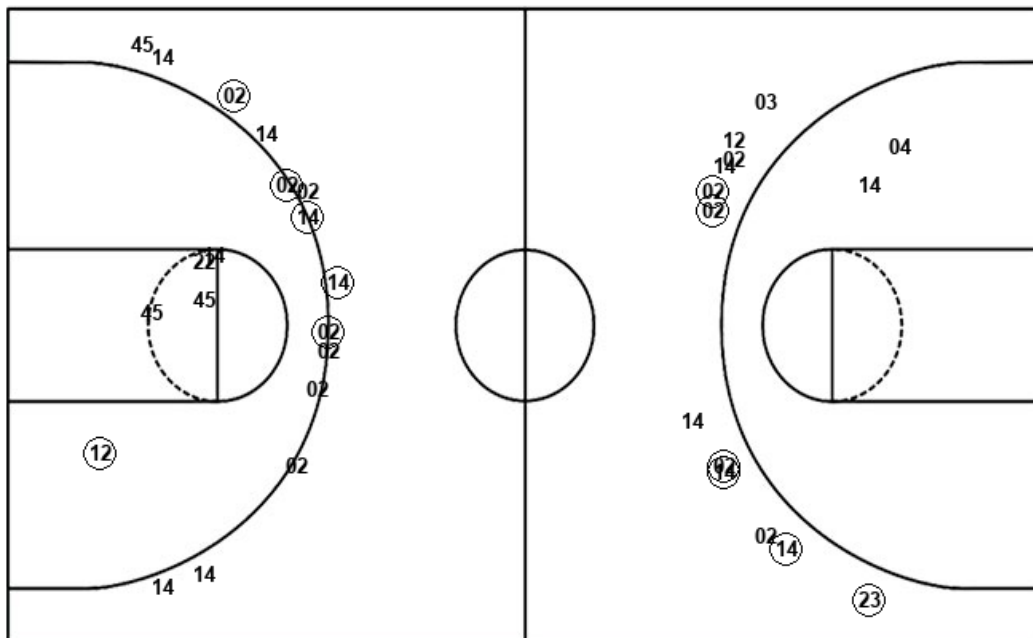
BAM : Period 3	Made	Att	Pct
Layups	3	6	50.0
Dunks	0	0	0
2PT Field Goals	6	10	60.0
3PT Field Goals	0	5	00.0
<b>Total Field Goals</b>	<b>6</b>	<b>15</b>	<b>40.0</b>

BAM : Period 4	Made	Att	Pct
Layups	6	12	50.0
Dunks	0	0	0
2PT Field Goals	6	14	42.9
3PT Field Goals	1	3	33.3
<b>Total Field Goals</b>	<b>7</b>	<b>17</b>	<b>41.2</b>

**Official Shot Chart**  
**Alabama vs South Alabama**  
**South Alabama Team Shots**  
**November 21, 2019 at Mitchell Center - Mobile**



Layups



Layups

35 (14) 14 12 (02)  
 23 (02) (12) 35 23  
 22 35 35 23 (12)  
 35 12

Dunks

Dunks

USA : Period 1	Made	Att	Pct
Layups	1	3	33.3
Dunks	0	0	0
2PT Field Goals	1	3	33.3
3PT Field Goals	2	6	33.3
<b>Total Field Goals</b>	<b>3</b>	<b>9</b>	<b>33.3</b>

USA : Period 2	Made	Att	Pct
Layups	1	3	33.3
Dunks	0	0	0
2PT Field Goals	1	5	20.0
3PT Field Goals	4	6	66.7
<b>Total Field Goals</b>	<b>5</b>	<b>11</b>	<b>45.5</b>

USA : Period 3	Made	Att	Pct
Layups	2	5	40.0
Dunks	0	0	0
2PT Field Goals	3	7	42.9
3PT Field Goals	1	6	16.7
<b>Total Field Goals</b>	<b>4</b>	<b>13</b>	<b>30.8</b>

USA : Period 4	Made	Att	Pct
Layups	1	6	16.7
Dunks	0	0	0
2PT Field Goals	1	9	11.1
3PT Field Goals	4	8	50.0
<b>Total Field Goals</b>	<b>5</b>	<b>17</b>	<b>29.4</b>