

FINAL SCORE



Southern Utah

71



Utah Valley

58

November 09, 2019 • Lockhart Arena - Orem

FINAL STATISTICS

Official Box Score
Southern Utah vs Utah Valley
Game Totals -- Final Statistics
November 09, 2019 at Lockhart Arena - Orem



Southern Utah 71

No.	Player	S	Pts	FG	3FG	FT	OR	DR	TR	PF	A	TO	Blk	Stl	Min	+/-
02	CARDENAS, REBECCA	G	23	8-17	4-7	3-4	1	3	4	1	2	1	0	2	32	17
04	LARSEN, ASHLEY	F	8	3-8	0-0	2-2	3	10	13	5	1	1	1	0	21	21
10	ARMATO, CLAUDIA	G	8	1-8	1-4	5-6	0	0	0	3	6	1	0	2	31	13
14	FANO, SHALYN	F	0	0-5	0-2	0-0	1	5	6	2	0	3	0	1	14	5
23	HANSEN, HARLEY	G	13	4-11	2-5	3-4	4	2	6	1	3	1	0	3	26	21
12	LIVINGSTON, HALLE	G	0	0-1	0-0	0-0	0	1	1	0	0	0	0	0	7	-7
20	EATON, MADELYN	G	7	2-8	1-3	2-2	1	3	4	1	2	1	0	1	18	12
24	CHATMAN, JESSICA	F	8	2-6	2-6	2-2	1	2	3	3	0	0	0	0	15	9
25	SATINI, MARGARITA	G	1	0-0	0-0	1-2	0	0	0	1	0	0	0	0	6	-11
30	LORD, ALEXA	G	0	0-1	0-0	0-0	0	0	0	0	0	0	0	0	2	-6
32	BLACK, REBECCA	F	0	0-0	0-0	0-0	1	1	2	1	0	1	0	0	5	2
34	ROBINS, HANNAH	C	1	0-0	0-0	1-2	0	0	0	2	0	1	0	0	9	-13
40	FRANDSEN, DARRI	F	2	1-5	0-0	0-1	5	4	9	1	1	2	0	1	15	2
TEAM							2	1	3	0		2				
TOTALS			71	21-70	10-27	19-25	19	32	51	21	15	14	1	10	200	

Shooting By Period

Period	FG	FG%	3FG	3FG%	FT	FT%
1st Qtr	7-17	41%	5-9	56%	4-5	80%
2nd Qtr	8-17	47%	2-5	40%	5-7	71%
3rd Qtr	4-19	21%	2-6	33%	6-7	86%
4th Qtr	2-17	12%	1-7	14%	4-6	67%
1st Half	15-34	44%	7-14	50%	9-12	75%
2nd Half	6-36	17%	3-13	23%	10-13	77%
Game	21-70	30.0%	10-27	37.0%	19-25	76.0%

Deadball Rebounds: 2,0

Last FG: 4th-09:07

Biggest Run: 24-0

Largest lead: By 28 at -

Technical Fouls: None.

Utah Valley 58

No.	Player	S	Pts	FG	3FG	FT	OR	DR	TR	PF	A	TO	Blk	Stl	Min	+/-
03	CARVALHO, MARIA	G	6	1-9	0-2	4-4	0	4	4	2	2	4	0	0	25	-25
14	BRASLIS, EVE	F	4	2-5	0-1	0-0	0	2	2	5	1	3	0	0	31	-12
20	CORTEZ, ALEXIS	G	16	7-13	2-3	0-0	0	6	6	1	2	2	2	1	28	-4
35	HOLLAND, JORDAN	F	13	2-10	1-5	8-10	2	8	10	3	3	1	0	2	31	-11
40	WILLIAMS, JOSIE	C	5	0-3	0-0	5-6	0	3	3	3	1	1	2	0	19	-15
05	WRIGHT, SYDNEY	G	0	0-0	0-0	0-0	0	0	0	1	3	0	0	1	15	12
11	DELOS SANTOS, KEANA	G	2	1-3	0-1	0-0	1	1	2	4	2	3	0	1	14	-12
21	SOHAIL, NEHAA	F	10	4-6	2-3	0-0	1	4	5	2	1	1	2	1	17	11
22	JENSEN, MEGAN	C	2	1-1	0-0	0-0	0	3	3	5	0	1	0	0	10	-5
23	GRANGE, MADISON	G	0	0-1	0-0	0-0	0	1	1	1	0	0	1	0	9	-4
33	MALUFAU, VA'E	F	0	0-2	0-0	0-0	0	0	0	0	0	0	0	0	2	0
TEAM							0	2	2	0		1				
TOTALS			58	18-53	5-15	17-20	4	34	38	27	15	17	7	6	200	

Shooting By Period

Period	FG	FG%	3FG	3FG%	FT	FT%
1st Qtr	4-15	27%	0-3	00%	5-6	83%
2nd Qtr	2-13	15%	0-2	00%	4-4	100%
3rd Qtr	6-13	46%	3-4	75%	3-4	75%
4th Qtr	6-12	50%	2-6	33%	5-6	83%
1st Half	6-28	21%	0-5	00%	9-10	90%
2nd Half	12-25	48%	5-10	50%	8-10	80%
Game	18-53	34.0%	5-15	33.3%	17-20	85.0%

Deadball Rebounds: 2,0

Last FG: 4th-00:01

Biggest Run: 11-0

Largest lead: By 2 at -

Technical Fouls: None.

Game Notes:

Officials: Anita Ortega, Lorena Ahumada, SHELLEY NAKASONE
Attendance: 1247

Start Time: 06:06 PM ET

End Time: 07:56 PM ET

Game Duration: 1:50

Score	1st	2nd	3rd	4th	TOT
SUU	23	23	16	9	71
UVU	13	8	18	19	58

SUU led for 37:53. UVU led for 0:53.

Game was tied for 1:14.

Times tied: 75 Lead Changes: 0

Points from	SUU	UVU
In the Paint	20	18
Off Turns	22	15
2nd Chance	14	4
Fast Break	22	10
Bench	19	14

Official Box Score
Southern Utah vs Utah Valley
First Half Statistics Only
November 09, 2019 at Lockhart Arena - Orem



Southern Utah 46

No.	Player	S	Pts	FG	3FG	FT	OR	DR	TR	PF	A	TO	Blk	Stl	Min	+/-
02	CARDENAS, REBECCA	G	19	7-12	4-6	1-1	1	1	2	1	1	0	0	1	17	25
04	LARSEN, ASHLEY	F	6	2-4	0-0	2-2	0	8	8	1	0	0	1	0	13	17
10	ARMATO, CLAUDIA	G	5	1-4	1-3	2-2	0	0	0	1	5	0	0	1	15	20
12	LIVINGSTON, HALLE	G	0	0-1	0-0	0-0	0	1	1	0	0	0	0	0	3	1
14	FANO, SHALYN	F	0	0-3	0-1	0-0	0	3	3	1	0	2	0	1	10	8
20	EATON, MADELYN	G	2	1-3	0-1	0-0	1	0	1	1	1	1	0	0	8	8
23	HANSEN, HARLEY	G	11	3-4	2-3	3-4	1	2	3	0	3	1	0	1	15	21
24	CHATMAN, JESSICA	F	0	0-0	0-0	0-0	0	0	0	2	0	0	0	0	3	7
25	SATINI, MARGARITA	G	0	0-0	0-0	0-0	0	0	0	1	0	0	0	0	2	0
30	LORD, ALEXA	G	0	0-0	0-0	0-0	0	0	0	0	0	0	0	0	0	0
32	BLACK, REBECCA	F	0	0-0	0-0	0-0	0	1	1	0	0	0	0	0	3	3
34	ROBINS, HANNAH	C	1	0-0	0-0	1-2	0	0	0	0	0	1	0	0	3	1
40	FRANDSEN, DARRI	F	2	1-3	0-0	0-1	2	2	4	1	1	1	0	1	8	14
	TEAM		0	0-0	0-0	0-0	0	0	0	0	0	0	0	0	0	0
TOTALS			46	15-34	7-14	9-12	5	18	23	9	11	6	1	5	100	

Shooting By Period

Period	FG	FG%	3FG	3FG%	FT	FT%
1st Qtr	7-17	41%	5-9	56%	4-5	80%
2nd Qtr	8-17	47%	2-5	40%	5-7	71%
1st Half	15-34	44%	7-14	50%	9-12	75%
Game	21-70	30.0%	10-27	37.0%	19-25	76.0%

Deadball Rebounds: 2,0

Last FG Half: SUU 2nd-01:24

Utah Valley 21

No.	Player	S	Pts	FG	3FG	FT	OR	DR	TR	PF	A	TO	Blk	Stl	Min	+/-
03	CARVALHO, MARIA	G	6	1-6	0-2	4-4	0	4	4	0	1	1	0	0	17	-18
05	WRIGHT, SYDNEY	G	0	0-0	0-0	0-0	0	0	0	1	0	0	0	0	3	-7
11	DELOS SANTOS, KEANA	G	0	0-2	0-1	0-0	0	0	0	1	1	1	0	0	5	-14
14	BRASLIS, EVE	F	2	1-2	0-0	0-0	0	0	0	2	0	3	0	0	17	-19
20	CORTEZ, ALEXIS	G	4	2-7	0-1	0-0	0	3	3	0	1	1	0	1	13	-18
21	SOHAIL, NEHAA	F	2	1-2	0-0	0-0	1	0	1	1	0	1	1	0	7	-5
22	JENSEN, MEGAN	C	0	0-0	0-0	0-0	0	3	3	3	0	1	0	0	6	-7
23	GRANGE, MADISON	G	0	0-1	0-0	0-0	0	0	0	0	0	0	1	0	7	-5
33	MALUFAU, VA'E	F	0	0-2	0-0	0-0	0	0	0	0	0	0	0	0	2	0
35	HOLLAND, JORDAN	F	7	1-4	0-1	5-6	2	4	6	3	0	1	0	1	14	-18
40	WILLIAMS, JOSIE	C	0	0-2	0-0	0-0	0	1	1	1	1	0	0	0	9	-14
	TEAM		0	0-0	0-0	0-0	0	1	1	0	0	1	0	0	0	0
TOTALS			21	6-28	0-5	9-10	3	16	19	12	4	10	2	2	100	

Shooting By Period

Period	FG	FG%	3FG	3FG%	FT	FT%
1st Qtr	4-15	27%	0-3	00%	5-6	83%
2nd Qtr	2-13	15%	0-2	00%	4-4	100%
1st Half	6-28	21%	0-5	00%	9-10	90%
Game	18-53	34.0%	5-15	33.3%	17-20	85.0%

Deadball Rebounds: 2,0

Last FG Half: UVU 2nd-02:19

Game Notes:

Officials: Anita Ortega, Lorena Ahumada, SHELLEY NAKASONE
Attendance: 1247

Start Time: 06:06 PM ET
End Time: 07:56 PM ET
Game Duration: 1:50

Score	1st	2nd	3rd	4th	TOT
SUU	23	23	16	9	71
UVU	13	8	18	19	58

Points from (This Period)	SUU	UVU
In the Paint	14	8
Off Turns	12	5
2nd Chance	9	2
Fast Break	9	5
Bench	5	2

Official Box Score
Southern Utah vs Utah Valley
First Quarter Statistics Only
November 09, 2019 at Lockhart Arena - Orem



Southern Utah 23

No.	Player	S	Pts	FG	3FG	FT	OR	DR	TR	PF	A	TO	Blk	Stl	Min	+/-
02	CARDENAS, REBECCA	G	11	4-7	3-5	0-0	1	1	2	1	0	0	0	0	9	10
04	LARSEN, ASHLEY	F	0	0-1	0-0	0-0	0	3	3	0	0	0	1	0	6	5
10	ARMATO, CLAUDIA	G	5	1-3	1-2	2-2	0	0	0	0	4	0	0	0	10	10
14	FANO, SHALYN	F	0	0-2	0-0	0-0	0	3	3	0	0	1	0	0	5	3
23	HANSEN, HARLEY	G	5	1-1	1-1	2-2	1	0	1	0	1	1	0	0	8	7
12	LIVINGSTON, HALLE	G	0	0-0	0-0	0-0	0	0	0	0	0	0	0	0	0	0
20	EATON, MADELYN	G	0	0-1	0-1	0-0	0	0	0	0	1	0	0	0	3	3
24	CHATMAN, JESSICA	F	0	0-0	0-0	0-0	0	0	0	2	0	0	0	0	3	7
25	SATINI, MARGARITA	G	0	0-0	0-0	0-0	0	0	0	0	0	0	0	0	0	0
30	LORD, ALEXA	G	0	0-0	0-0	0-0	0	0	0	0	0	0	0	0	0	0
32	BLACK, REBECCA	F	0	0-0	0-0	0-0	0	0	0	0	0	0	0	0	0	0
34	ROBINS, HANNAH	C	0	0-0	0-0	0-0	0	0	0	0	0	0	0	0	0	0
40	FRANDSEN, DARRI	F	2	1-2	0-0	0-1	1	2	3	1	0	1	0	1	6	5
	TEAM						0	0	0	0		0				
TOTALS			23	7-17	5-9	4-5	3	9	12	4	6	3	1	1	50	

Shooting By Period

Period	FG	FG%	3FG	3FG%	FT	FT%
1st Qtr	7-17	41%	5-9	56%	4-5	80%
2nd Qtr	8-17	47%	2-5	40%	5-7	71%
1st Half	7-17	41%	5-9	56%	4-5	80%
1st Half	15-34	44%	7-14	50%	9-12	75%
Game	21-70	30.0%	10-27	37.0%	19-25	76.0%

Deadball Rebounds: 2,0

Utah Valley 13

No.	Player	S	Pts	FG	3FG	FT	OR	DR	TR	PF	A	TO	Blk	Stl	Min	+/-
03	CARVALHO, MARIA	G	0	0-3	0-2	0-0	0	0	0	0	1	0	0	0	8	-10
14	BRASLIS, EVE	F	2	1-2	0-0	0-0	0	0	0	1	0	0	0	0	8	-8
20	CORTEZ, ALEXIS	G	2	1-5	0-1	0-0	0	3	3	0	1	1	0	1	8	-4
35	HOLLAND, JORDAN	F	7	1-2	0-0	5-6	2	3	5	1	0	0	0	1	10	-10
40	WILLIAMS, JOSIE	C	0	0-1	0-0	0-0	0	1	1	1	1	0	0	0	7	-7
05	WRIGHT, SYDNEY	G	0	0-0	0-0	0-0	0	0	0	0	0	0	0	0	2	0
11	DELOS SANTOS, KEANA	G	0	0-0	0-0	0-0	0	0	0	0	0	0	0	0	0	0
21	SOHAIL, NEHAA	F	2	1-1	0-0	0-0	0	0	0	0	0	1	0	0	2	-4
22	JENSEN, MEGAN	C	0	0-0	0-0	0-0	0	0	0	2	0	0	0	0	3	-3
23	GRANGE, MADISON	G	0	0-1	0-0	0-0	0	0	0	0	0	0	0	0	2	-4
33	MALUFAU, VA'E	F	0	0-0	0-0	0-0	0	0	0	0	0	0	0	0	0	0
	TEAM						0	1	1	0		0				
TOTALS			13	4-15	0-3	5-6	2	8	10	5	3	2	0	2	50	

Shooting By Period

Period	FG	FG%	3FG	3FG%	FT	FT%
1st Qtr	4-15	27%	0-3	00%	5-6	83%
2nd Qtr	2-13	15%	0-2	00%	4-4	100%
1st Half	4-15	27%	0-3	00%	5-6	83%
1st Half	6-28	21%	0-5	00%	9-10	90%
Game	18-53	34.0%	5-15	33.3%	17-20	85.0%

Deadball Rebounds: 2,0

Game Notes:

Officials: Anita Ortega, Lorena Ahumada, SHELLEY NAKASONE
Attendance: 1247

Start Time: 06:06 PM ET
End Time: 07:56 PM ET
Game Duration: 1:50

Score	1st	2nd	3rd	4th	TOT
SUU	23	23	16	9	71
UVU	13	8	18	19	58

Points from (This Period)	SUU	UVU
In the Paint	4	6
Off Turns	3	3
2nd Chance	7	2
Fast Break	0	3
Bench	2	2

Official Play-By-Play
Southern Utah vs Utah Valley
First Quarter
November 09, 2019 at Lockhart Arena - Orem



Period 1

Starters:

Southern Utah: 2 CARDENAS, REBECCA (G); 4 LARSEN, ASHLEY (F); 10 ARMATO, CLAUDIA (G); 14 FANO, SHALYN (F); 23 HANSEN, HARLEY (G);
Utah Valley: 3 CARVALHO, MARIA (G); 14 BRASLIS, EVE (F); 20 CORTEZ, ALEXIS (G); 35 HOLLAND, JORDAN (F); 40 WILLIAMS, JOSIE (C);

Time	VISITORS: Southern Utah	Score	Margin	HOME: Utah Valley
09:41	MISSED LAYUP by ARMATO, CLAUDIA			
09:38				REBOUND (DEF) by HOLLAND, JORDAN
09:21		2-0	H 2	GOOD! LAYUP by CORTEZ, ALEXIS [PNT]
09:21				ASSIST by WILLIAMS, JOSIE
09:08	GOOD! LAYUP by CARDENAS, REBECCA [PNT]	2-2	T	
08:53				MISSED LAYUP by CORTEZ, ALEXIS
08:53	BLOCK by LARSEN, ASHLEY			
08:48				REBOUND (OFF) by HOLLAND, JORDAN
08:48		4-2	H 2	GOOD! LAYUP by HOLLAND, JORDAN
08:23	GOOD! 3PTR by CARDENAS, REBECCA	4-5	V 1	
08:23	ASSIST by ARMATO, CLAUDIA			
07:58		6-5	H 1	GOOD! JUMPER by BRASLIS, EVE
07:58				ASSIST by CORTEZ, ALEXIS
07:43	GOOD! 3PTR by HANSEN, HARLEY	6-8	V 2	
07:43	ASSIST by ARMATO, CLAUDIA			
07:21				MISSED JUMPER by CORTEZ, ALEXIS
07:18	REBOUND (DEF) by FANO, SHALYN			
07:15	MISSED 3PTR by CARDENAS, REBECCA			
07:10				REBOUND (DEF) by WILLIAMS, JOSIE
06:56				MISSED 3PTR by CARVALHO, MARIA
06:52	REBOUND (DEF) by LARSEN, ASHLEY			
06:33	GOOD! 3PTR by ARMATO, CLAUDIA	6-11	V 5	
06:33	ASSIST by HANSEN, HARLEY			
06:12				TURNOVER (OTHER) by CORTEZ, ALEXIS
05:47	MISSED JUMPER by FANO, SHALYN			
05:42				REBOUND (DEF) by HOLLAND, JORDAN
05:35				MISSED JUMPER by WILLIAMS, JOSIE
05:33	REBOUND (DEF) by FANO, SHALYN			
05:31	TURNOVER (DRIBBLING) by FANO, SHALYN			
05:31				SUB OUT: WILLIAMS, JOSIE
05:31				SUB IN: JENSEN, MEGAN
05:31	SUB OUT: LARSEN, ASHLEY			
05:31	SUB IN: FRANSEN, DARRI			
05:18	FOUL (PERSONAL) by FRANSEN, DARRI			
05:18		7-11	V 4	GOOD! FT by HOLLAND, JORDAN
05:18		8-11	V 3	GOOD! FT by HOLLAND, JORDAN
05:09	MISSED LAYUP by FANO, SHALYN			
05:05				REBOUND (DEF) by CORTEZ, ALEXIS
04:58				MISSED JUMPER by CARVALHO, MARIA
04:56	REBOUND (DEF) by FANO, SHALYN			
04:44				FOUL (PERSONAL) by BRASLIS, EVE
04:44				
04:44	SUB OUT: FANO, SHALYN			
04:44	SUB IN: CHATMAN, JESSICA			
04:44	GOOD! FT by ARMATO, CLAUDIA	8-12	V 4	
04:44	GOOD! FT by ARMATO, CLAUDIA	8-13	V 5	
04:34	FOUL (PERSONAL) by CHATMAN, JESSICA			
04:34	SUB OUT: HANSEN, HARLEY			
04:34	SUB IN: EATON, MADELYN			
04:34		9-13	V 4	GOOD! FT by HOLLAND, JORDAN
04:34		10-13	V 3	GOOD! FT by HOLLAND, JORDAN
04:13	TURNOVER (BADPASS) by FRANSEN, DARRI			
04:13				STEAL by HOLLAND, JORDAN
04:10	FOUL (PERSONAL) by CARDENAS, REBECCA			
04:10				MISSED FT by HOLLAND, JORDAN
04:10				REBOUND (OFF) by TEAM
04:10		11-13	V 2	GOOD! FT by HOLLAND, JORDAN [FB]
04:10				SUB OUT: CORTEZ, ALEXIS
04:10				SUB IN: SOHAIL, NEHAA
04:02	MISSED 3PTR by EATON, MADELYN			
03:58				REBOUND (DEF) by HOLLAND, JORDAN
03:52		13-13	T	GOOD! LAYUP by SOHAIL, NEHAA [FB/PNT]
03:52				ASSIST by CARVALHO, MARIA
03:37	GOOD! 3PTR by CARDENAS, REBECCA	13-16	V 3	
03:37	ASSIST by ARMATO, CLAUDIA			
03:19				TURNOVER (BADPASS) by SOHAIL, NEHAA
03:19	STEAL by FRANSEN, DARRI			
03:04				FOUL (PERSONAL) by JENSEN, MEGAN
02:50	MISSED 3PTR by ARMATO, CLAUDIA			
02:46	REBOUND (OFF) by CARDENAS, REBECCA			

Time	VISITORS: Southern Utah	Score	Margin	HOME: Utah Valley
02:44	GOOD! 3PTR by CARDENAS, REBECCA	13-19	V 6	
02:44	ASSIST by EATON, MADELYN			
02:26				MISSED LAYUP by BRASLIS, EVE
02:23	REBOUND (DEF) by CARDENAS, REBECCA			
02:16	MISSED LAYUP by CARDENAS, REBECCA			
02:16	REBOUND (OFF) by FRANDSEN, DARRI			
02:16				FOUL (PERSONAL) by HOLLAND, JORDAN
02:16				SUB OUT: SOHAIL, NEHAA
02:16				SUB IN: GRANGE, MADISON
02:12	GOOD! LAYUP by FRANDSEN, DARRI [PNT]	13-21	V 8	
02:12	ASSIST by ARMATO, CLAUDIA			
02:12				FOUL (PERSONAL) by JENSEN, MEGAN
02:12				SUB OUT: BRASLIS, EVE
02:12				SUB OUT: JENSEN, MEGAN
02:12				SUB IN: CORTEZ, ALEXIS
02:12				SUB IN: WILLIAMS, JOSIE
02:12	SUB OUT: CARDENAS, REBECCA			
02:12	SUB IN: HANSEN, HARLEY			
02:12	MISSED FT by FRANDSEN, DARRI			
02:11				REBOUND (DEF) by CORTEZ, ALEXIS
01:55				MISSED 3PTR by CARVALHO, MARIA
01:52	REBOUND (DEF) by FRANDSEN, DARRI			
01:45	MISSED JUMPER by FRANDSEN, DARRI			
01:41	REBOUND (OFF) by HANSEN, HARLEY			
01:41				FOUL (PERSONAL) by WILLIAMS, JOSIE
01:41	SUB OUT: EATON, MADELYN			
01:41	SUB IN: CARDENAS, REBECCA			
01:41	GOOD! FT by HANSEN, HARLEY	13-22	V 9	
01:41	GOOD! FT by HANSEN, HARLEY	13-23	V 10	
01:41				SUB OUT: CARVALHO, MARIA
01:41				SUB IN: WRIGHT, SYDNEY
01:15	FOUL (PERSONAL) by CHATMAN, JESSICA			
01:15	SUB OUT: CHATMAN, JESSICA			
01:15	SUB IN: LARSEN, ASHLEY			
01:12				MISSED LAYUP by CORTEZ, ALEXIS
01:09	REBOUND (DEF) by FRANDSEN, DARRI			
00:58	TURNOVER (BADPASS) by HANSEN, HARLEY			
00:58				STEAL by CORTEZ, ALEXIS
00:38				MISSED 3PTR by CORTEZ, ALEXIS
00:34				REBOUND (OFF) by HOLLAND, JORDAN
00:34				MISSED LAYUP by HOLLAND, JORDAN
00:32	REBOUND (DEF) by LARSEN, ASHLEY			
00:14	MISSED LAYUP by LARSEN, ASHLEY			
00:11				REBOUND (DEF) by CORTEZ, ALEXIS
00:03				MISSED JUMPER by GRANGE, MADISON
00:00	REBOUND (DEF) by LARSEN, ASHLEY			
00:00	MISSED 3PTR by CARDENAS, REBECCA			
00:00				REBOUND (DEF) by TEAM

Southern Utah 23, Utah Valley 13

Points from (This Period)	SUU	UVU
In the Paint	4	6
Off Turns	3	3
2nd Chance	7	2
Fast Break	0	3
Bench	2	2

Official Box Score
Southern Utah vs Utah Valley
Second Quarter Statistics Only
November 09, 2019 at Lockhart Arena - Orem



Southern Utah 23

No.	Player	S	Pts	FG	3FG	FT	OR	DR	TR	PF	A	TO	Blk	Stl	Min	+/-
02	CARDENAS, REBECCA	G	8	3-5	1-1	1-1	0	0	0	0	1	0	0	1	8	15
04	LARSEN, ASHLEY	F	6	2-3	0-0	2-2	0	5	5	1	0	0	0	0	7	12
10	ARMATO, CLAUDIA	G	0	0-1	0-1	0-0	0	0	0	1	1	0	0	1	5	10
14	FANO, SHALYN	F	0	0-1	0-1	0-0	0	0	0	1	0	1	0	1	5	5
23	HANSEN, HARLEY	G	6	2-3	1-2	1-2	0	2	2	0	2	0	0	1	7	14
12	LIVINGSTON, HALLE	G	0	0-1	0-0	0-0	0	1	1	0	0	0	0	0	3	1
20	EATON, MADELYN	G	2	1-2	0-0	0-0	1	0	1	1	0	1	0	0	5	5
24	CHATMAN, JESSICA	F	0	0-0	0-0	0-0	0	0	0	0	0	0	0	0	0	0
25	SATINI, MARGARITA	G	0	0-0	0-0	0-0	0	0	0	1	0	0	0	0	2	0
30	LORD, ALEXA	G	0	0-0	0-0	0-0	0	0	0	0	0	0	0	0	0	0
32	BLACK, REBECCA	F	0	0-0	0-0	0-0	0	1	1	0	0	0	0	0	3	3
34	ROBINS, HANNAH	C	1	0-0	0-0	1-2	0	0	0	0	0	1	0	0	3	1
40	FRANDSEN, DARRI	F	0	0-1	0-0	0-0	1	0	1	0	1	0	0	0	2	9
	TEAM						0	0	0	0		0				
TOTALS			23	8-17	2-5	5-7	2	9	11	5	5	3	0	4	50	

Shooting By Period

Period	FG	FG%	3FG	3FG%	FT	FT%
3rd Qtr	4-19	21%	2-6	33%	6-7	86%
4th Qtr	2-17	12%	1-7	14%	4-6	67%
2nd Half	8-17	47%	2-5	40%	5-7	71%
2nd Half	6-36	17%	3-13	23%	10-13	77%
Game	21-70	30.0%	10-27	37.0%	19-25	76.0%

Deadball Rebounds: 2,0

Utah Valley 8

No.	Player	S	Pts	FG	3FG	FT	OR	DR	TR	PF	A	TO	Blk	Stl	Min	+/-
03	CARVALHO, MARIA	G	6	1-3	0-0	4-4	0	4	4	0	0	1	0	0	9	-8
14	BRASLIS, EVE	F	0	0-0	0-0	0-0	0	0	0	1	0	3	0	0	9	-11
20	CORTEZ, ALEXIS	G	2	1-2	0-0	0-0	0	0	0	0	0	0	0	0	5	-14
35	HOLLAND, JORDAN	F	0	0-2	0-1	0-0	0	1	1	2	0	1	0	0	4	-8
40	WILLIAMS, JOSIE	C	0	0-1	0-0	0-0	0	0	0	0	0	0	0	0	2	-7
05	WRIGHT, SYDNEY	G	0	0-0	0-0	0-0	0	0	0	1	0	0	0	0	1	-7
11	DELOS SANTOS, KEANA	G	0	0-2	0-1	0-0	0	0	0	1	1	1	0	0	5	-14
21	SOHAIL, NEHAA	F	0	0-1	0-0	0-0	1	0	1	1	0	0	1	0	5	-1
22	JENSEN, MEGAN	C	0	0-0	0-0	0-0	0	3	3	1	0	1	0	0	3	-4
23	GRANGE, MADISON	G	0	0-0	0-0	0-0	0	0	0	0	0	0	1	0	5	-1
33	MALUFAU, VA'E	F	0	0-2	0-0	0-0	0	0	0	0	0	0	0	0	2	0
	TEAM						0	0	0	0		1				
TOTALS			8	2-13	0-2	4-4	1	8	9	7	1	8	2	0	50	

Shooting By Period

Period	FG	FG%	3FG	3FG%	FT	FT%
3rd Qtr	6-13	46%	3-4	75%	3-4	75%
4th Qtr	6-12	50%	2-6	33%	5-6	83%
2nd Half	2-13	15%	0-2	00%	4-4	100%
2nd Half	12-25	48%	5-10	50%	8-10	80%
Game	18-53	34.0%	5-15	33.3%	17-20	85.0%

Deadball Rebounds: 2,0

Game Notes:

Officials: Anita Ortega, Lorena Ahumada, SHELLEY NAKASONE
Attendance: 1247

Start Time: 06:06 PM ET
End Time: 07:56 PM ET
Game Duration: 1:50

Score	1st	2nd	3rd	4th	TOT
SUU	23	23	16	9	71
UVU	13	8	18	19	58

Points from (This Period)	SUU	UVU
In the Paint	10	2
Off Turns	9	2
2nd Chance	2	0
Fast Break	9	2
Bench	3	0

Official Play-By-Play
Southern Utah vs Utah Valley
Second Quarter
November 09, 2019 at Lockhart Arena - Orem



Period 2

Starters:

Southern Utah: 2 CARDENAS, REBECCA (G); 4 LARSEN, ASHLEY (F); 10 ARMATO, CLAUDIA (G); 14 FANO, SHALYN (F); 23 HANSEN, HARLEY (G);
Utah Valley: 3 CARVALHO, MARIA (G); 14 BRASLIS, EVE (F); 20 CORTEZ, ALEXIS (G); 35 HOLLAND, JORDAN (F); 40 WILLIAMS, JOSIE (C);

Time	VISITORS: Southern Utah	Score	Margin	HOME: Utah Valley
10:00				SUB OUT: GRANGE, MADISON
10:00				SUB IN: DELOS SANTOS, KEANA
09:51				TURNOVER (3SEC) by HOLLAND, JORDAN
09:37				FOUL (PERSONAL) by HOLLAND, JORDAN
09:37	GOOD! FT by LARSEN, ASHLEY	13-24	V 11	
09:37	GOOD! FT by LARSEN, ASHLEY	13-25	V 12	
09:20				MISSED JUMPER by CORTEZ, ALEXIS
09:18	REBOUND (DEF) by HANSEN, HARLEY			
09:15	GOOD! LAYUP by LARSEN, ASHLEY [FB/PNT]	13-27	V 14	
09:15	ASSIST by HANSEN, HARLEY			
09:14				TIMEOUT 30SEC
09:14				SUB OUT: HOLLAND, JORDAN
09:14				SUB OUT: WILLIAMS, JOSIE
09:14				SUB IN: BRASLIS, EVE
09:14				SUB IN: JENSEN, MEGAN
09:05				TURNOVER (BADPASS) by DELOS SANTOS, KEANA
09:05	STEAL by CARDENAS, REBECCA			
08:59	GOOD! 3PTR by HANSEN, HARLEY	13-30	V 17	
08:59	ASSIST by FRANDSEN, DARRI			
08:46				TURNOVER (BADPASS) by BRASLIS, EVE
08:46	STEAL by HANSEN, HARLEY			
08:46				FOUL (PERSONAL) by WRIGHT, SYDNEY
08:46				SUB OUT: WRIGHT, SYDNEY
08:46				SUB IN: CARVALHO, MARIA
08:36	GOOD! JUMPER by LARSEN, ASHLEY [PNT]	13-32	V 19	
08:36	ASSIST by HANSEN, HARLEY			
08:13				MISSED JUMPER by DELOS SANTOS, KEANA
08:11	REBOUND (DEF) by LARSEN, ASHLEY			
08:06	MISSED 3PTR by ARMATO, CLAUDIA			
08:01				REBOUND (DEF) by CARVALHO, MARIA
07:58				TURNOVER (BADPASS) by CARVALHO, MARIA
07:58	STEAL by ARMATO, CLAUDIA			
07:37	MISSED LAYUP by LARSEN, ASHLEY			
07:35	REBOUND (OFF) by FRANDSEN, DARRI			
07:35	MISSED LAYUP by FRANDSEN, DARRI			
07:35				REBOUND (DEF) by JENSEN, MEGAN
07:35	FOUL (PERSONAL) by LARSEN, ASHLEY			
07:35				SUB OUT: CORTEZ, ALEXIS
07:35				SUB IN: HOLLAND, JORDAN
07:35	SUB OUT: ARMATO, CLAUDIA			
07:35	SUB OUT: FRANDSEN, DARRI			
07:35	SUB IN: FANO, SHALYN			
07:35	SUB IN: EATON, MADELYN			
07:24				FOUL (OFF) by BRASLIS, EVE
07:24				TURNOVER (OFFENSIVE) by BRASLIS, EVE
07:07	FOUL (OFF) by FANO, SHALYN			
07:07	TURNOVER (OFFENSIVE) by FANO, SHALYN			
07:07				SUB OUT: JENSEN, MEGAN
07:07				SUB IN: CORTEZ, ALEXIS
06:56				MISSED 3PTR by DELOS SANTOS, KEANA
06:55	REBOUND (DEF) by LARSEN, ASHLEY			
06:55				FOUL (PERSONAL) by HOLLAND, JORDAN
06:42	GOOD! LAYUP by CARDENAS, REBECCA [PNT]	13-34	V 21	
06:27				MISSED 3PTR by HOLLAND, JORDAN
06:24	REBOUND (DEF) by LARSEN, ASHLEY			
06:22				FOUL (PERSONAL) by DELOS SANTOS, KEANA
06:22				SUB OUT: HOLLAND, JORDAN
06:22				SUB IN: WILLIAMS, JOSIE
06:22	SUB OUT: LARSEN, ASHLEY			
06:22	SUB IN: BLACK, REBECCA			
06:22	MISSED FT by HANSEN, HARLEY			
06:22	REBOUND (OFF) by TEAM			
06:22	GOOD! FT by HANSEN, HARLEY [FB]	13-35	V 22	
06:16	FOUL (PERSONAL) by EATON, MADELYN			
06:04				MISSED LAYUP by WILLIAMS, JOSIE
06:02	REBOUND (DEF) by BLACK, REBECCA			
05:57	GOOD! JUMPER by HANSEN, HARLEY [FB]	13-37	V 24	
05:57	ASSIST by CARDENAS, REBECCA			
05:39		15-37	V 22	GOOD! JUMPER by CORTEZ, ALEXIS
05:39				ASSIST by DELOS SANTOS, KEANA

Time	VISITORS: Southern Utah	Score	Margin	HOME: Utah Valley
05:22	GOOD! LAYUP by CARDENAS, REBECCA [PNT]	15-39	V 24	
05:03				TURNOVER (LOSTBALL) by BRASLIS, EVE
05:03	STEAL by FANO, SHALYN			
05:03				SUB OUT: DELOS SANTOS, KEANA
05:03				SUB OUT: CORTEZ, ALEXIS
05:03				SUB OUT: WILLIAMS, JOSIE
05:03				SUB IN: SOHAIL, NEHAA
05:03				SUB IN: GRANGE, MADISON
05:03				SUB IN: MALUFAU, VA'E
05:03	SUB OUT: CARDENAS, REBECCA			
05:03	SUB IN: SATINI, MARGARITA			
04:50	MISSED 3PTR by FANO, SHALYN			
04:48				REBOUND (DEF) by CARVALHO, MARIA
04:41	FOUL (PERSONAL) by SATINI, MARGARITA			
04:41		16-39	V 23	GOOD! FT by CARVALHO, MARIA
04:41		17-39	V 22	GOOD! FT by CARVALHO, MARIA
04:26	MISSED LAYUP by EATON, MADELYN			
04:26				REBOUND (DEF) by CARVALHO, MARIA
04:19				MISSED LAYUP by CARVALHO, MARIA
04:16				REBOUND (OFF) by SOHAIL, NEHAA
03:59				MISSED JUMPER by MALUFAU, VA'E
03:59				REBOUND (OFF) by TEAM
03:59				TURNOVER (SHOTCLOCK) by TEAM
03:37	MISSED 3PTR by HANSEN, HARLEY			
03:32	REBOUND (OFF) by EATON, MADELYN			
03:32	GOOD! LAYUP by EATON, MADELYN	17-41	V 24	
03:13				MISSED LAYUP by MALUFAU, VA'E
03:10	REBOUND (DEF) by HANSEN, HARLEY			
03:03	TURNOVER (LOSTBALL) by EATON, MADELYN			
03:03				SUB OUT: MALUFAU, VA'E
03:03				SUB IN: HOLLAND, JORDAN
03:03	SUB OUT: FANO, SHALYN			
03:03	SUB OUT: EATON, MADELYN			
03:03	SUB OUT: HANSEN, HARLEY			
03:03	SUB OUT: SATINI, MARGARITA			
03:03	SUB OUT: BLACK, REBECCA			
03:03	SUB IN: CARDENAS, REBECCA			
03:03	SUB IN: LARSEN, ASHLEY			
03:03	SUB IN: ARMATO, CLAUDIA			
03:03	SUB IN: LIVINGSTON, HALLE			
03:03	SUB IN: ROBINS, HANNAH			
02:52				MISSED LAYUP by HOLLAND, JORDAN
02:50	REBOUND (DEF) by LARSEN, ASHLEY			
02:34	TURNOVER (3SEC) by ROBINS, HANNAH			
02:19		19-41	V 22	GOOD! LAYUP by CARVALHO, MARIA [PNT]
01:45	MISSED JUMPER by CARDENAS, REBECCA			
01:42				REBOUND (DEF) by HOLLAND, JORDAN
01:32				MISSED JUMPER by CARVALHO, MARIA
01:30	REBOUND (DEF) by LARSEN, ASHLEY			
01:24	GOOD! 3PTR by CARDENAS, REBECCA [FB]	19-44	V 25	
01:24	ASSIST by ARMATO, CLAUDIA			
01:24				FOUL (PERSONAL) by SOHAIL, NEHAA
01:24	GOOD! FT by CARDENAS, REBECCA [FB]	19-45	V 26	
01:17	FOUL (PERSONAL) by ARMATO, CLAUDIA			
01:17				SUB OUT: HOLLAND, JORDAN
01:17				SUB IN: JENSEN, MEGAN
01:17		20-45	V 25	GOOD! FT by CARVALHO, MARIA [FB]
01:17		21-45	V 24	GOOD! FT by CARVALHO, MARIA [FB]
01:05	MISSED LAYUP by LIVINGSTON, HALLE			
01:05				BLOCK by GRANGE, MADISON
01:00				REBOUND (DEF) by JENSEN, MEGAN
00:43				MISSED JUMPER by SOHAIL, NEHAA
00:40	REBOUND (DEF) by LIVINGSTON, HALLE			
00:24				FOUL (PERSONAL) by JENSEN, MEGAN
00:24	GOOD! FT by ROBINS, HANNAH	21-46	V 25	
00:24	MISSED FT by ROBINS, HANNAH			
00:23				REBOUND (DEF) by JENSEN, MEGAN
00:08				TURNOVER (TRAVEL) by JENSEN, MEGAN
00:08				SUB OUT: JENSEN, MEGAN
00:08				SUB IN: CORTEZ, ALEXIS
00:00	MISSED LAYUP by CARDENAS, REBECCA			
00:00				REBOUND (DEF) by CARVALHO, MARIA

Southern Utah 46, Utah Valley 21

Points from (This Period)	SUU	UVU
In the Paint	10	2
Off Turns	9	2
2nd Chance	2	0
Fast Break	9	2
Bench	3	0

Official Box Score
Southern Utah vs Utah Valley
Second Half Statistics Only
November 09, 2019 at Lockhart Arena - Orem



Southern Utah 25

No.	Player	S	Pts	FG	3FG	FT	OR	DR	TR	PF	A	TO	Blk	Stl	Min	+/-
02	CARDENAS, REBECCA	G	4	1-5	0-1	2-3	0	2	2	0	1	1	0	1	14	-8
04	LARSEN, ASHLEY	F	2	1-4	0-0	0-0	3	2	5	4	1	1	0	0	9	4
10	ARMATO, CLAUDIA	G	3	0-4	0-1	3-4	0	0	0	2	1	1	0	1	15	-7
12	LIVINGSTON, HALLE	G	0	0-0	0-0	0-0	0	0	0	0	0	0	0	0	4	-8
14	FANO, SHALYN	F	0	0-2	0-1	0-0	1	2	3	1	0	1	0	0	4	-3
20	EATON, MADELYN	G	5	1-5	1-2	2-2	0	3	3	0	1	0	0	1	11	4
23	HANSEN, HARLEY	G	2	1-7	0-2	0-0	3	0	3	1	0	0	0	2	11	0
24	CHATMAN, JESSICA	F	8	2-6	2-6	2-2	1	2	3	1	0	0	0	0	12	2
25	SATINI, MARGARITA	G	1	0-0	0-0	1-2	0	0	0	0	0	0	0	0	4	-11
30	LORD, ALEXA	G	0	0-1	0-0	0-0	0	0	0	0	0	0	0	0	2	-6
32	BLACK, REBECCA	F	0	0-0	0-0	0-0	1	0	1	1	0	1	0	0	2	-1
34	ROBINS, HANNAH	C	0	0-0	0-0	0-0	0	0	0	2	0	0	0	0	6	-14
40	FRANSEN, DARRI	F	0	0-2	0-0	0-0	3	2	5	0	0	1	0	0	7	-12
	TEAM		0	0-0	0-0	0-0	2	1	3	0	0	2	0	0	0	
TOTALS			25	6-36	3-13	10-13	14	14	28	12	4	8	0	5	100	

Shooting By Period

Period	FG	FG%	3FG	3FG%	FT	FT%
3rd Qtr	4-19	21%	2-6	33%	6-7	86%
4th Qtr	2-17	12%	1-7	14%	4-6	67%
2nd Half	6-36	17%	3-13	23%	10-13	77%
Game	21-70	30.0%	10-27	37.0%	19-25	76.0%

Deadball Rebounds: 2,0

Last FG Half: SUU 4th-09:07

Utah Valley 37

No.	Player	S	Pts	FG	3FG	FT	OR	DR	TR	PF	A	TO	Blk	Stl	Min	+/-
03	CARVALHO, MARIA	G	0	0-3	0-0	0-0	0	0	0	2	1	3	0	0	8	-7
05	WRIGHT, SYDNEY	G	0	0-0	0-0	0-0	0	0	0	0	3	0	0	1	12	19
11	DELOS SANTOS, KEANA	G	2	1-1	0-0	0-0	1	1	2	3	1	2	0	1	9	2
14	BRASLIS, EVE	F	2	1-3	0-1	0-0	0	2	2	3	1	0	0	0	14	7
20	CORTEZ, ALEXIS	G	12	5-6	2-2	0-0	0	3	3	1	1	1	2	0	15	14
21	SOHAIL, NEHAA	F	8	3-4	2-3	0-0	0	4	4	1	1	0	1	1	10	16
22	JENSEN, MEGAN	C	2	1-1	0-0	0-0	0	0	0	2	0	0	0	0	3	2
23	GRANGE, MADISON	G	0	0-0	0-0	0-0	0	1	1	1	0	0	0	0	2	1
33	MALUFAU, VA'E	F	0	0-0	0-0	0-0	0	0	0	0	0	0	0	0	0	0
35	HOLLAND, JORDAN	F	6	1-6	1-4	3-4	0	4	4	0	3	0	0	1	17	7
40	WILLIAMS, JOSIE	C	5	0-1	0-0	5-6	0	2	2	2	0	1	2	0	10	-1
	TEAM		0	0-0	0-0	0-0	0	1	1	0	0	0	0	0	0	
TOTALS			37	12-25	5-10	8-10	1	18	19	15	11	7	5	4	100	

Shooting By Period

Period	FG	FG%	3FG	3FG%	FT	FT%
3rd Qtr	6-13	46%	3-4	75%	3-4	75%
4th Qtr	6-12	50%	2-6	33%	5-6	83%
2nd Half	12-25	48%	5-10	50%	8-10	80%
Game	18-53	34.0%	5-15	33.3%	17-20	85.0%

Deadball Rebounds: 2,0

Last FG Half: UVU 4th-00:01

Game Notes:

Officials: Anita Ortega, Lorena Ahumada, SHELLEY NAKASONE
Attendance: 1247

Start Time: 06:06 PM ET

End Time: 07:56 PM ET

Game Duration: 1:50

Score	1st	2nd	3rd	4th	TOT
SUU	23	23	16	9	71
UVU	13	8	18	19	58

Points from (This Period)	SUU	UVU
In the Paint	6	10
Off Turns	10	10
2nd Chance	5	2
Fast Break	13	5
Bench	14	12

Official Box Score
Southern Utah vs Utah Valley
Third Quarter Statistics Only
November 09, 2019 at Lockhart Arena - Orem



Southern Utah 25

No.	Player	S	Pts	FG	3FG	FT	OR	DR	TR	PF	A	TO	Blk	Stl	Min	+/-
02	CARDENAS, REBECCA	G	4	1-5	0-1	2-3	0	1	1	0	1	1	0	1	10	-4
04	LARSEN, ASHLEY	F	2	1-3	0-0	0-0	2	2	4	3	1	1	0	0	7	-1
10	ARMATO, CLAUDIA	G	0	0-2	0-1	0-0	0	0	0	1	1	0	0	0	10	-2
14	FANO, SHALYN	F	0	0-2	0-1	0-0	1	2	3	1	0	1	0	0	4	-3
23	HANSEN, HARLEY	G	0	0-1	0-0	0-0	0	0	0	1	0	0	0	0	5	-1
12	LIVINGSTON, HALLE	G	0	0-0	0-0	0-0	0	0	0	0	0	0	0	0	0	0
20	EATON, MADELYN	G	5	1-2	1-1	2-2	0	1	1	0	0	0	0	1	6	1
24	CHATMAN, JESSICA	F	5	1-2	1-2	2-2	0	0	0	0	0	0	0	0	6	1
25	SATINI, MARGARITA	G	0	0-0	0-0	0-0	0	0	0	0	0	0	0	0	0	0
30	LORD, ALEXA	G	0	0-0	0-0	0-0	0	0	0	0	0	0	0	0	0	0
32	BLACK, REBECCA	F	0	0-0	0-0	0-0	0	0	0	0	0	0	0	0	0	0
34	ROBINS, HANNAH	C	0	0-0	0-0	0-0	0	0	0	0	0	0	0	0	0	0
40	FRANDSEN, DARRI	F	0	0-2	0-0	0-0	2	2	4	0	0	0	0	0	3	-1
TEAM							2	0	2	0		0				
TOTALS			16	4-19	2-6	6-7	7	8	15	6	3	3	0	2	50	

Shooting By Period

Period	FG	FG%	3FG	3FG%	FT	FT%
2nd Half	0-0	0%	0-0	0%	0-0	0%
Game	21-70	30.0%	10-27	37.0%	19-25	76.0%

Deadball Rebounds: 2,0

Utah Valley 37

No.	Player	S	Pts	FG	3FG	FT	OR	DR	TR	PF	A	TO	Blk	Stl	Min	+/-
03	CARVALHO, MARIA	G	0	0-3	0-0	0-0	0	0	0	2	1	2	0	0	7	-2
14	BRASLIS, EVE	F	2	1-3	0-1	0-0	0	2	2	2	1	0	0	0	10	2
20	CORTEZ, ALEXIS	G	5	2-2	1-1	0-0	0	0	0	1	0	0	1	0	7	5
35	HOLLAND, JORDAN	F	3	1-2	1-1	0-0	0	3	3	0	3	0	0	1	10	2
40	WILLIAMS, JOSIE	C	3	0-1	0-0	3-4	0	2	2	1	0	1	1	0	5	1
05	WRIGHT, SYDNEY	G	0	0-0	0-0	0-0	0	0	0	0	1	0	0	0	3	4
11	DELOS SANTOS, KEANA	G	0	0-0	0-0	0-0	0	0	0	1	0	0	0	1	3	-3
21	SOHAIL, NEHAA	F	3	1-1	1-1	0-0	0	1	1	1	0	0	0	0	4	2
22	JENSEN, MEGAN	C	2	1-1	0-0	0-0	0	0	0	1	0	0	0	0	1	-1
23	GRANGE, MADISON	G	0	0-0	0-0	0-0	0	0	0	0	0	0	0	0	0	0
33	MALUFAU, VA'E	F	0	0-0	0-0	0-0	0	0	0	0	0	0	0	0	0	0
TEAM							0	1	1	0		0				
TOTALS			18	6-13	3-4	3-4	0	9	9	9	6	3	2	2	50	

Shooting By Period

Period	FG	FG%	3FG	3FG%	FT	FT%
2nd Half	0-0	0%	0-0	0%	0-0	0%
Game	18-53	34.0%	5-15	33.3%	17-20	85.0%

Deadball Rebounds: 2,0

Game Notes:

Officials: Anita Ortega, Lorena Ahumada, SHELLEY NAKASONE
Attendance: 1247

Start Time: 06:06 PM ET
End Time: 07:56 PM ET
Game Duration: 1:50

Score	1st	2nd	3rd	4th	TOT
SUU	23	23	16	9	71
UVU	13	8	18	19	58

Points from (This Period)	SUU	UVU
In the Paint	4	4
Off Turns	5	4
2nd Chance	2	0
Fast Break	8	3
Bench	10	5

Official Play-By-Play
Southern Utah vs Utah Valley
Third Quarter
November 09, 2019 at Lockhart Arena - Orem



Period 3

Starters:

Southern Utah: 2 CARDENAS, REBECCA (G); 4 LARSEN, ASHLEY (F); 10 ARMATO, CLAUDIA (G); 14 FANO, SHALYN (F); 23 HANSEN, HARLEY (G);
Utah Valley: 3 CARVALHO, MARIA (G); 14 BRASLIS, EVE (F); 20 CORTEZ, ALEXIS (G); 35 HOLLAND, JORDAN (F); 40 WILLIAMS, JOSIE (C);

Time	VISITORS: Southern Utah	Score	Margin	HOME: Utah Valley
04:26				BLOCK by SOHAIL, NEHAA
10:00				SUB OUT: SOHAIL, NEHAA
10:00				SUB OUT: GRANGE, MADISON
10:00				SUB IN: HOLLAND, JORDAN
10:00				SUB IN: WILLIAMS, JOSIE
10:00	SUB OUT: LIVINGSTON, HALLE			
10:00	SUB OUT: ROBINS, HANNAH			
10:00	SUB IN: FANO, SHALYN			
10:00	SUB IN: HANSEN, HARLEY			
09:50	FOUL (PERSONAL) by LARSEN, ASHLEY			
09:50		22-46	V 24	GOOD! FT by WILLIAMS, JOSIE
09:50		23-46	V 23	GOOD! FT by WILLIAMS, JOSIE
09:33	MISSED JUMPER by LARSEN, ASHLEY			
09:30				REBOUND (DEF) by HOLLAND, JORDAN
09:13				MISSED JUMPER by CARVALHO, MARIA
09:11	REBOUND (DEF) by LARSEN, ASHLEY			
08:52	MISSED JUMPER by CARDENAS, REBECCA			
08:50				REBOUND (DEF) by HOLLAND, JORDAN
08:43	FOUL (PERSONAL) by LARSEN, ASHLEY			
08:43	SUB OUT: LARSEN, ASHLEY			
08:43	SUB IN: FRANSEN, DARRI			
08:36				MISSED JUMPER by CARVALHO, MARIA
08:33	REBOUND (DEF) by FRANSEN, DARRI			
08:29				FOUL (PERSONAL) by CARVALHO, MARIA
08:26				FOUL (PERSONAL) by CARVALHO, MARIA
08:02	TURNOVER (BADPASS) by CARDENAS, REBECCA			
08:02				STEAL by HOLLAND, JORDAN
07:50		25-46	V 21	GOOD! LAYUP by BRASLIS, EVE [PNT]
07:50				ASSIST by CARVALHO, MARIA
07:41	MISSED LAYUP by ARMATO, CLAUDIA			
07:37	REBOUND (OFF) by FANO, SHALYN			
07:37	MISSED LAYUP by FANO, SHALYN			
07:36	REBOUND (OFF) by FRANSEN, DARRI			
07:36	MISSED LAYUP by FRANSEN, DARRI			
07:36				REBOUND (DEF) by TEAM
07:29	FOUL (PERSONAL) by FANO, SHALYN			
07:20				MISSED JUMPER by WILLIAMS, JOSIE
07:19	REBOUND (DEF) by FANO, SHALYN			
07:19				FOUL (PERSONAL) by CORTEZ, ALEXIS
07:19				SUB OUT: CORTEZ, ALEXIS
07:19				SUB IN: DELOS SANTOS, KEANA
07:07	TURNOVER (LOSTBALL) by FANO, SHALYN			
07:07				STEAL by DELOS SANTOS, KEANA
06:52				MISSED 3PTR by BRASLIS, EVE
06:49	REBOUND (DEF) by FANO, SHALYN			
06:31				FOUL (PERSONAL) by DELOS SANTOS, KEANA
06:31	FOUL (PERSONAL) by ARMATO, CLAUDIA			
06:22	MISSED 3PTR by ARMATO, CLAUDIA			
06:20				REBOUND (DEF) by BRASLIS, EVE
06:16				MISSED LAYUP by HOLLAND, JORDAN
06:15	REBOUND (DEF) by CARDENAS, REBECCA			
06:15				FOUL (PERSONAL) by BRASLIS, EVE
06:15	GOOD! FT by CARDENAS, REBECCA [FB]	25-47	V 22	
06:15	MISSED FT by CARDENAS, REBECCA			
06:14				REBOUND (DEF) by WILLIAMS, JOSIE
05:50				MISSED LAYUP by CARVALHO, MARIA
05:47	REBOUND (DEF) by FRANSEN, DARRI			
05:40	MISSED LAYUP by HANSEN, HARLEY			
05:40				BLOCK by WILLIAMS, JOSIE
05:40	REBOUND (OFF) by TEAM			
05:36	MISSED 3PTR by FANO, SHALYN			
05:33	REBOUND (OFF) by FRANSEN, DARRI			
05:33	MISSED LAYUP by FRANSEN, DARRI			
05:32				REBOUND (DEF) by WILLIAMS, JOSIE
05:32	FOUL (PERSONAL) by HANSEN, HARLEY			
05:32	SUB OUT: FANO, SHALYN			
05:32	SUB OUT: HANSEN, HARLEY			
05:32	SUB OUT: FRANSEN, DARRI			
05:32	SUB IN: LARSEN, ASHLEY			
05:32	SUB IN: EATON, MADELYN			

Time	VISITORS: Southern Utah	Score	Margin	HOME: Utah Valley
05:32	SUB IN: CHATMAN, JESSICA			
05:32		26-47	V 21	GOOD! FT by WILLIAMS, JOSIE [FB]
05:32				MISSED FT by WILLIAMS, JOSIE
05:31	REBOUND (DEF) by LARSEN, ASHLEY			
05:12	GOOD! 3PTR by CHATMAN, JESSICA	26-50	V 24	
05:12	ASSIST by ARMATO, CLAUDIA			
04:59				FOUL (OFF) by WILLIAMS, JOSIE
04:59				TURNOVER (OFFENSIVE) by WILLIAMS, JOSIE
04:59				
04:48	FOUL (OFF) by LARSEN, ASHLEY			
04:48	TURNOVER (OFFENSIVE) by LARSEN, ASHLEY			
04:48				SUB OUT: DELOS SANTOS, KEANA
04:48				SUB OUT: WILLIAMS, JOSIE
04:48				SUB IN: CORTEZ, ALEXIS
04:48				SUB IN: JENSEN, MEGAN
04:36		28-50	V 22	GOOD! LAYUP by JENSEN, MEGAN [FB]
04:36				ASSIST by HOLLAND, JORDAN
04:28	MISSED JUMPER by EATON, MADELYN			
04:28	REBOUND (OFF) by TEAM			
04:28				BLOCK by CORTEZ, ALEXIS
04:12	MISSED 3PTR by CARDENAS, REBECCA			
04:09				REBOUND (DEF) by BRASLIS, EVE
03:58				TURNOVER (LOSTBALL) by CARVALHO, MARIA
03:58	STEAL by CARDENAS, REBECCA			
03:54	GOOD! LAYUP by CARDENAS, REBECCA [FB]	28-52	V 24	
03:54				FOUL (PERSONAL) by JENSEN, MEGAN
03:54	GOOD! FT by CARDENAS, REBECCA [FB]	28-53	V 25	
03:54				SUB OUT: JENSEN, MEGAN
03:54				SUB IN: SOHAIL, NEHAA
03:39				TURNOVER (BADPASS) by CARVALHO, MARIA
03:39	STEAL by EATON, MADELYN			
03:33				FOUL (PERSONAL) by SOHAIL, NEHAA
03:33				SUB OUT: CARVALHO, MARIA
03:33				SUB IN: WRIGHT, SYDNEY
03:33	GOOD! FT by EATON, MADELYN [FB]	28-54	V 26	
03:33	GOOD! FT by EATON, MADELYN [FB]	28-55	V 27	
03:16		31-55	V 24	GOOD! 3PTR by HOLLAND, JORDAN
03:16				ASSIST by BRASLIS, EVE
02:57	MISSED LAYUP by CARDENAS, REBECCA			
02:52	REBOUND (OFF) by LARSEN, ASHLEY			
02:52	MISSED LAYUP by LARSEN, ASHLEY			
02:51				REBOUND (DEF) by HOLLAND, JORDAN
02:44		34-55	V 21	GOOD! 3PTR by SOHAIL, NEHAA
02:44				ASSIST by WRIGHT, SYDNEY
02:41	TIMEOUT 30SEC			
02:26	MISSED LAYUP by CARDENAS, REBECCA			
02:26	REBOUND (OFF) by LARSEN, ASHLEY			
02:17	GOOD! LAYUP by LARSEN, ASHLEY [PNT]	34-57	V 23	
02:17	ASSIST by CARDENAS, REBECCA			
01:57		37-57	V 20	GOOD! 3PTR by CORTEZ, ALEXIS
01:57				ASSIST by HOLLAND, JORDAN
01:38	GOOD! 3PTR by EATON, MADELYN	37-60	V 23	
01:38	ASSIST by LARSEN, ASHLEY			
01:10		39-60	V 21	GOOD! JUMPER by CORTEZ, ALEXIS
01:10				ASSIST by HOLLAND, JORDAN
00:40	MISSED 3PTR by CHATMAN, JESSICA			
00:37				REBOUND (DEF) by SOHAIL, NEHAA
00:16				MISSED JUMPER by BRASLIS, EVE
00:11	REBOUND (DEF) by EATON, MADELYN			
00:09				FOUL (PERSONAL) by BRASLIS, EVE
00:09				SUB OUT: WRIGHT, SYDNEY
00:09				SUB IN: CARVALHO, MARIA
00:09	SUB OUT: CARDENAS, REBECCA			
00:09	SUB IN: HANSEN, HARLEY			
00:09	GOOD! FT by CHATMAN, JESSICA [FB]	39-61	V 22	
00:09	GOOD! FT by CHATMAN, JESSICA [FB]	39-62	V 23	

Southern Utah 62, Utah Valley 39

Points from (This Period)	SUU	UVU
In the Paint	4	4
Off Turns	5	4
2nd Chance	2	0
Fast Break	8	3
Bench	10	5

Official Box Score
Southern Utah vs Utah Valley
Fourth Quarter Statistics Only
November 09, 2019 at Lockhart Arena - Orem



Southern Utah 9

No.	Player	S	Pts	FG	3FG	FT	OR	DR	TR	PF	A	TO	Blk	Stl	Min	+/-
02	CARDENAS, REBECCA	G	0	0-0	0-0	0-0	0	1	1	0	0	0	0	0	4	-4
04	LARSEN, ASHLEY	F	0	0-1	0-0	0-0	1	0	1	1	0	0	0	0	2	5
10	ARMATO, CLAUDIA	G	3	0-2	0-0	3-4	0	0	0	1	0	1	0	1	5	-5
14	FANO, SHALYN	F	0	0-0	0-0	0-0	0	0	0	0	0	0	0	0	0	0
23	HANSEN, HARLEY	G	2	1-6	0-2	0-0	3	0	3	0	0	0	0	2	6	1
12	LIVINGSTON, HALLE	G	0	0-0	0-0	0-0	0	0	0	0	0	0	0	0	4	-8
20	EATON, MADELYN	G	0	0-3	0-1	0-0	0	2	2	0	1	0	0	0	5	3
24	CHATMAN, JESSICA	F	3	1-4	1-4	0-0	1	2	3	1	0	0	0	0	6	1
25	SATINI, MARGARITA	G	1	0-0	0-0	1-2	0	0	0	0	0	0	0	0	4	-11
30	LORD, ALEXA	G	0	0-1	0-0	0-0	0	0	0	0	0	0	0	0	2	-6
32	BLACK, REBECCA	F	0	0-0	0-0	0-0	1	0	1	1	0	1	0	0	2	-1
34	ROBINS, HANNAH	C	0	0-0	0-0	0-0	0	0	0	2	0	0	0	0	6	-14
40	FRANDSEN, DARRI	F	0	0-0	0-0	0-0	1	0	1	0	0	1	0	0	4	-11
	TEAM						0	1	1	0		2				
TOTALS			9	2-17	1-7	4-6	7	6	13	6	1	5	0	3	50	

Shooting By Period

Period	FG	FG%	3FG	3FG%	FT	FT%
Game	21-70	30.0%	10-27	37.0%	19-25	76.0%

Deadball Rebounds: 2,0

Utah Valley 19

No.	Player	S	Pts	FG	3FG	FT	OR	DR	TR	PF	A	TO	Blk	Stl	Min	+/-
03	CARVALHO, MARIA	G	0	0-0	0-0	0-0	0	0	0	0	0	1	0	0	1	-5
14	BRASLIS, EVE	F	0	0-0	0-0	0-0	0	0	0	1	0	0	0	0	4	5
20	CORTEZ, ALEXIS	G	7	3-4	1-1	0-0	0	3	3	0	1	1	1	0	8	9
35	HOLLAND, JORDAN	F	3	0-4	0-3	3-4	0	1	1	0	0	0	0	0	7	5
40	WILLIAMS, JOSIE	C	2	0-0	0-0	2-2	0	0	0	1	0	0	1	0	5	-2
05	WRIGHT, SYDNEY	G	0	0-0	0-0	0-0	0	0	0	0	2	0	0	1	9	15
11	DELOS SANTOS, KEANA	G	2	1-1	0-0	0-0	1	1	2	2	1	2	0	0	6	5
21	SOHAIL, NEHAA	F	5	2-3	1-2	0-0	0	3	3	0	1	0	1	1	6	14
22	JENSEN, MEGAN	C	0	0-0	0-0	0-0	0	0	0	1	0	0	0	0	2	3
23	GRANGE, MADISON	G	0	0-0	0-0	0-0	0	1	1	1	0	0	0	0	2	1
33	MALUFAU, VA'E	F	0	0-0	0-0	0-0	0	0	0	0	0	0	0	0	0	0
	TEAM						0	0	0	0		0				
TOTALS			19	6-12	2-6	5-6	1	9	10	6	5	4	3	2	50	

Shooting By Period

Period	FG	FG%	3FG	3FG%	FT	FT%
Game	18-53	34.0%	5-15	33.3%	17-20	85.0%

Deadball Rebounds: 2,0

Game Notes:

Officials: Anita Ortega, Lorena Ahumada, SHELLEY NAKASONE
Attendance: 1247

Start Time: 06:06 PM ET
End Time: 07:56 PM ET
Game Duration: 1:50

Score	1st	2nd	3rd	4th	TOT
SUU	23	23	16	9	71
UVU	13	8	18	19	58

Points from (This Period)	SUU	UVU
In the Paint	2	6
Off Turns	5	6
2nd Chance	3	2
Fast Break	5	2
Bench	4	7

Official Play-By-Play
Southern Utah vs Utah Valley
Fourth Quarter
November 09, 2019 at Lockhart Arena - Orem



Period 4

Starters:

Southern Utah: 2 CARDENAS, REBECCA (G); 4 LARSEN, ASHLEY (F); 10 ARMATO, CLAUDIA (G); 14 FANO, SHALYN (F); 23 HANSEN, HARLEY (G);
Utah Valley: 3 CARVALHO, MARIA (G); 14 BRASLIS, EVE (F); 20 CORTEZ, ALEXIS (G); 35 HOLLAND, JORDAN (F); 40 WILLIAMS, JOSIE (C);

Time	VISITORS: Southern Utah	Score	Margin	HOME: Utah Valley
10:00				SUB OUT: BRASLIS, EVE
10:00				SUB OUT: SOHAIL, NEHAA
10:00				SUB IN: DELOS SANTOS, KEANA
10:00				SUB IN: WILLIAMS, JOSIE
09:51				TURNOVER (LOSTBALL) by CARVALHO, MARIA
09:51	STEAL by ARMATO, CLAUDIA			
09:34	MISSED JUMPER by EATON, MADELYN			
09:30	REBOUND (OFF) by HANSEN, HARLEY			
09:30	MISSED LAYUP by HANSEN, HARLEY			
09:30				BLOCK by WILLIAMS, JOSIE
09:27	REBOUND (OFF) by HANSEN, HARLEY			
09:27				FOUL (PERSONAL) by WILLIAMS, JOSIE
09:24	GOOD! 3PTR by CHATMAN, JESSICA	39-65	V 26	
09:24	ASSIST by EATON, MADELYN			
09:11				TURNOVER (BADPASS) by CORTEZ, ALEXIS
09:11	STEAL by HANSEN, HARLEY			
09:07	GOOD! LAYUP by HANSEN, HARLEY [FB]	39-67	V 28	
08:57				MISSED LAYUP by CORTEZ, ALEXIS
08:57	REBOUND (DEF) by TEAM			
08:57				SUB OUT: CARVALHO, MARIA
08:57				SUB OUT: CORTEZ, ALEXIS
08:57				SUB IN: WRIGHT, SYDNEY
08:57				SUB IN: GRANGE, MADISON
08:31	MISSED JUMPER by EATON, MADELYN			
08:27	REBOUND (OFF) by HANSEN, HARLEY			
08:16	MISSED 3PTR by CHATMAN, JESSICA			
08:11	REBOUND (OFF) by LARSEN, ASHLEY			
08:11	MISSED LAYUP by LARSEN, ASHLEY			
08:11				REBOUND (DEF) by HOLLAND, JORDAN
08:11	FOUL (PERSONAL) by CHATMAN, JESSICA			
07:59	FOUL (PERSONAL) by LARSEN, ASHLEY			
07:59	SUB OUT: LARSEN, ASHLEY			
07:59	SUB OUT: ARMATO, CLAUDIA			
07:59	SUB IN: CARDENAS, REBECCA			
07:59	SUB IN: BLACK, REBECCA			
07:59		40-67	V 27	GOOD! FT by HOLLAND, JORDAN
07:59				MISSED FT by HOLLAND, JORDAN
07:58	REBOUND (DEF) by EATON, MADELYN			
07:47	MISSED 3PTR by CHATMAN, JESSICA			
07:44				REBOUND (DEF) by GRANGE, MADISON
07:29				TURNOVER (BADPASS) by DELOS SANTOS, KEANA
07:29	STEAL by HANSEN, HARLEY			
07:20	MISSED 3PTR by EATON, MADELYN			
07:18	REBOUND (OFF) by BLACK, REBECCA			
07:18				FOUL (PERSONAL) by GRANGE, MADISON
07:18				SUB OUT: GRANGE, MADISON
07:18				SUB OUT: WILLIAMS, JOSIE
07:18				SUB IN: BRASLIS, EVE
07:18				SUB IN: JENSEN, MEGAN
07:00	TURNOVER (LOSTBALL) by BLACK, REBECCA			
07:00				STEAL by WRIGHT, SYDNEY
06:50	FOUL (PERSONAL) by BLACK, REBECCA			
06:50				SUB OUT: DELOS SANTOS, KEANA
06:50				SUB IN: CORTEZ, ALEXIS
06:32				MISSED LAYUP by HOLLAND, JORDAN
06:15	REBOUND (DEF) by CARDENAS, REBECCA			
06:13	MISSED JUMPER by HANSEN, HARLEY			
06:13				REBOUND (DEF) by CORTEZ, ALEXIS
06:09				MISSED 3PTR by HOLLAND, JORDAN
06:05	REBOUND (DEF) by CHATMAN, JESSICA			
05:56				SUB OUT: HOLLAND, JORDAN
05:56				SUB IN: SOHAIL, NEHAA
05:56	SUB OUT: EATON, MADELYN			
05:56	SUB OUT: BLACK, REBECCA			
05:56	SUB IN: LIVINGSTON, HALLE			
05:56	SUB IN: ROBINS, HANNAH			
05:45	TIMEOUT 30SEC			
05:45				
06:13				BLOCK by CORTEZ, ALEXIS
05:42	MISSED 3PTR by HANSEN, HARLEY			

Time	VISITORS: Southern Utah	Score	Margin	HOME: Utah Valley
05:39				REBOUND (DEF) by CORTEZ, ALEXIS
05:17		43-67	V 24	GOOD! 3PTR by CORTEZ, ALEXIS
05:17				ASSIST by WRIGHT, SYDNEY
04:58				FOUL (PERSONAL) by JENSEN, MEGAN
04:58				SUB OUT: JENSEN, MEGAN
04:58				SUB IN: WILLIAMS, JOSIE
04:46	MISSED 3PTR by CHATMAN, JESSICA			
04:43	REBOUND (OFF) by CHATMAN, JESSICA			
04:39	MISSED LAYUP by HANSEN, HARLEY			
04:36				REBOUND (DEF) by SOHAIL, NEHAA
04:11				MISSED 3PTR by SOHAIL, NEHAA
04:08	REBOUND (DEF) by CHATMAN, JESSICA			
03:40	MISSED 3PTR by HANSEN, HARLEY			
03:39	REBOUND (OFF) by TEAM			
03:39	TURNOVER (SHOTCLOCK) by TEAM			
03:39	SUB OUT: CARDENAS, REBECCA			
03:39	SUB OUT: HANSEN, HARLEY			
03:39	SUB OUT: CHATMAN, JESSICA			
03:39	SUB IN: ARMATO, CLAUDIA			
03:39	SUB IN: SATINI, MARGARITA			
03:39	SUB IN: FRANDSEN, DARRI			
03:28	FOUL (PERSONAL) by ROBINS, HANNAH			
03:28		44-67	V 23	GOOD! FT by WILLIAMS, JOSIE
03:28		45-67	V 22	GOOD! FT by WILLIAMS, JOSIE
03:07				FOUL (PERSONAL) by BRASLIS, EVE
03:07				SUB OUT: BRASLIS, EVE
03:07				SUB OUT: WILLIAMS, JOSIE
03:07				SUB IN: DELOS SANTOS, KEANA
03:07				SUB IN: HOLLAND, JORDAN
03:07	GOOD! FT by ARMATO, CLAUDIA	45-68	V 23	
03:07	MISSED FT by ARMATO, CLAUDIA			
03:06				REBOUND (DEF) by SOHAIL, NEHAA
02:48		47-68	V 21	GOOD! LAYUP by SOHAIL, NEHAA
02:48				ASSIST by CORTEZ, ALEXIS
02:40	FOUL (OFF) by ARMATO, CLAUDIA			
02:40	TURNOVER (OFFENSIVE) by ARMATO, CLAUDIA			
02:31		49-68	V 19	GOOD! LAYUP by CORTEZ, ALEXIS
02:31				ASSIST by SOHAIL, NEHAA
02:16	TURNOVER (LOSTBALL) by FRANDSEN, DARRI			
02:16				STEAL by SOHAIL, NEHAA
02:11				TURNOVER (BADPASS) by DELOS SANTOS, KEANA
02:11	TIMEOUT 30SEC			
02:11	SUB OUT: LIVINGSTON, HALLE			
02:11	SUB IN: LORD, ALEXA			
01:59	TURNOVER (10SEC) by TEAM			
01:52	FOUL (PERSONAL) by ROBINS, HANNAH			
01:52		50-68	V 18	GOOD! FT by HOLLAND, JORDAN [FB]
01:52		51-68	V 17	GOOD! FT by HOLLAND, JORDAN [FB]
01:32	MISSED JUMPER by LORD, ALEXA			
01:29				REBOUND (DEF) by DELOS SANTOS, KEANA
01:22		54-68	V 14	GOOD! 3PTR by SOHAIL, NEHAA
01:22				ASSIST by DELOS SANTOS, KEANA
00:56	MISSED LAYUP by ARMATO, CLAUDIA			
00:56	REBOUND (OFF) by FRANDSEN, DARRI			
00:52	MISSED LAYUP by ARMATO, CLAUDIA			
00:52				BLOCK by SOHAIL, NEHAA
00:49				REBOUND (DEF) by CORTEZ, ALEXIS
00:43				MISSED 3PTR by HOLLAND, JORDAN
00:40				REBOUND (OFF) by DELOS SANTOS, KEANA
00:40		56-68	V 12	GOOD! LAYUP by DELOS SANTOS, KEANA
00:32				FOUL (PERSONAL) by DELOS SANTOS, KEANA
00:32	GOOD! FT by ARMATO, CLAUDIA [FB]	56-69	V 13	
00:32	GOOD! FT by ARMATO, CLAUDIA [FB]	56-70	V 14	
00:32	SUB OUT: ARMATO, CLAUDIA			
00:32	SUB IN: EATON, MADELYN			
00:21				MISSED 3PTR by HOLLAND, JORDAN
00:18	REBOUND (DEF) by EATON, MADELYN			
00:15				FOUL (PERSONAL) by DELOS SANTOS, KEANA
00:15	GOOD! FT by SATINI, MARGARITA [FB]	56-71	V 15	
00:15	MISSED FT by SATINI, MARGARITA			
00:15				REBOUND (DEF) by SOHAIL, NEHAA
00:01		58-71	V 13	GOOD! JUMPER by CORTEZ, ALEXIS
00:01				ASSIST by WRIGHT, SYDNEY

Southern Utah 71, Utah Valley 58

Points from (This Period)	SUU	UVU
In the Paint	2	6
Off Turns	5	6
2nd Chance	3	2
Fast Break	5	2
Bench	4	7

Official Scoring/Possession Reference Chart
Southern Utah vs Utah Valley
Period 1
November 09, 2019 at Lockhart Arena - Orem



Period 1

Starters:

Southern Utah: 2 CARDENAS, REBECCA (G); 4 LARSEN, ASHLEY (F); 10 ARMATO, CLAUDIA (G); 14 FANO, SHALYN (F); 23 HANSEN, HARLEY (G);
Utah Valley: 3 CARVALHO, MARIA (G); 14 BRASLIS, EVE (F); 20 CORTEZ, ALEXIS (G); 35 HOLLAND, JORDAN (F); 40 WILLIAMS, JOSIE (C);

Time	VISITORS: Southern Utah	Score	Margin	HOME: Utah Valley
09:21		2-0	H 2	GOOD! LAYUP by CORTEZ, ALEXIS [PNT]
09:08	GOOD! LAYUP by CARDENAS, REBECCA [PNT]	2-2	T	
08:48		4-2	H 2	GOOD! LAYUP by HOLLAND, JORDAN
08:23	GOOD! 3PTR by CARDENAS, REBECCA	4-5	V 1	
07:58		6-5	H 1	GOOD! JUMPER by BRASLIS, EVE
07:43	GOOD! 3PTR by HANSEN, HARLEY	6-8	V 2	
06:33	GOOD! 3PTR by ARMATO, CLAUDIA	6-11	V 5	
05:18		7-11	V 4	GOOD! FT by HOLLAND, JORDAN
05:18		8-11	V 3	GOOD! FT by HOLLAND, JORDAN
04:44	GOOD! FT by ARMATO, CLAUDIA	8-12	V 4	
04:44	GOOD! FT by ARMATO, CLAUDIA	8-13	V 5	
04:34		9-13	V 4	GOOD! FT by HOLLAND, JORDAN
04:34		10-13	V 3	GOOD! FT by HOLLAND, JORDAN
04:10		11-13	V 2	GOOD! FT by HOLLAND, JORDAN [FB]
03:52		13-13	T	GOOD! LAYUP by SOHAIL, NEHAA [FB/PNT]
03:37	GOOD! 3PTR by CARDENAS, REBECCA	13-16	V 3	
02:44	GOOD! 3PTR by CARDENAS, REBECCA	13-19	V 6	
02:12	GOOD! LAYUP by FRANSEN, DARRI [PNT]	13-21	V 8	
01:41	GOOD! FT by HANSEN, HARLEY	13-22	V 9	
01:41	GOOD! FT by HANSEN, HARLEY	13-23	V 10	

Southern Utah 23, Utah Valley 13

Official Scoring/Possession Reference Chart
Southern Utah vs Utah Valley
Period 2
November 09, 2019 at Lockhart Arena - Orem



Period 2

Starters:

Southern Utah: 2 CARDENAS, REBECCA (G); 4 LARSEN, ASHLEY (F); 10 ARMATO, CLAUDIA (G); 14 FANO, SHALYN (F); 23 HANSEN, HARLEY (G);
Utah Valley: 3 CARVALHO, MARIA (G); 14 BRASLIS, EVE (F); 20 CORTEZ, ALEXIS (G); 35 HOLLAND, JORDAN (F); 40 WILLIAMS, JOSIE (C);

Time	VISITORS: Southern Utah	Score	Margin	HOME: Utah Valley
09:37	GOOD! FT by LARSEN, ASHLEY	13-24	V 11	
09:37	GOOD! FT by LARSEN, ASHLEY	13-25	V 12	
09:15	GOOD! LAYUP by LARSEN, ASHLEY [FB/PNT]	13-27	V 14	
08:59	GOOD! 3PTR by HANSEN, HARLEY	13-30	V 17	
08:36	GOOD! JUMPER by LARSEN, ASHLEY [PNT]	13-32	V 19	
06:42	GOOD! LAYUP by CARDENAS, REBECCA [PNT]	13-34	V 21	
06:22	GOOD! FT by HANSEN, HARLEY [FB]	13-35	V 22	
05:57	GOOD! JUMPER by HANSEN, HARLEY [FB]	13-37	V 24	
05:39		15-37	V 22	GOOD! JUMPER by CORTEZ, ALEXIS
05:22	GOOD! LAYUP by CARDENAS, REBECCA [PNT]	15-39	V 24	
04:41		16-39	V 23	GOOD! FT by CARVALHO, MARIA
04:41		17-39	V 22	GOOD! FT by CARVALHO, MARIA
03:32	GOOD! LAYUP by EATON, MADELYN	17-41	V 24	
02:19		19-41	V 22	GOOD! LAYUP by CARVALHO, MARIA [PNT]
01:24	GOOD! 3PTR by CARDENAS, REBECCA [FB]	19-44	V 25	
01:24	GOOD! FT by CARDENAS, REBECCA [FB]	19-45	V 26	
01:17		20-45	V 25	GOOD! FT by CARVALHO, MARIA [FB]
01:17		21-45	V 24	GOOD! FT by CARVALHO, MARIA [FB]
00:24	GOOD! FT by ROBINS, HANNAH	21-46	V 25	

Southern Utah 46, Utah Valley 21

Official Scoring/Possession Reference Chart
Southern Utah vs Utah Valley
Period 3
November 09, 2019 at Lockhart Arena - Orem



Period 3

Starters:

Southern Utah: 2 CARDENAS, REBECCA (G); 4 LARSEN, ASHLEY (F); 10 ARMATO, CLAUDIA (G); 14 FANO, SHALYN (F); 23 HANSEN, HARLEY (G);
Utah Valley: 3 CARVALHO, MARIA (G); 14 BRASLIS, EVE (F); 20 CORTEZ, ALEXIS (G); 35 HOLLAND, JORDAN (F); 40 WILLIAMS, JOSIE (C);

Time	VISITORS: Southern Utah	Score	Margin	HOME: Utah Valley
09:50		22-46	V 24	GOOD! FT by WILLIAMS, JOSIE
09:50		23-46	V 23	GOOD! FT by WILLIAMS, JOSIE
07:50		25-46	V 21	GOOD! LAYUP by BRASLIS, EVE [PNT]
06:15	GOOD! FT by CARDENAS, REBECCA [FB]	25-47	V 22	
05:32		26-47	V 21	GOOD! FT by WILLIAMS, JOSIE [FB]
05:12	GOOD! 3PTR by CHATMAN, JESSICA	26-50	V 24	
04:36		28-50	V 22	GOOD! LAYUP by JENSEN, MEGAN [FB]
03:54	GOOD! LAYUP by CARDENAS, REBECCA [FB]	28-52	V 24	
03:54	GOOD! FT by CARDENAS, REBECCA [FB]	28-53	V 25	
03:33	GOOD! FT by EATON, MADELYN [FB]	28-54	V 26	
03:33	GOOD! FT by EATON, MADELYN [FB]	28-55	V 27	
03:16		31-55	V 24	GOOD! 3PTR by HOLLAND, JORDAN
02:44		34-55	V 21	GOOD! 3PTR by SOHAIL, NEHAA
02:17	GOOD! LAYUP by LARSEN, ASHLEY [PNT]	34-57	V 23	
01:57		37-57	V 20	GOOD! 3PTR by CORTEZ, ALEXIS
01:38	GOOD! 3PTR by EATON, MADELYN	37-60	V 23	
01:10		39-60	V 21	GOOD! JUMPER by CORTEZ, ALEXIS
00:09	GOOD! FT by CHATMAN, JESSICA [FB]	39-61	V 22	
00:09	GOOD! FT by CHATMAN, JESSICA [FB]	39-62	V 23	

Southern Utah 62, Utah Valley 39

Official Scoring/Possession Reference Chart
Southern Utah vs Utah Valley
Period 4
November 09, 2019 at Lockhart Arena - Orem



Period 4

Starters:

Southern Utah: 2 CARDENAS, REBECCA (G); 4 LARSEN, ASHLEY (F); 10 ARMATO, CLAUDIA (G); 14 FANO, SHALYN (F); 23 HANSEN, HARLEY (G);
Utah Valley: 3 CARVALHO, MARIA (G); 14 BRASLIS, EVE (F); 20 CORTEZ, ALEXIS (G); 35 HOLLAND, JORDAN (F); 40 WILLIAMS, JOSIE (C);

Time	VISITORS: Southern Utah	Score	Margin	HOME: Utah Valley
09:24	GOOD! 3PTR by CHATMAN, JESSICA	39-65	V 26	
09:07	GOOD! LAYUP by HANSEN, HARLEY [FB]	39-67	V 28	
07:59		40-67	V 27	GOOD! FT by HOLLAND, JORDAN
05:17		43-67	V 24	GOOD! 3PTR by CORTEZ, ALEXIS
03:28		44-67	V 23	GOOD! FT by WILLIAMS, JOSIE
03:28		45-67	V 22	GOOD! FT by WILLIAMS, JOSIE
03:07	GOOD! FT by ARMATO, CLAUDIA	45-68	V 23	
02:48		47-68	V 21	GOOD! LAYUP by SOHAIL, NEHAA
02:31		49-68	V 19	GOOD! LAYUP by CORTEZ, ALEXIS
01:52		50-68	V 18	GOOD! FT by HOLLAND, JORDAN [FB]
01:52		51-68	V 17	GOOD! FT by HOLLAND, JORDAN [FB]
01:22		54-68	V 14	GOOD! 3PTR by SOHAIL, NEHAA
00:40		56-68	V 12	GOOD! LAYUP by DELOS SANTOS, KEANA
00:32	GOOD! FT by ARMATO, CLAUDIA [FB]	56-69	V 13	
00:32	GOOD! FT by ARMATO, CLAUDIA [FB]	56-70	V 14	
00:15	GOOD! FT by SATINI, MARGARITA [FB]	56-71	V 15	
00:01		58-71	V 13	GOOD! JUMPER by CORTEZ, ALEXIS

Southern Utah 71, Utah Valley 58

Official Substitutions Log
Southern Utah vs Utah Valley
Period 1
November 09, 2019 at Lockhart Arena - Orem



VISITORS: Southern Utah	Time	Score	HOME: Utah Valley
2 CARDENAS, REBECCA			3 CARVALHO, MARIA
4 LARSEN, ASHLEY			14 BRASLIS, EVE
10 ARMATO, CLAUDIA			20 CORTEZ, ALEXIS
14 FANO, SHALYN			35 HOLLAND, JORDAN
23 HANSEN, HARLEY			40 WILLIAMS, JOSIE
	05:31	11-6	SUB OUT: WILLIAMS, JOSIE
	05:31		SUB IN: JENSEN, MEGAN
SUB OUT: 4 LARSEN, ASHLEY	05:31		
SUB IN: 40 FRANDSEN, DARRI	05:31		
SUB OUT: 14 FANO, SHALYN	04:44	11-8	
SUB IN: 24 CHATMAN, JESSICA	04:44		
SUB OUT: 23 HANSEN, HARLEY	04:34	13-8	
SUB IN: 20 EATON, MADELYN	04:34		
	04:10	13-11	SUB OUT: CORTEZ, ALEXIS
	04:10		SUB IN: SOHAIL, NEHAA
	02:16	19-13	SUB OUT: SOHAIL, NEHAA
	02:16		SUB IN: GRANGE, MADISON
	02:12	21-13	SUB OUT: BRASLIS, EVE
	02:12		SUB OUT: JENSEN, MEGAN
	02:12		SUB IN: CORTEZ, ALEXIS
	02:12		SUB IN: WILLIAMS, JOSIE
SUB OUT: 2 CARDENAS, REBECCA	02:12		
SUB IN: 23 HANSEN, HARLEY	02:12		
SUB OUT: 20 EATON, MADELYN	01:41	21-13	
SUB IN: 2 CARDENAS, REBECCA	01:41		
	01:41		SUB OUT: CARVALHO, MARIA
	01:41		SUB IN: WRIGHT, SYDNEY
SUB OUT: 24 CHATMAN, JESSICA	01:15	23-13	
SUB IN: 4 LARSEN, ASHLEY	01:15		

Southern Utah 23, Utah Valley 13

Official Substitutions Log
Southern Utah vs Utah Valley
Period 2
November 09, 2019 at Lockhart Arena - Orem



VISITORS: Southern Utah	Time	Score	HOME: Utah Valley
2 CARDENAS, REBECCA			3 CARVALHO, MARIA
4 LARSEN, ASHLEY			14 BRASLIS, EVE
10 ARMATO, CLAUDIA			20 CORTEZ, ALEXIS
14 FANO, SHALYN			35 HOLLAND, JORDAN
23 HANSEN, HARLEY			40 WILLIAMS, JOSIE
	10:00	-	SUB OUT: GRANGE, MADISON
	10:00		SUB IN: DELOS SANTOS, KEANA
	09:14	27-13	SUB OUT: HOLLAND, JORDAN
	09:14		SUB OUT: WILLIAMS, JOSIE
	09:14		SUB IN: BRASLIS, EVE
	09:14		SUB IN: JENSEN, MEGAN
	08:46	30-13	SUB OUT: WRIGHT, SYDNEY
	08:46		SUB IN: CARVALHO, MARIA
	07:35	32-13	SUB OUT: CORTEZ, ALEXIS
	07:35		SUB IN: HOLLAND, JORDAN
SUB OUT: 10 ARMATO, CLAUDIA	07:35		
SUB OUT: 40 FRANDSEN, DARRI	07:35		
SUB IN: 14 FANO, SHALYN	07:35		
SUB IN: 20 EATON, MADELYN	07:35		
	07:07	32-13	SUB OUT: JENSEN, MEGAN
	07:07		SUB IN: CORTEZ, ALEXIS
	06:22	34-13	SUB OUT: HOLLAND, JORDAN
	06:22		SUB IN: WILLIAMS, JOSIE
SUB OUT: 4 LARSEN, ASHLEY	06:22		
SUB IN: 32 BLACK, REBECCA	06:22		
	05:03	39-15	SUB OUT: DELOS SANTOS, KEANA
	05:03		SUB OUT: CORTEZ, ALEXIS
	05:03		SUB OUT: WILLIAMS, JOSIE
	05:03		SUB IN: SOHAIL, NEHAA
	05:03		SUB IN: GRANGE, MADISON
	05:03		SUB IN: MALUFAU, VA'E
SUB OUT: 2 CARDENAS, REBECCA	05:03		
SUB IN: 25 SATINI, MARGARITA	05:03		
	03:03	41-17	SUB OUT: MALUFAU, VA'E
	03:03		SUB IN: HOLLAND, JORDAN
SUB OUT: 14 FANO, SHALYN	03:03		
SUB OUT: 20 EATON, MADELYN	03:03		
SUB OUT: 23 HANSEN, HARLEY	03:03		
SUB OUT: 25 SATINI, MARGARITA	03:03		
SUB OUT: 32 BLACK, REBECCA	03:03		
SUB IN: 2 CARDENAS, REBECCA	03:03		
SUB IN: 4 LARSEN, ASHLEY	03:03		
SUB IN: 10 ARMATO, CLAUDIA	03:03		
SUB IN: 12 LIVINGSTON, HALLE	03:03		
SUB IN: 34 ROBINS, HANNAH	03:03		
	01:17	45-19	SUB OUT: HOLLAND, JORDAN
	01:17		SUB IN: JENSEN, MEGAN
	00:08	46-21	SUB OUT: JENSEN, MEGAN
	00:08		SUB IN: CORTEZ, ALEXIS

Southern Utah 46, Utah Valley 21

Official Substitutions Log
Southern Utah vs Utah Valley
Period 3
November 09, 2019 at Lockhart Arena - Orem



VISITORS: Southern Utah	Time	Score	HOME: Utah Valley
2 CARDENAS, REBECCA			3 CARVALHO, MARIA
4 LARSEN, ASHLEY			14 BRASLIS, EVE
10 ARMATO, CLAUDIA			20 CORTEZ, ALEXIS
14 FANO, SHALYN			35 HOLLAND, JORDAN
23 HANSEN, HARLEY			40 WILLIAMS, JOSIE
	10:00	-	SUB OUT: SOHAIL, NEHAA
	10:00		SUB OUT: GRANGE, MADISON
	10:00		SUB IN: HOLLAND, JORDAN
	10:00		SUB IN: WILLIAMS, JOSIE
SUB OUT: 12 LIVINGSTON, HALLE	10:00		
SUB OUT: 34 ROBINS, HANNAH	10:00		
SUB IN: 14 FANO, SHALYN	10:00		
SUB IN: 23 HANSEN, HARLEY	10:00		
SUB OUT: 4 LARSEN, ASHLEY	08:43	46-23	
SUB IN: 40 FRANDSEN, DARRI	08:43		
	07:19	46-25	SUB OUT: CORTEZ, ALEXIS
	07:19		SUB IN: DELOS SANTOS, KEANA
SUB OUT: 14 FANO, SHALYN	05:32	47-25	
SUB OUT: 23 HANSEN, HARLEY	05:32		
SUB OUT: 40 FRANDSEN, DARRI	05:32		
SUB IN: 4 LARSEN, ASHLEY	05:32		
SUB IN: 20 EATON, MADELYN	05:32		
SUB IN: 24 CHATMAN, JESSICA	05:32		
	04:48	50-26	SUB OUT: DELOS SANTOS, KEANA
	04:48		SUB OUT: WILLIAMS, JOSIE
	04:48		SUB IN: CORTEZ, ALEXIS
	04:48		SUB IN: JENSEN, MEGAN
	03:54	53-28	SUB OUT: JENSEN, MEGAN
	03:54		SUB IN: SOHAIL, NEHAA
	03:33	53-28	SUB OUT: CARVALHO, MARIA
	03:33		SUB IN: WRIGHT, SYDNEY
	00:09	60-39	SUB OUT: WRIGHT, SYDNEY
	00:09		SUB IN: CARVALHO, MARIA
SUB OUT: 2 CARDENAS, REBECCA	00:09		
SUB IN: 23 HANSEN, HARLEY	00:09		

Southern Utah 62, Utah Valley 39

Official Substitutions Log
Southern Utah vs Utah Valley
Period 4
November 09, 2019 at Lockhart Arena - Orem



VISITORS: Southern Utah	Time	Score	HOME: Utah Valley
2 CARDENAS, REBECCA			3 CARVALHO, MARIA
4 LARSEN, ASHLEY			14 BRASLIS, EVE
10 ARMATO, CLAUDIA			20 CORTEZ, ALEXIS
14 FANO, SHALYN			35 HOLLAND, JORDAN
23 HANSEN, HARLEY			40 WILLIAMS, JOSIE
	10:00	-	SUB OUT: BRASLIS, EVE
	10:00		SUB OUT: SOHAIL, NEHAA
	10:00		SUB IN: DELOS SANTOS, KEANA
	10:00		SUB IN: WILLIAMS, JOSIE
	08:57	67-39	SUB OUT: CARVALHO, MARIA
	08:57		SUB OUT: CORTEZ, ALEXIS
	08:57		SUB IN: WRIGHT, SYDNEY
	08:57		SUB IN: GRANGE, MADISON
SUB OUT: 4 LARSEN, ASHLEY	07:59	67-39	
SUB OUT: 10 ARMATO, CLAUDIA	07:59		
SUB IN: 2 CARDENAS, REBECCA	07:59		
SUB IN: 32 BLACK, REBECCA	07:59		
	07:18	67-40	SUB OUT: GRANGE, MADISON
	07:18		SUB OUT: WILLIAMS, JOSIE
	07:18		SUB IN: BRASLIS, EVE
	07:18		SUB IN: JENSEN, MEGAN
	06:50	67-40	SUB OUT: DELOS SANTOS, KEANA
	06:50		SUB IN: CORTEZ, ALEXIS
	05:56	67-40	SUB OUT: HOLLAND, JORDAN
	05:56		SUB IN: SOHAIL, NEHAA
SUB OUT: 20 EATON, MADELYN	05:56		
SUB OUT: 32 BLACK, REBECCA	05:56		
SUB IN: 12 LIVINGSTON, HALLE	05:56		
SUB IN: 34 ROBINS, HANNAH	05:56		
	04:58	67-43	SUB OUT: JENSEN, MEGAN
	04:58		SUB IN: WILLIAMS, JOSIE
SUB OUT: 2 CARDENAS, REBECCA	03:39	67-43	
SUB OUT: 23 HANSEN, HARLEY	03:39		
SUB OUT: 24 CHATMAN, JESSICA	03:39		
SUB IN: 10 ARMATO, CLAUDIA	03:39		
SUB IN: 25 SATINI, MARGARITA	03:39		
SUB IN: 40 FRANSEN, DARRI	03:39		
	03:07	67-45	SUB OUT: BRASLIS, EVE
	03:07		SUB OUT: WILLIAMS, JOSIE
	03:07		SUB IN: DELOS SANTOS, KEANA
	03:07		SUB IN: HOLLAND, JORDAN
SUB OUT: 12 LIVINGSTON, HALLE	02:11	68-49	
SUB IN: 30 LORD, ALEXA	02:11		
SUB OUT: 10 ARMATO, CLAUDIA	00:32	70-56	
SUB IN: 20 EATON, MADELYN	00:32		

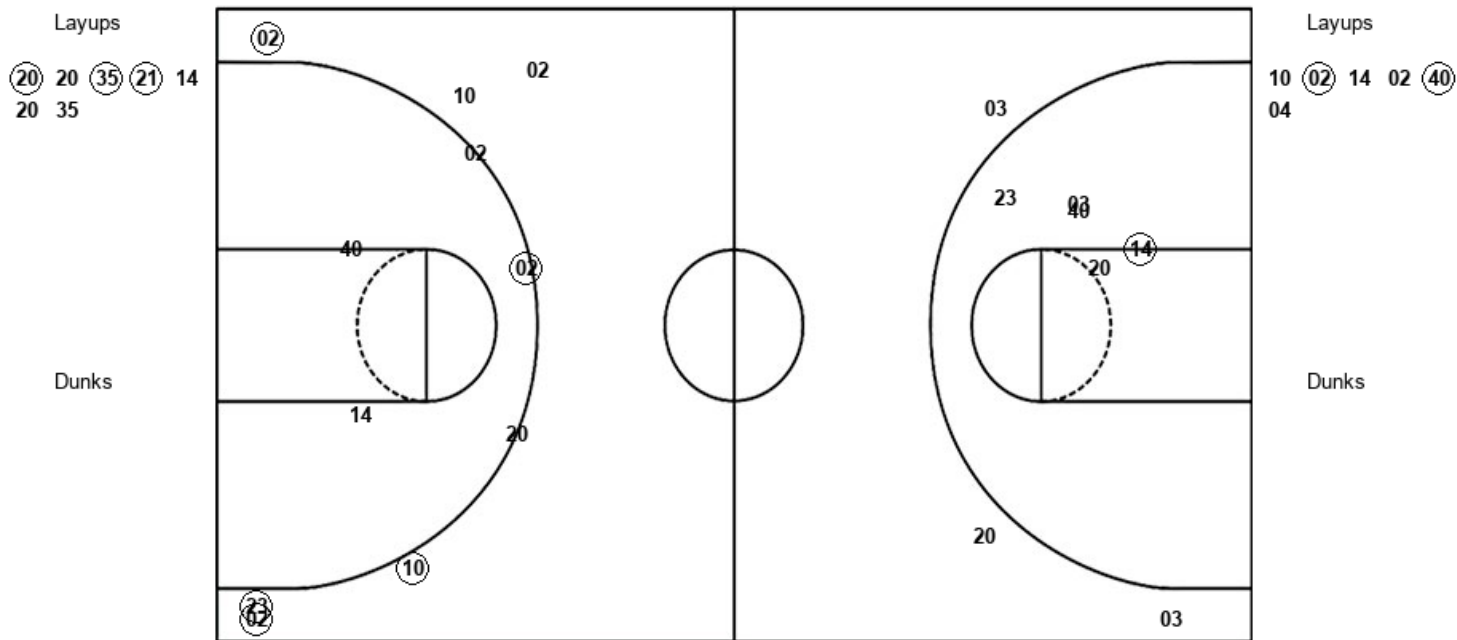
Southern Utah 71, Utah Valley 58

Official Shot Chart
Southern Utah vs Utah Valley
 PERIOD 1 Shots
 November 09, 2019 at Lockhart Arena - Orem



Utah Valley

Southern Utah



UVU : Period 1	Made	Att	Pct
Layups	3	7	42.9
Dunks	0	0	0
2PT Field Goals	4	12	33.3
3PT Field Goals	0	3	00.0
Total Field Goals	4	15	26.7

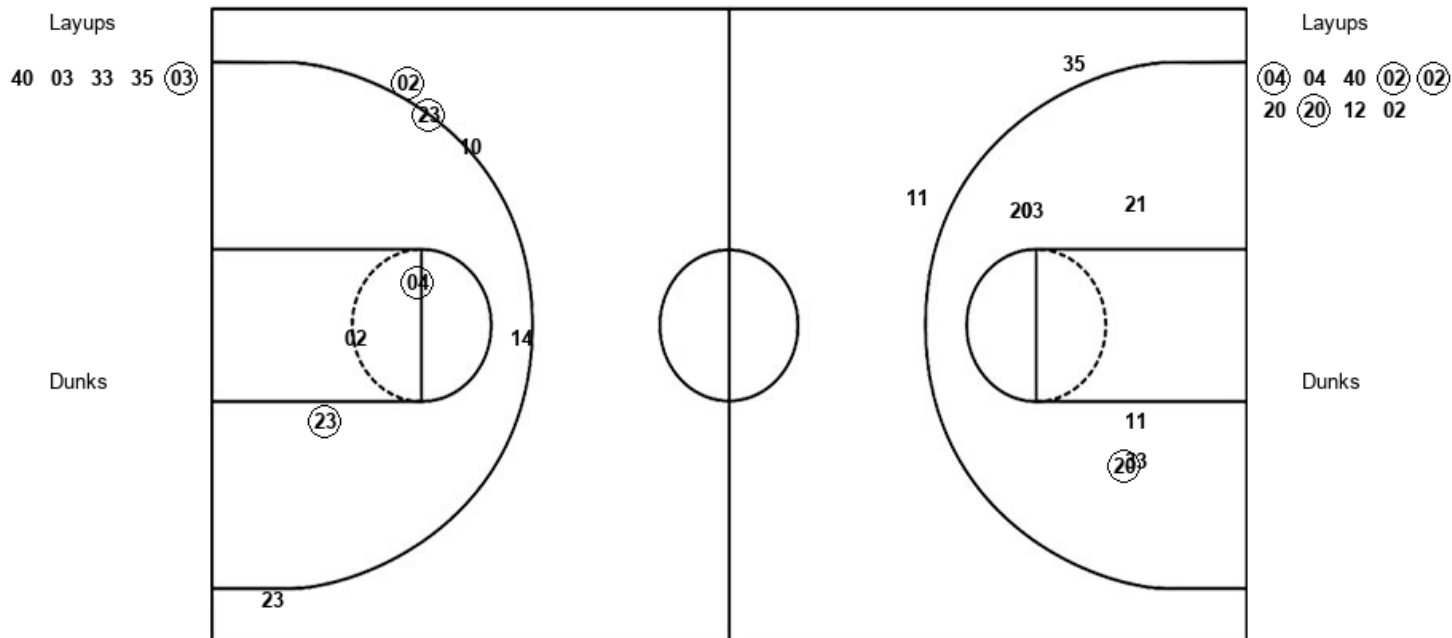
SUU : Period 1	Made	Att	Pct
Layups	2	6	33.3
Dunks	0	0	0
2PT Field Goals	2	8	25.0
3PT Field Goals	5	9	55.6
Total Field Goals	7	17	41.2

Official Shot Chart
Southern Utah vs Utah Valley
 PERIOD 2 Shots
 November 09, 2019 at Lockhart Arena - Orem



Utah Valley

Southern Utah



UVU : Period 2	Made	Att	Pct
Layups	1	5	20.0
Dunks	0	0	0
2PT Field Goals	2	11	18.2
3PT Field Goals	0	2	00.0
Total Field Goals	2	13	15.4

SUU : Period 2	Made	Att	Pct
Layups	4	9	44.4
Dunks	0	0	0
2PT Field Goals	6	12	50.0
3PT Field Goals	2	5	40.0
Total Field Goals	8	17	47.1

Official Shot Chart
Southern Utah vs Utah Valley
 PERIOD 3 Shots
 November 09, 2019 at Lockhart Arena - Orem

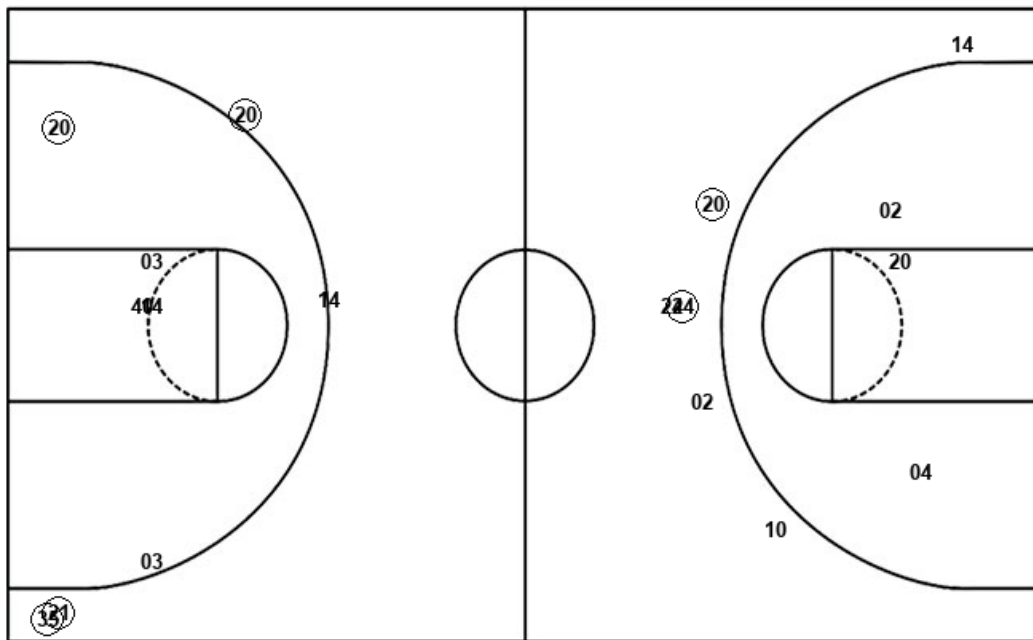


Utah Valley

Southern Utah

Layups
 (14) 35 03 (22)

Dunks



Layups
 10 14 40 23 40
 (02) 02 04 02 (04)

Dunks

UVU : Period 3	Made	Att	Pct
Layups	2	4	50.0
Dunks	0	0	0
2PT Field Goals	3	9	33.3
3PT Field Goals	3	4	75.0
Total Field Goals	6	13	46.2

SUU : Period 3	Made	Att	Pct
Layups	2	10	20.0
Dunks	0	0	0
2PT Field Goals	2	13	15.4
3PT Field Goals	2	6	33.3
Total Field Goals	4	19	21.1

Official Shot Chart
Southern Utah vs Utah Valley
 PERIOD 4 Shots
 November 09, 2019 at Lockhart Arena - Orem

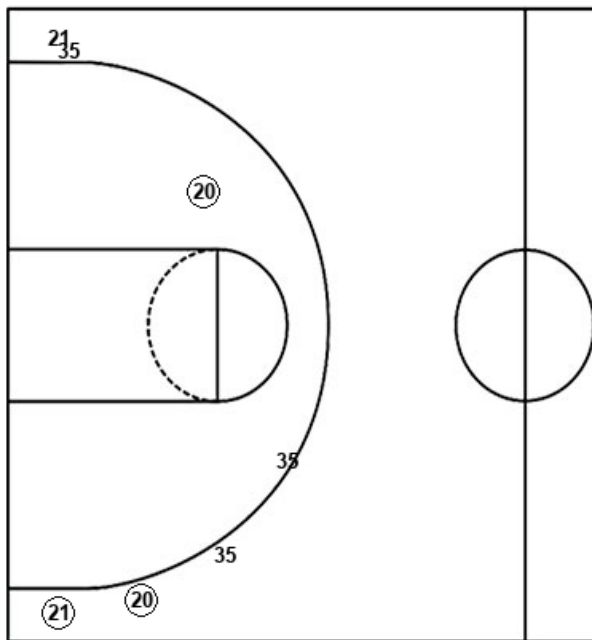


Utah Valley

Southern Utah

Layups
 20 35 (21) (20) (11)

Dunks

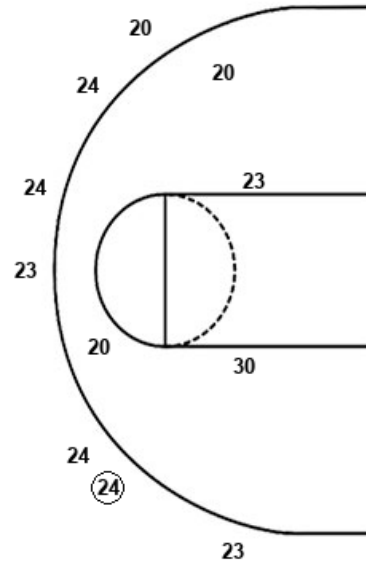


UVU : Period 4	Made	Att	Pct
Layups	3	5	60.0
Dunks	0	0	0
2PT Field Goals	4	6	66.7
3PT Field Goals	2	6	33.3
Total Field Goals	6	12	50.0

Layups

23 (23) 04 23 10
 10

Dunks



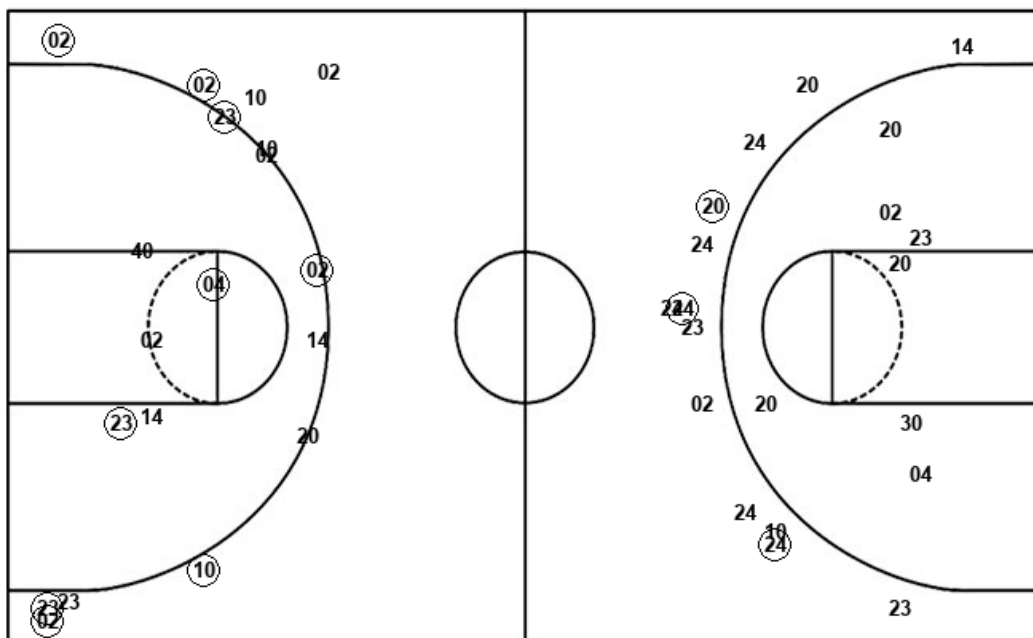
SUU : Period 4	Made	Att	Pct
Layups	1	6	16.7
Dunks	0	0	0
2PT Field Goals	1	10	10.0
3PT Field Goals	1	7	14.3
Total Field Goals	2	17	11.8

Official Shot Chart
Southern Utah vs Utah Valley
 Southern Utah Team Shots
 November 09, 2019 at Lockhart Arena - Orem



Layups

Dunks



Layups

Dunks

10 02 14 02 40
 04 04 04 40 02
 02 20 20 12 02
 10 14 40 23 40
 02 02 04 02 04
 23 23 04 23 10
 10

SUU : Period 1	Made	Att	Pct
Layups	2	6	33.3
Dunks	0	0	0
2PT Field Goals	2	8	25.0
3PT Field Goals	5	9	55.6
Total Field Goals	7	17	41.2

SUU : Period 3	Made	Att	Pct
Layups	2	10	20.0
Dunks	0	0	0
2PT Field Goals	2	13	15.4
3PT Field Goals	2	6	33.3
Total Field Goals	4	19	21.1

SUU : Period 2	Made	Att	Pct
Layups	4	9	44.4
Dunks	0	0	0
2PT Field Goals	6	12	50.0
3PT Field Goals	2	5	40.0
Total Field Goals	8	17	47.1

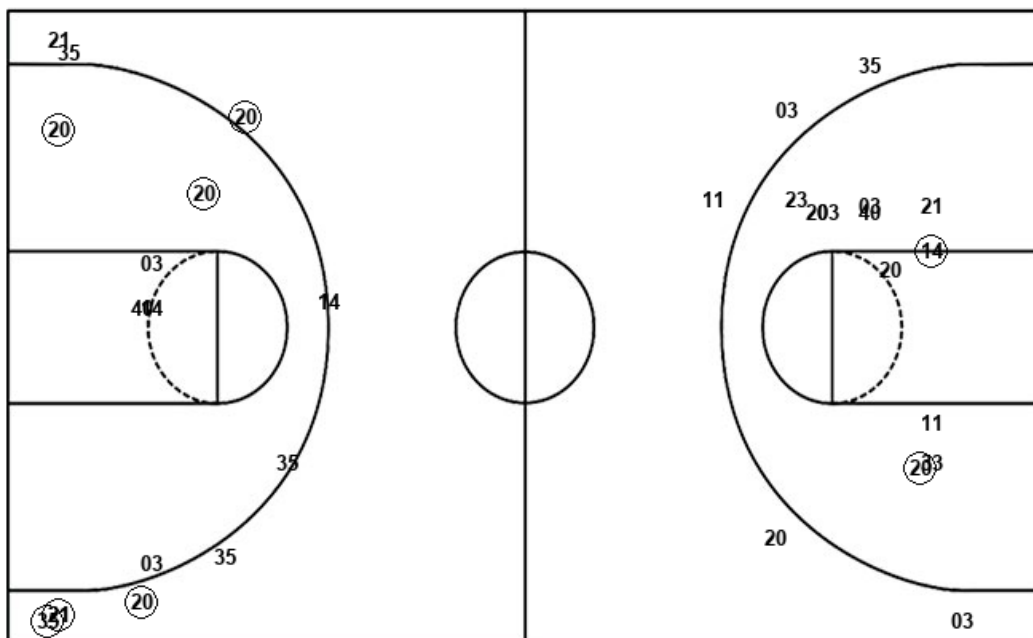
SUU : Period 4	Made	Att	Pct
Layups	1	6	16.7
Dunks	0	0	0
2PT Field Goals	1	10	10.0
3PT Field Goals	1	7	14.3
Total Field Goals	2	17	11.8

Official Shot Chart
Southern Utah vs Utah Valley
 Utah Valley Team Shots
 November 09, 2019 at Lockhart Arena - Orem



Layups

Dunks



Layups

Dunks

(20) 20 (35) (21) 14
 20 35 40 03 33
 35 (03) (14) 35 03
 (22) 20 35 (21) (20)
 (11)

UVU : Period 1	Made	Att	Pct
Layups	3	7	42.9
Dunks	0	0	0
2PT Field Goals	4	12	33.3
3PT Field Goals	0	3	00.0
Total Field Goals	4	15	26.7

UVU : Period 3	Made	Att	Pct
Layups	2	4	50.0
Dunks	0	0	0
2PT Field Goals	3	9	33.3
3PT Field Goals	3	4	75.0
Total Field Goals	6	13	46.2

UVU : Period 2	Made	Att	Pct
Layups	1	5	20.0
Dunks	0	0	0
2PT Field Goals	2	11	18.2
3PT Field Goals	0	2	00.0
Total Field Goals	2	13	15.4

UVU : Period 4	Made	Att	Pct
Layups	3	5	60.0
Dunks	0	0	0
2PT Field Goals	4	6	66.7
3PT Field Goals	2	6	33.3
Total Field Goals	6	12	50.0