

## FINAL SCORE



**Kansas St.**

**56**



**West Virginia**

**55**

February 11, 2020 • WVU Coliseum - Morgantown, W.Va.

## FINAL STATISTICS

**Official Box Score**  
**Kansas St. vs West Virginia**  
**Game Totals -- Final Statistics**  
**February 11, 2020 at WVU Coliseum - Morgantown, W.Va.**



**Kansas St. 56**

No.	Player	S	Pts	FG	3FG	FT	OR	DR	TR	PF	A	TO	Blk	Stl	Min	+/-	
03	HARRIS, ANGELA	G	18	7-13	2-5	2-2	0	4	4	4	4	2	0	1	34	6	
11	WILLIAMS, PEYTON	F	14	6-14	0-7	2-2	0	8	8	3	4	3	0	0	37	4	
25	BEARD, JASAUEN	F	2	1-5	0-0	0-0	0	1	1	2	0	1	1	0	16	-10	
43	CARR, CHRISTIANNA	G	3	1-7	1-4	0-0	0	0	0	2	1	4	1	0	32	5	
50	LEE, AYOKA	C	15	6-11	0-0	3-7	3	13	16	2	0	0	6	2	38	2	
01	SIMMONS, SAVANNAH	G	3	1-1	1-1	0-0	0	1	1	2	3	2	0	0	28	0	
02	GOODRICH, CYMONE	G	0	0-1	0-0	0-2	0	1	1	0	0	0	0	1	4	-3	
13	MACKE, LAURA	F	1	0-0	0-0	1-2	1	0	1	0	0	0	0	0	2	-1	
24	EBERT, EMILEE	G	0	0-1	0-0	0-0	0	0	0	0	0	0	0	0	8	3	
44	CHAPMAN, EMMA	F	0	0-0	0-0	0-0	0	0	0	0	0	0	0	0	1	-1	
<b>TEAM</b>							2	3	5	0	2						
<b>TOTALS</b>			<b>56</b>	<b>22-53</b>	<b>4-17</b>	<b>8-15</b>	<b>6</b>	<b>31</b>	<b>37</b>	<b>15</b>	<b>12</b>	<b>14</b>	<b>8</b>	<b>4</b>	<b>200</b>		

*Shooting By Period*

Period	FG	FG%	3FG	3FG%	FT	FT%
1st Qtr	6-14	43%	1-4	25%	2-4	50%
2nd Qtr	4-13	31%	0-2	00%	1-2	50%
3rd Qtr	2-9	22%	0-4	00%	2-4	50%
4th Qtr	10-17	59%	3-7	43%	3-5	60%
1st Half	10-27	37%	1-6	17%	3-6	50%
2nd Half	12-26	46%	3-11	27%	5-9	56%
<b>Game</b>	<b>22-53</b>	<b>41.5%</b>	<b>4-17</b>	<b>23.5%</b>	<b>8-15</b>	<b>53.3%</b>

*Deadball Rebounds: 5.0*  
*Last FG: 4th-00:22*  
*Biggest Run: 19-0*  
*Largest lead: By 6 at 1st-07:27*  
*Technical Fouls: None.*

**West Virginia 55**

No.	Player	S	Pts	FG	3FG	FT	OR	DR	TR	PF	A	TO	Blk	Stl	Min	+/-	
02	GONDREZICK, KYSRE	G	10	3-12	2-6	2-2	1	5	6	0	4	3	0	2	38	0	
03	DEANS, KIRSTEN	G	0	0-4	0-1	0-0	0	2	2	3	3	1	0	1	16	3	
05	MARTIN, TYNICE	G	12	4-17	2-4	2-2	1	6	7	2	0	0	2	2	36	-1	
14	NIBLACK, KARI	F	12	5-13	0-0	2-4	4	3	7	4	2	3	0	1	26	14	
22	EJIOFOR, BLESSING	C	6	3-4	0-0	0-0	1	3	4	3	0	0	0	1	22	-3	
04	RUDD, LUCKY	G	4	1-4	0-2	2-2	0	1	1	0	4	1	1	1	29	-5	
12	MARTINEZ, ESMERY	F	6	3-7	0-0	0-0	1	1	2	3	0	2	0	0	14	-15	
31	NORRIS, ROCHELLE	C	5	2-3	0-0	1-1	1	4	5	4	0	2	1	0	18	2	
<b>TEAM</b>							3	2	5	0	0						
<b>TOTALS</b>			<b>55</b>	<b>21-64</b>	<b>4-13</b>	<b>9-11</b>	<b>12</b>	<b>27</b>	<b>39</b>	<b>19</b>	<b>13</b>	<b>12</b>	<b>4</b>	<b>8</b>	<b>200</b>		

*Shooting By Period*

Period	FG	FG%	3FG	3FG%	FT	FT%
1st Qtr	5-16	31%	0-1	00%	2-2	100%
2nd Qtr	5-15	33%	1-3	33%	1-2	50%
3rd Qtr	5-16	31%	2-5	40%	5-5	100%
4th Qtr	6-17	35%	1-4	25%	1-2	50%
1st Half	10-31	32%	1-4	25%	3-4	75%
2nd Half	11-33	33%	3-9	33%	6-7	86%
<b>Game</b>	<b>21-64</b>	<b>32.8%</b>	<b>4-13</b>	<b>30.8%</b>	<b>9-11</b>	<b>81.8%</b>

*Deadball Rebounds: 2.0*  
*Last FG: 4th-00:00*  
*Biggest Run: 9-0*  
*Largest lead: By 18 at 4th-07:08*  
*Technical Fouls: None.*

Game Notes:

Officials: Felicia Grinter, Mark Zentz, Cameron Inouye  
Attendance: 1455

Start Time: 07:05 PM ET  
End Time: 09:06 PM ET  
Game Duration: 2:01  
Conference Game;

Score	1st	2nd	3rd	4th	TOT
KSU	15	9	6	26	<b>56</b>
WVU	12	12	17	14	<b>55</b>

KSU led for 15:59. WVU led for 17:37.  
Game was tied for 6:24.  
Times tied: 9      Lead Changes: 6

Points from	KSU	WVU
In the Paint	24	24
Off Turns	9	11
2nd Chance	3	11
Fast Break	4	6
Bench	4	15

**Official Box Score**  
**Kansas St. vs West Virginia**  
**First Half Statistics Only**  
**February 11, 2020 at WVU Coliseum - Morgantown, W.Va.**



**Kansas St. 24**

No.	Player	S	Pts	FG	3FG	FT	OR	DR	TR	PF	A	TO	Blk	Stl	Min	+/-
01	SIMMONS, SAVANNAH	G	3	1-1	1-1	0-0	0	0	0	0	1	0	0	0	12	-4
02	GOODRICH, CYMONE	G	0	0-1	0-0	0-2	0	1	1	0	0	0	0	1	4	-3
03	HARRIS, ANGELA	G	10	4-8	0-2	2-2	0	2	2	2	0	1	0	1	17	-3
11	WILLIAMS, PEYTON	F	2	1-5	0-3	0-0	0	5	5	1	3	2	0	0	19	1
13	MACKE, LAURA	F	1	0-0	0-0	1-2	1	0	1	0	0	0	0	0	3	-1
24	EBERT, EMILEE	G	0	0-1	0-0	0-0	0	0	0	0	0	0	0	0	7	5
25	BEARD, JASAUEN	F	2	1-4	0-0	0-0	0	0	0	1	0	1	0	0	8	1
43	CARR, CHRISTIANNA	G	0	0-1	0-0	0-0	0	0	0	1	0	2	0	0	12	4
44	CHAPMAN, EMMA	F	0	0-0	0-0	0-0	0	0	0	0	0	0	0	0	1	-1
50	LEE, AYOKA	C	6	3-6	0-0	0-0	1	5	6	1	0	0	4	1	17	1
	TEAM		0	0-0	0-0	0-0	1	2	3	0	0	0	0	0	0	
<b>TOTALS</b>			<b>24</b>	<b>10-27</b>	<b>1-6</b>	<b>3-6</b>	<b>3</b>	<b>15</b>	<b>18</b>	<b>6</b>	<b>4</b>	<b>6</b>	<b>4</b>	<b>3</b>	<b>100</b>	

*Shooting By Period*

Period	FG	FG%	3FG	3FG%	FT	FT%
1st Qtr	6-14	43%	1-4	25%	2-4	50%
2nd Qtr	4-13	31%	0-2	00%	1-2	50%
1st Half	10-27	37%	1-6	17%	3-6	50%
Game	22-53	41.5%	4-17	23.5%	8-15	53.3%

*Deadball Rebounds: 5,0*  
*Last FG Half: KSU 2nd-01:30*

**West Virginia 24**

No.	Player	S	Pts	FG	3FG	FT	OR	DR	TR	PF	A	TO	Blk	Stl	Min	+/-
02	GONDREZICK, KYSRE	G	0	0-2	0-0	0-0	0	2	2	0	3	1	0	1	18	-1
03	DEANS, KIRSTEN	G	0	0-4	0-1	0-0	0	2	2	0	2	1	0	0	12	-3
04	RUDD, LUCKY	G	0	0-0	0-0	0-0	0	0	0	0	1	0	1	0	11	4
05	MARTIN, TYNICE	G	9	3-10	1-3	2-2	1	3	4	1	0	0	1	0	19	0
12	MARTINEZ, ESMERY	F	6	3-5	0-0	0-0	1	1	2	2	0	2	0	0	9	-3
14	NIBLACK, KARI	F	5	2-6	0-0	1-2	2	1	3	2	1	2	0	0	11	3
22	EJIOFOR, BLESSING	C	4	2-3	0-0	0-0	0	3	3	1	0	0	0	1	11	-3
31	NORRIS, ROCHELLE	C	0	0-1	0-0	0-0	0	2	2	1	0	1	1	0	9	3
	TEAM		0	0-0	0-0	0-0	2	1	3	0	0	0	0	0	0	
<b>TOTALS</b>			<b>24</b>	<b>10-31</b>	<b>1-4</b>	<b>3-4</b>	<b>6</b>	<b>15</b>	<b>21</b>	<b>7</b>	<b>7</b>	<b>7</b>	<b>3</b>	<b>2</b>	<b>100</b>	

*Shooting By Period*

Period	FG	FG%	3FG	3FG%	FT	FT%
1st Qtr	5-16	31%	0-1	00%	2-2	100%
2nd Qtr	5-15	33%	1-3	33%	1-2	50%
1st Half	10-31	32%	1-4	25%	3-4	75%
Game	21-64	32.8%	4-13	30.8%	9-11	81.8%

*Deadball Rebounds: 2,0*  
*Last FG Half: WVU 2nd-00:36*

Game Notes:

Officials: Felicia Grinter, Mark Zentz, Cameron Inouye  
 Attendance: 1455

Start Time: 07:05 PM ET  
 End Time: 09:06 PM ET  
 Game Duration: 2:01  
 Conference Game;

Score	1st	2nd	3rd	4th	TOT
KSU	15	9	6	26	56
WVU	12	12	17	14	55

Points from (This Period)	KSU	WVU
In the Paint	10	12
Off Turns	9	2
2nd Chance	3	6
Fast Break	2	0
Bench	4	6

**Official Box Score**  
**Kansas St. vs West Virginia**  
**First Quarter Statistics Only**  
**February 11, 2020 at WVU Coliseum - Morgantown, W.Va.**



**Kansas St. 15**

No.	Player	S	Pts	FG	3FG	FT	OR	DR	TR	PF	A	TO	Blk	Stl	Min	+/-	
03	HARRIS, ANGELA	G	6	2-3	0-1	2-2	0	0	0	2	0	1	0	1	7	0	
11	WILLIAMS, PEYTON	F	0	0-2	0-2	0-0	0	2	2	1	2	2	0	0	10	3	
25	BEARD, JASAUEN	F	2	1-2	0-0	0-0	0	0	0	1	0	0	0	0	5	4	
43	CARR, CHRISTIANNA	G	0	0-1	0-0	0-0	0	0	0	0	0	1	0	0	7	7	
50	LEE, AYOKA	C	4	2-3	0-0	0-0	1	3	4	0	0	0	3	1	8	5	
01	SIMMONS, SAVANNAH	G	3	1-1	1-1	0-0	0	0	0	0	0	0	0	0	5	-1	
02	GOODRICH, CYMONE	G	0	0-1	0-0	0-2	0	0	0	0	0	0	0	1	3	-4	
13	MACKE, LAURA	F	0	0-0	0-0	0-0	0	0	0	0	0	0	0	0	2	-2	
24	EBERT, EMILEE	G	0	0-1	0-0	0-0	0	0	0	0	0	0	0	0	3	3	
44	CHAPMAN, EMMA	F	0	0-0	0-0	0-0	0	0	0	0	0	0	0	0	0	0	
TEAM							1	1	2	0	0						
<b>TOTALS</b>			<b>15</b>	<b>6-14</b>	<b>1-4</b>	<b>2-4</b>	<b>2</b>	<b>6</b>	<b>8</b>	<b>4</b>	<b>2</b>	<b>4</b>	<b>3</b>	<b>3</b>	<b>50</b>		

*Shooting By Period*

Period	FG	FG%	3FG	3FG%	FT	FT%
1st Qtr	6-14	43%	1-4	25%	2-4	50%
2nd Qtr	4-13	31%	0-2	00%	1-2	50%
1st Half	6-14	43%	1-4	25%	2-4	50%
1st Half	10-27	37%	1-6	17%	3-6	50%
Game	22-53	41.5%	4-17	23.5%	8-15	53.3%

*Deadball Rebounds: 5,0*

**West Virginia 12**

No.	Player	S	Pts	FG	3FG	FT	OR	DR	TR	PF	A	TO	Blk	Stl	Min	+/-	
02	GONDREZICK, KYSRE	G	0	0-1	0-0	0-0	0	2	2	0	2	0	0	0	10	-3	
03	DEANS, KIRSTEN	G	0	0-2	0-0	0-0	0	0	0	0	0	1	0	0	5	-4	
05	MARTIN, TYNICE	G	4	1-4	0-1	2-2	0	2	2	0	0	0	0	0	9	-3	
14	NIBLACK, KARI	F	2	1-5	0-0	0-0	2	1	3	1	1	2	0	0	8	0	
22	EJIOFOR, BLESSING	C	4	2-3	0-0	0-0	0	2	2	1	0	0	0	1	8	-5	
04	RUDD, LUCKY	G	0	0-0	0-0	0-0	0	0	0	0	0	0	1	0	6	1	
12	MARTINEZ, ESMERY	F	2	1-1	0-0	0-0	1	0	1	1	0	2	0	0	2	-3	
31	NORRIS, ROCHELLE	C	0	0-0	0-0	0-0	0	0	0	1	0	1	0	0	2	2	
TEAM							2	0	2	0	0						
<b>TOTALS</b>			<b>12</b>	<b>5-16</b>	<b>0-1</b>	<b>2-2</b>	<b>5</b>	<b>7</b>	<b>12</b>	<b>4</b>	<b>3</b>	<b>6</b>	<b>1</b>	<b>1</b>	<b>50</b>		

*Shooting By Period*

Period	FG	FG%	3FG	3FG%	FT	FT%
1st Qtr	5-16	31%	0-1	00%	2-2	100%
2nd Qtr	5-15	33%	1-3	33%	1-2	50%
1st Half	5-16	31%	0-1	00%	2-2	100%
1st Half	10-31	32%	1-4	25%	3-4	75%
Game	21-64	32.8%	4-13	30.8%	9-11	81.8%

*Deadball Rebounds: 2,0*

*Game Notes:*

Officials: Felicia Grinter, Mark Zentz, Cameron Inouye  
 Attendance: 1455

Start Time: 07:05 PM ET  
 End Time: 09:06 PM ET  
 Game Duration: 2:01  
 Conference Game;

Score	1st	2nd	3rd	4th	TOT
KSU	15	9	6	26	<b>56</b>
WVU	12	12	17	14	<b>55</b>

Points from (This Period)	KSU	WVU
In the Paint	6	8
Off Turns	9	2
2nd Chance	2	6
Fast Break	2	0
Bench	3	2

**Official Play-By-Play**  
**Kansas St. vs West Virginia**  
**First Quarter**  
**February 11, 2020 at WVU Coliseum - Morgantown, W.Va.**



**Period 1**

**Starters:**

**Kansas St.:** 3 HARRIS, ANGELA (G); 11 WILLIAMS, PEYTON (F); 25 BEARD, JASAUEN (F); 43 CARR, CHRISTIANNA (G); 50 LEE, AYOKA (C);

**West Virginia:** 2 GONDREZICK, KYSRE (G); 3 DEANS, KIRSTEN (G); 5 MARTIN, TYNICE (G); 14 NIBLACK, KARI (F); 22 EJIOFOR, BLESSING (C);

Time	VISITORS: Kansas St.	Score	Margin	HOME: West Virginia
09:45	GOOD! JUMPER by BEARD, JASAUEN	0-2	V 2	
09:29				MISSED JUMPER by EJIOFOR, BLESSING
09:27				REBOUND (OFF) by NIBLACK, KARI
09:25		2-2	T	GOOD! LAYUP by EJIOFOR, BLESSING
09:25				ASSIST by NIBLACK, KARI
09:04	GOOD! JUMPER by HARRIS, ANGELA	2-4	V 2	
08:47				MISSED JUMPER by NIBLACK, KARI
08:43	REBOUND (DEF) by LEE, AYOKA			
08:40	TURNOVER (BADPASS) by HARRIS, ANGELA			
08:18				MISSED JUMPER by NIBLACK, KARI
08:18	BLOCK by LEE, AYOKA			
08:13	REBOUND (DEF) by LEE, AYOKA			
08:02	MISSED LAYUP by BEARD, JASAUEN			
07:59	REBOUND (OFF) by LEE, AYOKA			
07:58	MISSED LAYUP by LEE, AYOKA			
07:55				REBOUND (DEF) by NIBLACK, KARI
07:52				TURNOVER (BADPASS) by NIBLACK, KARI
07:52	STEAL by LEE, AYOKA			
07:47	GOOD! LAYUP by LEE, AYOKA	2-6	V 4	
07:36	FOUL (PERSONAL) by HARRIS, ANGELA			
07:33				TURNOVER (LOSTBALL) by DEANS, KIRSTEN
07:33	STEAL by HARRIS, ANGELA			
07:27	GOOD! LAYUP by HARRIS, ANGELA [FB]	2-8	V 6	
07:17				MISSED LAYUP by DEANS, KIRSTEN
07:13	REBOUND (DEF) by LEE, AYOKA			
07:08	TURNOVER (BADPASS) by CARR, CHRISTIANNA			
07:08				STEAL by EJIOFOR, BLESSING
06:43		4-8	V 4	GOOD! LAYUP by NIBLACK, KARI
06:43				ASSIST by GONDREZICK, KYSRE
06:27	MISSED JUMPER by CARR, CHRISTIANNA			
06:23				REBOUND (DEF) by EJIOFOR, BLESSING
06:05				MISSED JUMPER by GONDREZICK, KYSRE
06:01				REBOUND (OFF) by NIBLACK, KARI
05:54	FOUL (PERSONAL) by BEARD, JASAUEN			
05:54				SUB OUT: DEANS, KIRSTEN
05:54				SUB OUT: EJIOFOR, BLESSING
05:54				SUB IN: RUDD, LUCKY
05:54				SUB IN: NORRIS, ROCHELLE
05:54	SUB OUT: BEARD, JASAUEN			
05:54	SUB OUT: CARR, CHRISTIANNA			
05:54	SUB IN: SIMMONS, SAVANNAH			
05:54	SUB IN: GOODRICH, CYMONE			
05:54		5-8	V 3	GOOD! FT by MARTIN, TYNICE
05:54		6-8	V 2	GOOD! FT by MARTIN, TYNICE
05:46	MISSED 3PTR by WILLIAMS, PEYTON			
05:42				REBOUND (DEF) by MARTIN, TYNICE
05:31				MISSED LAYUP by NIBLACK, KARI
05:31	BLOCK by LEE, AYOKA			
05:31				REBOUND (OFF) by TEAM
05:29				MISSED 3PTR by MARTIN, TYNICE
05:25	REBOUND (DEF) by WILLIAMS, PEYTON			
05:19	MISSED LAYUP by GOODRICH, CYMONE			
05:15				REBOUND (DEF) by GONDREZICK, KYSRE
05:12				TURNOVER (BADPASS) by NIBLACK, KARI
05:12	STEAL by GOODRICH, CYMONE			
04:45	MISSED 3PTR by HARRIS, ANGELA			
04:42				REBOUND (DEF) by MARTIN, TYNICE
04:34				TURNOVER (TRAVEL) by NORRIS, ROCHELLE
04:34				
04:34	SUB OUT: LEE, AYOKA			
04:34	SUB IN: MACKE, LAURA			
04:22				FOUL (PERSONAL) by NORRIS, ROCHELLE
04:22				SUB OUT: NORRIS, ROCHELLE
04:22				SUB IN: EJIOFOR, BLESSING
04:22	GOOD! FT by HARRIS, ANGELA	6-9	V 3	
04:22	GOOD! FT by HARRIS, ANGELA	6-10	V 4	
03:56		8-10	V 2	GOOD! JUMPER by MARTIN, TYNICE
03:29	MISSED 3PTR by WILLIAMS, PEYTON			
03:26				REBOUND (DEF) by GONDREZICK, KYSRE
03:16		10-10	T	GOOD! JUMPER by EJIOFOR, BLESSING [PNT]

Time	VISITORS: Kansas St.	Score	Margin	HOME: West Virginia
03:16				ASSIST by GONDREZICK, KYBRE
02:52				FOUL (PERSONAL) by NIBLACK, KARI
02:52				SUB OUT: NIBLACK, KARI
02:52				SUB IN: MARTINEZ, ESMERY
02:52	SUB OUT: MACKE, LAURA			
02:52	SUB IN: LEE, AYOKA			
02:52	MISSED FT by GOODRICH, CYMONE			
02:52	REBOUND (OFF) by TEAM			
02:52	MISSED FT by GOODRICH, CYMONE			
02:52				REBOUND (DEF) by EJIOFOR, BLESSING
02:44	FOUL (PERSONAL) by HARRIS, ANGELA			
02:44	SUB OUT: GOODRICH, CYMONE			
02:44	SUB OUT: HARRIS, ANGELA			
02:44	SUB IN: EBERT, EMILEE			
02:44	SUB IN: CARR, CHRISTIANNA			
02:42				MISSED JUMPER by MARTIN, TYNICE
02:39				REBOUND (OFF) by MARTINEZ, ESMERY
02:38		12-10	H 2	GOOD! LAYUP by MARTINEZ, ESMERY
02:15	MISSED LAYUP by EBERT, EMILEE			
02:15				BLOCK by RUDD, LUCKY
02:15	REBOUND (OFF) by TEAM			
02:11	GOOD! LAYUP by LEE, AYOKA [PNT]	12-12	T	
02:11	ASSIST by WILLIAMS, PEYTON			
01:55				TURNOVER (DRIBBLING) by MARTINEZ, ESMERY
01:40	GOOD! 3PTR by SIMMONS, SAVANNAH	12-15	V 3	
01:40	ASSIST by WILLIAMS, PEYTON			
01:23				MISSED JUMPER by MARTIN, TYNICE
01:21	REBOUND (DEF) by WILLIAMS, PEYTON			
01:21				FOUL (PERSONAL) by MARTINEZ, ESMERY
01:21				SUB OUT: MARTIN, TYNICE
01:21				SUB IN: DEANS, KIRSTEN
01:21	SUB OUT: SIMMONS, SAVANNAH			
01:21	SUB IN: BEARD, JASAUEN			
01:05				FOUL (PERSONAL) by EJIOFOR, BLESSING
00:47	FOUL (OFF) by WILLIAMS, PEYTON			
00:47	TURNOVER (OFFENSIVE) by WILLIAMS, PEYTON			
00:33				TURNOVER (TRAVEL) by MARTINEZ, ESMERY
00:33				SUB OUT: MARTINEZ, ESMERY
00:33				SUB IN: NIBLACK, KARI
00:33	SUB OUT: EBERT, EMILEE			
00:33	SUB IN: HARRIS, ANGELA			
00:23	TURNOVER (BADPASS) by WILLIAMS, PEYTON			
00:23	SUB OUT: HARRIS, ANGELA			
00:23	SUB IN: EBERT, EMILEE			
00:01				MISSED LAYUP by DEANS, KIRSTEN
00:01	BLOCK by LEE, AYOKA			
00:01				REBOUND (OFF) by TEAM
00:01				MISSED JUMPER by NIBLACK, KARI
00:01	REBOUND (DEF) by TEAM			

### Kansas St. 15, West Virginia 12

Points from (This Period)	KSU	WVU
In the Paint	6	8
Off Turns	9	2
2nd Chance	2	6
Fast Break	2	0
Bench	3	2

**Official Box Score**  
**Kansas St. vs West Virginia**  
**Second Quarter Statistics Only**  
**February 11, 2020 at WVU Coliseum - Morgantown, W.Va.**



**Kansas St. 9**

No.	Player	S	Pts	FG	3FG	FT	OR	DR	TR	PF	A	TO	Blk	Stl	Min	+/-	
03	HARRIS, ANGELA	G	4	2-5	0-1	0-0	0	2	2	0	0	0	0	0	10	-3	
11	WILLIAMS, PEYTON	F	2	1-3	0-1	0-0	0	3	3	0	1	0	0	0	9	-2	
25	BEARD, JASAUEN	F	0	0-2	0-0	0-0	0	0	0	0	0	1	0	0	3	-3	
43	CARR, CHRISTIANNA	G	0	0-0	0-0	0-0	0	0	0	1	0	1	0	0	5	-3	
50	LEE, AYOKA	C	2	1-3	0-0	0-0	0	2	2	1	0	0	1	0	9	-4	
01	SIMMONS, SAVANNAH	G	0	0-0	0-0	0-0	0	0	0	0	1	0	0	0	7	-3	
02	GOODRICH, CYMONE	G	0	0-0	0-0	0-0	0	1	1	0	0	0	0	0	1	1	
13	MACKE, LAURA	F	1	0-0	0-0	1-2	1	0	1	0	0	0	0	0	1	1	
24	EBERT, EMILEE	G	0	0-0	0-0	0-0	0	0	0	0	0	0	0	0	4	2	
44	CHAPMAN, EMMA	F	0	0-0	0-0	0-0	0	0	0	0	0	0	0	0	1	-1	
TEAM							0	1	1	0	0						
<b>TOTALS</b>			<b>9</b>	<b>4-13</b>	<b>0-2</b>	<b>1-2</b>	<b>1</b>	<b>9</b>	<b>10</b>	<b>2</b>	<b>2</b>	<b>2</b>	<b>1</b>	<b>0</b>	<b>50</b>		

*Shooting By Period*

Period	FG	FG%	3FG	3FG%	FT	FT%
3rd Qtr	2-9	22%	0-4	00%	2-4	50%
4th Qtr	10-17	59%	3-7	43%	3-5	60%
2nd Half	4-13	31%	0-2	00%	1-2	50%
2nd Half	12-26	46%	3-11	27%	5-9	56%
Game	22-53	41.5%	4-17	23.5%	8-15	53.3%

*Deadball Rebounds: 5,0*

**West Virginia 12**

No.	Player	S	Pts	FG	3FG	FT	OR	DR	TR	PF	A	TO	Blk	Stl	Min	+/-	
02	GONDREZICK, KYSRE	G	0	0-1	0-0	0-0	0	0	0	0	1	1	0	1	8	2	
03	DEANS, KIRSTEN	G	0	0-2	0-1	0-0	0	2	2	0	2	0	0	0	7	1	
05	MARTIN, TYNICE	G	5	2-6	1-2	0-0	1	1	2	1	0	0	1	0	10	3	
14	NIBLACK, KARI	F	3	1-1	0-0	1-2	0	0	0	1	0	0	0	0	3	3	
22	EJIOFOR, BLESSING	C	0	0-0	0-0	0-0	0	1	1	0	0	0	0	0	3	2	
04	RUDD, LUCKY	G	0	0-0	0-0	0-0	0	0	0	0	1	0	0	0	5	3	
12	MARTINEZ, ESMERY	F	4	2-4	0-0	0-0	0	1	1	1	0	0	0	0	7	0	
31	NORRIS, ROCHELLE	C	0	0-1	0-0	0-0	0	2	2	0	0	0	1	0	7	1	
TEAM							0	1	1	0	0						
<b>TOTALS</b>			<b>12</b>	<b>5-15</b>	<b>1-3</b>	<b>1-2</b>	<b>1</b>	<b>8</b>	<b>9</b>	<b>3</b>	<b>4</b>	<b>1</b>	<b>2</b>	<b>1</b>	<b>50</b>		

*Shooting By Period*

Period	FG	FG%	3FG	3FG%	FT	FT%
3rd Qtr	5-16	31%	2-5	40%	5-5	100%
4th Qtr	6-17	35%	1-4	25%	1-2	50%
2nd Half	5-15	33%	1-3	33%	1-2	50%
2nd Half	11-33	33%	3-9	33%	6-7	86%
Game	21-64	32.8%	4-13	30.8%	9-11	81.8%

*Deadball Rebounds: 2,0*

*Game Notes:*

Officials: Felicia Grinter, Mark Zentz, Cameron Inouye  
Attendance: 1455

Start Time: 07:05 PM ET  
End Time: 09:06 PM ET  
Game Duration: 2:01  
Conference Game;

Score	1st	2nd	3rd	4th	TOT
KSU	15	9	6	26	<b>56</b>
WVU	12	12	17	14	<b>55</b>

Points from (This Period)	KSU	WVU
In the Paint	4	4
Off Turns	0	0
2nd Chance	1	0
Fast Break	0	0
Bench	1	4

**Official Play-By-Play**  
**Kansas St. vs West Virginia**  
**Second Quarter**  
**February 11, 2020 at WVU Coliseum - Morgantown, W.Va.**



**Period 2**

**Starters:**

**Kansas St.:** 3 HARRIS, ANGELA (G); 11 WILLIAMS, PEYTON (F); 25 BEARD, JASAUEN (F); 43 CARR, CHRISTIANNA (G); 50 LEE, AYOKA (C);

**West Virginia:** 2 GONDREZICK, KYSRE (G); 3 DEANS, KIRSTEN (G); 5 MARTIN, TYNICE (G); 14 NIBLACK, KARI (F); 22 EJIOFOR, BLESSING (C);

Time	VISITORS: Kansas St.	Score	Margin	HOME: West Virginia
10:00				SUB OUT: GONDREZICK, KYSRE
10:00				SUB OUT: EJIOFOR, BLESSING
10:00				SUB IN: MARTIN, TYNICE
10:00				SUB IN: NORRIS, ROCHELLE
10:00	SUB OUT: WILLIAMS, PEYTON			
10:00	SUB OUT: EBERT, EMILEE			
10:00	SUB IN: HARRIS, ANGELA			
10:00	SUB IN: CHAPMAN, EMMA			
09:46				MISSED 3PTR by MARTIN, TYNICE
09:45	REBOUND (DEF) by TEAM			
09:17	MISSED 3PTR by HARRIS, ANGELA			
09:14				REBOUND (DEF) by MARTIN, TYNICE
08:56	FOUL (PERSONAL) by LEE, AYOKA			
08:56				MISSED FT by NIBLACK, KARI
08:56				REBOUND (OFF) by TEAM
08:56		13-15	V 2	GOOD! FT by NIBLACK, KARI
08:56	SUB OUT: CHAPMAN, EMMA			
08:56	SUB IN: WILLIAMS, PEYTON			
08:41	MISSED LAYUP by BEARD, JASAUEN			
08:41				BLOCK by MARTIN, TYNICE
08:30				REBOUND (DEF) by NORRIS, ROCHELLE
08:28	FOUL (PERSONAL) by CARR, CHRISTIANNA			
08:28				SUB OUT: RUDD, LUCKY
08:28				SUB IN: GONDREZICK, KYSRE
08:28	SUB OUT: CARR, CHRISTIANNA			
08:28	SUB IN: SIMMONS, SAVANNAH			
08:25		15-15	T	GOOD! LAYUP by NIBLACK, KARI
08:25				ASSIST by DEANS, KIRSTEN
08:09	MISSED LAYUP by BEARD, JASAUEN			
08:09				BLOCK by NORRIS, ROCHELLE
08:04				REBOUND (DEF) by NORRIS, ROCHELLE
08:00				MISSED JUMPER by MARTIN, TYNICE
07:57	REBOUND (DEF) by HARRIS, ANGELA			
07:45	TURNOVER (BADPASS) by BEARD, JASAUEN			
07:45				STEAL by GONDREZICK, KYSRE
07:19				MISSED 3PTR by DEANS, KIRSTEN
07:15	REBOUND (DEF) by WILLIAMS, PEYTON			
07:01				FOUL (PERSONAL) by NIBLACK, KARI
07:01				SUB OUT: NIBLACK, KARI
07:01				SUB IN: MARTINEZ, ESMERY
07:01	SUB OUT: BEARD, JASAUEN			
07:01	SUB IN: EBERT, EMILEE			
06:52	GOOD! JUMPER by HARRIS, ANGELA	15-17	V 2	
06:23				MISSED JUMPER by MARTIN, TYNICE
06:19				REBOUND (OFF) by MARTIN, TYNICE
06:16				MISSED LAYUP by MARTINEZ, ESMERY
06:12	REBOUND (DEF) by WILLIAMS, PEYTON			
06:04	MISSED JUMPER by LEE, AYOKA			
06:00				REBOUND (DEF) by DEANS, KIRSTEN
05:40				MISSED JUMPER by DEANS, KIRSTEN
05:37	REBOUND (DEF) by WILLIAMS, PEYTON			
05:16	MISSED JUMPER by WILLIAMS, PEYTON			
05:12				REBOUND (DEF) by DEANS, KIRSTEN
05:06		17-17	T	GOOD! JUMPER by MARTIN, TYNICE
05:06				ASSIST by DEANS, KIRSTEN
04:36	GOOD! JUMPER by LEE, AYOKA [PNT]	17-19	V 2	
04:36	ASSIST by WILLIAMS, PEYTON			
04:17		19-19	T	GOOD! JUMPER by MARTINEZ, ESMERY
04:00	GOOD! JUMPER by HARRIS, ANGELA	19-21	V 2	
03:41				MISSED JUMPER by NORRIS, ROCHELLE
03:41	BLOCK by LEE, AYOKA			
03:36	REBOUND (DEF) by LEE, AYOKA			
03:30	MISSED 3PTR by WILLIAMS, PEYTON			
03:29				REBOUND (DEF) by TEAM
03:29				SUB OUT: DEANS, KIRSTEN
03:29				SUB OUT: NORRIS, ROCHELLE
03:29				SUB IN: RUDD, LUCKY
03:29				SUB IN: EJIOFOR, BLESSING
03:29	SUB OUT: SIMMONS, SAVANNAH			



Time	VISITORS: Kansas St.	Score	Margin	HOME: West Virginia
03:29	SUB OUT: EBERT, EMILEE			
03:29	SUB OUT: LEE, AYOKA			
03:29	SUB IN: GOODRICH, CYMONE			
03:29	SUB IN: MACKE, LAURA			
03:29	SUB IN: CARR, CHRISTIANNA			
03:18				MISSED LAYUP by MARTIN, TYNICE
03:15	REBOUND (DEF) by HARRIS, ANGELA			
02:46	MISSED JUMPER by HARRIS, ANGELA			
02:45	REBOUND (OFF) by MACKE, LAURA			
02:45				FOUL (PERSONAL) by MARTIN, TYNICE
02:45	MISSED FT by MACKE, LAURA			
02:45	REBOUND (OFF) by TEAM			
02:45	GOOD! FT by MACKE, LAURA	19-22	V 3	
02:45	SUB OUT: MACKE, LAURA			
02:45	SUB IN: LEE, AYOKA			
02:31				MISSED JUMPER by GONDREZICK, KYSRE
02:30	REBOUND (DEF) by GOODRICH, CYMONE			
02:30				FOUL (PERSONAL) by MARTINEZ, ESMERY
02:13	TURNOVER (TRAVEL) by CARR, CHRISTIANNA			
02:13	SUB OUT: GOODRICH, CYMONE			
02:13	SUB IN: SIMMONS, SAVANNAH			
02:02				MISSED JUMPER by MARTINEZ, ESMERY
01:58	REBOUND (DEF) by LEE, AYOKA			
01:30	GOOD! LAYUP by WILLIAMS, PEYTON	19-24	V 5	
01:30	ASSIST by SIMMONS, SAVANNAH			
01:10		22-24	V 2	GOOD! 3PTR by MARTIN, TYNICE
01:10				ASSIST by RUDD, LUCKY
00:49	MISSED LAYUP by HARRIS, ANGELA			
00:45				REBOUND (DEF) by MARTINEZ, ESMERY
00:36		24-24	T	GOOD! LAYUP by MARTINEZ, ESMERY
00:36				ASSIST by GONDREZICK, KYSRE
00:03	MISSED LAYUP by LEE, AYOKA			
00:00				TURNOVER (DRIBBLING) by GONDREZICK, KYSRE
00:00				REBOUND (DEF) by EJIOFOR, BLESSING

### Kansas St. 24, West Virginia 24

Points from (This Period)	KSU	WVU
In the Paint	4	4
Off Turns	0	0
2nd Chance	1	0
Fast Break	0	0
Bench	1	4

**Official Box Score**  
**Kansas St. vs West Virginia**  
**Second Half Statistics Only**  
**February 11, 2020 at WVU Coliseum - Morgantown, W.Va.**



**Kansas St. 32**

No.	Player	S	Pts	FG	3FG	FT	OR	DR	TR	PF	A	TO	Blk	Stl	Min	+/-
01	SIMMONS, SAVANNAH	G	0	0-0	0-0	0-0	0	1	1	2	2	2	0	0	16	4
02	GOODRICH, CYMONE	G	0	0-0	0-0	0-0	0	0	0	0	0	0	0	0	0	0
03	HARRIS, ANGELA	G	8	3-5	2-3	0-0	0	2	2	2	4	1	0	0	17	9
11	WILLIAMS, PEYTON	F	12	5-9	0-4	2-2	0	3	3	2	1	1	0	0	18	3
13	MACKE, LAURA	F	0	0-0	0-0	0-0	0	0	0	0	0	0	0	0	0	0
24	EBERT, EMILEE	G	0	0-0	0-0	0-0	0	0	0	0	0	0	0	0	2	-2
25	BEARD, JASAUEN	F	0	0-1	0-0	0-0	0	1	1	1	0	0	1	0	8	-11
43	CARR, CHRISTIANNA	G	3	1-6	1-4	0-0	0	0	0	1	1	2	1	0	20	1
44	CHAPMAN, EMMA	F	0	0-0	0-0	0-0	0	0	0	0	0	0	0	0	0	0
50	LEE, AYOKA	C	9	3-5	0-0	3-7	2	8	10	1	0	0	2	1	20	1
	TEAM		0	0-0	0-0	0-0	1	1	2	0	0	2	0	0	0	0
<b>TOTALS</b>			<b>32</b>	<b>12-26</b>	<b>3-11</b>	<b>5-9</b>	<b>3</b>	<b>16</b>	<b>19</b>	<b>9</b>	<b>8</b>	<b>8</b>	<b>4</b>	<b>1</b>	<b>100</b>	

*Shooting By Period*

Period	FG	FG%	3FG	3FG%	FT	FT%
3rd Qtr	2-9	22%	0-4	00%	2-4	50%
4th Qtr	10-17	59%	3-7	43%	3-5	60%
2nd Half	12-26	46%	3-11	27%	5-9	56%
Game	22-53	41.5%	4-17	23.5%	8-15	53.3%

*Deadball Rebounds: 5,0*

*Last FG Half: KSU 4th-00:22*

**West Virginia 31**

No.	Player	S	Pts	FG	3FG	FT	OR	DR	TR	PF	A	TO	Blk	Stl	Min	+/-
02	GONDREZICK, KYSRE	G	10	3-10	2-6	2-2	1	3	4	0	1	2	0	1	20	1
03	DEANS, KIRSTEN	G	0	0-0	0-0	0-0	0	0	0	3	1	0	0	1	4	6
04	RUDD, LUCKY	G	4	1-4	0-2	2-2	0	1	1	0	3	1	0	1	18	-9
05	MARTIN, TYNICE	G	3	1-7	1-1	0-0	0	3	3	1	0	0	1	2	18	-1
12	MARTINEZ, ESMERY	F	0	0-2	0-0	0-0	0	0	0	1	0	0	0	0	4	-12
14	NIBLACK, KARI	F	7	3-7	0-0	1-2	2	2	4	2	1	1	0	1	16	11
22	EJIOFOR, BLESSING	C	2	1-1	0-0	0-0	1	0	1	2	0	0	0	0	11	0
31	NORRIS, ROCHELLE	C	5	2-2	0-0	1-1	1	2	3	3	0	1	0	0	9	-1
	TEAM		0	0-0	0-0	0-0	1	1	2	0	0	0	0	0	0	0
<b>TOTALS</b>			<b>31</b>	<b>11-33</b>	<b>3-9</b>	<b>6-7</b>	<b>6</b>	<b>12</b>	<b>18</b>	<b>12</b>	<b>6</b>	<b>5</b>	<b>1</b>	<b>6</b>	<b>100</b>	

*Shooting By Period*

Period	FG	FG%	3FG	3FG%	FT	FT%
3rd Qtr	5-16	31%	2-5	40%	5-5	100%
4th Qtr	6-17	35%	1-4	25%	1-2	50%
2nd Half	11-33	33%	3-9	33%	6-7	86%
Game	21-64	32.8%	4-13	30.8%	9-11	81.8%

*Deadball Rebounds: 2,0*

*Last FG Half: WVU 4th-00:00*

*Game Notes:*

Officials: Felicia Grinter, Mark Zentz, Cameron Inouye  
 Attendance: 1455

Start Time: 07:05 PM ET  
 End Time: 09:06 PM ET  
 Game Duration: 2:01  
 Conference Game;

Score	1st	2nd	3rd	4th	TOT
KSU	15	9	6	26	56
WVU	12	12	17	14	55

Points from (This Period)	KSU	WVU
In the Paint	14	12
Off Turns	0	9
2nd Chance	0	5
Fast Break	2	6
Bench	0	9

**Official Box Score**  
**Kansas St. vs West Virginia**  
**Third Quarter Statistics Only**  
**February 11, 2020 at WVU Coliseum - Morgantown, W.Va.**



**Kansas St. 32**

No.	Player	S	Pts	FG	3FG	FT	OR	DR	TR	PF	A	TO	Blk	Stl	Min	+/-
03	HARRIS, ANGELA	G	0	0-1	0-1	0-0	0	0	0	2	0	1	0	0	7	-3
11	WILLIAMS, PEYTON	F	2	1-3	0-2	0-0	0	1	1	0	0	1	0	0	8	-9
25	BEARD, JASAUEN	F	0	0-1	0-0	0-0	0	1	1	1	0	0	1	0	8	-11
43	CARR, CHRISTIANNA	G	0	0-3	0-1	0-0	0	0	0	1	1	1	0	0	10	-11
50	LEE, AYOKA	C	4	1-1	0-0	2-4	0	4	4	1	0	0	0	0	10	-11
01	SIMMONS, SAVANNAH	G	0	0-0	0-0	0-0	0	0	0	1	0	2	0	0	6	-8
02	GOODRICH, CYMONE	G	0	0-0	0-0	0-0	0	0	0	0	0	0	0	0	0	0
13	MACKE, LAURA	F	0	0-0	0-0	0-0	0	0	0	0	0	0	0	0	0	0
24	EBERT, EMILEE	G	0	0-0	0-0	0-0	0	0	0	0	0	0	0	0	2	-2
44	CHAPMAN, EMMA	F	0	0-0	0-0	0-0	0	0	0	0	0	0	0	0	0	0
TEAM							0	0	0	0		2				
<b>TOTALS</b>			<b>6</b>	<b>2-9</b>	<b>0-4</b>	<b>2-4</b>	<b>0</b>	<b>6</b>	<b>6</b>	<b>6</b>	<b>1</b>	<b>7</b>	<b>1</b>	<b>0</b>	<b>50</b>	

*Shooting By Period*

Period	FG	FG%	3FG	3FG%	FT	FT%
2nd Half	0-0	0%	0-0	0%	0-0	0%
Game	22-53	41.5%	4-17	23.5%	8-15	53.3%

*Deadball Rebounds: 5,0*

**West Virginia 31**

No.	Player	S	Pts	FG	3FG	FT	OR	DR	TR	PF	A	TO	Blk	Stl	Min	+/-
02	GONDREZICK, KYSRE	G	8	2-6	2-3	2-2	1	1	2	0	0	1	0	1	10	11
03	DEANS, KIRSTEN	G	0	0-0	0-0	0-0	0	0	0	2	1	0	0	1	4	6
05	MARTIN, TYNICE	G	0	0-3	0-0	0-0	0	1	1	1	0	0	0	2	8	11
14	NIBLACK, KARI	F	2	1-2	0-0	0-0	1	2	3	1	1	1	0	0	10	11
22	EJIOFOR, BLESSING	C	0	0-0	0-0	0-0	0	0	0	0	0	0	0	0	6	3
04	RUDD, LUCKY	G	4	1-4	0-2	2-2	0	1	1	0	1	1	0	1	8	5
12	MARTINEZ, ESMERY	F	0	0-0	0-0	0-0	0	0	0	1	0	0	0	0	0	0
31	NORRIS, ROCHELLE	C	3	1-1	0-0	1-1	1	1	2	0	0	0	0	0	4	8
TEAM							1	1	2	0		0				
<b>TOTALS</b>			<b>17</b>	<b>5-16</b>	<b>2-5</b>	<b>5-5</b>	<b>4</b>	<b>7</b>	<b>11</b>	<b>5</b>	<b>3</b>	<b>3</b>	<b>0</b>	<b>5</b>	<b>50</b>	

*Shooting By Period*

Period	FG	FG%	3FG	3FG%	FT	FT%
2nd Half	0-0	0%	0-0	0%	0-0	0%
Game	21-64	32.8%	4-13	30.8%	9-11	81.8%

*Deadball Rebounds: 2,0*

**Game Notes:**

Officials: Felicia Grinter, Mark Zentz, Cameron Inouye  
 Attendance: 1455

Start Time: 07:05 PM ET  
 End Time: 09:06 PM ET  
 Game Duration: 2:01  
 Conference Game;

Score	1st	2nd	3rd	4th	TOT
KSU	15	9	6	26	<b>56</b>
WVU	12	12	17	14	<b>55</b>

Points from (This Period)	KSU	WVU
In the Paint	4	6
Off Turns	0	7
2nd Chance	0	3
Fast Break	0	4
Bench	0	7

**Official Play-By-Play**  
**Kansas St. vs West Virginia**  
**Third Quarter**  
**February 11, 2020 at WVU Coliseum - Morgantown, W.Va.**



**Period 3**

**Starters:**

**Kansas St.:** 3 HARRIS, ANGELA (G); 11 WILLIAMS, PEYTON (F); 25 BEARD, JASAUEN (F); 43 CARR, CHRISTIANNA (G); 50 LEE, AYOKA (C);

**West Virginia:** 2 GONDREZICK, KYSRE (G); 3 DEANS, KIRSTEN (G); 5 MARTIN, TYNICE (G); 14 NIBLACK, KARI (F); 22 EJIOFOR, BLESSING (C);

Time	VISITORS: Kansas St.	Score	Margin	HOME: West Virginia
10:00				SUB OUT: MARTINEZ, ESMERY
10:00				SUB IN: NIBLACK, KARI
10:00	SUB OUT: SIMMONS, SAVANNAH			
10:00	SUB IN: BEARD, JASAUEN			
09:35	MISSED 3PTR by WILLIAMS, PEYTON			
09:31				REBOUND (DEF) by MARTIN, TYNICE
09:22				MISSED JUMPER by GONDREZICK, KYSRE
09:18	REBOUND (DEF) by LEE, AYOKA			
09:15	MISSED JUMPER by CARR, CHRISTIANNA			
09:14				REBOUND (DEF) by NIBLACK, KARI
09:13	FOUL (PERSONAL) by BEARD, JASAUEN			
08:46				MISSED JUMPER by MARTIN, TYNICE
08:42	REBOUND (DEF) by BEARD, JASAUEN			
08:37	GOOD! LAYUP by LEE, AYOKA	24-26	V 2	
08:37	ASSIST by CARR, CHRISTIANNA			
08:18		26-26	T	GOOD! LAYUP by NIBLACK, KARI
08:18				ASSIST by RUDD, LUCKY
07:58	GOOD! JUMPER by WILLIAMS, PEYTON [PNT]	26-28	V 2	
07:44		29-28	H 1	GOOD! 3PTR by GONDREZICK, KYSRE
07:23	MISSED JUMPER by CARR, CHRISTIANNA			
07:20				REBOUND (DEF) by RUDD, LUCKY
07:16		31-28	H 3	GOOD! LAYUP by RUDD, LUCKY [FB]
07:04	TIMEOUT 30SEC			
06:44	MISSED 3PTR by HARRIS, ANGELA			
06:44	REBOUND (OFF) by TEAM			
06:44	TURNOVER (SHOTCLOCK) by TEAM			
06:20				MISSED JUMPER by MARTIN, TYNICE
06:16	REBOUND (DEF) by WILLIAMS, PEYTON			
05:57	TURNOVER (LOSTBALL) by WILLIAMS, PEYTON			
05:57				STEAL by MARTIN, TYNICE
05:54				TURNOVER (BADPASS) by GONDREZICK, KYSRE
05:54	SUB OUT: WILLIAMS, PEYTON			
05:54	SUB IN: SIMMONS, SAVANNAH			
05:52	TURNOVER (BADPASS) by SIMMONS, SAVANNAH			
05:52				STEAL by RUDD, LUCKY
05:51				TURNOVER (LOSTBALL) by RUDD, LUCKY
05:32	TURNOVER (BADPASS) by HARRIS, ANGELA			
05:32				STEAL by MARTIN, TYNICE
05:29	FOUL (PERSONAL) by HARRIS, ANGELA			
05:29				SUB OUT: MARTIN, TYNICE
05:29				SUB IN: DEANS, KIRSTEN
05:21				MISSED JUMPER by RUDD, LUCKY
05:17	REBOUND (DEF) by LEE, AYOKA			
05:03	MISSED JUMPER by BEARD, JASAUEN			
05:01				REBOUND (DEF) by NIBLACK, KARI
05:00	FOUL (PERSONAL) by SIMMONS, SAVANNAH			
05:00				
04:48				MISSED 3PTR by GONDREZICK, KYSRE
04:43				REBOUND (OFF) by NIBLACK, KARI
04:43				TURNOVER (BADPASS) by NIBLACK, KARI
04:25	TURNOVER (BADPASS) by SIMMONS, SAVANNAH			
04:25				STEAL by DEANS, KIRSTEN
04:21	FOUL (PERSONAL) by HARRIS, ANGELA			
04:21				SUB OUT: NIBLACK, KARI
04:21				SUB OUT: EJIOFOR, BLESSING
04:21				SUB IN: MARTINEZ, ESMERY
04:21				SUB IN: NORRIS, ROCHELLE
04:21	SUB OUT: HARRIS, ANGELA			
04:21	SUB IN: EBERT, EMILEE			
04:21		32-28	H 4	GOOD! FT by RUDD, LUCKY [FB]
04:21		33-28	H 5	GOOD! FT by RUDD, LUCKY [FB]
03:53				FOUL (PERSONAL) by MARTINEZ, ESMERY
03:53	SUB OUT: BEARD, JASAUEN			
03:53	SUB IN: WILLIAMS, PEYTON			
03:53	GOOD! FT by LEE, AYOKA	33-29	H 4	
03:53	GOOD! FT by LEE, AYOKA	33-30	H 3	
03:53				SUB OUT: MARTINEZ, ESMERY
03:53				SUB IN: NIBLACK, KARI
03:32				MISSED 3PTR by RUDD, LUCKY
03:29				REBOUND (OFF) by NORRIS, ROCHELLE

Time	VISITORS: Kansas St.	Score	Margin	HOME: West Virginia
03:21				MISSED JUMPER by NIBLACK, KARI
03:18	REBOUND (DEF) by LEE, AYOKA			
03:18				FOUL (PERSONAL) by DEANS, KIRSTEN
03:18				SUB OUT: RUDD, LUCKY
03:18				SUB IN: MARTIN, TYNICE
03:01	MISSED 3PTR by CARR, CHRISTIANNA			
02:58				REBOUND (DEF) by GONDREZICK, KYSRE
02:42		35-30	H 5	GOOD! LAYUP by NORRIS, ROCHELLE
02:42				ASSIST by NIBLACK, KARI
02:42	FOUL (PERSONAL) by LEE, AYOKA			
02:42	SUB OUT: EBERT, EMILEE			
02:42	SUB IN: BEARD, JASAUEN			
02:42		36-30	H 6	GOOD! FT by NORRIS, ROCHELLE
02:41				FOUL (PERSONAL) by NIBLACK, KARI
02:21	TURNOVER (BADPASS) by CARR, CHRISTIANNA			
02:21				STEAL by GONDREZICK, KYSRE
02:19				MISSED LAYUP by GONDREZICK, KYSRE
02:19	BLOCK by BEARD, JASAUEN			
02:19				REBOUND (OFF) by TEAM
02:07		39-30	H 9	GOOD! 3PTR by GONDREZICK, KYSRE
02:07				ASSIST by DEANS, KIRSTEN
01:54				FOUL (PERSONAL) by DEANS, KIRSTEN
01:32	TURNOVER (SHOTCLOCK) by TEAM			
01:16	FOUL (PERSONAL) by CARR, CHRISTIANNA			
01:16				SUB OUT: DEANS, KIRSTEN
01:16				SUB IN: RUDD, LUCKY
01:16		40-30	H 10	GOOD! FT by GONDREZICK, KYSRE
01:16		41-30	H 11	GOOD! FT by GONDREZICK, KYSRE
01:16	SUB OUT: BEARD, JASAUEN			
01:16	SUB IN: HARRIS, ANGELA			
00:57				FOUL (PERSONAL) by MARTIN, TYNICE
00:57	MISSED FT by LEE, AYOKA			
00:57	REBOUND (OFF) by TEAM			
00:57	MISSED FT by LEE, AYOKA			
00:57				REBOUND (DEF) by NORRIS, ROCHELLE
00:52				MISSED LAYUP by MARTIN, TYNICE
00:48	REBOUND (DEF) by LEE, AYOKA			
00:28	MISSED 3PTR by WILLIAMS, PEYTON			
00:25				REBOUND (DEF) by TEAM
00:02				MISSED 3PTR by RUDD, LUCKY
00:00				MISSED JUMPER by GONDREZICK, KYSRE
00:00				REBOUND (OFF) by TEAM
00:00				REBOUND (OFF) by GONDREZICK, KYSRE

### Kansas St. 30, West Virginia 41

Points from (This Period)	KSU	WVU
In the Paint	4	6
Off Turns	0	7
2nd Chance	0	3
Fast Break	0	4
Bench	0	7

**Official Box Score**  
**Kansas St. vs West Virginia**  
**Fourth Quarter Statistics Only**  
**February 11, 2020 at WVU Coliseum - Morgantown, W.Va.**



**Kansas St. 26**

No.	Player	S	Pts	FG	3FG	FT	OR	DR	TR	PF	A	TO	Blk	Stl	Min	+/-
03	HARRIS, ANGELA	G	8	3-4	2-2	0-0	0	2	2	0	4	0	0	0	10	12
11	WILLIAMS, PEYTON	F	10	4-6	0-2	2-2	0	2	2	2	1	0	0	0	10	12
25	BEARD, JASAUEN	F	0	0-0	0-0	0-0	0	0	0	0	0	0	0	0	0	0
43	CARR, CHRISTIANNA	G	3	1-3	1-3	0-0	0	0	0	0	0	1	1	0	10	12
50	LEE, AYOKA	C	5	2-4	0-0	1-3	2	4	6	0	0	0	2	1	10	12
01	SIMMONS, SAVANNAH	G	0	0-0	0-0	0-0	0	1	1	1	2	0	0	0	10	12
02	GOODRICH, CYMONE	G	0	0-0	0-0	0-0	0	0	0	0	0	0	0	0	0	0
13	MACKE, LAURA	F	0	0-0	0-0	0-0	0	0	0	0	0	0	0	0	0	0
24	EBERT, EMILEE	G	0	0-0	0-0	0-0	0	0	0	0	0	0	0	0	0	0
44	CHAPMAN, EMMA	F	0	0-0	0-0	0-0	0	0	0	0	0	0	0	0	0	0
TEAM							1	1	2	0						
<b>TOTALS</b>			<b>26</b>	<b>10-17</b>	<b>3-7</b>	<b>3-5</b>	<b>3</b>	<b>10</b>	<b>13</b>	<b>3</b>	<b>7</b>	<b>1</b>	<b>3</b>	<b>1</b>	<b>50</b>	

*Shooting By Period*

Period	FG	FG%	3FG	3FG%	FT	FT%
Game	22-53	41.5%	4-17	23.5%	8-15	53.3%

*Deadball Rebounds: 5,0*

**West Virginia 14**

No.	Player	S	Pts	FG	3FG	FT	OR	DR	TR	PF	A	TO	Blk	Stl	Min	+/-
02	GONDREZICK, KYSRE	G	2	1-4	0-3	0-0	0	2	2	0	1	1	0	0	10	-10
03	DEANS, KIRSTEN	G	0	0-0	0-0	0-0	0	0	0	1	0	0	0	0	0	0
05	MARTIN, TYNICE	G	3	1-4	1-1	0-0	0	2	2	0	0	0	1	0	10	-12
14	NIBLACK, KARI	F	5	2-5	0-0	1-2	1	0	1	1	0	0	0	1	6	0
22	EJIOFOR, BLESSING	C	2	1-1	0-0	0-0	1	0	1	2	0	0	0	0	5	-3
04	RUDD, LUCKY	G	0	0-0	0-0	0-0	0	0	0	0	2	0	0	0	10	-14
12	MARTINEZ, ESMERY	F	0	0-2	0-0	0-0	0	0	0	0	0	0	0	0	4	-12
31	NORRIS, ROCHELLE	C	2	1-1	0-0	0-0	0	1	1	3	0	1	0	0	5	-9
TEAM							0	0	0	0						
<b>TOTALS</b>			<b>14</b>	<b>6-17</b>	<b>1-4</b>	<b>1-2</b>	<b>2</b>	<b>5</b>	<b>7</b>	<b>7</b>	<b>3</b>	<b>2</b>	<b>1</b>	<b>1</b>	<b>50</b>	

*Shooting By Period*

Period	FG	FG%	3FG	3FG%	FT	FT%
Game	21-64	32.8%	4-13	30.8%	9-11	81.8%

*Deadball Rebounds: 2,0*

Game Notes:

Officials: Felicia Grinter, Mark Zentz, Cameron Inouye  
 Attendance: 1455

Start Time: 07:05 PM ET  
 End Time: 09:06 PM ET  
 Game Duration: 2:01  
 Conference Game;

Score	1st	2nd	3rd	4th	TOT
KSU	15	9	6	26	<b>56</b>
WVU	12	12	17	14	<b>55</b>

Points from (This Period)	KSU	WVU
In the Paint	10	6
Off Turns	0	2
2nd Chance	0	2
Fast Break	2	2
Bench	0	2

**Official Play-By-Play**  
**Kansas St. vs West Virginia**  
**Fourth Quarter**  
**February 11, 2020 at WVU Coliseum - Morgantown, W.Va.**



**Period 4**

**Starters:**

**Kansas St.:** 3 HARRIS, ANGELA (G); 11 WILLIAMS, PEYTON (F); 25 BEARD, JASAUEN (F); 43 CARR, CHRISTIANNA (G); 50 LEE, AYOKA (C);

**West Virginia:** 2 GONDREZICK, KYSRE (G); 3 DEANS, KIRSTEN (G); 5 MARTIN, TYNICE (G); 14 NIBLACK, KARI (F); 22 EJIOFOR, BLESSING (C);

Time	VISITORS: Kansas St.	Score	Margin	HOME: West Virginia
09:50	FOUL (PERSONAL) by WILLIAMS, PEYTON			
09:50		42-30	H 12	GOOD! FT by NIBLACK, KARI
09:50				MISSED FT by NIBLACK, KARI
09:50	REBOUND (DEF) by LEE, AYOKA			
09:38	GOOD! JUMPER by WILLIAMS, PEYTON	42-32	H 10	
09:38	ASSIST by HARRIS, ANGELA			
09:25				MISSED 3PTR by GONDREZICK, KYSRE
09:22	REBOUND (DEF) by SIMMONS, SAVANNAH			
09:11	MISSED 3PTR by CARR, CHRISTIANNA			
09:06				REBOUND (DEF) by NORRIS, ROCHELLE
08:49		44-32	H 12	GOOD! LAYUP by NORRIS, ROCHELLE
08:49				ASSIST by GONDREZICK, KYSRE
08:33				FOUL (PERSONAL) by NORRIS, ROCHELLE
08:33				SUB OUT: NORRIS, ROCHELLE
08:33				SUB IN: EJIOFOR, BLESSING
08:33	MISSED FT by LEE, AYOKA			
08:33	REBOUND (OFF) by TEAM			
08:33	MISSED FT by LEE, AYOKA			
08:33				REBOUND (DEF) by MARTIN, TYNICE
08:29		46-32	H 14	GOOD! LAYUP by GONDREZICK, KYSRE [FB/PNT]
08:09	MISSED 3PTR by WILLIAMS, PEYTON			
08:07	REBOUND (OFF) by LEE, AYOKA			
08:05				FOUL (PERSONAL) by EJIOFOR, BLESSING
07:58	MISSED JUMPER by HARRIS, ANGELA			
07:55	REBOUND (OFF) by LEE, AYOKA			
07:53	MISSED JUMPER by LEE, AYOKA			
07:50				REBOUND (DEF) by MARTIN, TYNICE
07:44		48-32	H 16	GOOD! JUMPER by NIBLACK, KARI
07:22	TURNOVER (BADPASS) by CARR, CHRISTIANNA			
07:22				STEAL by NIBLACK, KARI
07:19	FOUL (PERSONAL) by SIMMONS, SAVANNAH			
07:08		50-32	H 18	GOOD! LAYUP by NIBLACK, KARI
07:08				ASSIST by RUDD, LUCKY
07:03	TIMEOUT 30SEC			
06:49	GOOD! LAYUP by WILLIAMS, PEYTON	50-34	H 16	
06:49	ASSIST by SIMMONS, SAVANNAH			
06:30				MISSED JUMPER by NIBLACK, KARI
06:30	BLOCK by LEE, AYOKA			
06:30	REBOUND (DEF) by TEAM			
06:15	GOOD! 3PTR by HARRIS, ANGELA	50-37	H 13	
05:49				MISSED JUMPER by NIBLACK, KARI
05:48	REBOUND (DEF) by WILLIAMS, PEYTON			
05:47				FOUL (PERSONAL) by NIBLACK, KARI
05:47				SUB OUT: NIBLACK, KARI
05:47				SUB IN: MARTINEZ, ESMERY
05:26	GOOD! LAYUP by LEE, AYOKA	50-39	H 11	
05:26	ASSIST by WILLIAMS, PEYTON			
05:06				TURNOVER (LOSTBALL) by GONDREZICK, KYSRE
05:06	STEAL by LEE, AYOKA			
05:00	MISSED LAYUP by LEE, AYOKA			
05:00				BLOCK by MARTIN, TYNICE
05:00	REBOUND (OFF) by TEAM			
04:59				FOUL (PERSONAL) by EJIOFOR, BLESSING
04:50	MISSED 3PTR by WILLIAMS, PEYTON			
04:46				REBOUND (DEF) by GONDREZICK, KYSRE
04:33				MISSED JUMPER by MARTIN, TYNICE
04:30	REBOUND (DEF) by WILLIAMS, PEYTON			
04:11	GOOD! JUMPER by WILLIAMS, PEYTON	50-41	H 9	
04:11	ASSIST by SIMMONS, SAVANNAH			
04:07				TIMEOUT 30SEC
04:07				SUB OUT: EJIOFOR, BLESSING
04:07				SUB IN: NORRIS, ROCHELLE
03:49				MISSED JUMPER by MARTINEZ, ESMERY
03:45	REBOUND (DEF) by LEE, AYOKA			
03:35	GOOD! 3PTR by CARR, CHRISTIANNA	50-44	H 6	
03:35	ASSIST by HARRIS, ANGELA			
03:10				FOUL (OFF) by NORRIS, ROCHELLE
03:10				TURNOVER (OFFENSIVE) by NORRIS, ROCHELLE
02:57	MISSED 3PTR by CARR, CHRISTIANNA			
02:54				REBOUND (DEF) by GONDREZICK, KYSRE

Time	VISITORS: Kansas St.	Score	Margin	HOME: West Virginia
02:28				MISSED JUMPER by MARTIN, TYNICE
02:28	BLOCK by LEE, AYOKA			
02:21	REBOUND (DEF) by HARRIS, ANGELA			
02:18	GOOD! 3PTR by HARRIS, ANGELA	50-47	H 3	
02:01				MISSED 3PTR by GONDREZICK, KYSRE
01:58	REBOUND (DEF) by LEE, AYOKA			
01:53	GOOD! LAYUP by WILLIAMS, PEYTON [FB]	50-49	H 1	
01:53	ASSIST by HARRIS, ANGELA			
01:47				TIMEOUT 30SEC
01:47				SUB OUT: MARTINEZ, ESMERY
01:47				SUB IN: NIBLACK, KARI
01:24				MISSED LAYUP by NIBLACK, KARI
01:22				REBOUND (OFF) by NIBLACK, KARI
01:20	FOUL (PERSONAL) by WILLIAMS, PEYTON			
01:10				MISSED JUMPER by MARTIN, TYNICE
01:07	REBOUND (DEF) by HARRIS, ANGELA			
01:03	TIMEOUT 30SEC			
00:49	GOOD! LAYUP by HARRIS, ANGELA [PNT]	50-51	V 1	
00:38		53-51	H 2	GOOD! 3PTR by MARTIN, TYNICE
00:38				ASSIST by RUDD, LUCKY
00:22	GOOD! LAYUP by LEE, AYOKA [PNT]	53-53	T	
00:22	ASSIST by HARRIS, ANGELA			
00:22				FOUL (PERSONAL) by NORRIS, ROCHELLE
00:22	GOOD! FT by LEE, AYOKA	53-54	V 1	
00:22				TIMEOUT 30SEC
00:22				SUB OUT: NORRIS, ROCHELLE
00:22				SUB IN: MARTINEZ, ESMERY
00:08				MISSED LAYUP by MARTINEZ, ESMERY
00:07	REBOUND (DEF) by LEE, AYOKA			
00:07	TIMEOUT TEAM			
00:07				SUB OUT: GONDREZICK, KYSRE
00:07				SUB OUT: MARTINEZ, ESMERY
00:07				SUB IN: DEANS, KIRSTEN
00:07				SUB IN: EJIOFOR, BLESSING
00:03				FOUL (PERSONAL) by DEANS, KIRSTEN
00:03	GOOD! FT by WILLIAMS, PEYTON	53-55	V 2	
00:03	GOOD! FT by WILLIAMS, PEYTON	53-56	V 3	
00:03				TIMEOUT TEAM
00:03				SUB OUT: RUDD, LUCKY
00:03				SUB IN: GONDREZICK, KYSRE
00:00				MISSED 3PTR by GONDREZICK, KYSRE
00:00	BLOCK by CARR, CHRISTIANNA			
00:00				REBOUND (OFF) by EJIOFOR, BLESSING
00:00		55-56	V 1	GOOD! JUMPER by EJIOFOR, BLESSING

### Kansas St. 56, West Virginia 55

Points from (This Period)	KSU	WVU
In the Paint	10	6
Off Turns	0	2
2nd Chance	0	2
Fast Break	2	2
Bench	0	2



**Official Scoring/Possession Reference Chart**  
**Kansas St. vs West Virginia**  
**Period 1**  
**February 11, 2020 at WVU Coliseum - Morgantown, W.Va.**



**Period 1**

**Starters:**

**Kansas St.:** 3 HARRIS, ANGELA (G); 11 WILLIAMS, PEYTON (F); 25 BEARD, JASAUEN (F); 43 CARR, CHRISTIANNA (G); 50 LEE, AYOKA (C);

**West Virginia:** 2 GONDREZICK, KYSRE (G); 3 DEANS, KIRSTEN (G); 5 MARTIN, TYNICE (G); 14 NIBLACK, KARI (F); 22 EJIOFOR, BLESSING (C);

Time	VISITORS: Kansas St.	Score	Margin	HOME: West Virginia
09:45	GOOD! JUMPER by BEARD, JASAUEN	0-2	V 2	
09:25		2-2	T	GOOD! LAYUP by EJIOFOR, BLESSING
09:04	GOOD! JUMPER by HARRIS, ANGELA	2-4	V 2	
07:47	GOOD! LAYUP by LEE, AYOKA	2-6	V 4	
07:27	GOOD! LAYUP by HARRIS, ANGELA [FB]	2-8	V 6	
06:43		4-8	V 4	GOOD! LAYUP by NIBLACK, KARI
05:54		5-8	V 3	GOOD! FT by MARTIN, TYNICE
05:54		6-8	V 2	GOOD! FT by MARTIN, TYNICE
04:22	GOOD! FT by HARRIS, ANGELA	6-9	V 3	
04:22	GOOD! FT by HARRIS, ANGELA	6-10	V 4	
03:56		8-10	V 2	GOOD! JUMPER by MARTIN, TYNICE
03:16		10-10	T	GOOD! JUMPER by EJIOFOR, BLESSING [PNT]
02:38		12-10	H 2	GOOD! LAYUP by MARTINEZ, ESMERY
02:11	GOOD! LAYUP by LEE, AYOKA [PNT]	12-12	T	
01:40	GOOD! 3PTR by SIMMONS, SAVANNAH	12-15	V 3	

**Kansas St. 15, West Virginia 12**

**Official Scoring/Possession Reference Chart**  
**Kansas St. vs West Virginia**  
**Period 2**  
**February 11, 2020 at WVU Coliseum - Morgantown, W.Va.**



**Period 2**

**Starters:**

**Kansas St.:** 3 HARRIS, ANGELA (G); 11 WILLIAMS, PEYTON (F); 25 BEARD, JASAUEN (F); 43 CARR, CHRISTIANNA (G); 50 LEE, AYOKA (C);

**West Virginia:** 2 GONDREZICK, KYSRE (G); 3 DEANS, KIRSTEN (G); 5 MARTIN, TYNICE (G); 14 NIBLACK, KARI (F); 22 EJIOFOR, BLESSING (C);

Time	VISITORS: Kansas St.	Score	Margin	HOME: West Virginia
08:56		13-15	V 2	GOOD! FT by NIBLACK, KARI
08:25		15-15	T	GOOD! LAYUP by NIBLACK, KARI
06:52	GOOD! JUMPER by HARRIS, ANGELA	15-17	V 2	
05:06		17-17	T	GOOD! JUMPER by MARTIN, TYNICE
04:36	GOOD! JUMPER by LEE, AYOKA [PNT]	17-19	V 2	
04:17		19-19	T	GOOD! JUMPER by MARTINEZ, ESMERY
04:00	GOOD! JUMPER by HARRIS, ANGELA	19-21	V 2	
02:45	GOOD! FT by MACKE, LAURA	19-22	V 3	
01:30	GOOD! LAYUP by WILLIAMS, PEYTON	19-24	V 5	
01:10		22-24	V 2	GOOD! 3PTR by MARTIN, TYNICE
00:36		24-24	T	GOOD! LAYUP by MARTINEZ, ESMERY

**Kansas St. 24, West Virginia 24**

**Official Scoring/Possession Reference Chart**  
**Kansas St. vs West Virginia**  
**Period 3**  
**February 11, 2020 at WVU Coliseum - Morgantown, W.Va.**



**Period 3**

**Starters:**

**Kansas St.:** 3 HARRIS, ANGELA (G); 11 WILLIAMS, PEYTON (F); 25 BEARD, JASAUEN (F); 43 CARR, CHRISTIANNA (G); 50 LEE, AYOKA (C);

**West Virginia:** 2 GONDREZICK, KYSRE (G); 3 DEANS, KIRSTEN (G); 5 MARTIN, TYNICE (G); 14 NIBLACK, KARI (F); 22 EJIOFOR, BLESSING (C);

Time	VISITORS: Kansas St.	Score	Margin	HOME: West Virginia
08:37	GOOD! LAYUP by LEE, AYOKA	24-26	V 2	
08:18		26-26	T	GOOD! LAYUP by NIBLACK, KARI
07:58	GOOD! JUMPER by WILLIAMS, PEYTON [PNT]	26-28	V 2	
07:44		29-28	H 1	GOOD! 3PTR by GONDREZICK, KYSRE
07:16		31-28	H 3	GOOD! LAYUP by RUDD, LUCKY [FB]
04:21		32-28	H 4	GOOD! FT by RUDD, LUCKY [FB]
04:21		33-28	H 5	GOOD! FT by RUDD, LUCKY [FB]
03:53	GOOD! FT by LEE, AYOKA	33-29	H 4	
03:53	GOOD! FT by LEE, AYOKA	33-30	H 3	
02:42		35-30	H 5	GOOD! LAYUP by NORRIS, ROCHELLE
02:42		36-30	H 6	GOOD! FT by NORRIS, ROCHELLE
02:07		39-30	H 9	GOOD! 3PTR by GONDREZICK, KYSRE
01:16		40-30	H 10	GOOD! FT by GONDREZICK, KYSRE
01:16		41-30	H 11	GOOD! FT by GONDREZICK, KYSRE

**Kansas St. 30, West Virginia 41**

**Official Scoring/Possession Reference Chart**  
**Kansas St. vs West Virginia**  
**Period 4**  
**February 11, 2020 at WVU Coliseum - Morgantown, W.Va.**



**Period 4**

**Starters:**

**Kansas St.:** 3 HARRIS, ANGELA (G); 11 WILLIAMS, PEYTON (F); 25 BEARD, JASAUEN (F); 43 CARR, CHRISTIANNA (G); 50 LEE, AYOKA (C);

**West Virginia:** 2 GONDREZICK, KYSRE (G); 3 DEANS, KIRSTEN (G); 5 MARTIN, TYNICE (G); 14 NIBLACK, KARI (F); 22 EJIOFOR, BLESSING (C);

Time	VISITORS: Kansas St.	Score	Margin	HOME: West Virginia
09:50		42-30	H 12	GOOD! FT by NIBLACK, KARI
09:38	GOOD! JUMPER by WILLIAMS, PEYTON	42-32	H 10	
08:49		44-32	H 12	GOOD! LAYUP by NORRIS, ROCHELLE
08:29		46-32	H 14	GOOD! LAYUP by GONDREZICK, KYSRE [FB/PNT]
07:44		48-32	H 16	GOOD! JUMPER by NIBLACK, KARI
07:08		50-32	H 18	GOOD! LAYUP by NIBLACK, KARI
06:49	GOOD! LAYUP by WILLIAMS, PEYTON	50-34	H 16	
06:15	GOOD! 3PTR by HARRIS, ANGELA	50-37	H 13	
05:26	GOOD! LAYUP by LEE, AYOKA	50-39	H 11	
04:11	GOOD! JUMPER by WILLIAMS, PEYTON	50-41	H 9	
03:35	GOOD! 3PTR by CARR, CHRISTIANNA	50-44	H 6	
02:18	GOOD! 3PTR by HARRIS, ANGELA	50-47	H 3	
01:53	GOOD! LAYUP by WILLIAMS, PEYTON [FB]	50-49	H 1	
00:49	GOOD! LAYUP by HARRIS, ANGELA [PNT]	50-51	V 1	
00:38		53-51	H 2	GOOD! 3PTR by MARTIN, TYNICE
00:22	GOOD! LAYUP by LEE, AYOKA [PNT]	53-53	T	
00:22	GOOD! FT by LEE, AYOKA	53-54	V 1	
00:03	GOOD! FT by WILLIAMS, PEYTON	53-55	V 2	
00:03	GOOD! FT by WILLIAMS, PEYTON	53-56	V 3	
00:00		55-56	V 1	GOOD! JUMPER by EJIOFOR, BLESSING

**Kansas St. 56, West Virginia 55**

**Official Substitutions Log**  
**Kansas St. vs West Virginia**  
**Period 1**  
**February 11, 2020 at WVU Coliseum - Morgantown, W.Va.**



VISITORS: Kansas St.	Time	Score	HOME: West Virginia
3 HARRIS, ANGELA			2 GONDREZICK, KYSRE
11 WILLIAMS, PEYTON			3 DEANS, KIRSTEN
25 BEARD, JASAUEN			5 MARTIN, TYNICE
43 CARR, CHRISTIANNA			14 NIBLACK, KARI
50 LEE, AYOKA			22 EJIOFOR, BLESSING
	05:54	8-4	SUB OUT: DEANS, KIRSTEN
	05:54		SUB OUT: EJIOFOR, BLESSING
	05:54		SUB IN: RUDD, LUCKY
	05:54		SUB IN: NORRIS, ROCHELLE
SUB OUT: 25 BEARD, JASAUEN	05:54		
SUB OUT: 43 CARR, CHRISTIANNA	05:54		
SUB IN: 1 SIMMONS, SAVANNAH	05:54		
SUB IN: 2 GOODRICH, CYMONE	05:54		
SUB OUT: 50 LEE, AYOKA	04:34	8-6	
SUB IN: 13 MACKE, LAURA	04:34		
	04:22	8-6	SUB OUT: NORRIS, ROCHELLE
	04:22		SUB IN: EJIOFOR, BLESSING
	02:52	10-10	SUB OUT: NIBLACK, KARI
	02:52		SUB IN: MARTINEZ, ESMERY
SUB OUT: 13 MACKE, LAURA	02:52		
SUB IN: 50 LEE, AYOKA	02:52		
SUB OUT: 2 GOODRICH, CYMONE	02:44	10-10	
SUB OUT: 3 HARRIS, ANGELA	02:44		
SUB IN: 24 EBERT, EMILEE	02:44		
SUB IN: 43 CARR, CHRISTIANNA	02:44		
	01:21	15-12	SUB OUT: MARTIN, TYNICE
	01:21		SUB IN: DEANS, KIRSTEN
SUB OUT: 1 SIMMONS, SAVANNAH	01:21		
SUB IN: 25 BEARD, JASAUEN	01:21		
	00:33	15-12	SUB OUT: MARTINEZ, ESMERY
	00:33		SUB IN: NIBLACK, KARI
SUB OUT: 24 EBERT, EMILEE	00:33		
SUB IN: 3 HARRIS, ANGELA	00:33		
SUB OUT: 3 HARRIS, ANGELA	00:23	15-12	
SUB IN: 24 EBERT, EMILEE	00:23		

**Kansas St. 15, West Virginia 12**

**Official Substitutions Log**  
**Kansas St. vs West Virginia**  
**Period 2**  
**February 11, 2020 at WVU Coliseum - Morgantown, W.Va.**



VISITORS: Kansas St.	Time	Score	HOME: West Virginia
3 HARRIS, ANGELA			2 GONDREZICK, KYSRE
11 WILLIAMS, PEYTON			3 DEANS, KIRSTEN
25 BEARD, JASAUEN			5 MARTIN, TYNICE
43 CARR, CHRISTIANNA			14 NIBLACK, KARI
50 LEE, AYOKA			22 EJIOFOR, BLESSING
	10:00	-	SUB OUT: GONDREZICK, KYSRE
	10:00		SUB OUT: EJIOFOR, BLESSING
	10:00		SUB IN: MARTIN, TYNICE
	10:00		SUB IN: NORRIS, ROCHELLE
SUB OUT: 11 WILLIAMS, PEYTON	10:00		
SUB OUT: 24 EBERT, EMILEE	10:00		
SUB IN: 3 HARRIS, ANGELA	10:00		
SUB IN: 44 CHAPMAN, EMMA	10:00		
SUB OUT: 44 CHAPMAN, EMMA	08:56	15-13	
SUB IN: 11 WILLIAMS, PEYTON	08:56		
	08:28	15-13	SUB OUT: RUDD, LUCKY
	08:28		SUB IN: GONDREZICK, KYSRE
SUB OUT: 43 CARR, CHRISTIANNA	08:28		
SUB IN: 1 SIMMONS, SAVANNAH	08:28		
	07:01	15-15	SUB OUT: NIBLACK, KARI
	07:01		SUB IN: MARTINEZ, ESMERY
SUB OUT: 25 BEARD, JASAUEN	07:01		
SUB IN: 24 EBERT, EMILEE	07:01		
	03:29	21-19	SUB OUT: DEANS, KIRSTEN
	03:29		SUB OUT: NORRIS, ROCHELLE
	03:29		SUB IN: RUDD, LUCKY
	03:29		SUB IN: EJIOFOR, BLESSING
SUB OUT: 1 SIMMONS, SAVANNAH	03:29		
SUB OUT: 24 EBERT, EMILEE	03:29		
SUB OUT: 50 LEE, AYOKA	03:29		
SUB IN: 2 GOODRICH, CYMONE	03:29		
SUB IN: 13 MACKE, LAURA	03:29		
SUB IN: 43 CARR, CHRISTIANNA	03:29		
SUB OUT: 13 MACKE, LAURA	02:45	22-19	
SUB IN: 50 LEE, AYOKA	02:45		
SUB OUT: 2 GOODRICH, CYMONE	02:13	22-19	
SUB IN: 1 SIMMONS, SAVANNAH	02:13		

**Kansas St. 24, West Virginia 24**

**Official Substitutions Log**  
**Kansas St. vs West Virginia**  
**Period 3**  
**February 11, 2020 at WVU Coliseum - Morgantown, W.Va.**



VISITORS: Kansas St.	Time	Score	HOME: West Virginia
3 HARRIS, ANGELA			2 GONDREZICK, KYRSRE
11 WILLIAMS, PEYTON			3 DEANS, KIRSTEN
25 BEARD, JASAUEN			5 MARTIN, TYNICE
43 CARR, CHRISTIANNA			14 NIBLACK, KARI
50 LEE, AYOKA			22 EJIOFOR, BLESSING
	10:00	-	SUB OUT: MARTINEZ, ESMERY
	10:00		SUB IN: NIBLACK, KARI
SUB OUT: 1 SIMMONS, SAVANNAH	10:00		
SUB IN: 25 BEARD, JASAUEN	10:00		
SUB OUT: 11 WILLIAMS, PEYTON	05:54	28-31	
SUB IN: 1 SIMMONS, SAVANNAH	05:54		
	05:29	28-31	SUB OUT: MARTIN, TYNICE
	05:29		SUB IN: DEANS, KIRSTEN
	04:21	28-31	SUB OUT: NIBLACK, KARI
	04:21		SUB OUT: EJIOFOR, BLESSING
	04:21		SUB IN: MARTINEZ, ESMERY
	04:21		SUB IN: NORRIS, ROCHELLE
SUB OUT: 3 HARRIS, ANGELA	04:21		
SUB IN: 24 EBERT, EMILEE	04:21		
SUB OUT: 25 BEARD, JASAUEN	03:53	28-33	
SUB IN: 11 WILLIAMS, PEYTON	03:53		
	03:53		SUB OUT: MARTINEZ, ESMERY
	03:53		SUB IN: NIBLACK, KARI
	03:18	30-33	SUB OUT: RUDD, LUCKY
	03:18		SUB IN: MARTIN, TYNICE
SUB OUT: 24 EBERT, EMILEE	02:42	30-35	
SUB IN: 25 BEARD, JASAUEN	02:42		
	01:16	30-39	SUB OUT: DEANS, KIRSTEN
	01:16		SUB IN: RUDD, LUCKY
SUB OUT: 25 BEARD, JASAUEN	01:16		
SUB IN: 3 HARRIS, ANGELA	01:16		

**Kansas St. 30, West Virginia 41**

**Official Substitutions Log**  
**Kansas St. vs West Virginia**  
**Period 4**  
**February 11, 2020 at WVU Coliseum - Morgantown, W.Va.**



VISITORS: Kansas St.	Time	Score	HOME: West Virginia
3 HARRIS, ANGELA			2 GONDREZICK, KYSRE
11 WILLIAMS, PEYTON			3 DEANS, KIRSTEN
25 BEARD, JASAUEN			5 MARTIN, TYNICE
43 CARR, CHRISTIANNA			14 NIBLACK, KARI
50 LEE, AYOKA			22 EJIOFOR, BLESSING
	08:33	32-44	SUB OUT: NORRIS, ROCHELLE
	08:33		SUB IN: EJIOFOR, BLESSING
	05:47	37-50	SUB OUT: NIBLACK, KARI
	05:47		SUB IN: MARTINEZ, ESMERY
	04:07	41-50	SUB OUT: EJIOFOR, BLESSING
	04:07		SUB IN: NORRIS, ROCHELLE
	01:47	49-50	SUB OUT: MARTINEZ, ESMERY
	01:47		SUB IN: NIBLACK, KARI
	00:22	54-53	SUB OUT: NORRIS, ROCHELLE
	00:22		SUB IN: MARTINEZ, ESMERY
	00:07	54-53	SUB OUT: GONDREZICK, KYSRE
	00:07		SUB OUT: MARTINEZ, ESMERY
	00:07		SUB IN: DEANS, KIRSTEN
	00:07		SUB IN: EJIOFOR, BLESSING
	00:03	56-53	SUB OUT: RUDD, LUCKY
	00:03		SUB IN: GONDREZICK, KYSRE

**Kansas St. 56, West Virginia 55**

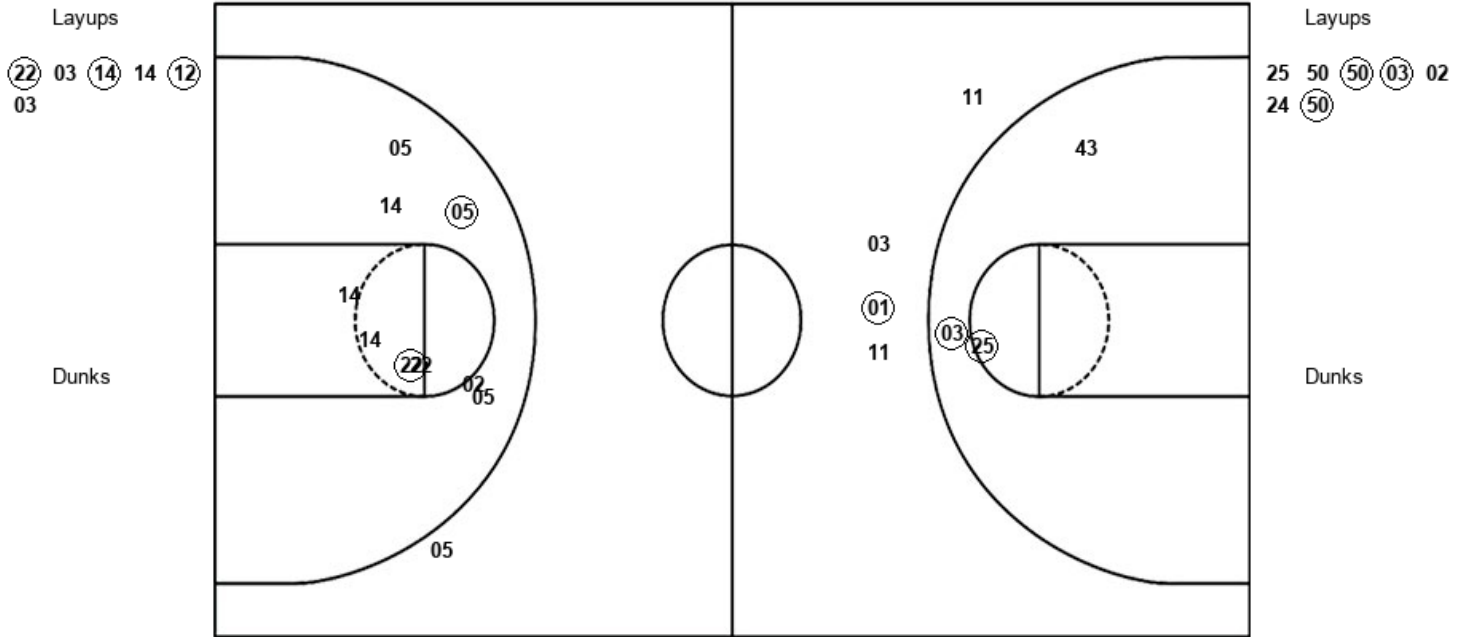


**Official Shot Chart**  
**Kansas St. vs West Virginia**  
**PERIOD 1 Shots**  
 February 11, 2020 at WVU Coliseum - Morgantown, W.Va.



**West Virginia**

**Kansas St.**



WVU : Period 1	Made	Att	Pct
Layups	3	6	50.0
Dunks	0	0	0
2PT Field Goals	5	15	33.3
3PT Field Goals	0	1	00.0
<b>Total Field Goals</b>	<b>5</b>	<b>16</b>	<b>31.3</b>

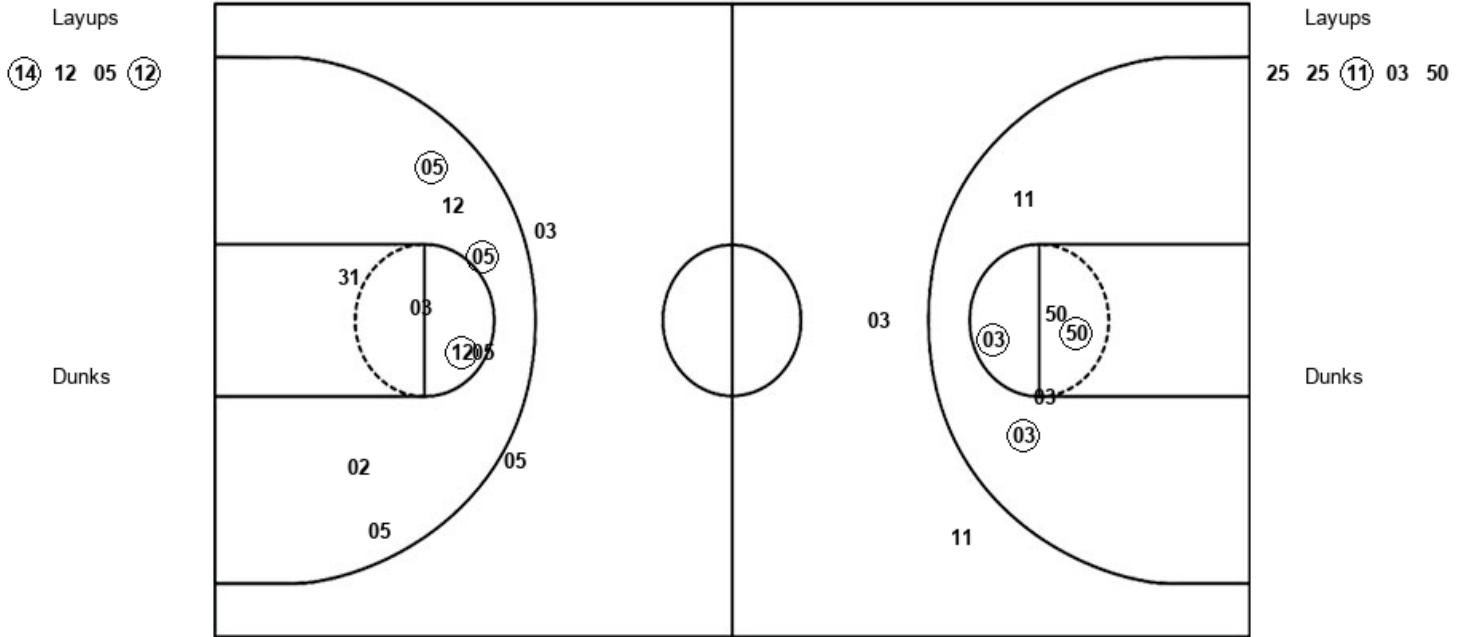
KSU : Period 1	Made	Att	Pct
Layups	3	7	42.9
Dunks	0	0	0
2PT Field Goals	5	10	50.0
3PT Field Goals	1	4	25.0
<b>Total Field Goals</b>	<b>6</b>	<b>14</b>	<b>42.9</b>

Official Shot Chart  
**Kansas St. vs West Virginia**  
 PERIOD 2 Shots  
 February 11, 2020 at WVU Coliseum - Morgantown, W.Va.



**West Virginia**

**Kansas St.**



WVU : Period 2	Made	Att	Pct
Layups	2	4	50.0
Dunks	0	0	0
2PT Field Goals	4	12	33.3
3PT Field Goals	1	3	33.3
<b>Total Field Goals</b>	<b>5</b>	<b>15</b>	<b>33.3</b>

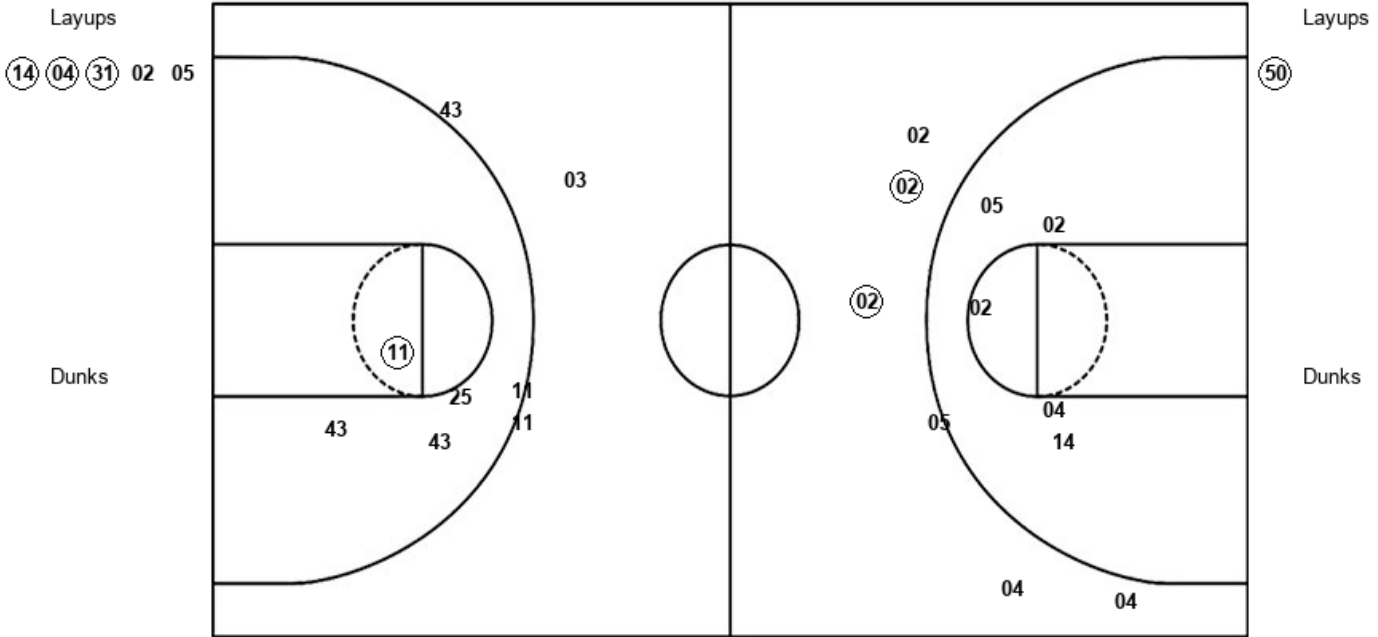
KSU : Period 2	Made	Att	Pct
Layups	1	5	20.0
Dunks	0	0	0
2PT Field Goals	4	11	36.4
3PT Field Goals	0	2	00.0
<b>Total Field Goals</b>	<b>4</b>	<b>13</b>	<b>30.8</b>

Official Shot Chart  
**Kansas St. vs West Virginia**  
 PERIOD 3 Shots  
 February 11, 2020 at WVU Coliseum - Morgantown, W.Va.



**West Virginia**

**Kansas St.**



WVU : Period 3	Made	Att	Pct
Layups	3	5	60.0
Dunks	0	0	0
2PT Field Goals	3	11	27.3
3PT Field Goals	2	5	40.0
<b>Total Field Goals</b>	<b>5</b>	<b>16</b>	<b>31.3</b>

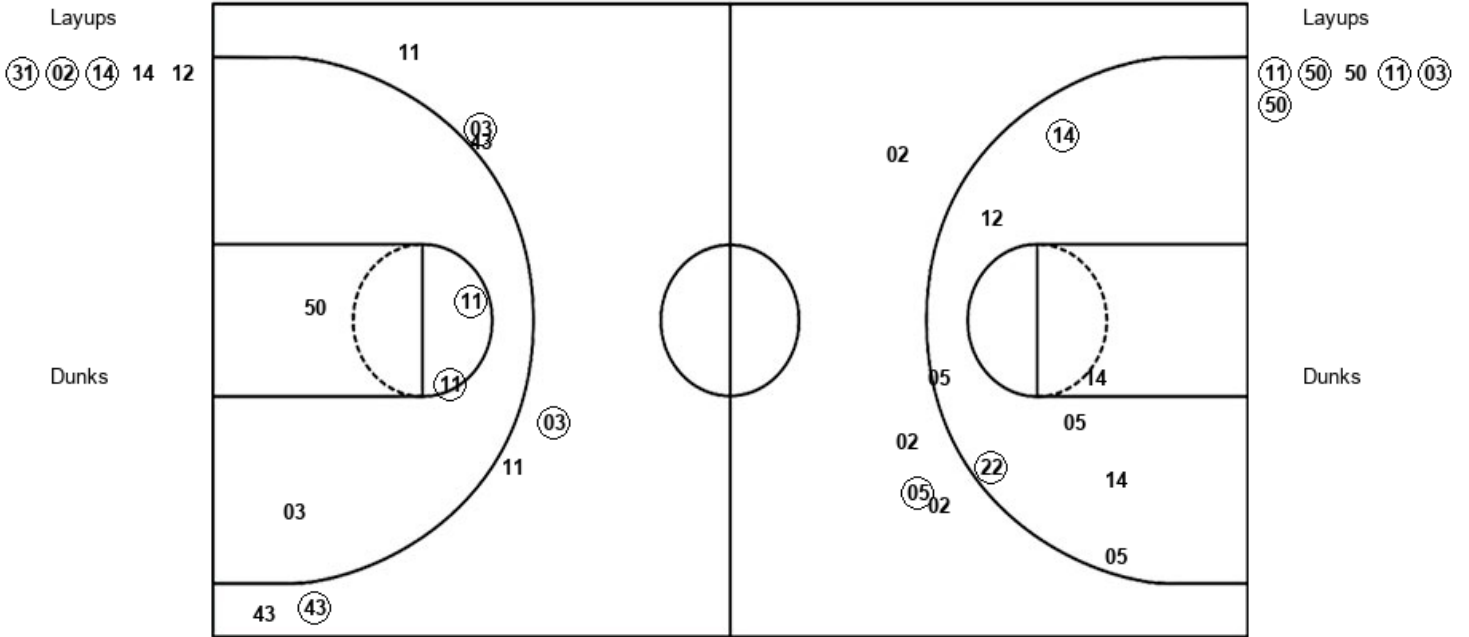
KSU : Period 3	Made	Att	Pct
Layups	1	1	100.0
Dunks	0	0	0
2PT Field Goals	2	5	40.0
3PT Field Goals	0	4	00.0
<b>Total Field Goals</b>	<b>2</b>	<b>9</b>	<b>22.2</b>

Official Shot Chart  
**Kansas St. vs West Virginia**  
 PERIOD 4 Shots  
 February 11, 2020 at WVU Coliseum - Morgantown, W.Va.



**West Virginia**

**Kansas St.**



WVU : Period 4	Made	Att	Pct
Layups	3	5	60.0
Dunks	0	0	0
2PT Field Goals	5	13	38.5
3PT Field Goals	1	4	25.0
<b>Total Field Goals</b>	<b>6</b>	<b>17</b>	<b>35.3</b>

KSU : Period 4	Made	Att	Pct
Layups	5	6	83.3
Dunks	0	0	0
2PT Field Goals	7	10	70.0
3PT Field Goals	3	7	42.9
<b>Total Field Goals</b>	<b>10</b>	<b>17</b>	<b>58.8</b>



