

## FINAL SCORE



**Northwestern**

**76**



**Michigan St.**

**48**

January 23, 2020 • Breslin Events Center - East Lansing

## FINAL STATISTICS

**Official Box Score**  
**Northwestern vs Michigan St.**  
**Game Totals -- Final Statistics**  
**January 23, 2020 at Breslin Events Center - East Lansing**



**Northwestern 76**

No.	Player	S	Pts	FG	3FG	FT	OR	DR	TR	PF	A	TO	Blk	Stl	Min	+/-
03	WOOD, SYDNEY	G	2	1-5	0-0	0-0	1	4	5	1	1	2	2	2	31	9
10	PULLIAM, LINDSEY	G	22	8-19	1-3	5-7	2	3	5	0	5	3	0	2	35	28
12	BURTON, VERONICA	G	22	8-14	2-5	4-6	1	7	8	2	3	1	2	6	32	26
21	WOLF, ABBIE	C	14	7-11	0-0	0-0	6	3	9	3	1	3	0	2	26	7
44	SCHEID, ABI	C	5	1-3	1-3	2-2	0	6	6	2	4	3	0	1	33	30
00	SANCATALDO, JESS	G	0	0-1	0-1	0-0	0	0	0	0	1	0	0	1	3	2
01	RAINEY, KAYLAH	G	2	1-1	0-0	0-0	0	0	0	0	1	0	0	1	2	3
02	SATTERWHITE, LAURYN	G	0	0-0	0-0	0-0	0	0	0	0	0	0	0	0	2	3
15	SHAW, COURTNEY	F	2	1-1	0-0	0-0	0	1	1	4	1	0	1	3	14	21
22	GALERNIK, BYRDY	G	2	1-1	0-0	0-0	0	0	0	0	0	2	0	1	4	-2
24	HAMILTON, JORDAN	G	2	1-4	0-2	0-0	0	0	0	2	1	1	0	0	16	11
33	HARTMAN, LAYA	G	3	1-3	1-2	0-0	0	1	1	0	0	0	0	0	3	2
<b>TEAM</b>							3	2	5	0		0				
<b>TOTALS</b>			<b>76</b>	<b>30-63</b>	<b>5-16</b>	<b>11-15</b>	<b>13</b>	<b>27</b>	<b>40</b>	<b>14</b>	<b>18</b>	<b>15</b>	<b>5</b>	<b>19</b>	<b>200</b>	

*Shooting By Period*

Period	FG	FG%	3FG	3FG%	FT	FT%
1st Qtr	7-16	44%	2-4	50%	1-2	50%
2nd Qtr	7-16	44%	1-4	25%	1-3	33%
3rd Qtr	9-15	60%	0-2	00%	8-8	100%
4th Qtr	7-16	44%	2-6	33%	1-2	50%
1st Half	14-32	44%	3-8	38%	2-5	40%
2nd Half	16-31	52%	2-8	25%	9-10	90%
<b>Game</b>	<b>30-63</b>	<b>47.6%</b>	<b>5-16</b>	<b>31.3%</b>	<b>11-15</b>	<b>73.3%</b>

*Deadball Rebounds: 3,0*

*Last FG: 4th-00:40*

*Biggest Run: 11-0*

*Largest lead: By 30 at 4th-06:46*

*Technical Fouls: None.*

**Michigan St. 48**

No.	Player	S	Pts	FG	3FG	FT	OR	DR	TR	PF	A	TO	Blk	Stl	Min	+/-
04	MCCUTCHEON, TARYN	G	0	0-3	0-3	0-0	2	1	3	1	4	5	1	0	26	-21
12	HOLLIE, NIA	F	6	2-5	0-0	2-2	1	3	4	3	1	0	0	1	20	-5
22	JOINER, MOIRA	G	17	6-14	5-8	0-0	1	3	4	2	2	1	0	0	34	-19
24	CLOUDEN, NIA	G	0	0-7	0-4	0-2	0	2	2	1	1	1	0	0	27	-19
42	BELLES, KAYLA	F	1	0-3	0-0	1-2	1	2	3	3	0	4	0	0	14	-7
01	OZMENT, TORY	G	5	2-3	0-0	1-2	0	2	2	2	0	2	0	0	14	-20
02	COOK, MARDREKIA	F	0	0-3	0-1	0-2	0	0	0	1	0	2	0	0	8	-13
03	WINSTON, ALYZA	G	2	1-1	0-0	0-0	0	0	0	1	2	2	0	0	8	-3
05	HENDRICKSON, CLAIRE	G	8	3-3	2-2	0-0	0	0	0	0	1	0	0	0	7	1
14	PARKS, TAIYIER	F	6	3-4	0-0	0-2	3	4	7	1	0	3	2	4	20	-12
21	JACQMAIN, LAUREL	G	0	0-0	0-0	0-0	0	0	0	0	0	1	0	0	2	-3
40	AYRAULT, JULIA	G	3	1-5	1-4	0-0	0	2	2	0	2	2	1	0	18	-16
50	DODD, CYDNI	C	0	0-0	0-0	0-2	0	1	1	0	0	0	0	0	2	-3
<b>TEAM</b>							3	1	4	0		0				
<b>TOTALS</b>			<b>48</b>	<b>18-51</b>	<b>8-22</b>	<b>4-14</b>	<b>11</b>	<b>21</b>	<b>32</b>	<b>15</b>	<b>12</b>	<b>24</b>	<b>4</b>	<b>5</b>	<b>200</b>	

*Shooting By Period*

Period	FG	FG%	3FG	3FG%	FT	FT%
1st Qtr	3-12	25%	1-3	33%	0-0	0%
2nd Qtr	5-13	38%	4-8	50%	2-2	100%
3rd Qtr	4-15	27%	0-6	00%	1-8	13%
4th Qtr	6-11	55%	3-5	60%	1-4	25%
1st Half	8-25	32%	5-11	45%	2-2	100%
2nd Half	10-26	38%	3-11	27%	2-12	17%
<b>Game</b>	<b>18-51</b>	<b>35.3%</b>	<b>8-22</b>	<b>36.4%</b>	<b>4-14</b>	<b>28.6%</b>

*Deadball Rebounds: 5,0*

*Last FG: 4th-01:03*

*Biggest Run: 6-0*

*Largest lead: By 3 at 1st-05:43*

*Technical Fouls: None.*

Game Notes:

Officials: Tina Napier, Cameron Inouye, Gina Cross  
 Attendance: 3963

Start Time: 06:30 PM ET  
 End Time: 08:14 PM ET  
 Game Duration: 1:43  
 Conference Game;

Score	1st	2nd	3rd	4th	TOT
NWU	17	16	26	17	<b>76</b>
MSU	7	16	9	16	<b>48</b>

NWU led for 32:44. MSU led for 4:22.  
 Game was tied for 2:55.  
 Times tied: 1      Lead Changes: 3

Points from	NWU	MSU
In the Paint	38	18
Off Turns	35	14
2nd Chance	9	3
Fast Break	22	13
Bench	11	24

**Official Box Score**  
**Northwestern vs Michigan St.**  
**First Half Statistics Only**  
**January 23, 2020 at Breslin Events Center - East Lansing**



### Northwestern 33

No.	Player	S	Pts	FG	3FG	FT	OR	DR	TR	PF	A	TO	Blk	Stl	Min	+/-
00	SANCATALDO, JESS	G	0	0-0	0-0	0-0	0	0	0	0	0	0	0	0	0	0
01	RAINEY, KAYLAH	G	0	0-0	0-0	0-0	0	0	0	0	0	0	0	0	0	0
02	SATTERWHITE, LAURYN	G	0	0-0	0-0	0-0	0	0	0	0	0	0	0	0	0	0
03	WOOD, SYDNEY	G	0	0-4	0-0	0-0	0	0	0	1	1	1	2	2	18	2
10	PULLIAM, LINDSEY	G	11	5-11	0-1	1-2	2	1	3	0	1	2	0	1	18	12
12	BURTON, VERONICA	G	11	4-7	2-3	1-3	1	5	6	2	1	1	1	4	18	9
15	SHAW, COURTNEY	F	2	1-1	0-0	0-0	0	0	0	1	1	0	0	1	5	11
21	WOLF, ABBIE	C	6	3-5	0-0	0-0	6	1	7	1	0	2	0	1	15	-1
22	GALERNIK, BYRDY	G	0	0-0	0-0	0-0	0	0	0	0	0	0	0	0	0	0
24	HAMILTON, JORDAN	G	0	0-1	0-1	0-0	0	0	0	0	1	0	0	0	7	7
33	HARTMAN, LAYA	G	0	0-0	0-0	0-0	0	0	0	0	0	0	0	0	0	0
44	SCHEID, ABI	C	3	1-3	1-3	0-0	0	3	3	0	3	2	0	1	19	10
	TEAM		0	0-0	0-0	0-0	1	1	2	0	0	0	0	0	0	0
	<b>TOTALS</b>		<b>33</b>	<b>14-32</b>	<b>3-8</b>	<b>2-5</b>	<b>10</b>	<b>11</b>	<b>21</b>	<b>5</b>	<b>8</b>	<b>8</b>	<b>3</b>	<b>10</b>	<b>100</b>	

*Shooting By Period*

Period	FG	FG%	3FG	3FG%	FT	FT%
1st Qtr	7-16	44%	2-4	50%	1-2	50%
2nd Qtr	7-16	44%	1-4	25%	1-3	33%
1st Half	14-32	44%	3-8	38%	2-5	40%
Game	30-63	47.6%	5-16	31.3%	11-15	73.3%

Deadball Rebounds: 3,0  
 Last FG Half: NWU 2nd-01:57

### Michigan St. 23

No.	Player	S	Pts	FG	3FG	FT	OR	DR	TR	PF	A	TO	Blk	Stl	Min	+/-
01	OZMENT, TORY	G	0	0-1	0-0	0-0	0	0	0	0	0	1	0	0	3	-11
02	COOK, MARDREKIA	F	0	0-2	0-1	0-0	0	0	0	1	0	1	0	0	6	-11
03	WINSTON, ALYZA	G	0	0-0	0-0	0-0	0	0	0	1	0	1	0	0	1	-4
04	MCCUTCHEON, TARYN	G	0	0-2	0-2	0-0	1	1	2	0	3	3	1	0	19	-6
05	HENDRICKSON, CLAIRE	G	0	0-0	0-0	0-0	0	0	0	0	0	0	0	0	0	0
12	HOLLIE, NIA	F	4	1-2	0-0	2-2	0	2	2	2	1	0	0	0	11	5
14	PARKS, TAIYIER	F	4	2-3	0-0	0-0	2	3	5	0	0	3	1	2	13	-10
21	JACQMAIN, LAUREL	G	0	0-0	0-0	0-0	0	0	0	0	0	0	0	0	0	0
22	JOINER, MOIRA	G	12	4-6	4-4	0-0	0	1	1	0	0	0	0	0	18	-2
24	CLOUDEN, NIA	G	0	0-5	0-2	0-0	0	1	1	0	1	1	0	0	19	-7
40	AYRAULT, JULIA	G	3	1-3	1-2	0-0	0	0	0	0	1	1	1	0	6	-5
42	BELLES, KAYLA	F	0	0-1	0-0	0-0	0	1	1	2	0	2	0	0	4	1
50	DODD, CYDNI	C	0	0-0	0-0	0-0	0	0	0	0	0	0	0	0	0	0
	TEAM		0	0-0	0-0	0-0	3	0	3	0	0	0	0	0	0	0
	<b>TOTALS</b>		<b>23</b>	<b>8-25</b>	<b>5-11</b>	<b>2-2</b>	<b>6</b>	<b>9</b>	<b>15</b>	<b>6</b>	<b>6</b>	<b>13</b>	<b>3</b>	<b>2</b>	<b>100</b>	

*Shooting By Period*

Period	FG	FG%	3FG	3FG%	FT	FT%
1st Qtr	3-12	25%	1-3	33%	0-0	0%
2nd Qtr	5-13	38%	4-8	50%	2-2	100%
1st Half	8-25	32%	5-11	45%	2-2	100%
Game	18-51	35.3%	8-22	36.4%	4-14	28.6%

Deadball Rebounds: 5,0  
 Last FG Half: MSU 2nd-01:02

Game Notes:

Officials: Tina Napier, Cameron Inouye, Gina Cross  
 Attendance: 3963

Start Time: 06:30 PM ET  
 End Time: 08:14 PM ET  
 Game Duration: 1:43  
 Conference Game;

Score	1st	2nd	3rd	4th	TOT
NWU	17	16	26	17	<b>76</b>
MSU	7	16	9	16	<b>48</b>

Points from (This Period)	NWU	MSU
In the Paint	14	6
Off Turns	20	9
2nd Chance	7	2
Fast Break	8	5
Bench	2	7

**Official Box Score**  
**Northwestern vs Michigan St.**  
**First Quarter Statistics Only**  
**January 23, 2020 at Breslin Events Center - East Lansing**



**Northwestern 17**

No.	Player	S	Pts	FG	3FG	FT	OR	DR	TR	PF	A	TO	Blk	Stl	Min	+/-
03	WOOD, SYDNEY	G	0	0-1	0-0	0-0	0	0	0	0	0	1	1	1	8	2
10	PULLIAM, LINDSEY	G	2	1-5	0-1	0-0	0	1	1	0	1	0	0	0	10	10
12	BURTON, VERONICA	G	6	2-3	1-1	1-2	0	3	3	1	1	1	0	1	9	7
21	WOLF, ABBIE	C	4	2-4	0-0	0-0	3	0	3	0	0	0	0	0	7	-1
44	SCHEID, ABI	C	3	1-2	1-2	0-0	0	3	3	0	0	1	0	1	10	10
00	SANCATALDO, JESS	G	0	0-0	0-0	0-0	0	0	0	0	0	0	0	0	0	0
01	RAINEY, KAYLAH	G	0	0-0	0-0	0-0	0	0	0	0	0	0	0	0	0	0
02	SATTERWHITE, LAURYN	G	0	0-0	0-0	0-0	0	0	0	0	0	0	0	0	0	0
15	SHAW, COURTNEY	F	2	1-1	0-0	0-0	0	0	0	0	1	0	0	1	3	11
22	GALERNIK, BYRDY	G	0	0-0	0-0	0-0	0	0	0	0	0	0	0	0	0	0
24	HAMILTON, JORDAN	G	0	0-0	0-0	0-0	0	0	0	0	1	0	0	0	3	11
33	HARTMAN, LAYA	G	0	0-0	0-0	0-0	0	0	0	0	0	0	0	0	0	0
TEAM							0	1	1	0		0				
<b>TOTALS</b>			<b>17</b>	<b>7-16</b>	<b>2-4</b>	<b>1-2</b>	<b>3</b>	<b>8</b>	<b>11</b>	<b>1</b>	<b>4</b>	<b>3</b>	<b>1</b>	<b>4</b>	<b>50</b>	

*Shooting By Period*

Period	FG	FG%	3FG	3FG%	FT	FT%
1st Qtr	7-16	44%	2-4	50%	1-2	50%
2nd Qtr	7-16	44%	1-4	25%	1-3	33%
1st Half	7-16	44%	2-4	50%	1-2	50%
1st Half	14-32	44%	3-8	38%	2-5	40%
Game	30-63	47.6%	5-16	31.3%	11-15	73.3%

*Deadball Rebounds: 3,0*

**Michigan St. 7**

No.	Player	S	Pts	FG	3FG	FT	OR	DR	TR	PF	A	TO	Blk	Stl	Min	+/-
04	MCCUTCHEON, TARYN	G	0	0-1	0-1	0-0	0	1	1	0	1	0	1	0	10	-10
12	HOLLIE, NIA	F	2	1-2	0-0	0-0	0	2	2	1	1	0	0	0	8	-2
22	JOINER, MOIRA	G	3	1-2	1-1	0-0	0	1	1	0	0	0	0	0	8	-2
24	CLOUDEN, NIA	G	0	0-4	0-1	0-0	0	1	1	0	0	1	0	0	9	-7
42	BELLES, KAYLA	F	0	0-1	0-0	0-0	0	1	1	2	0	2	0	0	4	1
01	OZMENT, TORY	G	0	0-1	0-0	0-0	0	0	0	0	0	1	0	0	3	-11
02	COOK, MARDREKIA	F	0	0-0	0-0	0-0	0	0	0	0	0	1	0	0	3	-11
03	WINSTON, ALYZA	G	0	0-0	0-0	0-0	0	0	0	0	0	0	0	0	0	0
05	HENDRICKSON, CLAIRE	G	0	0-0	0-0	0-0	0	0	0	0	0	0	0	0	0	0
14	PARKS, TAIYIER	F	2	1-1	0-0	0-0	0	0	0	0	0	1	0	0	5	-8
21	JACQMAIN, LAUREL	G	0	0-0	0-0	0-0	0	0	0	0	0	0	0	0	0	0
40	AYRAULT, JULIA	G	0	0-0	0-0	0-0	0	0	0	0	0	0	0	0	0	0
50	DODD, CYDNI	C	0	0-0	0-0	0-0	0	0	0	0	0	0	0	0	0	0
TEAM							1	0	1	0		0				
<b>TOTALS</b>			<b>7</b>	<b>3-12</b>	<b>1-3</b>	<b>0-0</b>	<b>1</b>	<b>6</b>	<b>7</b>	<b>3</b>	<b>2</b>	<b>6</b>	<b>1</b>	<b>0</b>	<b>50</b>	

*Shooting By Period*

Period	FG	FG%	3FG	3FG%	FT	FT%
1st Qtr	3-12	25%	1-3	33%	0-0	0%
2nd Qtr	5-13	38%	4-8	50%	2-2	100%
1st Half	3-12	25%	1-3	33%	0-0	0%
1st Half	8-25	32%	5-11	45%	2-2	100%
Game	18-51	35.3%	8-22	36.4%	4-14	28.6%

*Deadball Rebounds: 5,0*

Game Notes:

Officials: Tina Napier, Cameron Inouye, Gina Cross  
 Attendance: 3963

Start Time: 06:30 PM ET  
 End Time: 08:14 PM ET  
 Game Duration: 1:43  
 Conference Game;

Score	1st	2nd	3rd	4th	TOT
NWU	17	16	26	17	<b>76</b>
MSU	7	16	9	16	<b>48</b>

Points from (This Period)	NWU	MSU
In the Paint	8	4
Off Turns	12	3
2nd Chance	2	0
Fast Break	4	2
Bench	2	2

**Official By-By-Play**  
**Northwestern vs Michigan St.**  
**First Quarter**  
**January 23, 2020 at Breslin Events Center - East Lansing**



**Period 1**

**Starters:**

**Northwestern:** 3 WOOD, SYDNEY (G); 10 PULLIAM, LINDSEY (G); 12 BURTON, VERONICA (G); 21 WOLF, ABBIE (C); 44 SCHEID, ABI (C);

**Michigan St.:** 4 MCCUTCHEON, TARYN (G); 12 HOLLIE, NIA (F); 22 JOINER, MOIRA (G); 24 CLOUDEN, NIA (G); 42 BELLES, KAYLA (F);

Time	VISITORS: Northwestern	Score	Margin	HOME: Michigan St.
09:34				MISSED JUMPER by CLOUDEN, NIA
09:31	REBOUND (DEF) by SCHEID, ABI			
09:04	MISSED LAYUP by WOOD, SYDNEY			
09:00				REBOUND (DEF) by BELLES, KAYLA
08:47				MISSED JUMPER by BELLES, KAYLA
08:44	REBOUND (DEF) by BURTON, VERONICA			
08:35	MISSED LAYUP by WOLF, ABBIE			
08:35	REBOUND (OFF) by WOLF, ABBIE			
08:35				BLOCK by MCCUTCHEON, TARYN
08:32	MISSED LAYUP by WOLF, ABBIE			
08:28				REBOUND (DEF) by HOLLIE, NIA
08:16	FOUL (PERSONAL) by BURTON, VERONICA			
08:13				MISSED JUMPER by CLOUDEN, NIA
08:10	REBOUND (DEF) by PULLIAM, LINDSEY			
07:44	TURNOVER (BADPASS) by BURTON, VERONICA			
07:28		3-0	H 3	GOOD! 3PTR by JOINER, MOIRA
07:28				ASSIST by MCCUTCHEON, TARYN
07:03	MISSED 3PTR by PULLIAM, LINDSEY			
06:59				REBOUND (DEF) by HOLLIE, NIA
06:50				TURNOVER (LOSTBALL) by BELLES, KAYLA
06:50	STEAL by WOOD, SYDNEY			
06:34				FOUL (PERSONAL) by BELLES, KAYLA
06:30	MISSED LAYUP by PULLIAM, LINDSEY			
06:29	REBOUND (OFF) by WOLF, ABBIE			
06:28	GOOD! LAYUP by WOLF, ABBIE	3-2	H 1	
06:17				TURNOVER (TRAVEL) by BELLES, KAYLA
06:04	MISSED 3PTR by SCHEID, ABI			
06:04	REBOUND (OFF) by WOLF, ABBIE			
06:03				FOUL (PERSONAL) by BELLES, KAYLA
06:03				SUB OUT: BELLES, KAYLA
06:03				SUB IN: PARKS, TAIYIER
05:52	MISSED JUMPER by PULLIAM, LINDSEY			
05:48				REBOUND (DEF) by MCCUTCHEON, TARYN
05:43		5-2	H 3	GOOD! LAYUP by PARKS, TAIYIER [FB]
05:43				ASSIST by HOLLIE, NIA
05:19	TURNOVER (BADPASS) by SCHEID, ABI			
05:05				MISSED JUMPER by JOINER, MOIRA
05:02	REBOUND (DEF) by BURTON, VERONICA			
04:53	MISSED LAYUP by BURTON, VERONICA			
04:50				REBOUND (DEF) by CLOUDEN, NIA
04:47				MISSED LAYUP by CLOUDEN, NIA
04:44	REBOUND (DEF) by TEAM			
04:44				
04:31	MISSED JUMPER by PULLIAM, LINDSEY			
04:28				REBOUND (DEF) by JOINER, MOIRA
04:18				TURNOVER (BADPASS) by CLOUDEN, NIA
04:18	STEAL by BURTON, VERONICA			
04:14	GOOD! LAYUP by BURTON, VERONICA [FB]	5-4	H 1	
03:54				TURNOVER (BADPASS) by PARKS, TAIYIER
03:29	GOOD! LAYUP by WOLF, ABBIE	5-6	V 1	
03:29	ASSIST by BURTON, VERONICA			
03:17		7-6	H 1	GOOD! JUMPER by HOLLIE, NIA [PNT]
02:55				FOUL (PERSONAL) by HOLLIE, NIA
02:55				SUB OUT: HOLLIE, NIA
02:55				SUB IN: COOK, MARDREKIA
02:55	SUB OUT: WOOD, SYDNEY			
02:55	SUB OUT: WOLF, ABBIE			
02:55	SUB IN: SHAW, COURTNEY			
02:55	SUB IN: HAMILTON, JORDAN			
02:55				SUB OUT: JOINER, MOIRA
02:55				SUB IN: OZMENT, TORY
02:55	MISSED FT by BURTON, VERONICA			
02:55	REBOUND (OFF) by TEAM			
02:55	GOOD! FT by BURTON, VERONICA	7-7	T	
02:47				MISSED 3PTR by CLOUDEN, NIA
02:43	REBOUND (DEF) by BURTON, VERONICA			
02:32	GOOD! JUMPER by PULLIAM, LINDSEY	7-9	V 2	
02:10				TURNOVER (BADPASS) by OZMENT, TORY
02:10	STEAL by SCHEID, ABI			
02:00	GOOD! 3PTR by BURTON, VERONICA	7-12	V 5	

Time	VISITORS: Northwestern	Score	Margin	HOME: Michigan St.
02:00	ASSIST by SHAW, COURTNEY			
01:23				MISSED JUMPER by OZMENT, TORY
01:20	REBOUND (DEF) by SCHEID, ABI			
01:16	GOOD! LAYUP by SHAW, COURTNEY [FB]	7-14	V 7	
01:16	ASSIST by HAMILTON, JORDAN			
01:14				TIMEOUT 30SEC
01:14				SUB OUT: PARKS, TAIYIER
01:14				SUB OUT: CLOUDEN, NIA
01:14				SUB IN: HOLLIE, NIA
01:14				SUB IN: JOINER, MOIRA
01:14	SUB OUT: BURTON, VERONICA			
01:14	SUB IN: WOOD, SYDNEY			
01:02				TURNOVER (BADPASS) by COOK, MARDREKIA
01:02	STEAL by SHAW, COURTNEY			
00:44	GOOD! 3PTR by SCHEID, ABI	7-17	V 10	
00:44	ASSIST by PULLIAM, LINDSEY			
00:23				MISSED LAYUP by HOLLIE, NIA
00:21	REBOUND (DEF) by SCHEID, ABI			
00:06	TURNOVER (BADPASS) by WOOD, SYDNEY			
00:06				SUB OUT: OZMENT, TORY
00:06				SUB IN: CLOUDEN, NIA
00:01				MISSED 3PTR by MCCUTCHEON, TARYN
00:01	BLOCK by WOOD, SYDNEY			
00:00				REBOUND (OFF) by TEAM

### Northwestern 17, Michigan St. 7

Points from (This Period)	NWU	MSU
In the Paint	8	4
Off Turns	12	3
2nd Chance	2	0
Fast Break	4	2
Bench	2	2

**Official Box Score**  
**Northwestern vs Michigan St.**  
**Second Quarter Statistics Only**  
**January 23, 2020 at Breslin Events Center - East Lansing**



**Northwestern 16**

No.	Player	S	Pts	FG	3FG	FT	OR	DR	TR	PF	A	TO	Blk	Stl	Min	+/-
03	WOOD, SYDNEY	G	0	0-3	0-0	0-0	0	0	0	1	1	0	1	1	10	0
10	PULLIAM, LINDSEY	G	9	4-6	0-0	1-2	2	0	2	0	0	2	0	1	8	2
12	BURTON, VERONICA	G	5	2-4	1-2	0-1	1	2	3	1	0	0	1	3	9	2
21	WOLF, ABBIE	C	2	1-1	0-0	0-0	3	1	4	1	0	2	0	1	8	0
44	SCHEID, ABI	C	0	0-1	0-1	0-0	0	0	0	0	3	1	0	0	9	0
00	SANCATALDO, JESS	G	0	0-0	0-0	0-0	0	0	0	0	0	0	0	0	0	0
01	RAINEY, KAYLAH	G	0	0-0	0-0	0-0	0	0	0	0	0	0	0	0	0	0
02	SATTERWHITE, LAURYN	G	0	0-0	0-0	0-0	0	0	0	0	0	0	0	0	0	0
15	SHAW, COURTNEY	F	0	0-0	0-0	0-0	0	0	0	1	0	0	0	0	2	0
22	GALERNIK, BYRDY	G	0	0-0	0-0	0-0	0	0	0	0	0	0	0	0	0	0
24	HAMILTON, JORDAN	G	0	0-1	0-1	0-0	0	0	0	0	0	0	0	0	4	-4
33	HARTMAN, LAYA	G	0	0-0	0-0	0-0	0	0	0	0	0	0	0	0	0	0
TEAM							1	0	1	0						
<b>TOTALS</b>			<b>16</b>	<b>7-16</b>	<b>1-4</b>	<b>1-3</b>	<b>7</b>	<b>3</b>	<b>10</b>	<b>4</b>	<b>4</b>	<b>5</b>	<b>2</b>	<b>6</b>	<b>50</b>	

*Shooting By Period*

Period	FG	FG%	3FG	3FG%	FT	FT%
3rd Qtr	9-15	60%	0-2	00%	8-8	100%
4th Qtr	7-16	44%	2-6	33%	1-2	50%
2nd Half	7-16	44%	1-4	25%	1-3	33%
2nd Half	16-31	52%	2-8	25%	9-10	90%
Game	30-63	47.6%	5-16	31.3%	11-15	73.3%

*Deadball Rebounds: 3,0*

**Michigan St. 16**

No.	Player	S	Pts	FG	3FG	FT	OR	DR	TR	PF	A	TO	Blk	Stl	Min	+/-
04	MCCUTCHEON, TARYN	G	0	0-1	0-1	0-0	1	0	1	0	2	3	0	0	9	4
12	HOLLIE, NIA	F	2	0-0	0-0	2-2	0	0	0	1	0	0	0	0	3	7
22	JOINER, MOIRA	G	9	3-4	3-3	0-0	0	0	0	0	0	0	0	0	10	0
24	CLOUDEN, NIA	G	0	0-1	0-1	0-0	0	0	0	0	1	0	0	0	10	0
42	BELLES, KAYLA	F	0	0-0	0-0	0-0	0	0	0	0	0	0	0	0	0	0
01	OZMENT, TORY	G	0	0-0	0-0	0-0	0	0	0	0	0	0	0	0	0	0
02	COOK, MARDREKIA	F	0	0-2	0-1	0-0	0	0	0	1	0	0	0	0	3	0
03	WINSTON, ALYZA	G	0	0-0	0-0	0-0	0	0	0	1	0	1	0	0	1	-4
05	HENDRICKSON, CLAIRE	G	0	0-0	0-0	0-0	0	0	0	0	0	0	0	0	0	0
14	PARKS, TAIYIER	F	2	1-2	0-0	0-0	2	3	5	0	0	2	1	2	8	-2
21	JACQMAIN, LAUREL	G	0	0-0	0-0	0-0	0	0	0	0	0	0	0	0	0	0
40	AYRAULT, JULIA	G	3	1-3	1-2	0-0	0	0	0	0	1	1	1	0	6	-5
50	DODD, CYDNI	C	0	0-0	0-0	0-0	0	0	0	0	0	0	0	0	0	0
TEAM							2	0	2	0						
<b>TOTALS</b>			<b>16</b>	<b>5-13</b>	<b>4-8</b>	<b>2-2</b>	<b>5</b>	<b>3</b>	<b>8</b>	<b>3</b>	<b>4</b>	<b>7</b>	<b>2</b>	<b>2</b>	<b>50</b>	

*Shooting By Period*

Period	FG	FG%	3FG	3FG%	FT	FT%
3rd Qtr	4-15	27%	0-6	00%	1-8	13%
4th Qtr	6-11	55%	3-5	60%	1-4	25%
2nd Half	5-13	38%	4-8	50%	2-2	100%
2nd Half	10-26	38%	3-11	27%	2-12	17%
Game	18-51	35.3%	8-22	36.4%	4-14	28.6%

*Deadball Rebounds: 5,0*

Game Notes:

Officials: Tina Napier, Cameron Inouye, Gina Cross  
Attendance: 3963

Start Time: 06:30 PM ET  
End Time: 08:14 PM ET  
Game Duration: 1:43  
Conference Game;

Score	1st	2nd	3rd	4th	TOT
NWU	17	16	26	17	<b>76</b>
MSU	7	16	9	16	<b>48</b>

Points from (This Period)	NWU	MSU
In the Paint	6	2
Off Turns	8	6
2nd Chance	5	2
Fast Break	4	3
Bench	0	5

**Official Play-By-Play**  
**Northwestern vs Michigan St.**  
**Second Quarter**  
**January 23, 2020 at Breslin Events Center - East Lansing**



**Period 2**

**Starters:**

**Northwestern:** 3 WOOD, SYDNEY (G); 10 PULLIAM, LINDSEY (G); 12 BURTON, VERONICA (G); 21 WOLF, ABBIE (C); 44 SCHEID, ABI (C);

**Michigan St.:** 4 MCCUTCHEON, TARYN (G); 12 HOLLIE, NIA (F); 22 JOINER, MOIRA (G); 24 CLOUDEN, NIA (G); 42 BELLES, KAYLA (F);

Time	VISITORS: Northwestern	Score	Margin	HOME: Michigan St.
10:00				SUB OUT: COOK, MARDREKIA
10:00				SUB IN: AYRAULT, JULIA
10:00	SUB OUT: PULLIAM, LINDSEY			
10:00	SUB IN: BURTON, VERONICA			
09:33				MISSED 3PTR by MCCUTCHEON, TARYN
09:31	REBOUND (DEF) by BURTON, VERONICA			
09:16	TURNOVER (3SEC) by SCHEID, ABI			
08:56		10-17	V 7	GOOD! 3PTR by JOINER, MOIRA
08:56				ASSIST by AYRAULT, JULIA
08:35	GOOD! 3PTR by BURTON, VERONICA	10-20	V 10	
08:35	ASSIST by SCHEID, ABI			
08:21	FOUL (PERSONAL) by SHAW, COURTNEY			
08:21	SUB OUT: SHAW, COURTNEY			
08:21	SUB IN: WOLF, ABBIE			
08:21		11-20	V 9	GOOD! FT by HOLLIE, NIA
08:21		12-20	V 8	GOOD! FT by HOLLIE, NIA
08:21				SUB OUT: HOLLIE, NIA
08:21				SUB IN: PARKS, TAIYIER
08:21	SUB OUT: HAMILTON, JORDAN			
08:21	SUB IN: PULLIAM, LINDSEY			
08:09	GOOD! JUMPER by PULLIAM, LINDSEY	12-22	V 10	
08:09	ASSIST by SCHEID, ABI			
07:51				MISSED LAYUP by PARKS, TAIYIER
07:48				REBOUND (OFF) by PARKS, TAIYIER
07:47				TURNOVER (BADPASS) by MCCUTCHEON, TARYN
07:47	STEAL by BURTON, VERONICA			
07:42	MISSED LAYUP by WOOD, SYDNEY			
07:40	REBOUND (OFF) by BURTON, VERONICA			
07:32	GOOD! JUMPER by PULLIAM, LINDSEY	12-24	V 12	
07:32	ASSIST by SCHEID, ABI			
07:09		15-24	V 9	GOOD! 3PTR by AYRAULT, JULIA
07:09				ASSIST by MCCUTCHEON, TARYN
06:46	MISSED JUMPER by PULLIAM, LINDSEY			
06:41	REBOUND (OFF) by WOLF, ABBIE			
06:40	MISSED 3PTR by SCHEID, ABI			
06:36	REBOUND (OFF) by PULLIAM, LINDSEY			
06:24	FOUL (OFF) by WOLF, ABBIE			
06:24	TURNOVER (OFFENSIVE) by WOLF, ABBIE			
06:12				MISSED 3PTR by AYRAULT, JULIA
06:07	REBOUND (DEF) by BURTON, VERONICA			
05:59	GOOD! JUMPER by PULLIAM, LINDSEY [PNT]	15-26	V 11	
05:27				MISSED JUMPER by AYRAULT, JULIA
05:24	REBOUND (DEF) by WOLF, ABBIE			
05:16	TURNOVER (BADPASS) by PULLIAM, LINDSEY			
05:16				SUB OUT: AYRAULT, JULIA
05:16				SUB IN: COOK, MARDREKIA
05:00				TURNOVER (LOSTBALL) by PARKS, TAIYIER
05:00				
05:00	SUB OUT: SCHEID, ABI			
05:00	SUB IN: HAMILTON, JORDAN			
04:53	MISSED LAYUP by BURTON, VERONICA			
04:53				BLOCK by PARKS, TAIYIER
04:50	REBOUND (OFF) by TEAM			
04:41	MISSED LAYUP by WOOD, SYDNEY			
04:38	REBOUND (OFF) by WOLF, ABBIE			
04:33	TURNOVER (BADPASS) by WOLF, ABBIE			
04:33				STEAL by PARKS, TAIYIER
04:29				MISSED LAYUP by JOINER, MOIRA
04:29	BLOCK by BURTON, VERONICA			
04:27				REBOUND (OFF) by TEAM
04:25				MISSED 3PTR by COOK, MARDREKIA
04:21				REBOUND (OFF) by MCCUTCHEON, TARYN
04:08				MISSED LAYUP by COOK, MARDREKIA
04:08				REBOUND (OFF) by TEAM
04:08	BLOCK by WOOD, SYDNEY			
04:06	SUB OUT: HAMILTON, JORDAN			
04:06	SUB IN: SCHEID, ABI			
04:05				TURNOVER (BADPASS) by MCCUTCHEON, TARYN
04:05	STEAL by WOOD, SYDNEY			
03:58	GOOD! JUMPER by PULLIAM, LINDSEY [FB]	15-28	V 13	



Time	VISITORS: Northwestern	Score	Margin	HOME: Michigan St.
03:58	ASSIST by WOOD, SYDNEY			
03:34				MISSED 3PTR by CLOUDEN, NIA
03:29				REBOUND (OFF) by PARKS, TAIYIER
03:28		17-28	V 11	GOOD! LAYUP by PARKS, TAIYIER
03:09				FOUL (PERSONAL) by COOK, MARDREKIA
03:09				SUB OUT: COOK, MARDREKIA
03:09				SUB OUT: MCCUTCHEON, TARYN
03:09				SUB IN: WINSTON, ALYZA
03:09				SUB IN: AYRAULT, JULIA
02:57	MISSED 3PTR by BURTON, VERONICA			
02:53				REBOUND (DEF) by PARKS, TAIYIER
02:51				TURNOVER (BADPASS) by PARKS, TAIYIER
02:51	STEAL by PULLIAM, LINDSEY			
02:46	MISSED JUMPER by PULLIAM, LINDSEY			
02:43				REBOUND (DEF) by PARKS, TAIYIER
02:41				TURNOVER (BADPASS) by AYRAULT, JULIA
02:41	STEAL by BURTON, VERONICA			
02:34	GOOD! LAYUP by BURTON, VERONICA [FB/PNT]	17-30	V 13	
02:33				FOUL (PERSONAL) by WINSTON, ALYZA
02:33	MISSED FT by BURTON, VERONICA			
02:33				REBOUND (DEF) by PARKS, TAIYIER
02:07	FOUL (PERSONAL) by WOOD, SYDNEY			
02:06				TURNOVER (BADPASS) by WINSTON, ALYZA
02:06	STEAL by BURTON, VERONICA			
01:59	MISSED LAYUP by WOOD, SYDNEY			
01:59	REBOUND (OFF) by WOLF, ABBIE			
01:59				BLOCK by AYRAULT, JULIA
01:57	GOOD! LAYUP by WOLF, ABBIE [PNT]	17-32	V 15	
01:57				TIMEOUT 30SEC
01:57				SUB OUT: WINSTON, ALYZA
01:57				SUB OUT: AYRAULT, JULIA
01:57				SUB IN: MCCUTCHEON, TARYN
01:57				SUB IN: HOLLIE, NIA
01:50		20-32	V 12	GOOD! 3PTR by JOINER, MOIRA [FB]
01:50				ASSIST by CLOUDEN, NIA
01:23	TURNOVER (LOSTBALL) by PULLIAM, LINDSEY			
01:23				STEAL by PARKS, TAIYIER
01:20	FOUL (PERSONAL) by BURTON, VERONICA			
01:20	SUB OUT: BURTON, VERONICA			
01:20	SUB IN: HAMILTON, JORDAN			
01:02		23-32	V 9	GOOD! 3PTR by JOINER, MOIRA
01:02				ASSIST by MCCUTCHEON, TARYN
00:37	MISSED 3PTR by HAMILTON, JORDAN			
00:34	REBOUND (OFF) by PULLIAM, LINDSEY			
00:33				FOUL (PERSONAL) by HOLLIE, NIA
00:33	MISSED FT by PULLIAM, LINDSEY			
00:33	REBOUND (OFF) by TEAM			
00:33	GOOD! FT by PULLIAM, LINDSEY	23-33	V 10	
00:33				SUB OUT: HOLLIE, NIA
00:33				SUB IN: COOK, MARDREKIA
00:17				TURNOVER (LOSTBALL) by MCCUTCHEON, TARYN
00:17	STEAL by WOLF, ABBIE			

### Northwestern 33, Michigan St. 23

Points from (This Period)	NWU	MSU
In the Paint	6	2
Off Turns	8	6
2nd Chance	5	2
Fast Break	4	3
Bench	0	5

**Official Box Score**  
**Northwestern vs Michigan St.**  
**Second Half Statistics Only**  
**January 23, 2020 at Breslin Events Center - East Lansing**



**Northwestern 43**

No.	Player	S	Pts	FG	3FG	FT	OR	DR	TR	PF	A	TO	Blk	Stl	Min	+/-
00	SANCATALDO, JESS	G	0	0-1	0-1	0-0	0	0	0	0	1	0	0	1	3	2
01	RAINEY, KAYLAH	G	2	1-1	0-0	0-0	0	0	0	0	1	0	0	1	2	3
02	SATTERWHITE, LAURYN	G	0	0-0	0-0	0-0	0	0	0	0	0	0	0	0	2	3
03	WOOD, SYDNEY	G	2	1-1	0-0	0-0	1	4	5	0	0	1	0	0	12	7
10	PULLIAM, LINDSEY	G	11	3-8	1-2	4-5	0	2	2	0	4	1	0	1	17	16
12	BURTON, VERONICA	G	11	4-7	0-2	3-3	0	2	2	0	2	0	1	2	14	17
15	SHAW, COURTNEY	F	0	0-0	0-0	0-0	0	1	1	3	0	0	1	2	10	10
21	WOLF, ABBIE	C	8	4-6	0-0	0-0	0	2	2	2	1	1	0	1	10	8
22	GALERNIK, BYRDY	G	2	1-1	0-0	0-0	0	0	0	0	0	2	0	1	4	-2
24	HAMILTON, JORDAN	G	2	1-3	0-1	0-0	0	0	0	2	0	1	0	0	9	4
33	HARTMAN, LAYA	G	3	1-3	1-2	0-0	0	1	1	0	0	0	0	0	3	2
44	SCHEID, ABI	C	2	0-0	0-0	2-2	0	3	3	2	1	1	0	0	14	20
	TEAM		0	0-0	0-0	0-0	2	1	3	0	0	0	0	0	0	0
	<b>TOTALS</b>		<b>43</b>	<b>16-31</b>	<b>2-8</b>	<b>9-10</b>	<b>3</b>	<b>16</b>	<b>19</b>	<b>9</b>	<b>10</b>	<b>7</b>	<b>2</b>	<b>9</b>	<b>100</b>	

*Shooting By Period*

Period	FG	FG%	3FG	3FG%	FT	FT%
3rd Qtr	9-15	60%	0-2	00%	8-8	100%
4th Qtr	7-16	44%	2-6	33%	1-2	50%
2nd Half	16-31	52%	2-8	25%	9-10	90%
Game	30-63	47.6%	5-16	31.3%	11-15	73.3%

*Deadball Rebounds: 3,0*  
*Last FG Half: NWU 4th-00:40*

**Michigan St. 25**

No.	Player	S	Pts	FG	3FG	FT	OR	DR	TR	PF	A	TO	Blk	Stl	Min	+/-
01	OZMENT, TORY	G	5	2-2	0-0	1-2	0	2	2	2	0	1	0	0	12	-9
02	COOK, MARDREKIA	F	0	0-1	0-0	0-2	0	0	0	0	0	1	0	0	3	-2
03	WINSTON, ALYZA	G	2	1-1	0-0	0-0	0	0	0	0	2	1	0	0	7	1
04	MCCUTCHEON, TARYN	G	0	0-1	0-1	0-0	1	0	1	1	1	2	0	0	7	-15
05	HENDRICKSON, CLAIRE	G	8	3-3	2-2	0-0	0	0	0	0	0	1	0	0	7	1
12	HOLLIE, NIA	F	2	1-3	0-0	0-0	1	1	2	1	0	0	0	1	9	-10
14	PARKS, TAIYIER	F	2	1-1	0-0	0-2	1	1	2	1	0	0	1	2	6	-2
21	JACQMAIN, LAUREL	G	0	0-0	0-0	0-0	0	0	0	0	0	1	0	0	2	-3
22	JOINER, MOIRA	G	5	2-8	1-4	0-0	1	2	3	2	2	1	0	0	15	-17
24	CLOUDEN, NIA	G	0	0-2	0-2	0-2	0	1	1	1	0	0	0	0	8	-12
40	AYRAULT, JULIA	G	0	0-2	0-2	0-0	0	2	2	0	1	1	0	0	12	-11
42	BELLES, KAYLA	F	1	0-2	0-0	1-2	1	1	2	1	0	2	0	0	10	-8
50	DODD, CYDNI	C	0	0-0	0-0	0-2	0	1	1	0	0	0	0	0	2	-3
	TEAM		0	0-0	0-0	0-0	0	1	1	0	0	0	0	0	0	0
	<b>TOTALS</b>		<b>25</b>	<b>10-26</b>	<b>3-11</b>	<b>2-12</b>	<b>5</b>	<b>12</b>	<b>17</b>	<b>9</b>	<b>6</b>	<b>11</b>	<b>1</b>	<b>3</b>	<b>100</b>	

*Shooting By Period*

Period	FG	FG%	3FG	3FG%	FT	FT%
3rd Qtr	4-15	27%	0-6	00%	1-8	13%
4th Qtr	6-11	55%	3-5	60%	1-4	25%
2nd Half	10-26	38%	3-11	27%	2-12	17%
Game	18-51	35.3%	8-22	36.4%	4-14	28.6%

*Deadball Rebounds: 5,0*  
*Last FG Half: MSU 4th-01:03*

Game Notes:

Officials: Tina Napier, Cameron Inouye, Gina Cross  
 Attendance: 3963

Start Time: 06:30 PM ET  
 End Time: 08:14 PM ET  
 Game Duration: 1:43  
 Conference Game;

Score	1st	2nd	3rd	4th	TOT
NWU	17	16	26	17	<b>76</b>
MSU	7	16	9	16	<b>48</b>

Points from (This Period)	NWU	MSU
In the Paint	24	12
Off Turns	15	5
2nd Chance	2	1
Fast Break	14	8
Bench	9	17

**Official Box Score**  
**Northwestern vs Michigan St.**  
**Third Quarter Statistics Only**  
**January 23, 2020 at Breslin Events Center - East Lansing**



**Northwestern 43**

No.	Player	S	Pts	FG	3FG	FT	OR	DR	TR	PF	A	TO	Blk	Stl	Min	+/-
03	WOOD, SYDNEY	G	0	0-0	0-0	0-0	0	2	2	0	0	0	0	0	5	8
10	PULLIAM, LINDSEY	G	7	2-5	0-1	3-3	0	1	1	0	3	1	0	1	10	17
12	BURTON, VERONICA	G	9	3-4	0-1	3-3	0	2	2	0	2	0	0	1	9	17
21	WOLF, ABBIE	C	6	3-4	0-0	0-0	0	2	2	2	0	1	0	0	5	8
44	SCHEID, ABI	C	2	0-0	0-0	2-2	0	3	3	1	1	0	0	0	10	17
00	SANCATALDO, JESS	G	0	0-0	0-0	0-0	0	0	0	0	0	0	0	0	0	0
01	RAINEY, KAYLAH	G	0	0-0	0-0	0-0	0	0	0	0	0	0	0	0	0	0
02	SATTERWHITE, LAURYN	G	0	0-0	0-0	0-0	0	0	0	0	0	0	0	0	0	0
15	SHAW, COURTNEY	F	0	0-0	0-0	0-0	0	0	0	1	0	0	1	1	5	9
22	GALERNIK, BYRDY	G	0	0-0	0-0	0-0	0	0	0	0	0	1	0	0	1	0
24	HAMILTON, JORDAN	G	2	1-2	0-0	0-0	0	0	0	2	0	0	0	0	5	9
33	HARTMAN, LAYA	G	0	0-0	0-0	0-0	0	0	0	0	0	0	0	0	0	0
	TEAM						0	0	0	0	0	0				
<b>TOTALS</b>			<b>26</b>	<b>9-15</b>	<b>0-2</b>	<b>8-8</b>	<b>0</b>	<b>10</b>	<b>10</b>	<b>6</b>	<b>6</b>	<b>3</b>	<b>1</b>	<b>3</b>	<b>50</b>	

*Shooting By Period*

Period	FG	FG%	3FG	3FG%	FT	FT%
2nd Half	0-0	0%	0-0	0%	0-0	0%
Game	30-63	47.6%	5-16	31.3%	11-15	73.3%

Deadball Rebounds: 3,0

**Michigan St. 25**

No.	Player	S	Pts	FG	3FG	FT	OR	DR	TR	PF	A	TO	Blk	Stl	Min	+/-
04	MCCUTCHEON, TARYN	G	0	0-1	0-1	0-0	1	0	1	1	1	2	0	0	7	-15
12	HOLLIE, NIA	F	2	1-3	0-0	0-0	1	0	1	1	0	0	0	1	6	-13
22	JOINER, MOIRA	G	2	1-4	0-3	0-0	1	2	3	1	1	0	0	0	10	-17
24	CLOUDEN, NIA	G	0	0-1	0-1	0-2	0	1	1	1	0	0	0	0	5	-10
42	BELLES, KAYLA	F	0	0-2	0-0	0-0	0	1	1	0	0	2	0	0	7	-10
01	OZMENT, TORY	G	5	2-2	0-0	1-2	0	2	2	2	0	0	0	0	6	-9
02	COOK, MARDREKIA	F	0	0-1	0-0	0-2	0	0	0	0	0	1	0	0	3	-2
03	WINSTON, ALYZA	G	0	0-0	0-0	0-0	0	0	0	0	0	0	0	0	0	0
05	HENDRICKSON, CLAIRE	G	0	0-0	0-0	0-0	0	0	0	0	0	0	0	0	0	0
14	PARKS, TAIYIER	F	0	0-0	0-0	0-2	1	0	1	0	0	0	0	1	1	-2
21	JACQMAIN, LAUREL	G	0	0-0	0-0	0-0	0	0	0	0	0	0	0	0	0	0
40	AYRAULT, JULIA	G	0	0-1	0-1	0-0	0	0	0	0	0	0	0	0	5	-7
50	DODD, CYDNI	C	0	0-0	0-0	0-0	0	0	0	0	0	0	0	0	0	0
	TEAM						0	0	0	0	0	0				
<b>TOTALS</b>			<b>9</b>	<b>4-15</b>	<b>0-6</b>	<b>1-8</b>	<b>4</b>	<b>6</b>	<b>10</b>	<b>6</b>	<b>2</b>	<b>5</b>	<b>0</b>	<b>2</b>	<b>50</b>	

*Shooting By Period*

Period	FG	FG%	3FG	3FG%	FT	FT%
2nd Half	0-0	0%	0-0	0%	0-0	0%
Game	18-51	35.3%	8-22	36.4%	4-14	28.6%

Deadball Rebounds: 5,0

*Game Notes:*

Officials: Tina Napier, Cameron Inouye, Gina Cross  
 Attendance: 3963

Start Time: 06:30 PM ET  
 End Time: 08:14 PM ET  
 Game Duration: 1:43  
 Conference Game;

Score	1st	2nd	3rd	4th	TOT
NWU	17	16	26	17	<b>76</b>
MSU	7	16	9	16	<b>48</b>

Points from (This Period)	NWU	MSU
In the Paint	16	6
Off Turns	9	2
2nd Chance	0	0
Fast Break	10	3
Bench	2	5

**Official Play-By-Play**  
**Northwestern vs Michigan St.**  
**Third Quarter**  
**January 23, 2020 at Breslin Events Center - East Lansing**



**Period 3**

**Starters:**

**Northwestern:** 3 WOOD, SYDNEY (G); 10 PULLIAM, LINDSEY (G); 12 BURTON, VERONICA (G); 21 WOLF, ABBIE (C); 44 SCHEID, ABI (C);

**Michigan St.:** 4 MCCUTCHEON, TARYN (G); 12 HOLLIE, NIA (F); 22 JOINER, MOIRA (G); 24 CLOUDEN, NIA (G); 42 BELLES, KAYLA (F);

Time	VISITORS: Northwestern	Score	Margin	HOME: Michigan St.
10:00				SUB OUT: PARKS, TAIYIER
10:00				SUB OUT: COOK, MARDREKIA
10:00				SUB IN: HOLLIE, NIA
10:00				SUB IN: BELLES, KAYLA
10:00	SUB OUT: HAMILTON, JORDAN			
10:00	SUB IN: BURTON, VERONICA			
09:37	MISSED LAYUP by WOLF, ABBIE			
09:35				REBOUND (DEF) by JOINER, MOIRA
09:30				MISSED LAYUP by BELLES, KAYLA
09:27	REBOUND (DEF) by WOLF, ABBIE			
09:10	GOOD! LAYUP by WOLF, ABBIE	23-35	V 12	
09:10	ASSIST by PULLIAM, LINDSEY			
08:49				MISSED JUMPER by BELLES, KAYLA
08:45	REBOUND (DEF) by PULLIAM, LINDSEY			
08:38	GOOD! LAYUP by WOLF, ABBIE	23-37	V 14	
08:38	ASSIST by PULLIAM, LINDSEY			
08:12				MISSED 3PTR by CLOUDEN, NIA
08:08	REBOUND (DEF) by WOLF, ABBIE			
08:06	TURNOVER (LOSTBALL) by WOLF, ABBIE			
08:06				STEAL by HOLLIE, NIA
07:59		25-37	V 12	GOOD! JUMPER by HOLLIE, NIA [FB]
07:59				ASSIST by MCCUTCHEON, TARYN
07:44	GOOD! JUMPER by WOLF, ABBIE [PNT]	25-39	V 14	
07:44	ASSIST by SCHEID, ABI			
07:31				MISSED 3PTR by JOINER, MOIRA
07:28				REBOUND (OFF) by HOLLIE, NIA
07:25				MISSED JUMPER by HOLLIE, NIA
07:22	REBOUND (DEF) by SCHEID, ABI			
07:00	MISSED 3PTR by BURTON, VERONICA			
06:56				REBOUND (DEF) by CLOUDEN, NIA
06:50	FOUL (PERSONAL) by WOLF, ABBIE			
06:50				MISSED FT by CLOUDEN, NIA
06:50				REBOUND (OFF) by TEAM
06:50				MISSED FT by CLOUDEN, NIA
06:50	REBOUND (DEF) by WOOD, SYDNEY			
06:32				FOUL (PERSONAL) by CLOUDEN, NIA
06:32	GOOD! FT by PULLIAM, LINDSEY	25-40	V 15	
06:32	GOOD! FT by PULLIAM, LINDSEY	25-41	V 16	
06:25				MISSED 3PTR by MCCUTCHEON, TARYN
06:22	REBOUND (DEF) by SCHEID, ABI			
06:12	TURNOVER (BADPASS) by PULLIAM, LINDSEY			
05:52				TURNOVER (BADPASS) by MCCUTCHEON, TARYN
05:52	STEAL by BURTON, VERONICA			
05:47	GOOD! LAYUP by BURTON, VERONICA [FB]	25-43	V 18	
05:34	FOUL (PERSONAL) by SCHEID, ABI			
05:34				SUB OUT: MCCUTCHEON, TARYN
05:34				SUB OUT: HOLLIE, NIA
05:34				SUB IN: OZMENT, TORY
05:34				SUB IN: COOK, MARDREKIA
05:31	FOUL (PERSONAL) by WOLF, ABBIE			
05:31				MISSED FT by COOK, MARDREKIA
05:31				REBOUND (OFF) by TEAM
05:31				MISSED FT by COOK, MARDREKIA
05:30	REBOUND (DEF) by WOOD, SYDNEY			
05:08	MISSED JUMPER by PULLIAM, LINDSEY			
05:06				REBOUND (DEF) by OZMENT, TORY
04:57				MISSED LAYUP by COOK, MARDREKIA
04:54	REBOUND (DEF) by BURTON, VERONICA			
04:49				FOUL (PERSONAL) by JOINER, MOIRA
04:49				
04:49	SUB OUT: WOOD, SYDNEY			
04:49	SUB OUT: WOLF, ABBIE			
04:49	SUB IN: SHAW, COURTNEY			
04:49	SUB IN: HAMILTON, JORDAN			
04:49	GOOD! FT by BURTON, VERONICA [FB]	25-44	V 19	
04:49	GOOD! FT by BURTON, VERONICA [FB]	25-45	V 20	
04:49				SUB OUT: CLOUDEN, NIA
04:49				SUB IN: AYRAULT, JULIA
04:40	FOUL (PERSONAL) by HAMILTON, JORDAN			
04:29				TURNOVER (OTHER) by COOK, MARDREKIA

Time	VISITORS: Northwestern	Score	Margin	HOME: Michigan St.
04:13	MISSED JUMPER by HAMILTON, JORDAN			
04:10				REBOUND (DEF) by JOINER, MOIRA
03:57				TURNOVER (BADPASS) by BELLES, KAYLA
03:39	GOOD! LAYUP by BURTON, VERONICA [PNT]	25-47	V 22	
03:26		27-47	V 20	GOOD! JUMPER by JOINER, MOIRA [PNT]
03:01	MISSED JUMPER by PULLIAM, LINDSEY			
02:58				REBOUND (DEF) by BELLES, KAYLA
02:56				TURNOVER (LOSTBALL) by BELLES, KAYLA
02:56	STEAL by SHAW, COURTNEY			
02:56				SUB OUT: COOK, MARDREKIA
02:56				SUB IN: MCCUTCHEON, TARYN
02:50	TIMEOUT 30SEC			
02:50				SUB OUT: BELLES, KAYLA
02:50				SUB IN: HOLLIE, NIA
02:43				FOUL (PERSONAL) by OZMENT, TORY
02:42	GOOD! JUMPER by PULLIAM, LINDSEY	27-49	V 22	
02:42	ASSIST by BURTON, VERONICA			
02:42				FOUL (PERSONAL) by MCCUTCHEON, TARYN
02:42	GOOD! FT by PULLIAM, LINDSEY	27-50	V 23	
02:33		29-50	V 21	GOOD! JUMPER by OZMENT, TORY [PNT]
02:33				ASSIST by JOINER, MOIRA
02:17	MISSED 3PTR by PULLIAM, LINDSEY			
02:13				REBOUND (DEF) by OZMENT, TORY
02:10	FOUL (PERSONAL) by SHAW, COURTNEY			
02:10				MISSED FT by OZMENT, TORY
02:10				REBOUND (OFF) by TEAM
02:10		30-50	V 20	GOOD! FT by OZMENT, TORY [FB]
01:48	GOOD! LAYUP by BURTON, VERONICA [PNT]	30-52	V 22	
01:47				FOUL (PERSONAL) by OZMENT, TORY
01:47	GOOD! FT by BURTON, VERONICA	30-53	V 23	
01:41				MISSED LAYUP by HOLLIE, NIA
01:41	BLOCK by SHAW, COURTNEY			
01:36	REBOUND (DEF) by BURTON, VERONICA			
01:35	GOOD! LAYUP by PULLIAM, LINDSEY [FB]	30-55	V 25	
01:35	ASSIST by BURTON, VERONICA			
01:19				MISSED 3PTR by AYRAULT, JULIA
01:16	REBOUND (DEF) by SCHEID, ABI			
01:16				FOUL (PERSONAL) by HOLLIE, NIA
01:16				SUB OUT: HOLLIE, NIA
01:16				SUB IN: PARKS, TAIYIER
01:16	GOOD! FT by SCHEID, ABI [FB]	30-56	V 26	
01:16	GOOD! FT by SCHEID, ABI [FB]	30-57	V 27	
01:16	SUB OUT: BURTON, VERONICA			
01:16	SUB IN: GALERNIK, BYRDY			
01:00		32-57	V 25	GOOD! LAYUP by OZMENT, TORY [PNT]
00:38	TURNOVER (LOSTBALL) by GALERNIK, BYRDY			
00:38				STEAL by PARKS, TAIYIER
00:30				MISSED 3PTR by JOINER, MOIRA
00:26				REBOUND (OFF) by MCCUTCHEON, TARYN
00:24				TURNOVER (LOSTBALL) by MCCUTCHEON, TARYN
00:24	STEAL by PULLIAM, LINDSEY			
00:19	GOOD! LAYUP by HAMILTON, JORDAN [FB]	32-59	V 27	
00:19	ASSIST by PULLIAM, LINDSEY			
00:11				MISSED 3PTR by JOINER, MOIRA
00:09				REBOUND (OFF) by PARKS, TAIYIER
00:07	FOUL (PERSONAL) by HAMILTON, JORDAN			
00:07				MISSED FT by PARKS, TAIYIER
00:07				REBOUND (OFF) by TEAM
00:07				MISSED FT by PARKS, TAIYIER
00:07				REBOUND (OFF) by JOINER, MOIRA

### Northwestern 59, Michigan St. 32

Points from (This Period)	NWU	MSU
In the Paint	16	6
Off Turns	9	2
2nd Chance	0	0
Fast Break	10	3
Bench	2	5

**Official Box Score**  
**Northwestern vs Michigan St.**  
**Fourth Quarter Statistics Only**  
**January 23, 2020 at Breslin Events Center - East Lansing**



**Northwestern 17**

No.	Player	S	Pts	FG	3FG	FT	OR	DR	TR	PF	A	TO	Blk	Stl	Min	+/-			
03	WOOD, SYDNEY	G	2	1-1	0-0	0-0	1	2	3	0	0	1	0	0	7	-1			
10	PULLIAM, LINDSEY	G	4	1-3	1-1	1-2	0	1	1	0	1	0	0	0	7	-1			
12	BURTON, VERONICA	G	2	1-3	0-1	0-0	0	0	0	0	0	0	1	1	5	0			
21	WOLF, ABBIE	C	2	1-2	0-0	0-0	0	0	0	0	1	0	0	1	5	0			
44	SCHEID, ABI	C	0	0-0	0-0	0-0	0	0	0	1	0	1	0	0	4	3			
00	SANCATALDO, JESS	G	0	0-1	0-1	0-0	0	0	0	0	1	0	0	1	3	2			
01	RAINEY, KAYLAH	G	2	1-1	0-0	0-0	0	0	0	0	1	0	0	1	2	3			
02	SATTERWHITE, LAURYN	G	0	0-0	0-0	0-0	0	0	0	0	0	0	0	0	2	3			
15	SHAW, COURTNEY	F	0	0-0	0-0	0-0	0	1	1	2	0	0	0	1	5	1			
22	GALERNIK, BYRDY	G	2	1-1	0-0	0-0	0	0	0	0	0	1	0	1	3	-2			
24	HAMILTON, JORDAN	G	0	0-1	0-1	0-0	0	0	0	0	0	1	0	0	4	-5			
33	HARTMAN, LAYA	G	3	1-3	1-2	0-0	0	1	1	0	0	0	0	0	3	2			
TEAM																			
<b>TOTALS</b>							<b>17</b>	<b>7-16</b>	<b>2-6</b>	<b>1-2</b>	<b>3</b>	<b>6</b>	<b>9</b>	<b>3</b>	<b>4</b>	<b>4</b>	<b>1</b>	<b>6</b>	<b>50</b>

*Shooting By Period*

Period	FG	FG%	3FG	3FG%	FT	FT%
Game	30-63	47.6%	5-16	31.3%	11-15	73.3%

*Deadball Rebounds: 3,0*

**Michigan St. 16**

No.	Player	S	Pts	FG	3FG	FT	OR	DR	TR	PF	A	TO	Blk	Stl	Min	+/-			
04	MCCUTCHEON, TARYN	G	0	0-0	0-0	0-0	0	0	0	0	0	0	0	0	0	0			
12	HOLLIE, NIA	F	0	0-0	0-0	0-0	0	1	1	0	0	0	0	0	3	3			
22	JOINER, MOIRA	G	3	1-4	1-1	0-0	0	0	0	1	1	1	0	0	5	0			
24	CLOUDEN, NIA	G	0	0-1	0-1	0-0	0	0	0	0	0	0	0	0	3	-2			
42	BELLES, KAYLA	F	1	0-0	0-0	1-2	1	0	1	1	0	0	0	0	3	2			
01	OZMENT, TORY	G	0	0-0	0-0	0-0	0	0	0	0	0	1	0	0	6	0			
02	COOK, MARDREKIA	F	0	0-0	0-0	0-0	0	0	0	0	0	0	0	0	0	0			
03	WINSTON, ALYZA	G	2	1-1	0-0	0-0	0	0	0	0	2	1	0	0	7	1			
05	HENDRICKSON, CLAIRE	G	8	3-3	2-2	0-0	0	0	0	0	0	1	0	0	7	1			
14	PARKS, TAIYIER	F	2	1-1	0-0	0-0	0	1	1	1	0	0	1	1	5	0			
21	JACQMAIN, LAUREL	G	0	0-0	0-0	0-0	0	0	0	0	0	1	0	0	2	-3			
40	AYRAULT, JULIA	G	0	0-1	0-1	0-0	0	2	2	0	1	1	0	0	7	-4			
50	DODD, CYDNI	C	0	0-0	0-0	0-2	0	1	1	0	0	0	0	0	2	-3			
TEAM																			
<b>TOTALS</b>							<b>16</b>	<b>6-11</b>	<b>3-5</b>	<b>1-4</b>	<b>1</b>	<b>6</b>	<b>7</b>	<b>3</b>	<b>4</b>	<b>6</b>	<b>1</b>	<b>1</b>	<b>50</b>

*Shooting By Period*

Period	FG	FG%	3FG	3FG%	FT	FT%
Game	18-51	35.3%	8-22	36.4%	4-14	28.6%

*Deadball Rebounds: 5,0*

Game Notes:

Officials: Tina Napier, Cameron Inouye, Gina Cross  
 Attendance: 3963

Start Time: 06:30 PM ET  
 End Time: 08:14 PM ET  
 Game Duration: 1:43  
 Conference Game;

Score	1st	2nd	3rd	4th	TOT
NWU	17	16	26	17	<b>76</b>
MSU	7	16	9	16	<b>48</b>

Points from (This Period)	NWU	MSU
In the Paint	8	6
Off Turns	6	3
2nd Chance	2	1
Fast Break	4	5
Bench	7	12

**Official Play-By-Play**  
**Northwestern vs Michigan St.**  
**Fourth Quarter**  
**January 23, 2020 at Breslin Events Center - East Lansing**



**Period 4**

**Starters:**

**Northwestern:** 3 WOOD, SYDNEY (G); 10 PULLIAM, LINDSEY (G); 12 BURTON, VERONICA (G); 21 WOLF, ABBIE (C); 44 SCHEID, ABI (C);

**Michigan St.:** 4 MCCUTCHEON, TARYN (G); 12 HOLLIE, NIA (F); 22 JOINER, MOIRA (G); 24 CLOUDEN, NIA (G); 42 BELLES, KAYLA (F);

Time	VISITORS: Northwestern	Score	Margin	HOME: Michigan St.
10:00				SUB OUT: MCCUTCHEON, TARYN
10:00				SUB IN: CLOUDEN, NIA
10:00	SUB OUT: SHAW, COURTNEY			
10:00	SUB OUT: GALERNIK, BYRDY			
10:00	SUB OUT: HAMILTON, JORDAN			
10:00	SUB IN: WOOD, SYDNEY			
10:00	SUB IN: BURTON, VERONICA			
10:00	SUB IN: WOLF, ABBIE			
09:39	GOOD! JUMPER by BURTON, VERONICA [PNT]	32-61	V 29	
09:25				TURNOVER (BADPASS) by OZMENT, TORY
09:25	STEAL by WOLF, ABBIE			
09:11	FOUL (OFF) by SCHEID, ABI			
09:11	TURNOVER (OFFENSIVE) by SCHEID, ABI			
09:03		34-61	V 27	GOOD! LAYUP by PARKS, TAIYIER [FB/PNT]
09:03				ASSIST by JOINER, MOIRA
08:39	MISSED 3PTR by BURTON, VERONICA			
08:35				REBOUND (DEF) by AYRAULT, JULIA
08:32				MISSED LAYUP by JOINER, MOIRA
08:32	BLOCK by BURTON, VERONICA			
08:27	REBOUND (DEF) by WOOD, SYDNEY			
08:24	GOOD! LAYUP by WOLF, ABBIE [FB]	34-63	V 29	
08:24	ASSIST by PULLIAM, LINDSEY			
08:09		37-63	V 26	GOOD! 3PTR by JOINER, MOIRA
08:09				ASSIST by AYRAULT, JULIA
07:46	GOOD! 3PTR by PULLIAM, LINDSEY	37-66	V 29	
07:46	ASSIST by WOLF, ABBIE			
07:24				MISSED 3PTR by CLOUDEN, NIA
07:21	REBOUND (DEF) by WOOD, SYDNEY			
07:12	TURNOVER (LOSTBALL) by WOOD, SYDNEY			
07:12				STEAL by PARKS, TAIYIER
06:53				TURNOVER (BADPASS) by JOINER, MOIRA
06:53	STEAL by BURTON, VERONICA			
06:47				SUB OUT: CLOUDEN, NIA
06:47				SUB OUT: AYRAULT, JULIA
06:47				SUB IN: WINSTON, ALYZA
06:47				SUB IN: HOLLIE, NIA
06:46				FOUL (PERSONAL) by JOINER, MOIRA
06:46				SUB OUT: OZMENT, TORY
06:46				SUB IN: HENDRICKSON, CLAIRE
06:46	MISSED FT by PULLIAM, LINDSEY			
06:46	REBOUND (OFF) by TEAM			
06:46	GOOD! FT by PULLIAM, LINDSEY	37-67	V 30	
06:34				MISSED JUMPER by JOINER, MOIRA
06:33	REBOUND (DEF) by PULLIAM, LINDSEY			
06:31				FOUL (PERSONAL) by PARKS, TAIYIER
06:26	MISSED LAYUP by BURTON, VERONICA			
06:26				BLOCK by PARKS, TAIYIER
06:24	REBOUND (OFF) by TEAM			
06:24	SUB OUT: SCHEID, ABI			
06:24	SUB IN: HAMILTON, JORDAN			
06:13	MISSED JUMPER by PULLIAM, LINDSEY			
06:09				REBOUND (DEF) by PARKS, TAIYIER
06:02		39-67	V 28	GOOD! LAYUP by HENDRICKSON, CLAIRE [PNT]
06:02				ASSIST by WINSTON, ALYZA
05:38	MISSED JUMPER by PULLIAM, LINDSEY			
05:35				REBOUND (DEF) by HOLLIE, NIA
05:31		42-67	V 25	GOOD! 3PTR by HENDRICKSON, CLAIRE [FB]
05:31				ASSIST by WINSTON, ALYZA
04:55	MISSED JUMPER by WOLF, ABBIE			
04:49	REBOUND (OFF) by WOOD, SYDNEY			
04:49	GOOD! LAYUP by WOOD, SYDNEY	42-69	V 27	
04:38				MISSED JUMPER by JOINER, MOIRA
04:37	REBOUND (DEF) by TEAM			
04:37				SUB OUT: PARKS, TAIYIER
04:37				SUB OUT: JOINER, MOIRA
04:37				SUB IN: OZMENT, TORY
04:37				SUB IN: BELLES, KAYLA
04:37	SUB OUT: BURTON, VERONICA			
04:37	SUB OUT: WOLF, ABBIE			

Time	VISITORS: Northwestern	Score	Margin	HOME: Michigan St.
04:37	SUB IN: SHAW, COURTNEY			
04:37	SUB IN: GALERNIK, BYRDY			
04:21	GOOD! JUMPER by GALERNIK, BYRDY	42-71	V 29	
04:10		45-71	V 26	GOOD! 3PTR by HENDRICKSON, CLAIRE
03:39	TURNOVER (BADPASS) by HAMILTON, JORDAN			
03:39				SUB OUT: HOLLIE, NIA
03:39				SUB IN: AYRAULT, JULIA
03:14				TURNOVER (LOSTBALL) by HENDRICKSON, CLAIRE
03:14	STEAL by GALERNIK, BYRDY			
02:56				FOUL (PERSONAL) by BELLES, KAYLA
02:56	SUB OUT: PULLIAM, LINDSEY			
02:56	SUB IN: HARTMAN, LAYA			
02:45	TURNOVER (BADPASS) by GALERNIK, BYRDY			
02:45	SUB OUT: WOOD, SYDNEY			
02:45	SUB IN: SANCATALDO, JESS			
02:29				MISSED 3PTR by AYRAULT, JULIA
02:25				REBOUND (OFF) by BELLES, KAYLA
02:24	FOUL (PERSONAL) by SHAW, COURTNEY			
02:24		46-71	V 25	GOOD! FT by BELLES, KAYLA
02:24				MISSED FT by BELLES, KAYLA
02:24	REBOUND (DEF) by HARTMAN, LAYA			
02:08	MISSED 3PTR by HAMILTON, JORDAN			
02:08				REBOUND (DEF) by TEAM
02:06				SUB OUT: OZMENT, TORY
02:06				SUB OUT: BELLES, KAYLA
02:06				SUB IN: JACQMAIN, LAUREL
02:06				SUB IN: DODD, CYDNI
02:06	SUB OUT: GALERNIK, BYRDY			
02:06	SUB OUT: HAMILTON, JORDAN			
02:06	SUB IN: RAINEY, KAYLAH			
02:06	SUB IN: SATTERWHITE, LAURYN			
01:57				TURNOVER (BADPASS) by WINSTON, ALYZA
01:57	STEAL by SANCATALDO, JESS			
01:53	GOOD! LAYUP by RAINEY, KAYLAH [FB]	46-73	V 27	
01:53	ASSIST by SANCATALDO, JESS			
01:32	FOUL (PERSONAL) by SHAW, COURTNEY			
01:32				MISSED FT by DODD, CYDNI
01:32				REBOUND (OFF) by TEAM
01:32				MISSED FT by DODD, CYDNI
01:31	REBOUND (DEF) by SHAW, COURTNEY			
01:21	MISSED JUMPER by HARTMAN, LAYA			
01:16	REBOUND (OFF) by TEAM			
01:16	MISSED 3PTR by HARTMAN, LAYA			
01:16				REBOUND (DEF) by DODD, CYDNI
01:03		48-73	V 25	GOOD! LAYUP by WINSTON, ALYZA
00:54	MISSED 3PTR by SANCATALDO, JESS			
00:51				REBOUND (DEF) by AYRAULT, JULIA
00:50				TURNOVER (BADPASS) by AYRAULT, JULIA
00:50	STEAL by RAINEY, KAYLAH			
00:40	GOOD! 3PTR by HARTMAN, LAYA	48-76	V 28	
00:40	ASSIST by RAINEY, KAYLAH			
00:21				TURNOVER (BADPASS) by JACQMAIN, LAUREL
00:21	STEAL by SHAW, COURTNEY			

### Northwestern 76, Michigan St. 48

Points from (This Period)	NWU	MSU
In the Paint	8	6
Off Turns	6	3
2nd Chance	2	1
Fast Break	4	5
Bench	7	12



**Official Scoring/Possession Reference Chart  
Northwestern vs Michigan St.  
Period 1  
January 23, 2020 at Breslin Events Center - East Lansing**



**Period 1**

**Starters:**

**Northwestern:** 3 WOOD, SYDNEY (G); 10 PULLIAM, LINDSEY (G); 12 BURTON, VERONICA (G); 21 WOLF, ABBIE (C); 44 SCHEID, ABI (C);

**Michigan St.:** 4 MCCUTCHEON, TARYN (G); 12 HOLLIE, NIA (F); 22 JOINER, MOIRA (G); 24 CLOUDEN, NIA (G); 42 BELLES, KAYLA (F);

Time	VISITORS: Northwestern	Score	Margin	HOME: Michigan St.
07:28		3-0	H 3	GOOD! 3PTR by JOINER, MOIRA
06:28	GOOD! LAYUP by WOLF, ABBIE	3-2	H 1	
05:43		5-2	H 3	GOOD! LAYUP by PARKS, TAIYER [FB]
04:14	GOOD! LAYUP by BURTON, VERONICA [FB]	5-4	H 1	
03:29	GOOD! LAYUP by WOLF, ABBIE	5-6	V 1	
03:17		7-6	H 1	GOOD! JUMPER by HOLLIE, NIA [PNT]
02:55	GOOD! FT by BURTON, VERONICA	7-7	T	
02:32	GOOD! JUMPER by PULLIAM, LINDSEY	7-9	V 2	
02:00	GOOD! 3PTR by BURTON, VERONICA	7-12	V 5	
01:16	GOOD! LAYUP by SHAW, COURTNEY [FB]	7-14	V 7	
00:44	GOOD! 3PTR by SCHEID, ABI	7-17	V 10	

**Northwestern 17, Michigan St. 7**

**Official Scoring/Possession Reference Chart  
Northwestern vs Michigan St.  
Period 2  
January 23, 2020 at Breslin Events Center - East Lansing**



**Period 2**

**Starters:**

**Northwestern:** 3 WOOD, SYDNEY (G); 10 PULLIAM, LINDSEY (G); 12 BURTON, VERONICA (G); 21 WOLF, ABBIE (C); 44 SCHEID, ABI (C);

**Michigan St.:** 4 MCCUTCHEON, TARYN (G); 12 HOLLIE, NIA (F); 22 JOINER, MOIRA (G); 24 CLOUDEN, NIA (G); 42 BELLES, KAYLA (F);

Time	VISITORS: Northwestern	Score	Margin	HOME: Michigan St.
08:56		10-17	V 7	GOOD! 3PTR by JOINER, MOIRA
08:35	GOOD! 3PTR by BURTON, VERONICA	10-20	V 10	
08:21		11-20	V 9	GOOD! FT by HOLLIE, NIA
08:21		12-20	V 8	GOOD! FT by HOLLIE, NIA
08:09	GOOD! JUMPER by PULLIAM, LINDSEY	12-22	V 10	
07:32	GOOD! JUMPER by PULLIAM, LINDSEY	12-24	V 12	
07:09		15-24	V 9	GOOD! 3PTR by AYRAULT, JULIA
05:59	GOOD! JUMPER by PULLIAM, LINDSEY [PNT]	15-26	V 11	
03:58	GOOD! JUMPER by PULLIAM, LINDSEY [FB]	15-28	V 13	
03:28		17-28	V 11	GOOD! LAYUP by PARKS, TAIYIER
02:34	GOOD! LAYUP by BURTON, VERONICA [FB/PNT]	17-30	V 13	
01:57	GOOD! LAYUP by WOLF, ABBIE [PNT]	17-32	V 15	
01:50		20-32	V 12	GOOD! 3PTR by JOINER, MOIRA [FB]
01:02		23-32	V 9	GOOD! 3PTR by JOINER, MOIRA
00:33	GOOD! FT by PULLIAM, LINDSEY	23-33	V 10	

**Northwestern 33, Michigan St. 23**

**Official Scoring/Possession Reference Chart  
Northwestern vs Michigan St.  
Period 3  
January 23, 2020 at Breslin Events Center - East Lansing**



**Period 3**

**Starters:**

**Northwestern:** 3 WOOD, SYDNEY (G); 10 PULLIAM, LINDSEY (G); 12 BURTON, VERONICA (G); 21 WOLF, ABBIE (C); 44 SCHEID, ABI (C);

**Michigan St.:** 4 MCCUTCHEON, TARYN (G); 12 HOLLIE, NIA (F); 22 JOINER, MOIRA (G); 24 CLOUDEN, NIA (G); 42 BELLES, KAYLA (F);

Time	VISITORS: Northwestern	Score	Margin	HOME: Michigan St.
09:10	GOOD! LAYUP by WOLF, ABBIE	23-35	V 12	
08:38	GOOD! LAYUP by WOLF, ABBIE	23-37	V 14	
07:59		25-37	V 12	GOOD! JUMPER by HOLLIE, NIA [FB]
07:44	GOOD! JUMPER by WOLF, ABBIE [PNT]	25-39	V 14	
06:32	GOOD! FT by PULLIAM, LINDSEY	25-40	V 15	
06:32	GOOD! FT by PULLIAM, LINDSEY	25-41	V 16	
05:47	GOOD! LAYUP by BURTON, VERONICA [FB]	25-43	V 18	
04:49	GOOD! FT by BURTON, VERONICA [FB]	25-44	V 19	
04:49	GOOD! FT by BURTON, VERONICA [FB]	25-45	V 20	
03:39	GOOD! LAYUP by BURTON, VERONICA [PNT]	25-47	V 22	
03:26		27-47	V 20	GOOD! JUMPER by JOINER, MOIRA [PNT]
02:42	GOOD! JUMPER by PULLIAM, LINDSEY	27-49	V 22	
02:42	GOOD! FT by PULLIAM, LINDSEY	27-50	V 23	
02:33		29-50	V 21	GOOD! JUMPER by OZMENT, TORY [PNT]
02:10		30-50	V 20	GOOD! FT by OZMENT, TORY [FB]
01:48	GOOD! LAYUP by BURTON, VERONICA [PNT]	30-52	V 22	
01:47	GOOD! FT by BURTON, VERONICA	30-53	V 23	
01:35	GOOD! LAYUP by PULLIAM, LINDSEY [FB]	30-55	V 25	
01:16	GOOD! FT by SCHEID, ABI [FB]	30-56	V 26	
01:16	GOOD! FT by SCHEID, ABI [FB]	30-57	V 27	
01:00		32-57	V 25	GOOD! LAYUP by OZMENT, TORY [PNT]
00:19	GOOD! LAYUP by HAMILTON, JORDAN [FB]	32-59	V 27	

**Northwestern 59, Michigan St. 32**

**Official Scoring/Possession Reference Chart  
Northwestern vs Michigan St.  
Period 4  
January 23, 2020 at Breslin Events Center - East Lansing**



**Period 4**

**Starters:**

**Northwestern:** 3 WOOD, SYDNEY (G); 10 PULLIAM, LINDSEY (G); 12 BURTON, VERONICA (G); 21 WOLF, ABBIE (C); 44 SCHEID, ABI (C);

**Michigan St.:** 4 MCCUTCHEON, TARYN (G); 12 HOLLIE, NIA (F); 22 JOINER, MOIRA (G); 24 CLOUDEN, NIA (G); 42 BELLES, KAYLA (F);

Time	VISITORS: Northwestern	Score	Margin	HOME: Michigan St.
09:39	GOOD! JUMPER by BURTON, VERONICA [PNT]	32-61	V 29	
09:03		34-61	V 27	GOOD! LAYUP by PARKS, TAIYER [FB/PNT]
08:24	GOOD! LAYUP by WOLF, ABBIE [FB]	34-63	V 29	
08:09		37-63	V 26	GOOD! 3PTR by JOINER, MOIRA
07:46	GOOD! 3PTR by PULLIAM, LINDSEY	37-66	V 29	
06:46	GOOD! FT by PULLIAM, LINDSEY	37-67	V 30	
06:02		39-67	V 28	GOOD! LAYUP by HENDRICKSON, CLAIRE [PNT]
05:31		42-67	V 25	GOOD! 3PTR by HENDRICKSON, CLAIRE [FB]
04:49	GOOD! LAYUP by WOOD, SYDNEY	42-69	V 27	
04:21	GOOD! JUMPER by GALERNIK, BYRDY	42-71	V 29	
04:10		45-71	V 26	GOOD! 3PTR by HENDRICKSON, CLAIRE
02:24		46-71	V 25	GOOD! FT by BELLES, KAYLA
01:53	GOOD! LAYUP by RAINEY, KAYLAH [FB]	46-73	V 27	
01:03		48-73	V 25	GOOD! LAYUP by WINSTON, ALYZA
00:40	GOOD! 3PTR by HARTMAN, LAYA	48-76	V 28	

**Northwestern 76, Michigan St. 48**

**Official Substitutions Log**  
**Northwestern vs Michigan St.**  
**Period 1**  
**January 23, 2020 at Breslin Events Center - East Lansing**



<b>VISITORS: Northwestern</b>	<b>Time</b>	<b>Score</b>	<b>HOME: Michigan St.</b>
3 WOOD, SYDNEY			4 MCCUTCHEON, TARYN
10 PULLIAM, LINDSEY			12 HOLLIE, NIA
12 BURTON, VERONICA			22 JOINER, MOIRA
21 WOLF, ABBIE			24 CLOUDEN, NIA
44 SCHEID, ABI			42 BELLES, KAYLA
	06:03	2-3	SUB OUT: BELLES, KAYLA
	06:03		SUB IN: PARKS, TAIYIER
	02:55	6-7	SUB OUT: HOLLIE, NIA
	02:55		SUB IN: COOK, MARDREKIA
SUB OUT: 3 WOOD, SYDNEY	02:55		
SUB OUT: 21 WOLF, ABBIE	02:55		
SUB IN: 15 SHAW, COURTNEY	02:55		
SUB IN: 24 HAMILTON, JORDAN	02:55		
	02:55		SUB OUT: JOINER, MOIRA
	02:55		SUB IN: OZMENT, TORY
	01:14	14-7	SUB OUT: PARKS, TAIYIER
	01:14		SUB OUT: CLOUDEN, NIA
	01:14		SUB IN: HOLLIE, NIA
	01:14		SUB IN: JOINER, MOIRA
SUB OUT: 12 BURTON, VERONICA	01:14		
SUB IN: 3 WOOD, SYDNEY	01:14		
	00:06	17-7	SUB OUT: OZMENT, TORY
	00:06		SUB IN: CLOUDEN, NIA

**Northwestern 17, Michigan St. 7**

**Official Substitutions Log**  
**Northwestern vs Michigan St.**  
**Period 2**  
**January 23, 2020 at Breslin Events Center - East Lansing**



VISITORS: Northwestern	Time	Score	HOME: Michigan St.
3 WOOD, SYDNEY			4 MCCUTCHEON, TARYN
10 PULLIAM, LINDSEY			12 HOLLIE, NIA
12 BURTON, VERONICA			22 JOINER, MOIRA
21 WOLF, ABBIE			24 CLOUDEN, NIA
44 SCHEID, ABI			42 BELLES, KAYLA
	10:00	-	SUB OUT: COOK, MARDREKIA
	10:00		SUB IN: AYRAULT, JULIA
SUB OUT: 10 PULLIAM, LINDSEY	10:00		
SUB IN: 12 BURTON, VERONICA	10:00		
SUB OUT: 15 SHAW, COURTNEY	08:21	20-10	
SUB IN: 21 WOLF, ABBIE	08:21		
	08:21		SUB OUT: HOLLIE, NIA
	08:21		SUB IN: PARKS, TAIYIER
SUB OUT: 24 HAMILTON, JORDAN	08:21		
SUB IN: 10 PULLIAM, LINDSEY	08:21		
	05:16	26-15	SUB OUT: AYRAULT, JULIA
	05:16		SUB IN: COOK, MARDREKIA
SUB OUT: 44 SCHEID, ABI	05:00	26-15	
SUB IN: 24 HAMILTON, JORDAN	05:00		
SUB OUT: 24 HAMILTON, JORDAN	04:06	26-15	
SUB IN: 44 SCHEID, ABI	04:06		
	03:09	28-17	SUB OUT: COOK, MARDREKIA
	03:09		SUB OUT: MCCUTCHEON, TARYN
	03:09		SUB IN: WINSTON, ALYZA
	03:09		SUB IN: AYRAULT, JULIA
	01:57	32-17	SUB OUT: WINSTON, ALYZA
	01:57		SUB OUT: AYRAULT, JULIA
	01:57		SUB IN: MCCUTCHEON, TARYN
	01:57		SUB IN: HOLLIE, NIA
SUB OUT: 12 BURTON, VERONICA	01:20	32-20	
SUB IN: 24 HAMILTON, JORDAN	01:20		
	00:33	33-23	SUB OUT: HOLLIE, NIA
	00:33		SUB IN: COOK, MARDREKIA

**Northwestern 33, Michigan St. 23**

**Official Substitutions Log**  
**Northwestern vs Michigan St.**  
**Period 3**  
**January 23, 2020 at Breslin Events Center - East Lansing**



VISITORS: Northwestern	Time	Score	HOME: Michigan St.
3 WOOD, SYDNEY			4 MCCUTCHEON, TARYN
10 PULLIAM, LINDSEY			12 HOLLIE, NIA
12 BURTON, VERONICA			22 JOINER, MOIRA
21 WOLF, ABBIE			24 CLOUDEN, NIA
44 SCHEID, ABI			42 BELLES, KAYLA
	10:00	-	SUB OUT: PARKS, TAIYIER
	10:00		SUB OUT: COOK, MARDREKIA
	10:00		SUB IN: HOLLIE, NIA
	10:00		SUB IN: BELLES, KAYLA
SUB OUT: 24 HAMILTON, JORDAN	10:00		
SUB IN: 12 BURTON, VERONICA	10:00		
	05:34	43-25	SUB OUT: MCCUTCHEON, TARYN
	05:34		SUB OUT: HOLLIE, NIA
	05:34		SUB IN: OZMENT, TORY
	05:34		SUB IN: COOK, MARDREKIA
SUB OUT: 3 WOOD, SYDNEY	04:49	43-25	
SUB OUT: 21 WOLF, ABBIE	04:49		
SUB IN: 15 SHAW, COURTNEY	04:49		
SUB IN: 24 HAMILTON, JORDAN	04:49		
	04:49		SUB OUT: CLOUDEN, NIA
	04:49		SUB IN: AYRAULT, JULIA
	02:56	47-27	SUB OUT: COOK, MARDREKIA
	02:56		SUB IN: MCCUTCHEON, TARYN
	02:50	47-27	SUB OUT: BELLES, KAYLA
	02:50		SUB IN: HOLLIE, NIA
	01:16	55-30	SUB OUT: HOLLIE, NIA
	01:16		SUB IN: PARKS, TAIYIER
SUB OUT: 12 BURTON, VERONICA	01:16		
SUB IN: 22 GALERNIK, BYRDY	01:16		

**Northwestern 59, Michigan St. 32**

**Official Substitutions Log**  
**Northwestern vs Michigan St.**  
**Period 4**  
**January 23, 2020 at Breslin Events Center - East Lansing**



VISITORS: Northwestern	Time	Score	HOME: Michigan St.
3 WOOD, SYDNEY			4 MCCUTCHEON, TARYN
10 PULLIAM, LINDSEY			12 HOLLIE, NIA
12 BURTON, VERONICA			22 JOINER, MOIRA
21 WOLF, ABBIE			24 CLOUDEN, NIA
44 SCHEID, ABI			42 BELLES, KAYLA
	10:00	-	SUB OUT: MCCUTCHEON, TARYN
	10:00		SUB IN: CLOUDEN, NIA
SUB OUT: 15 SHAW, COURTNEY	10:00		
SUB OUT: 22 GALERNIK, BYRDY	10:00		
SUB OUT: 24 HAMILTON, JORDAN	10:00		
SUB IN: 3 WOOD, SYDNEY	10:00		
SUB IN: 12 BURTON, VERONICA	10:00		
SUB IN: 21 WOLF, ABBIE	10:00		
	06:47	66-37	SUB OUT: CLOUDEN, NIA
	06:47		SUB OUT: AYRAULT, JULIA
	06:47		SUB IN: WINSTON, ALYZA
	06:47		SUB IN: HOLLIE, NIA
	06:46	66-37	SUB OUT: OZMENT, TORY
	06:46		SUB IN: HENDRICKSON, CLAIRE
SUB OUT: 44 SCHEID, ABI	06:24	67-37	
SUB IN: 24 HAMILTON, JORDAN	06:24		
	04:37	69-42	SUB OUT: PARKS, TAIYIER
	04:37		SUB OUT: JOINER, MOIRA
	04:37		SUB IN: OZMENT, TORY
	04:37		SUB IN: BELLES, KAYLA
SUB OUT: 12 BURTON, VERONICA	04:37		
SUB OUT: 21 WOLF, ABBIE	04:37		
SUB IN: 15 SHAW, COURTNEY	04:37		
SUB IN: 22 GALERNIK, BYRDY	04:37		
	03:39	71-45	SUB OUT: HOLLIE, NIA
	03:39		SUB IN: AYRAULT, JULIA
SUB OUT: 10 PULLIAM, LINDSEY	02:56	71-45	
SUB IN: 33 HARTMAN, LAYA	02:56		
SUB OUT: 3 WOOD, SYDNEY	02:45	71-45	
SUB IN: 0 SANCATALDO, JESS	02:45		
	02:06	71-46	SUB OUT: OZMENT, TORY
	02:06		SUB OUT: BELLES, KAYLA
	02:06		SUB IN: JACQMAIN, LAUREL
	02:06		SUB IN: DODD, CYDNI
SUB OUT: 22 GALERNIK, BYRDY	02:06		
SUB OUT: 24 HAMILTON, JORDAN	02:06		
SUB IN: 1 RAINEY, KAYLAH	02:06		
SUB IN: 2 SATTERWHITE, LAURYN	02:06		

**Northwestern 76, Michigan St. 48**

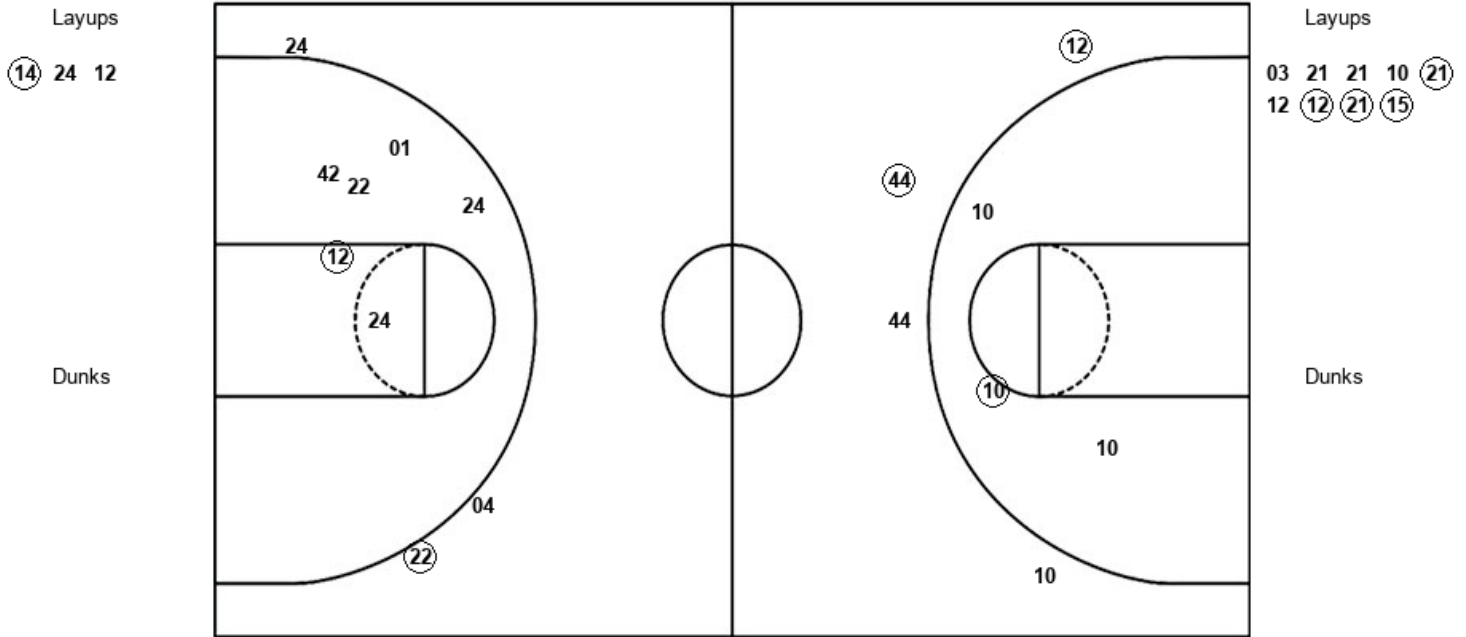


**Official Shot Chart**  
**Northwestern vs Michigan St.**  
**PERIOD 1 Shots**  
 January 23, 2020 at Breslin Events Center - East Lansing



**Michigan St.**

**Northwestern**



MSU : Period 1	Made	Att	Pct
Layups	1	3	33.3
Dunks	0	0	0
2PT Field Goals	2	9	22.2
3PT Field Goals	1	3	33.3
<b>Total Field Goals</b>	<b>3</b>	<b>12</b>	<b>25.0</b>

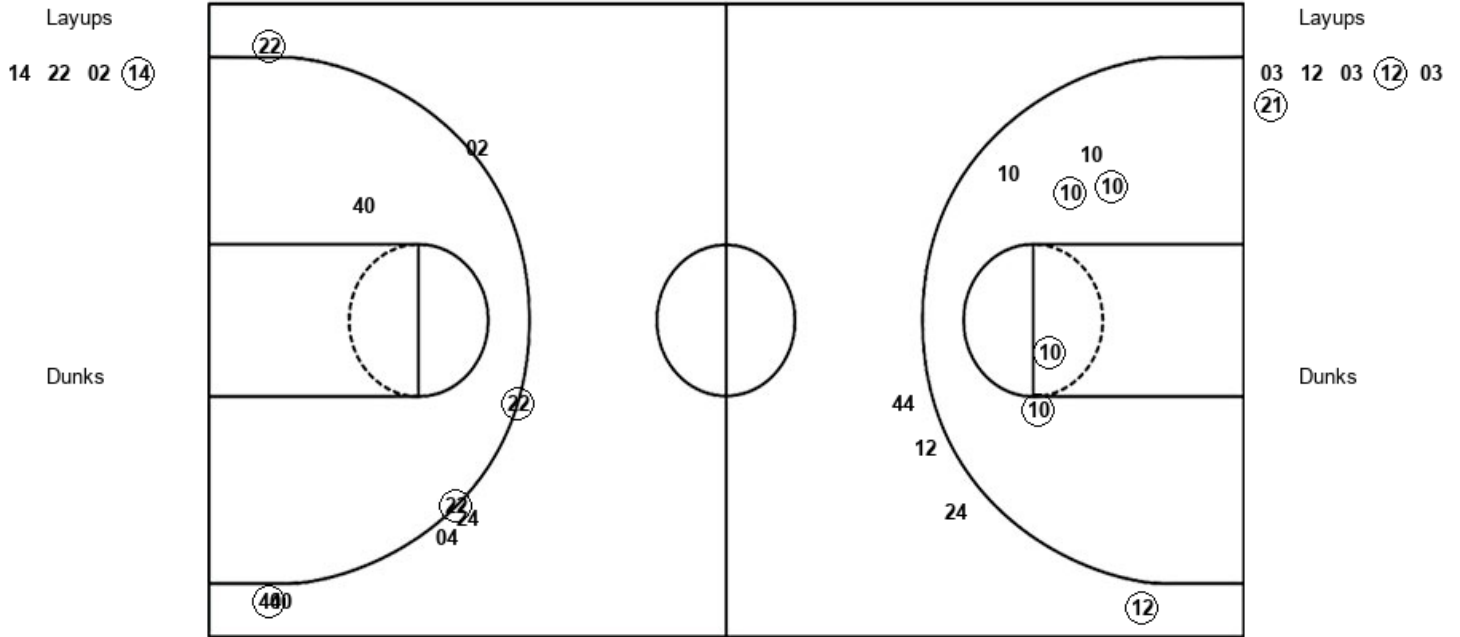
NWU : Period 1	Made	Att	Pct
Layups	4	9	44.4
Dunks	0	0	0
2PT Field Goals	5	12	41.7
3PT Field Goals	2	4	50.0
<b>Total Field Goals</b>	<b>7</b>	<b>16</b>	<b>43.8</b>

**Official Shot Chart**  
**Northwestern vs Michigan St.**  
**PERIOD 2 Shots**  
 January 23, 2020 at Breslin Events Center - East Lansing



**Michigan St.**

**Northwestern**



<b>MSU : Period 2</b>	<b>Made</b>	<b>Att</b>	<b>Pct</b>
Layups	1	4	25.0
Dunks	0	0	0
2PT Field Goals	1	5	20.0
3PT Field Goals	4	8	50.0
<b>Total Field Goals</b>	<b>5</b>	<b>13</b>	<b>38.5</b>

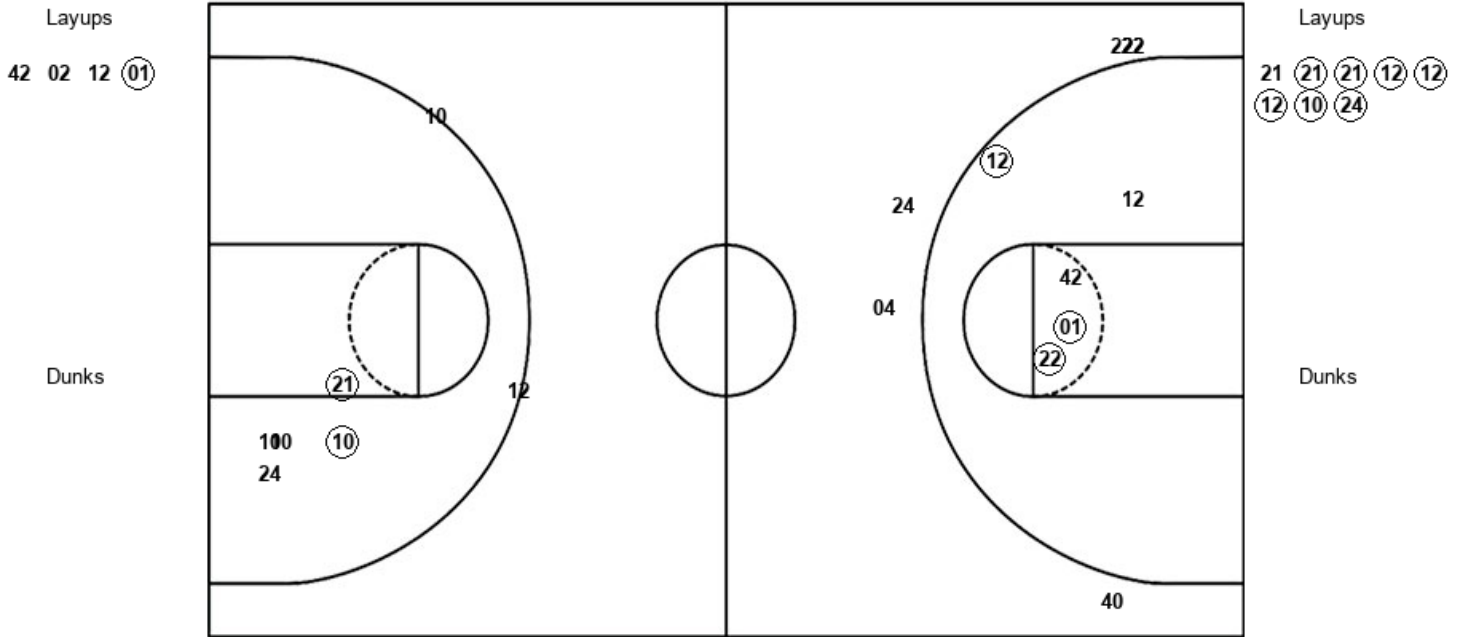
<b>NWU : Period 2</b>	<b>Made</b>	<b>Att</b>	<b>Pct</b>
Layups	2	6	33.3
Dunks	0	0	0
2PT Field Goals	6	12	50.0
3PT Field Goals	1	4	25.0
<b>Total Field Goals</b>	<b>7</b>	<b>16</b>	<b>43.8</b>

**Official Shot Chart**  
**Northwestern vs Michigan St.**  
**PERIOD 3 Shots**  
 January 23, 2020 at Breslin Events Center - East Lansing



**Michigan St.**

**Northwestern**



<b>MSU : Period 3</b>	<b>Made</b>	<b>Att</b>	<b>Pct</b>
Layups	1	4	25.0
Dunks	0	0	0
2PT Field Goals	4	9	44.4
3PT Field Goals	0	6	00.0
<b>Total Field Goals</b>	<b>4</b>	<b>15</b>	<b>26.7</b>

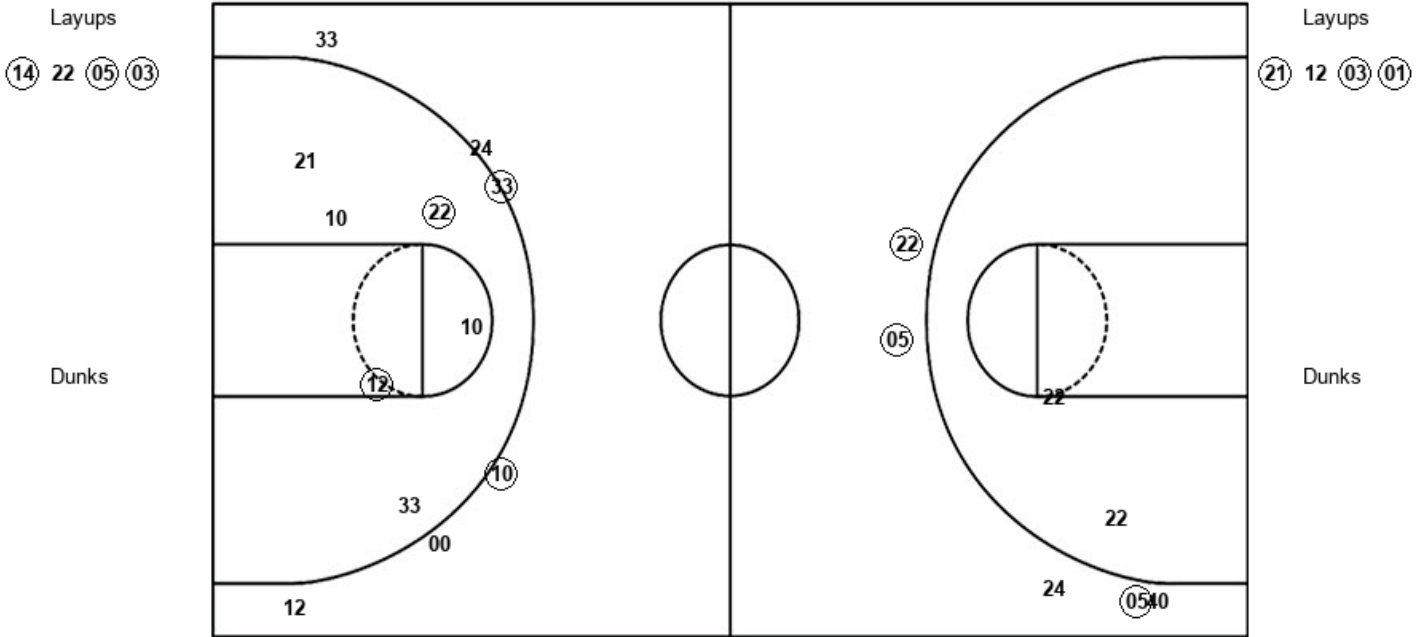
<b>NWU : Period 3</b>	<b>Made</b>	<b>Att</b>	<b>Pct</b>
Layups	7	8	87.5
Dunks	0	0	0
2PT Field Goals	9	13	69.2
3PT Field Goals	0	2	00.0
<b>Total Field Goals</b>	<b>9</b>	<b>15</b>	<b>60.0</b>

**Official Shot Chart**  
**Northwestern vs Michigan St.**  
**PERIOD 4 Shots**  
 January 23, 2020 at Breslin Events Center - East Lansing



**Michigan St.**

**Northwestern**



<b>MSU : Period 4</b>	<b>Made</b>	<b>Att</b>	<b>Pct</b>
Layups	3	4	75.0
Dunks	0	0	0
2PT Field Goals	3	6	50.0
3PT Field Goals	3	5	60.0
<b>Total Field Goals</b>	<b>6</b>	<b>11</b>	<b>54.5</b>

<b>NWU : Period 4</b>	<b>Made</b>	<b>Att</b>	<b>Pct</b>
Layups	3	4	75.0
Dunks	0	0	0
2PT Field Goals	5	10	50.0
3PT Field Goals	2	6	33.3
<b>Total Field Goals</b>	<b>7</b>	<b>16</b>	<b>43.8</b>



