

FINAL SCORE



Ole Miss

43



Auburn

59

January 23, 2020 • Auburn Arena - Auburn

FINAL STATISTICS

Official Box Score
Ole Miss vs Auburn
Game Totals -- Final Statistics
January 23, 2020 at Auburn Arena - Auburn



Ole Miss 43

No.	Player	S	Pts	FG	3FG	FT	OR	DR	TR	PF	A	TO	Blk	Stl	Min	+/-
02	REID, MIMI	G	3	1-6	0-3	1-2	1	3	4	2	6	1	0	2	34	-7
11	RANKIN, TOOTIE	G	4	2-5	0-0	0-0	2	1	3	2	1	1	0	0	23	-21
20	ALEXANDER, JAYLA	G	8	3-10	2-6	0-0	1	5	6	2	1	1	0	2	32	-16
32	KITCHENS, IYANLA	F	4	2-4	0-0	0-0	3	3	6	4	0	4	1	1	28	-1
44	LEWIS, TORRI	G	3	1-7	1-7	0-0	1	3	4	0	1	1	0	1	14	-1
13	BANKS, DOMINIQUE	F	2	1-4	0-0	0-0	2	4	6	3	0	2	0	1	12	-15
21	SMITH, TAYLOR	G	7	3-11	0-2	1-2	0	3	3	0	0	2	0	3	31	-15
25	PARKER, BRYN	G	0	0-1	0-0	0-0	0	0	0	0	0	2	0	0	9	-3
31	CAGE, DEJA	G	12	4-14	4-11	0-0	0	1	1	0	0	3	0	2	19	-1
	TEAM						0	4	4	0		1				
TOTALS			43	17-62	7-29	2-4	10	27	37	13	9	18	1	12	200	

Shooting By Period

Period	FG	FG%	3FG	3FG%	FT	FT%
1st Qtr	7-17	41%	4-10	40%	0-0	0%
2nd Qtr	1-14	07%	0-6	00%	0-0	0%
3rd Qtr	5-16	31%	3-6	50%	1-2	50%
4th Qtr	4-15	27%	0-7	00%	1-2	50%
1st Half	8-31	26%	4-16	25%	0-0	0%
2nd Half	9-31	29%	3-13	23%	2-4	50%
Game	17-62	27.4%	7-29	24.1%	2-4	50.0%

Deadball Rebounds: 1,0

Last FG: 4th-00:08

Biggest Run: 8-0

Largest lead: By 6 at 1st-02:05

Technical Fouls: None.

Auburn 59

No.	Player	S	Pts	FG	3FG	FT	OR	DR	TR	PF	A	TO	Blk	Stl	Min	+/-
00	ALEXANDER, DAISA	G	7	2-10	1-4	2-3	3	7	10	1	3	3	1	2	33	15
01	BENTON, ROBYN	G	17	5-13	3-8	4-4	4	2	6	1	3	1	0	2	30	16
05	MOORE, BROOKE	G	10	4-12	2-4	0-0	3	1	4	0	1	0	0	2	23	10
20	THOMPSON, UNIQUE	F	10	3-10	0-0	4-4	5	8	13	1	1	2	0	0	27	9
24	HOWARD, ERIN	F	3	1-6	0-4	1-2	1	4	5	2	1	3	0	2	29	14
02	WELLS, SANIA	G	0	0-1	0-0	0-0	0	0	0	0	0	1	0	0	3	-1
03	HUGHES, ANNIE	G	0	0-2	0-2	0-0	0	1	1	0	0	1	0	0	6	4
10	WHITE, KIYAE'	F	5	2-3	0-0	1-2	3	6	9	2	0	0	0	1	25	6
13	HANSEN, LAUREN	G	7	3-8	1-5	0-0	0	1	1	2	1	3	0	3	17	5
30	ROBINSON-NWAGWU, MORG	G	0	0-1	0-0	0-0	0	1	1	0	1	2	0	0	7	2
	TEAM						0	5	5	0		1				
TOTALS			59	20-66	7-27	12-15	19	36	55	9	11	17	1	12	200	

Shooting By Period

Period	FG	FG%	3FG	3FG%	FT	FT%
1st Qtr	5-15	33%	2-6	33%	5-6	83%
2nd Qtr	2-18	11%	0-8	00%	0-0	0%
3rd Qtr	6-14	43%	2-6	33%	3-4	75%
4th Qtr	7-19	37%	3-7	43%	4-5	80%
1st Half	7-33	21%	2-14	14%	5-6	83%
2nd Half	13-33	39%	5-13	38%	7-9	78%
Game	20-66	30.3%	7-27	25.9%	12-15	80.0%

Deadball Rebounds: 3,0

Last FG: 4th-02:28

Biggest Run: 12-0

Largest lead: By 19 at 4th-01:30

Technical Fouls: None.

Game Notes:

Officials: **Beverly Roberts, Amy Bonner, Laura Morris**

Attendance: **1483**

Start Time: **07:02 PM ET**

End Time: **08:49 PM ET**

Game Duration: **1:46**

Conference Game;

Score	1st	2nd	3rd	4th	TOT
MIS	18	2	14	9	43
AUB	17	4	17	21	59

MIS led for 8:04. AUB led for 30:40.

Game was tied for 1:16.

Times tied: **1** Lead Changes: **5**

Points from	MIS	AUB
In the Paint	14	16
Off Turns	15	14
2nd Chance	11	8
Fast Break	3	12
Bench	21	12

Official Box Score
Ole Miss vs Auburn
First Half Statistics Only
January 23, 2020 at Auburn Arena - Auburn



Ole Miss 20

No.	Player	S	Pts	FG	3FG	FT	OR	DR	TR	PF	A	TO	Blk	Stl	Min	+/-
02	REID, MIMI	G	0	0-3	0-2	0-0	0	1	1	0	3	0	0	0	16	4
11	RANKIN, TOOTIE	G	2	1-3	0-0	0-0	1	0	1	1	0	1	0	0	11	-7
13	BANKS, DOMINIQUE	F	0	0-0	0-0	0-0	0	0	0	2	0	0	0	1	3	0
20	ALEXANDER, JAYLA	G	6	2-5	2-5	0-0	0	4	4	1	1	1	0	1	16	-3
21	SMITH, TAYLOR	G	2	1-4	0-1	0-0	0	1	1	0	0	0	0	3	13	-1
25	PARKER, BRYN	G	0	0-1	0-0	0-0	0	0	0	0	0	2	0	0	6	-2
31	CAGE, DEJA	G	3	1-5	1-2	0-0	0	1	1	0	0	2	0	1	8	3
32	KITCHENS, IYANLA	F	4	2-4	0-0	0-0	2	0	2	1	0	2	1	1	17	-1
44	LEWIS, TORRI	G	3	1-6	1-6	0-0	1	3	4	0	0	1	0	1	10	2
	TEAM		0	0-0	0-0	0-0	0	2	2	0	0	0	0	0	0	
TOTALS			20	8-31	4-16	0-0	4	12	16	5	4	9	1	8	100	

Shooting By Period

Period	FG	FG%	3FG	3FG%	FT	FT%
1st Qtr	7-17	41%	4-10	40%	0-0	0%
2nd Qtr	1-14	07%	0-6	00%	0-0	0%
1st Half	8-31	26%	4-16	25%	0-0	0%
Game	17-62	27.4%	7-29	24.1%	2-4	50.0%

Deadball Rebounds: 1,0

Last FG Half: MIS 2nd-00:55

Auburn 21

No.	Player	S	Pts	FG	3FG	FT	OR	DR	TR	PF	A	TO	Blk	Stl	Min	+/-
00	ALEXANDER, DAISA	G	2	1-5	0-2	0-0	2	5	7	0	3	2	0	1	17	1
02	WELLS, SANIA	G	0	0-0	0-0	0-0	0	0	0	0	0	0	0	0	2	2
03	HUGHES, ANNIE	G	0	0-2	0-2	0-0	0	0	0	0	0	1	0	0	4	-2
05	MOORE, BROOKE	G	0	0-3	0-0	0-0	3	1	4	0	1	0	0	2	11	2
10	WHITE, KIYAE'	F	3	1-2	0-0	1-2	1	2	3	0	0	0	0	1	10	-3
13	HANSEN, LAUREN	G	2	1-4	0-2	0-0	0	1	1	0	0	2	0	1	9	-1
20	THOMPSON, UNIQUE	F	6	2-7	0-0	2-2	4	4	8	1	0	2	0	0	13	3
24	HOWARD, ERIN	F	0	0-2	0-2	0-0	0	3	3	0	1	2	0	2	17	2
30	ROBINSON-NWAGWU, MORGAN	G	0	0-0	0-0	0-0	0	0	0	0	1	1	0	0	3	0
01	BENTON, ROBYN	G	8	2-8	2-6	2-2	3	0	3	0	0	1	0	1	14	1
	TEAM		0	0-0	0-0	0-0	0	3	3	0	0	1	0	0	0	
TOTALS			21	7-33	2-14	5-6	13	19	32	1	6	12	0	8	100	

Shooting By Period

Period	FG	FG%	3FG	3FG%	FT	FT%
1st Qtr	5-15	33%	2-6	33%	5-6	83%
2nd Qtr	2-18	11%	0-8	00%	0-0	0%
1st Half	7-33	21%	2-14	14%	5-6	83%
Game	20-66	30.3%	7-27	25.9%	12-15	80.0%

Deadball Rebounds: 3,0

Last FG Half: AUB 2nd-02:01

Game Notes:

Officials: Beverly Roberts, Amy Bonner, Laura Morris
Attendance: 1483

Start Time: 07:02 PM ET

End Time: 08:49 PM ET

Game Duration: 1:46

Conference Game;

Score	1st	2nd	3rd	4th	TOT
MIS	18	2	14	9	43
AUB	17	4	17	21	59

Points from (This Period)	MIS	AUB
In the Paint	8	4
Off Turns	10	4
2nd Chance	5	3
Fast Break	3	4
Bench	5	5

Official Box Score
Ole Miss vs Auburn
First Quarter Statistics Only
January 23, 2020 at Auburn Arena - Auburn



Ole Miss 18

No.	Player	S	Pts	FG	3FG	FT	OR	DR	TR	PF	A	TO	Blk	Stl	Min	+/-
02	REID, MIMI	G	0	0-1	0-1	0-0	0	1	1	0	2	0	0	0	8	4
11	RANKIN, TOOTIE	G	2	1-2	0-0	0-0	1	0	1	1	0	0	0	0	6	-3
20	ALEXANDER, JAYLA	G	6	2-3	2-3	0-0	0	1	1	1	1	1	0	1	7	1
32	KITCHENS, IYANLA	F	2	1-2	0-0	0-0	2	0	2	1	0	1	1	1	9	-1
44	LEWIS, TORRI	G	3	1-4	1-4	0-0	0	2	2	0	0	1	0	1	7	2
13	BANKS, DOMINIQUE	F	0	0-0	0-0	0-0	0	0	0	2	0	0	0	0	1	2
21	SMITH, TAYLOR	G	2	1-3	0-1	0-0	0	0	0	0	0	0	0	2	6	-1
25	PARKER, BRYN	G	0	0-0	0-0	0-0	0	0	0	0	0	1	0	0	1	0
31	CAGE, DEJA	G	3	1-2	1-1	0-0	0	0	0	0	0	2	0	0	5	1
	TEAM						0	0	0	0		0				
TOTALS			18	7-17	4-10	0-0	3	4	7	5	3	6	1	5	50	

Shooting By Period

Period	FG	FG%	3FG	3FG%	FT	FT%
1st Qtr	7-17	41%	4-10	40%	0-0	0%
2nd Qtr	1-14	07%	0-6	00%	0-0	0%
1st Half	7-17	41%	4-10	40%	0-0	0%
1st Half	8-31	26%	4-16	25%	0-0	0%
Game	17-62	27.4%	7-29	24.1%	2-4	50.0%

Deadball Rebounds: 1,0

Auburn 17

No.	Player	S	Pts	FG	3FG	FT	OR	DR	TR	PF	A	TO	Blk	Stl	Min	+/-
00	ALEXANDER, DAISA	G	2	1-3	0-1	0-0	0	3	3	0	2	1	0	1	7	-1
01	BENTON, ROBYN	G	8	2-6	2-4	2-2	1	0	1	0	0	0	0	1	9	1
05	MOORE, BROOKE	G	0	0-1	0-0	0-0	1	0	1	0	0	0	0	1	5	0
20	THOMPSON, UNIQUE	F	4	1-2	0-0	2-2	3	2	5	1	0	1	0	0	7	1
24	HOWARD, ERIN	F	0	0-1	0-1	0-0	0	0	0	0	1	2	0	1	7	0
02	WELLS, SANIA	G	0	0-0	0-0	0-0	0	0	0	0	0	0	0	0	0	0
03	HUGHES, ANNIE	G	0	0-0	0-0	0-0	0	0	0	0	0	0	0	0	1	-2
10	WHITE, KIYAE'	F	3	1-1	0-0	1-2	1	0	1	0	0	0	0	1	6	-3
13	HANSEN, LAUREN	G	0	0-1	0-0	0-0	0	0	0	0	0	2	0	1	5	-1
30	ROBINSON-NWAGWU, MORG	G	0	0-0	0-0	0-0	0	0	0	0	1	1	0	0	3	0
	TEAM						0	2	2	0		0				
TOTALS			17	5-15	2-6	5-6	6	7	13	1	4	7	0	6	50	

Shooting By Period

Period	FG	FG%	3FG	3FG%	FT	FT%
1st Qtr	5-15	33%	2-6	33%	5-6	83%
2nd Qtr	2-18	11%	0-8	00%	0-0	0%
1st Half	5-15	33%	2-6	33%	5-6	83%
1st Half	7-33	21%	2-14	14%	5-6	83%
Game	20-66	30.3%	7-27	25.9%	12-15	80.0%

Deadball Rebounds: 3,0

Game Notes:

Officials: Beverly Roberts,Amy Bonner,Laura Morris
Attendance: 1483

Start Time: 07:02 PM ET
End Time: 08:49 PM ET
Game Duration: 1:46
Conference Game;

Score	1st	2nd	3rd	4th	TOT
MIS	18	2	14	9	43
AUB	17	4	17	21	59

Points from (This Period)	MIS	AUB
In the Paint	6	2
Off Turns	10	2
2nd Chance	5	1
Fast Break	3	2
Bench	5	3

**Official Play-By-Play
Ole Miss vs Auburn
First Quarter
January 23, 2020 at Auburn Arena - Auburn**



Period 1

Starters:

Ole Miss: 2 REID,MIMI (G); 11 RANKIN,TOOTIE (G); 20 ALEXANDER,JAYLA (G); 32 KITCHENS,IYANLA (F); 44 LEWIS,TORRI (G);

Auburn: 00 ALEXANDER,DAISA (G); 5 MOORE,BROOKE (G); 20 THOMPSON,UNIQUE (F); 24 HOWARD,ERIN (F); 1 BENTON,ROBYN (G);

Time	VISITORS: Ole Miss	Score	Margin	HOME: Auburn
09:42				FOUL (PERSONAL) by THOMPSON, UNIQUE
09:28	GOOD! 3PTR by LEWIS, TORRI	0-3	V 3	
09:28	ASSIST by ALEXANDER, JAYLA			
09:00		3-3	T	GOOD! 3PTR by BENTON, ROBYN
09:00				ASSIST by HOWARD, ERIN
08:42	MISSED 3PTR by LEWIS, TORRI			
08:40				REBOUND (DEF) by TEAM
08:40				SUB OUT: THOMPSON, UNIQUE
08:40				SUB IN: WHITE, KIYAE'
08:16		5-3	H 2	GOOD! JUMPER by ALEXANDER, DAISA
07:59	TURNOVER (BADPASS) by LEWIS, TORRI			
07:59				STEAL by MOORE, BROOKE
07:50				MISSED 3PTR by BENTON, ROBYN
07:46	REBOUND (DEF) by REID, MIMI			
07:34	MISSED 3PTR by LEWIS, TORRI			
07:29				REBOUND (DEF) by ALEXANDER, DAISA
07:25		7-3	H 4	GOOD! LAYUP by WHITE, KIYAE' [FB]
07:25				ASSIST by ALEXANDER, DAISA
07:11	MISSED 3PTR by ALEXANDER, JAYLA			
07:07	REBOUND (OFF) by RANKIN, TOOTIE			
06:54	MISSED JUMPER by RANKIN, TOOTIE			
06:49				REBOUND (DEF) by ALEXANDER, DAISA
06:46				TURNOVER (BADPASS) by ALEXANDER, DAISA
06:46	STEAL by LEWIS, TORRI			
06:38	GOOD! 3PTR by ALEXANDER, JAYLA [FB]	7-6	H 1	
06:38	ASSIST by REID, MIMI			
06:20				MISSED JUMPER by MOORE, BROOKE
06:20	BLOCK by KITCHENS, IYANLA			
06:13	REBOUND (DEF) by ALEXANDER, JAYLA			
06:06	GOOD! 3PTR by ALEXANDER, JAYLA	7-9	V 2	
06:06	ASSIST by REID, MIMI			
05:47				MISSED 3PTR by HOWARD, ERIN
05:42	REBOUND (DEF) by LEWIS, TORRI			
05:35	MISSED 3PTR by LEWIS, TORRI			
05:32				REBOUND (DEF) by TEAM
05:32				SUB OUT: MOORE, BROOKE
05:32				SUB OUT: HOWARD, ERIN
05:32				SUB IN: HANSEN, LAUREN
05:32				SUB IN: THOMPSON, UNIQUE
05:32	SUB OUT: RANKIN, TOOTIE			
05:32	SUB OUT: KITCHENS, IYANLA			
05:32	SUB OUT: LEWIS, TORRI			
05:32	SUB IN: BANKS, DOMINIQUE			
05:32	SUB IN: SMITH, TAYLOR			
05:32	SUB IN: CAGE, DEJA			
05:19	FOUL (PERSONAL) by ALEXANDER, JAYLA			
05:19				SUB OUT: BENTON, ROBYN
05:19				SUB IN: HUGHES, ANNIE
05:16				MISSED JUMPER by ALEXANDER, DAISA
05:12				REBOUND (OFF) by THOMPSON, UNIQUE
05:09				TURNOVER (TRAVEL) by THOMPSON, UNIQUE
04:58	GOOD! LAYUP by SMITH, TAYLOR	7-11	V 4	
04:37	FOUL (PERSONAL) by BANKS, DOMINIQUE			
04:37				
04:37	SUB OUT: REID, MIMI			
04:37	SUB IN: RANKIN, TOOTIE			
04:35				MISSED JUMPER by HANSEN, LAUREN
04:34				REBOUND (OFF) by WHITE, KIYAE'
04:34	FOUL (PERSONAL) by BANKS, DOMINIQUE			
04:32				SUB OUT: HUGHES, ANNIE
04:32				SUB IN: BENTON, ROBYN
04:32	SUB OUT: BANKS, DOMINIQUE			
04:32	SUB IN: KITCHENS, IYANLA			
04:32				MISSED FT by WHITE, KIYAE'
04:32				REBOUND (OFF) by TEAM
04:32		8-11	V 3	GOOD! FT by WHITE, KIYAE'
04:18	MISSED JUMPER by SMITH, TAYLOR			
04:11				REBOUND (DEF) by ALEXANDER, DAISA
04:07		10-11	V 1	GOOD! JUMPER by THOMPSON, UNIQUE
04:07				ASSIST by ALEXANDER, DAISA

Time	VISITORS: Ole Miss	Score	Margin	HOME: Auburn
03:47	GOOD! LAYUP by RANKIN, TOOTIE	10-13	V 3	
03:32				TURNOVER (BADPASS) by HANSEN, LAUREN
03:32	STEAL by ALEXANDER, JAYLA			
03:25	TURNOVER (LOSTBALL) by ALEXANDER, JAYLA			
03:25				STEAL by HANSEN, LAUREN
03:25	FOUL (PERSONAL) by RANKIN, TOOTIE			
03:25				SUB OUT: ALEXANDER, DAISA
03:25				SUB IN: ROBINSON-NWAGWU, MORGAN
03:25	SUB OUT: ALEXANDER, JAYLA			
03:25	SUB IN: REID, MIMI			
03:25		11-13	V 2	GOOD! FT by BENTON, ROBYN
03:25		12-13	V 1	GOOD! FT by BENTON, ROBYN
03:25	SUB OUT: RANKIN, TOOTIE			
03:25	SUB IN: PARKER, BRYN			
03:13	TURNOVER (LOSTBALL) by PARKER, BRYN			
03:13				STEAL by WHITE, KIYAE'
03:00				TURNOVER (BADPASS) by ROBINSON-NWAGWU, MORGAN
03:00	STEAL by KITCHENS, IYANLA			
02:48	MISSED 3PTR by SMITH, TAYLOR			
02:44	REBOUND (OFF) by KITCHENS, IYANLA			
02:42	GOOD! LAYUP by KITCHENS, IYANLA	12-15	V 3	
02:35				MISSED JUMPER by BENTON, ROBYN
02:31				REBOUND (OFF) by THOMPSON, UNIQUE
02:27				TURNOVER (BADPASS) by HANSEN, LAUREN
02:27				SUB OUT: WHITE, KIYAE'
02:27				SUB IN: HOWARD, ERIN
02:27	SUB OUT: PARKER, BRYN			
02:27	SUB IN: LEWIS, TORRI			
02:12	MISSED 3PTR by REID, MIMI			
02:08	REBOUND (OFF) by KITCHENS, IYANLA			
02:05	GOOD! 3PTR by CAGE, DEJA	12-18	V 6	
01:45				TURNOVER (LOSTBALL) by HOWARD, ERIN
01:45	STEAL by SMITH, TAYLOR			
01:36	TURNOVER (BADPASS) by CAGE, DEJA			
01:36				STEAL by BENTON, ROBYN
01:28				MISSED JUMPER by BENTON, ROBYN
01:25				REBOUND (OFF) by THOMPSON, UNIQUE
01:23				MISSED LAYUP by THOMPSON, UNIQUE
01:19	REBOUND (DEF) by LEWIS, TORRI			
01:10	MISSED LAYUP by CAGE, DEJA			
01:06				REBOUND (DEF) by THOMPSON, UNIQUE
01:02		15-18	V 3	GOOD! 3PTR by BENTON, ROBYN
01:02				ASSIST by ROBINSON-NWAGWU, MORGAN
00:53	TURNOVER (LOSTBALL) by CAGE, DEJA			
00:53				STEAL by HOWARD, ERIN
00:47				TURNOVER (BADPASS) by HOWARD, ERIN
00:47	STEAL by SMITH, TAYLOR			
00:23	MISSED LAYUP by KITCHENS, IYANLA			
00:23				REBOUND (DEF) by THOMPSON, UNIQUE
00:23	FOUL (PERSONAL) by KITCHENS, IYANLA			
00:23				SUB OUT: HANSEN, LAUREN
00:23				SUB OUT: ROBINSON-NWAGWU, MORGAN
00:23				SUB IN: ALEXANDER, DAISA
00:23				SUB IN: MOORE, BROOKE
00:23	SUB OUT: REID, MIMI			
00:23	SUB OUT: CAGE, DEJA			
00:23	SUB OUT: LEWIS, TORRI			
00:23	SUB IN: RANKIN, TOOTIE			
00:23	SUB IN: ALEXANDER, JAYLA			
00:23	SUB IN: PARKER, BRYN			
00:23		16-18	V 2	GOOD! FT by THOMPSON, UNIQUE
00:23		17-18	V 1	GOOD! FT by THOMPSON, UNIQUE
00:11	TURNOVER (LOSTBALL) by KITCHENS, IYANLA			
00:11				STEAL by ALEXANDER, DAISA
00:03				MISSED 3PTR by BENTON, ROBYN
00:00				MISSED 3PTR by ALEXANDER, DAISA
00:00				REBOUND (OFF) by BENTON, ROBYN
00:00				REBOUND (OFF) by MOORE, BROOKE

Ole Miss 18, Auburn 17

Points from (This Period)	MIS	AUB
In the Paint	6	2
Off Turns	10	2
2nd Chance	5	1
Fast Break	3	2
Bench	5	3

Official Box Score
Ole Miss vs Auburn
Second Quarter Statistics Only
January 23, 2020 at Auburn Arena - Auburn



Ole Miss 2

No.	Player	S	Pts	FG	3FG	FT	OR	DR	TR	PF	A	TO	Blk	Stl	Min	+/-
02	REID, MIMI	G	0	0-2	0-1	0-0	0	0	0	0	1	0	0	0	8	0
11	RANKIN, TOOTIE	G	0	0-1	0-0	0-0	0	0	0	0	0	1	0	0	5	-4
20	ALEXANDER, JAYLA	G	0	0-2	0-2	0-0	0	3	3	0	0	0	0	0	9	-4
32	KITCHENS, IYANLA	F	2	1-2	0-0	0-0	0	0	0	0	0	1	0	0	8	0
44	LEWIS, TORRI	G	0	0-2	0-2	0-0	1	1	2	0	0	0	0	0	3	0
13	BANKS, DOMINIQUE	F	0	0-0	0-0	0-0	0	0	0	0	0	0	0	1	2	-2
21	SMITH, TAYLOR	G	0	0-1	0-0	0-0	0	1	1	0	0	0	0	1	7	0
25	PARKER, BRYN	G	0	0-1	0-0	0-0	0	0	0	0	0	1	0	0	5	-2
31	CAGE, DEJA	G	0	0-3	0-1	0-0	0	1	1	0	0	0	0	1	3	2
	TEAM						0	2	2	0		0				
TOTALS			2	1-14	0-6	0-0	1	8	9	0	1	3	0	3	50	

Shooting By Period

Period	FG	FG%	3FG	3FG%	FT	FT%
3rd Qtr	5-16	31%	3-6	50%	1-2	50%
4th Qtr	4-15	27%	0-7	00%	1-2	50%
2nd Half	1-14	07%	0-6	00%	0-0	0%
2nd Half	9-31	29%	3-13	23%	2-4	50%
Game	17-62	27.4%	7-29	24.1%	2-4	50.0%

Deadball Rebounds: 1,0

Auburn 4

No.	Player	S	Pts	FG	3FG	FT	OR	DR	TR	PF	A	TO	Blk	Stl	Min	+/-
00	ALEXANDER, DAISA	G	0	0-2	0-1	0-0	2	2	4	0	1	1	0	0	10	2
01	BENTON, ROBYN	G	0	0-2	0-2	0-0	2	0	2	0	0	1	0	0	5	0
05	MOORE, BROOKE	G	0	0-2	0-0	0-0	2	1	3	0	1	0	0	1	6	2
20	THOMPSON, UNIQUE	F	2	1-5	0-0	0-0	1	2	3	0	0	1	0	0	6	2
24	HOWARD, ERIN	F	0	0-1	0-1	0-0	0	3	3	0	0	0	0	1	10	2
02	WELLS, SANIA	G	0	0-0	0-0	0-0	0	0	0	0	0	0	0	0	2	2
03	HUGHES, ANNIE	G	0	0-2	0-2	0-0	0	0	0	0	0	1	0	0	3	0
10	WHITE, KIYAE'	F	0	0-1	0-0	0-0	0	2	2	0	0	0	0	0	4	0
13	HANSEN, LAUREN	G	2	1-3	0-2	0-0	0	1	1	0	0	0	0	0	4	0
30	ROBINSON-NWAGWU, MORG,	G	0	0-0	0-0	0-0	0	0	0	0	0	0	0	0	0	0
	TEAM						0	1	1	0		1				
TOTALS			4	2-18	0-8	0-0	7	12	19	0	2	5	0	2	50	

Shooting By Period

Period	FG	FG%	3FG	3FG%	FT	FT%
3rd Qtr	6-14	43%	2-6	33%	3-4	75%
4th Qtr	7-19	37%	3-7	43%	4-5	80%
2nd Half	2-18	11%	0-8	00%	0-0	0%
2nd Half	13-33	39%	5-13	38%	7-9	78%
Game	20-66	30.3%	7-27	25.9%	12-15	80.0%

Deadball Rebounds: 3,0

Game Notes:

Officials: Beverly Roberts, Amy Bonner, Laura Morris
Attendance: 1483

Start Time: 07:02 PM ET
End Time: 08:49 PM ET
Game Duration: 1:46
Conference Game;

Score	1st	2nd	3rd	4th	TOT
MIS	18	2	14	9	43
AUB	17	4	17	21	59

Points from (This Period)	MIS	AUB
In the Paint	2	2
Off Turns	0	2
2nd Chance	0	2
Fast Break	0	2
Bench	0	2

**Official Play-By-Play
Ole Miss vs Auburn
Second Quarter
January 23, 2020 at Auburn Arena - Auburn**



Period 2

Starters:

Ole Miss: 2 REID, MIMI (G); 11 RANKIN, TOOTIE (G); 20 ALEXANDER, JAYLA (G); 32 KITCHENS, IYANLA (F); 44 LEWIS, TORRI (G);

Auburn: 00 ALEXANDER, DAISA (G); 5 MOORE, BROOKE (G); 20 THOMPSON, UNIQUE (F); 24 HOWARD, ERIN (F); 1 BENTON, ROBYN (G);

Time	VISITORS: Ole Miss	Score	Margin	HOME: Auburn
10:00	SUB OUT: KITCHENS, IYANLA			
10:00	SUB IN: BANKS, DOMINIQUE			
09:42	MISSED 3PTR by ALEXANDER, JAYLA			
09:39				REBOUND (DEF) by TEAM
09:20				TURNOVER (BADPASS) by THOMPSON, UNIQUE
09:03	TURNOVER (LOSTBALL) by RANKIN, TOOTIE			
09:03				STEAL by MOORE, BROOKE
08:57		19-18	H 1	GOOD! JUMPER by THOMPSON, UNIQUE [FB/PNT]
08:57				ASSIST by MOORE, BROOKE
08:47	TURNOVER (LOSTBALL) by PARKER, BRYN			
08:47				STEAL by HOWARD, ERIN
08:40				MISSED JUMPER by MOORE, BROOKE
08:36	REBOUND (DEF) by SMITH, TAYLOR			
08:20	MISSED JUMPER by SMITH, TAYLOR			
08:15				REBOUND (DEF) by MOORE, BROOKE
08:09				TURNOVER (BADPASS) by ALEXANDER, DAISA
08:09	STEAL by BANKS, DOMINIQUE			
07:53	MISSED JUMPER by PARKER, BRYN			
07:49				REBOUND (DEF) by HOWARD, ERIN
07:44				MISSED JUMPER by THOMPSON, UNIQUE
07:44	REBOUND (DEF) by TEAM			
07:44				SUB OUT: THOMPSON, UNIQUE
07:44				SUB IN: WHITE, KIYAE'
07:44	SUB OUT: RANKIN, TOOTIE			
07:44	SUB OUT: BANKS, DOMINIQUE			
07:44	SUB OUT: PARKER, BRYN			
07:44	SUB IN: REID, MIMI			
07:44	SUB IN: KITCHENS, IYANLA			
07:44	SUB IN: LEWIS, TORRI			
07:34	MISSED LAYUP by KITCHENS, IYANLA			
07:32				REBOUND (DEF) by WHITE, KIYAE'
07:11				TURNOVER (BADPASS) by BENTON, ROBYN
07:11	STEAL by SMITH, TAYLOR			
07:03	MISSED 3PTR by LEWIS, TORRI			
07:00				REBOUND (DEF) by ALEXANDER, DAISA
06:57				MISSED JUMPER by ALEXANDER, DAISA
06:52	REBOUND (DEF) by ALEXANDER, JAYLA			
06:37	MISSED 3PTR by ALEXANDER, JAYLA			
06:33				REBOUND (DEF) by HOWARD, ERIN
06:27				MISSED 3PTR by BENTON, ROBYN
06:22				REBOUND (OFF) by MOORE, BROOKE
06:20				MISSED JUMPER by WHITE, KIYAE'
06:14				REBOUND (OFF) by ALEXANDER, DAISA
06:12				MISSED JUMPER by MOORE, BROOKE
06:09				REBOUND (OFF) by BENTON, ROBYN
06:08				MISSED 3PTR by ALEXANDER, DAISA
06:04				REBOUND (OFF) by BENTON, ROBYN
06:02				MISSED 3PTR by BENTON, ROBYN
06:01	REBOUND (DEF) by ALEXANDER, JAYLA			
06:01	TIMEOUT 30SEC			
06:01				SUB OUT: BENTON, ROBYN
06:01				SUB IN: HUGHES, ANNIE
06:01	SUB OUT: LEWIS, TORRI			
06:01	SUB IN: CAGE, DEJA			
05:30	MISSED JUMPER by CAGE, DEJA			
05:27				REBOUND (DEF) by ALEXANDER, DAISA
05:10				MISSED 3PTR by HOWARD, ERIN
05:06				REBOUND (OFF) by MOORE, BROOKE
04:49				TURNOVER (LOSTBALL) by HUGHES, ANNIE
04:49	STEAL by CAGE, DEJA			
04:42	MISSED LAYUP by CAGE, DEJA			
04:38				REBOUND (DEF) by WHITE, KIYAE'
04:20				MISSED 3PTR by HUGHES, ANNIE
04:18	REBOUND (DEF) by TEAM			
04:18				SUB OUT: MOORE, BROOKE
04:18				SUB IN: HANSEN, LAUREN
04:18	SUB OUT: SMITH, TAYLOR			
04:18	SUB OUT: CAGE, DEJA			
04:18	SUB IN: RANKIN, TOOTIE			
04:18	SUB IN: LEWIS, TORRI			

Time	VISITORS: Ole Miss	Score	Margin	HOME: Auburn
04:09	MISSED 3PTR by LEWIS, TORRI			
04:05	REBOUND (OFF) by LEWIS, TORRI			
03:58	MISSED LAYUP by REID, MIMI			
03:56				REBOUND (DEF) by HOWARD, ERIN
03:55				SUB OUT: WHITE, KIYAE'
03:55				SUB IN: THOMPSON, UNIQUE
03:37				MISSED LAYUP by THOMPSON, UNIQUE
03:33	REBOUND (DEF) by LEWIS, TORRI			
03:27	MISSED JUMPER by RANKIN, TOOTIE			
03:22				REBOUND (DEF) by THOMPSON, UNIQUE
03:17				MISSED 3PTR by HUGHES, ANNIE
03:12				REBOUND (OFF) by ALEXANDER, DAISA
02:54				TURNOVER (SHOTCLOCK) by TEAM
02:54				SUB OUT: HUGHES, ANNIE
02:54				SUB IN: WELLS, SANIA
02:54	SUB OUT: LEWIS, TORRI			
02:54	SUB IN: PARKER, BRYN			
02:39	MISSED 3PTR by REID, MIMI			
02:32				REBOUND (DEF) by THOMPSON, UNIQUE
02:11				MISSED 3PTR by HANSEN, LAUREN
02:06				REBOUND (OFF) by THOMPSON, UNIQUE
02:01		21-18	H 3	GOOD! JUMPER by HANSEN, LAUREN
02:01				ASSIST by ALEXANDER, DAISA
01:30	TURNOVER (LOSTBALL) by KITCHENS, IYANLA			
01:30	SUB OUT: RANKIN, TOOTIE			
01:30	SUB IN: SMITH, TAYLOR			
01:21				MISSED 3PTR by HANSEN, LAUREN
01:17	REBOUND (DEF) by ALEXANDER, JAYLA			
01:17				SUB OUT: WELLS, SANIA
01:17				SUB IN: BENTON, ROBYN
01:17	SUB OUT: ALEXANDER, JAYLA			
01:17	SUB IN: CAGE, DEJA			
00:55	GOOD! LAYUP by KITCHENS, IYANLA [PNT]	21-20	H 1	
00:55	ASSIST by REID, MIMI			
00:37				MISSED JUMPER by THOMPSON, UNIQUE
00:32	REBOUND (DEF) by CAGE, DEJA			
00:22	MISSED 3PTR by CAGE, DEJA			
00:18				REBOUND (DEF) by HANSEN, LAUREN
00:01				MISSED LAYUP by THOMPSON, UNIQUE
00:00				REBOUND (OFF) by TEAM

Ole Miss 20, Auburn 21

Points from (This Period)	MIS	AUB
In the Paint	2	2
Off Turns	0	2
2nd Chance	0	2
Fast Break	0	2
Bench	0	2

Official Box Score
Ole Miss vs Auburn
Second Half Statistics Only
January 23, 2020 at Auburn Arena - Auburn



Ole Miss 23

No.	Player	S	Pts	FG	3FG	FT	OR	DR	TR	PF	A	TO	Blk	Stl	Min	+/-
02	REID, MIMI	G	3	1-3	0-1	1-2	1	2	3	2	3	1	0	2	17	-11
11	RANKIN, TOOTIE	G	2	1-2	0-0	0-0	1	1	2	1	1	0	0	0	11	-14
13	BANKS, DOMINIQUE	F	2	1-4	0-0	0-0	2	4	6	1	0	2	0	0	10	-15
20	ALEXANDER, JAYLA	G	2	1-5	0-1	0-0	1	1	2	1	0	0	0	1	16	-13
21	SMITH, TAYLOR	G	5	2-7	0-1	1-2	0	2	2	0	0	2	0	0	18	-14
25	PARKER, BRYN	G	0	0-0	0-0	0-0	0	0	0	0	0	0	0	0	2	-1
31	CAGE, DEJA	G	9	3-9	3-9	0-0	0	0	0	0	0	1	0	1	11	-4
32	KITCHENS, IYANLA	F	0	0-0	0-0	0-0	1	3	4	3	0	2	0	0	10	0
44	LEWIS, TORRI	G	0	0-1	0-1	0-0	0	0	0	0	1	0	0	0	4	-3
	TEAM		0	0-0	0-0	0-0	0	2	2	0	0	1	0	0	0	
TOTALS			23	9-31	3-13	2-4	6	15	21	8	5	9	0	4	100	

Shooting By Period

Period	FG	FG%	3FG	3FG%	FT	FT%
3rd Qtr	5-16	31%	3-6	50%	1-2	50%
4th Qtr	4-15	27%	0-7	00%	1-2	50%
2nd Half	9-31	29%	3-13	23%	2-4	50%
Game	17-62	27.4%	7-29	24.1%	2-4	50.0%

Deadball Rebounds: 1,0
Last FG Half: MIS 4th-00:08

Auburn 38

No.	Player	S	Pts	FG	3FG	FT	OR	DR	TR	PF	A	TO	Blk	Stl	Min	+/-
00	ALEXANDER, DAISA	G	5	1-5	1-2	2-3	1	2	3	1	0	1	1	1	16	14
02	WELLS, SANIA	G	0	0-1	0-0	0-0	0	0	0	0	0	1	0	0	1	-3
03	HUGHES, ANNIE	G	0	0-0	0-0	0-0	0	1	1	0	0	0	0	0	2	6
05	MOORE, BROOKE	G	10	4-9	2-4	0-0	0	0	0	0	0	0	0	0	12	8
10	WHITE, KIYAE'	F	2	1-1	0-0	0-0	2	4	6	2	0	0	0	0	15	9
13	HANSEN, LAUREN	G	5	2-4	1-3	0-0	0	0	0	2	1	1	0	2	8	6
20	THOMPSON, UNIQUE	F	4	1-3	0-0	2-2	1	4	5	0	1	0	0	0	14	6
24	HOWARD, ERIN	F	3	1-4	0-2	1-2	1	1	2	2	0	1	0	0	12	12
30	ROBINSON-NWAGWU, MORG	G	0	0-1	0-0	0-0	0	1	1	0	0	1	0	0	4	2
01	BENTON, ROBYN	G	9	3-5	1-2	2-2	1	2	3	1	3	0	0	1	15	15
	TEAM		0	0-0	0-0	0-0	0	2	2	0	0	0	0	0	0	
TOTALS			38	13-33	5-13	7-9	6	17	23	8	5	5	1	4	100	

Shooting By Period

Period	FG	FG%	3FG	3FG%	FT	FT%
3rd Qtr	6-14	43%	2-6	33%	3-4	75%
4th Qtr	7-19	37%	3-7	43%	4-5	80%
2nd Half	13-33	39%	5-13	38%	7-9	78%
Game	20-66	30.3%	7-27	25.9%	12-15	80.0%

Deadball Rebounds: 3,0
Last FG Half: AUB 4th-02:28

Game Notes:

Officials: Beverly Roberts, Amy Bonner, Laura Morris
Attendance: 1483

Start Time: 07:02 PM ET
End Time: 08:49 PM ET
Game Duration: 1:46
Conference Game;

Score	1st	2nd	3rd	4th	TOT
MIS	18	2	14	9	43
AUB	17	4	17	21	59

Points from (This Period)	MIS	AUB
In the Paint	6	12
Off Turns	5	10
2nd Chance	6	5
Fast Break	0	8
Bench	16	7

Official Box Score
Ole Miss vs Auburn
Third Quarter Statistics Only
January 23, 2020 at Auburn Arena - Auburn



Ole Miss 23

No.	Player	S	Pts	FG	3FG	FT	OR	DR	TR	PF	A	TO	Blk	Stl	Min	+/-
02	REID, MIMI	G	1	0-1	0-0	1-2	1	1	2	1	3	1	0	2	9	-5
11	RANKIN, TOOTIE	G	2	1-1	0-0	0-0	0	1	1	1	0	0	0	0	4	-5
20	ALEXANDER, JAYLA	G	0	0-2	0-0	0-0	0	0	0	1	0	0	0	0	9	-2
32	KITCHENS, IYANLA	F	0	0-0	0-0	0-0	0	3	3	1	0	1	0	0	5	3
44	LEWIS, TORRI	G	0	0-1	0-1	0-0	0	0	0	0	0	0	0	0	2	-2
13	BANKS, DOMINIQUE	F	2	1-2	0-0	0-0	2	2	4	0	0	1	0	0	5	-6
21	SMITH, TAYLOR	G	0	0-5	0-1	0-0	0	1	1	0	0	1	0	0	10	-3
25	PARKER, BRYN	G	0	0-0	0-0	0-0	0	0	0	0	0	0	0	0	0	0
31	CAGE, DEJA	G	9	3-4	3-4	0-0	0	0	0	0	0	1	0	1	6	5
	TEAM						0	1	1	0		0				
TOTALS			14	5-16	3-6	1-2	3	9	12	4	3	5	0	3	50	

Shooting By Period

Period	FG	FG%	3FG	3FG%	FT	FT%
2nd Half	0-0	0%	0-0	0%	0-0	0%
Game	17-62	27.4%	7-29	24.1%	2-4	50.0%

Deadball Rebounds: 1,0

Auburn 38

No.	Player	S	Pts	FG	3FG	FT	OR	DR	TR	PF	A	TO	Blk	Stl	Min	+/-
00	ALEXANDER, DAISA	G	4	1-2	1-1	1-2	0	0	0	0	0	1	1	0	6	1
01	BENTON, ROBYN	G	7	2-3	1-2	2-2	0	1	1	0	2	0	0	1	8	6
05	MOORE, BROOKE	G	4	2-4	0-1	0-0	0	0	0	0	0	0	0	0	7	3
20	THOMPSON, UNIQUE	F	0	0-1	0-0	0-0	0	3	3	0	1	0	0	0	8	1
24	HOWARD, ERIN	F	2	1-2	0-1	0-0	0	0	0	1	0	1	0	0	2	0
02	WELLS, SANIA	G	0	0-0	0-0	0-0	0	0	0	0	0	0	0	0	0	0
03	HUGHES, ANNIE	G	0	0-0	0-0	0-0	0	1	1	0	0	0	0	0	0	0
10	WHITE, KIYAE'	F	0	0-0	0-0	0-0	0	2	2	2	0	0	0	0	10	5
13	HANSEN, LAUREN	G	0	0-1	0-1	0-0	0	0	0	1	0	0	0	1	4	-3
30	ROBINSON-NWAGWU, MORG	G	0	0-1	0-0	0-0	0	1	1	0	0	1	0	0	4	2
	TEAM						0	1	1	0		0				
TOTALS			17	6-14	2-6	3-4	0	9	9	4	3	3	1	2	50	

Shooting By Period

Period	FG	FG%	3FG	3FG%	FT	FT%
2nd Half	0-0	0%	0-0	0%	0-0	0%
Game	20-66	30.3%	7-27	25.9%	12-15	80.0%

Deadball Rebounds: 3,0

Game Notes:

Officials: Beverly Roberts, Amy Bonner, Laura Morris
Attendance: 1483

Start Time: 07:02 PM ET
End Time: 08:49 PM ET
Game Duration: 1:46
Conference Game;

Score	1st	2nd	3rd	4th	TOT
MIS	18	2	14	9	43
AUB	17	4	17	21	59

Points from (This Period)	MIS	AUB
In the Paint	4	6
Off Turns	5	5
2nd Chance	4	0
Fast Break	0	6
Bench	11	0

**Official Play-By-Play
Ole Miss vs Auburn
Third Quarter
January 23, 2020 at Auburn Arena - Auburn**



Period 3

Starters:

Ole Miss: 2 REID, MIMI (G); 11 RANKIN, TOOTIE (G); 20 ALEXANDER, JAYLA (G); 32 KITCHENS, IYANLA (F); 44 LEWIS, TORRI (G);

Auburn: 00 ALEXANDER, DAISA (G); 5 MOORE, BROOKE (G); 20 THOMPSON, UNIQUE (F); 24 HOWARD, ERIN (F); 1 BENTON, ROBYN (G);

Time	VISITORS: Ole Miss	Score	Margin	HOME: Auburn
10:00				SUB OUT: HANSEN, LAUREN
10:00				SUB IN: MOORE, BROOKE
10:00	SUB OUT: PARKER, BRYN			
10:00	SUB OUT: CAGE, DEJA			
10:00	SUB OUT: KITCHENS, IYANLA			
10:00	SUB IN: RANKIN, TOOTIE			
10:00	SUB IN: BANKS, DOMINIQUE			
10:00	SUB IN: ALEXANDER, JAYLA			
09:46				TURNOVER (BADPASS) by HOWARD, ERIN
09:46	STEAL by REID, MIMI			
09:40	MISSED LAYUP by SMITH, TAYLOR			
09:36	GOOD! LAYUP by BANKS, DOMINIQUE	21-22	V 1	
09:36				TIMEOUT 30SEC
09:36				SUB OUT: HOWARD, ERIN
09:36				SUB IN: WHITE, KIYAE'
09:35	REBOUND (OFF) by BANKS, DOMINIQUE			
09:09		23-22	H 1	GOOD! JUMPER by BENTON, ROBYN
08:54	TIMEOUT 30SEC			
08:41	MISSED LAYUP by BANKS, DOMINIQUE			
08:38				REBOUND (DEF) by THOMPSON, UNIQUE
08:35	FOUL (PERSONAL) by REID, MIMI			
08:35		24-22	H 2	GOOD! FT by BENTON, ROBYN [FB]
08:35		25-22	H 3	GOOD! FT by BENTON, ROBYN [FB]
08:19	MISSED JUMPER by ALEXANDER, JAYLA			
08:19				BLOCK by ALEXANDER, DAISA
08:12				REBOUND (DEF) by BENTON, ROBYN
08:11		27-22	H 5	GOOD! JUMPER by MOORE, BROOKE [FB/PNT]
08:11				ASSIST by BENTON, ROBYN
08:03	TURNOVER (LOSTBALL) by REID, MIMI			
08:03				STEAL by BENTON, ROBYN
08:00		29-22	H 7	GOOD! LAYUP by MOORE, BROOKE [FB]
08:00				ASSIST by BENTON, ROBYN
08:00	TIMEOUT 30SEC			
08:00	SUB OUT: BANKS, DOMINIQUE			
08:00	SUB OUT: ALEXANDER, JAYLA			
08:00	SUB IN: CAGE, DEJA			
08:00	SUB IN: KITCHENS, IYANLA			
07:55	TURNOVER (TRAVEL) by KITCHENS, IYANLA			
07:45		32-22	H 10	GOOD! 3PTR by ALEXANDER, DAISA
07:19	MISSED 3PTR by SMITH, TAYLOR			
07:14	REBOUND (OFF) by REID, MIMI			
06:59	GOOD! JUMPER by RANKIN, TOOTIE	32-24	H 8	
06:59	ASSIST by REID, MIMI			
06:44				MISSED 3PTR by MOORE, BROOKE
06:41	REBOUND (DEF) by RANKIN, TOOTIE			
06:32	SUB OUT: REID, MIMI			
06:32	SUB IN: ALEXANDER, JAYLA			
06:22	MISSED JUMPER by SMITH, TAYLOR			
06:21				REBOUND (DEF) by TEAM
06:02				MISSED 3PTR by BENTON, ROBYN
06:01	REBOUND (DEF) by TEAM			
05:51	GOOD! 3PTR by CAGE, DEJA	32-27	H 5	
05:42	FOUL (PERSONAL) by RANKIN, TOOTIE			
05:42				SUB OUT: BENTON, ROBYN
05:42				SUB IN: HANSEN, LAUREN
05:42		33-27	H 6	GOOD! FT by ALEXANDER, DAISA
05:41				MISSED FT by ALEXANDER, DAISA
05:40	REBOUND (DEF) by SMITH, TAYLOR			
05:40				FOUL (PERSONAL) by HANSEN, LAUREN
05:31	SUB OUT: RANKIN, TOOTIE			
05:31	SUB IN: REID, MIMI			
05:31				FOUL (PERSONAL) by WHITE, KIYAE'
05:31	GOOD! FT by REID, MIMI	33-28	H 5	
05:31	MISSED FT by REID, MIMI			
05:27				REBOUND (DEF) by WHITE, KIYAE'
05:24				MISSED JUMPER by ALEXANDER, DAISA
05:20	REBOUND (DEF) by KITCHENS, IYANLA			
05:05	GOOD! 3PTR by CAGE, DEJA	33-31	H 2	
05:05	ASSIST by REID, MIMI			
04:38				TURNOVER (BADPASS) by ALEXANDER, DAISA

Time	VISITORS: Ole Miss	Score	Margin	HOME: Auburn
04:38	STEAL by CAGE, DEJA			
04:35	TURNOVER (BADPASS) by CAGE, DEJA			
04:21				MISSED JUMPER by MOORE, BROOKE
04:17	REBOUND (DEF) by REID, MIMI			
04:11	MISSED LAYUP by REID, MIMI			
04:11				REBOUND (DEF) by THOMPSON, UNIQUE
04:11	FOUL (PERSONAL) by KITCHENS, IYANLA			
04:11				SUB OUT: ALEXANDER, DAISA
04:11				SUB IN: ROBINSON-NWAGWU, MORGAN
04:11				SUB OUT: MOORE, BROOKE
04:11				SUB IN: BENTON, ROBYN
04:11	SUB OUT: KITCHENS, IYANLA			
04:11	SUB IN: BANKS, DOMINIQUE			
03:51		36-31	H 5	GOOD! 3PTR by BENTON, ROBYN
03:51				ASSIST by THOMPSON, UNIQUE
03:38	TURNOVER (LOSTBALL) by BANKS, DOMINIQUE			
03:38				STEAL by HANSEN, LAUREN
03:31				TURNOVER (LOSTBALL) by ROBINSON-NWAGWU, MORGAN
03:31	STEAL by REID, MIMI			
03:23	GOOD! 3PTR by CAGE, DEJA	36-34	H 2	
03:23	ASSIST by REID, MIMI			
03:08				MISSED 3PTR by HANSEN, LAUREN
03:04	REBOUND (DEF) by BANKS, DOMINIQUE			
02:50	MISSED 3PTR by CAGE, DEJA			
02:46	REBOUND (OFF) by BANKS, DOMINIQUE			
02:39	MISSED LAYUP by SMITH, TAYLOR			
02:34				REBOUND (DEF) by THOMPSON, UNIQUE
02:22				MISSED JUMPER by THOMPSON, UNIQUE
02:18	REBOUND (DEF) by BANKS, DOMINIQUE			
01:52	MISSED JUMPER by SMITH, TAYLOR			
01:47				REBOUND (DEF) by ROBINSON-NWAGWU, MORGAN
01:40	FOUL (PERSONAL) by ALEXANDER, JAYLA			
01:40				SUB OUT: HANSEN, LAUREN
01:40				SUB OUT: THOMPSON, UNIQUE
01:40				SUB IN: MOORE, BROOKE
01:40				SUB IN: HOWARD, ERIN
01:40	SUB OUT: BANKS, DOMINIQUE			
01:40	SUB OUT: CAGE, DEJA			
01:40	SUB IN: KITCHENS, IYANLA			
01:40	SUB IN: LEWIS, TORRI			
01:28				MISSED 3PTR by HOWARD, ERIN
01:27	REBOUND (DEF) by KITCHENS, IYANLA			
01:27				FOUL (PERSONAL) by WHITE, KIYAE'
01:22	TURNOVER (OTHER) by SMITH, TAYLOR			
01:07				MISSED JUMPER by ROBINSON-NWAGWU, MORGAN
01:02	REBOUND (DEF) by KITCHENS, IYANLA			
00:49	MISSED JUMPER by ALEXANDER, JAYLA			
00:43				REBOUND (DEF) by WHITE, KIYAE'
00:33		38-34	H 4	GOOD! JUMPER by HOWARD, ERIN [PNT]
00:22				FOUL (PERSONAL) by HOWARD, ERIN
00:22				SUB OUT: BENTON, ROBYN
00:22				SUB IN: HUGHES, ANNIE
00:03	MISSED 3PTR by LEWIS, TORRI			
00:00				REBOUND (DEF) by HUGHES, ANNIE

Ole Miss 34, Auburn 38

Points from (This Period)	MIS	AUB
In the Paint	4	6
Off Turns	5	5
2nd Chance	4	0
Fast Break	0	6
Bench	11	0

Official Box Score
Ole Miss vs Auburn
Fourth Quarter Statistics Only
January 23, 2020 at Auburn Arena - Auburn



Ole Miss 9

No.	Player	S	Pts	FG	3FG	FT	OR	DR	TR	PF	A	TO	Blk	Stl	Min	+/-
02	REID, MIMI	G	2	1-2	0-1	0-0	0	1	1	1	0	0	0	0	8	-6
11	RANKIN, TOOTIE	G	0	0-1	0-0	0-0	1	0	1	0	1	0	0	0	7	-9
20	ALEXANDER, JAYLA	G	2	1-3	0-1	0-0	1	1	2	0	0	0	0	1	7	-11
32	KITCHENS, IYANLA	F	0	0-0	0-0	0-0	1	0	1	2	0	1	0	0	5	-3
44	LEWIS, TORRI	G	0	0-0	0-0	0-0	0	0	0	0	1	0	0	0	2	-1
13	BANKS, DOMINIQUE	F	0	0-2	0-0	0-0	0	2	2	1	0	1	0	0	5	-9
21	SMITH, TAYLOR	G	5	2-2	0-0	1-2	0	1	1	0	0	1	0	0	8	-11
25	PARKER, BRYN	G	0	0-0	0-0	0-0	0	0	0	0	0	0	0	0	2	-1
31	CAGE, DEJA	G	0	0-5	0-5	0-0	0	0	0	0	0	0	0	0	5	-9
	TEAM						0	1	1	0		1				
TOTALS			9	4-15	0-7	1-2	3	6	9	4	2	4	0	1	50	

Shooting By Period

Period	FG	FG%	3FG	3FG%	FT	FT%
Game	17-62	27.4%	7-29	24.1%	2-4	50.0%

Deadball Rebounds: 1,0

Auburn 21

No.	Player	S	Pts	FG	3FG	FT	OR	DR	TR	PF	A	TO	Blk	Stl	Min	+/-
00	ALEXANDER, DAISA	G	1	0-3	0-1	1-1	1	2	3	1	0	0	0	1	10	13
01	BENTON, ROBYN	G	2	1-2	0-0	0-0	1	1	2	1	1	0	0	0	7	9
05	MOORE, BROOKE	G	6	2-5	2-3	0-0	0	0	0	0	0	0	0	0	5	5
20	THOMPSON, UNIQUE	F	4	1-2	0-0	2-2	1	1	2	0	0	0	0	0	6	5
24	HOWARD, ERIN	F	1	0-2	0-1	1-2	1	1	2	1	0	0	0	0	10	12
02	WELLS, SANIA	G	0	0-1	0-0	0-0	0	0	0	0	0	1	0	0	1	-3
03	HUGHES, ANNIE	G	0	0-0	0-0	0-0	0	0	0	0	0	0	0	0	2	6
10	WHITE, KIYAE'	F	2	1-1	0-0	0-0	2	2	4	0	0	0	0	0	5	4
13	HANSEN, LAUREN	G	5	2-3	1-2	0-0	0	0	0	1	1	1	0	1	4	9
30	ROBINSON-NWAGWU, MORG	G	0	0-0	0-0	0-0	0	0	0	0	0	0	0	0	0	0
	TEAM						0	1	1	0		0				
TOTALS			21	7-19	3-7	4-5	6	8	14	4	2	2	0	2	50	

Shooting By Period

Period	FG	FG%	3FG	3FG%	FT	FT%
Game	20-66	30.3%	7-27	25.9%	12-15	80.0%

Deadball Rebounds: 3,0

Game Notes:

Officials: Beverly Roberts, Amy Bonner, Laura Morris
Attendance: 1483

Start Time: 07:02 PM ET
End Time: 08:49 PM ET
Game Duration: 1:46
Conference Game;

Score	1st	2nd	3rd	4th	TOT
MIS	18	2	14	9	43
AUB	17	4	17	21	59

Points from (This Period)	MIS	AUB
In the Paint	2	6
Off Turns	0	5
2nd Chance	2	5
Fast Break	0	2
Bench	5	7

**Official Play-By-Play
Ole Miss vs Auburn
Fourth Quarter
January 23, 2020 at Auburn Arena - Auburn**



Period 4

Starters:

Ole Miss: 2 REID,MIMI (G); 11 RANKIN,TOOTIE (G); 20 ALEXANDER,JAYLA (G); 32 KITCHENS,IYANLA (F); 44 LEWIS,TORRI (G);

Auburn: 00 ALEXANDER,DAISA (G); 5 MOORE,BROOKE (G); 20 THOMPSON,UNIQUE (F); 24 HOWARD,ERIN (F); 1 BENTON,ROBYN (G);

Time	VISITORS: Ole Miss	Score	Margin	HOME: Auburn
10:00				SUB OUT: ROBINSON-NWAGWU, MORGAN
10:00				SUB IN: ALEXANDER, DAISA
10:00	SUB OUT: REID, MIMI			
10:00	SUB OUT: KITCHENS, IYANLA			
10:00	SUB OUT: LEWIS, TORRI			
10:00	SUB IN: RANKIN, TOOTIE			
10:00	SUB IN: BANKS, DOMINIQUE			
10:00	SUB IN: CAGE, DEJA			
09:36	MISSED 3PTR by CAGE, DEJA			
09:31				REBOUND (DEF) by WHITE, KIYAE'
09:22		41-34	H 7	GOOD! 3PTR by MOORE, BROOKE
09:05	MISSED LAYUP by BANKS, DOMINIQUE			
09:00				REBOUND (DEF) by ALEXANDER, DAISA
08:46		44-34	H 10	GOOD! 3PTR by MOORE, BROOKE
08:31	MISSED JUMPER by ALEXANDER, JAYLA			
08:29				REBOUND (DEF) by TEAM
08:29				SUB OUT: HUGHES, ANNIE
08:29				SUB IN: BENTON, ROBYN
08:29	SUB OUT: BANKS, DOMINIQUE			
08:29	SUB OUT: ALEXANDER, JAYLA			
08:29	SUB IN: REID, MIMI			
08:29	SUB IN: KITCHENS, IYANLA			
08:00				MISSED JUMPER by MOORE, BROOKE
07:57	FOUL (PERSONAL) by KITCHENS, IYANLA			
07:57				MISSED FT by HOWARD, ERIN
07:57				REBOUND (OFF) by TEAM
07:57		45-34	H 11	GOOD! FT by HOWARD, ERIN
07:56				REBOUND (OFF) by HOWARD, ERIN
07:46	MISSED 3PTR by CAGE, DEJA			
07:42				REBOUND (DEF) by WHITE, KIYAE'
07:33				MISSED LAYUP by BENTON, ROBYN
07:29	REBOUND (DEF) by SMITH, TAYLOR			
07:21	MISSED JUMPER by RANKIN, TOOTIE			
07:16	REBOUND (OFF) by KITCHENS, IYANLA			
07:14	MISSED 3PTR by CAGE, DEJA			
07:12	REBOUND (OFF) by RANKIN, TOOTIE			
07:12				FOUL (PERSONAL) by HOWARD, ERIN
07:06	GOOD! JUMPER by SMITH, TAYLOR	45-36	H 9	
07:06	ASSIST by RANKIN, TOOTIE			
06:51				MISSED JUMPER by MOORE, BROOKE
06:47				REBOUND (OFF) by WHITE, KIYAE'
06:46		47-36	H 11	GOOD! LAYUP by WHITE, KIYAE'
06:31	MISSED 3PTR by CAGE, DEJA			
06:27				REBOUND (DEF) by BENTON, ROBYN
06:21				MISSED 3PTR by HOWARD, ERIN
06:17				REBOUND (OFF) by BENTON, ROBYN
06:15				MISSED 3PTR by ALEXANDER, DAISA
06:08				REBOUND (OFF) by WHITE, KIYAE'
05:51				MISSED 3PTR by MOORE, BROOKE
05:51	REBOUND (DEF) by TEAM			
05:51				SUB OUT: WHITE, KIYAE'
05:51				SUB IN: THOMPSON, UNIQUE
05:51	SUB OUT: RANKIN, TOOTIE			
05:51	SUB OUT: SMITH, TAYLOR			
05:51	SUB OUT: CAGE, DEJA			
05:51	SUB OUT: KITCHENS, IYANLA			
05:51	SUB IN: BANKS, DOMINIQUE			
05:51	SUB IN: ALEXANDER, JAYLA			
05:51	SUB IN: PARKER, BRYN			
05:51	SUB IN: LEWIS, TORRI			
05:20	GOOD! LAYUP by REID, MIMI [PNT]	47-38	H 9	
05:01				MISSED JUMPER by HOWARD, ERIN
04:57	REBOUND (DEF) by BANKS, DOMINIQUE			
04:45				FOUL (PERSONAL) by ALEXANDER, DAISA
04:45				
04:45				SUB OUT: MOORE, BROOKE
04:45				SUB IN: HANSEN, LAUREN
04:43	GOOD! JUMPER by ALEXANDER, JAYLA	47-40	H 7	
04:43	ASSIST by LEWIS, TORRI			
04:26		50-40	H 10	GOOD! 3PTR by HANSEN, LAUREN

Time	VISITORS: Ole Miss	Score	Margin	HOME: Auburn
04:02	MISSED LAYUP by BANKS, DOMINIQUE			
03:59				REBOUND (DEF) by HOWARD, ERIN
03:53		52-40	H 12	GOOD! LAYUP by THOMPSON, UNIQUE [PNT]
03:53				ASSIST by BENTON, ROBYN
03:40				FOUL (PERSONAL) by HANSEN, LAUREN
03:40	SUB OUT: BANKS, DOMINIQUE			
03:40	SUB OUT: PARKER, BRYN			
03:40	SUB OUT: LEWIS, TORRI			
03:40	SUB IN: SMITH, TAYLOR			
03:40	SUB IN: CAGE, DEJA			
03:40	SUB IN: KITCHENS, IYANLA			
03:24	MISSED 3PTR by CAGE, DEJA			
03:20				REBOUND (DEF) by THOMPSON, UNIQUE
03:12	FOUL (PERSONAL) by REID, MIMI			
03:07		54-40	H 14	GOOD! JUMPER by HANSEN, LAUREN
02:56	TURNOVER (DRIBBLING) by SMITH, TAYLOR			
02:56	SUB OUT: CAGE, DEJA			
02:56	SUB OUT: KITCHENS, IYANLA			
02:56	SUB IN: RANKIN, TOOTIE			
02:56	SUB IN: BANKS, DOMINIQUE			
02:48				MISSED LAYUP by THOMPSON, UNIQUE
02:42	REBOUND (DEF) by BANKS, DOMINIQUE			
02:34	TURNOVER (LOSTBALL) by BANKS, DOMINIQUE			
02:34				STEAL by HANSEN, LAUREN
02:28		56-40	H 16	GOOD! JUMPER by BENTON, ROBYN [FB/PNT]
02:28				ASSIST by HANSEN, LAUREN
02:16	TURNOVER (10SEC) by TEAM			
02:07	FOUL (PERSONAL) by BANKS, DOMINIQUE			
02:07	SUB OUT: BANKS, DOMINIQUE			
02:07	SUB IN: KITCHENS, IYANLA			
02:07		57-40	H 17	GOOD! FT by ALEXANDER, DAISA
02:07				TURNOVER (LANEVIOLATION) by HANSEN, LAUREN
01:44	TURNOVER (LOSTBALL) by KITCHENS, IYANLA			
01:44				STEAL by ALEXANDER, DAISA
01:40				MISSED JUMPER by ALEXANDER, DAISA
01:36				REBOUND (OFF) by ALEXANDER, DAISA
01:35				MISSED 3PTR by HANSEN, LAUREN
01:31				REBOUND (OFF) by THOMPSON, UNIQUE
01:30	FOUL (PERSONAL) by KITCHENS, IYANLA			
01:30		58-40	H 18	GOOD! FT by THOMPSON, UNIQUE
01:30		59-40	H 19	GOOD! FT by THOMPSON, UNIQUE
01:17				FOUL (PERSONAL) by BENTON, ROBYN
01:17				SUB OUT: ALEXANDER, DAISA
01:17				SUB OUT: BENTON, ROBYN
01:17				SUB IN: WELLS, SANIA
01:17				SUB IN: WHITE, KIYAE'
01:17	MISSED FT by SMITH, TAYLOR			
01:17	REBOUND (OFF) by TEAM			
01:17	GOOD! FT by SMITH, TAYLOR	59-41	H 18	
01:14				SUB OUT: HANSEN, LAUREN
01:14				SUB IN: ALEXANDER, DAISA
01:02				MISSED JUMPER by ALEXANDER, DAISA
00:57	REBOUND (DEF) by ALEXANDER, JAYLA			
00:52	MISSED 3PTR by REID, MIMI			
00:48	REBOUND (OFF) by ALEXANDER, JAYLA			
00:47	MISSED 3PTR by ALEXANDER, JAYLA			
00:42				REBOUND (DEF) by ALEXANDER, DAISA
00:18				MISSED LAYUP by WELLS, SANIA
00:15	REBOUND (DEF) by REID, MIMI			
00:08	GOOD! JUMPER by SMITH, TAYLOR	59-43	H 16	
00:00				TURNOVER (LOSTBALL) by WELLS, SANIA
00:00	STEAL by ALEXANDER, JAYLA			

Ole Miss 43, Auburn 59

Points from (This Period)	MIS	AUB
In the Paint	2	6
Off Turns	0	5
2nd Chance	2	5
Fast Break	0	2
Bench	5	7

Official Scoring/Possession Reference Chart
Ole Miss vs Auburn
Period 1
January 23, 2020 at Auburn Arena - Auburn



Period 1

Starters:

Ole Miss: 2 REID,MIMI (G); 11 RANKIN,TOOTIE (G); 20 ALEXANDER,JAYLA (G); 32 KITCHENS,IYANLA (F); 44 LEWIS,TORRI (G);

Auburn: 00 ALEXANDER,DAISA (G); 5 MOORE,BROOKE (G); 20 THOMPSON,UNIQUE (F); 24 HOWARD,ERIN (F); 1 BENTON,ROBYN (G);

Time	VISITORS: Ole Miss	Score	Margin	HOME: Auburn
09:28	GOOD! 3PTR by LEWIS, TORRI	0-3	V 3	
09:00		3-3	T	GOOD! 3PTR by BENTON, ROBYN
08:16		5-3	H 2	GOOD! JUMPER by ALEXANDER, DAISA
07:25		7-3	H 4	GOOD! LAYUP by WHITE, KIYAE' [FB]
06:38	GOOD! 3PTR by ALEXANDER, JAYLA [FB]	7-6	H 1	
06:06	GOOD! 3PTR by ALEXANDER, JAYLA	7-9	V 2	
04:58	GOOD! LAYUP by SMITH, TAYLOR	7-11	V 4	
04:32		8-11	V 3	GOOD! FT by WHITE, KIYAE'
04:07		10-11	V 1	GOOD! JUMPER by THOMPSON, UNIQUE
03:47	GOOD! LAYUP by RANKIN, TOOTIE	10-13	V 3	
03:25		11-13	V 2	GOOD! FT by BENTON, ROBYN
03:25		12-13	V 1	GOOD! FT by BENTON, ROBYN
02:42	GOOD! LAYUP by KITCHENS, IYANLA	12-15	V 3	
02:05	GOOD! 3PTR by CAGE, DEJA	12-18	V 6	
01:02		15-18	V 3	GOOD! 3PTR by BENTON, ROBYN
00:23		16-18	V 2	GOOD! FT by THOMPSON, UNIQUE
00:23		17-18	V 1	GOOD! FT by THOMPSON, UNIQUE

Ole Miss 18, Auburn 17

Official Scoring/Possession Reference Chart
Ole Miss vs Auburn
Period 2
January 23, 2020 at Auburn Arena - Auburn



Period 2

Starters:

Ole Miss: 2 REID,MIMI (G); 11 RANKIN,TOOTIE (G); 20 ALEXANDER,JAYLA (G); 32 KITCHENS,IYANLA (F); 44 LEWIS,TORRI (G);

Auburn: 00 ALEXANDER,DAISA (G); 5 MOORE,BROOKE (G); 20 THOMPSON,UNIQUE (F); 24 HOWARD,ERIN (F); 1 BENTON,ROBYN (G);

Time	VISITORS: Ole Miss	Score	Margin	HOME: Auburn
08:57		19-18	H 1	GOOD! JUMPER by THOMPSON, UNIQUE [FB/PNT]
02:01		21-18	H 3	GOOD! JUMPER by HANSEN, LAUREN
00:55	GOOD! LAYUP by KITCHENS, IYANLA [PNT]	21-20	H 1	

Ole Miss 20, Auburn 21

Official Scoring/Possession Reference Chart
Ole Miss vs Auburn
Period 3
January 23, 2020 at Auburn Arena - Auburn



Period 3

Starters:

Ole Miss: 2 REID,MIMI (G); 11 RANKIN,TOOTIE (G); 20 ALEXANDER,JAYLA (G); 32 KITCHENS,IYANLA (F); 44 LEWIS,TORRI (G);

Auburn: 00 ALEXANDER,DAISA (G); 5 MOORE,BROOKE (G); 20 THOMPSON,UNIQUE (F); 24 HOWARD,ERIN (F); 1 BENTON,ROBYN (G);

Time	VISITORS: Ole Miss	Score	Margin	HOME: Auburn
09:36	GOOD! LAYUP by BANKS, DOMINIQUE	21-22	V 1	
09:09		23-22	H 1	GOOD! JUMPER by BENTON, ROBYN
08:35		24-22	H 2	GOOD! FT by BENTON, ROBYN [FB]
08:35		25-22	H 3	GOOD! FT by BENTON, ROBYN [FB]
08:11		27-22	H 5	GOOD! JUMPER by MOORE, BROOKE [FB/PNT]
08:00		29-22	H 7	GOOD! LAYUP by MOORE, BROOKE [FB]
07:45		32-22	H 10	GOOD! 3PTR by ALEXANDER, DAISA
06:59	GOOD! JUMPER by RANKIN, TOOTIE	32-24	H 8	
05:51	GOOD! 3PTR by CAGE, DEJA	32-27	H 5	
05:42		33-27	H 6	GOOD! FT by ALEXANDER, DAISA
05:31	GOOD! FT by REID, MIMI	33-28	H 5	
05:05	GOOD! 3PTR by CAGE, DEJA	33-31	H 2	
03:51		36-31	H 5	GOOD! 3PTR by BENTON, ROBYN
03:23	GOOD! 3PTR by CAGE, DEJA	36-34	H 2	
00:33		38-34	H 4	GOOD! JUMPER by HOWARD, ERIN [PNT]

Ole Miss 34, Auburn 38

Official Scoring/Possession Reference Chart
Ole Miss vs Auburn
Period 4
January 23, 2020 at Auburn Arena - Auburn



Period 4

Starters:

Ole Miss: 2 REID,MIMI (G); 11 RANKIN,TOOTIE (G); 20 ALEXANDER,JAYLA (G); 32 KITCHENS,IYANLA (F); 44 LEWIS,TORRI (G);

Auburn: 00 ALEXANDER,DAISA (G); 5 MOORE,BROOKE (G); 20 THOMPSON,UNIQUE (F); 24 HOWARD,ERIN (F); 1 BENTON,ROBYN (G);

Time	VISITORS: Ole Miss	Score	Margin	HOME: Auburn
09:22		41-34	H 7	GOOD! 3PTR by MOORE, BROOKE
08:46		44-34	H 10	GOOD! 3PTR by MOORE, BROOKE
07:57		45-34	H 11	GOOD! FT by HOWARD, ERIN
07:06	GOOD! JUMPER by SMITH, TAYLOR	45-36	H 9	
06:46		47-36	H 11	GOOD! LAYUP by WHITE, KIYAE'
05:20	GOOD! LAYUP by REID, MIMI [PNT]	47-38	H 9	
04:43	GOOD! JUMPER by ALEXANDER, JAYLA	47-40	H 7	
04:26		50-40	H 10	GOOD! 3PTR by HANSEN, LAUREN
03:53		52-40	H 12	GOOD! LAYUP by THOMPSON, UNIQUE [PNT]
03:07		54-40	H 14	GOOD! JUMPER by HANSEN, LAUREN
02:28		56-40	H 16	GOOD! JUMPER by BENTON, ROBYN [FB/PNT]
02:07		57-40	H 17	GOOD! FT by ALEXANDER, DAISA
01:30		58-40	H 18	GOOD! FT by THOMPSON, UNIQUE
01:30		59-40	H 19	GOOD! FT by THOMPSON, UNIQUE
01:17	GOOD! FT by SMITH, TAYLOR	59-41	H 18	
00:08	GOOD! JUMPER by SMITH, TAYLOR	59-43	H 16	

Ole Miss 43, Auburn 59

Official Substitutions Log
Ole Miss vs Auburn
Period 1
January 23, 2020 at Auburn Arena - Auburn



VISITORS: Ole Miss	Time	Score	HOME: Auburn
2 REID,MIMI			00 ALEXANDER,DAISA
11 RANKIN,TOOTIE			5 MOORE,BROOKE
20 ALEXANDER,JAYLA			20 THOMPSON,UNIQUE
32 KITCHENS,IYANLA			24 HOWARD,ERIN
44 LEWIS,TORRI			1 BENTON,ROBYN
	08:40	3-3	SUB OUT: THOMPSON,UNIQUE
	08:40		SUB IN: WHITE,KIYAE'
	05:32	9-7	SUB OUT: MOORE,BROOKE
	05:32		SUB OUT: HOWARD,ERIN
	05:32		SUB IN: HANSEN,LAUREN
	05:32		SUB IN: THOMPSON,UNIQUE
SUB OUT: 11 RANKIN,TOOTIE	05:32		
SUB OUT: 32 KITCHENS,IYANLA	05:32		
SUB OUT: 44 LEWIS,TORRI	05:32		
SUB IN: 13 BANKS,DOMINIQUE	05:32		
SUB IN: 21 SMITH,TAYLOR	05:32		
SUB IN: 31 CAGE,DEJA	05:32		
	05:19	9-7	SUB OUT: BENTON,ROBYN
	05:19		SUB IN: HUGHES,ANNIE
SUB OUT: 2 REID,MIMI	04:37	11-7	
SUB IN: 11 RANKIN,TOOTIE	04:37		
	04:32	11-7	SUB OUT: HUGHES,ANNIE
	04:32		SUB IN: BENTON,ROBYN
SUB OUT: 13 BANKS,DOMINIQUE	04:32		
SUB IN: 32 KITCHENS,IYANLA	04:32		
	03:25	13-10	SUB OUT: ALEXANDER,DAISA
	03:25		SUB IN: ROBINSON-NWAGWU,MORGAN
SUB OUT: 20 ALEXANDER,JAYLA	03:25		
SUB IN: 2 REID,MIMI	03:25		
SUB OUT: 11 RANKIN,TOOTIE	03:25		
SUB IN: 25 PARKER,BRYN	03:25		
	02:27	15-12	SUB OUT: WHITE,KIYAE'
	02:27		SUB IN: HOWARD,ERIN
SUB OUT: 25 PARKER,BRYN	02:27		
SUB IN: 44 LEWIS,TORRI	02:27		
	00:23	18-15	SUB OUT: HANSEN,LAUREN
	00:23		SUB OUT: ROBINSON-NWAGWU,MORGAN
	00:23		SUB IN: ALEXANDER,DAISA
	00:23		SUB IN: MOORE,BROOKE
SUB OUT: 2 REID,MIMI	00:23		
SUB OUT: 31 CAGE,DEJA	00:23		
SUB OUT: 44 LEWIS,TORRI	00:23		
SUB IN: 11 RANKIN,TOOTIE	00:23		
SUB IN: 20 ALEXANDER,JAYLA	00:23		
SUB IN: 25 PARKER,BRYN	00:23		

Ole Miss 18, Auburn 17

Official Substitutions Log
Ole Miss vs Auburn
Period 2
January 23, 2020 at Auburn Arena - Auburn



VISITORS: Ole Miss	Time	Score	HOME: Auburn
2 REID,MIMI			00 ALEXANDER,DAISA
11 RANKIN,TOOTIE			5 MOORE,BROOKE
20 ALEXANDER,JAYLA			20 THOMPSON,UNIQUE
32 KITCHENS,IYANLA			24 HOWARD,ERIN
44 LEWIS,TORRI			1 BENTON,ROBYN
SUB OUT: 32 KITCHENS,IYANLA	10:00	-	
SUB IN: 13 BANKS,DOMINIQUE	10:00		
	07:44	18-19	SUB OUT: THOMPSON,UNIQUE
	07:44		SUB IN: WHITE,KIYAE'
SUB OUT: 11 RANKIN,TOOTIE	07:44		
SUB OUT: 13 BANKS,DOMINIQUE	07:44		
SUB OUT: 25 PARKER,BRYN	07:44		
SUB IN: 2 REID,MIMI	07:44		
SUB IN: 32 KITCHENS,IYANLA	07:44		
SUB IN: 44 LEWIS,TORRI	07:44		
	06:01	18-19	SUB OUT: BENTON,ROBYN
	06:01		SUB IN: HUGHES,ANNIE
SUB OUT: 44 LEWIS,TORRI	06:01		
SUB IN: 31 CAGE,DEJA	06:01		
	04:18	18-19	SUB OUT: MOORE,BROOKE
	04:18		SUB IN: HANSEN,LAUREN
SUB OUT: 21 SMITH,TAYLOR	04:18		
SUB OUT: 31 CAGE,DEJA	04:18		
SUB IN: 11 RANKIN,TOOTIE	04:18		
SUB IN: 44 LEWIS,TORRI	04:18		
	03:55	18-19	SUB OUT: WHITE,KIYAE'
	03:55		SUB IN: THOMPSON,UNIQUE
	02:54	18-19	SUB OUT: HUGHES,ANNIE
	02:54		SUB IN: WELLS,SANIA
SUB OUT: 44 LEWIS,TORRI	02:54		
SUB IN: 25 PARKER,BRYN	02:54		
SUB OUT: 11 RANKIN,TOOTIE	01:30	18-21	
SUB IN: 21 SMITH,TAYLOR	01:30		
	01:17	18-21	SUB OUT: WELLS,SANIA
	01:17		SUB IN: BENTON,ROBYN
SUB OUT: 20 ALEXANDER,JAYLA	01:17		
SUB IN: 31 CAGE,DEJA	01:17		

Ole Miss 20, Auburn 21

Official Substitutions Log
Ole Miss vs Auburn
Period 3
January 23, 2020 at Auburn Arena - Auburn



VISITORS: Ole Miss	Time	Score	HOME: Auburn
2 REID,MIMI			00 ALEXANDER,DAISA
11 RANKIN,TOOTIE			5 MOORE,BROOKE
20 ALEXANDER,JAYLA			20 THOMPSON,UNIQUE
32 KITCHENS,IYANLA			24 HOWARD,ERIN
44 LEWIS,TORRI			1 BENTON,ROBYN
	10:00	-	SUB OUT: HANSEN,LAUREN
	10:00		SUB IN: MOORE,BROOKE
SUB OUT: 25 PARKER,BRYN	10:00		
SUB OUT: 31 CAGE,DEJA	10:00		
SUB OUT: 32 KITCHENS,IYANLA	10:00		
SUB IN: 11 RANKIN,TOOTIE	10:00		
SUB IN: 13 BANKS,DOMINIQUE	10:00		
SUB IN: 20 ALEXANDER,JAYLA	10:00		
	09:36	22-21	SUB OUT: HOWARD,ERIN
	09:36		SUB IN: WHITE,KIYAE'
SUB OUT: 13 BANKS,DOMINIQUE	08:00	22-29	
SUB OUT: 20 ALEXANDER,JAYLA	08:00		
SUB IN: 31 CAGE,DEJA	08:00		
SUB IN: 32 KITCHENS,IYANLA	08:00		
SUB OUT: 2 REID,MIMI	06:32	24-32	
SUB IN: 20 ALEXANDER,JAYLA	06:32		
	05:42	27-32	SUB OUT: BENTON,ROBYN
	05:42		SUB IN: HANSEN,LAUREN
SUB OUT: 11 RANKIN,TOOTIE	05:31	27-33	
SUB IN: 2 REID,MIMI	05:31		
	04:11	31-33	SUB OUT: ALEXANDER,DAISA
	04:11		SUB IN: ROBINSON-NWAGWU,MORGAN
	04:11		SUB OUT: MOORE,BROOKE
	04:11		SUB IN: BENTON,ROBYN
SUB OUT: 32 KITCHENS,IYANLA	04:11		
SUB IN: 13 BANKS,DOMINIQUE	04:11		
	01:40	34-36	SUB OUT: HANSEN,LAUREN
	01:40		SUB OUT: THOMPSON,UNIQUE
	01:40		SUB IN: MOORE,BROOKE
	01:40		SUB IN: HOWARD,ERIN
SUB OUT: 13 BANKS,DOMINIQUE	01:40		
SUB OUT: 31 CAGE,DEJA	01:40		
SUB IN: 32 KITCHENS,IYANLA	01:40		
SUB IN: 44 LEWIS,TORRI	01:40		
	00:22	34-38	SUB OUT: BENTON,ROBYN
	00:22		SUB IN: HUGHES,ANNIE

Ole Miss 34, Auburn 38

Official Substitutions Log
Ole Miss vs Auburn
Period 4
January 23, 2020 at Auburn Arena - Auburn



VISITORS: Ole Miss	Time	Score	HOME: Auburn
2 REID,MIMI			00 ALEXANDER,DAISA
11 RANKIN,TOOTIE			5 MOORE,BROOKE
20 ALEXANDER,JAYLA			20 THOMPSON,UNIQUE
32 KITCHENS,IYANLA			24 HOWARD,ERIN
44 LEWIS,TORRI			1 BENTON,ROBYN
	10:00	-	SUB OUT: ROBINSON-NWAGWU,MORGAN
	10:00		SUB IN: ALEXANDER,DAISA
SUB OUT: 2 REID,MIMI	10:00		
SUB OUT: 32 KITCHENS,IYANLA	10:00		
SUB OUT: 44 LEWIS,TORRI	10:00		
SUB IN: 11 RANKIN,TOOTIE	10:00		
SUB IN: 13 BANKS,DOMINIQUE	10:00		
SUB IN: 31 CAGE,DEJA	10:00		
	08:29	34-44	SUB OUT: HUGHES,ANNIE
	08:29		SUB IN: BENTON,ROBYN
SUB OUT: 13 BANKS,DOMINIQUE	08:29		
SUB OUT: 20 ALEXANDER,JAYLA	08:29		
SUB IN: 2 REID,MIMI	08:29		
SUB IN: 32 KITCHENS,IYANLA	08:29		
	05:51	36-47	SUB OUT: WHITE,KIYAE'
	05:51		SUB IN: THOMPSON,UNIQUE
SUB OUT: 11 RANKIN,TOOTIE	05:51		
SUB OUT: 21 SMITH,TAYLOR	05:51		
SUB OUT: 31 CAGE,DEJA	05:51		
SUB OUT: 32 KITCHENS,IYANLA	05:51		
SUB IN: 13 BANKS,DOMINIQUE	05:51		
SUB IN: 20 ALEXANDER,JAYLA	05:51		
SUB IN: 25 PARKER,BRYN	05:51		
SUB IN: 44 LEWIS,TORRI	05:51		
	04:45	38-47	SUB OUT: MOORE,BROOKE
	04:45		SUB IN: HANSEN,LAUREN
SUB OUT: 13 BANKS,DOMINIQUE	03:40	40-52	
SUB OUT: 25 PARKER,BRYN	03:40		
SUB OUT: 44 LEWIS,TORRI	03:40		
SUB IN: 21 SMITH,TAYLOR	03:40		
SUB IN: 31 CAGE,DEJA	03:40		
SUB IN: 32 KITCHENS,IYANLA	03:40		
SUB OUT: 31 CAGE,DEJA	02:56	40-54	
SUB OUT: 32 KITCHENS,IYANLA	02:56		
SUB IN: 11 RANKIN,TOOTIE	02:56		
SUB IN: 13 BANKS,DOMINIQUE	02:56		
SUB OUT: 13 BANKS,DOMINIQUE	02:07	40-56	
SUB IN: 32 KITCHENS,IYANLA	02:07		
	01:17	40-59	SUB OUT: ALEXANDER,DAISA
	01:17		SUB OUT: BENTON,ROBYN
	01:17		SUB IN: WELLS,SANIA
	01:17		SUB IN: WHITE,KIYAE'
	01:14	41-59	SUB OUT: HANSEN,LAUREN
	01:14		SUB IN: ALEXANDER,DAISA

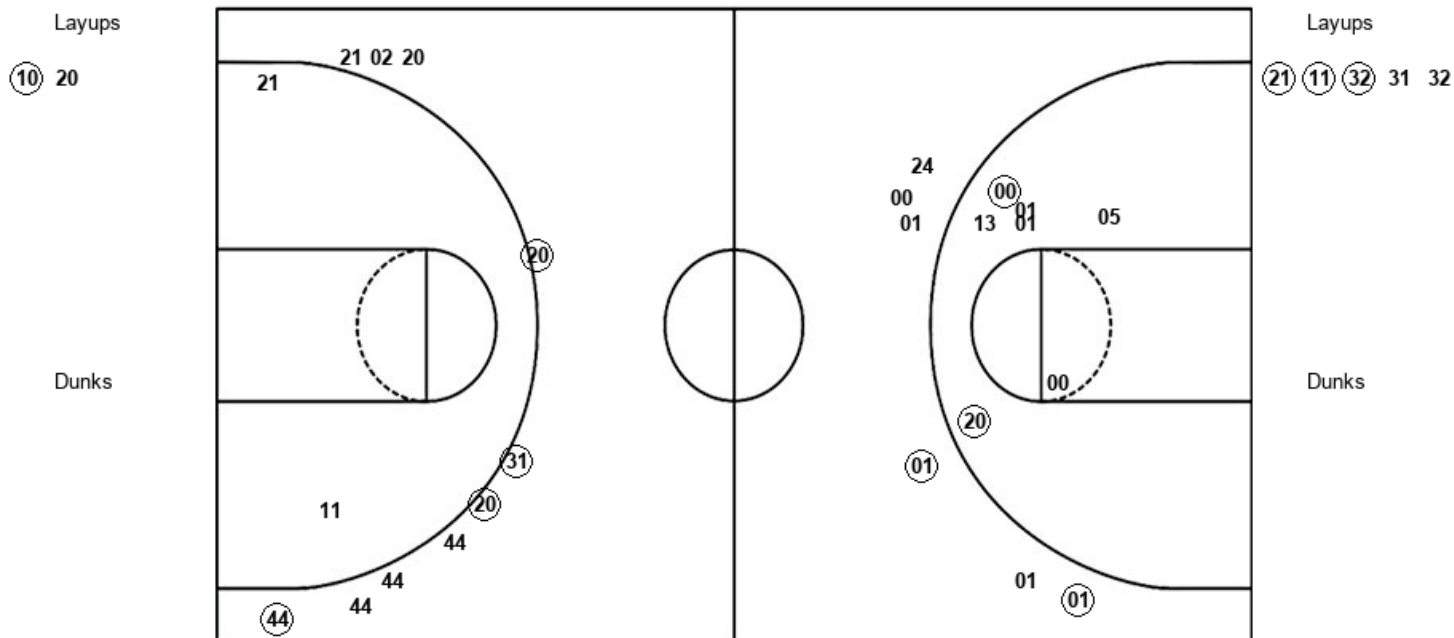
Ole Miss 43, Auburn 59

Official Shot Chart
Ole Miss vs Auburn
 PERIOD 1 Shots
 January 23, 2020 at Auburn Arena - Auburn



Auburn

Ole Miss



AUB : Period 1	Made	Att	Pct
Layups	1	2	50.0
Dunks	0	0	0
2PT Field Goals	3	9	33.3
3PT Field Goals	2	6	33.3
Total Field Goals	5	15	33.3

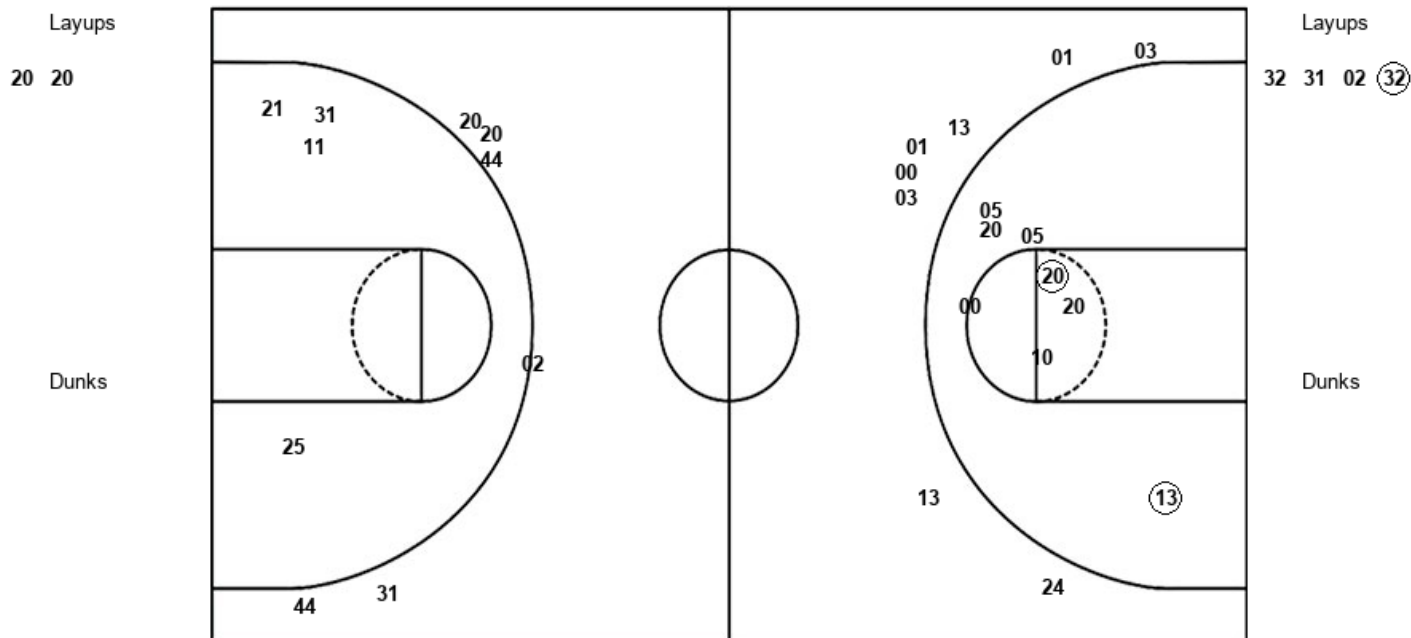
MIS : Period 1	Made	Att	Pct
Layups	3	5	60.0
Dunks	0	0	0
2PT Field Goals	3	7	42.9
3PT Field Goals	4	10	40.0
Total Field Goals	7	17	41.2

Official Shot Chart
Ole Miss vs Auburn
 PERIOD 2 Shots
 January 23, 2020 at Auburn Arena - Auburn



Auburn

Ole Miss



AUB : Period 2	Made	Att	Pct
Layups	0	2	00.0
Dunks	0	0	0
2PT Field Goals	2	10	20.0
3PT Field Goals	0	8	00.0
Total Field Goals	2	18	11.1

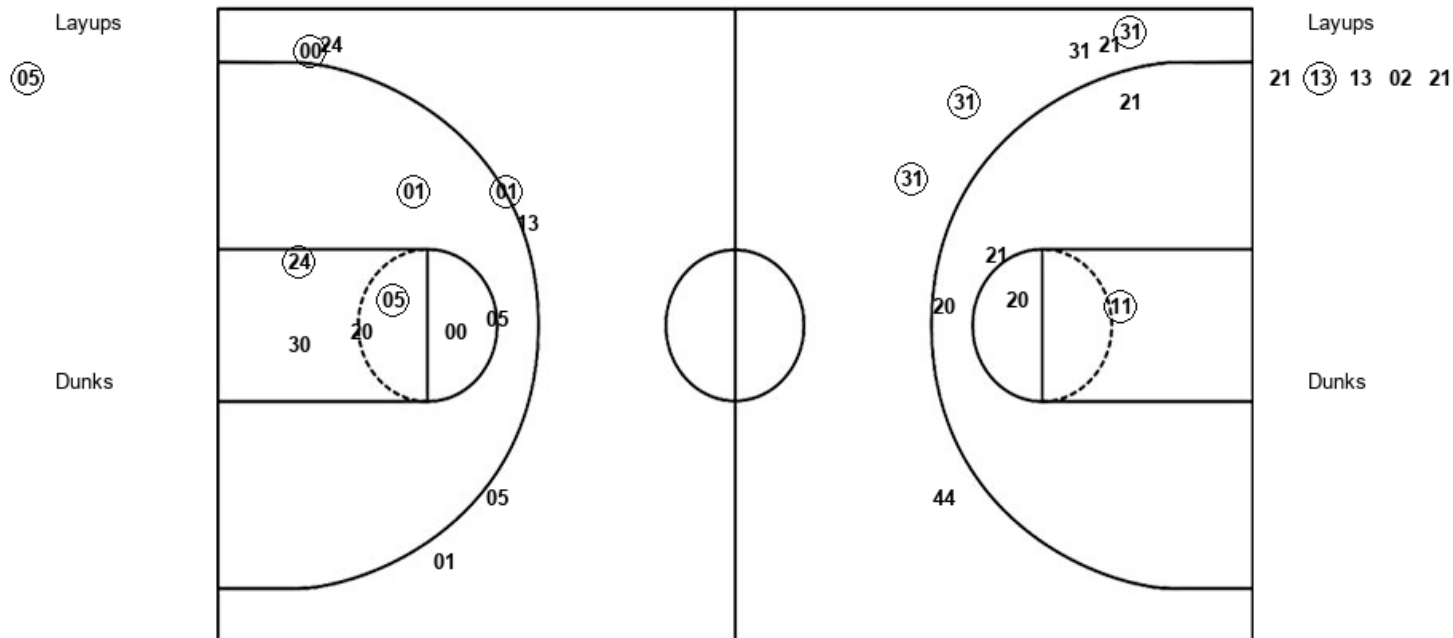
MIS : Period 2	Made	Att	Pct
Layups	1	4	25.0
Dunks	0	0	0
2PT Field Goals	1	8	12.5
3PT Field Goals	0	6	00.0
Total Field Goals	1	14	07.1

Official Shot Chart
Ole Miss vs Auburn
 PERIOD 3 Shots
 January 23, 2020 at Auburn Arena - Auburn



Auburn

Ole Miss



AUB : Period 3	Made	Att	Pct
Layups	1	1	100.0
Dunks	0	0	0
2PT Field Goals	4	8	50.0
3PT Field Goals	2	6	33.3
Total Field Goals	6	14	42.9

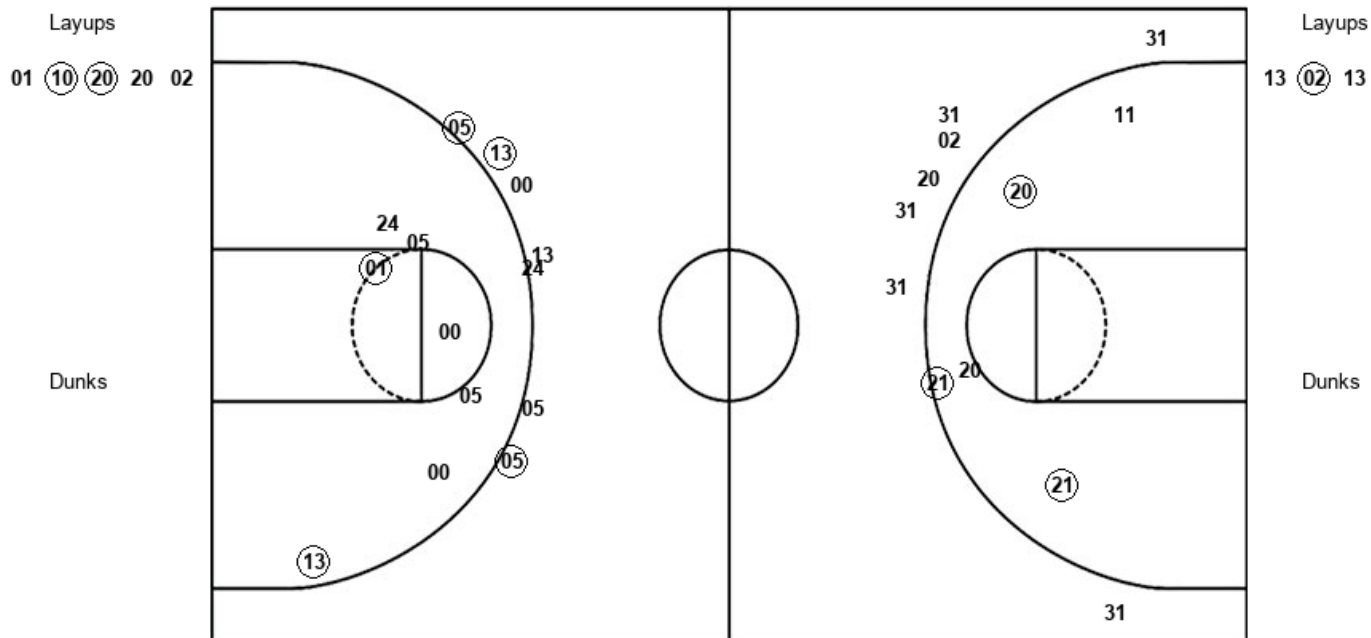
MIS : Period 3	Made	Att	Pct
Layups	1	5	20.0
Dunks	0	0	0
2PT Field Goals	2	10	20.0
3PT Field Goals	3	6	50.0
Total Field Goals	5	16	31.3

Official Shot Chart
Ole Miss vs Auburn
 PERIOD 4 Shots
 January 23, 2020 at Auburn Arena - Auburn



Auburn

Ole Miss



AUB : Period 4	Made	Att	Pct
Layups	2	5	40.0
Dunks	0	0	0
2PT Field Goals	4	12	33.3
3PT Field Goals	3	7	42.9
Total Field Goals	7	19	36.8

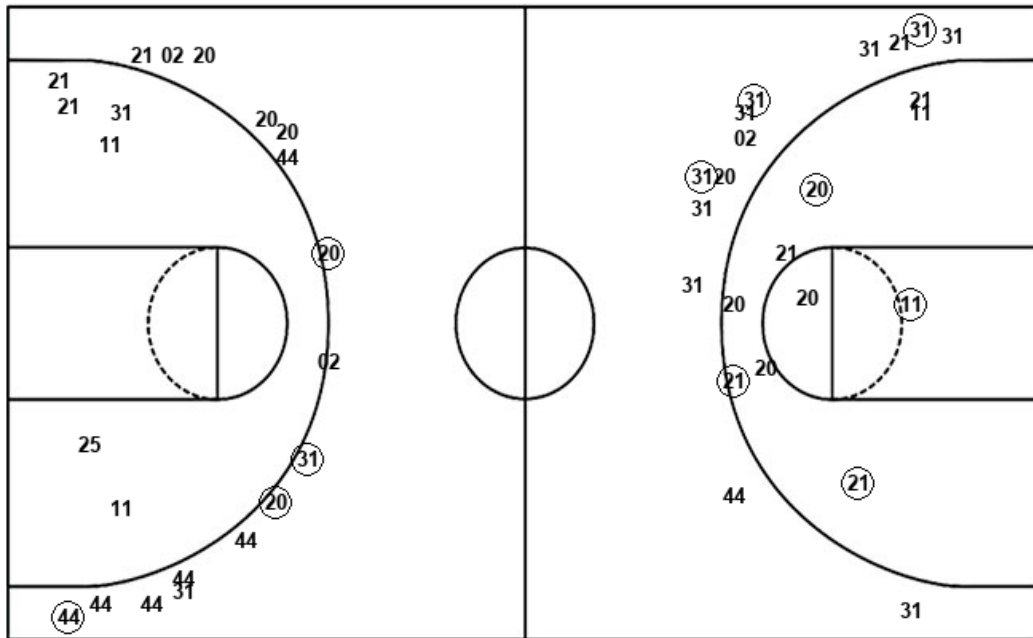
MIS : Period 4	Made	Att	Pct
Layups	1	3	33.3
Dunks	0	0	0
2PT Field Goals	4	8	50.0
3PT Field Goals	0	7	00.0
Total Field Goals	4	15	26.7

Official Shot Chart
Ole Miss vs Auburn
Ole Miss Team Shots
January 23, 2020 at Auburn Arena - Auburn



Layups

Dunks



Layups

Dunks

(21) (11) (32) 31 32
32 31 02 (32) 21
(13) 13 02 21 13
(02) 13

MIS : Period 1	Made	Att	Pct
Layups	3	5	60.0
Dunks	0	0	0
2PT Field Goals	3	7	42.9
3PT Field Goals	4	10	40.0
Total Field Goals	7	17	41.2

MIS : Period 3	Made	Att	Pct
Layups	1	5	20.0
Dunks	0	0	0
2PT Field Goals	2	10	20.0
3PT Field Goals	3	6	50.0
Total Field Goals	5	16	31.3

MIS : Period 2	Made	Att	Pct
Layups	1	4	25.0
Dunks	0	0	0
2PT Field Goals	1	8	12.5
3PT Field Goals	0	6	00.0
Total Field Goals	1	14	07.1

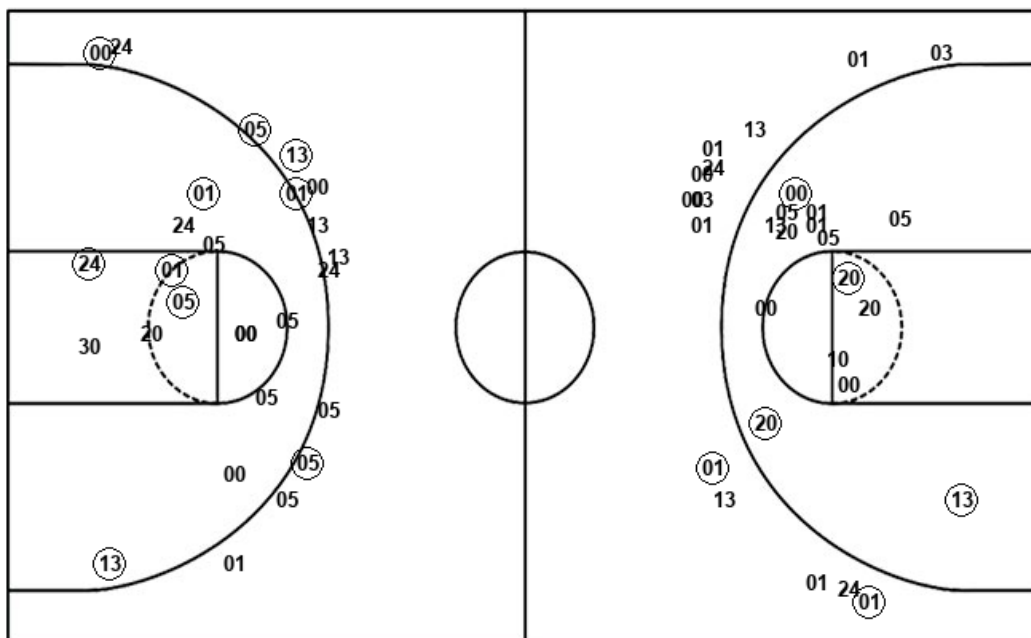
MIS : Period 4	Made	Att	Pct
Layups	1	3	33.3
Dunks	0	0	0
2PT Field Goals	4	8	50.0
3PT Field Goals	0	7	00.0
Total Field Goals	4	15	26.7

Official Shot Chart
Ole Miss vs Auburn
Auburn Team Shots
January 23, 2020 at Auburn Arena - Auburn



Layups

Dunks



Layups

Dunks

AUB : Period 1	Made	Att	Pct
Layups	1	2	50.0
Dunks	0	0	0
2PT Field Goals	3	9	33.3
3PT Field Goals	2	6	33.3
Total Field Goals	5	15	33.3

AUB : Period 3	Made	Att	Pct
Layups	1	1	100.0
Dunks	0	0	0
2PT Field Goals	4	8	50.0
3PT Field Goals	2	6	33.3
Total Field Goals	6	14	42.9

AUB : Period 2	Made	Att	Pct
Layups	0	2	00.0
Dunks	0	0	0
2PT Field Goals	2	10	20.0
3PT Field Goals	0	8	00.0
Total Field Goals	2	18	11.1

AUB : Period 4	Made	Att	Pct
Layups	2	5	40.0
Dunks	0	0	0
2PT Field Goals	4	12	33.3
3PT Field Goals	3	7	42.9
Total Field Goals	7	19	36.8