

FINAL SCORE



Bethune-Cookman

56



Auburn

74

December 15, 2019 • Auburn Arena - Auburn

FINAL STATISTICS

Official Box Score
Bethune-Cookman vs Auburn
Game Totals -- Final Statistics
December 15, 2019 at Auburn Arena - Auburn



Bethune-Cookman 56

No.	Player	S	Pts	FG	3FG	FT	OR	DR	TR	PF	A	TO	Blk	Stl	Min	+/-
02	SCOTT, AMAYA	F	4	2-5	0-0	0-0	0	1	1	0	0	2	0	1	21	-15
05	WALKER, ARMANI	G	0	0-1	0-0	0-0	0	1	1	0	2	1	0	0	16	-8
11	HUNT, ASHANTI	G	8	1-2	0-1	6-9	0	1	1	1	1	1	0	0	28	-17
20	HATCHER, DANIELLA	G	16	5-12	2-5	4-7	2	1	3	1	1	1	0	4	30	-7
23	THOMPSON, CIARA	F	12	6-13	0-2	0-2	5	3	8	3	1	1	0	1	28	-19
01	HARRIS, CAMRY	G	8	3-10	2-8	0-0	1	2	3	0	0	0	0	1	23	-9
03	WILLIAMS, KIANA	G	4	1-3	0-1	2-2	0	1	1	0	2	2	0	1	12	-3
04	BEACHAM, MORGAN	G	4	1-3	1-1	1-2	0	0	0	1	0	0	0	1	9	-2
10	WHITE, TANIA	F	0	0-0	0-0	0-0	0	1	1	0	0	1	0	0	3	-1
12	HAYES, TATUM	G	0	0-3	0-3	0-0	0	0	0	1	0	0	0	0	3	-4
15	BALL, AMANI	F	0	0-3	0-3	0-2	0	0	0	0	0	0	0	0	11	-7
22	REID, IMANI	F	0	0-1	0-0	0-0	0	0	0	0	0	0	0	0	3	-1
35	HOWELL, ASHLIE	C	0	0-0	0-0	0-0	1	1	2	1	0	0	0	0	11	3
TEAM							4	1	5	0		2				
TOTALS			56	19-56	5-24	13-24	13	13	26	8	7	11	0	9	200	

Shooting By Period

Period	FG	FG%	3FG	3FG%	FT	FT%
1st Qtr	8-15	53%	2-5	40%	1-1	100%
2nd Qtr	4-12	33%	1-7	14%	3-5	60%
3rd Qtr	4-12	33%	1-2	50%	5-12	42%
4th Qtr	3-17	18%	1-10	10%	4-6	67%
1st Half	12-27	44%	3-12	25%	4-6	67%
2nd Half	7-29	24%	2-12	17%	9-18	50%
Game	19-56	33.9%	5-24	20.8%	13-24	54.2%

Deadball Rebounds: 8,0
Last FG: 4th-03:08
Biggest Run: 8-0
Largest lead: By 5 at 2-07
Technical Fouls: None.

Auburn 74

No.	Player	S	Pts	FG	3FG	FT	OR	DR	TR	PF	A	TO	Blk	Stl	Min	+/-
00	ALEXANDER, DAISA	G	11	5-10	1-5	0-0	0	4	4	3	2	2	0	1	28	6
03	HUGHES, ANNIE	G	5	2-5	1-3	0-0	4	3	7	2	2	2	0	0	31	19
10	WHITE, KIYAE'	F	4	1-1	0-0	2-2	1	5	6	3	0	4	1	0	14	7
13	HANSEN, LAUREN	G	10	4-11	2-6	0-0	0	0	0	5	3	5	0	0	24	9
20	THOMPSON, UNIQUE	F	16	7-10	0-0	2-3	5	8	13	4	2	1	0	4	30	16
01	BENTON, ROBYN	G	10	4-7	2-4	0-0	1	0	1	1	1	0	2	1	16	11
02	WELLS, SANIA	G	0	0-1	0-1	0-0	0	0	0	0	0	1	0	0	7	-3
24	HOWARD, ERIN	F	12	4-9	2-6	2-2	2	5	7	4	1	3	0	0	27	12
30	ROBINSON-NWAGWU, MORG	G	6	3-5	0-0	0-0	1	0	1	0	3	0	1	0	22	12
35	KELLY, NATALIE	F	0	0-0	0-0	0-0	0	1	1	0	0	0	0	0	3	1
TEAM							2	1	3	0		1				
TOTALS			74	30-59	8-25	6-7	16	27	43	22	14	19	4	6	200	

Shooting By Period

Period	FG	FG%	3FG	3FG%	FT	FT%
1st Qtr	9-19	47%	1-7	14%	0-0	0%
2nd Qtr	6-17	35%	2-9	22%	3-3	100%
3rd Qtr	9-10	90%	2-3	67%	3-4	75%
4th Qtr	6-13	46%	3-6	50%	0-0	0%
1st Half	15-36	42%	3-16	19%	3-3	100%
2nd Half	15-23	65%	5-9	56%	3-4	75%
Game	30-59	50.8%	8-25	32.0%	6-7	85.7%

Deadball Rebounds: 1,0
Last FG: 4th-02:09
Biggest Run: 10-0
Largest lead: By 19 at 4-03
Technical Fouls: None.

Game Notes:

Officials: **Cameron Inouye,Stephanie Barksdale,Kristen Bell**
 Attendance: **1588**

Start Time: **03:02 PM ET**
 End Time: **04:56 PM ET**
 Game Duration: **1:54**

Score	1st	2nd	3rd	4th	TOT
BCU	19	12	14	11	56
AUB	19	17	23	15	74

BCU led for **6:08**. AUB led for **29:21**.
Game was tied for 4:31.
 Times tied: **5** Lead Changes: **10**

Points from	BCU	AUB
In the Paint	20	36
Off Turns	16	8
2nd Chance	7	21
Fast Break	14	4
Bench	16	28

Official Box Score
Bethune-Cookman vs Auburn
First Half Statistics Only
December 15, 2019 at Auburn Arena - Auburn



Bethune-Cookman 31

No.	Player	S	Pts	FG	3FG	FT	OR	DR	TR	PF	A	TO	Blk	Stl	Min	+/-
01	HARRIS, CAMRY	G	6	2-4	2-4	0-0	0	1	1	0	0	0	0	0	11	-3
02	SCOTT, AMAYA	F	2	1-2	0-0	0-0	0	0	0	0	0	2	0	1	15	-5
03	WILLIAMS, KIANA	G	0	0-0	0-0	0-0	0	0	0	0	1	2	0	0	3	5
04	BEACHAM, MORGAN	G	0	0-0	0-0	0-0	0	0	0	0	0	0	0	0	0	0
05	WALKER, ARMANI	G	0	0-1	0-0	0-0	0	1	1	0	2	1	0	0	15	-5
11	HUNT, ASHANTI	G	3	0-0	0-0	3-5	0	1	1	0	1	1	0	0	12	-5
12	HAYES, TATUM	G	0	0-2	0-2	0-0	0	0	0	1	0	0	0	0	2	-5
15	BALL, AMANI	F	0	0-0	0-0	0-0	0	0	0	0	0	0	0	0	0	0
20	HATCHER, DANIELLA	G	8	3-7	1-4	1-1	1	1	2	0	0	0	0	0	17	-2
22	REID, IMANI	F	0	0-0	0-0	0-0	0	0	0	0	0	0	0	0	0	0
10	WHITE, TANIA	F	0	0-0	0-0	0-0	0	0	0	0	0	0	0	0	0	0
23	THOMPSON, CIARA	F	12	6-11	0-2	0-0	5	3	8	0	1	1	0	0	20	-5
35	HOWELL, ASHLIE	C	0	0-0	0-0	0-0	0	1	1	1	0	0	0	0	5	0
	TEAM		0	0-0	0-0	0-0	2	1	3	0	0	1	0	0	0	0
TOTALS			31	12-27	3-12	4-6	8	9	17	2	5	8	0	1	100	

Shooting By Period

Period	FG	FG%	3FG	3FG%	FT	FT%
1st Qtr	8-15	53%	2-5	40%	1-1	100%
2nd Qtr	4-12	33%	1-7	14%	3-5	60%
1st Half	12-27	44%	3-12	25%	4-6	67%
Game	19-56	33.9%	5-24	20.8%	13-24	54.2%

Deadball Rebounds: 8,0
 Last FG Half: BCU 2nd-00:04

Auburn 36

No.	Player	S	Pts	FG	3FG	FT	OR	DR	TR	PF	A	TO	Blk	Stl	Min	+/-
00	ALEXANDER, DAISA	G	4	2-5	0-2	0-0	0	1	1	1	2	0	0	1	13	-6
02	WELLS, SANIA	G	0	0-0	0-0	0-0	0	0	0	0	0	0	0	0	1	-3
03	HUGHES, ANNIE	G	2	1-3	0-2	0-0	3	2	5	1	1	0	0	0	14	4
10	WHITE, KIYAE'	F	2	1-1	0-0	0-0	1	0	1	2	0	2	0	0	6	4
13	HANSEN, LAUREN	G	0	0-7	0-4	0-0	0	0	0	0	2	2	0	0	16	-1
20	THOMPSON, UNIQUE	F	11	5-8	0-0	1-1	5	4	9	1	1	0	0	3	19	6
24	HOWARD, ERIN	F	7	2-5	1-4	2-2	1	0	1	2	0	0	0	0	11	5
30	ROBINSON-NWAGWU, MORGAN	G	2	1-2	0-0	0-0	0	0	0	0	1	0	0	0	9	9
35	KELLY, NATALIE	F	0	0-0	0-0	0-0	0	0	0	0	0	0	0	0	0	0
01	BENTON, ROBYN	G	8	3-5	2-4	0-0	1	0	1	0	0	0	1	1	10	7
	TEAM		0	0-0	0-0	0-0	1	0	1	0	0	0	0	0	0	0
TOTALS			36	15-36	3-16	3-3	12	7	19	7	7	4	1	5	100	

Shooting By Period

Period	FG	FG%	3FG	3FG%	FT	FT%
1st Qtr	9-19	47%	1-7	14%	0-0	0%
2nd Qtr	6-17	35%	2-9	22%	3-3	100%
1st Half	15-36	42%	3-16	19%	3-3	100%
Game	30-59	50.8%	8-25	32.0%	6-7	85.7%

Deadball Rebounds: 1,0
 Last FG Half: AUB 2nd-00:35

Game Notes:

Officials: Cameron Inouye, Stephanie Barksdale, Kristen Bell
 Attendance: 1588

Start Time: 03:02 PM ET
 End Time: 04:56 PM ET
 Game Duration: 1:54

Score	1st	2nd	3rd	4th	TOT
BCU	19	12	14	11	56
AUB	19	17	23	15	74

Points from (This Period)	BCU	AUB
In the Paint	12	20
Off Turns	4	8
2nd Chance	6	14
Fast Break	2	2
Bench	6	17

Official Box Score
Bethune-Cookman vs Auburn
First Quarter Statistics Only
December 15, 2019 at Auburn Arena - Auburn



Bethune-Cookman 19

No.	Player	S	Pts	FG	3FG	FT	OR	DR	TR	PF	A	TO	Blk	Stl	Min	+/-
02	SCOTT, AMAYA	F	0	0-0	0-0	0-0	0	0	0	0	0	1	0	1	10	0
05	WALKER, ARMANI	G	0	0-0	0-0	0-0	0	1	1	0	2	1	0	0	10	0
11	HUNT, ASHANTI	G	0	0-0	0-0	0-0	0	0	0	0	1	0	0	0	7	-1
20	HATCHER, DANIELLA	G	6	2-4	1-2	1-1	1	1	2	0	0	0	0	0	10	0
23	THOMPSON, CIARA	F	10	5-9	0-1	0-0	3	1	4	0	1	1	0	0	10	0
01	HARRIS, CAMRY	G	3	1-2	1-2	0-0	0	0	0	0	0	0	0	0	3	1
03	WILLIAMS, KIANA	G	0	0-0	0-0	0-0	0	0	0	0	0	0	0	0	0	0
04	BEACHAM, MORGAN	G	0	0-0	0-0	0-0	0	0	0	0	0	0	0	0	0	0
10	WHITE, TANIA	F	0	0-0	0-0	0-0	0	0	0	0	0	0	0	0	0	0
12	HAYES, TATUM	G	0	0-0	0-0	0-0	0	0	0	0	0	0	0	0	0	0
15	BALL, AMANI	F	0	0-0	0-0	0-0	0	0	0	0	0	0	0	0	0	0
22	REID, IMANI	F	0	0-0	0-0	0-0	0	0	0	0	0	0	0	0	0	0
35	HOWELL, ASHLIE	C	0	0-0	0-0	0-0	0	0	0	0	0	0	0	0	0	0
	TEAM						0	1	1	0		0				
TOTALS			19	8-15	2-5	1-1	4	4	8	0	4	3	0	1	50	

Shooting By Period

Period	FG	FG%	3FG	3FG%	FT	FT%
1st Qtr	8-15	53%	2-5	40%	1-1	100%
2nd Qtr	4-12	33%	1-7	14%	3-5	60%
1st Half	8-15	53%	2-5	40%	1-1	100%
1st Half	12-27	44%	3-12	25%	4-6	67%
Game	19-56	33.9%	5-24	20.8%	13-24	54.2%

Deadball Rebounds: 8,0

Auburn 19

No.	Player	S	Pts	FG	3FG	FT	OR	DR	TR	PF	A	TO	Blk	Stl	Min	+/-
00	ALEXANDER, DAISA	G	2	1-2	0-1	0-0	0	0	0	0	1	0	0	0	7	-3
03	HUGHES, ANNIE	G	2	1-2	0-1	0-0	2	1	3	0	0	0	0	0	6	1
10	WHITE, KIYAE'	F	2	1-1	0-0	0-0	1	0	1	2	0	1	0	0	3	1
13	HANSEN, LAUREN	G	0	0-4	0-2	0-0	0	0	0	0	1	1	0	0	8	-3
20	THOMPSON, UNIQUE	F	4	2-4	0-0	0-0	2	2	4	0	0	0	0	1	9	1
01	BENTON, ROBYN	G	2	1-1	0-0	0-0	1	0	1	0	0	0	0	1	5	2
02	WELLS, SANIA	G	0	0-0	0-0	0-0	0	0	0	0	0	0	0	0	0	0
24	HOWARD, ERIN	F	5	2-4	1-3	0-0	0	0	0	1	0	0	0	0	8	-2
30	ROBINSON-NWAGWU, MORG	G	2	1-1	0-0	0-0	0	0	0	0	1	0	0	0	3	3
35	KELLY, NATALIE	F	0	0-0	0-0	0-0	0	0	0	0	0	0	0	0	0	0
	TEAM						0	0	0	0		0				
TOTALS			19	9-19	1-7	0-0	6	3	9	3	3	2	0	2	50	

Shooting By Period

Period	FG	FG%	3FG	3FG%	FT	FT%
1st Qtr	9-19	47%	1-7	14%	0-0	0%
2nd Qtr	6-17	35%	2-9	22%	3-3	100%
1st Half	9-19	47%	1-7	14%	0-0	0%
1st Half	15-36	42%	3-16	19%	3-3	100%
Game	30-59	50.8%	8-25	32.0%	6-7	85.7%

Deadball Rebounds: 1,0

Game Notes:

Officials: **Cameron Inouye, Stephanie Barksdale, Kristen Bell**
Attendance: **1588**

Start Time: **03:02 PM ET**
End Time: **04:56 PM ET**
Game Duration: **1:54**

Score	1st	2nd	3rd	4th	TOT
BCU	19	12	14	11	56
AUB	19	17	23	15	74

Points from (This Period)	BCU	AUB
In the Paint	10	14
Off Turns	2	4
2nd Chance	4	6
Fast Break	0	2
Bench	3	9

Official Play-By-Play
Bethune-Cookman vs Auburn
First Quarter
December 15, 2019 at Auburn Arena - Auburn



Period 1

Starters:

Bethune-Cookman: 2 SCOTT, AMAYA (F); 5 WALKER, ARMANI (G); 11 HUNT, ASHANTI (G); 20 HATCHER, DANIELLA (G); 23 THOMPSON, CIARA (F);
Auburn: 00 ALEXANDER, DAISA (G); 3 HUGHES, ANNIE (G); 10 WHITE, KIYAE' (F); 13 HANSEN, LAUREN (G); 20 THOMPSON, UNIQUE (F);

Time	VISITORS: Bethune-Cookman	Score	Margin	HOME: Auburn
09:28		2-0	H 2	GOOD! JUMPER by ALEXANDER, DAISA
08:57	MISSED JUMPER by THOMPSON, CIARA			
08:51				REBOUND (DEF) by THOMPSON, UNIQUE
08:33				MISSED JUMPER by HANSEN, LAUREN
08:27				REBOUND (OFF) by WHITE, KIYAE'
08:26		4-0	H 4	GOOD! LAYUP by WHITE, KIYAE'
08:19	MISSED LAYUP by THOMPSON, CIARA			
08:12	REBOUND (OFF) by THOMPSON, CIARA			
08:11	GOOD! LAYUP by THOMPSON, CIARA	4-2	H 2	
07:58				MISSED 3PTR by ALEXANDER, DAISA
07:57	REBOUND (DEF) by TEAM			
07:53				FOUL (PERSONAL) by WHITE, KIYAE'
07:53				SUB OUT: WHITE, KIYAE'
07:53				SUB IN: HOWARD, ERIN
07:41	MISSED JUMPER by THOMPSON, CIARA			
07:37	REBOUND (OFF) by THOMPSON, CIARA			
07:35	GOOD! JUMPER by THOMPSON, CIARA [PNT]	4-4	T	
07:20				TURNOVER (LOSTBALL) by HANSEN, LAUREN
07:20	STEAL by SCOTT, AMAYA			
07:17	GOOD! LAYUP by THOMPSON, CIARA	4-6	V 2	
07:06				SUB OUT: ALEXANDER, DAISA
07:06				SUB IN: ROBINSON-NWAGWU, MORGAN
07:03		6-6	T	GOOD! JUMPER by ROBINSON-NWAGWU, MORGAN [PNT]
06:51	TURNOVER (BADPASS) by THOMPSON, CIARA			
06:51				STEAL by THOMPSON, UNIQUE
06:33				MISSED 3PTR by HOWARD, ERIN
06:25				REBOUND (OFF) by THOMPSON, UNIQUE
06:24		8-6	H 2	GOOD! LAYUP by THOMPSON, UNIQUE
06:08	GOOD! 3PTR by HATCHER, DANIELLA	8-9	V 1	
06:08	ASSIST by WALKER, ARMANI			
05:50				MISSED 3PTR by HANSEN, LAUREN
05:45				REBOUND (OFF) by HUGHES, ANNIE
05:43		10-9	H 1	GOOD! LAYUP by HUGHES, ANNIE [PNT]
05:22	GOOD! JUMPER by HATCHER, DANIELLA	10-11	V 1	
05:22				FOUL (PERSONAL) by HOWARD, ERIN
05:22				SUB OUT: THOMPSON, UNIQUE
05:22				SUB IN: WHITE, KIYAE'
05:22	GOOD! FT by HATCHER, DANIELLA	10-12	V 2	
05:22				SUB OUT: HANSEN, LAUREN
05:22				SUB IN: BENTON, ROBYN
05:01				MISSED 3PTR by HUGHES, ANNIE
04:55				REBOUND (OFF) by HUGHES, ANNIE
04:50				FOUL (OFF) by WHITE, KIYAE'
04:50				SUB OUT: WHITE, KIYAE'
04:50				SUB IN: THOMPSON, UNIQUE
04:35	MISSED 3PTR by THOMPSON, CIARA			
04:32	REBOUND (OFF) by HATCHER, DANIELLA			
04:30	MISSED JUMPER by HATCHER, DANIELLA			
04:26				REBOUND (DEF) by HUGHES, ANNIE
04:05		13-12	H 1	GOOD! 3PTR by HOWARD, ERIN
04:05				ASSIST by ROBINSON-NWAGWU, MORGAN
03:39	TIMEOUT 30SEC			
04:50				TURNOVER (OFFENSIVE) by WHITE, KIYAE'
03:39				SUB OUT: HUGHES, ANNIE
03:39				SUB OUT: ROBINSON-NWAGWU, MORGAN
03:39				SUB IN: ALEXANDER, DAISA
03:39				SUB IN: HANSEN, LAUREN
03:37	GOOD! JUMPER by THOMPSON, CIARA	13-14	V 1	
03:37	ASSIST by HUNT, ASHANTI			
03:16				MISSED 3PTR by HOWARD, ERIN
03:12				REBOUND (OFF) by BENTON, ROBYN
03:10				MISSED JUMPER by THOMPSON, UNIQUE
03:06	REBOUND (DEF) by WALKER, ARMANI			
02:51	TURNOVER (BADPASS) by WALKER, ARMANI			
02:51				STEAL by BENTON, ROBYN
02:45		15-14	H 1	GOOD! LAYUP by BENTON, ROBYN [FB]
02:36	TURNOVER (TRAVEL) by SCOTT, AMAYA			
02:36	SUB OUT: HUNT, ASHANTI			
02:36	SUB IN: HARRIS, CAMRY			

Time	VISITORS: Bethune-Cookman	Score	Margin	HOME: Auburn
02:08				MISSED JUMPER by HANSEN, LAUREN
02:04				REBOUND (OFF) by THOMPSON, UNIQUE
02:03				MISSED JUMPER by THOMPSON, UNIQUE
01:58	REBOUND (DEF) by THOMPSON, CIARA			
01:41	MISSED 3PTR by HATCHER, DANIELLA			
01:35				REBOUND (DEF) by THOMPSON, UNIQUE
01:24		17-14	H 3	GOOD! LAYUP by HOWARD, ERIN [PNT]
01:24				ASSIST by ALEXANDER, DAISA
01:07	GOOD! 3PTR by HARRIS, CAMRY	17-17	T	
01:07	ASSIST by THOMPSON, CIARA			
00:48		19-17	H 2	GOOD! LAYUP by THOMPSON, UNIQUE
00:48				ASSIST by HANSEN, LAUREN
00:34	GOOD! LAYUP by THOMPSON, CIARA [PNT]	19-19	T	
00:34	ASSIST by WALKER, ARMANI			
00:11				MISSED 3PTR by HANSEN, LAUREN
00:08	REBOUND (DEF) by HATCHER, DANIELLA			
00:02	MISSED 3PTR by HARRIS, CAMRY			
00:00	REBOUND (OFF) by THOMPSON, CIARA			

Bethune-Cookman 19, Auburn 19

Points from (This Period)	BCU	AUB
In the Paint	10	14
Off Turns	2	4
2nd Chance	4	6
Fast Break	0	2
Bench	3	9

Official Box Score
Bethune-Cookman vs Auburn
Second Quarter Statistics Only
December 15, 2019 at Auburn Arena - Auburn



Bethune-Cookman 12

No.	Player	S	Pts	FG	3FG	FT	OR	DR	TR	PF	A	TO	Blk	Stl	Min	+/-
02	SCOTT, AMAYA	F	2	1-2	0-0	0-0	0	0	0	0	0	1	0	0	5	-5
05	WALKER, ARMANI	G	0	0-1	0-0	0-0	0	0	0	0	0	0	0	0	5	-5
11	HUNT, ASHANTI	G	3	0-0	0-0	3-5	0	1	1	0	0	1	0	0	5	-4
20	HATCHER, DANIELLA	G	2	1-3	0-2	0-0	0	0	0	0	0	0	0	0	7	-2
23	THOMPSON, CIARA	F	2	1-2	0-1	0-0	2	2	4	0	0	0	0	0	10	-5
01	HARRIS, CAMRY	G	3	1-2	1-2	0-0	0	1	1	0	0	0	0	0	8	-4
03	WILLIAMS, KIANA	G	0	0-0	0-0	0-0	0	0	0	0	1	2	0	0	3	5
04	BEACHAM, MORGAN	G	0	0-0	0-0	0-0	0	0	0	0	0	0	0	0	0	0
10	WHITE, TANIA	F	0	0-0	0-0	0-0	0	0	0	0	0	0	0	0	0	0
12	HAYES, TATUM	G	0	0-2	0-2	0-0	0	0	0	1	0	0	0	0	2	-5
15	BALL, AMANI	F	0	0-0	0-0	0-0	0	0	0	0	0	0	0	0	0	0
22	REID, IMANI	F	0	0-0	0-0	0-0	0	0	0	0	0	0	0	0	0	0
35	HOWELL, ASHLIE	C	0	0-0	0-0	0-0	0	1	1	1	0	0	0	0	5	0
TEAM							2	0	2	0		1				
TOTALS			12	4-12	1-7	3-5	4	5	9	2	1	5	0	0	50	

Shooting By Period

Period	FG	FG%	3FG	3FG%	FT	FT%
3rd Qtr	4-12	33%	1-2	50%	5-12	42%
4th Qtr	3-17	18%	1-10	10%	4-6	67%
2nd Half	4-12	33%	1-7	14%	3-5	60%
2nd Half	7-29	24%	2-12	17%	9-18	50%
Game	19-56	33.9%	5-24	20.8%	13-24	54.2%

Deadball Rebounds: 8,0

Auburn 17

No.	Player	S	Pts	FG	3FG	FT	OR	DR	TR	PF	A	TO	Blk	Stl	Min	+/-
00	ALEXANDER, DAISA	G	2	1-3	0-1	0-0	0	1	1	1	1	0	0	1	6	-3
03	HUGHES, ANNIE	G	0	0-1	0-1	0-0	1	1	2	1	1	0	0	0	8	3
10	WHITE, KIYAE'	F	0	0-0	0-0	0-0	0	0	0	0	0	1	0	0	3	3
13	HANSEN, LAUREN	G	0	0-3	0-2	0-0	0	0	0	0	1	1	0	0	8	2
20	THOMPSON, UNIQUE	F	7	3-4	0-0	1-1	3	2	5	1	1	0	0	2	10	5
01	BENTON, ROBYN	G	6	2-4	2-4	0-0	0	0	0	0	0	0	1	0	5	5
02	WELLS, SANIA	G	0	0-0	0-0	0-0	0	0	0	0	0	0	0	0	1	-3
24	HOWARD, ERIN	F	2	0-1	0-1	2-2	1	0	1	1	0	0	0	0	3	7
30	ROBINSON-NWAGWU, MORG,	G	0	0-1	0-0	0-0	0	0	0	0	0	0	0	0	6	6
35	KELLY, NATALIE	F	0	0-0	0-0	0-0	0	0	0	0	0	0	0	0	0	0
TEAM							1	0	1	0		0				
TOTALS			17	6-17	2-9	3-3	6	4	10	4	4	2	1	3	50	

Shooting By Period

Period	FG	FG%	3FG	3FG%	FT	FT%
3rd Qtr	9-10	90%	2-3	67%	3-4	75%
4th Qtr	6-13	46%	3-6	50%	0-0	0%
2nd Half	6-17	35%	2-9	22%	3-3	100%
2nd Half	15-23	65%	5-9	56%	3-4	75%
Game	30-59	50.8%	8-25	32.0%	6-7	85.7%

Deadball Rebounds: 1,0

Game Notes:

Officials: **Cameron Inouye, Stephanie Barksdale, Kristen Bell**
 Attendance: **1588**

Start Time: **03:02 PM ET**
 End Time: **04:56 PM ET**
 Game Duration: **1:54**

Score	1st	2nd	3rd	4th	TOT
BCU	19	12	14	11	56
AUB	19	17	23	15	74

Points from (This Period)	BCU	AUB
In the Paint	2	6
Off Turns	2	4
2nd Chance	2	8
Fast Break	2	0
Bench	3	8

Official Play-By-Play
Bethune-Cookman vs Auburn
Second Quarter
December 15, 2019 at Auburn Arena - Auburn



Period 2

Starters:

Bethune-Cookman: 2 SCOTT, AMAYA (F); 5 WALKER, ARMANI (G); 11 HUNT, ASHANTI (G); 20 HATCHER, DANIELLA (G); 23 THOMPSON, CIARA (F);
Auburn: 00 ALEXANDER, DAISA (G); 3 HUGHES, ANNIE (G); 10 WHITE, KIYAE' (F); 13 HANSEN, LAUREN (G); 20 THOMPSON, UNIQUE (F);

Time	VISITORS: Bethune-Cookman	Score	Margin	HOME: Auburn
10:00				SUB OUT: BENTON, ROBYN
10:00				SUB IN: WELLS, SANIA
10:00	SUB OUT: SCOTT, AMAYA			
10:00	SUB OUT: WALKER, ARMANI			
10:00	SUB IN: WILLIAMS, KIANA			
10:00	SUB IN: HOWELL, ASHLIE			
09:43	MISSED 3PTR by HARRIS, CAMRY			
09:40	REBOUND (OFF) by THOMPSON, CIARA			
09:35				SUB OUT: HOWARD, ERIN
09:35				SUB IN: HUGHES, ANNIE
09:33	TURNOVER (BADPASS) by WILLIAMS, KIANA			
09:33				STEAL by ALEXANDER, DAISA
09:27				MISSED LAYUP by ALEXANDER, DAISA
09:23	REBOUND (DEF) by THOMPSON, CIARA			
09:05	GOOD! 3PTR by HARRIS, CAMRY	19-22	V 3	
09:05	ASSIST by WILLIAMS, KIANA			
08:44				MISSED 3PTR by HANSEN, LAUREN
08:40				REBOUND (OFF) by THOMPSON, UNIQUE
08:38				MISSED 3PTR by HANSEN, LAUREN
08:36				REBOUND (OFF) by TEAM
08:36				SUB OUT: WELLS, SANIA
08:36				SUB IN: ROBINSON-NWAGWU, MORGAN
08:27				MISSED 3PTR by ALEXANDER, DAISA
08:22	REBOUND (DEF) by HARRIS, CAMRY			
07:59	MISSED 3PTR by THOMPSON, CIARA			
07:55	REBOUND (OFF) by TEAM			
07:55	SUB OUT: HATCHER, DANIELLA			
07:55	SUB IN: HUNT, ASHANTI			
07:38	TURNOVER (BADPASS) by WILLIAMS, KIANA			
07:38				STEAL by THOMPSON, UNIQUE
07:30				MISSED 3PTR by HUGHES, ANNIE
07:25	REBOUND (DEF) by HUNT, ASHANTI			
07:25				FOUL (PERSONAL) by HUGHES, ANNIE
07:25	GOOD! FT by HUNT, ASHANTI [FB]	19-23	V 4	
07:25	GOOD! FT by HUNT, ASHANTI [FB]	19-24	V 5	
07:08				TURNOVER (BADPASS) by HANSEN, LAUREN
07:08				SUB OUT: ALEXANDER, DAISA
07:08				SUB IN: HOWARD, ERIN
07:08	SUB OUT: WILLIAMS, KIANA			
07:08	SUB IN: HAYES, TATUM			
06:52	TURNOVER (BADPASS) by HUNT, ASHANTI			
06:52				STEAL by THOMPSON, UNIQUE
06:40				MISSED JUMPER by THOMPSON, UNIQUE
06:38				REBOUND (OFF) by HOWARD, ERIN
06:38	FOUL (PERSONAL) by HOWELL, ASHLIE			
06:38		20-24	V 4	GOOD! FT by HOWARD, ERIN
06:38		21-24	V 3	GOOD! FT by HOWARD, ERIN
06:13	MISSED 3PTR by HAYES, TATUM			
06:08				REBOUND (DEF) by HUGHES, ANNIE
05:46				MISSED 3PTR by HOWARD, ERIN
05:45				REBOUND (OFF) by THOMPSON, UNIQUE
05:45		23-24	V 1	GOOD! LAYUP by THOMPSON, UNIQUE
05:45	FOUL (PERSONAL) by HAYES, TATUM			
05:45		24-24	T	GOOD! FT by THOMPSON, UNIQUE
05:26	MISSED 3PTR by HAYES, TATUM			
05:22				REBOUND (DEF) by THOMPSON, UNIQUE
05:16				MISSED JUMPER by HANSEN, LAUREN
05:12	REBOUND (DEF) by HOWELL, ASHLIE			
04:45	TURNOVER (SHOTCLOCK) by TEAM			
04:45				
04:45				SUB OUT: HANSEN, LAUREN
04:45				SUB IN: BENTON, ROBYN
04:45	SUB OUT: HUNT, ASHANTI			
04:45	SUB IN: HATCHER, DANIELLA			
04:45	SUB OUT: HAYES, TATUM			
04:45	SUB IN: WALKER, ARMANI			
04:45	SUB OUT: HOWELL, ASHLIE			
04:45	SUB IN: SCOTT, AMAYA			
04:31		26-24	H 2	GOOD! LAYUP by THOMPSON, UNIQUE
04:31				ASSIST by HUGHES, ANNIE

Time	VISITORS: Bethune-Cookman	Score	Margin	HOME: Auburn
04:23				FOUL (PERSONAL) by HOWARD, ERIN
04:23				SUB OUT: HOWARD, ERIN
04:23				SUB IN: WHITE, KIYAE'
04:11	MISSED JUMPER by WALKER, ARMANI			
04:03				REBOUND (DEF) by THOMPSON, UNIQUE
03:59				MISSED 3PTR by BENTON, ROBYN
03:56				REBOUND (OFF) by HUGHES, ANNIE
03:53				MISSED JUMPER by ROBINSON-NWAGWU, MORGAN
03:49				REBOUND (OFF) by THOMPSON, UNIQUE
03:47		29-24	H 5	GOOD! 3PTR by BENTON, ROBYN
03:47				ASSIST by THOMPSON, UNIQUE
03:36	TURNOVER (TRAVEL) by SCOTT, AMAYA			
03:31				MISSED 3PTR by BENTON, ROBYN
03:26	REBOUND (DEF) by THOMPSON, CIARA			
03:08	GOOD! JUMPER by HATCHER, DANIELLA	29-26	H 3	
02:53				TURNOVER (BADPASS) by WHITE, KIYAE'
02:53				SUB OUT: HUGHES, ANNIE
02:53				SUB OUT: ROBINSON-NWAGWU, MORGAN
02:53				SUB IN: ALEXANDER, DAISA
02:53				SUB IN: HANSEN, LAUREN
02:25	GOOD! JUMPER by SCOTT, AMAYA	29-28	H 1	
01:59		32-28	H 4	GOOD! 3PTR by BENTON, ROBYN
01:59				ASSIST by ALEXANDER, DAISA
01:47	MISSED LAYUP by SCOTT, AMAYA			
01:47				BLOCK by BENTON, ROBYN
01:47	REBOUND (OFF) by TEAM			
01:47	SUB OUT: HARRIS, CAMRY			
01:47	SUB IN: HUNT, ASHANTI			
01:47				TIMEOUT 30SEC
01:40	MISSED 3PTR by HATCHER, DANIELLA			
01:36				REBOUND (DEF) by ALEXANDER, DAISA
01:17		34-28	H 6	GOOD! JUMPER by ALEXANDER, DAISA
00:55				FOUL (PERSONAL) by ALEXANDER, DAISA
00:55	MISSED FT by HUNT, ASHANTI			
00:55	REBOUND (OFF) by TEAM			
00:55	MISSED FT by HUNT, ASHANTI			
00:55	REBOUND (OFF) by TEAM			
00:55	GOOD! FT by HUNT, ASHANTI	34-29	H 5	
00:55				SUB OUT: WHITE, KIYAE'
00:55				SUB IN: HUGHES, ANNIE
00:35		36-29	H 7	GOOD! LAYUP by THOMPSON, UNIQUE [PNT]
00:35				ASSIST by HANSEN, LAUREN
00:17				FOUL (PERSONAL) by THOMPSON, UNIQUE
00:13	MISSED 3PTR by HATCHER, DANIELLA			
00:05	REBOUND (OFF) by THOMPSON, CIARA			
00:04	GOOD! LAYUP by THOMPSON, CIARA	36-31	H 5	

Bethune-Cookman 31, Auburn 36

Points from (This Period)	BCU	AUB
In the Paint	2	6
Off Turns	2	4
2nd Chance	2	8
Fast Break	2	0
Bench	3	8

Official Box Score
Bethune-Cookman vs Auburn
Second Half Statistics Only
December 15, 2019 at Auburn Arena - Auburn



Bethune-Cookman 25

No.	Player	S	Pts	FG	3FG	FT	OR	DR	TR	PF	A	TO	Blk	Stl	Min	+/-
01	HARRIS, CAMRY	G	2	1-6	0-4	0-0	1	1	2	0	0	0	0	1	12	-6
02	SCOTT, AMAYA	F	2	1-3	0-0	0-0	0	1	1	0	0	0	0	0	6	-10
03	WILLIAMS, KIANA	G	4	1-3	0-1	2-2	0	1	1	0	1	0	0	1	9	-8
04	BEACHAM, MORGAN	G	4	1-3	1-1	1-2	0	0	0	1	0	0	0	1	9	-2
05	WALKER, ARMANI	G	0	0-0	0-0	0-0	0	0	0	0	0	0	0	0	2	-3
11	HUNT, ASHANTI	G	5	1-2	0-1	3-4	0	0	0	1	0	0	0	0	16	-12
12	HAYES, TATUM	G	0	0-1	0-1	0-0	0	0	0	0	0	0	0	0	1	1
15	BALL, AMANI	F	0	0-3	0-3	0-2	0	0	0	0	0	0	0	0	11	-7
20	HATCHER, DANIELLA	G	8	2-5	1-1	3-6	1	0	1	1	1	1	0	4	13	-5
22	REID, IMANI	F	0	0-1	0-0	0-0	0	0	0	0	0	0	0	0	3	-1
10	WHITE, TANIA	F	0	0-0	0-0	0-0	0	1	1	0	0	1	0	0	3	-1
23	THOMPSON, CIARA	F	0	0-2	0-0	0-2	0	0	0	3	0	0	0	1	8	-14
35	HOWELL, ASHLIE	C	0	0-0	0-0	0-0	1	0	1	0	0	0	0	0	6	3
	TEAM		0	0-0	0-0	0-0	2	0	2	0	0	1	0	0	0	0
	TOTALS		25	7-29	2-12	9-18	5	4	9	6	2	3	0	8	100	

Shooting By Period

Period	FG	FG%	3FG	3FG%	FT	FT%
3rd Qtr	4-12	33%	1-2	50%	5-12	42%
4th Qtr	3-17	18%	1-10	10%	4-6	67%
2nd Half	7-29	24%	2-12	17%	9-18	50%
Game	19-56	33.9%	5-24	20.8%	13-24	54.2%

Deadball Rebounds: 8,0

Last FG Half: BCU 4th-03:08

Auburn 38

No.	Player	S	Pts	FG	3FG	FT	OR	DR	TR	PF	A	TO	Blk	Stl	Min	+/-
00	ALEXANDER, DAISA	G	7	3-5	1-3	0-0	0	3	3	2	0	2	0	0	15	12
02	WELLS, SANIA	G	0	0-1	0-1	0-0	0	0	0	0	0	1	0	0	6	0
03	HUGHES, ANNIE	G	3	1-2	1-1	0-0	1	1	2	1	1	2	0	0	17	15
10	WHITE, KIYAE'	F	2	0-0	0-0	2-2	0	5	5	1	0	2	1	0	8	3
13	HANSEN, LAUREN	G	10	4-4	2-2	0-0	0	0	0	5	1	3	0	0	7	10
20	THOMPSON, UNIQUE	F	5	2-2	0-0	1-2	0	4	4	3	1	1	0	1	11	10
24	HOWARD, ERIN	F	5	2-4	1-2	0-0	1	5	6	2	1	3	0	0	16	7
30	ROBINSON-NWAGWU, MORG	G	4	2-3	0-0	0-0	1	0	1	0	2	0	1	0	13	3
35	KELLY, NATALIE	F	0	0-0	0-0	0-0	0	1	1	0	0	0	0	0	3	1
01	BENTON, ROBYN	G	2	1-2	0-0	0-0	0	0	0	1	1	0	1	0	5	4
	TEAM		0	0-0	0-0	0-0	1	1	2	0	0	1	0	0	0	0
	TOTALS		38	15-23	5-9	3-4	4	20	24	15	7	15	3	1	100	

Shooting By Period

Period	FG	FG%	3FG	3FG%	FT	FT%
3rd Qtr	9-10	90%	2-3	67%	3-4	75%
4th Qtr	6-13	46%	3-6	50%	0-0	0%
2nd Half	15-23	65%	5-9	56%	3-4	75%
Game	30-59	50.8%	8-25	32.0%	6-7	85.7%

Deadball Rebounds: 1,0

Last FG Half: AUB 4th-02:09

Game Notes:

Officials: Cameron Inouye, Stephanie Barksdale, Kristen Bell
 Attendance: 1588

Start Time: 03:02 PM ET
 End Time: 04:56 PM ET
 Game Duration: 1:54

Score	1st	2nd	3rd	4th	TOT
BCU	19	12	14	11	56
AUB	19	17	23	15	74

Points from (This Period)	BCU	AUB
In the Paint	8	16
Off Turns	12	0
2nd Chance	1	7
Fast Break	12	2
Bench	10	11

Official Box Score
Bethune-Cookman vs Auburn
Third Quarter Statistics Only
December 15, 2019 at Auburn Arena - Auburn



Bethune-Cookman 25

No.	Player	S	Pts	FG	3FG	FT	OR	DR	TR	PF	A	TO	Blk	Stl	Min	+/-
02	SCOTT, AMAYA	F	2	1-3	0-0	0-0	0	1	1	0	0	0	0	0	5	-10
05	WALKER, ARMANI	G	0	0-0	0-0	0-0	0	0	0	0	0	0	0	0	2	-3
11	HUNT, ASHANTI	G	4	1-2	0-1	2-2	0	0	0	0	0	0	0	0	10	-9
20	HATCHER, DANIELLA	G	4	1-3	0-0	2-4	0	0	0	0	1	1	0	3	9	-8
23	THOMPSON, CIARA	F	0	0-1	0-0	0-2	0	0	0	3	0	0	0	0	5	-7
01	HARRIS, CAMRY	G	0	0-0	0-0	0-0	0	0	0	0	0	0	0	1	5	-3
03	WILLIAMS, KIANA	G	0	0-1	0-0	0-0	0	0	0	0	0	0	0	0	5	-7
04	BEACHAM, MORGAN	G	4	1-2	1-1	1-2	0	0	0	1	0	0	0	1	3	1
10	WHITE, TANIA	F	0	0-0	0-0	0-0	0	0	0	0	0	0	0	0	0	0
12	HAYES, TATUM	G	0	0-0	0-0	0-0	0	0	0	0	0	0	0	0	0	0
15	BALL, AMANI	F	0	0-0	0-0	0-2	0	0	0	0	0	0	0	0	1	-3
22	REID, IMANI	F	0	0-0	0-0	0-0	0	0	0	0	0	0	0	0	0	0
35	HOWELL, ASHLIE	C	0	0-0	0-0	0-0	0	0	0	0	0	0	0	0	3	4
TEAM							1	0	1	0		0				
TOTALS			14	4-12	1-2	5-12	1	1	2	4	1	1	0	5	50	

Shooting By Period

Period	FG	FG%	3FG	3FG%	FT	FT%
2nd Half	0-0	0%	0-0	0%	0-0	0%
Game	19-56	33.9%	5-24	20.8%	13-24	54.2%

Deadball Rebounds: 8,0

Auburn 38

No.	Player	S	Pts	FG	3FG	FT	OR	DR	TR	PF	A	TO	Blk	Stl	Min	+/-
00	ALEXANDER, DAISA	G	2	1-2	0-1	0-0	0	2	2	1	0	0	0	0	8	9
03	HUGHES, ANNIE	G	0	0-0	0-0	0-0	0	0	0	0	1	1	0	0	10	8
10	WHITE, KIYAE'	F	2	0-0	0-0	2-2	0	4	4	0	0	1	0	0	4	7
13	HANSEN, LAUREN	G	10	4-4	2-2	0-0	0	0	0	3	1	2	0	0	6	11
20	THOMPSON, UNIQUE	F	3	1-1	0-0	1-2	0	2	2	3	1	1	0	1	7	3
01	BENTON, ROBYN	G	2	1-1	0-0	0-0	0	0	0	1	1	0	1	0	4	6
02	WELLS, SANIA	G	0	0-0	0-0	0-0	0	0	0	0	0	0	0	0	2	0
24	HOWARD, ERIN	F	2	1-1	0-0	0-0	0	2	2	1	0	2	0	0	6	3
30	ROBINSON-NWAGWU, MORG,	G	2	1-1	0-0	0-0	0	0	0	0	0	0	0	0	4	-2
35	KELLY, NATALIE	F	0	0-0	0-0	0-0	0	0	0	0	0	0	0	0	0	0
TEAM							0	0	0	0		0				
TOTALS			23	9-10	2-3	3-4	0	10	10	9	4	7	1	1	50	

Shooting By Period

Period	FG	FG%	3FG	3FG%	FT	FT%
2nd Half	0-0	0%	0-0	0%	0-0	0%
Game	30-59	50.8%	8-25	32.0%	6-7	85.7%

Deadball Rebounds: 1,0

Game Notes:

Officials: Cameron Inouye, Stephanie Barksdale, Kristen Bell
 Attendance: 1588

Start Time: 03:02 PM ET
 End Time: 04:56 PM ET
 Game Duration: 1:54

Score	1st	2nd	3rd	4th	TOT
BCU	19	12	14	11	56
AUB	19	17	23	15	74

Points from (This Period)	BCU	AUB
In the Paint	4	10
Off Turns	9	0
2nd Chance	0	0
Fast Break	8	2
Bench	4	6

Official Play-By-Play
Bethune-Cookman vs Auburn
Third Quarter
December 15, 2019 at Auburn Arena - Auburn



Period 3

Starters:

Bethune-Cookman: 2 SCOTT, AMAYA (F); 5 WALKER, ARMANI (G); 11 HUNT, ASHANTI (G); 20 HATCHER, DANIELLA (G); 23 THOMPSON, CIARA (F);
Auburn: 00 ALEXANDER, DAISA (G); 3 HUGHES, ANNIE (G); 10 WHITE, KIYAE' (F); 13 HANSEN, LAUREN (G); 20 THOMPSON, UNIQUE (F);

Time	VISITORS: Bethune-Cookman	Score	Margin	HOME: Auburn
10:00				SUB OUT: BENTON, ROBYN
10:00				SUB IN: HOWARD, ERIN
09:39				FOUL (OFF) by THOMPSON, UNIQUE
09:39				TURNOVER (OFFENSIVE) by THOMPSON, UNIQUE
09:31				FOUL (PERSONAL) by ALEXANDER, DAISA
09:31	GOOD! FT by HATCHER, DANIELLA [FB]	36-32	H 4	
09:31	GOOD! FT by HATCHER, DANIELLA [FB]	36-33	H 3	
09:14		38-33	H 5	GOOD! JUMPER by HANSEN, LAUREN [PNT]
09:14				ASSIST by THOMPSON, UNIQUE
08:55	MISSED JUMPER by HATCHER, DANIELLA			
08:52				REBOUND (DEF) by HOWARD, ERIN
08:34		41-33	H 8	GOOD! 3PTR by HANSEN, LAUREN
08:28	SUB OUT: WALKER, ARMANI			
08:28	SUB IN: WILLIAMS, KIANA			
08:04	MISSED JUMPER by SCOTT, AMAYA			
07:59				REBOUND (DEF) by THOMPSON, UNIQUE
07:58				FOUL (OFF) by HANSEN, LAUREN
07:58				TURNOVER (OFFENSIVE) by HANSEN, LAUREN
07:27	MISSED JUMPER by THOMPSON, CIARA			
07:24				REBOUND (DEF) by HOWARD, ERIN
07:13	FOUL (PERSONAL) by THOMPSON, CIARA			
07:06		43-33	H 10	GOOD! JUMPER by HOWARD, ERIN [PNT]
07:06				ASSIST by HUGHES, ANNIE
06:43	TURNOVER (BADPASS) by HATCHER, DANIELLA			
06:43				STEAL by THOMPSON, UNIQUE
06:34	FOUL (PERSONAL) by THOMPSON, CIARA			
06:34				SUB OUT: HOWARD, ERIN
06:34				SUB IN: BENTON, ROBYN
06:29				MISSED 3PTR by ALEXANDER, DAISA
06:25	REBOUND (DEF) by SCOTT, AMAYA			
06:22	GOOD! LAYUP by SCOTT, AMAYA [FB/PNT]	43-35	H 8	
06:03		46-35	H 11	GOOD! 3PTR by HANSEN, LAUREN
06:03				ASSIST by BENTON, ROBYN
05:57				FOUL (PERSONAL) by HANSEN, LAUREN
05:57				SUB OUT: HANSEN, LAUREN
05:57				SUB OUT: THOMPSON, UNIQUE
05:57				SUB IN: WHITE, KIYAE'
05:57				SUB IN: ROBINSON-NWAGWU, MORGAN
05:36	MISSED 3PTR by HUNT, ASHANTI			
05:33				REBOUND (DEF) by ALEXANDER, DAISA
05:26	FOUL (PERSONAL) by THOMPSON, CIARA			
05:26	SUB OUT: THOMPSON, CIARA			
05:26	SUB IN: HARRIS, CAMRY			
05:26		47-35	H 12	GOOD! FT by WHITE, KIYAE'
05:26		48-35	H 13	GOOD! FT by WHITE, KIYAE'
04:58	MISSED JUMPER by HATCHER, DANIELLA			
04:54				REBOUND (DEF) by ALEXANDER, DAISA
04:46		50-35	H 15	GOOD! LAYUP by BENTON, ROBYN [PNT]
04:35	MISSED LAYUP by SCOTT, AMAYA			
04:35				BLOCK by BENTON, ROBYN
04:34	REBOUND (OFF) by TEAM			
04:34				SUB OUT: ALEXANDER, DAISA
04:34				SUB IN: WELLS, SANIA
04:34	SUB OUT: SCOTT, AMAYA			
04:34	SUB IN: HOWELL, ASHLIE			
04:23	MISSED JUMPER by WILLIAMS, KIANA			
04:19				REBOUND (DEF) by WHITE, KIYAE'
04:15		52-35	H 17	GOOD! LAYUP by ROBINSON-NWAGWU, MORGAN [FB]
03:53	GOOD! JUMPER by HUNT, ASHANTI	52-37	H 15	
03:22				TURNOVER (LOSTBALL) by WHITE, KIYAE'
03:22	STEAL by HARRIS, CAMRY			
03:03				FOUL (PERSONAL) by BENTON, ROBYN
03:03				SUB OUT: WELLS, SANIA
03:03				SUB OUT: HUGHES, ANNIE
03:03				SUB OUT: WHITE, KIYAE'
03:03				SUB OUT: ROBINSON-NWAGWU, MORGAN
03:03				SUB IN: ALEXANDER, DAISA
03:03				SUB IN: HANSEN, LAUREN
03:03				SUB IN: THOMPSON, UNIQUE

Time	VISITORS: Bethune-Cookman	Score	Margin	HOME: Auburn
03:03				SUB IN: HOWARD, ERIN
03:03	SUB OUT: WILLIAMS, KIANA			
03:03	SUB IN: BEACHAM, MORGAN			
03:03	MISSED FT by HATCHER, DANIELLA			
03:03	REBOUND (OFF) by TEAM			
03:03	MISSED FT by HATCHER, DANIELLA			
03:03				REBOUND (DEF) by THOMPSON, UNIQUE
02:55				TIMEOUT 30SEC
02:42		54-37	H 17	GOOD! JUMPER by THOMPSON, UNIQUE [PNT]
02:42				ASSIST by HANSEN, LAUREN
02:34				FOUL (PERSONAL) by HANSEN, LAUREN
02:34				SUB OUT: HANSEN, LAUREN
02:34				SUB IN: ROBINSON-NWAGWU, MORGAN
02:34	MISSED FT by BEACHAM, MORGAN			
02:34	REBOUND (OFF) by TEAM			
02:34	GOOD! FT by BEACHAM, MORGAN	54-38	H 16	
02:34				SUB OUT: BENTON, ROBYN
02:34				SUB IN: HUGHES, ANNIE
02:34				TIMEOUT 30SEC
02:15				TURNOVER (LOSTBALL) by HUGHES, ANNIE
02:15	STEAL by HATCHER, DANIELLA			
01:59	GOOD! 3PTR by BEACHAM, MORGAN	54-41	H 13	
01:59	ASSIST by HATCHER, DANIELLA			
01:48				TURNOVER (BADPASS) by HOWARD, ERIN
01:48	STEAL by HATCHER, DANIELLA			
01:42	GOOD! LAYUP by HATCHER, DANIELLA [FB]	54-43	H 11	
01:25				TURNOVER (BADPASS) by HOWARD, ERIN
01:25	STEAL by HATCHER, DANIELLA			
01:24				FOUL (PERSONAL) by HOWARD, ERIN
01:24				SUB OUT: HOWARD, ERIN
01:24				SUB OUT: ROBINSON-NWAGWU, MORGAN
01:24				SUB IN: WHITE, KIYAE'
01:24				SUB IN: HANSEN, LAUREN
01:24	SUB OUT: HATCHER, DANIELLA			
01:24	SUB IN: BALL, AMANI			
01:24	SUB OUT: HOWELL, ASHLIE			
01:24	SUB IN: THOMPSON, CIARA			
01:24	GOOD! FT by HUNT, ASHANTI [FB]	54-44	H 10	
01:24	GOOD! FT by HUNT, ASHANTI [FB]	54-45	H 9	
01:12				TURNOVER (BADPASS) by HANSEN, LAUREN
01:12	STEAL by BEACHAM, MORGAN			
01:06	MISSED LAYUP by BEACHAM, MORGAN			
01:03				REBOUND (DEF) by WHITE, KIYAE'
00:56		56-45	H 11	GOOD! JUMPER by ALEXANDER, DAISA
00:40				FOUL (PERSONAL) by THOMPSON, UNIQUE
00:40	MISSED FT by THOMPSON, CIARA			
00:40	REBOUND (OFF) by TEAM			
00:40	MISSED FT by THOMPSON, CIARA			
00:37				REBOUND (DEF) by WHITE, KIYAE'
00:34	FOUL (PERSONAL) by BEACHAM, MORGAN			
00:34				MISSED FT by THOMPSON, UNIQUE
00:34				REBOUND (OFF) by TEAM
00:34		57-45	H 12	GOOD! FT by THOMPSON, UNIQUE
00:34	SUB OUT: THOMPSON, CIARA			
00:34	SUB IN: HATCHER, DANIELLA			
00:27				FOUL (PERSONAL) by THOMPSON, UNIQUE
00:27				SUB OUT: THOMPSON, UNIQUE
00:27				SUB IN: HOWARD, ERIN
00:27	MISSED FT by BALL, AMANI			
00:27	REBOUND (OFF) by TEAM			
00:27	MISSED FT by BALL, AMANI			
00:25				REBOUND (DEF) by WHITE, KIYAE'
00:00		59-45	H 14	GOOD! JUMPER by HANSEN, LAUREN

Bethune-Cookman 45, Auburn 59

Points from (This Period)	BCU	AUB
In the Paint	4	10
Off Turns	9	0
2nd Chance	0	0
Fast Break	8	2
Bench	4	6

Official Box Score
Bethune-Cookman vs Auburn
Fourth Quarter Statistics Only
December 15, 2019 at Auburn Arena - Auburn



Bethune-Cookman 11

No.	Player	S	Pts	FG	3FG	FT	OR	DR	TR	PF	A	TO	Blk	Stl	Min	+/-
02	SCOTT, AMAYA	F	0	0-0	0-0	0-0	0	0	0	0	0	0	0	0	1	0
05	WALKER, ARMANI	G	0	0-0	0-0	0-0	0	0	0	0	0	0	0	0	0	0
11	HUNT, ASHANTI	G	1	0-0	0-0	1-2	0	0	0	1	0	0	0	0	6	-3
20	HATCHER, DANIELLA	G	4	1-2	1-1	1-2	1	0	1	1	0	0	0	1	4	3
23	THOMPSON, CIARA	F	0	0-1	0-0	0-0	0	0	0	0	0	0	0	1	3	-7
01	HARRIS, CAMRY	G	2	1-6	0-4	0-0	1	1	2	0	0	0	0	0	7	-3
03	WILLIAMS, KIANA	G	4	1-2	0-1	2-2	0	1	1	0	1	0	0	1	4	-1
04	BEACHAM, MORGAN	G	0	0-1	0-0	0-0	0	0	0	0	0	0	0	0	6	-3
10	WHITE, TANIA	F	0	0-0	0-0	0-0	0	1	1	0	0	1	0	0	3	-1
12	HAYES, TATUM	G	0	0-1	0-1	0-0	0	0	0	0	0	0	0	0	1	1
15	BALL, AMANI	F	0	0-3	0-3	0-0	0	0	0	0	0	0	0	0	10	-4
22	REID, IMANI	F	0	0-1	0-0	0-0	0	0	0	0	0	0	0	0	3	-1
35	HOWELL, ASHLIE	C	0	0-0	0-0	0-0	1	0	1	0	0	0	0	0	3	-1
TEAM							1	0	1	0		1				
TOTALS			11	3-17	1-10	4-6	4	3	7	2	1	2	0	3	50	

Shooting By Period

Period	FG	FG%	3FG	3FG%	FT	FT%
Game	19-56	33.9%	5-24	20.8%	13-24	54.2%

Deadball Rebounds: 8,0

Auburn 15

No.	Player	S	Pts	FG	3FG	FT	OR	DR	TR	PF	A	TO	Blk	Stl	Min	+/-
00	ALEXANDER, DAISA	G	5	2-3	1-2	0-0	0	1	1	1	0	2	0	0	7	3
03	HUGHES, ANNIE	G	3	1-2	1-1	0-0	1	1	2	1	0	1	0	0	7	7
10	WHITE, KIYAE'	F	0	0-0	0-0	0-0	0	1	1	1	0	1	1	0	4	-4
13	HANSEN, LAUREN	G	0	0-0	0-0	0-0	0	0	0	2	0	1	0	0	1	-1
20	THOMPSON, UNIQUE	F	2	1-1	0-0	0-0	0	2	2	0	0	0	0	0	4	7
01	BENTON, ROBYN	G	0	0-1	0-0	0-0	0	0	0	0	0	0	0	0	1	-2
02	WELLS, SANIA	G	0	0-1	0-1	0-0	0	0	0	0	0	1	0	0	4	0
24	HOWARD, ERIN	F	3	1-3	1-2	0-0	1	3	4	1	1	1	0	0	10	4
30	ROBINSON-NWAGWU, MORG,	G	2	1-2	0-0	0-0	1	0	1	0	2	0	1	0	9	5
35	KELLY, NATALIE	F	0	0-0	0-0	0-0	0	1	1	0	0	0	0	0	3	1
TEAM							1	1	2	0		1				
TOTALS			15	6-13	3-6	0-0	4	10	14	6	3	8	2	0	50	

Shooting By Period

Period	FG	FG%	3FG	3FG%	FT	FT%
Game	30-59	50.8%	8-25	32.0%	6-7	85.7%

Deadball Rebounds: 1,0

Game Notes:

Officials: Cameron Inouye, Stephanie Barksdale, Kristen Bell

Attendance: 1588

Start Time: 03:02 PM ET

End Time: 04:56 PM ET

Game Duration: 1:54

Score	1st	2nd	3rd	4th	TOT
BCU	19	12	14	11	56
AUB	19	17	23	15	74

Points from (This Period)	BCU	AUB
In the Paint	4	6
Off Turns	3	0
2nd Chance	1	7
Fast Break	4	0
Bench	6	5

Official Play-By-Play
Bethune-Cookman vs Auburn
Fourth Quarter
December 15, 2019 at Auburn Arena - Auburn



Period 4

Starters:

Bethune-Cookman: 2 SCOTT,AMAYA (F); 5 WALKER,ARMANI (G); 11 HUNT,ASHANTI (G); 20 HATCHER,DANIELLA (G); 23 THOMPSON,CIARA (F);
Auburn: 00 ALEXANDER,DAISA (G); 3 HUGHES,ANNIE (G); 10 WHITE,KIYAE' (F); 13 HANSEN,LAUREN (G); 20 THOMPSON,UNIQUE (F);

Time	VISITORS: Bethune-Cookman	Score	Margin	HOME: Auburn
09:49	MISSED 3PTR by HARRIS, CAMRY			
09:47	REBOUND (OFF) by HATCHER, DANIELLA			
09:47				FOUL (PERSONAL) by HUGHES, ANNIE
09:47	MISSED FT by HATCHER, DANIELLA			
09:47	REBOUND (OFF) by TEAM			
09:47	GOOD! FT by HATCHER, DANIELLA	59-46	H 13	
09:39				TURNOVER (BADPASS) by ALEXANDER, DAISA
09:39	STEAL by HATCHER, DANIELLA			
09:32	MISSED LAYUP by HATCHER, DANIELLA			
09:26				REBOUND (DEF) by WHITE, KIYAE'
09:12				FOUL (OFF) by ALEXANDER, DAISA
09:12				TURNOVER (OFFENSIVE) by ALEXANDER, DAISA
09:12				SUB OUT: HUGHES, ANNIE
09:12				SUB IN: BENTON, ROBYN
09:00	MISSED LAYUP by HARRIS, CAMRY			
09:00				BLOCK by WHITE, KIYAE'
08:59	REBOUND (OFF) by TEAM			
08:59				FOUL (PERSONAL) by HANSEN, LAUREN
08:52	MISSED 3PTR by HARRIS, CAMRY			
08:49				REBOUND (DEF) by HOWARD, ERIN
08:47				FOUL (OFF) by HANSEN, LAUREN
08:47				TURNOVER (OFFENSIVE) by HANSEN, LAUREN
08:47				SUB OUT: HANSEN, LAUREN
08:47				SUB IN: ROBINSON-NWAGWU, MORGAN
08:36	MISSED 3PTR by HARRIS, CAMRY			
08:36				BLOCK by ROBINSON-NWAGWU, MORGAN
08:30	REBOUND (OFF) by HARRIS, CAMRY			
08:27	TURNOVER (SHOTCLOCK) by TEAM			
07:59				MISSED JUMPER by BENTON, ROBYN
07:56	REBOUND (DEF) by HARRIS, CAMRY			
07:52	GOOD! LAYUP by HARRIS, CAMRY [FB]	59-48	H 11	
07:46				TURNOVER (LOSTBALL) by WHITE, KIYAE'
07:46				SUB OUT: BENTON, ROBYN
07:46				SUB IN: WELLS, SANIA
07:39	MISSED 3PTR by HARRIS, CAMRY			
07:39				REBOUND (DEF) by HOWARD, ERIN
07:39	FOUL (PERSONAL) by HATCHER, DANIELLA			
07:11				MISSED LAYUP by ROBINSON-NWAGWU, MORGAN
07:06				REBOUND (OFF) by HOWARD, ERIN
07:06				TURNOVER (SHOTCLOCK) by TEAM
07:06	SUB OUT: HATCHER, DANIELLA			
07:06	SUB IN: HAYES, TATUM			
06:52				FOUL (PERSONAL) by WHITE, KIYAE'
06:52	MISSED FT by HUNT, ASHANTI			
06:52	REBOUND (OFF) by TEAM			
06:52	GOOD! FT by HUNT, ASHANTI	59-49	H 10	
06:52	SUB OUT: HARRIS, CAMRY			
06:52	SUB IN: THOMPSON, CIARA			
06:48	FOUL (PERSONAL) by HUNT, ASHANTI			
06:35				TURNOVER (BADPASS) by WELLS, SANIA
06:35	STEAL by THOMPSON, CIARA			
06:27	MISSED 3PTR by HAYES, TATUM			
06:26				REBOUND (DEF) by TEAM
06:26				SUB OUT: WELLS, SANIA
06:26				SUB OUT: WHITE, KIYAE'
06:26				SUB IN: HUGHES, ANNIE
06:26				SUB IN: THOMPSON, UNIQUE
06:26	SUB OUT: HAYES, TATUM			
06:26	SUB IN: HARRIS, CAMRY			
06:10				MISSED 3PTR by HOWARD, ERIN
06:08				REBOUND (OFF) by TEAM
05:58		62-49	H 13	GOOD! 3PTR by HUGHES, ANNIE
05:58				ASSIST by ROBINSON-NWAGWU, MORGAN
05:41	MISSED LAYUP by BEACHAM, MORGAN			
05:38				REBOUND (DEF) by THOMPSON, UNIQUE
05:17				MISSED 3PTR by ALEXANDER, DAISA
05:13				REBOUND (OFF) by ROBINSON-NWAGWU, MORGAN
05:12		64-49	H 15	GOOD! LAYUP by ROBINSON-NWAGWU, MORGAN
04:55	MISSED LAYUP by THOMPSON, CIARA			
04:51				REBOUND (DEF) by THOMPSON, UNIQUE

Time	VISITORS: Bethune-Cookman	Score	Margin	HOME: Auburn
04:43		66-49	H 17	GOOD! LAYUP by THOMPSON, UNIQUE [PNT]
04:43				ASSIST by HOWARD, ERIN
04:23	MISSED 3PTR by BALL, AMANI			
04:17				REBOUND (DEF) by ALEXANDER, DAISA
03:55				MISSED JUMPER by HOWARD, ERIN
03:52				REBOUND (OFF) by HUGHES, ANNIE
03:52				
03:52	SUB OUT: BEACHAM, MORGAN			
03:52	SUB OUT: HUNT, ASHANTI			
03:52	SUB OUT: THOMPSON, CIARA			
03:52	SUB IN: SCOTT, AMAYA			
03:52	SUB IN: WILLIAMS, KIANA			
03:52	SUB IN: HATCHER, DANIELLA			
03:46		68-49	H 19	GOOD! JUMPER by ALEXANDER, DAISA [PNT]
03:28	GOOD! 3PTR by HATCHER, DANIELLA	68-52	H 16	
03:28	ASSIST by WILLIAMS, KIANA			
03:15				TURNOVER (BADPASS) by HOWARD, ERIN
03:15	STEAL by WILLIAMS, KIANA			
03:08	GOOD! LAYUP by WILLIAMS, KIANA [FB]	68-54	H 14	
02:46		71-54	H 17	GOOD! 3PTR by ALEXANDER, DAISA
02:35				FOUL (PERSONAL) by HOWARD, ERIN
02:35				SUB OUT: ALEXANDER, DAISA
02:35				SUB OUT: THOMPSON, UNIQUE
02:35				SUB IN: WELLS, SANIA
02:35				SUB IN: KELLY, NATALIE
02:35	SUB OUT: HARRIS, CAMRY			
02:35	SUB OUT: SCOTT, AMAYA			
02:35	SUB OUT: HATCHER, DANIELLA			
02:35	SUB IN: WHITE, TANIA			
02:35	SUB IN: REID, IMANI			
02:35	SUB IN: HOWELL, ASHLIE			
02:35	GOOD! FT by WILLIAMS, KIANA	71-55	H 16	
02:35	GOOD! FT by WILLIAMS, KIANA	71-56	H 15	
02:09		74-56	H 18	GOOD! 3PTR by HOWARD, ERIN
02:09				ASSIST by ROBINSON-NWAGWU, MORGAN
01:52	MISSED 3PTR by BALL, AMANI			
01:48	REBOUND (OFF) by HOWELL, ASHLIE			
01:46	MISSED 3PTR by WILLIAMS, KIANA			
01:42				REBOUND (DEF) by KELLY, NATALIE
01:32				MISSED 3PTR by WELLS, SANIA
01:28	REBOUND (DEF) by WHITE, TANIA			
01:26	TURNOVER (BADPASS) by WHITE, TANIA			
01:02				MISSED JUMPER by HUGHES, ANNIE
00:57	REBOUND (DEF) by WILLIAMS, KIANA			
00:52	MISSED JUMPER by REID, IMANI			
00:48				REBOUND (DEF) by HOWARD, ERIN
00:34				TURNOVER (LOSTBALL) by HUGHES, ANNIE
00:23	MISSED 3PTR by BALL, AMANI			
00:18				REBOUND (DEF) by HUGHES, ANNIE

Bethune-Cookman 56, Auburn 74

Points from (This Period)	BCU	AUB
In the Paint	4	6
Off Turns	3	0
2nd Chance	1	7
Fast Break	4	0
Bench	6	5

Official Scoring/Possession Reference Chart
Bethune-Cookman vs Auburn
Period 1
December 15, 2019 at Auburn Arena - Auburn



Period 1

Starters:

Bethune-Cookman: 2 SCOTT, AMAYA (F); 5 WALKER, ARMANI (G); 11 HUNT, ASHANTI (G); 20 HATCHER, DANIELLA (G); 23 THOMPSON, CIARA (F);
Auburn: 00 ALEXANDER, DAISA (G); 3 HUGHES, ANNIE (G); 10 WHITE, KIYAE' (F); 13 HANSEN, LAUREN (G); 20 THOMPSON, UNIQUE (F);

Time	VISITORS: Bethune-Cookman	Score	Margin	HOME: Auburn
09:28		2-0	H 2	GOOD! JUMPER by ALEXANDER, DAISA
08:26		4-0	H 4	GOOD! LAYUP by WHITE, KIYAE'
08:11	GOOD! LAYUP by THOMPSON, CIARA	4-2	H 2	
07:35	GOOD! JUMPER by THOMPSON, CIARA [PNT]	4-4	T	
07:17	GOOD! LAYUP by THOMPSON, CIARA	4-6	V 2	
07:03		6-6	T	GOOD! JUMPER by ROBINSON-NWAGWU, MORGAN [PNT]
06:24		8-6	H 2	GOOD! LAYUP by THOMPSON, UNIQUE
06:08	GOOD! 3PTR by HATCHER, DANIELLA	8-9	V 1	
05:43		10-9	H 1	GOOD! LAYUP by HUGHES, ANNIE [PNT]
05:22	GOOD! JUMPER by HATCHER, DANIELLA	10-11	V 1	
05:22	GOOD! FT by HATCHER, DANIELLA	10-12	V 2	
04:05		13-12	H 1	GOOD! 3PTR by HOWARD, ERIN
03:37	GOOD! JUMPER by THOMPSON, CIARA	13-14	V 1	
02:45		15-14	H 1	GOOD! LAYUP by BENTON, ROBYN [FB]
01:24		17-14	H 3	GOOD! LAYUP by HOWARD, ERIN [PNT]
01:07	GOOD! 3PTR by HARRIS, CAMRY	17-17	T	
00:48		19-17	H 2	GOOD! LAYUP by THOMPSON, UNIQUE
00:34	GOOD! LAYUP by THOMPSON, CIARA [PNT]	19-19	T	

Bethune-Cookman 19, Auburn 19

Official Scoring/Possession Reference Chart
Bethune-Cookman vs Auburn
Period 2
December 15, 2019 at Auburn Arena - Auburn



Period 2

Starters:

Bethune-Cookman: 2 SCOTT, AMAYA (F); 5 WALKER, ARMANI (G); 11 HUNT, ASHANTI (G); 20 HATCHER, DANIELLA (G); 23 THOMPSON, CIARA (F);
Auburn: 00 ALEXANDER, DAISA (G); 3 HUGHES, ANNIE (G); 10 WHITE, KIYAE' (F); 13 HANSEN, LAUREN (G); 20 THOMPSON, UNIQUE (F);

Time	VISITORS: Bethune-Cookman	Score	Margin	HOME: Auburn
09:05	GOOD! 3PTR by HARRIS, CAMRY	19-22	V 3	
07:25	GOOD! FT by HUNT, ASHANTI [FB]	19-23	V 4	
07:25	GOOD! FT by HUNT, ASHANTI [FB]	19-24	V 5	
06:38		20-24	V 4	GOOD! FT by HOWARD, ERIN
06:38		21-24	V 3	GOOD! FT by HOWARD, ERIN
05:45		23-24	V 1	GOOD! LAYUP by THOMPSON, UNIQUE
05:45		24-24	T	GOOD! FT by THOMPSON, UNIQUE
04:31		26-24	H 2	GOOD! LAYUP by THOMPSON, UNIQUE
03:47		29-24	H 5	GOOD! 3PTR by BENTON, ROBYN
03:08	GOOD! JUMPER by HATCHER, DANIELLA	29-26	H 3	
02:25	GOOD! JUMPER by SCOTT, AMAYA	29-28	H 1	
01:59		32-28	H 4	GOOD! 3PTR by BENTON, ROBYN
01:17		34-28	H 6	GOOD! JUMPER by ALEXANDER, DAISA
00:55	GOOD! FT by HUNT, ASHANTI	34-29	H 5	
00:35		36-29	H 7	GOOD! LAYUP by THOMPSON, UNIQUE [PNT]
00:04	GOOD! LAYUP by THOMPSON, CIARA	36-31	H 5	

Bethune-Cookman 31, Auburn 36

Official Scoring/Possession Reference Chart
Bethune-Cookman vs Auburn
Period 3
December 15, 2019 at Auburn Arena - Auburn



Period 3

Starters:

Bethune-Cookman: 2 SCOTT, AMAYA (F); 5 WALKER, ARMANI (G); 11 HUNT, ASHANTI (G); 20 HATCHER, DANIELLA (G); 23 THOMPSON, CIARA (F);
Auburn: 00 ALEXANDER, DAISA (G); 3 HUGHES, ANNIE (G); 10 WHITE, KIYAE' (F); 13 HANSEN, LAUREN (G); 20 THOMPSON, UNIQUE (F);

Time	VISITORS: Bethune-Cookman	Score	Margin	HOME: Auburn
09:31	GOOD! FT by HATCHER, DANIELLA [FB]	36-32	H 4	
09:31	GOOD! FT by HATCHER, DANIELLA [FB]	36-33	H 3	
09:14		38-33	H 5	GOOD! JUMPER by HANSEN, LAUREN [PNT]
08:34		41-33	H 8	GOOD! 3PTR by HANSEN, LAUREN
07:06		43-33	H 10	GOOD! JUMPER by HOWARD, ERIN [PNT]
06:22	GOOD! LAYUP by SCOTT, AMAYA [FB/PNT]	43-35	H 8	
06:03		46-35	H 11	GOOD! 3PTR by HANSEN, LAUREN
05:26		47-35	H 12	GOOD! FT by WHITE, KIYAE'
05:26		48-35	H 13	GOOD! FT by WHITE, KIYAE'
04:46		50-35	H 15	GOOD! LAYUP by BENTON, ROBYN [PNT]
04:15		52-35	H 17	GOOD! LAYUP by ROBINSON-NWAGWU, MORGAN [FB]
03:53	GOOD! JUMPER by HUNT, ASHANTI	52-37	H 15	
02:42		54-37	H 17	GOOD! JUMPER by THOMPSON, UNIQUE [PNT]
02:34	GOOD! FT by BEACHAM, MORGAN	54-38	H 16	
01:59	GOOD! 3PTR by BEACHAM, MORGAN	54-41	H 13	
01:42	GOOD! LAYUP by HATCHER, DANIELLA [FB]	54-43	H 11	
01:24	GOOD! FT by HUNT, ASHANTI [FB]	54-44	H 10	
01:24	GOOD! FT by HUNT, ASHANTI [FB]	54-45	H 9	
00:56		56-45	H 11	GOOD! JUMPER by ALEXANDER, DAISA
00:34		57-45	H 12	GOOD! FT by THOMPSON, UNIQUE
00:00		59-45	H 14	GOOD! JUMPER by HANSEN, LAUREN

Bethune-Cookman 45, Auburn 59

Official Scoring/Possession Reference Chart
Bethune-Cookman vs Auburn
Period 4
December 15, 2019 at Auburn Arena - Auburn



Period 4

Starters:

Bethune-Cookman: 2 SCOTT, AMAYA (F); 5 WALKER, ARMANI (G); 11 HUNT, ASHANTI (G); 20 HATCHER, DANIELLA (G); 23 THOMPSON, CIARA (F);
Auburn: 00 ALEXANDER, DAISA (G); 3 HUGHES, ANNIE (G); 10 WHITE, KIYAE' (F); 13 HANSEN, LAUREN (G); 20 THOMPSON, UNIQUE (F);

Time	VISITORS: Bethune-Cookman	Score	Margin	HOME: Auburn
09:47	GOOD! FT by HATCHER, DANIELLA	59-46	H 13	
07:52	GOOD! LAYUP by HARRIS, CAMRY [FB]	59-48	H 11	
06:52	GOOD! FT by HUNT, ASHANTI	59-49	H 10	
05:58		62-49	H 13	GOOD! 3PTR by HUGHES, ANNIE
05:12		64-49	H 15	GOOD! LAYUP by ROBINSON-NWAGWU, MORGAN
04:43		66-49	H 17	GOOD! LAYUP by THOMPSON, UNIQUE [PNT]
03:46		68-49	H 19	GOOD! JUMPER by ALEXANDER, DAISA [PNT]
03:28	GOOD! 3PTR by HATCHER, DANIELLA	68-52	H 16	
03:08	GOOD! LAYUP by WILLIAMS, KIANA [FB]	68-54	H 14	
02:46		71-54	H 17	GOOD! 3PTR by ALEXANDER, DAISA
02:35	GOOD! FT by WILLIAMS, KIANA	71-55	H 16	
02:35	GOOD! FT by WILLIAMS, KIANA	71-56	H 15	
02:09		74-56	H 18	GOOD! 3PTR by HOWARD, ERIN

Bethune-Cookman 56, Auburn 74

Official Substitutions Log
Bethune-Cookman vs Auburn
Period 1
December 15, 2019 at Auburn Arena - Auburn



VISITORS: Bethune-Cookman	Time	Score	HOME: Auburn
2 SCOTT,AMAYA			00 ALEXANDER,DAISA
5 WALKER,ARMANI			3 HUGHES,ANNIE
11 HUNT,ASHANTI			10 WHITE,KIYAE'
20 HATCHER,DANIELLA			13 HANSEN,LAUREN
23 THOMPSON,CIARA			20 THOMPSON,UNIQUE
	07:53	2-4	SUB OUT: WHITE,KIYAE'
	07:53		SUB IN: HOWARD,ERIN
	07:06	6-4	SUB OUT: ALEXANDER,DAISA
	07:06		SUB IN: ROBINSON-NWAGWU,MORGAN
	05:22	11-10	SUB OUT: THOMPSON,UNIQUE
	05:22		SUB IN: WHITE,KIYAE'
	05:22		SUB OUT: HANSEN,LAUREN
	05:22		SUB IN: BENTON,ROBYN
	04:50	12-10	SUB OUT: WHITE,KIYAE'
	04:50		SUB IN: THOMPSON,UNIQUE
	03:39	12-13	SUB OUT: HUGHES,ANNIE
	03:39		SUB OUT: ROBINSON-NWAGWU,MORGAN
	03:39		SUB IN: ALEXANDER,DAISA
	03:39		SUB IN: HANSEN,LAUREN
SUB OUT: 11 HUNT,ASHANTI	02:36	14-15	
SUB IN: 1 HARRIS,CAMRY	02:36		

Bethune-Cookman 19, Auburn 19

Official Substitutions Log
Bethune-Cookman vs Auburn
Period 2
December 15, 2019 at Auburn Arena - Auburn



VISITORS: Bethune-Cookman	Time	Score	HOME: Auburn
2 SCOTT,AMAYA			00 ALEXANDER,DAISA
5 WALKER,ARMANI			3 HUGHES,ANNIE
11 HUNT,ASHANTI			10 WHITE,KIYAE'
20 HATCHER,DANIELLA			13 HANSEN,LAUREN
23 THOMPSON,CIARA			20 THOMPSON,UNIQUE
	10:00	-	SUB OUT: BENTON,ROBYN
	10:00		SUB IN: WELLS,SANIA
SUB OUT: 2 SCOTT,AMAYA	10:00		
SUB OUT: 5 WALKER,ARMANI	10:00		
SUB IN: 3 WILLIAMS,KIANA	10:00		
SUB IN: 35 HOWELL,ASHLIE	10:00		
	09:35	-	SUB OUT: HOWARD,ERIN
	09:35		SUB IN: HUGHES,ANNIE
	08:36	22-19	SUB OUT: WELLS,SANIA
	08:36		SUB IN: ROBINSON-NWAGWU,MORGAN
SUB OUT: 20 HATCHER,DANIELLA	07:55	22-19	
SUB IN: 11 HUNT,ASHANTI	07:55		
	07:08	24-19	SUB OUT: ALEXANDER,DAISA
	07:08		SUB IN: HOWARD,ERIN
SUB OUT: 3 WILLIAMS,KIANA	07:08		
SUB IN: 12 HAYES,TATUM	07:08		
	04:45	24-24	SUB OUT: HANSEN,LAUREN
	04:45		SUB IN: BENTON,ROBYN
SUB OUT: 11 HUNT,ASHANTI	04:45		
SUB IN: 20 HATCHER,DANIELLA	04:45		
SUB OUT: 12 HAYES,TATUM	04:45		
SUB IN: 5 WALKER,ARMANI	04:45		
SUB OUT: 35 HOWELL,ASHLIE	04:45		
SUB IN: 2 SCOTT,AMAYA	04:45		
	04:23	24-26	SUB OUT: HOWARD,ERIN
	04:23		SUB IN: WHITE,KIYAE'
	02:53	26-29	SUB OUT: HUGHES,ANNIE
	02:53		SUB OUT: ROBINSON-NWAGWU,MORGAN
	02:53		SUB IN: ALEXANDER,DAISA
	02:53		SUB IN: HANSEN,LAUREN
SUB OUT: 1 HARRIS,CAMRY	01:47	28-32	
SUB IN: 11 HUNT,ASHANTI	01:47		
	00:55	29-34	SUB OUT: WHITE,KIYAE'
	00:55		SUB IN: HUGHES,ANNIE

Bethune-Cookman 31, Auburn 36

Official Substitutions Log
Bethune-Cookman vs Auburn
Period 3
December 15, 2019 at Auburn Arena - Auburn



VISITORS: Bethune-Cookman	Time	Score	HOME: Auburn
2 SCOTT,AMAYA			00 ALEXANDER,DAISA
5 WALKER,ARMANI			3 HUGHES,ANNIE
11 HUNT,ASHANTI			10 WHITE,KIYAE'
20 HATCHER,DANIELLA			13 HANSEN,LAUREN
23 THOMPSON,CIARA			20 THOMPSON,UNIQUE
	10:00	-	SUB OUT: BENTON,ROBYN
	10:00		SUB IN: HOWARD,ERIN
SUB OUT: 5 WALKER,ARMANI	08:28	33-41	
SUB IN: 3 WILLIAMS,KIANA	08:28		
	06:34	33-43	SUB OUT: HOWARD,ERIN
	06:34		SUB IN: BENTON,ROBYN
	05:57	35-46	SUB OUT: HANSEN,LAUREN
	05:57		SUB OUT: THOMPSON,UNIQUE
	05:57		SUB IN: WHITE,KIYAE'
	05:57		SUB IN: ROBINSON-NWAGWU,MORGAN
SUB OUT: 23 THOMPSON,CIARA	05:26	35-46	
SUB IN: 1 HARRIS,CAMRY	05:26		
	04:34	35-50	SUB OUT: ALEXANDER,DAISA
	04:34		SUB IN: WELLS,SANIA
SUB OUT: 2 SCOTT,AMAYA	04:34		
SUB IN: 35 HOWELL,ASHLIE	04:34		
	03:03	37-52	SUB OUT: WELLS,SANIA
	03:03		SUB OUT: HUGHES,ANNIE
	03:03		SUB OUT: WHITE,KIYAE'
	03:03		SUB OUT: ROBINSON-NWAGWU,MORGAN
	03:03		SUB IN: ALEXANDER,DAISA
	03:03		SUB IN: HANSEN,LAUREN
	03:03		SUB IN: THOMPSON,UNIQUE
	03:03		SUB IN: HOWARD,ERIN
SUB OUT: 3 WILLIAMS,KIANA	03:03		
SUB IN: 4 BEACHAM,MORGAN	03:03		
	02:34	37-54	SUB OUT: HANSEN,LAUREN
	02:34		SUB IN: ROBINSON-NWAGWU,MORGAN
	02:34		SUB OUT: BENTON,ROBYN
	02:34		SUB IN: HUGHES,ANNIE
	01:24	43-54	SUB OUT: HOWARD,ERIN
	01:24		SUB OUT: ROBINSON-NWAGWU,MORGAN
	01:24		SUB IN: WHITE,KIYAE'
	01:24		SUB IN: HANSEN,LAUREN
SUB OUT: 20 HATCHER,DANIELLA	01:24		
SUB IN: 15 BALL,AMANI	01:24		
SUB OUT: 35 HOWELL,ASHLIE	01:24		
SUB IN: 23 THOMPSON,CIARA	01:24		
SUB OUT: 23 THOMPSON,CIARA	00:34	45-57	
SUB IN: 20 HATCHER,DANIELLA	00:34		
	00:27	45-57	SUB OUT: THOMPSON,UNIQUE
	00:27		SUB IN: HOWARD,ERIN

Bethune-Cookman 45, Auburn 59

Official Substitutions Log
Bethune-Cookman vs Auburn
Period 4
December 15, 2019 at Auburn Arena - Auburn



VISITORS: Bethune-Cookman	Time	Score	HOME: Auburn
2 SCOTT,AMAYA			00 ALEXANDER,DAISA
5 WALKER,ARMANI			3 HUGHES,ANNIE
11 HUNT,ASHANTI			10 WHITE,KIYAE'
20 HATCHER,DANIELLA			13 HANSEN,LAUREN
23 THOMPSON,CIARA			20 THOMPSON,UNIQUE
	09:12	46-59	SUB OUT: HUGHES,ANNIE
	09:12		SUB IN: BENTON,ROBYN
	08:47	46-59	SUB OUT: HANSEN,LAUREN
	08:47		SUB IN: ROBINSON-NWAGWU,MORGAN
	07:46	48-59	SUB OUT: BENTON,ROBYN
	07:46		SUB IN: WELLS,SANIA
SUB OUT: 20 HATCHER,DANIELLA	07:06	48-59	
SUB IN: 12 HAYES,TATUM	07:06		
SUB OUT: 1 HARRIS,CAMRY	06:52	49-59	
SUB IN: 23 THOMPSON,CIARA	06:52		
	06:26	49-59	SUB OUT: WELLS,SANIA
	06:26		SUB OUT: WHITE,KIYAE'
	06:26		SUB IN: HUGHES,ANNIE
	06:26		SUB IN: THOMPSON,UNIQUE
SUB OUT: 12 HAYES,TATUM	06:26		
SUB IN: 1 HARRIS,CAMRY	06:26		
SUB OUT: 4 BEACHAM,MORGAN	03:52	49-66	
SUB OUT: 11 HUNT,ASHANTI	03:52		
SUB OUT: 23 THOMPSON,CIARA	03:52		
SUB IN: 2 SCOTT,AMAYA	03:52		
SUB IN: 3 WILLIAMS,KIANA	03:52		
SUB IN: 20 HATCHER,DANIELLA	03:52		
	02:35	54-71	SUB OUT: ALEXANDER,DAISA
	02:35		SUB OUT: THOMPSON,UNIQUE
	02:35		SUB IN: WELLS,SANIA
	02:35		SUB IN: KELLY,NATALIE
SUB OUT: 1 HARRIS,CAMRY	02:35		
SUB OUT: 2 SCOTT,AMAYA	02:35		
SUB OUT: 20 HATCHER,DANIELLA	02:35		
SUB IN: 10 WHITE,TANIA	02:35		
SUB IN: 22 REID,IMANI	02:35		
SUB IN: 35 HOWELL,ASHLIE	02:35		

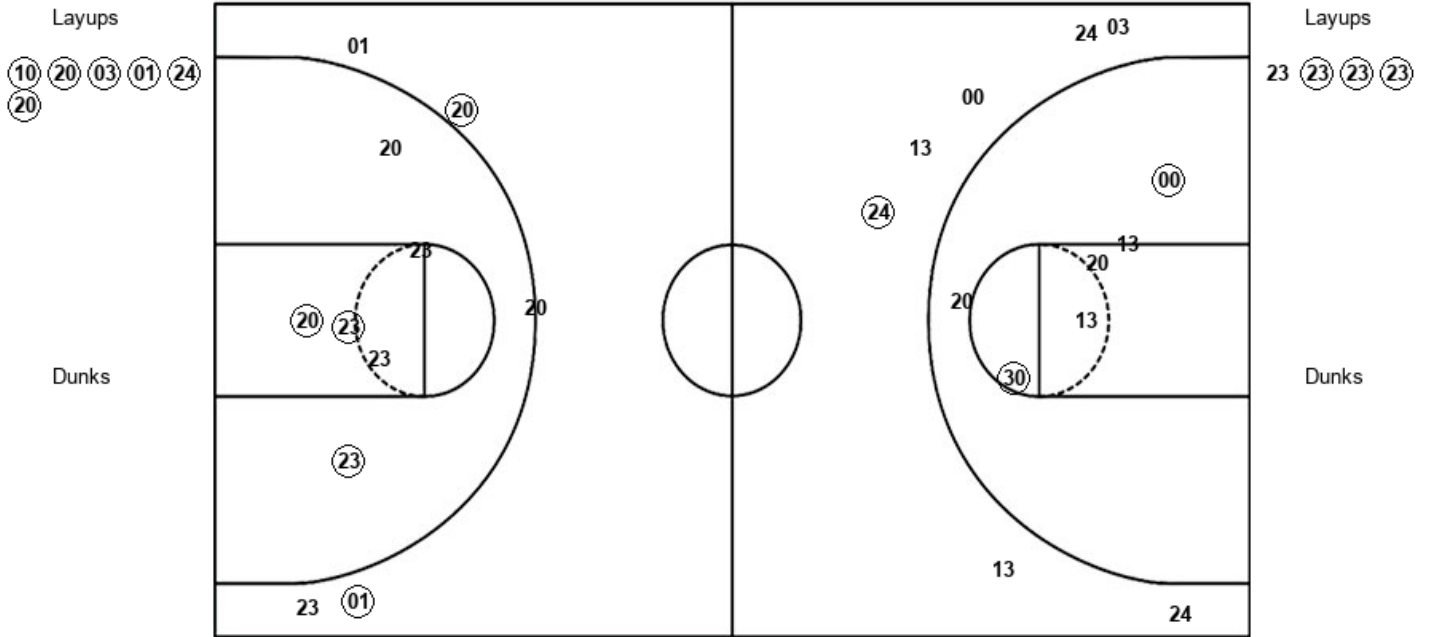
Bethune-Cookman 56, Auburn 74

Official Shot Chart
Bethune-Cookman vs Auburn
PERIOD 1 Shots
 December 15, 2019 at Auburn Arena - Auburn



Auburn

Bethune-Cookman



AUB : Period 1	Made	Att	Pct
Layups	6	6	100.0
Dunks	0	0	0
2PT Field Goals	8	12	66.7
3PT Field Goals	1	7	14.3
Total Field Goals	9	19	47.4

BCU : Period 1	Made	Att	Pct
Layups	3	4	75.0
Dunks	0	0	0
2PT Field Goals	6	10	60.0
3PT Field Goals	2	5	40.0
Total Field Goals	8	15	53.3

Official Shot Chart
Bethune-Cookman vs Auburn
 PERIOD 2 Shots
 December 15, 2019 at Auburn Arena - Auburn



Auburn

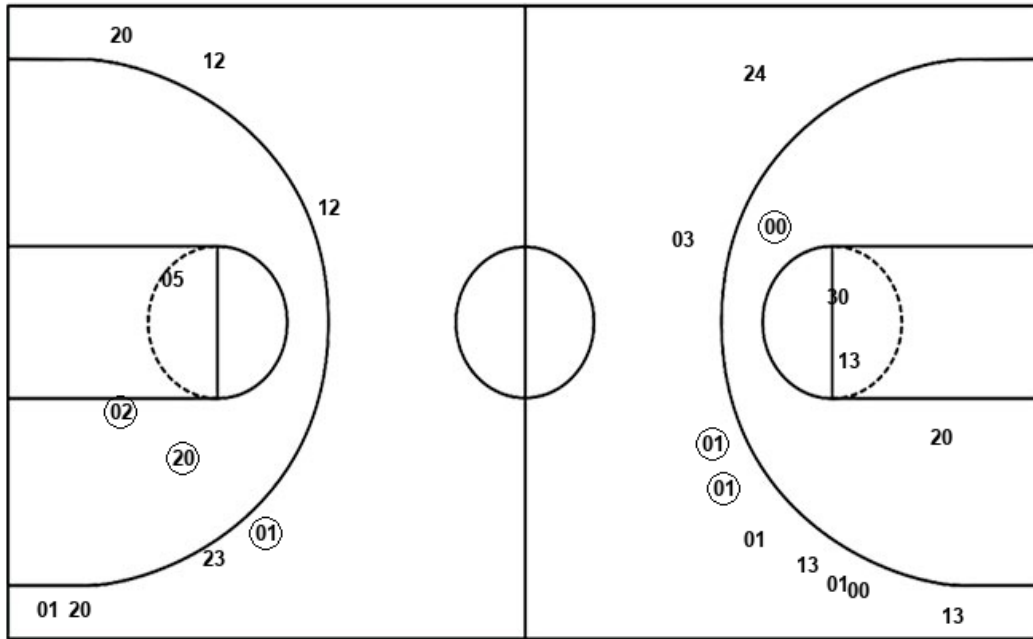
Bethune-Cookman

Layups
 00 (20) (20) (20)

Layups
 02 (23)

Dunks

Dunks



AUB : Period 2	Made	Att	Pct
Layups	3	4	75.0
Dunks	0	0	0
2PT Field Goals	4	8	50.0
3PT Field Goals	2	9	22.2
Total Field Goals	6	17	35.3

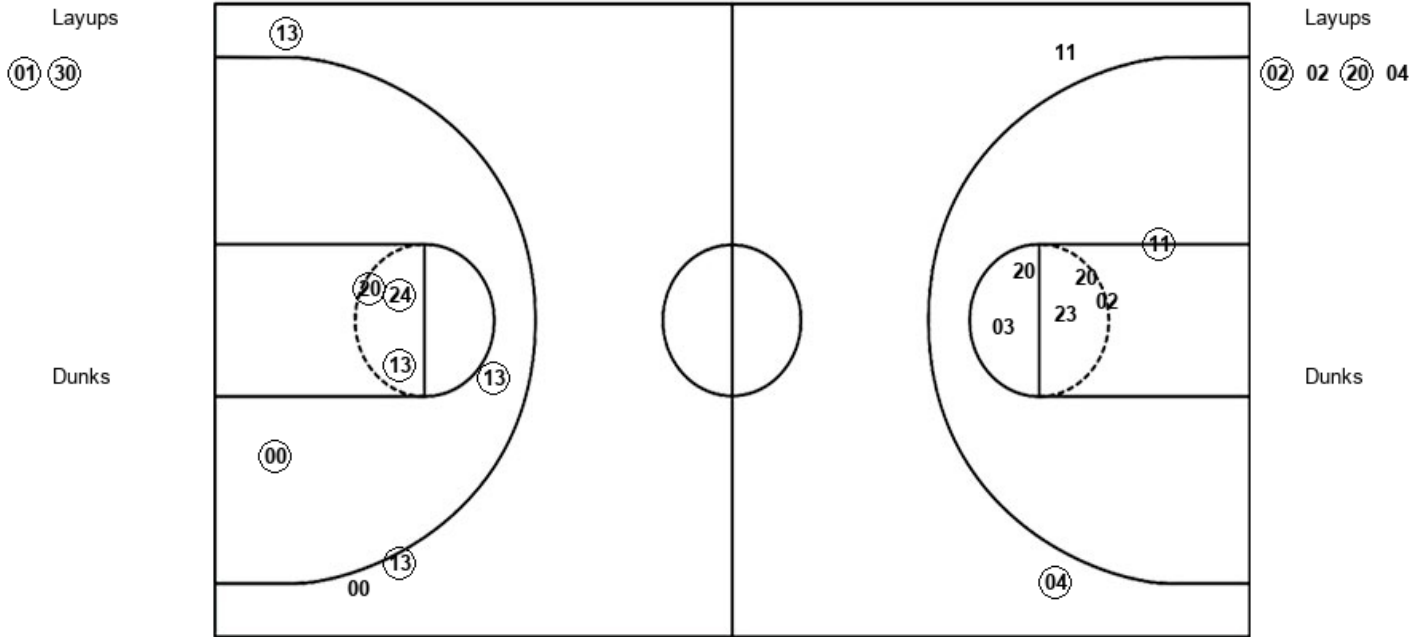
BCU : Period 2	Made	Att	Pct
Layups	1	2	50.0
Dunks	0	0	0
2PT Field Goals	3	5	60.0
3PT Field Goals	1	7	14.3
Total Field Goals	4	12	33.3

Official Shot Chart
 Bethune-Cookman vs Auburn
 PERIOD 3 Shots
 December 15, 2019 at Auburn Arena - Auburn



Auburn

Bethune-Cookman



AUB : Period 3	Made	Att	Pct
Layups	2	2	100.0
Dunks	0	0	0
2PT Field Goals	7	7	100.0
3PT Field Goals	2	3	66.7
Total Field Goals	9	10	90.0

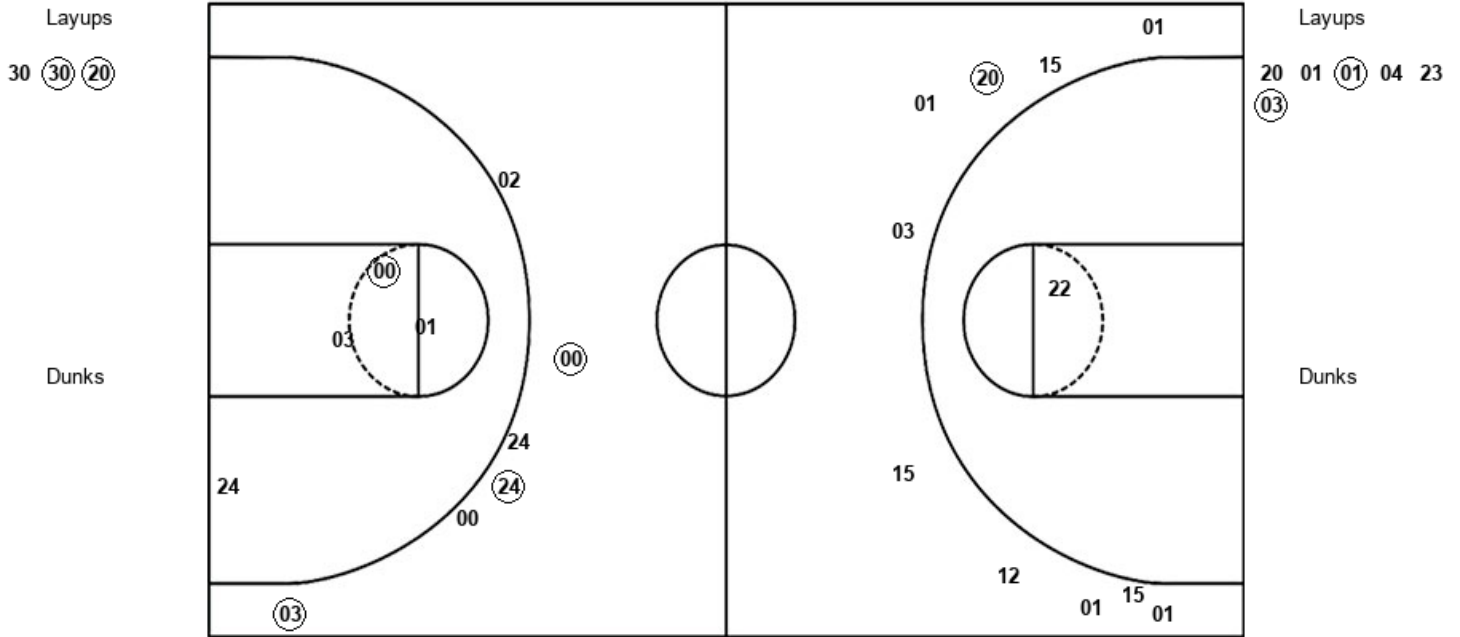
BCU : Period 3	Made	Att	Pct
Layups	2	4	50.0
Dunks	0	0	0
2PT Field Goals	3	10	30.0
3PT Field Goals	1	2	50.0
Total Field Goals	4	12	33.3

Official Shot Chart
Bethune-Cookman vs Auburn
PERIOD 4 Shots
 December 15, 2019 at Auburn Arena - Auburn



Auburn

Bethune-Cookman



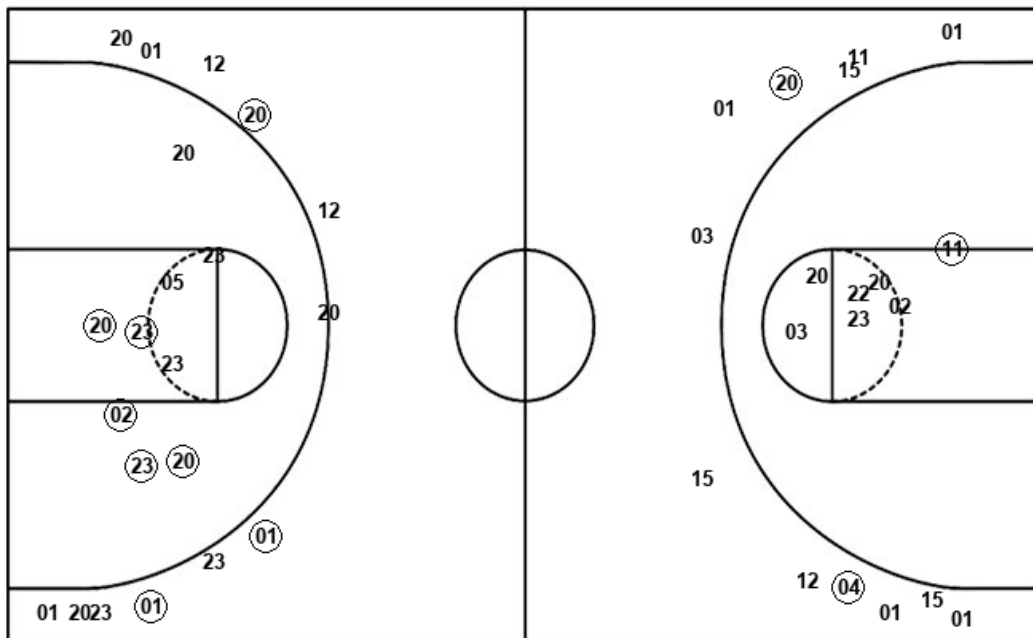
AUB : Period 4	Made	Att	Pct
Layups	2	3	66.7
Dunks	0	0	0
2PT Field Goals	3	7	42.9
3PT Field Goals	3	6	50.0
Total Field Goals	6	13	46.2

BCU : Period 4	Made	Att	Pct
Layups	2	6	33.3
Dunks	0	0	0
2PT Field Goals	2	7	28.6
3PT Field Goals	1	10	10.0
Total Field Goals	3	17	17.6

Official Shot Chart
Bethune-Cookman vs Auburn
 Bethune-Cookman Team Shots
 December 15, 2019 at Auburn Arena - Auburn



Layups



Layups

23 (23) (23) (23) 02
 (23) (02) 02 (20) 04
 20 01 (01) 04 23
 (03)

Dunks

Dunks

BCU : Period 1	Made	Att	Pct
Layups	3	4	75.0
Dunks	0	0	0
2PT Field Goals	6	10	60.0
3PT Field Goals	2	5	40.0
Total Field Goals	8	15	53.3

BCU : Period 2	Made	Att	Pct
Layups	1	2	50.0
Dunks	0	0	0
2PT Field Goals	3	5	60.0
3PT Field Goals	1	7	14.3
Total Field Goals	4	12	33.3

BCU : Period 3	Made	Att	Pct
Layups	2	4	50.0
Dunks	0	0	0
2PT Field Goals	3	10	30.0
3PT Field Goals	1	2	50.0
Total Field Goals	4	12	33.3

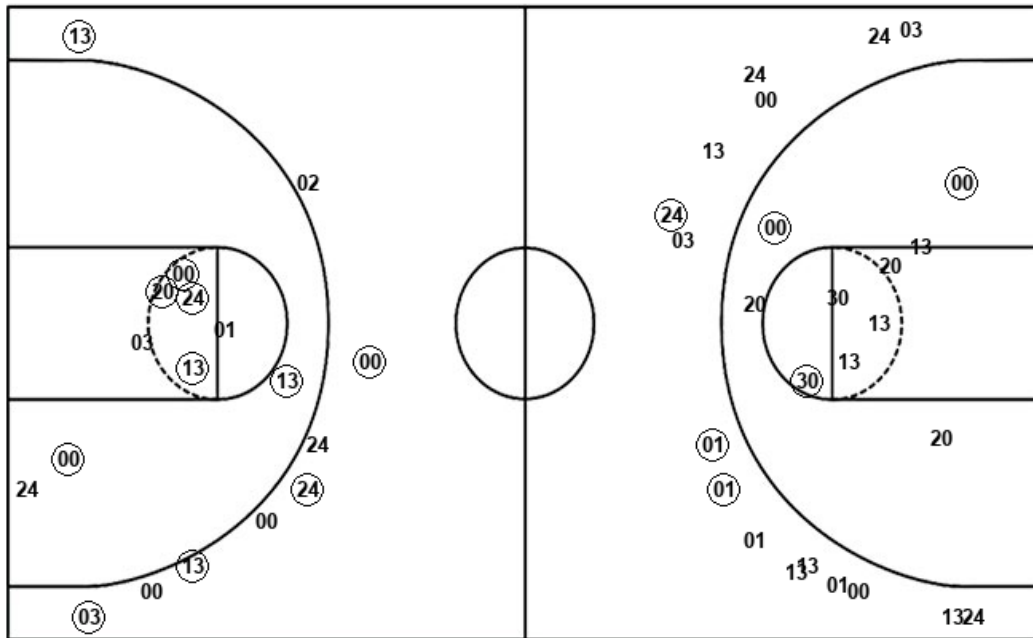
BCU : Period 4	Made	Att	Pct
Layups	2	6	33.3
Dunks	0	0	0
2PT Field Goals	2	7	28.6
3PT Field Goals	1	10	10.0
Total Field Goals	3	17	17.6

Official Shot Chart
Bethune-Cookman vs Auburn
Auburn Team Shots
December 15, 2019 at Auburn Arena - Auburn



Layups

Dunks



Layups

Dunks



AUB : Period 1	Made	Att	Pct
Layups	6	6	100.0
Dunks	0	0	0
2PT Field Goals	8	12	66.7
3PT Field Goals	1	7	14.3
Total Field Goals	9	19	47.4

AUB : Period 3	Made	Att	Pct
Layups	2	2	100.0
Dunks	0	0	0
2PT Field Goals	7	7	100.0
3PT Field Goals	2	3	66.7
Total Field Goals	9	10	90.0

AUB : Period 2	Made	Att	Pct
Layups	3	4	75.0
Dunks	0	0	0
2PT Field Goals	4	8	50.0
3PT Field Goals	2	9	22.2
Total Field Goals	6	17	35.3

AUB : Period 4	Made	Att	Pct
Layups	2	3	66.7
Dunks	0	0	0
2PT Field Goals	3	7	42.9
3PT Field Goals	3	6	50.0
Total Field Goals	6	13	46.2