

FINAL SCORE



Notre Dame

57



UConn

UConn

81

December 08, 2019 • Harry A. Gampel Pavilion - Storrs, Conn.

FINAL STATISTICS

Official Box Score
Notre Dame vs UConn
Game Totals -- Final Statistics
December 08, 2019 at Harry A. Gampel Pavilion - Storrs, Conn.



Notre Dame 57

No.	Player	S	Pts	FG	3FG	FT	OR	DR	TR	PF	A	TO	Blk	Stl	Min	+/-
10	GILBERT, KATLYN	G	15	6-15	2-5	1-4	1	2	3	2	0	1	0	3	37	-23
13	SNIEZEK, MARTA	G	14	5-8	1-4	3-3	0	1	1	2	6	6	0	4	40	-24
22	COSGROVE, DANIELLE	F	3	1-5	1-5	0-0	0	3	3	2	1	1	1	0	26	-13
24	WALKER, DESTINEE	G	2	1-7	0-3	0-0	0	3	3	2	0	2	0	1	30	-27
33	BRUNELLE, SAM	F	4	2-10	0-3	0-0	1	5	6	1	2	2	0	0	19	-22
02	COLE, KAITLIN	G	2	1-3	0-0	0-0	1	1	2	1	0	1	0	0	11	-5
20	BENZ, NICOLE	G	0	0-1	0-1	0-0	0	0	0	0	0	0	0	0	2	5
21	PEOPLES, ANAYA	G	17	8-16	0-4	1-2	5	6	11	3	3	1	1	0	34	-11
TEAM							2	1	3	0		2				
TOTALS			57	24-65	4-25	5-9	10	22	32	13	12	16	2	8	199	

Shooting By Period

Period	FG	FG%	3FG	3FG%	FT	FT%
1st Qtr	5-16	31%	0-5	00%	3-3	100%
2nd Qtr	6-13	46%	0-3	00%	0-0	0%
3rd Qtr	6-15	40%	1-6	17%	1-2	50%
4th Qtr	7-21	33%	3-11	27%	1-4	25%
1st Half	11-29	38%	0-8	00%	3-3	100%
2nd Half	13-36	36%	4-17	24%	2-6	33%
Game	24-65	36.9%	4-25	16.0%	5-9	55.6%

Deadball Rebounds: 3,0

Last FG: 4th-00:17

Biggest Run: 10-0

Largest lead: By 0 at -

Technical Fouls: None.

UConn 81

No.	Player	S	Pts	FG	3FG	FT	OR	DR	TR	PF	A	TO	Blk	Stl	Min	+/-
03	WALKER, MEGAN	F	26	10-18	3-5	3-5	4	9	13	1	4	5	2	2	38	27
05	DANGERFIELD, CRYSTAL	G	10	3-11	2-7	2-2	1	5	6	1	5	4	0	2	33	33
13	WILLIAMS, CHRISTYN	G	12	4-8	1-3	3-4	1	3	4	3	3	2	0	1	37	30
20	NELSON-ODODA, OLIVIA	F	16	6-14	0-0	4-7	4	6	10	1	0	1	3	0	27	21
25	IRWIN, KYLA	F	5	2-4	1-2	0-0	2	4	6	0	4	1	1	0	22	23
10	BENT, MOLLY	G	5	2-3	0-1	1-1	0	1	1	1	1	1	0	0	9	-2
14	ADEBAYO, EVELYN	F	0	0-0	0-0	0-0	0	1	1	0	0	1	0	0	2	-5
24	MAKURAT, ANNA	G	3	1-4	1-4	0-0	0	1	1	1	0	0	0	0	14	-9
44	GRIFFIN, AUBREY	G	4	2-4	0-1	0-0	1	2	3	1	1	0	0	0	16	2
TEAM							3	0	3	0		0				
TOTALS			81	30-66	8-23	13-19	16	32	48	9	18	15	6	5	199	

Shooting By Period

Period	FG	FG%	3FG	3FG%	FT	FT%
1st Qtr	12-22	55%	3-7	43%	2-3	67%
2nd Qtr	9-19	47%	2-7	29%	3-3	100%
3rd Qtr	6-11	55%	1-4	25%	4-7	57%
4th Qtr	3-14	21%	2-5	40%	4-6	67%
1st Half	21-41	51%	5-14	36%	5-6	83%
2nd Half	9-25	36%	3-9	33%	8-13	62%
Game	30-66	45.5%	8-23	34.8%	13-19	68.4%

Deadball Rebounds: 4,0

Last FG: 4th-02:33

Biggest Run: 18-0

Largest lead: By 34 at 3-06

Technical Fouls: None.

Game Notes:

Officials: **Joseph Vaszily, Karen Preato, Pualani Spurlock**
Attendance: **10167**

Start Time: **04:04 PM ET**

End Time: **05:48 PM ET**

Game Duration: **1:43**

Score	1st	2nd	3rd	4th	TOT
UND	13	12	14	18	57
UCN	29	23	17	12	81

UND led for 0:00. UCN led for 39:34.

Game was tied for 0:11.

Times tied: 0

Lead Changes: 0

Points from	UND	UCN
In the Paint	36	34
Off Turns	11	23
2nd Chance	5	21
Fast Break	8	13
Bench	19	12

Official Box Score
Notre Dame vs UConn
First Half Statistics Only
December 08, 2019 at Harry A. Gampel Pavilion - Storrs, Conn.



Notre Dame 25

No.	Player	S	Pts	FG	3FG	FT	OR	DR	TR	PF	A	TO	Blk	Stl	Min	+/-
02	COLE, KAITLIN	G	2	1-2	0-0	0-0	1	0	1	0	0	1	0	0	4	-7
10	GILBERT, KATLYN	G	4	2-5	0-1	0-0	0	0	0	1	0	0	0	2	20	-27
13	SNIEZEK, MARTA	G	9	3-4	0-1	3-3	0	0	0	1	4	6	0	3	20	-27
20	BENZ, NICOLE	G	0	0-0	0-0	0-0	0	0	0	0	0	0	0	0	0	0
21	PEOPLES, ANAYA	G	4	2-3	0-1	0-0	1	1	2	0	2	1	0	0	17	-17
22	COSGROVE, DANIELLE	F	0	0-1	0-1	0-0	0	2	2	0	1	1	0	0	6	-16
24	WALKER, DESTINEE	G	2	1-4	0-1	0-0	0	1	1	1	0	2	0	1	14	-19
33	BRUNELLE, SAM	F	4	2-10	0-3	0-0	1	5	6	1	2	2	0	0	19	-22
	TEAM		0	0-0	0-0	0-0	1	0	1	0	0	1	0	0	0	
TOTALS			25	11-29	0-8	3-3	4	9	13	4	9	14	0	6	100	

Shooting By Period

Period	FG	FG%	3FG	3FG%	FT	FT%
1st Qtr	5-16	31%	0-5	00%	3-3	100%
2nd Qtr	6-13	46%	0-3	00%	0-0	0%
1st Half	11-29	38%	0-8	00%	3-3	100%
Game	24-65	36.9%	4-25	16.0%	5-9	55.6%

Deadball Rebounds: 3,0

Last FG Half: UND 2nd-02:55

UConn 52

No.	Player	S	Pts	FG	3FG	FT	OR	DR	TR	PF	A	TO	Blk	Stl	Min	+/-
10	BENT, MOLLY	G	0	0-1	0-1	0-0	0	0	0	0	1	0	0	0	2	7
13	WILLIAMS, CHRISTYN	G	5	1-3	0-1	3-4	1	2	3	0	2	1	0	0	20	27
14	ADEBAYO, EVELYN	F	0	0-0	0-0	0-0	0	0	0	0	0	0	0	0	0	0
20	NELSON-ODODA, OLIVIA	F	13	6-10	0-0	1-1	2	2	4	1	0	0	2	0	16	19
24	MAKURAT, ANNA	G	0	0-1	0-1	0-0	0	1	1	0	0	0	0	0	4	4
25	IRWIN, KYLA	F	5	2-4	1-2	0-0	1	3	4	0	1	1	0	0	8	17
44	GRIFFIN, AUBREY	G	4	2-2	0-0	0-0	1	0	1	1	1	0	0	0	8	7
03	WALKER, MEGAN	F	19	8-13	2-3	1-1	4	4	8	0	4	3	1	2	20	27
05	DANGERFIELD, CRYSTAL	G	6	2-7	2-6	0-0	0	2	2	1	4	3	0	2	20	27
	TEAM		0	0-0	0-0	0-0	2	0	2	0	0	0	0	0	0	
TOTALS			52	21-41	5-14	5-6	11	14	25	3	13	8	3	4	100	

Shooting By Period

Period	FG	FG%	3FG	3FG%	FT	FT%
1st Qtr	12-22	55%	3-7	43%	2-3	67%
2nd Qtr	9-19	47%	2-7	29%	3-3	100%
1st Half	21-41	51%	5-14	36%	5-6	83%
Game	30-66	45.5%	8-23	34.8%	13-19	68.4%

Deadball Rebounds: 4,0

Last FG Half: UCN 2nd-00:11

Game Notes:

Officials: Joseph Vaszily, Karen Preato, Pualani Spurlock
Attendance: 10167

Start Time: 04:04 PM ET
End Time: 05:48 PM ET
Game Duration: 1:43

Score	1st	2nd	3rd	4th	TOT
UND	13	12	14	18	57
UCN	29	23	17	12	81

Points from (This Period)	UND	UCN
In the Paint	22	28
Off Turns	8	21
2nd Chance	0	14
Fast Break	6	11
Bench	6	4

Official Box Score
Notre Dame vs UConn
First Quarter Statistics Only
December 08, 2019 at Harry A. Gampel Pavilion - Storrs, Conn.



Notre Dame 13

No.	Player	S	Pts	FG	3FG	FT	OR	DR	TR	PF	A	TO	Blk	Stl	Min	+/-
10	GILBERT, KATLYN	G	2	1-4	0-1	0-0	0	0	0	1	0	0	0	2	10	-16
13	SNIEZEK, MARTA	G	9	3-4	0-1	3-3	0	0	0	0	1	3	0	2	10	-16
22	COSGROVE, DANIELLE	F	0	0-1	0-1	0-0	0	2	2	0	1	1	0	0	6	-16
24	WALKER, DESTINEE	G	0	0-3	0-1	0-0	0	0	0	0	0	1	0	0	8	-15
33	BRUNELLE, SAM	F	2	1-4	0-1	0-0	1	3	4	1	0	0	0	0	9	-11
02	COLE, KAITLIN	G	0	0-0	0-0	0-0	0	0	0	0	0	0	0	0	0	0
20	BENZ, NICOLE	G	0	0-0	0-0	0-0	0	0	0	0	0	0	0	0	0	0
21	PEOPLES, ANAYA	G	0	0-0	0-0	0-0	0	0	0	0	1	1	0	0	7	-6
TEAM							0	0	0	0		0				
TOTALS			13	5-16	0-5	3-3	1	5	6	2	3	6	0	4	50	

Shooting By Period

Period	FG	FG%	3FG	3FG%	FT	FT%
1st Qtr	5-16	31%	0-5	00%	3-3	100%
2nd Qtr	6-13	46%	0-3	00%	0-0	0%
1st Half	5-16	31%	0-5	00%	3-3	100%
1st Half	11-29	38%	0-8	00%	3-3	100%
Game	24-65	36.9%	4-25	16.0%	5-9	55.6%

Deadball Rebounds: 3,0

UConn 29

No.	Player	S	Pts	FG	3FG	FT	OR	DR	TR	PF	A	TO	Blk	Stl	Min	+/-
03	WALKER, MEGAN	F	9	4-7	1-2	0-0	1	2	3	0	3	2	1	1	10	16
05	DANGERFIELD, CRYSTAL	G	3	1-3	1-2	0-0	0	1	1	0	3	2	0	0	10	16
13	WILLIAMS, CHRISTYN	G	3	1-1	0-0	1-2	1	2	3	0	0	1	0	0	10	16
20	NELSON-ODODA, OLIVIA	F	9	4-6	0-0	1-1	1	2	3	1	0	0	1	0	7	10
25	IRWIN, KYLA	F	3	1-3	1-2	0-0	0	2	2	0	1	0	0	0	5	7
10	BENT, MOLLY	G	0	0-1	0-1	0-0	0	0	0	0	1	0	0	0	1	5
14	ADEBAYO, EVELYN	F	0	0-0	0-0	0-0	0	0	0	0	0	0	0	0	0	0
24	MAKURAT, ANNA	G	0	0-0	0-0	0-0	0	1	1	0	0	0	0	0	3	4
44	GRIFFIN, AUBREY	G	2	1-1	0-0	0-0	1	0	1	1	1	0	0	0	3	6
TEAM							1	0	1	0		0				
TOTALS			29	12-22	3-7	2-3	5	10	15	2	9	5	2	1	50	

Shooting By Period

Period	FG	FG%	3FG	3FG%	FT	FT%
1st Qtr	12-22	55%	3-7	43%	2-3	67%
2nd Qtr	9-19	47%	2-7	29%	3-3	100%
1st Half	12-22	55%	3-7	43%	2-3	67%
1st Half	21-41	51%	5-14	36%	5-6	83%
Game	30-66	45.5%	8-23	34.8%	13-19	68.4%

Deadball Rebounds: 4,0

Game Notes:

Officials: Joseph Vaszily, Karen Preato, Pualani Spurlock
Attendance: 10167

Start Time: 04:04 PM ET
End Time: 05:48 PM ET
Game Duration: 1:43

Score	1st	2nd	3rd	4th	TOT
UND	13	12	14	18	57
UCN	29	23	17	12	81

Points from (This Period)	UND	UCN
In the Paint	10	16
Off Turns	4	7
2nd Chance	0	10
Fast Break	4	4
Bench	0	2

Official Play-By-Play
Notre Dame vs UConn
First Quarter
December 08, 2019 at Harry A. Gampel Pavilion - Storrs, Conn.



Period 1

Starters:

Notre Dame: 10 GILBERT, KATLYN (G); 13 SNIEZEK, MARTA (G); 22 COSGROVE, DANIELLE (F); 24 WALKER, DESTINEE (G); 33 BRUNELLE, SAM (F);
UConn: 13 WILLIAMS, CHRISTYN (G); 20 NELSON-ODODA, OLIVIA (F); 25 IRWIN, KYLA (F); 3 WALKER, MEGAN (F); 5 DANGERFIELD, CRYSTAL (G);

Time	VISITORS: Notre Dame	Score	Margin	HOME: UConn
09:49		3-0	H 3	GOOD! 3PTR by IRWIN, KYLA
09:49				ASSIST by WALKER, MEGAN
09:34				FOUL (PERSONAL) by NELSON-ODODA, OLIVIA
09:34	GOOD! FT by SNIEZEK, MARTA	3-1	H 2	
09:34	GOOD! FT by SNIEZEK, MARTA	3-2	H 1	
09:18				MISSED LAYUP by NELSON-ODODA, OLIVIA
09:16				REBOUND (OFF) by WALKER, MEGAN
09:13		5-2	H 3	GOOD! JUMPER by WALKER, MEGAN [PNT]
09:06	MISSED JUMPER by GILBERT, KATLYN			
09:02				REBOUND (DEF) by WILLIAMS, CHRISTYN
08:55				MISSED 3PTR by WALKER, MEGAN
08:52	REBOUND (DEF) by COSGROVE, DANIELLE			
08:40	MISSED JUMPER by BRUNELLE, SAM			
08:36				REBOUND (DEF) by NELSON-ODODA, OLIVIA
08:28		7-2	H 5	GOOD! LAYUP by NELSON-ODODA, OLIVIA
08:28				ASSIST by WALKER, MEGAN
08:18	TURNOVER (TRAVEL) by WALKER, DESTINEE			
08:12				TURNOVER (LOSTBALL) by WILLIAMS, CHRISTYN
08:12	STEAL by GILBERT, KATLYN			
08:06	MISSED LAYUP by GILBERT, KATLYN			
08:03	REBOUND (OFF) by BRUNELLE, SAM			
08:01	MISSED 3PTR by WALKER, DESTINEE			
07:58				REBOUND (DEF) by WALKER, MEGAN
07:46				MISSED JUMPER by WALKER, MEGAN
07:46				REBOUND (OFF) by NELSON-ODODA, OLIVIA
07:46		9-2	H 7	GOOD! LAYUP by NELSON-ODODA, OLIVIA
07:46	FOUL (PERSONAL) by BRUNELLE, SAM			
07:46		10-2	H 8	GOOD! FT by NELSON-ODODA, OLIVIA
07:19	MISSED 3PTR by SNIEZEK, MARTA			
07:15				REBOUND (DEF) by WALKER, MEGAN
07:13				TURNOVER (BADPASS) by WALKER, MEGAN
07:13	STEAL by SNIEZEK, MARTA			
07:07	MISSED LAYUP by WALKER, DESTINEE			
07:07				BLOCK by WALKER, MEGAN
07:03				REBOUND (DEF) by IRWIN, KYLA
06:50		12-2	H 10	GOOD! LAYUP by NELSON-ODODA, OLIVIA
06:50				ASSIST by IRWIN, KYLA
06:47	TIMEOUT 30SEC			
06:47	SUB OUT: COSGROVE, DANIELLE			
06:47	SUB IN: PEOPLES, ANAYA			
06:36	MISSED 3PTR by GILBERT, KATLYN			
06:33				REBOUND (DEF) by IRWIN, KYLA
06:29				TURNOVER (BADPASS) by DANGERFIELD, CRYSTAL
06:29	STEAL by SNIEZEK, MARTA			
06:25	GOOD! LAYUP by SNIEZEK, MARTA [FB]	12-4	H 8	
06:14				TURNOVER (BADPASS) by DANGERFIELD, CRYSTAL
06:14	STEAL by GILBERT, KATLYN			
06:08	GOOD! LAYUP by GILBERT, KATLYN [FB/PNT]	12-6	H 6	
05:57		15-6	H 9	GOOD! 3PTR by DANGERFIELD, CRYSTAL
05:57				ASSIST by WALKER, MEGAN
05:36	TURNOVER (TRAVEL) by PEOPLES, ANAYA			
05:21				MISSED JUMPER by IRWIN, KYLA
05:19	REBOUND (DEF) by BRUNELLE, SAM			
04:53	GOOD! LAYUP by BRUNELLE, SAM [PNT]	15-8	H 7	
04:53	ASSIST by SNIEZEK, MARTA			
04:42				MISSED 3PTR by IRWIN, KYLA
04:39				REBOUND (OFF) by WILLIAMS, CHRISTYN
04:39	FOUL (PERSONAL) by GILBERT, KATLYN			
04:39				SUB OUT: IRWIN, KYLA
04:39				SUB IN: MAKURAT, ANNA
04:39				MISSED FT by WILLIAMS, CHRISTYN
04:39				REBOUND (OFF) by TEAM
04:39		16-8	H 8	GOOD! FT by WILLIAMS, CHRISTYN
04:31	TURNOVER (BADPASS) by SNIEZEK, MARTA			
04:31				STEAL by WALKER, MEGAN
04:25		18-8	H 10	GOOD! LAYUP by WALKER, MEGAN [FB]
04:25				ASSIST by DANGERFIELD, CRYSTAL
04:11	MISSED LAYUP by BRUNELLE, SAM			
04:09				REBOUND (DEF) by NELSON-ODODA, OLIVIA
03:59		20-8	H 12	GOOD! LAYUP by NELSON-ODODA, OLIVIA [PNT]

Time	VISITORS: Notre Dame	Score	Margin	HOME: UConn
03:59				ASSIST by DANGERFIELD, CRYSTAL
03:44	GOOD! LAYUP by SNIEZEK, MARTA [PNT]	20-10	H 10	
03:44	ASSIST by PEOPLES, ANAYA			
03:29				MISSED 3PTR by DANGERFIELD, CRYSTAL
03:26	REBOUND (DEF) by BRUNELLE, SAM			
03:19	MISSED LAYUP by WALKER, DESTINEE			
03:19				BLOCK by NELSON-ODODA, OLIVIA
03:16				REBOUND (DEF) by DANGERFIELD, CRYSTAL
03:03				MISSED JUMPER by NELSON-ODODA, OLIVIA
03:00	REBOUND (DEF) by BRUNELLE, SAM			
02:50	TURNOVER (BADPASS) by SNIEZEK, MARTA			
02:50				SUB OUT: NELSON-ODODA, OLIVIA
02:50				SUB IN: GRIFFIN, AUBREY
02:50	SUB OUT: WALKER, DESTINEE			
02:50	SUB IN: COSGROVE, DANIELLE			
02:41				MISSED JUMPER by WALKER, MEGAN
02:39				REBOUND (OFF) by TEAM
02:37		22-10	H 12	GOOD! JUMPER by WALKER, MEGAN
02:37				ASSIST by GRIFFIN, AUBREY
02:21	GOOD! LAYUP by SNIEZEK, MARTA [PNT]	22-12	H 10	
02:21	ASSIST by COSGROVE, DANIELLE			
02:21				FOUL (PERSONAL) by GRIFFIN, AUBREY
02:21	GOOD! FT by SNIEZEK, MARTA	22-13	H 9	
02:16		24-13	H 11	GOOD! LAYUP by WILLIAMS, CHRISTYN [FB/PNT]
02:16				ASSIST by DANGERFIELD, CRYSTAL
01:50	MISSED 3PTR by BRUNELLE, SAM			
01:44				REBOUND (DEF) by MAKURAT, ANNA
01:27				TURNOVER (TRAVEL) by WALKER, MEGAN
01:15	TURNOVER (BADPASS) by COSGROVE, DANIELLE			
01:15				SUB OUT: MAKURAT, ANNA
01:15				SUB IN: BENT, MOLLY
01:15	SUB OUT: BRUNELLE, SAM			
01:15	SUB IN: WALKER, DESTINEE			
00:57				MISSED 3PTR by BENT, MOLLY
00:54	REBOUND (DEF) by COSGROVE, DANIELLE			
00:50	TURNOVER (TRAVEL) by SNIEZEK, MARTA			
00:40		27-13	H 14	GOOD! 3PTR by WALKER, MEGAN
00:40				ASSIST by BENT, MOLLY
00:27	MISSED 3PTR by COSGROVE, DANIELLE			
00:24				REBOUND (DEF) by WILLIAMS, CHRISTYN
00:04				MISSED LAYUP by DANGERFIELD, CRYSTAL
00:00				REBOUND (OFF) by GRIFFIN, AUBREY
00:00		29-13	H 16	GOOD! LAYUP by GRIFFIN, AUBREY

Notre Dame 13, UConn 29

Points from (This Period)	UND	UCN
In the Paint	10	16
Off Turns	4	7
2nd Chance	0	10
Fast Break	4	4
Bench	0	2

Official Box Score
Notre Dame vs UConn
Second Quarter Statistics Only
December 08, 2019 at Harry A. Gampel Pavilion - Storrs, Conn.



Notre Dame 12

No.	Player	S	Pts	FG	3FG	FT	OR	DR	TR	PF	A	TO	Blk	Stl	Min	+/-
10	GILBERT, KATLYN	G	2	1-1	0-0	0-0	0	0	0	0	0	0	0	0	10	-11
13	SNIEZEK, MARTA	G	0	0-0	0-0	0-0	0	0	0	1	3	3	0	1	10	-11
22	COSGROVE, DANIELLE	F	0	0-0	0-0	0-0	0	0	0	0	0	0	0	0	0	0
24	WALKER, DESTINEE	G	2	1-1	0-0	0-0	0	1	1	1	0	1	0	1	6	-4
33	BRUNELLE, SAM	F	2	1-6	0-2	0-0	0	2	2	0	2	2	0	0	10	-11
02	COLE, KAITLIN	G	2	1-2	0-0	0-0	1	0	1	0	0	1	0	0	4	-7
20	BENZ, NICOLE	G	0	0-0	0-0	0-0	0	0	0	0	0	0	0	0	0	0
21	PEOPLES, ANAYA	G	4	2-3	0-1	0-0	1	1	2	0	1	0	0	0	10	-11
TEAM							1	0	1	0		1				
TOTALS			12	6-13	0-3	0-0	3	4	7	2	6	8	0	2	50	

Shooting By Period

Period	FG	FG%	3FG	3FG%	FT	FT%
3rd Qtr	6-15	40%	1-6	17%	1-2	50%
4th Qtr	7-21	33%	3-11	27%	1-4	25%
2nd Half	6-13	46%	0-3	00%	0-0	0%
2nd Half	13-36	36%	4-17	24%	2-6	33%
Game	24-65	36.9%	4-25	16.0%	5-9	55.6%

Deadball Rebounds: 3,0

UConn 23

No.	Player	S	Pts	FG	3FG	FT	OR	DR	TR	PF	A	TO	Blk	Stl	Min	+/-
03	WALKER, MEGAN	F	10	4-6	1-1	1-1	3	2	5	0	1	1	0	1	10	11
05	DANGERFIELD, CRYSTAL	G	3	1-4	1-4	0-0	0	1	1	1	1	1	0	2	10	11
13	WILLIAMS, CHRISTYN	G	2	0-2	0-1	2-2	0	0	0	0	2	0	0	0	10	11
20	NELSON-ODODA, OLIVIA	F	4	2-4	0-0	0-0	1	0	1	0	0	0	1	0	9	9
25	IRWIN, KYLA	F	2	1-1	0-0	0-0	1	1	2	0	0	1	0	0	3	10
10	BENT, MOLLY	G	0	0-0	0-0	0-0	0	0	0	0	0	0	0	0	1	2
14	ADEBAYO, EVELYN	F	0	0-0	0-0	0-0	0	0	0	0	0	0	0	0	0	0
24	MAKURAT, ANNA	G	0	0-1	0-1	0-0	0	0	0	0	0	0	0	0	1	0
44	GRIFFIN, AUBREY	G	2	1-1	0-0	0-0	0	0	0	0	0	0	0	0	5	1
TEAM							1	0	1	0		0				
TOTALS			23	9-19	2-7	3-3	6	4	10	1	4	3	1	3	50	

Shooting By Period

Period	FG	FG%	3FG	3FG%	FT	FT%
3rd Qtr	6-11	55%	1-4	25%	4-7	57%
4th Qtr	3-14	21%	2-5	40%	4-6	67%
2nd Half	9-19	47%	2-7	29%	3-3	100%
2nd Half	9-25	36%	3-9	33%	8-13	62%
Game	30-66	45.5%	8-23	34.8%	13-19	68.4%

Deadball Rebounds: 4,0

Game Notes:

Officials: Joseph Vaszily, Karen Preato, Pualani Spurlock
Attendance: 10167

Start Time: 04:04 PM ET
End Time: 05:48 PM ET
Game Duration: 1:43

Score	1st	2nd	3rd	4th	TOT
UND	13	12	14	18	57
UCN	29	23	17	12	81

Points from (This Period)	UND	UCN
In the Paint	12	12
Off Turns	4	14
2nd Chance	0	4
Fast Break	2	7
Bench	6	2

Official Play-By-Play
Notre Dame vs UConn
Second Quarter
December 08, 2019 at Harry A. Gampel Pavilion - Storrs, Conn.



Period 2

Starters:

Notre Dame: 10 GILBERT, KATLYN (G); 13 SNIEZEK, MARTA (G); 22 COSGROVE, DANIELLE (F); 24 WALKER, DESTINEE (G); 33 BRUNELLE, SAM (F);
UConn: 13 WILLIAMS, CHRISTYN (G); 20 NELSON-ODODA, OLIVIA (F); 25 IRWIN, KYLA (F); 3 WALKER, MEGAN (F); 5 DANGERFIELD, CRYSTAL (G);

Time	VISITORS: Notre Dame	Score	Margin	HOME: UConn
10:00				SUB OUT: BENT, MOLLY
10:00				SUB IN: NELSON-ODODA, OLIVIA
10:00	SUB OUT: COSGROVE, DANIELLE			
10:00	SUB OUT: WALKER, DESTINEE			
10:00	SUB IN: COLE, KAITLIN			
10:00	SUB IN: BRUNELLE, SAM			
09:56	GOOD! LAYUP by PEOPLES, ANAYA [PNT]	29-15	H 14	
09:56	ASSIST by SNIEZEK, MARTA			
09:34		32-15	H 17	GOOD! 3PTR by DANGERFIELD, CRYSTAL
09:34				ASSIST by WALKER, MEGAN
09:16	GOOD! LAYUP by COLE, KAITLIN [PNT]	32-17	H 15	
09:16	ASSIST by PEOPLES, ANAYA			
09:02		34-17	H 17	GOOD! LAYUP by NELSON-ODODA, OLIVIA
08:50	MISSED LAYUP by COLE, KAITLIN			
08:50				BLOCK by NELSON-ODODA, OLIVIA
08:47	REBOUND (OFF) by PEOPLES, ANAYA			
08:36	MISSED LAYUP by BRUNELLE, SAM			
08:33				REBOUND (DEF) by DANGERFIELD, CRYSTAL
08:23				MISSED LAYUP by NELSON-ODODA, OLIVIA
08:22				REBOUND (OFF) by TEAM
08:12				MISSED JUMPER by WALKER, MEGAN
08:08	REBOUND (DEF) by BRUNELLE, SAM			
07:55	MISSED 3PTR by BRUNELLE, SAM			
07:53	REBOUND (OFF) by COLE, KAITLIN			
07:49	TURNOVER (BADPASS) by COLE, KAITLIN			
07:49				STEAL by DANGERFIELD, CRYSTAL
07:44		36-17	H 19	GOOD! LAYUP by GRIFFIN, AUBREY [FB]
07:44				ASSIST by DANGERFIELD, CRYSTAL
07:12	TURNOVER (SHOTCLOCK) by TEAM			
07:12	SUB OUT: COLE, KAITLIN			
07:12	SUB IN: WALKER, DESTINEE			
07:00				TURNOVER (LOSTBALL) by WALKER, MEGAN
07:00	STEAL by WALKER, DESTINEE			
06:56	GOOD! LAYUP by WALKER, DESTINEE [FB]	36-19	H 17	
06:56	ASSIST by SNIEZEK, MARTA			
06:39				MISSED JUMPER by NELSON-ODODA, OLIVIA
06:37	REBOUND (DEF) by BRUNELLE, SAM			
06:19	GOOD! LAYUP by BRUNELLE, SAM [PNT]	36-21	H 15	
06:19	ASSIST by SNIEZEK, MARTA			
05:54				MISSED 3PTR by DANGERFIELD, CRYSTAL
05:50	REBOUND (DEF) by WALKER, DESTINEE			
05:37	MISSED 3PTR by PEOPLES, ANAYA			
05:33	REBOUND (OFF) by TEAM			
05:33				SUB OUT: GRIFFIN, AUBREY
05:33				SUB IN: MAKURAT, ANNA
05:27	MISSED JUMPER by BRUNELLE, SAM			
05:24				REBOUND (DEF) by WALKER, MEGAN
05:20				MISSED JUMPER by WILLIAMS, CHRISTYN
05:17				REBOUND (OFF) by WALKER, MEGAN
05:16				MISSED LAYUP by WALKER, MEGAN
05:14				REBOUND (OFF) by WALKER, MEGAN
05:13		38-21	H 17	GOOD! LAYUP by WALKER, MEGAN [PNT]
04:58	GOOD! LAYUP by PEOPLES, ANAYA	38-23	H 15	
04:58	ASSIST by BRUNELLE, SAM			
04:33				MISSED 3PTR by MAKURAT, ANNA
04:30	REBOUND (DEF) by PEOPLES, ANAYA			
04:16	TURNOVER (BADPASS) by SNIEZEK, MARTA			
04:16				
04:16				SUB OUT: MAKURAT, ANNA
04:16				SUB IN: IRWIN, KYLA
03:48		41-23	H 18	GOOD! 3PTR by WALKER, MEGAN
03:38	MISSED 3PTR by BRUNELLE, SAM			
03:35				REBOUND (DEF) by IRWIN, KYLA
03:22				MISSED 3PTR by DANGERFIELD, CRYSTAL
03:19				REBOUND (OFF) by NELSON-ODODA, OLIVIA
03:07				TURNOVER (LOSTBALL) by DANGERFIELD, CRYSTAL
03:07	STEAL by SNIEZEK, MARTA			
03:07				FOUL (PERSONAL) by DANGERFIELD, CRYSTAL
02:55	GOOD! LAYUP by GILBERT, KATLYN [PNT]	41-25	H 16	
02:55	ASSIST by BRUNELLE, SAM			

Time	VISITORS: Notre Dame	Score	Margin	HOME: UConn
02:45		43-25	H 18	GOOD! JUMPER by NELSON-ODODA, OLIVIA
02:45				ASSIST by WILLIAMS, CHRISTYN
02:29	MISSED JUMPER by BRUNELLE, SAM			
02:26				REBOUND (DEF) by WALKER, MEGAN
02:18				MISSED 3PTR by DANGERFIELD, CRYSTAL
02:16				REBOUND (OFF) by WALKER, MEGAN
02:04				TURNOVER (BADPASS) by IRWIN, KYLA
01:48	TURNOVER (BADPASS) by SNIEZEK, MARTA			
01:48				STEAL by WALKER, MEGAN
01:44		45-25	H 20	GOOD! LAYUP by WALKER, MEGAN [FB]
01:44	FOUL (PERSONAL) by SNIEZEK, MARTA			
01:44		46-25	H 21	GOOD! FT by WALKER, MEGAN [FB]
01:35	TURNOVER (BADPASS) by SNIEZEK, MARTA			
01:19				MISSED 3PTR by WILLIAMS, CHRISTYN
01:16				REBOUND (OFF) by IRWIN, KYLA
01:13		48-25	H 23	GOOD! LAYUP by IRWIN, KYLA [PNT]
00:58	TURNOVER (BADPASS) by WALKER, DESTINEE			
00:58				STEAL by DANGERFIELD, CRYSTAL
00:56	FOUL (PERSONAL) by WALKER, DESTINEE			
00:56	SUB OUT: WALKER, DESTINEE			
00:56	SUB IN: COLE, KAITLIN			
00:56		49-25	H 24	GOOD! FT by WILLIAMS, CHRISTYN [FB]
00:56		50-25	H 25	GOOD! FT by WILLIAMS, CHRISTYN [FB]
00:56				SUB OUT: NELSON-ODODA, OLIVIA
00:56				SUB OUT: IRWIN, KYLA
00:56				SUB IN: BENT, MOLLY
00:56				SUB IN: GRIFFIN, AUBREY
00:41	TURNOVER (BADPASS) by BRUNELLE, SAM			
00:11		52-25	H 27	GOOD! JUMPER by WALKER, MEGAN [PNT]
00:11				ASSIST by WILLIAMS, CHRISTYN
00:00	TURNOVER (TRAVEL) by BRUNELLE, SAM			

Notre Dame 25, UConn 52

Points from (This Period)	UND	UCN
In the Paint	12	12
Off Turns	4	14
2nd Chance	0	4
Fast Break	2	7
Bench	6	2

Official Box Score
Notre Dame vs UConn
Second Half Statistics Only
December 08, 2019 at Harry A. Gampel Pavilion - Storrs, Conn.



Notre Dame 32

No.	Player	S	Pts	FG	3FG	FT	OR	DR	TR	PF	A	TO	Blk	Stl	Min	+/-
02	COLE, KAITLIN	G	0	0-1	0-0	0-0	0	1	1	1	0	0	0	0	7	2
10	GILBERT, KATLYN	G	11	4-10	2-4	1-4	1	2	3	1	0	1	0	1	17	4
13	SNIEZEK, MARTA	G	5	2-4	1-3	0-0	0	1	1	1	2	0	0	1	20	3
20	BENZ, NICOLE	G	0	0-1	0-1	0-0	0	0	0	0	0	0	0	0	2	5
21	PEOPLES, ANAYA	G	13	6-13	0-3	1-2	4	5	9	3	1	0	1	0	18	6
22	COSGROVE, DANIELLE	F	3	1-4	1-4	0-0	0	1	1	2	0	0	1	0	20	3
24	WALKER, DESTINEE	G	0	0-3	0-2	0-0	0	2	2	1	0	0	0	0	16	-8
33	BRUNELLE, SAM	F	0	0-0	0-0	0-0	0	0	0	0	0	0	0	0	0	0
	TEAM		0	0-0	0-0	0-0	1	1	2	0	0	1	0	0	0	
TOTALS			32	13-36	4-17	2-6	6	13	19	9	3	2	2	2	99	

Shooting By Period

Period	FG	FG%	3FG	3FG%	FT	FT%
3rd Qtr	6-15	40%	1-6	17%	1-2	50%
4th Qtr	7-21	33%	3-11	27%	1-4	25%
2nd Half	13-36	36%	4-17	24%	2-6	33%
Game	24-65	36.9%	4-25	16.0%	5-9	55.6%

Deadball Rebounds: 3,0

Last FG Half: UND 4th-00:17

UConn 29

No.	Player	S	Pts	FG	3FG	FT	OR	DR	TR	PF	A	TO	Blk	Stl	Min	+/-
10	BENT, MOLLY	G	5	2-2	0-0	1-1	0	1	1	1	0	1	0	0	7	-9
13	WILLIAMS, CHRISTYN	G	7	3-5	1-2	0-0	0	1	1	3	1	1	0	1	17	3
14	ADEBAYO, EVELYN	F	0	0-0	0-0	0-0	0	1	1	0	0	1	0	0	2	-5
20	NELSON-ODODA, OLIVIA	F	3	0-4	0-0	3-6	2	4	6	0	0	1	1	0	11	2
24	MAKURAT, ANNA	G	3	1-3	1-3	0-0	0	0	0	1	0	0	0	0	10	-13
25	IRWIN, KYLA	F	0	0-0	0-0	0-0	1	1	2	0	3	0	1	0	13	6
44	GRIFFIN, AUBREY	G	0	0-2	0-1	0-0	0	2	2	0	0	0	0	0	8	-5
03	WALKER, MEGAN	F	7	2-5	1-2	2-4	0	5	5	1	0	2	1	0	18	0
05	DANGERFIELD, CRYSTAL	G	4	1-4	0-1	2-2	1	3	4	0	1	1	0	0	13	6
	TEAM		0	0-0	0-0	0-0	1	0	1	0	0	0	0	0	0	
TOTALS			29	9-25	3-9	8-13	5	18	23	6	5	7	3	1	99	

Shooting By Period

Period	FG	FG%	3FG	3FG%	FT	FT%
3rd Qtr	6-11	55%	1-4	25%	4-7	57%
4th Qtr	3-14	21%	2-5	40%	4-6	67%
2nd Half	9-25	36%	3-9	33%	8-13	62%
Game	30-66	45.5%	8-23	34.8%	13-19	68.4%

Deadball Rebounds: 4,0

Last FG Half: UCN 4th-02:33

Game Notes:

Officials: Joseph Vaszily, Karen Preato, Pualani Spurlock
Attendance: 10167

Start Time: 04:04 PM ET
End Time: 05:48 PM ET
Game Duration: 1:43

Score	1st	2nd	3rd	4th	TOT
UND	13	12	14	18	57
UCN	29	23	17	12	81

Points from (This Period)	UND	UCN
In the Paint	14	6
Off Turns	3	2
2nd Chance	5	7
Fast Break	2	2
Bench	13	8

Official Box Score
Notre Dame vs UConn
Third Quarter Statistics Only
December 08, 2019 at Harry A. Gampel Pavilion - Storrs, Conn.



Notre Dame 32

No.	Player	S	Pts	FG	3FG	FT	OR	DR	TR	PF	A	TO	Blk	Stl	Min	+/-
10	GILBERT, KATLYN	G	8	3-6	1-2	1-2	0	0	0	1	0	1	0	1	10	-3
13	SNIEZEK, MARTA	G	2	1-2	0-1	0-0	0	1	1	0	0	0	0	0	10	-3
22	COSGROVE, DANIELLE	F	0	0-1	0-1	0-0	0	0	0	1	0	0	1	0	10	-3
24	WALKER, DESTINEE	G	0	0-1	0-1	0-0	0	2	2	1	0	0	0	0	10	-3
33	BRUNELLE, SAM	F	0	0-0	0-0	0-0	0	0	0	0	0	0	0	0	0	0
02	COLE, KAITLIN	G	0	0-0	0-0	0-0	0	0	0	0	0	0	0	0	2	-3
20	BENZ, NICOLE	G	0	0-0	0-0	0-0	0	0	0	0	0	0	0	0	0	0
21	PEOPLES, ANAYA	G	4	2-5	0-1	0-0	0	1	1	2	0	0	0	0	8	0
TEAM							0	0	0	0		1				
TOTALS			14	6-15	1-6	1-2	0	4	4	5	0	2	1	1	50	

Shooting By Period

Period	FG	FG%	3FG	3FG%	FT	FT%
2nd Half	0-0	0%	0-0	0%	0-0	0%
Game	24-65	36.9%	4-25	16.0%	5-9	55.6%

Deadball Rebounds: 3,0

UConn 29

No.	Player	S	Pts	FG	3FG	FT	OR	DR	TR	PF	A	TO	Blk	Stl	Min	+/-
03	WALKER, MEGAN	F	2	1-1	0-0	0-0	0	2	2	1	0	2	0	0	10	3
05	DANGERFIELD, CRYSTAL	G	4	1-3	0-1	2-2	1	3	4	0	0	1	0	0	9	3
13	WILLIAMS, CHRISTYN	G	4	2-3	0-1	0-0	0	0	0	1	1	1	0	1	10	3
20	NELSON-ODODA, OLIVIA	F	1	0-0	0-0	1-4	0	2	2	0	0	1	1	0	5	5
25	IRWIN, KYLA	F	0	0-0	0-0	0-0	0	0	0	0	1	0	0	0	5	7
10	BENT, MOLLY	G	3	1-1	0-0	1-1	0	0	0	0	0	0	0	0	1	0
14	ADEBAYO, EVELYN	F	0	0-0	0-0	0-0	0	0	0	0	0	0	0	0	0	0
24	MAKURAT, ANNA	G	3	1-1	1-1	0-0	0	0	0	1	0	0	0	0	6	-4
44	GRIFFIN, AUBREY	G	0	0-2	0-1	0-0	0	1	1	0	0	0	0	0	4	-2
TEAM							1	0	1	0		0				
TOTALS			17	6-11	1-4	4-7	2	8	10	3	2	5	1	1	50	

Shooting By Period

Period	FG	FG%	3FG	3FG%	FT	FT%
2nd Half	0-0	0%	0-0	0%	0-0	0%
Game	30-66	45.5%	8-23	34.8%	13-19	68.4%

Deadball Rebounds: 4,0

Game Notes:

Officials: Joseph Vaszily, Karen Preato, Pualani Spurlock
Attendance: 10167

Start Time: 04:04 PM ET
End Time: 05:48 PM ET
Game Duration: 1:43

Score	1st	2nd	3rd	4th	TOT
UND	13	12	14	18	57
UCN	29	23	17	12	81

Points from (This Period)	UND	UCN
In the Paint	6	6
Off Turns	2	2
2nd Chance	0	2
Fast Break	2	2
Bench	4	6

**Official Play-By-Play
Notre Dame vs UConn
Third Quarter**

December 08, 2019 at Harry A. Gampel Pavilion - Storrs, Conn.



Period 3

Starters:

Notre Dame: 10 GILBERT, KATLYN (G); 13 SNIEZEK, MARTA (G); 22 COSGROVE, DANIELLE (F); 24 WALKER, DESTINEE (G); 33 BRUNELLE, SAM (F);
UConn: 13 WILLIAMS, CHRISTYN (G); 20 NELSON-ODODA, OLIVIA (F); 25 IRWIN, KYLA (F); 3 WALKER, MEGAN (F); 5 DANGERFIELD, CRYSTAL (G);

Time	VISITORS: Notre Dame	Score	Margin	HOME: UConn
10:00				SUB OUT: BENT, MOLLY
10:00				SUB OUT: GRIFFIN, AUBREY
10:00				SUB IN: NELSON-ODODA, OLIVIA
10:00				SUB IN: IRWIN, KYLA
10:00	SUB OUT: COLE, KAITLIN			
10:00	SUB IN: COSGROVE, DANIELLE			
09:46	FOUL (PERSONAL) by PEOPLES, ANAYA			
09:33	FOUL (PERSONAL) by GILBERT, KATLYN			
09:33	SUB OUT: BRUNELLE, SAM			
09:33	SUB IN: WALKER, DESTINEE			
09:33				MISSED FT by NELSON-ODODA, OLIVIA
09:33				REBOUND (OFF) by TEAM
09:33		53-25	H 28	GOOD! FT by NELSON-ODODA, OLIVIA
09:09	MISSED JUMPER by PEOPLES, ANAYA			
09:04				REBOUND (DEF) by NELSON-ODODA, OLIVIA
08:49		55-25	H 30	GOOD! JUMPER by WILLIAMS, CHRISTYN
08:49				ASSIST by IRWIN, KYLA
08:34	MISSED 3PTR by PEOPLES, ANAYA			
08:30				REBOUND (DEF) by NELSON-ODODA, OLIVIA
08:12		57-25	H 32	GOOD! JUMPER by WALKER, MEGAN
07:42	MISSED 3PTR by COSGROVE, DANIELLE			
07:39				REBOUND (DEF) by WALKER, MEGAN
07:24				TURNOVER (TRAVEL) by NELSON-ODODA, OLIVIA
06:58	MISSED 3PTR by WALKER, DESTINEE			
06:54				REBOUND (DEF) by WALKER, MEGAN
06:48				TURNOVER (BADPASS) by DANGERFIELD, CRYSTAL
06:48	STEAL by GILBERT, KATLYN			
06:39	MISSED LAYUP by GILBERT, KATLYN			
06:34				REBOUND (DEF) by DANGERFIELD, CRYSTAL
06:30				FOUL (OFF) by WILLIAMS, CHRISTYN
06:30				TURNOVER (OFFENSIVE) by WILLIAMS, CHRISTYN
06:13	TURNOVER (BADPASS) by GILBERT, KATLYN			
06:13				STEAL by WILLIAMS, CHRISTYN
06:09		59-25	H 34	GOOD! LAYUP by WILLIAMS, CHRISTYN [FB/PNT]
05:36	MISSED JUMPER by GILBERT, KATLYN			
05:36				BLOCK by NELSON-ODODA, OLIVIA
05:34	REBOUND (OFF) by TEAM			
05:34	TURNOVER (SHOTCLOCK) by TEAM			
05:34				SUB OUT: IRWIN, KYLA
05:34				SUB IN: MAKURAT, ANNA
05:22				MISSED JUMPER by DANGERFIELD, CRYSTAL
05:20				REBOUND (OFF) by TEAM
05:08	FOUL (PERSONAL) by COSGROVE, DANIELLE			
05:08				MISSED FT by NELSON-ODODA, OLIVIA
05:08				REBOUND (OFF) by TEAM
05:08				MISSED FT by NELSON-ODODA, OLIVIA
05:05	REBOUND (DEF) by PEOPLES, ANAYA			
04:59	GOOD! LAYUP by PEOPLES, ANAYA [FB/PNT]	59-27	H 32	
04:47				
04:47				SUB OUT: NELSON-ODODA, OLIVIA
04:47				SUB IN: GRIFFIN, AUBREY
04:42				TURNOVER (TRAVEL) by WALKER, MEGAN
04:17	MISSED LAYUP by PEOPLES, ANAYA			
04:15				REBOUND (DEF) by GRIFFIN, AUBREY
04:03				MISSED 3PTR by DANGERFIELD, CRYSTAL
03:59	REBOUND (DEF) by WALKER, DESTINEE			
03:50	GOOD! 3PTR by GILBERT, KATLYN	59-30	H 29	
03:29				TURNOVER (LOSTBALL) by WALKER, MEGAN
03:22				FOUL (PERSONAL) by MAKURAT, ANNA
03:18	GOOD! LAYUP by PEOPLES, ANAYA [PNT]	59-32	H 27	
03:03				MISSED 3PTR by GRIFFIN, AUBREY
03:00	REBOUND (DEF) by WALKER, DESTINEE			
02:52	MISSED 3PTR by GILBERT, KATLYN			
02:49				REBOUND (DEF) by DANGERFIELD, CRYSTAL
02:25	FOUL (PERSONAL) by PEOPLES, ANAYA			
02:25	SUB OUT: PEOPLES, ANAYA			
02:25	SUB IN: COLE, KAITLIN			
02:25		60-32	H 28	GOOD! FT by DANGERFIELD, CRYSTAL
02:25		61-32	H 29	GOOD! FT by DANGERFIELD, CRYSTAL
02:13	MISSED 3PTR by SNIEZEK, MARTA			

Time	VISITORS: Notre Dame	Score	Margin	HOME: UConn
02:09				REBOUND (DEF) by DANGERFIELD, CRYSTAL
02:01		64-32	H 32	GOOD! 3PTR by MAKURAT, ANNA
02:01				ASSIST by WILLIAMS, CHRISTYN
01:47	GOOD! JUMPER by GILBERT, KATLYN	64-34	H 30	
01:25				MISSED 3PTR by WILLIAMS, CHRISTYN
01:22	REBOUND (DEF) by SNIEZEK, MARTA			
01:16	GOOD! LAYUP by SNIEZEK, MARTA	64-36	H 28	
00:55				MISSED LAYUP by GRIFFIN, AUBREY
00:55	BLOCK by COSGROVE, DANIELLE			
00:51				REBOUND (OFF) by DANGERFIELD, CRYSTAL
00:50		66-36	H 30	GOOD! LAYUP by DANGERFIELD, CRYSTAL [PNT]
00:37				FOUL (PERSONAL) by WALKER, MEGAN
00:37				SUB OUT: DANGERFIELD, CRYSTAL
00:37				SUB OUT: GRIFFIN, AUBREY
00:37				SUB IN: BENT, MOLLY
00:37				SUB IN: IRWIN, KYLA
00:37	MISSED FT by GILBERT, KATLYN			
00:37	REBOUND (OFF) by TEAM			
00:37	GOOD! FT by GILBERT, KATLYN	66-37	H 29	
00:18		68-37	H 31	GOOD! LAYUP by BENT, MOLLY [PNT]
00:18	FOUL (PERSONAL) by WALKER, DESTINEE			
00:18		69-37	H 32	GOOD! FT by BENT, MOLLY
00:06	GOOD! JUMPER by GILBERT, KATLYN	69-39	H 30	

Notre Dame 39, UConn 69

Points from (This Period)	UND	UCN
In the Paint	6	6
Off Turns	2	2
2nd Chance	0	2
Fast Break	2	2
Bench	4	6

Official Box Score
Notre Dame vs UConn
Fourth Quarter Statistics Only
December 08, 2019 at Harry A. Gampel Pavilion - Storrs, Conn.



Notre Dame 18

No.	Player	S	Pts	FG	3FG	FT	OR	DR	TR	PF	A	TO	Blk	Stl	Min	+/-
10	GILBERT, KATLYN	G	3	1-4	1-2	0-2	1	2	3	0	0	0	0	0	7	7
13	SNIEZEK, MARTA	G	3	1-2	1-2	0-0	0	0	0	1	2	0	0	1	10	6
22	COSGROVE, DANIELLE	F	3	1-3	1-3	0-0	0	1	1	1	0	0	0	0	10	6
24	WALKER, DESTINEE	G	0	0-2	0-1	0-0	0	0	0	0	0	0	0	0	6	-5
33	BRUNELLE, SAM	F	0	0-0	0-0	0-0	0	0	0	0	0	0	0	0	0	0
02	COLE, KAITLIN	G	0	0-1	0-0	0-0	0	1	1	1	0	0	0	0	5	5
20	BENZ, NICOLE	G	0	0-1	0-1	0-0	0	0	0	0	0	0	0	0	2	5
21	PEOPLES, ANAYA	G	9	4-8	0-2	1-2	4	4	8	1	1	0	1	0	10	6
TEAM							1	1	2	0		0				
TOTALS			18	7-21	3-11	1-4	6	9	15	4	3	0	1	1	49	

Shooting By Period

Period	FG	FG%	3FG	3FG%	FT	FT%
Game	24-65	36.9%	4-25	16.0%	5-9	55.6%

Deadball Rebounds: 3,0

UConn 12

No.	Player	S	Pts	FG	3FG	FT	OR	DR	TR	PF	A	TO	Blk	Stl	Min	+/-
03	WALKER, MEGAN	F	5	1-4	1-2	2-4	0	3	3	0	0	0	1	0	8	-3
05	DANGERFIELD, CRYSTAL	G	0	0-1	0-0	0-0	0	0	0	0	1	0	0	0	4	3
13	WILLIAMS, CHRISTYN	G	3	1-2	1-1	0-0	0	1	1	2	0	0	0	0	7	0
20	NELSON-ODODA, OLIVIA	F	2	0-4	0-0	2-2	2	2	4	0	0	0	0	0	6	-3
25	IRWIN, KYLA	F	0	0-0	0-0	0-0	1	1	2	0	2	0	1	0	8	-1
10	BENT, MOLLY	G	2	1-1	0-0	0-0	0	1	1	1	0	1	0	0	6	-9
14	ADEBAYO, EVELYN	F	0	0-0	0-0	0-0	0	1	1	0	0	1	0	0	2	-5
24	MAKURAT, ANNA	G	0	0-2	0-2	0-0	0	0	0	0	0	0	0	0	4	-9
44	GRIFFIN, AUBREY	G	0	0-0	0-0	0-0	0	1	1	0	0	0	0	0	4	-3
TEAM							0	0	0	0		0				
TOTALS			12	3-14	2-5	4-6	3	10	13	3	3	2	2	0	49	

Shooting By Period

Period	FG	FG%	3FG	3FG%	FT	FT%
Game	30-66	45.5%	8-23	34.8%	13-19	68.4%

Deadball Rebounds: 4,0

Game Notes:

Officials: Joseph Vaszily, Karen Preato, Pualani Spurlock
Attendance: 10167

Start Time: 04:04 PM ET
End Time: 05:48 PM ET
Game Duration: 1:43

Score	1st	2nd	3rd	4th	TOT
UND	13	12	14	18	57
UCN	29	23	17	12	81

Points from (This Period)	UND	UCN
In the Paint	8	0
Off Turns	1	0
2nd Chance	5	5
Fast Break	0	0
Bench	9	2

Official Play-By-Play
Notre Dame vs UConn
Fourth Quarter
December 08, 2019 at Harry A. Gampel Pavilion - Storrs, Conn.



Period 4

Starters:

Notre Dame: 10 GILBERT,KATLYN (G); 13 SNIEZEK,MARTA (G); 22 COSGROVE,DANIELLE (F); 24 WALKER,DESTINEE (G); 33 BRUNELLE,SAM (F);
UConn: 13 WILLIAMS,CHRISTYN (G); 20 NELSON-ODODA,OLIVIA (F); 25 IRWIN,KYLA (F); 3 WALKER,MEGAN (F); 5 DANGERFIELD,CRYSTAL (G);

Time	VISITORS: Notre Dame	Score	Margin	HOME: UConn
10:00				SUB OUT: WILLIAMS, CHRISTYN
10:00				SUB IN: NELSON-ODODA, OLIVIA
10:00	SUB OUT: WALKER, DESTINEE			
10:00	SUB IN: PEOPLES, ANAYA			
09:41	MISSED 3PTR by COSGROVE, DANIELLE			
09:37				REBOUND (DEF) by BENT, MOLLY
09:33				TURNOVER (LOSTBALL) by BENT, MOLLY
09:33	STEAL by SNIEZEK, MARTA			
09:29	MISSED LAYUP by PEOPLES, ANAYA			
09:29				BLOCK by IRWIN, KYLA
09:24	REBOUND (OFF) by PEOPLES, ANAYA			
09:19	MISSED LAYUP by GILBERT, KATLYN			
09:19				BLOCK by WALKER, MEGAN
09:15	REBOUND (OFF) by GILBERT, KATLYN			
09:10	MISSED 3PTR by PEOPLES, ANAYA			
09:07				REBOUND (DEF) by NELSON-ODODA, OLIVIA
08:56				MISSED LAYUP by WALKER, MEGAN
08:51				REBOUND (OFF) by NELSON-ODODA, OLIVIA
08:51				MISSED LAYUP by NELSON-ODODA, OLIVIA
08:50	REBOUND (DEF) by PEOPLES, ANAYA			
08:43	GOOD! 3PTR by SNIEZEK, MARTA	69-42	H 27	
08:43	ASSIST by PEOPLES, ANAYA			
08:31				MISSED JUMPER by NELSON-ODODA, OLIVIA
08:29	REBOUND (DEF) by TEAM			
08:13	GOOD! 3PTR by COSGROVE, DANIELLE	69-45	H 24	
08:13	ASSIST by SNIEZEK, MARTA			
07:51				MISSED 3PTR by MAKURAT, ANNA
07:51	BLOCK by PEOPLES, ANAYA			
07:44	REBOUND (DEF) by COLE, KAITLIN			
07:41				FOUL (PERSONAL) by BENT, MOLLY
07:41				SUB OUT: BENT, MOLLY
07:41				SUB OUT: MAKURAT, ANNA
07:41				SUB IN: DANGERFIELD, CRYSTAL
07:41				SUB IN: WILLIAMS, CHRISTYN
07:41	SUB OUT: PEOPLES, ANAYA			
07:41	SUB IN: WALKER, DESTINEE			
07:41	MISSED FT by GILBERT, KATLYN			
07:41	REBOUND (OFF) by TEAM			
07:41	MISSED FT by GILBERT, KATLYN			
07:39				REBOUND (DEF) by IRWIN, KYLA
07:35	FOUL (PERSONAL) by COSGROVE, DANIELLE			
07:35	SUB OUT: GILBERT, KATLYN			
07:35	SUB IN: PEOPLES, ANAYA			
07:35				MISSED FT by WALKER, MEGAN
07:35				REBOUND (OFF) by TEAM
07:35				MISSED FT by WALKER, MEGAN
07:34	REBOUND (DEF) by COSGROVE, DANIELLE			
07:16	MISSED JUMPER by COLE, KAITLIN			
07:13	REBOUND (OFF) by PEOPLES, ANAYA			
07:11	GOOD! LAYUP by PEOPLES, ANAYA	69-47	H 22	
06:49	FOUL (PERSONAL) by COLE, KAITLIN			
06:46	FOUL (PERSONAL) by PEOPLES, ANAYA			
06:46		70-47	H 23	GOOD! FT by WALKER, MEGAN
06:46		71-47	H 24	GOOD! FT by WALKER, MEGAN
06:26				FOUL (PERSONAL) by WILLIAMS, CHRISTYN
06:24	GOOD! LAYUP by PEOPLES, ANAYA	71-49	H 22	
06:24	ASSIST by SNIEZEK, MARTA			
06:06				MISSED 3PTR by WALKER, MEGAN
06:01	REBOUND (DEF) by PEOPLES, ANAYA			
05:54	MISSED 3PTR by SNIEZEK, MARTA			
05:51				REBOUND (DEF) by WALKER, MEGAN
05:39				MISSED JUMPER by NELSON-ODODA, OLIVIA
05:36				REBOUND (OFF) by IRWIN, KYLA
05:30		74-49	H 25	GOOD! 3PTR by WILLIAMS, CHRISTYN
05:30				ASSIST by DANGERFIELD, CRYSTAL
05:03	MISSED LAYUP by PEOPLES, ANAYA			
05:00				REBOUND (DEF) by NELSON-ODODA, OLIVIA
04:52				MISSED LAYUP by DANGERFIELD, CRYSTAL
04:50				REBOUND (OFF) by NELSON-ODODA, OLIVIA
04:50	FOUL (PERSONAL) by SNIEZEK, MARTA			

Time	VISITORS: Notre Dame	Score	Margin	HOME: UConn
04:50				
04:50	SUB OUT: COLE, KAITLIN			
04:50	SUB IN: GILBERT, KATLYN			
04:49		75-49	H 26	GOOD! FT by NELSON-ODODA, OLIVIA
04:49		76-49	H 27	GOOD! FT by NELSON-ODODA, OLIVIA
04:37	MISSED JUMPER by GILBERT, KATLYN			
04:34				REBOUND (DEF) by WALKER, MEGAN
04:10				MISSED JUMPER by NELSON-ODODA, OLIVIA
04:07	REBOUND (DEF) by GILBERT, KATLYN			
04:02	MISSED 3PTR by WALKER, DESTINEE			
03:58	REBOUND (OFF) by TEAM			
03:58				SUB OUT: DANGERFIELD, CRYSTAL
03:58				SUB OUT: NELSON-ODODA, OLIVIA
03:58				SUB IN: BENT, MOLLY
03:58				SUB IN: GRIFFIN, AUBREY
03:40	MISSED 3PTR by PEOPLES, ANAYA			
03:37				REBOUND (DEF) by GRIFFIN, AUBREY
03:17		78-49	H 29	GOOD! JUMPER by BENT, MOLLY
03:17				ASSIST by IRWIN, KYLA
02:54	MISSED LAYUP by WALKER, DESTINEE			
02:52				REBOUND (DEF) by WALKER, MEGAN
02:33		81-49	H 32	GOOD! 3PTR by WALKER, MEGAN
02:33				ASSIST by IRWIN, KYLA
02:13	GOOD! 3PTR by GILBERT, KATLYN	81-52	H 29	
02:03				TIMEOUT 30SEC
02:03				SUB OUT: IRWIN, KYLA
02:03				SUB IN: ADEBAYO, EVELYN
02:03	SUB OUT: WALKER, DESTINEE			
02:03	SUB IN: BENZ, NICOLE			
01:56				MISSED JUMPER by WALKER, MEGAN
01:52	REBOUND (DEF) by PEOPLES, ANAYA			
01:44	MISSED 3PTR by BENZ, NICOLE			
01:41	REBOUND (OFF) by PEOPLES, ANAYA			
01:40	GOOD! LAYUP by PEOPLES, ANAYA [PNT]	81-54	H 27	
01:35				TIMEOUT 30SEC
01:35				SUB OUT: WALKER, MEGAN
01:35				SUB IN: MAKURAT, ANNA
01:19				TURNOVER (TRAVEL) by ADEBAYO, EVELYN
01:10	MISSED 3PTR by COSGROVE, DANIELLE			
01:07	REBOUND (OFF) by PEOPLES, ANAYA			
01:07				FOUL (PERSONAL) by WILLIAMS, CHRISTYN
01:07	GOOD! FT by PEOPLES, ANAYA	81-55	H 26	
01:07	MISSED FT by PEOPLES, ANAYA			
01:06				REBOUND (DEF) by ADEBAYO, EVELYN
00:51				MISSED JUMPER by WILLIAMS, CHRISTYN
00:47	REBOUND (DEF) by GILBERT, KATLYN			
00:42	MISSED 3PTR by GILBERT, KATLYN			
00:39				REBOUND (DEF) by WILLIAMS, CHRISTYN
00:26				MISSED 3PTR by MAKURAT, ANNA
00:22	REBOUND (DEF) by PEOPLES, ANAYA			
00:17	GOOD! LAYUP by PEOPLES, ANAYA [PNT]	81-57	H 24	

Notre Dame 57, UConn 81

Points from (This Period)	UND	UCN
In the Paint	8	0
Off Turns	1	0
2nd Chance	5	5
Fast Break	0	0
Bench	9	2

**Official Scoring/Possession Reference Chart
Notre Dame vs UConn**

Period 1

December 08, 2019 at Harry A. Gampel Pavilion - Storrs, Conn.



Period 1

Starters:

Notre Dame: 10 GILBERT, KATLYN (G); 13 SNIEZEK, MARTA (G); 22 COSGROVE, DANIELLE (F); 24 WALKER, DESTINEE (G); 33 BRUNELLE, SAM (F);

UConn: 13 WILLIAMS, CHRISTYN (G); 20 NELSON-ODODA, OLIVIA (F); 25 IRWIN, KYLA (F); 3 WALKER, MEGAN (F); 5 DANGERFIELD, CRYSTAL (G);

Time	VISITORS: Notre Dame	Score	Margin	HOME: UConn
09:49		3-0	H 3	GOOD! 3PTR by IRWIN, KYLA
09:34	GOOD! FT by SNIEZEK, MARTA	3-1	H 2	
09:34	GOOD! FT by SNIEZEK, MARTA	3-2	H 1	
09:13		5-2	H 3	GOOD! JUMPER by WALKER, MEGAN [PNT]
08:28		7-2	H 5	GOOD! LAYUP by NELSON-ODODA, OLIVIA
07:46		9-2	H 7	GOOD! LAYUP by NELSON-ODODA, OLIVIA
07:46		10-2	H 8	GOOD! FT by NELSON-ODODA, OLIVIA
06:50		12-2	H 10	GOOD! LAYUP by NELSON-ODODA, OLIVIA
06:25	GOOD! LAYUP by SNIEZEK, MARTA [FB]	12-4	H 8	
06:08	GOOD! LAYUP by GILBERT, KATLYN [FB/PNT]	12-6	H 6	
05:57		15-6	H 9	GOOD! 3PTR by DANGERFIELD, CRYSTAL
04:53	GOOD! LAYUP by BRUNELLE, SAM [PNT]	15-8	H 7	
04:39		16-8	H 8	GOOD! FT by WILLIAMS, CHRISTYN
04:25		18-8	H 10	GOOD! LAYUP by WALKER, MEGAN [FB]
03:59		20-8	H 12	GOOD! LAYUP by NELSON-ODODA, OLIVIA [PNT]
03:44	GOOD! LAYUP by SNIEZEK, MARTA [PNT]	20-10	H 10	
02:37		22-10	H 12	GOOD! JUMPER by WALKER, MEGAN
02:21	GOOD! LAYUP by SNIEZEK, MARTA [PNT]	22-12	H 10	
02:21	GOOD! FT by SNIEZEK, MARTA	22-13	H 9	
02:16		24-13	H 11	GOOD! LAYUP by WILLIAMS, CHRISTYN [FB/PNT]
00:40		27-13	H 14	GOOD! 3PTR by WALKER, MEGAN
00:00		29-13	H 16	GOOD! LAYUP by GRIFFIN, AUBREY

Notre Dame 13, UConn 29

Official Scoring/Possession Reference Chart
Notre Dame vs UConn
Period 2
December 08, 2019 at Harry A. Gampel Pavilion - Storrs, Conn.



Period 2

Starters:

Notre Dame: 10 GILBERT, KATLYN (G); 13 SNIEZEK, MARTA (G); 22 COSGROVE, DANIELLE (F); 24 WALKER, DESTINEE (G); 33 BRUNELLE, SAM (F);
UConn: 13 WILLIAMS, CHRISTYN (G); 20 NELSON-ODODA, OLIVIA (F); 25 IRWIN, KYLA (F); 3 WALKER, MEGAN (F); 5 DANGERFIELD, CRYSTAL (G);

Time	VISITORS: Notre Dame	Score	Margin	HOME: UConn
09:56	GOOD! LAYUP by PEOPLES, ANAYA [PNT]	29-15	H 14	
09:34		32-15	H 17	GOOD! 3PTR by DANGERFIELD, CRYSTAL
09:16	GOOD! LAYUP by COLE, KAITLIN [PNT]	32-17	H 15	
09:02		34-17	H 17	GOOD! LAYUP by NELSON-ODODA, OLIVIA
07:44		36-17	H 19	GOOD! LAYUP by GRIFFIN, AUBREY [FB]
06:56	GOOD! LAYUP by WALKER, DESTINEE [FB]	36-19	H 17	
06:19	GOOD! LAYUP by BRUNELLE, SAM [PNT]	36-21	H 15	
05:13		38-21	H 17	GOOD! LAYUP by WALKER, MEGAN [PNT]
04:58	GOOD! LAYUP by PEOPLES, ANAYA	38-23	H 15	
03:48		41-23	H 18	GOOD! 3PTR by WALKER, MEGAN
02:55	GOOD! LAYUP by GILBERT, KATLYN [PNT]	41-25	H 16	
02:45		43-25	H 18	GOOD! JUMPER by NELSON-ODODA, OLIVIA
01:44		45-25	H 20	GOOD! LAYUP by WALKER, MEGAN [FB]
01:44		46-25	H 21	GOOD! FT by WALKER, MEGAN [FB]
01:13		48-25	H 23	GOOD! LAYUP by IRWIN, KYLA [PNT]
00:56		49-25	H 24	GOOD! FT by WILLIAMS, CHRISTYN [FB]
00:56		50-25	H 25	GOOD! FT by WILLIAMS, CHRISTYN [FB]
00:11		52-25	H 27	GOOD! JUMPER by WALKER, MEGAN [PNT]

Notre Dame 25, UConn 52

Official Scoring/Possession Reference Chart
Notre Dame vs UConn
Period 3
December 08, 2019 at Harry A. Gampel Pavilion - Storrs, Conn.



Period 3

Starters:

Notre Dame: 10 GILBERT,KATLYN (G); 13 SNIEZEK,MARTA (G); 22 COSGROVE,DANIELLE (F); 24 WALKER,DESTINEE (G); 33 BRUNELLE,SAM (F);

UConn: 13 WILLIAMS,CHRISTYN (G); 20 NELSON-ODODA,OLIVIA (F); 25 IRWIN,KYLA (F); 3 WALKER,MEGAN (F); 5 DANGERFIELD,CRYSTAL (G);

Time	VISITORS: Notre Dame	Score	Margin	HOME: UConn
09:33		53-25	H 28	GOOD! FT by NELSON-ODODA, OLIVIA
08:49		55-25	H 30	GOOD! JUMPER by WILLIAMS, CHRISTYN
08:12		57-25	H 32	GOOD! JUMPER by WALKER, MEGAN
06:09		59-25	H 34	GOOD! LAYUP by WILLIAMS, CHRISTYN [FB/PNT]
04:59	GOOD! LAYUP by PEOPLES, ANAYA [FB/PNT]	59-27	H 32	
03:50	GOOD! 3PTR by GILBERT, KATLYN	59-30	H 29	
03:18	GOOD! LAYUP by PEOPLES, ANAYA [PNT]	59-32	H 27	
02:25		60-32	H 28	GOOD! FT by DANGERFIELD, CRYSTAL
02:25		61-32	H 29	GOOD! FT by DANGERFIELD, CRYSTAL
02:01		64-32	H 32	GOOD! 3PTR by MAKURAT, ANNA
01:47	GOOD! JUMPER by GILBERT, KATLYN	64-34	H 30	
01:16	GOOD! LAYUP by SNIEZEK, MARTA	64-36	H 28	
00:50		66-36	H 30	GOOD! LAYUP by DANGERFIELD, CRYSTAL [PNT]
00:37	GOOD! FT by GILBERT, KATLYN	66-37	H 29	
00:18		68-37	H 31	GOOD! LAYUP by BENT, MOLLY [PNT]
00:18		69-37	H 32	GOOD! FT by BENT, MOLLY
00:06	GOOD! JUMPER by GILBERT, KATLYN	69-39	H 30	

Notre Dame 39, UConn 69

Official Scoring/Possession Reference Chart
Notre Dame vs UConn
Period 4
December 08, 2019 at Harry A. Gampel Pavilion - Storrs, Conn.



Period 4

Starters:

Notre Dame: 10 GILBERT, KATLYN (G); 13 SNIEZEK, MARTA (G); 22 COSGROVE, DANIELLE (F); 24 WALKER, DESTINEE (G); 33 BRUNELLE, SAM (F);

UConn: 13 WILLIAMS, CHRISTYN (G); 20 NELSON-ODODA, OLIVIA (F); 25 IRWIN, KYLA (F); 3 WALKER, MEGAN (F); 5 DANGERFIELD, CRYSTAL (G);

Time	VISITORS: Notre Dame	Score	Margin	HOME: UConn
08:43	GOOD! 3PTR by SNIEZEK, MARTA	69-42	H 27	
08:13	GOOD! 3PTR by COSGROVE, DANIELLE	69-45	H 24	
07:11	GOOD! LAYUP by PEOPLES, ANAYA	69-47	H 22	
06:46		70-47	H 23	GOOD! FT by WALKER, MEGAN
06:46		71-47	H 24	GOOD! FT by WALKER, MEGAN
06:24	GOOD! LAYUP by PEOPLES, ANAYA	71-49	H 22	
05:30		74-49	H 25	GOOD! 3PTR by WILLIAMS, CHRISTYN
04:49		75-49	H 26	GOOD! FT by NELSON-ODODA, OLIVIA
04:49		76-49	H 27	GOOD! FT by NELSON-ODODA, OLIVIA
03:17		78-49	H 29	GOOD! JUMPER by BENT, MOLLY
02:33		81-49	H 32	GOOD! 3PTR by WALKER, MEGAN
02:13	GOOD! 3PTR by GILBERT, KATLYN	81-52	H 29	
01:40	GOOD! LAYUP by PEOPLES, ANAYA [PNT]	81-54	H 27	
01:07	GOOD! FT by PEOPLES, ANAYA	81-55	H 26	
00:17	GOOD! LAYUP by PEOPLES, ANAYA [PNT]	81-57	H 24	

Notre Dame 57, UConn 81

Official Substitutions Log
Notre Dame vs UConn
Period 1
December 08, 2019 at Harry A. Gampel Pavilion - Storrs, Conn.



VISITORS: Notre Dame	Time	Score	HOME: UConn
10 GILBERT,KATLYN			13 WILLIAMS,CHRISTYN
13 SNIEZEK,MARTA			20 NELSON-ODODA,OLIVIA
22 COSGROVE,DANIELLE			25 IRWIN,KYLA
24 WALKER,DESTINEE			3 WALKER,MEGAN
33 BRUNELLE,SAM			5 DANGERFIELD,CRYSTAL
SUB OUT: 22 COSGROVE,DANIELLE	06:47	2-12	
SUB IN: 21 PEOPLES,ANAYA	06:47		
	04:39	8-15	
	04:39		SUB OUT: IRWIN,KYLA
			SUB IN: MAKURAT,ANNA
	02:50	10-20	SUB OUT: NELSON-ODODA,OLIVIA
	02:50		SUB IN: GRIFFIN,AUBREY
SUB OUT: 24 WALKER,DESTINEE	02:50		
SUB IN: 22 COSGROVE,DANIELLE	02:50		
	01:15	13-24	
	01:15		SUB OUT: MAKURAT,ANNA
			SUB IN: BENT,MOLLY
SUB OUT: 33 BRUNELLE,SAM	01:15		
SUB IN: 24 WALKER,DESTINEE	01:15		

Notre Dame 13, UConn 29

Official Substitutions Log
Notre Dame vs UConn
Period 2
December 08, 2019 at Harry A. Gampel Pavilion - Storrs, Conn.



VISITORS: Notre Dame	Time	Score	HOME: UConn
10 GILBERT,KATLYN			13 WILLIAMS,CHRISTYN
13 SNIEZEK,MARTA			20 NELSON-ODODA,OLIVIA
22 COSGROVE,DANIELLE			25 IRWIN,KYLA
24 WALKER,DESTINEE			3 WALKER,MEGAN
33 BRUNELLE,SAM			5 DANGERFIELD,CRYSTAL
	10:00	-	SUB OUT: BENT,MOLLY
	10:00		SUB IN: NELSON-ODODA,OLIVIA
SUB OUT: 22 COSGROVE,DANIELLE	10:00		
SUB OUT: 24 WALKER,DESTINEE	10:00		
SUB IN: 2 COLE,KAITLIN	10:00		
SUB IN: 33 BRUNELLE,SAM	10:00		
SUB OUT: 2 COLE,KAITLIN	07:12	17-36	
SUB IN: 24 WALKER,DESTINEE	07:12		
	05:33	21-36	SUB OUT: GRIFFIN,AUBREY
	05:33		SUB IN: MAKURAT,ANNA
	04:16	23-38	SUB OUT: MAKURAT,ANNA
	04:16		SUB IN: IRWIN,KYLA
SUB OUT: 24 WALKER,DESTINEE	00:56	25-48	
SUB IN: 2 COLE,KAITLIN	00:56		
	00:56		SUB OUT: NELSON-ODODA,OLIVIA
	00:56		SUB OUT: IRWIN,KYLA
	00:56		SUB IN: BENT,MOLLY
	00:56		SUB IN: GRIFFIN,AUBREY

Notre Dame 25, UConn 52

Official Substitutions Log
Notre Dame vs UConn
Period 3
December 08, 2019 at Harry A. Gampel Pavilion - Storrs, Conn.



VISITORS: Notre Dame	Time	Score	HOME: UConn
10 GILBERT,KATLYN			13 WILLIAMS,CHRISTYN
13 SNIEZEK,MARTA			20 NELSON-ODODA,OLIVIA
22 COSGROVE,DANIELLE			25 IRWIN,KYLA
24 WALKER,DESTINEE			3 WALKER,MEGAN
33 BRUNELLE,SAM			5 DANGERFIELD,CRYSTAL
	10:00	-	SUB OUT: BENT,MOLLY
	10:00		SUB OUT: GRIFFIN,AUBREY
	10:00		SUB IN: NELSON-ODODA,OLIVIA
	10:00		SUB IN: IRWIN,KYLA
SUB OUT: 2 COLE,KAITLIN	10:00		
SUB IN: 22 COSGROVE,DANIELLE	10:00		
SUB OUT: 33 BRUNELLE,SAM	09:33	-	
SUB IN: 24 WALKER,DESTINEE	09:33		
	05:34	25-59	SUB OUT: IRWIN,KYLA
	05:34		SUB IN: MAKURAT,ANNA
	04:47	27-59	SUB OUT: NELSON-ODODA,OLIVIA
	04:47		SUB IN: GRIFFIN,AUBREY
SUB OUT: 21 PEOPLES,ANAYA	02:25	32-59	
SUB IN: 2 COLE,KAITLIN	02:25		
	00:37	36-66	SUB OUT: DANGERFIELD,CRYSTAL
	00:37		SUB OUT: GRIFFIN,AUBREY
	00:37		SUB IN: BENT,MOLLY
	00:37		SUB IN: IRWIN,KYLA

Notre Dame 39, UConn 69

Official Substitutions Log
Notre Dame vs UConn
Period 4
December 08, 2019 at Harry A. Gampel Pavilion - Storrs, Conn.



VISITORS: Notre Dame	Time	Score	HOME: UConn
10 GILBERT,KATLYN			13 WILLIAMS,CHRISTYN
13 SNIEZEK,MARTA			20 NELSON-ODODA,OLIVIA
22 COSGROVE,DANIELLE			25 IRWIN,KYLA
24 WALKER,DESTINEE			3 WALKER,MEGAN
33 BRUNELLE,SAM			5 DANGERFIELD,CRYSTAL
	10:00	-	SUB OUT: WILLIAMS,CHRISTYN
	10:00		SUB IN: NELSON-ODODA,OLIVIA
SUB OUT: 24 WALKER,DESTINEE	10:00		
SUB IN: 21 PEOPLES,ANAYA	10:00		
	07:41	45-69	SUB OUT: BENT,MOLLY
	07:41		SUB OUT: MAKURAT,ANNA
	07:41		SUB IN: DANGERFIELD,CRYSTAL
	07:41		SUB IN: WILLIAMS,CHRISTYN
SUB OUT: 21 PEOPLES,ANAYA	07:41		
SUB IN: 24 WALKER,DESTINEE	07:41		
SUB OUT: 10 GILBERT,KATLYN	07:35	45-69	
SUB IN: 21 PEOPLES,ANAYA	07:35		
SUB OUT: 2 COLE,KAITLIN	04:50	49-74	
SUB IN: 10 GILBERT,KATLYN	04:50		
	03:58	49-76	SUB OUT: DANGERFIELD,CRYSTAL
	03:58		SUB OUT: NELSON-ODODA,OLIVIA
	03:58		SUB IN: BENT,MOLLY
	03:58		SUB IN: GRIFFIN,AUBREY
	02:03	52-81	SUB OUT: IRWIN,KYLA
	02:03		SUB IN: ADEBAYO,EVELYN
SUB OUT: 24 WALKER,DESTINEE	02:03		
SUB IN: 20 BENZ,NICOLE	02:03		
	01:35	54-81	SUB OUT: WALKER,MEGAN
	01:35		SUB IN: MAKURAT,ANNA

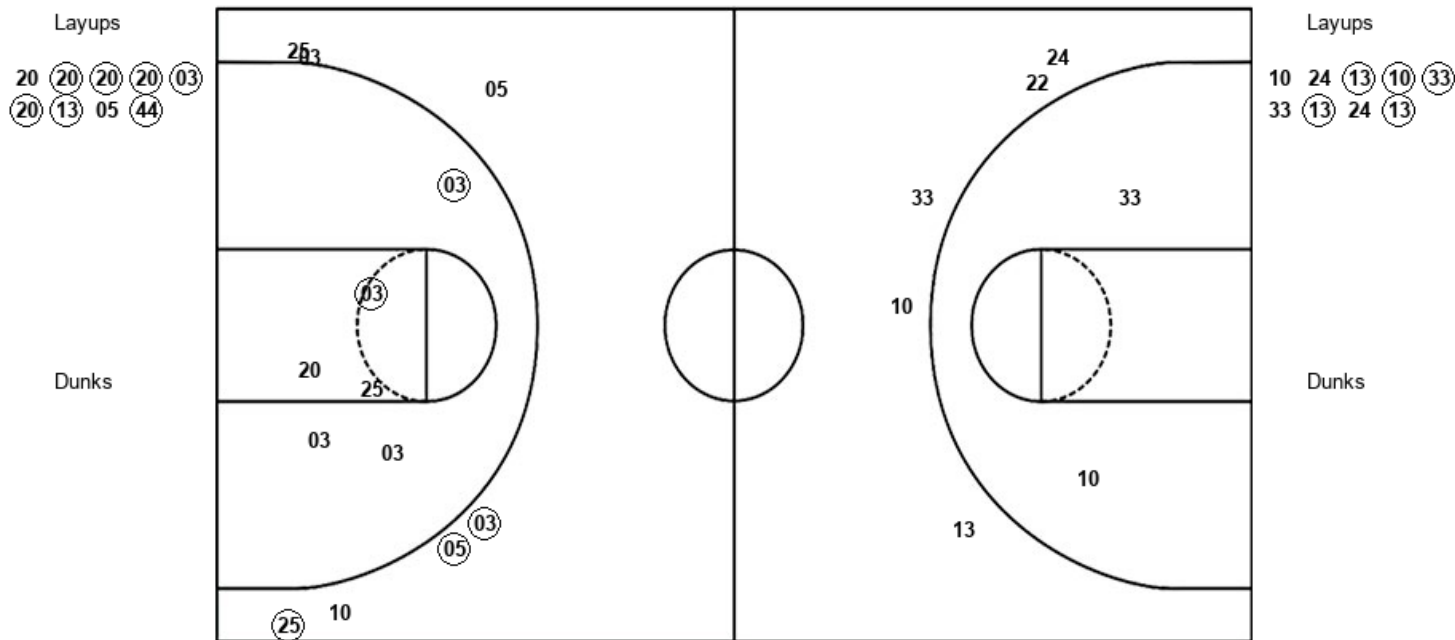
Notre Dame 57, UConn 81

Official Shot Chart
Notre Dame vs UConn
 PERIOD 1 Shots
 December 08, 2019 at Harry A. Gampel Pavilion - Storrs, Conn.



UConn

Notre Dame



UCN : Period 1	Made	Att	Pct
Layups	7	9	77.8
Dunks	0	0	0
2PT Field Goals	9	15	60.0
3PT Field Goals	3	7	42.9
Total Field Goals	12	22	54.5

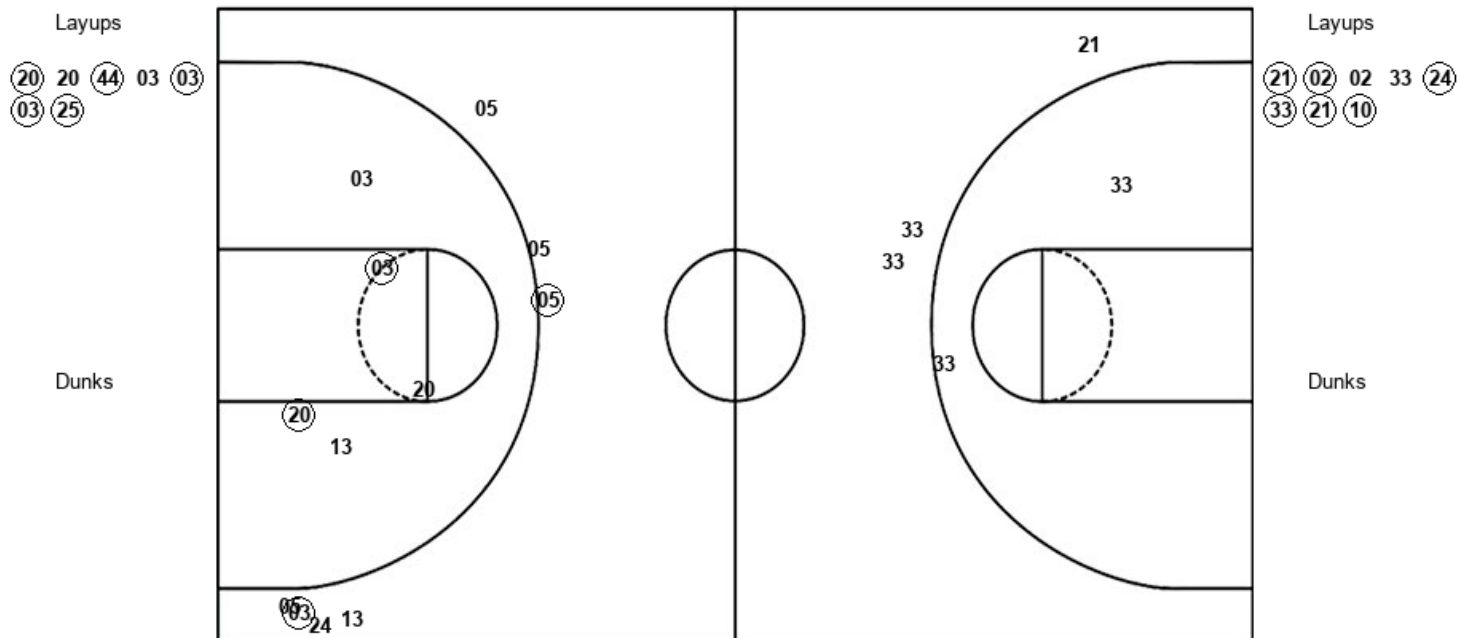
UND : Period 1	Made	Att	Pct
Layups	5	9	55.6
Dunks	0	0	0
2PT Field Goals	5	11	45.5
3PT Field Goals	0	5	00.0
Total Field Goals	5	16	31.3

Official Shot Chart
Notre Dame vs UConn
 PERIOD 2 Shots
 December 08, 2019 at Harry A. Gampel Pavilion - Storrs, Conn.



UConn

Notre Dame

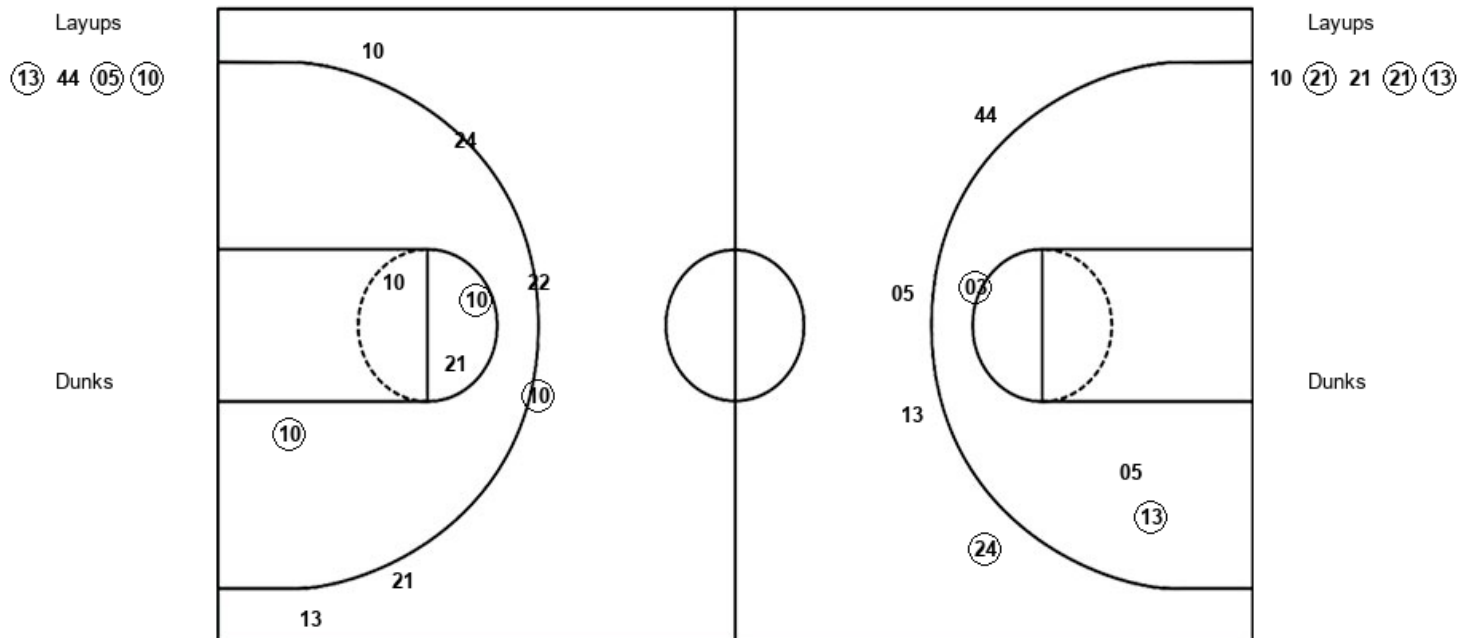


UCN : Period 2	Made	Att	Pct
Layups	5	7	71.4
Dunks	0	0	0
2PT Field Goals	7	12	58.3
3PT Field Goals	2	7	28.6
Total Field Goals	9	19	47.4

UND : Period 2	Made	Att	Pct
Layups	6	8	75.0
Dunks	0	0	0
2PT Field Goals	6	10	60.0
3PT Field Goals	0	3	00.0
Total Field Goals	6	13	46.2



Notre Dame



UCN : Period 3	Made	Att	Pct
Layups	3	4	75.0
Dunks	0	0	0
2PT Field Goals	5	7	71.4
3PT Field Goals	1	4	25.0
Total Field Goals	6	11	54.5

UND : Period 3	Made	Att	Pct
Layups	3	5	60.0
Dunks	0	0	0
2PT Field Goals	5	9	55.6
3PT Field Goals	1	6	16.7
Total Field Goals	6	15	40.0

Official Shot Chart
Notre Dame vs UConn
 PERIOD 4 Shots
 December 08, 2019 at Harry A. Gampel Pavilion - Storrs, Conn.



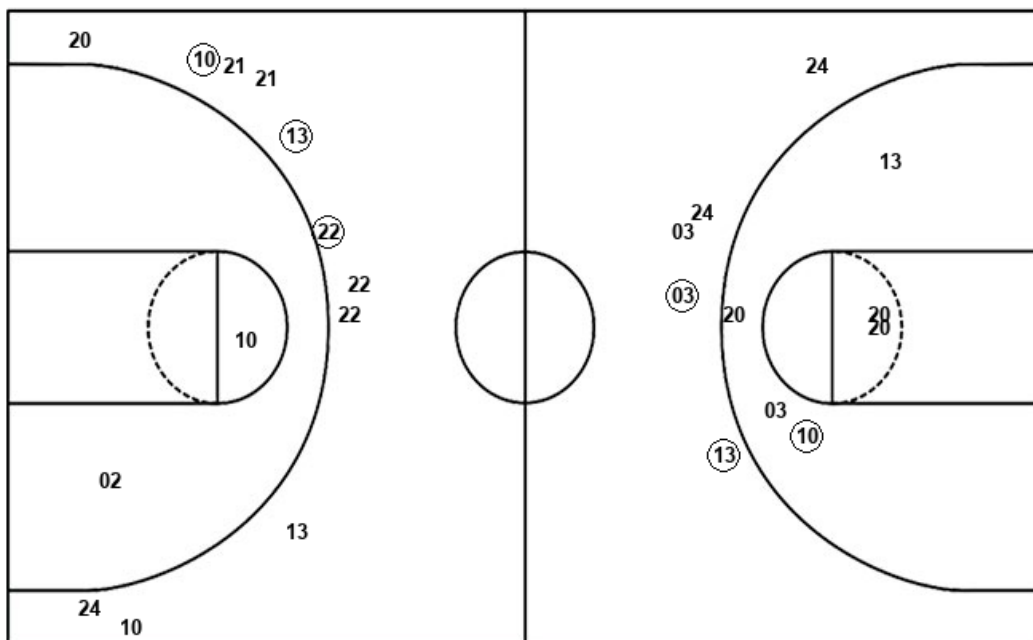
UConn

Notre Dame

Layups

03 20 05

Dunks



Layups

21 10 (21) (21) 21
 24 (21) (21)

Dunks

UCN : Period 4	Made	Att	Pct
Layups	0	3	00.0
Dunks	0	0	0
2PT Field Goals	1	9	11.1
3PT Field Goals	2	5	40.0
Total Field Goals	3	14	21.4

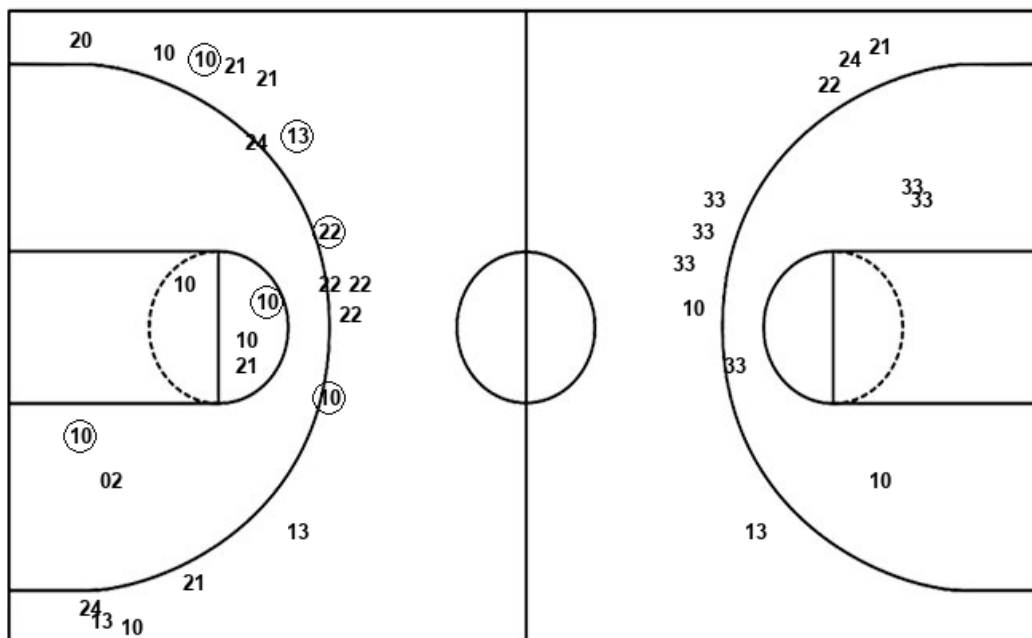
UND : Period 4	Made	Att	Pct
Layups	4	8	50.0
Dunks	0	0	0
2PT Field Goals	4	10	40.0
3PT Field Goals	3	11	27.3
Total Field Goals	7	21	33.3

Official Shot Chart
Notre Dame vs UConn
 Notre Dame Team Shots
 December 08, 2019 at Harry A. Gampel Pavilion - Storrs, Conn.



Layups

Dunks



Layups

Dunks

10 24 (13) (10) (33)
 33 (13) 24 (13) (21)
 (02) 02 33 24 (33)
 (21) (10) 10 (21) 21
 (21) (13) 21 10 (21)
 (21) 21 24 (21) (21)

UND : Period 1	Made	Att	Pct
Layups	5	9	55.6
Dunks	0	0	0
2PT Field Goals	5	11	45.5
3PT Field Goals	0	5	00.0
Total Field Goals	5	16	31.3

UND : Period 3	Made	Att	Pct
Layups	3	5	60.0
Dunks	0	0	0
2PT Field Goals	5	9	55.6
3PT Field Goals	1	6	16.7
Total Field Goals	6	15	40.0

UND : Period 2	Made	Att	Pct
Layups	6	8	75.0
Dunks	0	0	0
2PT Field Goals	6	10	60.0
3PT Field Goals	0	3	00.0
Total Field Goals	6	13	46.2

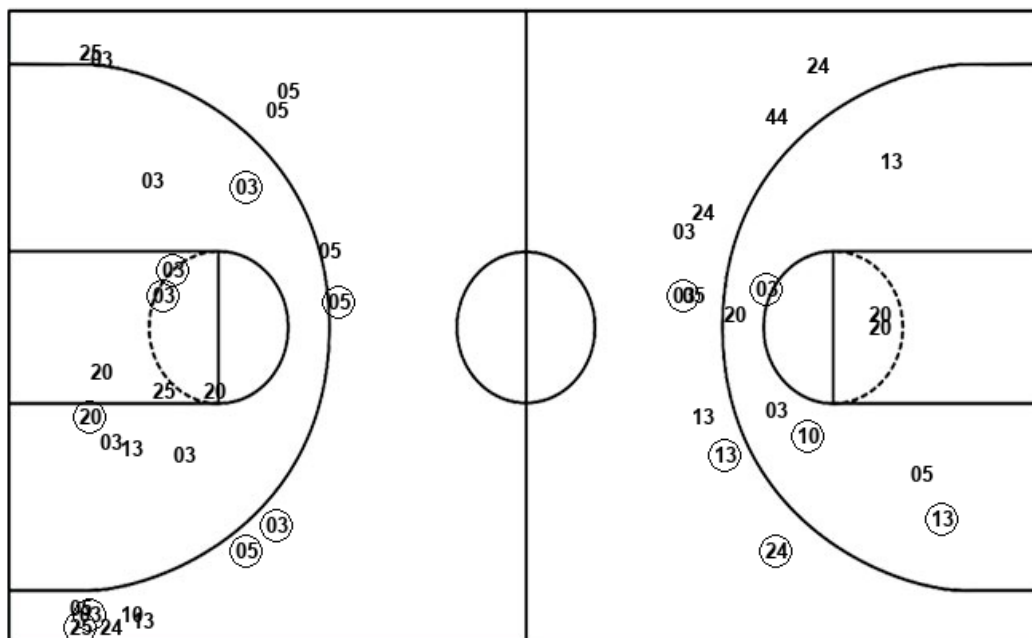
UND : Period 4	Made	Att	Pct
Layups	4	8	50.0
Dunks	0	0	0
2PT Field Goals	4	10	40.0
3PT Field Goals	3	11	27.3
Total Field Goals	7	21	33.3

Official Shot Chart
Notre Dame vs UConn
 UConn Team Shots
 December 08, 2019 at Harry A. Gampel Pavilion - Storrs, Conn.



Layups

Dunks



Layups

Dunks

20 (20) (20) (20) (03)
 (20) (13) 05 44 (20)
 20 44 03 03 (03)
 (25) (13) 44 05 (10)
 03 20 05

UCN : Period 1	Made	Att	Pct
Layups	7	9	77.8
Dunks	0	0	0
2PT Field Goals	9	15	60.0
3PT Field Goals	3	7	42.9
Total Field Goals	12	22	54.5

UCN : Period 3	Made	Att	Pct
Layups	3	4	75.0
Dunks	0	0	0
2PT Field Goals	5	7	71.4
3PT Field Goals	1	4	25.0
Total Field Goals	6	11	54.5

UCN : Period 2	Made	Att	Pct
Layups	5	7	71.4
Dunks	0	0	0
2PT Field Goals	7	12	58.3
3PT Field Goals	2	7	28.6
Total Field Goals	9	19	47.4

UCN : Period 4	Made	Att	Pct
Layups	0	3	00.0
Dunks	0	0	0
2PT Field Goals	1	9	11.1
3PT Field Goals	2	5	40.0
Total Field Goals	3	14	21.4