

FINAL SCORE



Virginia

44



UConn

83

November 19, 2019 • XL Center - Hartford, Conn.

FINAL STATISTICS

Official Box Score
Virginia vs UConn
Game Totals -- Final Statistics
November 19, 2019 at XL Center - Hartford, Conn.



Virginia 44

| No. | Player | S | Pts | FG | 3FG | FT | OR | DR | TR | PF | A | TO | Blk | Stl | Min | +/- |
|---------------|-----------------------|---|-----------|--------------|-------------|--------------|-----------|-----------|-----------|-----------|----------|-----------|----------|----------|------------|-----|
| 04 | TOUSSAINT, DOMINIQUE | G | 7 | 3-6 | 1-3 | 0-0 | 0 | 2 | 2 | 1 | 1 | 2 | 0 | 3 | 32 | -37 |
| 13 | WILLOUGHBY, JOCELYN | G | 13 | 3-15 | 0-2 | 7-8 | 3 | 4 | 7 | 3 | 1 | 3 | 0 | 1 | 31 | -32 |
| 14 | JABLONOWSKI, LISA | G | 7 | 2-6 | 1-1 | 2-4 | 4 | 3 | 7 | 3 | 1 | 3 | 0 | 0 | 27 | -27 |
| 21 | LAWSON, DANI | F | 0 | 0-5 | 0-0 | 0-0 | 0 | 3 | 3 | 3 | 1 | 1 | 0 | 0 | 21 | -15 |
| 23 | TOI, AMANDINE | G | 2 | 1-6 | 0-2 | 0-0 | 0 | 0 | 0 | 3 | 2 | 2 | 0 | 0 | 24 | -16 |
| 00 | HORTON, DYLAN | G | 6 | 2-5 | 2-4 | 0-0 | 0 | 1 | 1 | 1 | 1 | 2 | 0 | 0 | 9 | -5 |
| 01 | MILLER, CAROLE | G | 6 | 2-7 | 2-3 | 0-0 | 1 | 4 | 5 | 2 | 0 | 2 | 0 | 1 | 28 | -30 |
| 12 | JEFFERSON, MEG | F | 0 | 0-1 | 0-0 | 0-0 | 1 | 1 | 2 | 0 | 0 | 1 | 0 | 0 | 4 | -3 |
| 15 | KORNEGAY-LUCAS, KYLIE | G | 3 | 1-6 | 0-1 | 1-2 | 2 | 2 | 4 | 4 | 1 | 2 | 1 | 0 | 22 | -30 |
| TEAM | | | | | | | 2 | 2 | 4 | 0 | | 1 | | | | |
| TOTALS | | | 44 | 14-57 | 6-16 | 10-14 | 13 | 22 | 35 | 20 | 8 | 19 | 1 | 5 | 199 | |

Shooting By Period

| Period | FG | FG% | 3FG | 3FG% | FT | FT% |
|-------------|--------------|--------------|-------------|--------------|--------------|--------------|
| 1st Qtr | 4-14 | 29% | 1-4 | 25% | 1-4 | 25% |
| 2nd Qtr | 2-14 | 14% | 2-6 | 33% | 1-2 | 50% |
| 3rd Qtr | 4-14 | 29% | 1-4 | 25% | 8-8 | 100% |
| 4th Qtr | 4-15 | 27% | 2-2 | 100% | 0-0 | 0% |
| 1st Half | 6-28 | 21% | 3-10 | 30% | 2-6 | 33% |
| 2nd Half | 8-29 | 28% | 3-6 | 50% | 8-8 | 100% |
| Game | 14-57 | 24.6% | 6-16 | 37.5% | 10-14 | 71.4% |

Deadball Rebounds: 2.0

Last FG: 4th-01:16

Biggest Run: 5-0

Largest lead: By 4 at 1-06

Technical Fouls: None.

UConn 83

| No. | Player | S | Pts | FG | 3FG | FT | OR | DR | TR | PF | A | TO | Blk | Stl | Min | +/- |
|---------------|----------------------|---|-----------|--------------|-------------|--------------|-----------|-----------|-----------|-----------|-----------|-----------|----------|-----------|------------|-----|
| 03 | WALKER, MEGAN | F | 19 | 7-15 | 2-3 | 3-4 | 2 | 7 | 9 | 2 | 3 | 1 | 0 | 1 | 33 | 38 |
| 05 | DANGERFIELD, CRYSTAL | G | 8 | 3-9 | 2-6 | 0-0 | 0 | 4 | 4 | 1 | 1 | 0 | 0 | 3 | 31 | 32 |
| 13 | WILLIAMS, CHRISTYN | G | 17 | 7-14 | 1-6 | 2-3 | 1 | 2 | 3 | 3 | 2 | 0 | 0 | 1 | 32 | 27 |
| 20 | NELSON-ODODA, OLIVIA | F | 9 | 3-4 | 0-0 | 3-4 | 1 | 5 | 6 | 3 | 2 | 3 | 4 | 1 | 19 | 15 |
| 24 | MAKURAT, ANNA | G | 10 | 4-9 | 2-6 | 0-0 | 1 | 5 | 6 | 2 | 5 | 2 | 1 | 2 | 29 | 22 |
| 10 | BENT, MOLLY | G | 0 | 0-0 | 0-0 | 0-0 | 0 | 0 | 0 | 1 | 1 | 0 | 0 | 1 | 11 | 6 |
| 14 | ADEBAYO, EVELYN | F | 1 | 0-1 | 0-0 | 1-2 | 0 | 0 | 0 | 0 | 0 | 0 | 0 | 0 | 6 | 5 |
| 25 | IRWIN, KYLA | F | 13 | 4-4 | 2-2 | 3-4 | 3 | 3 | 6 | 0 | 5 | 2 | 2 | 0 | 24 | 33 |
| 44 | GRIFFIN, AUBREY | G | 6 | 2-3 | 0-0 | 2-5 | 1 | 2 | 3 | 1 | 2 | 2 | 0 | 2 | 15 | 17 |
| TEAM | | | | | | | 1 | 4 | 5 | 0 | | 0 | | | | |
| TOTALS | | | 83 | 30-59 | 9-23 | 14-22 | 10 | 32 | 42 | 13 | 21 | 10 | 7 | 11 | 199 | |

Shooting By Period

| Period | FG | FG% | 3FG | 3FG% | FT | FT% |
|-------------|--------------|--------------|-------------|--------------|--------------|--------------|
| 1st Qtr | 10-16 | 63% | 3-4 | 75% | 3-5 | 60% |
| 2nd Qtr | 6-15 | 40% | 1-5 | 20% | 3-4 | 75% |
| 3rd Qtr | 8-17 | 47% | 3-8 | 38% | 3-4 | 75% |
| 4th Qtr | 6-11 | 55% | 2-6 | 33% | 5-9 | 56% |
| 1st Half | 16-31 | 52% | 4-9 | 44% | 6-9 | 67% |
| 2nd Half | 14-28 | 50% | 5-14 | 36% | 8-13 | 62% |
| Game | 30-59 | 50.8% | 9-23 | 39.1% | 14-22 | 63.6% |

Deadball Rebounds: 5.0

Last FG: 4th-01:35

Biggest Run: 17-0

Largest lead: By 41 at 4-01

Technical Fouls: None.

Game Notes:

Officials: Bruce Morris, Mark Resch, Krystle Apellaniz
Attendance: 7728

Start Time: 07:06 PM ET
End Time: 08:56 PM ET
Game Duration: 1:50

| Score | 1st | 2nd | 3rd | 4th | TOT |
|-------|-----|-----|-----|-----|-----------|
| UVA | 10 | 7 | 17 | 10 | 44 |
| UCN | 26 | 16 | 22 | 19 | 83 |

UVA led for 3:29. UCN led for 35:15.
Game was tied for 1:07.
Times tied: 1 Lead Changes: 3

| Points from | UVA | UCN |
|--------------|-----|-----|
| In the Paint | 8 | 36 |
| Off Turns | 0 | 20 |
| 2nd Chance | 7 | 10 |
| Fast Break | 4 | 20 |
| Bench | 15 | 20 |

Official Box Score
Virginia vs UConn
First Half Statistics Only
November 19, 2019 at XL Center - Hartford, Conn.



Virginia 17

| No. | Player | S | Pts | FG | 3FG | FT | OR | DR | TR | PF | A | TO | Blk | Stl | Min | +/- |
|---------------|-----------------------|---|-----------|-------------|-------------|------------|----------|-----------|-----------|----------|----------|-----------|----------|----------|------------|-----|
| 00 | HORTON, DYLAN | G | 0 | 0-2 | 0-2 | 0-0 | 0 | 1 | 1 | 0 | 1 | 1 | 0 | 0 | 5 | -4 |
| 12 | JEFFERSON, MEG | F | 0 | 0-1 | 0-0 | 0-0 | 1 | 1 | 2 | 0 | 0 | 1 | 0 | 0 | 2 | -5 |
| 13 | WILLOUGHBY, JOCELYN | G | 1 | 0-7 | 0-1 | 1-2 | 2 | 3 | 5 | 2 | 1 | 3 | 0 | 0 | 16 | -19 |
| 14 | JABLONOWSKI, LISA | G | 5 | 2-2 | 1-1 | 0-2 | 3 | 1 | 4 | 2 | 0 | 2 | 0 | 0 | 12 | -14 |
| 15 | KORNEGAY-LUCAS, KYLIE | G | 1 | 0-2 | 0-1 | 1-2 | 0 | 0 | 0 | 2 | 0 | 1 | 1 | 0 | 11 | -22 |
| 21 | LAWSON, DANI | F | 0 | 0-3 | 0-0 | 0-0 | 0 | 2 | 2 | 0 | 0 | 0 | 0 | 0 | 11 | -8 |
| 23 | TOI, AMANDINE | G | 0 | 0-2 | 0-1 | 0-0 | 0 | 0 | 0 | 2 | 1 | 0 | 0 | 0 | 9 | -3 |
| 01 | MILLER, CAROLE | G | 6 | 2-5 | 2-3 | 0-0 | 1 | 0 | 1 | 0 | 0 | 2 | 0 | 1 | 15 | -23 |
| 04 | TOUSSAINT, DOMINIQUE | G | 4 | 2-4 | 0-1 | 0-0 | 0 | 2 | 2 | 1 | 1 | 0 | 0 | 1 | 19 | -27 |
| | TEAM | | 0 | 0-0 | 0-0 | 0-0 | 1 | 1 | 2 | 0 | 0 | 1 | 0 | 0 | 0 | |
| TOTALS | | | 17 | 6-28 | 3-10 | 2-6 | 8 | 11 | 19 | 9 | 4 | 11 | 1 | 2 | 100 | |

Shooting By Period

| Period | FG | FG% | 3FG | 3FG% | FT | FT% |
|----------|-------|-------|------|-------|-------|-------|
| 1st Qtr | 4-14 | 29% | 1-4 | 25% | 1-4 | 25% |
| 2nd Qtr | 2-14 | 14% | 2-6 | 33% | 1-2 | 50% |
| 1st Half | 6-28 | 21% | 3-10 | 30% | 2-6 | 33% |
| Game | 14-57 | 24.6% | 6-16 | 37.5% | 10-14 | 71.4% |

Deadball Rebounds: 2,0

Last FG Half: UVA 2nd-04:44

UConn 42

| No. | Player | S | Pts | FG | 3FG | FT | OR | DR | TR | PF | A | TO | Blk | Stl | Min | +/- |
|---------------|----------------------|---|-----------|--------------|------------|------------|----------|-----------|-----------|----------|-----------|----------|----------|----------|------------|-----|
| 10 | BENT, MOLLY | G | 0 | 0-0 | 0-0 | 0-0 | 0 | 0 | 0 | 1 | 0 | 0 | 0 | 1 | 6 | 5 |
| 13 | WILLIAMS, CHRISTYN | G | 10 | 4-7 | 0-1 | 2-3 | 0 | 1 | 1 | 0 | 1 | 0 | 0 | 1 | 16 | 19 |
| 14 | ADEBAYO, EVELYN | F | 0 | 0-0 | 0-0 | 0-0 | 0 | 0 | 0 | 0 | 0 | 0 | 0 | 0 | 0 | 0 |
| 20 | NELSON-ODODA, OLIVIA | F | 0 | 0-1 | 0-0 | 0-0 | 0 | 4 | 4 | 3 | 1 | 3 | 3 | 0 | 9 | 7 |
| 24 | MAKURAT, ANNA | G | 7 | 3-5 | 1-3 | 0-0 | 1 | 1 | 2 | 1 | 1 | 1 | 0 | 1 | 13 | 9 |
| 25 | IRWIN, KYLA | F | 1 | 0-0 | 0-0 | 1-2 | 2 | 1 | 3 | 0 | 5 | 0 | 1 | 0 | 11 | 22 |
| 44 | GRIFFIN, AUBREY | G | 3 | 1-1 | 0-0 | 1-2 | 0 | 1 | 1 | 0 | 2 | 0 | 0 | 1 | 6 | 12 |
| 03 | WALKER, MEGAN | F | 15 | 6-11 | 1-1 | 2-2 | 2 | 4 | 6 | 1 | 1 | 1 | 0 | 0 | 19 | 26 |
| 05 | DANGERFIELD, CRYSTAL | G | 6 | 2-6 | 2-4 | 0-0 | 0 | 2 | 2 | 1 | 1 | 0 | 0 | 3 | 20 | 25 |
| | TEAM | | 0 | 0-0 | 0-0 | 0-0 | 1 | 2 | 3 | 0 | 0 | 0 | 0 | 0 | 0 | |
| TOTALS | | | 42 | 16-31 | 4-9 | 6-9 | 6 | 16 | 22 | 7 | 12 | 5 | 4 | 7 | 100 | |

Shooting By Period

| Period | FG | FG% | 3FG | 3FG% | FT | FT% |
|----------|-------|-------|------|-------|-------|-------|
| 1st Qtr | 10-16 | 63% | 3-4 | 75% | 3-5 | 60% |
| 2nd Qtr | 6-15 | 40% | 1-5 | 20% | 3-4 | 75% |
| 1st Half | 16-31 | 52% | 4-9 | 44% | 6-9 | 67% |
| Game | 30-59 | 50.8% | 9-23 | 39.1% | 14-22 | 63.6% |

Deadball Rebounds: 5,0

Last FG Half: UCN 2nd-02:12

Game Notes:

Officials: **Bruce Morris, Mark Resch, Krystle Apellaniz**
Attendance: 7728

Start Time: 07:06 PM ET
End Time: 08:56 PM ET
Game Duration: 1:50

| Score | 1st | 2nd | 3rd | 4th | TOT |
|-------|-----|-----|-----|-----|-----------|
| UVA | 10 | 7 | 17 | 10 | 44 |
| UCN | 26 | 16 | 22 | 19 | 83 |

| Points from (This Period) | UVA | UCN |
|---------------------------|-----|-----|
| In the Paint | 2 | 22 |
| Off Turns | 0 | 13 |
| 2nd Chance | 0 | 4 |
| Fast Break | 0 | 12 |
| Bench | 7 | 4 |

Official Box Score
Virginia vs UConn
First Quarter Statistics Only
November 19, 2019 at XL Center - Hartford, Conn.



Virginia 10

| No. | Player | S | Pts | FG | 3FG | FT | OR | DR | TR | PF | A | TO | Blk | Stl | Min | +/- |
|---------------|-----------------------|---|-----------|-------------|------------|------------|----------|----------|-----------|----------|----------|----------|----------|----------|-----------|-----|
| 04 | TOUSSAINT, DOMINIQUE | G | 4 | 2-4 | 0-1 | 0-0 | 0 | 0 | 0 | 1 | 0 | 0 | 0 | 0 | 10 | -16 |
| 13 | WILLOUGHBY, JOCELYN | G | 0 | 0-4 | 0-1 | 0-0 | 1 | 3 | 4 | 1 | 1 | 1 | 0 | 0 | 10 | -16 |
| 14 | JABLONOWSKI, LISA | G | 5 | 2-2 | 1-1 | 0-2 | 2 | 1 | 3 | 2 | 0 | 2 | 0 | 0 | 10 | -15 |
| 21 | LAWSON, DANI | F | 0 | 0-1 | 0-0 | 0-0 | 0 | 1 | 1 | 0 | 0 | 0 | 0 | 0 | 5 | -2 |
| 23 | TOI, AMANDINE | G | 0 | 0-1 | 0-0 | 0-0 | 0 | 0 | 0 | 2 | 1 | 0 | 0 | 0 | 7 | -4 |
| 00 | HORTON, DYLAN | G | 0 | 0-0 | 0-0 | 0-0 | 0 | 0 | 0 | 0 | 0 | 0 | 0 | 0 | 0 | 0 |
| 01 | MILLER, CAROLE | G | 0 | 0-2 | 0-1 | 0-0 | 0 | 0 | 0 | 0 | 0 | 2 | 0 | 1 | 5 | -14 |
| 12 | JEFFERSON, MEG | F | 0 | 0-0 | 0-0 | 0-0 | 0 | 1 | 1 | 0 | 0 | 1 | 0 | 0 | 0 | -1 |
| 15 | KORNEGAY-LUCAS, KYLIE | G | 1 | 0-0 | 0-0 | 1-2 | 0 | 0 | 0 | 0 | 0 | 0 | 0 | 0 | 3 | -12 |
| TEAM | | | | | | | 1 | 0 | 1 | 0 | | 1 | | | | |
| TOTALS | | | 10 | 4-14 | 1-4 | 1-4 | 4 | 6 | 10 | 6 | 2 | 7 | 0 | 1 | 50 | |

Shooting By Period

| Period | FG | FG% | 3FG | 3FG% | FT | FT% |
|----------|-------|-------|------|-------|-------|-------|
| 1st Qtr | 4-14 | 29% | 1-4 | 25% | 1-4 | 25% |
| 2nd Qtr | 2-14 | 14% | 2-6 | 33% | 1-2 | 50% |
| 1st Half | 4-14 | 29% | 1-4 | 25% | 1-4 | 25% |
| 1st Half | 6-28 | 21% | 3-10 | 30% | 2-6 | 33% |
| Game | 14-57 | 24.6% | 6-16 | 37.5% | 10-14 | 71.4% |

Deadball Rebounds: 2,0

UConn 26

| No. | Player | S | Pts | FG | 3FG | FT | OR | DR | TR | PF | A | TO | Blk | Stl | Min | +/- |
|---------------|----------------------|---|-----------|--------------|------------|------------|----------|----------|----------|----------|----------|----------|----------|----------|-----------|-----|
| 03 | WALKER, MEGAN | F | 11 | 5-7 | 1-1 | 0-0 | 1 | 0 | 1 | 1 | 0 | 1 | 0 | 0 | 10 | 16 |
| 05 | DANGERFIELD, CRYSTAL | G | 6 | 2-3 | 2-2 | 0-0 | 0 | 0 | 0 | 1 | 1 | 0 | 0 | 3 | 10 | 16 |
| 13 | WILLIAMS, CHRISTYN | G | 8 | 3-4 | 0-0 | 2-3 | 0 | 1 | 1 | 0 | 1 | 0 | 0 | 0 | 10 | 16 |
| 20 | NELSON-ODODA, OLIVIA | F | 0 | 0-1 | 0-0 | 0-0 | 0 | 3 | 3 | 2 | 1 | 1 | 3 | 0 | 8 | 8 |
| 24 | MAKURAT, ANNA | G | 0 | 0-1 | 0-1 | 0-0 | 1 | 0 | 1 | 1 | 1 | 1 | 0 | 1 | 7 | 4 |
| 10 | BENT, MOLLY | G | 0 | 0-0 | 0-0 | 0-0 | 0 | 0 | 0 | 0 | 0 | 0 | 0 | 0 | 0 | 0 |
| 14 | ADEBAYO, EVELYN | F | 0 | 0-0 | 0-0 | 0-0 | 0 | 0 | 0 | 0 | 0 | 0 | 0 | 0 | 0 | 0 |
| 25 | IRWIN, KYLA | F | 1 | 0-0 | 0-0 | 1-2 | 0 | 1 | 1 | 0 | 2 | 0 | 0 | 0 | 3 | 12 |
| 44 | GRIFFIN, AUBREY | G | 0 | 0-0 | 0-0 | 0-0 | 0 | 0 | 0 | 0 | 0 | 0 | 0 | 0 | 2 | 8 |
| TEAM | | | | | | | 0 | 2 | 2 | 0 | | 0 | | | | |
| TOTALS | | | 26 | 10-16 | 3-4 | 3-5 | 2 | 7 | 9 | 5 | 6 | 3 | 3 | 4 | 50 | |

Shooting By Period

| Period | FG | FG% | 3FG | 3FG% | FT | FT% |
|----------|-------|-------|------|-------|-------|-------|
| 1st Qtr | 10-16 | 63% | 3-4 | 75% | 3-5 | 60% |
| 2nd Qtr | 6-15 | 40% | 1-5 | 20% | 3-4 | 75% |
| 1st Half | 10-16 | 63% | 3-4 | 75% | 3-5 | 60% |
| 1st Half | 16-31 | 52% | 4-9 | 44% | 6-9 | 67% |
| Game | 30-59 | 50.8% | 9-23 | 39.1% | 14-22 | 63.6% |

Deadball Rebounds: 5,0

Game Notes:

Officials: Bruce Morris, Mark Resch, Krystle Apellaniz
Attendance: 7728

Start Time: 07:06 PM ET
End Time: 08:56 PM ET
Game Duration: 1:50

| Score | 1st | 2nd | 3rd | 4th | TOT |
|-------|-----|-----|-----|-----|-----------|
| UVA | 10 | 7 | 17 | 10 | 44 |
| UCN | 26 | 16 | 22 | 19 | 83 |

| Points from (This Period) | UVA | UCN |
|---------------------------|-----|-----|
| In the Paint | 2 | 12 |
| Off Turns | 0 | 10 |
| 2nd Chance | 0 | 0 |
| Fast Break | 0 | 11 |
| Bench | 1 | 1 |

Official Play-By-Play
Virginia vs UConn
First Quarter
November 19, 2019 at XL Center - Hartford, Conn.



Period 1

Starters:

Virginia: 13 WILLOUGHBY, JOCELYN (G); 14 JABLONOWSKI, LISA (G); 21 LAWSON, DANI (F); 23 TOI, AMANDINE (G); 4 TOUSSAINT, DOMINIQUE (G);
UConn: 13 WILLIAMS, CHRISTYN (G); 20 NELSON-ODODA, OLIVIA (F); 24 MAKURAT, ANNA (G); 3 WALKER, MEGAN (F); 5 DANGERFIELD, CRYSTAL (G);

| Time | VISITORS: Virginia | Score | Margin | HOME: UConn |
|-------|--|-------|--------|--|
| 09:38 | | | | MISSED LAYUP by WALKER, MEGAN |
| 09:35 | REBOUND (DEF) by WILLOUGHBY, JOCELYN | | | |
| 09:18 | GOOD! JUMPER by TOUSSAINT, DOMINIQUE | 0-2 | V 2 | |
| 08:53 | FOUL (PERSONAL) by TOI, AMANDINE | | | |
| 08:51 | | | | MISSED LAYUP by WALKER, MEGAN |
| 08:50 | REBOUND (DEF) by JABLONOWSKI, LISA | | | |
| 08:50 | | | | FOUL (PERSONAL) by WALKER, MEGAN |
| 08:36 | GOOD! JUMPER by TOUSSAINT, DOMINIQUE | 0-4 | V 4 | |
| 08:29 | | 2-4 | V 2 | GOOD! LAYUP by WILLIAMS, CHRISTYN [FB/PNT] |
| 08:29 | FOUL (PERSONAL) by TOUSSAINT, DOMINIQUE | | | |
| 08:29 | | | | MISSED FT by WILLIAMS, CHRISTYN |
| 08:27 | | | | REBOUND (OFF) by MAKURAT, ANNA |
| 08:19 | FOUL (PERSONAL) by JABLONOWSKI, LISA | | | |
| 08:13 | | | | MISSED 3PTR by MAKURAT, ANNA |
| 08:10 | | | | REBOUND (OFF) by WALKER, MEGAN |
| 08:09 | | | | TURNOVER (BADPASS) by WALKER, MEGAN |
| 07:53 | MISSED 3PTR by WILLOUGHBY, JOCELYN | | | |
| 07:49 | REBOUND (OFF) by JABLONOWSKI, LISA | | | |
| 07:48 | TURNOVER (BADPASS) by JABLONOWSKI, LISA | | | |
| 07:48 | | | | STEAL by DANGERFIELD, CRYSTAL |
| 07:44 | | | | MISSED LAYUP by DANGERFIELD, CRYSTAL |
| 07:40 | REBOUND (DEF) by WILLOUGHBY, JOCELYN | | | |
| 07:28 | TURNOVER (LOSTBALL) by JABLONOWSKI, LISA | | | |
| 07:28 | | | | STEAL by MAKURAT, ANNA |
| 07:21 | | 5-4 | H 1 | GOOD! 3PTR by DANGERFIELD, CRYSTAL [FB] |
| 07:21 | | | | ASSIST by MAKURAT, ANNA |
| 07:02 | GOOD! JUMPER by JABLONOWSKI, LISA [PNT] | 5-6 | V 1 | |
| 07:02 | ASSIST by TOI, AMANDINE | | | |
| 06:48 | | | | MISSED JUMPER by NELSON-ODODA, OLIVIA |
| 06:45 | REBOUND (DEF) by LAWSON, DANI | | | |
| 06:37 | GOOD! 3PTR by JABLONOWSKI, LISA | 5-9 | V 4 | |
| 06:37 | ASSIST by WILLOUGHBY, JOCELYN | | | |
| 06:11 | | 7-9 | V 2 | GOOD! JUMPER by WALKER, MEGAN |
| 06:11 | | | | ASSIST by NELSON-ODODA, OLIVIA |
| 05:53 | MISSED 3PTR by TOUSSAINT, DOMINIQUE | | | |
| 05:49 | | | | REBOUND (DEF) by TEAM |
| 05:30 | | 9-9 | T | GOOD! JUMPER by WALKER, MEGAN [PNT] |
| 05:11 | MISSED JUMPER by LAWSON, DANI | | | |
| 05:11 | | | | BLOCK by NELSON-ODODA, OLIVIA |
| 05:08 | | | | REBOUND (DEF) by WILLIAMS, CHRISTYN |
| 05:05 | | 11-9 | H 2 | GOOD! LAYUP by WILLIAMS, CHRISTYN [FB/PNT] |
| 04:47 | MISSED JUMPER by TOI, AMANDINE | | | |
| 04:44 | | | | REBOUND (DEF) by NELSON-ODODA, OLIVIA |
| 04:36 | | | | FOUL (OFF) by MAKURAT, ANNA |
| 04:36 | | | | TURNOVER (OFFENSIVE) by MAKURAT, ANNA |
| 04:36 | | | | |
| 04:36 | SUB OUT: LAWSON, DANI | | | |
| 04:36 | SUB IN: MILLER, CAROLE | | | |
| 04:12 | TURNOVER (BADPASS) by MILLER, CAROLE | | | |
| 04:12 | | | | STEAL by DANGERFIELD, CRYSTAL |
| 03:57 | | | | MISSED LAYUP by WILLIAMS, CHRISTYN |
| 03:54 | REBOUND (DEF) by WILLOUGHBY, JOCELYN | | | |
| 03:50 | TURNOVER (TRAVEL) by MILLER, CAROLE | | | |
| 03:32 | | 13-9 | H 4 | GOOD! LAYUP by WALKER, MEGAN [PNT] |
| 03:14 | MISSED LAYUP by WILLOUGHBY, JOCELYN | | | |
| 03:14 | | | | BLOCK by NELSON-ODODA, OLIVIA |
| 03:13 | REBOUND (OFF) by JABLONOWSKI, LISA | | | |
| 03:13 | | | | FOUL (PERSONAL) by NELSON-ODODA, OLIVIA |
| 03:13 | | | | SUB OUT: MAKURAT, ANNA |
| 03:13 | | | | SUB IN: GRIFFIN, AUBREY |
| 03:13 | | | | SUB OUT: NELSON-ODODA, OLIVIA |
| 03:13 | | | | SUB IN: IRWIN, KYLA |
| 03:13 | MISSED FT by JABLONOWSKI, LISA | | | |
| 03:13 | REBOUND (OFF) by TEAM | | | |
| 03:13 | MISSED FT by JABLONOWSKI, LISA | | | |
| 03:12 | | | | REBOUND (DEF) by IRWIN, KYLA |
| 02:49 | FOUL (PERSONAL) by TOI, AMANDINE | | | |
| 02:49 | SUB OUT: TOI, AMANDINE | | | |
| 02:49 | SUB IN: KORNEGAY-LUCAS, KYLIE | | | |
| 02:41 | | 15-9 | H 6 | GOOD! LAYUP by WALKER, MEGAN [PNT] |

| Time | VISITORS: Virginia | Score | Margin | HOME: UConn |
|-------|--|-------|--------|---|
| 02:41 | | | | ASSIST by IRWIN, KYLA |
| 02:30 | MISSED JUMPER by TOUSSAINT, DOMINIQUE | | | |
| 02:27 | REBOUND (OFF) by WILLOUGHBY, JOCELYN | | | |
| 02:25 | TURNOVER (LOSTBALL) by WILLOUGHBY, JOCELYN | | | |
| 02:25 | | | | STEAL by DANGERFIELD, CRYSTAL |
| 02:20 | | 18-9 | H 9 | GOOD! 3PTR by WALKER, MEGAN [FB] |
| 02:20 | | | | ASSIST by DANGERFIELD, CRYSTAL |
| 02:10 | TIMEOUT TEAM | | | |
| 02:10 | | | | SUB OUT: GRIFFIN, AUBREY |
| 02:10 | | | | SUB IN: NELSON-ODODA, OLIVIA |
| 01:59 | MISSED JUMPER by WILLOUGHBY, JOCELYN | | | |
| 01:55 | | | | REBOUND (DEF) by NELSON-ODODA, OLIVIA |
| 01:54 | | | | TURNOVER (LOSTBALL) by NELSON-ODODA, OLIVIA |
| 01:54 | STEAL by MILLER, CAROLE | | | |
| 01:53 | MISSED LAYUP by MILLER, CAROLE | | | |
| 01:53 | | | | BLOCK by NELSON-ODODA, OLIVIA |
| 01:53 | REBOUND (OFF) by TEAM | | | |
| 01:53 | TURNOVER (5SEC) by TEAM | | | |
| 01:44 | | 20-9 | H 11 | GOOD! LAYUP by WILLIAMS, CHRISTYN [PNT] |
| 01:44 | | | | ASSIST by IRWIN, KYLA |
| 01:29 | | | | FOUL (PERSONAL) by NELSON-ODODA, OLIVIA |
| 01:21 | MISSED JUMPER by WILLOUGHBY, JOCELYN | | | |
| 01:18 | | | | REBOUND (DEF) by NELSON-ODODA, OLIVIA |
| 01:12 | FOUL (PERSONAL) by WILLOUGHBY, JOCELYN | | | |
| 01:12 | | 21-9 | H 12 | GOOD! FT by WILLIAMS, CHRISTYN |
| 01:12 | | 22-9 | H 13 | GOOD! FT by WILLIAMS, CHRISTYN |
| 01:12 | | | | SUB OUT: NELSON-ODODA, OLIVIA |
| 01:12 | | | | SUB IN: GRIFFIN, AUBREY |
| 00:56 | | | | FOUL (PERSONAL) by DANGERFIELD, CRYSTAL |
| 00:56 | MISSED FT by KORNEGAY-LUCAS, KYLIE | | | |
| 00:56 | REBOUND (OFF) by TEAM | | | |
| 00:56 | GOOD! FT by KORNEGAY-LUCAS, KYLIE | 22-10 | H 12 | |
| 00:30 | | 25-10 | H 15 | GOOD! 3PTR by DANGERFIELD, CRYSTAL |
| 00:30 | | | | ASSIST by WILLIAMS, CHRISTYN |
| 00:11 | MISSED 3PTR by MILLER, CAROLE | | | |
| 00:09 | | | | REBOUND (DEF) by TEAM |
| 00:09 | FOUL (PERSONAL) by JABLONOWSKI, LISA | | | |
| 00:09 | SUB OUT: JABLONOWSKI, LISA | | | |
| 00:09 | SUB IN: JEFFERSON, MEG | | | |
| 00:09 | | 26-10 | H 16 | GOOD! FT by IRWIN, KYLA [FB] |
| 00:09 | | | | MISSED FT by IRWIN, KYLA |
| 00:08 | REBOUND (DEF) by JEFFERSON, MEG | | | |
| 00:00 | TURNOVER (TRAVEL) by JEFFERSON, MEG | | | |

Virginia 10, UConn 26

| Points from (This Period) | UVA | UCN |
|---------------------------|-----|-----|
| In the Paint | 2 | 12 |
| Off Turns | 0 | 10 |
| 2nd Chance | 0 | 0 |
| Fast Break | 0 | 11 |
| Bench | 1 | 1 |

Official Box Score
Virginia vs UConn
Second Quarter Statistics Only
November 19, 2019 at XL Center - Hartford, Conn.



Virginia 7

| No. | Player | S | Pts | FG | 3FG | FT | OR | DR | TR | PF | A | TO | Blk | Stl | Min | +/- |
|---------------|-----------------------|---|----------|-------------|------------|------------|----------|----------|----------|----------|----------|----------|----------|----------|-----------|-----|
| 04 | TOUSSAINT, DOMINIQUE | G | 0 | 0-0 | 0-0 | 0-0 | 0 | 2 | 2 | 0 | 1 | 0 | 0 | 1 | 9 | -11 |
| 13 | WILLOUGHBY, JOCELYN | G | 1 | 0-3 | 0-0 | 1-2 | 1 | 0 | 1 | 1 | 0 | 2 | 0 | 0 | 6 | -3 |
| 14 | JABLONOWSKI, LISA | G | 0 | 0-0 | 0-0 | 0-0 | 1 | 0 | 1 | 0 | 0 | 0 | 0 | 0 | 2 | 1 |
| 21 | LAWSON, DANI | F | 0 | 0-2 | 0-0 | 0-0 | 0 | 1 | 1 | 0 | 0 | 0 | 0 | 0 | 6 | -6 |
| 23 | TOI, AMANDINE | G | 0 | 0-1 | 0-1 | 0-0 | 0 | 0 | 0 | 0 | 0 | 0 | 0 | 0 | 2 | 1 |
| 00 | HORTON, DYLAN | G | 0 | 0-2 | 0-2 | 0-0 | 0 | 1 | 1 | 0 | 1 | 1 | 0 | 0 | 5 | -4 |
| 01 | MILLER, CAROLE | G | 6 | 2-3 | 2-2 | 0-0 | 1 | 0 | 1 | 0 | 0 | 0 | 0 | 0 | 10 | -9 |
| 12 | JEFFERSON, MEG | F | 0 | 0-1 | 0-0 | 0-0 | 1 | 0 | 1 | 0 | 0 | 0 | 0 | 0 | 2 | -4 |
| 15 | KORNEGAY-LUCAS, KYLIE | G | 0 | 0-2 | 0-1 | 0-0 | 0 | 0 | 0 | 2 | 0 | 1 | 1 | 0 | 8 | -10 |
| | TEAM | | | | | | 0 | 1 | 1 | 0 | | 0 | | | | |
| TOTALS | | | 7 | 2-14 | 2-6 | 1-2 | 4 | 5 | 9 | 3 | 2 | 4 | 1 | 1 | 50 | |

Shooting By Period

| Period | FG | FG% | 3FG | 3FG% | FT | FT% |
|----------|-------|-------|------|-------|-------|-------|
| 3rd Qtr | 4-14 | 29% | 1-4 | 25% | 8-8 | 100% |
| 4th Qtr | 4-15 | 27% | 2-2 | 100% | 0-0 | 0% |
| 2nd Half | 2-14 | 14% | 2-6 | 33% | 1-2 | 50% |
| 2nd Half | 8-29 | 28% | 3-6 | 50% | 8-8 | 100% |
| Game | 14-57 | 24.6% | 6-16 | 37.5% | 10-14 | 71.4% |

Deadball Rebounds: 2,0

UConn 16

| No. | Player | S | Pts | FG | 3FG | FT | OR | DR | TR | PF | A | TO | Blk | Stl | Min | +/- |
|---------------|----------------------|---|-----------|-------------|------------|------------|----------|----------|-----------|----------|----------|----------|----------|----------|-----------|-----|
| 03 | WALKER, MEGAN | F | 4 | 1-4 | 0-0 | 2-2 | 1 | 4 | 5 | 0 | 1 | 0 | 0 | 0 | 9 | 10 |
| 05 | DANGERFIELD, CRYSTAL | G | 0 | 0-3 | 0-2 | 0-0 | 0 | 2 | 2 | 0 | 0 | 0 | 0 | 0 | 10 | 9 |
| 13 | WILLIAMS, CHRISTYN | G | 2 | 1-3 | 0-1 | 0-0 | 0 | 0 | 0 | 0 | 0 | 0 | 0 | 1 | 6 | 3 |
| 20 | NELSON-ODODA, OLIVIA | F | 0 | 0-0 | 0-0 | 0-0 | 0 | 1 | 1 | 1 | 0 | 2 | 0 | 0 | 1 | -1 |
| 24 | MAKURAT, ANNA | G | 7 | 3-4 | 1-2 | 0-0 | 0 | 1 | 1 | 0 | 0 | 0 | 0 | 0 | 6 | 5 |
| 10 | BENT, MOLLY | G | 0 | 0-0 | 0-0 | 0-0 | 0 | 0 | 0 | 1 | 0 | 0 | 0 | 1 | 6 | 5 |
| 14 | ADEBAYO, EVELYN | F | 0 | 0-0 | 0-0 | 0-0 | 0 | 0 | 0 | 0 | 0 | 0 | 0 | 0 | 0 | 0 |
| 25 | IRWIN, KYLA | F | 0 | 0-0 | 0-0 | 0-0 | 2 | 0 | 2 | 0 | 3 | 0 | 1 | 0 | 8 | 10 |
| 44 | GRIFFIN, AUBREY | G | 3 | 1-1 | 0-0 | 1-2 | 0 | 1 | 1 | 0 | 2 | 0 | 0 | 1 | 4 | 4 |
| | TEAM | | | | | | 1 | 0 | 1 | 0 | | 0 | | | | |
| TOTALS | | | 16 | 6-15 | 1-5 | 3-4 | 4 | 9 | 13 | 2 | 6 | 2 | 1 | 3 | 50 | |

Shooting By Period

| Period | FG | FG% | 3FG | 3FG% | FT | FT% |
|----------|-------|-------|------|-------|-------|-------|
| 3rd Qtr | 8-17 | 47% | 3-8 | 38% | 3-4 | 75% |
| 4th Qtr | 6-11 | 55% | 2-6 | 33% | 5-9 | 56% |
| 2nd Half | 6-15 | 40% | 1-5 | 20% | 3-4 | 75% |
| 2nd Half | 14-28 | 50% | 5-14 | 36% | 8-13 | 62% |
| Game | 30-59 | 50.8% | 9-23 | 39.1% | 14-22 | 63.6% |

Deadball Rebounds: 5,0

Game Notes:

Officials: Bruce Morris, Mark Resch, Krystle Apellaniz
Attendance: 7728

Start Time: 07:06 PM ET
End Time: 08:56 PM ET
Game Duration: 1:50

| Score | 1st | 2nd | 3rd | 4th | TOT |
|-------|-----|-----|-----|-----|-----------|
| UVA | 10 | 7 | 17 | 10 | 44 |
| UCN | 26 | 16 | 22 | 19 | 83 |

| Points from (This Period) | UVA | UCN |
|---------------------------|-----|-----|
| In the Paint | 0 | 10 |
| Off Turns | 0 | 3 |
| 2nd Chance | 0 | 4 |
| Fast Break | 0 | 1 |
| Bench | 6 | 3 |

**Official Play-By-Play
Virginia vs UConn
Second Quarter
November 19, 2019 at XL Center - Hartford, Conn.**



Period 2

Starters:

Virginia: 13 WILLOUGHBY, JOCELYN (G); 14 JABLONOWSKI, LISA (G); 21 LAWSON, DANI (F); 23 TOI, AMANDINE (G); 4 TOUSSAINT, DOMINIQUE (G);
UConn: 13 WILLIAMS, CHRISTYN (G); 20 NELSON-ODODA, OLIVIA (F); 24 MAKURAT, ANNA (G); 3 WALKER, MEGAN (F); 5 DANGERFIELD, CRYSTAL (G);

| Time | VISITORS: Virginia | Score | Margin | HOME: UConn |
|-------|---|-------|--------|---|
| 09:49 | MISSED LAYUP by MILLER, CAROLE | | | |
| 09:46 | | | | REBOUND (DEF) by DANGERFIELD, CRYSTAL |
| 09:26 | | | | MISSED JUMPER by WALKER, MEGAN |
| 09:24 | | | | REBOUND (OFF) by WALKER, MEGAN |
| 09:15 | | | | MISSED 3PTR by DANGERFIELD, CRYSTAL |
| 09:12 | | | | REBOUND (OFF) by IRWIN, KYLA |
| 09:02 | | 28-10 | H 18 | GOOD! LAYUP by GRIFFIN, AUBREY [PNT] |
| 09:02 | | | | ASSIST by WALKER, MEGAN |
| 08:40 | MISSED LAYUP by KORNEGAY-LUCAS, KYLIE | | | |
| 08:38 | REBOUND (OFF) by JEFFERSON, MEG | | | |
| 08:38 | MISSED LAYUP by JEFFERSON, MEG | | | |
| 08:38 | | | | BLOCK by IRWIN, KYLA |
| 08:34 | | | | REBOUND (DEF) by GRIFFIN, AUBREY |
| 08:21 | | 30-10 | H 20 | GOOD! LAYUP by WILLIAMS, CHRISTYN [PNT] |
| 08:21 | | | | ASSIST by GRIFFIN, AUBREY |
| 08:05 | FOUL (OFF) by KORNEGAY-LUCAS, KYLIE | | | |
| 08:05 | TURNOVER (OFFENSIVE) by KORNEGAY-LUCAS, KYLIE | | | |
| 08:05 | SUB OUT: JEFFERSON, MEG | | | |
| 08:05 | SUB IN: LAWSON, DANI | | | |
| 07:48 | | 32-10 | H 22 | GOOD! JUMPER by WALKER, MEGAN [PNT] |
| 07:48 | | | | ASSIST by GRIFFIN, AUBREY |
| 07:20 | TURNOVER (LOSTBALL) by WILLOUGHBY, JOCELYN | | | |
| 07:20 | | | | STEAL by WILLIAMS, CHRISTYN |
| 07:16 | | | | MISSED LAYUP by WILLIAMS, CHRISTYN |
| 07:16 | BLOCK by KORNEGAY-LUCAS, KYLIE | | | |
| 07:16 | | | | REBOUND (OFF) by TEAM |
| 07:16 | SUB OUT: TOUSSAINT, DOMINIQUE | | | |
| 07:16 | SUB IN: HORTON, DYLAN | | | |
| 07:11 | | | | MISSED 3PTR by WILLIAMS, CHRISTYN |
| 07:08 | REBOUND (DEF) by HORTON, DYLAN | | | |
| 07:06 | TURNOVER (BADPASS) by HORTON, DYLAN | | | |
| 07:06 | | | | STEAL by GRIFFIN, AUBREY |
| 07:05 | FOUL (PERSONAL) by KORNEGAY-LUCAS, KYLIE | | | |
| 07:05 | | | | MISSED FT by GRIFFIN, AUBREY |
| 07:05 | | | | REBOUND (OFF) by TEAM |
| 07:05 | | 33-10 | H 23 | GOOD! FT by GRIFFIN, AUBREY [FB] |
| 06:42 | GOOD! 3PTR by MILLER, CAROLE | 33-13 | H 20 | |
| 06:42 | ASSIST by HORTON, DYLAN | | | |
| 06:22 | | | | MISSED 3PTR by DANGERFIELD, CRYSTAL |
| 06:18 | | | | REBOUND (OFF) by IRWIN, KYLA |
| 06:18 | | | | SUB OUT: WILLIAMS, CHRISTYN |
| 06:18 | | | | SUB IN: MAKURAT, ANNA |
| 06:18 | | | | SUB OUT: GRIFFIN, AUBREY |
| 06:18 | | | | SUB IN: BENT, MOLLY |
| 06:18 | SUB OUT: MILLER, CAROLE | | | |
| 06:18 | SUB IN: TOUSSAINT, DOMINIQUE | | | |
| 06:12 | FOUL (PERSONAL) by WILLOUGHBY, JOCELYN | | | |
| 06:12 | SUB OUT: WILLOUGHBY, JOCELYN | | | |
| 06:12 | SUB IN: MILLER, CAROLE | | | |
| 06:12 | | 34-13 | H 21 | GOOD! FT by WALKER, MEGAN |
| 06:12 | | 35-13 | H 22 | GOOD! FT by WALKER, MEGAN |
| 05:44 | MISSED 3PTR by HORTON, DYLAN | | | |
| 05:39 | | | | REBOUND (DEF) by WALKER, MEGAN |
| 05:30 | | | | MISSED JUMPER by WALKER, MEGAN |
| 05:27 | REBOUND (DEF) by TOUSSAINT, DOMINIQUE | | | |
| 05:09 | MISSED 3PTR by KORNEGAY-LUCAS, KYLIE | | | |
| 05:06 | | | | REBOUND (DEF) by DANGERFIELD, CRYSTAL |
| 04:58 | | | | MISSED JUMPER by WALKER, MEGAN |
| 04:55 | REBOUND (DEF) by TOUSSAINT, DOMINIQUE | | | |
| 04:44 | GOOD! 3PTR by MILLER, CAROLE | 35-16 | H 19 | |
| 04:44 | ASSIST by TOUSSAINT, DOMINIQUE | | | |
| 04:20 | | | | MISSED LAYUP by DANGERFIELD, CRYSTAL |
| 04:17 | REBOUND (DEF) by LAWSON, DANI | | | |
| 03:58 | MISSED JUMPER by LAWSON, DANI | | | |
| 03:55 | | | | REBOUND (DEF) by WALKER, MEGAN |
| 03:30 | | 37-16 | H 21 | GOOD! LAYUP by MAKURAT, ANNA [PNT] |
| 03:30 | | | | ASSIST by IRWIN, KYLA |
| 03:08 | MISSED 3PTR by HORTON, DYLAN | | | |
| 03:05 | | | | REBOUND (DEF) by WALKER, MEGAN |
| 02:49 | | 40-16 | H 24 | GOOD! 3PTR by MAKURAT, ANNA |

| Time | VISITORS: Virginia | Score | Margin | HOME: UConn |
|-------|---|-------|--------|--|
| 02:49 | | | | ASSIST by IRWIN, KYLA |
| 02:27 | MISSED JUMPER by LAWSON, DANI | | | |
| 02:25 | | | | REBOUND (DEF) by MAKURAT, ANNA |
| 02:12 | | 42-16 | H 26 | GOOD! LAYUP by MAKURAT, ANNA [PNT] |
| 02:12 | | | | ASSIST by IRWIN, KYLA |
| 02:10 | TIMEOUT 30SEC | | | |
| 02:10 | | | | SUB OUT: WALKER, MEGAN |
| 02:10 | | | | SUB OUT: IRWIN, KYLA |
| 02:10 | | | | SUB IN: WILLIAMS, CHRISTYN |
| 02:10 | | | | SUB IN: NELSON-ODODA, OLIVIA |
| 02:10 | SUB OUT: HORTON, DYLAN | | | |
| 02:10 | SUB OUT: KORNEGAY-LUCAS, KYLIE | | | |
| 02:10 | SUB OUT: LAWSON, DANI | | | |
| 02:10 | SUB IN: WILLOUGHBY, JOCELYN | | | |
| 02:10 | SUB IN: JABLONOWSKI, LISA | | | |
| 02:10 | SUB IN: TOI, AMANDINE | | | |
| 02:00 | | | | FOUL (PERSONAL) by BENT, MOLLY |
| 02:00 | GOOD! FT by WILLOUGHBY, JOCELYN | 42-17 | H 25 | |
| 02:00 | MISSED FT by WILLOUGHBY, JOCELYN | | | |
| 01:59 | | | | REBOUND (DEF) by NELSON-ODODA, OLIVIA |
| 01:32 | | | | TURNOVER (BADPASS) by NELSON-ODODA, OLIVIA |
| 01:32 | STEAL by TOUSSAINT, DOMINIQUE | | | |
| 01:15 | MISSED JUMPER by WILLOUGHBY, JOCELYN | | | |
| 01:12 | REBOUND (OFF) by JABLONOWSKI, LISA | | | |
| 01:00 | TURNOVER (BADPASS) by WILLOUGHBY, JOCELYN | | | |
| 01:00 | | | | STEAL by BENT, MOLLY |
| 00:52 | | | | FOUL (OFF) by NELSON-ODODA, OLIVIA |
| 00:52 | | | | TURNOVER (OFFENSIVE) by NELSON-ODODA, OLIVIA |
| 00:52 | | | | SUB OUT: NELSON-ODODA, OLIVIA |
| 00:52 | | | | SUB IN: WALKER, MEGAN |
| 00:39 | MISSED 3PTR by TOI, AMANDINE | | | |
| 00:36 | REBOUND (OFF) by MILLER, CAROLE | | | |
| 00:29 | MISSED LAYUP by WILLOUGHBY, JOCELYN | | | |
| 00:27 | REBOUND (OFF) by WILLOUGHBY, JOCELYN | | | |
| 00:26 | MISSED LAYUP by WILLOUGHBY, JOCELYN | | | |
| 00:23 | | | | REBOUND (DEF) by WALKER, MEGAN |
| 00:00 | | | | MISSED 3PTR by MAKURAT, ANNA |
| 00:00 | REBOUND (DEF) by TEAM | | | |

Virginia 17, UConn 42

| Points from (This Period) | UVA | UCN |
|---------------------------|-----|-----|
| In the Paint | 0 | 10 |
| Off Turns | 0 | 3 |
| 2nd Chance | 0 | 4 |
| Fast Break | 0 | 1 |
| Bench | 6 | 3 |

Official Box Score
Virginia vs UConn
Second Half Statistics Only
November 19, 2019 at XL Center - Hartford, Conn.



Virginia 27

| No. | Player | S | Pts | FG | 3FG | FT | OR | DR | TR | PF | A | TO | Blk | Stl | Min | +/- |
|---------------|-----------------------|---|-----------|-------------|------------|------------|----------|-----------|-----------|-----------|----------|----------|----------|----------|-----------|-----|
| 00 | HORTON, DYLAN | G | 6 | 2-3 | 2-2 | 0-0 | 0 | 0 | 0 | 1 | 0 | 1 | 0 | 0 | 4 | -1 |
| 12 | JEFFERSON, MEG | F | 0 | 0-0 | 0-0 | 0-0 | 0 | 0 | 0 | 0 | 0 | 0 | 0 | 0 | 2 | 2 |
| 13 | WILLOUGHBY, JOCELYN | G | 12 | 3-8 | 0-1 | 6-6 | 1 | 1 | 2 | 1 | 0 | 0 | 0 | 1 | 15 | -13 |
| 14 | JABLONOWSKI, LISA | G | 2 | 0-4 | 0-0 | 2-2 | 1 | 2 | 3 | 1 | 1 | 1 | 0 | 0 | 15 | -13 |
| 15 | KORNEGAY-LUCAS, KYLIE | G | 2 | 1-4 | 0-0 | 0-0 | 2 | 2 | 4 | 2 | 1 | 1 | 0 | 0 | 12 | -8 |
| 21 | LAWSON, DANI | F | 0 | 0-2 | 0-0 | 0-0 | 0 | 1 | 1 | 3 | 1 | 1 | 0 | 0 | 10 | -7 |
| 23 | TOI, AMANDINE | G | 2 | 1-4 | 0-1 | 0-0 | 0 | 0 | 0 | 1 | 1 | 2 | 0 | 0 | 14 | -13 |
| 01 | MILLER, CAROLE | G | 0 | 0-2 | 0-0 | 0-0 | 0 | 4 | 4 | 2 | 0 | 0 | 0 | 0 | 14 | -7 |
| 04 | TOUSSAINT, DOMINIQUE | G | 3 | 1-2 | 1-2 | 0-0 | 0 | 0 | 0 | 0 | 0 | 2 | 0 | 2 | 13 | -10 |
| | TEAM | | 0 | 0-0 | 0-0 | 0-0 | 1 | 1 | 2 | 0 | 0 | 0 | 0 | 0 | 0 | |
| TOTALS | | | 27 | 8-29 | 3-6 | 8-8 | 5 | 11 | 16 | 11 | 4 | 8 | 0 | 3 | 99 | |

Shooting By Period

| Period | FG | FG% | 3FG | 3FG% | FT | FT% |
|----------|-------|-------|------|-------|-------|-------|
| 3rd Qtr | 4-14 | 29% | 1-4 | 25% | 8-8 | 100% |
| 4th Qtr | 4-15 | 27% | 2-2 | 100% | 0-0 | 0% |
| 2nd Half | 8-29 | 28% | 3-6 | 50% | 8-8 | 100% |
| Game | 14-57 | 24.6% | 6-16 | 37.5% | 10-14 | 71.4% |

Deadball Rebounds: 2,0

Last FG Half: UVA 4th-01:16

UConn 41

| No. | Player | S | Pts | FG | 3FG | FT | OR | DR | TR | PF | A | TO | Blk | Stl | Min | +/- |
|---------------|----------------------|---|-----------|--------------|-------------|-------------|----------|-----------|-----------|----------|----------|----------|----------|----------|-----------|-----|
| 10 | BENT, MOLLY | G | 0 | 0-0 | 0-0 | 0-0 | 0 | 0 | 0 | 0 | 1 | 0 | 0 | 0 | 4 | 1 |
| 13 | WILLIAMS, CHRISTYN | G | 7 | 3-7 | 1-5 | 0-0 | 1 | 1 | 2 | 3 | 1 | 0 | 0 | 0 | 16 | 8 |
| 14 | ADEBAYO, EVELYN | F | 1 | 0-1 | 0-0 | 1-2 | 0 | 0 | 0 | 0 | 0 | 0 | 0 | 0 | 6 | 5 |
| 20 | NELSON-ODODA, OLIVIA | F | 9 | 3-3 | 0-0 | 3-4 | 1 | 1 | 2 | 0 | 1 | 0 | 1 | 1 | 10 | 8 |
| 24 | MAKURAT, ANNA | G | 3 | 1-4 | 1-3 | 0-0 | 0 | 4 | 4 | 1 | 4 | 1 | 1 | 1 | 16 | 13 |
| 25 | IRWIN, KYLA | F | 12 | 4-4 | 2-2 | 2-2 | 1 | 2 | 3 | 0 | 0 | 2 | 1 | 0 | 13 | 11 |
| 44 | GRIFFIN, AUBREY | G | 3 | 1-2 | 0-0 | 1-3 | 1 | 1 | 2 | 1 | 0 | 2 | 0 | 1 | 9 | 5 |
| 03 | WALKER, MEGAN | F | 4 | 1-4 | 1-2 | 1-2 | 0 | 3 | 3 | 1 | 2 | 0 | 0 | 1 | 14 | 12 |
| 05 | DANGERFIELD, CRYSTAL | G | 2 | 1-3 | 0-2 | 0-0 | 0 | 2 | 2 | 0 | 0 | 0 | 0 | 0 | 11 | 7 |
| | TEAM | | 0 | 0-0 | 0-0 | 0-0 | 0 | 2 | 2 | 0 | 0 | 0 | 0 | 0 | 0 | |
| TOTALS | | | 41 | 14-28 | 5-14 | 8-13 | 4 | 16 | 20 | 6 | 9 | 5 | 3 | 4 | 99 | |

Shooting By Period

| Period | FG | FG% | 3FG | 3FG% | FT | FT% |
|----------|-------|-------|------|-------|-------|-------|
| 3rd Qtr | 8-17 | 47% | 3-8 | 38% | 3-4 | 75% |
| 4th Qtr | 6-11 | 55% | 2-6 | 33% | 5-9 | 56% |
| 2nd Half | 14-28 | 50% | 5-14 | 36% | 8-13 | 62% |
| Game | 30-59 | 50.8% | 9-23 | 39.1% | 14-22 | 63.6% |

Deadball Rebounds: 5,0

Last FG Half: UCN 4th-01:35

Game Notes:

Officials: **Bruce Morris, Mark Resch, Krystle Apellaniz**
Attendance: **7728**

Start Time: **07:06 PM ET**
End Time: **08:56 PM ET**
Game Duration: **1:50**

| Score | 1st | 2nd | 3rd | 4th | TOT |
|-------|-----|-----|-----|-----|-----------|
| UVA | 10 | 7 | 17 | 10 | 44 |
| UCN | 26 | 16 | 22 | 19 | 83 |

| Points from (This Period) | UVA | UCN |
|---------------------------|-----|-----|
| In the Paint | 6 | 14 |
| Off Turns | 0 | 7 |
| 2nd Chance | 7 | 6 |
| Fast Break | 4 | 8 |
| Bench | 8 | 16 |

Official Box Score
Virginia vs UConn
Third Quarter Statistics Only
November 19, 2019 at XL Center - Hartford, Conn.



Virginia 27

| No. | Player | S | Pts | FG | 3FG | FT | OR | DR | TR | PF | A | TO | Blk | Stl | Min | +/- |
|---------------|-----------------------|---|-----------|-------------|------------|------------|----------|----------|-----------|----------|----------|----------|----------|----------|-----------|-----|
| 04 | TOUSSAINT, DOMINIQUE | G | 3 | 1-2 | 1-2 | 0-0 | 0 | 0 | 0 | 0 | 0 | 2 | 0 | 1 | 10 | -5 |
| 13 | WILLOUGHBY, JOCELYN | G | 12 | 3-7 | 0-1 | 6-6 | 1 | 1 | 2 | 0 | 0 | 0 | 0 | 0 | 10 | -5 |
| 14 | JABLONOWSKI, LISA | G | 2 | 0-2 | 0-0 | 2-2 | 1 | 2 | 3 | 1 | 1 | 0 | 0 | 0 | 10 | -5 |
| 21 | LAWSON, DANI | F | 0 | 0-0 | 0-0 | 0-0 | 0 | 0 | 0 | 0 | 1 | 0 | 0 | 0 | 2 | -1 |
| 23 | TOI, AMANDINE | G | 0 | 0-1 | 0-1 | 0-0 | 0 | 0 | 0 | 1 | 0 | 0 | 0 | 0 | 4 | -4 |
| 00 | HORTON, DYLAN | G | 0 | 0-0 | 0-0 | 0-0 | 0 | 0 | 0 | 0 | 0 | 0 | 0 | 0 | 0 | 0 |
| 01 | MILLER, CAROLE | G | 0 | 0-1 | 0-0 | 0-0 | 0 | 3 | 3 | 2 | 0 | 0 | 0 | 0 | 7 | -3 |
| 12 | JEFFERSON, MEG | F | 0 | 0-0 | 0-0 | 0-0 | 0 | 0 | 0 | 0 | 0 | 0 | 0 | 0 | 2 | 2 |
| 15 | KORNEGAY-LUCAS, KYLIE | G | 0 | 0-1 | 0-0 | 0-0 | 0 | 0 | 0 | 0 | 0 | 1 | 0 | 0 | 5 | -4 |
| | TEAM | | | | | | 1 | 1 | 2 | 0 | | 0 | | | | |
| TOTALS | | | 17 | 4-14 | 1-4 | 8-8 | 3 | 7 | 10 | 4 | 2 | 3 | 0 | 1 | 50 | |

Shooting By Period

| Period | FG | FG% | 3FG | 3FG% | FT | FT% |
|----------|-------|-------|------|-------|-------|-------|
| 2nd Half | 0-0 | 0% | 0-0 | 0% | 0-0 | 0% |
| Game | 14-57 | 24.6% | 6-16 | 37.5% | 10-14 | 71.4% |

Deadball Rebounds: 2,0

UConn 41

| No. | Player | S | Pts | FG | 3FG | FT | OR | DR | TR | PF | A | TO | Blk | Stl | Min | +/- |
|---------------|----------------------|---|-----------|-------------|------------|------------|----------|----------|----------|----------|----------|----------|----------|----------|-----------|-----|
| 03 | WALKER, MEGAN | F | 0 | 0-3 | 0-1 | 0-0 | 0 | 1 | 1 | 1 | 1 | 0 | 0 | 0 | 9 | 4 |
| 05 | DANGERFIELD, CRYSTAL | G | 2 | 1-3 | 0-2 | 0-0 | 0 | 2 | 2 | 0 | 0 | 0 | 0 | 0 | 10 | 5 |
| 13 | WILLIAMS, CHRISTYN | G | 7 | 3-5 | 1-3 | 0-0 | 1 | 0 | 1 | 2 | 1 | 0 | 0 | 0 | 10 | 5 |
| 20 | NELSON-ODODA, OLIVIA | F | 7 | 2-2 | 0-0 | 3-4 | 1 | 0 | 1 | 0 | 1 | 0 | 1 | 0 | 7 | 3 |
| 24 | MAKURAT, ANNA | G | 3 | 1-2 | 1-1 | 0-0 | 0 | 1 | 1 | 1 | 2 | 0 | 0 | 0 | 6 | 4 |
| 10 | BENT, MOLLY | G | 0 | 0-0 | 0-0 | 0-0 | 0 | 0 | 0 | 0 | 0 | 0 | 0 | 0 | 0 | 0 |
| 14 | ADEBAYO, EVELYN | F | 0 | 0-1 | 0-0 | 0-0 | 0 | 0 | 0 | 0 | 0 | 0 | 0 | 0 | 3 | 1 |
| 25 | IRWIN, KYLA | F | 3 | 1-1 | 1-1 | 0-0 | 0 | 0 | 0 | 0 | 0 | 0 | 1 | 0 | 3 | 2 |
| 44 | GRIFFIN, AUBREY | G | 0 | 0-0 | 0-0 | 0-0 | 0 | 1 | 1 | 1 | 0 | 1 | 0 | 1 | 2 | 1 |
| | TEAM | | | | | | 0 | 2 | 2 | 0 | | 0 | | | | |
| TOTALS | | | 22 | 8-17 | 3-8 | 3-4 | 2 | 7 | 9 | 5 | 5 | 1 | 2 | 1 | 50 | |

Shooting By Period

| Period | FG | FG% | 3FG | 3FG% | FT | FT% |
|----------|-------|-------|------|-------|-------|-------|
| 2nd Half | 0-0 | 0% | 0-0 | 0% | 0-0 | 0% |
| Game | 30-59 | 50.8% | 9-23 | 39.1% | 14-22 | 63.6% |

Deadball Rebounds: 5,0

Game Notes:

Officials: **Bruce Morris, Mark Resch, Krystle Apellaniz**
Attendance: 7728

Start Time: **07:06 PM ET**
End Time: **08:56 PM ET**
Game Duration: **1:50**

| Score | 1st | 2nd | 3rd | 4th | TOT |
|-------|-----|-----|-----|-----|-----------|
| UVA | 10 | 7 | 17 | 10 | 44 |
| UCN | 26 | 16 | 22 | 19 | 83 |

| Points from (This Period) | UVA | UCN |
|---------------------------|-----|-----|
| In the Paint | 2 | 6 |
| Off Turns | 0 | 0 |
| 2nd Chance | 4 | 2 |
| Fast Break | 4 | 4 |
| Bench | 0 | 3 |

**Official Play-By-Play
Virginia vs UConn
Third Quarter
November 19, 2019 at XL Center - Hartford, Conn.**



Period 3

Starters:

Virginia: 13 WILLOUGHBY, JOCELYN (G); 14 JABLONOWSKI, LISA (G); 21 LAWSON, DANI (F); 23 TOI, AMANDINE (G); 4 TOUSSAINT, DOMINIQUE (G);
UConn: 13 WILLIAMS, CHRISTYN (G); 20 NELSON-ODODA, OLIVIA (F); 24 MAKURAT, ANNA (G); 3 WALKER, MEGAN (F); 5 DANGERFIELD, CRYSTAL (G);

| Time | VISITORS: Virginia | Score | Margin | HOME: UConn |
|-------|---|-------|--------|--|
| 10:00 | | | | SUB OUT: BENT, MOLLY |
| 10:00 | | | | SUB IN: NELSON-ODODA, OLIVIA |
| 10:00 | SUB OUT: MILLER, CAROLE | | | |
| 10:00 | SUB IN: LAWSON, DANI | | | |
| 09:49 | GOOD! JUMPER by WILLOUGHBY, JOCELYN | 42-19 | H 23 | |
| 09:49 | ASSIST by LAWSON, DANI | | | |
| 09:33 | | | | MISSED 3PTR by WALKER, MEGAN |
| 09:28 | | | | REBOUND (OFF) by NELSON-ODODA, OLIVIA |
| 09:28 | | 44-19 | H 25 | GOOD! LAYUP by NELSON-ODODA, OLIVIA |
| 09:14 | MISSED JUMPER by JABLONOWSKI, LISA | | | |
| 09:10 | | | | REBOUND (DEF) by MAKURAT, ANNA |
| 09:07 | | 46-19 | H 27 | GOOD! LAYUP by NELSON-ODODA, OLIVIA [FB] |
| 09:07 | | | | ASSIST by WILLIAMS, CHRISTYN |
| 08:44 | MISSED 3PTR by WILLOUGHBY, JOCELYN | | | |
| 08:41 | | | | REBOUND (DEF) by WALKER, MEGAN |
| 08:34 | | 48-19 | H 29 | GOOD! JUMPER by DANGERFIELD, CRYSTAL |
| 08:01 | GOOD! 3PTR by TOUSSAINT, DOMINIQUE | 48-22 | H 26 | |
| 08:01 | ASSIST by JABLONOWSKI, LISA | | | |
| 07:44 | SUB OUT: LAWSON, DANI | | | |
| 07:44 | SUB IN: MILLER, CAROLE | | | |
| 07:40 | | | | MISSED LAYUP by WALKER, MEGAN |
| 07:37 | REBOUND (DEF) by WILLOUGHBY, JOCELYN | | | |
| 07:35 | | | | FOUL (PERSONAL) by MAKURAT, ANNA |
| 07:35 | GOOD! FT by WILLOUGHBY, JOCELYN [FB] | 48-23 | H 25 | |
| 07:35 | GOOD! FT by WILLOUGHBY, JOCELYN [FB] | 48-24 | H 24 | |
| 07:22 | FOUL (PERSONAL) by MILLER, CAROLE | | | |
| 07:22 | | | | MISSED FT by NELSON-ODODA, OLIVIA |
| 07:22 | | | | REBOUND (OFF) by TEAM |
| 07:22 | | 49-24 | H 25 | GOOD! FT by NELSON-ODODA, OLIVIA |
| 07:09 | MISSED 3PTR by TOI, AMANDINE | | | |
| 07:05 | | | | REBOUND (DEF) by DANGERFIELD, CRYSTAL |
| 06:58 | | 52-24 | H 28 | GOOD! 3PTR by MAKURAT, ANNA |
| 06:58 | | | | ASSIST by NELSON-ODODA, OLIVIA |
| 06:33 | TURNOVER (BADPASS) by TOUSSAINT, DOMINIQUE | | | |
| 06:25 | FOUL (PERSONAL) by TOI, AMANDINE | | | |
| 06:25 | SUB OUT: TOI, AMANDINE | | | |
| 06:25 | SUB IN: JEFFERSON, MEG | | | |
| 06:11 | | | | MISSED 3PTR by DANGERFIELD, CRYSTAL |
| 06:07 | | | | REBOUND (OFF) by WILLIAMS, CHRISTYN |
| 05:56 | | | | MISSED 3PTR by WILLIAMS, CHRISTYN |
| 05:53 | REBOUND (DEF) by MILLER, CAROLE | | | |
| 05:39 | MISSED LAYUP by MILLER, CAROLE | | | |
| 05:35 | | | | REBOUND (DEF) by DANGERFIELD, CRYSTAL |
| 05:17 | | 54-24 | H 30 | GOOD! LAYUP by WILLIAMS, CHRISTYN [PNT] |
| 05:17 | | | | ASSIST by MAKURAT, ANNA |
| 05:01 | GOOD! JUMPER by WILLOUGHBY, JOCELYN | 54-26 | H 28 | |
| 04:48 | | | | MISSED 3PTR by WILLIAMS, CHRISTYN |
| 04:44 | REBOUND (DEF) by MILLER, CAROLE | | | |
| 04:42 | | | | FOUL (PERSONAL) by WILLIAMS, CHRISTYN |
| 04:42 | | | | |
| 04:42 | | | | SUB OUT: MAKURAT, ANNA |
| 04:42 | | | | SUB IN: GRIFFIN, AUBREY |
| 04:42 | GOOD! FT by WILLOUGHBY, JOCELYN [FB] | 54-27 | H 27 | |
| 04:42 | GOOD! FT by WILLOUGHBY, JOCELYN [FB] | 54-28 | H 26 | |
| 04:42 | SUB OUT: JEFFERSON, MEG | | | |
| 04:42 | SUB IN: KORNEGAY-LUCAS, KYLIE | | | |
| 04:29 | FOUL (PERSONAL) by MILLER, CAROLE | | | |
| 04:29 | | 55-28 | H 27 | GOOD! FT by NELSON-ODODA, OLIVIA |
| 04:29 | | 56-28 | H 28 | GOOD! FT by NELSON-ODODA, OLIVIA |
| 04:17 | MISSED JUMPER by WILLOUGHBY, JOCELYN | | | |
| 04:14 | | | | REBOUND (DEF) by GRIFFIN, AUBREY |
| 04:02 | | | | TURNOVER (LOSTBALL) by GRIFFIN, AUBREY |
| 04:02 | STEAL by TOUSSAINT, DOMINIQUE | | | |
| 03:49 | | | | FOUL (PERSONAL) by WALKER, MEGAN |
| 03:47 | TURNOVER (BADPASS) by KORNEGAY-LUCAS, KYLIE | | | |
| 03:47 | | | | STEAL by GRIFFIN, AUBREY |
| 03:29 | | | | MISSED 3PTR by DANGERFIELD, CRYSTAL |
| 03:25 | REBOUND (DEF) by JABLONOWSKI, LISA | | | |
| 03:14 | MISSED JUMPER by WILLOUGHBY, JOCELYN | | | |
| 03:14 | | | | BLOCK by NELSON-ODODA, OLIVIA |

| Time | VISITORS: Virginia | Score | Margin | HOME: UConn |
|-------|--|-------|--------|---|
| 03:12 | | | | REBOUND (DEF) by TEAM |
| 03:09 | | | | SUB OUT: NELSON-ODODA, OLIVIA |
| 03:09 | | | | SUB IN: IRWIN, KYLA |
| 03:03 | | 59-28 | H 31 | GOOD! 3PTR by WILLIAMS, CHRISTYN |
| 03:03 | | | | ASSIST by WALKER, MEGAN |
| 02:33 | MISSED 3PTR by TOUSSAINT, DOMINIQUE | | | |
| 02:30 | REBOUND (OFF) by JABLONOWSKI, LISA | | | |
| 02:30 | | | | FOUL (PERSONAL) by GRIFFIN, AUBREY |
| 02:30 | GOOD! FT by JABLONOWSKI, LISA | 59-29 | H 30 | |
| 02:30 | GOOD! FT by JABLONOWSKI, LISA | 59-30 | H 29 | |
| 02:30 | | | | SUB OUT: GRIFFIN, AUBREY |
| 02:30 | | | | SUB IN: ADEBAYO, EVELYN |
| 02:06 | | | | MISSED JUMPER by ADEBAYO, EVELYN |
| 02:03 | REBOUND (DEF) by MILLER, CAROLE | | | |
| 02:01 | MISSED LAYUP by KORNEGAY-LUCAS, KYLIE | | | |
| 01:57 | REBOUND (OFF) by TEAM | | | |
| 01:53 | TURNOVER (BADPASS) by TOUSSAINT, DOMINIQUE | | | |
| 01:34 | | | | MISSED JUMPER by WALKER, MEGAN |
| 01:30 | REBOUND (DEF) by JABLONOWSKI, LISA | | | |
| 01:19 | MISSED LAYUP by WILLOUGHBY, JOCELYN | | | |
| 01:19 | | | | BLOCK by IRWIN, KYLA |
| 01:14 | REBOUND (OFF) by WILLOUGHBY, JOCELYN | | | |
| 01:13 | GOOD! LAYUP by WILLOUGHBY, JOCELYN | 59-32 | H 27 | |
| 01:08 | | 61-32 | H 29 | GOOD! JUMPER by WILLIAMS, CHRISTYN [FB] |
| 00:52 | MISSED JUMPER by JABLONOWSKI, LISA | | | |
| 00:50 | | | | REBOUND (DEF) by TEAM |
| 00:50 | FOUL (PERSONAL) by JABLONOWSKI, LISA | | | |
| 00:50 | | | | SUB OUT: WALKER, MEGAN |
| 00:50 | | | | SUB IN: MAKURAT, ANNA |
| 00:50 | SUB OUT: MILLER, CAROLE | | | |
| 00:50 | SUB IN: TOI, AMANDINE | | | |
| 00:31 | | 64-32 | H 32 | GOOD! 3PTR by IRWIN, KYLA |
| 00:31 | | | | ASSIST by MAKURAT, ANNA |
| 00:08 | | | | FOUL (PERSONAL) by WILLIAMS, CHRISTYN |
| 00:08 | GOOD! FT by WILLOUGHBY, JOCELYN | 64-33 | H 31 | |
| 00:08 | GOOD! FT by WILLOUGHBY, JOCELYN | 64-34 | H 30 | |
| 00:08 | SUB OUT: JABLONOWSKI, LISA | | | |
| 00:08 | SUB IN: LAWSON, DANI | | | |
| 00:00 | | | | MISSED JUMPER by MAKURAT, ANNA |
| 00:00 | REBOUND (DEF) by TEAM | | | |

Virginia 34, UConn 64

| Points from (This Period) | UVA | UCN |
|---------------------------|-----|-----|
| In the Paint | 2 | 6 |
| Off Turns | 0 | 0 |
| 2nd Chance | 4 | 2 |
| Fast Break | 4 | 4 |
| Bench | 0 | 3 |

Official Box Score
Virginia vs UConn
Fourth Quarter Statistics Only
November 19, 2019 at XL Center - Hartford, Conn.



Virginia 10

| No. | Player | S | Pts | FG | 3FG | FT | OR | DR | TR | PF | A | TO | Blk | Stl | Min | +/- |
|---------------|-----------------------|---|-----------|-------------|------------|------------|----------|----------|----------|----------|----------|----------|----------|----------|-----------|-----|
| 04 | TOUSSAINT, DOMINIQUE | G | 0 | 0-0 | 0-0 | 0-0 | 0 | 0 | 0 | 0 | 0 | 0 | 0 | 1 | 3 | -5 |
| 13 | WILLOUGHBY, JOCELYN | G | 0 | 0-1 | 0-0 | 0-0 | 0 | 0 | 0 | 1 | 0 | 0 | 0 | 1 | 5 | -8 |
| 14 | JABLONOWSKI, LISA | G | 0 | 0-2 | 0-0 | 0-0 | 0 | 0 | 0 | 0 | 0 | 1 | 0 | 0 | 5 | -8 |
| 21 | LAWSON, DANI | F | 0 | 0-2 | 0-0 | 0-0 | 0 | 1 | 1 | 3 | 0 | 1 | 0 | 0 | 8 | -6 |
| 23 | TOI, AMANDINE | G | 2 | 1-3 | 0-0 | 0-0 | 0 | 0 | 0 | 0 | 1 | 2 | 0 | 0 | 10 | -9 |
| 00 | HORTON, DYLAN | G | 6 | 2-3 | 2-2 | 0-0 | 0 | 0 | 0 | 1 | 0 | 1 | 0 | 0 | 4 | -1 |
| 01 | MILLER, CAROLE | G | 0 | 0-1 | 0-0 | 0-0 | 0 | 1 | 1 | 0 | 0 | 0 | 0 | 0 | 7 | -4 |
| 12 | JEFFERSON, MEG | F | 0 | 0-0 | 0-0 | 0-0 | 0 | 0 | 0 | 0 | 0 | 0 | 0 | 0 | 0 | 0 |
| 15 | KORNEGAY-LUCAS, KYLIE | G | 2 | 1-3 | 0-0 | 0-0 | 2 | 2 | 4 | 2 | 1 | 0 | 0 | 0 | 7 | -4 |
| | TEAM | | | | | | 0 | 0 | 0 | 0 | | 0 | | | | |
| TOTALS | | | 10 | 4-15 | 2-2 | 0-0 | 2 | 4 | 6 | 7 | 2 | 5 | 0 | 2 | 49 | |

Shooting By Period

| Period | FG | FG% | 3FG | 3FG% | FT | FT% |
|--------|-------|-------|------|-------|-------|-------|
| Game | 14-57 | 24.6% | 6-16 | 37.5% | 10-14 | 71.4% |

Deadball Rebounds: 2,0

UConn 19

| No. | Player | S | Pts | FG | 3FG | FT | OR | DR | TR | PF | A | TO | Blk | Stl | Min | +/- |
|---------------|----------------------|---|-----------|-------------|------------|------------|----------|----------|-----------|----------|----------|----------|----------|----------|-----------|-----|
| 03 | WALKER, MEGAN | F | 4 | 1-1 | 1-1 | 1-2 | 0 | 2 | 2 | 0 | 1 | 0 | 0 | 1 | 5 | 8 |
| 05 | DANGERFIELD, CRYSTAL | G | 0 | 0-0 | 0-0 | 0-0 | 0 | 0 | 0 | 0 | 0 | 0 | 0 | 0 | 1 | 2 |
| 13 | WILLIAMS, CHRISTYN | G | 0 | 0-2 | 0-2 | 0-0 | 0 | 1 | 1 | 1 | 0 | 0 | 0 | 0 | 6 | 3 |
| 20 | NELSON-ODODA, OLIVIA | F | 2 | 1-1 | 0-0 | 0-0 | 0 | 1 | 1 | 0 | 0 | 0 | 0 | 1 | 3 | 5 |
| 24 | MAKURAT, ANNA | G | 0 | 0-2 | 0-2 | 0-0 | 0 | 3 | 3 | 0 | 2 | 1 | 1 | 1 | 10 | 9 |
| 10 | BENT, MOLLY | G | 0 | 0-0 | 0-0 | 0-0 | 0 | 0 | 0 | 0 | 1 | 0 | 0 | 0 | 4 | 1 |
| 14 | ADEBAYO, EVELYN | F | 1 | 0-0 | 0-0 | 1-2 | 0 | 0 | 0 | 0 | 0 | 0 | 0 | 0 | 3 | 4 |
| 25 | IRWIN, KYLA | F | 9 | 3-3 | 1-1 | 2-2 | 1 | 2 | 3 | 0 | 0 | 2 | 0 | 0 | 10 | 9 |
| 44 | GRIFFIN, AUBREY | G | 3 | 1-2 | 0-0 | 1-3 | 1 | 0 | 1 | 0 | 0 | 1 | 0 | 0 | 7 | 4 |
| | TEAM | | | | | | 0 | 0 | 0 | 0 | | 0 | | | | |
| TOTALS | | | 19 | 6-11 | 2-6 | 5-9 | 2 | 9 | 11 | 1 | 4 | 4 | 1 | 3 | 49 | |

Shooting By Period

| Period | FG | FG% | 3FG | 3FG% | FT | FT% |
|--------|-------|-------|------|-------|-------|-------|
| Game | 30-59 | 50.8% | 9-23 | 39.1% | 14-22 | 63.6% |

Deadball Rebounds: 5,0

Game Notes:

Officials: **Bruce Morris, Mark Resch, Krystle Apellaniz**

Attendance: **7728**

Start Time: **07:06 PM ET**

End Time: **08:56 PM ET**

Game Duration: **1:50**

| Score | 1st | 2nd | 3rd | 4th | TOT |
|-------|-----|-----|-----|-----|-----------|
| UVA | 10 | 7 | 17 | 10 | 44 |
| UCN | 26 | 16 | 22 | 19 | 83 |

| Points from (This Period) | UVA | UCN |
|---------------------------|-----|-----|
| In the Paint | 4 | 8 |
| Off Turns | 0 | 7 |
| 2nd Chance | 3 | 4 |
| Fast Break | 0 | 4 |
| Bench | 8 | 13 |

Official Play-By-Play
Virginia vs UConn
Fourth Quarter
November 19, 2019 at XL Center - Hartford, Conn.



Period 4

Starters:

Virginia: 13 WILLOUGHBY, JOCELYN (G); 14 JABLONOWSKI, LISA (G); 21 LAWSON, DANI (F); 23 TOI, AMANDINE (G); 4 TOUSSAINT, DOMINIQUE (G);
UConn: 13 WILLIAMS, CHRISTYN (G); 20 NELSON-ODODA, OLIVIA (F); 24 MAKURAT, ANNA (G); 3 WALKER, MEGAN (F); 5 DANGERFIELD, CRYSTAL (G);

| Time | VISITORS: Virginia | Score | Margin | HOME: UConn |
|-------|--|-------|--------|---|
| 10:00 | | | | SUB OUT: WILLIAMS, CHRISTYN |
| 10:00 | | | | SUB OUT: ADEBAYO, EVELYN |
| 10:00 | | | | SUB IN: WALKER, MEGAN |
| 10:00 | | | | SUB IN: NELSON-ODODA, OLIVIA |
| 10:00 | SUB OUT: KORNEGAY-LUCAS, KYLIE | | | |
| 10:00 | SUB IN: JABLONOWSKI, LISA | | | |
| 09:44 | MISSED LAYUP by LAWSON, DANI | | | |
| 09:41 | | | | REBOUND (DEF) by NELSON-ODODA, OLIVIA |
| 09:36 | | 66-34 | H 32 | GOOD! LAYUP by IRWIN, KYLA [FB] |
| 09:36 | | | | ASSIST by MAKURAT, ANNA |
| 09:27 | TIMEOUT 30SEC | | | |
| 09:27 | | | | SUB OUT: DANGERFIELD, CRYSTAL |
| 09:27 | | | | SUB IN: WILLIAMS, CHRISTYN |
| 09:10 | MISSED LAYUP by JABLONOWSKI, LISA | | | |
| 09:07 | | | | REBOUND (DEF) by WALKER, MEGAN |
| 08:51 | | 69-34 | H 35 | GOOD! 3PTR by WALKER, MEGAN |
| 08:51 | | | | ASSIST by MAKURAT, ANNA |
| 08:28 | GOOD! LAYUP by TOI, AMANDINE [PNT] | 69-36 | H 33 | |
| 08:14 | | | | TURNOVER (BADPASS) by IRWIN, KYLA |
| 08:14 | STEAL by WILLOUGHBY, JOCELYN | | | |
| 07:59 | FOUL (OFF) by LAWSON, DANI | | | |
| 07:59 | TURNOVER (OFFENSIVE) by LAWSON, DANI | | | |
| 07:48 | | 71-36 | H 35 | GOOD! LAYUP by NELSON-ODODA, OLIVIA [PNT] |
| 07:30 | MISSED JUMPER by TOI, AMANDINE | | | |
| 07:26 | | | | REBOUND (DEF) by MAKURAT, ANNA |
| 07:14 | | | | TURNOVER (BADPASS) by MAKURAT, ANNA |
| 07:14 | STEAL by TOUSSAINT, DOMINIQUE | | | |
| 06:56 | TURNOVER (BADPASS) by JABLONOWSKI, LISA | | | |
| 06:56 | | | | STEAL by NELSON-ODODA, OLIVIA |
| 06:51 | FOUL (PERSONAL) by WILLOUGHBY, JOCELYN | | | |
| 06:51 | | | | SUB OUT: NELSON-ODODA, OLIVIA |
| 06:51 | | | | SUB IN: GRIFFIN, AUBREY |
| 06:51 | SUB OUT: TOUSSAINT, DOMINIQUE | | | |
| 06:51 | SUB OUT: LAWSON, DANI | | | |
| 06:51 | SUB IN: MILLER, CAROLE | | | |
| 06:51 | SUB IN: KORNEGAY-LUCAS, KYLIE | | | |
| 06:51 | | | | MISSED FT by WALKER, MEGAN |
| 06:51 | | | | REBOUND (OFF) by TEAM |
| 06:51 | | 72-36 | H 36 | GOOD! FT by WALKER, MEGAN [FB] |
| 06:37 | | | | FOUL (PERSONAL) by WILLIAMS, CHRISTYN |
| 06:24 | MISSED LAYUP by JABLONOWSKI, LISA | | | |
| 06:20 | REBOUND (OFF) by KORNEGAY-LUCAS, KYLIE | | | |
| 06:18 | MISSED JUMPER by KORNEGAY-LUCAS, KYLIE | | | |
| 06:15 | | | | REBOUND (DEF) by WILLIAMS, CHRISTYN |
| 06:00 | | | | MISSED 3PTR by MAKURAT, ANNA |
| 05:56 | REBOUND (DEF) by KORNEGAY-LUCAS, KYLIE | | | |
| 05:42 | MISSED LAYUP by WILLOUGHBY, JOCELYN | | | |
| 05:42 | | | | BLOCK by MAKURAT, ANNA |
| 05:37 | | | | REBOUND (DEF) by WALKER, MEGAN |
| 05:34 | | | | MISSED 3PTR by WILLIAMS, CHRISTYN |
| 05:31 | REBOUND (DEF) by MILLER, CAROLE | | | |
| 05:27 | TURNOVER (BADPASS) by TOI, AMANDINE | | | |
| 05:27 | | | | STEAL by MAKURAT, ANNA |
| 05:18 | | 74-36 | H 38 | GOOD! LAYUP by IRWIN, KYLA [PNT] |
| 05:18 | | | | ASSIST by WALKER, MEGAN |
| 04:58 | TURNOVER (BADPASS) by TOI, AMANDINE | | | |
| 04:58 | | | | STEAL by WALKER, MEGAN |
| 04:34 | | | | MISSED 3PTR by WILLIAMS, CHRISTYN |
| 04:31 | | | | REBOUND (OFF) by IRWIN, KYLA |
| 04:31 | FOUL (PERSONAL) by KORNEGAY-LUCAS, KYLIE | | | |
| 04:31 | | | | |
| 04:31 | | | | SUB OUT: WALKER, MEGAN |
| 04:31 | | | | SUB IN: BENT, MOLLY |
| 04:31 | SUB OUT: WILLOUGHBY, JOCELYN | | | |
| 04:31 | SUB OUT: JABLONOWSKI, LISA | | | |
| 04:31 | SUB IN: HORTON, DYLAN | | | |
| 04:31 | SUB IN: LAWSON, DANI | | | |
| 04:31 | | 75-36 | H 39 | GOOD! FT by IRWIN, KYLA |
| 04:31 | | 76-36 | H 40 | GOOD! FT by IRWIN, KYLA |
| 04:13 | GOOD! LAYUP by KORNEGAY-LUCAS, KYLIE [PNT] | 76-38 | H 38 | |

| Time | VISITORS: Virginia | Score | Margin | HOME: UConn |
|-------|--|-------|--------|--|
| 03:43 | | | | MISSED LAYUP by GRIFFIN, AUBREY |
| 03:40 | REBOUND (DEF) by KORNEGAY-LUCAS, KYLIE | | | |
| 03:37 | MISSED JUMPER by KORNEGAY-LUCAS, KYLIE | | | |
| 03:35 | REBOUND (OFF) by KORNEGAY-LUCAS, KYLIE | | | |
| 03:32 | GOOD! 3PTR by HORTON, DYLAN | 76-41 | H 35 | |
| 03:32 | ASSIST by KORNEGAY-LUCAS, KYLIE | | | |
| 03:10 | | | | TURNOVER (TRAVEL) by IRWIN, KYLA |
| 03:10 | | | | SUB OUT: WILLIAMS, CHRISTYN |
| 03:10 | | | | SUB IN: ADEBAYO, EVELYN |
| 02:53 | MISSED JUMPER by HORTON, DYLAN | | | |
| 02:50 | | | | REBOUND (DEF) by IRWIN, KYLA |
| 02:48 | FOUL (PERSONAL) by LAWSON, DANI | | | |
| 02:47 | | | | MISSED FT by GRIFFIN, AUBREY |
| 02:47 | | | | REBOUND (OFF) by TEAM |
| 02:47 | | 77-41 | H 36 | GOOD! FT by GRIFFIN, AUBREY [FB] |
| 02:31 | MISSED LAYUP by MILLER, CAROLE | | | |
| 02:27 | | | | REBOUND (DEF) by IRWIN, KYLA |
| 02:08 | | | | MISSED 3PTR by MAKURAT, ANNA |
| 02:04 | | | | REBOUND (OFF) by GRIFFIN, AUBREY |
| 02:04 | | 79-41 | H 38 | GOOD! LAYUP by GRIFFIN, AUBREY [PNT] |
| 02:04 | FOUL (PERSONAL) by KORNEGAY-LUCAS, KYLIE | | | |
| 02:04 | | | | MISSED FT by GRIFFIN, AUBREY |
| 02:02 | REBOUND (DEF) by LAWSON, DANI | | | |
| 01:45 | MISSED JUMPER by LAWSON, DANI | | | |
| 01:42 | | | | REBOUND (DEF) by MAKURAT, ANNA |
| 01:35 | | 82-41 | H 41 | GOOD! 3PTR by IRWIN, KYLA |
| 01:35 | | | | ASSIST by BENT, MOLLY |
| 01:16 | GOOD! 3PTR by HORTON, DYLAN | 82-44 | H 38 | |
| 01:16 | ASSIST by TOI, AMANDINE | | | |
| 00:59 | FOUL (PERSONAL) by LAWSON, DANI | | | |
| 00:59 | | | | MISSED FT by ADEBAYO, EVELYN |
| 00:59 | | | | REBOUND (OFF) by TEAM |
| 00:59 | | 83-44 | H 39 | GOOD! FT by ADEBAYO, EVELYN |
| 00:46 | MISSED JUMPER by TOI, AMANDINE | | | |
| 00:42 | | | | REBOUND (DEF) by MAKURAT, ANNA |
| 00:41 | | | | TURNOVER (LOSTBALL) by GRIFFIN, AUBREY |
| 00:26 | FOUL (OFF) by HORTON, DYLAN | | | |
| 00:26 | TURNOVER (OFFENSIVE) by HORTON, DYLAN | | | |

Virginia 44, UConn 83

| Points from (This Period) | UVA | UCN |
|---------------------------|-----|-----|
| In the Paint | 4 | 8 |
| Off Turns | 0 | 7 |
| 2nd Chance | 3 | 4 |
| Fast Break | 0 | 4 |
| Bench | 8 | 13 |

Official Scoring/Possession Reference Chart
Virginia vs UConn
Period 1
November 19, 2019 at XL Center - Hartford, Conn.



Period 1

Starters:

Virginia: 13 WILLOUGHBY, JOCELYN (G); 14 JABLONOWSKI, LISA (G); 21 LAWSON, DANI (F); 23 TOI, AMANDINE (G); 4 TOUSSAINT, DOMINIQUE (G);
UConn: 13 WILLIAMS, CHRISTYN (G); 20 NELSON-ODODA, OLIVIA (F); 24 MAKURAT, ANNA (G); 3 WALKER, MEGAN (F); 5 DANGERFIELD, CRYSTAL (G);

| Time | VISITORS: Virginia | Score | Margin | HOME: UConn |
|-------|---|-------|--------|--|
| 09:18 | GOOD! JUMPER by TOUSSAINT, DOMINIQUE | 0-2 | V 2 | |
| 08:36 | GOOD! JUMPER by TOUSSAINT, DOMINIQUE | 0-4 | V 4 | |
| 08:29 | | 2-4 | V 2 | GOOD! LAYUP by WILLIAMS, CHRISTYN [FB/PNT] |
| 07:21 | | 5-4 | H 1 | GOOD! 3PTR by DANGERFIELD, CRYSTAL [FB] |
| 07:02 | GOOD! JUMPER by JABLONOWSKI, LISA [PNT] | 5-6 | V 1 | |
| 06:37 | GOOD! 3PTR by JABLONOWSKI, LISA | 5-9 | V 4 | |
| 06:11 | | 7-9 | V 2 | GOOD! JUMPER by WALKER, MEGAN |
| 05:30 | | 9-9 | T | GOOD! JUMPER by WALKER, MEGAN [PNT] |
| 05:05 | | 11-9 | H 2 | GOOD! LAYUP by WILLIAMS, CHRISTYN [FB/PNT] |
| 03:32 | | 13-9 | H 4 | GOOD! LAYUP by WALKER, MEGAN [PNT] |
| 02:41 | | 15-9 | H 6 | GOOD! LAYUP by WALKER, MEGAN [PNT] |
| 02:20 | | 18-9 | H 9 | GOOD! 3PTR by WALKER, MEGAN [FB] |
| 01:44 | | 20-9 | H 11 | GOOD! LAYUP by WILLIAMS, CHRISTYN [PNT] |
| 01:12 | | 21-9 | H 12 | GOOD! FT by WILLIAMS, CHRISTYN |
| 01:12 | | 22-9 | H 13 | GOOD! FT by WILLIAMS, CHRISTYN |
| 00:56 | GOOD! FT by KORNEGAY-LUCAS, KYLIE | 22-10 | H 12 | |
| 00:30 | | 25-10 | H 15 | GOOD! 3PTR by DANGERFIELD, CRYSTAL |
| 00:09 | | 26-10 | H 16 | GOOD! FT by IRWIN, KYLA [FB] |

Virginia 10, UConn 26

Official Scoring/Possession Reference Chart
Virginia vs UConn
Period 2
November 19, 2019 at XL Center - Hartford, Conn.



Period 2

Starters:

Virginia: 13 WILLOUGHBY, JOCELYN (G); 14 JABLONOWSKI, LISA (G); 21 LAWSON, DANI (F); 23 TOI, AMANDINE (G); 4 TOUSSAINT, DOMINIQUE (G);
UConn: 13 WILLIAMS, CHRISTYN (G); 20 NELSON-ODODA, OLIVIA (F); 24 MAKURAT, ANNA (G); 3 WALKER, MEGAN (F); 5 DANGERFIELD, CRYSTAL (G);

| Time | VISITORS: Virginia | Score | Margin | HOME: UConn |
|-------|---------------------------------|-------|--------|---|
| 09:02 | | 28-10 | H 18 | GOOD! LAYUP by GRIFFIN, AUBREY [PNT] |
| 08:21 | | 30-10 | H 20 | GOOD! LAYUP by WILLIAMS, CHRISTYN [PNT] |
| 07:48 | | 32-10 | H 22 | GOOD! JUMPER by WALKER, MEGAN [PNT] |
| 07:05 | | 33-10 | H 23 | GOOD! FT by GRIFFIN, AUBREY [FB] |
| 06:42 | GOOD! 3PTR by MILLER, CAROLE | 33-13 | H 20 | |
| 06:12 | | 34-13 | H 21 | GOOD! FT by WALKER, MEGAN |
| 06:12 | | 35-13 | H 22 | GOOD! FT by WALKER, MEGAN |
| 04:44 | GOOD! 3PTR by MILLER, CAROLE | 35-16 | H 19 | |
| 03:30 | | 37-16 | H 21 | GOOD! LAYUP by MAKURAT, ANNA [PNT] |
| 02:49 | | 40-16 | H 24 | GOOD! 3PTR by MAKURAT, ANNA |
| 02:12 | | 42-16 | H 26 | GOOD! LAYUP by MAKURAT, ANNA [PNT] |
| 02:00 | GOOD! FT by WILLOUGHBY, JOCELYN | 42-17 | H 25 | |

Virginia 17, UConn 42

Official Scoring/Possession Reference Chart
Virginia vs UConn
Period 3
November 19, 2019 at XL Center - Hartford, Conn.



Period 3

Starters:

Virginia: 13 WILLOUGHBY, JOCELYN (G); 14 JABLONOWSKI, LISA (G); 21 LAWSON, DANI (F); 23 TOI, AMANDINE (G); 4 TOUSSAINT, DOMINIQUE (G);
UConn: 13 WILLIAMS, CHRISTYN (G); 20 NELSON-ODODA, OLIVIA (F); 24 MAKURAT, ANNA (G); 3 WALKER, MEGAN (F); 5 DANGERFIELD, CRYSTAL (G);

| Time | VISITORS: Virginia | Score | Margin | HOME: UConn |
|-------|--------------------------------------|-------|--------|--|
| 09:49 | GOOD! JUMPER by WILLOUGHBY, JOCELYN | 42-19 | H 23 | |
| 09:28 | | 44-19 | H 25 | GOOD! LAYUP by NELSON-ODODA, OLIVIA |
| 09:07 | | 46-19 | H 27 | GOOD! LAYUP by NELSON-ODODA, OLIVIA [FB] |
| 08:34 | | 48-19 | H 29 | GOOD! JUMPER by DANGERFIELD, CRYSTAL |
| 08:01 | GOOD! 3PTR by TOUSSAINT, DOMINIQUE | 48-22 | H 26 | |
| 07:35 | GOOD! FT by WILLOUGHBY, JOCELYN [FB] | 48-23 | H 25 | |
| 07:35 | GOOD! FT by WILLOUGHBY, JOCELYN [FB] | 48-24 | H 24 | |
| 07:22 | | 49-24 | H 25 | GOOD! FT by NELSON-ODODA, OLIVIA |
| 06:58 | | 52-24 | H 28 | GOOD! 3PTR by MAKURAT, ANNA |
| 05:17 | | 54-24 | H 30 | GOOD! LAYUP by WILLIAMS, CHRISTYN [PNT] |
| 05:01 | GOOD! JUMPER by WILLOUGHBY, JOCELYN | 54-26 | H 28 | |
| 04:42 | GOOD! FT by WILLOUGHBY, JOCELYN [FB] | 54-27 | H 27 | |
| 04:42 | GOOD! FT by WILLOUGHBY, JOCELYN [FB] | 54-28 | H 26 | |
| 04:29 | | 55-28 | H 27 | GOOD! FT by NELSON-ODODA, OLIVIA |
| 04:29 | | 56-28 | H 28 | GOOD! FT by NELSON-ODODA, OLIVIA |
| 03:03 | | 59-28 | H 31 | GOOD! 3PTR by WILLIAMS, CHRISTYN |
| 02:30 | GOOD! FT by JABLONOWSKI, LISA | 59-29 | H 30 | |
| 02:30 | GOOD! FT by JABLONOWSKI, LISA | 59-30 | H 29 | |
| 01:13 | GOOD! LAYUP by WILLOUGHBY, JOCELYN | 59-32 | H 27 | |
| 01:08 | | 61-32 | H 29 | GOOD! JUMPER by WILLIAMS, CHRISTYN [FB] |
| 00:31 | | 64-32 | H 32 | GOOD! 3PTR by IRWIN, KYLA |
| 00:08 | GOOD! FT by WILLOUGHBY, JOCELYN | 64-33 | H 31 | |
| 00:08 | GOOD! FT by WILLOUGHBY, JOCELYN | 64-34 | H 30 | |

Virginia 34, UConn 64

Official Scoring/Possession Reference Chart
Virginia vs UConn
Period 4
November 19, 2019 at XL Center - Hartford, Conn.



Period 4

Starters:

Virginia: 13 WILLOUGHBY, JOCELYN (G); 14 JABLONOWSKI, LISA (G); 21 LAWSON, DANI (F); 23 TOI, AMANDINE (G); 4 TOUSSAINT, DOMINIQUE (G);
UConn: 13 WILLIAMS, CHRISTYN (G); 20 NELSON-ODODA, OLIVIA (F); 24 MAKURAT, ANNA (G); 3 WALKER, MEGAN (F); 5 DANGERFIELD, CRYSTAL (G);

| Time | VISITORS: Virginia | Score | Margin | HOME: UConn |
|-------|--|-------|--------|---|
| 09:36 | | 66-34 | H 32 | GOOD! LAYUP by IRWIN, KYLA [FB] |
| 08:51 | | 69-34 | H 35 | GOOD! 3PTR by WALKER, MEGAN |
| 08:28 | GOOD! LAYUP by TOI, AMANDINE [PNT] | 69-36 | H 33 | |
| 07:48 | | 71-36 | H 35 | GOOD! LAYUP by NELSON-ODODA, OLIVIA [PNT] |
| 06:51 | | 72-36 | H 36 | GOOD! FT by WALKER, MEGAN [FB] |
| 05:18 | | 74-36 | H 38 | GOOD! LAYUP by IRWIN, KYLA [PNT] |
| 04:31 | | 75-36 | H 39 | GOOD! FT by IRWIN, KYLA |
| 04:31 | | 76-36 | H 40 | GOOD! FT by IRWIN, KYLA |
| 04:13 | GOOD! LAYUP by KORNEGAY-LUCAS, KYLIE [PNT] | 76-38 | H 38 | |
| 03:32 | GOOD! 3PTR by HORTON, DYLAN | 76-41 | H 35 | |
| 02:47 | | 77-41 | H 36 | GOOD! FT by GRIFFIN, AUBREY [FB] |
| 02:04 | | 79-41 | H 38 | GOOD! LAYUP by GRIFFIN, AUBREY [PNT] |
| 01:35 | | 82-41 | H 41 | GOOD! 3PTR by IRWIN, KYLA |
| 01:16 | GOOD! 3PTR by HORTON, DYLAN | 82-44 | H 38 | |
| 00:59 | | 83-44 | H 39 | GOOD! FT by ADEBAYO, EVELYN |

Virginia 44, UConn 83

Official Substitutions Log
Virginia vs UConn
Period 1
November 19, 2019 at XL Center - Hartford, Conn.



| VISITORS: Virginia | Time | Score | HOME: UConn |
|----------------------------------|-------|-------|-------------------------------|
| 13 WILLOUGHBY, JOCELYN | | | 13 WILLIAMS, CHRISTYN |
| 14 JABLONOWSKI, LISA | | | 20 NELSON-ODODA, OLIVIA |
| 21 LAWSON, DANI | | | 24 MAKURAT, ANNA |
| 23 TOI, AMANDINE | | | 3 WALKER, MEGAN |
| 4 TOUSSAINT, DOMINIQUE | | | 5 DANGERFIELD, CRYSTAL |
| SUB OUT: 21 LAWSON, DANI | 04:36 | 9-11 | |
| SUB IN: 1 MILLER, CAROLE | 04:36 | | |
| | 03:13 | 9-13 | SUB OUT: MAKURAT, ANNA |
| | 03:13 | | SUB IN: GRIFFIN, AUBREY |
| | 03:13 | | SUB OUT: NELSON-ODODA, OLIVIA |
| | 03:13 | | SUB IN: IRWIN, KYLA |
| SUB OUT: 23 TOI, AMANDINE | 02:49 | 9-13 | |
| SUB IN: 15 KORNEGAY-LUCAS, KYLIE | 02:49 | | |
| | 02:10 | 9-18 | SUB OUT: GRIFFIN, AUBREY |
| | 02:10 | | SUB IN: NELSON-ODODA, OLIVIA |
| | 01:12 | 9-22 | SUB OUT: NELSON-ODODA, OLIVIA |
| | 01:12 | | SUB IN: GRIFFIN, AUBREY |
| SUB OUT: 14 JABLONOWSKI, LISA | 00:09 | 10-25 | |
| SUB IN: 12 JEFFERSON, MEG | 00:09 | | |

Virginia 10, UConn 26

Official Substitutions Log
Virginia vs UConn
Period 2
November 19, 2019 at XL Center - Hartford, Conn.



| VISITORS: Virginia | Time | Score | HOME: UConn |
|-----------------------------------|-------|-------|-------------------------------|
| 13 WILLOUGHBY, JOCELYN | | | 13 WILLIAMS, CHRISTYN |
| 14 JABLONOWSKI, LISA | | | 20 NELSON-ODODA, OLIVIA |
| 21 LAWSON, DANI | | | 24 MAKURAT, ANNA |
| 23 TOI, AMANDINE | | | 3 WALKER, MEGAN |
| 4 TOUSSAINT, DOMINIQUE | | | 5 DANGERFIELD, CRYSTAL |
| SUB OUT: 12 JEFFERSON, MEG | 08:05 | 10-30 | |
| SUB IN: 21 LAWSON, DANI | 08:05 | | |
| SUB OUT: 4 TOUSSAINT, DOMINIQUE | 07:16 | 10-32 | |
| SUB IN: 0 HORTON, DYLAN | 07:16 | | |
| | 06:18 | 13-33 | SUB OUT: WILLIAMS, CHRISTYN |
| | 06:18 | | SUB IN: MAKURAT, ANNA |
| | 06:18 | | SUB OUT: GRIFFIN, AUBREY |
| | 06:18 | | SUB IN: BENT, MOLLY |
| SUB OUT: 1 MILLER, CAROLE | 06:18 | | |
| SUB IN: 4 TOUSSAINT, DOMINIQUE | 06:18 | | |
| SUB OUT: 13 WILLOUGHBY, JOCELYN | 06:12 | 13-33 | |
| SUB IN: 1 MILLER, CAROLE | 06:12 | | |
| | 02:10 | 16-42 | SUB OUT: WALKER, MEGAN |
| | 02:10 | | SUB OUT: IRWIN, KYLA |
| | 02:10 | | SUB IN: WILLIAMS, CHRISTYN |
| | 02:10 | | SUB IN: NELSON-ODODA, OLIVIA |
| SUB OUT: 0 HORTON, DYLAN | 02:10 | | |
| SUB OUT: 15 KORNEGAY-LUCAS, KYLIE | 02:10 | | |
| SUB OUT: 21 LAWSON, DANI | 02:10 | | |
| SUB IN: 13 WILLOUGHBY, JOCELYN | 02:10 | | |
| SUB IN: 14 JABLONOWSKI, LISA | 02:10 | | |
| SUB IN: 23 TOI, AMANDINE | 02:10 | | |
| | 00:52 | 17-42 | SUB OUT: NELSON-ODODA, OLIVIA |
| | 00:52 | | SUB IN: WALKER, MEGAN |

Virginia 17, UConn 42

Official Substitutions Log
Virginia vs UConn
Period 3
November 19, 2019 at XL Center - Hartford, Conn.



| VISITORS: Virginia | Time | Score | HOME: UConn |
|----------------------------------|-------|-------|-------------------------------|
| 13 WILLOUGHBY, JOCELYN | | | 13 WILLIAMS, CHRISTYN |
| 14 JABLONOWSKI, LISA | | | 20 NELSON-ODODA, OLIVIA |
| 21 LAWSON, DANI | | | 24 MAKURAT, ANNA |
| 23 TOI, AMANDINE | | | 3 WALKER, MEGAN |
| 4 TOUSSAINT, DOMINIQUE | | | 5 DANGERFIELD, CRYSTAL |
| | 10:00 | - | SUB OUT: BENT, MOLLY |
| | 10:00 | | SUB IN: NELSON-ODODA, OLIVIA |
| SUB OUT: 1 MILLER, CAROLE | 10:00 | | |
| SUB IN: 21 LAWSON, DANI | 10:00 | | |
| SUB OUT: 21 LAWSON, DANI | 07:44 | 22-48 | |
| SUB IN: 1 MILLER, CAROLE | 07:44 | | |
| SUB OUT: 23 TOI, AMANDINE | 06:25 | 24-52 | |
| SUB IN: 12 JEFFERSON, MEG | 06:25 | | |
| | 04:42 | 26-54 | SUB OUT: MAKURAT, ANNA |
| | 04:42 | | SUB IN: GRIFFIN, AUBREY |
| SUB OUT: 12 JEFFERSON, MEG | 04:42 | | |
| SUB IN: 15 KORNEGAY-LUCAS, KYLIE | 04:42 | | |
| | 03:09 | 28-56 | SUB OUT: NELSON-ODODA, OLIVIA |
| | 03:09 | | SUB IN: IRWIN, KYLA |
| | 02:30 | 30-59 | SUB OUT: GRIFFIN, AUBREY |
| | 02:30 | | SUB IN: ADEBAYO, EVELYN |
| | 00:50 | 32-61 | SUB OUT: WALKER, MEGAN |
| | 00:50 | | SUB IN: MAKURAT, ANNA |
| SUB OUT: 1 MILLER, CAROLE | 00:50 | | |
| SUB IN: 23 TOI, AMANDINE | 00:50 | | |
| SUB OUT: 14 JABLONOWSKI, LISA | 00:08 | 34-64 | |
| SUB IN: 21 LAWSON, DANI | 00:08 | | |

Virginia 34, UConn 64

Official Substitutions Log
Virginia vs UConn
Period 4
November 19, 2019 at XL Center - Hartford, Conn.



| VISITORS: Virginia | Time | Score | HOME: UConn |
|-----------------------------------|-------|-------|-------------------------------|
| 13 WILLOUGHBY, JOCELYN | | | 13 WILLIAMS, CHRISTYN |
| 14 JABLONOWSKI, LISA | | | 20 NELSON-ODODA, OLIVIA |
| 21 LAWSON, DANI | | | 24 MAKURAT, ANNA |
| 23 TOI, AMANDINE | | | 3 WALKER, MEGAN |
| 4 TOUSSAINT, DOMINIQUE | | | 5 DANGERFIELD, CRYSTAL |
| | 10:00 | - | SUB OUT: WILLIAMS, CHRISTYN |
| | 10:00 | | SUB OUT: ADEBAYO, EVELYN |
| | 10:00 | | SUB IN: WALKER, MEGAN |
| | 10:00 | | SUB IN: NELSON-ODODA, OLIVIA |
| SUB OUT: 15 KORNEGAY-LUCAS, KYLIE | 10:00 | | |
| SUB IN: 14 JABLONOWSKI, LISA | 10:00 | | |
| | 09:27 | 34-66 | SUB OUT: DANGERFIELD, CRYSTAL |
| | 09:27 | | SUB IN: WILLIAMS, CHRISTYN |
| | 06:51 | 36-71 | SUB OUT: NELSON-ODODA, OLIVIA |
| | 06:51 | | SUB IN: GRIFFIN, AUBREY |
| SUB OUT: 4 TOUSSAINT, DOMINIQUE | 06:51 | | |
| SUB OUT: 21 LAWSON, DANI | 06:51 | | |
| SUB IN: 1 MILLER, CAROLE | 06:51 | | |
| SUB IN: 15 KORNEGAY-LUCAS, KYLIE | 06:51 | | |
| | 04:31 | 36-74 | SUB OUT: WALKER, MEGAN |
| | 04:31 | | SUB IN: BENT, MOLLY |
| SUB OUT: 13 WILLOUGHBY, JOCELYN | 04:31 | | |
| SUB OUT: 14 JABLONOWSKI, LISA | 04:31 | | |
| SUB IN: 0 HORTON, DYLAN | 04:31 | | |
| SUB IN: 21 LAWSON, DANI | 04:31 | | |
| | 03:10 | 41-76 | SUB OUT: WILLIAMS, CHRISTYN |
| | 03:10 | | SUB IN: ADEBAYO, EVELYN |

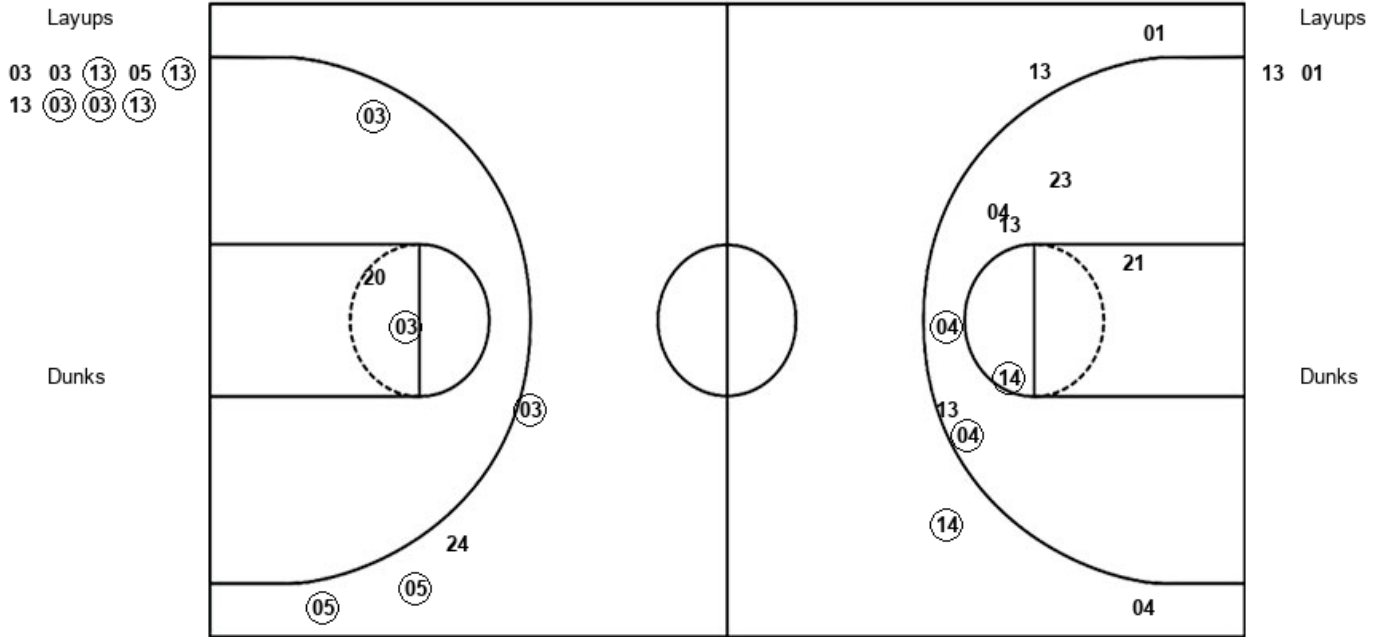
Virginia 44, UConn 83

Official Shot Chart
Virginia vs UConn
 PERIOD 1 Shots
 November 19, 2019 at XL Center - Hartford, Conn.



UConn

Virginia



| UCN : Period 1 | Made | Att | Pct |
|--------------------------|-----------|-----------|-------------|
| Layups | 5 | 9 | 55.6 |
| Dunks | 0 | 0 | 0 |
| 2PT Field Goals | 7 | 12 | 58.3 |
| 3PT Field Goals | 3 | 4 | 75.0 |
| Total Field Goals | 10 | 16 | 62.5 |

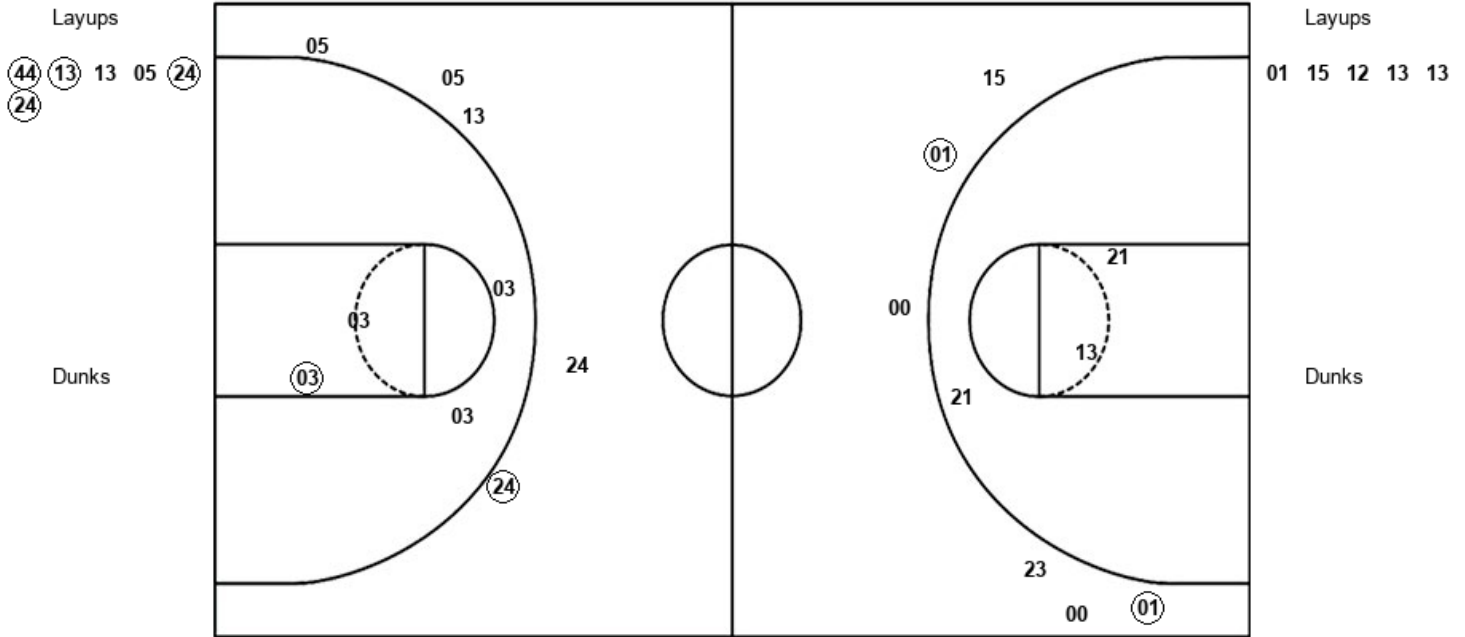
| UVA : Period 1 | Made | Att | Pct |
|--------------------------|----------|-----------|-------------|
| Layups | 0 | 2 | 00.0 |
| Dunks | 0 | 0 | 0 |
| 2PT Field Goals | 3 | 10 | 30.0 |
| 3PT Field Goals | 1 | 4 | 25.0 |
| Total Field Goals | 4 | 14 | 28.6 |

Official Shot Chart
Virginia vs UConn
 PERIOD 2 Shots
 November 19, 2019 at XL Center - Hartford, Conn.



UConn

Virginia



| UCN : Period 2 | Made | Att | Pct |
|--------------------------|----------|-----------|-------------|
| Layups | 4 | 6 | 66.7 |
| Dunks | 0 | 0 | 0 |
| 2PT Field Goals | 5 | 10 | 50.0 |
| 3PT Field Goals | 1 | 5 | 20.0 |
| Total Field Goals | 6 | 15 | 40.0 |

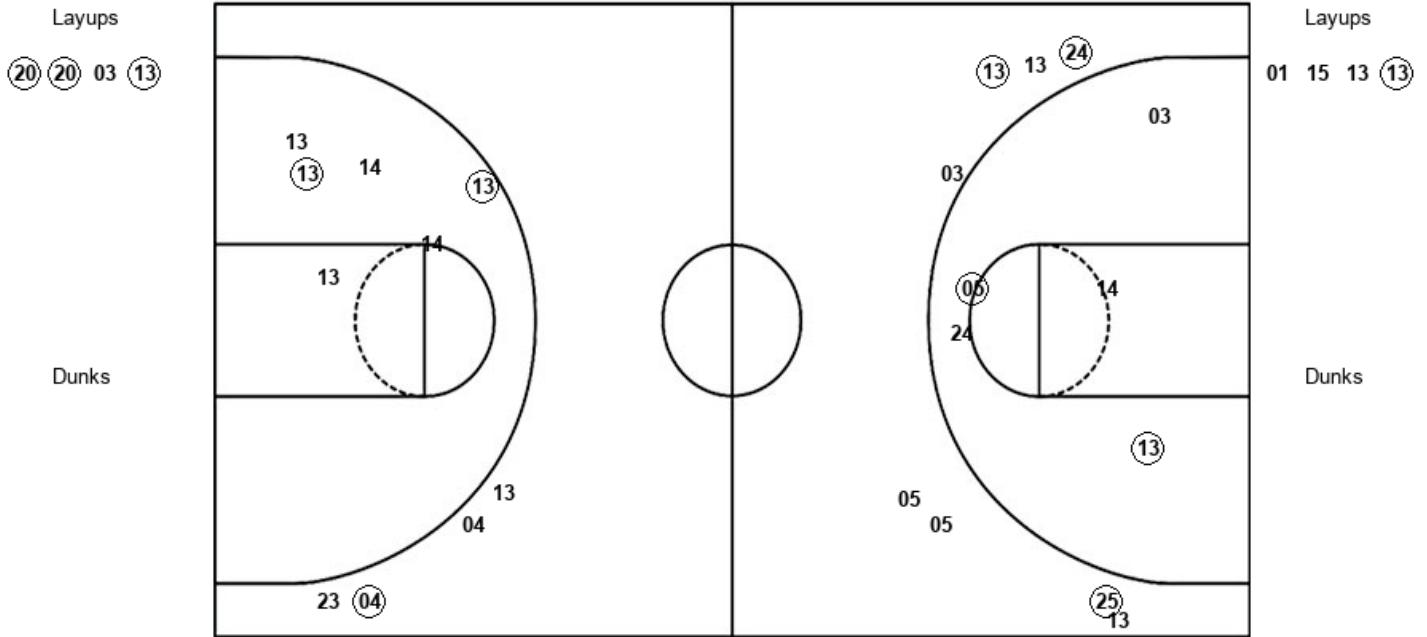
| UVA : Period 2 | Made | Att | Pct |
|--------------------------|----------|-----------|-------------|
| Layups | 0 | 5 | 00.0 |
| Dunks | 0 | 0 | 0 |
| 2PT Field Goals | 0 | 8 | 00.0 |
| 3PT Field Goals | 2 | 6 | 33.3 |
| Total Field Goals | 2 | 14 | 14.3 |

Official Shot Chart
Virginia vs UConn
 PERIOD 3 Shots
 November 19, 2019 at XL Center - Hartford, Conn.



UConn

Virginia



| UCN : Period 3 | Made | Att | Pct |
|--------------------------|----------|-----------|-------------|
| Layups | 3 | 4 | 75.0 |
| Dunks | 0 | 0 | 0 |
| 2PT Field Goals | 5 | 9 | 55.6 |
| 3PT Field Goals | 3 | 8 | 37.5 |
| Total Field Goals | 8 | 17 | 47.1 |

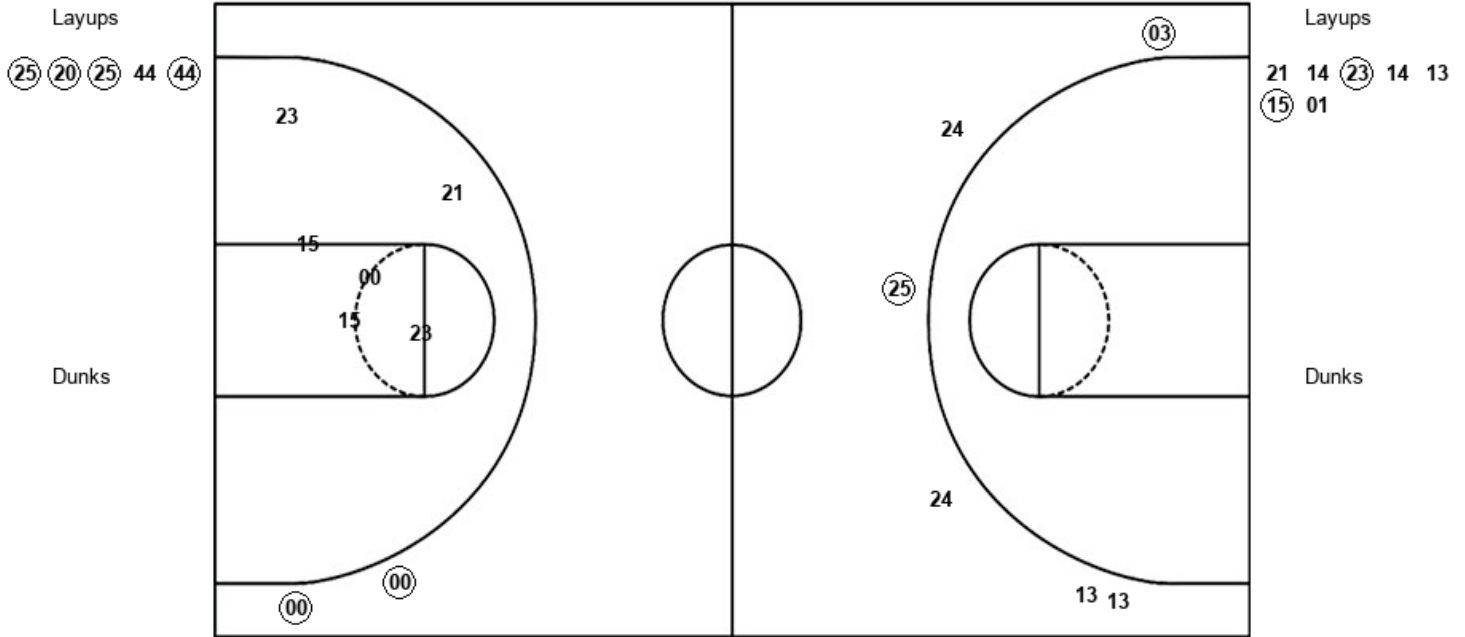
| UVA : Period 3 | Made | Att | Pct |
|--------------------------|----------|-----------|-------------|
| Layups | 1 | 4 | 25.0 |
| Dunks | 0 | 0 | 0 |
| 2PT Field Goals | 3 | 10 | 30.0 |
| 3PT Field Goals | 1 | 4 | 25.0 |
| Total Field Goals | 4 | 14 | 28.6 |

Official Shot Chart
Virginia vs UConn
 PERIOD 4 Shots
 November 19, 2019 at XL Center - Hartford, Conn.



UConn

Virginia



| UCN : Period 4 | Made | Att | Pct |
|--------------------------|----------|-----------|-------------|
| Layups | 4 | 5 | 80.0 |
| Dunks | 0 | 0 | 0 |
| 2PT Field Goals | 4 | 5 | 80.0 |
| 3PT Field Goals | 2 | 6 | 33.3 |
| Total Field Goals | 6 | 11 | 54.5 |

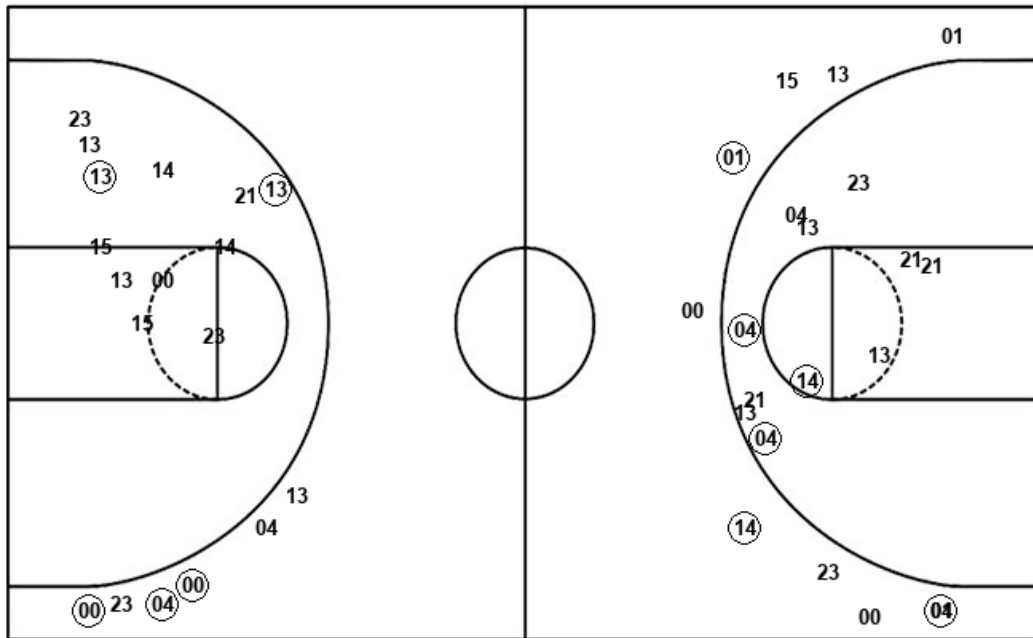
| UVA : Period 4 | Made | Att | Pct |
|--------------------------|----------|-----------|-------------|
| Layups | 2 | 7 | 28.6 |
| Dunks | 0 | 0 | 0 |
| 2PT Field Goals | 2 | 13 | 15.4 |
| 3PT Field Goals | 2 | 2 | 100.0 |
| Total Field Goals | 4 | 15 | 26.7 |

Official Shot Chart
Virginia vs UConn
 Virginia Team Shots
 November 19, 2019 at XL Center - Hartford, Conn.



Layups

Dunks



Layups

Dunks

| UVA : Period 1 | Made | Att | Pct |
|--------------------------|----------|-----------|-------------|
| Layups | 0 | 2 | 00.0 |
| Dunks | 0 | 0 | 0 |
| 2PT Field Goals | 3 | 10 | 30.0 |
| 3PT Field Goals | 1 | 4 | 25.0 |
| Total Field Goals | 4 | 14 | 28.6 |

| UVA : Period 3 | Made | Att | Pct |
|--------------------------|----------|-----------|-------------|
| Layups | 1 | 4 | 25.0 |
| Dunks | 0 | 0 | 0 |
| 2PT Field Goals | 3 | 10 | 30.0 |
| 3PT Field Goals | 1 | 4 | 25.0 |
| Total Field Goals | 4 | 14 | 28.6 |

| UVA : Period 2 | Made | Att | Pct |
|--------------------------|----------|-----------|-------------|
| Layups | 0 | 5 | 00.0 |
| Dunks | 0 | 0 | 0 |
| 2PT Field Goals | 0 | 8 | 00.0 |
| 3PT Field Goals | 2 | 6 | 33.3 |
| Total Field Goals | 2 | 14 | 14.3 |

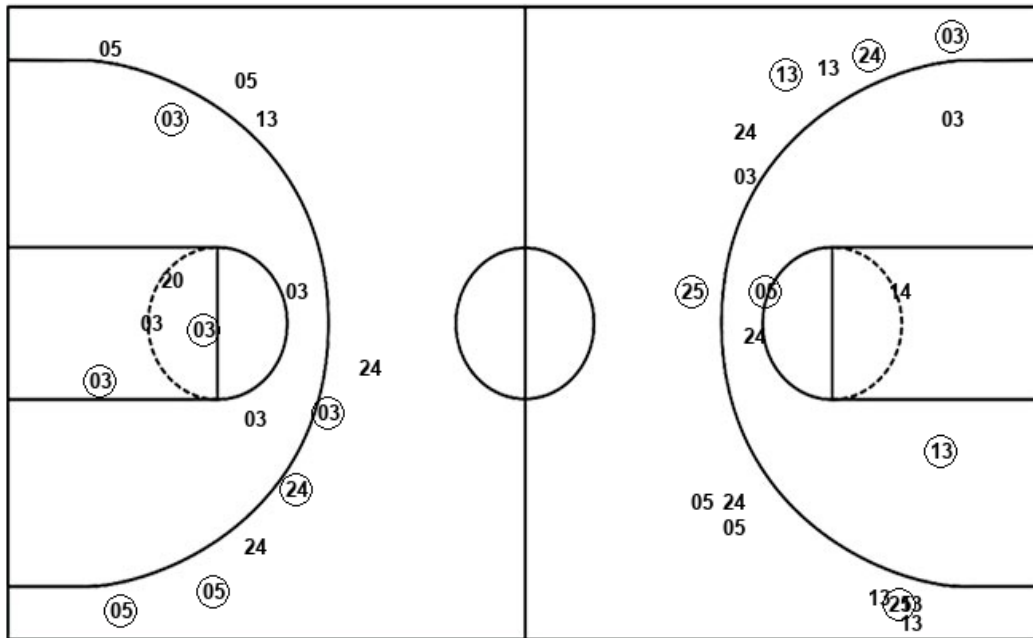
| UVA : Period 4 | Made | Att | Pct |
|--------------------------|----------|-----------|-------------|
| Layups | 2 | 7 | 28.6 |
| Dunks | 0 | 0 | 0 |
| 2PT Field Goals | 2 | 13 | 15.4 |
| 3PT Field Goals | 2 | 2 | 100.0 |
| Total Field Goals | 4 | 15 | 26.7 |

Official Shot Chart
Virginia vs UConn
 UConn Team Shots
 November 19, 2019 at XL Center - Hartford, Conn.



Layups

Dunks



Layups

Dunks

03 03 (13) 05 (13)
 13 (03) (03) (13) (44)
 (13) 13 05 (24) (24)
 (20) (20) 03 (13) (25)
 (20) (25) 44 (44)

| UCN : Period 1 | Made | Att | Pct |
|--------------------------|-----------|-----------|-------------|
| Layups | 5 | 9 | 55.6 |
| Dunks | 0 | 0 | 0 |
| 2PT Field Goals | 7 | 12 | 58.3 |
| 3PT Field Goals | 3 | 4 | 75.0 |
| Total Field Goals | 10 | 16 | 62.5 |

| UCN : Period 3 | Made | Att | Pct |
|--------------------------|----------|-----------|-------------|
| Layups | 3 | 4 | 75.0 |
| Dunks | 0 | 0 | 0 |
| 2PT Field Goals | 5 | 9 | 55.6 |
| 3PT Field Goals | 3 | 8 | 37.5 |
| Total Field Goals | 8 | 17 | 47.1 |

| UCN : Period 2 | Made | Att | Pct |
|--------------------------|----------|-----------|-------------|
| Layups | 4 | 6 | 66.7 |
| Dunks | 0 | 0 | 0 |
| 2PT Field Goals | 5 | 10 | 50.0 |
| 3PT Field Goals | 1 | 5 | 20.0 |
| Total Field Goals | 6 | 15 | 40.0 |

| UCN : Period 4 | Made | Att | Pct |
|--------------------------|----------|-----------|-------------|
| Layups | 4 | 5 | 80.0 |
| Dunks | 0 | 0 | 0 |
| 2PT Field Goals | 4 | 5 | 80.0 |
| 3PT Field Goals | 2 | 6 | 33.3 |
| Total Field Goals | 6 | 11 | 54.5 |