

FINAL SCORE



William Mary

64



UNCW

70

February 08, 2020 • Trask Coliseum - Wilmington, N.C.

FINAL STATISTICS

Official Box Score
William Mary vs UNCW
Game Totals -- Final Statistics
February 08, 2020 at Trask Coliseum - Wilmington, N.C.



William Mary 64

No.	Player	S	Pts	FG	3FG	FT	OR	DR	TR	PF	A	TO	Blk	Stl	Min	+/-
02	HAMILTON, TYLER	G	0	0-1	0-0	0-0	1	2	3	4	1	2	0	0	16	5
05	BARNES, BRYCE	G	7	3-6	0-1	1-2	0	0	0	2	4	4	0	2	29	0
11	VAN VLIET, ANDY	F	12	5-10	2-6	0-0	0	6	6	2	1	0	0	0	36	-8
12	LOEWE, LUKE	G	10	5-7	0-1	0-0	2	2	4	3	0	2	0	0	33	-4
13	KNIGHT, NATHAN	C	16	5-10	1-4	5-8	1	12	13	4	0	6	2	0	20	15
01	SCOTT, THORNTON	G	2	1-5	0-4	0-0	0	1	1	3	2	1	0	1	22	-18
10	HERMANOVSKIS, RAINERS	G	0	0-0	0-0	0-0	0	0	0	0	1	0	0	0	6	0
15	AYESA, MIGUEL	G	12	4-6	4-6	0-0	0	2	2	1	2	1	0	0	22	-6
21	BLAIR, QUINN	F	5	2-5	1-3	0-0	2	1	3	0	1	1	0	0	16	-14
TEAM							2	1	3	0		2				
TOTALS			64	25-50	8-25	6-10	8	27	35	19	12	19	2	3	200	

Shooting By Period

Period	FG	FG%	3FG	3FG%	FT	FT%
1st Half	14-23	61%	5-9	56%	2-2	100%
2nd Half	11-27	41%	3-16	19%	4-8	50%
Game	25-50	50.0%	8-25	32.0%	6-10	60.0%

Deadball Rebounds: 3,0
 Last FG: 2nd-00:37
 Biggest Run: 9-0
 Largest lead: By 14 at 1st-08:34
 Technical Fouls: None.

UNCW 70

No.	Player	S	Pts	FG	3FG	FT	OR	DR	TR	PF	A	TO	Blk	Stl	Min	+/-
00	GADSDEN, TY	G	14	4-8	1-4	5-6	0	2	2	1	3	0	0	4	36	-5
01	TOLEFREE, BRIAN	G	7	3-7	0-2	1-1	1	1	2	2	0	1	0	1	19	3
02	PHILLIPS, SHYKEIM	G	6	2-7	0-1	2-3	0	3	3	4	2	1	0	3	32	-2
04	OKAURU, MIKE	G	15	5-11	0-0	5-7	0	4	4	3	3	2	0	2	30	6
24	DODD, IMAJAE	F	8	4-4	0-0	0-1	3	3	6	5	1	3	3	1	20	8
05	BOGGS, JAKE	G	8	2-4	2-4	2-2	0	1	1	2	1	1	0	2	16	13
23	LINSEN, MARTEN	F	10	5-9	0-0	0-0	0	0	0	1	0	0	0	1	20	-4
30	SIMS, JAYLEN	G	2	1-4	0-0	0-0	1	4	5	0	0	0	0	0	28	11
TEAM							0	0	0	0		0				
TOTALS			70	26-54	3-11	15-20	5	18	23	18	10	8	3	14	200	

Shooting By Period

Period	FG	FG%	3FG	3FG%	FT	FT%
1st Half	15-32	47%	2-6	33%	2-2	100%
2nd Half	11-22	50%	1-5	20%	13-18	72%
Game	26-54	48.1%	3-11	27.3%	15-20	75.0%

Deadball Rebounds: 1,0
 Last FG: 2nd-03:00
 Biggest Run: 10-0
 Largest lead: By 10 at 2nd-03:00
 Technical Fouls: None.

Game Notes:

Officials: Kyle Regetz, Krl Fogleman, Andrew Barksdale
 Attendance: 4155

Start Time: 07:07 PM ET
 End Time: 09:07 PM ET
 Game Duration: 1:59
 Conference Game;

Score	1st	2nd	TOT
WM	35	29	64
NCW	34	36	70

WM led for 24:37. NCW led for 13:23.
 Game was tied for 2:01.
 Times tied: 2 Lead Changes: 4

Points from	WM	NCW
In the Paint	30	36
Off Turns	9	28
2nd Chance	4	6
Fast Break	8	26
Bench	19	20

Official Box Score
William Mary vs UNCW
First Half Statistics Only
February 08, 2020 at Trask Coliseum - Wilmington, N.C.



William Mary 35

No.	Player	S	Pts	FG	3FG	FT	OR	DR	TR	PF	A	TO	Blk	Stl	Min	+/-
02	HAMILTON, TYLER	G	0	0-0	0-0	0-0	1	1	2	0	0	1	0	0	9	5
05	BARNES, BRYCE	G	2	1-2	0-0	0-0	0	0	0	0	1	3	0	0	10	5
11	VAN VLIET, ANDY	F	10	4-5	2-2	0-0	0	3	3	1	0	0	0	0	19	-1
12	LOEWE, LUKE	G	8	4-5	0-0	0-0	1	0	1	1	0	1	0	0	14	1
13	KNIGHT, NATHAN	C	5	1-3	1-2	2-2	0	6	6	2	0	3	1	0	9	6
01	SCOTT, THORNTON	G	2	1-3	0-2	0-0	0	1	1	1	2	1	0	1	12	-4
10	HERMANOVSKIS, RAINERS	G	0	0-0	0-0	0-0	0	0	0	0	1	0	0	0	6	0
15	AYESA, MIGUEL	G	3	1-1	1-1	0-0	0	1	1	1	1	1	0	0	11	-4
21	BLAIR, QUINN	F	5	2-4	1-2	0-0	2	1	3	0	0	1	0	0	9	-3
TEAM							1	1	2	0		2				
TOTALS			35	14-23	5-9	2-2	5	14	19	6	5	13	1	1	100	

Shooting By Period

Period	FG	FG%	3FG	3FG%	FT	FT%
1st Half	14-23	61%	5-9	56%	2-2	100%
Game	25-50	50.0%	8-25	32.0%	6-10	60.0%

Deadball Rebounds: 3,0
Last FG Half: WM 2nd-00:37

UNCW 34

No.	Player	S	Pts	FG	3FG	FT	OR	DR	TR	PF	A	TO	Blk	Stl	Min	+/-
00	GADSDEN, TY	G	7	3-5	1-3	0-0	0	1	1	0	1	0	0	2	18	-8
01	TOLEFREE, BRIAN	G	0	0-2	0-0	0-0	0	0	0	2	0	1	0	1	5	6
02	PHILLIPS, SHYKEIM	G	4	1-6	0-1	2-2	0	1	1	1	2	0	0	3	19	-3
04	OKAURU, MIKE	G	6	3-5	0-0	0-0	0	1	1	1	1	0	0	2	13	6
24	DODD, IMAJAE	F	6	3-3	0-0	0-0	2	0	2	3	1	1	2	0	10	-1
05	BOGGS, JAKE	G	3	1-2	1-2	0-0	0	0	0	0	1	1	0	1	10	2
23	LINSSSEN, MARTEN	F	6	3-5	0-0	0-0	0	0	0	0	0	0	0	1	10	0
30	SIMS, JAYLEN	G	2	1-4	0-0	0-0	1	1	2	0	0	0	0	0	15	-7
TEAM							0	0	0	0		0				
TOTALS			34	15-32	2-6	2-2	3	4	7	7	6	3	2	10	100	

Shooting By Period

Period	FG	FG%	3FG	3FG%	FT	FT%
1st Half	15-32	47%	2-6	33%	2-2	100%
Game	26-54	48.1%	3-11	27.3%	15-20	75.0%

Deadball Rebounds: 1,0
Last FG Half: NCW 2nd-03:00

Game Notes:

Officials: Kyle Regetz, Krl Fogleman, Andrew Barksdale
Attendance: 4155

Start Time: 07:07 PM ET
End Time: 09:07 PM ET
Game Duration: 1:59
Conference Game;

Score	1st	2nd	TOT
WM	35	29	64
NCW	34	36	70

Points from (This Period)	WM	NCW
In the Paint	14	20
Off Turns	2	19
2nd Chance	4	4
Fast Break	5	11
Bench	10	11

Official Play-By-Play
William Mary vs UNCW
First Half
February 08, 2020 at Trask Coliseum - Wilmington, N.C.



Period 1

Starters:

William Mary: 2 HAMILTON, TYLER (G); 5 BARNES, BRYCE (G); 11 VAN VLIET, ANDY (F); 12 LOEWE, LUKE (G); 13 KNIGHT, NATHAN (C);
UNCW: 00 GADSDEN, TY (G); 1 TOLEFREE, BRIAN (G); 2 PHILLIPS, SHYKEIM (G); 4 OKAURU, MIKE (G); 24 DODD, IMAJAE (F);

Time	VISITORS: William Mary	Score	Margin	HOME: UNCW
19:29				MISSED JUMPER by TOLEFREE, BRIAN
19:25				REBOUND (OFF) by DODD, IMAJAE
19:24		2-0	H 2	GOOD! JUMPER by DODD, IMAJAE [PNT]
18:51	GOOD! JUMPER by LOEWE, LUKE	2-2	T	
18:34				MISSED JUMPER by PHILLIPS, SHYKEIM
18:31	REBOUND (DEF) by VAN VLIET, ANDY			
18:25	GOOD! 3PTR by KNIGHT, NATHAN	2-5	V 3	
18:25	ASSIST by BARNES, BRYCE			
18:21				FOUL (OFF) by TOLEFREE, BRIAN
18:21				TURNOVER (OFFENSIVE) by TOLEFREE, BRIAN
18:15	GOOD! JUMPER by LOEWE, LUKE [PNT]	2-7	V 5	
18:00				MISSED LAYUP by TOLEFREE, BRIAN
17:56				REBOUND (OFF) by DODD, IMAJAE
17:55		4-7	V 3	GOOD! LAYUP by DODD, IMAJAE
17:40	MISSED LAYUP by KNIGHT, NATHAN			
17:40				BLOCK by DODD, IMAJAE
17:34				REBOUND (DEF) by OKAURU, MIKE
17:32				MISSED 3PTR by GADSDEN, TY
17:29	REBOUND (DEF) by KNIGHT, NATHAN			
17:24				FOUL (PERSONAL) by TOLEFREE, BRIAN
17:24				SUB OUT: TOLEFREE, BRIAN
17:24				SUB IN: SIMS, JAYLEN
17:08	TURNOVER (LOSTBALL) by BARNES, BRYCE			
17:08				STEAL by PHILLIPS, SHYKEIM
16:51				MISSED LAYUP by PHILLIPS, SHYKEIM
16:47	REBOUND (DEF) by KNIGHT, NATHAN			
16:31	GOOD! JUMPER by VAN VLIET, ANDY [PNT]	4-9	V 5	
16:07				MISSED 3PTR by PHILLIPS, SHYKEIM
16:03	REBOUND (DEF) by KNIGHT, NATHAN			
16:01	TURNOVER (BADPASS) by BARNES, BRYCE			
16:01				STEAL by GADSDEN, TY
15:55		6-9	V 3	GOOD! DUNK by GADSDEN, TY [FB]
15:27	GOOD! JUMPER by LOEWE, LUKE	6-11	V 5	
15:08				MISSED LAYUP by OKAURU, MIKE
15:04	REBOUND (DEF) by KNIGHT, NATHAN			
14:54	GOOD! JUMPER by VAN VLIET, ANDY	6-13	V 7	
14:31				FOUL (OFF) by DODD, IMAJAE
14:31				TURNOVER (OFFENSIVE) by DODD, IMAJAE
14:31				SUB OUT: DODD, IMAJAE
14:31				SUB IN: LINSSEN, MARTEN
14:31	SUB OUT: HAMILTON, TYLER			
14:31	SUB OUT: BARNES, BRYCE			
14:31	SUB OUT: KNIGHT, NATHAN			
14:31	SUB IN: SCOTT, THORNTON			
14:31	SUB IN: AYESA, MIGUEL			
14:31	SUB IN: BLAIR, QUINN			
14:13	MISSED JUMPER by VAN VLIET, ANDY			
14:08				REBOUND (DEF) by GADSDEN, TY
14:05		9-13	V 4	GOOD! 3PTR by GADSDEN, TY [FB]
14:05				ASSIST by PHILLIPS, SHYKEIM
13:43	MISSED LAYUP by BLAIR, QUINN			
13:39	REBOUND (OFF) by BLAIR, QUINN			
13:38	GOOD! LAYUP by BLAIR, QUINN	9-15	V 6	
13:18				MISSED JUMPER by LINSSEN, MARTEN
13:14	REBOUND (DEF) by AYESA, MIGUEL			
13:10	GOOD! 3PTR by AYESA, MIGUEL [FB]	9-18	V 9	
13:10	ASSIST by SCOTT, THORNTON			
12:44		11-18	V 7	GOOD! LAYUP by LINSSEN, MARTEN
12:24				FOUL (PERSONAL) by OKAURU, MIKE
12:24				SUB OUT: OKAURU, MIKE
12:24				SUB IN: BOGGS, JAKE
12:24	SUB OUT: LOEWE, LUKE			
12:24	SUB IN: HERMANOVSKIS, RAINERS			
12:12	GOOD! LAYUP by SCOTT, THORNTON	11-20	V 9	
11:55		13-20	V 7	GOOD! JUMPER by SIMS, JAYLEN
11:30	MISSED 3PTR by SCOTT, THORNTON			
11:26	REBOUND (OFF) by BLAIR, QUINN			
11:14				FOUL (PERSONAL) by PHILLIPS, SHYKEIM
11:14				

Time	VISITORS: William Mary	Score	Margin	HOME: UNCW
11:14	SUB OUT: VAN VLIET, ANDY			
11:14	SUB IN: KNIGHT, NATHAN			
11:05	MISSED 3PTR by BLAIR, QUINN			
11:03				REBOUND (DEF) by PHILLIPS, SHYKEIM
11:03	FOUL (PERSONAL) by KNIGHT, NATHAN			
10:38				MISSED JUMPER by SIMS, JAYLEN
10:34	REBOUND (DEF) by BLAIR, QUINN			
10:26	FOUL (OFF) by KNIGHT, NATHAN			
10:26	TURNOVER (OFFENSIVE) by KNIGHT, NATHAN			
10:26	SUB OUT: KNIGHT, NATHAN			
10:26	SUB IN: VAN VLIET, ANDY			
10:07		15-20	V 5	GOOD! JUMPER by PHILLIPS, SHYKEIM
09:45	GOOD! 3PTR by VAN VLIET, ANDY	15-23	V 8	
09:45	ASSIST by AYESA, MIGUEL			
09:26				MISSED 3PTR by GADSDEN, TY
09:23	REBOUND (DEF) by SCOTT, THORNTON			
09:15	GOOD! 3PTR by VAN VLIET, ANDY	15-26	V 11	
09:15	ASSIST by SCOTT, THORNTON			
08:53				MISSED JUMPER by SIMS, JAYLEN
08:49				REBOUND (OFF) by SIMS, JAYLEN
08:48				MISSED JUMPER by SIMS, JAYLEN
08:46	REBOUND (DEF) by TEAM			
08:46				SUB OUT: LINSSEN, MARTEN
08:46				SUB IN: DODD, IMAJAE
08:34	GOOD! 3PTR by BLAIR, QUINN	15-29	V 14	
08:34	ASSIST by HERMANOVSKIS, RAINERS			
08:28				TIMEOUT 30SEC
08:28				
08:15				MISSED LAYUP by PHILLIPS, SHYKEIM
08:11	REBOUND (DEF) by VAN VLIET, ANDY			
08:04				SUB OUT: GADSDEN, TY
08:04				SUB OUT: SIMS, JAYLEN
08:04				SUB IN: TOLEFREE, BRIAN
08:04				SUB IN: OKAURU, MIKE
07:44	TURNOVER (SHOTCLOCK) by TEAM			
07:26		17-29	V 12	GOOD! DUNK by DODD, IMAJAE
07:26				ASSIST by BOGGS, JAKE
06:56	TURNOVER (LOSTBALL) by BLAIR, QUINN			
06:56				STEAL by PHILLIPS, SHYKEIM
06:34		20-29	V 9	GOOD! 3PTR by BOGGS, JAKE
06:34				ASSIST by DODD, IMAJAE
06:18	TURNOVER (LOSTBALL) by AYESA, MIGUEL			
06:18				STEAL by OKAURU, MIKE
06:11		22-29	V 7	GOOD! LAYUP by OKAURU, MIKE [FB/PNT]
06:11	TIMEOUT 30SEC			
06:11				SUB OUT: PHILLIPS, SHYKEIM
06:11				SUB IN: GADSDEN, TY
06:11	SUB OUT: SCOTT, THORNTON			
06:11	SUB OUT: HERMANOVSKIS, RAINERS			
06:11	SUB OUT: BLAIR, QUINN			
06:11	SUB IN: HAMILTON, TYLER			
06:11	SUB IN: BARNES, BRYCE			
06:11	SUB IN: LOEWE, LUKE			
06:00	TURNOVER (BADPASS) by BARNES, BRYCE			
06:00				STEAL by TOLEFREE, BRIAN
05:59	FOUL (PERSONAL) by AYESA, MIGUEL			
05:59	SUB OUT: AYESA, MIGUEL			
05:59	SUB IN: KNIGHT, NATHAN			
05:44		24-29	V 5	GOOD! JUMPER by GADSDEN, TY
05:44				ASSIST by OKAURU, MIKE
05:16	MISSED JUMPER by LOEWE, LUKE			
05:16				BLOCK by DODD, IMAJAE
05:16	REBOUND (OFF) by TEAM			
05:16				SUB OUT: TOLEFREE, BRIAN
05:16				SUB OUT: OKAURU, MIKE
05:16				SUB IN: PHILLIPS, SHYKEIM
05:16				SUB IN: SIMS, JAYLEN
05:16	SUB OUT: VAN VLIET, ANDY			
05:16	SUB IN: SCOTT, THORNTON			
05:15				FOUL (PERSONAL) by DODD, IMAJAE
04:57	TURNOVER (BADPASS) by KNIGHT, NATHAN			
04:57				STEAL by BOGGS, JAKE
04:44				MISSED 3PTR by BOGGS, JAKE
04:41	REBOUND (DEF) by KNIGHT, NATHAN			
04:41				FOUL (PERSONAL) by DODD, IMAJAE
04:41				SUB OUT: DODD, IMAJAE
04:41				SUB IN: LINSSEN, MARTEN
04:41	GOOD! FT by KNIGHT, NATHAN [FB]	24-30	V 6	
04:41	GOOD! FT by KNIGHT, NATHAN [FB]	24-31	V 7	
04:41	SUB OUT: KNIGHT, NATHAN			

Time	VISITORS: William Mary	Score	Margin	HOME: UNCW
04:41	SUB IN: VAN VLIET, ANDY			
04:27		26-31	V 5	GOOD! JUMPER by LINSSEN, MARTEN
04:08	MISSED 3PTR by SCOTT, THORNTON			
04:03	REBOUND (OFF) by HAMILTON, TYLER			
03:52	GOOD! LAYUP by LOEWE, LUKE	26-33	V 7	
03:28		28-33	V 5	GOOD! LAYUP by LINSSEN, MARTEN
03:28				ASSIST by PHILLIPS, SHYKEIM
03:06	TURNOVER (LOSTBALL) by HAMILTON, TYLER			
03:06				STEAL by LINSSEN, MARTEN
03:02				TURNOVER (LOSTBALL) by BOGGS, JAKE
03:02	STEAL by SCOTT, THORNTON			
02:47	MISSED LAYUP by BARNES, BRYCE			
02:44				REBOUND (DEF) by SIMS, JAYLEN
02:44	FOUL (PERSONAL) by VAN VLIET, ANDY			
02:44				SUB OUT: BOGGS, JAKE
02:44				SUB IN: OKAURU, MIKE
02:44	SUB OUT: HAMILTON, TYLER			
02:44	SUB OUT: BARNES, BRYCE			
02:44	SUB IN: AYESA, MIGUEL			
02:44	SUB IN: BLAIR, QUINN			
02:36	FOUL (PERSONAL) by SCOTT, THORNTON			
02:25				MISSED LAYUP by OKAURU, MIKE
02:20	REBOUND (DEF) by VAN VLIET, ANDY			
02:16	TURNOVER (BADPASS) by SCOTT, THORNTON			
02:16				STEAL by GADSDEN, TY
02:11		30-33	V 3	GOOD! LAYUP by OKAURU, MIKE [FB]
02:11				ASSIST by GADSDEN, TY
01:45	TURNOVER (LOSTBALL) by LOEWE, LUKE			
01:45				STEAL by PHILLIPS, SHYKEIM
01:42	FOUL (PERSONAL) by LOEWE, LUKE			
01:42		31-33	V 2	GOOD! FT by PHILLIPS, SHYKEIM [FB]
01:42	SUB OUT: BLAIR, QUINN			
01:42	SUB IN: KNIGHT, NATHAN			
01:42		32-33	V 1	GOOD! FT by PHILLIPS, SHYKEIM [FB]
01:33	SUB OUT: SCOTT, THORNTON			
01:33	SUB IN: BARNES, BRYCE			
01:23	TURNOVER (BADPASS) by KNIGHT, NATHAN			
01:23				STEAL by OKAURU, MIKE
01:19		34-33	H 1	GOOD! LAYUP by OKAURU, MIKE
00:56	GOOD! LAYUP by BARNES, BRYCE	34-35	V 1	
00:39				MISSED JUMPER by LINSSEN, MARTEN
00:39	BLOCK by KNIGHT, NATHAN			
00:33	REBOUND (DEF) by KNIGHT, NATHAN			
00:09	MISSED 3PTR by KNIGHT, NATHAN			
00:06	REBOUND (OFF) by LOEWE, LUKE			
00:06	TURNOVER (SHOTCLOCK) by TEAM			
00:06	SUB OUT: KNIGHT, NATHAN			
00:06	SUB IN: HAMILTON, TYLER			
00:00				MISSED JUMPER by PHILLIPS, SHYKEIM
00:00	REBOUND (DEF) by HAMILTON, TYLER			

William Mary 35, UNCW 34

Points from (This Period)	WM	NCW
In the Paint	14	20
Off Turns	2	19
2nd Chance	4	4
Fast Break	5	11
Bench	10	11

Official Box Score
William Mary vs UNCW
Second Half Statistics Only
February 08, 2020 at Trask Coliseum - Wilmington, N.C.



William Mary 29

No.	Player	S	Pts	FG	3FG	FT	OR	DR	TR	PF	A	TO	Blk	Stl	Min	+/-
02	HAMILTON, TYLER	G	0	0-1	0-0	0-0	0	1	1	4	1	1	0	0	7	0
05	BARNES, BRYCE	G	5	2-4	0-1	1-2	0	0	0	2	3	1	0	2	18	-5
11	VAN VLIET, ANDY	F	2	1-5	0-4	0-0	0	3	3	1	1	0	0	0	17	-7
12	LOEWE, LUKE	G	2	1-2	0-1	0-0	1	2	3	2	0	1	0	0	19	-5
13	KNIGHT, NATHAN	C	11	4-7	0-2	3-6	1	6	7	2	0	3	1	0	11	9
01	SCOTT, THORNTON	G	0	0-2	0-2	0-0	0	0	0	2	0	0	0	0	9	-14
10	HERMANOVSKIS, RAINERS	G	0	0-0	0-0	0-0	0	0	0	0	0	0	0	0	0	0
15	AYESA, MIGUEL	G	9	3-5	3-5	0-0	0	1	1	0	1	0	0	0	11	-2
21	BLAIR, QUINN	F	0	0-1	0-1	0-0	0	0	0	0	1	0	0	0	7	-11
	TEAM						1	0	1	0		0				
TOTALS			29	11-27	3-16	4-8	3	13	16	13	7	6	1	2	100	

Shooting By Period

Period	FG	FG%	3FG	3FG%	FT	FT%
2nd Half	11-27	41%	3-16	19%	4-8	50%
Game	25-50	50.0%	8-25	32.0%	6-10	60.0%

Deadball Rebounds: 3,0

Last FG Half: WM -

UNCW 36

No.	Player	S	Pts	FG	3FG	FT	OR	DR	TR	PF	A	TO	Blk	Stl	Min	+/-
00	GADSDEN, TY	G	7	1-3	0-1	5-6	0	1	1	1	2	0	0	2	17	3
01	TOLEFREE, BRIAN	G	7	3-5	0-2	1-1	1	1	2	0	0	0	0	0	14	-3
02	PHILLIPS, SHYKEIM	G	2	1-1	0-0	0-1	0	2	2	3	0	1	0	0	12	1
04	OKAURU, MIKE	G	9	2-6	0-0	5-7	0	3	3	2	2	2	0	0	17	0
24	DODD, IMAJAE	F	2	1-1	0-0	0-1	1	3	4	2	0	2	1	1	10	9
05	BOGGS, JAKE	G	5	1-2	1-2	2-2	0	1	1	2	0	0	0	1	6	11
23	LINSSEN, MARTEN	F	4	2-4	0-0	0-0	0	0	0	1	0	0	0	0	9	-4
30	SIMS, JAYLEN	G	0	0-0	0-0	0-0	0	3	3	0	0	0	0	0	14	18
	TEAM						0	0	0	0		0				
TOTALS			36	11-22	1-5	13-18	2	14	16	11	4	5	1	4	100	

Shooting By Period

Period	FG	FG%	3FG	3FG%	FT	FT%
2nd Half	11-22	50%	1-5	20%	13-18	72%
Game	26-54	48.1%	3-11	27.3%	15-20	75.0%

Deadball Rebounds: 1,0

Last FG Half: NCW -

Game Notes:

Officials: Kyle Regetz, Krl Fogleman, Andrew Barksdale
 Attendance: 4155

Start Time: 07:07 PM ET
 End Time: 09:07 PM ET
 Game Duration: 1:59
 Conference Game;

Score	1st	2nd	TOT
WM	35	29	64
NCW	34	36	70

Points from (This Period)	WM	NCW
In the Paint	16	16
Off Turns	7	9
2nd Chance	0	2
Fast Break	3	15
Bench	9	9

Official Play-By-Play
William Mary vs UNCW
Second Half
February 08, 2020 at Trask Coliseum - Wilmington, N.C.



Period 2

Starters:

William Mary: 2 HAMILTON, TYLER (G); 5 BARNES, BRYCE (G); 11 VAN VLIET, ANDY (F); 12 LOEWE, LUKE (G); 13 KNIGHT, NATHAN (C);
UNCW: 00 GADSDEN, TY (G); 1 TOLEFREE, BRIAN (G); 2 PHILLIPS, SHYKEIM (G); 4 OKAURU, MIKE (G); 24 DODD, IMAJAE (F);

Time	VISITORS: William Mary	Score	Margin	HOME: UNCW
20:00				SUB OUT: LINSSEN, MARTEN
20:00				SUB OUT: SIMS, JAYLEN
20:00				SUB IN: TOLEFREE, BRIAN
20:00				SUB IN: DODD, IMAJAE
20:00	SUB OUT: AYESA, MIGUEL			
20:00	SUB IN: KNIGHT, NATHAN			
19:42	GOOD! DUNK by KNIGHT, NATHAN	34-37	V 3	
19:42	ASSIST by BARNES, BRYCE			
19:10				TURNOVER (BADPASS) by DODD, IMAJAE
19:10	STEAL by BARNES, BRYCE			
19:05	GOOD! LAYUP by BARNES, BRYCE [FB]	34-39	V 5	
18:39				MISSED 3PTR by TOLEFREE, BRIAN
18:35	REBOUND (DEF) by KNIGHT, NATHAN			
18:28	TURNOVER (LOSTBALL) by HAMILTON, TYLER			
18:28				STEAL by DODD, IMAJAE
18:23				FOUL (OFF) by PHILLIPS, SHYKEIM
18:23				TURNOVER (OFFENSIVE) by PHILLIPS, SHYKEIM
18:06	MISSED 3PTR by VAN VLIET, ANDY			
18:02	REBOUND (OFF) by KNIGHT, NATHAN			
18:01	TURNOVER (LOSTBALL) by KNIGHT, NATHAN			
18:01				STEAL by GADSDEN, TY
18:01				SUB OUT: PHILLIPS, SHYKEIM
18:01				SUB OUT: DODD, IMAJAE
18:01				SUB IN: LINSSEN, MARTEN
18:01				SUB IN: SIMS, JAYLEN
17:39				MISSED 3PTR by GADSDEN, TY
17:34	REBOUND (DEF) by HAMILTON, TYLER			
17:29	GOOD! LAYUP by KNIGHT, NATHAN	34-41	V 7	
17:29	ASSIST by HAMILTON, TYLER			
17:26				TIMEOUT 30SEC
17:26				
17:04				MISSED JUMPER by LINSSEN, MARTEN
17:00	REBOUND (DEF) by KNIGHT, NATHAN			
16:53	FOUL (OFF) by KNIGHT, NATHAN			
16:53	TURNOVER (OFFENSIVE) by KNIGHT, NATHAN			
16:53	SUB OUT: KNIGHT, NATHAN			
16:53	SUB IN: BLAIR, QUINN			
16:53				SUB OUT: GADSDEN, TY
16:53				SUB IN: PHILLIPS, SHYKEIM
16:35		36-41	V 5	GOOD! JUMPER by TOLEFREE, BRIAN [PNT]
16:19				FOUL (PERSONAL) by LINSSEN, MARTEN
16:11				FOUL (PERSONAL) by PHILLIPS, SHYKEIM
16:11				SUB OUT: PHILLIPS, SHYKEIM
16:11				SUB OUT: LINSSEN, MARTEN
16:11				SUB IN: GADSDEN, TY
16:11				SUB IN: DODD, IMAJAE
15:58	GOOD! JUMPER by VAN VLIET, ANDY [PNT]	36-43	V 7	
15:58	ASSIST by BLAIR, QUINN			
15:39				
15:39	FOUL (PERSONAL) by HAMILTON, TYLER			
15:39		37-43	V 6	GOOD! FT by OKAURU, MIKE
15:39		38-43	V 5	GOOD! FT by OKAURU, MIKE
15:39	SUB OUT: HAMILTON, TYLER			
15:39	SUB IN: SCOTT, THORNTON			
15:19	MISSED 3PTR by VAN VLIET, ANDY			
15:15				REBOUND (DEF) by DODD, IMAJAE
15:15				SUB OUT: TOLEFREE, BRIAN
15:15				SUB IN: BOGGS, JAKE
15:01		41-43	V 2	GOOD! 3PTR by BOGGS, JAKE
15:01				ASSIST by OKAURU, MIKE
14:43	MISSED 3PTR by SCOTT, THORNTON			
14:38				REBOUND (DEF) by OKAURU, MIKE
14:36				TURNOVER (BADPASS) by OKAURU, MIKE
14:36	STEAL by BARNES, BRYCE			
14:22				FOUL (PERSONAL) by OKAURU, MIKE
14:22				SUB OUT: DODD, IMAJAE
14:22				SUB IN: LINSSEN, MARTEN
14:22	SUB OUT: BARNES, BRYCE			
14:22	SUB OUT: VAN VLIET, ANDY			
14:22	SUB IN: KNIGHT, NATHAN			

Time	VISITORS: William Mary	Score	Margin	HOME: UNCW
14:22	SUB IN: AYESA, MIGUEL			
14:14	GOOD! DUNK by KNIGHT, NATHAN	41-45	V 4	
14:14	ASSIST by AYESA, MIGUEL			
13:56		43-45	V 2	GOOD! JUMPER by OKAURU, MIKE
13:31	MISSED 3PTR by LOEWE, LUKE			
13:28				REBOUND (DEF) by OKAURU, MIKE
13:26		45-45	T	GOOD! LAYUP by OKAURU, MIKE [FB]
13:04	MISSED 3PTR by BLAIR, QUINN			
12:59				REBOUND (DEF) by SIMS, JAYLEN
12:53				MISSED LAYUP by LINSSEN, MARTEN
12:49	REBOUND (DEF) by AYESA, MIGUEL			
12:43				SUB OUT: OKAURU, MIKE
12:43				SUB OUT: LINSSEN, MARTEN
12:43				SUB IN: PHILLIPS, SHYKEIM
12:43				SUB IN: DODD, IMAJAE
12:43	SUB OUT: LOEWE, LUKE			
12:43	SUB IN: BARNES, BRYCE			
12:30	TURNOVER (BADPASS) by KNIGHT, NATHAN			
12:30				STEAL by BOGGS, JAKE
12:27	FOUL (PERSONAL) by KNIGHT, NATHAN			
12:27		46-45	H 1	GOOD! FT by BOGGS, JAKE [FB]
12:27	SUB OUT: KNIGHT, NATHAN			
12:27	SUB OUT: BLAIR, QUINN			
12:27	SUB IN: HAMILTON, TYLER			
12:27	SUB IN: VAN VLIET, ANDY			
12:27		47-45	H 2	GOOD! FT by BOGGS, JAKE [FB]
12:03	MISSED JUMPER by BARNES, BRYCE			
12:03				BLOCK by DODD, IMAJAE
11:57				REBOUND (DEF) by SIMS, JAYLEN
11:56	FOUL (PERSONAL) by HAMILTON, TYLER			
11:56				
11:56	SUB OUT: AYESA, MIGUEL			
11:56	SUB IN: LOEWE, LUKE			
11:56		48-45	H 3	GOOD! FT by GADSDEN, TY [FB]
11:56		49-45	H 4	GOOD! FT by GADSDEN, TY [FB]
11:56				SUB OUT: GADSDEN, TY
11:56				SUB IN: OKAURU, MIKE
11:29	MISSED 3PTR by BARNES, BRYCE			
11:25				REBOUND (DEF) by BOGGS, JAKE
11:11				MISSED 3PTR by BOGGS, JAKE
11:07	REBOUND (DEF) by VAN VLIET, ANDY			
10:50	MISSED 3PTR by SCOTT, THORNTON			
10:46				REBOUND (DEF) by PHILLIPS, SHYKEIM
10:42		51-45	H 6	GOOD! LAYUP by PHILLIPS, SHYKEIM [FB]
10:19	MISSED LAYUP by HAMILTON, TYLER			
10:15				REBOUND (DEF) by DODD, IMAJAE
10:06				FOUL (OFF) by OKAURU, MIKE
10:06				TURNOVER (OFFENSIVE) by OKAURU, MIKE
10:06				SUB OUT: OKAURU, MIKE
10:06				SUB IN: GADSDEN, TY
10:06	SUB OUT: SCOTT, THORNTON			
10:06	SUB OUT: HAMILTON, TYLER			
10:06	SUB IN: AYESA, MIGUEL			
10:06	SUB IN: BLAIR, QUINN			
09:50	MISSED 3PTR by VAN VLIET, ANDY			
09:47				REBOUND (DEF) by SIMS, JAYLEN
09:29				FOUL (OFF) by DODD, IMAJAE
09:29				TURNOVER (OFFENSIVE) by DODD, IMAJAE
09:29				SUB OUT: BOGGS, JAKE
09:29				SUB OUT: DODD, IMAJAE
09:29				SUB IN: TOLEFREE, BRIAN
09:29				SUB IN: LINSSEN, MARTEN
09:01	GOOD! 3PTR by AYESA, MIGUEL	51-48	H 3	
09:01	ASSIST by VAN VLIET, ANDY			
08:31		53-48	H 5	GOOD! LAYUP by GADSDEN, TY
08:17	TURNOVER (BADPASS) by BARNES, BRYCE			
07:58		55-48	H 7	GOOD! JUMPER by LINSSEN, MARTEN [PNT]
07:58				ASSIST by GADSDEN, TY
07:44	TURNOVER (BADPASS) by LOEWE, LUKE			
07:44				STEAL by GADSDEN, TY
07:44		57-48	H 9	GOOD! LAYUP by TOLEFREE, BRIAN [FB]
07:44				ASSIST by GADSDEN, TY
07:44	FOUL (PERSONAL) by LOEWE, LUKE			
07:44				
07:44	SUB OUT: BLAIR, QUINN			
07:44	SUB IN: KNIGHT, NATHAN			
07:44				SUB OUT: SIMS, JAYLEN
07:44				SUB IN: OKAURU, MIKE
07:44		58-48	H 10	GOOD! FT by TOLEFREE, BRIAN [FB]
07:12	GOOD! 3PTR by AYESA, MIGUEL	58-51	H 7	

Time	VISITORS: William Mary	Score	Margin	HOME: UNCW
07:12	ASSIST by BARNES, BRYCE			
06:53		60-51	H 9	GOOD! JUMPER by LINSSEN, MARTEN
06:53				ASSIST by OKAURU, MIKE
06:41				FOUL (PERSONAL) by GADSDEN, TY
06:41	MISSED FT by BARNES, BRYCE			
06:41				REBOUND (DEF) by GADSDEN, TY
06:41				MISSED LAYUP by OKAURU, MIKE
06:32	REBOUND (DEF) by KNIGHT, NATHAN			
06:15	SUB OUT: VAN VLIET, ANDY			
06:15	SUB IN: SCOTT, THORNTON			
05:49	GOOD! JUMPER by BARNES, BRYCE [PNT]	60-53	H 7	
05:49				FOUL (PERSONAL) by PHILLIPS, SHYKEIM
05:49				SUB OUT: PHILLIPS, SHYKEIM
05:49				SUB IN: SIMS, JAYLEN
05:49	SUB OUT: KNIGHT, NATHAN			
05:49	SUB IN: VAN VLIET, ANDY			
05:49	GOOD! FT by BARNES, BRYCE	60-54	H 6	
05:39	FOUL (PERSONAL) by SCOTT, THORNTON			
05:39				SUB OUT: LINSSEN, MARTEN
05:39				SUB IN: DODD, IMAJAE
05:33				MISSED LAYUP by OKAURU, MIKE
05:30				REBOUND (OFF) by DODD, IMAJAE
05:29		62-54	H 8	GOOD! JUMPER by DODD, IMAJAE [PNT]
05:27	FOUL (PERSONAL) by VAN VLIET, ANDY			
05:27				MISSED FT by DODD, IMAJAE
05:26	REBOUND (DEF) by LOEWE, LUKE			
05:10	MISSED 3PTR by AYESA, MIGUEL			
05:05				REBOUND (DEF) by DODD, IMAJAE
04:50				MISSED JUMPER by OKAURU, MIKE
04:47				REBOUND (OFF) by TOLEFREE, BRIAN
04:29				MISSED 3PTR by TOLEFREE, BRIAN
04:26	REBOUND (DEF) by LOEWE, LUKE			
04:23	SUB OUT: AYESA, MIGUEL			
04:23	SUB IN: KNIGHT, NATHAN			
04:15	MISSED JUMPER by KNIGHT, NATHAN			
04:11				REBOUND (DEF) by TOLEFREE, BRIAN
03:43				MISSED JUMPER by GADSDEN, TY
03:39	REBOUND (DEF) by VAN VLIET, ANDY			
03:32	MISSED 3PTR by KNIGHT, NATHAN			
03:27				REBOUND (DEF) by OKAURU, MIKE
03:00		64-54	H 10	GOOD! LAYUP by TOLEFREE, BRIAN
02:53	TIMEOUT 30SEC			
02:53				
02:53				SUB OUT: GADSDEN, TY
02:53				SUB OUT: DODD, IMAJAE
02:53				SUB IN: PHILLIPS, SHYKEIM
02:53				SUB IN: LINSSEN, MARTEN
02:53				SUB OUT: SIMS, JAYLEN
02:53				SUB IN: GADSDEN, TY
02:53	SUB OUT: SCOTT, THORNTON			
02:53	SUB IN: AYESA, MIGUEL			
02:29	GOOD! 3PTR by AYESA, MIGUEL	64-57	H 7	
02:29	ASSIST by BARNES, BRYCE			
01:59				MISSED LAYUP by OKAURU, MIKE
01:59	BLOCK by KNIGHT, NATHAN			
01:54	REBOUND (DEF) by KNIGHT, NATHAN			
01:45	MISSED 3PTR by VAN VLIET, ANDY			
01:43	REBOUND (OFF) by TEAM			
01:40	MISSED 3PTR by AYESA, MIGUEL			
01:37				REBOUND (DEF) by PHILLIPS, SHYKEIM
01:32	FOUL (PERSONAL) by BARNES, BRYCE			
01:32				SUB OUT: LINSSEN, MARTEN
01:32				SUB IN: DODD, IMAJAE
01:32				MISSED FT by PHILLIPS, SHYKEIM
01:31	REBOUND (DEF) by KNIGHT, NATHAN			
01:18				FOUL (PERSONAL) by DODD, IMAJAE
01:18				SUB OUT: TOLEFREE, BRIAN
01:18				SUB OUT: DODD, IMAJAE
01:18				SUB IN: LINSSEN, MARTEN
01:18				SUB IN: SIMS, JAYLEN
01:18	MISSED FT by KNIGHT, NATHAN			
01:18	REBOUND (OFF) by TEAM			
01:18	SUB OUT: VAN VLIET, ANDY			
01:18	SUB IN: HAMILTON, TYLER			
01:18	GOOD! FT by KNIGHT, NATHAN	64-58	H 6	
01:18	SUB OUT: KNIGHT, NATHAN			
01:18	SUB IN: SCOTT, THORNTON			
01:12				TIMEOUT 30SEC
01:07				SUB OUT: LINSSEN, MARTEN
01:07				SUB IN: TOLEFREE, BRIAN

Time	VISITORS: William Mary	Score	Margin	HOME: UNCW
01:05	FOUL (PERSONAL) by BARNES, BRYCE			
01:05				SUB OUT: SIMS, JAYLEN
01:05				SUB IN: LINSSEN, MARTEN
01:05	SUB OUT: SCOTT, THORNTON			
01:05	SUB OUT: HAMILTON, TYLER			
01:05	SUB IN: VAN VLIET, ANDY			
01:05	SUB IN: KNIGHT, NATHAN			
01:05				MISSED FT by OKAURU, MIKE
01:05	REBOUND (DEF) by KNIGHT, NATHAN			
00:54	GOOD! LAYUP by KNIGHT, NATHAN [PNT]	64-60	H 4	
00:54	TIMEOUT 30SEC			
00:54	SUB OUT: VAN VLIET, ANDY			
00:54	SUB OUT: KNIGHT, NATHAN			
00:54	SUB IN: SCOTT, THORNTON			
00:54	SUB IN: HAMILTON, TYLER			
00:45	FOUL (PERSONAL) by SCOTT, THORNTON			
00:45	SUB OUT: SCOTT, THORNTON			
00:45	SUB OUT: HAMILTON, TYLER			
00:45	SUB IN: VAN VLIET, ANDY			
00:45	SUB IN: KNIGHT, NATHAN			
00:45		65-60	H 5	GOOD! FT by OKAURU, MIKE
00:45		66-60	H 6	GOOD! FT by OKAURU, MIKE
00:37	GOOD! LAYUP by LOEWE, LUKE	66-62	H 4	
00:37	TIMEOUT TEAM			
00:37	SUB OUT: VAN VLIET, ANDY			
00:37	SUB OUT: KNIGHT, NATHAN			
00:37	SUB IN: SCOTT, THORNTON			
00:37	SUB IN: HAMILTON, TYLER			
00:35	FOUL (PERSONAL) by HAMILTON, TYLER			
00:35	SUB OUT: SCOTT, THORNTON			
00:35	SUB OUT: HAMILTON, TYLER			
00:35	SUB IN: VAN VLIET, ANDY			
00:35	SUB IN: KNIGHT, NATHAN			
00:35				MISSED FT by GADSDEN, TY
00:35				REBOUND (OFF) by TEAM
00:35		67-62	H 5	GOOD! FT by GADSDEN, TY [FB]
00:35				SUB OUT: LINSSEN, MARTEN
00:35				SUB IN: BOGGS, JAKE
00:27				FOUL (PERSONAL) by BOGGS, JAKE
00:27	MISSED FT by KNIGHT, NATHAN			
00:27	REBOUND (OFF) by TEAM			
00:27	SUB OUT: VAN VLIET, ANDY			
00:27	SUB IN: HAMILTON, TYLER			
00:27				SUB OUT: BOGGS, JAKE
00:27				SUB IN: LINSSEN, MARTEN
00:27	GOOD! FT by KNIGHT, NATHAN [FB]	67-63	H 4	
00:27	SUB OUT: KNIGHT, NATHAN			
00:27	SUB IN: SCOTT, THORNTON			
00:21	FOUL (PERSONAL) by HAMILTON, TYLER			
00:21		68-63	H 5	GOOD! FT by OKAURU, MIKE [FB]
00:21				SUB OUT: LINSSEN, MARTEN
00:21				SUB IN: BOGGS, JAKE
00:21	SUB OUT: SCOTT, THORNTON			
00:21	SUB OUT: HAMILTON, TYLER			
00:21	SUB IN: VAN VLIET, ANDY			
00:21	SUB IN: KNIGHT, NATHAN			
00:21				MISSED FT by OKAURU, MIKE
00:20	REBOUND (DEF) by VAN VLIET, ANDY			
00:11				FOUL (PERSONAL) by BOGGS, JAKE
00:11	MISSED FT by KNIGHT, NATHAN			
00:11	REBOUND (OFF) by TEAM			
00:11				SUB OUT: BOGGS, JAKE
00:11				SUB IN: LINSSEN, MARTEN
00:11	SUB OUT: VAN VLIET, ANDY			
00:11	SUB IN: HAMILTON, TYLER			
00:11	GOOD! FT by KNIGHT, NATHAN	68-64	H 4	
00:11	SUB OUT: KNIGHT, NATHAN			
00:11	SUB IN: SCOTT, THORNTON			
00:10				TIMEOUT TEAM
00:10				SUB OUT: LINSSEN, MARTEN
00:10				SUB IN: SIMS, JAYLEN
00:08	FOUL (PERSONAL) by LOEWE, LUKE			
00:08		69-64	H 5	GOOD! FT by GADSDEN, TY [FB]
00:08	SUB OUT: SCOTT, THORNTON			
00:08	SUB OUT: HAMILTON, TYLER			
00:08	SUB IN: VAN VLIET, ANDY			
00:08	SUB IN: KNIGHT, NATHAN			
00:08		70-64	H 6	GOOD! FT by GADSDEN, TY [FB]
00:00	MISSED 3PTR by KNIGHT, NATHAN			
00:00	REBOUND (OFF) by LOEWE, LUKE			

William Mary 64, UNCW 70

Points from (This Period)	WM	NCW
In the Paint	16	16
Off Turns	7	9
2nd Chance	0	2
Fast Break	3	15
Bench	9	9

Official Scoring/Possession Reference Chart
William Mary vs UNCW
Period 1
February 08, 2020 at Trask Coliseum - Wilmington, N.C.



Period 1

Starters:

William Mary: 2 HAMILTON, TYLER (G); 5 BARNES, BRYCE (G); 11 VAN VLIET, ANDY (F); 12 LOEWE, LUKE (G); 13 KNIGHT, NATHAN (C);
UNCW: 00 GADSDEN, TY (G); 1 TOLEFREE, BRIAN (G); 2 PHILLIPS, SHYKEIM (G); 4 OKAURU, MIKE (G); 24 DODD, IMAJAE (F);

Time	VISITORS: William Mary	Score	Margin	HOME: UNCW
19:24		2-0	H 2	GOOD! JUMPER by DODD, IMAJAE [PNT]
18:51	GOOD! JUMPER by LOEWE, LUKE	2-2	T	
18:25	GOOD! 3PTR by KNIGHT, NATHAN	2-5	V 3	
18:15	GOOD! JUMPER by LOEWE, LUKE [PNT]	2-7	V 5	
17:55		4-7	V 3	GOOD! LAYUP by DODD, IMAJAE
16:31	GOOD! JUMPER by VAN VLIET, ANDY [PNT]	4-9	V 5	
15:55		6-9	V 3	GOOD! DUNK by GADSDEN, TY [FB]
15:27	GOOD! JUMPER by LOEWE, LUKE	6-11	V 5	
14:54	GOOD! JUMPER by VAN VLIET, ANDY	6-13	V 7	
14:05		9-13	V 4	GOOD! 3PTR by GADSDEN, TY [FB]
13:38	GOOD! LAYUP by BLAIR, QUINN	9-15	V 6	
13:10	GOOD! 3PTR by AYESA, MIGUEL [FB]	9-18	V 9	
12:44		11-18	V 7	GOOD! LAYUP by LINSSEN, MARTEN
12:12	GOOD! LAYUP by SCOTT, THORNTON	11-20	V 9	
11:55		13-20	V 7	GOOD! JUMPER by SIMS, JAYLEN
10:07		15-20	V 5	GOOD! JUMPER by PHILLIPS, SHYKEIM
09:45	GOOD! 3PTR by VAN VLIET, ANDY	15-23	V 8	
09:15	GOOD! 3PTR by VAN VLIET, ANDY	15-26	V 11	
08:34	GOOD! 3PTR by BLAIR, QUINN	15-29	V 14	
07:26		17-29	V 12	GOOD! DUNK by DODD, IMAJAE
06:34		20-29	V 9	GOOD! 3PTR by BOGGS, JAKE
06:11		22-29	V 7	GOOD! LAYUP by OKAURU, MIKE [FB/PNT]
05:44		24-29	V 5	GOOD! JUMPER by GADSDEN, TY
04:41	GOOD! FT by KNIGHT, NATHAN [FB]	24-30	V 6	
04:41	GOOD! FT by KNIGHT, NATHAN [FB]	24-31	V 7	
04:27		26-31	V 5	GOOD! JUMPER by LINSSEN, MARTEN
03:52	GOOD! LAYUP by LOEWE, LUKE	26-33	V 7	
03:28		28-33	V 5	GOOD! LAYUP by LINSSEN, MARTEN
02:11		30-33	V 3	GOOD! LAYUP by OKAURU, MIKE [FB]
01:42		31-33	V 2	GOOD! FT by PHILLIPS, SHYKEIM [FB]
01:42		32-33	V 1	GOOD! FT by PHILLIPS, SHYKEIM [FB]
01:19		34-33	H 1	GOOD! LAYUP by OKAURU, MIKE
00:56	GOOD! LAYUP by BARNES, BRYCE	34-35	V 1	

William Mary 35, UNCW 34

Official Scoring/Possession Reference Chart
William Mary vs UNCW
Period 2
February 08, 2020 at Trask Coliseum - Wilmington, N.C.



Period 2

Starters:

William Mary: 2 HAMILTON, TYLER (G); 5 BARNES, BRYCE (G); 11 VAN VLIET, ANDY (F); 12 LOEWE, LUKE (G); 13 KNIGHT, NATHAN (C);
UNCW: 00 GADSDEN, TY (G); 1 TOLEFREE, BRIAN (G); 2 PHILLIPS, SHYKEIM (G); 4 OKAURU, MIKE (G); 24 DODD, IMAJAE (F);

Time	VISITORS: William Mary	Score	Margin	HOME: UNCW
19:42	GOOD! DUNK by KNIGHT, NATHAN	34-37	V 3	
19:05	GOOD! LAYUP by BARNES, BRYCE [FB]	34-39	V 5	
17:29	GOOD! LAYUP by KNIGHT, NATHAN	34-41	V 7	
16:35		36-41	V 5	GOOD! JUMPER by TOLEFREE, BRIAN [PNT]
15:58	GOOD! JUMPER by VAN VLIET, ANDY [PNT]	36-43	V 7	
15:39		37-43	V 6	GOOD! FT by OKAURU, MIKE
15:39		38-43	V 5	GOOD! FT by OKAURU, MIKE
15:01		41-43	V 2	GOOD! 3PTR by BOGGS, JAKE
14:14	GOOD! DUNK by KNIGHT, NATHAN	41-45	V 4	
13:56		43-45	V 2	GOOD! JUMPER by OKAURU, MIKE
13:26		45-45	T	GOOD! LAYUP by OKAURU, MIKE [FB]
12:27		46-45	H 1	GOOD! FT by BOGGS, JAKE [FB]
12:27		47-45	H 2	GOOD! FT by BOGGS, JAKE [FB]
11:56		48-45	H 3	GOOD! FT by GADSDEN, TY [FB]
11:56		49-45	H 4	GOOD! FT by GADSDEN, TY [FB]
10:42		51-45	H 6	GOOD! LAYUP by PHILLIPS, SHYKEIM [FB]
09:01	GOOD! 3PTR by AYESA, MIGUEL	51-48	H 3	
08:31		53-48	H 5	GOOD! LAYUP by GADSDEN, TY
07:58		55-48	H 7	GOOD! JUMPER by LINSSEN, MARTEN [PNT]
07:44		57-48	H 9	GOOD! LAYUP by TOLEFREE, BRIAN [FB]
07:44		58-48	H 10	GOOD! FT by TOLEFREE, BRIAN [FB]
07:12	GOOD! 3PTR by AYESA, MIGUEL	58-51	H 7	
06:53		60-51	H 9	GOOD! JUMPER by LINSSEN, MARTEN
05:49	GOOD! JUMPER by BARNES, BRYCE [PNT]	60-53	H 7	
05:49	GOOD! FT by BARNES, BRYCE	60-54	H 6	
05:29		62-54	H 8	GOOD! JUMPER by DODD, IMAJAE [PNT]
03:00		64-54	H 10	GOOD! LAYUP by TOLEFREE, BRIAN
02:29	GOOD! 3PTR by AYESA, MIGUEL	64-57	H 7	
01:18	GOOD! FT by KNIGHT, NATHAN	64-58	H 6	
00:54	GOOD! LAYUP by KNIGHT, NATHAN [PNT]	64-60	H 4	
00:45		65-60	H 5	GOOD! FT by OKAURU, MIKE
00:45		66-60	H 6	GOOD! FT by OKAURU, MIKE
00:37	GOOD! LAYUP by LOEWE, LUKE	66-62	H 4	
00:35		67-62	H 5	GOOD! FT by GADSDEN, TY [FB]
00:27	GOOD! FT by KNIGHT, NATHAN [FB]	67-63	H 4	
00:21		68-63	H 5	GOOD! FT by OKAURU, MIKE [FB]
00:11	GOOD! FT by KNIGHT, NATHAN	68-64	H 4	
00:08		69-64	H 5	GOOD! FT by GADSDEN, TY [FB]
00:08		70-64	H 6	GOOD! FT by GADSDEN, TY [FB]

William Mary 64, UNCW 70

Official Substitutions Log
William Mary vs UNCW
Period 1
February 08, 2020 at Trask Coliseum - Wilmington, N.C.



VISITORS: William Mary	Time	Score	HOME: UNCW
2 HAMILTON, TYLER			00 GADSDEN, TY
5 BARNES, BRYCE			1 TOLEFREE, BRIAN
11 VAN VLIET, ANDY			2 PHILLIPS, SHYKEIM
12 LOEWE, LUKE			4 OKAURU, MIKE
13 KNIGHT, NATHAN			24 DODD, IMAJAE
	17:24	7-4	SUB OUT: TOLEFREE, BRIAN
	17:24		SUB IN: SIMS, JAYLEN
	14:31	13-6	SUB OUT: DODD, IMAJAE
	14:31		SUB IN: LINSSEN, MARTEN
SUB OUT: 2 HAMILTON, TYLER	14:31		
SUB OUT: 5 BARNES, BRYCE	14:31		
SUB OUT: 13 KNIGHT, NATHAN	14:31		
SUB IN: 1 SCOTT, THORNTON	14:31		
SUB IN: 15 AYESA, MIGUEL	14:31		
SUB IN: 21 BLAIR, QUINN	14:31		
	12:24	18-11	SUB OUT: OKAURU, MIKE
	12:24		SUB IN: BOGGS, JAKE
SUB OUT: 12 LOEWE, LUKE	12:24		
SUB IN: 10 HERMANOVSKIS, RAINERS	12:24		
SUB OUT: 11 VAN VLIET, ANDY	11:14	20-13	
SUB IN: 13 KNIGHT, NATHAN	11:14		
SUB OUT: 13 KNIGHT, NATHAN	10:26	20-13	
SUB IN: 11 VAN VLIET, ANDY	10:26		
	08:46	26-15	SUB OUT: LINSSEN, MARTEN
	08:46		SUB IN: DODD, IMAJAE
	08:04	29-15	SUB OUT: GADSDEN, TY
	08:04		SUB OUT: SIMS, JAYLEN
	08:04		SUB IN: TOLEFREE, BRIAN
	08:04		SUB IN: OKAURU, MIKE
	06:11	29-22	SUB OUT: PHILLIPS, SHYKEIM
	06:11		SUB IN: GADSDEN, TY
SUB OUT: 1 SCOTT, THORNTON	06:11		
SUB OUT: 10 HERMANOVSKIS, RAINERS	06:11		
SUB OUT: 21 BLAIR, QUINN	06:11		
SUB IN: 2 HAMILTON, TYLER	06:11		
SUB IN: 5 BARNES, BRYCE	06:11		
SUB IN: 12 LOEWE, LUKE	06:11		
SUB OUT: 15 AYESA, MIGUEL	05:59	29-22	
SUB IN: 13 KNIGHT, NATHAN	05:59		
	05:16	29-24	SUB OUT: TOLEFREE, BRIAN
	05:16		SUB OUT: OKAURU, MIKE
	05:16		SUB IN: PHILLIPS, SHYKEIM
	05:16		SUB IN: SIMS, JAYLEN
SUB OUT: 11 VAN VLIET, ANDY	05:16		
SUB IN: 1 SCOTT, THORNTON	05:16		
	04:41	29-24	SUB OUT: DODD, IMAJAE
	04:41		SUB IN: LINSSEN, MARTEN
SUB OUT: 13 KNIGHT, NATHAN	04:41		
SUB IN: 11 VAN VLIET, ANDY	04:41		
	02:44	33-28	SUB OUT: BOGGS, JAKE
	02:44		SUB IN: OKAURU, MIKE
SUB OUT: 2 HAMILTON, TYLER	02:44		
SUB OUT: 5 BARNES, BRYCE	02:44		
SUB IN: 15 AYESA, MIGUEL	02:44		
SUB IN: 21 BLAIR, QUINN	02:44		
SUB OUT: 21 BLAIR, QUINN	01:42	33-31	
SUB IN: 13 KNIGHT, NATHAN	01:42		
SUB OUT: 1 SCOTT, THORNTON	01:33	33-32	
SUB IN: 5 BARNES, BRYCE	01:33		
SUB OUT: 13 KNIGHT, NATHAN	00:06	35-34	
SUB IN: 2 HAMILTON, TYLER	00:06		

William Mary 35, UNCW 34

Official Substitutions Log
William Mary vs UNCW
Period 2
February 08, 2020 at Trask Coliseum - Wilmington, N.C.



VISITORS: William Mary	Time	Score	HOME: UNCW
2 HAMILTON, TYLER			00 GADSDEN, TY
5 BARNES, BRYCE			1 TOLEFREE, BRIAN
11 VAN VLIET, ANDY			2 PHILLIPS, SHYKEIM
12 LOEWE, LUKE			4 OKAURU, MIKE
13 KNIGHT, NATHAN			24 DODD, IMAJAE
	20:00	-	SUB OUT: LINSSEN, MARTEN
	20:00		SUB OUT: SIMS, JAYLEN
	20:00		SUB IN: TOLEFREE, BRIAN
	20:00		SUB IN: DODD, IMAJAE
SUB OUT: 15 AYESA, MIGUEL	20:00		
SUB IN: 13 KNIGHT, NATHAN	20:00		
	18:01	39-34	SUB OUT: PHILLIPS, SHYKEIM
	18:01		SUB OUT: DODD, IMAJAE
	18:01		SUB IN: LINSSEN, MARTEN
	18:01		SUB IN: SIMS, JAYLEN
SUB OUT: 13 KNIGHT, NATHAN	16:53	41-34	
SUB IN: 21 BLAIR, QUINN	16:53		
	16:53		SUB OUT: GADSDEN, TY
	16:53		SUB IN: PHILLIPS, SHYKEIM
	16:11	41-36	SUB OUT: PHILLIPS, SHYKEIM
	16:11		SUB OUT: LINSSEN, MARTEN
	16:11		SUB IN: GADSDEN, TY
	16:11		SUB IN: DODD, IMAJAE
SUB OUT: 2 HAMILTON, TYLER	15:39	43-38	
SUB IN: 1 SCOTT, THORNTON	15:39		
	15:15	43-38	SUB OUT: TOLEFREE, BRIAN
	15:15		SUB IN: BOGGS, JAKE
	14:22	43-41	SUB OUT: DODD, IMAJAE
	14:22		SUB IN: LINSSEN, MARTEN
SUB OUT: 5 BARNES, BRYCE	14:22		
SUB OUT: 11 VAN VLIET, ANDY	14:22		
SUB IN: 13 KNIGHT, NATHAN	14:22		
SUB IN: 15 AYESA, MIGUEL	14:22		
	12:43	45-45	SUB OUT: OKAURU, MIKE
	12:43		SUB OUT: LINSSEN, MARTEN
	12:43		SUB IN: PHILLIPS, SHYKEIM
	12:43		SUB IN: DODD, IMAJAE
SUB OUT: 12 LOEWE, LUKE	12:43		
SUB IN: 5 BARNES, BRYCE	12:43		
SUB OUT: 13 KNIGHT, NATHAN	12:27	45-46	
SUB OUT: 21 BLAIR, QUINN	12:27		
SUB IN: 2 HAMILTON, TYLER	12:27		
SUB IN: 11 VAN VLIET, ANDY	12:27		
SUB OUT: 15 AYESA, MIGUEL	11:56	45-47	
SUB IN: 12 LOEWE, LUKE	11:56		
	11:56		SUB OUT: GADSDEN, TY
	11:56		SUB IN: OKAURU, MIKE
	10:06	45-51	SUB OUT: OKAURU, MIKE
	10:06		SUB IN: GADSDEN, TY
SUB OUT: 1 SCOTT, THORNTON	10:06		
SUB OUT: 2 HAMILTON, TYLER	10:06		
SUB IN: 15 AYESA, MIGUEL	10:06		
SUB IN: 21 BLAIR, QUINN	10:06		
	09:29	45-51	SUB OUT: BOGGS, JAKE
	09:29		SUB OUT: DODD, IMAJAE
	09:29		SUB IN: TOLEFREE, BRIAN
	09:29		SUB IN: LINSSEN, MARTEN
SUB OUT: 21 BLAIR, QUINN	07:44	48-57	
SUB IN: 13 KNIGHT, NATHAN	07:44		
	07:44		SUB OUT: SIMS, JAYLEN
	07:44		SUB IN: OKAURU, MIKE
SUB OUT: 11 VAN VLIET, ANDY	06:15	51-60	
SUB IN: 1 SCOTT, THORNTON	06:15		
	05:49	53-60	SUB OUT: PHILLIPS, SHYKEIM
	05:49		SUB IN: SIMS, JAYLEN
SUB OUT: 13 KNIGHT, NATHAN	05:49		
SUB IN: 11 VAN VLIET, ANDY	05:49		
	05:39	54-60	SUB OUT: LINSSEN, MARTEN
	05:39		SUB IN: DODD, IMAJAE
SUB OUT: 15 AYESA, MIGUEL	04:23	54-62	
SUB IN: 13 KNIGHT, NATHAN	04:23		
	02:53	54-64	SUB OUT: GADSDEN, TY
	02:53		SUB OUT: DODD, IMAJAE
	02:53		SUB IN: PHILLIPS, SHYKEIM
	02:53		SUB IN: LINSSEN, MARTEN

VISITORS: William Mary	Time	Score	HOME: UNCW
	02:53		SUB OUT: SIMS, JAYLEN
	02:53		SUB IN: GADSDEN, TY
SUB OUT: 1 SCOTT, THORNTON	02:53		
SUB IN: 15 AYESA, MIGUEL	02:53		
	01:32	57-64	SUB OUT: LINSSEN, MARTEN
	01:32		SUB IN: DODD, IMAJAE
	01:18	57-64	SUB OUT: TOLEFREE, BRIAN
	01:18		SUB OUT: DODD, IMAJAE
	01:18		SUB IN: LINSSEN, MARTEN
	01:18		SUB IN: SIMS, JAYLEN
SUB OUT: 11 VAN VLIET, ANDY	01:18		
SUB IN: 2 HAMILTON, TYLER	01:18		
SUB OUT: 13 KNIGHT, NATHAN	01:18		
SUB IN: 1 SCOTT, THORNTON	01:18		
	01:07	58-64	SUB OUT: LINSSEN, MARTEN
	01:07		SUB IN: TOLEFREE, BRIAN
	01:05	58-64	SUB OUT: SIMS, JAYLEN
	01:05		SUB IN: LINSSEN, MARTEN
SUB OUT: 1 SCOTT, THORNTON	01:05		
SUB OUT: 2 HAMILTON, TYLER	01:05		
SUB IN: 11 VAN VLIET, ANDY	01:05		
SUB IN: 13 KNIGHT, NATHAN	01:05		
SUB OUT: 11 VAN VLIET, ANDY	00:54	60-64	
SUB OUT: 13 KNIGHT, NATHAN	00:54		
SUB IN: 1 SCOTT, THORNTON	00:54		
SUB IN: 2 HAMILTON, TYLER	00:54		
SUB OUT: 1 SCOTT, THORNTON	00:45	60-64	
SUB OUT: 2 HAMILTON, TYLER	00:45		
SUB IN: 11 VAN VLIET, ANDY	00:45		
SUB IN: 13 KNIGHT, NATHAN	00:45		
SUB OUT: 11 VAN VLIET, ANDY	00:37	62-66	
SUB OUT: 13 KNIGHT, NATHAN	00:37		
SUB IN: 1 SCOTT, THORNTON	00:37		
SUB IN: 2 HAMILTON, TYLER	00:37		
SUB OUT: 1 SCOTT, THORNTON	00:35	62-66	
SUB OUT: 2 HAMILTON, TYLER	00:35		
SUB IN: 11 VAN VLIET, ANDY	00:35		
SUB IN: 13 KNIGHT, NATHAN	00:35		
	00:35		SUB OUT: LINSSEN, MARTEN
	00:35		SUB IN: BOGGS, JAKE
SUB OUT: 11 VAN VLIET, ANDY	00:27	62-67	
SUB IN: 2 HAMILTON, TYLER	00:27		
	00:27		SUB OUT: BOGGS, JAKE
	00:27		SUB IN: LINSSEN, MARTEN
SUB OUT: 13 KNIGHT, NATHAN	00:27		
SUB IN: 1 SCOTT, THORNTON	00:27		
	00:21	63-68	SUB OUT: LINSSEN, MARTEN
	00:21		SUB IN: BOGGS, JAKE
SUB OUT: 1 SCOTT, THORNTON	00:21		
SUB OUT: 2 HAMILTON, TYLER	00:21		
SUB IN: 11 VAN VLIET, ANDY	00:21		
SUB IN: 13 KNIGHT, NATHAN	00:21		
	00:11	63-68	SUB OUT: BOGGS, JAKE
	00:11		SUB IN: LINSSEN, MARTEN
SUB OUT: 11 VAN VLIET, ANDY	00:11		
SUB IN: 2 HAMILTON, TYLER	00:11		
SUB OUT: 13 KNIGHT, NATHAN	00:11		
SUB IN: 1 SCOTT, THORNTON	00:11		
	00:10	64-68	SUB OUT: LINSSEN, MARTEN
	00:10		SUB IN: SIMS, JAYLEN
SUB OUT: 1 SCOTT, THORNTON	00:08	64-69	
SUB OUT: 2 HAMILTON, TYLER	00:08		
SUB IN: 11 VAN VLIET, ANDY	00:08		
SUB IN: 13 KNIGHT, NATHAN	00:08		

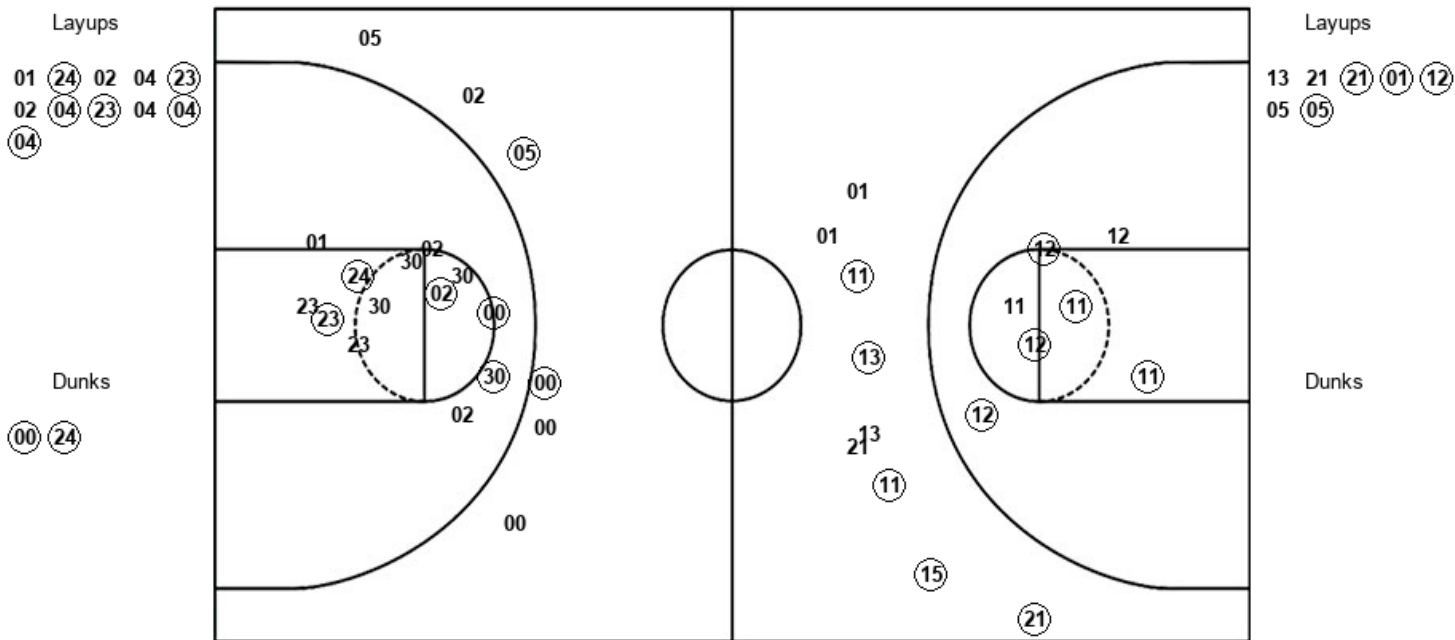
William Mary 64, UNCW 70

Official Shot Chart
William Mary vs UNCW
PERIOD 1 Shots
 February 08, 2020 at Trask Coliseum - Wilmington, N.C.



UNCW

William Mary



UNCW : Period 1	Made	Att	Pct
Layups	6	11	54.5
Dunks	2	2	100.0
2PT Field Goals	13	26	50.0
3PT Field Goals	2	6	33.3
Total Field Goals	15	32	46.9

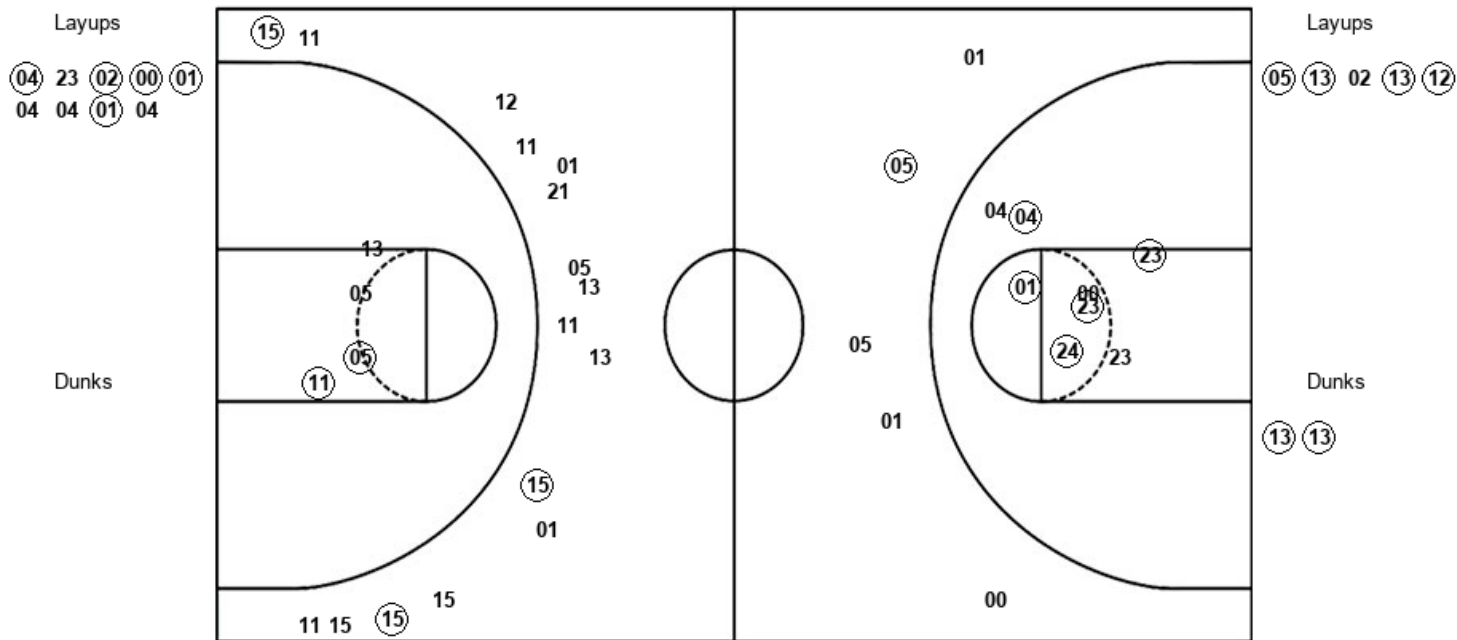
WM : Period 1	Made	Att	Pct
Layups	4	7	57.1
Dunks	0	0	0
2PT Field Goals	9	14	64.3
3PT Field Goals	5	9	55.6
Total Field Goals	14	23	60.9

Official Shot Chart
William Mary vs UNCW
PERIOD 2 Shots
 February 08, 2020 at Trask Coliseum - Wilmington, N.C.



UNCW

William Mary



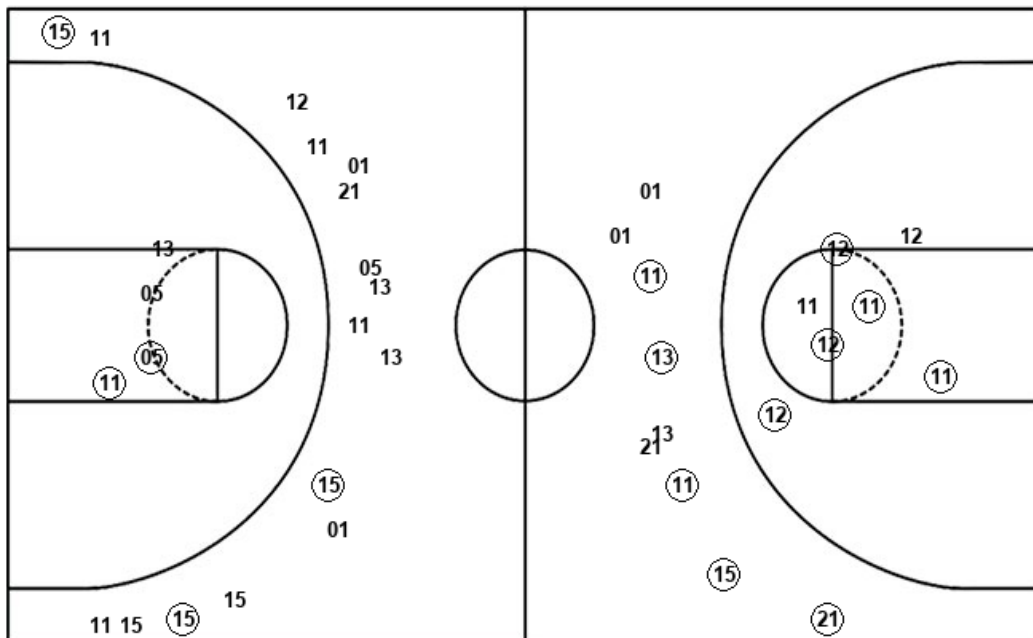
UNCW : Period 2	Made	Att	Pct
Layups	5	9	55.6
Dunks	0	0	0
2PT Field Goals	10	17	58.8
3PT Field Goals	1	5	20.0
Total Field Goals	11	22	50.0

WM : Period 2	Made	Att	Pct
Layups	4	5	80.0
Dunks	2	2	100.0
2PT Field Goals	8	11	72.7
3PT Field Goals	3	16	18.8
Total Field Goals	11	27	40.7

Official Shot Chart
William Mary vs UNCW
William Mary Team Shots
 February 08, 2020 at Trask Coliseum - Wilmington, N.C.



Layups



Layups

Dunks

13 21 (21) (01) (12)
 05 (05) (05) (13) 02
 (13) (12)

Dunks

(13) (13)

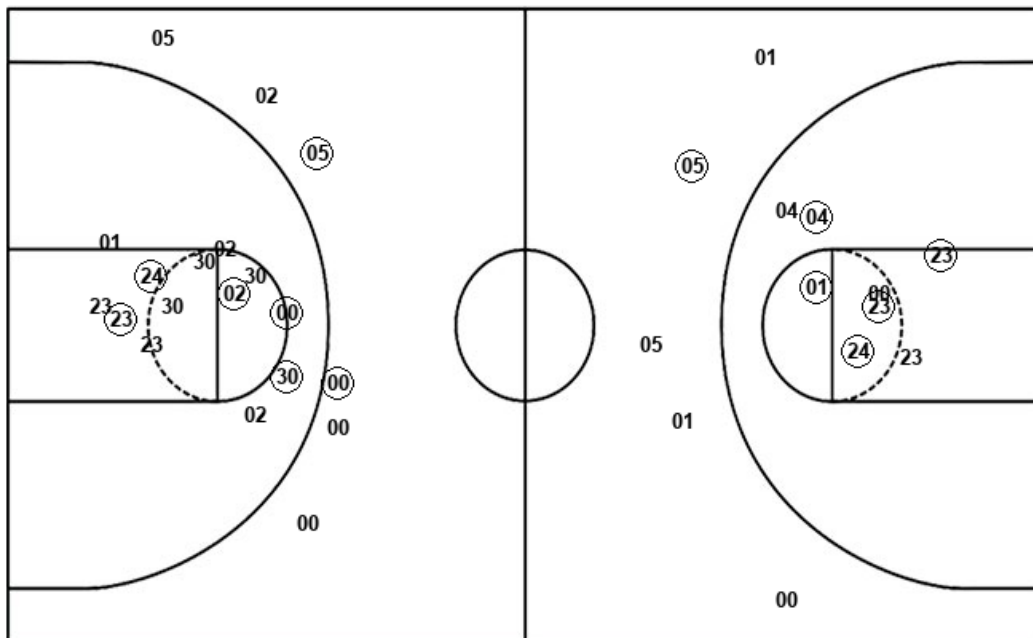
WM : Period 1	Made	Att	Pct
Layups	4	7	57.1
Dunks	0	0	0
2PT Field Goals	9	14	64.3
3PT Field Goals	5	9	55.6
Total Field Goals	14	23	60.9

WM : Period 2	Made	Att	Pct
Layups	4	5	80.0
Dunks	2	2	100.0
2PT Field Goals	8	11	72.7
3PT Field Goals	3	16	18.8
Total Field Goals	11	27	40.7

Official Shot Chart
William Mary vs UNCW
UNCW Team Shots
 February 08, 2020 at Trask Coliseum - Wilmington, N.C.



Layups



Layups

- 01 (24) 02 04 (23)
- 02 (04) (23) 04 (04)
- (04) (04) 23 (02) (00)
- (01) 04 04 (01) 04

Dunks

Dunks

- (00) (24)

NCW : Period 1	Made	Att	Pct
Layups	6	11	54.5
Dunks	2	2	100.0
2PT Field Goals	13	26	50.0
3PT Field Goals	2	6	33.3
Total Field Goals	15	32	46.9

NCW : Period 2	Made	Att	Pct
Layups	5	9	55.6
Dunks	0	0	0
2PT Field Goals	10	17	58.8
3PT Field Goals	1	5	20.0
Total Field Goals	11	22	50.0