

FINAL SCORE**Delaware****77****William Mary****81**

February 15, 2020 • Kaplan Arena (Kaplan Arena) - Williamsburg

FINAL STATISTICS

Official Box Score
Delaware vs William Mary
Game Totals -- Final Statistics
February 15, 2020 at Kaplan Arena (Kaplan Arena) - Williamsburg



Delaware 77

No.	Player	S	Pts	FG	3FG	FT	OR	DR	TR	PF	A	TO	Blk	Stl	Min	+/-
00	ALLEN, RYAN	G	8	2-10	1-4	3-4	2	2	4	3	3	1	0	2	38	-11
01	ANDERSON, KEVIN	G	10	4-9	0-2	2-2	1	5	6	4	2	1	0	0	32	-5
02	PAINTER, DYLAN	F	5	2-6	0-0	1-2	2	4	6	2	0	1	0	0	18	-13
03	DARLING, NATE	G	36	10-18	5-10	11-11	0	3	3	1	4	3	1	1	40	-4
25	MUTTS, JUSTYN	F	8	4-10	0-0	0-0	0	4	4	4	4	4	0	0	25	-3
10	MCCOY, JOHNNY	G	0	0-0	0-0	0-0	1	2	3	1	2	1	0	0	24	14
22	CUSHING, JACOB	F	0	0-2	0-1	0-0	1	0	1	2	0	1	0	0	9	0
33	GOSS, COLLIN	F	10	4-5	0-0	2-3	0	2	2	3	0	0	2	0	13	2
TEAM							2	0	2	0		0				
TOTALS			77	26-60	6-17	19-22	9	22	31	20	15	12	3	3	200	

Shooting By Period

Period	FG	FG%	3FG	3FG%	FT	FT%
1st Half	14-28	50%	4-9	44%	11-13	85%
2nd Half	12-32	38%	2-8	25%	8-9	89%
Game	26-60	43.3%	6-17	35.3%	19-22	86.4%

Deadball Rebounds: 3,0

Last FG: 2nd-00:10

Biggest Run: 13-0

Largest lead: By 9 at 1st-02:54

Technical Fouls: #25 MUTTS (Class A) @ 2nd - 16:01;

William Mary 81

No.	Player	S	Pts	FG	3FG	FT	OR	DR	TR	PF	A	TO	Blk	Stl	Min	+/-
02	HAMILTON, TYLER	G	3	1-4	1-1	0-0	0	1	1	3	2	1	1	2	20	9
05	BARNES, BRYCE	G	12	6-9	0-1	0-0	0	5	5	2	7	2	0	0	34	12
11	VAN VLIET, ANDY	F	12	5-9	1-3	1-3	0	6	6	3	3	4	6	0	30	-6
12	LOEWE, LUKE	G	8	3-6	0-1	2-2	0	1	1	4	2	0	0	1	38	2
13	KNIGHT, NATHAN	C	33	12-19	1-3	8-13	4	8	12	3	1	3	3	0	32	13
10	HERMANOVSKIS, RAINERS	G	0	0-0	0-0	0-0	0	0	0	0	0	1	0	0	5	0
15	AYESA, MIGUEL	G	0	0-2	0-2	0-0	0	2	2	2	1	0	0	1	20	-8
21	BLAIR, QUINN	F	13	5-6	0-0	3-3	0	1	1	3	0	0	0	1	20	-2
TEAM							1	1	2	0		0				
TOTALS			81	32-55	3-11	14-21	5	25	30	20	16	11	10	5	200	

Shooting By Period

Period	FG	FG%	3FG	3FG%	FT	FT%
1st Half	15-27	56%	1-5	20%	5-10	50%
2nd Half	17-28	61%	2-6	33%	9-11	82%
Game	32-55	58.2%	3-11	27.3%	14-21	66.7%

Deadball Rebounds: 3,0

Last FG: 2nd-01:31

Biggest Run: 10-0

Largest lead: By 9 at 2nd-03:35

Technical Fouls: #12 LOEWE (Class A) @ 2nd - 03:02;

Game Notes:

Officials: JW Lucas, Anthony Burris, Brian Zink

Attendance: 5090

Start Time: 04:05 PM ET

End Time: 06:02 PM ET

Game Duration: 1:56

Conference Game;

Score	1st	2nd	TOT
DEL	43	34	77
WM	36	45	81

DEL led for 22:32. WM led for 12:07.

Game was tied for 5:20.

Times tied: 12 Lead Changes: 12

Points from	DEL	WM
In the Paint	30	54
Off Turns	3	15
2nd Chance	9	9
Fast Break	9	17
Bench	10	13

Official Box Score
Delaware vs William Mary
First Half Statistics Only
February 15, 2020 at Kaplan Arena (Kaplan Arena) - Williamsburg



Delaware 43

No.	Player	S	Pts	FG	3FG	FT	OR	DR	TR	PF	A	TO	Blk	Stl	Min	+/-
00	ALLEN, RYAN	G	3	0-2	0-1	3-4	1	2	3	1	2	1	0	0	18	0
01	ANDERSON, KEVIN	G	2	1-2	0-1	0-0	0	1	1	2	0	1	0	0	12	6
02	PAINTER, DYLAN	F	5	2-3	0-0	1-2	1	3	4	1	0	1	0	0	13	-2
03	DARLING, NATE	G	25	7-11	4-6	7-7	0	2	2	1	1	0	1	1	20	7
25	MUTTS, JUSTYN	F	6	3-7	0-0	0-0	0	4	4	2	3	3	0	0	15	8
10	MCCOY, JOHNNY	G	0	0-0	0-0	0-0	1	0	1	0	2	0	0	0	11	8
22	CUSHING, JACOB	F	0	0-1	0-1	0-0	0	0	0	2	0	0	0	0	7	7
33	GOSS, COLLIN	F	2	1-2	0-0	0-0	0	0	0	1	0	0	0	0	4	1
TEAM							1	0	1	0		0				
TOTALS			43	14-28	4-9	11-13	4	12	16	10	8	6	1	1	100	

Shooting By Period

Period	FG	FG%	3FG	3FG%	FT	FT%
1st Half	14-28	50%	4-9	44%	11-13	85%
Game	26-60	43.3%	6-17	35.3%	19-22	86.4%

Deadball Rebounds: 3,0
Last FG Half: DEL 2nd-00:10

William Mary 36

No.	Player	S	Pts	FG	3FG	FT	OR	DR	TR	PF	A	TO	Blk	Stl	Min	+/-
02	HAMILTON, TYLER	G	0	0-1	0-0	0-0	0	0	0	2	1	1	0	1	8	-7
05	BARNES, BRYCE	G	8	4-6	0-1	0-0	0	3	3	2	2	1	0	0	16	1
11	VAN VLIET, ANDY	F	7	3-5	1-2	0-1	0	2	2	1	3	2	3	0	18	-8
12	LOEWE, LUKE	G	2	1-3	0-0	0-0	0	0	0	1	1	0	0	1	18	-9
13	KNIGHT, NATHAN	C	14	5-10	0-2	4-8	2	3	5	2	0	1	1	0	14	-3
10	HERMANOVSKIS, RAINERS	G	0	0-0	0-0	0-0	0	0	0	0	0	1	0	0	4	0
15	AYESA, MIGUEL	G	0	0-0	0-0	0-0	0	2	2	0	1	0	0	0	14	-7
21	BLAIR, QUINN	F	5	2-2	0-0	1-1	0	1	1	3	0	0	0	0	8	-2
TEAM							1	0	1	0		0				
TOTALS			36	15-27	1-5	5-10	3	11	14	11	8	6	4	2	100	

Shooting By Period

Period	FG	FG%	3FG	3FG%	FT	FT%
1st Half	15-27	56%	1-5	20%	5-10	50%
Game	32-55	58.2%	3-11	27.3%	14-21	66.7%

Deadball Rebounds: 3,0
Last FG Half: WM 2nd-01:31

Game Notes:

Officials: JW Lucas, Anthony Burris, Brian Zink
Attendance: 5090

Start Time: 04:05 PM ET
End Time: 06:02 PM ET
Game Duration: 1:56
Conference Game;

Score	1st	2nd	TOT
DEL	43	34	77
WM	36	45	81

Points from (This Period)	DEL	WM
In the Paint	14	28
Off Turns	3	5
2nd Chance	7	6
Fast Break	5	8
Bench	2	5

**Official Play-By-Play
Delaware vs William Mary
First Half**

February 15, 2020 at Kaplan Arena (Kaplan Arena) - Williamsburg



Period 1

Starters:

Delaware: 0 ALLEN, RYAN (G); 1 ANDERSON, KEVIN (G); 2 PAINTER, DYLAN (F); 3 DARLING, NATE (G); 25 MUTTS, JUSTYN (F);

William Mary: 2 HAMILTON, TYLER (G); 5 BARNES, BRYCE (G); 11 VAN VLIET, ANDY (F); 12 LOEWE, LUKE (G); 13 KNIGHT, NATHAN (C);

Time	VISITORS: Delaware	Score	Margin	HOME: William Mary
19:42	MISSED LAYUP by MUTTS, JUSTYN			
19:42				BLOCK by VAN VLIET, ANDY
19:38				REBOUND (DEF) by VAN VLIET, ANDY
19:37				TURNOVER (LOSTBALL) by VAN VLIET, ANDY
19:29	MISSED LAYUP by MUTTS, JUSTYN			
19:26				REBOUND (DEF) by BARNES, BRYCE
19:25		2-0	H 2	GOOD! LAYUP by KNIGHT, NATHAN
19:25				ASSIST by HAMILTON, TYLER
19:05				FOUL (PERSONAL) by BARNES, BRYCE
18:59	TURNOVER (TRAVEL) by ANDERSON, KEVIN			
18:45				MISSED LAYUP by KNIGHT, NATHAN
18:43				REBOUND (OFF) by KNIGHT, NATHAN
18:43	FOUL (PERSONAL) by PAINTER, DYLAN			
18:43				MISSED FT by KNIGHT, NATHAN
18:43				REBOUND (OFF) by TEAM
18:43		3-0	H 3	GOOD! FT by KNIGHT, NATHAN
18:31	GOOD! 3PTR by DARLING, NATE	3-3	T	
18:31	ASSIST by ALLEN, RYAN			
18:15				TURNOVER (BADPASS) by HAMILTON, TYLER
18:00	TURNOVER (BADPASS) by MUTTS, JUSTYN			
18:00				STEAL by HAMILTON, TYLER
17:56		5-3	H 2	GOOD! LAYUP by BARNES, BRYCE [FB/PNT]
17:45				FOUL (PERSONAL) by HAMILTON, TYLER
17:38				FOUL (PERSONAL) by LOEWE, LUKE
17:38	GOOD! FT by DARLING, NATE	5-4	H 1	
17:38	GOOD! FT by DARLING, NATE	5-5	T	
17:38	GOOD! FT by DARLING, NATE	5-6	V 1	
17:21				MISSED 3PTR by KNIGHT, NATHAN
17:18	REBOUND (DEF) by MUTTS, JUSTYN			
17:11	GOOD! 3PTR by DARLING, NATE	5-9	V 4	
17:11	ASSIST by MUTTS, JUSTYN			
16:46				MISSED 3PTR by KNIGHT, NATHAN
16:42	REBOUND (DEF) by ANDERSON, KEVIN			
16:34	MISSED LAYUP by MUTTS, JUSTYN			
16:34				BLOCK by VAN VLIET, ANDY
16:29				REBOUND (DEF) by KNIGHT, NATHAN
16:29		7-9	V 2	GOOD! LAYUP by KNIGHT, NATHAN [FB]
16:29	FOUL (PERSONAL) by ANDERSON, KEVIN			
16:29				SUB OUT: HAMILTON, TYLER
16:29				SUB IN: AYESA, MIGUEL
16:28				MISSED FT by KNIGHT, NATHAN
16:27	REBOUND (DEF) by PAINTER, DYLAN			
16:07	TURNOVER (BADPASS) by MUTTS, JUSTYN			
16:07				STEAL by LOEWE, LUKE
15:43				MISSED JUMPER by BARNES, BRYCE
15:40	REBOUND (DEF) by MUTTS, JUSTYN			
15:35	GOOD! 3PTR by DARLING, NATE [FB]	7-12	V 5	
15:35	ASSIST by MUTTS, JUSTYN			
15:16		9-12	V 3	GOOD! JUMPER by KNIGHT, NATHAN
15:16				ASSIST by AYESA, MIGUEL
14:58	MISSED 3PTR by ANDERSON, KEVIN			
14:55				REBOUND (DEF) by BARNES, BRYCE
14:45		12-12	T	GOOD! 3PTR by VAN VLIET, ANDY
14:45				ASSIST by LOEWE, LUKE
14:24	MISSED 3PTR by ALLEN, RYAN			
14:21				REBOUND (DEF) by AYESA, MIGUEL
14:10	FOUL (PERSONAL) by ANDERSON, KEVIN			
14:10				
14:10				SUB OUT: BARNES, BRYCE
14:10				SUB IN: HERMANOVSKIS, RAINERS
14:10	SUB OUT: ANDERSON, KEVIN			
14:10	SUB OUT: PAINTER, DYLAN			
14:10	SUB IN: MCCOY, JOHNNY			
14:10	SUB IN: GOSS, COLLIN			
14:10		13-12	H 1	GOOD! FT by KNIGHT, NATHAN
14:10		14-12	H 2	GOOD! FT by KNIGHT, NATHAN
14:10				SUB OUT: KNIGHT, NATHAN
14:10				SUB IN: BLAIR, QUINN
13:53	GOOD! DUNK by MUTTS, JUSTYN	14-14	T	
13:53	ASSIST by DARLING, NATE			

Time	VISITORS: Delaware	Score	Margin	HOME: William Mary
13:31		16-14	H 2	GOOD! JUMPER by BLAIR, QUINN [PNT]
13:16	GOOD! JUMPER by MUTTS, JUSTYN	16-16	T	
13:16	ASSIST by MCCOY, JOHNNY			
12:39				MISSED JUMPER by VAN VLIET, ANDY
12:36	REBOUND (DEF) by ALLEN, RYAN			
12:22	MISSED LAYUP by MUTTS, JUSTYN			
12:22				BLOCK by VAN VLIET, ANDY
12:22	REBOUND (OFF) by TEAM			
12:22	SUB OUT: MUTTS, JUSTYN			
12:22	SUB IN: CUSHING, JACOB			
12:17	GOOD! JUMPER by DARLING, NATE	16-18	V 2	
12:01				MISSED JUMPER by LOEWE, LUKE
11:56	REBOUND (DEF) by ALLEN, RYAN			
11:52	GOOD! LAYUP by GOSS, COLLIN [FB]	16-20	V 4	
11:52	ASSIST by ALLEN, RYAN			
11:52				TIMEOUT 30SEC
11:52				SUB OUT: VAN VLIET, ANDY
11:52				SUB OUT: LOEWE, LUKE
11:52				SUB IN: BARNES, BRYCE
11:52				SUB IN: KNIGHT, NATHAN
11:32				TURNOVER (BADPASS) by HERMANOVSKIS, RAINERS
11:20	MISSED LAYUP by GOSS, COLLIN			
11:20				BLOCK by KNIGHT, NATHAN
11:15				REBOUND (DEF) by BLAIR, QUINN
11:13		18-20	V 2	GOOD! LAYUP by BARNES, BRYCE [FB]
10:56	MISSED JUMPER by ALLEN, RYAN			
10:53				REBOUND (DEF) by AYESA, MIGUEL
10:42				MISSED LAYUP by KNIGHT, NATHAN
10:37				REBOUND (OFF) by KNIGHT, NATHAN
10:37		20-20	T	GOOD! DUNK by KNIGHT, NATHAN
10:36				SUB OUT: HERMANOVSKIS, RAINERS
10:36				SUB IN: HAMILTON, TYLER
10:16	GOOD! JUMPER by DARLING, NATE	20-22	V 2	
09:54	FOUL (PERSONAL) by GOSS, COLLIN			
09:54				MISSED FT by KNIGHT, NATHAN
09:54				REBOUND (OFF) by TEAM
09:54				SUB OUT: AYESA, MIGUEL
09:54				SUB IN: LOEWE, LUKE
09:54		21-22	V 1	GOOD! FT by KNIGHT, NATHAN
09:54	SUB OUT: CUSHING, JACOB			
09:54	SUB OUT: GOSS, COLLIN			
09:54	SUB IN: PAINTER, DYLAN			
09:54	SUB IN: MUTTS, JUSTYN			
09:34	GOOD! JUMPER by MUTTS, JUSTYN [PNT]	21-24	V 3	
09:22				FOUL (OFF) by KNIGHT, NATHAN
09:22				TURNOVER (OFFENSIVE) by KNIGHT, NATHAN
09:22				SUB OUT: BLAIR, QUINN
09:22				SUB IN: VAN VLIET, ANDY
09:03	MISSED JUMPER by DARLING, NATE			
08:59				REBOUND (DEF) by KNIGHT, NATHAN
08:44		23-24	V 1	GOOD! LAYUP by BARNES, BRYCE
08:44				ASSIST by VAN VLIET, ANDY
08:24				FOUL (PERSONAL) by KNIGHT, NATHAN
08:24				SUB OUT: KNIGHT, NATHAN
08:24				SUB IN: BLAIR, QUINN
08:12				FOUL (PERSONAL) by BLAIR, QUINN
08:12				SUB OUT: HAMILTON, TYLER
08:12				SUB IN: AYESA, MIGUEL
08:00	FOUL (OFF) by MUTTS, JUSTYN			
08:00	TURNOVER (OFFENSIVE) by MUTTS, JUSTYN			
08:00				
08:00				SUB OUT: BARNES, BRYCE
08:00				SUB IN: HERMANOVSKIS, RAINERS
08:00	SUB OUT: MCCOY, JOHNNY			
08:00	SUB IN: ANDERSON, KEVIN			
07:48	FOUL (PERSONAL) by DARLING, NATE			
07:31				TURNOVER (TRAVEL) by VAN VLIET, ANDY
07:16				FOUL (PERSONAL) by VAN VLIET, ANDY
07:16	MISSED FT by PAINTER, DYLAN			
07:16	REBOUND (OFF) by TEAM			
07:16				SUB OUT: HERMANOVSKIS, RAINERS
07:16				SUB IN: BARNES, BRYCE
07:16	GOOD! FT by PAINTER, DYLAN	23-25	V 2	
07:00		25-25	T	GOOD! LAYUP by LOEWE, LUKE
06:46				FOUL (PERSONAL) by BLAIR, QUINN
06:46	GOOD! FT by ALLEN, RYAN	25-26	V 1	
06:46	MISSED FT by ALLEN, RYAN			
06:44				REBOUND (DEF) by VAN VLIET, ANDY
06:30		27-26	H 1	GOOD! LAYUP by VAN VLIET, ANDY
06:13	GOOD! LAYUP by PAINTER, DYLAN	27-28	V 1	

Time	VISITORS: Delaware	Score	Margin	HOME: William Mary
06:13	ASSIST by MUTTS, JUSTYN			
05:56				MISSED LAYUP by LOEWE, LUKE
05:56	BLOCK by DARLING, NATE			
05:56				REBOUND (OFF) by TEAM
05:56	SUB OUT: PAINTER, DYLAN			
05:56	SUB IN: CUSHING, JACOB			
05:53		29-28	H 1	GOOD! LAYUP by BLAIR, QUINN
05:53				ASSIST by BARNES, BRYCE
05:53	FOUL (PERSONAL) by CUSHING, JACOB			
05:53				SUB OUT: AYESA, MIGUEL
05:53				SUB IN: HAMILTON, TYLER
05:53		30-28	H 2	GOOD! FT by BLAIR, QUINN
05:34	GOOD! LAYUP by ANDERSON, KEVIN	30-30	T	
05:19		32-30	H 2	GOOD! DUNK by BARNES, BRYCE
05:19				ASSIST by VAN VLIET, ANDY
05:08	MISSED 3PTR by DARLING, NATE			
05:05	REBOUND (OFF) by ALLEN, RYAN			
05:05				FOUL (PERSONAL) by BLAIR, QUINN
05:05				SUB OUT: BLAIR, QUINN
05:05				SUB IN: AYESA, MIGUEL
05:05	GOOD! FT by ALLEN, RYAN	32-31	H 1	
05:05				SUB OUT: HAMILTON, TYLER
05:05				SUB IN: KNIGHT, NATHAN
05:05	GOOD! FT by ALLEN, RYAN	32-32	T	
05:05	SUB OUT: ALLEN, RYAN			
05:05	SUB IN: MCCOY, JOHNNY			
04:43	FOUL (PERSONAL) by CUSHING, JACOB			
04:42				MISSED FT by VAN VLIET, ANDY
04:41	REBOUND (DEF) by DARLING, NATE			
04:27	GOOD! LAYUP by DARLING, NATE	32-34	V 2	
04:10				TURNOVER (LOSTBALL) by BARNES, BRYCE
04:10	STEAL by DARLING, NATE			
04:10				FOUL (PERSONAL) by BARNES, BRYCE
04:10	GOOD! FT by DARLING, NATE	32-35	V 3	
04:10				SUB OUT: BARNES, BRYCE
04:10				SUB IN: HAMILTON, TYLER
04:10	GOOD! FT by DARLING, NATE	32-36	V 4	
03:51				MISSED LAYUP by HAMILTON, TYLER
03:48	REBOUND (DEF) by MUTTS, JUSTYN			
03:45	MISSED 3PTR by CUSHING, JACOB			
03:43	REBOUND (OFF) by MCCOY, JOHNNY			
03:41	GOOD! 3PTR by DARLING, NATE	32-39	V 7	
03:41	ASSIST by MCCOY, JOHNNY			
03:11				MISSED 3PTR by VAN VLIET, ANDY
03:07	REBOUND (DEF) by MUTTS, JUSTYN			
02:54				FOUL (PERSONAL) by HAMILTON, TYLER
02:54				
02:54				SUB OUT: HAMILTON, TYLER
02:54				SUB IN: BARNES, BRYCE
02:54	SUB OUT: ANDERSON, KEVIN			
02:54	SUB IN: ALLEN, RYAN			
02:54	GOOD! FT by DARLING, NATE	32-40	V 8	
02:54	GOOD! FT by DARLING, NATE	32-41	V 9	
02:42	FOUL (PERSONAL) by MUTTS, JUSTYN			
02:42	SUB OUT: MUTTS, JUSTYN			
02:42	SUB IN: PAINTER, DYLAN			
02:42				MISSED FT by KNIGHT, NATHAN
02:40	REBOUND (DEF) by PAINTER, DYLAN			
02:25	TURNOVER (TRAVEL) by PAINTER, DYLAN			
02:11				MISSED LAYUP by KNIGHT, NATHAN
02:08	REBOUND (DEF) by DARLING, NATE			
01:57	FOUL (OFF) by ALLEN, RYAN			
01:57	TURNOVER (OFFENSIVE) by ALLEN, RYAN			
01:40		34-41	V 7	GOOD! LAYUP by KNIGHT, NATHAN
01:40				ASSIST by VAN VLIET, ANDY
01:32	TIMEOUT 30SEC			
01:32	SUB OUT: CUSHING, JACOB			
01:32	SUB IN: ANDERSON, KEVIN			
01:18	MISSED 3PTR by DARLING, NATE			
01:14				REBOUND (DEF) by BARNES, BRYCE
01:10		36-41	V 5	GOOD! DUNK by VAN VLIET, ANDY [FB]
01:10				ASSIST by BARNES, BRYCE
00:46	GOOD! LAYUP by PAINTER, DYLAN	36-43	V 7	
00:19				MISSED 3PTR by BARNES, BRYCE
00:15	REBOUND (DEF) by PAINTER, DYLAN			
00:02	MISSED JUMPER by DARLING, NATE			
00:02	MISSED LAYUP by PAINTER, DYLAN			
00:02	REBOUND (OFF) by PAINTER, DYLAN			
00:02				REBOUND (DEF) by KNIGHT, NATHAN

Delaware 43, William Mary 36

Points from (This Period)	DEL	WM
In the Paint	14	28
Off Turns	3	5
2nd Chance	7	6
Fast Break	5	8
Bench	2	5

Official Box Score
Delaware vs William Mary
Second Half Statistics Only
February 15, 2020 at Kaplan Arena (Kaplan Arena) - Williamsburg



Delaware 34

No.	Player	S	Pts	FG	3FG	FT	OR	DR	TR	PF	A	TO	Blk	Stl	Min	+/-
00	ALLEN, RYAN	G	5	2-8	1-3	0-0	1	0	1	2	1	0	0	2	20	-11
01	ANDERSON, KEVIN	G	8	3-7	0-1	2-2	1	4	5	2	2	0	0	0	20	-11
02	PAINTER, DYLAN	F	0	0-3	0-0	0-0	1	1	2	1	0	0	0	0	5	-11
03	DARLING, NATE	G	11	3-7	1-4	4-4	0	1	1	0	3	3	0	0	20	-11
25	MUTTS, JUSTYN	F	2	1-3	0-0	0-0	0	0	0	2	1	1	0	0	11	-11
10	MCCOY, JOHNNY	G	0	0-0	0-0	0-0	0	2	2	1	0	1	0	0	13	6
22	CUSHING, JACOB	F	0	0-1	0-0	0-0	1	0	1	0	0	1	0	0	2	-7
33	GOSS, COLLIN	F	8	3-3	0-0	2-3	0	2	2	2	0	0	2	0	9	1
TEAM							1	0	1	0		0				
TOTALS			34	12-32	2-8	8-9	5	10	15	10	7	6	2	2	100	

Shooting By Period

Period	FG	FG%	3FG	3FG%	FT	FT%
2nd Half	12-32	38%	2-8	25%	8-9	89%
Game	26-60	43.3%	6-17	35.3%	19-22	86.4%

Deadball Rebounds: 3,0
Last FG Half: DEL -

William Mary 45

No.	Player	S	Pts	FG	3FG	FT	OR	DR	TR	PF	A	TO	Blk	Stl	Min	+/-
02	HAMILTON, TYLER	G	3	1-3	1-1	0-0	0	1	1	1	1	0	1	1	12	16
05	BARNES, BRYCE	G	4	2-3	0-0	0-0	0	2	2	0	5	1	0	0	19	11
11	VAN VLIET, ANDY	F	5	2-4	0-1	1-2	0	4	4	2	0	2	3	0	13	2
12	LOEWE, LUKE	G	6	2-3	0-1	2-2	0	1	1	3	1	0	0	0	20	11
13	KNIGHT, NATHAN	C	19	7-9	1-1	4-5	2	5	7	1	1	2	2	0	18	16
10	HERMANOVSKIS, RAINERS	G	0	0-0	0-0	0-0	0	0	0	0	0	0	0	0	1	0
15	AYESA, MIGUEL	G	0	0-2	0-2	0-0	0	0	0	2	0	0	0	1	6	-1
21	BLAIR, QUINN	F	8	3-4	0-0	2-2	0	0	0	0	0	0	0	1	12	0
TEAM							0	1	1	0		0				
TOTALS			45	17-28	2-6	9-11	2	14	16	9	8	5	6	3	100	

Shooting By Period

Period	FG	FG%	3FG	3FG%	FT	FT%
2nd Half	17-28	61%	2-6	33%	9-11	82%
Game	32-55	58.2%	3-11	27.3%	14-21	66.7%

Deadball Rebounds: 3,0
Last FG Half: WM -

Game Notes:

Officials: JW Lucas, Anthony Burris, Brian Zink
Attendance: 5090

Start Time: 04:05 PM ET
End Time: 06:02 PM ET
Game Duration: 1:56
Conference Game;

Score	1st	2nd	TOT
DEL	43	34	77
WM	36	45	81

Points from (This Period)	DEL	WM
In the Paint	16	26
Off Turns	0	10
2nd Chance	2	3
Fast Break	4	9
Bench	8	8

**Official Play-By-Play
Delaware vs William Mary
Second Half**

February 15, 2020 at Kaplan Arena (Kaplan Arena) - Williamsburg



Period 2

Starters:

Delaware: 0 ALLEN, RYAN (G); 1 ANDERSON, KEVIN (G); 2 PAINTER, DYLAN (F); 3 DARLING, NATE (G); 25 MUTTS, JUSTYN (F);

William Mary: 2 HAMILTON, TYLER (G); 5 BARNES, BRYCE (G); 11 VAN VLIET, ANDY (F); 12 LOEWE, LUKE (G); 13 KNIGHT, NATHAN (C);

Time	VISITORS: Delaware	Score	Margin	HOME: William Mary
20:00				SUB OUT: AYESA, MIGUEL
20:00				SUB IN: HAMILTON, TYLER
20:00	SUB OUT: MCCOY, JOHNNY			
20:00	SUB IN: MUTTS, JUSTYN			
19:45		38-43	V 5	GOOD! JUMPER by VAN VLIET, ANDY
19:23	MISSED JUMPER by PAINTER, DYLAN			
19:20				REBOUND (DEF) by VAN VLIET, ANDY
19:11		40-43	V 3	GOOD! LAYUP by KNIGHT, NATHAN [PNT]
18:52	MISSED LAYUP by MUTTS, JUSTYN			
18:52				BLOCK by VAN VLIET, ANDY
18:51				REBOUND (DEF) by VAN VLIET, ANDY
18:51	FOUL (PERSONAL) by MUTTS, JUSTYN			
18:33				FOUL (OFF) by VAN VLIET, ANDY
18:33				TURNOVER (OFFENSIVE) by VAN VLIET, ANDY
18:08	MISSED JUMPER by PAINTER, DYLAN			
18:05				REBOUND (DEF) by VAN VLIET, ANDY
17:52				TURNOVER (BADPASS) by VAN VLIET, ANDY
17:52	STEAL by ALLEN, RYAN			
17:44	MISSED LAYUP by ANDERSON, KEVIN			
17:44				BLOCK by VAN VLIET, ANDY
17:41				REBOUND (DEF) by KNIGHT, NATHAN
17:34				MISSED 3PTR by LOEWE, LUKE
17:31	REBOUND (DEF) by ANDERSON, KEVIN			
17:23	MISSED 3PTR by ALLEN, RYAN			
17:20				REBOUND (DEF) by KNIGHT, NATHAN
17:04				FOUL (OFF) by KNIGHT, NATHAN
17:04				TURNOVER (OFFENSIVE) by KNIGHT, NATHAN
16:46	MISSED LAYUP by ANDERSON, KEVIN			
16:46				BLOCK by KNIGHT, NATHAN
16:41				REBOUND (DEF) by KNIGHT, NATHAN
16:40		42-43	V 1	GOOD! LAYUP by BARNES, BRYCE [FB]
16:40				ASSIST by HAMILTON, TYLER
16:19	TURNOVER (LOSTBALL) by MUTTS, JUSTYN			
16:19				STEAL by HAMILTON, TYLER
16:19				SUB OUT: HAMILTON, TYLER
16:19				SUB IN: AYESA, MIGUEL
16:01	FOUL (PERSONAL) by PAINTER, DYLAN			
16:01	FOUL (TECH) by MUTTS, JUSTYN			
16:01				
16:01	SUB OUT: MUTTS, JUSTYN			
16:01	SUB IN: CUSHING, JACOB			
16:01		43-43	T	GOOD! FT by KNIGHT, NATHAN
16:01		44-43	H 1	GOOD! FT by KNIGHT, NATHAN
16:01		45-43	H 2	GOOD! FT by KNIGHT, NATHAN
16:01				MISSED FT by KNIGHT, NATHAN
16:00	REBOUND (DEF) by PAINTER, DYLAN			
15:41	GOOD! LAYUP by ANDERSON, KEVIN	45-45	T	
15:41	ASSIST by DARLING, NATE			
15:21		47-45	H 2	GOOD! LAYUP by KNIGHT, NATHAN
15:01	MISSED 3PTR by DARLING, NATE			
14:58	REBOUND (OFF) by PAINTER, DYLAN			
14:54	MISSED LAYUP by PAINTER, DYLAN			
14:54				BLOCK by VAN VLIET, ANDY
14:48	MISSED LAYUP by CUSHING, JACOB			
14:48	REBOUND (OFF) by CUSHING, JACOB			
14:48				REBOUND (DEF) by BARNES, BRYCE
14:48		49-45	H 4	GOOD! LAYUP by LOEWE, LUKE [FB]
14:48				ASSIST by BARNES, BRYCE
14:34	TURNOVER (BADPASS) by CUSHING, JACOB			
14:34				SUB OUT: VAN VLIET, ANDY
14:34				SUB IN: BLAIR, QUINN
14:34	SUB OUT: PAINTER, DYLAN			
14:34	SUB IN: GOSS, COLLIN			
14:15		51-45	H 6	GOOD! JUMPER by KNIGHT, NATHAN
14:06	TIMEOUT 30SEC			
14:06				SUB OUT: KNIGHT, NATHAN
14:06				SUB IN: VAN VLIET, ANDY
14:06	SUB OUT: CUSHING, JACOB			
14:06	SUB IN: MCCOY, JOHNNY			
13:51				FOUL (PERSONAL) by VAN VLIET, ANDY

Time	VISITORS: Delaware	Score	Margin	HOME: William Mary
13:51	MISSED FT by GOSS, COLLIN			
13:51	REBOUND (OFF) by TEAM			
13:51	GOOD! FT by GOSS, COLLIN	51-46	H 5	
13:32		53-46	H 7	GOOD! JUMPER by VAN VLIET, ANDY [PNT]
13:16	GOOD! LAYUP by DARLING, NATE	53-48	H 5	
12:54				MISSED 3PTR by AYESA, MIGUEL
12:50	REBOUND (DEF) by GOSS, COLLIN			
12:41	GOOD! LAYUP by ANDERSON, KEVIN	53-50	H 3	
12:14				MISSED 3PTR by AYESA, MIGUEL
12:11	REBOUND (DEF) by MCCOY, JOHNNY			
12:05	GOOD! LAYUP by GOSS, COLLIN	53-52	H 1	
12:05	ASSIST by DARLING, NATE			
12:05				FOUL (PERSONAL) by AYESA, MIGUEL
12:05				SUB OUT: BLAIR, QUINN
12:05				SUB IN: KNIGHT, NATHAN
12:05	GOOD! FT by GOSS, COLLIN	53-53	T	
11:45				MISSED JUMPER by KNIGHT, NATHAN
11:42	REBOUND (DEF) by MCCOY, JOHNNY			
11:39	GOOD! LAYUP by GOSS, COLLIN [FB]	53-55	V 2	
11:39	ASSIST by ANDERSON, KEVIN			
11:16				TURNOVER (TRAVEL) by BARNES, BRYCE
11:16				
11:16				SUB OUT: BARNES, BRYCE
11:16				SUB OUT: AYESA, MIGUEL
11:16				SUB IN: HERMANOVSKIS, RAINERS
11:16				SUB IN: BLAIR, QUINN
10:59	TURNOVER (BADPASS) by DARLING, NATE			
10:37	FOUL (PERSONAL) by GOSS, COLLIN			
10:27				MISSED LAYUP by KNIGHT, NATHAN
10:27	BLOCK by GOSS, COLLIN			
10:23	REBOUND (DEF) by DARLING, NATE			
10:18	MISSED LAYUP by ALLEN, RYAN			
10:18	REBOUND (OFF) by TEAM			
10:18				SUB OUT: HERMANOVSKIS, RAINERS
10:18				SUB IN: BARNES, BRYCE
10:08	GOOD! JUMPER by ANDERSON, KEVIN	53-57	V 4	
09:34				MISSED JUMPER by VAN VLIET, ANDY
09:31	REBOUND (DEF) by ANDERSON, KEVIN			
09:18	GOOD! LAYUP by GOSS, COLLIN	53-59	V 6	
09:18	ASSIST by ALLEN, RYAN			
09:11				TIMEOUT 30SEC
09:11				SUB OUT: BLAIR, QUINN
09:11				SUB IN: AYESA, MIGUEL
08:53				MISSED JUMPER by BARNES, BRYCE
08:49	REBOUND (DEF) by ANDERSON, KEVIN			
08:36	TURNOVER (BADPASS) by MCCOY, JOHNNY			
08:36				STEAL by AYESA, MIGUEL
08:31	FOUL (PERSONAL) by MCCOY, JOHNNY			
08:29				MISSED 3PTR by VAN VLIET, ANDY
08:25	REBOUND (DEF) by GOSS, COLLIN			
08:12	MISSED JUMPER by DARLING, NATE			
08:08	REBOUND (OFF) by ALLEN, RYAN			
08:05				FOUL (PERSONAL) by AYESA, MIGUEL
08:05				SUB OUT: AYESA, MIGUEL
08:05				SUB IN: HAMILTON, TYLER
07:57	MISSED JUMPER by ALLEN, RYAN			
07:51				REBOUND (DEF) by VAN VLIET, ANDY
07:36		56-59	V 3	GOOD! 3PTR by KNIGHT, NATHAN
07:36				ASSIST by BARNES, BRYCE
07:15				FOUL (PERSONAL) by HAMILTON, TYLER
07:13				
07:13				SUB OUT: VAN VLIET, ANDY
07:13				SUB IN: BLAIR, QUINN
07:13	SUB OUT: GOSS, COLLIN			
07:13	SUB IN: MUTTS, JUSTYN			
07:03	MISSED JUMPER by ANDERSON, KEVIN			
06:59				REBOUND (DEF) by HAMILTON, TYLER
06:49		58-59	V 1	GOOD! LAYUP by BLAIR, QUINN
06:49				ASSIST by KNIGHT, NATHAN
06:21	MISSED LAYUP by MUTTS, JUSTYN			
06:21				BLOCK by KNIGHT, NATHAN
06:16				REBOUND (DEF) by LOEWE, LUKE
06:14		60-59	H 1	GOOD! JUMPER by LOEWE, LUKE [FB]
05:51	GOOD! JUMPER by ALLEN, RYAN	60-61	V 1	
05:51	ASSIST by MUTTS, JUSTYN			
05:35		63-61	H 2	GOOD! 3PTR by HAMILTON, TYLER
05:35				ASSIST by BARNES, BRYCE
05:16	TURNOVER (BADPASS) by DARLING, NATE			
05:16				STEAL by BLAIR, QUINN
05:15	FOUL (PERSONAL) by ANDERSON, KEVIN			

Time	VISITORS: Delaware	Score	Margin	HOME: William Mary
05:15	SUB OUT: MCCOY, JOHNNY			
05:15	SUB IN: GOSS, COLLIN			
04:56				MISSED LAYUP by HAMILTON, TYLER
04:52		65-61	H 4	GOOD! LAYUP by KNIGHT, NATHAN
04:52				REBOUND (OFF) by KNIGHT, NATHAN
04:37	MISSED JUMPER by ALLEN, RYAN			
04:33				REBOUND (DEF) by KNIGHT, NATHAN
04:21		67-61	H 6	GOOD! LAYUP by KNIGHT, NATHAN
04:21				ASSIST by LOEWE, LUKE
04:14	TIMEOUT 30SEC			
04:14	SUB OUT: MUTTS, JUSTYN			
04:14	SUB IN: MCCOY, JOHNNY			
04:00	TURNOVER (TRAVEL) by DARLING, NATE			
03:35				MISSED LAYUP by BLAIR, QUINN
03:35	BLOCK by GOSS, COLLIN			
03:35				REBOUND (OFF) by KNIGHT, NATHAN
03:35		69-61	H 8	GOOD! LAYUP by KNIGHT, NATHAN
03:35	FOUL (PERSONAL) by GOSS, COLLIN			
03:35	SUB OUT: GOSS, COLLIN			
03:35	SUB IN: MUTTS, JUSTYN			
03:35		70-61	H 9	GOOD! FT by KNIGHT, NATHAN
03:26				FOUL (PERSONAL) by LOEWE, LUKE
03:26	GOOD! FT by DARLING, NATE	70-62	H 8	
03:26	GOOD! FT by DARLING, NATE	70-63	H 7	
03:05				MISSED LAYUP by HAMILTON, TYLER
03:02	REBOUND (DEF) by ANDERSON, KEVIN			
03:02				FOUL (PERSONAL) by LOEWE, LUKE
03:02				FOUL (TECH) by LOEWE, LUKE
03:02	GOOD! FT by DARLING, NATE	70-64	H 6	
03:02	GOOD! FT by DARLING, NATE	70-65	H 5	
03:02	GOOD! FT by ANDERSON, KEVIN	70-66	H 4	
03:02	GOOD! FT by ANDERSON, KEVIN	70-67	H 3	
02:48		72-67	H 5	GOOD! LAYUP by BLAIR, QUINN
02:48				ASSIST by BARNES, BRYCE
02:30	MISSED LAYUP by ALLEN, RYAN			
02:30				BLOCK by HAMILTON, TYLER
02:30	REBOUND (OFF) by TEAM			
02:24	MISSED 3PTR by DARLING, NATE			
02:21				REBOUND (DEF) by KNIGHT, NATHAN
01:57		74-67	H 7	GOOD! JUMPER by BARNES, BRYCE
01:45	GOOD! LAYUP by DARLING, NATE	74-69	H 5	
01:45	TIMEOUT TEAM			
01:31		76-69	H 7	GOOD! LAYUP by BLAIR, QUINN [FB]
01:31				ASSIST by BARNES, BRYCE
01:17	GOOD! 3PTR by ALLEN, RYAN	76-72	H 4	
00:39				TURNOVER (LOSTBALL) by KNIGHT, NATHAN
00:39	STEAL by ALLEN, RYAN			
00:32	MISSED 3PTR by ALLEN, RYAN			
00:29				REBOUND (DEF) by BARNES, BRYCE
00:29	FOUL (PERSONAL) by ALLEN, RYAN			
00:29				SUB OUT: BARNES, BRYCE
00:29				SUB IN: VAN VLIET, ANDY
00:29		77-72	H 5	GOOD! FT by BLAIR, QUINN
00:29		78-72	H 6	GOOD! FT by BLAIR, QUINN
00:29				TIMEOUT 30SEC
00:20	GOOD! 3PTR by DARLING, NATE	78-75	H 3	
00:20	ASSIST by ANDERSON, KEVIN			
00:16	FOUL (PERSONAL) by ALLEN, RYAN			
00:16		79-75	H 4	GOOD! FT by LOEWE, LUKE
00:16		80-75	H 5	GOOD! FT by LOEWE, LUKE
00:10	GOOD! LAYUP by MUTTS, JUSTYN [FB]	80-77	H 3	
00:10	ASSIST by DARLING, NATE			
00:07	FOUL (PERSONAL) by ANDERSON, KEVIN			
00:07				MISSED FT by VAN VLIET, ANDY
00:07				REBOUND (OFF) by TEAM
00:07		81-77	H 4	GOOD! FT by VAN VLIET, ANDY [FB]
00:03	MISSED 3PTR by DARLING, NATE			
00:01	REBOUND (OFF) by ANDERSON, KEVIN			
00:01	MISSED 3PTR by ANDERSON, KEVIN			
00:01				REBOUND (DEF) by TEAM

Delaware 77, William Mary 81

Points from (This Period)	DEL	WM
In the Paint	16	26
Off Turns	0	10
2nd Chance	2	3
Fast Break	4	9
Bench	8	8

Official Scoring/Possession Reference Chart
Delaware vs William Mary
Period 1
February 15, 2020 at Kaplan Arena (Kaplan Arena) - Williamsburg



Period 1

Starters:

Delaware: 0 ALLEN, RYAN (G); 1 ANDERSON, KEVIN (G); 2 PAINTER, DYLAN (F); 3 DARLING, NATE (G); 25 MUTTS, JUSTYN (F);

William Mary: 2 HAMILTON, TYLER (G); 5 BARNES, BRYCE (G); 11 VAN VLIET, ANDY (F); 12 LOEWE, LUKE (G); 13 KNIGHT, NATHAN (C);

Time	VISITORS: Delaware	Score	Margin	HOME: William Mary
19:25		2-0	H 2	GOOD! LAYUP by KNIGHT, NATHAN
18:43		3-0	H 3	GOOD! FT by KNIGHT, NATHAN
18:31	GOOD! 3PTR by DARLING, NATE	3-3	T	
17:56		5-3	H 2	GOOD! LAYUP by BARNES, BRYCE [FB/PNT]
17:38	GOOD! FT by DARLING, NATE	5-4	H 1	
17:38	GOOD! FT by DARLING, NATE	5-5	T	
17:38	GOOD! FT by DARLING, NATE	5-6	V 1	
17:11	GOOD! 3PTR by DARLING, NATE	5-9	V 4	
16:29		7-9	V 2	GOOD! LAYUP by KNIGHT, NATHAN [FB]
15:35	GOOD! 3PTR by DARLING, NATE [FB]	7-12	V 5	
15:16		9-12	V 3	GOOD! JUMPER by KNIGHT, NATHAN
14:45		12-12	T	GOOD! 3PTR by VAN VLIET, ANDY
14:10		13-12	H 1	GOOD! FT by KNIGHT, NATHAN
14:10		14-12	H 2	GOOD! FT by KNIGHT, NATHAN
13:53	GOOD! DUNK by MUTTS, JUSTYN	14-14	T	
13:31		16-14	H 2	GOOD! JUMPER by BLAIR, QUINN [PNT]
13:16	GOOD! JUMPER by MUTTS, JUSTYN	16-16	T	
12:17	GOOD! JUMPER by DARLING, NATE	16-18	V 2	
11:52	GOOD! LAYUP by GOSS, COLLIN [FB]	16-20	V 4	
11:13		18-20	V 2	GOOD! LAYUP by BARNES, BRYCE [FB]
10:37		20-20	T	GOOD! DUNK by KNIGHT, NATHAN
10:16	GOOD! JUMPER by DARLING, NATE	20-22	V 2	
09:54		21-22	V 1	GOOD! FT by KNIGHT, NATHAN
09:34	GOOD! JUMPER by MUTTS, JUSTYN [PNT]	21-24	V 3	
08:44		23-24	V 1	GOOD! LAYUP by BARNES, BRYCE
07:16	GOOD! FT by PAINTER, DYLAN	23-25	V 2	
07:00		25-25	T	GOOD! LAYUP by LOEWE, LUKE
06:46	GOOD! FT by ALLEN, RYAN	25-26	V 1	
06:30		27-26	H 1	GOOD! LAYUP by VAN VLIET, ANDY
06:13	GOOD! LAYUP by PAINTER, DYLAN	27-28	V 1	
05:53		29-28	H 1	GOOD! LAYUP by BLAIR, QUINN
05:53		30-28	H 2	GOOD! FT by BLAIR, QUINN
05:34	GOOD! LAYUP by ANDERSON, KEVIN	30-30	T	
05:19		32-30	H 2	GOOD! DUNK by BARNES, BRYCE
05:05	GOOD! FT by ALLEN, RYAN	32-31	H 1	
05:05	GOOD! FT by ALLEN, RYAN	32-32	T	
04:27	GOOD! LAYUP by DARLING, NATE	32-34	V 2	
04:10	GOOD! FT by DARLING, NATE	32-35	V 3	
04:10	GOOD! FT by DARLING, NATE	32-36	V 4	
03:41	GOOD! 3PTR by DARLING, NATE	32-39	V 7	
02:54	GOOD! FT by DARLING, NATE	32-40	V 8	
02:54	GOOD! FT by DARLING, NATE	32-41	V 9	
01:40		34-41	V 7	GOOD! LAYUP by KNIGHT, NATHAN
01:10		36-41	V 5	GOOD! DUNK by VAN VLIET, ANDY [FB]
00:46	GOOD! LAYUP by PAINTER, DYLAN	36-43	V 7	

Delaware 43, William Mary 36

Official Scoring/Possession Reference Chart
Delaware vs William Mary
Period 2
February 15, 2020 at Kaplan Arena (Kaplan Arena) - Williamsburg



Period 2

Starters:

Delaware: 0 ALLEN, RYAN (G); 1 ANDERSON, KEVIN (G); 2 PAINTER, DYLAN (F); 3 DARLING, NATE (G); 25 MUTTS, JUSTYN (F);

William Mary: 2 HAMILTON, TYLER (G); 5 BARNES, BRYCE (G); 11 VAN VLIET, ANDY (F); 12 LOEWE, LUKE (G); 13 KNIGHT, NATHAN (C);

Time	VISITORS: Delaware	Score	Margin	HOME: William Mary
19:45		38-43	V 5	GOOD! JUMPER by VAN VLIET, ANDY
19:11		40-43	V 3	GOOD! LAYUP by KNIGHT, NATHAN [PNT]
16:40		42-43	V 1	GOOD! LAYUP by BARNES, BRYCE [FB]
16:01		43-43	T	GOOD! FT by KNIGHT, NATHAN
16:01		44-43	H 1	GOOD! FT by KNIGHT, NATHAN
16:01		45-43	H 2	GOOD! FT by KNIGHT, NATHAN
15:41	GOOD! LAYUP by ANDERSON, KEVIN	45-45	T	
15:21		47-45	H 2	GOOD! LAYUP by KNIGHT, NATHAN
14:48		49-45	H 4	GOOD! LAYUP by LOEWE, LUKE [FB]
14:15		51-45	H 6	GOOD! JUMPER by KNIGHT, NATHAN
13:51	GOOD! FT by GOSS, COLLIN	51-46	H 5	
13:32		53-46	H 7	GOOD! JUMPER by VAN VLIET, ANDY [PNT]
13:16	GOOD! LAYUP by DARLING, NATE	53-48	H 5	
12:41	GOOD! LAYUP by ANDERSON, KEVIN	53-50	H 3	
12:05	GOOD! LAYUP by GOSS, COLLIN	53-52	H 1	
12:05	GOOD! FT by GOSS, COLLIN	53-53	T	
11:39	GOOD! LAYUP by GOSS, COLLIN [FB]	53-55	V 2	
10:08	GOOD! JUMPER by ANDERSON, KEVIN	53-57	V 4	
09:18	GOOD! LAYUP by GOSS, COLLIN	53-59	V 6	
07:36		56-59	V 3	GOOD! 3PTR by KNIGHT, NATHAN
06:49		58-59	V 1	GOOD! LAYUP by BLAIR, QUINN
06:14		60-59	H 1	GOOD! JUMPER by LOEWE, LUKE [FB]
05:51	GOOD! JUMPER by ALLEN, RYAN	60-61	V 1	
05:35		63-61	H 2	GOOD! 3PTR by HAMILTON, TYLER
04:52		65-61	H 4	GOOD! LAYUP by KNIGHT, NATHAN
04:21		67-61	H 6	GOOD! LAYUP by KNIGHT, NATHAN
03:35		69-61	H 8	GOOD! LAYUP by KNIGHT, NATHAN
03:35		70-61	H 9	GOOD! FT by KNIGHT, NATHAN
03:26	GOOD! FT by DARLING, NATE	70-62	H 8	
03:26	GOOD! FT by DARLING, NATE	70-63	H 7	
03:02	GOOD! FT by DARLING, NATE	70-64	H 6	
03:02	GOOD! FT by DARLING, NATE	70-65	H 5	
03:02	GOOD! FT by ANDERSON, KEVIN	70-66	H 4	
03:02	GOOD! FT by ANDERSON, KEVIN	70-67	H 3	
02:48		72-67	H 5	GOOD! LAYUP by BLAIR, QUINN
01:57		74-67	H 7	GOOD! JUMPER by BARNES, BRYCE
01:45	GOOD! LAYUP by DARLING, NATE	74-69	H 5	
01:31		76-69	H 7	GOOD! LAYUP by BLAIR, QUINN [FB]
01:17	GOOD! 3PTR by ALLEN, RYAN	76-72	H 4	
00:29		77-72	H 5	GOOD! FT by BLAIR, QUINN
00:29		78-72	H 6	GOOD! FT by BLAIR, QUINN
00:20	GOOD! 3PTR by DARLING, NATE	78-75	H 3	
00:16		79-75	H 4	GOOD! FT by LOEWE, LUKE
00:16		80-75	H 5	GOOD! FT by LOEWE, LUKE
00:10	GOOD! LAYUP by MUTTS, JUSTYN [FB]	80-77	H 3	
00:07		81-77	H 4	GOOD! FT by VAN VLIET, ANDY [FB]

Delaware 77, William Mary 81

**Official Substitutions Log
Delaware vs William Mary
Period 1**

February 15, 2020 at Kaplan Arena (Kaplan Arena) - Williamsburg



VISITORS: Delaware	Time	Score	HOME: William Mary
0 ALLEN, RYAN			2 HAMILTON, TYLER
1 ANDERSON, KEVIN			5 BARNES, BRYCE
2 PAINTER, DYLAN			11 VAN VLIET, ANDY
3 DARLING, NATE			12 LOEWE, LUKE
25 MUTTS, JUSTYN			13 KNIGHT, NATHAN
	16:29	9-7	SUB OUT: HAMILTON, TYLER
	16:29		SUB IN: AYESA, MIGUEL
	14:10	12-12	SUB OUT: BARNES, BRYCE
	14:10		SUB IN: HERMANOVSKIS, RAINERS
SUB OUT: 1 ANDERSON, KEVIN	14:10		
SUB OUT: 2 PAINTER, DYLAN	14:10		
SUB IN: 10 MCCOY, JOHNNY	14:10		
SUB IN: 33 GOSS, COLLIN	14:10		
	14:10		SUB OUT: KNIGHT, NATHAN
	14:10		SUB IN: BLAIR, QUINN
SUB OUT: 25 MUTTS, JUSTYN	12:22	16-16	
SUB IN: 22 CUSHING, JACOB	12:22		
	11:52	20-16	SUB OUT: VAN VLIET, ANDY
	11:52		SUB OUT: LOEWE, LUKE
	11:52		SUB IN: BARNES, BRYCE
	11:52		SUB IN: KNIGHT, NATHAN
	10:36	20-20	SUB OUT: HERMANOVSKIS, RAINERS
	10:36		SUB IN: HAMILTON, TYLER
	09:54	22-20	SUB OUT: AYESA, MIGUEL
	09:54		SUB IN: LOEWE, LUKE
SUB OUT: 22 CUSHING, JACOB	09:54		
SUB OUT: 33 GOSS, COLLIN	09:54		
SUB IN: 2 PAINTER, DYLAN	09:54		
SUB IN: 25 MUTTS, JUSTYN	09:54		
	09:22	24-21	SUB OUT: BLAIR, QUINN
	09:22		SUB IN: VAN VLIET, ANDY
	08:24	24-23	SUB OUT: KNIGHT, NATHAN
	08:24		SUB IN: BLAIR, QUINN
	08:12	24-23	SUB OUT: HAMILTON, TYLER
	08:12		SUB IN: AYESA, MIGUEL
	08:00	24-23	SUB OUT: BARNES, BRYCE
	08:00		SUB IN: HERMANOVSKIS, RAINERS
SUB OUT: 10 MCCOY, JOHNNY	08:00		
SUB IN: 1 ANDERSON, KEVIN	08:00		
	07:16	24-23	SUB OUT: HERMANOVSKIS, RAINERS
	07:16		SUB IN: BARNES, BRYCE
SUB OUT: 2 PAINTER, DYLAN	05:56	28-27	
SUB IN: 22 CUSHING, JACOB	05:56		
	05:53	28-29	SUB OUT: AYESA, MIGUEL
	05:53		SUB IN: HAMILTON, TYLER
	05:05	30-32	SUB OUT: BLAIR, QUINN
	05:05		SUB IN: AYESA, MIGUEL
	05:05		SUB OUT: HAMILTON, TYLER
	05:05		SUB IN: KNIGHT, NATHAN
SUB OUT: 0 ALLEN, RYAN	05:05		
SUB IN: 10 MCCOY, JOHNNY	05:05		
	04:10	35-32	SUB OUT: BARNES, BRYCE
	04:10		SUB IN: HAMILTON, TYLER
	02:54	39-32	SUB OUT: HAMILTON, TYLER
	02:54		SUB IN: BARNES, BRYCE
SUB OUT: 1 ANDERSON, KEVIN	02:54		
SUB IN: 0 ALLEN, RYAN	02:54		
SUB OUT: 25 MUTTS, JUSTYN	02:42	41-32	
SUB IN: 2 PAINTER, DYLAN	02:42		
SUB OUT: 22 CUSHING, JACOB	01:32	41-34	
SUB IN: 1 ANDERSON, KEVIN	01:32		

Delaware 43, William Mary 36

Official Substitutions Log
Delaware vs William Mary
Period 2
February 15, 2020 at Kaplan Arena (Kaplan Arena) - Williamsburg



VISITORS: Delaware	Time	Score	HOME: William Mary
0 ALLEN, RYAN			2 HAMILTON, TYLER
1 ANDERSON, KEVIN			5 BARNES, BRYCE
2 PAINTER, DYLAN			11 VAN VLIET, ANDY
3 DARLING, NATE			12 LOEWE, LUKE
25 MUTTS, JUSTYN			13 KNIGHT, NATHAN
	20:00	-	SUB OUT: AYESA, MIGUEL
	20:00		SUB IN: HAMILTON, TYLER
SUB OUT: 10 MCCOY, JOHNNY	20:00		
SUB IN: 25 MUTTS, JUSTYN	20:00		
	16:19	43-42	SUB OUT: HAMILTON, TYLER
	16:19		SUB IN: AYESA, MIGUEL
SUB OUT: 25 MUTTS, JUSTYN	16:01	43-42	
SUB IN: 22 CUSHING, JACOB	16:01		
	14:34	45-49	SUB OUT: VAN VLIET, ANDY
	14:34		SUB IN: BLAIR, QUINN
SUB OUT: 2 PAINTER, DYLAN	14:34		
SUB IN: 33 GOSS, COLLIN	14:34		
	14:06	45-51	SUB OUT: KNIGHT, NATHAN
	14:06		SUB IN: VAN VLIET, ANDY
SUB OUT: 22 CUSHING, JACOB	14:06		
SUB IN: 10 MCCOY, JOHNNY	14:06		
	12:05	52-53	SUB OUT: BLAIR, QUINN
	12:05		SUB IN: KNIGHT, NATHAN
	11:16	55-53	SUB OUT: BARNES, BRYCE
	11:16		SUB OUT: AYESA, MIGUEL
	11:16		SUB IN: HERMANOVSKIS, RAINERS
	11:16		SUB IN: BLAIR, QUINN
	10:18	55-53	SUB OUT: HERMANOVSKIS, RAINERS
	10:18		SUB IN: BARNES, BRYCE
	09:11	59-53	SUB OUT: BLAIR, QUINN
	09:11		SUB IN: AYESA, MIGUEL
	08:05	59-53	SUB OUT: AYESA, MIGUEL
	08:05		SUB IN: HAMILTON, TYLER
	07:13	59-56	SUB OUT: VAN VLIET, ANDY
	07:13		SUB IN: BLAIR, QUINN
SUB OUT: 33 GOSS, COLLIN	07:13		
SUB IN: 25 MUTTS, JUSTYN	07:13		
SUB OUT: 10 MCCOY, JOHNNY	05:15	61-63	
SUB IN: 33 GOSS, COLLIN	05:15		
SUB OUT: 25 MUTTS, JUSTYN	04:14	61-67	
SUB IN: 10 MCCOY, JOHNNY	04:14		
SUB OUT: 33 GOSS, COLLIN	03:35	61-69	
SUB IN: 25 MUTTS, JUSTYN	03:35		
	00:29	72-76	SUB OUT: BARNES, BRYCE
	00:29		SUB IN: VAN VLIET, ANDY

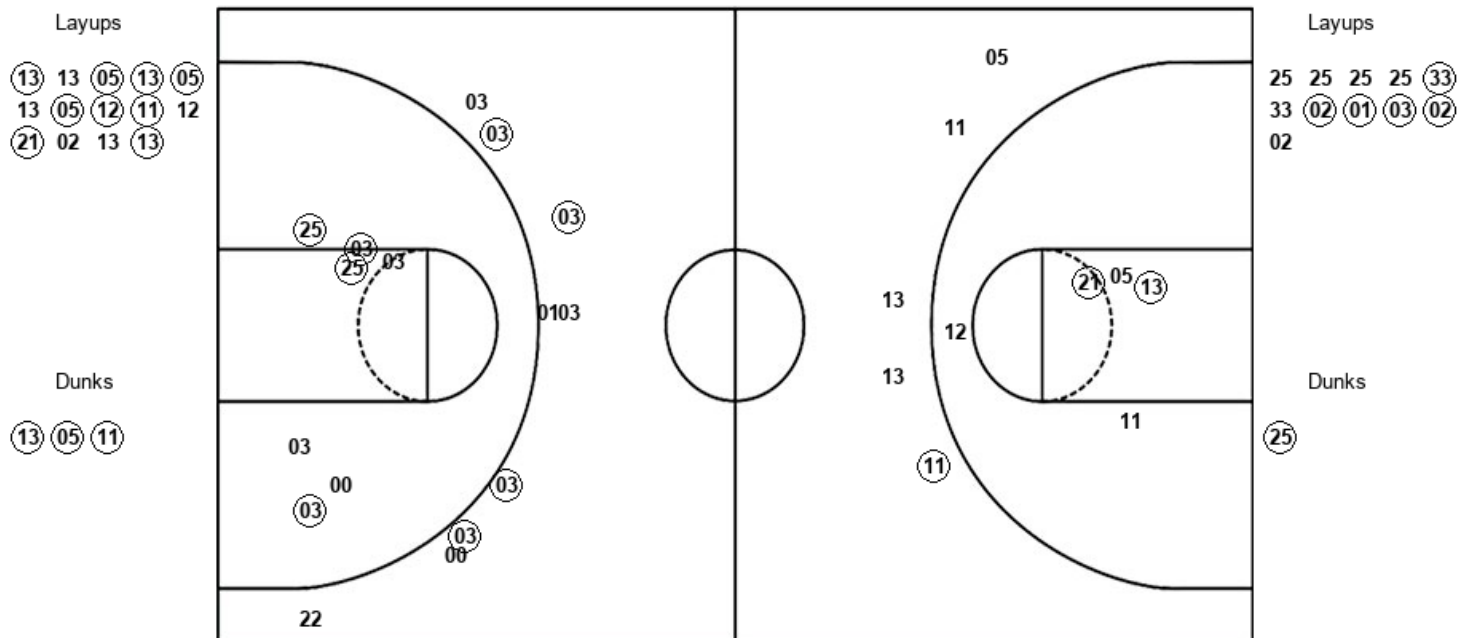
Delaware 77, William Mary 81

Official Shot Chart
Delaware vs William Mary
 PERIOD 1 Shots
 February 15, 2020 at Kaplan Arena (Kaplan Arena) - Williamsburg



William Mary

Delaware



WM : Period 1	Made	Att	Pct
Layups	9	14	64.3
Dunks	3	3	100.0
2PT Field Goals	14	22	63.6
3PT Field Goals	1	5	20.0
Total Field Goals	15	27	55.6

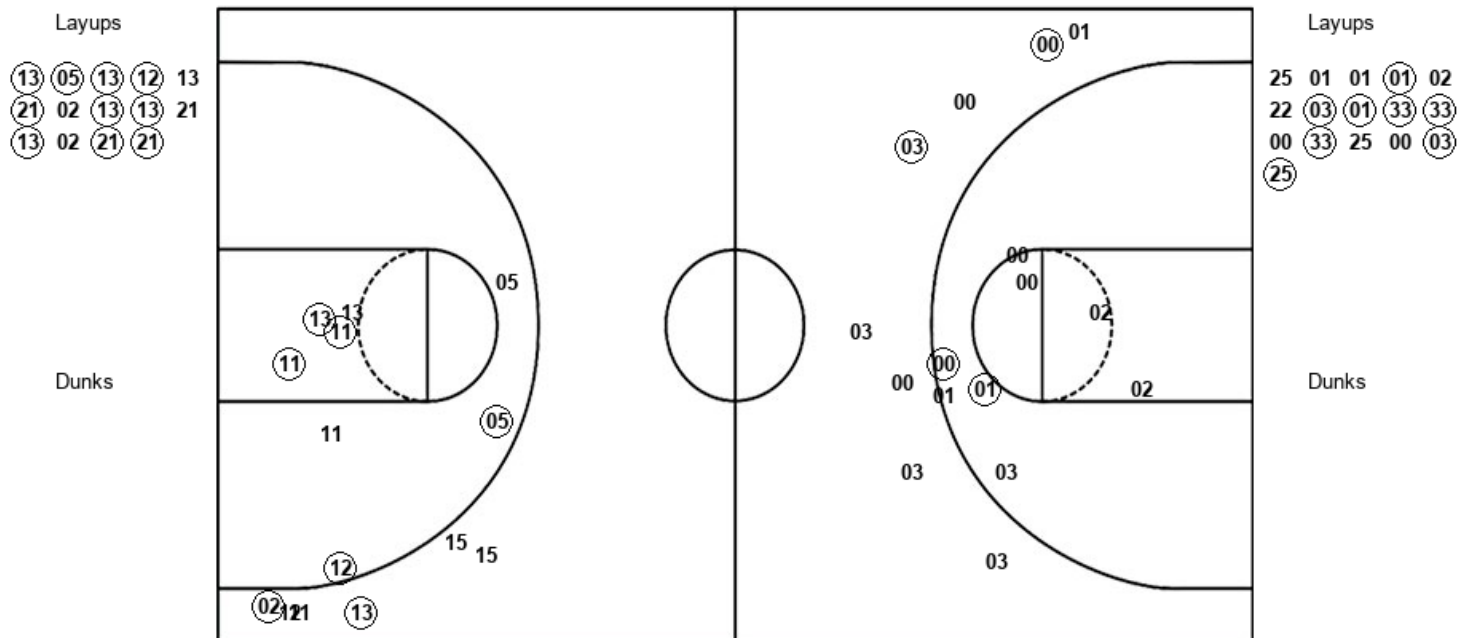
DEL : Period 1	Made	Att	Pct
Layups	5	11	45.5
Dunks	1	1	100.0
2PT Field Goals	10	19	52.6
3PT Field Goals	4	9	44.4
Total Field Goals	14	28	50.0

Official Shot Chart
Delaware vs William Mary
 PERIOD 2 Shots
 February 15, 2020 at Kaplan Arena (Kaplan Arena) - Williamsburg



William Mary

Delaware



WM : Period 2	Made	Att	Pct
Layups	10	14	71.4
Dunks	0	0	0
2PT Field Goals	15	22	68.2
3PT Field Goals	2	6	33.3
Total Field Goals	17	28	60.7

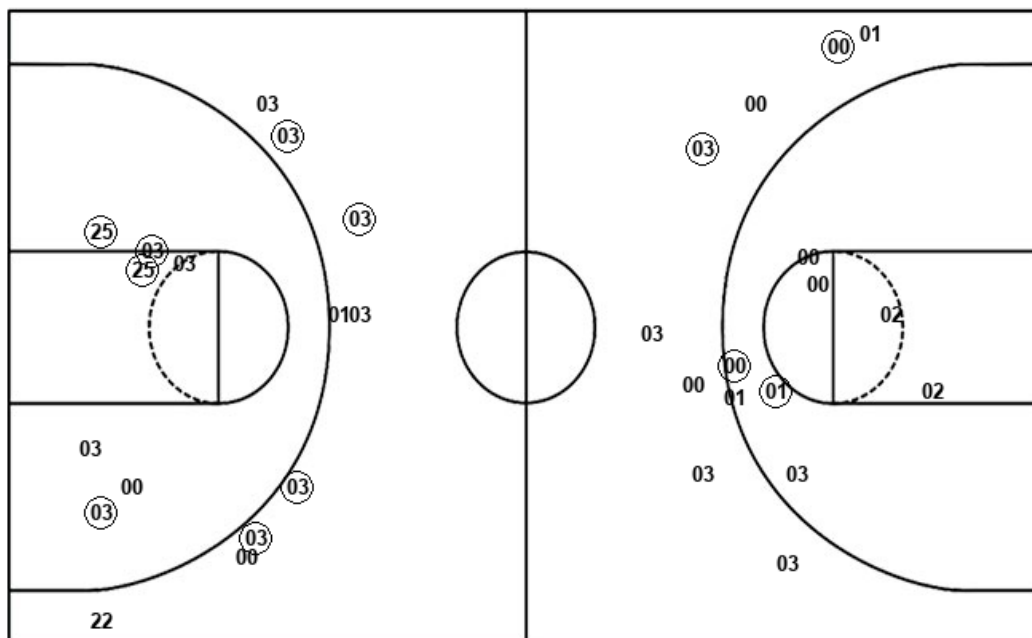
DEL : Period 2	Made	Att	Pct
Layups	8	16	50.0
Dunks	0	0	0
2PT Field Goals	10	24	41.7
3PT Field Goals	2	8	25.0
Total Field Goals	12	32	37.5

Official Shot Chart
Delaware vs William Mary
 Delaware Team Shots
 February 15, 2020 at Kaplan Arena (Kaplan Arena) - Williamsburg



Layups

Dunks



Layups

Dunks

DEL : Period 1	Made	Att	Pct
Layups	5	11	45.5
Dunks	1	1	100.0
2PT Field Goals	10	19	52.6
3PT Field Goals	4	9	44.4
Total Field Goals	14	28	50.0

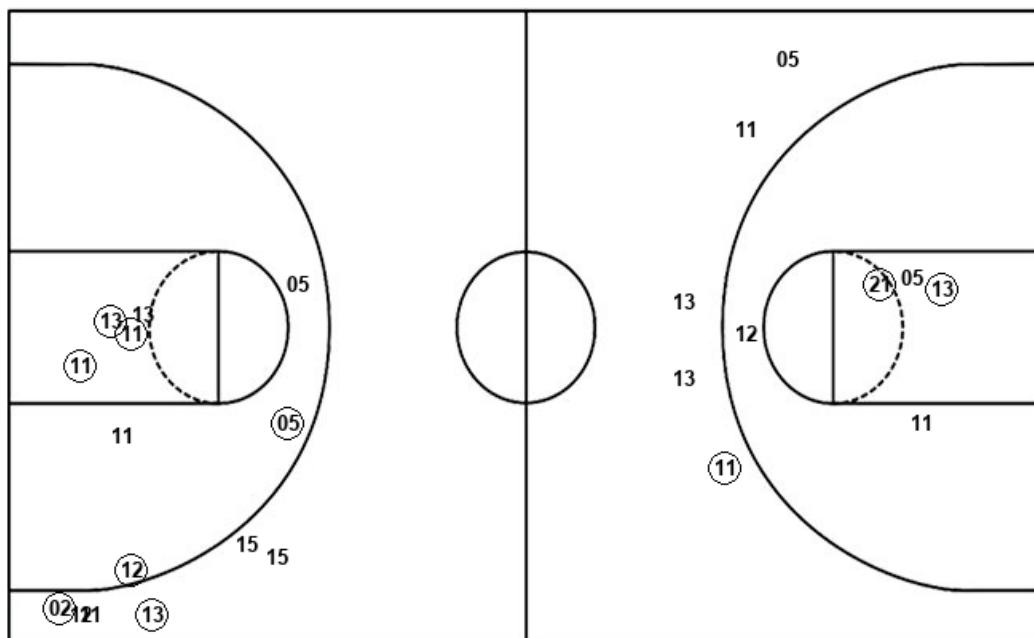
DEL : Period 2	Made	Att	Pct
Layups	8	16	50.0
Dunks	0	0	0
2PT Field Goals	10	24	41.7
3PT Field Goals	2	8	25.0
Total Field Goals	12	32	37.5

Official Shot Chart
Delaware vs William Mary
 William Mary Team Shots
 February 15, 2020 at Kaplan Arena (Kaplan Arena) - Williamsburg



Layups

Dunks



Layups

13 13 05 13 05
 13 05 12 11 12
 21 02 13 13 13
 05 13 12 13 21
 02 13 13 21 13
 02 21 21

Dunks

13 05 11

WM : Period 1	Made	Att	Pct
Layups	9	14	64.3
Dunks	3	3	100.0
2PT Field Goals	14	22	63.6
3PT Field Goals	1	5	20.0
Total Field Goals	15	27	55.6

WM : Period 2	Made	Att	Pct
Layups	10	14	71.4
Dunks	0	0	0
2PT Field Goals	15	22	68.2
3PT Field Goals	2	6	33.3
Total Field Goals	17	28	60.7