

FINAL SCORE



Drexel

72



William Mary

77

February 13, 2020 • Kaplan Arena (Kaplan Arena) - Williamsburg

FINAL STATISTICS

Official Box Score
Drexel vs William Mary
Game Totals -- Final Statistics
February 13, 2020 at Kaplan Arena (Kaplan Arena) - Williamsburg



Drexel 72

No.	Player	S	Pts	FG	3FG	FT	OR	DR	TR	PF	A	TO	Blk	Stl	Min	+/-
04	GREEN, SAM	F	0	0-2	0-2	0-0	0	2	2	3	1	0	0	0	16	-1
05	WALTON, ZACH	G	14	6-11	1-2	1-2	0	6	6	3	2	1	1	1	28	1
11	WYNTER, CAMREN	G	24	8-19	2-5	6-8	1	8	9	2	8	3	0	3	38	-5
21	OKROS, MATE	F	3	1-2	1-2	0-1	0	1	1	2	1	2	0	0	20	-8
51	BUTLER, JAMES	F	6	2-7	1-1	1-2	2	4	6	5	1	1	0	0	27	0
00	WASHINGTON, COLETRANE	G	13	4-7	4-7	1-1	0	0	0	3	1	0	0	0	23	-4
13	PERRY, JR.,TIM	F	3	1-2	0-0	1-2	0	1	1	4	0	1	0	1	13	-3
15	JURIC, MATEY	G	9	2-3	1-2	4-5	0	2	2	2	0	0	0	0	23	3
23	BICKERSTAFF, T.J.	F	0	0-2	0-0	0-0	1	3	4	1	0	1	1	0	11	-8
	TEAM						1	2	3	0		0				
TOTALS			72	24-55	10-21	14-21	5	29	34	25	14	9	2	5	200	

Shooting By Period

Period	FG	FG%	3FG	3FG%	FT	FT%
1st Half	11-26	42%	5-11	45%	7-10	70%
2nd Half	13-29	45%	5-10	50%	7-11	64%
Game	24-55	43.6%	10-21	47.6%	14-21	66.7%

Deadball Rebounds: 1,0
Last FG: 2nd-00:03
Biggest Run: 8-0
Largest lead: By 0 at -
Technical Fouls: None.

William Mary 77

No.	Player	S	Pts	FG	3FG	FT	OR	DR	TR	PF	A	TO	Blk	Stl	Min	+/-
02	HAMILTON, TYLER	G	0	0-0	0-0	0-0	1	3	4	5	0	0	0	0	13	9
05	BARNES, BRYCE	G	18	8-11	1-1	1-1	0	4	4	3	2	2	0	0	31	7
11	VAN VLIET, ANDY	F	17	6-12	2-5	3-4	3	10	13	0	3	1	1	0	35	-2
12	LOEWE, LUKE	G	10	3-10	2-6	2-2	0	1	1	4	4	1	0	0	35	0
13	KNIGHT, NATHAN	C	28	8-14	0-3	12-17	0	7	7	3	2	1	7	0	25	7
10	HERMANOVSKIS, RAINERS	G	0	0-2	0-1	0-0	1	1	2	1	0	1	0	1	14	-5
15	AYESA, MIGUEL	G	0	0-2	0-2	0-0	0	1	1	2	2	1	0	1	25	1
21	BLAIR, QUINN	F	4	1-4	1-3	1-3	0	4	4	2	0	0	0	0	22	8
	TEAM						1	1	2	0		0				
TOTALS			77	26-55	6-21	19-27	6	32	38	20	13	7	8	2	200	

Shooting By Period

Period	FG	FG%	3FG	3FG%	FT	FT%
1st Half	16-31	52%	4-11	36%	7-9	78%
2nd Half	10-24	42%	2-10	20%	12-18	67%
Game	26-55	47.3%	6-21	28.6%	19-27	70.4%

Deadball Rebounds: 2,0
Last FG: 2nd-00:22
Biggest Run: 8-0
Largest lead: By 13 at 1st-09:27
Technical Fouls: None.

Game Notes:

Officials: Justin Porterfield, Tony Crisp, Tim Kelly
 Attendance: 3590

Start Time: 07:05 PM ET
 End Time: 09:04 PM ET
 Game Duration: 1:58
 Conference Game;

Score	1st	2nd	TOT
DRX	34	38	72
WM	43	34	77

DRX led for 0:00. WM led for 39:41.
 Game was tied for 0:19.
 Times tied: 0 Lead Changes: 0

Points from	DRX	WM
In the Paint	20	38
Off Turns	10	5
2nd Chance	2	9
Fast Break	7	9
Bench	25	4

Official Box Score
Drexel vs William Mary
First Half Statistics Only
February 13, 2020 at Kaplan Arena (Kaplan Arena) - Williamsburg



Drexel 34

No.	Player	S	Pts	FG	3FG	FT	OR	DR	TR	PF	A	TO	Blk	Stl	Min	+/-	
04	GREEN, SAM	F	0	0-1	0-1	0-0	0	1	1	2	0	0	0	0	10	-2	
05	WALTON, ZACH	G	4	2-3	0-1	0-0	0	1	1	2	1	1	0	1	11	-5	
11	WYNTER, CAMREN	G	12	4-10	2-4	2-2	1	2	3	1	2	1	0	1	18	-9	
21	OKROS, MATE	F	3	1-1	1-1	0-1	0	1	1	1	1	2	0	0	14	-7	
51	BUTLER, JAMES	F	6	2-5	1-1	1-2	1	4	5	1	1	1	0	0	16	-7	
00	WASHINGTON, COLETRANE	G	3	1-2	1-2	0-0	0	0	0	2	1	0	0	0	10	-7	
13	PERRY, JR.,TIM	F	0	0-0	0-0	0-0	0	0	0	0	0	0	0	0	4	-2	
15	JURIC, MATEY	G	6	1-2	0-1	4-5	0	1	1	1	0	0	0	0	10	0	
23	BICKERSTAFF, T.J.	F	0	0-2	0-0	0-0	1	2	3	1	0	1	1	0	8	-6	
TEAM							0	1	1	0	0						
TOTALS			34	11-26	5-11	7-10	3	13	16	11	6	6	1	2	100		

Shooting By Period

Period	FG	FG%	3FG	3FG%	FT	FT%
1st Half	11-26	42%	5-11	45%	7-10	70%
Game	24-55	43.6%	10-21	47.6%	14-21	66.7%

Deadball Rebounds: 1,0
Last FG Half: DRX 2nd-00:03

William Mary 43

No.	Player	S	Pts	FG	3FG	FT	OR	DR	TR	PF	A	TO	Blk	Stl	Min	+/-	
02	HAMILTON, TYLER	G	0	0-0	0-0	0-0	1	2	3	3	0	0	0	0	7	14	
05	BARNES, BRYCE	G	14	6-8	1-1	1-1	0	1	1	1	1	0	0	0	15	13	
11	VAN VLIET, ANDY	F	8	3-7	1-4	1-1	1	5	6	0	1	1	1	0	17	3	
12	LOEWE, LUKE	G	7	2-6	1-3	2-2	0	1	1	0	3	0	0	0	17	2	
13	KNIGHT, NATHAN	C	10	4-5	0-0	2-2	0	0	0	2	1	0	2	0	7	11	
10	HERMANOVSKIS, RAINERS	G	0	0-1	0-0	0-0	1	0	1	1	0	1	0	1	9	-5	
15	AYESA, MIGUEL	G	0	0-2	0-2	0-0	0	0	0	2	2	1	0	1	11	2	
21	BLAIR, QUINN	F	4	1-2	1-1	1-3	0	4	4	2	0	0	0	0	15	5	
TEAM							1	1	2	0	0						
TOTALS			43	16-31	4-11	7-9	4	14	18	11	8	3	3	2	100		

Shooting By Period

Period	FG	FG%	3FG	3FG%	FT	FT%
1st Half	16-31	52%	4-11	36%	7-9	78%
Game	26-55	47.3%	6-21	28.6%	19-27	70.4%

Deadball Rebounds: 2,0
Last FG Half: WM 2nd-00:22

Game Notes:

Officials: Justin Porterfield, Tony Crisp, Tim Kelly
 Attendance: 3590

Start Time: 07:05 PM ET
 End Time: 09:04 PM ET
 Game Duration: 1:58
 Conference Game;

Score	1st	2nd	TOT
DRX	34	38	72
WM	43	34	77

Points from (This Period)	DRX	WM
In the Paint	8	22
Off Turns	4	5
2nd Chance	1	5
Fast Break	2	5
Bench	9	4

**Official Play-By-Play
Drexel vs William Mary
First Half**

February 13, 2020 at Kaplan Arena (Kaplan Arena) - Williamsburg



Period 1

Starters:

Drexel: 4 GREEN,SAM (F); 5 WALTON,ZACH (G); 11 WYNTER,CAMREN (G); 21 OKROS,MATE (F); 51 BUTLER,JAMES (F);

William Mary: 2 HAMILTON,TYLER (G); 5 BARNES,BRYCE (G); 11 VAN VLIET,ANDY (F); 12 LOEWE,LUKE (G); 13 KNIGHT,NATHAN (C);

Time	VISITORS: Drexel	Score	Margin	HOME: William Mary
19:41		2-0	H 2	GOOD! JUMPER by BARNES, BRYCE [PNT]
19:29	FOUL (OFF) by OKROS, MATE			
19:29	TURNOVER (OFFENSIVE) by OKROS, MATE			
19:13		4-0	H 4	GOOD! DUNK by KNIGHT, NATHAN
18:46	MISSED JUMPER by BUTLER, JAMES			
18:46				BLOCK by KNIGHT, NATHAN
18:40				REBOUND (DEF) by HAMILTON, TYLER
18:39		6-0	H 6	GOOD! LAYUP by BARNES, BRYCE [FB]
18:39				ASSIST by KNIGHT, NATHAN
18:30	TURNOVER (TRAVEL) by WYNTER, CAMREN			
18:19		8-0	H 8	GOOD! LAYUP by BARNES, BRYCE
18:19				ASSIST by VAN VLIET, ANDY
17:53	GOOD! 3PTR by OKROS, MATE	8-3	H 5	
17:53	ASSIST by WYNTER, CAMREN			
17:22				MISSED 3PTR by LOEWE, LUKE
17:19				REBOUND (OFF) by VAN VLIET, ANDY
17:19		10-3	H 7	GOOD! LAYUP by VAN VLIET, ANDY
17:19	FOUL (PERSONAL) by GREEN, SAM			
17:19		11-3	H 8	GOOD! FT by VAN VLIET, ANDY
17:09	GOOD! JUMPER by WYNTER, CAMREN	11-5	H 6	
16:43				MISSED JUMPER by KNIGHT, NATHAN
16:43	REBOUND (DEF) by WALTON, ZACH			
16:42				FOUL (PERSONAL) by KNIGHT, NATHAN
16:31	MISSED 3PTR by GREEN, SAM			
16:27	REBOUND (OFF) by WYNTER, CAMREN			
16:25	MISSED JUMPER by WYNTER, CAMREN			
16:22				REBOUND (DEF) by LOEWE, LUKE
16:14	FOUL (PERSONAL) by WALTON, ZACH			
16:14		12-5	H 7	GOOD! FT by KNIGHT, NATHAN
16:14		13-5	H 8	GOOD! FT by KNIGHT, NATHAN
16:14				SUB OUT: KNIGHT, NATHAN
16:14				SUB IN: BLAIR, QUINN
15:46				FOUL (PERSONAL) by HAMILTON, TYLER
15:46				
15:46				SUB OUT: HAMILTON, TYLER
15:46				SUB OUT: BARNES, BRYCE
15:46				SUB IN: HERMANOVSKIS, RAINERS
15:46				SUB IN: AYESA, MIGUEL
15:40	GOOD! JUMPER by WALTON, ZACH	13-7	H 6	
15:40	ASSIST by OKROS, MATE			
15:19				MISSED 3PTR by LOEWE, LUKE
15:16	REBOUND (DEF) by BUTLER, JAMES			
14:55	GOOD! LAYUP by WALTON, ZACH	13-9	H 4	
14:33		16-9	H 7	GOOD! 3PTR by VAN VLIET, ANDY
14:33				ASSIST by LOEWE, LUKE
14:24				FOUL (PERSONAL) by HERMANOVSKIS, RAINERS
14:15	MISSED LAYUP by BUTLER, JAMES			
14:15				BLOCK by VAN VLIET, ANDY
14:10				REBOUND (DEF) by VAN VLIET, ANDY
14:04				MISSED LAYUP by LOEWE, LUKE
14:01	REBOUND (DEF) by BUTLER, JAMES			
13:54	MISSED 3PTR by WYNTER, CAMREN			
13:51				REBOUND (DEF) by VAN VLIET, ANDY
13:45				TURNOVER (BADPASS) by VAN VLIET, ANDY
13:45	STEAL by WALTON, ZACH			
13:39	MISSED 3PTR by WYNTER, CAMREN			
13:36				REBOUND (DEF) by VAN VLIET, ANDY
13:24				MISSED 3PTR by VAN VLIET, ANDY
13:22				REBOUND (OFF) by HERMANOVSKIS, RAINERS
13:22	FOUL (PERSONAL) by WALTON, ZACH			
13:22	SUB OUT: WALTON, ZACH			
13:22	SUB OUT: OKROS, MATE			
13:22	SUB IN: WASHINGTON, COLETRANE			
13:22	SUB IN: JURIC, MATEY			
13:09				MISSED LAYUP by HERMANOVSKIS, RAINERS
13:06	REBOUND (DEF) by WYNTER, CAMREN			
13:03	GOOD! LAYUP by WYNTER, CAMREN [FB]	16-11	H 5	
12:37		18-11	H 7	GOOD! LAYUP by VAN VLIET, ANDY
12:37				ASSIST by LOEWE, LUKE
12:07	GOOD! JUMPER by BUTLER, JAMES	18-13	H 5	

Time	VISITORS: Drexel	Score	Margin	HOME: William Mary
12:07	ASSIST by WASHINGTON, COLETRANE			
11:49				
11:49				SUB OUT: HERMANOVSKIS, RAINERS
11:49				SUB OUT: VAN VLIET, ANDY
11:49				SUB OUT: LOEWE, LUKE
11:49				SUB IN: HAMILTON, TYLER
11:49				SUB IN: BARNES, BRYCE
11:49				SUB IN: KNIGHT, NATHAN
11:49	SUB OUT: GREEN, SAM			
11:49	SUB IN: BICKERSTAFF, T.J.			
11:43		20-13	H 7	GOOD! LAYUP by KNIGHT, NATHAN
11:30	MISSED LAYUP by BUTLER, JAMES			
11:30				BLOCK by KNIGHT, NATHAN
11:30				REBOUND (DEF) by TEAM
11:30	SUB OUT: BUTLER, JAMES			
11:30	SUB IN: PERRY, JR.,TIM			
11:30				TIMEOUT 30SEC
11:01		22-13	H 9	GOOD! LAYUP by KNIGHT, NATHAN
10:47				FOUL (PERSONAL) by BLAIR, QUINN
10:39	MISSED LAYUP by BICKERSTAFF, T.J.			
10:36				REBOUND (DEF) by HAMILTON, TYLER
10:33				MISSED 3PTR by AYESA, MIGUEL
10:31				REBOUND (OFF) by HAMILTON, TYLER
10:31	FOUL (PERSONAL) by JURIC, MATEY			
10:20	FOUL (PERSONAL) by WYNTER, CAMREN			
10:14		24-13	H 11	GOOD! LAYUP by KNIGHT, NATHAN
09:47	MISSED 3PTR by WASHINGTON, COLETRANE			
09:44				REBOUND (DEF) by BARNES, BRYCE
09:27		26-13	H 13	GOOD! LAYUP by BARNES, BRYCE
09:27				ASSIST by AYESA, MIGUEL
09:27	TIMEOUT 30SEC			
09:05				FOUL (PERSONAL) by HAMILTON, TYLER
09:05	MISSED FT by JURIC, MATEY			
09:05	REBOUND (OFF) by TEAM			
09:05	GOOD! FT by JURIC, MATEY	26-14	H 12	
09:05				SUB OUT: HAMILTON, TYLER
09:05				SUB IN: LOEWE, LUKE
09:05	SUB OUT: WASHINGTON, COLETRANE			
09:05	SUB OUT: BICKERSTAFF, T.J.			
09:05	SUB IN: GREEN, SAM			
09:05	SUB IN: WALTON, ZACH			
09:05	GOOD! FT by JURIC, MATEY	26-15	H 11	
08:55				MISSED 3PTR by AYESA, MIGUEL
08:53	REBOUND (DEF) by GREEN, SAM			
08:53				FOUL (PERSONAL) by BLAIR, QUINN
08:48				SUB OUT: BLAIR, QUINN
08:48				SUB IN: VAN VLIET, ANDY
08:43	GOOD! 3PTR by WYNTER, CAMREN	26-18	H 8	
08:43	ASSIST by WALTON, ZACH			
08:23				MISSED 3PTR by VAN VLIET, ANDY
08:20	REBOUND (DEF) by WYNTER, CAMREN			
08:20				FOUL (PERSONAL) by KNIGHT, NATHAN
08:20				SUB OUT: KNIGHT, NATHAN
08:20				SUB IN: BLAIR, QUINN
08:20	GOOD! FT by WYNTER, CAMREN	26-19	H 7	
08:20	GOOD! FT by WYNTER, CAMREN	26-20	H 6	
08:04				SUB OUT: AYESA, MIGUEL
08:04				SUB IN: HERMANOVSKIS, RAINERS
08:03		29-20	H 9	GOOD! 3PTR by BARNES, BRYCE
07:45	MISSED 3PTR by WALTON, ZACH			
07:41				REBOUND (DEF) by VAN VLIET, ANDY
07:40	FOUL (PERSONAL) by GREEN, SAM			
07:29				
07:29	SUB OUT: GREEN, SAM			
07:29	SUB OUT: WALTON, ZACH			
07:29	SUB OUT: PERRY, JR.,TIM			
07:29	SUB IN: OKROS, MATE			
07:29	SUB IN: BICKERSTAFF, T.J.			
07:29	SUB IN: BUTLER, JAMES			
07:29		30-20	H 10	GOOD! FT by LOEWE, LUKE
07:29		31-20	H 11	GOOD! FT by LOEWE, LUKE
07:07	GOOD! 3PTR by WYNTER, CAMREN	31-23	H 8	
06:52				MISSED LAYUP by BARNES, BRYCE
06:49	REBOUND (DEF) by BUTLER, JAMES			
06:42	MISSED 3PTR by JURIC, MATEY			
06:41				REBOUND (DEF) by BLAIR, QUINN
06:41	FOUL (PERSONAL) by BICKERSTAFF, T.J.			
06:40				MISSED FT by BLAIR, QUINN
06:40				SUB OUT: BARNES, BRYCE
06:40				SUB IN: AYESA, MIGUEL

Time	VISITORS: Drexel	Score	Margin	HOME: William Mary
06:39	REBOUND (DEF) by BICKERSTAFF, T.J.			
06:18	TURNOVER (BADPASS) by OKROS, MATE			
06:18				STEAL by AYESA, MIGUEL
06:10				TURNOVER (BADPASS) by HERMANOVSKIS, RAINERS
06:10	STEAL by WYNTER, CAMREN			
06:05	MISSED LAYUP by WYNTER, CAMREN			
06:04	REBOUND (OFF) by BUTLER, JAMES			
06:04				FOUL (PERSONAL) by AYESA, MIGUEL
06:04				SUB OUT: BLAIR, QUINN
06:04				SUB IN: HAMILTON, TYLER
06:04	GOOD! FT by BUTLER, JAMES	31-24	H 7	
06:04	SUB OUT: WYNTER, CAMREN			
06:04	SUB IN: WASHINGTON, COLETRANE			
06:04	MISSED FT by BUTLER, JAMES			
06:02				REBOUND (DEF) by VAN VLIET, ANDY
05:43				MISSED 3PTR by VAN VLIET, ANDY
05:42	REBOUND (DEF) by OKROS, MATE			
05:42				FOUL (PERSONAL) by HAMILTON, TYLER
05:42				SUB OUT: HAMILTON, TYLER
05:42				SUB IN: BLAIR, QUINN
05:42	MISSED FT by OKROS, MATE			
05:42	REBOUND (OFF) by BICKERSTAFF, T.J.			
05:42	TURNOVER (TRAVEL) by BICKERSTAFF, T.J.			
05:42				SUB OUT: AYESA, MIGUEL
05:42				SUB IN: BARNES, BRYCE
05:30				MISSED LAYUP by BARNES, BRYCE
05:30	REBOUND (DEF) by JURIC, MATEY			
05:30				FOUL (PERSONAL) by BARNES, BRYCE
05:30	GOOD! FT by JURIC, MATEY	31-25	H 6	
05:30	GOOD! FT by JURIC, MATEY	31-26	H 5	
05:07				MISSED JUMPER by VAN VLIET, ANDY
05:05				REBOUND (OFF) by TEAM
04:41				MISSED JUMPER by BLAIR, QUINN
04:41	BLOCK by BICKERSTAFF, T.J.			
04:37	REBOUND (DEF) by BICKERSTAFF, T.J.			
04:30	GOOD! JUMPER by JURIC, MATEY	31-28	H 3	
04:30				TIMEOUT 30SEC
04:30				SUB OUT: HERMANOVSKIS, RAINERS
04:30				SUB IN: AYESA, MIGUEL
04:15		33-28	H 5	GOOD! JUMPER by LOEWE, LUKE
03:48	MISSED LAYUP by BICKERSTAFF, T.J.			
03:45				REBOUND (DEF) by BLAIR, QUINN
03:42		35-28	H 7	GOOD! LAYUP by BARNES, BRYCE [FB]
03:42	FOUL (PERSONAL) by WASHINGTON, COLETRANE			
03:42	SUB OUT: JURIC, MATEY			
03:42	SUB IN: WYNTER, CAMREN			
03:42		36-28	H 8	GOOD! FT by BARNES, BRYCE [FB]
03:42				ASSIST by AYESA, MIGUEL
03:30	MISSED JUMPER by WYNTER, CAMREN			
03:26				REBOUND (DEF) by BLAIR, QUINN
03:19		39-28	H 11	GOOD! 3PTR by BLAIR, QUINN
03:19				ASSIST by LOEWE, LUKE
02:51	GOOD! 3PTR by BUTLER, JAMES	39-31	H 8	
02:51	ASSIST by WYNTER, CAMREN			
02:16				MISSED LAYUP by LOEWE, LUKE
02:16	REBOUND (DEF) by TEAM			
02:16	SUB OUT: BICKERSTAFF, T.J.			
02:16	SUB IN: WALTON, ZACH			
02:01	FOUL (OFF) by BUTLER, JAMES			
02:01	TURNOVER (OFFENSIVE) by BUTLER, JAMES			
01:51				FOUL (OFF) by AYESA, MIGUEL
01:51				TURNOVER (OFFENSIVE) by AYESA, MIGUEL
01:51				SUB OUT: AYESA, MIGUEL
01:51				SUB IN: HERMANOVSKIS, RAINERS
01:31	GOOD! 3PTR by WASHINGTON, COLETRANE	39-34	H 5	
01:31	ASSIST by BUTLER, JAMES			
01:09		42-34	H 8	GOOD! 3PTR by LOEWE, LUKE
01:09				ASSIST by BARNES, BRYCE
00:42	TURNOVER (LOSTBALL) by WALTON, ZACH			
00:42				STEAL by HERMANOVSKIS, RAINERS
00:28	FOUL (PERSONAL) by WASHINGTON, COLETRANE			
00:28		43-34	H 9	GOOD! FT by BLAIR, QUINN
00:28				MISSED FT by BLAIR, QUINN
00:27	REBOUND (DEF) by BUTLER, JAMES			
00:05	MISSED JUMPER by WYNTER, CAMREN			
00:02				REBOUND (DEF) by BLAIR, QUINN

Drexel 34, William Mary 43

Points from (This Period)	DRX	WM
In the Paint	8	22
Off Turns	4	5
2nd Chance	1	5
Fast Break	2	5
Bench	9	4

Official Box Score
Drexel vs William Mary
Second Half Statistics Only
February 13, 2020 at Kaplan Arena (Kaplan Arena) - Williamsburg



Drexel 38

No.	Player	S	Pts	FG	3FG	FT	OR	DR	TR	PF	A	TO	Blk	Stl	Min	+/-
04	GREEN, SAM	F	0	0-1	0-1	0-0	0	1	1	1	1	0	0	0	7	1
05	WALTON, ZACH	G	10	4-8	1-1	1-2	0	5	5	1	1	0	1	0	18	6
11	WYNTER, CAMREN	G	12	4-9	0-1	4-6	0	6	6	1	6	2	0	2	20	4
21	OKROS, MATE	F	0	0-1	0-1	0-0	0	0	0	1	0	0	0	0	6	-1
51	BUTLER, JAMES	F	0	0-2	0-0	0-0	1	0	1	4	0	0	0	0	11	7
00	WASHINGTON, COLETRANE	G	10	3-5	3-5	1-1	0	0	0	1	0	0	0	0	13	3
13	PERRY, JR.,TIM	F	3	1-2	0-0	1-2	0	1	1	4	0	1	0	1	9	-1
15	JURIC, MATEY	G	3	1-1	1-1	0-0	0	1	1	1	0	0	0	0	14	3
23	BICKERSTAFF, T.J.	F	0	0-0	0-0	0-0	0	1	1	0	0	0	0	0	3	-2
	TEAM						1	1	2	0		0				
TOTALS			38	13-29	5-10	7-11	2	16	18	14	8	3	1	3	100	

Shooting By Period

Period	FG	FG%	3FG	3FG%	FT	FT%
2nd Half	13-29	45%	5-10	50%	7-11	64%
Game	24-55	43.6%	10-21	47.6%	14-21	66.7%

Deadball Rebounds: 1,0

Last FG Half: DRX -

William Mary 34

No.	Player	S	Pts	FG	3FG	FT	OR	DR	TR	PF	A	TO	Blk	Stl	Min	+/-
02	HAMILTON, TYLER	G	0	0-0	0-0	0-0	0	1	1	2	0	0	0	0	6	-5
05	BARNES, BRYCE	G	4	2-3	0-0	0-0	0	3	3	2	1	2	0	0	16	-6
11	VAN VLIET, ANDY	F	9	3-5	1-1	2-3	2	5	7	0	2	0	0	0	18	-5
12	LOEWE, LUKE	G	3	1-4	1-3	0-0	0	0	0	4	1	1	0	0	18	-2
13	KNIGHT, NATHAN	C	18	4-9	0-3	10-15	0	7	7	1	1	1	5	0	18	-4
10	HERMANOVSKIS, RAINERS	G	0	0-1	0-1	0-0	0	1	1	0	0	0	0	0	4	0
15	AYESA, MIGUEL	G	0	0-0	0-0	0-0	0	1	1	0	0	0	0	0	13	-1
21	BLAIR, QUINN	F	0	0-2	0-2	0-0	0	0	0	0	0	0	0	0	6	3
	TEAM						0	0	0	0		0				
TOTALS			34	10-24	2-10	12-18	2	18	20	9	5	4	5	0	100	

Shooting By Period

Period	FG	FG%	3FG	3FG%	FT	FT%
2nd Half	10-24	42%	2-10	20%	12-18	67%
Game	26-55	47.3%	6-21	28.6%	19-27	70.4%

Deadball Rebounds: 2,0

Last FG Half: WM -

Game Notes:

Officials: Justin Porterfield, Tony Crisp, Tim Kelly
 Attendance: 3590

Start Time: 07:05 PM ET
 End Time: 09:04 PM ET
 Game Duration: 1:58
 Conference Game;

Score	1st	2nd	TOT
DRX	34	38	72
WM	43	34	77

Points from (This Period)	DRX	WM
In the Paint	12	16
Off Turns	6	0
2nd Chance	1	4
Fast Break	5	4
Bench	16	0

Official Play-By-Play
Drexel vs William Mary
Second Half
February 13, 2020 at Kaplan Arena (Kaplan Arena) - Williamsburg



Period 2

Starters:

Drexel: 4 GREEN,SAM (F); 5 WALTON,ZACH (G); 11 WYNTER,CAMREN (G); 21 OKROS,MATE (F); 51 BUTLER,JAMES (F);

William Mary: 2 HAMILTON,TYLER (G); 5 BARNES,BRYCE (G); 11 VAN VLIET,ANDY (F); 12 LOEWE,LUKE (G); 13 KNIGHT,NATHAN (C);

Time	VISITORS: Drexel	Score	Margin	HOME: William Mary
20:00				SUB OUT: HERMANOVSKIS, RAINERS
20:00				SUB OUT: BLAIR, QUINN
20:00				SUB IN: HAMILTON, TYLER
20:00				SUB IN: KNIGHT, NATHAN
20:00	SUB OUT: WASHINGTON, COLETRANE			
20:00	SUB IN: GREEN, SAM			
19:35	GOOD! JUMPER by WYNTER, CAMREN	43-36	H 7	
19:35				FOUL (PERSONAL) by BARNES, BRYCE
19:34	MISSED FT by WYNTER, CAMREN			
19:33				REBOUND (DEF) by VAN VLIET, ANDY
19:20	FOUL (PERSONAL) by WYNTER, CAMREN			
19:18		46-36	H 10	GOOD! 3PTR by VAN VLIET, ANDY
19:18				ASSIST by BARNES, BRYCE
19:02	TURNOVER (LOSTBALL) by WYNTER, CAMREN			
18:38				MISSED LAYUP by VAN VLIET, ANDY
18:35	REBOUND (DEF) by WYNTER, CAMREN			
18:10	GOOD! LAYUP by WALTON, ZACH	46-38	H 8	
18:10	ASSIST by WYNTER, CAMREN			
17:53				MISSED 3PTR by KNIGHT, NATHAN
17:49	REBOUND (DEF) by GREEN, SAM			
17:40	MISSED 3PTR by OKROS, MATE			
17:36				REBOUND (DEF) by VAN VLIET, ANDY
17:27	FOUL (PERSONAL) by BUTLER, JAMES			
17:27				MISSED FT by KNIGHT, NATHAN
17:27				REBOUND (OFF) by TEAM
17:27		47-38	H 9	GOOD! FT by KNIGHT, NATHAN
16:56	GOOD! JUMPER by WYNTER, CAMREN	47-40	H 7	
16:56	ASSIST by GREEN, SAM			
16:34				MISSED LAYUP by BARNES, BRYCE
16:31	REBOUND (DEF) by WALTON, ZACH			
16:27	MISSED LAYUP by WALTON, ZACH			
16:27				BLOCK by KNIGHT, NATHAN
16:27	REBOUND (OFF) by TEAM			
16:20	MISSED JUMPER by BUTLER, JAMES			
16:14				REBOUND (DEF) by HAMILTON, TYLER
16:09				MISSED 3PTR by KNIGHT, NATHAN
16:05	REBOUND (DEF) by WYNTER, CAMREN			
15:57	MISSED JUMPER by WYNTER, CAMREN			
15:53	REBOUND (OFF) by BUTLER, JAMES			
15:44				FOUL (PERSONAL) by LOEWE, LUKE
15:44				
15:44				SUB OUT: BARNES, BRYCE
15:44				SUB OUT: VAN VLIET, ANDY
15:44				SUB IN: AYESA, MIGUEL
15:44				SUB IN: BLAIR, QUINN
15:44	SUB OUT: BUTLER, JAMES			
15:44	SUB IN: PERRY, JR.,TIM			
15:34				FOUL (PERSONAL) by HAMILTON, TYLER
15:34	GOOD! FT by WALTON, ZACH	47-41	H 6	
15:34				SUB OUT: HAMILTON, TYLER
15:34				SUB IN: HERMANOVSKIS, RAINERS
15:34	MISSED FT by WALTON, ZACH			
15:32				REBOUND (DEF) by KNIGHT, NATHAN
15:18				MISSED 3PTR by BLAIR, QUINN
15:14	REBOUND (DEF) by PERRY, JR.,TIM			
15:03	MISSED LAYUP by WALTON, ZACH			
15:03				BLOCK by KNIGHT, NATHAN
14:59				REBOUND (DEF) by KNIGHT, NATHAN
14:39		49-41	H 8	GOOD! LAYUP by KNIGHT, NATHAN
14:31	MISSED 3PTR by GREEN, SAM			
14:27				REBOUND (DEF) by KNIGHT, NATHAN
14:16				MISSED 3PTR by KNIGHT, NATHAN
14:13	REBOUND (DEF) by WYNTER, CAMREN			
13:46	MISSED JUMPER by PERRY, JR.,TIM			
13:46				BLOCK by KNIGHT, NATHAN
13:46				REBOUND (DEF) by HERMANOVSKIS, RAINERS
13:46	FOUL (PERSONAL) by GREEN, SAM			
13:46				SUB OUT: KNIGHT, NATHAN
13:46				SUB IN: VAN VLIET, ANDY
13:46	SUB OUT: OKROS, MATE			

Time	VISITORS: Drexel	Score	Margin	HOME: William Mary
13:46	SUB IN: JURIC, MATEY			
13:31				MISSED 3PTR by HERMANOVSKIS, RAINERS
13:31	BLOCK by WALTON, ZACH			
13:26	REBOUND (DEF) by JURIC, MATEY			
13:20	MISSED 3PTR by WYNTER, CAMREN			
13:18				REBOUND (DEF) by VAN VLIET, ANDY
13:18	FOUL (PERSONAL) by PERRY, JR.,TIM			
13:18				SUB OUT: LOEWE, LUKE
13:18				SUB IN: BARNES, BRYCE
13:18	SUB OUT: GREEN, SAM			
13:18	SUB IN: BICKERSTAFF, T.J.			
12:54				MISSED JUMPER by VAN VLIET, ANDY
12:54	REBOUND (DEF) by TEAM			
12:48	SUB OUT: WALTON, ZACH			
12:48	SUB IN: WASHINGTON, COLETRANE			
12:27	GOOD! LAYUP by PERRY, JR.,TIM	49-43	H 6	
12:27	ASSIST by WYNTER, CAMREN			
12:08		51-43	H 8	GOOD! JUMPER by VAN VLIET, ANDY
12:08	FOUL (PERSONAL) by PERRY, JR.,TIM			
12:07				MISSED FT by VAN VLIET, ANDY
12:06	REBOUND (DEF) by BICKERSTAFF, T.J.			
11:59	FOUL (OFF) by PERRY, JR.,TIM			
11:59	TURNOVER (OFFENSIVE) by PERRY, JR.,TIM			
11:59				SUB OUT: BLAIR, QUINN
11:59				SUB IN: KNIGHT, NATHAN
11:59	SUB OUT: PERRY, JR.,TIM			
11:59	SUB IN: BUTLER, JAMES			
11:45				TURNOVER (LOSTBALL) by BARNES, BRYCE
11:45	STEAL by WYNTER, CAMREN			
11:40	GOOD! 3PTR by JURIC, MATEY [FB]	51-46	H 5	
11:40	ASSIST by WYNTER, CAMREN			
11:15	FOUL (PERSONAL) by BUTLER, JAMES			
11:15		52-46	H 6	GOOD! FT by KNIGHT, NATHAN
11:15				SUB OUT: HERMANOVSKIS, RAINERS
11:15				SUB IN: LOEWE, LUKE
11:15				MISSED FT by KNIGHT, NATHAN
11:12				REBOUND (OFF) by VAN VLIET, ANDY
10:59		54-46	H 8	GOOD! JUMPER by KNIGHT, NATHAN [PNT]
10:40	MISSED LAYUP by WYNTER, CAMREN			
10:37				REBOUND (DEF) by KNIGHT, NATHAN
10:33		56-46	H 10	GOOD! LAYUP by BARNES, BRYCE [FB]
10:33				ASSIST by VAN VLIET, ANDY
10:22	TIMEOUT 30SEC			
10:22	SUB OUT: BICKERSTAFF, T.J.			
10:22	SUB IN: WALTON, ZACH			
10:11	GOOD! 3PTR by WASHINGTON, COLETRANE	56-49	H 7	
10:11	ASSIST by WALTON, ZACH			
09:51				MISSED JUMPER by LOEWE, LUKE
09:48	REBOUND (DEF) by WALTON, ZACH			
09:46				FOUL (PERSONAL) by LOEWE, LUKE
09:32	GOOD! LAYUP by WALTON, ZACH [PNT]	56-51	H 5	
09:15				FOUL (OFF) by KNIGHT, NATHAN
09:15				TURNOVER (OFFENSIVE) by KNIGHT, NATHAN
09:15				SUB OUT: AYESA, MIGUEL
09:15				SUB IN: BLAIR, QUINN
08:58	TURNOVER (DRIBBLING) by WYNTER, CAMREN			
08:48				MISSED 3PTR by BLAIR, QUINN
08:44	REBOUND (DEF) by WYNTER, CAMREN			
08:40	MISSED 3PTR by WASHINGTON, COLETRANE			
08:37				REBOUND (DEF) by VAN VLIET, ANDY
08:27	FOUL (PERSONAL) by BUTLER, JAMES			
08:27		57-51	H 6	GOOD! FT by KNIGHT, NATHAN
08:27	SUB OUT: BUTLER, JAMES			
08:27	SUB IN: PERRY, JR.,TIM			
08:27				SUB OUT: BARNES, BRYCE
08:27				SUB IN: AYESA, MIGUEL
08:27		58-51	H 7	GOOD! FT by KNIGHT, NATHAN
08:06	MISSED JUMPER by WALTON, ZACH			
08:00				REBOUND (DEF) by AYESA, MIGUEL
07:55				TURNOVER (LOSTBALL) by LOEWE, LUKE
07:55	STEAL by PERRY, JR.,TIM			
07:32	GOOD! 3PTR by WASHINGTON, COLETRANE	58-54	H 4	
07:32	ASSIST by WYNTER, CAMREN			
07:00		61-54	H 7	GOOD! 3PTR by LOEWE, LUKE
07:00				ASSIST by KNIGHT, NATHAN
06:36				FOUL (PERSONAL) by LOEWE, LUKE
06:36				SUB OUT: BLAIR, QUINN
06:36				SUB IN: BARNES, BRYCE

Time	VISITORS: Drexel	Score	Margin	HOME: William Mary
06:36	GOOD! FT by WYNTER, CAMREN	61-55	H 6	
06:36	GOOD! FT by WYNTER, CAMREN	61-56	H 5	
06:36	GOOD! FT by WYNTER, CAMREN	61-57	H 4	
06:32		63-57	H 6	GOOD! LAYUP by BARNES, BRYCE [FB]
06:32				ASSIST by LOEWE, LUKE
06:22	MISSED 3PTR by WASHINGTON, COLETRANE			
06:19				REBOUND (DEF) by BARNES, BRYCE
06:12	FOUL (PERSONAL) by WALTON, ZACH			
06:12		64-57	H 7	GOOD! FT by VAN VLIET, ANDY
06:12		65-57	H 8	GOOD! FT by VAN VLIET, ANDY
05:44				FOUL (PERSONAL) by LOEWE, LUKE
05:44	GOOD! FT by PERRY, JR.,TIM	65-58	H 7	
05:42	MISSED FT by PERRY, JR.,TIM			
05:41				REBOUND (DEF) by KNIGHT, NATHAN
05:21	FOUL (PERSONAL) by JURIC, MATEY			
05:21				MISSED FT by KNIGHT, NATHAN
05:21				REBOUND (OFF) by TEAM
05:21	SUB OUT: PERRY, JR.,TIM			
05:21	SUB IN: BUTLER, JAMES			
05:21				MISSED FT by KNIGHT, NATHAN
05:19	REBOUND (DEF) by WYNTER, CAMREN			
05:03	GOOD! LAYUP by WYNTER, CAMREN	65-60	H 5	
04:41				MISSED JUMPER by KNIGHT, NATHAN
04:38	REBOUND (DEF) by WALTON, ZACH			
04:27				FOUL (PERSONAL) by BARNES, BRYCE
04:27	GOOD! FT by WYNTER, CAMREN	65-61	H 4	
04:26	MISSED FT by WYNTER, CAMREN			
04:25				REBOUND (DEF) by KNIGHT, NATHAN
04:10				MISSED 3PTR by LOEWE, LUKE
04:07	REBOUND (DEF) by WYNTER, CAMREN			
03:57	MISSED LAYUP by WALTON, ZACH			
03:53				REBOUND (DEF) by BARNES, BRYCE
03:52				TURNOVER (BADPASS) by BARNES, BRYCE
03:52	STEAL by WYNTER, CAMREN			
03:26	MISSED JUMPER by BUTLER, JAMES			
03:23				REBOUND (DEF) by VAN VLIET, ANDY
03:02		67-61	H 6	GOOD! DUNK by KNIGHT, NATHAN
03:02				ASSIST by VAN VLIET, ANDY
02:43	GOOD! JUMPER by WYNTER, CAMREN	67-63	H 4	
02:20	FOUL (PERSONAL) by BUTLER, JAMES			
02:20				
02:20	SUB OUT: BUTLER, JAMES			
02:20	SUB IN: PERRY, JR.,TIM			
02:20				SUB OUT: AYESA, MIGUEL
02:20				SUB IN: HAMILTON, TYLER
02:20		68-63	H 5	GOOD! FT by KNIGHT, NATHAN
02:20		69-63	H 6	GOOD! FT by KNIGHT, NATHAN
01:50	MISSED JUMPER by WYNTER, CAMREN			
01:50				BLOCK by KNIGHT, NATHAN
01:45				REBOUND (DEF) by BARNES, BRYCE
01:45				MISSED 3PTR by LOEWE, LUKE
01:41	REBOUND (DEF) by WALTON, ZACH			
01:35	GOOD! 3PTR by WALTON, ZACH	69-66	H 3	
01:35	ASSIST by WYNTER, CAMREN			
01:02				MISSED JUMPER by KNIGHT, NATHAN
00:57				REBOUND (OFF) by VAN VLIET, ANDY
00:56		71-66	H 5	GOOD! LAYUP by VAN VLIET, ANDY
00:47	GOOD! 3PTR by WASHINGTON, COLETRANE	71-69	H 2	
00:47	ASSIST by WYNTER, CAMREN			
00:47				FOUL (PERSONAL) by HAMILTON, TYLER
00:47				SUB OUT: HAMILTON, TYLER
00:47				SUB IN: AYESA, MIGUEL
00:47	GOOD! FT by WASHINGTON, COLETRANE	71-70	H 1	
00:38				TIMEOUT TEAM
00:22		73-70	H 3	GOOD! LAYUP by KNIGHT, NATHAN
00:22	FOUL (PERSONAL) by PERRY, JR.,TIM			
00:22	TIMEOUT TEAM			
00:22		74-70	H 4	GOOD! FT by KNIGHT, NATHAN
00:09	MISSED LAYUP by WYNTER, CAMREN			
00:09				BLOCK by KNIGHT, NATHAN
00:08				REBOUND (DEF) by KNIGHT, NATHAN
00:08	FOUL (PERSONAL) by WASHINGTON, COLETRANE			
00:08		75-70	H 5	GOOD! FT by KNIGHT, NATHAN
00:08				MISSED FT by KNIGHT, NATHAN
00:06	REBOUND (DEF) by WALTON, ZACH			
00:03	GOOD! DUNK by WALTON, ZACH [FB]	75-72	H 3	
00:03	TIMEOUT 30SEC			
00:03	SUB OUT: PERRY, JR.,TIM			
00:03	SUB IN: OKROS, MATE			
00:00	FOUL (PERSONAL) by OKROS, MATE			

Time	VISITORS: Drexel	Score	Margin	HOME: William Mary
00:00		76-72	H 4	GOOD! FT by KNIGHT, NATHAN
00:00		77-72	H 5	GOOD! FT by KNIGHT, NATHAN

Drexel 72, William Mary 77

Points from (This Period)	DRX	WM
In the Paint	12	16
Off Turns	6	0
2nd Chance	1	4
Fast Break	5	4
Bench	16	0

Official Scoring/Possession Reference Chart
Drexel vs William Mary
Period 1
February 13, 2020 at Kaplan Arena (Kaplan Arena) - Williamsburg



Period 1

Starters:

Drexel: 4 GREEN,SAM (F); 5 WALTON,ZACH (G); 11 WYNTER,CAMREN (G); 21 OKROS,MATE (F); 51 BUTLER,JAMES (F);

William Mary: 2 HAMILTON,TYLER (G); 5 BARNES,BRYCE (G); 11 VAN VLIET,ANDY (F); 12 LOEWE,LUKE (G); 13 KNIGHT,NATHAN (C);

Time	VISITORS: Drexel	Score	Margin	HOME: William Mary
19:41		2-0	H 2	GOOD! JUMPER by BARNES, BRYCE [PNT]
19:13		4-0	H 4	GOOD! DUNK by KNIGHT, NATHAN
18:39		6-0	H 6	GOOD! LAYUP by BARNES, BRYCE [FB]
18:19		8-0	H 8	GOOD! LAYUP by BARNES, BRYCE
17:53	GOOD! 3PTR by OKROS, MATE	8-3	H 5	
17:19		10-3	H 7	GOOD! LAYUP by VAN VLIET, ANDY
17:19		11-3	H 8	GOOD! FT by VAN VLIET, ANDY
17:09	GOOD! JUMPER by WYNTER, CAMREN	11-5	H 6	
16:14		12-5	H 7	GOOD! FT by KNIGHT, NATHAN
16:14		13-5	H 8	GOOD! FT by KNIGHT, NATHAN
15:40	GOOD! JUMPER by WALTON, ZACH	13-7	H 6	
14:55	GOOD! LAYUP by WALTON, ZACH	13-9	H 4	
14:33		16-9	H 7	GOOD! 3PTR by VAN VLIET, ANDY
13:03	GOOD! LAYUP by WYNTER, CAMREN [FB]	16-11	H 5	
12:37		18-11	H 7	GOOD! LAYUP by VAN VLIET, ANDY
12:07	GOOD! JUMPER by BUTLER, JAMES	18-13	H 5	
11:43		20-13	H 7	GOOD! LAYUP by KNIGHT, NATHAN
11:01		22-13	H 9	GOOD! LAYUP by KNIGHT, NATHAN
10:14		24-13	H 11	GOOD! LAYUP by KNIGHT, NATHAN
09:27		26-13	H 13	GOOD! LAYUP by BARNES, BRYCE
09:05	GOOD! FT by JURIC, MATEY	26-14	H 12	
09:05	GOOD! FT by JURIC, MATEY	26-15	H 11	
08:43	GOOD! 3PTR by WYNTER, CAMREN	26-18	H 8	
08:20	GOOD! FT by WYNTER, CAMREN	26-19	H 7	
08:20	GOOD! FT by WYNTER, CAMREN	26-20	H 6	
08:03		29-20	H 9	GOOD! 3PTR by BARNES, BRYCE
07:29		30-20	H 10	GOOD! FT by LOEWE, LUKE
07:29		31-20	H 11	GOOD! FT by LOEWE, LUKE
07:07	GOOD! 3PTR by WYNTER, CAMREN	31-23	H 8	
06:04	GOOD! FT by BUTLER, JAMES	31-24	H 7	
05:30	GOOD! FT by JURIC, MATEY	31-25	H 6	
05:30	GOOD! FT by JURIC, MATEY	31-26	H 5	
04:30	GOOD! JUMPER by JURIC, MATEY	31-28	H 3	
04:15		33-28	H 5	GOOD! JUMPER by LOEWE, LUKE
03:42		35-28	H 7	GOOD! LAYUP by BARNES, BRYCE [FB]
03:42		36-28	H 8	GOOD! FT by BARNES, BRYCE [FB]
03:19		39-28	H 11	GOOD! 3PTR by BLAIR, QUINN
02:51	GOOD! 3PTR by BUTLER, JAMES	39-31	H 8	
01:31	GOOD! 3PTR by WASHINGTON, COLETRANE	39-34	H 5	
01:09		42-34	H 8	GOOD! 3PTR by LOEWE, LUKE
00:28		43-34	H 9	GOOD! FT by BLAIR, QUINN

Drexel 34, William Mary 43

Official Scoring/Possession Reference Chart
Drexel vs William Mary
Period 2
February 13, 2020 at Kaplan Arena (Kaplan Arena) - Williamsburg



Period 2

Starters:

Drexel: 4 GREEN,SAM (F); 5 WALTON,ZACH (G); 11 WYNTER,CAMREN (G); 21 OKROS,MATE (F); 51 BUTLER,JAMES (F);

William Mary: 2 HAMILTON,TYLER (G); 5 BARNES,BRYCE (G); 11 VAN VLIET,ANDY (F); 12 LOEWE,LUKE (G); 13 KNIGHT,NATHAN (C);

Time	VISITORS: Drexel	Score	Margin	HOME: William Mary
19:35	GOOD! JUMPER by WYNTER, CAMREN	43-36	H 7	
19:18		46-36	H 10	GOOD! 3PTR by VAN VLIET, ANDY
18:10	GOOD! LAYUP by WALTON, ZACH	46-38	H 8	
17:27		47-38	H 9	GOOD! FT by KNIGHT, NATHAN
16:56	GOOD! JUMPER by WYNTER, CAMREN	47-40	H 7	
15:34	GOOD! FT by WALTON, ZACH	47-41	H 6	
14:39		49-41	H 8	GOOD! LAYUP by KNIGHT, NATHAN
12:27	GOOD! LAYUP by PERRY, JR.,TIM	49-43	H 6	
12:08		51-43	H 8	GOOD! JUMPER by VAN VLIET, ANDY
11:40	GOOD! 3PTR by JURIC, MATEY [FB]	51-46	H 5	
11:15		52-46	H 6	GOOD! FT by KNIGHT, NATHAN
10:59		54-46	H 8	GOOD! JUMPER by KNIGHT, NATHAN [PNT]
10:33		56-46	H 10	GOOD! LAYUP by BARNES, BRYCE [FB]
10:11	GOOD! 3PTR by WASHINGTON, COLETRANE	56-49	H 7	
09:32	GOOD! LAYUP by WALTON, ZACH [PNT]	56-51	H 5	
08:27		57-51	H 6	GOOD! FT by KNIGHT, NATHAN
08:27		58-51	H 7	GOOD! FT by KNIGHT, NATHAN
07:32	GOOD! 3PTR by WASHINGTON, COLETRANE	58-54	H 4	
07:00		61-54	H 7	GOOD! 3PTR by LOEWE, LUKE
06:36	GOOD! FT by WYNTER, CAMREN	61-55	H 6	
06:36	GOOD! FT by WYNTER, CAMREN	61-56	H 5	
06:36	GOOD! FT by WYNTER, CAMREN	61-57	H 4	
06:32		63-57	H 6	GOOD! LAYUP by BARNES, BRYCE [FB]
06:12		64-57	H 7	GOOD! FT by VAN VLIET, ANDY
06:12		65-57	H 8	GOOD! FT by VAN VLIET, ANDY
05:44	GOOD! FT by PERRY, JR.,TIM	65-58	H 7	
05:03	GOOD! LAYUP by WYNTER, CAMREN	65-60	H 5	
04:27	GOOD! FT by WYNTER, CAMREN	65-61	H 4	
03:02		67-61	H 6	GOOD! DUNK by KNIGHT, NATHAN
02:43	GOOD! JUMPER by WYNTER, CAMREN	67-63	H 4	
02:20		68-63	H 5	GOOD! FT by KNIGHT, NATHAN
02:20		69-63	H 6	GOOD! FT by KNIGHT, NATHAN
01:35	GOOD! 3PTR by WALTON, ZACH	69-66	H 3	
00:56		71-66	H 5	GOOD! LAYUP by VAN VLIET, ANDY
00:47	GOOD! 3PTR by WASHINGTON, COLETRANE	71-69	H 2	
00:47	GOOD! FT by WASHINGTON, COLETRANE	71-70	H 1	
00:22		73-70	H 3	GOOD! LAYUP by KNIGHT, NATHAN
00:22		74-70	H 4	GOOD! FT by KNIGHT, NATHAN
00:08		75-70	H 5	GOOD! FT by KNIGHT, NATHAN
00:03	GOOD! DUNK by WALTON, ZACH [FB]	75-72	H 3	
00:00		76-72	H 4	GOOD! FT by KNIGHT, NATHAN
00:00		77-72	H 5	GOOD! FT by KNIGHT, NATHAN

Drexel 72, William Mary 77

**Official Substitutions Log
Drexel vs William Mary
Period 1
February 13, 2020 at Kaplan Arena (Kaplan Arena) - Williamsburg**



VISITORS: Drexel	Time	Score	HOME: William Mary
4 GREEN,SAM			2 HAMILTON, TYLER
5 WALTON,ZACH			5 BARNES,BRYCE
11 WYNTER,CAMREN			11 VAN VLIET,ANDY
21 OKROS,MATE			12 LOEWE,LUKE
51 BUTLER,JAMES			13 KNIGHT,NATHAN
	16:14	5-13	SUB OUT: KNIGHT,NATHAN
	16:14		SUB IN: BLAIR,QUINN
	15:46	5-13	SUB OUT: HAMILTON, TYLER
	15:46		SUB OUT: BARNES,BRYCE
	15:46		SUB IN: HERMANOVSKIS,RAINERS
	15:46		SUB IN: AYESA,MIGUEL
SUB OUT: 5 WALTON,ZACH	13:22	9-16	
SUB OUT: 21 OKROS,MATE	13:22		
SUB IN: 0 WASHINGTON,COLETRANE	13:22		
SUB IN: 15 JURIC,MATEY	13:22		
	11:49	13-18	SUB OUT: HERMANOVSKIS,RAINERS
	11:49		SUB OUT: VAN VLIET,ANDY
	11:49		SUB OUT: LOEWE,LUKE
	11:49		SUB IN: HAMILTON, TYLER
	11:49		SUB IN: BARNES,BRYCE
	11:49		SUB IN: KNIGHT,NATHAN
SUB OUT: 4 GREEN,SAM	11:49		
SUB IN: 23 BICKERSTAFF,T.J.	11:49		
SUB OUT: 51 BUTLER,JAMES	11:30	13-20	
SUB IN: 13 PERRY, JR.,TIM	11:30		
	09:05	14-26	SUB OUT: HAMILTON, TYLER
	09:05		SUB IN: LOEWE,LUKE
SUB OUT: 0 WASHINGTON,COLETRANE	09:05		
SUB OUT: 23 BICKERSTAFF,T.J.	09:05		
SUB IN: 4 GREEN,SAM	09:05		
SUB IN: 5 WALTON,ZACH	09:05		
	08:48	15-26	SUB OUT: BLAIR,QUINN
	08:48		SUB IN: VAN VLIET,ANDY
	08:20	18-26	SUB OUT: KNIGHT,NATHAN
	08:20		SUB IN: BLAIR,QUINN
	08:04	20-26	SUB OUT: AYESA,MIGUEL
	08:04		SUB IN: HERMANOVSKIS,RAINERS
SUB OUT: 4 GREEN,SAM	07:29	20-29	
SUB OUT: 5 WALTON,ZACH	07:29		
SUB OUT: 13 PERRY, JR.,TIM	07:29		
SUB IN: 21 OKROS,MATE	07:29		
SUB IN: 23 BICKERSTAFF,T.J.	07:29		
SUB IN: 51 BUTLER,JAMES	07:29		
	06:40	23-31	SUB OUT: BARNES,BRYCE
	06:40		SUB IN: AYESA,MIGUEL
	06:04	23-31	SUB OUT: BLAIR,QUINN
	06:04		SUB IN: HAMILTON, TYLER
SUB OUT: 11 WYNTER,CAMREN	06:04		
SUB IN: 0 WASHINGTON,COLETRANE	06:04		
	05:42	24-31	SUB OUT: HAMILTON, TYLER
	05:42		SUB IN: BLAIR,QUINN
	05:42		SUB OUT: AYESA,MIGUEL
	05:42		SUB IN: BARNES,BRYCE
	04:30	28-31	SUB OUT: HERMANOVSKIS,RAINERS
	04:30		SUB IN: AYESA,MIGUEL
SUB OUT: 15 JURIC,MATEY	03:42	28-35	
SUB IN: 11 WYNTER,CAMREN	03:42		
SUB OUT: 23 BICKERSTAFF,T.J.	02:16	31-39	
SUB IN: 5 WALTON,ZACH	02:16		
	01:51	31-39	SUB OUT: AYESA,MIGUEL
	01:51		SUB IN: HERMANOVSKIS,RAINERS

Drexel 34, William Mary 43

Official Substitutions Log
Drexel vs William Mary
Period 2
February 13, 2020 at Kaplan Arena (Kaplan Arena) - Williamsburg



VISITORS: Drexel	Time	Score	HOME: William Mary
4 GREEN,SAM			2 HAMILTON, TYLER
5 WALTON,ZACH			5 BARNES,BRYCE
11 WYNTER,CAMREN			11 VAN VLIET,ANDY
21 OKROS,MATE			12 LOEWE,LUKE
51 BUTLER,JAMES			13 KNIGHT,NATHAN
	20:00	-	SUB OUT: HERMANOVSKIS,RAINERS
	20:00		SUB OUT: BLAIR,QUINN
	20:00		SUB IN: HAMILTON, TYLER
	20:00		SUB IN: KNIGHT,NATHAN
SUB OUT: 0 WASHINGTON,COLETRANE	20:00		
SUB IN: 4 GREEN,SAM	20:00		
	15:44	40-47	SUB OUT: BARNES,BRYCE
	15:44		SUB OUT: VAN VLIET,ANDY
	15:44		SUB IN: AYESA,MIGUEL
	15:44		SUB IN: BLAIR,QUINN
SUB OUT: 51 BUTLER,JAMES	15:44		
SUB IN: 13 PERRY, JR.,TIM	15:44		
	15:34	41-47	SUB OUT: HAMILTON, TYLER
	15:34		SUB IN: HERMANOVSKIS,RAINERS
	13:46	41-49	SUB OUT: KNIGHT,NATHAN
	13:46		SUB IN: VAN VLIET,ANDY
SUB OUT: 21 OKROS,MATE	13:46		
SUB IN: 15 JURIC,MATEY	13:46		
	13:18	41-49	SUB OUT: LOEWE,LUKE
	13:18		SUB IN: BARNES,BRYCE
SUB OUT: 4 GREEN,SAM	13:18		
SUB IN: 23 BICKERSTAFF,T.J.	13:18		
SUB OUT: 5 WALTON,ZACH	12:48	41-49	
SUB IN: 0 WASHINGTON,COLETRANE	12:48		
	11:59	43-51	SUB OUT: BLAIR,QUINN
	11:59		SUB IN: KNIGHT,NATHAN
SUB OUT: 13 PERRY, JR.,TIM	11:59		
SUB IN: 51 BUTLER,JAMES	11:59		
	11:15	46-52	SUB OUT: HERMANOVSKIS,RAINERS
	11:15		SUB IN: LOEWE,LUKE
SUB OUT: 23 BICKERSTAFF,T.J.	10:22	46-56	
SUB IN: 5 WALTON,ZACH	10:22		
	09:15	51-56	SUB OUT: AYESA,MIGUEL
	09:15		SUB IN: BLAIR,QUINN
SUB OUT: 51 BUTLER,JAMES	08:27	51-57	
SUB IN: 13 PERRY, JR.,TIM	08:27		
	08:27		SUB OUT: BARNES,BRYCE
	08:27		SUB IN: AYESA,MIGUEL
	06:36	54-61	SUB OUT: BLAIR,QUINN
	06:36		SUB IN: BARNES,BRYCE
SUB OUT: 13 PERRY, JR.,TIM	05:21	58-65	
SUB IN: 51 BUTLER,JAMES	05:21		
SUB OUT: 51 BUTLER,JAMES	02:20	63-67	
SUB IN: 13 PERRY, JR.,TIM	02:20		
	02:20		SUB OUT: AYESA,MIGUEL
	02:20		SUB IN: HAMILTON, TYLER
	00:47	69-71	SUB OUT: HAMILTON, TYLER
	00:47		SUB IN: AYESA,MIGUEL
SUB OUT: 13 PERRY, JR.,TIM	00:03	72-75	
SUB IN: 21 OKROS,MATE	00:03		

Drexel 72, William Mary 77

Official Shot Chart
Drexel vs William Mary
PERIOD 1 Shots
 February 13, 2020 at Kaplan Arena (Kaplan Arena) - Williamsburg

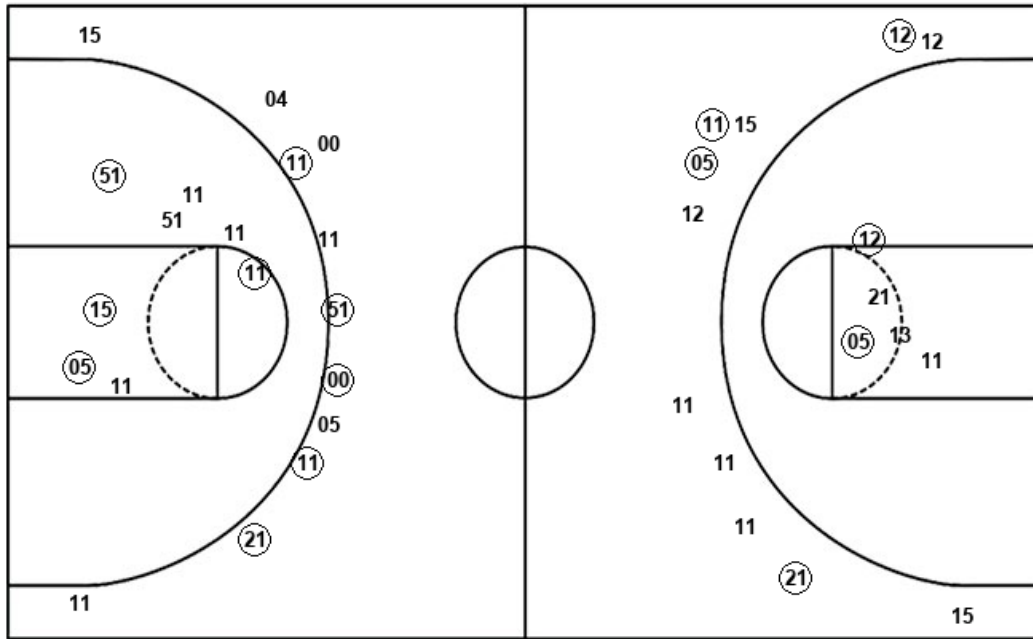


William Mary

Drexel

Layups
 (05) (05) (11) 12 10
 (11) (13) (13) (13) (05)
 05 05 (05) 12

Dunks
 (13)



Layups
 (05) 51 (11) 51 23
 11 23

Dunks

WM : Period 1	Made	Att	Pct
Layups	9	14	64.3
Dunks	1	1	100.0
2PT Field Goals	12	20	60.0
3PT Field Goals	4	11	36.4
Total Field Goals	16	31	51.6

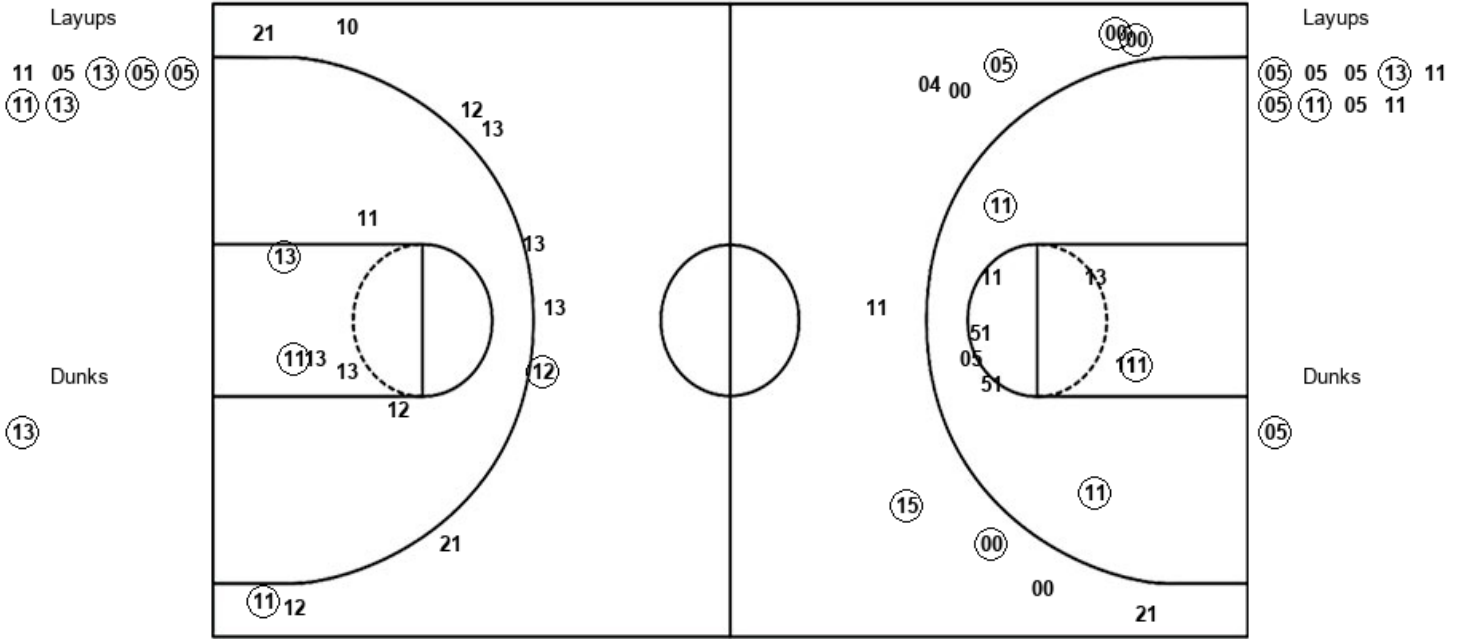
DRX : Period 1	Made	Att	Pct
Layups	2	7	28.6
Dunks	0	0	0
2PT Field Goals	6	15	40.0
3PT Field Goals	5	11	45.5
Total Field Goals	11	26	42.3

Official Shot Chart
Drexel vs William Mary
PERIOD 2 Shots
 February 13, 2020 at Kaplan Arena (Kaplan Arena) - Williamsburg



William Mary

Drexel



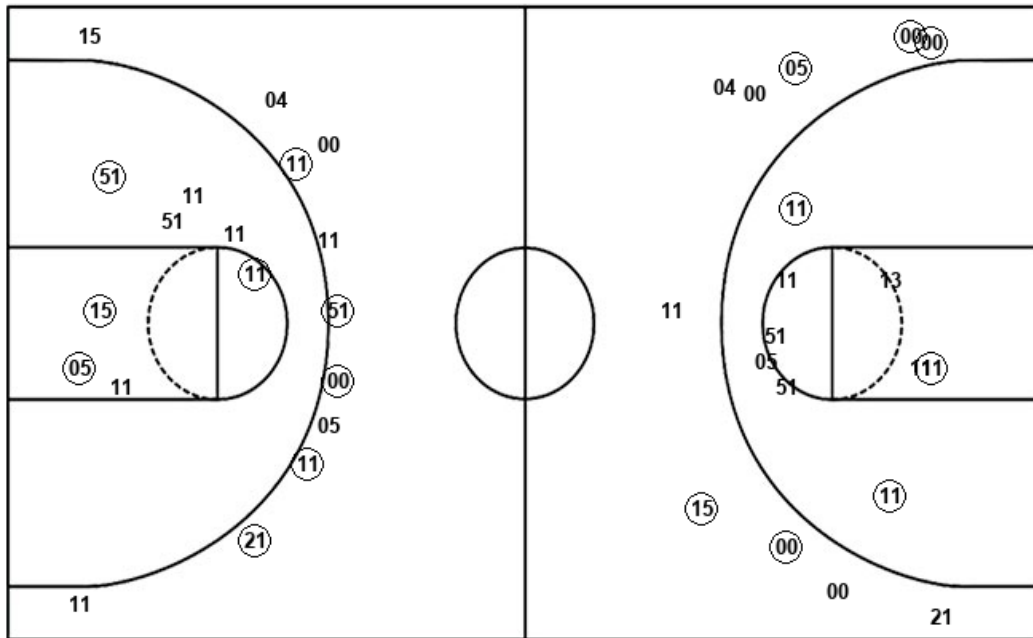
WM : Period 2	Made	Att	Pct
Layups	5	7	71.4
Dunks	1	1	100.0
2PT Field Goals	8	14	57.1
3PT Field Goals	2	10	20.0
Total Field Goals	10	24	41.7

DRX : Period 2	Made	Att	Pct
Layups	4	9	44.4
Dunks	1	1	100.0
2PT Field Goals	8	19	42.1
3PT Field Goals	5	10	50.0
Total Field Goals	13	29	44.8

Official Shot Chart
Drexel vs William Mary
Drexel Team Shots
 February 13, 2020 at Kaplan Arena (Kaplan Arena) - Williamsburg



Layups



Layups

(05) 51 (11) 51 23
 11 23 (05) 05 05
 (13) 11 (05) (11) 05
 11

Dunks

Dunks

(05)

DRX : Period 1	Made	Att	Pct
Layups	2	7	28.6
Dunks	0	0	0
2PT Field Goals	6	15	40.0
3PT Field Goals	5	11	45.5
Total Field Goals	11	26	42.3

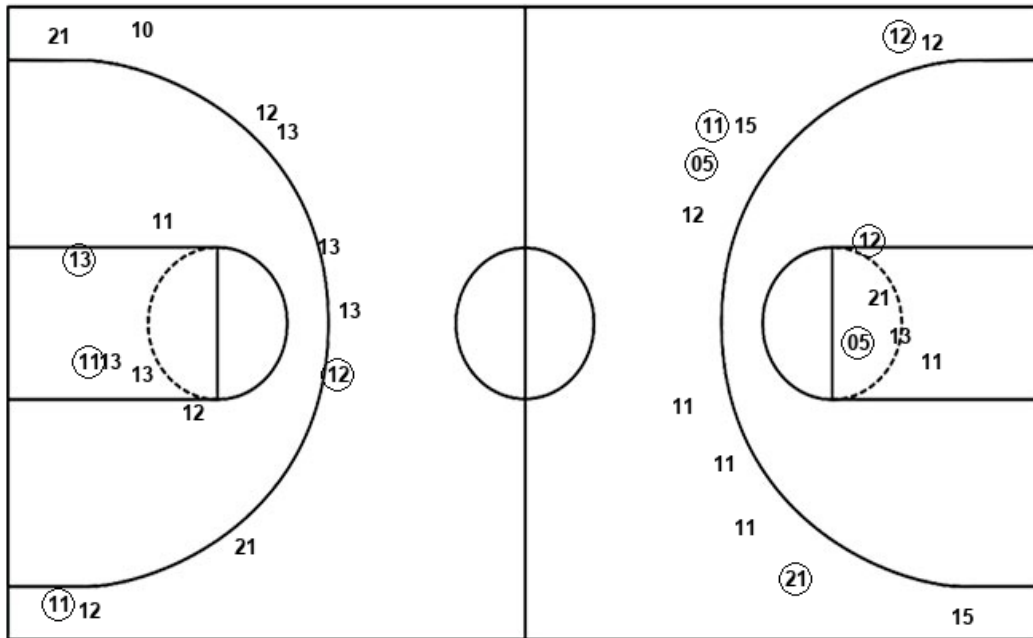
DRX : Period 2	Made	Att	Pct
Layups	4	9	44.4
Dunks	1	1	100.0
2PT Field Goals	8	19	42.1
3PT Field Goals	5	10	50.0
Total Field Goals	13	29	44.8

Official Shot Chart
Drexel vs William Mary
William Mary Team Shots
 February 13, 2020 at Kaplan Arena (Kaplan Arena) - Williamsburg



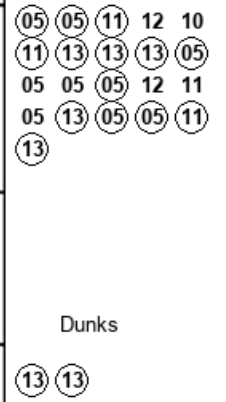
Layups

Dunks



Layups

Dunks



WM : Period 1	Made	Att	Pct
Layups	9	14	64.3
Dunks	1	1	100.0
2PT Field Goals	12	20	60.0
3PT Field Goals	4	11	36.4
Total Field Goals	16	31	51.6

WM : Period 2	Made	Att	Pct
Layups	5	7	71.4
Dunks	1	1	100.0
2PT Field Goals	8	14	57.1
3PT Field Goals	2	10	20.0
Total Field Goals	10	24	41.7