

FINAL SCORE

NORTHEASTERN



Northeastern

58

William Mary

59



January 30, 2020 • Kaplan Arena (Kaplan Arena) - Williamsburg

FINAL STATISTICS

Official Box Score
Northeastern vs William Mary
Game Totals -- Final Statistics
January 30, 2020 at Kaplan Arena (Kaplan Arena) - Williamsburg



Northeastern 58

No.	Player	S	Pts	FG	3FG	FT	OR	DR	TR	PF	A	TO	Blk	Stl	Min	+/-
02	WALKER, TYSON	G	10	4-10	0-1	2-4	0	1	1	1	4	1	1	3	36	3
10	EBOIGBODIN, GREG	F	0	0-1	0-0	0-0	0	1	1	5	0	1	0	0	11	2
12	ROLAND, JORDAN	G	18	7-14	1-4	3-3	2	4	6	1	1	1	0	1	40	-1
14	BOURSIQUOT, MAXIME	F	12	6-10	0-1	0-2	0	4	4	4	0	5	0	2	31	1
20	BRACE, BOLDEN	G	6	2-4	1-1	1-2	0	4	4	4	1	2	0	1	29	6
00	STRONG, JASON	F	2	1-6	0-2	0-2	2	2	4	1	1	0	0	0	13	-8
13	FRANKLIN, MYLES	G	0	0-0	0-0	0-0	0	0	0	1	0	1	0	0	4	-2
21	SMITH, GUILIEN	G	6	2-2	1-1	1-1	0	1	1	0	1	0	0	0	10	5
22	EMANGA, QUIRIN	G	0	0-1	0-1	0-0	0	0	0	0	0	0	0	0	0	-1
24	WALTERS, SHAQUILLE	F	4	2-4	0-0	0-0	0	6	6	3	2	1	0	0	26	-10
TEAM								1	4	5	0	0				
TOTALS			58	24-52	3-11	7-14	5	27	32	20	10	12	1	7	200	

Shooting By Period

Period	FG	FG%	3FG	3FG%	FT	FT%
1st Half	12-31	39%	2-6	33%	3-3	100%
2nd Half	12-21	57%	1-5	20%	4-11	36%
Game	24-52	46.2%	3-11	27.3%	7-14	50.0%

Deadball Rebounds: 4,0
Last FG: 2nd-02:59
Biggest Run: 7-0
Largest lead: By 9 at 1st-11:32
Technical Fouls: None.

William Mary 59

No.	Player	S	Pts	FG	3FG	FT	OR	DR	TR	PF	A	TO	Blk	Stl	Min	+/-
01	SCOTT, THORNTON	G	2	0-3	0-2	2-2	0	3	3	0	2	2	0	1	31	-1
05	BARNES, BRYCE	G	6	3-5	0-1	0-0	1	0	1	4	0	1	0	0	25	-8
11	VAN VLIET, ANDY	F	7	2-11	0-5	3-4	1	11	12	4	2	2	1	0	30	3
12	LOEWE, LUKE	G	9	3-10	1-4	2-3	1	0	1	1	2	1	0	1	36	1
13	KNIGHT, NATHAN	C	17	5-12	0-2	7-8	2	9	11	4	2	3	0	0	27	4
02	HAMILTON, TYLER	G	5	1-2	0-0	3-3	0	2	2	1	1	2	1	1	20	7
10	HERMANOVSKIS, RAINERS	G	0	0-0	0-0	0-0	0	1	1	0	0	0	0	0	6	3
15	AYESA, MIGUEL	G	2	1-2	0-1	0-0	0	0	0	0	0	0	0	0	5	3
21	BLAIR, QUINN	F	11	4-6	1-2	2-2	2	0	2	2	0	0	0	1	19	-7
TEAM								0	0	0	0	1				
TOTALS			59	19-51	2-17	19-22	7	26	33	16	9	12	2	4	200	

Shooting By Period

Period	FG	FG%	3FG	3FG%	FT	FT%
1st Half	7-28	25%	1-10	10%	9-9	100%
2nd Half	12-23	52%	1-7	14%	10-13	77%
Game	19-51	37.3%	2-17	11.8%	19-22	86.4%

Deadball Rebounds: 1,0
Last FG: 2nd-00:01
Biggest Run: 6-0
Largest lead: By 6 at 2nd-08:43
Technical Fouls: None.

Game Notes:

Officials: Dwayne Gladden, Lamar Simpson, AJ Desai
 Attendance: 3405

Start Time: 07:06 PM ET
 End Time: 09:04 PM ET
 Game Duration: 1:58
 Conference Game;

Score	1st	2nd	TOT
NEU	29	29	58
WM	24	35	59

NEU led for 29:03. WM led for 8:21.
 Game was tied for 2:38.
 Times tied: 2 Lead Changes: 7

Points from	NEU	WM
In the Paint	34	32
Off Turns	19	13
2nd Chance	3	4
Fast Break	8	7
Bench	12	18

Official Box Score
Northeastern vs William Mary
First Half Statistics Only
January 30, 2020 at Kaplan Arena (Kaplan Arena) - Williamsburg



Northeastern 29

No.	Player	S	Pts	FG	3FG	FT	OR	DR	TR	PF	A	TO	Blk	Stl	Min	+/-
02	WALKER, TYSON	G	2	1-5	0-1	0-0	0	1	1	0	2	0	1	1	17	5
10	EBOIGBODIN, GREG	F	0	0-1	0-0	0-0	0	1	1	3	0	1	0	0	7	4
12	ROLAND, JORDAN	G	16	6-10	1-3	3-3	2	2	4	1	0	0	0	1	20	5
14	BOURSIQUOT, MAXIME	F	4	2-4	0-0	0-0	0	1	1	2	0	3	0	0	13	5
20	BRACE, BOLDEN	G	3	1-3	1-1	0-0	0	3	3	2	1	0	0	1	17	9
00	STRONG, JASON	F	2	1-5	0-1	0-0	2	2	4	0	1	0	0	0	8	-5
13	FRANKLIN, MYLES	G	0	0-0	0-0	0-0	0	0	0	0	0	0	0	0	3	0
21	SMITH, GUILIEN	G	0	0-0	0-0	0-0	0	0	0	0	0	0	0	0	0	0
22	EMANGA, QUIRIN	G	0	0-0	0-0	0-0	0	0	0	0	0	0	0	0	0	0
24	WALTERS, SHAQUILLE	F	2	1-3	0-0	0-0	0	4	4	1	2	1	0	0	16	2
TEAM							1	2	3	0						
TOTALS			29	12-31	2-6	3-3	5	16	21	9	6	5	1	3	100	

Shooting By Period

Period	FG	FG%	3FG	3FG%	FT	FT%
1st Half	12-31	39%	2-6	33%	3-3	100%
Game	24-52	46.2%	3-11	27.3%	7-14	50.0%

Deadball Rebounds: 4,0
Last FG Half: NEU 2nd-02:59

William Mary 24

No.	Player	S	Pts	FG	3FG	FT	OR	DR	TR	PF	A	TO	Blk	Stl	Min	+/-
01	SCOTT, THORNTON	G	2	0-0	0-0	2-2	0	2	2	0	1	1	0	1	15	-6
05	BARNES, BRYCE	G	4	2-4	0-1	0-0	1	0	1	1	0	1	0	0	11	-10
11	VAN VLIET, ANDY	F	2	1-7	0-3	0-0	1	5	6	1	0	1	1	0	13	-2
12	LOEWE, LUKE	G	3	1-6	0-2	1-1	0	0	0	1	0	0	0	0	16	-5
13	KNIGHT, NATHAN	C	4	1-7	0-2	2-2	2	5	7	2	1	2	0	0	14	-5
02	HAMILTON, TYLER	G	2	0-1	0-0	2-2	0	1	1	0	0	1	1	0	10	3
10	HERMANOVSKIS, RAINERS	G	0	0-0	0-0	0-0	0	1	1	0	0	0	0	0	6	3
15	AYESA, MIGUEL	G	2	1-2	0-1	0-0	0	0	0	0	0	0	0	0	5	2
21	BLAIR, QUINN	F	5	1-1	1-1	2-2	1	0	1	1	0	0	0	1	9	-5
TEAM							0	0	0	0						
TOTALS			24	7-28	1-10	9-9	5	14	19	6	2	6	2	2	100	

Shooting By Period

Period	FG	FG%	3FG	3FG%	FT	FT%
1st Half	7-28	25%	1-10	10%	9-9	100%
Game	19-51	37.3%	2-17	11.8%	19-22	86.4%

Deadball Rebounds: 1,0
Last FG Half: WM 2nd-00:01

Game Notes:

Officials: Dwayne Gladden, Lamar Simpson, AJ Desai
 Attendance: 3405

Start Time: 07:06 PM ET
 End Time: 09:04 PM ET
 Game Duration: 1:58
 Conference Game;

Score	1st	2nd	TOT
NEU	29	29	58
WM	24	35	59

Points from (This Period)	NEU	WM
In the Paint	14	10
Off Turns	10	2
2nd Chance	3	2
Fast Break	6	4
Bench	4	9

Official Play-By-Play
Northeastern vs William Mary
First Half
January 30, 2020 at Kaplan Arena (Kaplan Arena) - Williamsburg



Period 1

Starters:

Northeastern: 2 WALKER, TYSON (G); 10 EBOIGBODIN, GREG (F); 12 ROLAND, JORDAN (G); 14 BOURSQUOT, MAXIME (F); 20 BRACE, BOLDEN (G);

William Mary: 1 SCOTT, THORNTON (G); 5 BARNES, BRYCE (G); 11 VAN VLIET, ANDY (F); 12 LOEWE, LUKE (G); 13 KNIGHT, NATHAN (C);

Time	VISITORS: Northeastern	Score	Margin	HOME: William Mary
19:32				MISSED 3PTR by BARNES, BRYCE
19:28	REBOUND (DEF) by BRACE, BOLDEN			
19:06	MISSED LAYUP by WALKER, TYSON			
19:04				REBOUND (DEF) by VAN VLIET, ANDY
18:59				TURNOVER (BADPASS) by VAN VLIET, ANDY
18:59	STEAL by ROLAND, JORDAN			
18:53	GOOD! LAYUP by ROLAND, JORDAN [FB]	0-2	V 2	
18:40				TURNOVER (LOSTBALL) by SCOTT, THORNTON
18:40	STEAL by BRACE, BOLDEN			
18:34	MISSED JUMPER by BRACE, BOLDEN			
18:31				REBOUND (DEF) by KNIGHT, NATHAN
18:09				MISSED JUMPER by VAN VLIET, ANDY
18:05				REBOUND (OFF) by BARNES, BRYCE
18:04				MISSED JUMPER by BARNES, BRYCE
18:01				REBOUND (OFF) by VAN VLIET, ANDY
17:49				MISSED 3PTR by KNIGHT, NATHAN
17:46	REBOUND (DEF) by BOURSQUOT, MAXIME			
17:30	GOOD! 3PTR by ROLAND, JORDAN	0-5	V 5	
17:07				MISSED 3PTR by VAN VLIET, ANDY
17:04	REBOUND (DEF) by WALKER, TYSON			
16:59	GOOD! LAYUP by BOURSQUOT, MAXIME [FB]	0-7	V 7	
16:59	ASSIST by WALKER, TYSON			
16:59				TIMEOUT 30SEC
16:59				SUB OUT: SCOTT, THORNTON
16:59				SUB OUT: BARNES, BRYCE
16:59				SUB IN: HAMILTON, TYLER
16:59				SUB IN: HERMANOVSKIS, RAINERS
16:41		2-7	V 5	GOOD! JUMPER by KNIGHT, NATHAN [PNT]
16:24	MISSED LAYUP by WALKER, TYSON			
16:21				REBOUND (DEF) by KNIGHT, NATHAN
16:13				MISSED 3PTR by VAN VLIET, ANDY
16:10	REBOUND (DEF) by BRACE, BOLDEN			
16:04	MISSED 3PTR by WALKER, TYSON			
16:00				REBOUND (DEF) by VAN VLIET, ANDY
15:53		4-7	V 3	GOOD! LAYUP by LOEWE, LUKE
15:53	FOUL (PERSONAL) by EBOIGBODIN, GREG			
15:53				SUB OUT: VAN VLIET, ANDY
15:53				SUB IN: BLAIR, QUINN
15:53	SUB OUT: EBOIGBODIN, GREG			
15:53	SUB IN: WALTERS, SHAQUILLE			
15:53		5-7	V 2	GOOD! FT by LOEWE, LUKE
15:35	GOOD! JUMPER by ROLAND, JORDAN	5-9	V 4	
15:17				MISSED LAYUP by LOEWE, LUKE
15:17	BLOCK by WALKER, TYSON			
15:14	REBOUND (DEF) by ROLAND, JORDAN			
15:14	FOUL (OFF) by WALTERS, SHAQUILLE			
15:14	TURNOVER (OFFENSIVE) by WALTERS, SHAQUILLE			
14:48				MISSED LAYUP by KNIGHT, NATHAN
14:48	REBOUND (DEF) by TEAM			
14:27	GOOD! JUMPER by WALKER, TYSON	5-11	V 6	
14:04				MISSED JUMPER by HAMILTON, TYLER
14:04				MISSED LAYUP by KNIGHT, NATHAN
14:04				REBOUND (OFF) by KNIGHT, NATHAN
14:04				REBOUND (OFF) by KNIGHT, NATHAN
14:04	FOUL (PERSONAL) by BRACE, BOLDEN			
13:53				TURNOVER (LOSTBALL) by KNIGHT, NATHAN
13:35				FOUL (PERSONAL) by LOEWE, LUKE
13:35	GOOD! FT by ROLAND, JORDAN	5-12	V 7	
13:35	GOOD! FT by ROLAND, JORDAN	5-13	V 8	
13:35				SUB OUT: HERMANOVSKIS, RAINERS
13:35				SUB OUT: LOEWE, LUKE
13:35				SUB OUT: KNIGHT, NATHAN
13:35				SUB IN: SCOTT, THORNTON
13:35				SUB IN: VAN VLIET, ANDY
13:35				SUB IN: AYESA, MIGUEL
13:35	GOOD! FT by ROLAND, JORDAN	5-14	V 9	
13:35	SUB OUT: BRACE, BOLDEN			
13:35	SUB IN: STRONG, JASON			
13:15				MISSED JUMPER by VAN VLIET, ANDY

Time	VISITORS: Northeastern	Score	Margin	HOME: William Mary
13:11	REBOUND (DEF) by STRONG, JASON			
12:56	MISSED 3PTR by ROLAND, JORDAN			
12:52				REBOUND (DEF) by VAN VLIET, ANDY
12:39		7-14	V 7	GOOD! JUMPER by AYESA, MIGUEL
12:19	TURNOVER (LOSTBALL) by BOURSQUOT, MAXIME			
12:19				STEAL by BLAIR, QUINN
11:57				MISSED JUMPER by VAN VLIET, ANDY
11:53	REBOUND (DEF) by WALTERS, SHAQUILLE			
11:38	MISSED LAYUP by STRONG, JASON			
11:34	REBOUND (OFF) by STRONG, JASON			
11:34	MISSED LAYUP by STRONG, JASON			
11:32	GOOD! LAYUP by STRONG, JASON	7-16	V 9	
11:32	REBOUND (OFF) by STRONG, JASON			
11:08		10-16	V 6	GOOD! 3PTR by BLAIR, QUINN
11:08				ASSIST by SCOTT, THORNTON
10:51	FOUL (OFF) by BOURSQUOT, MAXIME			
10:51	TURNOVER (OFFENSIVE) by BOURSQUOT, MAXIME			
10:51				
10:51				SUB OUT: HAMILTON, TYLER
10:51				SUB OUT: VAN VLIET, ANDY
10:51				SUB OUT: AYESA, MIGUEL
10:51				SUB IN: BARNES, BRYCE
10:51				SUB IN: LOEWE, LUKE
10:51				SUB IN: KNIGHT, NATHAN
10:51	SUB OUT: WALKER, TYSON			
10:51	SUB OUT: BOURSQUOT, MAXIME			
10:51	SUB IN: EBOIGBODIN, GREG			
10:51	SUB IN: FRANKLIN, MYLES			
10:37				MISSED 3PTR by LOEWE, LUKE
10:37	REBOUND (DEF) by EBOIGBODIN, GREG			
10:37				FOUL (PERSONAL) by KNIGHT, NATHAN
10:09	TURNOVER (BADPASS) by EBOIGBODIN, GREG			
10:09				STEAL by SCOTT, THORNTON
10:06	FOUL (PERSONAL) by EBOIGBODIN, GREG			
10:06		11-16	V 5	GOOD! FT by BLAIR, QUINN [FB]
10:06	SUB OUT: STRONG, JASON			
10:06	SUB OUT: EBOIGBODIN, GREG			
10:06	SUB IN: BOURSQUOT, MAXIME			
10:06	SUB IN: BRACE, BOLDEN			
10:06		12-16	V 4	GOOD! FT by BLAIR, QUINN [FB]
09:45	GOOD! JUMPER by BOURSQUOT, MAXIME [PNT]	12-18	V 6	
09:45	ASSIST by WALTERS, SHAQUILLE			
09:26				MISSED LAYUP by LOEWE, LUKE
09:26	REBOUND (DEF) by TEAM			
09:15	GOOD! LAYUP by ROLAND, JORDAN	12-20	V 8	
09:15	ASSIST by BRACE, BOLDEN			
08:42				MISSED 3PTR by LOEWE, LUKE
08:38				REBOUND (OFF) by BLAIR, QUINN
08:31		14-20	V 6	GOOD! LAYUP by BARNES, BRYCE
08:10	TURNOVER (LOSTBALL) by BOURSQUOT, MAXIME			
08:10				SUB OUT: SCOTT, THORNTON
08:10				SUB IN: AYESA, MIGUEL
08:10	SUB OUT: FRANKLIN, MYLES			
08:10	SUB IN: WALKER, TYSON			
07:53				MISSED JUMPER by KNIGHT, NATHAN
07:53	REBOUND (DEF) by BRACE, BOLDEN			
07:53				FOUL (PERSONAL) by BLAIR, QUINN
07:53				
07:53				SUB OUT: BLAIR, QUINN
07:53				SUB IN: HAMILTON, TYLER
07:28	MISSED LAYUP by BOURSQUOT, MAXIME			
07:28				BLOCK by HAMILTON, TYLER
07:23				REBOUND (DEF) by KNIGHT, NATHAN
07:22				MISSED 3PTR by AYESA, MIGUEL
07:20	REBOUND (DEF) by WALTERS, SHAQUILLE			
07:12	MISSED JUMPER by WALTERS, SHAQUILLE			
07:09				REBOUND (DEF) by KNIGHT, NATHAN
07:06	FOUL (PERSONAL) by BOURSQUOT, MAXIME			
06:41				MISSED 3PTR by KNIGHT, NATHAN
06:38	REBOUND (DEF) by WALTERS, SHAQUILLE			
06:31	MISSED LAYUP by BOURSQUOT, MAXIME			
06:29				REBOUND (DEF) by KNIGHT, NATHAN
06:26		16-20	V 4	GOOD! LAYUP by BARNES, BRYCE [FB]
06:26				ASSIST by KNIGHT, NATHAN
06:25	TIMEOUT 30SEC			
06:25				SUB OUT: LOEWE, LUKE
06:25				SUB OUT: KNIGHT, NATHAN
06:25				SUB IN: SCOTT, THORNTON
06:25				SUB IN: VAN VLIET, ANDY
06:25	SUB OUT: BOURSQUOT, MAXIME			

Time	VISITORS: Northeastern	Score	Margin	HOME: William Mary
06:25	SUB IN: EBOIGBODIN, GREG			
06:12	GOOD! JUMPER by ROLAND, JORDAN [PNT]	16-22	V 6	
05:53				MISSED 3PTR by VAN VLIET, ANDY
05:50	REBOUND (DEF) by ROLAND, JORDAN			
05:43	MISSED LAYUP by BRACE, BOLDEN			
05:40	REBOUND (OFF) by ROLAND, JORDAN			
05:38	MISSED JUMPER by ROLAND, JORDAN			
05:38	REBOUND (OFF) by TEAM			
05:38				SUB OUT: BARNES, BRYCE
05:38				SUB IN: LOEWE, LUKE
05:38				SUB OUT: AYESA, MIGUEL
05:38				SUB IN: HERMANOVSKIS, RAINERS
05:27	MISSED JUMPER by ROLAND, JORDAN			
05:24				REBOUND (DEF) by VAN VLIET, ANDY
05:05				TURNOVER (BADPASS) by HAMILTON, TYLER
05:05	STEAL by WALKER, TYSON			
05:00	GOOD! DUNK by ROLAND, JORDAN [FB]	16-24	V 8	
05:00	ASSIST by WALKER, TYSON			
04:38		18-24	V 6	GOOD! JUMPER by VAN VLIET, ANDY [PNT]
04:10	MISSED LAYUP by EBOIGBODIN, GREG			
04:10				REBOUND (DEF) by HAMILTON, TYLER
04:10	FOUL (PERSONAL) by EBOIGBODIN, GREG			
04:10	SUB OUT: EBOIGBODIN, GREG			
04:10	SUB IN: STRONG, JASON			
04:10		19-24	V 5	GOOD! FT by HAMILTON, TYLER
04:10		20-24	V 4	GOOD! FT by HAMILTON, TYLER
03:57	MISSED LAYUP by STRONG, JASON			
03:57				BLOCK by VAN VLIET, ANDY
03:53				REBOUND (DEF) by HERMANOVSKIS, RAINERS
03:42	FOUL (PERSONAL) by ROLAND, JORDAN			
03:42				
03:42				SUB OUT: HAMILTON, TYLER
03:42				SUB IN: KNIGHT, NATHAN
03:42		21-24	V 3	GOOD! FT by SCOTT, THORNTON
03:42		22-24	V 2	GOOD! FT by SCOTT, THORNTON
03:27	MISSED JUMPER by WALKER, TYSON			
03:23				REBOUND (DEF) by SCOTT, THORNTON
03:05				TURNOVER (TRAVEL) by KNIGHT, NATHAN
03:05				SUB OUT: HERMANOVSKIS, RAINERS
03:05				SUB IN: BARNES, BRYCE
02:50	MISSED 3PTR by STRONG, JASON			
02:47	REBOUND (OFF) by ROLAND, JORDAN			
02:36	GOOD! 3PTR by BRACE, BOLDEN	22-27	V 5	
02:36	ASSIST by WALTERS, SHAQUILLE			
02:18	FOUL (PERSONAL) by BRACE, BOLDEN			
02:18		23-27	V 4	GOOD! FT by KNIGHT, NATHAN
02:18		24-27	V 3	GOOD! FT by KNIGHT, NATHAN
02:00				FOUL (PERSONAL) by VAN VLIET, ANDY
01:41	MISSED LAYUP by WALTERS, SHAQUILLE			
01:38				REBOUND (DEF) by SCOTT, THORNTON
01:36				TURNOVER (TRAVEL) by BARNES, BRYCE
01:20	MISSED 3PTR by ROLAND, JORDAN			
01:16				REBOUND (DEF) by VAN VLIET, ANDY
01:02				MISSED JUMPER by KNIGHT, NATHAN
00:58	REBOUND (DEF) by STRONG, JASON			
00:52				FOUL (PERSONAL) by BARNES, BRYCE
00:43				FOUL (PERSONAL) by KNIGHT, NATHAN
00:43				SUB OUT: KNIGHT, NATHAN
00:43				SUB IN: BLAIR, QUINN
00:35	GOOD! JUMPER by WALTERS, SHAQUILLE	24-29	V 5	
00:35	ASSIST by STRONG, JASON			
00:01				MISSED LAYUP by LOEWE, LUKE
00:01	REBOUND (DEF) by WALTERS, SHAQUILLE			

Northeastern 29, William Mary 24

Points from (This Period)	NEU	WM
In the Paint	14	10
Off Turns	10	2
2nd Chance	3	2
Fast Break	6	4
Bench	4	9

Official Box Score
Northeastern vs William Mary
Second Half Statistics Only
January 30, 2020 at Kaplan Arena (Kaplan Arena) - Williamsburg



Northeastern 29

No.	Player	S	Pts	FG	3FG	FT	OR	DR	TR	PF	A	TO	Blk	Stl	Min	+/-
02	WALKER, TYSON	G	8	3-5	0-0	2-4	0	0	0	1	2	1	0	2	19	-2
10	EBOIGBODIN, GREG	F	0	0-0	0-0	0-0	0	0	0	2	0	0	0	0	4	-2
12	ROLAND, JORDAN	G	2	1-4	0-1	0-0	0	2	2	0	1	1	0	0	20	-6
14	BOURSIQUOT, MAXIME	F	8	4-6	0-1	0-2	0	3	3	2	0	2	0	2	18	-4
20	BRACE, BOLDEN	G	3	1-1	0-0	1-2	0	1	1	2	0	2	0	0	13	-3
00	STRONG, JASON	F	0	0-1	0-1	0-2	0	0	0	1	0	0	0	0	5	-3
13	FRANKLIN, MYLES	G	0	0-0	0-0	0-0	0	0	0	1	0	1	0	0	1	-2
21	SMITH, GUILIEN	G	6	2-2	1-1	1-1	0	1	1	0	1	0	0	0	10	5
22	EMANGA, QUIRIN	G	0	0-1	0-1	0-0	0	0	0	0	0	0	0	0	0	-1
24	WALTERS, SHAQUILLE	F	2	1-1	0-0	0-0	0	2	2	2	0	0	0	0	10	-12
	TEAM						0	2	2	0		0				
TOTALS			29	12-21	1-5	4-11	0	11	11	11	4	7	0	4	100	

Shooting By Period

Period	FG	FG%	3FG	3FG%	FT	FT%
2nd Half	12-21	57%	1-5	20%	4-11	36%
Game	24-52	46.2%	3-11	27.3%	7-14	50.0%

Deadball Rebounds: 4,0

Last FG Half: NEU -

William Mary 35

No.	Player	S	Pts	FG	3FG	FT	OR	DR	TR	PF	A	TO	Blk	Stl	Min	+/-
01	SCOTT, THORNTON	G	0	0-3	0-2	0-0	0	1	1	0	1	1	0	0	17	5
05	BARNES, BRYCE	G	2	1-1	0-0	0-0	0	0	0	3	0	0	0	0	13	2
11	VAN VLIET, ANDY	F	5	1-4	0-2	3-4	0	6	6	3	2	1	0	0	17	5
12	LOEWE, LUKE	G	6	2-4	1-2	1-2	1	0	1	0	2	1	0	1	20	6
13	KNIGHT, NATHAN	C	13	4-5	0-0	5-6	0	4	4	2	1	1	0	0	13	9
02	HAMILTON, TYLER	G	3	1-1	0-0	1-1	0	1	1	1	1	1	0	1	10	4
10	HERMANOVSKIS, RAINERS	G	0	0-0	0-0	0-0	0	0	0	0	0	0	0	0	0	0
15	AYESA, MIGUEL	G	0	0-0	0-0	0-0	0	0	0	0	0	0	0	0	0	1
21	BLAIR, QUINN	F	6	3-5	0-1	0-0	1	0	1	1	0	0	0	0	10	-2
	TEAM						0	0	0	0		1				
TOTALS			35	12-23	1-7	10-13	2	12	14	10	7	6	0	2	100	

Shooting By Period

Period	FG	FG%	3FG	3FG%	FT	FT%
2nd Half	12-23	52%	1-7	14%	10-13	77%
Game	19-51	37.3%	2-17	11.8%	19-22	86.4%

Deadball Rebounds: 1,0

Last FG Half: WM -

Game Notes:

Officials: Dwayne Gladden, Lamar Simpson, AJ Desai
 Attendance: 3405

Start Time: 07:06 PM ET
 End Time: 09:04 PM ET
 Game Duration: 1:58
 Conference Game;

Score	1st	2nd	TOT
NEU	29	29	58
WM	24	35	59

Points from (This Period)	NEU	WM
In the Paint	20	22
Off Turns	9	11
2nd Chance	0	2
Fast Break	2	3
Bench	8	9

Official Play-By-Play
Northeastern vs William Mary
Second Half
January 30, 2020 at Kaplan Arena (Kaplan Arena) - Williamsburg



Period 2

Starters:

Northeastern: 2 WALKER, TYSON (G); 10 EBOIGBODIN, GREG (F); 12 ROLAND, JORDAN (G); 14 BOURSQUOT, MAXIME (F); 20 BRACE, BOLDEN (G);

William Mary: 1 SCOTT, THORNTON (G); 5 BARNES, BRYCE (G); 11 VAN VLIET, ANDY (F); 12 LOEWE, LUKE (G); 13 KNIGHT, NATHAN (C);

Time	VISITORS: Northeastern	Score	Margin	HOME: William Mary
20:00				SUB OUT: BLAIR, QUINN
20:00				SUB IN: KNIGHT, NATHAN
20:00	SUB OUT: STRONG, JASON			
20:00	SUB IN: EBOIGBODIN, GREG			
19:47	MISSED 3PTR by ROLAND, JORDAN			
19:44				REBOUND (DEF) by KNIGHT, NATHAN
19:30		26-29	V 3	GOOD! LAYUP by KNIGHT, NATHAN
19:15	FOUL (OFF) by BRACE, BOLDEN			
19:15	TURNOVER (OFFENSIVE) by BRACE, BOLDEN			
19:02		28-29	V 1	GOOD! LAYUP by KNIGHT, NATHAN
18:50	GOOD! LAYUP by WALKER, TYSON	28-31	V 3	
18:25	SUB OUT: EBOIGBODIN, GREG			
18:25	SUB IN: BOURSQUOT, MAXIME			
18:20	FOUL (PERSONAL) by BRACE, BOLDEN			
18:20		29-31	V 2	GOOD! FT by KNIGHT, NATHAN
18:20	SUB OUT: BRACE, BOLDEN			
18:20	SUB IN: STRONG, JASON			
18:20		30-31	V 1	GOOD! FT by KNIGHT, NATHAN
18:08				FOUL (PERSONAL) by BARNES, BRYCE
17:50	MISSED 3PTR by STRONG, JASON			
17:47				REBOUND (DEF) by VAN VLIET, ANDY
17:34	FOUL (PERSONAL) by STRONG, JASON			
17:19				TURNOVER (BADPASS) by KNIGHT, NATHAN
17:19	STEAL by WALKER, TYSON			
17:15	GOOD! LAYUP by WALKER, TYSON [FB]	30-33	V 3	
16:51	FOUL (PERSONAL) by WALTERS, SHAQUILLE			
16:37				MISSED 3PTR by SCOTT, THORNTON
16:35	REBOUND (DEF) by ROLAND, JORDAN			
16:24	GOOD! LAYUP by WALTERS, SHAQUILLE	30-35	V 5	
15:55				MISSED 3PTR by SCOTT, THORNTON
15:52	REBOUND (DEF) by ROLAND, JORDAN			
15:37	MISSED JUMPER by WALKER, TYSON			
15:34				REBOUND (DEF) by KNIGHT, NATHAN
15:20				MISSED LAYUP by VAN VLIET, ANDY
15:20				REBOUND (OFF) by LOEWE, LUKE
15:20				MISSED LAYUP by LOEWE, LUKE
15:20	REBOUND (DEF) by WALTERS, SHAQUILLE			
15:20				FOUL (PERSONAL) by BARNES, BRYCE
15:20				SUB OUT: BARNES, BRYCE
15:20				SUB OUT: VAN VLIET, ANDY
15:20				SUB IN: HAMILTON, TYLER
15:20				SUB IN: BLAIR, QUINN
14:57	MISSED JUMPER by BOURSQUOT, MAXIME			
14:54				REBOUND (DEF) by KNIGHT, NATHAN
14:37				MISSED LAYUP by SCOTT, THORNTON
14:34				REBOUND (OFF) by BLAIR, QUINN
14:33		32-35	V 3	GOOD! JUMPER by BLAIR, QUINN
14:23	TURNOVER (BADPASS) by WALKER, TYSON			
13:59		34-35	V 1	GOOD! LAYUP by LOEWE, LUKE
13:59				ASSIST by KNIGHT, NATHAN
13:42				FOUL (PERSONAL) by KNIGHT, NATHAN
13:42	MISSED FT by STRONG, JASON			
13:42	REBOUND (OFF) by TEAM			
13:42				SUB OUT: KNIGHT, NATHAN
13:42				SUB IN: VAN VLIET, ANDY
13:42	SUB OUT: WALKER, TYSON			
13:42	SUB IN: FRANKLIN, MYLES			
13:41	MISSED FT by STRONG, JASON			
13:40				REBOUND (DEF) by VAN VLIET, ANDY
13:22		36-35	H 1	GOOD! JUMPER by BLAIR, QUINN
13:22				ASSIST by HAMILTON, TYLER
13:02	TURNOVER (LOSTBALL) by FRANKLIN, MYLES			
13:02				STEAL by LOEWE, LUKE
13:02	FOUL (PERSONAL) by FRANKLIN, MYLES			
13:02	SUB OUT: STRONG, JASON			
13:02	SUB IN: BRACE, BOLDEN			
12:43				MISSED JUMPER by BLAIR, QUINN
12:43	REBOUND (DEF) by TEAM			
12:43	SUB OUT: FRANKLIN, MYLES			

Time	VISITORS: Northeastern	Score	Margin	HOME: William Mary
12:43	SUB IN: WALKER, TYSON			
12:43				SUB OUT: SCOTT, THORNTON
12:43				SUB IN: BARNES, BRYCE
12:28	GOOD! JUMPER by ROLAND, JORDAN	36-37	V 1	
12:15		38-37	H 1	GOOD! LAYUP by BARNES, BRYCE
12:04	MISSED JUMPER by ROLAND, JORDAN			
12:01				REBOUND (DEF) by HAMILTON, TYLER
11:54				MISSED 3PTR by VAN VLIET, ANDY
11:51	REBOUND (DEF) by WALTERS, SHAQUILLE			
11:38	GOOD! JUMPER by BOURSQUOT, MAXIME [PNT]	38-39	V 1	
11:17		40-39	H 1	GOOD! LAYUP by HAMILTON, TYLER
11:17				ASSIST by LOEWE, LUKE
11:17	FOUL (PERSONAL) by WALTERS, SHAQUILLE			
11:17				
11:17				SUB OUT: BLAIR, QUINN
11:17				SUB IN: KNIGHT, NATHAN
11:17	SUB OUT: WALTERS, SHAQUILLE			
11:17	SUB IN: EMANGA, QUIRIN			
11:17		41-39	H 2	GOOD! FT by HAMILTON, TYLER
11:17	SUB OUT: BRACE, BOLDEN			
11:17	SUB IN: EBOIGBODIN, GREG			
10:59	MISSED 3PTR by EMANGA, QUIRIN			
10:58				REBOUND (DEF) by VAN VLIET, ANDY
10:58	FOUL (PERSONAL) by EBOIGBODIN, GREG			
10:58	SUB OUT: EMANGA, QUIRIN			
10:58	SUB IN: SMITH, GUILIEN			
10:58		42-39	H 3	GOOD! FT by VAN VLIET, ANDY
10:57				MISSED FT by VAN VLIET, ANDY
10:56	REBOUND (DEF) by BOURSQUOT, MAXIME			
10:48				FOUL (PERSONAL) by VAN VLIET, ANDY
10:48	MISSED FT by BOURSQUOT, MAXIME			
10:48	REBOUND (OFF) by TEAM			
10:47	MISSED FT by BOURSQUOT, MAXIME			
10:46				REBOUND (DEF) by VAN VLIET, ANDY
10:26				TURNOVER (BADPASS) by LOEWE, LUKE
10:26	STEAL by BOURSQUOT, MAXIME			
10:23	TURNOVER (BADPASS) by BOURSQUOT, MAXIME			
10:03		44-39	H 5	GOOD! DUNK by KNIGHT, NATHAN
10:03				ASSIST by LOEWE, LUKE
09:38	GOOD! 3PTR by SMITH, GUILIEN	44-42	H 2	
09:38	ASSIST by WALKER, TYSON			
09:13	FOUL (PERSONAL) by EBOIGBODIN, GREG			
09:13				SUB OUT: BARNES, BRYCE
09:13				SUB IN: SCOTT, THORNTON
09:13	SUB OUT: EBOIGBODIN, GREG			
09:13	SUB IN: BRACE, BOLDEN			
09:13		45-42	H 3	GOOD! FT by VAN VLIET, ANDY
09:13		46-42	H 4	GOOD! FT by VAN VLIET, ANDY
08:58	TURNOVER (TRAVEL) by BOURSQUOT, MAXIME			
08:43		48-42	H 6	GOOD! JUMPER by VAN VLIET, ANDY
08:43				ASSIST by SCOTT, THORNTON
08:27	GOOD! LAYUP by SMITH, GUILIEN	48-44	H 4	
08:27				FOUL (PERSONAL) by KNIGHT, NATHAN
08:27				SUB OUT: KNIGHT, NATHAN
08:27				SUB IN: BLAIR, QUINN
08:27	GOOD! FT by SMITH, GUILIEN	48-45	H 3	
08:05				TURNOVER (LOSTBALL) by HAMILTON, TYLER
08:05	STEAL by BOURSQUOT, MAXIME			
08:00	GOOD! LAYUP by BOURSQUOT, MAXIME	48-47	H 1	
08:00	ASSIST by SMITH, GUILIEN			
07:33				MISSED 3PTR by VAN VLIET, ANDY
07:27	REBOUND (DEF) by SMITH, GUILIEN			
07:26	TURNOVER (OTHER) by BRACE, BOLDEN			
07:26				
07:26				SUB OUT: HAMILTON, TYLER
07:26				SUB IN: BARNES, BRYCE
07:13		50-47	H 3	GOOD! LAYUP by BLAIR, QUINN
07:13				ASSIST by VAN VLIET, ANDY
07:04				FOUL (PERSONAL) by BARNES, BRYCE
07:04				SUB OUT: BARNES, BRYCE
07:04				SUB IN: HAMILTON, TYLER
06:53	MISSED JUMPER by ROLAND, JORDAN			
06:49				REBOUND (DEF) by VAN VLIET, ANDY
06:36				MISSED 3PTR by LOEWE, LUKE
06:32	REBOUND (DEF) by TEAM			
06:11	GOOD! LAYUP by BRACE, BOLDEN	50-49	H 1	
06:11	ASSIST by WALKER, TYSON			
05:43				MISSED 3PTR by BLAIR, QUINN
05:40	REBOUND (DEF) by BOURSQUOT, MAXIME			
05:19	TURNOVER (BADPASS) by ROLAND, JORDAN			

Time	VISITORS: Northeastern	Score	Margin	HOME: William Mary
05:19				STEAL by HAMILTON, TYLER
05:16	FOUL (PERSONAL) by WALKER, TYSON			
05:16				MISSED FT by LOEWE, LUKE
05:16				REBOUND (OFF) by TEAM
05:16		51-49	H 2	GOOD! FT by LOEWE, LUKE [FB]
05:07				FOUL (PERSONAL) by HAMILTON, TYLER
05:07	GOOD! FT by WALKER, TYSON	51-50	H 1	
05:06	MISSED FT by WALKER, TYSON			
05:05				REBOUND (DEF) by VAN VLIET, ANDY
04:53				SUB OUT: HAMILTON, TYLER
04:53				SUB IN: BARNES, BRYCE
04:47				FOUL (OFF) by VAN VLIET, ANDY
04:47				TURNOVER (OFFENSIVE) by VAN VLIET, ANDY
04:29	GOOD! LAYUP by BOURSICQUOT, MAXIME	51-52	V 1	
04:07				SUB OUT: VAN VLIET, ANDY
04:07				SUB IN: KNIGHT, NATHAN
04:03	FOUL (PERSONAL) by BOURSICQUOT, MAXIME			
04:03		52-52	T	GOOD! FT by KNIGHT, NATHAN
04:02				MISSED FT by KNIGHT, NATHAN
04:01	REBOUND (DEF) by BOURSICQUOT, MAXIME			
03:51	GOOD! LAYUP by WALKER, TYSON	52-54	V 2	
03:31				
03:17				TURNOVER (SHOTCLOCK) by TEAM
02:59	GOOD! LAYUP by BOURSICQUOT, MAXIME	52-56	V 4	
02:59	ASSIST by ROLAND, JORDAN			
02:44				TURNOVER (LOSTBALL) by SCOTT, THORNTON
02:44	STEAL by WALKER, TYSON			
02:27				FOUL (PERSONAL) by BLAIR, QUINN
02:27	MISSED FT by WALKER, TYSON			
02:27	REBOUND (OFF) by TEAM			
02:27				SUB OUT: BLAIR, QUINN
02:27				SUB IN: VAN VLIET, ANDY
02:27	GOOD! FT by WALKER, TYSON	52-57	V 5	
02:27	TIMEOUT 30SEC			
02:27	SUB OUT: SMITH, GUILIEN			
02:27	SUB IN: WALTERS, SHAQUILLE			
02:07		55-57	V 2	GOOD! 3PTR by LOEWE, LUKE
02:07				ASSIST by VAN VLIET, ANDY
01:49	MISSED 3PTR by BOURSICQUOT, MAXIME			
01:45				REBOUND (DEF) by SCOTT, THORNTON
01:25	FOUL (PERSONAL) by BOURSICQUOT, MAXIME			
01:25		56-57	V 1	GOOD! FT by KNIGHT, NATHAN
01:25	SUB OUT: WALTERS, SHAQUILLE			
01:25	SUB IN: SMITH, GUILIEN			
01:25		57-57	T	GOOD! FT by KNIGHT, NATHAN
00:52	MISSED LAYUP by WALKER, TYSON			
00:48				REBOUND (DEF) by KNIGHT, NATHAN
00:48				TIMEOUT TEAM
00:37				MISSED JUMPER by KNIGHT, NATHAN
00:34	REBOUND (DEF) by BRACE, BOLDEN			
00:06				FOUL (PERSONAL) by VAN VLIET, ANDY
00:06				TIMEOUT 30SEC
00:06	MISSED FT by BRACE, BOLDEN			
00:06	REBOUND (OFF) by TEAM			
00:06				SUB OUT: BARNES, BRYCE
00:06				SUB IN: AYESA, MIGUEL
00:06	GOOD! FT by BRACE, BOLDEN	57-58	V 1	
00:06	TIMEOUT TEAM			
00:06	SUB OUT: WALKER, TYSON			
00:06	SUB IN: WALTERS, SHAQUILLE			
00:01		59-58	H 1	GOOD! LAYUP by KNIGHT, NATHAN [FB]
00:01	TIMEOUT 30SEC			
00:01				SUB OUT: VAN VLIET, ANDY
00:01				SUB OUT: AYESA, MIGUEL
00:01				SUB IN: HAMILTON, TYLER
00:01				SUB IN: BARNES, BRYCE
00:01	SUB OUT: WALTERS, SHAQUILLE			
00:01	SUB IN: WALKER, TYSON			

Northeastern 58, William Mary 59

Points from (This Period)	NEU	WM
In the Paint	20	22
Off Turns	9	11
2nd Chance	0	2
Fast Break	2	3
Bench	8	9

Official Scoring/Possession Reference Chart
Northeastern vs William Mary
Period 1
January 30, 2020 at Kaplan Arena (Kaplan Arena) - Williamsburg



Period 1

Starters:

Northeastern: 2 WALKER, TYSON (G); 10 EBOIGBODIN, GREG (F); 12 ROLAND, JORDAN (G); 14 BOURSQUOT, MAXIME (F); 20 BRACE, BOLDEN (G);

William Mary: 1 SCOTT, THORNTON (G); 5 BARNES, BRYCE (G); 11 VAN VLIET, ANDY (F); 12 LOEWE, LUKE (G); 13 KNIGHT, NATHAN (C);

Time	VISITORS: Northeastern	Score	Margin	HOME: William Mary
18:53	GOOD! LAYUP by ROLAND, JORDAN [FB]	0-2	V 2	
17:30	GOOD! 3PTR by ROLAND, JORDAN	0-5	V 5	
16:59	GOOD! LAYUP by BOURSQUOT, MAXIME [FB]	0-7	V 7	
16:41		2-7	V 5	GOOD! JUMPER by KNIGHT, NATHAN [PNT]
15:53		4-7	V 3	GOOD! LAYUP by LOEWE, LUKE
15:53		5-7	V 2	GOOD! FT by LOEWE, LUKE
15:35	GOOD! JUMPER by ROLAND, JORDAN	5-9	V 4	
14:27	GOOD! JUMPER by WALKER, TYSON	5-11	V 6	
13:35	GOOD! FT by ROLAND, JORDAN	5-12	V 7	
13:35	GOOD! FT by ROLAND, JORDAN	5-13	V 8	
13:35	GOOD! FT by ROLAND, JORDAN	5-14	V 9	
12:39		7-14	V 7	GOOD! JUMPER by AYESA, MIGUEL
11:32	GOOD! LAYUP by STRONG, JASON	7-16	V 9	
11:08		10-16	V 6	GOOD! 3PTR by BLAIR, QUINN
10:06		11-16	V 5	GOOD! FT by BLAIR, QUINN [FB]
10:06		12-16	V 4	GOOD! FT by BLAIR, QUINN [FB]
09:45	GOOD! JUMPER by BOURSQUOT, MAXIME [PNT]	12-18	V 6	
09:15	GOOD! LAYUP by ROLAND, JORDAN	12-20	V 8	
08:31		14-20	V 6	GOOD! LAYUP by BARNES, BRYCE
06:26		16-20	V 4	GOOD! LAYUP by BARNES, BRYCE [FB]
06:12	GOOD! JUMPER by ROLAND, JORDAN [PNT]	16-22	V 6	
05:00	GOOD! DUNK by ROLAND, JORDAN [FB]	16-24	V 8	
04:38		18-24	V 6	GOOD! JUMPER by VAN VLIET, ANDY [PNT]
04:10		19-24	V 5	GOOD! FT by HAMILTON, TYLER
04:10		20-24	V 4	GOOD! FT by HAMILTON, TYLER
03:42		21-24	V 3	GOOD! FT by SCOTT, THORNTON
03:42		22-24	V 2	GOOD! FT by SCOTT, THORNTON
02:36	GOOD! 3PTR by BRACE, BOLDEN	22-27	V 5	
02:18		23-27	V 4	GOOD! FT by KNIGHT, NATHAN
02:18		24-27	V 3	GOOD! FT by KNIGHT, NATHAN
00:35	GOOD! JUMPER by WALTERS, SHAQUILLE	24-29	V 5	

Northeastern 29, William Mary 24

Official Scoring/Possession Reference Chart
Northeastern vs William Mary
Period 2
January 30, 2020 at Kaplan Arena (Kaplan Arena) - Williamsburg



Period 2

Starters:

Northeastern: 2 WALKER, TYSON (G); 10 EBOIGBODIN, GREG (F); 12 ROLAND, JORDAN (G); 14 BOURSQUOT, MAXIME (F); 20 BRACE, BOLDEN (G);

William Mary: 1 SCOTT, THORNTON (G); 5 BARNES, BRYCE (G); 11 VAN VLIET, ANDY (F); 12 LOEWE, LUKE (G); 13 KNIGHT, NATHAN (C);

Time	VISITORS: Northeastern	Score	Margin	HOME: William Mary
19:30		26-29	V 3	GOOD! LAYUP by KNIGHT, NATHAN
19:02		28-29	V 1	GOOD! LAYUP by KNIGHT, NATHAN
18:50	GOOD! LAYUP by WALKER, TYSON	28-31	V 3	
18:20		29-31	V 2	GOOD! FT by KNIGHT, NATHAN
18:20		30-31	V 1	GOOD! FT by KNIGHT, NATHAN
17:15	GOOD! LAYUP by WALKER, TYSON [FB]	30-33	V 3	
16:24	GOOD! LAYUP by WALTERS, SHAQUILLE	30-35	V 5	
14:33		32-35	V 3	GOOD! JUMPER by BLAIR, QUINN
13:59		34-35	V 1	GOOD! LAYUP by LOEWE, LUKE
13:22		36-35	H 1	GOOD! JUMPER by BLAIR, QUINN
12:28	GOOD! JUMPER by ROLAND, JORDAN	36-37	V 1	
12:15		38-37	H 1	GOOD! LAYUP by BARNES, BRYCE
11:38	GOOD! JUMPER by BOURSQUOT, MAXIME [PNT]	38-39	V 1	
11:17		40-39	H 1	GOOD! LAYUP by HAMILTON, TYLER
11:17		41-39	H 2	GOOD! FT by HAMILTON, TYLER
10:58		42-39	H 3	GOOD! FT by VAN VLIET, ANDY
10:03		44-39	H 5	GOOD! DUNK by KNIGHT, NATHAN
09:38	GOOD! 3PTR by SMITH, GUILIEN	44-42	H 2	
09:13		45-42	H 3	GOOD! FT by VAN VLIET, ANDY
09:13		46-42	H 4	GOOD! FT by VAN VLIET, ANDY
08:43		48-42	H 6	GOOD! JUMPER by VAN VLIET, ANDY
08:27	GOOD! LAYUP by SMITH, GUILIEN	48-44	H 4	
08:27	GOOD! FT by SMITH, GUILIEN	48-45	H 3	
08:00	GOOD! LAYUP by BOURSQUOT, MAXIME	48-47	H 1	
07:13		50-47	H 3	GOOD! LAYUP by BLAIR, QUINN
06:11	GOOD! LAYUP by BRACE, BOLDEN	50-49	H 1	
05:16		51-49	H 2	GOOD! FT by LOEWE, LUKE [FB]
05:07	GOOD! FT by WALKER, TYSON	51-50	H 1	
04:29	GOOD! LAYUP by BOURSQUOT, MAXIME	51-52	V 1	
04:03		52-52	T	GOOD! FT by KNIGHT, NATHAN
03:51	GOOD! LAYUP by WALKER, TYSON	52-54	V 2	
02:59	GOOD! LAYUP by BOURSQUOT, MAXIME	52-56	V 4	
02:27	GOOD! FT by WALKER, TYSON	52-57	V 5	
02:07		55-57	V 2	GOOD! 3PTR by LOEWE, LUKE
01:25		56-57	V 1	GOOD! FT by KNIGHT, NATHAN
01:25		57-57	T	GOOD! FT by KNIGHT, NATHAN
00:06	GOOD! FT by BRACE, BOLDEN	57-58	V 1	
00:01		59-58	H 1	GOOD! LAYUP by KNIGHT, NATHAN [FB]

Northeastern 58, William Mary 59

Official Substitutions Log
Northeastern vs William Mary
Period 1
January 30, 2020 at Kaplan Arena (Kaplan Arena) - Williamsburg



VISITORS: Northeastern	Time	Score	HOME: William Mary
2 WALKER, TYSON			1 SCOTT, THORNTON
10 EBOIGBODIN, GREG			5 BARNES, BRYCE
12 ROLAND, JORDAN			11 VAN VLIET, ANDY
14 BOURSQUOT, MAXIME			12 LOEWE, LUKE
20 BRACE, BOLDEN			13 KNIGHT, NATHAN
	16:59	7-0	SUB OUT: SCOTT, THORNTON
	16:59		SUB OUT: BARNES, BRYCE
	16:59		SUB IN: HAMILTON, TYLER
	16:59		SUB IN: HERMANOVSKIS, RAINERS
	15:53	7-4	SUB OUT: VAN VLIET, ANDY
	15:53		SUB IN: BLAIR, QUINN
SUB OUT: 10 EBOIGBODIN, GREG	15:53		
SUB IN: 24 WALTERS, SHAQUILLE	15:53		
	13:35	13-5	SUB OUT: HERMANOVSKIS, RAINERS
	13:35		SUB OUT: LOEWE, LUKE
	13:35		SUB OUT: KNIGHT, NATHAN
	13:35		SUB IN: SCOTT, THORNTON
	13:35		SUB IN: VAN VLIET, ANDY
	13:35		SUB IN: AYESA, MIGUEL
SUB OUT: 20 BRACE, BOLDEN	13:35		
SUB IN: 00 STRONG, JASON	13:35		
	10:51	16-10	SUB OUT: HAMILTON, TYLER
	10:51		SUB OUT: VAN VLIET, ANDY
	10:51		SUB OUT: AYESA, MIGUEL
	10:51		SUB IN: BARNES, BRYCE
	10:51		SUB IN: LOEWE, LUKE
	10:51		SUB IN: KNIGHT, NATHAN
SUB OUT: 2 WALKER, TYSON	10:51		
SUB OUT: 14 BOURSQUOT, MAXIME	10:51		
SUB IN: 10 EBOIGBODIN, GREG	10:51		
SUB IN: 13 FRANKLIN, MYLES	10:51		
SUB OUT: 00 STRONG, JASON	10:06	16-11	
SUB OUT: 10 EBOIGBODIN, GREG	10:06		
SUB IN: 14 BOURSQUOT, MAXIME	10:06		
SUB IN: 20 BRACE, BOLDEN	10:06		
	08:10	20-14	SUB OUT: SCOTT, THORNTON
	08:10		SUB IN: AYESA, MIGUEL
SUB OUT: 13 FRANKLIN, MYLES	08:10		
SUB IN: 2 WALKER, TYSON	08:10		
	07:53	20-14	SUB OUT: BLAIR, QUINN
	07:53		SUB IN: HAMILTON, TYLER
	06:25	20-16	SUB OUT: LOEWE, LUKE
	06:25		SUB OUT: KNIGHT, NATHAN
	06:25		SUB IN: SCOTT, THORNTON
	06:25		SUB IN: VAN VLIET, ANDY
SUB OUT: 14 BOURSQUOT, MAXIME	06:25		
SUB IN: 10 EBOIGBODIN, GREG	06:25		
	05:38	22-16	SUB OUT: BARNES, BRYCE
	05:38		SUB IN: LOEWE, LUKE
	05:38		SUB OUT: AYESA, MIGUEL
	05:38		SUB IN: HERMANOVSKIS, RAINERS
SUB OUT: 10 EBOIGBODIN, GREG	04:10	24-18	
SUB IN: 00 STRONG, JASON	04:10		
	03:42	24-20	SUB OUT: HAMILTON, TYLER
	03:42		SUB IN: KNIGHT, NATHAN
	03:05	24-22	SUB OUT: HERMANOVSKIS, RAINERS
	03:05		SUB IN: BARNES, BRYCE
	00:43	27-24	SUB OUT: KNIGHT, NATHAN
	00:43		SUB IN: BLAIR, QUINN

Northeastern 29, William Mary 24

Official Substitutions Log
Northeastern vs William Mary
Period 2
January 30, 2020 at Kaplan Arena (Kaplan Arena) - Williamsburg



VISITORS: Northeastern	Time	Score	HOME: William Mary
2 WALKER, TYSON			1 SCOTT, THORNTON
10 EBOIGBODIN, GREG			5 BARNES, BRYCE
12 ROLAND, JORDAN			11 VAN VLIET, ANDY
14 BOURSQUOT, MAXIME			12 LOEWE, LUKE
20 BRACE, BOLDEN			13 KNIGHT, NATHAN
	20:00	-	SUB OUT: BLAIR, QUINN
	20:00		SUB IN: KNIGHT, NATHAN
SUB OUT: 00 STRONG, JASON	20:00		
SUB IN: 10 EBOIGBODIN, GREG	20:00		
SUB OUT: 10 EBOIGBODIN, GREG	18:25	31-28	
SUB IN: 14 BOURSQUOT, MAXIME	18:25		
SUB OUT: 20 BRACE, BOLDEN	18:20	31-29	
SUB IN: 00 STRONG, JASON	18:20		
	15:20	35-30	SUB OUT: BARNES, BRYCE
	15:20		SUB OUT: VAN VLIET, ANDY
	15:20		SUB IN: HAMILTON, TYLER
	15:20		SUB IN: BLAIR, QUINN
	13:42	35-34	SUB OUT: KNIGHT, NATHAN
	13:42		SUB IN: VAN VLIET, ANDY
SUB OUT: 2 WALKER, TYSON	13:42		
SUB IN: 13 FRANKLIN, MYLES	13:42		
SUB OUT: 00 STRONG, JASON	13:02	35-36	
SUB IN: 20 BRACE, BOLDEN	13:02		
SUB OUT: 13 FRANKLIN, MYLES	12:43	35-36	
SUB IN: 2 WALKER, TYSON	12:43		
	12:43		SUB OUT: SCOTT, THORNTON
	12:43		SUB IN: BARNES, BRYCE
	11:17	39-40	SUB OUT: BLAIR, QUINN
	11:17		SUB IN: KNIGHT, NATHAN
SUB OUT: 24 WALTERS, SHAQUILLE	11:17		
SUB IN: 22 EMANGA, QUIRIN	11:17		
SUB OUT: 20 BRACE, BOLDEN	11:17		
SUB IN: 10 EBOIGBODIN, GREG	11:17		
SUB OUT: 22 EMANGA, QUIRIN	10:58	39-41	
SUB IN: 21 SMITH, GUILIEN	10:58		
	09:13	42-44	SUB OUT: BARNES, BRYCE
	09:13		SUB IN: SCOTT, THORNTON
SUB OUT: 10 EBOIGBODIN, GREG	09:13		
SUB IN: 20 BRACE, BOLDEN	09:13		
	08:27	44-48	SUB OUT: KNIGHT, NATHAN
	08:27		SUB IN: BLAIR, QUINN
	07:26	47-48	SUB OUT: HAMILTON, TYLER
	07:26		SUB IN: BARNES, BRYCE
	07:04	47-50	SUB OUT: BARNES, BRYCE
	07:04		SUB IN: HAMILTON, TYLER
	04:53	50-51	SUB OUT: HAMILTON, TYLER
	04:53		SUB IN: BARNES, BRYCE
	04:07	52-51	SUB OUT: VAN VLIET, ANDY
	04:07		SUB IN: KNIGHT, NATHAN
	02:27	56-52	SUB OUT: BLAIR, QUINN
	02:27		SUB IN: VAN VLIET, ANDY
SUB OUT: 21 SMITH, GUILIEN	02:27		
SUB IN: 24 WALTERS, SHAQUILLE	02:27		
SUB OUT: 24 WALTERS, SHAQUILLE	01:25	57-56	
SUB IN: 21 SMITH, GUILIEN	01:25		
	00:06	57-57	SUB OUT: BARNES, BRYCE
	00:06		SUB IN: AYESA, MIGUEL
SUB OUT: 2 WALKER, TYSON	00:06		
SUB IN: 24 WALTERS, SHAQUILLE	00:06		
	00:01	58-59	SUB OUT: VAN VLIET, ANDY
	00:01		SUB OUT: AYESA, MIGUEL
	00:01		SUB IN: HAMILTON, TYLER
	00:01		SUB IN: BARNES, BRYCE
SUB OUT: 24 WALTERS, SHAQUILLE	00:01		
SUB IN: 2 WALKER, TYSON	00:01		

Northeastern 58, William Mary 59

Official Shot Chart
Northeastern vs William Mary
PERIOD 1 Shots
 January 30, 2020 at Kaplan Arena (Kaplan Arena) - Williamsburg



William Mary

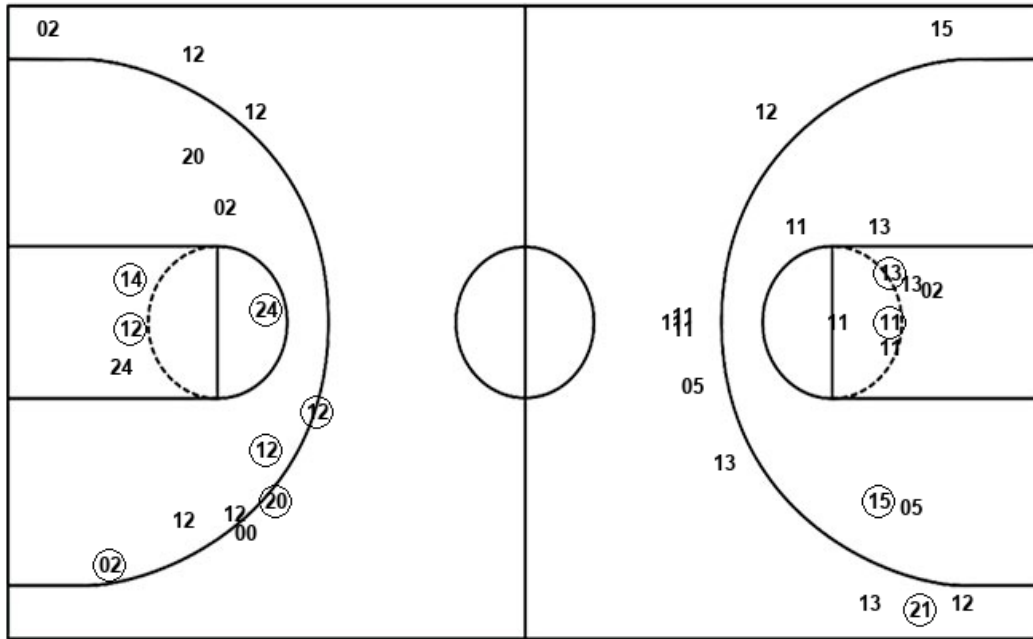
Northeastern

Layups
 12 12 13 13 12
 05 05 12

Layups
 02 12 14 02 00
 00 00 12 14 14
 20 10 00 24

Dunks

Dunks



WM : Period 1	Made	Att	Pct
Layups	3	8	37.5
Dunks	0	0	0
2PT Field Goals	6	18	33.3
3PT Field Goals	1	10	10.0
Total Field Goals	7	28	25.0

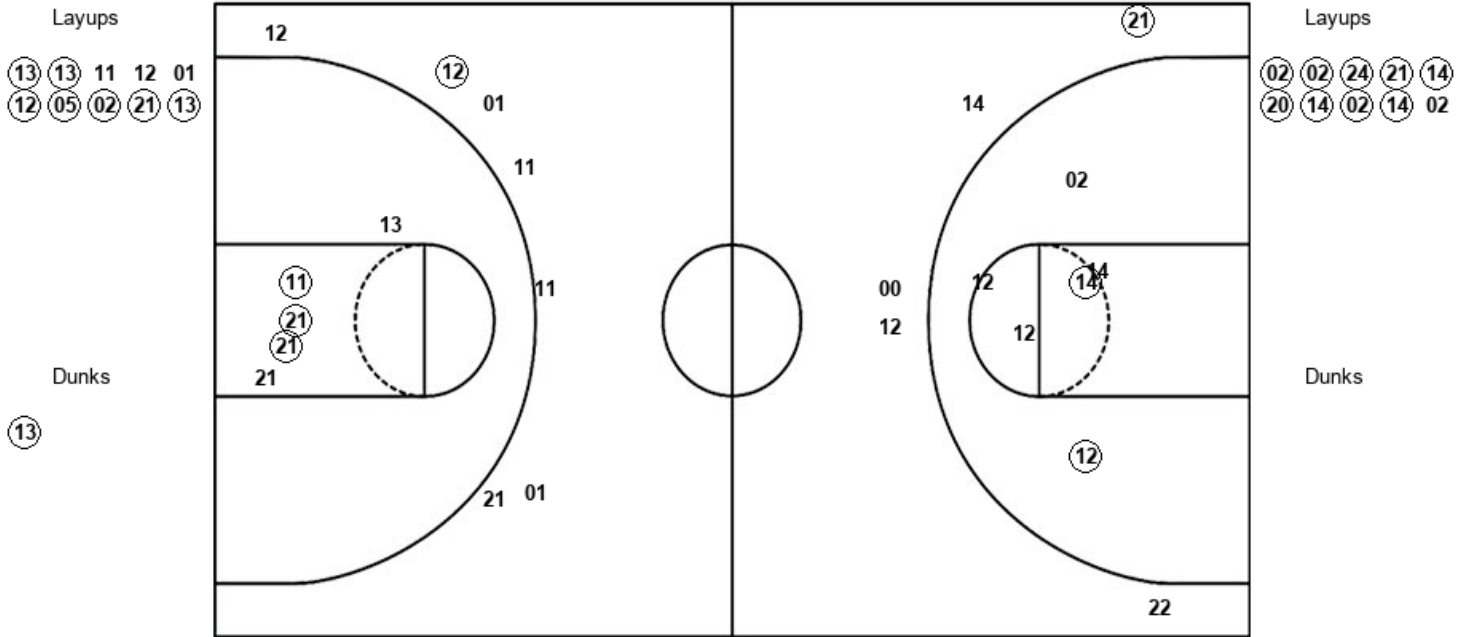
NEU : Period 1	Made	Att	Pct
Layups	4	14	28.6
Dunks	1	1	100.0
2PT Field Goals	10	25	40.0
3PT Field Goals	2	6	33.3
Total Field Goals	12	31	38.7

Official Shot Chart
Northeastern vs William Mary
 PERIOD 2 Shots
 January 30, 2020 at Kaplan Arena (Kaplan Arena) - Williamsburg



William Mary

Northeastern



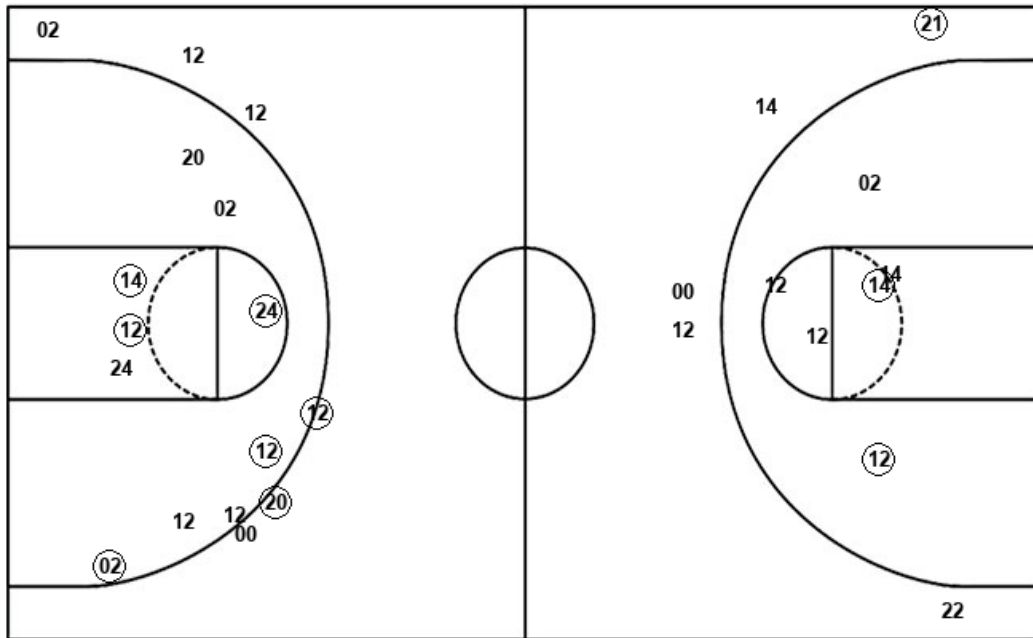
WM : Period 2	Made	Att	Pct
Layups	7	10	70.0
Dunks	1	1	100.0
2PT Field Goals	11	16	68.8
3PT Field Goals	1	7	14.3
Total Field Goals	12	23	52.2

NEU : Period 2	Made	Att	Pct
Layups	9	10	90.0
Dunks	0	0	0
2PT Field Goals	11	16	68.8
3PT Field Goals	1	5	20.0
Total Field Goals	12	21	57.1

Official Shot Chart
Northeastern vs William Mary
Northeastern Team Shots
 January 30, 2020 at Kaplan Arena (Kaplan Arena) - Williamsburg



Layups



Dunks

Layups

02	12	14	02	00
00	00	12	14	14
20	10	00	24	02
02	24	21	14	20
14	02	14	02	

Dunks

12

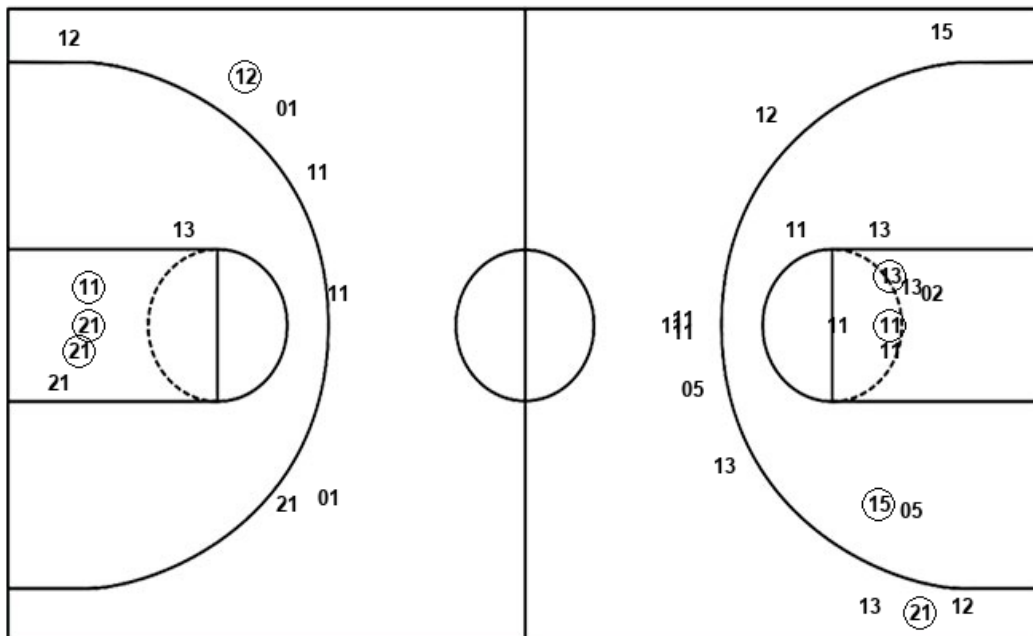
NEU : Period 1	Made	Att	Pct
Layups	4	14	28.6
Dunks	1	1	100.0
2PT Field Goals	10	25	40.0
3PT Field Goals	2	6	33.3
Total Field Goals	12	31	38.7

NEU : Period 2	Made	Att	Pct
Layups	9	10	90.0
Dunks	0	0	0
2PT Field Goals	11	16	68.8
3PT Field Goals	1	5	20.0
Total Field Goals	12	21	57.1

Official Shot Chart
Northeastern vs William Mary
William Mary Team Shots
 January 30, 2020 at Kaplan Arena (Kaplan Arena) - Williamsburg



Layups



Layups



Dunks

Dunks



WM : Period 1	Made	Att	Pct
Layups	3	8	37.5
Dunks	0	0	0
2PT Field Goals	6	18	33.3
3PT Field Goals	1	10	10.0
Total Field Goals	7	28	25.0

WM : Period 2	Made	Att	Pct
Layups	7	10	70.0
Dunks	1	1	100.0
2PT Field Goals	11	16	68.8
3PT Field Goals	1	7	14.3
Total Field Goals	12	23	52.2