

FINAL SCORE



Towson

70



William Mary

58

January 25, 2020 • Kaplan Arena (Kaplan Arena) - Williamsburg

FINAL STATISTICS

Official Box Score
Towson vs William Mary
Game Totals -- Final Statistics
January 25, 2020 at Kaplan Arena (Kaplan Arena) - Williamsburg



Towson 70

No.	Player	S	Pts	FG	3FG	FT	OR	DR	TR	PF	A	TO	Blk	Stl	Min	+/-
02	BETRAND, ALLEN	G	16	7-12	0-0	2-3	1	1	2	2	0	2	0	0	33	11
10	GIBSON, JASON	G	21	7-12	2-4	5-6	0	2	2	1	1	1	0	2	35	17
11	TUNSTALL, DENNIS	F	2	1-1	0-0	0-0	2	6	8	3	0	1	4	2	27	12
20	SANDERS, NAKYE	F	9	3-4	0-0	3-4	2	4	6	4	3	0	0	1	20	17
23	FOBBS, BRIAN	G	17	6-12	1-3	4-6	1	4	5	3	3	1	0	1	36	16
05	DOTTIN, JAKIGH	G	0	0-0	0-0	0-0	0	0	0	0	1	2	0	0	4	-9
12	GRAY, JUWAN	F	3	1-4	1-2	0-0	0	3	3	0	0	0	0	0	23	-8
25	TIMBERLAKE, NICOLAS	G	2	1-3	0-1	0-0	0	1	1	0	1	2	0	0	13	1
32	THOMPSON, CHARLES	F	0	0-1	0-0	0-0	2	1	3	3	0	1	0	0	10	3
TEAM							0	1	1	0		2				
TOTALS			70	26-49	4-10	14-19	8	23	31	16	9	12	4	6	199	

Shooting By Period

Period	FG	FG%	3FG	3FG%	FT	FT%
1st Half	17-27	63%	4-7	57%	1-2	50%
2nd Half	9-22	41%	0-3	00%	13-17	76%
Game	26-49	53.1%	4-10	40.0%	14-19	73.7%

Deadball Rebounds: 3.0
 Last FG: 2nd-03:37
 Biggest Run: 8-0
 Largest lead: By 12 at 2nd-00:06
 Technical Fouls: None.

William Mary 58

No.	Player	S	Pts	FG	3FG	FT	OR	DR	TR	PF	A	TO	Blk	Stl	Min	+/-
01	SCOTT, THORNTON	G	0	0-4	0-3	0-0	2	1	3	0	1	2	1	0	31	-24
05	BARNES, BRYCE	G	7	3-5	0-0	1-2	0	2	2	2	3	4	1	0	26	-6
11	VAN VLIET, ANDY	F	10	4-10	1-5	1-1	0	6	6	2	2	2	0	0	29	-19
12	LOEWE, LUKE	G	6	2-6	1-5	1-1	1	0	1	5	1	0	0	1	32	-15
13	KNIGHT, NATHAN	C	20	6-15	1-5	7-8	1	5	6	4	2	4	1	2	29	-15
02	HAMILTON, TYLER	G	8	4-5	0-0	0-2	1	2	3	4	0	1	0	1	18	9
10	HERMANOVSKIS, RAINERS	G	2	1-1	0-0	0-0	0	0	0	0	0	0	0	0	5	-6
15	AYESA, MIGUEL	G	3	1-2	1-2	0-0	0	0	0	0	0	0	0	0	15	11
21	BLAIR, QUINN	F	2	1-2	0-1	0-0	0	1	1	2	1	1	0	0	15	5
TEAM							2	0	2	0		0				
TOTALS			58	22-50	4-21	10-14	7	17	24	19	10	14	3	4	199	

Shooting By Period

Period	FG	FG%	3FG	3FG%	FT	FT%
1st Half	14-27	52%	3-11	27%	4-5	80%
2nd Half	8-23	35%	1-10	10%	6-9	67%
Game	22-50	44.0%	4-21	19.0%	10-14	71.4%

Deadball Rebounds: 2.0
 Last FG: 2nd-01:02
 Biggest Run: 6-0
 Largest lead: By 0 at 1st-07:59
 Technical Fouls: None.

Game Notes:

Officials: Louie Andrakakos, Ryan Sassano, JW Lucas
 Attendance: 4848

Start Time: 04:06 PM ET
 End Time: 05:59 PM ET
 Game Duration: 1:53
 Conference Game;

Score	1st	2nd	TOT
TOW	39	31	70
WM	35	23	58

TOW led for 38:12. WM led for 0:00.
 Game was tied for 1:42.
 Times tied: 2 Lead Changes: 0

Points from	TOW	WM
In the Paint	22	36
Off Turns	23	16
2nd Chance	12	2
Fast Break	4	10
Bench	5	15

Official Box Score
Towson vs William Mary
First Half Statistics Only
January 25, 2020 at Kaplan Arena (Kaplan Arena) - Williamsburg



Towson 39

No.	Player	S	Pts	FG	3FG	FT	OR	DR	TR	PF	A	TO	Blk	Stl	Min	+/-
02	BETRAND, ALLEN	G	4	2-3	0-0	0-0	0	1	1	1	0	2	0	0	15	-1
10	GIBSON, JASON	G	15	6-7	2-3	1-2	0	1	1	0	0	0	0	0	17	7
11	TUNSTALL, DENNIS	F	2	1-1	0-0	0-0	1	3	4	2	0	0	2	0	10	5
20	SANDERS, NAKYE	F	4	2-3	0-0	0-0	0	2	2	2	2	0	0	1	13	11
23	FOBBS, BRIAN	G	9	4-7	1-2	0-0	0	2	2	1	2	0	0	0	17	7
05	DOTTIN, JAKIGH	G	0	0-0	0-0	0-0	0	0	0	0	1	1	0	0	3	-3
12	GRAY, JUWAN	F	3	1-3	1-1	0-0	0	3	3	0	0	0	0	0	11	-5
25	TIMBERLAKE, NICOLAS	G	2	1-2	0-1	0-0	0	1	1	0	0	1	0	0	7	2
32	THOMPSON, CHARLES	F	0	0-1	0-0	0-0	1	0	1	2	0	1	0	0	5	-3
TEAM							0	0	0	0		0				
TOTALS			39	17-27	4-7	1-2	2	13	15	8	5	5	2	1	100	

Shooting By Period

Period	FG	FG%	3FG	3FG%	FT	FT%
1st Half	17-27	63%	4-7	57%	1-2	50%
Game	26-49	53.1%	4-10	40.0%	14-19	73.7%

Deadball Rebounds: 3,0

Last FG Half: TOW 2nd-03:37

William Mary 35

No.	Player	S	Pts	FG	3FG	FT	OR	DR	TR	PF	A	TO	Blk	Stl	Min	+/-
01	SCOTT, THORNTON	G	0	0-1	0-1	0-0	1	0	1	0	1	1	0	0	14	-12
05	BARNES, BRYCE	G	4	2-4	0-0	0-0	0	1	1	1	3	0	0	0	12	1
11	VAN VLIET, ANDY	F	5	2-6	0-3	1-1	0	2	2	2	0	1	0	0	10	-10
12	LOEWE, LUKE	G	3	1-3	1-3	0-0	0	0	0	0	1	0	0	0	15	-9
13	KNIGHT, NATHAN	C	12	4-7	1-2	3-4	0	3	3	1	2	1	1	1	17	-3
02	HAMILTON, TYLER	G	6	3-3	0-0	0-0	0	1	1	1	0	0	0	1	11	9
10	HERMANOVSKIS, RAINERS	G	2	1-1	0-0	0-0	0	0	0	0	0	0	0	0	5	-6
15	AYESA, MIGUEL	G	3	1-1	1-1	0-0	0	0	0	0	0	0	0	0	7	8
21	BLAIR, QUINN	F	0	0-1	0-1	0-0	0	1	1	0	0	0	0	0	9	2
TEAM							0	0	0	0		0				
TOTALS			35	14-27	3-11	4-5	1	8	9	5	7	3	1	2	100	

Shooting By Period

Period	FG	FG%	3FG	3FG%	FT	FT%
1st Half	14-27	52%	3-11	27%	4-5	80%
Game	22-50	44.0%	4-21	19.0%	10-14	71.4%

Deadball Rebounds: 2,0

Last FG Half: WM 2nd-01:02

Game Notes:

Officials: Louie Andrakakos, Ryan Sassano, JW Lucas
 Attendance: 4848

Start Time: 04:06 PM ET
 End Time: 05:59 PM ET
 Game Duration: 1:53
 Conference Game;

Score	1st	2nd	TOT
TOW	39	31	70
WM	35	23	58

Points from (This Period)	TOW	WM
In the Paint	14	22
Off Turns	6	6
2nd Chance	4	0
Fast Break	2	7
Bench	5	11

Official Play-By-Play
Towson vs William Mary
First Half
January 25, 2020 at Kaplan Arena (Kaplan Arena) - Williamsburg



Period 1

Starters:

Towson: 2 BETRAND, ALLEN (G); 10 GIBSON, JASON (G); 11 TUNSTALL, DENNIS (F); 20 SANDERS, NAKYE (F); 23 FOBBS, BRIAN (G);

William Mary: 1 SCOTT, THORNTON (G); 5 BARNES, BRYCE (G); 11 VAN VLIET, ANDY (F); 12 LOEWE, LUKE (G); 13 KNIGHT, NATHAN (C);

Time	VISITORS: Towson	Score	Margin	HOME: William Mary
19:43	GOOD! JUMPER by FOBBS, BRIAN	0-2	V 2	
19:16				MISSED JUMPER by KNIGHT, NATHAN
19:13	REBOUND (DEF) by TUNSTALL, DENNIS			
19:01	GOOD! JUMPER by BETRAND, ALLEN	0-4	V 4	
19:01	ASSIST by SANDERS, NAKYE			
18:41				MISSED 3PTR by VAN VLIET, ANDY
18:38	REBOUND (DEF) by SANDERS, NAKYE			
18:21	GOOD! JUMPER by GIBSON, JASON	0-6	V 6	
18:06				MISSED JUMPER by BARNES, BRYCE
18:06	BLOCK by TUNSTALL, DENNIS			
17:59				REBOUND (OFF) by SCOTT, THORNTON
17:59	FOUL (PERSONAL) by SANDERS, NAKYE			
17:56				MISSED JUMPER by KNIGHT, NATHAN
17:53	REBOUND (DEF) by FOBBS, BRIAN			
17:48	TURNOVER (LOSTBALL) by BETRAND, ALLEN			
17:48				STEAL by KNIGHT, NATHAN
17:41		2-6	V 4	GOOD! LAYUP by BARNES, BRYCE [FB]
17:41				ASSIST by KNIGHT, NATHAN
17:19	MISSED JUMPER by FOBBS, BRIAN			
17:15				REBOUND (DEF) by VAN VLIET, ANDY
17:04		5-6	V 1	GOOD! 3PTR by LOEWE, LUKE
17:04				ASSIST by BARNES, BRYCE
16:39	GOOD! JUMPER by SANDERS, NAKYE	5-8	V 3	
16:22				MISSED 3PTR by VAN VLIET, ANDY
16:19	REBOUND (DEF) by TUNSTALL, DENNIS			
16:01	GOOD! LAYUP by GIBSON, JASON	5-10	V 5	
15:47				MISSED 3PTR by SCOTT, THORNTON
15:44	REBOUND (DEF) by FOBBS, BRIAN			
15:40	GOOD! LAYUP by SANDERS, NAKYE [FB]	5-12	V 7	
15:40	ASSIST by FOBBS, BRIAN			
15:40				TIMEOUT 30SEC
15:37				SUB OUT: BARNES, BRYCE
15:37				SUB OUT: KNIGHT, NATHAN
15:37				SUB IN: HAMILTON, TYLER
15:37				SUB IN: BLAIR, QUINN
15:37	SUB OUT: BETRAND, ALLEN			
15:37	SUB OUT: TUNSTALL, DENNIS			
15:37	SUB OUT: SANDERS, NAKYE			
15:37	SUB IN: GRAY, JUWAN			
15:37	SUB IN: TIMBERLAKE, NICOLAS			
15:37	SUB IN: THOMPSON, CHARLES			
15:24				MISSED JUMPER by VAN VLIET, ANDY
15:20	REBOUND (DEF) by GRAY, JUWAN			
15:04	MISSED 3PTR by FOBBS, BRIAN			
15:01	REBOUND (OFF) by THOMPSON, CHARLES			
14:57	GOOD! LAYUP by TIMBERLAKE, NICOLAS	5-14	V 9	
14:27		7-14	V 7	GOOD! LAYUP by HAMILTON, TYLER
14:27				ASSIST by SCOTT, THORNTON
14:01	GOOD! JUMPER by GIBSON, JASON [PNT]	7-16	V 9	
13:43		9-16	V 7	GOOD! JUMPER by VAN VLIET, ANDY [PNT]
13:43	FOUL (PERSONAL) by FOBBS, BRIAN			
13:43				SUB OUT: LOEWE, LUKE
13:43				SUB IN: AYESA, MIGUEL
13:43	SUB OUT: GIBSON, JASON			
13:43	SUB OUT: FOBBS, BRIAN			
13:43	SUB IN: BETRAND, ALLEN			
13:43	SUB IN: DOTTIN, JAKIGH			
13:43		10-16	V 6	GOOD! FT by VAN VLIET, ANDY
13:17	FOUL (OFF) by BETRAND, ALLEN			
13:17	TURNOVER (OFFENSIVE) by BETRAND, ALLEN			
13:13	SUB OUT: THOMPSON, CHARLES			
13:13	SUB IN: SANDERS, NAKYE			
13:00				TURNOVER (LOSTBALL) by SCOTT, THORNTON
13:00	STEAL by SANDERS, NAKYE			
12:55				FOUL (PERSONAL) by HAMILTON, TYLER
12:51	GOOD! JUMPER by BETRAND, ALLEN	10-18	V 8	
12:51	ASSIST by DOTTIN, JAKIGH			
12:37				MISSED 3PTR by BLAIR, QUINN
12:36	REBOUND (DEF) by TIMBERLAKE, NICOLAS			
12:36				FOUL (PERSONAL) by VAN VLIET, ANDY

Time	VISITORS: Towson	Score	Margin	HOME: William Mary
12:36				SUB OUT: SCOTT, THORNTON
12:36				SUB OUT: VAN VLIET, ANDY
12:36				SUB IN: BARNES, BRYCE
12:36				SUB IN: KNIGHT, NATHAN
12:16	MISSED LAYUP by GRAY, JUWAN			
12:16				BLOCK by KNIGHT, NATHAN
12:12				REBOUND (DEF) by BLAIR, QUINN
12:03		12-18	V 6	GOOD! JUMPER by KNIGHT, NATHAN [PNT]
11:32	TURNOVER (LOSTBALL) by TIMBERLAKE, NICOLAS			
11:32				STEAL by HAMILTON, TYLER
11:26		14-18	V 4	GOOD! LAYUP by HAMILTON, TYLER [FB]
11:02	TURNOVER (TRAVEL) by DOTTIN, JAKIGH			
11:02				
11:02	SUB OUT: DOTTIN, JAKIGH			
11:02	SUB OUT: SANDERS, NAKYE			
11:02	SUB OUT: TIMBERLAKE, NICOLAS			
11:02	SUB IN: GIBSON, JASON			
11:02	SUB IN: TUNSTALL, DENNIS			
11:02	SUB IN: FOBBS, BRIAN			
10:42		16-18	V 2	GOOD! JUMPER by KNIGHT, NATHAN [PNT]
10:18	GOOD! 3PTR by GRAY, JUWAN	16-21	V 5	
10:01		18-21	V 3	GOOD! JUMPER by BARNES, BRYCE [PNT]
09:40	MISSED 3PTR by GIBSON, JASON			
09:36				REBOUND (DEF) by KNIGHT, NATHAN
09:33		21-21	T	GOOD! 3PTR by AYESA, MIGUEL [FB]
09:33				ASSIST by BARNES, BRYCE
09:29	TIMEOUT 30SEC			
09:29				SUB OUT: AYESA, MIGUEL
09:29				SUB OUT: BLAIR, QUINN
09:29				SUB IN: VAN VLIET, ANDY
09:29				SUB IN: LOEWE, LUKE
09:29	SUB OUT: TUNSTALL, DENNIS			
09:29	SUB IN: SANDERS, NAKYE			
09:09	GOOD! 3PTR by GIBSON, JASON	21-24	V 3	
09:09	ASSIST by SANDERS, NAKYE			
08:44		23-24	V 1	GOOD! LAYUP by HAMILTON, TYLER
08:18				FOUL (PERSONAL) by BARNES, BRYCE
08:18	MISSED FT by GIBSON, JASON			
08:18	REBOUND (OFF) by TEAM			
08:18				SUB OUT: BARNES, BRYCE
08:18				SUB IN: SCOTT, THORNTON
08:18				SUB OUT: HAMILTON, TYLER
08:18				SUB IN: HERMANOVSKIS, RAINERS
08:18	GOOD! FT by GIBSON, JASON	23-25	V 2	
07:59		25-25	T	GOOD! LAYUP by VAN VLIET, ANDY
07:33	MISSED JUMPER by BETRAND, ALLEN			
07:30				REBOUND (DEF) by VAN VLIET, ANDY
07:16				MISSED 3PTR by VAN VLIET, ANDY
07:13	REBOUND (DEF) by SANDERS, NAKYE			
06:58	GOOD! JUMPER by FOBBS, BRIAN	25-27	V 2	
06:31				FOUL (OFF) by VAN VLIET, ANDY
06:31				TURNOVER (OFFENSIVE) by VAN VLIET, ANDY
06:31				
06:28				SUB OUT: VAN VLIET, ANDY
06:28				SUB IN: BLAIR, QUINN
06:28	SUB OUT: BETRAND, ALLEN			
06:28	SUB OUT: GRAY, JUWAN			
06:28	SUB IN: TUNSTALL, DENNIS			
06:28	SUB IN: TIMBERLAKE, NICOLAS			
06:13	GOOD! LAYUP by GIBSON, JASON [PNT]	25-29	V 4	
05:50		27-29	V 2	GOOD! JUMPER by HERMANOVSKIS, RAINERS [PNT]
05:50				ASSIST by KNIGHT, NATHAN
05:26	GOOD! 3PTR by FOBBS, BRIAN	27-32	V 5	
04:54				MISSED 3PTR by LOEWE, LUKE
04:50	REBOUND (DEF) by TUNSTALL, DENNIS			
04:35	MISSED 3PTR by TIMBERLAKE, NICOLAS			
04:31				REBOUND (DEF) by KNIGHT, NATHAN
04:24				FOUL (OFF) by KNIGHT, NATHAN
04:24				TURNOVER (OFFENSIVE) by KNIGHT, NATHAN
04:24				SUB OUT: SCOTT, THORNTON
04:24				SUB OUT: LOEWE, LUKE
04:24				SUB IN: BARNES, BRYCE
04:24				SUB IN: AYESA, MIGUEL
04:24	SUB OUT: SANDERS, NAKYE			
04:24	SUB IN: THOMPSON, CHARLES			
04:01	GOOD! JUMPER by FOBBS, BRIAN	27-34	V 7	
03:45				
03:45				SUB OUT: HERMANOVSKIS, RAINERS
03:45				SUB OUT: BLAIR, QUINN
03:45				SUB IN: HAMILTON, TYLER

Time	VISITORS: Towson	Score	Margin	HOME: William Mary
03:45				SUB IN: LOEWE, LUKE
03:45	SUB OUT: TIMBERLAKE, NICOLAS			
03:45	SUB IN: BETRAND, ALLEN			
03:35	FOUL (PERSONAL) by TUNSTALL, DENNIS			
03:26	FOUL (PERSONAL) by THOMPSON, CHARLES			
03:26		28-34	V 6	GOOD! FT by KNIGHT, NATHAN
03:26		29-34	V 5	GOOD! FT by KNIGHT, NATHAN
03:15	MISSED LAYUP by THOMPSON, CHARLES			
03:11	REBOUND (OFF) by TUNSTALL, DENNIS			
03:11	GOOD! LAYUP by TUNSTALL, DENNIS	29-36	V 7	
03:01		32-36	V 4	GOOD! 3PTR by KNIGHT, NATHAN
03:01				ASSIST by BARNES, BRYCE
02:32	FOUL (OFF) by THOMPSON, CHARLES			
02:32	TURNOVER (OFFENSIVE) by THOMPSON, CHARLES			
02:32				SUB OUT: AYESA, MIGUEL
02:32				SUB IN: SCOTT, THORNTON
02:32	SUB OUT: THOMPSON, CHARLES			
02:32	SUB IN: SANDERS, NAKYE			
02:17				MISSED JUMPER by BARNES, BRYCE
02:17	BLOCK by TUNSTALL, DENNIS			
02:12	REBOUND (DEF) by GIBSON, JASON			
02:11	MISSED JUMPER by FOBBS, BRIAN			
02:11				REBOUND (DEF) by KNIGHT, NATHAN
02:11	FOUL (PERSONAL) by TUNSTALL, DENNIS			
02:11				SUB OUT: BARNES, BRYCE
02:11				SUB IN: AYESA, MIGUEL
02:11	SUB OUT: TUNSTALL, DENNIS			
02:11	SUB IN: GRAY, JUWAN			
02:08				MISSED FT by KNIGHT, NATHAN
02:07	REBOUND (DEF) by GRAY, JUWAN			
01:49	MISSED LAYUP by SANDERS, NAKYE			
01:45				REBOUND (DEF) by HAMILTON, TYLER
01:36				MISSED 3PTR by LOEWE, LUKE
01:33	REBOUND (DEF) by BETRAND, ALLEN			
01:07	GOOD! 3PTR by GIBSON, JASON	32-39	V 7	
01:07	ASSIST by FOBBS, BRIAN			
00:48		34-39	V 5	GOOD! LAYUP by KNIGHT, NATHAN
00:48				ASSIST by LOEWE, LUKE
00:48	FOUL (PERSONAL) by SANDERS, NAKYE			
00:48	SUB OUT: SANDERS, NAKYE			
00:48	SUB IN: THOMPSON, CHARLES			
00:48		35-39	V 4	GOOD! FT by KNIGHT, NATHAN
00:48				SUB OUT: AYESA, MIGUEL
00:48				SUB IN: BARNES, BRYCE
00:26	MISSED JUMPER by GRAY, JUWAN			
00:22				REBOUND (DEF) by BARNES, BRYCE
00:07				MISSED 3PTR by KNIGHT, NATHAN
00:07	REBOUND (DEF) by GRAY, JUWAN			

Towson 39, William Mary 35

Points from (This Period)	TOW	WM
In the Paint	14	22
Off Turns	6	6
2nd Chance	4	0
Fast Break	2	7
Bench	5	11

Official Box Score
Towson vs William Mary
Second Half Statistics Only
January 25, 2020 at Kaplan Arena (Kaplan Arena) - Williamsburg



Towson 31

No.	Player	S	Pts	FG	3FG	FT	OR	DR	TR	PF	A	TO	Blk	Stl	Min	+/-
02	BETRAND, ALLEN	G	12	5-9	0-0	2-3	1	0	1	1	0	0	0	0	17	12
10	GIBSON, JASON	G	6	1-5	0-1	4-4	0	1	1	1	1	1	0	2	17	10
11	TUNSTALL, DENNIS	F	0	0-0	0-0	0-0	1	3	4	1	0	1	2	2	17	7
20	SANDERS, NAKYE	F	5	1-1	0-0	3-4	2	2	4	2	1	0	0	0	7	6
23	FOBBS, BRIAN	G	8	2-5	0-1	4-6	1	2	3	2	1	1	0	1	18	9
05	DOTTIN, JAKIGH	G	0	0-0	0-0	0-0	0	0	0	0	0	1	0	0	1	-6
12	GRAY, JUWAN	F	0	0-1	0-1	0-0	0	0	0	0	0	0	0	0	11	-3
25	TIMBERLAKE, NICOLAS	G	0	0-1	0-0	0-0	0	0	0	0	1	1	0	0	5	-1
32	THOMPSON, CHARLES	F	0	0-0	0-0	0-0	1	1	2	1	0	0	0	0	5	6
TEAM							0	1	1	0		2				
TOTALS			31	9-22	0-3	13-17	6	10	16	8	4	7	2	5	99	

Shooting By Period

Period	FG	FG%	3FG	3FG%	FT	FT%
2nd Half	9-22	41%	0-3	00%	13-17	76%
Game	26-49	53.1%	4-10	40.0%	14-19	73.7%

Deadball Rebounds: 3,0
Last FG Half: TOW -

William Mary 23

No.	Player	S	Pts	FG	3FG	FT	OR	DR	TR	PF	A	TO	Blk	Stl	Min	+/-
01	SCOTT, THORNTON	G	0	0-3	0-2	0-0	1	1	2	0	0	1	1	0	18	-12
05	BARNES, BRYCE	G	3	1-1	0-0	1-2	0	1	1	1	0	4	1	0	14	-7
11	VAN VLIET, ANDY	F	5	2-4	1-2	0-0	0	4	4	0	2	1	0	0	19	-9
12	LOEWE, LUKE	G	3	1-3	0-2	1-1	1	0	1	5	0	0	0	1	17	-6
13	KNIGHT, NATHAN	C	8	2-8	0-3	4-4	1	2	3	3	0	3	0	1	12	-12
02	HAMILTON, TYLER	G	2	1-2	0-0	0-2	1	1	2	3	0	1	0	0	7	0
10	HERMANOVSKIS, RAINERS	G	0	0-0	0-0	0-0	0	0	0	0	0	0	0	0	0	0
15	AYESA, MIGUEL	G	0	0-1	0-1	0-0	0	0	0	0	0	0	0	0	7	3
21	BLAIR, QUINN	F	2	1-1	0-0	0-0	0	0	0	2	1	1	0	0	6	3
TEAM							2	0	2	0		0				
TOTALS			23	8-23	1-10	6-9	6	9	15	14	3	11	2	2	99	

Shooting By Period

Period	FG	FG%	3FG	3FG%	FT	FT%
2nd Half	8-23	35%	1-10	10%	6-9	67%
Game	22-50	44.0%	4-21	19.0%	10-14	71.4%

Deadball Rebounds: 2,0
Last FG Half: WM -

Game Notes:

Officials: Louie Andrakakos, Ryan Sassano, JW Lucas
 Attendance: 4848

Start Time: 04:06 PM ET
 End Time: 05:59 PM ET
 Game Duration: 1:53
 Conference Game;

Score	1st	2nd	TOT
TOW	39	31	70
WM	35	23	58

Points from (This Period)	TOW	WM
In the Paint	8	14
Off Turns	17	10
2nd Chance	8	2
Fast Break	2	3
Bench	0	4

Official Play-By-Play
Towson vs William Mary
Second Half
January 25, 2020 at Kaplan Arena (Kaplan Arena) - Williamsburg



Period 2

Starters:

Towson: 2 BETRAND, ALLEN (G); 10 GIBSON, JASON (G); 11 TUNSTALL, DENNIS (F); 20 SANDERS, NAKYE (F); 23 FOBBS, BRIAN (G);

William Mary: 1 SCOTT, THORNTON (G); 5 BARNES, BRYCE (G); 11 VAN VLIET, ANDY (F); 12 LOEWE, LUKE (G); 13 KNIGHT, NATHAN (C);

Time	VISITORS: Towson	Score	Margin	HOME: William Mary
20:00				SUB OUT: HAMILTON, TYLER
20:00				SUB IN: VAN VLIET, ANDY
20:00	SUB OUT: GRAY, JUWAN			
20:00	SUB OUT: THOMPSON, CHARLES			
20:00	SUB IN: TUNSTALL, DENNIS			
20:00	SUB IN: SANDERS, NAKYE			
19:39				MISSED 3PTR by SCOTT, THORNTON
19:35	REBOUND (DEF) by TUNSTALL, DENNIS			
19:20	TURNOVER (BADPASS) by FOBBS, BRIAN			
19:20				STEAL by KNIGHT, NATHAN
19:00				MISSED 3PTR by VAN VLIET, ANDY
18:58				REBOUND (OFF) by TEAM
18:54				MISSED JUMPER by SCOTT, THORNTON
18:51	REBOUND (DEF) by TUNSTALL, DENNIS			
18:47	MISSED LAYUP by BETRAND, ALLEN			
18:47				REBOUND (DEF) by KNIGHT, NATHAN
18:17				FOUL (OFF) by KNIGHT, NATHAN
18:17				TURNOVER (OFFENSIVE) by KNIGHT, NATHAN
17:57				FOUL (PERSONAL) by KNIGHT, NATHAN
17:57	GOOD! FT by SANDERS, NAKYE	35-40	V 5	
17:57	MISSED FT by SANDERS, NAKYE			
17:55				REBOUND (DEF) by VAN VLIET, ANDY
17:40				MISSED 3PTR by LOEWE, LUKE
17:37	REBOUND (DEF) by GIBSON, JASON			
17:20	GOOD! JUMPER by SANDERS, NAKYE [PNT]	35-42	V 7	
17:20	ASSIST by GIBSON, JASON			
17:07				MISSED 3PTR by KNIGHT, NATHAN
17:03	REBOUND (DEF) by FOBBS, BRIAN			
16:53	GOOD! JUMPER by BETRAND, ALLEN	35-44	V 9	
16:53	ASSIST by SANDERS, NAKYE			
16:42				TIMEOUT 30SEC
16:42				SUB OUT: BARNES, BRYCE
16:42				SUB IN: HAMILTON, TYLER
16:42	SUB OUT: SANDERS, NAKYE			
16:42	SUB IN: THOMPSON, CHARLES			
16:35				TURNOVER (BADPASS) by VAN VLIET, ANDY
16:16	MISSED JUMPER by BETRAND, ALLEN			
16:12	REBOUND (OFF) by BETRAND, ALLEN			
16:11	GOOD! LAYUP by BETRAND, ALLEN	35-46	V 11	
15:47	FOUL (PERSONAL) by THOMPSON, CHARLES			
15:47				
15:47	SUB OUT: TUNSTALL, DENNIS			
15:47	SUB OUT: THOMPSON, CHARLES			
15:47	SUB IN: GRAY, JUWAN			
15:47	SUB IN: SANDERS, NAKYE			
15:47		36-46	V 10	GOOD! FT by KNIGHT, NATHAN
15:47		37-46	V 9	GOOD! FT by KNIGHT, NATHAN
15:32	MISSED JUMPER by BETRAND, ALLEN			
15:32	REBOUND (OFF) by SANDERS, NAKYE			
15:32				FOUL (PERSONAL) by HAMILTON, TYLER
15:32	GOOD! FT by SANDERS, NAKYE	37-47	V 10	
15:32	SUB OUT: FOBBS, BRIAN			
15:32	SUB IN: TIMBERLAKE, NICOLAS			
15:32	GOOD! FT by SANDERS, NAKYE	37-48	V 11	
15:32				SUB OUT: LOEWE, LUKE
15:32				SUB IN: AYESA, MIGUEL
15:09				MISSED JUMPER by KNIGHT, NATHAN
15:07				REBOUND (OFF) by HAMILTON, TYLER
15:04				MISSED 3PTR by AYESA, MIGUEL
15:01	REBOUND (DEF) by SANDERS, NAKYE			
14:51	MISSED JUMPER by GIBSON, JASON			
14:48				REBOUND (DEF) by VAN VLIET, ANDY
14:41	FOUL (PERSONAL) by SANDERS, NAKYE			
14:41	SUB OUT: SANDERS, NAKYE			
14:41	SUB IN: TUNSTALL, DENNIS			
14:31		39-48	V 9	GOOD! JUMPER by KNIGHT, NATHAN [PNT]
14:09	MISSED JUMPER by TIMBERLAKE, NICOLAS			
14:06				REBOUND (DEF) by KNIGHT, NATHAN
13:57				MISSED 3PTR by KNIGHT, NATHAN
13:53				REBOUND (OFF) by KNIGHT, NATHAN

Time	VISITORS: Towson	Score	Margin	HOME: William Mary
13:53				FOUL (OFF) by KNIGHT, NATHAN
13:53				TURNOVER (OFFENSIVE) by KNIGHT, NATHAN
13:53				SUB OUT: KNIGHT, NATHAN
13:53				SUB IN: BLAIR, QUINN
13:53	SUB OUT: BETRAND, ALLEN			
13:53	SUB IN: FOBBS, BRIAN			
13:32	MISSED LAYUP by FOBBS, BRIAN			
13:29	REBOUND (OFF) by FOBBS, BRIAN			
13:24	GOOD! JUMPER by GIBSON, JASON	39-50	V 11	
13:24	ASSIST by TIMBERLAKE, NICOLAS			
13:07				FOUL (OFF) by HAMILTON, TYLER
13:07				TURNOVER (OFFENSIVE) by HAMILTON, TYLER
13:07				SUB OUT: SCOTT, THORNTON
13:07				SUB IN: BARNES, BRYCE
12:49	MISSED 3PTR by GRAY, JUWAN			
12:47				REBOUND (DEF) by HAMILTON, TYLER
12:47	FOUL (PERSONAL) by FOBBS, BRIAN			
12:47				SUB OUT: HAMILTON, TYLER
12:47				SUB IN: LOEWE, LUKE
12:36	FOUL (PERSONAL) by GIBSON, JASON			
12:36				MISSED FT by BARNES, BRYCE
12:36				REBOUND (OFF) by TEAM
12:36	SUB OUT: GIBSON, JASON			
12:36	SUB IN: DOTTIN, JAKIGH			
12:36		40-50	V 10	GOOD! FT by BARNES, BRYCE
12:16	TURNOVER (BADPASS) by DOTTIN, JAKIGH			
12:16				STEAL by LOEWE, LUKE
12:15		42-50	V 8	GOOD! LAYUP by LOEWE, LUKE [FB]
12:15	FOUL (PERSONAL) by FOBBS, BRIAN			
12:15		43-50	V 7	GOOD! FT by LOEWE, LUKE [FB]
12:00				
11:45	TURNOVER (SHOTCLOCK) by TEAM			
11:21		45-50	V 5	GOOD! LAYUP by BARNES, BRYCE
11:20	TIMEOUT 30SEC			
11:11	SUB OUT: DOTTIN, JAKIGH			
11:11	SUB IN: BETRAND, ALLEN			
11:03	GOOD! JUMPER by FOBBS, BRIAN	45-52	V 7	
10:46				FOUL (OFF) by BLAIR, QUINN
10:46				TURNOVER (OFFENSIVE) by BLAIR, QUINN
10:46				SUB OUT: AYESA, MIGUEL
10:46				SUB IN: SCOTT, THORNTON
10:30				FOUL (PERSONAL) by LOEWE, LUKE
10:30	GOOD! FT by FOBBS, BRIAN	45-53	V 8	
10:30	GOOD! FT by FOBBS, BRIAN	45-54	V 9	
10:18				MISSED JUMPER by VAN VLIET, ANDY
10:18	BLOCK by TUNSTALL, DENNIS			
10:18	REBOUND (DEF) by TEAM			
10:07	TURNOVER (BADPASS) by TIMBERLAKE, NICOLAS			
10:07	SUB OUT: TIMBERLAKE, NICOLAS			
10:07	SUB IN: GIBSON, JASON			
09:47		48-54	V 6	GOOD! 3PTR by VAN VLIET, ANDY
09:47				ASSIST by BLAIR, QUINN
09:24	MISSED JUMPER by FOBBS, BRIAN			
09:20				REBOUND (DEF) by VAN VLIET, ANDY
09:18				FOUL (OFF) by BARNES, BRYCE
09:18				TURNOVER (OFFENSIVE) by BARNES, BRYCE
08:58	GOOD! JUMPER by BETRAND, ALLEN	48-56	V 8	
08:32		50-56	V 6	GOOD! LAYUP by BLAIR, QUINN
08:32				ASSIST by VAN VLIET, ANDY
08:12				FOUL (PERSONAL) by BLAIR, QUINN
08:12				SUB OUT: BARNES, BRYCE
08:12				SUB OUT: BLAIR, QUINN
08:12				SUB IN: HAMILTON, TYLER
08:12				SUB IN: AYESA, MIGUEL
08:12	MISSED FT by BETRAND, ALLEN			
08:09	REBOUND (OFF) by TUNSTALL, DENNIS			
07:55	MISSED 3PTR by GIBSON, JASON			
07:52				REBOUND (DEF) by VAN VLIET, ANDY
07:35		52-56	V 4	GOOD! JUMPER by VAN VLIET, ANDY
07:04	MISSED 3PTR by FOBBS, BRIAN			
07:01				REBOUND (DEF) by SCOTT, THORNTON
06:57	FOUL (PERSONAL) by BETRAND, ALLEN			
06:57				
06:57				SUB OUT: AYESA, MIGUEL
06:57				SUB IN: BARNES, BRYCE
06:57	SUB OUT: TUNSTALL, DENNIS			
06:57	SUB IN: SANDERS, NAKYE			
06:57				MISSED FT by HAMILTON, TYLER
06:57				REBOUND (OFF) by TEAM
06:57				MISSED FT by HAMILTON, TYLER

Time	VISITORS: Towson	Score	Margin	HOME: William Mary
06:55				REBOUND (OFF) by LOEWE, LUKE
06:34		54-56	V 2	GOOD! LAYUP by HAMILTON, TYLER
06:34				ASSIST by VAN VLIET, ANDY
06:06	GOOD! JUMPER by BETRAND, ALLEN	54-58	V 4	
05:44				MISSED JUMPER by HAMILTON, TYLER
05:40	REBOUND (DEF) by SANDERS, NAKYE			
05:35	TURNOVER (BADPASS) by GIBSON, JASON			
05:35				SUB OUT: HAMILTON, TYLER
05:35				SUB IN: KNIGHT, NATHAN
05:16	FOUL (PERSONAL) by SANDERS, NAKYE			
05:16		55-58	V 3	GOOD! FT by KNIGHT, NATHAN
05:16	SUB OUT: SANDERS, NAKYE			
05:16	SUB IN: THOMPSON, CHARLES			
05:16				SUB OUT: VAN VLIET, ANDY
05:16				SUB IN: HAMILTON, TYLER
05:16		56-58	V 2	GOOD! FT by KNIGHT, NATHAN
05:16	SUB OUT: GRAY, JUWAN			
05:16	SUB IN: TUNSTALL, DENNIS			
05:02	FOUL (OFF) by TUNSTALL, DENNIS			
05:02	TURNOVER (OFFENSIVE) by TUNSTALL, DENNIS			
04:45				MISSED LAYUP by KNIGHT, NATHAN
04:40	REBOUND (DEF) by TUNSTALL, DENNIS			
04:27				FOUL (PERSONAL) by LOEWE, LUKE
04:27	MISSED FT by FOBBS, BRIAN			
04:27	REBOUND (OFF) by TEAM			
04:27				SUB OUT: HAMILTON, TYLER
04:27				SUB IN: VAN VLIET, ANDY
04:27	SUB OUT: GRAY, JUWAN			
04:27	SUB IN: TUNSTALL, DENNIS			
04:27	GOOD! FT by FOBBS, BRIAN	56-59	V 3	
04:15				TURNOVER (BADPASS) by BARNES, BRYCE
04:15	STEAL by TUNSTALL, DENNIS			
03:55	GOOD! LAYUP by BETRAND, ALLEN [PNT]	56-61	V 5	
03:55	ASSIST by FOBBS, BRIAN			
03:42				TURNOVER (BADPASS) by KNIGHT, NATHAN
03:42	STEAL by FOBBS, BRIAN			
03:37	GOOD! DUNK by FOBBS, BRIAN [FB]	56-63	V 7	
03:32				TIMEOUT 30SEC
03:21				MISSED LAYUP by KNIGHT, NATHAN
03:21	BLOCK by TUNSTALL, DENNIS			
03:20				REBOUND (OFF) by TEAM
03:17				MISSED 3PTR by SCOTT, THORNTON
03:14	REBOUND (DEF) by THOMPSON, CHARLES			
02:50	MISSED JUMPER by GIBSON, JASON			
02:50				BLOCK by SCOTT, THORNTON
02:45	REBOUND (OFF) by THOMPSON, CHARLES			
02:30	MISSED JUMPER by BETRAND, ALLEN			
02:23				REBOUND (DEF) by BARNES, BRYCE
02:14				TURNOVER (BADPASS) by BARNES, BRYCE
02:14	STEAL by GIBSON, JASON			
01:46	TURNOVER (SHOTCLOCK) by TEAM			
01:36				TURNOVER (BADPASS) by BARNES, BRYCE
01:36	STEAL by GIBSON, JASON			
01:36	SUB OUT: THOMPSON, CHARLES			
01:36	SUB IN: SANDERS, NAKYE			
01:31	MISSED LAYUP by GIBSON, JASON			
01:31				BLOCK by BARNES, BRYCE
01:23	REBOUND (OFF) by SANDERS, NAKYE			
01:13				FOUL (PERSONAL) by LOEWE, LUKE
01:13	GOOD! FT by BETRAND, ALLEN	56-64	V 8	
01:13				SUB OUT: BARNES, BRYCE
01:13				SUB IN: AYESA, MIGUEL
01:13	GOOD! FT by BETRAND, ALLEN	56-65	V 9	
01:02		58-65	V 7	GOOD! DUNK by KNIGHT, NATHAN
00:59				TIMEOUT 30SEC
00:59				SUB OUT: KNIGHT, NATHAN
00:59				SUB OUT: AYESA, MIGUEL
00:59				SUB IN: HAMILTON, TYLER
00:59				SUB IN: BARNES, BRYCE
00:59	SUB OUT: TUNSTALL, DENNIS			
00:59	SUB IN: GRAY, JUWAN			
00:57				FOUL (PERSONAL) by HAMILTON, TYLER
00:57	GOOD! FT by GIBSON, JASON	58-66	V 8	
00:57				SUB OUT: HAMILTON, TYLER
00:57				SUB OUT: BARNES, BRYCE
00:57				SUB IN: KNIGHT, NATHAN
00:57				SUB IN: AYESA, MIGUEL
00:57	GOOD! FT by GIBSON, JASON	58-67	V 9	
00:57	SUB OUT: SANDERS, NAKYE			
00:57	SUB IN: TUNSTALL, DENNIS			

Time	VISITORS: Towson	Score	Margin	HOME: William Mary
00:52				MISSED 3PTR by LOEWE, LUKE
00:49				REBOUND (OFF) by SCOTT, THORNTON
00:46				MISSED 3PTR by KNIGHT, NATHAN
00:43	REBOUND (DEF) by FOBBS, BRIAN			
00:42				FOUL (PERSONAL) by LOEWE, LUKE
00:42	MISSED FT by FOBBS, BRIAN			
00:42	REBOUND (OFF) by TEAM			
00:42	GOOD! FT by FOBBS, BRIAN	58-68	V 10	
00:31				TURNOVER (BADPASS) by SCOTT, THORNTON
00:31	STEAL by TUNSTALL, DENNIS			
00:06				FOUL (PERSONAL) by LOEWE, LUKE
00:06				SUB OUT: LOEWE, LUKE
00:06				SUB IN: BARNES, BRYCE
00:06	GOOD! FT by GIBSON, JASON	58-69	V 11	
00:06	GOOD! FT by GIBSON, JASON	58-70	V 12	

Towson 70, William Mary 58

Points from (This Period)	TOW	WM
In the Paint	8	14
Off Turns	17	10
2nd Chance	8	2
Fast Break	2	3
Bench	0	4

Official Scoring/Possession Reference Chart
Towson vs William Mary
Period 1
January 25, 2020 at Kaplan Arena (Kaplan Arena) - Williamsburg



Period 1

Starters:

Towson: 2 BETRAND, ALLEN (G); 10 GIBSON, JASON (G); 11 TUNSTALL, DENNIS (F); 20 SANDERS, NAKYE (F); 23 FOBBS, BRIAN (G);
William Mary: 1 SCOTT, THORNTON (G); 5 BARNES, BRYCE (G); 11 VAN VLIET, ANDY (F); 12 LOEWE, LUKE (G); 13 KNIGHT, NATHAN (C);

Time	VISITORS: Towson	Score	Margin	HOME: William Mary
19:43	GOOD! JUMPER by FOBBS, BRIAN	0-2	V 2	
19:01	GOOD! JUMPER by BETRAND, ALLEN	0-4	V 4	
18:21	GOOD! JUMPER by GIBSON, JASON	0-6	V 6	
17:41		2-6	V 4	GOOD! LAYUP by BARNES, BRYCE [FB]
17:04		5-6	V 1	GOOD! 3PTR by LOEWE, LUKE
16:39	GOOD! JUMPER by SANDERS, NAKYE	5-8	V 3	
16:01	GOOD! LAYUP by GIBSON, JASON	5-10	V 5	
15:40	GOOD! LAYUP by SANDERS, NAKYE [FB]	5-12	V 7	
14:57	GOOD! LAYUP by TIMBERLAKE, NICOLAS	5-14	V 9	
14:27		7-14	V 7	GOOD! LAYUP by HAMILTON, TYLER
14:01	GOOD! JUMPER by GIBSON, JASON [PNT]	7-16	V 9	
13:43		9-16	V 7	GOOD! JUMPER by VAN VLIET, ANDY [PNT]
13:43		10-16	V 6	GOOD! FT by VAN VLIET, ANDY
12:51	GOOD! JUMPER by BETRAND, ALLEN	10-18	V 8	
12:03		12-18	V 6	GOOD! JUMPER by KNIGHT, NATHAN [PNT]
11:26		14-18	V 4	GOOD! LAYUP by HAMILTON, TYLER [FB]
10:42		16-18	V 2	GOOD! JUMPER by KNIGHT, NATHAN [PNT]
10:18	GOOD! 3PTR by GRAY, JUWAN	16-21	V 5	
10:01		18-21	V 3	GOOD! JUMPER by BARNES, BRYCE [PNT]
09:33		21-21	T	GOOD! 3PTR by AYESA, MIGUEL [FB]
09:09	GOOD! 3PTR by GIBSON, JASON	21-24	V 3	
08:44		23-24	V 1	GOOD! LAYUP by HAMILTON, TYLER
08:18	GOOD! FT by GIBSON, JASON	23-25	V 2	
07:59		25-25	T	GOOD! LAYUP by VAN VLIET, ANDY
06:58	GOOD! JUMPER by FOBBS, BRIAN	25-27	V 2	
06:13	GOOD! LAYUP by GIBSON, JASON [PNT]	25-29	V 4	
05:50		27-29	V 2	GOOD! JUMPER by HERMANOVSKIS, RAINERS [PNT]
05:26	GOOD! 3PTR by FOBBS, BRIAN	27-32	V 5	
04:01	GOOD! JUMPER by FOBBS, BRIAN	27-34	V 7	
03:26		28-34	V 6	GOOD! FT by KNIGHT, NATHAN
03:26		29-34	V 5	GOOD! FT by KNIGHT, NATHAN
03:11	GOOD! LAYUP by TUNSTALL, DENNIS	29-36	V 7	
03:01		32-36	V 4	GOOD! 3PTR by KNIGHT, NATHAN
01:07	GOOD! 3PTR by GIBSON, JASON	32-39	V 7	
00:48		34-39	V 5	GOOD! LAYUP by KNIGHT, NATHAN
00:48		35-39	V 4	GOOD! FT by KNIGHT, NATHAN

Towson 39, William Mary 35

Official Scoring/Possession Reference Chart
Towson vs William Mary
Period 2
January 25, 2020 at Kaplan Arena (Kaplan Arena) - Williamsburg



Period 2

Starters:

Towson: 2 BETRAND, ALLEN (G); 10 GIBSON, JASON (G); 11 TUNSTALL, DENNIS (F); 20 SANDERS, NAKYE (F); 23 FOBBS, BRIAN (G);

William Mary: 1 SCOTT, THORNTON (G); 5 BARNES, BRYCE (G); 11 VAN VLIET, ANDY (F); 12 LOEWE, LUKE (G); 13 KNIGHT, NATHAN (C);

Time	VISITORS: Towson	Score	Margin	HOME: William Mary
17:57	GOOD! FT by SANDERS, NAKYE	35-40	V 5	
17:20	GOOD! JUMPER by SANDERS, NAKYE [PNT]	35-42	V 7	
16:53	GOOD! JUMPER by BETRAND, ALLEN	35-44	V 9	
16:11	GOOD! LAYUP by BETRAND, ALLEN	35-46	V 11	
15:47		36-46	V 10	GOOD! FT by KNIGHT, NATHAN
15:47		37-46	V 9	GOOD! FT by KNIGHT, NATHAN
15:32	GOOD! FT by SANDERS, NAKYE	37-47	V 10	
15:32	GOOD! FT by SANDERS, NAKYE	37-48	V 11	
14:31		39-48	V 9	GOOD! JUMPER by KNIGHT, NATHAN [PNT]
13:24	GOOD! JUMPER by GIBSON, JASON	39-50	V 11	
12:36		40-50	V 10	GOOD! FT by BARNES, BRYCE
12:15		42-50	V 8	GOOD! LAYUP by LOEWE, LUKE [FB]
12:15		43-50	V 7	GOOD! FT by LOEWE, LUKE [FB]
11:21		45-50	V 5	GOOD! LAYUP by BARNES, BRYCE
11:03	GOOD! JUMPER by FOBBS, BRIAN	45-52	V 7	
10:30	GOOD! FT by FOBBS, BRIAN	45-53	V 8	
10:30	GOOD! FT by FOBBS, BRIAN	45-54	V 9	
09:47		48-54	V 6	GOOD! 3PTR by VAN VLIET, ANDY
08:58	GOOD! JUMPER by BETRAND, ALLEN	48-56	V 8	
08:32		50-56	V 6	GOOD! LAYUP by BLAIR, QUINN
07:35		52-56	V 4	GOOD! JUMPER by VAN VLIET, ANDY
06:34		54-56	V 2	GOOD! LAYUP by HAMILTON, TYLER
06:06	GOOD! JUMPER by BETRAND, ALLEN	54-58	V 4	
05:16		55-58	V 3	GOOD! FT by KNIGHT, NATHAN
05:16		56-58	V 2	GOOD! FT by KNIGHT, NATHAN
04:27	GOOD! FT by FOBBS, BRIAN	56-59	V 3	
03:55	GOOD! LAYUP by BETRAND, ALLEN [PNT]	56-61	V 5	
03:37	GOOD! DUNK by FOBBS, BRIAN [FB]	56-63	V 7	
01:13	GOOD! FT by BETRAND, ALLEN	56-64	V 8	
01:13	GOOD! FT by BETRAND, ALLEN	56-65	V 9	
01:02		58-65	V 7	GOOD! DUNK by KNIGHT, NATHAN
00:57	GOOD! FT by GIBSON, JASON	58-66	V 8	
00:57	GOOD! FT by GIBSON, JASON	58-67	V 9	
00:42	GOOD! FT by FOBBS, BRIAN	58-68	V 10	
00:06	GOOD! FT by GIBSON, JASON	58-69	V 11	
00:06	GOOD! FT by GIBSON, JASON	58-70	V 12	

Towson 70, William Mary 58

Official Substitutions Log
Towson vs William Mary
Period 1
January 25, 2020 at Kaplan Arena (Kaplan Arena) - Williamsburg



VISITORS: Towson	Time	Score	HOME: William Mary
2 BETRAND,ALLEN			1 SCOTT,THORNTON
10 GIBSON,JASON			5 BARNES,BRYCE
11 TUNSTALL,DENNIS			11 VAN VLIET,ANDY
20 SANDERS,NAKYE			12 LOEWE,LUKE
23 FOBBS,BRIAN			13 KNIGHT,NATHAN
	15:37	12-5	SUB OUT: BARNES,BRYCE
	15:37		SUB OUT: KNIGHT,NATHAN
	15:37		SUB IN: HAMILTON,TYLER
	15:37		SUB IN: BLAIR,QUINN
SUB OUT: 2 BETRAND,ALLEN	15:37		
SUB OUT: 11 TUNSTALL,DENNIS	15:37		
SUB OUT: 20 SANDERS,NAKYE	15:37		
SUB IN: 12 GRAY,JUWAN	15:37		
SUB IN: 25 TIMBERLAKE,NICOLAS	15:37		
SUB IN: 32 THOMPSON,CHARLES	15:37		
	13:43	16-9	SUB OUT: LOEWE,LUKE
	13:43		SUB IN: AYESA,MIGUEL
SUB OUT: 10 GIBSON,JASON	13:43		
SUB OUT: 23 FOBBS,BRIAN	13:43		
SUB IN: 2 BETRAND,ALLEN	13:43		
SUB IN: 5 DOTTIN,JAKIGH	13:43		
SUB OUT: 32 THOMPSON,CHARLES	13:13	16-10	
SUB IN: 20 SANDERS,NAKYE	13:13		
	12:36	18-10	SUB OUT: SCOTT,THORNTON
	12:36		SUB OUT: VAN VLIET,ANDY
	12:36		SUB IN: BARNES,BRYCE
	12:36		SUB IN: KNIGHT,NATHAN
SUB OUT: 5 DOTTIN,JAKIGH	11:02	18-14	
SUB OUT: 20 SANDERS,NAKYE	11:02		
SUB OUT: 25 TIMBERLAKE,NICOLAS	11:02		
SUB IN: 10 GIBSON,JASON	11:02		
SUB IN: 11 TUNSTALL,DENNIS	11:02		
SUB IN: 23 FOBBS,BRIAN	11:02		
	09:29	21-21	SUB OUT: AYESA,MIGUEL
	09:29		SUB OUT: BLAIR,QUINN
	09:29		SUB IN: VAN VLIET,ANDY
	09:29		SUB IN: LOEWE,LUKE
SUB OUT: 11 TUNSTALL,DENNIS	09:29		
SUB IN: 20 SANDERS,NAKYE	09:29		
	08:18	24-23	SUB OUT: BARNES,BRYCE
	08:18		SUB IN: SCOTT,THORNTON
	08:18		SUB OUT: HAMILTON,TYLER
	08:18		SUB IN: HERMANOVSKIS,RAINERS
	06:28	27-25	SUB OUT: VAN VLIET,ANDY
	06:28		SUB IN: BLAIR,QUINN
SUB OUT: 2 BETRAND,ALLEN	06:28		
SUB OUT: 12 GRAY,JUWAN	06:28		
SUB IN: 11 TUNSTALL,DENNIS	06:28		
SUB IN: 25 TIMBERLAKE,NICOLAS	06:28		
	04:24	32-27	SUB OUT: SCOTT,THORNTON
	04:24		SUB OUT: LOEWE,LUKE
	04:24		SUB IN: BARNES,BRYCE
	04:24		SUB IN: AYESA,MIGUEL
SUB OUT: 20 SANDERS,NAKYE	04:24		
SUB IN: 32 THOMPSON,CHARLES	04:24		
	03:45	34-27	SUB OUT: HERMANOVSKIS,RAINERS
	03:45		SUB OUT: BLAIR,QUINN
	03:45		SUB IN: HAMILTON,TYLER
	03:45		SUB IN: LOEWE,LUKE
SUB OUT: 25 TIMBERLAKE,NICOLAS	03:45		
SUB IN: 2 BETRAND,ALLEN	03:45		
	02:32	36-32	SUB OUT: AYESA,MIGUEL
	02:32		SUB IN: SCOTT,THORNTON
SUB OUT: 32 THOMPSON,CHARLES	02:32		
SUB IN: 20 SANDERS,NAKYE	02:32		
	02:11	36-32	SUB OUT: BARNES,BRYCE
	02:11		SUB IN: AYESA,MIGUEL
SUB OUT: 11 TUNSTALL,DENNIS	02:11		
SUB IN: 12 GRAY,JUWAN	02:11		
SUB OUT: 20 SANDERS,NAKYE	00:48	39-34	
SUB IN: 32 THOMPSON,CHARLES	00:48		
	00:48		SUB OUT: AYESA,MIGUEL
	00:48		SUB IN: BARNES,BRYCE

Towson 39, William Mary 35

Official Substitutions Log
Towson vs William Mary
Period 2
January 25, 2020 at Kaplan Arena (Kaplan Arena) - Williamsburg



VISITORS: Towson	Time	Score	HOME: William Mary
2 BETRAND, ALLEN			1 SCOTT, THORNTON
10 GIBSON, JASON			5 BARNES, BRYCE
11 TUNSTALL, DENNIS			11 VAN VLIET, ANDY
20 SANDERS, NAKYE			12 LOEWE, LUKE
23 FOBBS, BRIAN			13 KNIGHT, NATHAN
	20:00	-	SUB OUT: HAMILTON, TYLER
	20:00		SUB IN: VAN VLIET, ANDY
SUB OUT: 12 GRAY, JUWAN	20:00		
SUB OUT: 32 THOMPSON, CHARLES	20:00		
SUB IN: 11 TUNSTALL, DENNIS	20:00		
SUB IN: 20 SANDERS, NAKYE	20:00		
	16:42	44-35	SUB OUT: BARNES, BRYCE
	16:42		SUB IN: HAMILTON, TYLER
SUB OUT: 20 SANDERS, NAKYE	16:42		
SUB IN: 32 THOMPSON, CHARLES	16:42		
SUB OUT: 11 TUNSTALL, DENNIS	15:47	46-35	
SUB OUT: 32 THOMPSON, CHARLES	15:47		
SUB IN: 12 GRAY, JUWAN	15:47		
SUB IN: 20 SANDERS, NAKYE	15:47		
SUB OUT: 23 FOBBS, BRIAN	15:32	47-37	
SUB IN: 25 TIMBERLAKE, NICOLAS	15:32		
	15:32		SUB OUT: LOEWE, LUKE
	15:32		SUB IN: AYESA, MIGUEL
SUB OUT: 20 SANDERS, NAKYE	14:41	48-37	
SUB IN: 11 TUNSTALL, DENNIS	14:41		
	13:53	48-39	SUB OUT: KNIGHT, NATHAN
	13:53		SUB IN: BLAIR, QUINN
SUB OUT: 2 BETRAND, ALLEN	13:53		
SUB IN: 23 FOBBS, BRIAN	13:53		
	13:07	50-39	SUB OUT: SCOTT, THORNTON
	13:07		SUB IN: BARNES, BRYCE
	12:47	50-39	SUB OUT: HAMILTON, TYLER
	12:47		SUB IN: LOEWE, LUKE
SUB OUT: 10 GIBSON, JASON	12:36	50-39	
SUB IN: 5 DOTTIN, JAKIGH	12:36		
SUB OUT: 5 DOTTIN, JAKIGH	11:11	50-45	
SUB IN: 2 BETRAND, ALLEN	11:11		
	10:46	52-45	SUB OUT: AYESA, MIGUEL
	10:46		SUB IN: SCOTT, THORNTON
SUB OUT: 25 TIMBERLAKE, NICOLAS	10:07	54-45	
SUB IN: 10 GIBSON, JASON	10:07		
	08:12	56-50	SUB OUT: BARNES, BRYCE
	08:12		SUB OUT: BLAIR, QUINN
	08:12		SUB IN: HAMILTON, TYLER
	08:12		SUB IN: AYESA, MIGUEL
	06:57	56-52	SUB OUT: AYESA, MIGUEL
	06:57		SUB IN: BARNES, BRYCE
SUB OUT: 11 TUNSTALL, DENNIS	06:57		
SUB IN: 20 SANDERS, NAKYE	06:57		
	05:35	58-54	SUB OUT: HAMILTON, TYLER
	05:35		SUB IN: KNIGHT, NATHAN
SUB OUT: 20 SANDERS, NAKYE	05:16	58-55	
SUB IN: 32 THOMPSON, CHARLES	05:16		
	05:16		SUB OUT: VAN VLIET, ANDY
	05:16		SUB IN: HAMILTON, TYLER
SUB OUT: 12 GRAY, JUWAN	05:16		
SUB IN: 11 TUNSTALL, DENNIS	05:16		
	04:27	58-56	SUB OUT: HAMILTON, TYLER
	04:27		SUB IN: VAN VLIET, ANDY
SUB OUT: 12 GRAY, JUWAN	04:27		
SUB IN: 11 TUNSTALL, DENNIS	04:27		
SUB OUT: 32 THOMPSON, CHARLES	01:36	63-56	
SUB IN: 20 SANDERS, NAKYE	01:36		
	01:13	64-56	SUB OUT: BARNES, BRYCE
	01:13		SUB IN: AYESA, MIGUEL
	00:59	65-58	SUB OUT: KNIGHT, NATHAN
	00:59		SUB OUT: AYESA, MIGUEL
	00:59		SUB IN: HAMILTON, TYLER
	00:59		SUB IN: BARNES, BRYCE
SUB OUT: 11 TUNSTALL, DENNIS	00:59		
SUB IN: 12 GRAY, JUWAN	00:59		
	00:57	66-58	SUB OUT: HAMILTON, TYLER
	00:57		SUB OUT: BARNES, BRYCE
	00:57		SUB IN: KNIGHT, NATHAN
	00:57		SUB IN: AYESA, MIGUEL

VISITORS: Towson	Time	Score	HOME: William Mary
SUB OUT: 20 SANDERS, NAKYE	00:57		
SUB IN: 11 TUNSTALL, DENNIS	00:57		
	00:06	68-58	SUB OUT: LOEWE, LUKE
	00:06		SUB IN: BARNES, BRYCE

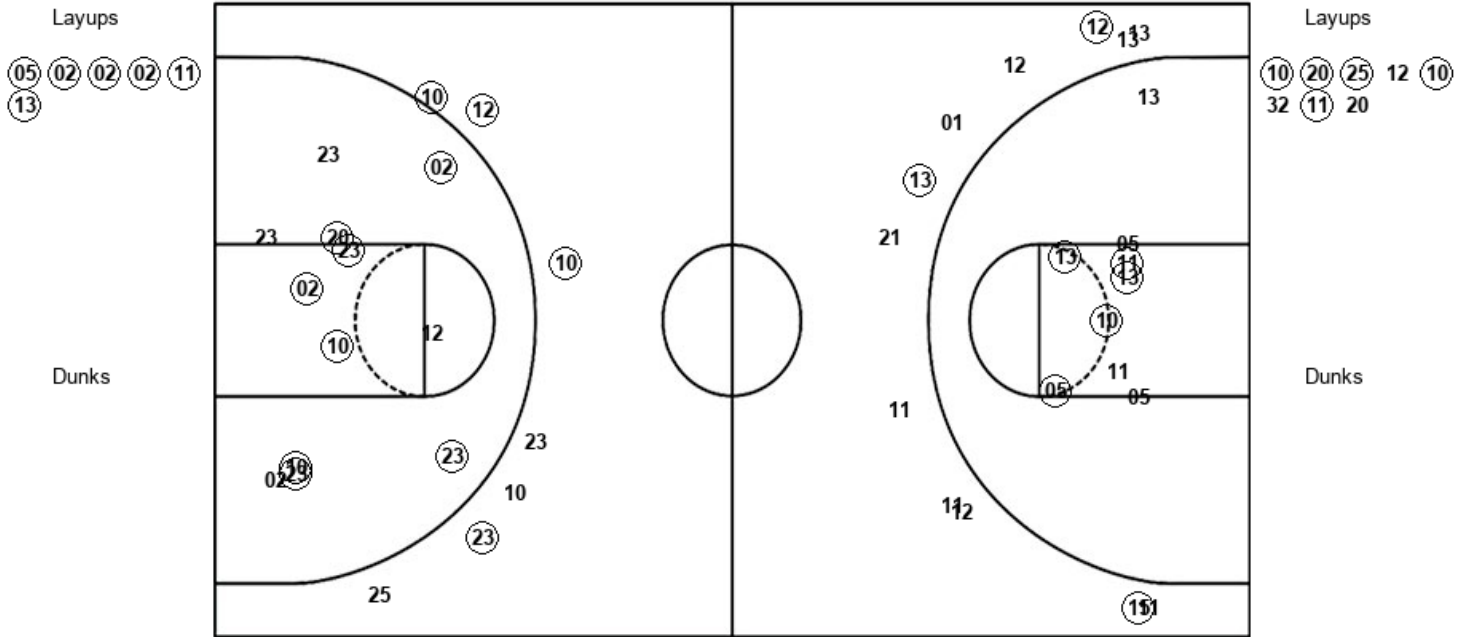
Towson 70, William Mary 58

Official Shot Chart
Towson vs William Mary
PERIOD 1 Shots
 January 25, 2020 at Kaplan Arena (Kaplan Arena) - Williamsburg



William Mary

Towson



WM : Period 1	Made	Att	Pct
Layups	6	6	100.0
Dunks	0	0	0
2PT Field Goals	11	16	68.8
3PT Field Goals	3	11	27.3
Total Field Goals	14	27	51.9

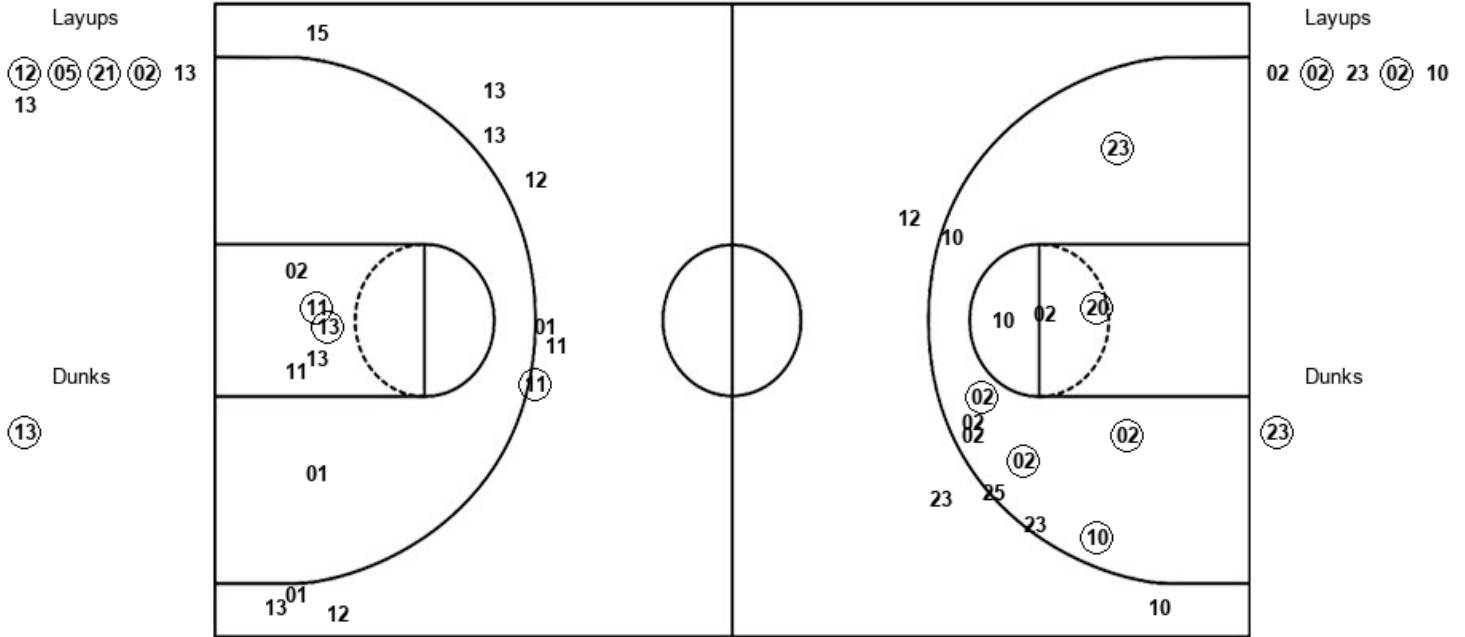
TOW : Period 1	Made	Att	Pct
Layups	5	8	62.5
Dunks	0	0	0
2PT Field Goals	13	20	65.0
3PT Field Goals	4	7	57.1
Total Field Goals	17	27	63.0

Official Shot Chart
Towson vs William Mary
 PERIOD 2 Shots
 January 25, 2020 at Kaplan Arena (Kaplan Arena) - Williamsburg



William Mary

Towson



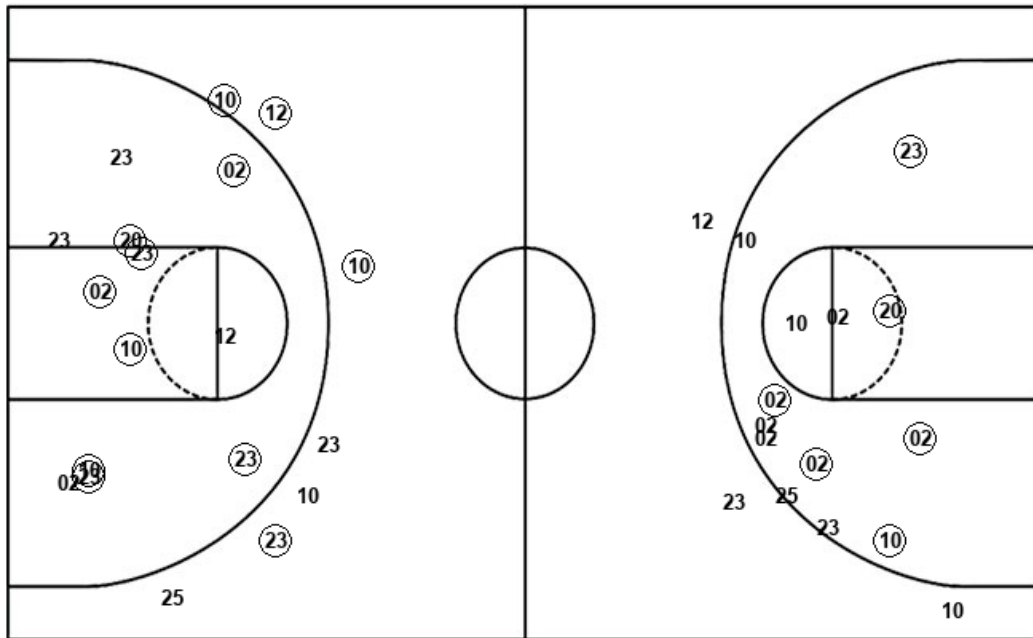
WM : Period 2	Made	Att	Pct
Layups	4	6	66.7
Dunks	1	1	100.0
2PT Field Goals	7	13	53.8
3PT Field Goals	1	10	10.0
Total Field Goals	8	23	34.8

TOW : Period 2	Made	Att	Pct
Layups	2	5	40.0
Dunks	1	1	100.0
2PT Field Goals	9	19	47.4
3PT Field Goals	0	3	00.0
Total Field Goals	9	22	40.9

Official Shot Chart
Towson vs William Mary
Towson Team Shots
January 25, 2020 at Kaplan Arena (Kaplan Arena) - Williamsburg



Layups



Layups

(10) (20) (25) 12 (10)
 32 (11) 20 02 (02)
 23 (02) 10

Dunks

Dunks

(23)

TOW : Period 1	Made	Att	Pct
Layups	5	8	62.5
Dunks	0	0	0
2PT Field Goals	13	20	65.0
3PT Field Goals	4	7	57.1
Total Field Goals	17	27	63.0

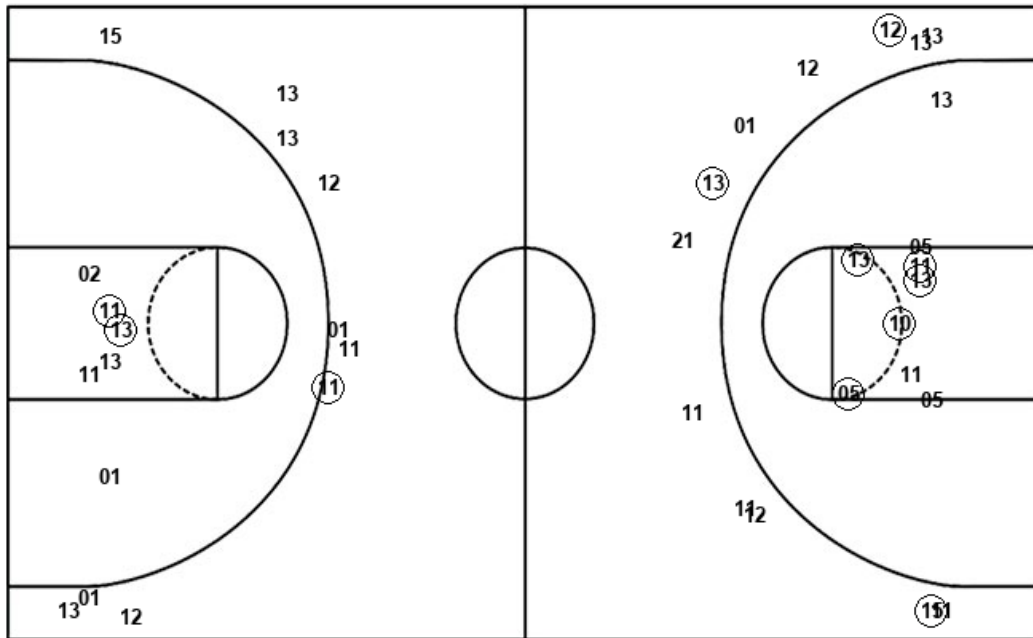
TOW : Period 2	Made	Att	Pct
Layups	2	5	40.0
Dunks	1	1	100.0
2PT Field Goals	9	19	47.4
3PT Field Goals	0	3	00.0
Total Field Goals	9	22	40.9

Official Shot Chart
Towson vs William Mary
William Mary Team Shots
 January 25, 2020 at Kaplan Arena (Kaplan Arena) - Williamsburg



Layups

Dunks



Layups

Dunks

(05) (02) (02) (02) (11)
 (13) (12) (05) (21) (02)
 13 13

(13)

WM : Period 1	Made	Att	Pct
Layups	6	6	100.0
Dunks	0	0	0
2PT Field Goals	11	16	68.8
3PT Field Goals	3	11	27.3
Total Field Goals	14	27	51.9

WM : Period 2	Made	Att	Pct
Layups	4	6	66.7
Dunks	1	1	100.0
2PT Field Goals	7	13	53.8
3PT Field Goals	1	10	10.0
Total Field Goals	8	23	34.8