

FINAL SCORE



UNCW

63



William & Mary

79

January 09, 2020 • Kaplan Arena (Kaplan Arena) - Williamsburg

FINAL STATISTICS

Official Box Score
UNCW vs William & Mary
Game Totals -- Final Statistics
January 09, 2020 at Kaplan Arena (Kaplan Arena) - Williamsburg



UNCW 63

No.	Player	S	Pts	FG	3FG	FT	OR	DR	TR	PF	A	TO	Blk	Stl	Min	+/-
01	TOLEFREE, BRIAN	G	4	1-4	0-0	2-2	0	2	2	0	2	2	0	0	30	-7
02	PHILLIPS, SHYKEIM	G	6	3-8	0-1	0-0	0	1	1	3	1	4	1	3	28	-17
04	OKAURU, MIKE	G	8	3-5	1-3	1-1	0	4	4	4	1	0	0	1	23	-18
23	LINSSSEN, MARTEN	F	4	2-8	0-0	0-0	1	1	2	2	0	0	0	0	24	-13
30	SIMS, JAYLEN	G	21	6-14	3-8	6-9	2	4	6	2	2	0	0	2	34	-10
00	GADSDEN, TY	G	10	3-9	0-3	4-6	1	3	4	4	0	2	1	0	18	-6
05	BOGGS, JAKE	G	6	2-8	2-5	0-0	1	2	3	1	2	0	0	1	20	-13
22	JENKINS, BRENT	G	2	1-1	0-0	0-0	0	0	0	0	0	0	0	0	2	3
24	DODD, IMAJAE	F	2	0-2	0-0	2-2	2	2	4	3	0	1	0	1	12	0
32	BOWEN, JOHN	F	0	0-0	0-0	0-0	0	1	1	1	0	0	0	0	7	1
TEAM							2	1	3	0		0				
TOTALS			63	21-59	6-20	15-20	9	21	30	20	8	9	2	8	199	

Shooting By Period

Period	FG	FG%	3FG	3FG%	FT	FT%
1st Half	9-28	32%	5-11	45%	6-7	86%
2nd Half	12-31	39%	1-9	11%	9-13	69%
Game	21-59	35.6%	6-20	30.0%	15-20	75.0%

Deadball Rebounds: 3,0

Last FG: 2nd-00:14

Biggest Run: 5-0

Largest lead: By 0 at -

Technical Fouls: None.

William & Mary 79

No.	Player	S	Pts	FG	3FG	FT	OR	DR	TR	PF	A	TO	Blk	Stl	Min	+/-
02	HAMILTON, TYLER	G	7	1-6	0-0	5-5	4	0	4	2	1	1	0	1	28	13
05	BARNES, BRYCE	G	11	4-8	1-2	2-4	1	1	2	0	5	2	0	2	27	11
11	VAN VLIET, ANDY	F	18	6-11	2-5	4-4	2	9	11	4	2	3	1	0	32	21
12	LOEWE, LUKE	G	14	6-10	2-4	0-0	0	2	2	1	0	4	0	0	29	15
13	KNIGHT, NATHAN	C	17	4-8	1-3	8-8	4	13	17	3	5	2	0	2	29	15
01	SCOTT, THORNTON	G	3	1-6	1-5	0-0	0	3	3	1	3	2	0	0	24	11
10	HERMANOVSKIS, RAINERS	G	0	0-0	0-0	0-0	0	0	0	1	0	0	0	0	7	-4
15	AYESA, MIGUEL	G	0	0-3	0-2	0-0	0	0	0	1	0	0	0	0	8	2
21	BLAIR, QUINN	F	9	3-4	0-1	3-4	0	2	2	0	1	1	0	0	16	-4
TEAM							2	1	3	0		0				
TOTALS			79	25-56	7-22	22-25	13	31	44	13	17	15	1	5	199	

Shooting By Period

Period	FG	FG%	3FG	3FG%	FT	FT%
1st Half	11-28	39%	3-12	25%	8-9	89%
2nd Half	14-28	50%	4-10	40%	14-16	88%
Game	25-56	44.6%	7-22	31.8%	22-25	88.0%

Deadball Rebounds: 0,0

Last FG: 2nd-01:48

Biggest Run: 10-0

Largest lead: By 21 at 2nd-01:48

Technical Fouls: None.

Game Notes:

Officials: Leslie Jones, Justin Porterfield, Tim Comer
Attendance: 3328

Start Time: 07:05 PM ET

End Time: 08:54 PM ET

Game Duration: 1:49

Conference Game;

Score	1st	2nd	TOT
NCW	29	34	63
W&M	33	46	79

NCW led for 0:00. W&M led for 38:05.

Game was tied for 1:41.

Times tied: 0 Lead Changes: 0

Points from	NCW	W&M
In the Paint	24	34
Off Turns	22	14
2nd Chance	6	12
Fast Break	19	9
Bench	20	12

Official Box Score
UNCW vs William & Mary
First Half Statistics Only
January 09, 2020 at Kaplan Arena (Kaplan Arena) - Williamsburg



UNCW 29

No.	Player	S	Pts	FG	3FG	FT	OR	DR	TR	PF	A	TO	Blk	Stl	Min	+/-
01	TOLEFREE, BRIAN	G	2	0-3	0-0	2-2	0	2	2	0	1	1	0	0	15	2
02	PHILLIPS, SHYKEIM	G	2	1-3	0-1	0-0	0	1	1	1	1	3	0	2	14	-2
04	OKAURU, MIKE	G	3	1-2	1-2	0-0	0	3	3	2	1	0	0	0	9	-10
23	LINSSSEN, MARTEN	F	2	1-5	0-0	0-0	1	1	2	0	0	0	0	0	15	-8
30	SIMS, JAYLEN	G	17	5-9	3-6	4-5	0	1	1	1	1	0	0	1	19	-2
00	GADSDEN, TY	G	0	0-2	0-0	0-0	0	2	2	2	0	1	1	0	9	-1
05	BOGGS, JAKE	G	3	1-4	1-2	0-0	1	1	2	0	1	0	0	1	9	-7
22	JENKINS, BRENT	G	0	0-0	0-0	0-0	0	0	0	0	0	0	0	0	0	0
24	DODD, IMAJAE	F	0	0-0	0-0	0-0	0	1	1	2	0	0	0	0	5	4
32	BOWEN, JOHN	F	0	0-0	0-0	0-0	0	1	1	0	0	0	0	0	6	4
TEAM							1	0	1	0		0				
TOTALS			29	9-28	5-11	6-7	3	13	16	8	5	5	1	4	100	

Shooting By Period

Period	FG	FG%	3FG	3FG%	FT	FT%
1st Half	9-28	32%	5-11	45%	6-7	86%
Game	21-59	35.6%	6-20	30.0%	15-20	75.0%

Deadball Rebounds: 3,0

Last FG Half: NCW 2nd-00:14

William & Mary 33

No.	Player	S	Pts	FG	3FG	FT	OR	DR	TR	PF	A	TO	Blk	Stl	Min	+/-
02	HAMILTON, TYLER	G	0	0-1	0-0	0-0	1	0	1	1	1	0	0	1	14	1
05	BARNES, BRYCE	G	4	1-4	0-0	2-3	1	0	1	0	2	0	0	1	14	4
11	VAN VLIET, ANDY	F	11	3-5	1-2	4-4	1	4	5	0	1	3	1	0	16	8
12	LOEWE, LUKE	G	9	4-7	1-2	0-0	0	1	1	0	0	1	0	0	15	7
13	KNIGHT, NATHAN	C	6	2-4	0-2	2-2	1	7	8	0	2	2	0	0	16	8
01	SCOTT, THORNTON	G	3	1-5	1-4	0-0	0	2	2	1	1	1	0	0	11	1
10	HERMANOVSKIS, RAINERS	G	0	0-0	0-0	0-0	0	0	0	1	0	0	0	0	4	-2
15	AYESA, MIGUEL	G	0	0-2	0-2	0-0	0	0	0	1	0	0	0	0	4	0
21	BLAIR, QUINN	F	0	0-0	0-0	0-0	0	2	2	0	1	0	0	0	7	-7
TEAM							1	1	2	0		0				
TOTALS			33	11-28	3-12	8-9	5	17	22	4	8	7	1	2	100	

Shooting By Period

Period	FG	FG%	3FG	3FG%	FT	FT%
1st Half	11-28	39%	3-12	25%	8-9	89%
Game	25-56	44.6%	7-22	31.8%	22-25	88.0%

Deadball Rebounds: 0,0

Last FG Half: W&M 2nd-01:48

Game Notes:

Officials: **Leslie Jones, Justin Porterfield, Tim Comer**
Attendance: **3328**

Start Time: **07:05 PM ET**

End Time: **08:54 PM ET**

Game Duration: **1:49**

Conference Game;

Score	1st	2nd	TOT
NCW	29	34	63
W&M	33	46	79

Points from (This Period)	NCW	W&M
In the Paint	6	14
Off Turns	13	6
2nd Chance	2	4
Fast Break	13	2
Bench	3	3

Official Play-By-Play
UNCW vs William & Mary
First Half

January 09, 2020 at Kaplan Arena (Kaplan Arena) - Williamsburg



Period 1

Starters:

UNCW: 1 TOLEFREE, BRIAN (G); 2 PHILLIPS, SHYKEIM (G); 4 OKAURU, MIKE (G); 23 LINSSEN, MARTEN (F); 30 SIMS, JAYLEN (G);

William & Mary: 2 HAMILTON, TYLER (G); 5 BARNES, BRYCE (G); 11 VAN VLIET, ANDY (F); 12 LOEWE, LUKE (G); 13 KNIGHT, NATHAN (C);

Time	VISITORS: UNCW	Score	Margin	HOME: William & Mary
19:39				MISSED 3PTR by KNIGHT, NATHAN
19:35	REBOUND (DEF) by OKAURU, MIKE			
19:08	MISSED LAYUP by TOLEFREE, BRIAN			
19:05				REBOUND (DEF) by KNIGHT, NATHAN
18:54				TURNOVER (LOSTBALL) by VAN VLIET, ANDY
18:54	STEAL by PHILLIPS, SHYKEIM			
18:34	MISSED 3PTR by PHILLIPS, SHYKEIM			
18:31				REBOUND (DEF) by KNIGHT, NATHAN
18:19		2-0	H 2	GOOD! LAYUP by VAN VLIET, ANDY
18:19				ASSIST by BARNES, BRYCE
17:59	MISSED 3PTR by OKAURU, MIKE			
17:56				REBOUND (DEF) by KNIGHT, NATHAN
17:52		4-0	H 4	GOOD! LAYUP by LOEWE, LUKE [FB]
17:52				ASSIST by BARNES, BRYCE
17:22	MISSED 3PTR by SIMS, JAYLEN			
17:19				REBOUND (DEF) by LOEWE, LUKE
17:07	FOUL (PERSONAL) by OKAURU, MIKE			
17:07	SUB OUT: TOLEFREE, BRIAN			
17:07	SUB OUT: OKAURU, MIKE			
17:07	SUB IN: GADSDEN, TY			
17:07	SUB IN: BOGGS, JAKE			
17:03				MISSED LAYUP by LOEWE, LUKE
17:03	BLOCK by GADSDEN, TY			
16:58	REBOUND (DEF) by GADSDEN, TY			
16:41	TURNOVER (LOSTBALL) by PHILLIPS, SHYKEIM			
16:41				STEAL by HAMILTON, TYLER
16:35	FOUL (PERSONAL) by GADSDEN, TY			
16:35		5-0	H 5	GOOD! FT by BARNES, BRYCE
16:35		6-0	H 6	GOOD! FT by BARNES, BRYCE
16:24	TURNOVER (TRAVEL) by PHILLIPS, SHYKEIM			
16:00		8-0	H 8	GOOD! JUMPER by LOEWE, LUKE [PNT]
15:46	FOUL (OFF) by PHILLIPS, SHYKEIM			
15:46	TURNOVER (OFFENSIVE) by PHILLIPS, SHYKEIM			
15:46				
15:46				SUB OUT: HAMILTON, TYLER
15:46				SUB IN: AYESA, MIGUEL
15:46	SUB OUT: PHILLIPS, SHYKEIM			
15:46	SUB OUT: LINSSEN, MARTEN			
15:46	SUB OUT: SIMS, JAYLEN			
15:46	SUB IN: TOLEFREE, BRIAN			
15:46	SUB IN: OKAURU, MIKE			
15:46	SUB IN: DODD, IMAJAE			
15:22		10-0	H 10	GOOD! LAYUP by BARNES, BRYCE
15:22				ASSIST by VAN VLIET, ANDY
15:22	FOUL (PERSONAL) by DODD, IMAJAE			
15:22				MISSED FT by BARNES, BRYCE
15:20	REBOUND (DEF) by BOGGS, JAKE			
15:14				FOUL (PERSONAL) by AYESA, MIGUEL
15:14				SUB OUT: KNIGHT, NATHAN
15:14				SUB IN: BLAIR, QUINN
14:59	TURNOVER (BADPASS) by GADSDEN, TY			
14:59				STEAL by BARNES, BRYCE
14:43				MISSED 3PTR by LOEWE, LUKE
14:40	REBOUND (DEF) by DODD, IMAJAE			
14:35				SUB OUT: BARNES, BRYCE
14:35				SUB IN: SCOTT, THORNTON
14:35	SUB OUT: BOGGS, JAKE			
14:35	SUB IN: SIMS, JAYLEN			
14:27	MISSED JUMPER by GADSDEN, TY			
14:24				REBOUND (DEF) by VAN VLIET, ANDY
14:08				MISSED LAYUP by LOEWE, LUKE
14:05	REBOUND (DEF) by TOLEFREE, BRIAN			
14:03	GOOD! 3PTR by OKAURU, MIKE [FB]	10-3	H 7	
14:03	ASSIST by TOLEFREE, BRIAN			
13:40				MISSED 3PTR by SCOTT, THORNTON
13:37				REBOUND (OFF) by VAN VLIET, ANDY
13:37	FOUL (PERSONAL) by GADSDEN, TY			
13:37		11-3	H 8	GOOD! FT by VAN VLIET, ANDY
13:37	SUB OUT: GADSDEN, TY			
13:37	SUB OUT: DODD, IMAJAE			

Time	VISITORS: UNCW	Score	Margin	HOME: William & Mary
13:37	SUB IN: PHILLIPS, SHYKEIM			
13:37	SUB IN: LINSSSEN, MARTEN			
13:37		12-3	H 9	GOOD! FT by VAN VLIET, ANDY
13:21	GOOD! JUMPER by SIMS, JAYLEN [PNT]	12-5	H 7	
13:06				MISSED 3PTR by AYESA, MIGUEL
13:03	REBOUND (DEF) by OKAURU, MIKE			
12:39	MISSED JUMPER by LINSSSEN, MARTEN			
12:35				REBOUND (DEF) by BLAIR, QUINN
12:27	FOUL (PERSONAL) by OKAURU, MIKE			
12:27				SUB OUT: LOEWE, LUKE
12:27				SUB IN: HERMANOVSKIS, RAINERS
12:27	SUB OUT: OKAURU, MIKE			
12:27	SUB IN: BOWEN, JOHN			
12:24		15-5	H 10	GOOD! 3PTR by VAN VLIET, ANDY
12:24				ASSIST by SCOTT, THORNTON
12:09	MISSED JUMPER by PHILLIPS, SHYKEIM			
12:03	REBOUND (OFF) by LINSSSEN, MARTEN			
12:03	GOOD! LAYUP by LINSSSEN, MARTEN	15-7	H 8	
11:53				MISSED 3PTR by AYESA, MIGUEL
11:49	REBOUND (DEF) by LINSSSEN, MARTEN			
11:43				FOUL (PERSONAL) by HERMANOVSKIS, RAINERS
11:43				
11:43				SUB OUT: VAN VLIET, ANDY
11:43				SUB OUT: AYESA, MIGUEL
11:43				SUB IN: HAMILTON, TYLER
11:43				SUB IN: KNIGHT, NATHAN
11:43	GOOD! FT by SIMS, JAYLEN	15-8	H 7	
11:43	GOOD! FT by SIMS, JAYLEN	15-9	H 6	
11:22		17-9	H 8	GOOD! LAYUP by KNIGHT, NATHAN
11:22				ASSIST by BLAIR, QUINN
11:13	MISSED LAYUP by SIMS, JAYLEN			
11:09				REBOUND (DEF) by SCOTT, THORNTON
10:57				TURNOVER (LOSTBALL) by SCOTT, THORNTON
10:57	STEAL by PHILLIPS, SHYKEIM			
10:53	GOOD! LAYUP by PHILLIPS, SHYKEIM [FB]	17-11	H 6	
10:53	ASSIST by SIMS, JAYLEN			
10:45				TURNOVER (BADPASS) by KNIGHT, NATHAN
10:45				SUB OUT: BLAIR, QUINN
10:45				SUB IN: BARNES, BRYCE
10:30	GOOD! 3PTR by SIMS, JAYLEN	17-14	H 3	
10:30	ASSIST by PHILLIPS, SHYKEIM			
10:09		19-14	H 5	GOOD! LAYUP by KNIGHT, NATHAN
09:57	MISSED LAYUP by TOLEFREE, BRIAN			
09:57				REBOUND (DEF) by TEAM
09:39				MISSED 3PTR by SCOTT, THORNTON
09:35	REBOUND (DEF) by PHILLIPS, SHYKEIM			
09:08	MISSED JUMPER by LINSSSEN, MARTEN			
09:05				REBOUND (DEF) by KNIGHT, NATHAN
08:57				MISSED 3PTR by KNIGHT, NATHAN
08:56				REBOUND (OFF) by TEAM
08:56				SUB OUT: SCOTT, THORNTON
08:56				SUB OUT: HERMANOVSKIS, RAINERS
08:56				SUB IN: VAN VLIET, ANDY
08:56				SUB IN: LOEWE, LUKE
08:56	SUB OUT: LINSSSEN, MARTEN			
08:56	SUB OUT: BOWEN, JOHN			
08:56	SUB IN: BOGGS, JAKE			
08:56	SUB IN: DODD, IMAJAE			
08:44				MISSED LAYUP by BARNES, BRYCE
08:40				MISSED LAYUP by HAMILTON, TYLER
08:40				REBOUND (OFF) by HAMILTON, TYLER
08:39	REBOUND (DEF) by TOLEFREE, BRIAN			
08:23	MISSED 3PTR by SIMS, JAYLEN			
08:20				REBOUND (DEF) by KNIGHT, NATHAN
08:08				TURNOVER (BADPASS) by LOEWE, LUKE
08:08	SUB OUT: PHILLIPS, SHYKEIM			
08:08	SUB IN: GADSDEN, TY			
07:42	GOOD! 3PTR by SIMS, JAYLEN	19-17	H 2	
07:16				MISSED 3PTR by VAN VLIET, ANDY
07:15				REBOUND (OFF) by KNIGHT, NATHAN
07:15	FOUL (PERSONAL) by SIMS, JAYLEN			
07:15				
07:15				SUB OUT: HAMILTON, TYLER
07:15				SUB IN: SCOTT, THORNTON
07:15	SUB OUT: TOLEFREE, BRIAN			
07:15	SUB IN: OKAURU, MIKE			
07:15		20-17	H 3	GOOD! FT by KNIGHT, NATHAN
07:15		21-17	H 4	GOOD! FT by KNIGHT, NATHAN
06:57	MISSED JUMPER by BOGGS, JAKE			
06:57				BLOCK by VAN VLIET, ANDY

Time	VISITORS: UNCW	Score	Margin	HOME: William & Mary
06:53				REBOUND (DEF) by VAN VLIET, ANDY
06:39				MISSED LAYUP by BARNES, BRYCE
06:34				REBOUND (OFF) by BARNES, BRYCE
06:34				MISSED LAYUP by BARNES, BRYCE
06:33	REBOUND (DEF) by OKAURU, MIKE			
06:30	GOOD! 3PTR by BOGGS, JAKE [FB]	21-20	H 1	
06:30	ASSIST by OKAURU, MIKE			
06:16				TURNOVER (TRAVEL) by KNIGHT, NATHAN
05:59	MISSED 3PTR by BOGGS, JAKE			
05:56				REBOUND (DEF) by SCOTT, THORNTON
05:49	FOUL (PERSONAL) by DODD, IMAJAE			
05:49	SUB OUT: DODD, IMAJAE			
05:49	SUB IN: LINSSEN, MARTEN			
05:49		22-20	H 2	GOOD! FT by VAN VLIET, ANDY
05:49		23-20	H 3	GOOD! FT by VAN VLIET, ANDY
05:49				SUB OUT: BARNES, BRYCE
05:49				SUB IN: HAMILTON, TYLER
05:27	MISSED JUMPER by LINSSEN, MARTEN			
05:24				REBOUND (DEF) by VAN VLIET, ANDY
05:17		26-20	H 6	GOOD! 3PTR by LOEWE, LUKE
05:17				ASSIST by HAMILTON, TYLER
04:58	MISSED LAYUP by BOGGS, JAKE			
04:51				REBOUND (DEF) by VAN VLIET, ANDY
04:44		29-20	H 9	GOOD! 3PTR by SCOTT, THORNTON
04:44				ASSIST by KNIGHT, NATHAN
04:42	TIMEOUT 30SEC			
04:42				SUB OUT: KNIGHT, NATHAN
04:42				SUB IN: BLAIR, QUINN
04:42	SUB OUT: OKAURU, MIKE			
04:42	SUB OUT: BOGGS, JAKE			
04:42	SUB IN: TOLEFREE, BRIAN			
04:42	SUB IN: BOWEN, JOHN			
04:18	GOOD! JUMPER by SIMS, JAYLEN	29-22	H 7	
03:58				MISSED JUMPER by VAN VLIET, ANDY
03:55	REBOUND (DEF) by GADSDEN, TY			
03:52	MISSED LAYUP by GADSDEN, TY			
03:52	REBOUND (OFF) by TEAM			
03:52				
03:52				SUB OUT: VAN VLIET, ANDY
03:52				SUB OUT: LOEWE, LUKE
03:52				SUB IN: BARNES, BRYCE
03:52				SUB IN: KNIGHT, NATHAN
03:52	SUB OUT: GADSDEN, TY			
03:52	SUB IN: PHILLIPS, SHYKEIM			
03:41	MISSED LAYUP by LINSSEN, MARTEN			
03:37				REBOUND (DEF) by KNIGHT, NATHAN
03:26				MISSED 3PTR by SCOTT, THORNTON
03:22	REBOUND (DEF) by BOWEN, JOHN			
03:14	MISSED JUMPER by TOLEFREE, BRIAN			
03:11				REBOUND (DEF) by BLAIR, QUINN
02:44				MISSED JUMPER by SCOTT, THORNTON
02:41	REBOUND (DEF) by SIMS, JAYLEN			
02:40				FOUL (PERSONAL) by SCOTT, THORNTON
02:40	GOOD! FT by TOLEFREE, BRIAN [FB]	29-23	H 6	
02:40				SUB OUT: SCOTT, THORNTON
02:40				SUB OUT: BLAIR, QUINN
02:40				SUB IN: VAN VLIET, ANDY
02:40				SUB IN: LOEWE, LUKE
02:40	GOOD! FT by TOLEFREE, BRIAN [FB]	29-24	H 5	
02:28		31-24	H 7	GOOD! DUNK by VAN VLIET, ANDY
02:28				ASSIST by KNIGHT, NATHAN
02:05	TURNOVER (BADPASS) by TOLEFREE, BRIAN			
02:05	SUB OUT: TOLEFREE, BRIAN			
02:05	SUB OUT: BOWEN, JOHN			
02:05	SUB IN: GADSDEN, TY			
02:05	SUB IN: BOGGS, JAKE			
01:37				TURNOVER (BADPASS) by VAN VLIET, ANDY
01:37	STEAL by BOGGS, JAKE			
01:31	GOOD! 3PTR by SIMS, JAYLEN [FB]	31-27	H 4	
01:31	ASSIST by BOGGS, JAKE			
01:07				TURNOVER (LOSTBALL) by VAN VLIET, ANDY
01:07	STEAL by SIMS, JAYLEN			
00:55				FOUL (PERSONAL) by HAMILTON, TYLER
00:55	GOOD! FT by SIMS, JAYLEN	31-28	H 3	
00:55	GOOD! FT by SIMS, JAYLEN	31-29	H 2	
00:55				SUB OUT: HAMILTON, TYLER
00:55				SUB IN: SCOTT, THORNTON
00:55	SUB OUT: GADSDEN, TY			
00:55	SUB IN: TOLEFREE, BRIAN			
00:54	MISSED FT by SIMS, JAYLEN			

Time	VISITORS: UNCW	Score	Margin	HOME: William & Mary
00:53	REBOUND (OFF) by BOGGS, JAKE			
00:35	MISSED 3PTR by SIMS, JAYLEN			
00:31				REBOUND (DEF) by KNIGHT, NATHAN
00:04		33-29	H 4	GOOD! JUMPER by LOEWE, LUKE

UNCW 29, William & Mary 33

Points from (This Period)	NCW	W&M
In the Paint	6	14
Off Turns	13	6
2nd Chance	2	4
Fast Break	13	2
Bench	3	3

Official Box Score
UNCW vs William & Mary
Second Half Statistics Only
January 09, 2020 at Kaplan Arena (Kaplan Arena) - Williamsburg



UNCW 34

No.	Player	S	Pts	FG	3FG	FT	OR	DR	TR	PF	A	TO	Blk	Stl	Min	+/-
01	TOLEFREE, BRIAN	G	2	1-1	0-0	0-0	0	0	0	0	1	1	0	0	15	-9
02	PHILLIPS, SHYKEIM	G	4	2-5	0-0	0-0	0	0	0	2	0	1	1	1	15	-15
04	OKAURU, MIKE	G	5	2-3	0-1	1-1	0	1	1	2	0	0	0	1	14	-8
23	LINSSSEN, MARTEN	F	2	1-3	0-0	0-0	0	0	0	2	0	0	0	0	10	-5
30	SIMS, JAYLEN	G	4	1-5	0-2	2-4	2	3	5	1	1	0	0	1	15	-8
00	GADSDEN, TY	G	10	3-7	0-3	4-6	1	1	2	2	0	1	0	0	9	-5
05	BOGGS, JAKE	G	3	1-4	1-3	0-0	0	1	1	1	1	0	0	0	11	-6
22	JENKINS, BRENT	G	2	1-1	0-0	0-0	0	0	0	0	0	0	0	0	2	3
24	DODD, IMAJAE	F	2	0-2	0-0	2-2	2	1	3	1	0	1	0	1	7	-4
32	BOWEN, JOHN	F	0	0-0	0-0	0-0	0	0	0	1	0	0	0	0	1	-3
	TEAM						1	1	2	0		0				
TOTALS			34	12-31	1-9	9-13	6	8	14	12	3	4	1	4	99	

Shooting By Period

Period	FG	FG%	3FG	3FG%	FT	FT%
2nd Half	12-31	39%	1-9	11%	9-13	69%
Game	21-59	35.6%	6-20	30.0%	15-20	75.0%

Deadball Rebounds: 3,0

Last FG Half: NCW -

William & Mary 46

No.	Player	S	Pts	FG	3FG	FT	OR	DR	TR	PF	A	TO	Blk	Stl	Min	+/-
02	HAMILTON, TYLER	G	7	1-5	0-0	5-5	3	0	3	1	0	1	0	0	14	12
05	BARNES, BRYCE	G	7	3-4	1-2	0-1	0	1	1	0	3	2	0	1	13	7
11	VAN VLIET, ANDY	F	7	3-6	1-3	0-0	1	5	6	4	1	0	0	0	16	13
12	LOEWE, LUKE	G	5	2-3	1-2	0-0	0	1	1	1	0	3	0	0	14	8
13	KNIGHT, NATHAN	C	11	2-4	1-1	6-6	3	6	9	3	3	0	0	2	13	7
01	SCOTT, THORNTON	G	0	0-1	0-1	0-0	0	1	1	0	2	1	0	0	13	10
10	HERMANOVSKIS, RAINERS	G	0	0-0	0-0	0-0	0	0	0	0	0	0	0	0	3	-2
15	AYESA, MIGUEL	G	0	0-1	0-0	0-0	0	0	0	0	0	0	0	0	4	2
21	BLAIR, QUINN	F	9	3-4	0-1	3-4	0	0	0	0	0	1	0	0	9	3
	TEAM						1	0	1	0		0				
TOTALS			46	14-28	4-10	14-16	8	14	22	9	9	8	0	3	99	

Shooting By Period

Period	FG	FG%	3FG	3FG%	FT	FT%
2nd Half	14-28	50%	4-10	40%	14-16	88%
Game	25-56	44.6%	7-22	31.8%	22-25	88.0%

Deadball Rebounds: 0,0

Last FG Half: W&M -

Game Notes:

Officials: **Leslie Jones, Justin Porterfield, Tim Comer**
Attendance: **3328**

Start Time: **07:05 PM ET**

End Time: **08:54 PM ET**

Game Duration: **1:49**

Conference Game;

Score	1st	2nd	TOT
NCW	29	34	63
W&M	33	46	79

Points from (This Period)	NCW	W&M
In the Paint	18	20
Off Turns	9	8
2nd Chance	4	8
Fast Break	6	7
Bench	17	9

Official Play-By-Play
UNCW vs William & Mary
Second Half

January 09, 2020 at Kaplan Arena (Kaplan Arena) - Williamsburg



Period 2

Starters:

UNCW: 1 TOLEFREE, BRIAN (G); 2 PHILLIPS, SHYKEIM (G); 4 OKAURU, MIKE (G); 23 LINSSEN, MARTEN (F); 30 SIMS, JAYLEN (G);

William & Mary: 2 HAMILTON, TYLER (G); 5 BARNES, BRYCE (G); 11 VAN VLIET, ANDY (F); 12 LOEWE, LUKE (G); 13 KNIGHT, NATHAN (C);

Time	VISITORS: UNCW	Score	Margin	HOME: William & Mary
20:00				SUB OUT: SCOTT, THORNTON
20:00				SUB IN: HAMILTON, TYLER
20:00	SUB OUT: BOGGS, JAKE			
20:00	SUB IN: OKAURU, MIKE			
19:36	MISSED JUMPER by LINSSEN, MARTEN			
19:32				REBOUND (DEF) by VAN VLIET, ANDY
19:30		35-29	H 6	GOOD! LAYUP by LOEWE, LUKE [FB]
19:30				ASSIST by BARNES, BRYCE
19:06	GOOD! LAYUP by TOLEFREE, BRIAN	35-31	H 4	
18:56				TURNOVER (LOSTBALL) by HAMILTON, TYLER
18:34	MISSED LAYUP by PHILLIPS, SHYKEIM			
18:31				REBOUND (DEF) by KNIGHT, NATHAN
18:24		38-31	H 7	GOOD! 3PTR by BARNES, BRYCE
18:24				ASSIST by KNIGHT, NATHAN
18:06	MISSED LAYUP by LINSSEN, MARTEN			
18:03				REBOUND (DEF) by KNIGHT, NATHAN
17:55				MISSED 3PTR by BARNES, BRYCE
17:52				REBOUND (OFF) by TEAM
17:39				MISSED 3PTR by VAN VLIET, ANDY
17:37	REBOUND (DEF) by TEAM			
17:19	TURNOVER (BADPASS) by TOLEFREE, BRIAN			
17:19				STEAL by KNIGHT, NATHAN
16:58		40-31	H 9	GOOD! JUMPER by VAN VLIET, ANDY
16:58				ASSIST by KNIGHT, NATHAN
16:45	GOOD! JUMPER by PHILLIPS, SHYKEIM [PNT]	40-33	H 7	
16:25		43-33	H 10	GOOD! 3PTR by VAN VLIET, ANDY
16:25				ASSIST by BARNES, BRYCE
16:00				
16:00				SUB OUT: HAMILTON, TYLER
16:00				SUB OUT: BARNES, BRYCE
16:00				SUB IN: SCOTT, THORNTON
16:00				SUB IN: AYESA, MIGUEL
16:00	SUB OUT: OKAURU, MIKE			
16:00	SUB OUT: LINSSEN, MARTEN			
16:00	SUB IN: GADSDEN, TY			
16:00	SUB IN: DODD, IMAJAE			
15:51	TURNOVER (BADPASS) by PHILLIPS, SHYKEIM			
15:51				STEAL by KNIGHT, NATHAN
15:35		45-33	H 12	GOOD! DUNK by KNIGHT, NATHAN
15:15	MISSED 3PTR by GADSDEN, TY			
15:11				REBOUND (DEF) by VAN VLIET, ANDY
15:00	SUB OUT: TOLEFREE, BRIAN			
15:00	SUB IN: BOGGS, JAKE			
15:00	SUB OUT: DODD, IMAJAE			
15:00	SUB IN: LINSSEN, MARTEN			
14:51	FOUL (PERSONAL) by LINSSEN, MARTEN			
14:51		46-33	H 13	GOOD! FT by KNIGHT, NATHAN
14:51		47-33	H 14	GOOD! FT by KNIGHT, NATHAN
14:34				FOUL (PERSONAL) by LOEWE, LUKE
14:34	MISSED FT by SIMS, JAYLEN			
14:34	REBOUND (OFF) by TEAM			
14:34	MISSED FT by SIMS, JAYLEN			
14:32	REBOUND (OFF) by GADSDEN, TY			
14:23	MISSED JUMPER by SIMS, JAYLEN			
14:20				REBOUND (DEF) by KNIGHT, NATHAN
14:00				TURNOVER (TRAVEL) by SCOTT, THORNTON
14:00				SUB OUT: VAN VLIET, ANDY
14:00				SUB IN: BLAIR, QUINN
13:34	GOOD! JUMPER by LINSSEN, MARTEN [PNT]	47-35	H 12	
13:18	FOUL (PERSONAL) by PHILLIPS, SHYKEIM			
13:18				SUB OUT: LOEWE, LUKE
13:18				SUB IN: HAMILTON, TYLER
13:02				MISSED LAYUP by HAMILTON, TYLER
13:02				MISSED LAYUP by KNIGHT, NATHAN
13:02				REBOUND (OFF) by KNIGHT, NATHAN
13:02				REBOUND (OFF) by KNIGHT, NATHAN
13:02	FOUL (PERSONAL) by GADSDEN, TY			
13:02		48-35	H 13	GOOD! FT by KNIGHT, NATHAN
13:02	SUB OUT: GADSDEN, TY			
13:02	SUB OUT: LINSSEN, MARTEN			

Time	VISITORS: UNCW	Score	Margin	HOME: William & Mary
13:02	SUB IN: OKAURU, MIKE			
13:02	SUB IN: DODD, IMAJAE			
13:02		49-35	H 14	GOOD! FT by KNIGHT, NATHAN
12:44	MISSED 3PTR by SIMS, JAYLEN			
12:41				REBOUND (DEF) by KNIGHT, NATHAN
12:28				MISSED LAYUP by AYESA, MIGUEL
12:28	BLOCK by PHILLIPS, SHYKEIM			
12:23	REBOUND (DEF) by SIMS, JAYLEN			
12:20				FOUL (PERSONAL) by HAMILTON, TYLER
12:13	GOOD! JUMPER by SIMS, JAYLEN [PNT]	49-37	H 12	
11:51				MISSED 3PTR by SCOTT, THORNTON
11:49	REBOUND (DEF) by SIMS, JAYLEN			
11:43	MISSED 3PTR by BOGGS, JAKE			
11:41	REBOUND (OFF) by TEAM			
11:41				
11:41				SUB OUT: KNIGHT, NATHAN
11:41				SUB OUT: AYESA, MIGUEL
11:41				SUB IN: BARNES, BRYCE
11:41				SUB IN: VAN VLIET, ANDY
11:41	SUB OUT: SIMS, JAYLEN			
11:41	SUB IN: TOLEFREE, BRIAN			
11:32	TURNOVER (BADPASS) by DODD, IMAJAE			
11:32				STEAL by BARNES, BRYCE
11:28		51-37	H 14	GOOD! LAYUP by BARNES, BRYCE [FB]
11:11	MISSED JUMPER by PHILLIPS, SHYKEIM			
11:08				REBOUND (DEF) by SCOTT, THORNTON
10:51	FOUL (PERSONAL) by BOGGS, JAKE			
10:51		52-37	H 15	GOOD! FT by BLAIR, QUINN
10:51	SUB OUT: PHILLIPS, SHYKEIM			
10:51	SUB OUT: BOGGS, JAKE			
10:51	SUB IN: GADSDEN, TY			
10:51	SUB IN: BOWEN, JOHN			
10:51		53-37	H 16	GOOD! FT by BLAIR, QUINN
10:41				FOUL (PERSONAL) by VAN VLIET, ANDY
10:41	MISSED FT by GADSDEN, TY			
10:41	REBOUND (OFF) by TEAM			
10:41				SUB OUT: BARNES, BRYCE
10:41				SUB IN: LOEWE, LUKE
10:41	GOOD! FT by GADSDEN, TY	53-38	H 15	
10:35		55-38	H 17	GOOD! LAYUP by BLAIR, QUINN [FB]
10:35				ASSIST by SCOTT, THORNTON
10:35	FOUL (PERSONAL) by BOWEN, JOHN			
10:35		56-38	H 18	GOOD! FT by BLAIR, QUINN [FB]
10:35	SUB OUT: DODD, IMAJAE			
10:35	SUB IN: SIMS, JAYLEN			
10:20	GOOD! LAYUP by OKAURU, MIKE	56-40	H 16	
10:20	ASSIST by SIMS, JAYLEN			
09:59				SUB OUT: HAMILTON, TYLER
09:59				SUB IN: HERMANOVSKIS, RAINERS
09:59				SUB OUT: BLAIR, QUINN
09:59				SUB IN: KNIGHT, NATHAN
09:48		59-40	H 19	GOOD! 3PTR by KNIGHT, NATHAN
09:30				FOUL (PERSONAL) by KNIGHT, NATHAN
09:30	GOOD! FT by GADSDEN, TY	59-41	H 18	
09:30				SUB OUT: SCOTT, THORNTON
09:30				SUB IN: BARNES, BRYCE
09:30	SUB OUT: BOWEN, JOHN			
09:30	SUB IN: LINSSSEN, MARTEN			
09:30	GOOD! FT by GADSDEN, TY	59-42	H 17	
09:02				MISSED 3PTR by VAN VLIET, ANDY
08:58	REBOUND (DEF) by SIMS, JAYLEN			
08:50	MISSED 3PTR by SIMS, JAYLEN			
08:46				REBOUND (DEF) by VAN VLIET, ANDY
08:36				TURNOVER (LOSTBALL) by BARNES, BRYCE
08:23	GOOD! JUMPER by GADSDEN, TY	59-44	H 15	
08:09				TURNOVER (BADPASS) by LOEWE, LUKE
08:09	STEAL by OKAURU, MIKE			
08:03	MISSED 3PTR by GADSDEN, TY			
08:00				REBOUND (DEF) by KNIGHT, NATHAN
07:47	FOUL (PERSONAL) by LINSSSEN, MARTEN			
07:47				
07:47	SUB OUT: OKAURU, MIKE			
07:47	SUB OUT: LINSSSEN, MARTEN			
07:47	SUB IN: PHILLIPS, SHYKEIM			
07:47	SUB IN: DODD, IMAJAE			
07:43		61-44	H 17	GOOD! LAYUP by BARNES, BRYCE
07:43				ASSIST by KNIGHT, NATHAN
07:43	FOUL (PERSONAL) by PHILLIPS, SHYKEIM			
07:43				MISSED FT by BARNES, BRYCE
07:42	REBOUND (DEF) by DODD, IMAJAE			

Time	VISITORS: UNCW	Score	Margin	HOME: William & Mary
07:37				FOUL (PERSONAL) by VAN VLIET, ANDY
07:25	GOOD! LAYUP by GADSDEN, TY	61-46	H 15	
07:09				TURNOVER (BADPASS) by BARNES, BRYCE
07:09	STEAL by DODD, IMAJAE			
07:01	MISSED LAYUP by GADSDEN, TY			
07:00	MISSED LAYUP by DODD, IMAJAE			
07:00	REBOUND (OFF) by DODD, IMAJAE			
07:00	REBOUND (OFF) by DODD, IMAJAE			
07:00				FOUL (PERSONAL) by VAN VLIET, ANDY
07:00	GOOD! FT by DODD, IMAJAE	61-47	H 14	
07:00				SUB OUT: HERMANOVSKIS, RAINERS
07:00				SUB OUT: VAN VLIET, ANDY
07:00				SUB IN: SCOTT, THORNTON
07:00				SUB IN: HAMILTON, TYLER
07:00	SUB OUT: GADSDEN, TY			
07:00	SUB IN: OKAURU, MIKE			
07:00	GOOD! FT by DODD, IMAJAE	61-48	H 13	
07:00	SUB OUT: DODD, IMAJAE			
07:00	SUB IN: BOGGS, JAKE			
06:32				MISSED LAYUP by KNIGHT, NATHAN
06:32				REBOUND (OFF) by KNIGHT, NATHAN
06:32	FOUL (PERSONAL) by OKAURU, MIKE			
06:32		62-48	H 14	GOOD! FT by KNIGHT, NATHAN
06:32		63-48	H 15	GOOD! FT by KNIGHT, NATHAN
06:12	MISSED 3PTR by OKAURU, MIKE			
06:08	REBOUND (OFF) by SIMS, JAYLEN			
06:06	MISSED 3PTR by BOGGS, JAKE			
06:03				REBOUND (DEF) by LOEWE, LUKE
05:57				TURNOVER (LOSTBALL) by LOEWE, LUKE
05:57	STEAL by SIMS, JAYLEN			
05:52	MISSED LAYUP by SIMS, JAYLEN			
05:48				REBOUND (DEF) by KNIGHT, NATHAN
05:47				TURNOVER (BADPASS) by LOEWE, LUKE
05:47	STEAL by PHILLIPS, SHYKEIM			
05:45	GOOD! LAYUP by OKAURU, MIKE [FB]	63-50	H 13	
05:45	ASSIST by TOLEFREE, BRIAN			
05:45				FOUL (PERSONAL) by KNIGHT, NATHAN
05:45	GOOD! FT by OKAURU, MIKE [FB]	63-51	H 12	
05:33		66-51	H 15	GOOD! 3PTR by LOEWE, LUKE
05:33				ASSIST by BARNES, BRYCE
05:16	MISSED JUMPER by BOGGS, JAKE			
05:16	REBOUND (OFF) by SIMS, JAYLEN			
05:16				FOUL (PERSONAL) by KNIGHT, NATHAN
05:16				SUB OUT: BARNES, BRYCE
05:16				SUB OUT: KNIGHT, NATHAN
05:16				SUB IN: VAN VLIET, ANDY
05:16				SUB IN: BLAIR, QUINN
05:16	SUB OUT: TOLEFREE, BRIAN			
05:16	SUB IN: GADSDEN, TY			
05:16	GOOD! FT by SIMS, JAYLEN	66-52	H 14	
05:16	GOOD! FT by SIMS, JAYLEN	66-53	H 13	
04:58		68-53	H 15	GOOD! LAYUP by HAMILTON, TYLER
04:58				ASSIST by VAN VLIET, ANDY
04:58	FOUL (PERSONAL) by OKAURU, MIKE			
04:58		69-53	H 16	GOOD! FT by HAMILTON, TYLER
04:58	SUB OUT: OKAURU, MIKE			
04:58	SUB IN: LINSSEN, MARTEN			
04:47	GOOD! JUMPER by GADSDEN, TY	69-55	H 14	
04:18		71-55	H 16	GOOD! JUMPER by VAN VLIET, ANDY [PNT]
04:18				ASSIST by SCOTT, THORNTON
04:03	MISSED JUMPER by PHILLIPS, SHYKEIM			
04:00				REBOUND (DEF) by VAN VLIET, ANDY
03:55				MISSED 3PTR by LOEWE, LUKE
03:51	REBOUND (DEF) by GADSDEN, TY			
03:51	TURNOVER (BADPASS) by GADSDEN, TY			
03:51				
03:51				SUB OUT: LOEWE, LUKE
03:51				SUB IN: BARNES, BRYCE
03:40				MISSED LAYUP by HAMILTON, TYLER
03:40				MISSED LAYUP by HAMILTON, TYLER
03:40				REBOUND (OFF) by HAMILTON, TYLER
03:40				REBOUND (OFF) by HAMILTON, TYLER
03:40	FOUL (PERSONAL) by SIMS, JAYLEN			
03:40		72-55	H 17	GOOD! FT by HAMILTON, TYLER
03:40		73-55	H 18	GOOD! FT by HAMILTON, TYLER
03:26				FOUL (PERSONAL) by VAN VLIET, ANDY
03:26	MISSED FT by GADSDEN, TY			
03:26	REBOUND (OFF) by TEAM			
03:26	SUB OUT: SIMS, JAYLEN			
03:26	SUB IN: TOLEFREE, BRIAN			

Time	VISITORS: UNCW	Score	Margin	HOME: William & Mary
03:26	GOOD! FT by GADSDEN, TY	73-56	H 17	
03:08				TURNOVER (LOSTBALL) by BLAIR, QUINN
03:08	SUB OUT: LINSSEN, MARTEN			
03:08	SUB IN: DODD, IMAJAE			
02:59	MISSED 3PTR by GADSDEN, TY			
02:55				REBOUND (DEF) by VAN VLIET, ANDY
02:50	FOUL (PERSONAL) by GADSDEN, TY			
02:50		74-56	H 18	GOOD! FT by HAMILTON, TYLER
02:50	SUB OUT: GADSDEN, TY			
02:50	SUB IN: OKAURU, MIKE			
02:50		75-56	H 19	GOOD! FT by HAMILTON, TYLER
02:36	GOOD! LAYUP by PHILLIPS, SHYKEIM	75-58	H 17	
02:08		77-58	H 19	GOOD! LAYUP by BLAIR, QUINN [PNT]
02:08	FOUL (PERSONAL) by DODD, IMAJAE			
02:08	SUB OUT: PHILLIPS, SHYKEIM			
02:08	SUB IN: JENKINS, BRENT			
02:08				MISSED FT by BLAIR, QUINN
02:07				REBOUND (OFF) by VAN VLIET, ANDY
01:48		79-58	H 21	GOOD! LAYUP by BLAIR, QUINN
01:33	MISSED LAYUP by DODD, IMAJAE			
01:30				REBOUND (DEF) by BARNES, BRYCE
01:09				MISSED 3PTR by BLAIR, QUINN
01:06	REBOUND (DEF) by OKAURU, MIKE			
00:51	GOOD! LAYUP by JENKINS, BRENT	79-60	H 19	
00:51	ASSIST by BOGGS, JAKE			
00:23				MISSED JUMPER by VAN VLIET, ANDY
00:19				REBOUND (OFF) by HAMILTON, TYLER
00:19				MISSED LAYUP by HAMILTON, TYLER
00:17	REBOUND (DEF) by BOGGS, JAKE			
00:14	GOOD! 3PTR by BOGGS, JAKE [FB]	79-63	H 16	

UNCW 63, William & Mary 79

Points from (This Period)	NCW	W&M
In the Paint	18	20
Off Turns	9	8
2nd Chance	4	8
Fast Break	6	7
Bench	17	9

Official Scoring/Possession Reference Chart
UNCW vs William & Mary
Period 1
January 09, 2020 at Kaplan Arena (Kaplan Arena) - Williamsburg



Period 1

Starters:

UNCW: 1 TOLEFREE, BRIAN (G); 2 PHILLIPS, SHYKEIM (G); 4 OKAURU, MIKE (G); 23 LINSSEN, MARTEN (F); 30 SIMS, JAYLEN (G);

William & Mary: 2 HAMILTON, TYLER (G); 5 BARNES, BRYCE (G); 11 VAN VLIET, ANDY (F); 12 LOEWE, LUKE (G); 13 KNIGHT, NATHAN (C);

Time	VISITORS: UNCW	Score	Margin	HOME: William & Mary
18:19		2-0	H 2	GOOD! LAYUP by VAN VLIET, ANDY
17:52		4-0	H 4	GOOD! LAYUP by LOEWE, LUKE [FB]
16:35		5-0	H 5	GOOD! FT by BARNES, BRYCE
16:35		6-0	H 6	GOOD! FT by BARNES, BRYCE
16:00		8-0	H 8	GOOD! JUMPER by LOEWE, LUKE [PNT]
15:22		10-0	H 10	GOOD! LAYUP by BARNES, BRYCE
14:03	GOOD! 3PTR by OKAURU, MIKE [FB]	10-3	H 7	
13:37		11-3	H 8	GOOD! FT by VAN VLIET, ANDY
13:37		12-3	H 9	GOOD! FT by VAN VLIET, ANDY
13:21	GOOD! JUMPER by SIMS, JAYLEN [PNT]	12-5	H 7	
12:24		15-5	H 10	GOOD! 3PTR by VAN VLIET, ANDY
12:03	GOOD! LAYUP by LINSSEN, MARTEN	15-7	H 8	
11:43	GOOD! FT by SIMS, JAYLEN	15-8	H 7	
11:43	GOOD! FT by SIMS, JAYLEN	15-9	H 6	
11:22		17-9	H 8	GOOD! LAYUP by KNIGHT, NATHAN
10:53	GOOD! LAYUP by PHILLIPS, SHYKEIM [FB]	17-11	H 6	
10:30	GOOD! 3PTR by SIMS, JAYLEN	17-14	H 3	
10:09		19-14	H 5	GOOD! LAYUP by KNIGHT, NATHAN
07:42	GOOD! 3PTR by SIMS, JAYLEN	19-17	H 2	
07:15		20-17	H 3	GOOD! FT by KNIGHT, NATHAN
07:15		21-17	H 4	GOOD! FT by KNIGHT, NATHAN
06:30	GOOD! 3PTR by BOGGS, JAKE [FB]	21-20	H 1	
05:49		22-20	H 2	GOOD! FT by VAN VLIET, ANDY
05:49		23-20	H 3	GOOD! FT by VAN VLIET, ANDY
05:17		26-20	H 6	GOOD! 3PTR by LOEWE, LUKE
04:44		29-20	H 9	GOOD! 3PTR by SCOTT, THORNTON
04:18	GOOD! JUMPER by SIMS, JAYLEN	29-22	H 7	
02:40	GOOD! FT by TOLEFREE, BRIAN [FB]	29-23	H 6	
02:40	GOOD! FT by TOLEFREE, BRIAN [FB]	29-24	H 5	
02:28		31-24	H 7	GOOD! DUNK by VAN VLIET, ANDY
01:31	GOOD! 3PTR by SIMS, JAYLEN [FB]	31-27	H 4	
00:55	GOOD! FT by SIMS, JAYLEN	31-28	H 3	
00:55	GOOD! FT by SIMS, JAYLEN	31-29	H 2	
00:04		33-29	H 4	GOOD! JUMPER by LOEWE, LUKE

UNCW 29, William & Mary 33

Official Scoring/Possession Reference Chart
UNCW vs William & Mary
Period 2
January 09, 2020 at Kaplan Arena (Kaplan Arena) - Williamsburg



Period 2

Starters:

UNCW: 1 TOLEFREE, BRIAN (G); 2 PHILLIPS, SHYKEIM (G); 4 OKAURU, MIKE (G); 23 LINSSEN, MARTEN (F); 30 SIMS, JAYLEN (G);

William & Mary: 2 HAMILTON, TYLER (G); 5 BARNES, BRYCE (G); 11 VAN VLIET, ANDY (F); 12 LOEWE, LUKE (G); 13 KNIGHT, NATHAN (C);

Time	VISITORS: UNCW	Score	Margin	HOME: William & Mary
19:30		35-29	H 6	GOOD! LAYUP by LOEWE, LUKE [FB]
19:06	GOOD! LAYUP by TOLEFREE, BRIAN	35-31	H 4	
18:24		38-31	H 7	GOOD! 3PTR by BARNES, BRYCE
16:58		40-31	H 9	GOOD! JUMPER by VAN VLIET, ANDY
16:45	GOOD! JUMPER by PHILLIPS, SHYKEIM [PNT]	40-33	H 7	
16:25		43-33	H 10	GOOD! 3PTR by VAN VLIET, ANDY
15:35		45-33	H 12	GOOD! DUNK by KNIGHT, NATHAN
14:51		46-33	H 13	GOOD! FT by KNIGHT, NATHAN
14:51		47-33	H 14	GOOD! FT by KNIGHT, NATHAN
13:34	GOOD! JUMPER by LINSSEN, MARTEN [PNT]	47-35	H 12	
13:02		48-35	H 13	GOOD! FT by KNIGHT, NATHAN
13:02		49-35	H 14	GOOD! FT by KNIGHT, NATHAN
12:13	GOOD! JUMPER by SIMS, JAYLEN [PNT]	49-37	H 12	
11:28		51-37	H 14	GOOD! LAYUP by BARNES, BRYCE [FB]
10:51		52-37	H 15	GOOD! FT by BLAIR, QUINN
10:51		53-37	H 16	GOOD! FT by BLAIR, QUINN
10:41	GOOD! FT by GADSDEN, TY	53-38	H 15	
10:35		55-38	H 17	GOOD! LAYUP by BLAIR, QUINN [FB]
10:35		56-38	H 18	GOOD! FT by BLAIR, QUINN [FB]
10:20	GOOD! LAYUP by OKAURU, MIKE	56-40	H 16	
09:48		59-40	H 19	GOOD! 3PTR by KNIGHT, NATHAN
09:30	GOOD! FT by GADSDEN, TY	59-41	H 18	
09:30	GOOD! FT by GADSDEN, TY	59-42	H 17	
08:23	GOOD! JUMPER by GADSDEN, TY	59-44	H 15	
07:43		61-44	H 17	GOOD! LAYUP by BARNES, BRYCE
07:25	GOOD! LAYUP by GADSDEN, TY	61-46	H 15	
07:00	GOOD! FT by DODD, IMAJAE	61-47	H 14	
07:00	GOOD! FT by DODD, IMAJAE	61-48	H 13	
06:32		62-48	H 14	GOOD! FT by KNIGHT, NATHAN
06:32		63-48	H 15	GOOD! FT by KNIGHT, NATHAN
05:45	GOOD! LAYUP by OKAURU, MIKE [FB]	63-50	H 13	
05:45	GOOD! FT by OKAURU, MIKE [FB]	63-51	H 12	
05:33		66-51	H 15	GOOD! 3PTR by LOEWE, LUKE
05:16	GOOD! FT by SIMS, JAYLEN	66-52	H 14	
05:16	GOOD! FT by SIMS, JAYLEN	66-53	H 13	
04:58		68-53	H 15	GOOD! LAYUP by HAMILTON, TYLER
04:58		69-53	H 16	GOOD! FT by HAMILTON, TYLER
04:47	GOOD! JUMPER by GADSDEN, TY	69-55	H 14	
04:18		71-55	H 16	GOOD! JUMPER by VAN VLIET, ANDY [PNT]
03:40		72-55	H 17	GOOD! FT by HAMILTON, TYLER
03:40		73-55	H 18	GOOD! FT by HAMILTON, TYLER
03:26	GOOD! FT by GADSDEN, TY	73-56	H 17	
02:50		74-56	H 18	GOOD! FT by HAMILTON, TYLER
02:50		75-56	H 19	GOOD! FT by HAMILTON, TYLER
02:36	GOOD! LAYUP by PHILLIPS, SHYKEIM	75-58	H 17	
02:08		77-58	H 19	GOOD! LAYUP by BLAIR, QUINN [PNT]
01:48		79-58	H 21	GOOD! LAYUP by BLAIR, QUINN
00:51	GOOD! LAYUP by JENKINS, BRENT	79-60	H 19	
00:14	GOOD! 3PTR by BOGGS, JAKE [FB]	79-63	H 16	

Official Substitutions Log
UNCW vs William & Mary
Period 1
January 09, 2020 at Kaplan Arena (Kaplan Arena) - Williamsburg



VISITORS: UNCW	Time	Score	HOME: William & Mary
1 TOLEFREE, BRIAN			2 HAMILTON, TYLER
2 PHILLIPS, SHYKEIM			5 BARNES, BRYCE
4 OKAURU, MIKE			11 VAN VLIET, ANDY
23 LINSSEN, MARTEN			12 LOEWE, LUKE
30 SIMS, JAYLEN			13 KNIGHT, NATHAN
SUB OUT: 1 TOLEFREE, BRIAN	17:07	0-4	
SUB OUT: 4 OKAURU, MIKE	17:07		
SUB IN: 0 GADSDEN, TY	17:07		
SUB IN: 5 BOGGS, JAKE	17:07		
	15:46	0-8	SUB OUT: HAMILTON, TYLER
	15:46		SUB IN: AYESA, MIGUEL
SUB OUT: 2 PHILLIPS, SHYKEIM	15:46		
SUB OUT: 23 LINSSEN, MARTEN	15:46		
SUB OUT: 30 SIMS, JAYLEN	15:46		
SUB IN: 1 TOLEFREE, BRIAN	15:46		
SUB IN: 4 OKAURU, MIKE	15:46		
SUB IN: 24 DODD, IMAJAE	15:46		
	15:14	0-10	SUB OUT: KNIGHT, NATHAN
	15:14		SUB IN: BLAIR, QUINN
	14:35	0-10	SUB OUT: BARNES, BRYCE
	14:35		SUB IN: SCOTT, THORNTON
SUB OUT: 5 BOGGS, JAKE	14:35		
SUB IN: 30 SIMS, JAYLEN	14:35		
SUB OUT: 0 GADSDEN, TY	13:37	3-11	
SUB OUT: 24 DODD, IMAJAE	13:37		
SUB IN: 2 PHILLIPS, SHYKEIM	13:37		
SUB IN: 23 LINSSEN, MARTEN	13:37		
	12:27	5-12	SUB OUT: LOEWE, LUKE
	12:27		SUB IN: HERMANOVSKIS, RAINERS
SUB OUT: 4 OKAURU, MIKE	12:27		
SUB IN: 32 BOWEN, JOHN	12:27		
	11:43	7-15	SUB OUT: VAN VLIET, ANDY
	11:43		SUB OUT: AYESA, MIGUEL
	11:43		SUB IN: HAMILTON, TYLER
	11:43		SUB IN: KNIGHT, NATHAN
	10:45	11-17	SUB OUT: BLAIR, QUINN
	10:45		SUB IN: BARNES, BRYCE
	08:56	14-19	SUB OUT: SCOTT, THORNTON
	08:56		SUB OUT: HERMANOVSKIS, RAINERS
	08:56		SUB IN: VAN VLIET, ANDY
	08:56		SUB IN: LOEWE, LUKE
SUB OUT: 23 LINSSEN, MARTEN	08:56		
SUB OUT: 32 BOWEN, JOHN	08:56		
SUB IN: 5 BOGGS, JAKE	08:56		
SUB IN: 24 DODD, IMAJAE	08:56		
SUB OUT: 2 PHILLIPS, SHYKEIM	08:08	14-19	
SUB IN: 0 GADSDEN, TY	08:08		
	07:15	17-19	SUB OUT: HAMILTON, TYLER
	07:15		SUB IN: SCOTT, THORNTON
SUB OUT: 1 TOLEFREE, BRIAN	07:15		
SUB IN: 4 OKAURU, MIKE	07:15		
SUB OUT: 24 DODD, IMAJAE	05:49	20-21	
SUB IN: 23 LINSSEN, MARTEN	05:49		
	05:49		SUB OUT: BARNES, BRYCE
	05:49		SUB IN: HAMILTON, TYLER
	04:42	20-29	SUB OUT: KNIGHT, NATHAN
	04:42		SUB IN: BLAIR, QUINN
SUB OUT: 4 OKAURU, MIKE	04:42		
SUB OUT: 5 BOGGS, JAKE	04:42		
SUB IN: 1 TOLEFREE, BRIAN	04:42		
SUB IN: 32 BOWEN, JOHN	04:42		
	03:52	22-29	SUB OUT: VAN VLIET, ANDY
	03:52		SUB OUT: LOEWE, LUKE
	03:52		SUB IN: BARNES, BRYCE
	03:52		SUB IN: KNIGHT, NATHAN
SUB OUT: 0 GADSDEN, TY	03:52		
SUB IN: 2 PHILLIPS, SHYKEIM	03:52		
	02:40	23-29	SUB OUT: SCOTT, THORNTON
	02:40		SUB OUT: BLAIR, QUINN
	02:40		SUB IN: VAN VLIET, ANDY
	02:40		SUB IN: LOEWE, LUKE
SUB OUT: 1 TOLEFREE, BRIAN	02:05	24-31	
SUB OUT: 32 BOWEN, JOHN	02:05		
SUB IN: 0 GADSDEN, TY	02:05		
SUB IN: 5 BOGGS, JAKE	02:05		

VISITORS: UNCW		Time	Score	HOME: William & Mary
		00:55	29-31	SUB OUT: HAMILTON, TYLER
		00:55		SUB IN: SCOTT, THORNTON
SUB OUT: 0 GADSDEN, TY		00:55		
SUB IN: 1 TOLEFREE, BRIAN		00:55		

UNCW 29, William & Mary 33

Official Substitutions Log
UNCW vs William & Mary
Period 2
January 09, 2020 at Kaplan Arena (Kaplan Arena) - Williamsburg



VISITORS: UNCW	Time	Score	HOME: William & Mary
1 TOLEFREE, BRIAN			2 HAMILTON, TYLER
2 PHILLIPS, SHYKEIM			5 BARNES, BRYCE
4 OKAURU, MIKE			11 VAN VLIET, ANDY
23 LINSSEN, MARTEN			12 LOEWE, LUKE
30 SIMS, JAYLEN			13 KNIGHT, NATHAN
	20:00	-	SUB OUT: SCOTT, THORNTON
	20:00		SUB IN: HAMILTON, TYLER
SUB OUT: 5 BOGGS, JAKE	20:00		
SUB IN: 4 OKAURU, MIKE	20:00		
	16:00	33-43	SUB OUT: HAMILTON, TYLER
	16:00		SUB OUT: BARNES, BRYCE
	16:00		SUB IN: SCOTT, THORNTON
	16:00		SUB IN: AYESA, MIGUEL
SUB OUT: 4 OKAURU, MIKE	16:00		
SUB OUT: 23 LINSSEN, MARTEN	16:00		
SUB IN: 0 GADSDEN, TY	16:00		
SUB IN: 24 DODD, IMAJAE	16:00		
SUB OUT: 1 TOLEFREE, BRIAN	15:00	33-45	
SUB IN: 5 BOGGS, JAKE	15:00		
SUB OUT: 24 DODD, IMAJAE	15:00		
SUB IN: 23 LINSSEN, MARTEN	15:00		
	14:00	33-47	SUB OUT: VAN VLIET, ANDY
	14:00		SUB IN: BLAIR, QUINN
	13:18	35-47	SUB OUT: LOEWE, LUKE
	13:18		SUB IN: HAMILTON, TYLER
SUB OUT: 0 GADSDEN, TY	13:02	35-48	
SUB OUT: 23 LINSSEN, MARTEN	13:02		
SUB IN: 4 OKAURU, MIKE	13:02		
SUB IN: 24 DODD, IMAJAE	13:02		
	11:41	37-49	SUB OUT: KNIGHT, NATHAN
	11:41		SUB OUT: AYESA, MIGUEL
	11:41		SUB IN: BARNES, BRYCE
	11:41		SUB IN: VAN VLIET, ANDY
SUB OUT: 30 SIMS, JAYLEN	11:41		
SUB IN: 1 TOLEFREE, BRIAN	11:41		
SUB OUT: 2 PHILLIPS, SHYKEIM	10:51	37-52	
SUB OUT: 5 BOGGS, JAKE	10:51		
SUB IN: 0 GADSDEN, TY	10:51		
SUB IN: 32 BOWEN, JOHN	10:51		
	10:41	37-53	SUB OUT: BARNES, BRYCE
	10:41		SUB IN: LOEWE, LUKE
SUB OUT: 24 DODD, IMAJAE	10:35	38-56	
SUB IN: 30 SIMS, JAYLEN	10:35		
	09:59	40-56	SUB OUT: HAMILTON, TYLER
	09:59		SUB IN: HERMANOVSKIS, RAINERS
	09:59		SUB OUT: BLAIR, QUINN
	09:59		SUB IN: KNIGHT, NATHAN
	09:30	41-59	SUB OUT: SCOTT, THORNTON
	09:30		SUB IN: BARNES, BRYCE
SUB OUT: 32 BOWEN, JOHN	09:30		
SUB IN: 23 LINSSEN, MARTEN	09:30		
SUB OUT: 4 OKAURU, MIKE	07:47	44-59	
SUB OUT: 23 LINSSEN, MARTEN	07:47		
SUB IN: 2 PHILLIPS, SHYKEIM	07:47		
SUB IN: 24 DODD, IMAJAE	07:47		
	07:00	47-61	SUB OUT: HERMANOVSKIS, RAINERS
	07:00		SUB OUT: VAN VLIET, ANDY
	07:00		SUB IN: SCOTT, THORNTON
	07:00		SUB IN: HAMILTON, TYLER
SUB OUT: 0 GADSDEN, TY	07:00		
SUB IN: 4 OKAURU, MIKE	07:00		
SUB OUT: 24 DODD, IMAJAE	07:00		
SUB IN: 5 BOGGS, JAKE	07:00		
	05:16	51-66	SUB OUT: BARNES, BRYCE
	05:16		SUB OUT: KNIGHT, NATHAN
	05:16		SUB IN: VAN VLIET, ANDY
	05:16		SUB IN: BLAIR, QUINN
SUB OUT: 1 TOLEFREE, BRIAN	05:16		
SUB IN: 0 GADSDEN, TY	05:16		
SUB OUT: 4 OKAURU, MIKE	04:58	53-69	
SUB IN: 23 LINSSEN, MARTEN	04:58		
	03:51	55-71	SUB OUT: LOEWE, LUKE
	03:51		SUB IN: BARNES, BRYCE
SUB OUT: 30 SIMS, JAYLEN	03:26	55-73	
SUB IN: 1 TOLEFREE, BRIAN	03:26		

VISITORS: UNCW		Time	Score	HOME: William & Mary
SUB OUT: 23	LINSSEN,MARTEN	03:08	56-73	
SUB IN: 24	DODD,IMAJAE	03:08		
SUB OUT: 0	GADSDEN,TY	02:50	56-74	
SUB IN: 4	OKAURU,MIKE	02:50		
SUB OUT: 2	PHILLIPS,SHYKEIM	02:08	58-77	
SUB IN: 22	JENKINS,BRENT	02:08		

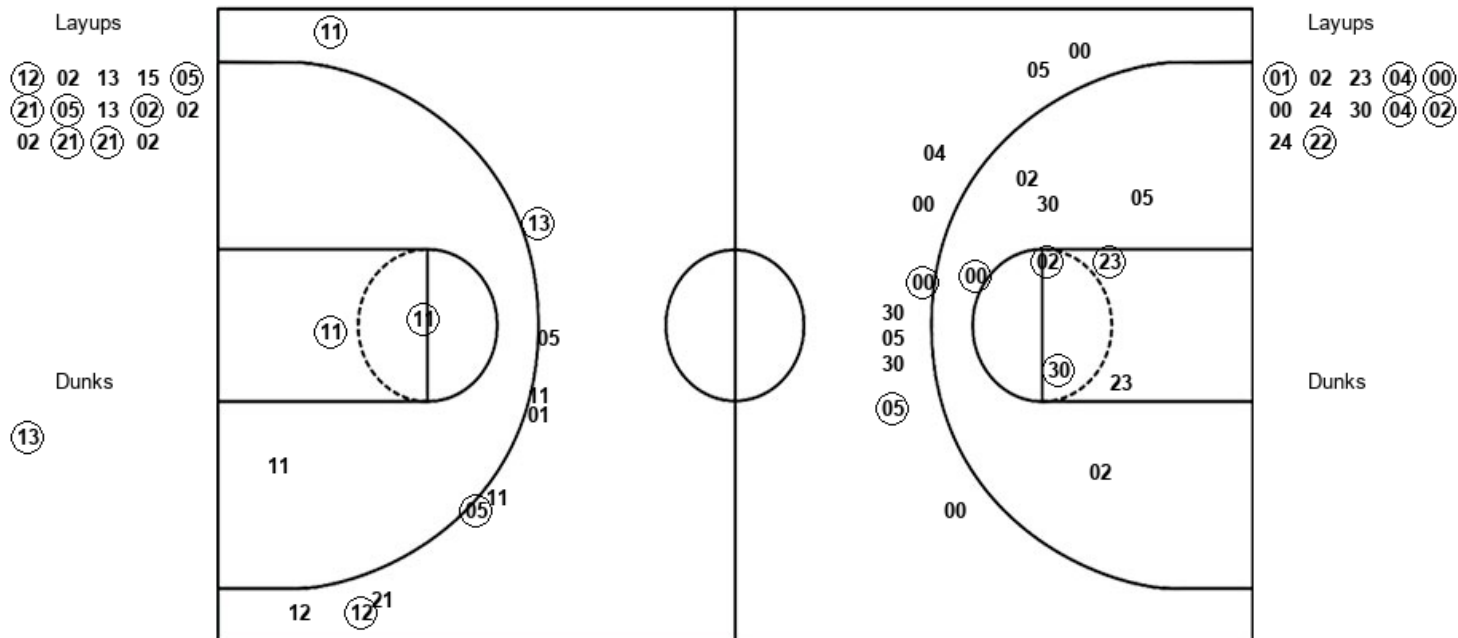
UNCW 63, William & Mary 79

Official Shot Chart
UNCW vs William & Mary
 PERIOD 2 Shots
 January 09, 2020 at Kaplan Arena (Kaplan Arena) - Williamsburg



William & Mary

UNCW



W&M : Period 2	Made	Att	Pct
Layups	7	14	50.0
Dunks	1	1	100.0
2PT Field Goals	10	18	55.6
3PT Field Goals	4	10	40.0
Total Field Goals	14	28	50.0

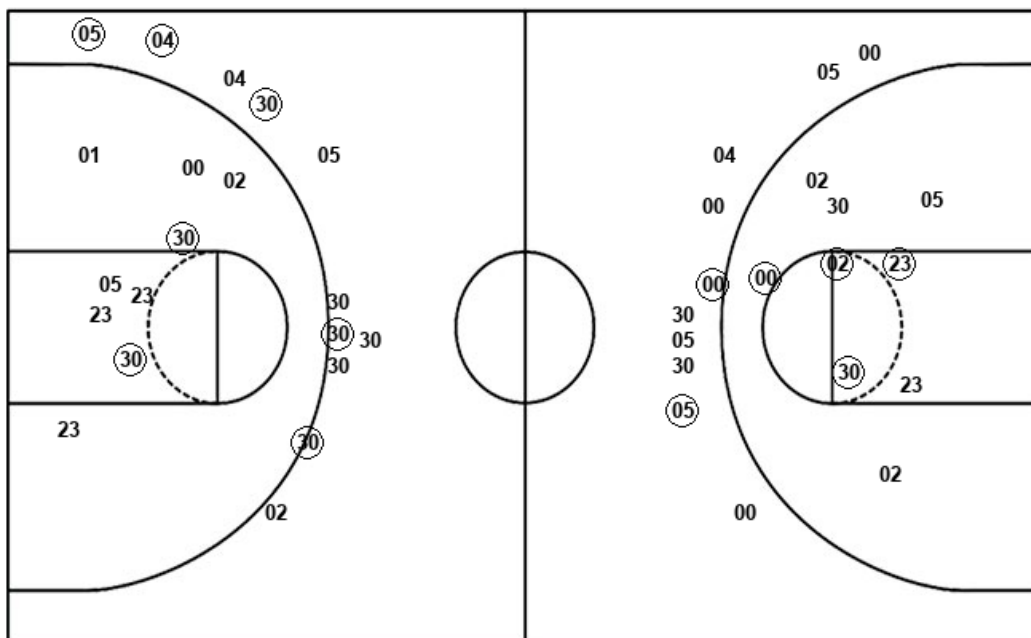
NCW : Period 2	Made	Att	Pct
Layups	6	12	50.0
Dunks	0	0	0
2PT Field Goals	11	22	50.0
3PT Field Goals	1	9	11.1
Total Field Goals	12	31	38.7

Official Shot Chart
UNCW vs William & Mary
 UNCW Team Shots
 January 09, 2020 at Kaplan Arena (Kaplan Arena) - Williamsburg



Layups

Dunks



Layups

Dunks

NCW : Period 1	Made	Att	Pct
Layups	2	8	25.0
Dunks	0	0	0
2PT Field Goals	4	17	23.5
3PT Field Goals	5	11	45.5
Total Field Goals	9	28	32.1

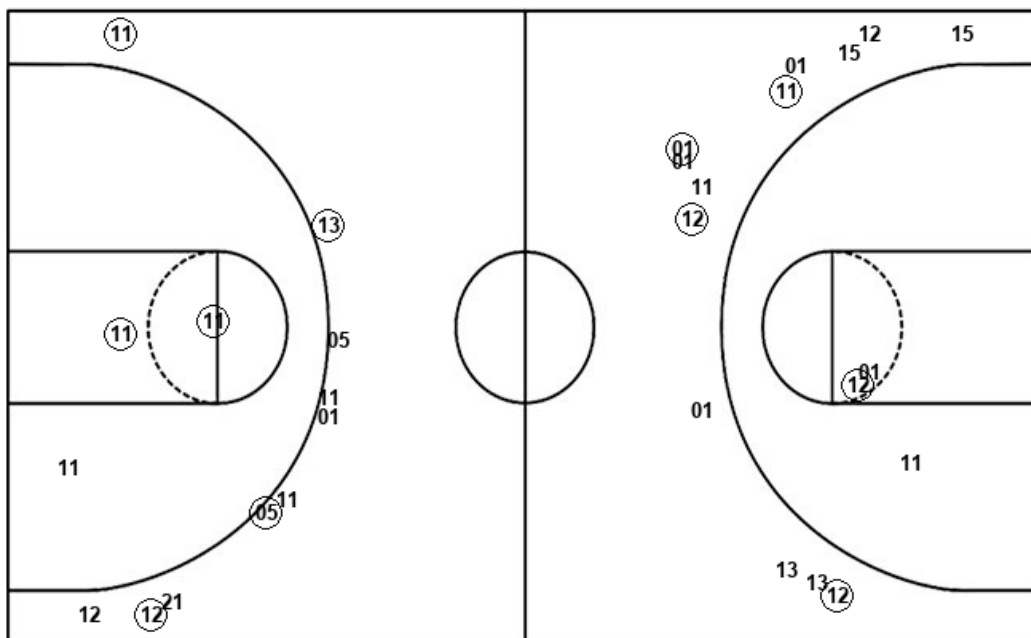
NCW : Period 2	Made	Att	Pct
Layups	6	12	50.0
Dunks	0	0	0
2PT Field Goals	11	22	50.0
3PT Field Goals	1	9	11.1
Total Field Goals	12	31	38.7

Official Shot Chart
UNCW vs William & Mary
 William & Mary Team Shots
 January 09, 2020 at Kaplan Arena (Kaplan Arena) - Williamsburg



Layups

Dunks



Layups

11 12 12 05 12
 13 13 05 02 05
 05 12 02 13 15
 05 21 05 13 02
 02 02 21 21 02

Dunks

11 13

W&M : Period 1	Made	Att	Pct
Layups	5	11	45.5
Dunks	1	1	100.0
2PT Field Goals	8	16	50.0
3PT Field Goals	3	12	25.0
Total Field Goals	11	28	39.3

W&M : Period 2	Made	Att	Pct
Layups	7	14	50.0
Dunks	1	1	100.0
2PT Field Goals	10	18	55.6
3PT Field Goals	4	10	40.0
Total Field Goals	14	28	50.0