

FINAL SCORE

James Madison

66



UNCW

58



January 17, 2020 • Trask Coliseum - Wilmington, N.C.

FINAL STATISTICS

Official Box Score
James Madison vs UNCW
Game Totals -- Final Statistics
January 17, 2020 at Trask Coliseum - Wilmington, N.C.



James Madison 66

No.	Player	S	Pts	FG	3FG	FT	OR	DR	TR	PF	A	TO	Blk	Stl	Min	+/-
03	SMALLS, KAMIAH	G	20	7-12	4-5	2-2	2	4	6	3	1	2	0	0	30	-8
15	BARRIER, LEXIE	G	6	3-11	0-2	0-0	2	5	7	3	2	3	0	2	29	-2
30	JEFFERSON, KIKI	G	9	2-5	1-4	4-6	3	3	6	2	2	2	0	1	24	-3
42	MERRITT, DEVON	F	5	2-5	0-0	1-2	2	1	3	1	0	1	0	0	16	-10
55	BENITEZ, JACKIE	G	12	4-19	3-13	1-4	0	3	3	1	0	1	0	1	34	9
00	OPPENHEIMER, NIKKI	G	0	0-0	0-0	0-0	0	0	0	0	0	0	0	0	2	5
02	CARODINE, JAYLIN	G	2	1-3	0-0	0-1	2	1	3	2	0	0	0	2	17	18
04	GREEN, MADISON	G	10	4-5	2-2	0-0	0	1	1	0	1	0	0	0	23	13
21	TUCKER, RAYNE	F	2	0-1	0-0	2-4	3	2	5	3	1	0	2	5	24	18
TEAM							2	1	3	0		2				
TOTALS			66	23-61	10-26	10-19	16	21	37	15	7	11	2	11	200	

Shooting By Period

Period	FG	FG%	3FG	3FG%	FT	FT%
1st Qtr	7-16	44%	2-5	40%	1-4	25%
2nd Qtr	6-13	46%	3-7	43%	1-5	20%
3rd Qtr	6-19	32%	3-8	38%	3-4	75%
4th Qtr	4-13	31%	2-6	33%	5-6	83%
1st Half	13-29	45%	5-12	42%	2-9	22%
2nd Half	10-32	31%	5-14	36%	8-10	80%
Game	23-61	37.7%	10-26	38.5%	10-19	52.6%

Deadball Rebounds: 5,0

Last FG: 4th-02:51

Biggest Run: 13-0

Largest lead: By 13 at 3rd-00:31

Technical Fouls: None.

UNCW 58

No.	Player	S	Pts	FG	3FG	FT	OR	DR	TR	PF	A	TO	Blk	Stl	Min	+/-
01	POWELL, PAIGE	F	0	0-0	0-0	0-0	0	2	2	1	1	0	1	0	15	-2
04	MUNOZ, JESSICA	F	0	0-3	0-0	0-0	1	2	3	1	1	1	0	0	16	-2
05	SMITH, GIGI	G	14	5-10	2-4	2-2	0	3	3	2	4	8	0	1	39	-11
10	VASON, AHYIONA	G	11	4-6	1-2	2-2	0	1	1	2	0	3	0	0	25	-5
13	SUGGS, LACEY	G	12	4-9	2-5	2-2	1	6	7	4	1	4	0	0	35	0
02	CRISP, MORIAH	G	3	1-3	1-2	0-0	0	0	0	2	3	0	0	0	16	-4
14	TATE, TIMBER	G	6	2-7	2-6	0-0	0	5	5	2	0	1	0	0	23	-4
22	THYBULLE, ZHANEIA	G	0	0-1	0-1	0-0	0	0	0	0	0	0	0	0	2	-4
24	BELL, CHINYERE	F	12	5-7	0-0	2-5	5	5	10	4	2	0	0	0	23	-2
32	OBUSEK, CAROL-ANNE	F	0	0-3	0-0	0-0	1	0	1	2	0	1	0	0	6	-6
TEAM							1	2	3	0		1				
TOTALS			58	21-49	8-20	8-11	9	26	35	20	12	19	1	1	200	

Shooting By Period

Period	FG	FG%	3FG	3FG%	FT	FT%
1st Qtr	6-12	50%	3-4	75%	2-2	100%
2nd Qtr	4-17	24%	1-8	13%	1-3	33%
3rd Qtr	4-10	40%	1-3	33%	4-4	100%
4th Qtr	7-10	70%	3-5	60%	1-2	50%
1st Half	10-29	34%	4-12	33%	3-5	60%
2nd Half	11-20	55%	4-8	50%	5-6	83%
Game	21-49	42.9%	8-20	40.0%	8-11	72.7%

Deadball Rebounds: 1,0

Last FG: 4th-00:00

Biggest Run: 11-0

Largest lead: By 7 at 1st-04:17

Technical Fouls: None.

Game Notes:

Officials: Eric Brewton, Jennifer Rezac, Nic Cappel
Attendance: 705

Start Time: 07:10 PM ET

End Time: 09:03 PM ET

Game Duration: 1:52

Conference Game;

Score	1st	2nd	3rd	4th	TOT
JMU	17	16	18	15	66
NCW	17	10	13	18	58

JMU led for 25:47. NCW led for 11:27.

Game was tied for 2:47.

Times tied: 3 Lead Changes: 5

Points from	JMU	NCW
In the Paint	20	22
Off Turns	14	14
2nd Chance	18	3
Fast Break	13	2
Bench	14	21

Official Box Score
James Madison vs UNCW
First Half Statistics Only
January 17, 2020 at Trask Coliseum - Wilmington, N.C.



James Madison 33

No.	Player	S	Pts	FG	3FG	FT	OR	DR	TR	PF	A	TO	Blk	Stl	Min	+/-
00	OPPENHEIMER, NIKKI	G	0	0-0	0-0	0-0	0	0	0	0	0	0	0	0	2	5
15	BARRIER, LEXIE	G	6	3-6	0-0	0-0	2	3	5	2	1	2	0	0	17	9
21	TUCKER, RAYNE	F	0	0-0	0-0	0-2	0	2	2	1	0	0	1	1	11	12
30	JEFFERSON, KIKI	G	1	0-2	0-2	1-2	0	1	1	1	1	1	0	1	11	-7
42	MERRITT, DEVON	F	4	2-3	0-0	0-0	1	1	2	0	0	1	0	0	9	-6
55	BENITEZ, JACKIE	G	9	3-10	2-6	1-4	0	3	3	0	0	1	0	1	18	8
02	CARODINE, JAYLIN	G	2	1-2	0-0	0-1	2	1	3	1	0	0	0	2	9	6
03	SMALLS, KAMIAH	G	6	2-4	2-3	0-0	0	2	2	2	0	2	0	0	12	-4
04	GREEN, MADISON	G	5	2-2	1-1	0-0	0	0	0	0	1	0	0	0	12	7
	TEAM		0	0-0	0-0	0-0	1	1	2	0	0	0	0	0	0	0
TOTALS			33	13-29	5-12	2-9	6	14	20	7	3	7	1	5	100	

Shooting By Period

Period	FG	FG%	3FG	3FG%	FT	FT%
1st Qtr	7-16	44%	2-5	40%	1-4	25%
2nd Qtr	6-13	46%	3-7	43%	1-5	20%
1st Half	13-29	45%	5-12	42%	2-9	22%
Game	23-61	37.7%	10-26	38.5%	10-19	52.6%

Deadball Rebounds: 5,0

Last FG Half: JMU 2nd-00:56

UNCW 27

No.	Player	S	Pts	FG	3FG	FT	OR	DR	TR	PF	A	TO	Blk	Stl	Min	+/-
01	POWELL, PAIGE	F	0	0-0	0-0	0-0	0	1	1	0	1	0	1	0	11	3
02	CRISP, MORIAH	G	0	0-1	0-0	0-0	0	0	0	1	1	0	0	0	7	-9
04	MUNOZ, JESSICA	F	0	0-1	0-0	0-0	1	0	1	1	1	0	0	0	9	-3
05	SMITH, GIGI	G	8	3-8	2-4	0-0	0	2	2	1	3	3	0	0	18	-9
10	VASON, AHYIONA	G	2	1-3	0-1	0-0	0	1	1	1	0	2	0	0	13	2
13	SUGGS, LACEY	G	5	1-4	1-2	2-2	1	4	5	2	1	2	0	0	14	2
14	TATE, TIMBER	G	3	1-4	1-4	0-0	0	4	4	1	0	0	0	0	9	-1
22	THYBULLE, ZHANEIA	G	0	0-1	0-1	0-0	0	0	0	0	0	0	0	0	2	-4
24	BELL, CHINYERE	F	9	4-6	0-0	1-3	4	1	5	1	0	0	0	0	10	-9
32	OBUSEK, CAROL-ANNE	F	0	0-1	0-0	0-0	0	0	0	1	0	1	0	0	5	-2
	TEAM		0	0-0	0-0	0-0	0	1	1	0	0	0	0	0	0	0
TOTALS			27	10-29	4-12	3-5	6	14	20	9	7	8	1	0	100	

Shooting By Period

Period	FG	FG%	3FG	3FG%	FT	FT%
1st Qtr	6-12	50%	3-4	75%	2-2	100%
2nd Qtr	4-17	24%	1-8	13%	1-3	33%
1st Half	10-29	34%	4-12	33%	3-5	60%
Game	21-49	42.9%	8-20	40.0%	8-11	72.7%

Deadball Rebounds: 1,0

Last FG Half: NCW 2nd-00:19

Game Notes:

Officials: Eric Brewton, Jennifer Rezac, Nic Cappel
Attendance: 705

Start Time: 07:10 PM ET

End Time: 09:03 PM ET

Game Duration: 1:52

Conference Game;

Score	1st	2nd	3rd	4th	TOT
JMU	17	16	18	15	66
NCW	17	10	13	18	58

Points from (This Period)	JMU	NCW
In the Paint	14	10
Off Turns	5	12
2nd Chance	8	3
Fast Break	8	0
Bench	7	12

Official Box Score
James Madison vs UNCW
First Quarter Statistics Only
January 17, 2020 at Trask Coliseum - Wilmington, N.C.



James Madison 17

No.	Player	S	Pts	FG	3FG	FT	OR	DR	TR	PF	A	TO	Blk	Stl	Min	+/-
03	SMALLS, KAMIAH	G	6	2-3	2-2	0-0	0	1	1	1	0	1	0	0	8	-1
15	BARRIER, LEXIE	G	2	1-4	0-0	0-0	1	2	3	0	0	0	0	0	8	1
30	JEFFERSON, KIKI	G	1	0-0	0-0	1-2	0	1	1	0	1	1	0	0	6	0
42	MERRITT, DEVON	F	4	2-3	0-0	0-0	1	1	2	0	0	0	0	0	5	-4
55	BENITEZ, JACKIE	G	2	1-5	0-3	0-0	0	1	1	0	0	0	0	1	10	0
00	OPPENHEIMER, NIKKI	G	0	0-0	0-0	0-0	0	0	0	0	0	0	0	0	0	0
02	CARODINE, JAYLIN	G	0	0-0	0-0	0-0	1	0	1	0	0	0	0	0	2	-1
04	GREEN, MADISON	G	2	1-1	0-0	0-0	0	0	0	0	1	0	0	0	6	1
21	TUCKER, RAYNE	F	0	0-0	0-0	0-2	0	0	0	0	0	0	1	1	5	4
TEAM							0	0	0	0		0				
TOTALS			17	7-16	2-5	1-4	3	6	9	1	2	2	1	2	50	

Shooting By Period

Period	FG	FG%	3FG	3FG%	FT	FT%
1st Qtr	7-16	44%	2-5	40%	1-4	25%
2nd Qtr	6-13	46%	3-7	43%	1-5	20%
1st Half	7-16	44%	2-5	40%	1-4	25%
1st Half	13-29	45%	5-12	42%	2-9	22%
Game	23-61	37.7%	10-26	38.5%	10-19	52.6%

Deadball Rebounds: 5,0

UNCW 17

No.	Player	S	Pts	FG	3FG	FT	OR	DR	TR	PF	A	TO	Blk	Stl	Min	+/-
01	POWELL, PAIGE	F	0	0-0	0-0	0-0	0	1	1	0	1	0	0	0	7	0
04	MUNOZ, JESSICA	F	0	0-0	0-0	0-0	0	0	0	0	1	0	0	0	5	4
05	SMITH, GIGI	G	8	3-6	2-2	0-0	0	2	2	0	1	0	0	0	9	-1
10	VASON, AHYIONA	G	2	1-2	0-0	0-0	0	0	0	1	0	1	0	0	8	3
13	SUGGS, LACEY	G	5	1-2	1-2	2-2	0	3	3	1	0	1	0	0	8	2
02	CRISP, MORIAH	G	0	0-0	0-0	0-0	0	0	0	0	0	0	0	0	2	-3
14	TATE, TIMBER	G	0	0-0	0-0	0-0	0	0	0	1	0	0	0	0	2	-1
22	THYBULLE, ZHANEIA	G	0	0-0	0-0	0-0	0	0	0	0	0	0	0	0	0	0
24	BELL, CHINYERE	F	2	1-1	0-0	0-0	0	0	0	1	0	0	0	0	3	-2
32	OBUSEK, CAROL-ANNE	F	0	0-1	0-0	0-0	0	0	0	1	0	1	0	0	5	-2
TEAM							0	1	1	0		0				
TOTALS			17	6-12	3-4	2-2	0	7	7	5	3	3	0	0	50	

Shooting By Period

Period	FG	FG%	3FG	3FG%	FT	FT%
1st Qtr	6-12	50%	3-4	75%	2-2	100%
2nd Qtr	4-17	24%	1-8	13%	1-3	33%
1st Half	6-12	50%	3-4	75%	2-2	100%
1st Half	10-29	34%	4-12	33%	3-5	60%
Game	21-49	42.9%	8-20	40.0%	8-11	72.7%

Deadball Rebounds: 1,0

Game Notes:

Officials: Eric Brewton, Jennifer Rezac, Nic Cappel
Attendance: 705

Start Time: 07:10 PM ET
End Time: 09:03 PM ET
Game Duration: 1:52
Conference Game;

Score	1st	2nd	3rd	4th	TOT
JMU	17	16	18	15	66
NCW	17	10	13	18	58

Points from (This Period)	JMU	NCW
In the Paint	10	4
Off Turns	2	6
2nd Chance	2	0
Fast Break	5	0
Bench	2	2

Official Play-By-Play
James Madison vs UNCW
First Quarter
January 17, 2020 at Trask Coliseum - Wilmington, N.C.



Period 1

Starters:

James Madison: 15 BARRIER, LEXIE (G); 30 JEFFERSON, KIKI (G); 42 MERRITT, DEVON (F); 55 BENITEZ, JACKIE (G); 3 SMALLS, KAMIAH (G);
UNCW: 1 POWELL, PAIGE (F); 4 MUNOZ, JESSICA (F); 5 SMITH, GIGI (G); 10 VASON, AHYIONA (G); 13 SUGGS, LACEY (G);

Time	VISITORS: James Madison	Score	Margin	HOME: UNCW
09:46	MISSED JUMPER by BARRIER, LEXIE			
09:42				REBOUND (DEF) by POWELL, PAIGE
09:28				MISSED LAYUP by SMITH, GIGI
09:24	REBOUND (DEF) by BARRIER, LEXIE			
09:20				FOUL (PERSONAL) by SUGGS, LACEY
09:16	MISSED 3PTR by BENITEZ, JACKIE			
09:12	REBOUND (OFF) by BARRIER, LEXIE			
09:05	MISSED JUMPER by MERRITT, DEVON			
09:01				REBOUND (DEF) by SUGGS, LACEY
08:47		2-0	H 2	GOOD! JUMPER by VASON, AHYIONA
08:41				FOUL (PERSONAL) by VASON, AHYIONA
08:33	GOOD! LAYUP by BARRIER, LEXIE	2-2	T	
08:06				MISSED 3PTR by SUGGS, LACEY
08:02	REBOUND (DEF) by JEFFERSON, KIKI			
07:56	TURNOVER (TRAVEL) by JEFFERSON, KIKI			
07:36		5-2	H 3	GOOD! 3PTR by SMITH, GIGI
07:36				ASSIST by MUNOZ, JESSICA
07:12	MISSED JUMPER by BENITEZ, JACKIE			
07:08	REBOUND (OFF) by MERRITT, DEVON			
07:07	GOOD! LAYUP by MERRITT, DEVON	5-4	H 1	
06:52				MISSED JUMPER by VASON, AHYIONA
06:48	REBOUND (DEF) by BARRIER, LEXIE			
06:45	MISSED LAYUP by BARRIER, LEXIE			
06:42				REBOUND (DEF) by SUGGS, LACEY
06:22	FOUL (PERSONAL) by SMALLS, KAMIAH			
06:22		6-4	H 2	GOOD! FT by SUGGS, LACEY
06:22		7-4	H 3	GOOD! FT by SUGGS, LACEY
06:02	GOOD! LAYUP by MERRITT, DEVON [PNT]	7-6	H 1	
06:02	ASSIST by JEFFERSON, KIKI			
05:47				TURNOVER (LOSTBALL) by VASON, AHYIONA
05:47	STEAL by BENITEZ, JACKIE			
05:44				SUB OUT: POWELL, PAIGE
05:44				SUB IN: OBUSEK, CAROL-ANNE
05:44	SUB OUT: JEFFERSON, KIKI			
05:44	SUB IN: GREEN, MADISON			
05:38	MISSED 3PTR by BENITEZ, JACKIE			
05:35				REBOUND (DEF) by SMITH, GIGI
05:29				MISSED JUMPER by SMITH, GIGI
05:25	REBOUND (DEF) by MERRITT, DEVON			
05:22	TURNOVER (TRAVEL) by SMALLS, KAMIAH			
05:03		10-6	H 4	GOOD! 3PTR by SMITH, GIGI
04:37	MISSED JUMPER by SMALLS, KAMIAH			
04:35				REBOUND (DEF) by TEAM
04:35				
04:35				SUB OUT: MUNOZ, JESSICA
04:35				SUB OUT: VASON, AHYIONA
04:35				SUB IN: CRISP, MORIAH
04:35				SUB IN: BELL, CHINYERE
04:35	SUB OUT: MERRITT, DEVON			
04:35	SUB IN: TUCKER, RAYNE			
04:17		13-6	H 7	GOOD! 3PTR by SUGGS, LACEY
04:17				ASSIST by SMITH, GIGI
03:48	GOOD! 3PTR by SMALLS, KAMIAH	13-9	H 4	
03:32				MISSED JUMPER by OBUSEK, CAROL-ANNE
03:32	BLOCK by TUCKER, RAYNE			
03:27	REBOUND (DEF) by SMALLS, KAMIAH			
03:24	MISSED JUMPER by BARRIER, LEXIE			
03:20				REBOUND (DEF) by SMITH, GIGI
03:06				MISSED JUMPER by SMITH, GIGI
03:02	REBOUND (DEF) by BENITEZ, JACKIE			
02:59	GOOD! 3PTR by SMALLS, KAMIAH [FB]	13-12	H 1	
02:59	ASSIST by GREEN, MADISON			
02:27				TURNOVER (DRIBBLING) by SUGGS, LACEY
02:27				SUB OUT: CRISP, MORIAH
02:27				SUB OUT: SUGGS, LACEY
02:27				SUB OUT: BELL, CHINYERE
02:27				SUB IN: POWELL, PAIGE
02:27				SUB IN: VASON, AHYIONA
02:27				SUB IN: TATE, TIMBER
02:27	GOOD! LAYUP by BENITEZ, JACKIE [FB/PNT]	13-14	V 1	

Time	VISITORS: James Madison	Score	Margin	HOME: UNCW
02:27	SUB OUT: BARRIER, LEXIE			
02:27	SUB IN: CARODINE, JAYLIN			
02:21		15-14	H 1	GOOD! LAYUP by SMITH, GIGI
01:43	SUB OUT: SMALLS, KAMIAH			
01:43	SUB IN: JEFFERSON, KIKI			
01:33	GOOD! LAYUP by GREEN, MADISON	15-16	V 1	
01:09				TURNOVER (LOSTBALL) by OBUSEK, CAROL-ANNE
01:09	STEAL by TUCKER, RAYNE			
01:09				FOUL (PERSONAL) by OBUSEK, CAROL-ANNE
01:09				SUB OUT: OBUSEK, CAROL-ANNE
01:09				SUB IN: BELL, CHINYERE
00:49	MISSED 3PTR by BENITEZ, JACKIE			
00:46	REBOUND (OFF) by CARODINE, JAYLIN			
00:46				FOUL (PERSONAL) by BELL, CHINYERE
00:46				SUB OUT: SMITH, GIGI
00:46				SUB IN: SUGGS, LACEY
00:46	MISSED FT by TUCKER, RAYNE			
00:46	REBOUND (OFF) by TEAM			
00:46	MISSED FT by TUCKER, RAYNE			
00:46				REBOUND (DEF) by SUGGS, LACEY
00:21		17-16	H 1	GOOD! LAYUP by BELL, CHINYERE
00:21				ASSIST by POWELL, PAIGE
00:01				FOUL (PERSONAL) by TATE, TIMBER
00:01	MISSED FT by JEFFERSON, KIKI			
00:01	REBOUND (OFF) by TEAM			
00:01	GOOD! FT by JEFFERSON, KIKI	17-17	T	

James Madison 17, UNCW 17

Points from (This Period)	JMU	NCW
In the Paint	10	4
Off Turns	2	6
2nd Chance	2	0
Fast Break	5	0
Bench	2	2

Official Box Score
James Madison vs UNCW
Second Quarter Statistics Only
January 17, 2020 at Trask Coliseum - Wilmington, N.C.



James Madison 16

No.	Player	S	Pts	FG	3FG	FT	OR	DR	TR	PF	A	TO	Blk	Stl	Min	+/-
03	SMALLS, KAMIAH	G	0	0-1	0-1	0-0	0	1	1	1	0	1	0	0	4	-3
15	BARRIER, LEXIE	G	4	2-2	0-0	0-0	1	1	2	2	1	2	0	0	9	8
30	JEFFERSON, KIKI	G	0	0-2	0-2	0-0	0	0	0	1	0	0	0	1	5	-7
42	MERRITT, DEVON	F	0	0-0	0-0	0-0	0	0	0	0	0	1	0	0	4	-2
55	BENITEZ, JACKIE	G	7	2-5	2-3	1-4	0	2	2	0	0	1	0	0	8	8
00	OPPENHEIMER, NIKKI	G	0	0-0	0-0	0-0	0	0	0	0	0	0	0	0	2	5
02	CARODINE, JAYLIN	G	2	1-2	0-0	0-1	1	1	2	1	0	0	0	2	7	7
04	GREEN, MADISON	G	3	1-1	1-1	0-0	0	0	0	0	0	0	0	0	6	6
21	TUCKER, RAYNE	F	0	0-0	0-0	0-0	0	2	2	1	0	0	0	0	6	8
	TEAM						1	1	2	0		0				
TOTALS			16	6-13	3-7	1-5	3	8	11	6	1	5	0	3	50	

Shooting By Period

Period	FG	FG%	3FG	3FG%	FT	FT%
3rd Qtr	6-19	32%	3-8	38%	3-4	75%
4th Qtr	4-13	31%	2-6	33%	5-6	83%
2nd Half	6-13	46%	3-7	43%	1-5	20%
2nd Half	10-32	31%	5-14	36%	8-10	80%
Game	23-61	37.7%	10-26	38.5%	10-19	52.6%

Deadball Rebounds: 5,0

UNCW 10

No.	Player	S	Pts	FG	3FG	FT	OR	DR	TR	PF	A	TO	Blk	Stl	Min	+/-
01	POWELL, PAIGE	F	0	0-0	0-0	0-0	0	0	0	0	0	0	1	0	4	3
04	MUNOZ, JESSICA	F	0	0-1	0-0	0-0	1	0	1	1	0	0	0	0	4	-7
05	SMITH, GIGI	G	0	0-2	0-2	0-0	0	0	0	1	2	3	0	0	9	-8
10	VASON, AHYIONA	G	0	0-1	0-1	0-0	0	1	1	0	0	1	0	0	5	-1
13	SUGGS, LACEY	G	0	0-2	0-0	0-0	1	1	2	1	1	1	0	0	6	0
02	CRISP, MORIAH	G	0	0-1	0-0	0-0	0	0	0	1	1	0	0	0	5	-6
14	TATE, TIMBER	G	3	1-4	1-4	0-0	0	4	4	0	0	0	0	0	7	0
22	THYBULLE, ZHANEIA	G	0	0-1	0-1	0-0	0	0	0	0	0	0	0	0	2	-4
24	BELL, CHINYERE	F	7	3-5	0-0	1-3	4	1	5	0	0	0	0	0	7	-7
32	OBUSEK, CAROL-ANNE	F	0	0-0	0-0	0-0	0	0	0	0	0	0	0	0	0	0
	TEAM						0	0	0	0		0				
TOTALS			10	4-17	1-8	1-3	6	7	13	4	4	5	1	0	50	

Shooting By Period

Period	FG	FG%	3FG	3FG%	FT	FT%
3rd Qtr	4-10	40%	1-3	33%	4-4	100%
4th Qtr	7-10	70%	3-5	60%	1-2	50%
2nd Half	4-17	24%	1-8	13%	1-3	33%
2nd Half	11-20	55%	4-8	50%	5-6	83%
Game	21-49	42.9%	8-20	40.0%	8-11	72.7%

Deadball Rebounds: 1,0

Game Notes:

Officials: Eric Brewton, Jennifer Rezac, Nic Cappel
Attendance: 705

Start Time: 07:10 PM ET
End Time: 09:03 PM ET
Game Duration: 1:52
Conference Game;

Score	1st	2nd	3rd	4th	TOT
JMU	17	16	18	15	66
NCW	17	10	13	18	58

Points from (This Period)	JMU	NCW
In the Paint	4	6
Off Turns	3	6
2nd Chance	6	3
Fast Break	3	0
Bench	5	10

Official Play-By-Play
James Madison vs UNCW
Second Quarter
January 17, 2020 at Trask Coliseum - Wilmington, N.C.



Period 2

Starters:

James Madison: 15 BARRIER, LEXIE (G); 30 JEFFERSON, KIKI (G); 42 MERRITT, DEVON (F); 55 BENITEZ, JACKIE (G); 3 SMALLS, KAMIAH (G);
UNCW: 1 POWELL, PAIGE (F); 4 MUNOZ, JESSICA (F); 5 SMITH, GIGI (G); 10 VASON, AHYIONA (G); 13 SUGGS, LACEY (G);

Time	VISITORS: James Madison	Score	Margin	HOME: UNCW
10:00	SUB OUT: TUCKER, RAYNE			
10:00	SUB OUT: BENITEZ, JACKIE			
10:00	SUB IN: SMALLS, KAMIAH			
10:00	SUB IN: MERRITT, DEVON			
09:45		19-17	H 2	GOOD! JUMPER by BELL, CHINYERE
09:45				ASSIST by SUGGS, LACEY
09:32	MISSED LAYUP by CARODINE, JAYLIN			
09:32				BLOCK by POWELL, PAIGE
09:26				REBOUND (DEF) by BELL, CHINYERE
09:25				TURNOVER (LOSTBALL) by VASON, AHYIONA
09:25	STEAL by CARODINE, JAYLIN			
09:25				SUB OUT: BELL, CHINYERE
09:25				SUB IN: SMITH, GIGI
09:11	MISSED 3PTR by SMALLS, KAMIAH			
09:08				REBOUND (DEF) by SUGGS, LACEY
09:08	FOUL (PERSONAL) by JEFFERSON, KIKI			
08:44				FOUL (OFF) by SMITH, GIGI
08:44				TURNOVER (OFFENSIVE) by SMITH, GIGI
08:44	SUB OUT: CARODINE, JAYLIN			
08:44	SUB IN: BARRIER, LEXIE			
08:13	MISSED 3PTR by JEFFERSON, KIKI			
08:10				REBOUND (DEF) by VASON, AHYIONA
08:02				MISSED 3PTR by SMITH, GIGI
07:59	REBOUND (DEF) by SMALLS, KAMIAH			
07:50	TURNOVER (TRAVEL) by MERRITT, DEVON			
07:50				SUB OUT: VASON, AHYIONA
07:50				SUB IN: CRISP, MORIAH
07:50	SUB OUT: GREEN, MADISON			
07:50	SUB IN: BENITEZ, JACKIE			
07:38		22-17	H 5	GOOD! 3PTR by TATE, TIMBER
07:38				ASSIST by CRISP, MORIAH
07:29	MISSED 3PTR by JEFFERSON, KIKI			
07:25				REBOUND (DEF) by TATE, TIMBER
07:20				MISSED 3PTR by TATE, TIMBER
07:18				REBOUND (OFF) by SUGGS, LACEY
07:18	FOUL (PERSONAL) by BARRIER, LEXIE			
07:18	SUB OUT: MERRITT, DEVON			
07:18	SUB IN: TUCKER, RAYNE			
07:07				TURNOVER (LOSTBALL) by SMITH, GIGI
06:58	MISSED 3PTR by BENITEZ, JACKIE			
06:54				REBOUND (DEF) by TATE, TIMBER
06:31				TURNOVER (BADPASS) by SUGGS, LACEY
06:31	STEAL by JEFFERSON, KIKI			
06:25	GOOD! JUMPER by BARRIER, LEXIE [FB/PNT]	22-19	H 3	
06:15				MISSED LAYUP by SUGGS, LACEY
06:12	REBOUND (DEF) by BARRIER, LEXIE			
06:04	FOUL (OFF) by SMALLS, KAMIAH			
06:04	TURNOVER (OFFENSIVE) by SMALLS, KAMIAH			
06:04				SUB OUT: POWELL, PAIGE
06:04				SUB OUT: SUGGS, LACEY
06:04				SUB OUT: TATE, TIMBER
06:04				SUB IN: MUNOZ, JESSICA
06:04				SUB IN: THYBULLE, ZHANEIA
06:04				SUB IN: BELL, CHINYERE
06:04	SUB OUT: SMALLS, KAMIAH			
06:04	SUB IN: CARODINE, JAYLIN			
05:57		24-19	H 5	GOOD! LAYUP by BELL, CHINYERE
05:57				ASSIST by SMITH, GIGI
05:57	FOUL (PERSONAL) by CARODINE, JAYLIN			
05:57	SUB OUT: JEFFERSON, KIKI			
05:57	SUB IN: GREEN, MADISON			
05:57				MISSED FT by BELL, CHINYERE
05:57	REBOUND (DEF) by CARODINE, JAYLIN			
05:33	MISSED LAYUP by BENITEZ, JACKIE			
05:30	REBOUND (OFF) by CARODINE, JAYLIN			
05:24	GOOD! 3PTR by BENITEZ, JACKIE	24-22	H 2	
05:02				MISSED 3PTR by THYBULLE, ZHANEIA
05:02	REBOUND (DEF) by TEAM			
04:50	GOOD! 3PTR by GREEN, MADISON	24-25	V 1	
04:24				MISSED JUMPER by MUNOZ, JESSICA

Time	VISITORS: James Madison	Score	Margin	HOME: UNCW
04:19				REBOUND (OFF) by BELL, CHINYERE
04:13				MISSED 3PTR by SMITH, GIGI
04:09	REBOUND (DEF) by BENITEZ, JACKIE			
04:07	TURNOVER (BADPASS) by BENITEZ, JACKIE			
04:07				
04:07				SUB OUT: THYBULLE, ZHANEIA
04:07				SUB IN: SUGGS, LACEY
03:44				MISSED JUMPER by BELL, CHINYERE
03:41				REBOUND (OFF) by MUNOZ, JESSICA
03:39				MISSED JUMPER by SUGGS, LACEY
03:35	REBOUND (DEF) by TUCKER, RAYNE			
03:31	GOOD! LAYUP by CARODINE, JAYLIN [PNT]	24-27	V 3	
03:31				FOUL (PERSONAL) by MUNOZ, JESSICA
03:31				SUB OUT: MUNOZ, JESSICA
03:31				SUB IN: TATE, TIMBER
03:31	MISSED FT by CARODINE, JAYLIN			
03:31				REBOUND (DEF) by TATE, TIMBER
03:02				SUB OUT: CRISP, MORIAH
03:02				SUB IN: VASON, AHYIONA
03:00				MISSED 3PTR by TATE, TIMBER
02:56				REBOUND (OFF) by BELL, CHINYERE
02:55				MISSED JUMPER by BELL, CHINYERE
02:51	REBOUND (DEF) by TUCKER, RAYNE			
02:41	TURNOVER (TRAVEL) by BARRIER, LEXIE			
02:20				MISSED 3PTR by VASON, AHYIONA
02:18				REBOUND (OFF) by BELL, CHINYERE
02:18	FOUL (PERSONAL) by TUCKER, RAYNE			
02:18	SUB OUT: GREEN, MADISON			
02:18	SUB IN: OPPENHEIMER, NIKKI			
02:18				MISSED FT by BELL, CHINYERE
02:18				REBOUND (OFF) by TEAM
02:18		25-27	V 2	GOOD! FT by BELL, CHINYERE
02:18	SUB OUT: TUCKER, RAYNE			
02:18	SUB IN: MERRITT, DEVON			
02:06	GOOD! JUMPER by BARRIER, LEXIE	25-29	V 4	
01:44				TURNOVER (BADPASS) by SMITH, GIGI
01:44	STEAL by CARODINE, JAYLIN			
01:37				FOUL (PERSONAL) by SUGGS, LACEY
01:37				SUB OUT: SUGGS, LACEY
01:37				SUB IN: CRISP, MORIAH
01:37	GOOD! FT by BENITEZ, JACKIE [FB]	25-30	V 5	
01:37	MISSED FT by BENITEZ, JACKIE			
01:37				REBOUND (DEF) by TATE, TIMBER
01:23				MISSED JUMPER by CRISP, MORIAH
01:19	REBOUND (DEF) by BENITEZ, JACKIE			
01:12				FOUL (PERSONAL) by CRISP, MORIAH
01:12				SUB OUT: CRISP, MORIAH
01:12				SUB IN: MUNOZ, JESSICA
01:12	SUB OUT: MERRITT, DEVON			
01:12	SUB IN: TUCKER, RAYNE			
01:12	MISSED FT by BENITEZ, JACKIE			
01:12	REBOUND (OFF) by TEAM			
01:12	MISSED FT by BENITEZ, JACKIE			
01:12	REBOUND (OFF) by TEAM			
01:05	MISSED JUMPER by BENITEZ, JACKIE			
01:01	REBOUND (OFF) by BARRIER, LEXIE			
00:56	GOOD! 3PTR by BENITEZ, JACKIE	25-33	V 8	
00:56	ASSIST by BARRIER, LEXIE			
00:36				MISSED 3PTR by TATE, TIMBER
00:33	SUB OUT: OPPENHEIMER, NIKKI			
00:33	SUB IN: JEFFERSON, KIKI			
00:33				REBOUND (OFF) by BELL, CHINYERE
00:19		27-33	V 6	GOOD! LAYUP by BELL, CHINYERE
00:19				ASSIST by SMITH, GIGI
00:02	FOUL (OFF) by BARRIER, LEXIE			
00:02	TURNOVER (OFFENSIVE) by BARRIER, LEXIE			
00:02				SUB OUT: BELL, CHINYERE
00:02				SUB IN: OBUSEK, CAROL-ANNE
00:02	SUB OUT: BARRIER, LEXIE			
00:02	SUB IN: GREEN, MADISON			

James Madison 33, UNCW 27

Points from (This Period)	JMU	NCW
In the Paint	4	6
Off Turns	3	6
2nd Chance	6	3
Fast Break	3	0
Bench	5	10

Official Box Score
James Madison vs UNCW
Second Half Statistics Only
January 17, 2020 at Trask Coliseum - Wilmington, N.C.



James Madison 33

No.	Player	S	Pts	FG	3FG	FT	OR	DR	TR	PF	A	TO	Blk	Stl	Min	+/-
00	OPPENHEIMER, NIKKI	G	0	0-0	0-0	0-0	0	0	0	0	0	0	0	0	0	0
15	BARRIER, LEXIE	G	0	0-5	0-2	0-0	0	2	2	1	1	1	0	2	13	-11
21	TUCKER, RAYNE	F	2	0-1	0-0	2-2	3	0	3	2	1	0	1	4	14	6
30	JEFFERSON, KIKI	G	8	2-3	1-2	3-4	3	2	5	1	1	1	0	0	13	4
42	MERRITT, DEVON	F	1	0-2	0-0	1-2	1	0	1	1	0	0	0	0	6	-4
55	BENITEZ, JACKIE	G	3	1-9	1-7	0-0	0	0	0	1	0	0	0	0	17	1
02	CARODINE, JAYLIN	G	0	0-1	0-0	0-0	0	0	0	1	0	0	0	0	8	12
03	SMALLS, KAMIAH	G	14	5-8	2-2	2-2	2	2	4	1	1	0	0	0	18	-4
04	GREEN, MADISON	G	5	2-3	1-1	0-0	0	1	1	0	0	0	0	0	12	6
	TEAM		0	0-0	0-0	0-0	1	0	1	0	0	2	0	0	0	
TOTALS			33	10-32	5-14	8-10	10	7	17	8	4	4	1	6	100	

Shooting By Period

Period	FG	FG%	3FG	3FG%	FT	FT%
3rd Qtr	6-19	32%	3-8	38%	3-4	75%
4th Qtr	4-13	31%	2-6	33%	5-6	83%
2nd Half	10-32	31%	5-14	36%	8-10	80%
Game	23-61	37.7%	10-26	38.5%	10-19	52.6%

Deadball Rebounds: 5,0

Last FG Half: JMU 4th-02:51

UNCW 31

No.	Player	S	Pts	FG	3FG	FT	OR	DR	TR	PF	A	TO	Blk	Stl	Min	+/-
01	POWELL, PAIGE	F	0	0-0	0-0	0-0	0	1	1	1	0	0	0	0	5	-5
02	CRISP, MORIAH	G	3	1-2	1-2	0-0	0	0	0	1	2	0	0	0	8	5
04	MUNOZ, JESSICA	F	0	0-2	0-0	0-0	0	2	2	0	0	1	0	0	7	1
05	SMITH, GIGI	G	6	2-2	0-0	2-2	0	1	1	1	1	5	0	1	20	-2
10	VASON, AHYIONA	G	9	3-3	1-1	2-2	0	0	0	1	0	1	0	0	12	-7
13	SUGGS, LACEY	G	7	3-5	1-3	0-0	0	2	2	2	0	2	0	0	20	-2
14	TATE, TIMBER	G	3	1-3	1-2	0-0	0	1	1	1	0	1	0	0	13	-3
22	THYBULLE, ZHANEIA	G	0	0-0	0-0	0-0	0	0	0	0	0	0	0	0	0	0
24	BELL, CHINYERE	F	3	1-1	0-0	1-2	1	4	5	3	2	0	0	0	13	7
32	OBUSEK, CAROL-ANNE	F	0	0-2	0-0	0-0	1	0	1	1	0	0	0	0	2	-4
	TEAM		0	0-0	0-0	0-0	1	1	2	0	0	1	0	0	0	
TOTALS			31	11-20	4-8	5-6	3	12	15	11	5	11	0	1	100	

Shooting By Period

Period	FG	FG%	3FG	3FG%	FT	FT%
3rd Qtr	4-10	40%	1-3	33%	4-4	100%
4th Qtr	7-10	70%	3-5	60%	1-2	50%
2nd Half	11-20	55%	4-8	50%	5-6	83%
Game	21-49	42.9%	8-20	40.0%	8-11	72.7%

Deadball Rebounds: 1,0

Last FG Half: NCW 4th-00:00

Game Notes:

Officials: Eric Brewton, Jennifer Rezac, Nic Cappel
Attendance: 705

Start Time: 07:10 PM ET
End Time: 09:03 PM ET
Game Duration: 1:52
Conference Game;

Score	1st	2nd	3rd	4th	TOT
JMU	17	16	18	15	66
NCW	17	10	13	18	58

Points from (This Period)	JMU	NCW
In the Paint	6	12
Off Turns	9	2
2nd Chance	10	0
Fast Break	5	2
Bench	7	9

Official Box Score
James Madison vs UNCW
Third Quarter Statistics Only
January 17, 2020 at Trask Coliseum - Wilmington, N.C.



James Madison 33

No.	Player	S	Pts	FG	3FG	FT	OR	DR	TR	PF	A	TO	Blk	Stl	Min	+/-
03	SMALLS, KAMIAH	G	4	2-4	0-0	0-0	2	0	2	0	1	0	0	0	8	-1
15	BARRIER, LEXIE	G	0	0-3	0-1	0-0	0	0	0	0	0	0	0	1	5	-6
30	JEFFERSON, KIKI	G	6	1-2	1-2	3-4	2	2	4	1	0	1	0	0	7	5
42	MERRITT, DEVON	F	0	0-2	0-0	0-0	1	0	1	0	0	0	0	0	4	-4
55	BENITEZ, JACKIE	G	3	1-5	1-4	0-0	0	0	0	1	0	0	0	0	9	4
00	OPPENHEIMER, NIKKI	G	0	0-0	0-0	0-0	0	0	0	0	0	0	0	0	0	0
02	CARODINE, JAYLIN	G	0	0-1	0-0	0-0	0	0	0	1	0	0	0	0	5	11
04	GREEN, MADISON	G	5	2-2	1-1	0-0	0	1	1	0	0	0	0	0	6	7
21	TUCKER, RAYNE	F	0	0-0	0-0	0-0	2	0	2	1	1	0	1	2	6	9
	TEAM						0	0	0	0		0				
TOTALS			18	6-19	3-8	3-4	7	3	10	4	2	1	1	3	50	

Shooting By Period

Period	FG	FG%	3FG	3FG%	FT	FT%
2nd Half	0-0	0%	0-0	0%	0-0	0%
Game	23-61	37.7%	10-26	38.5%	10-19	52.6%

Deadball Rebounds: 5,0

UNCW 31

No.	Player	S	Pts	FG	3FG	FT	OR	DR	TR	PF	A	TO	Blk	Stl	Min	+/-
01	POWELL, PAIGE	F	0	0-0	0-0	0-0	0	1	1	1	0	0	0	0	4	-5
04	MUNOZ, JESSICA	F	0	0-2	0-0	0-0	0	2	2	0	0	1	0	0	7	1
05	SMITH, GIGI	G	6	2-2	0-0	2-2	0	1	1	1	0	2	0	0	10	-5
10	VASON, AHYIONA	G	7	2-2	1-1	2-2	0	0	0	0	0	1	0	0	9	-5
13	SUGGS, LACEY	G	0	0-2	0-2	0-0	0	0	0	0	0	0	0	0	10	-5
02	CRISP, MORIAH	G	0	0-0	0-0	0-0	0	0	0	0	0	0	0	0	1	0
14	TATE, TIMBER	G	0	0-0	0-0	0-0	0	1	1	1	0	0	0	0	3	-6
22	THYBULLE, ZHANEIA	G	0	0-0	0-0	0-0	0	0	0	0	0	0	0	0	0	0
24	BELL, CHINYERE	F	0	0-0	0-0	0-0	1	1	2	1	2	0	0	0	4	4
32	OBUSEK, CAROL-ANNE	F	0	0-2	0-0	0-0	1	0	1	1	0	0	0	0	2	-4
	TEAM						1	0	1	0		1				
TOTALS			13	4-10	1-3	4-4	3	6	9	5	2	5	0	0	50	

Shooting By Period

Period	FG	FG%	3FG	3FG%	FT	FT%
2nd Half	0-0	0%	0-0	0%	0-0	0%
Game	21-49	42.9%	8-20	40.0%	8-11	72.7%

Deadball Rebounds: 1,0

Game Notes:

Officials: Eric Brewton, Jennifer Rezac, Nic Cappel

Attendance: 705

Start Time: 07:10 PM ET

End Time: 09:03 PM ET

Game Duration: 1:52

Conference Game;

Score	1st	2nd	3rd	4th	TOT
JMU	17	16	18	15	66
NCW	17	10	13	18	58

Points from (This Period)	JMU	NCW
In the Paint	4	6
Off Turns	7	2
2nd Chance	8	0
Fast Break	1	2
Bench	5	0

Official Play-By-Play
James Madison vs UNCW
Third Quarter
January 17, 2020 at Trask Coliseum - Wilmington, N.C.



Period 3

Starters:

James Madison: 15 BARRIER, LEXIE (G); 30 JEFFERSON, KIKI (G); 42 MERRITT, DEVON (F); 55 BENITEZ, JACKIE (G); 3 SMALLS, KAMIAH (G);
UNCW: 1 POWELL, PAIGE (F); 4 MUNOZ, JESSICA (F); 5 SMITH, GIGI (G); 10 VASON, AHYIONA (G); 13 SUGGS, LACEY (G);

Time	VISITORS: James Madison	Score	Margin	HOME: UNCW
10:00				SUB OUT: MUNOZ, JESSICA
10:00				SUB OUT: OBUSEK, CAROL-ANNE
10:00				SUB IN: POWELL, PAIGE
10:00				SUB IN: SUGGS, LACEY
10:00	SUB OUT: CARODINE, JAYLIN			
10:00	SUB OUT: GREEN, MADISON			
10:00	SUB OUT: TUCKER, RAYNE			
10:00	SUB IN: SMALLS, KAMIAH			
10:00	SUB IN: BARRIER, LEXIE			
10:00	SUB IN: MERRITT, DEVON			
09:42	MISSED JUMPER by MERRITT, DEVON			
09:39	REBOUND (OFF) by SMALLS, KAMIAH			
09:37	MISSED JUMPER by BENITEZ, JACKIE			
09:34	REBOUND (OFF) by MERRITT, DEVON			
09:27	GOOD! 3PTR by JEFFERSON, KIKI	27-36	V 9	
09:27	ASSIST by SMALLS, KAMIAH			
09:01				MISSED 3PTR by SUGGS, LACEY
09:01	REBOUND (DEF) by JEFFERSON, KIKI			
09:01				FOUL (PERSONAL) by POWELL, PAIGE
08:49	GOOD! JUMPER by SMALLS, KAMIAH	27-38	V 11	
08:46				TIMEOUT 30SEC
08:46				
08:46				SUB OUT: POWELL, PAIGE
08:46				SUB OUT: TATE, TIMBER
08:46				SUB IN: MUNOZ, JESSICA
08:46				SUB IN: BELL, CHINYERE
08:30		29-38	V 9	GOOD! LAYUP by SMITH, GIGI
08:30				ASSIST by BELL, CHINYERE
08:18	MISSED 3PTR by BENITEZ, JACKIE			
08:15				REBOUND (DEF) by MUNOZ, JESSICA
08:00				TURNOVER (LOSTBALL) by SMITH, GIGI
08:00	STEAL by BARRIER, LEXIE			
07:46	MISSED 3PTR by JEFFERSON, KIKI			
07:43				REBOUND (DEF) by MUNOZ, JESSICA
07:25		32-38	V 6	GOOD! 3PTR by VASON, AHYIONA
07:25				ASSIST by BELL, CHINYERE
06:55	MISSED LAYUP by MERRITT, DEVON			
06:52				REBOUND (DEF) by BELL, CHINYERE
06:51		34-38	V 4	GOOD! LAYUP by SMITH, GIGI [FB]
06:22	MISSED JUMPER by BARRIER, LEXIE			
06:22	REBOUND (OFF) by JEFFERSON, KIKI			
06:22	SUB OUT: MERRITT, DEVON			
06:22	SUB IN: TUCKER, RAYNE			
06:19	TURNOVER (BADPASS) by JEFFERSON, KIKI			
05:53	FOUL (PERSONAL) by JEFFERSON, KIKI			
05:53				SUB OUT: BELL, CHINYERE
05:53				SUB IN: POWELL, PAIGE
05:53	SUB OUT: JEFFERSON, KIKI			
05:53	SUB IN: GREEN, MADISON			
05:49		36-38	V 2	GOOD! JUMPER by VASON, AHYIONA [PNT]
05:42	MISSED JUMPER by BARRIER, LEXIE			
05:39	REBOUND (OFF) by SMALLS, KAMIAH			
05:38	MISSED JUMPER by SMALLS, KAMIAH			
05:35				REBOUND (DEF) by POWELL, PAIGE
05:15	FOUL (PERSONAL) by BENITEZ, JACKIE			
05:15				SUB OUT: VASON, AHYIONA
05:15				SUB IN: CRISP, MORIAH
05:15	TIMEOUT 30SEC			
05:15				
05:15	SUB OUT: BARRIER, LEXIE			
05:15	SUB IN: CARODINE, JAYLIN			
05:15		37-38	V 1	GOOD! FT by SMITH, GIGI
05:15		38-38	T	GOOD! FT by SMITH, GIGI
04:58	MISSED JUMPER by SMALLS, KAMIAH			
04:56	REBOUND (OFF) by TUCKER, RAYNE			
04:54	GOOD! JUMPER by GREEN, MADISON	38-40	V 2	
04:18				TURNOVER (SHOTCLOCK) by TEAM
04:18				SUB OUT: CRISP, MORIAH
04:18				SUB IN: VASON, AHYIONA
04:02	GOOD! JUMPER by SMALLS, KAMIAH [PNT]	38-42	V 4	

Time	VISITORS: James Madison	Score	Margin	HOME: UNCW
03:42				TURNOVER (BADPASS) by MUNOZ, JESSICA
03:42	STEAL by TUCKER, RAYNE			
03:27	MISSED 3PTR by BENITEZ, JACKIE			
03:23				REBOUND (DEF) by SMITH, GIGI
03:19				SUB OUT: POWELL, PAIGE
03:19				SUB IN: BELL, CHINYERE
03:15				MISSED 3PTR by SUGGS, LACEY
03:15				REBOUND (OFF) by BELL, CHINYERE
03:15	FOUL (PERSONAL) by CARODINE, JAYLIN			
03:15	SUB OUT: SMALLS, KAMIAH			
03:15	SUB IN: JEFFERSON, KIKI			
03:09				TURNOVER (BADPASS) by SMITH, GIGI
03:09	STEAL by TUCKER, RAYNE			
03:09				FOUL (PERSONAL) by BELL, CHINYERE
02:53	GOOD! 3PTR by GREEN, MADISON	38-45	V 7	
02:35				MISSED JUMPER by MUNOZ, JESSICA
02:31	REBOUND (DEF) by JEFFERSON, KIKI			
02:13	MISSED 3PTR by BENITEZ, JACKIE			
02:11	REBOUND (OFF) by JEFFERSON, KIKI			
02:11				FOUL (PERSONAL) by SMITH, GIGI
02:11				SUB OUT: BELL, CHINYERE
02:11				SUB IN: OBUSEK, CAROL-ANNE
02:04	MISSED LAYUP by CARODINE, JAYLIN			
02:00	REBOUND (OFF) by TUCKER, RAYNE			
01:59	GOOD! 3PTR by BENITEZ, JACKIE	38-48	V 10	
01:59	ASSIST by TUCKER, RAYNE			
01:57				TIMEOUT TEAM
01:42				MISSED JUMPER by MUNOZ, JESSICA
01:39				REBOUND (OFF) by OBUSEK, CAROL-ANNE
01:39				MISSED JUMPER by OBUSEK, CAROL-ANNE
01:39	BLOCK by TUCKER, RAYNE			
01:39				REBOUND (OFF) by TEAM
01:39				SUB OUT: MUNOZ, JESSICA
01:39				SUB IN: TATE, TIMBER
01:23				MISSED JUMPER by OBUSEK, CAROL-ANNE
01:19	REBOUND (DEF) by GREEN, MADISON			
01:15				FOUL (PERSONAL) by TATE, TIMBER
01:15	SUB OUT: BENITEZ, JACKIE			
01:15	SUB IN: SMALLS, KAMIAH			
01:15	MISSED FT by JEFFERSON, KIKI			
01:15	REBOUND (OFF) by TEAM			
01:15	GOOD! FT by JEFFERSON, KIKI [FB]	38-49	V 11	
00:48				TURNOVER (LOSTBALL) by VASON, AHYIONA
00:31				FOUL (PERSONAL) by OBUSEK, CAROL-ANNE
00:31				SUB OUT: OBUSEK, CAROL-ANNE
00:31				SUB IN: POWELL, PAIGE
00:31	GOOD! FT by JEFFERSON, KIKI	38-50	V 12	
00:31	GOOD! FT by JEFFERSON, KIKI	38-51	V 13	
00:19	FOUL (PERSONAL) by TUCKER, RAYNE			
00:19	SUB OUT: CARODINE, JAYLIN			
00:19	SUB OUT: TUCKER, RAYNE			
00:19	SUB IN: BARRIER, LEXIE			
00:19	SUB IN: MERRITT, DEVON			
00:19		39-51	V 12	GOOD! FT by VASON, AHYIONA
00:19		40-51	V 11	GOOD! FT by VASON, AHYIONA
00:00	MISSED 3PTR by BARRIER, LEXIE			
00:00				REBOUND (DEF) by TATE, TIMBER

James Madison 51, UNCW 40

Points from (This Period)	JMU	NCW
In the Paint	4	6
Off Turns	7	2
2nd Chance	8	0
Fast Break	1	2
Bench	5	0

Official Box Score
James Madison vs UNCW
Fourth Quarter Statistics Only
January 17, 2020 at Trask Coliseum - Wilmington, N.C.



James Madison 15

No.	Player	S	Pts	FG	3FG	FT	OR	DR	TR	PF	A	TO	Blk	Stl	Min	+/-
03	SMALLS, KAMIAH	G	10	3-4	2-2	2-2	0	2	2	1	0	0	0	0	10	-3
15	BARRIER, LEXIE	G	0	0-2	0-1	0-0	0	2	2	1	1	1	0	1	8	-5
30	JEFFERSON, KIKI	G	2	1-1	0-0	0-0	1	0	1	0	1	0	0	0	6	-1
42	MERRITT, DEVON	F	1	0-0	0-0	1-2	0	0	0	1	0	0	0	0	2	0
55	BENITEZ, JACKIE	G	0	0-4	0-3	0-0	0	0	0	0	0	0	0	0	8	-3
00	OPPENHEIMER, NIKKI	G	0	0-0	0-0	0-0	0	0	0	0	0	0	0	0	0	0
02	CARODINE, JAYLIN	G	0	0-0	0-0	0-0	0	0	0	0	0	0	0	0	3	1
04	GREEN, MADISON	G	0	0-1	0-0	0-0	0	0	0	0	0	0	0	0	6	-1
21	TUCKER, RAYNE	F	2	0-1	0-0	2-2	1	0	1	1	0	0	0	2	8	-3
	TEAM						1	0	1	0		2				
TOTALS			15	4-13	2-6	5-6	3	4	7	4	2	3	0	3	50	

Shooting By Period

Period	FG	FG%	3FG	3FG%	FT	FT%
Game	23-61	37.7%	10-26	38.5%	10-19	52.6%

Deadball Rebounds: 5,0

UNCW 18

No.	Player	S	Pts	FG	3FG	FT	OR	DR	TR	PF	A	TO	Blk	Stl	Min	+/-
01	POWELL, PAIGE	F	0	0-0	0-0	0-0	0	0	0	0	0	0	0	0	1	0
04	MUNOZ, JESSICA	F	0	0-0	0-0	0-0	0	0	0	0	0	0	0	0	0	0
05	SMITH, GIGI	G	0	0-0	0-0	0-0	0	0	0	0	1	3	0	1	10	3
10	VASON, AHYIONA	G	2	1-1	0-0	0-0	0	0	0	1	0	0	0	0	3	-2
13	SUGGS, LACEY	G	7	3-3	1-1	0-0	0	2	2	2	0	2	0	0	10	3
02	CRISP, MORIAH	G	3	1-2	1-2	0-0	0	0	0	1	2	0	0	0	7	5
14	TATE, TIMBER	G	3	1-3	1-2	0-0	0	0	0	0	0	1	0	0	10	3
22	THYBULLE, ZHANEIA	G	0	0-0	0-0	0-0	0	0	0	0	0	0	0	0	0	0
24	BELL, CHINYERE	F	3	1-1	0-0	1-2	0	3	3	2	0	0	0	0	9	3
32	OBUSEK, CAROL-ANNE	F	0	0-0	0-0	0-0	0	0	0	0	0	0	0	0	0	0
	TEAM						0	1	1	0		0				
TOTALS			18	7-10	3-5	1-2	0	6	6	6	3	6	0	1	50	

Shooting By Period

Period	FG	FG%	3FG	3FG%	FT	FT%
Game	21-49	42.9%	8-20	40.0%	8-11	72.7%

Deadball Rebounds: 1,0

Game Notes:

Officials: Eric Brewton, Jennifer Rezac, Nic Cappel
Attendance: 705

Start Time: 07:10 PM ET
End Time: 09:03 PM ET
Game Duration: 1:52
Conference Game;

Score	1st	2nd	3rd	4th	TOT
JMU	17	16	18	15	66
NCW	17	10	13	18	58

Points from (This Period)	JMU	NCW
In the Paint	2	6
Off Turns	2	0
2nd Chance	2	0
Fast Break	4	0
Bench	2	9

Official Play-By-Play
James Madison vs UNCW
Fourth Quarter
January 17, 2020 at Trask Coliseum - Wilmington, N.C.



Period 4

Starters:

James Madison: 15 BARRIER, LEXIE (G); 30 JEFFERSON, KIKI (G); 42 MERRITT, DEVON (F); 55 BENITEZ, JACKIE (G); 3 SMALLS, KAMIAH (G);
UNCW: 1 POWELL, PAIGE (F); 4 MUNOZ, JESSICA (F); 5 SMITH, GIGI (G); 10 VASON, AHYIONA (G); 13 SUGGS, LACEY (G);

Time	VISITORS: James Madison	Score	Margin	HOME: UNCW
10:00				SUB OUT: POWELL, PAIGE
10:00				SUB IN: BELL, CHINYERE
09:42		42-51	V 9	GOOD! LAYUP by SUGGS, LACEY [PNT]
09:15				FOUL (PERSONAL) by VASON, AHYIONA
09:12	GOOD! JUMPER by SMALLS, KAMIAH	42-53	V 11	
08:55		44-53	V 9	GOOD! LAYUP by BELL, CHINYERE
08:20	GOOD! 3PTR by SMALLS, KAMIAH	44-56	V 12	
08:20	ASSIST by JEFFERSON, KIKI			
08:11		46-56	V 10	GOOD! JUMPER by VASON, AHYIONA
07:55				FOUL (PERSONAL) by BELL, CHINYERE
07:55	MISSED FT by MERRITT, DEVON			
07:55	REBOUND (OFF) by TEAM			
07:55	GOOD! FT by MERRITT, DEVON	46-57	V 11	
07:55				SUB OUT: VASON, AHYIONA
07:55				SUB IN: CRISP, MORIAH
07:39	FOUL (PERSONAL) by MERRITT, DEVON			
07:39	SUB OUT: JEFFERSON, KIKI			
07:39	SUB OUT: MERRITT, DEVON			
07:39	SUB IN: TUCKER, RAYNE			
07:39	SUB IN: BENITEZ, JACKIE			
07:39		47-57	V 10	GOOD! FT by BELL, CHINYERE
07:39				MISSED FT by BELL, CHINYERE
07:39	REBOUND (DEF) by BARRIER, LEXIE			
07:13	MISSED JUMPER by BARRIER, LEXIE			
07:09				REBOUND (DEF) by BELL, CHINYERE
06:47		49-57	V 8	GOOD! LAYUP by SUGGS, LACEY
06:14	MISSED 3PTR by BENITEZ, JACKIE			
06:14	REBOUND (OFF) by TUCKER, RAYNE			
06:14	TURNOVER (SHOTCLOCK) by TEAM			
06:14	SUB OUT: GREEN, MADISON			
06:14	SUB OUT: BARRIER, LEXIE			
06:14	SUB IN: CARODINE, JAYLIN			
06:14	SUB IN: JEFFERSON, KIKI			
06:00				TURNOVER (BADPASS) by SMITH, GIGI
06:00	STEAL by TUCKER, RAYNE			
05:51	MISSED 3PTR by BENITEZ, JACKIE			
05:48	REBOUND (OFF) by TEAM			
05:27	TURNOVER (SHOTCLOCK) by TEAM			
05:27				SUB OUT: CRISP, MORIAH
05:27				SUB IN: VASON, AHYIONA
05:14				MISSED 3PTR by TATE, TIMBER
05:10	REBOUND (DEF) by SMALLS, KAMIAH			
05:02	MISSED JUMPER by TUCKER, RAYNE			
04:59	REBOUND (OFF) by JEFFERSON, KIKI			
04:58	GOOD! LAYUP by JEFFERSON, KIKI	49-59	V 10	
04:49				TIMEOUT 30SEC
04:49				
04:49				SUB OUT: BELL, CHINYERE
04:49				SUB IN: POWELL, PAIGE
04:49				SUB OUT: VASON, AHYIONA
04:49				SUB IN: CRISP, MORIAH
04:36				TURNOVER (TRAVEL) by SMITH, GIGI
04:18	MISSED 3PTR by BENITEZ, JACKIE			
04:18				REBOUND (DEF) by TEAM
04:18				SUB OUT: POWELL, PAIGE
04:18				SUB IN: BELL, CHINYERE
04:18	SUB OUT: CARODINE, JAYLIN			
04:18	SUB IN: BARRIER, LEXIE			
04:03		52-59	V 7	GOOD! 3PTR by CRISP, MORIAH
04:03				ASSIST by SMITH, GIGI
03:46				FOUL (PERSONAL) by SUGGS, LACEY
03:34	MISSED JUMPER by BENITEZ, JACKIE			
03:33				REBOUND (DEF) by SUGGS, LACEY
03:33	FOUL (PERSONAL) by TUCKER, RAYNE			
03:12		55-59	V 4	GOOD! 3PTR by TATE, TIMBER
03:12				ASSIST by CRISP, MORIAH
02:51	GOOD! 3PTR by SMALLS, KAMIAH	55-62	V 7	
02:51	ASSIST by BARRIER, LEXIE			
02:49	TIMEOUT 30SEC			
02:49	SUB OUT: JEFFERSON, KIKI			

Time	VISITORS: James Madison	Score	Margin	HOME: UNCW
02:49	SUB IN: GREEN, MADISON			
02:35				MISSED JUMPER by TATE, TIMBER
02:32	REBOUND (DEF) by BARRIER, LEXIE			
02:14	MISSED 3PTR by BARRIER, LEXIE			
02:11				REBOUND (DEF) by BELL, CHINYERE
02:01				TURNOVER (LOSTBALL) by SUGGS, LACEY
01:46				FOUL (PERSONAL) by CRISP, MORIAH
01:33	TURNOVER (BADPASS) by BARRIER, LEXIE			
01:33				STEAL by SMITH, GIGI
01:27				TURNOVER (BADPASS) by SUGGS, LACEY
01:27	STEAL by BARRIER, LEXIE			
01:02	MISSED LAYUP by GREEN, MADISON			
01:00				REBOUND (DEF) by SUGGS, LACEY
01:00	FOUL (PERSONAL) by BARRIER, LEXIE			
00:48				MISSED 3PTR by CRISP, MORIAH
00:46				FOUL (PERSONAL) by SUGGS, LACEY
00:46	GOOD! FT by SMALLS, KAMIAH [FB]	55-63	V 8	
00:46	GOOD! FT by SMALLS, KAMIAH [FB]	55-64	V 9	
00:46				TIMEOUT 30SEC
00:46	SUB OUT: GREEN, MADISON			
00:46	SUB IN: CARODINE, JAYLIN			
00:45	REBOUND (DEF) by SMALLS, KAMIAH			
00:36				TURNOVER (TRAVEL) by SMITH, GIGI
00:15	MISSED JUMPER by SMALLS, KAMIAH			
00:11				REBOUND (DEF) by BELL, CHINYERE
00:10	FOUL (PERSONAL) by SMALLS, KAMIAH			
00:08				TURNOVER (BADPASS) by TATE, TIMBER
00:08	STEAL by TUCKER, RAYNE			
00:05				FOUL (PERSONAL) by BELL, CHINYERE
00:05	GOOD! FT by TUCKER, RAYNE [FB]	55-65	V 10	
00:05	GOOD! FT by TUCKER, RAYNE [FB]	55-66	V 11	
00:00		58-66	V 8	GOOD! 3PTR by SUGGS, LACEY
00:00				ASSIST by CRISP, MORIAH

James Madison 66, UNCW 58

Points from (This Period)	JMU	NCW
In the Paint	2	6
Off Turns	2	0
2nd Chance	2	0
Fast Break	4	0
Bench	2	9

Official Scoring/Possession Reference Chart
James Madison vs UNCW
Period 1
January 17, 2020 at Trask Coliseum - Wilmington, N.C.



Period 1

Starters:

James Madison: 15 BARRIER, LEXIE (G); 30 JEFFERSON, KIKI (G); 42 MERRITT, DEVON (F); 55 BENITEZ, JACKIE (G); 3 SMALLS, KAMIAH (G);
UNCW: 1 POWELL, PAIGE (F); 4 MUNOZ, JESSICA (F); 5 SMITH, GIGI (G); 10 VASON, AHYIONA (G); 13 SUGGS, LACEY (G);

Time	VISITORS: James Madison	Score	Margin	HOME: UNCW
08:47		2-0	H 2	GOOD! JUMPER by VASON, AHYIONA
08:33	GOOD! LAYUP by BARRIER, LEXIE	2-2	T	
07:36		5-2	H 3	GOOD! 3PTR by SMITH, GIGI
07:07	GOOD! LAYUP by MERRITT, DEVON	5-4	H 1	
06:22		6-4	H 2	GOOD! FT by SUGGS, LACEY
06:22		7-4	H 3	GOOD! FT by SUGGS, LACEY
06:02	GOOD! LAYUP by MERRITT, DEVON [PNT]	7-6	H 1	
05:03		10-6	H 4	GOOD! 3PTR by SMITH, GIGI
04:17		13-6	H 7	GOOD! 3PTR by SUGGS, LACEY
03:48	GOOD! 3PTR by SMALLS, KAMIAH	13-9	H 4	
02:59	GOOD! 3PTR by SMALLS, KAMIAH [FB]	13-12	H 1	
02:27	GOOD! LAYUP by BENITEZ, JACKIE [FB/PNT]	13-14	V 1	
02:21		15-14	H 1	GOOD! LAYUP by SMITH, GIGI
01:33	GOOD! LAYUP by GREEN, MADISON	15-16	V 1	
00:21		17-16	H 1	GOOD! LAYUP by BELL, CHINYERE
00:01	GOOD! FT by JEFFERSON, KIKI	17-17	T	

James Madison 17, UNCW 17

Official Scoring/Possession Reference Chart
James Madison vs UNCW
Period 2
January 17, 2020 at Trask Coliseum - Wilmington, N.C.



Period 2

Starters:

James Madison: 15 BARRIER, LEXIE (G); 30 JEFFERSON, KIKI (G); 42 MERRITT, DEVON (F); 55 BENITEZ, JACKIE (G); 3 SMALLS, KAMIAH (G);
UNCW: 1 POWELL, PAIGE (F); 4 MUNOZ, JESSICA (F); 5 SMITH, GIGI (G); 10 VASON, AHYIONA (G); 13 SUGGS, LACEY (G);

Time	VISITORS: James Madison	Score	Margin	HOME: UNCW
09:45		19-17	H 2	GOOD! JUMPER by BELL, CHINYERE
07:38		22-17	H 5	GOOD! 3PTR by TATE, TIMBER
06:25	GOOD! JUMPER by BARRIER, LEXIE [FB/PNT]	22-19	H 3	
05:57		24-19	H 5	GOOD! LAYUP by BELL, CHINYERE
05:24	GOOD! 3PTR by BENITEZ, JACKIE	24-22	H 2	
04:50	GOOD! 3PTR by GREEN, MADISON	24-25	V 1	
03:31	GOOD! LAYUP by CARODINE, JAYLIN [PNT]	24-27	V 3	
02:18		25-27	V 2	GOOD! FT by BELL, CHINYERE
02:06	GOOD! JUMPER by BARRIER, LEXIE	25-29	V 4	
01:37	GOOD! FT by BENITEZ, JACKIE [FB]	25-30	V 5	
00:56	GOOD! 3PTR by BENITEZ, JACKIE	25-33	V 8	
00:19		27-33	V 6	GOOD! LAYUP by BELL, CHINYERE

James Madison 33, UNCW 27

Official Scoring/Possession Reference Chart
James Madison vs UNCW
Period 3
January 17, 2020 at Trask Coliseum - Wilmington, N.C.



Period 3

Starters:

James Madison: 15 BARRIER, LEXIE (G); 30 JEFFERSON, KIKI (G); 42 MERRITT, DEVON (F); 55 BENITEZ, JACKIE (G); 3 SMALLS, KAMIAH (G);
UNCW: 1 POWELL, PAIGE (F); 4 MUNOZ, JESSICA (F); 5 SMITH, GIGI (G); 10 VASON, AHYIONA (G); 13 SUGGS, LACEY (G);

Time	VISITORS: James Madison	Score	Margin	HOME: UNCW
09:27	GOOD! 3PTR by JEFFERSON, KIKI	27-36	V 9	
08:49	GOOD! JUMPER by SMALLS, KAMIAH	27-38	V 11	
08:30		29-38	V 9	GOOD! LAYUP by SMITH, GIGI
07:25		32-38	V 6	GOOD! 3PTR by VASON, AHYIONA
06:51		34-38	V 4	GOOD! LAYUP by SMITH, GIGI [FB]
05:49		36-38	V 2	GOOD! JUMPER by VASON, AHYIONA [PNT]
05:15		37-38	V 1	GOOD! FT by SMITH, GIGI
05:15		38-38	T	GOOD! FT by SMITH, GIGI
04:54	GOOD! JUMPER by GREEN, MADISON	38-40	V 2	
04:02	GOOD! JUMPER by SMALLS, KAMIAH [PNT]	38-42	V 4	
02:53	GOOD! 3PTR by GREEN, MADISON	38-45	V 7	
01:59	GOOD! 3PTR by BENITEZ, JACKIE	38-48	V 10	
01:15	GOOD! FT by JEFFERSON, KIKI [FB]	38-49	V 11	
00:31	GOOD! FT by JEFFERSON, KIKI	38-50	V 12	
00:31	GOOD! FT by JEFFERSON, KIKI	38-51	V 13	
00:19		39-51	V 12	GOOD! FT by VASON, AHYIONA
00:19		40-51	V 11	GOOD! FT by VASON, AHYIONA

James Madison 51, UNCW 40

Official Scoring/Possession Reference Chart
James Madison vs UNCW
Period 4
January 17, 2020 at Trask Coliseum - Wilmington, N.C.



Period 4

Starters:

James Madison: 15 BARRIER, LEXIE (G); 30 JEFFERSON, KIKI (G); 42 MERRITT, DEVON (F); 55 BENITEZ, JACKIE (G); 3 SMALLS, KAMIAH (G);
UNCW: 1 POWELL, PAIGE (F); 4 MUNOZ, JESSICA (F); 5 SMITH, GIGI (G); 10 VASON, AHYIONA (G); 13 SUGGS, LACEY (G);

Time	VISITORS: James Madison	Score	Margin	HOME: UNCW
09:42		42-51	V 9	GOOD! LAYUP by SUGGS, LACEY [PNT]
09:12	GOOD! JUMPER by SMALLS, KAMIAH	42-53	V 11	
08:55		44-53	V 9	GOOD! LAYUP by BELL, CHINYERE
08:20	GOOD! 3PTR by SMALLS, KAMIAH	44-56	V 12	
08:11		46-56	V 10	GOOD! JUMPER by VASON, AHYIONA
07:55	GOOD! FT by MERRITT, DEVON	46-57	V 11	
07:39		47-57	V 10	GOOD! FT by BELL, CHINYERE
06:47		49-57	V 8	GOOD! LAYUP by SUGGS, LACEY
04:58	GOOD! LAYUP by JEFFERSON, KIKI	49-59	V 10	
04:03		52-59	V 7	GOOD! 3PTR by CRISP, MORIAH
03:12		55-59	V 4	GOOD! 3PTR by TATE, TIMBER
02:51	GOOD! 3PTR by SMALLS, KAMIAH	55-62	V 7	
00:46	GOOD! FT by SMALLS, KAMIAH [FB]	55-63	V 8	
00:46	GOOD! FT by SMALLS, KAMIAH [FB]	55-64	V 9	
00:05	GOOD! FT by TUCKER, RAYNE [FB]	55-65	V 10	
00:05	GOOD! FT by TUCKER, RAYNE [FB]	55-66	V 11	
00:00		58-66	V 8	GOOD! 3PTR by SUGGS, LACEY

James Madison 66, UNCW 58

Official Substitutions Log
James Madison vs UNCW
Period 1
January 17, 2020 at Trask Coliseum - Wilmington, N.C.



VISITORS: James Madison	Time	Score	HOME: UNCW
15 BARRIER, LEXIE			1 POWELL, PAIGE
30 JEFFERSON, KIKI			4 MUNOZ, JESSICA
42 MERRITT, DEVON			5 SMITH, GIGI
55 BENITEZ, JACKIE			10 VASON, AHYIONA
3 SMALLS, KAMIAH			13 SUGGS, LACEY
	05:44	6-7	SUB OUT: POWELL, PAIGE
	05:44		SUB IN: OBUSEK, CAROL-ANNE
SUB OUT: 30 JEFFERSON, KIKI	05:44		
SUB IN: 4 GREEN, MADISON	05:44		
	04:35	6-10	SUB OUT: MUNOZ, JESSICA
	04:35		SUB OUT: VASON, AHYIONA
	04:35		SUB IN: CRISP, MORIAH
	04:35		SUB IN: BELL, CHINYERE
SUB OUT: 42 MERRITT, DEVON	04:35		
SUB IN: 21 TUCKER, RAYNE	04:35		
	02:27	12-13	SUB OUT: CRISP, MORIAH
	02:27		SUB OUT: SUGGS, LACEY
	02:27		SUB OUT: BELL, CHINYERE
	02:27		SUB IN: POWELL, PAIGE
	02:27		SUB IN: VASON, AHYIONA
	02:27		SUB IN: TATE, TIMBER
SUB OUT: 15 BARRIER, LEXIE	02:27		
SUB IN: 2 CARODINE, JAYLIN	02:27		
SUB OUT: 3 SMALLS, KAMIAH	01:43	14-15	
SUB IN: 30 JEFFERSON, KIKI	01:43		
	01:09	16-15	SUB OUT: OBUSEK, CAROL-ANNE
	01:09		SUB IN: BELL, CHINYERE
	00:46	16-15	SUB OUT: SMITH, GIGI
	00:46		SUB IN: SUGGS, LACEY

James Madison 17, UNCW 17

Official Substitutions Log
James Madison vs UNCW
Period 2
January 17, 2020 at Trask Coliseum - Wilmington, N.C.



VISITORS: James Madison	Time	Score	HOME: UNCW
15 BARRIER, LEXIE			1 POWELL, PAIGE
30 JEFFERSON, KIKI			4 MUNOZ, JESSICA
42 MERRITT, DEVON			5 SMITH, GIGI
55 BENITEZ, JACKIE			10 VASON, AHYIONA
3 SMALLS, KAMIAH			13 SUGGS, LACEY
SUB OUT: 21 TUCKER, RAYNE	10:00	-	
SUB OUT: 55 BENITEZ, JACKIE	10:00		
SUB IN: 3 SMALLS, KAMIAH	10:00		
SUB IN: 42 MERRITT, DEVON	10:00		
	09:25	17-19	SUB OUT: BELL, CHINYERE
	09:25		SUB IN: SMITH, GIGI
SUB OUT: 2 CARODINE, JAYLIN	08:44	17-19	
SUB IN: 15 BARRIER, LEXIE	08:44		
	07:50	17-19	SUB OUT: VASON, AHYIONA
	07:50		SUB IN: CRISP, MORIAH
SUB OUT: 4 GREEN, MADISON	07:50		
SUB IN: 55 BENITEZ, JACKIE	07:50		
SUB OUT: 42 MERRITT, DEVON	07:18	17-22	
SUB IN: 21 TUCKER, RAYNE	07:18		
	06:04	19-22	SUB OUT: POWELL, PAIGE
	06:04		SUB OUT: SUGGS, LACEY
	06:04		SUB OUT: TATE, TIMBER
	06:04		SUB IN: MUNOZ, JESSICA
	06:04		SUB IN: THYBULLE, ZHANEIA
	06:04		SUB IN: BELL, CHINYERE
SUB OUT: 3 SMALLS, KAMIAH	06:04		
SUB IN: 2 CARODINE, JAYLIN	06:04		
SUB OUT: 30 JEFFERSON, KIKI	05:57	19-24	
SUB IN: 4 GREEN, MADISON	05:57		
	04:07	25-24	SUB OUT: THYBULLE, ZHANEIA
	04:07		SUB IN: SUGGS, LACEY
	03:31	27-24	SUB OUT: MUNOZ, JESSICA
	03:31		SUB IN: TATE, TIMBER
	03:02	27-24	SUB OUT: CRISP, MORIAH
	03:02		SUB IN: VASON, AHYIONA
SUB OUT: 4 GREEN, MADISON	02:18	27-24	
SUB IN: 00 OPPENHEIMER, NIKKI	02:18		
SUB OUT: 21 TUCKER, RAYNE	02:18		
SUB IN: 42 MERRITT, DEVON	02:18		
	01:37	29-25	SUB OUT: SUGGS, LACEY
	01:37		SUB IN: CRISP, MORIAH
	01:12	30-25	SUB OUT: CRISP, MORIAH
	01:12		SUB IN: MUNOZ, JESSICA
SUB OUT: 42 MERRITT, DEVON	01:12		
SUB IN: 21 TUCKER, RAYNE	01:12		
SUB OUT: 00 OPPENHEIMER, NIKKI	00:33	33-25	
SUB IN: 30 JEFFERSON, KIKI	00:33		
	00:02	33-27	SUB OUT: BELL, CHINYERE
	00:02		SUB IN: OBUSEK, CAROL-ANNE
SUB OUT: 15 BARRIER, LEXIE	00:02		
SUB IN: 4 GREEN, MADISON	00:02		

James Madison 33, UNCW 27

Official Substitutions Log
James Madison vs UNCW
Period 3
January 17, 2020 at Trask Coliseum - Wilmington, N.C.



VISITORS: James Madison	Time	Score	HOME: UNCW
15 BARRIER, LEXIE			1 POWELL, PAIGE
30 JEFFERSON, KIKI			4 MUNOZ, JESSICA
42 MERRITT, DEVON			5 SMITH, GIGI
55 BENITEZ, JACKIE			10 VASON, AHYIONA
3 SMALLS, KAMIAH			13 SUGGS, LACEY
	10:00	-	SUB OUT: MUNOZ, JESSICA
	10:00		SUB OUT: OBUSEK, CAROL-ANNE
	10:00		SUB IN: POWELL, PAIGE
	10:00		SUB IN: SUGGS, LACEY
SUB OUT: 2 CARODINE, JAYLIN	10:00		
SUB OUT: 4 GREEN, MADISON	10:00		
SUB OUT: 21 TUCKER, RAYNE	10:00		
SUB IN: 3 SMALLS, KAMIAH	10:00		
SUB IN: 15 BARRIER, LEXIE	10:00		
SUB IN: 42 MERRITT, DEVON	10:00		
	08:46	38-27	SUB OUT: POWELL, PAIGE
	08:46		SUB OUT: TATE, TIMBER
	08:46		SUB IN: MUNOZ, JESSICA
	08:46		SUB IN: BELL, CHINYERE
SUB OUT: 42 MERRITT, DEVON	06:22	38-34	
SUB IN: 21 TUCKER, RAYNE	06:22		
	05:53	38-34	SUB OUT: BELL, CHINYERE
	05:53		SUB IN: POWELL, PAIGE
SUB OUT: 30 JEFFERSON, KIKI	05:53		
SUB IN: 4 GREEN, MADISON	05:53		
	05:15	38-36	SUB OUT: VASON, AHYIONA
	05:15		SUB IN: CRISP, MORIAH
SUB OUT: 15 BARRIER, LEXIE	05:15		
SUB IN: 2 CARODINE, JAYLIN	05:15		
	04:18	40-38	SUB OUT: CRISP, MORIAH
	04:18		SUB IN: VASON, AHYIONA
	03:19	42-38	SUB OUT: POWELL, PAIGE
	03:19		SUB IN: BELL, CHINYERE
SUB OUT: 3 SMALLS, KAMIAH	03:15	42-38	
SUB IN: 30 JEFFERSON, KIKI	03:15		
	02:11	45-38	SUB OUT: BELL, CHINYERE
	02:11		SUB IN: OBUSEK, CAROL-ANNE
	01:39	48-38	SUB OUT: MUNOZ, JESSICA
	01:39		SUB IN: TATE, TIMBER
SUB OUT: 55 BENITEZ, JACKIE	01:15	48-38	
SUB IN: 3 SMALLS, KAMIAH	01:15		
	00:31	49-38	SUB OUT: OBUSEK, CAROL-ANNE
	00:31		SUB IN: POWELL, PAIGE
SUB OUT: 2 CARODINE, JAYLIN	00:19	51-38	
SUB OUT: 21 TUCKER, RAYNE	00:19		
SUB IN: 15 BARRIER, LEXIE	00:19		
SUB IN: 42 MERRITT, DEVON	00:19		

James Madison 51, UNCW 40

**Official Substitutions Log
James Madison vs UNCW
Period 4**

January 17, 2020 at Trask Coliseum - Wilmington, N.C.



VISITORS: James Madison	Time	Score	HOME: UNCW
15 BARRIER, LEXIE			1 POWELL, PAIGE
30 JEFFERSON, KIKI			4 MUNOZ, JESSICA
42 MERRITT, DEVON			5 SMITH, GIGI
55 BENITEZ, JACKIE			10 VASON, AHYIONA
3 SMALLS, KAMIAH			13 SUGGS, LACEY
	10:00	-	SUB OUT: POWELL, PAIGE
	10:00		SUB IN: BELL, CHINYERE
	07:55	57-46	SUB OUT: VASON, AHYIONA
	07:55		SUB IN: CRISP, MORIAH
SUB OUT: 30 JEFFERSON, KIKI	07:39	57-46	
SUB OUT: 42 MERRITT, DEVON	07:39		
SUB IN: 21 TUCKER, RAYNE	07:39		
SUB IN: 55 BENITEZ, JACKIE	07:39		
SUB OUT: 4 GREEN, MADISON	06:14	57-49	
SUB OUT: 15 BARRIER, LEXIE	06:14		
SUB IN: 2 CARODINE, JAYLIN	06:14		
SUB IN: 30 JEFFERSON, KIKI	06:14		
	05:27	57-49	SUB OUT: CRISP, MORIAH
	05:27		SUB IN: VASON, AHYIONA
	04:49	59-49	SUB OUT: BELL, CHINYERE
	04:49		SUB IN: POWELL, PAIGE
	04:49		SUB OUT: VASON, AHYIONA
	04:49		SUB IN: CRISP, MORIAH
	04:18	59-49	SUB OUT: POWELL, PAIGE
	04:18		SUB IN: BELL, CHINYERE
SUB OUT: 2 CARODINE, JAYLIN	04:18		
SUB IN: 15 BARRIER, LEXIE	04:18		
SUB OUT: 30 JEFFERSON, KIKI	02:49	62-55	
SUB IN: 4 GREEN, MADISON	02:49		
SUB OUT: 4 GREEN, MADISON	00:46	64-55	
SUB IN: 2 CARODINE, JAYLIN	00:46		

James Madison 66, UNCW 58

Official Shot Chart
James Madison vs UNCW
 PERIOD 1 Shots
 January 17, 2020 at Trask Coliseum - Wilmington, N.C.

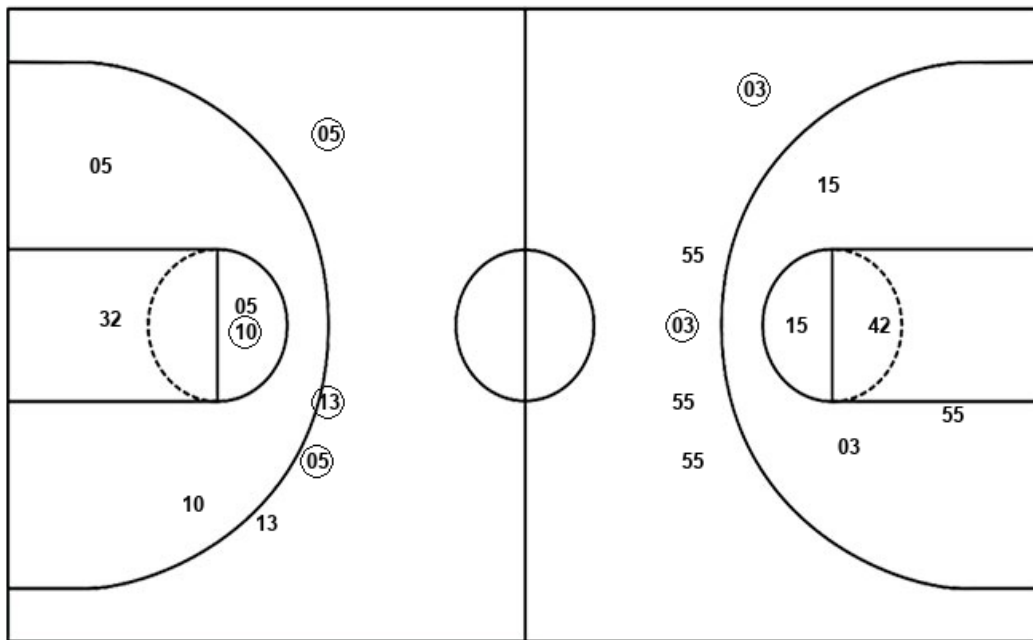


UNCW

James Madison

Layups
 05 (05) (24)

Dunks



Layups
 (15) (42) 15 (42) (55)
 (04)

Dunks

NCW : Period 1	Made	Att	Pct
Layups	2	3	66.7
Dunks	0	0	0
2PT Field Goals	3	8	37.5
3PT Field Goals	3	4	75.0
Total Field Goals	6	12	50.0

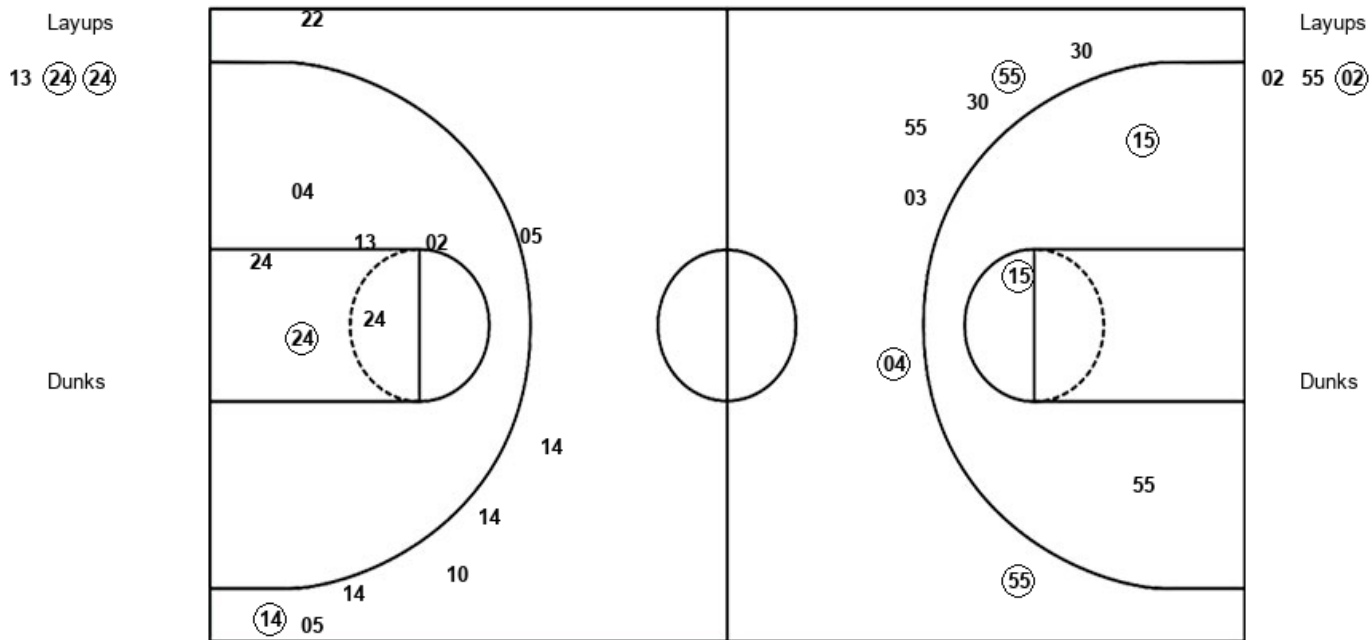
JMU : Period 1	Made	Att	Pct
Layups	5	6	83.3
Dunks	0	0	0
2PT Field Goals	5	11	45.5
3PT Field Goals	2	5	40.0
Total Field Goals	7	16	43.8

Official Shot Chart
James Madison vs UNCW
 PERIOD 2 Shots
 January 17, 2020 at Trask Coliseum - Wilmington, N.C.



UNCW

James Madison



UNCW : Period 2	Made	Att	Pct
Layups	2	3	66.7
Dunks	0	0	0
2PT Field Goals	3	9	33.3
3PT Field Goals	1	8	12.5
Total Field Goals	4	17	23.5

JMU : Period 2	Made	Att	Pct
Layups	1	3	33.3
Dunks	0	0	0
2PT Field Goals	3	6	50.0
3PT Field Goals	3	7	42.9
Total Field Goals	6	13	46.2

Official Shot Chart
James Madison vs UNCW
 PERIOD 3 Shots
 January 17, 2020 at Trask Coliseum - Wilmington, N.C.



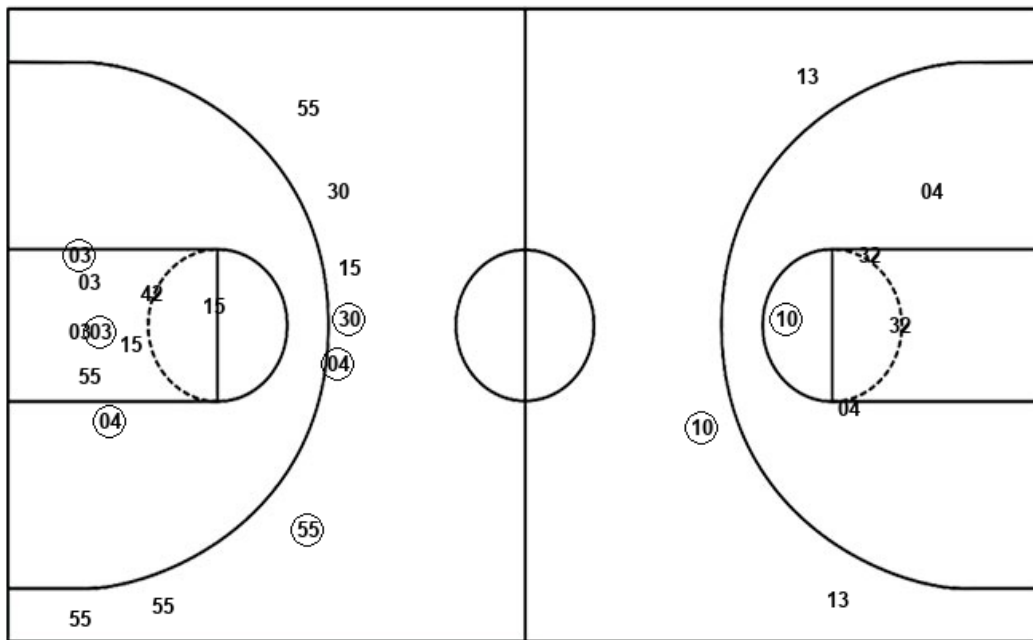
UNCW

James Madison

Layups

05 05

Dunks



Layups

42 02

Dunks

NCW : Period 3	Made	Att	Pct
Layups	2	2	100.0
Dunks	0	0	0
2PT Field Goals	3	7	42.9
3PT Field Goals	1	3	33.3
Total Field Goals	4	10	40.0

JMU : Period 3	Made	Att	Pct
Layups	0	2	00.0
Dunks	0	0	0
2PT Field Goals	3	11	27.3
3PT Field Goals	3	8	37.5
Total Field Goals	6	19	31.6

Official Shot Chart
James Madison vs UNCW
 PERIOD 4 Shots
 January 17, 2020 at Trask Coliseum - Wilmington, N.C.

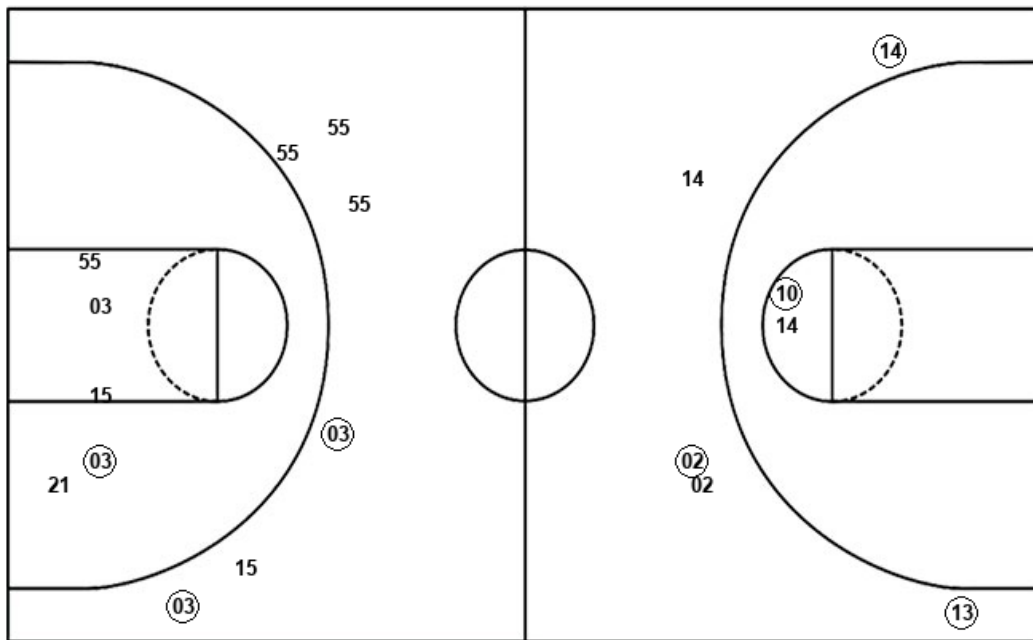


UNCW

James Madison

Layups
 13 24 13

Dunks



Layups

30 04

Dunks

UNCW : Period 4	Made	Att	Pct
Layups	3	3	100.0
Dunks	0	0	0
2PT Field Goals	4	5	80.0
3PT Field Goals	3	5	60.0
Total Field Goals	7	10	70.0

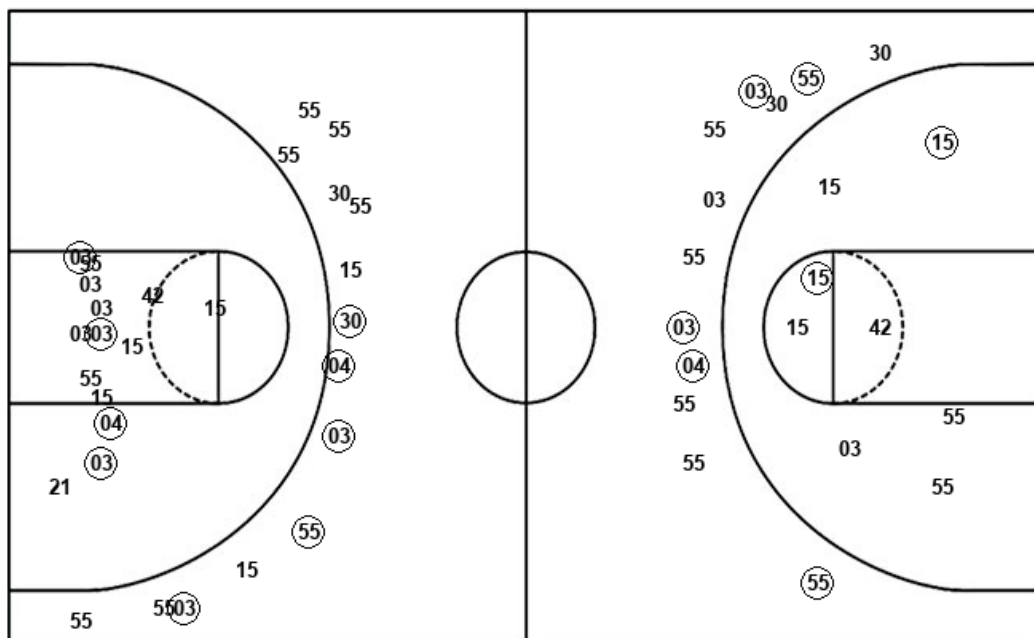
JMU : Period 4	Made	Att	Pct
Layups	1	2	50.0
Dunks	0	0	0
2PT Field Goals	2	7	28.6
3PT Field Goals	2	6	33.3
Total Field Goals	4	13	30.8

Official Shot Chart
James Madison vs UNCW
 James Madison Team Shots
 January 17, 2020 at Trask Coliseum - Wilmington, N.C.



Layups

Dunks



Layups

Dunks

JMU : Period 1	Made	Att	Pct
Layups	5	6	83.3
Dunks	0	0	0
2PT Field Goals	5	11	45.5
3PT Field Goals	2	5	40.0
Total Field Goals	7	16	43.8

JMU : Period 3	Made	Att	Pct
Layups	0	2	00.0
Dunks	0	0	0
2PT Field Goals	3	11	27.3
3PT Field Goals	3	8	37.5
Total Field Goals	6	19	31.6

JMU : Period 2	Made	Att	Pct
Layups	1	3	33.3
Dunks	0	0	0
2PT Field Goals	3	6	50.0
3PT Field Goals	3	7	42.9
Total Field Goals	6	13	46.2

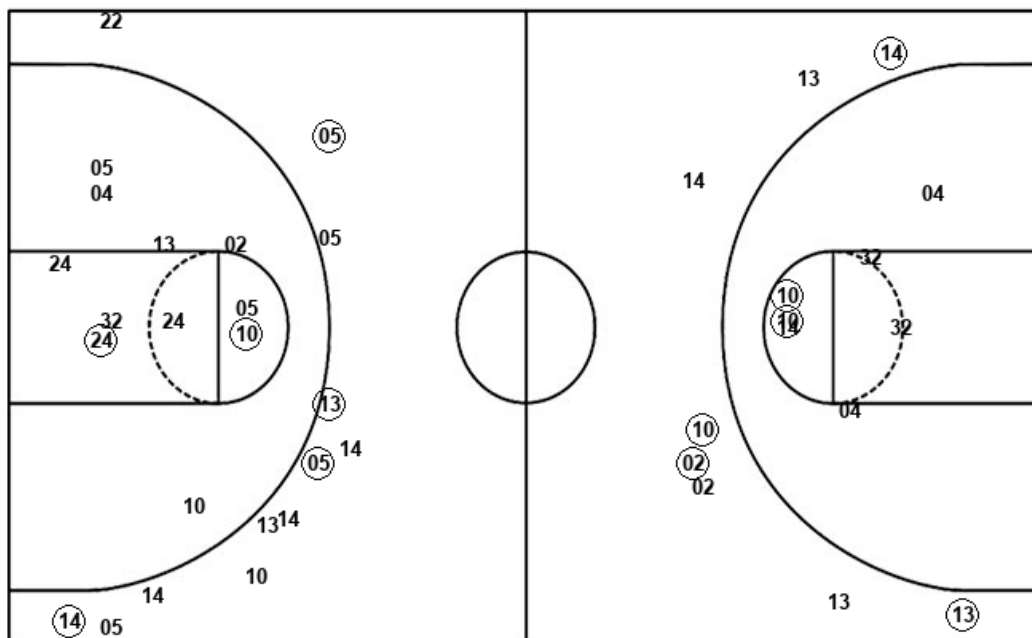
JMU : Period 4	Made	Att	Pct
Layups	1	2	50.0
Dunks	0	0	0
2PT Field Goals	2	7	28.6
3PT Field Goals	2	6	33.3
Total Field Goals	4	13	30.8

Official Shot Chart
James Madison vs UNCW
UNCW Team Shots
January 17, 2020 at Trask Coliseum - Wilmington, N.C.



Layups

Dunks



Layups

Dunks

NCW : Period 1	Made	Att	Pct
Layups	2	3	66.7
Dunks	0	0	0
2PT Field Goals	3	8	37.5
3PT Field Goals	3	4	75.0
Total Field Goals	6	12	50.0

NCW : Period 3	Made	Att	Pct
Layups	2	2	100.0
Dunks	0	0	0
2PT Field Goals	3	7	42.9
3PT Field Goals	1	3	33.3
Total Field Goals	4	10	40.0

NCW : Period 2	Made	Att	Pct
Layups	2	3	66.7
Dunks	0	0	0
2PT Field Goals	3	9	33.3
3PT Field Goals	1	8	12.5
Total Field Goals	4	17	23.5

NCW : Period 4	Made	Att	Pct
Layups	3	3	100.0
Dunks	0	0	0
2PT Field Goals	4	5	80.0
3PT Field Goals	3	5	60.0
Total Field Goals	7	10	70.0