

FINAL SCORE



Kennesaw St.

58



UNCW

56

November 23, 2019 • Trask Coliseum - Wilmington, N.C.

FINAL STATISTICS

Official Box Score
Kennesaw St. vs UNCW
Game Totals -- Final Statistics
November 23, 2019 at Trask Coliseum - Wilmington, N.C.



Kennesaw St. 58

No.	Player	S	Pts	FG	3FG	FT	OR	DR	TR	PF	A	TO	Blk	Stl	Min	+/-
00	JOHNSON, AMANI	G	9	3-16	1-5	2-2	1	0	1	2	0	3	0	0	40	2
10	POOLE, ALEXIS	F	27	8-16	0-0	11-13	8	3	11	5	1	2	2	1	29	2
13	GIANOLLA, CARLOTTA	F	2	1-5	0-0	0-0	4	4	8	3	2	2	0	1	27	0
21	HOOVER, BREANNA	G	0	0-1	0-1	0-0	3	3	6	1	1	2	0	2	25	2
30	PICCOLINO, GILLIAN	G	9	3-13	2-10	1-2	3	5	8	3	2	3	2	0	36	1
11	HEAD, KATE	G	0	0-0	0-0	0-0	0	0	0	2	0	3	0	0	15	0
14	AVRAM, SIMINA	C	0	0-0	0-0	0-0	0	0	0	0	0	1	0	1	4	-4
25	LEGISTER, GABI	F	4	1-1	0-0	2-2	0	1	1	1	0	0	0	0	4	1
33	MANN, LEXI	F	7	2-2	0-0	3-3	1	2	3	1	1	1	0	0	15	5
44	LEWIS, PEYTON	G	0	0-1	0-1	0-0	0	0	0	1	0	0	0	0	4	1
TEAM							0	3	3	0						
TOTALS			58	18-55	3-17	19-22	20	21	41	19	7	17	4	5	200	

Shooting By Period

Period	FG	FG%	3FG	3FG%	FT	FT%
1st Qtr	4-16	25%	1-6	17%	3-3	100%
2nd Qtr	6-12	50%	1-2	50%	5-5	100%
3rd Qtr	3-13	23%	1-6	17%	6-6	100%
4th Qtr	5-14	36%	0-3	00%	5-8	63%
1st Half	10-28	36%	2-8	25%	8-8	100%
2nd Half	8-27	30%	1-9	11%	11-14	79%
Game	18-55	32.7%	3-17	17.6%	19-22	86.4%

Deadball Rebounds: 1,0
Last FG: 4th-01:39
Biggest Run: 9-0
Largest lead: By 10 at 3-07
Technical Fouls: None.

UNCW 56

No.	Player	S	Pts	FG	3FG	FT	OR	DR	TR	PF	A	TO	Blk	Stl	Min	+/-
04	MUNOZ, JESSICA	F	0	0-0	0-0	0-0	0	1	1	1	1	1	0	0	8	-7
05	SMITH, GIGI	G	18	6-15	3-7	3-3	2	0	2	3	4	5	0	2	38	0
10	VASON, AHYIONA	G	13	5-8	2-3	1-2	0	0	0	2	1	0	0	2	24	-2
13	SUGGS, LACEY	G	7	1-8	1-2	4-4	4	2	6	3	1	1	0	0	38	-1
32	OBUSEK, CAROL-ANNE	F	7	3-7	0-0	1-3	4	5	9	4	0	2	1	2	24	9
01	POWELL, PAIGE	F	6	3-5	0-0	0-0	1	7	8	5	0	2	2	0	26	-1
02	CRISP, MORIAH	G	5	2-7	1-4	0-0	0	1	1	2	5	0	0	1	29	0
22	THYBULLE, ZHANEIA	G	0	0-0	0-0	0-0	0	1	1	1	0	1	0	0	2	-3
31	MITCHELL, JESSICA	F	0	0-1	0-0	0-0	0	0	0	2	0	0	0	0	2	-6
35	MCCRAE, SUNSHINE	F	0	0-1	0-0	0-0	0	1	1	0	0	0	0	0	9	1
TEAM							2	1	3	0						
TOTALS			56	20-52	7-16	9-12	13	19	32	23	12	15	3	7	200	

Shooting By Period

Period	FG	FG%	3FG	3FG%	FT	FT%
1st Qtr	3-12	25%	1-4	25%	3-3	100%
2nd Qtr	5-16	31%	3-7	43%	0-0	0%
3rd Qtr	6-13	46%	0-1	00%	3-4	75%
4th Qtr	6-11	55%	3-4	75%	3-5	60%
1st Half	8-28	29%	4-11	36%	3-3	100%
2nd Half	12-24	50%	3-5	60%	6-9	67%
Game	20-52	38.5%	7-16	43.8%	9-12	75.0%

Deadball Rebounds: 1,0
Last FG: 4th-00:28
Biggest Run: 6-0
Largest lead: By 2 at 2-07
Technical Fouls: None.

Game Notes:

Officials: **Mark Hardcastle, Michael Johnson, Libya Rentz**
 Attendance: **485**

Start Time: **02:06 PM ET**
 End Time: **04:04 PM ET**
 Game Duration: **1:58**

Score	1st	2nd	3rd	4th	TOT
KSU	12	18	13	15	58
NCW	10	13	15	18	56

KSU led for **34:19**. NCW led for **3:23**.
Game was tied for 2:15.
 Times tied: **4** Lead Changes: **8**

Points from	KSU	NCW
In the Paint	26	26
Off Turns	13	18
2nd Chance	17	7
Fast Break	5	5
Bench	11	11

Official Box Score
Kennesaw St. vs UNCW
First Half Statistics Only
November 23, 2019 at Trask Coliseum - Wilmington, N.C.



Kennesaw St. 30

No.	Player	S	Pts	FG	3FG	FT	OR	DR	TR	PF	A	TO	Blk	Stl	Min	+/-
00	JOHNSON, AMANI	G	5	2-10	1-2	0-0	0	0	0	0	0	2	0	0	20	7
10	POOLE, ALEXIS	F	11	3-5	0-0	5-5	6	1	7	2	0	0	0	0	11	7
11	HEAD, KATE	G	0	0-0	0-0	0-0	0	0	0	0	0	2	0	0	12	2
13	GIANOLLA, CARLOTTA	F	2	1-4	0-0	0-0	2	2	4	2	1	1	0	1	15	4
14	AVRAM, SIMINA	C	0	0-0	0-0	0-0	0	0	0	0	0	1	0	1	4	-4
21	HOOVER, BREANNA	G	0	0-0	0-0	0-0	0	2	2	1	0	1	0	1	8	5
25	LEGISTER, GABI	F	4	1-1	0-0	2-2	0	1	1	1	0	0	0	0	4	1
30	PICCOLINO, GILLIAN	G	5	2-6	1-5	0-0	2	3	5	1	2	1	2	0	18	8
33	MANN, LEXI	F	3	1-1	0-0	1-1	0	1	1	0	0	0	0	0	5	6
44	LEWIS, PEYTON	G	0	0-1	0-1	0-0	0	0	0	1	0	0	0	0	2	-1
	TEAM		0	0-0	0-0	0-0	0	2	2	0	0	0	0	0	0	0
TOTALS			30	10-28	2-8	8-8	10	12	22	8	3	8	2	3	100	

Shooting By Period

Period	FG	FG%	3FG	3FG%	FT	FT%
1st Qtr	4-16	25%	1-6	17%	3-3	100%
2nd Qtr	6-12	50%	1-2	50%	5-5	100%
1st Half	10-28	36%	2-8	25%	8-8	100%
Game	18-55	32.7%	3-17	17.6%	19-22	86.4%

Deadball Rebounds: 1,0
Last FG Half: KSU 2nd-00:01

UNCW 23

No.	Player	S	Pts	FG	3FG	FT	OR	DR	TR	PF	A	TO	Blk	Stl	Min	+/-
01	POWELL, PAIGE	F	4	2-4	0-0	0-0	1	0	1	2	0	1	1	0	9	-8
02	CRISP, MORIAH	G	3	1-5	1-4	0-0	0	1	1	1	3	0	0	0	15	-3
04	MUNOZ, JESSICA	F	0	0-0	0-0	0-0	0	1	1	1	1	1	0	0	8	-7
05	SMITH, GIGI	G	13	4-9	2-5	3-3	1	0	1	1	0	0	0	0	19	-5
10	VASON, AHYIONA	G	0	0-1	0-1	0-0	0	0	0	1	0	0	0	1	7	-9
13	SUGGS, LACEY	G	3	1-5	1-1	0-0	2	1	3	0	1	0	0	0	19	-6
22	THYBULLE, ZHANEIA	G	0	0-0	0-0	0-0	0	1	1	1	0	1	0	0	1	-1
31	MITCHELL, JESSICA	F	0	0-1	0-0	0-0	0	0	0	1	0	0	0	0	2	-4
32	OBUSEK, CAROL-ANNE	F	0	0-3	0-0	0-0	4	3	7	2	0	1	0	1	14	3
35	MCCRAE, SUNSHINE	F	0	0-0	0-0	0-0	0	1	1	0	0	0	0	0	6	5
	TEAM		0	0-0	0-0	0-0	0	0	0	0	0	2	0	0	0	0
TOTALS			23	8-28	4-11	3-3	8	8	16	10	5	6	1	2	100	

Shooting By Period

Period	FG	FG%	3FG	3FG%	FT	FT%
1st Qtr	3-12	25%	1-4	25%	3-3	100%
2nd Qtr	5-16	31%	3-7	43%	0-0	0%
1st Half	8-28	29%	4-11	36%	3-3	100%
Game	20-52	38.5%	7-16	43.8%	9-12	75.0%

Deadball Rebounds: 1,0
Last FG Half: NCW 2nd-01:24

Game Notes:

Officials: Mark Hardcastle, Michael Johnson, Libya Rentz
Attendance: 485

Start Time: 02:06 PM ET
End Time: 04:04 PM ET
Game Duration: 1:58

Score	1st	2nd	3rd	4th	TOT
KSU	12	18	13	15	58
NCW	10	13	15	18	56

Points from (This Period)	KSU	NCW
In the Paint	14	8
Off Turns	6	8
2nd Chance	11	7
Fast Break	2	0
Bench	7	7

Official Box Score
Kennesaw St. vs UNCW
First Quarter Statistics Only
November 23, 2019 at Trask Coliseum - Wilmington, N.C.



Kennesaw St. 12

No.	Player	S	Pts	FG	3FG	FT	OR	DR	TR	PF	A	TO	Blk	Stl	Min	+/-
00	JOHNSON, AMANI	G	5	2-6	1-2	0-0	0	0	0	0	0	2	0	0	10	2
10	POOLE, ALEXIS	F	7	2-4	0-0	3-3	5	1	6	1	0	0	0	0	9	4
13	GIANOLLA, CARLOTTA	F	0	0-2	0-0	0-0	1	2	3	1	0	0	0	0	10	2
21	HOOVER, BREANNA	G	0	0-0	0-0	0-0	0	2	2	1	0	1	0	1	8	3
30	PICCOLINO, GILLIAN	G	0	0-3	0-3	0-0	1	0	1	1	1	1	1	0	8	3
11	HEAD, KATE	G	0	0-0	0-0	0-0	0	0	0	0	0	0	0	0	2	-1
14	AVRAM, SIMINA	C	0	0-0	0-0	0-0	0	0	0	0	0	0	0	0	1	-2
25	LEGISTER, GABI	F	0	0-0	0-0	0-0	0	0	0	0	0	0	0	0	0	0
33	MANN, LEXI	F	0	0-0	0-0	0-0	0	0	0	0	0	0	0	0	0	0
44	LEWIS, PEYTON	G	0	0-1	0-1	0-0	0	0	0	1	0	0	0	0	2	-1
TEAM							0	2	2	0		0				
TOTALS			12	4-16	1-6	3-3	7	7	14	5	1	4	1	1	50	

Shooting By Period

Period	FG	FG%	3FG	3FG%	FT	FT%
1st Qtr	4-16	25%	1-6	17%	3-3	100%
2nd Qtr	6-12	50%	1-2	50%	5-5	100%
1st Half	4-16	25%	1-6	17%	3-3	100%
1st Half	10-28	36%	2-8	25%	8-8	100%
Game	18-55	32.7%	3-17	17.6%	19-22	86.4%

Deadball Rebounds: 1,0

UNCW 10

No.	Player	S	Pts	FG	3FG	FT	OR	DR	TR	PF	A	TO	Blk	Stl	Min	+/-
04	MUNOZ, JESSICA	F	0	0-0	0-0	0-0	0	1	1	1	1	1	0	0	6	-6
05	SMITH, GIGI	G	5	1-5	0-3	3-3	0	0	0	0	0	0	0	0	10	-2
10	VASON, AHYIONA	G	0	0-0	0-0	0-0	0	0	0	1	0	0	0	0	4	-2
13	SUGGS, LACEY	G	0	0-3	0-0	0-0	1	0	1	0	1	0	0	0	9	-1
32	OBUSEK, CAROL-ANNE	F	0	0-1	0-0	0-0	1	2	3	0	0	0	0	0	8	2
01	POWELL, PAIGE	F	2	1-1	0-0	0-0	0	0	0	2	0	0	0	0	2	-4
02	CRISP, MORIAH	G	3	1-2	1-1	0-0	0	0	0	0	0	0	0	0	6	0
22	THYBULLE, ZHANEIA	G	0	0-0	0-0	0-0	0	1	1	1	0	1	0	0	1	-1
31	MITCHELL, JESSICA	F	0	0-0	0-0	0-0	0	0	0	0	0	0	0	0	0	0
35	MCCRAE, SUNSHINE	F	0	0-0	0-0	0-0	0	1	1	0	0	0	0	0	4	4
TEAM							0	0	0	0		0				
TOTALS			10	3-12	1-4	3-3	2	5	7	5	2	2	0	0	50	

Shooting By Period

Period	FG	FG%	3FG	3FG%	FT	FT%
1st Qtr	3-12	25%	1-4	25%	3-3	100%
2nd Qtr	5-16	31%	3-7	43%	0-0	0%
1st Half	3-12	25%	1-4	25%	3-3	100%
1st Half	8-28	29%	4-11	36%	3-3	100%
Game	20-52	38.5%	7-16	43.8%	9-12	75.0%

Deadball Rebounds: 1,0

Game Notes:

Officials: **Mark Hardcastle, Michael Johnson, Libya Rentz**
 Attendance: **485**

Start Time: **02:06 PM ET**
 End Time: **04:04 PM ET**
 Game Duration: **1:58**

Score	1st	2nd	3rd	4th	TOT
KSU	12	18	13	15	58
NCW	10	13	15	18	56

Points from (This Period)	KSU	NCW
In the Paint	6	4
Off Turns	2	5
2nd Chance	3	0
Fast Break	0	0
Bench	0	5

Official Play-By-Play
Kennesaw St. vs UNCW
First Quarter
November 23, 2019 at Trask Coliseum - Wilmington, N.C.



Period 1

Starters:

Kennesaw St.: 0 JOHNSON, AMANI (G); 10 POOLE, ALEXIS (F); 13 GIANOLLA, CARLOTTA (F); 21 HOOVER, BREANNA (G); 30 PICCOLINO, GILLIAN (G);

UNCW: 4 MUNOZ, JESSICA (F); 5 SMITH, GIGI (G); 10 VASON, AHYIONA (G); 13 SUGGS, LACEY (G); 32 OBUSEK, CAROL-ANNE (F);

Time	VISITORS: Kennesaw St.	Score	Margin	HOME: UNCW
09:45	GOOD! 3PTR by JOHNSON, AMANI	0-3	V 3	
09:45	ASSIST by PICCOLINO, GILLIAN			
09:09				MISSED JUMPER by SUGGS, LACEY
09:07				REBOUND (OFF) by OBUSEK, CAROL-ANNE
09:04				MISSED JUMPER by OBUSEK, CAROL-ANNE
09:02	REBOUND (DEF) by POOLE, ALEXIS			
08:39	MISSED JUMPER by JOHNSON, AMANI			
08:36	REBOUND (OFF) by POOLE, ALEXIS			
08:36				FOUL (PERSONAL) by MUNOZ, JESSICA
08:36	GOOD! FT by POOLE, ALEXIS	0-4	V 4	
08:36	TURNOVER (LANEVIOLATION) by JOHNSON, AMANI			
08:13	FOUL (PERSONAL) by GIANOLLA, CARLOTTA			
08:13		1-4	V 3	GOOD! FT by SMITH, GIGI
08:13		2-4	V 2	GOOD! FT by SMITH, GIGI
07:59	TURNOVER (BADPASS) by HOOVER, BREANNA			
07:28				MISSED JUMPER by SUGGS, LACEY
07:25				REBOUND (OFF) by SUGGS, LACEY
07:23				MISSED LAYUP by SUGGS, LACEY
07:23	BLOCK by PICCOLINO, GILLIAN			
07:17	REBOUND (DEF) by GIANOLLA, CARLOTTA			
07:05	MISSED LAYUP by POOLE, ALEXIS			
07:01	REBOUND (OFF) by PICCOLINO, GILLIAN			
06:56	MISSED JUMPER by GIANOLLA, CARLOTTA			
06:52				REBOUND (DEF) by MUNOZ, JESSICA
06:38				MISSED 3PTR by SMITH, GIGI
06:34	REBOUND (DEF) by GIANOLLA, CARLOTTA			
06:27	MISSED 3PTR by PICCOLINO, GILLIAN			
06:23	REBOUND (OFF) by GIANOLLA, CARLOTTA			
06:12	MISSED JUMPER by JOHNSON, AMANI			
06:09	REBOUND (OFF) by POOLE, ALEXIS			
06:08	MISSED LAYUP by POOLE, ALEXIS			
06:08	REBOUND (OFF) by POOLE, ALEXIS			
06:08				FOUL (PERSONAL) by VASON, AHYIONA
06:08				SUB OUT: VASON, AHYIONA
06:08				SUB OUT: OBUSEK, CAROL-ANNE
06:08				SUB IN: POWELL, PAIGE
06:08				SUB IN: CRISP, MORIAH
06:08	GOOD! FT by POOLE, ALEXIS	2-5	V 3	
06:08	GOOD! FT by POOLE, ALEXIS	2-6	V 4	
05:52				MISSED LAYUP by SMITH, GIGI
05:48	REBOUND (DEF) by HOOVER, BREANNA			
05:41	GOOD! JUMPER by POOLE, ALEXIS [PNT]	2-8	V 6	
05:17	FOUL (PERSONAL) by PICCOLINO, GILLIAN			
05:08	FOUL (PERSONAL) by HOOVER, BREANNA			
04:53		4-8	V 4	GOOD! JUMPER by POWELL, PAIGE [PNT]
04:53				ASSIST by MUNOZ, JESSICA
04:37				FOUL (PERSONAL) by POWELL, PAIGE
04:37				
04:27	GOOD! LAYUP by POOLE, ALEXIS	4-10	V 6	
04:09				TURNOVER (BADPASS) by MUNOZ, JESSICA
04:09	STEAL by HOOVER, BREANNA			
04:09				FOUL (PERSONAL) by POWELL, PAIGE
04:09				SUB OUT: POWELL, PAIGE
04:09				SUB IN: OBUSEK, CAROL-ANNE
03:58	TURNOVER (TRAVEL) by JOHNSON, AMANI			
03:58				SUB OUT: MUNOZ, JESSICA
03:58				SUB IN: MCCRAE, SUNSHINE
03:42				MISSED 3PTR by SMITH, GIGI
03:38	REBOUND (DEF) by HOOVER, BREANNA			
03:15	TURNOVER (TRAVEL) by PICCOLINO, GILLIAN			
02:51		7-10	V 3	GOOD! 3PTR by CRISP, MORIAH
02:51				ASSIST by SUGGS, LACEY
02:34	MISSED 3PTR by PICCOLINO, GILLIAN			
02:30	REBOUND (OFF) by POOLE, ALEXIS			
02:25	MISSED LAYUP by GIANOLLA, CARLOTTA			
02:23				REBOUND (DEF) by OBUSEK, CAROL-ANNE
02:23	FOUL (PERSONAL) by POOLE, ALEXIS			
02:11				MISSED JUMPER by CRISP, MORIAH
02:08	REBOUND (DEF) by TEAM			
02:08	SUB OUT: POOLE, ALEXIS			

Time	VISITORS: Kennesaw St.	Score	Margin	HOME: UNCW
02:08	SUB OUT: HOOVER, BREANNA			
02:08	SUB IN: HEAD, KATE			
02:08	SUB IN: AVRAM, SIMINA			
01:46	MISSED 3PTR by PICCOLINO, GILLIAN			
01:43				REBOUND (DEF) by OBUSEK, CAROL-ANNE
01:34				MISSED 3PTR by SMITH, GIGI
01:31	REBOUND (DEF) by TEAM			
01:31	SUB OUT: PICCOLINO, GILLIAN			
01:31	SUB IN: LEWIS, PEYTON			
01:15	MISSED JUMPER by JOHNSON, AMANI			
01:11				REBOUND (DEF) by MCCRAE, SUNSHINE
01:05		9-10	V 1	GOOD! LAYUP by SMITH, GIGI
01:05	FOUL (PERSONAL) by LEWIS, PEYTON			
01:05				SUB OUT: SUGGS, LACEY
01:05				SUB IN: THYBULLE, ZHANEIA
01:05	TIMEOUT 30SEC			
01:05	SUB OUT: AVRAM, SIMINA			
01:05	SUB IN: POOLE, ALEXIS			
01:05		10-10	T	GOOD! FT by SMITH, GIGI
00:49	MISSED 3PTR by LEWIS, PEYTON			
00:46	REBOUND (OFF) by POOLE, ALEXIS			
00:39	MISSED 3PTR by JOHNSON, AMANI			
00:35				REBOUND (DEF) by THYBULLE, ZHANEIA
00:19				FOUL (OFF) by THYBULLE, ZHANEIA
00:19				TURNOVER (OFFENSIVE) by THYBULLE, ZHANEIA
00:07	GOOD! LAYUP by JOHNSON, AMANI [PNT]	10-12	V 2	

Kennesaw St. 12, UNCW 10

Points from (This Period)	KSU	NCW
In the Paint	6	4
Off Turns	2	5
2nd Chance	3	0
Fast Break	0	0
Bench	0	5

Official Box Score
Kennesaw St. vs UNCW
Second Quarter Statistics Only
November 23, 2019 at Trask Coliseum - Wilmington, N.C.



Kennesaw St. 18

No.	Player	S	Pts	FG	3FG	FT	OR	DR	TR	PF	A	TO	Blk	Stl	Min	+/-
00	JOHNSON, AMANI	G	0	0-4	0-0	0-0	0	0	0	0	0	0	0	0	10	5
10	POOLE, ALEXIS	F	4	1-1	0-0	2-2	1	0	1	1	0	0	0	0	2	3
13	GIANOLLA, CARLOTTA	F	2	1-2	0-0	0-0	1	0	1	1	1	1	0	1	5	2
21	HOOVER, BREANNA	G	0	0-0	0-0	0-0	0	0	0	0	0	0	0	0	0	2
30	PICCOLINO, GILLIAN	G	5	2-3	1-2	0-0	1	3	4	0	1	0	1	0	10	5
11	HEAD, KATE	G	0	0-0	0-0	0-0	0	0	0	0	0	2	0	0	10	3
14	AVRAM, SIMINA	C	0	0-0	0-0	0-0	0	0	0	0	0	1	0	1	3	-2
25	LEGISTER, GABI	F	4	1-1	0-0	2-2	0	1	1	1	0	0	0	0	4	1
33	MANN, LEXI	F	3	1-1	0-0	1-1	0	1	1	0	0	0	0	0	5	6
44	LEWIS, PEYTON	G	0	0-0	0-0	0-0	0	0	0	0	0	0	0	0	0	0
TEAM							0	0	0	0	0	0	0	0	0	0
TOTALS			18	6-12	1-2	5-5	3	5	8	3	2	4	1	2	50	

Shooting By Period

Period	FG	FG%	3FG	3FG%	FT	FT%
3rd Qtr	3-13	23%	1-6	17%	6-6	100%
4th Qtr	5-14	36%	0-3	00%	5-8	63%
2nd Half	6-12	50%	1-2	50%	5-5	100%
2nd Half	8-27	30%	1-9	11%	11-14	79%
Game	18-55	32.7%	3-17	17.6%	19-22	86.4%

Deadball Rebounds: 1,0

UNCW 13

No.	Player	S	Pts	FG	3FG	FT	OR	DR	TR	PF	A	TO	Blk	Stl	Min	+/-
04	MUNOZ, JESSICA	F	0	0-0	0-0	0-0	0	0	0	0	0	0	0	0	2	-1
05	SMITH, GIGI	G	8	3-4	2-2	0-0	1	0	1	1	0	0	0	0	9	-3
10	VASON, AHYIONA	G	0	0-1	0-1	0-0	0	0	0	0	0	0	0	1	3	-7
13	SUGGS, LACEY	G	3	1-2	1-1	0-0	1	1	2	0	0	0	0	0	10	-5
32	OBUSEK, CAROL-ANNE	F	0	0-2	0-0	0-0	3	1	4	2	0	1	0	1	6	1
01	POWELL, PAIGE	F	2	1-3	0-0	0-0	1	0	1	0	0	1	1	0	7	-4
02	CRISP, MORIAH	G	0	0-3	0-3	0-0	0	1	1	1	3	0	0	0	9	-3
22	THYBULLE, ZHANEIA	G	0	0-0	0-0	0-0	0	0	0	0	0	0	0	0	0	0
31	MITCHELL, JESSICA	F	0	0-1	0-0	0-0	0	0	0	1	0	0	0	0	2	-4
35	MCCRAE, SUNSHINE	F	0	0-0	0-0	0-0	0	0	0	0	0	0	0	0	2	1
TEAM							0	0	0	0	2	0	0	0	0	
TOTALS			13	5-16	3-7	0-0	6	3	9	5	3	4	1	2	50	

Shooting By Period

Period	FG	FG%	3FG	3FG%	FT	FT%
3rd Qtr	6-13	46%	0-1	00%	3-4	75%
4th Qtr	6-11	55%	3-4	75%	3-5	60%
2nd Half	5-16	31%	3-7	43%	0-0	0%
2nd Half	12-24	50%	3-5	60%	6-9	67%
Game	20-52	38.5%	7-16	43.8%	9-12	75.0%

Deadball Rebounds: 1,0

Game Notes:

Officials: **Mark Hardcastle, Michael Johnson, Libya Rentz**
 Attendance: **485**

Start Time: **02:06 PM ET**
 End Time: **04:04 PM ET**
 Game Duration: **1:58**

Score	1st	2nd	3rd	4th	TOT
KSU	12	18	13	15	58
NCW	10	13	15	18	56

Points from (This Period)	KSU	NCW
In the Paint	8	4
Off Turns	4	3
2nd Chance	8	7
Fast Break	2	0
Bench	7	2

Official Play-By-Play
Kennesaw St. vs UNCW
Second Quarter
November 23, 2019 at Trask Coliseum - Wilmington, N.C.



Period 2

Starters:

Kennesaw St.: 0 JOHNSON, AMANI (G); 10 POOLE, ALEXIS (F); 13 GIANOLLA, CARLOTTA (F); 21 HOOVER, BREANNA (G); 30 PICCOLINO, GILLIAN (G);

UNCW: 4 MUNOZ, JESSICA (F); 5 SMITH, GIGI (G); 10 VASON, AHYIONA (G); 13 SUGGS, LACEY (G); 32 OBUSEK, CAROL-ANNE (F);

Time	VISITORS: Kennesaw St.	Score	Margin	HOME: UNCW
10:00				SUB OUT: THYBULLE, ZHANEIA
10:00				SUB IN: SUGGS, LACEY
10:00	SUB OUT: LEWIS, PEYTON			
10:00	SUB IN: PICCOLINO, GILLIAN			
09:44	MISSED JUMPER by JOHNSON, AMANI			
09:43				REBOUND (DEF) by SUGGS, LACEY
09:43	FOUL (PERSONAL) by POOLE, ALEXIS			
09:43	SUB OUT: POOLE, ALEXIS			
09:43	SUB IN: AVRAM, SIMINA			
09:21				MISSED 3PTR by CRISP, MORIAH
09:17	REBOUND (DEF) by PICCOLINO, GILLIAN			
09:08	MISSED JUMPER by GIANOLLA, CARLOTTA			
09:05				REBOUND (DEF) by CRISP, MORIAH
08:57		13-12	H 1	GOOD! 3PTR by SMITH, GIGI
08:57				ASSIST by CRISP, MORIAH
08:40	GOOD! LAYUP by GIANOLLA, CARLOTTA	13-14	V 1	
08:27				SUB OUT: MCCRAE, SUNSHINE
08:27				SUB IN: POWELL, PAIGE
08:27				TURNOVER (10SEC) by TEAM
08:27	SUB OUT: AVRAM, SIMINA			
08:27	SUB IN: POOLE, ALEXIS			
08:23				FOUL (PERSONAL) by CRISP, MORIAH
08:16	TURNOVER (BADPASS) by GIANOLLA, CARLOTTA			
08:16				STEAL by OBUSEK, CAROL-ANNE
08:02		16-14	H 2	GOOD! 3PTR by SMITH, GIGI
08:02				ASSIST by CRISP, MORIAH
07:34				FOUL (PERSONAL) by OBUSEK, CAROL-ANNE
07:34	GOOD! FT by POOLE, ALEXIS	16-15	H 1	
07:34	GOOD! FT by POOLE, ALEXIS	16-16	T	
07:34	SUB OUT: POOLE, ALEXIS			
07:34	SUB IN: AVRAM, SIMINA			
07:13				MISSED 3PTR by CRISP, MORIAH
07:11				REBOUND (OFF) by POWELL, PAIGE
07:10		18-16	H 2	GOOD! JUMPER by POWELL, PAIGE [PNT]
06:57	MISSED JUMPER by JOHNSON, AMANI			
06:52	REBOUND (OFF) by GIANOLLA, CARLOTTA			
06:37	GOOD! 3PTR by PICCOLINO, GILLIAN	18-19	V 1	
06:37	ASSIST by GIANOLLA, CARLOTTA			
06:19				MISSED JUMPER by POWELL, PAIGE
06:16				REBOUND (OFF) by OBUSEK, CAROL-ANNE
06:15				MISSED JUMPER by OBUSEK, CAROL-ANNE
06:12				REBOUND (OFF) by OBUSEK, CAROL-ANNE
06:11				MISSED JUMPER by OBUSEK, CAROL-ANNE
06:07				REBOUND (OFF) by SMITH, GIGI
06:05		20-19	H 1	GOOD! JUMPER by SMITH, GIGI [PNT]
05:51	TURNOVER (3SEC) by AVRAM, SIMINA			
05:51	SUB OUT: GIANOLLA, CARLOTTA			
05:51	SUB IN: LEGISTER, GABI			
05:34				TURNOVER (BADPASS) by OBUSEK, CAROL-ANNE
05:34	STEAL by AVRAM, SIMINA			
05:29	MISSED LAYUP by JOHNSON, AMANI			
05:26				REBOUND (DEF) by OBUSEK, CAROL-ANNE
05:26				SUB OUT: CRISP, MORIAH
05:26				SUB IN: VASON, AHYIONA
05:26	SUB OUT: AVRAM, SIMINA			
05:26	SUB IN: MANN, LEXI			
05:03				MISSED 3PTR by VASON, AHYIONA
04:58	REBOUND (DEF) by PICCOLINO, GILLIAN			
04:44				FOUL (PERSONAL) by SMITH, GIGI
04:44				
04:44	SUB OUT: LEGISTER, GABI			
04:44	SUB IN: POOLE, ALEXIS			
04:27	MISSED JUMPER by JOHNSON, AMANI			
04:24	REBOUND (OFF) by PICCOLINO, GILLIAN			
04:13	GOOD! LAYUP by MANN, LEXI [PNT]	20-21	V 1	
04:13				FOUL (PERSONAL) by OBUSEK, CAROL-ANNE
04:13				SUB OUT: OBUSEK, CAROL-ANNE
04:13				SUB IN: CRISP, MORIAH
04:13	SUB OUT: POOLE, ALEXIS			
04:13	SUB IN: GIANOLLA, CARLOTTA			

Time	VISITORS: Kennesaw St.	Score	Margin	HOME: UNCW
04:13	GOOD! FT by MANN, LEXI	20-22	V 2	
03:59				TURNOVER (BADPASS) by POWELL, PAIGE
03:59	STEAL by GIANOLLA, CARLOTTA			
03:47	GOOD! JUMPER by PICCOLINO, GILLIAN	20-24	V 4	
03:32	FOUL (PERSONAL) by GIANOLLA, CARLOTTA			
03:32				SUB OUT: POWELL, PAIGE
03:32				SUB IN: MITCHELL, JESSICA
03:32	SUB OUT: GIANOLLA, CARLOTTA			
03:32	SUB IN: LEGISTER, GABI			
03:29				MISSED JUMPER by SMITH, GIGI
03:25	REBOUND (DEF) by MANN, LEXI			
03:10	TURNOVER (BADPASS) by HEAD, KATE			
03:10				STEAL by VASON, AHYIONA
03:05				MISSED JUMPER by SUGGS, LACEY
03:05	BLOCK by PICCOLINO, GILLIAN			
02:59	REBOUND (DEF) by PICCOLINO, GILLIAN			
02:57	GOOD! LAYUP by LEGISTER, GABI [FB]	20-26	V 6	
02:57	ASSIST by PICCOLINO, GILLIAN			
02:56				TIMEOUT 30SEC
02:35				MISSED 3PTR by CRISP, MORIAH
02:32	REBOUND (DEF) by LEGISTER, GABI			
02:14				FOUL (PERSONAL) by MITCHELL, JESSICA
02:14				SUB OUT: SMITH, GIGI
02:14				SUB OUT: VASON, AHYIONA
02:14				SUB IN: POWELL, PAIGE
02:14				SUB IN: MUNOZ, JESSICA
02:14	GOOD! FT by LEGISTER, GABI	20-27	V 7	
02:14	GOOD! FT by LEGISTER, GABI	20-28	V 8	
01:56				MISSED JUMPER by MITCHELL, JESSICA
01:54				REBOUND (OFF) by SUGGS, LACEY
01:54				SUB OUT: MITCHELL, JESSICA
01:54				SUB IN: OBUSEK, CAROL-ANNE
01:44				MISSED JUMPER by POWELL, PAIGE
01:42				REBOUND (OFF) by OBUSEK, CAROL-ANNE
01:42				SUB OUT: OBUSEK, CAROL-ANNE
01:42				SUB IN: SMITH, GIGI
01:40	FOUL (PERSONAL) by LEGISTER, GABI			
01:24		23-28	V 5	GOOD! 3PTR by SUGGS, LACEY
01:24				ASSIST by CRISP, MORIAH
00:56	TURNOVER (TRAVEL) by HEAD, KATE			
00:26				TURNOVER (SHOTCLOCK) by TEAM
00:26	SUB OUT: LEGISTER, GABI			
00:26	SUB OUT: MANN, LEXI			
00:26	SUB IN: POOLE, ALEXIS			
00:26	SUB IN: GIANOLLA, CARLOTTA			
00:26	SUB OUT: HEAD, KATE			
00:26	SUB IN: HOOVER, BREANNA			
00:09	MISSED 3PTR by PICCOLINO, GILLIAN			
00:09				BLOCK by POWELL, PAIGE
00:02	REBOUND (OFF) by POOLE, ALEXIS			
00:01	GOOD! LAYUP by POOLE, ALEXIS	23-30	V 7	

Kennesaw St. 30, UNCW 23

Points from (This Period)	KSU	NCW
In the Paint	8	4
Off Turns	4	3
2nd Chance	8	7
Fast Break	2	0
Bench	7	2

Official Box Score
Kennesaw St. vs UNCW
Second Half Statistics Only
November 23, 2019 at Trask Coliseum - Wilmington, N.C.



Kennesaw St. 28

No.	Player	S	Pts	FG	3FG	FT	OR	DR	TR	PF	A	TO	Blk	Stl	Min	+/-
00	JOHNSON, AMANI	G	4	1-6	0-3	2-2	1	0	1	2	0	1	0	0	20	-5
10	POOLE, ALEXIS	F	16	5-11	0-0	6-8	2	2	4	3	1	2	2	1	19	-5
11	HEAD, KATE	G	0	0-0	0-0	0-0	0	0	0	2	0	1	0	0	3	-2
13	GIANOLLA, CARLOTTA	F	0	0-1	0-0	0-0	2	2	4	1	1	1	0	0	11	-4
14	AVRAM, SIMINA	C	0	0-0	0-0	0-0	0	0	0	0	0	0	0	0	0	0
21	HOOVER, BREANNA	G	0	0-1	0-1	0-0	3	1	4	0	1	1	0	1	17	-3
25	LEGISTER, GABI	F	0	0-0	0-0	0-0	0	0	0	0	0	0	0	0	0	0
30	PICCOLINO, GILLIAN	G	4	1-7	1-5	1-2	1	2	3	2	0	2	0	0	17	-7
33	MANN, LEXI	F	4	1-1	0-0	2-2	1	1	2	1	1	1	0	0	10	-1
44	LEWIS, PEYTON	G	0	0-0	0-0	0-0	0	0	0	0	0	0	0	0	3	2
	TEAM		0	0-0	0-0	0-0	0	1	1	0	0	0	0	0	0	0
TOTALS			28	8-27	1-9	11-14	10	9	19	11	4	9	2	2	100	

Shooting By Period

Period	FG	FG%	3FG	3FG%	FT	FT%
3rd Qtr	3-13	23%	1-6	17%	6-6	100%
4th Qtr	5-14	36%	0-3	00%	5-8	63%
2nd Half	8-27	30%	1-9	11%	11-14	79%
Game	18-55	32.7%	3-17	17.6%	19-22	86.4%

Deadball Rebounds: 1,0
Last FG Half: KSU 4th-01:39

UNCW 33

No.	Player	S	Pts	FG	3FG	FT	OR	DR	TR	PF	A	TO	Blk	Stl	Min	+/-
01	POWELL, PAIGE	F	2	1-1	0-0	0-0	0	7	7	3	0	1	1	0	17	7
02	CRISP, MORIAH	G	2	1-2	0-0	0-0	0	0	0	1	2	0	0	1	14	3
04	MUNOZ, JESSICA	F	0	0-0	0-0	0-0	0	0	0	0	0	0	0	0	0	0
05	SMITH, GIGI	G	5	2-6	1-2	0-0	1	0	1	2	4	5	0	2	19	5
10	VASON, AHYIONA	G	13	5-7	2-2	1-2	0	0	0	1	1	0	0	1	17	7
13	SUGGS, LACEY	G	4	0-3	0-1	4-4	2	1	3	3	0	1	0	0	19	5
22	THYBULLE, ZHANEIA	G	0	0-0	0-0	0-0	0	0	0	0	0	0	0	0	1	-2
31	MITCHELL, JESSICA	F	0	0-0	0-0	0-0	0	0	0	1	0	0	0	0	0	-2
32	OBUSEK, CAROL-ANNE	F	7	3-4	0-0	1-3	0	2	2	2	0	1	1	1	10	6
35	MCCRAE, SUNSHINE	F	0	0-1	0-0	0-0	0	0	0	0	0	0	0	0	3	-4
	TEAM		0	0-0	0-0	0-0	2	1	3	0	0	1	0	0	0	0
TOTALS			33	12-24	3-5	6-9	5	11	16	13	7	9	2	5	100	

Shooting By Period

Period	FG	FG%	3FG	3FG%	FT	FT%
3rd Qtr	6-13	46%	0-1	00%	3-4	75%
4th Qtr	6-11	55%	3-4	75%	3-5	60%
2nd Half	12-24	50%	3-5	60%	6-9	67%
Game	20-52	38.5%	7-16	43.8%	9-12	75.0%

Deadball Rebounds: 1,0
Last FG Half: NCW 4th-00:28

Game Notes:

Officials: Mark Hardcastle, Michael Johnson, Libya Rentz
 Attendance: 485

Start Time: 02:06 PM ET
 End Time: 04:04 PM ET
 Game Duration: 1:58

Score	1st	2nd	3rd	4th	TOT
KSU	12	18	13	15	58
NCW	10	13	15	18	56

Points from (This Period)	KSU	NCW
In the Paint	12	18
Off Turns	7	10
2nd Chance	6	0
Fast Break	3	5
Bench	4	4

Official Box Score
Kennesaw St. vs UNCW
Third Quarter Statistics Only
November 23, 2019 at Trask Coliseum - Wilmington, N.C.



Kennesaw St. 28

No.	Player	S	Pts	FG	3FG	FT	OR	DR	TR	PF	A	TO	Blk	Stl	Min	+/-
00	JOHNSON, AMANI	G	2	1-5	0-3	0-0	1	0	1	1	0	1	0	0	10	-2
10	POOLE, ALEXIS	F	4	0-2	0-0	4-4	0	1	1	0	1	0	1	1	9	-1
13	GIANOLLA, CARLOTTA	F	0	0-0	0-0	0-0	1	2	3	0	1	1	0	0	5	-4
21	HOOVER, BREANNA	G	0	0-1	0-1	0-0	2	0	2	0	1	1	0	0	7	0
30	PICCOLINO, GILLIAN	G	3	1-4	1-2	0-0	1	2	3	1	0	2	0	0	7	-4
11	HEAD, KATE	G	0	0-0	0-0	0-0	0	0	0	2	0	1	0	0	3	-2
14	AVRAM, SIMINA	C	0	0-0	0-0	0-0	0	0	0	0	0	0	0	0	0	0
25	LEGISTER, GABI	F	0	0-0	0-0	0-0	0	0	0	0	0	0	0	0	0	0
33	MANN, LEXI	F	4	1-1	0-0	2-2	1	1	2	1	0	1	0	0	6	1
44	LEWIS, PEYTON	G	0	0-0	0-0	0-0	0	0	0	0	0	0	0	0	3	2
TEAM							0	0	0	0		0				
TOTALS			13	3-13	1-6	6-6	6	6	12	5	3	7	1	1	50	

Shooting By Period

Period	FG	FG%	3FG	3FG%	FT	FT%
2nd Half	0-0	0%	0-0	0%	0-0	0%
Game	18-55	32.7%	3-17	17.6%	19-22	86.4%

Deadball Rebounds: 1,0

UNCW 33

No.	Player	S	Pts	FG	3FG	FT	OR	DR	TR	PF	A	TO	Blk	Stl	Min	+/-
04	MUNOZ, JESSICA	F	0	0-0	0-0	0-0	0	0	0	0	0	0	0	0	0	0
05	SMITH, GIGI	G	2	1-2	0-0	0-0	0	0	0	1	2	2	0	2	9	2
10	VASON, AHYIONA	G	7	3-4	0-0	1-2	0	0	0	0	1	0	0	1	7	4
13	SUGGS, LACEY	G	2	0-2	0-1	2-2	1	1	2	0	0	0	0	0	9	2
32	OBUSEK, CAROL-ANNE	F	4	2-3	0-0	0-0	0	0	0	2	0	1	1	1	8	5
01	POWELL, PAIGE	F	0	0-0	0-0	0-0	0	3	3	0	0	0	1	0	10	2
02	CRISP, MORIAH	G	0	0-1	0-0	0-0	0	0	0	1	0	0	0	0	4	0
22	THYBULLE, ZHANEIA	G	0	0-0	0-0	0-0	0	0	0	0	0	0	0	0	1	-2
31	MITCHELL, JESSICA	F	0	0-0	0-0	0-0	0	0	0	1	0	0	0	0	0	-2
35	MCCRAE, SUNSHINE	F	0	0-1	0-0	0-0	0	0	0	0	0	0	0	0	2	-1
TEAM							1	0	1	0		0				
TOTALS			15	6-13	0-1	3-4	2	4	6	5	3	3	2	4	50	

Shooting By Period

Period	FG	FG%	3FG	3FG%	FT	FT%
2nd Half	0-0	0%	0-0	0%	0-0	0%
Game	20-52	38.5%	7-16	43.8%	9-12	75.0%

Deadball Rebounds: 1,0

Game Notes:

Officials: Mark Hardcastle, Michael Johnson, Libya Rentz
 Attendance: 485

Start Time: 02:06 PM ET
 End Time: 04:04 PM ET
 Game Duration: 1:58

Score	1st	2nd	3rd	4th	TOT
KSU	12	18	13	15	58
NCW	10	13	15	18	56

Points from (This Period)	KSU	NCW
In the Paint	2	12
Off Turns	0	8
2nd Chance	2	0
Fast Break	2	4
Bench	4	0

Official Play-By-Play
Kennesaw St. vs UNCW
Third Quarter
November 23, 2019 at Trask Coliseum - Wilmington, N.C.



Period 3

Starters:

Kennesaw St.: 0 JOHNSON, AMANI (G); 10 POOLE, ALEXIS (F); 13 GIANOLLA, CARLOTTA (F); 21 HOOVER, BREANNA (G); 30 PICCOLINO, GILLIAN (G);

UNCW: 4 MUNOZ, JESSICA (F); 5 SMITH, GIGI (G); 10 VASON, AHYIONA (G); 13 SUGGS, LACEY (G); 32 OBUSEK, CAROL-ANNE (F);

Time	VISITORS: Kennesaw St.	Score	Margin	HOME: UNCW
10:00				SUB OUT: POWELL, PAIGE
10:00				SUB OUT: CRISP, MORIAH
10:00				SUB IN: VASON, AHYIONA
10:00				SUB IN: OBUSEK, CAROL-ANNE
10:00				SUB OUT: MUNOZ, JESSICA
10:00				SUB IN: POWELL, PAIGE
09:59	MISSED 3PTR by HOOVER, BREANNA			
09:57	REBOUND (OFF) by GIANOLLA, CARLOTTA			
09:57				FOUL (PERSONAL) by SMITH, GIGI
09:51	FOUL (OFF) by JOHNSON, AMANI			
09:51	TURNOVER (OFFENSIVE) by JOHNSON, AMANI			
09:26		25-30	V 5	GOOD! LAYUP by VASON, AHYIONA
09:01	MISSED 3PTR by PICCOLINO, GILLIAN			
08:57	REBOUND (OFF) by HOOVER, BREANNA			
08:54	MISSED JUMPER by JOHNSON, AMANI			
08:51	REBOUND (OFF) by PICCOLINO, GILLIAN			
08:50	MISSED JUMPER by PICCOLINO, GILLIAN			
08:50				BLOCK by OBUSEK, CAROL-ANNE
08:41	REBOUND (OFF) by HOOVER, BREANNA			
08:39	TURNOVER (BADPASS) by PICCOLINO, GILLIAN			
08:39				STEAL by SMITH, GIGI
08:33				MISSED LAYUP by SMITH, GIGI
08:30	REBOUND (DEF) by GIANOLLA, CARLOTTA			
08:11	GOOD! 3PTR by PICCOLINO, GILLIAN	25-33	V 8	
08:11	ASSIST by GIANOLLA, CARLOTTA			
07:52				MISSED JUMPER by VASON, AHYIONA
07:48	REBOUND (DEF) by PICCOLINO, GILLIAN			
07:46	GOOD! LAYUP by JOHNSON, AMANI [FB]	25-35	V 10	
07:46	ASSIST by HOOVER, BREANNA			
07:31				TIMEOUT 30SEC
07:31				
07:18		27-35	V 8	GOOD! JUMPER by OBUSEK, CAROL-ANNE
07:18				ASSIST by SMITH, GIGI
06:57	MISSED JUMPER by POOLE, ALEXIS			
06:54				REBOUND (DEF) by POWELL, PAIGE
06:50				TURNOVER (BADPASS) by SMITH, GIGI
06:50	STEAL by POOLE, ALEXIS			
06:37	MISSED 3PTR by JOHNSON, AMANI			
06:33				REBOUND (DEF) by SUGGS, LACEY
06:25		29-35	V 6	GOOD! LAYUP by OBUSEK, CAROL-ANNE
06:25				ASSIST by VASON, AHYIONA
06:07	TURNOVER (BADPASS) by PICCOLINO, GILLIAN			
06:07				STEAL by OBUSEK, CAROL-ANNE
06:01		31-35	V 4	GOOD! LAYUP by VASON, AHYIONA [FB]
05:44	SUB OUT: POOLE, ALEXIS			
05:44	SUB IN: MANN, LEXI			
05:44				SUB OUT: OBUSEK, CAROL-ANNE
05:44				SUB IN: MITCHELL, JESSICA
05:36				FOUL (PERSONAL) by MITCHELL, JESSICA
05:36	GOOD! FT by MANN, LEXI	31-36	V 5	
05:36	GOOD! FT by MANN, LEXI	31-37	V 6	
05:36				SUB OUT: MITCHELL, JESSICA
05:36				SUB IN: MCCRAE, SUNSHINE
05:15	FOUL (PERSONAL) by MANN, LEXI			
05:15		32-37	V 5	GOOD! FT by VASON, AHYIONA
05:15				MISSED FT by VASON, AHYIONA
05:15	REBOUND (DEF) by PICCOLINO, GILLIAN			
04:59	MISSED JUMPER by PICCOLINO, GILLIAN			
04:59				BLOCK by POWELL, PAIGE
04:54				REBOUND (DEF) by POWELL, PAIGE
04:50				MISSED 3PTR by SUGGS, LACEY
04:46	REBOUND (DEF) by GIANOLLA, CARLOTTA			
04:41	TURNOVER (LOSTBALL) by GIANOLLA, CARLOTTA			
04:41				STEAL by VASON, AHYIONA
04:35		34-37	V 3	GOOD! LAYUP by VASON, AHYIONA [FB]
04:35				ASSIST by SMITH, GIGI
04:32	TIMEOUT 30SEC			
04:32				
04:32				SUB OUT: VASON, AHYIONA
04:32				SUB IN: MITCHELL, JESSICA

Time	VISITORS: Kennesaw St.	Score	Margin	HOME: UNCW
04:32				SUB OUT: MITCHELL, JESSICA
04:32				SUB IN: CRISP, MORIAH
04:32	SUB OUT: GIANOLLA, CARLOTTA			
04:32	SUB OUT: PICCOLINO, GILLIAN			
04:32	SUB IN: POOLE, ALEXIS			
04:32	SUB IN: LEWIS, PEYTON			
04:09	GOOD! JUMPER by MANN, LEXI	34-39	V 5	
04:09	ASSIST by POOLE, ALEXIS			
03:46				MISSED JUMPER by MCCRAE, SUNSHINE
03:42	REBOUND (DEF) by POOLE, ALEXIS			
03:37	TURNOVER (BADPASS) by HOOVER, BREANNA			
03:37				STEAL by SMITH, GIGI
03:37				SUB OUT: MCCRAE, SUNSHINE
03:37				SUB IN: OBUSEK, CAROL-ANNE
03:37	SUB OUT: HOOVER, BREANNA			
03:37	SUB IN: HEAD, KATE			
03:21				MISSED JUMPER by OBUSEK, CAROL-ANNE
03:17	REBOUND (DEF) by MANN, LEXI			
03:04	MISSED 3PTR by JOHNSON, AMANI			
03:01	REBOUND (OFF) by JOHNSON, AMANI			
02:59				FOUL (PERSONAL) by OBUSEK, CAROL-ANNE
02:59	GOOD! FT by POOLE, ALEXIS	34-40	V 6	
02:59	GOOD! FT by POOLE, ALEXIS	34-41	V 7	
02:46	FOUL (PERSONAL) by HEAD, KATE			
02:42		36-41	V 5	GOOD! JUMPER by SMITH, GIGI [PNT]
02:11				FOUL (PERSONAL) by CRISP, MORIAH
02:08	MISSED JUMPER by POOLE, ALEXIS			
02:05				REBOUND (DEF) by POWELL, PAIGE
01:41				MISSED LAYUP by CRISP, MORIAH
01:41	BLOCK by POOLE, ALEXIS			
01:41				REBOUND (OFF) by TEAM
01:37				TURNOVER (TRAVEL) by SMITH, GIGI
01:37				SUB OUT: SUGGS, LACEY
01:37				SUB IN: VASON, AHYIONA
01:37	SUB OUT: LEWIS, PEYTON			
01:37	SUB IN: PICCOLINO, GILLIAN			
01:21	MISSED 3PTR by JOHNSON, AMANI			
01:19	REBOUND (OFF) by MANN, LEXI			
01:19	TURNOVER (LOSTBALL) by MANN, LEXI			
01:06				TURNOVER (3SEC) by OBUSEK, CAROL-ANNE
01:06				SUB OUT: SMITH, GIGI
01:06				SUB IN: SUGGS, LACEY
00:43	FOUL (OFF) by HEAD, KATE			
00:43	TURNOVER (OFFENSIVE) by HEAD, KATE			
00:34	FOUL (PERSONAL) by PICCOLINO, GILLIAN			
00:34		37-41	V 4	GOOD! FT by SUGGS, LACEY
00:34		38-41	V 3	GOOD! FT by SUGGS, LACEY
00:34				SUB OUT: CRISP, MORIAH
00:34				SUB IN: THYBULLE, ZHANEIA
00:34	SUB OUT: HEAD, KATE			
00:34	SUB IN: HOOVER, BREANNA			
00:12				FOUL (PERSONAL) by OBUSEK, CAROL-ANNE
00:12				SUB OUT: OBUSEK, CAROL-ANNE
00:12				SUB IN: MCCRAE, SUNSHINE
00:12	GOOD! FT by POOLE, ALEXIS	38-42	V 4	
00:12	GOOD! FT by POOLE, ALEXIS	38-43	V 5	
00:12	SUB OUT: POOLE, ALEXIS			
00:12	SUB IN: LEGISTER, GABI			
00:02				MISSED LAYUP by SUGGS, LACEY
00:00				REBOUND (OFF) by SUGGS, LACEY

Kennesaw St. 43, UNCW 38

Points from (This Period)	KSU	NCW
In the Paint	2	12
Off Turns	0	8
2nd Chance	2	0
Fast Break	2	4
Bench	4	0

Official Box Score
Kennesaw St. vs UNCW
Fourth Quarter Statistics Only
November 23, 2019 at Trask Coliseum - Wilmington, N.C.



Kennesaw St. 15

No.	Player	S	Pts	FG	3FG	FT	OR	DR	TR	PF	A	TO	Blk	Stl	Min	+/-
00	JOHNSON, AMANI	G	2	0-1	0-0	2-2	0	0	0	1	0	0	0	0	10	-3
10	POOLE, ALEXIS	F	12	5-9	0-0	2-4	2	1	3	3	0	2	1	0	10	-4
13	GIANOLLA, CARLOTTA	F	0	0-1	0-0	0-0	1	0	1	1	0	0	0	0	6	0
21	HOOVER, BREANNA	G	0	0-0	0-0	0-0	1	1	2	0	0	0	0	1	10	-3
30	PICCOLINO, GILLIAN	G	1	0-3	0-3	1-2	0	0	0	1	0	0	0	0	10	-3
11	HEAD, KATE	G	0	0-0	0-0	0-0	0	0	0	0	0	0	0	0	0	0
14	AVRAM, SIMINA	C	0	0-0	0-0	0-0	0	0	0	0	0	0	0	0	0	0
25	LEGISTER, GABI	F	0	0-0	0-0	0-0	0	0	0	0	0	0	0	0	0	0
33	MANN, LEXI	F	0	0-0	0-0	0-0	0	0	0	0	1	0	0	0	4	-2
44	LEWIS, PEYTON	G	0	0-0	0-0	0-0	0	0	0	0	0	0	0	0	0	0
TEAM							0	1	1	0		0				
TOTALS			15	5-14	0-3	5-8	4	3	7	6	1	2	1	1	50	

Shooting By Period

Period	FG	FG%	3FG	3FG%	FT	FT%
Game	18-55	32.7%	3-17	17.6%	19-22	86.4%

Deadball Rebounds: 1,0

UNCW 18

No.	Player	S	Pts	FG	3FG	FT	OR	DR	TR	PF	A	TO	Blk	Stl	Min	+/-
04	MUNOZ, JESSICA	F	0	0-0	0-0	0-0	0	0	0	0	0	0	0	0	0	0
05	SMITH, GIGI	G	3	1-4	1-2	0-0	1	0	1	1	2	3	0	0	10	3
10	VASON, AHYIONA	G	6	2-3	2-2	0-0	0	0	0	1	0	0	0	0	10	3
13	SUGGS, LACEY	G	2	0-1	0-0	2-2	1	0	1	3	0	1	0	0	10	3
32	OBUSEK, CAROL-ANNE	F	3	1-1	0-0	1-3	0	2	2	0	0	0	0	0	2	1
01	POWELL, PAIGE	F	2	1-1	0-0	0-0	0	4	4	3	0	1	0	0	7	5
02	CRISP, MORIAH	G	2	1-1	0-0	0-0	0	0	0	0	2	0	0	1	10	3
22	THYBULLE, ZHANEIA	G	0	0-0	0-0	0-0	0	0	0	0	0	0	0	0	0	0
31	MITCHELL, JESSICA	F	0	0-0	0-0	0-0	0	0	0	0	0	0	0	0	0	0
35	MCCRAGE, SUNSHINE	F	0	0-0	0-0	0-0	0	0	0	0	0	0	0	0	1	-3
TEAM							1	1	2	0		1				
TOTALS			18	6-11	3-4	3-5	3	7	10	8	4	6	0	1	50	

Shooting By Period

Period	FG	FG%	3FG	3FG%	FT	FT%
Game	20-52	38.5%	7-16	43.8%	9-12	75.0%

Deadball Rebounds: 1,0

Game Notes:

Officials: Mark Hardcastle, Michael Johnson, Libya Rentz
 Attendance: 485

Start Time: 02:06 PM ET
 End Time: 04:04 PM ET
 Game Duration: 1:58

Score	1st	2nd	3rd	4th	TOT
KSU	12	18	13	15	58
NCW	10	13	15	18	56

Points from (This Period)	KSU	NCW
In the Paint	10	6
Off Turns	7	2
2nd Chance	4	0
Fast Break	1	1
Bench	0	4

Official Play-By-Play
Kennesaw St. vs UNCW
Fourth Quarter
November 23, 2019 at Trask Coliseum - Wilmington, N.C.



Period 4

Starters:

Kennesaw St.: 0 JOHNSON, AMANI (G); 10 POOLE, ALEXIS (F); 13 GIANOLLA, CARLOTTA (F); 21 HOOVER, BREANNA (G); 30 PICCOLINO, GILLIAN (G);

UNCW: 4 MUNOZ, JESSICA (F); 5 SMITH, GIGI (G); 10 VASON, AHYIONA (G); 13 SUGGS, LACEY (G); 32 OBUSEK, CAROL-ANNE (F);

Time	VISITORS: Kennesaw St.	Score	Margin	HOME: UNCW
10:00				SUB OUT: THYBULLE, ZHANEIA
10:00				SUB IN: CRISP, MORIAH
10:00	SUB OUT: LEGISTER, GABI			
10:00	SUB OUT: MANN, LEXI			
10:00	SUB IN: POOLE, ALEXIS			
10:00	SUB IN: GIANOLLA, CARLOTTA			
10:00				SUB OUT: MCCRAE, SUNSHINE
10:00				SUB IN: SMITH, GIGI
09:54	FOUL (PERSONAL) by GIANOLLA, CARLOTTA			
09:46		41-43	V 2	GOOD! 3PTR by SMITH, GIGI
09:24	MISSED JUMPER by JOHNSON, AMANI			
09:20	REBOUND (OFF) by HOOVER, BREANNA			
09:19	MISSED 3PTR by PICCOLINO, GILLIAN			
09:16				REBOUND (DEF) by POWELL, PAIGE
09:15				TURNOVER (LOSTBALL) by SMITH, GIGI
09:15	STEAL by HOOVER, BREANNA			
08:56	MISSED JUMPER by POOLE, ALEXIS			
08:53				REBOUND (DEF) by POWELL, PAIGE
08:45	FOUL (PERSONAL) by JOHNSON, AMANI			
08:45		42-43	V 1	GOOD! FT by SUGGS, LACEY
08:45		43-43	T	GOOD! FT by SUGGS, LACEY
08:21	MISSED 3PTR by PICCOLINO, GILLIAN			
08:18	REBOUND (OFF) by GIANOLLA, CARLOTTA			
08:07	GOOD! LAYUP by POOLE, ALEXIS	43-45	V 2	
07:47		46-45	H 1	GOOD! 3PTR by VASON, AHYIONA
07:47				ASSIST by CRISP, MORIAH
07:34				FOUL (PERSONAL) by VASON, AHYIONA
07:34	GOOD! FT by JOHNSON, AMANI	46-46	T	
07:34	GOOD! FT by JOHNSON, AMANI	46-47	V 1	
07:19				MISSED JUMPER by VASON, AHYIONA
07:17	REBOUND (DEF) by TEAM			
07:00	MISSED JUMPER by GIANOLLA, CARLOTTA			
06:57	REBOUND (OFF) by POOLE, ALEXIS			
06:56	MISSED JUMPER by POOLE, ALEXIS			
06:53				REBOUND (DEF) by POWELL, PAIGE
06:47				MISSED 3PTR by SMITH, GIGI
06:45	REBOUND (DEF) by POOLE, ALEXIS			
06:45				FOUL (PERSONAL) by POWELL, PAIGE
06:31	MISSED JUMPER by POOLE, ALEXIS			
06:28				REBOUND (DEF) by POWELL, PAIGE
06:23				MISSED JUMPER by SMITH, GIGI
06:22	REBOUND (DEF) by HOOVER, BREANNA			
06:22				FOUL (PERSONAL) by SUGGS, LACEY
05:57				FOUL (PERSONAL) by POWELL, PAIGE
05:57				SUB OUT: POWELL, PAIGE
05:57				SUB IN: MCCRAE, SUNSHINE
05:57	GOOD! FT by POOLE, ALEXIS	46-48	V 2	
05:57	MISSED FT by POOLE, ALEXIS			
05:27				REBOUND (DEF) by TEAM
05:27	FOUL (PERSONAL) by POOLE, ALEXIS			
05:19				FOUL (OFF) by SUGGS, LACEY
05:19				TURNOVER (OFFENSIVE) by SUGGS, LACEY
04:55	GOOD! LAYUP by POOLE, ALEXIS	46-50	V 4	
04:40				FOUL (OFF) by SMITH, GIGI
04:40				TURNOVER (OFFENSIVE) by SMITH, GIGI
04:40				SUB OUT: MCCRAE, SUNSHINE
04:40				SUB IN: POWELL, PAIGE
04:40				
04:22	TURNOVER (3SEC) by POOLE, ALEXIS			
04:22	FOUL (PERSONAL) by PICCOLINO, GILLIAN			
04:03				MISSED LAYUP by SUGGS, LACEY
04:03	BLOCK by POOLE, ALEXIS			
04:03				REBOUND (OFF) by TEAM
03:56				TURNOVER (DRIBBLING) by POWELL, PAIGE
03:56	SUB OUT: GIANOLLA, CARLOTTA			
03:56	SUB IN: MANN, LEXI			
03:43	GOOD! JUMPER by POOLE, ALEXIS	46-52	V 6	
03:17		48-52	V 4	GOOD! JUMPER by POWELL, PAIGE [PNT]
03:17				ASSIST by SMITH, GIGI
02:46	MISSED JUMPER by POOLE, ALEXIS			

Time	VISITORS: Kennesaw St.	Score	Margin	HOME: UNCW
02:43	REBOUND (OFF) by POOLE, ALEXIS			
02:42	GOOD! JUMPER by POOLE, ALEXIS	48-54	V 6	
02:26		51-54	V 3	GOOD! 3PTR by VASON, AHYIONA
02:26				ASSIST by CRISP, MORIAH
02:07				FOUL (PERSONAL) by POWELL, PAIGE
02:07				SUB OUT: POWELL, PAIGE
02:07				SUB IN: OBUSEK, CAROL-ANNE
02:07	GOOD! FT by POOLE, ALEXIS	51-55	V 4	
02:07	MISSED FT by POOLE, ALEXIS			
02:07				REBOUND (DEF) by OBUSEK, CAROL-ANNE
02:01				TURNOVER (BADPASS) by SMITH, GIGI
01:39	GOOD! LAYUP by POOLE, ALEXIS	51-57	V 6	
01:39	ASSIST by MANN, LEXI			
01:25		53-57	V 4	GOOD! LAYUP by CRISP, MORIAH
01:11	MISSED 3PTR by PICCOLINO, GILLIAN			
01:11				REBOUND (DEF) by OBUSEK, CAROL-ANNE
01:11	FOUL (PERSONAL) by POOLE, ALEXIS			
01:11				MISSED FT by OBUSEK, CAROL-ANNE
01:11				REBOUND (OFF) by TEAM
01:11		54-57	V 3	GOOD! FT by OBUSEK, CAROL-ANNE [FB]
00:43	TURNOVER (LOSTBALL) by POOLE, ALEXIS			
00:43				STEAL by CRISP, MORIAH
00:43				TIMEOUT TEAM
00:28		56-57	V 1	GOOD! JUMPER by OBUSEK, CAROL-ANNE [PNT]
00:28				ASSIST by SMITH, GIGI
00:28	FOUL (PERSONAL) by POOLE, ALEXIS			
00:28	SUB OUT: POOLE, ALEXIS			
00:28	SUB IN: GIANOLLA, CARLOTTA			
00:28				MISSED FT by OBUSEK, CAROL-ANNE
00:28				REBOUND (OFF) by SMITH, GIGI
00:19				TIMEOUT 30SEC
00:04				MISSED JUMPER by SMITH, GIGI
00:04				REBOUND (OFF) by SUGGS, LACEY
00:04				TURNOVER (SHOTCLOCK) by TEAM
00:04	TIMEOUT 30SEC			
00:03				FOUL (PERSONAL) by SUGGS, LACEY
00:03	MISSED FT by PICCOLINO, GILLIAN			
00:03	REBOUND (OFF) by TEAM			
00:03	GOOD! FT by PICCOLINO, GILLIAN [FB]	56-58	V 2	

Kennesaw St. 58, UNCW 56

Points from (This Period)	KSU	NCW
In the Paint	10	6
Off Turns	7	2
2nd Chance	4	0
Fast Break	1	1
Bench	0	4

Official Scoring/Possession Reference Chart
Kennesaw St. vs UNCW
Period 1
November 23, 2019 at Trask Coliseum - Wilmington, N.C.



Period 1

Starters:

Kennesaw St.: 0 JOHNSON, AMANI (G); 10 POOLE, ALEXIS (F); 13 GIANOLLA, CARLOTTA (F); 21 HOOVER, BREANNA (G); 30 PICCOLINO, GILLIAN (G);
UNCW: 4 MUNOZ, JESSICA (F); 5 SMITH, GIGI (G); 10 VASON, AHYIONA (G); 13 SUGGS, LACEY (G); 32 OBUSEK, CAROL-ANNE (F);

Time	VISITORS: Kennesaw St.	Score	Margin	HOME: UNCW
09:45	GOOD! 3PTR by JOHNSON, AMANI	0-3	V 3	
08:36	GOOD! FT by POOLE, ALEXIS	0-4	V 4	
08:13		1-4	V 3	GOOD! FT by SMITH, GIGI
08:13		2-4	V 2	GOOD! FT by SMITH, GIGI
06:08	GOOD! FT by POOLE, ALEXIS	2-5	V 3	
06:08	GOOD! FT by POOLE, ALEXIS	2-6	V 4	
05:41	GOOD! JUMPER by POOLE, ALEXIS [PNT]	2-8	V 6	
04:53		4-8	V 4	GOOD! JUMPER by POWELL, PAIGE [PNT]
04:27	GOOD! LAYUP by POOLE, ALEXIS	4-10	V 6	
02:51		7-10	V 3	GOOD! 3PTR by CRISP, MORIAH
01:05		9-10	V 1	GOOD! LAYUP by SMITH, GIGI
01:05		10-10	T	GOOD! FT by SMITH, GIGI
00:07	GOOD! LAYUP by JOHNSON, AMANI [PNT]	10-12	V 2	

Kennesaw St. 12, UNCW 10

Official Scoring/Possession Reference Chart
Kennesaw St. vs UNCW
Period 2
November 23, 2019 at Trask Coliseum - Wilmington, N.C.



Period 2

Starters:

Kennesaw St.: 0 JOHNSON, AMANI (G); 10 POOLE, ALEXIS (F); 13 GIANOLLA, CARLOTTA (F); 21 HOOVER, BREANNA (G); 30 PICCOLINO, GILLIAN (G);
UNCW: 4 MUNOZ, JESSICA (F); 5 SMITH, GIGI (G); 10 VASON, AHYIONA (G); 13 SUGGS, LACEY (G); 32 OBUSEK, CAROL-ANNE (F);

Time	VISITORS: Kennesaw St.	Score	Margin	HOME: UNCW
08:57		13-12	H 1	GOOD! 3PTR by SMITH, GIGI
08:40	GOOD! LAYUP by GIANOLLA, CARLOTTA	13-14	V 1	
08:02		16-14	H 2	GOOD! 3PTR by SMITH, GIGI
07:34	GOOD! FT by POOLE, ALEXIS	16-15	H 1	
07:34	GOOD! FT by POOLE, ALEXIS	16-16	T	
07:10		18-16	H 2	GOOD! JUMPER by POWELL, PAIGE [PNT]
06:37	GOOD! 3PTR by PICCOLINO, GILLIAN	18-19	V 1	
06:05		20-19	H 1	GOOD! JUMPER by SMITH, GIGI [PNT]
04:13	GOOD! LAYUP by MANN, LEXI [PNT]	20-21	V 1	
04:13	GOOD! FT by MANN, LEXI	20-22	V 2	
03:47	GOOD! JUMPER by PICCOLINO, GILLIAN	20-24	V 4	
02:57	GOOD! LAYUP by LEGISTER, GABI [FB]	20-26	V 6	
02:14	GOOD! FT by LEGISTER, GABI	20-27	V 7	
02:14	GOOD! FT by LEGISTER, GABI	20-28	V 8	
01:24		23-28	V 5	GOOD! 3PTR by SUGGS, LACEY
00:01	GOOD! LAYUP by POOLE, ALEXIS	23-30	V 7	

Kennesaw St. 30, UNCW 23

Official Scoring/Possession Reference Chart
Kennesaw St. vs UNCW
Period 3
November 23, 2019 at Trask Coliseum - Wilmington, N.C.



Period 3

Starters:

Kennesaw St.: 0 JOHNSON, AMANI (G); 10 POOLE, ALEXIS (F); 13 GIANOLLA, CARLOTTA (F); 21 HOOVER, BREANNA (G); 30 PICCOLINO, GILLIAN (G);
UNCW: 4 MUNOZ, JESSICA (F); 5 SMITH, GIGI (G); 10 VASON, AHYIONA (G); 13 SUGGS, LACEY (G); 32 OBUSEK, CAROL-ANNE (F);

Time	VISITORS: Kennesaw St.	Score	Margin	HOME: UNCW
09:26		25-30	V 5	GOOD! LAYUP by VASON, AHYIONA
08:11	GOOD! 3PTR by PICCOLINO, GILLIAN	25-33	V 8	
07:46	GOOD! LAYUP by JOHNSON, AMANI [FB]	25-35	V 10	
07:18		27-35	V 8	GOOD! JUMPER by OBUSEK, CAROL-ANNE
06:25		29-35	V 6	GOOD! LAYUP by OBUSEK, CAROL-ANNE
06:01		31-35	V 4	GOOD! LAYUP by VASON, AHYIONA [FB]
05:36	GOOD! FT by MANN, LEXI	31-36	V 5	
05:36	GOOD! FT by MANN, LEXI	31-37	V 6	
05:15		32-37	V 5	GOOD! FT by VASON, AHYIONA
04:35		34-37	V 3	GOOD! LAYUP by VASON, AHYIONA [FB]
04:09	GOOD! JUMPER by MANN, LEXI	34-39	V 5	
02:59	GOOD! FT by POOLE, ALEXIS	34-40	V 6	
02:59	GOOD! FT by POOLE, ALEXIS	34-41	V 7	
02:42		36-41	V 5	GOOD! JUMPER by SMITH, GIGI [PNT]
00:34		37-41	V 4	GOOD! FT by SUGGS, LACEY
00:34		38-41	V 3	GOOD! FT by SUGGS, LACEY
00:12	GOOD! FT by POOLE, ALEXIS	38-42	V 4	
00:12	GOOD! FT by POOLE, ALEXIS	38-43	V 5	

Kennesaw St. 43, UNCW 38

Official Scoring/Possession Reference Chart
Kennesaw St. vs UNCW
Period 4
November 23, 2019 at Trask Coliseum - Wilmington, N.C.



Period 4

Starters:

Kennesaw St.: 0 JOHNSON, AMANI (G); 10 POOLE, ALEXIS (F); 13 GIANOLLA, CARLOTTA (F); 21 HOOVER, BREANNA (G); 30 PICCOLINO, GILLIAN (G);
UNCW: 4 MUNOZ, JESSICA (F); 5 SMITH, GIGI (G); 10 VASON, AHYIONA (G); 13 SUGGS, LACEY (G); 32 OBUSEK, CAROL-ANNE (F);

Time	VISITORS: Kennesaw St.	Score	Margin	HOME: UNCW
09:46		41-43	V 2	GOOD! 3PTR by SMITH, GIGI
08:45		42-43	V 1	GOOD! FT by SUGGS, LACEY
08:45		43-43	T	GOOD! FT by SUGGS, LACEY
08:07	GOOD! LAYUP by POOLE, ALEXIS	43-45	V 2	
07:47		46-45	H 1	GOOD! 3PTR by VASON, AHYIONA
07:34	GOOD! FT by JOHNSON, AMANI	46-46	T	
07:34	GOOD! FT by JOHNSON, AMANI	46-47	V 1	
05:57	GOOD! FT by POOLE, ALEXIS	46-48	V 2	
04:55	GOOD! LAYUP by POOLE, ALEXIS	46-50	V 4	
03:43	GOOD! JUMPER by POOLE, ALEXIS	46-52	V 6	
03:17		48-52	V 4	GOOD! JUMPER by POWELL, PAIGE [PNT]
02:42	GOOD! JUMPER by POOLE, ALEXIS	48-54	V 6	
02:26		51-54	V 3	GOOD! 3PTR by VASON, AHYIONA
02:07	GOOD! FT by POOLE, ALEXIS	51-55	V 4	
01:39	GOOD! LAYUP by POOLE, ALEXIS	51-57	V 6	
01:25		53-57	V 4	GOOD! LAYUP by CRISP, MORIAH
01:11		54-57	V 3	GOOD! FT by OBUSEK, CAROL-ANNE [FB]
00:28		56-57	V 1	GOOD! JUMPER by OBUSEK, CAROL-ANNE [PNT]
00:03	GOOD! FT by PICCOLINO, GILLIAN [FB]	56-58	V 2	

Kennesaw St. 58, UNCW 56

Official Substitutions Log
Kennesaw St. vs UNCW
Period 1
November 23, 2019 at Trask Coliseum - Wilmington, N.C.



VISITORS: Kennesaw St.	Time	Score	HOME: UNCW
0 JOHNSON, AMANI			4 MUNOZ, JESSICA
10 POOLE, ALEXIS			5 SMITH, GIGI
13 GIANOLLA, CARLOTTA			10 VASON, AHYIONA
21 HOOVER, BREANNA			13 SUGGS, LACEY
30 PICCOLINO, GILLIAN			32 OBUSEK, CAROL-ANNE
	06:08	4-2	SUB OUT: VASON, AHYIONA
	06:08		SUB OUT: OBUSEK, CAROL-ANNE
	06:08		SUB IN: POWELL, PAIGE
	06:08		SUB IN: CRISP, MORIAH
	04:09	10-4	SUB OUT: POWELL, PAIGE
	04:09		SUB IN: OBUSEK, CAROL-ANNE
	03:58	10-4	SUB OUT: MUNOZ, JESSICA
	03:58		SUB IN: MCCRAE, SUNSHINE
SUB OUT: 10 POOLE, ALEXIS	02:08	10-7	
SUB OUT: 21 HOOVER, BREANNA	02:08		
SUB IN: 11 HEAD, KATE	02:08		
SUB IN: 14 AVRAM, SIMINA	02:08		
SUB OUT: 30 PICCOLINO, GILLIAN	01:31	10-7	
SUB IN: 44 LEWIS, PEYTON	01:31		
	01:05	10-9	SUB OUT: SUGGS, LACEY
	01:05		SUB IN: THYBULLE, ZHANEIA
SUB OUT: 14 AVRAM, SIMINA	01:05		
SUB IN: 10 POOLE, ALEXIS	01:05		

Kennesaw St. 12, UNCW 10

Official Substitutions Log
Kennesaw St. vs UNCW
Period 2
November 23, 2019 at Trask Coliseum - Wilmington, N.C.



VISITORS: Kennesaw St.	Time	Score	HOME: UNCW
0 JOHNSON, AMANI			4 MUNOZ, JESSICA
10 POOLE, ALEXIS			5 SMITH, GIGI
13 GIANOLLA, CARLOTTA			10 VASON, AHYIONA
21 HOOVER, BREANNA			13 SUGGS, LACEY
30 PICCOLINO, GILLIAN			32 OBUSEK, CAROL-ANNE
	10:00	-	SUB OUT: THYBULLE, ZHANEIA
	10:00		SUB IN: SUGGS, LACEY
SUB OUT: 44 LEWIS, PEYTON	10:00		
SUB IN: 30 PICCOLINO, GILLIAN	10:00		
SUB OUT: 10 POOLE, ALEXIS	09:43	-	
SUB IN: 14 AVRAM, SIMINA	09:43		
	08:27	14-13	SUB OUT: MCCRAE, SUNSHINE
	08:27		SUB IN: POWELL, PAIGE
SUB OUT: 14 AVRAM, SIMINA	08:27		
SUB IN: 10 POOLE, ALEXIS	08:27		
SUB OUT: 10 POOLE, ALEXIS	07:34	16-16	
SUB IN: 14 AVRAM, SIMINA	07:34		
SUB OUT: 13 GIANOLLA, CARLOTTA	05:51	19-20	
SUB IN: 25 LEGISTER, GABI	05:51		
	05:26	19-20	SUB OUT: CRISP, MORIAH
	05:26		SUB IN: VASON, AHYIONA
SUB OUT: 14 AVRAM, SIMINA	05:26		
SUB IN: 33 MANN, LEXI	05:26		
SUB OUT: 25 LEGISTER, GABI	04:44	19-20	
SUB IN: 10 POOLE, ALEXIS	04:44		
	04:13	21-20	SUB OUT: OBUSEK, CAROL-ANNE
	04:13		SUB IN: CRISP, MORIAH
SUB OUT: 10 POOLE, ALEXIS	04:13		
SUB IN: 13 GIANOLLA, CARLOTTA	04:13		
	03:32	24-20	SUB OUT: POWELL, PAIGE
	03:32		SUB IN: MITCHELL, JESSICA
SUB OUT: 13 GIANOLLA, CARLOTTA	03:32		
SUB IN: 25 LEGISTER, GABI	03:32		
	02:14	26-20	SUB OUT: SMITH, GIGI
	02:14		SUB OUT: VASON, AHYIONA
	02:14		SUB IN: POWELL, PAIGE
	02:14		SUB IN: MUNOZ, JESSICA
	01:54	28-20	SUB OUT: MITCHELL, JESSICA
	01:54		SUB IN: OBUSEK, CAROL-ANNE
	01:42	28-20	SUB OUT: OBUSEK, CAROL-ANNE
	01:42		SUB IN: SMITH, GIGI
SUB OUT: 25 LEGISTER, GABI	00:26	28-23	
SUB OUT: 33 MANN, LEXI	00:26		
SUB IN: 10 POOLE, ALEXIS	00:26		
SUB IN: 13 GIANOLLA, CARLOTTA	00:26		
SUB OUT: 11 HEAD, KATE	00:26		
SUB IN: 21 HOOVER, BREANNA	00:26		

Kennesaw St. 30, UNCW 23

Official Substitutions Log
Kennesaw St. vs UNCW
Period 3
November 23, 2019 at Trask Coliseum - Wilmington, N.C.



VISITORS: Kennesaw St.	Time	Score	HOME: UNCW
0 JOHNSON, AMANI			4 MUNOZ, JESSICA
10 POOLE, ALEXIS			5 SMITH, GIGI
13 GIANOLLA, CARLOTTA			10 VASON, AHYIONA
21 HOOVER, BREANNA			13 SUGGS, LACEY
30 PICCOLINO, GILLIAN			32 OBUSEK, CAROL-ANNE
	10:00	-	SUB OUT: POWELL, PAIGE
	10:00		SUB OUT: CRISP, MORIAH
	10:00		SUB IN: VASON, AHYIONA
	10:00		SUB IN: OBUSEK, CAROL-ANNE
	10:00		SUB OUT: MUNOZ, JESSICA
	10:00		SUB IN: POWELL, PAIGE
SUB OUT: 10 POOLE, ALEXIS	05:44	35-31	
SUB IN: 33 MANN, LEXI	05:44		
	05:44		SUB OUT: OBUSEK, CAROL-ANNE
	05:44		SUB IN: MITCHELL, JESSICA
	05:36	37-31	SUB OUT: MITCHELL, JESSICA
	05:36		SUB IN: MCCRAE, SUNSHINE
	04:32	37-34	SUB OUT: VASON, AHYIONA
	04:32		SUB IN: MITCHELL, JESSICA
	04:32		SUB OUT: MITCHELL, JESSICA
	04:32		SUB IN: CRISP, MORIAH
SUB OUT: 13 GIANOLLA, CARLOTTA	04:32		
SUB OUT: 30 PICCOLINO, GILLIAN	04:32		
SUB IN: 10 POOLE, ALEXIS	04:32		
SUB IN: 44 LEWIS, PEYTON	04:32		
	03:37	39-34	SUB OUT: MCCRAE, SUNSHINE
	03:37		SUB IN: OBUSEK, CAROL-ANNE
SUB OUT: 21 HOOVER, BREANNA	03:37		
SUB IN: 11 HEAD, KATE	03:37		
	01:37	41-36	SUB OUT: SUGGS, LACEY
	01:37		SUB IN: VASON, AHYIONA
SUB OUT: 44 LEWIS, PEYTON	01:37		
SUB IN: 30 PICCOLINO, GILLIAN	01:37		
	01:06	41-36	SUB OUT: SMITH, GIGI
	01:06		SUB IN: SUGGS, LACEY
	00:34	41-38	SUB OUT: CRISP, MORIAH
	00:34		SUB IN: THYBULLE, ZHANEIA
SUB OUT: 11 HEAD, KATE	00:34		
SUB IN: 21 HOOVER, BREANNA	00:34		
	00:12	41-38	SUB OUT: OBUSEK, CAROL-ANNE
	00:12		SUB IN: MCCRAE, SUNSHINE
SUB OUT: 10 POOLE, ALEXIS	00:12		
SUB IN: 25 LEGISTER, GABI	00:12		

Kennesaw St. 43, UNCW 38

Official Substitutions Log
Kennesaw St. vs UNCW
Period 4
November 23, 2019 at Trask Coliseum - Wilmington, N.C.



VISITORS: Kennesaw St.	Time	Score	HOME: UNCW
0 JOHNSON, AMANI			4 MUNOZ, JESSICA
10 POOLE, ALEXIS			5 SMITH, GIGI
13 GIANOLLA, CARLOTTA			10 VASON, AHYIONA
21 HOOVER, BREANNA			13 SUGGS, LACEY
30 PICCOLINO, GILLIAN			32 OBUSEK, CAROL-ANNE
	10:00	-	SUB OUT: THYBULLE, ZHANEIA
	10:00		SUB IN: CRISP, MORIAH
SUB OUT: 25 LEGISTER, GABI	10:00		
SUB OUT: 33 MANN, LEXI	10:00		
SUB IN: 10 POOLE, ALEXIS	10:00		
SUB IN: 13 GIANOLLA, CARLOTTA	10:00		
	10:00		SUB OUT: MCCRAE, SUNSHINE
	10:00		SUB IN: SMITH, GIGI
	05:57	47-46	SUB OUT: POWELL, PAIGE
	05:57		SUB IN: MCCRAE, SUNSHINE
	04:40	50-46	SUB OUT: MCCRAE, SUNSHINE
	04:40		SUB IN: POWELL, PAIGE
SUB OUT: 13 GIANOLLA, CARLOTTA	03:56	50-46	
SUB IN: 33 MANN, LEXI	03:56		
	02:07	54-51	SUB OUT: POWELL, PAIGE
	02:07		SUB IN: OBUSEK, CAROL-ANNE
SUB OUT: 10 POOLE, ALEXIS	00:28	57-56	
SUB IN: 13 GIANOLLA, CARLOTTA	00:28		

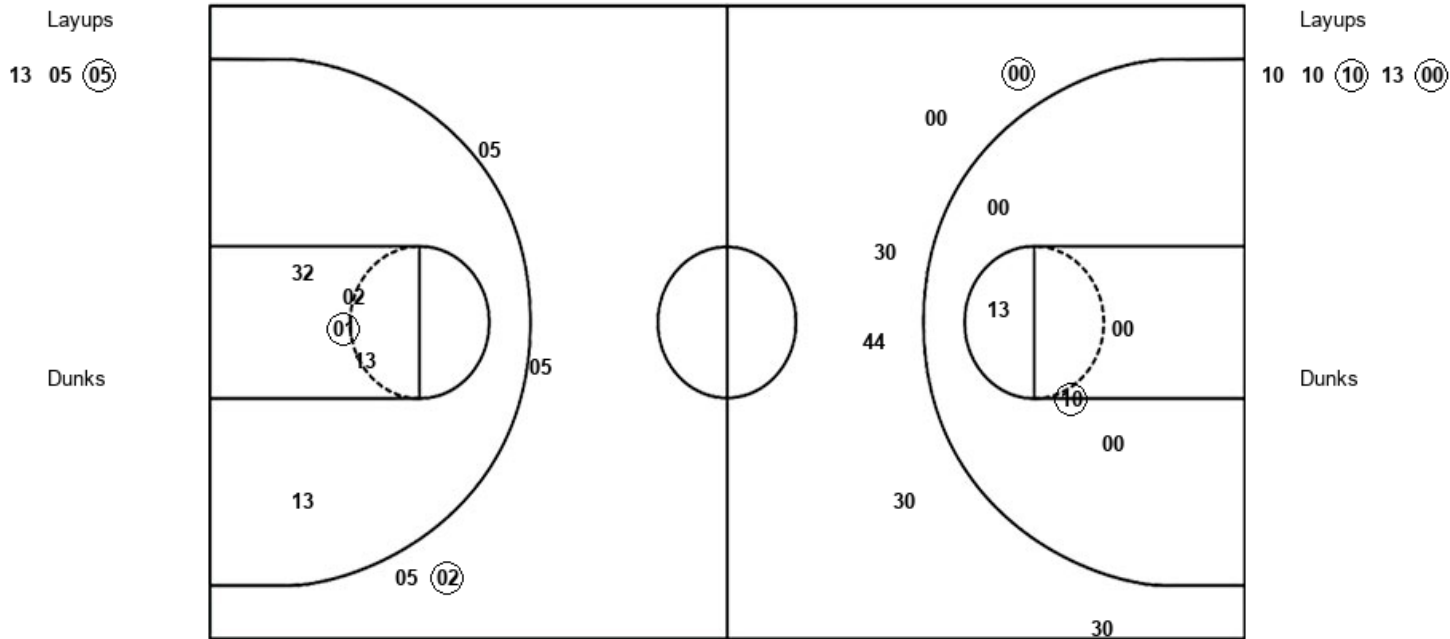
Kennesaw St. 58, UNCW 56

Official Shot Chart
Kennesaw St. vs UNCW
PERIOD 1 Shots
 November 23, 2019 at Trask Coliseum - Wilmington, N.C.



UNCW

Kennesaw St.



NCW : Period 1	Made	Att	Pct
Layups	1	3	33.3
Dunks	0	0	0
2PT Field Goals	2	8	25.0
3PT Field Goals	1	4	25.0
Total Field Goals	3	12	25.0

KSU : Period 1	Made	Att	Pct
Layups	2	5	40.0
Dunks	0	0	0
2PT Field Goals	3	10	30.0
3PT Field Goals	1	6	16.7
Total Field Goals	4	16	25.0

Official Shot Chart
Kennesaw St. vs UNCW
PERIOD 2 Shots
 November 23, 2019 at Trask Coliseum - Wilmington, N.C.



UNCW

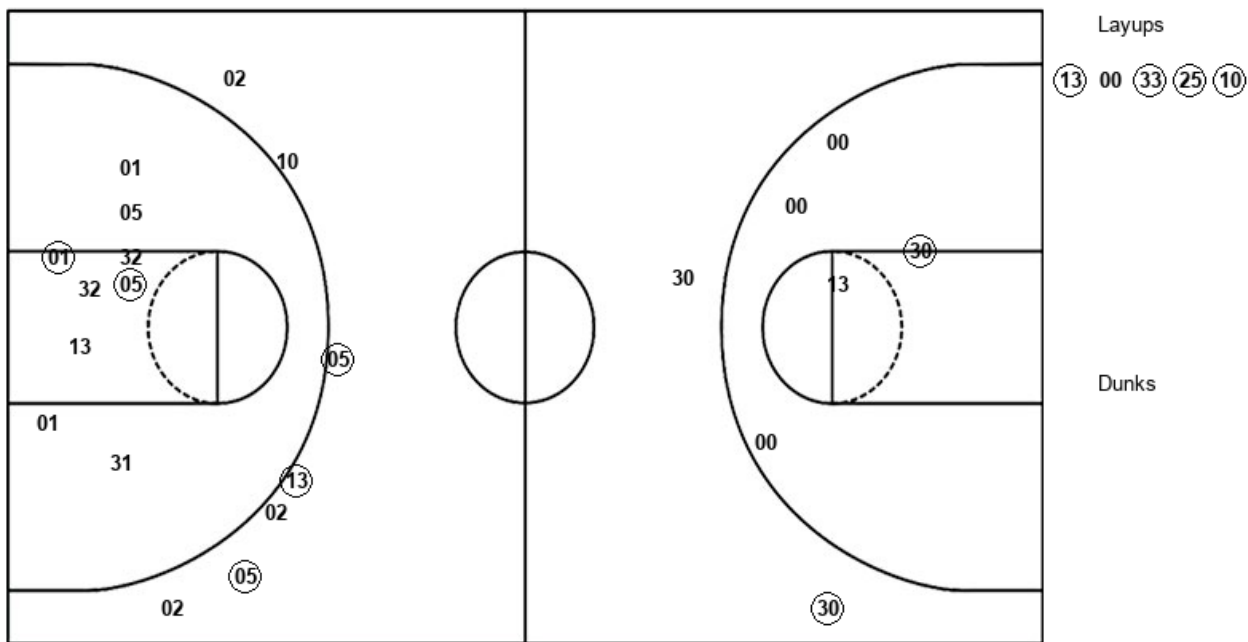
Kennesaw St.

Layups

Layups

Dunks

Dunks



NCW : Period 2	Made	Att	Pct
Layups	0	0	0
Dunks	0	0	0
2PT Field Goals	2	9	22.2
3PT Field Goals	3	7	42.9
Total Field Goals	5	16	31.3

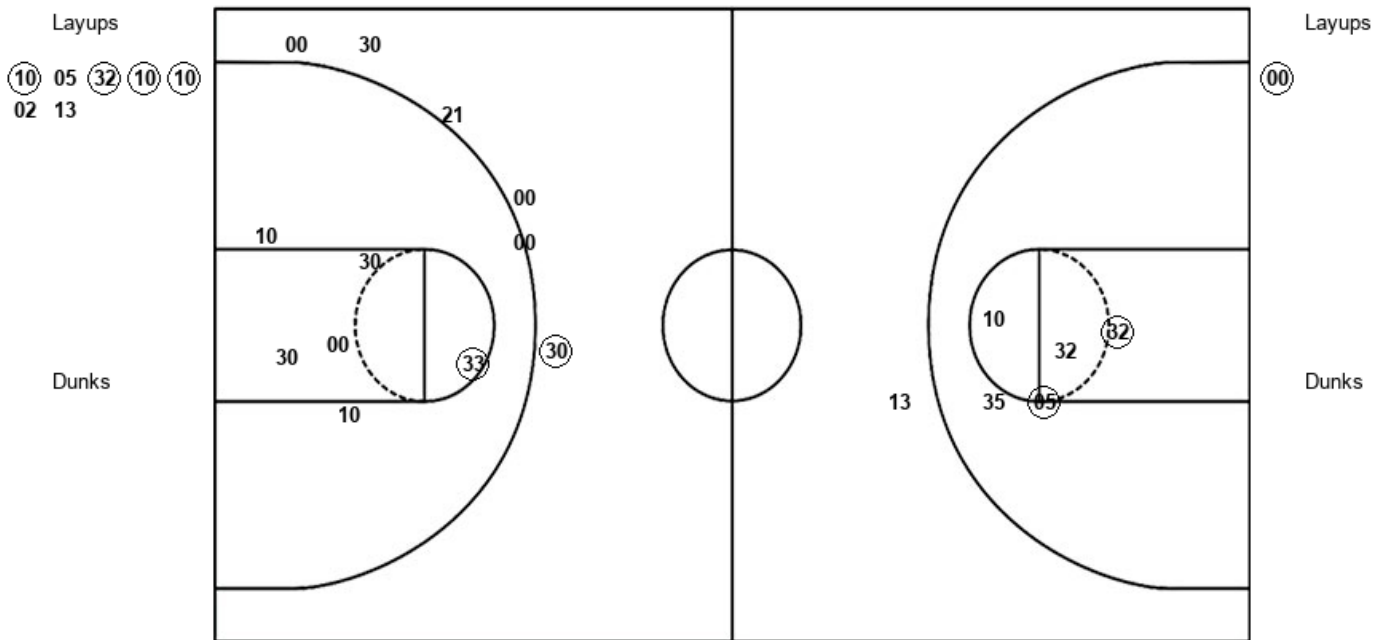
KSU : Period 2	Made	Att	Pct
Layups	4	5	80.0
Dunks	0	0	0
2PT Field Goals	5	10	50.0
3PT Field Goals	1	2	50.0
Total Field Goals	6	12	50.0

Official Shot Chart
Kennesaw St. vs UNCW
PERIOD 3 Shots
November 23, 2019 at Trask Coliseum - Wilmington, N.C.



UNCW

Kennesaw St.



NCW : Period 3	Made	Att	Pct
Layups	4	7	57.1
Dunks	0	0	0
2PT Field Goals	6	12	50.0
3PT Field Goals	0	1	00.0
Total Field Goals	6	13	46.2

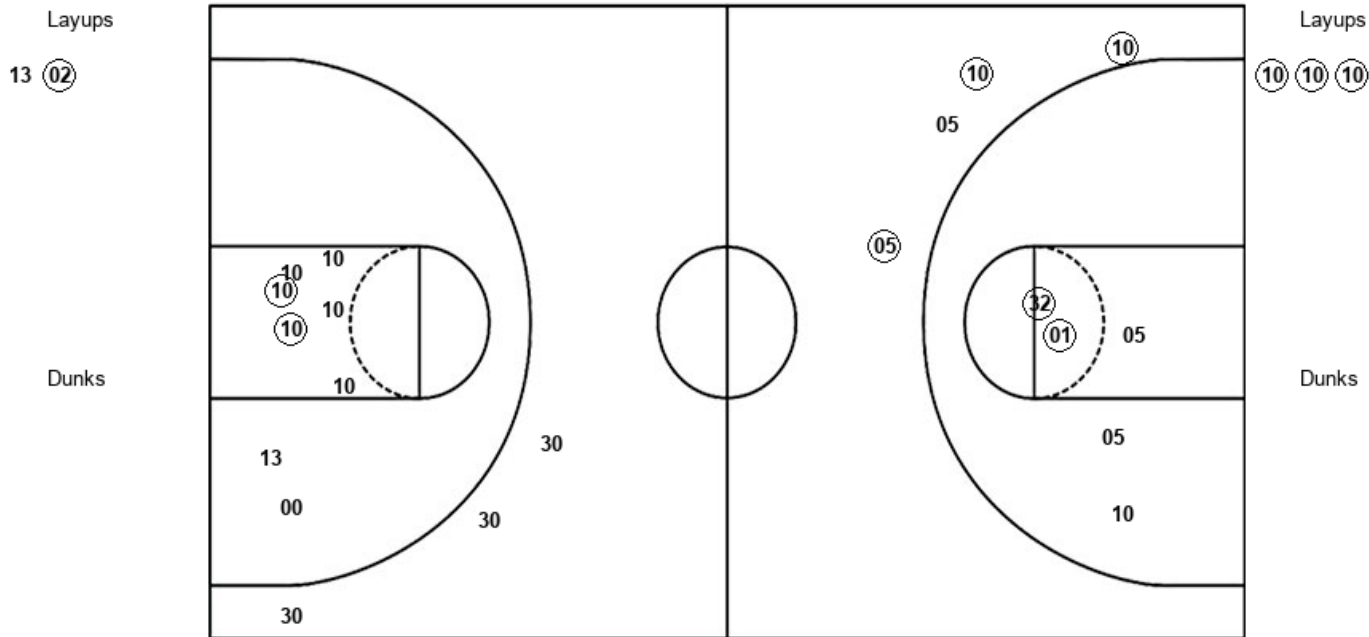
KSU : Period 3	Made	Att	Pct
Layups	1	1	100.0
Dunks	0	0	0
2PT Field Goals	2	7	28.6
3PT Field Goals	1	6	16.7
Total Field Goals	3	13	23.1

Official Shot Chart
Kennesaw St. vs UNCW
PERIOD 4 Shots
 November 23, 2019 at Trask Coliseum - Wilmington, N.C.



UNCW

Kennesaw St.



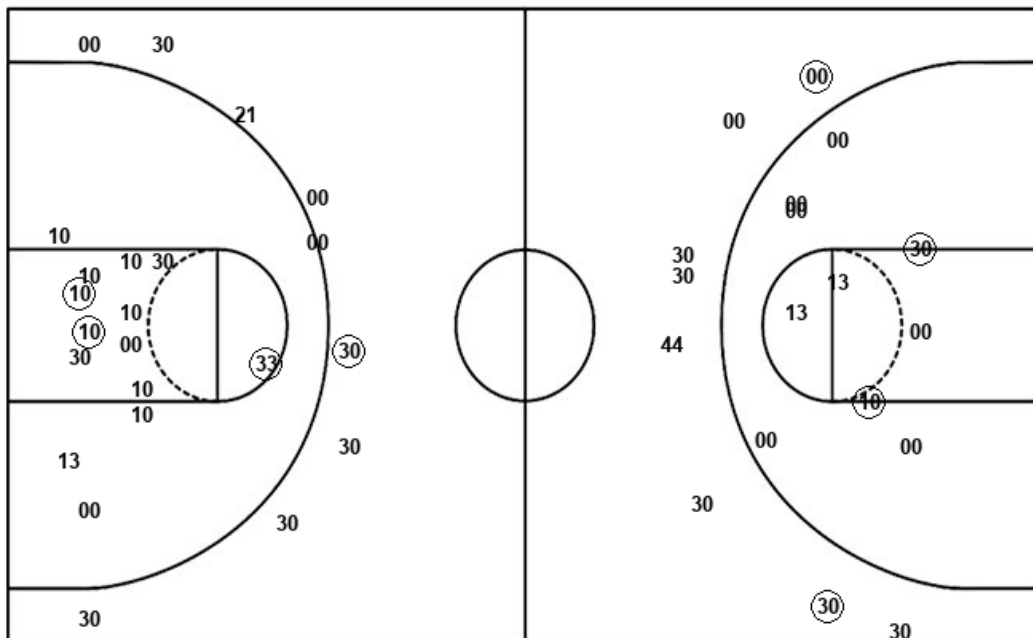
UNCW : Period 4	Made	Att	Pct
Layups	1	2	50.0
Dunks	0	0	0
2PT Field Goals	3	7	42.9
3PT Field Goals	3	4	75.0
Total Field Goals	6	11	54.5

KSU : Period 4	Made	Att	Pct
Layups	3	3	100.0
Dunks	0	0	0
2PT Field Goals	5	11	45.5
3PT Field Goals	0	3	00.0
Total Field Goals	5	14	35.7

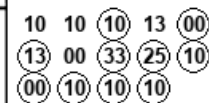
Official Shot Chart
Kennesaw St. vs UNCW
Kennesaw St. Team Shots
November 23, 2019 at Trask Coliseum - Wilmington, N.C.



Layups



Layups



Dunks

Dunks

KSU : Period 1	Made	Att	Pct
Layups	2	5	40.0
Dunks	0	0	0
2PT Field Goals	3	10	30.0
3PT Field Goals	1	6	16.7
Total Field Goals	4	16	25.0

KSU : Period 2	Made	Att	Pct
Layups	4	5	80.0
Dunks	0	0	0
2PT Field Goals	5	10	50.0
3PT Field Goals	1	2	50.0
Total Field Goals	6	12	50.0

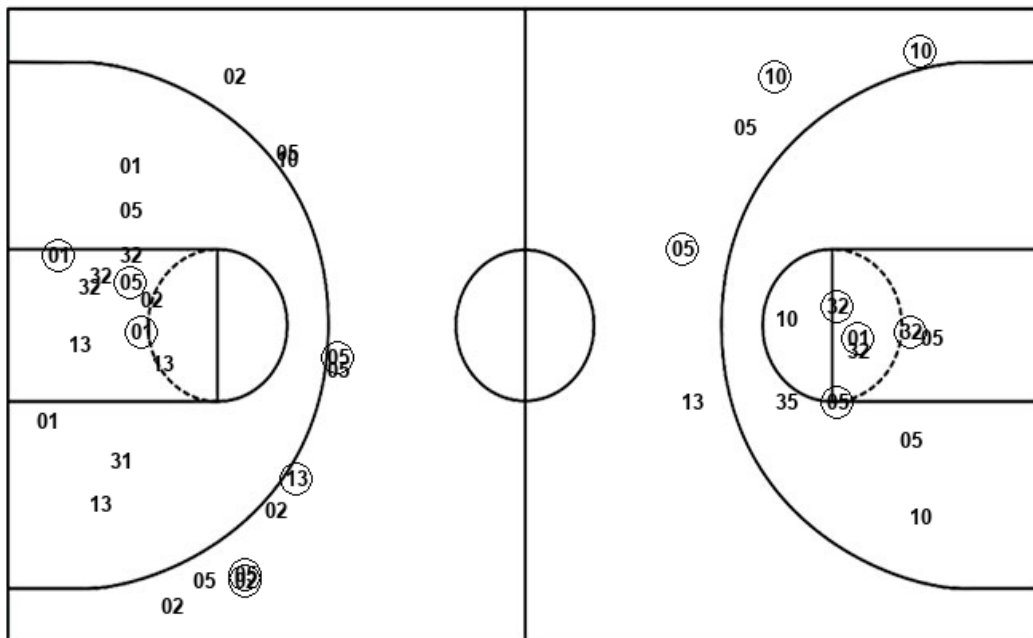
KSU : Period 3	Made	Att	Pct
Layups	1	1	100.0
Dunks	0	0	0
2PT Field Goals	2	7	28.6
3PT Field Goals	1	6	16.7
Total Field Goals	3	13	23.1

KSU : Period 4	Made	Att	Pct
Layups	3	3	100.0
Dunks	0	0	0
2PT Field Goals	5	11	45.5
3PT Field Goals	0	3	00.0
Total Field Goals	5	14	35.7

Official Shot Chart
Kennesaw St. vs UNCW
UNCW Team Shots
 November 23, 2019 at Trask Coliseum - Wilmington, N.C.



Layups



Layups

13 05 (05) (10) 05
 (32) (10) (10) 02 13
 13 (02)

Dunks

Dunks

NCW : Period 1	Made	Att	Pct
Layups	1	3	33.3
Dunks	0	0	0
2PT Field Goals	2	8	25.0
3PT Field Goals	1	4	25.0
Total Field Goals	3	12	25.0

NCW : Period 2	Made	Att	Pct
Layups	0	0	0
Dunks	0	0	0
2PT Field Goals	2	9	22.2
3PT Field Goals	3	7	42.9
Total Field Goals	5	16	31.3

NCW : Period 3	Made	Att	Pct
Layups	4	7	57.1
Dunks	0	0	0
2PT Field Goals	6	12	50.0
3PT Field Goals	0	1	00.0
Total Field Goals	6	13	46.2

NCW : Period 4	Made	Att	Pct
Layups	1	2	50.0
Dunks	0	0	0
2PT Field Goals	3	7	42.9
3PT Field Goals	3	4	75.0
Total Field Goals	6	11	54.5