

## FINAL SCORE

**LSU**



**90**

**Vanderbilt**



**99**

February 05, 2020 • Memorial Gymnasium - Nashville

## FINAL STATISTICS



**Official Box Score**  
**LSU vs Vanderbilt**  
**Game Totals -- Final Statistics**  
**February 05, 2020 at Memorial Gymnasium - Nashville**



### LSU 90

No.	Player	S	Pts	FG	3FG	FT	OR	DR	TR	PF	A	TO	Blk	Stl	Min	+/-
00	DAYS, DARIUS	F	9	3-5	0-2	3-4	0	5	5	4	1	1	0	0	19	-4
01	SMART, JAVONTE	G	15	6-14	2-4	1-2	2	0	2	2	2	3	0	1	36	-4
02	WATFORD, TRENDON	F	26	8-13	1-3	9-10	3	6	9	2	0	2	0	0	36	-6
04	MAYS, SKYLAR	G	15	5-12	1-6	4-6	0	4	4	4	3	2	0	2	30	-11
05	WILLIAMS, EMMITT	F	24	7-14	0-0	10-12	4	7	11	4	1	0	2	1	34	-3
12	GRAVES, MARSHALL	G	1	0-1	0-1	1-2	0	0	0	0	0	0	0	0	4	-3
14	TAYLOR, MARLON	G	0	0-2	0-1	0-0	1	1	2	3	3	0	0	0	27	-2
15	HYATT, AUNDRE	F	0	0-1	0-1	0-0	0	3	3	2	0	1	0	0	12	-12
TEAM							2	0	2	0		1				
<b>TOTALS</b>			<b>90</b>	<b>29-62</b>	<b>4-18</b>	<b>28-36</b>	<b>12</b>	<b>26</b>	<b>38</b>	<b>21</b>	<b>10</b>	<b>10</b>	<b>2</b>	<b>4</b>	<b>198</b>	

#### Shooting By Period

Period	FG	FG%	3FG	3FG%	FT	FT%
1st Half	14-31	45%	1-9	11%	18-21	86%
2nd Half	15-31	48%	3-9	33%	10-15	67%
<b>Game</b>	<b>29-62</b>	<b>46.8%</b>	<b>4-18</b>	<b>22.2%</b>	<b>28-36</b>	<b>77.8%</b>

Deadball Rebounds: 4,0

Last FG: 2nd-00:44

Biggest Run: 9-0

Largest lead: By 3 at 2nd-05:53

Technical Fouls: None.

### Vanderbilt 99

No.	Player	S	Pts	FG	3FG	FT	OR	DR	TR	PF	A	TO	Blk	Stl	Min	+/-
00	LEE, SABEN	G	33	13-20	2-6	5-8	0	4	4	3	6	2	0	1	37	8
01	DISU, DYLAN	F	8	3-6	2-5	0-0	1	2	3	5	0	0	0	0	17	5
02	PIPPEN JR., SCOTTY	G	13	5-8	1-3	2-2	0	1	1	2	2	4	0	1	26	5
03	EVANS, MAXWELL	G	31	10-18	7-12	4-4	0	2	2	2	1	0	0	2	35	16
50	OBINNA, EJIKE	C	0	0-0	0-0	0-1	0	5	5	5	0	0	0	0	16	6
04	WRIGHT, JORDAN	G	11	4-7	0-3	3-4	0	2	2	2	3	2	0	2	25	11
11	ALBERT, BRAELEE	G	2	0-1	0-1	2-2	3	2	5	4	0	0	0	0	13	3
13	MOYER, MATTHEW	F	1	0-0	0-0	1-2	0	4	4	2	2	0	1	0	21	1
14	RICE, ISAIAH	G	0	0-0	0-0	0-0	0	0	0	0	0	0	0	0	2	-2
21	JOSSELL, JON	G	0	0-0	0-0	0-0	0	0	0	0	0	0	0	0	2	-6
55	JANKOVIC, OTON	F	0	0-1	0-0	0-0	0	1	1	0	0	0	0	0	4	-2
TEAM							1	2	3	0		0				
<b>TOTALS</b>			<b>99</b>	<b>35-61</b>	<b>12-30</b>	<b>17-23</b>	<b>5</b>	<b>25</b>	<b>30</b>	<b>25</b>	<b>14</b>	<b>8</b>	<b>1</b>	<b>6</b>	<b>198</b>	

#### Shooting By Period

Period	FG	FG%	3FG	3FG%	FT	FT%
1st Half	18-33	55%	8-18	44%	8-10	80%
2nd Half	17-28	61%	4-12	33%	9-13	69%
<b>Game</b>	<b>35-61</b>	<b>57.4%</b>	<b>12-30</b>	<b>40.0%</b>	<b>17-23</b>	<b>73.9%</b>

Deadball Rebounds: 1,0

Last FG: 2nd-01:08

Biggest Run: 8-0

Largest lead: By 13 at 1st-01:51

Technical Fouls: None.

#### Game Notes:

Officials: Joe Lindsay, Tony Greene, Bart Lenox

Attendance: 9256

Start Time: 09:05 PM ET

End Time: 11:17 PM ET

Game Duration: 2:11

Conference Game;

Score	1st	2nd	TOT
LSU	47	43	<b>90</b>
VAN	52	47	<b>99</b>

LSU led for 4:48. VAN led for 32:39.

Game was tied for 2:05.

Times tied: 6      Lead Changes: 11

Points from	LSU	VAN
In the Paint	48	40
Off Turns	13	9
2nd Chance	15	6
Fast Break	11	14
Bench	1	14



**Official Box Score**  
**LSU vs Vanderbilt**  
**First Half Statistics Only**  
**February 05, 2020 at Memorial Gymnasium - Nashville**



## LSU 47

No.	Player	S	Pts	FG	3FG	FT	OR	DR	TR	PF	A	TO	Blk	Stl	Min	+/-
00	DAYS, DARIUS	F	5	2-3	0-1	1-1	0	3	3	2	0	0	0	0	9	-3
01	SMART, JAVONTE	G	5	2-8	0-2	1-2	1	0	1	1	2	1	0	0	19	-3
02	WATFORD, TRENDON	F	14	4-5	0-0	6-6	2	2	4	1	0	1	0	0	18	-2
04	MAYS, SKYLAR	G	7	2-7	1-4	2-2	0	2	2	2	0	1	0	1	14	-7
05	WILLIAMS, EMMITT	F	15	4-6	0-0	7-8	2	3	5	1	0	0	2	1	17	-3
12	GRAVES, MARSHALL	G	1	0-0	0-0	1-2	0	0	0	0	0	0	0	0	2	-3
14	TAYLOR, MARLON	G	0	0-1	0-1	0-0	0	1	1	1	2	0	0	0	12	8
15	HYATT, AUNDRE	F	0	0-1	0-1	0-0	0	1	1	2	0	1	0	0	9	-12
TEAM							1	0	1	0		0				
<b>TOTALS</b>			<b>47</b>	<b>14-31</b>	<b>1-9</b>	<b>18-21</b>	<b>6</b>	<b>12</b>	<b>18</b>	<b>10</b>	<b>4</b>	<b>4</b>	<b>2</b>	<b>2</b>	<b>100</b>	

### Shooting By Period

Period	FG	FG%	3FG	3FG%	FT	FT%
1st Half	14-31	45%	1-9	11%	18-21	86%
Game	29-62	46.8%	4-18	22.2%	28-36	77.8%

Deadball Rebounds: 4,0  
Last FG Half: LSU 2nd-00:44

## Vanderbilt 52

No.	Player	S	Pts	FG	3FG	FT	OR	DR	TR	PF	A	TO	Blk	Stl	Min	+/-
00	LEE, SABEN	G	16	6-10	2-5	2-4	0	2	2	2	3	0	0	1	19	4
01	DISU, DYLAN	F	5	2-4	1-3	0-0	1	2	3	2	0	0	0	0	13	5
02	PIPPEN JR., SCOTTY	G	2	1-2	0-1	0-0	0	1	1	2	2	2	0	0	8	1
03	EVANS, MAXWELL	G	25	8-13	5-7	4-4	0	2	2	1	0	0	0	0	19	8
50	OBINNA, EJIKE	C	0	0-0	0-0	0-0	0	0	0	2	0	0	0	0	4	0
04	WRIGHT, JORDAN	G	2	1-2	0-1	0-0	0	1	1	1	3	2	0	1	12	4
11	ALBERT, BRAELEE	G	2	0-1	0-1	2-2	2	1	3	3	0	0	0	0	7	7
13	MOYER, MATTHEW	F	0	0-0	0-0	0-0	0	1	1	2	1	0	1	0	9	6
14	RICE, ISAIAH	G	0	0-0	0-0	0-0	0	0	0	0	0	0	0	0	2	-2
21	JOSSELL, JON	G	0	0-0	0-0	0-0	0	0	0	0	0	0	0	0	2	-6
55	JANKOVIC, OTON	F	0	0-1	0-0	0-0	0	1	1	0	0	0	0	0	4	-2
TEAM							1	1	2	0		0				
<b>TOTALS</b>			<b>52</b>	<b>18-33</b>	<b>8-18</b>	<b>8-10</b>	<b>4</b>	<b>12</b>	<b>16</b>	<b>15</b>	<b>9</b>	<b>4</b>	<b>1</b>	<b>2</b>	<b>100</b>	

### Shooting By Period

Period	FG	FG%	3FG	3FG%	FT	FT%
1st Half	18-33	55%	8-18	44%	8-10	80%
Game	35-61	57.4%	12-30	40.0%	17-23	73.9%

Deadball Rebounds: 1,0  
Last FG Half: VAN 2nd-01:08

### Game Notes:

Officials: Joe Lindsay, Tony Greene, Bart Lenox  
Attendance: 9256

Start Time: 09:05 PM ET  
End Time: 11:17 PM ET  
Game Duration: 2:11  
Conference Game;

Score	1st	2nd	TOT
LSU	47	43	<b>90</b>
VAN	52	47	<b>99</b>

Points from (This Period)	LSU	VAN
In the Paint	26	16
Off Turns	9	7
2nd Chance	12	4
Fast Break	2	8
Bench	1	4



**Official Play-By-Play**  
**LSU vs Vanderbilt**  
**First Half**  
**February 05, 2020 at Memorial Gymnasium - Nashville**



**Period 1**

**Starters:**

**LSU:** 0 DAYS, DARIUS (F); 2 WATFORD, TRENDON (F); 5 WILLIAMS, EMMITT (F); 1 SMART, JAVONTE (G); 4 MAYS, SKYLAR (G);

**Vanderbilt:** 0 LEE, SABEN (G); 1 DISU, DYLAN (F); 2 PIPPEN JR., SCOTTY (G); 3 EVANS, MAXWELL (G); 50 OBINNA, EJIKE (C);

Time	VISITORS: LSU	Score	Margin	HOME: Vanderbilt
19:44	MISSED JUMPER by SMART, JAVONTE			
19:43				REBOUND (DEF) by DISU, DYLAN
19:43	FOUL (PERSONAL) by DAYS, DARIUS			
19:34				TURNOVER (OTHER) by PIPPEN JR., SCOTTY
19:30	GOOD! LAYUP by DAYS, DARIUS [PNT]	0-2	V 2	
19:03		3-2	H 1	GOOD! 3PTR by DISU, DYLAN
19:03				ASSIST by LEE, SABEN
18:37	MISSED 3PTR by DAYS, DARIUS			
18:35				REBOUND (DEF) by LEE, SABEN
18:10				MISSED 3PTR by EVANS, MAXWELL
18:08				REBOUND (OFF) by DISU, DYLAN
17:57				MISSED 3PTR by LEE, SABEN
17:54	REBOUND (DEF) by MAYS, SKYLAR			
17:44	GOOD! JUMPER by WATFORD, TRENDON [PNT]	3-4	V 1	
17:15		5-4	H 1	GOOD! JUMPER by EVANS, MAXWELL
17:08				FOUL (PERSONAL) by OBINNA, EJIKE
17:01				FOUL (PERSONAL) by EVANS, MAXWELL
16:57	MISSED JUMPER by SMART, JAVONTE			
16:54				REBOUND (DEF) by LEE, SABEN
16:48		7-4	H 3	GOOD! LAYUP by DISU, DYLAN
16:23				FOUL (PERSONAL) by OBINNA, EJIKE
16:23	MISSED FT by SMART, JAVONTE			
16:23	REBOUND (OFF) by TEAM			
16:23				SUB OUT: OBINNA, EJIKE
16:23				SUB IN: MOYER, MATTHEW
16:23	SUB OUT: WILLIAMS, EMMITT			
16:23	SUB IN: TAYLOR, MARLON			
16:23	GOOD! FT by SMART, JAVONTE	7-5	H 2	
16:14				MISSED LAYUP by LEE, SABEN
16:12	REBOUND (DEF) by DAYS, DARIUS			
16:07	MISSED 3PTR by SMART, JAVONTE			
16:05	REBOUND (OFF) by WATFORD, TRENDON			
16:04	GOOD! LAYUP by WATFORD, TRENDON	7-7	T	
16:04				FOUL (PERSONAL) by DISU, DYLAN
16:04	GOOD! FT by WATFORD, TRENDON	7-8	V 1	
15:35				MISSED 3PTR by DISU, DYLAN
15:30	REBOUND (DEF) by DAYS, DARIUS			
15:28	FOUL (OFF) by MAYS, SKYLAR			
15:28	TURNOVER (OFFENSIVE) by MAYS, SKYLAR			
15:28				
15:28	SUB OUT: DAYS, DARIUS			
15:28	SUB IN: HYATT, AUNDRE			
14:58				MISSED 3PTR by PIPPEN JR., SCOTTY
14:55	REBOUND (DEF) by HYATT, AUNDRE			
14:44	MISSED 3PTR by HYATT, AUNDRE			
14:41				REBOUND (DEF) by PIPPEN JR., SCOTTY
14:30		10-8	H 2	GOOD! 3PTR by LEE, SABEN
14:30				ASSIST by PIPPEN JR., SCOTTY
14:20	GOOD! LAYUP by SMART, JAVONTE	10-10	T	
14:05				SUB OUT: DISU, DYLAN
14:05				SUB IN: ALBERT, BRAELEE
14:05	SUB OUT: WATFORD, TRENDON			
14:05	SUB IN: WILLIAMS, EMMITT			
13:56		12-10	H 2	GOOD! LAYUP by PIPPEN JR., SCOTTY
13:31	MISSED 3PTR by MAYS, SKYLAR			
13:30				REBOUND (DEF) by EVANS, MAXWELL
13:30	FOUL (PERSONAL) by TAYLOR, MARLON			
13:15				TURNOVER (BADPASS) by PIPPEN JR., SCOTTY
13:03				FOUL (PERSONAL) by PIPPEN JR., SCOTTY
13:03	GOOD! FT by WILLIAMS, EMMITT	12-11	H 1	
13:03	GOOD! FT by WILLIAMS, EMMITT	12-12	T	
12:48	FOUL (PERSONAL) by HYATT, AUNDRE			
12:43		15-12	H 3	GOOD! 3PTR by EVANS, MAXWELL
12:43				ASSIST by PIPPEN JR., SCOTTY
12:26	GOOD! LAYUP by WILLIAMS, EMMITT	15-14	H 1	
12:26	ASSIST by SMART, JAVONTE			
12:26				FOUL (PERSONAL) by PIPPEN JR., SCOTTY
12:26				SUB OUT: PIPPEN JR., SCOTTY
12:26				SUB IN: WRIGHT, JORDAN
12:26	MISSED FT by WILLIAMS, EMMITT			



Time	VISITORS: LSU	Score	Margin	HOME: Vanderbilt
12:25				REBOUND (DEF) by ALBERT, BRAELEE
12:14		18-14	H 4	GOOD! 3PTR by EVANS, MAXWELL
12:14				ASSIST by LEE, SABEN
12:02				FOUL (PERSONAL) by ALBERT, BRAELEE
12:02	GOOD! FT by WILLIAMS, EMMITT	18-15	H 3	
12:02	SUB OUT: MAYS, SKYLAR			
12:02	SUB IN: WATFORD, TRENDON			
12:02	GOOD! FT by WILLIAMS, EMMITT	18-16	H 2	
11:37				MISSED 3PTR by ALBERT, BRAELEE
11:33	REBOUND (DEF) by WILLIAMS, EMMITT			
11:27	MISSED JUMPER by SMART, JAVONTE			
11:24	REBOUND (OFF) by SMART, JAVONTE			
11:23	GOOD! LAYUP by SMART, JAVONTE	18-18	T	
11:05				MISSED 3PTR by WRIGHT, JORDAN
11:02				REBOUND (OFF) by ALBERT, BRAELEE
10:58		20-18	H 2	GOOD! LAYUP by LEE, SABEN
10:44				
10:44	SUB OUT: SMART, JAVONTE			
10:44	SUB IN: MAYS, SKYLAR			
10:34				FOUL (PERSONAL) by ALBERT, BRAELEE
10:34				SUB OUT: ALBERT, BRAELEE
10:34				SUB IN: JANKOVIC, OTON
10:34	GOOD! FT by WATFORD, TRENDON	20-19	H 1	
10:34	GOOD! FT by WATFORD, TRENDON	20-20	T	
10:34	SUB OUT: TAYLOR, MARLON			
10:34	SUB IN: DAYS, DARIUS			
10:08		22-20	H 2	GOOD! JUMPER by WRIGHT, JORDAN
09:50	TURNOVER (LOSTBALL) by WATFORD, TRENDON			
09:50				STEAL by WRIGHT, JORDAN
09:35		24-20	H 4	GOOD! LAYUP by EVANS, MAXWELL
09:35	FOUL (PERSONAL) by HYATT, AUNDRE			
09:35	SUB OUT: HYATT, AUNDRE			
09:35	SUB IN: SMART, JAVONTE			
09:35		25-20	H 5	GOOD! FT by EVANS, MAXWELL
09:10	MISSED JUMPER by MAYS, SKYLAR			
09:07				REBOUND (DEF) by JANKOVIC, OTON
09:01				TURNOVER (LOSTBALL) by WRIGHT, JORDAN
09:01	STEAL by WILLIAMS, EMMITT			
08:56	MISSED LAYUP by MAYS, SKYLAR			
08:55	REBOUND (OFF) by WILLIAMS, EMMITT			
08:55	GOOD! LAYUP by DAYS, DARIUS [PNT]	25-22	H 3	
08:55				FOUL (PERSONAL) by MOYER, MATTHEW
08:55	SUB OUT: MAYS, SKYLAR			
08:55	SUB IN: TAYLOR, MARLON			
08:55	GOOD! FT by DAYS, DARIUS	25-23	H 2	
08:55				SUB OUT: LEE, SABEN
08:55				SUB IN: RICE, ISIAIAH
08:49		28-23	H 5	GOOD! 3PTR by EVANS, MAXWELL [FB]
08:49				ASSIST by MOYER, MATTHEW
08:31	GOOD! LAYUP by WILLIAMS, EMMITT	28-25	H 3	
08:31	ASSIST by TAYLOR, MARLON			
08:18				MISSED 3PTR by EVANS, MAXWELL
08:15	REBOUND (DEF) by DAYS, DARIUS			
08:04	MISSED DUNK by WILLIAMS, EMMITT			
08:04				BLOCK by MOYER, MATTHEW
08:04	REBOUND (OFF) by TEAM			
07:57	MISSED JUMPER by SMART, JAVONTE			
07:56	REBOUND (OFF) by WATFORD, TRENDON			
07:56				FOUL (PERSONAL) by WRIGHT, JORDAN
07:56				
07:56				SUB OUT: EVANS, MAXWELL
07:56				SUB OUT: MOYER, MATTHEW
07:56				SUB IN: LEE, SABEN
07:56				SUB IN: DISU, DYLAN
07:56	GOOD! FT by WATFORD, TRENDON	28-26	H 2	
07:56	GOOD! FT by WATFORD, TRENDON	28-27	H 1	
07:32				MISSED JUMPER by JANKOVIC, OTON
07:30	REBOUND (DEF) by WATFORD, TRENDON			
07:22	MISSED JUMPER by WATFORD, TRENDON			
07:17	REBOUND (OFF) by WILLIAMS, EMMITT			
07:17	GOOD! LAYUP by WILLIAMS, EMMITT	28-29	V 1	
07:01		31-29	H 2	GOOD! 3PTR by LEE, SABEN
07:01				ASSIST by WRIGHT, JORDAN
06:44	GOOD! DUNK by WILLIAMS, EMMITT [PNT]	31-31	T	
06:44	ASSIST by TAYLOR, MARLON			
06:44				FOUL (PERSONAL) by LEE, SABEN
06:44				SUB OUT: RICE, ISIAIAH
06:44				SUB IN: EVANS, MAXWELL
06:44				SUB OUT: JANKOVIC, OTON
06:44				SUB IN: MOYER, MATTHEW



Time	VISITORS: LSU	Score	Margin	HOME: Vanderbilt
06:44	GOOD! FT by WILLIAMS, EMMITT	31-32	V 1	
06:44	SUB OUT: WILLIAMS, EMMITT			
06:44	SUB IN: MAYS, SKYLAR			
06:30		34-32	H 2	GOOD! 3PTR by EVANS, MAXWELL
06:30				ASSIST by LEE, SABEN
06:19	MISSED 3PTR by MAYS, SKYLAR			
06:17				REBOUND (DEF) by TEAM
06:15		36-32	H 4	GOOD! LAYUP by EVANS, MAXWELL [FB]
06:15				ASSIST by WRIGHT, JORDAN
06:15	FOUL (PERSONAL) by DAYS, DARIUS			
06:15	SUB OUT: DAYS, DARIUS			
06:15	SUB IN: WILLIAMS, EMMITT			
06:15		37-32	H 5	GOOD! FT by EVANS, MAXWELL [FB]
06:02	MISSED 3PTR by TAYLOR, MARLON			
05:59				REBOUND (DEF) by MOYER, MATTHEW
05:54		39-32	H 7	GOOD! LAYUP by LEE, SABEN
05:53	TIMEOUT 30SEC			
05:43				FOUL (PERSONAL) by MOYER, MATTHEW
05:43	GOOD! FT by WILLIAMS, EMMITT	39-33	H 6	
05:43				SUB OUT: MOYER, MATTHEW
05:43				SUB IN: ALBERT, BRAELEE
05:43	GOOD! FT by WILLIAMS, EMMITT	39-34	H 5	
05:28				MISSED 3PTR by LEE, SABEN
05:25	REBOUND (DEF) by WILLIAMS, EMMITT			
05:18	MISSED LAYUP by WILLIAMS, EMMITT			
05:16				REBOUND (DEF) by DISU, DYLAN
05:09		41-34	H 7	GOOD! LAYUP by LEE, SABEN
04:50	GOOD! LAYUP by WATFORD, TRENDON	41-36	H 5	
04:37				MISSED LAYUP by EVANS, MAXWELL
04:37	BLOCK by WILLIAMS, EMMITT			
04:36				REBOUND (OFF) by TEAM
04:35	FOUL (PERSONAL) by WILLIAMS, EMMITT			
04:35		42-36	H 6	GOOD! FT by ALBERT, BRAELEE
04:35	SUB OUT: TAYLOR, MARLON			
04:35	SUB IN: HYATT, AUNDRE			
04:35		43-36	H 7	GOOD! FT by ALBERT, BRAELEE
04:18	MISSED 3PTR by MAYS, SKYLAR			
04:14				REBOUND (DEF) by EVANS, MAXWELL
04:11	FOUL (PERSONAL) by SMART, JAVONTE			
04:11				MISSED FT by LEE, SABEN
04:11				REBOUND (OFF) by TEAM
04:11	SUB OUT: MAYS, SKYLAR			
04:11	SUB IN: GRAVES, MARSHALL			
04:11		44-36	H 8	GOOD! FT by LEE, SABEN [FB]
03:54	TURNOVER (LOSTBALL) by SMART, JAVONTE			
03:54				STEAL by LEE, SABEN
03:54				
03:31		47-36	H 11	GOOD! 3PTR by EVANS, MAXWELL
03:31				ASSIST by WRIGHT, JORDAN
03:11	MISSED 3PTR by SMART, JAVONTE			
03:07				REBOUND (DEF) by WRIGHT, JORDAN
02:58				MISSED 3PTR by DISU, DYLAN
02:56				REBOUND (OFF) by ALBERT, BRAELEE
02:38				MISSED 3PTR by LEE, SABEN
02:36	REBOUND (DEF) by WILLIAMS, EMMITT			
02:23				FOUL (PERSONAL) by ALBERT, BRAELEE
02:23	MISSED FT by GRAVES, MARSHALL			
02:23	REBOUND (OFF) by TEAM			
02:23				SUB OUT: ALBERT, BRAELEE
02:23				SUB IN: JOSSELL, JON
02:23	GOOD! FT by GRAVES, MARSHALL	47-37	H 10	
02:23	SUB OUT: GRAVES, MARSHALL			
02:23	SUB IN: MAYS, SKYLAR			
02:13		49-37	H 12	GOOD! LAYUP by LEE, SABEN
01:55	TURNOVER (LOSTBALL) by HYATT, AUNDRE			
01:51	FOUL (PERSONAL) by MAYS, SKYLAR			
01:51		50-37	H 13	GOOD! FT by LEE, SABEN [FB]
01:51	SUB OUT: HYATT, AUNDRE			
01:51	SUB IN: TAYLOR, MARLON			
01:51				MISSED FT by LEE, SABEN
01:50	REBOUND (DEF) by MAYS, SKYLAR			
01:43	GOOD! LAYUP by MAYS, SKYLAR [PNT]	50-39	H 11	
01:20				MISSED JUMPER by EVANS, MAXWELL
01:17	REBOUND (DEF) by TAYLOR, MARLON			
01:05	GOOD! LAYUP by WATFORD, TRENDON	50-41	H 9	
01:05				FOUL (PERSONAL) by DISU, DYLAN
01:05	GOOD! FT by WATFORD, TRENDON	50-42	H 8	
00:51	FOUL (PERSONAL) by WATFORD, TRENDON			
00:51		51-42	H 9	GOOD! FT by EVANS, MAXWELL
00:51				SUB OUT: DISU, DYLAN



Time	VISITORS: LSU	Score	Margin	HOME: Vanderbilt
00:51				SUB IN: OBINNA, EJIKE
00:51		52-42	H 10	GOOD! FT by EVANS, MAXWELL
00:37	GOOD! 3PTR by MAYS, SKYLAR	52-45	H 7	
00:37	ASSIST by SMART, JAVONTE			
00:30				TURNOVER (BADPASS) by WRIGHT, JORDAN
00:30	STEAL by MAYS, SKYLAR			
00:30				FOUL (PERSONAL) by LEE, SABEN
00:30	GOOD! FT by MAYS, SKYLAR [FB]	52-46	H 6	
00:30				SUB OUT: OBINNA, EJIKE
00:30				SUB IN: DISU, DYLAN
00:30	GOOD! FT by MAYS, SKYLAR [FB]	52-47	H 5	
00:30	SUB OUT: MAYS, SKYLAR			
00:30	SUB IN: GRAVES, MARSHALL			
00:11				TIMEOUT 30SEC
00:11				SUB OUT: DISU, DYLAN
00:11				SUB OUT: JOSSELL, JON
00:11				SUB IN: PIPPEN JR., SCOTTY
00:11				SUB IN: OBINNA, EJIKE
00:03				MISSED LAYUP by EVANS, MAXWELL
00:03	BLOCK by WILLIAMS, EMMITT			
00:00	REBOUND (DEF) by WATFORD, TRENDON			

LSU 47, Vanderbilt 52

Points from (This Period)	LSU	VAN
In the Paint	26	16
Off Turns	9	7
2nd Chance	12	4
Fast Break	2	8
Bench	1	4



**Official Box Score**  
**LSU vs Vanderbilt**  
**Second Half Statistics Only**  
**February 05, 2020 at Memorial Gymnasium - Nashville**



### LSU 43

No.	Player	S	Pts	FG	3FG	FT	OR	DR	TR	PF	A	TO	Blk	Stl	Min	+/-
00	DAYS, DARIUS	F	4	1-2	0-1	2-3	0	2	2	2	1	1	0	0	11	-1
01	SMART, JAVONTE	G	10	4-6	2-2	0-0	1	0	1	1	0	2	0	1	17	-1
02	WATFORD, TRENDON	F	12	4-8	1-3	3-4	1	4	5	1	0	1	0	0	18	-4
04	MAYS, SKYLAR	G	8	3-5	0-2	2-4	0	2	2	2	3	1	0	1	16	-4
05	WILLIAMS, EMMITT	F	9	3-8	0-0	3-4	2	4	6	3	1	0	0	0	17	0
12	GRAVES, MARSHALL	G	0	0-1	0-1	0-0	0	0	0	0	0	0	0	0	1	0
14	TAYLOR, MARLON	G	0	0-1	0-0	0-0	1	0	1	2	1	0	0	0	15	-10
15	HYATT, AUNDRE	F	0	0-0	0-0	0-0	0	2	2	0	0	0	0	0	3	0
TEAM							1	0	1	0		1				
<b>TOTALS</b>			<b>43</b>	<b>15-31</b>	<b>3-9</b>	<b>10-15</b>	<b>6</b>	<b>14</b>	<b>20</b>	<b>11</b>	<b>6</b>	<b>6</b>	<b>0</b>	<b>2</b>	<b>98</b>	

#### Shooting By Period

Period	FG	FG%	3FG	3FG%	FT	FT%
2nd Half	15-31	48%	3-9	33%	10-15	67%
Game	29-62	46.8%	4-18	22.2%	28-36	77.8%

Deadball Rebounds: 4,0

Last FG Half: LSU -

### Vanderbilt 47

No.	Player	S	Pts	FG	3FG	FT	OR	DR	TR	PF	A	TO	Blk	Stl	Min	+/-
00	LEE, SABEN	G	17	7-10	0-1	3-4	0	2	2	1	3	2	0	0	18	4
01	DISU, DYLAN	F	3	1-2	1-2	0-0	0	0	0	3	0	0	0	0	4	0
02	PIPPEN JR., SCOTTY	G	11	4-6	1-2	2-2	0	0	0	0	0	2	0	1	18	4
03	EVANS, MAXWELL	G	6	2-5	2-5	0-0	0	0	0	1	1	0	0	2	16	8
50	OBINNA, EJIKE	C	0	0-0	0-0	0-1	0	5	5	3	0	0	0	0	12	6
04	WRIGHT, JORDAN	G	9	3-5	0-2	3-4	0	1	1	1	0	0	0	1	12	7
11	ALBERT, BRAELEE	G	0	0-0	0-0	0-0	1	1	2	1	0	0	0	0	6	-4
13	MOYER, MATTHEW	F	1	0-0	0-0	1-2	0	3	3	0	1	0	0	0	11	-5
14	RICE, ISAIAH	G	0	0-0	0-0	0-0	0	0	0	0	0	0	0	0	0	0
21	JOSSELL, JON	G	0	0-0	0-0	0-0	0	0	0	0	0	0	0	0	0	0
55	JANKOVIC, OTON	F	0	0-0	0-0	0-0	0	0	0	0	0	0	0	0	0	0
TEAM							0	1	1	0		0				
<b>TOTALS</b>			<b>47</b>	<b>17-28</b>	<b>4-12</b>	<b>9-13</b>	<b>1</b>	<b>13</b>	<b>14</b>	<b>10</b>	<b>5</b>	<b>4</b>	<b>0</b>	<b>4</b>	<b>98</b>	

#### Shooting By Period

Period	FG	FG%	3FG	3FG%	FT	FT%
2nd Half	17-28	61%	4-12	33%	9-13	69%
Game	35-61	57.4%	12-30	40.0%	17-23	73.9%

Deadball Rebounds: 1,0

Last FG Half: VAN -

#### Game Notes:

Officials: Joe Lindsay, Tony Greene, Bart Lenox  
Attendance: 9256

Start Time: 09:05 PM ET

End Time: 11:17 PM ET

Game Duration: 2:11

Conference Game;

Score	1st	2nd	TOT
LSU	47	43	90
VAN	52	47	99

Points from (This Period)	LSU	VAN
In the Paint	22	24
Off Turns	4	2
2nd Chance	3	2
Fast Break	9	6
Bench	0	10



**Official Play-By-Play**  
**LSU vs Vanderbilt**  
**Second Half**  
**February 05, 2020 at Memorial Gymnasium - Nashville**



**Period 2**

**Starters:**

**LSU:** 0 DAYS, DARIUS (F); 2 WATFORD, TRENDON (F); 5 WILLIAMS, EMMITT (F); 1 SMART, JAVONTE (G); 4 MAYS, SKYLAR (G);

**Vanderbilt:** 0 LEE, SABEN (G); 1 DISU, DYLAN (F); 2 PIPPEN JR., SCOTTY (G); 3 EVANS, MAXWELL (G); 50 OBINNA, EJIKE (C);

Time	VISITORS: LSU	Score	Margin	HOME: Vanderbilt
20:00				SUB OUT: WRIGHT, JORDAN
20:00				SUB IN: DISU, DYLAN
20:00	SUB OUT: GRAVES, MARSHALL			
20:00	SUB OUT: TAYLOR, MARLON			
20:00	SUB IN: DAYS, DARIUS			
20:00	SUB IN: MAYS, SKYLAR			
19:44				TURNOVER (BADPASS) by PIPPEN JR., SCOTTY
19:44	STEAL by MAYS, SKYLAR			
19:39	GOOD! DUNK by MAYS, SKYLAR [FB]	52-49	H 3	
19:33		54-49	H 5	GOOD! LAYUP by LEE, SABEN
19:11	GOOD! JUMPER by WATFORD, TRENDON	54-51	H 3	
18:55		57-51	H 6	GOOD! 3PTR by DISU, DYLAN
18:55				ASSIST by LEE, SABEN
18:45	MISSED 3PTR by DAYS, DARIUS			
18:42	REBOUND (OFF) by WILLIAMS, EMMITT			
18:39	GOOD! JUMPER by WILLIAMS, EMMITT [PNT]	57-53	H 4	
18:33	FOUL (PERSONAL) by MAYS, SKYLAR			
18:22		60-53	H 7	GOOD! 3PTR by EVANS, MAXWELL
18:22				ASSIST by LEE, SABEN
18:01	MISSED LAYUP by WATFORD, TRENDON			
17:58				REBOUND (DEF) by OBINNA, EJIKE
17:53				TURNOVER (LOSTBALL) by LEE, SABEN
17:53	STEAL by SMART, JAVONTE			
17:48				FOUL (PERSONAL) by DISU, DYLAN
17:48	GOOD! FT by WATFORD, TRENDON [FB]	60-54	H 6	
17:48	GOOD! FT by WATFORD, TRENDON [FB]	60-55	H 5	
17:22				MISSED 3PTR by DISU, DYLAN
17:20	REBOUND (DEF) by MAYS, SKYLAR			
17:17	GOOD! DUNK by WILLIAMS, EMMITT [FB]	60-57	H 3	
17:17	ASSIST by MAYS, SKYLAR			
16:57		63-57	H 6	GOOD! 3PTR by EVANS, MAXWELL
16:57				ASSIST by LEE, SABEN
16:46	MISSED LAYUP by WILLIAMS, EMMITT			
16:45	REBOUND (OFF) by WATFORD, TRENDON			
16:45				FOUL (PERSONAL) by DISU, DYLAN
16:45				TIMEOUT 30SEC
16:45				
16:45				SUB OUT: DISU, DYLAN
16:45				SUB IN: MOYER, MATTHEW
16:45	GOOD! FT by WATFORD, TRENDON	63-58	H 5	
16:45	MISSED FT by WATFORD, TRENDON			
16:44				REBOUND (DEF) by MOYER, MATTHEW
16:16		65-58	H 7	GOOD! LAYUP by LEE, SABEN
16:05	GOOD! JUMPER by SMART, JAVONTE [PNT]	65-60	H 5	
15:53	FOUL (PERSONAL) by DAYS, DARIUS			
15:53				
15:53	SUB OUT: DAYS, DARIUS			
15:53	SUB IN: TAYLOR, MARLON			
15:53		66-60	H 6	GOOD! FT by LEE, SABEN
15:53		67-60	H 7	GOOD! FT by LEE, SABEN
15:36				FOUL (PERSONAL) by OBINNA, EJIKE
15:36	GOOD! FT by WILLIAMS, EMMITT	67-61	H 6	
15:36	GOOD! FT by WILLIAMS, EMMITT	67-62	H 5	
15:23		69-62	H 7	GOOD! LAYUP by LEE, SABEN
15:10	GOOD! JUMPER by WILLIAMS, EMMITT	69-64	H 5	
14:52				MISSED LAYUP by LEE, SABEN
14:50	REBOUND (DEF) by WATFORD, TRENDON			
14:39	GOOD! 3PTR by WATFORD, TRENDON	69-67	H 2	
14:39	ASSIST by TAYLOR, MARLON			
14:20		71-67	H 4	GOOD! DUNK by LEE, SABEN
14:20				ASSIST by MOYER, MATTHEW
14:08	GOOD! 3PTR by SMART, JAVONTE	71-70	H 1	
14:08	ASSIST by MAYS, SKYLAR			
13:56		73-70	H 3	GOOD! JUMPER by PIPPEN JR., SCOTTY
13:40	MISSED 3PTR by WATFORD, TRENDON			
13:38				REBOUND (DEF) by OBINNA, EJIKE
13:30	FOUL (PERSONAL) by MAYS, SKYLAR			
13:30				SUB OUT: OBINNA, EJIKE
13:30				SUB IN: WRIGHT, JORDAN
13:30	SUB OUT: MAYS, SKYLAR			



Time	VISITORS: LSU	Score	Margin	HOME: Vanderbilt
13:30	SUB IN: HYATT, AUNDRE			
13:21				MISSED 3PTR by WRIGHT, JORDAN
13:18	REBOUND (DEF) by HYATT, AUNDRE			
13:02	MISSED JUMPER by WILLIAMS, EMMITT			
12:59	REBOUND (OFF) by TAYLOR, MARLON			
12:48	TURNOVER (SHOTCLOCK) by TEAM			
12:48				SUB OUT: LEE, SABEN
12:48				SUB IN: ALBERT, BRAELEE
12:33				MISSED 3PTR by PIPPEN JR., SCOTTY
12:30	REBOUND (DEF) by WATFORD, TRENDON			
12:27	TURNOVER (BADPASS) by WATFORD, TRENDON			
12:27				STEAL by PIPPEN JR., SCOTTY
12:00				MISSED 3PTR by EVANS, MAXWELL
11:56	REBOUND (DEF) by HYATT, AUNDRE			
11:53	TURNOVER (BADPASS) by SMART, JAVONTE			
11:53				STEAL by EVANS, MAXWELL
11:37				TURNOVER (TRAVEL) by PIPPEN JR., SCOTTY
11:37				
11:37				SUB OUT: PIPPEN JR., SCOTTY
11:37				SUB IN: LEE, SABEN
11:37	SUB OUT: WATFORD, TRENDON			
11:37	SUB IN: GRAVES, MARSHALL			
11:15	MISSED 3PTR by GRAVES, MARSHALL			
11:12	REBOUND (OFF) by SMART, JAVONTE			
11:10	MISSED JUMPER by SMART, JAVONTE			
11:09	REBOUND (OFF) by TEAM			
11:07	MISSED JUMPER by WILLIAMS, EMMITT			
11:05				REBOUND (DEF) by WRIGHT, JORDAN
10:41				TURNOVER (TRAVEL) by LEE, SABEN
10:14	MISSED JUMPER by SMART, JAVONTE			
10:13				REBOUND (DEF) by TEAM
10:13				SUB OUT: EVANS, MAXWELL
10:13				SUB IN: PIPPEN JR., SCOTTY
10:13	SUB OUT: GRAVES, MARSHALL			
10:13	SUB OUT: HYATT, AUNDRE			
10:13	SUB IN: WATFORD, TRENDON			
10:13	SUB IN: MAYS, SKYLAR			
09:57	FOUL (PERSONAL) by WILLIAMS, EMMITT			
09:57		74-70	H 4	GOOD! FT by WRIGHT, JORDAN
09:57				MISSED FT by WRIGHT, JORDAN
09:56	REBOUND (DEF) by WATFORD, TRENDON			
09:48	GOOD! LAYUP by WATFORD, TRENDON	74-72	H 2	
09:29	FOUL (PERSONAL) by WILLIAMS, EMMITT			
09:29		75-72	H 3	GOOD! FT by WRIGHT, JORDAN
09:29	SUB OUT: WILLIAMS, EMMITT			
09:29	SUB IN: DAYS, DARIUS			
09:29		76-72	H 4	GOOD! FT by WRIGHT, JORDAN
09:10	GOOD! LAYUP by SMART, JAVONTE	76-74	H 2	
09:10	ASSIST by DAYS, DARIUS			
08:44		78-74	H 4	GOOD! LAYUP by WRIGHT, JORDAN
08:29	MISSED JUMPER by TAYLOR, MARLON			
08:27				REBOUND (DEF) by ALBERT, BRAELEE
08:27	FOUL (PERSONAL) by TAYLOR, MARLON			
08:15				MISSED 3PTR by LEE, SABEN
08:13				REBOUND (OFF) by ALBERT, BRAELEE
07:52		80-74	H 6	GOOD! LAYUP by WRIGHT, JORDAN
07:41	GOOD! LAYUP by DAYS, DARIUS	80-76	H 4	
07:41	ASSIST by MAYS, SKYLAR			
07:40				FOUL (PERSONAL) by WRIGHT, JORDAN
07:40				
07:40	SUB OUT: TAYLOR, MARLON			
07:40	SUB IN: WILLIAMS, EMMITT			
07:40	GOOD! FT by DAYS, DARIUS	80-77	H 3	
07:21				MISSED JUMPER by PIPPEN JR., SCOTTY
07:16	REBOUND (DEF) by MAYS, SKYLAR			
07:10	GOOD! JUMPER by WATFORD, TRENDON [PNT]	80-79	H 1	
06:50				MISSED JUMPER by LEE, SABEN
06:47	REBOUND (DEF) by DAYS, DARIUS			
06:46	GOOD! LAYUP by MAYS, SKYLAR [FB]	80-81	V 1	
06:46				FOUL (PERSONAL) by ALBERT, BRAELEE
06:46				SUB OUT: WRIGHT, JORDAN
06:46				SUB OUT: ALBERT, BRAELEE
06:46				SUB OUT: MOYER, MATTHEW
06:46				SUB IN: DISU, DYLAN
06:46				SUB IN: EVANS, MAXWELL
06:46				SUB IN: OBINNA, EJIKE
06:46	GOOD! FT by MAYS, SKYLAR [FB]	80-82	V 2	
06:46	SUB OUT: MAYS, SKYLAR			
06:46	SUB IN: TAYLOR, MARLON			
06:33				MISSED 3PTR by EVANS, MAXWELL



Time	VISITORS: LSU	Score	Margin	HOME: Vanderbilt
06:30	REBOUND (DEF) by WILLIAMS, EMMITT			
06:14	TURNOVER (TRAVEL) by SMART, JAVONTE			
06:07	FOUL (PERSONAL) by TAYLOR, MARLON			
06:07				MISSED FT by LEE, SABEN
06:06	REBOUND (DEF) by DAYS, DARIUS			
06:06				FOUL (PERSONAL) by OBINNA, EJIKE
06:06	SUB OUT: TAYLOR, MARLON			
06:06	SUB IN: MAYS, SKYLAR			
06:06	SUB OUT: SMART, JAVONTE			
06:06	SUB IN: TAYLOR, MARLON			
05:53				FOUL (PERSONAL) by DISU, DYLAN
05:53				SUB OUT: DISU, DYLAN
05:53				SUB IN: WRIGHT, JORDAN
05:53	GOOD! FT by MAYS, SKYLAR	80-83	V 3	
05:53	MISSED FT by MAYS, SKYLAR			
05:53				REBOUND (DEF) by OBINNA, EJIKE
05:37				MISSED 3PTR by WRIGHT, JORDAN
05:34	REBOUND (DEF) by WILLIAMS, EMMITT			
05:25	MISSED LAYUP by WATFORD, TRENDON			
05:20	REBOUND (OFF) by WILLIAMS, EMMITT			
05:20	MISSED LAYUP by WILLIAMS, EMMITT			
05:19				REBOUND (DEF) by OBINNA, EJIKE
05:17		82-83	V 1	GOOD! LAYUP by PIPPEN JR., SCOTTY [FB]
05:04	TURNOVER (LOSTBALL) by MAYS, SKYLAR			
05:04				STEAL by WRIGHT, JORDAN
04:58		84-83	H 1	GOOD! LAYUP by WRIGHT, JORDAN
04:30	TURNOVER (BADPASS) by DAYS, DARIUS			
04:30				STEAL by EVANS, MAXWELL
04:20				MISSED 3PTR by EVANS, MAXWELL
04:11	REBOUND (DEF) by WILLIAMS, EMMITT			
04:02	SUB OUT: WILLIAMS, EMMITT			
04:02	SUB IN: SMART, JAVONTE			
03:53	MISSED 3PTR by MAYS, SKYLAR			
03:51				REBOUND (DEF) by LEE, SABEN
03:45		86-83	H 3	GOOD! JUMPER by PIPPEN JR., SCOTTY [FB]
03:33				FOUL (PERSONAL) by LEE, SABEN
03:33				
03:33	MISSED FT by DAYS, DARIUS			
03:33	REBOUND (OFF) by TEAM			
03:33	GOOD! FT by DAYS, DARIUS	86-84	H 2	
03:06		88-84	H 4	GOOD! LAYUP by LEE, SABEN [PNT]
03:06	FOUL (PERSONAL) by DAYS, DARIUS			
03:06	SUB OUT: DAYS, DARIUS			
03:06	SUB IN: WILLIAMS, EMMITT			
03:06		89-84	H 5	GOOD! FT by LEE, SABEN
02:55				FOUL (PERSONAL) by EVANS, MAXWELL
02:55	MISSED FT by MAYS, SKYLAR			
02:54				REBOUND (DEF) by OBINNA, EJIKE
02:52	FOUL (PERSONAL) by WILLIAMS, EMMITT			
02:52				MISSED FT by OBINNA, EJIKE
02:51	REBOUND (DEF) by WATFORD, TRENDON			
02:37	MISSED 3PTR by MAYS, SKYLAR			
02:34				REBOUND (DEF) by LEE, SABEN
02:12		91-84	H 7	GOOD! LAYUP by LEE, SABEN [PNT]
02:03	GOOD! LAYUP by MAYS, SKYLAR	91-86	H 5	
02:01	TIMEOUT 30SEC			
01:54		93-86	H 7	GOOD! LAYUP by LEE, SABEN [FB]
01:54				ASSIST by EVANS, MAXWELL
01:37				FOUL (PERSONAL) by OBINNA, EJIKE
01:37				SUB OUT: OBINNA, EJIKE
01:37				SUB IN: MOYER, MATTHEW
01:37	MISSED FT by WILLIAMS, EMMITT			
01:37	REBOUND (OFF) by TEAM			
01:37	GOOD! FT by WILLIAMS, EMMITT	93-87	H 6	
01:08		96-87	H 9	GOOD! 3PTR by PIPPEN JR., SCOTTY
00:54	MISSED JUMPER by WILLIAMS, EMMITT			
00:53	FOUL (PERSONAL) by WATFORD, TRENDON			
00:53		97-87	H 10	GOOD! FT by MOYER, MATTHEW
00:53				MISSED FT by MOYER, MATTHEW
00:52	REBOUND (DEF) by WILLIAMS, EMMITT			
00:51				REBOUND (DEF) by MOYER, MATTHEW
00:44	GOOD! 3PTR by SMART, JAVONTE	97-90	H 7	
00:44	ASSIST by WILLIAMS, EMMITT			
00:43	TIMEOUT 30SEC			
00:37	FOUL (PERSONAL) by SMART, JAVONTE			
00:37		98-90	H 8	GOOD! FT by PIPPEN JR., SCOTTY
00:37		99-90	H 9	GOOD! FT by PIPPEN JR., SCOTTY
00:32	MISSED 3PTR by WATFORD, TRENDON			
00:29				REBOUND (DEF) by MOYER, MATTHEW



## LSU 90, Vanderbilt 99

Points from (This Period)	LSU	VAN
In the Paint	22	24
Off Turns	4	2
2nd Chance	3	2
Fast Break	9	6
Bench	0	10



**Official Scoring/Possession Reference Chart**  
**LSU vs Vanderbilt**  
**Period 1**  
**February 05, 2020 at Memorial Gymnasium - Nashville**



**Period 1**

**Starters:**

LSU: 0 DAYS, DARIUS (F); 2 WATFORD, TRENDON (F); 5 WILLIAMS, EMMITT (F); 1 SMART, JAVONTE (G); 4 MAYS, SKYLAR (G);

Vanderbilt: 0 LEE, SABEN (G); 1 DISU, DYLAN (F); 2 PIPPEN JR., SCOTTY (G); 3 EVANS, MAXWELL (G); 50 OBIINNA, EJIKE (C);

Time	VISITORS: LSU	Score	Margin	HOME: Vanderbilt
19:30	GOOD! LAYUP by DAYS, DARIUS [PNT]	0-2	V 2	
19:03		3-2	H 1	GOOD! 3PTR by DISU, DYLAN
17:44	GOOD! JUMPER by WATFORD, TRENDON [PNT]	3-4	V 1	
17:15		5-4	H 1	GOOD! JUMPER by EVANS, MAXWELL
16:48		7-4	H 3	GOOD! LAYUP by DISU, DYLAN
16:23	GOOD! FT by SMART, JAVONTE	7-5	H 2	
16:04	GOOD! LAYUP by WATFORD, TRENDON	7-7	T	
16:04	GOOD! FT by WATFORD, TRENDON	7-8	V 1	
14:30		10-8	H 2	GOOD! 3PTR by LEE, SABEN
14:20	GOOD! LAYUP by SMART, JAVONTE	10-10	T	
13:56		12-10	H 2	GOOD! LAYUP by PIPPEN JR., SCOTTY
13:03	GOOD! FT by WILLIAMS, EMMITT	12-11	H 1	
13:03	GOOD! FT by WILLIAMS, EMMITT	12-12	T	
12:43		15-12	H 3	GOOD! 3PTR by EVANS, MAXWELL
12:26	GOOD! LAYUP by WILLIAMS, EMMITT	15-14	H 1	
12:14		18-14	H 4	GOOD! 3PTR by EVANS, MAXWELL
12:02	GOOD! FT by WILLIAMS, EMMITT	18-15	H 3	
12:02	GOOD! FT by WILLIAMS, EMMITT	18-16	H 2	
11:23	GOOD! LAYUP by SMART, JAVONTE	18-18	T	
10:58		20-18	H 2	GOOD! LAYUP by LEE, SABEN
10:34	GOOD! FT by WATFORD, TRENDON	20-19	H 1	
10:34	GOOD! FT by WATFORD, TRENDON	20-20	T	
10:08		22-20	H 2	GOOD! JUMPER by WRIGHT, JORDAN
09:35		24-20	H 4	GOOD! LAYUP by EVANS, MAXWELL
09:35		25-20	H 5	GOOD! FT by EVANS, MAXWELL
08:55	GOOD! LAYUP by DAYS, DARIUS [PNT]	25-22	H 3	
08:55	GOOD! FT by DAYS, DARIUS	25-23	H 2	
08:49		28-23	H 5	GOOD! 3PTR by EVANS, MAXWELL [FB]
08:31	GOOD! LAYUP by WILLIAMS, EMMITT	28-25	H 3	
07:56	GOOD! FT by WATFORD, TRENDON	28-26	H 2	
07:56	GOOD! FT by WATFORD, TRENDON	28-27	H 1	
07:17	GOOD! LAYUP by WILLIAMS, EMMITT	28-29	V 1	
07:01		31-29	H 2	GOOD! 3PTR by LEE, SABEN
06:44	GOOD! DUNK by WILLIAMS, EMMITT [PNT]	31-31	T	
06:44	GOOD! FT by WILLIAMS, EMMITT	31-32	V 1	
06:30		34-32	H 2	GOOD! 3PTR by EVANS, MAXWELL
06:15		36-32	H 4	GOOD! LAYUP by EVANS, MAXWELL [FB]
06:15		37-32	H 5	GOOD! FT by EVANS, MAXWELL [FB]
05:54		39-32	H 7	GOOD! LAYUP by LEE, SABEN
05:43	GOOD! FT by WILLIAMS, EMMITT	39-33	H 6	
05:43	GOOD! FT by WILLIAMS, EMMITT	39-34	H 5	
05:09		41-34	H 7	GOOD! LAYUP by LEE, SABEN
04:50	GOOD! LAYUP by WATFORD, TRENDON	41-36	H 5	
04:35		42-36	H 6	GOOD! FT by ALBERT, BRAELEE
04:35		43-36	H 7	GOOD! FT by ALBERT, BRAELEE
04:11		44-36	H 8	GOOD! FT by LEE, SABEN [FB]
03:31		47-36	H 11	GOOD! 3PTR by EVANS, MAXWELL
02:23	GOOD! FT by GRAVES, MARSHALL	47-37	H 10	
02:13		49-37	H 12	GOOD! LAYUP by LEE, SABEN
01:51		50-37	H 13	GOOD! FT by LEE, SABEN [FB]
01:43	GOOD! LAYUP by MAYS, SKYLAR [PNT]	50-39	H 11	
01:05	GOOD! LAYUP by WATFORD, TRENDON	50-41	H 9	



Time	VISITORS: LSU	Score	Margin	HOME: Vanderbilt
01:05	GOOD! FT by WATFORD, TRENDON	50-42	H 8	
00:51		51-42	H 9	GOOD! FT by EVANS, MAXWELL
00:51		52-42	H 10	GOOD! FT by EVANS, MAXWELL
00:37	GOOD! 3PTR by MAYS, SKYLAR	52-45	H 7	
00:30	GOOD! FT by MAYS, SKYLAR [FB]	52-46	H 6	
00:30	GOOD! FT by MAYS, SKYLAR [FB]	52-47	H 5	

LSU 47, Vanderbilt 52



**Official Scoring/Possession Reference Chart**  
**LSU vs Vanderbilt**  
**Period 2**  
**February 05, 2020 at Memorial Gymnasium - Nashville**



**Period 2**

**Starters:**

LSU: 0 DAYS, DARIUS (F); 2 WATFORD, TRENDON (F); 5 WILLIAMS, EMMITT (F); 1 SMART, JAVONTE (G); 4 MAYS, SKYLAR (G);

Vanderbilt: 0 LEE, SABEN (G); 1 DISU, DYLAN (F); 2 PIPPEN JR., SCOTTY (G); 3 EVANS, MAXWELL (G); 50 OBIINNA, EJIKE (C);

Time	VISITORS: LSU	Score	Margin	HOME: Vanderbilt
19:39	GOOD! DUNK by MAYS, SKYLAR [FB]	52-49	H 3	
19:33		54-49	H 5	GOOD! LAYUP by LEE, SABEN
19:11	GOOD! JUMPER by WATFORD, TRENDON	54-51	H 3	
18:55		57-51	H 6	GOOD! 3PTR by DISU, DYLAN
18:39	GOOD! JUMPER by WILLIAMS, EMMITT [PNT]	57-53	H 4	
18:22		60-53	H 7	GOOD! 3PTR by EVANS, MAXWELL
17:48	GOOD! FT by WATFORD, TRENDON [FB]	60-54	H 6	
17:48	GOOD! FT by WATFORD, TRENDON [FB]	60-55	H 5	
17:17	GOOD! DUNK by WILLIAMS, EMMITT [FB]	60-57	H 3	
16:57		63-57	H 6	GOOD! 3PTR by EVANS, MAXWELL
16:45	GOOD! FT by WATFORD, TRENDON	63-58	H 5	
16:16		65-58	H 7	GOOD! LAYUP by LEE, SABEN
16:05	GOOD! JUMPER by SMART, JAVONTE [PNT]	65-60	H 5	
15:53		66-60	H 6	GOOD! FT by LEE, SABEN
15:53		67-60	H 7	GOOD! FT by LEE, SABEN
15:36	GOOD! FT by WILLIAMS, EMMITT	67-61	H 6	
15:36	GOOD! FT by WILLIAMS, EMMITT	67-62	H 5	
15:23		69-62	H 7	GOOD! LAYUP by LEE, SABEN
15:10	GOOD! JUMPER by WILLIAMS, EMMITT	69-64	H 5	
14:39	GOOD! 3PTR by WATFORD, TRENDON	69-67	H 2	
14:20		71-67	H 4	GOOD! DUNK by LEE, SABEN
14:08	GOOD! 3PTR by SMART, JAVONTE	71-70	H 1	
13:56		73-70	H 3	GOOD! JUMPER by PIPPEN JR., SCOTTY
09:57		74-70	H 4	GOOD! FT by WRIGHT, JORDAN
09:48	GOOD! LAYUP by WATFORD, TRENDON	74-72	H 2	
09:29		75-72	H 3	GOOD! FT by WRIGHT, JORDAN
09:29		76-72	H 4	GOOD! FT by WRIGHT, JORDAN
09:10	GOOD! LAYUP by SMART, JAVONTE	76-74	H 2	
08:44		78-74	H 4	GOOD! LAYUP by WRIGHT, JORDAN
07:52		80-74	H 6	GOOD! LAYUP by WRIGHT, JORDAN
07:41	GOOD! LAYUP by DAYS, DARIUS	80-76	H 4	
07:40	GOOD! FT by DAYS, DARIUS	80-77	H 3	
07:10	GOOD! JUMPER by WATFORD, TRENDON [PNT]	80-79	H 1	
06:46	GOOD! LAYUP by MAYS, SKYLAR [FB]	80-81	V 1	
06:46	GOOD! FT by MAYS, SKYLAR [FB]	80-82	V 2	
05:53	GOOD! FT by MAYS, SKYLAR	80-83	V 3	
05:17		82-83	V 1	GOOD! LAYUP by PIPPEN JR., SCOTTY [FB]
04:58		84-83	H 1	GOOD! LAYUP by WRIGHT, JORDAN
03:45		86-83	H 3	GOOD! JUMPER by PIPPEN JR., SCOTTY [FB]
03:33	GOOD! FT by DAYS, DARIUS	86-84	H 2	
03:06		88-84	H 4	GOOD! LAYUP by LEE, SABEN [PNT]
03:06		89-84	H 5	GOOD! FT by LEE, SABEN
02:12		91-84	H 7	GOOD! LAYUP by LEE, SABEN [PNT]
02:03	GOOD! LAYUP by MAYS, SKYLAR	91-86	H 5	
01:54		93-86	H 7	GOOD! LAYUP by LEE, SABEN [FB]
01:37	GOOD! FT by WILLIAMS, EMMITT	93-87	H 6	
01:08		96-87	H 9	GOOD! 3PTR by PIPPEN JR., SCOTTY
00:53		97-87	H 10	GOOD! FT by MOYER, MATTHEW
00:44	GOOD! 3PTR by SMART, JAVONTE	97-90	H 7	
00:37		98-90	H 8	GOOD! FT by PIPPEN JR., SCOTTY
00:37		99-90	H 9	GOOD! FT by PIPPEN JR., SCOTTY







**Official Substitutions Log**  
**LSU vs Vanderbilt**  
**Period 1**  
**February 05, 2020 at Memorial Gymnasium - Nashville**



VISITORS: LSU	Time	Score	HOME: Vanderbilt
0 DAYS,DARIUS			0 LEE,SABEN
2 WATFORD,TRENDON			1 DISU,DYLAN
5 WILLIAMS,EMMITT			2 PIPPEN JR.,SCOTTY
1 SMART,JAVONTE			3 EVANS,MAXWELL
4 MAYS,SKYLAR			50 OBINNA,EJIKE
	16:23	4-7	SUB OUT: OBINNA,EJIKE
	16:23		SUB IN: MOYER,MATTHEW
SUB OUT: 5 WILLIAMS,EMMITT	16:23		
SUB IN: 14 TAYLOR,MARLON	16:23		
SUB OUT: 0 DAYS,DARIUS	15:28	8-7	
SUB IN: 15 HYATT,AUNDRE	15:28		
	14:05	10-10	SUB OUT: DISU,DYLAN
	14:05		SUB IN: ALBERT,BRAELEE
SUB OUT: 2 WATFORD,TRENDON	14:05		
SUB IN: 5 WILLIAMS,EMMITT	14:05		
	12:26	14-15	SUB OUT: PIPPEN JR.,SCOTTY
	12:26		SUB IN: WRIGHT,JORDAN
SUB OUT: 4 MAYS,SKYLAR	12:02	15-18	
SUB IN: 2 WATFORD,TRENDON	12:02		
SUB OUT: 1 SMART,JAVONTE	10:44	18-20	
SUB IN: 4 MAYS,SKYLAR	10:44		
	10:34	18-20	SUB OUT: ALBERT,BRAELEE
	10:34		SUB IN: JANKOVIC,OTON
SUB OUT: 14 TAYLOR,MARLON	10:34		
SUB IN: 0 DAYS,DARIUS	10:34		
SUB OUT: 15 HYATT,AUNDRE	09:35	20-24	
SUB IN: 1 SMART,JAVONTE	09:35		
SUB OUT: 4 MAYS,SKYLAR	08:55	22-25	
SUB IN: 14 TAYLOR,MARLON	08:55		
	08:55		SUB OUT: LEE,SABEN
	08:55		SUB IN: RICE,ISAIAH
	07:56	25-28	SUB OUT: EVANS,MAXWELL
	07:56		SUB OUT: MOYER,MATTHEW
	07:56		SUB IN: LEE,SABEN
	07:56		SUB IN: DISU,DYLAN
	06:44	31-31	SUB OUT: RICE,ISAIAH
	06:44		SUB IN: EVANS,MAXWELL
	06:44		SUB OUT: JANKOVIC,OTON
	06:44		SUB IN: MOYER,MATTHEW
SUB OUT: 5 WILLIAMS,EMMITT	06:44		
SUB IN: 4 MAYS,SKYLAR	06:44		
SUB OUT: 0 DAYS,DARIUS	06:15	32-36	
SUB IN: 5 WILLIAMS,EMMITT	06:15		
	05:43	33-39	SUB OUT: MOYER,MATTHEW
	05:43		SUB IN: ALBERT,BRAELEE
SUB OUT: 14 TAYLOR,MARLON	04:35	36-42	
SUB IN: 15 HYATT,AUNDRE	04:35		
SUB OUT: 4 MAYS,SKYLAR	04:11	36-43	
SUB IN: 12 GRAVES,MARSHALL	04:11		
	02:23	36-47	SUB OUT: ALBERT,BRAELEE
	02:23		SUB IN: JOSSELL,JON
SUB OUT: 12 GRAVES,MARSHALL	02:23		
SUB IN: 4 MAYS,SKYLAR	02:23		
SUB OUT: 15 HYATT,AUNDRE	01:51	37-50	
SUB IN: 14 TAYLOR,MARLON	01:51		
	00:51	42-51	SUB OUT: DISU,DYLAN
	00:51		SUB IN: OBINNA,EJIKE
	00:30	46-52	SUB OUT: OBINNA,EJIKE
	00:30		SUB IN: DISU,DYLAN
SUB OUT: 4 MAYS,SKYLAR	00:30		
SUB IN: 12 GRAVES,MARSHALL	00:30		
	00:11	47-52	SUB OUT: DISU,DYLAN
	00:11		SUB OUT: JOSSELL,JON
	00:11		SUB IN: PIPPEN JR.,SCOTTY
	00:11		SUB IN: OBINNA,EJIKE

**LSU 47, Vanderbilt 52**



**Official Substitutions Log**  
**LSU vs Vanderbilt**  
**Period 2**  
**February 05, 2020 at Memorial Gymnasium - Nashville**



VISITORS: LSU	Time	Score	HOME: Vanderbilt
0 DAYS,DARIUS			0 LEE,SABEN
2 WATFORD,TRENDON			1 DISU,DYLAN
5 WILLIAMS,EMMITT			2 PIPPEN JR.,SCOTTY
1 SMART,JAVONTE			3 EVANS,MAXWELL
4 MAYS,SKYLAR			50 OBINNA,EJIKE
	20:00	-	SUB OUT: WRIGHT,JORDAN
	20:00		SUB IN: DISU,DYLAN
SUB OUT: 12 GRAVES,MARSHALL	20:00		
SUB OUT: 14 TAYLOR,MARLON	20:00		
SUB IN: 0 DAYS,DARIUS	20:00		
SUB IN: 4 MAYS,SKYLAR	20:00		
	16:45	57-63	SUB OUT: DISU,DYLAN
	16:45		SUB IN: MOYER,MATTHEW
SUB OUT: 0 DAYS,DARIUS	15:53	60-65	
SUB IN: 14 TAYLOR,MARLON	15:53		
	13:30	70-73	SUB OUT: OBINNA,EJIKE
	13:30		SUB IN: WRIGHT,JORDAN
SUB OUT: 4 MAYS,SKYLAR	13:30		
SUB IN: 15 HYATT,AUNDRE	13:30		
	12:48	70-73	SUB OUT: LEE,SABEN
	12:48		SUB IN: ALBERT,BRAELEE
	11:37	70-73	SUB OUT: PIPPEN JR.,SCOTTY
	11:37		SUB IN: LEE,SABEN
SUB OUT: 2 WATFORD,TRENDON	11:37		
SUB IN: 12 GRAVES,MARSHALL	11:37		
	10:13	70-73	SUB OUT: EVANS,MAXWELL
	10:13		SUB IN: PIPPEN JR.,SCOTTY
SUB OUT: 12 GRAVES,MARSHALL	10:13		
SUB OUT: 15 HYATT,AUNDRE	10:13		
SUB IN: 2 WATFORD,TRENDON	10:13		
SUB IN: 4 MAYS,SKYLAR	10:13		
SUB OUT: 5 WILLIAMS,EMMITT	09:29	72-75	
SUB IN: 0 DAYS,DARIUS	09:29		
SUB OUT: 14 TAYLOR,MARLON	07:40	76-80	
SUB IN: 5 WILLIAMS,EMMITT	07:40		
	06:46	81-80	SUB OUT: WRIGHT,JORDAN
	06:46		SUB OUT: ALBERT,BRAELEE
	06:46		SUB OUT: MOYER,MATTHEW
	06:46		SUB IN: DISU,DYLAN
	06:46		SUB IN: EVANS,MAXWELL
	06:46		SUB IN: OBINNA,EJIKE
SUB OUT: 4 MAYS,SKYLAR	06:46		
SUB IN: 14 TAYLOR,MARLON	06:46		
SUB OUT: 14 TAYLOR,MARLON	06:06	82-80	
SUB IN: 4 MAYS,SKYLAR	06:06		
SUB OUT: 1 SMART,JAVONTE	06:06		
SUB IN: 14 TAYLOR,MARLON	06:06		
	05:53	82-80	SUB OUT: DISU,DYLAN
	05:53		SUB IN: WRIGHT,JORDAN
SUB OUT: 5 WILLIAMS,EMMITT	04:02	83-84	
SUB IN: 1 SMART,JAVONTE	04:02		
SUB OUT: 0 DAYS,DARIUS	03:06	84-88	
SUB IN: 5 WILLIAMS,EMMITT	03:06		
	01:37	86-93	SUB OUT: OBINNA,EJIKE
	01:37		SUB IN: MOYER,MATTHEW

**LSU 90, Vanderbilt 99**



Official Shot Chart  
**LSU vs Vanderbilt**  
 PERIOD 1 Shots  
 February 05, 2020 at Memorial Gymnasium - Nashville

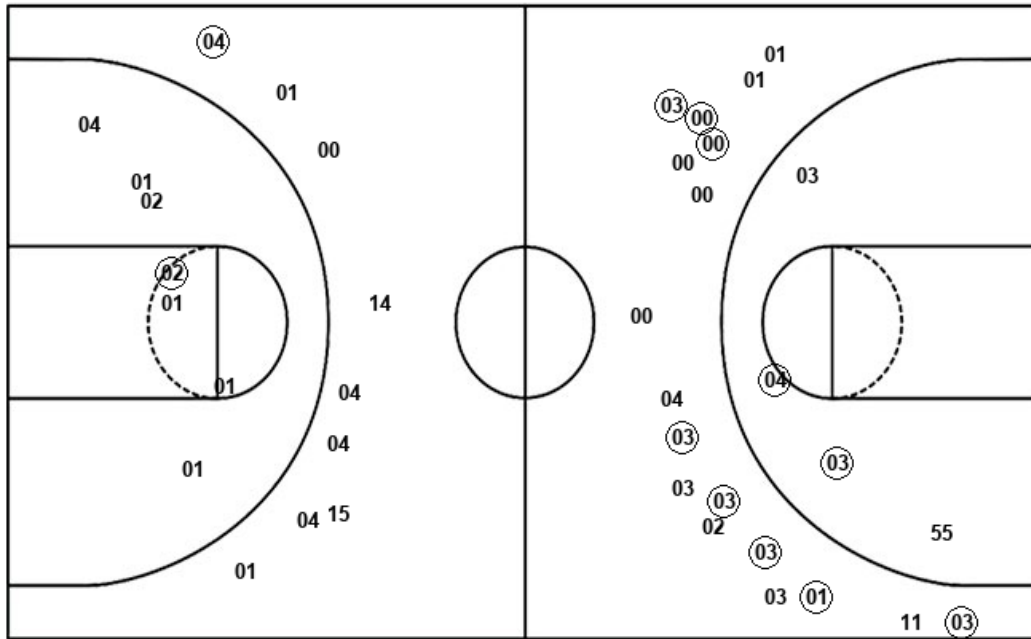


**Vanderbilt**

**LSU**

Layups  
 (01) 00 (02) (00) (03)  
 (03) (00) (00) 03 (00)  
 03

Dunks



Layups  
 (00) (02) (01) (05) (01)  
 (04) (00) (05) (05) 05  
 (02) (04) (02)

Dunks

<b>VAN : Period 1</b>	<b>Made</b>	<b>Att</b>	<b>Pct</b>
Layups	8	11	72.7
Dunks	0	0	0
2PT Field Goals	10	15	66.7
3PT Field Goals	8	18	44.4
<b>Total Field Goals</b>	<b>18</b>	<b>33</b>	<b>54.5</b>

<b>LSU : Period 1</b>	<b>Made</b>	<b>Att</b>	<b>Pct</b>
Layups	11	13	84.6
Dunks	1	2	50.0
2PT Field Goals	13	22	59.1
3PT Field Goals	1	9	11.1
<b>Total Field Goals</b>	<b>14</b>	<b>31</b>	<b>45.2</b>

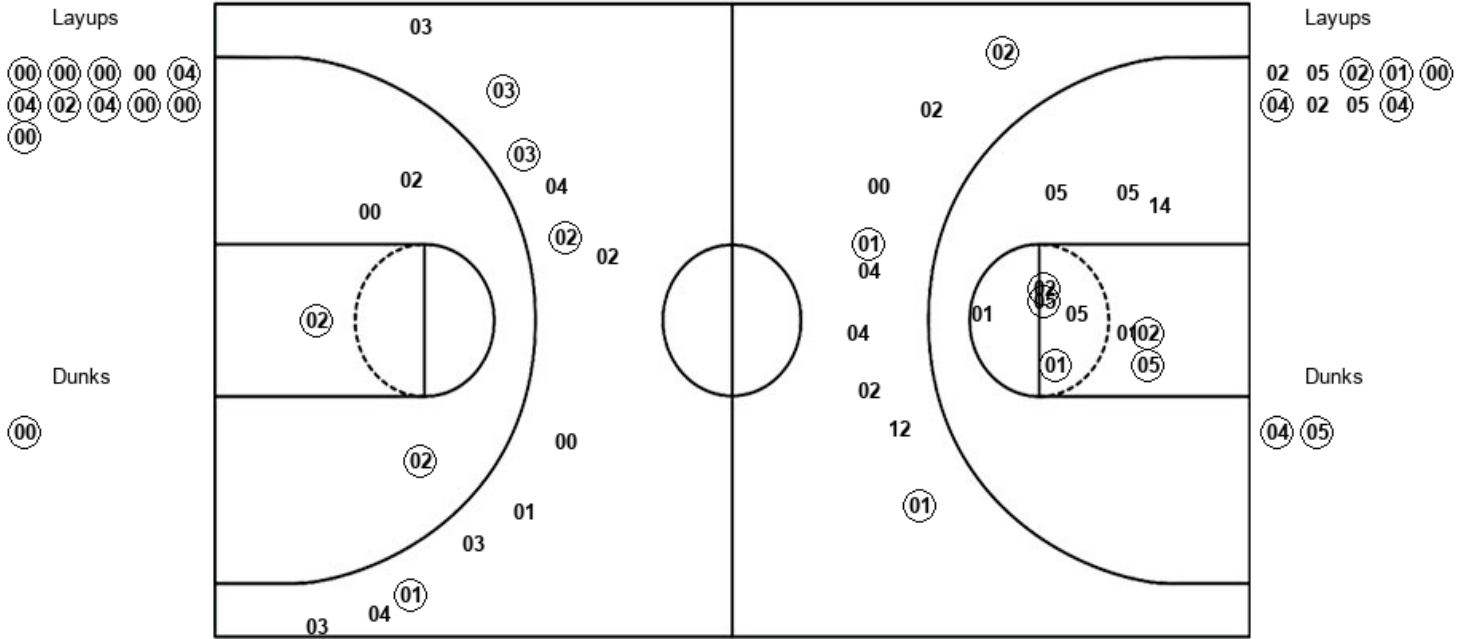


Official Shot Chart  
**LSU vs Vanderbilt**  
 PERIOD 2 Shots  
 February 05, 2020 at Memorial Gymnasium - Nashville



**Vanderbilt**

**LSU**



<b>VAN : Period 2</b>	<b>Made</b>	<b>Att</b>	<b>Pct</b>
Layups	10	11	90.9
Dunks	1	1	100.0
2PT Field Goals	13	16	81.3
3PT Field Goals	4	12	33.3
<b>Total Field Goals</b>	<b>17</b>	<b>28</b>	<b>60.7</b>

<b>LSU : Period 2</b>	<b>Made</b>	<b>Att</b>	<b>Pct</b>
Layups	5	9	55.6
Dunks	2	2	100.0
2PT Field Goals	12	22	54.5
3PT Field Goals	3	9	33.3
<b>Total Field Goals</b>	<b>15</b>	<b>31</b>	<b>48.4</b>

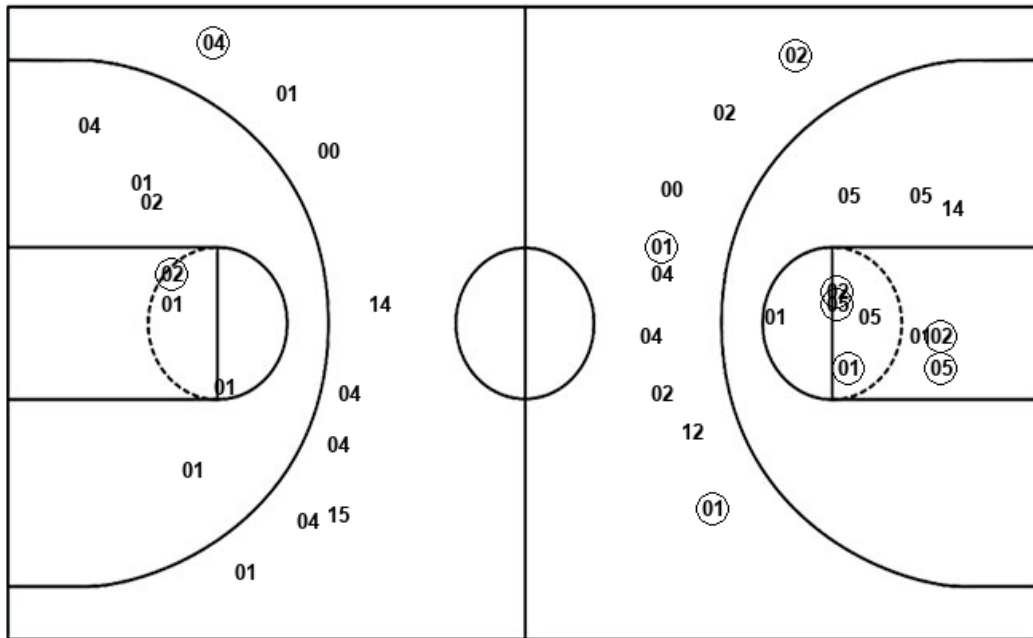


**Official Shot Chart**  
**LSU vs Vanderbilt**  
**LSU Team Shots**  
**February 05, 2020 at Memorial Gymnasium - Nashville**



Layups

Dunks



Layups

Dunks

00 02 01 05 01  
 04 00 05 05 05  
 02 04 02 02 05  
 02 01 00 04 02  
 05 04

05 05 04 05

LSU : Period 1	Made	Att	Pct
Layups	11	13	84.6
Dunks	1	2	50.0
2PT Field Goals	13	22	59.1
3PT Field Goals	1	9	11.1
<b>Total Field Goals</b>	<b>14</b>	<b>31</b>	<b>45.2</b>

LSU : Period 2	Made	Att	Pct
Layups	5	9	55.6
Dunks	2	2	100.0
2PT Field Goals	12	22	54.5
3PT Field Goals	3	9	33.3
<b>Total Field Goals</b>	<b>15</b>	<b>31</b>	<b>48.4</b>

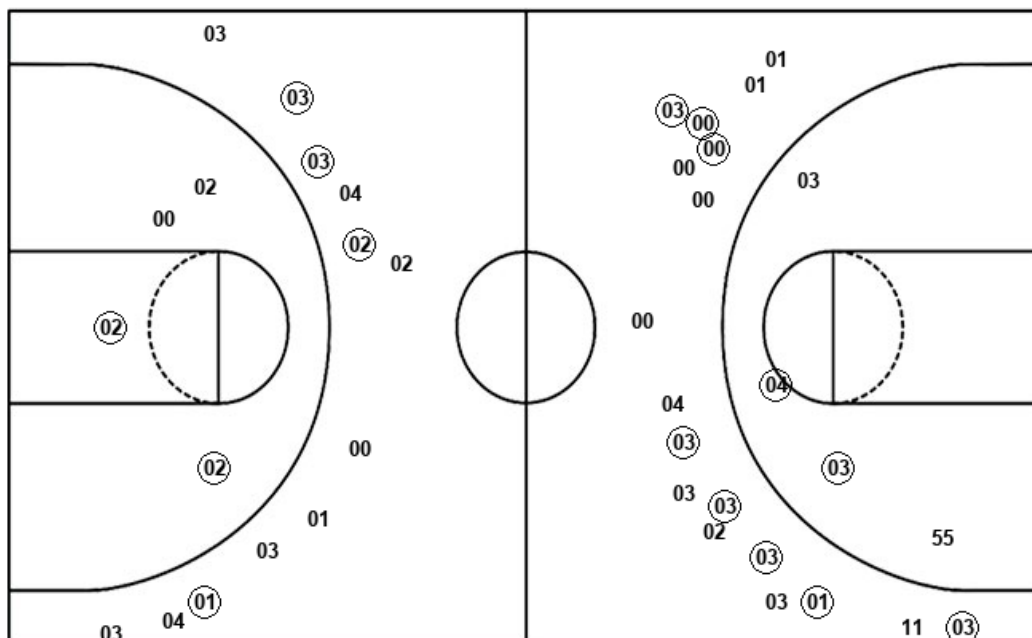


Official Shot Chart  
**LSU vs Vanderbilt**  
Vanderbilt Team Shots  
February 05, 2020 at Memorial Gymnasium - Nashville



Layups

Dunks



Layups

Dunks



VAN : Period 1	Made	Att	Pct
Layups	8	11	72.7
Dunks	0	0	0
2PT Field Goals	10	15	66.7
3PT Field Goals	8	18	44.4
<b>Total Field Goals</b>	<b>18</b>	<b>33</b>	<b>54.5</b>

VAN : Period 2	Made	Att	Pct
Layups	10	11	90.9
Dunks	1	1	100.0
2PT Field Goals	13	16	81.3
3PT Field Goals	4	12	33.3
<b>Total Field Goals</b>	<b>17</b>	<b>28</b>	<b>60.7</b>