

## FINAL SCORE

**SMU**



**52**

**Memphis**



**57**

January 21, 2020 • Elma Roane Fieldhouse - Memphis

## FINAL STATISTICS

**Official Box Score**  
**SMU vs Memphis**  
**Game Totals -- Final Statistics**  
**January 21, 2020 at Elma Roane Fieldhouse - Memphis**



**SMU 52**

No.	Player	S	Pts	FG	3FG	FT	OR	DR	TR	PF	A	TO	Blk	Stl	Min	+/-
13	BRADLEY, REAGAN	G	14	6-13	0-1	2-2	3	2	5	3	5	1	0	3	40	-5
14	BAYLISS, PAIGE	C	8	4-5	0-0	0-0	2	4	6	2	0	2	1	1	35	-8
24	WHITE, JAQUIA	G	2	1-8	0-4	0-0	1	2	3	2	1	1	0	0	32	-2
32	WHITE, KAYLA	G	12	5-14	2-6	0-0	2	1	3	2	0	1	0	0	31	-3
33	CASH, JOHNASIA	F	10	4-12	0-0	2-2	3	2	5	3	2	4	0	3	25	2
04	BACON, AMBER	G	4	2-5	0-0	0-0	1	0	1	2	1	2	0	0	17	-8
22	TSHIMANGA, FLORENCE	C	2	1-3	0-0	0-0	0	1	1	0	0	1	2	0	20	-1
TEAM							3	0	3	0		2				
<b>TOTALS</b>			<b>52</b>	<b>23-60</b>	<b>2-11</b>	<b>4-4</b>	<b>15</b>	<b>12</b>	<b>27</b>	<b>14</b>	<b>9</b>	<b>14</b>	<b>3</b>	<b>7</b>	<b>200</b>	

*Shooting By Period*

Period	FG	FG%	3FG	3FG%	FT	FT%
1st Qtr	6-16	38%	0-0	0%	2-2	100%
2nd Qtr	6-18	33%	1-5	20%	0-0	0%
3rd Qtr	7-12	58%	1-4	25%	0-0	0%
4th Qtr	4-14	29%	0-2	00%	2-2	100%
1st Half	12-34	35%	1-5	20%	2-2	100%
2nd Half	11-26	42%	1-6	17%	2-2	100%
<b>Game</b>	<b>23-60</b>	<b>38.3%</b>	<b>2-11</b>	<b>18.2%</b>	<b>4-4</b>	<b>100.0%</b>

*Deadball Rebounds: 0,1*

*Last FG: 4th-02:19*

*Biggest Run: 8-0*

*Largest lead: By 10 at 3rd-08:16*

*Technical Fouls: None.*

**Memphis 57**

No.	Player	S	Pts	FG	3FG	FT	OR	DR	TR	PF	A	TO	Blk	Stl	Min	+/-
02	GRIGGS, MADISON	G	10	3-9	3-9	1-2	0	2	2	0	1	4	0	0	32	11
03	HERNDON, GAZMYNE	G	0	0-2	0-0	0-0	0	2	2	2	3	4	0	0	19	-8
05	WILSON, AERIAL	G	9	4-5	1-1	0-0	0	1	1	2	2	2	0	1	30	13
32	MENDJIADEU FANKAM, DULC'	F	7	3-7	0-0	1-2	0	4	4	3	2	5	0	2	32	8
53	WILLIAMS, LANETTA	F	8	4-6	0-0	0-0	1	2	3	0	0	1	3	0	23	-8
23	SHUTES, JAMIRAH	G	14	4-7	0-1	6-8	2	2	4	2	2	4	0	0	34	3
33	DAVIS, ALANA	F	9	4-7	0-0	1-2	2	3	5	2	1	1	1	1	23	11
35	MCDONALD, JULAN	G	0	0-1	0-1	0-0	0	0	0	0	0	1	0	2	7	-5
TEAM							5	3	8	0		0				
<b>TOTALS</b>			<b>57</b>	<b>22-44</b>	<b>4-12</b>	<b>9-14</b>	<b>10</b>	<b>19</b>	<b>29</b>	<b>11</b>	<b>11</b>	<b>22</b>	<b>4</b>	<b>6</b>	<b>200</b>	

*Shooting By Period*

Period	FG	FG%	3FG	3FG%	FT	FT%
1st Qtr	4-11	36%	1-2	50%	0-0	0%
2nd Qtr	5-10	50%	1-3	33%	1-2	50%
3rd Qtr	8-14	57%	0-2	00%	1-1	100%
4th Qtr	5-9	56%	2-5	40%	7-11	64%
1st Half	9-21	43%	2-5	40%	1-2	50%
2nd Half	13-23	57%	2-7	29%	8-12	67%
<b>Game</b>	<b>22-44</b>	<b>50.0%</b>	<b>4-12</b>	<b>33.3%</b>	<b>9-14</b>	<b>64.3%</b>

*Deadball Rebounds: 4,3*

*Last FG: 4th-02:03*

*Biggest Run: 8-0*

*Largest lead: By 5 at 4th-00:01*

*Technical Fouls: None.*

Game Notes:

Officials: **Dee Kantner, Mark Resch, Fatou Cissoko-Stephens**  
Attendance: 470

Start Time: **08:01 PM ET**

End Time: **09:51 PM ET**

Game Duration: **1:49**

Conference Game;

Score	1st	2nd	3rd	4th	TOT
SMU	14	13	15	10	<b>52</b>
MEM	9	12	17	19	<b>57</b>

SMU led for 32:42. MEM led for 3:26.

Game was tied for 3:52.

Times tied: 2      Lead Changes: 2

Points from	SMU	MEM
In the Paint	36	30
Off Turns	18	10
2nd Chance	12	8
Fast Break	6	3
Bench	6	23

**Official Box Score**  
**SMU vs Memphis**  
**First Half Statistics Only**  
**January 21, 2020 at Elma Roane Fieldhouse - Memphis**



### SMU 27

No.	Player	S	Pts	FG	3FG	FT	OR	DR	TR	PF	A	TO	Blk	Stl	Min	+/-
13	BRADLEY, REAGAN	G	10	4-9	0-1	2-2	3	1	4	1	3	1	0	2	20	6
14	BAYLISS, PAIGE	C	4	2-3	0-0	0-0	2	2	4	1	0	0	1	1	17	4
22	TSHIMANGA, FLORENCE	C	2	1-3	0-0	0-0	0	1	1	0	0	1	2	0	11	4
24	WHITE, JAQUIA	G	0	0-0	0-0	0-0	0	0	0	2	1	0	0	0	13	9
32	WHITE, KAYLA	G	3	1-6	1-4	0-0	0	1	1	0	0	0	0	0	17	2
33	CASH, JOHNASIA	F	4	2-8	0-0	0-0	2	2	4	2	1	3	0	1	12	4
04	BACON, AMBER	G	4	2-5	0-0	0-0	1	0	1	0	1	1	0	0	10	1
	TEAM		0	0-0	0-0	0-0	3	0	3	0	0	0	0	0	0	
<b>TOTALS</b>			<b>27</b>	<b>12-34</b>	<b>1-5</b>	<b>2-2</b>	<b>11</b>	<b>7</b>	<b>18</b>	<b>6</b>	<b>6</b>	<b>6</b>	<b>3</b>	<b>4</b>	<b>100</b>	

#### Shooting By Period

Period	FG	FG%	3FG	3FG%	FT	FT%
1st Qtr	6-16	38%	0-0	0%	2-2	100%
2nd Qtr	6-18	33%	1-5	20%	0-0	0%
1st Half	12-34	35%	1-5	20%	2-2	100%
Game	23-60	38.3%	2-11	18.2%	4-4	100.0%

Deadball Rebounds: 0,1

Last FG Half: SMU 2nd-01:07

### Memphis 21

No.	Player	S	Pts	FG	3FG	FT	OR	DR	TR	PF	A	TO	Blk	Stl	Min	+/-
02	GRIGGS, MADISON	G	6	2-4	2-4	0-0	0	0	0	0	0	2	0	0	16	0
03	HERNDON, GAZMYNE	G	0	0-1	0-0	0-0	0	1	1	0	3	2	0	0	13	-6
05	WILSON, AERIAL	G	4	2-3	0-0	0-0	0	1	1	2	0	1	0	0	12	-1
23	SHUTES, JAMIRAH	G	0	0-2	0-0	0-0	2	1	3	0	0	2	0	0	14	-8
32	MENDJIADU FANKAM, DULC'	F	4	2-4	0-0	0-0	0	1	1	2	1	4	0	1	12	-3
33	DAVIS, ALANA	F	1	0-2	0-0	1-2	1	0	1	2	0	1	1	0	8	-3
35	MCDONALD, JULAN	G	0	0-1	0-1	0-0	0	0	0	0	0	1	0	2	7	-5
53	WILLIAMS, LANETTA	F	6	3-4	0-0	0-0	1	2	3	0	0	0	3	0	18	-4
	TEAM		0	0-0	0-0	0-0	1	3	4	0	0	0	0	0	0	
<b>TOTALS</b>			<b>21</b>	<b>9-21</b>	<b>2-5</b>	<b>1-2</b>	<b>5</b>	<b>9</b>	<b>14</b>	<b>6</b>	<b>4</b>	<b>13</b>	<b>4</b>	<b>3</b>	<b>100</b>	

#### Shooting By Period

Period	FG	FG%	3FG	3FG%	FT	FT%
1st Qtr	4-11	36%	1-2	50%	0-0	0%
2nd Qtr	5-10	50%	1-3	33%	1-2	50%
1st Half	9-21	43%	2-5	40%	1-2	50%
Game	22-44	50.0%	4-12	33.3%	9-14	64.3%

Deadball Rebounds: 4,3

Last FG Half: MEM 2nd-03:36

#### Game Notes:

Officials: Dee Kantner, Mark Resch, Fatou Cissoko-Stephens  
Attendance: 470

Start Time: 08:01 PM ET

End Time: 09:51 PM ET

Game Duration: 1:49

Conference Game;

Score	1st	2nd	3rd	4th	TOT
SMU	14	13	15	10	<b>52</b>
MEM	9	12	17	19	<b>57</b>

Points from (This Period)	SMU	MEM
In the Paint	18	12
Off Turns	10	2
2nd Chance	8	2
Fast Break	2	2
Bench	6	1

**Official Box Score**  
**SMU vs Memphis**  
**First Quarter Statistics Only**  
**January 21, 2020 at Elma Roane Fieldhouse - Memphis**



### SMU 14

No.	Player	S	Pts	FG	3FG	FT	OR	DR	TR	PF	A	TO	Blk	Stl	Min	+/-
13	BRADLEY, REAGAN	G	6	2-5	0-0	2-2	2	0	2	0	2	1	0	0	10	5
14	BAYLISS, PAIGE	C	0	0-0	0-0	0-0	0	2	2	1	0	0	1	1	7	3
24	WHITE, JAQUIA	G	0	0-0	0-0	0-0	0	0	0	1	0	0	0	0	10	5
32	WHITE, KAYLA	G	0	0-1	0-0	0-0	0	0	0	0	0	0	0	0	7	1
33	CASH, JOHNASIA	F	4	2-6	0-0	0-0	1	1	2	1	0	2	0	0	7	1
04	BACON, AMBER	G	2	1-2	0-0	0-0	0	0	0	0	1	0	0	0	3	4
22	TSHIMANGA, FLORENCE	C	2	1-2	0-0	0-0	0	1	1	0	0	0	2	0	6	6
TEAM							2	0	2	0		0				
<b>TOTALS</b>			<b>14</b>	<b>6-16</b>	<b>0-0</b>	<b>2-2</b>	<b>5</b>	<b>4</b>	<b>9</b>	<b>3</b>	<b>3</b>	<b>3</b>	<b>3</b>	<b>1</b>	<b>50</b>	

#### Shooting By Period

Period	FG	FG%	3FG	3FG%	FT	FT%
1st Qtr	6-16	38%	0-0	0%	2-2	100%
2nd Qtr	6-18	33%	1-5	20%	0-0	0%
1st Half	6-16	38%	0-0	0%	2-2	100%
1st Half	12-34	35%	1-5	20%	2-2	100%
Game	23-60	38.3%	2-11	18.2%	4-4	100.0%

Deadball Rebounds: 0,1

### Memphis 9

No.	Player	S	Pts	FG	3FG	FT	OR	DR	TR	PF	A	TO	Blk	Stl	Min	+/-
02	GRIGGS, MADISON	G	3	1-2	1-2	0-0	0	0	0	0	0	1	0	0	9	-3
03	HERNDON, GAZMYNE	G	0	0-0	0-0	0-0	0	0	0	0	2	2	0	0	7	-1
05	WILSON, AERIAL	G	2	1-1	0-0	0-0	0	0	0	0	0	1	0	0	8	-5
32	MENDJIADU FANKAM, DULC'	F	2	1-3	0-0	0-0	0	0	0	1	0	3	0	1	7	-5
53	WILLIAMS, LANETTA	F	2	1-2	0-0	0-0	1	1	2	0	0	0	2	0	10	-5
23	SHUTES, JAMIRAH	G	0	0-2	0-0	0-0	1	0	1	0	0	0	0	0	6	-6
33	DAVIS, ALANA	F	0	0-1	0-0	0-0	0	0	0	2	0	0	1	0	3	0
35	MCDONALD, JULAN	G	0	0-0	0-0	0-0	0	0	0	0	0	0	0	0	0	0
TEAM							1	3	4	0		0				
<b>TOTALS</b>			<b>9</b>	<b>4-11</b>	<b>1-2</b>	<b>0-0</b>	<b>3</b>	<b>4</b>	<b>7</b>	<b>3</b>	<b>2</b>	<b>7</b>	<b>3</b>	<b>1</b>	<b>50</b>	

#### Shooting By Period

Period	FG	FG%	3FG	3FG%	FT	FT%
1st Qtr	4-11	36%	1-2	50%	0-0	0%
2nd Qtr	5-10	50%	1-3	33%	1-2	50%
1st Half	4-11	36%	1-2	50%	0-0	0%
1st Half	9-21	43%	2-5	40%	1-2	50%
Game	22-44	50.0%	4-12	33.3%	9-14	64.3%

Deadball Rebounds: 4,3

#### Game Notes:

Officials: Dee Kantner, Mark Resch, Fatou Cissoko-Stephens  
Attendance: 470

Start Time: 08:01 PM ET  
End Time: 09:51 PM ET  
Game Duration: 1:49  
Conference Game;

Score	1st	2nd	3rd	4th	TOT
SMU	14	13	15	10	<b>52</b>
MEM	9	12	17	19	<b>57</b>

Points from (This Period)	SMU	MEM
In the Paint	8	4
Off Turns	8	2
2nd Chance	4	2
Fast Break	2	0
Bench	4	0

**Official Play-By-Play**  
**SMU vs Memphis**  
**First Quarter**  
**January 21, 2020 at Elma Roane Fieldhouse - Memphis**



**Period 1**

**Starters:**

**SMU:** 13 BRADLEY, REAGAN (G); 14 BAYLISS, PAIGE (C); 24 WHITE, JAQUIA (G); 32 WHITE, KAYLA (G); 33 CASH, JOHNASIA (F);

**Memphis:** 2 GRIGGS, MADISON (G); 3 HERNDON, GAZMYNE (G); 5 WILSON, AERIAL (G); 32 MENDJIADEU FANKAM, DULCY (F); 53 WILLIAMS, LANETTA (F);

Time	VISITORS: SMU	Score	Margin	HOME: Memphis
09:40	MISSED JUMPER by CASH, JOHNASIA			
09:38				REBOUND (DEF) by TEAM
09:13				MISSED JUMPER by MENDJIADEU FANKAM, DULCY
09:13	BLOCK by BAYLISS, PAIGE			
09:08	REBOUND (DEF) by BAYLISS, PAIGE			
08:49	MISSED LAYUP by CASH, JOHNASIA			
08:49				BLOCK by WILLIAMS, LANETTA
08:47				REBOUND (DEF) by TEAM
08:31		3-0	H 3	GOOD! 3PTR by GRIGGS, MADISON
08:31				ASSIST by HERNDON, GAZMYNE
08:11	GOOD! JUMPER by BRADLEY, REAGAN [PNT]	3-2	H 1	
07:44				TURNOVER (LOSTBALL) by MENDJIADEU FANKAM, DULCY
07:26	TURNOVER (BADPASS) by BRADLEY, REAGAN			
07:26				STEAL by MENDJIADEU FANKAM, DULCY
07:14	FOUL (PERSONAL) by BAYLISS, PAIGE			
07:03		5-2	H 3	GOOD! JUMPER by MENDJIADEU FANKAM, DULCY
06:45	GOOD! LAYUP by CASH, JOHNASIA	5-4	H 1	
06:21				MISSED LAYUP by MENDJIADEU FANKAM, DULCY
06:19	REBOUND (DEF) by CASH, JOHNASIA			
06:03	FOUL (OFF) by CASH, JOHNASIA			
06:03	TURNOVER (OFFENSIVE) by CASH, JOHNASIA			
06:03				SUB OUT: GRIGGS, MADISON
06:03				SUB IN: SHUTES, JAMIRAH
06:03	SUB OUT: BAYLISS, PAIGE			
06:03	SUB IN: TSHIMANGA, FLORENCE			
05:50				TURNOVER (BADPASS) by HERNDON, GAZMYNE
05:37	GOOD! LAYUP by TSHIMANGA, FLORENCE	5-6	V 1	
05:23				FOUL (OFF) by MENDJIADEU FANKAM, DULCY
05:23				TURNOVER (OFFENSIVE) by MENDJIADEU FANKAM, DULCY
05:23				SUB OUT: MENDJIADEU FANKAM, DULCY
05:23				SUB IN: DAVIS, ALANA
05:03	MISSED LAYUP by CASH, JOHNASIA			
05:03				BLOCK by DAVIS, ALANA
05:03	REBOUND (OFF) by TEAM			
05:02				SUB OUT: WILSON, AERIAL
05:02				SUB IN: GRIGGS, MADISON
04:55	GOOD! JUMPER by CASH, JOHNASIA	5-8	V 3	
04:55	ASSIST by BRADLEY, REAGAN			
04:29				MISSED LAYUP by DAVIS, ALANA
04:29	BLOCK by TSHIMANGA, FLORENCE			
04:29				REBOUND (OFF) by TEAM
04:28		7-8	V 1	GOOD! JUMPER by WILLIAMS, LANETTA [PNT]
04:28				ASSIST by HERNDON, GAZMYNE
04:13	TURNOVER (3SEC) by CASH, JOHNASIA			
03:48				TURNOVER (BADPASS) by HERNDON, GAZMYNE
03:28	MISSED JUMPER by BRADLEY, REAGAN			
03:22	REBOUND (OFF) by CASH, JOHNASIA			
03:22	MISSED LAYUP by CASH, JOHNASIA			
03:21	REBOUND (OFF) by BRADLEY, REAGAN			
03:21	MISSED LAYUP by BRADLEY, REAGAN			
03:21	REBOUND (OFF) by TEAM			
03:21				BLOCK by WILLIAMS, LANETTA
03:20				SUB OUT: HERNDON, GAZMYNE
03:20				SUB IN: WILSON, AERIAL
03:20	SUB OUT: CASH, JOHNASIA			
03:20	SUB IN: BAYLISS, PAIGE			
03:04	MISSED JUMPER by WHITE, KAYLA			
03:02				REBOUND (DEF) by TEAM
02:50				TURNOVER (TRAVEL) by WILSON, AERIAL
02:50	SUB OUT: WHITE, KAYLA			
02:50	SUB IN: BACON, AMBER			
02:34	MISSED JUMPER by BRADLEY, REAGAN			
02:31	REBOUND (OFF) by BRADLEY, REAGAN			
02:30				FOUL (PERSONAL) by DAVIS, ALANA
02:30	GOOD! FT by BRADLEY, REAGAN	7-9	V 2	
02:30	GOOD! FT by BRADLEY, REAGAN	7-10	V 3	
02:22		9-10	V 1	GOOD! LAYUP by WILSON, AERIAL
02:05				FOUL (PERSONAL) by DAVIS, ALANA
02:05				SUB OUT: DAVIS, ALANA

Time	VISITORS: SMU	Score	Margin	HOME: Memphis
02:05				SUB IN: MENDJIADEU FANKAM, DULCY
01:56	MISSED JUMPER by BACON, AMBER			
01:54				REBOUND (DEF) by WILLIAMS, LANETTA
01:49				TURNOVER (LOSTBALL) by MENDJIADEU FANKAM, DULCY
01:25	GOOD! JUMPER by BACON, AMBER	9-12	V 3	
01:25	ASSIST by BRADLEY, REAGAN			
01:11	FOUL (PERSONAL) by WHITE, JAQUIA			
01:03				MISSED 3PTR by GRIGGS, MADISON
01:00				REBOUND (OFF) by WILLIAMS, LANETTA
00:58				MISSED JUMPER by WILLIAMS, LANETTA
00:58	BLOCK by TSHIMANGA, FLORENCE			
00:52				REBOUND (OFF) by SHUTES, JAMIRAH
00:51				MISSED LAYUP by SHUTES, JAMIRAH
00:48	REBOUND (DEF) by BAYLISS, PAIGE			
00:45	GOOD! LAYUP by BRADLEY, REAGAN [FB]	9-14	V 5	
00:45	ASSIST by BACON, AMBER			
00:28				TURNOVER (BADPASS) by GRIGGS, MADISON
00:28	STEAL by BAYLISS, PAIGE			
00:22	MISSED JUMPER by TSHIMANGA, FLORENCE			
00:19				REBOUND (DEF) by TEAM
00:19	SUB OUT: WHITE, JAQUIA			
00:19	SUB IN: WHITE, KAYLA			
00:02				MISSED JUMPER by SHUTES, JAMIRAH
00:00	REBOUND (DEF) by TSHIMANGA, FLORENCE			

SMU 14, Memphis 9

Points from (This Period)	SMU	MEM
In the Paint	8	4
Off Turns	8	2
2nd Chance	4	2
Fast Break	2	0
Bench	4	0

**Official Box Score**  
**SMU vs Memphis**  
**Second Quarter Statistics Only**  
**January 21, 2020 at Elma Roane Fieldhouse - Memphis**



### SMU 13

No.	Player	S	Pts	FG	3FG	FT	OR	DR	TR	PF	A	TO	Blk	Stl	Min	+/-
13	BRADLEY, REAGAN	G	4	2-4	0-1	0-0	1	1	2	1	1	0	0	2	10	1
14	BAYLISS, PAIGE	C	4	2-3	0-0	0-0	2	0	2	0	0	0	0	0	10	1
24	WHITE, JAQUIA	G	0	0-0	0-0	0-0	0	0	0	1	1	0	0	0	3	4
32	WHITE, KAYLA	G	3	1-5	1-4	0-0	0	1	1	0	0	0	0	0	10	1
33	CASH, JOHNASIA	F	0	0-2	0-0	0-0	1	1	2	1	1	1	0	1	5	3
04	BACON, AMBER	G	2	1-3	0-0	0-0	1	0	1	0	0	1	0	0	7	-3
22	TSHIMANGA, FLORENCE	C	0	0-1	0-0	0-0	0	0	0	0	0	1	0	0	5	-2
TEAM							1	0	1	0	0	0	0	0	0	0
<b>TOTALS</b>			<b>13</b>	<b>6-18</b>	<b>1-5</b>	<b>0-0</b>	<b>6</b>	<b>3</b>	<b>9</b>	<b>3</b>	<b>3</b>	<b>3</b>	<b>0</b>	<b>3</b>	<b>50</b>	

#### Shooting By Period

Period	FG	FG%	3FG	3FG%	FT	FT%
3rd Qtr	7-12	58%	1-4	25%	0-0	0%
4th Qtr	4-14	29%	0-2	00%	2-2	100%
2nd Half	6-18	33%	1-5	20%	0-0	0%
2nd Half	11-26	42%	1-6	17%	2-2	100%
Game	23-60	38.3%	2-11	18.2%	4-4	100.0%

Deadball Rebounds: 0,1

### Memphis 12

No.	Player	S	Pts	FG	3FG	FT	OR	DR	TR	PF	A	TO	Blk	Stl	Min	+/-
02	GRIGGS, MADISON	G	3	1-2	1-2	0-0	0	0	0	0	0	1	0	0	7	3
03	HERNDON, GAZMYNE	G	0	0-1	0-0	0-0	0	1	1	0	1	0	0	0	6	-5
05	WILSON, AERIAL	G	2	1-2	0-0	0-0	0	1	1	2	0	0	0	0	4	4
32	MENDJIADU FANKAM, DULC'	F	2	1-1	0-0	0-0	0	1	1	1	1	1	0	0	5	2
53	WILLIAMS, LANETTA	F	4	2-2	0-0	0-0	0	1	1	0	0	0	1	0	8	1
23	SHUTES, JAMIRAH	G	0	0-0	0-0	0-0	1	1	2	0	0	2	0	0	8	-2
33	DAVIS, ALANA	F	1	0-1	0-0	1-2	1	0	1	0	0	1	0	0	5	-3
35	MCDONALD, JULAN	G	0	0-1	0-1	0-0	0	0	0	0	0	1	0	2	7	-5
TEAM							0	0	0	0	0	0	0	0	0	0
<b>TOTALS</b>			<b>12</b>	<b>5-10</b>	<b>1-3</b>	<b>1-2</b>	<b>2</b>	<b>5</b>	<b>7</b>	<b>3</b>	<b>2</b>	<b>6</b>	<b>1</b>	<b>2</b>	<b>50</b>	

#### Shooting By Period

Period	FG	FG%	3FG	3FG%	FT	FT%
3rd Qtr	8-14	57%	0-2	00%	1-1	100%
4th Qtr	5-9	56%	2-5	40%	7-11	64%
2nd Half	5-10	50%	1-3	33%	1-2	50%
2nd Half	13-23	57%	2-7	29%	8-12	67%
Game	22-44	50.0%	4-12	33.3%	9-14	64.3%

Deadball Rebounds: 4,3

#### Game Notes:

Officials: Dee Kantner, Mark Resch, Fatou Cissoko-Stephens  
Attendance: 470

Start Time: 08:01 PM ET  
End Time: 09:51 PM ET  
Game Duration: 1:49  
Conference Game;

Score	1st	2nd	3rd	4th	TOT
SMU	14	13	15	10	<b>52</b>
MEM	9	12	17	19	<b>57</b>

Points from (This Period)	SMU	MEM
In the Paint	10	8
Off Turns	2	0
2nd Chance	4	0
Fast Break	0	2
Bench	2	1

**Official Play-By-Play**  
**SMU vs Memphis**  
**Second Quarter**  
**January 21, 2020 at Elma Roane Fieldhouse - Memphis**



**Period 2**

**Starters:**

**SMU:** 13 BRADLEY, REAGAN (G); 14 BAYLISS, PAIGE (C); 24 WHITE, JAQUIA (G); 32 WHITE, KAYLA (G); 33 CASH, JOHNASIA (F);

**Memphis:** 2 GRIGGS, MADISON (G); 3 HERNDON, GAZMYNE (G); 5 WILSON, AERIAL (G); 32 MENDJIADEU FANKAM, DULCY (F); 53 WILLIAMS, LANETTA (F);

Time	VISITORS: SMU	Score	Margin	HOME: Memphis
09:44		11-14	V 3	GOOD! JUMPER by MENDJIADEU FANKAM, DULCY [PNT]
09:28	MISSED 3PTR by WHITE, KAYLA			
09:25	REBOUND (OFF) by BAYLISS, PAIGE			
09:22	GOOD! JUMPER by BACON, AMBER [PNT]	11-16	V 5	
09:09		13-16	V 3	GOOD! LAYUP by WILLIAMS, LANETTA [PNT]
08:42	GOOD! 3PTR by WHITE, KAYLA	13-19	V 6	
08:42	ASSIST by BRADLEY, REAGAN			
08:29		16-19	V 3	GOOD! 3PTR by GRIGGS, MADISON
08:29				ASSIST by MENDJIADEU FANKAM, DULCY
07:52	MISSED LAYUP by TSHIMANGA, FLORENCE			
07:52				BLOCK by WILLIAMS, LANETTA
07:48				REBOUND (DEF) by WILLIAMS, LANETTA
07:45				TURNOVER (BADPASS) by GRIGGS, MADISON
07:45	STEAL by BRADLEY, REAGAN			
07:38	MISSED JUMPER by BACON, AMBER			
07:34				REBOUND (DEF) by MENDJIADEU FANKAM, DULCY
07:13		18-19	V 1	GOOD! LAYUP by WILSON, AERIAL
06:53				FOUL (PERSONAL) by WILSON, AERIAL
06:53				SUB OUT: GRIGGS, MADISON
06:53				SUB IN: MCDONALD, JULAN
06:53	SUB OUT: BACON, AMBER			
06:53	SUB OUT: TSHIMANGA, FLORENCE			
06:53	SUB IN: WHITE, JAQUIA			
06:53	SUB IN: CASH, JOHNASIA			
06:43	MISSED 3PTR by BRADLEY, REAGAN			
06:39	REBOUND (OFF) by CASH, JOHNASIA			
06:29	MISSED 3PTR by WHITE, KAYLA			
06:25				REBOUND (DEF) by SHUTES, JAMIRAH
06:19				TURNOVER (BADPASS) by SHUTES, JAMIRAH
06:01	MISSED LAYUP by CASH, JOHNASIA			
05:58				REBOUND (DEF) by WILSON, AERIAL
05:55				MISSED LAYUP by WILSON, AERIAL
05:50	REBOUND (DEF) by WHITE, KAYLA			
05:49				FOUL (PERSONAL) by WILSON, AERIAL
05:49				SUB OUT: WILSON, AERIAL
05:49				SUB IN: HERNDON, GAZMYNE
05:29	GOOD! LAYUP by BAYLISS, PAIGE	18-21	V 3	
05:29	ASSIST by CASH, JOHNASIA			
05:15				FOUL (OFF) by MENDJIADEU FANKAM, DULCY
05:15				TURNOVER (OFFENSIVE) by MENDJIADEU FANKAM, DULCY
05:03	TURNOVER (TRAVEL) by CASH, JOHNASIA			
05:03				SUB OUT: MENDJIADEU FANKAM, DULCY
05:03				SUB IN: DAVIS, ALANA
04:45				TURNOVER (LOSTBALL) by SHUTES, JAMIRAH
04:45	STEAL by CASH, JOHNASIA			
04:35	GOOD! JUMPER by BAYLISS, PAIGE [PNT]	18-23	V 5	
04:35	ASSIST by WHITE, JAQUIA			
04:08	FOUL (PERSONAL) by WHITE, JAQUIA			
04:08				
04:08				SUB OUT: SHUTES, JAMIRAH
04:08				SUB IN: GRIGGS, MADISON
04:08	SUB OUT: WHITE, JAQUIA			
04:08	SUB IN: BACON, AMBER			
04:08				MISSED FT by DAVIS, ALANA
04:08				REBOUND (OFF) by TEAM
04:08		19-23	V 4	GOOD! FT by DAVIS, ALANA
04:03	MISSED JUMPER by WHITE, KAYLA			
04:00				REBOUND (DEF) by TEAM
04:00	FOUL (PERSONAL) by CASH, JOHNASIA			
03:50				MISSED 3PTR by GRIGGS, MADISON
03:47	REBOUND (DEF) by CASH, JOHNASIA			
03:43	MISSED LAYUP by BACON, AMBER			
03:40				REBOUND (DEF) by HERNDON, GAZMYNE
03:36		21-23	V 2	GOOD! LAYUP by WILLIAMS, LANETTA [FB]
03:36				ASSIST by HERNDON, GAZMYNE
03:03	GOOD! LAYUP by BRADLEY, REAGAN	21-25	V 4	
02:43				TURNOVER (LOSTBALL) by DAVIS, ALANA
02:43	STEAL by BRADLEY, REAGAN			
02:22	MISSED JUMPER by CASH, JOHNASIA			
02:19	REBOUND (OFF) by BAYLISS, PAIGE			

Time	VISITORS: SMU	Score	Margin	HOME: Memphis
02:19	SUB OUT: CASH, JOHNASIA			
02:19	SUB IN: TSHIMANGA, FLORENCE			
02:08	TURNOVER (BADPASS) by TSHIMANGA, FLORENCE			
02:08				STEAL by MCDONALD, JULAN
02:04				SUB OUT: WILLIAMS, LANETTA
02:04				SUB IN: SHUTES, JAMIRAH
01:50				MISSED LAYUP by HERNDON, GAZMYNE
01:47	REBOUND (DEF) by BRADLEY, REAGAN			
01:27	MISSED JUMPER by BRADLEY, REAGAN			
01:24	REBOUND (OFF) by TEAM			
01:12	MISSED JUMPER by BAYLISS, PAIGE			
01:08	REBOUND (OFF) by BRADLEY, REAGAN			
01:07	GOOD! JUMPER by BRADLEY, REAGAN [PNT]	21-27	V 6	
00:49				MISSED LAYUP by DAVIS, ALANA
00:48				REBOUND (OFF) by DAVIS, ALANA
00:48	FOUL (PERSONAL) by BRADLEY, REAGAN			
00:48	TIMEOUT 30SEC			
00:38				MISSED 3PTR by MCDONALD, JULAN
00:35				REBOUND (OFF) by SHUTES, JAMIRAH
00:33				TURNOVER (TRAVEL) by MCDONALD, JULAN
00:06	MISSED 3PTR by WHITE, KAYLA			
00:03	REBOUND (OFF) by BACON, AMBER			
00:00	TURNOVER (LOSTBALL) by BACON, AMBER			
00:00				STEAL by MCDONALD, JULAN

SMU 27, Memphis 21

Points from (This Period)	SMU	MEM
In the Paint	10	8
Off Turns	2	0
2nd Chance	4	0
Fast Break	0	2
Bench	2	1

**Official Box Score**  
**SMU vs Memphis**  
**Second Half Statistics Only**  
**January 21, 2020 at Elma Roane Fieldhouse - Memphis**



**SMU 25**

No.	Player	S	Pts	FG	3FG	FT	OR	DR	TR	PF	A	TO	Blk	Stl	Min	+/-
13	BRADLEY, REAGAN	G	4	2-4	0-0	0-0	0	1	1	2	2	0	0	1	20	-11
14	BAYLISS, PAIGE	C	4	2-2	0-0	0-0	0	2	2	1	0	2	0	0	18	-12
22	TSHIMANGA, FLORENCE	C	0	0-0	0-0	0-0	0	0	0	0	0	0	0	0	8	-5
24	WHITE, JAQUIA	G	2	1-8	0-4	0-0	1	2	3	0	0	1	0	0	20	-11
32	WHITE, KAYLA	G	9	4-8	1-2	0-0	2	0	2	2	0	1	0	0	14	-5
33	CASH, JOHNASIA	F	6	2-4	0-0	2-2	1	0	1	1	1	1	0	2	13	-2
04	BACON, AMBER	G	0	0-0	0-0	0-0	0	0	0	2	0	1	0	0	6	-9
	TEAM		0	0-0	0-0	0-0	0	0	0	0	0	2	0	0	0	
<b>TOTALS</b>			<b>25</b>	<b>11-26</b>	<b>1-6</b>	<b>2-2</b>	<b>4</b>	<b>5</b>	<b>9</b>	<b>8</b>	<b>3</b>	<b>8</b>	<b>0</b>	<b>3</b>	<b>100</b>	

*Shooting By Period*

Period	FG	FG%	3FG	3FG%	FT	FT%
3rd Qtr	7-12	58%	1-4	25%	0-0	0%
4th Qtr	4-14	29%	0-2	00%	2-2	100%
2nd Half	11-26	42%	1-6	17%	2-2	100%
Game	23-60	38.3%	2-11	18.2%	4-4	100.0%

*Deadball Rebounds: 0,1*

*Last FG Half: SMU 4th-02:19*

**Memphis 36**

No.	Player	S	Pts	FG	3FG	FT	OR	DR	TR	PF	A	TO	Blk	Stl	Min	+/-
02	GRIGGS, MADISON	G	4	1-5	1-5	1-2	0	2	2	0	1	2	0	0	16	11
03	HERNDON, GAZMYNE	G	0	0-1	0-0	0-0	0	1	1	2	0	2	0	0	7	-2
05	WILSON, AERIAL	G	5	2-2	1-1	0-0	0	0	0	0	2	1	0	1	18	14
23	SHUTES, JAMIRAH	G	14	4-5	0-1	6-8	0	1	1	2	2	2	0	0	20	11
32	MENDJIADU FANKAM, DULC'	F	3	1-3	0-0	1-2	0	3	3	1	1	1	0	1	20	11
33	DAVIS, ALANA	F	8	4-5	0-0	0-0	1	3	4	0	1	0	0	1	15	14
35	MCDONALD, JULAN	G	0	0-0	0-0	0-0	0	0	0	0	0	0	0	0	0	0
53	WILLIAMS, LANETTA	F	2	1-2	0-0	0-0	0	0	0	0	0	1	0	0	5	-4
	TEAM		0	0-0	0-0	0-0	4	0	4	0	0	0	0	0	0	
<b>TOTALS</b>			<b>36</b>	<b>13-23</b>	<b>2-7</b>	<b>8-12</b>	<b>5</b>	<b>10</b>	<b>15</b>	<b>5</b>	<b>7</b>	<b>9</b>	<b>0</b>	<b>3</b>	<b>100</b>	

*Shooting By Period*

Period	FG	FG%	3FG	3FG%	FT	FT%
3rd Qtr	8-14	57%	0-2	00%	1-1	100%
4th Qtr	5-9	56%	2-5	40%	7-11	64%
2nd Half	13-23	57%	2-7	29%	8-12	67%
Game	22-44	50.0%	4-12	33.3%	9-14	64.3%

*Deadball Rebounds: 4,3*

*Last FG Half: MEM 4th-02:03*

Game Notes:

Officials: Dee Kantner, Mark Resch, Fatou Cissoko-Stephens  
Attendance: 470

Start Time: 08:01 PM ET  
End Time: 09:51 PM ET  
Game Duration: 1:49  
Conference Game;

Score	1st	2nd	3rd	4th	TOT
SMU	14	13	15	10	<b>52</b>
MEM	9	12	17	19	<b>57</b>

Points from (This Period)	SMU	MEM
In the Paint	18	18
Off Turns	8	8
2nd Chance	4	6
Fast Break	4	1
Bench	0	22

**Official Box Score**  
**SMU vs Memphis**  
**Third Quarter Statistics Only**  
**January 21, 2020 at Elma Roane Fieldhouse - Memphis**



**SMU 25**

No.	Player	S	Pts	FG	3FG	FT	OR	DR	TR	PF	A	TO	Blk	Stl	Min	+/-
13	BRADLEY, REAGAN	G	2	1-1	0-0	0-0	0	1	1	0	2	0	0	0	10	-2
14	BAYLISS, PAIGE	C	4	2-2	0-0	0-0	0	0	0	0	0	1	0	0	9	-2
24	WHITE, JAQUIA	G	0	0-3	0-3	0-0	0	1	1	0	0	1	0	0	10	-2
32	WHITE, KAYLA	G	7	3-4	1-1	0-0	0	0	0	1	0	0	0	0	7	0
33	CASH, JOHNASIA	F	2	1-2	0-0	0-0	0	0	0	0	1	1	0	2	7	0
04	BACON, AMBER	G	0	0-0	0-0	0-0	0	0	0	1	0	0	0	0	3	-2
22	TSHIMANGA, FLORENCE	C	0	0-0	0-0	0-0	0	0	0	0	0	0	0	0	4	-2
TEAM							0	0	0	0		1				
<b>TOTALS</b>			<b>15</b>	<b>7-12</b>	<b>1-4</b>	<b>0-0</b>	<b>0</b>	<b>2</b>	<b>2</b>	<b>2</b>	<b>3</b>	<b>4</b>	<b>0</b>	<b>2</b>	<b>50</b>	

*Shooting By Period*

Period	FG	FG%	3FG	3FG%	FT	FT%
2nd Half	0-0	0%	0-0	0%	0-0	0%
Game	23-60	38.3%	2-11	18.2%	4-4	100.0%

*Deadball Rebounds: 0,1*

**Memphis 36**

No.	Player	S	Pts	FG	3FG	FT	OR	DR	TR	PF	A	TO	Blk	Stl	Min	+/-
02	GRIGGS, MADISON	G	0	0-1	0-1	0-0	0	0	0	0	0	0	0	0	6	2
03	HERNDON, GAZMYNE	G	0	0-1	0-0	0-0	0	0	0	0	0	1	0	0	4	0
05	WILSON, AERIAL	G	2	1-1	0-0	0-0	0	0	0	0	1	1	0	0	10	2
32	MENDJIADU FANKAM, DULC'	F	2	1-2	0-0	0-0	0	2	2	0	1	1	0	0	10	2
53	WILLIAMS, LANETTA	F	2	1-2	0-0	0-0	0	0	0	0	0	1	0	0	4	-2
23	SHUTES, JAMIRAH	G	5	2-3	0-1	1-1	0	1	1	1	1	1	0	0	10	2
33	DAVIS, ALANA	F	6	3-4	0-0	0-0	0	2	2	0	0	0	0	0	6	4
35	MCDONALD, JULAN	G	0	0-0	0-0	0-0	0	0	0	0	0	0	0	0	0	0
TEAM							2	0	2	0		0				
<b>TOTALS</b>			<b>17</b>	<b>8-14</b>	<b>0-2</b>	<b>1-1</b>	<b>2</b>	<b>5</b>	<b>7</b>	<b>1</b>	<b>3</b>	<b>5</b>	<b>0</b>	<b>0</b>	<b>50</b>	

*Shooting By Period*

Period	FG	FG%	3FG	3FG%	FT	FT%
2nd Half	0-0	0%	0-0	0%	0-0	0%
Game	22-44	50.0%	4-12	33.3%	9-14	64.3%

*Deadball Rebounds: 4,3*

Game Notes:

Officials: **Dee Kantner, Mark Resch, Fatou Cissoko-Stephens**  
Attendance: **470**

Start Time: **08:01 PM ET**  
End Time: **09:51 PM ET**  
Game Duration: **1:49**  
Conference Game;

Score	1st	2nd	3rd	4th	TOT
SMU	14	13	15	10	<b>52</b>
MEM	9	12	17	19	<b>57</b>

Points from (This Period)	SMU	MEM
In the Paint	10	12
Off Turns	6	4
2nd Chance	0	2
Fast Break	4	0
Bench	0	11

**Official Play-By-Play**  
**SMU vs Memphis**  
**Third Quarter**  
**January 21, 2020 at Elma Roane Fieldhouse - Memphis**



**Period 3**

**Starters:**

**SMU:** 13 BRADLEY, REAGAN (G); 14 BAYLISS, PAIGE (C); 24 WHITE, JAQUIA (G); 32 WHITE, KAYLA (G); 33 CASH, JOHNASIA (F);

**Memphis:** 2 GRIGGS, MADISON (G); 3 HERNDON, GAZMYNE (G); 5 WILSON, AERIAL (G); 32 MENDJIADEU FANKAM, DULCY (F); 53 WILLIAMS, LANETTA (F);

Time	VISITORS: SMU	Score	Margin	HOME: Memphis
10:00				SUB OUT: GRIGGS, MADISON
10:00				SUB OUT: DAVIS, ALANA
10:00				SUB OUT: MCDONALD, JULAN
10:00				SUB IN: WILSON, AERIAL
10:00				SUB IN: MENDJIADEU FANKAM, DULCY
10:00				SUB IN: WILLIAMS, LANETTA
10:00	SUB OUT: BACON, AMBER			
10:00	SUB OUT: TSHIMANGA, FLORENCE			
10:00	SUB IN: WHITE, JAQUIA			
10:00	SUB IN: CASH, JOHNASIA			
09:44				TURNOVER (BADPASS) by WILLIAMS, LANETTA
09:16	GOOD! LAYUP by BAYLISS, PAIGE	21-29	V 8	
09:16	ASSIST by CASH, JOHNASIA			
08:58				TURNOVER (BADPASS) by WILSON, AERIAL
08:58	STEAL by CASH, JOHNASIA			
08:54	MISSED LAYUP by WHITE, KAYLA			
08:49				REBOUND (DEF) by SHUTES, JAMIRAH
08:41				MISSED JUMPER by WILLIAMS, LANETTA
08:38	REBOUND (DEF) by WHITE, JAQUIA			
08:16	GOOD! LAYUP by CASH, JOHNASIA	21-31	V 10	
08:05		23-31	V 8	GOOD! LAYUP by WILLIAMS, LANETTA [PNT]
07:47	MISSED LAYUP by CASH, JOHNASIA			
07:43				REBOUND (DEF) by MENDJIADEU FANKAM, DULCY
07:37				MISSED LAYUP by HERNDON, GAZMYNE
07:37				REBOUND (OFF) by TEAM
07:36				SUB OUT: WILLIAMS, LANETTA
07:36				SUB IN: DAVIS, ALANA
07:27		25-31	V 6	GOOD! LAYUP by DAVIS, ALANA [PNT]
07:27				ASSIST by MENDJIADEU FANKAM, DULCY
07:15	MISSED 3PTR by WHITE, JAQUIA			
07:11				REBOUND (DEF) by DAVIS, ALANA
06:55				TURNOVER (BADPASS) by HERNDON, GAZMYNE
06:40	GOOD! LAYUP by BAYLISS, PAIGE	25-33	V 8	
06:40	ASSIST by BRADLEY, REAGAN			
06:17		27-33	V 6	GOOD! LAYUP by WILSON, AERIAL
06:08	TURNOVER (TRAVEL) by WHITE, JAQUIA			
06:08	SUB OUT: WHITE, KAYLA			
06:08	SUB OUT: CASH, JOHNASIA			
06:08	SUB IN: BACON, AMBER			
06:08	SUB IN: TSHIMANGA, FLORENCE			
05:50				MISSED LAYUP by MENDJIADEU FANKAM, DULCY
05:46				REBOUND (OFF) by TEAM
05:46				SUB OUT: HERNDON, GAZMYNE
05:46				SUB IN: GRIGGS, MADISON
05:35				MISSED LAYUP by DAVIS, ALANA
05:31	REBOUND (DEF) by BRADLEY, REAGAN			
05:18	GOOD! JUMPER by BRADLEY, REAGAN [PNT]	27-35	V 8	
04:48	FOUL (PERSONAL) by BACON, AMBER			
04:48				
04:42		29-35	V 6	GOOD! LAYUP by SHUTES, JAMIRAH
04:07	TURNOVER (SHOTCLOCK) by TEAM			
03:48		31-35	V 4	GOOD! LAYUP by MENDJIADEU FANKAM, DULCY
03:37	MISSED 3PTR by WHITE, JAQUIA			
03:34				REBOUND (DEF) by DAVIS, ALANA
03:28				FOUL (OFF) by SHUTES, JAMIRAH
03:28				TURNOVER (OFFENSIVE) by SHUTES, JAMIRAH
03:28	SUB OUT: TSHIMANGA, FLORENCE			
03:28	SUB IN: CASH, JOHNASIA			
02:59	TURNOVER (TRAVEL) by CASH, JOHNASIA			
02:59	SUB OUT: BACON, AMBER			
02:59	SUB IN: WHITE, KAYLA			
02:34		33-35	V 2	GOOD! JUMPER by DAVIS, ALANA
02:34				ASSIST by WILSON, AERIAL
02:25	GOOD! JUMPER by WHITE, KAYLA [FB]	33-37	V 4	
02:14				TURNOVER (BADPASS) by MENDJIADEU FANKAM, DULCY
02:14	STEAL by CASH, JOHNASIA			
02:08	GOOD! JUMPER by WHITE, KAYLA [FB/PNT]	33-39	V 6	
01:47		35-39	V 4	GOOD! JUMPER by DAVIS, ALANA
01:47				ASSIST by SHUTES, JAMIRAH
01:21	TURNOVER (BADPASS) by BAYLISS, PAIGE			

Time	VISITORS: SMU	Score	Margin	HOME: Memphis
01:21				SUB OUT: DAVIS, ALANA
01:21				SUB IN: WILLIAMS, LANETTA
01:21	SUB OUT: BAYLISS, PAIGE			
01:21	SUB IN: TSHIMANGA, FLORENCE			
00:55				MISSED 3PTR by SHUTES, JAMIRAH
00:50	REBOUND (DEF) by TEAM			
00:38	MISSED 3PTR by WHITE, JAQUIA			
00:34				REBOUND (DEF) by MENDJIADEU FANKAM, DULCY
00:22		37-39	V 2	GOOD! LAYUP by SHUTES, JAMIRAH [PNT]
00:22	FOUL (PERSONAL) by WHITE, KAYLA			
00:22		38-39	V 1	GOOD! FT by SHUTES, JAMIRAH
00:11	GOOD! 3PTR by WHITE, KAYLA	38-42	V 4	
00:11	ASSIST by BRADLEY, REAGAN			
00:01				MISSED 3PTR by GRIGGS, MADISON
00:00				REBOUND (OFF) by TEAM

SMU 42, Memphis 38

Points from (This Period)	SMU	MEM
In the Paint	10	12
Off Turns	6	4
2nd Chance	0	2
Fast Break	4	0
Bench	0	11

**Official Box Score**  
**SMU vs Memphis**  
**Fourth Quarter Statistics Only**  
**January 21, 2020 at Elma Roane Fieldhouse - Memphis**



### SMU 10

No.	Player	S	Pts	FG	3FG	FT	OR	DR	TR	PF	A	TO	Blk	Stl	Min	+/-
13	BRADLEY, REAGAN	G	2	1-3	0-0	0-0	0	0	0	2	0	0	0	1	10	-9
14	BAYLISS, PAIGE	C	0	0-0	0-0	0-0	0	2	2	1	0	1	0	0	9	-10
24	WHITE, JAQUIA	G	2	1-5	0-1	0-0	1	1	2	0	0	0	0	0	10	-9
32	WHITE, KAYLA	G	2	1-4	0-1	0-0	2	0	2	1	0	1	0	0	7	-5
33	CASH, JOHNASIA	F	4	1-2	0-0	2-2	1	0	1	1	0	0	0	0	6	-2
04	BACON, AMBER	G	0	0-0	0-0	0-0	0	0	0	1	0	1	0	0	3	-7
22	TSHIMANGA, FLORENCE	C	0	0-0	0-0	0-0	0	0	0	0	0	0	0	0	4	-3
TEAM							0	0	0	0		1				
<b>TOTALS</b>			<b>10</b>	<b>4-14</b>	<b>0-2</b>	<b>2-2</b>	<b>4</b>	<b>3</b>	<b>7</b>	<b>6</b>	<b>0</b>	<b>4</b>	<b>0</b>	<b>1</b>	<b>50</b>	

*Shooting By Period*

Period	FG	FG%	3FG	3FG%	FT	FT%
Game	23-60	38.3%	2-11	18.2%	4-4	100.0%

*Deadball Rebounds: 0,1*

### Memphis 19

No.	Player	S	Pts	FG	3FG	FT	OR	DR	TR	PF	A	TO	Blk	Stl	Min	+/-
02	GRIGGS, MADISON	G	4	1-4	1-4	1-2	0	2	2	0	1	2	0	0	10	9
03	HERNDON, GAZMYNE	G	0	0-0	0-0	0-0	0	1	1	2	0	1	0	0	3	-2
05	WILSON, AERIAL	G	3	1-1	1-1	0-0	0	0	0	0	1	0	0	1	8	12
32	MENDJIADU FANKAM, DULC'	F	1	0-1	0-0	1-2	0	1	1	1	0	0	0	1	10	9
53	WILLIAMS, LANETTA	F	0	0-0	0-0	0-0	0	0	0	0	0	0	0	0	1	-2
23	SHUTES, JAMIRAH	G	9	2-2	0-0	5-7	0	0	0	1	1	1	0	0	10	9
33	DAVIS, ALANA	F	2	1-1	0-0	0-0	1	1	2	0	1	0	0	1	9	10
35	MCDONALD, JULAN	G	0	0-0	0-0	0-0	0	0	0	0	0	0	0	0	0	0
TEAM							2	0	2	0		0				
<b>TOTALS</b>			<b>19</b>	<b>5-9</b>	<b>2-5</b>	<b>7-11</b>	<b>3</b>	<b>5</b>	<b>8</b>	<b>4</b>	<b>4</b>	<b>4</b>	<b>0</b>	<b>3</b>	<b>50</b>	

*Shooting By Period*

Period	FG	FG%	3FG	3FG%	FT	FT%
Game	22-44	50.0%	4-12	33.3%	9-14	64.3%

*Deadball Rebounds: 4,3*

Game Notes:

Officials: Dee Kantner, Mark Resch, Fatou Cissoko-Stephens  
Attendance: 470

Start Time: 08:01 PM ET  
End Time: 09:51 PM ET  
Game Duration: 1:49  
Conference Game;

Score	1st	2nd	3rd	4th	TOT
SMU	14	13	15	10	<b>52</b>
MEM	9	12	17	19	<b>57</b>

Points from (This Period)	SMU	MEM
In the Paint	8	6
Off Turns	2	4
2nd Chance	4	4
Fast Break	0	1
Bench	0	11

**Official Play-By-Play**  
**SMU vs Memphis**  
**Fourth Quarter**  
**January 21, 2020 at Elma Roane Fieldhouse - Memphis**



**Period 4**

**Starters:**

**SMU:** 13 BRADLEY, REAGAN (G); 14 BAYLISS, PAIGE (C); 24 WHITE, JAQUIA (G); 32 WHITE, KAYLA (G); 33 CASH, JOHNASIA (F);

**Memphis:** 2 GRIGGS, MADISON (G); 3 HERNDON, GAZMYNE (G); 5 WILSON, AERIAL (G); 32 MENDJIADEU FANKAM, DULCY (F); 53 WILLIAMS, LANETTA (F);

Time	VISITORS: SMU	Score	Margin	HOME: Memphis
10:00				SUB OUT: WILSON, AERIAL
10:00				SUB IN: HERNDON, GAZMYNE
09:45				FOUL (PERSONAL) by MENDJIADEU FANKAM, DULCY
09:45	GOOD! FT by CASH, JOHNASIA	38-43	V 5	
09:45	GOOD! FT by CASH, JOHNASIA	38-44	V 6	
09:30				TURNOVER (DRIBBLING) by GRIGGS, MADISON
09:04	MISSED JUMPER by WHITE, JAQUIA			
09:01				REBOUND (DEF) by HERNDON, GAZMYNE
08:55	FOUL (PERSONAL) by BRADLEY, REAGAN			
08:55				SUB OUT: WILLIAMS, LANETTA
08:55				SUB IN: DAVIS, ALANA
08:55		39-44	V 5	GOOD! FT by SHUTES, JAMIRAH [FB]
08:55				MISSED FT by SHUTES, JAMIRAH
08:53				REBOUND (OFF) by TEAM
08:53	SUB OUT: TSHIMANGA, FLORENCE			
08:53	SUB IN: BAYLISS, PAIGE			
08:43				FOUL (OFF) by HERNDON, GAZMYNE
08:43				TURNOVER (OFFENSIVE) by HERNDON, GAZMYNE
08:21	GOOD! LAYUP by CASH, JOHNASIA	39-46	V 7	
08:01				MISSED 3PTR by GRIGGS, MADISON
07:58				REBOUND (OFF) by TEAM
07:58				SUB OUT: HERNDON, GAZMYNE
07:58				SUB IN: WILSON, AERIAL
07:47	FOUL (PERSONAL) by BAYLISS, PAIGE			
07:47				MISSED FT by MENDJIADEU FANKAM, DULCY
07:47				REBOUND (OFF) by TEAM
07:47		40-46	V 6	GOOD! FT by MENDJIADEU FANKAM, DULCY
07:23	MISSED JUMPER by CASH, JOHNASIA			
07:20	REBOUND (OFF) by WHITE, KAYLA			
07:18	MISSED JUMPER by WHITE, KAYLA			
07:16	REBOUND (OFF) by WHITE, KAYLA			
07:15	GOOD! LAYUP by WHITE, KAYLA	40-48	V 8	
07:00		42-48	V 6	GOOD! LAYUP by DAVIS, ALANA [PNT]
07:00				ASSIST by SHUTES, JAMIRAH
06:27	MISSED JUMPER by BRADLEY, REAGAN			
06:26	REBOUND (OFF) by CASH, JOHNASIA			
06:25	TURNOVER (SHOTCLOCK) by TEAM			
06:25	SUB OUT: CASH, JOHNASIA			
06:25	SUB IN: TSHIMANGA, FLORENCE			
06:15				TURNOVER (BADPASS) by GRIGGS, MADISON
06:15	STEAL by BRADLEY, REAGAN			
06:10	MISSED LAYUP by WHITE, JAQUIA			
06:09				REBOUND (DEF) by GRIGGS, MADISON
05:59				MISSED 3PTR by GRIGGS, MADISON
05:56	REBOUND (DEF) by BAYLISS, PAIGE			
05:32	GOOD! LAYUP by BRADLEY, REAGAN	42-50	V 8	
05:24				TIMEOUT 30SEC
05:24				
05:05				MISSED 3PTR by GRIGGS, MADISON
05:02				REBOUND (OFF) by DAVIS, ALANA
04:59		45-50	V 5	GOOD! 3PTR by WILSON, AERIAL
04:59				ASSIST by DAVIS, ALANA
04:29	MISSED 3PTR by WHITE, KAYLA			
04:26				REBOUND (DEF) by DAVIS, ALANA
03:59		48-50	V 2	GOOD! 3PTR by GRIGGS, MADISON
03:59				ASSIST by WILSON, AERIAL
03:26	TURNOVER (LOSTBALL) by WHITE, KAYLA			
03:26				STEAL by DAVIS, ALANA
03:26				
03:26	SUB OUT: TSHIMANGA, FLORENCE			
03:26	SUB OUT: WHITE, KAYLA			
03:26	SUB IN: BACON, AMBER			
03:26	SUB IN: CASH, JOHNASIA			
03:12		50-50	T	GOOD! LAYUP by SHUTES, JAMIRAH
02:58	MISSED JUMPER by BRADLEY, REAGAN			
02:54				REBOUND (DEF) by MENDJIADEU FANKAM, DULCY
02:34				MISSED LAYUP by MENDJIADEU FANKAM, DULCY
02:31	REBOUND (DEF) by WHITE, JAQUIA			
02:24	MISSED JUMPER by WHITE, JAQUIA			
02:19	REBOUND (OFF) by WHITE, JAQUIA			

Time	VISITORS: SMU	Score	Margin	HOME: Memphis
02:19	GOOD! LAYUP by WHITE, JAQUIA	50-52	V 2	
02:03		52-52	T	GOOD! JUMPER by SHUTES, JAMIRAH [PNT]
02:03				ASSIST by GRIGGS, MADISON
01:34	TURNOVER (BADPASS) by BACON, AMBER			
01:34				STEAL by WILSON, AERIAL
01:19				TURNOVER (TRAVEL) by SHUTES, JAMIRAH
00:56	TURNOVER (BADPASS) by BAYLISS, PAIGE			
00:56				STEAL by MENDJIADU FANKAM, DULCY
00:32	FOUL (PERSONAL) by CASH, JOHNASIA			
00:32				MISSED FT by SHUTES, JAMIRAH
00:32				REBOUND (OFF) by TEAM
00:32		53-52	H 1	GOOD! FT by SHUTES, JAMIRAH
00:32		54-52	H 2	GOOD! FT by SHUTES, JAMIRAH
00:32	TIMEOUT TEAM			
00:32				SUB OUT: GRIGGS, MADISON
00:32				SUB IN: HERNDON, GAZMYNE
00:32	SUB OUT: CASH, JOHNASIA			
00:32	SUB IN: WHITE, KAYLA			
00:13	MISSED JUMPER by WHITE, KAYLA			
00:11				REBOUND (DEF) by TEAM
00:11				TIMEOUT TEAM
00:11				SUB OUT: HERNDON, GAZMYNE
00:11				SUB IN: GRIGGS, MADISON
00:11	FOUL (PERSONAL) by BACON, AMBER			
00:11	FOUL (PERSONAL) by WHITE, KAYLA			
00:11				SUB OUT: DAVIS, ALANA
00:11				SUB IN: HERNDON, GAZMYNE
00:11		55-52	H 3	GOOD! FT by GRIGGS, MADISON
00:11				MISSED FT by GRIGGS, MADISON
00:10	REBOUND (DEF) by BAYLISS, PAIGE			
00:10	TIMEOUT 30SEC			
00:10				FOUL (PERSONAL) by SHUTES, JAMIRAH
00:07				FOUL (PERSONAL) by HERNDON, GAZMYNE
00:06	MISSED 3PTR by WHITE, JAQUIA			
00:02				REBOUND (DEF) by GRIGGS, MADISON
00:02				TIMEOUT 30SEC
00:02				SUB OUT: HERNDON, GAZMYNE
00:02				SUB IN: DAVIS, ALANA
00:01	FOUL (PERSONAL) by BRADLEY, REAGAN			
00:01		56-52	H 4	GOOD! FT by SHUTES, JAMIRAH
00:01		57-52	H 5	GOOD! FT by SHUTES, JAMIRAH

SMU 52, Memphis 57

Points from (This Period)	SMU	MEM
In the Paint	8	6
Off Turns	2	4
2nd Chance	4	4
Fast Break	0	1
Bench	0	11

**Official Scoring/Possession Reference Chart**  
**SMU vs Memphis**  
**Period 1**  
**January 21, 2020 at Elma Roane Fieldhouse - Memphis**



**Period 1**

**Starters:**

**SMU:** 13 BRADLEY, REAGAN (G); 14 BAYLISS, PAIGE (C); 24 WHITE, JAQUIA (G); 32 WHITE, KAYLA (G); 33 CASH, JOHNASIA (F);

**Memphis:** 2 GRIGGS, MADISON (G); 3 HERNDON, GAZMYNE (G); 5 WILSON, AERIAL (G); 32 MENDJIADEU FANKAM, DULCY (F); 53 WILLIAMS, LANETTA (F);

Time	VISITORS: SMU	Score	Margin	HOME: Memphis
08:31		3-0	H 3	GOOD! 3PTR by GRIGGS, MADISON
08:11	GOOD! JUMPER by BRADLEY, REAGAN [PNT]	3-2	H 1	
07:03		5-2	H 3	GOOD! JUMPER by MENDJIADEU FANKAM, DULCY
06:45	GOOD! LAYUP by CASH, JOHNASIA	5-4	H 1	
05:37	GOOD! LAYUP by TSHIMANGA, FLORENCE	5-6	V 1	
04:55	GOOD! JUMPER by CASH, JOHNASIA	5-8	V 3	
04:28		7-8	V 1	GOOD! JUMPER by WILLIAMS, LANETTA [PNT]
02:30	GOOD! FT by BRADLEY, REAGAN	7-9	V 2	
02:30	GOOD! FT by BRADLEY, REAGAN	7-10	V 3	
02:22		9-10	V 1	GOOD! LAYUP by WILSON, AERIAL
01:25	GOOD! JUMPER by BACON, AMBER	9-12	V 3	
00:45	GOOD! LAYUP by BRADLEY, REAGAN [FB]	9-14	V 5	

**SMU 14, Memphis 9**

**Official Scoring/Possession Reference Chart**  
**SMU vs Memphis**  
**Period 2**  
**January 21, 2020 at Elma Roane Fieldhouse - Memphis**



**Period 2**

**Starters:**

**SMU:** 13 BRADLEY, REAGAN (G); 14 BAYLISS, PAIGE (C); 24 WHITE, JAQUIA (G); 32 WHITE, KAYLA (G); 33 CASH, JOHNASIA (F);

**Memphis:** 2 GRIGGS, MADISON (G); 3 HERNDON, GAZMYNE (G); 5 WILSON, AERIAL (G); 32 MENDJIADEU FANKAM, DULCY (F); 53 WILLIAMS, LANETTA (F);

Time	VISITORS: SMU	Score	Margin	HOME: Memphis
09:44		11-14	V 3	GOOD! JUMPER by MENDJIADEU FANKAM, DULCY [PNT]
09:22	GOOD! JUMPER by BACON, AMBER [PNT]	11-16	V 5	
09:09		13-16	V 3	GOOD! LAYUP by WILLIAMS, LANETTA [PNT]
08:42	GOOD! 3PTR by WHITE, KAYLA	13-19	V 6	
08:29		16-19	V 3	GOOD! 3PTR by GRIGGS, MADISON
07:13		18-19	V 1	GOOD! LAYUP by WILSON, AERIAL
05:29	GOOD! LAYUP by BAYLISS, PAIGE	18-21	V 3	
04:35	GOOD! JUMPER by BAYLISS, PAIGE [PNT]	18-23	V 5	
04:08		19-23	V 4	GOOD! FT by DAVIS, ALANA
03:36		21-23	V 2	GOOD! LAYUP by WILLIAMS, LANETTA [FB]
03:03	GOOD! LAYUP by BRADLEY, REAGAN	21-25	V 4	
01:07	GOOD! JUMPER by BRADLEY, REAGAN [PNT]	21-27	V 6	

**SMU 27, Memphis 21**

**Official Scoring/Possession Reference Chart**  
**SMU vs Memphis**  
**Period 3**  
**January 21, 2020 at Elma Roane Fieldhouse - Memphis**



**Period 3**

**Starters:**

**SMU:** 13 BRADLEY, REAGAN (G); 14 BAYLISS, PAIGE (C); 24 WHITE, JAQUIA (G); 32 WHITE, KAYLA (G); 33 CASH, JOHNASIA (F);

**Memphis:** 2 GRIGGS, MADISON (G); 3 HERNDON, GAZMYNE (G); 5 WILSON, AERIAL (G); 32 MENDJIADU FANKAM, DULCY (F); 53 WILLIAMS, LANETTA (F);

Time	VISITORS: SMU	Score	Margin	HOME: Memphis
09:16	GOOD! LAYUP by BAYLISS, PAIGE	21-29	V 8	
08:16	GOOD! LAYUP by CASH, JOHNASIA	21-31	V 10	
08:05		23-31	V 8	GOOD! LAYUP by WILLIAMS, LANETTA [PNT]
07:27		25-31	V 6	GOOD! LAYUP by DAVIS, ALANA [PNT]
06:40	GOOD! LAYUP by BAYLISS, PAIGE	25-33	V 8	
06:17		27-33	V 6	GOOD! LAYUP by WILSON, AERIAL
05:18	GOOD! JUMPER by BRADLEY, REAGAN [PNT]	27-35	V 8	
04:42		29-35	V 6	GOOD! LAYUP by SHUTES, JAMIRAH
03:48		31-35	V 4	GOOD! LAYUP by MENDJIADU FANKAM, DULCY
02:34		33-35	V 2	GOOD! JUMPER by DAVIS, ALANA
02:25	GOOD! JUMPER by WHITE, KAYLA [FB]	33-37	V 4	
02:08	GOOD! JUMPER by WHITE, KAYLA [FB/PNT]	33-39	V 6	
01:47		35-39	V 4	GOOD! JUMPER by DAVIS, ALANA
00:22		37-39	V 2	GOOD! LAYUP by SHUTES, JAMIRAH [PNT]
00:22		38-39	V 1	GOOD! FT by SHUTES, JAMIRAH
00:11	GOOD! 3PTR by WHITE, KAYLA	38-42	V 4	

**SMU 42, Memphis 38**

**Official Scoring/Possession Reference Chart**  
**SMU vs Memphis**  
**Period 4**  
**January 21, 2020 at Elma Roane Fieldhouse - Memphis**



**Period 4**

**Starters:**

**SMU:** 13 BRADLEY, REAGAN (G); 14 BAYLISS, PAIGE (C); 24 WHITE, JAQUIA (G); 32 WHITE, KAYLA (G); 33 CASH, JOHNASIA (F);

**Memphis:** 2 GRIGGS, MADISON (G); 3 HERNDON, GAZMYNE (G); 5 WILSON, AERIAL (G); 32 MENDJIADEU FANKAM, DULCY (F); 53 WILLIAMS, LANETTA (F);

Time	VISITORS: SMU	Score	Margin	HOME: Memphis
09:45	GOOD! FT by CASH, JOHNASIA	38-43	V 5	
09:45	GOOD! FT by CASH, JOHNASIA	38-44	V 6	
08:55		39-44	V 5	GOOD! FT by SHUTES, JAMIRAH [FB]
08:21	GOOD! LAYUP by CASH, JOHNASIA	39-46	V 7	
07:47		40-46	V 6	GOOD! FT by MENDJIADEU FANKAM, DULCY
07:15	GOOD! LAYUP by WHITE, KAYLA	40-48	V 8	
07:00		42-48	V 6	GOOD! LAYUP by DAVIS, ALANA [PNT]
05:32	GOOD! LAYUP by BRADLEY, REAGAN	42-50	V 8	
04:59		45-50	V 5	GOOD! 3PTR by WILSON, AERIAL
03:59		48-50	V 2	GOOD! 3PTR by GRIGGS, MADISON
03:12		50-50	T	GOOD! LAYUP by SHUTES, JAMIRAH
02:19	GOOD! LAYUP by WHITE, JAQUIA	50-52	V 2	
02:03		52-52	T	GOOD! JUMPER by SHUTES, JAMIRAH [PNT]
00:32		53-52	H 1	GOOD! FT by SHUTES, JAMIRAH
00:32		54-52	H 2	GOOD! FT by SHUTES, JAMIRAH
00:11		55-52	H 3	GOOD! FT by GRIGGS, MADISON
00:01		56-52	H 4	GOOD! FT by SHUTES, JAMIRAH
00:01		57-52	H 5	GOOD! FT by SHUTES, JAMIRAH

**SMU 52, Memphis 57**

**Official Substitutions Log**  
**SMU vs Memphis**  
**Period 1**  
**January 21, 2020 at Elma Roane Fieldhouse - Memphis**



VISITORS: SMU	Time	Score	HOME: Memphis
13 BRADLEY, REAGAN			2 GRIGGS, MADISON
14 BAYLISS, PAIGE			3 HERNDON, GAZMYNE
24 WHITE, JAQUIA			5 WILSON, AERIAL
32 WHITE, KAYLA			32 MENDJIADU FANKAM, DULCY
33 CASH, JOHNASIA			53 WILLIAMS, LANETTA
	06:03	4-5	SUB OUT: GRIGGS, MADISON
	06:03		SUB IN: SHUTES, JAMIRAH
SUB OUT: 14 BAYLISS, PAIGE	06:03		
SUB IN: 22 TSHIMANGA, FLORENCE	06:03		
	05:23	6-5	SUB OUT: MENDJIADU FANKAM, DULCY
	05:23		SUB IN: DAVIS, ALANA
	05:02	6-5	SUB OUT: WILSON, AERIAL
	05:02		SUB IN: GRIGGS, MADISON
	03:20	8-7	SUB OUT: HERNDON, GAZMYNE
	03:20		SUB IN: WILSON, AERIAL
SUB OUT: 33 CASH, JOHNASIA	03:20		
SUB IN: 14 BAYLISS, PAIGE	03:20		
SUB OUT: 32 WHITE, KAYLA	02:50	8-7	
SUB IN: 4 BACON, AMBER	02:50		
	02:05	10-9	SUB OUT: DAVIS, ALANA
	02:05		SUB IN: MENDJIADU FANKAM, DULCY
SUB OUT: 24 WHITE, JAQUIA	00:19	14-9	
SUB IN: 32 WHITE, KAYLA	00:19		

**SMU 14, Memphis 9**

**Official Substitutions Log**  
**SMU vs Memphis**  
**Period 2**  
**January 21, 2020 at Elma Roane Fieldhouse - Memphis**



VISITORS: SMU	Time	Score	HOME: Memphis
13 BRADLEY, REAGAN			2 GRIGGS, MADISON
14 BAYLISS, PAIGE			3 HERNDON, GAZMYNE
24 WHITE, JAQUIA			5 WILSON, AERIAL
32 WHITE, KAYLA			32 MENDJI ADEU FANKAM, DULCY
33 CASH, JOHNASIA			53 WILLIAMS, LANETTA
	06:53	19-18	SUB OUT: GRIGGS, MADISON
	06:53		SUB IN: MCDONALD, JULAN
SUB OUT: 4 BACON, AMBER	06:53		
SUB OUT: 22 TSHIMANGA, FLORENCE	06:53		
SUB IN: 24 WHITE, JAQUIA	06:53		
SUB IN: 33 CASH, JOHNASIA	06:53		
	05:49	19-18	SUB OUT: WILSON, AERIAL
	05:49		SUB IN: HERNDON, GAZMYNE
	05:03	21-18	SUB OUT: MENDJI ADEU FANKAM, DULCY
	05:03		SUB IN: DAVIS, ALANA
	04:08	23-18	SUB OUT: SHUTES, JAMIRAH
	04:08		SUB IN: GRIGGS, MADISON
SUB OUT: 24 WHITE, JAQUIA	04:08		
SUB IN: 4 BACON, AMBER	04:08		
SUB OUT: 33 CASH, JOHNASIA	02:19	25-21	
SUB IN: 22 TSHIMANGA, FLORENCE	02:19		
	02:04	25-21	SUB OUT: WILLIAMS, LANETTA
	02:04		SUB IN: SHUTES, JAMIRAH

**SMU 27, Memphis 21**

**Official Substitutions Log**  
**SMU vs Memphis**  
**Period 3**  
**January 21, 2020 at Elma Roane Fieldhouse - Memphis**



VISITORS: SMU	Time	Score	HOME: Memphis
13 BRADLEY, REAGAN			2 GRIGGS, MADISON
14 BAYLISS, PAIGE			3 HERNDON, GAZMYNE
24 WHITE, JAQUIA			5 WILSON, AERIAL
32 WHITE, KAYLA			32 MENDJI ADEU FANKAM, DULCY
33 CASH, JOHNASIA			53 WILLIAMS, LANETTA
	10:00	-	SUB OUT: GRIGGS, MADISON
	10:00		SUB OUT: DAVIS, ALANA
	10:00		SUB OUT: MCDONALD, JULAN
	10:00		SUB IN: WILSON, AERIAL
	10:00		SUB IN: MENDJI ADEU FANKAM, DULCY
	10:00		SUB IN: WILLIAMS, LANETTA
SUB OUT: 4 BACON, AMBER	10:00		
SUB OUT: 22 TSHIMANGA, FLORENCE	10:00		
SUB IN: 24 WHITE, JAQUIA	10:00		
SUB IN: 33 CASH, JOHNASIA	10:00		
	07:36	31-23	SUB OUT: WILLIAMS, LANETTA
	07:36		SUB IN: DAVIS, ALANA
SUB OUT: 32 WHITE, KAYLA	06:08	33-27	
SUB OUT: 33 CASH, JOHNASIA	06:08		
SUB IN: 4 BACON, AMBER	06:08		
SUB IN: 22 TSHIMANGA, FLORENCE	06:08		
	05:46	33-27	SUB OUT: HERNDON, GAZMYNE
	05:46		SUB IN: GRIGGS, MADISON
SUB OUT: 22 TSHIMANGA, FLORENCE	03:28	35-31	
SUB IN: 33 CASH, JOHNASIA	03:28		
SUB OUT: 4 BACON, AMBER	02:59	35-31	
SUB IN: 32 WHITE, KAYLA	02:59		
	01:21	39-35	SUB OUT: DAVIS, ALANA
	01:21		SUB IN: WILLIAMS, LANETTA
SUB OUT: 14 BAYLISS, PAIGE	01:21		
SUB IN: 22 TSHIMANGA, FLORENCE	01:21		

**SMU 42, Memphis 38**

**Official Substitutions Log**  
**SMU vs Memphis**  
**Period 4**  
**January 21, 2020 at Elma Roane Fieldhouse - Memphis**



VISITORS: SMU	Time	Score	HOME: Memphis
13 BRADLEY, REAGAN			2 GRIGGS, MADISON
14 BAYLISS, PAIGE			3 HERNDON, GAZMYNE
24 WHITE, JAQUIA			5 WILSON, AERIAL
32 WHITE, KAYLA			32 MENDJI ADEU FANKAM, DULCY
33 CASH, JOHNASIA			53 WILLIAMS, LANETTA
	10:00	-	SUB OUT: WILSON, AERIAL
	10:00		SUB IN: HERNDON, GAZMYNE
	08:55	44-38	SUB OUT: WILLIAMS, LANETTA
	08:55		SUB IN: DAVIS, ALANA
SUB OUT: 22 TSHIMANGA, FLORENCE	08:53	44-39	
SUB IN: 14 BAYLISS, PAIGE	08:53		
	07:58	46-39	SUB OUT: HERNDON, GAZMYNE
	07:58		SUB IN: WILSON, AERIAL
SUB OUT: 33 CASH, JOHNASIA	06:25	48-42	
SUB IN: 22 TSHIMANGA, FLORENCE	06:25		
SUB OUT: 22 TSHIMANGA, FLORENCE	03:26	50-48	
SUB OUT: 32 WHITE, KAYLA	03:26		
SUB IN: 4 BACON, AMBER	03:26		
SUB IN: 33 CASH, JOHNASIA	03:26		
	00:32	52-54	SUB OUT: GRIGGS, MADISON
	00:32		SUB IN: HERNDON, GAZMYNE
SUB OUT: 33 CASH, JOHNASIA	00:32		
SUB IN: 32 WHITE, KAYLA	00:32		
	00:11	52-54	SUB OUT: HERNDON, GAZMYNE
	00:11		SUB IN: GRIGGS, MADISON
	00:11		SUB OUT: DAVIS, ALANA
	00:11		SUB IN: HERNDON, GAZMYNE
	00:02	52-55	SUB OUT: HERNDON, GAZMYNE
	00:02		SUB IN: DAVIS, ALANA

**SMU 52, Memphis 57**

Official Shot Chart  
**SMU vs Memphis**  
 PERIOD 1 Shots  
 January 21, 2020 at Elma Roane Fieldhouse - Memphis

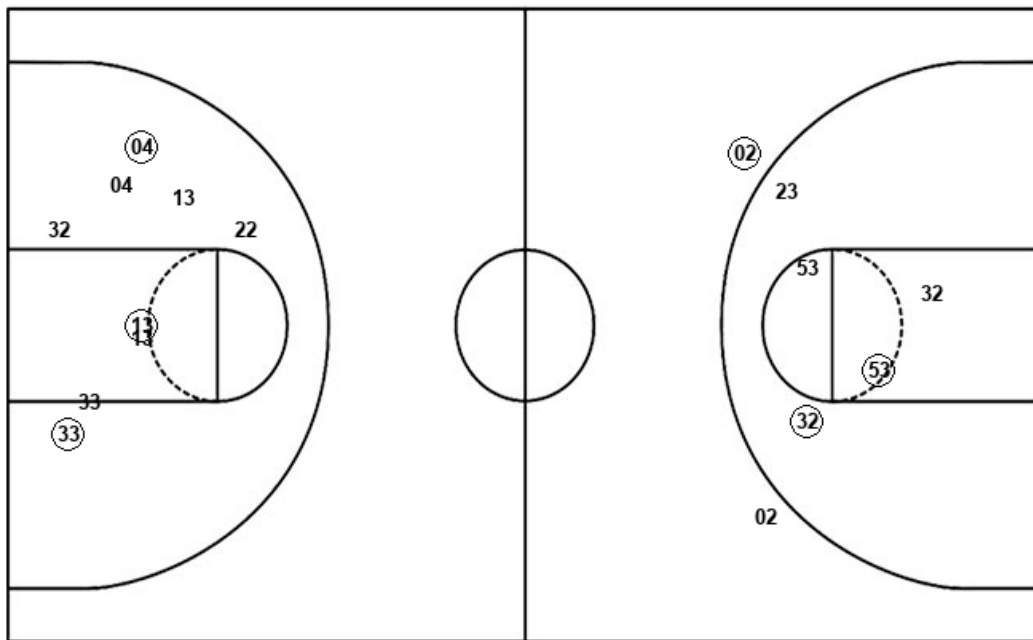


**Memphis**

**SMU**

Layups  
 32 33 (05) 23

Dunks



Layups

33 (33) (22) 33 33  
 13 (13)

Dunks

MEM : Period 1	Made	Att	Pct
Layups	1	4	25.0
Dunks	0	0	0
2PT Field Goals	3	9	33.3
3PT Field Goals	1	2	50.0
<b>Total Field Goals</b>	<b>4</b>	<b>11</b>	<b>36.4</b>

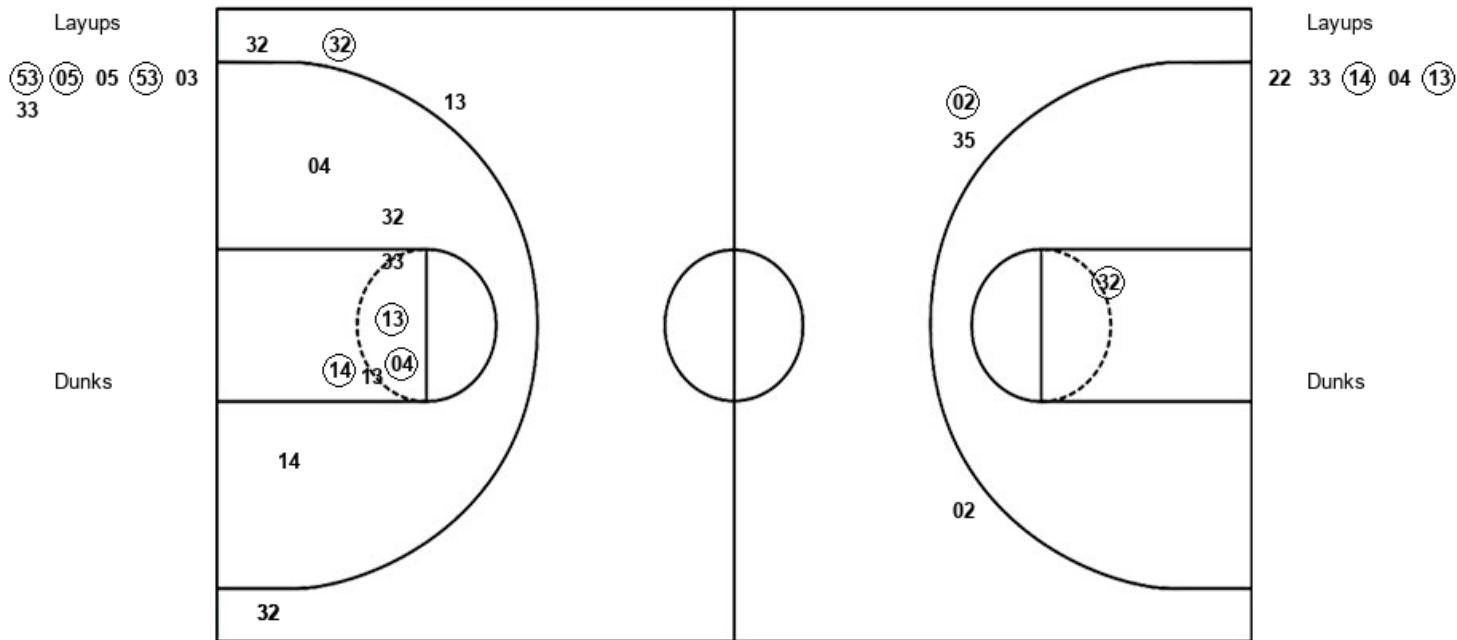
SMU : Period 1	Made	Att	Pct
Layups	3	7	42.9
Dunks	0	0	0
2PT Field Goals	6	16	37.5
3PT Field Goals	0	0	0
<b>Total Field Goals</b>	<b>6</b>	<b>16</b>	<b>37.5</b>

Official Shot Chart  
**SMU vs Memphis**  
 PERIOD 2 Shots  
 January 21, 2020 at Elma Roane Fieldhouse - Memphis



**Memphis**

**SMU**



MEM : Period 2	Made	Att	Pct
Layups	3	6	50.0
Dunks	0	0	0
2PT Field Goals	4	7	57.1
3PT Field Goals	1	3	33.3
<b>Total Field Goals</b>	<b>5</b>	<b>10</b>	<b>50.0</b>

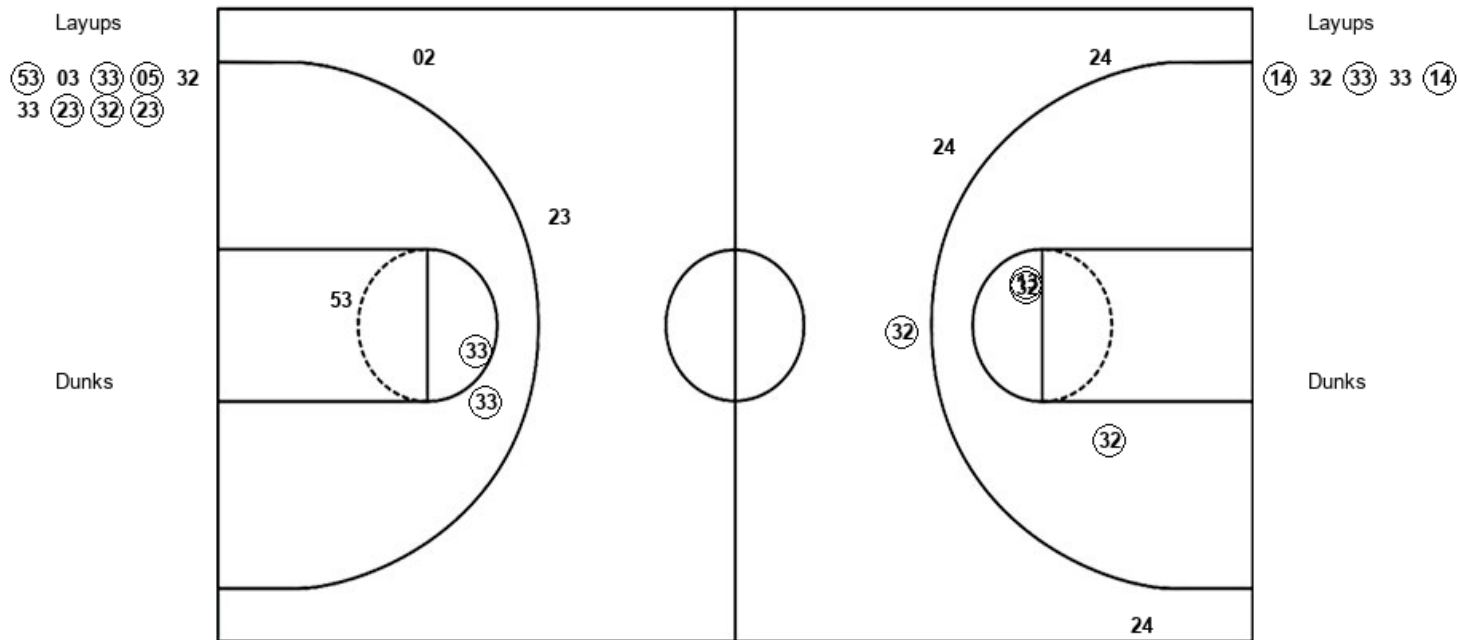
SMU : Period 2	Made	Att	Pct
Layups	2	5	40.0
Dunks	0	0	0
2PT Field Goals	5	13	38.5
3PT Field Goals	1	5	20.0
<b>Total Field Goals</b>	<b>6</b>	<b>18</b>	<b>33.3</b>

Official Shot Chart  
**SMU vs Memphis**  
 PERIOD 3 Shots  
 January 21, 2020 at Elma Roane Fieldhouse - Memphis



**Memphis**

**SMU**



MEM : Period 3	Made	Att	Pct
Layups	6	9	66.7
Dunks	0	0	0
2PT Field Goals	8	12	66.7
3PT Field Goals	0	2	00.0
<b>Total Field Goals</b>	<b>8</b>	<b>14</b>	<b>57.1</b>

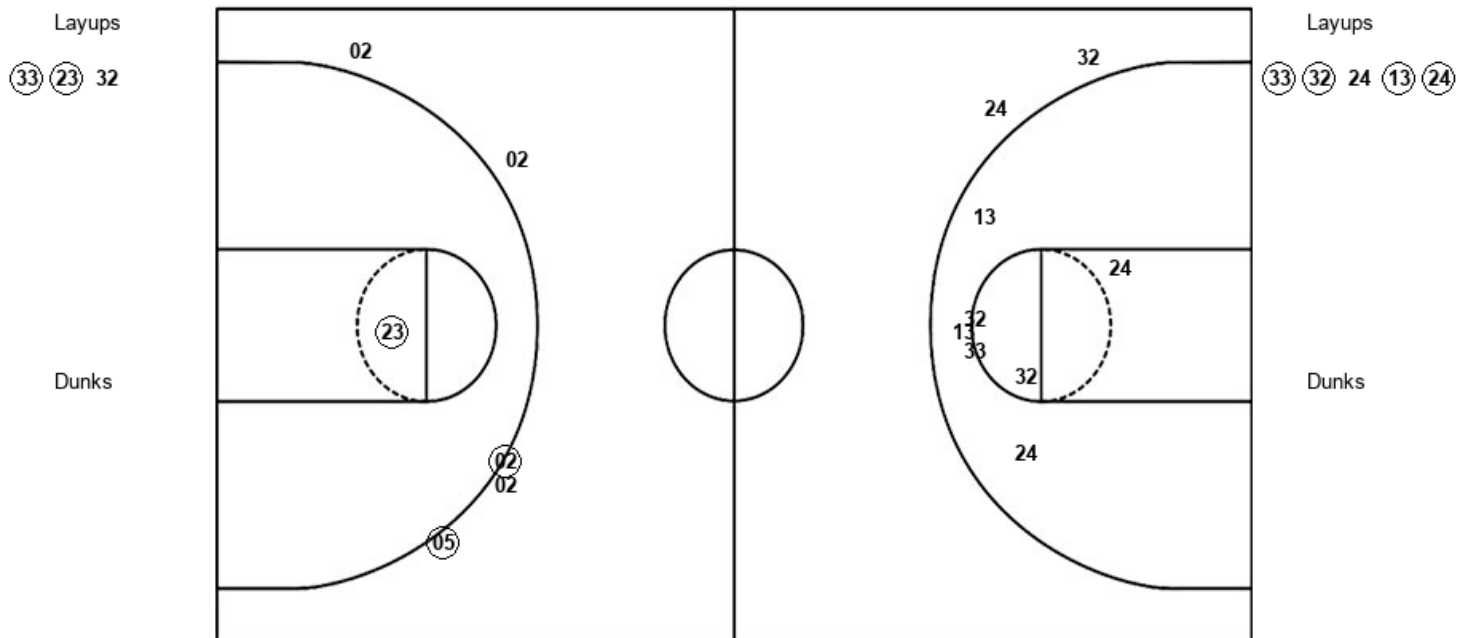
SMU : Period 3	Made	Att	Pct
Layups	3	5	60.0
Dunks	0	0	0
2PT Field Goals	6	8	75.0
3PT Field Goals	1	4	25.0
<b>Total Field Goals</b>	<b>7</b>	<b>12</b>	<b>58.3</b>

Official Shot Chart  
**SMU vs Memphis**  
 PERIOD 4 Shots  
 January 21, 2020 at Elma Roane Fieldhouse - Memphis



**Memphis**

**SMU**



MEM : Period 4	Made	Att	Pct
Layups	2	3	66.7
Dunks	0	0	0
2PT Field Goals	3	4	75.0
3PT Field Goals	2	5	40.0
<b>Total Field Goals</b>	<b>5</b>	<b>9</b>	<b>55.6</b>

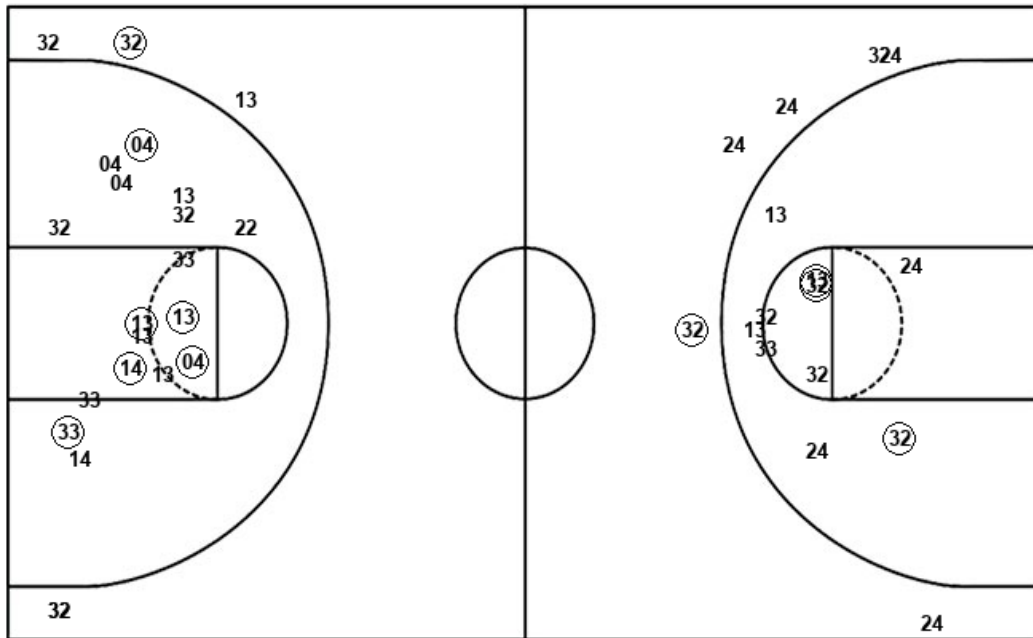
SMU : Period 4	Made	Att	Pct
Layups	4	5	80.0
Dunks	0	0	0
2PT Field Goals	4	12	33.3
3PT Field Goals	0	2	00.0
<b>Total Field Goals</b>	<b>4</b>	<b>14</b>	<b>28.6</b>

Official Shot Chart  
**SMU vs Memphis**  
 SMU Team Shots  
 January 21, 2020 at Elma Roane Fieldhouse - Memphis



Layups

Dunks



Layups

Dunks

33 (33) (22) 33 33  
 13 (13) 22 33 (14)  
 04 (13) (14) 32 (33)  
 33 (14) (33) (32) 24  
 (13) (24)

SMU : Period 1	Made	Att	Pct
Layups	3	7	42.9
Dunks	0	0	0
2PT Field Goals	6	16	37.5
3PT Field Goals	0	0	0
<b>Total Field Goals</b>	<b>6</b>	<b>16</b>	<b>37.5</b>

SMU : Period 3	Made	Att	Pct
Layups	3	5	60.0
Dunks	0	0	0
2PT Field Goals	6	8	75.0
3PT Field Goals	1	4	25.0
<b>Total Field Goals</b>	<b>7</b>	<b>12</b>	<b>58.3</b>

SMU : Period 2	Made	Att	Pct
Layups	2	5	40.0
Dunks	0	0	0
2PT Field Goals	5	13	38.5
3PT Field Goals	1	5	20.0
<b>Total Field Goals</b>	<b>6</b>	<b>18</b>	<b>33.3</b>

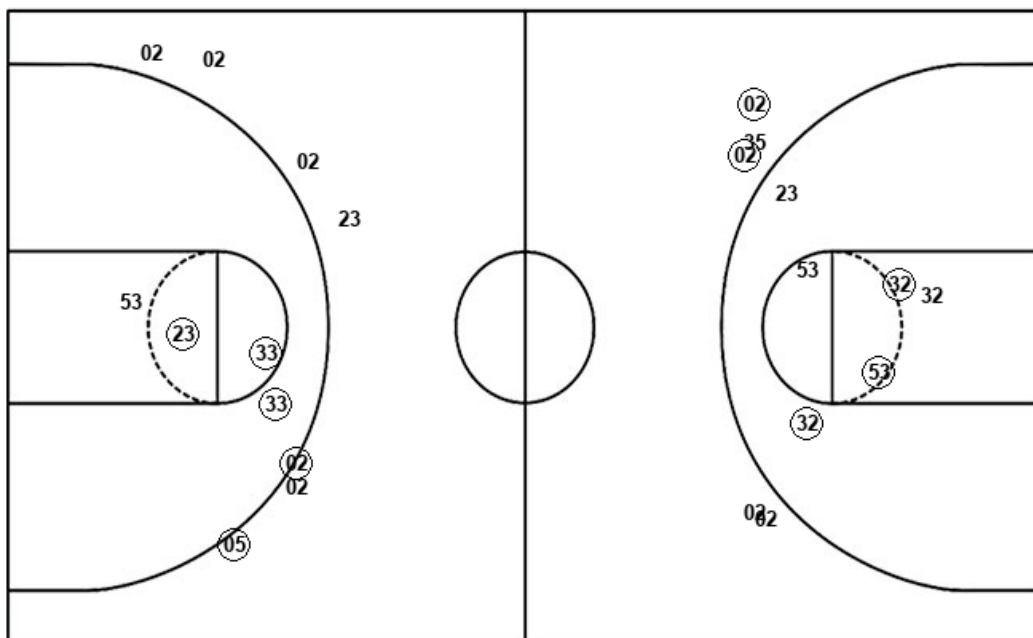
SMU : Period 4	Made	Att	Pct
Layups	4	5	80.0
Dunks	0	0	0
2PT Field Goals	4	12	33.3
3PT Field Goals	0	2	00.0
<b>Total Field Goals</b>	<b>4</b>	<b>14</b>	<b>28.6</b>

Official Shot Chart  
**SMU vs Memphis**  
 Memphis Team Shots  
 January 21, 2020 at Elma Roane Fieldhouse - Memphis



Layups

Dunks



Layups

Dunks

32 33 05 23 53  
 05 05 53 03 33  
 53 03 33 05 32  
 33 23 32 23 33  
 23 32

MEM : Period 1	Made	Att	Pct
Layups	1	4	25.0
Dunks	0	0	0
2PT Field Goals	3	9	33.3
3PT Field Goals	1	2	50.0
<b>Total Field Goals</b>	<b>4</b>	<b>11</b>	<b>36.4</b>

MEM : Period 3	Made	Att	Pct
Layups	6	9	66.7
Dunks	0	0	0
2PT Field Goals	8	12	66.7
3PT Field Goals	0	2	00.0
<b>Total Field Goals</b>	<b>8</b>	<b>14</b>	<b>57.1</b>

MEM : Period 2	Made	Att	Pct
Layups	3	6	50.0
Dunks	0	0	0
2PT Field Goals	4	7	57.1
3PT Field Goals	1	3	33.3
<b>Total Field Goals</b>	<b>5</b>	<b>10</b>	<b>50.0</b>

MEM : Period 4	Made	Att	Pct
Layups	2	3	66.7
Dunks	0	0	0
2PT Field Goals	3	4	75.0
3PT Field Goals	2	5	40.0
<b>Total Field Goals</b>	<b>5</b>	<b>9</b>	<b>55.6</b>