

## FINAL SCORE



**Wichita St.**

**60**



**Memphis**

**68**

March 05, 2020 • FedExForum - Memphis

## FINAL STATISTICS

**Official Box Score**  
**Wichita St. vs Memphis**  
**Game Totals -- Final Statistics**  
**March 05, 2020 at FedExForum - Memphis**



**Wichita St. 60**

No.	Player	S	Pts	FG	3FG	FT	OR	DR	TR	PF	A	TO	Blk	Stl	Min	+/-
00	DENNIS, DEXTER	G	15	5-17	1-7	4-5	2	4	6	3	1	1	0	2	32	-1
02	BURTON, JAMARIUS	G	13	4-12	3-7	2-2	1	3	4	2	3	0	0	1	30	-2
05	WADE, TREY	F	2	1-4	0-2	0-0	1	8	9	2	1	1	0	1	29	-15
21	ECHENIQUE, JAIME	C	13	6-11	0-2	1-2	2	1	3	3	0	3	1	0	27	-6
52	SHERFIELD, GRANT	G	11	4-11	2-3	1-3	1	7	8	2	3	2	0	0	30	-1
01	ETIENNE, TYSON	G	2	0-3	0-2	2-3	0	1	1	2	0	0	0	0	24	-15
10	STEVENSON, ERIK	G	2	1-2	0-0	0-1	0	2	2	0	0	1	0	0	15	2
24	UDEZE, MORRIS	C	1	0-0	0-0	1-4	1	2	3	2	0	1	0	0	4	-3
44	POOR BEAR-CHANDLER, ISAI	C	1	0-1	0-0	1-2	1	3	4	2	0	0	1	0	9	1
	TEAM						4	0	4	0		1				
<b>TOTALS</b>			<b>60</b>	<b>21-61</b>	<b>6-23</b>	<b>12-22</b>	<b>13</b>	<b>31</b>	<b>44</b>	<b>18</b>	<b>8</b>	<b>10</b>	<b>2</b>	<b>4</b>	<b>200</b>	

*Shooting By Period*

Period	FG	FG%	3FG	3FG%	FT	FT%
1st Half	10-32	31%	2-9	22%	2-5	40%
2nd Half	11-29	38%	4-14	29%	10-17	59%
<b>Game</b>	<b>21-61</b>	<b>34.4%</b>	<b>6-23</b>	<b>26.1%</b>	<b>12-22</b>	<b>54.5%</b>

*Deadball Rebounds: 4,3*

*Last FG: 2nd-00:10*

*Biggest Run: 7-0*

*Largest lead: By 7 at 1st-16:30*

*Technical Fouls: None.*

**Memphis 68**

No.	Player	S	Pts	FG	3FG	FT	OR	DR	TR	PF	A	TO	Blk	Stl	Min	+/-
05	ELLIS, BOOGIE	G	2	1-6	0-1	0-0	0	1	1	2	2	3	0	1	25	-7
10	BAUGH, DAMION	G	0	0-2	0-0	0-0	0	3	3	0	1	0	0	0	7	0
11	QUINONES, LESTER	G	12	4-10	1-5	3-4	2	5	7	4	1	0	0	1	34	3
14	MAURICE, ISAIAH	F	2	1-4	0-1	0-0	0	1	1	1	0	1	0	0	9	6
55	ACHIUWA, PRECIOUS	F	14	4-11	0-0	6-9	4	12	16	1	1	0	3	2	37	7
01	HARRIS, TYLER	G	19	6-11	5-9	2-3	1	3	4	5	4	0	0	0	27	16
02	LOMAX, ALEX	G	8	3-9	0-3	2-3	0	2	2	1	4	3	2	0	34	13
15	THOMAS, LANCE	F	9	3-7	3-7	0-0	0	1	1	2	0	0	1	0	21	-4
23	DANDRIDGE, MALCOLM	C	2	1-1	0-0	0-0	0	0	0	2	1	0	0	0	6	6
	TEAM						2	2	4	0		0				
<b>TOTALS</b>			<b>68</b>	<b>23-61</b>	<b>9-26</b>	<b>13-19</b>	<b>9</b>	<b>30</b>	<b>39</b>	<b>18</b>	<b>14</b>	<b>7</b>	<b>6</b>	<b>4</b>	<b>200</b>	

*Shooting By Period*

Period	FG	FG%	3FG	3FG%	FT	FT%
1st Half	9-29	31%	6-15	40%	5-6	83%
2nd Half	14-32	44%	3-11	27%	8-13	62%
<b>Game</b>	<b>23-61</b>	<b>37.7%</b>	<b>9-26</b>	<b>34.6%</b>	<b>13-19</b>	<b>68.4%</b>

*Deadball Rebounds: 1,3*

*Last FG: 2nd-01:50*

*Biggest Run: 13-0*

*Largest lead: By 17 at 2nd-05:03*

*Technical Fouls: None.*

Game Notes:

Officials: **Doug Shows, Jeffrey Anderson, Lamar Simpson**

Attendance: **17021**

Start Time: **09:06 PM ET**

End Time: **11:08 PM ET**

Game Duration: **2:01**

Conference Game;

Score	1st	2nd	TOT
WSU	24	36	<b>60</b>
MEM	29	39	<b>68</b>

WSU led for 5:16. MEM led for 32:58.

Game was tied for 1:40.

Times tied: 0 Lead Changes: 1

Points from	WSU	MEM
In the Paint	28	20
Off Turns	8	15
2nd Chance	13	5
Fast Break	9	9
Bench	6	38

**Official Box Score**  
**Wichita St. vs Memphis**  
**First Half Statistics Only**  
**March 05, 2020 at FedExForum - Memphis**



**Wichita St. 24**

No.	Player	S	Pts	FG	3FG	FT	OR	DR	TR	PF	A	TO	Blk	Stl	Min	+/-
00	DENNIS, DEXTER	G	6	2-9	0-2	2-3	1	1	2	1	1	0	0	1	13	1
02	BURTON, JAMARIUS	G	6	2-8	2-4	0-0	1	3	4	0	1	0	0	1	15	-1
05	WADE, TREY	F	2	1-3	0-1	0-0	1	3	4	2	1	1	0	1	15	-5
21	ECHENIQUE, JAIME	C	8	4-7	0-1	0-0	1	0	1	1	0	3	1	0	16	0
52	SHERFIELD, GRANT	G	0	0-3	0-1	0-0	0	5	5	1	1	1	0	0	14	-6
01	ETIENNE, TYSON	G	0	0-0	0-0	0-0	0	1	1	1	0	0	0	0	14	-8
10	STEVENSON, ERIK	G	2	1-1	0-0	0-0	0	0	0	0	0	0	0	0	9	-1
24	UDEZE, MORRIS	C	0	0-0	0-0	0-2	0	1	1	1	0	1	0	0	2	-3
44	POOR BEAR-CHANDLER, ISAI	C	0	0-1	0-0	0-0	0	1	1	1	0	0	0	0	3	-2
	TEAM						3	0	3	0		0				
<b>TOTALS</b>			<b>24</b>	<b>10-32</b>	<b>2-9</b>	<b>2-5</b>	<b>7</b>	<b>15</b>	<b>22</b>	<b>8</b>	<b>4</b>	<b>6</b>	<b>1</b>	<b>3</b>	<b>100</b>	

*Shooting By Period*

Period	FG	FG%	3FG	3FG%	FT	FT%
1st Half	10-32	31%	2-9	22%	2-5	40%
Game	21-61	34.4%	6-23	26.1%	12-22	54.5%

*Deadball Rebounds: 4,3*

*Last FG Half: WSU 2nd-00:10*

**Memphis 29**

No.	Player	S	Pts	FG	3FG	FT	OR	DR	TR	PF	A	TO	Blk	Stl	Min	+/-
05	ELLIS, BOOGIE	G	2	1-4	0-1	0-0	0	0	0	1	1	2	0	1	14	-3
10	BAUGH, DAMION	G	0	0-2	0-0	0-0	0	3	3	0	1	0	0	0	7	0
11	QUINONES, LESTER	G	3	1-4	1-2	0-0	1	3	4	2	1	0	0	0	14	0
14	MAURICE, ISAIAH	F	2	1-4	0-1	0-0	0	0	0	1	0	1	0	0	7	0
55	ACHIUWA, PRECIOUS	F	5	0-3	0-0	5-6	1	6	7	0	0	0	3	1	19	5
01	HARRIS, TYLER	G	9	3-5	3-5	0-0	0	2	2	0	2	0	0	0	12	8
02	LOMAX, ALEX	G	0	0-1	0-1	0-0	0	0	0	0	1	3	0	0	14	10
15	THOMAS, LANCE	F	6	2-5	2-5	0-0	0	1	1	1	0	0	1	0	10	0
23	DANDRIDGE, MALCOLM	C	2	1-1	0-0	0-0	0	0	0	0	0	0	0	0	4	5
	TEAM						2	1	3	0		0				
<b>TOTALS</b>			<b>29</b>	<b>9-29</b>	<b>6-15</b>	<b>5-6</b>	<b>4</b>	<b>16</b>	<b>20</b>	<b>5</b>	<b>6</b>	<b>6</b>	<b>4</b>	<b>2</b>	<b>100</b>	

*Shooting By Period*

Period	FG	FG%	3FG	3FG%	FT	FT%
1st Half	9-29	31%	6-15	40%	5-6	83%
Game	23-61	37.7%	9-26	34.6%	13-19	68.4%

*Deadball Rebounds: 1,3*

*Last FG Half: MEM 2nd-01:50*

Game Notes:

Officials: **Doug Shows, Jeffrey Anderson, Lamar Simpson**  
Attendance: **17021**

Start Time: **09:06 PM ET**  
End Time: **11:08 PM ET**  
Game Duration: **2:01**  
Conference Game;

Score	1st	2nd	TOT
WSU	24	36	<b>60</b>
MEM	29	39	<b>68</b>

Points from (This Period)	WSU	MEM
In the Paint	14	6
Off Turns	6	4
2nd Chance	2	2
Fast Break	2	3
Bench	2	17

**Official Play-By-Play**  
**Wichita St. vs Memphis**  
**First Half**  
**March 05, 2020 at FedExForum - Memphis**



**Period 1**

**Starters:**

**Wichita St.:** 0 DENNIS,DEXTER (G); 2 BURTON,JAMARIUS (G); 5 WADE,TREY (F); 21 ECHENIQUE,JAIME (C); 52 SHERFIELD,GRANT (G);

**Memphis:** 5 ELLIS,BOOGIE (G); 10 BAUGH,DAMION (G); 11 QUINONES,LESTER (G); 14 MAURICE,ISIAH (F); 55 ACHIUWA,PRECIOUS (F);

Time	VISITORS: Wichita St.	Score	Margin	HOME: Memphis
19:45				MISSED 3PTR by MAURICE, ISIAH
19:42	REBOUND (DEF) by SHERFIELD, GRANT			
19:31	MISSED 3PTR by DENNIS, DEXTER			
19:26				REBOUND (DEF) by ACHIUWA, PRECIOUS
19:21				MISSED LAYUP by BAUGH, DAMION
19:19	REBOUND (DEF) by SHERFIELD, GRANT			
19:15	MISSED 3PTR by SHERFIELD, GRANT			
19:13	REBOUND (OFF) by BURTON, JAMARIUS			
19:02	MISSED JUMPER by ECHENIQUE, JAIME			
18:59	REBOUND (OFF) by TEAM			
18:54	MISSED 3PTR by BURTON, JAMARIUS			
18:51	REBOUND (OFF) by WADE, TREY			
18:50	TURNOVER (OTHER) by WADE, TREY			
18:29				MISSED LAYUP by ACHIUWA, PRECIOUS
18:26	REBOUND (DEF) by SHERFIELD, GRANT			
18:20	GOOD! LAYUP by WADE, TREY [FB]	0-2	V 2	
18:20	ASSIST by SHERFIELD, GRANT			
18:04				MISSED JUMPER by QUINONES, LESTER
18:02	REBOUND (DEF) by SHERFIELD, GRANT			
17:56	MISSED 3PTR by ECHENIQUE, JAIME			
17:52				REBOUND (DEF) by BAUGH, DAMION
17:46				MISSED LAYUP by BAUGH, DAMION
17:43	REBOUND (DEF) by BURTON, JAMARIUS			
17:26	TURNOVER (LOSTBALL) by SHERFIELD, GRANT			
17:26				STEAL by ACHIUWA, PRECIOUS
17:19				MISSED 3PTR by ELLIS, BOOGIE
17:16	REBOUND (DEF) by SHERFIELD, GRANT			
17:05	GOOD! 3PTR by BURTON, JAMARIUS	0-5	V 5	
16:47	FOUL (PERSONAL) by DENNIS, DEXTER			
16:47				SUB OUT: BAUGH, DAMION
16:47				SUB OUT: MAURICE, ISIAH
16:47				SUB IN: LOMAX, ALEX
16:47				SUB IN: THOMAS, LANCE
16:47	SUB OUT: DENNIS, DEXTER			
16:47	SUB IN: ETIENNE, TYSON			
16:41				MISSED 3PTR by THOMAS, LANCE
16:38	REBOUND (DEF) by BURTON, JAMARIUS			
16:30	GOOD! JUMPER by ECHENIQUE, JAIME [PNT]	0-7	V 7	
16:30	ASSIST by BURTON, JAMARIUS			
16:14				TIMEOUT 30SEC
16:14				
16:03		3-7	V 4	GOOD! 3PTR by THOMAS, LANCE
16:03				ASSIST by ELLIS, BOOGIE
15:45				SUB OUT: ELLIS, BOOGIE
15:45				SUB IN: HARRIS, TYLER
15:30	MISSED 3PTR by WADE, TREY			
15:27	REBOUND (OFF) by TEAM			
15:09	MISSED LAYUP by WADE, TREY			
15:05	REBOUND (OFF) by TEAM			
14:52	MISSED JUMPER by ECHENIQUE, JAIME			
14:50				REBOUND (DEF) by TEAM
14:50	FOUL (PERSONAL) by WADE, TREY			
14:40				MISSED 3PTR by THOMAS, LANCE
14:38	REBOUND (DEF) by BURTON, JAMARIUS			
14:18	MISSED 3PTR by BURTON, JAMARIUS			
14:15				REBOUND (DEF) by QUINONES, LESTER
14:09		6-7	V 1	GOOD! 3PTR by THOMAS, LANCE
14:09				ASSIST by QUINONES, LESTER
13:50	MISSED JUMPER by SHERFIELD, GRANT			
13:50				BLOCK by THOMAS, LANCE
13:47				REBOUND (DEF) by QUINONES, LESTER
13:43				MISSED 3PTR by QUINONES, LESTER
13:39	REBOUND (DEF) by WADE, TREY			
13:33	MISSED JUMPER by BURTON, JAMARIUS			
13:30				REBOUND (DEF) by ACHIUWA, PRECIOUS
13:21				MISSED JUMPER by ACHIUWA, PRECIOUS
13:17	REBOUND (DEF) by ETIENNE, TYSON			
13:11	MISSED LAYUP by BURTON, JAMARIUS			
13:09				REBOUND (DEF) by ACHIUWA, PRECIOUS
13:04		9-7	H 2	GOOD! 3PTR by QUINONES, LESTER [FB]

Time	VISITORS: Wichita St.	Score	Margin	HOME: Memphis
13:04				ASSIST by HARRIS, TYLER
12:28	MISSED JUMPER by SHERFIELD, GRANT			
12:25				REBOUND (DEF) by QUINONES, LESTER
12:01				MISSED 3PTR by LOMAX, ALEX
11:54				REBOUND (OFF) by TEAM
11:54				
11:54				SUB OUT: QUINONES, LESTER
11:54				SUB OUT: ACHIUWA, PRECIOUS
11:54				SUB IN: ELLIS, BOOGIE
11:54				SUB IN: DANDRIDGE, MALCOLM
11:54	SUB OUT: WADE, TREY			
11:54	SUB OUT: ECHENIQUE, JAIME			
11:54	SUB OUT: SHERFIELD, GRANT			
11:54	SUB IN: DENNIS, DEXTER			
11:54	SUB IN: STEVENSON, ERIK			
11:54	SUB IN: UDEZE, MORRIS			
11:51				MISSED 3PTR by HARRIS, TYLER
11:49	REBOUND (DEF) by UDEZE, MORRIS			
11:31	MISSED 3PTR by DENNIS, DEXTER			
11:28				REBOUND (DEF) by HARRIS, TYLER
11:21				MISSED JUMPER by ELLIS, BOOGIE
11:18	REBOUND (DEF) by DENNIS, DEXTER			
11:03				FOUL (PERSONAL) by THOMAS, LANCE
11:03	MISSED FT by UDEZE, MORRIS			
11:03	REBOUND (OFF) by TEAM			
11:03	MISSED FT by UDEZE, MORRIS			
11:02				REBOUND (DEF) by THOMAS, LANCE
10:40				FOUL (OFF) by ELLIS, BOOGIE
10:40				TURNOVER (OFFENSIVE) by ELLIS, BOOGIE
10:40				SUB OUT: THOMAS, LANCE
10:40				SUB IN: ACHIUWA, PRECIOUS
10:28	MISSED LAYUP by BURTON, JAMARIUS			
10:26				REBOUND (DEF) by ACHIUWA, PRECIOUS
10:22		12-7	H 5	GOOD! 3PTR by HARRIS, TYLER
10:03	FOUL (OFF) by UDEZE, MORRIS			
10:03	TURNOVER (OFFENSIVE) by UDEZE, MORRIS			
10:03	SUB OUT: ETIENNE, TYSON			
10:03	SUB OUT: BURTON, JAMARIUS			
10:03	SUB OUT: UDEZE, MORRIS			
10:03	SUB IN: WADE, TREY			
10:03	SUB IN: ECHENIQUE, JAIME			
10:03	SUB IN: SHERFIELD, GRANT			
09:41	FOUL (PERSONAL) by ECHENIQUE, JAIME			
09:41				MISSED FT by ACHIUWA, PRECIOUS
09:41				REBOUND (OFF) by TEAM
09:41		13-7	H 6	GOOD! FT by ACHIUWA, PRECIOUS
09:15	GOOD! DUNK by ECHENIQUE, JAIME	13-9	H 4	
09:03				TURNOVER (BADPASS) by LOMAX, ALEX
09:03	STEAL by DENNIS, DEXTER			
08:55	MISSED LAYUP by DENNIS, DEXTER			
08:55				BLOCK by ACHIUWA, PRECIOUS
08:52	REBOUND (OFF) by ECHENIQUE, JAIME			
08:51	GOOD! LAYUP by ECHENIQUE, JAIME	13-11	H 2	
08:28		15-11	H 4	GOOD! LAYUP by DANDRIDGE, MALCOLM
08:28				ASSIST by HARRIS, TYLER
08:11	TURNOVER (TRAVEL) by ECHENIQUE, JAIME			
08:11				SUB OUT: LOMAX, ALEX
08:11				SUB OUT: DANDRIDGE, MALCOLM
08:11				SUB IN: BAUGH, DAMION
08:11				SUB IN: MAURICE, ISAIAH
08:02				FOUL (OFF) by MAURICE, ISAIAH
08:02				TURNOVER (OFFENSIVE) by MAURICE, ISAIAH
07:44	TURNOVER (BADPASS) by ECHENIQUE, JAIME			
07:44				STEAL by ELLIS, BOOGIE
07:38		18-11	H 7	GOOD! 3PTR by HARRIS, TYLER
07:38				ASSIST by BAUGH, DAMION
07:18	TURNOVER (TRAVEL) by ECHENIQUE, JAIME			
07:18				
07:18				SUB OUT: ELLIS, BOOGIE
07:18				SUB IN: QUINONES, LESTER
07:18	SUB OUT: STEVENSON, ERIK			
07:18	SUB OUT: ECHENIQUE, JAIME			
07:18	SUB IN: ETIENNE, TYSON			
07:18	SUB IN: POOR BEAR-CHANDLER, ISAIAH			
07:07				MISSED 3PTR by HARRIS, TYLER
07:04	REBOUND (DEF) by POOR BEAR-CHANDLER, ISAIAH			
06:56	MISSED LAYUP by POOR BEAR-CHANDLER, ISAIAH			
06:56				BLOCK by ACHIUWA, PRECIOUS
06:53				REBOUND (DEF) by HARRIS, TYLER
06:50	FOUL (PERSONAL) by SHERFIELD, GRANT			

Time	VISITORS: Wichita St.	Score	Margin	HOME: Memphis
06:40				MISSED JUMPER by MAURICE, ISIAIAH
06:38	REBOUND (DEF) by WADE, TREY			
06:14	MISSED LAYUP by DENNIS, DEXTER			
06:10				REBOUND (DEF) by TEAM
06:10				SUB OUT: HARRIS, TYLER
06:10				SUB IN: LOMAX, ALEX
05:58	FOUL (PERSONAL) by ETIENNE, TYSON			
05:54	FOUL (PERSONAL) by POOR BEAR-CHANDLER, ISIAIAH			
05:54		19-11	H 8	GOOD! FT by ACHIUWA, PRECIOUS
05:54		20-11	H 9	GOOD! FT by ACHIUWA, PRECIOUS
05:34	GOOD! JUMPER by DENNIS, DEXTER [PNT]	20-13	H 7	
05:34				FOUL (PERSONAL) by QUINONES, LESTER
05:34	MISSED FT by DENNIS, DEXTER			
05:33				REBOUND (DEF) by BAUGH, DAMION
05:24		22-13	H 9	GOOD! LAYUP by MAURICE, ISIAIAH
05:24				ASSIST by LOMAX, ALEX
05:06	MISSED LAYUP by DENNIS, DEXTER			
05:02	REBOUND (OFF) by DENNIS, DEXTER			
05:02	MISSED LAYUP by DENNIS, DEXTER			
05:02				BLOCK by ACHIUWA, PRECIOUS
05:00				REBOUND (DEF) by BAUGH, DAMION
04:52				MISSED JUMPER by QUINONES, LESTER
04:50				REBOUND (OFF) by QUINONES, LESTER
04:45				MISSED JUMPER by MAURICE, ISIAIAH
04:42				REBOUND (OFF) by ACHIUWA, PRECIOUS
04:39	FOUL (PERSONAL) by WADE, TREY			
04:39				SUB OUT: BAUGH, DAMION
04:39				SUB OUT: MAURICE, ISIAIAH
04:39				SUB IN: ELLIS, BOOGIE
04:39				SUB IN: THOMAS, LANCE
04:39	SUB OUT: DENNIS, DEXTER			
04:39	SUB OUT: POOR BEAR-CHANDLER, ISIAIAH			
04:39	SUB OUT: SHERFIELD, GRANT			
04:39	SUB IN: BURTON, JAMARIUS			
04:39	SUB IN: STEVENSON, ERIK			
04:39	SUB IN: ECHENIQUE, JAIME			
04:39		23-13	H 10	GOOD! FT by ACHIUWA, PRECIOUS
04:39		24-13	H 11	GOOD! FT by ACHIUWA, PRECIOUS
04:15	MISSED JUMPER by BURTON, JAMARIUS			
04:12				REBOUND (DEF) by ACHIUWA, PRECIOUS
04:01				MISSED LAYUP by ACHIUWA, PRECIOUS
03:58	REBOUND (DEF) by WADE, TREY			
03:43	GOOD! 3PTR by BURTON, JAMARIUS	24-16	H 8	
03:43	ASSIST by WADE, TREY			
03:30				TURNOVER (LOSTBALL) by LOMAX, ALEX
03:30	STEAL by WADE, TREY			
03:19	GOOD! JUMPER by STEVENSON, ERIK [PNT]	24-18	H 6	
02:56		26-18	H 8	GOOD! JUMPER by ELLIS, BOOGIE [PNT]
02:41				
02:41				SUB OUT: LOMAX, ALEX
02:41				SUB IN: HARRIS, TYLER
02:41	SUB OUT: WADE, TREY			
02:41	SUB IN: DENNIS, DEXTER			
02:22	GOOD! JUMPER by ECHENIQUE, JAIME	26-20	H 6	
02:22	ASSIST by DENNIS, DEXTER			
01:56				MISSED 3PTR by THOMAS, LANCE
01:54	REBOUND (DEF) by TEAM			
01:31				FOUL (PERSONAL) by QUINONES, LESTER
01:31	GOOD! FT by DENNIS, DEXTER	26-21	H 5	
01:31				SUB OUT: QUINONES, LESTER
01:31				SUB IN: LOMAX, ALEX
01:31	GOOD! FT by DENNIS, DEXTER	26-22	H 4	
01:24				MISSED JUMPER by ELLIS, BOOGIE
01:24	BLOCK by ECHENIQUE, JAIME			
01:19				REBOUND (OFF) by TEAM
01:06				TURNOVER (BADPASS) by ELLIS, BOOGIE
00:54	GOOD! LAYUP by DENNIS, DEXTER	26-24	H 2	
00:34				TURNOVER (LOSTBALL) by LOMAX, ALEX
00:34	STEAL by BURTON, JAMARIUS			
00:34				SUB OUT: THOMAS, LANCE
00:34				SUB IN: DANDRIDGE, MALCOLM
00:23	MISSED JUMPER by DENNIS, DEXTER			
00:18				REBOUND (DEF) by ACHIUWA, PRECIOUS
00:03		29-24	H 5	GOOD! 3PTR by HARRIS, TYLER

Wichita St. 24, Memphis 29

Points from (This Period)	WSU	MEM
In the Paint	14	6
Off Turns	6	4
2nd Chance	2	2
Fast Break	2	3
Bench	2	17

**Official Box Score**  
**Wichita St. vs Memphis**  
**Second Half Statistics Only**  
**March 05, 2020 at FedExForum - Memphis**



**Wichita St. 36**

No.	Player	S	Pts	FG	3FG	FT	OR	DR	TR	PF	A	TO	Blk	Stl	Min	+/-
00	DENNIS, DEXTER	G	9	3-8	1-5	2-2	1	3	4	2	0	1	0	1	19	-2
02	BURTON, JAMARIUS	G	7	2-4	1-3	2-2	0	0	0	2	2	0	0	0	15	-1
05	WADE, TREY	F	0	0-1	0-1	0-0	0	5	5	0	0	0	0	0	13	-10
21	ECHENIQUE, JAIME	C	5	2-4	0-1	1-2	1	1	2	2	0	0	0	0	12	-6
52	SHERFIELD, GRANT	G	11	4-8	2-2	1-3	1	2	3	1	2	1	0	0	17	5
01	ETIENNE, TYSON	G	2	0-3	0-2	2-3	0	0	0	1	0	0	0	0	10	-7
10	STEVENSON, ERIK	G	0	0-1	0-0	0-1	0	2	2	0	0	1	0	0	6	3
24	UDEZE, MORRIS	C	1	0-0	0-0	1-2	1	1	2	1	0	0	0	0	2	0
44	POOR BEAR-CHANDLER, ISAI	C	1	0-0	0-0	1-2	1	2	3	1	0	0	1	0	6	3
	TEAM						1	0	1	0		1				
<b>TOTALS</b>			<b>36</b>	<b>11-29</b>	<b>4-14</b>	<b>10-17</b>	<b>6</b>	<b>16</b>	<b>22</b>	<b>10</b>	<b>4</b>	<b>4</b>	<b>1</b>	<b>1</b>	<b>100</b>	

*Shooting By Period*

Period	FG	FG%	3FG	3FG%	FT	FT%
2nd Half	11-29	38%	4-14	29%	10-17	59%
Game	21-61	34.4%	6-23	26.1%	12-22	54.5%

*Deadball Rebounds: 4,3*

*Last FG Half: WSU -*

**Memphis 39**

No.	Player	S	Pts	FG	3FG	FT	OR	DR	TR	PF	A	TO	Blk	Stl	Min	+/-
05	ELLIS, BOOGIE	G	0	0-2	0-0	0-0	0	1	1	1	1	1	0	0	12	-4
10	BAUGH, DAMION	G	0	0-0	0-0	0-0	0	0	0	0	0	0	0	0	0	0
11	QUINONES, LESTER	G	9	3-6	0-3	3-4	1	2	3	2	0	0	0	1	20	3
14	MAURICE, ISAIAH	F	0	0-0	0-0	0-0	0	1	1	0	0	0	0	0	2	6
55	ACHIUWA, PRECIOUS	F	9	4-8	0-0	1-3	3	6	9	1	1	0	0	1	18	2
01	HARRIS, TYLER	G	10	3-6	2-4	2-3	1	1	2	5	2	0	0	0	15	8
02	LOMAX, ALEX	G	8	3-8	0-2	2-3	0	2	2	1	3	0	2	0	20	3
15	THOMAS, LANCE	F	3	1-2	1-2	0-0	0	0	0	1	0	0	0	0	11	-4
23	DANDRIDGE, MALCOLM	C	0	0-0	0-0	0-0	0	0	0	2	1	0	0	0	2	1
	TEAM						0	1	1	0		0				
<b>TOTALS</b>			<b>39</b>	<b>14-32</b>	<b>3-11</b>	<b>8-13</b>	<b>5</b>	<b>14</b>	<b>19</b>	<b>13</b>	<b>8</b>	<b>1</b>	<b>2</b>	<b>2</b>	<b>100</b>	

*Shooting By Period*

Period	FG	FG%	3FG	3FG%	FT	FT%
2nd Half	14-32	44%	3-11	27%	8-13	62%
Game	23-61	37.7%	9-26	34.6%	13-19	68.4%

*Deadball Rebounds: 1,3*

*Last FG Half: MEM -*

*Game Notes:*

Officials: **Doug Shows, Jeffrey Anderson, Lamar Simpson**

Attendance: **17021**

Start Time: **09:06 PM ET**

End Time: **11:08 PM ET**

Game Duration: **2:01**

Conference Game;

Score	1st	2nd	TOT
WSU	24	36	<b>60</b>
MEM	29	39	<b>68</b>

Points from (This Period)	WSU	MEM
In the Paint	14	14
Off Turns	2	11
2nd Chance	11	3
Fast Break	7	6
Bench	4	21



**Official Play-By-Play**  
**Wichita St. vs Memphis**  
**Second Half**  
**March 05, 2020 at FedExForum - Memphis**



**Period 2**

**Starters:**

**Wichita St.:** 0 DENNIS, DEXTER (G); 2 BURTON, JAMARIUS (G); 5 WADE, TREY (F); 21 ECHENIQUE, JAIME (C); 52 SHERFIELD, GRANT (G);

**Memphis:** 5 ELLIS, BOOGIE (G); 10 BAUGH, DAMION (G); 11 QUINONES, LESTER (G); 14 MAURICE, ISAIAH (F); 55 ACHIUWA, PRECIOUS (F);

Time	VISITORS: Wichita St.	Score	Margin	HOME: Memphis
20:00				SUB OUT: HARRIS, TYLER
20:00				SUB OUT: DANDRIDGE, MALCOLM
20:00				SUB IN: QUINONES, LESTER
20:00	SUB OUT: ETIENNE, TYSON			
20:00	SUB OUT: STEVENSON, ERIK			
20:00	SUB IN: WADE, TREY			
20:00	SUB IN: SHERFIELD, GRANT			
20:00				SUB IN: THOMAS, LANCE
19:52				MISSED JUMPER by ACHIUWA, PRECIOUS
19:48	REBOUND (DEF) by ECHENIQUE, JAIME			
19:46				FOUL (PERSONAL) by ACHIUWA, PRECIOUS
19:32	MISSED 3PTR by BURTON, JAMARIUS			
19:29				REBOUND (DEF) by ACHIUWA, PRECIOUS
19:11		31-24	H 7	GOOD! JUMPER by QUINONES, LESTER [PNT]
18:57	GOOD! JUMPER by ECHENIQUE, JAIME [PNT]	31-26	H 5	
18:36		34-26	H 8	GOOD! 3PTR by THOMAS, LANCE
18:36				ASSIST by ELLIS, BOOGIE
18:11	MISSED JUMPER by ECHENIQUE, JAIME			
18:09				REBOUND (DEF) by ELLIS, BOOGIE
18:00				MISSED 3PTR by QUINONES, LESTER
17:57	REBOUND (DEF) by SHERFIELD, GRANT			
17:51	MISSED JUMPER by SHERFIELD, GRANT			
17:47				REBOUND (DEF) by LOMAX, ALEX
17:41				MISSED LAYUP by LOMAX, ALEX
17:38	REBOUND (DEF) by WADE, TREY			
17:34	MISSED 3PTR by DENNIS, DEXTER			
17:31				REBOUND (DEF) by ACHIUWA, PRECIOUS
17:16		36-26	H 10	GOOD! JUMPER by QUINONES, LESTER
17:16				ASSIST by LOMAX, ALEX
16:44				FOUL (PERSONAL) by ELLIS, BOOGIE
16:44	GOOD! FT by SHERFIELD, GRANT	36-27	H 9	
16:44	MISSED FT by SHERFIELD, GRANT			
16:43	REBOUND (OFF) by ECHENIQUE, JAIME			
16:33	GOOD! 3PTR by BURTON, JAMARIUS	36-30	H 6	
16:33	ASSIST by SHERFIELD, GRANT			
16:26				TURNOVER (BADPASS) by ELLIS, BOOGIE
16:26	STEAL by DENNIS, DEXTER			
16:21	GOOD! LAYUP by BURTON, JAMARIUS [FB]	36-32	H 4	
16:10	FOUL (PERSONAL) by ECHENIQUE, JAIME			
16:10		37-32	H 5	GOOD! FT by QUINONES, LESTER
16:10				SUB OUT: ELLIS, BOOGIE
16:10				SUB IN: HARRIS, TYLER
16:10				MISSED FT by QUINONES, LESTER
16:08	REBOUND (DEF) by WADE, TREY			
15:58	MISSED 3PTR by ECHENIQUE, JAIME			
15:55				REBOUND (DEF) by QUINONES, LESTER
15:41				MISSED 3PTR by THOMAS, LANCE
15:36	REBOUND (DEF) by WADE, TREY			
15:30	TURNOVER (BADPASS) by SHERFIELD, GRANT			
15:30				STEAL by ACHIUWA, PRECIOUS
15:26	FOUL (PERSONAL) by SHERFIELD, GRANT			
15:26				
15:26				SUB OUT: THOMAS, LANCE
15:26				SUB IN: MAURICE, ISAIAH
15:26	SUB OUT: SHERFIELD, GRANT			
15:26	SUB IN: ETIENNE, TYSON			
15:10				MISSED JUMPER by LOMAX, ALEX
15:07				REBOUND (OFF) by ACHIUWA, PRECIOUS
15:06		39-32	H 7	GOOD! LAYUP by ACHIUWA, PRECIOUS
15:05	FOUL (PERSONAL) by ECHENIQUE, JAIME			
15:05		40-32	H 8	GOOD! FT by ACHIUWA, PRECIOUS
15:05	SUB OUT: ECHENIQUE, JAIME			
15:05	SUB IN: POOR BEAR-CHANDLER, ISAIAH			
14:38	MISSED 3PTR by DENNIS, DEXTER			
14:35				REBOUND (DEF) by LOMAX, ALEX
14:30		42-32	H 10	GOOD! LAYUP by LOMAX, ALEX [FB/PNT]
14:30	FOUL (PERSONAL) by BURTON, JAMARIUS			
14:30				MISSED FT by LOMAX, ALEX
14:29	REBOUND (DEF) by POOR BEAR-CHANDLER, ISAIAH			
14:17	MISSED 3PTR by ETIENNE, TYSON			

Time	VISITORS: Wichita St.	Score	Margin	HOME: Memphis
14:15				REBOUND (DEF) by MAURICE, ISIAIAH
13:55	FOUL (PERSONAL) by DENNIS, DEXTER			
13:55		43-32	H 11	GOOD! FT by HARRIS, TYLER
13:55		44-32	H 12	GOOD! FT by HARRIS, TYLER
13:49	TIMEOUT 30SEC			
13:49				
13:49	SUB OUT: BURTON, JAMARIUS			
13:49	SUB OUT: WADE, TREY			
13:49	SUB IN: STEVENSON, ERIK			
13:49	SUB IN: SHERFIELD, GRANT			
13:29	GOOD! LAYUP by DENNIS, DEXTER	44-34	H 10	
13:05	FOUL (PERSONAL) by POOR BEAR-CHANDLER, ISIAIAH			
13:05		45-34	H 11	GOOD! FT by QUINONES, LESTER
13:05				SUB OUT: MAURICE, ISIAIAH
13:05				SUB IN: ELLIS, BOOGIE
13:05		46-34	H 12	GOOD! FT by QUINONES, LESTER
12:51	MISSED JUMPER by SHERFIELD, GRANT			
12:48	REBOUND (OFF) by SHERFIELD, GRANT			
12:45				FOUL (PERSONAL) by HARRIS, TYLER
12:37	GOOD! 3PTR by DENNIS, DEXTER	46-37	H 9	
12:37	ASSIST by SHERFIELD, GRANT			
12:25		48-37	H 11	GOOD! JUMPER by QUINONES, LESTER
12:25				ASSIST by LOMAX, ALEX
12:05	MISSED JUMPER by SHERFIELD, GRANT			
12:03				REBOUND (DEF) by ACHIUWA, PRECIOUS
11:42				MISSED 3PTR by HARRIS, TYLER
11:39	REBOUND (DEF) by SHERFIELD, GRANT			
11:34	MISSED LAYUP by SHERFIELD, GRANT			
11:34				BLOCK by LOMAX, ALEX
11:33	REBOUND (OFF) by TEAM			
11:33				
11:33				SUB OUT: ACHIUWA, PRECIOUS
11:33				SUB IN: DANDRIDGE, MALCOLM
11:33	SUB OUT: ETIENNE, TYSON			
11:33	SUB OUT: POOR BEAR-CHANDLER, ISIAIAH			
11:33	SUB IN: BURTON, JAMARIUS			
11:33	SUB IN: UDEZE, MORRIS			
11:19	GOOD! JUMPER by SHERFIELD, GRANT [PNT]	48-39	H 9	
11:07				MISSED 3PTR by QUINONES, LESTER
11:03	REBOUND (DEF) by STEVENSON, ERIK			
11:03				FOUL (PERSONAL) by DANDRIDGE, MALCOLM
10:36	MISSED JUMPER by STEVENSON, ERIK			
10:34	REBOUND (OFF) by UDEZE, MORRIS			
10:33	TURNOVER (SHOTCLOCK) by TEAM			
10:14		51-39	H 12	GOOD! 3PTR by HARRIS, TYLER
10:14				ASSIST by DANDRIDGE, MALCOLM
10:03				FOUL (PERSONAL) by DANDRIDGE, MALCOLM
10:03	MISSED FT by UDEZE, MORRIS			
10:03	REBOUND (OFF) by TEAM			
10:03				SUB OUT: DANDRIDGE, MALCOLM
10:03				SUB IN: ACHIUWA, PRECIOUS
10:03	GOOD! FT by UDEZE, MORRIS [FB]	51-40	H 11	
09:39				MISSED LAYUP by ACHIUWA, PRECIOUS
09:36	REBOUND (DEF) by UDEZE, MORRIS			
09:31	MISSED 3PTR by BURTON, JAMARIUS			
09:27				REBOUND (DEF) by TEAM
09:27	FOUL (PERSONAL) by UDEZE, MORRIS			
09:27	SUB OUT: UDEZE, MORRIS			
09:27	SUB IN: ECHENIQUE, JAIME			
09:27				MISSED FT by ACHIUWA, PRECIOUS
09:27	REBOUND (DEF) by TEAM			
09:27				FOUL (PERSONAL) by QUINONES, LESTER
09:16				FOUL (PERSONAL) by HARRIS, TYLER
09:16	MISSED FT by STEVENSON, ERIK			
09:14				REBOUND (DEF) by TEAM
09:08				MISSED LAYUP by LOMAX, ALEX
09:05				REBOUND (OFF) by ACHIUWA, PRECIOUS
09:05				MISSED LAYUP by ACHIUWA, PRECIOUS
09:04				REBOUND (OFF) by ACHIUWA, PRECIOUS
09:04				MISSED LAYUP by ACHIUWA, PRECIOUS
09:02	REBOUND (DEF) by DENNIS, DEXTER			
08:52	GOOD! JUMPER by ECHENIQUE, JAIME [PNT]	51-42	H 9	
08:52	ASSIST by BURTON, JAMARIUS			
08:37				MISSED JUMPER by ELLIS, BOOGIE
08:35	REBOUND (DEF) by STEVENSON, ERIK			
08:29	TURNOVER (BADPASS) by STEVENSON, ERIK			
08:29				STEAL by QUINONES, LESTER
08:06	SUB OUT: STEVENSON, ERIK			
08:06	SUB IN: WADE, TREY			
08:05		54-42	H 12	GOOD! 3PTR by HARRIS, TYLER

Time	VISITORS: Wichita St.	Score	Margin	HOME: Memphis
08:05				ASSIST by ACHIUWA, PRECIOUS
07:44	GOOD! LAYUP by DENNIS, DEXTER	54-44	H 10	
07:23		56-44	H 12	GOOD! JUMPER by LOMAX, ALEX
07:12				FOUL (PERSONAL) by LOMAX, ALEX
07:12				
07:12				SUB OUT: ELLIS, BOOGIE
07:12				SUB IN: THOMAS, LANCE
07:12	SUB OUT: SHERFIELD, GRANT			
07:12	SUB IN: ETIENNE, TYSON			
07:12	GOOD! FT by ECHENIQUE, JAIME [FB]	56-45	H 11	
07:12	MISSED FT by ECHENIQUE, JAIME			
07:11				REBOUND (DEF) by ACHIUWA, PRECIOUS
06:47		58-45	H 13	GOOD! JUMPER by LOMAX, ALEX [PNT]
06:14	MISSED LAYUP by DENNIS, DEXTER			
06:14				BLOCK by LOMAX, ALEX
06:11				REBOUND (DEF) by TEAM
05:52				MISSED LAYUP by HARRIS, TYLER
05:50	REBOUND (DEF) by WADE, TREY			
05:30	MISSED 3PTR by DENNIS, DEXTER			
05:27	REBOUND (OFF) by TEAM			
05:27	TURNOVER (TRAVEL) by DENNIS, DEXTER			
05:27	SUB OUT: BURTON, JAMARIUS			
05:27	SUB IN: SHERFIELD, GRANT			
05:18		60-45	H 15	GOOD! DUNK by ACHIUWA, PRECIOUS [FB]
05:18				ASSIST by HARRIS, TYLER
05:08				FOUL (PERSONAL) by HARRIS, TYLER
05:08	MISSED FT by SHERFIELD, GRANT			
05:07				REBOUND (DEF) by ACHIUWA, PRECIOUS
05:03		62-45	H 17	GOOD! DUNK by ACHIUWA, PRECIOUS [FB]
05:03				ASSIST by HARRIS, TYLER
04:52	MISSED 3PTR by WADE, TREY			
04:49				REBOUND (DEF) by QUINONES, LESTER
04:34				MISSED 3PTR by LOMAX, ALEX
04:32	REBOUND (DEF) by DENNIS, DEXTER			
04:28	MISSED 3PTR by DENNIS, DEXTER			
04:25	REBOUND (OFF) by DENNIS, DEXTER			
04:18	GOOD! 3PTR by SHERFIELD, GRANT	62-48	H 14	
03:44		64-48	H 16	GOOD! JUMPER by HARRIS, TYLER
03:27	MISSED JUMPER by ETIENNE, TYSON			
03:25				REBOUND (DEF) by HARRIS, TYLER
03:07				MISSED 3PTR by HARRIS, TYLER
03:02	REBOUND (DEF) by DENNIS, DEXTER			
02:53				FOUL (PERSONAL) by HARRIS, TYLER
02:53				
02:53	SUB OUT: WADE, TREY			
02:53	SUB IN: BURTON, JAMARIUS			
02:53	MISSED FT by ETIENNE, TYSON			
02:53	REBOUND (OFF) by TEAM			
02:53	GOOD! FT by ETIENNE, TYSON	64-49	H 15	
02:53	GOOD! FT by ETIENNE, TYSON	64-50	H 14	
02:47	FOUL (PERSONAL) by DENNIS, DEXTER			
02:47				MISSED FT by HARRIS, TYLER
02:46				REBOUND (OFF) by HARRIS, TYLER
02:33				TIMEOUT 30SEC
02:33	SUB OUT: ECHENIQUE, JAIME			
02:33	SUB IN: POOR BEAR-CHANDLER, ISAIAH			
02:26				MISSED 3PTR by QUINONES, LESTER
02:22	REBOUND (DEF) by TEAM			
02:08				FOUL (PERSONAL) by THOMAS, LANCE
02:08	GOOD! FT by DENNIS, DEXTER	64-51	H 13	
02:08				SUB OUT: THOMAS, LANCE
02:08				SUB IN: ELLIS, BOOGIE
02:08	GOOD! FT by DENNIS, DEXTER	64-52	H 12	
02:08	SUB OUT: DENNIS, DEXTER			
02:08	SUB IN: WADE, TREY			
01:50		66-52	H 14	GOOD! DUNK by ACHIUWA, PRECIOUS
01:50				ASSIST by LOMAX, ALEX
01:32				FOUL (PERSONAL) by QUINONES, LESTER
01:32	GOOD! FT by POOR BEAR-CHANDLER, ISAIAH	66-53	H 13	
01:32	MISSED FT by POOR BEAR-CHANDLER, ISAIAH			
01:30	REBOUND (OFF) by POOR BEAR-CHANDLER, ISAIAH			
01:28	MISSED 3PTR by ETIENNE, TYSON			
01:25				REBOUND (DEF) by ACHIUWA, PRECIOUS
01:24	FOUL (PERSONAL) by ETIENNE, TYSON			
01:24	SUB OUT: ETIENNE, TYSON			
01:24	SUB IN: DENNIS, DEXTER			
01:24				MISSED FT by ACHIUWA, PRECIOUS
01:23				REBOUND (OFF) by QUINONES, LESTER
01:06				MISSED 3PTR by LOMAX, ALEX
01:02	REBOUND (DEF) by WADE, TREY			

Time	VISITORS: Wichita St.	Score	Margin	HOME: Memphis
00:59				FOUL (PERSONAL) by HARRIS, TYLER
00:59				SUB OUT: HARRIS, TYLER
00:59				SUB IN: THOMAS, LANCE
00:59	GOOD! FT by BURTON, JAMARIUS	66-54	H 12	
00:59	GOOD! FT by BURTON, JAMARIUS	66-55	H 11	
00:36				MISSED LAYUP by ELLIS, BOOGIE
00:36	BLOCK by POOR BEAR-CHANDLER, ISAIAH			
00:33	REBOUND (DEF) by POOR BEAR-CHANDLER, ISAIAH			
00:27	GOOD! 3PTR by SHERFIELD, GRANT [FB]	66-58	H 8	
00:27	ASSIST by BURTON, JAMARIUS			
00:27	TIMEOUT 30SEC			
00:23	FOUL (PERSONAL) by BURTON, JAMARIUS			
00:23		67-58	H 9	GOOD! FT by LOMAX, ALEX
00:23		68-58	H 10	GOOD! FT by LOMAX, ALEX
00:10	GOOD! LAYUP by SHERFIELD, GRANT	68-60	H 8	
00:06				TIMEOUT 30SEC
00:06	SUB OUT: POOR BEAR-CHANDLER, ISAIAH			
00:06	SUB IN: ETIENNE, TYSON			

Wichita St. 60, Memphis 68

Points from (This Period)	WSU	MEM
In the Paint	14	14
Off Turns	2	11
2nd Chance	11	3
Fast Break	7	6
Bench	4	21

**Official Scoring/Possession Reference Chart**  
**Wichita St. vs Memphis**  
**Period 1**  
**March 05, 2020 at FedExForum - Memphis**



**Period 1**

**Starters:**

**Wichita St.:** 0 DENNIS, DEXTER (G); 2 BURTON, JAMARIUS (G); 5 WADE, TREY (F); 21 ECHENIQUE, JAIME (C); 52 SHERFIELD, GRANT (G);

**Memphis:** 5 ELLIS, BOOGIE (G); 10 BAUGH, DAMION (G); 11 QUINONES, LESTER (G); 14 MAURICE, ISAIAH (F); 55 ACHIUWA, PRECIOUS (F);

Time	VISITORS: Wichita St.	Score	Margin	HOME: Memphis
18:20	GOOD! LAYUP by WADE, TREY [FB]	0-2	V 2	
17:05	GOOD! 3PTR by BURTON, JAMARIUS	0-5	V 5	
16:30	GOOD! JUMPER by ECHENIQUE, JAIME [PNT]	0-7	V 7	
16:03		3-7	V 4	GOOD! 3PTR by THOMAS, LANCE
14:09		6-7	V 1	GOOD! 3PTR by THOMAS, LANCE
13:04		9-7	H 2	GOOD! 3PTR by QUINONES, LESTER [FB]
10:22		12-7	H 5	GOOD! 3PTR by HARRIS, TYLER
09:41		13-7	H 6	GOOD! FT by ACHIUWA, PRECIOUS
09:15	GOOD! DUNK by ECHENIQUE, JAIME	13-9	H 4	
08:51	GOOD! LAYUP by ECHENIQUE, JAIME	13-11	H 2	
08:28		15-11	H 4	GOOD! LAYUP by DANDRIDGE, MALCOLM
07:38		18-11	H 7	GOOD! 3PTR by HARRIS, TYLER
05:54		19-11	H 8	GOOD! FT by ACHIUWA, PRECIOUS
05:54		20-11	H 9	GOOD! FT by ACHIUWA, PRECIOUS
05:34	GOOD! JUMPER by DENNIS, DEXTER [PNT]	20-13	H 7	
05:24		22-13	H 9	GOOD! LAYUP by MAURICE, ISAIAH
04:39		23-13	H 10	GOOD! FT by ACHIUWA, PRECIOUS
04:39		24-13	H 11	GOOD! FT by ACHIUWA, PRECIOUS
03:43	GOOD! 3PTR by BURTON, JAMARIUS	24-16	H 8	
03:19	GOOD! JUMPER by STEVENSON, ERIK [PNT]	24-18	H 6	
02:56		26-18	H 8	GOOD! JUMPER by ELLIS, BOOGIE [PNT]
02:22	GOOD! JUMPER by ECHENIQUE, JAIME	26-20	H 6	
01:31	GOOD! FT by DENNIS, DEXTER	26-21	H 5	
01:31	GOOD! FT by DENNIS, DEXTER	26-22	H 4	
00:54	GOOD! LAYUP by DENNIS, DEXTER	26-24	H 2	
00:03		29-24	H 5	GOOD! 3PTR by HARRIS, TYLER

**Wichita St. 24, Memphis 29**

**Official Scoring/Possession Reference Chart**  
**Wichita St. vs Memphis**  
**Period 2**  
**March 05, 2020 at FedExForum - Memphis**



**Period 2**

**Starters:**

**Wichita St.:** 0 DENNIS, DEXTER (G); 2 BURTON, JAMARIUS (G); 5 WADE, TREY (F); 21 ECHENIQUE, JAIME (C); 52 SHERFIELD, GRANT (G);

**Memphis:** 5 ELLIS, BOOGIE (G); 10 BAUGH, DAMION (G); 11 QUINONES, LESTER (G); 14 MAURICE, ISAIAH (F); 55 ACHIUWA, PRECIOUS (F);

Time	VISITORS: Wichita St.	Score	Margin	HOME: Memphis
19:11		31-24	H 7	GOOD! JUMPER by QUINONES, LESTER [PNT]
18:57	GOOD! JUMPER by ECHENIQUE, JAIME [PNT]	31-26	H 5	
18:36		34-26	H 8	GOOD! 3PTR by THOMAS, LANCE
17:16		36-26	H 10	GOOD! JUMPER by QUINONES, LESTER
16:44	GOOD! FT by SHERFIELD, GRANT	36-27	H 9	
16:33	GOOD! 3PTR by BURTON, JAMARIUS	36-30	H 6	
16:21	GOOD! LAYUP by BURTON, JAMARIUS [FB]	36-32	H 4	
16:10		37-32	H 5	GOOD! FT by QUINONES, LESTER
15:06		39-32	H 7	GOOD! LAYUP by ACHIUWA, PRECIOUS
15:05		40-32	H 8	GOOD! FT by ACHIUWA, PRECIOUS
14:30		42-32	H 10	GOOD! LAYUP by LOMAX, ALEX [FB/PNT]
13:55		43-32	H 11	GOOD! FT by HARRIS, TYLER
13:55		44-32	H 12	GOOD! FT by HARRIS, TYLER
13:29	GOOD! LAYUP by DENNIS, DEXTER	44-34	H 10	
13:05		45-34	H 11	GOOD! FT by QUINONES, LESTER
13:05		46-34	H 12	GOOD! FT by QUINONES, LESTER
12:37	GOOD! 3PTR by DENNIS, DEXTER	46-37	H 9	
12:25		48-37	H 11	GOOD! JUMPER by QUINONES, LESTER
11:19	GOOD! JUMPER by SHERFIELD, GRANT [PNT]	48-39	H 9	
10:14		51-39	H 12	GOOD! 3PTR by HARRIS, TYLER
10:03	GOOD! FT by UDEZE, MORRIS [FB]	51-40	H 11	
08:52	GOOD! JUMPER by ECHENIQUE, JAIME [PNT]	51-42	H 9	
08:05		54-42	H 12	GOOD! 3PTR by HARRIS, TYLER
07:44	GOOD! LAYUP by DENNIS, DEXTER	54-44	H 10	
07:23		56-44	H 12	GOOD! JUMPER by LOMAX, ALEX
07:12	GOOD! FT by ECHENIQUE, JAIME [FB]	56-45	H 11	
06:47		58-45	H 13	GOOD! JUMPER by LOMAX, ALEX [PNT]
05:18		60-45	H 15	GOOD! DUNK by ACHIUWA, PRECIOUS [FB]
05:03		62-45	H 17	GOOD! DUNK by ACHIUWA, PRECIOUS [FB]
04:18	GOOD! 3PTR by SHERFIELD, GRANT	62-48	H 14	
03:44		64-48	H 16	GOOD! JUMPER by HARRIS, TYLER
02:53	GOOD! FT by ETIENNE, TYSON	64-49	H 15	
02:53	GOOD! FT by ETIENNE, TYSON	64-50	H 14	
02:08	GOOD! FT by DENNIS, DEXTER	64-51	H 13	
02:08	GOOD! FT by DENNIS, DEXTER	64-52	H 12	
01:50		66-52	H 14	GOOD! DUNK by ACHIUWA, PRECIOUS
01:32	GOOD! FT by POOR BEAR-CHANDLER, ISAIAH	66-53	H 13	
00:59	GOOD! FT by BURTON, JAMARIUS	66-54	H 12	
00:59	GOOD! FT by BURTON, JAMARIUS	66-55	H 11	
00:27	GOOD! 3PTR by SHERFIELD, GRANT [FB]	66-58	H 8	
00:23		67-58	H 9	GOOD! FT by LOMAX, ALEX
00:23		68-58	H 10	GOOD! FT by LOMAX, ALEX
00:10	GOOD! LAYUP by SHERFIELD, GRANT	68-60	H 8	

**Wichita St. 60, Memphis 68**

**Official Substitutions Log**  
**Wichita St. vs Memphis**  
**Period 1**  
**March 05, 2020 at FedExForum - Memphis**



VISITORS: Wichita St.	Time	Score	HOME: Memphis
0 DENNIS,DEXTER			5 ELLIS,BOOGIE
2 BURTON,JAMARIUS			10 BAUGH,DAMION
5 WADE,TREY			11 QUINONES,LESTER
21 ECHENIQUE,JAIME			14 MAURICE,ISAIHAH
52 SHERFIELD,GRANT			55 ACHIUWA,PRECIOUS
	16:47	5-0	SUB OUT: BAUGH,DAMION
	16:47		SUB OUT: MAURICE,ISAIHAH
	16:47		SUB IN: LOMAX,ALEX
	16:47		SUB IN: THOMAS,LANCE
SUB OUT: 0 DENNIS,DEXTER	16:47		
SUB IN: 1 ETIENNE, TYSON	16:47		
	15:45	7-3	SUB OUT: ELLIS,BOOGIE
	15:45		SUB IN: HARRIS,TYLER
	11:54	7-9	SUB OUT: QUINONES,LESTER
	11:54		SUB OUT: ACHIUWA,PRECIOUS
	11:54		SUB IN: ELLIS,BOOGIE
	11:54		SUB IN: DANDRIDGE,MALCOLM
SUB OUT: 5 WADE,TREY	11:54		
SUB OUT: 21 ECHENIQUE,JAIME	11:54		
SUB OUT: 52 SHERFIELD,GRANT	11:54		
SUB IN: 0 DENNIS,DEXTER	11:54		
SUB IN: 10 STEVENSON,ERIK	11:54		
SUB IN: 24 UDEZE,MORRIS	11:54		
	10:40	7-9	SUB OUT: THOMAS,LANCE
	10:40		SUB IN: ACHIUWA,PRECIOUS
SUB OUT: 1 ETIENNE, TYSON	10:03	7-12	
SUB OUT: 2 BURTON,JAMARIUS	10:03		
SUB OUT: 24 UDEZE,MORRIS	10:03		
SUB IN: 5 WADE,TREY	10:03		
SUB IN: 21 ECHENIQUE,JAIME	10:03		
SUB IN: 52 SHERFIELD,GRANT	10:03		
	08:11	11-15	SUB OUT: LOMAX,ALEX
	08:11		SUB OUT: DANDRIDGE,MALCOLM
	08:11		SUB IN: BAUGH,DAMION
	08:11		SUB IN: MAURICE,ISAIHAH
	07:18	11-18	SUB OUT: ELLIS,BOOGIE
	07:18		SUB IN: QUINONES,LESTER
SUB OUT: 10 STEVENSON,ERIK	07:18		
SUB OUT: 21 ECHENIQUE,JAIME	07:18		
SUB IN: 1 ETIENNE, TYSON	07:18		
SUB IN: 44 POOR BEAR-CHANDLER,ISAIHAH	07:18		
	06:10	11-18	SUB OUT: HARRIS,TYLER
	06:10		SUB IN: LOMAX,ALEX
	04:39	13-22	SUB OUT: BAUGH,DAMION
	04:39		SUB OUT: MAURICE,ISAIHAH
	04:39		SUB IN: ELLIS,BOOGIE
	04:39		SUB IN: THOMAS,LANCE
SUB OUT: 0 DENNIS,DEXTER	04:39		
SUB OUT: 44 POOR BEAR-CHANDLER,ISAIHAH	04:39		
SUB OUT: 52 SHERFIELD,GRANT	04:39		
SUB IN: 2 BURTON,JAMARIUS	04:39		
SUB IN: 10 STEVENSON,ERIK	04:39		
SUB IN: 21 ECHENIQUE,JAIME	04:39		
	02:41	18-26	SUB OUT: LOMAX,ALEX
	02:41		SUB IN: HARRIS,TYLER
SUB OUT: 5 WADE,TREY	02:41		
SUB IN: 0 DENNIS,DEXTER	02:41		
	01:31	21-26	SUB OUT: QUINONES,LESTER
	01:31		SUB IN: LOMAX,ALEX
	00:34	24-26	SUB OUT: THOMAS,LANCE
	00:34		SUB IN: DANDRIDGE,MALCOLM

**Wichita St. 24, Memphis 29**

**Official Substitutions Log**  
**Wichita St. vs Memphis**  
**Period 2**  
**March 05, 2020 at FedExForum - Memphis**

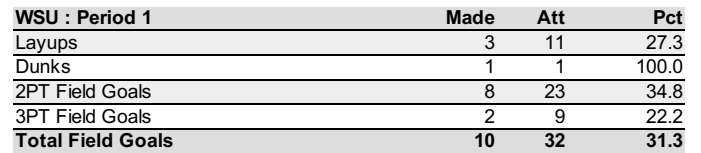


VISITORS: Wichita St.	Time	Score	HOME: Memphis
0 DENNIS,DEXTER			5 ELLIS,BOOGIE
2 BURTON,JAMARIUS			10 BAUGH,DAMION
5 WADE,TREY			11 QUINONES,LESTER
21 ECHENIQUE,JAIME			14 MAURICE,ISAIHAH
52 SHERFIELD,GRANT			55 ACHIUWA,PRECIOUS
	20:00	-	SUB OUT: HARRIS,TYLER
	20:00		SUB OUT: DANDRIDGE,MALCOLM
	20:00		SUB IN: QUINONES,LESTER
SUB OUT: 1 ETIENNE,TYSON	20:00		
SUB OUT: 10 STEVENSON,ERIK	20:00		
SUB IN: 5 WADE,TREY	20:00		
SUB IN: 52 SHERFIELD,GRANT	20:00		
	20:00		SUB IN: THOMAS,LANCE
	16:10	32-37	SUB OUT: ELLIS,BOOGIE
	16:10		SUB IN: HARRIS,TYLER
	15:26	32-37	SUB OUT: THOMAS,LANCE
	15:26		SUB IN: MAURICE,ISAIHAH
SUB OUT: 52 SHERFIELD,GRANT	15:26		
SUB IN: 1 ETIENNE,TYSON	15:26		
SUB OUT: 21 ECHENIQUE,JAIME	15:05	32-40	
SUB IN: 44 POOR BEAR-CHANDLER,ISAIHAH	15:05		
SUB OUT: 2 BURTON,JAMARIUS	13:49	32-44	
SUB OUT: 5 WADE,TREY	13:49		
SUB IN: 10 STEVENSON,ERIK	13:49		
SUB IN: 52 SHERFIELD,GRANT	13:49		
	13:05	34-45	SUB OUT: MAURICE,ISAIHAH
	13:05		SUB IN: ELLIS,BOOGIE
	11:33	37-48	SUB OUT: ACHIUWA,PRECIOUS
	11:33		SUB IN: DANDRIDGE,MALCOLM
SUB OUT: 1 ETIENNE,TYSON	11:33		
SUB OUT: 44 POOR BEAR-CHANDLER,ISAIHAH	11:33		
SUB IN: 2 BURTON,JAMARIUS	11:33		
SUB IN: 24 UDEZE,MORRIS	11:33		
	10:03	39-51	SUB OUT: DANDRIDGE,MALCOLM
	10:03		SUB IN: ACHIUWA,PRECIOUS
SUB OUT: 24 UDEZE,MORRIS	09:27	40-51	
SUB IN: 21 ECHENIQUE,JAIME	09:27		
SUB OUT: 10 STEVENSON,ERIK	08:06	42-51	
SUB IN: 5 WADE,TREY	08:06		
	07:12	44-56	SUB OUT: ELLIS,BOOGIE
	07:12		SUB IN: THOMAS,LANCE
SUB OUT: 52 SHERFIELD,GRANT	07:12		
SUB IN: 1 ETIENNE,TYSON	07:12		
SUB OUT: 2 BURTON,JAMARIUS	05:27	45-58	
SUB IN: 52 SHERFIELD,GRANT	05:27		
SUB OUT: 5 WADE,TREY	02:53	48-64	
SUB IN: 2 BURTON,JAMARIUS	02:53		
SUB OUT: 21 ECHENIQUE,JAIME	02:33	50-64	
SUB IN: 44 POOR BEAR-CHANDLER,ISAIHAH	02:33		
	02:08	51-64	SUB OUT: THOMAS,LANCE
	02:08		SUB IN: ELLIS,BOOGIE
SUB OUT: 0 DENNIS,DEXTER	02:08		
SUB IN: 5 WADE,TREY	02:08		
SUB OUT: 1 ETIENNE,TYSON	01:24	53-66	
SUB IN: 0 DENNIS,DEXTER	01:24		
	00:59	53-66	SUB OUT: HARRIS,TYLER
	00:59		SUB IN: THOMAS,LANCE
SUB OUT: 44 POOR BEAR-CHANDLER,ISAIHAH	00:06	60-68	
SUB IN: 1 ETIENNE,TYSON	00:06		

**Wichita St. 60, Memphis 68**



**Wichita St.**



Official Shot Chart  
**Wichita St. vs Memphis**  
 PERIOD 2 Shots  
 March 05, 2020 at FedExForum - Memphis

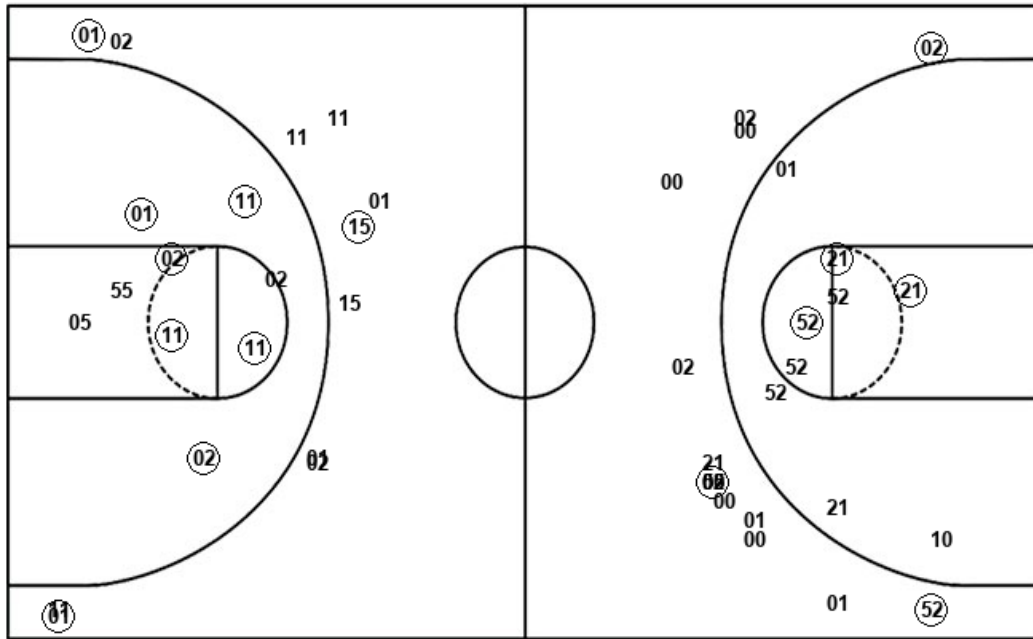


**Memphis**

**Wichita St.**

Layups  
 02 (55) (02) 55 02  
 55 55 01 05

Dunks  
 (55) (55) (55)



Layups  
 (02) (00) 52 (00) 00  
 (52)

Dunks

MEM : Period 2	Made	Att	Pct
Layups	2	9	22.2
Dunks	3	3	100.0
2PT Field Goals	11	21	52.4
3PT Field Goals	3	11	27.3
<b>Total Field Goals</b>	<b>14</b>	<b>32</b>	<b>43.8</b>

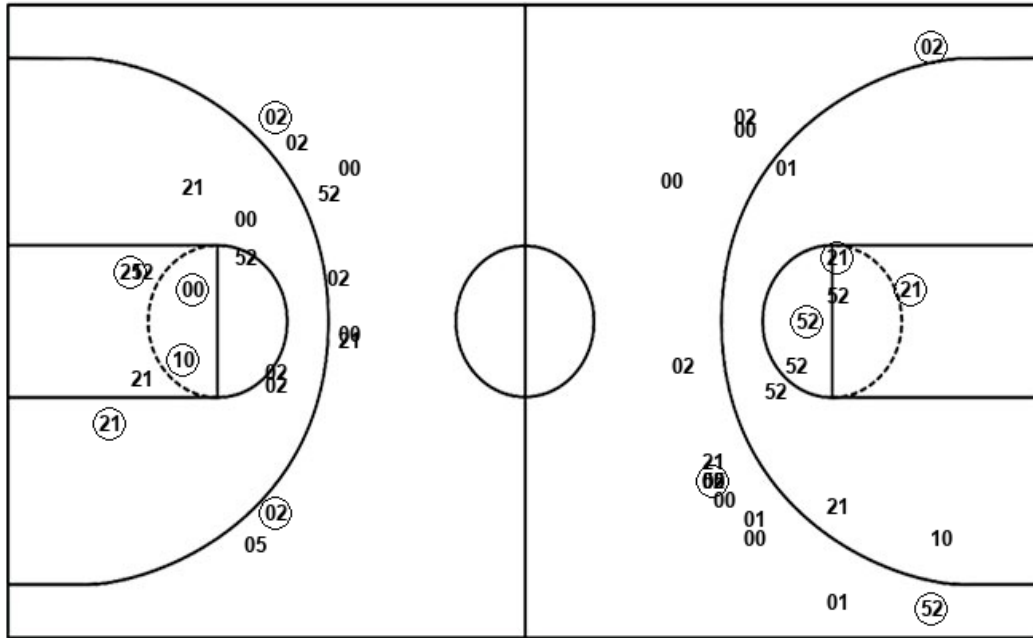
WSU : Period 2	Made	Att	Pct
Layups	4	6	66.7
Dunks	0	0	0
2PT Field Goals	7	15	46.7
3PT Field Goals	4	14	28.6
<b>Total Field Goals</b>	<b>11</b>	<b>29</b>	<b>37.9</b>

Official Shot Chart  
**Wichita St. vs Memphis**  
Wichita St. Team Shots  
March 05, 2020 at FedExForum - Memphis



Layups

Dunks



Layups

Dunks

(05) 05 02 02 00  
(21) 44 00 00 00  
(00) 02 00 52 00  
00 52

(21)

WSU : Period 1	Made	Att	Pct
Layups	3	11	27.3
Dunks	1	1	100.0
2PT Field Goals	8	23	34.8
3PT Field Goals	2	9	22.2
<b>Total Field Goals</b>	<b>10</b>	<b>32</b>	<b>31.3</b>

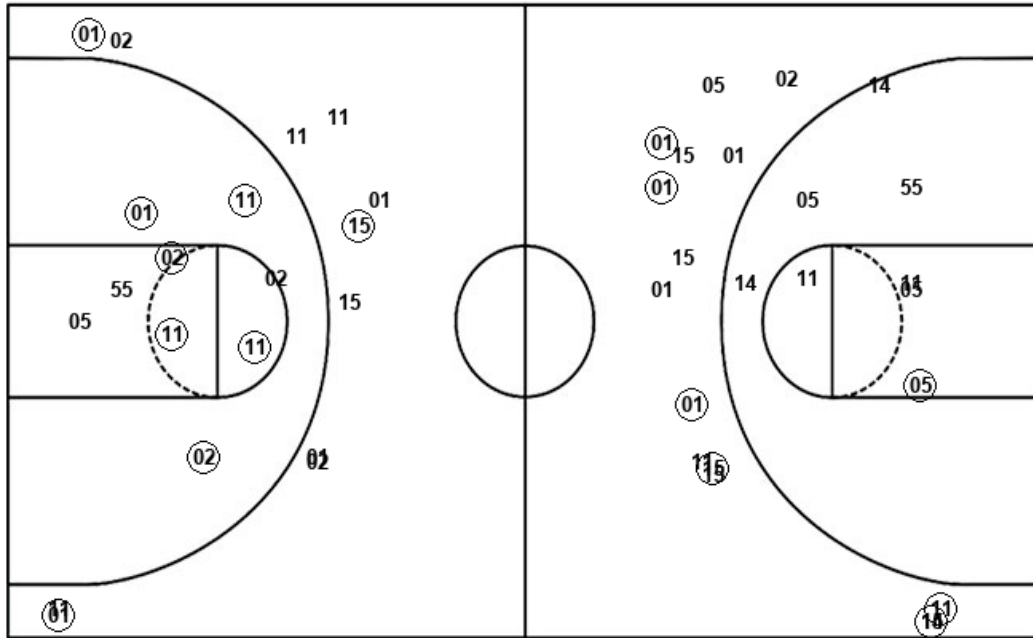
WSU : Period 2	Made	Att	Pct
Layups	4	6	66.7
Dunks	0	0	0
2PT Field Goals	7	15	46.7
3PT Field Goals	4	14	28.6
<b>Total Field Goals</b>	<b>11</b>	<b>29</b>	<b>37.9</b>

Official Shot Chart  
**Wichita St. vs Memphis**  
 Memphis Team Shots  
 March 05, 2020 at FedExForum - Memphis



Layups

Dunks



Layups

10 55 10 (23) (14)  
 55 02 (55) (02) 55  
 02 55 55 01 05

Dunks

(55) (55) (55)

MEM : Period 1	Made	Att	Pct
Layups	2	6	33.3
Dunks	0	0	0
2PT Field Goals	3	14	21.4
3PT Field Goals	6	15	40.0
<b>Total Field Goals</b>	<b>9</b>	<b>29</b>	<b>31.0</b>

MEM : Period 2	Made	Att	Pct
Layups	2	9	22.2
Dunks	3	3	100.0
2PT Field Goals	11	21	52.4
3PT Field Goals	3	11	27.3
<b>Total Field Goals</b>	<b>14</b>	<b>32</b>	<b>43.8</b>