

## FINAL SCORE



**Bradley**

**56**



**Memphis**

**71**

December 03, 2019 • FedExForum - Memphis

## FINAL STATISTICS

**Official Box Score**  
**Bradley vs Memphis**  
**Game Totals -- Final Statistics**  
**December 03, 2019 at FedExForum - Memphis**



**Bradley 56**

No.	Player	S	Pts	FG	3FG	FT	OR	DR	TR	PF	A	TO	Blk	Stl	Min	+/-
05	BROWN, DARRELL	G	4	1-16	0-8	2-5	1	3	4	3	0	2	0	0	35	-19
10	CHILDS, ELIJAH	F	21	9-22	0-1	3-6	9	5	14	1	1	1	1	1	38	-12
12	BAR, KOCH	C	0	0-6	0-0	0-0	2	1	3	0	0	2	0	0	12	-12
22	HENRY, JA'SHON	F	7	2-7	0-2	3-4	4	5	9	4	0	0	0	0	21	-23
25	KENNEL, NATE	G	2	1-8	0-4	0-0	0	5	5	3	3	0	0	1	29	-12
00	KINGSBY, DANYA	G	12	4-11	2-5	2-3	0	2	2	4	0	1	0	1	23	-7
01	BOYA, ARI	C	4	2-3	0-0	0-0	3	4	7	2	1	0	1	0	17	3
02	THOMAS, ANTONIO	G	4	2-4	0-1	0-0	0	1	1	1	1	1	0	0	9	5
03	GABRIEL, STEPHAN	G	0	0-2	0-0	0-0	0	0	0	0	0	0	0	0	2	-3
23	TAHVANAINEN, VILLE	G	2	1-3	0-2	0-0	0	4	4	1	2	0	0	0	13	5
	TEAM						4	2	6	0		0				
<b>TOTALS</b>			<b>56</b>	<b>22-82</b>	<b>2-23</b>	<b>10-18</b>	<b>23</b>	<b>32</b>	<b>55</b>	<b>19</b>	<b>8</b>	<b>7</b>	<b>2</b>	<b>3</b>	<b>200</b>	

*Shooting By Period*

Period	FG	FG%	3FG	3FG%	FT	FT%
1st Half	9-36	25%	0-7	00%	1-4	25%
2nd Half	13-46	28%	2-16	13%	9-14	64%
<b>Game</b>	<b>22-82</b>	<b>26.8%</b>	<b>2-23</b>	<b>08.7%</b>	<b>10-18</b>	<b>55.6%</b>

*Deadball Rebounds: 4,1*  
*Last FG: 2nd-00:38*  
*Biggest Run: 8-0*  
*Largest lead: By 0 at -*  
*Technical Fouls: None.*

**Memphis 71**

No.	Player	S	Pts	FG	3FG	FT	OR	DR	TR	PF	A	TO	Blk	Stl	Min	+/-
00	JEFFRIES, D.J.	F	10	4-10	0-1	2-2	1	8	9	2	0	0	2	0	28	8
05	ELLIS, BOOGIE	G	12	3-7	2-3	4-6	1	4	5	1	2	1	0	0	29	15
10	BAUGH, DAMION	G	8	2-6	0-1	4-4	2	2	4	3	3	4	1	0	17	16
14	MAURICE, ISAIAH	F	3	1-4	1-3	0-0	1	1	2	1	0	1	1	1	15	0
55	ACHIUWA, PRECIOUS	F	6	3-13	0-1	0-0	1	13	14	3	2	0	5	0	27	6
01	HARRIS, TYLER	G	10	3-8	2-5	2-2	0	3	3	0	1	3	0	1	24	14
02	LOMAX, ALEX	G	17	4-7	0-1	9-12	1	1	2	2	2	1	1	3	27	1
15	THOMAS, LANCE	F	3	1-4	1-2	0-0	2	0	2	1	1	0	0	1	12	2
23	DANDRIDGE, MALCOLM	C	2	1-1	0-0	0-0	1	3	4	3	0	0	0	1	13	14
25	HARDAWAY, JAYDEN	G	0	0-1	0-1	0-0	0	0	0	0	0	0	0	0	10	-1
	TEAM						0	2	2	0		0				
<b>TOTALS</b>			<b>71</b>	<b>22-61</b>	<b>6-18</b>	<b>21-26</b>	<b>10</b>	<b>37</b>	<b>47</b>	<b>16</b>	<b>11</b>	<b>10</b>	<b>10</b>	<b>7</b>	<b>200</b>	

*Shooting By Period*

Period	FG	FG%	3FG	3FG%	FT	FT%
1st Half	11-31	35%	2-10	20%	5-6	83%
2nd Half	11-30	37%	4-8	50%	16-20	80%
<b>Game</b>	<b>22-61</b>	<b>36.1%</b>	<b>6-18</b>	<b>33.3%</b>	<b>21-26</b>	<b>80.8%</b>

*Deadball Rebounds: 1,4*  
*Last FG: 2nd-00:12*  
*Biggest Run: 9-0*  
*Largest lead: By 18 at 2-06*  
*Technical Fouls: None.*

Game Notes:

Officials: Gerry Pollard,Bill Jacobson,Jason Baker  
Attendance: 15517

Start Time: 09:05 PM ET  
End Time: 11:06 PM ET  
Game Duration: 2:00

Score	1st	2nd	TOT
BRD	19	37	<b>56</b>
MEM	29	42	<b>71</b>

BRD led for 0:00. MEM led for 39:11.  
Game was tied for 0:45.  
Times tied: 0      Lead Changes: 0

Points from	BRD	MEM
In the Paint	26	26
Off Turns	6	11
2nd Chance	19	9
Fast Break	11	21
Bench	22	32

**Official Box Score**  
**Bradley vs Memphis**  
**First Half Statistics Only**  
**December 03, 2019 at FedExForum - Memphis**



**Bradley 19**

No.	Player	S	Pts	FG	3FG	FT	OR	DR	TR	PF	A	TO	Blk	Stl	Min	+/-
05	BROWN, DARRELL	G	0	0-5	0-2	0-2	0	2	2	0	0	2	0	0	19	-10
10	CHILDS, ELIJAH	F	8	4-10	0-0	0-0	4	2	6	0	0	0	0	0	18	-7
12	BAR, KOCH	C	0	0-4	0-0	0-0	1	1	2	0	0	2	0	0	11	-7
22	HENRY, JA'SHON	F	1	0-1	0-1	1-2	1	1	2	1	0	0	0	0	9	-12
25	KENNEL, NATE	G	2	1-4	0-2	0-0	0	4	4	1	2	0	0	1	16	-2
00	KINGSBY, DANYA	G	2	1-4	0-0	0-0	0	2	2	1	0	0	0	0	10	-8
01	BOYA, ARI	C	4	2-3	0-0	0-0	2	2	4	2	1	0	1	0	8	-1
02	THOMAS, ANTONIO	G	2	1-1	0-0	0-0	0	0	0	1	0	0	0	0	3	-2
03	GABRIEL, STEPHAN	G	0	0-2	0-0	0-0	0	0	0	0	0	0	0	0	2	-3
23	TAHVANAINEN, VILLE	G	0	0-2	0-2	0-0	0	0	0	0	0	0	0	0	4	2
TEAM							1	1	2	0		0				
<b>TOTALS</b>			<b>19</b>	<b>9-36</b>	<b>0-7</b>	<b>1-4</b>	<b>9</b>	<b>15</b>	<b>24</b>	<b>6</b>	<b>3</b>	<b>4</b>	<b>1</b>	<b>1</b>	<b>100</b>	

*Shooting By Period*

Period	FG	FG%	3FG	3FG%	FT	FT%
1st Half	9-36	25%	0-7	00%	1-4	25%
Game	22-82	26.8%	2-23	08.7%	10-18	55.6%

*Deadball Rebounds: 4,1*  
*Last FG Half: BRD 2nd-00:38*

**Memphis 29**

No.	Player	S	Pts	FG	3FG	FT	OR	DR	TR	PF	A	TO	Blk	Stl	Min	+/-
00	JEFFRIES, D.J.	F	6	2-5	0-0	2-2	1	4	5	0	0	0	2	0	13	8
05	ELLIS, BOOGIE	G	1	0-2	0-1	1-2	0	2	2	1	1	1	0	0	18	9
10	BAUGH, DAMION	G	2	1-2	0-1	0-0	1	1	2	2	0	3	0	0	4	6
14	MAURICE, ISAIAH	F	3	1-3	1-3	0-0	0	0	0	0	0	0	0	1	11	4
55	ACHIUWA, PRECIOUS	F	2	1-4	0-0	0-0	1	4	5	0	0	0	0	0	12	1
01	HARRIS, TYLER	G	0	0-3	0-1	0-0	0	1	1	0	0	1	0	0	10	10
02	LOMAX, ALEX	G	10	4-7	0-1	2-2	0	1	1	1	0	0	0	1	15	4
15	THOMAS, LANCE	F	3	1-3	1-2	0-0	2	0	2	0	1	0	0	1	7	7
23	DANDRIDGE, MALCOLM	C	2	1-1	0-0	0-0	1	1	2	2	0	0	0	1	4	3
25	HARDAWAY, JAYDEN	G	0	0-1	0-1	0-0	0	0	0	0	0	0	0	0	5	-2
TEAM							0	2	2	0		0				
<b>TOTALS</b>			<b>29</b>	<b>11-31</b>	<b>2-10</b>	<b>5-6</b>	<b>6</b>	<b>16</b>	<b>22</b>	<b>6</b>	<b>2</b>	<b>5</b>	<b>2</b>	<b>4</b>	<b>100</b>	

*Shooting By Period*

Period	FG	FG%	3FG	3FG%	FT	FT%
1st Half	11-31	35%	2-10	20%	5-6	83%
Game	22-61	36.1%	6-18	33.3%	21-26	80.8%

*Deadball Rebounds: 1,4*  
*Last FG Half: MEM 2nd-00:12*

*Game Notes:*

*Officials: Gerry Pollard, Bill Jacobson, Jason Baker*  
*Attendance: 15517*

*Start Time: 09:05 PM ET*  
*End Time: 11:06 PM ET*  
*Game Duration: 2:00*

Score	1st	2nd	TOT
BRD	19	37	56
MEM	29	42	71

Points from (This Period)	BRD	MEM
In the Paint	12	14
Off Turns	2	7
2nd Chance	8	8
Fast Break	4	8
Bench	8	15

**Official Play-By-Play**  
**Bradley vs Memphis**  
**First Half**  
**December 03, 2019 at FedExForum - Memphis**



**Period 1**

**Starters:**

**Bradley:** 5 BROWN, DARRELL (G); 10 CHILDS, ELIJAH (F); 12 BAR, KOCH (C); 22 HENRY, JA'SHON (F); 25 KENNEL, NATE (G);

**Memphis:** 0 JEFFRIES, D.J. (F); 5 ELLIS, BOOGIE (G); 10 BAUGH, DAMION (G); 14 MAURICE, ISAIAH (F); 55 ACHIUWA, PRECIOUS (F);

Time	VISITORS: Bradley	Score	Margin	HOME: Memphis
19:32				MISSED JUMPER by JEFFRIES, D.J.
19:30				REBOUND (OFF) by BAUGH, DAMION
19:15		2-0	H 2	GOOD! JUMPER by BAUGH, DAMION [PNT]
18:42	MISSED JUMPER by BROWN, DARRELL			
18:42				REBOUND (DEF) by TEAM
18:29				TURNOVER (TRAVEL) by BAUGH, DAMION
18:05	MISSED LAYUP by BAR, KOCH			
18:02				REBOUND (DEF) by ACHIUWA, PRECIOUS
17:43				FOUL (OFF) by BAUGH, DAMION
17:43				TURNOVER (OFFENSIVE) by BAUGH, DAMION
17:29	MISSED 3PTR by KENNEL, NATE			
17:25				REBOUND (DEF) by ACHIUWA, PRECIOUS
17:20	FOUL (PERSONAL) by HENRY, JA'SHON			
17:08				MISSED 3PTR by MAURICE, ISAIAH
17:04	REBOUND (DEF) by KENNEL, NATE			
16:55				FOUL (PERSONAL) by ELLIS, BOOGIE
16:55	MISSED FT by BROWN, DARRELL			
16:55	REBOUND (OFF) by TEAM			
16:55	SUB OUT: HENRY, JA'SHON			
16:55	SUB IN: KINGSBY, DANYA			
16:55	MISSED FT by BROWN, DARRELL			
16:53				REBOUND (DEF) by JEFFRIES, D.J.
16:32				MISSED 3PTR by BAUGH, DAMION
16:26				REBOUND (OFF) by ACHIUWA, PRECIOUS
16:26		4-0	H 4	GOOD! LAYUP by ACHIUWA, PRECIOUS
16:13	TURNOVER (BADPASS) by BAR, KOCH			
16:13				STEAL by MAURICE, ISAIAH
16:09				MISSED LAYUP by ELLIS, BOOGIE
16:04				REBOUND (OFF) by JEFFRIES, D.J.
16:07		6-0	H 6	GOOD! DUNK by JEFFRIES, D.J. [FB]
16:07	TIMEOUT 30SEC			
16:07				
16:08				SUB OUT: ELLIS, BOOGIE
16:08				SUB OUT: BAUGH, DAMION
16:08				SUB IN: HARRIS, TYLER
16:08				SUB IN: LOMAX, ALEX
15:48	GOOD! JUMPER by CHILDS, ELIJAH [PNT]	6-2	H 4	
15:23		9-2	H 7	GOOD! 3PTR by MAURICE, ISAIAH
15:03				FOUL (PERSONAL) by LOMAX, ALEX
15:03	SUB OUT: BAR, KOCH			
15:03	SUB IN: BOYA, ARI			
14:56	MISSED JUMPER by KINGSBY, DANYA			
14:51				REBOUND (DEF) by JEFFRIES, D.J.
14:31				MISSED 3PTR by MAURICE, ISAIAH
14:28	REBOUND (DEF) by TEAM			
14:19	MISSED JUMPER by KENNEL, NATE			
14:16				REBOUND (DEF) by JEFFRIES, D.J.
14:11				TURNOVER (LOSTBALL) by HARRIS, TYLER
14:11	STEAL by KENNEL, NATE			
14:11				SUB OUT: JEFFRIES, D.J.
14:11				SUB OUT: MAURICE, ISAIAH
14:11				SUB OUT: ACHIUWA, PRECIOUS
14:11				SUB IN: ELLIS, BOOGIE
14:11				SUB IN: THOMAS, LANCE
14:11				SUB IN: DANDRIDGE, MALCOLM
13:55	GOOD! LAYUP by BOYA, ARI [PNT]	9-4	H 5	
13:55	ASSIST by KENNEL, NATE			
13:44				MISSED JUMPER by LOMAX, ALEX
13:43	REBOUND (DEF) by KINGSBY, DANYA			
13:43				FOUL (PERSONAL) by DANDRIDGE, MALCOLM
13:43	SUB OUT: CHILDS, ELIJAH			
13:43	SUB IN: HENRY, JA'SHON			
13:38	MISSED 3PTR by KENNEL, NATE			
13:33	REBOUND (OFF) by HENRY, JA'SHON			
13:26	MISSED 3PTR by HENRY, JA'SHON			
13:24				REBOUND (DEF) by TEAM
13:24	FOUL (PERSONAL) by BOYA, ARI			
13:24	SUB OUT: KENNEL, NATE			
13:24	SUB IN: GABRIEL, STEPHAN			
13:02				MISSED 3PTR by THOMAS, LANCE

Time	VISITORS: Bradley	Score	Margin	HOME: Memphis
12:59	REBOUND (DEF) by BOYA, ARI			
12:39	MISSED LAYUP by GABRIEL, STEPHAN			
12:35				REBOUND (DEF) by ELLIS, BOOGIE
12:31				MISSED LAYUP by THOMAS, LANCE
12:31	BLOCK by BOYA, ARI			
12:25				REBOUND (OFF) by DANDRIDGE, MALCOLM
12:25		11-4	H 7	GOOD! LAYUP by DANDRIDGE, MALCOLM
12:22	TURNOVER (BADPASS) by BROWN, DARRELL			
12:22				STEAL by DANDRIDGE, MALCOLM
12:12	FOUL (PERSONAL) by KINGSBY, DANYA			
12:12		12-4	H 8	GOOD! FT by ELLIS, BOOGIE
12:12				SUB OUT: LOMAX, ALEX
12:12				SUB IN: HARDAWAY, JAYDEN
12:12	SUB OUT: KINGSBY, DANYA			
12:12	SUB OUT: BOYA, ARI			
12:12	SUB OUT: BROWN, DARRELL			
12:12	SUB IN: THOMAS, ANTONIO			
12:12	SUB IN: CHILDS, ELIJAH			
12:12	SUB IN: KENNEL, NATE			
12:12				MISSED FT by ELLIS, BOOGIE
12:09	REBOUND (DEF) by HENRY, JA'SHON			
11:52	MISSED JUMPER by CHILDS, ELIJAH			
11:49				REBOUND (DEF) by ELLIS, BOOGIE
11:45				MISSED 3PTR by ELLIS, BOOGIE
11:41	REBOUND (DEF) by KENNEL, NATE			
11:36	MISSED LAYUP by GABRIEL, STEPHAN			
11:34				REBOUND (DEF) by DANDRIDGE, MALCOLM
11:33	FOUL (PERSONAL) by THOMAS, ANTONIO			
11:33				
11:33				SUB OUT: THOMAS, LANCE
11:33				SUB IN: ACHIUWA, PRECIOUS
11:33	SUB OUT: THOMAS, ANTONIO			
11:33	SUB OUT: GABRIEL, STEPHAN			
11:33	SUB OUT: HENRY, JA'SHON			
11:33	SUB IN: BROWN, DARRELL			
11:33	SUB IN: BAR, KOCH			
11:33	SUB IN: TAHVANAINEN, VILLE			
11:23				MISSED JUMPER by HARRIS, TYLER
11:20	REBOUND (DEF) by BROWN, DARRELL			
11:06	MISSED JUMPER by BROWN, DARRELL			
11:01	REBOUND (OFF) by CHILDS, ELIJAH			
11:01	MISSED LAYUP by CHILDS, ELIJAH			
11:01	REBOUND (OFF) by BAR, KOCH			
11:01	MISSED LAYUP by BAR, KOCH			
11:01	REBOUND (OFF) by TEAM			
11:01				SUB OUT: HARRIS, TYLER
11:01				SUB IN: BAUGH, DAMION
10:56	MISSED 3PTR by BROWN, DARRELL			
10:53				REBOUND (DEF) by BAUGH, DAMION
10:48				FOUL (OFF) by BAUGH, DAMION
10:48				TURNOVER (OFFENSIVE) by BAUGH, DAMION
10:48				SUB OUT: BAUGH, DAMION
10:48				SUB OUT: DANDRIDGE, MALCOLM
10:48				SUB IN: LOMAX, ALEX
10:48				SUB IN: MAURICE, ISAIAH
10:28	MISSED 3PTR by TAHVANAINEN, VILLE			
10:24				REBOUND (DEF) by ACHIUWA, PRECIOUS
10:06				MISSED 3PTR by HARDAWAY, JAYDEN
10:02	REBOUND (DEF) by BROWN, DARRELL			
09:56	TURNOVER (LOSTBALL) by BROWN, DARRELL			
09:56				STEAL by LOMAX, ALEX
09:50		14-4	H 10	GOOD! LAYUP by LOMAX, ALEX [FB]
09:26	MISSED 3PTR by TAHVANAINEN, VILLE			
09:23	REBOUND (OFF) by CHILDS, ELIJAH			
09:21	GOOD! JUMPER by CHILDS, ELIJAH	14-6	H 8	
09:01				MISSED JUMPER by ACHIUWA, PRECIOUS
08:59	REBOUND (DEF) by BAR, KOCH			
08:47	GOOD! JUMPER by CHILDS, ELIJAH	14-8	H 6	
08:28		16-8	H 8	GOOD! JUMPER by LOMAX, ALEX
08:09	MISSED JUMPER by BAR, KOCH			
08:05				REBOUND (DEF) by LOMAX, ALEX
07:57				MISSED JUMPER by LOMAX, ALEX
07:54	REBOUND (DEF) by KENNEL, NATE			
07:49	GOOD! JUMPER by CHILDS, ELIJAH [FB/PNT]	16-10	H 6	
07:49	ASSIST by KENNEL, NATE			
07:38				TIMEOUT 30SEC
07:38				
07:38				SUB OUT: HARDAWAY, JAYDEN
07:38				SUB IN: JEFFRIES, D.J.
07:38	SUB OUT: BAR, KOCH			

Time	VISITORS: Bradley	Score	Margin	HOME: Memphis
07:38	SUB OUT: TAHVANAINEN, VILLE			
07:38	SUB IN: KINGSBY, DANYA			
07:38	SUB IN: BOYA, ARI			
07:26				MISSED DUNK by JEFFRIES, D.J.
07:23	REBOUND (DEF) by KENNEL, NATE			
06:57	MISSED LAYUP by CHILDS, ELIJAH			
06:57				BLOCK by JEFFRIES, D.J.
06:53	REBOUND (OFF) by BOYA, ARI			
06:53	GOOD! LAYUP by BOYA, ARI	16-12	H 4	
06:35				MISSED JUMPER by ACHIUWA, PRECIOUS
06:32	REBOUND (DEF) by KINGSBY, DANYA			
06:29	GOOD! JUMPER by KINGSBY, DANYA [FB/PNT]	16-14	H 2	
06:06				MISSED LAYUP by ACHIUWA, PRECIOUS
06:03	REBOUND (DEF) by BOYA, ARI			
05:52	MISSED JUMPER by BOYA, ARI			
05:48				REBOUND (DEF) by ACHIUWA, PRECIOUS
05:42				SUB OUT: JEFFRIES, D.J.
05:42				SUB OUT: ACHIUWA, PRECIOUS
05:42				SUB IN: HARRIS, TYLER
05:42				SUB IN: THOMAS, LANCE
05:42	SUB OUT: KENNEL, NATE			
05:42	SUB IN: HENRY, JA'SHON			
05:38		19-14	H 5	GOOD! 3PTR by THOMAS, LANCE
05:38				ASSIST by ELLIS, BOOGIE
05:12	MISSED JUMPER by KINGSBY, DANYA			
05:09				REBOUND (DEF) by TEAM
05:09				SUB OUT: MAURICE, ISAIAH
05:09				SUB IN: JEFFRIES, D.J.
05:09	SUB OUT: BOYA, ARI			
05:09	SUB IN: BAR, KOCH			
04:57				TURNOVER (BADPASS) by ELLIS, BOOGIE
04:34	MISSED JUMPER by CHILDS, ELIJAH			
04:31				REBOUND (DEF) by TEAM
04:19				MISSED LAYUP by JEFFRIES, D.J.
04:16				REBOUND (OFF) by THOMAS, LANCE
04:15				MISSED 3PTR by LOMAX, ALEX
04:09				REBOUND (OFF) by THOMAS, LANCE
04:00				MISSED 3PTR by HARRIS, TYLER
03:57	REBOUND (DEF) by CHILDS, ELIJAH			
03:44	MISSED JUMPER by BAR, KOCH			
03:41				REBOUND (DEF) by JEFFRIES, D.J.
03:34				MISSED JUMPER by HARRIS, TYLER
03:30	REBOUND (DEF) by CHILDS, ELIJAH			
03:17	TURNOVER (LOSTBALL) by BAR, KOCH			
03:17				STEAL by THOMAS, LANCE
03:12		21-14	H 7	GOOD! DUNK by JEFFRIES, D.J. [FB]
03:12				ASSIST by THOMAS, LANCE
03:12	TIMEOUT 30SEC			
03:12				
03:12	SUB OUT: BAR, KOCH			
03:12	SUB OUT: HENRY, JA'SHON			
03:12	SUB IN: BOYA, ARI			
03:12	SUB IN: KENNEL, NATE			
02:53	MISSED JUMPER by BROWN, DARRELL			
02:53				BLOCK by JEFFRIES, D.J.
02:49	REBOUND (OFF) by BOYA, ARI			
02:47	GOOD! JUMPER by KENNEL, NATE	21-16	H 5	
02:47	ASSIST by BOYA, ARI			
02:21		23-16	H 7	GOOD! JUMPER by LOMAX, ALEX [PNT]
02:02	MISSED LAYUP by KINGSBY, DANYA			
01:59				REBOUND (DEF) by HARRIS, TYLER
01:56	FOUL (PERSONAL) by KENNEL, NATE			
01:56		24-16	H 8	GOOD! FT by JEFFRIES, D.J. [FB]
01:56	SUB OUT: KINGSBY, DANYA			
01:56	SUB IN: THOMAS, ANTONIO			
01:56		25-16	H 9	GOOD! FT by JEFFRIES, D.J. [FB]
01:29	MISSED JUMPER by CHILDS, ELIJAH			
01:25	REBOUND (OFF) by CHILDS, ELIJAH			
01:24	MISSED JUMPER by CHILDS, ELIJAH			
01:22	REBOUND (OFF) by CHILDS, ELIJAH			
01:17	GOOD! LAYUP by THOMAS, ANTONIO [PNT]	25-18	H 7	
01:01	FOUL (PERSONAL) by BOYA, ARI			
01:01		26-18	H 8	GOOD! FT by LOMAX, ALEX
01:01				SUB OUT: HARRIS, TYLER
01:01				SUB OUT: THOMAS, LANCE
01:01				SUB IN: DANDRIDGE, MALCOLM
01:01				SUB IN: HARDAWAY, JAYDEN
01:01	SUB OUT: BOYA, ARI			
01:01	SUB IN: HENRY, JA'SHON			
01:01		27-18	H 9	GOOD! FT by LOMAX, ALEX

Time	VISITORS: Bradley	Score	Margin	HOME: Memphis
00:37				FOUL (PERSONAL) by DANDRIDGE, MALCOLM
00:37	GOOD! FT by HENRY, JA'SHON	27-19	H 8	
00:37	MISSED FT by HENRY, JA'SHON			
00:36				REBOUND (DEF) by TEAM
00:36				SUB OUT: HARDAWAY, JAYDEN
00:36				SUB IN: HARRIS, TYLER
00:11		29-19	H 10	GOOD! JUMPER by LOMAX, ALEX
00:03	MISSED 3PTR by BROWN, DARRELL			
00:00	REBOUND (OFF) by TEAM			

**Bradley 19, Memphis 29**

Points from (This Period)	BRD	MEM
In the Paint	12	14
Off Turns	2	7
2nd Chance	8	8
Fast Break	4	8
Bench	8	15

**Official Box Score**  
**Bradley vs Memphis**  
**Second Half Statistics Only**  
**December 03, 2019 at FedExForum - Memphis**



**Bradley 37**

No.	Player	S	Pts	FG	3FG	FT	OR	DR	TR	PF	A	TO	Blk	Stl	Min	+/-
05	BROWN, DARRELL	G	4	1-11	0-6	2-3	1	1	2	3	0	0	0	0	16	-9
10	CHILDS, ELIJAH	F	13	5-12	0-1	3-6	5	3	8	1	1	1	1	1	20	-5
12	BAR, KOCH	C	0	0-2	0-0	0-0	1	0	1	0	0	0	0	0	1	-5
22	HENRY, JA'SHON	F	6	2-6	0-1	2-2	3	4	7	3	0	0	0	0	13	-11
25	KENNEL, NATE	G	0	0-4	0-2	0-0	0	1	1	2	1	0	0	0	13	-10
00	KINGSBY, DANAYA	G	10	3-7	2-5	2-3	0	0	0	3	0	1	0	1	13	1
01	BOYA, ARI	C	0	0-0	0-0	0-0	1	2	3	0	0	0	0	0	10	4
02	THOMAS, ANTONIO	G	2	1-3	0-1	0-0	0	1	1	0	1	1	0	0	6	7
03	GABRIEL, STEPHAN	G	0	0-0	0-0	0-0	0	0	0	0	0	0	0	0	0	0
23	TAHVANAINEN, VILLE	G	2	1-1	0-0	0-0	0	4	4	1	2	0	0	0	9	3
	TEAM						3	1	4	0		0				
<b>TOTALS</b>			<b>37</b>	<b>13-46</b>	<b>2-16</b>	<b>9-14</b>	<b>14</b>	<b>17</b>	<b>31</b>	<b>13</b>	<b>5</b>	<b>3</b>	<b>1</b>	<b>2</b>	<b>100</b>	

*Shooting By Period*

Period	FG	FG%	3FG	3FG%	FT	FT%
2nd Half	13-46	28%	2-16	13%	9-14	64%
Game	22-82	26.8%	2-23	08.7%	10-18	55.6%

*Deadball Rebounds: 4,1*

*Last FG Half: BRD -*

**Memphis 42**

No.	Player	S	Pts	FG	3FG	FT	OR	DR	TR	PF	A	TO	Blk	Stl	Min	+/-
00	JEFFRIES, D.J.	F	4	2-5	0-1	0-0	0	4	4	2	0	0	0	0	15	0
05	ELLIS, BOOGIE	G	11	3-5	2-2	3-4	1	2	3	0	1	0	0	0	11	6
10	BAUGH, DAMION	G	6	1-4	0-0	4-4	1	1	2	1	3	1	1	0	13	10
14	MAURICE, ISAIAH	F	0	0-1	0-0	0-0	1	1	2	1	0	1	1	0	3	-4
55	ACHIUWA, PRECIOUS	F	4	2-9	0-1	0-0	0	9	9	3	2	0	5	0	15	5
01	HARRIS, TYLER	G	10	3-5	2-4	2-2	0	2	2	0	1	2	0	1	14	4
02	LOMAX, ALEX	G	7	0-0	0-0	7-10	1	0	1	1	2	1	1	2	12	-3
15	THOMAS, LANCE	F	0	0-1	0-0	0-0	0	0	0	1	0	0	0	0	4	-5
23	DANDRIDGE, MALCOLM	C	0	0-0	0-0	0-0	0	2	2	1	0	0	0	0	8	11
25	HARDAWAY, JAYDEN	G	0	0-0	0-0	0-0	0	0	0	0	0	0	0	0	5	1
	TEAM						0	0	0	0		0				
<b>TOTALS</b>			<b>42</b>	<b>11-30</b>	<b>4-8</b>	<b>16-20</b>	<b>4</b>	<b>21</b>	<b>25</b>	<b>10</b>	<b>9</b>	<b>5</b>	<b>8</b>	<b>3</b>	<b>100</b>	

*Shooting By Period*

Period	FG	FG%	3FG	3FG%	FT	FT%
2nd Half	11-30	37%	4-8	50%	16-20	80%
Game	22-61	36.1%	6-18	33.3%	21-26	80.8%

*Deadball Rebounds: 1,4*

*Last FG Half: MEM -*

Game Notes:

Officials: Gerry Pollard,Bill Jacobson,Jason Baker  
 Attendance: 15517

Start Time: 09:05 PM ET  
 End Time: 11:06 PM ET  
 Game Duration: 2:00

Score	1st	2nd	TOT
BRD	19	37	56
MEM	29	42	71

Points from (This Period)	BRD	MEM
In the Paint	14	12
Off Turns	4	4
2nd Chance	11	1
Fast Break	7	13
Bench	14	17



**Official Play-By-Play**  
**Bradley vs Memphis**  
**Second Half**  
**December 03, 2019 at FedExForum - Memphis**



**Period 2**

**Starters:**

**Bradley:** 5 BROWN,DARRELL (G); 10 CHILDS,ELIJAH (F); 12 BAR,KOCH (C); 22 HENRY,JA'SHON (F); 25 KENNEL,NATE (G);

**Memphis:** 0 JEFFRIES,D.J. (F); 5 ELLIS,BOOGIE (G); 10 BAUGH,DAMION (G); 14 MAURICE,ISAIAH (F); 55 ACHIUWA,PRECIOUS (F);

Time	VISITORS: Bradley	Score	Margin	HOME: Memphis
20:00				SUB OUT: HARRIS, TYLER
20:00				SUB OUT: LOMAX, ALEX
20:00				SUB IN: BAUGH, DAMION
20:00				SUB IN: ACHIUWA, PRECIOUS
20:00	SUB OUT: THOMAS, ANTONIO			
20:00	SUB IN: BAR, KOCH			
19:47		31-19	H 12	GOOD! LAYUP by BAUGH, DAMION
19:20	MISSED LAYUP by BAR, KOCH			
19:20				BLOCK by ACHIUWA, PRECIOUS
19:17				REBOUND (DEF) by JEFFRIES, D.J.
19:12		34-19	H 15	GOOD! 3PTR by ELLIS, BOOGIE [FB]
19:12				ASSIST by BAUGH, DAMION
18:52	MISSED JUMPER by CHILDS, ELIJAH			
18:48	REBOUND (OFF) by BAR, KOCH			
18:47	MISSED LAYUP by BAR, KOCH			
18:46	REBOUND (OFF) by TEAM			
18:46	SUB OUT: BAR, KOCH			
18:46	SUB IN: BOYA, ARI			
18:38	MISSED JUMPER by KENNEL, NATE			
18:33				REBOUND (DEF) by DANDRIDGE, MALCOLM
18:30				TURNOVER (LOSTBALL) by BAUGH, DAMION
18:18	MISSED 3PTR by BROWN, DARRELL			
18:13				REBOUND (DEF) by ACHIUWA, PRECIOUS
18:08				MISSED JUMPER by ACHIUWA, PRECIOUS
18:04	REBOUND (DEF) by BOYA, ARI			
17:56	MISSED 3PTR by HENRY, JA'SHON			
17:51				REBOUND (DEF) by ELLIS, BOOGIE
17:42				MISSED JUMPER by ELLIS, BOOGIE
17:39	REBOUND (DEF) by HENRY, JA'SHON			
17:34	MISSED 3PTR by BROWN, DARRELL			
17:31	REBOUND (OFF) by CHILDS, ELIJAH			
17:30	MISSED LAYUP by CHILDS, ELIJAH			
17:28				REBOUND (DEF) by ACHIUWA, PRECIOUS
17:07				MISSED JUMPER by ACHIUWA, PRECIOUS
17:03	REBOUND (DEF) by BROWN, DARRELL			
16:54	MISSED 3PTR by CHILDS, ELIJAH			
16:51	REBOUND (OFF) by BOYA, ARI			
16:48	MISSED 3PTR by BROWN, DARRELL			
16:44				REBOUND (DEF) by BAUGH, DAMION
16:40		36-19	H 17	GOOD! LAYUP by ACHIUWA, PRECIOUS [FB]
16:40				ASSIST by ELLIS, BOOGIE
16:39	TIMEOUT 30SEC			
16:39				SUB OUT: JEFFRIES, D.J.
16:39				SUB OUT: ELLIS, BOOGIE
16:39				SUB OUT: DANDRIDGE, MALCOLM
16:39				SUB OUT: ACHIUWA, PRECIOUS
16:39				SUB IN: HARRIS, TYLER
16:39				SUB IN: LOMAX, ALEX
16:39				SUB IN: MAURICE, ISAIAH
16:39				SUB IN: THOMAS, LANCE
16:39	SUB OUT: BROWN, DARRELL			
16:39	SUB OUT: HENRY, JA'SHON			
16:39	SUB IN: KINGSBY, DANYA			
16:39	SUB IN: THOMAS, ANTONIO			
16:20	GOOD! 3PTR by KINGSBY, DANYA	36-22	H 14	
16:20	ASSIST by THOMAS, ANTONIO			
15:59				MISSED LAYUP by BAUGH, DAMION
15:59				REBOUND (OFF) by BAUGH, DAMION
15:54				MISSED LAYUP by BAUGH, DAMION
15:53				REBOUND (OFF) by MAURICE, ISAIAH
15:53				MISSED LAYUP by MAURICE, ISAIAH
15:53	BLOCK by CHILDS, ELIJAH			
15:50	REBOUND (DEF) by CHILDS, ELIJAH			
15:33	MISSED JUMPER by KENNEL, NATE			
15:31				REBOUND (DEF) by TEAM
15:31				
15:31	SUB OUT: BOYA, ARI			
15:31	SUB OUT: THOMAS, ANTONIO			
15:31	SUB OUT: KENNEL, NATE			

Time	VISITORS: Bradley	Score	Margin	HOME: Memphis
15:31	SUB IN: BROWN, DARRELL			
15:31	SUB IN: HENRY, JA'SHON			
15:31	SUB IN: TAHVANAINEN, VILLE			
15:20	FOUL (PERSONAL) by BROWN, DARRELL			
15:20		37-22	H 15	GOOD! FT by LOMAX, ALEX
15:20				MISSED FT by LOMAX, ALEX
15:17				REBOUND (OFF) by LOMAX, ALEX
15:18	FOUL (PERSONAL) by HENRY, JA'SHON			
15:18		38-22	H 16	GOOD! FT by LOMAX, ALEX
15:18				MISSED FT by LOMAX, ALEX
15:17	REBOUND (DEF) by CHILDS, ELIJAH			
15:09	MISSED 3PTR by KINGSBY, DANYA			
15:08	REBOUND (OFF) by TEAM			
15:08				FOUL (PERSONAL) by THOMAS, LANCE
15:08				SUB OUT: BAUGH, DAMION
15:08				SUB OUT: THOMAS, LANCE
15:08				SUB IN: JEFFRIES, D.J.
15:08				SUB IN: ACHIUWA, PRECIOUS
15:08	SUB OUT: KINGSBY, DANYA			
15:08	SUB IN: THOMAS, ANTONIO			
15:03				FOUL (PERSONAL) by MAURICE, ISAIAH
15:03	GOOD! FT by CHILDS, ELIJAH	38-23	H 15	
15:03	MISSED FT by CHILDS, ELIJAH			
15:00	REBOUND (OFF) by HENRY, JA'SHON			
15:00	GOOD! LAYUP by HENRY, JA'SHON	38-25	H 13	
14:42		40-25	H 15	GOOD! JUMPER by JEFFRIES, D.J.
14:30	MISSED LAYUP by BROWN, DARRELL			
14:28				REBOUND (DEF) by MAURICE, ISAIAH
14:20				TURNOVER (LOSTBALL) by LOMAX, ALEX
14:20	STEAL by CHILDS, ELIJAH			
14:15	MISSED 3PTR by THOMAS, ANTONIO			
14:11				REBOUND (DEF) by ACHIUWA, PRECIOUS
14:06				MISSED 3PTR by HARRIS, TYLER
14:02	REBOUND (DEF) by HENRY, JA'SHON			
13:56	MISSED LAYUP by CHILDS, ELIJAH			
13:56				BLOCK by MAURICE, ISAIAH
13:53	REBOUND (OFF) by CHILDS, ELIJAH			
13:50	GOOD! LAYUP by TAHVANAINEN, VILLE	40-27	H 13	
13:34				TURNOVER (TRAVEL) by MAURICE, ISAIAH
13:34				SUB OUT: MAURICE, ISAIAH
13:34				SUB IN: BAUGH, DAMION
13:34	SUB OUT: THOMAS, ANTONIO			
13:34	SUB IN: KENNEL, NATE			
13:26				FOUL (PERSONAL) by BAUGH, DAMION
13:14				FOUL (PERSONAL) by JEFFRIES, D.J.
13:14	GOOD! FT by HENRY, JA'SHON	40-28	H 12	
13:14	GOOD! FT by HENRY, JA'SHON	40-29	H 11	
13:03				MISSED JUMPER by BAUGH, DAMION
13:01	REBOUND (DEF) by CHILDS, ELIJAH			
12:52				FOUL (PERSONAL) by ACHIUWA, PRECIOUS
12:52	GOOD! FT by CHILDS, ELIJAH	40-30	H 10	
12:52				SUB OUT: JEFFRIES, D.J.
12:52				SUB IN: ELLIS, BOOGIE
12:52	GOOD! FT by CHILDS, ELIJAH	40-31	H 9	
12:39		43-31	H 12	GOOD! 3PTR by HARRIS, TYLER
12:39				ASSIST by LOMAX, ALEX
12:18	MISSED DUNK by CHILDS, ELIJAH			
12:16				REBOUND (DEF) by HARRIS, TYLER
12:16	FOUL (PERSONAL) by TAHVANAINEN, VILLE			
11:58				MISSED JUMPER by ACHIUWA, PRECIOUS
11:54	REBOUND (DEF) by HENRY, JA'SHON			
11:51	MISSED LAYUP by BROWN, DARRELL			
11:48				REBOUND (DEF) by HARRIS, TYLER
11:42	FOUL (PERSONAL) by KENNEL, NATE			
11:42				
11:42				SUB OUT: ACHIUWA, PRECIOUS
11:42				SUB IN: DANDRIDGE, MALCOLM
11:42	SUB OUT: BROWN, DARRELL			
11:42	SUB IN: THOMAS, ANTONIO			
11:42		44-31	H 13	GOOD! FT by LOMAX, ALEX
11:42				MISSED FT by LOMAX, ALEX
11:40	REBOUND (DEF) by HENRY, JA'SHON			
11:34	TURNOVER (BADPASS) by THOMAS, ANTONIO			
11:34				STEAL by LOMAX, ALEX
11:31		46-31	H 15	GOOD! LAYUP by ELLIS, BOOGIE [FB]
11:31				ASSIST by LOMAX, ALEX
11:19				FOUL (PERSONAL) by DANDRIDGE, MALCOLM
11:19	MISSED FT by CHILDS, ELIJAH			
11:19	REBOUND (OFF) by TEAM			
11:19				SUB OUT: LOMAX, ALEX

Time	VISITORS: Bradley	Score	Margin	HOME: Memphis
11:19				SUB IN: HARDAWAY, JAYDEN
11:19	SUB OUT: THOMAS, ANTONIO			
11:19	SUB OUT: HENRY, JA'SHON			
11:19	SUB IN: BOYA, ARI			
11:19	SUB IN: BROWN, DARRELL			
11:19	MISSED FT by CHILDS, ELIJAH			
11:17				REBOUND (DEF) by DANDRIDGE, MALCOLM
11:11				MISSED 3PTR by HARRIS, TYLER
11:08	REBOUND (DEF) by TAHVANAINEN, VILLE			
11:06	SUB OUT: TAHVANAINEN, VILLE			
11:06	SUB IN: KINGSBY, DANYA			
10:58	GOOD! LAYUP by CHILDS, ELIJAH	46-33	H 13	
10:58	ASSIST by KENNEL, NATE			
10:30		49-33	H 16	GOOD! 3PTR by ELLIS, BOOGIE
10:30				ASSIST by BAUGH, DAMION
10:09	MISSED 3PTR by BROWN, DARRELL			
10:06				REBOUND (DEF) by ELLIS, BOOGIE
10:05	FOUL (PERSONAL) by KINGSBY, DANYA			
09:54	FOUL (PERSONAL) by BROWN, DARRELL			
09:43				TURNOVER (BADPASS) by HARRIS, TYLER
09:31	MISSED 3PTR by KENNEL, NATE			
09:28	REBOUND (OFF) by CHILDS, ELIJAH			
09:27	GOOD! LAYUP by CHILDS, ELIJAH	49-35	H 14	
09:14	FOUL (PERSONAL) by KENNEL, NATE			
09:14				SUB OUT: BAUGH, DAMION
09:14				SUB IN: ACHIUWA, PRECIOUS
09:14	SUB OUT: BOYA, ARI			
09:14	SUB IN: HENRY, JA'SHON			
09:14		50-35	H 15	GOOD! FT by ELLIS, BOOGIE
09:14		51-35	H 16	GOOD! FT by ELLIS, BOOGIE
09:14				SUB OUT: ELLIS, BOOGIE
09:14				SUB IN: JEFFRIES, D.J.
09:07	MISSED 3PTR by KENNEL, NATE			
09:04				REBOUND (DEF) by JEFFRIES, D.J.
08:51				MISSED 3PTR by JEFFRIES, D.J.
08:48	REBOUND (DEF) by TEAM			
08:48	SUB OUT: KENNEL, NATE			
08:48	SUB IN: TAHVANAINEN, VILLE			
08:23	MISSED LAYUP by HENRY, JA'SHON			
08:23				BLOCK by ACHIUWA, PRECIOUS
08:21				REBOUND (DEF) by ACHIUWA, PRECIOUS
08:18		53-35	H 18	GOOD! LAYUP by HARRIS, TYLER [FB/PNT]
08:18				ASSIST by ACHIUWA, PRECIOUS
08:11	MISSED LAYUP by HENRY, JA'SHON			
08:11				BLOCK by ACHIUWA, PRECIOUS
08:07	REBOUND (OFF) by HENRY, JA'SHON			
08:07	MISSED LAYUP by HENRY, JA'SHON			
08:07				BLOCK by ACHIUWA, PRECIOUS
08:04				REBOUND (DEF) by ACHIUWA, PRECIOUS
07:45				TURNOVER (BADPASS) by HARRIS, TYLER
07:45	STEAL by KINGSBY, DANYA			
07:40	MISSED LAYUP by KINGSBY, DANYA			
07:37	REBOUND (OFF) by CHILDS, ELIJAH			
07:36	MISSED 3PTR by BROWN, DARRELL			
07:34	REBOUND (OFF) by BROWN, DARRELL			
07:33	MISSED JUMPER by BROWN, DARRELL			
07:30				REBOUND (DEF) by JEFFRIES, D.J.
07:26				MISSED LAYUP by JEFFRIES, D.J.
07:23	REBOUND (DEF) by TAHVANAINEN, VILLE			
07:06	GOOD! JUMPER by CHILDS, ELIJAH	53-37	H 16	
06:44	FOUL (PERSONAL) by KINGSBY, DANYA			
06:44				SUB OUT: DANDRIDGE, MALCOLM
06:44				SUB OUT: HARDAWAY, JAYDEN
06:44				SUB IN: LOMAX, ALEX
06:44				SUB IN: THOMAS, LANCE
06:44	SUB OUT: BROWN, DARRELL			
06:44	SUB OUT: HENRY, JA'SHON			
06:44	SUB IN: BOYA, ARI			
06:44	SUB IN: THOMAS, ANTONIO			
06:44		54-37	H 17	GOOD! FT by HARRIS, TYLER
06:44		55-37	H 18	GOOD! FT by HARRIS, TYLER
06:44				SUB OUT: HARRIS, TYLER
06:44				SUB IN: ELLIS, BOOGIE
06:39	GOOD! JUMPER by CHILDS, ELIJAH [FB]	55-39	H 16	
06:39	ASSIST by TAHVANAINEN, VILLE			
06:09				MISSED LAYUP by ACHIUWA, PRECIOUS
06:07	REBOUND (DEF) by TAHVANAINEN, VILLE			
05:57	GOOD! JUMPER by CHILDS, ELIJAH [PNT]	55-41	H 14	
05:26				MISSED JUMPER by ACHIUWA, PRECIOUS

Time	VISITORS: Bradley	Score	Margin	HOME: Memphis
05:24	REBOUND (DEF) by BOYA, ARI			
05:08	MISSED 3PTR by KINGSBY, DANYA			
05:05				REBOUND (DEF) by ACHIUWA, PRECIOUS
04:57				MISSED JUMPER by THOMAS, LANCE
04:54				REBOUND (OFF) by ELLIS, BOOGIE
04:36				MISSED 3PTR by ACHIUWA, PRECIOUS
04:33	REBOUND (DEF) by TAHVANAINEN, VILLE			
04:28	GOOD! LAYUP by THOMAS, ANTONIO [FB]	55-43	H 12	
04:28	ASSIST by TAHVANAINEN, VILLE			
04:15				MISSED DUNK by ACHIUWA, PRECIOUS
04:12	REBOUND (DEF) by THOMAS, ANTONIO			
03:53	MISSED LAYUP by THOMAS, ANTONIO			
03:53				BLOCK by ACHIUWA, PRECIOUS
03:51	REBOUND (OFF) by TEAM			
03:51				
03:51				SUB OUT: THOMAS, LANCE
03:51				SUB OUT: ACHIUWA, PRECIOUS
03:51				SUB IN: HARRIS, TYLER
03:51				SUB IN: BAUGH, DAMION
03:51	SUB OUT: BOYA, ARI			
03:51	SUB OUT: THOMAS, ANTONIO			
03:51	SUB OUT: TAHVANAINEN, VILLE			
03:51	SUB IN: BROWN, DARRELL			
03:51	SUB IN: HENRY, JA'SHON			
03:51	SUB IN: KENNEL, NATE			
03:47	GOOD! JUMPER by BROWN, DARRELL	55-45	H 10	
03:47	ASSIST by CHILDS, ELIJAH			
03:35	FOUL (PERSONAL) by CHILDS, ELIJAH			
03:35				MISSED FT by ELLIS, BOOGIE
03:35				REBOUND (OFF) by TEAM
03:35		56-45	H 11	GOOD! FT by ELLIS, BOOGIE
03:10	TURNOVER (LOSTBALL) by CHILDS, ELIJAH			
03:10				STEAL by LOMAX, ALEX
02:50				MISSED JUMPER by ELLIS, BOOGIE
02:49	REBOUND (DEF) by TEAM			
02:49				FOUL (PERSONAL) by LOMAX, ALEX
02:49				SUB OUT: ELLIS, BOOGIE
02:49				SUB IN: ACHIUWA, PRECIOUS
02:49	GOOD! FT by KINGSBY, DANYA	56-46	H 10	
02:49	MISSED FT by KINGSBY, DANYA			
02:48				REBOUND (DEF) by ACHIUWA, PRECIOUS
02:40	FOUL (PERSONAL) by HENRY, JA'SHON			
02:40		57-46	H 11	GOOD! FT by LOMAX, ALEX
02:40		58-46	H 12	GOOD! FT by LOMAX, ALEX
02:22	MISSED JUMPER by CHILDS, ELIJAH			
02:20				REBOUND (DEF) by JEFFRIES, D.J.
02:07				MISSED JUMPER by JEFFRIES, D.J.
02:04	REBOUND (DEF) by KENNEL, NATE			
01:56				FOUL (PERSONAL) by ACHIUWA, PRECIOUS
01:56	MISSED FT by BROWN, DARRELL			
01:55				REBOUND (DEF) by ACHIUWA, PRECIOUS
01:48	FOUL (PERSONAL) by BROWN, DARRELL			
01:48		59-46	H 13	GOOD! FT by BAUGH, DAMION
01:48		60-46	H 14	GOOD! FT by BAUGH, DAMION
01:44	GOOD! LAYUP by KINGSBY, DANYA [FB]	60-48	H 12	
01:44				FOUL (PERSONAL) by ACHIUWA, PRECIOUS
01:44	GOOD! FT by KINGSBY, DANYA [FB]	60-49	H 11	
01:44	FOUL (PERSONAL) by KINGSBY, DANYA			
01:44		61-49	H 12	GOOD! FT by LOMAX, ALEX
01:44		62-49	H 13	GOOD! FT by LOMAX, ALEX
01:35	MISSED 3PTR by KINGSBY, DANYA			
01:29	REBOUND (OFF) by CHILDS, ELIJAH			
01:29	MISSED LAYUP by CHILDS, ELIJAH			
01:29				BLOCK by BAUGH, DAMION
01:23	REBOUND (OFF) by HENRY, JA'SHON			
01:23	GOOD! LAYUP by HENRY, JA'SHON	62-51	H 11	
01:23	FOUL (PERSONAL) by HENRY, JA'SHON			
01:23		63-51	H 12	GOOD! FT by BAUGH, DAMION
01:23		64-51	H 13	GOOD! FT by BAUGH, DAMION
01:23	SUB OUT: HENRY, JA'SHON			
01:23	SUB IN: BOYA, ARI			
01:15				FOUL (PERSONAL) by JEFFRIES, D.J.
01:15	GOOD! FT by BROWN, DARRELL	64-52	H 12	
01:15	GOOD! FT by BROWN, DARRELL	64-53	H 11	
01:08		66-53	H 13	GOOD! DUNK by JEFFRIES, D.J. [FB]
01:08				ASSIST by ACHIUWA, PRECIOUS
00:58	MISSED LAYUP by BROWN, DARRELL			
00:58				BLOCK by LOMAX, ALEX
00:58	REBOUND (OFF) by TEAM			
00:50	TURNOVER (LOSTBALL) by KINGSBY, DANYA			

Time	VISITORS: Bradley	Score	Margin	HOME: Memphis
00:50				STEAL by HARRIS, TYLER
00:46		68-53	H 15	GOOD! DUNK by ACHIUWA, PRECIOUS [FB]
00:46				ASSIST by HARRIS, TYLER
00:38	GOOD! 3PTR by KINGSBY, DANYA	68-56	H 12	
00:12		71-56	H 15	GOOD! 3PTR by HARRIS, TYLER
00:12				ASSIST by BAUGH, DAMION
00:07	MISSED 3PTR by BROWN, DARRELL			
00:05				REBOUND (DEF) by ACHIUWA, PRECIOUS

**Bradley 56, Memphis 71**

Points from (This Period)	BRD	MEM
In the Paint	14	12
Off Turns	4	4
2nd Chance	11	1
Fast Break	7	13
Bench	14	17

**Official Scoring/Possession Reference Chart**  
**Bradley vs Memphis**  
**Period 1**  
**December 03, 2019 at FedExForum - Memphis**



**Period 1**

**Starters:**

**Bradley:** 5 BROWN, DARRELL (G); 10 CHILDS, ELIJAH (F); 12 BAR, KOCH (C); 22 HENRY, JA'SHON (F); 25 KENNEL, NATE (G);

**Memphis:** 0 JEFFRIES, D.J. (F); 5 ELLIS, BOOGIE (G); 10 BAUGH, DAMION (G); 14 MAURICE, ISAIAH (F); 55 ACHIUWA, PRECIOUS (F);

Time	VISITORS: Bradley	Score	Margin	HOME: Memphis
19:15		2-0	H 2	GOOD! JUMPER by BAUGH, DAMION [PNT]
16:26		4-0	H 4	GOOD! LAYUP by ACHIUWA, PRECIOUS
16:07		6-0	H 6	GOOD! DUNK by JEFFRIES, D.J. [FB]
15:48	GOOD! JUMPER by CHILDS, ELIJAH [PNT]	6-2	H 4	
15:23		9-2	H 7	GOOD! 3PTR by MAURICE, ISAIAH
13:55	GOOD! LAYUP by BOYA, ARI [PNT]	9-4	H 5	
12:25		11-4	H 7	GOOD! LAYUP by DANDRIDGE, MALCOLM
12:12		12-4	H 8	GOOD! FT by ELLIS, BOOGIE
09:50		14-4	H 10	GOOD! LAYUP by LOMAX, ALEX [FB]
09:21	GOOD! JUMPER by CHILDS, ELIJAH	14-6	H 8	
08:47	GOOD! JUMPER by CHILDS, ELIJAH	14-8	H 6	
08:28		16-8	H 8	GOOD! JUMPER by LOMAX, ALEX
07:49	GOOD! JUMPER by CHILDS, ELIJAH [FB/PNT]	16-10	H 6	
06:53	GOOD! LAYUP by BOYA, ARI	16-12	H 4	
06:29	GOOD! JUMPER by KINGSBY, DANYA [FB/PNT]	16-14	H 2	
05:38		19-14	H 5	GOOD! 3PTR by THOMAS, LANCE
03:12		21-14	H 7	GOOD! DUNK by JEFFRIES, D.J. [FB]
02:47	GOOD! JUMPER by KENNEL, NATE	21-16	H 5	
02:21		23-16	H 7	GOOD! JUMPER by LOMAX, ALEX [PNT]
01:56		24-16	H 8	GOOD! FT by JEFFRIES, D.J. [FB]
01:56		25-16	H 9	GOOD! FT by JEFFRIES, D.J. [FB]
01:17	GOOD! LAYUP by THOMAS, ANTONIO [PNT]	25-18	H 7	
01:01		26-18	H 8	GOOD! FT by LOMAX, ALEX
01:01		27-18	H 9	GOOD! FT by LOMAX, ALEX
00:37	GOOD! FT by HENRY, JA'SHON	27-19	H 8	
00:11		29-19	H 10	GOOD! JUMPER by LOMAX, ALEX

**Bradley 19, Memphis 29**

**Official Scoring/Possession Reference Chart**  
**Bradley vs Memphis**  
**Period 2**  
**December 03, 2019 at FedExForum - Memphis**



**Period 2**

**Starters:**

**Bradley:** 5 BROWN, DARRELL (G); 10 CHILDS, ELIJAH (F); 12 BAR, KOCH (C); 22 HENRY, JA'SHON (F); 25 KENNEL, NATE (G);

**Memphis:** 0 JEFFRIES, D.J. (F); 5 ELLIS, BOOGIE (G); 10 BAUGH, DAMION (G); 14 MAURICE, ISAIAH (F); 55 ACHIUWA, PRECIOUS (F);

Time	VISITORS: Bradley	Score	Margin	HOME: Memphis
19:47		31-19	H 12	GOOD! LAYUP by BAUGH, DAMION
19:12		34-19	H 15	GOOD! 3PTR by ELLIS, BOOGIE [FB]
16:40		36-19	H 17	GOOD! LAYUP by ACHIUWA, PRECIOUS [FB]
16:20	GOOD! 3PTR by KINGSBY, DANYA	36-22	H 14	
15:20		37-22	H 15	GOOD! FT by LOMAX, ALEX
15:18		38-22	H 16	GOOD! FT by LOMAX, ALEX
15:03	GOOD! FT by CHILDS, ELIJAH	38-23	H 15	
15:00	GOOD! LAYUP by HENRY, JA'SHON	38-25	H 13	
14:42		40-25	H 15	GOOD! JUMPER by JEFFRIES, D.J.
13:50	GOOD! LAYUP by TAHVANAINEN, VILLE	40-27	H 13	
13:14	GOOD! FT by HENRY, JA'SHON	40-28	H 12	
13:14	GOOD! FT by HENRY, JA'SHON	40-29	H 11	
12:52	GOOD! FT by CHILDS, ELIJAH	40-30	H 10	
12:52	GOOD! FT by CHILDS, ELIJAH	40-31	H 9	
12:39		43-31	H 12	GOOD! 3PTR by HARRIS, TYLER
11:42		44-31	H 13	GOOD! FT by LOMAX, ALEX
11:31		46-31	H 15	GOOD! LAYUP by ELLIS, BOOGIE [FB]
10:58	GOOD! LAYUP by CHILDS, ELIJAH	46-33	H 13	
10:30		49-33	H 16	GOOD! 3PTR by ELLIS, BOOGIE
09:27	GOOD! LAYUP by CHILDS, ELIJAH	49-35	H 14	
09:14		50-35	H 15	GOOD! FT by ELLIS, BOOGIE
09:14		51-35	H 16	GOOD! FT by ELLIS, BOOGIE
08:18		53-35	H 18	GOOD! LAYUP by HARRIS, TYLER [FB/PNT]
07:06	GOOD! JUMPER by CHILDS, ELIJAH	53-37	H 16	
06:44		54-37	H 17	GOOD! FT by HARRIS, TYLER
06:44		55-37	H 18	GOOD! FT by HARRIS, TYLER
06:39	GOOD! JUMPER by CHILDS, ELIJAH [FB]	55-39	H 16	
05:57	GOOD! JUMPER by CHILDS, ELIJAH [PNT]	55-41	H 14	
04:28	GOOD! LAYUP by THOMAS, ANTONIO [FB]	55-43	H 12	
03:47	GOOD! JUMPER by BROWN, DARRELL	55-45	H 10	
03:35		56-45	H 11	GOOD! FT by ELLIS, BOOGIE
02:49	GOOD! FT by KINGSBY, DANYA	56-46	H 10	
02:40		57-46	H 11	GOOD! FT by LOMAX, ALEX
02:40		58-46	H 12	GOOD! FT by LOMAX, ALEX
01:48		59-46	H 13	GOOD! FT by BAUGH, DAMION
01:48		60-46	H 14	GOOD! FT by BAUGH, DAMION
01:44	GOOD! LAYUP by KINGSBY, DANYA [FB]	60-48	H 12	
01:44	GOOD! FT by KINGSBY, DANYA [FB]	60-49	H 11	
01:44		61-49	H 12	GOOD! FT by LOMAX, ALEX
01:44		62-49	H 13	GOOD! FT by LOMAX, ALEX
01:23	GOOD! LAYUP by HENRY, JA'SHON	62-51	H 11	
01:23		63-51	H 12	GOOD! FT by BAUGH, DAMION
01:23		64-51	H 13	GOOD! FT by BAUGH, DAMION
01:15	GOOD! FT by BROWN, DARRELL	64-52	H 12	
01:15	GOOD! FT by BROWN, DARRELL	64-53	H 11	
01:08		66-53	H 13	GOOD! DUNK by JEFFRIES, D.J. [FB]
00:46		68-53	H 15	GOOD! DUNK by ACHIUWA, PRECIOUS [FB]
00:38	GOOD! 3PTR by KINGSBY, DANYA	68-56	H 12	
00:12		71-56	H 15	GOOD! 3PTR by HARRIS, TYLER





**Official Substitutions Log**  
**Bradley vs Memphis**  
**Period 1**  
**December 03, 2019 at FedExForum - Memphis**



VISITORS: Bradley	Time	Score	HOME: Memphis
5 BROWN,DARRELL			0 JEFFRIES,D.J.
10 CHILDS,ELIJAH			5 ELLIS,BOOGIE
12 BAR,KOCH			10 BAUGH,DAMION
22 HENRY,JA'SHON			14 MAURICE,ISAIAH
25 KENNEL,NATE			55 ACHIUWA,PRECIOUS
SUB OUT: 22 HENRY,JA'SHON	16:55	0-2	
SUB IN: 0 KINGSBY,DANYA	16:55		
	16:08	0-6	SUB OUT: ELLIS,BOOGIE
	16:08		SUB OUT: BAUGH,DAMION
	16:08		SUB IN: HARRIS,TYLER
	16:08		SUB IN: LOMAX,ALEX
SUB OUT: 12 BAR,KOCH	15:03	2-9	
SUB IN: 1 BOYA,ARI	15:03		
	14:11	2-9	SUB OUT: JEFFRIES,D.J.
	14:11		SUB OUT: MAURICE,ISAIAH
	14:11		SUB OUT: ACHIUWA,PRECIOUS
	14:11		SUB IN: ELLIS,BOOGIE
	14:11		SUB IN: THOMAS,LANCE
	14:11		SUB IN: DANDRIDGE,MALCOLM
SUB OUT: 10 CHILDS,ELIJAH	13:43	4-9	
SUB IN: 22 HENRY,JA'SHON	13:43		
SUB OUT: 25 KENNEL,NATE	13:24	4-9	
SUB IN: 3 GABRIEL,STEPHAN	13:24		
	12:12	4-12	SUB OUT: LOMAX,ALEX
	12:12		SUB IN: HARDAWAY,JAYDEN
SUB OUT: 0 KINGSBY,DANYA	12:12		
SUB OUT: 1 BOYA,ARI	12:12		
SUB OUT: 5 BROWN,DARRELL	12:12		
SUB IN: 2 THOMAS,ANTONIO	12:12		
SUB IN: 10 CHILDS,ELIJAH	12:12		
SUB IN: 25 KENNEL,NATE	12:12		
	11:33	4-12	SUB OUT: THOMAS,LANCE
	11:33		SUB IN: ACHIUWA,PRECIOUS
SUB OUT: 2 THOMAS,ANTONIO	11:33		
SUB OUT: 3 GABRIEL,STEPHAN	11:33		
SUB OUT: 22 HENRY,JA'SHON	11:33		
SUB IN: 5 BROWN,DARRELL	11:33		
SUB IN: 12 BAR,KOCH	11:33		
SUB IN: 23 TAHVANAINEN,VILLE	11:33		
	11:01	4-12	SUB OUT: HARRIS,TYLER
	11:01		SUB IN: BAUGH,DAMION
	10:48	4-12	SUB OUT: BAUGH,DAMION
	10:48		SUB OUT: DANDRIDGE,MALCOLM
	10:48		SUB IN: LOMAX,ALEX
	10:48		SUB IN: MAURICE,ISAIAH
	07:38	10-16	SUB OUT: HARDAWAY,JAYDEN
	07:38		SUB IN: JEFFRIES,D.J.
SUB OUT: 12 BAR,KOCH	07:38		
SUB OUT: 23 TAHVANAINEN,VILLE	07:38		
SUB IN: 0 KINGSBY,DANYA	07:38		
SUB IN: 1 BOYA,ARI	07:38		
	05:42	14-16	SUB OUT: JEFFRIES,D.J.
	05:42		SUB OUT: ACHIUWA,PRECIOUS
	05:42		SUB IN: HARRIS,TYLER
	05:42		SUB IN: THOMAS,LANCE
SUB OUT: 25 KENNEL,NATE	05:42		
SUB IN: 22 HENRY,JA'SHON	05:42		
	05:09	14-19	SUB OUT: MAURICE,ISAIAH
	05:09		SUB IN: JEFFRIES,D.J.
SUB OUT: 1 BOYA,ARI	05:09		
SUB IN: 12 BAR,KOCH	05:09		
SUB OUT: 12 BAR,KOCH	03:12	14-21	
SUB OUT: 22 HENRY,JA'SHON	03:12		
SUB IN: 1 BOYA,ARI	03:12		
SUB IN: 25 KENNEL,NATE	03:12		
SUB OUT: 0 KINGSBY,DANYA	01:56	16-24	
SUB IN: 2 THOMAS,ANTONIO	01:56		
	01:01	18-26	SUB OUT: HARRIS,TYLER
	01:01		SUB OUT: THOMAS,LANCE
	01:01		SUB IN: DANDRIDGE,MALCOLM
	01:01		SUB IN: HARDAWAY,JAYDEN
SUB OUT: 1 BOYA,ARI	01:01		
SUB IN: 22 HENRY,JA'SHON	01:01		
	00:36	19-27	SUB OUT: HARDAWAY,JAYDEN
	00:36		SUB IN: HARRIS,TYLER

**Bradley 19, Memphis 29**

**Official Substitutions Log**  
**Bradley vs Memphis**  
**Period 2**  
**December 03, 2019 at FedExForum - Memphis**



VISITORS: Bradley	Time	Score	HOME: Memphis
5 BROWN,DARRELL			0 JEFFRIES,D.J.
10 CHILDS,ELIJAH			5 ELLIS,BOOGIE
12 BAR,KOCH			10 BAUGH,DAMION
22 HENRY,JA'SHON			14 MAURICE,ISAIAH
25 KENNEL,NATE			55 ACHIUWA,PRECIOUS
	20:00	-	SUB OUT: HARRIS, TYLER
	20:00		SUB OUT: LOMAX,ALEX
	20:00		SUB IN: BAUGH,DAMION
	20:00		SUB IN: ACHIUWA,PRECIOUS
SUB OUT: 2 THOMAS,ANTONIO	20:00		
SUB IN: 12 BAR,KOCH	20:00		
SUB OUT: 12 BAR,KOCH	18:46	19-34	
SUB IN: 1 BOYA,ARI	18:46		
	16:39	19-36	SUB OUT: JEFFRIES,D.J.
	16:39		SUB OUT: ELLIS,BOOGIE
	16:39		SUB OUT: DANDRIDGE,MALCOLM
	16:39		SUB OUT: ACHIUWA,PRECIOUS
	16:39		SUB IN: HARRIS, TYLER
	16:39		SUB IN: LOMAX,ALEX
	16:39		SUB IN: MAURICE,ISAIAH
	16:39		SUB IN: THOMAS,LANCE
SUB OUT: 5 BROWN,DARRELL	16:39		
SUB OUT: 22 HENRY,JA'SHON	16:39		
SUB IN: 0 KINGSBY,DANYA	16:39		
SUB IN: 2 THOMAS,ANTONIO	16:39		
SUB OUT: 1 BOYA,ARI	15:31	22-36	
SUB OUT: 2 THOMAS,ANTONIO	15:31		
SUB OUT: 25 KENNEL,NATE	15:31		
SUB IN: 5 BROWN,DARRELL	15:31		
SUB IN: 22 HENRY,JA'SHON	15:31		
SUB IN: 23 TAHVANAINEN,VILLE	15:31		
	15:08	22-38	SUB OUT: BAUGH,DAMION
	15:08		SUB OUT: THOMAS,LANCE
	15:08		SUB IN: JEFFRIES,D.J.
	15:08		SUB IN: ACHIUWA,PRECIOUS
SUB OUT: 0 KINGSBY,DANYA	15:08		
SUB IN: 2 THOMAS,ANTONIO	15:08		
	13:34	27-40	SUB OUT: MAURICE,ISAIAH
	13:34		SUB IN: BAUGH,DAMION
SUB OUT: 2 THOMAS,ANTONIO	13:34		
SUB IN: 25 KENNEL,NATE	13:34		
	12:52	30-40	SUB OUT: JEFFRIES,D.J.
	12:52		SUB IN: ELLIS,BOOGIE
	11:42	31-43	SUB OUT: ACHIUWA,PRECIOUS
	11:42		SUB IN: DANDRIDGE,MALCOLM
SUB OUT: 5 BROWN,DARRELL	11:42		
SUB IN: 2 THOMAS,ANTONIO	11:42		
	11:19	31-46	SUB OUT: LOMAX,ALEX
	11:19		SUB IN: HARDAWAY,JAYDEN
SUB OUT: 2 THOMAS,ANTONIO	11:19		
SUB OUT: 22 HENRY,JA'SHON	11:19		
SUB IN: 1 BOYA,ARI	11:19		
SUB IN: 5 BROWN,DARRELL	11:19		
SUB OUT: 23 TAHVANAINEN,VILLE	11:06	31-46	
SUB IN: 0 KINGSBY,DANYA	11:06		
	09:14	35-49	SUB OUT: BAUGH,DAMION
	09:14		SUB IN: ACHIUWA,PRECIOUS
SUB OUT: 1 BOYA,ARI	09:14		
SUB IN: 22 HENRY,JA'SHON	09:14		
	09:14		SUB OUT: ELLIS,BOOGIE
	09:14		SUB IN: JEFFRIES,D.J.
SUB OUT: 25 KENNEL,NATE	08:48	35-51	
SUB IN: 23 TAHVANAINEN,VILLE	08:48		
	06:44	37-53	SUB OUT: DANDRIDGE,MALCOLM
	06:44		SUB OUT: HARDAWAY,JAYDEN
	06:44		SUB IN: LOMAX,ALEX
	06:44		SUB IN: THOMAS,LANCE
SUB OUT: 5 BROWN,DARRELL	06:44		
SUB OUT: 22 HENRY,JA'SHON	06:44		
SUB IN: 1 BOYA,ARI	06:44		
SUB IN: 2 THOMAS,ANTONIO	06:44		
	06:44		SUB OUT: HARRIS, TYLER
	06:44		SUB IN: ELLIS,BOOGIE
	03:51	43-55	SUB OUT: THOMAS,LANCE
	03:51		SUB OUT: ACHIUWA,PRECIOUS

VISITORS: Bradley	Time	Score	HOME: Memphis
	03:51		SUB IN: HARRIS, TYLER
	03:51		SUB IN: BAUGH, DAMION
SUB OUT: 1 BOYA, ARI	03:51		
SUB OUT: 2 THOMAS, ANTONIO	03:51		
SUB OUT: 23 TAHVANAINEN, VILLE	03:51		
SUB IN: 5 BROWN, DARRELL	03:51		
SUB IN: 22 HENRY, JA'SHON	03:51		
SUB IN: 25 KENNELL, NATE	03:51		
	02:49	45-56	SUB OUT: ELLIS, BOOGIE
	02:49		SUB IN: ACHIUWA, PRECIOUS
SUB OUT: 22 HENRY, JA'SHON	01:23	51-64	
SUB IN: 1 BOYA, ARI	01:23		

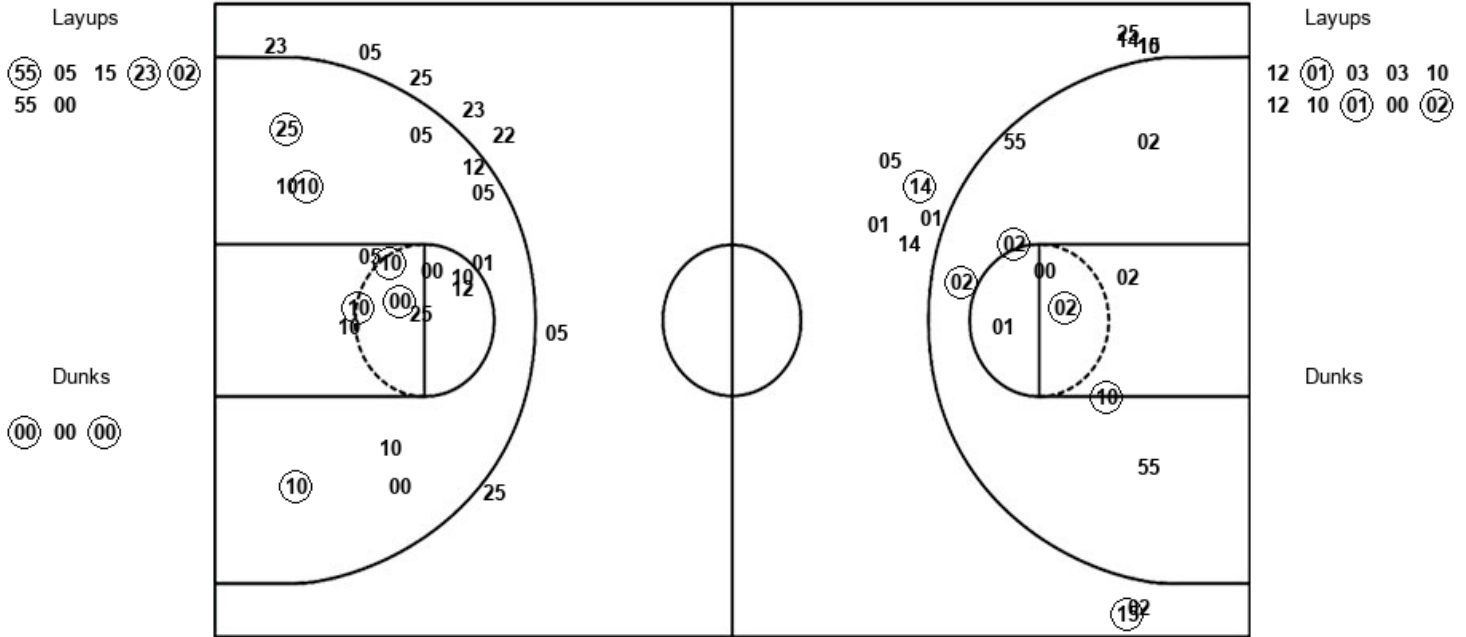
**Bradley 56, Memphis 71**

Official Shot Chart  
**Bradley vs Memphis**  
 PERIOD 1 Shots  
 December 03, 2019 at FedExForum - Memphis



**Memphis**

**Bradley**



MEM : Period 1	Made	Att	Pct
Layups	3	7	42.9
Dunks	2	3	66.7
2PT Field Goals	9	21	42.9
3PT Field Goals	2	10	20.0
<b>Total Field Goals</b>	<b>11</b>	<b>31</b>	<b>35.5</b>

BRD : Period 1	Made	Att	Pct
Layups	3	10	30.0
Dunks	0	0	0
2PT Field Goals	9	29	31.0
3PT Field Goals	0	7	00.0
<b>Total Field Goals</b>	<b>9</b>	<b>36</b>	<b>25.0</b>

**Official Shot Chart**  
**Bradley vs Memphis**  
**PERIOD 2 Shots**  
 December 03, 2019 at FedExForum - Memphis

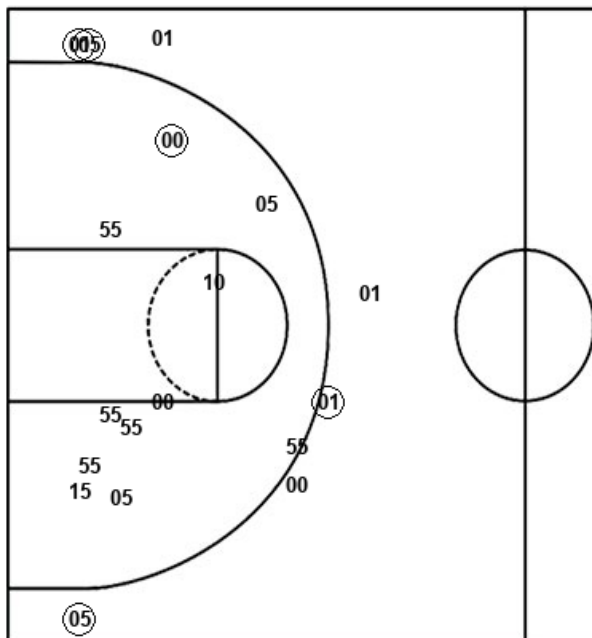


**Memphis**

**Bradley**

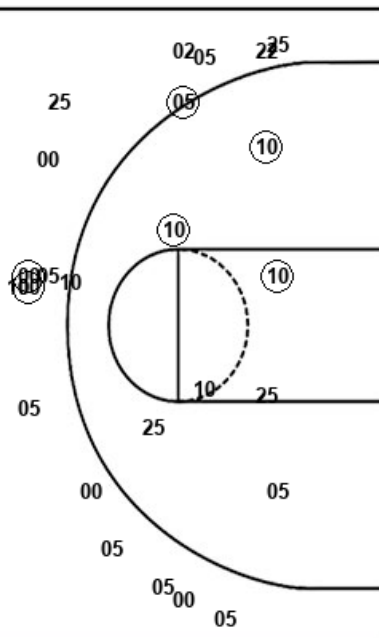
Layups  
 (10) (55) 10 10 14  
 (05) (01) 00 55

Dunks  
 55 (00) (55)



Layups  
 12 12 10 (22) 05  
 10 (23) 05 (10) (10)  
 22 22 22 00 (02)  
 02 (00) 10 (22) 05

Dunks  
 10



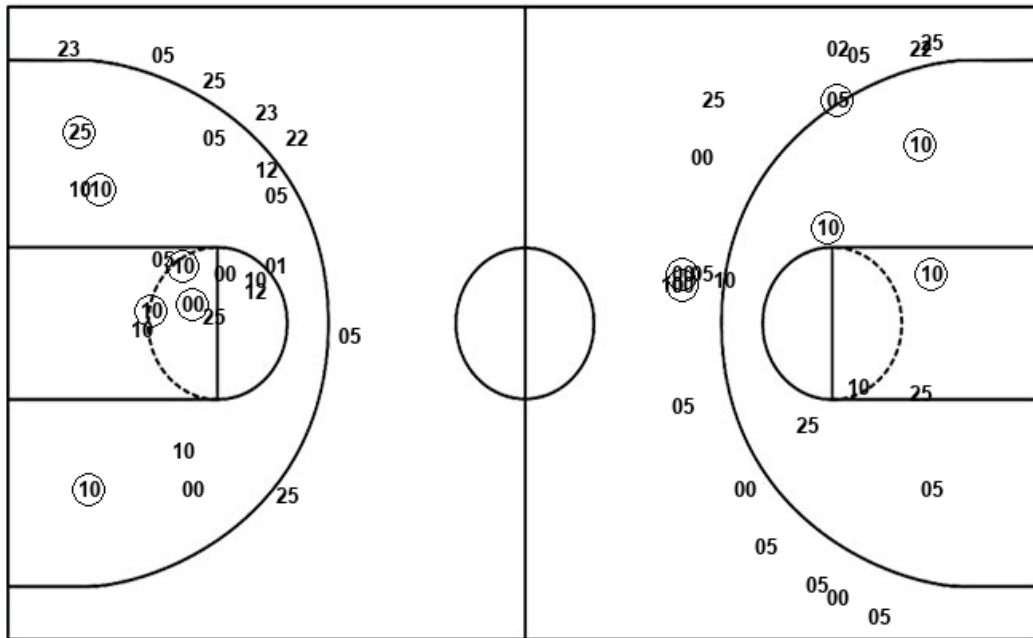
MEM : Period 2	Made	Att	Pct
Layups	4	9	44.4
Dunks	2	3	66.7
2PT Field Goals	7	22	31.8
3PT Field Goals	4	8	50.0
<b>Total Field Goals</b>	<b>11</b>	<b>30</b>	<b>36.7</b>

BRD : Period 2	Made	Att	Pct
Layups	7	20	35.0
Dunks	0	1	00.0
2PT Field Goals	11	30	36.7
3PT Field Goals	2	16	12.5
<b>Total Field Goals</b>	<b>13</b>	<b>46</b>	<b>28.3</b>

**Official Shot Chart**  
**Bradley vs Memphis**  
 Bradley Team Shots  
 December 03, 2019 at FedExForum - Memphis



Layups



Layups

12	01	03	03	10
12	10	01	00	02
12	12	10	22	05
10	23	05	10	10
22	22	22	00	02
02	00	10	22	05

Dunks

Dunks

10

BRD : Period 1	Made	Att	Pct
Layups	3	10	30.0
Dunks	0	0	0
2PT Field Goals	9	29	31.0
3PT Field Goals	0	7	00.0
<b>Total Field Goals</b>	<b>9</b>	<b>36</b>	<b>25.0</b>

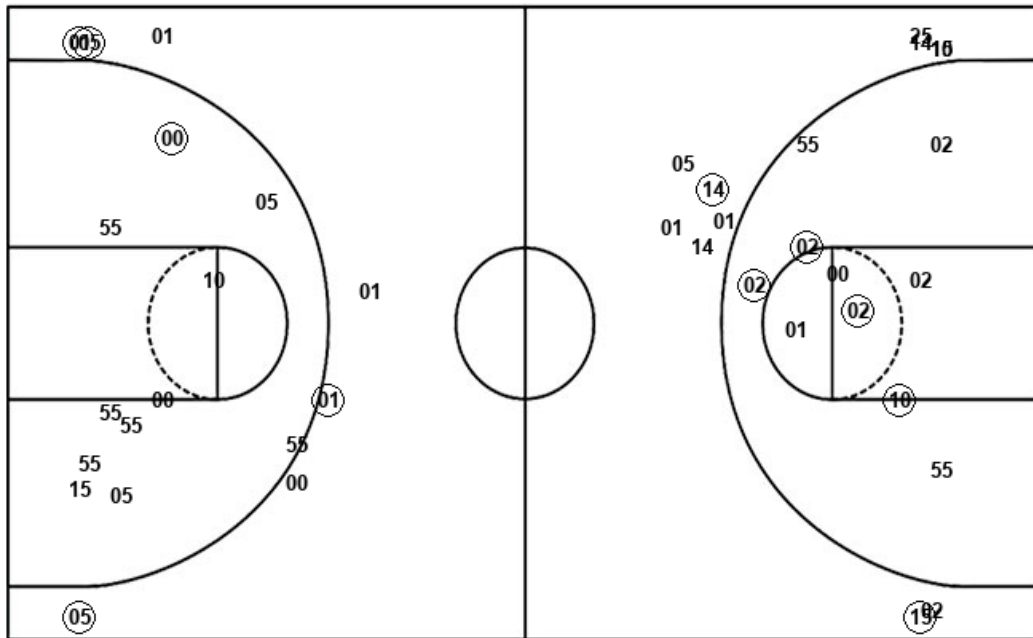
BRD : Period 2	Made	Att	Pct
Layups	7	20	35.0
Dunks	0	1	00.0
2PT Field Goals	11	30	36.7
3PT Field Goals	2	16	12.5
<b>Total Field Goals</b>	<b>13</b>	<b>46</b>	<b>28.3</b>

**Official Shot Chart**  
**Bradley vs Memphis**  
**Memphis Team Shots**  
 December 03, 2019 at FedExForum - Memphis



Layups

Dunks



Layups

Dunks

(55) 05 15 (23) (02)  
 55 00 (10) (55) 10  
 10 14 (05) (01) 00  
 55

(00) 00 (00) 55 (00)  
 (55)

MEM : Period 1	Made	Att	Pct
Layups	3	7	42.9
Dunks	2	3	66.7
2PT Field Goals	9	21	42.9
3PT Field Goals	2	10	20.0
<b>Total Field Goals</b>	<b>11</b>	<b>31</b>	<b>35.5</b>

MEM : Period 2	Made	Att	Pct
Layups	4	9	44.4
Dunks	2	3	66.7
2PT Field Goals	7	22	31.8
3PT Field Goals	4	8	50.0
<b>Total Field Goals</b>	<b>11</b>	<b>30</b>	<b>36.7</b>