

FINAL SCORE



Bloomfield

52



Seton Hall

81

October 25, 2019 • Walsh Gymnasium

FINAL STATISTICS

Official Box Score
Bloomfield vs Seton Hall
Game Totals -- Final Statistics
October 25, 2019 at Walsh Gymnasium



Bloomfield 52

No.	Player	S	Pts	FG	3FG	FT	OR	DR	TR	PF	A	TO	Blk	Stl	Min	+/-
03	JULIUS, DONTAY	G	3	1-4	1-1	0-0	1	1	2	1	2	4	0	1	27	-24
05	LESTEM, SOL	G	11	5-14	1-8	0-0	0	1	1	0	0	4	0	0	26	-20
12	ABDUS-SABUR, SAFEE	G	13	5-15	2-7	1-1	1	8	9	3	0	6	0	0	30	-20
23	BELLINGER, DARIN	F	5	2-4	1-1	0-0	1	3	4	3	0	1	0	2	26	-19
25	LAJEUNESSE, MATT	F	11	5-10	1-2	0-1	2	6	8	2	2	0	1	0	32	-22
10	LIZIMA, EWENS	G	1	0-0	0-0	1-2	0	0	0	0	0	0	0	0	3	-2
11	GODWIN, TONY	G	0	0-0	0-0	0-0	1	3	4	0	0	1	0	0	19	-9
15	WASHINGTON, RON	F	4	1-4	0-1	2-2	0	0	0	2	2	2	0	0	21	-16
20	LOWBER, JAHAUD	F	2	1-1	0-0	0-0	0	0	0	0	0	0	0	0	3	-4
21	ELSALEH, ABDALLAH	F	2	1-2	0-1	0-0	0	0	0	1	1	0	0	0	4	-2
31	BENNETT, TYMERE	F	0	0-1	0-1	0-0	0	1	1	0	0	2	1	0	9	-7
	TEAM						3	2	5	0		0				
TOTALS			52	21-55	6-22	4-6	9	25	34	12	7	20	2	3	200	

Shooting By Period

Period	FG	FG%	3FG	3FG%	FT	FT%
1st Half	11-29	38%	3-12	25%	1-1	100%
2nd Half	10-26	38%	3-10	30%	3-5	60%
Game	21-55	38.2%	6-22	27.3%	4-6	66.7%

Last FG: 2nd-01:54

Largest lead: By 0 at

Technical Fouls: None.

Seton Hall 81

No.	Player	S	Pts	FG	3FG	FT	OR	DR	TR	PF	A	TO	Blk	Stl	Min	+/-
00	MCKNIGHT, QUINCY	G	2	1-8	0-2	0-0	0	4	4	2	8	1	0	2	24	24
13	POWELL, MYLES	G	21	7-12	5-9	2-3	0	3	3	0	0	0	0	2	17	14
21	OBIAGU, IKE	C	2	1-2	0-0	0-0	1	0	1	2	0	1	1	0	11	2
22	CALE, MYLES	G	10	4-10	0-5	2-2	1	2	3	1	3	1	0	2	24	20
23	MAMUKELASHVILI, SANDRO	F	9	4-6	1-3	0-0	2	1	3	1	1	2	1	1	25	26
04	SAMUEL, TYRESE	F	5	2-4	0-2	1-2	3	7	10	0	1	1	0	0	16	6
14	RHODEN, JARED	F	13	5-7	3-4	0-0	2	1	3	2	1	0	0	2	25	14
15	THOMPSON, TAUREAN	F	5	2-3	1-1	0-0	0	1	1	3	0	1	0	0	9	5
30	AVENT, ASIAH	G	0	0-0	0-0	0-0	0	0	0	0	0	0	0	0	2	1
32	BRODIE, DARNELL	F	1	0-0	0-0	1-2	0	1	1	0	0	0	0	0	5	7
33	REYNOLDS, SHAVAR	G	7	3-8	1-5	0-0	0	4	4	2	1	1	0	3	26	19
35	GILL, ROMARO	C	6	2-4	0-0	2-2	1	0	1	1	1	0	5	0	16	13
	TEAM						0	2	2	0		0				
TOTALS			81	31-64	11-31	8-11	10	26	36	14	16	8	7	12	200	

Shooting By Period

Period	FG	FG%	3FG	3FG%	FT	FT%
1st Half	16-31	52%	7-18	39%	4-5	80%
2nd Half	15-33	45%	4-13	31%	4-6	67%
Game	31-64	48.4%	11-31	35.5%	8-11	72.7%

Last FG: 2nd-00:39

Largest lead: By 30 at

Technical Fouls: None.

Game Notes:

Officials: Brian O'Connell, Nathan Farrell, Evon Burroughs

Attendance: 1655

Start Time: 11:00 PM

Score	1st	2nd	TOT
BLO	26	26	52
SHU	43	38	81

BLO led for 0:00. SHU led for 39:45.

Game was tied for 0:0.

Times tied: 0 Lead Changes: 0

Points from	BLO	SHU
In the Paint	24	40
Off Turns	3	29
2nd Chance	8	8
Fast Break	0	23
Bench	9	37

Official Box Score
Bloomfield vs Seton Hall
First Half Statistics Only
October 25, 2019 at Walsh Gymnasium



Bloomfield 26

No.	Player	S	Pts	FG	3FG	FT	OR	DR	TR	PF	A	TO	Blk	Stl	Min
03	JULIUS, DONTAY	G	0	0-3	0-0	0-0	1	0	1	1	1	1	0	0	15
05	LESHAM, SOL	G	7	3-10	1-7	0-0	0	0	0	0	0	3	0	0	15
12	ABDUS-SABUR, SAFEE	G	10	4-7	1-3	1-1	1	7	8	3	0	2	0	0	16
23	BELLINGER, DARIN	F	2	1-2	0-0	0-0	1	1	2	1	0	1	0	2	15
25	LAJEUNESSE, MATT	F	7	3-5	1-1	0-0	1	1	2	0	1	0	0	0	16
10	LIZIMA, EWENS	G	0	0-0	0-0	0-0	0	0	0	0	0	0	0	0	0
11	GODWIN, TONY	G	0	0-0	0-0	0-0	1	2	3	0	0	0	0	0	9
15	WASHINGTON, RON	F	0	0-2	0-1	0-0	0	0	0	2	1	1	0	0	10
20	LOWBER, JAHAUD	F	0	0-0	0-0	0-0	0	0	0	0	0	0	0	0	0
21	ELSALEH, ABDALLAH	F	0	0-0	0-0	0-0	0	0	0	0	0	0	0	0	0
31	BENNETT, TYMERE	F	0	0-0	0-0	0-0	0	1	1	0	0	2	0	0	4
	TEAM			0-0			1	0	1	0		0			
TOTALS			26	11-29	3-12	1-1	6	12	18	7	3	10	0	2	100

Shooting By Period

Period	FG	FG%	3FG	3FG%	FT	FT%
1st Half	11-29	38%	3-12	25%	1-1	100%
Game	21-55	38.2%	6-22	27.3%	4-6	66.7%

Last FG Half: BLO 2nd-01:54

Seton Hall 43

No.	Player	S	Pts	FG	3FG	FT	OR	DR	TR	PF	A	TO	Blk	Stl	Min
00	MCKNIGHT, QUINCY	G	0	0-3	0-1	0-0	0	3	3	2	4	0	0	1	12
13	POWELL, MYLES	G	15	5-7	3-5	2-3	0	3	3	0	0	0	0	2	12
21	OBIAGU, IKE	C	2	1-2	0-0	0-0	1	0	1	1	0	1	1	0	9
22	CALE, MYLES	G	4	2-5	0-3	0-0	0	1	1	0	0	1	0	1	13
23	MAMUKELASHVILI, SANDRO	F	5	2-3	1-2	0-0	1	1	2	1	1	1	0	0	13
04	SAMUEL, TYRESE	F	0	0-1	0-1	0-0	1	3	4	0	1	0	0	0	7
14	RHODEN, JARED	F	6	2-3	2-3	0-0	0	1	1	1	1	0	0	0	13
15	THOMPSON, TAUREAN	F	0	0-0	0-0	0-0	0	0	0	0	0	0	0	0	0
30	AVENT, ASIAH	G	0	0-0	0-0	0-0	0	0	0	0	0	0	0	0	0
32	BRODIE, DARNELL	F	0	0-0	0-0	0-0	0	0	0	0	0	0	0	0	0
33	REYNOLDS, SHAVAR	G	5	2-4	1-3	0-0	0	0	0	0	0	0	0	1	11
35	GILL, ROMARO	C	6	2-3	0-0	2-2	0	0	0	0	0	0	2	0	11
	TEAM			0-0			0	0	0	0		0			
TOTALS			43	16-31	7-18	4-5	3	12	15	5	7	3	3	5	100

Shooting By Period

Period	FG	FG%	3FG	3FG%	FT	FT%
1st Half	16-31	52%	7-18	39%	4-5	80%
Game	31-64	48.4%	11-31	35.5%	8-11	72.7%

Last FG Half: SHU 2nd-00:39

Game Notes:

Officials: Brian O'Connell, Nathan Farrell, Evon Burroughs
Attendance: 1655

Start Time: 11:00 PM

Score	1st	2nd	TOT
BLO	26	26	52
SHU	43	38	81

Points from (This Period)	BLO	SHU
In the Paint	14	18
Off Turns	0	12
2nd Chance	5	2
Fast Break	0	9
Bench	0	17

Official Play-By-Play
Bloomfield vs Seton Hall
First Half
October 25, 2019 at Walsh Gymnasium



Period 1

Starters:

Bloomfield: 3 JULIUS,DONTAY (G); 5 LESHEM,SOL (G); 12 ABDUS-SABUR,SAFEER (G); 23 BELLINGER,DARIN (F); 25 LAJEUNESSE,MATT (F);

Seton Hall: 0 MCKNIGHT,QUINCY (G); 13 POWELL,MYLES (G); 21 OBIAGU,IKE (C); 22 CALE,MYLES (G); 23 MAMUKELASHVILI,SANDRO (F);

Time	VISITORS: Bloomfield	Score	Margin	HOME: Seton Hall
19:45		3-0	H 3	GOOD! 3PTR by MAMUKELASHVILI, SANDRO
19:45				ASSIST by MCKNIGHT, QUINCY
19:14	TURNOVER by LESHEM, SOL			
19:14				STEAL by POWELL, MYLES
19:09		6-0	H 6	GOOD! 3PTR by POWELL, MYLES [FB]
18:53	GOOD! JUMPER by LAJEUNESSE, MATT [PNT]	6-2	H 4	
18:32				TURNOVER by OBIAGU, IKE [PNT]
18:19	MISSED 3PTR by LESHEM, SOL			
18:13				REBOUND (DEF) by MAMUKELASHVILI, SANDRO
18:09	FOUL by ABDUS-SABUR, SAFEER			
17:57				TURNOVER by CALE, MYLES
17:57	STEAL by BELLINGER, DARIN			
17:51	TURNOVER by LESHEM, SOL			
17:51				STEAL by MCKNIGHT, QUINCY
17:46				MISSED 3PTR by CALE, MYLES
17:38	REBOUND (DEF) by ABDUS-SABUR, SAFEER			
17:36	MISSED LAYUP by JULIUS, DONTAY			
17:32				REBOUND (DEF) by POWELL, MYLES
17:30				MISSED 3PTR by POWELL, MYLES
17:27	REBOUND (DEF) by ABDUS-SABUR, SAFEER			
17:27				FOUL by MAMUKELASHVILI, SANDRO
17:18	MISSED LAYUP by JULIUS, DONTAY			
17:18				BLOCK by OBIAGU, IKE
17:13				REBOUND (DEF) by MCKNIGHT, QUINCY
17:10		8-2	H 6	GOOD! LAYUP by CALE, MYLES [FB]
17:10				ASSIST by MCKNIGHT, QUINCY
16:54	MISSED 3PTR by LESHEM, SOL			
16:50				REBOUND (DEF) by MCKNIGHT, QUINCY
16:46		10-2	H 8	GOOD! LAYUP by POWELL, MYLES [FB/PNT]
16:46				ASSIST by MCKNIGHT, QUINCY
16:20	MISSED 3PTR by LESHEM, SOL			
16:14				REBOUND (DEF) by POWELL, MYLES
15:56				MISSED 3PTR by MCKNIGHT, QUINCY
15:51	REBOUND (DEF) by LAJEUNESSE, MATT			
15:45	MISSED 3PTR by ABDUS-SABUR, SAFEER			
15:41	REBOUND (OFF) by ABDUS-SABUR, SAFEER			
15:39	MISSED JUMPER by ABDUS-SABUR, SAFEER [PNT]			
15:39	REBOUND (OFF) by TEAM			
15:39	TIMEOUT MEDIA			
15:39				SUB OUT: MCKNIGHT, QUINCY
15:39				SUB IN: REYNOLDS, SHAVAR
15:39	SUB OUT: LESHEM, SOL			
15:39	SUB IN: WASHINGTON, RON			
15:35	GOOD! 3PTR by LAJEUNESSE, MATT	10-5	H 5	
15:35	ASSIST by WASHINGTON, RON			
15:09		12-5	H 7	GOOD! JUMPER by OBIAGU, IKE [PNT]
15:09				ASSIST by MAMUKELASHVILI, SANDRO
14:49	TURNOVER by ABDUS-SABUR, SAFEER			
14:49				STEAL by POWELL, MYLES
14:46	FOUL by JULIUS, DONTAY			
14:46				SUB OUT: OBIAGU, IKE
14:46				SUB OUT: CALE, MYLES
14:46				SUB OUT: MAMUKELASHVILI, SANDRO
14:46				SUB IN: SAMUEL, TYRESE
14:46				SUB IN: RHODEN, JARED
14:46				SUB IN: GILL, ROMARO
14:37		14-5	H 9	GOOD! JUMPER by REYNOLDS, SHAVAR [PNT]
14:23	MISSED LAYUP by LAJEUNESSE, MATT [PNT]			
14:23				BLOCK by GILL, ROMARO
14:21				REBOUND (DEF) by SAMUEL, TYRESE
14:21	SUB OUT: JULIUS, DONTAY			
14:21	SUB IN: GODWIN, TONY			
14:10		16-5	H 11	GOOD! JUMPER by GILL, ROMARO [PNT]
14:10				ASSIST by RHODEN, JARED
13:45	MISSED 3PTR by WASHINGTON, RON			
13:41	REBOUND (OFF) by BELLINGER, DARIN			
13:39	GOOD! DUNK by BELLINGER, DARIN	16-7	H 9	
13:23				MISSED 3PTR by REYNOLDS, SHAVAR
13:19	REBOUND (DEF) by ABDUS-SABUR, SAFEER			
13:15	GOOD! LAYUP by ABDUS-SABUR, SAFEER	16-9	H 7	

Time	VISITORS: Bloomfield	Score	Margin	HOME: Seton Hall
13:15				FOUL by MCKNIGHT, QUINCY
13:15	SUB OUT: LAJEUNESSE, MATT			
13:15	SUB IN: BENNETT, TYMERE			
13:15				SUB OUT: POWELL, MYLES
13:15				SUB IN: MCKNIGHT, QUINCY
13:15	GOOD! FT by ABDUS-SABUR, SAFEE	16-10	H 6	
13:06				MISSED 3PTR by RHODEN, JARED
12:44	REBOUND (DEF) by ABDUS-SABUR, SAFEE			
12:40	MISSED JUMPER by WASHINGTON, RON			
12:36				REBOUND (DEF) by SAMUEL, TYRESE
12:33		19-10	H 9	GOOD! 3PTR by RHODEN, JARED
12:33				ASSIST by MCKNIGHT, QUINCY
12:23	MISSED JUMPER by BELLINGER, DARIN			
12:20				REBOUND (DEF) by RHODEN, JARED
12:16		22-10	H 12	GOOD! 3PTR by RHODEN, JARED
12:16				ASSIST by SAMUEL, TYRESE
10:53	TURNOVER by BELLINGER, DARIN			
10:53	TIMEOUT MEDIA			
10:53				SUB OUT: SAMUEL, TYRESE
10:53				SUB OUT: REYNOLDS, SHAVAR
10:53				SUB OUT: GILL, ROMARO
10:53				SUB IN: POWELL, MYLES
10:53				SUB IN: OBIAGU, IKE
10:53				SUB IN: MAMUKELASHVILI, SANDRO
10:53	SUB OUT: BELLINGER, DARIN			
10:53	SUB IN: ELSALEH, ABDALLAH			
10:25				SUB OUT: MCKNIGHT, QUINCY
10:25				SUB IN: REYNOLDS, SHAVAR
10:25	SUB OUT: GODWIN, TONY			
10:25	SUB OUT: ELSALEH, ABDALLAH			
10:25	SUB OUT: BENNETT, TYMERE			
10:25	SUB IN: JULIUS, DONTAY			
10:25	SUB IN: LESHEM, SOL			
10:25	SUB IN: LAJEUNESSE, MATT			
09:27		25-10	H 15	GOOD! 3PTR by POWELL, MYLES
09:07	SUB OUT: LAJEUNESSE, MATT			
09:07	SUB IN: BENNETT, TYMERE			
09:06	TURNOVER by BENNETT, TYMERE			
09:04				MISSED 3PTR by MAMUKELASHVILI, SANDRO
09:00				REBOUND (OFF) by OBIAGU, IKE
08:57				MISSED LAYUP by OBIAGU, IKE
08:51	REBOUND (DEF) by BENNETT, TYMERE			
08:45	TURNOVER by WASHINGTON, RON			
08:38	FOUL by ABDUS-SABUR, SAFEE			
08:38	FOUL by WASHINGTON, RON			
08:38		26-10	H 16	GOOD! FT by POWELL, MYLES [FB]
08:38				MISSED FT by POWELL, MYLES [FB]
08:38				REBOUND (DEADB) by TEAM
08:38		27-10	H 17	GOOD! FT by POWELL, MYLES [FB]
08:37	GOOD! LAYUP by LESHEM, SOL	27-12	H 15	
08:33				FOUL by OBIAGU, IKE
07:41	TURNOVER by BENNETT, TYMERE			
07:37				MISSED 3PTR by POWELL, MYLES
07:33	REBOUND (DEF) by ABDUS-SABUR, SAFEE			
07:33				SUB OUT: RHODEN, JARED
07:33				SUB OUT: OBIAGU, IKE
07:33				SUB OUT: MAMUKELASHVILI, SANDRO
07:33				SUB IN: SAMUEL, TYRESE
07:33				SUB IN: CALE, MYLES
07:33				SUB IN: GILL, ROMARO
07:33	SUB OUT: BENNETT, TYMERE			
07:33	SUB IN: LAJEUNESSE, MATT			
07:33				FOUL by RHODEN, JARED
07:30	TURNOVER by LESHEM, SOL			
07:11	MISSED 3PTR by LESHEM, SOL			
06:58	REBOUND (OFF) by LAJEUNESSE, MATT			
06:58	MISSED LAYUP by JULIUS, DONTAY			
06:58				BLOCK by GILL, ROMARO
06:23	REBOUND (OFF) by JULIUS, DONTAY			
06:21	MISSED 3PTR by ABDUS-SABUR, SAFEE			
06:17				REBOUND (DEF) by POWELL, MYLES
05:58				MISSED 3PTR by REYNOLDS, SHAVAR
05:53				REBOUND (OFF) by SAMUEL, TYRESE
05:51				SUB OUT: POWELL, MYLES
05:51				SUB IN: RHODEN, JARED
05:51	SUB OUT: WASHINGTON, RON			
05:51	SUB IN: BELLINGER, DARIN			
05:39	TURNOVER by JULIUS, DONTAY			
05:39				STEAL by CALE, MYLES
05:22	SUB OUT: JULIUS, DONTAY			

Time	VISITORS: Bloomfield	Score	Margin	HOME: Seton Hall
05:22	SUB IN: GODWIN, TONY			
05:13	GOOD! JUMPER by ABDUS-SABUR, SAFEE	27-14	H 13	
05:02				MISSED 3PTR by CALE, MYLES
05:02	REBOUND (DEF) by ABDUS-SABUR, SAFEE			
04:55				MISSED LAYUP by GILL, ROMARO [PNT]
04:51	REBOUND (DEF) by BELLINGER, DARIN			
04:41	MISSED 3PTR by LESHEM, SOL			
04:36				REBOUND (DEF) by SAMUEL, TYRESE
04:32				MISSED 3PTR by SAMUEL, TYRESE
04:26	REBOUND (DEF) by ABDUS-SABUR, SAFEE			
04:22	TURNOVER by ABDUS-SABUR, SAFEE			
04:22				STEAL by REYNOLDS, SHAVAR
04:22				SUB OUT: SAMUEL, TYRESE
04:22				SUB OUT: REYNOLDS, SHAVAR
04:22				SUB IN: MCKNIGHT, QUINCY
04:22				SUB IN: MAMUKELASHVILI, SANDRO
04:22	SUB OUT: ABDUS-SABUR, SAFEE			
04:22	SUB IN: JULIUS, DONTAY			
04:06				TURNOVER by MAMUKELASHVILI, SANDRO
04:06	STEAL by BELLINGER, DARIN			
03:51	MISSED JUMPER by LESHEM, SOL			
03:46	REBOUND (OFF) by GODWIN, TONY			
03:43	MISSED LAYUP by LAJEUNESSE, MATT			
03:40				REBOUND (DEF) by MCKNIGHT, QUINCY
03:23				MISSED JUMPER by MCKNIGHT, QUINCY [PNT]
03:18				REBOUND (OFF) by MAMUKELASHVILI, SANDRO
03:17		29-14	H 15	GOOD! DUNK by MAMUKELASHVILI, SANDRO [PNT]
03:10		31-14	H 17	GOOD! LAYUP by CALE, MYLES
03:09	MISSED 3PTR by LESHEM, SOL			
03:03				REBOUND (DEF) by CALE, MYLES
02:59				MISSED 3PTR by CALE, MYLES
02:54	REBOUND (DEF) by GODWIN, TONY			
02:39	GOOD! JUMPER by ABDUS-SABUR, SAFEE [PNT]	31-16	H 15	
02:22				MISSED LAYUP by MCKNIGHT, QUINCY [PNT]
02:18	REBOUND (DEF) by GODWIN, TONY			
02:18		33-16	H 17	GOOD! LAYUP by GILL, ROMARO
02:18	GOOD! 3PTR by ABDUS-SABUR, SAFEE	33-19	H 14	
02:18	ASSIST by JULIUS, DONTAY			
02:18				FOUL by MCKNIGHT, QUINCY
02:18		36-19	H 17	GOOD! 3PTR by POWELL, MYLES
02:18	GOOD! 3PTR by LESHEM, SOL	36-22	H 14	
02:18	ASSIST by LAJEUNESSE, MATT			
02:18	FOUL by WASHINGTON, RON			
02:18		38-22	H 16	GOOD! LAYUP by POWELL, MYLES
02:18	GOOD! LAYUP by LAJEUNESSE, MATT	38-24	H 14	
02:18		41-24	H 17	GOOD! 3PTR by REYNOLDS, SHAVAR
02:18	FOUL by BELLINGER, DARIN [PNT]			
02:18		42-24	H 18	GOOD! FT by GILL, ROMARO
02:18		43-24	H 19	GOOD! FT by GILL, ROMARO
02:18	GOOD! JUMPER by LESHEM, SOL [PNT]	43-26	H 17	
02:18	FOUL by ABDUS-SABUR, SAFEE			

Bloomfield 26, Seton Hall 43

Points from (This Period)	BLO	SHU
In the Paint	14	18
Off Turns	0	12
2nd Chance	5	2
Fast Break	0	9
Bench	0	17

Official Box Score
Bloomfield vs Seton Hall
Second Half Statistics Only
October 25, 2019 at Walsh Gymnasium



Bloomfield 26

No.	Player	S	Pts	FG	3FG	FT	OR	DR	TR	PF	A	TO	Blk	Stl	Min
03	JULIUS, DONTAY	G	3	1-1	1-1	0-0	0	1	1	0	1	3	0	1	12
05	LESHEM, SOL	G	4	2-4	0-1	0-0	0	1	1	0	0	1	0	0	11
12	ABDUS-SABUR, SAFEE	G	3	1-8	1-4	0-0	0	1	1	0	0	4	0	0	14
23	BELLINGER, DARIN	F	3	1-2	1-1	0-0	0	2	2	2	0	0	0	0	11
25	LAJEUNESSE, MATT	F	4	2-5	0-1	0-1	1	5	6	2	1	0	1	0	16
10	LIZIMA, EWENS	G	1	0-0	0-0	1-2	0	0	0	0	0	0	0	0	3
11	GODWIN, TONY	G	0	0-0	0-0	0-0	0	1	1	0	0	1	0	0	9
15	WASHINGTON, RON	F	4	1-2	0-0	2-2	0	0	0	0	1	1	0	0	11
20	LOWBER, JAHAUD	F	2	1-1	0-0	0-0	0	0	0	0	0	0	0	0	3
21	ELSALEH, ABDALLAH	F	2	1-2	0-1	0-0	0	0	0	1	1	0	0	0	4
31	BENNETT, TYMERE	F	0	0-1	0-1	0-0	0	0	0	0	0	0	1	0	4
	TEAM			0-0			2	2	4	0		0			
TOTALS			26	10-26	3-10	3-5	3	13	16	5	4	10	2	1	100

Shooting By Period

Period	FG	FG%	3FG	3FG%	FT	FT%
2nd Half	10-26	38%	3-10	30%	3-5	60%
Game	21-55	38.2%	6-22	27.3%	4-6	66.7%

Last FG Half: BLO -

Seton Hall 38

No.	Player	S	Pts	FG	3FG	FT	OR	DR	TR	PF	A	TO	Blk	Stl	Min
00	MCKNIGHT, QUINCY	G	2	1-5	0-1	0-0	0	1	1	0	4	1	0	1	13
13	POWELL, MYLES	G	6	2-5	2-4	0-0	0	0	0	0	0	0	0	0	6
21	OBIAGU, IKE	C	0	0-0	0-0	0-0	0	0	0	1	0	0	0	0	2
22	CALE, MYLES	G	6	2-5	0-2	2-2	1	1	2	1	3	0	0	1	11
23	MAMUKELASHVILI, SANDRO	F	4	2-3	0-1	0-0	1	0	1	0	0	1	1	1	12
04	SAMUEL, TYRESE	F	5	2-3	0-1	1-2	2	4	6	0	0	1	0	0	9
14	RHODEN, JARED	F	7	3-4	1-1	0-0	2	0	2	1	0	0	0	2	12
15	THOMPSON, TAUREAN	F	5	2-3	1-1	0-0	0	1	1	3	0	1	0	0	9
30	AVENT, ASIAH	G	0	0-0	0-0	0-0	0	0	0	0	0	0	0	0	2
32	BRODIE, DARNELL	F	1	0-0	0-0	1-2	0	1	1	0	0	0	0	0	5
33	REYNOLDS, SHAVAR	G	2	1-4	0-2	0-0	0	4	4	2	1	1	0	2	15
35	GILL, ROMARO	C	0	0-1	0-0	0-0	1	0	1	1	1	0	3	0	5
	TEAM			0-0			0	2	2	0		0			
TOTALS			38	15-33	4-13	4-6	7	14	21	9	9	5	4	7	100

Shooting By Period

Period	FG	FG%	3FG	3FG%	FT	FT%
2nd Half	15-33	45%	4-13	31%	4-6	67%
Game	31-64	48.4%	11-31	35.5%	8-11	72.7%

Last FG Half: SHU -

Game Notes:

Officials: **Brian O'Connell, Nathan Farrell, Evon Burroughs**
Attendance: **1655**

Start Time: **11:00 PM**

Score	1st	2nd	TOT
BLO	26	26	52
SHU	43	38	81

Points from (This Period)	BLO	SHU
In the Paint	10	22
Off Turns	3	17
2nd Chance	3	6
Fast Break	0	14
Bench	9	20

Official Play-By-Play
Bloomfield vs Seton Hall
Second Half
October 25, 2019 at Walsh Gymnasium



Period 2

Starters:

Bloomfield: 3 JULIUS,DONTAY (G); 5 LESHEM,SOL (G); 12 ABDUS-SABUR,SAFEER (G); 23 BELLINGER,DARIN (F); 25 LAJEUNESSE,MATT (F);
Seton Hall: 0 MCKNIGHT,QUINCY (G); 13 POWELL,MYLES (G); 21 OBIAGU,IKE (C); 22 CALE,MYLES (G); 23 MAMUKELASHVILI,SANDRO (F);

Time	VISITORS: Bloomfield	Score	Margin	HOME: Seton Hall
20:00				SUB OUT: GILL, ROMARO
20:00				SUB IN: OBIAGU, IKE
20:00	SUB OUT: GODWIN, TONY			
20:00	SUB IN: ABDUS-SABUR, SAFEER			
19:44				FOUL by CALE, MYLES
19:41	GOOD! 3PTR by ABDUS-SABUR, SAFEER	43-29	H 14	
19:41	ASSIST by JULIUS, DONTAY			
19:14				MISSED 3PTR by MCKNIGHT, QUINCY
19:08	REBOUND (DEF) by BELLINGER, DARIN			
19:01	MISSED LAYUP by ABDUS-SABUR, SAFEER [PNT]			
18:57	REBOUND (OFF) by LAJEUNESSE, MATT			
18:56	GOOD! 3PTR by BELLINGER, DARIN	43-32	H 11	
18:56	ASSIST by LAJEUNESSE, MATT			
18:37	FOUL by BELLINGER, DARIN			
18:37				SUB OUT: RHODEN, JARED
18:37				SUB OUT: CALE, MYLES
18:37				SUB IN: POWELL, MYLES
18:37				SUB IN: REYNOLDS, SHAVAR
18:27				MISSED LAYUP by MCKNIGHT, QUINCY
18:22				REBOUND (OFF) by MAMUKELASHVILI, SANDRO
18:19				MISSED 3PTR by REYNOLDS, SHAVAR
18:17	REBOUND (DEF) by LAJEUNESSE, MATT			
18:17				FOUL by OBIAGU, IKE
18:06	GOOD! JUMPER by LESHEM, SOL	43-34	H 9	
17:53				TURNOVER by MAMUKELASHVILI, SANDRO
17:53				TIMEOUT 30SEC
17:53	TIMEOUT MEDIA			
17:53				SUB OUT: OBIAGU, IKE
17:53				SUB IN: GILL, ROMARO
17:37	TURNOVER by JULIUS, DONTAY [PNT]			
17:37				STEAL by MCKNIGHT, QUINCY
17:31		46-34	H 12	GOOD! 3PTR by POWELL, MYLES [FB]
17:31				ASSIST by MCKNIGHT, QUINCY
17:00	MISSED 3PTR by ABDUS-SABUR, SAFEER			
16:58				REBOUND (DEF) by TEAM
16:58	SUB OUT: BELLINGER, DARIN			
16:58	SUB IN: WASHINGTON, RON			
16:41				MISSED LAYUP by GILL, ROMARO
16:37	REBOUND (DEF) by LAJEUNESSE, MATT			
16:30	MISSED LAYUP by ABDUS-SABUR, SAFEER [PNT]			
16:30				BLOCK by GILL, ROMARO
16:30	REBOUND (OFF) by TEAM			
16:18	MISSED LAYUP by ABDUS-SABUR, SAFEER [PNT]			
16:18				BLOCK by GILL, ROMARO
16:17				REBOUND (DEF) by TEAM
15:58		49-34	H 15	GOOD! 3PTR by POWELL, MYLES
15:58				ASSIST by MCKNIGHT, QUINCY
15:28	MISSED 3PTR by ABDUS-SABUR, SAFEER			
15:23				REBOUND (DEF) by MCKNIGHT, QUINCY
15:20				MISSED 3PTR by POWELL, MYLES
15:15				REBOUND (OFF) by GILL, ROMARO
15:08		51-34	H 17	GOOD! JUMPER by REYNOLDS, SHAVAR [PNT]
15:08				ASSIST by GILL, ROMARO
15:08	TIMEOUT MEDIA			
15:08				SUB OUT: MCKNIGHT, QUINCY
15:08				SUB OUT: MAMUKELASHVILI, SANDRO
15:08				SUB IN: SAMUEL, TYRESE
15:08				SUB IN: RHODEN, JARED
15:08	SUB OUT: JULIUS, DONTAY			
15:08	SUB IN: GODWIN, TONY			
14:55	MISSED LAYUP by LESHEM, SOL [PNT]			
14:55				BLOCK by GILL, ROMARO
14:49				REBOUND (DEF) by SAMUEL, TYRESE
14:47				MISSED LAYUP by POWELL, MYLES
14:47	REBOUND (DEF) by LAJEUNESSE, MATT			
14:47				FOUL by GILL, ROMARO
14:34	GOOD! JUMPER by LESHEM, SOL [PNT]	51-36	H 15	
14:14				MISSED 3PTR by SAMUEL, TYRESE
14:11	REBOUND (DEF) by ABDUS-SABUR, SAFEER			
13:45	GOOD! JUMPER by WASHINGTON, RON	51-38	H 13	

Time	VISITORS: Bloomfield	Score	Margin	HOME: Seton Hall
13:21				MISSED 3PTR by POWELL, MYLES
13:14				REBOUND (OFF) by SAMUEL, TYRESE
13:13		53-38	H 15	GOOD! DUNK by SAMUEL, TYRESE
13:06				FOUL by RHODEN, JARED
13:06				SUB OUT: POWELL, MYLES
13:06				SUB OUT: REYNOLDS, SHAVAR
13:06				SUB OUT: GILL, ROMARO
13:06				SUB IN: MCKNIGHT, QUINCY
13:06				SUB IN: CALE, MYLES
13:06				SUB IN: MAMUKELASHVILI, SANDRO
13:04	TURNOVER by ABDUS-SABUR, SAFEE			
13:04				STEAL by MAMUKELASHVILI, SANDRO
13:00		55-38	H 17	GOOD! DUNK by MAMUKELASHVILI, SANDRO [FB]
12:39	GOOD! DUNK by LAJEUNESSE, MATT	55-40	H 15	
12:39	ASSIST by WASHINGTON, RON			
12:24		57-40	H 17	GOOD! LAYUP by CALE, MYLES
12:11	MISSED 3PTR by ABDUS-SABUR, SAFEE			
12:07				REBOUND (DEF) by SAMUEL, TYRESE
11:48				MISSED 3PTR by MAMUKELASHVILI, SANDRO
11:43	REBOUND (DEF) by LAJEUNESSE, MATT			
11:37	MISSED JUMPER by WASHINGTON, RON			
11:33				REBOUND (DEF) by SAMUEL, TYRESE
11:26				MISSED JUMPER by MCKNIGHT, QUINCY
11:26	REBOUND (DEF) by TEAM			
11:26	TIMEOUT MEDIA			
11:26	SUB OUT: LESHEM, SOL			
11:26	SUB IN: BELLINGER, DARIN			
11:00	TURNOVER by ABDUS-SABUR, SAFEE [PNT]			
11:00				STEAL by RHODEN, JARED
10:55		59-40	H 19	GOOD! JUMPER by CALE, MYLES [FB]
10:55				ASSIST by MCKNIGHT, QUINCY
10:25	TURNOVER by ABDUS-SABUR, SAFEE [PNT]			
10:25				SUB OUT: RHODEN, JARED
10:25				SUB IN: THOMPSON, TAUREAN
10:25	SUB OUT: ABDUS-SABUR, SAFEE			
10:25	SUB IN: JULIUS, DONTAY			
10:08				MISSED LAYUP by MCKNIGHT, QUINCY
10:08	BLOCK by LAJEUNESSE, MATT			
10:08	REBOUND (DEF) by TEAM			
09:48	TURNOVER by JULIUS, DONTAY			
09:47				SUB OUT: SAMUEL, TYRESE
09:47				SUB IN: REYNOLDS, SHAVAR
09:47	SUB OUT: GODWIN, TONY			
09:47	SUB IN: LESHEM, SOL			
09:30		62-40	H 22	GOOD! 3PTR by THOMPSON, TAUREAN
09:30				ASSIST by MCKNIGHT, QUINCY
09:04	MISSED JUMPER by BELLINGER, DARIN			
09:04				BLOCK by MAMUKELASHVILI, SANDRO
09:03	REBOUND (OFF) by TEAM			
08:56	MISSED JUMPER by LAJEUNESSE, MATT [PNT]			
08:50				REBOUND (DEF) by REYNOLDS, SHAVAR
08:38	SUB OUT: WASHINGTON, RON			
08:38	SUB IN: ABDUS-SABUR, SAFEE			
08:28				MISSED 3PTR by CALE, MYLES
08:25	REBOUND (DEF) by LESHEM, SOL			
08:11	MISSED 3PTR by LESHEM, SOL			
08:06				REBOUND (DEF) by CALE, MYLES
08:04		64-40	H 24	GOOD! DUNK by THOMPSON, TAUREAN [FB/PNT]
08:04				ASSIST by CALE, MYLES
07:37	TURNOVER by LESHEM, SOL [PNT]			
07:37				STEAL by CALE, MYLES
07:32		66-40	H 26	GOOD! DUNK by MCKNIGHT, QUINCY [FB]
07:32				ASSIST by CALE, MYLES
07:13				FOUL by THOMPSON, TAUREAN [PNT]
07:13	TIMEOUT MEDIA			
07:13				SUB OUT: CALE, MYLES
07:13				SUB OUT: MAMUKELASHVILI, SANDRO
07:13				SUB IN: SAMUEL, TYRESE
07:13				SUB IN: RHODEN, JARED
07:13	SUB OUT: LESHEM, SOL			
07:13	SUB IN: WASHINGTON, RON			
07:06	MISSED 3PTR by LAJEUNESSE, MATT			
07:01				REBOUND (DEF) by REYNOLDS, SHAVAR
06:58				TURNOVER by SAMUEL, TYRESE [PNT]
06:58	STEAL by JULIUS, DONTAY			
06:49	MISSED JUMPER by ABDUS-SABUR, SAFEE [PNT]			
06:44				REBOUND (DEF) by REYNOLDS, SHAVAR
06:34				TURNOVER by MCKNIGHT, QUINCY
06:25	GOOD! 3PTR by JULIUS, DONTAY	66-43	H 23	
05:55				MISSED 3PTR by REYNOLDS, SHAVAR

Time	VISITORS: Bloomfield	Score	Margin	HOME: Seton Hall
05:50	REBOUND (DEF) by LAJEUNESSE, MATT			
05:44	MISSED LAYUP by LAJEUNESSE, MATT			
05:40				REBOUND (DEF) by REYNOLDS, SHAVAR
05:27	FOUL by LAJEUNESSE, MATT			
05:27		67-43	H 24	GOOD! FT by SAMUEL, TYRESE
05:27				MISSED FT by SAMUEL, TYRESE
05:26	REBOUND (DEF) by BELLINGER, DARIN			
05:16	GOOD! LAYUP by LAJEUNESSE, MATT [PNT]	67-45	H 22	
05:16				FOUL by THOMPSON, TAUREAN [PNT]
05:16				SUB OUT: MCKNIGHT, QUINCY
05:16				SUB OUT: THOMPSON, TAUREAN
05:16				SUB IN: CALE, MYLES
05:16				SUB IN: BRODIE, DARNELL
05:16	MISSED FT by LAJEUNESSE, MATT			
05:15				REBOUND (DEF) by SAMUEL, TYRESE
04:56	FOUL by LAJEUNESSE, MATT			
04:56		68-45	H 23	GOOD! FT by CALE, MYLES
04:56		69-45	H 24	GOOD! FT by CALE, MYLES
04:43	TURNOVER by WASHINGTON, RON			
04:43				STEAL by REYNOLDS, SHAVAR
04:38				MISSED LAYUP by REYNOLDS, SHAVAR
04:35				REBOUND (OFF) by CALE, MYLES
04:34				MISSED LAYUP by CALE, MYLES
04:29				REBOUND (OFF) by SAMUEL, TYRESE
04:28		71-45	H 26	GOOD! LAYUP by SAMUEL, TYRESE
04:15	TURNOVER by ABDUS-SABUR, SAFEE			
04:15				STEAL by RHODEN, JARED
04:07	FOUL by BELLINGER, DARIN [PNT]			
04:07		72-45	H 27	GOOD! FT by BRODIE, DARNELL [FB]
04:07	SUB OUT: ABDUS-SABUR, SAFEE			
04:07	SUB OUT: WASHINGTON, RON			
04:07	SUB IN: GODWIN, TONY			
04:07	SUB IN: BENNETT, TYMERE			
04:07				MISSED FT by BRODIE, DARNELL [FB]
04:07				REBOUND (OFF) by RHODEN, JARED
04:07				MISSED LAYUP by RHODEN, JARED
04:07	BLOCK by BENNETT, TYMERE			
03:58	REBOUND (DEF) by JULIUS, DONTAY			
03:55	TURNOVER by JULIUS, DONTAY			
03:46	TIMEOUT MEDIA			
03:46				SUB OUT: SAMUEL, TYRESE
03:46				SUB IN: THOMPSON, TAUREAN
03:46	SUB OUT: JULIUS, DONTAY			
03:46	SUB OUT: BELLINGER, DARIN			
03:46	SUB OUT: LAJEUNESSE, MATT			
03:46	SUB IN: ABDUS-SABUR, SAFEE			
03:46	SUB IN: WASHINGTON, RON			
03:46	SUB IN: ELSALEH, ABDALLAH			
03:45				MISSED LAYUP by THOMPSON, TAUREAN
03:42	REBOUND (DEF) by GODWIN, TONY			
03:30				FOUL by THOMPSON, TAUREAN
03:30	SUB OUT: ABDUS-SABUR, SAFEE			
03:30	SUB IN: LIZIMA, EWENS			
03:30	GOOD! FT by WASHINGTON, RON	72-46	H 26	
03:30	GOOD! FT by WASHINGTON, RON	72-47	H 25	
03:30	SUB OUT: WASHINGTON, RON			
03:30	SUB IN: LOWBER, JAHAUD			
03:16		75-47	H 28	GOOD! 3PTR by RHODEN, JARED
03:16				ASSIST by CALE, MYLES
02:58	TURNOVER by GODWIN, TONY [PNT]			
02:58				STEAL by REYNOLDS, SHAVAR
02:52		77-47	H 30	GOOD! DUNK by RHODEN, JARED [FB]
02:52				ASSIST by REYNOLDS, SHAVAR
02:34	GOOD! LAYUP by ELSALEH, ABDALLAH	77-49	H 28	
02:17				MISSED 3PTR by CALE, MYLES
02:12				REBOUND (OFF) by RHODEN, JARED
02:11		79-49	H 30	GOOD! LAYUP by RHODEN, JARED
01:54	GOOD! JUMPER by LOWBER, JAHAUD [PNT]	79-51	H 28	
01:54	ASSIST by ELSALEH, ABDALLAH			
01:29				TURNOVER by THOMPSON, TAUREAN
01:29				SUB OUT: RHODEN, JARED
01:29				SUB OUT: CALE, MYLES
01:29				SUB IN: MAMUKELASHVILI, SANDRO
01:29				SUB IN: AVENT, ASIAH
01:26	MISSED 3PTR by ELSALEH, ABDALLAH			
01:22				REBOUND (DEF) by BRODIE, DARNELL
01:06				FOUL by REYNOLDS, SHAVAR
01:06				TURNOVER by REYNOLDS, SHAVAR
00:57	MISSED 3PTR by BENNETT, TYMERE			
00:55				REBOUND (DEF) by THOMPSON, TAUREAN

Time	VISITORS: Bloomfield	Score	Margin	HOME: Seton Hall
00:55	FOUL by ELSALEH, ABDALLAH			
00:39		81-51	H 30	GOOD! LAYUP by MAMUKELASHVILI, SANDRO
00:16				FOUL by REYNOLDS, SHAVAR
00:16	MISSED FT by LIZIMA, EWENS			
00:16	REBOUND (DEADB) by TEAM			
00:16	GOOD! FT by LIZIMA, EWENS	81-52	H 29	

Bloomfield 52, Seton Hall 81

Points from (This Period)	BLO	SHU
In the Paint	10	22
Off Turns	3	17
2nd Chance	3	6
Fast Break	0	14
Bench	9	20

Official Scoring/Possession Reference Chart
Bloomfield vs Seton Hall
Period 1
October 25, 2019 at Walsh Gymnasium



Period 1

Starters:

Bloomfield: 3 JULIUS,DONTAY (G); 5 LESHEM,SOL (G); 12 ABDUS-SABUR,SAFEER (G); 23 BELLINGER,DARIN (F); 25 LAJEUNESSE,MATT (F);

Seton Hall: 0 MCKNIGHT,QUINCY (G); 13 POWELL,MYLES (G); 21 OBIAGU,IKE (C); 22 CALE,MYLES (G); 23 MAMUKELASHVILI,SANDRO (F);

Time	VISITORS: Bloomfield	Score	Margin	HOME: Seton Hall
19:45		3-0	H 3	GOOD! 3PTR by MAMUKELASHVILI, SANDRO
19:09		6-0	H 6	GOOD! 3PTR by POWELL, MYLES [FB]
18:53	GOOD! JUMPER by LAJEUNESSE, MATT [PNT]	6-2	H 4	
17:10		8-2	H 6	GOOD! LAYUP by CALE, MYLES [FB]
16:46		10-2	H 8	GOOD! LAYUP by POWELL, MYLES [FB/PNT]
15:35	GOOD! 3PTR by LAJEUNESSE, MATT	10-5	H 5	
15:09		12-5	H 7	GOOD! JUMPER by OBIAGU, IKE [PNT]
14:37		14-5	H 9	GOOD! JUMPER by REYNOLDS, SHAVAR [PNT]
14:10		16-5	H 11	GOOD! JUMPER by GILL, ROMARO [PNT]
13:39	GOOD! DUNK by BELLINGER, DARIN	16-7	H 9	
13:15	GOOD! LAYUP by ABDUS-SABUR, SAFEER	16-9	H 7	
13:15	GOOD! FT by ABDUS-SABUR, SAFEER	16-10	H 6	
12:33		19-10	H 9	GOOD! 3PTR by RHODEN, JARED
12:16		22-10	H 12	GOOD! 3PTR by RHODEN, JARED
09:27		25-10	H 15	GOOD! 3PTR by POWELL, MYLES
08:38		26-10	H 16	GOOD! FT by POWELL, MYLES [FB]
08:38		27-10	H 17	GOOD! FT by POWELL, MYLES [FB]
08:37	GOOD! LAYUP by LESHEM, SOL	27-12	H 15	
05:13	GOOD! JUMPER by ABDUS-SABUR, SAFEER	27-14	H 13	
03:17		29-14	H 15	GOOD! DUNK by MAMUKELASHVILI, SANDRO [PNT]
03:10		31-14	H 17	GOOD! LAYUP by CALE, MYLES
02:39	GOOD! JUMPER by ABDUS-SABUR, SAFEER [PNT]	31-16	H 15	
02:18		33-16	H 17	GOOD! LAYUP by GILL, ROMARO
02:18	GOOD! 3PTR by ABDUS-SABUR, SAFEER	33-19	H 14	
02:18		36-19	H 17	GOOD! 3PTR by POWELL, MYLES
02:18	GOOD! 3PTR by LESHEM, SOL	36-22	H 14	
02:18		38-22	H 16	GOOD! LAYUP by POWELL, MYLES
02:18	GOOD! LAYUP by LAJEUNESSE, MATT	38-24	H 14	
02:18		41-24	H 17	GOOD! 3PTR by REYNOLDS, SHAVAR
02:18		42-24	H 18	GOOD! FT by GILL, ROMARO
02:18		43-24	H 19	GOOD! FT by GILL, ROMARO
02:18	GOOD! JUMPER by LESHEM, SOL [PNT]	43-26	H 17	

Bloomfield 26, Seton Hall 43

Official Scoring/Possession Reference Chart
Bloomfield vs Seton Hall
Period 2
October 25, 2019 at Walsh Gymnasium



Period 2

Starters:

Bloomfield: 3 JULIUS,DONTAY (G); 5 LESHEM,SOL (G); 12 ABDUS-SABUR,SAFEER (G); 23 BELLINGER,DARIN (F); 25 LAJEUNESSE,MATT (F);
Seton Hall: 0 MCKNIGHT,QUINCY (G); 13 POWELL,MYLES (G); 21 OBIAGU,IKE (C); 22 CALE,MYLES (G); 23 MAMUKELASHVILI,SANDRO (F);

Time	VISITORS: Bloomfield	Score	Margin	HOME: Seton Hall
19:41	GOOD! 3PTR by ABDUS-SABUR, SAFEER	43-29	H 14	
18:56	GOOD! 3PTR by BELLINGER, DARIN	43-32	H 11	
18:06	GOOD! JUMPER by LESHEM, SOL	43-34	H 9	
17:31		46-34	H 12	GOOD! 3PTR by POWELL, MYLES [FB]
15:58		49-34	H 15	GOOD! 3PTR by POWELL, MYLES
15:08		51-34	H 17	GOOD! JUMPER by REYNOLDS, SHAVAR [PNT]
14:34	GOOD! JUMPER by LESHEM, SOL [PNT]	51-36	H 15	
13:45	GOOD! JUMPER by WASHINGTON, RON	51-38	H 13	
13:13		53-38	H 15	GOOD! DUNK by SAMUEL, TYRESE
13:00		55-38	H 17	GOOD! DUNK by MAMUKELASHVILI, SANDRO [FB]
12:39	GOOD! DUNK by LAJEUNESSE, MATT	55-40	H 15	
12:24		57-40	H 17	GOOD! LAYUP by CALE, MYLES
10:55		59-40	H 19	GOOD! JUMPER by CALE, MYLES [FB]
09:30		62-40	H 22	GOOD! 3PTR by THOMPSON, TAUREAN
08:04		64-40	H 24	GOOD! DUNK by THOMPSON, TAUREAN [FB/PNT]
07:32		66-40	H 26	GOOD! DUNK by MCKNIGHT, QUINCY [FB]
06:25	GOOD! 3PTR by JULIUS, DONTAY	66-43	H 23	
05:27		67-43	H 24	GOOD! FT by SAMUEL, TYRESE
05:16	GOOD! LAYUP by LAJEUNESSE, MATT [PNT]	67-45	H 22	
04:56		68-45	H 23	GOOD! FT by CALE, MYLES
04:56		69-45	H 24	GOOD! FT by CALE, MYLES
04:28		71-45	H 26	GOOD! LAYUP by SAMUEL, TYRESE
04:07		72-45	H 27	GOOD! FT by BRODIE, DARNELL [FB]
03:30	GOOD! FT by WASHINGTON, RON	72-46	H 26	
03:30	GOOD! FT by WASHINGTON, RON	72-47	H 25	
03:16		75-47	H 28	GOOD! 3PTR by RHODEN, JARED
02:52		77-47	H 30	GOOD! DUNK by RHODEN, JARED [FB]
02:34	GOOD! LAYUP by ELSALEH, ABDALLAH	77-49	H 28	
02:11		79-49	H 30	GOOD! LAYUP by RHODEN, JARED
01:54	GOOD! JUMPER by LOWBER, JAHAUD [PNT]	79-51	H 28	
00:39		81-51	H 30	GOOD! LAYUP by MAMUKELASHVILI, SANDRO
00:16	GOOD! FT by LIZIMA, EWENS	81-52	H 29	

Bloomfield 52, Seton Hall 81

Official Substitutions Log
Bloomfield vs Seton Hall
Period 1
October 25, 2019 at Walsh Gymnasium



VISITORS: Bloomfield	Time	Score	HOME: Seton Hall
3 JULIUS,DONTAY			0 MCKNIGHT,QUINCY
5 LESHEM,SOL			13 POWELL,MYLES
12 ABDUS-SABUR,SAFE			21 OBIAGU,IKE
23 BELLINGER,DARIN			22 CALE,MYLES
25 LAJEUNESSE,MATT			23 MAMUKELASHVILI,SANDRO
	15:39	2-10	SUB OUT: MCKNIGHT,QUINCY
	15:39		SUB IN: REYNOLDS,SHAVAR
SUB OUT: 5 LESHEM,SOL	15:39		
SUB IN: 15 WASHINGTON,RON	15:39		
	14:46	5-12	SUB OUT: OBIAGU,IKE
	14:46		SUB OUT: CALE,MYLES
	14:46		SUB OUT: MAMUKELASHVILI,SANDRO
	14:46		SUB IN: SAMUEL,TYRESE
	14:46		SUB IN: RHODEN,JARED
	14:46		SUB IN: GILL,ROMARO
SUB OUT: 3 JULIUS,DONTAY	14:21	5-14	
SUB IN: 11 GODWIN,TONY	14:21		
SUB OUT: 25 LAJEUNESSE,MATT	13:15	9-16	
SUB IN: 31 BENNETT,TYMER	13:15		
	13:15		SUB OUT: POWELL,MYLES
	13:15		SUB IN: MCKNIGHT,QUINCY
	10:53	10-22	SUB OUT: SAMUEL,TYRESE
	10:53		SUB OUT: REYNOLDS,SHAVAR
	10:53		SUB OUT: GILL,ROMARO
	10:53		SUB IN: POWELL,MYLES
	10:53		SUB IN: OBIAGU,IKE
	10:53		SUB IN: MAMUKELASHVILI,SANDRO
SUB OUT: 23 BELLINGER,DARIN	10:53		
SUB IN: 21 ELSALEH,ABDALLAH	10:53		
	10:25	10-22	SUB OUT: MCKNIGHT,QUINCY
	10:25		SUB IN: REYNOLDS,SHAVAR
SUB OUT: 11 GODWIN,TONY	10:25		
SUB OUT: 21 ELSALEH,ABDALLAH	10:25		
SUB OUT: 31 BENNETT,TYMER	10:25		
SUB IN: 3 JULIUS,DONTAY	10:25		
SUB IN: 5 LESHEM,SOL	10:25		
SUB IN: 25 LAJEUNESSE,MATT	10:25		
SUB OUT: 25 LAJEUNESSE,MATT	09:07	10-25	
SUB IN: 31 BENNETT,TYMER	09:07		
	07:33	12-27	SUB OUT: RHODEN,JARED
	07:33		SUB OUT: OBIAGU,IKE
	07:33		SUB OUT: MAMUKELASHVILI,SANDRO
	07:33		SUB IN: SAMUEL,TYRESE
	07:33		SUB IN: CALE,MYLES
	07:33		SUB IN: GILL,ROMARO
SUB OUT: 31 BENNETT,TYMER	07:33		
SUB IN: 25 LAJEUNESSE,MATT	07:33		
	05:51	12-27	SUB OUT: POWELL,MYLES
	05:51		SUB IN: RHODEN,JARED
SUB OUT: 15 WASHINGTON,RON	05:51		
SUB IN: 23 BELLINGER,DARIN	05:51		
SUB OUT: 3 JULIUS,DONTAY	05:22	12-27	
SUB IN: 11 GODWIN,TONY	05:22		
	04:22	14-27	SUB OUT: SAMUEL,TYRESE
	04:22		SUB OUT: REYNOLDS,SHAVAR
	04:22		SUB IN: MCKNIGHT,QUINCY
	04:22		SUB IN: MAMUKELASHVILI,SANDRO
SUB OUT: 12 ABDUS-SABUR,SAFE	04:22		
SUB IN: 3 JULIUS,DONTAY	04:22		

Bloomfield 26, Seton Hall 43

Official Substitutions Log
Bloomfield vs Seton Hall
Period 2
October 25, 2019 at Walsh Gymnasium



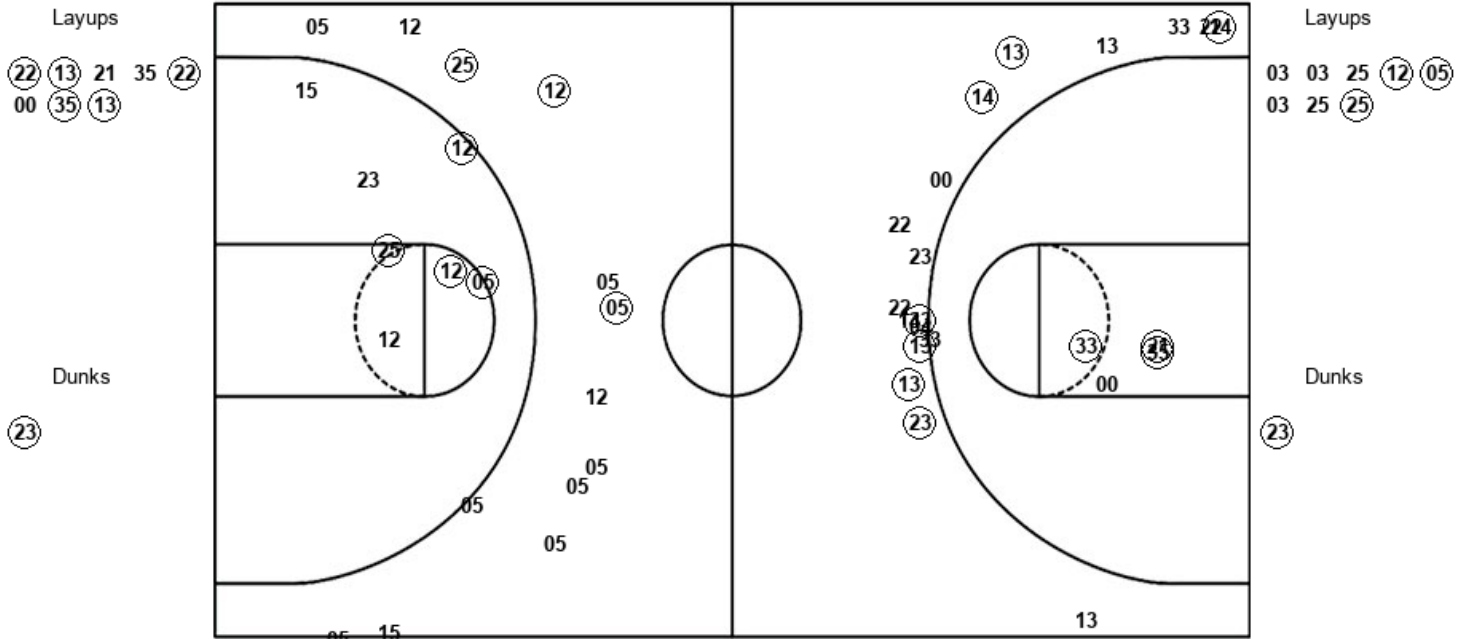
VISITORS: Bloomfield	Time	Score	HOME: Seton Hall
3 JULIUS,DONTAY			0 MCKNIGHT,QUINCY
5 LESHEM,SOL			13 POWELL,MYLES
12 ABDUS-SABUR,SAFEER			21 OBIAGU,IKE
23 BELLINGER,DARIN			22 CALE,MYLES
25 LAJEUNESSE,MATT			23 MAMUKELASHVILI,SANDRO
	20:00	-	SUB OUT: GILL,ROMARO
	20:00		SUB IN: OBIAGU,IKE
SUB OUT: 11 GODWIN,TONY	20:00		
SUB IN: 12 ABDUS-SABUR,SAFEER	20:00		
	18:37	32-43	SUB OUT: RHODEN,JARED
	18:37		SUB OUT: CALE,MYLES
	18:37		SUB IN: POWELL,MYLES
	18:37		SUB IN: REYNOLDS,SHAVAR
	17:53	34-43	SUB OUT: OBIAGU,IKE
	17:53		SUB IN: GILL,ROMARO
SUB OUT: 23 BELLINGER,DARIN	16:58	34-46	
SUB IN: 15 WASHINGTON,RON	16:58		
	15:08	34-51	SUB OUT: MCKNIGHT,QUINCY
	15:08		SUB OUT: MAMUKELASHVILI,SANDRO
	15:08		SUB IN: SAMUEL,TYRESE
	15:08		SUB IN: RHODEN,JARED
SUB OUT: 3 JULIUS,DONTAY	15:08		
SUB IN: 11 GODWIN,TONY	15:08		
	13:06	38-53	SUB OUT: POWELL,MYLES
	13:06		SUB OUT: REYNOLDS,SHAVAR
	13:06		SUB OUT: GILL,ROMARO
	13:06		SUB IN: MCKNIGHT,QUINCY
	13:06		SUB IN: CALE,MYLES
	13:06		SUB IN: MAMUKELASHVILI,SANDRO
SUB OUT: 5 LESHEM,SOL	11:26	40-57	
SUB IN: 23 BELLINGER,DARIN	11:26		
	10:25	40-59	SUB OUT: RHODEN,JARED
	10:25		SUB IN: THOMPSON,TAUREAN
SUB OUT: 12 ABDUS-SABUR,SAFEER	10:25		
SUB IN: 3 JULIUS,DONTAY	10:25		
	09:47	40-59	SUB OUT: SAMUEL,TYRESE
	09:47		SUB IN: REYNOLDS,SHAVAR
SUB OUT: 11 GODWIN,TONY	09:47		
SUB IN: 5 LESHEM,SOL	09:47		
SUB OUT: 15 WASHINGTON,RON	08:38	40-62	
SUB IN: 12 ABDUS-SABUR,SAFEER	08:38		
	07:13	40-66	SUB OUT: CALE,MYLES
	07:13		SUB OUT: MAMUKELASHVILI,SANDRO
	07:13		SUB IN: SAMUEL,TYRESE
	07:13		SUB IN: RHODEN,JARED
SUB OUT: 5 LESHEM,SOL	07:13		
SUB IN: 15 WASHINGTON,RON	07:13		
	05:16	45-67	SUB OUT: MCKNIGHT,QUINCY
	05:16		SUB OUT: THOMPSON,TAUREAN
	05:16		SUB IN: CALE,MYLES
	05:16		SUB IN: BRODIE,DARNELL
SUB OUT: 12 ABDUS-SABUR,SAFEER	04:07	45-72	
SUB OUT: 15 WASHINGTON,RON	04:07		
SUB IN: 11 GODWIN,TONY	04:07		
SUB IN: 31 BENNETT,TYMER	04:07		
	03:46	45-72	SUB OUT: SAMUEL,TYRESE
	03:46		SUB IN: THOMPSON,TAUREAN
SUB OUT: 3 JULIUS,DONTAY	03:46		
SUB OUT: 23 BELLINGER,DARIN	03:46		
SUB OUT: 25 LAJEUNESSE,MATT	03:46		
SUB IN: 12 ABDUS-SABUR,SAFEER	03:46		
SUB IN: 15 WASHINGTON,RON	03:46		
SUB IN: 21 ELSALEH,ABDALLAH	03:46		
SUB OUT: 12 ABDUS-SABUR,SAFEER	03:30	45-72	
SUB IN: 10 LIZIMA,EWENS	03:30		
SUB OUT: 15 WASHINGTON,RON	03:30		
SUB IN: 20 LOWBER,JAHAUD	03:30		
	01:29	51-79	SUB OUT: RHODEN,JARED
	01:29		SUB OUT: CALE,MYLES
	01:29		SUB IN: MAMUKELASHVILI,SANDRO
	01:29		SUB IN: AVENT,ASIAH

Official Shot Chart
Bloomfield vs Seton Hall
 PERIOD 1 Shots
 October 25, 2019 at Walsh Gymnasium



Seton Hall

Bloomfield



SHU : Period 1	Made	Att	Pct
Layups	5	8	62.5
Dunks	1	1	100.0
2PT Field Goals	9	13	69.2
3PT Field Goals	7	18	38.9
Total Field Goals	16	31	51.6

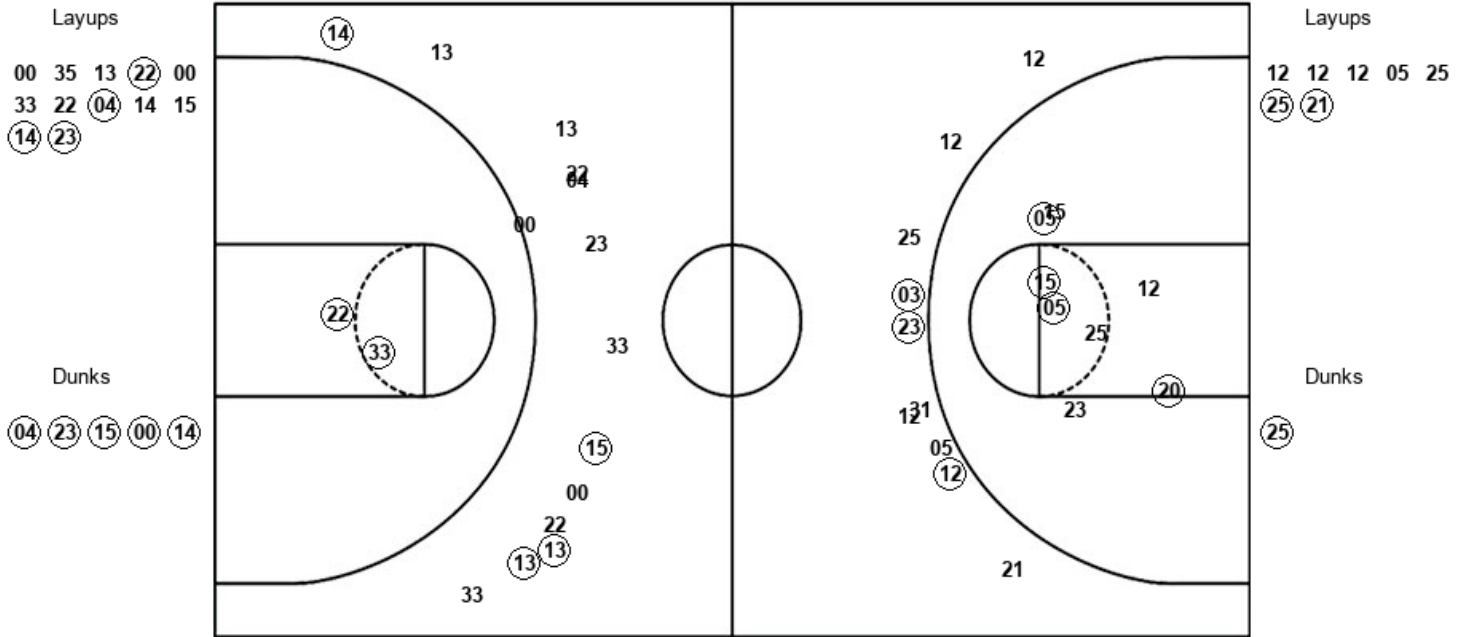
BLO : Period 1	Made	Att	Pct
Layups	3	8	37.5
Dunks	1	1	100.0
2PT Field Goals	8	17	47.1
3PT Field Goals	3	12	25.0
Total Field Goals	11	29	37.9

Official Shot Chart
Bloomfield vs Seton Hall
 PERIOD 2 Shots
 October 25, 2019 at Walsh Gymnasium



Seton Hall

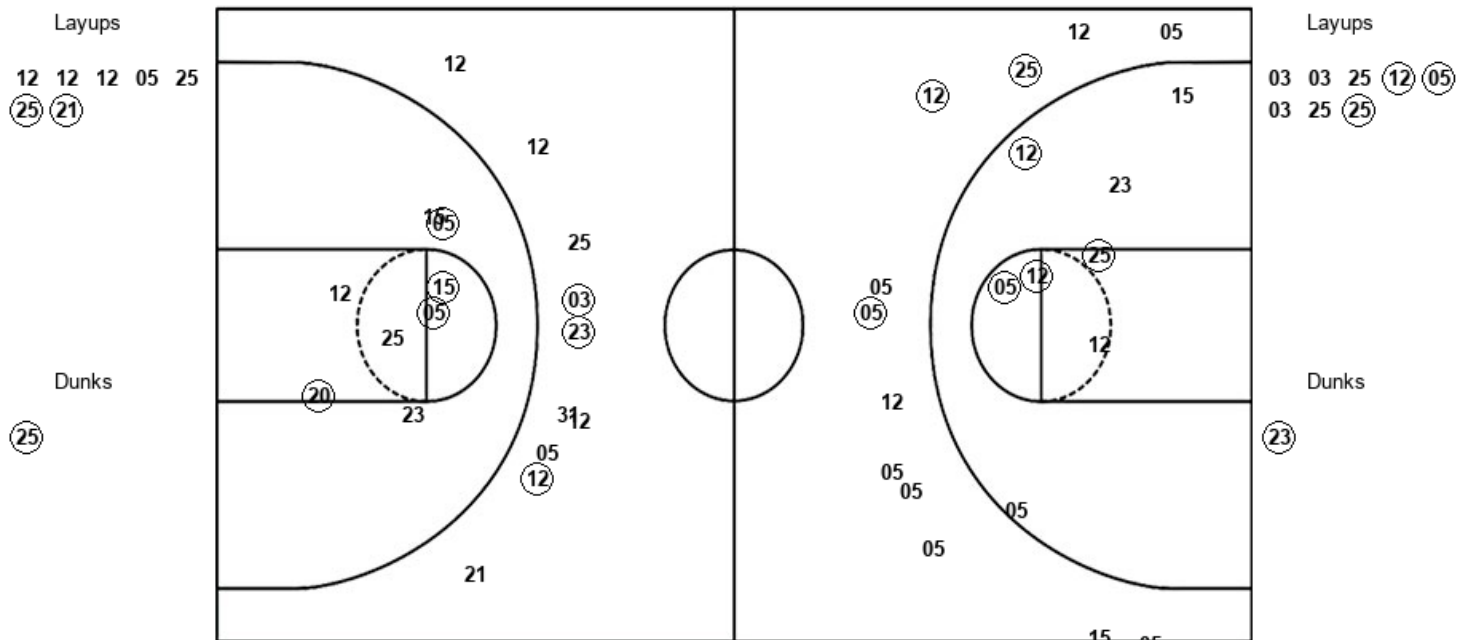
Bloomfield



SHU : Period 2	Made	Att	Pct
Layups	4	12	33.3
Dunks	5	5	100.0
2PT Field Goals	11	20	55.0
3PT Field Goals	4	13	30.8
Total Field Goals	15	33	45.5

BLO : Period 2	Made	Att	Pct
Layups	2	7	28.6
Dunks	1	1	100.0
2PT Field Goals	7	16	43.8
3PT Field Goals	3	10	30.0
Total Field Goals	10	26	38.5

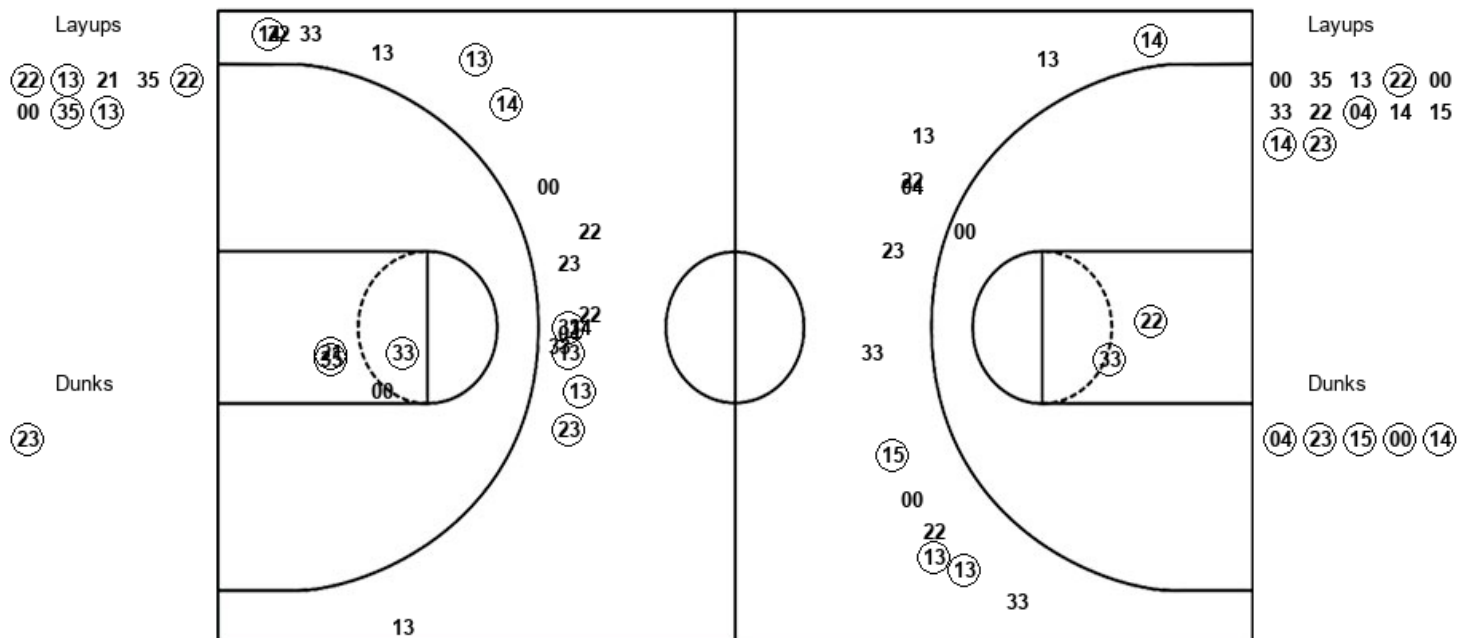
Official Shot Chart
Bloomfield vs Seton Hall
 Bloomfield Team Shots
 October 25, 2019 at Walsh Gymnasium



BLO : Period 1	Made	Att	Pct
Layups	3	8	37.5
Dunks	1	1	100.0
2PT Field Goals	8	17	47.1
3PT Field Goals	3	12	25.0
Total Field Goals	11	29	37.9

BLO : Period 2	Made	Att	Pct
Layups	2	7	28.6
Dunks	1	1	100.0
2PT Field Goals	7	16	43.8
3PT Field Goals	3	10	30.0
Total Field Goals	10	26	38.5

Official Shot Chart
Bloomfield vs Seton Hall
Seton Hall Team Shots
October 25, 2019 at Walsh Gymnasium



SHU : Period 1	Made	Att	Pct
Layups	5	8	62.5
Dunks	1	1	100.0
2PT Field Goals	9	13	69.2
3PT Field Goals	7	18	38.9
Total Field Goals	16	31	51.6

SHU : Period 2	Made	Att	Pct
Layups	4	12	33.3
Dunks	5	5	100.0
2PT Field Goals	11	20	55.0
3PT Field Goals	4	13	30.8
Total Field Goals	15	33	45.5