

## FINAL SCORE

**North Texas**

**79**



**UTSA**

**55**



January 23, 2020 • Convocation Center - San Antonio, Texas

## FINAL STATISTICS

**Official Box Score**  
**North Texas vs UTSA**  
**Game Totals -- Final Statistics**  
**January 23, 2020 at Convocation Center - San Antonio, Texas**



**North Texas 79**

No.	Player	S	Pts	FG	3FG	FT	OR	DR	TR	PF	A	TO	Blk	Stl	Min	+/-
03	BOYD, N'YAH	G	13	3-12	0-1	7-8	2	5	7	1	6	2	0	0	29	10
10	MIMS, TRENA	G	5	2-5	0-0	1-2	2	3	5	1	3	0	1	2	32	31
23	THOMPSON, RANDI	G	11	3-8	2-5	3-4	0	1	1	4	2	1	0	2	24	3
41	TOWNLEY, MADI	F	8	4-8	0-0	0-0	5	3	8	1	4	1	0	3	33	26
42	GEORGE, ANISHA	C	17	8-14	0-0	1-3	7	5	12	1	2	3	1	1	30	13
02	JONES, SUMMER	G	21	8-12	4-7	1-1	0	1	1	3	1	0	0	0	21	13
04	JACKSON, JAZION	G	1	0-1	0-0	1-2	0	1	1	2	2	2	0	0	13	15
11	SHEPHERD, CHARLENE	F	3	1-5	0-0	1-2	0	2	2	3	0	2	0	0	17	9
<b>TEAM</b>							3	2	5	0						
<b>TOTALS</b>			<b>79</b>	<b>29-65</b>	<b>6-13</b>	<b>15-22</b>	<b>19</b>	<b>23</b>	<b>42</b>	<b>16</b>	<b>20</b>	<b>11</b>	<b>2</b>	<b>8</b>	<b>199</b>	

*Shooting By Period*

Period	FG	FG%	3FG	3FG%	FT	FT%
1st Qtr	7-15	47%	2-4	50%	5-5	100%
2nd Qtr	5-18	28%	0-4	00%	3-4	75%
3rd Qtr	7-14	50%	2-3	67%	4-6	67%
4th Qtr	10-18	56%	2-2	100%	3-7	43%
1st Half	12-33	36%	2-8	25%	8-9	89%
2nd Half	17-32	53%	4-5	80%	7-13	54%
<b>Game</b>	<b>29-65</b>	<b>44.6%</b>	<b>6-13</b>	<b>46.2%</b>	<b>15-22</b>	<b>68.2%</b>

*Deadball Rebounds: 4,0*  
*Last FG: 4th-00:33*  
*Biggest Run: 8-0*  
*Largest lead: By 26 at 4th-00:33*  
*Technical Fouls: None.*

**UTSA 55**

No.	Player	S	Pts	FG	3FG	FT	OR	DR	TR	PF	A	TO	Blk	Stl	Min	+/-
01	OMEMMAH, EVELYN	F	11	5-9	0-0	1-1	3	3	6	3	1	2	2	1	20	-1
11	MASS, CHARLENE	G	8	3-14	0-4	2-4	1	1	2	1	2	2	0	1	29	-23
13	COUSIN, DEJA	G	1	0-1	0-1	1-2	0	0	0	0	0	0	0	0	14	-11
15	TOTH, TIMEA	F	6	2-7	0-0	2-2	4	4	8	2	1	1	0	0	29	-24
34	DONALD, KARRINGTON	G	7	3-8	1-5	0-0	0	4	4	3	2	5	0	0	34	-22
03	BLANDING, ELENA	C	0	0-0	0-0	0-0	1	0	1	0	0	1	0	0	9	-15
04	WOODS, MIKAYLA	G	11	4-10	0-0	3-4	1	3	4	0	0	2	0	5	29	-13
22	MASS, CEYENNE	G	0	0-0	0-0	0-0	0	0	0	2	0	2	1	0	12	-2
25	MITCHELL, SHANNAN	F	11	3-5	1-2	4-6	1	4	5	4	1	3	2	1	23	-9
<b>TEAM</b>							3	1	4	0						
<b>TOTALS</b>			<b>55</b>	<b>20-54</b>	<b>2-12</b>	<b>13-19</b>	<b>14</b>	<b>20</b>	<b>34</b>	<b>15</b>	<b>7</b>	<b>20</b>	<b>5</b>	<b>8</b>	<b>199</b>	

*Shooting By Period*

Period	FG	FG%	3FG	3FG%	FT	FT%
1st Qtr	2-14	14%	0-1	00%	3-6	50%
2nd Qtr	6-14	43%	1-5	20%	2-2	100%
3rd Qtr	4-14	29%	0-3	00%	4-5	80%
4th Qtr	8-12	67%	1-3	33%	4-6	67%
1st Half	8-28	29%	1-6	17%	5-8	63%
2nd Half	12-26	46%	1-6	17%	8-11	73%
<b>Game</b>	<b>20-54</b>	<b>37.0%</b>	<b>2-12</b>	<b>16.7%</b>	<b>13-19</b>	<b>68.4%</b>

*Deadball Rebounds: 3,0*  
*Last FG: 4th-00:13*  
*Biggest Run: 6-0*  
*Largest lead: By 0 at -*  
*Technical Fouls: None.*

*Game Notes:*

Officials: **Scott Yarbrough, Ify Seales, Marc Merritt**  
Attendance: **1153**

Start Time: **12:05 PM ET**  
End Time: **01:51 PM ET**  
Game Duration: **1:45**  
Conference Game;

Score	1st	2nd	3rd	4th	TOT
UNT	21	13	20	25	<b>79</b>
UTS	7	15	12	21	<b>55</b>

UNT led for 39:17. UTS led for 0:00.  
**Game was tied for 0:30.**  
Times tied: **0**      Lead Changes: **0**

Points from	UNT	UTS
In the Paint	32	26
Off Turns	25	12
2nd Chance	15	12
Fast Break	7	8
Bench	25	22

**Official Box Score**  
**North Texas vs UTSA**  
**First Half Statistics Only**  
**January 23, 2020 at Convocation Center - San Antonio, Texas**



### North Texas 34

No.	Player	S	Pts	FG	3FG	FT	OR	DR	TR	PF	A	TO	Blk	Stl	Min	+/-
02	JONES, SUMMER	G	10	4-7	1-3	1-1	0	1	1	2	0	0	0	0	8	0
03	BOYD, N'YAH	G	9	1-7	0-1	7-8	2	3	5	0	4	1	0	0	17	6
04	JACKSON, JAZION	G	0	0-0	0-0	0-0	0	0	0	2	0	2	0	0	6	7
10	MIMS, TRENA	G	0	0-2	0-0	0-0	1	2	3	0	2	0	1	0	16	21
11	SHEPHERD, CHARLENE	F	2	1-4	0-0	0-0	0	2	2	2	0	2	0	0	10	6
23	THOMPSON, RANDI	G	3	1-4	1-4	0-0	0	0	0	1	0	0	0	1	13	2
41	TOWNLEY, MADI	F	4	2-4	0-0	0-0	3	2	5	1	1	1	0	3	17	13
42	GEORGE, ANISHA	C	6	3-5	0-0	0-0	4	2	6	0	1	2	1	0	14	5
	TEAM		0	0-0	0-0	0-0	1	1	2	0	0	0	0	0	0	0
<b>TOTALS</b>			<b>34</b>	<b>12-33</b>	<b>2-8</b>	<b>8-9</b>	<b>11</b>	<b>13</b>	<b>24</b>	<b>8</b>	<b>8</b>	<b>8</b>	<b>2</b>	<b>4</b>	<b>100</b>	

#### Shooting By Period

Period	FG	FG%	3FG	3FG%	FT	FT%
1st Qtr	7-15	47%	2-4	50%	5-5	100%
2nd Qtr	5-18	28%	0-4	00%	3-4	75%
1st Half	12-33	36%	2-8	25%	8-9	89%
Game	29-65	44.6%	6-13	46.2%	15-22	68.2%

Deadball Rebounds: 4,0  
 Last FG Half: UNT 2nd-01:50

### UTSA 22

No.	Player	S	Pts	FG	3FG	FT	OR	DR	TR	PF	A	TO	Blk	Stl	Min	+/-
01	OMEMMAH, EVELYN	F	2	1-4	0-0	0-0	0	1	1	2	1	1	0	1	11	2
03	BLANDING, ELENA	C	0	0-0	0-0	0-0	0	0	0	0	0	1	0	0	3	-9
04	WOODS, MIKAYLA	G	7	3-7	0-0	1-2	1	2	3	0	0	2	0	4	16	-6
11	MASS, CHARLENE	G	5	2-5	0-1	1-2	0	0	0	0	0	1	0	1	15	-11
13	COUSIN, DEJA	G	0	0-1	0-1	0-0	0	0	0	0	0	0	0	0	4	-7
15	TOTH, TIMEA	F	0	0-4	0-0	0-0	3	4	7	2	0	1	0	0	18	-11
22	MASS, CEYENNE	G	0	0-0	0-0	0-0	0	0	0	0	0	1	0	0	6	1
25	MITCHELL, SHANNAN	F	3	0-2	0-1	3-4	1	2	3	1	0	2	2	0	10	-6
34	DONALD, KARRINGTON	G	5	2-5	1-3	0-0	0	2	2	1	1	2	0	0	18	-13
	TEAM		0	0-0	0-0	0-0	3	0	3	0	0	1	0	0	0	0
<b>TOTALS</b>			<b>22</b>	<b>8-28</b>	<b>1-6</b>	<b>5-8</b>	<b>8</b>	<b>11</b>	<b>19</b>	<b>6</b>	<b>2</b>	<b>12</b>	<b>2</b>	<b>6</b>	<b>100</b>	

#### Shooting By Period

Period	FG	FG%	3FG	3FG%	FT	FT%
1st Qtr	2-14	14%	0-1	00%	3-6	50%
2nd Qtr	6-14	43%	1-5	20%	2-2	100%
1st Half	8-28	29%	1-6	17%	5-8	63%
Game	20-54	37.0%	2-12	16.7%	13-19	68.4%

Deadball Rebounds: 3,0  
 Last FG Half: UTS 2nd-02:14

#### Game Notes:

Officials: Scott Yarbrough, Ify Seales, Marc Merritt  
 Attendance: 1153

Start Time: 12:05 PM ET  
 End Time: 01:51 PM ET  
 Game Duration: 1:45  
 Conference Game;

Score	1st	2nd	3rd	4th	TOT
UNT	21	13	20	25	<b>79</b>
UTS	7	15	12	21	<b>55</b>

Points from (This Period)	UNT	UTS
In the Paint	8	10
Off Turns	14	10
2nd Chance	6	6
Fast Break	3	5
Bench	12	10

**Official Box Score**  
**North Texas vs UTSA**  
**First Quarter Statistics Only**  
**January 23, 2020 at Convocation Center - San Antonio, Texas**



### North Texas 21

No.	Player	S	Pts	FG	3FG	FT	OR	DR	TR	PF	A	TO	Blk	Stl	Min	+/-
03	BOYD, N'YAH	G	4	0-2	0-0	4-4	1	2	3	0	2	1	0	0	7	8
10	MIMS, TRENA	G	0	0-0	0-0	0-0	0	1	1	0	2	0	1	0	9	16
23	THOMPSON, RANDI	G	3	1-2	1-2	0-0	0	0	0	1	0	0	0	1	6	5
41	TOWNLEY, MADI	F	2	1-2	0-0	0-0	1	0	1	0	0	0	0	2	8	11
42	GEORGE, ANISHA	C	2	1-2	0-0	0-0	1	1	2	0	1	2	1	0	7	8
02	JONES, SUMMER	G	10	4-5	1-2	1-1	0	1	1	1	0	0	0	0	5	7
04	JACKSON, JAZION	G	0	0-0	0-0	0-0	0	0	0	2	0	2	0	0	3	6
11	SHEPHERD, CHARLENE	F	0	0-2	0-0	0-0	0	1	1	1	0	0	0	0	6	9
<b>TEAM</b>							1	1	2	0						
<b>TOTALS</b>			<b>21</b>	<b>7-15</b>	<b>2-4</b>	<b>5-5</b>	<b>4</b>	<b>7</b>	<b>11</b>	<b>5</b>	<b>5</b>	<b>5</b>	<b>2</b>	<b>3</b>	<b>50</b>	

*Shooting By Period*

Period	FG	FG%	3FG	3FG%	FT	FT%
1st Qtr	7-15	47%	2-4	50%	5-5	100%
2nd Qtr	5-18	28%	0-4	00%	3-4	75%
1st Half	7-15	47%	2-4	50%	5-5	100%
1st Half	12-33	36%	2-8	25%	8-9	89%
Game	29-65	44.6%	6-13	46.2%	15-22	68.2%

*Deadball Rebounds: 4,0*

### UTSA 7

No.	Player	S	Pts	FG	3FG	FT	OR	DR	TR	PF	A	TO	Blk	Stl	Min	+/-
01	OMEMMAH, EVELYN	F	0	0-1	0-0	0-0	0	1	1	0	0	1	0	1	5	-3
11	MASS, CHARLENE	G	3	1-3	0-1	1-2	0	0	0	0	0	1	0	1	7	-13
13	COUSIN, DEJA	G	0	0-0	0-0	0-0	0	0	0	0	0	0	0	0	2	-7
15	TOTH, TIMEA	F	0	0-4	0-0	0-0	3	1	4	1	0	1	0	0	10	-12
34	DONALD, KARRINGTON	G	2	1-2	0-0	0-0	0	0	0	1	0	2	0	0	10	-14
03	BLANDING, ELENA	C	0	0-0	0-0	0-0	0	0	0	0	0	1	0	0	2	-5
04	WOODS, MIKAYLA	G	1	0-3	0-0	1-2	0	1	1	0	0	0	0	2	8	-7
22	MASS, CEYENNE	G	0	0-0	0-0	0-0	0	0	0	0	0	0	0	0	3	-1
25	MITCHELL, SHANNAN	F	1	0-1	0-0	1-2	1	1	2	1	0	1	2	0	4	-8
<b>TEAM</b>							2	0	2	0						
<b>TOTALS</b>			<b>7</b>	<b>2-14</b>	<b>0-1</b>	<b>3-6</b>	<b>6</b>	<b>4</b>	<b>10</b>	<b>3</b>	<b>0</b>	<b>8</b>	<b>2</b>	<b>4</b>	<b>50</b>	

*Shooting By Period*

Period	FG	FG%	3FG	3FG%	FT	FT%
1st Qtr	2-14	14%	0-1	00%	3-6	50%
2nd Qtr	6-14	43%	1-5	20%	2-2	100%
1st Half	2-14	14%	0-1	00%	3-6	50%
1st Half	8-28	29%	1-6	17%	5-8	63%
Game	20-54	37.0%	2-12	16.7%	13-19	68.4%

*Deadball Rebounds: 3,0*

**Game Notes:**

Officials: **Scott Yarbrough, Ify Seales, Marc Merritt**  
 Attendance: **1153**

Start Time: **12:05 PM ET**  
 End Time: **01:51 PM ET**  
 Game Duration: **1:45**  
 Conference Game;

Score	1st	2nd	3rd	4th	TOT
UNT	21	13	20	25	<b>79</b>
UTS	7	15	12	21	<b>55</b>

Points from (This Period)	UNT	UTS
In the Paint	2	2
Off Turns	14	3
2nd Chance	0	1
Fast Break	2	1
Bench	10	2

**Official By-By-Play**  
**North Texas vs UTSA**  
**First Quarter**  
**January 23, 2020 at Convocation Center - San Antonio, Texas**



**Period 1**

**Starters:**

**North Texas:** 3 BOYD,N'YAH (G); 10 MIMS,TRENA (G); 23 THOMPSON,RANDI (G); 41 TOWNLEY,MADI (F); 42 GEORGE,ANISHA (C);  
**UTSA:** 1 OMEMMAH,EVELYN (F); 11 MASS,CHARLENE (G); 13 COUSIN,DEJA (G); 15 TOTH,TIMEA (F); 34 DONALD,KARRINGTON (G);

Time	VISITORS: North Texas	Score	Margin	HOME: UTSA
09:40				TURNOVER (LOSTBALL) by DONALD, KARRINGTON
09:40	STEAL by THOMPSON, RANDI			
09:30	GOOD! JUMPER by TOWNLEY, MADI	0-2	V 2	
09:30	ASSIST by MIMS, TRENA			
09:18				TURNOVER (LOSTBALL) by DONALD, KARRINGTON
09:00	GOOD! 3PTR by THOMPSON, RANDI	0-5	V 5	
09:00	ASSIST by BOYD, N'YAH			
08:26				MISSED JUMPER by TOTH, TIMEA
08:26	BLOCK by GEORGE, ANISHA			
08:26				REBOUND (OFF) by TEAM
08:26				TURNOVER (SHOTCLOCK) by TEAM
08:03	GOOD! LAYUP by GEORGE, ANISHA	0-7	V 7	
08:03	ASSIST by BOYD, N'YAH			
07:44				MISSED LAYUP by OMEMMAH, EVELYN
07:41				REBOUND (OFF) by TOTH, TIMEA
07:37				MISSED 3PTR by MASS, CHARLENE
07:37	REBOUND (DEF) by TEAM			
07:37				SUB OUT: COUSIN, DEJA
07:37				SUB IN: WOODS, MIKAYLA
07:23	MISSED LAYUP by BOYD, N'YAH			
07:19	REBOUND (OFF) by BOYD, N'YAH			
07:18	MISSED JUMPER by TOWNLEY, MADI			
07:17	REBOUND (OFF) by GEORGE, ANISHA			
07:17	TURNOVER (LOSTBALL) by GEORGE, ANISHA			
07:17				STEAL by OMEMMAH, EVELYN
07:05	FOUL (PERSONAL) by THOMPSON, RANDI			
06:53				TURNOVER (TRAVEL) by OMEMMAH, EVELYN
06:43	MISSED LAYUP by GEORGE, ANISHA			
06:40	REBOUND (OFF) by TOWNLEY, MADI			
06:37	MISSED 3PTR by THOMPSON, RANDI			
06:34				REBOUND (DEF) by OMEMMAH, EVELYN
06:23				MISSED LAYUP by TOTH, TIMEA
06:21				REBOUND (OFF) by TOTH, TIMEA
06:18				MISSED JUMPER by TOTH, TIMEA
06:15	REBOUND (DEF) by BOYD, N'YAH			
06:03	TURNOVER (LOSTBALL) by GEORGE, ANISHA			
06:03				STEAL by MASS, CHARLENE
05:55		2-7	V 5	GOOD! LAYUP by MASS, CHARLENE
05:45				FOUL (PERSONAL) by TOTH, TIMEA
05:45	SUB OUT: GEORGE, ANISHA			
05:45	SUB IN: SHEPHERD, CHARLENE			
05:45				SUB OUT: OMEMMAH, EVELYN
05:45				SUB IN: MITCHELL, SHANNAN
05:45	GOOD! FT by BOYD, N'YAH	2-8	V 6	
05:45	GOOD! FT by BOYD, N'YAH	2-9	V 7	
05:36				TURNOVER (BADPASS) by MASS, CHARLENE
05:36	STEAL by TOWNLEY, MADI			
05:28				FOUL (PERSONAL) by MITCHELL, SHANNAN
05:28	GOOD! FT by BOYD, N'YAH [FB]	2-10	V 8	
05:28	GOOD! FT by BOYD, N'YAH [FB]	2-11	V 9	
05:17				MISSED JUMPER by MASS, CHARLENE
05:14	REBOUND (DEF) by SHEPHERD, CHARLENE			
05:00	MISSED LAYUP by SHEPHERD, CHARLENE			
05:00				BLOCK by MITCHELL, SHANNAN
05:00	REBOUND (OFF) by TEAM			
05:00				SUB OUT: MASS, CHARLENE
05:00				SUB IN: MASS, CEYENNE
05:00	MISSED LAYUP by SHEPHERD, CHARLENE			
05:00				BLOCK by MITCHELL, SHANNAN
05:00				REBOUND (DEF) by TOTH, TIMEA
05:00		4-11	V 7	GOOD! JUMPER by DONALD, KARRINGTON
05:00	SUB OUT: THOMPSON, RANDI			
05:00	SUB IN: JONES, SUMMER			
05:00	GOOD! JUMPER by JONES, SUMMER	4-13	V 9	
05:00	ASSIST by MIMS, TRENA			
03:59				MISSED JUMPER by DONALD, KARRINGTON
03:56	REBOUND (DEF) by BOYD, N'YAH			
03:54	TURNOVER (BADPASS) by BOYD, N'YAH			
03:54				STEAL by WOODS, MIKAYLA

Time	VISITORS: North Texas	Score	Margin	HOME: UTSA
03:50				MISSED LAYUP by WOODS, MIKAYLA
03:50	BLOCK by MIMS, TRENA			
03:50				REBOUND (OFF) by TEAM
03:50	SUB OUT: BOYD, NYAH			
03:50	SUB IN: JACKSON, JAZION			
03:34	FOUL (PERSONAL) by JACKSON, JAZION			
03:31				MISSED JUMPER by MITCHELL, SHANNAN
03:25				REBOUND (OFF) by TOTH, TIMEA
03:25				MISSED LAYUP by TOTH, TIMEA
03:24	REBOUND (DEF) by MIMS, TRENA			
03:06	MISSED 3PTR by JONES, SUMMER			
03:01				REBOUND (DEF) by MITCHELL, SHANNAN
02:45				TURNOVER (LOSTBALL) by MITCHELL, SHANNAN
02:45	STEAL by TOWNLEY, MADI			
02:31	GOOD! JUMPER by JONES, SUMMER	4-15	V 11	
02:21				MISSED LAYUP by WOODS, MIKAYLA
02:18				REBOUND (OFF) by MITCHELL, SHANNAN
02:18	FOUL (PERSONAL) by SHEPHERD, CHARLENE			
02:18	SUB OUT: TOWNLEY, MADI			
02:18	SUB IN: GEORGE, ANISHA			
02:18				SUB OUT: TOTH, TIMEA
02:18				SUB IN: BLANDING, ELENA
02:18				MISSED FT by MITCHELL, SHANNAN
02:18				REBOUND (OFF) by TEAM
02:18		5-15	V 10	GOOD! FT by MITCHELL, SHANNAN
02:18				SUB OUT: MASS, CEYENNE
02:18				SUB IN: MASS, CHARLENE
01:58	GOOD! JUMPER by JONES, SUMMER	5-17	V 12	
01:58				FOUL (PERSONAL) by DONALD, KARRINGTON
01:58	GOOD! FT by JONES, SUMMER	5-18	V 13	
01:52				SUB OUT: MITCHELL, SHANNAN
01:52				SUB IN: TOTH, TIMEA
01:52				TURNOVER (BADPASS) by TOTH, TIMEA
01:52				TIMEOUT 30SEC
01:46	TURNOVER (DRIBBLING) by JACKSON, JAZION			
01:17				TURNOVER (TRAVEL) by BLANDING, ELENA
00:58	GOOD! 3PTR by JONES, SUMMER	5-21	V 16	
00:58	ASSIST by GEORGE, ANISHA			
00:38	FOUL (PERSONAL) by JONES, SUMMER			
00:38				SUB OUT: BLANDING, ELENA
00:38				SUB IN: OMEMMAH, EVELYN
00:38	SUB OUT: MIMS, TRENA			
00:38	SUB IN: THOMPSON, RANDI			
00:38				MISSED FT by MASS, CHARLENE
00:38				REBOUND (OFF) by TEAM
00:38		6-21	V 15	GOOD! FT by MASS, CHARLENE
00:28	TURNOVER (BADPASS) by JACKSON, JAZION			
00:28				STEAL by WOODS, MIKAYLA
00:26	FOUL (PERSONAL) by JACKSON, JAZION			
00:26	SUB OUT: JACKSON, JAZION			
00:26	SUB IN: BOYD, NYAH			
00:26		7-21	V 14	GOOD! FT by WOODS, MIKAYLA [FB]
00:25				MISSED FT by WOODS, MIKAYLA
00:24	REBOUND (DEF) by GEORGE, ANISHA			
00:07	MISSED LAYUP by BOYD, NYAH			
00:03				REBOUND (DEF) by WOODS, MIKAYLA
00:00				MISSED JUMPER by WOODS, MIKAYLA
00:00	REBOUND (DEF) by JONES, SUMMER			

### North Texas 21, UTSA 7

Points from (This Period)	UNT	UTS
In the Paint	2	2
Off Turns	14	3
2nd Chance	0	1
Fast Break	2	1
Bench	10	2

**Official Box Score**  
**North Texas vs UTSA**  
**Second Quarter Statistics Only**  
**January 23, 2020 at Convocation Center - San Antonio, Texas**



### North Texas 13

No.	Player	S	Pts	FG	3FG	FT	OR	DR	TR	PF	A	TO	Blk	Stl	Min	+/-
03	BOYD, N'YAH	G	5	1-5	0-1	3-4	1	1	2	0	2	0	0	0	10	-2
10	MIMS, TRENA	G	0	0-2	0-0	0-0	1	1	2	0	0	0	0	0	7	5
23	THOMPSON, RANDI	G	0	0-2	0-2	0-0	0	0	0	0	0	0	0	0	7	-3
41	TOWNLEY, MADI	F	2	1-2	0-0	0-0	2	2	4	1	1	1	0	1	9	2
42	GEORGE, ANISHA	C	4	2-3	0-0	0-0	3	1	4	0	0	0	0	0	7	-3
02	JONES, SUMMER	G	0	0-2	0-1	0-0	0	0	0	1	0	0	0	0	3	-7
04	JACKSON, JAZION	G	0	0-0	0-0	0-0	0	0	0	0	0	0	0	0	3	1
11	SHEPHERD, CHARLENE	F	2	1-2	0-0	0-0	0	1	1	1	0	2	0	0	4	-3
	TEAM						0	0	0	0		0				
<b>TOTALS</b>			<b>13</b>	<b>5-18</b>	<b>0-4</b>	<b>3-4</b>	<b>7</b>	<b>6</b>	<b>13</b>	<b>3</b>	<b>3</b>	<b>3</b>	<b>0</b>	<b>1</b>	<b>50</b>	

#### Shooting By Period

Period	FG	FG%	3FG	3FG%	FT	FT%
3rd Qtr	7-14	50%	2-3	67%	4-6	67%
4th Qtr	10-18	56%	2-2	100%	3-7	43%
2nd Half	5-18	28%	0-4	00%	3-4	75%
2nd Half	17-32	53%	4-5	80%	7-13	54%
Game	29-65	44.6%	6-13	46.2%	15-22	68.2%

Deadball Rebounds: 4,0

### UTSA 15

No.	Player	S	Pts	FG	3FG	FT	OR	DR	TR	PF	A	TO	Blk	Stl	Min	+/-
01	OMEMMAH, EVELYN	F	2	1-3	0-0	0-0	0	0	0	2	1	0	0	0	6	5
11	MASS, CHARLENE	G	2	1-2	0-0	0-0	0	0	0	0	0	0	0	0	8	2
13	COUSIN, DEJA	G	0	0-1	0-1	0-0	0	0	0	0	0	0	0	0	2	0
15	TOTH, TIMEA	F	0	0-0	0-0	0-0	0	3	3	1	0	0	0	0	8	1
34	DONALD, KARRINGTON	G	3	1-3	1-3	0-0	0	2	2	0	1	0	0	0	8	1
03	BLANDING, ELENA	C	0	0-0	0-0	0-0	0	0	0	0	0	0	0	0	1	-4
04	WOODS, MIKAYLA	G	6	3-4	0-0	0-0	1	1	2	0	0	2	0	2	8	1
22	MASS, CEYENNE	G	0	0-0	0-0	0-0	0	0	0	0	0	1	0	0	3	2
25	MITCHELL, SHANNAN	F	2	0-1	0-1	2-2	0	1	1	0	0	1	0	0	6	2
	TEAM						1	0	1	0		0				
<b>TOTALS</b>			<b>15</b>	<b>6-14</b>	<b>1-5</b>	<b>2-2</b>	<b>2</b>	<b>7</b>	<b>9</b>	<b>3</b>	<b>2</b>	<b>4</b>	<b>0</b>	<b>2</b>	<b>50</b>	

#### Shooting By Period

Period	FG	FG%	3FG	3FG%	FT	FT%
3rd Qtr	4-14	29%	0-3	00%	4-5	80%
4th Qtr	8-12	67%	1-3	33%	4-6	67%
2nd Half	6-14	43%	1-5	20%	2-2	100%
2nd Half	12-26	46%	1-6	17%	8-11	73%
Game	20-54	37.0%	2-12	16.7%	13-19	68.4%

Deadball Rebounds: 3,0

#### Game Notes:

Officials: Scott Yarbrough, Ify Seales, Marc Merritt  
 Attendance: 1153

Start Time: 12:05 PM ET  
 End Time: 01:51 PM ET  
 Game Duration: 1:45  
 Conference Game;

Score	1st	2nd	3rd	4th	TOT
UNT	21	13	20	25	<b>79</b>
UTS	7	15	12	21	<b>55</b>

Points from (This Period)	UNT	UTS
In the Paint	6	8
Off Turns	0	7
2nd Chance	6	5
Fast Break	1	4
Bench	2	8

**Official Play-By-Play**  
**North Texas vs UTSA**  
**Second Quarter**  
**January 23, 2020 at Convocation Center - San Antonio, Texas**



**Period 2**

**Starters:**

**North Texas:** 3 BOYD,N'YAH (G); 10 MIMS,TRENA (G); 23 THOMPSON,RANDI (G); 41 TOWNLEY,MADI (F); 42 GEORGE,ANISHA (C);  
**UTSA:** 1 OMEMMAH,EVELYN (F); 11 MASS,CHARLENE (G); 13 COUSIN,DEJA (G); 15 TOTH,TIMEA (F); 34 DONALD,KARRINGTON (G);

Time	VISITORS: North Texas	Score	Margin	HOME: UTSA
09:53		9-21	V 12	GOOD! JUMPER by OMEMMAH, EVELYN
09:53				ASSIST by DONALD, KARRINGTON
09:38	MISSED JUMPER by JONES, SUMMER			
09:35				REBOUND (DEF) by TOTH, TIMEA
09:17				MISSED LAYUP by OMEMMAH, EVELYN
09:14	REBOUND (DEF) by SHEPHERD, CHARLENE			
09:01	TURNOVER (BADPASS) by SHEPHERD, CHARLENE			
09:01				STEAL by WOODS, MIKAYLA
08:55		11-21	V 10	GOOD! LAYUP by WOODS, MIKAYLA [FB]
08:38				FOUL (PERSONAL) by OMEMMAH, EVELYN
08:38				SUB OUT: DONALD, KARRINGTON
08:38				SUB IN: MITCHELL, SHANNAN
08:38	SUB OUT: SHEPHERD, CHARLENE			
08:38	SUB IN: TOWNLEY, MADI			
08:38	GOOD! FT by BOYD, N'YAH	11-22	V 11	
08:38	GOOD! FT by BOYD, N'YAH	11-23	V 12	
08:24		13-23	V 10	GOOD! LAYUP by MASS, CHARLENE
08:02	TURNOVER (BADPASS) by TOWNLEY, MADI			
08:02				STEAL by WOODS, MIKAYLA
07:57				MISSED LAYUP by WOODS, MIKAYLA
07:56				REBOUND (OFF) by TEAM
07:56	TIMEOUT 30SEC			
07:55				SUB OUT: WOODS, MIKAYLA
07:55				SUB OUT: TOTH, TIMEA
07:55				SUB IN: MASS, CEYENNE
07:55				SUB IN: DONALD, KARRINGTON
07:49		16-23	V 7	GOOD! 3PTR by DONALD, KARRINGTON
07:49				ASSIST by OMEMMAH, EVELYN
07:28	MISSED 3PTR by THOMPSON, RANDI			
07:25				REBOUND (DEF) by MITCHELL, SHANNAN
06:58				TURNOVER (BADPASS) by MITCHELL, SHANNAN
06:58	STEAL by TOWNLEY, MADI			
06:51	MISSED 3PTR by JONES, SUMMER			
06:47				REBOUND (DEF) by DONALD, KARRINGTON
06:39	FOUL (PERSONAL) by JONES, SUMMER			
06:39	SUB OUT: JONES, SUMMER			
06:39	SUB IN: MIMS, TRENA			
06:30				MISSED JUMPER by MASS, CHARLENE
06:25	REBOUND (DEF) by TOWNLEY, MADI			
06:18	MISSED 3PTR by THOMPSON, RANDI			
06:14	REBOUND (OFF) by GEORGE, ANISHA			
06:04	GOOD! LAYUP by GEORGE, ANISHA	16-25	V 9	
06:04	ASSIST by TOWNLEY, MADI			
05:42				TURNOVER (TRAVEL) by MASS, CEYENNE
05:42				SUB OUT: OMEMMAH, EVELYN
05:42				SUB OUT: MASS, CEYENNE
05:42				SUB OUT: MITCHELL, SHANNAN
05:42				SUB IN: BLANDING, ELENA
05:42				SUB IN: WOODS, MIKAYLA
05:42				SUB IN: TOTH, TIMEA
05:33	MISSED LAYUP by BOYD, N'YAH			
05:30	REBOUND (OFF) by GEORGE, ANISHA			
05:28	MISSED JUMPER by TOWNLEY, MADI			
05:28	REBOUND (OFF) by GEORGE, ANISHA			
05:28	MISSED LAYUP by GEORGE, ANISHA			
05:28	REBOUND (OFF) by BOYD, N'YAH			
05:18	GOOD! LAYUP by GEORGE, ANISHA	16-27	V 11	
05:18	ASSIST by BOYD, N'YAH			
05:03				MISSED 3PTR by DONALD, KARRINGTON
05:00	REBOUND (DEF) by GEORGE, ANISHA			
04:51	GOOD! JUMPER by BOYD, N'YAH	16-29	V 13	
04:50				TIMEOUT 30SEC
04:50				SUB OUT: BLANDING, ELENA
04:50				SUB OUT: MASS, CHARLENE
04:50				SUB IN: OMEMMAH, EVELYN
04:50				SUB IN: COUSIN, DEJA
04:39				MISSED 3PTR by COUSIN, DEJA
04:36	REBOUND (DEF) by MIMS, TRENA			
04:30	GOOD! JUMPER by TOWNLEY, MADI	16-31	V 15	
04:03				MISSED JUMPER by OMEMMAH, EVELYN



Time	VISITORS: North Texas	Score	Margin	HOME: UTSA
04:02	REBOUND (DEF) by TOWNLEY, MADI			
04:02				FOUL (PERSONAL) by OMEMMAH, EVELYN
03:35	MISSED JUMPER by BOYD, N'YAH			
03:32				REBOUND (DEF) by WOODS, MIKAYLA
03:28		18-31	V 13	GOOD! LAYUP by WOODS, MIKAYLA [FB]
03:13	MISSED LAYUP by MIMS, TRENA			
03:10				REBOUND (DEF) by DONALD, KARRINGTON
03:05				TURNOVER (BADPASS) by WOODS, MIKAYLA
03:05				SUB OUT: OMEMMAH, EVELYN
03:05				SUB OUT: COUSIN, DEJA
03:05				SUB IN: MASS, CHARLENE
03:05				SUB IN: MITCHELL, SHANNAN
03:05	SUB OUT: THOMPSON, RANDI			
03:05	SUB OUT: GEORGE, ANISHA			
03:05	SUB IN: JACKSON, JAZION			
03:05	SUB IN: SHEPHERD, CHARLENE			
02:39	MISSED JUMPER by MIMS, TRENA			
02:36				REBOUND (DEF) by TOTH, TIMEA
02:19				MISSED 3PTR by MITCHELL, SHANNAN
02:14				REBOUND (OFF) by WOODS, MIKAYLA
02:14		20-31	V 11	GOOD! LAYUP by WOODS, MIKAYLA
01:56	MISSED 3PTR by BOYD, N'YAH			
01:52	REBOUND (OFF) by TOWNLEY, MADI			
01:50	GOOD! LAYUP by SHEPHERD, CHARLENE	20-33	V 13	
01:50	ASSIST by BOYD, N'YAH			
01:30				TURNOVER (TRAVEL) by WOODS, MIKAYLA
01:18	MISSED LAYUP by SHEPHERD, CHARLENE			
01:15				REBOUND (DEF) by TOTH, TIMEA
01:01				MISSED 3PTR by DONALD, KARRINGTON
00:57	REBOUND (DEF) by BOYD, N'YAH			
00:55				FOUL (PERSONAL) by TOTH, TIMEA
00:55				SUB OUT: DONALD, KARRINGTON
00:55				SUB IN: MASS, CEYENNE
00:55	GOOD! FT by BOYD, N'YAH [FB]	20-34	V 14	
00:55	MISSED FT by BOYD, N'YAH			
00:52	REBOUND (OFF) by MIMS, TRENA			
00:37	MISSED JUMPER by BOYD, N'YAH			
00:34	REBOUND (OFF) by TOWNLEY, MADI			
00:33	FOUL (OFF) by SHEPHERD, CHARLENE			
00:33	TURNOVER (OFFENSIVE) by SHEPHERD, CHARLENE			
00:33	SUB OUT: JACKSON, JAZION			
00:33	SUB OUT: SHEPHERD, CHARLENE			
00:33	SUB IN: THOMPSON, RANDI			
00:33	SUB IN: GEORGE, ANISHA			
00:04	FOUL (PERSONAL) by TOWNLEY, MADI			
00:04		21-34	V 13	GOOD! FT by MITCHELL, SHANNAN
00:04		22-34	V 12	GOOD! FT by MITCHELL, SHANNAN

### North Texas 34, UTSA 22

Points from (This Period)	UNT	UTS
In the Paint	6	8
Off Turns	0	7
2nd Chance	6	5
Fast Break	1	4
Bench	2	8

**Official Box Score**  
**North Texas vs UTSA**  
**Second Half Statistics Only**  
**January 23, 2020 at Convocation Center - San Antonio, Texas**



**North Texas 45**

No.	Player	S	Pts	FG	3FG	FT	OR	DR	TR	PF	A	TO	Blk	Stl	Min	+/-
02	JONES, SUMMER	G	11	4-5	3-4	0-0	0	0	0	1	1	0	0	0	13	13
03	BOYD, N'YAH	G	4	2-5	0-0	0-0	0	2	2	1	2	1	0	0	12	4
04	JACKSON, JAZION	G	1	0-1	0-0	1-2	0	1	1	0	2	0	0	0	8	8
10	MIMS, TRENA	G	5	2-3	0-0	1-2	1	1	2	1	1	0	0	2	16	10
11	SHEPHERD, CHARLENE	F	1	0-1	0-0	1-2	0	0	0	1	0	0	0	0	7	3
23	THOMPSON, RANDI	G	8	2-4	1-1	3-4	0	1	1	3	2	1	0	1	11	1
41	TOWNLEY, MADI	F	4	2-4	0-0	0-0	2	1	3	0	3	0	0	0	16	13
42	GEORGE, ANISHA	C	11	5-9	0-0	1-3	3	3	6	1	1	1	0	1	16	8
	TEAM		0	0-0	0-0	0-0	2	1	3	0	0	0	0	0	0	0
<b>TOTALS</b>			<b>45</b>	<b>17-32</b>	<b>4-5</b>	<b>7-13</b>	<b>8</b>	<b>10</b>	<b>18</b>	<b>8</b>	<b>12</b>	<b>3</b>	<b>0</b>	<b>4</b>	<b>99</b>	

*Shooting By Period*

Period	FG	FG%	3FG	3FG%	FT	FT%
3rd Qtr	7-14	50%	2-3	67%	4-6	67%
4th Qtr	10-18	56%	2-2	100%	3-7	43%
2nd Half	17-32	53%	4-5	80%	7-13	54%
Game	29-65	44.6%	6-13	46.2%	15-22	68.2%

*Deadball Rebounds: 4,0*  
*Last FG Half: UNT 4th-00:33*

**UTSA 33**

No.	Player	S	Pts	FG	3FG	FT	OR	DR	TR	PF	A	TO	Blk	Stl	Min	+/-
01	OMEMMAH, EVELYN	F	9	4-5	0-0	1-1	3	2	5	1	0	1	2	0	9	-3
03	BLANDING, ELENA	C	0	0-0	0-0	0-0	1	0	1	0	0	0	0	0	6	-6
04	WOODS, MIKAYLA	G	4	1-3	0-0	2-2	0	1	1	0	0	0	0	1	13	-7
11	MASS, CHARLENE	G	3	1-9	0-3	1-2	1	1	2	1	2	1	0	0	13	-12
13	COUSIN, DEJA	G	1	0-0	0-0	1-2	0	0	0	0	0	0	0	0	10	-4
15	TOTH, TIMEA	F	6	2-3	0-0	2-2	1	0	1	0	1	0	0	0	12	-13
22	MASS, CEYENNE	G	0	0-0	0-0	0-0	0	0	0	2	0	1	1	0	6	-3
25	MITCHELL, SHANNAN	F	8	3-3	1-1	1-2	0	2	2	3	1	1	0	1	14	-3
34	DONALD, KARRINGTON	G	2	1-3	0-2	0-0	0	2	2	2	1	3	0	0	16	-9
	TEAM		0	0-0	0-0	0-0	0	1	1	0	0	1	0	0	0	0
<b>TOTALS</b>			<b>33</b>	<b>12-26</b>	<b>1-6</b>	<b>8-11</b>	<b>6</b>	<b>9</b>	<b>15</b>	<b>9</b>	<b>5</b>	<b>8</b>	<b>3</b>	<b>2</b>	<b>99</b>	

*Shooting By Period*

Period	FG	FG%	3FG	3FG%	FT	FT%
3rd Qtr	4-14	29%	0-3	00%	4-5	80%
4th Qtr	8-12	67%	1-3	33%	4-6	67%
2nd Half	12-26	46%	1-6	17%	8-11	73%
Game	20-54	37.0%	2-12	16.7%	13-19	68.4%

*Deadball Rebounds: 3,0*  
*Last FG Half: UTS 4th-00:13*

*Game Notes:*

Officials: **Scott Yarbrough, Ify Seales, Marc Merritt**  
 Attendance: **1153**

Start Time: **12:05 PM ET**  
 End Time: **01:51 PM ET**  
 Game Duration: **1:45**  
 Conference Game;

Score	1st	2nd	3rd	4th	TOT
UNT	21	13	20	25	<b>79</b>
UTS	7	15	12	21	<b>55</b>

Points from (This Period)	UNT	UTS
In the Paint	24	16
Off Turns	11	2
2nd Chance	9	6
Fast Break	4	3
Bench	13	12

**Official Box Score**  
**North Texas vs UTSA**  
**Third Quarter Statistics Only**  
**January 23, 2020 at Convocation Center - San Antonio, Texas**



**North Texas 45**

No.	Player	S	Pts	FG	3FG	FT	OR	DR	TR	PF	A	TO	Blk	Stl	Min	+/-
03	BOYD, N'YAH	G	2	1-2	0-0	0-0	0	2	2	1	1	1	0	0	7	7
10	MIMS, TRENA	G	0	0-1	0-0	0-0	1	1	2	1	0	0	0	0	8	6
23	THOMPSON, RANDI	G	6	1-3	1-1	3-4	0	1	1	1	1	1	0	0	5	2
41	TOWNLEY, MADI	F	4	2-3	0-0	0-0	0	1	1	0	1	0	0	0	10	8
42	GEORGE, ANISHA	C	3	1-2	0-0	1-2	2	0	2	1	1	1	0	1	7	7
02	JONES, SUMMER	G	5	2-3	1-2	0-0	0	0	0	0	0	0	0	0	8	8
04	JACKSON, JAZION	G	0	0-0	0-0	0-0	0	1	1	0	0	0	0	0	3	1
11	SHEPHERD, CHARLENE	F	0	0-0	0-0	0-0	0	0	0	0	0	0	0	0	3	1
	TEAM						1	1	2	0		0				
<b>TOTALS</b>			<b>20</b>	<b>7-14</b>	<b>2-3</b>	<b>4-6</b>	<b>4</b>	<b>7</b>	<b>11</b>	<b>4</b>	<b>4</b>	<b>3</b>	<b>0</b>	<b>1</b>	<b>50</b>	

*Shooting By Period*

Period	FG	FG%	3FG	3FG%	FT	FT%
2nd Half	0-0	0%	0-0	0%	0-0	0%
Game	29-65	44.6%	6-13	46.2%	15-22	68.2%

Deadball Rebounds: 4,0

**UTSA 33**

No.	Player	S	Pts	FG	3FG	FT	OR	DR	TR	PF	A	TO	Blk	Stl	Min	+/-
01	OMEMMAH, EVELYN	F	3	1-2	0-0	1-1	2	0	2	1	0	0	2	0	5	1
11	MASS, CHARLENE	G	3	1-7	0-2	1-2	1	0	1	1	1	1	0	0	9	-8
13	COUSIN, DEJA	G	0	0-0	0-0	0-0	0	0	0	0	0	0	0	0	0	0
15	TOTH, TIMEA	F	2	1-1	0-0	0-0	0	0	0	0	0	0	0	0	7	-7
34	DONALD, KARRINGTON	G	2	1-2	0-1	0-0	0	1	1	1	0	1	0	0	8	-6
03	BLANDING, ELENA	C	0	0-0	0-0	0-0	1	0	1	0	0	0	0	0	2	-7
04	WOODS, MIKAYLA	G	2	0-2	0-0	2-2	0	1	1	0	0	0	0	1	10	-8
22	MASS, CEYENNE	G	0	0-0	0-0	0-0	0	0	0	0	0	0	0	0	3	-2
25	MITCHELL, SHANNAN	F	0	0-0	0-0	0-0	0	1	1	2	1	1	0	1	6	-3
	TEAM						0	0	0	0		1				
<b>TOTALS</b>			<b>12</b>	<b>4-14</b>	<b>0-3</b>	<b>4-5</b>	<b>4</b>	<b>3</b>	<b>7</b>	<b>5</b>	<b>2</b>	<b>4</b>	<b>2</b>	<b>2</b>	<b>50</b>	

*Shooting By Period*

Period	FG	FG%	3FG	3FG%	FT	FT%
2nd Half	0-0	0%	0-0	0%	0-0	0%
Game	20-54	37.0%	2-12	16.7%	13-19	68.4%

Deadball Rebounds: 3,0

Game Notes:

Officials: Scott Yarbrough, Ify Seales, Marc Merritt  
 Attendance: 1153

Start Time: 12:05 PM ET  
 End Time: 01:51 PM ET  
 Game Duration: 1:45  
 Conference Game;

Score	1st	2nd	3rd	4th	TOT
UNT	21	13	20	25	<b>79</b>
UTS	7	15	12	21	<b>55</b>

Points from (This Period)	UNT	UTS
In the Paint	8	6
Off Turns	4	2
2nd Chance	3	2
Fast Break	1	2
Bench	5	2

**Official Play-By-Play**  
**North Texas vs UTSA**  
**Third Quarter**  
**January 23, 2020 at Convocation Center - San Antonio, Texas**



**Period 3**

**Starters:**

**North Texas:** 3 BOYD,N'YAH (G); 10 MIMS,TRENA (G); 23 THOMPSON,RANDI (G); 41 TOWNLEY,MADI (F); 42 GEORGE,ANISHA (C);  
**UTSA:** 1 OMEMMAH,EVELYN (F); 11 MASS,CHARLENE (G); 13 COUSIN,DEJA (G); 15 TOTH,TIMEA (F); 34 DONALD,KARRINGTON (G);

Time	VISITORS: North Texas	Score	Margin	HOME: UTSA
10:00				SUB OUT: MASS, CEYENNE
10:00				SUB OUT: MITCHELL, SHANNAN
10:00				SUB IN: OMEMMAH, EVELYN
10:00				SUB IN: DONALD, KARRINGTON
09:45	GOOD! LAYUP by BOYD, N'YAH	22-36	V 14	
09:32	FOUL (PERSONAL) by THOMPSON, RANDI			
09:27				MISSED LAYUP by WOODS, MIKAYLA
09:23				REBOUND (OFF) by OMEMMAH, EVELYN
09:23				MISSED LAYUP by OMEMMAH, EVELYN
09:22	REBOUND (DEF) by TEAM			
09:04	MISSED JUMPER by THOMPSON, RANDI			
09:00				REBOUND (DEF) by WOODS, MIKAYLA
08:44				MISSED 3PTR by MASS, CHARLENE
08:41	REBOUND (DEF) by BOYD, N'YAH			
08:35	MISSED JUMPER by TOWNLEY, MADI			
08:33	REBOUND (OFF) by TEAM			
08:18	TURNOVER (LOSTBALL) by GEORGE, ANISHA			
08:18				STEAL by WOODS, MIKAYLA
08:15	FOUL (PERSONAL) by BOYD, N'YAH			
08:15		23-36	V 13	GOOD! FT by WOODS, MIKAYLA [FB]
08:15		24-36	V 12	GOOD! FT by WOODS, MIKAYLA [FB]
07:56	MISSED LAYUP by GEORGE, ANISHA			
07:56				BLOCK by OMEMMAH, EVELYN
07:49	REBOUND (OFF) by MIMS, TRENA			
07:47	MISSED JUMPER by THOMPSON, RANDI			
07:44				REBOUND (DEF) by DONALD, KARRINGTON
07:36				MISSED 3PTR by DONALD, KARRINGTON
07:35	REBOUND (DEF) by BOYD, N'YAH			
07:35	SUB OUT: THOMPSON, RANDI			
07:35	SUB IN: JONES, SUMMER			
07:14	MISSED LAYUP by BOYD, N'YAH			
07:14				BLOCK by OMEMMAH, EVELYN
07:14	REBOUND (OFF) by GEORGE, ANISHA			
07:14				FOUL (PERSONAL) by OMEMMAH, EVELYN
07:14				SUB OUT: OMEMMAH, EVELYN
07:14				SUB IN: BLANDING, ELENA
07:14	MISSED FT by GEORGE, ANISHA			
07:14	REBOUND (OFF) by TEAM			
07:14	GOOD! FT by GEORGE, ANISHA	24-37	V 13	
06:56				FOUL (OFF) by DONALD, KARRINGTON
06:56				TURNOVER (OFFENSIVE) by DONALD, KARRINGTON
06:31	MISSED LAYUP by MIMS, TRENA			
06:28	REBOUND (OFF) by GEORGE, ANISHA			
06:28	GOOD! LAYUP by GEORGE, ANISHA	24-39	V 15	
06:17	FOUL (PERSONAL) by GEORGE, ANISHA			
06:17		25-39	V 14	GOOD! FT by MASS, CHARLENE
06:16				MISSED FT by MASS, CHARLENE
06:14	REBOUND (DEF) by TOWNLEY, MADI			
05:54	GOOD! 3PTR by JONES, SUMMER	25-42	V 17	
05:54	ASSIST by BOYD, N'YAH			
05:37				MISSED 3PTR by MASS, CHARLENE
05:36				REBOUND (OFF) by BLANDING, ELENA
05:36				SUB OUT: TOTH, TIMEA
05:36				SUB OUT: DONALD, KARRINGTON
05:36				SUB IN: MASS, CEYENNE
05:36				SUB IN: MITCHELL, SHANNAN
05:31				TURNOVER (TRAVEL) by MITCHELL, SHANNAN
05:12	GOOD! LAYUP by TOWNLEY, MADI	25-44	V 19	
05:12	ASSIST by GEORGE, ANISHA			
04:48				
04:48				SUB OUT: BLANDING, ELENA
04:48				SUB IN: OMEMMAH, EVELYN
04:46				TURNOVER (BADPASS) by MASS, CHARLENE
04:46	STEAL by GEORGE, ANISHA			
04:25	TURNOVER (BADPASS) by BOYD, N'YAH			
04:25				STEAL by MITCHELL, SHANNAN
03:55				MISSED JUMPER by MASS, CHARLENE
03:55				REBOUND (OFF) by OMEMMAH, EVELYN
03:55				TURNOVER (SHOTCLOCK) by TEAM
03:26	MISSED 3PTR by JONES, SUMMER			

Time	VISITORS: North Texas	Score	Margin	HOME: UTSA
03:22				REBOUND (DEF) by MITCHELL, SHANNAN
03:14				MISSED LAYUP by WOODS, MIKAYLA
03:13	REBOUND (DEF) by MIMS, TRENA			
03:13				FOUL (PERSONAL) by MITCHELL, SHANNAN
03:13				SUB OUT: MASS, CHARLENE
03:13				SUB IN: DONALD, KARRINGTON
02:48	GOOD! JUMPER by JONES, SUMMER	25-46	V 21	
02:35		27-46	V 19	GOOD! LAYUP by OMEMMAH, EVELYN
02:35				ASSIST by MITCHELL, SHANNAN
02:35	FOUL (PERSONAL) by MIMS, TRENA			
02:35				SUB OUT: MASS, CEYENNE
02:35				SUB IN: MASS, CHARLENE
02:35	SUB OUT: BOYD, NYAH			
02:35	SUB OUT: GEORGE, ANISHA			
02:35	SUB IN: JACKSON, JAZION			
02:35	SUB IN: SHEPHERD, CHARLENE			
02:35		28-46	V 18	GOOD! FT by OMEMMAH, EVELYN
02:35				SUB OUT: OMEMMAH, EVELYN
02:35				SUB IN: TOTH, TIMEA
02:35				TIMEOUT 30SEC
02:32	TIMEOUT 30SEC			
02:20				FOUL (PERSONAL) by MASS, CHARLENE
02:20	SUB OUT: MIMS, TRENA			
02:20	SUB IN: THOMPSON, RANDI			
02:20	GOOD! FT by THOMPSON, RANDI	28-47	V 19	
02:20	GOOD! FT by THOMPSON, RANDI	28-48	V 20	
02:08				MISSED JUMPER by MASS, CHARLENE
02:04				REBOUND (OFF) by MASS, CHARLENE
02:04		30-48	V 18	GOOD! LAYUP by MASS, CHARLENE
01:56				FOUL (PERSONAL) by MITCHELL, SHANNAN
01:56	MISSED FT by THOMPSON, RANDI			
01:56	REBOUND (OFF) by TEAM			
01:56	GOOD! FT by THOMPSON, RANDI [FB]	30-49	V 19	
01:42				MISSED JUMPER by MASS, CHARLENE
01:38	REBOUND (DEF) by THOMPSON, RANDI			
01:10	GOOD! 3PTR by THOMPSON, RANDI	30-52	V 22	
01:10	ASSIST by TOWNLEY, MADI			
00:44		32-52	V 20	GOOD! JUMPER by TOTH, TIMEA
00:44				ASSIST by MASS, CHARLENE
00:32	GOOD! LAYUP by TOWNLEY, MADI	32-54	V 22	
00:32	ASSIST by THOMPSON, RANDI			
00:18		34-54	V 20	GOOD! LAYUP by DONALD, KARRINGTON
00:11	TURNOVER (BADPASS) by THOMPSON, RANDI			
00:01				MISSED JUMPER by MASS, CHARLENE
00:00	REBOUND (DEF) by JACKSON, JAZION			

### North Texas 54, UTSA 34

Points from (This Period)	UNT	UTS
In the Paint	8	6
Off Turns	4	2
2nd Chance	3	2
Fast Break	1	2
Bench	5	2

**Official Box Score**  
**North Texas vs UTSA**  
**Fourth Quarter Statistics Only**  
**January 23, 2020 at Convocation Center - San Antonio, Texas**



**North Texas 25**

No.	Player	S	Pts	FG	3FG	FT	OR	DR	TR	PF	A	TO	Blk	Stl	Min	+/-
03	BOYD, N'YAH	G	2	1-3	0-0	0-0	0	0	0	0	1	0	0	0	5	-3
10	MIMS, TRENA	G	5	2-2	0-0	1-2	0	0	0	0	1	0	0	2	8	4
23	THOMPSON, RANDI	G	2	1-1	0-0	0-0	0	0	0	2	1	0	0	1	6	-1
41	TOWNLEY, MADI	F	0	0-1	0-0	0-0	2	0	2	0	2	0	0	0	6	5
42	GEORGE, ANISHA	C	8	4-7	0-0	0-1	1	3	4	0	0	0	0	0	9	1
02	JONES, SUMMER	G	6	2-2	2-2	0-0	0	0	0	1	1	0	0	0	5	5
04	JACKSON, JAZION	G	1	0-1	0-0	1-2	0	0	0	0	2	0	0	0	5	7
11	SHEPHERD, CHARLENE	F	1	0-1	0-0	1-2	0	0	0	1	0	0	0	0	4	2
<b>TEAM</b>							1	0	1	0						
<b>TOTALS</b>			<b>25</b>	<b>10-18</b>	<b>2-2</b>	<b>3-7</b>	<b>4</b>	<b>3</b>	<b>7</b>	<b>4</b>	<b>8</b>	<b>0</b>	<b>0</b>	<b>3</b>	<b>49</b>	

*Shooting By Period*

Period	FG	FG%	3FG	3FG%	FT	FT%
Game	29-65	44.6%	6-13	46.2%	15-22	68.2%

Deadball Rebounds: 4,0

**UTSA 21**

No.	Player	S	Pts	FG	3FG	FT	OR	DR	TR	PF	A	TO	Blk	Stl	Min	+/-
01	OMEMMAH, EVELYN	F	6	3-3	0-0	0-0	1	2	3	0	0	1	0	0	4	-4
11	MASS, CHARLENE	G	0	0-2	0-1	0-0	0	1	1	0	1	0	0	0	4	-4
13	COUSIN, DEJA	G	1	0-0	0-0	1-2	0	0	0	0	0	0	0	0	10	-4
15	TOTH, TIMEA	F	4	1-2	0-0	2-2	1	0	1	0	1	0	0	0	5	-6
34	DONALD, KARRINGTON	G	0	0-1	0-1	0-0	0	1	1	1	1	2	0	0	8	-3
03	BLANDING, ELENA	C	0	0-0	0-0	0-0	0	0	0	0	0	0	0	0	4	1
04	WOODS, MIKAYLA	G	2	1-1	0-0	0-0	0	0	0	0	0	0	0	0	3	1
22	MASS, CEYENNE	G	0	0-0	0-0	0-0	0	0	0	2	0	1	1	0	3	-1
25	MITCHELL, SHANNAN	F	8	3-3	1-1	1-2	0	1	1	1	0	0	0	0	8	0
<b>TEAM</b>							0	1	1	0						
<b>TOTALS</b>			<b>21</b>	<b>8-12</b>	<b>1-3</b>	<b>4-6</b>	<b>2</b>	<b>6</b>	<b>8</b>	<b>4</b>	<b>3</b>	<b>4</b>	<b>1</b>	<b>0</b>	<b>49</b>	

*Shooting By Period*

Period	FG	FG%	3FG	3FG%	FT	FT%
Game	20-54	37.0%	2-12	16.7%	13-19	68.4%

Deadball Rebounds: 3,0

Game Notes:

Officials: Scott Yarbrough, Ify Seales, Marc Merritt

Attendance: 1153

Start Time: 12:05 PM ET

End Time: 01:51 PM ET

Game Duration: 1:45

Conference Game;

Score	1st	2nd	3rd	4th	TOT
UNT	21	13	20	25	<b>79</b>
UTS	7	15	12	21	<b>55</b>

Points from (This Period)	UNT	UTS
In the Paint	16	10
Off Turns	7	0
2nd Chance	6	4
Fast Break	3	1
Bench	8	10

**Official By-By-Play  
North Texas vs UTSA  
Fourth Quarter  
January 23, 2020 at Convocation Center - San Antonio, Texas**



**Period 4**

**Starters:**

**North Texas:** 3 BOYD,N'YAH (G); 10 MIMS,TRENA (G); 23 THOMPSON,RANDI (G); 41 TOWNLEY,MADI (F); 42 GEORGE,ANISHA (C);  
**UTSA:** 1 OMEMMAH,EVELYN (F); 11 MASS,CHARLENE (G); 13 COUSIN,DEJA (G); 15 TOTH,TIMEA (F); 34 DONALD,KARRINGTON (G);

Time	VISITORS: North Texas	Score	Margin	HOME: UTSA
10:00				SUB OUT: DONALD, KARRINGTON
10:00				SUB IN: COUSIN, DEJA
10:00	SUB OUT: TOWNLEY, MADI			
10:00	SUB IN: GEORGE, ANISHA			
09:50	GOOD! 3PTR by JONES, SUMMER	34-57	V 23	
09:50	ASSIST by JACKSON, JAZION			
09:18		36-57	V 21	GOOD! JUMPER by MITCHELL, SHANNAN [PNT]
09:05	GOOD! LAYUP by GEORGE, ANISHA	36-59	V 23	
09:05	ASSIST by THOMPSON, RANDI			
08:41	FOUL (PERSONAL) by SHEPHERD, CHARLENE			
08:41				SUB OUT: MASS, CHARLENE
08:41				SUB IN: MASS, CEYENNE
08:41	SUB OUT: JACKSON, JAZION			
08:41	SUB IN: BOYD, N'YAH			
08:41		37-59	V 22	GOOD! FT by TOTH, TIMEA
08:41		38-59	V 21	GOOD! FT by TOTH, TIMEA
08:41				SUB OUT: TOTH, TIMEA
08:41				SUB IN: OMEMMAH, EVELYN
08:27	MISSED JUMPER by SHEPHERD, CHARLENE			
08:25				REBOUND (DEF) by TEAM
08:10	FOUL (PERSONAL) by JONES, SUMMER			
08:10				MISSED FT by MITCHELL, SHANNAN
08:10				REBOUND (OFF) by TEAM
08:10		39-59	V 20	GOOD! FT by MITCHELL, SHANNAN
08:10	SUB OUT: JONES, SUMMER			
08:10	SUB IN: MIMS, TRENA			
07:56	MISSED LAYUP by GEORGE, ANISHA			
07:56				BLOCK by MASS, CEYENNE
07:51	REBOUND (OFF) by GEORGE, ANISHA			
07:50				FOUL (PERSONAL) by MASS, CEYENNE
07:50	MISSED FT by SHEPHERD, CHARLENE			
07:50	REBOUND (OFF) by TEAM			
07:50	GOOD! FT by SHEPHERD, CHARLENE	39-60	V 21	
07:50				SUB OUT: MASS, CEYENNE
07:50				SUB IN: DONALD, KARRINGTON
07:42	FOUL (PERSONAL) by THOMPSON, RANDI			
07:42				SUB OUT: OMEMMAH, EVELYN
07:42				SUB IN: BLANDING, ELENA
07:36		41-60	V 19	GOOD! JUMPER by MITCHELL, SHANNAN
07:24	GOOD! LAYUP by BOYD, N'YAH	41-62	V 21	
07:14		43-62	V 19	GOOD! LAYUP by WOODS, MIKAYLA
06:47	MISSED LAYUP by GEORGE, ANISHA			
06:43	REBOUND (OFF) by TEAM			
06:43				SUB OUT: WOODS, MIKAYLA
06:43				SUB IN: MASS, CHARLENE
06:43	SUB OUT: SHEPHERD, CHARLENE			
06:43	SUB IN: TOWNLEY, MADI			
06:26	MISSED LAYUP by GEORGE, ANISHA			
06:22				REBOUND (DEF) by MITCHELL, SHANNAN
06:10		46-62	V 16	GOOD! 3PTR by MITCHELL, SHANNAN
06:10				ASSIST by DONALD, KARRINGTON
05:57	MISSED LAYUP by BOYD, N'YAH			
05:54				REBOUND (DEF) by DONALD, KARRINGTON
05:53	FOUL (PERSONAL) by THOMPSON, RANDI			
05:53				SUB OUT: MITCHELL, SHANNAN
05:53				SUB IN: TOTH, TIMEA
05:53	SUB OUT: THOMPSON, RANDI			
05:53	SUB IN: JONES, SUMMER			
05:53		47-62	V 15	GOOD! FT by COUSIN, DEJA [FB]
05:52				MISSED FT by COUSIN, DEJA
05:50	REBOUND (DEF) by GEORGE, ANISHA			
05:39	MISSED JUMPER by TOWNLEY, MADI			
05:35	REBOUND (OFF) by TOWNLEY, MADI			
05:31	GOOD! 3PTR by JONES, SUMMER	47-65	V 18	
05:31	ASSIST by BOYD, N'YAH			
05:08				MISSED 3PTR by MASS, CHARLENE
05:05	REBOUND (DEF) by GEORGE, ANISHA			
04:53	GOOD! LAYUP by GEORGE, ANISHA	47-67	V 20	
04:53	ASSIST by TOWNLEY, MADI			
04:30				MISSED JUMPER by MASS, CHARLENE

Time	VISITORS: North Texas	Score	Margin	HOME: UTSA
04:27	REBOUND (DEF) by GEORGE, ANISHA			
04:21	MISSED LAYUP by BOYD, NYAH			
04:17				REBOUND (DEF) by MASS, CHARLENE
04:07		49-67	V 18	GOOD! JUMPER by TOTH, TIMEA
04:07				ASSIST by MASS, CHARLENE
03:55	GOOD! LAYUP by MIMS, TRENA	49-69	V 20	
03:55	ASSIST by JONES, SUMMER			
03:39				TURNOVER (LOSTBALL) by DONALD, KARRINGTON
03:39	STEAL by MIMS, TRENA			
03:37				FOUL (PERSONAL) by DONALD, KARRINGTON
03:37				
03:37				SUB OUT: BLANDING, ELENA
03:37				SUB OUT: MASS, CHARLENE
03:37				SUB IN: OMEMMAH, EVELYN
03:37				SUB IN: MITCHELL, SHANNAN
03:37	SUB OUT: BOYD, NYAH			
03:37	SUB IN: JACKSON, JAZION			
03:37	GOOD! FT by MIMS, TRENA [FB]	49-70	V 21	
03:36	MISSED FT by MIMS, TRENA			
03:34				REBOUND (DEF) by OMEMMAH, EVELYN
03:09				MISSED LAYUP by TOTH, TIMEA
03:06				REBOUND (OFF) by TOTH, TIMEA
03:04		51-70	V 19	GOOD! JUMPER by OMEMMAH, EVELYN
03:04				ASSIST by TOTH, TIMEA
02:43	GOOD! LAYUP by GEORGE, ANISHA	51-72	V 21	
02:43	ASSIST by JACKSON, JAZION			
02:36				SUB OUT: TOTH, TIMEA
02:36				SUB IN: MASS, CEYENNE
02:36	SUB OUT: JONES, SUMMER			
02:36	SUB IN: THOMPSON, RANDI			
02:34				TIMEOUT TEAM
02:24				TURNOVER (LOSTBALL) by OMEMMAH, EVELYN
02:24	STEAL by MIMS, TRENA			
01:57	MISSED LAYUP by JACKSON, JAZION			
01:54	REBOUND (OFF) by TOWNLEY, MADI			
01:48	GOOD! JUMPER by GEORGE, ANISHA [PNT]	51-74	V 23	
01:48	ASSIST by MIMS, TRENA			
01:48				FOUL (PERSONAL) by MITCHELL, SHANNAN
01:47	MISSED FT by GEORGE, ANISHA			
01:46				REBOUND (DEF) by OMEMMAH, EVELYN
01:28		53-74	V 21	GOOD! JUMPER by OMEMMAH, EVELYN
01:22	TIMEOUT 30SEC			
01:22	SUB OUT: GEORGE, ANISHA			
01:22	SUB IN: SHEPHERD, CHARLENE			
01:11				FOUL (PERSONAL) by MASS, CEYENNE
01:11	MISSED FT by JACKSON, JAZION			
01:11	REBOUND (OFF) by TEAM			
01:11	GOOD! FT by JACKSON, JAZION	53-75	V 22	
00:59				TURNOVER (TRAVEL) by MASS, CEYENNE
00:46	GOOD! JUMPER by MIMS, TRENA [PNT]	53-77	V 24	
00:46	ASSIST by TOWNLEY, MADI			
00:36				TURNOVER (BADPASS) by DONALD, KARRINGTON
00:36	STEAL by THOMPSON, RANDI			
00:33	GOOD! LAYUP by THOMPSON, RANDI [FB]	53-79	V 26	
00:18				MISSED 3PTR by DONALD, KARRINGTON
00:13				REBOUND (OFF) by OMEMMAH, EVELYN
00:13		55-79	V 24	GOOD! LAYUP by OMEMMAH, EVELYN

### North Texas 79, UTSA 55

Points from (This Period)	UNT	UTS
In the Paint	16	10
Off Turns	7	0
2nd Chance	6	4
Fast Break	3	1
Bench	8	10



**Official Scoring/Possession Reference Chart**  
**North Texas vs UTSA**  
**Period 1**  
**January 23, 2020 at Convocation Center - San Antonio, Texas**



**Period 1**

**Starters:**

**North Texas:** 3 BOYD,N'YAH (G); 10 MIMS,TRENA (G); 23 THOMPSON,RANDI (G); 41 TOWNLEY,MADI (F); 42 GEORGE,ANISHA (C);

**UTSA:** 1 OMEMMAH,EVELYN (F); 11 MASS,CHARLENE (G); 13 COUSIN,DEJA (G); 15 TOTH,TIMEA (F); 34 DONALD,KARRINGTON (G);

Time	VISITORS: North Texas	Score	Margin	HOME: UTSA
09:30	GOOD! JUMPER by TOWNLEY, MADI	0-2	V 2	
09:00	GOOD! 3PTR by THOMPSON, RANDI	0-5	V 5	
08:03	GOOD! LAYUP by GEORGE, ANISHA	0-7	V 7	
05:55		2-7	V 5	GOOD! LAYUP by MASS, CHARLENE
05:45	GOOD! FT by BOYD, N'YAH	2-8	V 6	
05:45	GOOD! FT by BOYD, N'YAH	2-9	V 7	
05:28	GOOD! FT by BOYD, N'YAH [FB]	2-10	V 8	
05:28	GOOD! FT by BOYD, N'YAH [FB]	2-11	V 9	
05:00		4-11	V 7	GOOD! JUMPER by DONALD, KARRINGTON
05:00	GOOD! JUMPER by JONES, SUMMER	4-13	V 9	
02:31	GOOD! JUMPER by JONES, SUMMER	4-15	V 11	
02:18		5-15	V 10	GOOD! FT by MITCHELL, SHANNAN
01:58	GOOD! JUMPER by JONES, SUMMER	5-17	V 12	
01:58	GOOD! FT by JONES, SUMMER	5-18	V 13	
00:58	GOOD! 3PTR by JONES, SUMMER	5-21	V 16	
00:38		6-21	V 15	GOOD! FT by MASS, CHARLENE
00:26		7-21	V 14	GOOD! FT by WOODS, MIKAYLA [FB]

**North Texas 21, UTSA 7**

**Official Scoring/Possession Reference Chart**  
**North Texas vs UTSA**  
**Period 2**  
**January 23, 2020 at Convocation Center - San Antonio, Texas**



**Period 2**

**Starters:**

**North Texas:** 3 BOYD,N'YAH (G); 10 MIMS,TRENA (G); 23 THOMPSON,RANDI (G); 41 TOWNLEY,MADI (F); 42 GEORGE,ANISHA (C);  
**UTSA:** 1 OMEMMAH,EVELYN (F); 11 MASS,CHARLENE (G); 13 COUSIN,DEJA (G); 15 TOTH,TIMEA (F); 34 DONALD,KARRINGTON (G);

Time	VISITORS: North Texas	Score	Margin	HOME: UTSA
09:53		9-21	V 12	GOOD! JUMPER by OMEMMAH, EVELYN
08:55		11-21	V 10	GOOD! LAYUP by WOODS, MIKAYLA [FB]
08:38	GOOD! FT by BOYD, N'YAH	11-22	V 11	
08:38	GOOD! FT by BOYD, N'YAH	11-23	V 12	
08:24		13-23	V 10	GOOD! LAYUP by MASS, CHARLENE
07:49		16-23	V 7	GOOD! 3PTR by DONALD, KARRINGTON
06:04	GOOD! LAYUP by GEORGE, ANISHA	16-25	V 9	
05:18	GOOD! LAYUP by GEORGE, ANISHA	16-27	V 11	
04:51	GOOD! JUMPER by BOYD, N'YAH	16-29	V 13	
04:30	GOOD! JUMPER by TOWNLEY, MADI	16-31	V 15	
03:28		18-31	V 13	GOOD! LAYUP by WOODS, MIKAYLA [FB]
02:14		20-31	V 11	GOOD! LAYUP by WOODS, MIKAYLA
01:50	GOOD! LAYUP by SHEPHERD, CHARLENE	20-33	V 13	
00:55	GOOD! FT by BOYD, N'YAH [FB]	20-34	V 14	
00:04		21-34	V 13	GOOD! FT by MITCHELL, SHANNAN
00:04		22-34	V 12	GOOD! FT by MITCHELL, SHANNAN

**North Texas 34, UTSA 22**

**Official Scoring/Possession Reference Chart**  
**North Texas vs UTSA**  
**Period 3**  
**January 23, 2020 at Convocation Center - San Antonio, Texas**



**Period 3**

**Starters:**

**North Texas:** 3 BOYD,N'YAH (G); 10 MIMS,TRENA (G); 23 THOMPSON,RANDI (G); 41 TOWNLEY,MADI (F); 42 GEORGE,ANISHA (C);

**UTSA:** 1 OMEMMAH,EVELYN (F); 11 MASS,CHARLENE (G); 13 COUSIN,DEJA (G); 15 TOTH,TIMEA (F); 34 DONALD,KARRINGTON (G);

Time	VISITORS: North Texas	Score	Margin	HOME: UTSA
09:45	GOOD! LAYUP by BOYD, N'YAH	22-36	V 14	
08:15		23-36	V 13	GOOD! FT by WOODS, MIKAYLA [FB]
08:15		24-36	V 12	GOOD! FT by WOODS, MIKAYLA [FB]
07:14	GOOD! FT by GEORGE, ANISHA	24-37	V 13	
06:28	GOOD! LAYUP by GEORGE, ANISHA	24-39	V 15	
06:17		25-39	V 14	GOOD! FT by MASS, CHARLENE
05:54	GOOD! 3PTR by JONES, SUMMER	25-42	V 17	
05:12	GOOD! LAYUP by TOWNLEY, MADI	25-44	V 19	
02:48	GOOD! JUMPER by JONES, SUMMER	25-46	V 21	
02:35		27-46	V 19	GOOD! LAYUP by OMEMMAH, EVELYN
02:35		28-46	V 18	GOOD! FT by OMEMMAH, EVELYN
02:20	GOOD! FT by THOMPSON, RANDI	28-47	V 19	
02:20	GOOD! FT by THOMPSON, RANDI	28-48	V 20	
02:04		30-48	V 18	GOOD! LAYUP by MASS, CHARLENE
01:56	GOOD! FT by THOMPSON, RANDI [FB]	30-49	V 19	
01:10	GOOD! 3PTR by THOMPSON, RANDI	30-52	V 22	
00:44		32-52	V 20	GOOD! JUMPER by TOTH, TIMEA
00:32	GOOD! LAYUP by TOWNLEY, MADI	32-54	V 22	
00:18		34-54	V 20	GOOD! LAYUP by DONALD, KARRINGTON

**North Texas 54, UTSA 34**

**Official Scoring/Possession Reference Chart**  
**North Texas vs UTSA**  
**Period 4**  
**January 23, 2020 at Convocation Center - San Antonio, Texas**



**Period 4**

**Starters:**

**North Texas:** 3 BOYD,N'YAH (G); 10 MIMS,TRENA (G); 23 THOMPSON,RANDI (G); 41 TOWNLEY,MADI (F); 42 GEORGE,ANISHA (C);  
**UTSA:** 1 OMEMMAH,EVELYN (F); 11 MASS,CHARLENE (G); 13 COUSIN,DEJA (G); 15 TOTH,TIMEA (F); 34 DONALD,KARRINGTON (G);

Time	VISITORS: North Texas	Score	Margin	HOME: UTSA
09:50	GOOD! 3PTR by JONES, SUMMER	34-57	V 23	
09:18		36-57	V 21	GOOD! JUMPER by MITCHELL, SHANNAN [PNT]
09:05	GOOD! LAYUP by GEORGE, ANISHA	36-59	V 23	
08:41		37-59	V 22	GOOD! FT by TOTH, TIMEA
08:41		38-59	V 21	GOOD! FT by TOTH, TIMEA
08:10		39-59	V 20	GOOD! FT by MITCHELL, SHANNAN
07:50	GOOD! FT by SHEPHERD, CHARLENE	39-60	V 21	
07:36		41-60	V 19	GOOD! JUMPER by MITCHELL, SHANNAN
07:24	GOOD! LAYUP by BOYD, N'YAH	41-62	V 21	
07:14		43-62	V 19	GOOD! LAYUP by WOODS, MIKAYLA
06:10		46-62	V 16	GOOD! 3PTR by MITCHELL, SHANNAN
05:53		47-62	V 15	GOOD! FT by COUSIN, DEJA [FB]
05:31	GOOD! 3PTR by JONES, SUMMER	47-65	V 18	
04:53	GOOD! LAYUP by GEORGE, ANISHA	47-67	V 20	
04:07		49-67	V 18	GOOD! JUMPER by TOTH, TIMEA
03:55	GOOD! LAYUP by MIMS, TRENA	49-69	V 20	
03:37	GOOD! FT by MIMS, TRENA [FB]	49-70	V 21	
03:04		51-70	V 19	GOOD! JUMPER by OMEMMAH, EVELYN
02:43	GOOD! LAYUP by GEORGE, ANISHA	51-72	V 21	
01:48	GOOD! JUMPER by GEORGE, ANISHA [PNT]	51-74	V 23	
01:28		53-74	V 21	GOOD! JUMPER by OMEMMAH, EVELYN
01:11	GOOD! FT by JACKSON, JAZION	53-75	V 22	
00:46	GOOD! JUMPER by MIMS, TRENA [PNT]	53-77	V 24	
00:33	GOOD! LAYUP by THOMPSON, RANDI [FB]	53-79	V 26	
00:13		55-79	V 24	GOOD! LAYUP by OMEMMAH, EVELYN

**North Texas 79, UTSA 55**

**Official Substitutions Log**  
**North Texas vs UTSA**  
**Period 1**  
**January 23, 2020 at Convocation Center - San Antonio, Texas**



VISITORS: North Texas	Time	Score	HOME: UTSA
3 BOYD,N'YAH			1 OMEMMAH,EVELYN
10 MIMS,TRENA			11 MASS,CHARLENE
23 THOMPSON,RANDI			13 COUSIN,DEJA
41 TOWNLEY,MADI			15 TOTH,TIMEA
42 GEORGE,ANISHA			34 DONALD,KARRINGTON
	07:37	7-0	SUB OUT: COUSIN,DEJA
	07:37		SUB IN: WOODS,MIKAYLA
SUB OUT: 42 GEORGE,ANISHA	05:45	7-2	
SUB IN: 11 SHEPHERD,CHARLENE	05:45		
	05:45		SUB OUT: OMEMMAH,EVELYN
	05:45		SUB IN: MITCHELL,SHANNAN
	05:00	11-2	SUB OUT: MASS,CHARLENE
	05:00		SUB IN: MASS,CEYENNE
SUB OUT: 23 THOMPSON,RANDI	05:00		
SUB IN: 2 JONES,SUMMER	05:00		
SUB OUT: 3 BOYD,N'YAH	03:50	13-4	
SUB IN: 4 JACKSON,JAZION	03:50		
SUB OUT: 41 TOWNLEY,MADI	02:18	15-4	
SUB IN: 42 GEORGE,ANISHA	02:18		
	02:18		SUB OUT: TOTH,TIMEA
	02:18		SUB IN: BLANDING,ELENA
	02:18		SUB OUT: MASS,CEYENNE
	02:18		SUB IN: MASS,CHARLENE
	01:52	18-5	SUB OUT: MITCHELL,SHANNAN
	01:52		SUB IN: TOTH,TIMEA
	00:38	21-5	SUB OUT: BLANDING,ELENA
	00:38		SUB IN: OMEMMAH,EVELYN
SUB OUT: 10 MIMS,TRENA	00:38		
SUB IN: 23 THOMPSON,RANDI	00:38		
SUB OUT: 4 JACKSON,JAZION	00:26	21-6	
SUB IN: 3 BOYD,N'YAH	00:26		

**North Texas 21, UTSA 7**

**Official Substitutions Log**  
**North Texas vs UTSA**  
**Period 2**  
**January 23, 2020 at Convocation Center - San Antonio, Texas**



VISITORS: North Texas	Time	Score	HOME: UTSA
3 BOYD,N'YAH			1 OMEMMAH,EVELYN
10 MIMS,TRENA			11 MASS,CHARLENE
23 THOMPSON,RANDI			13 COUSIN,DEJA
41 TOWNLEY,MADI			15 TOTH,TIMEA
42 GEORGE,ANISHA			34 DONALD,KARRINGTON
	08:38	21-11	SUB OUT: DONALD,KARRINGTON
	08:38		SUB IN: MITCHELL,SHANNAN
SUB OUT: 11 SHEPHERD,CHARLENE	08:38		
SUB IN: 41 TOWNLEY,MADI	08:38		
	07:55	23-13	SUB OUT: WOODS,MIKAYLA
	07:55		SUB OUT: TOTH,TIMEA
	07:55		SUB IN: MASS,CEYENNE
	07:55		SUB IN: DONALD,KARRINGTON
SUB OUT: 2 JONES,SUMMER	06:39	23-16	
SUB IN: 10 MIMS,TRENA	06:39		
	05:42	25-16	SUB OUT: OMEMMAH,EVELYN
	05:42		SUB OUT: MASS,CEYENNE
	05:42		SUB OUT: MITCHELL,SHANNAN
	05:42		SUB IN: BLANDING,ELENA
	05:42		SUB IN: WOODS,MIKAYLA
	05:42		SUB IN: TOTH,TIMEA
	04:50	29-16	SUB OUT: BLANDING,ELENA
	04:50		SUB OUT: MASS,CHARLENE
	04:50		SUB IN: OMEMMAH,EVELYN
	04:50		SUB IN: COUSIN,DEJA
	03:05	31-18	SUB OUT: OMEMMAH,EVELYN
	03:05		SUB OUT: COUSIN,DEJA
	03:05		SUB IN: MASS,CHARLENE
	03:05		SUB IN: MITCHELL,SHANNAN
SUB OUT: 23 THOMPSON,RANDI	03:05		
SUB OUT: 42 GEORGE,ANISHA	03:05		
SUB IN: 4 JACKSON,JAZION	03:05		
SUB IN: 11 SHEPHERD,CHARLENE	03:05		
	00:55	33-20	SUB OUT: DONALD,KARRINGTON
	00:55		SUB IN: MASS,CEYENNE
SUB OUT: 4 JACKSON,JAZION	00:33	34-20	
SUB OUT: 11 SHEPHERD,CHARLENE	00:33		
SUB IN: 23 THOMPSON,RANDI	00:33		
SUB IN: 42 GEORGE,ANISHA	00:33		

**North Texas 34, UTSA 22**

**Official Substitutions Log**  
**North Texas vs UTSA**  
**Period 3**  
**January 23, 2020 at Convocation Center - San Antonio, Texas**



VISITORS: North Texas	Time	Score	HOME: UTSA
3 BOYD,N'YAH			1 OMEMMAH,EVELYN
10 MIMS,TRENA			11 MASS,CHARLENE
23 THOMPSON,RANDI			13 COUSIN,DEJA
41 TOWNLEY,MADI			15 TOTH,TIMEA
42 GEORGE,ANISHA			34 DONALD,KARRINGTON
	10:00	-	SUB OUT: MASS,CEYENNE
	10:00		SUB OUT: MITCHELL,SHANNAN
	10:00		SUB IN: OMEMMAH,EVELYN
	10:00		SUB IN: DONALD,KARRINGTON
SUB OUT: 23 THOMPSON,RANDI	07:35	36-24	
SUB IN: 2 JONES,SUMMER	07:35		
	07:14	36-24	SUB OUT: OMEMMAH,EVELYN
	07:14		SUB IN: BLANDING,ELENA
	05:36	42-25	SUB OUT: TOTH,TIMEA
	05:36		SUB OUT: DONALD,KARRINGTON
	05:36		SUB IN: MASS,CEYENNE
	05:36		SUB IN: MITCHELL,SHANNAN
	04:48	44-25	SUB OUT: BLANDING,ELENA
	04:48		SUB IN: OMEMMAH,EVELYN
	03:13	44-25	SUB OUT: MASS,CHARLENE
	03:13		SUB IN: DONALD,KARRINGTON
	02:35	46-27	SUB OUT: MASS,CEYENNE
	02:35		SUB IN: MASS,CHARLENE
SUB OUT: 3 BOYD,N'YAH	02:35		
SUB OUT: 42 GEORGE,ANISHA	02:35		
SUB IN: 4 JACKSON,JAZION	02:35		
SUB IN: 11 SHEPHERD,CHARLENE	02:35		
	02:35		SUB OUT: OMEMMAH,EVELYN
	02:35		SUB IN: TOTH,TIMEA
SUB OUT: 10 MIMS,TRENA	02:20	46-28	
SUB IN: 23 THOMPSON,RANDI	02:20		

**North Texas 54, UTSA 34**

**Official Substitutions Log**  
**North Texas vs UTSA**  
**Period 4**  
**January 23, 2020 at Convocation Center - San Antonio, Texas**



VISITORS: North Texas	Time	Score	HOME: UTSA
3 BOYD,N'YAH			1 OMEMMAH,EVELYN
10 MIMS,TRENA			11 MASS,CHARLENE
23 THOMPSON,RANDI			13 COUSIN,DEJA
41 TOWNLEY,MADI			15 TOTH,TIMEA
42 GEORGE,ANISHA			34 DONALD,KARRINGTON
	10:00	-	SUB OUT: DONALD,KARRINGTON
	10:00		SUB IN: COUSIN,DEJA
SUB OUT: 41 TOWNLEY,MADI	10:00		
SUB IN: 42 GEORGE,ANISHA	10:00		
	08:41	59-36	SUB OUT: MASS,CHARLENE
	08:41		SUB IN: MASS,CEYENNE
SUB OUT: 4 JACKSON,JAZION	08:41		
SUB IN: 3 BOYD,N'YAH	08:41		
	08:41		SUB OUT: TOTH,TIMEA
	08:41		SUB IN: OMEMMAH,EVELYN
SUB OUT: 2 JONES,SUMMER	08:10	59-39	
SUB IN: 10 MIMS,TRENA	08:10		
	07:50	60-39	SUB OUT: MASS,CEYENNE
	07:50		SUB IN: DONALD,KARRINGTON
	07:42	60-39	SUB OUT: OMEMMAH,EVELYN
	07:42		SUB IN: BLANDING,ELENA
	06:43	62-43	SUB OUT: WOODS,MIKAYLA
	06:43		SUB IN: MASS,CHARLENE
SUB OUT: 11 SHEPHERD,CHARLENE	06:43		
SUB IN: 41 TOWNLEY,MADI	06:43		
	05:53	62-46	SUB OUT: MITCHELL,SHANNAN
	05:53		SUB IN: TOTH,TIMEA
SUB OUT: 23 THOMPSON,RANDI	05:53		
SUB IN: 2 JONES,SUMMER	05:53		
	03:37	69-49	SUB OUT: BLANDING,ELENA
	03:37		SUB OUT: MASS,CHARLENE
	03:37		SUB IN: OMEMMAH,EVELYN
	03:37		SUB IN: MITCHELL,SHANNAN
SUB OUT: 3 BOYD,N'YAH	03:37		
SUB IN: 4 JACKSON,JAZION	03:37		
	02:36	72-51	SUB OUT: TOTH,TIMEA
	02:36		SUB IN: MASS,CEYENNE
SUB OUT: 2 JONES,SUMMER	02:36		
SUB IN: 23 THOMPSON,RANDI	02:36		
SUB OUT: 42 GEORGE,ANISHA	01:22	74-53	
SUB IN: 11 SHEPHERD,CHARLENE	01:22		

**North Texas 79, UTSA 55**

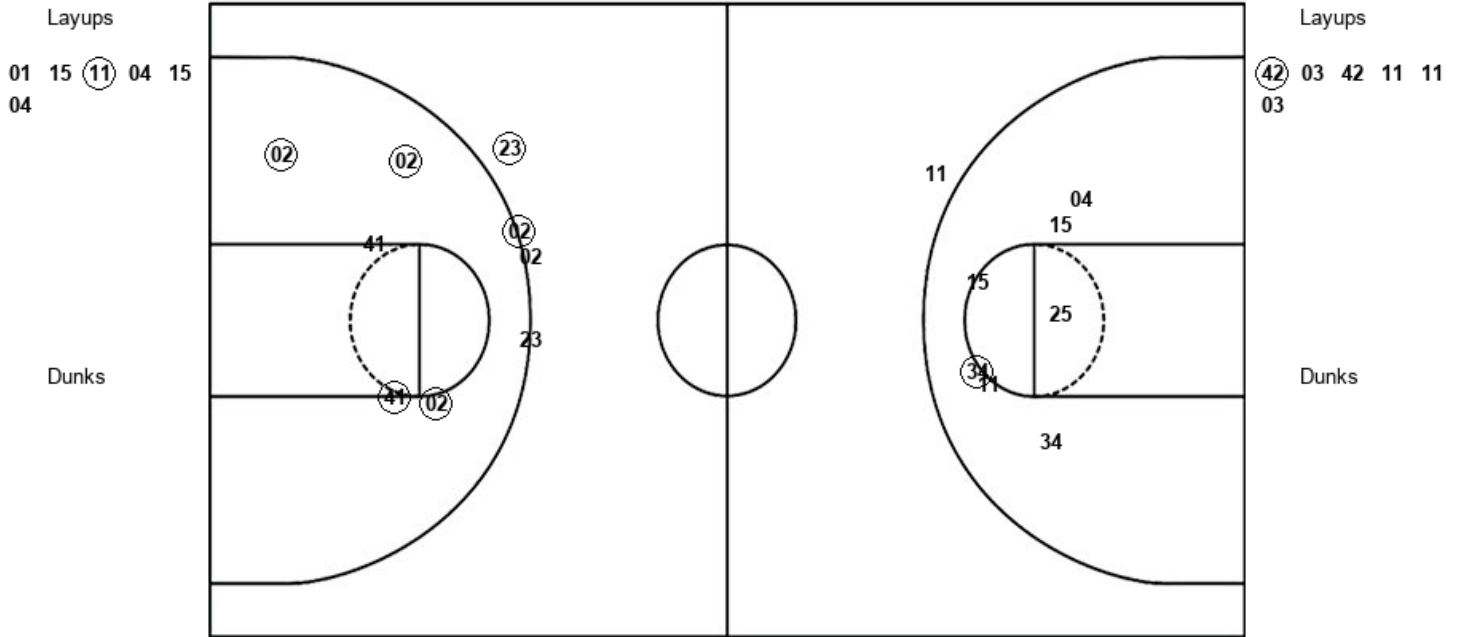


**Official Shot Chart**  
**North Texas vs UTSA**  
**PERIOD 1 Shots**  
 January 23, 2020 at Convocation Center - San Antonio, Texas



**UTSA**

**North Texas**



UTS : Period 1	Made	Att	Pct
Layups	1	6	16.7
Dunks	0	0	0
2PT Field Goals	2	13	15.4
3PT Field Goals	0	1	00.0
<b>Total Field Goals</b>	<b>2</b>	<b>14</b>	<b>14.3</b>

UNT : Period 1	Made	Att	Pct
Layups	1	6	16.7
Dunks	0	0	0
2PT Field Goals	5	11	45.5
3PT Field Goals	2	4	50.0
<b>Total Field Goals</b>	<b>7</b>	<b>15</b>	<b>46.7</b>

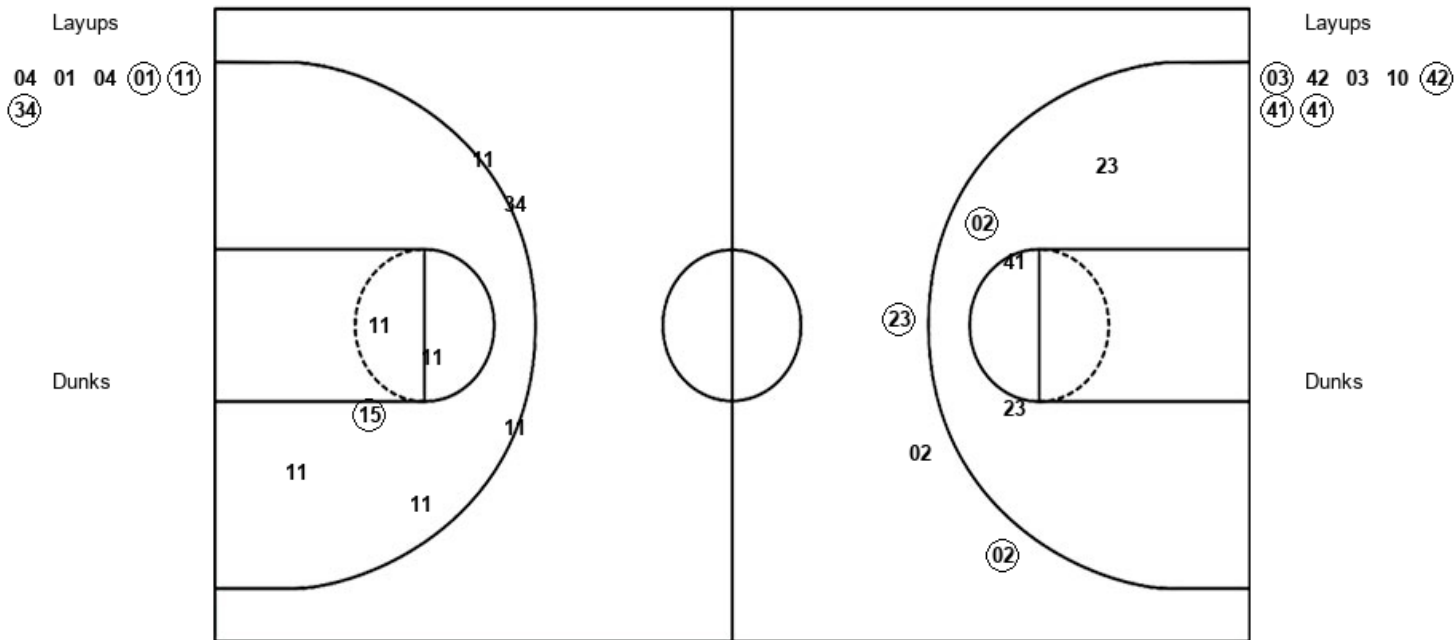


**Official Shot Chart**  
**North Texas vs UTSA**  
**PERIOD 3 Shots**  
 January 23, 2020 at Convocation Center - San Antonio, Texas



**UTSA**

**North Texas**



UTS : Period 3	Made	Att	Pct
Layups	3	6	50.0
Dunks	0	0	0
2PT Field Goals	4	11	36.4
3PT Field Goals	0	3	00.0
<b>Total Field Goals</b>	<b>4</b>	<b>14</b>	<b>28.6</b>

UNT : Period 3	Made	Att	Pct
Layups	4	7	57.1
Dunks	0	0	0
2PT Field Goals	5	11	45.5
3PT Field Goals	2	3	66.7
<b>Total Field Goals</b>	<b>7</b>	<b>14</b>	<b>50.0</b>

**Official Shot Chart**  
**North Texas vs UTSA**  
**PERIOD 4 Shots**  
 January 23, 2020 at Convocation Center - San Antonio, Texas

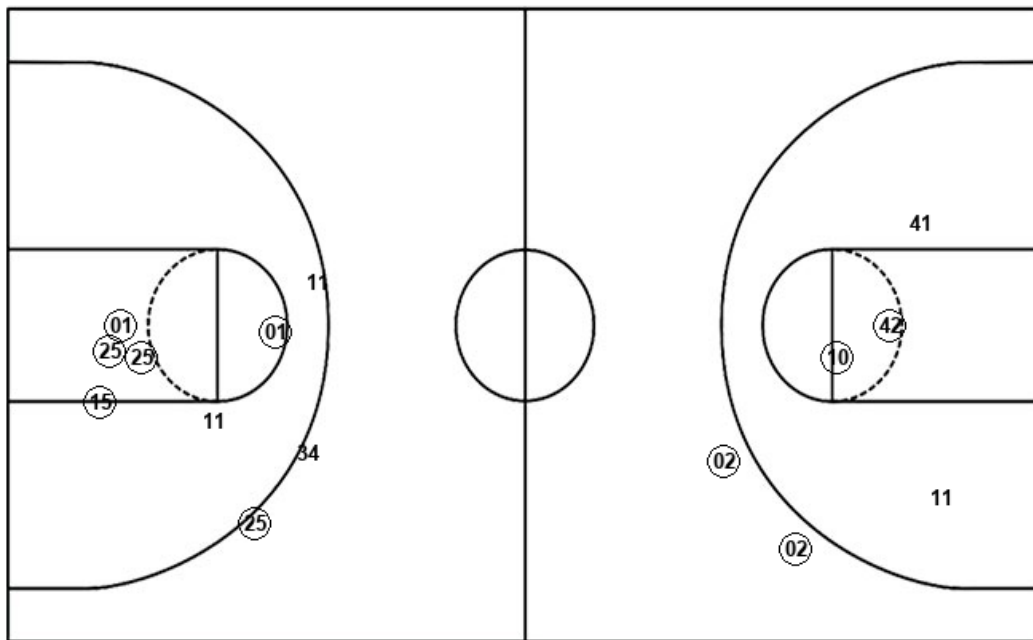


**UTSA**

**North Texas**

Layups  
 04 15 01

Dunks



Layups  
 42 42 03 42 42  
 03 42 03 10 42  
 04 23

Dunks

UTS : Period 4	Made	Att	Pct
Layups	2	3	66.7
Dunks	0	0	0
2PT Field Goals	7	9	77.8
3PT Field Goals	1	3	33.3
<b>Total Field Goals</b>	<b>8</b>	<b>12</b>	<b>66.7</b>

UNT : Period 4	Made	Att	Pct
Layups	6	12	50.0
Dunks	0	0	0
2PT Field Goals	8	16	50.0
3PT Field Goals	2	2	100.0
<b>Total Field Goals</b>	<b>10</b>	<b>18</b>	<b>55.6</b>

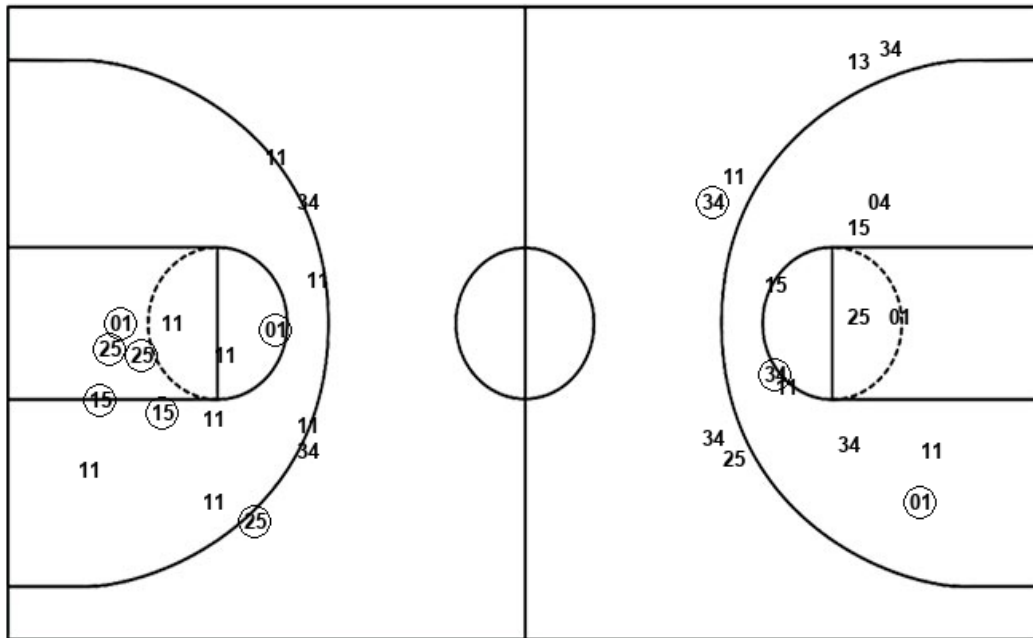


**Official Shot Chart**  
**North Texas vs UTSA**  
**UTSA Team Shots**  
 January 23, 2020 at Convocation Center - San Antonio, Texas



Layups

Dunks



Layups

Dunks

01 15 (11) 04 15  
 04 01 (04) (11) 04  
 (04) (04) 04 01 04  
 (01) (11) (34) (04) 15  
 (01)

UTS : Period 1	Made	Att	Pct
Layups	1	6	16.7
Dunks	0	0	0
2PT Field Goals	2	13	15.4
3PT Field Goals	0	1	00.0
<b>Total Field Goals</b>	<b>2</b>	<b>14</b>	<b>14.3</b>

UTS : Period 3	Made	Att	Pct
Layups	3	6	50.0
Dunks	0	0	0
2PT Field Goals	4	11	36.4
3PT Field Goals	0	3	00.0
<b>Total Field Goals</b>	<b>4</b>	<b>14</b>	<b>28.6</b>

UTS : Period 2	Made	Att	Pct
Layups	4	6	66.7
Dunks	0	0	0
2PT Field Goals	5	9	55.6
3PT Field Goals	1	5	20.0
<b>Total Field Goals</b>	<b>6</b>	<b>14</b>	<b>42.9</b>

UTS : Period 4	Made	Att	Pct
Layups	2	3	66.7
Dunks	0	0	0
2PT Field Goals	7	9	77.8
3PT Field Goals	1	3	33.3
<b>Total Field Goals</b>	<b>8</b>	<b>12</b>	<b>66.7</b>