

FINAL SCORE

FIU



FIU

45

UTSA



60

January 04, 2020 • Convocation Center - San Antonio, Texas

FINAL STATISTICS

Official Box Score
FIU vs UTSA
Game Totals -- Final Statistics
January 04, 2020 at Convocation Center - San Antonio, Texas



FIU 45

No.	Player	S	Pts	FG	3FG	FT	OR	DR	TR	PF	A	TO	Blk	Stl	Min	+/-			
02	DANIELS, CHEYANNE	F	4	2-5	0-0	0-1	0	8	8	1	0	3	1	0	25	-8			
05	NIMMO, FUJIKA	G	6	1-14	1-7	3-4	1	5	6	4	3	0	0	0	31	-7			
14	GUIMARAES, CHELSEA	C	16	7-11	0-1	2-2	2	12	14	1	1	3	2	0	36	-16			
23	SCOTT, BRE'OSHA	G	4	2-5	0-1	0-0	1	1	2	4	2	2	0	0	31	-17			
30	THOMAS, JISELLE	G	0	0-2	0-0	0-0	0	0	0	3	0	2	0	0	11	-7			
03	SWIFT, ALANA	G	0	0-0	0-0	0-0	0	1	1	2	0	1	0	0	3	-3			
21	DIANE, DIENE	G	13	5-15	1-4	2-3	2	3	5	1	2	2	0	1	32	-12			
24	WYKOFF, ALEXUS	F	0	0-2	0-0	0-0	1	0	1	0	0	0	0	0	6	-2			
25	BONGIORNO, GIULIA	G	2	1-2	0-1	0-0	1	0	1	1	2	0	0	0	11	1			
34	WALKER, SHANTE	F	0	0-3	0-1	0-2	1	2	3	1	0	3	0	1	12	-4			
TEAM																			
TOTALS							45	18-59	2-15	7-12	11	34	45	18	10	16	3	2	199

Shooting By Period

Period	FG	FG%	3FG	3FG%	FT	FT%
1st Qtr	5-14	36%	0-3	00%	0-0	0%
2nd Qtr	4-15	27%	0-3	00%	3-4	75%
3rd Qtr	5-14	36%	0-3	00%	3-4	75%
4th Qtr	4-16	25%	2-6	33%	1-4	25%
1st Half	9-29	31%	0-6	00%	3-4	75%
2nd Half	9-30	30%	2-9	22%	4-8	50%
Game	18-59	30.5%	2-15	13.3%	7-12	58.3%

Deadball Rebounds: 3,0
Last FG: 4th-00:16
Biggest Run: 6-0
Largest lead: By 7 at 2nd-05:23
Technical Fouls: None.

UTSA 60

No.	Player	S	Pts	FG	3FG	FT	OR	DR	TR	PF	A	TO	Blk	Stl	Min	+/-			
01	OMEMMAH, EVELYN	F	4	0-7	0-0	4-6	3	4	7	4	1	1	2	0	24	10			
04	WOODS, MIKAYLA	G	11	4-9	0-1	3-8	1	6	7	2	2	2	0	1	28	11			
15	TOTH, TIMEA	F	2	1-4	0-0	0-0	3	3	6	2	1	0	1	1	28	-1			
32	QUEZADA, ADRYANA	F	9	3-7	0-0	3-9	3	2	5	3	1	0	1	1	23	22			
34	DONALD, KARRINGTON	G	18	7-18	4-10	0-0	2	3	5	0	1	0	0	1	36	12			
03	BLANDING, ELENA	C	0	0-1	0-0	0-0	1	3	4	1	0	1	0	1	16	5			
11	MASS, CHARLENE	G	11	3-14	1-1	4-5	0	6	6	1	0	1	0	4	34	11			
25	MITCHELL, SHANNAN	F	5	2-4	1-1	0-0	1	0	1	3	0	1	0	1	9	5			
TEAM																			
TOTALS							60	20-64	6-13	14-28	16	32	48	16	6	7	4	10	199

Shooting By Period

Period	FG	FG%	3FG	3FG%	FT	FT%
1st Qtr	3-18	17%	2-4	50%	0-0	0%
2nd Qtr	3-15	20%	0-1	00%	2-4	50%
3rd Qtr	8-19	42%	4-5	80%	5-11	45%
4th Qtr	6-12	50%	0-3	00%	7-13	54%
1st Half	6-33	18%	2-5	40%	2-4	50%
2nd Half	14-31	45%	4-8	50%	12-24	50%
Game	20-64	31.3%	6-13	46.2%	14-28	50.0%

Deadball Rebounds: 8,0
Last FG: 4th-00:44
Biggest Run: 10-0
Largest lead: By 18 at 4th-00:26
Technical Fouls: None.

Game Notes:

Officials: Chris Saucedo, Jaclyn Watson, Katrina Lyles
 Attendance: 293

Start Time: 03:05 PM ET
 End Time: 04:48 PM ET
 Game Duration: 1:43
 Conference Game;

Score	1st	2nd	3rd	4th	TOT
FIU	10	11	13	11	45
UTS	8	8	25	19	60

FIU led for 20:32. UTS led for 17:14.
 Game was tied for 1:58.
 Times tied: 3 Lead Changes: 9

Points from	FIU	UTS
In the Paint	28	22
Off Turns	9	19
2nd Chance	5	16
Fast Break	8	11
Bench	15	16

Official Box Score
FIU vs UTSA
First Half Statistics Only
January 04, 2020 at Convocation Center - San Antonio, Texas



FIU 21

No.	Player	S	Pts	FG	3FG	FT	OR	DR	TR	PF	A	TO	Blk	Stl	Min	+/-
02	DANIELS, CHEYANNE	F	2	1-2	0-0	0-0	0	5	5	0	0	3	0	0	14	6
03	SWIFT, ALANA	G	0	0-0	0-0	0-0	0	0	0	0	0	0	0	0	0	0
05	NIMMO, FUJIKAI	G	0	0-6	0-3	0-0	0	4	4	0	1	0	0	0	15	6
14	GUIMARAES, CHELSEA	C	8	3-5	0-1	2-2	1	7	8	0	0	1	1	0	17	4
21	DIANE, DIENE	G	7	3-8	0-2	1-2	1	1	2	0	0	0	0	1	15	2
23	SCOTT, BRE'OSHA	G	2	1-2	0-0	0-0	0	1	1	1	1	0	0	0	14	1
24	WYKOFF, ALEXUS	F	0	0-2	0-0	0-0	1	0	1	0	0	0	0	0	6	-2
25	BONGIORNO, GIULIA	G	2	1-1	0-0	0-0	1	0	1	1	2	0	0	0	6	4
30	THOMAS, JISELLE	G	0	0-2	0-0	0-0	0	0	0	0	0	1	0	0	9	2
34	WALKER, SHANTE	F	0	0-1	0-0	0-0	0	1	1	1	0	1	0	0	3	2
	TEAM		0	0-0	0-0	0-0	0	2	2	0	0	0	0	0	0	0
TOTALS			21	9-29	0-6	3-4	4	21	25	3	4	6	1	1	100	

Shooting By Period

Period	FG	FG%	3FG	3FG%	FT	FT%
1st Qtr	5-14	36%	0-3	00%	0-0	0%
2nd Qtr	4-15	27%	0-3	00%	3-4	75%
1st Half	9-29	31%	0-6	00%	3-4	75%
Game	18-59	30.5%	2-15	13.3%	7-12	58.3%

Deadball Rebounds: 3,0
Last FG Half: FIU 2nd-01:20

UTSA 16

No.	Player	S	Pts	FG	3FG	FT	OR	DR	TR	PF	A	TO	Blk	Stl	Min	+/-
01	OMEMMAH, EVELYN	F	1	0-5	0-0	1-2	2	1	3	0	1	1	2	0	9	-6
03	BLANDING, ELENA	C	0	0-0	0-0	0-0	1	3	4	1	0	1	0	1	11	1
04	WOODS, MIKAYLA	G	0	0-3	0-0	0-0	0	0	0	2	0	1	0	0	10	-6
11	MASS, CHARLENE	G	6	2-7	1-1	1-2	0	5	5	0	0	0	0	1	17	-3
15	TOTH, TIMEA	F	0	0-2	0-0	0-0	1	0	1	0	0	0	0	0	15	-9
25	MITCHELL, SHANNAN	F	0	0-2	0-0	0-0	0	0	0	2	0	0	0	0	6	-1
32	QUEZADA, ADRYANA	F	2	1-5	0-0	0-0	1	2	3	2	0	0	1	1	13	3
34	DONALD, KARRINGTON	G	7	3-9	1-4	0-0	0	2	2	0	1	0	0	0	19	-4
	TEAM		0	0-0	0-0	0-0	1	2	3	0	0	1	0	0	0	0
TOTALS			16	6-33	2-5	2-4	6	15	21	7	2	4	3	3	100	

Shooting By Period

Period	FG	FG%	3FG	3FG%	FT	FT%
1st Qtr	3-18	17%	2-4	50%	0-0	0%
2nd Qtr	3-15	20%	0-1	00%	2-4	50%
1st Half	6-33	18%	2-5	40%	2-4	50%
Game	20-64	31.3%	6-13	46.2%	14-28	50.0%

Deadball Rebounds: 8,0
Last FG Half: UTS 2nd-01:07

Game Notes:

Officials: **Chris Saucedo, Jaclyn Watson, Katrina Lyles**
Attendance: **293**

Start Time: **03:05 PM ET**
End Time: **04:48 PM ET**
Game Duration: **1:43**
Conference Game;

Score	1st	2nd	3rd	4th	TOT
FIU	10	11	13	11	45
UTS	8	8	25	19	60

Points from (This Period)	FIU	UTS
In the Paint	16	4
Off Turns	4	3
2nd Chance	2	3
Fast Break	4	1
Bench	9	6

Official Box Score
FIU vs UTSA
First Quarter Statistics Only
January 04, 2020 at Convocation Center - San Antonio, Texas



FIU 10

No.	Player	S	Pts	FG	3FG	FT	OR	DR	TR	PF	A	TO	Blk	Stl	Min	+/-
02	DANIELS, CHEYANNE	F	0	0-1	0-0	0-0	0	4	4	0	0	2	0	0	8	1
05	NIMMO, FUJIKAI	G	0	0-3	0-1	0-0	0	1	1	0	0	0	0	0	5	3
14	GUIMARAES, CHELSEA	C	6	3-4	0-1	0-0	0	5	5	0	0	1	1	0	10	2
23	SCOTT, BRE'OSHA	G	0	0-0	0-0	0-0	0	0	0	0	1	0	0	0	8	1
30	THOMAS, JISELLE	G	0	0-2	0-0	0-0	0	0	0	0	0	1	0	0	8	1
03	SWIFT, ALANA	G	0	0-0	0-0	0-0	0	0	0	0	0	0	0	0	0	0
21	DIANE, DIENE	G	4	2-3	0-1	0-0	0	1	1	0	0	0	0	0	6	0
24	WYKOFF, ALEXUS	F	0	0-0	0-0	0-0	0	0	0	0	0	0	0	0	0	0
25	BONGIORNO, GIULIA	G	0	0-0	0-0	0-0	0	0	0	1	1	0	0	0	2	1
34	WALKER, SHANTE	F	0	0-1	0-0	0-0	0	0	0	0	0	0	0	0	2	1
TEAM							0	0	0	0	0	0	0	0	0	0
TOTALS			10	5-14	0-3	0-0	0	11	11	1	2	4	1	0	50	

Shooting By Period

Period	FG	FG%	3FG	3FG%	FT	FT%
1st Qtr	5-14	36%	0-3	00%	0-0	0%
2nd Qtr	4-15	27%	0-3	00%	3-4	75%
1st Half	5-14	36%	0-3	00%	0-0	0%
1st Half	9-29	31%	0-6	00%	3-4	75%
Game	18-59	30.5%	2-15	13.3%	7-12	58.3%

Deadball Rebounds: 3,0

UTSA 8

No.	Player	S	Pts	FG	3FG	FT	OR	DR	TR	PF	A	TO	Blk	Stl	Min	+/-
01	OMEMMAH, EVELYN	F	0	0-4	0-0	0-0	1	0	1	0	1	0	1	0	5	-3
04	WOODS, MIKAYLA	G	0	0-0	0-0	0-0	0	0	0	2	0	1	0	0	3	-2
15	TOTH, TIMEA	F	0	0-1	0-0	0-0	1	0	1	0	0	0	0	0	9	-5
32	QUEZADA, ADRYANA	F	2	1-4	0-0	0-0	1	2	3	0	0	0	1	1	9	2
34	DONALD, KARRINGTON	G	3	1-5	1-3	0-0	0	2	2	0	1	0	0	0	10	-2
03	BLANDING, ELENA	C	0	0-0	0-0	0-0	0	1	1	0	0	1	0	1	5	1
11	MASS, CHARLENE	G	3	1-3	1-1	0-0	0	2	2	0	0	0	0	0	7	0
25	MITCHELL, SHANNAN	F	0	0-1	0-0	0-0	0	0	0	0	0	0	0	0	2	-1
TEAM							1	1	2	0	1	0	0	0	0	
TOTALS			8	3-18	2-4	0-0	4	8	12	2	2	3	2	2	50	

Shooting By Period

Period	FG	FG%	3FG	3FG%	FT	FT%
1st Qtr	3-18	17%	2-4	50%	0-0	0%
2nd Qtr	3-15	20%	0-1	00%	2-4	50%
1st Half	3-18	17%	2-4	50%	0-0	0%
1st Half	6-33	18%	2-5	40%	2-4	50%
Game	20-64	31.3%	6-13	46.2%	14-28	50.0%

Deadball Rebounds: 8,0

Game Notes:

Officials: Chris Saucedo, Jaclyn Watson, Katrina Lyles
 Attendance: 293

Start Time: 03:05 PM ET
 End Time: 04:48 PM ET
 Game Duration: 1:43
 Conference Game;

Score	1st	2nd	3rd	4th	TOT
FIU	10	11	13	11	45
UTS	8	8	25	19	60

Points from (This Period)

	FIU	UTS
In the Paint	10	2
Off Turns	4	3
2nd Chance	0	3
Fast Break	4	0
Bench	4	3

Official Play-By-Play
FIU vs UTSA
First Quarter
January 04, 2020 at Convocation Center - San Antonio, Texas



Period 1

Starters:

FIU: 2 DANIELS,CHEYANNE (F); 5 NIMMO,FUJIKI (G); 14 GUIMARAES,CHELSEA (C); 23 SCOTT,BRE'OSHA (G); 30 THOMAS,JISELLE (G);
UTSA: 1 OMEMMAH,EVELYN (F); 4 WOODS,MIKAYLA (G); 15 TOTH,TIMEA (F); 32 QUEZADA,ADRYANA (F); 34 DONALD,KARRINGTON (G);

Time	VISITORS: FIU	Score	Margin	HOME: UTSA
09:44	MISSED LAYUP by THOMAS, JISELLE			
09:43				REBOUND (DEF) by TEAM
09:14				FOUL (OFF) by WOODS, MIKAYLA
09:14				TURNOVER (OFFENSIVE) by WOODS, MIKAYLA
08:56	TURNOVER (BADPASS) by DANIELS, CHEYANNE			
08:39				MISSED JUMPER by OMEMMAH, EVELYN
08:35				REBOUND (OFF) by TOTH, TIMEA
08:16				TURNOVER (SHOTCLOCK) by TEAM
08:02	GOOD! JUMPER by GUIMARAES, CHELSEA [PNT]	0-2	V 2	
07:42				MISSED JUMPER by QUEZADA, ADRYANA
07:36				REBOUND (OFF) by OMEMMAH, EVELYN
07:36				MISSED LAYUP by OMEMMAH, EVELYN
07:35	REBOUND (DEF) by DANIELS, CHEYANNE			
07:31	MISSED 3PTR by NIMMO, FUJIKI			
07:25				REBOUND (DEF) by QUEZADA, ADRYANA
07:19				MISSED 3PTR by DONALD, KARRINGTON
07:15	REBOUND (DEF) by NIMMO, FUJIKI			
07:06				FOUL (PERSONAL) by WOODS, MIKAYLA
07:06				SUB OUT: OMEMMAH, EVELYN
07:06				SUB OUT: WOODS, MIKAYLA
07:06				SUB IN: BLANDING, ELENA
07:06				SUB IN: MASS, CHARLENE
06:55	MISSED LAYUP by NIMMO, FUJIKI			
06:52				REBOUND (DEF) by QUEZADA, ADRYANA
06:47				MISSED JUMPER by MASS, CHARLENE
06:42	REBOUND (DEF) by GUIMARAES, CHELSEA			
06:38	TURNOVER (LOSTBALL) by THOMAS, JISELLE			
06:38				STEAL by QUEZADA, ADRYANA
06:31				MISSED LAYUP by QUEZADA, ADRYANA
06:28	REBOUND (DEF) by GUIMARAES, CHELSEA			
06:27	TURNOVER (BADPASS) by GUIMARAES, CHELSEA			
06:27	SUB OUT: NIMMO, FUJIKI			
06:27	SUB IN: DIANE, DIENE			
06:03				MISSED LAYUP by TOTH, TIMEA
05:56				REBOUND (OFF) by QUEZADA, ADRYANA
05:56				MISSED LAYUP by QUEZADA, ADRYANA
05:52	REBOUND (DEF) by DANIELS, CHEYANNE			
05:50	GOOD! LAYUP by DIANE, DIENE [FB]	0-4	V 4	
05:50				TIMEOUT 30SEC
05:50				
05:23				MISSED JUMPER by DONALD, KARRINGTON
05:17	REBOUND (DEF) by DANIELS, CHEYANNE			
05:05	MISSED JUMPER by THOMAS, JISELLE			
05:01				REBOUND (DEF) by MASS, CHARLENE
04:56				MISSED LAYUP by DONALD, KARRINGTON
04:52	REBOUND (DEF) by GUIMARAES, CHELSEA			
04:30	MISSED JUMPER by DANIELS, CHEYANNE			
04:26				REBOUND (DEF) by MASS, CHARLENE
04:20				MISSED 3PTR by DONALD, KARRINGTON
04:15	REBOUND (DEF) by GUIMARAES, CHELSEA			
04:09	MISSED 3PTR by GUIMARAES, CHELSEA			
04:05				REBOUND (DEF) by BLANDING, ELENA
03:49				MISSED JUMPER by MASS, CHARLENE
03:46	REBOUND (DEF) by DANIELS, CHEYANNE			
03:38	MISSED 3PTR by DIANE, DIENE			
03:33				REBOUND (DEF) by DONALD, KARRINGTON
03:07		2-4	V 2	GOOD! JUMPER by QUEZADA, ADRYANA [PNT]
02:50	TURNOVER (LOSTBALL) by DANIELS, CHEYANNE			
02:50				STEAL by BLANDING, ELENA
02:41		5-4	H 1	GOOD! 3PTR by MASS, CHARLENE
02:41				ASSIST by DONALD, KARRINGTON
02:10	GOOD! JUMPER by GUIMARAES, CHELSEA	5-6	V 1	
02:10	ASSIST by SCOTT, BRE'OSHA			
01:55				TURNOVER (TRAVEL) by BLANDING, ELENA
01:54				SUB OUT: BLANDING, ELENA
01:54				SUB OUT: QUEZADA, ADRYANA
01:54				SUB IN: OMEMMAH, EVELYN
01:54				SUB IN: MITCHELL, SHANNAN
01:54	SUB OUT: DANIELS, CHEYANNE			
01:54	SUB OUT: SCOTT, BRE'OSHA			

Time	VISITORS: FIU	Score	Margin	HOME: UTSA
01:54	SUB OUT: THOMAS, JISELLE			
01:54	SUB IN: NIMMO, FUJIKA			
01:54	SUB IN: BONGIORNO, GIULIA			
01:54	SUB IN: WALKER, SHANTE			
01:30	GOOD! LAYUP by DIANE, DIENE [PNT]	5-8	V 3	
01:17				MISSED JUMPER by OMEMMAH, EVELYN
01:11	REBOUND (DEF) by DIANE, DIENE			
01:09	GOOD! LAYUP by GUIMARAES, CHELSEA [FB]	5-10	V 5	
01:09	ASSIST by BONGIORNO, GIULIA			
00:53				MISSED LAYUP by MITCHELL, SHANNAN
00:53	BLOCK by GUIMARAES, CHELSEA			
00:53				REBOUND (OFF) by TEAM
00:53				SUB OUT: TOTH, TIMEA
00:53				SUB IN: QUEZADA, ADRYANA
00:50		8-10	V 2	GOOD! 3PTR by DONALD, KARRINGTON
00:50				ASSIST by OMEMMAH, EVELYN
00:16	MISSED LAYUP by NIMMO, FUJIKA			
00:16				BLOCK by OMEMMAH, EVELYN
00:10				REBOUND (DEF) by DONALD, KARRINGTON
00:10	FOUL (PERSONAL) by BONGIORNO, GIULIA			
00:08				MISSED JUMPER by OMEMMAH, EVELYN
00:03	REBOUND (DEF) by GUIMARAES, CHELSEA			
00:00	MISSED LAYUP by WALKER, SHANTE			
00:00				BLOCK by QUEZADA, ADRYANA
00:00	REBOUND (OFF) by TEAM			

FIU 10, UTSA 8

Points from (This Period)	FIU	UTS
In the Paint	10	2
Off Turns	4	3
2nd Chance	0	3
Fast Break	4	0
Bench	4	3

Official Box Score
FIU vs UTSA
Second Quarter Statistics Only
January 04, 2020 at Convocation Center - San Antonio, Texas



FIU 11

No.	Player	S	Pts	FG	3FG	FT	OR	DR	TR	PF	A	TO	Blk	Stl	Min	+/-	
02	DANIELS, CHEYANNE	F	2	1-1	0-0	0-0	0	1	1	0	0	1	0	0	6	5	
05	NIMMO, FUJIKI	G	0	0-3	0-2	0-0	0	3	3	0	1	0	0	0	10	3	
14	GUIMARAES, CHELSEA	C	2	0-1	0-0	2-2	1	2	3	0	0	0	0	0	7	2	
23	SCOTT, BRE'OSHA	G	2	1-2	0-0	0-0	0	1	1	1	0	0	0	0	6	0	
30	THOMAS, JISELLE	G	0	0-0	0-0	0-0	0	0	0	0	0	0	0	0	1	1	
03	SWIFT, ALANA	G	0	0-0	0-0	0-0	0	0	0	0	0	0	0	0	0	0	
21	DIANE, DIENE	G	3	1-5	0-1	1-2	1	0	1	0	0	0	0	1	9	2	
24	WYKOFF, ALEXUS	F	0	0-2	0-0	0-0	1	0	1	0	0	0	0	0	6	-2	
25	BONGIORNO, GIULIA	G	2	1-1	0-0	0-0	1	0	1	0	1	0	0	0	4	3	
34	WALKER, SHANTE	F	0	0-0	0-0	0-0	0	1	1	1	0	1	0	0	1	1	
TEAM							0	2	2	0	0						
TOTALS			11	4-15	0-3	3-4	4	10	14	2	2	2	0	1	50		

Shooting By Period

Period	FG	FG%	3FG	3FG%	FT	FT%
3rd Qtr	5-14	36%	0-3	00%	3-4	75%
4th Qtr	4-16	25%	2-6	33%	1-4	25%
2nd Half	4-15	27%	0-3	00%	3-4	75%
2nd Half	9-30	30%	2-9	22%	4-8	50%
Game	18-59	30.5%	2-15	13.3%	7-12	58.3%

Deadball Rebounds: 3,0

UTSA 8

No.	Player	S	Pts	FG	3FG	FT	OR	DR	TR	PF	A	TO	Blk	Stl	Min	+/-	
01	OMEMMAH, EVELYN	F	1	0-1	0-0	1-2	1	1	2	0	0	1	1	0	4	-3	
04	WOODS, MIKAYLA	G	0	0-3	0-0	0-0	0	0	0	0	0	0	0	0	7	-4	
15	TOTH, TIMEA	F	0	0-1	0-0	0-0	0	0	0	0	0	0	0	0	6	-4	
32	QUEZADA, ADRYANA	F	0	0-1	0-0	0-0	0	0	0	2	0	0	0	0	4	1	
34	DONALD, KARRINGTON	G	4	2-4	0-1	0-0	0	0	0	0	0	0	0	0	9	-2	
03	BLANDING, ELENA	C	0	0-0	0-0	0-0	1	2	3	1	0	0	0	0	6	0	
11	MASS, CHARLENE	G	3	1-4	0-0	1-2	0	3	3	0	0	0	0	1	10	-3	
25	MITCHELL, SHANNAN	F	0	0-1	0-0	0-0	0	0	0	2	0	0	0	0	4	0	
TEAM							0	1	1	0	0						
TOTALS			8	3-15	0-1	2-4	2	7	9	5	0	1	1	1	50		

Shooting By Period

Period	FG	FG%	3FG	3FG%	FT	FT%
3rd Qtr	8-19	42%	4-5	80%	5-11	45%
4th Qtr	6-12	50%	0-3	00%	7-13	54%
2nd Half	3-15	20%	0-1	00%	2-4	50%
2nd Half	14-31	45%	4-8	50%	12-24	50%
Game	20-64	31.3%	6-13	46.2%	14-28	50.0%

Deadball Rebounds: 8,0

Game Notes:

Officials: Chris Saucedo, Jaclyn Watson, Katrina Lyles
 Attendance: 293

Start Time: 03:05 PM ET
 End Time: 04:48 PM ET
 Game Duration: 1:43
 Conference Game;

Score	1st	2nd	3rd	4th	TOT
FIU	10	11	13	11	45
UTS	8	8	25	19	60

Points from (This Period)	FIU	UTS
In the Paint	6	2
Off Turns	0	0
2nd Chance	2	0
Fast Break	0	1
Bench	5	3

Official Play-By-Play
FIU vs UTSA
Second Quarter
January 04, 2020 at Convocation Center - San Antonio, Texas



Period 2

Starters:

FIU: 2 DANIELS,CHEYANNE (F); 5 NIMMO,FUJIKI (G); 14 GUIMARAES,CHELSEA (C); 23 SCOTT,BRE'OSHA (G); 30 THOMAS,JISELLE (G);
UTSA: 1 OMEMMAH,EVELYN (F); 4 WOODS,MIKAYLA (G); 15 TOTTH,TIMEA (F); 32 QUEZADA,ADRYANA (F); 34 DONALD,KARRINGTON (G);

Time	VISITORS: FIU	Score	Margin	HOME: UTSA
10:00				SUB OUT: MITCHELL, SHANNAN
10:00				SUB OUT: DONALD, KARRINGTON
10:00				SUB IN: WOODS, MIKAYLA
10:00				SUB IN: TOTTH, TIMEA
10:00	SUB OUT: GUIMARAES, CHELSEA			
10:00	SUB IN: DANIELS, CHEYANNE			
09:48	FOUL (PERSONAL) by WALKER, SHANTE			
09:48				MISSED FT by OMEMMAH, EVELYN
09:48				REBOUND (OFF) by TEAM
09:48		9-10	V 1	GOOD! FT by OMEMMAH, EVELYN
09:32	GOOD! LAYUP by DANIELS, CHEYANNE [PNT]	9-12	V 3	
09:32	ASSIST by BONGIORNO, GIULIA			
09:15				MISSED LAYUP by TOTTH, TIMEA
09:15	REBOUND (DEF) by TEAM			
09:02	TURNOVER (LOSTBALL) by WALKER, SHANTE			
09:02				STEAL by MASS, CHARLENE
08:50				MISSED JUMPER by QUEZADA, ADRYANA
08:46	REBOUND (DEF) by WALKER, SHANTE			
08:35	MISSED 3PTR by NIMMO, FUJIKI			
08:32	REBOUND (OFF) by BONGIORNO, GIULIA			
08:32				FOUL (PERSONAL) by QUEZADA, ADRYANA
08:32				SUB OUT: QUEZADA, ADRYANA
08:32				SUB IN: DONALD, KARRINGTON
08:32	SUB OUT: WALKER, SHANTE			
08:32	SUB IN: GUIMARAES, CHELSEA			
08:21	MISSED JUMPER by NIMMO, FUJIKI			
08:17	REBOUND (OFF) by GUIMARAES, CHELSEA			
08:12	GOOD! LAYUP by BONGIORNO, GIULIA	9-14	V 5	
07:50				MISSED JUMPER by OMEMMAH, EVELYN
07:46	REBOUND (DEF) by DANIELS, CHEYANNE			
07:34	MISSED LAYUP by DIANE, DIENE			
07:34				REBOUND (DEF) by OMEMMAH, EVELYN
07:34				BLOCK by OMEMMAH, EVELYN
07:06				MISSED JUMPER by WOODS, MIKAYLA
07:01				REBOUND (OFF) by OMEMMAH, EVELYN
06:59				TURNOVER (BADPASS) by OMEMMAH, EVELYN
06:59	STEAL by DIANE, DIENE			
06:39	MISSED 3PTR by NIMMO, FUJIKI			
06:35	REBOUND (OFF) by DIANE, DIENE			
06:25	TURNOVER (BADPASS) by DANIELS, CHEYANNE			
06:20				SUB OUT: OMEMMAH, EVELYN
06:20				SUB IN: BLANDING, ELENA
06:20	SUB OUT: DANIELS, CHEYANNE			
06:20	SUB OUT: BONGIORNO, GIULIA			
06:20	SUB IN: SCOTT, BRE'OSHA			
06:20	SUB IN: WYKOFF, ALEXUS			
06:14				MISSED JUMPER by MASS, CHARLENE
06:11	REBOUND (DEF) by GUIMARAES, CHELSEA			
05:57	MISSED JUMPER by DIANE, DIENE			
05:53				REBOUND (DEF) by MASS, CHARLENE
05:50				MISSED LAYUP by WOODS, MIKAYLA
05:47	REBOUND (DEF) by NIMMO, FUJIKI			
05:23	GOOD! LAYUP by SCOTT, BRE'OSHA [PNT]	9-16	V 7	
05:09		11-16	V 5	GOOD! JUMPER by DONALD, KARRINGTON
04:46	MISSED LAYUP by DIANE, DIENE			
04:42				REBOUND (DEF) by BLANDING, ELENA
04:18				MISSED JUMPER by WOODS, MIKAYLA
04:17	REBOUND (DEF) by TEAM			
04:17				SUB OUT: WOODS, MIKAYLA
04:17				SUB OUT: TOTTH, TIMEA
04:17				SUB IN: MITCHELL, SHANNAN
04:17				SUB IN: QUEZADA, ADRYANA
03:54	MISSED JUMPER by GUIMARAES, CHELSEA			
03:51				REBOUND (DEF) by BLANDING, ELENA
03:32				MISSED JUMPER by MASS, CHARLENE
03:28	REBOUND (DEF) by NIMMO, FUJIKI			
03:12	MISSED JUMPER by WYKOFF, ALEXUS			
03:09				REBOUND (DEF) by MASS, CHARLENE
03:03		13-16	V 3	GOOD! LAYUP by MASS, CHARLENE

Time	VISITORS: FIU	Score	Margin	HOME: UTSA
02:41	MISSED LAYUP by SCOTT, BRE'OSHA			
02:40				REBOUND (DEF) by TEAM
02:40	SUB OUT: GUIMARAES, CHELSEA			
02:40	SUB IN: DANIELS, CHEYANNE			
02:21				MISSED JUMPER by MASS, CHARLENE
02:20	REBOUND (DEF) by SCOTT, BRE'OSHA			
02:20				FOUL (PERSONAL) by QUEZADA, ADRYANA
02:08				FOUL (PERSONAL) by MITCHELL, SHANNAN
02:08				SUB OUT: QUEZADA, ADRYANA
02:08				SUB IN: WOODS, MIKAYLA
02:08	MISSED FT by DIANE, DIENE			
02:08	REBOUND (OFF) by TEAM			
02:08	GOOD! FT by DIANE, DIENE	13-17	V 4	
01:40				MISSED JUMPER by MITCHELL, SHANNAN
01:36				REBOUND (OFF) by BLANDING, ELENA
01:33				MISSED 3PTR by DONALD, KARRINGTON
01:30	REBOUND (DEF) by NIMMO, FUJIIKA			
01:30				FOUL (PERSONAL) by MITCHELL, SHANNAN
01:20	GOOD! JUMPER by DIANE, DIENE	13-19	V 6	
01:20	ASSIST by NIMMO, FUJIIKA			
01:07		15-19	V 4	GOOD! JUMPER by DONALD, KARRINGTON
00:46	MISSED 3PTR by DIANE, DIENE			
00:38	REBOUND (OFF) by WYKOFF, ALEXUS			
00:38	MISSED LAYUP by WYKOFF, ALEXUS			
00:37				REBOUND (DEF) by MASS, CHARLENE
00:37	FOUL (PERSONAL) by SCOTT, BRE'OSHA			
00:37				SUB OUT: WOODS, MIKAYLA
00:37				SUB IN: TOTH, TIMEA
00:37	SUB OUT: DIANE, DIENE			
00:37	SUB IN: THOMAS, JISELLE			
00:37				MISSED FT by MASS, CHARLENE
00:37				REBOUND (OFF) by TEAM
00:37		16-19	V 3	GOOD! FT by MASS, CHARLENE [FB]
00:37	SUB OUT: WYKOFF, ALEXUS			
00:37	SUB IN: GUIMARAES, CHELSEA			
00:25				FOUL (PERSONAL) by BLANDING, ELENA
00:25	GOOD! FT by GUIMARAES, CHELSEA	16-20	V 4	
00:25	GOOD! FT by GUIMARAES, CHELSEA	16-21	V 5	
00:04				MISSED JUMPER by DONALD, KARRINGTON
00:01	REBOUND (DEF) by GUIMARAES, CHELSEA			

FIU 21, UTSA 16

Points from (This Period)	FIU	UTS
In the Paint	6	2
Off Turns	0	0
2nd Chance	2	0
Fast Break	0	1
Bench	5	3

Official Box Score
FIU vs UTSA
Second Half Statistics Only
January 04, 2020 at Convocation Center - San Antonio, Texas



FIU 24

No.	Player	S	Pts	FG	3FG	FT	OR	DR	TR	PF	A	TO	Blk	Stl	Min	+/-
02	DANIELS, CHEYANNE	F	2	1-3	0-0	0-1	0	3	3	1	0	0	1	0	11	-14
03	SWIFT, ALANA	G	0	0-0	0-0	0-0	0	1	1	2	0	1	0	0	3	-3
05	NIMMO, FUJIKA	G	6	1-8	1-4	3-4	1	1	2	4	2	0	0	0	16	-13
14	GUIMARAES, CHELSEA	C	8	4-6	0-0	0-0	1	5	6	1	1	2	1	0	20	-20
21	DIANE, DIENE	G	6	2-7	1-2	1-1	1	2	3	1	2	2	0	0	17	-14
23	SCOTT, BRE'OSHA	G	2	1-3	0-1	0-0	1	0	1	3	1	2	0	0	16	-18
24	WYKOFF, ALEXUS	F	0	0-0	0-0	0-0	0	0	0	0	0	0	0	0	0	0
25	BONGIORNO, GIULIA	G	0	0-1	0-1	0-0	0	0	0	0	0	0	0	0	6	-3
30	THOMAS, JISELLE	G	0	0-0	0-0	0-0	0	0	0	3	0	1	0	0	2	-9
34	WALKER, SHANTE	F	0	0-2	0-1	0-2	1	1	2	0	0	2	0	1	9	-6
	TEAM		0	0-0	0-0	0-0	2	0	2	0	0	0	0	0	0	0
TOTALS			24	9-30	2-9	4-8	7	13	20	15	6	10	2	1	99	

Shooting By Period

Period	FG	FG%	3FG	3FG%	FT	FT%
3rd Qtr	5-14	36%	0-3	00%	3-4	75%
4th Qtr	4-16	25%	2-6	33%	1-4	25%
2nd Half	9-30	30%	2-9	22%	4-8	50%
Game	18-59	30.5%	2-15	13.3%	7-12	58.3%

Deadball Rebounds: 3,0
 Last FG Half: FIU 4th-00:16

UTSA 44

No.	Player	S	Pts	FG	3FG	FT	OR	DR	TR	PF	A	TO	Blk	Stl	Min	+/-
01	OMEMMAH, EVELYN	F	3	0-2	0-0	3-4	1	3	4	4	0	0	0	0	15	16
03	BLANDING, ELENA	C	0	0-1	0-0	0-0	0	0	0	0	0	0	0	0	5	4
04	WOODS, MIKAYLA	G	11	4-6	0-1	3-8	1	6	7	0	2	1	0	1	19	17
11	MASS, CHARLENE	G	5	1-7	0-0	3-3	0	1	1	1	0	1	0	3	17	14
15	TOTH, TIMEA	F	2	1-2	0-0	0-0	2	3	5	2	1	0	1	1	13	8
25	MITCHELL, SHANNAN	F	5	2-2	1-1	0-0	1	0	1	1	0	1	0	1	3	6
32	QUEZADA, ADRYANA	F	7	2-2	0-0	3-9	2	0	2	1	1	0	0	0	11	19
34	DONALD, KARRINGTON	G	11	4-9	3-6	0-0	2	1	3	0	0	0	0	1	18	16
	TEAM		0	0-0	0-0	0-0	1	3	4	0	0	0	0	0	0	0
TOTALS			44	14-31	4-8	12-24	10	17	27	9	4	3	1	7	99	

Shooting By Period

Period	FG	FG%	3FG	3FG%	FT	FT%
3rd Qtr	8-19	42%	4-5	80%	5-11	45%
4th Qtr	6-12	50%	0-3	00%	7-13	54%
2nd Half	14-31	45%	4-8	50%	12-24	50%
Game	20-64	31.3%	6-13	46.2%	14-28	50.0%

Deadball Rebounds: 8,0
 Last FG Half: UTS 4th-00:44

Game Notes:

Officials: Chris Saucedo, Jaclyn Watson, Katrina Lyles
 Attendance: 293

Start Time: 03:05 PM ET
 End Time: 04:48 PM ET
 Game Duration: 1:43
 Conference Game;

Score	1st	2nd	3rd	4th	TOT
FIU	10	11	13	11	45
UTS	8	8	25	19	60

Points from (This Period)	FIU	UTS
In the Paint	12	18
Off Turns	5	16
2nd Chance	3	13
Fast Break	4	10
Bench	6	10

Official Box Score
FIU vs UTSA
Third Quarter Statistics Only
January 04, 2020 at Convocation Center - San Antonio, Texas



FIU 24

No.	Player	S	Pts	FG	3FG	FT	OR	DR	TR	PF	A	TO	Blk	Stl	Min	+/-
02	DANIELS, CHEYANNE	F	2	1-3	0-0	0-1	0	1	1	0	0	0	1	0	6	-9
05	NIMMO, FUJIKAI	G	2	0-3	0-2	2-2	0	0	0	1	1	0	0	0	6	-5
14	GUIMARAES, CHELSEA	C	4	2-3	0-0	0-0	1	5	6	0	0	2	1	0	10	-12
23	SCOTT, BRE'OSHA	G	2	1-1	0-0	0-0	0	0	0	1	1	2	0	0	9	-9
30	THOMAS, JISELLE	G	0	0-0	0-0	0-0	0	0	0	3	0	1	0	0	2	-9
03	SWIFT, ALANA	G	0	0-0	0-0	0-0	0	1	1	2	0	1	0	0	3	-3
21	DIANE, DIENE	G	3	1-2	0-0	1-1	0	1	1	0	1	0	0	0	7	-6
24	WYKOFF, ALEXUS	F	0	0-0	0-0	0-0	0	0	0	0	0	0	0	0	0	0
25	BONGIORNO, GIULIA	G	0	0-1	0-1	0-0	0	0	0	0	0	0	0	0	3	-4
34	WALKER, SHANTE	F	0	0-1	0-0	0-0	0	1	1	0	0	1	0	0	4	-3
TEAM							1	0	1	0						
TOTALS			13	5-14	0-3	3-4	2	9	11	7	3	7	2	0	50	

Shooting By Period

Period	FG	FG%	3FG	3FG%	FT	FT%
2nd Half	0-0	0%	0-0	0%	0-0	0%
Game	18-59	30.5%	2-15	13.3%	7-12	58.3%

Deadball Rebounds: 3,0

UTSA 44

No.	Player	S	Pts	FG	3FG	FT	OR	DR	TR	PF	A	TO	Blk	Stl	Min	+/-
01	OMEMMAH, EVELYN	F	1	0-1	0-0	1-2	1	1	2	1	0	0	0	0	6	9
04	WOODS, MIKAYLA	G	6	2-3	0-0	2-4	0	3	3	0	2	1	0	1	9	9
15	TOTH, TIMEA	F	2	1-2	0-0	0-0	2	1	3	1	1	0	1	0	8	7
32	QUEZADA, ADRYANA	F	4	1-1	0-0	2-5	1	0	1	1	1	0	0	0	6	12
34	DONALD, KARRINGTON	G	9	3-6	3-4	0-0	1	0	1	0	0	0	0	1	9	9
03	BLANDING, ELENA	C	0	0-1	0-0	0-0	0	0	0	0	0	0	0	0	4	3
11	MASS, CHARLENE	G	0	0-4	0-0	0-0	0	1	1	0	0	0	0	2	7	6
25	MITCHELL, SHANNAN	F	3	1-1	1-1	0-0	0	0	0	1	0	1	0	1	2	5
TEAM							1	2	3	0						
TOTALS			25	8-19	4-5	5-11	6	8	14	4	4	2	1	5	50	

Shooting By Period

Period	FG	FG%	3FG	3FG%	FT	FT%
2nd Half	0-0	0%	0-0	0%	0-0	0%
Game	20-64	31.3%	6-13	46.2%	14-28	50.0%

Deadball Rebounds: 8,0

Game Notes:

Officials: Chris Saucedo, Jaclyn Watson, Katrina Lyles
Attendance: 293

Start Time: 03:05 PM ET
End Time: 04:48 PM ET
Game Duration: 1:43
Conference Game;

Score	1st	2nd	3rd	4th	TOT
FIU	10	11	13	11	45
UTS	8	8	25	19	60

Points from (This Period)	FIU	UTS
In the Paint	8	8
Off Turns	4	12
2nd Chance	0	5
Fast Break	3	10
Bench	3	3

Official Play-By-Play
FIU vs UTSA
Third Quarter
January 04, 2020 at Convocation Center - San Antonio, Texas



Period 3

Starters:

FIU: 2 DANIELS, CHEYANNE (F); 5 NIMMO, FUJIKA (G); 14 GUIMARAES, CHELSEA (C); 23 SCOTT, BRE'OSHA (G); 30 THOMAS, JISELLE (G);
UTSA: 1 OMEMMAH, EVELYN (F); 4 WOODS, MIKAYLA (G); 15 TOTH, TIMEA (F); 32 QUEZADA, ADRYANA (F); 34 DONALD, KARRINGTON (G);

Time	VISITORS: FIU	Score	Margin	HOME: UTSA
10:00				SUB OUT: BLANDING, ELENA
10:00				SUB OUT: MASS, CHARLENE
10:00				SUB OUT: MITCHELL, SHANNAN
10:00				SUB IN: OMEMMAH, EVELYN
10:00				SUB IN: WOODS, MIKAYLA
10:00				SUB IN: QUEZADA, ADRYANA
09:49	MISSED 3PTR by NIMMO, FUJIKA			
09:47				REBOUND (DEF) by TEAM
09:27		19-21	V 2	GOOD! 3PTR by DONALD, KARRINGTON
09:27				ASSIST by QUEZADA, ADRYANA
09:16	TURNOVER (BADPASS) by SCOTT, BRE'OSHA			
09:16				STEAL by DONALD, KARRINGTON
09:08		22-21	H 1	GOOD! 3PTR by DONALD, KARRINGTON [FB]
09:08				ASSIST by WOODS, MIKAYLA
09:00	TIMEOUT 30SEC			
09:00	SUB OUT: THOMAS, JISELLE			
09:00	SUB IN: DIANE, DIENE			
08:52				FOUL (PERSONAL) by QUEZADA, ADRYANA
08:52				SUB OUT: QUEZADA, ADRYANA
08:52				SUB IN: MASS, CHARLENE
08:52	GOOD! FT by NIMMO, FUJIKA	22-22	T	
08:52	GOOD! FT by NIMMO, FUJIKA	22-23	V 1	
08:39				MISSED JUMPER by DONALD, KARRINGTON
08:37				REBOUND (OFF) by OMEMMAH, EVELYN
08:35	FOUL (PERSONAL) by NIMMO, FUJIKA			
08:35				MISSED FT by WOODS, MIKAYLA
08:35				REBOUND (OFF) by TEAM
08:35				MISSED FT by WOODS, MIKAYLA
08:34	REBOUND (DEF) by GUIMARAES, CHELSEA			
08:25	MISSED LAYUP by DANIELS, CHEYANNE			
08:21				REBOUND (DEF) by MASS, CHARLENE
08:00				MISSED JUMPER by TOTH, TIMEA
07:57	REBOUND (DEF) by GUIMARAES, CHELSEA			
07:38	MISSED JUMPER by GUIMARAES, CHELSEA			
07:36	REBOUND (OFF) by GUIMARAES, CHELSEA			
07:36	TURNOVER (TRAVEL) by GUIMARAES, CHELSEA			
07:19		24-23	H 1	GOOD! LAYUP by WOODS, MIKAYLA
06:58	MISSED JUMPER by NIMMO, FUJIKA			
06:54				REBOUND (DEF) by TOTH, TIMEA
06:37		27-23	H 4	GOOD! 3PTR by DONALD, KARRINGTON
06:37				ASSIST by TOTH, TIMEA
06:16	GOOD! LAYUP by DANIELS, CHEYANNE	27-25	H 2	
06:16	ASSIST by NIMMO, FUJIKA			
06:16				FOUL (PERSONAL) by OMEMMAH, EVELYN
06:15	MISSED FT by DANIELS, CHEYANNE			
06:15				REBOUND (DEF) by TEAM
06:05				MISSED LAYUP by MASS, CHARLENE
06:05	BLOCK by DANIELS, CHEYANNE			
06:00				REBOUND (OFF) by TOTH, TIMEA
05:58				MISSED JUMPER by MASS, CHARLENE
05:54	REBOUND (DEF) by DIANE, DIENE			
05:51	GOOD! LAYUP by DIANE, DIENE [FB]	27-27	T	
05:51				FOUL (PERSONAL) by TOTH, TIMEA
05:51	SUB OUT: NIMMO, FUJIKA			
05:51	SUB IN: BONGIORNO, GIULIA			
05:51	GOOD! FT by DIANE, DIENE [FB]	27-28	V 1	
05:43				MISSED JUMPER by MASS, CHARLENE
05:40	REBOUND (DEF) by GUIMARAES, CHELSEA			
05:26	MISSED LAYUP by DANIELS, CHEYANNE			
05:26				BLOCK by TOTH, TIMEA
05:21				REBOUND (DEF) by WOODS, MIKAYLA
05:21	FOUL (PERSONAL) by SCOTT, BRE'OSHA			
05:21				SUB OUT: TOTH, TIMEA
05:21				SUB IN: MITCHELL, SHANNAN
05:21		28-28	T	GOOD! FT by WOODS, MIKAYLA [FB]
05:21		29-28	H 1	GOOD! FT by WOODS, MIKAYLA [FB]
05:21	SUB OUT: DANIELS, CHEYANNE			
05:21	SUB IN: WALKER, SHANTE			
05:08	MISSED JUMPER by WALKER, SHANTE			
05:03				REBOUND (DEF) by OMEMMAH, EVELYN

Time	VISITORS: FIU	Score	Margin	HOME: UTSA
04:53				MISSED JUMPER by MASS, CHARLENE
04:48	REBOUND (DEF) by WALKER, SHANTE			
04:41	MISSED 3PTR by BONGIORNO, GIULIA			
04:37				REBOUND (DEF) by WOODS, MIKAYLA
04:26				MISSED LAYUP by OMEMMAH, EVELYN
04:26	BLOCK by GUIMARAES, CHELSEA			
04:26				REBOUND (OFF) by TEAM
04:26				
04:26				SUB OUT: OMEMMAH, EVELYN
04:26				SUB OUT: DONALD, KARRINGTON
04:26				SUB IN: BLANDING, ELENA
04:26				SUB IN: QUEZADA, ADRYANA
04:08				TURNOVER (TRAVEL) by WOODS, MIKAYLA
03:59	GOOD! JUMPER by SCOTT, BRE'OSHA	29-30	V 1	
03:59	ASSIST by DIANE, DIENE			
03:53		32-30	H 2	GOOD! 3PTR by MITCHELL, SHANNAN
03:53				ASSIST by WOODS, MIKAYLA
03:42	TURNOVER (BADPASS) by WALKER, SHANTE			
03:42				STEAL by WOODS, MIKAYLA
03:37		34-30	H 4	GOOD! LAYUP by WOODS, MIKAYLA [FB]
03:14	TURNOVER (BADPASS) by SCOTT, BRE'OSHA			
03:14				STEAL by MITCHELL, SHANNAN
03:03				FOUL (OFF) by MITCHELL, SHANNAN
03:03				TURNOVER (OFFENSIVE) by MITCHELL, SHANNAN
03:03				SUB OUT: MASS, CHARLENE
03:03				SUB OUT: MITCHELL, SHANNAN
03:03				SUB IN: TOTH, TIMEA
03:03				SUB IN: DONALD, KARRINGTON
03:03	SUB OUT: DIANE, DIENE			
03:03	SUB OUT: BONGIORNO, GIULIA			
03:03	SUB IN: SWIFT, ALANA			
03:03	SUB IN: NIMMO, FUJIKI			
02:43	GOOD! JUMPER by GUIMARAES, CHELSEA [PNT]	34-32	H 2	
02:25				MISSED JUMPER by BLANDING, ELENA
02:21	REBOUND (DEF) by GUIMARAES, CHELSEA			
02:01	MISSED 3PTR by NIMMO, FUJIKI			
01:57				REBOUND (DEF) by WOODS, MIKAYLA
01:54				MISSED LAYUP by WOODS, MIKAYLA
01:52				REBOUND (OFF) by QUEZADA, ADRYANA
01:52		36-32	H 4	GOOD! LAYUP by QUEZADA, ADRYANA
01:52	FOUL (PERSONAL) by SWIFT, ALANA			
01:52				MISSED FT by QUEZADA, ADRYANA
01:51	REBOUND (DEF) by GUIMARAES, CHELSEA			
01:31	TURNOVER (3SEC) by GUIMARAES, CHELSEA			
01:28				SUB OUT: WOODS, MIKAYLA
01:28				SUB IN: MASS, CHARLENE
01:28	SUB OUT: NIMMO, FUJIKI			
01:28	SUB OUT: WALKER, SHANTE			
01:28	SUB IN: DANIELS, CHEYANNE			
01:28	SUB IN: THOMAS, JISELLE			
01:23				MISSED 3PTR by DONALD, KARRINGTON
01:18				REBOUND (OFF) by TOTH, TIMEA
01:18		38-32	H 6	GOOD! LAYUP by TOTH, TIMEA
01:05	GOOD! LAYUP by GUIMARAES, CHELSEA	38-34	H 4	
01:05	ASSIST by SCOTT, BRE'OSHA			
00:53	SUB OUT: SCOTT, BRE'OSHA			
00:53	SUB IN: DIANE, DIENE			
00:53	FOUL (PERSONAL) by THOMAS, JISELLE			
00:53				SUB OUT: BLANDING, ELENA
00:53				SUB IN: OMEMMAH, EVELYN
00:37	FOUL (PERSONAL) by THOMAS, JISELLE			
00:37				MISSED FT by QUEZADA, ADRYANA
00:37				REBOUND (OFF) by TEAM
00:37				MISSED FT by QUEZADA, ADRYANA
00:36	REBOUND (DEF) by DANIELS, CHEYANNE			
00:22	MISSED LAYUP by DIANE, DIENE			
00:21	REBOUND (OFF) by TEAM			
00:19	TURNOVER (BADPASS) by THOMAS, JISELLE			
00:19				STEAL by MASS, CHARLENE
00:13				MISSED LAYUP by DONALD, KARRINGTON
00:11				REBOUND (OFF) by DONALD, KARRINGTON
00:11	FOUL (PERSONAL) by SWIFT, ALANA			
00:11		39-34	H 5	GOOD! FT by OMEMMAH, EVELYN [FB]
00:11				MISSED FT by OMEMMAH, EVELYN
00:10	REBOUND (DEF) by SWIFT, ALANA			
00:08	TURNOVER (LOSTBALL) by SWIFT, ALANA			
00:08				STEAL by MASS, CHARLENE
00:01	FOUL (PERSONAL) by THOMAS, JISELLE			
00:01		40-34	H 6	GOOD! FT by QUEZADA, ADRYANA [FB]
00:01		41-34	H 7	GOOD! FT by QUEZADA, ADRYANA [FB]

FIU 34, UTSA 41

Points from (This Period)	FIU	UTS
In the Paint	8	8
Off Turns	4	12
2nd Chance	0	5
Fast Break	3	10
Bench	3	3

Official Box Score
FIU vs UTSA
Fourth Quarter Statistics Only
January 04, 2020 at Convocation Center - San Antonio, Texas



FIU 11

No.	Player	S	Pts	FG	3FG	FT	OR	DR	TR	PF	A	TO	Blk	Stl	Min	+/-
02	DANIELS, CHEYANNE	F	0	0-0	0-0	0-0	0	2	2	1	0	0	0	0	5	-5
05	NIMMO, FUJIKAI	G	4	1-5	1-2	1-2	1	1	2	3	1	0	0	0	10	-8
14	GUIMARAES, CHELSEA	C	4	2-3	0-0	0-0	0	0	0	1	1	0	0	0	10	-8
23	SCOTT, BRE'OSHA	G	0	0-2	0-1	0-0	1	0	1	2	0	0	0	0	7	-9
30	THOMAS, JISELLE	G	0	0-0	0-0	0-0	0	0	0	0	0	0	0	0	0	0
03	SWIFT, ALANA	G	0	0-0	0-0	0-0	0	0	0	0	0	0	0	0	0	0
21	DIANE, DIENE	G	3	1-5	1-2	0-0	1	1	2	1	1	2	0	0	10	-8
24	WYKOFF, ALEXUS	F	0	0-0	0-0	0-0	0	0	0	0	0	0	0	0	0	0
25	BONGIORNO, GIULIA	G	0	0-0	0-0	0-0	0	0	0	0	0	0	0	0	3	1
34	WALKER, SHANTE	F	0	0-1	0-1	0-2	1	0	1	0	0	1	0	1	5	-3
TEAM							1	0	1	0						
TOTALS			11	4-16	2-6	1-4	5	4	9	8	3	3	0	1	49	

Shooting By Period

Period	FG	FG%	3FG	3FG%	FT	FT%
Game	18-59	30.5%	2-15	13.3%	7-12	58.3%

Deadball Rebounds: 3,0

UTSA 19

No.	Player	S	Pts	FG	3FG	FT	OR	DR	TR	PF	A	TO	Blk	Stl	Min	+/-
01	OMEMMAH, EVELYN	F	2	0-1	0-0	2-2	0	2	2	3	0	0	0	0	9	7
04	WOODS, MIKAYLA	G	5	2-3	0-1	1-4	1	3	4	0	0	0	0	0	10	8
15	TOTH, TIMEA	F	0	0-0	0-0	0-0	0	2	2	1	0	0	0	1	5	1
32	QUEZADA, ADRYANA	F	3	1-1	0-0	1-4	1	0	1	0	0	0	0	0	5	7
34	DONALD, KARRINGTON	G	2	1-3	0-2	0-0	1	1	2	0	0	0	0	0	9	7
03	BLANDING, ELENA	C	0	0-0	0-0	0-0	0	0	0	0	0	0	0	0	1	1
11	MASS, CHARLENE	G	5	1-3	0-0	3-3	0	0	0	1	0	1	0	1	10	8
25	MITCHELL, SHANNAN	F	2	1-1	0-0	0-0	1	0	1	0	0	0	0	0	1	1
TEAM							0	1	1	0						
TOTALS			19	6-12	0-3	7-13	4	9	13	5	0	1	0	2	49	

Shooting By Period

Period	FG	FG%	3FG	3FG%	FT	FT%
Game	20-64	31.3%	6-13	46.2%	14-28	50.0%

Deadball Rebounds: 8,0

Game Notes:

Officials: Chris Saucedo, Jaclyn Watson, Katrina Lyles
Attendance: 293

Start Time: 03:05 PM ET
End Time: 04:48 PM ET
Game Duration: 1:43
Conference Game;

Score	1st	2nd	3rd	4th	TOT
FIU	10	11	13	11	45
UTS	8	8	25	19	60

Points from (This Period)	FIU	UTS
In the Paint	4	10
Off Turns	1	4
2nd Chance	3	8
Fast Break	1	0
Bench	3	7

Official Play-By-Play
FIU vs UTSA
Fourth Quarter
January 04, 2020 at Convocation Center - San Antonio, Texas



Period 4

Starters:

FIU: 2 DANIELS,CHEYANNE (F); 5 NIMMO,FUJIKI (G); 14 GUIMARAES,CHELSEA (C); 23 SCOTT,BRE'OSHA (G); 30 THOMAS,JISELLE (G);
UTSA: 1 OMEMMAH,EVELYN (F); 4 WOODS,MIKAYLA (G); 15 TOTHTIMEA (F); 32 QUEZADA,ADRYANA (F); 34 DONALD,KARRINGTON (G);

Time	VISITORS: FIU	Score	Margin	HOME: UTSA
10:00				SUB OUT: QUEZADA, ADRYANA
10:00				SUB IN: WOODS, MIKAYLA
10:00	SUB OUT: SWIFT, ALANA			
10:00	SUB OUT: THOMAS, JISELLE			
10:00	SUB IN: NIMMO, FUJIKI			
10:00	SUB IN: SCOTT, BRE'OSHA			
09:47	MISSED JUMPER by NIMMO, FUJIKI			
09:41	REBOUND (OFF) by NIMMO, FUJIKI			
09:41	MISSED LAYUP by NIMMO, FUJIKI			
09:39				REBOUND (DEF) by TOTHTIMEA
09:29				MISSED 3PTR by DONALD, KARRINGTON
09:24	REBOUND (DEF) by DANIELS, CHEYANNE			
09:11	MISSED JUMPER by GUIMARAES, CHELSEA			
09:09				REBOUND (DEF) by TEAM
08:40				MISSED JUMPER by OMEMMAH, EVELYN
08:40	REBOUND (DEF) by DANIELS, CHEYANNE			
08:40				FOUL (PERSONAL) by TOTHTIMEA
08:21	MISSED 3PTR by SCOTT, BRE'OSHA			
08:17	REBOUND (OFF) by SCOTT, BRE'OSHA			
08:11	FOUL (OFF) by DIANE, DIENE			
08:11	TURNOVER (OFFENSIVE) by DIANE, DIENE			
08:11				SUB OUT: TOTHTIMEA
08:11				SUB IN: QUEZADA, ADRYANA
07:55				MISSED JUMPER by MASS, CHARLENE
07:51				REBOUND (OFF) by QUEZADA, ADRYANA
07:46		43-34	H 9	GOOD! JUMPER by WOODS, MIKAYLA [PNT]
07:27	GOOD! LAYUP by GUIMARAES, CHELSEA	43-36	H 7	
07:27	ASSIST by NIMMO, FUJIKI			
07:11				MISSED JUMPER by MASS, CHARLENE
07:05				REBOUND (OFF) by DONALD, KARRINGTON
07:05		45-36	H 9	GOOD! LAYUP by DONALD, KARRINGTON
06:45	MISSED JUMPER by DIANE, DIENE			
06:41				REBOUND (DEF) by OMEMMAH, EVELYN
06:28		47-36	H 11	GOOD! JUMPER by WOODS, MIKAYLA
06:08	GOOD! JUMPER by GUIMARAES, CHELSEA [PNT]	47-38	H 9	
05:51		49-38	H 11	GOOD! JUMPER by QUEZADA, ADRYANA [PNT]
05:33	MISSED JUMPER by SCOTT, BRE'OSHA			
05:28				REBOUND (DEF) by OMEMMAH, EVELYN
05:07	FOUL (PERSONAL) by DANIELS, CHEYANNE			
05:07				MISSED FT by QUEZADA, ADRYANA
05:07				REBOUND (OFF) by TEAM
05:07		50-38	H 12	GOOD! FT by QUEZADA, ADRYANA
05:06				SUB OUT: QUEZADA, ADRYANA
05:06				SUB IN: TOTHTIMEA
05:06	SUB OUT: DANIELS, CHEYANNE			
05:06	SUB OUT: SCOTT, BRE'OSHA			
05:06	SUB IN: BONGIORNO, GIULIA			
05:06	SUB IN: WALKER, SHANTE			
04:57	MISSED JUMPER by NIMMO, FUJIKI			
04:52	REBOUND (OFF) by DIANE, DIENE			
04:38	MISSED JUMPER by DIANE, DIENE			
04:35	REBOUND (OFF) by WALKER, SHANTE			
04:32	MISSED 3PTR by NIMMO, FUJIKI			
04:32	REBOUND (OFF) by TEAM			
04:32				
04:17				FOUL (PERSONAL) by OMEMMAH, EVELYN
04:13				FOUL (PERSONAL) by OMEMMAH, EVELYN
03:58	GOOD! 3PTR by DIANE, DIENE	50-41	H 9	
03:58	ASSIST by GUIMARAES, CHELSEA			
03:47				TURNOVER (BADPASS) by MASS, CHARLENE
03:47	STEAL by WALKER, SHANTE			
03:45				FOUL (PERSONAL) by MASS, CHARLENE
03:45				SUB OUT: TOTHTIMEA
03:45				SUB IN: QUEZADA, ADRYANA
03:45	GOOD! FT by NIMMO, FUJIKI [FB]	50-42	H 8	
03:45	MISSED FT by NIMMO, FUJIKI			
03:44				REBOUND (DEF) by WOODS, MIKAYLA
03:17		52-42	H 10	GOOD! LAYUP by MASS, CHARLENE [PNT]
03:17	FOUL (PERSONAL) by NIMMO, FUJIKI			
03:17				SUB OUT: QUEZADA, ADRYANA

Time	VISITORS: FIU	Score	Margin	HOME: UTSA
03:17				SUB IN: TOT, TIMEA
03:17		53-42	H 11	GOOD! FT by MASS, CHARLENE
02:53	MISSED 3PTR by WALKER, SHANTE			
02:49				REBOUND (DEF) by TOT, TIMEA
02:47				MISSED 3PTR by DONALD, KARRINGTON
02:43				REBOUND (OFF) by WOODS, MIKAYLA
02:36				SUB OUT: TOT, TIMEA
02:36				SUB IN: QUEZADA, ADRYANA
02:36	SUB OUT: BONGIORNO, GIULIA			
02:36	SUB IN: SCOTT, BRE'OSHA			
02:27	FOUL (PERSONAL) by GUIMARAES, CHELSEA			
02:27				SUB OUT: QUEZADA, ADRYANA
02:27				SUB IN: TOT, TIMEA
02:27		54-42	H 12	GOOD! FT by OMEMMAH, EVELYN
02:27		55-42	H 13	GOOD! FT by OMEMMAH, EVELYN
02:07	TURNOVER (BADPASS) by WALKER, SHANTE			
02:07				STEAL by TOT, TIMEA
02:02				TIMEOUT 30SEC
02:02				SUB OUT: TOT, TIMEA
02:02				SUB IN: QUEZADA, ADRYANA
01:35				MISSED 3PTR by WOODS, MIKAYLA
01:32	REBOUND (DEF) by DIANE, DIENE			
01:32	TIMEOUT 30SEC			
01:32				SUB OUT: QUEZADA, ADRYANA
01:32				SUB IN: TOT, TIMEA
01:21	MISSED JUMPER by DIANE, DIENE			
01:17				REBOUND (DEF) by DONALD, KARRINGTON
01:11	FOUL (PERSONAL) by NIMMO, FUJIKI			
01:11				MISSED FT by WOODS, MIKAYLA
01:11				REBOUND (OFF) by TEAM
01:11		56-42	H 14	GOOD! FT by WOODS, MIKAYLA
01:01				FOUL (PERSONAL) by OMEMMAH, EVELYN
01:01				SUB OUT: TOT, TIMEA
01:01				SUB IN: QUEZADA, ADRYANA
01:01	MISSED FT by WALKER, SHANTE			
01:01	REBOUND (OFF) by TEAM			
01:01	MISSED FT by WALKER, SHANTE			
00:59				REBOUND (DEF) by WOODS, MIKAYLA
00:54	FOUL (PERSONAL) by SCOTT, BRE'OSHA			
00:54				SUB OUT: OMEMMAH, EVELYN
00:54				SUB OUT: DONALD, KARRINGTON
00:54				SUB IN: BLANDING, ELENA
00:54				SUB IN: MITCHELL, SHANNAN
00:54				MISSED FT by QUEZADA, ADRYANA
00:54				REBOUND (OFF) by TEAM
00:54				MISSED FT by QUEZADA, ADRYANA
00:46				REBOUND (OFF) by MITCHELL, SHANNAN
00:44		58-42	H 16	GOOD! LAYUP by MITCHELL, SHANNAN
00:41	MISSED 3PTR by DIANE, DIENE			
00:39				REBOUND (DEF) by WOODS, MIKAYLA
00:39	FOUL (PERSONAL) by NIMMO, FUJIKI			
00:39				MISSED FT by WOODS, MIKAYLA
00:39				REBOUND (OFF) by TEAM
00:39				MISSED FT by WOODS, MIKAYLA
00:38	REBOUND (DEF) by NIMMO, FUJIKI			
00:37	TIMEOUT 30SEC			
00:29	TURNOVER (LOSTBALL) by DIANE, DIENE			
00:29				STEAL by MASS, CHARLENE
00:26	FOUL (PERSONAL) by SCOTT, BRE'OSHA			
00:26		59-42	H 17	GOOD! FT by MASS, CHARLENE
00:26		60-42	H 18	GOOD! FT by MASS, CHARLENE
00:16	GOOD! 3PTR by NIMMO, FUJIKI	60-45	H 15	
00:16	ASSIST by DIANE, DIENE			

FIU 45, UTSA 60

Points from (This Period)	FIU	UTS
In the Paint	4	10
Off Turns	1	4
2nd Chance	3	8
Fast Break	1	0
Bench	3	7

Official Scoring/Possession Reference Chart
FIU vs UTSA
Period 1
January 04, 2020 at Convocation Center - San Antonio, Texas



Period 1

Starters:

FIU: 2 DANIELS,CHEYANNE (F); 5 NIMMO,FUJIKI (G); 14 GUIMARAES,CHELSEA (C); 23 SCOTT,BRE'OSHA (G); 30 THOMAS,JISELLE (G);
 UTSA: 1 OMEMMAH,EVELYN (F); 4 WOODS,MIKAYLA (G); 15 TOTH,TIMEA (F); 32 QUEZADA,ADRYANA (F); 34 DONALD,KARRINGTON (G);

Time	VISITORS: FIU	Score	Margin	HOME: UTSA
08:02	GOOD! JUMPER by GUIMARAES, CHELSEA [PNT]	0-2	V 2	
05:50	GOOD! LAYUP by DIANE, DIENE [FB]	0-4	V 4	
03:07		2-4	V 2	GOOD! JUMPER by QUEZADA, ADRYANA [PNT]
02:41		5-4	H 1	GOOD! 3PTR by MASS, CHARLENE
02:10	GOOD! JUMPER by GUIMARAES, CHELSEA	5-6	V 1	
01:30	GOOD! LAYUP by DIANE, DIENE [PNT]	5-8	V 3	
01:09	GOOD! LAYUP by GUIMARAES, CHELSEA [FB]	5-10	V 5	
00:50		8-10	V 2	GOOD! 3PTR by DONALD, KARRINGTON

FIU 10, UTSA 8

Official Scoring/Possession Reference Chart
FIU vs UTSA
Period 2
January 04, 2020 at Convocation Center - San Antonio, Texas



Period 2

Starters:

FIU: 2 DANIELS,CHEYANNE (F); 5 NIMMO,FUJIKI (G); 14 GUIMARAES,CHELSEA (C); 23 SCOTT,BRE'OSHA (G); 30 THOMAS,JISELLE (G);
 UTSA: 1 OMEMMAH,EVELYN (F); 4 WOODS,MIKAYLA (G); 15 TOTH,TIMEA (F); 32 QUEZADA,ADRYANA (F); 34 DONALD,KARRINGTON (G);

Time	VISITORS: FIU	Score	Margin	HOME: UTSA
09:48		9-10	V 1	GOOD! FT by OMEMMAH, EVELYN
09:32	GOOD! LAYUP by DANIELS, CHEYANNE [PNT]	9-12	V 3	
08:12	GOOD! LAYUP by BONGIORNO, GIULIA	9-14	V 5	
05:23	GOOD! LAYUP by SCOTT, BRE'OSHA [PNT]	9-16	V 7	
05:09		11-16	V 5	GOOD! JUMPER by DONALD, KARRINGTON
03:03		13-16	V 3	GOOD! LAYUP by MASS, CHARLENE
02:08	GOOD! FT by DIANE, DIENE	13-17	V 4	
01:20	GOOD! JUMPER by DIANE, DIENE	13-19	V 6	
01:07		15-19	V 4	GOOD! JUMPER by DONALD, KARRINGTON
00:37		16-19	V 3	GOOD! FT by MASS, CHARLENE [FB]
00:25	GOOD! FT by GUIMARAES, CHELSEA	16-20	V 4	
00:25	GOOD! FT by GUIMARAES, CHELSEA	16-21	V 5	

FIU 21, UTSA 16

Official Scoring/Possession Reference Chart
FIU vs UTSA
Period 3
January 04, 2020 at Convocation Center - San Antonio, Texas



Period 3

Starters:

FIU: 2 DANIELS,CHEYANNE (F); 5 NIMMO,FUJIKI (G); 14 GUIMARAES,CHELSEA (C); 23 SCOTT,BRE'OSHA (G); 30 THOMAS,JISELLE (G);
UTSA: 1 OMEMMAH,EVELYN (F); 4 WOODS,MIKAYLA (G); 15 TOTH,TIMEA (F); 32 QUEZADA,ADRYANA (F); 34 DONALD,KARRINGTON (G);

Time	VISITORS: FIU	Score	Margin	HOME: UTSA
09:27		19-21	V 2	GOOD! 3PTR by DONALD, KARRINGTON
09:08		22-21	H 1	GOOD! 3PTR by DONALD, KARRINGTON [FB]
08:52	GOOD! FT by NIMMO, FUJIKI	22-22	T	
08:52	GOOD! FT by NIMMO, FUJIKI	22-23	V 1	
07:19		24-23	H 1	GOOD! LAYUP by WOODS, MIKAYLA
06:37		27-23	H 4	GOOD! 3PTR by DONALD, KARRINGTON
06:16	GOOD! LAYUP by DANIELS, CHEYANNE	27-25	H 2	
05:51	GOOD! LAYUP by DIANE, DIENE [FB]	27-27	T	
05:51	GOOD! FT by DIANE, DIENE [FB]	27-28	V 1	
05:21		28-28	T	GOOD! FT by WOODS, MIKAYLA [FB]
05:21		29-28	H 1	GOOD! FT by WOODS, MIKAYLA [FB]
03:59	GOOD! JUMPER by SCOTT, BRE'OSHA	29-30	V 1	
03:53		32-30	H 2	GOOD! 3PTR by MITCHELL, SHANNAN
03:37		34-30	H 4	GOOD! LAYUP by WOODS, MIKAYLA [FB]
02:43	GOOD! JUMPER by GUIMARAES, CHELSEA [PNT]	34-32	H 2	
01:52		36-32	H 4	GOOD! LAYUP by QUEZADA, ADRYANA
01:18		38-32	H 6	GOOD! LAYUP by TOTH, TIMEA
01:05	GOOD! LAYUP by GUIMARAES, CHELSEA	38-34	H 4	
00:11		39-34	H 5	GOOD! FT by OMEMMAH, EVELYN [FB]
00:01		40-34	H 6	GOOD! FT by QUEZADA, ADRYANA [FB]
00:01		41-34	H 7	GOOD! FT by QUEZADA, ADRYANA [FB]

FIU 34, UTSA 41

Official Scoring/Possession Reference Chart
FIU vs UTSA
Period 4
January 04, 2020 at Convocation Center - San Antonio, Texas



Period 4

Starters:

FIU: 2 DANIELS,CHEYANNE (F); 5 NIMMO,FUJIKI (G); 14 GUIMARAES,CHELSEA (C); 23 SCOTT,BRE'OSHA (G); 30 THOMAS,JISELLE (G);
UTSA: 1 OMEMMAH,EVELYN (F); 4 WOODS,MIKAYLA (G); 15 TOTH,TIMEA (F); 32 QUEZADA,ADRYANA (F); 34 DONALD,KARRINGTON (G);

Time	VISITORS: FIU	Score	Margin	HOME: UTSA
07:46		43-34	H 9	GOOD! JUMPER by WOODS, MIKAYLA [PNT]
07:27	GOOD! LAYUP by GUIMARAES, CHELSEA	43-36	H 7	
07:05		45-36	H 9	GOOD! LAYUP by DONALD, KARRINGTON
06:28		47-36	H 11	GOOD! JUMPER by WOODS, MIKAYLA
06:08	GOOD! JUMPER by GUIMARAES, CHELSEA [PNT]	47-38	H 9	
05:51		49-38	H 11	GOOD! JUMPER by QUEZADA, ADRYANA [PNT]
05:07		50-38	H 12	GOOD! FT by QUEZADA, ADRYANA
03:58	GOOD! 3PTR by DIANE, DIENE	50-41	H 9	
03:45	GOOD! FT by NIMMO, FUJIKI [FB]	50-42	H 8	
03:17		52-42	H 10	GOOD! LAYUP by MASS, CHARLENE [PNT]
03:17		53-42	H 11	GOOD! FT by MASS, CHARLENE
02:27		54-42	H 12	GOOD! FT by OMEMMAH, EVELYN
02:27		55-42	H 13	GOOD! FT by OMEMMAH, EVELYN
01:11		56-42	H 14	GOOD! FT by WOODS, MIKAYLA
00:44		58-42	H 16	GOOD! LAYUP by MITCHELL, SHANNAN
00:26		59-42	H 17	GOOD! FT by MASS, CHARLENE
00:26		60-42	H 18	GOOD! FT by MASS, CHARLENE
00:16	GOOD! 3PTR by NIMMO, FUJIKI	60-45	H 15	

FIU 45, UTSA 60

Official Substitutions Log
FIU vs UTSA
Period 1
January 04, 2020 at Convocation Center - San Antonio, Texas



VISITORS: FIU	Time	Score	HOME: UTSA
2 DANIELS,CHEYANNE			1 OMEMMAH,EVELYN
5 NIMMO,FUJIIKA			4 WOODS,MIKAYLA
14 GUIMARAES,CHELSEA			15 TOTH,TIMEA
23 SCOTT,BRE'OSHA			32 QUEZADA,ADRYANA
30 THOMAS,JISELLE			34 DONALD,KARRINGTON
	07:06	2-0	SUB OUT: OMEMMAH,EVELYN
	07:06		SUB OUT: WOODS,MIKAYLA
	07:06		SUB IN: BLANDING,ELENA
	07:06		SUB IN: MASS,CHARLENE
SUB OUT: 5 NIMMO,FUJIIKA	06:27	2-0	
SUB IN: 21 DIANE,DIENE	06:27		
	01:54	6-5	SUB OUT: BLANDING,ELENA
	01:54		SUB OUT: QUEZADA,ADRYANA
	01:54		SUB IN: OMEMMAH,EVELYN
	01:54		SUB IN: MITCHELL,SHANNAN
SUB OUT: 2 DANIELS,CHEYANNE	01:54		
SUB OUT: 23 SCOTT,BRE'OSHA	01:54		
SUB OUT: 30 THOMAS,JISELLE	01:54		
SUB IN: 5 NIMMO,FUJIIKA	01:54		
SUB IN: 25 BONGIORNO,GIULIA	01:54		
SUB IN: 34 WALKER,SHANTE	01:54		
	00:53	10-5	SUB OUT: TOTH,TIMEA
	00:53		SUB IN: QUEZADA,ADRYANA

FIU 10, UTSA 8

Official Substitutions Log
FIU vs UTSA
Period 2
January 04, 2020 at Convocation Center - San Antonio, Texas



VISITORS: FIU	Time	Score	HOME: UTSA
2 DANIELS,CHEYANNE			1 OMEMMAH,EVELYN
5 NIMMO,FUJIKI			4 WOODS,MIKAYLA
14 GUIMARAES,CHELSEA			15 TOTH,TIMEA
23 SCOTT,BRE'OSHA			32 QUEZADA,ADRYANA
30 THOMAS,JISELLE			34 DONALD,KARRINGTON
	10:00	-	SUB OUT: MITCHELL,SHANNAN
	10:00		SUB OUT: DONALD,KARRINGTON
	10:00		SUB IN: WOODS,MIKAYLA
	10:00		SUB IN: TOTH,TIMEA
SUB OUT: 14 GUIMARAES,CHELSEA	10:00		
SUB IN: 2 DANIELS,CHEYANNE	10:00		
	08:32	12-9	SUB OUT: QUEZADA,ADRYANA
	08:32		SUB IN: DONALD,KARRINGTON
SUB OUT: 34 WALKER,SHANTE	08:32		
SUB IN: 14 GUIMARAES,CHELSEA	08:32		
	06:20	14-9	SUB OUT: OMEMMAH,EVELYN
	06:20		SUB IN: BLANDING,ELENA
SUB OUT: 2 DANIELS,CHEYANNE	06:20		
SUB OUT: 25 BONGIORNO,GIULIA	06:20		
SUB IN: 23 SCOTT,BRE'OSHA	06:20		
SUB IN: 24 WYKOFF,ALEXUS	06:20		
	04:17	16-11	SUB OUT: WOODS,MIKAYLA
	04:17		SUB OUT: TOTH,TIMEA
	04:17		SUB IN: MITCHELL,SHANNAN
	04:17		SUB IN: QUEZADA,ADRYANA
SUB OUT: 14 GUIMARAES,CHELSEA	02:40	16-13	
SUB IN: 2 DANIELS,CHEYANNE	02:40		
	02:08	16-13	SUB OUT: QUEZADA,ADRYANA
	02:08		SUB IN: WOODS,MIKAYLA
	00:37	19-15	SUB OUT: WOODS,MIKAYLA
	00:37		SUB IN: TOTH,TIMEA
SUB OUT: 21 DIANE,DIENE	00:37		
SUB IN: 30 THOMAS,JISELLE	00:37		
SUB OUT: 24 WYKOFF,ALEXUS	00:37		
SUB IN: 14 GUIMARAES,CHELSEA	00:37		

FIU 21, UTSA 16

Official Substitutions Log
FIU vs UTSA
Period 3
January 04, 2020 at Convocation Center - San Antonio, Texas



VISITORS: FIU	Time	Score	HOME: UTSA
2 DANIELS,CHEYANNE			1 OMEMMAH,EVELYN
5 NIMMO,FUJIKI			4 WOODS,MIKAYLA
14 GUIMARAES,CHELSEA			15 TOTH,TIMEA
23 SCOTT,BRE'OSHA			32 QUEZADA,ADRYANA
30 THOMAS,JISELLE			34 DONALD,KARRINGTON
	10:00	-	SUB OUT: BLANDING,ELENA
	10:00		SUB OUT: MASS,CHARLENE
	10:00		SUB OUT: MITCHELL,SHANNAN
	10:00		SUB IN: OMEMMAH,EVELYN
	10:00		SUB IN: WOODS,MIKAYLA
	10:00		SUB IN: QUEZADA,ADRYANA
SUB OUT: 30 THOMAS,JISELLE	09:00	21-22	
SUB IN: 21 DIANE,DIENE	09:00		
	08:52	21-22	SUB OUT: QUEZADA,ADRYANA
	08:52		SUB IN: MASS,CHARLENE
SUB OUT: 5 NIMMO,FUJIKI	05:51	27-27	
SUB IN: 25 BONGIORNO,GIULIA	05:51		
	05:21	28-27	SUB OUT: TOTH,TIMEA
	05:21		SUB IN: MITCHELL,SHANNAN
SUB OUT: 2 DANIELS,CHEYANNE	05:21		
SUB IN: 34 WALKER,SHANTE	05:21		
	04:26	28-29	SUB OUT: OMEMMAH,EVELYN
	04:26		SUB OUT: DONALD,KARRINGTON
	04:26		SUB IN: BLANDING,ELENA
	04:26		SUB IN: QUEZADA,ADRYANA
	03:03	30-34	SUB OUT: MASS,CHARLENE
	03:03		SUB OUT: MITCHELL,SHANNAN
	03:03		SUB IN: TOTH,TIMEA
	03:03		SUB IN: DONALD,KARRINGTON
SUB OUT: 21 DIANE,DIENE	03:03		
SUB OUT: 25 BONGIORNO,GIULIA	03:03		
SUB IN: 3 SWIFT,ALANA	03:03		
SUB IN: 5 NIMMO,FUJIKI	03:03		
	01:28	32-36	SUB OUT: WOODS,MIKAYLA
	01:28		SUB IN: MASS,CHARLENE
SUB OUT: 5 NIMMO,FUJIKI	01:28		
SUB OUT: 34 WALKER,SHANTE	01:28		
SUB IN: 2 DANIELS,CHEYANNE	01:28		
SUB IN: 30 THOMAS,JISELLE	01:28		
SUB OUT: 23 SCOTT,BRE'OSHA	00:53	34-38	
SUB IN: 21 DIANE,DIENE	00:53		
	00:53		SUB OUT: BLANDING,ELENA
	00:53		SUB IN: OMEMMAH,EVELYN

FIU 34, UTSA 41

Official Substitutions Log
FIU vs UTSA
Period 4
January 04, 2020 at Convocation Center - San Antonio, Texas



VISITORS: FIU	Time	Score	HOME: UTSA
2 DANIELS,CHEYANNE			1 OMEMMAH,EVELYN
5 NIMMO,FUJIIKA			4 WOODS,MIKAYLA
14 GUIMARAES,CHELSEA			15 TOTH,TIMEA
23 SCOTT,BRE'OSHA			32 QUEZADA,ADRYANA
30 THOMAS,JISELLE			34 DONALD,KARRINGTON
	10:00	-	SUB OUT: QUEZADA,ADRYANA
	10:00		SUB IN: WOODS,MIKAYLA
SUB OUT: 3 SWIFT,ALANA	10:00		
SUB OUT: 30 THOMAS,JISELLE	10:00		
SUB IN: 5 NIMMO,FUJIIKA	10:00		
SUB IN: 23 SCOTT,BRE'OSHA	10:00		
	08:11	-	SUB OUT: TOTH,TIMEA
	08:11		SUB IN: QUEZADA,ADRYANA
	05:06	38-50	SUB OUT: QUEZADA,ADRYANA
	05:06		SUB IN: TOTH,TIMEA
SUB OUT: 2 DANIELS,CHEYANNE	05:06		
SUB OUT: 23 SCOTT,BRE'OSHA	05:06		
SUB IN: 25 BONGIORNO,GIULIA	05:06		
SUB IN: 34 WALKER,SHANTE	05:06		
	03:45	41-50	SUB OUT: TOTH,TIMEA
	03:45		SUB IN: QUEZADA,ADRYANA
	03:17	42-52	SUB OUT: QUEZADA,ADRYANA
	03:17		SUB IN: TOTH,TIMEA
	02:36	42-53	SUB OUT: TOTH,TIMEA
	02:36		SUB IN: QUEZADA,ADRYANA
SUB OUT: 25 BONGIORNO,GIULIA	02:36		
SUB IN: 23 SCOTT,BRE'OSHA	02:36		
	02:27	42-53	SUB OUT: QUEZADA,ADRYANA
	02:27		SUB IN: TOTH,TIMEA
	02:02	42-55	SUB OUT: TOTH,TIMEA
	02:02		SUB IN: QUEZADA,ADRYANA
	01:32	42-55	SUB OUT: QUEZADA,ADRYANA
	01:32		SUB IN: TOTH,TIMEA
	01:01	42-56	SUB OUT: TOTH,TIMEA
	01:01		SUB IN: QUEZADA,ADRYANA
	00:54	42-56	SUB OUT: OMEMMAH,EVELYN
	00:54		SUB OUT: DONALD,KARRINGTON
	00:54		SUB IN: BLANDING,ELENA
	00:54		SUB IN: MITCHELL,SHANNAN

FIU 45, UTSA 60

Official Shot Chart
FIU vs UTSA
PERIOD 1 Shots
 January 04, 2020 at Convocation Center - San Antonio, Texas



UTSA

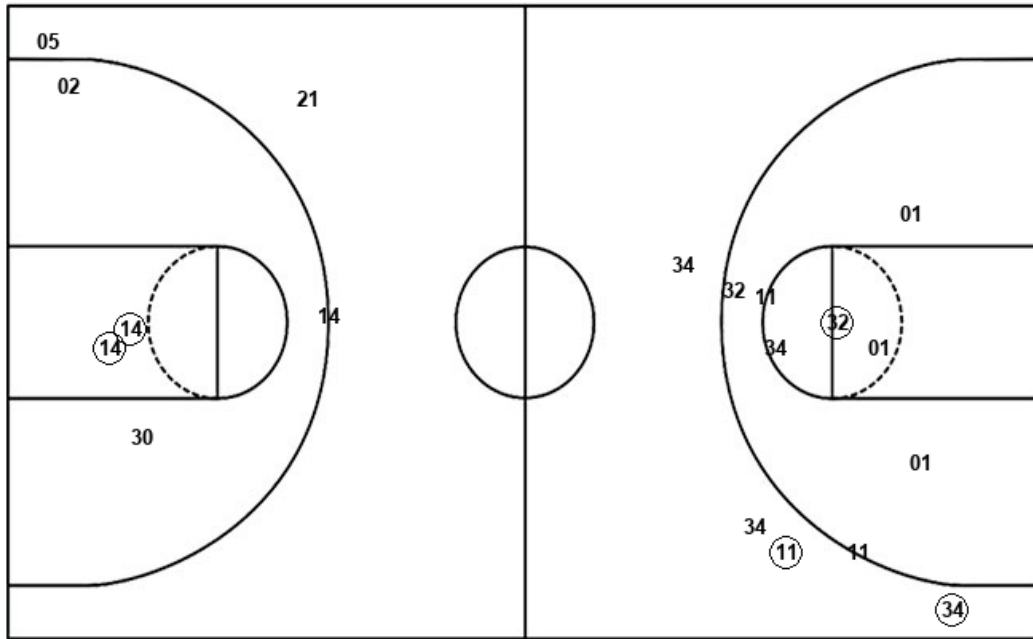
FIU

Layups
 01 32 15 32 34
 25

Layups
 30 05 (21) (21) (14)
 05 34

Dunks

Dunks



UTS : Period 1	Made	Att	Pct
Layups	0	6	00.0
Dunks	0	0	0
2PT Field Goals	1	14	07.1
3PT Field Goals	2	4	50.0
Total Field Goals	3	18	16.7

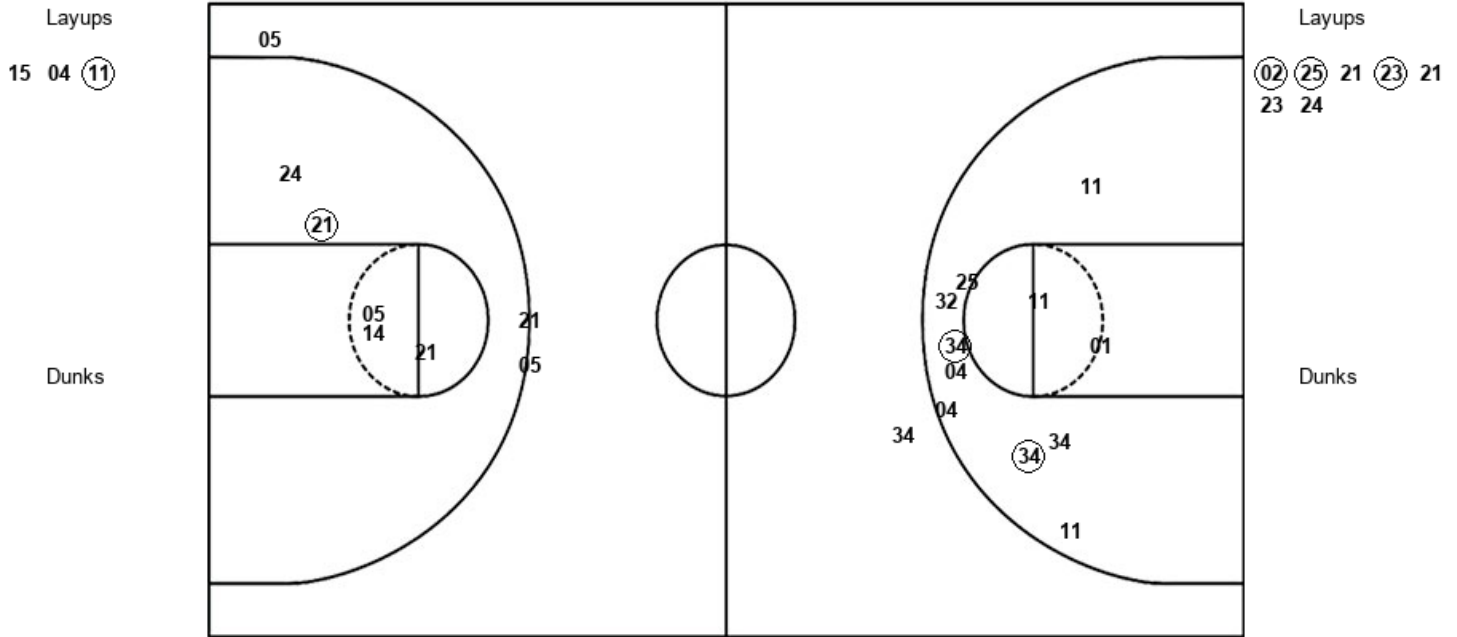
FIU : Period 1	Made	Att	Pct
Layups	3	7	42.9
Dunks	0	0	0
2PT Field Goals	5	11	45.5
3PT Field Goals	0	3	00.0
Total Field Goals	5	14	35.7

Official Shot Chart
FIU vs UTSA
PERIOD 2 Shots
 January 04, 2020 at Convocation Center - San Antonio, Texas



UTSA

FIU



UTS : Period 2	Made	Att	Pct
Layups	1	3	33.3
Dunks	0	0	0
2PT Field Goals	3	14	21.4
3PT Field Goals	0	1	00.0
Total Field Goals	3	15	20.0

FIU : Period 2	Made	Att	Pct
Layups	3	7	42.9
Dunks	0	0	0
2PT Field Goals	4	12	33.3
3PT Field Goals	0	3	00.0
Total Field Goals	4	15	26.7

Official Shot Chart
FIU vs UTSA
PERIOD 3 Shots
 January 04, 2020 at Convocation Center - San Antonio, Texas



UTSA

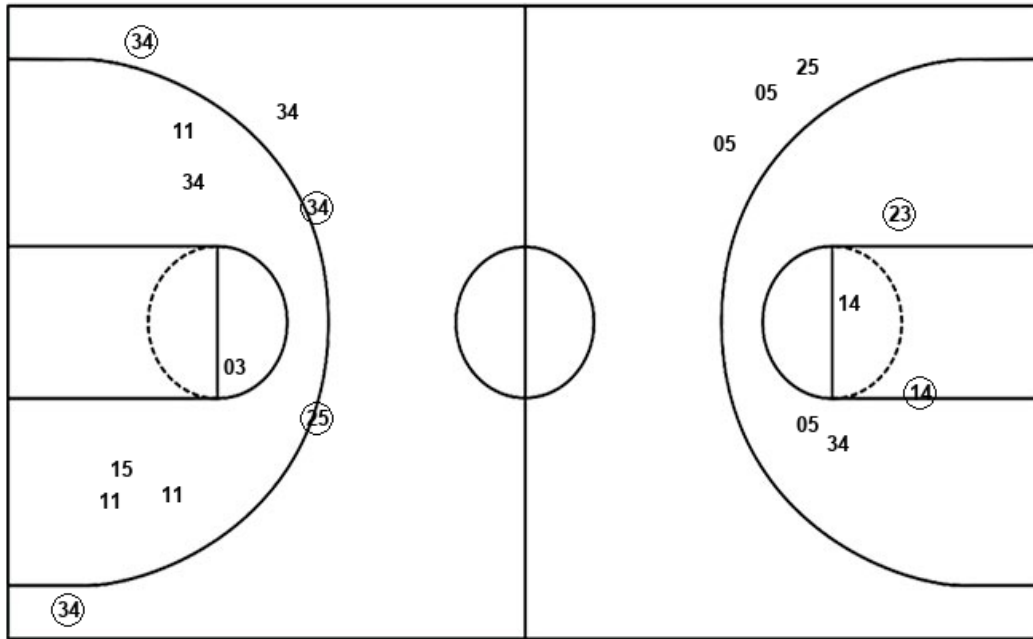
FIU

Layups
 (04) 11 01 (04) 04
 (32) (15) 34

Layups
 02 (02) (21) 02 (14)
 21

Dunks

Dunks



UTS : Period 3	Made	Att	Pct
Layups	4	8	50.0
Dunks	0	0	0
2PT Field Goals	4	14	28.6
3PT Field Goals	4	5	80.0
Total Field Goals	8	19	42.1

FIU : Period 3	Made	Att	Pct
Layups	3	6	50.0
Dunks	0	0	0
2PT Field Goals	5	11	45.5
3PT Field Goals	0	3	00.0
Total Field Goals	5	14	35.7

Official Shot Chart
FIU vs UTSA
PERIOD 4 Shots
 January 04, 2020 at Convocation Center - San Antonio, Texas



UTSA

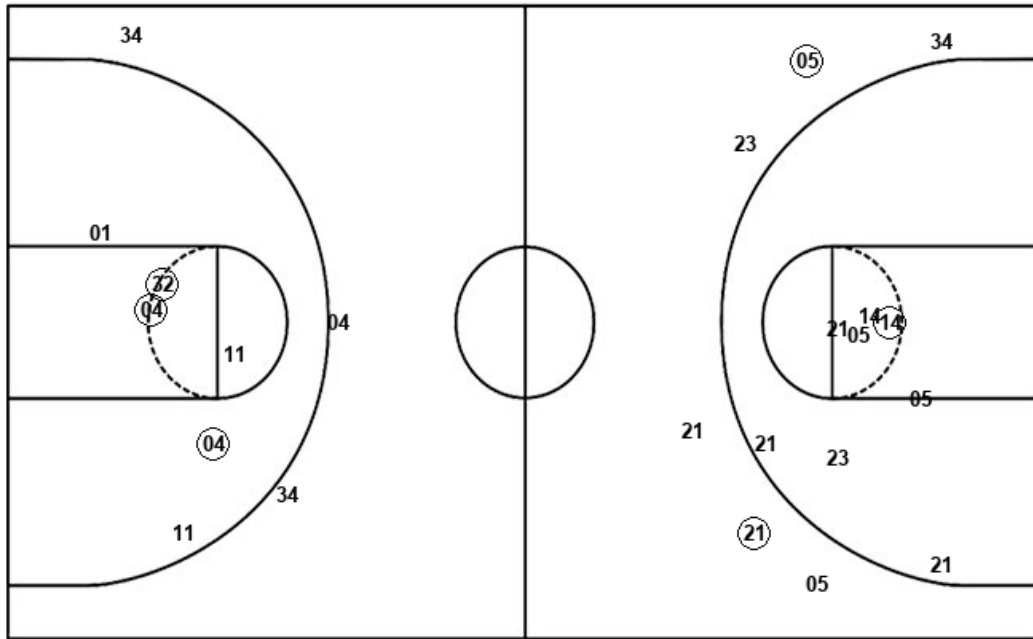
FIU

Layups
 34 11 25

Layups
 05 14

Dunks

Dunks



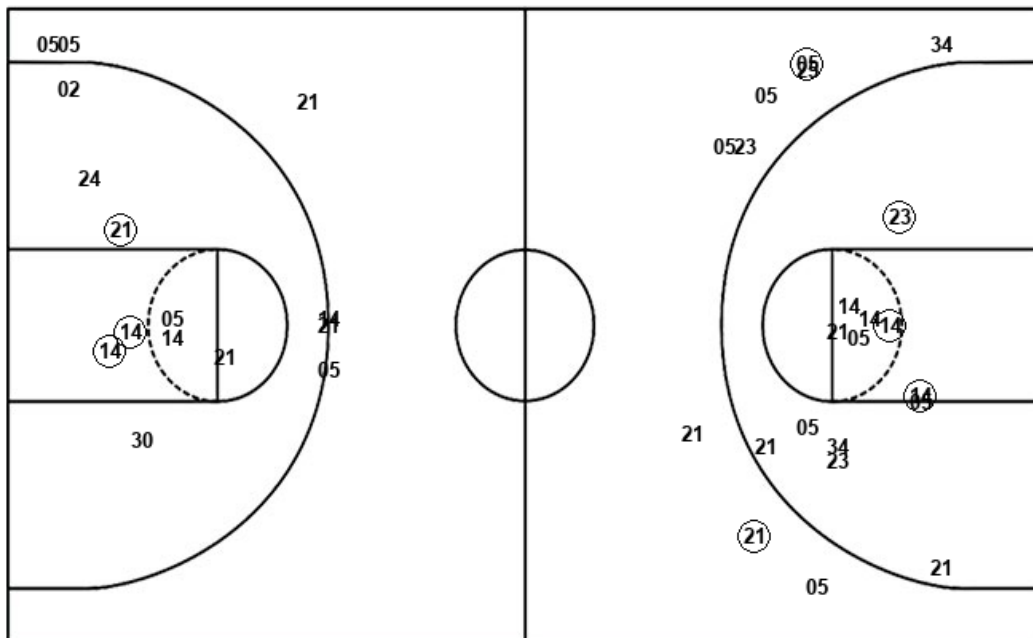
UTS : Period 4	Made	Att	Pct
Layups	3	3	100.0
Dunks	0	0	0
2PT Field Goals	6	9	66.7
3PT Field Goals	0	3	00.0
Total Field Goals	6	12	50.0

FIU : Period 4	Made	Att	Pct
Layups	1	2	50.0
Dunks	0	0	0
2PT Field Goals	2	10	20.0
3PT Field Goals	2	6	33.3
Total Field Goals	4	16	25.0

Official Shot Chart
FIU vs UTSA
FIU Team Shots
 January 04, 2020 at Convocation Center - San Antonio, Texas



Layups



Layups

30 05 (21) (21) (14)
 05 34 (02) (25) 21
 (23) 21 23 24 02
 (02) (21) 02 (14) 21
 05 (14)

Dunks

Dunks

FIU : Period 1	Made	Att	Pct
Layups	3	7	42.9
Dunks	0	0	0
2PT Field Goals	5	11	45.5
3PT Field Goals	0	3	00.0
Total Field Goals	5	14	35.7

FIU : Period 2	Made	Att	Pct
Layups	3	7	42.9
Dunks	0	0	0
2PT Field Goals	4	12	33.3
3PT Field Goals	0	3	00.0
Total Field Goals	4	15	26.7

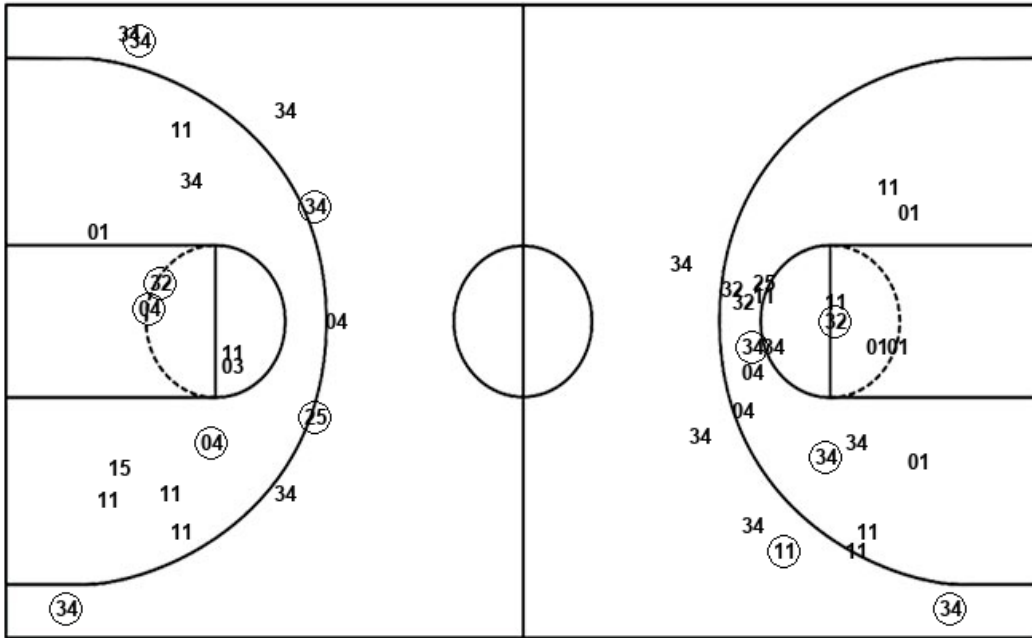
FIU : Period 3	Made	Att	Pct
Layups	3	6	50.0
Dunks	0	0	0
2PT Field Goals	5	11	45.5
3PT Field Goals	0	3	00.0
Total Field Goals	5	14	35.7

FIU : Period 4	Made	Att	Pct
Layups	1	2	50.0
Dunks	0	0	0
2PT Field Goals	2	10	20.0
3PT Field Goals	2	6	33.3
Total Field Goals	4	16	25.0

Official Shot Chart
FIU vs UTSA
UTSA Team Shots
 January 04, 2020 at Convocation Center - San Antonio, Texas



Layups



Layups

01 32 15 32 34
 25 15 04 (11) (04)
 11 01 (04) 04 (32)
 (15) 34 (34) (11) (25)

Dunks

UTS : Period 1	Made	Att	Pct
Layups	0	6	00.0
Dunks	0	0	0
2PT Field Goals	1	14	07.1
3PT Field Goals	2	4	50.0
Total Field Goals	3	18	16.7

UTS : Period 2	Made	Att	Pct
Layups	1	3	33.3
Dunks	0	0	0
2PT Field Goals	3	14	21.4
3PT Field Goals	0	1	00.0
Total Field Goals	3	15	20.0

UTS : Period 3	Made	Att	Pct
Layups	4	8	50.0
Dunks	0	0	0
2PT Field Goals	4	14	28.6
3PT Field Goals	4	5	80.0
Total Field Goals	8	19	42.1

UTS : Period 4	Made	Att	Pct
Layups	3	3	100.0
Dunks	0	0	0
2PT Field Goals	6	9	66.7
3PT Field Goals	0	3	00.0
Total Field Goals	6	12	50.0