

## FINAL SCORE

**Texas Wesleyan**

**78**

**UTSA**

**80**



December 20, 2019 • Convocation Center - San Antonio

## FINAL STATISTICS



**Official Box Score**  
**Texas Wesleyan vs UTSA**  
**Game Totals -- Final Statistics**  
**December 20, 2019 at Convocation Center - San Antonio**



### Texas Wesleyan 78

No.	Player	S	Pts	FG	3FG	FT	OR	DR	TR	PF	A	TO	Blk	Stl	Min	+/-
05	WINGFIELD, DESTINEY	*	15	6-18	2-6	1-1	0	2	2	1	6	2	0	2	36	2
15	WHORLEY, EVIE	G	12	4-9	2-5	2-2	3	3	6	1	1	0	0	1	37	-3
24	BRIGHTWELL, JORDAN	G	0	0-2	0-0	0-0	0	2	2	0	0	1	0	1	18	6
25	NGAWUCHU, CHRYSTAL	G	9	4-5	0-0	1-1	1	2	3	4	0	0	1	0	17	-10
30	GLEASON, NICOLE	G	14	5-19	4-15	0-1	2	2	4	2	3	0	1	2	36	3
10	COX, MAKAYLA		14	3-9	1-4	7-8	2	3	5	2	0	1	0	0	24	-6
23	BRIGHAM, ALEXUS	G	14	6-11	0-0	2-5	3	2	5	3	3	4	0	2	31	-2
TEAM							2	1	3	0		0				
<b>TOTALS</b>			<b>78</b>	<b>28-73</b>	<b>9-30</b>	<b>13-18</b>	<b>13</b>	<b>17</b>	<b>30</b>	<b>13</b>	<b>13</b>	<b>8</b>	<b>2</b>	<b>8</b>	<b>200</b>	

#### Shooting By Period

Period	FG	FG%	3FG	3FG%	FT	FT%
1st Qtr	2-15	13%	0-8	00%	2-2	100%
2nd Qtr	8-18	44%	2-6	33%	1-1	100%
3rd Qtr	10-18	56%	6-11	55%	2-3	67%
4th Qtr	8-22	36%	1-5	20%	8-12	67%
1st Half	10-33	30%	2-14	14%	3-3	100%
2nd Half	18-40	45%	7-16	44%	10-15	67%
<b>Game</b>	<b>28-73</b>	<b>38.4%</b>	<b>9-30</b>	<b>30.0%</b>	<b>13-18</b>	<b>72.2%</b>

Deadball Rebounds: 2,0

Last FG: 4th-01:02

Biggest Run: 8-0

Largest lead: By 4 at 4-08

Technical Fouls: #23 BRIGHAM @ 4th - 07:29;

### UTSA 80

No.	Player	S	Pts	FG	3FG	FT	OR	DR	TR	PF	A	TO	Blk	Stl	Min	+/-
10	LARSON, KARLEY	G	0	0-4	0-4	0-0	0	0	0	0	1	0	0	1	16	-1
13	COUSIN, DEJA	G	7	2-7	2-7	1-2	0	3	3	0	4	2	0	0	25	6
15	TOTH, TIMEA	F	6	3-4	0-0	0-0	2	3	5	4	3	2	0	1	23	-12
32	QUEZADA, ADRYANA	F	32	15-21	0-1	2-4	3	9	12	1	2	4	2	0	35	-6
34	DONALD, KARRINGTON	G	16	6-10	4-5	0-0	1	3	4	3	6	6	0	0	36	-1
01	OMEMMAH, EVELYN	F	7	3-6	0-0	1-2	2	9	11	4	0	3	3	0	23	7
03	BLANDING, ELENA	C	0	0-0	0-0	0-0	0	0	0	0	0	0	0	0	1	-5
11	MASS, CHARLENE	G	6	1-5	0-2	4-4	0	2	2	4	1	1	0	0	17	-1
25	MITCHELL, SHANNAN	F	2	0-2	0-0	2-4	1	2	3	3	0	2	1	0	10	2
40	COOKS, MANDI	F	4	1-1	0-0	2-2	0	1	1	1	1	0	0	0	13	21
TEAM							4	2	6	0		1				
<b>TOTALS</b>			<b>80</b>	<b>31-60</b>	<b>6-19</b>	<b>12-18</b>	<b>13</b>	<b>34</b>	<b>47</b>	<b>20</b>	<b>18</b>	<b>21</b>	<b>6</b>	<b>2</b>	<b>200</b>	

#### Shooting By Period

Period	FG	FG%	3FG	3FG%	FT	FT%
1st Qtr	4-15	27%	1-7	14%	1-2	50%
2nd Qtr	9-15	60%	2-4	50%	2-2	100%
3rd Qtr	9-16	56%	2-7	29%	3-4	75%
4th Qtr	9-14	64%	1-1	100%	6-10	60%
1st Half	13-30	43%	3-11	27%	3-4	75%
2nd Half	18-30	60%	3-8	38%	9-14	64%
<b>Game</b>	<b>31-60</b>	<b>51.7%</b>	<b>6-19</b>	<b>31.6%</b>	<b>12-18</b>	<b>66.7%</b>

Deadball Rebounds: 5,1

Last FG: 4th-00:14

Biggest Run: 9-0

Largest lead: By 8 at 3-01

Technical Fouls: None.

#### Game Notes:

Officials: Scott Yarbrough, Alexis Burton, Charles Stein  
Attendance: 282

Start Time: 03:05 PM ET

End Time: 04:51 PM ET

Game Duration: 1:46

Score	1st	2nd	3rd	4th	TOT
TSW	6	19	28	25	<b>78</b>
UTS	10	22	23	25	<b>80</b>

TSW led for 1:54. UTS led for 36:35.

Game was tied for 1:32.

Times tied: 5      Lead Changes: 8

Points from	TSW	UTS
In the Paint	30	38
Off Turns	24	10
2nd Chance	16	14
Fast Break	3	7
Bench	28	19



**Official Box Score**  
**Texas Wesleyan vs UTSA**  
**First Half Statistics Only**  
**December 20, 2019 at Convocation Center - San Antonio**



### Texas Wesleyan 25

No.	Player	S	Pts	FG	3FG	FT	OR	DR	TR	PF	A	TO	Blk	Stl	Min	+/-
05	WINGFIELD, DESTINEY	*	5	2-7	0-2	1-1	0	1	1	1	4	1	0	0	16	-3
10	COX, MAKAYLA		4	1-3	0-1	2-2	0	2	2	2	0	1	0	0	14	-7
15	WHORLEY, EVIE	G	5	2-2	1-1	0-0	2	2	4	0	0	0	0	0	18	-8
23	BRIGHAM, ALEXUS	G	4	2-5	0-0	0-0	1	2	3	0	1	3	0	1	15	-6
24	BRIGHTWELL, JORDAN	G	0	0-1	0-0	0-0	0	1	1	0	0	1	0	1	10	2
25	NGAWUCHU, CHRYSTAL	G	4	2-3	0-0	0-0	1	1	2	1	0	0	0	0	9	-10
30	GLEASON, NICOLE	G	3	1-12	1-10	0-0	0	1	1	0	1	0	1	1	18	-3
	TEAM		0	0-0	0-0	0-0	0	1	1	0	0	0	0	0	0	
<b>TOTALS</b>			<b>25</b>	<b>10-33</b>	<b>2-14</b>	<b>3-3</b>	<b>4</b>	<b>11</b>	<b>15</b>	<b>4</b>	<b>6</b>	<b>6</b>	<b>1</b>	<b>3</b>	<b>100</b>	

#### Shooting By Period

Period	FG	FG%	3FG	3FG%	FT	FT%
1st Qtr	2-15	13%	0-8	00%	2-2	100%
2nd Qtr	8-18	44%	2-6	33%	1-1	100%
1st Half	10-33	30%	2-14	14%	3-3	100%
Game	28-73	38.4%	9-30	30.0%	13-18	72.2%

Deadball Rebounds: 2,0

Last FG Half: TSW 2nd-01:03

### UTSA 32

No.	Player	S	Pts	FG	3FG	FT	OR	DR	TR	PF	A	TO	Blk	Stl	Min	+/-
01	OMEMMAH, EVELYN	F	2	1-2	0-0	0-0	1	6	7	0	0	1	2	0	9	8
03	BLANDING, ELENA	C	0	0-0	0-0	0-0	0	0	0	0	0	0	0	0	0	0
10	LARSON, KARLEY	G	0	0-4	0-4	0-0	0	0	0	0	1	0	0	1	16	-1
11	MASS, CHARLENE	G	4	1-4	0-1	2-2	0	1	1	2	0	1	0	0	10	7
13	COUSIN, DEJA	G	6	2-4	2-4	0-0	0	0	0	0	2	2	0	0	11	9
15	TOTH, TIMEA	F	2	1-2	0-0	0-0	1	1	2	1	3	0	0	1	12	1
25	MITCHELL, SHANNAN	F	1	0-2	0-0	1-2	1	0	1	1	0	0	0	0	5	3
32	QUEZADA, ADRYANA	F	12	6-9	0-0	0-0	1	7	8	0	1	2	0	0	16	-2
34	DONALD, KARRINGTON	G	5	2-3	1-2	0-0	1	1	2	0	3	4	0	0	16	4
40	COOKS, MANDI	F	0	0-0	0-0	0-0	0	0	0	1	0	0	0	0	4	6
	TEAM		0	0-0	0-0	0-0	2	2	4	0	0	1	0	0	0	
<b>TOTALS</b>			<b>32</b>	<b>13-30</b>	<b>3-11</b>	<b>3-4</b>	<b>7</b>	<b>18</b>	<b>25</b>	<b>5</b>	<b>10</b>	<b>11</b>	<b>2</b>	<b>2</b>	<b>100</b>	

#### Shooting By Period

Period	FG	FG%	3FG	3FG%	FT	FT%
1st Qtr	4-15	27%	1-7	14%	1-2	50%
2nd Qtr	9-15	60%	2-4	50%	2-2	100%
1st Half	13-30	43%	3-11	27%	3-4	75%
Game	31-60	51.7%	6-19	31.6%	12-18	66.7%

Deadball Rebounds: 5,1

Last FG Half: UTS 2nd-00:25

#### Game Notes:

Officials: Scott Yarbrough, Alexis Burton, Charles Stein

Attendance: 282

Start Time: 03:05 PM ET

End Time: 04:51 PM ET

Game Duration: 1:46

Score	1st	2nd	3rd	4th	TOT
TSW	6	19	28	25	<b>78</b>
UTS	10	22	23	25	<b>80</b>

Points from (This Period)	TSW	UTS
In the Paint	16	14
Off Turns	6	8
2nd Chance	6	3
Fast Break	0	2
Bench	8	7



**Official Box Score**  
**Texas Wesleyan vs UTSA**  
**First Quarter Statistics Only**  
**December 20, 2019 at Convocation Center - San Antonio**



### Texas Wesleyan 6

No.	Player	S	Pts	FG	3FG	FT	OR	DR	TR	PF	A	TO	Blk	Stl	Min	+/-
05	WINGFIELD, DESTINEY	*	2	1-2	0-1	0-0	0	1	1	1	0	0	0	0	6	0
15	WHORLEY, EVIE	G	0	0-0	0-0	0-0	1	1	2	0	0	0	0	0	9	-5
24	BRIGHTWELL, JORDAN	G	0	0-1	0-0	0-0	0	1	1	0	0	1	0	1	6	-3
25	NGAWUCHU, CHRYSTAL	G	2	1-2	0-0	0-0	0	1	1	1	0	0	0	0	6	-6
30	GLEASON, NICOLE	G	0	0-7	0-6	0-0	0	0	0	0	1	0	0	0	10	-4
10	COX, MAKAYLA		2	0-1	0-1	2-2	0	1	1	1	0	1	0	0	8	1
23	BRIGHAM, ALEXUS	G	0	0-2	0-0	0-0	1	2	3	0	0	2	0	0	5	-3
TEAM							0	0	0	0		0				
<b>TOTALS</b>			<b>6</b>	<b>2-15</b>	<b>0-8</b>	<b>2-2</b>	<b>2</b>	<b>7</b>	<b>9</b>	<b>3</b>	<b>1</b>	<b>4</b>	<b>0</b>	<b>1</b>	<b>50</b>	

#### Shooting By Period

Period	FG	FG%	3FG	3FG%	FT	FT%
1st Qtr	2-15	13%	0-8	00%	2-2	100%
2nd Qtr	8-18	44%	2-6	33%	1-1	100%
1st Half	2-15	13%	0-8	00%	2-2	100%
1st Half	10-33	30%	2-14	14%	3-3	100%
Game	28-73	38.4%	9-30	30.0%	13-18	72.2%

Deadball Rebounds: 2,0

### UTSA 10

No.	Player	S	Pts	FG	3FG	FT	OR	DR	TR	PF	A	TO	Blk	Stl	Min	+/-
10	LARSON, KARLEY	G	0	0-3	0-3	0-0	0	0	0	0	0	0	0	1	7	2
13	COUSIN, DEJA	G	3	1-2	1-2	0-0	0	0	0	0	1	2	0	0	7	4
15	TOTH, TIMEA	F	2	1-2	0-0	0-0	1	1	2	1	0	0	0	1	6	3
32	QUEZADA, ADRYANA	F	0	0-0	0-0	0-0	0	4	4	0	1	1	0	0	7	1
34	DONALD, KARRINGTON	G	0	0-1	0-1	0-0	1	0	1	0	1	2	0	0	7	3
01	OMEMMAH, EVELYN	F	2	1-2	0-0	0-0	1	3	4	0	0	1	1	0	4	1
03	BLANDING, ELENA	C	0	0-0	0-0	0-0	0	0	0	0	0	0	0	0	0	0
11	MASS, CHARLENE	G	2	1-4	0-1	0-0	0	1	1	0	0	0	0	0	5	3
25	MITCHELL, SHANNAN	F	1	0-1	0-0	1-2	1	0	1	0	0	0	0	0	3	3
40	COOKS, MANDI	F	0	0-0	0-0	0-0	0	0	0	1	0	0	0	0	3	0
TEAM							1	1	2	0		1				
<b>TOTALS</b>			<b>10</b>	<b>4-15</b>	<b>1-7</b>	<b>1-2</b>	<b>5</b>	<b>10</b>	<b>15</b>	<b>2</b>	<b>3</b>	<b>7</b>	<b>1</b>	<b>2</b>	<b>50</b>	

#### Shooting By Period

Period	FG	FG%	3FG	3FG%	FT	FT%
1st Qtr	4-15	27%	1-7	14%	1-2	50%
2nd Qtr	9-15	60%	2-4	50%	2-2	100%
1st Half	4-15	27%	1-7	14%	1-2	50%
1st Half	13-30	43%	3-11	27%	3-4	75%
Game	31-60	51.7%	6-19	31.6%	12-18	66.7%

Deadball Rebounds: 5,1

#### Game Notes:

Officials: Scott Yarbrough, Alexis Burton, Charles Stein  
Attendance: 282

Start Time: 03:05 PM ET  
End Time: 04:51 PM ET  
Game Duration: 1:46

Score	1st	2nd	3rd	4th	TOT
TSW	6	19	28	25	<b>78</b>
UTS	10	22	23	25	<b>80</b>

Points from (This Period)	TSW	UTS
In the Paint	4	2
Off Turns	4	3
2nd Chance	2	1
Fast Break	0	0
Bench	2	5



**Official Play-By-Play**  
**Texas Wesleyan vs UTSA**  
**First Quarter**

**December 20, 2019 at Convocation Center - San Antonio**



**Period 1**

**Starters:**

**Texas Wesleyan:** 5 WINGFIELD, DESTINEY; 15 WHORLEY, EVIE (G); 24 BRIGHTWELL, JORDAN (G); 25 NGAWUCHU, CHRYSTAL (G); 30 GLEASON, NICOLE (G);  
**UTSA:** 10 LARSON, KARLEY (G); 13 COUSIN, DEJA (G); 15 TOTH, TIMEA (F); 32 QUEZADA, ADRYANA (F); 34 DONALD, KARRINGTON (G);

Time	VISITORS: Texas Wesleyan	Score	Margin	HOME: UTSA
09:48				TURNOVER (BADPASS) by COUSIN, DEJA
09:36	MISSED 3PTR by GLEASON, NICOLE			
09:30				REBOUND (DEF) by QUEZADA, ADRYANA
09:07		2-0	H 2	GOOD! JUMPER by TOTH, TIMEA
09:07				ASSIST by QUEZADA, ADRYANA
08:47	MISSED 3PTR by WINGFIELD, DESTINEY			
08:45				REBOUND (DEF) by TEAM
08:23		5-0	H 5	GOOD! 3PTR by COUSIN, DEJA
08:23				ASSIST by DONALD, KARRINGTON
08:03	MISSED 3PTR by GLEASON, NICOLE			
07:57	REBOUND (OFF) by WHORLEY, EVIE			
07:54	MISSED JUMPER by NGAWUCHU, CHRYSTAL			
07:50				REBOUND (DEF) by QUEZADA, ADRYANA
07:49				TURNOVER (DRIBBLING) by QUEZADA, ADRYANA
07:49	SUB OUT: NGAWUCHU, CHRYSTAL			
07:49	SUB IN: COX, MAKAYLA			
07:30	MISSED 3PTR by GLEASON, NICOLE			
07:27				REBOUND (DEF) by TEAM
07:14				MISSED 3PTR by LARSON, KARLEY
07:09	REBOUND (DEF) by WINGFIELD, DESTINEY			
07:05	GOOD! LAYUP by WINGFIELD, DESTINEY	5-2	H 3	
06:53				MISSED JUMPER by TOTH, TIMEA
06:49	REBOUND (DEF) by COX, MAKAYLA			
06:34	MISSED LAYUP by GLEASON, NICOLE			
06:34				REBOUND (DEF) by QUEZADA, ADRYANA
06:34	FOUL (PERSONAL) by COX, MAKAYLA			
06:23				MISSED 3PTR by LARSON, KARLEY
06:17	REBOUND (DEF) by WHORLEY, EVIE			
06:07				FOUL (PERSONAL) by TOTH, TIMEA
06:07				SUB OUT: COUSIN, DEJA
06:07				SUB IN: COOKS, MANDI
05:52	TURNOVER (LOSTBALL) by BRIGHTWELL, JORDAN			
05:52				STEAL by TOTH, TIMEA
05:28				MISSED 3PTR by LARSON, KARLEY
05:23				REBOUND (OFF) by TOTH, TIMEA
05:22				TURNOVER (SHOTCLOCK) by TEAM
05:10				FOUL (PERSONAL) by COOKS, MANDI
05:10	GOOD! FT by COX, MAKAYLA	5-3	H 2	
05:10	GOOD! FT by COX, MAKAYLA	5-4	H 1	
05:10				SUB OUT: LARSON, KARLEY
05:10				SUB IN: MASS, CHARLENE
05:10	SUB OUT: WINGFIELD, DESTINEY			
05:10	SUB IN: BRIGHAM, ALEXUS			
04:56				TURNOVER (BADPASS) by DONALD, KARRINGTON
04:56	STEAL by BRIGHTWELL, JORDAN			
04:47	MISSED 3PTR by GLEASON, NICOLE			
04:42				REBOUND (DEF) by TOTH, TIMEA
04:37		7-4	H 3	GOOD! LAYUP by MASS, CHARLENE [PNT]
04:22	MISSED JUMPER by BRIGHTWELL, JORDAN			
04:18				REBOUND (DEF) by QUEZADA, ADRYANA
04:00				MISSED 3PTR by DONALD, KARRINGTON
03:57	REBOUND (DEF) by BRIGHTWELL, JORDAN			
03:46	MISSED 3PTR by GLEASON, NICOLE			
03:44				REBOUND (DEF) by MASS, CHARLENE
03:37				MISSED JUMPER by MASS, CHARLENE
03:34	REBOUND (DEF) by BRIGHAM, ALEXUS			
03:31	TURNOVER (LOSTBALL) by BRIGHAM, ALEXUS			
03:31				
03:31				SUB OUT: TOTH, TIMEA
03:31				SUB OUT: QUEZADA, ADRYANA
03:31				SUB OUT: COOKS, MANDI
03:31				SUB IN: OMEMMAH, EVELYN
03:31				SUB IN: COUSIN, DEJA
03:31				SUB IN: MITCHELL, SHANNAN
03:31	SUB OUT: BRIGHTWELL, JORDAN			
03:31	SUB IN: NGAWUCHU, CHRYSTAL			
03:18				MISSED JUMPER by MITCHELL, SHANNAN
03:15				REBOUND (OFF) by DONALD, KARRINGTON
03:13				MISSED JUMPER by MASS, CHARLENE
03:10	REBOUND (DEF) by BRIGHAM, ALEXUS			



Time	VISITORS: Texas Wesleyan	Score	Margin	HOME: UTSA
02:54	MISSED 3PTR by COX, MAKAYLA			
02:50				REBOUND (DEF) by OMEMMAH, EVELYN
02:36				TURNOVER (TRAVEL) by DONALD, KARRINGTON
02:36				SUB OUT: DONALD, KARRINGTON
02:36				SUB IN: LARSON, KARLEY
02:25	TURNOVER (BADPASS) by COX, MAKAYLA			
02:25				STEAL by LARSON, KARLEY
02:18		9-4	H 5	GOOD! JUMPER by OMEMMAH, EVELYN
02:18				ASSIST by COUSIN, DEJA
02:02	MISSED JUMPER by BRIGHAM, ALEXUS			
01:59				REBOUND (DEF) by OMEMMAH, EVELYN
01:47				TURNOVER (LOSTBALL) by COUSIN, DEJA
01:33	TURNOVER (BADPASS) by BRIGHAM, ALEXUS			
01:22				MISSED 3PTR by COUSIN, DEJA
01:14				REBOUND (OFF) by OMEMMAH, EVELYN
01:14				MISSED LAYUP by OMEMMAH, EVELYN
01:14				REBOUND (OFF) by MITCHELL, SHANNAN
01:14	FOUL (PERSONAL) by NGAWUCHU, CHRYSTAL			
01:14	SUB OUT: WHORLEY, EVIE			
01:14	SUB IN: WINGFIELD, DESTINEY			
01:14		10-4	H 6	GOOD! FT by MITCHELL, SHANNAN
01:14				MISSED FT by MITCHELL, SHANNAN
01:13	REBOUND (DEF) by NGAWUCHU, CHRYSTAL			
01:04	MISSED 3PTR by GLEASON, NICOLE			
01:00				REBOUND (DEF) by OMEMMAH, EVELYN
00:53	FOUL (PERSONAL) by WINGFIELD, DESTINEY			
00:53				SUB OUT: MITCHELL, SHANNAN
00:53				SUB IN: QUEZADA, ADRYANA
00:41				TURNOVER (LOSTBALL) by OMEMMAH, EVELYN
00:36	MISSED LAYUP by BRIGHAM, ALEXUS			
00:36				BLOCK by OMEMMAH, EVELYN
00:30	REBOUND (OFF) by BRIGHAM, ALEXUS			
00:21	GOOD! LAYUP by NGAWUCHU, CHRYSTAL	10-6	H 4	
00:21	ASSIST by GLEASON, NICOLE			
00:04				MISSED 3PTR by MASS, CHARLENE
00:03				REBOUND (OFF) by TEAM

Texas Wesleyan 6, UTSA 10

Points from (This Period)	TSW	UTS
In the Paint	4	2
Off Turns	4	3
2nd Chance	2	1
Fast Break	0	0
Bench	2	5



**Official Box Score**  
**Texas Wesleyan vs UTSA**  
**Second Quarter Statistics Only**  
**December 20, 2019 at Convocation Center - San Antonio**



### Texas Wesleyan 19

No.	Player	S	Pts	FG	3FG	FT	OR	DR	TR	PF	A	TO	Blk	Stl	Min	+/-
05	WINGFIELD, DESTINEY	*	3	1-5	0-1	1-1	0	0	0	0	4	1	0	0	10	-3
15	WHORLEY, EVIE	G	5	2-2	1-1	0-0	1	1	2	0	0	0	0	0	9	-3
24	BRIGHTWELL, JORDAN	G	0	0-0	0-0	0-0	0	0	0	0	0	0	0	0	4	5
25	NGAWUCHU, CHRYSTAL	G	2	1-1	0-0	0-0	1	0	1	0	0	0	0	0	3	-4
30	GLEASON, NICOLE	G	3	1-5	1-4	0-0	0	1	1	0	0	0	1	1	8	1
10	COX, MAKAYLA		2	1-2	0-0	0-0	0	1	1	1	0	0	0	0	6	-8
23	BRIGHAM, ALEXUS	G	4	2-3	0-0	0-0	0	0	0	0	1	1	0	1	10	-3
TEAM							0	1	1	0		0				
<b>TOTALS</b>			<b>19</b>	<b>8-18</b>	<b>2-6</b>	<b>1-1</b>	<b>2</b>	<b>4</b>	<b>6</b>	<b>1</b>	<b>5</b>	<b>2</b>	<b>1</b>	<b>2</b>	<b>50</b>	

#### Shooting By Period

Period	FG	FG%	3FG	3FG%	FT	FT%
3rd Qtr	10-18	56%	6-11	55%	2-3	67%
4th Qtr	8-22	36%	1-5	20%	8-12	67%
2nd Half	8-18	44%	2-6	33%	1-1	100%
2nd Half	18-40	45%	7-16	44%	10-15	67%
Game	28-73	38.4%	9-30	30.0%	13-18	72.2%

Deadball Rebounds: 2,0

### UTSA 22

No.	Player	S	Pts	FG	3FG	FT	OR	DR	TR	PF	A	TO	Blk	Stl	Min	+/-
10	LARSON, KARLEY	G	0	0-1	0-1	0-0	0	0	0	0	1	0	0	0	9	-3
13	COUSIN, DEJA	G	3	1-2	1-2	0-0	0	0	0	0	1	0	0	0	4	5
15	TOTH, TIMEA	F	0	0-0	0-0	0-0	0	0	0	0	3	0	0	0	6	-2
32	QUEZADA, ADRYANA	F	12	6-9	0-0	0-0	1	3	4	0	0	1	0	0	9	-3
34	DONALD, KARRINGTON	G	5	2-2	1-1	0-0	0	1	1	0	2	2	0	0	9	1
01	OMEMMAH, EVELYN	F	0	0-0	0-0	0-0	0	3	3	0	0	0	1	0	5	7
03	BLANDING, ELENA	C	0	0-0	0-0	0-0	0	0	0	0	0	0	0	0	0	0
11	MASS, CHARLENE	G	2	0-0	0-0	2-2	0	0	0	2	0	1	0	0	5	4
25	MITCHELL, SHANNAN	F	0	0-1	0-0	0-0	0	0	0	1	0	0	0	0	2	0
40	COOKS, MANDI	F	0	0-0	0-0	0-0	0	0	0	0	0	0	0	0	1	6
TEAM							1	1	2	0		0				
<b>TOTALS</b>			<b>22</b>	<b>9-15</b>	<b>2-4</b>	<b>2-2</b>	<b>2</b>	<b>8</b>	<b>10</b>	<b>3</b>	<b>7</b>	<b>4</b>	<b>1</b>	<b>0</b>	<b>50</b>	

#### Shooting By Period

Period	FG	FG%	3FG	3FG%	FT	FT%
3rd Qtr	9-16	56%	2-7	29%	3-4	75%
4th Qtr	9-14	64%	1-1	100%	6-10	60%
2nd Half	9-15	60%	2-4	50%	2-2	100%
2nd Half	18-30	60%	3-8	38%	9-14	64%
Game	31-60	51.7%	6-19	31.6%	12-18	66.7%

Deadball Rebounds: 5,1

#### Game Notes:

Officials: Scott Yarbrough, Alexis Burton, Charles Stein  
Attendance: 282

Start Time: 03:05 PM ET  
End Time: 04:51 PM ET  
Game Duration: 1:46

Score	1st	2nd	3rd	4th	TOT
TSW	6	19	28	25	<b>78</b>
UTS	10	22	23	25	<b>80</b>

Points from (This Period)	TSW	UTS
In the Paint	12	12
Off Turns	2	5
2nd Chance	4	2
Fast Break	0	2
Bench	6	2



**Official Play-By-Play**  
**Texas Wesleyan vs UTSA**  
**Second Quarter**  
**December 20, 2019 at Convocation Center - San Antonio**



**Period 2**

**Starters:**

**Texas Wesleyan:** 5 WINGFIELD, DESTINEY; 15 WHORLEY, EVIE (G); 24 BRIGHTWELL, JORDAN (G); 25 NGAWUCHU, CHRYSTAL (G); 30 GLEASON, NICOLE (G);  
**UTSA:** 10 LARSON, KARLEY (G); 13 COUSIN, DEJA (G); 15 TOTH, TIMEA (F); 32 QUEZADA, ADRYANA (F); 34 DONALD, KARRINGTON (G);

Time	VISITORS: Texas Wesleyan	Score	Margin	HOME: UTSA
10:00				SUB OUT: COUSIN, DEJA
10:00				SUB IN: TOTH, TIMEA
09:37				FOUL (PERSONAL) by MASS, CHARLENE
09:32	MISSED 3PTR by GLEASON, NICOLE			
09:29				REBOUND (DEF) by OMEMMAH, EVELYN
08:59				TURNOVER (BADPASS) by MASS, CHARLENE
08:59	STEAL by BRIGHAM, ALEXUS			
08:53	MISSED 3PTR by GLEASON, NICOLE			
08:50				REBOUND (DEF) by TEAM
08:33	FOUL (PERSONAL) by COX, MAKAYLA			
08:33	SUB OUT: GLEASON, NICOLE			
08:33	SUB IN: WHORLEY, EVIE			
08:33		11-6	H 5	GOOD! FT by MASS, CHARLENE
08:33		12-6	H 6	GOOD! FT by MASS, CHARLENE
08:33				SUB OUT: OMEMMAH, EVELYN
08:33				SUB IN: DONALD, KARRINGTON
08:22	MISSED JUMPER by WINGFIELD, DESTINEY			
08:17	REBOUND (OFF) by NGAWUCHU, CHRYSTAL			
08:17	GOOD! LAYUP by NGAWUCHU, CHRYSTAL	12-8	H 4	
08:04		14-8	H 6	GOOD! JUMPER by QUEZADA, ADRYANA [PNT]
08:04				ASSIST by TOTH, TIMEA
07:43	GOOD! LAYUP by BRIGHAM, ALEXUS	14-10	H 4	
07:43	ASSIST by WINGFIELD, DESTINEY			
07:31		16-10	H 6	GOOD! JUMPER by QUEZADA, ADRYANA
07:31				ASSIST by TOTH, TIMEA
07:12	MISSED JUMPER by WINGFIELD, DESTINEY			
07:08				REBOUND (DEF) by QUEZADA, ADRYANA
06:58		18-10	H 8	GOOD! LAYUP by QUEZADA, ADRYANA
06:58				ASSIST by TOTH, TIMEA
06:51	TIMEOUT 30SEC			
06:51				
06:51				SUB OUT: MASS, CHARLENE
06:51				SUB IN: MITCHELL, SHANNAN
06:51	SUB OUT: COX, MAKAYLA			
06:51	SUB OUT: NGAWUCHU, CHRYSTAL			
06:51	SUB IN: BRIGHTWELL, JORDAN			
06:51	SUB IN: GLEASON, NICOLE			
06:35	GOOD! 3PTR by GLEASON, NICOLE	18-13	H 5	
06:35	ASSIST by BRIGHAM, ALEXUS			
06:16				TURNOVER (BADPASS) by DONALD, KARRINGTON
06:16	STEAL by GLEASON, NICOLE			
06:06	MISSED 3PTR by GLEASON, NICOLE			
06:02				REBOUND (DEF) by QUEZADA, ADRYANA
05:50				MISSED LAYUP by MITCHELL, SHANNAN
05:45	REBOUND (DEF) by GLEASON, NICOLE			
05:39	GOOD! 3PTR by WHORLEY, EVIE	18-16	H 2	
05:39	ASSIST by WINGFIELD, DESTINEY			
05:36				TIMEOUT 30SEC
05:36				SUB OUT: MITCHELL, SHANNAN
05:36				SUB IN: MASS, CHARLENE
05:25				MISSED JUMPER by QUEZADA, ADRYANA
05:23				REBOUND (OFF) by TEAM
05:17				MISSED 3PTR by LARSON, KARLEY
05:15	REBOUND (DEF) by TEAM			
05:05	TURNOVER (BADPASS) by BRIGHAM, ALEXUS			
04:51				MISSED JUMPER by QUEZADA, ADRYANA
04:51	BLOCK by GLEASON, NICOLE			
04:42				REBOUND (OFF) by QUEZADA, ADRYANA
04:36		20-16	H 4	GOOD! LAYUP by QUEZADA, ADRYANA
04:19	GOOD! LAYUP by WHORLEY, EVIE [PNT]	20-18	H 2	
04:08		22-18	H 4	GOOD! JUMPER by QUEZADA, ADRYANA [PNT]
04:08				ASSIST by LARSON, KARLEY
03:59	GOOD! JUMPER by WINGFIELD, DESTINEY [PNT]	22-20	H 2	
03:59				FOUL (PERSONAL) by MASS, CHARLENE
03:59				SUB OUT: MASS, CHARLENE
03:59				SUB IN: COUSIN, DEJA
03:59				SUB OUT: TOTH, TIMEA
03:59				SUB IN: OMEMMAH, EVELYN
03:59	GOOD! FT by WINGFIELD, DESTINEY	22-21	H 1	
03:44		24-21	H 3	GOOD! JUMPER by DONALD, KARRINGTON [PNT]



Time	VISITORS: Texas Wesleyan	Score	Margin	HOME: UTSA
03:44				ASSIST by COUSIN, DEJA
03:31	MISSED LAYUP by WINGFIELD, DESTINEY			
03:28				REBOUND (DEF) by OMEMMAH, EVELYN
03:27				TURNOVER (LOSTBALL) by DONALD, KARRINGTON
03:09	MISSED 3PTR by WINGFIELD, DESTINEY			
03:07				REBOUND (DEF) by OMEMMAH, EVELYN
02:51				TURNOVER (TRAVEL) by QUEZADA, ADRYANA
02:51	SUB OUT: BRIGHTWELL, JORDAN			
02:51	SUB IN: COX, MAKAYLA			
02:33	GOOD! LAYUP by BRIGHAM, ALEXUS	24-23	H 1	
02:33	ASSIST by WINGFIELD, DESTINEY			
02:24				MISSED 3PTR by COUSIN, DEJA
02:20	REBOUND (DEF) by COX, MAKAYLA			
02:08	MISSED LAYUP by BRIGHAM, ALEXUS			
02:04				REBOUND (DEF) by QUEZADA, ADRYANA
01:55				MISSED JUMPER by QUEZADA, ADRYANA
01:49	REBOUND (DEF) by WHORLEY, EVIE			
01:38	MISSED LAYUP by COX, MAKAYLA			
01:38				BLOCK by OMEMMAH, EVELYN
01:32				REBOUND (DEF) by DONALD, KARRINGTON
01:31		26-23	H 3	GOOD! LAYUP by QUEZADA, ADRYANA [FB]
01:31				ASSIST by DONALD, KARRINGTON
01:11	MISSED JUMPER by GLEASON, NICOLE			
01:06	REBOUND (OFF) by WHORLEY, EVIE			
01:03	GOOD! LAYUP by COX, MAKAYLA	26-25	H 1	
01:03	ASSIST by WINGFIELD, DESTINEY			
01:03				SUB OUT: LARSON, KARLEY
01:03				SUB OUT: QUEZADA, ADRYANA
01:03				SUB IN: MITCHELL, SHANNAN
01:03				SUB IN: COOKS, MANDI
00:55		29-25	H 4	GOOD! 3PTR by COUSIN, DEJA
00:55				ASSIST by DONALD, KARRINGTON
00:36	TURNOVER (DRIBBLING) by WINGFIELD, DESTINEY			
00:25		32-25	H 7	GOOD! 3PTR by DONALD, KARRINGTON
00:13				FOUL (PERSONAL) by MITCHELL, SHANNAN

Texas Wesleyan 25, UTSA 32

Points from (This Period)	TSW	UTS
In the Paint	12	12
Off Turns	2	5
2nd Chance	4	2
Fast Break	0	2
Bench	6	2



**Official Box Score**  
**Texas Wesleyan vs UTSA**  
**Second Half Statistics Only**  
**December 20, 2019 at Convocation Center - San Antonio**



### Texas Wesleyan 53

No.	Player	S	Pts	FG	3FG	FT	OR	DR	TR	PF	A	TO	Blk	Stl	Min	+/-
05	WINGFIELD, DESTINEY	*	10	4-11	2-4	0-0	0	1	1	0	2	1	0	2	20	5
10	COX, MAKAYLA		10	2-6	1-3	5-6	2	1	3	0	0	0	0	0	10	1
15	WHORLEY, EVIE	G	7	2-7	1-4	2-2	1	1	2	1	1	0	0	1	20	5
23	BRIGHAM, ALEXUS	G	10	4-6	0-0	2-5	2	0	2	3	2	1	0	1	16	4
24	BRIGHTWELL, JORDAN	G	0	0-1	0-0	0-0	0	1	1	0	0	0	0	0	8	4
25	NGAWUCHU, CHRYSTAL	G	5	2-2	0-0	1-1	0	1	1	3	0	0	1	0	8	0
30	GLEASON, NICOLE	G	11	4-7	3-5	0-1	2	1	3	2	2	0	0	1	18	6
	TEAM		0	0-0	0-0	0-0	2	0	2	0	0	0	0	0	0	
<b>TOTALS</b>			<b>53</b>	<b>18-40</b>	<b>7-16</b>	<b>10-15</b>	<b>9</b>	<b>6</b>	<b>15</b>	<b>9</b>	<b>7</b>	<b>2</b>	<b>1</b>	<b>5</b>	<b>100</b>	

#### Shooting By Period

Period	FG	FG%	3FG	3FG%	FT	FT%
3rd Qtr	10-18	56%	6-11	55%	2-3	67%
4th Qtr	8-22	36%	1-5	20%	8-12	67%
2nd Half	18-40	45%	7-16	44%	10-15	67%
Game	28-73	38.4%	9-30	30.0%	13-18	72.2%

Deadball Rebounds: 2,0

Last FG Half: TSW 4th-01:02

### UTSA 48

No.	Player	S	Pts	FG	3FG	FT	OR	DR	TR	PF	A	TO	Blk	Stl	Min	+/-
01	OMEMMAH, EVELYN	F	5	2-4	0-0	1-2	1	3	4	4	0	2	1	0	14	-1
03	BLANDING, ELENA	C	0	0-0	0-0	0-0	0	0	0	0	0	0	0	0	1	-5
10	LARSON, KARLEY	G	0	0-0	0-0	0-0	0	0	0	0	0	0	0	0	0	0
11	MASS, CHARLENE	G	2	0-1	0-1	2-2	0	1	1	2	1	0	0	0	7	-8
13	COUSIN, DEJA	G	1	0-3	0-3	1-2	0	3	3	0	2	0	0	0	14	-3
15	TOTH, TIMEA	F	4	2-2	0-0	0-0	1	2	3	3	0	2	0	0	11	-13
25	MITCHELL, SHANNAN	F	1	0-0	0-0	1-2	0	2	2	2	0	2	1	0	5	-1
32	QUEZADA, ADRYANA	F	20	9-12	0-1	2-4	2	2	4	1	1	2	2	0	19	-4
34	DONALD, KARRINGTON	G	11	4-7	3-3	0-0	0	2	2	3	3	2	0	0	20	-5
40	COOKS, MANDI	F	4	1-1	0-0	2-2	0	1	1	0	1	0	0	0	9	15
	TEAM		0	0-0	0-0	0-0	2	0	2	0	0	0	0	0	0	
<b>TOTALS</b>			<b>48</b>	<b>18-30</b>	<b>3-8</b>	<b>9-14</b>	<b>6</b>	<b>16</b>	<b>22</b>	<b>15</b>	<b>8</b>	<b>10</b>	<b>4</b>	<b>0</b>	<b>100</b>	

#### Shooting By Period

Period	FG	FG%	3FG	3FG%	FT	FT%
3rd Qtr	9-16	56%	2-7	29%	3-4	75%
4th Qtr	9-14	64%	1-1	100%	6-10	60%
2nd Half	18-30	60%	3-8	38%	9-14	64%
Game	31-60	51.7%	6-19	31.6%	12-18	66.7%

Deadball Rebounds: 5,1

Last FG Half: UTS 4th-00:14

#### Game Notes:

Officials: **Scott Yarbrough, Alexis Burton, Charles Stein**  
Attendance: **282**

Start Time: **03:05 PM ET**

End Time: **04:51 PM ET**

Game Duration: **1:46**

Score	1st	2nd	3rd	4th	TOT
TSW	6	19	28	25	<b>78</b>
UTS	10	22	23	25	<b>80</b>

Points from (This Period)	TSW	UTS
In the Paint	14	24
Off Turns	18	2
2nd Chance	10	11
Fast Break	3	5
Bench	20	12



**Official Box Score**  
**Texas Wesleyan vs UTSA**  
**Third Quarter Statistics Only**  
**December 20, 2019 at Convocation Center - San Antonio**



**Texas Wesleyan 53**

No.	Player	S	Pts	FG	3FG	FT	OR	DR	TR	PF	A	TO	Blk	Stl	Min	+/-
05	WINGFIELD, DESTINEY	*	5	2-5	1-3	0-0	0	0	0	0	2	1	0	0	10	5
15	WHORLEY, EVIE	G	3	1-4	1-3	0-0	0	1	1	0	1	0	0	0	10	5
24	BRIGHTWELL, JORDAN	G	0	0-1	0-0	0-0	0	1	1	0	0	0	0	0	7	3
25	NGAWUCHU, CHRYSTAL	G	5	2-2	0-0	1-1	0	1	1	1	0	0	0	0	4	1
30	GLEASON, NICOLE	G	9	3-4	3-4	0-0	1	0	1	2	1	0	0	0	10	5
10	COX, MAKAYLA		3	1-1	1-1	0-0	0	0	0	0	0	0	0	0	3	2
23	BRIGHAM, ALEXUS	G	3	1-1	0-0	1-2	0	0	0	0	2	1	0	1	6	4
TEAM							1	0	1	0		0				
<b>TOTALS</b>			<b>28</b>	<b>10-18</b>	<b>6-11</b>	<b>2-3</b>	<b>2</b>	<b>3</b>	<b>5</b>	<b>3</b>	<b>6</b>	<b>2</b>	<b>0</b>	<b>1</b>	<b>50</b>	

*Shooting By Period*

Period	FG	FG%	3FG	3FG%	FT	FT%
2nd Half	0-0	0%	0-0	0%	0-0	0%
Game	28-73	38.4%	9-30	30.0%	13-18	72.2%

*Deadball Rebounds: 2,0*

**UTSA 48**

No.	Player	S	Pts	FG	3FG	FT	OR	DR	TR	PF	A	TO	Blk	Stl	Min	+/-
10	LARSON, KARLEY	G	0	0-0	0-0	0-0	0	0	0	0	0	0	0	0	0	0
13	COUSIN, DEJA	G	0	0-3	0-3	0-0	0	1	1	0	2	0	0	0	7	-4
15	TOTH, TIMEA	F	4	2-2	0-0	0-0	1	0	1	1	0	0	0	0	6	-8
32	QUEZADA, ADRYANA	F	4	2-4	0-1	0-0	0	1	1	0	1	1	0	0	9	-4
34	DONALD, KARRINGTON	G	8	3-4	2-2	0-0	0	0	0	0	2	1	0	0	10	-5
01	OMEMMAH, EVELYN	F	3	1-1	0-0	1-2	1	1	2	2	0	0	1	0	6	-3
03	BLANDING, ELENA	C	0	0-0	0-0	0-0	0	0	0	0	0	0	0	0	1	-5
11	MASS, CHARLENE	G	0	0-1	0-1	0-0	0	0	0	0	0	0	0	0	2	-7
25	MITCHELL, SHANNAN	F	0	0-0	0-0	0-0	0	2	2	2	0	2	1	0	4	-2
40	COOKS, MANDI	F	4	1-1	0-0	2-2	0	1	1	0	1	0	0	0	5	13
TEAM							2	0	2	0		0				
<b>TOTALS</b>			<b>23</b>	<b>9-16</b>	<b>2-7</b>	<b>3-4</b>	<b>4</b>	<b>6</b>	<b>10</b>	<b>5</b>	<b>6</b>	<b>4</b>	<b>2</b>	<b>0</b>	<b>50</b>	

*Shooting By Period*

Period	FG	FG%	3FG	3FG%	FT	FT%
2nd Half	0-0	0%	0-0	0%	0-0	0%
Game	31-60	51.7%	6-19	31.6%	12-18	66.7%

*Deadball Rebounds: 5,1*

Game Notes:

Officials: **Scott Yarbrough, Alexis Burton, Charles Stein**  
Attendance: **282**

Start Time: **03:05 PM ET**  
End Time: **04:51 PM ET**  
Game Duration: **1:46**

Score	1st	2nd	3rd	4th	TOT
TSW	6	19	28	25	<b>78</b>
UTS	10	22	23	25	<b>80</b>

Points from (This Period)	TSW	UTS
In the Paint	4	12
Off Turns	11	2
2nd Chance	3	7
Fast Break	0	2
Bench	6	7



**Official Play-By-Play**  
**Texas Wesleyan vs UTSA**  
**Third Quarter**  
**December 20, 2019 at Convocation Center - San Antonio**



**Period 3**

**Starters:**

**Texas Wesleyan:** 5 WINGFIELD, DESTINEY; 15 WHORLEY, EVIE (G); 24 BRIGHTWELL, JORDAN (G); 25 NGAWUCHU, CHRYSTAL (G); 30 GLEASON, NICOLE (G);

**UTSA:** 10 LARSON, KARLEY (G); 13 COUSIN, DEJA (G); 15 TOTH, TIMEA (F); 32 QUEZADA, ADRYANA (F); 34 DONALD, KARRINGTON (G);

Time	VISITORS: Texas Wesleyan	Score	Margin	HOME: UTSA
10:00				SUB OUT: OMEMMAH, EVELYN
10:00				SUB OUT: MITCHELL, SHANNAN
10:00				SUB OUT: COOKS, MANDI
10:00				SUB IN: MASS, CHARLENE
10:00				SUB IN: TOTH, TIMEA
10:00				SUB IN: QUEZADA, ADRYANA
10:00	SUB OUT: COX, MAKAYLA			
10:00	SUB OUT: BRIGHAM, ALEXUS			
10:00	SUB IN: BRIGHTWELL, JORDAN			
10:00	SUB IN: NGAWUCHU, CHRYSTAL			
09:50	TURNOVER (DRIBBLING) by WINGFIELD, DESTINEY			
09:33				MISSED JUMPER by QUEZADA, ADRYANA
09:30	REBOUND (DEF) by NGAWUCHU, CHRYSTAL			
09:21	GOOD! JUMPER by NGAWUCHU, CHRYSTAL [PNT]	32-27	H 5	
09:21	ASSIST by GLEASON, NICOLE			
09:11	FOUL (PERSONAL) by NGAWUCHU, CHRYSTAL			
09:04				TURNOVER (LOSTBALL) by QUEZADA, ADRYANA
08:38	GOOD! 3PTR by WINGFIELD, DESTINEY	32-30	H 2	
08:38	ASSIST by WHORLEY, EVIE			
08:21				MISSED 3PTR by MASS, CHARLENE
08:17	REBOUND (DEF) by WHORLEY, EVIE			
08:08	GOOD! LAYUP by NGAWUCHU, CHRYSTAL	32-32	T	
08:08				FOUL (PERSONAL) by TOTH, TIMEA
08:08				SUB OUT: TOTH, TIMEA
08:08				SUB IN: OMEMMAH, EVELYN
08:08				SUB OUT: MASS, CHARLENE
08:08				SUB IN: COOKS, MANDI
08:08	GOOD! FT by NGAWUCHU, CHRYSTAL	32-33	V 1	
07:56				MISSED 3PTR by QUEZADA, ADRYANA
07:54				REBOUND (OFF) by TEAM
07:50		34-33	H 1	GOOD! LAYUP by QUEZADA, ADRYANA
07:50				ASSIST by COUSIN, DEJA
07:32				FOUL (PERSONAL) by OMEMMAH, EVELYN
07:22	MISSED LAYUP by WINGFIELD, DESTINEY			
07:18				REBOUND (DEF) by QUEZADA, ADRYANA
07:08		37-33	H 4	GOOD! 3PTR by DONALD, KARRINGTON
07:08				ASSIST by COUSIN, DEJA
06:47	MISSED LAYUP by WHORLEY, EVIE			
06:47				BLOCK by OMEMMAH, EVELYN
06:47	REBOUND (OFF) by TEAM			
06:42	MISSED 3PTR by WHORLEY, EVIE			
06:39				REBOUND (DEF) by OMEMMAH, EVELYN
06:31		39-33	H 6	GOOD! LAYUP by QUEZADA, ADRYANA
06:31				ASSIST by DONALD, KARRINGTON
06:21	MISSED 3PTR by GLEASON, NICOLE			
06:18				REBOUND (DEF) by COUSIN, DEJA
06:10				MISSED 3PTR by COUSIN, DEJA
06:07	REBOUND (DEF) by BRIGHTWELL, JORDAN			
05:59	MISSED 3PTR by WHORLEY, EVIE			
05:56				REBOUND (DEF) by COOKS, MANDI
05:42				MISSED 3PTR by COUSIN, DEJA
05:40				REBOUND (OFF) by TEAM
05:40	SUB OUT: BRIGHTWELL, JORDAN			
05:40	SUB OUT: NGAWUCHU, CHRYSTAL			
05:40	SUB IN: COX, MAKAYLA			
05:40	SUB IN: BRIGHAM, ALEXUS			
05:32		41-33	H 8	GOOD! LAYUP by OMEMMAH, EVELYN
05:32				ASSIST by DONALD, KARRINGTON
05:26				FOUL (PERSONAL) by OMEMMAH, EVELYN
05:26				SUB OUT: QUEZADA, ADRYANA
05:26				SUB IN: MITCHELL, SHANNAN
05:19	GOOD! 3PTR by GLEASON, NICOLE	41-36	H 5	
05:19	ASSIST by BRIGHAM, ALEXUS			
04:59		43-36	H 7	GOOD! JUMPER by COOKS, MANDI
04:49	MISSED 3PTR by WINGFIELD, DESTINEY			
04:45				REBOUND (DEF) by MITCHELL, SHANNAN
04:36				MISSED JUMPER by DONALD, KARRINGTON
04:35				REBOUND (OFF) by OMEMMAH, EVELYN
04:35	FOUL (PERSONAL) by GLEASON, NICOLE			
04:35				



Time	VISITORS: Texas Wesleyan	Score	Margin	HOME: UTSA
04:35				SUB OUT: COUSIN, DEJA
04:35				SUB OUT: COOKS, MANDI
04:35				SUB IN: BLANDING, ELENA
04:35				SUB IN: QUEZADA, ADRYANA
04:35				MISSED FT by OMEMMAH, EVELYN
04:35				REBOUND (OFF) by TEAM
04:35		44-36	H 8	GOOD! FT by OMEMMAH, EVELYN
04:25	GOOD! 3PTR by GLEASON, NICOLE	44-39	H 5	
04:25	ASSIST by BRIGHAM, ALEXUS			
04:20				TURNOVER (BADPASS) by DONALD, KARRINGTON
04:03	GOOD! JUMPER by WINGFIELD, DESTINEY	44-41	H 3	
03:49				FOUL (OFF) by MITCHELL, SHANNAN
03:49				TURNOVER (OFFENSIVE) by MITCHELL, SHANNAN
03:49				SUB OUT: OMEMMAH, EVELYN
03:49				SUB IN: TOT, TIMEA
03:28	GOOD! 3PTR by COX, MAKAYLA	44-44	T	
03:17		46-44	H 2	GOOD! LAYUP by DONALD, KARRINGTON [PNT]
03:09	TIMEOUT 30SEC			
03:09				SUB OUT: BLANDING, ELENA
03:09				SUB IN: COOKS, MANDI
02:52	TURNOVER (LOSTBALL) by BRIGHAM, ALEXUS			
02:34		48-44	H 4	GOOD! LAYUP by TOT, TIMEA
02:34				ASSIST by COOKS, MANDI
02:14				FOUL (PERSONAL) by MITCHELL, SHANNAN
02:14	SUB OUT: COX, MAKAYLA			
02:14	SUB IN: BRIGHTWELL, JORDAN			
02:14	MISSED FT by BRIGHAM, ALEXUS			
02:14	REBOUND (OFF) by TEAM			
02:14	GOOD! FT by BRIGHAM, ALEXUS	48-45	H 3	
02:02		51-45	H 6	GOOD! 3PTR by DONALD, KARRINGTON
02:02				ASSIST by QUEZADA, ADRYANA
01:52	MISSED JUMPER by BRIGHTWELL, JORDAN			
01:52				BLOCK by MITCHELL, SHANNAN
01:46				REBOUND (DEF) by MITCHELL, SHANNAN
01:46	FOUL (PERSONAL) by GLEASON, NICOLE			
01:46		52-45	H 7	GOOD! FT by COOKS, MANDI [FB]
01:46		53-45	H 8	GOOD! FT by COOKS, MANDI [FB]
01:46				SUB OUT: COOKS, MANDI
01:46				SUB IN: OMEMMAH, EVELYN
01:27	GOOD! JUMPER by BRIGHAM, ALEXUS	53-47	H 6	
01:07				TURNOVER (LOSTBALL) by MITCHELL, SHANNAN
01:07	STEAL by BRIGHAM, ALEXUS			
01:07				SUB OUT: MITCHELL, SHANNAN
01:07				SUB IN: COUSIN, DEJA
00:56	GOOD! 3PTR by GLEASON, NICOLE	53-50	H 3	
00:56	ASSIST by WINGFIELD, DESTINEY			
00:47				MISSED 3PTR by COUSIN, DEJA
00:41				REBOUND (OFF) by TOT, TIMEA
00:41		55-50	H 5	GOOD! LAYUP by TOT, TIMEA
00:24	MISSED 3PTR by WINGFIELD, DESTINEY			
00:20	REBOUND (OFF) by GLEASON, NICOLE			
00:04	GOOD! 3PTR by WHORLEY, EVIE	55-53	H 2	
00:04	ASSIST by WINGFIELD, DESTINEY			

Texas Wesleyan 53, UTSA 55

Points from (This Period)	TSW	UTS
In the Paint	4	12
Off Turns	11	2
2nd Chance	3	7
Fast Break	0	2
Bench	6	7



**Official Box Score**  
**Texas Wesleyan vs UTSA**  
**Fourth Quarter Statistics Only**  
**December 20, 2019 at Convocation Center - San Antonio**



### Texas Wesleyan 25

No.	Player	S	Pts	FG	3FG	FT	OR	DR	TR	PF	A	TO	Blk	Stl	Min	+/-
05	WINGFIELD, DESTINEY	*	5	2-6	1-1	0-0	0	1	1	0	0	0	0	2	10	0
15	WHORLEY, EVIE	G	4	1-3	0-1	2-2	1	0	1	1	0	0	0	1	10	0
24	BRIGHTWELL, JORDAN	G	0	0-0	0-0	0-0	0	0	0	0	0	0	0	0	1	1
25	NGAWUCHU, CHRYSTAL	G	0	0-0	0-0	0-0	0	0	0	2	0	0	1	0	4	-1
30	GLEASON, NICOLE	G	2	1-3	0-1	0-1	1	1	2	0	1	0	0	1	8	1
10	COX, MAKAYLA		7	1-5	0-2	5-6	2	1	3	0	0	0	0	0	7	-1
23	BRIGHAM, ALEXUS	G	7	3-5	0-0	1-3	2	0	2	3	0	0	0	0	10	0
	TEAM						1	0	1	0		0				
<b>TOTALS</b>			<b>25</b>	<b>8-22</b>	<b>1-5</b>	<b>8-12</b>	<b>7</b>	<b>3</b>	<b>10</b>	<b>6</b>	<b>1</b>	<b>0</b>	<b>1</b>	<b>4</b>	<b>50</b>	

#### Shooting By Period

Period	FG	FG%	3FG	3FG%	FT	FT%
Game	28-73	38.4%	9-30	30.0%	13-18	72.2%

Deadball Rebounds: 2,0

### UTSA 25

No.	Player	S	Pts	FG	3FG	FT	OR	DR	TR	PF	A	TO	Blk	Stl	Min	+/-
10	LARSON, KARLEY	G	0	0-0	0-0	0-0	0	0	0	0	0	0	0	0	0	0
13	COUSIN, DEJA	G	1	0-0	0-0	1-2	0	2	2	0	0	0	0	0	7	1
15	TOTH, TIMEA	F	0	0-0	0-0	0-0	0	2	2	2	0	2	0	0	5	-5
32	QUEZADA, ADRYANA	F	16	7-8	0-0	2-4	2	1	3	1	0	1	2	0	10	0
34	DONALD, KARRINGTON	G	3	1-3	1-1	0-0	0	2	2	3	1	1	0	0	10	0
01	OMEMMAH, EVELYN	F	2	1-3	0-0	0-0	0	2	2	2	0	2	0	0	8	2
03	BLANDING, ELENA	C	0	0-0	0-0	0-0	0	0	0	0	0	0	0	0	0	0
11	MASS, CHARLENE	G	2	0-0	0-0	2-2	0	1	1	2	1	0	0	0	5	-1
25	MITCHELL, SHANNAN	F	1	0-0	0-0	1-2	0	0	0	0	0	0	0	0	1	1
40	COOKS, MANDI	F	0	0-0	0-0	0-0	0	0	0	0	0	0	0	0	4	2
	TEAM						0	0	0	0		0				
<b>TOTALS</b>			<b>25</b>	<b>9-14</b>	<b>1-1</b>	<b>6-10</b>	<b>2</b>	<b>10</b>	<b>12</b>	<b>10</b>	<b>2</b>	<b>6</b>	<b>2</b>	<b>0</b>	<b>50</b>	

#### Shooting By Period

Period	FG	FG%	3FG	3FG%	FT	FT%
Game	31-60	51.7%	6-19	31.6%	12-18	66.7%

Deadball Rebounds: 5,1

#### Game Notes:

Officials: Scott Yarbrough, Alexis Burton, Charles Stein  
Attendance: 282

Start Time: 03:05 PM ET  
End Time: 04:51 PM ET  
Game Duration: 1:46

Score	1st	2nd	3rd	4th	TOT
TSW	6	19	28	25	<b>78</b>
UTS	10	22	23	25	<b>80</b>

Points from (This Period)	TSW	UTS
In the Paint	10	12
Off Turns	7	0
2nd Chance	7	4
Fast Break	3	3
Bench	14	5



**Official Play-By-Play**  
**Texas Wesleyan vs UTSA**  
**Fourth Quarter**  
**December 20, 2019 at Convocation Center - San Antonio**



**Period 4**

**Starters:**

**Texas Wesleyan:** 5 WINGFIELD, DESTINEY; 15 WHORLEY, EVIE (G); 24 BRIGHTWELL, JORDAN (G); 25 NGAWUCHU, CHRYSTAL (G); 30 GLEASON, NICOLE (G);

**UTSA:** 10 LARSON, KARLEY (G); 13 COUSIN, DEJA (G); 15 TOTH, TIMEA (F); 32 QUEZADA, ADRYANA (F); 34 DONALD, KARRINGTON (G);

Time	VISITORS: Texas Wesleyan	Score	Margin	HOME: UTSA
10:00				SUB OUT: OMEMMAH, EVELYN
10:00				SUB IN: MASS, CHARLENE
09:33		57-53	H 4	GOOD! JUMPER by QUEZADA, ADRYANA [PNT]
09:17	GOOD! LAYUP by BRIGHAM, ALEXUS [PNT]	57-55	H 2	
09:17				FOUL (PERSONAL) by MASS, CHARLENE
09:17	GOOD! FT by BRIGHAM, ALEXUS	57-56	H 1	
09:02	SUB OUT: BRIGHTWELL, JORDAN			
09:02	SUB IN: NGAWUCHU, CHRYSTAL			
08:53				MISSED JUMPER by QUEZADA, ADRYANA
08:53	BLOCK by NGAWUCHU, CHRYSTAL			
08:53	REBOUND (DEF) by GLEASON, NICOLE			
08:39	GOOD! JUMPER by WINGFIELD, DESTINEY	57-58	V 1	
08:20				TURNOVER (LOSTBALL) by TOTH, TIMEA
08:20	STEAL by WINGFIELD, DESTINEY			
08:15	MISSED LAYUP by WINGFIELD, DESTINEY			
08:15	REBOUND (OFF) by BRIGHAM, ALEXUS			
08:15				FOUL (PERSONAL) by DONALD, KARRINGTON
08:15				SUB OUT: COUSIN, DEJA
08:15				SUB OUT: TOTH, TIMEA
08:15				SUB IN: OMEMMAH, EVELYN
08:15				SUB IN: COOKS, MANDI
08:08	GOOD! 3PTR by WINGFIELD, DESTINEY	57-61	V 4	
08:08	ASSIST by GLEASON, NICOLE			
07:58		59-61	V 2	GOOD! LAYUP by QUEZADA, ADRYANA [PNT]
07:35	MISSED JUMPER by GLEASON, NICOLE			
07:32				REBOUND (DEF) by MASS, CHARLENE
07:29	FOUL (PERSONAL) by BRIGHAM, ALEXUS			
07:29	FOUL (TECH) by BRIGHAM, ALEXUS			
07:29				MISSED FT by QUEZADA, ADRYANA
07:29		60-61	V 1	GOOD! FT by QUEZADA, ADRYANA [FB]
07:29		61-61	T	GOOD! FT by MASS, CHARLENE
07:29		62-61	H 1	GOOD! FT by MASS, CHARLENE
07:29				REBOUND (OFF) by TEAM
07:18				TURNOVER (BADPASS) by QUEZADA, ADRYANA
07:14				FOUL (PERSONAL) by MASS, CHARLENE
07:14				SUB OUT: MASS, CHARLENE
07:14				SUB IN: MITCHELL, SHANNAN
07:14	SUB OUT: GLEASON, NICOLE			
07:14	SUB IN: COX, MAKAYLA			
07:14	MISSED FT by BRIGHAM, ALEXUS			
07:14	REBOUND (OFF) by TEAM			
07:12	MISSED FT by BRIGHAM, ALEXUS			
07:11	REBOUND (OFF) by COX, MAKAYLA			
07:09	MISSED LAYUP by COX, MAKAYLA			
07:05				REBOUND (DEF) by QUEZADA, ADRYANA
06:45		64-61	H 3	GOOD! JUMPER by QUEZADA, ADRYANA
06:33	GOOD! JUMPER by BRIGHAM, ALEXUS	64-63	H 1	
06:19	FOUL (PERSONAL) by NGAWUCHU, CHRYSTAL			
06:19				SUB OUT: COOKS, MANDI
06:19				SUB IN: TOTH, TIMEA
06:19				MISSED FT by MITCHELL, SHANNAN
06:19				REBOUND (OFF) by TEAM
06:19		65-63	H 2	GOOD! FT by MITCHELL, SHANNAN
06:19				SUB OUT: MITCHELL, SHANNAN
06:19				SUB IN: COUSIN, DEJA
06:09				FOUL (PERSONAL) by DONALD, KARRINGTON
06:01	MISSED 3PTR by COX, MAKAYLA			
05:57				REBOUND (DEF) by OMEMMAH, EVELYN
05:44	FOUL (PERSONAL) by NGAWUCHU, CHRYSTAL			
05:36				MISSED LAYUP by OMEMMAH, EVELYN
05:32				REBOUND (OFF) by QUEZADA, ADRYANA
05:32		67-63	H 4	GOOD! LAYUP by QUEZADA, ADRYANA
05:13				FOUL (PERSONAL) by TOTH, TIMEA
05:13	GOOD! FT by COX, MAKAYLA	67-64	H 3	
05:13	GOOD! FT by COX, MAKAYLA	67-65	H 2	
05:13	SUB OUT: NGAWUCHU, CHRYSTAL			
05:13	SUB IN: GLEASON, NICOLE			
05:02		69-65	H 4	GOOD! JUMPER by QUEZADA, ADRYANA
04:49	GOOD! LAYUP by BRIGHAM, ALEXUS	69-67	H 2	
04:36				MISSED JUMPER by DONALD, KARRINGTON



Time	VISITORS: Texas Wesleyan	Score	Margin	HOME: UTSA
04:35	REBOUND (DEF) by COX, MAKAYLA			
04:35				FOUL (PERSONAL) by TOTH, TIMEA
04:35				
04:35				SUB OUT: TOTH, TIMEA
04:35				SUB IN: COOKS, MANDI
04:35	GOOD! FT by COX, MAKAYLA [FB]	69-68	H 1	
04:35	MISSED FT by COX, MAKAYLA			
04:33				REBOUND (DEF) by DONALD, KARRINGTON
04:20				MISSED JUMPER by OMEMMAH, EVELYN
04:12				REBOUND (OFF) by QUEZADA, ADRYANA
04:12		71-68	H 3	GOOD! LAYUP by QUEZADA, ADRYANA
04:10	MISSED LAYUP by WINGFIELD, DESTINEY			
04:10				BLOCK by QUEZADA, ADRYANA
03:59	REBOUND (OFF) by BRIGHAM, ALEXUS			
03:58	MISSED LAYUP by BRIGHAM, ALEXUS			
03:51	REBOUND (OFF) by WHORLEY, EVIE			
03:51	GOOD! LAYUP by WHORLEY, EVIE	71-70	H 1	
03:51	FOUL (PERSONAL) by WHORLEY, EVIE			
03:51				MISSED FT by QUEZADA, ADRYANA
03:51				REBOUND (OFF) by TEAM
03:51		72-70	H 2	GOOD! FT by QUEZADA, ADRYANA [FB]
03:30	MISSED 3PTR by WHORLEY, EVIE			
03:26	REBOUND (OFF) by GLEASON, NICOLE			
03:24	MISSED 3PTR by COX, MAKAYLA			
03:20				REBOUND (DEF) by COUSIN, DEJA
03:05		74-70	H 4	GOOD! LAYUP by OMEMMAH, EVELYN
03:05				ASSIST by DONALD, KARRINGTON
02:53	MISSED JUMPER by WINGFIELD, DESTINEY			
02:50				REBOUND (DEF) by DONALD, KARRINGTON
02:37				TURNOVER (LOSTBALL) by OMEMMAH, EVELYN
02:37	STEAL by WHORLEY, EVIE			
02:31	MISSED JUMPER by WHORLEY, EVIE			
02:31				BLOCK by QUEZADA, ADRYANA
02:31	REBOUND (OFF) by TEAM			
02:31				SUB OUT: COOKS, MANDI
02:31				SUB IN: TOTH, TIMEA
02:31				SUB OUT: COUSIN, DEJA
02:31				SUB IN: MASS, CHARLENE
02:28	MISSED LAYUP by BRIGHAM, ALEXUS			
02:28				REBOUND (DEF) by TOTH, TIMEA
02:16				FOUL (OFF) by OMEMMAH, EVELYN
02:16				TURNOVER (OFFENSIVE) by OMEMMAH, EVELYN
02:09	MISSED 3PTR by GLEASON, NICOLE			
02:05				REBOUND (DEF) by TOTH, TIMEA
02:04				TURNOVER (BADPASS) by TOTH, TIMEA
02:04	STEAL by WINGFIELD, DESTINEY			
01:56	MISSED LAYUP by COX, MAKAYLA			
01:51	REBOUND (OFF) by COX, MAKAYLA			
01:51	GOOD! LAYUP by COX, MAKAYLA	74-72	H 2	
01:35				TURNOVER (BADPASS) by DONALD, KARRINGTON
01:35	STEAL by GLEASON, NICOLE			
01:30				FOUL (PERSONAL) by QUEZADA, ADRYANA
01:30	GOOD! FT by WHORLEY, EVIE [FB]	74-73	H 1	
01:30	GOOD! FT by WHORLEY, EVIE [FB]	74-74	T	
01:30	TIMEOUT 30SEC			
01:22				SUB OUT: MASS, CHARLENE
01:22				SUB OUT: TOTH, TIMEA
01:22				SUB IN: COUSIN, DEJA
01:22				SUB IN: COOKS, MANDI
01:19				MISSED JUMPER by DONALD, KARRINGTON
01:14	REBOUND (DEF) by WINGFIELD, DESTINEY			
01:02	GOOD! LAYUP by GLEASON, NICOLE	74-76	V 2	
01:02				FOUL (PERSONAL) by OMEMMAH, EVELYN
01:02	MISSED FT by GLEASON, NICOLE			
01:00				REBOUND (DEF) by OMEMMAH, EVELYN
00:56				TIMEOUT TEAM
00:50		77-76	H 1	GOOD! 3PTR by DONALD, KARRINGTON
00:50				ASSIST by MASS, CHARLENE
00:38				SUB OUT: COOKS, MANDI
00:38				SUB IN: MASS, CHARLENE
00:28				FOUL (PERSONAL) by DONALD, KARRINGTON
00:28	GOOD! FT by COX, MAKAYLA	77-77	T	
00:28	GOOD! FT by COX, MAKAYLA	77-78	V 1	
00:28				TIMEOUT 30SEC
00:14		79-78	H 1	GOOD! LAYUP by QUEZADA, ADRYANA
00:13	TIMEOUT TEAM			
00:13				SUB OUT: QUEZADA, ADRYANA
00:13				SUB IN: TOTH, TIMEA
00:02	MISSED LAYUP by WINGFIELD, DESTINEY			
00:02				REBOUND (DEF) by COUSIN, DEJA



Time	VISITORS: Texas Wesleyan	Score	Margin	HOME: UTSA
00:02	FOUL (PERSONAL) by BRIGHAM, ALEXUS			
00:02				SUB OUT: OMEMMAH, EVELYN
00:02				SUB IN: QUEZADA, ADRYANA
00:02				MISSED FT by COUSIN, DEJA
00:02				REBOUND (OFF) by TEAM
00:02		80-78	H 2	GOOD! FT by COUSIN, DEJA [FB]

Texas Wesleyan 78, UTSA 80

Points from (This Period)	TSW	UTS
In the Paint	10	12
Off Turns	7	0
2nd Chance	7	4
Fast Break	3	3
Bench	14	5



**Official Scoring/Possession Reference Chart**  
**Texas Wesleyan vs UTSA**  
**Period 1**  
**December 20, 2019 at Convocation Center - San Antonio**



**Period 1**

**Starters:**

**Texas Wesleyan:** 5 WINGFIELD, DESTINEY; 15 WHORLEY, EVIE (G); 24 BRIGHTWELL, JORDAN (G); 25 NGAWUCHU, CHRYSTAL (G); 30 GLEASON, NICOLE (G);  
**UTSA:** 10 LARSON, KARLEY (G); 13 COUSIN, DEJA (G); 15 TOTH, TIMEA (F); 32 QUEZADA, ADRYANA (F); 34 DONALD, KARRINGTON (G);

Time	VISITORS: Texas Wesleyan	Score	Margin	HOME: UTSA
09:07		2-0	H 2	GOOD! JUMPER by TOTH, TIMEA
08:23		5-0	H 5	GOOD! 3PTR by COUSIN, DEJA
07:05	GOOD! LAYUP by WINGFIELD, DESTINEY	5-2	H 3	
05:10	GOOD! FT by COX, MAKAYLA	5-3	H 2	
05:10	GOOD! FT by COX, MAKAYLA	5-4	H 1	
04:37		7-4	H 3	GOOD! LAYUP by MASS, CHARLENE (PNT)
02:18		9-4	H 5	GOOD! JUMPER by OMEMMAH, EVELYN
01:14		10-4	H 6	GOOD! FT by MITCHELL, SHANNAN
00:21	GOOD! LAYUP by NGAWUCHU, CHRYSTAL	10-6	H 4	

**Texas Wesleyan 6, UTSA 10**



**Official Scoring/Possession Reference Chart**  
**Texas Wesleyan vs UTSA**  
**Period 2**  
**December 20, 2019 at Convocation Center - San Antonio**



**Period 2**

**Starters:**

**Texas Wesleyan:** 5 WINGFIELD, DESTINEY; 15 WHORLEY, EVIE (G); 24 BRIGHTWELL, JORDAN (G); 25 NGAWUCHU, CRYSTAL (G); 30 GLEASON, NICOLE (G);  
**UTSA:** 10 LARSON, KARLEY (G); 13 COUSIN, DEJA (G); 15 TOTH, TIMEA (F); 32 QUEZADA, ADRYANA (F); 34 DONALD, KARRINGTON (G);

Time	VISITORS: Texas Wesleyan	Score	Margin	HOME: UTSA
08:33		11-6	H 5	GOOD! FT by MASS, CHARLENE
08:33		12-6	H 6	GOOD! FT by MASS, CHARLENE
08:17	GOOD! LAYUP by NGAWUCHU, CRYSTAL	12-8	H 4	
08:04		14-8	H 6	GOOD! JUMPER by QUEZADA, ADRYANA [PNT]
07:43	GOOD! LAYUP by BRIGHAM, ALEXUS	14-10	H 4	
07:31		16-10	H 6	GOOD! JUMPER by QUEZADA, ADRYANA
06:58		18-10	H 8	GOOD! LAYUP by QUEZADA, ADRYANA
06:35	GOOD! 3PTR by GLEASON, NICOLE	18-13	H 5	
05:39	GOOD! 3PTR by WHORLEY, EVIE	18-16	H 2	
04:36		20-16	H 4	GOOD! LAYUP by QUEZADA, ADRYANA
04:19	GOOD! LAYUP by WHORLEY, EVIE [PNT]	20-18	H 2	
04:08		22-18	H 4	GOOD! JUMPER by QUEZADA, ADRYANA [PNT]
03:59	GOOD! JUMPER by WINGFIELD, DESTINEY [PNT]	22-20	H 2	
03:59	GOOD! FT by WINGFIELD, DESTINEY	22-21	H 1	
03:44		24-21	H 3	GOOD! JUMPER by DONALD, KARRINGTON [PNT]
02:33	GOOD! LAYUP by BRIGHAM, ALEXUS	24-23	H 1	
01:31		26-23	H 3	GOOD! LAYUP by QUEZADA, ADRYANA [FB]
01:03	GOOD! LAYUP by COX, MAKAYLA	26-25	H 1	
00:55		29-25	H 4	GOOD! 3PTR by COUSIN, DEJA
00:25		32-25	H 7	GOOD! 3PTR by DONALD, KARRINGTON

**Texas Wesleyan 25, UTSA 32**



**Official Scoring/Possession Reference Chart**  
**Texas Wesleyan vs UTSA**  
**Period 3**  
**December 20, 2019 at Convocation Center - San Antonio**



**Period 3**

**Starters:**

**Texas Wesleyan:** 5 WINGFIELD, DESTINEY; 15 WHORLEY, EVIE (G); 24 BRIGHTWELL, JORDAN (G); 25 NGAWUCHU, CHRYSTAL (G); 30 GLEASON, NICOLE (G);  
**UTSA:** 10 LARSON, KARLEY (G); 13 COUSIN, DEJA (G); 15 TOTH, TIMEA (F); 32 QUEZADA, ADRYANA (F); 34 DONALD, KARRINGTON (G);

Time	VISITORS: Texas Wesleyan	Score	Margin	HOME: UTSA
09:21	GOOD! JUMPER by NGAWUCHU, CHRYSTAL [PNT]	32-27	H 5	
08:38	GOOD! 3PTR by WINGFIELD, DESTINEY	32-30	H 2	
08:08	GOOD! LAYUP by NGAWUCHU, CHRYSTAL	32-32	T	
08:08	GOOD! FT by NGAWUCHU, CHRYSTAL	32-33	V 1	
07:50		34-33	H 1	GOOD! LAYUP by QUEZADA, ADRYANA
07:08		37-33	H 4	GOOD! 3PTR by DONALD, KARRINGTON
06:31		39-33	H 6	GOOD! LAYUP by QUEZADA, ADRYANA
05:32		41-33	H 8	GOOD! LAYUP by OMEMMAH, EVELYN
05:19	GOOD! 3PTR by GLEASON, NICOLE	41-36	H 5	
04:59		43-36	H 7	GOOD! JUMPER by COOKS, MANDI
04:35		44-36	H 8	GOOD! FT by OMEMMAH, EVELYN
04:25	GOOD! 3PTR by GLEASON, NICOLE	44-39	H 5	
04:03	GOOD! JUMPER by WINGFIELD, DESTINEY	44-41	H 3	
03:28	GOOD! 3PTR by COX, MAKAYLA	44-44	T	
03:17		46-44	H 2	GOOD! LAYUP by DONALD, KARRINGTON [PNT]
02:34		48-44	H 4	GOOD! LAYUP by TOTH, TIMEA
02:14	GOOD! FT by BRIGHAM, ALEXUS	48-45	H 3	
02:02		51-45	H 6	GOOD! 3PTR by DONALD, KARRINGTON
01:46		52-45	H 7	GOOD! FT by COOKS, MANDI [FB]
01:46		53-45	H 8	GOOD! FT by COOKS, MANDI [FB]
01:27	GOOD! JUMPER by BRIGHAM, ALEXUS	53-47	H 6	
00:56	GOOD! 3PTR by GLEASON, NICOLE	53-50	H 3	
00:41		55-50	H 5	GOOD! LAYUP by TOTH, TIMEA
00:04	GOOD! 3PTR by WHORLEY, EVIE	55-53	H 2	

**Texas Wesleyan 53, UTSA 55**



**Official Scoring/Possession Reference Chart**  
**Texas Wesleyan vs UTSA**  
**Period 4**  
**December 20, 2019 at Convocation Center - San Antonio**



**Period 4**

**Starters:**

**Texas Wesleyan:** 5 WINGFIELD, DESTINEY; 15 WHORLEY, EVIE (G); 24 BRIGHTWELL, JORDAN (G); 25 NGAWUCHU, CHRYSTAL (G); 30 GLEASON, NICOLE (G);  
**UTSA:** 10 LARSON, KARLEY (G); 13 COUSIN, DEJA (G); 15 TOTH, TIMEA (F); 32 QUEZADA, ADRYANA (F); 34 DONALD, KARRINGTON (G);

Time	VISITORS: Texas Wesleyan	Score	Margin	HOME: UTSA
09:33		57-53	H 4	GOOD! JUMPER by QUEZADA, ADRYANA [PNT]
09:17	GOOD! LAYUP by BRIGHAM, ALEXUS [PNT]	57-55	H 2	
09:17	GOOD! FT by BRIGHAM, ALEXUS	57-56	H 1	
08:39	GOOD! JUMPER by WINGFIELD, DESTINEY	57-58	V 1	
08:08	GOOD! 3PTR by WINGFIELD, DESTINEY	57-61	V 4	
07:58		59-61	V 2	GOOD! LAYUP by QUEZADA, ADRYANA [PNT]
07:29		60-61	V 1	GOOD! FT by QUEZADA, ADRYANA [FB]
07:29		61-61	T	GOOD! FT by MASS, CHARLENE
07:29		62-61	H 1	GOOD! FT by MASS, CHARLENE
06:45		64-61	H 3	GOOD! JUMPER by QUEZADA, ADRYANA
06:33	GOOD! JUMPER by BRIGHAM, ALEXUS	64-63	H 1	
06:19		65-63	H 2	GOOD! FT by MITCHELL, SHANNAN
05:32		67-63	H 4	GOOD! LAYUP by QUEZADA, ADRYANA
05:13	GOOD! FT by COX, MAKAYLA	67-64	H 3	
05:13	GOOD! FT by COX, MAKAYLA	67-65	H 2	
05:02		69-65	H 4	GOOD! JUMPER by QUEZADA, ADRYANA
04:49	GOOD! LAYUP by BRIGHAM, ALEXUS	69-67	H 2	
04:35	GOOD! FT by COX, MAKAYLA [FB]	69-68	H 1	
04:12		71-68	H 3	GOOD! LAYUP by QUEZADA, ADRYANA
03:51	GOOD! LAYUP by WHORLEY, EVIE	71-70	H 1	
03:51		72-70	H 2	GOOD! FT by QUEZADA, ADRYANA [FB]
03:05		74-70	H 4	GOOD! LAYUP by OMEMMAH, EVELYN
01:51	GOOD! LAYUP by COX, MAKAYLA	74-72	H 2	
01:30	GOOD! FT by WHORLEY, EVIE [FB]	74-73	H 1	
01:30	GOOD! FT by WHORLEY, EVIE [FB]	74-74	T	
01:02	GOOD! LAYUP by GLEASON, NICOLE	74-76	V 2	
00:50		77-76	H 1	GOOD! 3PTR by DONALD, KARRINGTON
00:28	GOOD! FT by COX, MAKAYLA	77-77	T	
00:28	GOOD! FT by COX, MAKAYLA	77-78	V 1	
00:14		79-78	H 1	GOOD! LAYUP by QUEZADA, ADRYANA
00:02		80-78	H 2	GOOD! FT by COUSIN, DEJA [FB]

**Texas Wesleyan 78, UTSA 80**



**Official Substitutions Log  
Texas Wesleyan vs UTSA  
Period 1**

**December 20, 2019 at Convocation Center - San Antonio**



<b>VISITORS: Texas Wesleyan</b>	<b>Time</b>	<b>Score</b>	<b>HOME: UTSA</b>
5 WINGFIELD, DESTINEY			10 LARSON, KARLEY
15 WHORLEY, EVIE			13 COUSIN, DEJA
24 BRIGHTWELL, JORDAN			15 TOTH, TIMEA
25 NGAWUCHU, CHRYSTAL			32 QUEZADA, ADRYANA
30 GLEASON, NICOLE			34 DONALD, KARRINGTON
SUB OUT: 25 NGAWUCHU, CHRYSTAL	07:49	0-5	
SUB IN: 10 COX, MAKAYLA	07:49		
	06:07	2-5	SUB OUT: COUSIN, DEJA
	06:07		SUB IN: COOKS, MANDI
	05:10	4-5	SUB OUT: LARSON, KARLEY
	05:10		SUB IN: MASS, CHARLENE
SUB OUT: 5 WINGFIELD, DESTINEY	05:10		
SUB IN: 23 BRIGHAM, ALEXUS	05:10		
	03:31	4-7	SUB OUT: TOTH, TIMEA
	03:31		SUB OUT: QUEZADA, ADRYANA
	03:31		SUB OUT: COOKS, MANDI
	03:31		SUB IN: OMEMMAH, EVELYN
	03:31		SUB IN: COUSIN, DEJA
	03:31		SUB IN: MITCHELL, SHANNAN
SUB OUT: 24 BRIGHTWELL, JORDAN	03:31		
SUB IN: 25 NGAWUCHU, CHRYSTAL	03:31		
	02:36	4-7	SUB OUT: DONALD, KARRINGTON
			SUB IN: LARSON, KARLEY
SUB OUT: 15 WHORLEY, EVIE	01:14	4-9	
SUB IN: 5 WINGFIELD, DESTINEY	01:14		
	00:53	4-10	SUB OUT: MITCHELL, SHANNAN
	00:53		SUB IN: QUEZADA, ADRYANA

**Texas Wesleyan 6, UTSA 10**



**Official Substitutions Log  
Texas Wesleyan vs UTSA  
Period 2**

**December 20, 2019 at Convocation Center - San Antonio**



VISITORS: Texas Wesleyan	Time	Score	HOME: UTSA
5 WINGFIELD, DESTINEY			10 LARSON, KARLEY
15 WHORLEY, EVIE			13 COUSIN, DEJA
24 BRIGHTWELL, JORDAN			15 TOTH, TIMEA
25 NGAWUCHU, CHRYSTAL			32 QUEZADA, ADRYANA
30 GLEASON, NICOLE			34 DONALD, KARRINGTON
	10:00	-	SUB OUT: COUSIN, DEJA
	10:00		SUB IN: TOTH, TIMEA
SUB OUT: 30 GLEASON, NICOLE	08:33	-	
SUB IN: 15 WHORLEY, EVIE	08:33		
	08:33		SUB OUT: OMEMMAH, EVELYN
	08:33		SUB IN: DONALD, KARRINGTON
	06:51	10-18	SUB OUT: MASS, CHARLENE
	06:51		SUB IN: MITCHELL, SHANNAN
SUB OUT: 10 COX, MAKAYLA	06:51		
SUB OUT: 25 NGAWUCHU, CHRYSTAL	06:51		
SUB IN: 24 BRIGHTWELL, JORDAN	06:51		
SUB IN: 30 GLEASON, NICOLE	06:51		
	05:36	16-18	SUB OUT: MITCHELL, SHANNAN
	05:36		SUB IN: MASS, CHARLENE
	03:59	20-22	SUB OUT: MASS, CHARLENE
	03:59		SUB IN: COUSIN, DEJA
	03:59		SUB OUT: TOTH, TIMEA
	03:59		SUB IN: OMEMMAH, EVELYN
SUB OUT: 24 BRIGHTWELL, JORDAN	02:51	21-24	
SUB IN: 10 COX, MAKAYLA	02:51		
	01:03	25-26	SUB OUT: LARSON, KARLEY
	01:03		SUB OUT: QUEZADA, ADRYANA
	01:03		SUB IN: MITCHELL, SHANNAN
	01:03		SUB IN: COOKS, MANDI

**Texas Wesleyan 25, UTSA 32**



**Official Substitutions Log  
Texas Wesleyan vs UTSA  
Period 3**

**December 20, 2019 at Convocation Center - San Antonio**



VISITORS: Texas Wesleyan	Time	Score	HOME: UTSA
5 WINGFIELD, DESTINEY			10 LARSON, KARLEY
15 WHORLEY, EVIE			13 COUSIN, DEJA
24 BRIGHTWELL, JORDAN			15 TOTH, TIMEA
25 NGAWUCHU, CHRYSTAL			32 QUEZADA, ADRYANA
30 GLEASON, NICOLE			34 DONALD, KARRINGTON
	10:00	-	SUB OUT: OMEMMAH, EVELYN
	10:00		SUB OUT: MITCHELL, SHANNAN
	10:00		SUB OUT: COOKS, MANDI
	10:00		SUB IN: MASS, CHARLENE
	10:00		SUB IN: TOTH, TIMEA
	10:00		SUB IN: QUEZADA, ADRYANA
SUB OUT: 10 COX, MAKAYLA	10:00		
SUB OUT: 23 BRIGHAM, ALEXUS	10:00		
SUB IN: 24 BRIGHTWELL, JORDAN	10:00		
SUB IN: 25 NGAWUCHU, CHRYSTAL	10:00		
	08:08	32-32	SUB OUT: TOTH, TIMEA
	08:08		SUB IN: OMEMMAH, EVELYN
	08:08		SUB OUT: MASS, CHARLENE
	08:08		SUB IN: COOKS, MANDI
SUB OUT: 24 BRIGHTWELL, JORDAN	05:40	33-39	
SUB OUT: 25 NGAWUCHU, CHRYSTAL	05:40		
SUB IN: 10 COX, MAKAYLA	05:40		
SUB IN: 23 BRIGHAM, ALEXUS	05:40		
	05:26	33-41	SUB OUT: QUEZADA, ADRYANA
	05:26		SUB IN: MITCHELL, SHANNAN
	04:35	36-43	SUB OUT: COUSIN, DEJA
	04:35		SUB OUT: COOKS, MANDI
	04:35		SUB IN: BLANDING, ELENA
	04:35		SUB IN: QUEZADA, ADRYANA
	03:49	41-44	SUB OUT: OMEMMAH, EVELYN
	03:49		SUB IN: TOTH, TIMEA
	03:09	44-46	SUB OUT: BLANDING, ELENA
	03:09		SUB IN: COOKS, MANDI
SUB OUT: 10 COX, MAKAYLA	02:14	44-48	
SUB IN: 24 BRIGHTWELL, JORDAN	02:14		
	01:46	45-53	SUB OUT: COOKS, MANDI
	01:46		SUB IN: OMEMMAH, EVELYN
	01:07	47-53	SUB OUT: MITCHELL, SHANNAN
	01:07		SUB IN: COUSIN, DEJA

**Texas Wesleyan 53, UTSA 55**



**Official Substitutions Log  
Texas Wesleyan vs UTSA  
Period 4**

**December 20, 2019 at Convocation Center - San Antonio**



VISITORS: Texas Wesleyan	Time	Score	HOME: UTSA
5 WINGFIELD, DESTINEY			10 LARSON, KARLEY
15 WHORLEY, EVIE			13 COUSIN, DEJA
24 BRIGHTWELL, JORDAN			15 TOTH, TIMEA
25 NGAWUCHU, CHRYSTAL			32 QUEZADA, ADRYANA
30 GLEASON, NICOLE			34 DONALD, KARRINGTON
	10:00	-	SUB OUT: OMEMMAH, EVELYN
	10:00		SUB IN: MASS, CHARLENE
SUB OUT: 24 BRIGHTWELL, JORDAN	09:02	56-57	
SUB IN: 25 NGAWUCHU, CHRYSTAL	09:02		
	08:15	58-57	SUB OUT: COUSIN, DEJA
	08:15		SUB OUT: TOTH, TIMEA
	08:15		SUB IN: OMEMMAH, EVELYN
	08:15		SUB IN: COOKS, MANDI
	07:14	61-62	SUB OUT: MASS, CHARLENE
	07:14		SUB IN: MITCHELL, SHANNAN
SUB OUT: 30 GLEASON, NICOLE	07:14		
SUB IN: 10 COX, MAKAYLA	07:14		
	06:19	63-64	SUB OUT: COOKS, MANDI
	06:19		SUB IN: TOTH, TIMEA
	06:19		SUB OUT: MITCHELL, SHANNAN
	06:19		SUB IN: COUSIN, DEJA
SUB OUT: 25 NGAWUCHU, CHRYSTAL	05:13	65-67	
SUB IN: 30 GLEASON, NICOLE	05:13		
	04:35	67-69	SUB OUT: TOTH, TIMEA
	04:35		SUB IN: COOKS, MANDI
	02:31	70-74	SUB OUT: COOKS, MANDI
	02:31		SUB IN: TOTH, TIMEA
	02:31		SUB OUT: COUSIN, DEJA
	02:31		SUB IN: MASS, CHARLENE
	01:22	74-74	SUB OUT: MASS, CHARLENE
	01:22		SUB OUT: TOTH, TIMEA
	01:22		SUB IN: COUSIN, DEJA
	01:22		SUB IN: COOKS, MANDI
	00:38	76-77	SUB OUT: COOKS, MANDI
	00:38		SUB IN: MASS, CHARLENE
	00:13	78-79	SUB OUT: QUEZADA, ADRYANA
	00:13		SUB IN: TOTH, TIMEA
	00:02	78-79	SUB OUT: OMEMMAH, EVELYN
	00:02		SUB IN: QUEZADA, ADRYANA

**Texas Wesleyan 78, UTSA 80**

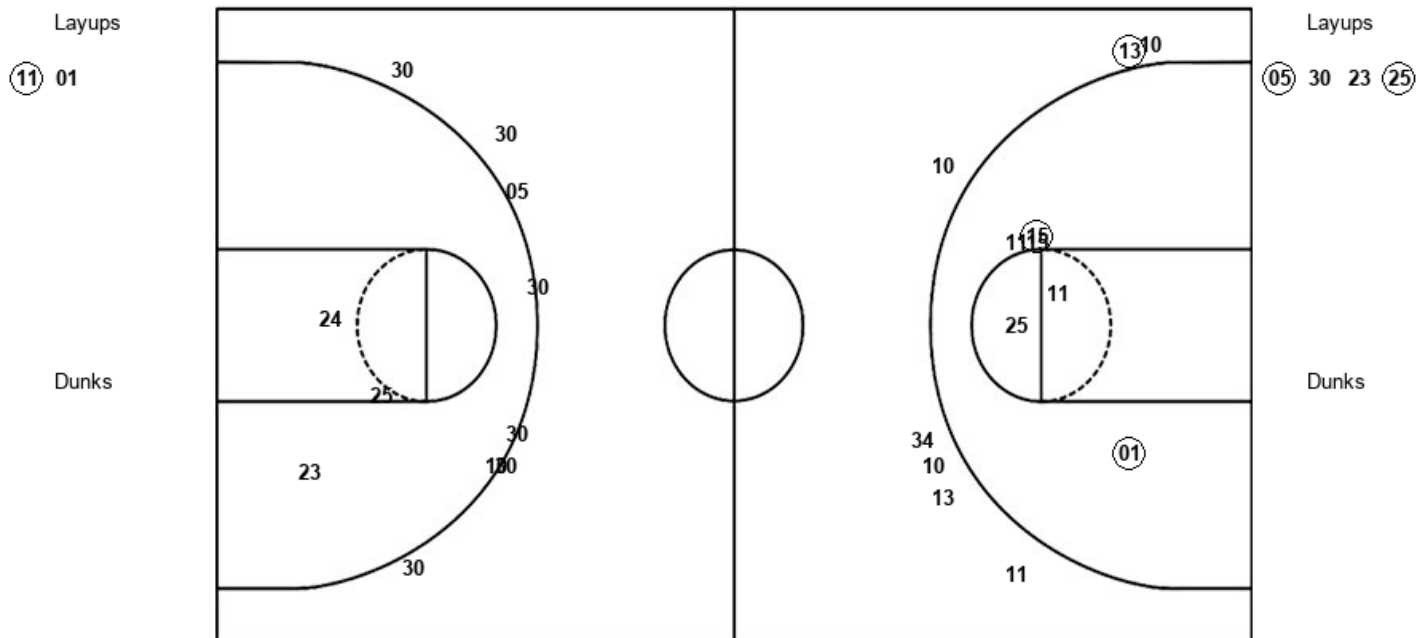


Official Shot Chart  
**Texas Wesleyan vs UTSA**  
 PERIOD 1 Shots  
 December 20, 2019 at Convocation Center - San Antonio



**UTSA**

**Texas Wesleyan**



UTS : Period 1	Made	Att	Pct
Layups	1	2	50.0
Dunks	0	0	0
2PT Field Goals	3	8	37.5
3PT Field Goals	1	7	14.3
<b>Total Field Goals</b>	<b>4</b>	<b>15</b>	<b>26.7</b>

TSW : Period 1	Made	Att	Pct
Layups	2	4	50.0
Dunks	0	0	0
2PT Field Goals	2	7	28.6
3PT Field Goals	0	8	00.0
<b>Total Field Goals</b>	<b>2</b>	<b>15</b>	<b>13.3</b>



Official Shot Chart  
**Texas Wesleyan vs UTSA**  
 PERIOD 2 Shots  
 December 20, 2019 at Convocation Center - San Antonio

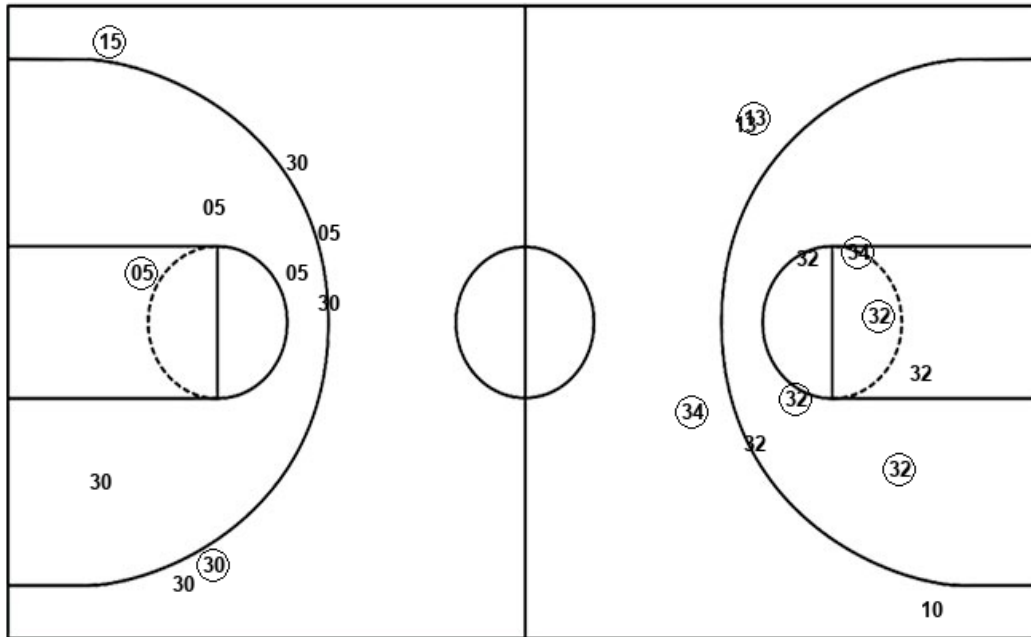


**UTSA**

**Texas Wesleyan**

Layups  
 (32) 25 (32) (32)

Dunks



UTS : Period 2	Made	Att	Pct
Layups	3	4	75.0
Dunks	0	0	0
2PT Field Goals	7	11	63.6
3PT Field Goals	2	4	50.0
<b>Total Field Goals</b>	<b>9</b>	<b>15</b>	<b>60.0</b>

TSW : Period 2	Made	Att	Pct
Layups	5	8	62.5
Dunks	0	0	0
2PT Field Goals	6	12	50.0
3PT Field Goals	2	6	33.3
<b>Total Field Goals</b>	<b>8</b>	<b>18</b>	<b>44.4</b>



Official Shot Chart  
**Texas Wesleyan vs UTSA**  
 PERIOD 3 Shots  
 December 20, 2019 at Convocation Center - San Antonio

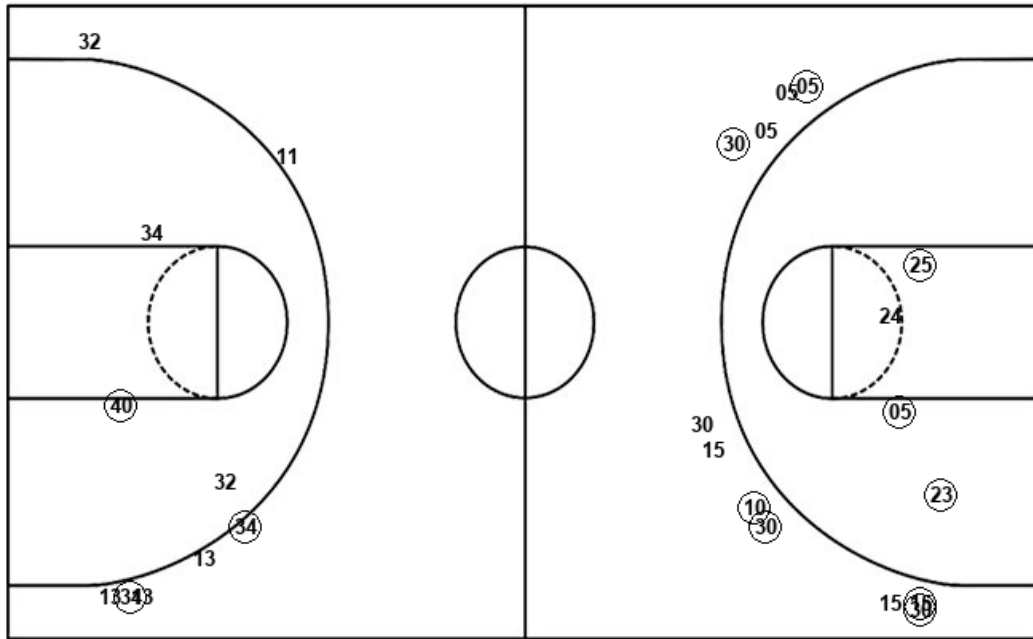


**UTSA**

**Texas Wesleyan**

Layups  
 32 32 01 34 15  
 15

Dunks



Layups

Dunks

UTS : Period 3	Made	Att	Pct
Layups	6	6	100.0
Dunks	0	0	0
2PT Field Goals	7	9	77.8
3PT Field Goals	2	7	28.6
<b>Total Field Goals</b>	<b>9</b>	<b>16</b>	<b>56.3</b>

TSW : Period 3	Made	Att	Pct
Layups	1	3	33.3
Dunks	0	0	0
2PT Field Goals	4	7	57.1
3PT Field Goals	6	11	54.5
<b>Total Field Goals</b>	<b>10</b>	<b>18</b>	<b>55.6</b>



Official Shot Chart  
**Texas Wesleyan vs UTSA**  
 PERIOD 4 Shots  
 December 20, 2019 at Convocation Center - San Antonio

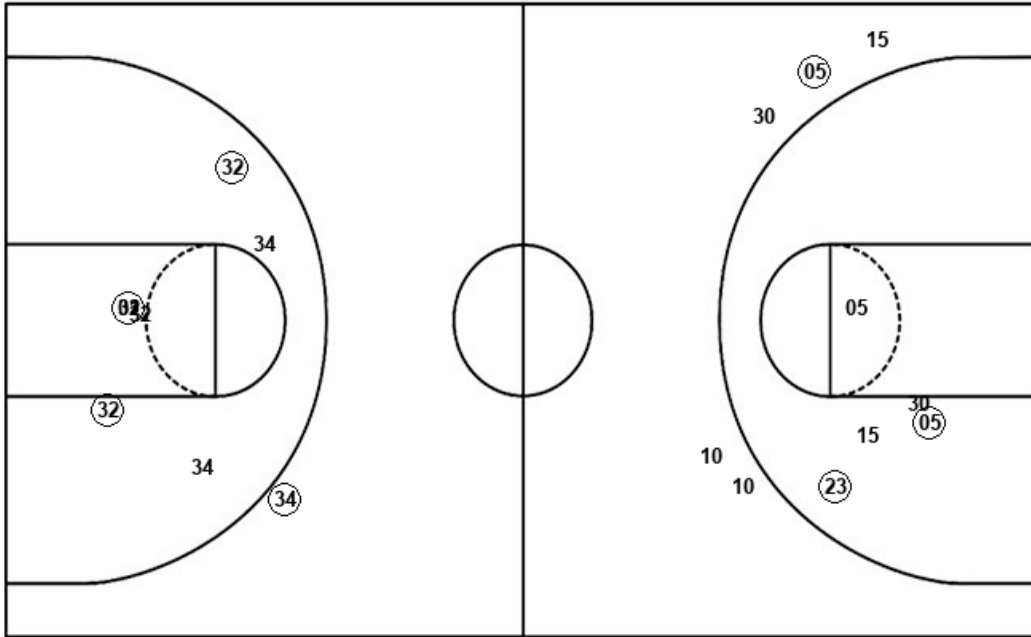


**UTSA**

**Texas Wesleyan**

Layups  
 (32) 01 (32) (32) (01)  
 (32)

Dunks



Layups

(23) 05 10 (23) 05  
 23 15 23 10 (10)  
 (30) 05

Dunks

UTS : Period 4	Made	Att	Pct
Layups	5	6	83.3
Dunks	0	0	0
2PT Field Goals	8	13	61.5
3PT Field Goals	1	1	100.0
<b>Total Field Goals</b>	<b>9</b>	<b>14</b>	<b>64.3</b>

TSW : Period 4	Made	Att	Pct
Layups	5	12	41.7
Dunks	0	0	0
2PT Field Goals	7	17	41.2
3PT Field Goals	1	5	20.0
<b>Total Field Goals</b>	<b>8</b>	<b>22</b>	<b>36.4</b>

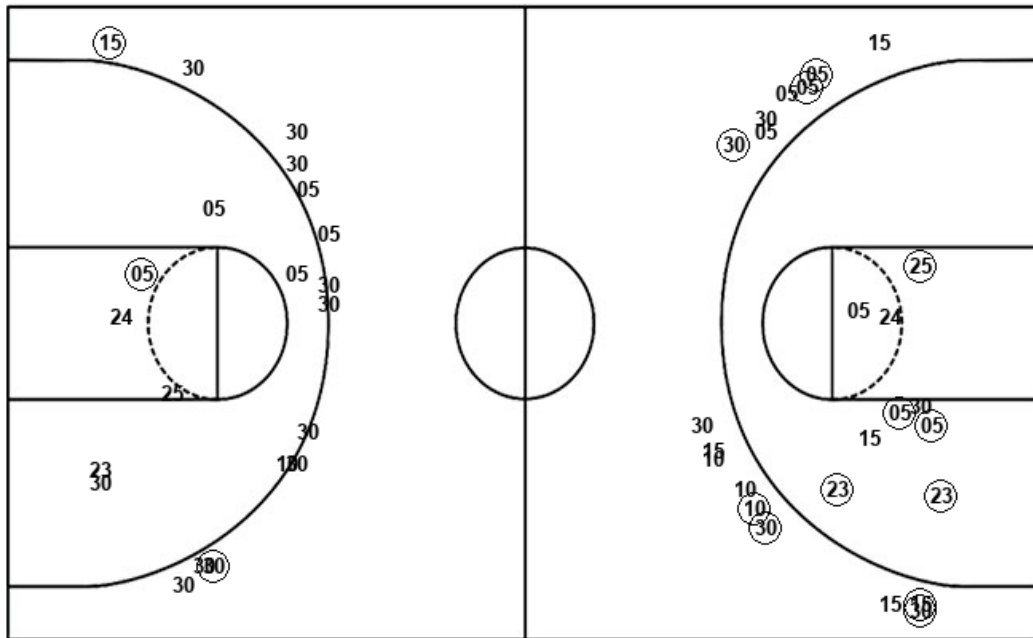


Official Shot Chart  
**Texas Wesleyan vs UTSA**  
 Texas Wesleyan Team Shots  
 December 20, 2019 at Convocation Center - San Antonio



Layups

Dunks



Layups

Dunks

(05) 30 23 (25) (25)  
 (23) (15) 05 (23) 23  
 10 (10) (25) 05 15  
 (23) 05 10 (23) 05  
 23 (15) 23 10 (10)  
 (30) 05

TSW : Period 1	Made	Att	Pct
Layups	2	4	50.0
Dunks	0	0	0
2PT Field Goals	2	7	28.6
3PT Field Goals	0	8	00.0
<b>Total Field Goals</b>	<b>2</b>	<b>15</b>	<b>13.3</b>

TSW : Period 3	Made	Att	Pct
Layups	1	3	33.3
Dunks	0	0	0
2PT Field Goals	4	7	57.1
3PT Field Goals	6	11	54.5
<b>Total Field Goals</b>	<b>10</b>	<b>18</b>	<b>55.6</b>

TSW : Period 2	Made	Att	Pct
Layups	5	8	62.5
Dunks	0	0	0
2PT Field Goals	6	12	50.0
3PT Field Goals	2	6	33.3
<b>Total Field Goals</b>	<b>8</b>	<b>18</b>	<b>44.4</b>

TSW : Period 4	Made	Att	Pct
Layups	5	12	41.7
Dunks	0	0	0
2PT Field Goals	7	17	41.2
3PT Field Goals	1	5	20.0
<b>Total Field Goals</b>	<b>8</b>	<b>22</b>	<b>36.4</b>

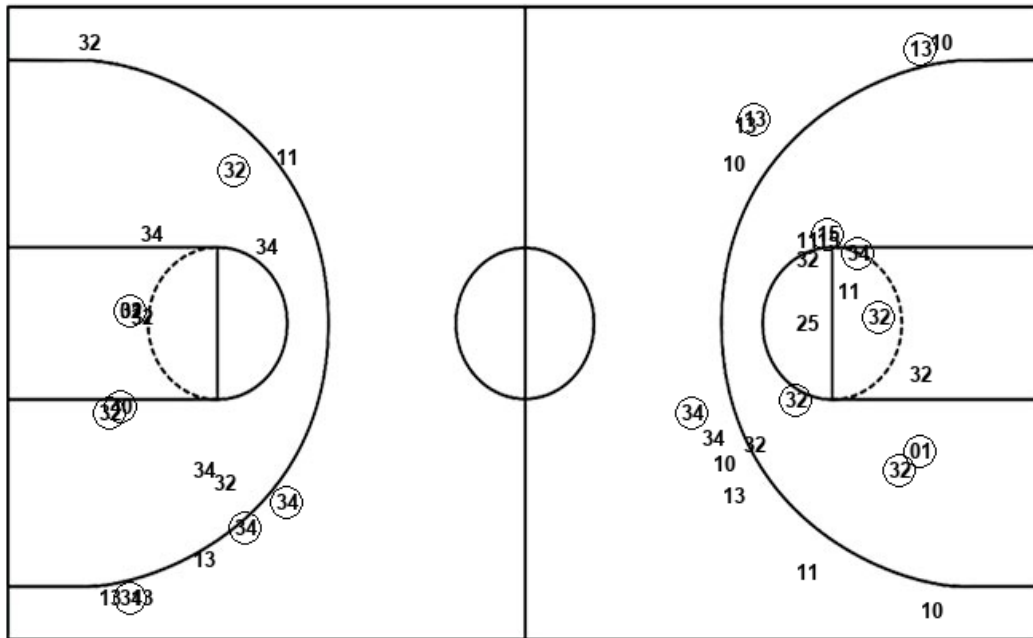


Official Shot Chart  
**Texas Wesleyan vs UTSA**  
 UTSA Team Shots  
 December 20, 2019 at Convocation Center - San Antonio



Layups

Dunks



Layups

Dunks

(11) (01) (32) (25) (32)  
 (32) (32) (32) (01) (34)  
 (15) (15) (32) (01) (32)  
 (32) (01) (32)

UTS : Period 1	Made	Att	Pct
Layups	1	2	50.0
Dunks	0	0	0
2PT Field Goals	3	8	37.5
3PT Field Goals	1	7	14.3
<b>Total Field Goals</b>	<b>4</b>	<b>15</b>	<b>26.7</b>

UTS : Period 3	Made	Att	Pct
Layups	6	6	100.0
Dunks	0	0	0
2PT Field Goals	7	9	77.8
3PT Field Goals	2	7	28.6
<b>Total Field Goals</b>	<b>9</b>	<b>16</b>	<b>56.3</b>

UTS : Period 2	Made	Att	Pct
Layups	3	4	75.0
Dunks	0	0	0
2PT Field Goals	7	11	63.6
3PT Field Goals	2	4	50.0
<b>Total Field Goals</b>	<b>9</b>	<b>15</b>	<b>60.0</b>

UTS : Period 4	Made	Att	Pct
Layups	5	6	83.3
Dunks	0	0	0
2PT Field Goals	8	13	61.5
3PT Field Goals	1	1	100.0
<b>Total Field Goals</b>	<b>9</b>	<b>14</b>	<b>64.3</b>