

FINAL SCORE

Incarnate Word

56



UTSA

63



November 11, 2019 • Convocation Center - San Antonio

FINAL STATISTICS

Official Box Score
Incarnate Word vs UTSA
Game Totals -- Final Statistics
November 11, 2019 at Convocation Center - San Antonio



Incarnate Word 56

No.	Player	S	Pts	FG	3FG	FT	OR	DR	TR	PF	A	TO	Blk	Stl	Min	+/-
02	HENRY, LUNDEN	F	3	1-6	0-0	1-2	0	2	2	1	0	0	2	1	10	-4
05	SPEER, KARA	G	8	2-5	0-0	4-6	2	5	7	2	2	0	0	1	31	-7
10	JACKSON, VICTORIA	G	6	3-7	0-0	0-0	0	2	2	4	1	0	0	2	25	-13
11	ROBINSON, IMANI	G	9	2-5	2-2	3-4	1	2	3	1	3	1	0	1	23	-1
23	STAFFORD, BRITTNEY	G	4	1-5	1-4	1-2	0	2	2	2	2	1	0	0	19	4
00	RAY, MACY	G	10	4-10	2-5	0-0	1	2	3	3	0	1	1	2	33	-2
01	HENRY, ALEXIS	F	6	2-4	0-0	2-2	0	3	3	1	0	2	0	0	14	-13
04	JENKINS, DESINY	G	1	0-4	0-1	1-2	0	2	2	2	0	2	0	1	19	-5
15	OMOZEE, STARR	F	9	4-9	0-0	1-3	3	2	5	3	4	4	1	1	23	7
22	GREEN, TAYLOR	G	0	0-2	0-1	0-0	0	0	0	0	0	0	1	0	3	-1
TEAM							1	3	4	0		1				
TOTALS			56	19-57	5-13	13-21	8	25	33	19	12	12	5	9	200	

Shooting By Period

Period	FG	FG%	3FG	3FG%	FT	FT%
1st Qtr	2-9	22%	0-3	00%	3-4	75%
2nd Qtr	5-16	31%	0-1	00%	6-10	60%
3rd Qtr	5-17	29%	1-3	33%	2-3	67%
4th Qtr	7-15	47%	4-6	67%	2-4	50%
1st Half	7-25	28%	0-4	00%	9-14	64%
2nd Half	12-32	38%	5-9	56%	4-7	57%
Game	19-57	33.3%	5-13	38.5%	13-21	61.9%

Deadball Rebounds: 4,1
 Last FG: 4th-00:10
 Biggest Run: 11-0
 Largest lead: By 0 at 4-00
 Technical Fouls: None.

UTSA 63

No.	Player	S	Pts	FG	3FG	FT	OR	DR	TR	PF	A	TO	Blk	Stl	Min	+/-
04	WOODS, MIKAYLA	G	12	5-12	0-3	2-5	1	4	5	2	4	1	0	3	32	10
15	TOTH, TIMEA	F	6	2-3	0-0	2-2	3	6	9	2	1	0	3	2	27	1
23	HAWKINS, TIJA	F	7	3-5	0-0	1-2	0	4	4	2	0	2	2	1	16	2
32	QUEZADA, ADRYANA	F	11	5-7	1-2	0-2	0	1	1	2	0	2	0	0	27	-1
34	DONALD, KARRINGTON	G	8	3-10	1-4	1-2	3	7	10	1	3	6	0	1	35	1
01	OMEMMAH, EVELYN	F	5	1-5	0-0	3-4	3	6	9	4	0	3	2	1	18	8
10	LARSON, KARLEY	G	0	0-5	0-4	0-0	0	2	2	0	3	1	1	0	13	9
11	MASS, CHARLENE	G	10	3-7	1-1	3-8	1	1	2	2	1	1	0	0	25	-6
40	COOKS, MANDI	F	4	1-3	0-0	2-2	1	2	3	3	0	0	0	0	8	11
TEAM							3	1	4	0		0				
TOTALS			63	23-57	3-14	14-27	15	34	49	18	12	16	8	8	200	

Shooting By Period

Period	FG	FG%	3FG	3FG%	FT	FT%
1st Qtr	11-16	69%	3-8	38%	4-4	100%
2nd Qtr	6-18	33%	0-1	00%	0-0	0%
3rd Qtr	5-15	33%	0-3	00%	6-13	46%
4th Qtr	1-8	13%	0-2	00%	4-10	40%
1st Half	17-34	50%	3-9	33%	4-4	100%
2nd Half	6-23	26%	0-5	00%	10-23	43%
Game	23-57	40.4%	3-14	21.4%	14-27	51.9%

Deadball Rebounds: 6,0
 Last FG: 4th-03:22
 Biggest Run: 8-0
 Largest lead: By 24 at -
 Technical Fouls: None.

Game Notes:

Officials: Brian Hall, Kelly Broomfield, Tanesha Wilkins
 Attendance: 482

Start Time: 08:06 PM ET
 End Time: 09:55 PM ET
 Game Duration: 1:49

Score	1st	2nd	3rd	4th	TOT
UIW	7	16	13	20	56
UTS	29	12	16	6	63

UIW led for 0:00. UTS led for 38:52.
 Game was tied for 1:08.
 Times tied: 69 Lead Changes: 0

Points from	UIW	UTS
In the Paint	24	32
Off Turns	21	10
2nd Chance	7	11
Fast Break	11	14
Bench	26	19

Official Box Score
Incarnate Word vs UTSA
First Half Statistics Only
November 11, 2019 at Convocation Center - San Antonio



Incarnate Word 23

No.	Player	S	Pts	FG	3FG	FT	OR	DR	TR	PF	A	TO	Blk	Stl	Min	+/-
00	RAY, MACY	G	4	2-2	0-0	0-0	0	1	1	1	0	0	0	1	15	-9
04	JENKINS, DESINY	G	1	0-3	0-1	1-2	0	2	2	1	0	2	0	1	11	-8
05	SPEER, KARA	G	4	0-1	0-0	4-6	1	1	2	0	0	0	0	1	13	-16
10	JACKSON, VICTORIA	G	4	2-4	0-0	0-0	0	1	1	0	0	0	0	1	12	-14
11	ROBINSON, IMANI	G	2	0-1	0-0	2-2	0	1	1	1	2	1	0	1	13	-15
15	OMOZEE, STARR	F	0	0-3	0-0	0-0	0	0	0	0	1	1	0	0	10	-8
22	GREEN, TAYLOR	G	0	0-0	0-0	0-0	0	0	0	0	0	0	0	0	0	0
23	STAFFORD, BRITTNEY	G	1	0-3	0-3	1-2	0	1	1	0	0	0	0	0	9	-7
01	HENRY, ALEXIS	F	4	2-2	0-0	0-0	0	3	3	1	0	2	0	0	9	-10
02	HENRY, LUNDEN	F	3	1-6	0-0	1-2	0	2	2	1	0	0	2	0	8	-3
	TEAM		0	0-0	0-0	0-0	0	0	0	0	0	0	0	0	0	
TOTALS			23	7-25	0-4	9-14	1	12	13	5	3	6	2	5	100	

Shooting By Period

Period	FG	FG%	3FG	3FG%	FT	FT%
1st Qtr	2-9	22%	0-3	00%	3-4	75%
2nd Qtr	5-16	31%	0-1	00%	6-10	60%
1st Half	7-25	28%	0-4	00%	9-14	64%
Game	19-57	33.3%	5-13	38.5%	13-21	61.9%

Deadball Rebounds: 4,1

Last FG Half: UIW 2nd-01:00

UTSA 41

No.	Player	S	Pts	FG	3FG	FT	OR	DR	TR	PF	A	TO	Blk	Stl	Min	+/-
01	OMEMMAH, EVELYN	F	4	1-3	0-0	2-2	1	3	4	1	0	1	0	1	8	13
04	WOODS, MIKAYLA	G	4	2-4	0-1	0-0	0	3	3	2	3	0	0	2	14	19
10	LARSON, KARLEY	G	0	0-4	0-3	0-0	0	1	1	0	3	0	0	0	10	8
11	MASS, CHARLENE	G	7	3-5	1-1	0-0	0	1	1	0	1	1	0	0	11	4
15	TOTH, TIMEA	F	2	1-1	0-0	0-0	0	2	2	2	0	0	0	0	7	12
23	HAWKINS, TIJA	F	4	2-3	0-0	0-0	0	3	3	0	0	0	1	1	12	5
32	QUEZADA, ADRYANA	F	11	5-5	1-1	0-0	0	1	1	2	0	1	0	0	17	8
34	DONALD, KARRINGTON	G	5	2-7	1-3	0-0	3	4	7	0	3	3	0	0	18	13
40	COOKS, MANDI	F	4	1-2	0-0	2-2	1	0	1	2	0	0	0	0	3	8
	TEAM		0	0-0	0-0	0-0	0	1	1	0	0	0	0	0	0	
TOTALS			41	17-34	3-9	4-4	5	19	24	9	10	6	1	4	100	

Shooting By Period

Period	FG	FG%	3FG	3FG%	FT	FT%
1st Qtr	11-16	69%	3-8	38%	4-4	100%
2nd Qtr	6-18	33%	0-1	00%	0-0	0%
1st Half	17-34	50%	3-9	33%	4-4	100%
Game	23-57	40.4%	3-14	21.4%	14-27	51.9%

Deadball Rebounds: 6,0

Last FG Half: UTS 2nd-00:34

Game Notes:

Officials: Brian Hall, Kelly Broomfield, Tanesha Wilkins
Attendance: 482

Start Time: 08:06 PM ET

End Time: 09:55 PM ET

Game Duration: 1:49

Score	1st	2nd	3rd	4th	TOT
UIW	7	16	13	20	56
UTS	29	12	16	6	63

Points from (This Period)	UIW	UTS
In the Paint	14	20
Off Turns	7	9
2nd Chance	1	4
Fast Break	5	6
Bench	9	15

Official Box Score
Incarnate Word vs UTSA
First Quarter Statistics Only
November 11, 2019 at Convocation Center - San Antonio



Incarnate Word 7

No.	Player	S	Pts	FG	3FG	FT	OR	DR	TR	PF	A	TO	Blk	Stl	Min	+/-
02	HENRY, LUNDEN	F	2	1-3	0-0	0-0	0	1	1	0	0	0	0	0	4	-7
05	SPEER, KARA	G	3	0-0	0-0	3-4	0	0	0	0	0	0	0	1	8	-18
10	JACKSON, VICTORIA	G	2	1-3	0-0	0-0	0	1	1	0	0	0	0	0	7	-16
11	ROBINSON, IMANI	G	0	0-0	0-0	0-0	0	0	0	1	0	1	0	0	8	-17
23	STAFFORD, BRITTNEY	G	0	0-2	0-2	0-0	0	0	0	0	0	0	0	0	5	-9
00	RAY, MACY	G	0	0-0	0-0	0-0	0	0	0	0	0	0	0	0	5	-13
01	HENRY, ALEXIS	F	0	0-0	0-0	0-0	0	1	1	0	0	2	0	0	3	-10
04	JENKINS, DESINY	G	0	0-1	0-1	0-0	0	0	0	1	0	1	0	0	5	-10
15	OMOZEE, STARR	F	0	0-0	0-0	0-0	0	0	0	0	0	1	0	0	5	-10
22	GREEN, TAYLOR	G	0	0-0	0-0	0-0	0	0	0	0	0	0	0	0	0	0
TEAM							0	0	0	0		0				
TOTALS			7	2-9	0-3	3-4	0	3	3	2	0	5	0	1	50	

Shooting By Period

Period	FG	FG%	3FG	3FG%	FT	FT%
1st Qtr	2-9	22%	0-3	00%	3-4	75%
2nd Qtr	5-16	31%	0-1	00%	6-10	60%
1st Half	2-9	22%	0-3	00%	3-4	75%
1st Half	7-25	28%	0-4	00%	9-14	64%
Game	19-57	33.3%	5-13	38.5%	13-21	61.9%

Deadball Rebounds: 4,1

UTSA 29

No.	Player	S	Pts	FG	3FG	FT	OR	DR	TR	PF	A	TO	Blk	Stl	Min	+/-
04	WOODS, MIKAYLA	G	2	1-2	0-1	0-0	0	1	1	1	3	0	0	2	8	19
15	TOTH, TIMEA	F	2	1-1	0-0	0-0	0	1	1	1	0	0	0	0	6	12
23	HAWKINS, TIJA	F	2	1-1	0-0	0-0	0	2	2	0	0	0	0	0	6	9
32	QUEZADA, ADRYANA	F	7	3-3	1-1	0-0	0	1	1	0	0	0	0	0	7	12
34	DONALD, KARRINGTON	G	5	2-4	1-3	0-0	1	2	3	0	2	1	0	0	9	17
01	OMEMMAH, EVELYN	F	4	1-1	0-0	2-2	0	0	0	0	0	0	0	1	4	13
10	LARSON, KARLEY	G	0	0-2	0-2	0-0	0	0	0	0	1	0	0	0	4	10
11	MASS, CHARLENE	G	3	1-1	1-1	0-0	0	0	0	0	0	0	0	0	4	10
40	COOKS, MANDI	F	4	1-1	0-0	2-2	1	0	1	0	0	0	0	0	2	8
TEAM							0	1	1	0		0				
TOTALS			29	11-16	3-8	4-4	2	8	10	2	6	1	0	3	50	

Shooting By Period

Period	FG	FG%	3FG	3FG%	FT	FT%
1st Qtr	11-16	69%	3-8	38%	4-4	100%
2nd Qtr	6-18	33%	0-1	00%	0-0	0%
1st Half	11-16	69%	3-8	38%	4-4	100%
1st Half	17-34	50%	3-9	33%	4-4	100%
Game	23-57	40.4%	3-14	21.4%	14-27	51.9%

Deadball Rebounds: 6,0

Game Notes:

Officials: Brian Hall, Kelly Broomfield, Tanesha Wilkins
Attendance: 482

Start Time: 08:06 PM ET
End Time: 09:55 PM ET
Game Duration: 1:49

Score	1st	2nd	3rd	4th	TOT
UIW	7	16	13	20	56
UTS	29	12	16	6	63

Points from (This Period)	UIW	UTS
In the Paint	4	12
Off Turns	0	9
2nd Chance	0	4
Fast Break	0	2
Bench	0	11

**Official Play-By-Play
Incarnate Word vs UTSA
First Quarter**

November 11, 2019 at Convocation Center - San Antonio



Period 1

Starters:

Incarnate Word: 5 SPEER, KARA (G); 10 JACKSON, VICTORIA (G); 11 ROBINSON, IMANI (G); 23 STAFFORD, BRITTNEY (G); 2 HENRY, LUNDEN (F);

UTSA: 4 WOODS, MIKAYLA (G); 15 TOTH, TIMEA (F); 23 HAWKINS, TIJA (F); 32 QUEZADA, ADRYANA (F); 34 DONALD, KARRINGTON (G);

Time	VISITORS: Incarnate Word	Score	Margin	HOME: UTSA
09:46		2-0	H 2	GOOD! LAYUP by QUEZADA, ADRYANA
09:34	GOOD! LAYUP by HENRY, LUNDEN	2-2	T	
09:14				TURNOVER (BADPASS) by DONALD, KARRINGTON
09:14	STEAL by SPEER, KARA			
08:50	MISSED 3PTR by STAFFORD, BRITTNEY			
08:45				REBOUND (DEF) by TOTH, TIMEA
08:40		4-2	H 2	GOOD! LAYUP by QUEZADA, ADRYANA
08:40				ASSIST by WOODS, MIKAYLA
08:20	MISSED LAYUP by HENRY, LUNDEN			
08:17				REBOUND (DEF) by HAWKINS, TIJA
08:00				MISSED 3PTR by DONALD, KARRINGTON
07:52	REBOUND (DEF) by HENRY, LUNDEN			
07:45	MISSED JUMPER by JACKSON, VICTORIA			
07:41				REBOUND (DEF) by WOODS, MIKAYLA
07:35		6-2	H 4	GOOD! LAYUP by TOTH, TIMEA
07:35				ASSIST by DONALD, KARRINGTON
07:12	MISSED 3PTR by STAFFORD, BRITTNEY			
07:07				REBOUND (DEF) by DONALD, KARRINGTON
06:59		8-2	H 6	GOOD! JUMPER by HAWKINS, TIJA
06:59				ASSIST by WOODS, MIKAYLA
06:29	GOOD! LAYUP by JACKSON, VICTORIA [PNT]	8-4	H 4	
06:18		11-4	H 7	GOOD! 3PTR by QUEZADA, ADRYANA
06:18				ASSIST by DONALD, KARRINGTON
05:58	MISSED JUMPER by HENRY, LUNDEN			
05:57				REBOUND (DEF) by TEAM
05:57				SUB OUT: HAWKINS, TIJA
05:57				SUB IN: OMEMMAH, EVELYN
05:57	SUB OUT: HENRY, LUNDEN			
05:57	SUB OUT: STAFFORD, BRITTNEY			
05:57	SUB IN: RAY, MACY			
05:57	SUB IN: HENRY, ALEXIS			
05:44		14-4	H 10	GOOD! 3PTR by DONALD, KARRINGTON
05:44				ASSIST by WOODS, MIKAYLA
05:40	TIMEOUT 30SEC			
05:40				
05:38	TURNOVER (BADPASS) by ROBINSON, IMANI			
05:38				STEAL by WOODS, MIKAYLA
05:32		16-4	H 12	GOOD! LAYUP by WOODS, MIKAYLA [FB]
05:13				FOUL (PERSONAL) by TOTH, TIMEA
05:13	SUB OUT: JACKSON, VICTORIA			
05:13	SUB IN: JENKINS, DESINY			
05:13	GOOD! FT by SPEER, KARA	16-5	H 11	
05:13	GOOD! FT by SPEER, KARA	16-6	H 10	
04:51	FOUL (PERSONAL) by JENKINS, DESINY			
04:51				SUB OUT: QUEZADA, ADRYANA
04:51				SUB IN: MASS, CHARLENE
04:51		17-6	H 11	GOOD! FT by OMEMMAH, EVELYN
04:51		18-6	H 12	GOOD! FT by OMEMMAH, EVELYN
04:51	SUB OUT: ROBINSON, IMANI			
04:51	SUB IN: OMOZEE, STARR			
04:35	TURNOVER (LOSTBALL) by HENRY, ALEXIS			
04:35				STEAL by WOODS, MIKAYLA
04:28				MISSED 3PTR by DONALD, KARRINGTON
04:22	REBOUND (DEF) by HENRY, ALEXIS			
04:06	TURNOVER (TRAVEL) by OMOZEE, STARR			
04:06				SUB OUT: TOTH, TIMEA
04:06				SUB OUT: DONALD, KARRINGTON
04:06				SUB IN: LARSON, KARLEY
04:06				SUB IN: COOKS, MANDI
03:37		20-6	H 14	GOOD! LAYUP by COOKS, MANDI
03:22	TURNOVER (LOSTBALL) by HENRY, ALEXIS			
03:22				STEAL by OMEMMAH, EVELYN
03:08		23-6	H 17	GOOD! 3PTR by MASS, CHARLENE
03:08				ASSIST by LARSON, KARLEY
02:46				FOUL (PERSONAL) by WOODS, MIKAYLA
02:46				SUB OUT: WOODS, MIKAYLA
02:46				SUB IN: DONALD, KARRINGTON
02:46	SUB OUT: HENRY, ALEXIS			
02:46	SUB IN: ROBINSON, IMANI			
02:46	GOOD! FT by SPEER, KARA	23-7	H 16	

Time	VISITORS: Incarnate Word	Score	Margin	HOME: UTSA
02:45	MISSED FT by SPEER, KARA			
02:44				REBOUND (DEF) by DONALD, KARRINGTON
02:31		25-7	H 18	GOOD! JUMPER by OMEMMAH, EVELYN
02:15	TURNOVER (TRAVEL) by JENKINS, DESINY			
02:15	SUB OUT: SPEER, KARA			
02:15	SUB IN: JACKSON, VICTORIA			
01:49				MISSED 3PTR by LARSON, KARLEY
01:46				REBOUND (OFF) by COOKS, MANDI
01:46	FOUL (PERSONAL) by ROBINSON, IMANI			
01:46		26-7	H 19	GOOD! FT by COOKS, MANDI
01:46		27-7	H 20	GOOD! FT by COOKS, MANDI
01:46				SUB OUT: COOKS, MANDI
01:46				SUB IN: QUEZADA, ADRYANA
01:46				SUB OUT: OMEMMAH, EVELYN
01:46				SUB IN: HAWKINS, TIJA
01:25	MISSED 3PTR by JENKINS, DESINY			
01:18				REBOUND (DEF) by QUEZADA, ADRYANA
01:12				SUB OUT: MASS, CHARLENE
01:12				SUB IN: WOODS, MIKAYLA
01:12	SUB OUT: RAY, MACY			
01:12	SUB IN: STAFFORD, BRITTNEY			
01:00				MISSED 3PTR by WOODS, MIKAYLA
00:54				REBOUND (OFF) by DONALD, KARRINGTON
00:52		29-7	H 22	GOOD! LAYUP by DONALD, KARRINGTON
00:25	MISSED LAYUP by JACKSON, VICTORIA			
00:22				REBOUND (DEF) by HAWKINS, TIJA
00:06				MISSED 3PTR by LARSON, KARLEY
00:03	REBOUND (DEF) by JACKSON, VICTORIA			

Incarnate Word 7, UTSA 29

Points from (This Period)	UIW	UTS
In the Paint	4	12
Off Turns	0	9
2nd Chance	0	4
Fast Break	0	2
Bench	0	11

Official Box Score
Incarnate Word vs UTSA
Second Quarter Statistics Only
November 11, 2019 at Convocation Center - San Antonio



Incarnate Word 16

No.	Player	S	Pts	FG	3FG	FT	OR	DR	TR	PF	A	TO	Blk	Stl	Min	+/-
02	HENRY, LUNDEN	F	1	0-3	0-0	1-2	0	1	1	1	0	0	2	0	4	4
05	SPEER, KARA	G	1	0-1	0-0	1-2	1	1	2	0	0	0	0	0	5	2
10	JACKSON, VICTORIA	G	2	1-1	0-0	0-0	0	0	0	0	0	0	0	1	5	2
11	ROBINSON, IMANI	G	2	0-1	0-0	2-2	0	1	1	0	2	0	0	1	5	2
23	STAFFORD, BRITTNEY	G	1	0-1	0-1	1-2	0	1	1	0	0	0	0	0	4	2
00	RAY, MACY	G	4	2-2	0-0	0-0	0	1	1	1	0	0	0	1	10	4
01	HENRY, ALEXIS	F	4	2-2	0-0	0-0	0	2	2	1	0	0	0	0	6	0
04	JENKINS, DESINY	G	1	0-2	0-0	1-2	0	2	2	0	0	1	0	1	6	2
15	OMOZEE, STARR	F	0	0-3	0-0	0-0	0	0	0	0	1	0	0	0	5	2
22	GREEN, TAYLOR	G	0	0-0	0-0	0-0	0	0	0	0	0	0	0	0	0	0
TEAM							0	0	0	0		0				
TOTALS			16	5-16	0-1	6-10	1	9	10	3	3	1	2	4	50	

Shooting By Period

Period	FG	FG%	3FG	3FG%	FT	FT%
3rd Qtr	5-17	29%	1-3	33%	2-3	67%
4th Qtr	7-15	47%	4-6	67%	2-4	50%
2nd Half	5-16	31%	0-1	00%	6-10	60%
2nd Half	12-32	38%	5-9	56%	4-7	57%
Game	19-57	33.3%	5-13	38.5%	13-21	61.9%

Deadball Rebounds: 4,1

UTSA 12

No.	Player	S	Pts	FG	3FG	FT	OR	DR	TR	PF	A	TO	Blk	Stl	Min	+/-
04	WOODS, MIKAYLA	G	2	1-2	0-0	0-0	0	2	2	1	0	0	0	0	6	0
15	TOTH, TIMEA	F	0	0-0	0-0	0-0	0	1	1	1	0	0	0	0	1	0
23	HAWKINS, TIJA	F	2	1-2	0-0	0-0	0	1	1	0	0	0	1	1	6	-4
32	QUEZADA, ADRYANA	F	4	2-2	0-0	0-0	0	0	0	2	0	1	0	0	10	-4
34	DONALD, KARRINGTON	G	0	0-3	0-0	0-0	2	2	4	0	1	2	0	0	9	-4
01	OMEMMAH, EVELYN	F	0	0-2	0-0	0-0	1	3	4	1	0	1	0	0	4	0
10	LARSON, KARLEY	G	0	0-2	0-1	0-0	0	1	1	0	2	0	0	0	6	-2
11	MASS, CHARLENE	G	4	2-4	0-0	0-0	0	1	1	0	1	1	0	0	7	-6
40	COOKS, MANDI	F	0	0-1	0-0	0-0	0	0	0	2	0	0	0	0	1	0
TEAM							0	0	0	0		0				
TOTALS			12	6-18	0-1	0-0	3	11	14	7	4	5	1	1	50	

Shooting By Period

Period	FG	FG%	3FG	3FG%	FT	FT%
3rd Qtr	5-15	33%	0-3	00%	6-13	46%
4th Qtr	1-8	13%	0-2	00%	4-10	40%
2nd Half	6-18	33%	0-1	00%	0-0	0%
2nd Half	6-23	26%	0-5	00%	10-23	43%
Game	23-57	40.4%	3-14	21.4%	14-27	51.9%

Deadball Rebounds: 6,0

Game Notes:

Officials: Brian Hall, Kelly Broomfield, Tanesha Wilkins
Attendance: 482

Start Time: 08:06 PM ET
End Time: 09:55 PM ET
Game Duration: 1:49

Score	1st	2nd	3rd	4th	TOT
UIW	7	16	13	20	56
UTS	29	12	16	6	63

Points from (This Period)	UIW	UTS
In the Paint	10	8
Off Turns	7	0
2nd Chance	1	0
Fast Break	5	4
Bench	9	4

**Official Play-By-Play
Incarnate Word vs UTSA
Second Quarter**

November 11, 2019 at Convocation Center - San Antonio



Period 2

Starters:

Incarnate Word: 5 SPEER, KARA (G); 10 JACKSON, VICTORIA (G); 11 ROBINSON, IMANI (G); 23 STAFFORD, BRITTNEY (G); 2 HENRY, LUNDEN (F);

UTSA: 4 WOODS, MIKAYLA (G); 15 TOTH, TIMEA (F); 23 HAWKINS, TIJA (F); 32 QUEZADA, ADRYANA (F); 34 DONALD, KARRINGTON (G);

Time	VISITORS: Incarnate Word	Score	Margin	HOME: UTSA
10:00				SUB OUT: LARSON, KARLEY
10:00				SUB IN: TOTH, TIMEA
10:00	SUB OUT: JENKINS, DESINY			
10:00	SUB OUT: ROBINSON, IMANI			
10:00	SUB OUT: OMOZEE, STARR			
10:00	SUB IN: RAY, MACY			
10:00	SUB IN: HENRY, LUNDEN			
10:00	SUB IN: SPEER, KARA			
09:42	GOOD! LAYUP by RAY, MACY	29-9	H 20	
09:26		31-9	H 22	GOOD! JUMPER by QUEZADA, ADRYANA
09:04	MISSED 3PTR by STAFFORD, BRITTNEY			
08:59				REBOUND (DEF) by TOTH, TIMEA
08:53				MISSED JUMPER by DONALD, KARRINGTON
08:51	REBOUND (DEF) by RAY, MACY			
08:51				FOUL (PERSONAL) by TOTH, TIMEA
08:51				SUB OUT: TOTH, TIMEA
08:51				SUB IN: COOKS, MANDI
08:41				FOUL (PERSONAL) by COOKS, MANDI
08:21	MISSED JUMPER by HENRY, LUNDEN			
08:17				REBOUND (DEF) by WOODS, MIKAYLA
08:02				MISSED LAYUP by COOKS, MANDI
08:02	BLOCK by HENRY, LUNDEN			
07:56	REBOUND (DEF) by HENRY, LUNDEN			
07:56	MISSED LAYUP by HENRY, LUNDEN			
07:56	REBOUND (OFF) by SPEER, KARA			
07:56				FOUL (PERSONAL) by COOKS, MANDI
07:56				SUB OUT: HAWKINS, TIJA
07:56				SUB OUT: COOKS, MANDI
07:56				SUB IN: OMEMMAH, EVELYN
07:56				SUB IN: MASS, CHARLENE
07:56	MISSED FT by SPEER, KARA			
07:56	REBOUND (OFF) by TEAM			
07:56	GOOD! FT by SPEER, KARA [FB]	31-10	H 21	
07:45				TURNOVER (BADPASS) by OMEMMAH, EVELYN
07:45	STEAL by JACKSON, VICTORIA			
07:40	GOOD! LAYUP by JACKSON, VICTORIA	31-12	H 19	
07:26				MISSED JUMPER by WOODS, MIKAYLA
07:22	REBOUND (DEF) by SPEER, KARA			
07:10				FOUL (PERSONAL) by OMEMMAH, EVELYN
07:10	SUB OUT: STAFFORD, BRITTNEY			
07:10	SUB IN: JENKINS, DESINY			
07:10	MISSED FT by HENRY, LUNDEN			
07:10	REBOUND (OFF) by TEAM			
07:10	GOOD! FT by HENRY, LUNDEN	31-13	H 18	
06:55				MISSED JUMPER by MASS, CHARLENE
06:54				REBOUND (OFF) by OMEMMAH, EVELYN
06:54	SUB OUT: HENRY, LUNDEN			
06:54	SUB IN: HENRY, ALEXIS			
06:49				MISSED JUMPER by OMEMMAH, EVELYN
06:46	REBOUND (DEF) by JENKINS, DESINY			
06:30	MISSED JUMPER by JENKINS, DESINY			
06:27				REBOUND (DEF) by DONALD, KARRINGTON
06:24		33-13	H 20	GOOD! LAYUP by WOODS, MIKAYLA [FB]
06:24				ASSIST by DONALD, KARRINGTON
06:09	MISSED LAYUP by SPEER, KARA			
06:05				REBOUND (DEF) by OMEMMAH, EVELYN
05:56	FOUL (PERSONAL) by RAY, MACY			
05:56	SUB OUT: SPEER, KARA			
05:56	SUB OUT: JACKSON, VICTORIA			
05:56	SUB IN: ROBINSON, IMANI			
05:56	SUB IN: OMOZEE, STARR			
05:53	FOUL (PERSONAL) by HENRY, ALEXIS			
05:53				SUB OUT: MASS, CHARLENE
05:53				SUB IN: LARSON, KARLEY
05:49				MISSED LAYUP by OMEMMAH, EVELYN
05:46	REBOUND (DEF) by JENKINS, DESINY			
05:39	MISSED JUMPER by OMOZEE, STARR			
05:35				REBOUND (DEF) by WOODS, MIKAYLA
05:24		35-13	H 22	GOOD! JUMPER by QUEZADA, ADRYANA
05:24				ASSIST by LARSON, KARLEY

Time	VISITORS: Incarnate Word	Score	Margin	HOME: UTSA
05:03	MISSED JUMPER by OMOZEE, STARR			
05:00				REBOUND (DEF) by OMEMMAH, EVELYN
04:42				TURNOVER (BADPASS) by DONALD, KARRINGTON
04:42				
04:42				SUB OUT: OMEMMAH, EVELYN
04:42				SUB OUT: DONALD, KARRINGTON
04:42				SUB IN: MASS, CHARLENE
04:42				SUB IN: HAWKINS, TIJA
04:28	MISSED JUMPER by ROBINSON, IMANI			
04:24				REBOUND (DEF) by LARSON, KARLEY
04:22				TURNOVER (LOSTBALL) by MASS, CHARLENE
04:22	STEAL by RAY, MACY			
04:00				FOUL (PERSONAL) by WOODS, MIKAYLA
04:00				SUB OUT: MASS, CHARLENE
04:00				SUB IN: DONALD, KARRINGTON
04:00				SUB OUT: WOODS, MIKAYLA
04:00				SUB IN: MASS, CHARLENE
04:00	GOOD! FT by ROBINSON, IMANI	35-14	H 21	
04:00	GOOD! FT by ROBINSON, IMANI	35-15	H 20	
03:48		37-15	H 22	GOOD! JUMPER by HAWKINS, TIJA [PNT]
03:48				ASSIST by MASS, CHARLENE
03:36	TURNOVER (BADPASS) by JENKINS, DESINY			
03:36				STEAL by HAWKINS, TIJA
03:28				MISSED JUMPER by LARSON, KARLEY
03:20				REBOUND (OFF) by DONALD, KARRINGTON
03:20				MISSED LAYUP by DONALD, KARRINGTON
03:17				REBOUND (OFF) by DONALD, KARRINGTON
03:17				MISSED LAYUP by DONALD, KARRINGTON
03:16	REBOUND (DEF) by HENRY, ALEXIS			
03:07	MISSED JUMPER by JENKINS, DESINY			
03:04				REBOUND (DEF) by HAWKINS, TIJA
02:49				MISSED 3PTR by LARSON, KARLEY
02:45	REBOUND (DEF) by ROBINSON, IMANI			
02:37	GOOD! JUMPER by RAY, MACY [PNT]	37-17	H 20	
02:37	ASSIST by ROBINSON, IMANI			
02:20		39-17	H 22	GOOD! JUMPER by MASS, CHARLENE [PNT]
02:20				ASSIST by LARSON, KARLEY
02:00	MISSED LAYUP by OMOZEE, STARR			
02:00				BLOCK by HAWKINS, TIJA
01:54				REBOUND (DEF) by MASS, CHARLENE
01:46				TURNOVER (LOSTBALL) by DONALD, KARRINGTON
01:46	STEAL by ROBINSON, IMANI			
01:40	GOOD! LAYUP by HENRY, ALEXIS [FB]	39-19	H 20	
01:40	ASSIST by ROBINSON, IMANI			
01:20				MISSED JUMPER by HAWKINS, TIJA
01:16	REBOUND (DEF) by HENRY, ALEXIS			
01:00	GOOD! JUMPER by HENRY, ALEXIS [PNT]	39-21	H 18	
01:00	ASSIST by OMOZEE, STARR			
00:44				TURNOVER (BADPASS) by QUEZADA, ADRYANA
00:44	STEAL by JENKINS, DESINY			
00:41				FOUL (PERSONAL) by QUEZADA, ADRYANA
00:41				SUB OUT: HAWKINS, TIJA
00:41				SUB IN: OMEMMAH, EVELYN
00:41	SUB OUT: HENRY, ALEXIS			
00:41	SUB OUT: ROBINSON, IMANI			
00:41	SUB OUT: OMOZEE, STARR			
00:41	SUB IN: HENRY, LUNDEN			
00:41	SUB IN: SPEER, KARA			
00:41	SUB IN: JACKSON, VICTORIA			
00:41	MISSED FT by JENKINS, DESINY			
00:41	REBOUND (OFF) by TEAM			
00:41	GOOD! FT by JENKINS, DESINY [FB]	39-22	H 17	
00:41	SUB OUT: JENKINS, DESINY			
00:41	SUB IN: STAFFORD, BRITTNEY			
00:34		41-22	H 19	GOOD! JUMPER by MASS, CHARLENE [FB/PNT]
00:20	MISSED JUMPER by HENRY, LUNDEN			
00:16				REBOUND (DEF) by OMEMMAH, EVELYN
00:04				MISSED JUMPER by MASS, CHARLENE
00:04	BLOCK by HENRY, LUNDEN			
00:04	REBOUND (DEF) by STAFFORD, BRITTNEY			
00:04				FOUL (PERSONAL) by QUEZADA, ADRYANA
00:04	GOOD! FT by STAFFORD, BRITTNEY [FB]	41-23	H 18	
00:03	MISSED FT by STAFFORD, BRITTNEY			
00:02				REBOUND (DEF) by DONALD, KARRINGTON
00:02	FOUL (PERSONAL) by HENRY, LUNDEN			
00:02	SUB OUT: HENRY, LUNDEN			
00:02	SUB IN: HENRY, ALEXIS			

Points from (This Period)	UIW	UTS
In the Paint	10	8
Off Turns	7	0
2nd Chance	1	0
Fast Break	5	4
Bench	9	4

Official Box Score
Incarnate Word vs UTSA
Second Half Statistics Only
November 11, 2019 at Convocation Center - San Antonio



Incarnate Word 33

No.	Player	S	Pts	FG	3FG	FT	OR	DR	TR	PF	A	TO	Blk	Stl	Min	+/-
00	RAY, MACY	G	6	2-8	2-5	0-0	1	1	2	2	0	1	1	1	18	7
04	JENKINS, DESINY	G	0	0-1	0-0	0-0	0	0	0	1	0	0	0	0	7	3
05	SPEER, KARA	G	4	2-4	0-0	0-0	1	4	5	2	2	0	0	0	18	9
10	JACKSON, VICTORIA	G	2	1-3	0-0	0-0	0	1	1	4	1	0	0	1	13	1
11	ROBINSON, IMANI	G	7	2-4	2-2	1-2	1	1	2	0	1	0	0	0	10	14
15	OMOZEE, STARR	F	9	4-6	0-0	1-3	3	2	5	3	3	3	1	1	13	15
22	GREEN, TAYLOR	G	0	0-2	0-1	0-0	0	0	0	0	0	0	1	0	3	-1
23	STAFFORD, BRITTNEY	G	3	1-2	1-1	0-0	0	1	1	2	2	1	0	0	10	11
01	HENRY, ALEXIS	F	2	0-2	0-0	2-2	0	0	0	0	0	0	0	0	4	-3
02	HENRY, LUNDEN	F	0	0-0	0-0	0-0	0	0	0	0	0	0	0	1	2	-1
	TEAM		0	0-0	0-0	0-0	1	3	4	0	0	1	0	0	0	
TOTALS			33	12-32	5-9	4-7	7	13	20	14	9	6	3	4	100	

Shooting By Period

Period	FG	FG%	3FG	3FG%	FT	FT%
3rd Qtr	5-17	29%	1-3	33%	2-3	67%
4th Qtr	7-15	47%	4-6	67%	2-4	50%
2nd Half	12-32	38%	5-9	56%	4-7	57%
Game	19-57	33.3%	5-13	38.5%	13-21	61.9%

Deadball Rebounds: 4,1

Last FG Half: UIW 4th-00:10

UTSA 22

No.	Player	S	Pts	FG	3FG	FT	OR	DR	TR	PF	A	TO	Blk	Stl	Min	+/-
01	OMEMMAH, EVELYN	F	1	0-2	0-0	1-2	2	3	5	3	0	2	2	0	10	-5
04	WOODS, MIKAYLA	G	8	3-8	0-2	2-5	1	1	2	0	1	1	0	1	18	-9
10	LARSON, KARLEY	G	0	0-1	0-1	0-0	0	1	1	0	0	1	1	0	3	1
11	MASS, CHARLENE	G	3	0-2	0-0	3-8	1	0	1	2	0	0	0	0	15	-10
15	TOTH, TIMEA	F	4	1-2	0-0	2-2	3	4	7	0	1	0	3	2	20	-11
23	HAWKINS, TIJA	F	3	1-2	0-0	1-2	0	1	1	2	0	2	1	0	4	-3
32	QUEZADA, ADRYANA	F	0	0-2	0-1	0-2	0	0	0	0	0	1	0	0	9	-9
34	DONALD, KARRINGTON	G	3	1-3	0-1	1-2	0	3	3	1	0	3	0	1	16	-12
40	COOKS, MANDI	F	0	0-1	0-0	0-0	0	2	2	1	0	0	0	0	4	3
	TEAM		0	0-0	0-0	0-0	3	0	3	0	0	0	0	0	0	
TOTALS			22	6-23	0-5	10-23	10	15	25	9	2	10	7	4	100	

Shooting By Period

Period	FG	FG%	3FG	3FG%	FT	FT%
3rd Qtr	5-15	33%	0-3	00%	6-13	46%
4th Qtr	1-8	13%	0-2	00%	4-10	40%
2nd Half	6-23	26%	0-5	00%	10-23	43%
Game	23-57	40.4%	3-14	21.4%	14-27	51.9%

Deadball Rebounds: 6,0

Last FG Half: UTS 4th-03:22

Game Notes:

Officials: Brian Hall, Kelly Broomfield, Tanesha Wilkins
Attendance: 482

Start Time: 08:06 PM ET

End Time: 09:55 PM ET

Game Duration: 1:49

Score	1st	2nd	3rd	4th	TOT
UIW	7	16	13	20	56
UTS	29	12	16	6	63

Points from (This Period)	UIW	UTS
In the Paint	10	12
Off Turns	14	1
2nd Chance	6	7
Fast Break	6	8
Bench	17	4

Official Box Score
Incarnate Word vs UTSA
Third Quarter Statistics Only
November 11, 2019 at Convocation Center - San Antonio



Incarnate Word 33

No.	Player	S	Pts	FG	3FG	FT	OR	DR	TR	PF	A	TO	Blk	Stl	Min	+/-
02	HENRY, LUNDEN	F	0	0-0	0-0	0-0	0	0	0	0	0	0	0	1	2	-1
05	SPEER, KARA	G	0	0-2	0-0	0-0	1	1	2	1	1	0	0	0	10	-3
10	JACKSON, VICTORIA	G	2	1-3	0-0	0-0	0	0	0	2	0	0	0	1	7	-2
11	ROBINSON, IMANI	G	0	0-0	0-0	0-0	0	0	0	0	0	0	0	0	0	0
23	STAFFORD, BRITTNEY	G	0	0-1	0-0	0-0	0	1	1	2	1	0	0	0	8	2
00	RAY, MACY	G	3	1-4	1-2	0-0	1	1	2	0	0	0	1	0	10	-3
01	HENRY, ALEXIS	F	2	0-2	0-0	2-2	0	0	0	0	0	0	0	0	4	-3
04	JENKINS, DESINY	G	0	0-0	0-0	0-0	0	0	0	1	0	0	0	0	2	-5
15	OMOZEE, STARR	F	6	3-3	0-0	0-1	0	0	0	1	0	1	0	0	3	1
22	GREEN, TAYLOR	G	0	0-2	0-1	0-0	0	0	0	0	0	0	1	0	3	-1
TEAM							0	2	2	0		0				
TOTALS			13	5-17	1-3	2-3	2	5	7	7	2	1	2	2	50	

Shooting By Period

Period	FG	FG%	3FG	3FG%	FT	FT%
2nd Half	0-0	0%	0-0	0%	0-0	0%
Game	19-57	33.3%	5-13	38.5%	13-21	61.9%

Deadball Rebounds: 4,1

UTSA 22

No.	Player	S	Pts	FG	3FG	FT	OR	DR	TR	PF	A	TO	Blk	Stl	Min	+/-
04	WOODS, MIKAYLA	G	7	3-4	0-1	1-3	1	1	2	0	0	1	0	0	8	5
15	TOTH, TIMEA	F	4	1-2	0-0	2-2	3	2	5	0	1	0	2	0	10	3
23	HAWKINS, TIJA	F	0	0-0	0-0	0-0	0	0	0	0	0	0	0	0	0	0
32	QUEZADA, ADRYANA	F	0	0-1	0-0	0-0	0	0	0	0	0	0	0	0	5	-1
34	DONALD, KARRINGTON	G	3	1-3	0-1	1-2	0	2	2	1	0	1	0	1	7	2
01	OMEMMAH, EVELYN	F	1	0-2	0-0	1-2	2	3	5	0	0	1	1	0	6	0
10	LARSON, KARLEY	G	0	0-1	0-1	0-0	0	1	1	0	0	1	1	0	3	1
11	MASS, CHARLENE	G	1	0-1	0-0	1-4	1	0	1	1	0	0	0	0	7	2
40	COOKS, MANDI	F	0	0-1	0-0	0-0	0	2	2	1	0	0	0	0	4	3
TEAM							1	0	1	0		0				
TOTALS			16	5-15	0-3	6-13	8	11	19	3	1	4	4	1	50	

Shooting By Period

Period	FG	FG%	3FG	3FG%	FT	FT%
2nd Half	0-0	0%	0-0	0%	0-0	0%
Game	23-57	40.4%	3-14	21.4%	14-27	51.9%

Deadball Rebounds: 6,0

Game Notes:

Officials: Brian Hall, Kelly Broomfield, Tanesha Wilkins

Attendance: 482

Start Time: 08:06 PM ET

End Time: 09:55 PM ET

Game Duration: 1:49

Score	1st	2nd	3rd	4th	TOT
UIW	7	16	13	20	56
UTS	29	12	16	6	63

Points from (This Period)	UIW	UTS
In the Paint	4	10
Off Turns	4	1
2nd Chance	0	6
Fast Break	2	5
Bench	11	2

**Official Play-By-Play
Incarnate Word vs UTSA
Third Quarter**

November 11, 2019 at Convocation Center - San Antonio



Period 3

Starters:

Incarnate Word: 5 SPEER, KARA (G); 10 JACKSON, VICTORIA (G); 11 ROBINSON, IMANI (G); 23 STAFFORD, BRITTNEY (G); 2 HENRY, LUNDEN (F);

UTSA: 4 WOODS, MIKAYLA (G); 15 TOTH, TIMEA (F); 23 HAWKINS, TIJA (F); 32 QUEZADA, ADRYANA (F); 34 DONALD, KARRINGTON (G);

Time	VISITORS: Incarnate Word	Score	Margin	HOME: UTSA
10:00				SUB OUT: LARSON, KARLEY
10:00				SUB OUT: MASS, CHARLENE
10:00				SUB IN: WOODS, MIKAYLA
10:00				SUB IN: TOTH, TIMEA
09:40				TURNOVER (DRIBBLING) by WOODS, MIKAYLA
09:29	MISSED LAYUP by HENRY, ALEXIS			
09:29				BLOCK by OMEMMAH, EVELYN
09:25				REBOUND (DEF) by DONALD, KARRINGTON
09:23				TURNOVER (BADPASS) by DONALD, KARRINGTON
09:23	STEAL by JACKSON, VICTORIA			
09:17	GOOD! JUMPER by JACKSON, VICTORIA [FB/PNT]	41-25	H 16	
09:01				MISSED JUMPER by QUEZADA, ADRYANA
08:56				REBOUND (OFF) by OMEMMAH, EVELYN
08:55				MISSED LAYUP by OMEMMAH, EVELYN
08:55				REBOUND (OFF) by TEAM
08:52	FOUL (PERSONAL) by JACKSON, VICTORIA			
08:52		42-25	H 17	GOOD! FT by OMEMMAH, EVELYN
08:52				MISSED FT by OMEMMAH, EVELYN
08:52	REBOUND (DEF) by TEAM			
08:28	MISSED JUMPER by STAFFORD, BRITTNEY			
08:25	REBOUND (OFF) by SPEER, KARA			
08:23	MISSED JUMPER by SPEER, KARA			
08:20				REBOUND (DEF) by TOTH, TIMEA
08:11				MISSED 3PTR by WOODS, MIKAYLA
08:07	REBOUND (DEF) by TEAM			
07:54				FOUL (PERSONAL) by DONALD, KARRINGTON
07:54	GOOD! FT by HENRY, ALEXIS	42-26	H 16	
07:54	GOOD! FT by HENRY, ALEXIS	42-27	H 15	
07:38		44-27	H 17	GOOD! LAYUP by DONALD, KARRINGTON
07:38				ASSIST by TOTH, TIMEA
07:13	MISSED JUMPER by HENRY, ALEXIS			
07:13				BLOCK by TOTH, TIMEA
07:08				REBOUND (DEF) by OMEMMAH, EVELYN
06:57		46-27	H 19	GOOD! LAYUP by WOODS, MIKAYLA
06:57	FOUL (PERSONAL) by SPEER, KARA			
06:57				SUB IN: MASS, CHARLENE
06:57				SUB OUT: QUEZADA, ADRYANA
06:57				SUB IN: DONALD, KARRINGTON
06:56				MISSED FT by WOODS, MIKAYLA
06:54				REBOUND (OFF) by TOTH, TIMEA
06:52		48-27	H 21	GOOD! JUMPER by TOTH, TIMEA [PNT]
06:34	MISSED LAYUP by RAY, MACY			
06:31				REBOUND (DEF) by OMEMMAH, EVELYN
06:24				MISSED JUMPER by TOTH, TIMEA
06:24	BLOCK by RAY, MACY			
06:18	REBOUND (DEF) by RAY, MACY			
06:15	MISSED JUMPER by JACKSON, VICTORIA			
06:12	REBOUND (OFF) by RAY, MACY			
06:02				SUB OUT: DONALD, KARRINGTON
06:02				SUB IN: LARSON, KARLEY
05:55	MISSED LAYUP by JACKSON, VICTORIA			
05:52				REBOUND (DEF) by OMEMMAH, EVELYN
05:47	FOUL (PERSONAL) by JACKSON, VICTORIA			
05:47	SUB OUT: HENRY, ALEXIS			
05:47	SUB IN: HENRY, LUNDEN			
05:47				MISSED FT by MASS, CHARLENE
05:47				REBOUND (OFF) by TEAM
05:47				MISSED FT by MASS, CHARLENE
05:45				REBOUND (OFF) by OMEMMAH, EVELYN
05:43				TURNOVER (LOSTBALL) by OMEMMAH, EVELYN
05:43	STEAL by HENRY, LUNDEN			
05:21	MISSED JUMPER by RAY, MACY			
05:17				REBOUND (DEF) by LARSON, KARLEY
05:14	SUB OUT: JACKSON, VICTORIA			
05:14	SUB IN: GREEN, TAYLOR			
05:04				MISSED 3PTR by LARSON, KARLEY
05:01				REBOUND (OFF) by MASS, CHARLENE
05:01				MISSED JUMPER by MASS, CHARLENE
05:01	REBOUND (DEF) by TEAM			
05:01	BLOCK by GREEN, TAYLOR			

Time	VISITORS: Incarnate Word	Score	Margin	HOME: UTSA
04:49	GOOD! 3PTR by RAY, MACY	48-30	H 18	
04:49	ASSIST by SPEER, KARA			
04:30				MISSED LAYUP by OMEMMAH, EVELYN
04:29				REBOUND (OFF) by TOTH, TIMEA
04:29	FOUL (PERSONAL) by STAFFORD, BRITTNEY			
04:29				
04:29				SUB OUT: OMEMMAH, EVELYN
04:29				SUB IN: COOKS, MANDI
04:29	SUB OUT: STAFFORD, BRITTNEY			
04:29	SUB IN: JENKINS, DESINY			
04:29		49-30	H 19	GOOD! FT by TOTH, TIMEA
04:29		50-30	H 20	GOOD! FT by TOTH, TIMEA
04:00	MISSED 3PTR by GREEN, TAYLOR			
03:56				REBOUND (DEF) by WOODS, MIKAYLA
03:52		52-30	H 22	GOOD! LAYUP by WOODS, MIKAYLA [FB]
03:33	MISSED JUMPER by SPEER, KARA			
03:33				BLOCK by LARSON, KARLEY
03:28				REBOUND (DEF) by COOKS, MANDI
03:24				TURNOVER (LOSTBALL) by LARSON, KARLEY
03:24				SUB OUT: LARSON, KARLEY
03:24				SUB IN: DONALD, KARRINGTON
03:24	SUB OUT: HENRY, LUNDEN			
03:24	SUB IN: OMOZEE, STARR			
02:58	GOOD! LAYUP by OMOZEE, STARR	52-32	H 20	
02:58				FOUL (PERSONAL) by COOKS, MANDI
02:58	MISSED FT by OMOZEE, STARR			
02:57				REBOUND (DEF) by DONALD, KARRINGTON
02:51		54-32	H 22	GOOD! LAYUP by WOODS, MIKAYLA [FB]
02:35	MISSED JUMPER by GREEN, TAYLOR			
02:35				BLOCK by TOTH, TIMEA
02:29				REBOUND (DEF) by TOTH, TIMEA
02:27				MISSED JUMPER by DONALD, KARRINGTON
02:25				REBOUND (OFF) by WOODS, MIKAYLA
02:25	FOUL (PERSONAL) by JENKINS, DESINY			
02:25	SUB OUT: GREEN, TAYLOR			
02:25	SUB IN: JACKSON, VICTORIA			
02:25				MISSED FT by WOODS, MIKAYLA
02:25				REBOUND (OFF) by TEAM
02:25		55-32	H 23	GOOD! FT by WOODS, MIKAYLA
02:25				SUB OUT: WOODS, MIKAYLA
02:25				SUB IN: QUEZADA, ADRYANA
02:06				FOUL (PERSONAL) by MASS, CHARLENE
02:06	SUB OUT: JENKINS, DESINY			
02:06	SUB IN: STAFFORD, BRITTNEY			
01:51	TURNOVER (LOSTBALL) by OMOZEE, STARR			
01:51				STEAL by DONALD, KARRINGTON
01:51	FOUL (PERSONAL) by OMOZEE, STARR			
01:51				MISSED FT by DONALD, KARRINGTON
01:51				REBOUND (OFF) by TEAM
01:51		56-32	H 24	GOOD! FT by DONALD, KARRINGTON [FB]
01:36	MISSED 3PTR by RAY, MACY			
01:33				REBOUND (DEF) by COOKS, MANDI
01:21				MISSED JUMPER by COOKS, MANDI
01:17	REBOUND (DEF) by STAFFORD, BRITTNEY			
00:58	GOOD! JUMPER by OMOZEE, STARR [PNT]	56-34	H 22	
00:45				MISSED 3PTR by DONALD, KARRINGTON
00:41	REBOUND (DEF) by SPEER, KARA			
00:23	GOOD! JUMPER by OMOZEE, STARR	56-36	H 20	
00:23	ASSIST by STAFFORD, BRITTNEY			
00:07	FOUL (PERSONAL) by STAFFORD, BRITTNEY			
00:07		57-36	H 21	GOOD! FT by MASS, CHARLENE
00:07				MISSED FT by MASS, CHARLENE
00:04				REBOUND (OFF) by TOTH, TIMEA
00:03	SUB OUT: STAFFORD, BRITTNEY			
00:03	SUB IN: JENKINS, DESINY			

Incarnate Word 36, UTSA 57

Points from (This Period)	UIW	UTS
In the Paint	4	10
Off Turns	4	1
2nd Chance	0	6
Fast Break	2	5
Bench	11	2

Official Box Score
Incarnate Word vs UTSA
Fourth Quarter Statistics Only
November 11, 2019 at Convocation Center - San Antonio



Incarnate Word 20

No.	Player	S	Pts	FG	3FG	FT	OR	DR	TR	PF	A	TO	Blk	Stl	Min	+/-
02	HENRY, LUNDEN	F	0	0-0	0-0	0-0	0	0	0	0	0	0	0	0	0	0
05	SPEER, KARA	G	4	2-2	0-0	0-0	0	3	3	1	1	0	0	0	8	12
10	JACKSON, VICTORIA	G	0	0-0	0-0	0-0	0	1	1	2	1	0	0	0	6	3
11	ROBINSON, IMANI	G	7	2-4	2-2	1-2	1	1	2	0	1	0	0	0	10	14
23	STAFFORD, BRITTNEY	G	3	1-1	1-1	0-0	0	0	0	0	1	1	0	0	2	9
00	RAY, MACY	G	3	1-4	1-3	0-0	0	0	0	2	0	1	0	1	8	10
01	HENRY, ALEXIS	F	0	0-0	0-0	0-0	0	0	0	0	0	0	0	0	0	0
04	JENKINS, DESINY	G	0	0-1	0-0	0-0	0	0	0	0	0	0	0	0	5	8
15	OMOZEE, STARR	F	3	1-3	0-0	1-2	3	2	5	2	3	2	1	1	10	14
22	GREEN, TAYLOR	G	0	0-0	0-0	0-0	0	0	0	0	0	0	0	0	0	0
TEAM							1	1	2	0		1				
TOTALS			20	7-15	4-6	2-4	5	8	13	7	7	5	1	2	50	

Shooting By Period

Period	FG	FG%	3FG	3FG%	FT	FT%
Game	19-57	33.3%	5-13	38.5%	13-21	61.9%

Deadball Rebounds: 4,1

UTSA 6

No.	Player	S	Pts	FG	3FG	FT	OR	DR	TR	PF	A	TO	Blk	Stl	Min	+/-
04	WOODS, MIKAYLA	G	1	0-4	0-1	1-2	0	0	0	0	1	0	0	1	10	-14
15	TOTH, TIMEA	F	0	0-0	0-0	0-0	0	2	2	0	0	0	1	2	10	-14
23	HAWKINS, TIJA	F	3	1-2	0-0	1-2	0	1	1	2	0	2	1	0	4	-3
32	QUEZADA, ADRYANA	F	0	0-1	0-1	0-2	0	0	0	0	0	1	0	0	4	-8
34	DONALD, KARRINGTON	G	0	0-0	0-0	0-0	0	1	1	0	0	2	0	0	9	-14
01	OMEMMAH, EVELYN	F	0	0-0	0-0	0-0	0	0	0	3	0	1	1	0	4	-5
10	LARSON, KARLEY	G	0	0-0	0-0	0-0	0	0	0	0	0	0	0	0	0	0
11	MASS, CHARLENE	G	2	0-1	0-0	2-4	0	0	0	1	0	0	0	0	8	-12
40	COOKS, MANDI	F	0	0-0	0-0	0-0	0	0	0	0	0	0	0	0	0	0
TEAM							2	0	2	0		0				
TOTALS			6	1-8	0-2	4-10	2	4	6	6	1	6	3	3	50	

Shooting By Period

Period	FG	FG%	3FG	3FG%	FT	FT%
Game	23-57	40.4%	3-14	21.4%	14-27	51.9%

Deadball Rebounds: 6,0

Game Notes:

Officials: Brian Hall, Kelly Broomfield, Tanesha Wilkins
Attendance: 482

Start Time: 08:06 PM ET
End Time: 09:55 PM ET
Game Duration: 1:49

Score	1st	2nd	3rd	4th	TOT
UIW	7	16	13	20	56
UTS	29	12	16	6	63

Points from (This Period)	UIW	UTS
In the Paint	6	2
Off Turns	10	0
2nd Chance	6	1
Fast Break	4	3
Bench	6	2

**Official Play-By-Play
Incarnate Word vs UTSA
Fourth Quarter**

November 11, 2019 at Convocation Center - San Antonio



Period 4

Starters:

Incarnate Word: 5 SPEER, KARA (G); 10 JACKSON, VICTORIA (G); 11 ROBINSON, IMANI (G); 23 STAFFORD, BRITTNEY (G); 2 HENRY, LUNDEN (F);

UTSA: 4 WOODS, MIKAYLA (G); 15 TOTH, TIMEA (F); 23 HAWKINS, TIJA (F); 32 QUEZADA, ADRYANA (F); 34 DONALD, KARRINGTON (G);

Time	VISITORS: Incarnate Word	Score	Margin	HOME: UTSA
10:00				SUB OUT: MASS, CHARLENE
10:00				SUB OUT: COOKS, MANDI
10:00				SUB IN: OMEMMAH, EVELYN
10:00				SUB IN: WOODS, MIKAYLA
10:00	SUB OUT: SPEER, KARA			
10:00	SUB IN: ROBINSON, IMANI			
09:51				FOUL (PERSONAL) by OMEMMAH, EVELYN
09:38	TURNOVER (BADPASS) by RAY, MACY			
09:38				STEAL by TOTH, TIMEA
09:31				MISSED JUMPER by WOODS, MIKAYLA
09:26	REBOUND (DEF) by ROBINSON, IMANI			
09:25	GOOD! LAYUP by OMOZEE, STARR [FB]	57-38	H 19	
09:25	ASSIST by ROBINSON, IMANI			
09:07				MISSED 3PTR by QUEZADA, ADRYANA
09:02	REBOUND (DEF) by JACKSON, VICTORIA			
08:51	MISSED LAYUP by ROBINSON, IMANI			
08:48				REBOUND (DEF) by TOTH, TIMEA
08:48				TIMEOUT 30SEC
08:28				TURNOVER (BADPASS) by DONALD, KARRINGTON
08:28	STEAL by OMOZEE, STARR			
08:01	MISSED LAYUP by ROBINSON, IMANI			
08:01				BLOCK by OMEMMAH, EVELYN
08:01	REBOUND (OFF) by TEAM			
08:01				SUB OUT: DONALD, KARRINGTON
08:01				SUB IN: MASS, CHARLENE
08:01	SUB OUT: RAY, MACY			
08:01	SUB IN: SPEER, KARA			
07:55	TURNOVER (SHOTCLOCK) by TEAM			
07:33	FOUL (PERSONAL) by JACKSON, VICTORIA			
07:33				MISSED FT by QUEZADA, ADRYANA
07:33				REBOUND (OFF) by TEAM
07:33				MISSED FT by QUEZADA, ADRYANA
07:32	REBOUND (DEF) by OMOZEE, STARR			
07:17				FOUL (PERSONAL) by OMEMMAH, EVELYN
07:17				SUB OUT: OMEMMAH, EVELYN
07:17				SUB IN: DONALD, KARRINGTON
07:17	MISSED FT by OMOZEE, STARR			
07:17	REBOUND (OFF) by TEAM			
07:17	GOOD! FT by OMOZEE, STARR	57-39	H 18	
07:11				TURNOVER (TRAVEL) by QUEZADA, ADRYANA
06:52	GOOD! 3PTR by ROBINSON, IMANI	57-42	H 15	
06:52	ASSIST by JACKSON, VICTORIA			
06:29	FOUL (PERSONAL) by JACKSON, VICTORIA			
06:29	SUB OUT: JACKSON, VICTORIA			
06:29	SUB IN: RAY, MACY			
06:11				MISSED 3PTR by WOODS, MIKAYLA
06:08	REBOUND (DEF) by TEAM			
05:51	GOOD! LAYUP by SPEER, KARA [PNT]	57-44	H 13	
05:51	ASSIST by OMOZEE, STARR			
05:41	FOUL (PERSONAL) by OMOZEE, STARR			
05:41				SUB OUT: QUEZADA, ADRYANA
05:41				SUB IN: OMEMMAH, EVELYN
05:41				MISSED FT by MASS, CHARLENE
05:41				REBOUND (OFF) by TEAM
05:41				MISSED FT by MASS, CHARLENE
05:40	REBOUND (DEF) by SPEER, KARA			
05:18	MISSED JUMPER by JENKINS, DESINY			
05:14	REBOUND (OFF) by ROBINSON, IMANI			
05:01				FOUL (OFF) by OMEMMAH, EVELYN
05:01				TURNOVER (OFFENSIVE) by OMEMMAH, EVELYN
05:01	SUB OUT: JENKINS, DESINY			
05:01	SUB IN: STAFFORD, BRITTNEY			
04:45	GOOD! 3PTR by STAFFORD, BRITTNEY	57-47	H 10	
04:45	ASSIST by SPEER, KARA			
04:30				MISSED JUMPER by MASS, CHARLENE
04:29				REBOUND (OFF) by TEAM
04:29				SUB OUT: OMEMMAH, EVELYN
04:29				SUB IN: HAWKINS, TIJA
04:11	FOUL (PERSONAL) by RAY, MACY			

Time	VISITORS: Incarnate Word	Score	Margin	HOME: UTSA
04:11	SUB OUT: STAFFORD, BRITTNEY			
04:11	SUB IN: JACKSON, VICTORIA			
04:11		58-47	H 11	GOOD! FT by WOODS, MIKAYLA
04:10				MISSED FT by WOODS, MIKAYLA
04:09	REBOUND (DEF) by SPEER, KARA			
03:43	MISSED JUMPER by OMOZEE, STARR			
03:43				BLOCK by HAWKINS, TIJA
03:37				REBOUND (DEF) by DONALD, KARRINGTON
03:22		60-47	H 13	GOOD! JUMPER by HAWKINS, TIJA
03:22				ASSIST by WOODS, MIKAYLA
03:21	TIMEOUT 30SEC			
06:57				SUB OUT: DONALD, KARRINGTON
02:58	MISSED 3PTR by RAY, MACY			
02:54	REBOUND (OFF) by OMOZEE, STARR			
02:54	FOUL (OFF) by OMOZEE, STARR			
02:54	TURNOVER (OFFENSIVE) by OMOZEE, STARR			
02:45				MISSED JUMPER by HAWKINS, TIJA
02:42	REBOUND (DEF) by SPEER, KARA			
02:37				FOUL (PERSONAL) by HAWKINS, TIJA
02:32	MISSED JUMPER by RAY, MACY			
02:29				REBOUND (DEF) by HAWKINS, TIJA
02:19				TURNOVER (LOSTBALL) by DONALD, KARRINGTON
02:19	STEAL by RAY, MACY			
01:58	TURNOVER (BADPASS) by OMOZEE, STARR			
01:58				STEAL by TOTH, TIMEA
01:54				TIMEOUT 30SEC
01:32				FOUL (OFF) by HAWKINS, TIJA
01:32				TURNOVER (OFFENSIVE) by HAWKINS, TIJA
01:32	SUB OUT: JACKSON, VICTORIA			
01:32	SUB IN: STAFFORD, BRITTNEY			
01:17	MISSED JUMPER by OMOZEE, STARR			
01:17				BLOCK by TOTH, TIMEA
01:12	REBOUND (OFF) by OMOZEE, STARR			
01:09	GOOD! 3PTR by ROBINSON, IMANI	60-50	H 10	
01:09	ASSIST by STAFFORD, BRITTNEY			
00:44				MISSED LAYUP by WOODS, MIKAYLA
00:44	BLOCK by OMOZEE, STARR			
00:44				REBOUND (OFF) by TEAM
00:43				TURNOVER (TRAVEL) by HAWKINS, TIJA
00:43	TIMEOUT 30SEC			
00:34				FOUL (PERSONAL) by MASS, CHARLENE
00:34	GOOD! FT by ROBINSON, IMANI	60-51	H 9	
00:34	MISSED FT by ROBINSON, IMANI			
00:33	REBOUND (OFF) by OMOZEE, STARR			
00:31	GOOD! 3PTR by RAY, MACY	60-54	H 6	
00:31	ASSIST by OMOZEE, STARR			
00:31				TIMEOUT 30SEC
00:26	FOUL (PERSONAL) by SPEER, KARA			
00:26		61-54	H 7	GOOD! FT by MASS, CHARLENE [FB]
00:26		62-54	H 8	GOOD! FT by MASS, CHARLENE [FB]
00:26	TIMEOUT TEAM			
00:22	TURNOVER (BADPASS) by STAFFORD, BRITTNEY			
00:22				STEAL by WOODS, MIKAYLA
00:16				MISSED JUMPER by WOODS, MIKAYLA
00:12	REBOUND (DEF) by OMOZEE, STARR			
00:10	GOOD! LAYUP by SPEER, KARA [FB]	62-56	H 6	
00:10	ASSIST by OMOZEE, STARR			
00:10				TIMEOUT TEAM
00:10	SUB OUT: OMOZEE, STARR			
00:10	SUB IN: JACKSON, VICTORIA			
00:09	FOUL (PERSONAL) by RAY, MACY			
00:09	SUB OUT: JACKSON, VICTORIA			
00:09	SUB IN: OMOZEE, STARR			
00:09				MISSED FT by HAWKINS, TIJA
00:09				REBOUND (OFF) by TEAM
00:09		63-56	H 7	GOOD! FT by HAWKINS, TIJA [FB]
00:02	MISSED 3PTR by RAY, MACY			
00:00				REBOUND (DEF) by TOTH, TIMEA

Incarnate Word 56, UTSA 63

Points from (This Period)	UIW	UTS
In the Paint	6	2
Off Turns	10	0
2nd Chance	6	1
Fast Break	4	3
Bench	6	2

**Official Scoring/Possession Reference Chart
Incarnate Word vs UTSA**

Period 1

November 11, 2019 at Convocation Center - San Antonio



Period 1

Starters:

Incarnate Word: 5 SPEER, KARA (G); 10 JACKSON, VICTORIA (G); 11 ROBINSON, IMANI (G); 23 STAFFORD, BRITTNEY (G); 2 HENRY, LUNDEN (F);

UTSA: 4 WOODS, MIKAYLA (G); 15 TOTH, TIMEA (F); 23 HAWKINS, TIJA (F); 32 QUEZADA, ADRYANA (F); 34 DONALD, KARRINGTON (G);

Time	VISITORS: Incarnate Word	Score	Margin	HOME: UTSA
09:46		2-0	H 2	GOOD! LAYUP by QUEZADA, ADRYANA
09:34	GOOD! LAYUP by HENRY, LUNDEN	2-2	T	
08:40		4-2	H 2	GOOD! LAYUP by QUEZADA, ADRYANA
07:35		6-2	H 4	GOOD! LAYUP by TOTH, TIMEA
06:59		8-2	H 6	GOOD! JUMPER by HAWKINS, TIJA
06:29	GOOD! LAYUP by JACKSON, VICTORIA [PNT]	8-4	H 4	
06:18		11-4	H 7	GOOD! 3PTR by QUEZADA, ADRYANA
05:44		14-4	H 10	GOOD! 3PTR by DONALD, KARRINGTON
05:32		16-4	H 12	GOOD! LAYUP by WOODS, MIKAYLA [FB]
05:13	GOOD! FT by SPEER, KARA	16-5	H 11	
05:13	GOOD! FT by SPEER, KARA	16-6	H 10	
04:51		17-6	H 11	GOOD! FT by OMEMMAH, EVELYN
04:51		18-6	H 12	GOOD! FT by OMEMMAH, EVELYN
03:37		20-6	H 14	GOOD! LAYUP by COOKS, MANDI
03:08		23-6	H 17	GOOD! 3PTR by MASS, CHARLENE
02:46	GOOD! FT by SPEER, KARA	23-7	H 16	
02:31		25-7	H 18	GOOD! JUMPER by OMEMMAH, EVELYN
01:46		26-7	H 19	GOOD! FT by COOKS, MANDI
01:46		27-7	H 20	GOOD! FT by COOKS, MANDI
00:52		29-7	H 22	GOOD! LAYUP by DONALD, KARRINGTON

Incarnate Word 7, UTSA 29

Official Scoring/Possession Reference Chart
Incarnate Word vs UTSA
Period 2
November 11, 2019 at Convocation Center - San Antonio



Period 2

Starters:

Incarnate Word: 5 SPEER, KARA (G); 10 JACKSON, VICTORIA (G); 11 ROBINSON, IMANI (G); 23 STAFFORD, BRITTNEY (G); 2 HENRY, LUNDEN (F);

UTSA: 4 WOODS, MIKAYLA (G); 15 TOTH, TIMEA (F); 23 HAWKINS, TIJA (F); 32 QUEZADA, ADRYANA (F); 34 DONALD, KARRINGTON (G);

Time	VISITORS: Incarnate Word	Score	Margin	HOME: UTSA
09:42	GOOD! LAYUP by RAY, MACY	29-9	H 20	
09:26		31-9	H 22	GOOD! JUMPER by QUEZADA, ADRYANA
07:56	GOOD! FT by SPEER, KARA [FB]	31-10	H 21	
07:40	GOOD! LAYUP by JACKSON, VICTORIA	31-12	H 19	
07:10	GOOD! FT by HENRY, LUNDEN	31-13	H 18	
06:24		33-13	H 20	GOOD! LAYUP by WOODS, MIKAYLA [FB]
05:24		35-13	H 22	GOOD! JUMPER by QUEZADA, ADRYANA
04:00	GOOD! FT by ROBINSON, IMANI	35-14	H 21	
04:00	GOOD! FT by ROBINSON, IMANI	35-15	H 20	
03:48		37-15	H 22	GOOD! JUMPER by HAWKINS, TIJA [PNT]
02:37	GOOD! JUMPER by RAY, MACY [PNT]	37-17	H 20	
02:20		39-17	H 22	GOOD! JUMPER by MASS, CHARLENE [PNT]
01:40	GOOD! LAYUP by HENRY, ALEXIS [FB]	39-19	H 20	
01:00	GOOD! JUMPER by HENRY, ALEXIS [PNT]	39-21	H 18	
00:41	GOOD! FT by JENKINS, DESINY [FB]	39-22	H 17	
00:34		41-22	H 19	GOOD! JUMPER by MASS, CHARLENE [FB/PNT]
00:04	GOOD! FT by STAFFORD, BRITTNEY [FB]	41-23	H 18	

Incarnate Word 23, UTSA 41

Official Scoring/Possession Reference Chart
Incarnate Word vs UTSA
Period 3
November 11, 2019 at Convocation Center - San Antonio



Period 3

Starters:

Incarnate Word: 5 SPEER, KARA (G); 10 JACKSON, VICTORIA (G); 11 ROBINSON, IMANI (G); 23 STAFFORD, BRITTNEY (G); 2 HENRY, LUNDEN (F);

UTSA: 4 WOODS, MIKAYLA (G); 15 TOTH, TIMEA (F); 23 HAWKINS, TIJA (F); 32 QUEZADA, ADRYANA (F); 34 DONALD, KARRINGTON (G);

Time	VISITORS: Incarnate Word	Score	Margin	HOME: UTSA
09:17	GOOD! JUMPER by JACKSON, VICTORIA [FB/PNT]	41-25	H 16	
08:52		42-25	H 17	GOOD! FT by OMEMMAH, EVELYN
07:54	GOOD! FT by HENRY, ALEXIS	42-26	H 16	
07:54	GOOD! FT by HENRY, ALEXIS	42-27	H 15	
07:38		44-27	H 17	GOOD! LAYUP by DONALD, KARRINGTON
06:57		46-27	H 19	GOOD! LAYUP by WOODS, MIKAYLA
06:52		48-27	H 21	GOOD! JUMPER by TOTH, TIMEA [PNT]
04:49	GOOD! 3PTR by RAY, MACY	48-30	H 18	
04:29		49-30	H 19	GOOD! FT by TOTH, TIMEA
04:29		50-30	H 20	GOOD! FT by TOTH, TIMEA
03:52		52-30	H 22	GOOD! LAYUP by WOODS, MIKAYLA [FB]
02:58	GOOD! LAYUP by OMOZEE, STARR	52-32	H 20	
02:51		54-32	H 22	GOOD! LAYUP by WOODS, MIKAYLA [FB]
02:25		55-32	H 23	GOOD! FT by WOODS, MIKAYLA
01:51		56-32	H 24	GOOD! FT by DONALD, KARRINGTON [FB]
00:58	GOOD! JUMPER by OMOZEE, STARR [PNT]	56-34	H 22	
00:23	GOOD! JUMPER by OMOZEE, STARR	56-36	H 20	
00:07		57-36	H 21	GOOD! FT by MASS, CHARLENE

Incarnate Word 36, UTSA 57

Official Scoring/Possession Reference Chart
Incarnate Word vs UTSA
Period 4
November 11, 2019 at Convocation Center - San Antonio



Period 4

Starters:

Incarnate Word: 5 SPEER, KARA (G); 10 JACKSON, VICTORIA (G); 11 ROBINSON, IMANI (G); 23 STAFFORD, BRITTNEY (G); 2 HENRY, LUNDEN (F);

UTSA: 4 WOODS, MIKAYLA (G); 15 TOTH, TIMEA (F); 23 HAWKINS, TIJA (F); 32 QUEZADA, ADRYANA (F); 34 DONALD, KARRINGTON (G);

Time	VISITORS: Incarnate Word	Score	Margin	HOME: UTSA
09:25	GOOD! LAYUP by OMOZEE, STARR [FB]	57-38	H 19	
07:17	GOOD! FT by OMOZEE, STARR	57-39	H 18	
06:52	GOOD! 3PTR by ROBINSON, IMANI	57-42	H 15	
05:51	GOOD! LAYUP by SPEER, KARA [PNT]	57-44	H 13	
04:45	GOOD! 3PTR by STAFFORD, BRITTNEY	57-47	H 10	
04:11		58-47	H 11	GOOD! FT by WOODS, MIKAYLA
03:22		60-47	H 13	GOOD! JUMPER by HAWKINS, TIJA
01:09	GOOD! 3PTR by ROBINSON, IMANI	60-50	H 10	
00:34	GOOD! FT by ROBINSON, IMANI	60-51	H 9	
00:31	GOOD! 3PTR by RAY, MACY	60-54	H 6	
00:26		61-54	H 7	GOOD! FT by MASS, CHARLENE [FB]
00:26		62-54	H 8	GOOD! FT by MASS, CHARLENE [FB]
00:10	GOOD! LAYUP by SPEER, KARA [FB]	62-56	H 6	
00:09		63-56	H 7	GOOD! FT by HAWKINS, TIJA [FB]

Incarnate Word 56, UTSA 63

**Official Substitutions Log
Incarnate Word vs UTSA
Period 1**

November 11, 2019 at Convocation Center - San Antonio



VISITORS: Incarnate Word	Time	Score	HOME: UTSA
5 SPEER,KARA			4 WOODS,MIKAYLA
10 JACKSON,VICTORIA			15 TOTH,TIMEA
11 ROBINSON,IMANI			23 HAWKINS,TIJA
23 STAFFORD,BRITTNEY			32 QUEZADA,ADRYANA
2 HENRY,LUNDEN			34 DONALD,KARRINGTON
	05:57	4-11	SUB OUT: HAWKINS,TIJA
	05:57		SUB IN: OMEMMAH,EVELYN
SUB OUT: 2 HENRY,LUNDEN	05:57		
SUB OUT: 23 STAFFORD,BRITTNEY	05:57		
SUB IN: 00 RAY,MACY	05:57		
SUB IN: 1 HENRY,ALEXIS	05:57		
SUB OUT: 10 JACKSON,VICTORIA	05:13	4-16	
SUB IN: 4 JENKINS,DESINY	05:13		
	04:51	6-16	SUB OUT: QUEZADA,ADRYANA
	04:51		SUB IN: MASS,CHARLENE
SUB OUT: 11 ROBINSON,IMANI	04:51		
SUB IN: 15 OMOZEE,STARR	04:51		
	04:06	6-18	SUB OUT: TOTH,TIMEA
	04:06		SUB OUT: DONALD,KARRINGTON
	04:06		SUB IN: LARSON,KARLEY
	04:06		SUB IN: COOKS,MANDI
	02:46	6-23	SUB OUT: WOODS,MIKAYLA
	02:46		SUB IN: DONALD,KARRINGTON
SUB OUT: 1 HENRY,ALEXIS	02:46		
SUB IN: 11 ROBINSON,IMANI	02:46		
SUB OUT: 5 SPEER,KARA	02:15	7-25	
SUB IN: 10 JACKSON,VICTORIA	02:15		
	01:46	7-27	SUB OUT: COOKS,MANDI
	01:46		SUB IN: QUEZADA,ADRYANA
	01:46		SUB OUT: OMEMMAH,EVELYN
	01:46		SUB IN: HAWKINS,TIJA
	01:12	7-27	SUB OUT: MASS,CHARLENE
	01:12		SUB IN: WOODS,MIKAYLA
SUB OUT: 00 RAY,MACY	01:12		
SUB IN: 23 STAFFORD,BRITTNEY	01:12		

Incarnate Word 7, UTSA 29

**Official Substitutions Log
Incarnate Word vs UTSA
Period 2**

November 11, 2019 at Convocation Center - San Antonio



VISITORS: Incarnate Word	Time	Score	HOME: UTSA
5 SPEER,KARA			4 WOODS,MIKAYLA
10 JACKSON,VICTORIA			15 TOTH,TIMEA
11 ROBINSON,IMANI			23 HAWKINS,TIJA
23 STAFFORD,BRITTNEY			32 QUEZADA,ADRYANA
2 HENRY,LUNDEN			34 DONALD,KARRINGTON
	10:00	-	SUB OUT: LARSON,KARLEY
	10:00		SUB IN: TOTH,TIMEA
SUB OUT: 4 JENKINS,DESINY	10:00		
SUB OUT: 11 ROBINSON,IMANI	10:00		
SUB OUT: 15 OMOZEE,STARR	10:00		
SUB IN: 00 RAY,MACY	10:00		
SUB IN: 2 HENRY,LUNDEN	10:00		
SUB IN: 5 SPEER,KARA	10:00		
	08:51	9-31	SUB OUT: TOTH,TIMEA
	08:51		SUB IN: COOKS,MANDI
	07:56	9-31	SUB OUT: HAWKINS,TIJA
	07:56		SUB OUT: COOKS,MANDI
	07:56		SUB IN: OMEMMAH,EVELYN
	07:56		SUB IN: MASS,CHARLENE
SUB OUT: 23 STAFFORD,BRITTNEY	07:10	12-31	
SUB IN: 4 JENKINS,DESINY	07:10		
SUB OUT: 2 HENRY,LUNDEN	06:54	13-31	
SUB IN: 1 HENRY,ALEXIS	06:54		
SUB OUT: 5 SPEER,KARA	05:56	13-33	
SUB OUT: 10 JACKSON,VICTORIA	05:56		
SUB IN: 11 ROBINSON,IMANI	05:56		
SUB IN: 15 OMOZEE,STARR	05:56		
	05:53	13-33	SUB OUT: MASS,CHARLENE
	05:53		SUB IN: LARSON,KARLEY
	04:42	13-35	SUB OUT: OMEMMAH,EVELYN
	04:42		SUB OUT: DONALD,KARRINGTON
	04:42		SUB IN: MASS,CHARLENE
	04:42		SUB IN: HAWKINS,TIJA
	04:00	13-35	SUB OUT: MASS,CHARLENE
	04:00		SUB IN: DONALD,KARRINGTON
	04:00		SUB OUT: WOODS,MIKAYLA
	04:00		SUB IN: MASS,CHARLENE
	00:41	21-39	SUB OUT: HAWKINS,TIJA
	00:41		SUB IN: OMEMMAH,EVELYN
SUB OUT: 1 HENRY,ALEXIS	00:41		
SUB OUT: 11 ROBINSON,IMANI	00:41		
SUB OUT: 15 OMOZEE,STARR	00:41		
SUB IN: 2 HENRY,LUNDEN	00:41		
SUB IN: 5 SPEER,KARA	00:41		
SUB IN: 10 JACKSON,VICTORIA	00:41		
SUB OUT: 4 JENKINS,DESINY	00:41		
SUB IN: 23 STAFFORD,BRITTNEY	00:41		
SUB OUT: 2 HENRY,LUNDEN	00:02	23-41	
SUB IN: 1 HENRY,ALEXIS	00:02		

Incarnate Word 23, UTSA 41

**Official Substitutions Log
Incarnate Word vs UTSA
Period 3**

November 11, 2019 at Convocation Center - San Antonio



VISITORS: Incarnate Word	Time	Score	HOME: UTSA
5 SPEER, KARA			4 WOODS, MIKAYLA
10 JACKSON, VICTORIA			15 TOTH, TIMEA
11 ROBINSON, IMANI			23 HAWKINS, TIJA
23 STAFFORD, BRITTNEY			32 QUEZADA, ADRYANA
2 HENRY, LUNDEN			34 DONALD, KARRINGTON
	10:00	-	SUB OUT: LARSON, KARLEY
	10:00		SUB OUT: MASS, CHARLENE
	10:00		SUB IN: WOODS, MIKAYLA
	10:00		SUB IN: TOTH, TIMEA
	06:57	27-46	SUB IN: MASS, CHARLENE
	06:57		SUB OUT: QUEZADA, ADRYANA
	06:57		SUB IN: DONALD, KARRINGTON
	06:02	27-48	SUB OUT: DONALD, KARRINGTON
	06:02		SUB IN: LARSON, KARLEY
SUB OUT: 1 HENRY, ALEXIS	05:47	27-48	
SUB IN: 2 HENRY, LUNDEN	05:47		
SUB OUT: 10 JACKSON, VICTORIA	05:14	27-48	
SUB IN: 22 GREEN, TAYLOR	05:14		
	04:29	30-48	SUB OUT: OMEMMAH, EVELYN
	04:29		SUB IN: COOKS, MANDI
SUB OUT: 23 STAFFORD, BRITTNEY	04:29		
SUB IN: 4 JENKINS, DESINY	04:29		
	03:24	30-52	SUB OUT: LARSON, KARLEY
	03:24		SUB IN: DONALD, KARRINGTON
SUB OUT: 2 HENRY, LUNDEN	03:24		
SUB IN: 15 OMOZEE, STARR	03:24		
SUB OUT: 22 GREEN, TAYLOR	02:25	32-54	
SUB IN: 10 JACKSON, VICTORIA	02:25		
	02:25		SUB OUT: WOODS, MIKAYLA
	02:25		SUB IN: QUEZADA, ADRYANA
SUB OUT: 4 JENKINS, DESINY	02:06	32-55	
SUB IN: 23 STAFFORD, BRITTNEY	02:06		
SUB OUT: 23 STAFFORD, BRITTNEY	00:03	36-57	
SUB IN: 4 JENKINS, DESINY	00:03		

Incarnate Word 36, UTSA 57

**Official Substitutions Log
Incarnate Word vs UTSA
Period 4**

November 11, 2019 at Convocation Center - San Antonio



VISITORS: Incarnate Word	Time	Score	HOME: UTSA
5 SPEER,KARA			4 WOODS,MIKAYLA
10 JACKSON,VICTORIA			15 TOTH,TIMEA
11 ROBINSON,IMANI			23 HAWKINS,TIJA
23 STAFFORD,BRITTNEY			32 QUEZADA,ADRYANA
2 HENRY,LUNDEN			34 DONALD,KARRINGTON
	10:00	-	SUB OUT: MASS,CHARLENE
	10:00		SUB OUT: COOKS,MANDI
	10:00		SUB IN: OMEMMAH,EVELYN
	10:00		SUB IN: WOODS,MIKAYLA
SUB OUT: 5 SPEER,KARA	10:00		
SUB IN: 11 ROBINSON,IMANI	10:00		
	08:01	38-57	SUB OUT: DONALD,KARRINGTON
	08:01		SUB IN: MASS,CHARLENE
SUB OUT: 00 RAY,MACY	08:01		
SUB IN: 5 SPEER,KARA	08:01		
	07:17	38-57	SUB OUT: OMEMMAH,EVELYN
	07:17		SUB IN: DONALD,KARRINGTON
SUB OUT: 10 JACKSON,VICTORIA	06:29	42-57	
SUB IN: 00 RAY,MACY	06:29		
	05:41	44-57	SUB OUT: QUEZADA,ADRYANA
	05:41		SUB IN: OMEMMAH,EVELYN
SUB OUT: 4 JENKINS,DESINY	05:01	44-57	
SUB IN: 23 STAFFORD,BRITTNEY	05:01		
	04:29	47-57	SUB OUT: OMEMMAH,EVELYN
	04:29		SUB IN: HAWKINS,TIJA
SUB OUT: 23 STAFFORD,BRITTNEY	04:11	47-57	
SUB IN: 10 JACKSON,VICTORIA	04:11		
	06:57	47-60	SUB OUT: DONALD,KARRINGTON
SUB OUT: 10 JACKSON,VICTORIA	01:32	47-60	
SUB IN: 23 STAFFORD,BRITTNEY	01:32		
SUB OUT: 15 OMOZEE,STARR	00:10	56-62	
SUB IN: 10 JACKSON,VICTORIA	00:10		
SUB OUT: 10 JACKSON,VICTORIA	00:09	56-62	
SUB IN: 15 OMOZEE,STARR	00:09		

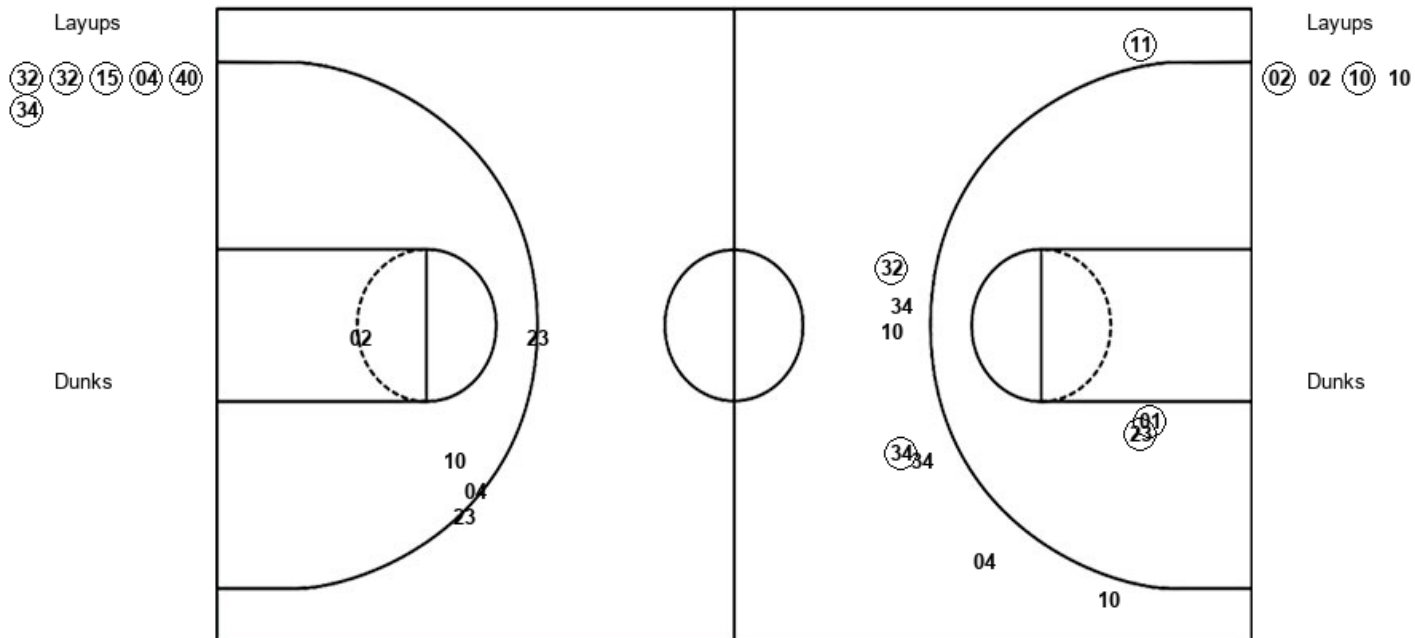
Incarnate Word 56, UTSA 63

Official Shot Chart
Incarnate Word vs UTSA
 PERIOD 1 Shots
 November 11, 2019 at Convocation Center - San Antonio



UTSA

Incarnate Word



UTS : Period 1	Made	Att	Pct
Layups	6	6	100.0
Dunks	0	0	0
2PT Field Goals	8	8	100.0
3PT Field Goals	3	8	37.5
Total Field Goals	11	16	68.8

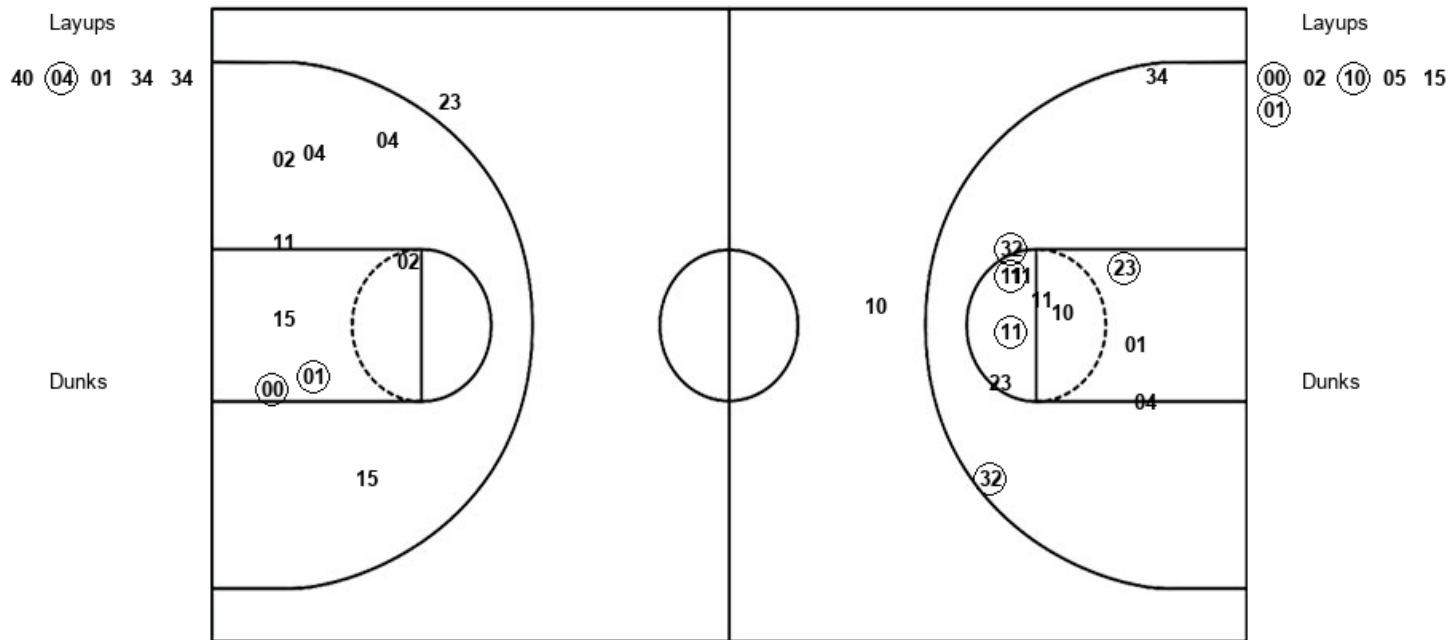
UIW : Period 1	Made	Att	Pct
Layups	2	4	50.0
Dunks	0	0	0
2PT Field Goals	2	6	33.3
3PT Field Goals	0	3	00.0
Total Field Goals	2	9	22.2

Official Shot Chart
Incarnate Word vs UTSA
 PERIOD 2 Shots
 November 11, 2019 at Convocation Center - San Antonio



UTSA

Incarnate Word



UTS : Period 2	Made	Att	Pct
Layups	1	5	20.0
Dunks	0	0	0
2PT Field Goals	6	17	35.3
3PT Field Goals	0	1	00.0
Total Field Goals	6	18	33.3

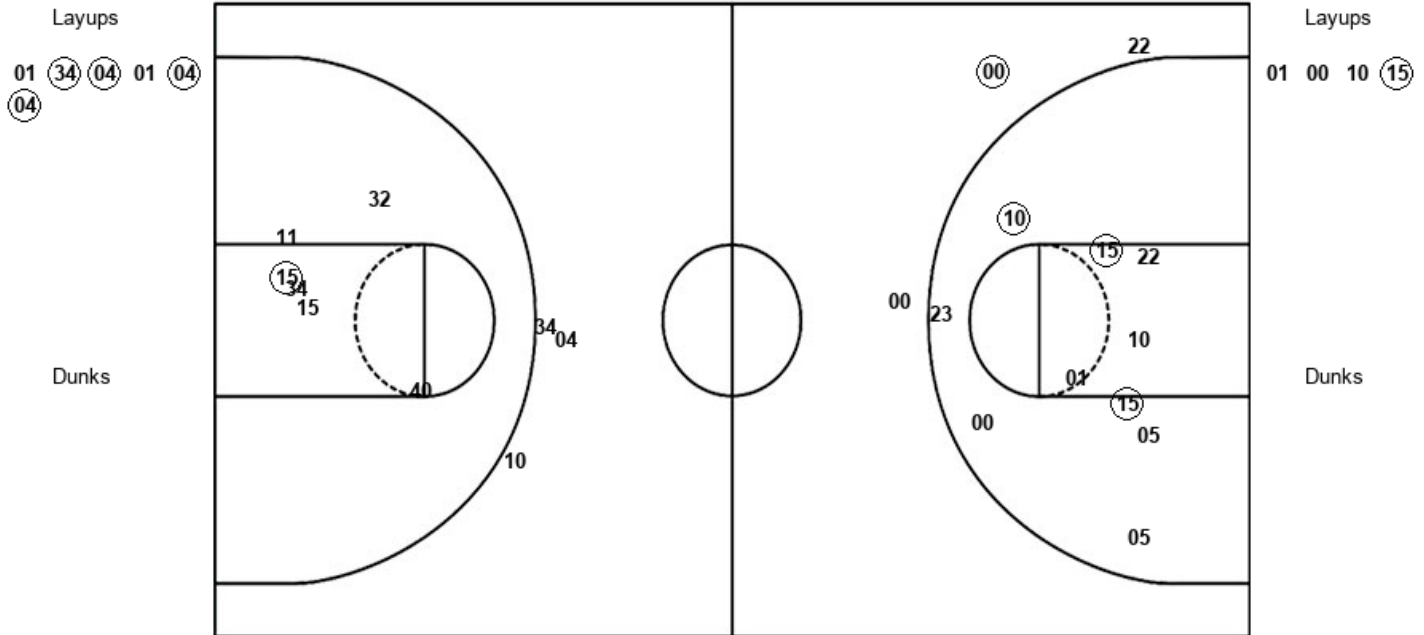
UIW : Period 2	Made	Att	Pct
Layups	3	6	50.0
Dunks	0	0	0
2PT Field Goals	5	15	33.3
3PT Field Goals	0	1	00.0
Total Field Goals	5	16	31.3

Official Shot Chart
Incarinate Word vs UTSA
 PERIOD 3 Shots
 November 11, 2019 at Convocation Center - San Antonio



UTSA

Incarinate Word



UTS : Period 3	Made	Att	Pct
Layups	4	6	66.7
Dunks	0	0	0
2PT Field Goals	5	12	41.7
3PT Field Goals	0	3	00.0
Total Field Goals	5	15	33.3

UIW : Period 3	Made	Att	Pct
Layups	1	4	25.0
Dunks	0	0	0
2PT Field Goals	4	14	28.6
3PT Field Goals	1	3	33.3
Total Field Goals	5	17	29.4

Official Shot Chart
Incarnate Word vs UTSA
 PERIOD 4 Shots
 November 11, 2019 at Convocation Center - San Antonio

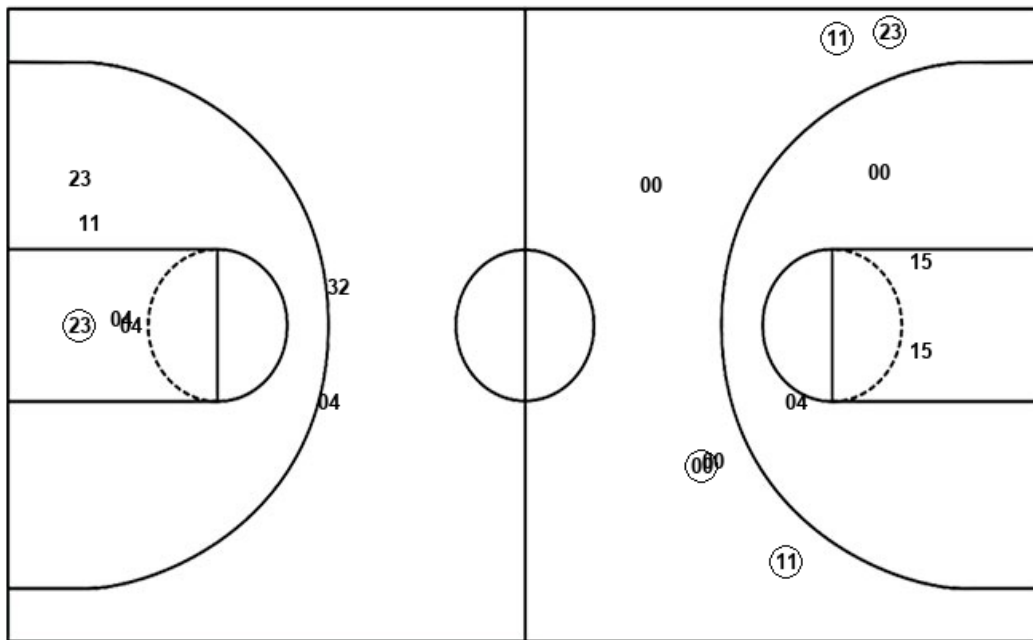


UTSA

Incarnate Word

Layups

04



Layups

(15) 11 11 (05) (05)

Dunks

Dunks

UTS : Period 4	Made	Att	Pct
Layups	0	1	00.0
Dunks	0	0	0
2PT Field Goals	1	6	16.7
3PT Field Goals	0	2	00.0
Total Field Goals	1	8	12.5

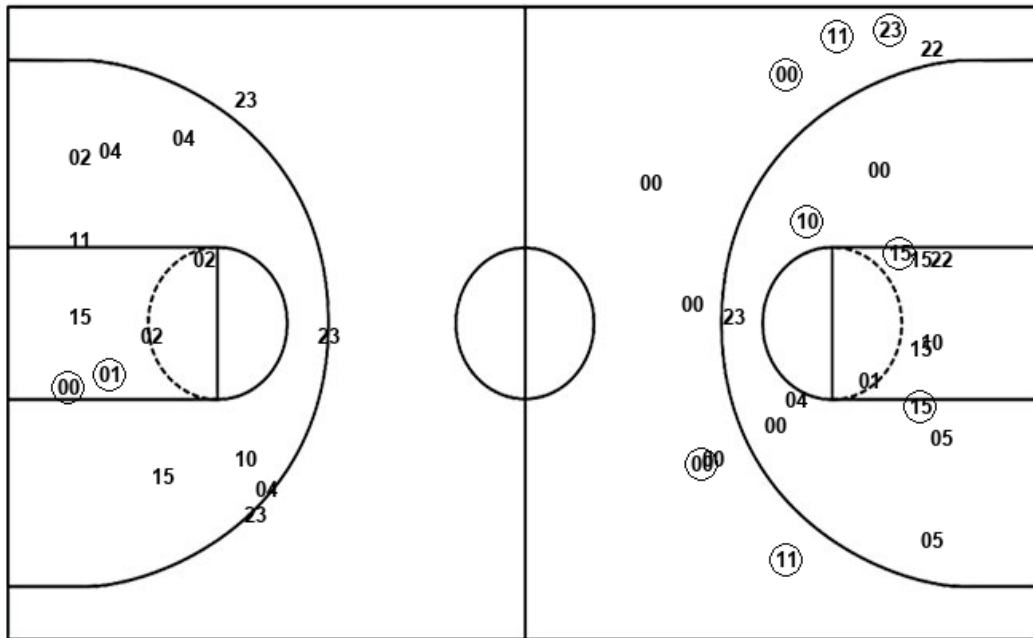
UIW : Period 4	Made	Att	Pct
Layups	3	5	60.0
Dunks	0	0	0
2PT Field Goals	3	9	33.3
3PT Field Goals	4	6	66.7
Total Field Goals	7	15	46.7

Official Shot Chart
Incarnate Word vs UTSA
 Incarnate Word Team Shots
 November 11, 2019 at Convocation Center - San Antonio



Layups

Dunks



Layups

Dunks

02 02 10 10 00
 02 10 05 15 01
 01 00 10 15 15
 11 11 05 05

UIW : Period 1	Made	Att	Pct
Layups	2	4	50.0
Dunks	0	0	0
2PT Field Goals	2	6	33.3
3PT Field Goals	0	3	00.0
Total Field Goals	2	9	22.2

UIW : Period 3	Made	Att	Pct
Layups	1	4	25.0
Dunks	0	0	0
2PT Field Goals	4	14	28.6
3PT Field Goals	1	3	33.3
Total Field Goals	5	17	29.4

UIW : Period 2	Made	Att	Pct
Layups	3	6	50.0
Dunks	0	0	0
2PT Field Goals	5	15	33.3
3PT Field Goals	0	1	00.0
Total Field Goals	5	16	31.3

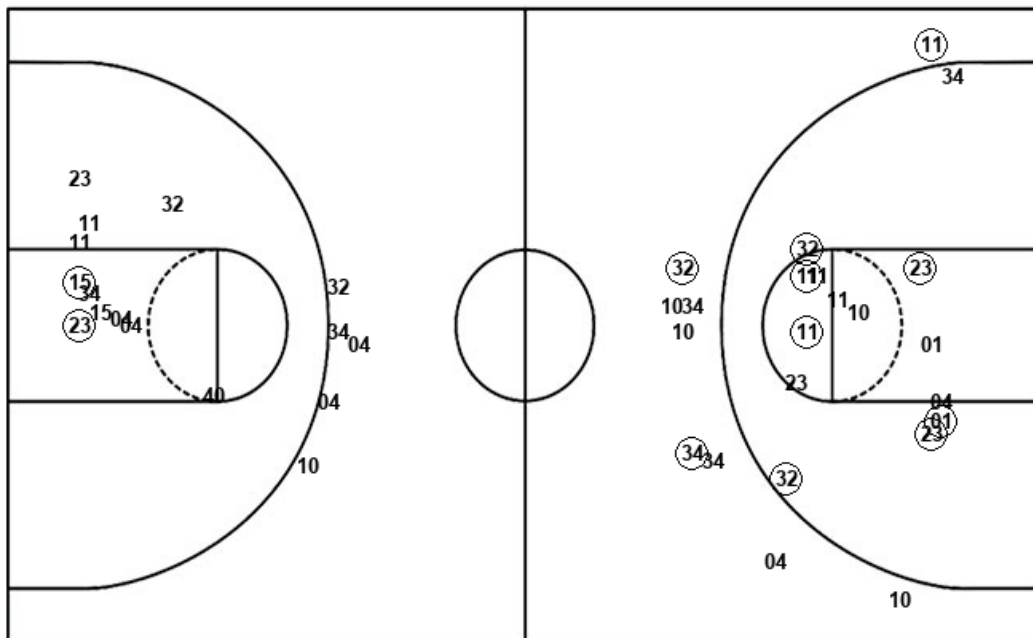
UIW : Period 4	Made	Att	Pct
Layups	3	5	60.0
Dunks	0	0	0
2PT Field Goals	3	9	33.3
3PT Field Goals	4	6	66.7
Total Field Goals	7	15	46.7

Official Shot Chart
Incarnate Word vs UTSA
UTSA Team Shots
November 11, 2019 at Convocation Center - San Antonio



Layups

Dunks



Layups

Dunks

UTS : Period 1	Made	Att	Pct
Layups	6	6	100.0
Dunks	0	0	0
2PT Field Goals	8	8	100.0
3PT Field Goals	3	8	37.5
Total Field Goals	11	16	68.8

UTS : Period 3	Made	Att	Pct
Layups	4	6	66.7
Dunks	0	0	0
2PT Field Goals	5	12	41.7
3PT Field Goals	0	3	00.0
Total Field Goals	5	15	33.3

UTS : Period 2	Made	Att	Pct
Layups	1	5	20.0
Dunks	0	0	0
2PT Field Goals	6	17	35.3
3PT Field Goals	0	1	00.0
Total Field Goals	6	18	33.3

UTS : Period 4	Made	Att	Pct
Layups	0	1	00.0
Dunks	0	0	0
2PT Field Goals	1	6	16.7
3PT Field Goals	0	2	00.0
Total Field Goals	1	8	12.5