

FINAL SCORE

UCLA

74

Chaminade

48

Maui Jim Maui Invitational

November 26, 2019 • Lahaina Civic Center - Lahaina



FINAL STATISTICS

Official Box Score
UCLA vs Chaminade
Game Totals -- Final Statistics
November 26, 2019 at Lahaina Civic Center - Lahaina



UCLA 74

No.	Player	S	Pts	FG	3FG	FT	OR	DR	TR	PF	A	TO	Blk	Stl	Min	+/-
02	RILEY, CODY	F	15	6-10	0-0	3-5	1	5	6	2	1	4	1	0	26	14
05	SMITH, CHRIS	G	5	2-5	0-2	1-2	0	2	2	0	1	3	1	1	20	14
10	CAMPBELL, TYGER	G	6	2-5	0-2	2-2	0	5	5	2	6	2	0	2	23	12
23	ALI, PRINCE	G	10	4-5	0-1	2-2	0	5	5	3	1	3	0	1	22	17
24	HILL, JALEN	C	4	2-3	0-0	0-0	2	7	9	2	1	1	3	0	17	15
00	OLESINSKI, ALEX	F	0	0-0	0-0	0-2	1	0	1	0	0	1	0	1	10	0
03	BERNARD, JULES	G	2	0-5	0-1	2-2	0	0	0	1	1	1	0	0	16	12
04	JAQUEZ JR., JAIME	G	17	8-11	0-1	1-2	4	8	12	2	2	2	1	3	30	19
13	KYMAN, JAKE	G	0	0-1	0-1	0-0	0	0	0	0	0	0	1	0	6	-1
22	O'NEAL, SHAREEF	F	0	0-0	0-0	0-0	1	0	1	4	0	1	0	0	6	2
34	SINGLETON, DAVID	G	15	5-8	5-6	0-0	0	3	3	2	1	0	0	1	23	26
TEAM							0	1	1	1		0				
TOTALS			74	29-53	5-14	11-17	9	36	45	19	14	18	7	9	199	

Shooting By Period

Period	FG	FG%	3FG	3FG%	FT	FT%
1st Half	10-24	42%	0-6	00%	2-4	50%
2nd Half	19-29	66%	5-8	63%	9-13	69%
Game	29-53	54.7%	5-14	35.7%	11-17	64.7%

Deadball Rebounds: 4,0
 Last FG: 2nd-01:39
 Biggest Run: 12-0
 Largest lead: By 29 at 2-01
 Technical Fouls: None.

Chaminade 48

No.	Player	S	Pts	FG	3FG	FT	OR	DR	TR	PF	A	TO	Blk	Stl	Min	+/-
01	YOUNG, ROMAN	G	6	0-3	0-2	6-6	0	0	0	2	1	1	0	2	25	-20
03	DONLEY, ELIET	F	10	2-4	0-0	6-6	5	3	8	4	0	2	0	0	26	-13
10	ARISSOL, ANDRE	G	6	2-13	1-9	1-2	1	1	2	0	2	1	0	2	32	-11
13	CARTAINO, TYLER	G	9	4-16	1-5	0-0	0	3	3	1	0	2	0	3	31	-14
25	SMALL, KENDALL	G	8	2-12	0-0	4-7	2	2	4	3	2	5	0	1	29	-14
12	AWET, BILL	F	0	0-4	0-1	0-0	1	1	2	4	0	2	0	0	16	-25
22	KREMER, KEVIN	G	2	1-3	0-1	0-0	0	4	4	1	0	0	0	0	20	-10
24	YOUNG, KOBE	F	0	0-0	0-0	0-0	0	0	0	0	0	0	0	0	0	-2
34	TAKAPU, MORNINGSTAR	F	0	0-0	0-0	0-0	0	0	0	0	0	0	0	0	2	1
55	AMARAL-ARTHAREE, ISAAC	G	7	3-5	1-3	0-0	0	0	0	2	0	1	0	0	18	-22
TEAM							3	3	6	0		0				
TOTALS			48	14-60	3-21	17-21	12	17	29	17	5	14	0	8	199	

Shooting By Period

Period	FG	FG%	3FG	3FG%	FT	FT%
1st Half	6-31	19%	1-10	10%	3-6	50%
2nd Half	8-29	28%	2-11	18%	14-15	93%
Game	14-60	23.3%	3-21	14.3%	17-21	81.0%

Deadball Rebounds: 2,0
 Last FG: 2nd-00:42
 Biggest Run: 6-0
 Largest lead: By 0 at 2-18
 Technical Fouls: None.

Game Notes:

Officials: Tom Eads, Patrick Evans, Shawn Lehigh
 Attendance: 2400

Start Time: 05:06 PM ET
 End Time: 07:06 PM ET
 Game Duration: 2:00
 Neutral Court;

Score	1st	2nd	TOT
UCL	22	52	74
CHM	16	32	48

UCL led for 38:30. CHM led for 0:00.
 Game was tied for 1:13.
 Times tied: 1 Lead Changes: 0

Points from	UCL	CHM
In the Paint	42	20
Off Turns	20	22
2nd Chance	12	9
Fast Break	13	13
Bench	34	9

Official Box Score
UCLA vs Chaminade
First Half Statistics Only
November 26, 2019 at Lahaina Civic Center - Lahaina



UCLA 22

No.	Player	S	Pts	FG	3FG	FT	OR	DR	TR	PF	A	TO	Blk	Stl	Min	+/-
02	RILEY, CODY	F	4	2-5	0-0	0-0	0	1	1	0	0	3	1	0	14	4
05	SMITH, CHRIS	G	2	1-4	0-2	0-0	0	1	1	0	0	3	0	0	12	5
10	CAMPBELL, TYGER	G	2	1-3	0-1	0-0	0	5	5	0	3	1	0	1	14	2
23	ALI, PRINCE	G	8	3-4	0-1	2-2	0	5	5	1	0	1	0	0	13	6
24	HILL, JALEN	C	2	1-2	0-0	0-0	1	3	4	2	1	0	2	0	11	5
00	OLESINSKI, ALEX	F	0	0-0	0-0	0-2	1	0	1	0	0	1	0	0	6	2
03	BERNARD, JULES	G	0	0-1	0-1	0-0	0	0	0	0	0	1	0	0	6	2
04	JAQUEZ JR., JAIME	G	4	2-4	0-1	0-0	3	3	6	0	1	1	1	0	10	-1
13	KYMAN, JAKE	G	0	0-0	0-0	0-0	0	0	0	0	0	0	0	0	3	0
22	O'NEAL, SHAREEF	F	0	0-0	0-0	0-0	1	0	1	3	0	1	0	0	5	1
34	SINGLETON, DAVID	G	0	0-1	0-0	0-0	0	2	2	1	0	0	0	0	6	4
	TEAM						0	0	0	0		0				
TOTALS			22	10-24	0-6	2-4	6	20	26	7	5	12	4	1	100	

Shooting By Period

Period	FG	FG%	3FG	3FG%	FT	FT%
1st Half	10-24	42%	0-6	00%	2-4	50%
Game	29-53	54.7%	5-14	35.7%	11-17	64.7%

Deadball Rebounds: 4,0
 Last FG Half: UCL 2nd-01:39

Chaminade 16

No.	Player	S	Pts	FG	3FG	FT	OR	DR	TR	PF	A	TO	Blk	Stl	Min	+/-
01	YOUNG, ROMAN	G	0	0-1	0-1	0-0	0	0	0	0	0	0	0	0	13	-6
03	DONLEY, ELIET	F	4	2-4	0-0	0-0	2	1	3	2	0	1	0	0	12	-3
10	ARISSOL, ANDRE	G	1	0-7	0-5	1-2	0	0	0	0	1	0	0	1	17	-6
13	CARTAINO, TYLER	G	7	3-9	1-3	0-0	0	1	1	1	0	0	0	2	19	-2
25	SMALL, KENDALL	G	2	0-5	0-0	2-4	1	1	2	0	1	2	0	0	15	-6
12	AWET, BILL	F	0	0-3	0-1	0-0	1	1	2	1	0	0	0	0	8	-3
22	KREMER, KEVIN	G	0	0-1	0-0	0-0	0	2	2	0	0	0	0	0	9	-2
24	YOUNG, KOBE	F	0	0-0	0-0	0-0	0	0	0	0	0	0	0	0	0	0
34	TAKAPU, MORNINGSTAR	F	0	0-0	0-0	0-0	0	0	0	0	0	0	0	0	0	0
55	AMARAL-ARTHAREE, ISAAC	G	2	1-1	0-0	0-0	0	0	0	1	0	1	0	0	8	-2
	TEAM						2	3	5	0		0				
TOTALS			16	6-31	1-10	3-6	6	9	15	5	2	4	0	3	100	

Shooting By Period

Period	FG	FG%	3FG	3FG%	FT	FT%
1st Half	6-31	19%	1-10	10%	3-6	50%
Game	14-60	23.3%	3-21	14.3%	17-21	81.0%

Deadball Rebounds: 2,0
 Last FG Half: CHM 2nd-00:42

Game Notes:

Officials: Tom Eads, Patrick Evans, Shawn Lehigh
 Attendance: 2400

Start Time: 05:06 PM ET
 End Time: 07:06 PM ET
 Game Duration: 2:00
 Neutral Court;

Score	1st	2nd	TOT
UCL	22	52	74
CHM	16	32	48

Points from (This Period)	UCL	CHM
In the Paint	18	10
Off Turns	4	10
2nd Chance	6	5
Fast Break	4	1
Bench	4	2

Official Play-By-Play
UCLA vs Chaminade
First Half
November 26, 2019 at Lahaina Civic Center - Lahaina



Period 1

Starters:

UCLA: 2 RILEY, CODY (F); 5 SMITH, CHRIS (G); 10 CAMPBELL, TYGER (G); 23 ALI, PRINCE (G); 24 HILL, JALEN (C);

Chaminade: 10 ARISSOL, ANDRE (G); 13 CARTAINO, TYLER (G); 25 SMALL, KENDALL (G); 1 YOUNG, ROMAN (G); 3 DONLEY, ELIET (F);

Time	VISITORS: UCLA	Score	Margin	HOME: Chaminade
19:44	MISSED 3PTR by SMITH, CHRIS			
19:37	REBOUND (OFF) by HILL, JALEN			
19:32				FOUL (PERSONAL) by DONLEY, ELIET
19:19	GOOD! LAYUP by ALI, PRINCE	0-2	V 2	
19:19	ASSIST by CAMPBELL, TYGER			
18:56				MISSED 3PTR by CARTAINO, TYLER
18:53	REBOUND (DEF) by ALI, PRINCE			
18:40	GOOD! LAYUP by SMITH, CHRIS	0-4	V 4	
18:30				TURNOVER (LOSTBALL) by SMALL, KENDALL
18:21	TURNOVER (LOSTBALL) by SMITH, CHRIS			
18:21				STEAL by CARTAINO, TYLER
18:11		2-4	V 2	GOOD! LAYUP by CARTAINO, TYLER
17:50	MISSED JUMPER by HILL, JALEN			
17:47				REBOUND (DEF) by TEAM
17:34				MISSED LAYUP by DONLEY, ELIET
17:34	BLOCK by HILL, JALEN			
17:30	REBOUND (DEF) by ALI, PRINCE			
17:11	FOUL (OFF) by ALI, PRINCE			
17:11	TURNOVER (OFFENSIVE) by ALI, PRINCE			
16:53				MISSED LAYUP by SMALL, KENDALL
16:49	REBOUND (DEF) by CAMPBELL, TYGER			
16:45	MISSED JUMPER by CAMPBELL, TYGER			
16:41				REBOUND (DEF) by SMALL, KENDALL
16:29				MISSED 3PTR by ARISSOL, ANDRE
16:26				REBOUND (OFF) by TEAM
16:24				SUB OUT: ARISSOL, ANDRE
16:24				SUB IN: KREMER, KEVIN
16:24	SUB OUT: HILL, JALEN			
16:24	SUB IN: O'NEAL, SHAREEF			
16:23				TURNOVER (BADPASS) by SMALL, KENDALL
16:23	STEAL by CAMPBELL, TYGER			
16:15	GOOD! LAYUP by RILEY, CODY	2-6	V 4	
16:15	ASSIST by CAMPBELL, TYGER			
16:03	FOUL (PERSONAL) by O'NEAL, SHAREEF			
16:03		3-6	V 3	GOOD! FT by SMALL, KENDALL
16:03				SUB OUT: DONLEY, ELIET
16:03				SUB IN: AWET, BILL
16:03		4-6	V 2	GOOD! FT by SMALL, KENDALL
15:44	MISSED JUMPER by RILEY, CODY			
15:40				REBOUND (DEF) by KREMER, KEVIN
15:32				MISSED LAYUP by AWET, BILL
15:29	REBOUND (DEF) by CAMPBELL, TYGER			
15:24				FOUL (PERSONAL) by CARTAINO, TYLER
15:24				SUB OUT: CARTAINO, TYLER
15:24				SUB IN: ARISSOL, ANDRE
15:24	GOOD! FT by ALI, PRINCE [FB]	4-7	V 3	
15:24	GOOD! FT by ALI, PRINCE [FB]	4-8	V 4	
14:54				MISSED JUMPER by SMALL, KENDALL
14:49	REBOUND (DEF) by RILEY, CODY			
14:46	TURNOVER (LOSTBALL) by SMITH, CHRIS			
14:46				STEAL by ARISSOL, ANDRE
14:41				MISSED LAYUP by ARISSOL, ANDRE
14:41	BLOCK by RILEY, CODY			
14:37	REBOUND (DEF) by ALI, PRINCE			
14:27	GOOD! LAYUP by RILEY, CODY [PNT]	4-10	V 6	
14:18				MISSED 3PTR by YOUNG, ROMAN
14:15	REBOUND (DEF) by CAMPBELL, TYGER			
14:08	MISSED JUMPER by RILEY, CODY			
14:05	REBOUND (OFF) by O'NEAL, SHAREEF			
14:00	FOUL (OFF) by O'NEAL, SHAREEF			
14:00	TURNOVER (OFFENSIVE) by O'NEAL, SHAREEF			
14:00				SUB OUT: YOUNG, ROMAN
14:00				SUB OUT: AWET, BILL
14:00				SUB OUT: KREMER, KEVIN
14:00				SUB IN: DONLEY, ELIET
14:00				SUB IN: CARTAINO, TYLER
14:00				SUB IN: AMARAL-ARTHAREE, ISAAC
14:00	SUB OUT: RILEY, CODY			
14:00	SUB OUT: SMITH, CHRIS			

Time	VISITORS: UCLA	Score	Margin	HOME: Chaminade
14:00	SUB OUT: CAMPBELL, TYGER			
14:00	SUB OUT: O'NEAL, SHAREEF			
14:00	SUB OUT: ALI, PRINCE			
14:00	SUB IN: OLESINSKI, ALEX			
14:00	SUB IN: BERNARD, JULES			
14:00	SUB IN: JAQUEZ JR., JAIME			
14:00	SUB IN: HILL, JALEN			
14:00	SUB IN: SINGLETON, DAVID			
13:36				MISSED LAYUP by DONLEY, ELIET
13:32	REBOUND (DEF) by HILL, JALEN			
13:12	GOOD! LAYUP by JAQUEZ JR., JAIME [PNT]	4-12	V 8	
13:12	ASSIST by HILL, JALEN			
12:54				MISSED 3PTR by CARTAINO, TYLER
12:50	REBOUND (DEF) by SINGLETON, DAVID			
12:47	MISSED 3PTR by BERNARD, JULES			
12:47	REBOUND (OFF) by OLESINSKI, ALEX			
12:43				FOUL (PERSONAL) by AMARAL-ARTHAREE, ISAAC
12:43	MISSED FT by OLESINSKI, ALEX			
12:43	REBOUND (OFF) by TEAM			
12:43				SUB OUT: SMALL, KENDALL
12:43				SUB IN: YOUNG, ROMAN
12:43	SUB OUT: BERNARD, JULES			
12:43	SUB IN: KYMAN, JAKE			
12:43	MISSED FT by OLESINSKI, ALEX			
12:43				REBOUND (DEF) by DONLEY, ELIET
12:36		6-12	V 6	GOOD! LAYUP by DONLEY, ELIET
12:11	GOOD! LAYUP by HILL, JALEN	6-14	V 8	
11:53				MISSED JUMPER by ARISSOL, ANDRE
11:49	REBOUND (DEF) by HILL, JALEN			
11:35	MISSED JUMPER by SINGLETON, DAVID			
11:31				REBOUND (DEF) by CARTAINO, TYLER
11:16		8-14	V 6	GOOD! JUMPER by CARTAINO, TYLER [PNT]
10:50	MISSED JUMPER by JAQUEZ JR., JAIME			
10:47	REBOUND (OFF) by JAQUEZ JR., JAIME			
10:46	GOOD! LAYUP by JAQUEZ JR., JAIME	8-16	V 8	
10:19				MISSED 3PTR by ARISSOL, ANDRE
10:16	REBOUND (DEF) by JAQUEZ JR., JAIME			
10:04	MISSED 3PTR by JAQUEZ JR., JAIME			
10:01				REBOUND (DEF) by TEAM
10:01				SUB OUT: YOUNG, ROMAN
10:01				SUB OUT: DONLEY, ELIET
10:01				SUB OUT: AMARAL-ARTHAREE, ISAAC
10:01				SUB IN: AWET, BILL
10:01				SUB IN: KREMER, KEVIN
10:01				SUB IN: SMALL, KENDALL
10:01	SUB OUT: OLESINSKI, ALEX			
10:01	SUB OUT: KYMAN, JAKE			
10:01	SUB OUT: HILL, JALEN			
10:01	SUB OUT: SINGLETON, DAVID			
10:01	SUB IN: RILEY, CODY			
10:01	SUB IN: CAMPBELL, TYGER			
10:01	SUB IN: O'NEAL, SHAREEF			
10:01	SUB IN: ALI, PRINCE			
09:36				MISSED JUMPER by SMALL, KENDALL
09:32	REBOUND (DEF) by CAMPBELL, TYGER			
09:25	TURNOVER (LOSTBALL) by RILEY, CODY			
09:25				STEAL by CARTAINO, TYLER
09:18				MISSED 3PTR by ARISSOL, ANDRE
09:15	REBOUND (DEF) by JAQUEZ JR., JAIME			
08:51	TURNOVER (BADPASS) by JAQUEZ JR., JAIME			
08:23				MISSED JUMPER by SMALL, KENDALL
08:20				REBOUND (OFF) by SMALL, KENDALL
08:17		11-16	V 5	GOOD! 3PTR by CARTAINO, TYLER
08:17				ASSIST by SMALL, KENDALL
07:43	TURNOVER (LOSTBALL) by RILEY, CODY			
07:39	FOUL (PERSONAL) by O'NEAL, SHAREEF			
07:39				
07:39	SUB OUT: JAQUEZ JR., JAIME			
07:39	SUB OUT: O'NEAL, SHAREEF			
07:39	SUB IN: SMITH, CHRIS			
07:39	SUB IN: HILL, JALEN			
07:39				MISSED FT by ARISSOL, ANDRE
07:39				REBOUND (OFF) by TEAM
07:39		12-16	V 4	GOOD! FT by ARISSOL, ANDRE [FB]
07:26	MISSED 3PTR by CAMPBELL, TYGER			
07:23				REBOUND (DEF) by TEAM
07:02				MISSED LAYUP by CARTAINO, TYLER
06:58	REBOUND (DEF) by ALI, PRINCE			
06:53				FOUL (PERSONAL) by AWET, BILL

Time	VISITORS: UCLA	Score	Margin	HOME: Chaminade
06:36	MISSED 3PTR by SMITH, CHRIS			
06:34				REBOUND (DEF) by AWET, BILL
06:28				MISSED 3PTR by ARISSOL, ANDRE
06:24	REBOUND (DEF) by CAMPBELL, TYGER			
06:20	GOOD! LAYUP by ALI, PRINCE [FB]	12-18	V 6	
06:20	ASSIST by CAMPBELL, TYGER			
05:57				MISSED 3PTR by AWET, BILL
05:55				REBOUND (OFF) by TEAM
05:55				SUB OUT: ARISSOL, ANDRE
05:55				SUB IN: YOUNG, ROMAN
05:55	SUB OUT: RILEY, CODY			
05:55	SUB OUT: ALI, PRINCE			
05:55	SUB IN: OLESINSKI, ALEX			
05:55	SUB IN: BERNARD, JULES			
05:51				MISSED JUMPER by KREMER, KEVIN
05:51	BLOCK by HILL, JALEN			
05:45				REBOUND (OFF) by AWET, BILL
05:44				MISSED LAYUP by AWET, BILL
05:41	REBOUND (DEF) by HILL, JALEN			
05:32	TURNOVER (TRAVEL) by OLESINSKI, ALEX			
05:32				SUB OUT: AWET, BILL
05:32				SUB IN: DONLEY, ELIET
05:10	FOUL (PERSONAL) by HILL, JALEN			
05:10				SUB OUT: KREMER, KEVIN
05:10				SUB IN: AMARAL-ARTHAREE, ISAAC
05:00		14-18	V 4	GOOD! JUMPER by AMARAL-ARTHAREE, ISAAC [PNT]
04:34	GOOD! JUMPER by CAMPBELL, TYGER [PNT]	14-20	V 6	
04:19				TURNOVER (LOSTBALL) by DONLEY, ELIET
04:19				SUB OUT: SMALL, KENDALL
04:19				SUB IN: ARISSOL, ANDRE
04:19	SUB OUT: OLESINSKI, ALEX			
04:19	SUB OUT: HILL, JALEN			
04:19	SUB IN: RILEY, CODY			
04:19	SUB IN: JAQUEZ JR., JAIME			
04:07	TURNOVER (TRAVEL) by SMITH, CHRIS			
03:38				MISSED JUMPER by CARTAINO, TYLER
03:34				REBOUND (OFF) by DONLEY, ELIET
03:31		16-20	V 4	GOOD! LAYUP by DONLEY, ELIET
03:31				ASSIST by ARISSOL, ANDRE
03:10				FOUL (PERSONAL) by DONLEY, ELIET
03:10				SUB OUT: DONLEY, ELIET
03:10				SUB IN: AWET, BILL
03:10	SUB OUT: SMITH, CHRIS			
03:10	SUB IN: ALI, PRINCE			
03:03	TURNOVER (LOSTBALL) by CAMPBELL, TYGER			
03:03	SUB OUT: CAMPBELL, TYGER			
03:03	SUB IN: SINGLETON, DAVID			
02:38				TURNOVER (TRAVEL) by AMARAL-ARTHAREE, ISAAC
02:08	MISSED 3PTR by ALI, PRINCE			
02:04	REBOUND (OFF) by JAQUEZ JR., JAIME			
02:00	GOOD! JUMPER by ALI, PRINCE	16-22	V 6	
02:00	ASSIST by JAQUEZ JR., JAIME			
01:47				MISSED 3PTR by ARISSOL, ANDRE
01:43	REBOUND (DEF) by JAQUEZ JR., JAIME			
01:39	TURNOVER (TRAVEL) by BERNARD, JULES			
01:39				SUB OUT: YOUNG, ROMAN
01:39				SUB OUT: AWET, BILL
01:39				SUB OUT: AMARAL-ARTHAREE, ISAAC
01:39				SUB IN: DONLEY, ELIET
01:39				SUB IN: KREMER, KEVIN
01:39				SUB IN: SMALL, KENDALL
01:39				TIMEOUT 30SEC
01:39	SUB OUT: BERNARD, JULES			
01:39	SUB IN: SMITH, CHRIS			
01:28				MISSED JUMPER by SMALL, KENDALL
01:24	REBOUND (DEF) by SINGLETON, DAVID			
01:21	MISSED JUMPER by SMITH, CHRIS			
01:16				REBOUND (DEF) by KREMER, KEVIN
00:57				MISSED LAYUP by CARTAINO, TYLER
00:56				REBOUND (OFF) by DONLEY, ELIET
00:56	FOUL (PERSONAL) by SINGLETON, DAVID			
00:56	SUB OUT: JAQUEZ JR., JAIME			
00:56	SUB OUT: SINGLETON, DAVID			
00:56	SUB IN: CAMPBELL, TYGER			
00:56	SUB IN: HILL, JALEN			
00:42	FOUL (PERSONAL) by HILL, JALEN			
00:42				MISSED FT by SMALL, KENDALL
00:42				REBOUND (OFF) by TEAM
00:42	SUB OUT: HILL, JALEN			

Time	VISITORS: UCLA	Score	Margin	HOME: Chaminade
00:42	SUB IN: JAQUEZ JR., JAIME			
00:42				MISSED FT by SMALL, KENDALL
00:42	REBOUND (DEF) by SMITH, CHRIS			
00:24	MISSED JUMPER by RILEY, CODY			
00:22	REBOUND (OFF) by JAQUEZ JR., JAIME			
00:17	TURNOVER (TRAVEL) by RILEY, CODY			
00:17	SUB OUT: RILEY, CODY			
00:17	SUB IN: OLESINSKI, ALEX			
00:17				SUB OUT: KREMER, KEVIN
00:17				SUB IN: YOUNG, ROMAN
00:03				MISSED JUMPER by CARTAINO, TYLER
00:03	BLOCK by JAQUEZ JR., JAIME			
00:00	REBOUND (DEF) by ALI, PRINCE			

UCLA 22, Chaminade 16

Points from (This Period)	UCL	CHM
In the Paint	18	10
Off Turns	4	10
2nd Chance	6	5
Fast Break	4	1
Bench	4	2

Official Box Score
UCLA vs Chaminade
Second Half Statistics Only
November 26, 2019 at Lahaina Civic Center - Lahaina



UCLA 52

No.	Player	S	Pts	FG	3FG	FT	OR	DR	TR	PF	A	TO	Blk	Stl	Min	+/-
02	RILEY, CODY	F	11	4-5	0-0	3-5	1	4	5	2	1	1	0	0	12	10
05	SMITH, CHRIS	G	3	1-1	0-0	1-2	0	1	1	0	1	0	1	1	8	9
10	CAMPBELL, TYGER	G	4	1-2	0-1	2-2	0	0	0	2	3	1	0	1	9	10
23	ALI, PRINCE	G	2	1-1	0-0	0-0	0	0	0	2	1	2	0	1	9	11
24	HILL, JALEN	C	2	1-1	0-0	0-0	1	4	5	0	0	1	1	0	6	10
00	OLESINSKI, ALEX	F	0	0-0	0-0	0-0	0	0	0	0	0	0	0	1	4	-2
03	BERNARD, JULES	G	2	0-4	0-0	2-2	0	0	0	1	1	0	0	0	10	10
04	Jaquez Jr., Jaime	G	13	6-7	0-0	1-2	1	5	6	2	1	1	0	3	20	20
13	KYMAN, JAKE	G	0	0-1	0-1	0-0	0	0	0	0	0	0	1	0	3	-1
22	O'NEAL, SHAREEF	F	0	0-0	0-0	0-0	0	0	0	1	0	0	0	0	2	1
34	SINGLETON, DAVID	G	15	5-7	5-6	0-0	0	1	1	1	1	0	0	1	17	22
	TEAM						0	1	1	1		0				
TOTALS			52	19-29	5-8	9-13	3	16	19	12	9	6	3	8	99	

Shooting By Period

Period	FG	FG%	3FG	3FG%	FT	FT%
2nd Half	19-29	66%	5-8	63%	9-13	69%
Game	29-53	54.7%	5-14	35.7%	11-17	64.7%

Deadball Rebounds: 4,0
Last FG Half: UCL -

Chaminade 32

No.	Player	S	Pts	FG	3FG	FT	OR	DR	TR	PF	A	TO	Blk	Stl	Min	+/-
01	YOUNG, ROMAN	G	6	0-2	0-1	6-6	0	0	0	2	1	1	0	2	12	-14
03	DONLEY, ELIET	F	6	0-0	0-0	6-6	3	2	5	2	0	1	0	0	14	-10
10	ARISSOL, ANDRE	G	5	2-6	1-4	0-0	1	1	2	0	1	1	0	1	14	-5
13	CARTAINO, TYLER	G	2	1-7	0-2	0-0	0	2	2	0	0	2	0	1	13	-12
25	SMALL, KENDALL	G	6	2-7	0-0	2-3	1	1	2	3	1	3	0	1	15	-8
12	AWET, BILL	F	0	0-1	0-0	0-0	0	0	0	3	0	2	0	0	8	-22
22	KREMER, KEVIN	G	2	1-2	0-1	0-0	0	2	2	1	0	0	0	0	12	-8
24	YOUNG, KOBE	F	0	0-0	0-0	0-0	0	0	0	0	0	0	0	0	0	-2
34	TAKAPU, MORNINGSTAR	F	0	0-0	0-0	0-0	0	0	0	0	0	0	0	0	2	1
55	AMARAL-ARTHAREE, ISAAC	G	5	2-4	1-3	0-0	0	0	0	1	0	0	0	0	10	-20
	TEAM						1	0	1	0		0				
TOTALS			32	8-29	2-11	14-15	6	8	14	12	3	10	0	5	99	

Shooting By Period

Period	FG	FG%	3FG	3FG%	FT	FT%
2nd Half	8-29	28%	2-11	18%	14-15	93%
Game	14-60	23.3%	3-21	14.3%	17-21	81.0%

Deadball Rebounds: 2,0
Last FG Half: CHM -

Game Notes:

Officials: Tom Eads, Patrick Evans, Shawn Lehigh
Attendance: 2400

Start Time: 05:06 PM ET
End Time: 07:06 PM ET
Game Duration: 2:00
Neutral Court;

Score	1st	2nd	TOT
UCL	22	52	74
CHM	16	32	48

Points from (This Period)	UCL	CHM
In the Paint	24	10
Off Turns	16	12
2nd Chance	6	4
Fast Break	9	12
Bench	30	7

Official Play-By-Play
UCLA vs Chaminade
Second Half
November 26, 2019 at Lahaina Civic Center - Lahaina



Period 2

Starters:

UCLA: 2 RILEY, CODY (F); 5 SMITH, CHRIS (G); 10 CAMPBELL, TYGER (G); 23 ALI, PRINCE (G); 24 HILL, JALEN (C);

Chaminade: 10 ARISSOL, ANDRE (G); 13 CARTAINO, TYLER (G); 25 SMALL, KENDALL (G); 1 YOUNG, ROMAN (G); 3 DONLEY, ELIET (F);

Time	VISITORS: UCLA	Score	Margin	HOME: Chaminade
20:00	SUB OUT: OLESINSKI, ALEX			
20:00	SUB OUT: SMITH, CHRIS			
20:00	SUB IN: RILEY, CODY			
20:00	SUB IN: HILL, JALEN			
19:40				MISSED LAYUP by CARTAINO, TYLER
19:36	REBOUND (DEF) by HILL, JALEN			
19:26	TURNOVER (BADPASS) by HILL, JALEN			
19:26				STEAL by YOUNG, ROMAN
19:21				MISSED LAYUP by YOUNG, ROMAN
19:21	BLOCK by HILL, JALEN			
19:20				REBOUND (OFF) by DONLEY, ELIET
19:20	FOUL (PERSONAL) by ALI, PRINCE			
19:20		17-22	V 5	GOOD! FT by DONLEY, ELIET [FB]
19:20	SUB OUT: HILL, JALEN			
19:20	SUB IN: OLESINSKI, ALEX			
19:20		18-22	V 4	GOOD! FT by DONLEY, ELIET [FB]
19:11	TURNOVER (LOSTBALL) by CAMPBELL, TYGER			
19:11				STEAL by ARISSOL, ANDRE
19:07		20-22	V 2	GOOD! LAYUP by ARISSOL, ANDRE [FB]
18:47	TURNOVER (BADPASS) by ALI, PRINCE			
18:47				STEAL by CARTAINO, TYLER
18:43		22-22	T	GOOD! DUNK by CARTAINO, TYLER [FB]
18:22				FOUL (PERSONAL) by DONLEY, ELIET
18:11	GOOD! LAYUP by JAQUEZ JR., JAIME	22-24	V 2	
18:11	ASSIST by RILEY, CODY			
18:02	FOUL (PERSONAL) by RILEY, CODY			
18:02				SUB OUT: YOUNG, ROMAN
18:02				SUB OUT: DONLEY, ELIET
18:02				SUB IN: AWET, BILL
18:02				SUB IN: AMARAL-ARTHAREE, ISAAC
18:01				TURNOVER (BADPASS) by SMALL, KENDALL
18:01	STEAL by OLESINSKI, ALEX			
17:45				FOUL (PERSONAL) by AWET, BILL
17:45	MISSED FT by RILEY, CODY			
17:45	REBOUND (OFF) by TEAM			
17:45	SUB OUT: CAMPBELL, TYGER			
17:45	SUB IN: SINGLETON, DAVID			
17:45	GOOD! FT by RILEY, CODY	22-25	V 3	
17:37	FOUL (PERSONAL) by JAQUEZ JR., JAIME			
17:35				MISSED 3PTR by AMARAL-ARTHAREE, ISAAC
17:31				REBOUND (OFF) by ARISSOL, ANDRE
17:27				TURNOVER (LOSTBALL) by ARISSOL, ANDRE
17:27	STEAL by SINGLETON, DAVID			
17:27	SUB OUT: ALI, PRINCE			
17:27	SUB IN: BERNARD, JULES			
17:21				FOUL (PERSONAL) by SMALL, KENDALL
16:54				FOUL (PERSONAL) by AWET, BILL
16:54	GOOD! FT by RILEY, CODY	22-26	V 4	
16:54				SUB OUT: ARISSOL, ANDRE
16:54				SUB IN: YOUNG, ROMAN
16:54	GOOD! FT by RILEY, CODY	22-27	V 5	
16:54	SUB OUT: OLESINSKI, ALEX			
16:54	SUB IN: SMITH, CHRIS			
16:41	FOUL (PERSONAL) by JAQUEZ JR., JAIME			
16:41				SUB OUT: AWET, BILL
16:41				SUB IN: KREMER, KEVIN
16:40				TURNOVER (BADPASS) by SMALL, KENDALL
16:40	STEAL by JAQUEZ JR., JAIME			
16:34	GOOD! LAYUP by JAQUEZ JR., JAIME [FB]	22-29	V 7	
16:34	ASSIST by SMITH, CHRIS			
16:22		24-29	V 5	GOOD! JUMPER by AMARAL-ARTHAREE, ISAAC
15:58				FOUL (PERSONAL) by AMARAL-ARTHAREE, ISAAC
15:58				SUB OUT: CARTAINO, TYLER
15:58				SUB IN: AWET, BILL
15:46	GOOD! 3PTR by SINGLETON, DAVID	24-32	V 8	
15:46	ASSIST by BERNARD, JULES			
15:39				MISSED LAYUP by AWET, BILL
15:34	REBOUND (DEF) by JAQUEZ JR., JAIME			
15:25	GOOD! JUMPER by RILEY, CODY	24-34	V 10	

Time	VISITORS: UCLA	Score	Margin	HOME: Chaminade
15:25	ASSIST by SINGLETON, DAVID			
15:04				MISSED LAYUP by SMALL, KENDALL
15:00	REBOUND (DEF) by RILEY, CODY			
14:58				SUB OUT: KREMER, KEVIN
14:58				SUB OUT: AMARAL-ARTHAREE, ISAAC
14:58				SUB IN: DONLEY, ELIET
14:58				SUB IN: CARTAINO, TYLER
14:47	MISSED JUMPER by BERNARD, JULES			
14:43				REBOUND (DEF) by DONLEY, ELIET
14:41				MISSED LAYUP by CARTAINO, TYLER
14:41	BLOCK by SMITH, CHRIS			
14:38	REBOUND (DEF) by JAQUEZ JR., JAIME			
14:37				FOUL (PERSONAL) by YOUNG, ROMAN
14:29	FOUL (OFF) by RILEY, CODY			
14:29	TURNOVER (OFFENSIVE) by RILEY, CODY			
14:29	FOUL (COACHTECHNICAL) by TEAM			
14:29		25-34	V 9	GOOD! FT by YOUNG, ROMAN [FB]
14:29		26-34	V 8	GOOD! FT by YOUNG, ROMAN [FB]
14:29				SUB OUT: YOUNG, ROMAN
14:29				SUB IN: ARISSOL, ANDRE
14:18				TURNOVER (LOSTBALL) by AWET, BILL
14:18	STEAL by JAQUEZ JR., JAIME			
14:00	GOOD! 3PTR by SINGLETON, DAVID	26-37	V 11	
13:50				MISSED 3PTR by ARISSOL, ANDRE
13:49	REBOUND (DEF) by SMITH, CHRIS			
13:48				SUB OUT: AWET, BILL
13:48				SUB IN: KREMER, KEVIN
13:31	MISSED JUMPER by BERNARD, JULES			
13:27				REBOUND (DEF) by ARISSOL, ANDRE
13:27	SUB OUT: RILEY, CODY			
13:27	SUB IN: HILL, JALEN			
13:00		28-37	V 9	GOOD! LAYUP by SMALL, KENDALL
12:43	MISSED LAYUP by SINGLETON, DAVID			
12:37	REBOUND (OFF) by HILL, JALEN			
12:37	GOOD! LAYUP by HILL, JALEN	28-39	V 11	
12:23				TURNOVER (BADPASS) by SMALL, KENDALL
12:16	MISSED JUMPER by BERNARD, JULES			
12:12				REBOUND (DEF) by DONLEY, ELIET
12:12				SUB OUT: CARTAINO, TYLER
12:12				SUB OUT: SMALL, KENDALL
12:12				SUB IN: YOUNG, ROMAN
12:12				SUB IN: AMARAL-ARTHAREE, ISAAC
12:12	SUB OUT: BERNARD, JULES			
12:12	SUB IN: ALI, PRINCE			
11:53				
11:42				TURNOVER (LOSTBALL) by YOUNG, ROMAN
11:42	STEAL by ALI, PRINCE			
11:18	GOOD! JUMPER by ALI, PRINCE	28-41	V 13	
11:10		30-41	V 11	GOOD! LAYUP by KREMER, KEVIN [PNT]
11:10				ASSIST by ARISSOL, ANDRE
10:50	GOOD! JUMPER by SMITH, CHRIS	30-43	V 13	
10:27				MISSED LAYUP by ARISSOL, ANDRE
10:24	REBOUND (DEF) by HILL, JALEN			
10:20				FOUL (PERSONAL) by KREMER, KEVIN
10:20	MISSED FT by SMITH, CHRIS			
10:20	REBOUND (OFF) by TEAM			
10:20				SUB OUT: YOUNG, ROMAN
10:20				SUB OUT: AMARAL-ARTHAREE, ISAAC
10:20				SUB IN: CARTAINO, TYLER
10:20				SUB IN: SMALL, KENDALL
10:20	SUB OUT: HILL, JALEN			
10:20	SUB IN: RILEY, CODY			
10:20	GOOD! FT by SMITH, CHRIS [FB]	30-44	V 14	
10:04	FOUL (PERSONAL) by SINGLETON, DAVID			
10:04		31-44	V 13	GOOD! FT by DONLEY, ELIET
10:04		32-44	V 12	GOOD! FT by DONLEY, ELIET
10:04	SUB OUT: SINGLETON, DAVID			
10:04	SUB IN: CAMPBELL, TYGER			
09:47	MISSED LAYUP by RILEY, CODY			
09:40				REBOUND (DEF) by KREMER, KEVIN
09:40				TURNOVER (LOSTBALL) by CARTAINO, TYLER
09:40	STEAL by SMITH, CHRIS			
09:32				FOUL (PERSONAL) by SMALL, KENDALL
09:32	GOOD! FT by CAMPBELL, TYGER	32-45	V 13	
09:32	GOOD! FT by CAMPBELL, TYGER	32-46	V 14	
09:22	FOUL (PERSONAL) by CAMPBELL, TYGER			
09:22	SUB OUT: CAMPBELL, TYGER			
09:22	SUB IN: SINGLETON, DAVID			
09:22		33-46	V 13	GOOD! FT by SMALL, KENDALL
09:22		34-46	V 12	GOOD! FT by SMALL, KENDALL

Time	VISITORS: UCLA	Score	Margin	HOME: Chaminade
09:16	GOOD! LAYUP by RILEY, CODY [FB]	34-48	V 14	
09:16	ASSIST by JAQUEZ JR., JAIME			
08:58				MISSED JUMPER by CARTAINO, TYLER
08:55				REBOUND (OFF) by TEAM
08:55				SUB OUT: DONLEY, ELIET
08:55				SUB OUT: KREMER, KEVIN
08:55				SUB IN: YOUNG, ROMAN
08:55				SUB IN: AWET, BILL
08:53				MISSED JUMPER by CARTAINO, TYLER
08:53	REBOUND (DEF) by RILEY, CODY			
08:41	GOOD! LAYUP by JAQUEZ JR., JAIME	34-50	V 16	
08:41				TIMEOUT 30SEC
08:41				
08:41				SUB OUT: CARTAINO, TYLER
08:41				SUB IN: DONLEY, ELIET
08:41	SUB OUT: SMITH, CHRIS			
08:41	SUB IN: BERNARD, JULES			
08:30				MISSED JUMPER by SMALL, KENDALL
08:26				REBOUND (OFF) by DONLEY, ELIET
08:25				MISSED 3PTR by ARISSOL, ANDRE
08:22	REBOUND (DEF) by RILEY, CODY			
07:54	TURNOVER (LOSTBALL) by ALI, PRINCE			
07:54				STEAL by YOUNG, ROMAN
07:52	FOUL (PERSONAL) by ALI, PRINCE			
07:52				
07:52				SUB OUT: AWET, BILL
07:52				SUB IN: KREMER, KEVIN
07:52	SUB OUT: ALI, PRINCE			
07:52	SUB IN: CAMPBELL, TYGER			
07:52		35-50	V 15	GOOD! FT by YOUNG, ROMAN [FB]
07:52		36-50	V 14	GOOD! FT by YOUNG, ROMAN [FB]
07:25	MISSED JUMPER by BERNARD, JULES			
07:24	REBOUND (OFF) by RILEY, CODY			
07:24	GOOD! LAYUP by RILEY, CODY	36-52	V 16	
07:24				FOUL (PERSONAL) by YOUNG, ROMAN
07:24	MISSED FT by RILEY, CODY			
07:24				REBOUND (DEF) by KREMER, KEVIN
07:12				MISSED JUMPER by SMALL, KENDALL
07:10	REBOUND (DEF) by RILEY, CODY			
06:54	MISSED 3PTR by SINGLETON, DAVID			
06:50				REBOUND (DEF) by SMALL, KENDALL
06:33				FOUL (OFF) by DONLEY, ELIET
06:33				TURNOVER (OFFENSIVE) by DONLEY, ELIET
06:33				SUB OUT: YOUNG, ROMAN
06:33				SUB OUT: DONLEY, ELIET
06:33				SUB OUT: ARISSOL, ANDRE
06:33				SUB IN: AWET, BILL
06:33				SUB IN: CARTAINO, TYLER
06:33				SUB IN: AMARAL-ARTHAREE, ISAAC
06:24	GOOD! DUNK by RILEY, CODY [FB]	36-54	V 18	
06:24	ASSIST by CAMPBELL, TYGER			
06:15				MISSED JUMPER by SMALL, KENDALL
06:13	REBOUND (DEF) by JAQUEZ JR., JAIME			
06:14				FOUL (PERSONAL) by AWET, BILL
06:13	MISSED FT by JAQUEZ JR., JAIME			
06:13	REBOUND (OFF) by TEAM			
06:13				SUB OUT: SMALL, KENDALL
06:13				SUB IN: YOUNG, ROMAN
06:13	GOOD! FT by JAQUEZ JR., JAIME	36-55	V 19	
06:04		39-55	V 16	GOOD! 3PTR by AMARAL-ARTHAREE, ISAAC
06:04				ASSIST by YOUNG, ROMAN
05:39	GOOD! 3PTR by SINGLETON, DAVID	39-58	V 19	
05:39	ASSIST by CAMPBELL, TYGER			
05:38	TIMEOUT 30SEC			
05:38				SUB OUT: KREMER, KEVIN
05:38				SUB IN: DONLEY, ELIET
05:18	FOUL (PERSONAL) by CAMPBELL, TYGER			
05:18		40-58	V 18	GOOD! FT by YOUNG, ROMAN
05:18	SUB OUT: BERNARD, JULES			
05:18	SUB IN: ALI, PRINCE			
05:18	SUB OUT: RILEY, CODY			
05:18	SUB IN: HILL, JALEN			
05:18		41-58	V 17	GOOD! FT by YOUNG, ROMAN
04:56	GOOD! 3PTR by SINGLETON, DAVID	41-61	V 20	
04:56	ASSIST by CAMPBELL, TYGER			
04:32				MISSED 3PTR by YOUNG, ROMAN
04:29	REBOUND (DEF) by HILL, JALEN			
04:15	GOOD! LAYUP by CAMPBELL, TYGER [PNT]	41-63	V 22	
04:00				MISSED 3PTR by CARTAINO, TYLER
03:56	REBOUND (DEF) by HILL, JALEN			

Time	VISITORS: UCLA	Score	Margin	HOME: Chaminade
03:44	GOOD! 3PTR by SINGLETON, DAVID	41-66	V 25	
03:44	ASSIST by ALI, PRINCE			
03:32				TURNOVER (LOSTBALL) by AWET, BILL
03:32	STEAL by JAQUEZ JR., JAIME			
03:28	GOOD! DUNK by JAQUEZ JR., JAIME [FB]	41-68	V 27	
03:27				TIMEOUT 30SEC
03:27				
03:27				SUB OUT: YOUNG, ROMAN
03:27				SUB OUT: AWET, BILL
03:27				SUB OUT: AMARAL-ARTHAREE, ISAAC
03:27				SUB IN: ARISSOL, ANDRE
03:27				SUB IN: KREMER, KEVIN
03:27				SUB IN: SMALL, KENDALL
03:27	SUB OUT: ALI, PRINCE			
03:27	SUB OUT: HILL, JALEN			
03:27	SUB IN: KYMAN, JAKE			
03:27	SUB IN: O'NEAL, SHAREEF			
03:05				MISSED 3PTR by KREMER, KEVIN
03:02	REBOUND (DEF) by JAQUEZ JR., JAIME			
02:58	MISSED 3PTR by KYMAN, JAKE			
02:55				REBOUND (DEF) by CARTAINO, TYLER
02:50				TURNOVER (LOSTBALL) by CARTAINO, TYLER
02:50	STEAL by CAMPBELL, TYGER			
02:38	MISSED 3PTR by CAMPBELL, TYGER			
02:35				REBOUND (DEF) by CARTAINO, TYLER
02:30				MISSED 3PTR by CARTAINO, TYLER
02:27	REBOUND (DEF) by TEAM			
02:27				SUB OUT: CARTAINO, TYLER
02:27				SUB IN: AMARAL-ARTHAREE, ISAAC
02:11	MISSED JUMPER by JAQUEZ JR., JAIME			
02:08	REBOUND (OFF) by JAQUEZ JR., JAIME			
02:07	GOOD! LAYUP by JAQUEZ JR., JAIME	41-70	V 29	
01:59				MISSED JUMPER by SMALL, KENDALL
01:56				REBOUND (OFF) by SMALL, KENDALL
01:52				MISSED 3PTR by AMARAL-ARTHAREE, ISAAC
01:50				REBOUND (OFF) by DONLEY, ELIET
01:50	FOUL (PERSONAL) by O'NEAL, SHAREEF			
01:50		42-70	V 28	GOOD! FT by DONLEY, ELIET
01:50	SUB OUT: CAMPBELL, TYGER			
01:50	SUB OUT: O'NEAL, SHAREEF			
01:50	SUB IN: OLESINSKI, ALEX			
01:50	SUB IN: BERNARD, JULES			
01:50		43-70	V 27	GOOD! FT by DONLEY, ELIET
01:50				SUB OUT: DONLEY, ELIET
01:50				SUB IN: TAKAPU, MORNINGSTAR
01:39	GOOD! LAYUP by JAQUEZ JR., JAIME [PNT]	43-72	V 29	
01:24		46-72	V 26	GOOD! 3PTR by ARISSOL, ANDRE
01:24				ASSIST by SMALL, KENDALL
00:47	TURNOVER (LOSTBALL) by JAQUEZ JR., JAIME			
00:47				STEAL by SMALL, KENDALL
00:42		48-72	V 24	GOOD! LAYUP by SMALL, KENDALL [FB]
00:42	FOUL (PERSONAL) by BERNARD, JULES			
00:42				SUB OUT: KREMER, KEVIN
00:42				SUB IN: YOUNG, KOBE
00:42				MISSED FT by SMALL, KENDALL
00:40	REBOUND (DEF) by JAQUEZ JR., JAIME			
00:34				FOUL (PERSONAL) by SMALL, KENDALL
00:34	GOOD! FT by BERNARD, JULES	48-73	V 25	
00:34				SUB OUT: SMALL, KENDALL
00:34				SUB IN: YOUNG, ROMAN
00:34	GOOD! FT by BERNARD, JULES	48-74	V 26	
00:22				MISSED 3PTR by ARISSOL, ANDRE
00:22	BLOCK by KYMAN, JAKE			
00:17	REBOUND (DEF) by SINGLETON, DAVID			

UCLA 74, Chaminade 48

Points from (This Period)	UCL	CHM
In the Paint	24	10
Off Turns	16	12
2nd Chance	6	4
Fast Break	9	12
Bench	30	7

Official Scoring/Possession Reference Chart
UCLA vs Chaminade
Period 1
November 26, 2019 at Lahaina Civic Center - Lahaina



Period 1

Starters:

UCLA: 2 RILEY, CODY (F); 5 SMITH, CHRIS (G); 10 CAMPBELL, TYGER (G); 23 ALI, PRINCE (G); 24 HILL, JALEN (C);

Chaminade: 10 ARISSOL, ANDRE (G); 13 CARTAINO, TYLER (G); 25 SMALL, KENDALL (G); 1 YOUNG, ROMAN (G); 3 DONLEY, ELIET (F);

Time	VISITORS: UCLA	Score	Margin	HOME: Chaminade
19:19	GOOD! LAYUP by ALI, PRINCE	0-2	V 2	
18:40	GOOD! LAYUP by SMITH, CHRIS	0-4	V 4	
18:11		2-4	V 2	GOOD! LAYUP by CARTAINO, TYLER
16:15	GOOD! LAYUP by RILEY, CODY	2-6	V 4	
16:03		3-6	V 3	GOOD! FT by SMALL, KENDALL
16:03		4-6	V 2	GOOD! FT by SMALL, KENDALL
15:24	GOOD! FT by ALI, PRINCE [FB]	4-7	V 3	
15:24	GOOD! FT by ALI, PRINCE [FB]	4-8	V 4	
14:27	GOOD! LAYUP by RILEY, CODY [PNT]	4-10	V 6	
13:12	GOOD! LAYUP by JAQUEZ JR., JAIME [PNT]	4-12	V 8	
12:36		6-12	V 6	GOOD! LAYUP by DONLEY, ELIET
12:11	GOOD! LAYUP by HILL, JALEN	6-14	V 8	
11:16		8-14	V 6	GOOD! JUMPER by CARTAINO, TYLER [PNT]
10:46	GOOD! LAYUP by JAQUEZ JR., JAIME	8-16	V 8	
08:17		11-16	V 5	GOOD! 3PTR by CARTAINO, TYLER
07:39		12-16	V 4	GOOD! FT by ARISSOL, ANDRE [FB]
06:20	GOOD! LAYUP by ALI, PRINCE [FB]	12-18	V 6	
05:00		14-18	V 4	GOOD! JUMPER by AMARAL-ARTHAREE, ISAAC [PNT]
04:34	GOOD! JUMPER by CAMPBELL, TYGER [PNT]	14-20	V 6	
03:31		16-20	V 4	GOOD! LAYUP by DONLEY, ELIET
02:00	GOOD! JUMPER by ALI, PRINCE	16-22	V 6	

UCLA 22, Chaminade 16

Official Scoring/Possession Reference Chart
UCLA vs Chaminade
Period 2
November 26, 2019 at Lahaina Civic Center - Lahaina



Period 2

Starters:

UCLA: 2 RILEY, CODY (F); 5 SMITH, CHRIS (G); 10 CAMPBELL, TYGER (G); 23 ALI, PRINCE (G); 24 HILL, JALEN (C);

Chaminade: 10 ARISSOL, ANDRE (G); 13 CARTAINO, TYLER (G); 25 SMALL, KENDALL (G); 1 YOUNG, ROMAN (G); 3 DONLEY, ELIET (F);

Time	VISITORS: UCLA	Score	Margin	HOME: Chaminade
19:20		17-22	V 5	GOOD! FT by DONLEY, ELIET [FB]
19:20		18-22	V 4	GOOD! FT by DONLEY, ELIET [FB]
19:07		20-22	V 2	GOOD! LAYUP by ARISSOL, ANDRE [FB]
18:43		22-22	T	GOOD! DUNK by CARTAINO, TYLER [FB]
18:11	GOOD! LAYUP by JAQUEZ JR., JAIME	22-24	V 2	
17:45	GOOD! FT by RILEY, CODY	22-25	V 3	
16:54	GOOD! FT by RILEY, CODY	22-26	V 4	
16:54	GOOD! FT by RILEY, CODY	22-27	V 5	
16:34	GOOD! LAYUP by JAQUEZ JR., JAIME [FB]	22-29	V 7	
16:22		24-29	V 5	GOOD! JUMPER by AMARAL-ARTHAREE, ISAAC
15:46	GOOD! 3PTR by SINGLETON, DAVID	24-32	V 8	
15:25	GOOD! JUMPER by RILEY, CODY	24-34	V 10	
14:29		25-34	V 9	GOOD! FT by YOUNG, ROMAN [FB]
14:29		26-34	V 8	GOOD! FT by YOUNG, ROMAN [FB]
14:00	GOOD! 3PTR by SINGLETON, DAVID	26-37	V 11	
13:00		28-37	V 9	GOOD! LAYUP by SMALL, KENDALL
12:37	GOOD! LAYUP by HILL, JALEN	28-39	V 11	
11:18	GOOD! JUMPER by ALI, PRINCE	28-41	V 13	
11:10		30-41	V 11	GOOD! LAYUP by KREMER, KEVIN [PNT]
10:50	GOOD! JUMPER by SMITH, CHRIS	30-43	V 13	
10:20	GOOD! FT by SMITH, CHRIS [FB]	30-44	V 14	
10:04		31-44	V 13	GOOD! FT by DONLEY, ELIET
10:04		32-44	V 12	GOOD! FT by DONLEY, ELIET
09:32	GOOD! FT by CAMPBELL, TYGER	32-45	V 13	
09:32	GOOD! FT by CAMPBELL, TYGER	32-46	V 14	
09:22		33-46	V 13	GOOD! FT by SMALL, KENDALL
09:22		34-46	V 12	GOOD! FT by SMALL, KENDALL
09:16	GOOD! LAYUP by RILEY, CODY [FB]	34-48	V 14	
08:41	GOOD! LAYUP by JAQUEZ JR., JAIME	34-50	V 16	
07:52		35-50	V 15	GOOD! FT by YOUNG, ROMAN [FB]
07:52		36-50	V 14	GOOD! FT by YOUNG, ROMAN [FB]
07:24	GOOD! LAYUP by RILEY, CODY	36-52	V 16	
06:24	GOOD! DUNK by RILEY, CODY [FB]	36-54	V 18	
06:13	GOOD! FT by JAQUEZ JR., JAIME	36-55	V 19	
06:04		39-55	V 16	GOOD! 3PTR by AMARAL-ARTHAREE, ISAAC
05:39	GOOD! 3PTR by SINGLETON, DAVID	39-58	V 19	
05:18		40-58	V 18	GOOD! FT by YOUNG, ROMAN
05:18		41-58	V 17	GOOD! FT by YOUNG, ROMAN
04:56	GOOD! 3PTR by SINGLETON, DAVID	41-61	V 20	
04:15	GOOD! LAYUP by CAMPBELL, TYGER [PNT]	41-63	V 22	
03:44	GOOD! 3PTR by SINGLETON, DAVID	41-66	V 25	
03:28	GOOD! DUNK by JAQUEZ JR., JAIME [FB]	41-68	V 27	
02:07	GOOD! LAYUP by JAQUEZ JR., JAIME	41-70	V 29	
01:50		42-70	V 28	GOOD! FT by DONLEY, ELIET
01:50		43-70	V 27	GOOD! FT by DONLEY, ELIET
01:39	GOOD! LAYUP by JAQUEZ JR., JAIME [PNT]	43-72	V 29	
01:24		46-72	V 26	GOOD! 3PTR by ARISSOL, ANDRE
00:42		48-72	V 24	GOOD! LAYUP by SMALL, KENDALL [FB]
00:34	GOOD! FT by BERNARD, JULES	48-73	V 25	
00:34	GOOD! FT by BERNARD, JULES	48-74	V 26	

UCLA 74, Chaminade 48

Official Substitutions Log
UCLA vs Chaminade
Period 1
November 26, 2019 at Lahaina Civic Center - Lahaina



VISITORS: UCLA	Time	Score	HOME: Chaminade
2 RILEY, CODY			10 ARISSOL, ANDRE
5 SMITH, CHRIS			13 CARTAINO, TYLER
10 CAMPBELL, TYGER			25 SMALL, KENDALL
23 ALI, PRINCE			1 YOUNG, ROMAN
24 HILL, JALEN			3 DONLEY, ELIET
	16:24	4-2	SUB OUT: ARISSOL, ANDRE
	16:24		SUB IN: KREMER, KEVIN
SUB OUT: 24 HILL, JALEN	16:24		
SUB IN: 22 O'NEAL, SHAREEF	16:24		
	16:03	6-3	SUB OUT: DONLEY, ELIET
	16:03		SUB IN: AWET, BILL
	15:24	6-4	SUB OUT: CARTAINO, TYLER
	15:24		SUB IN: ARISSOL, ANDRE
	14:00	10-4	SUB OUT: YOUNG, ROMAN
	14:00		SUB OUT: AWET, BILL
	14:00		SUB OUT: KREMER, KEVIN
	14:00		SUB IN: DONLEY, ELIET
	14:00		SUB IN: CARTAINO, TYLER
	14:00		SUB IN: AMARAL-ARTHAREE, ISAAC
SUB OUT: 2 RILEY, CODY	14:00		
SUB OUT: 5 SMITH, CHRIS	14:00		
SUB OUT: 10 CAMPBELL, TYGER	14:00		
SUB OUT: 22 O'NEAL, SHAREEF	14:00		
SUB OUT: 23 ALI, PRINCE	14:00		
SUB IN: 00 OLESINSKI, ALEX	14:00		
SUB IN: 3 BERNARD, JULES	14:00		
SUB IN: 4 JAQUEZ JR., JAIME	14:00		
SUB IN: 24 HILL, JALEN	14:00		
SUB IN: 34 SINGLETON, DAVID	14:00		
	12:43	12-4	SUB OUT: SMALL, KENDALL
	12:43		SUB IN: YOUNG, ROMAN
SUB OUT: 3 BERNARD, JULES	12:43		
SUB IN: 13 KYMAN, JAKE	12:43		
	10:01	16-8	SUB OUT: YOUNG, ROMAN
	10:01		SUB OUT: DONLEY, ELIET
	10:01		SUB OUT: AMARAL-ARTHAREE, ISAAC
	10:01		SUB IN: AWET, BILL
	10:01		SUB IN: KREMER, KEVIN
	10:01		SUB IN: SMALL, KENDALL
SUB OUT: 00 OLESINSKI, ALEX	10:01		
SUB OUT: 13 KYMAN, JAKE	10:01		
SUB OUT: 24 HILL, JALEN	10:01		
SUB OUT: 34 SINGLETON, DAVID	10:01		
SUB IN: 2 RILEY, CODY	10:01		
SUB IN: 10 CAMPBELL, TYGER	10:01		
SUB IN: 22 O'NEAL, SHAREEF	10:01		
SUB IN: 23 ALI, PRINCE	10:01		
SUB OUT: 4 JAQUEZ JR., JAIME	07:39	16-11	
SUB OUT: 22 O'NEAL, SHAREEF	07:39		
SUB IN: 5 SMITH, CHRIS	07:39		
SUB IN: 24 HILL, JALEN	07:39		
	05:55	18-12	SUB OUT: ARISSOL, ANDRE
	05:55		SUB IN: YOUNG, ROMAN
SUB OUT: 2 RILEY, CODY	05:55		
SUB OUT: 23 ALI, PRINCE	05:55		
SUB IN: 00 OLESINSKI, ALEX	05:55		
SUB IN: 3 BERNARD, JULES	05:55		
	05:32	18-12	SUB OUT: AWET, BILL
	05:32		SUB IN: DONLEY, ELIET
	05:10	18-12	SUB OUT: KREMER, KEVIN
	05:10		SUB IN: AMARAL-ARTHAREE, ISAAC
	04:19	20-14	SUB OUT: SMALL, KENDALL
	04:19		SUB IN: ARISSOL, ANDRE
SUB OUT: 00 OLESINSKI, ALEX	04:19		
SUB OUT: 24 HILL, JALEN	04:19		
SUB IN: 2 RILEY, CODY	04:19		
SUB IN: 4 JAQUEZ JR., JAIME	04:19		
	03:10	20-16	SUB OUT: DONLEY, ELIET
	03:10		SUB IN: AWET, BILL
SUB OUT: 5 SMITH, CHRIS	03:10		
SUB IN: 23 ALI, PRINCE	03:10		
SUB OUT: 10 CAMPBELL, TYGER	03:03	20-16	
SUB IN: 34 SINGLETON, DAVID	03:03		
	01:39	22-16	SUB OUT: YOUNG, ROMAN
	01:39		SUB OUT: AWET, BILL

VISITORS: UCLA	Time	Score	HOME: Chaminade
	01:39		SUB OUT: AMARAL-ARTHAREE, ISAAC
	01:39		SUB IN: DONLEY, ELIET
	01:39		SUB IN: KREMER, KEVIN
	01:39		SUB IN: SMALL, KENDALL
SUB OUT: 3 BERNARD, JULES	01:39		
SUB IN: 5 SMITH, CHRIS	01:39		
SUB OUT: 4 JAQUEZ JR., JAIME	00:56	22-16	
SUB OUT: 34 SINGLETON, DAVID	00:56		
SUB IN: 10 CAMPBELL, TYGER	00:56		
SUB IN: 24 HILL, JALEN	00:56		
SUB OUT: 24 HILL, JALEN	00:42	22-16	
SUB IN: 4 JAQUEZ JR., JAIME	00:42		
SUB OUT: 2 RILEY, CODY	00:17	22-16	
SUB IN: 00 OLESINSKI, ALEX	00:17		
	00:17		SUB OUT: KREMER, KEVIN
	00:17		SUB IN: YOUNG, ROMAN

UCLA 22, Chaminade 16

Official Substitutions Log
UCLA vs Chaminade
Period 2
November 26, 2019 at Lahaina Civic Center - Lahaina



VISITORS: UCLA	Time	Score	HOME: Chaminade
2 RILEY, CODY			10 ARISSOL, ANDRE
5 SMITH, CHRIS			13 CARTAINO, TYLER
10 CAMPBELL, TYGER			25 SMALL, KENDALL
23 ALI, PRINCE			1 YOUNG, ROMAN
24 HILL, JALEN			3 DONLEY, ELIET
SUB OUT: 00 OLESINSKI, ALEX	20:00	-	
SUB OUT: 5 SMITH, CHRIS	20:00		
SUB IN: 2 RILEY, CODY	20:00		
SUB IN: 24 HILL, JALEN	20:00		
SUB OUT: 24 HILL, JALEN	19:20	22-17	
SUB IN: 00 OLESINSKI, ALEX	19:20		
	18:02	24-22	SUB OUT: YOUNG, ROMAN
	18:02		SUB OUT: DONLEY, ELIET
	18:02		SUB IN: AWET, BILL
	18:02		SUB IN: AMARAL-ARTHAREE, ISAAC
SUB OUT: 10 CAMPBELL, TYGER	17:45	24-22	
SUB IN: 34 SINGLETON, DAVID	17:45		
SUB OUT: 23 ALI, PRINCE	17:27	25-22	
SUB IN: 3 BERNARD, JULES	17:27		
	16:54	26-22	SUB OUT: ARISSOL, ANDRE
	16:54		SUB IN: YOUNG, ROMAN
SUB OUT: 00 OLESINSKI, ALEX	16:54		
SUB IN: 5 SMITH, CHRIS	16:54		
	16:41	27-22	SUB OUT: AWET, BILL
	16:41		SUB IN: KREMER, KEVIN
	15:58	29-24	SUB OUT: CARTAINO, TYLER
	15:58		SUB IN: AWET, BILL
	14:58	34-24	SUB OUT: KREMER, KEVIN
	14:58		SUB OUT: AMARAL-ARTHAREE, ISAAC
	14:58		SUB IN: DONLEY, ELIET
	14:58		SUB IN: CARTAINO, TYLER
	14:29	34-26	SUB OUT: YOUNG, ROMAN
	14:29		SUB IN: ARISSOL, ANDRE
	13:48	37-26	SUB OUT: AWET, BILL
	13:48		SUB IN: KREMER, KEVIN
SUB OUT: 2 RILEY, CODY	13:27	37-26	
SUB IN: 24 HILL, JALEN	13:27		
	12:12	39-28	SUB OUT: CARTAINO, TYLER
	12:12		SUB OUT: SMALL, KENDALL
	12:12		SUB IN: YOUNG, ROMAN
	12:12		SUB IN: AMARAL-ARTHAREE, ISAAC
SUB OUT: 3 BERNARD, JULES	12:12		
SUB IN: 23 ALI, PRINCE	12:12		
	10:20	43-30	SUB OUT: YOUNG, ROMAN
	10:20		SUB OUT: AMARAL-ARTHAREE, ISAAC
	10:20		SUB IN: CARTAINO, TYLER
	10:20		SUB IN: SMALL, KENDALL
SUB OUT: 24 HILL, JALEN	10:20		
SUB IN: 2 RILEY, CODY	10:20		
SUB OUT: 34 SINGLETON, DAVID	10:04	44-32	
SUB IN: 10 CAMPBELL, TYGER	10:04		
SUB OUT: 10 CAMPBELL, TYGER	09:22	46-32	
SUB IN: 34 SINGLETON, DAVID	09:22		
	08:55	48-34	SUB OUT: DONLEY, ELIET
	08:55		SUB OUT: KREMER, KEVIN
	08:55		SUB IN: YOUNG, ROMAN
	08:55		SUB IN: AWET, BILL
	08:41	50-34	SUB OUT: CARTAINO, TYLER
	08:41		SUB IN: DONLEY, ELIET
SUB OUT: 5 SMITH, CHRIS	08:41		
SUB IN: 3 BERNARD, JULES	08:41		
	07:52	50-34	SUB OUT: AWET, BILL
	07:52		SUB IN: KREMER, KEVIN
SUB OUT: 23 ALI, PRINCE	07:52		
SUB IN: 10 CAMPBELL, TYGER	07:52		
	06:33	52-36	SUB OUT: YOUNG, ROMAN
	06:33		SUB OUT: DONLEY, ELIET
	06:33		SUB OUT: ARISSOL, ANDRE
	06:33		SUB IN: AWET, BILL
	06:33		SUB IN: CARTAINO, TYLER
	06:33		SUB IN: AMARAL-ARTHAREE, ISAAC
	06:13	54-36	SUB OUT: SMALL, KENDALL
	06:13		SUB IN: YOUNG, ROMAN
	05:38	58-39	SUB OUT: KREMER, KEVIN
	05:38		SUB IN: DONLEY, ELIET

VISITORS: UCLA	Time	Score	HOME: Chaminade
SUB OUT: 3 BERNARD,JULES	05:18	58-40	
SUB IN: 23 ALI,PRINCE	05:18		
SUB OUT: 2 RILEY,CODY	05:18		
SUB IN: 24 HILL,JALEN	05:18		
	03:27	68-41	SUB OUT: YOUNG,ROMAN
	03:27		SUB OUT: AWET,BILL
	03:27		SUB OUT: AMARAL-ARTHAREE,ISAAC
	03:27		SUB IN: ARISSOL,ANDRE
	03:27		SUB IN: KREMER,KEVIN
	03:27		SUB IN: SMALL,KENDALL
SUB OUT: 23 ALI,PRINCE	03:27		
SUB OUT: 24 HILL,JALEN	03:27		
SUB IN: 13 KYMAN,JAKE	03:27		
SUB IN: 22 O'NEAL,SHAREEF	03:27		
	02:27	68-41	SUB OUT: CARTAINO,TYLER
	02:27		SUB IN: AMARAL-ARTHAREE,ISAAC
SUB OUT: 10 CAMPBELL,TYGER	01:50	70-42	
SUB OUT: 22 O'NEAL,SHAREEF	01:50		
SUB IN: 00 OLESINSKI,ALEX	01:50		
SUB IN: 3 BERNARD,JULES	01:50		
	01:50		SUB OUT: DONLEY,ELIET
	01:50		SUB IN: TAKAPU,MORNINGSTAR
	00:42	72-48	SUB OUT: KREMER,KEVIN
	00:42		SUB IN: YOUNG,KOBE
	00:34	73-48	SUB OUT: SMALL,KENDALL
	00:34		SUB IN: YOUNG,ROMAN

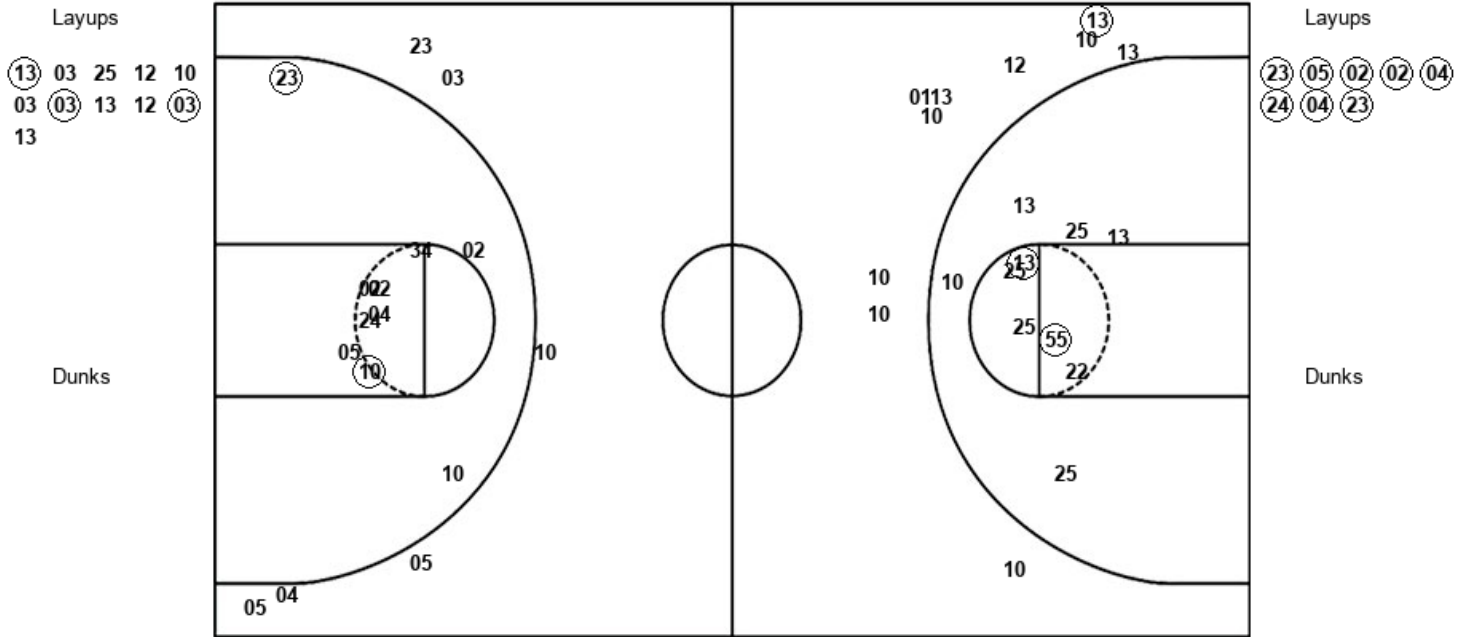
UCLA 74, Chaminade 48

Official Shot Chart
UCLA vs Chaminade
PERIOD 1 Shots
November 26, 2019 at Lahaina Civic Center - Lahaina



Chaminade

UCLA



CHM : Period 1	Made	Att	Pct
Layups	3	11	27.3
Dunks	0	0	0
2PT Field Goals	5	21	23.8
3PT Field Goals	1	10	10.0
Total Field Goals	6	31	19.4

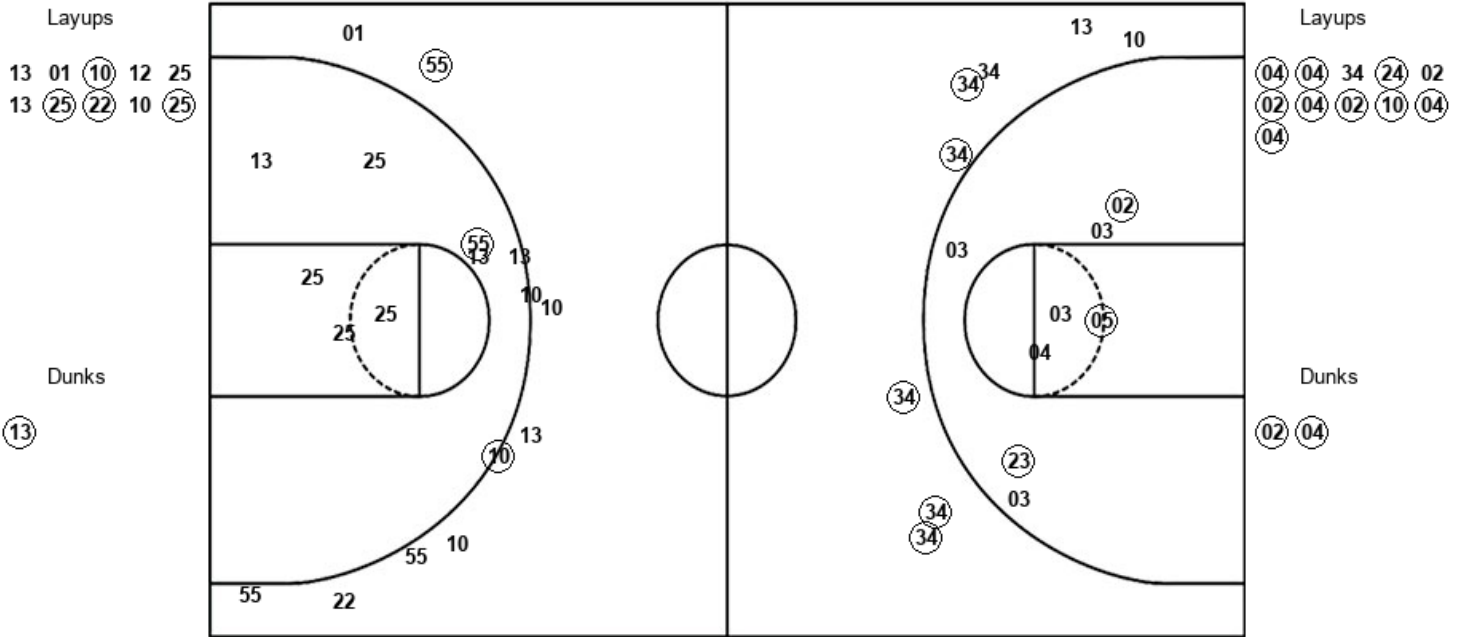
UCL : Period 1	Made	Att	Pct
Layups	8	8	100.0
Dunks	0	0	0
2PT Field Goals	10	18	55.6
3PT Field Goals	0	6	00.0
Total Field Goals	10	24	41.7

Official Shot Chart
UCLA vs Chaminade
PERIOD 2 Shots
November 26, 2019 at Lahaina Civic Center - Lahaina



Chaminade

UCLA



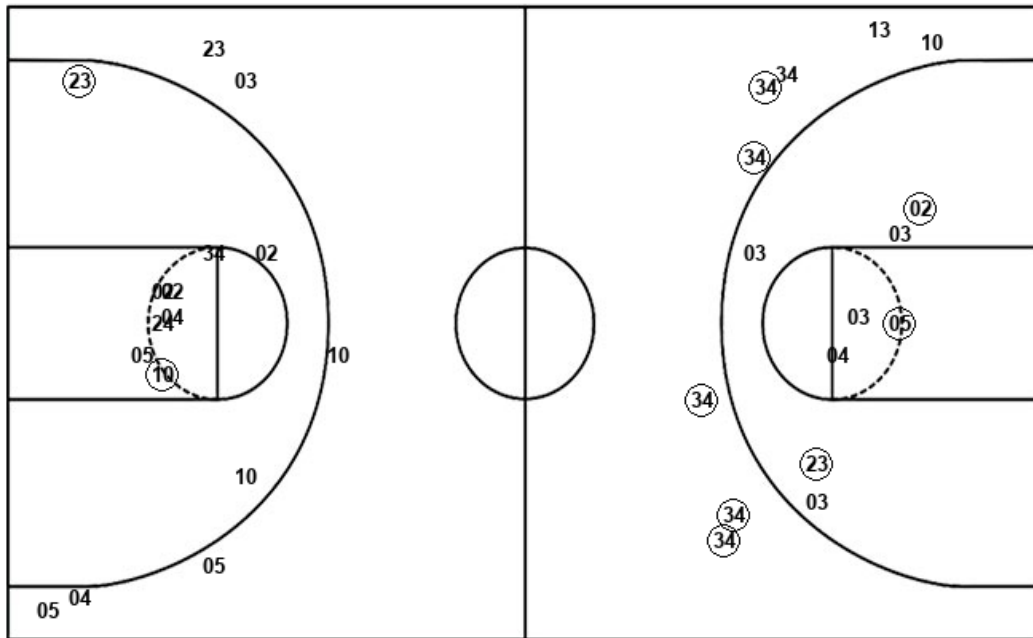
CHM : Period 2	Made	Att	Pct
Layups	4	10	40.0
Dunks	1	1	100.0
2PT Field Goals	6	18	33.3
3PT Field Goals	2	11	18.2
Total Field Goals	8	29	27.6

UCL : Period 2	Made	Att	Pct
Layups	9	11	81.8
Dunks	2	2	100.0
2PT Field Goals	14	21	66.7
3PT Field Goals	5	8	62.5
Total Field Goals	19	29	65.5

Official Shot Chart
UCLA vs Chaminade
UCLA Team Shots
November 26, 2019 at Lahaina Civic Center - Lahaina



Layups

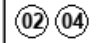


Layups



Dunks

Dunks



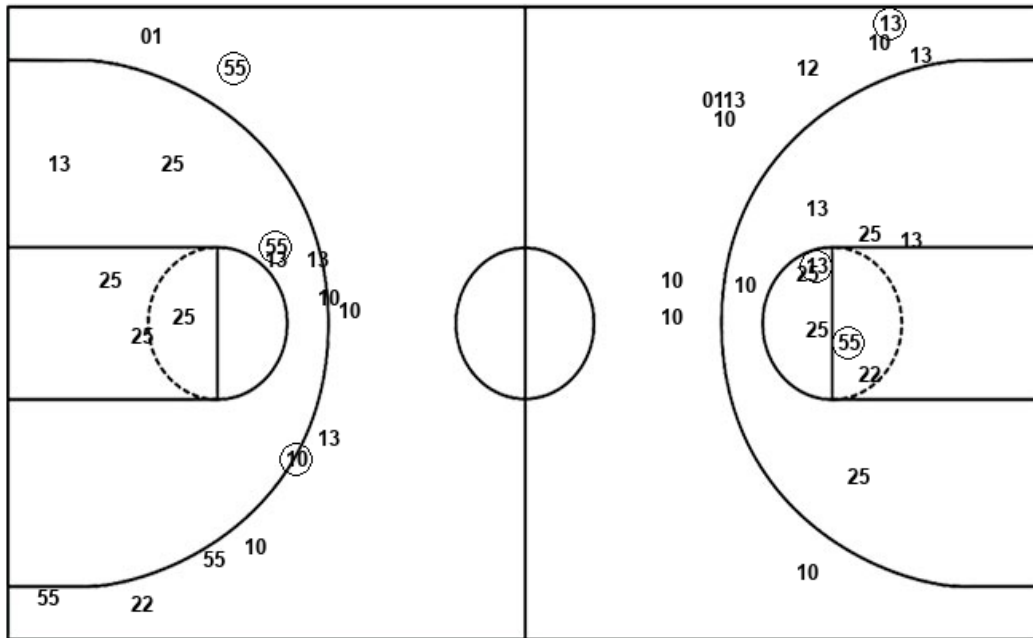
UCL : Period 1	Made	Att	Pct
Layups	8	8	100.0
Dunks	0	0	0
2PT Field Goals	10	18	55.6
3PT Field Goals	0	6	00.0
Total Field Goals	10	24	41.7

UCL : Period 2	Made	Att	Pct
Layups	9	11	81.8
Dunks	2	2	100.0
2PT Field Goals	14	21	66.7
3PT Field Goals	5	8	62.5
Total Field Goals	19	29	65.5

Official Shot Chart
UCLA vs Chaminade
Chaminade Team Shots
November 26, 2019 at Lahaina Civic Center - Lahaina



Layups



Layups

13 03 25 12 10
 03 03 13 12 03
 13 13 01 10 12
 25 13 25 22 10
 25

Dunks

Dunks

13

CHM : Period 1	Made	Att	Pct
Layups	3	11	27.3
Dunks	0	0	0
2PT Field Goals	5	21	23.8
3PT Field Goals	1	10	10.0
Total Field Goals	6	31	19.4

CHM : Period 2	Made	Att	Pct
Layups	4	10	40.0
Dunks	1	1	100.0
2PT Field Goals	6	18	33.3
3PT Field Goals	2	11	18.2
Total Field Goals	8	29	27.6