

**FINAL SCORE**

**Southern Utah**

**74**



**Montana**

**81**



January 02, 2020 • Dahlberg Arena - Missoula

**FINAL STATISTICS**

**Official Box Score**  
**Southern Utah vs Montana**  
**Game Totals -- Final Statistics**  
**January 02, 2020 at Dahlberg Arena - Missoula**



**Southern Utah 74**

No.	Player	S	Pts	FG	3FG	FT	OR	DR	TR	PF	A	TO	Blk	Stl	Min	+/-
02	CARDENAS, REBECCA	G	18	5-19	2-7	6-8	2	3	5	2	3	4	0	2	38	-3
10	ARMATO, CLAUDIA	G	0	0-0	0-0	0-0	0	0	0	1	2	2	0	0	14	-16
14	FANO, SHALYN	F	7	3-9	0-2	1-1	1	3	4	5	0	1	0	1	19	-8
23	HANSEN, HARLEY	G	18	5-10	3-7	5-6	3	2	5	2	3	3	0	1	40	-7
24	CHATMAN, JESSICA	F	9	4-5	0-0	1-2	3	5	8	4	1	2	0	0	29	-5
20	EATON, MADELYN	G	15	5-9	3-5	2-2	0	1	1	2	0	2	0	1	28	3
32	BLACK, REBECCA	F	2	1-2	0-0	0-0	2	3	5	1	0	2	0	0	8	1
34	ROBINS, HANNAH	C	0	0-1	0-1	0-0	0	1	1	0	0	0	0	0	5	6
40	FRANDSEN, DARRI	F	5	1-2	0-0	3-4	1	4	5	3	2	3	2	2	19	-6
	TEAM						1	0	1	0		0				
<b>TOTALS</b>			<b>74</b>	<b>24-57</b>	<b>8-22</b>	<b>18-23</b>	<b>13</b>	<b>22</b>	<b>35</b>	<b>20</b>	<b>11</b>	<b>19</b>	<b>2</b>	<b>7</b>	<b>200</b>	

*Shooting By Period*

Period	FG	FG%	3FG	3FG%	FT	FT%
1st Qtr	0-10	00%	0-3	00%	5-6	83%
2nd Qtr	10-18	56%	5-9	56%	3-4	75%
3rd Qtr	10-16	63%	2-5	40%	3-5	60%
4th Qtr	4-13	31%	1-5	20%	7-8	88%
1st Half	10-28	36%	5-12	42%	8-10	80%
2nd Half	14-29	48%	3-10	30%	10-13	77%
<b>Game</b>	<b>24-57</b>	<b>42.1%</b>	<b>8-22</b>	<b>36.4%</b>	<b>18-23</b>	<b>78.3%</b>

Deadball Rebounds: 2.0  
 Last FG: 4th-04:23  
 Biggest Run: 7-0  
 Largest lead: By 1 at 4th-04:03  
 Technical Fouls: None.

**Montana 81**

No.	Player	S	Pts	FG	3FG	FT	OR	DR	TR	PF	A	TO	Blk	Stl	Min	+/-
02	STILES, SOPHIA	G	6	2-5	0-1	2-4	1	0	1	3	1	1	0	3	24	7
03	HARRINGTON, GABI	G	11	5-9	1-2	0-0	0	4	4	3	0	2	0	0	31	10
11	ANDERSON, ABBY	F	17	4-8	0-0	9-11	2	1	3	2	5	1	2	2	29	0
32	JOHNSTON, MCKENZIE	G	17	8-10	0-0	1-2	2	3	5	2	4	3	0	4	40	7
44	STOCKHOLM, EMMA	F	17	7-13	0-2	3-3	2	5	7	2	1	1	0	2	27	8
13	FROHLICH, KYLIE	F	4	2-3	0-0	0-0	0	0	0	1	0	1	0	1	10	-1
23	GOLIGOSKI, TAYLOR	G	5	1-5	1-4	2-2	1	1	2	1	0	1	0	1	17	2
34	SCHOENING, MADI	G	0	0-2	0-1	0-0	0	2	2	1	0	1	0	0	9	-3
42	PICKENS, JAMIE	F	4	1-5	0-0	2-2	1	1	2	3	1	0	0	1	14	5
	TEAM						1	6	7	0		0				
<b>TOTALS</b>			<b>81</b>	<b>30-60</b>	<b>2-10</b>	<b>19-24</b>	<b>10</b>	<b>23</b>	<b>33</b>	<b>18</b>	<b>12</b>	<b>11</b>	<b>2</b>	<b>14</b>	<b>200</b>	

*Shooting By Period*

Period	FG	FG%	3FG	3FG%	FT	FT%
1st Qtr	8-16	50%	0-0	0%	3-3	100%
2nd Qtr	9-19	47%	1-6	17%	1-2	50%
3rd Qtr	10-16	63%	1-3	33%	2-2	100%
4th Qtr	3-9	33%	0-1	00%	13-17	76%
1st Half	17-35	49%	1-6	17%	4-5	80%
2nd Half	13-25	52%	1-4	25%	15-19	79%
<b>Game</b>	<b>30-60</b>	<b>50.0%</b>	<b>2-10</b>	<b>20.0%</b>	<b>19-24</b>	<b>79.2%</b>

Deadball Rebounds: 3.0  
 Last FG: 4th-01:33  
 Biggest Run: 9-0  
 Largest lead: By 14 at 1st-01:07  
 Technical Fouls: None.

Game Notes:

Officials: Michal Watts, Kimberly Hobbs, Mark Munoz  
 Attendance: 2660

Start Time: 09:06 PM ET  
 End Time: 10:47 PM ET  
 Game Duration: 1:40  
 Conference Game;

Score	1st	2nd	3rd	4th	TOT
SUU	5	28	25	16	<b>74</b>
MON	19	20	23	19	<b>81</b>

SUU led for 0:30. MON led for 36:45.  
 Game was tied for 2:45.  
 Times tied: 4      Lead Changes: 4

Points from	SUU	MON
In the Paint	26	52
Off Turns	14	23
2nd Chance	10	13
Fast Break	7	5
Bench	22	13

**Official Box Score**  
**Southern Utah vs Montana**  
**First Half Statistics Only**  
**January 02, 2020 at Dahlberg Arena - Missoula**



**Southern Utah 33**

No.	Player	S	Pts	FG	3FG	FT	OR	DR	TR	PF	A	TO	Blk	Stl	Min	+/-
02	CARDENAS, REBECCA	G	5	1-6	1-1	2-2	0	2	2	0	3	1	0	0	18	-2
10	ARMATO, CLAUDIA	G	0	0-0	0-0	0-0	0	0	0	0	0	1	0	0	8	-16
14	FANO, SHALYN	F	0	0-1	0-1	0-0	0	0	0	2	0	0	0	0	3	-8
20	EATON, MADELYN	G	15	5-8	3-4	2-2	0	1	1	0	0	0	0	1	14	6
23	HANSEN, HARLEY	G	5	1-6	1-5	2-2	2	1	3	0	1	3	0	0	20	-6
24	CHATMAN, JESSICA	F	5	2-3	0-0	1-2	2	4	6	3	1	1	0	0	18	-6
32	BLACK, REBECCA	F	2	1-2	0-0	0-0	2	3	5	1	0	2	0	0	8	1
34	ROBINS, HANNAH	C	0	0-1	0-1	0-0	0	1	1	0	0	0	0	0	5	6
40	FRANSEN, DARRI	F	1	0-1	0-0	1-2	1	1	2	1	0	2	1	0	6	-5
	TEAM		0	0-0	0-0	0-0	0	0	0	0	0	0	0	0	0	0
<b>TOTALS</b>			<b>33</b>	<b>10-28</b>	<b>5-12</b>	<b>8-10</b>	<b>7</b>	<b>13</b>	<b>20</b>	<b>7</b>	<b>5</b>	<b>10</b>	<b>1</b>	<b>1</b>	<b>100</b>	

*Shooting By Period*

Period	FG	FG%	3FG	3FG%	FT	FT%
1st Qtr	0-10	00%	0-3	00%	5-6	83%
2nd Qtr	10-18	56%	5-9	56%	3-4	75%
1st Half	10-28	36%	5-12	42%	8-10	80%
Game	24-57	42.1%	8-22	36.4%	18-23	78.3%

*Deadball Rebounds: 2,0*

*Last FG Half: SUU 2nd-00:18*

**Montana 39**

No.	Player	S	Pts	FG	3FG	FT	OR	DR	TR	PF	A	TO	Blk	Stl	Min	+/-
02	STILES, SOPHIA	G	1	0-1	0-0	1-2	0	0	0	2	0	1	0	1	10	5
03	HARRINGTON, GABI	G	6	3-6	0-1	0-0	0	1	1	1	0	0	0	0	12	2
11	ANDERSON, ABBY	F	7	3-4	0-0	1-1	1	0	1	0	3	0	1	1	13	3
13	FROHLICH, KYLIE	F	4	2-3	0-0	0-0	0	0	0	1	0	1	0	1	8	4
23	GOLIGOSKI, TAYLOR	G	3	1-4	1-3	0-0	0	1	1	0	0	1	0	0	10	1
32	JOHNSTON, MCKENZIE	G	8	4-5	0-0	0-0	1	2	3	0	2	0	0	2	20	6
34	SCHOENING, MADI	G	0	0-2	0-1	0-0	0	1	1	0	0	0	0	0	8	4
42	PICKENS, JAMIE	F	4	1-4	0-0	2-2	1	1	2	2	0	0	0	1	10	1
44	STOCKHOLM, EMMA	F	6	3-6	0-1	0-0	1	3	4	2	1	0	0	1	10	4
	TEAM		0	0-0	0-0	0-0	1	4	5	0	0	0	0	0	0	0
<b>TOTALS</b>			<b>39</b>	<b>17-35</b>	<b>1-6</b>	<b>4-5</b>	<b>5</b>	<b>13</b>	<b>18</b>	<b>8</b>	<b>6</b>	<b>3</b>	<b>1</b>	<b>7</b>	<b>100</b>	

*Shooting By Period*

Period	FG	FG%	3FG	3FG%	FT	FT%
1st Qtr	8-16	50%	0-0	0%	3-3	100%
2nd Qtr	9-19	47%	1-6	17%	1-2	50%
1st Half	17-35	49%	1-6	17%	4-5	80%
Game	30-60	50.0%	2-10	20.0%	19-24	79.2%

*Deadball Rebounds: 3,0*

*Last FG Half: MON 2nd-01:02*

*Game Notes:*

Officials: Michal Watts, Kimberly Hobbs, Mark Munoz  
 Attendance: 2660

Start Time: 09:06 PM ET  
 End Time: 10:47 PM ET  
 Game Duration: 1:40  
 Conference Game;

Score	1st	2nd	3rd	4th	TOT
SUU	5	28	25	16	<b>74</b>
MON	19	20	23	19	<b>81</b>

Points from (This Period)	SUU	MON
In the Paint	8	30
Off Turns	3	10
2nd Chance	5	5
Fast Break	0	2
Bench	18	11

**Official Box Score**  
**Southern Utah vs Montana**  
**First Quarter Statistics Only**  
**January 02, 2020 at Dahlberg Arena - Missoula**



**Southern Utah 5**

No.	Player	S	Pts	FG	3FG	FT	OR	DR	TR	PF	A	TO	Blk	Stl	Min	+/-
02	CARDENAS, REBECCA	G	2	0-4	0-0	2-2	0	2	2	0	0	1	0	0	10	-14
10	ARMATO, CLAUDIA	G	0	0-0	0-0	0-0	0	0	0	0	0	0	0	0	6	-12
14	FANO, SHALYN	F	0	0-0	0-0	0-0	0	0	0	2	0	0	0	0	3	-7
23	HANSEN, HARLEY	G	0	0-3	0-2	0-0	2	0	2	0	0	3	0	0	10	-14
24	CHATMAN, JESSICA	F	0	0-1	0-0	0-0	0	2	2	2	0	1	0	0	8	-14
20	EATON, MADELYN	G	2	0-0	0-0	2-2	0	0	0	0	0	0	0	0	4	-2
32	BLACK, REBECCA	F	0	0-0	0-0	0-0	1	0	1	0	0	1	0	0	2	0
34	ROBINS, HANNAH	C	0	0-1	0-1	0-0	0	0	0	0	0	0	0	0	1	-2
40	FRANSEN, DARRI	F	1	0-1	0-0	1-2	1	1	2	1	0	2	1	0	6	-5
	TEAM						0	0	0	0		0				
<b>TOTALS</b>			<b>5</b>	<b>0-10</b>	<b>0-3</b>	<b>5-6</b>	<b>4</b>	<b>5</b>	<b>9</b>	<b>5</b>	<b>0</b>	<b>8</b>	<b>1</b>	<b>0</b>	<b>50</b>	

*Shooting By Period*

Period	FG	FG%	3FG	3FG%	FT	FT%
1st Qtr	0-10	00%	0-3	00%	5-6	83%
2nd Qtr	10-18	56%	5-9	56%	3-4	75%
1st Half	0-10	00%	0-3	00%	5-6	83%
1st Half	10-28	36%	5-12	42%	8-10	80%
Game	24-57	42.1%	8-22	36.4%	18-23	78.3%

*Deadball Rebounds: 2,0*

**Montana 19**

No.	Player	S	Pts	FG	3FG	FT	OR	DR	TR	PF	A	TO	Blk	Stl	Min	+/-
02	STILES, SOPHIA	G	0	0-1	0-0	0-0	0	0	0	1	0	1	0	1	6	12
03	HARRINGTON, GABI	G	4	2-3	0-0	0-0	0	1	1	0	0	0	0	0	6	12
11	ANDERSON, ABBY	F	3	1-1	0-0	1-1	1	0	1	0	1	0	0	1	6	12
32	JOHNSTON, MCKENZIE	G	4	2-3	0-0	0-0	0	1	1	0	0	0	0	1	10	14
44	STOCKHOLM, EMMA	F	2	1-3	0-0	0-0	1	3	4	1	0	0	0	1	6	12
13	FROHLICH, KYLIE	F	4	2-2	0-0	0-0	0	0	0	1	0	1	0	1	4	2
23	GOLIGOSKI, TAYLOR	G	0	0-1	0-0	0-0	0	1	1	0	0	0	0	0	4	2
34	SCHOENING, MADI	G	0	0-1	0-0	0-0	0	0	0	0	0	0	0	0	4	2
42	PICKENS, JAMIE	F	2	0-1	0-0	2-2	0	1	1	1	0	0	0	0	4	2
	TEAM						1	0	1	0		0				
<b>TOTALS</b>			<b>19</b>	<b>8-16</b>	<b>0-0</b>	<b>3-3</b>	<b>3</b>	<b>7</b>	<b>10</b>	<b>4</b>	<b>1</b>	<b>2</b>	<b>0</b>	<b>5</b>	<b>50</b>	

*Shooting By Period*

Period	FG	FG%	3FG	3FG%	FT	FT%
1st Qtr	8-16	50%	0-0	0%	3-3	100%
2nd Qtr	9-19	47%	1-6	17%	1-2	50%
1st Half	8-16	50%	0-0	0%	3-3	100%
1st Half	17-35	49%	1-6	17%	4-5	80%
Game	30-60	50.0%	2-10	20.0%	19-24	79.2%

*Deadball Rebounds: 3,0*

Game Notes:

Officials: Michal Watts, Kimberly Hobbs, Mark Munoz  
 Attendance: 2660

Start Time: 09:06 PM ET  
 End Time: 10:47 PM ET  
 Game Duration: 1:40  
 Conference Game;

Score	1st	2nd	3rd	4th	TOT
SUU	5	28	25	16	<b>74</b>
MON	19	20	23	19	<b>81</b>

Points from (This Period)	SUU	MON
In the Paint	0	16
Off Turns	0	8
2nd Chance	0	3
Fast Break	0	0
Bench	3	6

**Official Play-By-Play**  
**Southern Utah vs Montana**  
**First Quarter**  
**January 02, 2020 at Dahlberg Arena - Missoula**



**Period 1**

**Starters:**

**Southern Utah:** 2 CARDENAS, REBECCA (G); 10 ARMATO, CLAUDIA (G); 14 FANO, SHALYN (F); 23 HANSEN, HARLEY (G); 24 CHATMAN, JESSICA (F);

**Montana:** 2 STILES, SOPHIA (G); 3 HARRINGTON, GABI (G); 11 ANDERSON, ABBY (F); 32 JOHNSTON, MCKENZIE (G); 44 STOCKHOLM, EMMA (F);

Time	VISITORS: Southern Utah	Score	Margin	HOME: Montana
09:33	MISSED JUMPER by HANSEN, HARLEY			
09:29	REBOUND (OFF) by HANSEN, HARLEY			
09:27	TURNOVER (LOSTBALL) by HANSEN, HARLEY			
09:27				STEAL by STILES, SOPHIA
09:19				TURNOVER (BADPASS) by STILES, SOPHIA
09:00	MISSED JUMPER by CARDENAS, REBECCA			
08:57				REBOUND (DEF) by JOHNSTON, MCKENZIE
08:44		2-0	H 2	GOOD! LAYUP by JOHNSTON, MCKENZIE
08:44				ASSIST by ANDERSON, ABBY
08:19	MISSED JUMPER by CARDENAS, REBECCA			
08:16				REBOUND (DEF) by STOCKHOLM, EMMA
08:15	FOUL (PERSONAL) by FANO, SHALYN			
07:58		4-0	H 4	GOOD! LAYUP by HARRINGTON, GABI
07:40	MISSED LAYUP by CARDENAS, REBECCA			
07:37				REBOUND (DEF) by STOCKHOLM, EMMA
07:19				MISSED JUMPER by HARRINGTON, GABI
07:16				REBOUND (OFF) by STOCKHOLM, EMMA
07:15				MISSED JUMPER by STOCKHOLM, EMMA
07:15				REBOUND (OFF) by ANDERSON, ABBY
07:15		6-0	H 6	GOOD! JUMPER by ANDERSON, ABBY
07:15	FOUL (PERSONAL) by FANO, SHALYN			
07:15		7-0	H 7	GOOD! FT by ANDERSON, ABBY
07:15	SUB OUT: FANO, SHALYN			
07:15	SUB IN: FRANSEN, DARRI			
07:02	TURNOVER (LOSTBALL) by HANSEN, HARLEY			
07:02				STEAL by JOHNSTON, MCKENZIE
06:43		9-0	H 9	GOOD! LAYUP by JOHNSTON, MCKENZIE [PNT]
06:41	TIMEOUT 30SEC			
06:16				FOUL (PERSONAL) by STOCKHOLM, EMMA
06:16	GOOD! FT by FRANSEN, DARRI	9-1	H 8	
06:16	MISSED FT by FRANSEN, DARRI			
06:16				REBOUND (DEF) by HARRINGTON, GABI
06:09				MISSED JUMPER by STOCKHOLM, EMMA
06:05	REBOUND (DEF) by CARDENAS, REBECCA			
05:51	TURNOVER (BADPASS) by FRANSEN, DARRI			
05:51				STEAL by ANDERSON, ABBY
05:31		11-1	H 10	GOOD! JUMPER by STOCKHOLM, EMMA [PNT]
04:59	TURNOVER (BADPASS) by FRANSEN, DARRI			
04:59				STEAL by STOCKHOLM, EMMA
04:51				MISSED LAYUP by STILES, SOPHIA
04:47	REBOUND (DEF) by CHATMAN, JESSICA			
04:33	MISSED JUMPER by FRANSEN, DARRI			
04:30				REBOUND (DEF) by STOCKHOLM, EMMA
04:12		13-1	H 12	GOOD! LAYUP by HARRINGTON, GABI [PNT]
03:58				FOUL (PERSONAL) by STILES, SOPHIA
03:58				SUB OUT: STILES, SOPHIA
03:58				SUB OUT: HARRINGTON, GABI
03:58				SUB OUT: ANDERSON, ABBY
03:58				SUB OUT: STOCKHOLM, EMMA
03:58				SUB IN: FROHLICH, KYLIE
03:58				SUB IN: GOLIGOSKI, TAYLOR
03:58				SUB IN: SCHOENING, MADI
03:58				SUB IN: PICKENS, JAMIE
03:58	SUB OUT: ARMATO, CLAUDIA			
03:58	SUB IN: EATON, MADELYN			
03:58	GOOD! FT by CARDENAS, REBECCA	13-2	H 11	
03:58	GOOD! FT by CARDENAS, REBECCA	13-3	H 10	
03:40				MISSED LAYUP by PICKENS, JAMIE
03:37	REBOUND (DEF) by CHATMAN, JESSICA			
03:31	FOUL (OFF) by CHATMAN, JESSICA			
03:31	TURNOVER (OFFENSIVE) by CHATMAN, JESSICA			
03:15		15-3	H 12	GOOD! JUMPER by FROHLICH, KYLIE [PNT]
02:57	MISSED 3PTR by HANSEN, HARLEY			
02:53				REBOUND (DEF) by GOLIGOSKI, TAYLOR
02:43	FOUL (PERSONAL) by CHATMAN, JESSICA			
02:43	SUB OUT: CHATMAN, JESSICA			
02:43	SUB IN: BLACK, REBECCA			
02:38				MISSED LAYUP by SCHOENING, MADI
02:34	REBOUND (DEF) by FRANSEN, DARRI			
02:29				FOUL (PERSONAL) by PICKENS, JAMIE

Time	VISITORS: Southern Utah	Score	Margin	HOME: Montana
02:29	GOOD! FT by EATON, MADELYN	15-4	H 11	
02:29	GOOD! FT by EATON, MADELYN	15-5	H 10	
02:12		17-5	H 12	GOOD! LAYUP by FROHLICH, KYLIE [PNT]
01:50	MISSED 3PTR by HANSEN, HARLEY			
01:47	REBOUND (OFF) by FRANSEN, DARRI			
01:45	TURNOVER (BADPASS) by HANSEN, HARLEY			
01:45				STEAL by FROHLICH, KYLIE
01:39				MISSED JUMPER by GOLIGOSKI, TAYLOR
01:39	BLOCK by FRANSEN, DARRI			
01:39				REBOUND (OFF) by TEAM
01:39				FOUL (OFF) by FROHLICH, KYLIE
01:39				TURNOVER (OFFENSIVE) by FROHLICH, KYLIE
01:24	MISSED JUMPER by CARDENAS, REBECCA			
01:20	REBOUND (OFF) by BLACK, REBECCA			
01:19	TURNOVER (TRAVEL) by BLACK, REBECCA			
01:07	FOUL (PERSONAL) by FRANSEN, DARRI			
01:07	SUB OUT: BLACK, REBECCA			
01:07	SUB OUT: FRANSEN, DARRI			
01:07	SUB IN: CHATMAN, JESSICA			
01:07	SUB IN: ROBINS, HANNAH			
01:07		18-5	H 13	GOOD! FT by PICKENS, JAMIE
01:07		19-5	H 14	GOOD! FT by PICKENS, JAMIE
00:56	MISSED 3PTR by ROBINS, HANNAH			
00:53	REBOUND (OFF) by HANSEN, HARLEY			
00:47	MISSED JUMPER by CHATMAN, JESSICA			
00:44				REBOUND (DEF) by PICKENS, JAMIE
00:31				MISSED JUMPER by JOHNSTON, MCKENZIE
00:28	REBOUND (DEF) by CARDENAS, REBECCA			
00:00	TURNOVER (OTHER) by CARDENAS, REBECCA			

### Southern Utah 5, Montana 19

Points from (This Period)	SUU	MON
In the Paint	0	16
Off Turns	0	8
2nd Chance	0	3
Fast Break	0	0
Bench	3	6

**Official Box Score**  
**Southern Utah vs Montana**  
**Second Quarter Statistics Only**  
**January 02, 2020 at Dahlberg Arena - Missoula**



**Southern Utah 28**

No.	Player	S	Pts	FG	3FG	FT	OR	DR	TR	PF	A	TO	Blk	Stl	Min	+/-
02	CARDENAS, REBECCA	G	3	1-2	1-1	0-0	0	0	0	0	3	0	0	0	8	12
10	ARMATO, CLAUDIA	G	0	0-0	0-0	0-0	0	0	0	0	0	1	0	0	2	-4
14	FANO, SHALYN	F	0	0-1	0-1	0-0	0	0	0	0	0	0	0	0	0	-1
23	HANSEN, HARLEY	G	5	1-3	1-3	2-2	0	1	1	0	1	0	0	0	10	8
24	CHATMAN, JESSICA	F	5	2-2	0-0	1-2	2	2	4	1	1	0	0	0	10	8
20	EATON, MADELYN	G	13	5-8	3-4	0-0	0	1	1	0	0	0	0	1	10	8
32	BLACK, REBECCA	F	2	1-2	0-0	0-0	1	3	4	1	0	1	0	0	6	1
34	ROBINS, HANNAH	C	0	0-0	0-0	0-0	0	1	1	0	0	0	0	0	4	8
40	FRANDSEN, DARRI	F	0	0-0	0-0	0-0	0	0	0	0	0	0	0	0	0	0
	TEAM						0	0	0	0		0				
<b>TOTALS</b>			<b>28</b>	<b>10-18</b>	<b>5-9</b>	<b>3-4</b>	<b>3</b>	<b>8</b>	<b>11</b>	<b>2</b>	<b>5</b>	<b>2</b>	<b>0</b>	<b>1</b>	<b>50</b>	

*Shooting By Period*

Period	FG	FG%	3FG	3FG%	FT	FT%
3rd Qtr	10-16	63%	2-5	40%	3-5	60%
4th Qtr	4-13	31%	1-5	20%	7-8	88%
2nd Half	10-18	56%	5-9	56%	3-4	75%
2nd Half	14-29	48%	3-10	30%	10-13	77%
Game	24-57	42.1%	8-22	36.4%	18-23	78.3%

*Deadball Rebounds: 2,0*

**Montana 20**

No.	Player	S	Pts	FG	3FG	FT	OR	DR	TR	PF	A	TO	Blk	Stl	Min	+/-
02	STILES, SOPHIA	G	1	0-0	0-0	1-2	0	0	0	1	0	0	0	0	4	-7
03	HARRINGTON, GABI	G	2	1-3	0-1	0-0	0	0	0	1	0	0	0	0	6	-10
11	ANDERSON, ABBY	F	4	2-3	0-0	0-0	0	0	0	0	2	0	1	0	7	-9
32	JOHNSTON, MCKENZIE	G	4	2-2	0-0	0-0	1	1	2	0	2	0	0	1	10	-8
44	STOCKHOLM, EMMA	F	4	2-3	0-1	0-0	0	0	0	1	1	0	0	0	4	-8
13	FROHLICH, KYLIE	F	0	0-1	0-0	0-0	0	0	0	0	0	0	0	0	4	2
23	GOLIGOSKI, TAYLOR	G	3	1-3	1-3	0-0	0	0	0	0	0	1	0	0	6	-1
34	SCHOENING, MADI	G	0	0-1	0-1	0-0	0	1	1	0	0	0	0	0	4	2
42	PICKENS, JAMIE	F	2	1-3	0-0	0-0	1	0	1	1	0	0	0	1	6	-1
	TEAM						0	4	4	0		0				
<b>TOTALS</b>			<b>20</b>	<b>9-19</b>	<b>1-6</b>	<b>1-2</b>	<b>2</b>	<b>6</b>	<b>8</b>	<b>4</b>	<b>5</b>	<b>1</b>	<b>1</b>	<b>2</b>	<b>50</b>	

*Shooting By Period*

Period	FG	FG%	3FG	3FG%	FT	FT%
3rd Qtr	10-16	63%	1-3	33%	2-2	100%
4th Qtr	3-9	33%	0-1	00%	13-17	76%
2nd Half	9-19	47%	1-6	17%	1-2	50%
2nd Half	13-25	52%	1-4	25%	15-19	79%
Game	30-60	50.0%	2-10	20.0%	19-24	79.2%

*Deadball Rebounds: 3,0*

Game Notes:

Officials: Michal Watts, Kimberly Hobbs, Mark Munoz  
Attendance: 2660

Start Time: 09:06 PM ET  
End Time: 10:47 PM ET  
Game Duration: 1:40  
Conference Game;

Score	1st	2nd	3rd	4th	TOT
SUU	5	28	25	16	<b>74</b>
MON	19	20	23	19	<b>81</b>

Points from (This Period)	SUU	MON
In the Paint	8	14
Off Turns	3	2
2nd Chance	5	2
Fast Break	0	2
Bench	15	5

**Official Play-By-Play**  
**Southern Utah vs Montana**  
**Second Quarter**  
**January 02, 2020 at Dahlberg Arena - Missoula**



**Period 2**

**Starters:**

**Southern Utah:** 2 CARDENAS, REBECCA (G); 10 ARMATO, CLAUDIA (G); 14 FANO, SHALYN (F); 23 HANSEN, HARLEY (G); 24 CHATMAN, JESSICA (F);

**Montana:** 2 STILES, SOPHIA (G); 3 HARRINGTON, GABI (G); 11 ANDERSON, ABBY (F); 32 JOHNSTON, MCKENZIE (G); 44 STOCKHOLM, EMMA (F);

Time	VISITORS: Southern Utah	Score	Margin	HOME: Montana
10:00				SUB OUT: FROHLICH, KYLIE
10:00				SUB OUT: GOLIGOSKI, TAYLOR
10:00				SUB OUT: SCHOENING, MADI
10:00				SUB OUT: PICKENS, JAMIE
10:00				SUB IN: STILES, SOPHIA
10:00				SUB IN: HARRINGTON, GABI
10:00				SUB IN: ANDERSON, ABBY
10:00				SUB IN: STOCKHOLM, EMMA
09:47				MISSED JUMPER by HARRINGTON, GABI
09:43	REBOUND (DEF) by ROBINS, HANNAH			
09:37				FOUL (PERSONAL) by HARRINGTON, GABI
09:33	GOOD! 3PTR by EATON, MADELYN	19-8	H 11	
09:33	ASSIST by CARDENAS, REBECCA			
09:23		21-8	H 13	GOOD! LAYUP by ANDERSON, ABBY [PNT]
09:23				ASSIST by JOHNSTON, MCKENZIE
09:03				FOUL (PERSONAL) by STILES, SOPHIA
09:03	GOOD! FT by HANSEN, HARLEY	21-9	H 12	
09:03	GOOD! FT by HANSEN, HARLEY	21-10	H 11	
08:48				MISSED 3PTR by STOCKHOLM, EMMA
08:44	REBOUND (DEF) by HANSEN, HARLEY			
08:32	GOOD! 3PTR by CARDENAS, REBECCA	21-13	H 8	
08:32	ASSIST by CHATMAN, JESSICA			
08:13		23-13	H 10	GOOD! JUMPER by ANDERSON, ABBY [PNT]
08:13				ASSIST by STOCKHOLM, EMMA
07:59	GOOD! 3PTR by EATON, MADELYN	23-16	H 7	
07:59	ASSIST by HANSEN, HARLEY			
07:39		25-16	H 9	GOOD! LAYUP by STOCKHOLM, EMMA
07:39				ASSIST by ANDERSON, ABBY
07:13	GOOD! 3PTR by HANSEN, HARLEY	25-19	H 6	
07:13	ASSIST by CARDENAS, REBECCA			
06:57		27-19	H 8	GOOD! LAYUP by STOCKHOLM, EMMA
06:57				ASSIST by ANDERSON, ABBY
06:37	GOOD! LAYUP by CHATMAN, JESSICA	27-21	H 6	
06:20				MISSED JUMPER by ANDERSON, ABBY
06:17	REBOUND (DEF) by CHATMAN, JESSICA			
06:17				FOUL (PERSONAL) by STOCKHOLM, EMMA
06:17				SUB OUT: STILES, SOPHIA
06:17				SUB OUT: STOCKHOLM, EMMA
06:17				SUB IN: GOLIGOSKI, TAYLOR
06:17				SUB IN: PICKENS, JAMIE
06:17	SUB OUT: ROBINS, HANNAH			
06:17	SUB IN: BLACK, REBECCA			
06:11	MISSED JUMPER by CARDENAS, REBECCA			
06:09				REBOUND (DEF) by TEAM
05:55				MISSED LAYUP by PICKENS, JAMIE
05:51	REBOUND (DEF) by BLACK, REBECCA			
05:38	MISSED 3PTR by HANSEN, HARLEY			
05:35				REBOUND (DEF) by TEAM
05:23				MISSED 3PTR by HARRINGTON, GABI
05:20	REBOUND (DEF) by EATON, MADELYN			
05:16	MISSED LAYUP by EATON, MADELYN			
05:13	REBOUND (OFF) by CHATMAN, JESSICA			
05:11	GOOD! LAYUP by CHATMAN, JESSICA	27-23	H 4	
04:57				MISSED 3PTR by GOLIGOSKI, TAYLOR
04:53	REBOUND (DEF) by CHATMAN, JESSICA			
04:39	GOOD! JUMPER by EATON, MADELYN	27-25	H 2	
04:19		29-25	H 4	GOOD! LAYUP by HARRINGTON, GABI
03:47	MISSED JUMPER by EATON, MADELYN			
03:47				BLOCK by ANDERSON, ABBY
03:45				REBOUND (DEF) by TEAM
03:45				SUB OUT: HARRINGTON, GABI
03:45				SUB OUT: ANDERSON, ABBY
03:45				SUB IN: FROHLICH, KYLIE
03:45				SUB IN: SCHOENING, MADI
03:45	SUB OUT: CARDENAS, REBECCA			
03:45	SUB IN: ARMATO, CLAUDIA			
03:35		32-25	H 7	GOOD! 3PTR by GOLIGOSKI, TAYLOR
03:35				ASSIST by JOHNSTON, MCKENZIE
02:59	MISSED JUMPER by BLACK, REBECCA			
02:56				REBOUND (DEF) by SCHOENING, MADI



Time	VISITORS: Southern Utah	Score	Margin	HOME: Montana
02:48				MISSED LAYUP by PICKENS, JAMIE
02:44	REBOUND (DEF) by BLACK, REBECCA			
02:39	MISSED 3PTR by EATON, MADELYN			
02:35	REBOUND (OFF) by CHATMAN, JESSICA			
02:34				FOUL (PERSONAL) by PICKENS, JAMIE
02:34	GOOD! FT by CHATMAN, JESSICA	32-26	H 6	
02:34	MISSED FT by CHATMAN, JESSICA			
02:34	REBOUND (OFF) by BLACK, REBECCA			
02:34	GOOD! LAYUP by BLACK, REBECCA	32-28	H 4	
02:34				MISSED 3PTR by SCHOENING, MADI
02:34				REBOUND (OFF) by JOHNSTON, MCKENZIE
02:34		34-28	H 6	GOOD! JUMPER by JOHNSTON, MCKENZIE
02:34	TURNOVER (BADPASS) by ARMATO, CLAUDIA			
02:34				STEAL by JOHNSTON, MCKENZIE
02:34		36-28	H 8	GOOD! LAYUP by JOHNSTON, MCKENZIE [FB/PNT]
02:22	TURNOVER (BADPASS) by BLACK, REBECCA			
02:22				STEAL by PICKENS, JAMIE
01:42	FOUL (PERSONAL) by BLACK, REBECCA			
01:42	SUB OUT: ARMATO, CLAUDIA			
01:42	SUB IN: CARDENAS, REBECCA			
01:31				TURNOVER (BADPASS) by GOLIGOSKI, TAYLOR
01:31	STEAL by EATON, MADELYN			
01:18	GOOD! 3PTR by EATON, MADELYN	36-31	H 5	
01:18	ASSIST by CARDENAS, REBECCA			
01:02		38-31	H 7	GOOD! LAYUP by PICKENS, JAMIE [PNT]
00:45	MISSED 3PTR by HANSEN, HARLEY			
00:42				REBOUND (DEF) by JOHNSTON, MCKENZIE
00:35				MISSED 3PTR by GOLIGOSKI, TAYLOR
00:31				REBOUND (OFF) by PICKENS, JAMIE
00:29				MISSED JUMPER by FROHLICH, KYLIE
00:24	REBOUND (DEF) by BLACK, REBECCA			
00:18	GOOD! LAYUP by EATON, MADELYN [PNT]	38-33	H 5	
00:16				SUB OUT: GOLIGOSKI, TAYLOR
00:16				SUB OUT: PICKENS, JAMIE
00:16				SUB IN: STILES, SOPHIA
00:16				SUB IN: ANDERSON, ABBY
00:16	SUB OUT: BLACK, REBECCA			
00:16	SUB IN: FANO, SHALYN			
00:06	FOUL (PERSONAL) by CHATMAN, JESSICA			
00:06				MISSED FT by STILES, SOPHIA
00:06				REBOUND (OFF) by TEAM
00:06		39-33	H 6	GOOD! FT by STILES, SOPHIA
00:06				SUB OUT: STILES, SOPHIA
00:06				SUB IN: GOLIGOSKI, TAYLOR
00:00	MISSED 3PTR by FANO, SHALYN			
00:00				REBOUND (DEF) by TEAM

### Southern Utah 33, Montana 39

Points from (This Period)	SUU	MON
In the Paint	8	14
Off Turns	3	2
2nd Chance	5	2
Fast Break	0	2
Bench	15	5

**Official Box Score**  
**Southern Utah vs Montana**  
**Second Half Statistics Only**  
**January 02, 2020 at Dahlberg Arena - Missoula**



**Southern Utah 41**

No.	Player	S	Pts	FG	3FG	FT	OR	DR	TR	PF	A	TO	Blk	Stl	Min	+/-
02	CARDENAS, REBECCA	G	13	4-13	1-6	4-6	2	1	3	2	0	3	0	2	20	-1
10	ARMATO, CLAUDIA	G	0	0-0	0-0	0-0	0	0	0	1	2	1	0	0	6	0
14	FANO, SHALYN	F	7	3-8	0-1	1-1	1	3	4	3	0	1	0	1	16	0
20	EATON, MADELYN	G	0	0-1	0-1	0-0	0	0	0	2	0	2	0	0	14	-3
23	HANSEN, HARLEY	G	13	4-4	2-2	3-4	1	1	2	2	2	0	0	1	20	-1
24	CHATMAN, JESSICA	F	4	2-2	0-0	0-0	1	1	2	1	0	1	0	0	11	1
32	BLACK, REBECCA	F	0	0-0	0-0	0-0	0	0	0	0	0	0	0	0	0	0
34	ROBINS, HANNAH	C	0	0-0	0-0	0-0	0	0	0	0	0	0	0	0	0	0
40	FRANDSEN, DARRI	F	4	1-1	0-0	2-2	0	3	3	2	2	1	1	2	12	-1
	TEAM		0	0-0	0-0	0-0	1	0	1	0	0	0	0	0	0	0
<b>TOTALS</b>			<b>41</b>	<b>14-29</b>	<b>3-10</b>	<b>10-13</b>	<b>6</b>	<b>9</b>	<b>15</b>	<b>13</b>	<b>6</b>	<b>9</b>	<b>1</b>	<b>6</b>	<b>100</b>	

*Shooting By Period*

Period	FG	FG%	3FG	3FG%	FT	FT%
3rd Qtr	10-16	63%	2-5	40%	3-5	60%
4th Qtr	4-13	31%	1-5	20%	7-8	88%
2nd Half	14-29	48%	3-10	30%	10-13	77%
Game	24-57	42.1%	8-22	36.4%	18-23	78.3%

*Deadball Rebounds: 2,0*  
*Last FG Half: SUU 4th-04:23*

**Montana 42**

No.	Player	S	Pts	FG	3FG	FT	OR	DR	TR	PF	A	TO	Blk	Stl	Min	+/-
02	STILES, SOPHIA	G	5	2-4	0-1	1-2	1	0	1	1	1	0	0	2	14	2
03	HARRINGTON, GABI	G	5	2-3	1-1	0-0	0	3	3	2	0	2	0	0	18	8
11	ANDERSON, ABBY	F	10	1-4	0-0	8-10	1	1	2	2	2	1	1	1	16	-3
13	FROHLICH, KYLIE	F	0	0-0	0-0	0-0	0	0	0	0	0	0	0	0	3	-5
23	GOLIGOSKI, TAYLOR	G	2	0-1	0-1	2-2	1	0	1	1	0	0	0	1	7	1
32	JOHNSTON, MCKENZIE	G	9	4-5	0-0	1-2	1	1	2	2	2	3	0	2	20	1
34	SCHOENING, MADI	G	0	0-0	0-0	0-0	0	1	1	1	0	1	0	0	2	-7
42	PICKENS, JAMIE	F	0	0-1	0-0	0-0	0	0	0	1	1	0	0	0	4	4
44	STOCKHOLM, EMMA	F	11	4-7	0-1	3-3	1	2	3	0	0	1	0	1	17	4
	TEAM		0	0-0	0-0	0-0	0	2	2	0	0	0	0	0	0	0
<b>TOTALS</b>			<b>42</b>	<b>13-25</b>	<b>1-4</b>	<b>15-19</b>	<b>5</b>	<b>10</b>	<b>15</b>	<b>10</b>	<b>6</b>	<b>8</b>	<b>1</b>	<b>7</b>	<b>100</b>	

*Shooting By Period*

Period	FG	FG%	3FG	3FG%	FT	FT%
3rd Qtr	10-16	63%	1-3	33%	2-2	100%
4th Qtr	3-9	33%	0-1	00%	13-17	76%
2nd Half	13-25	52%	1-4	25%	15-19	79%
Game	30-60	50.0%	2-10	20.0%	19-24	79.2%

*Deadball Rebounds: 3,0*  
*Last FG Half: MON 4th-01:33*

*Game Notes:*

Officials: Michal Watts, Kimberly Hobbs, Mark Munoz  
 Attendance: 2660

Start Time: 09:06 PM ET  
 End Time: 10:47 PM ET  
 Game Duration: 1:40  
 Conference Game;

Score	1st	2nd	3rd	4th	TOT
SUU	5	28	25	16	<b>74</b>
MON	19	20	23	19	<b>81</b>

Points from (This Period)	SUU	MON
In the Paint	18	22
Off Turns	11	13
2nd Chance	5	8
Fast Break	7	3
Bench	4	2

**Official Box Score**  
**Southern Utah vs Montana**  
**Third Quarter Statistics Only**  
**January 02, 2020 at Dahlberg Arena - Missoula**



**Southern Utah 41**

No.	Player	S	Pts	FG	3FG	FT	OR	DR	TR	PF	A	TO	Blk	Stl	Min	+/-
02	CARDENAS, REBECCA	G	6	2-4	0-1	2-4	1	1	2	0	0	0	0	0	10	2
10	ARMATO, CLAUDIA	G	0	0-0	0-0	0-0	0	0	0	1	2	1	0	0	6	2
14	FANO, SHALYN	F	7	3-6	0-1	1-1	1	1	2	1	0	1	0	1	10	2
23	HANSEN, HARLEY	G	8	3-3	2-2	0-0	0	0	0	0	1	0	0	1	10	2
24	CHATMAN, JESSICA	F	2	1-1	0-0	0-0	0	0	0	0	0	0	0	0	4	2
20	EATON, MADELYN	G	0	0-1	0-1	0-0	0	0	0	0	0	0	0	0	4	0
32	BLACK, REBECCA	F	0	0-0	0-0	0-0	0	0	0	0	0	0	0	0	0	0
34	ROBINS, HANNAH	C	0	0-0	0-0	0-0	0	0	0	0	0	0	0	0	0	0
40	FRANSEN, DARRI	F	2	1-1	0-0	0-0	0	1	1	0	1	1	1	1	6	0
TEAM							0	0	0	0	0	0	0	0	0	0
<b>TOTALS</b>			<b>25</b>	<b>10-16</b>	<b>2-5</b>	<b>3-5</b>	<b>2</b>	<b>3</b>	<b>5</b>	<b>2</b>	<b>4</b>	<b>3</b>	<b>1</b>	<b>3</b>	<b>50</b>	

*Shooting By Period*

Period	FG	FG%	3FG	3FG%	FT	FT%
2nd Half	0-0	0%	0-0	0%	0-0	0%
Game	24-57	42.1%	8-22	36.4%	18-23	78.3%

*Deadball Rebounds: 2,0*

**Montana 42**

No.	Player	S	Pts	FG	3FG	FT	OR	DR	TR	PF	A	TO	Blk	Stl	Min	+/-
02	STILES, SOPHIA	G	4	2-4	0-1	0-0	1	0	1	1	1	0	0	1	8	-3
03	HARRINGTON, GABI	G	5	2-2	1-1	0-0	0	1	1	1	0	1	0	0	10	2
11	ANDERSON, ABBY	F	2	0-1	0-0	2-2	0	0	0	0	2	0	0	0	6	-6
32	JOHNSTON, MCKENZIE	G	8	4-4	0-0	0-0	1	0	1	1	1	2	0	1	10	-2
44	STOCKHOLM, EMMA	F	4	2-4	0-1	0-0	1	2	3	0	0	0	0	0	10	2
13	FROHLICH, KYLIE	F	0	0-0	0-0	0-0	0	0	0	0	0	0	0	0	0	-4
23	GOLIGOSKI, TAYLOR	G	0	0-0	0-0	0-0	0	0	0	0	0	0	0	0	2	1
34	SCHOENING, MADI	G	0	0-0	0-0	0-0	0	1	1	0	0	1	0	0	0	-4
42	PICKENS, JAMIE	F	0	0-1	0-0	0-0	0	0	0	1	1	0	0	0	4	4
TEAM							0	1	1	0	0	0	0	0	0	
<b>TOTALS</b>			<b>23</b>	<b>10-16</b>	<b>1-3</b>	<b>2-2</b>	<b>3</b>	<b>5</b>	<b>8</b>	<b>4</b>	<b>5</b>	<b>4</b>	<b>0</b>	<b>2</b>	<b>50</b>	

*Shooting By Period*

Period	FG	FG%	3FG	3FG%	FT	FT%
2nd Half	0-0	0%	0-0	0%	0-0	0%
Game	30-60	50.0%	2-10	20.0%	19-24	79.2%

*Deadball Rebounds: 3,0*

*Game Notes:*

Officials: Michal Watts, Kimberly Hobbs, Mark Munoz  
 Attendance: 2660

Start Time: 09:06 PM ET  
 End Time: 10:47 PM ET  
 Game Duration: 1:40  
 Conference Game;

Score	1st	2nd	3rd	4th	TOT
SUU	5	28	25	16	<b>74</b>
MON	19	20	23	19	<b>81</b>

Points from (This Period)	SUU	MON
In the Paint	12	18
Off Turns	7	7
2nd Chance	1	4
Fast Break	4	2
Bench	2	0

**Official Play-By-Play**  
**Southern Utah vs Montana**  
**Third Quarter**  
**January 02, 2020 at Dahlberg Arena - Missoula**



**Period 3**

**Starters:**

**Southern Utah:** 2 CARDENAS, REBECCA (G); 10 ARMATO, CLAUDIA (G); 14 FANO, SHALYN (F); 23 HANSEN, HARLEY (G); 24 CHATMAN, JESSICA (F);

**Montana:** 2 STILES, SOPHIA (G); 3 HARRINGTON, GABI (G); 11 ANDERSON, ABBY (F); 32 JOHNSTON, MCKENZIE (G); 44 STOCKHOLM, EMMA (F);

Time	VISITORS: Southern Utah	Score	Margin	HOME: Montana
10:00				SUB OUT: FROHLICH, KYLIE
10:00				SUB OUT: GOLIGOSKI, TAYLOR
10:00				SUB OUT: SCHOENING, MADI
10:00				SUB IN: STILES, SOPHIA
10:00				SUB IN: HARRINGTON, GABI
10:00				SUB IN: STOCKHOLM, EMMA
10:00	SUB OUT: EATON, MADELYN			
10:00	SUB IN: ARMATO, CLAUDIA			
09:41	GOOD! JUMPER by FANO, SHALYN	39-35	H 4	
09:14		41-35	H 6	GOOD! JUMPER by JOHNSTON, MCKENZIE [PNT]
09:14				ASSIST by ANDERSON, ABBY
08:53	GOOD! LAYUP by CARDENAS, REBECCA [PNT]	41-37	H 4	
08:32		43-37	H 6	GOOD! LAYUP by STILES, SOPHIA
08:32				ASSIST by ANDERSON, ABBY
08:24	GOOD! LAYUP by HANSEN, HARLEY [FB]	43-39	H 4	
08:24	ASSIST by ARMATO, CLAUDIA			
08:12				MISSED JUMPER by ANDERSON, ABBY
08:09	REBOUND (DEF) by CARDENAS, REBECCA			
08:01	MISSED 3PTR by FANO, SHALYN			
07:57				REBOUND (DEF) by TEAM
07:49	FOUL (PERSONAL) by FANO, SHALYN			
07:49		44-39	H 5	GOOD! FT by ANDERSON, ABBY
07:49		45-39	H 6	GOOD! FT by ANDERSON, ABBY
07:28	GOOD! LAYUP by CHATMAN, JESSICA	45-41	H 4	
07:16				MISSED 3PTR by STOCKHOLM, EMMA
07:13				REBOUND (OFF) by JOHNSTON, MCKENZIE
07:11		47-41	H 6	GOOD! LAYUP by JOHNSTON, MCKENZIE
07:03	TURNOVER (BADPASS) by FANO, SHALYN			
07:03				STEAL by STILES, SOPHIA
06:56				MISSED LAYUP by STILES, SOPHIA
06:51				REBOUND (OFF) by STILES, SOPHIA
06:50		49-41	H 8	GOOD! LAYUP by STILES, SOPHIA
06:39	MISSED LAYUP by CARDENAS, REBECCA			
06:34	REBOUND (OFF) by CARDENAS, REBECCA			
06:33	TIMEOUT 30SEC			
06:33	SUB OUT: CHATMAN, JESSICA			
06:33	SUB IN: FRANSEN, DARRI			
06:29				FOUL (PERSONAL) by HARRINGTON, GABI
06:29	MISSED FT by CARDENAS, REBECCA			
06:29	REBOUND (OFF) by TEAM			
06:29	GOOD! FT by CARDENAS, REBECCA	49-42	H 7	
06:13				MISSED 3PTR by STILES, SOPHIA
06:13	BLOCK by FRANSEN, DARRI			
06:07				REBOUND (OFF) by STOCKHOLM, EMMA
06:04				MISSED JUMPER by STOCKHOLM, EMMA
06:00	REBOUND (DEF) by FRANSEN, DARRI			
05:40	TURNOVER (BADPASS) by ARMATO, CLAUDIA			
05:40				STEAL by JOHNSTON, MCKENZIE
05:33		51-42	H 9	GOOD! LAYUP by JOHNSTON, MCKENZIE [FB]
05:12	GOOD! LAYUP by FANO, SHALYN [PNT]	51-44	H 7	
04:41		53-44	H 9	GOOD! LAYUP by HARRINGTON, GABI
04:41				ASSIST by STILES, SOPHIA
04:16	GOOD! 3PTR by HANSEN, HARLEY	53-47	H 6	
04:16	ASSIST by ARMATO, CLAUDIA			
04:00				TURNOVER (BADPASS) by JOHNSTON, MCKENZIE
04:00	STEAL by FRANSEN, DARRI			
03:52	GOOD! JUMPER by CARDENAS, REBECCA [FB]	53-49	H 4	
03:46				
03:46	FOUL (PERSONAL) by ARMATO, CLAUDIA			
03:46				SUB OUT: ANDERSON, ABBY
03:46				SUB IN: PICKENS, JAMIE
03:46	SUB OUT: ARMATO, CLAUDIA			
03:46	SUB IN: EATON, MADELYN			
03:37		55-49	H 6	GOOD! JUMPER by JOHNSTON, MCKENZIE [PNT]
03:22				FOUL (PERSONAL) by JOHNSTON, MCKENZIE
03:12	GOOD! LAYUP by FRANSEN, DARRI	55-51	H 4	
03:12	ASSIST by HANSEN, HARLEY			
02:58				TURNOVER (BADPASS) by JOHNSTON, MCKENZIE
02:41	GOOD! LAYUP by FANO, SHALYN [PNT]	55-53	H 2	
02:41	ASSIST by FRANSEN, DARRI			

Time	VISITORS: Southern Utah	Score	Margin	HOME: Montana
02:23				TURNOVER (LOSTBALL) by HARRINGTON, GABI
02:23	STEAL by FANO, SHALYN			
02:15	MISSED 3PTR by CARDENAS, REBECCA			
02:11				REBOUND (DEF) by HARRINGTON, GABI
01:58		57-53	H 4	GOOD! LAYUP by STOCKHOLM, EMMA [PNT]
01:58				ASSIST by JOHNSTON, MCKENZIE
01:43				FOUL (PERSONAL) by STILES, SOPHIA
01:43	GOOD! FT by FANO, SHALYN	57-54	H 3	
01:43	TURNOVER (LANEVIOLATION) by FRANSEN, DARRI			
01:43				SUB OUT: STILES, SOPHIA
01:43				SUB IN: GOLIGOSKI, TAYLOR
01:38		60-54	H 6	GOOD! 3PTR by HARRINGTON, GABI
01:38				ASSIST by PICKENS, JAMIE
01:15	MISSED JUMPER by FANO, SHALYN			
01:11	REBOUND (OFF) by FANO, SHALYN			
01:09	MISSED JUMPER by FANO, SHALYN			
01:05				REBOUND (DEF) by STOCKHOLM, EMMA
00:59				MISSED JUMPER by PICKENS, JAMIE
00:55	REBOUND (DEF) by FANO, SHALYN			
00:49	MISSED 3PTR by EATON, MADELYN			
00:45				REBOUND (DEF) by STOCKHOLM, EMMA
00:27		62-54	H 8	GOOD! LAYUP by STOCKHOLM, EMMA [PNT]
00:05				FOUL (PERSONAL) by PICKENS, JAMIE
00:05				SUB OUT: HARRINGTON, GABI
00:05				SUB OUT: PICKENS, JAMIE
00:05				SUB OUT: STOCKHOLM, EMMA
00:05				SUB IN: ANDERSON, ABBY
00:05				SUB IN: FROHLICH, KYLIE
00:05				SUB IN: SCHOENING, MADI
00:05	SUB OUT: FRANSEN, DARRI			
00:05	SUB IN: CHATMAN, JESSICA			
00:05	GOOD! FT by CARDENAS, REBECCA	62-55	H 7	
00:05	MISSED FT by CARDENAS, REBECCA			
00:05				REBOUND (DEF) by SCHOENING, MADI
00:02				TURNOVER (BADPASS) by SCHOENING, MADI
00:02	STEAL by HANSEN, HARLEY			
00:00	GOOD! 3PTR by HANSEN, HARLEY	62-58	H 4	

### Southern Utah 58, Montana 62

Points from (This Period)	SUU	MON
In the Paint	12	18
Off Turns	7	7
2nd Chance	1	4
Fast Break	4	2
Bench	2	0

**Official Box Score**  
**Southern Utah vs Montana**  
**Fourth Quarter Statistics Only**  
**January 02, 2020 at Dahlberg Arena - Missoula**



**Southern Utah 16**

No.	Player	S	Pts	FG	3FG	FT	OR	DR	TR	PF	A	TO	Blk	Stl	Min	+/-
02	CARDENAS, REBECCA	G	7	2-9	1-5	2-2	1	0	1	2	0	3	0	2	10	-3
10	ARMATO, CLAUDIA	G	0	0-0	0-0	0-0	0	0	0	0	0	0	0	0	0	-2
14	FANO, SHALYN	F	0	0-2	0-0	0-0	0	2	2	2	0	0	0	0	6	-2
23	HANSEN, HARLEY	G	5	1-1	0-0	3-4	1	1	2	2	1	0	0	0	10	-3
24	CHATMAN, JESSICA	F	2	1-1	0-0	0-0	1	1	2	1	0	1	0	0	7	-1
20	EATON, MADELYN	G	0	0-0	0-0	0-0	0	0	0	2	0	2	0	0	10	-3
32	BLACK, REBECCA	F	0	0-0	0-0	0-0	0	0	0	0	0	0	0	0	0	0
34	ROBINS, HANNAH	C	0	0-0	0-0	0-0	0	0	0	0	0	0	0	0	0	0
40	FRANSDEN, DARRI	F	2	0-0	0-0	2-2	0	2	2	2	1	0	0	1	6	-1
	TEAM						1	0	1	0		0				
<b>TOTALS</b>			<b>16</b>	<b>4-13</b>	<b>1-5</b>	<b>7-8</b>	<b>4</b>	<b>6</b>	<b>10</b>	<b>11</b>	<b>2</b>	<b>6</b>	<b>0</b>	<b>3</b>	<b>50</b>	

*Shooting By Period*

Period	FG	FG%	3FG	3FG%	FT	FT%
Game	24-57	42.1%	8-22	36.4%	18-23	78.3%

*Deadball Rebounds: 2,0*

**Montana 19**

No.	Player	S	Pts	FG	3FG	FT	OR	DR	TR	PF	A	TO	Blk	Stl	Min	+/-
02	STILES, SOPHIA	G	1	0-0	0-0	1-2	0	0	0	0	0	0	0	1	6	5
03	HARRINGTON, GABI	G	0	0-1	0-0	0-0	0	2	2	1	0	1	0	0	8	6
11	ANDERSON, ABBY	F	8	1-3	0-0	6-8	1	1	2	2	0	1	1	1	10	3
32	JOHNSTON, MCKENZIE	G	1	0-1	0-0	1-2	0	1	1	1	1	1	0	1	10	3
44	STOCKHOLM, EMMA	F	7	2-3	0-0	3-3	0	0	0	0	0	1	0	1	7	2
13	FROHLICH, KYLIE	F	0	0-0	0-0	0-0	0	0	0	0	0	0	0	0	3	-1
23	GOLIGOSKI, TAYLOR	G	2	0-1	0-1	2-2	1	0	1	1	0	0	0	1	5	0
34	SCHOENING, MADI	G	0	0-0	0-0	0-0	0	0	0	1	0	0	0	0	2	-3
42	PICKENS, JAMIE	F	0	0-0	0-0	0-0	0	0	0	0	0	0	0	0	0	0
	TEAM						0	1	1	0		0				
<b>TOTALS</b>			<b>19</b>	<b>3-9</b>	<b>0-1</b>	<b>13-17</b>	<b>2</b>	<b>5</b>	<b>7</b>	<b>6</b>	<b>1</b>	<b>4</b>	<b>1</b>	<b>5</b>	<b>50</b>	

*Shooting By Period*

Period	FG	FG%	3FG	3FG%	FT	FT%
Game	30-60	50.0%	2-10	20.0%	19-24	79.2%

*Deadball Rebounds: 3,0*

Game Notes:

Officials: Michal Watts, Kimberly Hobbs, Mark Munoz  
 Attendance: 2660

Start Time: 09:06 PM ET  
 End Time: 10:47 PM ET  
 Game Duration: 1:40  
 Conference Game;

Score	1st	2nd	3rd	4th	TOT
SUU	5	28	25	16	<b>74</b>
MON	19	20	23	19	<b>81</b>

Points from (This Period)	SUU	MON
In the Paint	6	4
Off Turns	4	6
2nd Chance	4	4
Fast Break	3	1
Bench	2	2

**Official Play-By-Play**  
**Southern Utah vs Montana**  
**Fourth Quarter**  
**January 02, 2020 at Dahlberg Arena - Missoula**



**Period 4**

**Starters:**

**Southern Utah:** 2 CARDENAS, REBECCA (G); 10 ARMATO, CLAUDIA (G); 14 FANO, SHALYN (F); 23 HANSEN, HARLEY (G); 24 CHATMAN, JESSICA (F);

**Montana:** 2 STILES, SOPHIA (G); 3 HARRINGTON, GABI (G); 11 ANDERSON, ABBY (F); 32 JOHNSTON, MCKENZIE (G); 44 STOCKHOLM, EMMA (F);

Time	VISITORS: Southern Utah	Score	Margin	HOME: Montana
09:45				MISSED 3PTR by GOLIGOSKI, TAYLOR
09:42	REBOUND (DEF) by FANO, SHALYN			
09:25	TURNOVER (BADPASS) by CHATMAN, JESSICA			
09:25				STEAL by GOLIGOSKI, TAYLOR
09:05				MISSED JUMPER by ANDERSON, ABBY
09:02	REBOUND (DEF) by FANO, SHALYN			
08:58				FOUL (PERSONAL) by SCHOENING, MADI
08:54	GOOD! 3PTR by CARDENAS, REBECCA	62-61	H 1	
08:38	FOUL (PERSONAL) by EATON, MADELYN			
08:32				MISSED JUMPER by JOHNSTON, MCKENZIE
08:29				REBOUND (OFF) by GOLIGOSKI, TAYLOR
08:26	FOUL (PERSONAL) by FANO, SHALYN			
08:26				SUB OUT: SCHOENING, MADI
08:26				SUB IN: HARRINGTON, GABI
08:26	SUB OUT: FANO, SHALYN			
08:26	SUB IN: FRANSEN, DARRI			
08:26		63-61	H 2	GOOD! FT by ANDERSON, ABBY
08:26		64-61	H 3	GOOD! FT by ANDERSON, ABBY
08:10	MISSED JUMPER by CARDENAS, REBECCA			
08:07	REBOUND (OFF) by CHATMAN, JESSICA			
08:05	TURNOVER (BADPASS) by CARDENAS, REBECCA			
08:05				STEAL by JOHNSTON, MCKENZIE
07:41				FOUL (OFF) by HARRINGTON, GABI
07:41				TURNOVER (OFFENSIVE) by HARRINGTON, GABI
07:27	MISSED JUMPER by CARDENAS, REBECCA			
07:27				BLOCK by ANDERSON, ABBY
07:27	REBOUND (OFF) by TEAM			
07:27				SUB OUT: FROHLICH, KYLIE
07:27				SUB IN: STOCKHOLM, EMMA
07:14	GOOD! LAYUP by CHATMAN, JESSICA	64-63	H 1	
07:14	ASSIST by HANSEN, HARLEY			
06:48				TURNOVER (BADPASS) by JOHNSTON, MCKENZIE
06:48	STEAL by FRANSEN, DARRI			
06:42	GOOD! LAYUP by CARDENAS, REBECCA [FB]	64-65	V 1	
06:42	ASSIST by FRANSEN, DARRI			
06:42				TIMEOUT 30SEC
06:23		66-65	H 1	GOOD! LAYUP by STOCKHOLM, EMMA [PNT]
06:23	FOUL (PERSONAL) by FRANSEN, DARRI			
06:23		67-65	H 2	GOOD! FT by STOCKHOLM, EMMA
06:11				FOUL (PERSONAL) by ANDERSON, ABBY
06:11	GOOD! FT by FRANSEN, DARRI	67-66	H 1	
06:11	GOOD! FT by FRANSEN, DARRI	67-67	T	
05:55				MISSED LAYUP by ANDERSON, ABBY
05:51				REBOUND (OFF) by ANDERSON, ABBY
05:48		69-67	H 2	GOOD! LAYUP by ANDERSON, ABBY [PNT]
05:34				FOUL (PERSONAL) by GOLIGOSKI, TAYLOR
05:34				SUB OUT: GOLIGOSKI, TAYLOR
05:34				SUB IN: STILES, SOPHIA
05:34	GOOD! FT by CARDENAS, REBECCA	69-68	H 1	
05:34	GOOD! FT by CARDENAS, REBECCA	69-69	T	
05:17				MISSED JUMPER by STOCKHOLM, EMMA
05:14	REBOUND (DEF) by CHATMAN, JESSICA			
05:02	FOUL (OFF) by EATON, MADELYN			
05:02	TURNOVER (OFFENSIVE) by EATON, MADELYN			
04:48	FOUL (PERSONAL) by FRANSEN, DARRI			
04:48	SUB OUT: FRANSEN, DARRI			
04:48	SUB IN: FANO, SHALYN			
04:48		70-69	H 1	GOOD! FT by STOCKHOLM, EMMA
04:48		71-69	H 2	GOOD! FT by STOCKHOLM, EMMA
04:23	GOOD! LAYUP by HANSEN, HARLEY [PNT]	71-71	T	
04:07				MISSED JUMPER by HARRINGTON, GABI
04:03	REBOUND (DEF) by HANSEN, HARLEY			
04:03				FOUL (PERSONAL) by JOHNSTON, MCKENZIE
04:03	MISSED FT by HANSEN, HARLEY			
04:03	REBOUND (OFF) by TEAM			
04:03	GOOD! FT by HANSEN, HARLEY [FB]	71-72	V 1	
03:52	FOUL (PERSONAL) by CARDENAS, REBECCA			
03:52		72-72	T	GOOD! FT by ANDERSON, ABBY
03:52		73-72	H 1	GOOD! FT by ANDERSON, ABBY
03:23	MISSED 3PTR by CARDENAS, REBECCA			

Time	VISITORS: Southern Utah	Score	Margin	HOME: Montana
03:19				REBOUND (DEF) by HARRINGTON, GABI
02:55	FOUL (PERSONAL) by CHATMAN, JESSICA			
02:55		74-72	H 2	GOOD! FT by ANDERSON, ABBY
02:55		75-72	H 3	GOOD! FT by ANDERSON, ABBY
02:55	SUB OUT: CHATMAN, JESSICA			
02:55	SUB IN: FRANSEN, DARRI			
02:43	MISSED JUMPER by CARDENAS, REBECCA			
02:40	REBOUND (OFF) by CARDENAS, REBECCA			
02:34	MISSED LAYUP by FANO, SHALYN			
02:29	REBOUND (OFF) by HANSEN, HARLEY			
02:28				FOUL (PERSONAL) by ANDERSON, ABBY
02:28	GOOD! FT by HANSEN, HARLEY	75-73	H 2	
02:28	GOOD! FT by HANSEN, HARLEY	75-74	H 1	
02:16				TURNOVER (BADPASS) by ANDERSON, ABBY
02:16	STEAL by CARDENAS, REBECCA			
01:55	TURNOVER (BADPASS) by CARDENAS, REBECCA			
01:55				STEAL by STOCKHOLM, EMMA
01:33		77-74	H 3	GOOD! JUMPER by STOCKHOLM, EMMA
01:33				ASSIST by JOHNSTON, MCKENZIE
01:21	MISSED JUMPER by FANO, SHALYN			
01:17				REBOUND (DEF) by JOHNSTON, MCKENZIE
00:48				TURNOVER (LOSTBALL) by STOCKHOLM, EMMA
00:48	STEAL by CARDENAS, REBECCA			
00:41	TURNOVER (BADPASS) by EATON, MADELYN			
00:41				STEAL by ANDERSON, ABBY
00:35	FOUL (PERSONAL) by HANSEN, HARLEY			
00:35				MISSED FT by JOHNSTON, MCKENZIE
00:35				REBOUND (OFF) by TEAM
00:35		78-74	H 4	GOOD! FT by JOHNSTON, MCKENZIE
00:35	TIMEOUT TEAM			
00:29	TURNOVER (LOSTBALL) by CARDENAS, REBECCA			
00:29				STEAL by STILES, SOPHIA
00:24	FOUL (PERSONAL) by CARDENAS, REBECCA			
00:24		79-74	H 5	GOOD! FT by STILES, SOPHIA [FB]
00:24				MISSED FT by STILES, SOPHIA
00:24	REBOUND (DEF) by FRANSEN, DARRI			
00:20	MISSED 3PTR by CARDENAS, REBECCA			
00:17	FOUL (PERSONAL) by HANSEN, HARLEY			
00:17				SUB OUT: STOCKHOLM, EMMA
00:17				SUB IN: GOLIGOSKI, TAYLOR
00:17				MISSED FT by ANDERSON, ABBY
00:17				REBOUND (OFF) by TEAM
00:17				MISSED FT by ANDERSON, ABBY
00:17	REBOUND (DEF) by FRANSEN, DARRI			
00:17				REBOUND (DEF) by ANDERSON, ABBY
00:09	MISSED 3PTR by CARDENAS, REBECCA			
00:06				REBOUND (DEF) by HARRINGTON, GABI
00:03	SUB OUT: EATON, MADELYN			
00:03	SUB IN: ARMATO, CLAUDIA			
00:03				TIMEOUT 30SEC
00:03	SUB OUT: FRANSEN, DARRI			
00:03	SUB IN: EATON, MADELYN			
00:01	FOUL (PERSONAL) by FANO, SHALYN			
00:01	SUB OUT: FANO, SHALYN			
00:01	SUB IN: CHATMAN, JESSICA			
00:01		80-74	H 6	GOOD! FT by GOLIGOSKI, TAYLOR
00:01		81-74	H 7	GOOD! FT by GOLIGOSKI, TAYLOR
00:01	TIMEOUT 30SEC			
00:00	MISSED 3PTR by CARDENAS, REBECCA			
00:00				REBOUND (DEF) by TEAM

### Southern Utah 74, Montana 81

Points from (This Period)	SUU	MON
In the Paint	6	4
Off Turns	4	6
2nd Chance	4	4
Fast Break	3	1
Bench	2	2



**Official Scoring/Possession Reference Chart**  
**Southern Utah vs Montana**  
**Period 1**  
**January 02, 2020 at Dahlberg Arena - Missoula**



**Period 1**

**Starters:**

**Southern Utah:** 2 CARDENAS, REBECCA (G); 10 ARMATO, CLAUDIA (G); 14 FANO, SHALYN (F); 23 HANSEN, HARLEY (G); 24 CHATMAN, JESSICA (F);

**Montana:** 2 STILES, SOPHIA (G); 3 HARRINGTON, GABI (G); 11 ANDERSON, ABBY (F); 32 JOHNSTON, MCKENZIE (G); 44 STOCKHOLM, EMMA (F);

Time	VISITORS: Southern Utah	Score	Margin	HOME: Montana
08:44		2-0	H 2	GOOD! LAYUP by JOHNSTON, MCKENZIE
07:58		4-0	H 4	GOOD! LAYUP by HARRINGTON, GABI
07:15		6-0	H 6	GOOD! JUMPER by ANDERSON, ABBY
07:15		7-0	H 7	GOOD! FT by ANDERSON, ABBY
06:43		9-0	H 9	GOOD! LAYUP by JOHNSTON, MCKENZIE [PNT]
06:16	GOOD! FT by FRANSEN, DARRI	9-1	H 8	
05:31		11-1	H 10	GOOD! JUMPER by STOCKHOLM, EMMA [PNT]
04:12		13-1	H 12	GOOD! LAYUP by HARRINGTON, GABI [PNT]
03:58	GOOD! FT by CARDENAS, REBECCA	13-2	H 11	
03:58	GOOD! FT by CARDENAS, REBECCA	13-3	H 10	
03:15		15-3	H 12	GOOD! JUMPER by FROHLICH, KYLIE [PNT]
02:29	GOOD! FT by EATON, MADELYN	15-4	H 11	
02:29	GOOD! FT by EATON, MADELYN	15-5	H 10	
02:12		17-5	H 12	GOOD! LAYUP by FROHLICH, KYLIE [PNT]
01:07		18-5	H 13	GOOD! FT by PICKENS, JAMIE
01:07		19-5	H 14	GOOD! FT by PICKENS, JAMIE

**Southern Utah 5, Montana 19**

**Official Scoring/Possession Reference Chart**  
**Southern Utah vs Montana**  
**Period 2**  
**January 02, 2020 at Dahlberg Arena - Missoula**



**Period 2**

**Starters:**

**Southern Utah:** 2 CARDENAS, REBECCA (G); 10 ARMATO, CLAUDIA (G); 14 FANO, SHALYN (F); 23 HANSEN, HARLEY (G); 24 CHATMAN, JESSICA (F);

**Montana:** 2 STILES, SOPHIA (G); 3 HARRINGTON, GABI (G); 11 ANDERSON, ABBY (F); 32 JOHNSTON, MCKENZIE (G); 44 STOCKHOLM, EMMA (F);

Time	VISITORS: Southern Utah	Score	Margin	HOME: Montana
09:33	GOOD! 3PTR by EATON, MADELYN	19-8	H 11	
09:23		21-8	H 13	GOOD! LAYUP by ANDERSON, ABBY [PNT]
09:03	GOOD! FT by HANSEN, HARLEY	21-9	H 12	
09:03	GOOD! FT by HANSEN, HARLEY	21-10	H 11	
08:32	GOOD! 3PTR by CARDENAS, REBECCA	21-13	H 8	
08:13		23-13	H 10	GOOD! JUMPER by ANDERSON, ABBY [PNT]
07:59	GOOD! 3PTR by EATON, MADELYN	23-16	H 7	
07:39		25-16	H 9	GOOD! LAYUP by STOCKHOLM, EMMA
07:13	GOOD! 3PTR by HANSEN, HARLEY	25-19	H 6	
06:57		27-19	H 8	GOOD! LAYUP by STOCKHOLM, EMMA
06:37	GOOD! LAYUP by CHATMAN, JESSICA	27-21	H 6	
05:11	GOOD! LAYUP by CHATMAN, JESSICA	27-23	H 4	
04:39	GOOD! JUMPER by EATON, MADELYN	27-25	H 2	
04:19		29-25	H 4	GOOD! LAYUP by HARRINGTON, GABI
03:35		32-25	H 7	GOOD! 3PTR by GOLIGOSKI, TAYLOR
02:34	GOOD! FT by CHATMAN, JESSICA	32-26	H 6	
02:34	GOOD! LAYUP by BLACK, REBECCA	32-28	H 4	
02:34		34-28	H 6	GOOD! JUMPER by JOHNSTON, MCKENZIE
02:34		36-28	H 8	GOOD! LAYUP by JOHNSTON, MCKENZIE [FB/PNT]
01:18	GOOD! 3PTR by EATON, MADELYN	36-31	H 5	
01:02		38-31	H 7	GOOD! LAYUP by PICKENS, JAMIE [PNT]
00:18	GOOD! LAYUP by EATON, MADELYN [PNT]	38-33	H 5	
00:06		39-33	H 6	GOOD! FT by STILES, SOPHIA

**Southern Utah 33, Montana 39**

**Official Scoring/Possession Reference Chart**  
**Southern Utah vs Montana**  
**Period 3**  
**January 02, 2020 at Dahlberg Arena - Missoula**



**Period 3**

**Starters:**

**Southern Utah:** 2 CARDENAS, REBECCA (G); 10 ARMATO, CLAUDIA (G); 14 FANO, SHALYN (F); 23 HANSEN, HARLEY (G); 24 CHATMAN, JESSICA (F);  
**Montana:** 2 STILES, SOPHIA (G); 3 HARRINGTON, GABI (G); 11 ANDERSON, ABBY (F); 32 JOHNSTON, MCKENZIE (G); 44 STOCKHOLM, EMMA (F);

Time	VISITORS: Southern Utah	Score	Margin	HOME: Montana
09:41	GOOD! JUMPER by FANO, SHALYN	39-35	H 4	
09:14		41-35	H 6	GOOD! JUMPER by JOHNSTON, MCKENZIE [PNT]
08:53	GOOD! LAYUP by CARDENAS, REBECCA [PNT]	41-37	H 4	
08:32		43-37	H 6	GOOD! LAYUP by STILES, SOPHIA
08:24	GOOD! LAYUP by HANSEN, HARLEY [FB]	43-39	H 4	
07:49		44-39	H 5	GOOD! FT by ANDERSON, ABBY
07:49		45-39	H 6	GOOD! FT by ANDERSON, ABBY
07:28	GOOD! LAYUP by CHATMAN, JESSICA	45-41	H 4	
07:11		47-41	H 6	GOOD! LAYUP by JOHNSTON, MCKENZIE
06:50		49-41	H 8	GOOD! LAYUP by STILES, SOPHIA
06:29	GOOD! FT by CARDENAS, REBECCA	49-42	H 7	
05:33		51-42	H 9	GOOD! LAYUP by JOHNSTON, MCKENZIE [FB]
05:12	GOOD! LAYUP by FANO, SHALYN [PNT]	51-44	H 7	
04:41		53-44	H 9	GOOD! LAYUP by HARRINGTON, GABI
04:16	GOOD! 3PTR by HANSEN, HARLEY	53-47	H 6	
03:52	GOOD! JUMPER by CARDENAS, REBECCA [FB]	53-49	H 4	
03:37		55-49	H 6	GOOD! JUMPER by JOHNSTON, MCKENZIE [PNT]
03:12	GOOD! LAYUP by FRANSEN, DARRI	55-51	H 4	
02:41	GOOD! LAYUP by FANO, SHALYN [PNT]	55-53	H 2	
01:58		57-53	H 4	GOOD! LAYUP by STOCKHOLM, EMMA [PNT]
01:43	GOOD! FT by FANO, SHALYN	57-54	H 3	
01:38		60-54	H 6	GOOD! 3PTR by HARRINGTON, GABI
00:27		62-54	H 8	GOOD! LAYUP by STOCKHOLM, EMMA [PNT]
00:05	GOOD! FT by CARDENAS, REBECCA	62-55	H 7	
00:00	GOOD! 3PTR by HANSEN, HARLEY	62-58	H 4	

**Southern Utah 58, Montana 62**

**Official Scoring/Possession Reference Chart**  
**Southern Utah vs Montana**  
**Period 4**  
**January 02, 2020 at Dahlberg Arena - Missoula**



**Period 4**

**Starters:**

**Southern Utah:** 2 CARDENAS, REBECCA (G); 10 ARMATO, CLAUDIA (G); 14 FANO, SHALYN (F); 23 HANSEN, HARLEY (G); 24 CHATMAN, JESSICA (F);  
**Montana:** 2 STILES, SOPHIA (G); 3 HARRINGTON, GABI (G); 11 ANDERSON, ABBY (F); 32 JOHNSTON, MCKENZIE (G); 44 STOCKHOLM, EMMA (F);

Time	VISITORS: Southern Utah	Score	Margin	HOME: Montana
08:54	GOOD! 3PTR by CARDENAS, REBECCA	62-61	H 1	
08:26		63-61	H 2	GOOD! FT by ANDERSON, ABBY
08:26		64-61	H 3	GOOD! FT by ANDERSON, ABBY
07:14	GOOD! LAYUP by CHATMAN, JESSICA	64-63	H 1	
06:42	GOOD! LAYUP by CARDENAS, REBECCA [FB]	64-65	V 1	
06:23		66-65	H 1	GOOD! LAYUP by STOCKHOLM, EMMA [PNT]
06:23		67-65	H 2	GOOD! FT by STOCKHOLM, EMMA
06:11	GOOD! FT by FRANSEN, DARRI	67-66	H 1	
06:11	GOOD! FT by FRANSEN, DARRI	67-67	T	
05:48		69-67	H 2	GOOD! LAYUP by ANDERSON, ABBY [PNT]
05:34	GOOD! FT by CARDENAS, REBECCA	69-68	H 1	
05:34	GOOD! FT by CARDENAS, REBECCA	69-69	T	
04:48		70-69	H 1	GOOD! FT by STOCKHOLM, EMMA
04:48		71-69	H 2	GOOD! FT by STOCKHOLM, EMMA
04:23	GOOD! LAYUP by HANSEN, HARLEY [PNT]	71-71	T	
04:03	GOOD! FT by HANSEN, HARLEY [FB]	71-72	V 1	
03:52		72-72	T	GOOD! FT by ANDERSON, ABBY
03:52		73-72	H 1	GOOD! FT by ANDERSON, ABBY
02:55		74-72	H 2	GOOD! FT by ANDERSON, ABBY
02:55		75-72	H 3	GOOD! FT by ANDERSON, ABBY
02:28	GOOD! FT by HANSEN, HARLEY	75-73	H 2	
02:28	GOOD! FT by HANSEN, HARLEY	75-74	H 1	
01:33		77-74	H 3	GOOD! JUMPER by STOCKHOLM, EMMA
00:35		78-74	H 4	GOOD! FT by JOHNSTON, MCKENZIE
00:24		79-74	H 5	GOOD! FT by STILES, SOPHIA [FB]
00:01		80-74	H 6	GOOD! FT by GOLIGOSKI, TAYLOR
00:01		81-74	H 7	GOOD! FT by GOLIGOSKI, TAYLOR

**Southern Utah 74, Montana 81**

**Official Substitutions Log**  
**Southern Utah vs Montana**  
**Period 1**  
**January 02, 2020 at Dahlberg Arena - Missoula**



VISITORS: Southern Utah	Time	Score	HOME: Montana
2 CARDENAS, REBECCA			2 STILES, SOPHIA
10 ARMATO, CLAUDIA			3 HARRINGTON, GABI
14 FANO, SHALYN			11 ANDERSON, ABBY
23 HANSEN, HARLEY			32 JOHNSTON, MCKENZIE
24 CHATMAN, JESSICA			44 STOCKHOLM, EMMA
SUB OUT: 14 FANO, SHALYN	07:15	0-7	
SUB IN: 40 FRANSEN, DARRI	07:15		
	03:58	1-13	SUB OUT: STILES, SOPHIA
	03:58		SUB OUT: HARRINGTON, GABI
	03:58		SUB OUT: ANDERSON, ABBY
	03:58		SUB OUT: STOCKHOLM, EMMA
	03:58		SUB IN: FROHLICH, KYLIE
	03:58		SUB IN: GOLIGOSKI, TAYLOR
	03:58		SUB IN: SCHOENING, MADI
	03:58		SUB IN: PICKENS, JAMIE
SUB OUT: 10 ARMATO, CLAUDIA	03:58		
SUB IN: 20 EATON, MADELYN	03:58		
SUB OUT: 24 CHATMAN, JESSICA	02:43	3-15	
SUB IN: 32 BLACK, REBECCA	02:43		
SUB OUT: 32 BLACK, REBECCA	01:07	5-17	
SUB OUT: 40 FRANSEN, DARRI	01:07		
SUB IN: 24 CHATMAN, JESSICA	01:07		
SUB IN: 34 ROBINS, HANNAH	01:07		

**Southern Utah 5, Montana 19**

**Official Substitutions Log**  
**Southern Utah vs Montana**  
**Period 2**  
**January 02, 2020 at Dahlberg Arena - Missoula**



VISITORS: Southern Utah	Time	Score	HOME: Montana
2 CARDENAS, REBECCA			2 STILES, SOPHIA
10 ARMATO, CLAUDIA			3 HARRINGTON, GABI
14 FANO, SHALYN			11 ANDERSON, ABBY
23 HANSEN, HARLEY			32 JOHNSTON, MCKENZIE
24 CHATMAN, JESSICA			44 STOCKHOLM, EMMA
	10:00	-	SUB OUT: FROHLICH, KYLIE
	10:00		SUB OUT: GOLIGOSKI, TAYLOR
	10:00		SUB OUT: SCHOENING, MADI
	10:00		SUB OUT: PICKENS, JAMIE
	10:00		SUB IN: STILES, SOPHIA
	10:00		SUB IN: HARRINGTON, GABI
	10:00		SUB IN: ANDERSON, ABBY
	10:00		SUB IN: STOCKHOLM, EMMA
	06:17	21-27	SUB OUT: STILES, SOPHIA
	06:17		SUB OUT: STOCKHOLM, EMMA
	06:17		SUB IN: GOLIGOSKI, TAYLOR
	06:17		SUB IN: PICKENS, JAMIE
SUB OUT: 34 ROBINS, HANNAH	06:17		
SUB IN: 32 BLACK, REBECCA	06:17		
	03:45	25-29	SUB OUT: HARRINGTON, GABI
	03:45		SUB OUT: ANDERSON, ABBY
	03:45		SUB IN: FROHLICH, KYLIE
	03:45		SUB IN: SCHOENING, MADI
SUB OUT: 2 CARDENAS, REBECCA	03:45		
SUB IN: 10 ARMATO, CLAUDIA	03:45		
SUB OUT: 10 ARMATO, CLAUDIA	01:42	28-36	
SUB IN: 2 CARDENAS, REBECCA	01:42		
	00:16	33-38	SUB OUT: GOLIGOSKI, TAYLOR
	00:16		SUB OUT: PICKENS, JAMIE
	00:16		SUB IN: STILES, SOPHIA
	00:16		SUB IN: ANDERSON, ABBY
SUB OUT: 32 BLACK, REBECCA	00:16		
SUB IN: 14 FANO, SHALYN	00:16		
	00:06	33-39	SUB OUT: STILES, SOPHIA
	00:06		SUB IN: GOLIGOSKI, TAYLOR

**Southern Utah 33, Montana 39**

**Official Substitutions Log**  
**Southern Utah vs Montana**  
**Period 3**  
**January 02, 2020 at Dahlberg Arena - Missoula**



VISITORS: Southern Utah	Time	Score	HOME: Montana
2 CARDENAS, REBECCA			2 STILES, SOPHIA
10 ARMATO, CLAUDIA			3 HARRINGTON, GABI
14 FANO, SHALYN			11 ANDERSON, ABBY
23 HANSEN, HARLEY			32 JOHNSTON, MCKENZIE
24 CHATMAN, JESSICA			44 STOCKHOLM, EMMA
	10:00	-	SUB OUT: FROHLICH, KYLIE
	10:00		SUB OUT: GOLIGOSKI, TAYLOR
	10:00		SUB OUT: SCHOENING, MADI
	10:00		SUB IN: STILES, SOPHIA
	10:00		SUB IN: HARRINGTON, GABI
	10:00		SUB IN: STOCKHOLM, EMMA
SUB OUT: 20 EATON, MADELYN	10:00		
SUB IN: 10 ARMATO, CLAUDIA	10:00		
SUB OUT: 24 CHATMAN, JESSICA	06:33	41-49	
SUB IN: 40 FRANSEN, DARRI	06:33		
	03:46	49-53	SUB OUT: ANDERSON, ABBY
	03:46		SUB IN: PICKENS, JAMIE
SUB OUT: 10 ARMATO, CLAUDIA	03:46		
SUB IN: 20 EATON, MADELYN	03:46		
	01:43	54-57	SUB OUT: STILES, SOPHIA
	01:43		SUB IN: GOLIGOSKI, TAYLOR
	00:05	54-62	SUB OUT: HARRINGTON, GABI
	00:05		SUB OUT: PICKENS, JAMIE
	00:05		SUB OUT: STOCKHOLM, EMMA
	00:05		SUB IN: ANDERSON, ABBY
	00:05		SUB IN: FROHLICH, KYLIE
	00:05		SUB IN: SCHOENING, MADI
SUB OUT: 40 FRANSEN, DARRI	00:05		
SUB IN: 24 CHATMAN, JESSICA	00:05		

**Southern Utah 58, Montana 62**

**Official Substitutions Log  
Southern Utah vs Montana  
Period 4  
January 02, 2020 at Dahlberg Arena - Missoula**



VISITORS: Southern Utah	Time	Score	HOME: Montana
2 CARDENAS, REBECCA			2 STILES, SOPHIA
10 ARMATO, CLAUDIA			3 HARRINGTON, GABI
14 FANO, SHALYN			11 ANDERSON, ABBY
23 HANSEN, HARLEY			32 JOHNSTON, MCKENZIE
24 CHATMAN, JESSICA			44 STOCKHOLM, EMMA
	08:26	61-62	SUB OUT: SCHOENING, MADI
	08:26		SUB IN: HARRINGTON, GABI
SUB OUT: 14 FANO, SHALYN	08:26		
SUB IN: 40 FRANSEN, DARRI	08:26		
	07:27	61-64	SUB OUT: FROHLICH, KYLIE
	07:27		SUB IN: STOCKHOLM, EMMA
	05:34	67-69	SUB OUT: GOLIGOSKI, TAYLOR
	05:34		SUB IN: STILES, SOPHIA
SUB OUT: 40 FRANSEN, DARRI	04:48	69-69	
SUB IN: 14 FANO, SHALYN	04:48		
SUB OUT: 24 CHATMAN, JESSICA	02:55	72-75	
SUB IN: 40 FRANSEN, DARRI	02:55		
	00:17	74-79	SUB OUT: STOCKHOLM, EMMA
	00:17		SUB IN: GOLIGOSKI, TAYLOR
SUB OUT: 20 EATON, MADELYN	00:03	74-79	
SUB IN: 10 ARMATO, CLAUDIA	00:03		
SUB OUT: 40 FRANSEN, DARRI	00:03		
SUB IN: 20 EATON, MADELYN	00:03		
SUB OUT: 14 FANO, SHALYN	00:01	74-79	
SUB IN: 24 CHATMAN, JESSICA	00:01		

**Southern Utah 74, Montana 81**

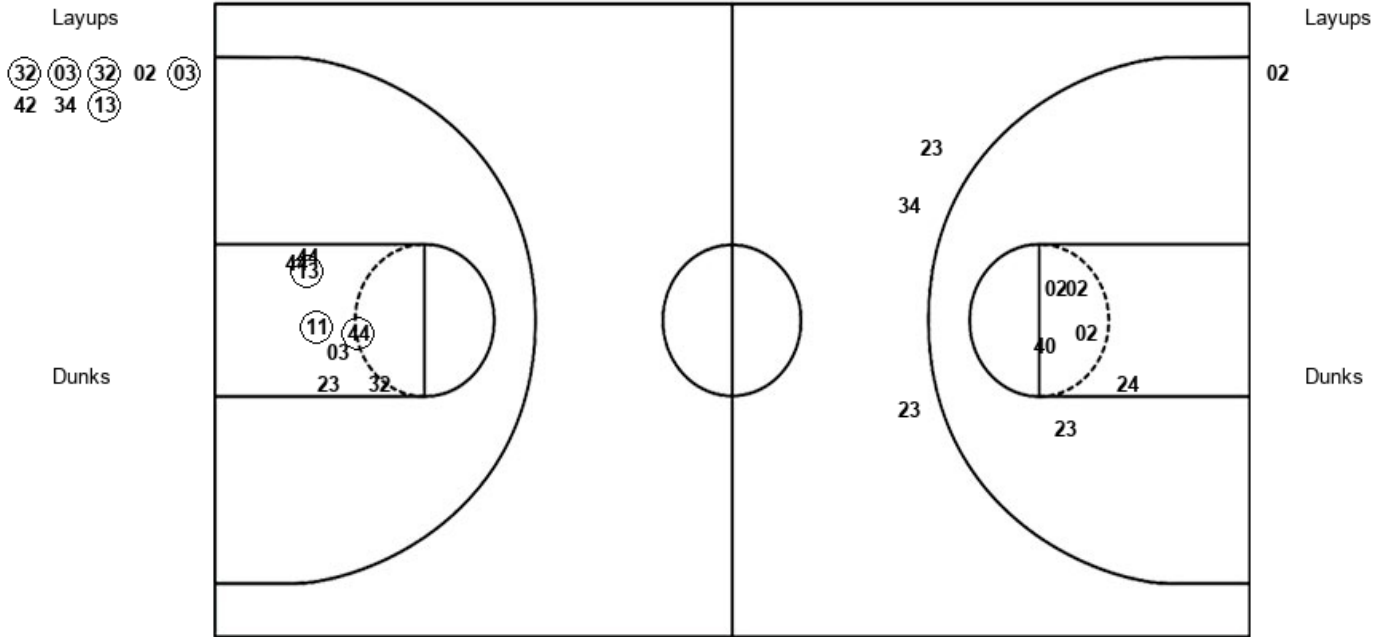


Official Shot Chart  
 Southern Utah vs Montana  
 PERIOD 1 Shots  
 January 02, 2020 at Dahlberg Arena - Missoula



Montana

Southern Utah



MON : Period 1	Made	Att	Pct
Layups	5	8	62.5
Dunks	0	0	0
2PT Field Goals	8	16	50.0
3PT Field Goals	0	0	0
<b>Total Field Goals</b>	<b>8</b>	<b>16</b>	<b>50.0</b>

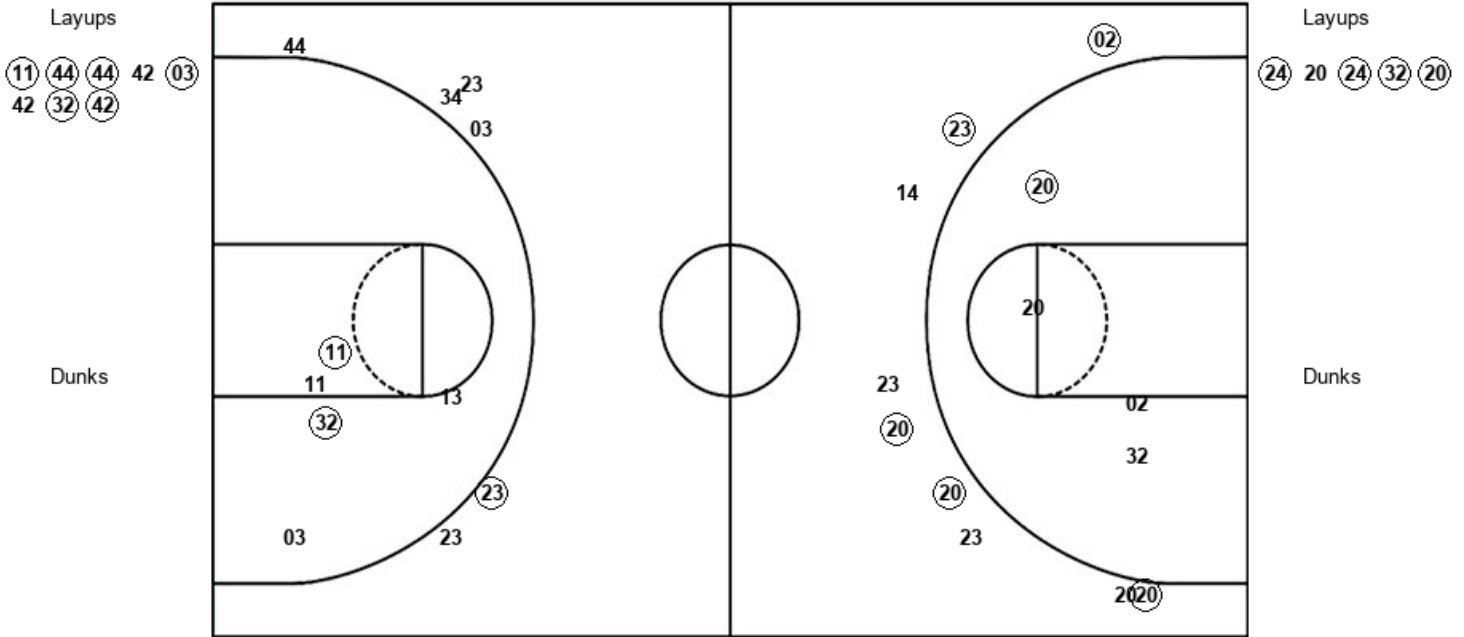
SUU : Period 1	Made	Att	Pct
Layups	0	1	00.0
Dunks	0	0	0
2PT Field Goals	0	7	00.0
3PT Field Goals	0	3	00.0
<b>Total Field Goals</b>	<b>0</b>	<b>10</b>	<b>00.0</b>

Official Shot Chart  
 Southern Utah vs Montana  
 PERIOD 2 Shots  
 January 02, 2020 at Dahlberg Arena - Missoula



Montana

Southern Utah



MON : Period 2	Made	Att	Pct
Layups	6	8	75.0
Dunks	0	0	0
2PT Field Goals	8	13	61.5
3PT Field Goals	1	6	16.7
<b>Total Field Goals</b>	<b>9</b>	<b>19</b>	<b>47.4</b>

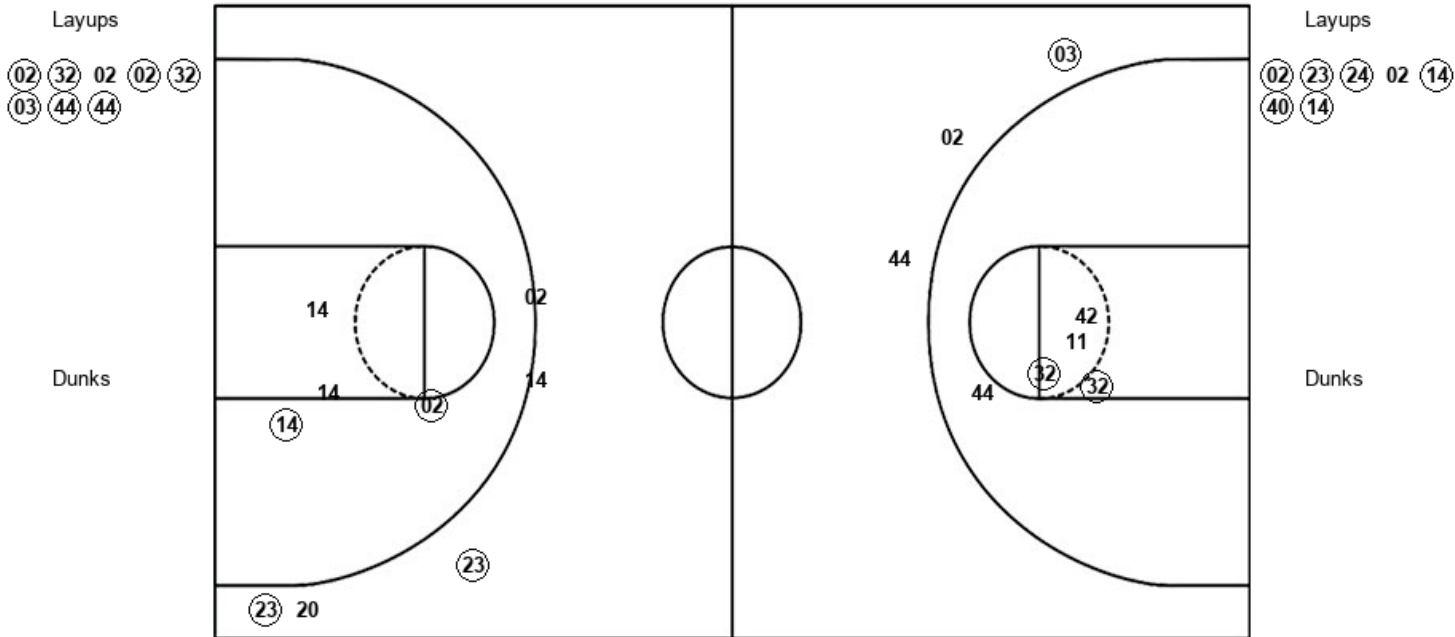
SUU : Period 2	Made	Att	Pct
Layups	4	5	80.0
Dunks	0	0	0
2PT Field Goals	5	9	55.6
3PT Field Goals	5	9	55.6
<b>Total Field Goals</b>	<b>10</b>	<b>18</b>	<b>55.6</b>

Official Shot Chart  
**Southern Utah vs Montana**  
 PERIOD 3 Shots  
 January 02, 2020 at Dahlberg Arena - Missoula



**Montana**

**Southern Utah**



MON : Period 3	Made	Att	Pct
Layups	7	8	87.5
Dunks	0	0	0
2PT Field Goals	9	13	69.2
3PT Field Goals	1	3	33.3
<b>Total Field Goals</b>	<b>10</b>	<b>16</b>	<b>62.5</b>

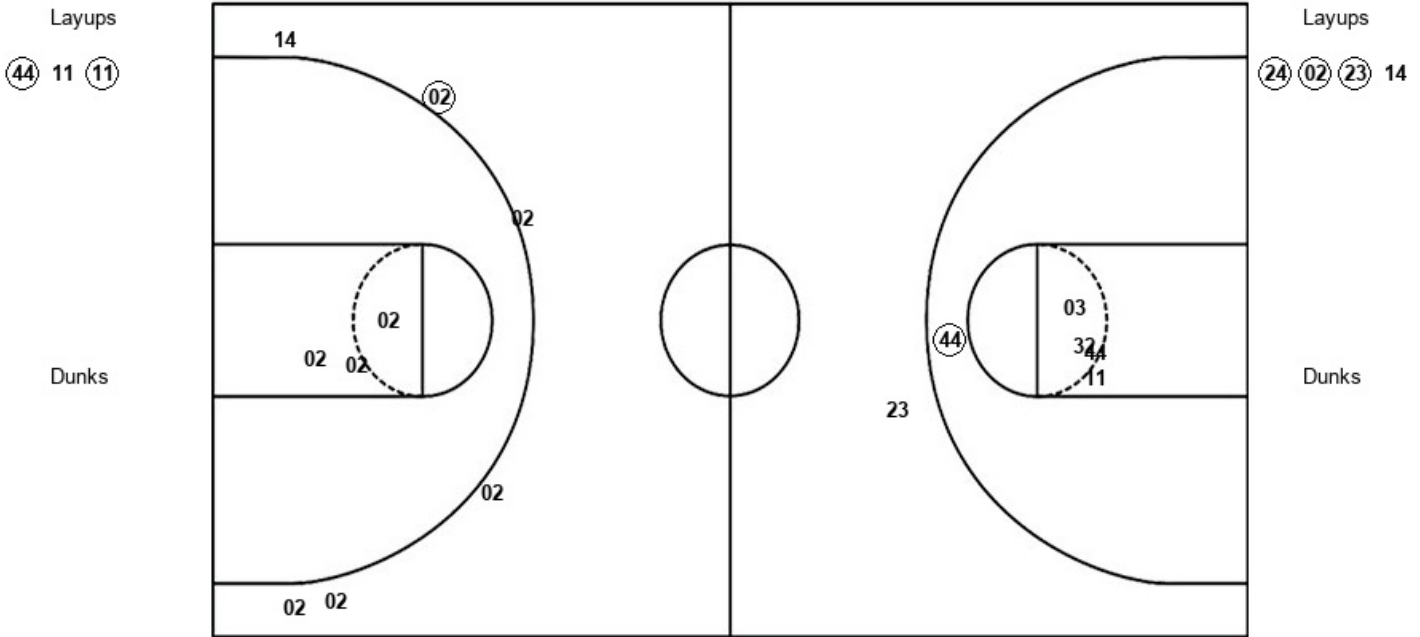
SUU : Period 3	Made	Att	Pct
Layups	6	7	85.7
Dunks	0	0	0
2PT Field Goals	8	11	72.7
3PT Field Goals	2	5	40.0
<b>Total Field Goals</b>	<b>10</b>	<b>16</b>	<b>62.5</b>

Official Shot Chart  
 Southern Utah vs Montana  
 PERIOD 4 Shots  
 January 02, 2020 at Dahlberg Arena - Missoula



Montana

Southern Utah



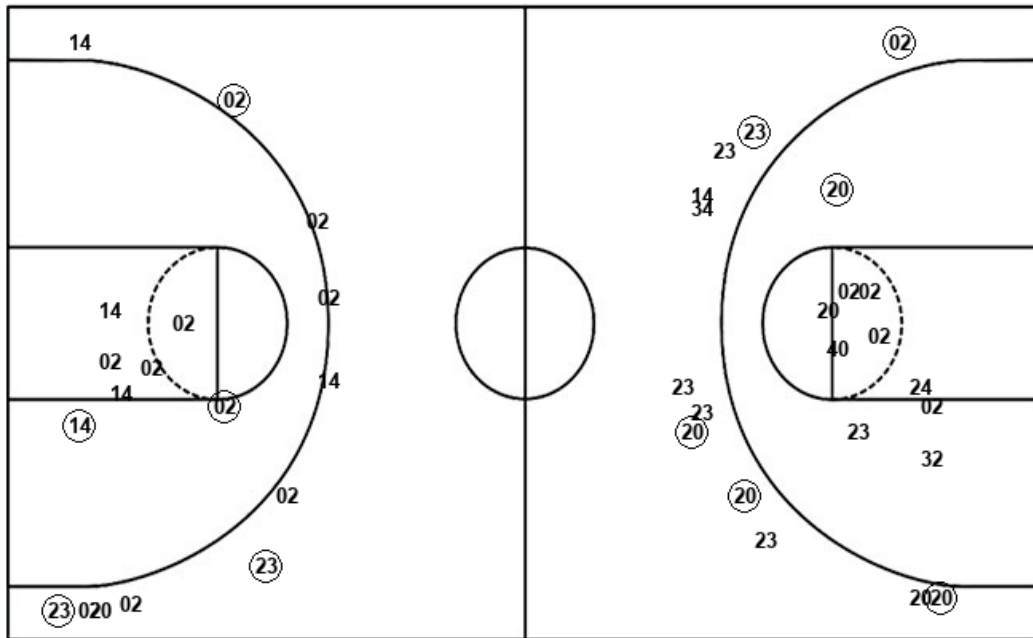
MON : Period 4	Made	Att	Pct
Layups	2	3	66.7
Dunks	0	0	0
2PT Field Goals	3	8	37.5
3PT Field Goals	0	1	00.0
<b>Total Field Goals</b>	<b>3</b>	<b>9</b>	<b>33.3</b>

SUU : Period 4	Made	Att	Pct
Layups	3	4	75.0
Dunks	0	0	0
2PT Field Goals	3	8	37.5
3PT Field Goals	1	5	20.0
<b>Total Field Goals</b>	<b>4</b>	<b>13</b>	<b>30.8</b>

**Official Shot Chart**  
**Southern Utah vs Montana**  
**Southern Utah Team Shots**  
 January 02, 2020 at Dahlberg Arena - Missoula



Layups



Layups

02 (24) 20 (24) (32)  
 (20) 02 (23) (24) 02  
 (14) (40) (14) (24) (02)  
 (23) 14

Dunks

Dunks

SUU : Period 1	Made	Att	Pct
Layups	0	1	00.0
Dunks	0	0	0
2PT Field Goals	0	7	00.0
3PT Field Goals	0	3	00.0
<b>Total Field Goals</b>	<b>0</b>	<b>10</b>	<b>00.0</b>

SUU : Period 3	Made	Att	Pct
Layups	6	7	85.7
Dunks	0	0	0
2PT Field Goals	8	11	72.7
3PT Field Goals	2	5	40.0
<b>Total Field Goals</b>	<b>10</b>	<b>16</b>	<b>62.5</b>

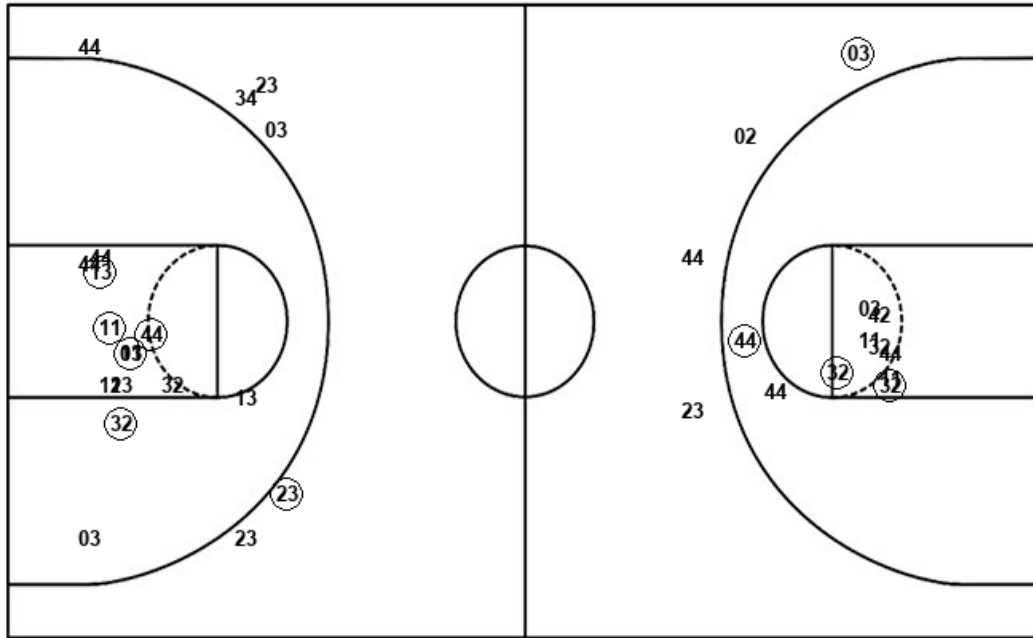
SUU : Period 2	Made	Att	Pct
Layups	4	5	80.0
Dunks	0	0	0
2PT Field Goals	5	9	55.6
3PT Field Goals	5	9	55.6
<b>Total Field Goals</b>	<b>10</b>	<b>18</b>	<b>55.6</b>

SUU : Period 4	Made	Att	Pct
Layups	3	4	75.0
Dunks	0	0	0
2PT Field Goals	3	8	37.5
3PT Field Goals	1	5	20.0
<b>Total Field Goals</b>	<b>4</b>	<b>13</b>	<b>30.8</b>

**Official Shot Chart**  
**Southern Utah vs Montana**  
**Montana Team Shots**  
**January 02, 2020 at Dahlberg Arena - Missoula**



Layups



Layups

- (32) (03) (32) (02) (03)
- (42) (34) (13) (11) (44)
- (44) (42) (03) (42) (32)
- (42) (02) (32) (02) (02)
- (32) (03) (44) (44) (44)
- 11 (11)

Dunks

Dunks

MON : Period 1	Made	Att	Pct
Layups	5	8	62.5
Dunks	0	0	0
2PT Field Goals	8	16	50.0
3PT Field Goals	0	0	0
<b>Total Field Goals</b>	<b>8</b>	<b>16</b>	<b>50.0</b>

MON : Period 3	Made	Att	Pct
Layups	7	8	87.5
Dunks	0	0	0
2PT Field Goals	9	13	69.2
3PT Field Goals	1	3	33.3
<b>Total Field Goals</b>	<b>10</b>	<b>16</b>	<b>62.5</b>

MON : Period 2	Made	Att	Pct
Layups	6	8	75.0
Dunks	0	0	0
2PT Field Goals	8	13	61.5
3PT Field Goals	1	6	16.7
<b>Total Field Goals</b>	<b>9</b>	<b>19</b>	<b>47.4</b>

MON : Period 4	Made	Att	Pct
Layups	2	3	66.7
Dunks	0	0	0
2PT Field Goals	3	8	37.5
3PT Field Goals	0	1	00.0
<b>Total Field Goals</b>	<b>3</b>	<b>9</b>	<b>33.3</b>