

FINAL SCORE



Kansas St.

57



TCU

68

February 15, 2020 • Ed and Rae Schollmaier Arena

FINAL STATISTICS

Official Box Score
Kansas St. vs TCU
Game Totals -- Final Statistics
February 15, 2020 at Ed and Rae Schollmaier Arena



Kansas St. 57

No.	Player	S	Pts	FG	3FG	FT	OR	DR	TR	PF	A	TO	Blk	Stl	Min	+/-
03	GORDON, DAJUAN	G	0	0-2	0-2	0-0	0	1	1	3	0	1	0	1	14	-12
04	SLOAN, DAVID	G	11	5-11	0-0	1-2	0	2	2	0	3	2	1	3	31	-6
14	MAWIEN, MAKOL	F	6	2-6	0-1	2-2	2	7	9	1	0	2	1	0	25	-20
20	SNEED, XAVIER	F	15	6-12	0-4	3-8	1	2	3	2	2	0	1	1	33	-8
23	MURPHY, MONTAVIOUS	F	5	2-3	1-1	0-0	1	2	3	1	0	1	0	0	23	-6
00	MCGUIRL, MIKE	G	5	2-6	1-1	0-0	1	1	2	2	2	1	0	1	16	-2
02	DIARRA, CARTIER	G	10	4-7	0-3	2-2	0	2	2	2	2	1	2	2	26	-2
11	GORDON, ANTONIO	F	5	2-3	0-0	1-2	2	3	5	3	0	0	0	0	17	-5
34	STOCKARD III, LEVI	F	0	0-4	0-0	0-0	1	0	1	1	0	0	0	0	14	9
	TEAM						2	0	2	0		0				
TOTALS			57	23-54	2-12	9-16	10	20	30	15	9	8	5	8	199	

Shooting By Period

Period	FG	FG%	3FG	3FG%	FT	FT%
1st Half	12-30	40%	0-5	00%	3-4	75%
2nd Half	11-24	46%	2-7	29%	6-12	50%
Game	23-54	42.6%	2-12	16.7%	9-16	56.3%

Last FG: 2nd-00:29
Largest lead: By 3 at
Technical Fouls: None.

TCU 68

No.	Player	S	Pts	FG	3FG	FT	OR	DR	TR	PF	A	TO	Blk	Stl	Min	+/-
01	BANE, DESMOND	G	17	6-14	5-10	0-0	1	7	8	3	8	4	4	1	33	22
04	FULLER, PJ	G	5	2-6	0-3	1-1	0	1	1	5	2	1	0	0	21	15
05	GRAY, JAIRE	G	15	5-12	4-9	1-2	2	4	6	1	1	0	0	1	33	9
21	SAMUEL, KEVIN	C	5	2-3	0-0	1-2	2	4	6	2	0	1	2	0	25	11
22	NEMBARD, RJ	G	15	5-10	3-5	2-2	0	4	4	2	5	3	0	0	36	14
02	DENNIS, EDRIC	G	0	0-1	0-1	0-0	0	0	0	1	1	1	0	0	5	-8
03	FARABELLO, FRANCISCO	G	8	2-5	2-4	2-2	0	1	1	1	2	2	0	0	24	-10
10	SMITH, DIANTE	F	3	1-1	1-1	0-0	0	0	0	0	0	1	0	0	7	2
23	LEDEE, JAEDON	F	0	0-0	0-0	0-0	1	4	5	1	0	0	1	0	15	0
	TEAM						3	0	3	0		1				
TOTALS			68	23-52	15-33	7-9	9	25	34	16	19	14	7	2	199	

Shooting By Period

Period	FG	FG%	3FG	3FG%	FT	FT%
1st Half	10-24	42%	6-16	38%	0-0	0%
2nd Half	13-28	46%	9-17	53%	7-9	78%
Game	23-52	44.2%	15-33	45.5%	7-9	77.8%

Last FG: 2nd-01:18
Largest lead: By 13 at
Technical Fouls: None.

Game Notes:

Officials: Keith Kimble, Rick Crawford, Bret Smith
 Attendance: 6288

Start Time: 10:00 PM
 Conference Game;

Score	1st	2nd	TOT
KSU	27	30	57
TCU	26	42	68

KSU led for 3:51. TCU led for 34:32.
 Game was tied for 0:0.
 Times tied: 0 Lead Changes: 0

Points from	KSU	TCU
In the Paint	22	14
Off Turns	19	6
2nd Chance	9	6
Fast Break	11	9
Bench	20	11

Official Box Score
Kansas St. vs TCU
First Half Statistics Only
February 15, 2020 at Ed and Rae Schollmaier Arena



Kansas St. 27

No.	Player	S	Pts	FG	3FG	FT	OR	DR	TR	PF	A	TO	Blk	Stl	Min
03	GORDON, DAJUAN	G	0	0-1	0-1	0-0	0	1	1	2	0	0	0	1	11
04	SLOAN, DAVID	G	7	3-6	0-0	1-2	0	1	1	0	0	1	0	2	12
14	MAWIEN, MAKOL	F	4	2-6	0-1	0-0	1	3	4	0	0	1	0	0	12
20	SNEED, XAVIER	F	4	2-5	0-1	0-0	0	2	2	0	2	0	1	1	15
23	MURPHY, MONTAVIOUS	F	2	1-1	0-0	0-0	1	1	2	1	0	1	0	0	13
00	MCGUIRL, MIKE	G	2	1-4	0-0	0-0	1	1	2	1	1	1	0	0	7
02	DIARRA, CARTIER	G	6	2-4	0-2	2-2	0	1	1	1	1	1	2	1	15
11	GORDON, ANTONIO	F	2	1-1	0-0	0-0	1	0	1	0	0	0	0	0	7
34	STOCKARD III, LEVI	F	0	0-2	0-0	0-0	1	0	1	1	0	0	0	0	8
	TEAM			0-0			1	0	1	0		0			
TOTALS			27	12-30	0-5	3-4	6	10	16	6	4	5	3	5	100

Shooting By Period

Period	FG	FG%	3FG	3FG%	FT	FT%
1st Half	12-30	40%	0-5	00%	3-4	75%
Game	23-54	42.6%	2-12	16.7%	9-16	56.3%

Last FG Half: KSU 2nd-00:29

TCU 26

No.	Player	S	Pts	FG	3FG	FT	OR	DR	TR	PF	A	TO	Blk	Stl	Min
01	BANE, DESMOND	G	5	2-5	1-3	0-0	1	1	2	2	1	2	2	1	14
04	FULLER, PJ	G	0	0-3	0-2	0-0	0	1	1	2	2	1	0	0	12
05	GRAYER, JAIRE	G	9	3-7	3-7	0-0	0	1	1	0	0	0	0	0	17
21	SAMUEL, KEVIN	C	4	2-3	0-0	0-0	0	3	3	1	0	1	1	0	12
22	NEMBARD, RJ	G	2	1-3	0-1	0-0	0	4	4	0	3	2	0	0	17
02	DENNIS, EDRIC	G	0	0-1	0-1	0-0	0	0	0	1	1	1	0	0	5
03	FARABELLO, FRANCISCO	G	3	1-1	1-1	0-0	0	0	0	0	1	2	0	0	13
10	SMITH, DIANTE	F	3	1-1	1-1	0-0	0	0	0	0	0	1	0	0	3
23	LEDEE, JAEDON	F	0	0-0	0-0	0-0	1	3	4	1	0	0	0	0	8
	TEAM			0-0			1	0	1	0		0			
TOTALS			26	10-24	6-16	0-0	3	13	16	7	8	10	3	1	100

Shooting By Period

Period	FG	FG%	3FG	3FG%	FT	FT%
1st Half	10-24	42%	6-16	38%	0-0	0%
Game	23-52	44.2%	15-33	45.5%	7-9	77.8%

Last FG Half: TCU 2nd-01:18

Game Notes:

Officials: Keith Kimble, Rick Crawford, Bret Smith
Attendance: 6288

Start Time: 10:00 PM
Conference Game;

Score	1st	2nd	TOT
KSU	27	30	57
TCU	26	42	68

Points from (This Period)	KSU	TCU
In the Paint	14	8
Off Turns	13	3
2nd Chance	4	0
Fast Break	5	2
Bench	10	6

Official Play-By-Play
Kansas St. vs TCU
First Half
February 15, 2020 at Ed and Rae Schollmaier Arena



Period 1

Starters:

Kansas St.: 3 GORDON, DAJUAN (G); 4 SLOAN, DAVID (G); 14 MAWIEN, MAKOL (F); 20 SNEED, XAVIER (F); 23 MURPHY, MONTAVIOUS (F);
TCU: 1 BANE, DESMOND (G); 4 FULLER, PJ (G); 5 GRAYER, JAIRE (G); 21 SAMUEL, KEVIN (C); 22 NEMBHARD, RJ (G);

Time	VISITORS: Kansas St.	Score	Margin	HOME: TCU
19:38		2-0	H 2	GOOD! LAYUP by SAMUEL, KEVIN
19:38				ASSIST by FULLER, PJ
19:15	GOOD! JUMPER by MURPHY, MONTAVIOUS	2-2	T	
19:15	ASSIST by SNEED, XAVIER			
18:45		4-2	H 2	GOOD! LAYUP by BANE, DESMOND [PNT]
18:29	TURNOVER by SLOAN, DAVID			
18:29				STEAL by BANE, DESMOND
18:24				MISSED 3PTR by NEMBHARD, RJ
18:21				REBOUND (OFF) by BANE, DESMOND
18:02				MISSED JUMPER by FULLER, PJ
17:59	REBOUND (DEF) by MURPHY, MONTAVIOUS			
17:48	TURNOVER by MURPHY, MONTAVIOUS			
17:24				FOUL by SAMUEL, KEVIN
17:24				TURNOVER by SAMUEL, KEVIN
17:24				SUB OUT: SAMUEL, KEVIN
17:24				SUB IN: LEDEE, JAEDON
17:08	MISSED LAYUP by SNEED, XAVIER [PNT]			
17:08				BLOCK by BANE, DESMOND
17:05				REBOUND (DEF) by GRAYER, JAIRE
16:49				MISSED 3PTR by BANE, DESMOND
16:45	REBOUND (DEF) by SLOAN, DAVID			
16:42	MISSED LAYUP by SLOAN, DAVID			
16:39				REBOUND (DEF) by LEDEE, JAEDON
16:31		7-2	H 5	GOOD! 3PTR by BANE, DESMOND
16:31				ASSIST by FULLER, PJ
15:59	MISSED 3PTR by GORDON, DAJUAN			
15:54	REBOUND (OFF) by MURPHY, MONTAVIOUS			
15:45	MISSED 3PTR by SNEED, XAVIER			
15:42				REBOUND (DEF) by BANE, DESMOND
15:18				MISSED 3PTR by GRAYER, JAIRE
15:15	REBOUND (DEF) by SNEED, XAVIER			
15:08	MISSED 3PTR by MAWIEN, MAKOL			
15:05				REBOUND (DEF) by NEMBHARD, RJ
15:00		9-2	H 7	GOOD! LAYUP by NEMBHARD, RJ [FB]
14:58	TIMEOUT 30SEC			
14:58	TIMEOUT MEDIA			
14:57				SUB OUT: FULLER, PJ
14:57				SUB OUT: GRAYER, JAIRE
14:57				SUB IN: FARABELLO, FRANCISCO
14:57				SUB IN: SMITH, DIANTE
14:57	SUB OUT: GORDON, DAJUAN			
14:57	SUB OUT: SLOAN, DAVID			
14:57	SUB OUT: MAWIEN, MAKOL			
14:57	SUB IN: MCGUIRL, MIKE			
14:57	SUB IN: DIARRA, CARTIER			
14:57	SUB IN: STOCKARD III, LEVI			
14:42	MISSED JUMPER by STOCKARD III, LEVI [PNT]			
14:36	REBOUND (OFF) by MCGUIRL, MIKE			
14:36	GOOD! LAYUP by MCGUIRL, MIKE	9-4	H 5	
14:10		12-4	H 8	GOOD! 3PTR by SMITH, DIANTE
14:10				ASSIST by BANE, DESMOND
13:53	MISSED JUMPER by MCGUIRL, MIKE			
13:49				REBOUND (DEF) by LEDEE, JAEDON
13:46	FOUL by MCGUIRL, MIKE			
13:46	SUB OUT: MURPHY, MONTAVIOUS			
13:46	SUB IN: GORDON, ANTONIO			
13:20				TURNOVER by FARABELLO, FRANCISCO
13:20	STEAL by SNEED, XAVIER			
13:16	MISSED LAYUP by SNEED, XAVIER [PNT]			
13:16				BLOCK by BANE, DESMOND
13:16	REBOUND (OFF) by TEAM			
13:16				SUB OUT: NEMBHARD, RJ
13:16				SUB IN: DENNIS, EDRIC
13:09	TURNOVER by MCGUIRL, MIKE			
12:46				MISSED 3PTR by BANE, DESMOND
12:43				REBOUND (OFF) by LEDEE, JAEDON
12:43	FOUL by STOCKARD III, LEVI [PNT]			
12:43	SUB OUT: SNEED, XAVIER			
12:43	SUB IN: GORDON, DAJUAN			
12:26				TURNOVER by SMITH, DIANTE [PNT]

Time	VISITORS: Kansas St.	Score	Margin	HOME: TCU
12:26	STEAL by GORDON, DAJUAN			
12:17	GOOD! LAYUP by DIARRA, CARTIER [PNT]	12-6	H 6	
11:58	FOUL by GORDON, DAJUAN			
11:58	TIMEOUT MEDIA			
11:58				SUB OUT: SMITH, DIANTE
11:58				SUB OUT: LEDEE, JAEDON
11:58				SUB IN: GRAYER, JAIRE
11:58				SUB IN: SAMUEL, KEVIN
11:49				MISSED JUMPER by BANE, DESMOND [PNT]
11:46	REBOUND (DEF) by GORDON, DAJUAN			
11:25	MISSED LAYUP by MCGUIRL, MIKE [PNT]			
11:21	REBOUND (OFF) by STOCKARD III, LEVI			
11:21	MISSED LAYUP by STOCKARD III, LEVI			
11:20	REBOUND (OFF) by GORDON, ANTONIO			
11:10	GOOD! JUMPER by DIARRA, CARTIER	12-8	H 4	
10:45		15-8	H 7	GOOD! 3PTR by GRAYER, JAIRE
10:45				ASSIST by DENNIS, EDRIC
10:14	MISSED 3PTR by DIARRA, CARTIER			
10:11				REBOUND (DEF) by SAMUEL, KEVIN
10:03				MISSED 3PTR by DENNIS, EDRIC
10:03	BLOCK by DIARRA, CARTIER			
09:57	REBOUND (DEF) by MCGUIRL, MIKE			
09:55	GOOD! DUNK by GORDON, ANTONIO [FB]	15-10	H 5	
09:55	ASSIST by MCGUIRL, MIKE			
09:53				TIMEOUT 30SEC
09:53				SUB OUT: DENNIS, EDRIC
09:53				SUB OUT: FARABELLO, FRANCISCO
09:53				SUB IN: FULLER, PJ
09:53				SUB IN: NEMBHARD, RJ
09:53	SUB OUT: STOCKARD III, LEVI			
09:53	SUB IN: MAWIEN, MAKOL			
09:35				FOUL by BANE, DESMOND
09:35				TURNOVER by BANE, DESMOND
09:35				SUB OUT: BANE, DESMOND
09:35				SUB IN: FARABELLO, FRANCISCO
09:20	GOOD! JUMPER by MAWIEN, MAKOL	15-12	H 3	
08:47		18-12	H 6	GOOD! 3PTR by FARABELLO, FRANCISCO
08:47				ASSIST by NEMBHARD, RJ
08:26	MISSED JUMPER by MCGUIRL, MIKE [PNT]			
08:23				REBOUND (DEF) by NEMBHARD, RJ
08:07				MISSED 3PTR by FULLER, PJ
08:07	BLOCK by DIARRA, CARTIER			
08:03	REBOUND (DEF) by MAWIEN, MAKOL			
07:59	TURNOVER by DIARRA, CARTIER			
07:59	TIMEOUT MEDIA			
07:59				SUB OUT: FARABELLO, FRANCISCO
07:59				SUB IN: DENNIS, EDRIC
07:59	SUB OUT: MCGUIRL, MIKE			
07:59	SUB IN: SNEED, XAVIER			
07:59				SUB OUT: DENNIS, EDRIC
07:59				SUB IN: BANE, DESMOND
07:34		21-12	H 9	GOOD! 3PTR by GRAYER, JAIRE
07:34				ASSIST by NEMBHARD, RJ
07:21	TURNOVER by MAWIEN, MAKOL			
07:08	FOUL by GORDON, DAJUAN [PNT]			
07:03	SUB OUT: GORDON, DAJUAN			
07:03	SUB OUT: GORDON, ANTONIO			
07:03	SUB IN: SLOAN, DAVID			
07:03	SUB IN: MURPHY, MONTAVIOUS			
06:51				MISSED LAYUP by NEMBHARD, RJ [PNT]
06:49	REBOUND (DEF) by MAWIEN, MAKOL			
06:42	GOOD! JUMPER by SLOAN, DAVID [PNT]	21-14	H 7	
06:41				FOUL by FULLER, PJ [PNT]
06:40	MISSED FT by SLOAN, DAVID			
06:39	REBOUND (OFF) by MAWIEN, MAKOL			
06:34	MISSED JUMPER by MAWIEN, MAKOL			
06:31				REBOUND (DEF) by SAMUEL, KEVIN
06:23				MISSED 3PTR by FULLER, PJ
06:19	REBOUND (DEF) by SNEED, XAVIER			
06:09	MISSED JUMPER by MAWIEN, MAKOL			
06:07				REBOUND (DEF) by FULLER, PJ
06:07	FOUL by MURPHY, MONTAVIOUS			
05:56				SUB OUT: FULLER, PJ
05:56				SUB IN: FARABELLO, FRANCISCO
05:50				FOUL by BANE, DESMOND
05:50				TURNOVER by BANE, DESMOND
05:50				SUB OUT: BANE, DESMOND
05:50				SUB IN: FULLER, PJ
05:38	MISSED LAYUP by SLOAN, DAVID			
05:38				BLOCK by SAMUEL, KEVIN

Time	VISITORS: Kansas St.	Score	Margin	HOME: TCU
05:35				REBOUND (DEF) by NEMBHARD, RJ
05:29		24-14	H 10	GOOD! 3PTR by GRAYER, JAIRE
05:29				ASSIST by FARABELLO, FRANCISCO
05:06	GOOD! LAYUP by MAWIEN, MAKOL	24-16	H 8	
05:06	ASSIST by SNEED, XAVIER			
04:52	FOUL by DIARRA, CARTIER			
04:52				SUB OUT: SAMUEL, KEVIN
04:52				SUB IN: LEDEE, JAEDON
04:31				MISSED 3PTR by GRAYER, JAIRE
04:27	REBOUND (DEF) by DIARRA, CARTIER			
04:23	MISSED LAYUP by MAWIEN, MAKOL [PNT]			
04:20				REBOUND (DEF) by NEMBHARD, RJ
04:18				TURNOVER by FARABELLO, FRANCISCO [PNT]
04:18	STEAL by SLOAN, DAVID			
04:11	MISSED LAYUP by SLOAN, DAVID			
04:07				REBOUND (DEF) by LEDEE, JAEDON
03:53				TURNOVER by NEMBHARD, RJ [PNT]
03:53	STEAL by DIARRA, CARTIER			
03:37	GOOD! JUMPER by SNEED, XAVIER	24-18	H 6	
03:17				MISSED 3PTR by GRAYER, JAIRE
03:14	REBOUND (DEF) by MAWIEN, MAKOL			
02:54				FOUL by LEDEE, JAEDON [PNT]
02:54	TIMEOUT MEDIA			
02:54	SUB OUT: MAWIEN, MAKOL			
02:54	SUB IN: STOCKARD III, LEVI			
02:54	GOOD! FT by DIARRA, CARTIER	24-19	H 5	
02:54	GOOD! FT by DIARRA, CARTIER	24-20	H 4	
02:49				TURNOVER by FULLER, PJ
02:49	STEAL by SLOAN, DAVID			
02:47	GOOD! LAYUP by SLOAN, DAVID [FB/PNT]	24-22	H 2	
02:47				FOUL by FULLER, PJ [PNT]
02:47				SUB OUT: FULLER, PJ
02:47				SUB IN: DENNIS, EDRIC
02:47	GOOD! FT by SLOAN, DAVID [FB]	24-23	H 1	
02:35				TURNOVER by NEMBHARD, RJ [PNT]
02:18				SUB OUT: LEDEE, JAEDON
02:18				SUB IN: SAMUEL, KEVIN
02:14	GOOD! by SLOAN, DAVID [PNT]	24-25	V 1	
01:44				FOUL by DENNIS, EDRIC [PNT]
01:44				TURNOVER by DENNIS, EDRIC [PNT]
01:26	GOOD! JUMPER by SNEED, XAVIER	24-27	V 3	
01:26	ASSIST by DIARRA, CARTIER			
01:23				TIMEOUT 30SEC
01:23				SUB OUT: DENNIS, EDRIC
01:23				SUB IN: BANE, DESMOND
00:54		26-27	V 1	GOOD! DUNK by SAMUEL, KEVIN
00:54				ASSIST by NEMBHARD, RJ
00:32	MISSED 3PTR by DIARRA, CARTIER			
00:28				REBOUND (DEF) by SAMUEL, KEVIN
00:04				MISSED DUNK by SAMUEL, KEVIN
00:04	BLOCK by SNEED, XAVIER			
00:04				REBOUND (OFF) by TEAM
00:01				MISSED 3PTR by GRAYER, JAIRE
00:00				REBOUND (DEADB) by TEAM

Kansas St. 27, TCU 26

Points from (This Period)	KSU	TCU
In the Paint	14	8
Off Turns	13	3
2nd Chance	4	0
Fast Break	5	2
Bench	10	6

Official Box Score
Kansas St. vs TCU
Second Half Statistics Only
February 15, 2020 at Ed and Rae Schollmaier Arena



Kansas St. 30

No.	Player	S	Pts	FG	3FG	FT	OR	DR	TR	PF	A	TO	Blk	Stl	Min
03	GORDON, DAJUAN	G	0	0-1	0-1	0-0	0	0	0	1	0	1	0	0	3
04	SLOAN, DAVID	G	4	2-5	0-0	0-0	0	1	1	0	3	1	1	1	18
14	MAWIEN, MAKOL	F	2	0-0	0-0	2-2	1	4	5	1	0	1	1	0	13
20	SNEED, XAVIER	F	11	4-7	0-3	3-8	1	0	1	2	0	0	0	0	18
23	MURPHY, MONTAVIOUS	F	3	1-2	1-1	0-0	0	1	1	0	0	0	0	0	9
00	MCGUIRL, MIKE	G	3	1-2	1-1	0-0	0	0	0	1	1	0	0	1	9
02	DIARRA, CARTIER	G	4	2-3	0-1	0-0	0	1	1	1	1	0	0	1	11
11	GORDON, ANTONIO	F	3	1-2	0-0	1-2	1	3	4	3	0	0	0	0	11
34	STOCKARD III, LEVI	F	0	0-2	0-0	0-0	0	0	0	0	0	0	0	0	6
	TEAM			0-0			1	0	1	0		0			
TOTALS			30	11-24	2-7	6-12	4	10	14	9	5	3	2	3	99

Shooting By Period

Period	FG	FG%	3FG	3FG%	FT	FT%
2nd Half	11-24	46%	2-7	29%	6-12	50%
Game	23-54	42.6%	2-12	16.7%	9-16	56.3%

Last FG Half: KSU -

TCU 42

No.	Player	S	Pts	FG	3FG	FT	OR	DR	TR	PF	A	TO	Blk	Stl	Min
01	BANE, DESMOND	G	12	4-9	4-7	0-0	0	6	6	1	7	2	2	0	19
04	FULLER, PJ	G	5	2-3	0-1	1-1	0	0	0	3	0	0	0	0	9
05	GRAY, JAIRE	G	6	2-5	1-2	1-2	2	3	5	1	1	0	0	1	16
21	SAMUEL, KEVIN	C	1	0-0	0-0	1-2	2	1	3	1	0	0	1	0	13
22	NEMBARD, RJ	G	13	4-7	3-4	2-2	0	0	0	2	2	1	0	0	20
02	DENNIS, EDRIC	G	0	0-0	0-0	0-0	0	0	0	0	0	0	0	0	0
03	FARABELLO, FRANCISCO	G	5	1-4	1-3	2-2	0	1	1	1	1	0	0	0	12
10	SMITH, DIANTE	F	0	0-0	0-0	0-0	0	0	0	0	0	0	0	0	4
23	LEDEE, JAEDON	F	0	0-0	0-0	0-0	0	1	1	0	0	0	1	0	7
	TEAM			0-0			2	0	2	0		1			
TOTALS			42	13-28	9-17	7-9	6	12	18	9	11	4	4	1	99

Shooting By Period

Period	FG	FG%	3FG	3FG%	FT	FT%
2nd Half	13-28	46%	9-17	53%	7-9	78%
Game	23-52	44.2%	15-33	45.5%	7-9	77.8%

Last FG Half: TCU -

Game Notes:

Officials: Keith Kimble, Rick Crawford, Bret Smith
 Attendance: 6288

Start Time: 10:00 PM
 Conference Game;

Score	1st	2nd	TOT
KSU	27	30	57
TCU	26	42	68

Points from (This Period)	KSU	TCU
In the Paint	8	6
Off Turns	6	3
2nd Chance	5	6
Fast Break	6	7
Bench	10	5

Official Play-By-Play
Kansas St. vs TCU
Second Half
February 15, 2020 at Ed and Rae Schollmaier Arena



Period 2

Starters:

Kansas St.: 3 GORDON,DAJUAN (G); 4 SLOAN,DAVID (G); 14 MAWIEN,MAKOL (F); 20 SNEED,XAVIER (F); 23 MURPHY,MONTAVIOUS (F);
TCU: 1 BANE,DESMOND (G); 4 FULLER,PJ (G); 5 GRAYER,JAIRE (G); 21 SAMUEL,KEVIN (C); 22 NEMBHARD,RJ (G);

Time	VISITORS: Kansas St.	Score	Margin	HOME: TCU
20:00				SUB OUT: FARABELLO, FRANCISCO
20:00				SUB IN: FULLER, PJ
20:00	SUB OUT: STOCKARD III, LEVI			
20:00	SUB IN: MAWIEN, MAKOL			
19:35		28-27	H 1	GOOD! LAYUP by FULLER, PJ
19:35				ASSIST by BANE, DESMOND
19:05	MISSED by SLOAN, DAVID			
19:03				REBOUND (DEF) by GRAYER, JAIRE
18:55		31-27	H 4	GOOD! 3PTR by NEMBHARD, RJ
18:55				ASSIST by BANE, DESMOND
18:35	MISSED 3PTR by SNEED, XAVIER			
18:33	REBOUND (OFF) by MAWIEN, MAKOL			
18:31				FOUL by BANE, DESMOND
18:31	MISSED FT by SNEED, XAVIER			
18:31	REBOUND (DEADB) by TEAM			
18:31	GOOD! FT by SNEED, XAVIER	31-28	H 3	
18:12				TURNOVER by BANE, DESMOND
18:12	STEAL by DIARRA, CARTIER			
18:06	GOOD! DUNK by DIARRA, CARTIER [FB]	31-30	H 1	
17:34				MISSED 3PTR by FULLER, PJ
17:31				REBOUND (OFF) by SAMUEL, KEVIN
17:26	FOUL by SNEED, XAVIER [PNT]			
17:07				MISSED JUMPER by NEMBHARD, RJ
17:05				REBOUND (DEADB) by TEAM
17:05				TURNOVER by TEAM
16:46	GOOD! JUMPER by DIARRA, CARTIER	31-32	V 1	
16:26		34-32	H 2	GOOD! 3PTR by NEMBHARD, RJ
16:26				ASSIST by BANE, DESMOND
15:59	MISSED LAYUP by MURPHY, MONTAVIOUS			
15:59				BLOCK by SAMUEL, KEVIN
15:55				REBOUND (DEF) by SAMUEL, KEVIN
15:45	FOUL by MAWIEN, MAKOL [PNT]			
15:45	TIMEOUT MEDIA			
15:45				SUB OUT: FULLER, PJ
15:45				SUB OUT: GRAYER, JAIRE
15:45				SUB IN: FARABELLO, FRANCISCO
15:45				SUB IN: SMITH, DIANTE
15:45	SUB OUT: DIARRA, CARTIER			
15:45	SUB IN: GORDON, DAJUAN			
15:45		35-32	H 3	GOOD! FT by SAMUEL, KEVIN
15:45				MISSED FT by SAMUEL, KEVIN
15:43	REBOUND (DEF) by MURPHY, MONTAVIOUS			
15:25				FOUL by SAMUEL, KEVIN [PNT]
15:25	GOOD! FT by SNEED, XAVIER	35-33	H 2	
15:25				SUB OUT: SAMUEL, KEVIN
15:25				SUB IN: LEDEE, JAEDON
15:25	GOOD! FT by SNEED, XAVIER	35-34	H 1	
14:55				MISSED 3PTR by FARABELLO, FRANCISCO
14:50	REBOUND (DEF) by MAWIEN, MAKOL			
14:47	FOUL by GORDON, DAJUAN			
14:47	TURNOVER by GORDON, DAJUAN			
14:47	SUB OUT: GORDON, DAJUAN			
14:47	SUB IN: MCGUIRL, MIKE			
14:27		38-34	H 4	GOOD! 3PTR by BANE, DESMOND
14:27				ASSIST by FARABELLO, FRANCISCO
14:07	GOOD! 3PTR by MURPHY, MONTAVIOUS	38-37	H 1	
14:07	ASSIST by MCGUIRL, MIKE			
13:44				MISSED 3PTR by BANE, DESMOND
13:40	REBOUND (DEF) by MAWIEN, MAKOL			
13:34	MISSED 3PTR by SNEED, XAVIER			
13:30				REBOUND (DEF) by BANE, DESMOND
13:27				MISSED LAYUP by BANE, DESMOND
13:27	BLOCK by SLOAN, DAVID			
13:27				REBOUND (OFF) by TEAM
13:27				SUB OUT: SMITH, DIANTE
13:27				SUB IN: GRAYER, JAIRE
13:27	SUB OUT: MAWIEN, MAKOL			
13:27	SUB OUT: MURPHY, MONTAVIOUS			
13:27	SUB IN: GORDON, ANTONIO			
13:27	SUB IN: STOCKARD III, LEVI			

Time	VISITORS: Kansas St.	Score	Margin	HOME: TCU
13:11				MISSED 3PTR by NEMBARD, RJ
13:09				REBOUND (OFF) by GRAYER, JAIRE
13:09	FOUL by GORDON, ANTONIO [PNT]			
13:09	SUB OUT: SNEED, XAVIER			
13:09	SUB IN: GORDON, DAJUAN			
13:02		41-37	H 4	GOOD! 3PTR by BANE, DESMOND
13:02				ASSIST by NEMBARD, RJ
12:27	GOOD! 3PTR by MCGUIRL, MIKE	41-40	H 1	
12:27	ASSIST by SLOAN, DAVID			
12:06				TURNOVER by BANE, DESMOND [PNT]
12:06	STEAL by MCGUIRL, MIKE			
11:59	MISSED LAYUP by SLOAN, DAVID [PNT]			
11:59				BLOCK by LEDEE, JAEDON
11:55				REBOUND (DEF) by BANE, DESMOND
11:54		43-40	H 3	GOOD! DUNK by NEMBARD, RJ [FB]
11:54				ASSIST by BANE, DESMOND
11:29	MISSED 3PTR by GORDON, DAJUAN			
11:26				REBOUND (DEF) by BANE, DESMOND
11:20		46-40	H 6	GOOD! 3PTR by BANE, DESMOND
11:17	TIMEOUT 30SEC			
11:17	TIMEOUT MEDIA			
11:17				SUB OUT: LEDEE, JAEDON
11:17				SUB IN: SAMUEL, KEVIN
11:17	SUB OUT: GORDON, DAJUAN			
11:17	SUB IN: SNEED, XAVIER			
10:55	MISSED by STOCKARD III, LEVI [PNT]			
10:52	REBOUND (OFF) by GORDON, ANTONIO			
10:51	GOOD! LAYUP by GORDON, ANTONIO [PNT]	46-42	H 4	
10:20				TURNOVER by NEMBARD, RJ
10:20	STEAL by SLOAN, DAVID			
10:16	GOOD! LAYUP by SLOAN, DAVID [FB/PNT]	46-44	H 2	
09:57				MISSED 3PTR by FARABELLO, FRANCISCO
09:54				REBOUND (OFF) by GRAYER, JAIRE
09:54	TIMEOUT MEDIA			
09:32				MISSED LAYUP by NEMBARD, RJ [PNT]
09:30	REBOUND (DEF) by GORDON, ANTONIO			
09:12	GOOD! JUMPER by SNEED, XAVIER	46-46	T	
09:12	ASSIST by SLOAN, DAVID			
09:12				FOUL by FARABELLO, FRANCISCO
09:12	MISSED FT by SNEED, XAVIER			
09:11	REBOUND (OFF) by TEAM			
09:10	GOOD! JUMPER by SNEED, XAVIER	46-48	V 2	
09:10	ASSIST by SLOAN, DAVID			
08:54		48-48	T	GOOD! JUMPER by GRAYER, JAIRE
08:54				ASSIST by BANE, DESMOND
08:37				FOUL by NEMBARD, RJ
08:36				SUB OUT: BANE, DESMOND
08:36				SUB IN: FULLER, PJ
08:21	GOOD! JUMPER by SNEED, XAVIER	48-50	V 2	
08:09				TIMEOUT 30SEC
08:09	TIMEOUT MEDIA			
08:09				SUB OUT: FARABELLO, FRANCISCO
08:09				SUB IN: BANE, DESMOND
08:02		51-50	H 1	GOOD! 3PTR by NEMBARD, RJ
08:02				ASSIST by BANE, DESMOND
07:40	MISSED JUMPER by STOCKARD III, LEVI			
07:38				REBOUND (DEF) by BANE, DESMOND
07:38	FOUL by MCGUIRL, MIKE			
07:11				MISSED JUMPER by BANE, DESMOND
07:06	REBOUND (DEF) by GORDON, ANTONIO			
06:52				SUB OUT: GRAYER, JAIRE
06:52				SUB IN: SMITH, DIANTE
06:52	SUB OUT: STOCKARD III, LEVI			
06:52	SUB IN: MAWIEN, MAKOL			
06:52	SUB OUT: SLOAN, DAVID			
06:52	SUB IN: DIARRA, CARTIER			
06:47	GOOD! JUMPER by SNEED, XAVIER	51-52	V 1	
06:47	ASSIST by DIARRA, CARTIER			
06:30		54-52	H 2	GOOD! 3PTR by BANE, DESMOND
06:15				FOUL by FULLER, PJ
06:14	MISSED LAYUP by MCGUIRL, MIKE			
06:14				BLOCK by BANE, DESMOND
06:10				REBOUND (DEF) by BANE, DESMOND
05:49		56-52	H 4	GOOD! LAYUP by FULLER, PJ [PNT]
05:49				ASSIST by NEMBARD, RJ
05:49	FOUL by GORDON, ANTONIO [PNT]			
05:49	SUB OUT: MCGUIRL, MIKE			
05:49	SUB IN: SLOAN, DAVID			
05:49		57-52	H 5	GOOD! FT by FULLER, PJ
05:21	MISSED 3PTR by SNEED, XAVIER			

Time	VISITORS: Kansas St.	Score	Margin	HOME: TCU
05:19				REBOUND (DEF) by BANE, DESMOND
05:19				SUB OUT: SMITH, DIANTE
05:19				SUB IN: GRAYER, JAIRE
05:19	SUB OUT: GORDON, ANTONIO			
05:19	SUB IN: MURPHY, MONTAVIOUS			
04:54				MISSED LAYUP by GRAYER, JAIRE
04:54	BLOCK by MAWIEN, MAKOL			
04:51				REBOUND (OFF) by SAMUEL, KEVIN
04:49		60-52	H 8	GOOD! 3PTR by GRAYER, JAIRE
04:49				ASSIST by BANE, DESMOND
04:22				FOUL by FULLER, PJ
04:22	MISSED FT by SNEED, XAVIER			
04:22	REBOUND (DEADB) by TEAM			
04:22				SUB OUT: FULLER, PJ
04:22				SUB IN: FARABELLO, FRANCISCO
04:22	MISSED FT by SNEED, XAVIER			
04:20				REBOUND (DEF) by GRAYER, JAIRE
04:17	FOUL by SNEED, XAVIER			
04:17	SUB OUT: MURPHY, MONTAVIOUS			
04:17	SUB IN: GORDON, ANTONIO			
04:17		61-52	H 9	GOOD! FT by GRAYER, JAIRE [FB]
04:17				MISSED FT by GRAYER, JAIRE [FB]
04:16	REBOUND (DEF) by GORDON, ANTONIO			
04:06	TURNOVER by SLOAN, DAVID [PNT]			
03:37				MISSED 3PTR by BANE, DESMOND
03:33	REBOUND (DEF) by MAWIEN, MAKOL			
03:26				FOUL by NEMBARD, RJ
03:26	TIMEOUT MEDIA			
03:26				SUB OUT: SAMUEL, KEVIN
03:26				SUB IN: LEDEE, JAEDON
03:26	MISSED FT by GORDON, ANTONIO			
03:26	REBOUND (DEADB) by TEAM			
03:26	GOOD! FT by GORDON, ANTONIO	61-53	H 8	
02:57				MISSED LAYUP by GRAYER, JAIRE [PNT]
02:56				REBOUND (OFF) by TEAM
02:48				MISSED LAYUP by FARABELLO, FRANCISCO [PNT]
02:45	REBOUND (DEF) by MAWIEN, MAKOL			
02:35	TURNOVER by MAWIEN, MAKOL			
02:35				STEAL by GRAYER, JAIRE
02:10				MISSED 3PTR by GRAYER, JAIRE
02:06	REBOUND (DEF) by DIARRA, CARTIER			
02:04	MISSED LAYUP by GORDON, ANTONIO			
02:04				BLOCK by BANE, DESMOND
02:00				REBOUND (DEF) by GRAYER, JAIRE
01:57	FOUL by GORDON, ANTONIO			
01:57	SUB OUT: GORDON, ANTONIO			
01:57	SUB IN: MURPHY, MONTAVIOUS			
01:57		62-53	H 9	GOOD! FT by FARABELLO, FRANCISCO [FB]
01:57		63-53	H 10	GOOD! FT by FARABELLO, FRANCISCO [FB]
01:57				SUB OUT: LEDEE, JAEDON
01:57				SUB IN: SAMUEL, KEVIN
01:47	MISSED JUMPER by SLOAN, DAVID			
01:44				REBOUND (DEF) by FARABELLO, FRANCISCO
01:18		66-53	H 13	GOOD! 3PTR by FARABELLO, FRANCISCO
01:18				ASSIST by GRAYER, JAIRE
01:05	MISSED 3PTR by DIARRA, CARTIER			
01:01	REBOUND (OFF) by SNEED, XAVIER			
01:01				FOUL by GRAYER, JAIRE
01:01				SUB OUT: SAMUEL, KEVIN
01:01				SUB IN: LEDEE, JAEDON
01:01	MISSED FT by SNEED, XAVIER			
00:57				REBOUND (DEF) by LEDEE, JAEDON
00:35				MISSED 3PTR by BANE, DESMOND
00:31	REBOUND (DEF) by SLOAN, DAVID			
00:29	GOOD! LAYUP by SLOAN, DAVID [FB]	66-55	H 11	
00:28	TIMEOUT 30SEC			
00:28	SUB OUT: SLOAN, DAVID			
00:28	SUB OUT: MAWIEN, MAKOL			
00:28	SUB IN: GORDON, DAJUAN			
00:28	SUB IN: GORDON, ANTONIO			
00:22	FOUL by DIARRA, CARTIER			
00:22	SUB OUT: GORDON, ANTONIO			
00:22	SUB IN: MAWIEN, MAKOL			
00:22		67-55	H 12	GOOD! FT by NEMBARD, RJ [FB]
00:22		68-55	H 13	GOOD! FT by NEMBARD, RJ [FB]
00:22				SUB OUT: FARABELLO, FRANCISCO
00:22				SUB IN: FULLER, PJ
00:10				FOUL by FULLER, PJ [PNT]
00:10				SUB OUT: FULLER, PJ
00:10				SUB IN: FARABELLO, FRANCISCO

Time	VISITORS: Kansas St.	Score	Margin	HOME: TCU
00:10	GOOD! FT by MAWIEN, MAKOL	68-56	H 12	
00:10	GOOD! FT by MAWIEN, MAKOL	68-57	H 11	

Kansas St. 57, TCU 68

Points from (This Period)	KSU	TCU
In the Paint	8	6
Off Turns	6	3
2nd Chance	5	6
Fast Break	6	7
Bench	10	5

Official Scoring/Possession Reference Chart
Kansas St. vs TCU
Period 1
February 15, 2020 at Ed and Rae Schollmaier Arena



Period 1

Starters:

Kansas St.: 3 GORDON,DAJUAN (G); 4 SLOAN,DAVID (G); 14 MAWIEN,MAKOL (F); 20 SNEED,XAVIER (F); 23 MURPHY,MONTAVIOUS (F);
TCU: 1 BANE,DESMOND (G); 4 FULLER,PJ (G); 5 GRAYER,JAIRE (G); 21 SAMUEL,KEVIN (C); 22 NEMBHARD,RJ (G);

Time	VISITORS: Kansas St.	Score	Margin	HOME: TCU
19:38		2-0	H 2	GOOD! LAYUP by SAMUEL, KEVIN
19:15	GOOD! JUMPER by MURPHY, MONTAVIOUS	2-2	T	
18:45		4-2	H 2	GOOD! LAYUP by BANE, DESMOND [PNT]
16:31		7-2	H 5	GOOD! 3PTR by BANE, DESMOND
15:00		9-2	H 7	GOOD! LAYUP by NEMBHARD, RJ [FB]
14:36	GOOD! LAYUP by MCGUIRL, MIKE	9-4	H 5	
14:10		12-4	H 8	GOOD! 3PTR by SMITH, DIANTE
12:17	GOOD! LAYUP by DIARRA, CARTIER [PNT]	12-6	H 6	
11:10	GOOD! JUMPER by DIARRA, CARTIER	12-8	H 4	
10:45		15-8	H 7	GOOD! 3PTR by GRAYER, JAIRE
09:55	GOOD! DUNK by GORDON, ANTONIO [FB]	15-10	H 5	
09:20	GOOD! JUMPER by MAWIEN, MAKOL	15-12	H 3	
08:47		18-12	H 6	GOOD! 3PTR by FARABELLO, FRANCISCO
07:34		21-12	H 9	GOOD! 3PTR by GRAYER, JAIRE
06:42	GOOD! JUMPER by SLOAN, DAVID [PNT]	21-14	H 7	
05:29		24-14	H 10	GOOD! 3PTR by GRAYER, JAIRE
05:06	GOOD! LAYUP by MAWIEN, MAKOL	24-16	H 8	
03:37	GOOD! JUMPER by SNEED, XAVIER	24-18	H 6	
02:54	GOOD! FT by DIARRA, CARTIER	24-19	H 5	
02:54	GOOD! FT by DIARRA, CARTIER	24-20	H 4	
02:47	GOOD! LAYUP by SLOAN, DAVID [FB/PNT]	24-22	H 2	
02:47	GOOD! FT by SLOAN, DAVID [FB]	24-23	H 1	
02:14	GOOD! by SLOAN, DAVID [PNT]	24-25	V 1	
01:26	GOOD! JUMPER by SNEED, XAVIER	24-27	V 3	
00:54		26-27	V 1	GOOD! DUNK by SAMUEL, KEVIN

Kansas St. 27, TCU 26

Official Scoring/Possession Reference Chart
Kansas St. vs TCU
Period 2
February 15, 2020 at Ed and Rae Schollmaier Arena



Period 2

Starters:

Kansas St.: 3 GORDON, DAJUAN (G); 4 SLOAN, DAVID (G); 14 MAWIEN, MAKOL (F); 20 SNEED, XAVIER (F); 23 MURPHY, MONTAVIOUS (F);
TCU: 1 BANE, DESMOND (G); 4 FULLER, PJ (G); 5 GRAYER, JAIRE (G); 21 SAMUEL, KEVIN (C); 22 NEMBHARD, RJ (G);

Time	VISITORS: Kansas St.	Score	Margin	HOME: TCU
19:35		28-27	H 1	GOOD! LAYUP by FULLER, PJ
18:55		31-27	H 4	GOOD! 3PTR by NEMBHARD, RJ
18:31	GOOD! FT by SNEED, XAVIER	31-28	H 3	
18:06	GOOD! DUNK by DIARRA, CARTIER [FB]	31-30	H 1	
16:46	GOOD! JUMPER by DIARRA, CARTIER	31-32	V 1	
16:26		34-32	H 2	GOOD! 3PTR by NEMBHARD, RJ
15:45		35-32	H 3	GOOD! FT by SAMUEL, KEVIN
15:25	GOOD! FT by SNEED, XAVIER	35-33	H 2	
15:25	GOOD! FT by SNEED, XAVIER	35-34	H 1	
14:27		38-34	H 4	GOOD! 3PTR by BANE, DESMOND
14:07	GOOD! 3PTR by MURPHY, MONTAVIOUS	38-37	H 1	
13:02		41-37	H 4	GOOD! 3PTR by BANE, DESMOND
12:27	GOOD! 3PTR by MCGUIRL, MIKE	41-40	H 1	
11:54		43-40	H 3	GOOD! DUNK by NEMBHARD, RJ [FB]
11:20		46-40	H 6	GOOD! 3PTR by BANE, DESMOND
10:51	GOOD! LAYUP by GORDON, ANTONIO [PNT]	46-42	H 4	
10:16	GOOD! LAYUP by SLOAN, DAVID [FB/PNT]	46-44	H 2	
09:12	GOOD! JUMPER by SNEED, XAVIER	46-46	T	
09:10	GOOD! JUMPER by SNEED, XAVIER	46-48	V 2	
08:54		48-48	T	GOOD! JUMPER by GRAYER, JAIRE
08:21	GOOD! JUMPER by SNEED, XAVIER	48-50	V 2	
08:02		51-50	H 1	GOOD! 3PTR by NEMBHARD, RJ
06:47	GOOD! JUMPER by SNEED, XAVIER	51-52	V 1	
06:30		54-52	H 2	GOOD! 3PTR by BANE, DESMOND
05:49		56-52	H 4	GOOD! LAYUP by FULLER, PJ [PNT]
05:49		57-52	H 5	GOOD! FT by FULLER, PJ
04:49		60-52	H 8	GOOD! 3PTR by GRAYER, JAIRE
04:17		61-52	H 9	GOOD! FT by GRAYER, JAIRE [FB]
03:26	GOOD! FT by GORDON, ANTONIO	61-53	H 8	
01:57		62-53	H 9	GOOD! FT by FARABELLO, FRANCISCO [FB]
01:57		63-53	H 10	GOOD! FT by FARABELLO, FRANCISCO [FB]
01:18		66-53	H 13	GOOD! 3PTR by FARABELLO, FRANCISCO
00:29	GOOD! LAYUP by SLOAN, DAVID [FB]	66-55	H 11	
00:22		67-55	H 12	GOOD! FT by NEMBHARD, RJ [FB]
00:22		68-55	H 13	GOOD! FT by NEMBHARD, RJ [FB]
00:10	GOOD! FT by MAWIEN, MAKOL	68-56	H 12	
00:10	GOOD! FT by MAWIEN, MAKOL	68-57	H 11	

Kansas St. 57, TCU 68

Official Substitutions Log
Kansas St. vs TCU
Period 1
February 15, 2020 at Ed and Rae Schollmaier Arena



VISITORS: Kansas St.	Time	Score	HOME: TCU
3 GORDON,DAJUAN			1 BANE,DESMOND
4 SLOAN,DAVID			4 FULLER,PJ
14 MAWIEN,MAKOL			5 GRAYER,JAIRE
20 SNEED,XAVIER			21 SAMUEL,KEVIN
23 MURPHY,MONTAVIOUS			22 NEMBHARD,RJ
	17:24	2-4	SUB OUT: SAMUEL,KEVIN
	17:24		SUB IN: LEDEE,JAEDON
	14:57	2-9	SUB OUT: FULLER,PJ
	14:57		SUB OUT: GRAYER,JAIRE
	14:57		SUB IN: FARABELLO,FRANCISCO
	14:57		SUB IN: SMITH,DIANTE
SUB OUT: 3 GORDON,DAJUAN	14:57		
SUB OUT: 4 SLOAN,DAVID	14:57		
SUB OUT: 14 MAWIEN,MAKOL	14:57		
SUB IN: 00 MCGUIRL,MIKE	14:57		
SUB IN: 2 DIARRA,CARTIER	14:57		
SUB IN: 34 STOCKARD III,LEVI	14:57		
SUB OUT: 23 MURPHY,MONTAVIOUS	13:46	4-12	
SUB IN: 11 GORDON,ANTONIO	13:46		
	13:16	4-12	SUB OUT: NEMBHARD,RJ
	13:16		SUB IN: DENNIS,EDRIC
SUB OUT: 20 SNEED,XAVIER	12:43	4-12	
SUB IN: 3 GORDON,DAJUAN	12:43		
	11:58	6-12	SUB OUT: SMITH,DIANTE
	11:58		SUB OUT: LEDEE,JAEDON
	11:58		SUB IN: GRAYER,JAIRE
	11:58		SUB IN: SAMUEL,KEVIN
	09:53	10-15	SUB OUT: DENNIS,EDRIC
	09:53		SUB OUT: FARABELLO,FRANCISCO
	09:53		SUB IN: FULLER,PJ
	09:53		SUB IN: NEMBHARD,RJ
SUB OUT: 34 STOCKARD III,LEVI	09:53		
SUB IN: 14 MAWIEN,MAKOL	09:53		
	09:35	10-15	SUB OUT: BANE,DESMOND
	09:35		SUB IN: FARABELLO,FRANCISCO
	07:59	12-18	SUB OUT: FARABELLO,FRANCISCO
	07:59		SUB IN: DENNIS,EDRIC
SUB OUT: 00 MCGUIRL,MIKE	07:59		
SUB IN: 20 SNEED,XAVIER	07:59		
	07:59		SUB OUT: DENNIS,EDRIC
	07:59		SUB IN: BANE,DESMOND
SUB OUT: 3 GORDON,DAJUAN	07:03	12-21	
SUB OUT: 11 GORDON,ANTONIO	07:03		
SUB IN: 4 SLOAN,DAVID	07:03		
SUB IN: 23 MURPHY,MONTAVIOUS	07:03		
	05:56	14-21	SUB OUT: FULLER,PJ
	05:56		SUB IN: FARABELLO,FRANCISCO
	05:50	14-21	SUB OUT: BANE,DESMOND
	05:50		SUB IN: FULLER,PJ
	04:52	16-24	SUB OUT: SAMUEL,KEVIN
	04:52		SUB IN: LEDEE,JAEDON
SUB OUT: 14 MAWIEN,MAKOL	02:54	18-24	
SUB IN: 34 STOCKARD III,LEVI	02:54		
	02:47	22-24	SUB OUT: FULLER,PJ
	02:47		SUB IN: DENNIS,EDRIC
	02:18	23-24	SUB OUT: LEDEE,JAEDON
	02:18		SUB IN: SAMUEL,KEVIN
	01:23	27-24	SUB OUT: DENNIS,EDRIC
	01:23		SUB IN: BANE,DESMOND

Kansas St. 27, TCU 26

Official Substitutions Log
Kansas St. vs TCU
Period 2
February 15, 2020 at Ed and Rae Schollmaier Arena



VISITORS: Kansas St.	Time	Score	HOME: TCU
3 GORDON,DAJUAN			1 BANE,DESMOND
4 SLOAN,DAVID			4 FULLER,PJ
14 MAWIEN,MAKOL			5 GRAYER,JAIRE
20 SNEED,XAVIER			21 SAMUEL,KEVIN
23 MURPHY,MONTAVIOUS			22 NEMBHARD,RJ
	20:00	-	SUB OUT: FARABELLO,FRANCISCO
	20:00		SUB IN: FULLER,PJ
SUB OUT: 34 STOCKARD III,LEVI	20:00		
SUB IN: 14 MAWIEN,MAKOL	20:00		
	15:45	32-34	SUB OUT: FULLER,PJ
	15:45		SUB OUT: GRAYER,JAIRE
	15:45		SUB IN: FARABELLO,FRANCISCO
	15:45		SUB IN: SMITH,DIANTE
SUB OUT: 2 DIARRA,CARTIER	15:45		
SUB IN: 3 GORDON,DAJUAN	15:45		
	15:25	33-35	SUB OUT: SAMUEL,KEVIN
	15:25		SUB IN: LEDEE,JAEDON
SUB OUT: 3 GORDON,DAJUAN	14:47	34-35	
SUB IN: 00 MCGUIRL,MIKE	14:47		
	13:27	37-38	SUB OUT: SMITH,DIANTE
	13:27		SUB IN: GRAYER,JAIRE
SUB OUT: 14 MAWIEN,MAKOL	13:27		
SUB OUT: 23 MURPHY,MONTAVIOUS	13:27		
SUB IN: 11 GORDON,ANTONIO	13:27		
SUB IN: 34 STOCKARD III,LEVI	13:27		
SUB OUT: 20 SNEED,XAVIER	13:09	37-38	
SUB IN: 3 GORDON,DAJUAN	13:09		
	11:17	40-46	SUB OUT: LEDEE,JAEDON
	11:17		SUB IN: SAMUEL,KEVIN
SUB OUT: 3 GORDON,DAJUAN	11:17		
SUB IN: 20 SNEED,XAVIER	11:17		
	08:36	48-48	SUB OUT: BANE,DESMOND
	08:36		SUB IN: FULLER,PJ
	08:09	50-48	SUB OUT: FARABELLO,FRANCISCO
	08:09		SUB IN: BANE,DESMOND
	06:52	50-51	SUB OUT: GRAYER,JAIRE
	06:52		SUB IN: SMITH,DIANTE
SUB OUT: 34 STOCKARD III,LEVI	06:52		
SUB IN: 14 MAWIEN,MAKOL	06:52		
SUB OUT: 4 SLOAN,DAVID	06:52		
SUB IN: 2 DIARRA,CARTIER	06:52		
SUB OUT: 00 MCGUIRL,MIKE	05:49	52-56	
SUB IN: 4 SLOAN,DAVID	05:49		
	05:19	52-57	SUB OUT: SMITH,DIANTE
	05:19		SUB IN: GRAYER,JAIRE
SUB OUT: 11 GORDON,ANTONIO	05:19		
SUB IN: 23 MURPHY,MONTAVIOUS	05:19		
	04:22	52-60	SUB OUT: FULLER,PJ
	04:22		SUB IN: FARABELLO,FRANCISCO
SUB OUT: 23 MURPHY,MONTAVIOUS	04:17	52-60	
SUB IN: 11 GORDON,ANTONIO	04:17		
	03:26	52-61	SUB OUT: SAMUEL,KEVIN
	03:26		SUB IN: LEDEE,JAEDON
SUB OUT: 11 GORDON,ANTONIO	01:57	53-61	
SUB IN: 23 MURPHY,MONTAVIOUS	01:57		
	01:57		SUB OUT: LEDEE,JAEDON
	01:57		SUB IN: SAMUEL,KEVIN
	01:01	53-66	SUB OUT: SAMUEL,KEVIN
	01:01		SUB IN: LEDEE,JAEDON
SUB OUT: 4 SLOAN,DAVID	00:28	55-66	
SUB OUT: 14 MAWIEN,MAKOL	00:28		
SUB IN: 3 GORDON,DAJUAN	00:28		
SUB IN: 11 GORDON,ANTONIO	00:28		
SUB OUT: 11 GORDON,ANTONIO	00:22	55-66	
SUB IN: 14 MAWIEN,MAKOL	00:22		
	00:22		SUB OUT: FARABELLO,FRANCISCO
	00:22		SUB IN: FULLER,PJ
	00:10	55-68	SUB OUT: FULLER,PJ
	00:10		SUB IN: FARABELLO,FRANCISCO

Kansas St. 57, TCU 68

Official Shot Chart
Kansas St. vs TCU
PERIOD 1 Shots
 February 15, 2020 at Ed and Rae Schollmaier Arena

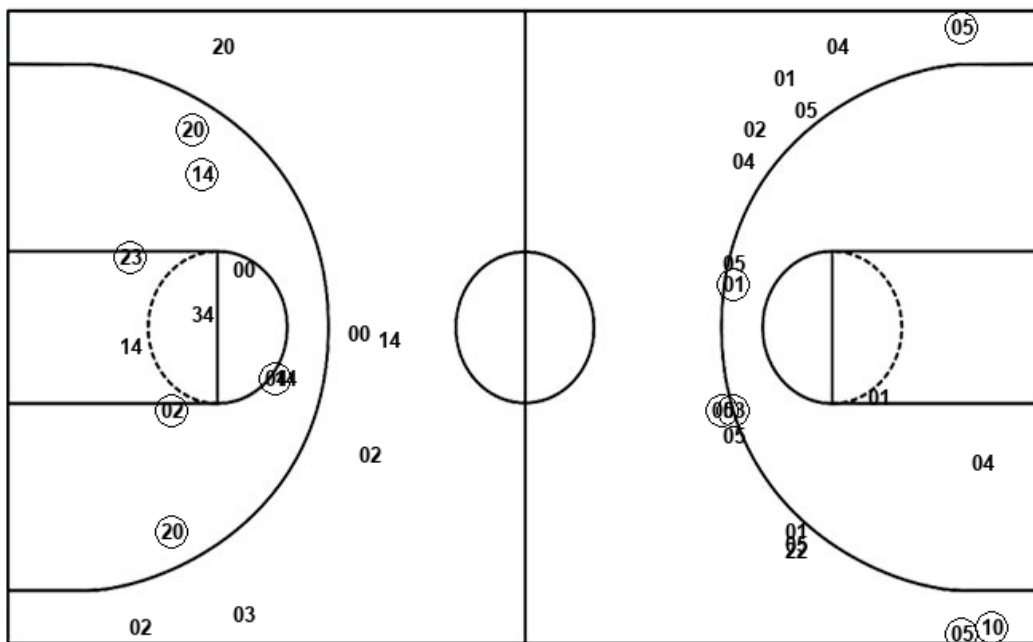


TCU

Kansas St.

Layups
 (21) (01) (22) 22

Dunks
 (21) 21



Layups
 20 04 (00) 20 (02)
 00 34 04 (14) 14
 04 (04)

Dunks
 (11)

TCU : Period 1	Made	Att	Pct
Layups	3	4	75.0
Dunks	1	2	50.0
2PT Field Goals	4	8	50.0
3PT Field Goals	6	16	37.5
Total Field Goals	10	24	41.7

KSU : Period 1	Made	Att	Pct
Layups	4	12	33.3
Dunks	1	1	100.0
2PT Field Goals	12	25	48.0
3PT Field Goals	0	5	00.0
Total Field Goals	12	30	40.0

Official Shot Chart
Kansas St. vs TCU
PERIOD 2 Shots
 February 15, 2020 at Ed and Rae Schollmaier Arena

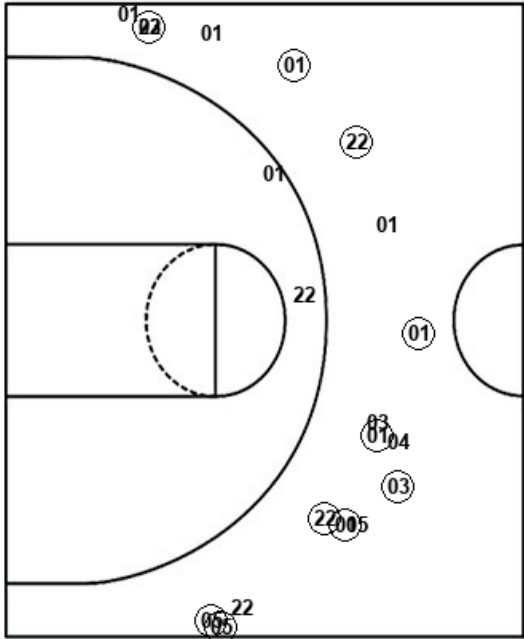


TCU

Kansas St.

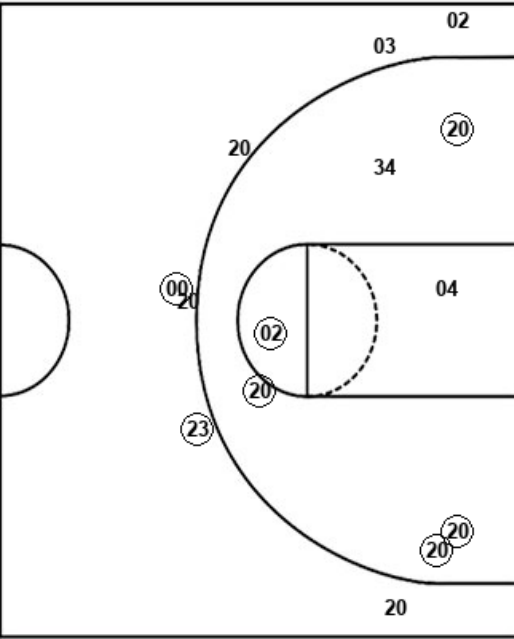
Layups
 (04) 01 22 (04) 05
 05 03

Dunks
 (22)



Layups
 23 04 (11) (04) 00
 11 (04)

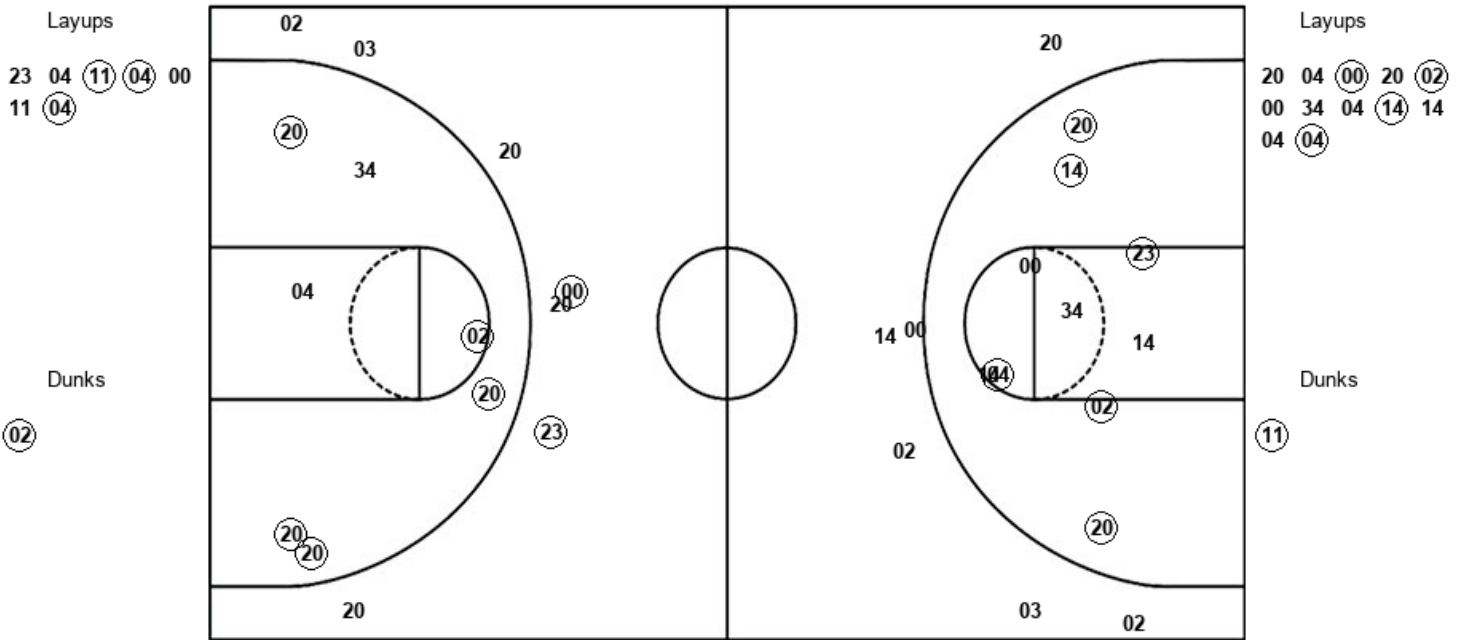
Dunks
 (02)



TCU : Period 2	Made	Att	Pct
Layups	2	7	28.6
Dunks	1	1	100.0
2PT Field Goals	4	11	36.4
3PT Field Goals	9	17	52.9
Total Field Goals	13	28	46.4

KSU : Period 2	Made	Att	Pct
Layups	3	7	42.9
Dunks	1	1	100.0
2PT Field Goals	9	17	52.9
3PT Field Goals	2	7	28.6
Total Field Goals	11	24	45.8

Official Shot Chart
Kansas St. vs TCU
Kansas St. Team Shots
February 15, 2020 at Ed and Rae Schollmaier Arena



KSU : Period 1	Made	Att	Pct
Layups	4	12	33.3
Dunks	1	1	100.0
2PT Field Goals	12	25	48.0
3PT Field Goals	0	5	00.0
Total Field Goals	12	30	40.0

KSU : Period 2	Made	Att	Pct
Layups	3	7	42.9
Dunks	1	1	100.0
2PT Field Goals	9	17	52.9
3PT Field Goals	2	7	28.6
Total Field Goals	11	24	45.8

